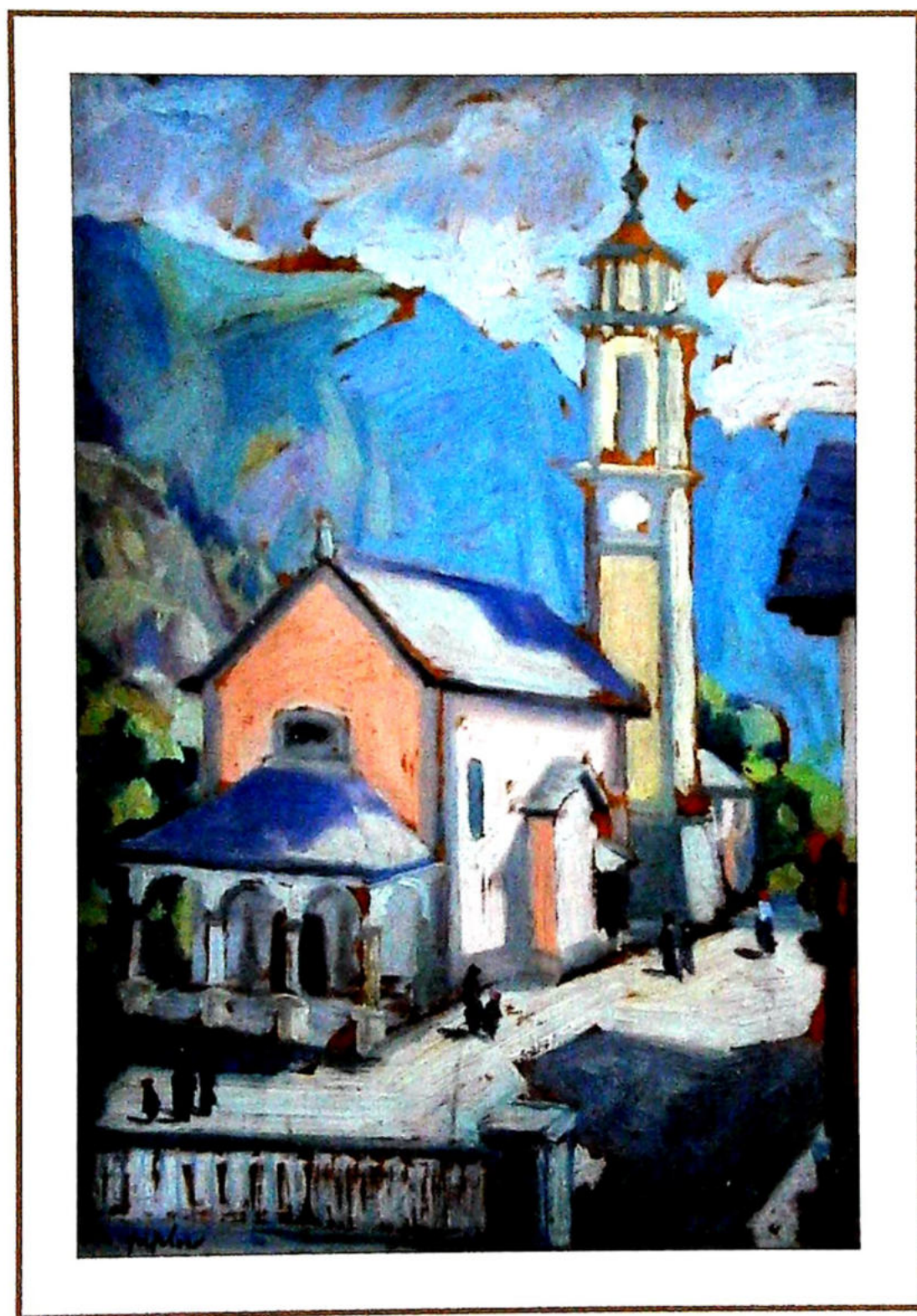


EVENING AUCTION OF FINE ART



Wednesday 5th February 2014 at 7pm

GOLDING YOUNG & MAWER ♦ 1864
CHARTERED AUCTIONEERS & VALUERS ♦ ARTS & ANTIQUES SURVEYORS

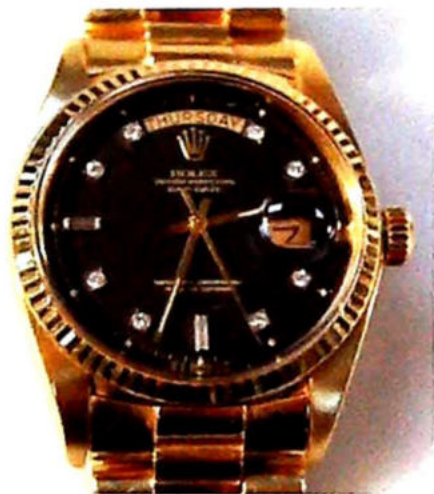
FINAL CALL FOR ENTRIES



Sold for £8750

Bourne
Wednesday 19th February

Automobilia and toys
19th March



Sold for £4000

Lincoln
Wednesday 26th February



Sold for £4400

Grantham
Wednesday 5th March

Asian Art
12th March

GOLDING YOUNG & MAWER 1864

CHARTERED AUCTIONEERS & VALUERS ♦ ARTS & ANTIQUES SURVEYORS

The Bourne Auction Rooms | Spalding Road | Bourne | Lincolnshire | PE10 9LE
T: +44 (0) 1778 422686 | E: bourne@goldingyoung.com | F: +44 (0) 1778 425726

The Grantham Auction Rooms | Old Wharf Road | Grantham | Lincolnshire | NG31 7AA
T: +44 (0) 1476 565118 | E: grantham@goldingyoung.com | F: +44 (0) 1476 561475



WWW.GOLDINGYOUNG.COM





Lot 102

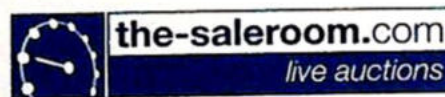
Evening Auction of
FINE ART

Wednesday 5th February 2014 at 7pm at
The Lincoln Auction Rooms

Viewing: Sunday 2nd February 2pm-5pm
Tuesday 4th February 10am-4pm
& Saleday 2pm-7pm

Catalogues £10

Bid online or simply watch the sale live at



All Enquiries to William Gregory MRICS

Front Cover image: Lot 5

GOLDING YOUNG & MAWER 1864
CHARTERED AUCTIONEERS & VALUERS ♦ ARTS & ANTIQUES SURVEYORS

The Lincoln Auction Rooms | Dunston House | Portland Street | Lincoln | Lincolnshire | LN5 7NN
T: +44 (0) 1522 524984 | E: lincoln@goldingyoung.com | F: +44 (0) 1522 535600



WWW.GOLDINGYOUNG.COM



IMPORTANT INFORMATION FOR BUYERS

1. **Introduction:** The following informative notes are intended to assist Buyers, particularly those inexperienced or new to our salerooms. All sales are conducted on our printed 'Conditions of sale' which are readily available for inspection and normally accompany catalogues. Our staff will be happy to help you if there is anything you do not fully understand.
2. **Agency:** As auctioneers we usually contract as agents for the seller whose identity, for reasons of confidentiality, is not normally disclosed. Accordingly, if you buy your primary contract is with the seller.
3. **Estimates:** Estimates are designed to help buyers gauge what sort of sum might be involved for the purchase of a particular lot. The lower estimate may represent the reserve price and certainly will not be below it. Estimates do not include the buyer's premium or VAT (where chargeable). Estimates are prepared some time before the sale and may be altered by announcement before the sale. They are in no sense definitive.
4. **Buyers premium:** The 'Conditions of sale' oblige buyers to pay a buyer's premium at 17.5% on the hammer price of each lot purchased with a minimum of £1 per lot. In the case of lots purchased 'Live On-line' or via www.the-saleroom.com or www.i-bidder.com this will be charged at 22.5% on the hammer price. In addition, VAT is payable on this premium (see below).
5. **VAT:** An asterisk (*) indicates that VAT is payable by the purchaser at the standard rate imposed by current UK law on the hammer price as well as being an element in the buyer's premium, lots are noted in the saleroom by a red dot on the lot number. This imposition of VAT is likely to be because the seller is registered for VAT within the European Union and is not operating the Dealers Margin Scheme or because VAT is due on importation into the UK. The double symbol (**) indicates that the lot has been imported from outside the European Union and the present position is that these lots are liable to a reduced rate of VAT on the gross lot price (i.e. both the hammer price and the buyer's premium). Lots which appear without either of the above symbols indicate that no VAT is payable on the hammer price. This is because such lots are sold using the Auctioneers' Margin Scheme and it should be noted that the VAT included within the premium is not recoverable as input tax. (VAT rates are changing with frequency, please check with HMRC. VAT will be charged as set by Government at the time of sale.)
6. **Condition and description of lots.** We are primarily, agents for the seller. We are dependent on information provided by the seller and whilst we may inspect lots and act reasonably in taking a general view about them we are normally unable to carry out a detailed or any examination of lots in order to ascertain their condition in the way in which it would be wise for a buyer to do. Intending buyers have ample opportunity for inspection of goods and, therefore, accept responsibility for inspecting and investigating lots in which they may be interested. Please note carefully the exclusion of liability for the condition of lots contained in the 'Conditions of sale'. Neither the seller nor we, as the auctioneers, accept any responsibility for their condition. In particular, mechanical objects of any age are not guaranteed to be in working order.

However, in so far as we have examined the goods and make a representation about their condition, we shall be liable for any defect which that examination ought to have revealed to the auctioneer but which would not have been revealed to the buyer had the buyer examined the goods. Additionally, in specified circumstances lots misdescribed because they are 'deliberate forgeries' may be returned and repayment made. There is a 21 day time limit from the date of sale, not date of collection or receipt. (The expression 'deliberate forgery' is defined in our 'Conditions of sale').
7. **Electrical goods:** Items are tested by a qualified electrician for SAFETY ONLY. An item that passes the PAT safety test may not work. Conversely, an item that fails the test may work with just minor repair. 'Working Order' and 'Safe' are two completely different concepts. The only thing you may take for granted is that the item will be safe at the point of sale. Items that have failed will have their cabling cut to source, labelled and sold 'For Trade Only'. To use the object you will have to change it radically from what was sold to you. Therefore, the Auctioneers cannot be held responsible after the point of sale. Those items sold genuinely as 'antiques or collectables' will not have been tested and if bought for use must be checked over for compliance with safety regulations by a qualified electrician before use. This is an express condition.
8. **Export of goods:** Buyers intending to export goods should ascertain (a) whether an export licence is required and (b) whether there is any specific prohibition on importing goods of that character because, e.g. they may contain prohibited materials such as ivory. Ask us if you need help.
9. **Bidding in person:** Some form of identification with proof of address will be required if you are unknown to us. Bidders may be required to register before the sale commences and lots will be invoiced to the name and address on the registration form. Account transfers will not be recognised or facilitated under any circumstances.
10. **Absentee bidding:** Commission bids may be left with the auctioneers indicating the maximum amount to be bid excluding buyers' premium. They will be executed as cheaply as possible having regard to the reserve (if any) and competing bids. If two buyers submit identical commission bids, the auctioneers may prefer the first bid received. If there are genuine reasons why you are unable to leave a Commission Bid and you wish to bid by telephone we may accommodate on lots where your opening bid will be £500 or above. There are inherent dangers with this practice; therefore all arrangements shall be entirely at the bidder's risk. Absentee bid instructions must be received by telephone, fax or email 12 hours prior to the sale.
11. **Live Internet Bidding:** In completing the bidder registration on www.the-saleroom.com and providing your credit card details and unless alternative arrangements are agreed with Golding Young Limited, you
 - (i) authorise Golding Young Limited, if they so wish, to charge the credit card given in part or full payment, including all fees, for items successfully purchased in the sale via www.the-saleroom.com or www.i-bidder.com, and
 - (ii) confirm that you are authorised to provide these credit card details to Golding Young Limited through www.the-saleroom.com or www.i-bidder.com.
12. **Methods of payment:** Accounts are due for settlement SALEDAY.

The following methods of payment are acceptable.
There will be NO EXCEPTIONS to this policy.
To avoid undue embarrassment for yourself or our staff, please do not ask for preferential treatment.

 - i. **Cash.** Single payments up to £10,000 only.
 - ii. **Debit Card.** No limit with chip & pin. (CNP limit £500).
 - iii. **Credit Card.** (Fee of 2%+vat) No limit with chip & pin. (CNP limit £500).
 - iv. **Bank Drafts & Building Society Cheques.** No limit. Due to forgeries, we will retain the goods for 3 working days to establish clearance of funds.
 - v. **Cheques.** Accepted up to the limit of the guarantee card for immediate clearance. For sums exceeding this, and you are not known to the auctioneers, we will retain the goods for 7 working days to establish clearance of funds.
 - vi. **Bank Transfer.** Please see details on our website.
13. **Collection and storage:** Goods can be collected as soon as they are paid for and within two working days following the sale. If goods remain with us and we have no contrary written advice of your intentions the items will be moved to storage and reasonable labour charges levied and storage at the rate of £2+vat per lot per day thereafter for small items and £10+vat per lot per day for furniture and large items.
14. **Postage and packing:** Options for buyers are available at www.goldingyoung.com/buying-shipping or ask a member of staff.

Paintings, Drawings & Sculpture

Any statement as to authorship, attribution, origin, date, age, provenance and condition is a statement or opinion and is not to be taken as a statement or representation of fact. Golding Young & Mawer reserve the right, in forming their opinion, to consult and rely upon any expert or authority considered by them to be reliable.

A picture catalogued with the forename(s) and surname of the painter is in our opinion a work by that artist; e.g. Joseph Mallord William Turner. When an artist's forename(s) is not known, a series of asterisks followed by the surname of the artist, whether preceded by an initial or not, indicates that in our opinion the work is by the artist.

1. **Attributed to....** *is in our opinion probably by the artist.*
2. **Studio of....** *is in our opinion a work from the studio of the artist which may or may not have been executed under his direction.*
3. **Circle of....** *is in our opinion a work of the period of the artist executed under his immediate influence.*
4. **Follower of....** *is in our opinion a work by a painter working in the artist's style, contemporary or nearly contemporary, but not necessarily his pupil.*
5. **Manner of....** *is in our opinion a work in a style related to that of the artist, but of a later date.*
6. **School....** *is in our opinion the picture was executed at that time and in that location.*
7. **After....** *is in our opinion a copy of any date after a work by that artist.*
8. The term **signed and/or dated and/or inscribed** means that in our opinion the signature and/or date and/or inscription are from the hand of the artist.
9. The term **Bears signature and/or dated and/or inscription** means that in our opinion the artist's name and/or date and/or inscription may have been added by another hand.
10. All references to signatures, inscriptions and dates refer to the present state of the work.
11. Dimensions are given height before width.

Artist's Resale Right Scheme (Droit de Suite)

Following the UK's implementation of the EU Artist's Resale Right directive in February 2006, living artists are entitled to receive a resale royalty each time their art work is sold in the UK by an art market professional, subject to certain conditions. In January 2014 this has been extended to the sale of works of art of artists who have died in the previous 70 years, despite the wishes of the British Art Market Federation and other professional bodies. This payment is calculated on qualifying works of art which are sold for a hammer price or best bid price of more than EUR 1000. The UK sterling equivalent of EUR 1000 will fluctuate in line with prevailing exchange rates.

The actual qualifying threshold will be calculated by the Artist's Resale Right Service Hub based on the European Central Bank reference rate published at 2.15pm on the day of the sale.

The royalty charge will apply if the hammer price is more than the UK sterling equivalent of EUR 1000. The royalty charge will be added to buyer invoices and must be paid before items can be cleared. No handling costs or additional fees with respect to these charges are retained by auctioneers despite us having to undertake all of the extra and considerable administration work. This sum is then paid by us to a 'not-for-profit' collecting society, who will actually extract their administration fees. Any residual amount may go to benefit the artist.

Portion of the hammer price (Euro's EUR)	Royalty rate
1000 to 50,000	4%
50,000.01 to 200,000	3%
200,000.01 to 350,000	1%
350,000.01 to 500,000	0.5%
Exceeding 500,000	0.25%

VAT is not payable on this royalty charge. The maximum royalty charge is 12,500 EUR.
Revised 4th January 2011.



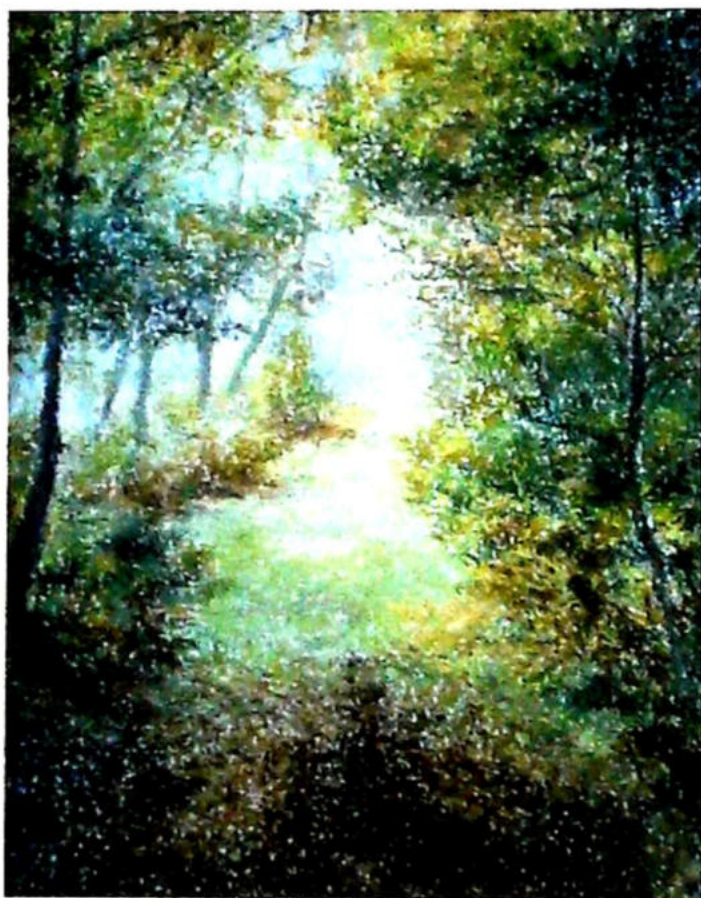
1

1
Simon Simonsen (1841-1928)
Old Danish Pointer,
oil on canvas, signed and dated 1864,
51.5cm x 63.5cm
£800-1200



3

3
19thC British School
Half length portrait of an Army Officer in red tunic,
oil on board,
25.5cm x 17cm
£100-200



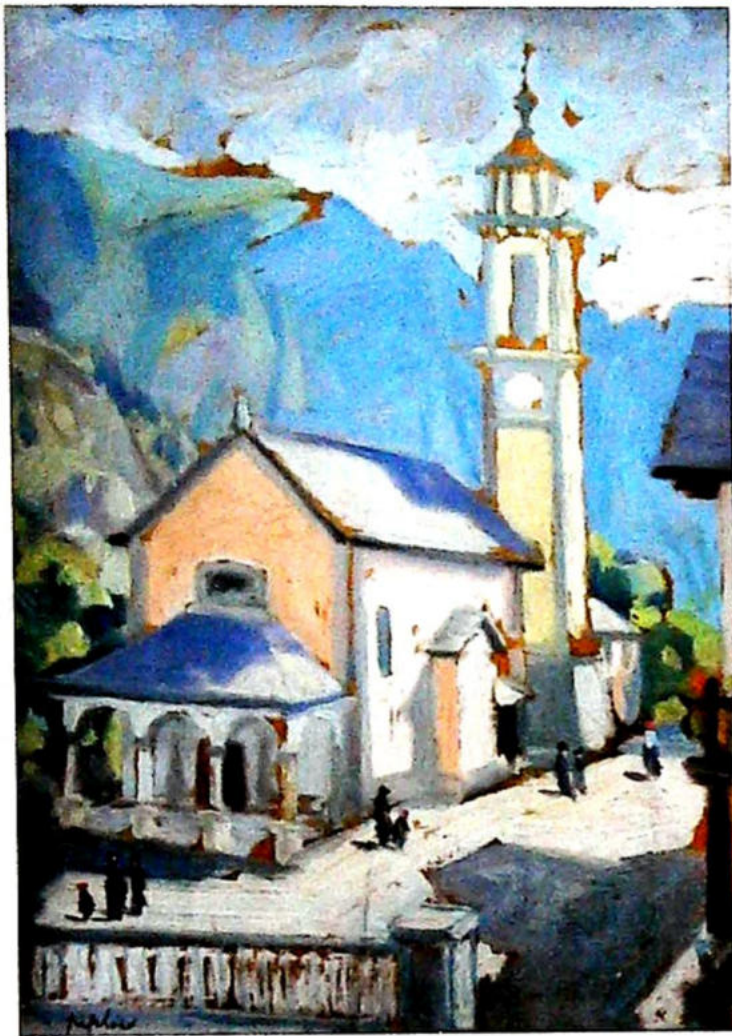
2

2
Lelia Pissarro (b.1963)
La Foret d'Otilia,
pastel, signed and titled verso,
35cm x 26cm,
also Thorold/Erickson Camille Pissarro
and his family, 1 volume
*Provenance: purchased Coach House Gallery,
Lincolnshire 1992*
£300-500



4

4
Keith Vaughan (1912-1977)
Study of figures, pencil drawing,
signed and dated 1957,
28cm x 18cm
£800-1200



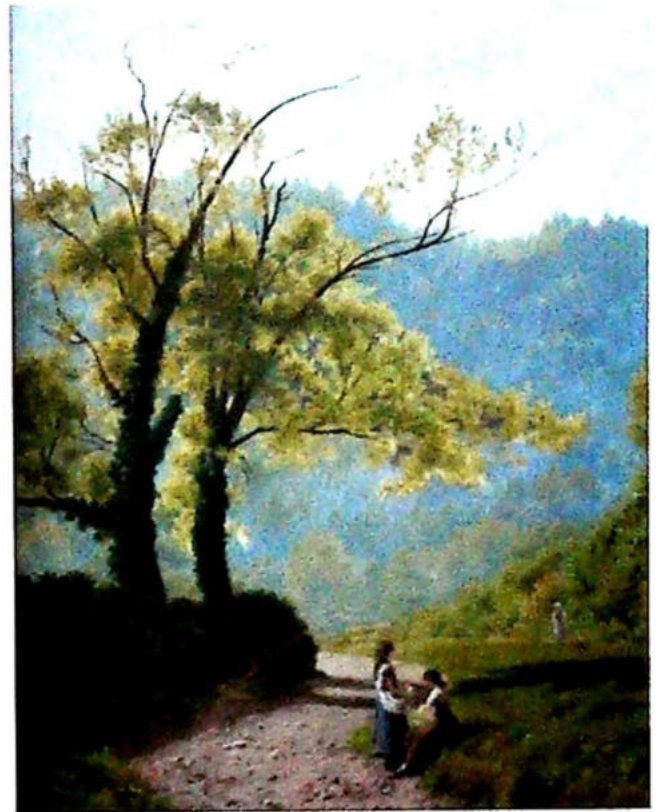
5

5
Samuel John Peploe (1871-1935)
Figures in front of church,
oil on board, signed,
32cm x 21cm
£15000-20000



6

6
Henry Earp (1831-1914)
Cattle in mountain landscape,
watercolour, signed,
18cm x 26cm
£80-120



7

7
Henry Hilton (act. 1879-1888)
Figures in country landscape,
oil on canvas, signed and dated (18)79,
39cm x 29cm
£200-300



8

8
Fred Yates (1922-2008)
People by lake, mixed media,
signed and dated 1982,
82.5cm x 68.5cm
£1000-1500



9

9
John Trickett (b.1952)
Working horses on the plough,
oil on canvas, signed,
60cm x 90cm
£300-500



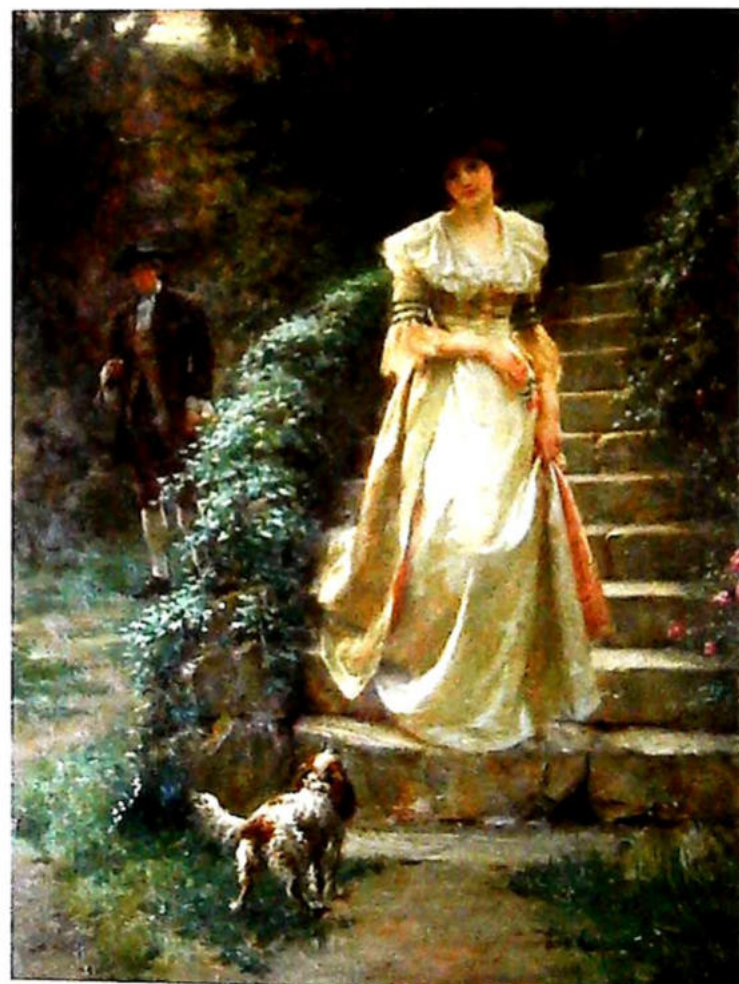
11

11
David C Bell (b.1950)
Early fisherman c.1894,
oil on canvas, signed and titled verso,
60cm x 90cm
£400-600



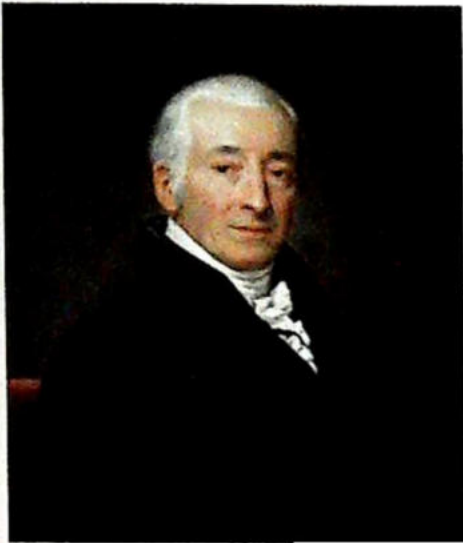
10

10
Filip Andreevic Maljavin (1869-1940)
Portrait of a woman wearing a pink scarf,
oil on canvas,
44.5cm x 36cm
£3000-5000



12

12
James Doyle Penrose (1862-1932)
The Trysting Place,
oil on canvas, signed and dated 1901,
title label verso,
60cm x 43.5cm
£2000-3000



13

13
19thC British School
Half length portrait of a
gentleman,
oil on canvas,
64cm x 53cm
£100-200

14
James Loder of Bath
(1784-1854)
Bay hunter in stable,
oil on canvas, signed and
dated 1842,
62cm x 75cm
£800-1200



14



16

15
Constance Pitcairn
(1853-1913)
The Queen of the
Carisbrooke Fete,
oil on canvas, signed,
90cm x 136cm
£6000-8000

16
Theodore Van Oorschot
(1910-1989)
Floral still life,
oil on canvas, signed,
79cm x 59cm
£300-500



15



17

17
19thC British School
Half length portrait of a lady,
oil on canvas,
72cm x 60cm
£200-300



18

18
Dorothy E Cooper (19th/20thC)
Floral still life,
oil on canvas, signed,
60cm x 44.5cm
£150-250



19

19
John Bates Noel (act. 1870-1927)
Mountain lakeland scenes,
oil on canvas, pair, signed and dated 1898,
50cm x 75cm
£300-500



20

20
Charles Thorneley (act. 1858-1902)
Fishing boats in coastal scene,
oil on canvas, monogrammed,
24.5cm x 39.5cm
£400-600



21

21
F Holzer (19th/20thC)
Cattle in landscape,
oil on canvas, pair, signed,
13.5cm x 29cm
£80-120



22

22
Laurent De Beul (1821-1876)
 Herding cattle and sheep in winter landscape,
 oil on canvas, signed and dated 1871,
 53.5cm x 83.5cm
 £300-500



25

25
James Elliott (19thC)
 Village view with church and figures,
 oil on canvas, signed,
 29cm x 44cm
 £150-250



23

23
William Mellor (1851-1931)
 Waterfall in river landscape,
 oil on canvas, signed,
 75cm x 126cm
 £600-800



26

26
18thC Continental School
 Extensive landscapes with figures on horseback
 driving cattle and sheep,
 oil on canvas, pair,
 35cm x 63cm (2)
 £1000-1500



24

24
19thC Continental School
 Figures in mountain lakeland scene,
 oil,
 24cm x 46cm
 £50-80



27

27
19thC British School
 Country inn scene with figures and horses,
 oil on canvas,
 29cm x 44cm
 £50-80



28

28
19thC British School
Embracing couple,
oil on board,
22cm x 14.5cm
£50-80



29

29
Mary Eristoff-Kazak (1857-1934)
Portrait of a lady,
oil on canvas, signed verso,
127cm x 102cm
£500-800



30

30
Guy Allen (20thC)
Orchard,
oil on canvas laid on board, signed,
39.5cm x 50cm
£80-120



31

31
Evelyn Street (20thC)
Dunmannis Bay, West Cork,
oil on canvas, monogrammed,
44.5cm x 65cm
£150-250



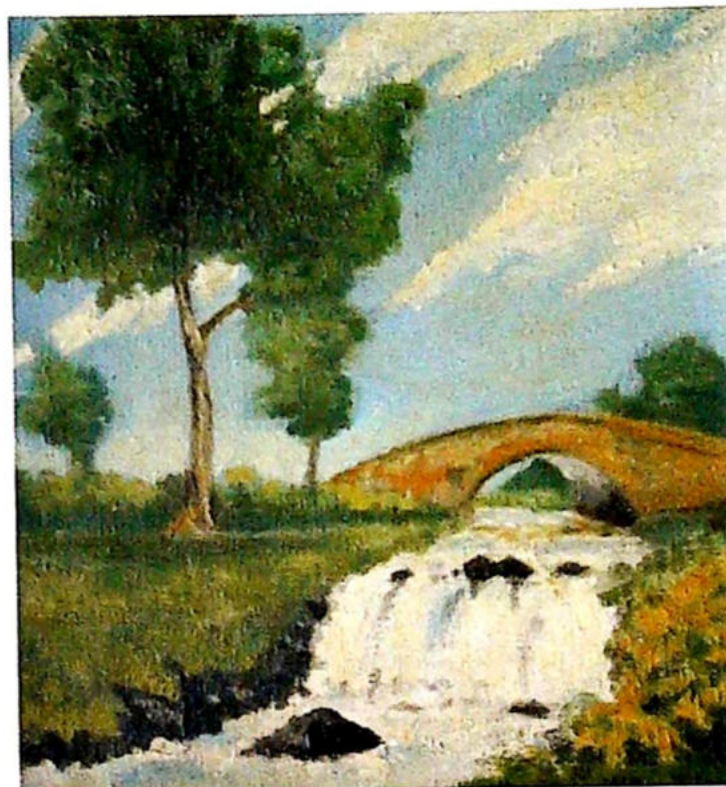
32

32
20thC Irish School
Coastal scene with figures,
oil on canvas,
38cm x 47.5cm
£80-120



33

33
Alois Hanisch (1866-1937)
Floral still life,
oil on canvas, signed, titled verso and dated 1928,
58.5cm x 50.5cm
£300-500



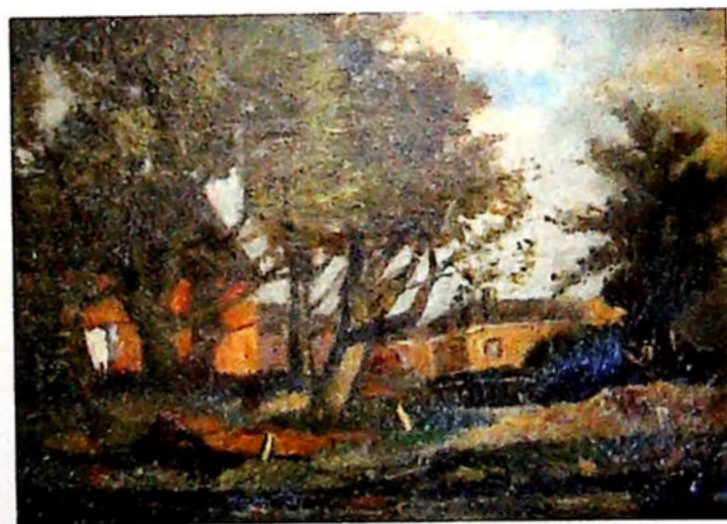
35

35
W Mullen (20thC)
River scene with bridge,
oil on canvas, signed,
50cm x 44cm
£50-80



34

34
Mary McNamara (20thC)
The Shornaugh,
oil, signed,
45cm x 56cm
£50-80



36

36
J Aussems (b.1950)
River landscape with village in background,
oil on board, signed,
17cm x 22.5cm
£100-150



37

37
Carlos Reymond (1884-1970)
Voiliers a quai a St Tropez,
oil on board, signed and dated (19)64, titled verso,
68.5cm x 48.5cm
£1000-1500



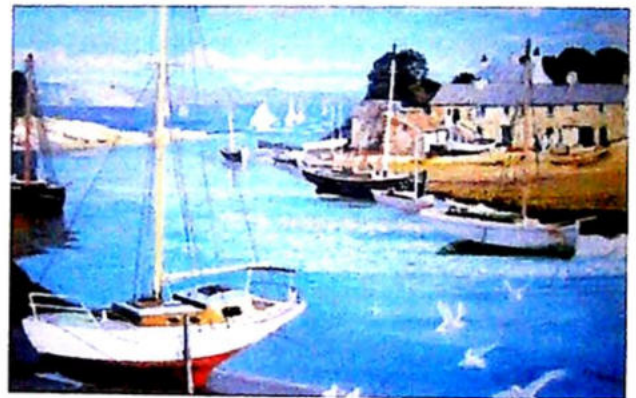
38

38
Gerard Passet (b.1936)
Hameau dans les Morts du Monan,
oil on canvas, signed and titled verso,
49.5cm x 72cm
£250-350



39

39
Gerard Passet (b.1936)
Riviere Pres D'Avallon,
oil on canvas, signed and titled verso,
72cm x 98cm
£250-350



40

40
Jonas, D (20thC)
Harbour scene,
oil on canvas, signed,
39.5cm x 60cm
£50-80



41

41
Vittorini Rossi (19th/20thC)
Still life - dead birds beside cooking pot,
oil on board, signed,
33cm x 43cm
£250-350



42

42
20thC Continental School
Lago Maggiore,
oil on canvas, indistinctly signed,
49cm x 69cm,
bears label verso - Galerie Commeter Hamburg
£50-80



44

44
V H (20thC)
Half length portrait,
oil on canvas, indistinctly signed,
60cm x 45cm,
and another by similar hand (2)
£50-80



43

43
Roberto Figerio (19thC)
Old gentleman smoking a pipe,
oil on canvas, pair, signed,
39cm x 28cm,
and another by similar hand (3)
£100-200



45

45
Svante Stenborg (20thC)
Winter landscape,
oil on canvas, signed,
59cm x 59cm
£50-80



46

46
Keith Roberts (b.1960)
Urban landscape,
oil on canvas, signed and dated 1999, verso,
84cm x 214cm
£300-500



47

47
Keith Roberts (b.1960)
Urban landscape,
oil on canvas, signed and dated 1998 verso,
152cm x 213cm
£300-500



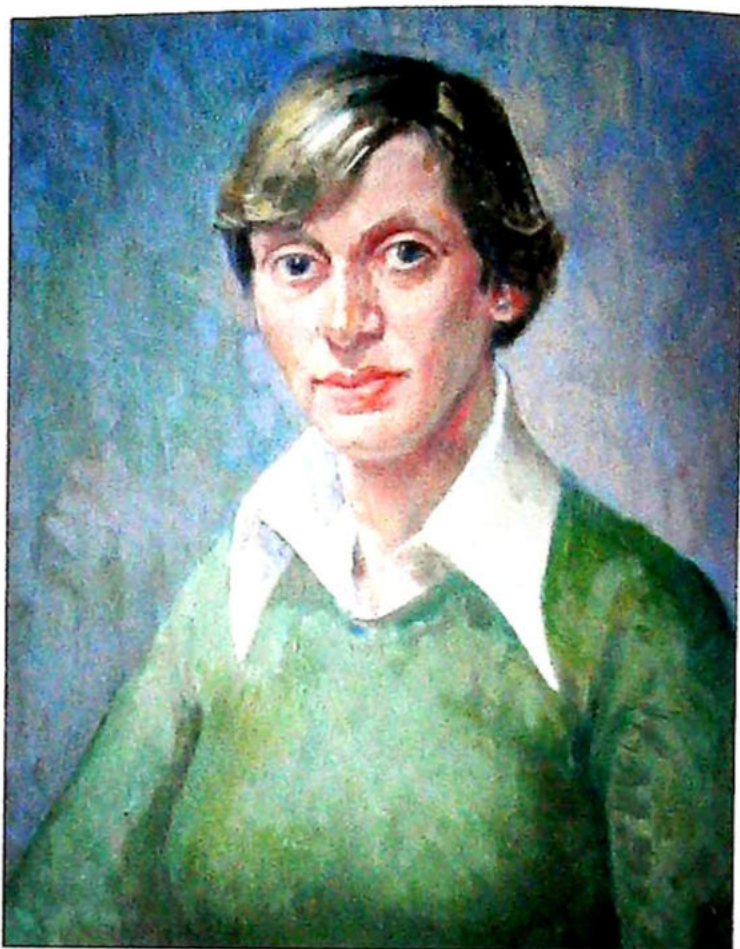
48

48
Hermann Haider (b.1938)
Monuments in Venice,
oil on canvas, signed, titled, dated 31.7.1987, verso,
136cm x 197cm
£300-500



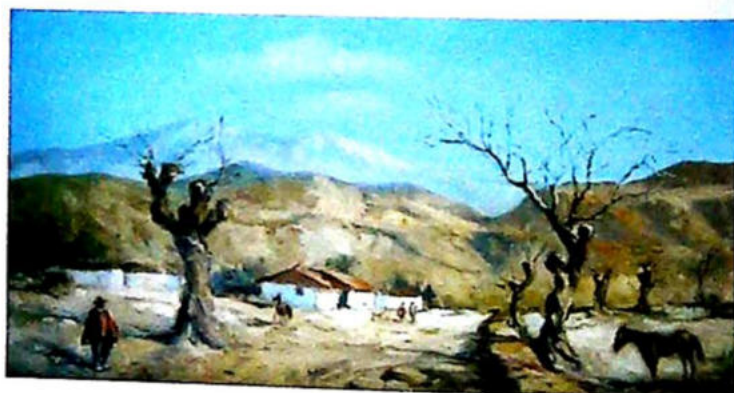
49

49
Hermann Haider (b.1938)
From Matthews Gospel to Pasolini's,
oil on canvas, signed, titled,
dated August 1987 verso,
136cm x 197cm
£300-500



50

50
Walter Woodington (1916-2000)
Portrait of a lady,
oil on canvas, signed and dated 1976,
55cm x 48cm
£100-200



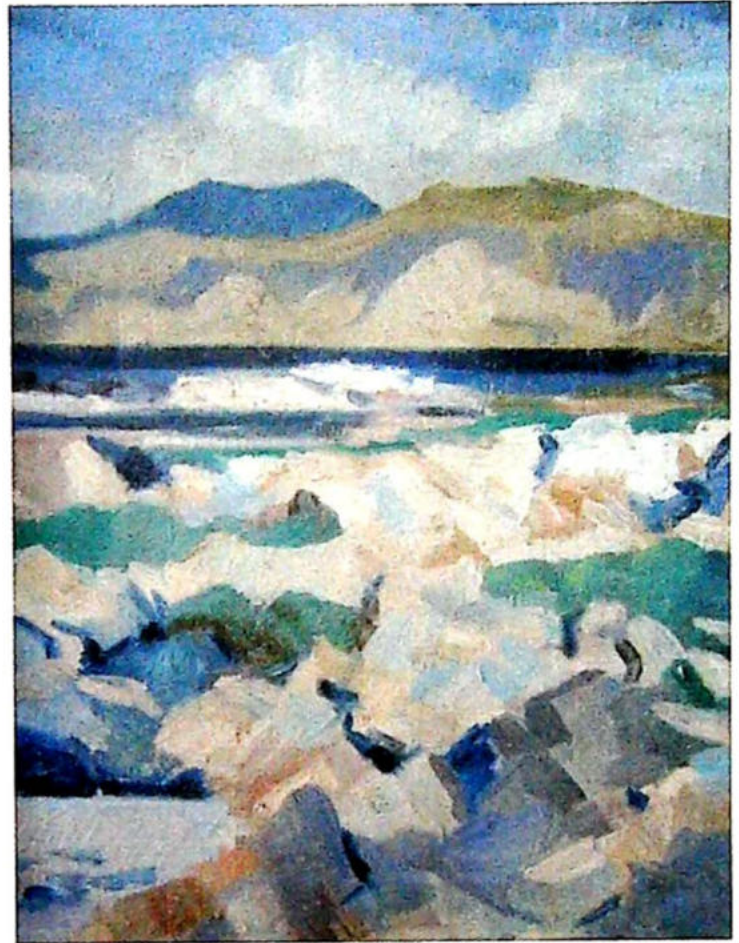
51

51
Gino Brogi (1902-1989)
Mountain landscape,
oil on board, signed,
58cm x 107cm
£50-200



52

52
 Brian Ballard (b.1943)
 Flowers with jug and bottle,
 oil on board, signed and dated (20)01,
 31.5cm x 37.5cm
 £300-500



54

54
 20thC British School
 Mull from Iona,
 oil on canvas,
 39.5cm x 29.5cm
 £50-80



53

53
 Seth Miles (b.1938)
 Peacock Fantasy,
 oil on board, signed and dated (19)70,
 61cm x 91cm
 £50-80



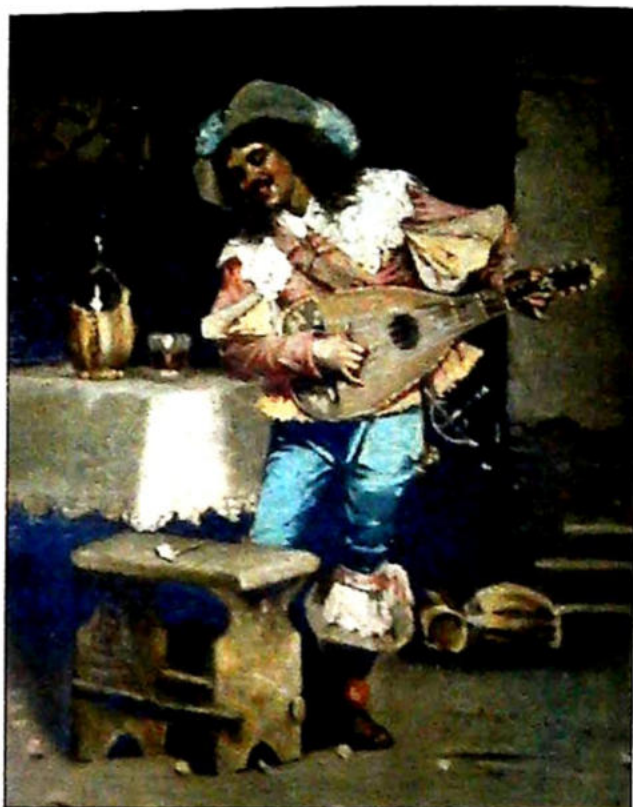
55

55
 G Wilson(?) (20thC)
 Country road,
 oil on canvas, indistinctly signed and dated (19)65,
 49cm x 59.5cm
 £50-80



56

56
Carl Noon (1878-1949)
Schloss Scheleiden Eifel,
oil on canvas, signed titled verso,
58.5cm x 49cm
£200-300



58

58
S Maresca (19th/20thC)
Mandolin player,
oil on canvas, signed,
38cm x 24cm
£200-300



57

57
Vittorini Rossi (19th/20thC)
Still life - lobster eggs and lemons,
oil on board, signed,
38cm x 38cm
£250-350



59

59
A L Grace (20thC)
Floral still life,
oil on canvas, signed,
49.5cm x 39cm
£50-80



60

60
James George Bingley (1840-1920)
The coast near Ballock,
oil on board,
26cm x 38.5cm
£100-200



62

62
19thC British School
Cattle and sheep at waterside,
oil on canvas,
29cm x 39cm
£150-250



61

61
Henry Thomas Schaefer (act. 1873-1915)
Rue St Pierre Caen, Rouen Normanby,
oil on canvas, pair, signed and dated 1890,
44.5cm x 34.5cm
£400-600



63

63
John Bampfield (b.1947)
Fishing vessels at low tide,
oil on canvas, signed,
60cm x 90cm
£100-200



64

64
John Bampfield (b.1947)
Fishing vessels in harbour,
oil on canvas, signed,
49cm x 75cm
£100-200



65

65
Keith W Hastings (b.1948)
River landscapes,
oil on board, pair, signed,
16cm x 24cm
£50-100



67

67
Auguste Henri Musin (1852-1923)
Masted ships off the coast in choppy seas,
oil on canvas, signed,
32cm x 47cm
£200-300



66

66
M Boucher (20thC)
Young woman seated,
oil on canvas, indistinctly signed,
44.5cm x 34.5cm
£100-150



68

68
David R Buchanan (20thC)
Springtime,
oil on canvas, signed,
49.5cm x 59cm
£50-80



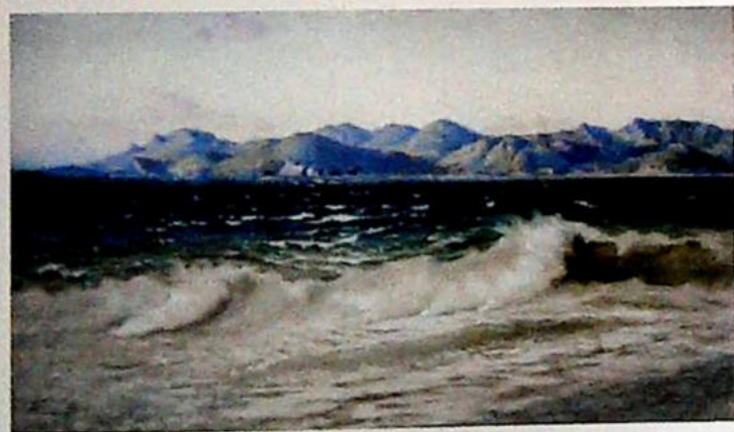
69

69
J Harris (20thC)
Off St Georges Bermuda,
oil on panel, signed, titled, dated 1949 verso,
31cm x 103cm
£150-250



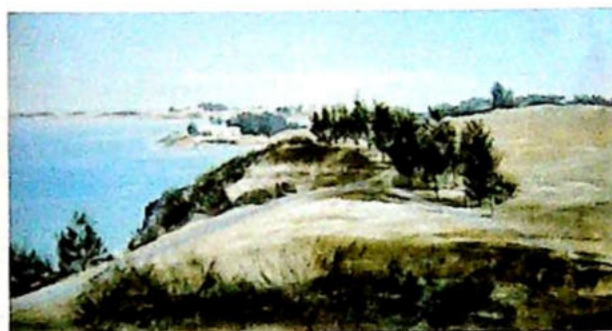
70

70
R E (20thC)
Chrysanthemums,
oil on canvas, initialled,
73cm x 55.5cm
£50-80



71

71
Felix Pille (1848-1919)
North African coastal scene,
oil on canvas, signed,
37cm x 60cm
£100-200



72

72
Michael D Barnfather (b.1934)
Saint Georges Bermuda,
oil on board, signed and dated (19)69,
60cm x 106cm
Provenance: J Pratt & Sons Derby, purchased
receipt 1969
£150-250



73

73
James D Preston (b.1946)
Rural landscape,
oil on canvas, signed,
50cm x 75cm
£50-100



74

74
20thC British School
Landscape,
oil on canvas, indistinctly signed,
45cm x 60cm
£50-80



75

75
20thC British
Village bus stop,
oil on canvas,
53cm x 73.5cm,
and another by the same hand (2)
£50-80



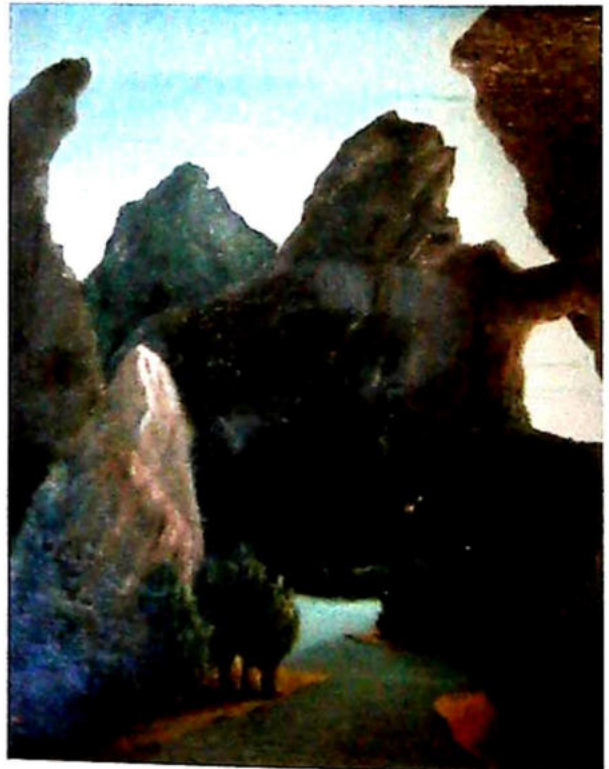
77

77
Italian School
Christ and Madonna,
oil on board,
44.5cm x 32cm
£50-80



76

76
Rex N Preston (b.1948)
Bluebell Wood near Catton Hall,
oil on canvas, signed and titled verso,
24cm x 19cm
£50-80



78

78
Thomas Hart Benton (1889-1975)
Canyon landscape,
oil on board, signed,
29.5cm x 21.5cm,
bears label Glassers San Antonio Texas
£1200-1600



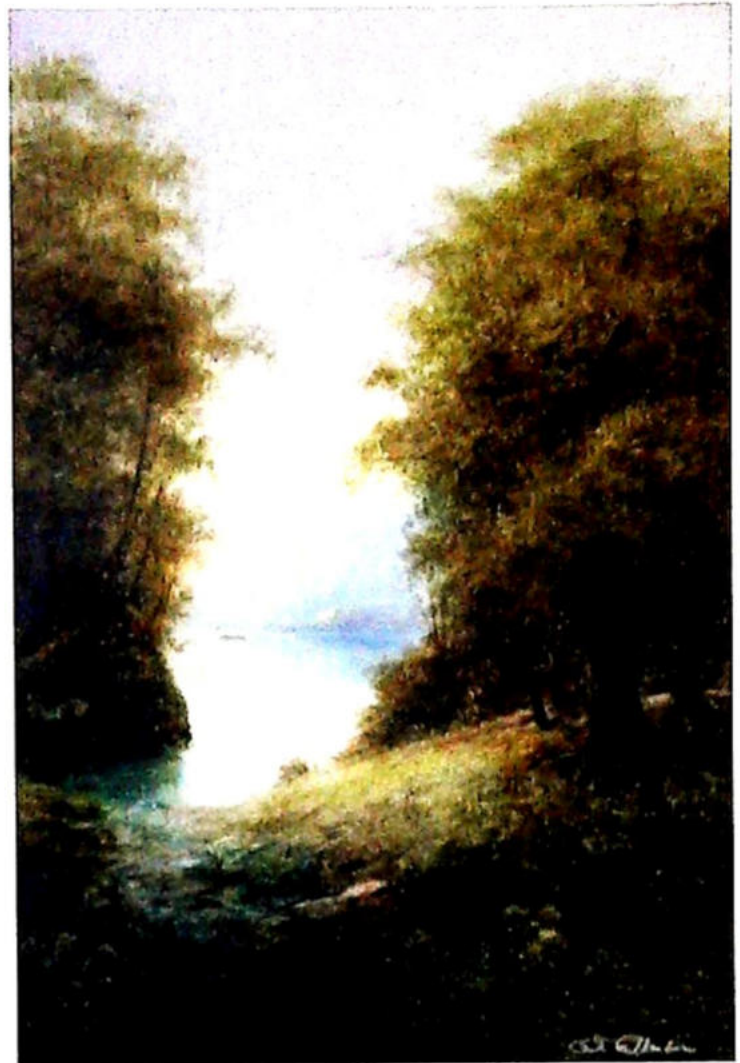
79

79
 Ted Dyer (b.1940)
 Figures in country landscapes,
 oil on canvas, pair, signed,
 29cm x 39cm
 £50-100



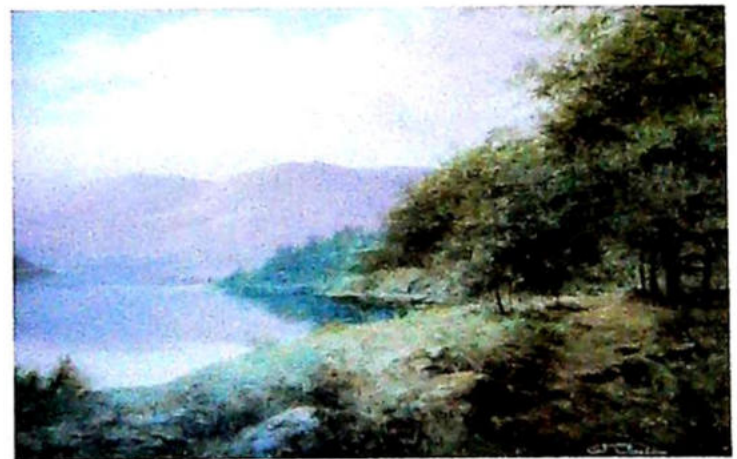
80

80
 Peter Hayward (1905-1993)
 Interior scene,
 oil on canvas laid on board, signed and dated (19)78,
 50cm x 40cm
 £50-80



81

81
 Preston (20thC)
 Woodland scenes,
 oil on canvas, signed,
 76cm x 50cm
 £300-400



82

82
 Preston (20thC)
 New England,
 oil on canvas, a pair,
 50cm x 78cm
 £300-400



83

83
B. Ridgley (20thC)
Asian boy on a step,
oil on board,
50cm x 40cm
£30-50



84

84
Blank (20thC)
Portrait of a young woman,
oil on canvas, signed,
34.5cm x 24cm
£30-50



85

85
Henry Fletcher (b.1901)
Still life with fruit and ceramics,
oil on canvas,
42cm x 60cm
£250-350



86

86
20thC Continental School
Alpine type watermill,
oil on board, indistinctly signed,
48cm x 59cm
£50-80



87

87
20thC Italian School
Venice,
oil on canvas, indistinctly signed,
48cm x 69cm
£100-150



88

88
Jorge Aguilar Agon (b.1936)
 Low Tide,
 oil on canvas, signed,
 29.5cm x 60cm
 £120-160



91

91
Herbert Rollett (1872-1932)
 Lincolnshire river landscape,
 oil canvas, signed,
 62cm x 74.5cm
 £500-800



89

89
19thC British School
 Storytime,
 oil on board,
 29cm x 36.5cm
 £100-200



92

92
Albert Goodwin (1845-1932)
 Wordsworth Street, Lincoln,
 oil on board, signed,
 26cm x 37cm
 £500-800



90

90
Alfred Ernest White (1873-1953)
 Lincoln from the South East,
 oil on board, signed,
 22cm x 29cm
 £80-120



93

93
Gordon Cumming (20thC)
 Boston, ink and watercolour, signed and dated
 (19)76,
 26cm x 49cm
 £50-80



94

94
Geof Smith (20thC)
Two nudes,
watercolour and pen, signed,
7.5cm x 17cm,
bears label Lincolnshire Artists Society,
another signed S Garlick (2)
£50-80



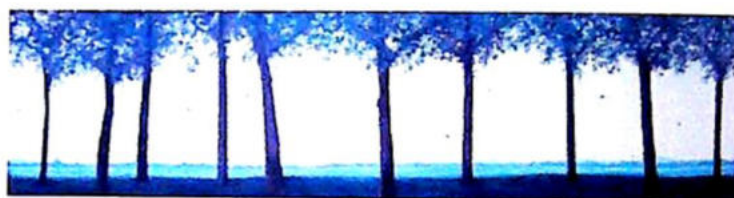
97

97
Cecil Thomas Hodgkinson (1895-1979)
Sailing boats in estuary,
watercolour, signed,
23cm x 33cm
£50-80



95

95
R A Gardner (20thC)
Greenhouse Interior,
watercolour, signed and dated 1925,
34cm x 23.5cm
£80-120



98

98
Graham Hillier (1946-2006)
Field Le Moulin Neuf,
oil on canvas laid on board, signed,
29.5cm x 105.5cm,
bears artist label verso
£100-200



96

96
R A Gardner (20thC)
Farmhouse and paddock,
oil on board,
25.5cm x 34cm
£100-150



99

99
Antonin (Tony) Bartl (1912-1998)
Standing portrait, Pat, pastel,
83cm x 58cm
£200-300



100

100
Edwin Aldridge Haddock (1921-1996)
Inquisitor I,
oil on board, signed, titled and dated (19)63 verso,
91.5cm x 102cm
£100-150



102

102
Henry George Hine (1811-1895)
Durlestone Head Dorset,
watercolour, signed, dated 1888, title label verso,
49.5cm x 87cm,
bears label Royal Commission for the Chicago
Exhibition 1893 Brussels International Exhibition
1897
£600-800



103

103
Henry George Hine (1811-1895)
Study of a heavy sea, south coast,
watercolour, signed, dated 1892, title label verso,
47cm x 72cm
£300-500



101

101
Edwin Aldridge Haddock (1921-1996)
Golgotha,
oil on board, signed, titled and dated (19)65 verso,
120cm x 89cm
£100-150



104

104
Henry George Hine (1811-1895)
The Roman Wall,
watercolour, signed, titled and dated 1886,
28cm x 46cm
£150-250



105

105
Henry George Hine (1811-1895)
The Match Girl,
watercolour, signed and titled verso,
32cm x 22cm
£100-150



106

106
William Egerton Hine (1851-1926)
Newlands Corner,
watercolour, signed, dated 1881, title verso,
14cm x 24cm
£50-80



107

107
William Egerton Hine (1851-1926)
Marley Down,
watercolour, signed,
30cm x 50cm
£100-200



108

108
W Sunderland (19th/20thC)
Harbour scene,
watercolour, signed and dated Sept (18)83,
24.5cm x 35cm
£50-80



109

109
19thC British School
Head and shoulder portrait of a lady,
watercolour, indistinctly signed,
47cm x 31cm
£30-50



110

110
19thC British School
The Silent Pool,
watercolour,
29cm x 39cm
£30-50



111

111
19thC British School
Rural landscape,
watercolour,
26cm x 48cm
£30-50



112

112
Mary Weatherill (1834-1913)
Moorland landscape with sheep,
watercolour, signed and dated 1884,
34.5cm x 51cm
£120-180



113

113
John Skinner Prout (1806-1876)
Continental town scene with river,
watercolour, signed,
32cm x 23.5cm
£150-250



114

114
Edwin Lawson James Harris (1891-1961)
River landscape,
watercolour, signed and dated 1950,
43cm x 56cm
£30-50



115

115
Edwin Lawson James Harris (1891-1961)
River landscape,
watercolour, signed,
43cm x 57cm
£30-50



116

116
Edwin Lawson James Harris (1891-1961)
River landscape,
watercolour, signed and dated 1952,
32.5cm x 49cm
£30-50



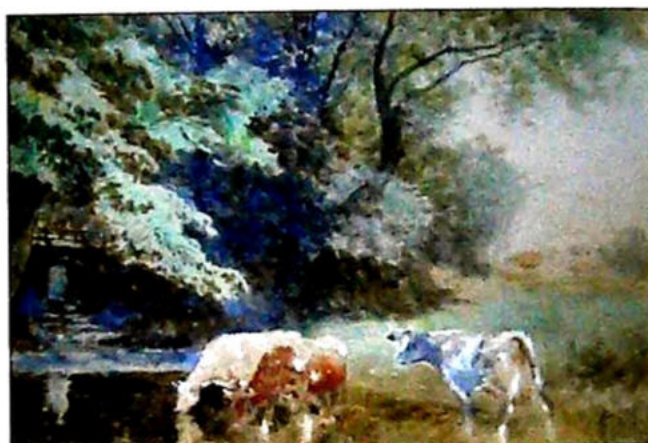
117

117
Edwin Lawson James Harris (1891-1961)
River landscape,
watercolour, signed,
26cm x 35cm
£30-50



118

118
Edmund Morison Wimperis (1835-1900)
Horse and cart in landscape,
watercolour, initialled,
50cm x 74cm
£120-160



119

119
Ernest Pile Bucknall (1861-1935)
Boreham Mill Chelmsford,
watercolour, signed,
39cm x 54cm
£150-250



120

120
Ernest Pile Bucknall (1861-1935)
Alverton Firewood, the waggon,
watercolour, signed,
28cm x 40cm
£80-120



121

121
Ernest Pile Bucknall (1861-1935)
At the watering place,
watercolour, signed and titled verso,
33cm x 42cm
£80-120



124

124
Isabella Howlden (19th/20thC)
Coastal scene with masted ship,
watercolour, signed,
23cm x 33cm
£30-50



122

122
Isabella Howlden (19th/20thC)
Middleton Dale,
watercolour, signed,
32.5cm x 47cm
£30-50



125

125
Richard Principal Leitch (circa 1800-1880)
River valley with cattle and figures,
watercolour, signed and dated 1864,
42.5cm x 57cm
£80-120



123

123
Isabella Howlden (19th/20thC)
Old Cottage, Bossington,
watercolour, signed,
26cm x 36cm
£30-50



126

126
John Marshall Jowett (act. 1900-1924)
Perwick Bay Isle of Man,
watercolour, signed,
50cm x 75cm
£80-120



127

127
Charles Knight (20thC)
Mountain landscape,
watercolour, signed,
34cm x 53cm
£30-50



130

130
Frank Beswick (act. 1881-1929)
Near Hartford,
watercolour, signed,
24.5cm x 30cm
£30-50



128

128
Myles Birket Foster (1825-1899)
Study of a watermill, pencil, monogrammed,
24cm x 20cm
£50-80



131

131
Edwin Earp (1851-1945)
Coastal scene with castle and fishing boats,
watercolour, pair, signed,
20.5cm x 56cm
£80-120



129

129
James M Robert Greenlees (1820-1894)
Head of Upper Lake, Killarney,
watercolour, signed and dated 1882,
18cm x 25cm
£30-50



132

132
Edmund Morison Wimperis (1835-1900)
A Welsh river,
watercolour, signed and titled verso,
33cm x 51cm
£120-160



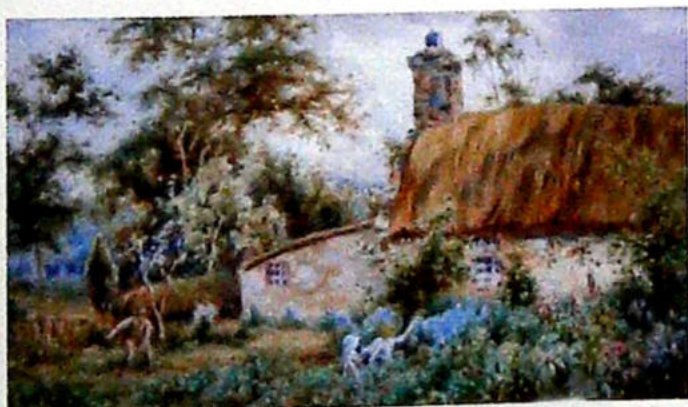
133

133
George Dunkerton Hiscox (1840-1909)
Coastal scene,
watercolour, signed,
25cm x 35cm
£30-50



134

134
Henry John Sylvester Stannard (1870-1951)
The Haunt of the Moorhen,
watercolour, signed,
24cm x 35cm
£140-180



135

135
William R Hoyles (c.1870-c.1935)
A busy day in the garden,
watercolour, signed,
24cm x 39cm
£70-100



136

136
E Nisbet (19th/20thC)
Floral still life,
watercolour, signed and dated 1898,
37cm x 28cm
£30-50



137

137
T Lambert (19thC)
Watermill and figures,
watercolour, signed,
17cm x 23cm,
four unsigned watercolours and a shooting print (6)
£30-50



138

138
18th/19thC Continental School
Town scene with figures,
watercolour, indistinctly signed,
27cm x 19.5cm
£30-50



139

139
19thC British School
Coastal scene,
watercolour,
19cm x 36cm,
and another watercolour, river landscape
£30-50



140

140
Charles Vincent Barber (1784-1854)
The Old Farmstead,
watercolour,
19cm x 25cm
£50-80



141

141
Thomas Leeson Rowbotham (1783-1853)
Continental lake scenes,
watercolour, pair,
7cm x 12cm
£50-80



142

142
J P (19thC)
Sandown Castle,
watercolour, initialled, date 1825, titled,
11cm x 19cm
£30-50



143

143
E Walton (19thC)
Sailing ships and steam boat,
watercolour, pair, signed,
18cm x 37cm
£200-300



146

146
Andrew Archer Gamley (1869-1949)
Westerly Breeze, Fife Coast,
watercolour, signed and titled verso,
27cm x 38cm
£80-120



144

144
Douglas Hooper (19thC)
Fishermen and workers on the shore line,
watercolour, signed,
23cm x 38cm
£30-50



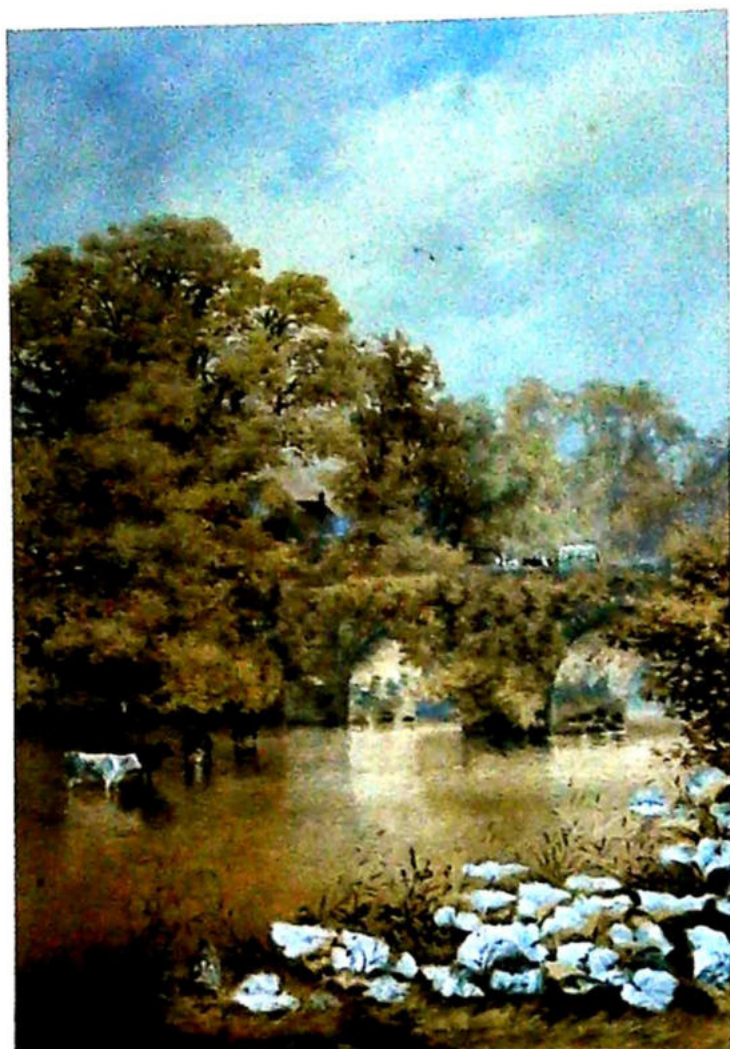
147

147
Andrew Archer Gamley (1869-1949)
Harbour scene with fishing boat,
watercolour,
24cm x 36cm
£80-120



145

145
19thC Continental School
Figures in Continental street scene,
watercolour, indistinctly signed,
17cm x 22cm
£30-50



148

148
Edward Henry Bearne (1844-?)
River landscape with cattle and horse drawn wagon,
watercolour, signed,
51cm x 35cm
£150-200



149

149
David A Baxter (19th/20thC)
Brand Fell looking over Derwent Water,
watercolour, signed, dated (19)38 and titled verso,
36cm x 53cm
£50-80



150

150
G.R.G. Jarvis (?) (19thC)
Figures of the Walcheren Campaign,
Netherlands 1809, a country woman with matches,
washerwoman, beggar, knife grinder,
watercolour (4), signed,
19cm x 16.5cm
£100-200



151

151
19thC Continental School
The fish marked at Dieppe,
watercolour,
16cm x 21cm
£30-50



152

152
Marion L Broom (1878-1962)
Floral still life,
watercolour, signed,
56cm x 77cm
£80-120



155

155
M Damoey (19thC)
Floral still life,
watercolour, signed and dated 1854,
37.5cm x 29cm
£50-80



153

153
Alfred Frank de Prades (1840-1895)
Coach and horses in town square,
watercolour, signed,
36cm x 52cm
£200-300



156

156
Thomas Herbert Victor (1894-1980)
Newlyn Harbour, Harbour and Lobster Pot,
Mousehole,
watercolour, pair, signed and titled,
24cm x 34.5cm
£50-80



154

154
Constance Wenlock (1852-1932)
Evening scene - The Golden Horn,
watercolour, signed,
34cm x 53cm
£150-250



157

157
19thC British School
Flower pots and ivy,
watercolour,
22.5cm x 43cm
£30-50



158

158
Gustave Jean Jacquet (1846-1909)
Seated lady,
watercolour, signed,
43cm x 29cm
£200-300



159

159
Algernon Newton (1880-1968)
Upton on Severn, Worcestershire,
watercolour, initialled,
18cm x 26cm
£150-250



160

160
19thC British School
Working horses in stable,
watercolour,
13cm x 23cm,
and an oil on canvas, horse
£30-50



161

161
J Alleylove (19th/20thC)
Sanvey gate with St Margarets Church, Leicester,
watercolour,
17.5cm x 25cm
£50-80



162

162
L Allison (20thC)
Loughborough, ink and watercolour, signed, titled
and dated 1940,
14cm x 18.5cm
£30-50



163

163
 Carl Donner (20thC)
 Golden plover in the Grampians,
 watercolour, signed,
 49cm x 33cm
 £350-450



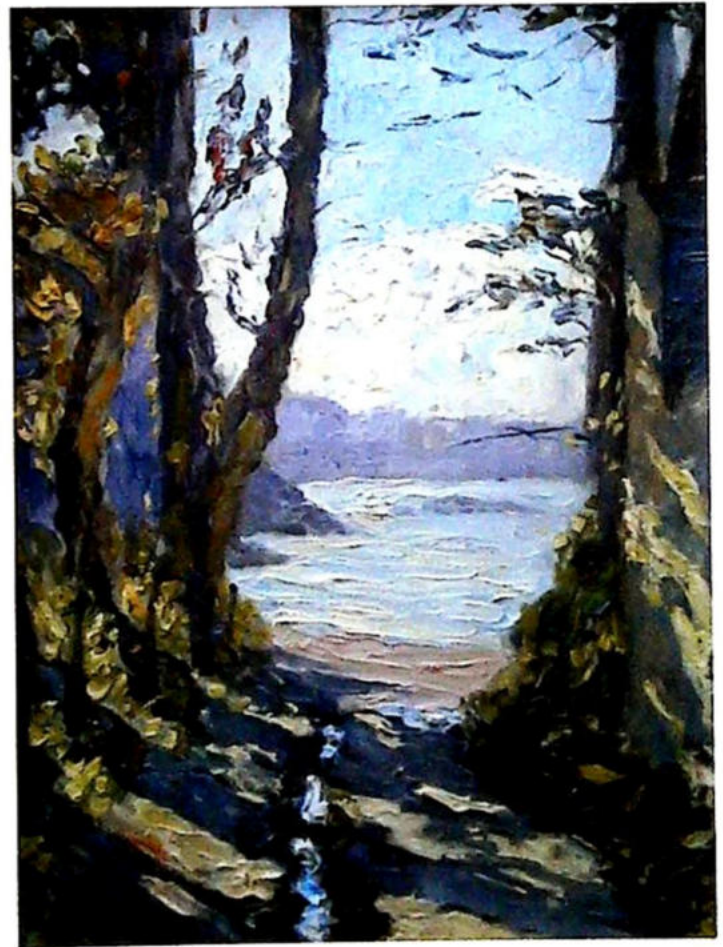
164

164
 Henry John Sylvester Stannard (1870-1951)
 Autumn Mist,
 watercolour, signed,
 26cm x 34cm
 £150-250



165

165
 Guy Huze (1912-1997)
 Ghana,
 gouache, a pair,
 signed and titled,
 23cm x 29cm
 £300-400



166

166
 Georges Pierre Guinegault (1893-?)
 Dinard, Soir,
 oil on board, a pair, signed, titled and dated (19)23,
 32cm x 23cm (2),
 stamped Lucien Lefebvre-Foinet Paris
 £100-200



167

167
S Jackson (19th/20thC)
Runswick Bay,
oil on canvas laid on board, signed, titled,
dated 1908,
24cm x 34cm
£200-300



169

169
G H Harris (19th/20thC)
Hay making,
watercolour, signed,
23cm x 36cm
£30-50



168

168
H Louisa Walford (19th/20thC)
English cottage garden,
watercolour, signed,
34cm x 24cm
£30-50



170

170
Joan Russell (19th/20thC)
Abberton Manor near Colchester,
watercolour, signed, dated 1930,
27cm x 37.5cm
£30-50



171

171
George Cooper (19th/20thC)
Landscape,
watercolour, signed,
32cm x 49cm
£30-50



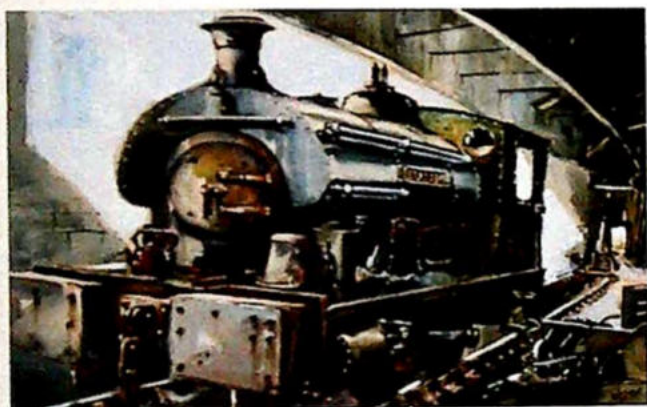
172

172
Vic Millington (20thC)
Railway Station Yard,
watercolour, signed and dated 1986,
49cm x 74cm
£30-50



175

175
C J Thornton (19th/20thC)
Rural landscape with farm building and sheep,
watercolour, signed,
35cm x 53cm
£50-80



173

173
Weston (20thC)
Railway Engine - Elizabeth,
watercolour, signed,
36cm x 54cm
£30-50



176

176
David C Wright (20thC)
Seaside chalets,
watercolour, signed,
16.5cm x 28cm,
and a pastel drawing, Eastern Eyes
£50-80



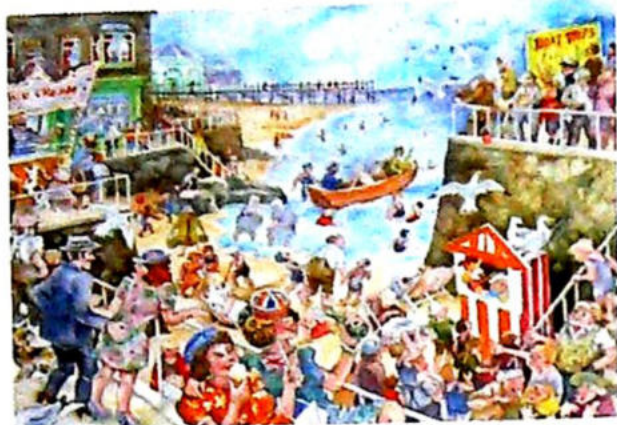
174

174
E L Wood (20thC)
Biff and Titus,
watercolour, signed and dated (19)80,
38cm x 53cm
£30-50



177

177
Allan Whitehead (b.1940)
Sailing ships at sea,
watercolour, signed,
13cm x 18cm,
and another signed McWeeney
£50-80



178

178
Monique Partridge (20thC)
Seaside Kiss Me Quick,
watercolour, signed, dated 2001,
24cm x 34cm,
and three others by the same hand
£50-100



179

179
Dawn Ogden White (20thC)
The Cricket Match, pastel, signed,
29cm x 39.5cm
£30-50



180

180
Amanda Hopkins (20thC)
Railway platform,
watercolour, signed and dated 1983,
8cm x 12.5cm,
and another signed Currer
£30-50



181

181
Julia O'Leary (20thC)
Humbug at Home, machine embroidery, signed,
titled, dated August 1990 verso,
25.5cm x 35.5cm
£30-50



182

182
Jan Bates (20thC)
Lincolnshire Wolds, mixed media, signed,
36cm x 54cm
£30-50



183

183
Mo Tøøuw (20thC)
Olive Grove,
oil, signed,
39.5cm x 49.5cm,
and a watercolour by the same hand,
original 2003 receipt verso
£50-100



184

184
Peter Hodson (20thC)
Figures in woodland scene, acrylic, signed,
28cm x 27.5cm,
and another by the same hand
£30-50



187

187
Rowland Emmett (1906-1990)
North Western Gas Board,
Fleet of service vehicles, ink and watercolour,
signed and verse dedication,
40.5cm x 32cm,
and four photographs of W Slack (head of
North Western Gas Board)
£500-800



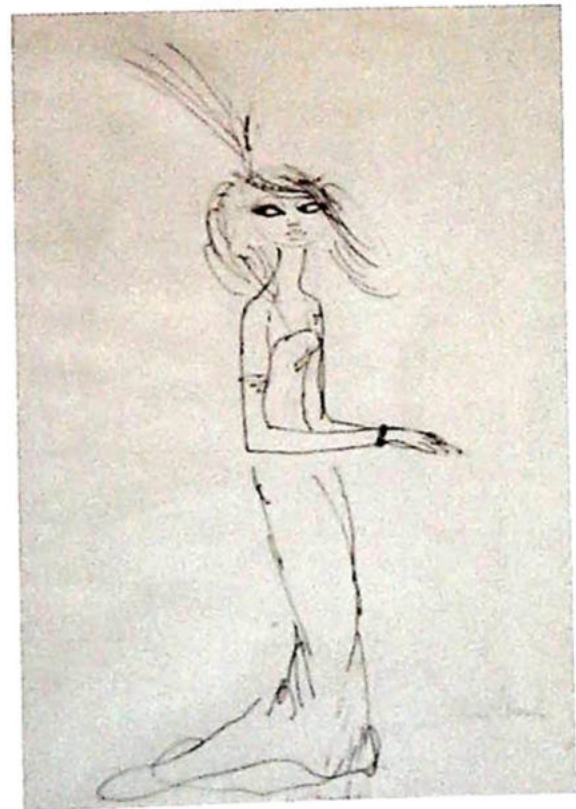
185

185
Chris M Wilkinson (20thC)
Fishing boat on the shore, acrylic, signed,
dated (20)02,
29.5cm x 39cm,
and two others by the same hand
£30-50



186

186
20thC British School
Lake landscape,
watercolour, indistinctly signed,
21cm x 28.5cm
£30-50



188

188
Ronald Searle (1920-2011)
Femme Fatale, ink, signed,
26.5cm x 17.5cm
£100-200



189

189
Eileen Alice Soper (1905-1990)
Dancing with Croci,
watercolour, signed,
22cm x 27cm
£50-100



191

191
Brian Bowhill (20thC)
Ballet dancer, mixed media,
46.5cm x 36cm
£30-50



190

190
20thC modern School
Figures in mythical landscape, multi-media,
147cm x 57cm
£100-200



192

192
Bruce Onobrakpeya (b.1932)
Eclipse, artist signed etching dated 1967,
40cm x 27.5cm
£300-500



193

193
Elyse Ashe Lord (1900-1971)
In the Palace of Pong Lai, artist signed etching
65/100,
42cm x 44cm
£80-120



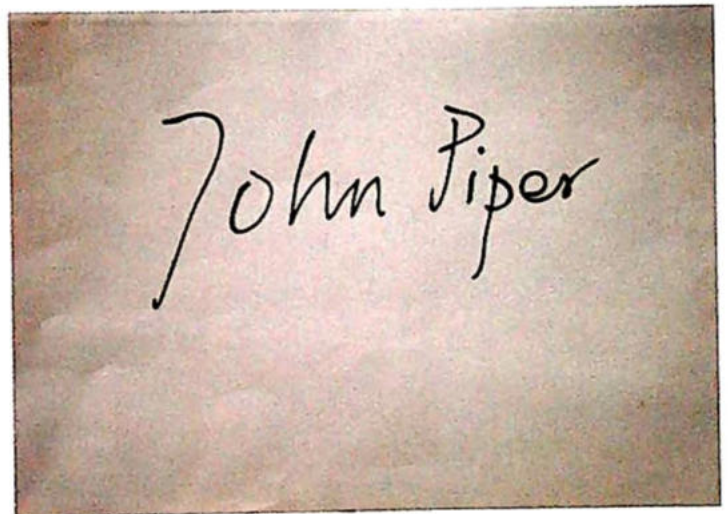
195

195
David Roger-Burton
Nelsons flag ship HMS Victory Oak,
modern turned wooden bowl,
26cm high
Provenance: Art Next the Sea Gallery, Norfolk
£50-100



194

194
Neapolitan School
Bay of Naples with Vesuvius in the background,
gouache,
31cm x 41cm
£200-300



196

196
An autograph of John Piper the artist,
in large script
£40-60



197

197
Anthony Bell, various sketched portraits etc.
and a quantity of posters relating to exhibitions at
The Usher Gallery
£30-50



198

198
Antoine Calbert (1860-1944)
Reclining nude figures, a pair of artist signed
coloured prints,
27cm x 34cm
£50-100



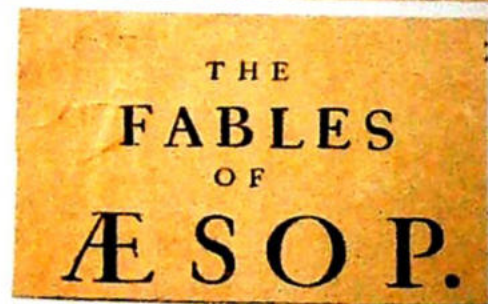
199

199
John May (20thC)
The Railway Station, artist signed coloured print,
dated 1986,
47cm x 64.5cm
£30-50



200

200
William Russell Flint (1880-1969)
The Wood Rick,
artist signed coloured print,
52cm x 69cm
£50-100



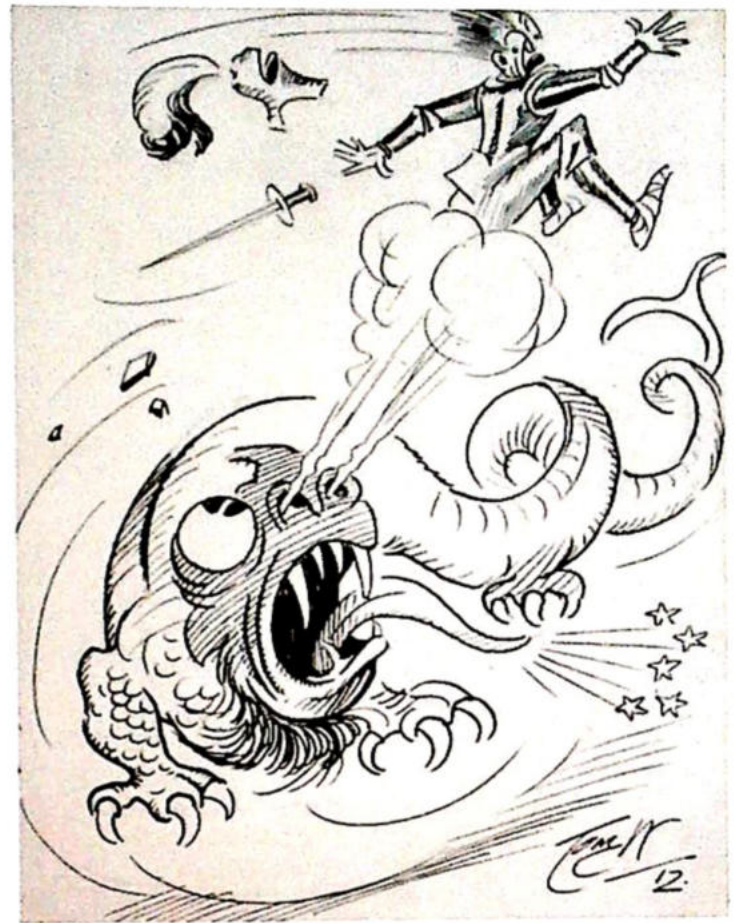
201

201
After Wenceslaus Hollar Von Prachna
The Fables of Aesop,
etchings, John Ogilby Edition,
25cm x 17cm (64)
£150-250



202

202
G Thomasset (20thC),
Floral studies,
watercolour, signed,
14cm x 10cm (14)
£50-80



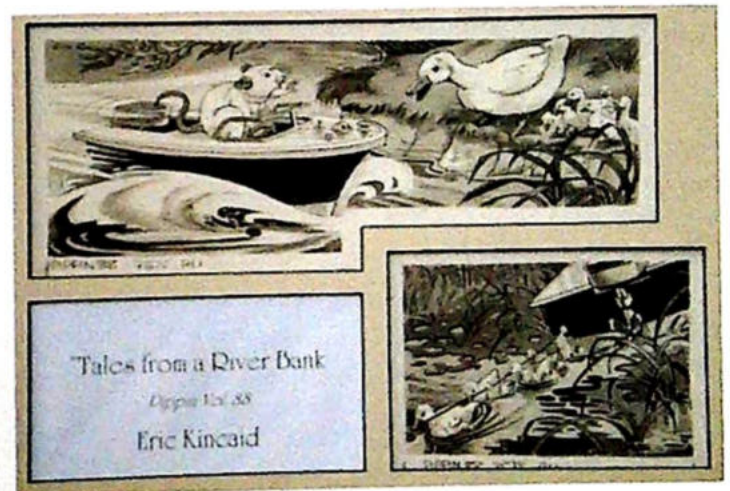
204

204
Tom Webster (1886-1962)
George and the Dragon, ink, signed and dated
(19)12,
20cm x 14.5cm,
and another by J.A. Shepherd
£30-50



203

203
Chatterbox
Illustrations, various, loose
£30-50



205

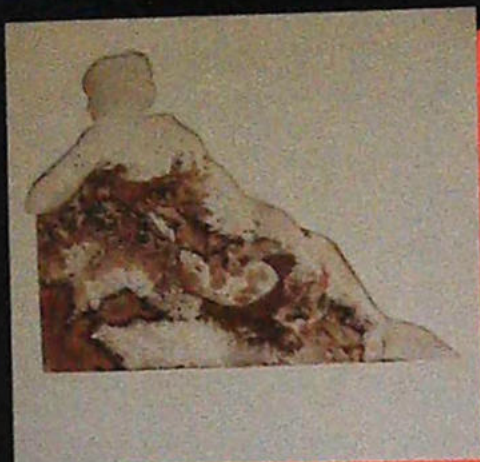
205
Eric Kincaid (20thC)
Tales from a river bank,
ink wash, initialed (5)
£50-80

Index of artists

A		G		N		V	
Agon, Jorge A	88	Gamley, Andrew	146, 147	Newton, Algernon	159	Van Oorschot, Theodore	16
Allen, Guy	30	Gardner, R	95, 96	Nisbet, E	136	Vaughan, Keith	4
Alleylove, J	161	Goodwin, Albert	92	Noel, John	19	Victor, Thomas	156
Allison, L	162	Grace, A	59	Noon, Carl	56		
Aussems, J	36	Greenlees, James	129				
		Guinegault, Georges	166				
B		H		O		W	
Ballard, Brian	52	Haddock, Edwin	100,101	O'Leary, Julia	181	Walford, H	168
Bampfield, John	63, 64	Haider, Hermann	48,49	Onobrakepeya, Bruce	192	Walton, E	143
Barber, Charles	140	Hanisch, Alois	33			Weatherill, Mary	112
Barnfather, Michael	72	Harris, Edwin	114-117	P		Webster, Tom	204
Bartl, A	99	Harris, G	169	Partridge, Monique	178	Wenlock, Constance	154
Bates, Jan	182	Harris, J	69	Passet, Gerard	38,39	Weston	173
Baxter, David	149	Hastings, K	65	Penrose, James	12	White, Alfred	90
Bearne, Edward	148	Hayward, Peter	80	Peploe, Samuel	5	White, Dawn	179
Bell, Anthony	197	Hilton, Henry	7	Pille, Felix	71	Whitehead, Allan	177
Bell, David C	11	Hine, Henry	102-105	Piper, John	196	Wilkinson, Chris	185
Benton, Thomas	78	Hine, William	106-108	Pissarro, Lelia	2	Wilson, G	55
Beswick, Frank	130	Hiscox, George	133	Pitcairn, Constance	15	Wimperis, Edmund	118, 132
Beul, Laurent	22	Hodgkinson, Cecil	97	Preston	81,82	Wood, E	174
Bingley, James	60	Hodson, Peter	184	Preston, James	73	Woodington, Walter	50
Blank	84	Holzer, F	21	Preston, Rex	76	Wright, David	176
Boucher, M	66	Hooper, Douglas	144	Prout, John	113		
Bowhill, Brian	191	Hopkins, Amanda	180				
Broggi, Gino	51	Howlden, Isabella	122-124	R			
Broom, Marion	152	Hoyles, William	135	Reymond, Carlos	37		
Buchanan, David	68	Huze, Guy	165	Ridgley, B	83		
Bucknall, Ernest	119-121			Roberts, Keith	46, 47		
				Roger-Burton, David	195		
C		J		Rollett, Herbert	91		
Calbert, Antoine	198	Jackson, S	167	Rossi, Vittorini	41, 57		
Cooper, Dorothy	18	Jacquet, G	158	Rowbotham, Thomas	141		
Cooper, George	171	Jarvis, G	150	Russell, J	170		
Cumming, Gordon	93	Jonas, D	40				
		Jowett, John	126	S			
D		K		Schaefer, Henry	61		
Damoey, M	155	Kincaid, Eric	205	Searle, Ronald	188		
Donner, Carl	163	Knight, Charles	127	Simonsen, Simon	1		
Dyer, Ted	79			Smith, Geof	94		
E		L		Soper, Eileen	189		
Earp, Edwin	131	Lambert, T	137	Stannard, Henry	134, 164		
Earp, Henry	6	Leitch, Richard	125	Stenburg, Svante	45		
Elliott, James	25	Loder, James	14	Street, Evelyn	31		
Emett, Rowland	187	Lord, Eylse	193				
Eristoff-Kazak, Mary	29			T			
		M		Teeuw, Mo	183		
F		Maljavin, Filip	10	Thomasset, G	202		
Figerio, Roberto	43	Maresca, S	58	Thorneley, Charles	20		
Fletcher, Henry	85	May, John	199	Thornton, C	175		
Flint, William	200	McNamara, Mary	34	Trickett, John	9		
Foster, Myles	128	Mellor, William	23				
Frank de Prades, Alfred	153	Miles, Seth	53				
		Millington, Vic	172				
		Mullen, W	35				
		Musin, Auguste	67				

Fine Art Sale 23 October 2013 - Sale Results

4	£3,100	57	£25	112	£140	159	£200	220	£2,200
5	£180	58	£60	115	£400	160	£85	222	£50
6	£1,300	60	£150	116	£170	161	£25	224	£25
7	£380	61	£60	117	£110	162	£45	225	£100
8	£440	62	£32	118	£20	163	£95	227	£75
9	£1,300	63	£30	119	£20	164	£10	228	£45
10	£500	64	£190	120	£25	165	£22	229	£70
11	£400	65	£500	122	£90	166	£20	231	£260
13	£2,000	67	£190	123	£48	167	£210	232	£110
15	£650	68	£50	124	£25	168	£50	234	£80
17	£130	69	£50	125	£300	169	£110	238	£70
19	£700	70	£650	126	£380	173	£45	241	£140
20	£180	71	£380	128	£85	174	£22	243	£70
21	£550	73	£120	129	£150	176	£260	244	£260
22	£260	75	£380	130	£110	177	£240	245	£90
23	£75	78	£200	131	£110	179	£230	246	£75
24	£140	79	£380	132	£260	181	£230	247	£45
25	£200	80	£35	133	£170	182	£100	252	£100
27	£180	81	£50	134	£160	183	£220	254	£140
28	£38	82	£30	135	£100	185	£180	255	£65
29	£130	83	£150	136	£190	187	£45	256	£65
30	£500	84	£30	137	£30	191	£3,000	257	£20
35	£150	85	£20	138	£10	193	£180	258	£12
37	£550	86	£50	141	£32	197	£480	259	£50
38	£45	87	£45	142	£10	198	£30	260	£22
39	£100	88	£40	143	£460	199	£150	261	£75
40	£150	93	£95	144	£300	200	£230	262	£30
42	£140	94	£90	145	£320	202	£75	263	£90
43	£100	95	£75	146	£200	203	£95	264	£85
44	£280	96	£95	147	£75	204	£170	265	£30
46	£260	98	£130	148	£50	205	£250	266	£40
48	£190	100	£100	149	£100	209	£1,500	267	£48
51	£130	102	£650	150	£100	211	£2,600	268	£30
52	£100	104	£700	153	£500	212	£500	269	£30
53	£25	105	£280	155	£75	213	£100	270	£90
54	£42	109	£95	156	£75	214	£200		
55	£65	110	£120	157	£45	215	£380		
56	£20	111	£300	158	£30	219	£140		



St. Martins Group

24th January - 2nd February

Anita Mortimer

4th Feb - 16th February

Bishop Grosseteste Staff

18th February - 2nd March

Bishop Grosseteste Students

4th March - 16th March

Phil Tetlow

18th March - 30th March

Denise Hawthorne

1st April - 13th April

Vincent Haddelsey 1934-2010

15th April - 27th April

Phil Bowman

29th April - 11th May

ARTESCAPE

13th May - 25th May

Kevin Wallhead

27th May - 8th June

Sam Scorer Gallery

5 Drury Lane Lincoln LN1 3BN

01522 589899

www.samscorergallery.co.uk

www.facebook.com/SamScorerGallery

PRIVATE CLIENT & PROFESSIONAL SERVICES DEPARTMENT

We value personal property for private and corporate clients. Our team have valued family heirlooms, art collections and museum holdings for a variety of purposes.

We are the only auction house in the region to have a bespoke Private Client Department with:

- Two RICS/Antiques Trade Gazette professional assessment award-winning valuers
- An in-house qualified jewellery valuer
- Experience in abundance and diversity since 1864
- 8 professional staff with RICS, NAVA or SoFAA qualifications





AUCTION APPRAISAL

We offer a **FREE** appraisal service at our offices for items you may wish to consign to auction.

This comprises advice for the most appropriate sale, a pre-sale estimate to encourage buyers and a reserve if necessary.

Items can accepted at each of the Auction Rooms
Monday to Friday 9am to 1pm & 2pm to 5pm.

Every Friday the valuers are available without appointment **from 9am to 1pm.**

You can also email images to valuers@goldingyoung.com

FREE home visits can also be arranged, please call your nearest saleroom to speak with the Saleroom Managers about these.

John Leatt at Lincoln **01522 524984**,
Andrew Doubleday at Grantham **01476 565118** or
Alastair McPhie-Meiklejon at Bourne **01778 422686**.

PROBATE – INHERITANCE TAX ASSESSMENT

For many Executors and Trustees the responsibility of dealing with a deceased's Estate is a one off experience. You have to make a number of important decisions in a very short space of time and all when the loss is most difficult to come to terms with.

The position of Executor is an important one in law and has defined personal liability and responsibility. To exhibit due diligence to beneficiaries and more importantly HM Revenue & Customs, an executor or advisor will instruct a firm Regulated by RICS.

Even if the estate will be taxed at 0%, a valuation remains an essential tool for an executor. The inventory will still be used for identification of bequests, trust items, family division and proof of value.

Our valuations are prepared to the International Valuations Standards requirement of the 'Red Book'.

The report will include the sections of:

- Jewellery
- Vehicles
- Antiques, Fine Art & Collections
- General Furniture & Effects

**For initial advice contact the following
Chartered Auctioneers & Valuers:**

Lincoln, Midlands & North – William Gregory MRICS – 01522 524984
Grantham, Bourne & South – Colin Young MRICS – 01476 565118



Providing your insurers with a written valuation will enable you to obtain the cover that is best suited to your requirements. If you are telling your insurer what is to be covered, they know the risk and can calculate the premium accurately and offer the best policy.

Over-insuring your personal property results in paying high premiums for unwanted cover. This can be as costly as discovering that something is not covered when you have to make a claim.

The requirements of each client are different and your needs will be assessed by one of our Chartered Arts & Antiques Surveyors.



INSURANCE VALUATIONS

We would discuss what needs to be included in the report and offer guidance to the cost. It may be necessary to do a pre-valuation inspection where large collections or specialist items are to be included.

A draft valuation report is provided initially for your approval.

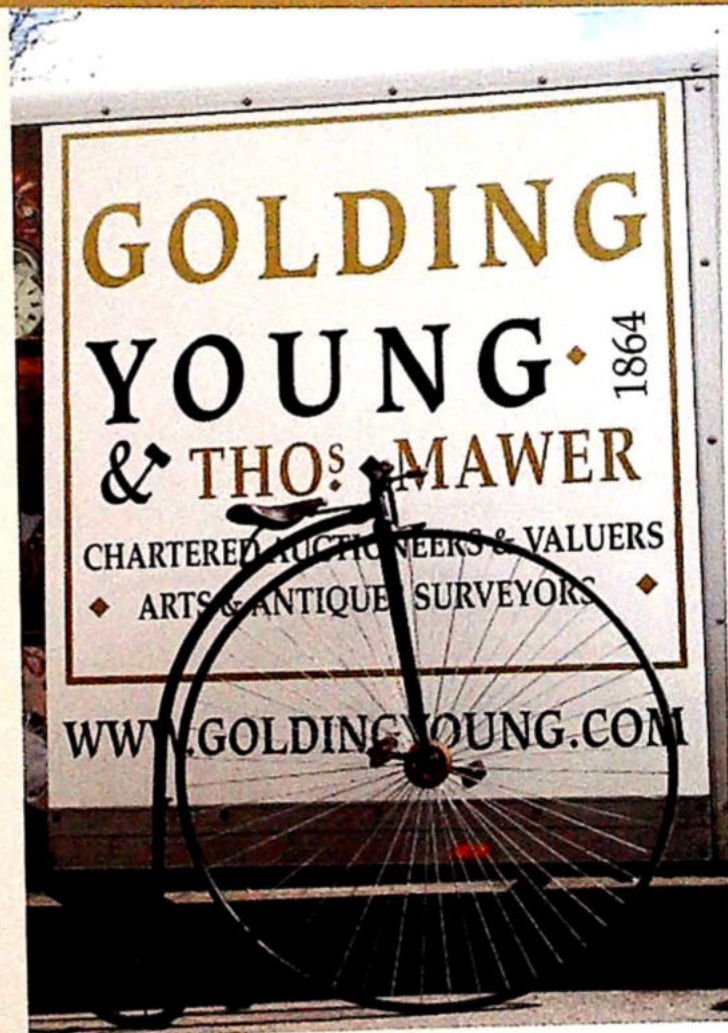
The report will contain a full description of each item, the basis of the valuation and its reinstatement value. Photographic records are usually provided too.

Upon approval, two copies of the final formally bound report is dispatched to you.

For appointments and quotations contact William Gregory MRICS on 01522 524984.

REMOVALS – HOUSEHOLD & COMMERCIAL

- Free Quotations
- Full Packing Service
- Suppliers of Packing Materials
- Shipping & Storage Arranged
- Antiques & Fine Art Specialists
- Specialist Piano Movers
- Office Movers



Contact Andrew Lowes on 07970 742577 for a quote
or email lowes@goldingyoung.com



**Adding Value... and
maximising your net return.**

HOUSE CLEARANCE

If there is that hidden 'find', it will be to your direct benefit.

Every week we take instructions for House Clearance for all of the prominent firms of Solicitors in the area, as well as from Private Individuals, Trustees and Executors.

If you are dealing with the contents of a property, please contact us at the earliest point.

A visit to the premises by one of our qualified and experienced appraisal staff will offer the best advice for Security, Valuation and Sale.

DISPOSE OF NOTHING – Often things thought to be rubbish are saleable.

IMMEDIATE ACTION IS REQUIRED – Once a property is uninhabited it is a target for burglars and your insurance may be invalid.

Items removed from premises are listed and handled by our professional carriers.

Goods are then allocated to the next appropriate sale to ensure your highest sale return.

We will also deal with the rubbish. It is disposed of in the most cost-effective and environmentally friendly way.

PROPERTIES CLEARED, PROMPTLY AND EFFICIENTLY

Call **Andrew Doubleday MNAVA**
on **01476 565118** for Grantham Area
& Midlands

Call **John Leatt ASFAV**
on **01522 524984** for Lincoln Area
& Northern Counties

Call **Alastair McPhie-Meiklejon
BSc(Hons)**
on **01778 422686** for Bourne
& Southern Counties

THINKING OF SELLING?

Here is the checklist of professional sellers at auction.

Executors, solicitors, accountants, insurers, corporates and government departments have to exhibit due diligence when instructing.

Use this checklist to do the same,
with a few reasons why you may wish to choose us.

- **Regulated by RICS**

This means that a firm is regulated and inspected by the Royal Institution of Chartered Surveyors. Firms have to comply to the strictest rules of Client Accounting, Professional Practice and Complaints Handling. Only one of the top three International firms of auctioneers manage to achieve full compliance, fewer still in the UK regions. *Better Regulation for Us. Better Protection for You. Accept Nothing Less.*

- **Chartered Auctioneers & Valuers**

You may be surprised to learn that here is no legal requirement for qualification and many firms use the terms 'auctioneer' or 'valuer'. Chartered status is the Hallmark of a Professional Auctioneer.

- **Arts & Antiques Surveyors**

We know the use of the word 'expert' is somewhat over indulged. We have a specialist Private Client and Professional Services Department with the largest concentration of A&A Surveyors of any firm in the region. Head of Department, William Gregory and Managing Director, Colin Young are both winners of The Antiques Trade Gazette/RICS prize for professional assessment. If you are submitting valuations to HM Revenue & Customs, Insurance Companies or Financial Institutions please speak to us for a free consultation.

- **Internet Auction Catalogues**

The high standards of cataloguing exhibited herein are provided by experienced professionals. All of our cataloguers are members of RICS, NAVA or SoFAA. This standard has to be reproduced on-line, every time and every lot; or there is simply no point doing it. We also illustrate lots online free of charge.

- **Live Webcast Auctions**

The good news with placing auctions online is there are more buyers. That is also bad news. There are new risks with the new technology. Magnified with un-regulated firms using it as marketing gloss and failure to protect their clients when it goes wrong. Our 150 years of auction experience is the substance behind the gloss that gets the most for our clients from Live Auctions.

- **House Clearance**

To place over £2m of personal property under the hammer in 2013 we had to clear a lot of properties. It is the core of our services. To achieve this we have to provide a full service of dealing with everything from the fine art, antiques, jewellery, collectables, furniture, vehicles and just as important, disposing of the rubbish. We are pleased and able to provide clearance at all levels by our dedicated in-house team of valuers, removers and auctioneers.

- **Sale Results**

You only have to go to our website to see why to use us. There are 13 years of results to judge us by. We do not need to list unsolds post-sale because January 2014 saw our 54th consecutive month with a sale at either Bourne, Grantham or Lincoln producing a sale rate of over 90%. Good advice, great results for hundreds of vendors every month.

*Join their success with an entry
in the next Collective Sale*