



The Lincoln Fine Art Sale Review
4th February 2026

GOLDING YOUNG EST
1864

Probate – Inheritance Tax Assessment

For many Executors and Trustees the responsibility of dealing with a deceased's Estate is a once-in-a-lifetime experience. You have to make a number of important decisions in a very short space of time and all when the loss is most difficult to come to terms with.

The position of Executor is an important one in law and has defined personal liability and responsibility. To exhibit due diligence to beneficiaries and more importantly HM Revenue & Customs, an Executor or advisor will instruct a firm Regulated by RICS.

Even if the estate will be taxed at 0%, a valuation remains an essential tool for an Executor. The inventory will still be used for identification of bequests, trust items, family division and proof of value.

Our valuations are prepared to the International Valuation Standards requirement of the 'Red Book'.

The report will cover sections of:

- Jewellery
- Vehicles
- Antiques, Fine Art & Collections
- General Furniture & Effects



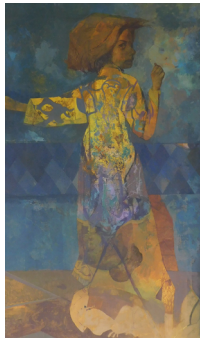
Removals – Household & Commercial

- Free Quotations
- Full Packing Service
- Suppliers of Packing Materials
- Shipping & Storage Arranged
- Antiques & Fine Art Specialists
- Specialist Piano Movers
- Office Movers

Contact Rupert Hope-Shaw at 07970 742577 for a quote or email transport@goldingyoung.com

goldingyoung.com

Lincoln Fine Art Sale



Leonard H Rosoman RA (1913-2012).
Actress Jill Bennett (1931-1990),
performing on stage, oil on canvas,
signed, 101.5cm x 76cm.
SOLD for £3,400



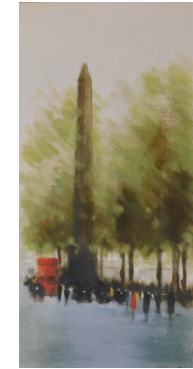
Peter Brannan (1926-1994). The
Cathedral, oil on board, signed,
dated (19)65 and titled verso,
60.5cm x 32.5cm.
SOLD for £420



Walter Williams (act.1841-1881).
Country river scene with church,
figures fishing and walking along
path, oil on canvas, signed, 70cm x
90cm.
SOLD for £500



William Anslow Thornley (act. 1858-1898).
Harbour coastal scene with fishing boats and
figures, oil on canvas, signed, 34cm x 29cm.
SOLD for £500



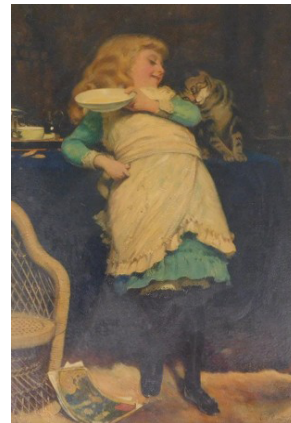
Anthony Robert Klitz (1917-2000).
Cleopatra's Needle London, oil
on canvas, signed, 75.5cm x 37cm.
SOLD for £240



Charles Thorneley (act. 1858-
c.1902). Masted ships and rowing
boat off the coast, oil on canvas,
signed, 44cm x 79.5cm.
SOLD for £550



Ronald Wong (b.1940). Prelude to
Peace (Mosquito to Pathfinders/
Manna), oil on canvas, signed and
titled verso, 50cm x 75cm.
SOLD for £380



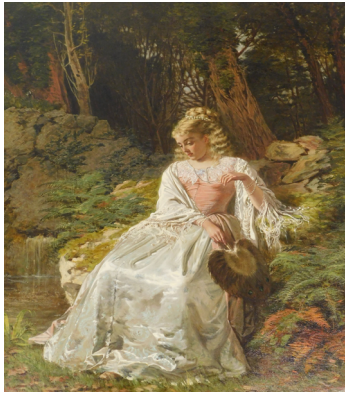
Charles Burton Barber (1845-
1894). Coaxing is better than
Scratching, oil on canvas, signed
and dated 1882, titled on mount,
37cm x 24cm.
SOLD for £3000



Walter Hunt (1861-1941). "The Proud
Mother" - a small white terrier type
bitch resting before her kennel with two
puppies. Each puppy having brown
and black patches on head and ears,
one puppy sitting hind legs in front of its
mother, the other standing on hind legs
with forelegs on the mothers back. oil on
canvas, signed, 51cm x 61cm.
SOLD for £850



Heywood Hardy (1842-1933). The
Hunt, oil on canvas, signed, 47.5cm x
36cm.
SOLD for £1,500



Thomas Edward Roberts (1820-1901). "Reminiscing" - a blond haired maiden sitting on a bank in a woodland setting with water falling into a still pool. oil on canvas, signed, 89cm x 68cm.
SOLD for £1,500



Henry John Yeend-King (1855-1924). "The Stream" - a pigtailed young maiden standing by a narrow stream in a woodland setting, with the stream bridged by a single flat stone. oil on canvas, signed, 60cm x 48cm.
SOLD for £600



Wright Barker (1864-1941). "A Disputed Point", a farrier at work filing the shoe of a bay hunter, oil on canvas, signed, titled verso, 73cm x 102cm.
SOLD for £1000



Sophie Anderson (1823-1903). "Spring" - a young lady wearing a white dress clasping a large bunch of flowers against her upper body. The girl having below waist length curly auburn hair, with a garland of pink and white flowers in her hair. oil on canvas, signed, 81cm x 54cm.
SOLD for £5,000



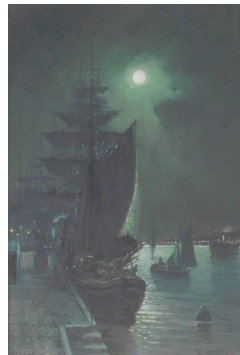
George Wright (1860-1942). "The Lost Scent" - a huntsman on chestnut horse riding towards edge of escarpment, followed by eleven hounds, against a storm clouded background, oil on canvas, signed, 30cm x 41cm.
SOLD for £2,200



James Baker Pyne (1800-1870). Masted ships off coast, oil on canvas, signed and dated 1849, 40cm x 59.5cm.
SOLD for £320



Henri Fabre (19thC/20thC). Floral still life, oil on canvas, signed, 75m x 60cm.
SOLD for £260



Walter Linsley Meegan (1859-1944). Moonlit harbour, oil on canvas, signed, 39.5cm x 29cm.
SOLD for £300



William Callow (1812-1908). River landscape with cathedral, oil on board, signed, 34cm x 52cm.
SOLD for £400



Richard Ansdell (1815-1885). Black game, oil on canvas, signed, titled and dated 1868 verso, 54cm x 93cm.
SOLD for £550

PRIVATE CLIENT & PROFESSIONAL SERVICE DEPARTMENT

We value personal property for private and corporate clients. Our team have valued family heirlooms, art collections and museum holdings for a variety of purposes.

We are the only auction house in the region to have a bespoke Private Client Department with:

- Three Chartered Arts & Antiques Surveyors
- Four RICS / Antiques Trade Gazette professional assessment award-winning valuers
- Two In-house qualified jewellery valuers
- Experience in abundance and diversity since 1864
- Ten professional staff with RICS, NAVA or SoFAA qualifications.



For initial advice contact the following Chartered Auctioneers & Valuers:

| | |
|---------------------------------------------------------------|--------------------------------------------------------------------|
| Bourne, Stamford & South Colin Young MRICS 01778 422686 | Grantham, Lincoln & North William Gregory MRICS 01522 524984 |
|---------------------------------------------------------------|--------------------------------------------------------------------|



Peter Brannan (1926-1994). Portrait of a lady at breakfast, oil on board, signed, dated (19)59, and titled verso, 50cm x 34cm.
SOLD for £420



20thC School. Two chestnut horses in landscape, oil on canvas, 90cm x 120cm.
SOLD for £320



Augustus Edwin John (1878-1961). Portrait of a woman wearing a hat, watercolour, signed, 45cm x 32cm.
SOLD for £1,500



George Thomas Paice (1854-1925). Joshua, oil on board, signed and titled verso, 38cm x 53cm.
SOLD for £280



20thC School. Seaside beach scene, oil on canvas, 75cm x 100cm.
SOLD for £250



Lawrence James Isherwood (1917-1989). Rain at St Martins London, oil on board, signed and titled verso, 60cm x 45cm.
SOLD for £1,100



John Trickett (b.1952). Cock Pheasant, oil on board, signed, 34cm x 44cm.
SOLD for £320



Mick Cawston (1959-2006). Badgers, oil on board, signed, 29.5cm x 24.5cm.
SOLD for £320



Malcolm Coward (b.1948). Grove and Rufford Hunt Meet, Manor Farm Laneham January 1994, oil on canvas, signed and titled verso, 60cm x 75cm.
SOLD for £400



Manner of Marmaduke Cradock (c.1660-1717). Geese, turkey and pigeons, oil on canvas, 89cm x 112cm.
SOLD for £1,800

GOLDING YOUNG EST
1864

Thinking of selling?

Executors, solicitors, accountants, insurers, corporations and government departments, have to exhibit due diligence when instructing. Use this checklist to do the same, with a few reasons why you may wish to choose us.

We are regulated by RICS

**Better Regulation for Us. Better Protection for You.
Accept Nothing Less.**

Our online catalogues

For over 20 years our catalogues have been online and our experience ensures they are placed in front of the right buyers in the global market.

Our sales results

July 2020 saw our 141st consecutive month with a sale at either Bourne, Grantham or Lincoln producing a sold rate of over 90%. Good advice, great results for hundreds of vendors every month.

Join their success with an entry in our next sale!

A firm of the highest standing

Being a firm of Chartered Auctioneers & Valuers means that we have not only qualified to the highest standard in the profession, but have to maintain those standards. The first due diligence check any professional makes when needing a formal valuation, or simply selling at auction is for The Hallmark of a Chartered Auctioneer & Valuer - Regulated by RICS.

RICS

The Royal Institution of Chartered Surveyors is the professional body that has been responsible for The Auctioneers Charter since 1970. All members have to complete at least 20 hours CPD or Continued Professional Development every year. All valuation work is prepared to the RICS Red Book requirements incorporating the International Valuation Standards (IVSC) Client Accounting. All client money has to be held in dedicated, ring-fenced accounts with a full audit trail.

NAVA Propertymark

The National Association of Valuers and Auctioneers are an important body within the auctioneering and valuation profession, specifically in our case relating to the sale of chattels or personal property. All members have to complete at least 12 hours CPD or Continued Professional Development every year. They work with auctioneers and consumers alike, to offer regulation and guidance. Membership also provides for Primary Authority with Trading Standards to ensure clarity and understanding.

SoFAA

The Society of Fine Art Auctioneers, formed in 1973, as the name suggests, is a society that exclusively represents the interests of the leading fine art auctioneers in the UK helping them provide the best service to clients. With this level of qualification and accreditation within the firm we pride ourselves on providing a reliable and professional service to get it right.



The Bourne Auction Rooms

Spalding Road, Bourne,

Lincolnshire PE10 9LE

E: bourne@goldingyoung.com

T: +44 (0) 1778 422686

F: +44 (0) 1778 425726

The Grantham Auction Rooms

Old Wharf Road, Grantham,

Lincolnshire NG31 7AA

E: grantham@goldingyoung.com

T: +44 (0) 1476 565118

F: +44 (0) 1476 561475

The Lincoln Auction Rooms

Thos Mawer House, Station Road

North Hykeham, Lincoln LN6 3QY

E: lincoln@goldingyoung.com

T: +44 (0) 1522 524984

F: +44 (0) 1522 681804

The Leicester & Midlands Office

E: leicester@goldingyoung.com

T: +44 (0) 116 473 5735

London & South Valuations

E: london@goldingyoung.com

T: +44 (0) 203 301 1007

The Louth & Wolds Office

E: louth@goldingyoung.com

T: +44 (0) 1507 661864

The Stamford & Rutland Office

E: stamford@goldingyoung.com

T: +44 (0) 1780 7516