



The Lincoln Fine Sale

Wednesday 31st January 2018
At The Lincoln Auction Rooms
Sale commences at 10am

Viewing: Tuesday 30th 10am-4pm
& Saleday from 8.30pm-10am.

Bid online or simply watch the sale live at



All enquiries to William Gregory MRICS or Colin Young MRICS on 01522 524984

Lincoln Fine Sale



▲ 2001.
A Victorian carved oak side table, decorated with lion masks, raised on twin bulbous supports to serpent feet, 143cm wide.
£150-200

2002.
A George III mahogany chest, of two short and two long drawers, raised on bracket feet, 88.5cm wide.
£100-150

2003.
An early 19thC mahogany longcase clock, the painted arched dial not named, with an eight day striking movement, 203cm high.
£250-350



▲ 2004.
A Victorian oak court cupboard, the canopy top with three field panelled doors, the base with three drawers above two cupboard doors, raised on block supports, 140cm wide.
£300-500



▲ 2005.
A Victorian mahogany standing corner cupboard, with four panelled doors, flanked by canted sides, 217cm high.
£200-300



▲ 2006.
A George III mahogany and satinwood banded bow fronted chest, of four drawers, 115cm wide.
£250-400



▲ 2007.
A Wainscot chair, with a carved panelled back, bearing date 1665 and initialled WN, with a planked seat on turned supports, constructed using some 17thC timber.
£150-250

2008.
A Wainscot chair, with a carved panelled back, bearing date 1665 and initialled WN, with a planked seat on turned supports, constructed using some 17thC timber.
£150-250



▲ 2009.
A late 17th/early 18thC and later walnut and oak cabinet, the top with a moulded edge above two doors, each with fielded panels enclosing a series of collector's drawers, the base with a frieze drawer on turned tapering cabriole legs and pad feet, 65cm wide.
£300-500



▲ 2010.
A 19thC Queen Anne design oak bureau bookcase, the upper section with double dome top, above glazed doors, the base with fall revealing fitted interior and well slide, above two short and two long drawers, raised on bracket feet, 89cm wide.
£250-400



▲ 2011.
A Pilkingtons Royal Lancastrian bottle shaped vase, with a lustre glaze decorated with geometric devices, flowers etc., decorator's initial B for Annie Burton, 20cm high.
£150-250



▲ 2012.
A Doulton Lambeth stoneware ewer, with incised decoration in brown, green and navy, impressed mark to underside and decorator's initials. £100-150

2013.
A pair of early 20thC Staffordshire recumbent greyhound inkwells, each on a shaped base, 18cm wide.



▲ 2014.
A 19thC Meissen figure group, in the form of various children around a wine press, on a circular base, cross swords mark to underside, 33cm high. £300-500

2015.
A pair of 19thC stoneware relief moulded jugs, each decorated with hunting scenes etc, possibly Derbyshire, 27cm high.

2016.
Two similar 19thC Staffordshire treacle glazed snuff taking Toby jugs, 25cm high.

2017.
A late 19thC/early 20thC Wedgwood blue Jasperware cheese dome and cover, decorated with neo-classical figures, impressed mark to underside (base very stained), 20cm high.

2018.
A Victorian porcelain dessert service, each piece painted with a flower spray, within elaborate gilt borders, comprising four comports, two stands and twelve plates.

2019.
A late 19th/early 20thC oak mantel clock, the hood with turned finials and with brass mounts, the enamel dial with Roman numerals, 50cm high.

2020.
Spare Lot

2021.
An extensive Mason's Patent Ironstone Regency pattern part dinner, tea and coffee service. £100-150

2022.
Twenty five early 20thC cut glass finger bowls.

2023.
A Continental white metal knife, the handle cast in the form of a heraldic lion, the blade stamped Becker, 24cm long. £200-300



▲ 2024.
A monumental 19thC French turquoise and green glazed jardiniere and stand, by Clement Massier, the top with applied decoration of leaves and scrolls, the base cast with lion's heads and paw feet, on a triangular plinth, 147cm high overall. £700-900

2025.
A pair of late 19thC painted spelter figures, maidens, 45cm high.



▲ 2026.
A late 19th/early 20thC French gilt metal mantel clock, mounted with a female classical figure with a putto and garlands, the enamel dial with Arabic numerals, signed Tiffany & Co, on a pink and white variegated marble base with tapering feet, 27cm wide. £150-250



▲ 2027.
A 1970's Jaeger Le Coultre electric desk or table clock/weather station, the rectangular brushed steel type case housing a square dial, stamped Electric, a barometer and a thermometer, single battery operated movement, the case stamped Swiss 5054, 14.5cm high, 18.5cm wide. £300-400

2028.
A pair of early 20thC black japanned turned wooden candlesticks, 37cm high.



▲ 2029.
A pair of Chinese famille rose porcelain octagonal dishes, each decorated with figures and children, within elaborate borders of flowers and butterflies, 34cm wide. £150-250

2030.
A Victorian Joseph Holdcroft Majolica jardiniere, decorated overall with carp, lilies etc., in Japanese style, impressed mark to underside, 32cm high. £100-150

Lincoln Fine Sale



- ▲ 2031.
A pair of 19thC German porcelain salts, in the form of a gentleman and lady preparing food beside two large clam shells, Meissen type mark to underside, 21cm wide.
£150-250

2032.
Spare Lot



- ▲ 2033.
A 19thC Japanese porcelain Meiji figure, of a geisha girl carrying a basket, elaborately decorated with a black robe, unmarked, 50cm high.
£200-400



2034.
A 19thC Japanese porcelain Meiji figure, of a geisha girl and a kitten, with an elaborately decorated robe, unmarked, 38cm high.
£200-400

2035.
A 19thC Sitzendorf porcelain centrepiece, in the form of two putti holding a flower encrusted basket.



- ▲ 2036.
A 19thC French pink variegated marble mantel clock garniture in the Persian style, the clock with a central dome, surrounded by turned brass finials, the dial with Arabic numerals, flanked by reeded pillars, on small turned feet, 34cm high, flanked by a pair of similar two handled urns, each 26cm high.
£700-900

2037.
A collection of teaware, to include a Victorian part set decorated with flowers and plain cobalt and gilt bands etc.

2038.
A 19thC School bust of a gentleman, wearing an evening cap with tassle, terracotta on tapering socle, 50cm high.



- ▲ 2039.
A Majolica two handled jardiniere, decorated with trailing ivy, (later hardwood base), 50cm high.
£100-150

2040.
William Dendy Sadler.
Artist signed monochrome print, *The Rent Day*, image size 46cm x 60cm, another *The Huntsman* (AF) (2)

2041.
William Dendy Sadler.
Artist signed monochrome print, gentlemen at the dinner table, image size 45cm x 35cm, and another, huntsman relaxing (AF) (2)

2042.
Italian School.
Landscapes with lakes, mountains and figures, pair of chromolithographs, 49cm x 82cm, in gilt plaster frames (AF).

2043.
A Regency tortoiseshell tea caddy, the sarcophagus shaped lid, velvet lined and hinging to reveal a two sectional compartment above a bombe body, terminating in compressed orb feet, with a silver (initialed) escutcheon, 17cm high.
£150-200

2044.
Spare Lot

2045.
A Carl Zeiss pair of binoculars, in a fitted leather case.

2046.
A taxidermied stag's head, with twelve point antlers, 61cm wide.
£100-150

2047.
A taxidermied stag's head, with fourteen point antlers, 58cm wide.
£100-150

2048.
A taxidermied stag's head, with ten point antlers, 54cm wide.
£100-150



- ▲ 2049.
A taxidermied stag's head, with fourteen point antlers, 108cm wide.
£150-200

2050.
A 19th Continental Parian figure, modelled in the form, of a woodsman on circular base, 35cm high.



▲ 2051.
A late 18th/early 19thC Norwegian birch peg tankard, the hinged lid carved centrally with a lion, the handle with thumb nail type carving etc., on tapering feet, carved with flutes, 23cm high, 17cm diameter and a turned wooden Freemasonry type gavel. (2)
£200-300

2052.
A collection of 19thC and later pewter measures, a tankard, tobacco jar and cover etc.

2053.
An oriental bronze planter, of foliate form, 30cm high.



▲ 2054.
A Victorian terracotta bust of a new classical lady, by J. M. Blashfield of Stamford, writing on a scroll on a square base, stamped to reverse, (AF) 59cm high.
£150-250

2055.
Two 19thC copper jelly moulds, to include a mould of tapering form, engraved with a crown and the letter C, 23cm high and a plain cylindrical mould, 10cm high. (2)

2056.
Spare Lot

2057.
A collection of brass and other items, to include a spark guard with stained glass panel, copper and brass coal bucket, pierced fender, kettle and trivet.

2058.
Victorian lustre jugs, teapots, Willow pattern meat plate, decorative china, Staffordshire ornaments, character jugs and commemorative wares etc.

2059.
A Victorian mahogany doll's crib, on runners, 50cm long.

2060.
A pair of 19thC bronze urns, on swept supports, ebonised wooden bases, 30cm high.



▲ 2061.
Tribal Art.
An African knobkerrie or throwing club, with spherical head and carving to one side, 95cm long.
Provenance: Given to the vendors' father by an African missionary.
£200-300

2062.
An 18thC oak coffer, with panelled lid, carved and decorated, 99cm wide.
£150-200

2063.
An 18thC and later oak longcase clock, with arched brass dial, moon roller movement, signed John Stephen Bristol, eight day striking movement.
£300-400



▲ 2064.
A George II oak and mahogany banded lowboy, with one long and two short drawers, raised on square tapering supports, 92cm wide.
£150-200

2065.
A Victorian gilt framed wall mirror, with floral decoration, 120cm high.
£100-150

2066.
An oriental rug, multi repeat pattern, blue ground, 173cm x 139cm. (AF).

2067.
A 19thC mahogany and marquetry inlaid banjo barometer, with silver dial, signed C Favari, Lincoln.

2068.
Spare Lot

2069.
A George III mahogany foldover tea table, with frieze drawer raised on straight supports to pad feet, 70cm wide.

2070.
A 19thC Maple & Co oak extending dining table, with wind-out action, raised on five bulbous carved supports (two leaves), 311cm extended.
£250-400



2071.
A set of fourteen Victorian oak dining chairs, with caned backs and seats, barley twist supports, two with arms.
£700-1000

2072.
A late 19thC oak and iron chest, with a hinged lid and side handles, 80cm wide.

2073.
A 17thC and later oak Wainscot type chair, the panelled back, carved with a stylised dragon and a lozenge, with shaped arms, a planked seat on part turned supports, adapted.
£150-250

2074.
A George III style mahogany fret mirror, with pierced decoration, 87cm high.

2075.
A set of four Victorian Gothic style dining chairs, each with a carved frame, a padded seat on square tapering legs.

2076.
An 18thC oak drop leaf gate leg dining table, on turned supports, united by cross stretchers, 104cm wide.

2077.
An 18thC oak drop leaf gate leg dining table, on turned supports united by cross stretchers, 138cm wide.

2078.
An early 20thC two seat Knoll type sofa, upholstered in textured purple velvet, 156cm wide.

Lincoln Fine Sale

2079.
A Victorian Turkey pattern carpet runner, on a red ground,
355cm x 98cm.

2080.
Spare Lot



▲ 2081.
An unusual late 19thC French champleve four glass desk clock, with three sets of revolving numbers, within the bowed glass case, 26cm x 16cm. (AF)
£1000-1500

2082.
A collection of German and Staffordshire ornaments, to include swan spill vases etc.

2083.
A 19thC Japanese Imari charger, decorated with flowers etc, 46cm dia.

2084.
A pair of Victorian pink glass lustres, with enamel decoration, 35cm high.
£200-300

2085.
A. Hamps.
Bust of an Arab gentleman, on square socle, terracotta, signed and number 192 to reverse, 40cm high.

2086.
A Victorian copper and brass two handled tea urn, with flower cast finial on scroll feet, 36cm high.

2087.
A Victorian copper and brass tea urn, with shaped border, opaque glass handles and leaf cast feet, 50cm high.

2088.
A collection of late 19th/early 20thC Continental bisque porcelain plaques, each moulded in relief with a near classical type scenes, possibly Danish, the largest 39cm diameter. (AF)
£100-150

2089.
A Doulton stoneware jug, (lacks handle), and a pair of oak barley twist candlesticks.

2090.
A George III mahogany and boxwood strung tea caddy, of sarcophagus form on bun feet.

2091.
A set of Victorian brass postal scales, with weights on bow fronted base.

2092.
Spare Lot

2093.
After Francis Wheatley. Stipple engraving by Jackson Stodart, a set of twelve, published by The Museum Galleries, Drury Lane, London. (12)

2094.
Sundry early 20thC and later prints.

2095.
A brown Bakelite cased radio. (AF)

2096.
A late 19th/early 20thC Gladstone type bag, containing a number of compartments for dressing table fittings, incomplete.

2097.
A gentleman's top hat made by Tress & Co of London, retailed by Mawer and Collingham of Lincoln Ltd, in leather hat box. (box AF)

2098.
A pair of Ostler Garmisch Skis and ski poles.



▲ 2099.
A 19thC Continental wine cooler, the circular top with a brass liner and a loop handle, with tapering sides, on turned column and concave platform, with bun feet, 48cm high, 32cm diameter.
£100-150



▲ 2100.
A 19thC narwhal tusk walking cane, with white metal mount, engraved with initials VL, brass ferule, 94.5cm long. N.B Sold with Cites D10 Licence.

2101.
A 19thC Continental ebonised and carved mirrored wall shelf, decorated with birds and acorns, 105cm high.

2102.
A George III mahogany bow fronted hanging corner cabinet.



▲ 2103.
A George III mahogany secretaire bookcase, the upper section with two astragal glazed doors, the base with a fitted drawer above three long graduated drawers, 106cm wide.
£300-400

2104.
Spare Lot

2105.
A Continental gilt wood standard lamp, with reeded leaf carved column on a square base with scroll feet, including shade, 184cm high.



▲ 2106.
A late 19thC Chinese hardwood urn stand, with a pink marble top, the frieze carved with prunus, etc., on cabriole legs headed by dragon masks, 39cm high.
£100-150

2107.
A George II design walnut fret frame mirror, the rectangular plate with bevel edge, size.

2108.
A collection of metalware, to include fire irons, firescreen, etc.

2109.
A George III mahogany demi-lune tea table, the crossbanded top enclosing a satinwood banded interior on square tapering legs, headed by marquetry ovals, 92cm wide.

2110.
A 19thC mahogany Pembroke table, the shaped top above a frieze drawer on square tapering legs with spade feet, 77cm wide.

2111.
A late Victorian/Edwardian mahogany breakfront side cabinet, with a gilt metal gallery above a central glazed door, flanked by shelves with reeded edges, square tapering legs, 105cm wide. £200-400

2112.
A William IV mahogany rectangular centre table, with a shaped gallery above drawers to the sides, on turned and reeded end supports, united by a central stretcher, on splayed legs, 69cm wide. £200-400



2113.
A 19thC mahogany standing corner cabinet, the top with a pierced swan neck pediment, above two astragal glazed doors and two panelled doors on bracket feet, 226cm high, 130cm wide. £150-250

2114.
An early 20thC mahogany cake stand, with two pie crust tiers on a central column with tripod base, 82cm high.



▲ 2115.
A 19thC mahogany and satinwood crossbanded breakfront sideboard, with an arrangement of frieze drawers, flanked by a door and a deep drawer, on square tapering legs, 153cm wide. £250-400

2116.
Spare Lot



2117.
A 19thC cream painted and parcel gilt overmantel mirror, decorated overall with rococo scrolls, 130cm wide. £100-150



▲ 2118.
A late 19thC French rosewood, brass and mother of pearl inlaid drinks cabinet, the hinged lid enclosing four decanters and sixteen glasses on a separate removable stand, with bun feet, 32cm wide. £200-400

2119.
A George III oak hanging corner cabinet, with two panelled doors.

2120.
A continental giltwood standard lamp, with a tapering column and tripod base. £100-150



▲ 2121.
A Tiffany & Co sterling silver plain bowl, a copy of a bowl made by Ephraim Brasher, in the Clearwater Collection, Metropolitan Museum of Art, 18æoz, 20cm dia. £500-800

2122.
A late 19th/early 20thC Continental white metal oval dish, embossed overall with flowers and scrolls on four squat feet, 19cm wide.



▲ 2123.
A Victorian navette shaped oval silver tea caddy, with a hinged handle and reeded borders, retailed by Reed & Sons of Newcastle on Tyne, London 1860, 12cm, 8ozs. £120-180



▲ 2124.
A late 19th/early 20thC Continental bronze figure of a wild boar, on a stylised rock base, the base applied with an inscription in German, on an elaborate cartouche, 26cm high. £300-400

Lincoln Fine Sale



- ▲ 2125.
After Isadore Bonheur
(1827-1901).
A horse and jockey on
rectangular base, bronze,
97cm high, 110cm wide.

2126.
20thC Oriental School.
A parrot perched on a branch,
bronze with green verdi gris, on a
star shaped base, 140cm high.



- ▲ 2127.
20thC Oriental School.
A parrot on a perch with
shaped base, bronze with
green verdi gris, 103cm high.

2128.
Spare Lot

2129.
A 19thC carved Burmese
hardwood spoonback type
nursing chair,
decorated overall with flowers,
birds etc., with a later woolwork
padded cushion, on stylised bird
and scroll legs, with ceramic
castors, and a similar foot stool.
(2)



2130.
A late 18th/early 19thC Dutch
walnut and floral marquetry
miniature cabinet,
with a domed shaped top, above
two panelled doors, enclosing a
fitted interior, with drawers etc.,
the bombe fronted base with three
long drawers, on bun feet,
95cm high, 65cm wide.

2131.
A 19thC oak drop leaf table,
with carved border on spiral
turned support, 76cm wide.

2132.
A George III oak bureau,
with fitted interior, the fall above
four drawers, raised on bracket
feet, 98cm wide.



- ▲ 2133.
A pair of late 19thC
Linden wood Black Forest
hall type chairs,
each carved to simulate
branches etc., with a solid seat
on cabriole legs.
£100-150



- ▲ 2134.
A Victorian mahogany
drop dial wall clock,
the dial painted to centre
Reindeer Hotel, Mansell
Lincoln, with a moulded edge,
the base section with pierced
foliate scrolls, four pillar
double fusee movement,
81cm x 62cm.
£300-400

2135.
An 18thC oak cricket table,
raised on three turned supports,
united by cross stretcher, 90cm dia.
£100-150

2136.
An oriental carpet rug,
of geometric design, dark blue
ground, 320cm x 110cm.

2137.
An 18thC carved oak coffer,
with three panel plain top and
three fielded relief panels to te
front, 135cm wide.
£150-250

2138.
Spare Lot.

2139.
A Victorian rosewood and
marble top mirror back
sideboard,
the mirror back with a carved
shaped frame, the top with a
white serpentine fronted marble
above two doors on plinth base.

2140.
Spare Lot



- ▲ 2141.
After Francois Nicolas
Martinet.
Two blackbird specimens, on a
branch, three blackbirds to
include a Senegalese blackbird,
a heron and two further
blackbirds, uncoloured
engravings, various sizes, in
four frames.
£100-150

2142.
A set of four 19thC Coalport
dessert plates,
with wavy edge, royal blue
borders with gilt highlights, the
centres decorated with flowers,
printed mark, paint number
C6079, 22cm dia.

2143.
A Flight Barr and Barr period
Worcester cup and saucer,
painted with Chinese figures in a
landscape with red ochre, etc.,
saucer 14cm dia. (all AF)

2144.
A Pinxton trio,
comprising coffee can, cup and
saucer, the exterior decorated with
landscape panels and gilt details.
(can AF)

2145.
An early 19thC Newhall
cream jug,
purple painted mark 171, 9cm high.

2146.
An early 19thC Newhall tea
bowl and saucer,
decorated with Chinese
figures.(bowl with firing faults)

2147.
An early 19thC Newhall
cream jug,
the exterior decorated in royal
blue, iron red and green stylised
flowers, red pattern mark 856,
10cm high.

2148.
An early 19thC English porcelain dish, the heart shape decorated with summer flowers, 26cm wide.

2149.
An early 19thC Newhall porcelain four sided teapot, decorated in typical palette, together with three matching tea bowls. (lid to teapot AF)

2150.
An early 19thC Ridgway jug, the fluted body decorated in beige and gilt, printed purple crown.

2151.
A 19thC Chinese famille rose wavy edge porcelain plate, decorated with scattered flowers, 22cm dia. (AF)

2152.
Spare Lot

2153.
A 19thC Derby teapot and matching milk jug, decorated with a band to the shoulders in blue and gilt.



▲ **2154.**
A pair of early 19thC Derby lozenge shaped dishes, painted with scattered pinks and gilt trailing leaves, red painted mark number 45.

2155.
An early 20thC Coalport jug and pair of cups and saucers, with royal blue borders and gilt highlights and summer flowers in enamels, printed mark and gilt number 3797/A.

2156.
A 19thC Staffordshire cup and saucer, decorated with blue and gilt borders, summer flowers, purple paint number 8766.

2157.
A 19thC English porcelain cup and saucer, the embossed body with royal blue borders, gilt highlights, four panels of pink roses, central gilt decoration.

2158.
A pair of 19thC Ridgeway porcelain cups and saucer, internally decorated in pal green and gilt and garland of flowers, cup with printed purple crown mark and number 2/6415, the saucer painted with the royal crest.

2159.
A pair of 19thC basketweave earthenware plates, with brown transfer print decoration, depicting two figures in the foreground with temple etc., beyond (1 AF), 18cm dia.

2160.
A 19thC Staffordshire cup and saucer, internally decorated in royal blue with flowers, gilt foliate, red painted mark 592.

2161.
Two Meissen shallow wavy edge dishes, decorated with summer flowers, underglaze blue painted mark with scratched cancellation, 23cm dia. (AF)



▲ **2162.**
A Derby Stephenson & Hancock period plate, with apple green border and gilt highlights, the centre decorated with scattered summer flowers, red painted mark, pattern 11, 20cm dia.

2163.
A 19thC Staffordshire trio, comprising coffee cup and saucer, decorated with gilt and heather to the exterior, red painted mark 4221.

2164.
Spare Lot

2165.
An early 19thC Rockingham cup and saucer, decorated in pale blue gilt and scattered flowers, red painted number 1149.

2166.
A pair of 19thC famille rose decorated octagonal shape porcelain bowls, 22cm dia.

2167.
A 19thC English porcelain part dessert service, with green border and gilt highlights, central landscape panels, four plates and two compots. (one plate AF)

2168.
Two 19thC Chinese famille rose decorated porcelain dishes.

2169.
A Sitzendorf porcelain basket, decorated with flowers and a cherub.

2170.
A 19thC Bloor Derby cup and saucer, cobalt blue banded with gilded scatter leaf decorations and borders.

2171.
Two Chinese green glazed plates, decorated with flowers, butterflies and birds, 26cm dia. and 15cm dia., and another similar. (3)



▲ **2172.**
A pair of 19thC Bloor Derby soup plates, each decorated with flower sprays, printed mark in red to underside, 22cm dia.

2173.
A 19thC Belleek porcelain trio, decorated with wheat ears, grasses etc., comprising cup, saucer and side plate, printed marks to underside in black.

2174.
A collection of early 19thC Newhall and Newhall type porcelain, to include a two handled sucrier, lacking lid, various tea bowls and saucers. (16)

2175.
A 19thC Derby porcelain plate, decorated with flower sprays, within a gilt border, factory mark to underside in red, 25cm dia.

2176.
Spare Lot



▲ **2177.**
Two items of 19thC Swansea porcelain, a cup and saucer decorated in Imari colours with floral sprays.

2178.
A collection of Continental porcelain, to include a Dresden trefoil shaped cabinet cup and saucer, painted with flower sprays, underglaze blue R marks to base and a set of three early 20thC German ribbon plates. (5)

Lincoln Fine Sale

2179.
A collection of 20thC ceramics, to include a Macintyre Moorcroft design hot water jug, decorated with blue flowers, printed mark to underside and registration number 31908, lacking lid and (AF), a St Ives Studio Pottery bowl etc. (4)

2180.
A collection of ceramics, to include six Copeland Spode Italian pattern blue printed coffee cups and saucers, 19thC Staffordshire teaware etc.

2181.
A pair of late 19th/early 20thC Meissen porcelain shallow moulded flower shaped dishes, each relief moulded and decorated in cobalt blue and gilt, crossed sword mark to underside and numbered 476, 20cm dia.

2182.
Two 19thC porcelain coffee cups and saucers, one made by the Derby Factory, decorated with gilt flowers, on a cobalt blue ground, hand painted mark in red to underside and pattern number 19 and a mid 19thC cup and saucer, pattern number 776, in iron red. (2)

2183.
A set of six 19thC feather and watercolour pictures, each depicting cock fighting, in the manner of Alken, 7cm x 10cm, in common frame.
£120-180



▲ **2184.**
A late 18th/early 19thC Continental Flemish style tapestry panel, depicting people picking grapes etc., 87cm high, 58cm wide.

2185.
A late 18th/early 19thC Savonnerie tapestry panel, depicting a lady playing a harp, whilst seated beside a window, within a decorative border, frame incomplete, panel size 87cm x 70cm.

2186.
A Jeroboam bottle of Joseph Perrier Fils & Cie Brut Champagne, supplied to their late Majesties Queen Victoria & King Edward VII to the label, 62cm high.

2187.
Southwell (Henry) The Rev. The Universal Family Bible for Christians Divine Library, published in London by J Cook of Paternoster Row, the inside cover printed with information regarding the birthdays of the children of Hugh and Jane Harrison, ranging of 1783-1802, in later pony skin binding.

2188.
Spare Lot

2189.
A pair of 14k gold diamond set earrings, each in the form of an oval, illusion set in white metal with tiny diamonds, with butterfly backs, 2.7g all in.
£300-500



▲ **2190.**
A ruby and diamond dress ring, the diamond shaped head set with three round brilliant cut rubies, surrounded by twenty tiny diamonds, in a rub over setting, yellow metal, marked 750, 4.6g all in, ring size M.
£200-300



▲ **2191.**
An 18ct gold sapphire and diamond twist ring, with illusion set diamond approx 0.12cts, and a sapphire approx 0.42cts, claw set in a white metal setting, possibly platinum, 3.4g all in. Ring size N
£600-800

2192.
A Universal Geneve ladies wristwatch, with small circular watch head, with raised glass cover, silvered dial, with gold marks and hands, on articulated bracelet, yellow metal, no.16400, marked 750, 27.1g all in.
£300-400

2193.
A diamond illusion set bracelet, of diamond and rectangle design, with each link set with an illusion set tiny diamond, in yellow metal setting, marked 9k, 19cm long overall, 23.7g all in.
£250-350



▲ **2194.**
A malachite necklace, set with four malachite stones, three of oval form, together with one of tear drop form, creating a drop pendant, with detachable drop element, on fine link chain, yellow metal, marked 750 to clasp, boxed, 33.2g all in.
N.B. Our client advises the drop element was added at a later stage in 9ct, so does not form part of the original necklace.
£200-300



▲ **2195.**
A Victorian bird brooch, set with seed pearls, rubies, emeralds and diamonds, in the form of a parakeet, the body formed of seed pearls, ruby eyes, with diamond set crest, emerald and ruby back, and seed pearl tail with layer of emerald and ruby, set in white metal, possibly platinum, with a yellow metal pin, 12.5g all in, 4cm high.
Provenance: By family repute given to Mrs Brown by the Duchess of Mouchy, France.
£500-800



▲ **2196.**
An early 20thC Continental silver Masonic crown wind triangular pocket watch, the mother of pearl dial decorated with various symbols, the case with similar decoration, sold with a silver watch chain and Masonic related fob, stamped Mexico 950.
Provenance: To be sold on behalf of the Mark Benevolent Fund Charity No. 207610
£500-800

2197.
An abstract nugget design necklace, with central circle design, surrounded by half moon design, yellow metal, marked 585, boxed, 38.8g all in.

2198.
A cultured pearl floral brooch, with two fern spray set with tiny cultured pearls (1 missing), with two sprigs of pearls, yellow metal, stamped 14K, 6cm long, 11.1g all in.



▲ **2199.**
An 18ct gold Omega De Ville wristwatch, with circular dial and Roman numerals, on articulated bracelet, boxed, 43.5g all in.

2200.
Spare Lot



▲ **2201.**
An 18ct gold pear cut diamond ring, with central pear cut stone approx 0.75cts, surrounded by twelve round brilliant cut diamonds, in a rub over setting each approx 0.04cts, totalling 1.23cts overall, with pierced shoulders, 4g all in, Ring size M. £5000-8000

2202.
A cultured pearl bracelet, design of gold scrolls each bearing six cultured pearls, yellow metal, marked K18, with safety chain, 19.3g all in.

2203.
A pair of 18ct white gold diamond stud earrings, each with round brilliant diamond approx 0.28cts, with claw setting, and butterfly backs, boxed, 1.4g all in.

2204.
A pair of 9ct gold cultured pearl drop earrings, in three tier graduated drop, with one to stud, with gold breaks, boxed, 3.2g all in.

2205.
A cultured pearl brooch, with one fern leaf wrapped around a bouquet of flowers, each with pearl to end, yellow metal, marked 18K, 4.5cm wide, 6.3g all in.

2206.
A 9ct gold and diamond tennis bracelet, set with tiny diamonds each approx 0.02cts, with gold bar breaks, 19cm long, 12g all in.



▲ **2207.**
A diamond pendant, with round brilliant cut diamond approx 1.9cts, in two claw settings, on fancy link white metal chain, marked 18K, 6.2g all in. £2000-3000



▲ **2208.**
A seven bead butterscotch coloured amber necklace, each bead oblong and approx 3.5cm wide, on a brown string, 141.8g all in. £250-350

2209.
A Victorian two coloured yellow metal brooch, set with citrine and garnets, and a single white stone earring.



▲ **2210.**
A George III Bank of Ireland token, six shillings, dated 1804, white metal, unmarked. £100-150



▲ **2211.**
A gentleman's Rolex 18ct gold Oyster perpetual date wristwatch, the dial with batons and stamped Superlative, officially certified, with oyster stamped 18k and 750, the dial 3.5cm dia. £4000-6000

2212.
Spare Lot

2213.
Seven various cased sets of silver plated cutlery and flatware.



▲ **2214.**
An early 20thC Russian porcelain figure of a Kamchatka woman, from the Peoples of Russian Series, titled to the base, in French to the front and Cyrillic to the reverse, unmarked, but possibly The Imperial Porcelain Factory, 22cm high. £3000-5000



▲ **2215.**
An early 20thC Russian porcelain figure of a Barbarian lady, with plaits, holding fruit etc., the base signed in French, to the front F Femme Barabien, the reverse in Cyrillic, from the Peoples of Russia series, possibly The Imperial Porcelain Factory, 22cm high. £3000-5000

Lincoln Fine Sale



▲ 2216.
A late 19th/early 20thC Russian porcelain figure of a Laplander, from the Peoples of Russian Series, titled to the front in French, and the reverse in Cyrillic, unmarked, but possibly the Imperial Porcelain Factory, 24cm high. £3000-5000



▲ 2217.
A late 19thC/early 20thC Russian Gardner Porcelain Factory Verbilki figure of a Balalaika player, with bisque finish, printed mark in red to underside, 21cm high. £1000-1500



▲ 2218.
A 19thC Continental kingwood and gilt metal mounted bedroom suite, comprising breakfront wardrobe with central mirror door, dressing table, double bed frame and bedside cabinet. £600-800



▲ 2219.
A 19thC Continental mahogany wine cooler, the circular top with a brass liner and a swing handle, with tapering sectional sides, on turned column and tripod base, 49cm high, 34cm dia. £100-150

2220.
A George III mahogany bow front chest, of two short and three long graduated drawers, raised on bracket feet, 104cm wide. £150-200

2221.
A Victorian mahogany chaise longue, with a padded back, arm rest and seat on turned legs.

2222.
A 19thC Continental oak desk, profusely carved, the upper section with acanthus scrolls and dragons and two cupboard doors, the serpentine fronted base with two frieze drawers, raised on end supports, united by turned cross stretcher, 106cm wide. £300-400

2223.
An 18thC oak side table, raised on bobbin turned supports, 79cm wide.

2224.
Spare Lot

2225.
A mid-19thC ash and elm high back Windsor chair, with a pierced splat, solid seat and turned legs. £100-150

2226.
An 18thC oak side chair, later carved decoration, with a solid seat on cabriole legs.

2227.
A George III mahogany bow fronted chest, of two short and three long graduated drawers, raised on bracket feet, 100cm wide. £150-250

2228.
An early 20thC oak work table, raised on bobbin turned supports.

2229.
A 19thC Malayan type Kris dagger, with a shaped blade and 'X' shaped wooden handle, 28cm long and a Continental dagger, with gilt metal collar and horn handle, 29.5cm long, both lacking scabbards.



2230.
A 19thC mahogany four poster bed, with carved decoration, panelled foot and headboard, adapted. £300-500



▲ 2231.
A George III walnut chest on stand, the upper section with four long graduated drawers, the base raised on cabriole supports to ball and claw feet, 80cm wide. £200-400



▲ 2232.
An early 19thC mahogany washstand, with three-quarter gallery, five frieze drawers, raised on turned and carved front supports, 128cm wide. £150-200



▲ 2233.
An Irish yew wood drop leaf double gateleg dining table, in the 17thC manner, the circular top above a single frieze drawer, raised on turned legs united by turned stretchers, 181cm x 178.5cm x 76.5cm.
£1000-1500



▲ 2234.
A George II style walnut bureau, the fall revealing a fitted interior and well, above two short and two long drawers, raised on bracket feet, 69.5cm wide.
£200-400



▲ 2235.
A George III mahogany sideboard, the top with a raised serpentine fronted platform inlaid with satinwood, the base of a similar shape and with an arrangement of two shallow and one deep drawer and a double sized door, on square tapering legs with splayed feet, 110cm high, 73cm deep, 204cm wide.
£120-180

2236.
Spare Lot



▲ 2237.
An associated set of ten George III elm dining chairs, each with a pierced splat, a newly upholstered drop in seat, on square tapering legs and H-stretcher, and two similar George III elm open armchairs.
£600-900



▲ 2238.
A late 19thC French Art Nouveau side chair, designed and manufactured by Louis Majorelle, with a carved frame, twisted upright supports and stylised poppy seed finials, the brown leather back with a tooled design of poppies within brass studded border, the later brown leather padded seat with a studded outer edge, on four twisted legs.
£200-300



▲ 2239.
The Barbara Smith bookmark collection. Railways and transport, comprising pre-British Rail up until '48, GWR, LNER, Caledonian, Southern LNWR, International Railway, Cunard Line, Pacific Line, White Star Line, Blue Funnel Line, Air France, US Lines, P&O, Royal Navy, Sealink, British Airways Concorde, RAC etc. (contents of one album)



▲ 2240.
The Barbara Smith bookmark collection. The household advertising bookmarks, comprising Pears Soap, Wright Soap, Oxo, Singer. (contents of one album)



▲ 2241.
The Barbara Smith bookmark collection. Victorian calendar cards, advertising ware and later calendars.

2242.
The Barbara Smith bookmark collection. The Scottish Widows collection, comprising Victorian and later. (contents of one folder)

2243.
The Barbara Smith bookmark collection. Pens, stationery and medical, including ContE, Fields, Oxley, Swan etc. (contents of two albums)

2244.
The Barbara Smith bookmark collection. An album of Stevengraphs, incorporating commemorative, ecclesiastical and others.

2245.
The Barbara Smith bookmark collection. Three folders of bookmarks, comprising greetings and parchments, modern bookmarks and bookshops. (contents of three albums)

Lincoln Fine Sale

- 2246.**
The Barbara Smith bookmark collection.
Three folders of bookmarks, comprising modern cards, book retailers and county councils. (contents of three albums)
- 2247.**
The Barbara Smith bookmark collection.
Three folders of bookmarks, comprising leather bookmarks, modern assorted bookmarks. (contents of three albums)
- 2248.**
Spare Lot
- 2249.**
The Barbara Smith bookmark collection.
Five albums of modern, book token etc. (contents of five albums)
- 2250.**
The Barbara Smith bookmark collection.
Bookmarks comprising pictorial, leather, etc.
- 2251.**
The Barbara Smith bookmark collection.
Two albums, comprising book token bookmarks, and assorted library bookmarks.
- 2252.**
The Barbara Smith bookmark collection.
Four albums, comprising Minute Minder bookmarks, last number county council, children's etc. (contents of four folders)
- 2253.**
The Barbara Smith bookmark collection.
Bookmarks, comprising book club, book tokens, bookshops, universities. (contents of three folders)
- 2254.**
The Barbara Smith bookmark collection.
Bookmarks, with Minute Minders, advertising ware, writers and ecclesiastical and religious. (contents of four folders)
- 2255.**
The Barbara Smith bookmark collection.
Bookmarks, dogs, cats, animals, cigarette advertising etc. (contents of three albums)
- 2256.**
The Barbara Smith bookmark collection.
Comic, maps and old library bookmarks, with some Stevengraphs. (contents of two folders)
- 2257.**
The Barbara Smith bookmark collection.
Road safety, hotels and royalty. (contents of three albums)
- 2258.**
The Barbara Smith bookmark collection.
Bookmarks, comprising churches, National Savings, building societies etc. (contents of three folders)
- 2259.**
The Barbara Smith bookmark collection.
The Tauchnitz bookmarks, with assorted annual bookmarks etc., with authors of books collection. (contents of two folders)
- 2260.**
Spare Lot
- 2261.**
The Barbara Smith bookmark collection.
Greetings cards with attached markers. (contents of three folders)
- 2262.**
The Barbara Smith bookmark collection.
Post Office, phones, printed silks and assorted modern bookmarks. (contents of three folders)
- 2263.**
The Barbara Smith bookmark collection.
Historical relic of the Houses of Parliament after the Blitz on May 10th 1941, a bookmark made from the wood of the Houses of Parliament, with a Balmoral greetings card album and three modern albums of bookmarks.
- 2264.**
The Barbara Smith bookmark collection.
Leather bookmarks, black and white bookmarks with assorted other modern. (comprising four albums)
- 2265.**
The Barbara Smith bookmark collection.
Travel, transport parchments, bookshops by name. (comprising three folders)
- 2266.**
The Barbara Smith bookmark collection.
Bookmarks, comprising insurance companies, Bristol Boards and a collection of Monack and Beresford. (contents of three albums)
- 2267.**
The Barbara Smith bookmark collection.
Edwardian, fabric, war, crime, authors, China and the books and bookshops. (contents of four albums)
- 2268.**
The Barbara Smith bookmark collection.
Collection of calendars, biblical bookmarks, Osram, 1960's and 70's. (contents of four albums)
- 2269.**
The Barbara Smith bookmark collection.
Assorted bookmarks and Collector's Society pamphlets. (contents of four albums)
- 2270.**
The Barbara Smith bookmark collection.
Two framed bookmark displays, incorporating brass, silver, bone etc., in two framed collections.
- 2271.**
The Barbara Smith bookmark collection.
A miscellaneous lot of assorted modern and 20thC bookmarks. (contents of one box)
- 2272.**
Spare Lot
- 2273.**
A George V crocheted baby's shawl,
sold with label dated 1911 from Royal Cottage Sandringham, stating worked by Her Majesty the Queen
- 2274.**
A collection of walking sticks,
to include an example carved with a monkey's head with retractable tongue, etc.
- 2275.**
19thC School.
Portrait of a lady in court dress, miniature, in ebonised frame, 15cm x 17cm overall.
- 2276.**
A Victorian magic lantern,
with lacquered brass and iron case, labelled patent, number 2459, 45cm long. (AF)
- 2277.**
A pair of moulded glass circular Grimsby trawler port holes,
26cm dia.
- 2278.**
A late 19thC cast iron dressing mirror,
the later gilded frame decorated with grapes and vines, on a strut support, 48cm x 36cm.
- 2279.**
A collection of early to mid 20thC costume dolls,
to include a Flemish girl carrying a flagon, wearing painted wooden clogs, a Czechoslovakian girl, an early plastic gnome and two Steiff figures of Lucki etc. (AF)
- 2280.**
A collection of glass,
to include a set of three, each with enamelled type decoration of birds, six tankards decorated with stylised trees, three wine glasses etc.
- 2281.**
A collection of items,
to include a French walnut metronome, a bronzed metal and brown stained Middle Eastern style lantern and a gourd decorated with the word 'OK' in copper wire.



- ▲ 2282.
A large single owner collection of cigarette cards, comprising a significant collection of Victorian through to 1950's. (contents of ten albums of complete sets and a large back catalogue of spares and part sets)
£1000-1500

2283.
A 19thC fob pendant, amber pendant and gold plated locket.

2284.
A selection of vintage and modern jewellery boxes.

2285.
Six various 9ct gold collar studs.

2286.
An 18ct white gold wedding ring, with engraved decoration, 7.7g all in.
£140-180



- ▲ 2287.
A 19thC signet ring, with inset purple stone, oval Intaglio, unmarked.

2288.
An Edward VII 18ct gold memorial ring, Chester 1907, 4.7g all in.
£90-120



- ▲ 2289.
A Victorian oval cameo brooch, in 9ct gold mount, 6cm x 5cm.



- ▲ 2290.
A George III mahogany press cupboard, the upper section with two doors revealing sliding shelves, the base with two short and two long drawers, raised on bracket feet, 122cm wide.
£200-400

2291.
A mahogany foot stool, and balloon back chair. (2)

2292.
A 19thC mahogany dressing table, raised on turned supports to castors, 92cm wide.
£150-250

2293.
A Victorian nursing chair, with piped and button back decoration within the tasselled borders, on ebonised turned legs.

2294.
A George III oak and mahogany banded bureau, the fall above one narrow and three long graduated drawers, raised on bracket feet, 96cm wide.

2295.
A Victorian painted storage cabinet, with two pairs of glazed doors and a drawer, 225cm high, 100cm wide.

2296.
Spare Lot

2297.
A Victorian rosewood centre table, on spirally turned supports and downswept legs with castors, 74cm high, 50cm deep, 90cm wide.
£100-150



- ▲ 2298.
A 19thC Chinese carved hardwood console table, with floral and dragon decoration, inset marble top, 130cm wide.
£400-600



- ▲ 2299.
An early 19thC mahogany longcase clock, with painted arched dial signed B Oates Hull, eight day striking movement.
£300-500

Lincoln Fine Sale

2300.
A Victorian scumbled pine blanket box, with a planked top and a chevron panelled sides, on a plinth base, with carrying handles, *91cm wide*.

2301.
A collection of items, to include a turned wooden box painted with roses, signed N.R., boudoir erotic playing cards (2), a hunting type glass with leather casing, Japanese inlaid box etc.

2302.
A mid 19thC copper two handled tea urn, with flower cast finial, brass spout with ceramic insulator, *35cm high*.

2303.
Miscellaneous items, to include an Edwardian oak inkstand (AF) and a hammered metal and stained glass lantern etc.

2304.
A large country made two handled terracotta urn or vase, a similar jug etc., the urn *37cm high*.



▲ **2305.**
A bronzed metal table lamp, modelled in the form of a lady standing on a stool beside a brazier, signed to base A. De Raniers, *26cm wide*.

2306.
A Lincoln Imp brass oil lamp, made to simulate a street lamp, an RAF cast metal example stamped St Athan, another plain example and a Lincoln Imp ashtray, a promotional piece from Rose Bros. of Gainsborough. (4)

2307.
A set of eight glazed prisoner of war related Naval buttons, with central plaque, stamped POW AMO FAUST July 1919, *16cm dia*.

2308.
A collection of military related items, to include a Lincolnshire Regiment cap with cap badge etc.

2309.
A late 19thC Chinese champlevè enamel jardiniere, decorated overall with flowers, scrolls etc., *36cm wide*. (AF)

2310.
A late 18th/early 19thC Chinese export porcelain plate, decorated in underglaze blue with grasses etc., over decorated in iron red and gilt with figures, birds etc., *23.5cm diameter* and two similar plates. (3)



▲ **2311.**
A collection of early 19thC Chinese export blue and white porcelain plates, each decorated with landscapes etc. and a similar Chinese charger (AF), the charger *34cm dia*/ **£100-200**

2312.
A Tibetan style bronze female figure, holding a tapering bowl, on a domed foot, engraved with petals etc., *27cm high*.

2313.
Three similar late 18thC/early 19thC Chinese porcelain saucer dishes, each decorated with vases of flowers etc., with a brown shaped rim (AF), *26cm dia*.

2314.
An English pottery teapot, modelled to simulate bamboo and cast with shoots etc., with turquoise coloured borders, printed number 2408 to underside, possibly Minton, *17cm wide*.



▲ **2315.**
A collection of oriental items, to include a bronze Noh-play male mask, a dog of fo and a small bird.

2316.
A collection of Wedgwood and other green leaf moulded dessert plates, a majolica plate moulded with corn on the cob etc. (AF)



▲ **2317.**
A late 18th/early 19thC Delft plate, decorated in blue with oriental scenes etc., *23cm diameter* and another similar with a shaped edge. (2)

2318.
Various 19thC blue and white printed items, to include a draining meat plate decorated overall with flowers, *53cm wide*, willow pattern etc.

2319.
Two late 18th/early 19thC Delft plates, to include an example decorated in blue with a central vase of flowers and feathers, within a yellow border and a plainer example. (AF)



2320.
An early 19thC Chinese porcelain saucer dish, decorated with a river landscape with a brown rim, *25cm dia*. **£150-200**



▲ **2321.**
A late 18th/early 19thC Chinese export canted rectangular meat dish, decorated with flowering branches, pheasants etc., *42cm wide*. **£200-400**

2322.
A brass ship's bulkhead wall clock, the paper dial with Roman numerals and mounted on a mahogany backing, *23cm dia* overall.

2323.
An early 20thC black Japanned oval tray, inset with a printed oriental style panel, *66cm wide*.

2324.
A collection of decanters and stoppers, to include a square section example, an Art Deco style piece with mushroom shaped stopper etc. (6)

2325.
A pair of cut glass decanters, each with a silver plated stopper and a vaseline glass vase, with silver mount. (3)

2326.
An early 20thC Wedgwood & Co Imperial porcelain dinner service,

to include two sized dinner plates, lidded tureen, 27cm wide, sauce dishes, side plates and serving pieces, each with a gilt Greek key style design on cream ground, printed unicorn mark beneath. (a quantity)

2327.
A George II silver waiter, with gadrooned and flower head outline, (later) chased with scrolls and engraved to the centre, on triple compressed claw feet, London 1759, 23cm wide, 12oz. **£100-150**

2328.
A George VI silver sauceboat, with acanthus capped ear handle, upper gadrooned outline, shell capped inverted scroll feet and plain body, London 1937, 12cm high, 9oz.

2329.
A George VI silver sauceboat, by Edward Viner, with shaped outline, scroll handle, plain body and triple hoof supports, Sheffield 1940, 8cm high, 3oz.

2330.
A pair of Edwardian silver candlesticks, with compressed dish holders, inverted stems and domed circular feet, Birmingham 1907, 14cm high, 23ozs (2, weighted)

2331.
A George VI silver sugar caster, with urnular finial, domed pierced top, inverted bellied body and circular domed foot, London 1939, 7^ooz.

2332.
An Edwardian silver footed tazza, the pierced floral and scroll outline on inverted stem and circular foot, Birmingham 1907, 11cm high, 11ozs (weighted), a napkin ring, silver plated basket with glass liner and a cut glass dressing table jar with silver lid. (a quantity)

2333.
A pair of Edwardian silver open salts, with flared rims, bombÉ bodies and quadruple scroll feet, 6cm wide, with blue glass liners and single associated spoon, Birmingham 1914, 3ozs gross, another similar open salt, pepper mill and two various liners. (a quantity)

2334.
A George VI silver three piece cruet, comprising pepper pot with flame finial, pierced domed lid, inverted bellied body and triple hoof feet, 12cm high, and mustard pot of compressed circular outline with thumb mould and acanthus leaf handles on triple scroll feet, and a salt with blue glass liner Birmingham 1939 and 1940, 8Ωoz, including one glass blue liner.

2335.
An Elizabeth II silver sherry label, with a scroll and floral outline and chain top, 6cm wide, Birmingham 1970, two other similar silver spirit labels, 1oz, and a plated port label, a lidded casket and wick cutters. (a quantity)

2336.
An Edwardian oak cased canteen, with (vacant) cartouche, of silver plated fish eaters, with bone handles and bright cut ends, 35cm wide.

2337.
An oak canteen of Edwardian silver, plated and mother of pearl entrÉe knives and forks, with (vacant) cartouche, 34cm wide, each with plain handles and bright cut decoration, fitted case, settings for twelve.

2338.
Various silver plate, comprising a pair of early 20thC candlesticks, with leafy compressed urn sconces, plain cylindrical stems and circular feet, repoussÉ decorated with flowers and scrolls, 12cm high, and two part cruet set. (a quantity)

2339.
A William IV Neo-Classical design silver coaster, of pierced circular outline, set with a repeat shaped band broken by etched oval coats of arms, on a wooden baize, London 1831, 12cm dia., 4Ωoz gross.

2340.
A late 19thC Old Sheffield Plate coaster, of shaped outline with an upper scroll border, centred by coats of arms, with (removable) wooden and baize, 18cm wide, another similar and various other coasters. (a quantity)

2341.
Various 19thC Old Sheffield Plate silver platedware etc., to include an Edwardian fruit basket, with swing handle and shaped outline, with a pierced body broken by fruits and flowerheads, 33cm wide, a leaf based preserve stand, wick cutters, chamberstick etc. (a quantity)

2342.
A pair of early 20thC electroplated monteith bowls, each with flared rims, lion mask ring handles, circular bodies with raised triple line banding and circular feet, 23cm wide. (2, AF)

2343.
An early 20thC leather gentleman's vanity case, concertina action, containing a quantity of various jars, velvet lined with chrome mounts, with a pigskin style lift out interior, containing further jars and boxes, 35cm wide.

2344.
An early 20thC Old Sheffield Plate salver, of shaped circular outline, with a line banding broken by flowerheads and leaves, with a bright cut and plain centre, on triple pierced scroll supports, 37cm wide, a shaped rectangular tray and a galleried edge example. (3)

2345.
An early 20thC PHBN holosteric wall barometer, the circular dial with arrow and crescent pointers, signed T B Winter, Newcastle upon Tyne, with ring top and plain metal casing, 13cm dia.

2346.
A George VI silver dish, by Mappin & Webb, with pierced triangular floral edge, gadrooned top, shaped body and quadruple acanthus leaf feet, Sheffield 1939, 29cm wide, 12oz. **£100-150**

2347.
A late 19thC cased trio of silver plated meat covers, each of oval form with a gadrooned outline and plain centre with coat of arms, the largest 47cm wide, with (removable) handles in fitted box

2348.
An early 20thC silver plated meat cover, by Elkington & Co. the shaped domed lid surmounted by a naturalistic bark work, leaf and berry handle, 32cm high, and a silver ashtray. (2)



2349.
A 19thC portable brass compass and sundial, stamped W Pinder & Sons, Old Dock, Northside, Hull, 5.5cm dia. **£100-150**

2350.
Spare Lot

Lincoln Fine Sale



2354.
A pair of 18thC design
baluster shaped tankards,
with hinged lids inset with coins,
20cm high.

2355.
Two silver back dressing
table brushes.

2356.
Two 19thC silver plated
gaming cups,
coin struck, with dice, 20cm high.

2357.
A cased three piece carving
set,
with horn handles.

▲ **2351.**
A 19thC German blue
glass pedestal bowl,
with white metal collar,
on four white guilloche enamel
columns and circular stepped
base, stamped to underside
900, 10cm high, 8.5cm dia.
£400-600



▲ **2352.**
A Robert Thompson of Kilburn 'Mouseman' oak refectory
table,
the rectangular adzed top on octagonal supports, carved with the
trademark mouse on a trestle base, the top 212cm x 82cm.
£2000-3000



▲ **2353.**
A set of ten Robert Thompson of Kilburn 'Mouseman' oak
dining chairs,
each with a lattice back, a pale brown leather seat, on octagonal legs,
carved with the typical mouse, two with arms.
£3000-4000

2358.
Two Victorian silver salts,
in the form of Viking boats,
London 1898/1901.

2359.
A cased set of six silver
teaspoons and matching
sugar tongs,
Sheffield 1923.

2360.
A cased set of George V six
silver teaspoons,
Birmingham 1937.

2361.
A set of six American sterling
silver collector's spoons,
New York, 5oz.

2362.
A pair of Edward VII silver
serving spoons,
King's pattern, Sheffield 1904,
Walker & Hall, 6oz.

2363.
A pair of George VI silver
engine turned napkin rings,
each of canted rectangular form,
with vacant cartouche,
Birmingham 1938, 2°oz.

2364.
A pair of Edward VIII silver
engine turned napkin rings,
each of cylindrical form, with
vacant cartouche, Sheffield 1936,
3°oz.

2365.
A George VI silver four piece
cruet,
with a gadrooned border,
Birmingham 1945, 4oz.



▲ **2366.**
A Coxwold Cabinet
Makers yew magazine
rack,
with panelled sides, shaped
ends, carved with the unicorn
emblem of the manufacturer,
49cm wide.
£80-120

2367.
Spare Lot.

2368.
A Coxwold Cabinet Makers
oak wall cupboard,
with two pairs of glazed doors,
flanking a central recess, the
raised back carved with the
makers unicorn emblem,
93cm high x 187cm wide.
£100-150

2369.
Spare Lot.

2370.
An early Robert of Kilburn
'Mouseman' Thompson oak
fender,
of plain form with a moulded
edge, carved with typical mice to
each end, 117cm wide.
£150-200



▲ **2371.**
A 19thC and earlier oak
side table,
the rectangular moulded edge
above a frieze drawer on
turned supports with flat
stretcher, 80cm wide.
£100-150

2372.
A 20thC Continental limed
coffee table,
the circular mirrored top with a
beaded edge on scroll carved 'X'
shaped support, 63cm dia.

2373.
A collection of furniture,
to include a towel rail, hall chair
and a nursing chair. (AF) (3).

2374.
Spare Lot



- ▲ 2375.
A pair of mahogany Gainsborough type chairs in George III style, each with a shaped padded back, arm rests and seat on channelled arm supports terminating with a patera on square tapering legs with H-stretcher, 62cm wide.
£200-400

2376.
A late 19thC oak pot cupboard, with a panelled, carved door on a plinth.

2377.
A 20thC gesso oval wall mirror, with a foliate frame, 66cm x 56cm. (AF)

2378.
A set of six Edwardian mahogany and satinwood banded dining chairs, two with arms.

2380.
A George III mahogany extending dining table, the crossbanded top on chamfered legs, 73cm high, the top 383cm x 152cm.

2381.
A late 19thC Japanese Shibayama inlaid two fold screen, decorated with flowers and birds etc (AF) 192cm high, 174cm wide.

2382.
A large 19thC gilt wood picture frame, carved with leaves, etc., partially stripped, 172cm x 130cm.

2383.
A mahogany four poster bed, the two front posts carved with scrolls, flutes, etc., below a moulded canopy, upholstered in pale gold coloured dralon, the canopy 163cm x 206cm.



- ▲ 2379.
A 17thC oak hall or refectory table, the single plank top on plain trestle supports with stretchers, 88cm high, the top 77cm x 360cm.
£2000-3000

2384.
A late 19thC limed oak gun cabinet, with two doors with leaded glazing, enclosing a shelf with cut outs for rifles, incomplete, 145cm high, 124cm wide.

2385.
A Victorian rose metal hollow bangle, unmarked.
£150-200

2386.
Spare Lot

2387.
A gent's gold plated open face pocket watch, bezel wind.

2388.
A 9ct gold cased ladies wristwatch, on gold plated expanding strap, head only stamped 375.

2389.
A pair of opera glasses, in a fitted case.

2390.
A 9ct gold charm bracelet, with 9ct gold and unmarked charms, 29g all in.
£200-250

2391.
A collection of silver and white metal, to include a Victorian silver salt, an 18thC French porcelain table knife, with possibly Saint Cloud handle, and gilt metal blade, weighable silver 5Ωoz.

2392.
A George V silver part cruet, each with a shaped edge etc, Birmingham 1914, 4oz.

2393.
Three silver spoons, a pair of Edwardian small serving spoon, Sheffield 1909, and a fiddle pattern dessert spoon, 5oz.

2394.
A pair of George V Kings pattern dessert spoons, Birmingham 1915, 5°oz.

2395.
A silver gilt curb link chain, with gold plated ball fob, set with various semi-precious stones.

2396.
A curb link chain and ball, the chain set with opal and amber, with a large ball fob, yellow metal, unmarked, set with various semi-precious stones, the bracelet yellow metal, marked 9ct, 24.1g all in.

2397.
A oval turquoise set dress ring, in rub over setting, yellow metal, unmarked, 2.5g all in.

2398.
Spare Lot

2399.
An 18ct gold sapphire and diamond dress ring, set with four sapphires and four diamonds, 2.8g all in.



- ▲ 2400.
A 19thC Grand Tour lava cameo set bracelet, each with neo-classical type figure head, on gilt metal setting, together with an intaglio set swivel ring, yellow metal, unmarked.

2401.
A Fumsup pendant, of a small child, yellow metal, marked 9ct, with number RD.636612 to back, 1.8g all in, 3cm high.

2402.
A Victorian enamel and citrine brooch, in gilt metal frame, with one section of enamel missing (AF), 7cm wide.

2403.
Various silver Victorian tablespoons, Fiddle pattern initialled, London 1887, 23cm wide, London, an RAF ashtray and a glass jar, gilt stencilled to the body with silver lid, 8oz all in. (3)

2404.
A set of six George V silver table forks, shell capped Kings pattern, London 1914, 20cm wide, 19oz. (5)
£150-200



- ▲ 2405.
A George V silver basket, with acanthus scroll handles, pierced scroll body, inverted stem and shaped base, London 1913, 19cm high, 14oz.
£120-150

Lincoln Fine Sale

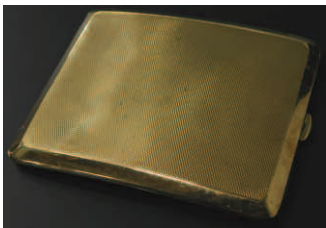
2406.
An Edwardian silver water ewer,
with thumb capped scroll ebonised handle, urn finial, hinged lid, classical urn shaped body, compressed circular stem and square foot, London 1902, 24cm high, 12oz all in.
£90-120

2407.
A Victorian silver serving spoon,
shell capped angular Kings pattern with plain bowl, London, probably 1840, 30cm wide, 5oz.

2408.
A George III silver fish knife,
shell capped angular Fiddle pattern with part pierced end, London 1809, 30cm wide, 6Ωoz.

2409.
A William IV silver serving ladle,
shell capped angular Kings pattern with plain bowl, 35cm wide, London 1834, 8Ωoz, and an associated early 20thC silver plated tureen and cover, Neo-classical design with domed lid, urn knob, strap work handles and oval foot. (2)
£90-120

2410.
Spare Lot



2411.
A George V 9ct gold cigarette case,
the engine turned body, with thumb mould handle, partially curved hinging to reveal a plain interior with material strap, London 1927, 11cm wide, 112.5g.
£900-1200

2412.
A George VI silver and silver gilt cigarette case,
by Walker & Hall, of oblong engine turned outline with plain interior, with material strap, Sheffield assay, 14cm wide, 7oz all in.



2413.
A George V silver three piece tea set,
each piece with a shaped edge, cast with bell flowers, leaves etc., comprising teapot with ebonised knob and handle, on pointed pad feet, two handled sugar bowl and a milk jug, Birmingham 1920, 45°oz gross.



▲ 2414.
A Victorian intaglio dress ring,
with a raised half portrait of a lady, on black agate back, on 18ct gold band, with floral and cross banding, Birmingham 1857, maker S&G, 5.2g all in.
£100-150

2415.
A 1911 George V bronze Coronation Medal,
with Queen Mary verso, red leather cased.

2416.
Costume jewellery,
to include necklaces, brooches, trinkets, etc, and teak box from HMS Rodney.

2417.
A diamond half hoop eternity ring,
set with seven diamonds of 2mm diameter, in white metal, marked 18ct.
£200-300

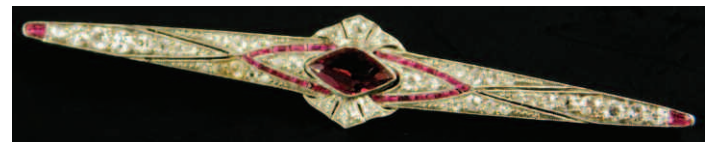
2418.
An orange topaz and diamond set dress ring,
the central topaz of 15mm x 13mm, surrounded by thirty tiny diamonds, in white metal, stamped 18ct.
£120-180

2419.
A diamond set stick pin,
set with one round brilliant cut stone of 4mm diameter, yellow metal, marked 585, base marked 18ct, and a collar stud, boxed.

2420.
An expanding bar link bracelet,
set with alternating blocks of tiny diamonds and black stones, in white metal, white metal, unmarked, 15.9g all in.
£120-180



▲ 2421.
An aquamarine and diamond set dress ring,
the central stone of 13.5mm x 10.5mm, in a basket setting, with three tiny diamonds to each shoulder, shank stamped PLAT.
£500-800



2424.
An Art Deco bar brooch,
set with central lozenge shaped ruby of 10mm x 6mm, surrounded by pave set diamonds, with baguette ruby accents and outline, the whole set in white metal, unmarked, with pin.
£600-900

2422.
Spare Lot



▲ 2423.
An ornate emerald and diamond set crucifix,
of 7cm x 4cm, set with emeralds of rectangular cuts and small round cut diamonds, including the bail, all in ornate pierced rococo style mount, yellow metal, unmarked.
£900-1200



▲ 2425.
A diamond set dress ring,
with nine diamonds in a lozenge shape, set in white metal to shank stamped 18ct, each diamond of 2mm approx, in millegrain and peg flat mount.
£300-400