



The Lincoln Art Sale

Wednesday 31st January 2018

**At The Lincoln Auction Rooms
Sale commences at 6pm**

Viewing: Tuesday 30th 10am-4pm
& Saleday from 8.30pm-10am.

Bid online or simply watch the sale live at



All enquiries to William Gregory MRICS or Colin Young MRICS on 01522 524984

Lincoln Fine Art Sale



▲ 2788.
Peter De Wint (1784-1849).
Newark Bridge and castle, watercolour, purchased Sotheby's July 1993, 50cm x 77.5cm
£4000-6000



▲ 2789.
20thC Continental School.
Village winter scene, oil on board, indistinctly signed, label verso Galerie David et Garnier, 45cm x 59.5cm
£400-600

2790.
M B Taylor (20thC).
Floral still life, oil on canvas, signed, 35.5cm x 37cm, and another John E Barker (2)

2791.
19thC British School.
Woodland scene, oil on board, indistinctly signed, 23.5cm x 31cm, and three other pictures (4)

2792.
20thC Continental School.
Portrait of a nobleman, watercolour, indistinctly signed, 76cm x 59cm

2793.
20thC School.
Portrait of a gentleman in a blue blazer, oil on board, 60cm x 49.5cm, and two other portraits and a landscape (4)

2794.
19thC School.
Moonlight scene, watercolour, 13.5cm x 21.5cm, and three other watercolours and a print (4)
2795.

19thC British School.
Interior scene with window view, watercolour, 52cm x 35cm, and another, coastal view (2)

2796.
Cynicus (1854-1932).
'He cometh not, she said', 'The warrior bowed his crested head', watercolour - a pair, signed and titled, 22cm x 17cm



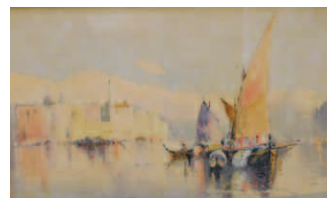
▲ 2797.
Robert Michael Ballantyne (1852-1894).
Foxgloves on riverbank, watercolour, signed and dated 1885, 51cm x 33.5cm, and another dated (1884) (2)



▲ 2798.
C H Bullington (19thC).
Villa Gustaries, Nice, watercolour, signed and titled, 38cm x 55cm, and another of figure on woodland path (2)



▲ 2799.
19thC School.
Young woman sleeping, ink drawing, indistinctly signed, 8.5cm x 12.5cm



▲ 2800.
J.A.H. (19th/20thC).
Venice scene, watercolour, initialled and dated 1915, 12.5cm x 20cm
£200-300

2801.
19thC School.
Entrance Hall, Baller Castle, Co Cork, watercolour, monogrammed and titled, 23.5cm x 18cm

2802.
Frederick Marriott (1860-1941).
Rue Guberantis, Nice, France, artist signed etching, label verso The Jerram Gallery Wiltshire, 31cm x 24.5cm

2803.
J Welford (19th/20thC).
Lakes scene, oil on canvas, signed and dated 1899, 25cm x 14.5cm, another rural scene, and a watercolour coastal scene (3)

2804.
After W Monkhouse.
Church scene, monochrome print, 20cm x 15cm, another of minstrel players, and two picture frames

2805.
S.W. (20thC).
Coastal scene, oil on board, initialled, 19cm x 24cm

2806.
Dave (19th/20thC).
Cottage in winter landscape, oil on canvas, signed, 19cm x 24cm

2807.
E Marwood (10th/20thC).
Country cottage with figures, watercolour, signed and dated 1913, 19cm x 26cm

2808.
Fegan (20thC).
Mountain cottages in landscape, oil on board, signed, artist label verso, 40.5cm x 64cm

2809.
Adam Knight (1855-1931).
From the pier head King's Lynn, watercolour, signed and titled verso, label verso Walker Galleries London, 18cm x 26cm

2810.
Richard Beavis (1824-1896).
Dutch boat, watercolour, initialled and titled verso, 30cm x 42cm



▲ 2811.
Henry Marko (1855-1921).
River landscapes, oil on canvas - a pair, signed, 28.5cm x 36.5cm
£400-600

2812.
19thC British School.
Fisher folk looking out to sea, oil on canvas, 30cm x 40.5cm

2813.
19thC British School.
 Children and dog in coastal view, oil on canvas, indistinctly signed, 39.5cm x 60cm

2814.
George R Belshaw (19th/20thC).
 Coastal scene with fisherfolk, oil on canvas, signed and dated 1903, 55cm x 34cm

2815.
N Richardson (19th/20thC).
 Country lane, watercolour, signed, 31cm x 23cm

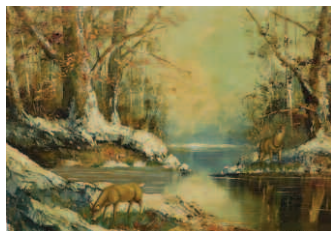
2816.
A M Wood (19th/20thC).
 Village lane, watercolour, signed and dated 1912, 25cm x 18cm



▲ **2817.**
19thC Dutch School.
 Winter river scene, oil on canvas, bears signature Louis Apol, 35cm x 53cm
£300-400

2818.
C Parkin (20thC).
 Town landscape with chimneys, watercolour, signed and dated 1928, 19.5cm x 38cm

2819.
Joseph Clarendon Smith.
 River landscape, watercolour, 23cm x 32.5cm
£80-120



▲ **2820.**
H S Palmer (19th/20thC).
 Canadian deer in river landscape, oil on canvas, signed, 60cm x 80.5cm
£200-300

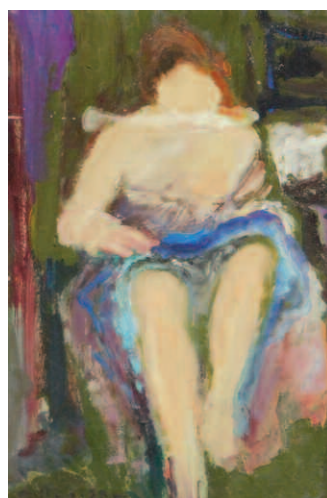


▲ **2821.**
Raimondo Scoppa (1820-1890).
 Alpine river scenes, oil on canvas - a pair, signed, 45cm x 37cm
£500-700



▲ **2822.**
Beatrice Meyer (19th/20thC).
 Children with nun sitting on a bench, watercolour, signed, 49cm x 34cm
£200-300

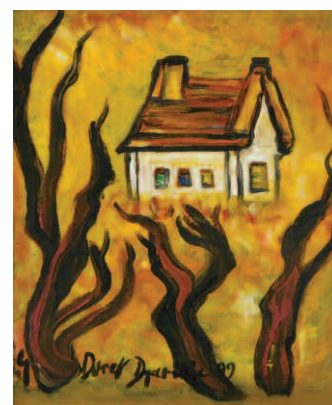
2823.
ĩZinsky.
 Cristiano Ronaldo in Manchester United shirt, oil on canvas, signed, 70cm x 50cm.
 Provenance: Acquired by the vendor from Zinsky's first exhibition in Lincolnshire Galleries, Spalding, organised by Mark Fisher.
£180-220



▲ **2824.**
Ramon Dilley (b.1932).
 Une de Pigalle, oil on board, signed and titled verso, 24.5cm x 15.5cm
£150-250



▲ **2825.**
John Markey Robinson (1918-1999).
 Coastal scene, gouache on board, signed, 27cm x 34.5cm
£400-600



▲ **2826.**
Isabelle Duret-Dujarric (b.1949).
 Woodland cottage, oil on board, signed and dated (19)99, 42cm x 31.5cm
£500-700



▲ **2827.**
Otto Ritschil (1885-1976).
 Mondmadchen, oil on board, signed, 33cm x 26cm
£2000-3000



▲ **2828.**
Kamel Moustafa (1917-1982).
 Life on the Nile bank, oil on board, signed, gallery labels verso, gilt metal identity plaque, 15cm x 36cm
£1000-2000

Lincoln Fine Art Sale



▲ 2829.
Rivera (20thC).
Arc de Triomphe, oil on canvas, signed, 25.5cm x 39.5cm
£200-300



▲ 2830.
A Nix (20thC).
Coastal scene with figures, oil on board, signed, 46cm x 61cm
£200-300



▲ 2831.
James Watterson Herald (1859-1914).
Street scene with figures, watercolour, signed, 33cm x 23.5cm



▲ 2832.
James Watterson Herald (1859-1914).
River bank scene, figures in costume, watercolour, signed, 21.5cm x 31.5cm



▲ 2833.
Jose Maria Sert y Badia (1874/6-1945).
Figures and animals, oil, 63cm x 24cm
£1200-1800



▲ 2834.
19thC British School.
Maiden seated holding flowers, watercolour, 33cm x 24cm
£500-700

2835.
Robert Michael Ballantyne (1852-1894).
Highland landscape, watercolour, signed and dated 1878, 37cm x 71cm

2836.
19thC Continental School.
Harbour scene, watercolour, 44cm x 67cm



▲ 2837.
Enrico Coleman (1846-1911).
Herding wild horses, watercolour, signed and dated 1868, 31.5cm x 47cm
£500-800



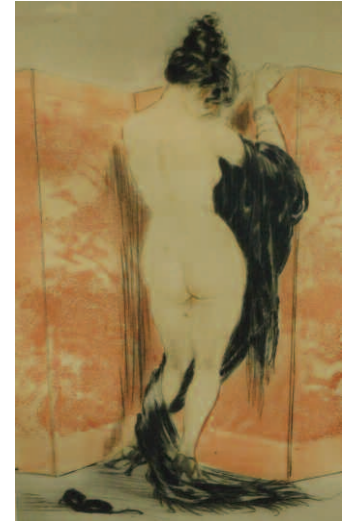
▲ 2838.
Jaume Canut (b.1950).
La Pedrera, oil on board, signed and titled verso, 21.5cm x 62cm, and an artist signed print La Rosa (2)
£200-300

2839.
Helen Layfield Bradley (1900-1979).
The Fair at Daisy Nook, artist signed coloured print, 54cm x 78cm

2840.
After William Russell Flint.
Irene, coloured print, 26cm x 18.5cm, and another female study (2)

2841.
Edwin Harris (1855-1906).
Sunset on the Arun, watercolour, label verso Albridge Bros Worthing, 36.5cm x 55cm

2842.
Albert Hodder (c.1850-c.1895).
The Trinity, watercolour, signed, titled and dated 1889, 35cm x 25cm



▲ 2843.
Louis Icart (1888-1950).
Paravent de lagne, artist signed and numbered 255, coloured etching, 40.5cm x 25.5cm
£100-200



▲ 2844.
Russian School.
Priests - titled, icon, oil on panel, 31cm x 26.5cm

2845.
L Maxey (19thC).
Lanyon Cromlech, oil on canvas, signed, titled and dated 1876 verso, 30.5cm x 40.5cm
£30-50



▲ 2846.
R Massone (19th/20thC).
La Dame en Brun, oil on canvas, signed and dated 20 Novembre 1924, label verso, 130cm x 74cm
£200-300



▲ 2847.
Marchand (20thC).
Place du Tertre - Montmartre, oil on canvas, signed and titled verso, 45cm x 53.5cm
£200-300



▲ 2848.
20thC Continental School.
Floral still life, oil on board, monogrammed L.P., 48cm x 38cm
£100-200



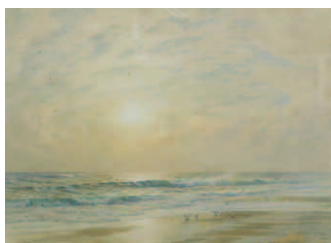
▲ 2849.
Blanche Augustine Camus (1881-1968).
Riviera scene, oil on canvas, signed, 44cm x 53cm
£300-500



▲ 2851.
Raymond Poulet (b.1934).
Vue sur les sanguinaires, oil on canvas, signed and titled verso, 79.5cm x 79.5cm
£400-600

2852.
Leonard Appleby (1914-2000).
Roses in a copper jug, oil on canvas, monogrammed and dated (19)50, 71cm x 56cm

2853.
19thC British School.
Shipwreck and rescue, watercolour, 110cm x 77cm



▲ 2854.
Arthur Severn.
Coastal seascape, watercolour, signed and dated 1910, 77cm x 90cm
£800-1200



▲ 2850.
Guisepppe Raggio (1823-1916).
Eastern war party, oil on canvas, signed and dated (18)83, stencil mark verso, 53.5cm x 79cm
£1500-2000

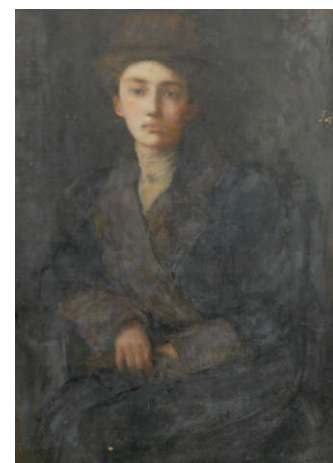


▲ 2855.
Alwyn H Holland (19th/20thC).
Victorian woman in garden scene, watercolour, signed, 47cm x 62cm
£100-200

2856.
H Miner (?) (19thC).
Masted ships in harbour scene, oil on canvas, indistinctly signed, 29.5cm x 45cm



▲ 2857.
19thC Scottish School.
The Young Laird, oil on canvas, 70cm x 45.5cm
£300-500



▲ 2858.
Jean Ballantyne (1815-1897?).
Portrait of a seated lady, oil on canvas, signed, 105.5cm x 70cm

2859.
19thC British School.
Half length portrait of a gentleman, oil on canvas, 92cm x 72.5cm

2860.
J Denny (19th/20thC).
River landscape, watercolour, signed, 18cm x 27cm
£40-60

Lincoln Fine Art Sale



▲ 2861.
Georges Rene Villain (1854-1930).
The Irish Governess, oil on canvas, signed and dated (19)05, 71.5cm x 59cm
£300-400

2862.
J D (19thC).
Horse Guards' Parade, ink drawing, initialled and dated (18)86, 17cm x 22cm



▲ 2863.
L.R.P. (19th/20thC).
African harbour scene, oil on board, initialled, 34.5cm x 44.5cm

2864.
19thC British School.
Portrait of a seated gentleman, oil on canvas, 86cm x 65.5cm



▲ 2865.
19thC British School.
Half length portraits - male and female, oil on canvas, signed, 21.5cm x 16cm



▲ 2866.
Y W Leung (20thC).
Portrait of an old man smoking a pipe, oil on canvas, signed, 59cm x 44.5cm

2867.
19thC British School.
Maiden looking out to sea, oil on canvas, 50cm x 90cm

2868.
W H Earp (19thC).
Mountain lake scene, watercolour, signed, 53cm x 24.5cm

2869.
Edwin Harris (1855-1906).
Sailing boats in river landscape, watercolour - a pair, signed, 24.5cm x 34cm

2870.
W Cecil Dumford (20thC).
Fishing boats in harbour scene, watercolour, signed, 25cm x 35cm

2871.
Art Mawhinney (20thC).
Canal bridge, watercolour, signed, 66cm x 50.5cm

2872.
J MacLaren (1881-1917).
Cattle grazing, watercolour, signed, 24cm x 34.5cm

£80-120
2873.
19thC British School.
Farmhouse, watercolour, 10cm x 17.5cm

2874.
19thC British School.
Floral and insect still lifes, watercolour - a pair, 29cm x 24cm
£50-100

2875.
Brian Bennett (b.1927).
Floral study, oil on canvas, signed, 24.5cm x 19cm

2876.
Sydney Nevell (20thC).
River landscape, watercolour - a pair, signed, label verso The Street Gallery Somerset, 30cm x 46.5cm

2877.
Anne McGuinness (20thC).
Boatyard, Southport, oil on board, signed and titled, 22cm x 34.5cm

2878.
Matteo Menghini (1840-1925).
The Artist, watercolour, signed, 45.5cm x 35.5cm

2879.
Dorothy Say (20thC).
Coastal scene, pastel - a pair, signed, artist label verso, 33cm x 45cm



▲ 2880.
Narcisse Virgile Diaz de la Pena (1807-1876).
Figures in woodland scene, oil on board - a pair, signed, 16cm x 24.5cm
£500-800

2881.
J Varges (19thC).
Sailing boat near harbour, oil on canvas, signed, 24cm x 19cm

2882.
Anton Lock (1893-1970).
Woodland scene, pencil, signed, 16cm x 21.5cm

2883.
E M Rowe (19th/20thC).
Evening - Dartmoor, watercolour - a pair, signed and titled verso, 24.5cm x 35cm

2884.
19thC British School.
Seascape, oil on canvas, indistinctly signed, 50cm x 75cm
£50-100

2885.
A Wood (19thC).
Dunstanburgh Coast, watercolour, signed and dated (18)83, 52.5cm x 74.5cm
£30-50



▲ 2886.
Paul Braddon (1864-1938).
Old street in Lisieux, old street in Rodez, watercolour - a pair, signed and titled, 56cm x 38cm
£100-200

2887.
Derval.
Fashion portrait miniature, 7cm x 7cm, and another
£60-90

2888.
19thC British School.
Country cottage with figures, (AF), 45cm x 60cm



▲ 2890.
George Ogilvy Reid (1851-1928).
Harbour scene, oil on canvas, signed, 39.5cm x 54.5cm
£300-500



▲ 2889.
John Crome (1768-1821).
 A gypsy encampment, Mousehold Heath, Norwich, oil on canvas,
 74cm x 112cm
 Provenance: Leggatt Brothers London.
 See Derek Clifford - John Crome p.232 number P89
£4000-6000



▲ 2891.
Thomas Mostyn (1864-1930).
 Mediterranean scene, oil on canvas, signed, label verso Schillay and
 Rehns New York, 60cm x 81cm
£1500-2000



▲ 2892.
John Fraser (1858-1927).
 Fishing boat at sea,
 watercolour, signed and dated
 (18)91, 35cm x 24.5cm
£100-200



▲ 2893.
Alec Fraser (act.1893-1939).
 Old Mill Baintenth Well,
 watercolour, signed and dated
 verso, label verso Scottish
 National Exhibition Edinburgh
 1908, Aiken Dottson
 Edinburgh - Whitechapel
 Exhibition 1901, 35cm x 50cm
£150-250



▲ 2894.
**Daniel Sherrin
 (1868-1940).**
 Woodland landscape with
 figures, oil on canvas, signed,
 60cm x 105cm
£500-800



▲ 2896.
**George Whitton Johnstone
 (1849-1901).**
 A Frosty Morning, oil on
 canvas, signed and titled
 verso, label verso Scottish
 National Exhibition Edinburgh
 1908, 60cm x 90cm
£400-600



▲ 2897.
**Campbell Archibald
 Mellon (1876-1955).**
 Richmond Castle, river Swale,
 oil on canvas, signed,
 49.5cm x 50.5cm



▲ 2895.
Henry Andrew Harper (1835-1900).
 Mount Hermon and the Sea of Galilee, watercolour, signed and dated
 1882, gallery label verso, 50cm x 74.5cm
£1000-1500

Lincoln Fine Art Sale



▲ 2898.
H H Martin (19thC).
The Fortune Teller, oil on canvas, signed and dated 1860, 52cm x 43.5cm
£500-800



▲ 2899.
T S Williams (19thC).
Portrait of a young girl, oil on canvas, signed, 69cm x 53cm

2900.
After Elizabeth Vigee le Brun (19thC).
Self portrait of the artist, painting Marie Antoinette, oil on canvas, 32.5cm x 24cm



▲ 2901.
William Edward Milner (1849-1895).
Naked maiden with lions and tigers, oil on canvas, initialled, 50cm x 100cm
£2000-3000



▲ 2902.
Arthur Charles Dodd (fl.1878-1891).
Scared, oil on canvas, signed and titled verso, 40cm x 24.5cm
£200-300



▲ 2903.
19thC British School.
Masted ship - coastal scene, oil on canvas, 64.5cm x 87.5cm

2904.
20thC British School.
Men of the Second Battalion The East Yorkshire Regiment (The Duke of York's Own) entering a village supported by a 'crocodile' during the advance into Germany - Spring 1945, oil on board, titled verso, 39cm x 29cm, letter verso 47 Infantry Brigade Chelsea, signed Brigadier A D R Saunders

2905.
After Charles Johnson Payne.
Snaffles - gunners, coloured print on titled mount, 39cm x 61cm, and two others, Good Hunting Old Sportsman, Jock (K.I.) (3)
£100-150

2906.
Antonin (Tony) Bartl (1912-1998).
Portrait study of Lyn, pencil, signed, titled and dated 1986, 40cm x 27cm
£50-80

2907.
Antonin (Tony) Bartl (1912-1998).
Portrait study of Lyn, pencil, signed, titled and dated 1986, 40cm x 27cm
£50-80



▲ 2908.
Antonin (Tony) Bartl (1912-1998).
La Villa Blanche, Le Havre, oil on canvas, signed, label verso Lincolnshire and South Humberside Artists' Society, 49cm x 39cm
£150-250

2909.
Antonin (Tony) Bartl (1912-1998).
Nile scene in green, oil on canvas, signed and dated 1984, 65.5cm x 95cm
£250-350



▲ 2910.
Antonin (Tony) Bartl (1912-1998).
Lincoln Cathedral from Temple Garden, Usher Art Gallery, oil on board, signed, 48.5cm x 61cm
£200-300

2911.
D M Komlosy (20thC).
Across Castle Hill, Exchequer Gate, fayre in castle grounds, oil on board (3), titled verso and dated Autumn 1986, 19cm x 24cm

2912.
Charles H Colley (20thC).
Apple Tree Cottage, Habrough, oil on board, titled verso, 46cm x 58.5cm

2913.
Angus Bernard Rands (1922-1985).
Knaresborough, Nidderdale, Yorks, watercolour, signed and titled verso, 43cm x 64.5cm. Bears label The Mall Galleries
£50-100



2914.
Michael Smart (20thC).
Beneath the Monastery, oil on board, signed, dated and titled verso, 28.5cm x 39cm
£150-250

2915.
Peter (20thC).
Rocky coastal scene, watercolour, signed and dated 1968, 44cm x 66cm

2916.
After Salvador Dali.
Divine Comedie - Enter O6: Cerbere, L'apparition du Christ, coloured prints, 24cm x 17.5cm

2917.
20thC British School.
 Anglers on the quayside, oil on canvas, inscribed verso 7276, 71cm x 92cm
£500-800

2918.
Holliday (20thC).
 Drakensberg Mountains, oil on board, signed, 72cm x 121cm



▲ **2919.**
Juriy Ohremovich (b.1956).
 Sunrise, oil on canvas, signed, 50cm x 75cm
£300-400

2920.
H Maufe (?) (20thC).
 River scene with town in the background, Reflexes alamma de Rufit, oil on canvas, indistinctly signed and titled verso, 74cm x 149cm

2921.
H A Vasse (19th/20thC).
 Kislingbury bridge, Northampton, oil on canvas, signed and dated 1934, and titled verso, 70.5cm x 90.5cm
£100-150

2922.
Herbert Isenberg (b.1930).
 Horse and carriage through country house garden, oil on canvas, signed and titled verso, label verso W Frank Gadsby Leicester, 60cm x 90cm
£100-200



▲ **2923.**
Ken White (b.1943).
 Three men talking, oil on canvas, signed and dated (20)11, 79cm x 99cm
£250-350

2924.
Mervyn Goode (b.1948).
 Wild flowers and evening shadows, oil on canvas, signed and titled verso, label verso The Jerram Gallery Salisbury, 60cm x 80cm

2925.
L E Forse (20thC).
 River and country landscapes, oil on canvas - a pair, signed, 60.5cm x 91cm

2926.
Vincent Haddelsey (1934-2010).
 Horses in the paddock, artist signed print, 21cm x 30cm and four others (5)



▲ **2927.**
Peter Lightfoot (b.1932).
 Craters, oil on canvas, signed, dated 1975 and titled verso, 49cm x 101cm
£150-250

2928.
William Richard Bunting (1866-1951).
 Humber bank and sands foreshore, 1894, Humber St. Bridge, Dean's dining rooms, oil on board, signed, titled and dated 1939, 26cm x 43cm
£50-100



▲ **2929.**
Colin Carr (1929-2002).
 Castle Square, watercolour, signed and dated (19)83, 50cm x 34cm.
Provenance: J D Wheeldon & Sons
£150-250

2930.
Colin Carr (1929-2002).
 Lincoln Railway Station, watercolour, signed and dated (19)80, 35cm x 51cm
£150-250

2931.
Colin Carr (1929-2002).
 The Strait, watercolour, signed and dated (19)84, 34cm x 34.5cm.
Provenance: J D Wheeldon & Sons
£100-200

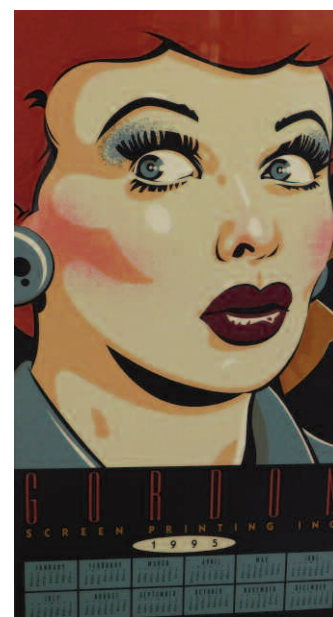
2932.
After William Russell Flint.
 Gossip in a provincial wood vault, coloured print, label verso The Medici Gallery London, 25.5cm x 44cm

2933.
20thC Continental School.
 City Park, oil on canvas, 48cm x 75.5cm

2934.
Petr Benes (20thC).
 Abstract, oil on canvas, signed and dated 29.4.2005, 70cm x 85cm
£40-60

2935.
20thC British School.
 Beneath the surface, multi-media, triptych, indistinctly signed, titled and dated (19)87 verso, 95cm x 65cm, 61cm, 63cm

2936.
David Wood (20thC).
 Glazier, watercolour, signed and titled, 50.5cm x 40.5cm, and three other works



▲ **2937.**
After Roy Lichtenstein.
 Gordon screen printing inc. 1995, coloured printed calendar, 98cm x 50cm
£50-100

2938.
Margo Mackenzie (20thC).
 High Sky, artist signed coloured limited edition print 80/100, 39cm x 51.5cm

2939.
Nicholas Barnham (b.1939).
 Norwich Unst, Shetland, lino-cut signed artist proof, titled verso, 27.5cm x 38cm

2940.
William Russell Flint (1880-1969).
 Under The Palace Terrace, artist signed coloured print, 49cm x 64cm

2941.
Derek Abel (1925-2008).
 Ely, Clare and Kings Cambridge, watercolour, signed and titled, 23cm x 53cm

2942.
David Hockney (b.1937).
 An etching and a lithograph for Editionz Alecto 1973, indistinctly artist signed limited edition etching 20/2000, 94cm x 70cm

2943.
Robert Taylor (b.1946).
 Crewing Up, and Climbing Out - a pair, artist signed limited edition coloured prints 735/850, also bears signature Arthur T Harris, 46cm x 64cm and 45.5cm x 63.5cm respectively

Lincoln Fine Art Sale



▲ 2944.
Beryl Cook (1926-2008).
Percy at the fridge, artist signed limited edition coloured print 123/300, 57cm x 44.5cm

2945.
Renos Loizou (1948-2013).
For Elizabeth, artist signed limited edition coloured print 51/75, dated 1981, 62cm x 82cm

2946.
Edwin Penny (b.1930).
Chaffinch, kingfisher, artist signed coloured prints (2), 54cm x 39.5cm



▲ 2947.
Laurence Stephen Lowry (1887-1976).
Group of Children, artist signed coloured print, 20.5cm x 20.5cm
£800-1200



▲ 2948.
Laurence Stephen Lowry (1887-1976).
Sailing boats, artist signed coloured print, 33cm x 37cm
£400-600



▲ 2949.
Laurence Stephen Lowry (1887-1976).
Peel Park, artist signed coloured print, 41cm x 78cm
£2000-3000



▲ 2950.
Laurence Stephen Lowry (1887-1976).
The Level Crossing, Burton on Trent, artist signed coloured print, 44cm x 58cm
£300-500



▲ 2952.
Laurence Stephen Lowry (1887-1976).
The Harbour, artist signed coloured print, 44cm x 58cm
£500-800



▲ 2951.
Laurence Stephen Lowry (1887-1976).
View of a town, artist signed coloured print, 46cm x 55cm
£2000-3000

2953.
After Laurence Stephen Lowry.
Sketch for a group of children, three coloured prints (3), 10cm x 12cm



▲ 2954.
Hyman Segal (1914-2004).
Abram, oil on board, signed and titled verso, artist label verso, 39.5cm x 29cm
£150-250



▲ 2955.
Hyman Segal (1914-2004).
'Wee Willie' at the Sloop, charcoal, signed and titled, 61cm x 48cm
£60-90

2956.
Hyman Segal (1914-2004).
Male study, charcoal, signed, 60cm x 41cm
£60-90

2957.
Hyman Segal (1914-2004).
Two boys - head and shoulder portrait study, pastel, signed, 30cm x 36cm
£50-80

2958.
Hyman Segal (1914-2004).
 Fisherman - St Ives, charcoal, signed and titled verso, label verso At The Mall Galleries R.B.A. Exhibition 1976 number 256, 30cm x 21.5cm
£50-80

2959.
Hyman Segal (1914-2004).
 Fisherman - portrait study, charcoal, signed, 31.15cm x 25.5cm
£50-80

2960.
Hyman Segal (1914-2004).
 Head of a surfer - St Ives, charcoal, signed and titled, 27cm x 27.5cm
£50-80

2961.
Hyman Segal (1914-2004).
 Fisherman - portrait study, charcoal, signed, 28cm x 24cm
£50-80



▲ 2962.
Hyman Segal (1914-2004).
 Night fishing - St Ives, charcoal on blue paper, signed and titled verso, label verso At The Mall Galleries No. 238, 58.5cm x 49cm
£60-90

2963.
Hyman Segal (1914-2004).
 Town bandsman, pastel, signed and titled verso, 49cm x 39cm
£60-90

2964.
Hyman Segal (1914-2014).
 Joan Oie, pastel, signed and titled verso, 28.5cm x 21.5cm
£50-80

2965.
Hyman Segal (1914-2004).
 Cornish fisherman, charcoal with highlight, signed and titled, 21cm x 17cm
£50-80

2966.
Hyman Segal (1914-2004).
 Head of a girl, sanguine wash, signed and titled verso, label verso At The Mall Galleries, 51cm x 36.5cm
£50-80

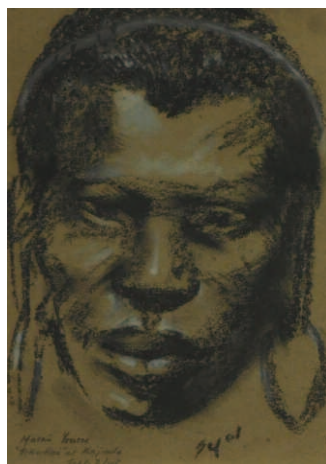
2967.
Hyman Segal (1914-2004).
 Head of a negro, chalk, signed and titled verso, label verso Art Foundation of British Artists Gallery number 354, 25cm x 20cm
£50-80

2968.
Hyman Segal (1914-2004).
 Head of a boy, charcoal, signed and titled verso, artist label verso, 24cm x 18cm
£50-80

2969.
Hyman Segal (1914-2004).
 Gypsy boy, charcoal, signed and titled, 27cm x 19.5cm
£50-80

2970.
Hyman Segal (1914-2004).
 Head and shoulders portrait of a young man, charcoal, signed, 27cm x 23cm
£50-80

2971.
Hyman Segal (1914-2004).
 Dispatch rider East Africa 1943, charcoal, signed and titled verso, 23.5cm x 18cm
£50-80



▲ 2972.
Hyman Segal (1914-2004).
 Masai Youth 'Sika-Kaa' at Kajiado, pastel with highlight, signed, titled and dated Sept 3 (19)43, 21.5cm x 14.5cm
£50-80

2973.
Hyman Segal (1914-2004).
 Portrait of a young man, pastel with highlight, signed, 30.5cm x 25cm
£50-80

2974.
Hyman Segal (1914-2004).
 Puntman, red chalk, signed, titled and dated 1968, 34.5cm x 16.5cm
£50-80

2975.
Hyman Segal (1914-2004).
 Marwa Chacha (Mteade-Tanganyika), charcoal, signed and titled, 26cm x 19.5cm
£50-80

2976.
Hyman Segal (1994-2004).
 Figures in a bar, charcoal, signed, 24cm x 18.5cm
£50-80

2977.
Hyman Segal (1914-2004).
 Portrait of a young woman, charcoal, signed, 23.5cm x 20cm
£30-50

2978.
Hyman Segal (1914-2004).
 Portrait of a young man, charcoal, signed, 30cm x 23cm
£50-80



▲ 2979.
Hyman Segal (1914-2004).
 Young St Ives fisherman 1975, charcoal, signed and titled verso, label verso At The Mall Galleries, 30cm x 23.5cm
£50-80

2980.
Hyman Segal (1914-2004).
 Portrait of an African young man, pastel, signed, 26.5cm x 22.5cm
£50-80

2981.
Hyman Segal (1914-2004).
 Kikuya, pastel on hardboard, signed and titled verso, 31.5cm x 26cm
£50-80



▲ 2982.
Hyman Segal (1914-2004).
 Coast Arab - Malindi - Indian Ocean, pastel, signed and titled, 25.5cm x 18cm
£50-80

Lincoln Fine Art Sale

2983.
Hyman Segal (1914-2004).
Sloop Inn, pastel and coloured wash, signed and titled, 18cm x 17cm
£40-60

2984.
Hyman Segal (1914-2004).
Phil Rogers - St Ives - Sloop Inn landlord for 34 years, charcoal, signed and titled, 29.5cm x 18.5cm
£50-80

2985.
Hyman Segal (1914-2004).
Young St Ives fisherman 1975, charcoal, signed and titled verso, label verso At The Mall Galleries, 26cm x 22.5cm
£50-80

2986.
Hyman Segal (1914-2004).
Study of a boy, charcoal and wash, signed and titled verso, label verso Royal Society of British Artists 1966, 23.5cm x 20cm
£50-80

2987.
Hyman Segal (1914-2004).
Portrait of a fisherman, charcoal, signed, 28cm x 24cm
£50-80

2988.
Hyman Segal (1914-2004).
Portrait of a young boy, charcoal, signed, 31cm x 23cm
£50-80

2989.
Hyman Segal (1914-2004).
Portrait of a young boy, coloured pastels, signed, 27cm x 22.5cm
£50-80

2990.
Hyman Segal (1914-2004).
Portrait of an African man, coloured pastels, signed, 27cm x 22.5cm
£50-80

2991.
Hyman Segal (1914-2004).
Wee Willie, charcoal and wash, signed and titled, 26.5cm x 24.5cm
£50-80

2992.
Hyman Segal (1914-2004).
Student St Ives, charcoal with highlight, signed and titled, 35.5cm x 27cm
£50-80

2993.
Hyman Segal (1914-2004).
Old fisherman, charcoal, signed, 35cm x 33.5cm
£50-80

2994.
Hyman Segal (1914-2004).
Sprint - USSR Africa - cartoon, charcoal and ink, signed, 25cm x 40cm
£30-50

2995.
Hyman Segal (1914-2004).
Nigel Marshall, charcoal, signed, 28.5cm x 23.5cm
£30-50

2996.
Hyman Segal (1914-2004).
Young St Ives fisherman 1975, charcoal, signed and titled verso, label verso At The Mall Galleries, 35cm x 23.5cm
£50-80



▲ 2997.
Hyman Segal (1914-2004).
Surfer - St Ives, charcoal, signed and titled verso, 34cm x 43cm
£40-60

2998.
Hyman Segal (1914-2004).
Surfer, charcoal, signed, 52.5cm x 36cm
£40-60

2999.
Hyman Segal (1914-2004).
Girl - Renee - St Ives, pen, signed and titled, 35cm x 24.5cm
£40-60

3000.
Hyman Segal (1914-2004).
Harbour scene with horse and cart, pastel, signed, 27.5cm x 34cm
£40-60

Artist index

NAME: LOT NUMBER

A

Abel, Derek 2941
Appleyby, Leonard 2852

B

Badia, Jose Maria y Sert 2833
Ballantyne, Jean 2858
Ballantyne, Robert Michael 2797, 2835
Barnham, Nicholas 2939
Bartl, Antonin (Tony) 2906-2910
Beavis, Richard 2810
Belshaw, George R 2814
Benes Petr 2934
Bennett, Brian 2875
Bingham, W H 123
Braddon, Paul 2886
Bradley, Helen Layfield 2839
Bullington, C H 2798
Bunting, William Richard 2928

C

Camus, Blanche Augustine 2849
Canut, James 2838
Carr, Colin 2929-2931
Cawston, Mick 127
Chaley, Richard 128
Coleman, Enrico 2837
Colley, Charles H 2912
Cook, Beryl 2944
Crome, John 2889
Cynicus 2976

D

Dalby, David of York 437
Davis, Simon 246
Denny, J 2860
Derval 2887
De Wint, Peter 2788
Dille, Ramon 2824
Dodd, Arthur Charles 2902
Dumford, W C 2870
Duret-Dujarric, Isabelle 2826

E

Earp, W H 2868
Easton, Timothy 438-440, 442, 514

F

Flint, William Russell 2940
Fegan 2808
Forse, L E 2925
Fraser, Alec 2893
Fraser, John 2892

G

Goode, Mervyn 2924

H

Haddelsey, Vincent 2926
Harris, Edwin 2341, 2869
Herald, James Watterson 2831, 2832
Hockney, David 2942
Hodder, Albert 2842
Holland, Alwyn H 2855
Holliday 2918

I

Icart, Louis 2843
Isenberg, Herbert 2922

J

Jag, J A B 119
Johnstone, George Whitton 2896

K

Komlosy, D M 2911
Knight, Adam 2809

L

Leung, Y W 2866
Lightfoot, Peter 2927
Lock, Anton 2882
Loizou, Renos 2945
Lowry, Laurence Stephen 2947-2952

M

Mackenzie, Margo 2938
MacLaren, J 2872
Mainstre, Le(Roy) Leveson
Joseph Laurent de 452
Marchand 2847
Marko, Henry 2811
Marriott, Frederick 2802
Martin, H H 2898
Marwood, E 2807
Massone, R 2846
Maufe, H 2920
Mawhinney, Art 2871
Maxey, L 2845
McGuinness, Anne 2877
Mellon, Campbell Archibald 2897
Menghini, Matteo 2878
Meyer, Beatrice 2822
Milner, William Edward 2901
Miner, H 2856
Moore, W 425
Mostyn, Thomas 2891
Moustafa, Kamel 2828

N

Nevell, Sydney 2876
Nix, A 2830

O

Ohremovich, Juriy 2919

P

Pace, George Thomas 121
Palmer, H S 2820
Parkin, C 2818
Pena, Narcisse Virgile Diaz de la 2880
Penny, Edwin 2946
Poulet, Raymond 2851

R

Raggio, Guiseppe 2850
Rands, Angus Bernard 2913
Reid, George Ogilvy 2890
Richardson, N 2815
Ritschil, Otto 2827
Riviera 2829
Robinson, John Markey 2825
Rowe, E M 2825
Russell, T 423

S

Sadler, William Denby 2040, 2041
Say, Dorothy 2879
Scoppa, Raimondo 2821
Scotney, Eric 455
Segal, Hyman 2954-3000
Severn, Arthur 2854
Sherrin, Daniel 2894
Slipjer, Henk 448
Smart, Michael 2914
Smith, Joseph Clarendon 2819

T

Taylor, M B 2789
Taylor, Robert 2943
Thurlby, Fred 117
Tsabay, N 111

V

Varges, J 2881
Vasse, H A 2921
Vazete, Lewis 434
Villain, Georges Rene 2861

W

Welford, J 2803
White, Ken 2923
Williams, T S 2899
Wood, A M 2816
Wood, A 2885
Wood, David 2936

Y

Yeomans, W V 120

Z

Zinsky 2823

As at the time of printing, lots without estimates are to be sold without reserve, auctioneer's discretion.
See online catalogue for updates.