

# The Bourne Fine Sale

**Thursday 18th January 2018**

**At The Bourne Auction Rooms**

**Sale commences at 10am**

Wednesday 17th 10am-4pm

& Saleday 8.30am-10am.

Bid online or simply watch the sale live at



All enquiries to John Ireland MRICS or Colin Young MRICS on 01778 422686

# Bourne Fine Sale



▲ 1. A Black Cat enamel sign, circa 1920's, 10 for 6d, Pure Matured Virginia Cigarettes, Carreras Ltd (Est 1788), London, England, 32cm x 22cm.

2. A Rowntree's Chocolates blue and white rectangular enamel advertising sign, Makers to T.M. The King & Queen, 38cm x 91cm.

3. A Stationer Stephen's Inks blue and white enamel advertising sign, 25cm x 45.5cm.

4. A Colman's Mustard blue and yellow enamel rectangular advertising sign, 40cm x 156cm, together with a Colman's Starch blue and white rectangular advertising sign, 91cm x 61cm, (2).

5. A Holdfast Boots black and yellow rectangular enamel advertising sign with a reef knot symbol, 46cm x 61cm.

6. A Westward Ho! Smoking Mixture red and white rectangular enamel advertising sign, per 4d oz, 45.5cm x 101cm.

7. A Stotherts Ltd black and yellow rectangular enamel advertising sign, Head & Stomach Pills, Mfg Chemists, Atherton, 30cm x 37cm.

8. A Bective Footwear blue and yellow enamel rectangular advertising sign, Baldwin, Broadway, Hanwell, 91cm x 121cm.

9. A Lyons Cakes blue and yellow pennant shaped enamel advertising sign, 39.5cm x 44.5cm.

10. A Woodbine Cigarettes blue and white rectangular enamel advertising sign, 43cm x 153cm.

11. A Park Drive blue and white rectangular enamel advertising sign, Plain & Cork Tipped, 10 for 4d, and 5 for 2d.

12. An Ogden's Robin Cigarettes blue and yellow rectangular enamel advertising sign, 91cm x 61cm.

13. An Iron Jelloids rectangular red and white enamel advertising sign, The Tonic for Women; The Tonic for Men (and Children), 15cm x 61cm.

14. A Hawkes & Co's Entire blue and white rectangular enamel advertising sign, 52.5cm x 97.5cm.

15. A Veno's Lightning Cough Cure rectangular blue and yellow enamel advertising sign, for Coughs, Colds & Bronchitis, 11 1/2d and 1/3 AU Chemists, 21cm x 66cm.

16. An Atcost Limited oblong yellow and black enamel advertising sign, 31cm x 75.5cm, and a Universal Red Bell Tobacco advertising sign, 24cm x 57cm, (2).

17. A White May and Royal Standard BP lamp oils blue and white enamel advertising sign, Next to Sunshine, 30.5cm x 45.5cm.

18. A MacNab Dyers & Cleaners arched black and white enamel advertising sign, Agent for in Edinburgh, By Appointment to HM The King, 50cm x 38.5cm.

19. A J Gibson Cracknell for Sale brown and white rectangular advertising sign, 59 Whippendell Road, Watford, Herts, 40.5cm x 49cm.



▲ 20. A Premier Bicycle Agency black and white enamel rectangular advertising sign, Made by the Premier Cycle Co Ltd, Coventry, By Appointment to HM The King, 45cm x 56cm.

21. A Capstan Navy Cut blue and white rectangular enamel advertising sign, Tobacco and Cigarettes, 27.5cm x 38cm.

22. A John Brown FAI To Let blue and white rectangular enamel advertising sign, Auctioneer, Valuer & Estate Agents, 55 Westgate St, Gloucester, Phone 2428, 30.5cm x 38.5cm.

23. Three enamel cigarette advertising signs, comprising Wills's Woodbines, 38cm x 129cm, Player's Please, 30.5cm x 41cm, and Craven 'A' For Your Throat's Sake - Smoke, 46cm x 214cm, (AF), (3).

24. An Ansell's 'The Wrekin' painted metal advertising sign, 112.5cm x 76cm.

25. A Geo Smith Quality Preserves painted wooden advertising sign, 33cm x 135cm.

26. A Stevens & Sons Patent cast iron wall plaque, cast with a Royal Coat of Arms, London & Glasgow, 24.5cm x 19.5cm.



▲ 27. A London & Lancashire Fire lead shield shaped insurance plaque, cast with two shields, 22cm x 20.5cm.

28. A painted early 20thC cast metal Royal Coat of Arms wall plaque, possibly for By Appointment, 18cm x 20cm.

29. An LENWR Co 18A oval black and white cast iron sign, 30cm x 45cm.

30. An LNER Penalty oblong black and white cast iron sign, Any Person who omits to shut and fasten this gate is liable to a Penalty not exceeding Forty Shillings, 9.5cm x 112.5cm.

31. A cast iron black and white rectangular 'Cattle' sign, Branco Signs Ltd, 54cm x 31cm.

32. **A London and North Western Railway Notice black and white square cast iron sign,** fasten gate, By Order, Euston Station, 1st November 1883, 46cm x 46cm.

33. **A black and white cast iron rectangular sign 'Rhandirmwyn',** 9cm x 57cm.

34. **An oblong blue and white enamel street sign Osborne Road,** 18cm x 109cm.

35. **An AA Recommended QQ black and yellow metal wall plaque,** 30cm x 19cm.

36. **A Lotus Brand circular red and white enamel advertising sign,** The Jubba Upore Portland Cement Coy Ltd, Balmer Lawrie & Co Ltd, Best Portland Cement, 39.5cm diameter.

37. **A Minton mid 19thC blue and white solitaire set,** decorated with chinoiserie landscapes, comprising teapot, sucrier, cream jug, cup and saucer, and a tray, (AF).

38. **A late 19thC grotesque pottery cat and dog pair,** possibly Aller Vale, modelled seated with bandaged heads, 16cm high, (AF).



▲ 39. **A Dresden porcelain advertising figure group,** for Yardley's Old English Lavender, raised on a rococo shell base, impressed marks, 31cm high.

40. **A Staffordshire 19thC pottery teapot modelled as The Snuff Taker,** 23cm high, Staffordshire Thin Man character jug, and a further character jug, (3), (AF).

41. **A pair of early 19thC Staffordshire pearl ware marine figures,** sailor's 'Departure' and 'Return', each raised on a seated, rectangular titled base, 23.5cm high, (AF).

42. **A Continental early 20thC porcelain mantel clock,** white metal dial bearing Arabic numerals, the green rococo case, mounted with putti and encrusted with flowers, raised on four scroll feet, 28cm high.

43. **A Neale type early 19thC pearl ware figure group,** allegorical representation of Faith, Hope and Charity, raised on a square base, 19cm high, another pearl ware figure of a boy with grapes, and a Staffordshire figure of a fisherman, 27cm high.

44. **A Staffordshire mid 19thC pottery figure of Napier,** modelled aside his horse, spill vase modelled with the Princess Royal and a zebra, brown slip ware figure of a Spaniel on a cushion, and six further figures, (9).

45. **A Mintons mid 19thC pottery rumtopf,** of baluster twin handled form, painted with flowers and blossom against a green ground, 40cm high, (AF).

46. **An ivory monochrome pottery circular wall plaque to commemorate The Coronation of King George VI,** May 12th 1937, with crown and cypher, impressed marks, 25cm diameter.

47. **Porcelain and ironstone plates,** early 19thC onwards including Spode, Masons, Crown Derby, and Ashworths, (qty).

48. **A Delfware 18thC blue and white vase,** of octagonal form painted with a reserve of a Chinese lady, and Rover, R22 mark, 30.5cm high (AF), and a pair of later vases decorated with canal scenes, and one further vase, (6).



▲ 49. **A Victorian late 19thC pottery green glazed jardiniere stand,** the circular top above three lion monopodia interspersed with scrolling leaves, raised on a triform base, 54cm high.

50. **An early 19thC porcelain silver lustre part tea service,** Masons coffee cup, Dresden type porcelain twin handled tray, relief moulded jug and sundries, (qty).

51. **A Royal Albert porcelain part tea service decorated in the Old Country Rose pattern,** comprising six cups, saucers and plates.

52. **A pair of Dresden style porcelain vase and covers,** of baluster form decorated with reserves of courting figures and flowers against a black ground, Victorian tiles, and sundry ceramics, (qty).

53. **A pair of Chinese Republic porcelain famille rose porcelain ginger jars,** decorated with figures in a fenced garden beneath a turquoise border decorated with butterflies and fruit reserves against a turquoise ground, three character mark, 24cm high, (AF).

54. **A Chinese early 20thC octagonal lacquered tiffin box,** decorated with figures and panels of flowers, 30cm high.



▲ 55. **A pair of 19thC Cantonese famille rose porcelain vases,** of baluster form with twin Buddhistic lion handles, decorated with panels of travelling courtiers, and similar figures in an interior, against a ground of birds, flowers, fruit and butterflies, 42.5cm high, (AF).

# Bourne Fine Sale

56. **A late 19thC Chinese blue and white crackle glaze porcelain vase,** of baluster form, decorated with dragons and flowers within brown sgraffito cloud borders, brown seal mark to base, 40cm high.
57. **A Cantonese famille rose porcelain vase,** reserve decorated with figures, Cantonese famille rose plate, blue and white floral decorated vases, and a Kangxi porcelain blue and white dish, (4), (AF).
58. **A Chinese Imari late 19thC porcelain fluted charger,** printed with a basket of flowers with in a floral decorated border, 41cm diameter, imari dish decorated with flowers, 35cm diameter, further imari dish and a vase, (4), (AF).
59. **A Victorian Mappin Brothers plated three bottle wine cruet,** wine three labels for Brandy, Gin and Whiskey, 29cm high.
60. **A Victorian silver three piece tea set,** of semi fluted forms, John Howard Wilmot, Birmingham 1894, 12oz.
61. **A pair of George II silver fruit spoons,** with embossed fruit and engraved leaf decoration, maker William Woodward, London, 4oz.
62. **Spare Lot**
63. **Spare Lot**
64. **A set of six Edward VII silver grapefruit spoons,** monogram engraved, Sheffield 1907, cased, 3.85oz, and six George V cake knives with silver handles, Sheffield 1923, cased.
65. **Spare Lot**
66. **An Edward VII silver replica of the Coronation Anointing spoon,** Birmingham 1901, 1.48oz.
67. **Spare Lot**
68. **A George II silver table spoon,** Edward Sawyer, Birmingham 1775, Victorian silver fork, monogram engraved, Chawner & Co, London 1859, and five further spoons, 5.85oz.
69. **Spare Lot**
70. **A Victorian silver handled Kings pattern butter knife,** silver tea, salt and mustard spoons, 3.5oz all in, continental paper knife and salt spoon, plated spoon and a carving knife and fork.
71. **Spare Lot**
72. **Spare Lot**
73. **A Cantonese 19thC ivory box and hinged cover,** of curvilinear rectangular form with pierced figural and garden landscape decoration, the lid set with a red cabochon, 6cm x 3.5cm, (AF).
74. **A Victorian porcelain scent bottle,** of tapering form, painted with flowers, with a silver screw top lid, Birmingham 1894, together with a faceted ruby glass scent bottle, with a white metal hinged lid embossed with flowers. (2), (AF).
75. **Spare Lot**
76. **Spare Lot**
77. **A Victorian Mauchline ware sycamore snuff box,** decorated to the lid with a hunting scene, 7.5cm long, and a Mauchline ware box, printed with the Shakespeare Memorial, Stratford on Avon, 8.5cm x 5.5cm x 3.5cm, (2).
78. **A carved Coquilla nut egg form box,** 6.5cm long, and a tortoiseshell early 19thC snuff box, of sarcophagus form, with silver wire detailing and white glass ball feet, 6.5cm long, (2), (AF).
79. **A Victorian parquetry lidded wooden box,** 9cm long, wooden pot and cover with printed fern decoration, and a wooden match sleeve with painted shell paterae, (3).
80. **Spare Lot**
81. **A Victorian late 19thC gilt brass and agate set casket,** square form with embossed C-scroll decoration, the lid cast with an Ottoman figure, raised on scroll feet, 8.5cm x 8.5cm x 8.5cm.
82. **An Edward VII meerschaum cigarette holder,** with an amber tip and silver ferules, Birmingham 1901, silver thimble, ivory sewing pot, Mary Gregory type cranberry glass circular pot with a hinged lid, and sundry collectables, (qty).
83. **Spare Lot**
84. **Spare Lot**
85. **A Great War medal to Pte G Stamp, Lincolnshire Regt,** 61117, pairs of gold or gilt rimmed spectacles, cigarette case, compacts and sundries.
86. **After Guillaume Coustou,** a late 19thC bronze cast of a Marley Horse, 18cm high.
87. **A Victorian papier mache book slide,** with mother of pearl inlay and painted lily-of-the-valley decoration, 33cm x 13cm, (AF).
88. **A shagreen rectangular box and winged cover,** 12cm x 10cm x 4.5cm, together with a Princess Mary brass Christmas tin 1914, ivory bound Common Prayer Book with a silver cross to the front, London 1901, and an olive wood bound Bible, (4).
89. **A loaded bronze figure of a horse,** modelled standing, on an oblong base, 28.5cm x 13cm x 32cm.



- ▲ 90. **A late 19thC brass Corinthian column oil lamp,** with an acanthus moulded green moulded glass reservoir and a green to clear moulded glass shade, 77.5cm high.
91. **A Continental late 19thC ormolu four branch candelabra,** of baluster form embossed with masks, rococo shells and shield reserves, raised on three scroll feet, 52cm high.
92. **A Regency mahogany sarcophagus tea caddy,** with a mixing bowl recess flanked by two tea containers, raised on ball feet, 28cm x 14cm x 16cm.

93. A pair of late 19thC bronzed plaster figures modelled on Venus bathing, raised on circular bases, 58.5cm high.

94. A Victorian oval rosewood tray, with a twin brass handled and galleried frame, inlaid with paterae, bars, urns and foliate scrolls, 69cm x 44cm.



▲ 95. A Regency mahogany and brass inlaid wall clock, by E Dent, 61 Strand, London, circular enamel dial bearing Roman numerals, single fusee movement with bell strike, with key, 47cm long.

96. A Victorian mahogany circular cased wall clock, by F Pinney & Son, Stamford, dial bearing Roman numerals, single fusee movement, no pendulum, with key, 38cm diameter.

97. A Hamburg American Clock Co late 19thC walnut cased mantel clock, circular brass dial with enamel chapter ring bearing Roman numerals, fourteen day movement with coil strike, no 3049, in an architectural case, 39cm high, with key.

98. A Ralph Lauren tweed shoulder bag, Stefano vari coloured leather bag, and a snakeskin handbag, (3).

99. A Victorian hazel wood walking stick with a white metal belt collar, 83.5cm long, and a further walking stick, silver tipped, London 1868, 85cm long, (2).

100. Victorian and later advertising tins, including Burdall's Gravy Salt, Gen Bassett & Co Ltd casket, Carlyle Tobacco, J & J Colman Ltd Mustard, and a Mackenzie & Mackenzie house farm money tin, (10).

101. A pair of cast metal figures modelled as musicians, 24cm high, Elizabeth II copper Coronation crown money box, lion car mascot, Japanese antimony card box and sundries, (7).



▲ 102. A Parnell & Sons Ltd white glazed pottery 'Pure Butter' advertising stand, 38.5cm x 28.5cm, white glazed pottery egg stand 'Fresh Daily', and five plastic imperial price markers.

103. A Haenel air rifle, 112cm long.

104. A set of Continental cast iron and white painted scales, to 20 stone.

105. A Hepworths tie press, stained glass heraldic panel, further stained glass panel, tapestry, wall plaques and sundry collectables, (qty).

106. A plaster early 20thC figural door stop modelled as a seated cat, 34cm high.

107. A Chinese early 20thC pottery jardiniere stand, sgraffito decorated in green with prunus and other blossom, and bamboo, against a yellow ground, 48.5cm high.

108. An oak and iron bound cooper's barrel oval stick stand, 43cm x 27cm x 46cm.

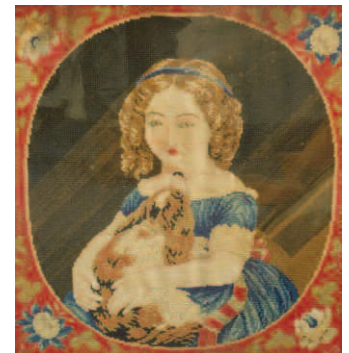
109. A Georgian silk work picture depicting a shepherd and lamb, 19cm x 16cm, a pastoral coastal scene, 28cm diameter, and a lady at a spinet, 31cm x 24.5cm.

110. A pair of Georgian silk work pictures; lady with wheat and a man with two baskets of grapes, 27cm x 20cm.

111. N Tsabey (20thC). Portrait of a Renaissance lady, watercolour on ivory, signed, 8cm x 6cm.

112. A Victorian Stevengraph 'The Present Time', 60 Miles an Hour, mounted and framed, 13cm x 20cm.

113. A pair of Victorian wool work pictures, pastoral scenes with children, 17.5cm x 15.5cm, silk work picture of a girl holding a bonnet, 11cm x 8.5cm, portrait of a lady, watercolour, 10.5cm x 8cm, and a stamp work type picture 'Good Dog!', 20.5cm x 18cm, (5).



▲ 114. A Victorian wool and bead work picture, Still Life of flowers, 44cm x 31.5cm, half length portrait of a lady with a Spaniel, 43.5cm x 40cm, pair of pastoral studies, seated man with dog, and lady with a basket, and one further picture, (5).



▲ 115. After George Morland (1763-1804). Figures in a stable, oil on canvas, 34.5cm x 43cm.



▲ 116. Manner of George Morland (1763-1804). The Village Inn, oil on canvas, 45cm x 58.5cm.

# Bourne Fine Sale



▲ 117.  
**Fred Thurlby (19th/20thC).**  
Fox Trot, oil on canvas, titled,  
signed, 28.5cm x 38.5cm.

118.  
**English School (20thC).**  
Horse in a stable, after a 19thC  
study, oil on board,  
25.5cm x 35.5cm.



▲ 119.  
**J A B Jag (19thC).**  
Stabled brown gloss horse, oil  
on canvas, signed, dated 1888,  
44cm x 59.5cm.

120.  
**W V Yeomans (19th/20thC).**  
Standing brown horse, oil on  
canvas, signed, 33cm x 42cm.



▲ 121.  
**George Thomas Pace  
(1854-1925).**  
Summer Lightning, oil on  
canvas, titled, signed, and  
dated '98, 49cm x 67cm.

122.  
**English School (19thC).**  
Three donkeys, oil on board,  
23cm x 27.5cm.

123.  
**W H Bingham (20thC).**  
A Break, National Ploughing  
Match 1975 Little Wissington, pen  
and watercolour, signed,  
20cm x 33cm.



▲ 124.  
**After Henry Hubbard  
(19thC).**  
The Prize Heifer Plover,  
lithograph, published by  
Thomas Moses, Barton, circa  
1847, 48cm x 58cm.

125.  
**After Howe (19thC).**  
Horse Racing at Edinburgh 1824,  
engraved by Lazars, 27cm x 42.5cm,  
two engravings of horses;  
Maritana and Hackney Mare  
Princess, 23cm x 23cm, and a  
coloured etching John Gilpin's  
Famous Ride, 17cm x 24.5cm, (4).

126.  
**English School (19thC).**  
Still Life of flowers, oil on glass,  
70cm x 23cm, and a woolwork  
picture of flowers, 22.5cm diameter,  
(2).

127.  
**Mick Cawston (21stC).**  
The Artful Digger; What About  
Me?, a pair of limited edition 500  
prints, signed and titled,  
39cm x 28.5cm and 32cm x 24.5cm,  
(2).

128.  
**Richard Chaley (20thC).**  
St Andrews Old Course Road  
Hole, limited edition print  
75/500, AJE blind stamp, signed,  
30cm x 43.5cm, and a further print,  
St Andrews Old Course Swilcan  
Bridge, signed, 42cm x 57cm, (2).

129.  
**A Victorian giltwood foot  
stool,**  
with a floral decorated wool and  
bead work upholstery,  
32.5cm diameter.



▲ 130.  
**A George III oak  
bachelor's chest of  
drawers,**  
with as brushing slide over  
four graduated long drawers,  
raised on bracket feet,  
84cm x 49.5cm x 82.5cm.

131.  
**Two 1930's oak framed two  
seater sofas,**  
one upholstered in blue draylon,  
152cm long, the other is a  
Caucasian rug pattern fabric,  
138cm long.

132.  
**A George III mahogany tilt  
top occasional oval table,**  
raised on a turned and spiral  
fluted column, over three cabriole  
legs, 77cm x 71cm.

133.  
**A George III mahogany  
bachelor's chest of drawers,**  
with brushing slide over four long  
drawers, raised on bracket,  
87cm x 49cm x 78.5cm.

134.  
**A 19thC William & Mary  
style oak stool,**  
with tapestry upholstery, raised  
on turned legs united by an X  
frame stretcher.



▲ 135.  
**A Georgian oak and elm  
Welsh dresser,**  
the outswept pediment over a  
two shelf Delft rack with  
panelled back, above three  
drawers and recesses, raised  
on square, straight legs united  
by an under tier,  
133cm x 39cm x 171cm.

136.  
**Two Victorian beech towel  
rails,**  
67cm and 72cm long.

137.  
**A Victorian mahogany pot  
cupboard,**  
converted from a desk pedestal,  
with two drawers above a  
cupboard, raised on a plinth base,  
33.5cm x 54cm x 73cm.



▲ 138.  
**A George III oak lowboy,**  
with one long and two short  
drawers, raised on straight  
square legs,  
86cm x 44cm x 73cm.



- ▲ 139.  
A George II walnut and cross banded chest of drawers, with one medium and two short drawers, over three long graduated drawers, raised on bracket feet, 98.5cm x 51cm x 97cm.

140.  
A French Kingwood and mahogany parquetry oval etagere, with brass mounts, single frieze drawer, raised on slender cabriole legs, 64cm x 51cm x 67.5cm.

141.  
A George II mahogany chest of drawers, with four long graduated drawers, raised on bracket feet, 78cm x 46cm x 79.5cm.

143.  
A walnut chest of drawers, with two short over two long deep drawers, raised on bracket feet, 113cm x 57cm x 91cm.

144.  
A Victorian brass double bed with a sprung iron base.

145.  
A Victorian black painted cast iron single bed.

146.  
A HS Army Lineman's Signal Corps test set, EE-65-B, 728. cased.

147.  
A pair of US Army Signal Corps field telephones, EE-8-A, cased.

148.  
Three WWI recruiting posters; Your King & Country Need You - Another 100,000 Men Wanted', published 1914, Fall In - Answer Now in your Country's Hour of Need, poster No 12, published by the Parliamentary Recruiting Committee, London 1919, and Your Country Needs You - Fall In! - Enlist Now reproduced from The London Daily Chronicle, printed by United Newspapers, London.

149.  
An Army WW Level Mk 1 Bombsight box containing lenses.

150.  
Two military Gunsight MkII Reflector boxes, containing sundry equipment spares.



- ▲ 151.  
A 17thC and later oak chest, of three deep drawers with twin panel fronts and pierced brass key escutcheons, on stile legs and with replacement knob handles, 105cm wide.



- ▲ 152.  
A late 17thC/early 18thC longcase clock by Samuel Barrow of London, in handmade figured walnut case with feather banding and with original eight day fusee movement, having five pillars with silvered chapter ring, brass spandrels, signed Sam Barrow, Londini, Fecit, with later ebonised plinth, 210cm high.

153.  
A D end dining table, with reeded border on square tapered legs with ebony line inlay, 221.5cm (fully extended with two leaves) x 121.5cm.

154.  
A set of eight composite mahogany dining chairs, with arched backs and over upholstered seats, George III and later.



- ▲ 155.  
A George III figured mahogany secretaire chest, of four drawers, with upper secretaire drawer and oval brass handles, with cross banding to the top and boxwood stringing, 101cm wide.

156.  
A Georgian mahogany D end side table, with plain frieze and turned and tapered legs, 122cm wide.

157.  
A brass six branch chandelier.



- ▲ 158.  
A Regency brass and copper samovar, of oval urn shaped design, with mask head ring handles and fish knob, on four lion's head and paw legs, 42cm high.



- ▲ 159.  
A rare early 18thC walnut framed settee, with carved birds head terminals to the arms, and later tapestry upholstery, upon cabriole legs and pad feet, 205cm wide.  
N.B. Please see reference and image BBC Roadshow 1992 Book, page 27, this settee was featured on the program.

# Bourne Fine Sale



▲ 160.  
A Queen Anne/George I walnut framed wingback chair, upholstered in green plush material with loose cushion, on cabriole legs with turned stretchers.

161.  
An 18thC figured walnut hanging corner cupboard, with arched mirror to the single door having original glass, and with canted corners and moulded shallow cornice, 68cm wide, 97cm high.



▲ 162.  
A George II mahogany turnover top card table, with green beize lining and counter cups and candle stands to the playing surface, upon stylised leaf capped cabriole legs and padded feet, 84cm wide.



▲ 163.  
A George oak standing corner cabinet, with glazed upper section, enclosed by two doors with plain moulded cornice and canted corners, lower section enclosed by two panelled doors.

164.  
A Regency gilt framed oval wall mirror, with panelled border and cushion reeded frame, 109cm high.

165.  
A George III inlaid mahogany Pembroke table, with cross banded border, 80cm, (AF).



▲ 166.  
A George I mahogany chest, of two short and three long drawers, with feather banding, and ten veneered panels to the top, with later feet and brass handles, 98cm wide.

167.  
A Victorian square ebonised table, on reeded quadruped legs, and painted with flowers, 68cm.



▲ 168.  
An early 19thC Chinese chinoiserie black lacquered chest, with two carrying handles, on later ebonised stand, 46cm wide, (AF).

169.  
A Victorian walnut spoon back nursing chair, with overstuffed seat and button back, raised on cabriole legs, on castors.

170.  
An Edwardian satin walnut kneehole desk, with reeded outline to the graduated drawers with brass handles on a plinth base, 122cm wide.

171.  
An early 20thC Japanese hardwood toilet mirror, the mirror above a stepped chest of six drawers, 58cm x 28cm x 110cm.

172.  
An antique graduated pine hanging plate rack, with three shelves and iron cup holders, 117cm wide.

173.  
A four tier gilt metal pendant chandelier with lustre drops.

174.  
An 18thC mahogany framed wingback chair, of small proportion, with swept arms and cabriole legs, in cream damask upholstery.

175.  
A George III mahogany chest, of two short and three long drawers, with brass handles and ogee bracket feet, (AF).

176.  
A 19thC mahogany side table, with two frieze drawers on tapered legs.

177.  
A gilt framed triple toilet mirror, with shell and harebell mouldings.



▲ 178.  
A Victorian settee, with high back and scrolling arms, on square tapered legs and castors, 150cm wide.

179.  
A pair of cut glass six branch chandeliers with lustre drops.

180.  
A George III mahogany night cupboard, with tambour shuttered front.

181.  
An Edwardian duet of Vernis Martin occasional table, raised on turned supports, largest 40cm x 33cm x 66.5cm.

182.  
A George III mahogany wardrobe, with two drawers below, and later replacement cornice, 138cm wide, 196cm high.

183.  
A George III mahogany side table, fitted with a single drawer, on square tapered legs, lacking centre stretcher, 90cm wide.

184.  
A gilt framed oval wall mirror, with reeded cushion frame, 58cm x 82cm overall.

185.  
A George III mahogany chest of two short and three long drawers, with oval brass handles, on bracket feet, 101cm wide.

186.  
A Georgian mahogany toilet mirror, with serpentine shaped base.



▲ 187.  
A Victorian half tester cast iron framed bed, with fitted drapes.

188.  
A mahogany night cupboard, with tray top and pierced handles, and another similar cupboard, (2).

189.  
A gilt metal five branch pendant light fitting, with classic cut lustres.



▲ 190.  
A pair of Victorian low seated easy chairs, in red patterned plush upholstery.

191.  
An Italian late 19thC painted and parcel gilt side table, the rectangular top above a scallop shell and foliate frieze, supported on a carved central column and four scrolls, raised on four scrolling legs, 62.5cm x 32.5cm x 68cm.

192.  
An 18thC oak circular tripod table, with turned column, 85cm diameter.

193.  
A George III mahogany and yew wood circular occasional table, raised on a baluster column above three cabriole legs, 40.5cm x 73cm, and a similar mahogany and oak tilt top occasional table, 43cm x 74cm, (AF), (2).

194.  
An 18thC oak chest, having frieze drawer and two short and three long drawers, probably the top section a chest on chest and converted with later feet, 109cm wide, 116cm high.

195.  
A carved mahogany bed post now converted to a floor lamp, with tripod legs.

196.  
A George III mahogany cellarette cupboard, with cross banding and enclosed by a single door and with two internal racks, 52cm wide, 107cm high.

197.  
A pierced brass fender, on claw feet.

198.  
An Arts & Crafts copper framed rectangular wall mirror, embossed with flowers and entwined leaves, and a banner bearing '1879 June 24th 1904', 40.5cm x 48cm.

199.  
A pair of three tier gilt metal pendant chandeliers with lustre drops.

200.  
A brass bag chandelier with brilliant cut drops, 30.5cm x 28cm.

201.  
A Victorian pierced steel bow fronted fender, 162cm long, three steel fire irons, three brass fire irons and a pair of andirons, (9).

202.  
A Herend porcelain part coffee service decorated in the Queen Victoria pattern, comprising coffee pot, cream jug, sucrier, six cups and saucers.

203.  
A Portmerion amethyst glass lemonade set decorated in the Beachcomber pattern, comprising pitcher and six tumblers.

204.  
A Poole pottery 1950's vase, of baluster form decorated with red and blue slits, X/PV mark, shaqpe No 718, 20cm high.

205.  
A late 19thC Art Pottery jardiniere stand, moulded and slip decorated with floral festoons and pendant masks against a green and brown grounds, 51.5cm high.



▲ 206.  
A late 19thC Art Pottery jardiniere, painted and enamelled with lavender and other flowers against a greenish brown ground, 27cm x 20.5cm.

207.  
A pair of Daum Nancy early 20thC glass salts, of tub form decorated en grisaille with landscapes, clear glass liners, cased for L Daum, Paris.

208.  
A Grindley late 19thC flow blue and white pottery part dinner service, decorated in the Derwent pattern, comprising seven meat platters in sizes, soup tureen cover, and ladle, pair of vegetable tureens and covers, twelve dinner and dessert plates, and eleven side plates.

209.  
A Wade British Leyland blue ashtray, of circular steering wheel form, printed mark, 19cm diameter.

210.  
A Staffordshire late 19thC flat back pottery figure group of the Prince and Princess, blue and white supper segment decorated in the Newnham Courtney pattern, glass stirrers, Continental porcelain cased mantel clock and sundries, (qty).

211.  
A Chinese Republic porcelain vase, of square tapering form, painted with bamboo, script and birds in branches of blossom, 47cm high, together with a table lamp of hexagonal form painted with flowers, 44cm high, (2).

212.  
A Chinese Porcelain figural vase modelled a winged lion, moulded with dragons chasing flaming pearls against a green ground, 25.5cm high, together with a copy of one of Emperor Qin's terracotta warriors, 26.5cm high, (2).

213.  
A Tibetan hardstone carving of Shiva, modelled standing holding a flame, 33cm high, together with a red lacquer box decorated with figures, 30.5cm long, (2).

214.  
A Japanese early 20thC porcelain doll modelled as a kneeling Geisha Girl, on a rectangular wooden base, 29cm high.

215.  
Seven Qing Dynasty late 19thC watercolours on pith paper of courtiers, frames and glazed, each 10.5cm x 7.5cm.

# Bourne Fine Sale

**216.**  
Seven Qing Dynasty late  
19thC watercolours on paper  
of artisans,  
framed and glazed, each  
9cm x 5.5cm.



▲ **217.**  
Four Qing Dynasty late  
19thC watercolours on  
paper,  
portraits, signed,  
22.5cm x 21cm.



▲ **218.**  
A George VI silver desk  
stand,  
with two glass ink receivers,  
makers Mappin & Webb,  
Birmingham 1938.

**219.**  
A presentation circular silver  
salver,  
Sheffield 1965, 15oz.

**220.**  
A silver George V comport,  
with two handles and pierced  
border,  
makers James Dixon & Son,  
Sheffield 1925, 15oz.

**221.**  
A George V three piece silver  
tea set,  
Sheffield 1930, 16oz all in.

**222.**  
A pair of silver sauce boats,  
of Georgian design with leaf  
capped handles, 4oz.

**223.**  
A pair of George III silver  
salts,  
of circular design on three hoof  
feet, London 1767, and a pair of  
spoons.

**224.**  
A George V silver oblong  
two handled tray,  
Sheffield 1921, 42oz.

**225.**  
Twelve pairs of Edwardian  
silver dessert knives and  
forks,  
makers Holland Aldwinckle &  
Slater, London 1903.

**226.**  
A pair of Edwardian Adam  
style candlesticks of urn and  
plinth form,  
on an outswept, square base,  
26.5cm high, (AF).

**227.**  
A Victorian silver salt  
engraved with swags,  
Birmingham 1889, pepperette,  
Birmingham 1876, napkin ring,  
and a pair of salt spoons, Josiah  
Williams & Co, Exeter 1872,  
2.61oz.

**228.**  
A George V silver backed  
hair brush embossed with a  
cherub and ivy,  
Birmingham 1918, silver backed  
hand mirror, Birmingham 1902,  
five coffee spoons with bean  
terminals, Robert Carr silver  
fronted strut bedside clock, SS  
City of Nagpur, silver and enamel  
commemorative tea spoon,  
Martini label, and two silver  
pocket watch cases.

**229.**  
A pair of Indian bowls  
embossed with a band of  
flowers,  
stamped silver, 14.26oz.



▲ **230.**  
An Indian oval cricket  
cage,  
with pierced and chased floral  
and foliate decoration, white  
metal, stamped 925, 11.91oz.

**231.**  
A Victorian One Rupee 1874  
coin dish,  
and an Edward VII One Rupee  
1906 coin dish, white metal  
stamped silver, boxed, together  
with a paper knife, coffee spoon  
and a handle mount, 4.81oz.

**232.**  
A Carl Zeiss 10x50  
monocular,  
DDR, 5468898, cased, (AF).

**233.**  
An Eligy Lumiere  
subminiature camera,  
with a Lypar 1:3.5 lens, cased.

**234.**  
An Olympus OM-2 camera,  
with a 1:1.8 f=50mm lens, a 135mm  
lens, Sigma 28mm lens, Miranda  
flash, and a Fotocare S24CTD.

**235.**  
A Victorian American  
Orgniette by Metzler & Co,  
37 Marlborough Street, London, By  
Her Majesty's Royal Letters  
Patent.

**236.**  
An Arts & Crafts hammered  
pewter chamber stick,  
21cm high, and a WMFG type tin  
vase, 35cm high.

**237.**  
A Sherwoods paraffin heater,  
ebony and porcupine quill box,  
21cm x 15cm x 8.5cm, pair of brass  
candlesticks, iron door keys and a  
British Coal scale model of The  
Flying Scotsman, (5).

**238.**  
A Native American Indian  
bead work cuff and a gourd,  
three later pieces and a pair of  
Belgium carved wooden Klepper  
clog shoes, 28cm long.

**239.**  
A Victorian brown gingham  
dress,  
together with under garments,  
black leather boots, lace  
christening gowns and a mop cap.



▲ **240.**  
Two 18thC tapestry panels  
with Chinese subjects,  
with some petit point detail,  
framed as a pair,  
31.5cm x 135cm and  
30cm x 130cm.

**241.**  
Two 18thC tapestry panels  
with Chinese subjects,  
with some petit point detail,  
framed as a pair, 29cm x 38cm and  
36cm x 39cm.

**242.**  
A brass and cut glass bag  
chandelier with brilliant cut  
drops,  
further chandelier parts and a mid  
20thC alabaster ceiling light,  
35cm x 12cm.

**243.**  
A vintage Hardy's fishing  
landing net handle,  
71cm long.

**244.**  
English School (19thC).  
Baghdad by the Tigris River, a  
pair of charcoal and body colour,  
verso attributed on signed by  
C.E.S. Dent? 1820, 20cm x 30cm,  
(2).

**245.**  
After William Heath (1794-  
1840).  
British Sports and Pastimes,  
coloured engravings, published  
by Samuel Maunders, London  
1829, comprising Bowls, Blind  
Man's Buff, Skittles and Hunt the  
Slipper, each 13.5cm x 19.5cm, (4).

**246.**  
Simon Davis (20thC).  
The Crook Maker, watercolour,  
signed, dated '91, 28.5cm x 20cm.



▲ 247.  
A 19thC oak and elm Windsor chair, with a crinoline stretcher, raised on turned legs.

248.  
A Chinese late 19thC hardwood urn table, the marble inset circular top with a beaded edge, above a carved frieze and four dragon's monopodia legs united by an X-frame stretcher, 28cm x 42cm.

249.  
A 19thC oak and elm Windsor chair, with a Prince of Wales feather splat, H-frame stretcher, on turned legs.

250.  
A Victorian rosewood rectangular cushion wall mirror, inset bevelled glass, 106cm x 61cm.

251.  
A George III mahogany framed leather wingback armchair, with studded green hide and moulded square front legs, later replacement stretchers.

252.  
A Victorian mahogany balloon back nursing chair, with button back upholstery and over stuffed seat, raised on cabriole legs, on castors.

253.  
A Caucasian wool rug, decorated with geometric motifs against a red ground, 236cm x 121cm.

254.  
A Turkish wool rug, decorated with geometric motifs against an indigo ground, within a cream border, 208cm x 134cm.

255.  
A Turkish wool rug, decorated with floral and geometric motif against a red ground, 118cm x 118cm.

256.  
A Persian wool runner, decorated with geometric motifs against a red ground, 272cm x 77cm.



▲ 257.  
A Caucasian wool runner, decorated with geometric motifs against a red ground, 284cm x 85cm.



▲ 258.  
An Iranian wool rug, decorated with floral motifs against a cream ground, 355cm x 272cm.

259.  
A Caucasian wool rug, decorated with floral and geometric motifs against a red ground, 124cm x 80cm.

260.  
A Caucasian wool rug, decorated with floral motifs against a brown ground, within a cream border, 197cm x 103cm.

261.  
A Turkish wool rug, decorated with geometric motifs against a red ground, within a brown border, 326cm x 168cm.

262.  
A Caucasian wool rug, decorated with flowers against a red and blue ground, 325cm x 209cm.

263.  
A Caucasian wool rug, decorated with geometric motifs against a brown ground, 227cm x 132cm.



▲ 264.  
A Moorcroft pottery baluster vase decorated in the Passion Fruit pattern, circa 1997, painted and impressed marks, boxed, 26cm high.

265.  
A Moorcroft pottery baluster vase decorated in the Knypersley pattern, circa 2003, painted and impressed marks, boxed, 19cm high.

266.  
A Moorcroft pottery trumpet shaped vase decoration in the Canna Lily pattern, circa 2001, painted and impressed marks, boxed, 25.5cm high.

267.  
A Moorcroft pottery slender necked vase decorated in the Hibiscus pattern, impressed marks, 27cm high.

268.  
A Moorcroft early 20thC baluster vase, Spanish design decorated with flowers against a green ground, painted signature, 23cm high.

269.  
A Moorcroft pottery vase of bulbous baluster form decorated in the Leicester pattern, circa 1995, painted and impressed marks, 16.5cm high.

270.  
A Moorcroft pottery baluster vase decorated in the Poppy pattern, circa 1996, painted and impressed marks, 23cm high.



▲ 271.  
A Moorcroft pottery bowl decorated in the Gustavia Augusta pattern, circa 1996, painted and impressed marks, 25.5cm diameter.

272.  
A Moorcroft pottery vase of bulbous baluster form decorated in the Rock Pool pattern, circa 1997, painted and impressed marks, 16.5cm high.

273.  
A Moorcroft early 20thC flambe dish decorated in the leaf and berry pattern, impressed marks, 26cm diameter.

274.  
A Moorcroft pottery vase of shouldered tapering form decorated in the Queen's Choice pattern, circa 2000, painted and impressed marks, boxed, 25cm high.

# Bourne Fine Sale



▲ 275.  
A Moorcroft pottery baluster vase decorated in the Anna Lily pattern, circa 1998, painted and impressed marks, boxed, 27cm high.

276.  
A Moorcroft pottery trumpet shaped vase decorated in the Ophir pattern, circa 2004, by Rachel Bishop, limited edition 86/100 for Liberty, printed and impressed marks, boxed, 25cm high.

277.  
A Moorcroft pottery baluster vase decorated in the Cluny pattern, painted and impressed marks, boxed, 27cm high.

278.  
A Moorcroft pottery baluster vase decorated in the Knightwood pattern, circa 1997, painted and impressed marks, boxed, 26cm high.

279.  
A Moorcroft pottery early 20thC ovoid vase decorated in the Anemone pattern, against a blue ground, impressed marks and paper label, 12.5cm high.

280.  
A Moorcroft pottery ginger jar and cover decorated in the Carousel pattern, circa 1996, painted and impressed marks, boxed, 15.5cm high.

281.  
A Moorcroft pottery ginger jar and cover decorated in the Poppy pattern, circa 2007, painted and impressed marks, 15.5cm high.

282.  
A Moorcroft pottery ginger jar and cover decorated in the Noah's Ark pattern, circa 1995, painted and impressed marks, 15.5cm high.



▲ 283.  
A Moorcroft pottery twin handled bon bon dish and cover decorated in the Loch Hope pattern, circa 2004, painted and impressed marks, 22cm high.

284.  
A Moorcroft pottery baluster vase decorated in the Bullrushes pattern, circa 1995, painted and impressed marks, boxed, 20.5cm high.

285.  
A Moorcroft pottery baluster vase decorated in the Strawberry Thief pattern, circa 1995, painted and impressed marks, boxed, 10.5cm high.

286.  
A Moorcroft pottery twin handled vase decorated in the Sea Holly pattern, circa 2006, painted and impressed marks, boxed, 15.5cm high.

287.  
A Moorcroft pottery vase of bulbous and baluster form decorated in the Finches pattern, painted and impressed marks, boxed, 10.5cm high.

288.  
A Moorcroft pottery powder bowl and cover decorated in the Mayfly pattern, circa 2004, painted and impressed marks, boxed, 12cm diameter.

289.  
A Moorcroft pottery vase, of shouldered tapering form decorated in the Foxgloves pattern, circa 1993, painted and impressed marks, boxed, 20.5cm high.

290.  
A Moorcroft pottery globular vase decorated in the Hepatica pattern, circa 1999, painted and impressed marks, boxed, 10cm high.

291.  
A Moorcroft pottery slender necked vase decorated in the Phoenix Bird pattern, circa 1996, painted and impressed marks, 20.5cm high.

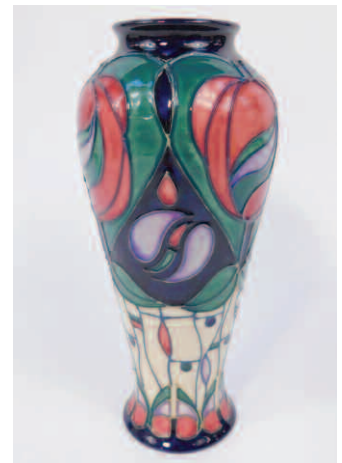
292.  
A pair of Moorcroft early 20thC pottery candlesticks decorated in the Hibiscus pattern, against a blue ground, impressed marks and paper label, 8cm high.



▲ 293.  
A Moorcroft pottery early 20thC bowl decorated in the Hibiscus pattern, 15.5cm diameter.

294.  
A Moorcroft pottery dish decorated in the Spring Flowers pattern, impressed marks, 11cm diameter.

295.  
A Moorcroft pottery baluster vase decorated in the Windrush pattern, circa 2001, painted and impressed marks, boxed, 20.5cm high.



▲ 296.  
A Moorcroft pottery baluster vase decorated in the Mackintosh Tribute pattern, circa 1995, painted and impressed marks, boxed, 20.5cm high.

297.  
A Moorcroft pottery ovoid vase decorated in the Tansy pattern, c1999, painted and impressed marks, boxed, 19cm high.

298.  
A Moorcroft pottery baluster vase, decorated in the Duet pattern, circa 2004, painted and impressed marks, boxed, 16cm high, baluster base decorated in the Fly Away Home pattern, 21cm high, and a ginger jar and cover decorated in the Violet pattern, boxed, 10.5cm high, (3).

299.  
A Moorcroft pottery ovoid vase decorated in the Fireflower pattern, circa 2005, painted and impressed marks, 9.5cm high, and a baluster vase decorated in the Sweet Briar pattern, circa 1997, painted and impressed marks, 16.5cm high, both boxed, (2).

300.  
A Moorcroft pottery bowl decorated in the Poppy pattern, 12cm diameter, Christmas Poinsettia dish and Watership Down dish, both boxed, Leicester pattern trial dish, 1995, and three Moorcroft reference books, (7).

Full catalogue online at [goldingyoung.com](http://goldingyoung.com)

*Upon instructions from the Executors of John Hewley Baines of the contents of  
Latimer House, Heckington, Lincolnshire (Pictured outside the family home Bell House, Nr. York)*



# Bourne Fine Sale



**601.**  
A set of six Bohemian cranberry flashed glass wine glasses, raised on fluted stems, 15cm high.

**602.**  
A Worcester First Period blue and white porcelain teapot, of globular form decorated with a chinoiserie landscape, and a tea bowl saucers, (AF), (2).

**603.**  
A Worcester First Period porcelain wrythen fluted teapot and sucrier, decorated in blue and gilt with floral sprigs beneath a repeating leaf and dot border, (2).

**604.**  
A mid 19thC brown and white relief moulded teapot and cover, with serpent spout and handle, decorated with a hunting scene, No 13, 15cm high.

**605.**  
A set of six mid 20thC wine glasses with vari-coloured stems, 16cm high.

**606.**  
A porcelain cylindrical stick stand printed with a cafe scene, manner of Alfonse Mucha, Coffe, EGuello Serigio Istantaneo, 33cm high.

**607.**  
A 19thC Prattware pot lid Walmer Castle, framed, 9.5cm diameter. £30-50

**608.**  
A Herend porcelain miniature tureen and cover, decorated in the Queen Victoria pattern, lemon finial, printed mark, 13cm long.

**609.**  
A Herend porcelain bud vase decorated in the Queen Victoria pattern, printed marks, 12cm high.

**610.**  
A Coalport porcelain part tea and coffee service decorated in the Revelry pattern, comprising pair of serving plates, pair of bread plates, three graduated twin handled dishes, twelve salad plates, teapot, milk jug, two graduated cream jugs and sugar bowls, nine tea cups, eight saucers and twenty tea plates, ten coffee cups, eleven saucers, spoon dish, preserve pot, butter knife, twelve salad knives and forks and two cake slices, (112). £80-120

**611.**  
A Royal Doulton porcelain part dinner service decorated in the Aegean pattern, comprising pair of oval meat platters, pair of vegetable tureens and covers, eleven dinner, twelve dessert and fourteen side plates, twelve fruit bowls, soup cups and eleven saucers, (76). £30-60

**612.**  
A set of three Crown Derby early 19thC porcelain soup plates, imari decorated, painted marks, 24.5cm diameter. £40-60

**613.**  
A Noritake porcelain early 20thC demi-tasse coffee service, decorated with grazing sheep, comprising coffee pot, cream jug, four cups and saucers, (AF), (11).

**614.**  
A Royal Albert porcelain part tea service decorated in the Lady Carlyle pattern, comprising teapot, cream jug, sugar bowl, pair of bread plates, nine tea cups, fourteen saucers and twelve tea plates, together with a coffee pot decorated in the Moss Rose pattern.

**615.**  
A Royal Cream Derby porcelain coffee and tea service decorated in the Derby Posies pattern, comprising pair of teapots, pair of milk and cream jugs, preserve pots, sugar bowl, pair of biscuit plates, five tea cups and six saucers, nineteen coffee cups and twenty three saucers, spoon dish, seven egg cups, three salts, four peppers and mustard pots.

**616.**  
A Leeds Art Pottery Ltd late 19thC green and brown pottery jardiniere stand, of wrythe column form raised on a triform lion's paw base, impressed marks, 97cm high.

**617.**  
A Shelley 1930's yellow Dainty porcelain part coffee service, pattern 11993, comprising coffee pot, cream jug, sugar bowl, six cups and saucers.

**618.**  
A late 19thC Bargeware biscuit barrel, moulded as an oak with acorn finial, reserve stamped 'A Present to Mrs Sharp 1892'. 15cm high, together with a jug 'Forget Me Not', 19cm high, (2).

**619.**  
Three Caithness glass paperweights, comprising Maydance, Congratulations and an untitled example, together with a Swarovski hedgehog, owl, rabbit and duck, (7).

**620.**  
A group of carnival glass, including vases, bowls and sweetmeat dishes, (qty).

**621.**  
A group of Wedgwood porcelain decorated with the Kutani Crane pattern, and an Aynsley vase and comport decorated in the Cottage Garden patter, (qty).

**622.**  
A Waterford cut glass decanter and stopper, and two pairs of candlesticks.

**623.**  
A Mason's Ironstone part tea service decorated in the Regency pattern, comprising teapot, hydra jug, six breakfast cups and saucers, six tea cups, saucers and plates, (32).

**624.**  
A Chinese 19thC reticulated famille verte porcelain bottle vase, decorated in high relief with eight lohan against clouds, six character seal mark, 24cm high.

**625.**  
Chinese School (late 19thC). Artisans and musicians, six watercolours on pith paper, four 14cm x 10cm, two 17cm x 12cm.

**626.**  
After Hiroshige (Japanese 1797-1858). Sanjo Bridge, wood block print, 20cm x 34cm, and two further prints of a seated geisha, 34.5cm x 22.5cm, and a woman reading, 30cm x 19.5cm, (3).



▲ **627.**  
An Indian early 20thC Zodiac bowl, repousse decorated with the symbols within floral borders, white metal, 7.21oz. £200-300

**628.**  
An Indian early 20thC three piece cruet set, embossed with flowers and scrolling leaves, white metal, 5.01oz. £50-80

**629.**  
An Indian oval trinket box and winged lid, of oval form embossed with acorns and ferns, white metal, stamped sterling, 1.9oz. £30-50

# Bourne Fine Sale

- 630.**  
An Indian pot and cover, embossed with flowers and foliate scrolls, the lid with an elephant and lion, sweetmeat dish embossed with animals, houses and palm trees, raised on three fish feet, and a similar dish, white metal.  
£120-180
- 631.**  
An Indian loaded bud vase, repoussé decorated with bands of flowers and scrolling leaves, two dishes, a bowl and pot and cover, similarly decorated, white metal, 27.27oz all in.  
£150-200
- 632.**  
An Indian bowl, repoussé decorated with blossom, reserve shield, raised on three feet, and a loaded bud vase with engraved floral decoration, white metal, 8.75oz all in.  
£50-80
- 633.**  
An Indian silver bowl, embossed with seated Hindu deities, and a pot and cover similarly decorated, 6.06oz.  
£50-80
- 634.**  
A Continental oval pierced sweetmeat dish, with an embossed drinking scene, two similarly decorated hand mirrors, matches sleeve and a caddy spoon.  
£50-80
- 635.**  
An Edward VII silver agricultural trophy, engraved Peterborough Xmas Show 1909 Won By Mr C.W.Brown for Champion Pig', 9.48oz, together with a silver three branch loaded epergne, one trumpet lacking, Chester 1908, 13.86oz all in, (AF).
- 636.**  
A pair of Edward VII blue opaline glass salts, with glass spoons, silver rims, London 1902.
- 637.**  
An Edward VII hobnail cut scent bottle and stopper, with silver mount, London 1902, bud vase with silver mount, London 1903, salt with silver mount, London 1902, pair of George III silver spoons, monogram engraved, London 1814 and a George VI pickle fork, Sheffield 1944, 2.12oz.
- 638.**  
A George V silver napkin ring, Chester 1931, two further napkin rings, 3.54oz, silver handled King's pattern paper knife, and William IV and later silver coinage.
- 639.**  
A 9ct gold curb link neck chain, 7.8g.  
£50-80
- 640.**  
A 9ct gold rope twist neck chain and a 9ct gold curb link bracelet, on a heart shaped padlock clasp, with safety chain, as fitted, 14.1g.  
£100-150
- 641.**  
A 9ct gold rope twist neck chain, on a bolt ring clasp, 7.2g.  
£50-80
- 642.**  
A 9ct gold wedding band, size L/M, 9ct gold, emerald and diamond half hoop eternity ring, size M/N, and a 9ct gold and diamond dress ring, size L, 5.5g.  
£100-150
- 643.**  
A 9ct gold curb link Albert chain, with T bar and double hardstone set swivel fob, 32.4g all in.  
£250-300
- 644.**  
A pair of 18ct gold double oval chain link cuff links, 10.0g.  
£120-180
- 645.**  
A 22ct gold wedding band, size L, 3.2g.  
£60-90
- 646.**  
An opal berry spray bar brooch, set in yellow metal, stamped 15ct, 1.8g.  
£30-50
- 647.**  
A 9ct gold and amethyst dress ring, size O, 9ct gold and claw set garnet cluster ring, size N, three stone paste set ring in yellow metal, stamped 9ct, size Q, and a lady's signet ring, size N, 11.8g all in, (4).
- 648.**  
A Victorian 18ct gold sapphire and diamond five stone ring, size L, and an 18ct gold and diamond five stone ring, size K, 6.2g.  
£80-120
- 649.**  
An 18ct gold and diamond three stone ring, size P, solitaire diamond ring set in yellow metal, stamped 18ct, diamond and sapphire half hoop eternity ring and a full eternity ring, 11.5g all in, (4).
- 650.**  
A 9ct rose gold curb link bracelet, on a heart shaped padlock clasp, with safety chain, as fitted, 13.5g.  
£100-150
- 651.**  
A 9ct gold bangle, foliate engraved, on a snap clasp with safety chain, as fitted, 9.4g.  
£70-100
- 652.**  
A diamond solitaire ring, set in white metal, stamped 18ct and platinum, approx 0.5cts, size Q, 2.4g.  
£250-300
- 653.**  
A diamond seven stone flower head ring, set in white metal, stamped 18ct, approx 0.25cts, size P, 2.6g.  
£100-150
- 654.**  
An 18ct gold red stone and diamond set ring, possibly a spinel, in an opal design, size Q, 4.0g.  
£200-300
- 655.**  
A 9ct gold three bar gate bracelet, on a heart shaped, padlock clasp, with safety chain as fitted, 8.2g.  
£60-90



- ▲ **656.**  
A platinum diamond and sapphire three stone ring, diamonds approx 0.5cts, size Q.  
£400-600

- 657.**  
An Edwardian amethyst and seed pearl bar brooch, set in yellow metal, stamped 9ct, pin stamped 9ct, further brooch and a pair of three colour earrings, 8.5g.

- 658.**  
A platinum wedding band, size P, 15.9g.  
£250-300

- 659.**  
A Victorian gentleman's silver pocket watch, open faced, key wind, enamel dial bearing Roman numerals, subsidiary seconds dial, on a curb link Albert chain, with T bar and compass fob, Birmingham 1893, and a George V silver vesta case on an Albert chain, Birmingham 1910.

- 660.**  
A diamond solitaire ring, set in white metal stamped 18ct, with diamond set shoulders, approx 0.3cts, size R, 2.4g.

661.  
An 18ct gold and diamond  
solitaire ring,  
0.523cts, size J, 3.2g, with  
certificate.  
£225-275



▲ 662.  
A lady's Rolex Oyster  
perpetual bi-colour  
wristwatch,  
stainless steel and yellow  
metal, silvered dial bearing  
Arabic numerals at quarters,  
number 76183/K747012, boxed  
with certificate.  
£1000-1500

663.  
A lady's 9ct gold circular  
cased wristwatch,  
dial bearing Arabic numerals, and  
a further 9ct gold lady's  
wristwatch, on an expanding  
bracelet, (2).

664.  
Silver and costume jewellery,  
gilt buttons containing  
lithographic animal portraits,  
pocket watches and a silver ingot  
on chain.



▲ 665.  
A gentleman's 1970s  
Omega Flightmaster  
chronograph stainless  
steel wristwatch,  
three subsidiary dials, on a  
steel bracelet.  
£1000-1500



▲ 666.  
A gentleman's Omega  
Speedmaster chronograph  
stainless steel wristwatch,  
black dial with three  
subsidiary dials, on a steel  
bracelet.  
black dial with three  
subsidiary dials, on a steel  
bracelet.  
£800-1200



▲ 667.  
A gentleman's Omega  
Seamaster stainless steel  
wristwatch,  
silvered dial with date  
aperture, No 80756830, boxed  
with certificate.  
£300-500



▲ 668.  
A gentleman's Longines  
chronograph bi-colour  
stainless steel wristwatch,  
white dial with date aperture,  
three subsidiary dials, model  
no E60150002, case no  
25409891, with certificates.  
£600-900



▲ 669.  
A gentleman's Longines  
Conquest stainless steel  
cased wristwatch,  
champagne dial with date  
aperture, automatic.  
£200-400

670.  
A Longines gentleman's  
stainless steel flagship  
wristwatch,  
white dial with date aperture, no  
2478462.

671.  
A Waltham gentleman's  
circular gold cased  
wristwatch,  
circular dial bearing Arabic  
numerals, subsidiary seconds  
dial, on a tan leather strap.  
£80-120

672.  
A George V gentleman's  
silver cased pocket watch,  
open faced, keyless wind, white  
dial bearing Roman numerals,  
subsidiary seconds dial,  
Birmingham 1927, and a lady's  
Shirland wristwatch, (2).



▲ 673.  
English School (19thC).  
James Hill Mellor Esq., half  
length miniature on ivory,  
6.5cm x 5cm.  
£800-1000



▲ 674.  
English School (early  
19thC).  
Portrait of a gentleman in a  
blue jacket, half length  
miniature, 5.5cm x 4.5cm.  
£150-250

# Bourne Fine Sale



▲ 675.  
**English School (19thC).**  
Portrait of a gentleman in a blue jacket, blue length, half length miniature, 7.5cm x 6cm.  
£500-700



▲ 676.  
**W Robertson (19thC).**  
Portrait of George Gibson Esq., half length miniature, attributed verso, dated 1819, 8.5cm x 7cm.  
£350-450

677.  
**Charles Foot Taylor (early 19thC).**  
Portrait of a lady, half length seated, miniature, attributed verso, dated 1824, 9.5cm x 7.5cm.  
£200-300

678.  
**A Baxter Print 'The Pretty Tale',**  
18.5cm x 13cm.

679.  
**Christine Rosenblet (20thC).**  
Still Life of Autumn hedgerow fruits, watercolour, monogrammed, dated '75, 7cm x 5cm.  
£50-80



▲ 680.  
**A 19thC prisoner of war straw work spectacle case,** decorated with figures from the Commedia del arte and flowers, 12cm long.  
£200-250

681.  
**B Bauckham (early 20thC).**  
Still Life of fruit, pair of oils on board, signed, 19cm x 24cm, and two coastal scenes, oil on board, signed, one dated 1918.

682.  
**Indian School (19thC).**  
Figure by a farmstead, watercolour, 19.5cm x 30cm.

683.  
**Continental School.**  
Miniature on ivory portrait of a lady holding a prayer book, verso titled Miss Hillmayr, signed Dumas, 8cm x 6.5cm.  
£50-80

684.  
**Continental School.**  
Miniature on ivory portrait of a lady in early nineteenth century costume, verso tilted Countess Cham-Martiniez, 8cm x 6.5cm.  
£40-80

685.  
**A Masonic silver and enamel Founder's jewel,** Chapter Truth, No 944, London 1908, boxed.  
£35-50

686.  
**A Mark Master Mason Member's jewel,** silver, Fattorini & Sons, boxed.  
£15-20

687.  
**Darsonja (20thC).**  
Half length nude portrait of a lady, pastel, signed, 73cm x 56cm.



▲ 688.  
**Cecil Hodgkinson (1895-1979).**  
Westminster, watercolours, attributed verso, 18cm x 27cm.

689.  
**Cecil Hodgkinson (1895-1979).**  
Blakeney, Norfolk, watercolour, signed, attributed verso, 25cm x 35cm.

691.  
**A Victorian Tunbridgeware hat pin box,** by T Barton, late Nye, the lid decorated with flowers, bears paper label, 26cm x 6cm x 4cm.



▲ 692.  
**A Spitfire Gun Sight MkII 1943,** boxed.  
£200-300

693.  
**A pair of Frank Bryan boxing gloves,** and a pair of Sykes boxing gloves.

694.  
**A WWI Tower of London porcelain commemorative Poppy,** by Paul Cummins Ceramics, boxed.

695.  
**A George III mahogany three division tea caddy,** with brass carry handle, raised on four ball feet, 21cm x 13cm x 12cm.

696.  
**A pair of American leather bound mounted steer horns,** 141cm long.



▲ 697.  
**An early 19thC ivory and whalebone walking stick,** with a whale handle above a wrythen fluted and tapering shaft, 89cm long.  
*Refer to p132-133 of E Norman Flayderman 'Scrimshaw and Scrimshanders'*  
£500-800

698.  
**An early 19thC ivory and whalebone walking stick,** with a serpent enveloped clenched fist handle above a tapering shaft, with white metal collar engraved 'Presented to W Smith C.T.', 81cm long.  
*Refer to p132-133 of E Norman Flayderman 'Scrimshaw and Scrimshanders'*  
£500-800

699.  
**An early 19thC ivory and whalebone walking stick,** with an ebony inlaid bird handle, vertical and spiral fluted tapering shaft, 89cm long.  
*Refer to p132-133 of E Norman Flayderman 'Scrimshaw and Scrimshanders'*  
£500-800



▲ 700.  
A French late 19thC bronze and marble cased mantel clock by Miroy Freres a Paris, circular enamel dial bearing Roman numerals, eight day movement with bell strike, the case surmounted with a bronze recumbent classical woman with musical instruments, raised on a serpentine veined green and black marble base, 87cm x 44cm.

701.  
Collector's and limited edition jazz records, including Billie & Dee Dee Pierce, Count Basie, Muggsy Spanier's Ragtime Band and The Panassie Sessions 1938, Ladiere Meggrows Bedat, (38).

702.  
Collector's and limited edition jazz records, including Eddie Condon, Emile and Paul Barnes, The Eureka Brass Band, and the First and Second Esquire Concerts, (37).  
£150-200

703.  
Collector's rare and limited edition jazz records, including Preservation Hall Jazz Band New Orleans, concert sale only, Sweet Emma and her Preservation Hall Jazz Band, signed, Murderers' Home by 'Negro' Prisoners, Mississippi State Penitentiary 1947, A New Orleans Jazz Party, and Tro Much Mustard Ragtime, Cakewalk & Stamps, vol 3, 1907-1919, (27).  
£300-500

704.  
After Claude Monet (Fr 1940-1926).  
Le Pont Japonais, gouttelette, limited edition 11/50, with certificates, 61cm x 87cm.  
£100-150

705.  
After Pablo Picasso (Sp 1881-1973).  
Les Femmes d'Alger, gouttelette on silk, limited edition 4/85, with certificates, 46cm x 58cm.  
£100-150



▲ 706.  
A red cast iron Edward VIII Post Office post box of pillar form.  
Viewing: Viewing is online only from imagery and descriptions provided; therefore the rights of the Distance Selling Regulations for buyers will apply on this particular lot. Successful purchasers will be emailed Sale day with the account and the collection address.



▲ 707.  
A red cast iron telephone box.  
Viewing & Collection: Viewing is online only from imagery and descriptions provided; therefore the rights of the Distance Selling Regulations for buyers will apply on this particular lot. Successful purchasers will be emailed Sale day with the account and the collection address.

708.  
A George V Post Office Letters Only post box, 30cm x 19cm x 50cm.

709.  
A George V Post Office Letters Only post box, 30cm x 19cm x 50cm.

710.  
A Celestron Astra Master 114 Celestial telescope, with instructions and tripod.

711.  
A Robotham Marmet carriage built pram, black with white trim, 138cm long.



▲ 712.  
A Billy Baldwin Travelling Showman's trunk, Acrobatic Contortionist, The Human Invertebrae, painted wood and leather, metal bound, 83cm x 49.5cm x 65cm.

713.  
A Amadeo (20th).  
The Bull Fight, pair of oils on board, signed, 29cm x 39cm.

714.  
Arthur Sarnoff (20thC).  
Jack the Ripper, print, published by Kaplan & Co, Inc, New York, 39.5cm x 50cm.

715.  
A set of Salter cream postal and parcel scales, Model 1821, Sky x 20g.

716.  
A 1930's English Numbering Machines industrial counter, with reset arm, 13.5cm long.

717.  
A brass paperweight modelled as a Tiger Moth bi-plane, 18cm long.

718.  
An early 20thC Sri Lankan hardwood smoker's companion, carved with an elephant's foot ashtray, match holder, elephant, crocodile and viper, titled to the front 'Ceylon' on a base carved as the outline of the island, 24cm long.

719.  
An oak church offertory box, 34cm x 16cm x 18cm, religious box surmounted with a cross, and a cast metal and wooden door lock, (3).

720.  
A pair of Lieberman & Gortz Astropax 25x52 binoculars, cased.

721.  
A GPO Volts & Milliamperes electrical tester, 6A PIC 1969, cased.

722.  
Collector's and limited edition jazz records, including Great Swing Jam Sessions, Capt John Handy and his New Orleans Stompers, Honky Tonk Train, and Kid Howard's Olympia/New Orleans Bands, (26).  
£150-200

723.  
A collection of jazz CDs, (46).

724.  
A Nothmann's sewing machine, No 341209, walnut cased with instructions.

725.  
A pair of late 17thC style giltwood six branch chandeliers, with leaf carving, 48cm high.

# Bourne Fine Sale



- ▲ 726.  
A set of Avery black enameled kitchen scales, Class C, to weigh 2lb, on a rectangular base and adjustable feet, 48cm, x 26cm x 46cm.



- ▲ 727.  
A Perdio Electronics Ltd Portarama MK2 television, grey and light brown plastic casing. £90-120

728.  
Three WWII BMB petrol cans, 1944-45.

729.  
A 1946 BMP petrol can and two green metal petroleum cans.

730.  
A Kelvin Hughes grey metal cased sextant, number 68280, circa 1982, cased.

731.  
A Volvo Itera plastic bicycle, circa 1980's, blue frame. £150-200

732.  
A Victorian mahogany side table, with two frieze drawers, raised on turned legs, 106.5cm x 58.5cm x 81cm.

733.  
A Damascene hardwood octagonal occasional table, with mother of pearl and ebony inlay, raised on Middle Eastern tracery legs, 41cm x 53cm.

734.  
A Victorian Carolean style carved oak carver chair, the crest rail carved with a shield and lion supports, padded back and overstuffed seat, lion's head arm terminals, raised on turned legs united by spiral twist stretchers.

735.  
A pair of Ikea Dennis industrial style folding grey metal and wooden stools.

736.  
A Dar retro atomic folding wooden and metal occasional table, 54cm x 28cm x 49cm.

737.  
A Victorain black cast iron and tile inset cathedral heater, 70cm high.

738.  
A Bang & Olufsen Beolink Active sound system. £200-400

739.  
A Victorian Arts & Crafts oak coat and stick stand, with a glazed top and slatted back, 214cm high.



- ▲ 740.  
A 19thC oak dresser, the three shelf open backed Delft rack, above two frieze drawers, raised on baluster turned legs united by an h frame stretcher, 151cm x 50cm x 205cm.