



Lincoln Fine Art Sale Review

Wednesday 14th August 2024

**GOLDING YOUNG** EST  
1864



# Probate – Inheritance Tax Assessment

For many Executors and Trustees the responsibility of dealing with a deceased's Estate is a once-in-a-lifetime experience. You have to make a number of important decisions in a very short space of time and all when the loss is most difficult to come to terms with.

The position of Executor is an important one in law and has defined personal liability and responsibility. To exhibit due diligence to beneficiaries and more importantly HM Revenue & Customs, an Executor or advisor will instruct a firm Regulated by RICS.

Even if the estate will be taxed at 0%, a valuation remains an essential tool for an Executor. The inventory will still be used for identification of bequests, trust items, family division and proof of value.

Our valuations are prepared to the International Valuation Standards requirement of the 'Red Book'.

The report will cover sections of:

- Jewellery
- Vehicles
- Antiques, Fine Art & Collections
- General Furniture & Effects



## Removals – Household & Commercial

- Free Quotations
- Full Packing Service
- Suppliers of Packing Materials
- Shipping & Storage Arranged
- Antiques & Fine Art Specialists
- Specialist Piano Movers
- Office Movers

**Contact Andrew Lowes on 07970 742577 for a quote  
or email [lowes@goldingyoung.com](mailto:lowes@goldingyoung.com)**

[goldingyoung.com](http://goldingyoung.com)

# Review



**Fred Yates (1922-2008). Holman's Yard, harbour scene with figures, oil on canvas, signed, 49.5cm x 60cm.  
SOLD for £3,000**



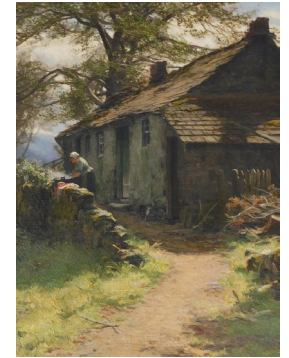
**Fred Yates (1922-2008). Hustle & Bustle, Sand Snipe in dock, oil on board, signed, 109cm x 108cm.  
SOLD for £3,200**



**Robert Gallon (1845-1925). Early morning on the Kennet, oil on board, signed and titled verso, 23.5cm x 40cm.  
SOLD for £300**



**19thC School. Portrait of a naval gentleman, oil on canvas, 76cm x 64cm.  
SOLD for £340**



**David Farquharson (1840-1907). Cottage Gleneagles, oil on canvas, signed, 44.5cm x 34cm.  
SOLD for £860**



**Alfred Montague (1832-1883). Dutch fishing vessels sailing in lively seas offshore, oil on canvas, signed, 59cm x 95cm.  
SOLD for £500**



**Robert Walter Macbeth (1848-1910). Woman bundling faggots, oil on canvas, initialled, 32cm x 22cm.  
SOLD for £220**



**19thC School. Masted ship, oil on canvas, 46cm x 71cm.  
SOLD for £220**



**William Banks Fortescue (c.1855-1924). Reflective moments, oil on canvas, titled verso, 50cm x 50cm.  
SOLD for £320**



**Charles Leaver (1824-1888). Huntsman in winter landscape, oil on canvas, attributed on mount, 97cm x 145cm.  
SOLD for £420**

# PRIVATE CLIENT & PROFESSIONAL SERVICE DEPARTMENT

We value personal property for private and corporate clients. Our team have valued family heirlooms, art collections and museum holdings for a variety of purposes.

We are the only auction house in the region to have a bespoke Private Client Department with:

- Three Chartered Arts & Antiques Surveyors
- Four RICS / Antiques Trade Gazette professional assessment award-winning valuers
- Two In-house qualified jewellery valuers
- Experience in abundance and diversity since 1864
- Ten professional staff with RICS, NAVA or SoFAA qualifications.



**For initial advice contact the following Chartered Auctioneers & Valuers:**

Bourne, Stamford & South	Grantham, Lincoln & North
Colin Young MRICS	William Gregory MRICS
01778 422686	01522 524984



# Review



20thC School. Pre-Raphaelite lady, oil on canvas, 89cm x 59cm  
SOLD for £260



Sir Charles Wheeler (1892-1974). Self portrait, watercolour, signed and dated 1923, 33cm x 25cm.  
SOLD for £260



David Bates (1840/41-1921). Fishing for trout, oil on canvas, signed and dated 1885, 50cm x 40.5cm. Label verso Richard Green London.  
SOLD for £480



David Bates (1840/41-1921). Young anglers by a lock, oil on canvas, signed and dated 1881, 34cm x 44.5cm. Label verso Richard Green London.  
SOLD for £220



David Bates (1840/41-1921). Near Malvern, oil on canvas, signed, titled and dated 1880, 29cm x 44cm. Label verso Christie of Broadway Worcestershire.  
SOLD for £240



Henry John Stock (1853-1930). Wonder thought, watercolour, signed, dated 1907 and titled on mount, 26cm x 19cm.  
SOLD for £1,100



Jules Philipe, The Lady of the Lake pastel, 72cm x 57cm.  
SOLD for £500



Michael Smart (20thC). Vicar of Delft, oil on board, signed, 49.5cm x 75cm. Label verso Spencer Colman Gallery Lincoln.  
SOLD for £340



19thC British School. Extensive landscape with figures and lake, oil on canvas, 43cm x 59cm.  
SOLD for £280



Herbert Rollett (1872-1932). Landscape, oil on board, signed, 24cm x 29.5cm.  
SOLD for £2,200

**GOLDING YOUNG** EST  
1864

## Thinking of selling?

Executors, solicitors, accountants, insurers, corporations and government departments, have to exhibit due diligence when instructing. Use this checklist to do the same, with a few reasons why you may wish to choose us.

### We are regulated by RICS

Better Regulation for Us. Better Protection for You.  
Accept Nothing Less.

### Our online catalogues

For over 20 years our catalogues have been online and our experience ensures they are placed in front of the right buyers in the global market.

### Our sales results

July 2020 saw our 141st consecutive month with a sale at either Bourne, Grantham or Lincoln producing a sold rate of over 90%. Good advice, great results for hundreds of vendors every month.

**Join their success with an entry in our next sale!**

# A firm of the highest standing

Being a firm of Chartered Auctioneers & Valuers means that we have not only qualified to the highest standard in the profession, but have to maintain those standards. The first due diligence check any professional makes when needing a formal valuation, or simply selling at auction is for The Hallmark of a Chartered Auctioneer & Valuer - Regulated by RICS.

## RICS

The Royal Institution of Chartered Surveyors is the professional body that has been responsible for The Auctioneers Charter since 1970. All members have to complete at least 20 hours CPD or Continued Professional Development every year. All valuation work is prepared to the RICS Red Book requirements incorporating the International Valuation Standards (IVSC) Client Accounting. All client money has to be held in dedicated, ring-fenced accounts with a full audit trail.

## NAVA Propertymark

The National Association of Valuers and Auctioneers are an important body within the auctioneering and valuation profession, specifically in our case relating to the sale of chattels or personal property. All members have to complete at least 12 hours CPD or Continued Professional Development every year. They work with auctioneers and consumers alike, to offer regulation and guidance. Membership also provides for Primary Authority with Trading Standards to ensure clarity and understanding.

## SoFAA

The Society of Fine Art Auctioneers, formed in 1973, as the name suggests, is a society that exclusively represents the interests of the leading fine art auctioneers in the UK helping them provide the best service to clients. With this level of qualification and accreditation within the firm we pride ourselves on providing a reliable and professional service to get it right.



#### The Bourne Auction Rooms

Spalding Road, Bourne,  
Lincolnshire PE10 9LE

E: [bourne@goldingyoung.com](mailto:bourne@goldingyoung.com)

T: +44 (0) 1778 422686

F: +44 (0) 1778 425726

#### The Grantham Auction Rooms

Old Wharf Road, Grantham,  
Lincolnshire NG31 7AA

E: [grantham@goldingyoung.com](mailto:grantham@goldingyoung.com)

T: +44 (0) 1476 565118

F: +44 (0) 1476 561475

#### The Lincoln Auction Rooms

Thos Mawer House, Station Road  
North Hykeham, Lincoln LN6 3QY

E: [lincoln@goldingyoung.com](mailto:lincoln@goldingyoung.com)

T: +44 (0) 1522 524984

F: +44 (0) 1522 681804

#### The Leicester & Midlands Office

E: [leicester@goldingyoung.com](mailto:leicester@goldingyoung.com)

T: +44 (0) 116 473 5735

#### London & South Valuations

E: [london@goldingyoung.com](mailto:london@goldingyoung.com)

T: +44 (0) 203 301 1007

#### The Louth & Wolds Office

E: [louth@goldingyoung.com](mailto:louth@goldingyoung.com)

T: +44 (0) 1507 661864

#### The Stamford & Rutland Office

E: [stamford@goldingyoung.com](mailto:stamford@goldingyoung.com)

T: +44 (0) 1780 7516