



Lincoln Fine Art Sale Review  
6th October 2024

**GOLDING YOUNG** EST  
1864

# Probate – Inheritance Tax Assessment

For many Executors and Trustees the responsibility of dealing with a deceased's Estate is a once-in-a-lifetime experience. You have to make a number of important decisions in a very short space of time and all when the loss is most difficult to come to terms with.

The position of Executor is an important one in law and has defined personal liability and responsibility. To exhibit due diligence to beneficiaries and more importantly HM Revenue & Customs, an Executor or advisor will instruct a firm Regulated by RICS.

Even if the estate will be taxed at 0%, a valuation remains an essential tool for an Executor. The inventory will still be used for identification of bequests, trust items, family division and proof of value.

Our valuations are prepared to the International Valuation Standards requirement of the 'Red Book'.

The report will cover sections of:

- Jewellery
- Vehicles
- Antiques, Fine Art & Collections
- General Furniture & Effects



## Removals – Household & Commercial

- Free Quotations
- Full Packing Service
- Suppliers of Packing Materials
- Shipping & Storage Arranged
- Antiques & Fine Art Specialists
- Specialist Piano Movers
- Office Movers

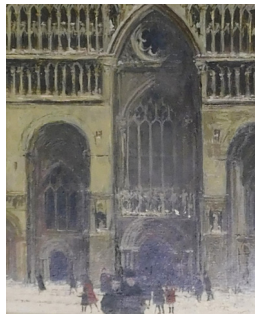
**Contact Andrew Lowes on 07970 742577 for a quote  
or email [lowes@goldingyoung.com](mailto:lowes@goldingyoung.com)**

[goldingyoung.com](http://goldingyoung.com)

# Lincoln Fine Art Sale - 6th October 2024



**Peter Brannan (1926-1994).**  
Beach, oil on board, signed, dated (19)68, titled verso, 21.5cm x 31cm.  
Label verso The Trafford Gallery, London  
**SOLD for £300**



**Peter Brannan (1926-1994).**  
West front, Lincoln Cathedral, oil on board, signed, dated (19)63, titled verso, 34cm x 27cm.  
**SOLD for £520**



**Eddis, after Jonathan Richardson.**  
Portrait of Peter King, 1st Baron King of Oakham and Lord Chancellor 1725, oil on canvas, inscribed on label on stretcher verso, 128cm x 104cm.  
**SOLD for £400**



**George Edward Lodge (1860-1954).**  
A Cheetah, watercolour, signed and titled verso, 21.5cm x 32cm.  
**SOLD for £200**



**J. Wilson.**  
Captain Henry Randall R.N., oil on canvas, signed, titled and dated 1851 verso, 70.5cm x 58cm.  
**SOLD for £340**



**John Nost Sartorius (1759-c.1828).**  
Mr Snow, with the Old Surrey fox hounds, oil on canvas, signed and titled on mount, 69.5cm x 90cm.  
**SOLD for £5,200**



**Alfred Pollentine (1836-1890).**  
S. Maria della Salute, Venice, oil on canvas, signed and indistinctly dated, 49cm x 80cm.  
**SOLD for £900**



**Alfred Pollentine (1836-1890).**  
Vieta del Gran Canal de Venecia, oil on canvas, signed and indistinctly dated, 49cm x 80cm.  
**SOLD for £800**



**19thC Dutch Scene.**  
Continental harbour scene, oil on canvas, signed, 46.5cm x 66cm.  
**SOLD for £420**



**Robert H. Edmonstone (19thC).**  
John Watson of Edinburgh 1789-1865, half length portrait, oil on canvas, attributed and titled on mount, 85cm x 82cm  
**SOLD for £200**

# Lincoln Fine Art Sale - 6th October 2024



**19thC School.**  
Three quarter portraits, husband and wife, oil on canvas - pair, 58cm x 48cm.  
**SOLD for £360**



**David Payne (c/1843/44-1891).**  
The Chequered Pathway, oil on canvas, signed and titled on mount, 49cm x 74cm.  
**SOLD for £300**



**St. Ives School.**  
Portrait of an old fisherman, oil on canvas, 59cm x 49cm  
**SOLD for £1,400**



**Alfred Wallis (1855-1942).**  
Masted ship on icy waters, mixed media, signed, 51cm x 74cm.  
**SOLD for £1,100**



**Samuel Buck.**  
The East Prospect of John of Gaunt's below the hill in Lincoln, engraving, 20.5cm x 37cm and four others  
**SOLD for £200**



**Egon Schiele.**  
Female study, print, 44cm x 27.5cm.  
Label verso - from the Estate of Bob Monkhouse and another  
**SOLD for £500**



**Annie Feray Nutriz (1826-1893).**  
Floral study, oil on panel, initialled and dated 1863, 46cm x 34cm, stencil mark verso  
**SOLD for £500**



**Peter De Wint (1784-1849).**  
Castle Towers and Assize Courts - Lincoln, watercolour, 20cm x 24cm.  
Provenance: Christie's Lot 163 21/11/07 (label verso) Stencil mark verso.  
**SOLD for £320**



**After Thomas Faed.**  
Morning reapers going out, oil on canvas, 76cm x 101cm  
**SOLD for £320**



**19thC/20thC. Watercolours,**  
drawings, prints, contents of folder, approx 70 items  
**SOLD for £220**

# PRIVATE CLIENT & PROFESSIONAL SERVICE DEPARTMENT

We value personal property for private and corporate clients. Our team have valued family heirlooms, art collections and museum holdings for a variety of purposes.

We are the only auction house in the region to have a bespoke Private Client Department with:

- Three Chartered Arts & Antiques Surveyors
- Four RICS / Antiques Trade Gazette professional assessment award-winning valuers
- Two In-house qualified jewellery valuers
- Experience in abundance and diversity since 1864
- Ten professional staff with RICS, NAVA or SoFAA qualifications.



**For initial advice contact the following Chartered Auctioneers & Valuers:**

Bourne, Stamford & South	Grantham, Lincoln & North
Colin Young MRICS	William Gregory MRICS
01778 422686	01522 524984

**GOLDING YOUNG** EST  
1864

## Thinking of selling?

Executors, solicitors, accountants, insurers, corporations and government departments, have to exhibit due diligence when instructing. Use this checklist to do the same, with a few reasons why you may wish to choose us.

### We are regulated by RICS

Better Regulation for Us. Better Protection for You.  
Accept Nothing Less.

### Our online catalogues

For over 20 years our catalogues have been online and our experience ensures they are placed in front of the right buyers in the global market.

### Our sales results

July 2020 saw our 141st consecutive month with a sale at either Bourne, Grantham or Lincoln producing a sold rate of over 90%. Good advice, great results for hundreds of vendors every month.

**Join their success with an entry in our next sale!**

# A firm of the highest standing

Being a firm of Chartered Auctioneers & Valuers means that we have not only qualified to the highest standard in the profession, but have to maintain those standards. The first due diligence check any professional makes when needing a formal valuation, or simply selling at auction is for The Hallmark of a Chartered Auctioneer & Valuer - Regulated by RICS.

## RICS

The Royal Institution of Chartered Surveyors is the professional body that has been responsible for The Auctioneers Charter since 1970. All members have to complete at least 20 hours CPD or Continued Professional Development every year. All valuation work is prepared to the RICS Red Book requirements incorporating the International Valuation Standards (IVSC) Client Accounting. All client money has to be held in dedicated, ring-fenced accounts with a full audit trail.

## NAVA Propertymark

The National Association of Valuers and Auctioneers are an important body within the auctioneering and valuation profession, specifically in our case relating to the sale of chattels or personal property. All members have to complete at least 12 hours CPD or Continued Professional Development every year. They work with auctioneers and consumers alike, to offer regulation and guidance. Membership also provides for Primary Authority with Trading Standards to ensure clarity and understanding.

## SoFAA

The Society of Fine Art Auctioneers, formed in 1973, as the name suggests, is a society that exclusively represents the interests of the leading fine art auctioneers in the UK helping them provide the best service to clients. With this level of qualification and accreditation within the firm we pride ourselves on providing a reliable and professional service to get it right.



#### The Bourne Auction Rooms

Spalding Road, Bourne,  
Lincolnshire PE10 9LE

E: [bourne@goldingyoung.com](mailto:bourne@goldingyoung.com)

T: +44 (0) 1778 422686

F: +44 (0) 1778 425726

#### The Grantham Auction Rooms

Old Wharf Road, Grantham,  
Lincolnshire NG31 7AA

E: [grantham@goldingyoung.com](mailto:grantham@goldingyoung.com)

T: +44 (0) 1476 565118

F: +44 (0) 1476 561475

#### The Lincoln Auction Rooms

Thos Mawer House, Station Road  
North Hykeham, Lincoln LN6 3QY

E: [lincoln@goldingyoung.com](mailto:lincoln@goldingyoung.com)

T: +44 (0) 1522 524984

F: +44 (0) 1522 681804

#### The Leicester & Midlands Office

E: [leicester@goldingyoung.com](mailto:leicester@goldingyoung.com)

T: +44 (0) 116 473 5735

#### London & South Valuations

E: [london@goldingyoung.com](mailto:london@goldingyoung.com)

T: +44 (0) 203 301 1007

#### The Louth & Wolds Office

E: [louth@goldingyoung.com](mailto:louth@goldingyoung.com)

T: +44 (0) 1507 661864

#### The Stamford & Rutland Office

E: [stamford@goldingyoung.com](mailto:stamford@goldingyoung.com)

T: +44 (0) 1780 7516