



Collective Sale Review

July 2025

GOLDING YOUNG EST
1864

Probate – Inheritance Tax Assessment

For many Executors and Trustees the responsibility of dealing with a deceased's Estate is a once-in-a-lifetime experience. You have to make a number of important decisions in a very short space of time and all when the loss is most difficult to come to terms with.

The position of Executor is an important one in law and has defined personal liability and responsibility. To exhibit due diligence to beneficiaries and more importantly HM Revenue & Customs, an Executor or advisor will instruct a firm Regulated by RICS.

Even if the estate will be taxed at 0%, a valuation remains an essential tool for an Executor. The inventory will still be used for identification of bequests, trust items, family division and proof of value.

Our valuations are prepared to the International Valuation Standards requirement of the 'Red Book'.

The report will cover sections of:

- Jewellery
- Vehicles
- Antiques, Fine Art & Collections
- General Furniture & Effects



Removals – Household & Commercial

- Free Quotations
- Full Packing Service
- Suppliers of Packing Materials
- Shipping & Storage Arranged
- Antiques & Fine Art Specialists
- Specialist Piano Movers
- Office Movers

**Contact Andrew Lowes on 07970 742577 for a quote
or email lowes@goldingyoung.com**

goldingyoung.com

Bourne Collective Sale



A John Pearson of Newlyn Arts and Crafts copper jardiniere, of cylindrical tapering form with outswept lip, repousse decorated with flowers and leaves against a hammered ground, incised signature J. Pearson and dated 1896 to underside, numbered 2301, 21.5cm high, 21cm diameter.
SOLD for £460



A George V Old English pattern part suite of silver flatware, comprising eleven tablespoons, 27.51oz, twelve soup spoons, 26.31oz, three sauce ladles, 7.36oz, soup ladle, 8.09oz, basting spoon, 4.98oz, plated fish servers, eleven dessert forks, 18.38oz, fifteen table forks, 37.43oz, nine dessert spoons, 15.11oz, and four teaspoons, 1.63oz, each handle engraved with the letter C, Josiah Williams and Co (David Landsborough Fullerton), London 1918-1922
SOLD for £2,200



A Saturno silver and enamel figure modelled as a standing Dalmatian, stamped Saturno Italy 925, 12.5cm high.
SOLD for £260



A silver and enamel figure modelled as a Greyhound, with front paw raised, wearing green collar, stamped 925, 15cm high. **SOLD for £240**



A silver and enamel figure modelled as a stag, stamped 925, 12.5cm high.
SOLD for £320



An 18ct gold amethyst pendant, in yellow metal pierced basket frame, on a fine link neck chain, yellow metal stamped 18k, 56.3g all in.
SOLD for £1,300



A pair of 18ct gold, pearl, sapphire and ruby earrings, maker JD, 10.8g all in
SOLD for £700



An 18ct gold jade necklace, the circular disc design with a round brilliant cut diamond in rub over setting, with a carved and pierced jade outer border, on yellow metal chain, stamped 750, 3.5cm, 62.1g all in.
SOLD for £1,300



An 18ct gold sapphire and diamond floral necklace, set with seven oval cut sapphire and eight round brilliant cut diamonds, 17.5g all in.
SOLD for £1,000



An Irving Avall jade and diamond set link brooch, yellow metal stamped 18k, 2cm wide.
SOLD for £600



A jade and diamond bracelet, the panel set with square cut jade, round brilliant cut diamonds set over ten sections, yellow metal stamped 18ct, 48.2g all in.
SOLD for £1,350



A diamond, ruby, sapphire and emerald brooch, of tied bouquet form, in yellow metal, with safety chain as fitted, unmarked, 29.3g, 7cm wide.
SOLD for £1,100



A diamond, emerald, sapphire and ruby brooch, of fruiting tree form, in yellow metal, unmarked, 27.4g, 7cm high.
SOLD for £950



A Bvlgari 18ct gold pendant, with star design centre, No. 3837, 4cm diameter, 24.3g all in, and a Bvlgari leather cord necklace, with 18ct gold clasp.
SOLD for £440



A rose double link gold watch chain, mounted with an Edward VII sovereign, dated 1908, on pendant mount, with T bar and two clips, 40cm long, 34.8g all in.
SOLD for £800



A Bvlgari 18ct gold circular pendant, with sunburst centre, No. 2337A1, 23.8g all in.
SOLD for £380



An early 20thC fob watch, in hammered gold case with a vacant cartouche and floral Roman numeric dial with blue hands, yellow metal stamped 18k, bearing serial no. 126155, key wind, on a later 9ct gold bow brooch mount, 4cm wide, 36.9g all in, boxed. **SOLD for £320**



A charm bracelet, the curb link charm bracelet with brushed and hammered links, with safety chain and rose gold padlock, 22cm long, with various 9ct gold charms to include horseshoes, hearts, boot, and a George III 1804 gold groat, 37.4g all in.
SOLD for £650



A Brandoni Super Musette piano accordion, in canvas case.
SOLD for £800

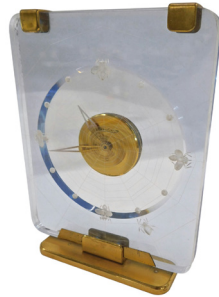


A Thomas Gnomeman Whittaker Yorkshire dark oak dining table and chairs, comprising a three plank refectory dining table, raised on trestle end supports, united by a straight stretcher, 74cm high, 316cm wide, 70cm deep, together with eight dining chairs
SOLD for £600

Lincoln Collective Sale



A Hasselblad 500C SLR camera,
with a Carl Zeiss Jena 80mm lens,
etc.
SOLD for £550



A Jaeger-LeCoultre desk clock,
the dial modelled as spiders on a
web, in Lucite case, with eight day
movement
SOLD for £500



A Robert 'Mouseman' Thompson
oak stool,
with a brown leather padded top
with studded border, chamfered part
baluster legs, carved with mouse,
45cm high, 39cm wide.
SOLD for £400



A pair of continental mahogany,
simulated marble and gilt
occasional tables, each with a
circular drum top, a part turned
leaf carved column and a concave
platform with gilt paw feet, 66cm
high, 56cm wide.
SOLD for £500



An early 20thC mahogany display
cabinet or vitrine,
the top with a shaped edge and a
frieze carved with oval and circular
patera above a serpentine shaped
glazed door flanked by shaped
sides, enclosing a silk lined interior,
the base with two panelled doors,
flanked by bell flower motifs, on
square tapering legs, 200cm high,
133cm wide.
SOLD for £280



Seven bottles of Chateau Mouton
Rothschild 1973 Premier Cru
Classe wine,
with labels designed after Picasso,
associated wooden case.
SOLD for £440



A case of Chateau Mouton
Rothschild 1973 wine,
case stamped Cubederre.
SOLD for £800



A 9ct gold charm bracelet,
applied with various charms,
to include 1917 sovereign, 1906
sovereign, 1909 half sovereign,
1918 half sovereign, a 9ct gold and
enamel fob related to the Bolsover
Colliery Company Limited,
awarded for Mansfield Colliery
Whist Competition 1924, 1925 half
sovereign, charms to include a Bible,
gilt metal seal, etc., 143.4g all in.
SOLD for £1,300



An Edwardian 9ct gold hinged
bracelet,
inset with rubies and pearls,
stamped 375, pierced design with
safety chain, 15.1g all in.
SOLD for £280



A Queen Victoria 1872 full gold
sovereign.
SOLD £370



A 9ct gold charm bracelet, set with various charms to include a pair of shoes, barrel, book, anchor, coach, teapot, 20.7g.
SOLD for £340



A 9ct gold watch chain, stamped to T bar 375, and a rose coloured gold fob, with vacant cartouche, 40g overall.
SOLD for £700



A pair of 9ct gold earrings, each inset with an Edward VII 1905 and a Victorian 1894 gold half sovereign, 10.1g all in.
SOLD for £380



A 9ct gold Waltham pocket watch, engraved to the reverse Presented to Mr S Tyler From the Girls in the Inspection Department 1916, and a 9ct gold chain, 107.1g all in.
SOLD for £550



A George IV 1825 gold double sovereign, in 9ct mount, 18.4g all in.
SOLD for £875



A Canon camera, with lens and various accessories.
SOLD for £850



A marquise diamond dress ring, the central marquise set panel with round brilliant cut diamonds, ring size R, metal unmarked, 3.4g all in.
SOLD for £260



A Chinese white metal and enamel pill box, with inner cover, the enamel decoration in blue and green, 0.94oz, 3cm diameter.
SOLD for £200



A large near pair of Chinese famille verte ginger jars, each decorated with warriors, etc., in shades of predominantly green, red, and aubergine, on a crackle ground, the lids with similar decoration, one lid AF, 28cm high.
SOLD for £200



A Victorian pine dresser, the associated raised back with a moulded cornice and two shelves for plates, the base with an arrangement of seven drawers around a central door with arched panel, on turned feet, 184cm high, 135cm wide.
SOLD for £220

Grantham Collective Sale



A WWI period scratch built model of the sailing ship King Albert, the three masted ship complete with rigging and flags, etc, on stand, with inscription 'Souvenir of War 22 February 1915 Louis Vermiere Belgian refugee', 31.5cm long, 20.5cm high, with Victorian glass dome
SOLD for £300



After Adrien Etienne Gaudes (French 1845-1902), 'Lulli Enfant', a bronze figure of a young violinist tuning his instrument, his foot raised on an upturned saucepan and with a cabbage at his feet, with circular socle base, inscribed, 73cm high.
SOLD for £420



A George V circular silver salver, with Chippendale style border, raised on four ball and claw feet, makers: James Dixon & Son, Sheffield 1929, 42oz, 36cm diameter
SOLD £1,300



A George V silver oval two-handled tray, with Chippendale style border and scrolling handles, raised on four stylised hoof feet, Birmingham 1929, 56oz, 52cm wide
SOLD for £900



A 9ct gold curb link bracelet, on a lobster claw clasp, 28.2g.
SOLD for £480



An Omega gentleman's 18ct gold half hunter pocket watch, keyless wind, circular enamel dial bearing Roman numerals, subsidiary seconds dial, the case of plain form, numbered 1618235, 93.7g all in.
SOLD for £1,350



An 18ct two colour gold necklace, in a bow and hexagonal link design, on a lobster claw clasp, 14.1g.
SOLD for £500



An Omega lady's 18ct white gold and diamond wristwatch, rectangular blue dial, on a gold strap, with snap clasp, 36.2g all in.
SOLD for £1,100



An Omega gentleman's 9ct gold cased wristwatch, circular champagne dial with Roman numerals at quarters, centre seconds, date aperture, on a 9ct gold mesh strap, cased with certificate, purchased 1964, 60g all in.
SOLD for £950



A Royal Albert porcelain Moonlight Rose dinner and tea service, comprising twelve dinner, dessert and side plates, pair of teapots, pair of bread plates, twelve fruit bowls, sugar bowl, twelve teacups and saucers.
SOLD for £750



A George VI silver square piecrust salver,
raised on angular feet, London 1940,
30.68oz.
SOLD for £500



A diamond two stone ring,
in a crossover design, with diamond
set shoulders, set in white metal,
each principle diamond approx 1ct,
size N, 4.1g.
SOLD for £1,800



A 22ct gold wedding band,
size W, 10.9g.
SOLD for £480



A 9ct gold gentleman's curb link bracelet,
with plain and engraved links, on
an over clip clasp, 59.4g.
SOLD for £1,100



A Baume gentleman's 18ct gold cased pocket watch, open face,
key wind, circular enamel
dial bearing Roman numerals,
subsidiary seconds dial, movement
number 3622, base metal cuvette,
the case with engine turned
decoration, vacant shield and garter
reserve, 65.9g all in, together with
keys, chains and a fob seal.
SOLD for £460



A violin, with a two piece back,
bearing spurious Stradivarius label,
together with a bow, cased.
SOLD £420



A William IV commemorative Sunderland lustre tankard,
painted with John Bull and other
figures, with 'Long King William
IV', and 'I hope the times will mend
Tom', 12cm high.
SOLD for £400



A late 19thC Swiss walnut and ebonised cased music box,
with bone escutcheons, playing
eighteen aires, the case with
mother of pearl inlay, kingwood
crossbanding and boxwood line
inlay, 95cm wide.
SOLD for £1,500



A Georgian oak longcase clock by Jas. Wilson of Stamford,
square dial with floral painted
spandrels, chapter ring bearing
Roman and Arabic numerals, two
train eight day movement, with
bell strike, the case with out swept
pediment with dentil moulding,
above a hood sported on two brass
capped columns, with plain case,
with weights, pendulum and key,
194cm high.
SOLD for £550



A Victorian mahogany cased polyphon,
with an outswept pediment
with dental moulding, above an
rectangular glazed door, with titled
"Polyphon" and carved panel over
domed glass, flanked by turned and
fluted columns, raised on a plinth
above turned feet, penny coin slots
to sides, with winder, with thirty
two discs, 121cm high, 77cm wide,
39cm deep.
SOLD for £2,800

PRIVATE CLIENT & PROFESSIONAL SERVICE DEPARTMENT

We value personal property for private and corporate clients. Our team have valued family heirlooms, art collections and museum holdings for a variety of purposes.

We are the only auction house in the region to have a bespoke Private Client Department with:

- Three Chartered Arts & Antiques Surveyors
- Four RICS / Antiques Trade Gazette professional assessment award-winning valuers
- Two In-house qualified jewellery valuers
- Experience in abundance and diversity since 1864
- Ten professional staff with RICS, NAVA or SoFAA qualifications.



For initial advice contact the following Chartered Auctioneers & Valuers:

Bourne, Stamford & South	Grantham, Lincoln & North
Colin Young MRICS	William Gregory MRICS
01778 422686	01522 524984

Bourne Collective Sale



A 1985 Porsche 924, registration B469 NRK,
2 litre, petrol, silver, 68,268 recd miles, MOT until 24th June 2025, V5 present, manual and service book, together with workshop manuals, wheel brace, tyre compressor and other paperwork.
SOLD for £4,400



A 9ct gold gate bracelet, with a curb link bracelet and safety chain, heart shaped padlock and various charms to include a cat, oyster, London Bridge, Jersey shield, seal fobs and others, three loose, mainly stamped 9ct, 14cm long, 54g all in.
SOLD for £1,100



A Victorian full gold sovereign pendant dated 1899, in a pierced pendant surround, stamped 375, 11g all in.
SOLD for £390



A George V full gold sovereign pendant dated 1927, with applied pendant mount, 8.3g all in.
SOLD for £345



An Italian three bar gate bracelet, of floral design, yellow metal stamped 750 585 VI and bearing star, 15cm long, 21.4g all in.
SOLD for £750



An 18ct gold bird brooch, set with sapphires, emeralds and diamonds, 6.5cm diameter, 11.9g. The weight is 11.9g.
SOLD for £420



An 18ct gold cultured pearl choker, set with ten point pearl and diamond drops, 27.6g all in
SOLD for £1,400



An Omega lady's 18ct gold cased wristwatch, rectangular gilt dial, quartz movement, on a two colour integral mesh strap, with snap clasp, strap numbered 791.9087A, boxed, 28.2g all in.
SOLD for £900



A rose gold coloured love ring, in a classic design set with three white stones and three separate arches, marked Cartier 750 C52833A ITO, and inscribed 'Leve' to band, ring size U, 5.4g all in.
SOLD for £460



A curb link bracelet, yellow metal stamped 585, 25g, 20.5cm long.
SOLD for £650



A Continental filigree design bracelet, the oval loops with pierced and scroll design, with shell capped centre, barrel clasp bearing the initials MS, unmarked, 6.5cm diameter, 23.9g.
SOLD for £650



Two hammered rose gold bangles, yellow metal, stamped K14, 7.5cm and 6.5cm diameter, 12.2g.
SOLD for £320



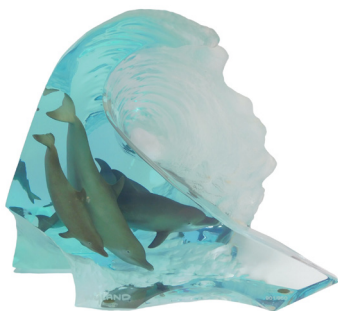
Two hammered design bangles, yellow metal, stamped K14, 7cm diameter, 18.2g all in.
SOLD for £480



A Young Victoria Head shield back full gold sovereign, dated 1881.
SOLD for £420



A George V silver muffin dish, with an ebonised knop, James Dixon and Sons, Sheffield 1926, 16.96oz.
SOLD for £300



Robert Wyland (1956-). The Big Wave, a Lucite marine sculpture modelled as a wave containing four dolphins, limited edition number 904/950, signed, 31cm high.
SOLD for £900



A pair of 19thC brass and wrought iron andirons, in the 17thC style each with two 'Haddon Hall' type pierced and foliate decorated roundels. on swept and floral decorated stems and T-shaped supports, 63cm high.
SOLD £650



A Certina 9ct gold lady's wristwatch, the small silvered dial with numbered border, on a bark effect design bracelet, with double rope twist border, 18.3g all in, in a Certina box.
SOLD £260



A Victorian mahogany show-frame chaise longue, with scrolling leaf carved back, floral upholstery, on scrolling carved legs with castors, 175cm wide, together with a spoonback matching armchair.
SOLD £130



A white painted cast metal umbrella stand in Coalbrookdale style, decorated with vine leaves, floral rosettes, etc., 71cm high, 46cm wide, 22cm deep.
SOLD £130

GOLDING YOUNG EST
1864

Thinking of selling?

Executors, solicitors, accountants, insurers, corporations and government departments, have to exhibit due diligence when instructing. Use this checklist to do the same, with a few reasons why you may wish to choose us.

We are regulated by RICS

Better Regulation for Us. Better Protection for You.
Accept Nothing Less.

Our online catalogues

For over 20 years our catalogues have been online and our experience ensures they are placed in front of the right buyers in the global market.

Our sales results

July 2020 saw our 141st consecutive month with a sale at either Bourne, Grantham or Lincoln producing a sold rate of over 90%. Good advice, great results for hundreds of vendors every month.

Join their success with an entry in our next sale!

A firm of the highest standing

Being a firm of Chartered Auctioneers & Valuers means that we have not only qualified to the highest standard in the profession, but have to maintain those standards. The first due diligence check any professional makes when needing a formal valuation, or simply selling at auction is for The Hallmark of a Chartered Auctioneer & Valuer - Regulated by RICS.

RICS

The Royal Institution of Chartered Surveyors is the professional body that has been responsible for The Auctioneers Charter since 1970. All members have to complete at least 20 hours CPD or Continued Professional Development every year. All valuation work is prepared to the RICS Red Book requirements incorporating the International Valuation Standards (IVSC) Client Accounting. All client money has to be held in dedicated, ring-fenced accounts with a full audit trail.

NAVA Propertymark

The National Association of Valuers and Auctioneers are an important body within the auctioneering and valuation profession, specifically in our case relating to the sale of chattels or personal property. All members have to complete at least 12 hours CPD or Continued Professional Development every year. They work with auctioneers and consumers alike, to offer regulation and guidance. Membership also provides for Primary Authority with Trading Standards to ensure clarity and understanding.

SoFAA

The Society of Fine Art Auctioneers, formed in 1973, as the name suggests, is a society that exclusively represents the interests of the leading fine art auctioneers in the UK helping them provide the best service to clients. With this level of qualification and accreditation within the firm we pride ourselves on providing a reliable and professional service to get it right.



The Bourne Auction Rooms

Spalding Road, Bourne,
Lincolnshire PE10 9LE

E: bourne@goldingyoung.com

T: +44 (0) 1778 422686

F: +44 (0) 1778 425726

The Grantham Auction Rooms

Old Wharf Road, Grantham,
Lincolnshire NG31 7AA

E: grantham@goldingyoung.com

T: +44 (0) 1476 565118

F: +44 (0) 1476 561475

The Lincoln Auction Rooms

Thos Mawer House, Station Road
North Hykeham, Lincoln LN6 3QY

E: lincoln@goldingyoung.com

T: +44 (0) 1522 524984

F: +44 (0) 1522 681804

The Leicester & Midlands Office

E: leicester@goldingyoung.com

T: +44 (0) 116 473 5735

London & South Valuations

E: london@goldingyoung.com

T: +44 (0) 203 301 1007

The Louth & Wolds Office

E: louth@goldingyoung.com

T: +44 (0) 1507 661864

The Stamford & Rutland Office

E: stamford@goldingyoung.com

T: +44 (0) 1780 7516