

GRANTHAM Lincolnshire

Instructed by the Executors of Miss Kathleen Farish

MESSRS. GOLDING WILL SELL BY AUCTION

The contents of the residence The White House, Brownlow Street, Grantham,
removed for convenience of sale to their

OLD WHARF ROAD AUCTION SALEROOMS

on Wednesday 28th January 1981

A FINE COLLECTION OF XVIII & XIX CENTURY ANTIQUE FURNITURE

**Silver, Plate, Porcelain, Pottery, Brassware, Glass,
Books, Oil and Water Colours.**

**A quantity of interesting Victorian Bijouterie and Collectors Items,
including Postcards.**

**ON VIEW TUESDAY 27TH JANUARY 10.00am to 4.30pm
and MORNING OF SALE from 9.00am.**

Sale to commence at 11 o'clock prompt.

AUCTIONEERS OFFICES:

45 High Street, Grantham. Tel: (0476) 5456

Conditions of Sale

1. The highest bidder shall be the purchaser, and if any dispute arises the auctioneers have the discretion to settle the dispute or to re-offer the lots, and the auctioneers decision shall be final.
2. The auctioneers reserve the right on behalf of the vendors to withdraw, amalgamate, consolidate or alter the order of any lot or lots, or bid on behalf of the vendors upon those lots on which there is a reserve price.
3. The purchasers are deemed to have satisfied themselves as to condition of any lot before bidding. No bid may be withdrawn and the auctioneers reserve the right to refuse any bidding.
4. At the fall of the hammer the lots shall be at the sole risk of the purchaser who shall on demand give to the auctioneers his full name and address and such deposit as the auctioneers may require.
5. All lots to be sold subject to all faults, errors of description whether apparent or not, and without any warranty or representation as to quality condition or any other matter.
6. If any buyer fails to comply with these conditions the auctioneers shall be at liberty to re-sell the lot(s) without further notice by public or private sale and any deficiency arising from such sale together with all charges and expenses shall be made good by the defaulter.
7. **IMPORTANT NOTE TO PURCHASERS.** Whilst every effort is made to ensure accuracy of lots, all statements whether made orally or contained in this catalogue as to authenticity, attribution, genuineness, origin, authorship, date, age, period, condition of quality of any lots are statements of opinion, and are not to be taken as, or as implying statements or representation of fact.
Intending purchasers must satisfy themselves by inspection or otherwise as to all such matters as to the physical description of any lot. The auctioneers would remind purchasers that it is unlikely that any antique or second hand item will be perfect in every respect.
8. In case of dispute on a point not covered by the foregoing conditions of sale the National Condition of Sale shall apply.

View Days

Viewing will be available Tuesday January 27th 1981, 10.00 am to 4.30 pm and Morning of Sale from 9.00 am..

Catalogue

Price £1 including postage from the Auctioneers offices and on day of sale.

Cheques

Will not be accepted from strangers unless accompanied by a bankers reference.

Commissions

The Auctioneers will be pleased to execute commissions on behalf of prospective buyers. We would request that these instructions be in writing and must be paid for prior to delivery.

Catalogue

Sale to commence at 11.00 am prompt.

NOTE:

All descriptions given in this catalogue are of opinion given in good faith after careful consideration and research but no guarantee of authenticity or condition is given or implied.

Pottery and Porcelain

LOT

- 1 2 Staffordshire Toilet Sets.
- 2 Toilet Set with gold scroll pattern.
- 3 Jug & Bowl with scroll pattern in carmine.
- 4 2 Tureens with Covers and 1 Dish.
- 5 Copeland Spode two-handled Soup Tureen.
- 6 Willow Pattern Cheese Dish, Cheese Dish Cover & Base.
- 7 Five Various Dishes.
- 8 Attractive Copeland Spode Fruit Dish with Floral Pattern.
- 9 Set of 3 Jugs with Blue Pattern depicting Ancient Ruins.
- 10 6 Various Spode China Plates & Spode China Jug.
- 11 Blue Patterned Fruit Bowl.
- 12 Willow Patterned Porcelain Dish.
- 13 9 Soup Plates with Blue Scrolled Edge & 2 other plates.
- 14 Part Dessert Service with Green Rim & Trailing Rose Floral Pattern, comprising 18 pieces (6 comports & 12 plates).
- 15 Part Havre Coffee Service comprising 13 pieces.
- 16 Part Coffee Service comprising 7 Cups & 9 Saucers in Indian Tree Pattern.
- 17 Coalport Tea Service in attractive Gold Leaf with blue panels and comprising 12 cups and saucers, 12 matching plates, 2 bread and butter plates, sugar bowl.
- 18 Pair of Blue Patterned Miniature Spice Jars.
- 19 Blue Patterned Tobacco Jar.
- 20 Pair of Oriental Vases with Lids.
- 21 Two-handled Staffordshire Sugar Bowl with Lid and 4 Cups.
- 22 Dressing Table Set comprising 6 pieces.
- 23 3 Green leaf patterned Wedgwood Plates.
- 24 2 Plates.
- 25 Staffordshire Fruit Bowl with floral pattern.
- 26 Part Dinner Service (Johnson Bros. England) Old Britain Castles, comprising 34 pieces.

LOT

- 27 4 Spode Italian Copeland Plates.
- 28 5 Pieces Dinner Service, Staffordshire Old Willow etc..
- 29 Ridgways Venice Dinnerware in Blue, comprising 25 pieces.
- 30 Jug & Bon Bon Dish in Blue.
- 31 Decorated Oriental Vase, together with Small Teapot Burslem Ware.
- 32 1 Decorated Green Comport, together with Dish & Cup and Saucer.
- 33 Teapot in vitreous ware together with 4 teacups and 3 saucers.
- 34 Decorated Blue & White China Teapot "Auld Lang Syne".
- 35-45 Sundry Lots.
- 46 Cut Glass Fruit Bowl, Glass Fairing & Glass Knife Rest.
- 47 6 Custard Glasses.
- 48 Cut Glass Decanter with Stopper.
- 49 Glass Decanter with Stopper.
- 50 Collection of Goss Crested China.
- 51 4 Cut Glass Tumblers.
- 52 Lozenge Cut Glass Champagne Glass, together with 2 other glass pieces.
- 53 4 Sherry Glasses.
- 54 Cut Glass Celery Jar.
- 55 6 Champagne Glasses.
- 56 Quantity of Glassware, comprising 7 pieces.
- 57 3 Barley Twist Claret Glasses.
- 58 5 Cut Glass Stem Wines.
- 59 3 Cut Glass Sherries.
- 60 2 Cut Glass Oval Bowls.
- 61 7 Various Glass Salt Cellars.
- 62 Victorian Cut Glass Table Lustre with 10 Pendants and 10 spare pendants.
- 63 Sundry Glassware.
- 64 Sundry Glassware.
- 65 3 Cut Glass Water Bottles.
- 66 Small Cut Glass Bowl, Salt Cellars, Vinegar Bottle & Condiment Set.
- 67 7 Coloured Glasses.
- 68 Sundry Wine Glasses.
- 69 Sundry Tumblers & Glasses.
- 70 Porcelain Basket with Foliage & Flowers, pierced sides and Cherub peering from basket.
- 71 2 Shell Shaped Porcelain Bowls.
- 72 Adderley Bone China Coffee Set of 5 cups & 5 saucers in green and gold.
- 73 Various cups and saucers.

LOT

- 74 Pair Small Oriental Vases.
- 75 Pair of Crown Derby Plates.
- 76 2 Commemorative Plates (Queen Victoria Jubilee 1897).
- 77 18 Various China Plates & Dishes.
- 78 Various China Bowls, Jugs & Jardiniere.
- 79 2 Wall Plaques.
- 80 2 Small Plates.
- 81 3 Rice Bowls.
- 82 Part Tea Service.
- 83 2 plates with blue edging.
- 84 Breakfast Service with yellow rim and 29 pieces.
- 85 White Fruit Dish & Plate.
- 86 6 Various Jugs.
- 87-96 Sundry Lots.

Copper & Brass etc.

- 97 Tray and 2 sets of Backgammon and draughts.
- 98 Various Playing Cards.
- 99 3 pairs Bellows.
- 100 2 Figures, "The Miner" and "The Blacksmith".
- 101 Various Boxes.
- 102 2 Papier-mache Letter Racks & 1 Wooden Letter Rack.
- 103 Green Ewer.
- 104 Westminster Chime Mahogany Framed Mantel Clock.
- 105 Mahogany Framed Mantel Clock.
- 106 Brass Carriage Clock in Leather Carrying Case.
- 107 Cuckoo Clock.
- 108 Georgian Style Inlaid Tea Caddy.
- 109 Inlaid Tea Caddy.
- 110 Inlaid Tea Caddy.
- 111 Inlaid Victorian Work Box.
- 112 Mahogany Table Desk.
- 113 2 Papier-mache Boxes with inlay.
- 114 Walnut Trinket Box with Mother-of-Pearl Inlay.
- 115 3 Leather Jewel Cases.
- 116 4 Various Wooden Boxes.

LOT

- 117 Brass Roasting Jack and Arm.
- 118 Brass Bellows.
- 119 Letter Scales.
- 120 Brass Toasting Fork & Poker.
- 121 Brass Trivet.
- 122 Pair Brass Candle Sconces.
- 123 Brass Note Pad & Miniature Warming Pan.
- 124 Dinner Gong and striker.
- 125 Pair Brass Candlesticks.
- 126 Mahogany Brass Inlaid Table Desk.
- 127 Brass Letter Rack & Copper Stand for kettle.
- 128 8 Miniature Daguerrotypes.
- 129 Pair Mahogany framed Photographs.
- 130 Pair Beadwork Tidies.
- 131 Tapestry Hassock on mahogany frame and on bun feet.
- 132 Fine Copper Tea Urn with brass tap.
- 133 Pair Brass Piano Candle Holders.

Costume Jewellery etc.

134-157 A varied collection of Costume Jewellery etc. in Lots.

Pictures, Photographs etc.

- 158 Water Colour, copied by Miss Farish from Wm. Copeland of 1862 (Girl in Blue Dress).
- 159 Victorian Print depicting church in background, in gilt frame.
- 160 Sepia Sketch, Grantham View, by A. Weston 1921.
- 161 Water Colour – St. Wulfram's Church. A. Weston 1913.
- 162 Water Colour (Grantham Market Cross) signed A. Weston 1915.
- 163 Water Colour (Swinegate, Grantham) A. Weston 1917.
- 164 Oil Painting (White House, Brownlow St., Grantham) with St. Wulfram's Church in the background, signed V.W.63.
- 165 Black & White Sketch, Castlegate towards St. Wulfram's. A. Weston 1921.
- 166 Black & White Sketch, Church Street with St. Wulfram's. A. Weston 1919.
- 167 Oil Painting. Country Scene with horse & cart and shepherd & sheep, in gilt frame (Williamson).

LOT

- 168 Framed Water Colour, Angel Grantham. Artist unknown.
- 169 Queen Anne Style Framed Mirror.
- 170 Oak Framed bevelled plate Mirror with metal decoration.
- 171-175 Sundry Lots.
- 176 2 Albums Family Photographs. Black & White.
- 177 2 Albums Photographs, black & white.
- 178 2 Ornate Albums, Family Photographs, black & white.
- 179 3 Albums, Family Photographs, black & white.
- 180 7 small Albums, Family Photographs.
- 181 Victorian Album & Photographs.
- 182 Memorial Album containing cards dating from 1853 to 1874.
- 183 Coloured Print, Forest Scene, in ornate gilt frame.
- 184 Pair fine Gilt Frames containing family photographs.
- 185 Framed Old Photograph "The White House" Brownlow Street.
- 186 Ornate Gilt Frame with photograph.
- 187 Ornate Gilt Frame with coloured print signed Gaymond.
- 188 Framed Print 'Loves Old Sweet Song'.
- 189 Framed Edwardian coloured print 'A Hearty Welcome'.
- 190 Collection of Framed Pictures & Picture Frames.
- 191 Still Life in decorated frame.
- 192 Collection of small family photographs in various sizes and types of frames.
- 193 Edwardian coloured print, Snow Scenes by C. T. Garland 1894.
- 194 Gilt Framed Water Colour signed W. Sedgewick 1935.
- 195 Framed Miniature, possibly copied by Miss Farish.
- 196 Various small prints & water colours.
- 197 2 Family photographs in ornate wooden frames.
- 198 Photograph in oval gilt frame.
- 199 Large photograph in ornate oval gilt frame.
- 200 Water colour signed A.W.

Books

- 201 The Play Pictorial, Monthly Theatrical Magazine, edited by B. W. Findon. Approximately 30 issues.
- 202 Miscellaneous Plays including Shaw, Barrie in Volumes.
- 203 St. Anne's Magazine, Abbots Bromley School Magazine 1912/13, 31 issues, together with Magazine of St. Mary and St. Anne 1926.
- 204 Holy Bibles, Testaments, etc..
- 205 Books of Common Prayer, Hymnals, Psalters.

LOT

- 206 Altar Manuals, Devotional Prayers, etc..
- 207 Miscellaneous Books of A Theological and Devotional Nature including "Exposition of the Creed" by John Pearson (Cambridge University Press 1859).
- 208 The Parish Magazine edited by J. E. Erskine 1874, 1875, 1880 together with The Banner of Faith 1893 and 1902, 6 volumes.
- 209 Collins Classics Uniform Edition of Dickens, Thackeray, Kingsley, etc..
- 210 Souvenir Royalty Gift Books.
- 211 The Quiver, an illustrated magazine for Sunday and General Reading Bound Volumes 1879, 1880, 1881, 1883, 1884, 5 volumes.
- 212 Every Womans Encyclopaedia, 7 volumes.
- 213 Miscellaneous Collection of Childrens' Primers and Readers.
- 214 Collection of Educational Books including sundry copies of Child Education magazines 1920/30.
- 215 Sundry Reference and Cookery Books.
- 216 Holy Bible 1806.
- 217 Bound Volumes of Punch, 1846, 1849, 1848, 1845 together with Bound Volumes of Woman's Realm etc., 9 volumes.
- 218 Cecilia or Memoirs of an Heiress, F. Burney (Martin & Hunter) 1809, 2 volumes.
- 219 Rose of Claremont by Catherine G. Ward (Kelly 1923) 2 volumes.
- 220 Childrens Stories.
- 221 Collection of Topography, etc..
- 222 History etc. including "Lives of the Queens of England", 9 volumes, and "Lives of the Princesses of England", 4 volumes.
- 223 Lincolnshire at the Opening of the Twentieth Century. Contemporary Biographies. (W.T. Pike 1907).
- 224 German Texts, Grammars etc..
- 225 Collection of Poetry including Longfellow, Keats, Tennyson, Byron, Shelley, De La Mare etc..
- 226 A Prosodial Grammar (Dr. Johnson) 1805.
- 227 Post Office Directory, Lincolnshire (Kelly 1868).
- 228 Virginibus Puerisque R.L. Stevenson (Chatto & Windus 1912), Fine Paper Edition.
- 229 Report of the National Schools' Board 1875.
- 230 Sundry Lot.

Cutlery

Plated Ware, Monogrammed 'F'.

LOT

- 231 6 Tablespoons A1 Plate.
- 232 7 Tablespoons A1 Plate.
- 233 6 Tablespoons A1 Plate.
- 234 6 Tablespoons A1 Plate.
- 235 6 Tablespoons A1 Plate.
- 236 6 Soup Spoons A1 Plate.
- 237 6 Soup Spoons A1 Plate.
- 238 6 Dessert Spoons.
- 239 6 Dessert Spoons.
- 240 7 Dessert Spoons.
- 241 6 Dessert Spoons.
- 242 Serving Spoon.
- 243 2 Gravy Ladles.
- 244 2 Gravy Ladles.
- 245 6 Dinner Forks.
- 246 6 Dinner Forks.
- 247 6 Dinner Forks.
- 248 6 Dinner Forks.
- 249 6 Dessert Forks.
- 250 6 Dessert Forks.
- 251 6 Dinner Forks.
- 252 Soup Ladle.
- 253 Soup Ladle.

Miscellaneous Plate

- 254 6 Dinner Forks.
- 255 6 Dessert Forks.
- 256 8 Dessert Forks, various.
- 257 6 Dessert Spoons, 2 Dessert Forks, 1 Dinner Fork, various.
- 258 2 Tablespoons.
- 259 Pair of Salad Servers.
- 260 2 Gravy Ladles.
- 261 2 Gravy Ladles.
- 262 6 Dinner Knives.
- 263 5 Dinner Knives.
- 264 5 Dessert Knives.

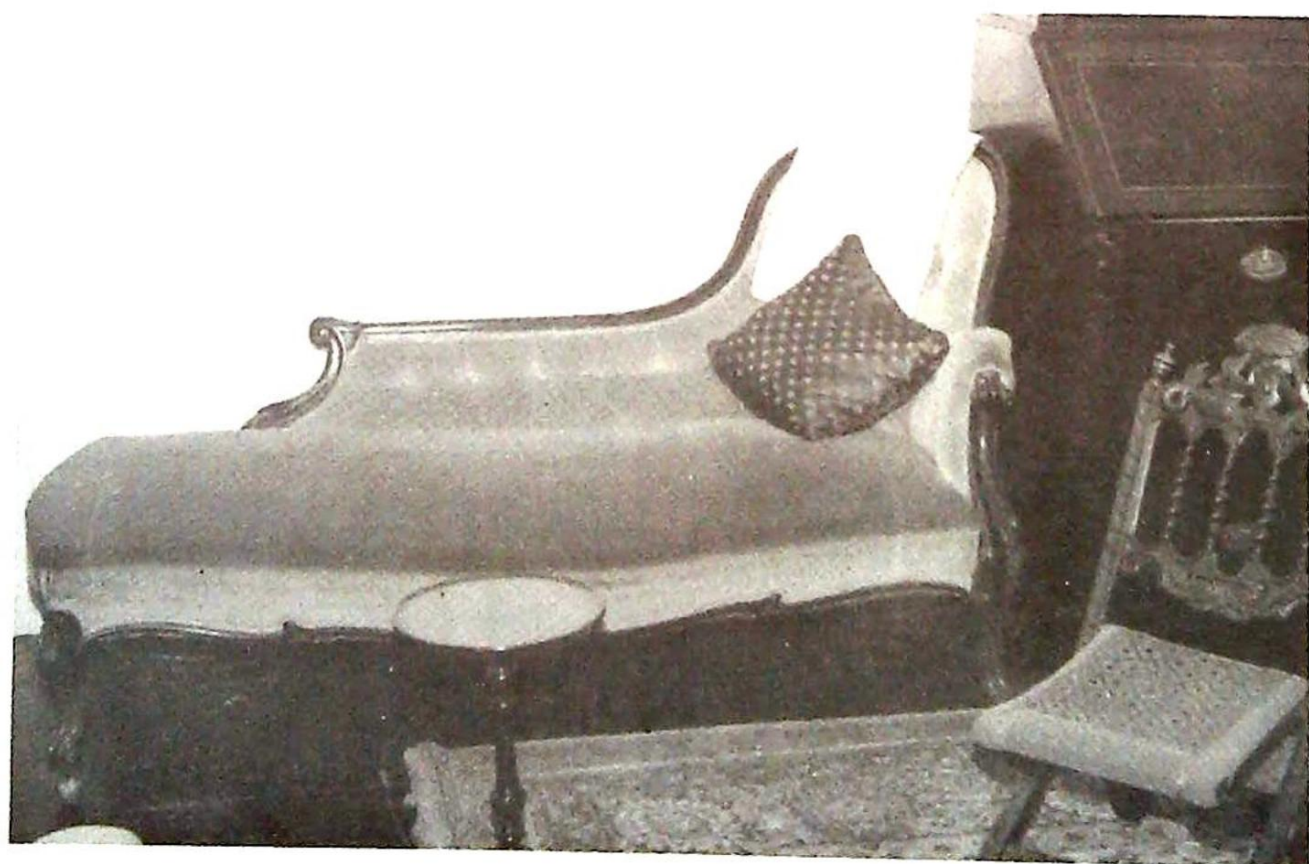
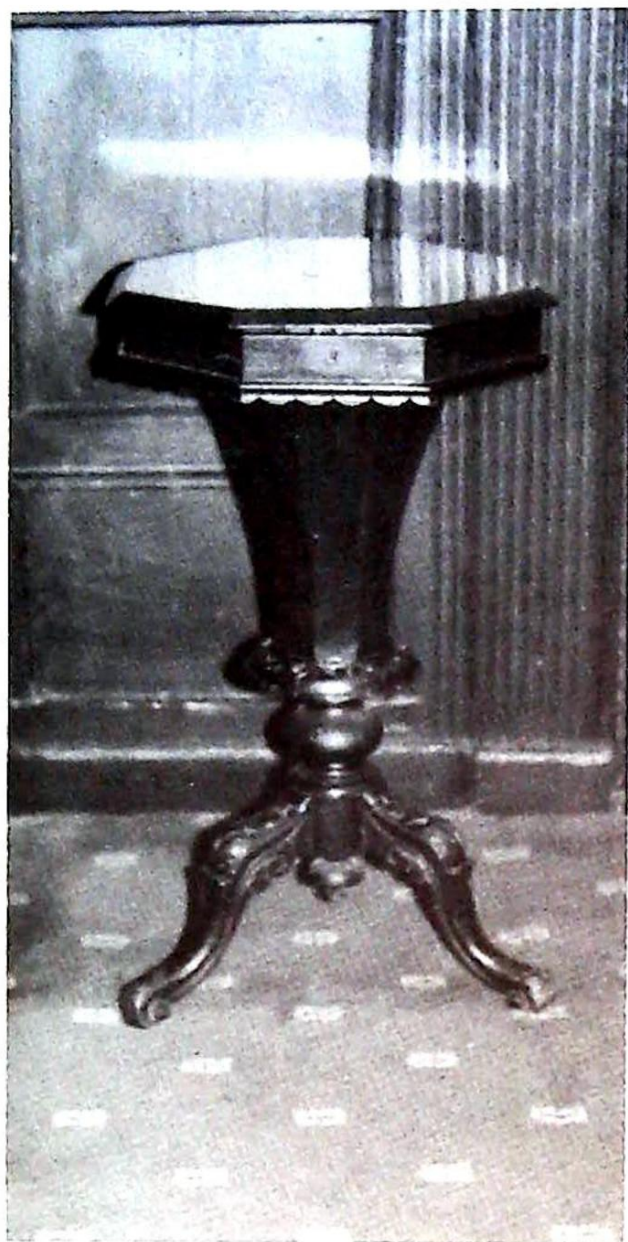
A Selection of Lots included in the Auction Sale



Left: Lot 444 & Lot 450 (mirror)
Above: Lot 436

Opposite Page

Top left: Lot 429
Top right: Lot 446
Bottom: Lot 437



LOT

- 265 Canteen of 6 Fish Knives & Forks.
- 266 6 Tea Knives in case.
- 267 6 Tea Knives in case.
- 268 6 Fish Knives & Forks in case.
- 269 6 Fish Knives & Forks A1 Plate.,
- 270 Cutlery Box & Miscellaneous Knives.
- 271 Cutlery Box & Miscellaneous Forks, Spoons & Servers.
- 272 Cutlery Box & Miscellaneous Steel Kitchen Knives & Forks.
- 273 6 Steel Steak Forks.
- 274 Collection of Pickle Forks, Tea Knives, Cheese Scoop & Miscellania.
- 275 3 pairs Plated Sugar Tongs.
- 276 5 Plated Cake Knives & 5 small tea spoons.
- 277
- 278
- 279
- 280
- 281 Plated Sandwich Serving Tray.
- 282 Circular Salver on 3 feet.
- 283 Plated Sugar Bowl.
- 284 5 Bottle Cruet in plated stand.
- 285 Round Plated Fruit Bowl.
- 286 Shaped Plated Fruit Bowl.
- 287 Plated Cake Stand with handle.
- 288 Fruit Stand with handle & fretted design.
- 289 Elegant Victorian Plated Teapot.
- 290 Victorian Plated Teapot in Fluted Design, sterling silver.
- 291 Attractive Victorian Plated Teapot in fluted design.
- 292 Attractive Victorian Plated Teapot in fluted design.
- 293 Collection of Plated Ware, serviette rings, salt cellars, mustard pot etc..
- 294 Pair Sheffield Plate Candlesticks.
- 295 Single Trumpet Vase with plated base.
- 296 Pewter Cream Jug.
- 297
- 298
- 299
- 300

Silver

LOT

- 301 Sauce Boat, Birmingham 7 oz. Makers Mark R.E.A.
- 302 Victorian Silver Backed Hair Brushes, mirror and comb.
- 303 Sweet Meat Dish, Mappin & Webb, Sheffield 1 oz.
- 304 3 Pepper Sifters.
- 305 2 Pepper Sifters, Birmingham 1919.
- 306 Pair Georgian Salt Cellars, London 1809/1810 1 oz.
- 307 Serviette Ring, Maker H.B. Birmingham 1898.
- 308 Cut Glass Scent Bottle with silver top.
- 309 Silver Trinket Case with tortoiseshell top Maker E.S.B. Birmingham 1913.
- 310 Blue Bristol Glass Victorian Scent Bottle with matching silver ends.
- 311 Silver Scent Bottle with leaf scroll pattern.
- 312 Knife with Mother-of-Pearl handle and silver blade in case.
- 313 Two Serving Spoons, Sheffield 2 oz.
- 314 Two Serving Spoons, London 2 oz.
- 315 6 Table Spoons, Maker E.C. London 12 oz.
- 316 6 Georgian Table Forks 10 oz.
- 317 4 Georgian Teaspoons.
- 318 9 Teaspoons, Maker C.B. Sheffield 1876 4 oz.
- 319 10 various teaspoons.
- 320 Silver Cake Knife, Sugar Tongs, Cut Glass Ink Holder with silver top.
- 321 2 Silver mounted Button Hooks and Glove Button Hook.
- 322 Silver Sugar Bows and Silver Mounted Shoe Horn.

Jewellery

- 323 18 ct. Solitair Diamond Ring, modern cut.
- 324 9 ct. Gold Choker Necklace with Garnets.
- 325. 18 ct. Gold Ring set with Amethyst.
- 326 15 ct. Gold Ear Rings.
- 327 Horseshoe Brooch set with seed pearls.
- 328 2 sets Amethyst Ear Rings and Silver Dress Ring set with coral.
- 329 Brass Seal 'F' and another Seal.
- 330 Silver Dress Watch.

Postcards

LOT

- 331 6 Cards "Songs and their Singers" signed Arthur Moreland.
- 332 6 Cards "There is a Time".
- 333 8 Cards Pig and Dog Series.
- 334 9 Cards 5 Dutch Art; 1 Dudley Ward; 3 Others.
- 335 2 Cards, Tom Brown Series.
- 336 6 Cards, signed Harry B. Neilson.
- 337 4 Cards, various including Cynicus "You and I".
- 338 7 Cards "Write Away Series".
- 339 8 Cartoon Cards including by Tom B. and Dudley Hardy.
- 340 7 Cards "Silly Question Series".
- 341 4 Cards 'Still Life' signed A. Billing.
- 342 22 various cards.
- 343 8 Book Postcards.
- 344 6 various cards.
- 345 6 Cards 'Political Humour' by Arthur Moreland.
- 346 Number of Cards depicting Theatrical Performances.
- 347 27 cards Lincolnshire Views.
- 348 28 Grantham Area Views.
- 349 24 Northamptonshire Views.
- 350 17 Derbyshire Views.
- 351 14 London Views.
- 352 16 Rushden Area Views.
- 353 7 Seascapes.
- 354 8 Nottingham Scenes.
- 355 7 Oilettes Newark signed H. Hadfield Cubley.
- 356 9 Newark Views.
- 357 Various cards.
- 358 Green Album.
- 359 Pink Album.
- 360 Album.
- 361-370 Sundry Lots.

Linen etc.

- 371-385 Damask Tablecloths in various sizes in Lots.
- 386-390 Sundry Lots.

Antique Furniture

LOT

- 391 Tea Trolley.
- 392 Oak Kitchen Stool.
- 393 Pine Blanket/Chest with 2 drawers.
- 394 Oak Book Stand on turned legs.
- 395 Oak Extending Occasional Bed.
- 396 Rush seat Foot Stool.
- 397 Occasional Chair.
- 398 Inlaid Walnut Occasional Chair.
- 399 Cane seat Stool.
- 400 School Tuck Box.
- 401 Small Oak Box with brass handles.
- 402 Pine Blanket Box.
- 403 Tapestry covered button back armchair with turned legs.
- 404 Inlaid mahogany stand.
- 405 Cane seat Nursing Chair.
- 406 Spindle back Spinning Chair.
- 407 Mahogany Bedside Pot Cupboard.
- 408 Oak dropleaf Afternoon tea table.
- 409 2 drawer Oak Chest.
- 410 Walnut oval tripod occasional table.
- 411 Small mahogany low stand.
- 412 Small circular inlaid stand.
- 413 Upholstered stool on turned legs.
- 414 Old Oak Commode Frame.
- 415 Cane Seat Stool with heavy carved legs & stretchers.
- 416 Hepplewhite style Armchair Commode.
- 417 4 Hardwood Cane Seat Bedroom Chairs.
- 418 Small mahogany Buffet.
- 419 Victorian Cane Seat Punishment Chair.
- 420 Sheraton style occasional Chair.
- 421 A Prayer Chair on turned legs in tapestry cover.
- 422 Small inlaid Ebony Display Cabinet 20" x 14".
- 423 Mahogany demi-lune Card Table opening to circular top on thin cabriole legs.
- 424 Solid brass Victorian Standard Lamp converted to electric.
- 425 Inlaid mahogany coal Cabinet.
- 426 Nest of mahogany wine tables.

LOT

- 427 Leather back Nursing Chair.
- 428 Tapestry covered Stool on turned legs.
- 429 Victorian Ladies Walnut Trumpet Type Sewing Table with floral marquetry lid revealing divisions and tapering down to carved cabriole legs.
- 430 Decorated earthenware glazed Umbrella Stand.
- 431 Decorated Jardiniere.
- 432 Fine cast iron lion doorstep.
- 433 Carved Footstool.
- 434 Copper Coal Scuttle.
- 435 Early Victorian Rosewood Circular Pedestal Dining Table, the central column has gadrooned baluster on rococo tripod legs. 54 inches dia..
- 436 Set of Eight Fine Early Victorian Rosewood Dining Chairs with slender balloon backs and carved splats and with cabriole legs terminating in scroll feet.
- 437 Victorian Single Ended Chaise-longue, button velvet upholstery and on rosewood cabriole scroll legs.
- 438 Elegant Gentlemans open armed Victorian deep button-back Chair in the rococo style with carved cabriole legs and padded arms.
- 439 Lady's Companion Chair to previous Lot.
- 440 Sheraton style Inlaid Wine Stand.
- 441 Circular Oak Tripod Table, snap top.
- 442 Mahogany Music Canterbury.
- 443 Oak Settle with high back, 5 ft..
- 444 Mahogany Bureau- Bookcase with 3 long and 2 short drawers, Inlaid flap top reveals fitted drawers and pigeon holed and glass bookcase over, 4 ft..
- 445 Figured Walnut Fall Front Bureau with fitted interior and 3 drawers under. 3 ft..
- 446 Excellent Burr Walnut Davenport with brass galleried lidded stationery compartment veneered interior and 4 real drawers on one side and 4 dummy ones on the other.
- 447 Mahogany Bow Front Kneehole Sideboard with central drawer flanked by 2 deep cupboards, original brass handles, 5ft..
- 448 Walnut Credenza with central cupboard and two angled cupboards with mirrored doors.
- 449 Rosewood Ornate Triple mirrored Sideboard Back or overmantel (previously fitted to Lot 448).
- 450 Chippendale Wall Mirror.
- 451 Oak Case pendulum striking Wall Clock.
(Hewitt, Lincoln).
- 452 Carved Case Barometer and thermometer.
- 453 Copper Warming Pan.

LOT

- 454 Mahogany Sheraton type Card Table with baize covered fold over top.
- 455 Mahogany Combined Sewing and Writing Table on turned end column supports with scroll feet connected by turned stretcher.
- 456 Pair of Fine Sheraton style Elbow chairs, shaped leather seats.
- 457 Old Oak Hall Table with drawer.
- 458 Walnut Coal Cabinet.
- 459 Windsor Single Chair.
- 460 Sheraton Style Mahogany Stand with under shelf.
- 461 Victorian Folding Chair with carved splats with fishes surmounted by crown on twisted columns, tapestry seat.
- 462 Finely figured Mahogany Centre Pedestal Table 18½" dia. on hexagonal column and platform base, with bun feet.
- 463 Old Oak Hall Table with drawer.
- 464 Mahogany Coal Cabinet with carved front.
- 465 Mahogany Carving Chair.
- 466 Mahogany fall leaf Dining Table with cutlery drawer, 3'3" square when opened.
- 467 Marquetry Centre Table 26" square with 4 drawers on central column and platform base.
- 468 Mahogany and Oak Lowboy with serpentine front having centre drawer and 2 drawers each side kneehole, Lion head handles.
- 469 Mahogany framed Parlour Fire Screen with peacock panel.
- 470 A Four plank Oak Coffin.
- 471 Old Oak Coffin with 2 panel front and legs which are a continuation of the end frame, 3 panelled top, 4 feet in length.
- 472 Mahogany Overmantel with bevelled plate mirror.
- 473 Oak Pedestal Table oblong fold-over top with rounded corners on tripod legs.
- 474 Oak Fall front Bureau with 2 drawers, fitted interior and with automatic action lopers, short twisted legs.
- 475 Mahogany Wardrobe with mirrored door and drawer under.
- 476 Mahogany Bookcase with adjustable shelves and 2 glazed doors.
- 477 Victorian Mahogany Wash Stand with marble top and tiled back, central drawer, & 2 Pot cupboards, brass handles.
- 478 Matching mahogany Dressing Table with adjustable mirror and drawer above kneehole and four drawers each side, brass handles.
- 479 Rosewood Dressing Mirror swung on box base with four drawers.
- 480 Mahogany Chest of Drawers with 3 small drawers top row and 3 full length drawers under.
- 481 Dressing Mirror swung on 2 turned columns on 3 drawer box base and bun feet.

LOT

- 482 Oak bracket Corner Cupboard 18" high with glazed door.
- 483 Bow fronted Satinwood Chest of 2 small and 2 large drawers, brass handles.
- 484 Large Pine chest covered in tapestry with upholstered top.
- 485 Mahogany-shaped Chest of 4 Graded depth Drawers, wooden knobs, splay feet.
- 486 Mahogany swing mirror.
- 487 Fine figured Mahogany Veneered tall bow fronted Chest of Graded depth drawers, capacious and with wooden knobs, turned bulbous feet.
- 488 Oak Library Bookcase with adjustable shelves and central divider.
- 489 Inlaid Mahogany Overmantel.
- 490 Drop-end Settee upholstered in tapestry.
- 491 Oval Inlaid Mahogany Bevel Plate Wall Mirror.
- 492 Drop-end Settee upholstered in red damask with loose cover.
- 493 Deep Wing Easy Chair upholstered in red moquette.
- 494 Easy Chair.
- 495 Wing Easy Chair with cabriole legs upholstered in tapestry.
- 496 Pine Kitchen Dresser with cupboard and three drawers 4 ft..
- 497 Pine Chest of 2 short and 2 long drawers.
- 498 Pine Blanket Box.
- 499 1 Dining chair, damaged.
- 500 Mahogany Step Commode, damaged.
- 501 Mahogany Towel Rail.
- 502 Small Folding Stand and carved tripod column.
for table.
- 503 Bamboo Stand.
- 504 Swing Mirror on turned columns.
- 505 2 Cane Seat Chairs, damaged.

Miscellania

506-625 Domestic Furniture, Crockery, Cooking Utensils and miscellaneous effects.

Notes

Auctioneers,
Valuers, Surveyors
and Estate Agents.

Messrs.

Established 1900

GOLDING

Bernard Millhouse, FSVA., C. Robin Hall, FRICS, Ian J. Shaw, ARICS.

45 High Street, Grantham, Lincolnshire Telephone 5456. STD 0476.