

GRANTHAM
Lincolnshire

Instructed by the Executors of the late Dr. Eva Giles and from other sources

MESSRS. GOLDING
WILL SELL BY AUCTION

at The Salerooms, Old Wharf Road
on Wednesday, 13th May, 1981

AN EXCELLENT COLLECTION of

ANTIQUE
FURNITURE

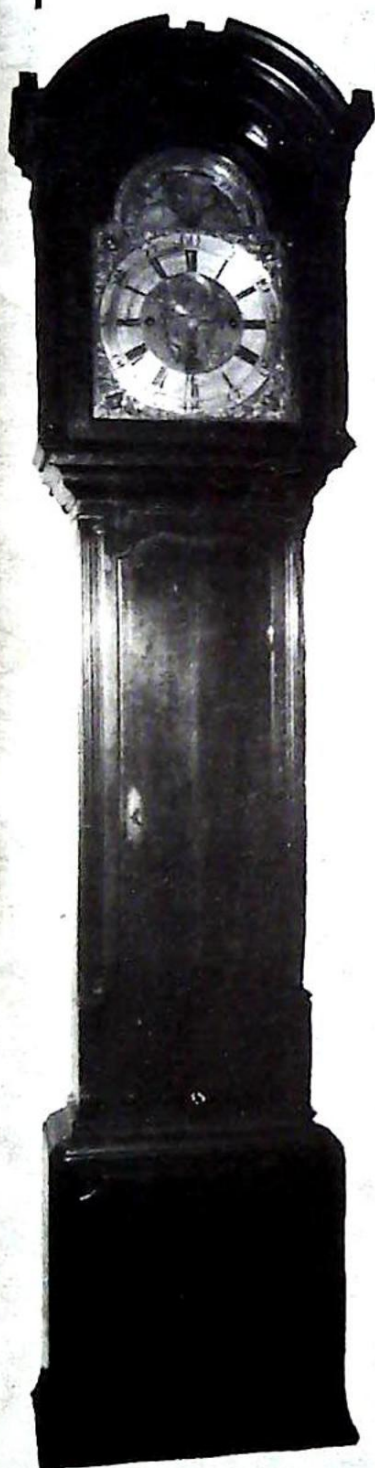
Porcelain, Pottery, Brassware, Glass, Silver & Plate
Items, Oil Paintings etc.

A quantity of Domestic Furniture, Glassware etc.

ON VIEW TUESDAY, 12th MAY
10.00am to 4.00pm.

Sale to commence at 11 o'clock prompt.

AUCTIONEERS OFFICE:
45 High Street, Grantham.
Tel: (0476) 5456.



Lot 223

Conditions of Sale

1. The highest bidder shall be the purchaser, and if any dispute arises the auctioneers have the discretion to settle the dispute or to re-offer the lots, and the auctioneers decision shall be final.
2. The auctioneers reserve the right on behalf of the vendors to withdraw, amalgamate, consolidate or alter the order of any lot or lots, or bid on behalf of the vendors upon those lots on which there is a reserve price.
3. The purchasers are deemed to have satisfied themselves as to condition of any lot before bidding. No bid may be withdrawn and the auctioneers reserve the right to refuse any bidding.
4. At the fall of the hammer the lots shall be at the sole risk of the purchaser who shall on demand give to the auctioneers his full name and address and such deposit as the auctioneers may require.
5. All lots to be sold subject to all faults, errors of description whether apparent or not and without any warranty or representation as to quality condition or any other matter.
6. If any buyer fails to comply with these conditions the auctioneers shall be at liberty to re-sell the lot(s) without further notice by public or private sale and any deficiency arising from such sale together with all charges and expenses shall be made good by the defaulter.
7. **IMPORTANT NOTE TO PURCHASERS.** Whilst every effort is made to ensure accuracy of lots, all statements whether made orally or contained in this catalogue as to authenticity, attribution, genuiness, origin, authorship, date, age, period, condition of quality of any lots are statements of opinion, and are not to be taken as, or as implying statements or representation of fact.
Intending purchasers must satisfy themselves by inspection or otherwise as to all such matters as to the physical description of any lot. The auctioneers would remind purchasers that it is unlikely that any antique or second hand item will be perfect in every respect.
8. In case of dispute on a point not covered by the foregoing conditions of sale the National Condition of Sale shall apply.
9. The purchase money for each lot with the usual commission of 5% plus V.A.T. shall be paid at the fall of the hammer (if required).

View Day

Viewing will be available Tuesday May 12th 1981, 10.00 am to 4.00 pm.

Catalogue

Price £1 including postage from the Auctioneers offices and on day of sale.

Cheques

Will not be accepted from strangers unless accompanied by a bankers reference.

Commissions

The Auctioneers will be pleased to execute commissions on behalf of prospective buyers. We would request that these instructions be in writing and must be paid for prior to delivery.

Catalogue

Sale to commence at 11.00 am prompt

NOTE:

All descriptions given in this catalogue are of opinion given in good faith after careful consideration and research but no guarantee of authenticity or condition is given or implied.

LOT

- 1 Victorian ormolu 5 branch chandelier wired for electric light.
- 2 Pair Empire ormolu caryatid 3 light candelabra on Tynos marble bases wired for electricity.
- 3 Pair of brass Cherub wall lights wired for electricity (miniature).
- 4 Pair brass Cherub wall lights wired for electricity (miniature).
- 5 Pair Marble and brass ornamental Lamps with shades and lustre-type drops, wired for electricity.
- 6 Oval Mahogany Galleried Tray with satinwood shell inlay, brass handles.
- 7 Bronze Statuette 'Cupid & Dolphin'.
- 8 Stuffed White Pheasant under glass dome.
- 9 Pair blue porcelain Victorian bedside Lamps wired for electricity.
- 10 Old wood carved Chinese wall ornament.
- 11 Similar carving of different design.
- 12 Pair brass twin branch Candelsticks.
- 13 Pair Brass Candlesticks 10".
- 14 Brass and copper kettle.
- 15 Large copper kettle with brass medallions and brass spout.
- 16 Viners silver plate tea and coffee service with galleried tray.
- 17 Pair Chinese Taper Holders.
- 18 - 25 Sundry lots.
- 26 Small marquetry Inlaid Box with brass shield motif.
- 27 4 various Mahogany and Oak Cutlery Boxes.
- 28 Victorian Copper Ornamental Plant Bowl.
- 29 6 Pewter Plates.
- 30 Pewter Jug and 2 other items.
- 31 2 Metal Ornaments.
- 32 Grape Scissors, tin opener and poker.
- 33 Plated Cruet, vases and mint holder.
- 34 Tortoiseshell inlaid Snuff Box with monogram.
- 35 Plated Cigarette Box and Cigarette Case.

- 36 Plated Butter dish and glass lidded container.
- 37 Small Plated Caddy.
- 38 Sundry Plated Ware.
- 39 3 bottled Cruet Stand and 2 bottles.
- 40 Oak & Brass Desk Ink Stand.
- 41 Plated 2 handle Tray, 12" diameter.
- 42 Victorian Chafing Dish.
- 43 Elliott Mantel Clock in burr walnut case.
- 44 Oak Plate mounted Biscuit Barrel.
- 45 Pair small plated Posy Holders.
- 46 Terrestrial Globe 8" dia.
- 47 2 Statuettes, Venus de Milo, and another.

Brass Ware & Copper

- 48 Copper and Brass Hearth Brush.
- 49 Small Copper Kettle.
- 50 Copper Jelly Mould.
- 51 Benares ware small items.
- 52 Brass Horseshoe Trivet.
- 53 Brass Circular Trivet.
- 54 Collection of small brass items.
- 55 Pair of fine fretted Brass Candelsticks with sconces 8".
- 56 Small brass Tray and collection of miniature items.
- 57 2 polished Brass Shell Cases and Brass Card Tray.
- 58 Collection of Brass Ash Trays.
- 59 Collection of 14 various Brass Candlesticks from 10" downwards.
- 60 Brass Wall Letter Rack.
- 61 Solid Brass Vase.
- 62 Solid Brass Bowl.
- 63 Benares ware Vase 9".
- 64 Collection of miniature Copper and Brass items.
- 65 Brass Chamber Stick with drip pan.
- 66 Pair Solid Brass Candelsticks 5".
- 67 Brass Chamber Stick with circular drip pan.
- 68 Chinese Brass Bowl 8" diameter.
- 69 Pair Excellent 2 branch Brass Candlesticks 8".

Miscellaneous

- 70 Georgian Mahogany Tea Caddy.
- 71 Pair 18ct. gold plated Palm Tree ornaments.
- 72 Collection of carved wood African animals.
- 73 Small metal Kettle and other metal containers.

74 Nest Ash Trays.

Pottery & Porcelain

75 Copeland Spode China Tea Service comprising 12 cups and saucers, plates and 2 bread & butter plates, sugar and cream.

76 Collection of Victorian Phoenix China Cups, saucers and plates.

77 Wedgwood Ornamental Plates.

78 Decorated Fruit Plate in blue by Villeroy & Boch, Dresden.

79 Wedgwood Meat Dish, in traditional design.

80 Pair William Adams Chinese pattern Candelsticks 10".

81 3 Royal Cauldon 'Madeira' decorative plates.

82 Copeland Spode Italianware Bowl and 2 other items.

83 3 Myott Staffordshire and Wetherby ware Dishes.

84 Stoneware Willow pattern hot water plate.

85 3 dinner plates and 2 small dishes, Royal Mail Staffordshire Ironstone Pottery.

86 Small blue pottery Jug & Vase.

Silver

87 Silver Tray with gadrooned side and centre panel depicting raised cherubs. Birmingham 1804 M.M.

88 Small silver bowl heavily engraved and with two handles depicting Indian Scene. London 1892 R.F.

89 Pair Small Sweetmeat dishes with pierced sides. Chester Mark.

90 Silver Seal and small silver piece.

91 Wine Label and Chain.

92 Silver Taper Case with engraved side.

93 Silver handled Button Hook and Shoe Horn.

94 Two Silver topped Scent Bottles.

95 3 Silver Spoons, Dagger and Knife.

China & Bric-A-Brac

96 - 100 Sundry Lots.

101 Patterned Plate - T & R Boote.

102 2 Plates & 2 Dishes - Delft.

103 Fruit Bowl - Davenport Ivy Wreath.

104 Collection of Jug & Dishes - Royal Crown Derby.

105 Mugs & Beakers.

106 Collection of Crested China.

107 Meat Dishes & Dinner Plates.

108 Collection of Jugs, Bowls & Dishes.

109 Collection of Vases.

110 6 Earthenware Jugs.

111 6 Coffee Cups & Saucers.

112 4 Teapots.

- 113 2 Teapots.
- 114 Jugs, Jam Dish & Hors d'oeuvres Trays.
- 115 Collection of modern Wedgwood Ware.
- 116 Pair of Shelley China Vases & sundry ornaments.
- 117 Decorated Blue & White small fretted design Jardiniere.
- 118 Aynsley & Minton Bone China Dishes.
- 119 Collection of hors d'oeuvres Dishes, scallop shells etc.
- 120 6 Jugs.
- 121 Sundry dinner plates etc.
- 122 Royal Worcester Bowl.
- 123 3 Coalport Plates & ornaments.
- 124 Collection of Bowls, Jugs & Vases.
- 125 Pomade Pot.
- 126 Vases & cups.
- 127 4 Coffee Cups & Saucers - Spode Copeland.
- 128 Fruit Bowl - Fieldings Royal Devon Lusterine.
- 129 Collection of Limoges & other small items.
- 130 2 Posy Vases.
- 131 2 Minton & 1 Delft Tiles.
- 132 Collection of ornaments.
- 133 Collection of ornaments.
- 134 2 Vases & 1 Jug.
- 135 Mugs & Cups.
- 136 Bookends, Mug & Ash Trays.
- 137 3 Welsh Mugs.
- 138 Piggy Bank and ornaments.
- 139 Vases & baskets.
- 140 2 Vases, 2 Chambersticks.
- 141 Hors d'oeuvres Dishes etc.

Glassware

- 142 Ash Trays.
- 143 15 Spirit Glasses.
- 144 14 Tumbler & Spirit Glasses.
- 145 Tankard, flask & jug.
- 146 Large lemon squeezer & water jug.
- 147 Pyrex vegetable dish.
- 148 Cake Stand.
- 149 2 Flower vases.
- 150 2 Fruit Bowls.
- 151 2 Fruit Bowls.

- 152 Green Flask.
- 153 2 Fruit Bowls.
- 154 Two Fruit Bowls.
- 155 Two Fruit Bowls.
- 156 2 Decanters.
- 157 Lager Tankard & sundry small items.
- 158 Vases etc.

Sundries

- 159 2 Electric Kettles
- 160 2 Aga Kettles
- 161 3 Electric Irons.
- 162 Coffee Percolator.
- 163 Coffee Percolator.
- 164 Coffee Percolator with filters.
- 165 Bathroom Scales.
- 166 National Panasonic Cassette Tape Recorder.
- 167 Royal Typewriter.
- 168 Morphy Richards Fan Heater.
- 169 Basket & Pencil Boxes.
- 170 Collection of 78 Records.
- 171 Jigsaw Puzzles.
- 172 2 Tennis Racquets.
- 173 K.B. Record Player.
- 174 Ornamental Wooden Cart.
- 175 Bush Record Player.

Furniture

- 176 Light Oak Bookcase with sliding glass doors 29" wide, 3ft tall.
- 177 Oak Hall Table 30".
- 178 Mahogany Towel Rail.
- 179 Mahogany Towel Rail.
- 180 Mahogany Towel Rail.
- 181 4 Spindle back country style Lancashire rush seat Dining Chairs.
- 182 Upholstered Occasional Chair.
- 183 Upholstered Occasional Chair.
- 184 Oak Carving Chair and Single matching Dining Chair.
- 185 Set of Oak open bookshelves.
- 186 Solid Oak 4 leaf Table.
- 187 3 Victorian Dining Chairs.
- 188 Oak Armcahir with upholstered arms and seat.



Lot 222



Lot 244



Lot 243





Lot 246



Lot 195

Lot 214



- 189 Mahogany Sideboard 6ft with Serpentine front, drawers and cupboards with brass lion head handles.
- 190 Oak Book Shelves.
- 191 Oak upholstered Fireside Chair.
- 192 Mahogany Bedside Cabinet.
- 193 Set of open book shelves 30".
- 194 Polished Walnut Hall Table 32".
- 195 George II Dressing Chest with 4 long graduated drawers. The top drawers fitted with compartments and rise and fall mirror. Circa 1760. 33½" x 34" high.
- 196 Set Victorian wall fixed book shelves 25" wide.
- 197 Mahogany inlaid Satinwood China Cabinet with glazed door and bevelled plate mirror under shelf in back.
- 198 Mahogany 4ft wide Cabinet with 2 curved cupboards having satinwood inlay, centre cupboard with glazed door on tapered footed legs. 3 ft high.
- 199 Mahogany framed Tapestry double ended button back Settee on Castors.
- 200 Oak Corner Cupboard 27" x 3ft high.
- 201 Small dropleaf Oak Tea Table.
- 202 Satinwood and walnut Davenport having 4 drawers with ebony handles and escutcheons, side cupboard, top pulling forward for writing access.
- 203 Oak Tapestry covered stool.
- 204 Period mahogany folding circular Tea Table 3'3" diameter on straight legs.
- 205 Old Oak Bureau 3ft wide on bracket feet, 2 long and 2 short drawers, internally fitted 6 drawers and stationery slots and a sliding panel disclosing open compartment.
- 206 Amboyna and Tulip wood inlaid Empire 15" diameter Circular Table with Tynos marble inlaid top, ormolu mounted.
- 207 Victorian Jardiniere.
- 208 Corona ware Jardiniere.
- 209 Chinese Dressing Table Tray.
- 210 Chinese Rice Bowl/Sweet Dish.
- 211 Pair Chinese Jardinieres on hardwood stands.
- 212 Pair large Chinese Vases.
- 213 Oak Buffet Table 4'6", 2 drawers, lion masked carved handles.
- 214 Set 6 Victorian Rosewood Dining Chairs with scroll balloon backs and cabriole legs.
- 215 Dark Oak draw leaf Refectory Table 6ft long extending to 11 ft, on bulbous legs with stretchers.
- 216 Brass kerb 4ft long.
- 217 Brass Triple Panel Fire Screen.
- 218 Set Solid Brass Fire Irons.
- 219 Set Solid Brass Fire Irons.
- 220 Brass Poker and Tongs.

- 221 Mahogany Inlaid Burr Walnut Wardrobe, 2 side doors with exterior bevel plate mirrors and ornamental cornice over.
- 222 Walnut Tallboy, 2 sections, on cabriole legs with 2 short and 4 long drawers, brass handles plates and escutcheons.
- 223 Fine George III Mahogany Long Case Clock Darrell Moulded Hood. Gild panels enclose brass and silver dial plate chased in Rococo scroll work. The Arch revealing Lunar movement. 3 train movement striking 6 bells. Calendar aperture. Inscribed Joseph Oxley, Norwich.
- 224 Oil Landscape by Jan Jacob Fels (a Dutch painter born in Campen in 1816 and studied under Pulger) 4ft x 3ft.
- 225 Inlaid Mother of Pearl Mirror.
- 226 Framed Seascape in oils, 2'6" x 2'.
- 227 Pair Small Oil Seascapes on copper in gilt frames.
- 228 Small Oil Portrait in ornate gilt frame.
- 229 Small Oil Portrait 'Man in Red Jacket' in gilt frame.
- 230 Walnut Credenza, ormolu decorated, centre glazed cupboard, the two outer cupboards having Sevres oval ormolu mounted panels. 5'6".
- 231 Duchess Dressing Chest 4ft wide, 2 long and 2 short drawers, with satinwood beading and inlay.
- 232 Pair Half circular Victorian Wall mirror backed Etageres 36" high 18" wide.
- 233 Excellent Mahogany Banjo Barometer.
- 234 4ft Empire 3-piece Wall Mirror with memorial inset.
- 235 4'6" Empire 3 piece bevel plate Wall Mirror.
- 236 2 door Mahogany Bookcase, cross banded satinwood beading, 3'9" wide, having 2 drawers in frieze and Rouge Royale marble inset top.
- 237 Rosewood 5'3" Cabinet having green pleated silk and brass frills to 4 doors enclosing 2 tray shelves and 2 others.
- 238 DECCASOUND DS1503 Record Player with Stereo Speakers (un-used).
- 239 Oak Welsh Dresser with 2 cupboards and 3 drawers and shelves plate rack top.
- 240 Gilt Wood Stool embroidered in tapestry, cushioned top.
- 241 Satinwood Circular Drop-leaf Table, 32" diameter having circular Sunray Satinwood and Amboyna inlaid patera and fitted drawer, on square tapered legs.
- 242 Brass tray top Table with scalloped sunken centre and edge on folding stand.
- 243 Mahogany half circular Sideboard 3'4" wide with satinwood inlay, 2 side cupboards and drawer, tapered legs.
- 244 Mahogany Davenport with galleried lidded stationery Cabinet and 3 drawers.
- 245 Rosewood Chest of 3 long and 2 short drawers with brass escutcheons, handle plates and handles, on bracket feet 3ft wide.
- 246 Finely carved Walnut Cellists Chair on 4 splayed legs, lion head mounts to arms, circular seat.

- 247 Windsor Arm Chair, with elm seat and crinoline stretcher.
- 248 Windsor Arm Chair with hoop back and straight stretcher.
- 249 Oak Chest of 2 short and 3 long drawers on bracket feet.
- 250 Plant Pedestal.
- 251 Mahogany inlaid Burr Walnut Pot Cupboard.
- 252 William IV Rosewood Card Table, 3ft wide, flap over top lined green baize on carved walnut claw feet.
- 253 Mahogany Pedestal Music Cabinet of 3 drop fronted drawers and display cupboard over.
- 254 Old Oak Welsh Corner Cupboard 28" wide, the door having shell inlay and a cheese base under.
- 255 Mahogany swing Mirror.
- 256 Dark Oak Hall Table, with 3 drawers. 2'8" .
- 257 4 legged Mahogany Centre Table with circular under shelf.
- 258 Walnut Oval Glass top Stand with inlaid tapestry top.
- 259 Veneered Pine Chest Drawers. 2 short 3 long on bracket feet.
- 260 Night Cabinet with cupboard and one drawer, 30" high.
- 261 Corner Cupboard, glazed door and two shelves.
- 262 Modern teak Telephone Table Seat.
- 263 Oak occasional Table on twisted legs, 28" high, 24" wide.
- 264 Pine hanging Bookshelves, open back, 3'6" x 3'6".
- 265 Oak Bookshelves, open back, 3' x 2'6".
- 266 Victorian Bedroom Screen, four fold.
- 267 3 piece Cottage Suite.
- 268 Mahogany Swing Mirror Frame (mirror broken).
- 269 Oak Drop Leaf Table 3'6".
- 270 4 Bentwood Chairs.
- 271 Oak drop leaf Tea Trolley Table, on castors.
- 272 Mahogany glazed Screen 3'3" high, two-fold.
- 273 Oak Stool.
- 274 Dining chair, upholstered seat & cane back.
- 275 Pine Blanket chest with fabric cover.
- 276 Oak Pot Cupboard, 2' high.
- 277 2 modern hardwood Dining Chairs, blue upholstered seats.
- 278 Rush Stool.
- 279 Dining Chair.
- 280 Oak Occasional Table 27" high, 22" wide.
- 281 Rush seated Dining Chair & towel rail.

Rugs & Carpets

- 282 Fur Rug 4'6" x 2'.
- 283 2 Green Rugs.

- 284 2 patterned Rugs 2½ yds x 1 yd.
- 285 1 patterned Rug 2½ yds x 1 yd 3 inches.
- 286 1 patterned Rug 2 yds x 1 yd.
- 287 1 patterned Rug 1.7/8ths yd x 1 yd.
- 288 3 patterned Rugs.
- 289 Round ended Rug 5' x 3'.
- 290 Rug 2½ yds x 1 ¼ yds.
- 291 Patterned Carpet 3¾ yds x 1¾ yds.
- 292 Round Carpet 6ft diameter.
- 293 Red patterned Rug 2 yds x 1 yd.
- 294 Red patterned Rug 2 yds x 1 yd.
- 295
- 296
- 297
- 298
- 299
- 300
- 301 Blue Carpet, 3¼ yds x 2½ yds.
- 302 Green Carpet & underfelt 3½ yds x 3 yds.
- 303 Patterned Carpet 4½ yds x 3½ yds.
- 304 Green Carpet & underfelt 4 yds x 3 yds.
- 305 Patterned Carpet with underlay 4 yds x 3 yds.
- 306 Red Carpet Wilton with underlay, 5 yds x 4 yds.
- 307 Brown patterned Carpet 3 yds x 2½ yds.

Furniture & Domestic Items

- 308 Mahogany Bookcase with glazed doors and four shelves, 5ft high x 4 ft wide.
- 309 Mahogany Sideboard with mirror back, having semi-circular panelled ends and pair of centre doors.
- 310 A fine quality Harewood and satinwood inlaid Bedroom Suite:- wardrobe, 6'6" wide with curved centre cupboard, 4 drawers and 2 mirrored doors; dressing table; washstand - writing desk en suite, pair of bedside cupboards and 3 chairs (by Waring of Lancaster).
- 311 A circular black glass topped Table on four legs and undershelf 31" diam.
- 312 Mahogany Open Bookcase with 4 shelves backed, 6ft high x 5'6" wide.
- 313 Oak Drawer & Cupboard Unit.
- 314 Oak Plant Stand.
- 315 A bookcase fitment, the top unit having 4 shelves and two dividers with glazed sliding doors, the bottom unit having 4 drawers, 2 front and 2 side cupboards, overall 6'3" high x 9'6" wide.
- 316 Dressing Table in mahogany and burr walnut on four turned legs and stretcher, two large and two small drawers.
- 317 Veneered Double Wardrobe.

- 318 Fitment of 1 cupboard and 2 drawers, 4' high x 18" wide.
- 319 Oak Single Bedstead & mattress.
- 320 Oak Double Bed & mattress.
- 321 Double Divan, mattress & headboard.
- 322 Oak Double Bedstead & mattress.
- 323 Single Divan with head and foot boards.
- 324 Meat Safe.
- 325 Enamel Sink Unit.
- 326 Electrolux Fridge/Freezer.
- 327 Burco Front Loader Tumble Drier.
- 328 Philco Front Loader Automatic Washing Machine.
- 329 Cannon 134F Gas Cooker.
- 330 Kitchen Cabinet, cupboard and 3 drawers and enamelled top.
- 331 Fourfold Bedroom Screen.



Lot 253

Lot 224



Lot 230

Messrs. Golding, 45 High Street, Grantham.