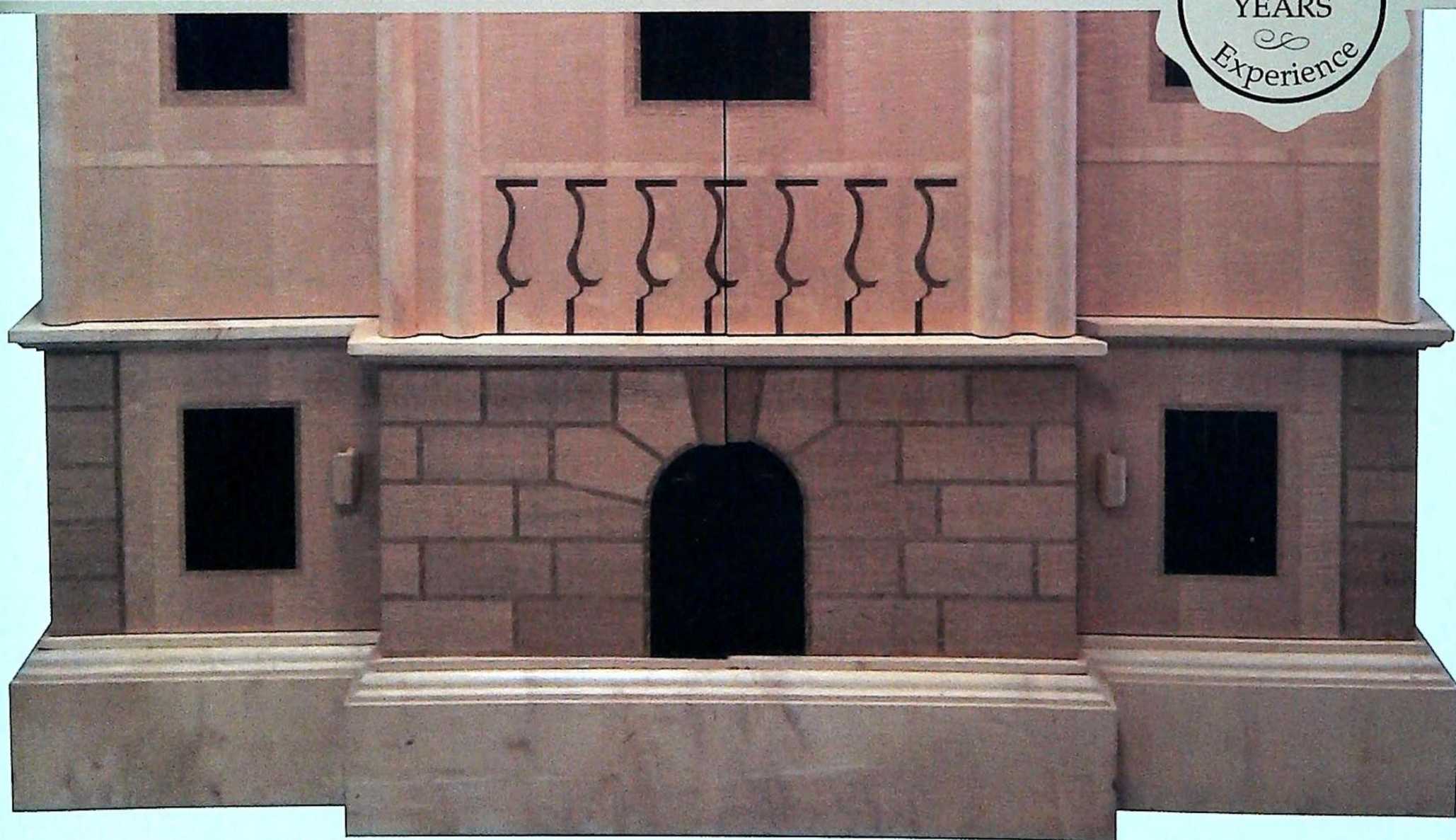




EST
1864

GOLDING YOUNG

preView Autumn 2016



CHARTERED AUCTIONEERS & VALUERS • ARTS & ANTIQUES SURVEYORS

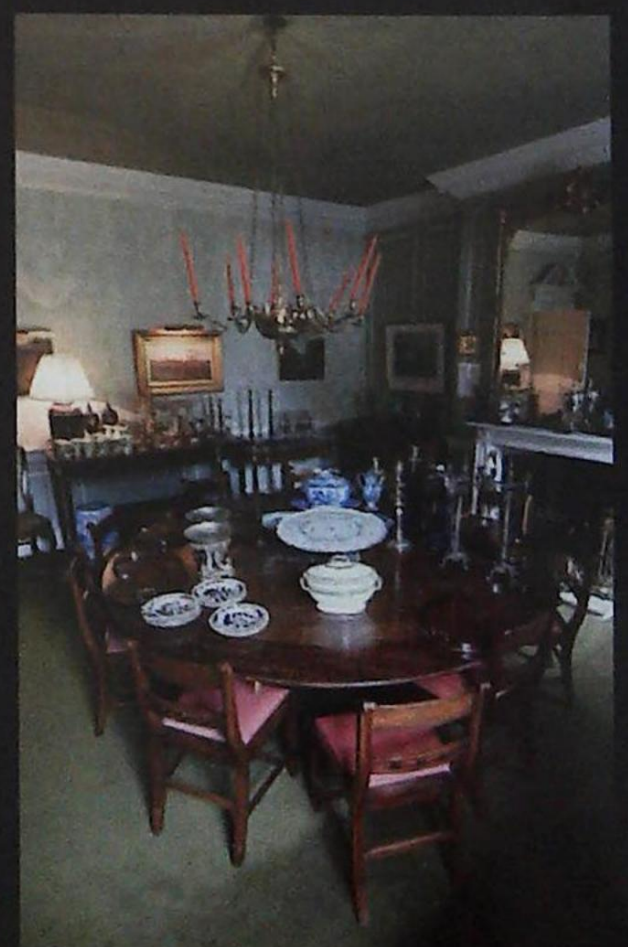
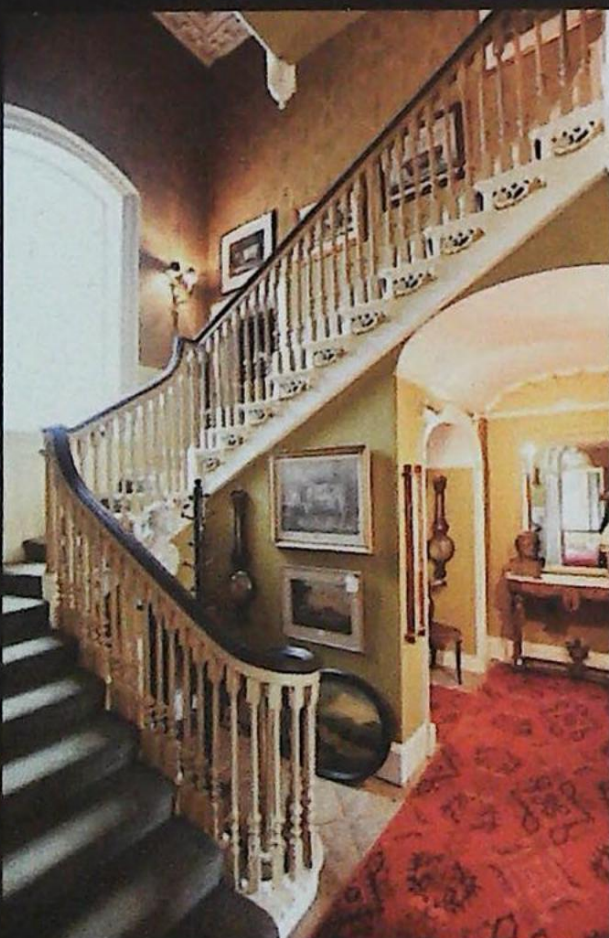
Leasingham Manor *reView*



The Sale Statistics

- 3½ weeks to value the entire house contents
- Over 1,400 buyers pre-registered
- A further 500+ bidders live online
- Another 200+ people leaving absentee bids
- The best attended marquee sale in recent times
- The £150,000 estimated sale total exceeded
- Over 90% sale rate
- 1132 lots finding new homes

View the results online at goldingyoung.com



reView 2016 –

We started 2016 with a feeling that auction life was going to get a lot busier. In anticipation of this we strengthened our team with John Ireland MRICS becoming Head of Department at Bourne. He is a Chartered Arts & Antiques Surveyor with over 20 years experience. We have also added three more staff to the team this year.

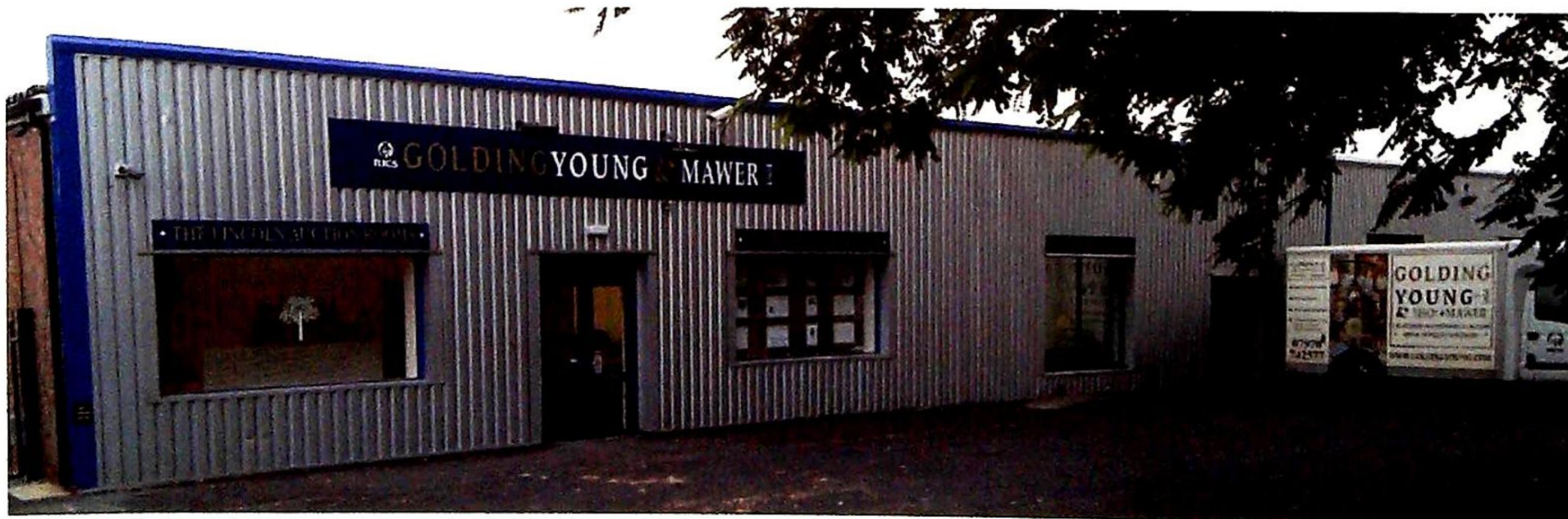
The anticipation had turned into reality by the time March arrived. The Private Client, Professional Services & Valuation Department had been working at near full capacity from day one and noting how incredibly busy it felt, we had to take a moment to see 'How busy?'. In January & February alone the number of Red Book valuation reports (probate, insurance, family division, etc.) had more than doubled on the period for previous year. William Gregory even managed to complete valuations in Bangkok and Tokyo during this period.

The salerooms have built to quite a crescendo with extra sales added in the calendar and all of the specialist sales have been performing very well indeed. Much of that early valuation work has now come under the hammer. The July sale at Dunston House was planned to be the last, but the relentless nature of instructions means that it will now remain in use for the months to come and we are now operating from four auction rooms.

In the background of all this auction activity has been the acquisition of **The NEW Lincoln Auction Rooms** in Station Road, North Hykeham. The journey started in January 2015 with surveys, planning and eventual purchase completion in October. This was followed by a program of a complete strip-out, rebuild and refurbishment. We opened the doors on the 1st August 2016 and look forward to seeing you at the first sale to enjoy the much improved facilities. The new display features include gallery picture hanging systems and a re-created high street jeweller's shop. The new Cafe Orange is open every Friday valuation morning as well as view & saledays and car parking has improved by 30%.



Colin R Young MRICS FNAVA ASFAV



Cover illustration: An early David Linley sycamore compactum, inlaid with oak and massacar ebony. £2,500-3,500.
Lot 14 at The Lincoln Auction Rooms on Wednesday 31st August.

Autumn *pre*View

Entries now invited for the following sales...

The Grantham Collective Sale

Wednesday 7th September

Antiques, Silver & Jewellery, Collectors Items, General Furniture & Effects



▲ A Meiji period Japanese satsuma moon flask, with Dai Nihon marks, probably Taizan Sei, 24cm high. £300-500

The Bourne Collective Sale

Wednesday 14th September

Fine Antique Furnishings, Silver & Jewellery, Collectors Items, General Furniture & Effects



▲ An early 18th century Welsh oak cwpwrdd tridarn £1500-2000

The Two-day Lincoln Collective Sale

Wednesday 21st September

Fine Antique Furnishings, Silver & Jewellery, Collectors Items – At Thos Mawer House

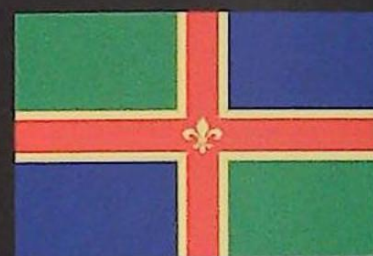
Thursday 22nd September

General House Clearance Furniture & Effects – At Dunston House

The Lincolnshire Sale

Saturday 1st October

Objects relating to the history and topography of the county. Inc. an important local collection of taxidermy



The Grantham Asian Art Sale

Wednesday 5th October

The Bourne Book, Stamp & Ephemera Sale

Wednesday 12th October

Inc. A private local collection of over 170 stamp albums.

The Lincoln Evening Art Sale

Wednesday 23rd November

PROBATE – INHERITANCE TAX ASSESSMENT

For many Executors and Trustees the responsibility of dealing with a deceased's Estate is a once-in-a-lifetime experience. You have to make a number of important decisions in a very short space of time and all when the loss is most difficult to come to terms with.

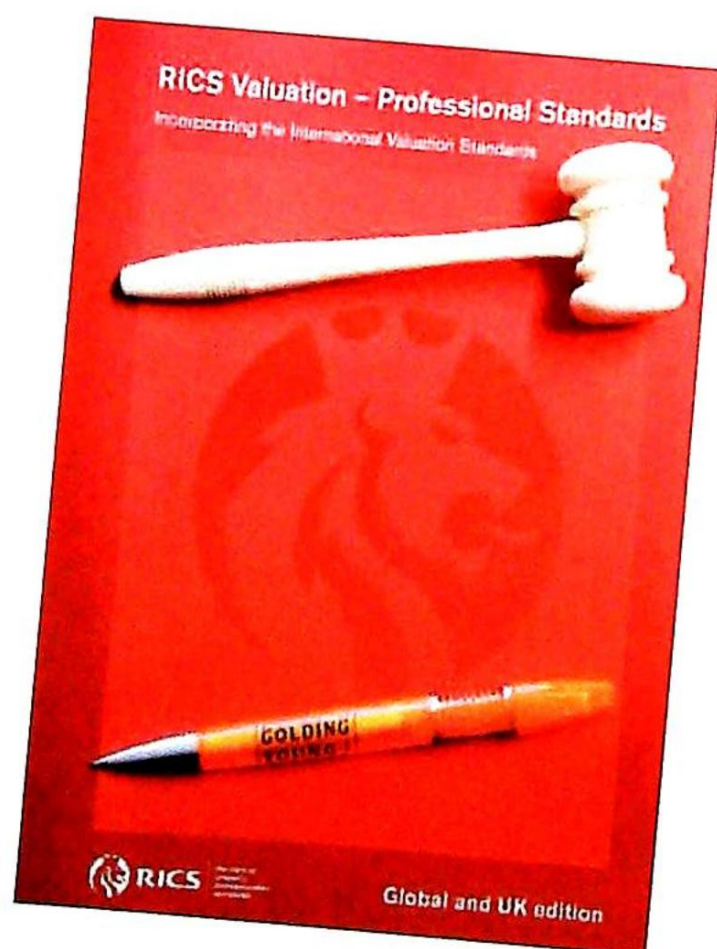
The position of Executor is an important one in law and has defined personal liability and responsibility. To exhibit due diligence to beneficiaries and more importantly HM Revenue & Customs, an Executor or advisor will instruct a firm Regulated by RICS.

Even if the estate will be taxed at 0%, a valuation remains an essential tool for an Executor. The inventory will still be used for identification of bequests, trust items, family division and proof of value.

Our valuations are prepared to the International Valuation Standards requirement of the 'Red Book'.

The report will cover sections of:

- Jewellery
- Vehicles
- Antiques, Fine Art & Collections
- General Furniture & Effects



For initial advice contact the following Chartered Auctioneers & Valuers:

Bourne, Stamford & South
Colin Young MRICS
01778 422686

Grantham, Lincoln & North
William Gregory MRICS
01522 524984

goldingyoung.com

Removals – Household & Commercial

- Free Quotations
- Full Packing Service
- Suppliers of Packing Materials
- Shipping & Storage Arranged
- Antiques & Fine Art Specialists
- Specialist Piano Movers
- Office Movers

Contact Andrew Lowes on 07970 742577 for a quote or email lowes@goldingyoung.com

goldingyoung.com

PRIVATE CLIENT & PROFESSIONAL SERVICE DEPARTMENT

We value personal property for private and corporate clients. Our team have valued family heirlooms, art collections and museum holdings for a variety of purposes.

We are the only auction house in the region to have a bespoke Private Client Department with:

- Three Chartered Arts & Antiques Surveyors
- Two RICS/ Antiques Trade Gazette professional assessment award-winning valuers
- Two In-house qualified jewellery valuers
- Experience in abundance and diversity since 1864
- Ten professional staff with RICS, NAVA or SoFAA qualifications.

Paintings, Drawings & Sculpture

Any statement as to authorship, attribution, origin, date, age, provenance and condition is a statement or opinion and is not to be taken as a statement or representation of fact. Golding Young & Mawer reserve the right, in forming their opinion, to consult and rely upon any expert or authority considered by them to be reliable.

A picture catalogued with the forename(s) and surname of the painter is in our opinion a work by that artist; e.g. Joseph Mallord William Turner. When an artist's forename(s) is not known, a series of asterisks followed by the surname of the artist, whether preceded by an initial or not, indicates that in our opinion the work is by the artist.

1. **Attributed to....** is in our opinion probably by the artist.
2. **Studio of....** is in our opinion a work from the studio of the artist which may or may not have been executed under his direction.
3. **Circle of....** is in our opinion a work of the period of the artist executed under his immediate influence.
4. **Follower of....** is in our opinion a work by a painter working in the artist's style, contemporary or nearly contemporary, but not necessarily his pupil.

5. **Manner of....** is in our opinion a work in a style related to that of the artist, but of a later date.
6. **School....** is in our opinion the picture was executed at that time and in that location.
7. **After....** is in our opinion a copy of any date after a work by that artist.
8. The term **signed** and/or **dated** and/or **inscribed** means that in our opinion the signature and/or date and/or inscription are from the hand of the artist.
9. The term **Bears signature** and/or **dated** and/or inscription means that in our opinion the artist's name and/or date and/or inscription have been added by another hand.
10. All references to signatures, inscriptions and dates refer to the present state of the work.
11. Dimensions are given height before width.

Artist's Resale Right Scheme (Droit de Suite)

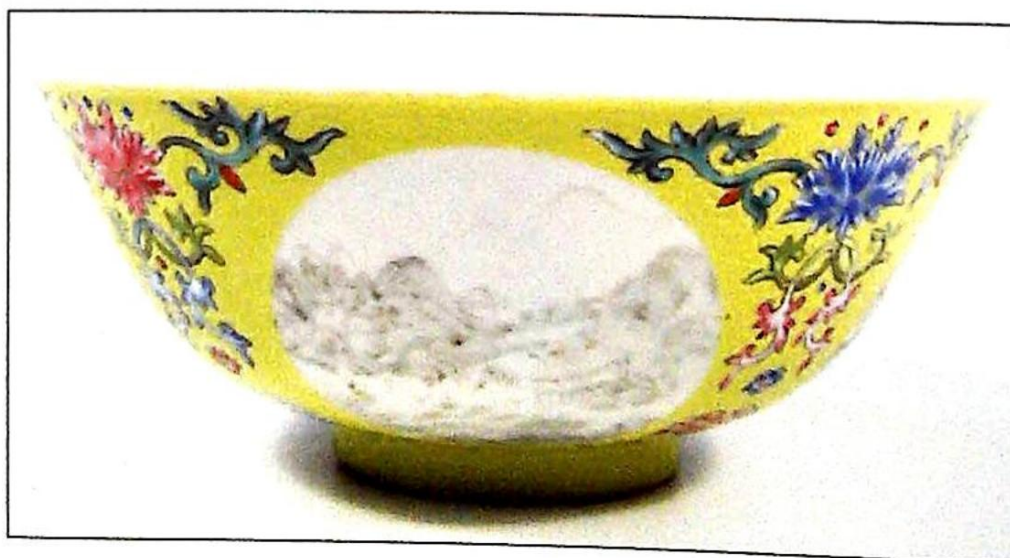
Following the UK's implementation of the EU Artist's Resale Right directive in February 2006, living artists are entitled to receive a resale royalty each time their art work is sold in the UK by an art market professional, subject to certain conditions. In January 2014 this has been extended to the sale of works of art of artists who have died in the previous 70 years, despite the wishes of the British Art Market Federation and other professional bodies. This payment is calculated on qualifying works of art which are sold for a hammer price or best bid price of more than EUR 1000. The UK sterling equivalent of EUR 1000 will fluctuate in line with prevailing exchange rates.

The actual qualifying threshold will be calculated by the Artist's Resale Right Service Hub based on the European Central Bank reference rate published at 2.15pm on the day of the sale.

The royalty charge will apply if the hammer price is more than the UK sterling equivalent of EUR 1000. The royalty charge will be added to buyer invoices and must be paid before items can be cleared. No handling costs or additional fees with respect to these charges are retained by auctioneers despite us having to undertake all of the extra and considerable administration work. This sum is then paid by us to a 'not-for-profit' collecting society, who will actually extract their administration fees. Any residual amount may go to benefit the artist.

Portion of the hammer price (Euro's EUR)	Royalty rate
1000 to 50,000	4%
50,000.01 to 200,000	3%
200,000.01 to 350,000	1%
350,000.01 to 500,000	0.5%
Exceeding 500,000	0.25%

VAT is not payable on this royalty charge. A maximum royalty charge is 12,500 EUR. Revised 4th January 2011.



Sold in our Summer Asian Art Sale at Grantham for £6,000

The background of the entire page is a painting of a mountain landscape. In the foreground, a person wearing a wide-brimmed hat and a poncho stands on a rocky path, leaning on a walking stick. The middle ground shows a valley with some small buildings and more mountains in the distance. The sky is a mix of blue and white, suggesting a hazy or cloudy day. The overall style is impressionistic, with visible brushstrokes and a rich color palette.

The Lincoln Art Sale

Wednesday 31st August
at The Lincoln Auction Rooms at 6pm
(or following The Collective Sale if later)

Selling from The Gallery rostrum at Thos Mawer House

Note: Lots 2001 to 2100 will be exhibited in The Gallery at Thos Mawer House
and Lots 2101 onwards exhibited at The Dunston House Saleroom for public viewing.

Viewing Times: Friday 26th 2pm to 6pm,
Tuesday 30th 10am to 4pm
& Saleday from 2pm.

Bid online or simply watch the sale live at



the-saleroom.com
live auctions

For enquiries for this sale to William Gregory MREs
on 01522 524984

Lincoln Fine Art Sale



▲ 2001.
Mary Dawson Holmes (Elwell) 1874-1952.
Portrait of Frederick William Elwell, oil on canvas, signed, dated 1913, and titled verso, 100cm x 69cm.
£1000-1500



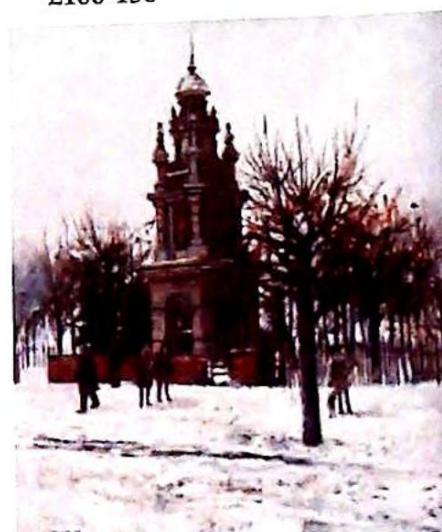
▲ 2002.
Late 18thC Continental School
Travellers in country landscape, oil on canvas, 48cm x 62cm.
£300-500



▲ 2003.
19thC English School.
A country maiden with a sheaf of corn, resting at style, oil possibly on board, 43cm x 31cm.
£700-1000



▲ 2004.
Rowland Langmaid (1897-1956).
London (Tower Bridge), artist signed and titled dry point etching, limited edition of 100, with original label verso, 17cm x 21.5cm.
£100-150



▲ 2005.
Peter Brannan (1926-1994).
The Monument, oil on board, signed and dated (19)68, 49.5cm x 39cm.
Upon instructions from the Executors of Euan Robertson (Dec'd) being residual contents of Leasingham Manor, Nr, Sleaford, Lincolnshire.
£250-400



▲ 2007.
Richard Ansdell (1815-1885).
Farmer with sheep dog and working horses in country landscape, oil on canvas, signed, 62cm x 73cm.
£800-1200



▲ 2008.
C. Mainetta (19thC/20thC).
Rio S Maurizio, Venezia, oil on canvas, signed and dated 1912, titled on mount, 66cm x 40.5cm.
£100-200



▲ 2006.
Julius Hare (1859-1932).
Coastal scene with fisherman, oil on canvas, signed, 34.5cm x 80.5cm.
£200-300



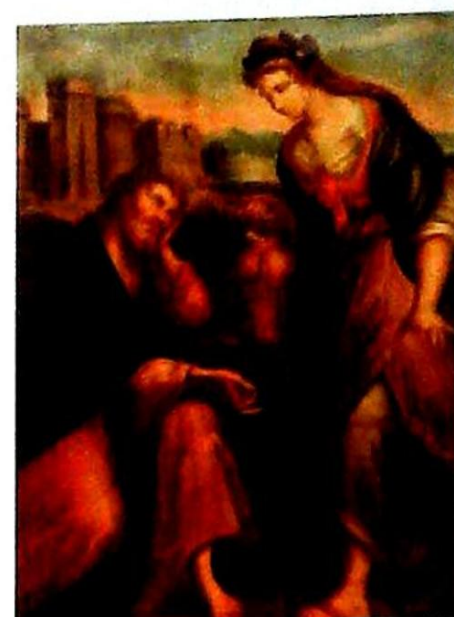
▲ 2009.
A Vescovi (19thC).
Fishing smacks in coastal landscape, oil on canvas, signed, 40cm x 66cm
£200-300



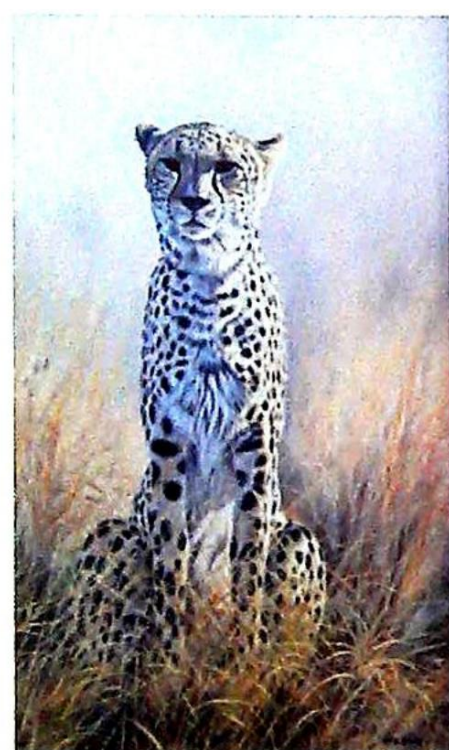
▲ 2012.
Egisto Chrivacci (c.1846-1881).
Continental coastal scene with masted ships, oil on canvas, signed verso, 21cm x 44.5cm.
£100-150



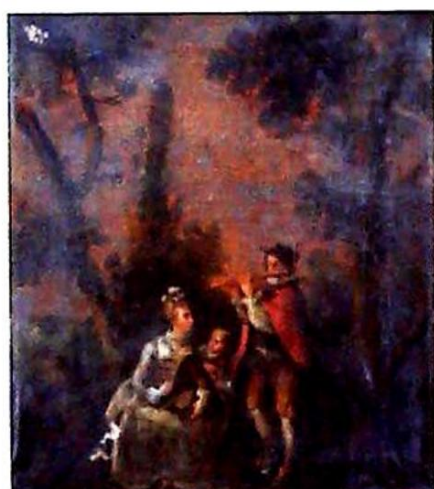
▲ 2015.
Thomas Lound (1802-1861).
Merkshall, Norfolk, oil on board, titled and dated 1842, in frame, 27.5cm x 22cm.
£200-300



▲ 2020.
After Angelika Kauffman.
Jesus and the Samaritan Woman at the Well, oil on canvas, 102.5cm x 75.5cm.
£200-400



▲ 2010.
Wim Kosch (20thC).
Sentinel, oil on board, signed and titled verso, 73cm x 43cm.
£100-200



▲ 2013.
18thC/19thC Continental School.
A landscape with a flautist and other figures beneath the bough of a tree, oil on card laid on canvas, 58cm x 50.5cm.
£100-150

2016.
Bartolozzi after Greuze.
A Bacchante, coloured engraving, 36cm x 25cm, with ornate gilt scroll frame.



▲ 2017.
Charles R Pettafor (act. 1870-1900).
River landscape, oil on canvas, signed and dated 1883, 30cm x 44cm.
£100-200

2021.
In the manner of John E. Ferneley (1782-1860).
A Chestnut Hunter and thatched stable, signed J. Ferneley and dated 1826, 27cm x 32cm, and handwritten paper label verso.
£80-120



▲ 2022.
19thC British School.
Young gentleman on horseback with hounds, oil on canvas, 65cm x 90cm.
Upon instructions from the Executors of Euan Robertson (Dec'd) being residual contents of Leasingham Manor, Nr, Sleaford, Lincolnshire.
£300-500



▲ 2011.
18thC British School.
Half length portrait of a gentleman with white collar, oil on canvas, 74.5cm x 62.5cm.
£300-500



▲ 2014.
19thC English School.
Head and shoulder profile portrait of a young woman in the classical romantic style, oil on panel, 29.5cm x 26cm.
£180-250

2018.
19thC British School.
Portrait of a young child, in silk dress and blue ribbon, oil on canvas, 61cm x 53cm.

2019.
19thC British School.
Country path scene with figures, oil on canvas, 49cm x 59.5cm.

2023.
19thC English School.
An old hut and figures in a landscape, oil on canvas, signed verso, 24.5cm x 30cm.
£80-120

Lincoln Fine Art Sale

2024.
A. Baker (19thC).
River landscape with figures, oil on canvas, signed, 49.5cm x 67.5cm.
Upon instructions from the Executors of Euan Robertson (Dec'd) being residual contents of Leasingham Manor, Nr, Sleaford, Lincolnshire.
£50-80

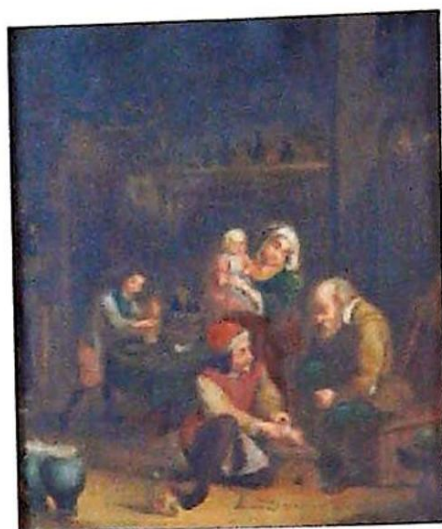
2025.
A. Baker (19thC).
River landscape, oil on canvas, signed, 49.5cm x 67.5cm.
Upon instructions from the Executors of Euan Robertson (Dec'd) being residual contents of Leasingham Manor, Nr, Sleaford, Lincolnshire.
£50-80

2026.
19thC/20thC British School.
Country landscape with industrial chimneys in the background, oil on board, 18cm x 46cm.
£50-100



▲ 2027.
19thC School.
Head and shoulders portrait of a young child in the classical style, oil on canvas, 30cm x 25cm.
£500-700

2029.
After Francis Wheatley (1745-1801).
The Fortune Teller, oil on board, titled verso, 20.5cm x 16cm.



▲ 2028.
19thC Dutch School.
Old Gentleman resting and an interior scene, oil on copper, a pair, 23cm x 19cm.
£150-250

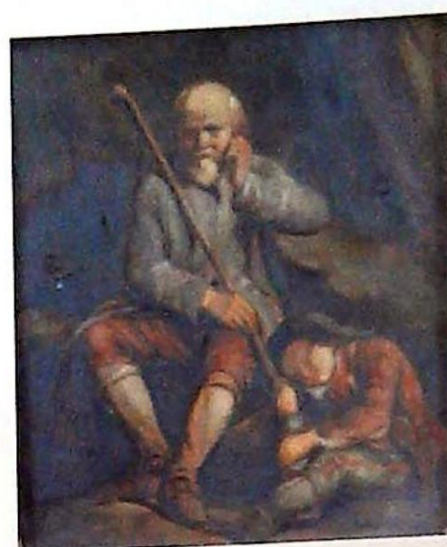
► 2030.
Daniel Sherrin (1868-1940).
River landscape, oil on canvas, signed Richards, 38cm x 59cm.
£250-350



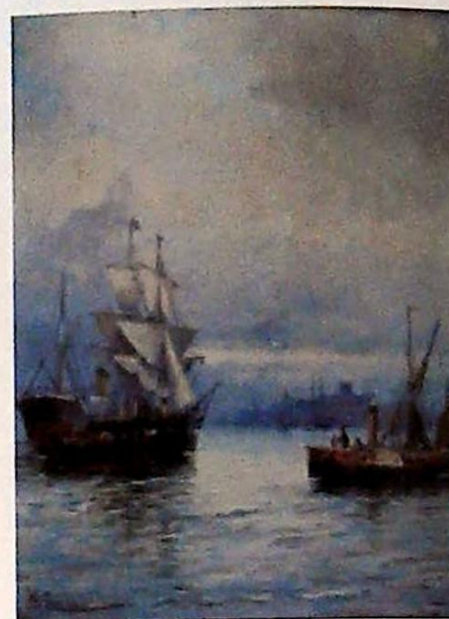
2032.
Spare Lot.



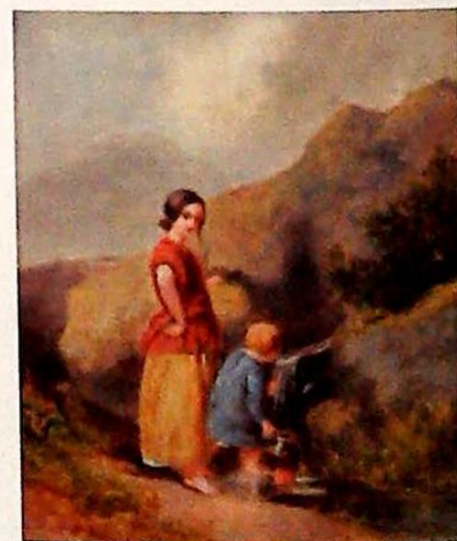
▲ 2031.
Charles Louis Lucien Muller (1815-1892).
The Lovers, oil on canvas, 70cm x 52cm.
£2000-3000



2033.
19thC School.
Half length portrait of a gentleman in cape and hat, oil on board, 11.5cm x 9cm.
£50-80



▲ 2034.
William Anslow Thornley (act. 1858-1898).
Masted ships and steamer, oil, pair, signed, 19.5cm x 14.5cm
£800-1200



▲ 2035.
Follower of Paul Falconer Poole (1807-1879).
Mother and son collecting water, oil on canvas, 30cm x 25cm
£100-200



▲ 2036.
Leonide Bourges (1838-1909).
The Young Artist, oil on panel, signed, 38.5cm x 31.5cm
£400-600

2037.
D Hall (19thC).
Figure in country landscape, oil on canvas, signed, 38cm x 48cm.



2038.
William Pitt (act.1853-1890).
On the Avon, Devon, oil on canvas, signed and titled verso, 33.5cm x 64cm
£400-600

2039.
R. Penson (19thC/20thC).
Fishing from the bank of the river, oil on canvas, signed, 27.5cm x 37.5cm.
£80-120

2040.
19thC British School.
River landscapes, watercolour - two monogrammed, 28.5cm x 40.5cm.
£80-120



▲ 2041.
Henry Follenfant (19thC/20thC).
Farmyard scene, oil on canvas, signed, 29.5cm x 40cm.
£120-160



▲ 2042.
William E Milner (1849-1895).
A young girl holding her bonnet and a biscuit, with a dog looking on, oil on canvas, oval, signed, 33.5cm x 30cm.
£400-600

2043.
19thC British School.
Two gentlemen holding golf clubs, oil, 41.5cm x 33.5cm.
£50-80

2044.
After Reynolds.
Portrait study, pencil and crayon, 35.5cm x 33.5cm.
£50-80

2045.
Newlyn School.
Half portrait of a woman, oil on canvas, 65.5cm x 49.5cm.
£50-80

2046.
19thC British School.
Head and shoulders portraits - sisters, pastel, a pair, 43cm x 38cm



▲ 2047.
John Reed Dickinson (1844-1887).
Maiden in country landscape, watercolour, signed, 34cm x 36.5cm.
£200-300



▲ 2048.
Arthur Claude Strachan (1865-c1938).
Country lane with maiden and cat, watercolour, signed, 17cm x 26cm.
£400-600

2049.
Williams (19thC).
On the Sussex Coast, watercolour, signed and titled, 21.5cm x 31cm.
£50-100

2050.
After Thomas Bush Hardy (1842-1897).
Coastal scenes with masted boats, coloured prints, a pair, 14.5cm x 33.5cm

▼ 2051.
Richard Parkes Bonington (1802-1828).
Portrait of French student, oil on canvas, signed and titled verso, 53cm x 43cm.
£1000-1500



▲ 2052.
19thC English School.
River landscape with figure fishing, oil on board, 14.5cm x 22.5cm.
£100-150



▲ 2053.
C. Rae (19thC).
Fishing boats and other sailing vessels in a breeze, and a companion picture of a fishing boat at night, oil on board, a pair, signed, 9.5cm x 15cm.
£200-300

Lincoln Fine Art Sale



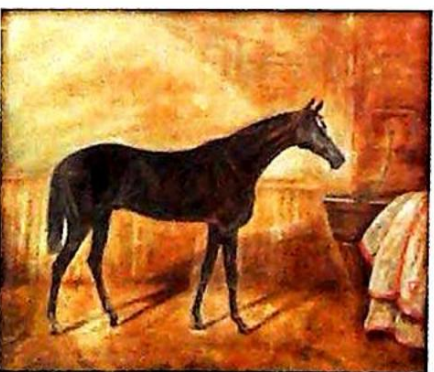
- ▲ 2054.
19thC Continental School.
Coastal scene with sailing boats, oil on canvas, 29.5cm x 50cm.
£150-250



- ▲ 2055.
Robert Watson (1865-1916).
Highland cattle at a river bank, oil on canvas, signed, dated 1911, 23.5cm x 34.5cm.
£200-300



- ▲ 2056.
19thC Continental School.
Coastal scene with fishing boats, oil, 24cm x 35.5cm.
£150-200

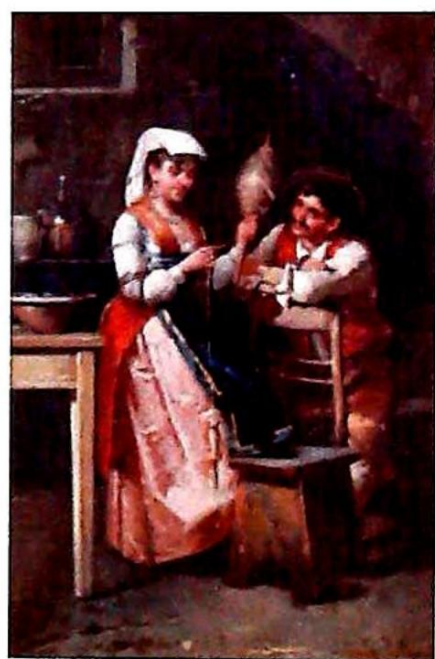


- ▲ 2057.
George Paice (1854-1925).
St Simon, portrait of a horse in stable, oil on canvas, initialled and titled 50.5cm x 60cm.
£600-800



- ▲ 2058.
William Gwynn of Ludlow (19thC).
A landscape with a Lurcher chasing a hare, and with figures on horseback in the distance, signed and dated 1833, indistinctly inscribed verso, 41cm x 56cm.
£200-300

2059.
M.W. Browne (19thC/20thC).
Old Tom Oxford, oil on canvas, signed, 55cm x 40.5cm.
£50-80



- ▲ 2060.
Francesco Pelinso (1836-1916).
Spinning Yarn, oil on canvas, a pair, signed, 38.5cm x 25.5cm.
£500-800



- ▲ 2061.
Adolf Theer (1811-1868).
Portrait of a lady holding a rose, watercolour, signed and dated 1854, 25.5cm x 19.5cm.
£200-300



- ▲ 2062.
Ludovico Marchetti (1853-1909).
Old gentleman holding bottles of wine, oil on canvas, signed, 37.5cm x 25cm.
£150-200



- ▲ 2063.
19thC Continental School.
Floral still life, oil on canvas laid on board, 26.5cm x 21.5cm.
£200-300

2064.
19thC Continental School.
Young street musician, watercolour, 52cm x 35cm.
£50-80



▲ 2065.
19thC Continental School.
Floral still life, oil on canvas,
indistinctly signed,
59cm x 29cm.
£150-200

2066.
George Colman
(19thC/20thC).
Garden Terrace, oil on board,
signed, 26cm x 37.5cm.

2067.
Alexander Jamieson (1873-1937).
The Elm Tree, oil on board, signed
and titled verso, 39.5cm x 29.5cm.
£50-80



▲ 2068.
Tom Seymour.
Country landscape with farm
girl, river landscape, oil on
canvas, a pair, signed,
39.5cm x 60cm.
£150-250



▲ 2069.
19thC Continental School.
Cattle in rural farm landscape,
oil on canvas, 29.5cm x 50cm.
200-300



▲ 2070.
G. Dubois (19thC/20thC).
Courtyard scene, oil on canvas,
signed, 27.5cm x 37.5cm.
£150-250



▲ 2071.
George Turner (1843-1910).
The brook near Kirk Ireton, oil
on board, signed and titled
verso, 29cm x 44cm.
£200-300

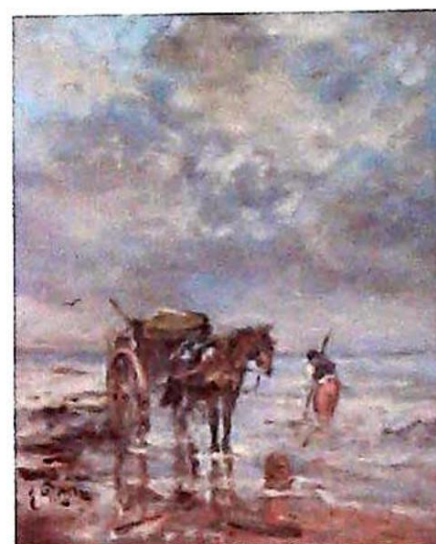
2072.
Mary Vaughan
(19thC/20thC).
Beach scene, oil on board, signed,
27.5cm x 38cm.
£50-80



▲ 2073.
A Vescovi (19thC).
Coastal scene with figures and
fishing boats, oil on canvas,
signed.
£250-350

2074.
19thC Continental School.
Market scene, oil on board,
36.5cm x 25.5cm.
£50-80

2075.
19thC/20thC Continental
School.
Landscape with castle, oil on
canvas, 39.5cm x 30.5cm.
£30-50



▲ 2076.
Evert Pieters (1856-1932).
Fisherman on beach, oil on
canvas, signed, 49cm x 39.5cm.
£400-600

2077.
Clarkson Stanfield (1793-1867).
Coastal scene with figure and
fishing boats, oil panel,
16cm x 21cm.



▲ 2078.
Willem George Frederick
Jansen (1871-1949).
Dutch landscape, oil on
canvas, signed, 21cm x 30.5cm.
£200-300



▲ 2079.
Stefano Novo (1862-1927).
Maiden on a floral balcony, oil
on panel, signed, 39cm x 19cm.
£1000-1500

2080.
Sydney Herbert (1854-1914).
River landscape with castle,
figures and barges, oil on board,
46cm x 30cm.
£50-100



▲ 2081.
Oranef Chimchidian
(19thC/20thC).
Felouques auport, Auclair
delune, oil on canvas, signed,
31cm x 20cm.
£400-600

Lincoln Fine Art Sale



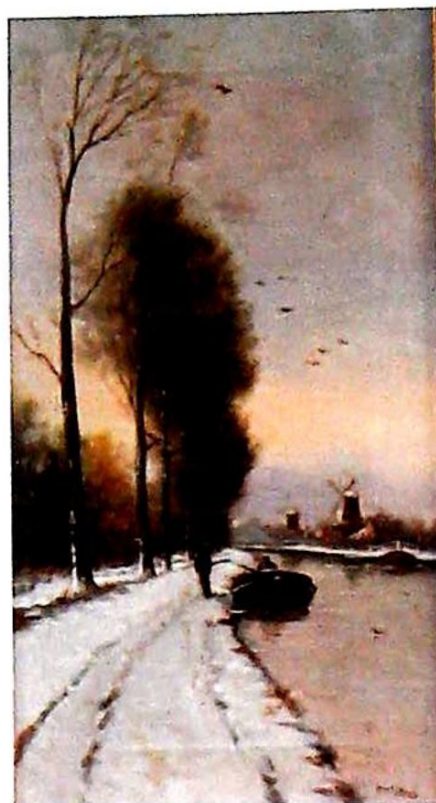
2082.
Robert James Winchester Fraser (1873-1930).
The Ferry Boat Inn, Holywell, Cambridgeshire, watercolour, signed, 25.5cm x 36cm.
£200-300



▲ 2083.
19thC Continental School.
Good Company, oil on canvas, 33cm x 41.5cm.
£150-250



▲ 2084.
Thomas Gruber (19th/20th Century).
River landscapes, oil on board - a pair, signed and inscribed Munchen, 30cm x 46cm
£100-200



▲ 2085.
Juriaen Marinus van Beek (1879-1965).
Dutch Winter canal scene, oil on canvas, signed, 39.5cm x 21cm
£200-300

2086.
20thC Victorian School.
Cats and flowers, oil on board, 19cm x 24cm.
£50-80

2087.
20thC Regency School.
Husband and wife formal portrait, oil on board, 29.5cm x 39.5cm.
£50-80

2088.
Richard John Pembury (1820-1891).
Figures, horse and dogs outside of tavern, oil on canvas, signed, 55cm x 44cm.
£50-100



▲ 2089.
James Poole (1803-1886).
River landscape, figures before trees on a summer day, oil on stiff canvas, signed, 41cm x 60cm.
Haynes Fine Art Of Broadway label verso.
£500-700



▲ 2090.
Henry Hillier Parker (1858-1930).
Streatley, Berkshire, hand cutting hay on a summers day before cottage and windmill, oil on canvas, signed, 41cm x 66cm,
Haynes Fine Art Of Broadway and John H Paris labels and chalk numbers verso.
£1000-1500

2091.
20thC Dutch School.
Winter landscape with fisherman in a boat, oil on canvas, indistinctly signed, 59.5cm x 90cm.
£80-120



▲ 2092.
Adam Barland (c1843-1875).
Rural landscape with figures and cattle, oil on canvas, signed, 24.5cm x 34.5cm
£200-300



▲ 2093.
Myles Birket Foster (1825-1899).
Rural scene - figures on horse and cart, watercolour, monogrammed, 11cm x 15cm.
£100-200

2094.
H. English (19thC/20thC).
Rural landscape with figures, watercolour, signed and dated 1902, 27.5cm x 44cm.
£60-90



▲ 2095.
19thC Continental School.
Coastal scenes with figures and fishing boats, oil on glass, a pair, 32cm x 41cm.
£200-300

2096.
20thC Continental School.
Lago Maggiore Isola Bella, oil on canvas, indistinctly signed and titled, 40cm x 84.5cm.
£50-100



▲ 2097.
George Gault (1916-2001).
River landscape, oil on board, signed, 48cm x 62.5cm. Bears label verso - The International and Educational Art Bureau, Ealing.
£400-600



▲ 2098.
D. Morrison (20thC).
Australian river landscape, oil on board, signed, 53.5cm x 41cm.
£50-80



▲ 2099.
20thC Continental School.
Flower Market (possibly Nice), oil on board, indistinctly signed, 50cm x 75cm.
£150-250



▲ 2100.
Edward Wesson (1910-1983).
Bosham Boatyard, oil on board, signed, 42.5cm x 53cm.
£400-600

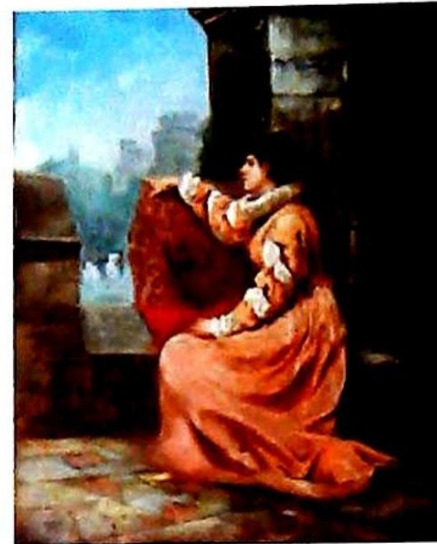


▲ 2101.
M.M. Haghe (19th/20thC).
A winter scene with musicians by moonlight, oil on board, signed, 32cm x 24cm. (probably executed for a Christmas card)
£200-300

2102.
K. Youthed (19thC/20thC).
Mountain and lake scene, oil on canvas, signed and dated 1910, 60cm x 90cm.
£50-80

2103.
Langham (19thC/20thC).
Fisherboy, watercolour, signed and dated 12 July 1861, 33cm x 21cm.

2104.
Frank Galsworthy (1863-?).
West Lynn opposite Kings Lynn, Norfolk, watercolour, signed, titled verso and dated 1931, 37cm x 50cm.



2110.
Richard Caton Woodville II (1856-1927).
Portrait of a young woman in a landscape, with white silk gown and broad brimmed hat, entitled 'A more charming girl is seldom seen upon a bright October morning', from a portfolio of works from the picture editor of the Illustrated London News, monochrome wash with white body colour, signed 21.5cm x 16.5cm.
£80-120

▲ 2105.
William A Breakspeare (1855-1914).
The Royal Prisoner, oil on canvas, signed, 51cm x 41cm.
£500-800

2106.
Andrew Fairbairn Affleck (1874-1935).
Grand Canal, Venice, dry point etching, signed, 18cm x 28cm. Two labels verso for Thos. Agnew & Sons, Manchester.
£70-100

2107.
Thomas Sunderland (1744-1828).
Lichfield Cathedral, ink drawing, 14cm x 21cm. Bears label verso - The Gallery Downstairs, London
£80-120

2108.
18thC/19thC Continental School.
Blois on the Loire, watercolour, inscribed, 21cm x 41cm.
£50-100



▲ 2109.
Joshua Cristall (c.1767-1847).
Mrs Southern - Coppet Hill, ink drawing, signed and dated 1826. Bears label verso - Abbott and Holder, London.
£200-300



▲ 2111.
David Cheng (20thC).
Hong Kong, oil on canvas, signed and dated 1961, 39.5cm x 50cm.
£200-300



▲ 2112.
Ezequiel Torroella (1921-1998).
Beached boats, oil on canvas, signed, 36.5cm x 53.5cm.
£100-200



▲ 2113.
Carlo Musso (1907-1968).
Snow mountain, oil on board, signed, 22.5cm x 28.5cm. Bears artist label verso.
£400-600

Lincoln Fine Art Sale



- ▲ 2114.
Henry Sutton Palmer
(1854-1933).
At Cranmore, watercolour,
15.5cm x 22.5cm.
£100-150

2115.
Louis Jennings (20thC).
A wedding party, oil on board,
signed and titled verso,
24cm x 34cm. Bears artist's label
verso.
£30-50

2116.
H.E. Cox (19thC/20thC).
Street scenes, watercolour - three,
signed and dated, 25cm x 17.5cm.
£60-90

2117.
H.E. Cox (19thC/20thC).
Street scenes, watercolour, two,
signed and dated,
25.5cm x 17.5cm.
£40-60

2118.
19thC British School.
Fox, oil on canvas, 19cm x 24cm,
and two framed prints, still life. (3)
£30-50



- ▲ 2119.
Wolfram Onslow Ford
(1879-1956).
The Orchard, oil on canvas,
75.5cm x 100.5cm. Bears label
verso
£300-500



- ▲ 2120.
Josep Martinez Lozano
(1923-2006).
Forge Korel, oil on canvas,
signed, dated (19)61, titled
verso, 32cm x 54cm.
£200-300



- ▲ 2121.
Edwina W. Lara (19thC).
Harbour scene, oil on canvas,
signed, 40.5cm x 60.5cm.
£200-300



- ▲ 2122.
August Lohr
(1842-1920).
Mexican landscape,
oil on canvas,
signed,
60cm x 49.5cm.
Stamp verso Mori
Y Guevara Condell
71.
£1000-2000



2123.
T.A. (19thC).
Country landscape with shepherd
and sheep, oil on board,
34cm x 59.5cm.
*Upon instructions from the
Executors of Euan Robertson (Dec'd)
being residual contents of
Leasingham Manor, Nr, Sleaford,
Lincolnshire.*
£50-80

2124.
19thC British School.
Shepherd and sheep in landscape,
oil on canvas, indistinctly signed
and dated 1900, 29.5cm x 65cm.
*Upon instructions from the
Executors of Euan Robertson (Dec'd)
being residual contents of
Leasingham Manor, Nr, Sleaford,
Lincolnshire.*
£60-90

2125.
19thC British School.
Masted ship in coastal scene, oil
on canvas, indistinctly signed and
dated, 16.5cm x 34cm.
*Upon instructions from the
Executors of Euan Robertson (Dec'd)
being residual contents of
Leasingham Manor, Nr, Sleaford,
Lincolnshire.*
£80-120

- ▼ 2126.
Alexander Mark Rossi
(1840-1916).
Nighttime, watercolour, signed,
50.5cm x 67cm
£1000-1500

2127.
19thC British School.
Landscape, Beverley, Yorkshire,
watercolour, 24cm x 41cm
£50-80

2128.
Caroline St John Mildmay
(1800-1894).
Church interior, watercolour,
46cm x 27cm
£50-80

2129.
Jack Cox (1914-2007).
Estuary scene with fishing boats,
oil on board, signed,
39.5cm x 49.5cm
£50-100

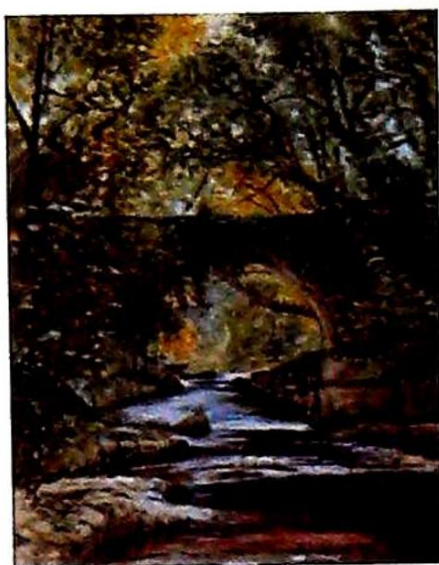
2130.
Benjamin Smith (20thC).
Rural landscape with horse and
cart, watercolour, signed,
29cm x 39cm
£50-80

2131.
Albert Edward Bowers
(19thC).
Country landscape with sheep,
watercolour, signed, 35cm x 50cm.
*Upon instructions from the
Executors of Euan Robertson (Dec'd)
being residual contents of
Leasingham Manor, Nr, Sleaford,
Lincolnshire.*
£50-80

2132.
George Oyston (1861-1937).
River landscape in summer with a
sailing boat and bridge in the
distance, watercolour, signed and
dated 1927, 25cm x 35cm.
£70-100



▲ 2133.
Mildred Anne Butler
(1858-1941).
In Princes St Gardens May 13
1916, watercolour, titled and
dated, 33cm x 23cm
£150-250



▲ 2134.
Robert Jobling (1841-1923).
River scene, watercolour,
signed and dated (18)75,
28cm x 21.5cm
£100-200

2135.
Lilla Knight (19/20thC).
Esterel Mountains from Cannes,
sunset, December afternoon,
watercolour, signed and titled
verso, 22.5cm x 30cm
£30-50

2136.
WCG.
Interior scene, watercolour,
initialled and dated July 51,
25cm x 35.5cm

2137.
Bertram Prance (1889-1958).
Market scene with figures,
watercolour, 26cm x 36.5cm
£30-50

2138.
19thC British School.
Boy with a rabbit, watercolour,
44cm x 33cm
£30-50

2139.
Albert H Findley (1880-1975).
Woodland track, watercolour,
signed, 25.5cm x 32cm
£30-50

2140.
After Henry Woods.
The Admonition, oil on canvas,
57.5cm x 72.5cm
£50-100

2141.
Arthur Henry Knighton-
Hammond (1875-1970).
Sisterton Provence, watercolour,
signed, 45cm x 61cm
£50-100



▲ 2142.
Anthony Eyton (b.1923).
Porta Maggiore, Rome, pastel,
signed and dated 1986,
42cm x 53.5cm. Bears label
verso The Mall Galleries,
London
£200-300



▲ 2143.
David C Bell (b.1950).
Masted ships at battle,
watercolour, signed,
37.5cm x 59cm
£100-200

2144.
David C Bell (b.1950).
Masted ships at sea, watercolour,
signed, 24cm x 35cm
£50-80

2145.
David C Bell (b.1950).
Masted ship at sea, watercolour,
signed, 34.5cm x 52cm. Bears label
verso James H Starkey Galleries,
Yorkshire
£80-120



▲ 2146.
Vincenzo Ciappa (19thC).
Fishing boats, oil on board,
pair, signed, 30.5cm x 40cm
£300-400



▲ 2147.
Tom G Purvis (1888-1959).
Gun boat off Hong Kong, oil
on canvas, signed and dated
(19)30, 24.5cm x 37.5cm
£150-200

2148.
19thC Continental School.
Naples, watercolour,
19.5cm x 27.5cm
£50-80



▲ 2149.
Gioacchino la Pira (act
1839-1870).
Naples - Mount Vesuvius
eruption, gouache, signed,
30cm x 45cm
£300-400

Lincoln Fine Art Sale



- ▲ 2150.
19th Century Italian School.
Bay of Naples, gouache, indistinctly signed, 32cm x 47cm
£200-300

2151.
Keith Roper (b.1946).
From the Old Marshelling Yards, pastel, signed, titled and dated (19)85, 20cm x 26cm
£50-80

2152.
Keith Roper (b.1946).
Canal scene, pastel, signed and dated 1986, 23.5cm x 30cm
£50-80

2153.
Roy Collett (b.1937).
Home from school, village gossip, oil on board, a pair, signed and titled, 29cm x 39cm
£50-80



- ▲ 2154.
Peter Brannan (1926-1994).
Brick Pit, oil on board, signed, dated (19)78, and titled verso, 60cm x 78cm.
Upon instructions from the Executors of Euan Robertson (Dec'd) being residual contents of Leasingham Manor, Nr Sleaford, Lincolnshire.
£250-400



- ▲ 2155.
William Bartol Thomas (1877-1947).
Country view with farmhouse, watercolour, signed and dated 1897, 19.5cm x 35cm.
Upon instructions from the Executors of Euan Robertson (Dec'd) being residual contents of Leasingham Manor, Nr Sleaford, Lincolnshire.
£100-150



- ▲ 2156.
William Bartol Thomas (1877-1947).
Boston Stump, watercolour, signed and dated 1898, 34cm x 24.5cm.
Upon instructions from the Executors of Euan Robertson (Dec'd) being residual contents of Leasingham Manor, Nr Sleaford, Lincolnshire.
£200-300



- ▲ 2157.
William Bartol Thomas (1877-1947).
Beach scene with figures, watercolour, signed and dated 1911, 25cm x 35cm.
Upon instructions from the Executors of Euan Robertson (Dec'd) being residual contents of Leasingham Manor, Nr Sleaford, Lincolnshire.
£100-200

2158.
William Bartol Thomas (1877-1947).
Farmhouse and track, watercolour, signed, 20cm x 35cm.
Upon instructions from the Executors of Euan Robertson (Dec'd) being residual contents of Leasingham Manor, Nr Sleaford, Lincolnshire.
£80-120

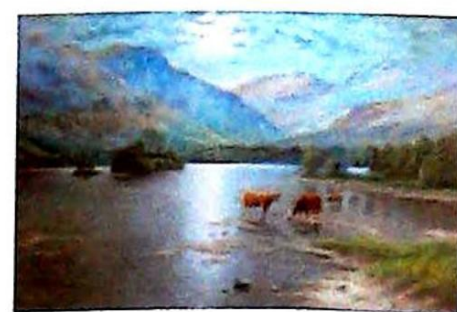


- ▲ 2159.
William Bartol Thomas (1877-1947).
Boston Church, watercolour, signed, dated 1897 and titled, 25cm x 17.5cm.
Upon instructions from the Executors of Euan Robertson (Dec'd) being residual contents of Leasingham Manor, Nr Sleaford, Lincolnshire.
£200-300

2160.
Alfred George Webster (?-1894).
Street scene, watercolour, signed, 35cm x 26cm
£50-80



- ▲ 2161.
Martin Spencer Coleman (b.1952).
River scenes, oil on canvas, a pair, signed, 29cm x 39cm
£100-150



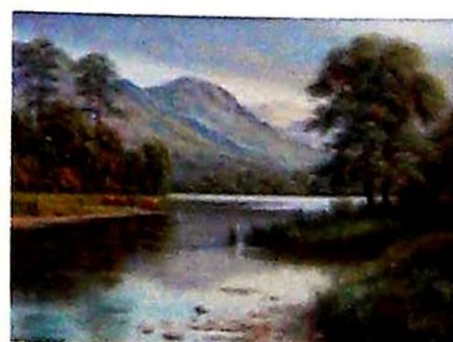
- ▲ 2162.
Martin Spencer Coleman (b.1952).
Highland cattle in river landscape, oil on canvas, signed, 49cm x 75cm
£100-150

2163.
Martin Spencer Coleman (b.1952).
Old friends, oil on canvas, a pair, signed, 36cm x 46cm
£50-100

2164.
20thC British School.
Lincoln from Washingborough, watercolour, 23cm x 32cm
£30-50

2165.
J West (19th/20thC).
Lincoln from South Hykeham, watercolour, signed, 23.5cm x 34cm
£30-50

2166.
J West (19th/20thC).
Brayford Pool Lincoln, watercolour, signed, 23.5cm x 34cm
£30-50





- ▲ 2167.
William Logsdail (1859-1944).
A Welsh Chimney Corner, oil on canvas, signed, titled and dated 1897, 30cm x 40cm
£250-350

2168.
Ray (20thC).
For Hooliganism and threatening the referee, watercolour, signed and titled, 23.5cm x 19cm and two other items (3)

Lots 2169 -2173 have specific vendor instructions to sell without reserve

2169.
Edwin Aldridge Haddock (1921-1996).
Abstract, oil on board, 92cm x 61cm
£50-80

2170.
Edwin Aldridge Haddock (1921-1996).
Abstract, oil on board, 92cm x 61cm
£50-80

2171.
Edwin Aldridge Haddock (1921-1996).
Abstract, oil on board, 92cm x 61cm
£50-80

2172.
Edwin Aldridge Haddock (1921-1996).
Despair, oil on board, 92cm x 122cm. Bears artist label verso
£50-80

2173.
Edwin Aldridge Haddock (1921-1996).
Abstract, oil on board, 121cm x 91.5cm
£50-100

2174.
Ben Maile (b.1922).
The Tops't Schooner, artist signed coloured print, 75cm x 58cm

2175.
David Shepherd (b.1931).
Luangwa Evening, artist signed limited edition coloured print 1025/1500, 33cm x 72cm
£80-120



▲ 2176.
David Shepherd (b.1931).
The Mountain Gorillas of Rwanda, artist signed limited edition coloured print 667/1500, 54cm x 76cm
£100-150



▲ 2177.
David Shepherd (b.1931).
The Sentinel, artist signed limited edition coloured print 1163/1500, 53cm x 83cm
£100-150

2178.
David Shepherd (b.1931).
Cheetah, artist signed limited edition coloured print 1077/1500, 30cm x 45cm
£80-120

2179.
David Shepherd (b.1931).
The Crossing, artist signed limited edition coloured print, 1073/1500, 30cm x 44.5cm
£80-120

2180.
After Margaret W Tarrant.
Fairies, three coloured prints, 40cm x 30cm

2181.
After Painton.
ADA, coloured print, 26cm x 18cm, and two others

2182.
David Waller (20thC).
Home of the Lincolnshire Red, artist signed limited edition coloured print, 40cm x 53.5cm and two others

2183.
Unknown.
Elephant, artist signed limited edition coloured print 68/750, 58cm x 70cm



▲ 2184.
After John Ruskin.
Victorian street trader, print, a pair, 38.5cm x 23.5cm
£100-150



▲ 2185.
After Edwin Long.
Irving as Hamlet, photogravure print - print by Goupil and Co c.1884, 49cm x 36cm
£120-160

2186.
Henry Brewis (1932-2000).
Five artist signed coloured printed cartoons, 18cm x 25cm and another picture
£30-50

2187.
Marjorie Turner.
Portrait of a dog, pastel, artist studio stamp, 48cm x 38cm
£50-80

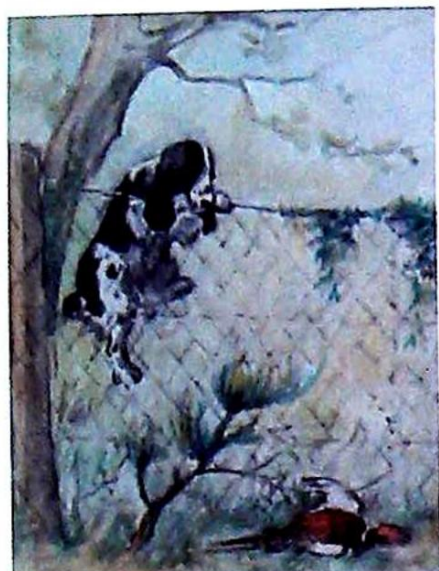
2188.
Marjorie Turner.
Portrait of a dog, pastel, artist studio stamp, 26cm x 24.5cm
£50-80

2189.
J L Hopper (19th/20thC).
Nelson the terrier, oil on opaque glass, signed and titled, 23.5cm x 29cm
£50-80



▲ 2190.
Marjorie Turner.
Feeding Time, pastel, signed and artist studio stamp, 43cm x 59cm
£100-200

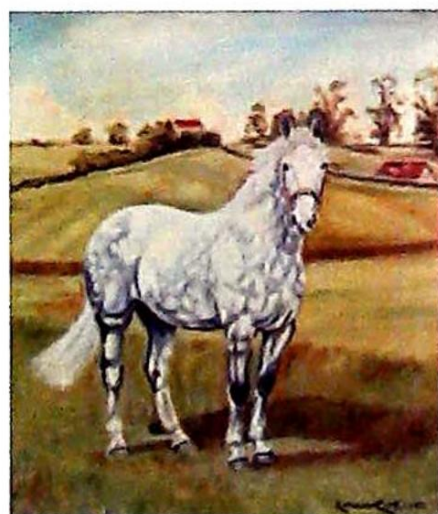
Lincoln Fine Art Sale



▲ 2191.
Marjorie Turner.
Over the fence, watercolour,
signed, 36.5cm x 28.5cm
£100-200

2192.
Michael Crawley (20thC).
Beresford Dale, Derbyshire, with a
fisherman on the River Dove,
watercolour, signed,
17cm x 26.5cm.
£70-100

2193.
Robert Nicholls (b.1973).
Above the Tarn, pastel, signed,
44cm x 69.5cm
£80-120



▲ 2194.
**Kathleen Cockayne (act.
c.1939).**
Horses, oil on canvas, a pair,
signed, 40cm x 34.5cm
£200-300



▲ 2195.
Max Hutchinson,
Spaniels at work, oil on board,
40cm x 59cm and another
similar sporting oil.
£250-350

2196.
V Williams (20thC).
The Hunt, oil on canvas, signed
and dated 1997, 50cm x 60cm
£50-80

2197.
19thC British School.
Cats dinner, oil on canvas,
indistinctly signed, 17.5cm x 58.5cm
£50-80

2198.
19thC British School.
Country house gate, pencil
drawing, 23.5cm x 31cm



▲ 2199.
**Henry James Holiday
(1839-1927).**
Longdales Pikes Windermere,
pencil drawing, 13.5cm x 21.5cm
and two others
£100-150

2200.
After Charles Johnson Payne.
The Soldier, Nasty Steeple
Chasing Devil, a coloured print,
32.5cm x 31cm and a print - The
Red Lion



▲ 2201.
H Taylor (20thC).
Rural landscapes, oil on
canvas, a pair, signed,
49.5cm x 59.5cm
£150-250

2202.
A Graios (?) (20thC).
Athens, The Acropolis, oil on
canvas, signed, 49.5cm x 95cm
£30-50

2203.
Arthur Lokie (b.1948).
The School, oil on canvas, signed,
49.5cm x 75cm



▲ 2204.
**Luciano Guarnieri (1930-
2009).**
Apples, oil on canvas, signed
and titled verso, 59cm x 79cm
£100-200



▲ 2205.
**Luciano Guarnien (1930-
2009).**
Apples, oil on canvas, signed,
66cm x 99cm
£100-200



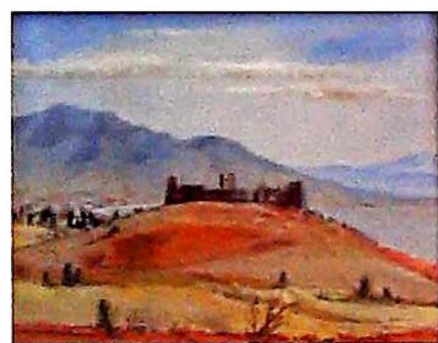
▲ 2206.
Frank Hider (1861-1933).
Softly Fall The Evening Shade,
Early Autumn in the Vale of
Ffestiniog N. Wales, oil on
canvas, a pair, signed and
titled verso, 34cm x 44cm
£200-300

2207.
Robert H Marcus (20thC).
In the woods in Glenmalure, oil
on board, signed and titled verso,
39cm x 49cm. Bears artist label
verso
£50-80

2208.
Rober H Marcus (20thC).
Rocks, Butterflies and Flowers -
The Barren, oil on board, signed
and titled verso, 39cm x 49cm.
Bears artist label verso
£50-80



▲ 2209.
Robert Marcus (20thC).
Harvest Moon and Recital St
Canices Kilkenny, The Prior,
Wells Co Kilkenny, oil on
board, a pair, signed and titled
verso, 29cm x 39cm. Bears
artist label verso
£100-200



▲ 2210.
Robert Genn (1936-2014).
Castle Sohail from Castle
Estates, Fuengirola Spain, oil
on canvas, signed, titled and
dated 1965, verso,
64cm x 81cm
£250-350



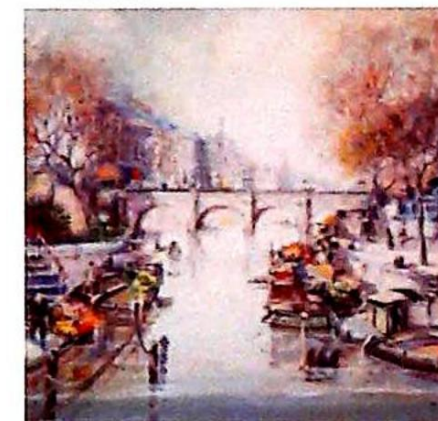
▲ 2211.
**Jorge Aguilar-Agon
(b.1936).**
Fishing boats in harbour, oil on
canvas, signed, 49cm x 100cm
£150-250



▲ 2212.
**Jorge Aguilar-Agon
(b.1936).**
Fishing boats in harbour, oil on
canvas, signed, 45cm x 90.5cm
£150-250



▲ 2213.
**Jorge Aguilar-Ayon
(b.1936).**
Island Church, oil on canvas,
signed and titled verso,
38cm x 79.5cm
£100-200



▲ 2214.
**Jorge Anguilar-Agon
(b.1936).**
Watching the river flow,
watercolour, signed and titled
verso, 45cm x 46cm
£150-250

2215.
Robbies (?) (20thC).
Sailing junk, oil on canvas,
indistinctly signed and dated,
41.5cm x 57cm
£50-80

2216.
Leake.
Church building, signed and
dated 1971, oil on board,
70cm x 121cm
£50-80

2217.
Zanit? (20thC).
River village, oil on canvas,
indistinctly signed, 49cm x 74cm
£50-80



▲ 2218.
Eli Kobeli (1932-1999).
African fruit seller,
watercolour, signed,
48cm x 35cm
£150-250



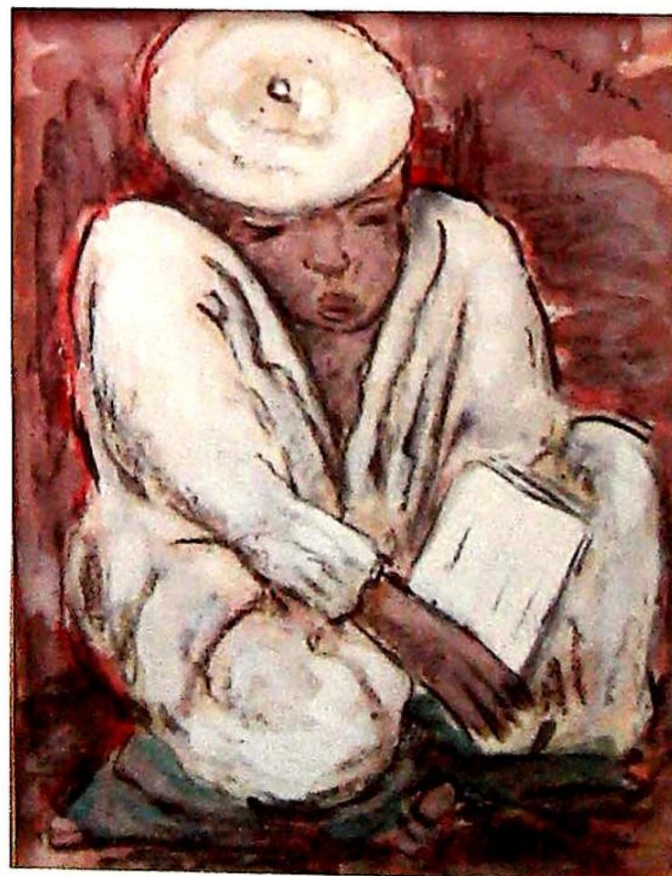
▲ 2219.
**Maurice Bany
(19th/20thC).**
Half length portrait of a
maiden, oil on canvas, signed,
43cm x 36cm
£100-200



▲ 2220.
19thC Continental School.
Old lady seated, oil on canvas,
38cm x 25cm
£100-200

2221.
19thC British School.
Gentleman with sword,
watercolour, initialled and dated
(18)94, 18cm x 10.5cm
£80-120

2222.
19thC Indian School.
Garden scene, watercolour,
24cm x 15cm
£80-120



◀ 2223.
**Irma Stern
(1894-1966).**
Study of an
Arab boy,
watercolour,
signed,
34cm x 27cm
£1000-2000

Lincoln Fine Art Sale



- ▲ 2224.
Eli Kobeli (1932-1999).
Mother and child, watercolour,
signed and dated (19)80,
47.5cm x 32.5cm
£150-250

2225.
Villanueva (20thC).
Abstract study, oil, indistinctly
signed and dated (19)90,
42.5cm x 52cm
£50-150



- ▲ 2226.
Josef Svoboda (1901-?).
Landscape with shepherdess,
oil on canvas, signed,
89cm x 89cm
£300-400

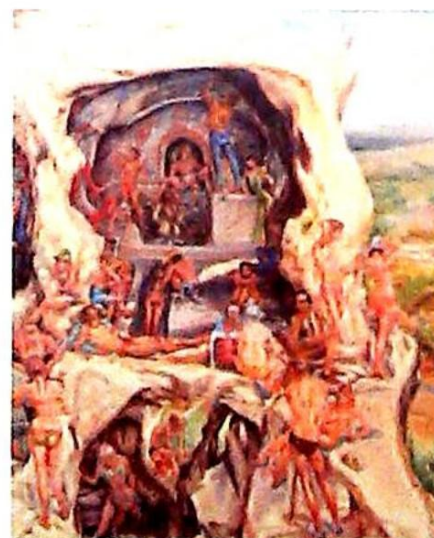
2227.
Otto Klar (1908-1994).
Figures by farm cottages,
watercolour, signed,
39.5cm x 49.5cm
£80-120



- ▲ 2228.
**William Hartley
Waddington (1883-1961).**
Mountain landscape with river
estuary and sand dunes, oil on
canvas, signed, 51cm x 61cm
£150-200



- ▲ 2229.
**Louis Robert James (1920-
1995).**
The Northern Lands, oil on
canvas, signed, titled and
dated (19)61, 35cm x 25cm
£300-400



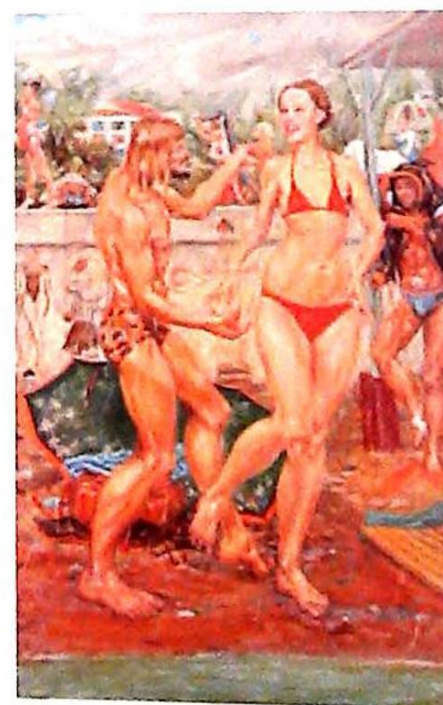
- ▲ 2230.
**Dmitry Gordeer (1940-
2011).**
Cave Party, oil on canvas,
signed, 112cm x 95cm
£100-200



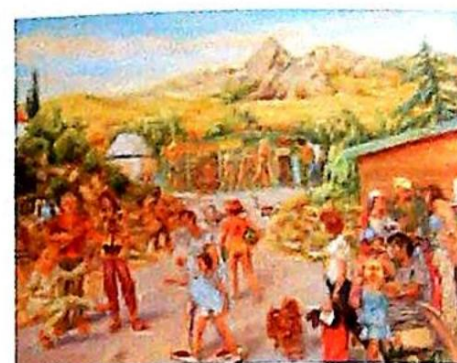
- ▲ 2231.
**Dmitry Gordeer (1940-
2011).**
Beach Party, raining, oil on
canvas, signed, 83cm x 149cm
£100-150



- ▲ 2232.
**Dmitry Gordeer (1940-
2011).**
The Bathers, oil on canvas,
signed, 99cm x 118cm
£100-200



- ▲ 2233.
**Dmitry Gordeer (1940-
2011).**
Pool Party, oil on canvas,
signed, 119cm x 79cm
£100-200



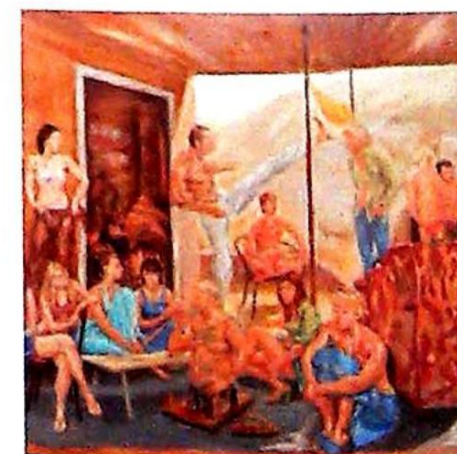
- ▲ 2234.
**Dmitry Gordeer (1940-
2011).**
To The Beach, oil on canvas,
signed, 79cm x 99cm
£100-200



- ▲ 2235.
**Dmitry Gordeer (1940-
2011).**
The Boating Lake, oil on
canvas, signed, 89cm x 150cm
£100-200



- ▲ 2236.
**Dmitry Gordeer (1940-
2011).**
The Concert, oil on canvas,
signed, 78cm x 98cm
£100-200



- ▲ 2237.
**Dmitry Gordeer (1940-
2011).**
House Party, oil on canvas,
signed, 114cm x 116cm
£100-200

2238.
Victor Kazarin (b.1948).
Abstract, oil on canvas, signed
verso, 88.5cm x 58cm
£50-100

2239.
Victor Kazarin (b.1948).
Abstract, oil on canvas, signed
verso, 98.5cm x 48cm
£50-100



▲ 2240.
Victor Kazarin (b.1948).
Abstract, oil on canvas, signed
verso, 98.5cm x 78.5cm
£100-200



▲ 2241.
Victor Kazarin (b.1948).
Abstract, oil on canvas, signed
verso, 88cm x 58cm
£100-200



▲ 2242.
Victor Kazarin (b.1948).
Abstract, oil on canvas, signed
verso, 98.5cm x 48.5cm
£100-200



▲ 2243.
Victor Kazarin (b.1948).
Abstract, oil on canvas, signed
verso, 58cm x 88.5cm
£100-200



▲ 2244.
Victor Kazarin (b.1948).
Abstract, oil on canvas, signed
verso, 58cm x 89cm
£100-200



▲ 2245.
Ronnie Kray (1933-1995).
Landscape showing house,
tree and sun, oil on board,
signed, 26.5cm x 36cm
£400-600



▲ 2246.
Reginald Kray (1933-2000).
Sailing boat on calm waters in
red, yellow, green and blue, oil
on canvas, signed,
49cm x 65cm
£400-600



▲ 2247.
Reginald Kray (1933-1995).
Liam born fighter, crayon on
canvas, signed and titled,
64cm x 45cm
£100-200

2248.
20thC British School.
Female study, pastel, signed,
13.5cm x 28cm
£50-80

2249.
20thC British School.
Female study, pastel, signed,
29cm x 13cm
£50-80

2250.
20thC British School.
Female study, pastel, signed,
28cm x 13cm
£50-80



▲ 2251.
John Yardley (b.1933).
Venice, snow scene, oil on
board, signed and dated
(19)77, 49.5cm x 59.5cm
£300-400

2252.
After Christine Wilson.
River scene, coloured print,
27cm x 37.5cm

2253.
**Andrew Grant Kurtis
(20thC).**
Moonlight reflections, oil on
canvas, signed, 19.5cm x 24.5cm
£50-80

2254.
**Andrew Grant Kurtis
(20thC).**
Moonlight sparkle, oil on canvas,
signed, 19.5cm x 24.5cm
£50-80



▲ 2255.
20thC British School.
Ducks in flight over Norfolk
Broads, oil on canvas,
indistinctly signed,
49.5cm x 99cm
£120-160

2256.
M Arnold (20thC).
Abstract, watercolour, signed and
dated 1983, 68cm x 62.5cm

Lincoln Fine Art Sale



- ▲ 2257.
Richard Hamilton (1922-2011).
Just what is it that makes today's home so different?, artist signed limited edition coloured print 2516/5000, 21cm x 29.5cm
£100-150

2258.
20thC British School.
Portrait studies, monoprints, 29cm x 20cm
£30-50

2259.
Charlie Downes.
Small plate with fruit, small jug and bowl, two artist signed limited edition coloured etchings, 11cm x 8.5cm
£30-50



- ▲ 2260.
Michael John Hill (b.1956).
Early morning mist, oil on canvas, signed, titled and dated 1989, 49.5cm x 121cm
£300-400



- ▲ 2261.
Maurice Gardner (20thC).
Spitfires escorting bombers below, oil on canvas, signed, 39cm x 59.5cm
£100-200

2262.
Daniel Russo (20thC).
Still life, ink drawing, signed, 29cm x 35cm
£80-120

2263.
Norah Ranshaw.
Red Earth, oil on canvas, signed and titled verso, 52cm x 93cm and eleven works by the same artist

2264.
H Hart (20thC).
Two Hoorahs, oil on board, signed, titled and dated (19)62 verso, 78cm x 60cm

2265.
After John Piper.
Church, coloured print, 55cm x 76.5cm

2266.
Granville D Clarke.
Landscape, artist signed limited edition coloured print 130/500, 29cm x 36cm and two other works

2267.
After Pablo Picasso.
Exposition Ceramiques, Galerie, Louise Levis, two exhibition posters, 65.5cm x 49cm



- ▲ 2268.
Prudence Turner (M Windle) (1930-2007).
Scottish landscape, oil on board, signed, 39cm x 80cm. Bears receipt Garson & Co Manchester
£100-150

2269.
Gordon Clifford Barlow (1913-2004).
Deepdale, oil on canvas, signed, 49.5cm x 75cm
£80-120

2270.
20thC British School.
Farmstead, watercolour, indistinctly signed, 40.5cm x 50.5cm



- ▲ 2271.
John Singer Sergeant (1856-1925).
Multiple figures playing the violin, crayon, 46cm x 60cm. Upon instructions from the Executors of Euan Robertson (Dec'd) being residual contents of Leasingham Manor, Nr Sleaford, Lincolnshire.
£700-900

2272.
Guy Marson (20thC).
Mediterranean church seascape, oil on canvas, signed and dated (19)67, 44.4cm x 54.5cm. Provenance: Butterfields, Thoresby Park, Newark, Notts
£30-40

2273.
Ortiz (20thC).
Floral still life, oil on canvas laid on board, signed, 46cm x 36cm
£50-80

2274.
20thC British School.
Country landscape with thatched cottage and figures - The Old Mills, oil on canvas, indistinctly signed, 38cm x 89cm
£50-80



- ▲ 2275.
Thomas Moran (1837-1926).
Landscape with flowers, watercolour, monogrammed and dated 1920, 31.5cm x 43cm
£500-700

2276.
***C.K.P.**
Wide Westgate, Grantham, oil, 90cm x 140cm
£100-200

2277.
***C.K.P.**
Market Place, Grantham, oil, initialled and dated 1932, 80cm x 150cm
£100-200



- ▲ 2278.
Jorge Aguilar-Agon (b.1936).
Fishing boats in harbour, oil on canvas, signed, 59cm x 90cm
£150-250



- ▲ 2279.
Jorge Anguilar-Agon (b.1936).
Fishing boats on shore, oil on canvas, signed, 44.5cm x 105cm
£150-250



- ▲ 2280.
Jorge Anguilar-Agon (b.1936).
River landscape, oil on canvas, signed, 60cm x 90cm
£150-250

2281.
20thC Dutch School.
Winter am Niederrheine, oil on canvas, indistinctly signed and titled verso, 49.5cm x 100cm
£80-120

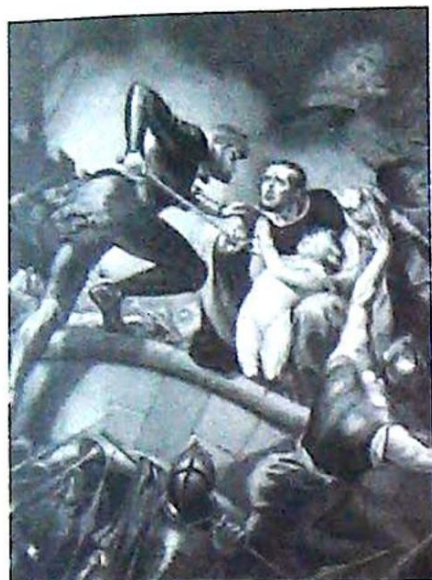
2282.
Pat Rooney (20thC).
Andy, Paddy, drawing, a pair, signed and dated (1947/8), 36.5cm x 22.5cm

2283.
F Hill (19thC/20thC).
View of the Zuiderkloof Amsterdam, watercolour, signed and dated July 1876, 22cm x 28cm

2284.
Colin Mason (20thC).
Frog in the water, oil on canvas, signed and dated 25.9.1983, 44.5cm x 54.5cm
£30-50

2285.
20thC British School.
Coastal view, oil on canvas, indistinctly signed, 53.5cm x 45cm
£50-80

2286.
After Fritz Scholder.
Coloured lithographic poster, New York Graphic Society 1975, 65cm x 45cm
£50-80



- ▲ 2287.
After J Northcote.
Shakespeare - Third Part of
King Henry the Sixth,
monochrome engraving,
58cm x 41cm
£450-650

2288.
20thC Victorian School.
Monkey and dogs, oil on canvas,
29cm x 39cm
£50-80

2289.
J W Bramham (20thC).
Street scene, watercolour, signed,
33.5cm x 26cm

2290.
Spare lot.

2291.
Ernest Nicol (b.1953).
Intrusion, artist signed proof
print, 59cm x 33.5cm

2292.
Christopher Roantree.
Prasna, artist signed limited
edition etching, 6/10, 52cm x
49cm and another picture (2)



- ▲ 2293.
Tito (19th/20thC).
Old gentleman smoking a pipe, old lady wearing a shawl, oil on
board, a pair, signed, 39cm x 29cm
£100-200

2294.
Pascale Bigot.
Parfume, artist signed limited
edition coloured print 14/295,
62cm x 47cm and two others (3)

2295.
Mary Horner.
Two scarves, pastel, signed and
titled verso, 62cm x 47cm

2296.
P Fenton.
River scene, watercolour, signed
and dated 2008, 37cm x 31cm and
another (2)

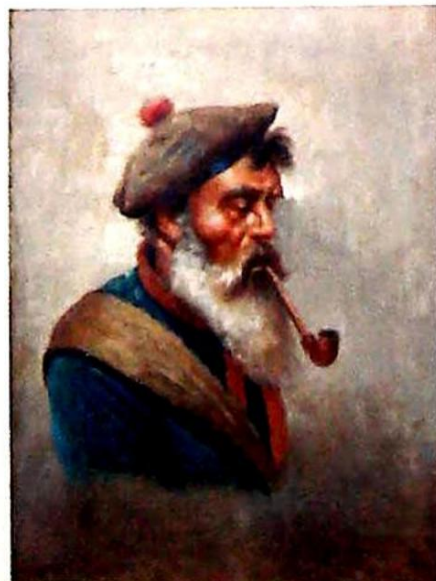
2297.
J Bell (19thC).
Watermill, watercolour, signed,
20cm x 26cm

2298.
M.A.D. (20thC).
Ceramic vase, 39cm high,
stoneware plaque, various prints,
a quantity

2299.
Margaret Palmer.
Three girls, oil, signed,
23.5cm x 28cm
£80-120

2300.
Robin Cox.
Yorkshire Dales, Shadows,
watercolour, signed and titled
verso, 14cm x 27cm and four other
pictures (5)

2301.
Karl S. Wood (1888-1958).
Gainsborough Old Hall,
watercolour, signed and dated
1944, 16cm x 23cm, and another.
(2)
£50-100



2302.
John Nichols (20thC).
The Shot, watercolour, signed and
dated (19)93, 11cm x 16cm.

2303.
E. Rivera (20thC).
Mother and child, oil on board,
signed, 31cm x 23cm, and three
others. (4)



- ▲ 2304.
E Waller (19thC).
Valle Crucis Abbey, in the vale
of Llangollen, North Wales, oil
on canvas, signed and titled
verso, 49.5cm x 75cm.
£250-400



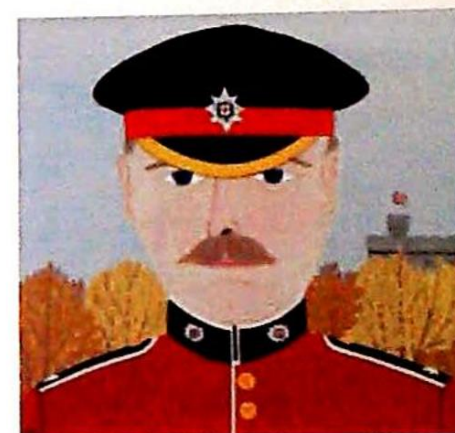
- ▲ 2305.
W. Yates (19thC/20thC).
Figure in country landscape,
oil on canvas, signed,
44.5cm x 80cm.
£250-400



- ▲ 2306.
Vincent Haddelsey (1929-2010).
The Blues in Front of the
Tower, oil on board, initialled,
signed and titled verso,
26.5cm x 34.5cm.
£500-800



- ▲ 2307.
Vincent Haddelsey (1929-2010).
State Landau taking
Ambassador to present his
credentials at the palace, oil on
canvas, initialled, titled and
dated 1967 verso, 23.5cm x
32.5cm. Bears label verso -
Art Collector's Company,
New York.
£500-800



- ▲ 2308.
Vincent Haddelsey (1929-2010).
Coldstream Guard, oil on
board, initialled, signed, titled
and dated 1970 verso,
27cm x 27cm. Exhibited Sam
Scorer Gallery
£500-800



- 2309-2340.
Vincent Haddelsey (1934-2010).
Studio Sale, artist signed prints
and other related ephemera, to
be sold in suitable lots.

EST
1864
GOLDING YOUNG



Thinking of selling?

Executors, solicitors, accountants, insurers, corporations and government departments, have to exhibit due diligence when instructing. Use this checklist to do the same, with a few reasons why you may wish to choose us.

We are regulated by RICS
Better Regulation for Us.
Better Protection for You.
Accept Nothing Less.

Our online catalogues
For over 20 years our catalogues have been online and our experience ensures they are placed in front of the right buyers in the global market.

Our sales results
August 2016 saw our 96th consecutive month with a sale at either Bourne, Grantham or Lincoln producing a sold rate of over 90%. Good advice, great results for hundreds of vendors every month.

Join their success with an entry in our next sale!

goldingyoung.com

HOUSE CLEARANCE

If there is that hidden 'find', it will be to your direct benefit.

Every week we take instructions for House Clearance for all of the prominent firms of Solicitors in the area, as well as from Private Individuals, Trustees and Executors.

If you are dealing with the content of a property, please contact us at the earliest point.

A visit to the premises by one of our qualified and experienced appraisal staff will offer the best advice for Security, Valuation and Sale.

DISPOSE OF NOTHING

Often things thought to be rubbish are saleable.

IMMEDIATE ACTION IS REQUIRED

Once a property is uninhabited it is a target for burglars and your insurance may be invalid.

Items removed from premises are listed and handled by our professional carriers. Goods are then allocated to the next appropriate sale to ensure the highest sale return.

We also deal with the unsaleable residue, disposed of in the most cost-effective and environmentally friendly way, giving a total service.



PROPERTIES CLEARED, PROMPTLY AND EFFICIENTLY

Call: John Ireland MA MRICS - **01778 422686**
For Bourne, Stamford, Peterborough Region and Southern Counties

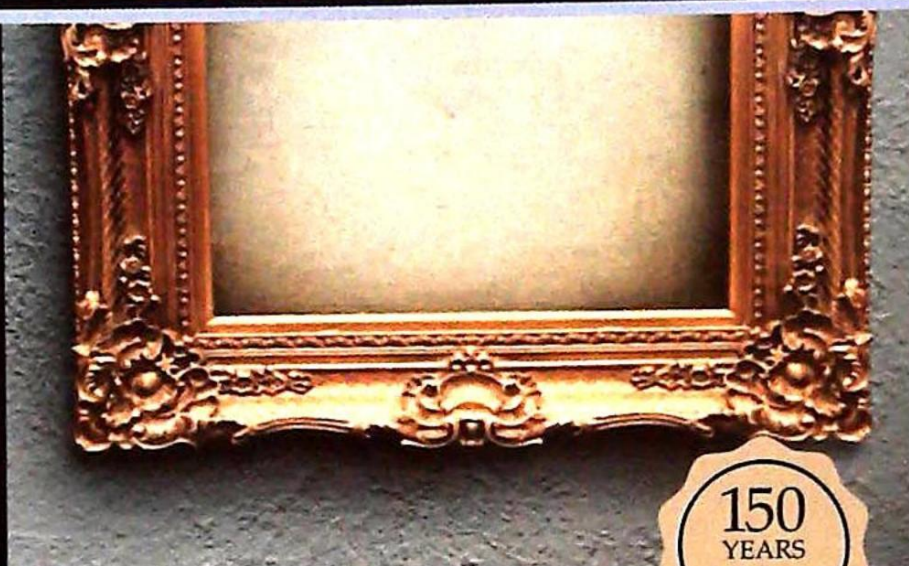
Call: Craig Bewick BA (Hons) FNAVA - **01476 565118**
For Grantham Region and The Midlands

Call: John Leatt ASFAV - **01522 524984**
For Lincoln Region and Northern Counties

CHARTERED AUCTIONEERS & VALUERS • ARTS & ANTIQUES SURVEYORS



The wrong time to find out
what it was worth...



Over 35 million pounds of antiques & fine art valuation
in UK, Europe, Asia & The Americas since January 2014.

ESTD 1864
GOLDING YOUNG

William Gregory MRICS and Colin Young MRICS
are RICS Registered Valuers and
offer free advice for Insurance, Tax Planning and Probate reporting
and of course the sale of single items and collections.



The Bourne Auction Rooms
+44 (0) 1778 422686

The Grantham Auction Rooms
+44 (0) 1476 565118

The Lincoln Auction Rooms
+44 (0) 1522 524984

The Stamford Valuation Office
+44 (0) 1780 751666

CHARTERED AUCTIONEERS & VALUERS ♦ ARTS & ANTIQUES SURVEYORS



goldingyoung.com

The Bourne Auction Rooms
Spalding Road, Bourne,
Lincolnshire PE10 9LE

E: bourne@goldingyoung.com
T: +44 (0) 1778 422686
F: +44 (0) 1778 425726

The Grantham Auction Rooms
Old Wharf Road, Grantham,
Lincolnshire NG31 7AA

E: grantham@goldingyoung.com
T: +44 (0) 1476 565118
F: +44 (0) 1476 561475

The Stamford Valuation Office
1, The George Mews
Station Road, Stamford
Lincolnshire PE9 2LB

E: stamford@goldingyoung.com
T: +44 (0) 1780 751666

The Lincoln Auction Rooms
Thos Mawer House, Station Road
North Hykeham, Lincoln LN6 3QY

E: lincoln@goldingyoung.com
T: +44 (0) 1522 524984
F: +44 (0) 1522 535600

Dunston House Saleroom
Portland Street,
Lincolnshire LN5 7NN

(Open only for specified viewing)

goldingyoung.com

