

GOLDING YOUNG • 1900

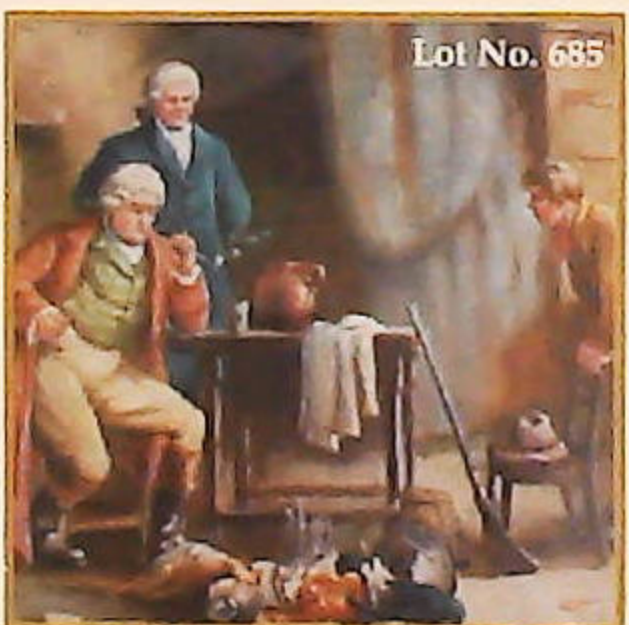
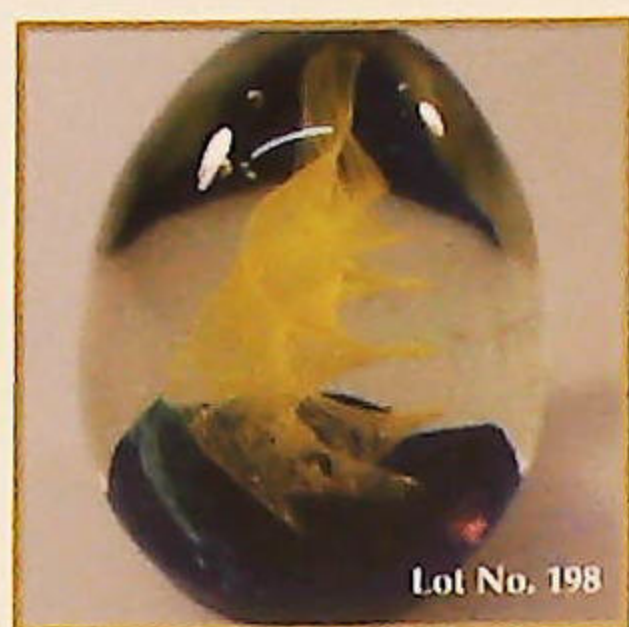
CHARTERED AUCTIONEERS & VALUERS Commercial Asset Agents • Arts & Antiques Surveyors

CATALOGUE SALE

MAY 2005



WWW.GOLDINGYOUNG.COM



IMPORTANT NOTES FOR PURCHASERS

1. **PAYMENT:** Must be made in full immediately after the Auction. The following methods of payment are acceptable.
 a) Cash b) Bankers Draft c) Building Society Cheque d) Cheques (accompanied by a valid card)
 e) Debit & Credit Cards (the latter subject to a charge of 2% + VAT)

PAYING BY CHEQUE?

If you are not known to the Auctioneers and wish to pay by cheque above your guarantee card limit WE WILL RETAIN THE GOODS until it has been cleared (7 days). There will be NO EXCEPTIONS to our policy. To avoid UNDUE EMBARRASSMENT for yourself or to our staff, please do not ask for preferential treatment. If you wish to clear goods immediately bring a letter from your Bank or a suitable guarantor reference.

2. **BUYERS PREMIUM** of 15% (with a minimum of £1 per lot) is payable on all lots, plus VAT.
3. **REMOVAL OF PURCHASES:** Goods must be collected as soon as they are paid for, and in the 2 Working Days following the sale. If goods are not collected on these days we reserve the right to charge £1 per lot per day thereafter.
4. **COMMISSION BIDS:** If you are unable to attend this or any of our future sales we will be pleased to bid on your behalf. We always purchase at the lowest possible price, subject to other bids and reserves.

All bids must be handed to the office on an official form. It remains the responsibility of prospective purchasers to contact GOLDINGS to confirm whether their bids have been successful.

5. **TELEPHONE BIDS:** There are inherent dangers with this practice, therefore all such arrangements are made entirely at the bidder's risk. Telephone bids will only be accepted if the lower estimate is £500 or above. For lots with a lower estimate below this figure Commission Bids Only will be accepted.
6. **SMOKING** is not permitted in any part of the Saleroom.
7. **REFRESHMENTS** will be available Saleday.
8. **ACCOUNT TRANSFER** will not be recognised after the sale. If any lots are purchased for another person, this must be declared at the fall of the hammer.
9. **ESTIMATES.** Our Auctioneers will be available during viewing to give guidance on your prospective purchases.

Front cover illustration Lot Nos 1 & 2, 54, 546, 767, 827 and 862



GOLDING YOUNG 1900

CHARTERED AUCTIONEERS & VALUERS Commercial Asset Agents ♦ Arts & Antiques Surveyors

Upon instructions from over 200 private and professional vendors
from throughout the region.

GOLDING YOUNG & CO will sell by AUCTION

ANTIQUES, WORKS OF ART, COLLECTORS ITEMS

WEDNESDAY 11th MAY 2005 at 10am

Lots 1 to 214	Ceramics & Glass
Lots 215 to 300	Metalware
Lots 301 to 423	Jewellery & Bijouterie
Lots 436 to 496	Silver
Lots 497 to 600	Collectables & Miscellanea
Lots 601 to 650	Books, Ephemera, etc.
Lots 651 to 740	Works of Art
Lots 741 to 784	Clocks
lots 792 to 820	Arms & Militaria
Lots 821 to 975	Furniture
Lots 981 to 1018	Toys

Lot enquiries

Suki J Burnett F.N.A.V.A.
Jan L Squires P.J.Gem.Dip, F.N.A.V.A.
Colin R Young M.R.I.C.S., F.N.A.V.A.

Accounts enquiries

Lucy N Christensen B.A.

VIEWING:

Over 1000 lots illustrated online at
WWW.GOLDINGYOUNG.COM
Also in the Auction Rooms
Sunday 8th 1pm-5pm, Monday 9th 2pm to 5pm,
Tuesday 10th 2pm to 7pm and Saleday 9am to 10am.

Golding Young & Co.

Old Wharf Road, Grantham, Lincolnshire NG31 7AA

Telephone: 01476 565118 Fax: 01476 561475 Email: enquiries@goldingyoung.com

Buyers Hotline: 01476 575202

For lot enquiries and commission bids viewday and saledays only.



Whatever you are thinking of selling...

Golding Young has the Auction Solutions.

Entries welcome 9am to 1pm Monday to Friday except Saleday.

Full Property Clearance Service



AUCTION SALE on SITE

Vehicles, farm implements, equestrian items, furniture and effects, tools, timber, worktops, etc.

Vehicles:

Volvo FL4 Turbo horse transporter, F-reg (3 horse or 4 pony + living);
Peugeot 306 ST Sedan, diesel, M-reg (no T&T, resprayed in 2000);
Volvo 740 Turbo estate, petrol, G-reg (no T&T);
Ford Transit flat-bed, with sides, G-reg (recent welding and rewire);
Range Rover V8, V-reg (probably parts only);
1970's Mustang caravan. Citroen ZX Elation, N-reg. Ifor Williams 10ft twin axle livestock trailer.

Equestrian items:

Pony exercise cart (up to 14hh), 6-division stable (modern galvanized and hardwood) split into suitable lots,
an extensive selection of feed bins, tack, blankets, etc.

Furniture & Effects:

1920s oak sideboard, Victorian wash stand, two Victorian mahogany chests, Cunard travel chest, oak gate-leg table, reproduction court cupboard, marble-topped pine farmhouse dresser, Victorian extending dining table, reproduction knee-hole desk, wicker patio suite, modern bedroom furniture, a chest and upright freezers, stacking patio chairs, 10off. 3-shelf folding book rack (ideal for collector's fair displays), wooden dresser, wardrobe, sideboard, cabinets, chairs, stereo system, desk, bookcase, mountain and other bikes (1970's Chipper), guitars, large quantity of books, decorative china, glass, etc.

Fishing equipment:

a quality selection of modern poles, reels, rods, lines, tackle, boxes, etc.

Commercial assets:

Pioneer Karaoke set (3000 song), Lincat griddle, s/s warming cupboard c/w overhead lights, disabled toilet suite (unfitted), pool table.

Yard items:

2 large hand-hewn stone troughs, stone statue of a horse on plinth (6'6" high),
quantity of wooden stake fence posts, tanalised pillars, pallets, steel profiles, paint, garden shed,
concrete slabs, kerbs, tarmac, galvanized 5-bar gate, two steel doors, garage doors, etc.

Tools include:

JCB HydroChief Solite generator, Lombardini generator welder, petrol whacker/compactor, tool strong box,
Stihl brush cutter, Stihl disc cutter, chainsaw, discs, gas welder, pneumatic jack hammer, petrol concrete mixer,
Butler shaping machine, Joseph Bradbury grinder, pair of Land rover lift jacks, etc.

Agricultural items include:

International grass mower, Farr Centipede hay turner, 48 square bale grab, 8ft Dutch harrow, Lister elevator,
Todd beet cleaner loader, Iron horse garden tractor with attachments, Small low loader, Tractor hoe, Doe tool carrier, yard brush,
Drag tines, fibreglass lorry top, Set of high silage sides and rear door for 8 ton cart,
Wheels and tyres inc 5 star dual wheels 13.6 x 12 x 38, wheel weights, steel tanker, Vacuum pump, small fan, weighing machine,
mobile feeder unit, Lamb creep feeders, steel troughs and concrete water troughs, Poultry equipment, 2 steel doors, Potato webbs etc.

On Saturday 7th May at 10.30am.

At Laughton Manor Equestrian Centre, Laughton, Nr. Bourne. (On the A15, between Folkingham and Aslackby)

Viewing Saleday only from 8.30am. Full catering and bar facilities on Saleday.

A lotted Pre-view list will be available on-line at WWW.GOLDINGYOUNG.COM From 7pm on the Thursday.

Further entries invited of a similar nature.



THE COLLECTIVE SALES

Your Market Place for Victorian, decorative and second-hand furnishings,

jewellery, silver, ceramics, glass, books, clocks, modern collectables, toys, etc.
Surplus business assets, stock-in-trade, vehicles, plant, machinery & equipment.

NEXT SALES: 25th May, 8th & 25th June

VIEWING: Tuesday prior 2pm to 6pm & Saleday from 9am to 10am with the sale commencing at 10am.

Lotted lists available on-line at WWW.GOLDINGYOUNG.COM

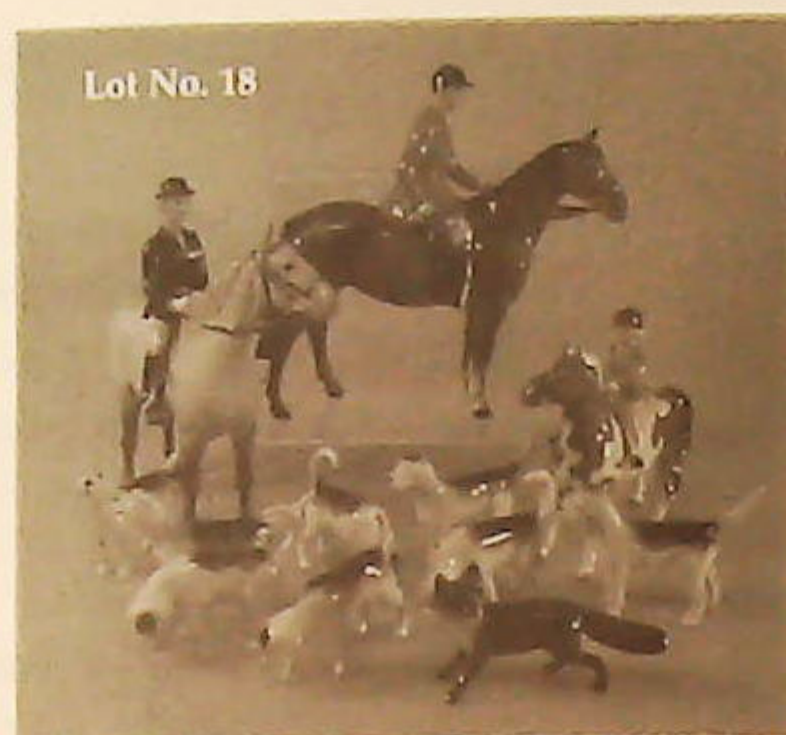
From 7pm on the Tuesday or earlier.

Further Sales on page 43

CERAMICS & GLASS

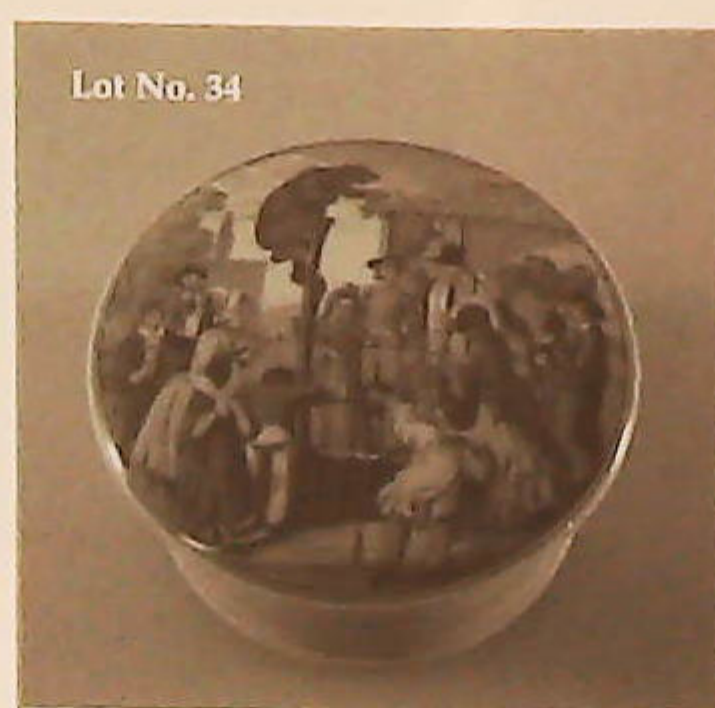
1. **A George Jones majolica rooster teapot and cover**, its tail feathers forming the handle, its beak the spout, on an oval base moulded with grasses, with brown and black feathers, pink comb and wattle; 11" wide.
2. **A George Jones majolica rooster teapot and cover**, its tail feather forming the handle, its beak the spout, on an oval base moulded with grasses, with white feathers, orange comb and wattle; 11" wide.
3. **A Copeland porcelain dessert plate**, decorated with rose sprays within moulded gilt scroll and diaper border, factory marks and retailers mark for T. G. Goode & Co., early 20thC; 9" dia.
4. **A 19thC Meissen group**, modelled as a courting couple, he kneeling at her feet and kissing her hand, on a rococo scroll moulded base, she in a floral sprigged dress with yellow bodice, he in a magenta cloak over striped jacket and breeches; blue crossed swords mark, 12" high.
5. **A 19thC Meissen figure**, of a youth holding a basket of flowers in his left hand, a flower aloft in his right, on a circular moulded base with Greek key border, in a pink sprigged jerkin over flowered waistcoat and breeches; 11" high.
6. **A 19thC Staffordshire pottery figure**, of a youth with a sheep, on a moulded base, dressed in underglaze blue jacket, yellow breeches and green waistcoat; 6¼" high.
7. **An 18thC Delft baluster jar**, printed in blue with a Chinese landscape, within foliate borders; 10" high.
8. **A Masons Ironstone china tazza**, with a moulded oblong disked plateau over an acanthus moulded column, on oval base, printed in blue with a floral spray within a repeat border; 14¼" wide, 7" high.
9. **A Chelsea Derby style figure**, of a lady in 18thC costume with a cherub seated at her feet, on a gilt moulded base, she in blue cloak over a flower sprigged gown with russet overskirt, coronet to her head; gold anchor mark, 7" high.
10. **A pair of Art Deco green sauceboats**, impressed 'McCoy, USA'.
11. **A 19thC English porcelain vase**, probably Minton, modelled as three shaped and pierced trumpets with acanthus terminals, on a rococo scroll moulded base, each painted with flower sprays against a magenta ground, pink, turquoise, and gilt highlights; 14½" high.
12. **A German porcelain baluster vase and domed cover**, painted with figural reserved encircled by applied floral framed, the white ground moulded and painted overall with cornflowers, the cover with rose finial, gilt line rims; 12½" high.
13. **A 19thC Sitzendorf porcelain table centrepiece**, the pierced basket encrusted with floral clusters, on a conforming pedestal with scantily dressed young girl to the left, on scroll moulded base; 15" high.
14. **A 19thC Carl Thieme Potsdam porcelain table centrepiece**, the pierced basket painted and encrusted with flowers, the moulded pedestal enhanced by a climbing rose and three putti, on a moulded base; impressed # 2107, and blue factory marks, 16¼" high.
15. **A pair of 19thC Meissen porcelain figures**, of a youth and female companion, in 18thC dress, on moulded flower encrusted bases, he standing before a scroll pedestal in ornate flower sprigged costume, she before a trunk and wearing a pink and yellow gown with striped and flower sprigged underskirt, both holding a basket of flowers; blue crossed swords mark, 16" high.
16. **A Continental large ovoid vase**, with two gilded ornate handles, the body enamelled and gilt in low relief with birds and flowers against a turquoise ground; 29" high.
17. **A Royal Doulton figure of Vice Admiral Lord Nelson**, modelled by Alan Maslankowski, standing upon a circular coopered base inscribed 'Trafalgar 1805'; Ltd Ed # 348/950, with certificate, 13" high.
18. **A Beswick hunting group**, comprising: huntsman on a bay horse, lady on a dappled grey, a young girl on a piebald, eight hounds and a fox.





19. A Royal Doulton two-handed vase, printed in underglaze blue with two children in a winter landscape, on a trumpet foot, gilt highlights; 6 1/4" high.
20. A Moorcroft trinket dish, circular with inverted rim, painted with a single anemone against a rich blue ground; impressed and printed factory marks, 4 1/2" dia.
21. A Moorcroft trinket dish, circular with inverted rim, painted with a single freesia against a shaded blue ground; impressed and printed factory marks, 4 1/2" dia.
22. A Moorcroft baluster vase, tubelined and painted with pink magnolias against a cream ground; modern monogram factory marks, 7 1/4" high.
23. A Noritake porcelain two-handed sugar bowl and cover, painted and gilt with alternating floral panels against a white ground; blue printed factory mark, 8 1/2" over handles.
24. A Chinese pottery turquoise ground vase, modelled as a hollow ring with flared collar, moulded in relief with celestial dragons; 8 1/2" high.
25. A Chinese terracotta vase, the ovoid body moulded in relief with celestial dragons against a stipple ground; 8 1/4" high.
26. A 19thC stoneware jug, the ovoid body moulded and gilt in relief with foliate and medallion panels in the Persian manner, twist handle; impressed 'Cashmere, W. B. Corridge', and registration diamond for 1865, 6 1/2" high.

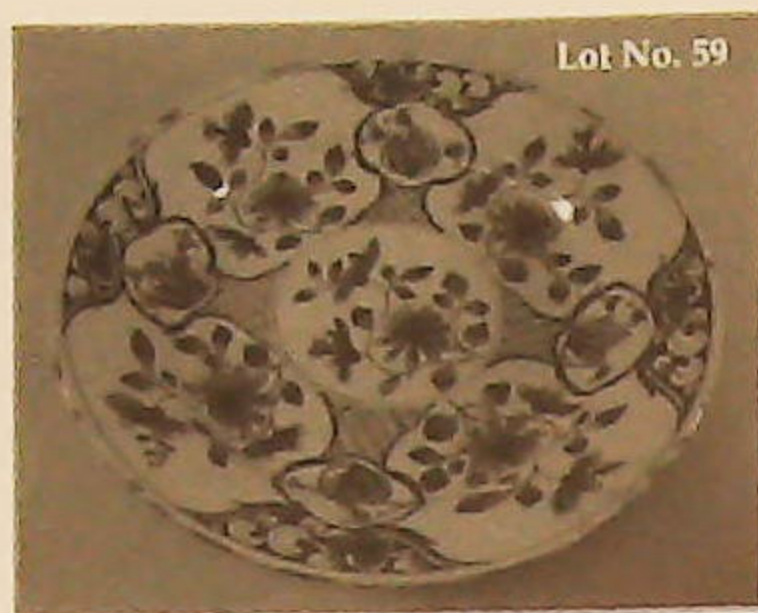
27. A late 19thC German bisque wall bracket, modelled as an elderly gentleman and his young female companion, on a square stepped plinth and mounted on a shell bracket, glazed in pastel hues with gilt bead highlights; 9 1/4" high.
28. A Burmantofts faience jardiniere, the turquoise ground incised with stylized flowers, beneath an inverted foliate rim; 8 1/4" dia.
29. A 19thC Wedgwood pottery vase, having a globular body beneath an elongated flared neck, on circular foot, painted and gilt with a bird amongst flowers against a cream ground, between green borders with overall gilt foliage; impressed and printed factory marks, 15" high.
30. A Carlton ware pottery novelty teapot, the plain body supported on a pair of feet wearing striped socks and yellow shoes, the cover modelled as a beanie hat; 7 1/2" high.
31. A Charlotte Rhead pottery vase, of squat baluster shape, decorated in the Persian Rose pattern against a mottled orange ground; 4 1/4" high.
32. A Swansea ware 'Rembrandt' pottery vase, of ribbed tapering shape, with a single handle, painted and gilt with stylized flowers between blue and orange line rims; 7" high.
33. A 19thC Staffordshire pottery milk jug, of diamond shape, polychrome printed with flowers and butterflies within black and terracotta borders, pewter cover; 8" high.
34. A Pratt ware pot lid, transfer printed with a bear baiting scene, complete with base; 3" dia.
35. Two German porcelain fairings, modelled as three young boys and three young girls in a row, on oblong bases; 2 1/4" wide.





36. A mid 18thC Chinese tankard, painted and gilt with flowers and insects between repeat borders, scroll handle; 6" high.
37. A pair of Royal Worcester ovoid two-handled vases and covers, painted with roses, the elongated necks gilt and moulded with leaf forms, conforming foot; one signed R. Austin, shape # 2307, circa 1911, 11 1/4" high.
38. A faience jardiniere, the circular body enamelled with brown flowers and foliage against an ochre ground, below a geometric collar; 11" dia.
39. A Beswick pottery biscuit jar and cover, of shaped oblong form, partly ribbed, in brown, yellow and green streaky glaze; 9 1/4" wide.
40. A Royal Worcester cream jug, with a shaped spout, reeded gilt handle, painted and gilt with flower sprays against a blush ivory ground; shape # 1094, circa 1905, 5" high.
41. A 19thC pottery frog mug, with moulded rim and leaf scroll handle, with applied flower sprays against a buff ground; 4 1/4" high.
42. A Wedgwood pottery green ground mug by Keith Murray, the slightly shaped body with reeded basal border, loop handle; 5" high.
43. A 19thC Doccia candlestick, modelled as a satyr astride a mythical beast, and holding a palm tree trunk supporting scroll candle sconce, on conforming base; 11 1/4" high.
44. A 19thC Continental feeding mug, with loop handle, painted in underglaze blue in the Meissen manner; 6 1/4" wide.
45. A Japanese Satsuma pottery figure, of a dog of Fo, lightly gilt overall, and holding a colourful tasselled rope in its mouth; 7" high.
46. A fine 19thC Meissen figure group, of a scantily dressed woman, standing beside a pillar, with dog and cherub close by, on rococo scroll base; 11" high.
47. A late 19thC Staffordshire pottery dinner service, printed in underglaze blue with flowers and foliage, with shaped and moulded borders.
48. A Clarice Cliff shell shaped posy bowl, with fan handles, painted with pink Taormina pattern, of trees on a cliff top with seagulls against a buff ground, 13 1/2" wide.
49. A Wedgwood Collector's Club 'Clarice Cliff Bizarre' plate, painted with the Caravan pattern, taken from an original Applique' design; 8" dia.
50. A Wedgwood Collector's Club 'Clarice Cliff Bizarre' plate, of oblong shape with disked centre, painted with orange tree pattern, produced for the Clarice Cliff Collectors Club; 9" wide.
51. A Wedgwood Collector's Club 'Clarice Cliff Bizarre' teapot, painted with orange trees pattern, produced for the Clarice Cliff Collectors Club; 4 1/2" wide.
52. A Wedgwood Collector's Club 'Clarice Cliff Bizarre' tea service, comprising teapot, milk jug, and sugar bowl, decorated with a cottage and tree landscape.
53. A Wedgwood Collector's Club 'Clarice Cliff Bizarre' tea service, comprising teapot, milk jug and sugar bowl, decorated with crocus pattern.
54. An extremely rare Burleigh Ware charger by Charlotte Rhead, pattern # 4012, centrally painted with a pheasant perched on a fruiting branch of pomegranates and foliage, in pink, yellow, green, blue, and brown against a pale yellow ground; printed and painted marks, 14 1/4" dia.
55. A Continental porcelain dinner service, each piece decorated with flower and wheat sprays, within blue moulded borders; printed mark and impressed F & M.





56. A collection of eleven Staffordshire style pottery buildings, being money boxes, pastille burners and ornaments.
57. A pair of Masons Ironstone china dinner plates, printed and polychrome painted with flowers, the underglaze blue borders reserved with chinoiserie panels - flower sprays; 10¼" dia; two further examples, 9¼" dia. (4).
58. A pair of Masons Ironstone china soup plates, painted and gilt with swimming ducks, flowers and foliage amidst rocks, the border with repeat flower and panel border; 10¼" dia.
59. An early 19thC Delft shallow dish, painted in blue with flower sprays and diaper well; 13" dia.
60. A Royal Doulton figure, 'Daffy-Down-Dilly' HN1712; 8" high.
61. A Royal Doulton figure, 'Roseanna' HN1926; 8¼" high.
62. A Wade Walt Disney Blow-up figure 'Dachie', 5" high.
63. A Shelley Harmony teapot, and matching hot water jug, decorated with blue and brown banding, each with ring handles.
64. A Royal Doulton bone china tea service, decorated in the Art Deco manner with silver bands on a white ground, pattern # H4244, Rd. # 775716.
65. A Beswick cottage ware tea service, comprising teapot, hot water jug, milk jug, sugar bowl, six cups, saucers and plates.
66. Beswick cottage ware cheese wedge, butter dish and cover, preserve dish and cover, biscuit barrel. (4).
67. A Measham bargeware teapot, decorated with applied flower sprays and birds, inscribed 'Mrs. Bean, Skellingthorpe 1892'; 12½" high. Together with a transfer printed teapot stand. (2).
68. A 19thC Staffordshire figure group, of two huntsmen with plumed hats, flanking a leaping deer over clock face, moulded base with gilt line; 9¼" high.
69. A pair of 19thC Davenport meat plates, painted in underglaze blue with a Chinese landscape with figures by a ruined temple, the borders printed with ferns and palms; impressed factory marks for circa 1820, 18" wide.
70. A Coalport dessert service, each piece printed and painted with floral sprays and fronds within shaped gilt scroll borders, comprising two boat shaped tazzae, a similar dish, each with integral pierced handles, and six plates; pattern # X905, circa 1900.
71. A 19thC Staffordshire pottery model, of a colourful parrot perched on a tree stump, circular base; 9" high.
72. A Royal Doulton miniature character jug, Gondolier D6595.
73. A Medieval jug, probably 14thC, of slender baluster shape, in reddish brown clay, the neck and shoulder with horizontal ridges, applied with a moulded handle, the body half-glazed with a mottled olive green glaze, on a plain skirt foot; 14¼" high.
74. A 19thC Swansea style plate, printed and painted in puce with flowering branches, gilt highlights, within diaper well, floral border, and moulded rim; 10¼" dia.
75. A Doulton Lambeth faience jardiniere, painted, gilt and silvered with birds perched on foliage and stylized flowers against a matt ivory ground, the brown neck rim printed with a gilt repeat border of stylized flowers; impressed and printed factory marks, # 2583, 13cm dia.
76. A Japanese Satsuma pottery vase, decorated with ducks in flight amidst rushes, below a repeat stencil border and line rim; Meiji period, 10" high.
77. A Beswick pottery vase, moulded overall with differing sea shells, star fish, coral and sea anemones; model # 2021, 9¼" high.
78. A Falcon ware pottery jug, inscribed with verse and moulded in relief with ghouls, ghosts and spiders; 8½" high.
79. A Moorcroft pottery baluster vase, tubelined and painted with hibiscus against a green ground; 5¼" high.
80. A 19thC Japanese porcelain shallow dish, painted and gilt with figures in a winter landscape, with children building a snowman, lake beyond; 13¼" dia.



81. **A pair of early 20thC German bisque mantelpiece figures, of a young boy and girl in 18thC costume, by a watermill; 11" high.**
82. **A Clarice Cliff vase, decorated in Pink Taormina pattern, of trees on a cliff top with seagulls, against a buff ground; circa 1936-37, 7" high.**
83. **A Wilkinson Honeyglaze small tray, by Clarice Cliff, of ribbed boat shape, painted with the Chippendale pattern within brown border; circa 1950, 9" wide.**
84. **A Clarice Cliff oval serving plate, decorated in the Chippendale pattern, within brown vine border; circa 1940, 12½" wide. Also a Wilkinson Honeyglaze pin tray by Clarice Cliff, painted in Pink Taormina pattern; circa 1950, 5¼" wide.**
85. **A set of 4 of 19thC earthenware wall plates attributed to R A Gardner, depicting the four seasons, painted with sprays of differing flowers against an unglazed buff ground; impressed 'P. Ipsen, Kjobenhavn', and a further pair on a black ground, 14¼" dia.**
87. **A 19thC stoneware saltglaze jug, the brown ovoid body with applied moulded toppers, hounds and trees; 8" high.**
88. **A Carter Stabler Adams Poole terracotta vase, painted with a band of flowers and foliage against a cream slip, painted by Gladys Brown; circa 1930, # 594, 5½" high.**
89. **A Poole terracotta vase, painted with a simple foliate border by Lily Pedley; circa 1920, # 352, 4" high.**
90. **A Carter Stabler Adams Poole terracotta vase, painted with a geometric pattern of stylized leaves and flower-heads by Eileen Prangrell; 7½" high.**
91. **A Poole pottery small vase, painted with stylized flower forms by Gladys Hallett; circa 1935, 3½" high.**
92. **A Poole terracotta small preserve pot and cover, painted with simple flower forms and dots; painter's mark I.W.V., 3" high.**
93. **A Poole pottery cream jug, painted with stylized flowers and leafage; ZG pattern by Marjorie Cryer, 3¼" high.**
94. **A Poole terracotta vase, painted with the grape pattern by Erna Manners; circa 1920, # 988, 4" high.**
95. **A Poole terracotta vase, painted with geometric banding, designed by Trudo Adams, painted by Marjorie Batt; circa 1925, # 354, 3½" high.**
96. **A Poole terracotta vase, painted with flowers and geometric forms; # 113, 5" high.**
97. **A Carter Stabler Adams Poole terracotta vase, painted with a simple dentil border pattern; #354, 4½" dia.**
98. **A Poole terracotta circular bowl, painted with a geometric floral pattern by Winifred Collett; # 381, 8" dia.**
99. **A Poole terracotta small vase, painted with scallop and dentil borders by Phyllis Ryall; # 585, 3¼" high.**
100. **A set of four Beswick pottery flying ducks; in sizes 10" to 5½".**
101. **A mid 20thC pottery teapot, modelled as a racing car and driver, cream ground with silver lustre highlights; 9" wide. Also a yellow ground pottery novelty teapot, modelled as The Old Woman Who Lived In A Shoe, gilt highlights. Cracked. (2).**
102. **A pair of Art Nouveau pottery vases, the swelling necks moulded with purple flowers and leafage, the bodies flanked by rudimentary stalks; impressed # 5643, 7½" high.**
103. **A pottery mug, commemorating the Coronation of Edward VIII, designed by Laura Knight, painted in colour with a profile portrait, Royal ciphers and crests, the handle moulded as a griffin; printed marks and facsimile signature, 3¼" high.**
104. **A collection of Art Deco inspired pottery bibelds, modelled as naked and semi-naked sunbathing beauties, signed R.S. and dated; together with three German porcelain half-dolls. (15).**
105. **A 19thC pottery baluster jug, with basket weave moulded body applied with foliate bands and leafage, hinged pewter cover; 9" high.**
106. **A Shelley Harmony pattern jug, in green, brown and buff glazes; 7½" high.**
107. **A Chinese Sang de Boeuf baluster vase, with everted rim; 14¼" high.**



108. A pair of Wedgwood basalt ovoid vases, with applied moulded figures and leaf detail; 4" high.
109. A modern Poole pottery vase, of slender ovoid shape, painted with flowers and leafage between line borders; artist's initials B.N.; 8 1/4" high. Also a sugar bowl with similar painted decoration; 4 1/4" dia. (2).
110. A Poole pottery bowl, painted with stylized flowers and leafage, between line borders; artist's initials M.T.; 7" dia. Also a small jug, painted with two flower sprays, dot rim; 3 1/4" high.
111. A Langley ware pottery jardiniere, of waisted baluster shape, painted with iris against a green ground, over a stencil basal border of Art Nouveau motifs; 8" high.
112. A Twigg's pottery cheese stand, transfer printed in blue with a willow pattern within geometric and floral borders; impressed Twigg's, 10 1/4" dia.
113. A Royal Doulton figure, of a standard schnauzer, on an oblong base with wooden plinth, from the Utility Dog Collection; boxed, 5" high.
114. A Wedgwood majolica goblet, with knopped stem and on a square base, the blue ground with two ribbon and ivy moulded borders, in shades of ochre and green; impressed mark, 6 1/2" high. Restored.
115. A Wedgwood blue jasper biscuit barrel, with applied classical figures and motifs, E.P.N.S. mounts; 5 1/4" high.
116. A modern Poole pottery baluster vase, painted with flower sprays, dot and line border; 7 1/4" high. Also a posy bowl painted with a girdle of flowers, dot border; 7" dia. (2).
117. A Masons Mandalay pottery ginger jar and cover, 7" high. Also a jug and dinner plate, 20thC. (3).
118. A Royal Crown Derby bone china figure, of a kingfisher perched on a branch, on a moulded base encrusted with flowers, designed by L. Payne; original box, 4 1/4" high.
119. A Royal Crown Derby bone china figure, of a barn owl standing on a moulded tree stump with leafage, designed by Joan Lee; original box, 6 1/4" high.
120. A Royal Crown Derby bone china figure, of a robin perched on a branch with berries, designed by Joan Lee; original box, 4" high.
121. A Royal Crown Derby bone china figure, of a blue tit perched on a branch, the moulded base with encrusted flowers, designed by D. Stafford; original box, 6" high.
122. A Doulton Lambeth Slater's Patent jug, of ovoid shape, decorated with a raised scroll and dot girdle between underglaze blue shoulders and textured malt ground, enamelled with flowerheads; 9" high.
123. A 19thC Longchamps majolica oyster dish, with six wells moulded against a deep turquoise basket moulded ground; 9 1/2" dia.
124. A bisque model of Bubbles, after Millais, seated on a log, with a bowl of suds, a pipe in his hand, the log inscribed 'PEARS'; 5 1/2" high.
125. A Royal Worcester flat back jug, painted with flowers against a blush ivory ground, the reeded gilt handle with foliate terminals; 1896, shape # 1094, 5 1/4" high.
126. An Art Deco pottery figure, of a naked female seated on an oblong plinth, with all-over turquoise matt glaze; Rgd. # 804862, 12 1/2" high. Another figure, painted white, and an Art Deco pottery jug, Odeon shape, with sunburst decoration; 9" high. (3).
127. A pair of late 19thC German biscuit figures, modelled as an 18thC dandy and his female companion. He in lilac costume, with flower sprigged jacket and breeches, she in pale blue flower sprigged frock; stamped ankh mark in blue and moulded numeral to underside, 10 1/2" high.
128. A set of three Royal Crown Derby porcelain cabinet or dessert plates, decorated with stylized urns and fruit baskets, in blue, heavily gilt within prunus moulded boarder; 9" dia.
129. An early 19thC Staffordshire pottery figure, of a young boy eating grapes, polychrome painted in pink, yellow, on moulded base and square plinth; 8" high. Plinth badly damaged.
130. A 19thC salt glazed cream jug, ovoid, applied stiff leaf border, foliate swags, and acanthus moulded spout, and handle terminals; 5 1/2" high. Also, a 19thC moulded stoneware jug, in relief with hunting scene, pewter lid; 5 1/2" high. The latter with hairline crack. (2).

131. A quantity of Derby Old Imari porcelain, comprising four tea plates, a large plate, two saucers, four breakfast cups.
132. A Westerwald salt glazed tobacco jar and cover, moulded in relief with masks, scrolls, and foliate detail; $4\frac{1}{2}$ " dia.
133. A Jasperware Stilton cheese bell, and copper cheese bell and stand, unmarked, moulded with classical figures and ivy leaf border; 10" dia.
134. A blue Jasperware biscuit barrel, with E.P.N.S. mounts.
135. A Copeland late Spode pottery teapot, of squat circular form, moulded in relief with classical figures against a pale green ground.
136. A Crown Devon Fielding pedestal fruitbowl, with printed decoration against a matt ivory ground; 9" dia. Together with a pair of matching salad servers, and a similar pierced salad bowl, with shaped rim.
137. Three 1pt pottery measures, with printed detail 'For J. Tams, Longton, Staffs.'; together with two matching $\frac{1}{2}$ pt measures, each with scroll handle and blue line border.
138. A 'Guinness is good for you!' pottery ashtray, the well with transfer decoration depicting Sam Weller composing his valentine, and showing a contemporary notice of Guinness, after Phiz; $4\frac{1}{2}$ " dia.
139. A Rooster novelty teapot, glazed in bright colours, the tail feathers incorporating the handle, and the head as the spout; 6" high.
140. A pair of Royal Crown Derby bone china Imari plates, pattern # 1128; 9" dia.
141. A set of four Royal Crown Derby coffee cans and saucers, pattern # 2451.
142. A Royal Doulton Kang He pattern part dinner service, each piece transfer printed in blue, with a deer in a country landscape, comprising three rectangular meat plates with canted sides; 18" wide, also a vegetable tureen and cover, and a sauce tureen and cover, the latter with strawberry finials.
143. A quantity of 19thC pottery dinner ware, including a Minton tureen stand, four matching dinner plates, a tureen and cover, and a blue and white cheese stand.
144. Royal Crown Derby 'Chatsworth' pattern porcelain, of bone china dinner and tea service, ten-place setting. Together with coffee pot, milk jug, and covered sugar. Some minor damage.
145. A Royal Crown Derby tea service, centrally decorated with rose spray within apple green borders and with moulded edge, ten-place setting.
146. A quantity of Mintons tea ware, each piece printed and enamelled with Chinese foliage within blue printed borders.
147. A Royal Doulton character jug, Uncle Tom Cobleigh; 7" high.
148. A Beswick figure, Champion Coddington, model of a black and white fresian cow. Chipped horn and ear.
149. Royal Doulton character jug, Mein Host; $3\frac{3}{4}$ " high.
150. A Royal Doulton character jug, Old Charlie; $3\frac{3}{4}$ " high.
151. An early 20thC Staffordshire pottery figure, Jack Tar; 9" high.
152. A 19thC Staffordshire pottery figure, of a Scottish Chieftain on horseback, white ground with gilt highlights; 15" high.
153. A pair of 19thC Staffordshire dogs, mainly white with gilt highlights, and orange muzzles; 12" high.
154. An early 20thC biscuit figure, of Little Red Riding Hood; 8" high.
155. A Royal Doulton Long John Silver character jug; $7\frac{1}{2}$ " high.
156. A 19thC Staffordshire pottery figure, General Gordon, on a camel; 14" high. Repainted.
157. A 19thC Staffordshire pottery figure group, of a donkey and maid, inscribed 'Sand'; $9\frac{1}{2}$ " high.





158. A pair of 19thC Staffordshire poodles; 5" high.
159. A 19thC Staffordshire pottery figure, of a fisherwoman, holding a basket of sardines, on moulded base; 13½" high.
160. A 19thC Staffordshire figure group, of a Scottish Chieftain astride a horse, moulded base, underglaze blue jacket; 14" high.
161. A 19thC Staffordshire pottery spill vase, moulded as a Scottish Chieftain with bow, wearing an orange cloak, and with deer to the side; 18½" high.
162. A pair of Royal Dux type figures, of a young fisherboy and his female companion, glazed in shades of green, with gilt highlights; 15" high.
163. A Royal Dux type figure, of a young musician in gaudy clothes, with tambourine, on moulded base; 20" high.
164. A Royal Dux figure, of a classically dressed maiden, model # 365. Also a male figure, # 1071. (Each missing an arm.)
165. A Staffordshire pottery pastille burner, modelled as an estate cottage, with underglaze blue roof, orange and green highlights; 6¾" high.
166. A Staffordshire pottery mantelpiece figure, modelled as a castle clock tower; 7½" high.
167. A Staffordshire pottery pastille burner, modelled as a thatched estate cottage; 5¼" high.
168. A Staffordshire pottery Toby jug, modelled as the Chancellor of the Exchequer, seated with underglaze blue jacket, red waistcoat and green breeches, holding a scroll labelled *BUDGET*; 11" high.
169. A Staffordshire pottery figure group, of three kilted musicians before a tree, each with underglaze blue jackets; 10" high.
170. A pair of late 19thC copper lustre baluster jugs, each with stippled ground with moulded border and painted with floral spray; 7½" high.
171. A pair of 19thC Chinese export baluster vases, decorated in underglaze blue with birds and flowering branches; 5" high, also an Imari dish, with fluted borders, painted with typical decoration; 8¼" dia.
172. A 19thC black basalt pedestal teapot, ovoid, with angular scroll handle, the body engraved with geometric reeded panels, the cover with a spaniel finial, unmarked; 8½" high.
173. A 19thC Continental porcelain dished circular plaque, painted with a head and shoulders study of a young girl, with a pensive expression, wearing a head scarf trimmed with greenery, facing sinister, in a cast metal frame with pierced and boss decoration.
174. A 19thC Continental porcelain dished circular plaque, painted with a head and shoulders study of a noblewoman, wearing an ornate feathered hat and fur trimmed cape, in a cast metal frame, with pierced strapwork decoration; 12½" dia.
175. A pair of terracotta type elephants, each with raised trunks and glass eyes, on moulded bases; 17" high.
176. A 19thC Staffordshire pottery military figure, on a horse, facing sinister, in helmet, military jacket and jackboots, glazed in colours; 7¼" high.
177. A Wilton pottery vase, of circular annulated shape, with moulded handle, mottled brown glaze; 5¼" wide, also an Art Deco period toast rack incorporating a pottery butter dish and cover. (2).
178. A pair of 19thC German porcelain cabinet plates, painted to the centre with courting couples in a landscape, the pierced border polychrome and gilt with flowers and diaper cells; faux Augustus Rex mark for Helena Wolfsohn, 9" dia.
179. A 19thC pottery charger, painted and enamelled in the Japanese manner with acer and prunus trees; 21½" dia.
180. An Art Deco period cut glass scent bottle, with slice cut oblong body and chrome atomiser; 4¼" wide, another similar example, and a cut glass sent bottle as a fish. (3).



181. A Venetian glass decanter, modelled as a clown, the stopper his head, decorated in green and white to the body, multi-coloured hat and bow tie; $11\frac{1}{2}$ " tall.
182. A cranberry glass bell, with clear baluster handle; $10\frac{1}{4}$ " high.
183. Four items of cranberry glass.
184. An amethyst glass baluster vase, with enamel and gilt decoration; $7\frac{1}{4}$ " high, also a green glass water glass, two small frill neck vases, and a cranberry glass caster. (5).
185. A cut glass bowl, with notched border over slice and diamond cut body, star cut to base; $8\frac{1}{2}$ " high, 10" dia.
186. An Art Nouveau blue glass vase, with a swelling and pinched neck, over tapering body gilt with stylized tulips; 9" high. Further piece, decorated with white enamel scrolling; 9" high. (2)
187. A green glass dump, with flower inclusion; another with tear drop and plant inclusion; two small paperweights and a pink frosted glass flower holder.
188. A late 19thC clear glass table centrepiece, with frill edged bowl, supporting the trumpet vase with blue waved rim; $9\frac{1}{4}$ " tall.
189. A 19thC brown glass decanter, with single ring handle and later silver plated collar and stopper with a horse and jockey finial; 10" high, together with a GIN label on chain.
190. A Copeland Spode's Italian dinner service, printed in blue, comprising ten dinner plates, twelve dessert plates, ten tea plates, six soup plates, two covered tureens, sauce boat and stand; blue factory mark.
191. A Copeland Spode's Italian dinner service, printed in blue, comprising ten dinner plates, twelve dessert plates, ten tea plates, six soup plates, two covered tureens, sauce boat and stand; blue factory mark.
192. Six graduated Copeland Spode's Italian meat plates, each with canted corners; blue factory marks, 17" to 8" wide.
193. Two Copeland Spode's Italian jugs; 4" and 3" high, also a sauce boat; blue factory marks. (3).
194. A Copeland Spode's Italian rectangular dish; 9" x 9", another with moulded handles; $11\frac{1}{2}$ " x $7\frac{1}{2}$ ", and a sandwich dish; $11\frac{1}{2}$ " x 6", blue factory marks. (3).
195. Five Copeland Spode's Italian plates, in various sizes; blue factory marks.
196. A cameo glass vase, overlaid in white with fruiting branches on an acid etched blue ground; $5\frac{1}{4}$ " high.
197. A Mdina blue glass vase, with yellow inclusions, of ovoid shape with rudimentary handles; 6" high, also a blue cased frill vase, on a square base; 6" high. (2).
198. A modern glass paperweight, perhaps Mdina, ovoid with yellow spiral inclusion; $3\frac{1}{4}$ " high.
199. A Baccarat style mushroom paperweight, with a central dome of close-packed canes within an outer blue opaque border, star cut base; $3\frac{1}{4}$ " dia.
200. A Continental amber glass oversize goblet, the bowl enamelled with a topping scene and foliate scroll, on a knopped baluster stem and domed foot; $10\frac{1}{4}$ " high.





Lot No. 200



Lot No. 202



Lot No. 203



Lot No. 207



Lot No. 212

201. A 19thC saltglaze jug, the collar moulded in relief with fruiting vine, the body with Royal Crest and recumbant lions; 8" high.
202. A Grimwades pottery *Cottage* tea service, moulded as half-timbered ivy clad houses, comprising teapot and stand, milk jug, sugar bowl and stand, and hot water jug, a similar cake stand and a preserve dish. (The latter missing cover).
203. A Charlotte Rhead Persian rose baluster vase, painted in autumnal hues, pattern # 4491; 8 1/2" high.
204. A Brannam pottery vase, spherical, with an everted rim, incised with stylized fish and seaweed in ochre and blue against a brown ground; 11 1/4" high (AF).
205. A Shelley *Phlox* pattern tea service, in blue; pattern # N12189.
206. A Wedgwood blue and white Jasperware biscuit barrel, with electroplated mounts, handle and cover.
207. A Japanese Satsuma baluster vase, decorated with peony and Oriental poppies, signed, Meiji period; 6".
208. A Japanese Satsuma baluster vase, decorated with mountain berries, and birds, signed, Meiji period; 7" high.
209. An Edwardian porcelain oval tray, painted with columbine, with a pierced electroplate gallery; 21".
210. Circa one hundred Victorian glass marbles.
211. Two Victorian tiles, embossed with neo-classical figures.
212. A triptych, of Victorian neo-classical design tiles.
213. A Victorian carved mahogany table plateau, with a carved frame inset with three Minton's polychrome tiles.
214. Six 18thC Delft blue and white tiles, and two further examples in a frame, depicting sailing ships.
- METALWARE**
215. A pair of Chinese brass incense burners, each surmounted with the dog of Fo, and having panelled bodies with stylized birds and flora; 14" high.
216. A Chinese enamel baluster vase, of hexagonal form, the yellow ground panels decorated with pink and green floral trails; 12" high.
217. A Chinese enamel baluster vase, of hexagonal form with opposing panels of birds, flora and landscape on a turquoise ground; 15" high.
218. Three Japanese cloisonné jars, with covers; 3 1/2" and 2 1/2".
219. A French wrought iron game-hanging bell, with eight hooks.
220. A Liberty & Co. planished pewter circular dish and cover, stamped 0293; 10" dia.
221. A black metal and brass car lamp, with interior burner and side bracket; 11" high.
222. A late 19thC Spelter figure, of a huntsman on horseback with hound at his feet, moulded base with rabbits, and on a wooden plinth with turquoise painted finish; 10 1/2" tall, also a late 19thC black painted Spelter figure, of a classically dressed youth seated on a chair; 9 1/2" high. Damage to left hand of latter.
223. A pair of wooden, leather and brass bellows, the front leather panel decorated with an image of Shakespeare's house; a brass miner's lamp, stamped 'The Protector Lamp and Lighting Company Limited, Eccles', and a copper and brass banded tobacco jar (3).
224. A Lucas *King of the Road* brass and metal car lamp, with swing handle and side bracket; # 632, 9 1/2" high.
225. A small brass tea kettle and stand, with turned wooden handle, 11 1/4" high.
226. A brass dome topped casket, the hinged cover applied with blue enamel monogram M.H.; 7 1/4" wide.
227. A cast brass inkwell, the cover with squirrel finial, stiff leaf and flower borders, the waisted pot supported by three claw feet on circ de socle and concave platform base, with shell feet; 6" high.
228. A pair of 19thC brass candlesticks, with diamond and fluted and knopped columns; 11" high, together with a brass chamberstick.



229. A copper tea urn, with brass tap, handles and finial.
230. A copper saucepan and cover, with iron handle, together with two copper funnels.
231. A Victorian copper kettle.
232. A Victorian copper kettle.
233. A Victorian copper kettle.
234. A Victorian copper kettle.
235. A Victorian copper kettle, with hinged cover.
236. A copper tea urn, with brass tap, handles, and turned wooden finial.
237. A copper tea urn, with ceramic handles, brass tap, the domed cover with fluted centrepiece and finial.
238. Four brass jam pans, in varying sizes, also a brass saucepan, and a small copper kettle.
239. A metal framed hanging oil lamp, with brass reservoir, and glass chimney.
240. A metal framed hanging lamp, with brass reservoir and milk shade and clear glass chimney.
241. A metal hanging lantern, with cranberry glass reservoir and white milk glass shade.
242. A brass oil lamp, with clear glass chimney.
243. A Victorian brass and coppered oil lamp, with moulded green tinted glass reservoir and acid etched shade.
244. A Victorian twin burner oil lamp, with a cast iron base, green glass reservoir and acid etched shade.

245. A brass oil lamp, with pierced and embossed decoration and with a plain acid etched shade and glass chimney.
246. A Victorian oil lamp, with a double burner, and clear glass reservoir over an embossed brass pencil and green ceramic base.
247. A late Victorian oil lamp, with double burner, blue glass ribbed oil reservoir over a pierced cast metal base.
248. A brass Composite column table lamp, with a stepped square base.
249. A cast brass figural table lamp, the pedestal cast as a maiden entwined around a tree, circular stepped base; 15½" high. Lamp fitting at fault.
250. An early 20thC oil lamp, with twin burner, milk glass reservoir over brass circular pedestal on domed foot, with a milk glass shade (AF).
251. A brass coal bucket, of oval shape, slightly domed lid with urn finial, two swing handles formed as horseshoes, relief cast girdle and on four claw feet.
252. A part set of eleven dessert knives and forks, with ebony handles in a figure mahogany case; together with a set of twelve dessert knives and forks with ivory handles in a mahogany case.
253. A quantity of plated items, predominantly from the Cunard Whitestar Shipping Lines.
254. A pair of 19thC pewter ejector candlesticks, with knopped baluster stems, on domed foot; 8½" tall.
255. A 19thC brass and copper warming pan, with pierced cover, fruitwood handle; 42½".



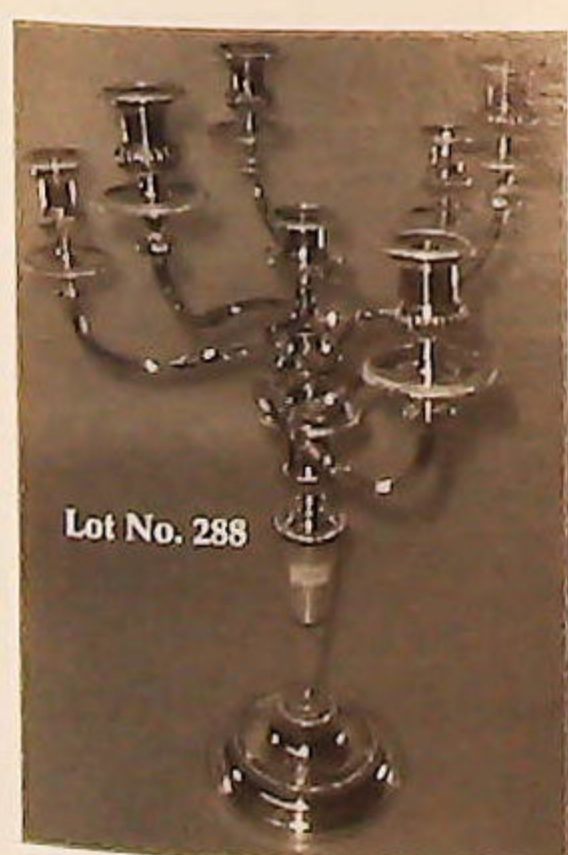


256. A 19thC pewter coffee pot, with panelled sides and wooden scrolling handle; another, with ebonised handle; a pewter teapot with half-lobed body, ebonised handle and finial and on pedestal foot; and a Britannia metal baluster claret jug, with embossed scroll, flower and foliate decoration and pierced scrolling handle. (4) Damage to teapot.
257. A pewter lidded ale jug, with reeded bands and plain handle; 9" high, another smaller example; 6" high.
258. A Britannia metal pitcher, having a hinged domed cover with berry finial, foliate cast scroll handle, fluted spout, the machine turned body with vacant cartouche beneath the spout; applied manufacturer's label to underside 'Stimpsons Patent Double Wall Pitcher April 17th 1854', and retailers stamp 'The Wellen Lake Ice Company, 140 The Strand, WC'; 12" tall.
259. A pair of pewter plates, 14" dia.; a planished pewter octagonal tray; and a circular pewter dish, the borders embossed with mollusc shells; 13" dia.
260. Two pewter small teapots, a Britannia metal small teapot, two funnels, cream jug, a pedestal dish, ladle, and a cast metal plate.
261. A Colman's Mustard tin, the hinged cover with Royal Crest, inscribed 'Manufacturers to the Queen', and with various landscapes to the sides, the interior with inner lid; 8½" wide.
262. Two brass trivets, a cast iron trivet, and other brass ware.
263. A matched set of brass fire irons, together with a 19thC brass inglenook trivet.
264. A large copper inglenook kettle, with cast iron overhead handle with suspension loop and an extended tap with brass spout; 20½" overall.
265. A Victorian copper kettle, with acorn finial.
266. A brass jam pan, with cast iron overhead handle; 11" dia.
267. A George VI brass fire engine bell, suspension loop missing; 7½" high, 8½" dia.
268. A George VI brass fire engine bell, with suspension loop; 9½" high, 9½" dia.
269. A George VI brass fire engine bell, with suspension loop; 11" high, 11" dia.
270. A George VI brass fire engine bell, with G.R. cipher to shoulder; 11½" high, 9" dia.
271. A 19thC brass oil lamp, by Veritas Lamp Works, with knopped circular column on dished base, with boss border, glass chimney.
272. A brass jam pan, with cast iron overhead handle; 13" dia.
273. A cast iron and brass pedestal trivet, with circular top, also a cast iron trivet with brass baluster pedestal. (2).
274. A late 19thC Salter brass roasting jack.
275. A large Chinese brass censer.
276. An early 20thC brass tea kettle, with turned ebonised handle on spirit stand.
277. A planished copper circular tray, with boss border; 16" dia.
278. A pair of late 19thC brass candlesticks, with diamond knopped and reeded columns, together with a brass chestnut roaster.
279. A quantity of horse brasses.
280. A quantity of horse brasses.
281. A quantity of horse brasses.
282. A quantity of horse brasses, and associated items.
283. A quantity of horse brasses, leather straps etc..
284. An early 20thC two-handled tray, oblong, the patera and ribbon swag design composed of coloured glass beads between glass panel, within a mahogany frame and brass handles; 25" x 10". Some damage.
285. An Indian hardwood two-handled tray, with ebony and bone inlay; 24" wide.
286. A set of four brass Avery Bell weights.
287. An early 20thC planished pewter circular biscuit barrel and cover, 5" high.

288. An electroplate on copper seven-light table candelabra of Adam design, with six reeded scrolling branches terminating in half-lobed sconces with gadroon rims, supported on a tapering fluted lobed column, and domed fluted circular foot; 28" high. Provenance: Bought by the current vendor at the sale of Boughton Hall, Northants.
289. An electroplate two bottle stand, with loop handle.
290. An early Victorian style cake basket, the shaped circular dish with pierced decoration, swing handle, and on conforming base, inscribed to the well, 'From The Lord & Lady Brownlow..... 1976'.
291. A pair of silver plated wick trimmers, with cast decoration.
292. A Bluebird's Toffee tin, printed in colours with images of Warwick castle, Carnarvon castle, Richmond castle, and Edinburgh castle; together with assorted contents of dominoes, darning mushroom, crochet implements etc..
293. An early 20thC brass fire engine bell; 10" high, 9" dia., together with a smaller example lacking suspension ring.
294. A brass three-branch ceiling light fitting.
295. A cast iron fire front, with copper and brass rail.
296. A heavy copper bucket, with ring handle; 11" high.
297. A early 20thC metal wine bottle stand, the handle applied with fruiting vine; 15" high.
298. A Victorian brass trivet, with turned fruitwood handle, also a pair of brass log tongs, with panelled handle; 17". (2).
299. An early 20thC copper and brass mounted regimental bugle, bearing the crests for the Notts. and Derby Sherwood Foresters, and also bearing the name of the bugler J. R. BENTLEY, with tassel; 11 1/4".
300. An early 20thC Continental brass chamberstick, with scalloped borders of simple pressed foliate decoration, side carrying handle.

JEWELLERY & BIJOUTERIE

301. A Victorian style necklet, of oval garnets and emerald green enamelled plaques interspaced with seed pearl topped floral motifs and scrolling and bead spacers, all in yellow metal. Total weight 19.8g, length 14 1/4".
302. A fancy belcher link charm bracelet, stamped for 9ct gold with padlock clasp with eighteen attached charms. Total weight 42.4g.
303. A fine link charm bracelet, stamped for 9ct gold with padlock clasp with eleven attached charms. Total weight 25.7g.
304. A curb link charm bracelet, stamped for 9ct gold with padlock clasp with fourteen attached charms. Total weight 35.1g.
305. A Victorian style mourning locket.
306. Two ladies dress rings, one set with six turquoise surrounding a pearl in yellow metal stamped 14K, the other purple paste set in a yellow metal floral mount.
307. Two ladies dress rings, one set with a pale amethyst in a split shoulder 9ct gold mount, Birmingham 1968; the other a pale amethyst in a bark finish setting, Birmingham 1974.
308. A half sovereign, 1912, set in a heavy 9ct gold wide shouldered ring mount, Birmingham 1965. Total weight 18g.
309. A 9ct gold medium weight curb watch chain, with two swivels and T bar. Total weight 23.8g, length 16".
310. A gold coin set ring, with pierced shoulders. Total weight 7.8g.
311. A unique designed ring, set with three white stones, pink metal stamped 18K. Total weight 3.4g.
312. A sovereign set pendant, 1900, filigree mount to a medium belcher chain. Total weight 17.2g, length 16".
313. A small black enamel seed pearl set Victorian mourning brooch, oval with scalloped edge together with a Victorian mourning hat pin top.



314. **An Edwardian pendant**, a gold wire work floral outline with centrally set round garnet and round garnet dropper, with small seed pearl highlights, on a fine trace chain. Total weight 4.8g, length 20".
315. **An 18ct gold gentleman's graduated barrel shaped signet ring**, set with a diamond in a star cut. Mounted estimated weight 0.12ct, Birmingham 1911.
316. **An 18ct gold five graduated diamond set ring**, total mounted estimated weight of diamonds 0.10ct, Birmingham assay, date rubbed.
317. **A signed Japanese ivory netsuke**, a study of a Noh-play sword dancer performing his act with blades swirling.
318. **A signed Japanese ivory netsuke**, a study of a pretty young Geisha combing her exceptionally long hair.
319. **A ladies 18ct gold wristwatch**, by Eterna with squared bronze dial, baton numerals on close mesh integral bracelet.
320. **A signed Japanese ivory netsuke**, a study of a street musician plucking his lyre.
321. **A signed Japanese ivory netsuke**, a study of Mu-Jima the famed mermaid of mythology sitting upright upon a large boulder.
322. **A sapphire and diamond dress ring**, a central dark blue sapphire, oval 8.4mm x 6mm approx., flanked by three small diamonds, set in 18ct white gold, London 1965, maker RN. Total weight 4.9g.
323. **A signed Japanese blackwood netsuke**, a study of the mythological evil horned Oni.
324. **A signed Japanese ivory netsuke**, a study of the famed court Samurai Noritsune standing holding his head proudly, his Katana sword in hand.
325. **A signed Japanese darkwood netsuke**, a rare study of a three-legged mythological dragon-toad, sat upon and guarding its hoard of treasure.
326. **A signed Japanese darkwood netsuke**, a traditional egg-shaped study of a three-clawed dragon coiled and hiding within its own smoke clouds.
327. **A ladies quartz stainless steel wristwatch**, dial scribed 'MUST DE CARTIER, SWISS', Roman numerals to outer bezel, leather strap.
328. **A diamond solitaire ring**, a princess cut diamond set in a high claw mount to yellow metal shank stamped 14K. Mounted estimated weight 0.61ct.
329. **An 18ct white gold diamond set half hoop eternity ring**, set with eight baguette cut diamonds. Total mounted estimated weight 1.64ct.
330. **An 18ct gold diamond channel set half hoop eternity ring**, set with nine round brilliant cut diamonds. Total mounted estimated weight 1.00ct.
331. **A 9ct gold longuard**; 65", 36.9g.
332. **A ladies diamond set floral cluster ring**, seven small diamonds set in yellow metal, stamped 18ct.
333. **A 9ct gold half hunter pocket watch**, by J. W. Benson.
334. **A Victorian memorial bar brooch**, with hair insert verso, in yellow metal stamped 15ct.
335. **A ladies Art Deco ring**, set with diamonds and emeralds, three up-finger set fancy yellow old-cut diamonds, wide shoulders set with lines of calibre cut emeralds interset with brilliant and old-cut diamonds, the whole set in white metal stamped PLAT. Total mounted estimated weight of principal diamonds 1.80ct.
336. **A necklet**, of graduated brickette design in yellow metal; 18".
337. **A 9ct gold medium curb link chain**; 20".
338. **A ladies 9ct gold dress ring**, set with a round central aquamarine flanked by three small diamonds each side to a D shaped shank; London 1963.
339. **A Victorian style memorial brooch**, with oval hair insert to the front and a yellow metal scrolling frame. 55mm x 45mm.
340. **A shell cameo brooch / pendant**, in a scalloped yellow metal frame, the cameo of a woman with flowers in her hair; 38mm x 28mm.
341. **A 9ct gold shell cameo brooch**, of a woman's head, Birmingham 1978; 27mm x 22mm.
342. **An emerald and diamond set 18ct yellow gold cross-over ring**, a band of four square cut small emeralds, and three small brilliant cut diamonds channel set alternately crossing a plain band. Total weight 4.7g, import marks.
343. **A three-stone diamond cross-over ring**, the three brilliant cut stones of total mounted estimated weight of 0.23ct set diagonally over a twist set with four tiny diamonds; stamped 18ct and PLAT. Total weight 3.2g.
344. **A ladies cluster stone set dress ring**, a small central red stone surrounded by six diamonds to split shoulders and yellow metal shank.
345. **A full hoop eternity ring**, set with tiny white stones in yellow metal.
346. **A wide fancy link bracelet**, rows of faceted lozenge shapes joined with cross hatched bars, stamped 750. Total weight 23g, 20cm x 1.5cm.



347. A 9ct gold four-bar gate bracelet, with padlock clasp; 17.6g, 18cm.
348. A rose gold three-bar gate bracelet, with alternate engraved links, padlock clasp, stamped 9ct; 10.3g, 18cm.
349. A very heavy 9ct yellow gold curb link bracelet, with padlock clasp and safety chain; London 1975, 51g, 18cm.
350. A platinum set diamond solitaire ring, the diamond of mounted estimated weight 1.04ct set in a four-claw mount to shoulders set with nine tiny diamonds each side, Sheffield 2004, maker E. F.
351. An 18ct gold and diamond set cluster ring, the lozenge shaped head set centrally with a collet set brilliant cut diamond of mounted estimated weight 0.32ct surrounded by twelve small diamonds totalling approximately 0.12ct to divided shoulders and D shaped shank. Sheffield 1995.
352. A Victorian memorial ring, set with a pale oval amethyst, 18ct gold; London 1852, inscribed 'Richard Carlisle died December 18 1853'.
353. A very heavy 9ct gold shot ring; 20.6g.
354. A 9ct gold bark effect half sovereign set ring, 1912; 11.5g.
355. A yellow metal boxing glove pendant; 15.8g.
356. A miniature Schuco teddy bear brooch, with articulated head and limbs, Berlin sash, crown and pin; 7cm tall.
357. A Continental 800 grade silver black enamelled hinged bangle, with silver and seed pearl floral decoration; maker G.A.S.
358. A Georgian sovereign, 1830.
359. An Edwardian sovereign, 1907.
360. An Edwardian sovereign, 1903.
361. A George III spade guinea, 1787.
362. An 18ct gold square set cluster ring, a central diamond of approximately 0.10ct surrounded by alternately set four small rubies and four small diamonds; Sheffield 1978.
363. A ladies diamond set dress ring, the lozenge shaped head set with eleven small diamonds to a ribbon mount and shoulders to yellow metal shank, stamped '14K SIFFARI'.
364. A Victorian memorial ring, set with a seed pearl with black enamelling, wide band, hallmark rubbed and obliterated by ring sizing.
365. A medium weight fancy link neck chain, stamped 10K; 20.8g, 50cm.
366. A plaited link yellow metal bracelet, stamped for 9ct; 9.3g, 17cm.
367. A fancy link yellow metal chain; 24.8g, 78cm.
368. An Edwardian seed pearl set floral spray brooch, in yellow metal.
369. A Victorian memorial brooch, oval shaped jet centre set with old cut diamond in a star shape surrounded by seed pearls, all in yellow metal; 5cm x 2cm, together with two bar brooches. (3).
370. A yellow metal button brooch, and a floral decorated stick pin; together with a 12ct gold turquoise set ring, Birmingham 1864.
371. A ladies stone set dress ring, set with a colour changing stone, blue/green in daylight to blue/purple in artificial light, set in yellow metal stamped 9ct.
372. A ladies stone set dress ring, a claw set pyrope garnet in yellow metal, stamped 9ct.
373. An 18ct gold ruby set modern starburst pendant, the centre set with a cluster of seven small rubies, stamped 750.
374. A Scottish carnelian chalcedony brooch, set in white metal 4cm x 3cm; together with a small silver lidded cosmetic pot, Birmingham 1918.
375. A 9ct gold curb link charm bracelet, with ten attached charms and padlock clasp; 47.2g.
376. A set of six silver Art Nouveau buttons, of pierced floral design, Chester 1901, maker J.M.B., each 26mm dia..
377. A Victorian brooch, a heart locket suspended from a turquoise and white paste set bower in yellow metal inscribed 'Toi et Moi'.



378. A Victorian memorial brooch, with hair insert in a yellow metal frame together with a small example with seed pearl surround.
379. A fob watch, in white metal modelled as a cuckoo clock set with marcasite together with a marcasite set cocktail fob watch, a ship brooch, and ring.
380. A three stone moonstone set ring, with turquoise enamel surrounding each stone set in yellow metal stamped 18ct.
381. A Victorian snake necklet, the snake's head clasping its tail, royal blue enamel head set with diamonds, garnet eyes and holding a diamond set pendant in its jaws with glass window to the reverse, the whole in yellow gold; length 35cm. Some slight damage to the enamelling.
382. A 9ct gold rice grain link bracelet, of seven rows wide; length 18cm, weight 37.2g.
383. Four yellow metal neck chains, including a fine belcher link, various lengths.
384. A silver curb link charm bracelet, eight charms attached.
385. A silver gilt and emerald green enamelled vesta case, green guilloche enamelling with gilt swag border decoration; marked 925, with a horizontal 'S' and a Cyrillic letter 'G'.
386. A small gilt mesh purse, with yellow metal frame.
387. A sovereign pendant, 1912.
388. A ½ sovereign pendant, 1907.
389. A Victorian memorial brooch, small rectangular shape with tiger's eye set in the front surrounded by seed pearls then black enamel and gold border; 20mm x 15mm.
390. A ladies dress ring, square head set with central square blue stone, four small blue stones set in corners, interspersed with pairs of white stones, to yellow metal shank; stamped 9ct gold, maker A. & Co.
391. A Victorian memorial brooch, oval shaped with four oval garnets in rub over setting interset with four seed pearls surrounded by vine leaves and tendrils, hair insert to reverse, the whole in yellow metal.
392. A Victorian styled pendant, with centrally set pale blue stone in a white metal surround set with small white stones, to a simulated pearl dropper; setting stamped 935.
393. A Victorian crescent brooch, set with seed pearls, mount stamped 9ct.
394. An Arts & Crafts style guilloche enamelled brooch, with white and lilac oval border and central shield shape with autumn coloured maple leaf, white metal stamped STERLING; 6.5cm x 4.7cm.
395. A ladies' stone set cluster dress ring, white stones set in silver; Birmingham 1990, together with various silver cutlery.
396. A white metal enamelled cigarette case, with Turkish/Moroccan decoration.
397. A 9ct gold charm bracelet, with twenty-three attached charms of mainly nautical connections; 54.6g.
398. A ½ sovereign pendant.
399. A solitaire ring, a white stone, possibly white sapphire, of approximately 1ct set in yellow metal stamped 18ct.
400. A shell cameo brooch, of Diana the Huntress, set in Art Nouveau styled frame in rose metal stamped 9ct; 43mm x 32mm.
401. An Art Deco fob brooch, the circular fob with a butterfly wing picture of a crinoline lady with domed glass cover, in white metal stamped STERLING; 25mm dia.
402. Two Victorian jet brooches, of floral design.
403. Two Victorian jet brooches, of circular design, one with seed pearl set star centre.
404. Two oval Victorian jet brooches, with carved decoration.
405. A Victorian jet brooch, oval with carved woman's head.
406. A Victorian jet brooch, octagonal with carved woman's head.
407. A ladies silver fob watch, white dial with Roman numerals.

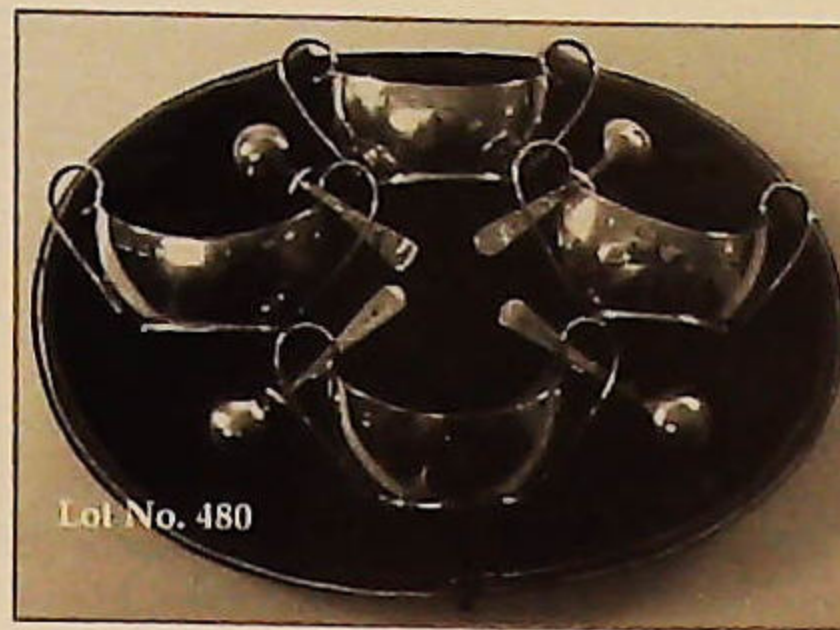
408. A ladies stone set signet ring, with central small sapphire, and two small diamonds, stamped 18K.
409. A stone set Byzantine style bracelet, set with multi-coloured stones in yellow metal, stamped 750.
410. A stone set Byzantine style pair of earrings, with red and blue stones in yellow metal, stamped 750.
411. A stone set Byzantine style collarette, set with multi-coloured stones in yellow metal stamped 750.
412. A cold-painted brass figure, of a greyhound, stamped GESCHULTZ, 4½" high.
413. A cold-painted brass figure, of an elephant, stamped GESCHULTZ # 895; 3½" high.
414. A 19thC treen club box, modelled as a pear, inscribed in ink 'Club box Jan'y 11th 1862'; 3¼" high.
415. Four various pocket watches.
416. An Omega 9ct gold Gentleman's manual wristwatch, with silvered dial and gilt batons, 17 jewel movement, Omega leather strap. Birmingham 1961.
417. Coin collection: MDM Crown collection, series of the Official coin collection in honour of the Queen Mother, various denominations and subjects in three mahogany finished cases, and singular \$20 and 100 Vartu coins.
418. Coin collection; MDM Crown collections - the official ECU's twenty four coins in a velvet lined case.
419. Coin collection; MDM Crown collections - ships and explorers, various coins in three velvet lined cases.
420. A signed Japanese ivory inro, four sections, with ojime bead and signed hardwood netsuke, carved with a dragon.
421. A Chinese carved ivory snuff bottle, of double gourd form; 3".
422. A signed Japanese ivory snuff bottle, polychrome scratch carved landscape; 2½".
423. A Chinese carved hardstone snuff bottle.

SILVER

436. A George III Irish silver fiddle pattern tablespoon, Dublin 1787, maker's mark WW, a pair of George III silver Old English pattern tablespoons by Richard Crossley, London 1783, 6.5oz gross, all items engraved with initials.
437. A George III silver snuff spoon, with a porcupine quill handle, 9½", Birmingham 1824, maker: John Lawrence & Co.
438. A modern silver bottle stopper, with a figure of a lady forming the knop. Maker: T.W.
439. A modern silver easel table mirror, maker: Carr of Sheffield; 15" high.
440. A George V silver mounted manicure set, in a velvet lined leather case, Birmingham assay.
441. A signed Japanese hardwood netsuke.
442. A Chinese carved ivory puzzle ball, carved in the whole with concentric balls, the outer with flowers and foliage, raised on a figural stand with conforming knop; 14½" high.
443. A Japanese ivory okinomo, of a street entertainer and monkey, the former holding a scroll, the latter with a lute, on a hardwood base; 9" high.
444. A Japanese ivory okimono, of a street entertainer with his two attendants, one balancing on his shoulder, the other at his feet with a scroll, on oval base; 7" high.
445. An early 20thC French pocket watch, the watch face painted in colours, with Arabic numerals within a black and gilt clock case image, complete with automaton 'pendulum', flanked by scantily dressed figures in a landscape, the back plate numbered 34979, white metal case; also a railway man's open face pocket watch; and an early 20thC porcelain scent bottle, circular, polychrome, printed with two Oriental women in a landscape, silver screw cover, hallmark for 1905; 2" high, together with a French silver salt with sapphire glass liner. (4).
446. An early 20thC Continental silver snuff box, circular, with overall white baisse-taille enamel, the cover with a coronet of flowers and thistle heads; import marks, Birmingham 1910, 1¼" dia.



447. A 19thC white metal snuff box, the hinged cover engine-turned and with a vacant cartouche within a fruiting vine border, gilt interior; 3½" x 2¼".
448. A portrait miniature, of a 19thC noblewoman, half-length, facing dexter, inscribed verso 'Lady Emily Lennox, wife of James, First Duke of Leinster', watercolour on ivory, in ebonised frame with gilt bezel; 4½" x 3½" overall.
449. A 19thC Continental gilt metal and blue basse-taille enamel casket, the hinged cover inset with a portrait miniature of a young girl in décolleté gown and pearls; 2" high, 2½" wide.
450. A 19thC easel boudoir timepiece, in a gilt metal square case, the ivory dial face with gilt Arabic chapter ring, centred by blue basse-taille enamel; 2¼" square.
451. A Victorian silver baptismal mug, by George Unite, of tapering panelled shape, engraved with scrollwork and paterae, the centre panel inscribed 'DOROTHY', scroll handle with strap-work cresting and bifurcated terminal; Birmingham 1877.
452. A Victorian silver fiddle pattern tablespoon, by George W. Adams (Chawner & Co.); London 1870, 4oz.
453. A silver gilt goblet, commemorating the seventh centenary of the completion of Lincoln Cathedral, the trumpet bowl over a pedestal cast in the round with musicians on a seven-sided pierced foot; #251/700, London 1980, 6½" high, 10½oz, together with a booklet signed by the Hon. Dean of Lincoln, Oliver Fiennes.
454. A Victorian silver sugar castor, the baluster panelled body repousse with foliate scrolls and flowers, the pierced finial with flame finial, on dome stepped foot; Birmingham 1897, maker's mark T.H., 8½" high, 7oz.
455. A George V silver rose bowl, by Adie Brothers, the circular bowl with foliate cast and reeded cutaway rim, with two capped flying scroll handles, on a circular stepped foot; Birmingham 1927, 11¼" wide over handles, 20oz.
456. A pair of Victorian silver knife rests, with slender baluster rails between quatrefoil terminals; London 1896, 2¼" long, 2oz.
457. A set of six George V silver seal top teaspoons; Sheffield 1922, 2oz.
458. Three Victorian silver Kings pattern tablespoons, by Marshall & Sons; Edinburgh 1870, 7oz.
459. A Victorian silver two-handled sugar bowl, by Edward, Edward Jr., John and William Barnard, with an everted rim over lobed body; London 1841, 8" wide over handles, 11½oz.
460. A pair of George III silver cauldron-shape salt, on three hoof feet; London 1795, 2¼" dia., 5oz.
461. A 19thC white metal oblong compact, heavily engraved with an urn of flowers and scrolls, the hinged cover overlaid in polychrome enamels with classical figures in a landscape, the interior with bevelled mirror; 2½" x 3½".
462. A William IV silver travelling communion set, comprising: a standing paten, engraved to the centre with a cross and the sacred monogram within a sunburst roundel, reeded rim, the pedestal foot fitting the Communion cup, with baluster bowl with conforming engraved symbol, knopped stem; London 1834, 2½" dia, 2½" high respectively, 3oz. gross. In a Morocco leather travelling case; 5" high.
463. A modern silver circular cigar box, with bark finish; Birmingham 1974, 4¼" high, 5½ oz.
464. A George III silver baptismal mug, the slightly tapering body with reeded girdles, scroll handle; London 1801, 2¼" high, 2oz.
465. A George V silver manicure set, the leather, velvet and satin lined case fitted with two paste pots, nail buffer, small brush and other six accessories, (scissors missing), Birmingham 1916; the case 16" wide.
466. An Edward VIII silver bell-shaped inkwell, with a hinged cover, with applied shield cartouche to the body; Birmingham 1936, 4" high, 7½oz gross.
467. A pair of Victorian silver oblong bon-bon dishes, each with scroll and floral cast borders over pierced well; Chester 1899, 6½" x 4", 4oz.
468. A Victorian silver cruet stand, by W.R. Smiley, the oval basket lightly engraved with flowers and foliage within lancet panels, below a border with paterae pendants, the wooden base on scroll feet, the centre loop handle issuing from an island with seven bottle bays; London 1852, 7½" wide.
469. A set of four Victorian silver salts, the circular bodies re'pousse' with roses and foliage over milled rim, on three hoof feet; London 1863, maker's mark R.H., 1¼" dia., 4oz.
470. A George V oblong stamp box, by Mappin & Webb, the silver and tortoiseshell hinged cover over a glass body; Birmingham 1914, 3¼" x 2¼".
471. A pair of George IV silver tongs, by George Wintle, engraved with monogram; London 1825, 2oz.
472. A 19thC silver Composite partial table suite, Kings pattern, comprising four tablespoons, two dessert spoons, six table forks, and six dessert forks; various dates and makers, 47oz gross, in a raffia cutlery basket.
473. A George V silver pepperette, the baluster body with reeded raised girdles; London 1934, 3¼" high, also assorted silver teaspoons.



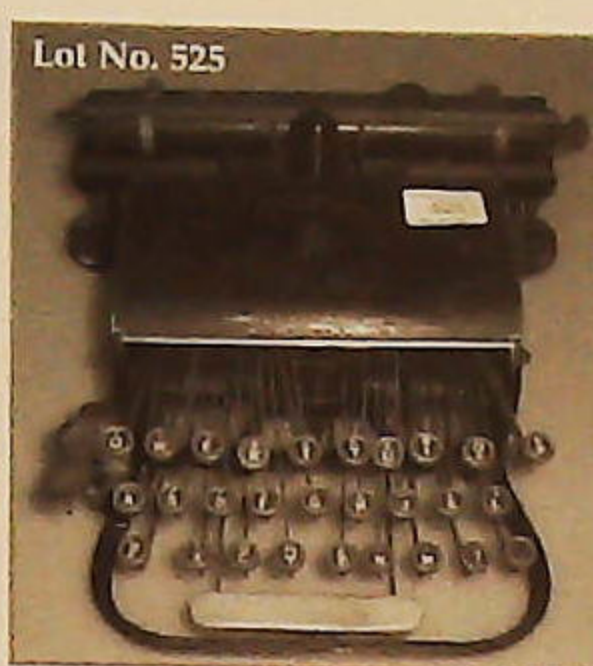
474. **A George V silver sugar basket**, boat-shaped, with swing handle, on a stepped circular foot; Birmingham 1922, 5¼" high over handle, 5oz.
475. **An Edward VII ivory page turner**, with silver mounts and tusk handle; London 1907, 17" long.
476. **A George V silver pedestal dish**, by James Dixon & Son, the circular dished top with quilted rim and two pierced ribbon handles, on circular stepped foot; Sheffield 1910, 9¾" wide over handles, 13oz.
477. **An Edward VII silver circular scent flask**, chased overall with scroll and flowers, with a hinged cover and glass inner stopper; Chester 1903, 2¾" high, 4oz. gross.
478. **A George V silver faced photograph frame**, oblong with reeded and ribband border; Birmingham 1923, 9½" x 7½".
479. **A pair of Edward VII Britannia standard silver trifid spoons**, by Pearce & Sons, the oval bowls with reed and bead rat-tails; London 1901, 8" long, 4oz, in a fitted Morocco leather case.
480. **A set of four late Victorian silver boat-shaped salts**, with scroll handle, with four salt spoons; Birmingham 1876, in fitted case.
481. **A Victorian silver cheroot case**, oblong, the cover engraved with a crest and motto 'Ædificat in Aeternum'; London 1893, 5¼" x 2½", 5oz.
482. **A set of four Victorian silver-gilt spoons**, with oval bowls, each with spirally pierced and scroll cast handles with figural finials; Birmingham 1891, 7" long, 6oz, in a Morocco leather fitted case.
483. **A Victorian silver mesh purse**, with oblong frame and chain handle; London 1856, 4" wide.
484. **Three Edward VII silver vesta cases**, each with engraved detail and suspension chains, also a silver stamp case, various hallmarks. (4).
485. **A pair of lead crystal square decanters**, each with hobnail and diamond cut side with slice cut corners, faceted stoppers and silver collar; Birmingham 1989, 10" high, together with a pair of spirit labels 'Whisky' and 'Brandy'.
486. **A silver coffee pot**, baluster, with gadroon borders, the domed cover with pineapple finial, leaf scrolled spout and composition handle; Birmingham 1974, 10½" high, 29oz.
487. **An Edward VII silver hot water jug**, with a fluted circular body, embossed with a vacant cartouche, the domed cover with ebonised finial, scroll handle, on a circular lobed foot; Birmingham 1903, 9" high, 10oz.
488. **A silver sugar caster**, baluster with gadroon borders, the pierced cover with cup and cover finial; London 1965, 7" high, 7oz.
489. **A Victorian silver mounted cut glass claret jug**, by John Heath & John Middleton (Hukin & Heath), with a domed cover, engraved with a monogram and crest, inscribed 'From Eddy & George Xmas 1888', loop handle, over a swag and slice cut globular body; London 1887, 7½" high.
490. **An Edward VII silver faced Bible**, embossed with angel heads and stylized flower forms; Birmingham 1904, 5½" x 3½".
491. **A Chinese silver cigarette case**, engraved with initials within an island landscape; also an E.P.N.S. cigarette case.
492. **A pair of Edward VII silver trumpet vases**, by Joseph Ridge (John Round & Son Ltd.), each with a frill edge and annulated collar, on a swept knopped circular foot, with scalloped calyx, weighted bases; London 1905, 12" high.
493. **A pair of modern silver candlesticks**, in the 18thC style, with waisted nozzles and knopped tapering circular stems, on stepped domed feet, weighted bases; London 1960, 10½" high.
494. **A pair of modern silver small coasters**, circular with gadroon rims and pierced walls, sapphire glass liners; London 1943, 3¼" dia. 3oz.
495. **A silver three-piece cruet set**, of squat baluster shape, with reeded rims, the pepper and mustard with raised flat-top finials, sapphire glass liners; London 1956, also two condiment spoons, Birmingham hallmarks.
496. **A pair of George V silver salts**, of circular waisted shape, with sapphire glass liners and two salt spoons, Birmingham 1919.



COLLECTABLES & MISCELLANEA

497. A mahogany cased valve radio transceiver set.
498. An enamel sign, marked 'The Loughborough Hut presented to the National Council of YMCAs by the citizens of Loughborough'; 48" x 15".
499. A quantity of early 20thC golf balls, various dimple designs and tee pegs.
500. A pair of Victorian brass and leather opera glasses, by T. Kirk, Hull, in fitted leather case.
- 500A. Eight Sumatra Austronesian scrimshaw buffalo bones, finely etched with 360 day Islamic calendars, c.16".
501. An ornamental oak sherry barrel, with silver plated banding, stopper and tap, with a small drip bucket, on trestle stand; 9 1/2" high.
502. An Edwardian oak desk stand, oblong, with two quill trays and centre loop handle, flanked by two cut glass inkwells, each with facet cut hinged covers; 11 1/2" wide.
503. A powder horn, with naive scrimshaw decoration, depicting Britannia; 12" long.
504. An Art Deco marble card tray or ashtray, oval, mounted with a bronze figure of a young girl, in gymnastic pose; 12" wide. Repaired.
505. A bronze Bacchanalian female figure, semi-naked, holding a flagon and drinking from a goblet, standing on a ball, stone plinth; 6 1/2" high.
506. A bronze animalier group, of copulating pigs, on oval stepped base; 4 1/2" wide.
507. A bronze model, of a pheasant on a naturalistic oval base; 5 1/4" high.
508. After the Antique, a bronze of a fallen warrior, the naked figure semi-recumbant on an oval base, with horns and sword close by, slate plinth; 11" wide.
509. After Christophe Fratin (1800-1864). A bronze animalier model of a recumbent goat, on an oblong base; 4 3/4" high.
510. A bronze figure, of a naked figure holding a pig under his left arm, on oblong plinth; 4 1/4" high.
- 510A. A green onyx chess board, inset with golden and white squares, together with a set of Chinese stained ivory chess pieces; King height 6", together with box for chess pieces.
511. A 19thC cast iron inkwell, modelled as an apple, with hinged cover and applied snail, 3" high.
512. A pair of E.P.N.S. table candlesticks, cast with leafage, shells and scrolls, on fluted columns, circular bases; 11" high.
513. A Victorian E.P.N.S. teapot, circular, with scroll capped handle, foliate finial, on scroll feet, also a baluster coffee pot with scroll capped handles, and a two-handled gallery tray. (3).
514. A pair of silver plated wine coasters, the borders cast with scrolls and flowers, wooden bases; 6 1/2" dia.
515. A pair of ceremonial horns, with silver plated mounts; 14 1/4" long.
516. A Chinese knife, with wooden handle, and scabbard with bone mounts; 12 1/2" long.
517. A copper coffee percolator, with brass mounts and tap, wooden final and stem, on domed circular foot; 15 1/2" high.
518. An early 20thC set of six dessert knives and forks, with mother-of-pearl handles, and six matching fish knives and forks, both in fitted case.





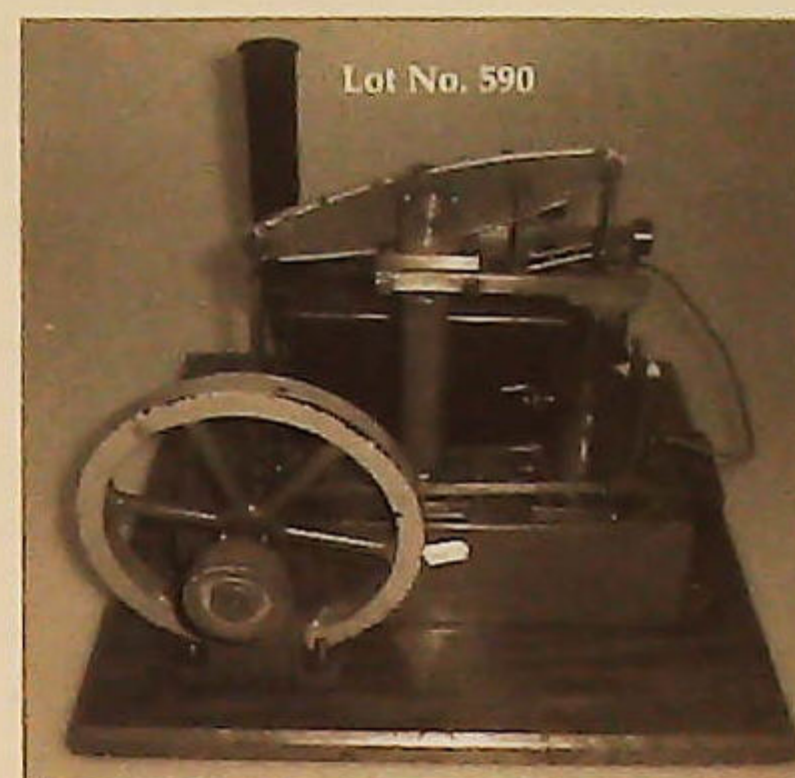
519. A pair of ormolu candlesticks, of naturalist form, with stylized palm tree stems, the shaped base mould with silvered birds; 9".
520. An Art Deco cold painted figure, of a young girl raised on her toes, her extended arms holding the hem of her dress, on a green onyx plinth, 6 1/4" high.
- 520A. A Victorian coach lamp.
521. An Art Deco cold painted figure, of a young female dancer raised on her toes, her extended arms holding the hem of her dress, on a 2-colour onyx plinth, 12" high.
522. An early 19thC brass snuff box, with hinged cover; 2 1/4" square.
523. An early 20thC oak tantalus, with plated mounts, enclosing three glass decanters with faceted stoppers (one replaced); 14" wide.
524. A Victorian two-handled oak tray, oblong, set with two polychrome tiles depicting Gladstone and Mrs. Gladstone, the underside with inserted letter from Gladstone to a Miss Burrell, dated March 1886; 7 1/4" x 13 1/4".
525. A Moya Visible No. 2 typewriter, manufactured by the Moya Typewriter Co., Leicester, England, in a black metal and brass case, c.1905.
526. A reconstituted stone model, of a heraldic lion, Sejan, 14" high.
527. A violin bow, probably by Thomas Tubbs (fl. 1790-1830) the octagonal stick stamped T. Tubbs, the ebony frog with mother-of-pearl eyes, the adjuster with ebony and white metal bands, no hair; 29 1/2" long.
528. A violin, with two-part back, with straight grain, in a good quality velvet lined mahogany case.

529. A late 19thC stoneware jar, bearing a label 'Coffin Varnish'; 9" high.
- 529A. A dark tan wool motoring coat, leather lined, 3/4 length.
530. A chrome Art Deco figure, of a naked young girl, after Limousin, standing on her tip-toes, her arms aloft holding a floral garland, on square plinth with canted corners, impressed LIMOUSIN marble base, the garland probably a mirror support; 16" high.
531. A chrome Art Deco figure, of a naked young girl, after Limousin, standing on her tip-toes, her arms aloft, supporting a bracket (previously for a mirror), on a square canted plinth, impressed LIMOUSIN, marble base; 14 1/4" high.
532. An Art Deco gilded Spelter figure, of a female archer and greyhound, on oblong base and marble plinth; 12" high, another similar figure, but lacking dog, 11" high.
533. An Art Deco amber bakelite desk stand, of curved outline, fitted with two pen rests and two covered ink wells; 11" wide, an amber bakelite ashtray, a German Alpaca and green plastic pen, pencil and seal.
534. An E.P.N.S. cocktail jug, of plain tapering form, with shaped handle, domed and knopped cover and spout; 8 1/4" high, also an E.P.N.S. cocktail shaker, of tapering form; 7 1/4" high.
535. A Princess Heatmaster pottery and chrome four-piece tea service, comprising: teapot, coffee pot, covered milk jug and two-handled sugar bowl.
536. An Art Nouveau brass and white metal chamberstick, the scone supported on a stylized stalk with leaf-shape dish; 5" wide, also a brass card tray, cast in low relief with an image of a pipe smoking man; 7 1/4" wide.





537. A silver plated punch bowl, with gadroon rim, the half-lobed body embossed with floral swags, with lion mask and ring handles, together with a *Kings* pattern punch ladle; 13" dia.
538. A Victorian walnut work box, with parquetry banding, the interior with a fitted lift-out tray; 10" wide.
539. A pair of early 20thC Spelter spill vase figures, of a seaside character holding a single oar, calling his trade, and a bathing belle, on circular bases; stamped LSF 84; 8¼" high.
540. A bakelite telephone, set F. Mk II. T.M.C., with two brass bells, # 144.482.
- 540A. A seated illuminated Michelin man figure.
541. A 19thC ebonised papier-mache' work box, oblong, the hinged cover lacquered gilt and mother-of-pearl with an Oriental island landscape, with a fitted interior removable tray; 10" wide, also a small circular treen box and cover with Tunbridge type inlays.
542. A 19thC rosewood box and hinged cover, oblong, the cover inlaid with a circular portrait miniature of a noblewoman, behind glass, watercolour; 4¼" x 3¼".
543. A French amboyna casket, with gilt-metal mounts, oval, the domed cover with finely cast scroll and paterae border, pierced clasp and key lock, with conforming lower border, raised on four feet, velvet lined interior; 6" wide.
544. An early 19thC fruitwood tea caddy, oblong, the cover and fascia inlaid with paterae and stamped metal escutcheon, the interior with two lidded compartments, on bun feet; 7½" wide.
545. A bronze figure of a horse, cold painted, 9" high.
546. An early 19thC tortoiseshell veneered tea caddy, of serpentine shape, the cover and fascia inlaid with mother-of-pearl scrolls and flowers, the interior banded with ivory, velvet lined lid, the two lidded compartments with ivory finials, on bun feet; 8" wide.
547. An early 20thC oak cigarette box, with plated mounts, oblong, the hinged cover with bezel borders; 8¼" wide.
- 547A. A Victorian Tonbridge inlaid walnut work box, with fitted tray interior.
548. A Victorian rosewood ladies travelling case, oblong, with brass banding and military style inset brass handles to the sides, the leather and velvet lined interior with easel mirror, and two removable trays, Bramah lock, containing an assortment of toilet bottles and accessories; 12" wide.
549. A 19thC walnut writing box, oblong, the curved edge cover inlaid with brass medallion and with conforming escutcheon, the interior having a tooled leather slop, quill and stamp trays; 13¼" wide.
550. A 19thC mahogany writing box, with brass mounts and escutcheon, the interior with leather cloth slopes, fitted wells, and concealed drawers; 19¼" wide.
- 550A. A Rolls Royce "Spirit of Ecstasy" car mascot, mounted on a radiator cap; 6½" high.
551. A 19thC walnut writing box, with brass mounts and escutcheons, the cover with later oblong medallion inscribed 'D.J. 1909' the interior with tooled leather slope and compartments; 17½" wide.
552. A 19thC rosewood travelling case, with brass mounts, the cover with shaped medallion inscribed 'W.P. Jan'y 21st, 1841', the fitted interior with blind tooled leather lids and various bottles; 12" wide.
553. A late 19thC Magneto-Electric machine, manufactured S. Maw, Son & Thompson, in a mahogany case.
554. A collection of desk ornaments, car mascots, as well as a chrome plated model of a twin-propeller aeroplane, on a stepped wooden plinth; 7½" high.
555. A cast metal model, of a golfer on an oval marble base; 7½" high.
556. A polished steel female figure, with upswept arms, on square marble plinth; 9½" high.
557. A chrome Jaguar car mascot, on a marble plinth; 7½" wide.
558. A chrome Jaguar car mascot, on a marble plinth; 7½" wide.



559. Two elephant mascots.
560. A cast brass mascot, as a rising phoenix, on an onyx plinth; 8¼" high, also a cast brass mascot as a cherub on marble plinth; 6½" high. (2).
561. A chrome Civil Service Motoring Association car mascot, on a marble plinth; 4¼", and a gilt metal swimming mascot; 3¼" high, and also a chrome mascot as an armoured knight, on Bakelite base; 7" high. (3).
562. A chrome mascot, as a reclining nude; 10", a cast metal figure of Venus on marble plinth; 5½" high, also two desk ornaments. (4).
563. An early 20thC Indian brass jardiniere, spherical, embossed with mythical beasts within blind fret border and lower lappet border, lion masks and ring handles; 21" dia.
564. A Victorian vaseline glass shade, various other shades, a Victorian pewter and brass small oil lamp base and also a clear glass oil lamp base.
566. A Victorian walnut and brass bound writing box, with velvet lined slope; 13¼" wide.
567. A Chinese bronze wine vessel, on three outspread legs, 7½" high.
568. A brass coal bucket, circular with lion mask and ring handles, on three claw feet; 19" wide over handles.
569. An oval wall mirror, in gilded frame; 30".
570. A Doctor's leather Gladstone bag, and contents including three circular boxwood bottle cases stamped 'DOWN BROS. LONDON'; 5" high; the bag 15" wide.
- 570A. A Spong guinea-size knife-sharpener, with oak case.
571. Five early 20thC marbled glass light bowls, and a similar light shade.
572. An early 20thC toleware columnar table lamp, with brass finial on a square plinth and stepped base, painted in ochre with gilt/black transfer decoration, the matching circular metal shade concealing two light fittings with pull switches; 32" high.
573. A set of twelve Chinese waterstones, each carved with various scenes, signed.
574. Advertising: a large packaging box, marked '6 gross in ¼ gross parcels, Colman's Penny Boxes Starch'.
575. A scratch-built model, of The Goosander, a later Wild Duck class mooring salvage and boom vessel; 48" wide, 21" high.
576. A quantity of umbrellas, early 20thC and later.
577. A quantity of fabrics, and haberdashery items.
578. A mahogany cased medical electro therapy unit, by Maw, Son & Thompson, London.
579. A walnut cased medical electro therapy unit, by J. Gardner & Son, Edinburgh.
580. A cased Medical electro therapy unit, with violet ray Tessler discharge tubes.
581. A pair of 19thC gilt brass oil lamp wall brackets, of scrolling form.
582. A quantity of boxed radio valves, (NOS).
583. A quantity of boxed radio valves, (NOS).
584. Two 2-gallon petrol cans, Pratt's 1931, and Pratt's Perfection Spirit 1925.
585. Two 2-gallon petrol cans, Pratt's 1926, and Shell Motor Spirit 1935.
586. Two 2-gallon petrol cans, Red Line 1932, and Shell Mex & BP 1938.
587. Two 2-gallon petrol cans, National Benzol Mixture 1937, and Shell Motor Spirit 1949.
588. A Fina Diesel glass petrol pump globe.
589. A Fina glass petrol pump globe, (unmarked), and Fina Motor Tonic bottle.
590. An early Stuart steam powered beam engine; 11" high.
591. A golden onyx plafonnier with central boss; 16" dia.
592. A South Seas turtle shell carapace.



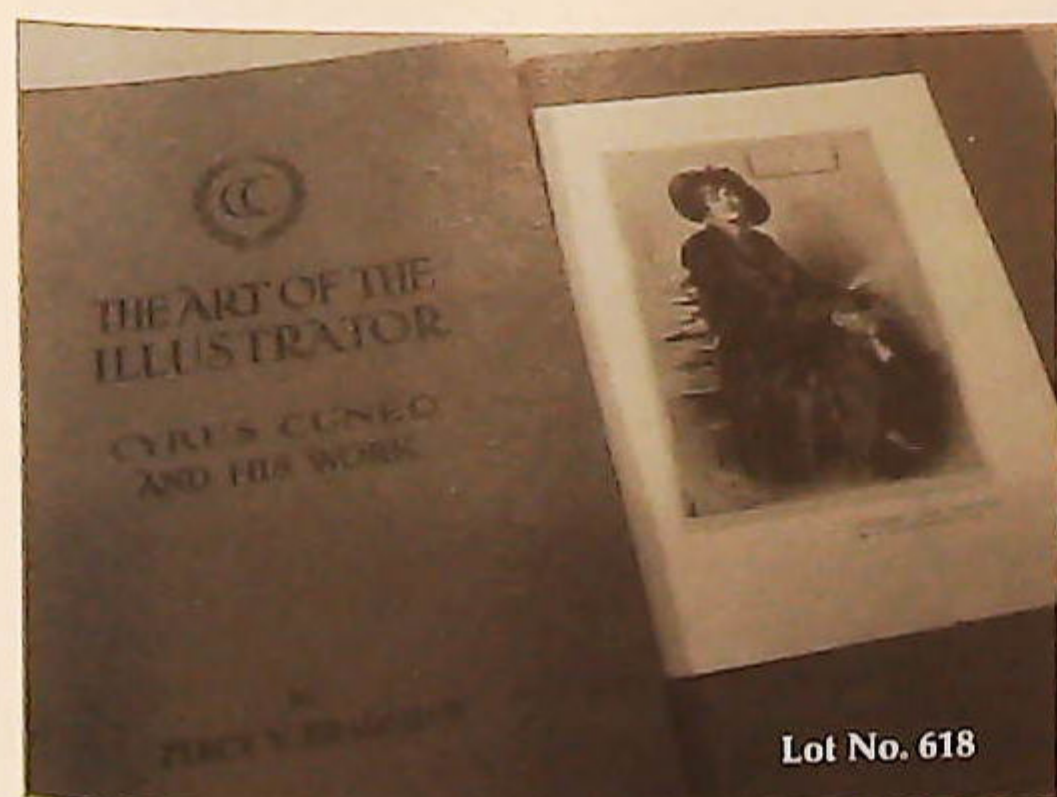
593. A Ross of London prismatic monocular telescope gunsight, boxed.
594. A walnut cased group of quality carving chisels, and mallet.
595. Twenty-one old cabinet maker's moulding planes, various shapes and sizes.
596. A mixed lot, including walking stick maker's tools, and materials, other items, including rams' horns etc.
597. A Stanley # 45 combination plane, complete with cutters, USA model.
598. An anodized and brass surveyor's level, by J. Holden & Co. Ltd., Manchester and London, fitted in a mahogany case.
599. A Thornton Pickard Junior Special camera, with roll-film back, strap, hard leather carrying case and strap, single lens reflex, focal plane shutter.
- 599A. A Planex 1/4 plate size single lens reflex camera, with roll-film back, strong canvas case, strap.
- 599B. A Yashica MAT-124G twin lens reflex camera.
- 599C. A KODAK # 2 Bullet special box camera, '98 model.

BOOKS, EPHEMERA, ETC.

600. A collection of early 20thC and later cigarette cards, in wooden case, plus a cigarette card album.
601. A good early 20thC postcard album, of about 280 cards, topographical - mainly G.B., Donald McGill, Mabel Lucie Atwell, Louis Wain, Wrights Biplane, Greetings etc.
602. Two early 20thC postcard albums, of approximately 260 cards, mainly G.B. and foreign topographical.
603. A Victorian scrap album, containing a good collection of chromolithographic scraps, an early 20thC photograph album, and four further albums, as well as two Royal scrap books. (8).
604. A late 19thC photograph album, with gilt tooled leather boards, containing a quantity of family photographs, another album, and an early 20thC album containing approximately twenty sepia photographs of views of the Isle of Man. (3).

605. A small collection of cigarette cards.
606. A quantity of early 20thC and later postcards, topographical, humerous, World War I, Greetings.
607. A GB and foreign stamp album; a sketchbook mainly GB; a small stamp album, GB and foreign. (3).
608. A coin album and coins.
609. Dickens (Charles) - Works, Fireside Edition, no date, London, New York, 22 vols, and 'The Life of Charles Dickens' orig. green cloth.
610. A collection of approximately thirty amateur photographs, taken when Belsen was liberated by Allied Forces, showing the horrific discoveries therein, and the subsequent burning of the buildings, etc. The photographs were taken by George Stanley Wright T/182413 who was born on 14/9/1917 and enlisted at Mansfield on 4/4/1940.
611. Creswicke (Louis). *South Africa and the Transvaal War*. Seven vols of eight (vol IV missing), London, no date, circa 1900. Red cloth boards, gt. decor, and five further volumes.
- 611A. A quantity of children's books.
612. Nansen (Fridtjof). *'Farthest North' Being the Record of a Voyage of Exploration of the Ship Fram 1893-96*. 2 vols, London 1898, numerous black and white illustrations, orig. cloth boards, gt. decor.
613. Galsworthy (John). *'Awakening'*. illus. R. H. Sauter, London, no date, circa 1920, col. portrait frontis. cl. boards, gt decor. d.w.
614. Balzac (Honore' de). *'The Physiology of Marriage'*. 1 vol, London 1904, ex libris Hugh MacDonald Sinclair, orig. boards.
615. Caldecott (Randolph). *The Complete Collection of Randolph Caldecott's Contributions to the 'GRAPHIC' with a preface by Arthur Locker*. 1888, numerous coloured illustrations, some minor spotting and soiling, partly untrimmed, rebound.
616. *Knights' Animated Nature*. 1844, 2 vols. Mammalia, birds and birds eggs, reptiles, mollusks, insects, col. frontis, numerous black and white illustrations, orig. half-calf, marble boards.

617. **Poe (Edgar Allan).** *'Tales of Mystery and Imagination'*. Illus. William Sharpe, Ltd. Ed. # 610/1500, signed by the illustrator, pub. 1941 by Garamond Press, Baltimore, 16 b/w aquatint plates, orig. cl. bds; also *'The Narrative of Arthur Gordon Pym'*, illus. Rene' Clark, Ltd. Ed. # 448/1500, signed by the illustrator, pub. 1930 by the Southworth Press, Portland, Maine, orig. cl. bds, slip case poor.
618. **Bradshaw (Percy V.).** *'The Art of the Illustrator'*. Twenty original parts, 1917, each part with b/w and col. plates mounted on grey paper, with associated booklet, all contained in orig. cloth box. The artists comprise: H. M. Bateman, C. E. Brock, Cyrus Cuneo, W. Russell Flint, Dudley Hardy, W. Hatherell, F. Matania, Bernard Partidge, Spencer Pryse, Frank Reynolds, Warwick Reynolds, W. Heath Robinson, Harry Rountree, Balliol Salmon, E. J. Sullivan, Bert Thomas, F. H. Townsend, Lawson Wood, and Louise Wright.
619. **Malory (Sir Thomas).** *'Le Morte D'Arthur'*. Illus. Robert Gibbings, 3 vols, Ltd. Ed.#970/1500, pub. 1936 by The Golden Cockerel Press, London, numerous b/w woodcuts, orig. printed boards, slip case.
620. **Burrage (A.M.).** *'The Occult Files of Francis Chard: Some Ghost Stories'*. 3 vols. ed. Jack Adrian, Ash Tree Press 1996, Ltd. Ed. of 500, five further Ltd. Ed. vols by Ash Tree Press. (8).
621. **Barker (Clive).** *'The Great and Secret Show, The First Book of the Act'*. Collins, London 1989, Ltd. Ed. 485/526, signed by the author, b/w illustrations, aeg. cl. bds. slipcase.
622. **Bousfield (H. N.).** *'Newark, A Poem - Interspersed with Occasional Reflections'*. 1826, some pages with hand written notes, cl. bds, ½ calf; White (William) - *'History, Gazetteer & Dictionary of Lincolnshire'*, 1882; Kelly (E. R.) - *'Nottinghamshire'* 1881. (3).
623. **Richardson (Sir John) and others -** *'The Museum of Natural History'*. 2 vols, no date, numerous col. plates, ½ calf poor
624. **Ruskin.** *'Modern Painters'*. General index, bibliography, and notes, 1 vol, 1888, cl. bds.
625. **Kipling (Rudyard).** *'The Years Between'*. 1919, cl. bds. gt; *'Limits and Renewals'* 1932, cl. bds. gt; *'Actions and Reactions'* 1909, cl. bds. gt; *'The Five Nations'* 1903, cl. bds; *'Wee Willie Winkie etc.'* 1910, cl. bds. (5).
626. **Greene (Graham).** *'The Comedians'*. New York, 1966, first U.S. edition, d.w.; *'A Burnt out Case'*, 1961, first English language edition, d.w.; *'The Honorary Consel'*, 1973 first edition, d.w.; *'The Human Factor'*, 1978, first edition, d.w.
627. **Conan Doyle (Arthur).** *Conan Doyle's Best Books: 'A Study in Scarlet' 'The White Company' 'The Sign of the Four'*. 3 vols. New York c.1905, orig. cl. bds. gt. decor.
628. **Ten crime novels**, first editions, mixed.
629. **A box of assorted first edition novels.**
630. **Whitaker (T. D.).** *'The History and Antiquities of the Deanery of Craven in the County of York'*. London 1805, frontis portrait of the author, illus. aquatint, engravings, plans and charts throughout the text, marble end papers, full calf boards gt. decor., some foxing and staining, front board loose.
631. **Carsteus (Asmus Jacque).** *'Les Argonautes'*. Twenty-four engraved plates by Joseph Koch, orig. boards, top board detached, generally clean, some minor staining and spotting; and six other volumes.
632. **Dugdale (Thomas).** *'England and Wales Delineated'*. 8 vols, numerous engraved plates and county maps, orig. cloth boards, gt.
633. **Good (Meyrick) & Betts (John).** *'Winners 1947-1954'*. 9 vols, d.w. (torn).
634. **Four bound vols of Punch**; and other vols.
635. **Dickens (Charles).** *Works*. 25 vols, London edition, no date, orig. cloth boards, gt.
636. **Stamps: Algeria, Argentina, etc.**, single album.
637. **Stamps: GB & Empire**, single album.
638. **Stamps: Eastern Europe, etc.**, single album.
639. **Napoleon Bonaparte**, Premiere Consul de la Republique Francais - portfolio of topographical, portraiture, and battle scenes, in a tooled gilt cloth binding with leather spine.





642. **Postcards**, a large quantity, various.
643. **Postcards**, including photographic 1935 Notts. Historical Pageant, Leicester Railway station, Royalty, etc.
644. **A postcard album**, mainly depicting early scenes of New York, Chicago, Detroit, etc. and various American cities, covering shipping, buildings, interiors, baseball etc., also a selection of British cards and photographs.
645. **Opera and theatre programmes**, with various autographs.
646. **Assorted announcement, greeting and other cards**, (2).
647. **A postcard album**, assorted mixed views, portraiture etc.
648. **A postcard album**, mainly views of Grantham and district from 1905.
649. **Forty-four old glass slides**, depicting various Victorian scenes, including fashion, paddle-steamer, menagerie show, etc., in a pine box.
650. **A collection of early stereoscopic cards**, comprising approximately 132, many by named photographers including Sedgfield, Elliot, Silvester, Bedford, Grundy and Good, The cards, dating from 1850s to 1870s are on thin white, yellow, and light grey mounts, mainly English subjects, with some Irish and Continental.
656. **Kevin Walsh. 'The Flying Cloud'** an American Clipper built by Donald Mackay of Boston, pastel, signed, script verso by the artist in 1977; 21" x 30".
657. **Hans Halbach. A portrait of two young boys with a basket of apples**, oil on canvas, signed; 24" x 20".
658. **L. Hoyland. A waterfall amongst trees**, oil on canvas, signed; 14" x 10".
659. **H. M. Marshall. A nocturnal street scene**, oil on canvas, signed; 12" x 16".
660. **H. M. Marshall. (Attrib.) A nocturnal view of a country home over a lake**, oil on canvas; 12" x 16".
- 660A. **E.S.K. Still life of flowers and fruit pieces in decorative antique pottery and porcelain**, watercolour, embossed initials within oval; 18" x 17".
661. **20thC School. Shooting with setters in a forest**, oil on canvas, indistinctly signed, dated 1977; 14" x 21".
662. **Seldon. Ewe and lambs in landscape**, oil, signed; 12" x 15".
663. **Crossley. An estuary at dusk**, watercolour, signed; 14" x 20".
664. **Claire Williams. A country lane**, oil on canvas, gilt frame; 24" x 36".
665. **After Leon Danchin. 'Fighting Cock'**, hand coloured engraving, signed in pencil; 21" x 30".

WORKS OF ART

651. **20thC English School. A port scene with fishing and other vessels**. Oil on canvas, indistinguishably signed (possibly Davids); 16" x 32".
652. **19thC English School. Puppies playing with an artist's oils**, a pair, oil on panel; 4" x 6".
653. **19thC School. A portrait of a Middle Eastern man smoking a pipe**, head study, oil on panel; 6½" x 5".
654. **Hunter. A fly fisherman**, oil on board, signed, gilt framed; 8" x 12".
655. **T. Newton. Highland landscape**, watercolour, signed, carved oak frame; 10" x 28".
- 655A. **19thC English School. Shop window scene of a cobbler**, oil on canvas, 13" x 18", gilt framed.
- 665A. **George S Barnes (20th century). 'Loch Insh'**, lakeland landscape in summer, oil on canvas, signed and dated 1955, Art Society label verso; 18" x 22".
666. **A. or H. Taylor. Highland cattle in landscape**, oil on canvas, signed, gilt frame; 15" x 11".
667. **19th/20thC School. Cattle watering at the river**, oil on canvas, gilt frame; 16" x 22".
668. **After Millais. 'Bubbles'**, chromolithograph, gilt frame; 6¼" x 4¼".
669. **A Victorian valentine card**, courting couples in a garden, inscribed 'I trust to your constancy' within lace border, original addressed envelope verso, framed; 8¼" x 7¼", also a 19thC silhouette study of a young girl, framed; 5½" x 4½". (2)



670. **J. M. Mallender.** *Sheep and shepherd in a landscape*, oil on board, gilt frame; 4 1/4" x 6 1/4".
- 670A. **Pawlitzeack, or Pawlitzichuk.** *Still life of flowers in a vase*, oil on canvas, signed; 24" x 20".
671. **F. Hull.** *Summer landscape with fishermen by a lakeside*, oil on board, signed; 18" x 24".
672. **W. G. Baker.** *'Unloading the Catch'*, moored fishing boats on tranquil water, evening, watercolour, signed; 13" x 20".
673. **19thC School.** *Highland cattle in misty landscapes*, a pair, oil on canvas, indistinctly signed; 24" x 36".
674. **After W S Colman.** *Butterflies*, a chromolithograph for PEARS, 19" x 12", framed.
675. **19thC School.** *Head and shoulders portrait of a noblewoman*, in Tudor costume, oil on canvas; 20" x 16".
- 675A. **By and after Henry Alken,** *'His Reverence Swims Like a Cork'; 'Bibury Meeting in its Palmy Days'; 'Not Handel's Sweet Music...'*, three plates, aquatints; plate size 8" x 11".
676. **Alfred Addy.** *Fisherfolk on a beach at low tide, beached fishing vessels alongside a jetty, lighthouse on cliff top beyond*, watercolour, signed; 14 1/2" x 21".
677. **W. Eastwood.** *Summer landscape with sheep and shepherd in a wooded meadow, rolling hills beyond*, watercolour, signed; 14" x 20 1/2".
678. **C. Duxa.** *Dutch girls lacemaking, by a harbour, menfolk nearby*, oil on board, signed; 13" x 20".

679. **Willem Wiltshut.** *A moored sailing barge on a Dutch canal, buildings beyond*, oil on board, signed and dated 1915; 21" x 17", another by the same hand, *sailing barge, figure on the towpath*, oil on board, signed and dated 1914; 19" x 24".
680. **19thC School.** *Figure in a landscape by a summer house*, oil on canvas, indistinctly signed; 10 1/2" x 15 1/2".
- 680A. **19thC School.** *Fisherman on a river tow path leading to a stone bridge*, oil on canvas; 20" x 30".
681. **Follower of Pether.** *Nocturnal moonlit landscape, with two figures by a lake, classical buildings on the wooded hillsides*, oil on canvas; 16" x 24".
682. **T. S. la Fontaine.** *Snow's Hill in a farming landscape*, oil on canvas, laid onto board, signed; 16" x 20".
683. **Wilfrid Moody Fryer (1891-1967).** *Reflections, St. Helens, Isle of Wight*, oil on panel, signed, artist's dedication label verso, dated 1948; 10" x 14".
684. **Wilfrid Moody Fryer (1891-1967).** *Woodbridge, view of the river*, oil on board, signed, dated 1951; 11" x 14 1/2".
685. **Wallace Rennie.** *'The Explanation'*, 19thC genre, oil on panel, signed; 9 1/2" x 13 1/2".
686. **Wallace Rennie.** *'Reckoning Day'*, 19thC genre, oil on panel, signed; 10" x 14".
- 686A. **O. St. John (19th century),** *'St. Goar on the Rhine'*, watercolour, signed and dated (18)56; 9 1/2" x 10".
687. **C. Habron.** *Fishing boats in stormy seas*, oil on canvas, signed; 9 1/2" x 17".

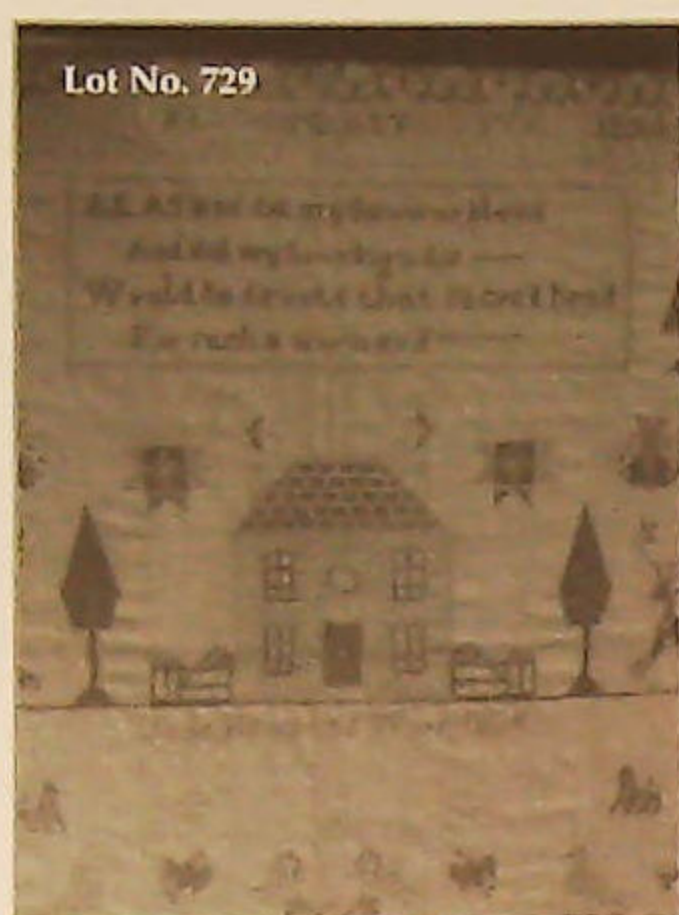




- 687A. **19thC English School.** *Landscape with cottage and trees, oil on panel, 10" x 14", gilt framed.*
688. **F. Brown.** *Summer landscape with grazing sheep on moorlands, pine trees to the left, hills beyond, oil on canvas, signed and dated 1881; 20" x 30".*
689. **Charles Rousse.** *19thC street scenes with figures before a medieval city gate, a pair, watercolour, signed; 9 1/4" x 5 1/4".*
690. **A 19thC coloured aquatint.** *'Going to cover', trimmed to margin, title verse; 15" x 21 1/4".*
- 690A. **19thC School.** *Portrait of a young boy arranging flowers in a bonnet ribbon, oil on canvas; 30" x 20".*
691. **Charles MacIver Grierson, R.I.** *Study of a lady seated on a beach, wearing a pink gown, looking at her reflection in a hand mirror, large umbrella behind, watercolour, signed and indistinctly dated; 18" x 14 1/2".*
692. **A Victorian gros-point and petit-point needlework panel,** depicting Christ taking Communion, worked in coloured wools, and gilt thread, in a gilt frame; 22" x 15 1/4".
693. **George Oyston. (19thC).** *Haymakers in a field and figures by a country house, a pair, watercolours, signed with initials and dated '94, 3 1/2" x 6".*
694. **F. Micklewright, after W Watson.** *The Chieftain, Highland cattle, watering in a misty mountain landscape, on porcelain for Paragon, No 339, signed; 4 1/2" dia., gilt framed.*
695. **F. Micklewright, after E W Haslehurst.** *Edwinstowe, Village street with figures by cottages, church beyond, on porcelain for Paragon, No.727 signed; 4 1/2" dia., gilt framed.*
696. **Wm. R. Hoyles.** *Coastal landscape with stone cross on the headland, signed and dated Feb. 1923; 4 1/2" x 5 1/2".*
697. **After William Flint.** *Nun and flower girl in a stone crypt, reproduction colour print # 585/850, blind trade guild stamp; 19 1/2" x 26 1/2".*
698. **P. B. Streetly.** *Extensive summer landscape with ruined castle, oil on board, signed; 14 1/2" x 20".*
699. **19thC School.** *Hayman on a river bridge, fishermen in the foreground, oil on canvas; 9" x 12".*
700. **19thC School.** *Still life of fruit on a platter, oil on canvas; 12" x 13 1/2". In a good early 18thC walnut ogee mirror frame.*
- 700A. **19thC School.** *Landscape with river and bridge in the foreground, oil on canvas; 15" x 24".*
701. **19thC School.** *Interior with grandmother and two children, oil on canvas, unsigned; 30" x 22".*
702. **20thC English School.** *Still life of summer flowers, in a terracotta vase decorated with putti, oil on canvas; 34" x 24".*
703. **Powell May.** *Children and chickens outside a thatched cottage on a country lane, surrounded by trees, watercolour / heightened white, signed; 11 1/2" x 18 1/2".*
704. **C. E. Wright.** *Coastal landscape at sunset, cottage on heathland, sea beyond, watercolour / heightened white, signed; 15 1/4" x 22 1/4".*
705. **19thC School.** *'Near Loch E xxx', oil on artist's board, signed with a monogram, indistinct title verso; 12" x 9".*
706. **Fred Thurlby.** *'Farewell', study of a black gelding in a stable, oil on canvas, signed and dated 1895; 18" x 24".*
707. **19thC School.** *Figures on a riverside path, with grazing sheep by cottages, oil on canvas, indistinctly signed; 14" x 18".*
708. **Brandl (J?).** *Mountainous lakeland landscape, oil on canvas, signed and dated (19)54, indistinctly titled verso; 18 1/4" x 24 1/2".*
709. **A. J. Sharnton (early 20th century).** *Highland landscapes, sailing boat on a Scottish loch, mountains beyond, a pair, gouache, signed; 11 1/4" x 8 1/4".*
710. **19th / 20th century English School.** *Cottage landscape with figure on a country lane, another standing at the gate of a half timbered dwelling with thatched roof, oil on canvas; 11 1/4" x 16 1/4".*

- 710A. **20thC School.** *Ducks on the riverbank*, oil on canvas, indistinctly signed; 20" x 16".
711. **D. Evison (20th century).** *Watering cattle by a wooden bridge, trees beyond*, oil on board, signed and dated '64; 31" x 22½".
712. **Marek Maruszewski (20th century Polish).** *Landscape*, oil on canvas, signed; 29" x 24". Inscribed verso 'Maruszewski Marek, Siedke VI Kasprzaka 1964.'
713. **19th century School.** *Quarrelsome lovers in a country landscape*, oil on canvas, indistinctly signed; 10" x 14".
714. **A. Stevenson (19th / 20th century).** *Study of a black horse in a stable*, oil on canvas, signed and dated 1900; 13" x 17¼".
715. **Spare lot.**
716. **Von Heike after Hofelich.** *Game shooting*, set of twelve, coloured lithographs, pub. c. 1880 Vienna; image size 7½" x 10".
717. **Stevengraph.** 'The London & York Royal Mail Coach' and 'Dick Turpin's Ride to York', two woven panels, in original two-part printed mount, manufacturers label verso; 7" x 7¼".
718. **An early 19thC gros-point needlework picture**, worked in coloured wools, of an elephant and mahout in a landscape, in contemporary moulded frame and gilt slip; 11½" x 16".
719. **20thC School.** *St. Michael's Mount, Cornwall*, watercolour; 17½" x 9".
720. **xxx Walton.** *Abstract landscape*, watercolour, signed and dated 1955; 13" x 18".
- 720A. **19thC School.** *Lympne Castle, Kent*, watercolour; 12" x 18", another framed work (2).
721. **G. Pretty (19thC).** *Autumn landscape with fallen trees*, watercolour, signed and dated '92; 9½" x 13".
722. **Wxx Bxx 1901.** *A summer haymaking scene, with figures by a hay wain*, oil on canvas, signed and dated; 15½" x 22".
723. **A. Rose.** *Interior family scene with a young child facing his father over a broken plate*, signed, oil on canvas; 14" x 18".
724. **After T. Smith.** *A view of the new waterworks at Belton in Lincolnshire*, hand coloured copper engraving; c. 1749, 15" x 21".
725. **Thomas C. Moore (attrib.).** *Winchelsea, village street with figures*, watercolour; 6" x 8".
- 725A. **J. Varley.** *A continental port scene*, watercolour, signed, 7" x 11".
- 725B. **J. Varley.** *Carnarvon Castle*, watercolour, 7" x 11".
726. **W. Oram Trivett.** *River and landscapes with fishermen, a pair*, watercolours, signed, one dated '06; 10½" x 7".
727. **A. Ashworth.** *Watering cattle by a lakeside, village and mountain beyond*, oil on canvas, signed and dated 1897; 12½" x 18½".
728. **20thC School.** *Two gentlemen studying the figure of a sleeping flower girl in parkland*, oil on panel, indistinctly signed; 15½" x 11½".
729. **A George IV needlework sampler**, worked in coloured threads, with trees, stag, house and birds, and inscribed 'ALAS and did my Saviour bleed And did my Sovereign die — Would he devote that sacred head For such a worm as I — Jane Hewettes work 1829'; 16" x 12".
730. **A gilt-framed colour print**, of ruins on the Nile, 1903; 10" x 16".
- 730A. **A Victorian woolwork picture**, depicting a young mother and children kneeling at an altar, gilt frame; 21" x 19".
731. **Beryl Turpin.** *Lion*, enamel on copper, label verso, 'John Neville Gallery'; 6" x 7".
732. **A 19thC Yokohama print**, depicting an illustration of Hotel at Tsukuji, Eastern Capital; 13½" x 9".
733. **A 19thC Japanese colour print**, depicting Kabuki actors - Onoe, Kikugoro, Ichikawa, and Danjuro, acting as Samuri; 13½" x 9".
734. **Two Chinese silk portfolios**, containing various watercolours on rice paper of traditional scenes, with figures depicting daily life; 8" x 12".





735. A souvenir, in commemoration of the death of Lord Nelson, on tissue paper (AF).
736. Style of George Grosz. *Abstract & erotic*, engraving, 9" x 8".
737. Pierre LeBeouff. *'Bergues pas de Calais'*, oil on canvas, gilt framed; 20" x 30".
738. Pierre LeBeouff. *'Provins Seine et Marne'*, oil on canvas, signed, modern frame; 20" x 30".
- 738A. A 19thC Chinese carved jade figure, of a seated Buddha on a hardwood plinth; 6" high with stand.
739. C. R. Faggioni. A neo-classical marble water carrying maiden standing by a Satanic mask wall fountain, signed; 28" high.
740. S. Moroni. A marble bust of a young woman wearing a bonnet and neck scarf, signed; 16" high, 12" wide, 8" deep.

CLOCKS

741. A 19thC table clock, in the form of an horseshoe, electroplated on copper, with hunting trophies and Bacchanalian decoration, with British United Clock Company movement; 9" high.
742. An early 20thC mahogany portico clock; 10" high.
743. An ATO electric works *'Electrique'* mantel clock, BC type, with a brass inlaid mahogany case, the dial having Arabic numerals and aperture for regulator viewing; 8" high, c/w instructions dating from 1927.
744. A Bulle electric mantel clock, with a string inlaid mahogany case, Arabic numerals; 10" high.
745. An Edwardian mahogany marquetry mantel clock, with Arabic numerals to the enamel chapter ring, eight-day Japy Freres striking a gong; 11" high.
746. A Bulle patent electric mantel clock, with a barley-twist oak case and Roman numerals; 13" high.
747. A 1930s mahogany mantel clock, with Roman numerals to the silvered chapter ring, and eight-day movement with Westminster chimes; 9" high.
748. A 19thC polished slate figural mantel clock, surmounted by a Spelter seated female, over a tapering case, enamel dial with Roman numerals and eight-day movement striking a bell; 19" high.
749. A cast brass mantel clock, surmounted with a lyre, and having a pierced case with cherubs supporting the silvered dial with Arabic numerals, eight-day movement striking a gong; 13" high.
750. A cast brass mantel clock, surmounted with an eagle, the case enclosing an enamel dial with Arabic numerals, and eight-day movement striking a gong; 18" high.
751. A 19thC polished slate figural mantel clock, with a female figure seated playing a lyre; 11" high (AF).
752. A 19thC French spelter clock garniture After Moreau, (les Fauvettes) cold painted with the figure of a robed young lady and a dove, seated upon the clock, and a pair of cherub-encrusted urnular vases on stepped grey and liver plinths.





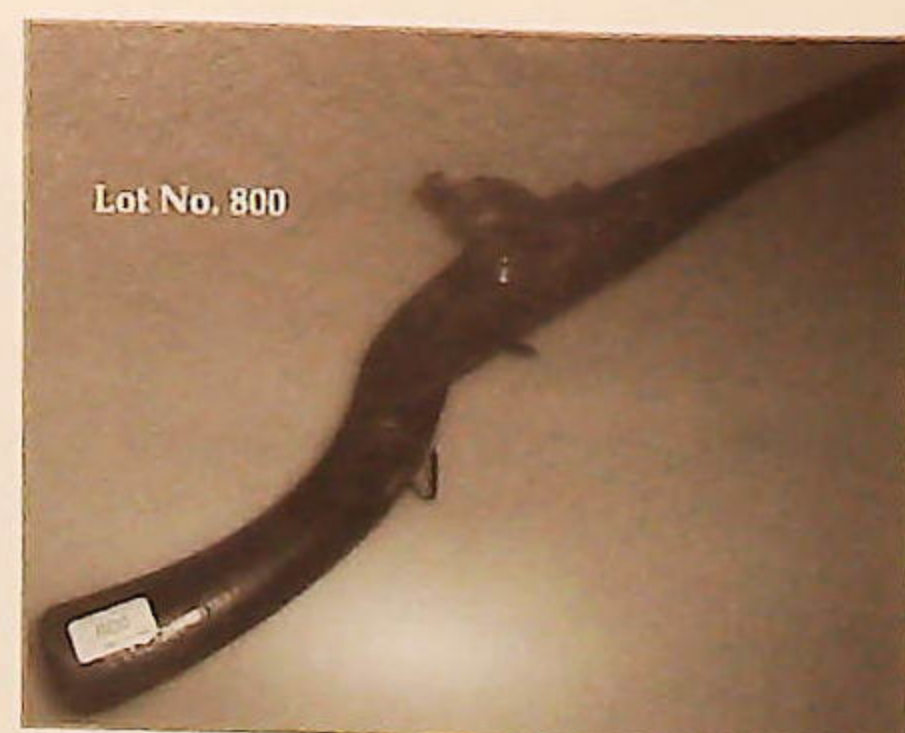
753. **An Edwardian oak cased lancet clock**, with silver dial having Arabic numerals, eight-day German movement striking a gong; 13" high.
754. **An Edwardian mahogany marquetry mantel clock**, with enamelled chapter ring with Arabic numerals, eight-day movement striking a gong; 10" high.
755. **A Victorian slate mantel clock**, of architectural form, with enamelled chapter ring, Arabic numerals, and presentation inscription '*Presented to First VBN Regt. Presented to Sgt. Major Collins by the Staff Sergeants and Sergeants as a mark of their respect and regard, December 10th 1894*'; 11" high.
756. **An Edwardian oak mantel clock**, with brass face, silvered chapter ring, with Roman numerals; 10" high.
757. **A gilt-brass and cloisonné' repeater carriage clock**, the enamelled dial having subsidiary day, date and alarm dials; 8" high.
758. **A gilt brass carriage clock**, with enamel dial; 6" high.
759. **A gilt brass strike/repeat carriage clock**, with enamel dial, inscribed '*ROUTLEY, BATH*'.
760. **A gilt-brass carriage timepiece**, with white enamel dial, and Roman numerals; 6" high.
761. **A gilt-brass carriage timepiece**, with white enamel dial and Roman numerals; 5½" high.
762. **A gilt-brass carriage timepiece**, with white enamel dial, Roman numerals, and subsidiary alarm dial; 4" high.
763. **A 19thC French porcelain figural mantel clock**, retailed by Tiffany and Co., New York, the floral rococo case embellished with pink flowers, cupids and a cherub with a cornucopia, 8-day movement striking a bell, 12" wide, 12" high.
764. **A 19thC French porcelain mantel clock**, polychrome decorated and encrusted with floral motifs within a gilt rococo scrolling form, enamel dial with Roman numerals, marked '*Rainco frere a Paris*', striking a bell; 12" high.
765. **A French gilt brass wall clock**, with enamel floral dial, marked '*Electrique, Paul Garnier*'; 8" high.
766. **A plated Goliath pocket watch**, with bezel wind and Roman numerals, fitted in a leather case; 5½" dia.
767. **A rare 20thC electric timepiece**, by the Eureka Clock Company Ltd., London, patent # 14614-1906, # 2778, modelled in the form of a lantern clock, with strapwork bell frame and bell, within pierced and engraved dolphin pediments, the chapter ring having Roman numerals, with inside quarter's track and pierced steel hands, centred by a bevelled glass panel showing a visible movement, of typical form, with oversized and compensated pendulum, with battery mounting to the back door; 16" high.
768. **An Edwardian floral marquetry bracket clock**, with silvered dial marked '*Tempus Fugit Z. BARRACLOUGH & SONS*', eight-day movement, striking a gong; 15" high.
769. **An eight-day longcase clock movement**, with circular brass dial, silvered chapter ring with Roman hour numerals and Arabic minutes, and subsidiary seconds and date rings, c/w weights and pendulum; 13" dia.
770. **A Victorian rosewood wheel barometer**, with onion top, bearing hygrometer, over thermometer (AF), convex mirror; 10" dial, and level; 40" high.
771. **1930s oak wall clock**, the silvered dial having Arabic numerals, eight-day movement striking a gong, hand bevelled plate door; 31" high.
772. **A Victorian mahogany wheel barometer**, with 7½" painted dial; 36" high.
773. **A Victorian rosewood drop-dial wall clock**, with mother-of-pearl inlays, painted dial with Roman numerals, and eight-day movement; 27" high.
774. **A late Victorian walnut timepiece barometer**, with dentil moulded cornice, chapter ring with Roman numerals, over thermometer and aneroid barometer; 22" high.
775. **An early 19thC flamed mahogany wheel barometer**, with swan-neck pediment, over hygrometer, thermometer, convex mirror, 8" dial, and level marked '*S. Oreggia, Nottingham*'; 39" high.
776. **A 19thC walnut Vienna regulator wall clock**, with two-part cream enamelled dial with subsidiary seconds ring, full length glazed door, enclosed by turned and reeded pillars; 45" high.
777. **A 19thC mahogany cross-banded oak clock longcase**, with swan-neck pillared hood; 6'3" high.

778. An early 20thC oak long-case clock, with circular brass dial, with Arabic numerals, three-train chiming movement exposed by a bevel full-length door, plinth base, and ball feet; 83" high.
779. An early 19thC mahogany cross-banded oak longcase clock, with swan-neck pillared hood and painted dial with Continental port scene to arch and ships to the spandrels, eight-day movement striking a bell; 80" high.
780. A late Victorian / Edwardian mahogany longcase clock, with open fretwork hood, blind fret trunk, and base on plinth, brass dial having dolphin and amorini spandrels, silvered chapter ring with Arabic numerals, and subsidiary seconds ring, and eight-day movement with silent / chime ring to arch; 88" high.
781. A George III mahogany longcase clock, with inlaid Corinthian column hood, string inlaid and canted trunk, with full length door, cross banded base, on bracket feet, the painted dial having horse and foal to arch, sheep and lamb to each spandrel, Roman numerals, and subsidiary dial, tracery marks of *Joshua Farrer, Doncaster*; 85" high.
782. A George III mahogany cross banded oak longcase clock, with swan-neck pillared hood, canted trunk, with short door, and panel base, with oval shell inlays, the painted dial having a harvest gathering scene to arch, and castle ruins to the spandrels, the embossed centre having Roman numerals, and subsidiary seconds ring, date crescent, and marked '*John Peck, Wellingboro*'; 84" high.
783. A 19thC mahogany wall timepiece, with convex painted dial having Roman numerals and marked '*J. R. JEFFRIES, SKEGNESS*', with single fusee movement; 14" dia.
784. An early 18thC oak longcase clock, with raised dentil moulded hood, full length door, moulded and plinth base, the 10" brass dial having applied cast spandrels, silvered chapter ring with Roman numerals, inscribed '*Thomas Muddle, tunBridge Wells*' [sic], matted centre engraved with stylized birds, date aperture, single hand, 30-hour movement, striking a bell; 84" high.



ARMS & MILITARIA

792. Medals, World War I service medals (2), and 1914-15 star, inscribed '*20599 Pte. A. Merritt Y & L R*'; WWII service medals (2), Defence medal, 1939-1945 star, the France and Germany star, the Africa star; death plaque of Henry George Syce; various crowns, postcards and photographs.
793. Assorted military and civil buttons, including Rutland Constabulary, Midland Railway, other cap badges etc.
794. Various military buttons, and medals.
795. A deactivated Lanchester MkI 9mm calibre submachine gun, SER. No. 35150, c/w deactivation certificate DA46319 Birmingham 1994.
796. A deactivated Enfield long branch military B/A rifle, .303 calibre, SER. No. 5L1915, c/w deactivation certificate DA37055 Birmingham 1993.
797. A deactivated Webley & Scott MkIV .38 revolver, SER. No. A27971, c/w deactivation certificate DA33798 Birmingham 1992.
798. A Webley & Scott Ltd. brass flare pistol, SER. No. 74344 (A FIREARMS PERMIT IS REQUIRED FOR THE PURCHASE OF THIS ITEM).
799. A Persian brass fitted flint-lock pistol, 18".
800. An eastern flintlock gun.
801. A 1913 American bayonet, with sheath.
802. A 1917 American bayonet, with sheath.
803. A 1913 American bayonet.
804. A Sanderson bayonet, with sheath.
805. A MK-II bayonet.
806. A Wilkinson bayonet, with sheath.
807. A Nazi SA dagger, by Haco, Berlin; with sheath.
808. A French brass handled bayonet, inscribed '*...1865 - S. B. No. 18421*'.
809. A 19thC Officer's sabre, with brass hilt and a scabbard.





Lot No. 810



Lot No. 819



Lot No. 825

810. A German Forester's hunting knife or short sword, with sheath.

811. A 19thC Officer's sword.

812. A 19thC Officer's sword.

813. A 19thC Officer's sword, with scabbard.

814. A cut steel hilted smallsword.

815. A 19thC basket-hilted sword.

816. A Japanese katana, with tsuba and leather grip & scabbard.

817. A Persian war hammer.

818. An Indian fighting axe.

819. A Persian design circular shield, helmet and pair of war hammers.

820. Two Eastern masks, set with turquoise glass on copper.

FURNITURE

821. A 19thC style extending dining table, with 11 section top, veneered in pollard oak, the pull-out mechanism supported by 9 taper turned legs with fluting and cabachon decoration on brass castors; 54" wide, 20' max.

822. A George I style walnut chest, of two short and three long graduated drawers, with cross-banded herringbone strung top, brass drop handles, and bracket feet; 39" wide.

823. A George III oak chest, of two short and three long graduated drawers, cross-banded with chevron stringing, brass loop handles, quarter inset reeded columns and bracket feet; 39" wide.

824. A George III mahogany chest, of two short and four long graduated drawers, with satinwood banded top, brass swan-neck handles and bracket feet; 43" wide.

825. A George III mahogany serpentine chest, of four graduated drawers, with brass ring handles and splay feet; 42" wide.

826. An 18thC walnut chest, of two short and three long graduated drawers, with cross-banded and herringbone strung quarter veneer top, brass solid backplate handles and escutcheons and bracket feet; 31" wide.

827. A 19thC French mahogany chest, of five long drawers, with grey and liver marble top, brass beading, loop handles and escutcheons, on turned feet; 50" wide.

828. A George III mahogany bureau, the fall flap revealing a fitted interior and resting on lopers, over two short and three long graduated drawers, with oval pressed brass loop handles and bracket feet; 42" wide.

829. A Victorian mahogany chest, of seven varying drawers, with knob handles and turned feet; 50" wide.

830. A George II walnut chest, of two short and three long graduated drawers, with moulded top, string inlaid drawers, with brass swan-neck handles, and bracket feet; 37" wide.

831. A Victorian mahogany D-front chest, of two short and three long graduated drawers with knob handles, and turned feet; 42" wide.



Lot No. 826



Lot No. 828



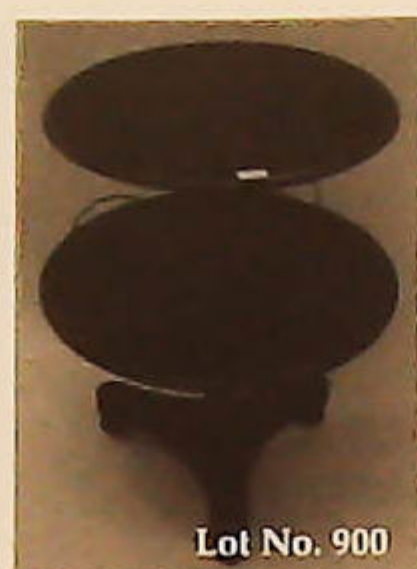
Lot No. 831



832. A Jacobean style chest, of two short and three long graduated moulded drawers, with brass drop handles and moulded base in the Jacobean style; 44" wide.
833. A George III oak chest, of two short and three long graduated drawers, with ebonised knob handles and turned feet; 36" wide.
834. A George III oak bureau, the fall flap revealing a fitted interior, and resting on lopers, over four graduated drawers with brass swan-neck handles, and bracket feet; 36" wide.
835. A Sheraton revival mahogany bow front sideboard, with satinwood cross-banding, and square taper legs; 61" wide.
836. A Sheraton revival mahogany bow front sideboard, with satinwood cross-banding and square taper legs; 65" wide.
837. A Sheraton revival mahogany break-front sideboard, with galleried raised back, satinwood cross-banding, lion mask ring handles, and square taper legs; 60" wide.
838. A Hepplewhite style flamed mahogany bow front side table, with cross-banded top, three frieze drawers with lion mask handles, reeded taper legs; 49" wide.
839. A George III mahogany chest, of two short and three long graduated drawers with knob handles, and bracket feet; 37" wide.
840. A teak campaign chest, in two parts, with brass handles, and turned feet; 36" wide.
841. An 18thC oak and fruitwood press chest, with screw press and framing over three graduated drawers with knob handles, and turned feet; 36" wide.
842. A George III mahogany bachelor's chest, with moulded top, brushing slide, and three graduated drawers with knob handles and splay feet; 40" wide.
843. A 19thC flamed mahogany chest, of two short and three long graduated drawers, with knob handles and turned feet; 41" wide.
844. A Victorian scrubbed pine Lincolnshire dresser, of traditional form, with raised back, three drawer uncovered base, with glass knob handles, and turned feet; 48" wide.
845. A late Victorian walnut music cabinet, with broken arch pediment, mirrored back, and single door with bevel plate mirrors, and bracket feet; 24" wide.
846. A Victorian mahogany console table in the Gothic manner, having a grey marble top, frieze drawer stamped 'WILKINSON & SON 8824 8, OLD BOND STREET', on square and turned uprights with chamfer framing; 42" wide, 25" deep.
847. A reproduction mahogany serpentine sideboard, with cross-banded and string inlaid top and drawer fronts, octagonal brass loop handles, moulded square taper legs, and spay feet; 60" wide.
848. A 19thC mahogany pier cabinet, with brass stringing to the top, and two drawers over two panel doors, with grills, enclosed by Egyptian columns; 48" wide.
849. A 17thC oak three-panelled coffer; 53" wide.
850. A 17thC oak four panel coffer, with plain moulded top, the front with lozenge and scoop carved panels; 57" wide, 24" deep, 26" high.
851. A 19thC mahogany Pembroke table, in the Irish manner, having carved moulded top, foliate carved drawer stamped 'EDWARDS & ROBERTS', cabriole legs with shell carved knees and ball and claw feet, supported by a turned stretcher; 24" square min.
852. A 17thC oak three-panelled coffer, with carved frieze and raised stiles; 40" wide, 21" deep, 26" high.
853. A Victorian carved oak knee-hole desk, having raised top, three frieze drawers, and three to each pedestal, with carved lion mask handles and plinth base; 48" wide, 27" deep.
854. A Victorian burr walnut davenport, with raised pen tray and stationary compartment, maple interior, four drawers and opposing dummies with knob handles; 21" wide.
855. A George III mahogany Pembroke table, with cross-banded and ebony strung top, three frieze and opposing dummy drawers, with knob handles, ring turned legs, and brass cup castors; 22" x 16" min.
856. A quartetto of Chinese hardwood tables, with moulded friezes; 18" down.
857. A Victorian string inlaid walnut davenport, with leather inset top, four drawers and opposing dummies with knob handles; 21" wide.

858. A 19thC mahogany Pembroke table, with moulded top, frieze drawer, turned legs, and brass castors; 36" x 19" min.
859. A 19thC mahogany Pembroke table, with frieze drawer, octagonal legs, and brass cup castors; 38" x 32" min.
860. A 19thC pitch-pine centre table, in the Gothic manner; 30" x 45".
861. A Victorian carved oak centre table, with gadrooned frieze and drawer with lion mask handle, bulbous supports, and carved stretcher, on dolphin feet; 47" x 35".
862. An oak refectory dining suite, in 17thC style, being a set of eight stylized North-Country chairs, including two carvers, and refectory table; 36" x 96".
863. A Georgian oak breakfast table, with rectangular tilt top, vase baluster, and three outspay legs; 36" x 43".
864. An ebonised baby grand piano, by Julius Bluthner of Leipzig, serial # 81040; 60" wide, 68" long.
865. A Victorian walnut stool, with moulded cabriole legs, and serpentine overstuffed seats.
866. An Edwardian string inlaid mahogany music seat, with raised handles, lift flap and cabriole legs.
867. A 17thC oak court cupboard, with moulded canopy, with iron hooks, plate rack back, and three-door cupboard base; 81" wide, 22" deep, 87" high. (one upper pillar missing)
868. A late 19thC oak dresser, the upper section with a gadrooned pediment over arcaded shelf, two further shelves, flanked by cupboards. The lower section with three frieze drawers on turned uprights joined by a pot-board, the whole heavily carved with serpent scroll and foliate detail, lion mask and ring handles to the drawers; 72" wide, 20" deep, 86" high.
869. A George III and later mahogany bureau bookcase, with dentil moulded cornice, two astragal glazed doors, fall flap revealing a fitted interior resting on lopers, over three graduated drawers with ebony stringing and brass swan-neck handles, on ogee feet; 42" wide, 89" high.
870. A George III and later mahogany bureau bookcase, with moulded cornice, two arch astragal glazed doors, fall flap revealing a fitted interior resting on lopers, over two short and two long graduated drawers with brass loop handles and bracket feet; 38" wide, 86" high.
871. A George III mahogany secretaire bookcase, with dentil moulded cornice, two astragal glazed doors over a deep secretaire drawer, with fitted interior and three further graduated drawers, on bracket feet; 43" wide, 21" deep; 92" high.
872. A 19thC stripped pine corner cupboard; 48" wide, 75" high.
873. A late Victorian mahogany break-front display cabinet, with dentil moulded cornice, three glazed doors with applied astragals, over two drawers and raised on slender cabriole legs, with a shaped undershelf; 51" wide, 16" deep, 66" high.
874. An early Victorian mahogany chiffonier, with panelled and shelved back, with turned supports, two frieze drawers over two doors, enclosed by turned pillars and plinth base; 48" wide.
875. An Edwardian string inlaid display cabinet, with dentil moulded cornice, and single door with oval glazed panel, enclosed by floral painted decoration, square taper legs, and splay feet; 24" wide, 66" high.
876. A late Victorian oak and elm dressing table; 54" wide.
877. A George III mahogany what-not, with three shelves over a single cupboard, with turned uprights; 18" square, 59" high.
878. A 19thC mahogany bureau, with string inlay decoration and bracket feet.
879. A 19thC satinwood escritoire, with raised drawer compartment, leather inset top, fitted frieze drawer and fluted taper legs; 30" wide.
880. An Edwardian mahogany bureau bookcase, with satinwood cross-banding and shell inlays, brass swan-neck handles and bracket feet; 30" wide, 73" high.





881. A Victorian rosewood serpentine whatnot, three tiers supported by open barley twist supports, having drawer base and brass castors, 21" wide.
882. A 1930's oak dresser, with platerack over drawer and cupboards, on baluster legs with stretchers; 48" wide, 20" deep, 74" high.
883. A 17thC oak coffer, with three-panel top over a blind fret frieze and three-panel front, raised on stiles; 43" wide, 20" deep, 24" high.
884. A 17thC style oak low sideboard, with an arrangement of scoop carved drawers and panelled doors, on turned legs with chamfered stretchers; 78" wide, 30" high.
885. A George III mahogany pad foot dining table, with oval top; 44" x 52" max.
886. An 18thC mahogany pad foot dining table, with an oval top; 45" x 51" max.
887. A 17thC and later oak gate-leg table, with bobbin turned framing; 36" x 48" max.
888. An 18thC mahogany drop-leaf table, with oval top, frieze drawer and cabriole legs; 39" x 42" max.
889. A Victorian carved oak jardiniere stand, of rectangular form, with acanthus leaves and berries, raised on a tapering barley-twist column; 24" x 16".
890. An Edwardian mahogany occasional table, with rectangular swivel and drop leaf cross-banded top and gallery undershelf; 34" x 31" max.
891. A Sheraton revival flamed mahogany card table, with demi-lune folding top, with shell inlays, on reeded and fluted square taper legs, with swell feet; 37" wide.
892. A 19thC rosewood and marquetry card table, the rectangular folding top having floral strap work, bandings, and similar to the frieze and square taper legs; 33" wide.
893. A 19thC mahogany Pembroke table, with frieze drawer and turned legs; 38" x 20" min.
894. A George III mahogany supper table, with circular dished top, turned pedestal, and three outspread legs with pad feet; 19" dia.
895. A George III mahogany hanging corner cupboard, with moulded cornice, single door and shaped shelves; 30" wide, 40" high.
896. A George III oak hanging corner cupboard, with moulded cornice and single door, with shaped shelves; 36" wide, 42" high.
897. A Victorian flamed mahogany wine cooler, of sarcophagus form, with a lead lined interior; 32" wide.
898. A 19thC mahogany cool chest, with painted exterior marked 'Sgt. Tho's Fisher 3rd W.L.F.AMY'.
899. A Georgian mahogany upholstered wingback armchair, with square framing and brass cup castors; 33" wide.
900. An Aesthetic Movement ebonised two-tier centre table, by James Shoolbred & Co., with gilt scratch carved decoration, fluted centre and trefoil base, and turned feet; 22" and 24" dia.
901. A Victorian walnut marquetry davenport, with raised bombe pen tray, and four drawer base with opposing dummy drawers having knob handles; 21" wide.
902. A Victorian mahogany dressing or writing table, with moulded top, two frieze drawers with knob handles, open supports, and turned stretcher; 44" wide.
903. A Victorian carved oak night-table, with single drawer and cupboard, on turned legs; 16" wide.
904. A George III elm hanging corner cupboard, with single door and shaped shelves; 30" wide, 33" high.
905. An early Victorian mahogany child's high chair, with rush seat, and turned framing.
906. A Regency mahogany tripod table, with circular tilt-top and vase baluster pillar; 23" dia.
907. An Arts & Crafts mahogany jardiniere stand, on square taper legs, with undershelf; 15" square.
908. A Victorian mahogany work table, with rectangular moulded top and single drawer with brass ring handles, slide drop compartment, turned stretcher and bun feet; 24" wide.
909. An American mahogany Pembroke table, in the style of Duncan Fyffe, bearing label of Steihl Furniture, New York; 30" x 20" min.
910. A William IV mahogany centre table, with moulded rectangular moulded top, shaped frieze with scroll mouldings, tulip baluster stem, and four scrolling legs from a reeded boss; 25" x 19".

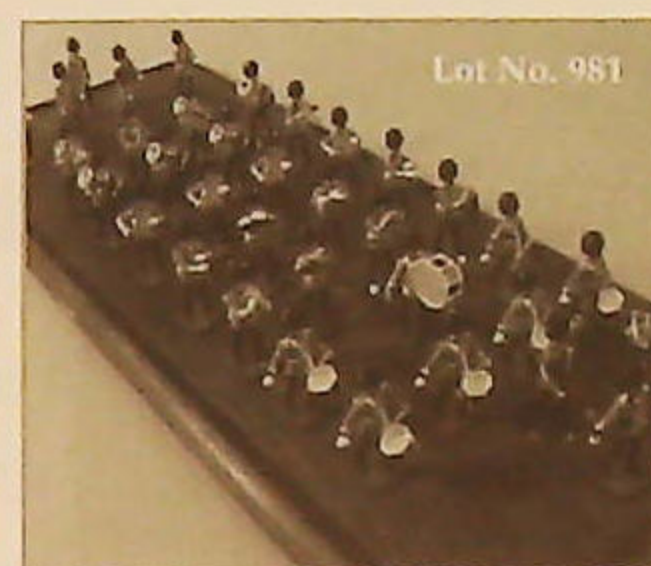
911. A Victorian mahogany lazy Susan, on a turned base; 20" dia.
912. A George III mahogany bow-front hanging corner cupboard, with moulded cornice and two doors with brass 'H'-hinges; 28" wide, 42" high.
913. A Victorian mahogany rise-and-fall adjusting gout stool.
914. A 19thC Continental table cabinet, with dentil moulded cornice over two doors, painted with neo-classical ladies; 31" wide, 13" deep, 20" high.
915. A Victorian walnut circular footstool, with beadwork pad, and turned feet; 13" dia.
916. A Victorian ebonised stool, with beadwork pad, gilt metal bands and turned feet; 12" dia.
917. A Regency mahogany wash stand with tray top and lift lid, turned legs and undershelf.
918. A George III mahogany side table, with reeded and turned legs; 42" wide, 23" deep.
919. A Dutch style floral marquetry folding card table, of triangular folding form, on square taper legs; 48" wide.
920. A fine George IV mahogany davenport, with pierced gallery, and fitted slope top, forming a sliding overhang, further slides to each side over four drawers and opposing dummies, with brass knob handles, and bun feet; 21" wide, 23" deep.
921. A George III flamed mahogany card table, with shaped folding top, square taper legs, and splay feet; 36" wide.
922. A Regency mahogany Pembroke table, with moulded plum pudding top, frieze drawer and opposing dummy, with brass loop handles, on a turned pillar, on four sabre legs with brass claw castors; 22" x 37" min.
923. A George III mahogany supper table, with string inlaid circular tilt-top, baluster pillar, and three downswept legs with pad feet; 30" dia.
924. A 19thC mahogany supper table, with circular tilt-top, on turned baluster pillar, and three downswept legs with pad feet; 36" dia.
925. A 19thC rustic centre table, with 'X'-frame supports and turned stretcher; 54" x 21".
926. An early 19thC mahogany serving table, with 'D'-shaped reeded top, single drawer and reeded square taper legs; 84" wide, 16" deep, 37" high.
927. A Jacobean style oak settle; 45" wide.
928. A 17thC oak side table, with moulded top, frieze drawer, turned baluster supports and plain stretchers; 40" wide, 24" deep, 29" high.
929. An oval flamed mahogany table, on square taper legs, 19thC; 48" x 72" min.
930. A Victorian mahogany looe table, with oval tilt top and scroll base; 54" x 40".
931. A Victorian mahogany library table, with leather inset moulded top, six drawers to each side with knob handles, raised on turned legs with brass cup castors; 36" x 118".
932. A George III mahogany dining table, with reeded plum pudding top, the base dividing into three gate-leg mechanisms, with ebony and ring-turned decoration on brass cup castors; 90" x 47".
933. A Victorian cast iron baby's cradle.
934. A 19thC upholstered armchair, with button back and projecting arms, on giltwood French cabriole legs with applied moulding.
935. A Victorian walnut spoonback open armchair, with button tapestry upholstery, and matching nursing chair (2).
936. An Edwardian string and shell inlaid mahogany corner chair, with fan splats and square taper legs.
937. A 19thC elm Lancashire ladderback carver chair, with rush seat and further side chair (2).
938. A 19thC carved oak corner chair, with high back supported by dolphin figures, pierced splats and overstuffed seat VAT payable on hammer price.
939. An Edwardian mahogany salon chair, with pierced back.
940. A Victorian ash and elm lathback Grandfather chair.





941. An 18thC ash and elm Windsor chair, with spindle back and turned legs.
942. A 19thC ash and elm Windsor chair, with spindle back, turned legs and stretchers.
943. A Thonet style bentwood carver chair.
944. A pair of Chippendale style mahogany carver chairs, with pierced vase splats, overstuffed seats, and cabriole legs with ball and claw feet.
945. A 19thC ash and elm child's Windsor chair.
946. An Edwardian string inlaid mahogany boudoir sofa, with pierced splat back, overstuffed seats and turned legs and framing; 48" wide.
947. A set of seven late 19thC walnut dining chairs, including carver.
948. A set of six mahogany dining chairs, with pierced vase splat, in the Chippendale manner.
949. A set of five Victorian walnut balloon back dining chairs, with overstuffed seats and fluted forelegs.
950. A set of six Georgian harlequin elm dining chairs, with bar backs, drop in seats, and square framing.
951. A set of three 19thC walnut framed tub chairs, the reeded top rail with scroll terminals, supported on three reeded and turned uprights, above a solid oak two part seat, on four spirally fluted, turned and channelled legs.
952. A set of six late Victorian oak dining chairs, with rectangular Turkish rug upholstered backs, overstuffed seats on barley-twist front legs joined by panelled 'H'-stretchers.
953. A set of four 19thC oak dining chairs, with barley-twist uprights and framing, in 17thC style.
954. A set of four Victorian mahogany balloon back dining chairs, with overstuffed seats, and octagonal taper forelegs.
955. An early 20thC club chair, upholstered in green buttoned leather, with carved mahogany cabriole forelegs.
956. An Edwardian brass club fender, with studded leather seats, steel strapping, brass gallery and planished brass plinth; 76" wide, int.

957. A Victorian mahogany firescreen, with scroll and turned framing, enclosing a Berlin woolwork picture of a dog saving a child from the water; 24" wide.
958. An Edwardian oak hall stand, with griffin carved and scrolling friezes, brass hooks, mirrored back, drawer, box seat and stick stand; 48" wide, 85" high.
959. An Edwardian walnut writing table, with moulded top, two frieze drawers with brass loop handles, galleried 'H'-frame stretcher, turned legs and brass and ceramic castors; 54" wide, 30" deep.
960. A Victorian brass and cast iron stick stand, with turned uprights, and six dividers.
961. A Victorian brass and mahogany double bedstead, with turned uprights and framing, and brass castors; 52" wide.
962. A Victorian mahogany double bedstead, with tulip carved finials; 52" wide.
963. A pair of single bedsteads, the headboards and footboards formed from a Victorian marquetry looe table top.
964. An early 19thC mahogany secretaire bookcase, with moulded cornice over two astragal glazed doors, the single drawer having solid brass back plate looped handles, revealing a fitted interior over two panelled doors and plinth base; 44" wide, 89" high.
965. A Victorian three-fold scrap screen.
966. A leaded glazed panel, with a central robed fox cartouche; 67" x 42" to inside frame.
967. A set of six Irish Regency rosewood dining chairs, with brass lyre inlaid splat and turned legs.
968. A 19thC Dutch floral marquetry wall mirror, with square moulded frame, and rectangular plate; 30" square.
969. A 19thC Spanish dough table, with hinged top.
970. A set of three 20thC obelisks, in pink / blue marbled finish, c. 8' high.
971. An Arion Art Deco overmantel mirror, with cast two colour scrolling frame and rectangular bevel plate; 47" wide, 36" high.
972. A 19thC Dieppe ivory wall mirror, with oval bevel plate, and cartouche frame, having applied leaves, shields, lyre and cherubs; 32" high.



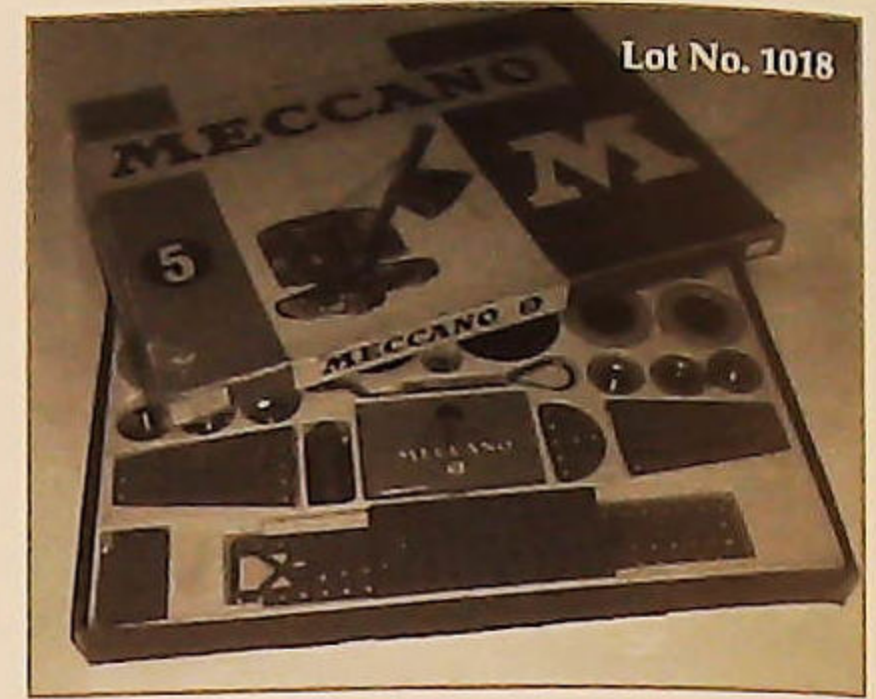
973. A pair of 19thC oval wall mirrors, with moulded gilt frames and bevelled plates; 37" high.
974. A late Victorian walnut what-not purdonium, with two-tier galleried levels over a carved slope front.
975. An early 19thC giltwood overmantel mirror, with floral column surround to the rectangular plate; 50" wide, 33" high.

TOYS

981. Military figures, Lifeguards' band (35) stuck on base.
982. Military figures, Scots Guards' band (18).
983. Britain's # 45F milk float and horse, boxed.
984. Britain's # 8F horse rake, boxed.
985. Britain's # 4F Turnbrel, boxed.
986. Miniature models # 169 The Village Blacksmith, boxed.
987. Britain's Zoo series # 92 Llama ride set, boxed.
988. Western wagon and horses.
989. Britain's Indian Elephant # 901, boxed.
990. Britain's Hippopotamous # 905, boxed.
991. Britain's Indian Rhinoceros # 908, boxed.
992. Britain's horse and foal.
993. Britain's Farm animals, various.
994. Dinky Empire Flying boat, unboxed (AF).

995. Dinky - four miniature Hurricane aircraft, 62S, unboxed (1 AF).
996. Dinky - five miniature Spitfire aircraft, 62A. (1 AF).
997. Dinky - Light transport aircraft, and another, and a seaplane (AF).
998. Dinky - Routemaster Bus 289, with Visit Madame Tussard's decals, boxed.
999. Dinky - Supertoys Guy van, 'Robertsons Golden Shred' livery, unboxed.
1000. A Hornby Dublo EPD1 passenger train set, 'Sir Nigel Gresley'.
1001. An early 20thC golden plush teddy bear, slight hump, long arms, long legs with long feet, felt pads, black eyes, horizontal stitched nose, wood wool filling; 26" tall.
1002. A Merrythought 'Cheeky' bear, c.1960 with label to foot, and bells in ear.
1003. A yellow plush 'Sooty' handpuppet, c.1954, sold with covering letter from the vendor stating that it was a gift from Harry Corbett.
1004. A Schuco Yes/No bear, c.1930, honey mohair plush, unknown if mechanism is working; 21".
1005. Two Corgi 41 1902 State Landau coaches, boxed with slip case.
1006. Nine Lineol soldiers, made in Germany c.1940, in Italian uniform.
1007. A Japanese battery operated seated teddy bear, on a tin plate base, with telephone.
1008. A Japanese battery operated Grandmother bear, seated knitting on a tin plate rocking chair.





- 1009. A Japanese battery operated tin plate toy, depicting Father Christmas (Kris Kringle) seated at the telephone receiving Christmas orders.
- 1010. A Hornby Dublo 3235 4-6-2 S.R. West Country Locomotive (Dorchester & Tender), boxed.
- 1011. A Hornby Dublo 7013 4-6-0 Locomotive 'Bristol Castle' & tender, unboxed.
- 1012. A Hornby Dublo 4498 4-6-2 Locomotive 'Sir Nigel Gresley', no tender, unboxed (pre-war).
- 1013. A Hornby Dublo 3221 4-6-0 Locomotive 'Ludlo Castle' & tender, boxed.
- 1014. A Hornby Dublo L30 1000BHP Bo-Bo diesel electric locomotive, boxed.
- 1015. A Hornby Dublo 3232 Co-Co diesel electric locomotive, boxed.
- 1016. A Hornby Dublo 3232 Co-Co diesel electric locomotive, boxed.
- 1017. Hornby Dublo; a mixed lot including Silver Fox, and Sir Nigel Gresley locomotives, tenders, carriages, track, etc.
- 1018. A Meccano # 5 construction kit.

END OF SALE.

THE COUNTRY LIFE & SPORTING SALE



A sale of all things
**HUNTING – FISHING – SHOOTING –
RACING**

On Saturday 23rd July at 6pm.

(To coincide with the Game Fair at Belvoir Castle)

**An ideal opportunity to consign
items to a sale with many important
buyers on our doorstep.
Entry closing Date 8th July.**

Entries now required of Paintings, Prints, Ceramics
especially Beswick Horses and Farm Animals, Border
Fine Arts, Silver, Metal ware, Books, Taxidermy,
Jewellery, Photographs, Postcards, Antiques,
Collectables, Guns (*All enquiries to Colin Young*),
Accessories, etc.

**VIEWING: Friday 21st 4pm – 7pm
& Saturday 22nd 1pm – 6pm.**

VALUATIONS

Antiques Auction Appraisal Days

Every Friday 9am to 1pm

For free advice on marketing there is only one
place to come.

We are the **ONLY** auction house in the region to
have **ALL** of our experienced valuation staff
Qualified as Fellows of The National Association
of Valuers & Auctioneers

THE CATALOGUE SALE

Your Market Place

for Fine antiques and works of art,
jewellery, silver, ceramics, glass,
books, clocks, furniture and all fields
of collectors' items.



Held quarterly, these sales
include select items that
need specific and direct
marketing through our
select mailing list &
databases.

Up to 200 vendors selling items to a
Worldwide Audience via The Internet.

The Closing date for
entries in the following
categories is

8th July

Jewellery, Watches &
Bijouterie
Glass, ceramics, collectables,
toys, etc.
Books, Stamps, Maps,
Ephemera
Textiles & Metalware, Arms,
Decorations, Coins
Silver and Plated Wares,
Clocks & Barometers
Pictures, Prints & Miniatures
Antique & Decorative
Furniture



NEXT SALE: 10th August 2005

Online at
WWW.GOLDINGYOUNG.COM
from Friday 6th

VIEWING:

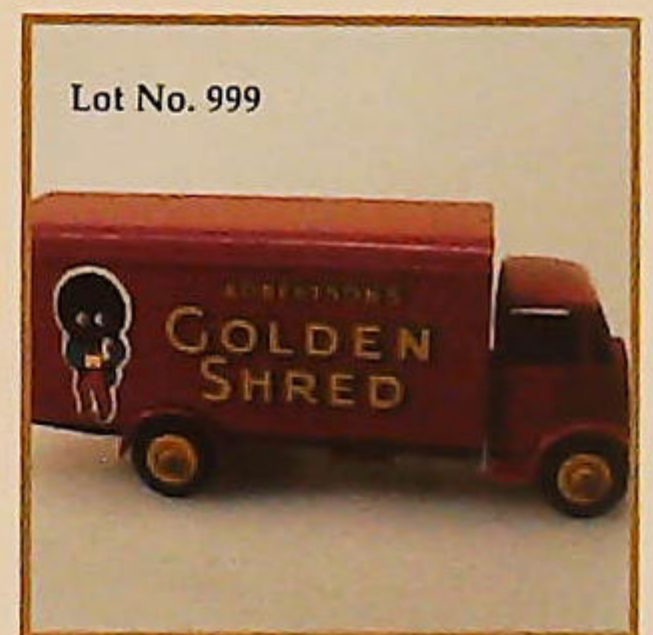
**Monday 9th 2pm to 5pm,
Tuesday 10th 2pm to 7pm and
Saleday 9am to 10am.**

Catalogues
£5 each
by post,
annual
subscription
£20



CONDITIONS OF SALE

1. These Conditions together with any Notices to Purchasers are the only terms and conditions subject to which Golding Young & Co ("the Auctioneers"), as agents for the Vendor will sell goods to a purchaser ("the Bidder") and all other conditions, whether express, or implied at common law or by statute as are capable of lawful exclusion are hereby excluded.
2. The highest bidder shall be the buyer. The Auctioneers reserve the right of regulating the biddings; of rejecting any bid; and of bidding for, withdrawing, consolidating, dividing or altering the order of lots.
3. The purchase money for each lot with the usual commission of 15% (with a minimum of £1 per lot) plus VAT at the current rate shall be paid at the fall of the hammer (if required). Each lot at the fall of the hammer shall be at the sole risk and expense of the buyer, and shall be paid for and removed immediately after the conclusion of the sale, but no lot shall become the property of the buyer, or be removable until paid for, and if taken away in contravention of these conditions without an order for removal signed by the Auctioneers, they shall have power to seize the same by their servants or agents, or otherwise, or the Auctioneers may recover either the lot sold or the price thereof (at their option) by action at law.
4. No contra account of any description whatever will be allowed to the buyer as a set off, and payment for each Lot shall be made to the Auctioneers or their clerk only, and a buyer paying by cheque must give satisfactory references.
5. For all purposes of this sale the Clerk of the Auctioneers shall be deemed to be the agent of both seller and buyer.
6. A bidder shall not be allowed to retract his bidding after the fall of the hammer, and he shall give up his full name and address if required. The Auctioneers will not recognise the transfer of any lot from one buyer to another, nor make any alteration in the sale book in respect thereof.
7. The Auctioneers are acting only as agents, and give no personal warranty as to the condition, quality or authenticity of any chattels offered for Auction. Any catalogue description is given merely as guide to purchasers, any description can be changed from the rostrum before the lot is sold. If a purchaser buys without previous inspection he will do so at his own risk.
8. Notwithstanding any other terms in these Conditions, if within 7 days of the Sale a purchaser gives notice in writing that a lot is a deliberate forgery, with supporting factual evidence, the Auctioneers may rescind the transaction. The burden of factual proof lies with purchaser, mere opinions will not satisfy. This benefit is not assignable.
9. If any buyer neglect or refuse to comply with the above conditions or any of them, his deposit money (if any) shall be forfeited, and the lot uncleared may, at the option of the Auctioneers, be resold without notice by public auction or private treaty, and any loss occasioned by such re-sale together with all expenses attendant thereon, or arising under these conditions shall be paid for by the defaulter and be recoverable as and for liquidated damages. This condition is however without prejudice to the right of the Auctioneers to enforce the contract made at this sale if they think fit.
10. Any Notes for Purchasers and Catalogue Glossaries will be construed as Conditions of Sale.
11. The Auctioneers shall be the sole Arbitrators in all matters of dispute relating to those conditions both as between the seller and the buyer and between the several bidders and buyers and their determination on all matters shall be final and binding on all parties concerned.



How to find us



By Road

From whichever direction you approach Grantham, you can find us if you observe the following rules: Follow signs for Town Centre. Follow signs for Railway Station. At the roundabout leading to "Station Road", continue around to a double viaduct/ railway bridge. Take the right hand arch which leads into Old Wharf Road.

The Salerooms are the first building on the right. There are parking and loading bays in front of the premises.

By Train

The auction house is situated very closely to the Railway Station, which is served by the East Coast Main Line. Trains run approximately every 20 minutes from Kings Cross during peak times.



WWW.GOLDINGYOUNG.COM

GOLDINGYOUNG • 1900

CHARTERED AUCTIONEERS & VALUERS Commercial Asset Agents • Arts & Antiques Surveyors

Golding Young & Co., Old Wharf Road, Grantham, Lincolnshire NG31 7AA
Telephone: 01476 565118 Fax: 01476 561475 Email: enquiries@goldingyoung.com