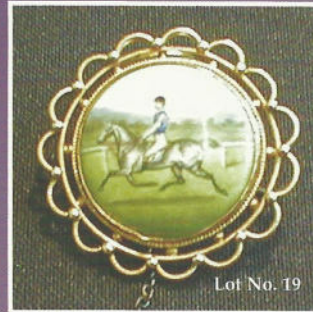


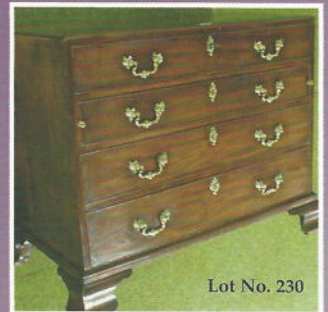
# GOLDING YOUNG 1900

CHARTERED AUCTIONEERS & VALUERS Commercial Asset Agents • Arts & Antiques Surveyors

WWW.GOLDINGYOUNG.COM



Lot No. 19



Lot No. 230

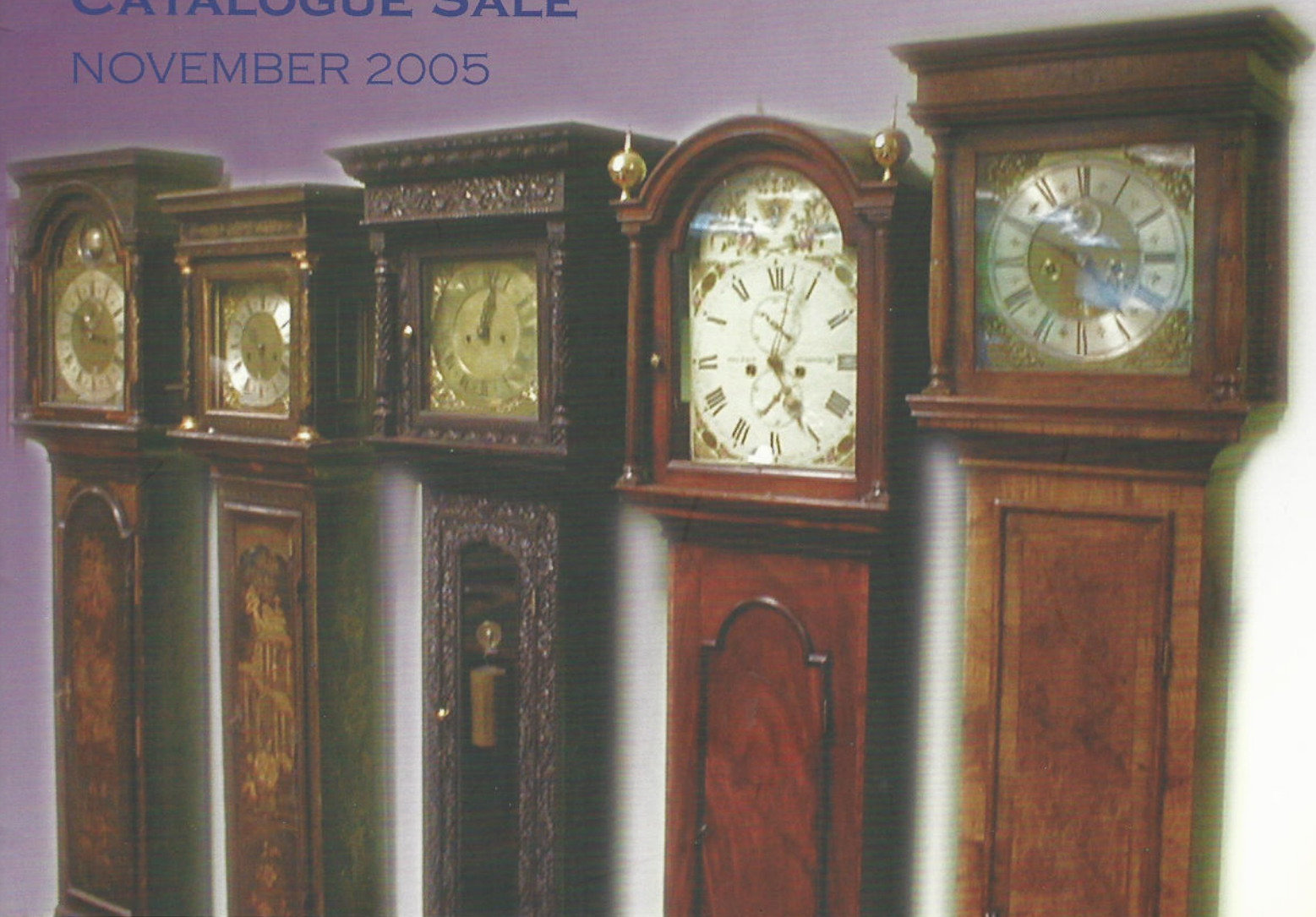


Lot No. 381



Lot No. 488

## CATALOGUE SALE NOVEMBER 2005







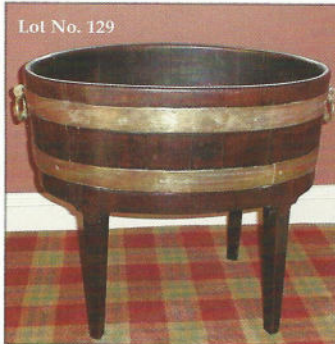
Lot No. 3



Lot No. 5



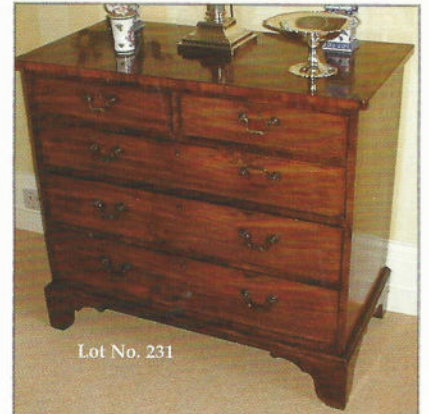
Lot No. 96



Lot No. 129



Lot No. 216



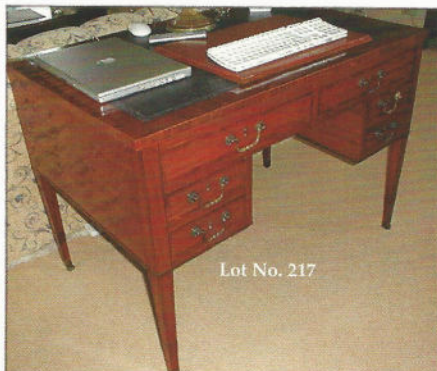
Lot No. 231



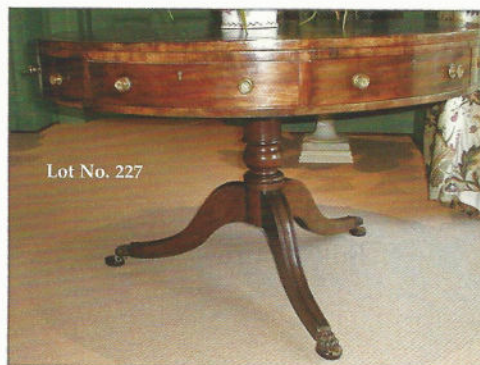
Lot No. 165



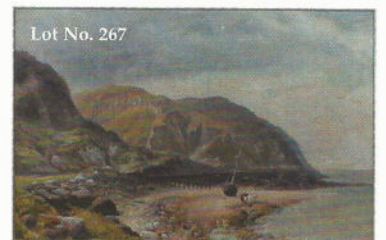
Lot No. 139



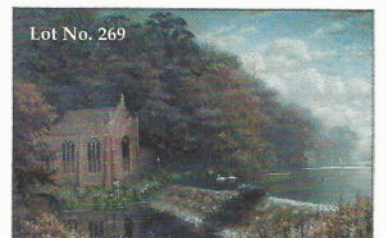
Lot No. 217



Lot No. 227



Lot No. 267



Lot No. 269



Lot No. 130



Lot No. 130



Lot No. 130 detail



# GOLDING YOUNG • 1900

CHARTERED AUCTIONEERS & VALUERS Commercial Asset Agents ♦ Arts & Antiques Surveyors

Upon instructions from over 200 private and professional vendors from throughout the region.

GOLDING YOUNG & CO will sell by AUCTION

## ANTIQUES & WORKS OF ART COLLECTORS ITEMS

On WEDNESDAY 2nd NOVEMBER 2005 at 10am

Lots 1 to 120Y	Jewellery & Bijouterie
Lots 121 to 245A	Furniture
Lots 246 to 254	Portrait Miniatures
Lots 255 to 300	Oil Paintings
Lots 301 to 419	Ceramics
Lots 420 to 439	Glass and Lighting
Lots 440 to 476	Metalware
Lots 477 to 534E	Collectors Items I
Lots 535 to 565B	Books & Ephemera
Lots 566 to 590	Prints
Lots 591 to 633	Watercolours
Lots 634 to 635A	Collectors Items II
Lots 636 to 665	Clocks & Barometers
Lots 666 to 737	Silver & Bijouterie
Lots 738 to 774	Collectors Items III

### *Lot enquiries*

Suki J Burnett F.N.A.V.A.

Jan L Squires P.J.Gem.Dip, F.N.A.V.A.

Colin R Young M.R.I.C.S., F.N.A.V.A.

### *Accounts enquiries*

Nicola Seymour B.A.

### VIEWING:

Over 750 lots illustrated online at

[WWW.GOLDINGYOUNG.COM](http://WWW.GOLDINGYOUNG.COM)

from Saturday 29th October

Also in the Auction Rooms

Sunday 30th October 1pm to 5pm,

Monday 31st October 2pm to 5pm,

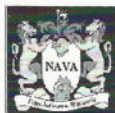
Tuesday 1st November 2pm to 7pm and

Saleday 9am to 10am.

### Golding Young & Co.

Old Wharf Road, Grantham, Lincolnshire NG31 7AA

Telephone: 01476 565118 Fax: 01476 561475 Email: [enquiries@goldingyoung.com](mailto:enquiries@goldingyoung.com)



**Buyers Hotline: 01476 575202**

For lot enquiries and commission bids viewday and saledays only.

## FORTHCOMING EVENTS AND NOTICES

Whatever you are thinking of selling... *Golding Young has the Auction Solutions.*

Entries welcome 9am to 1pm Monday to Friday except Saleday.

*Antiques Valuation Days - Every Friday 9am to 1pm*

For details of all forthcoming sales *visit our website or call for our Sale Calendar*

*Cataloguing Entries of Fine Antiques, Works of Art & Collectables*

*For our next important sale*

*Full Property Clearance Service*

---

### THE COLLECTIVE SALES

*Your Market Place*

for Victorian, decorative and second-hand furnishings, jewellery, silver, ceramics, glass, books, clocks, modern collectables, toys, etc.

Surplus business assets, stock-in-trade, vehicles, plant, machinery & equipment.

**10am on Wednesdays**

**16th & 30th November and 14th December**

*VIEWING:*

Online Tuesday prior 7pm at [WWW.GOLDINGYOUNG.COM](http://WWW.GOLDINGYOUNG.COM)

Tuesday prior 2pm to 6pm & Saleday from 9am to 10am

---

### THE CATALOGUE SALE

*Your Market Place*

for Fine antiques and works of art, jewellery, silver, ceramics, glass, books, clocks, furniture and all fields of collectors' items.

Held quarterly, these sales include select items that need specific and direct marketing through our select mailing list & databases.

Up to 200 vendors selling items to a Worldwide Audience via The Internet.

The Closing date for entries in the following categories is

**20th January 2006**

Jewellery, Watches & Bijouterie; Glass & Ceramics; Toys & Juvenalia;

Books, Stamps, Maps, Ephemera; Textiles & Metalware;

Arms, Decorations, Coins; Silver and Plated Wares;

Clocks & Barometers; Pictures, Prints & Miniatures

Antique & Decorative Furniture

Sporting: Hunting/Shooting/Fishing/Racing

**Tuesday 14th & Wednesday 15th February 2006**

Including an important collection of over  
300 pieces of 20thC art pottery.



Online from Friday at [WWW.GOLDINGYOUNG.COM](http://WWW.GOLDINGYOUNG.COM)

*VIEWING:* Sunday 1pm to 5pm, Monday 2pm to 7pm,

Tuesday 9am to 2pm and Wednesday 9am to 10am.

Catalogues £5 each by post

---

### SALEDAY & VIEWDAY PARKING

*Re-development of adjacent premises has commenced.*

Extra Parking can be found on Wharf Road in the  
multi-storey Car Park

Or the on-road parking of Westgate and  
Harlaxton Road, all 2 minutes walk max.

It is illegal to park on a yellow line.

The Loading Bay will be strictly monitored and used  
for that purpose.

Parking is no longer permitted past the blue gates for  
Health & Safety reasons.

The development will incorporate a 200 space Car  
Park to the rear of our premises.

*Please continue to respect our neighbour's property  
and patience to others during this period.*

---

### VALUATIONS

**Antiques Auction Appraisal Days**

**Every Friday 9am to 1pm**

For free advice on marketing  
there is only one place to come.

We are the ONLY auction house in the region to have  
ALL of our experienced valuation staff Qualified as  
Fellows of The National Association of Valuers &  
Auctioneers



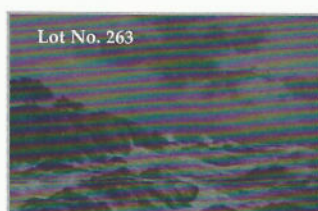
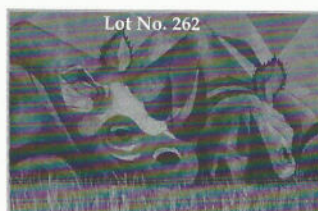
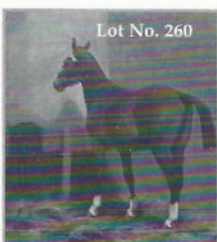
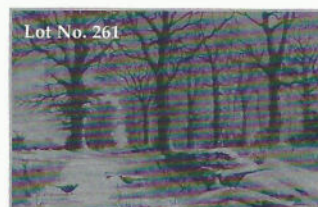
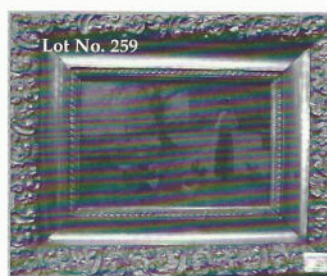
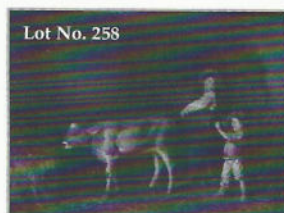
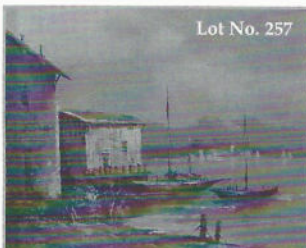
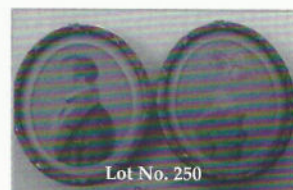
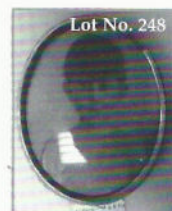
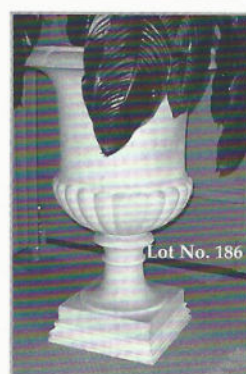
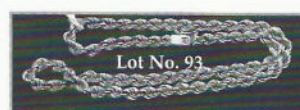
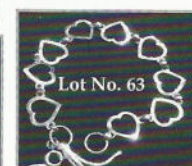
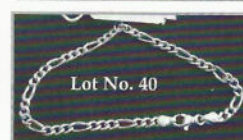
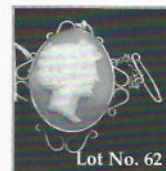
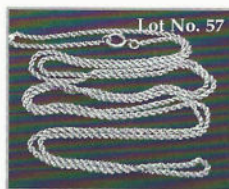
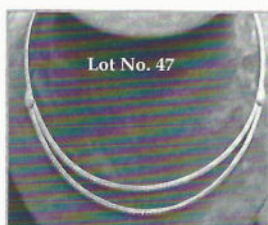
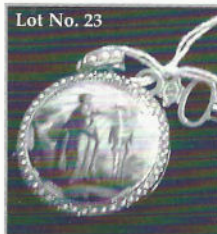
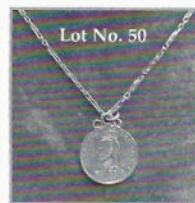
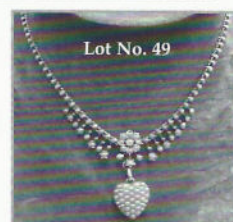
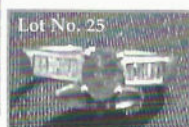
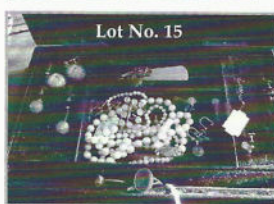
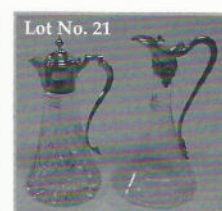
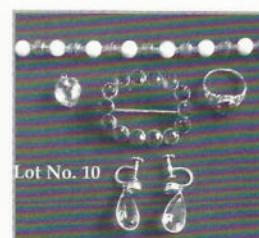
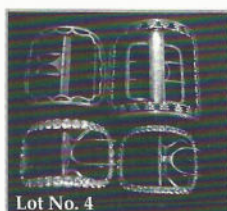
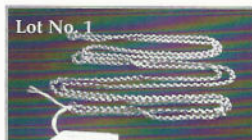
## JEWELLERY & BIJOUTERIE

1. **A rose metal rope chain**, 47", 23.3g.
2. **A heavy hollow curl link charm bracelet** with padlock clasp with a 1912, and 1989 sovereign, 1904 ½ sovereign, locket Masonic ball charm, Masonic emblem, and two other charms attached, all in 9ct rose gold, various hallmarks, 7" length and two extra links.
3. **A Victorian bloomed gold garnet set bracelet**, cushion crossed links to a quatre foil motif set with oval garnets, tongue clasp, 6½" in length.
4. **A large Georgian silver buckle** with pierced decoration. 3" x 3½", maker C.H, together with two more paste set examples and one other with pierced decoration. (4) marks indistinct.
5. **A late Victorian triple insect bar brooch**, a pearl set over the hinge then a double winged insect, diamond set wings and thorax, pink coral abdomen and ruby eye; then larger double winged insect, diamond set wings, pearls set thorax and pink coral abdomen, ruby set eyes; then single winged insect, diamond set wings and thorax and oval pearl abdomen, ruby set eyes; the insects set in silver with gold high lights to a gold narrow bar and pin. Length 2¼".
6. **A ladies crossover diamond ring**, two oval brilliant cut diamonds, totalling approx 1ct, mounted estimated weight, set in yellow metal stamped 18ct, total weight 3.2g.
7. **A ladies three stone diamond ring**, three round brilliant cut diamonds, total mounted estimated weight 0.07ct, illusion set in white metal to a yellow metal shank with pierced shoulders, stamped 18ct and PLAT. weight 3.2g.
8. **A Victorian stone set dress ring**, a central mid blue oval sapphire set in a closed back rub over setting, heavily moulded scrolling shoulders all in yellow metal.
9. **A five stone in line set diamond ring**, old brilliant cut diamonds, mounted estimated weight centre stone, 0.72 ct, flanked by two stones of 0.61 ct, flanked by two stones of 0.30 ct. Total = 2.54 cts., claw set in a pierced scroll mount to yellow metal shank, stamped 18 ct. Ring size W.
10. **A Victorian amethyst set brooch**, an oval of 14 deep purple facet cut amethysts set in closed back yellow metal mount, open centre, together with stud and drop pale amethyst ear-rings with screw backs, a pale amethyst coloured heart pendant, an amethyst set Victorian dress ring, and a faux amethyst and pearl necklace.
11. **Two ladies stone set dress rings**, one an oval garnet set in 9ct rose gold, the other a ruby and tiny diamond 5 stone in line set in 9ct gold.
12. **A Victorian rectangular blue guilloche' and ½ seed pearl set brooch**, a Victorian garnet set oval brooch and a small insect bar brooch set with seed pearls and coral.
13. **Various ear-rings**, all on screw fittings including oval opal drops, double pearl drops, single pearl drops, pale turquoise and white stone set cluster stud, garnet and seed pearl set drops.
14. **A Celtic shawl pin**, a cameo brooch and a marcasite insect brooch.
15. **A Victorian jewel casket**, black leatherette with blue velvet interior, and contents including large onyx and turquoise brooch in yellow metal frame, intaglio signet ring, coral bead necklace (AF), pearl necklaces, amber and other ear-rings, jet brooch etc, monogrammed lid.
16. **A pair of diamond stud ear-rings**, total mounted estimated weight 1.51ct, set in white gold.
17. **Three stick pins**, one set with a turquoise, one with a coral cameo, one with enameled ivy and seed pearls.
18. **A gentleman's diamond set signet ring** in 18ct yellow gold, London 1964, 5.2g.
19. **An Edwardian circular brooch** with painted porcelain plaque of a horse and jockey at the racetrack, 15ct gold filigree frame, Chester 1908.
20. **A solitaire diamond ring**, a single brilliant cut stone of mounted estimated weight 0.03ct illusion set in 9ct white gold to a yellow gold shank.
21. **A moonstone necklace**, 9 wire set and linked stones, 7 with oval graduated drops below, the centre stone having 2 drops and 2 yellow metal extenders. 15" in length.
22. **An open faced Waltham 9ct gold pocket watch**, arabic numerals, subsidiary second hand.
23. **A ladies open faced fob watch**, key wind, white enamel dial with blue arabic numerals, seed pearl set bezel, enamel of a Grecian woman on reverse (some damage), in yellow metal.
24. **A bar brooch with foxes mask** with red stone eyes, yellow metal stamped, 9ct.
25. **A ladies emerald and diamond set dress ring**, a small oval emerald set centrally flanked by five small baguette diamonds all in an 18ct gold setting to shank, import marks.
26. **An 18ct gold opal and diamond set dress ring**, an oval opal 6mm x 4.5mm surrounded by sixteen small diamonds, one to each shoulder.
27. **An R.A.F Old Cranwellians wings lapel brooch** in 9ct gold, 4cm span.
28. **A pearl and diamond set cluster ring**, a central cultured pearl surrounded by nine small old cut diamonds, to a yellow metal shank stamped 18ct
29. **A 9ct gold open faced pocket watch**, white dial, Roman numerals, subsidiary second hand, London 1925.
30. **A tan leather covered jewellery box containing a quantity of early 20thC costume jewellery**, small gold items, citrine bead necklace, marcasite cocktail watch and other marcasite items.
31. **A small selection of scrap Victorian and other gold items** including memorial ring, memorial pendant, cameo pendant, horseshoes bar brooch, together with mother of pearl button hook and costume items.

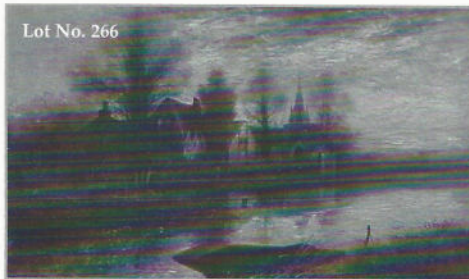


32. **Four small gold bar brooches;** a seed pearl set letter M, a floral seed pearl set, a seed pearl set crescent with red stone set star, a seed pearl set flower with red stone centre together with a large faceted white stone on white metal bar.
33. **An Art Deco bar brooch** in 15ct yellow gold, set centrally with a small aquamarine flanked by two seed pearls.
34. **A Royal Artillery bar brooch** in 15ct yellow gold, Birmingham marks.
35. **A pair of peridot and seed pearl drop earrings,** three small round peridots alternating with two seed pearls, on screw ear-fittings.
36. **An Edwardian open work pendant,** heart shaped frame with coral bead set flower heads and seed pearl set leaves within, oval coral bead suspender on curb link chain, all stamped 9ct, together with a stone set and chain choker necklace, five various coloured stones, linked by yellow metal chains to clasp.
37. **Two Victorian stick pins,** one a turquoise set shamrock with tiny diamond centre, the other a gold lead bordered elliptical plaque with a small diamond set centrally in a star cut.
38. **An 18ct gold open-face pocket watch,** with foliate engraved centre to the engine turned face, cased.
39. **A yellow metal fine fancy linked bracelet** stamped 750, 3.4g.
40. **A yellow metal mixed link bracelet** stamped 750, 3.5g.
41. **A 28" yellow metal fancy linked chain** stamped 750, 24.9g.
42. **A flat large link bracelet in yellow metal,** stamped 750, 9.5g.
43. **A yellow metal mixed linked bracelet** stamped 750, 6.6g.
44. **A ladies dress ring set centrally with an oval emerald,** flanked by two small diamonds, in yellow metal, stamped 750.
45. **Three Victorian rings,** two with memorial inserts.
46. **An Art Deco style three stone diamond set ring,** total diamond weight 0.07ct approx, set in squared white metal mounts to yellow metal shank, (undersetting damaged).
47. **A 1970's/80's necklet,** of satin flat linked chain divided to two graduated front falls, yellow metal stamped 750, 18" length, 31g weight.
48. **A three-row bracelet,** matching the previous lot, 31g weights, 7½" length.
49. **A Victorian gold and seed pearl necklace,** a central floral motif flanked by eight seed pearl set buds on stems, the supporting chain with each link set with a seed pearl together with a seed pearl set heart pendant which can be suspended below the central motif but which is an addition, in original case.
50. **A Victorian half sovereign pendant** with soldered loop to chain, 1887.
51. **A sapphire and diamond flower head cluster ring,** six round sapphires surrounding a central diamond, set in white metal stamped 18ct.
52. **A late Victorian/Edwardian brooch,** scrolling design, set with two small sapphires and seed pearls, stamped 15ct, maker: A.W.J & co.
53. **A ladies 9ct dress ring** set with an elliptical smokey quartz stone set in a claw with basket mount to shank. London 1973.
54. **A gentleman's signet ring in rose gold** set with an emerald cut garnet, 15mm x 11mm, to wide pierced shoulders and wide shank.
55. **A ladies five row diamond cluster ring** set with twenty-nine stones - total estimated mounted weight 0.29ct, to 9ct gold shank, import marks.
56. **A triple bar brooch,** the filigree centre section set with an aquamarine.
57. **A Victorian 9ct gold rope link guard chain.** Length 53", weight 14g.
58. **An Edwardian elliptical memorial brooch,** a small ruby set centrally flanked by seed pearls, Birmingham 1906.
59. **A hunting horn bar brooch,** the horn being crossed by a leaping fox jumping through a horseshoe, stamped 9ct.
60. **A Victorian double bar brooch,** set with an emerald cut pale amethyst flanked by ivy leaves.
61. **A late Victorian bar brooch,** a central flower, centre set sapphire, with entwining ropes. 15ct. Chester 1901.
62. **A shell cameo brooch** of a woman's head in yellow metal frame with scrolls stamped 9ct.
63. **A 9ct gold linked heart bracelet.**
64. **A 9ct gold block and curl link bracelet,** import marks. 11.4g, 7.5".
65. **Two Victorian "Baby" brooches** stamped 9ct.
66. **A Victorian oval memorial brooch,** scalloped border, small diamond set into centre, memorial insert verso, yellow metal.
67. **A circular Victorian memorial brooch,** shield life design, memorial insert verso in 15ct gold. Chester 1885.
68. **A bar brooch** set with a cats eye stone, stamped 9ct.
69. **A curb link bar brooch,** stamped 15ct.
70. **Two dress rings,** one set with a circular black onyx, the other with a token, stated metal 14ct gold.
71. **An amethyst and diamond set cluster ring,** a central oval amethyst surrounded by ten small diamonds, set in white metal to yellow metal shank.
72. **A 1930/40's style oblique set three stone diamond and sapphire ring,** the central square cut sapphire flanked by two small diamonds set in white metal to yellow metal shank, stamped 18ct.
73. **A bar brooch** with a central double heart ivy motif, stamped 9ct.
74. **A Victorian diamond set bar brooch,** stamped 9ct.
75. **A Victorian 15ct gold bar brooch,** Birmingham 1899.









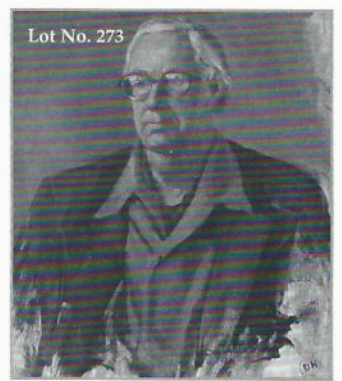
Lot No. 266



Lot No. 271



Lot No. 272



Lot No. 273



Lot No. 274



Lot No. 287



Lot No. 276



Lot No. 279



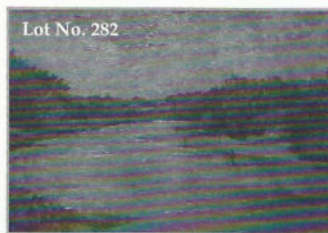
Lot No. 278



Lot No. 281



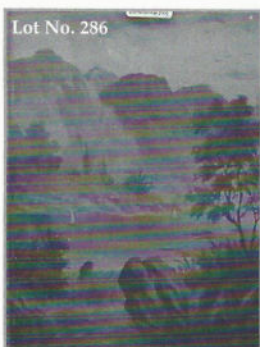
Lot No. 283



Lot No. 282



Lot No. 288



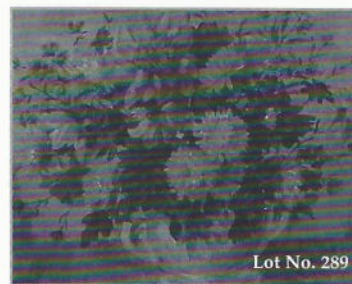
Lot No. 286



Lot No. 275



Lot No. 285



Lot No. 289



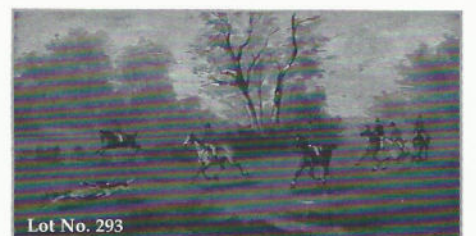
Lot No. 284



Lot No. 290



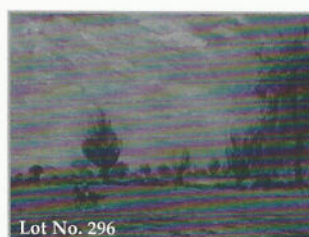
Lot No. 291



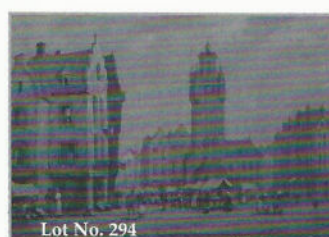
Lot No. 293



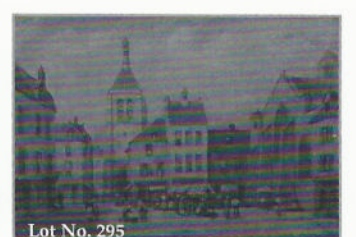
Lot No. 297



Lot No. 296



Lot No. 294



Lot No. 295



76. **A 9ct gold curb link bracelet** with padlock clasp, London marks.
77. **A dress ring** set with a shell cameo of a woman's head, shank stamped 9ct.
78. **A three stone diamond ring**, three old cut stone illusion set in white metal to yellow metal shank, stamped 18ct and PLAT, total mounted estimated weight 0.60ct.
79. **A letter "L" pendant** and a pair of Lapis Lazuli ear studs.
80. **An 18ct gold sapphire and diamond cluster ring**, a small round sapphire surrounded by two rows of small diamonds, London 1973.
81. **Three stone set seal fobs.**
82. **A horses hoof shoed brooch** in white metal, stamped STD SIL.
83. **Five 9ct gold bangles**, various designs.
84. **A Victorian heart pendant** with three applied white metal diamond set hearts, on yellow metal.
85. **Five 9ct gold dress rings.**
86. **Five gem stone set dress rings**, various grades.
87. **A multi layer diamond cluster ring**, total mounted estimated weight 1.00ct, white metal setting to yellow metal shank, 9ct import marks.
88. **Five gem set rings**, various marks.
89. **Five various signet rings.**
90. **Four various dress rings.**
91. **A 9ct gold gentleman's signet ring**, a double headed snake with stone set heads.
92. **Three yellow metal chin link bracelets.**
93. **A 9ct gold rope link neck chain**, import marks, 16".
94. **A 1930's pink metal armlet**, stamped 9ct.
95. **A 9ct gold padlock and curl link bar brooch**, Birmingham 1892.
96. **A 1920's diamond set brooch**, a central flower head of seven diamonds flanked by two bars each side of graduated diamonds terminating in a single diamond, all stones being old brilliant cut, set in white precious metal to a yellow precious metal mount and pin. total mounted estimated weight of diamonds 5.52cts.
97. **A ladies ring set with a central oval emerald 7mm x 5mm** flanked by alternating rows of three and two baguette cut diamonds, two of each, each side to a yellow metal shank, stamped 14K.
98. **A heavy fancy box link neck chain**, stamped 375, 22", 54g.
99. **A charm bracelet** with 15 charms attached, stamped for 18ct gold, 7.5" length, 30.8g.
100. **An emerald cut diamond ring** set in 18ct white gold basket mount to yellow gold shank, mounted estimated weight 1.07ct.
101. **An 18ct gold flower head diamond cluster ring**, six diamonds around a central stone, total mounted estimated weight 0.48ct.
102. **A 9ct gold pavé set diamond ring**, a wide band tapering to shank, with a reeded border.
103. **A very heavy curb link bracelet** with padlock clasp, 7.5", 61.4g.
104. **A tri-colour 9ct gold woven effect bracelet**, 0.75" wide, 7" length, 26.8g.
105. **A diamond set pendant**; a claw set diamond of 0.56ct stated weight on a fancy link chain, marked for 18ct white gold.
106. **A Vacheron & Constantin gentleman's 18ct gold cased rectangular wrist watch**, cased fully marked 261617, import mark London 1938, movement marked 17 jewels, Vacheron & Constantin Geneve Swiss, 420126 ADJ Temp 3 positions, dial with Roman numerals, gold hands, subsidiary second hand, retailed by Mappin & Webb, reverse engraved Evelyn to Charles 21.2.39.
107. **A Victorian bar brooch** set with a seed pearl encrusted crown, stamped 14ct.
108. **An emerald cut pale turquoise stone set ring** (probably aquamarine) 13mm x 11mm set in yellow metal stamped 750, together with matching earrings; .5mm x 7.5mm each one.
109. **A 9ct rose gold watch chain**, with T bar and attached football medallion. 16" length, 33.1g all in.
110. **A crossover three pearl set ring** in yellow metal mount, stamped 18ct.
111. **A jet brooch** carved with an all over floral design.
112. **A late Victorian bar brooch** with ½ sovereign attached, 1906.
113. **A shell cameo ring**, showing a bird above flowers, set in yellow metal.
114. **A crossover three stone sapphire and diamond ring**, 1930's, a central round sapphire flanked by two small mille grain set diamonds to yellow metal shank.
115. **A diamond set stick pin**, a small diamond set flower head attached, stamped 18ct and PLAT, in Mappin & Webb case.
116. **Two early 20thC 9ct gold cased ladies wrist watches**, and a similar silver cased.(3).
117. **A silver open faced pocket watch** by Charles Weber of Peterborough, Birmingham 1892.
118. **A 9ct rose gold heavy curb link watch chain** with "T" bar and swivels.
119. **Two gentleman's signet rings**, plain oval heads with rubbed monogramme, one 18ct shank cut, the other 9ct.
120. **A Victorian necklace** consisting of 16 linked lava cameo's, various earth colours, last link being a photograph of a young girl, the whole set in yellow metal.
- 120A. **A half hoop eternity ring** of alternating sapphires (5) and diamonds (4) set in 18ct gold, white gold faced.
- 120B. **A solitaire diamond ring**, illusion set, in 18ct gold, white gold faced mount to yellow gold shank, mounted estimated weight 0.52ct.



- 120C. **A Victorian 18ct gold small square plain locket** and another small plain oval.
- 120D. **Two dress rings**, one set with small cameo, the other with a green cabachon stone.
- 120E. **A memorial pendant**, an arrangement of hair, gold wire and seed pearls under glass in yellow metal frame, engine turned back.
- 120F. **A George V sovereign**, 1911.
- 120G. **A sapphire and white stone cluster ring**, a central oval sapphire surrounded by sixteen tiny white stones.
- 120H. **A Victorian memorial ring**, a diamond and ruby 18ct gold cluster ring and an 18ct gold diamond cluster ring (3).
- 120J. **A Victorian memorial brooch**, a layered scalloped oval with central ruby and diamond insert star, glass insert verso, stamped 15ct.
- 120K. **A bar brooch** with diamond set crown attached, stamped 18ct and PLAT.
- 120L. **An Edwardian dress ring**, an elliptical pink stone surrounded by small white stones, 9ct gold, Chester 1906.
- 120M. **A William IV silver pair cased pocket watch**, open faced (enamel damaged) maker Ja. Bridges, London 1835.
- 120N. **An Edwardian amber wire link necklace** of graduated semi-faceted chunks, 16" length, together with a similar bracelet, 7.5" length.
- 120P. **A delicate three stone diamond ring**, three small stones set in white metal to yellow metal shank, stamped 18ct and PLAT.
- 120Q. **A gold plated strap style hinged bangle** and a garnet set crucifix (AF).
- 120R. **A pair of pearl ear-studs**, screw backs, stamped 9ct.
- 120S. **A pair of oval opal and white stone ear-rings** together with an opal and white stone set ring, all set in yellow metal.
- 120T. **A mixed lot of small precious metal jewellery and costume items** including Victorian bar brooches, heavy jet locket and chain (AF), carnelian bead necklace (AF), Japanese carving etc.
- 120U. **A Victorian selection including a garnet set brooch**, a memorial pendant with scarab decoration, a memorial brooch with hair insert to front surrounded by seed pearls, and a stick pin with hair rope twist around a bar.
- 120V. **A small selection of precious metal and other jewellery items**, including crucifixes, "Baby" brooch, lady's wrist watch (AF), etc.
- 120W. **A Victorian bar brooch**, an oval central plaque set with a small diamond and seed pearls.
- 120Y. **A Victorian pendant**, triangular shape, set with emerald cut green stones and seed pearls with three bead droppers, snake link chain to stone set clasp, all in yellow metal.

## FURNITURE

121. **A mid 19thC mahogany breakfront sideboard**, the shaped back with foliate cresting and turned finials, the moulded edge top over a centre cavetto napery drawer and three doors each with inset arch panels, on a solid plinth, 71" wide.
122. **A Victorian flamed mahogany chest**, of two short and four long graduated drawers with knob handles.
123. **A George III and later mahogany bureau bookcase**, with moulded cornice, two arch astragal glazed doors, fall flap revealing a fitted interior resting on lopers, over two short and two long graduated drawers with brass loop handles and bracket feet; 38" wide, 86" high.
124. **A George III and later mahogany bureau bookcase**, with dentil moulded cornice, two astragal glazed doors, fall flap revealing a fitted interior resting on lopers, over three graduated drawers with ebony stringing and brass swan-neck handles, on ogee feet; 42" wide, 89" high.
125. **A Victorian walnut cabinet bookcase**, carved broken arch, two glazed doors over two drawers and two carved door base.
126. **A George III style mahogany standing corner cupboard**, the upper part with a moulded and dentil cornice, over a single door with geometric glazing bars, the interior with two shelves, the lower section with a single glazed door, on bracket feet, 72½" high, 27" wide.
127. **A Regency gilt wood wall mirror** surmounted with an eagle and scroll work, with circular beaded frame with reeded slip and convex glass. 33" high.
128. **A mid-Victorian mahogany serpentine serving table** with flamed and scroll carved splash back, single drawer stamped "Gillows", having heavily scrolling forelegs, 70" wide.
129. **A George III oval mahogany cellaret** with brass banding, loop handles, and square taper legs. 26" wide, 22" high.
130. **A George III mahogany bureau cabinet** with moulded cornice; the upper part having two panelled doors revealing a fitted interior, with central palladium compartment with inset Corinthian columnar supports; the lower part having a fall front resting on lopers, and revealing a shaped and fitted interior; over two short and three long cock-beaded, graduate drawers with cast brass rococo handles, and supported on bracket feet. 44" wide, 91" high.
131. **A leaded glazed panel**, with a central robed fox cartouche; 67" x 42" to inside frame.
132. **A Victorian light oak hall stand** with turned knob hangers and stick-stand base.
133. **A Victorian oak hall stand** with horn hangers and a stick-stand base.
134. **An Edwardian mahogany overmantel mirror** with reeded ionic column supports. 53" wide, 47" high.



135. **A 19thC rectangular wall mirror** with bevelled plate and carved scrolling wooden frame, finished in silver (in need of repair - further constituent parts present). 42" x 54".
136. **A gilt framed modern wall mirror.**
137. **A Victorian gilt wood and gesso overmantel mirror** having torch and quiver entwined garland and ribbon surmount, extensively decorated with scroll work, acanthus egg and dart, reeded pollens and floral lappets. 75" high 60" wide.
138. **A 19thC gilt wood pier glass** with rococo scrolling and moulded frame, shaped bevel plate, 40" wide 64" high.
139. **A Regency gilt wood triptich overmantel mirror** with beaded cornice having an applied frieze of cherubs and scrollwork, the three rectangular bevel plates mounted with reeded ebonised slip and enclosed by Corinthian cluster columns. 66" wide, 40" high.
140. **A Regency gilt wood pier glass** with beaded moulding over a diaper; flower, bird and urn frieze; rectangular plate enclosed by acathus capitol cluster columns. 26" wide, 47" high.
141. **An early Victorian low side table** with graduated shelves with turn columns and standing on turned legs, 46" wide.
142. **An early 19thC oak tilt-top pedestal table**, the planked circular top on a baluster and knopped column and three downswept legs, 36" dia.
143. **A Georgian mahogany side table**, with single drawer and square taper legs.
144. **A Georgian elm two-door cupboard.**
145. **An Edwardian mahogany chest** of six graduated fielded drawers with metal drop handles. 19" wide, 32" high.
146. **A pair of Edwardian string inlaid mahogany corner cabinets** with moulded broken arch cornice, glazed single door over panel door and bracket feet. 26" wide, 82" high.
147. **A George III mahogany chest** of two short and three long graduated drawers with moulded top, cast brass loop handles and escutcheons and bracket fit. 38" wide.
148. **A Victorian mahogany chest** of two short and three long graduated flamed mahogany drawers, with knob handles and turned feet.
149. **A walnut cased short grand piano** by Graham & Co, London. Frame number 31151 on square taper legs. 48" deep.
150. **A Regency style mahogany torchere**, with three reeded downswept legs.
151. **A set of six late Victorian oak dining chairs**, with rectangular Turkish rug upholstered backs, overstuffed seats on barley-twist front legs joined by panelled 'H'-stretchers.
152. **A pair of 18thC Hepplewhite design oak country chairs** with pierced star splats, solid seat and square framing.
153. **A 19thC oak Restoration style armchair**, the top rail centred by a crown flanked by scrolls, twist uprights, with downswept arms, solid seat, on turned and block legs with twist front stretcher.
154. **A comb-back Windsor style chair**, with pierced vase splat, saddle seat and cabriole legs.
155. **Two 18thC oak country chairs**, one with Chippendale design pierced splat, the other a solid vase splat, with solid seats and square framing (2).
156. **A late Victorian harlequin salon suite** comprising: open arm chair, tub chair, two pairs of side chairs, and boudoir sofa, each with square section cabriole legs.
157. **A late Victorian walnut nursing chair** with carved vase splat.
158. **A late Victorian walnut nursing chair** with low arms having leaf carved open work splat.
159. **A Victorian upholstered armchair** with turned legs and floral loose cover.
160. **A set of four Edwardian rosewood marquetry salon chairs.**
161. **A Victorian smokers bow chair** with elm seat.
162. **An early Victorian mahogany library chair** with brown studded leather bow back supported by scrolling uprights, shaped overstuffed seat with reeded and turned forelegs with brass cup castors.
163. **A rosewood cased boudoir grand piano** by Albert Fahr on square taper legs. 60" deep.
164. **A Victorian mahogany cameo backed sofa**, with scrolled serpentine rail.
165. **A Regency mahogany scroll-armed sofa** with carved scrolling supports, raised on heavy reeded legs with brass castors.
166. **A Victorian mahogany scroll-end sofa** with floral carved scroll end, channelled frame and part reeded taper tuned legs with brass castors.
167. **A 19thC rose tapestry upholstered fauteille.**
168. **An early 19thC mahogany elbow chair**, with oblong back, downswept arms, on turned legs.
169. **A 19thC button back armchair**, with crimson upholstery, on giltwood cabriole legs with strapwork detail and brass castors.
170. **A 19thC elm rocking chair** with string seat.
171. **A caned open armchair**, with barley-twist beech framing.
172. **A late Victorian beech smokers bow chair** with pierced vase splat.
173. **A late Victorian mahogany part suite**, comprising: elbow chair, four dining chairs, two nursing chairs, each having a carved top rail with pierced anthemion and foliate details, pierced splat, overstuffed seats, on turned legs, the elbow chair with an upholstered back panel.

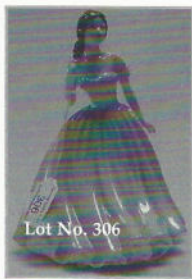


174. **A George II mahogany open armchair** with pierced vase splat in the Gothic Chippendale manner. the outplayed leaf and scroll carved arms supported by uprights, over-stuffed and studded seat, moulded square forelegs and H-frame structure.
175. **A 19thC corner seat** with yellow damask upholstery and raised on acanthus carved taper legs with brass cup castors.
176. **A pair of Victorian tub chairs** with candy twist gallery and writhen forelegs (in need of re-upholstery)
177. **A 19thC mahogany child's rocking chair** with gallery back and rush seat.
178. **A 18thC elm lowboy with moulded top**, three frieze drawers on square taper legs. 28" wide.
179. **A Regency mahogany Pembroke table**, with frieze drawer and ring-turned legs. 36" square max.
180. **An Edwardian string inlaid mahogany bow front corner cabinet**, with two glazed doors and under-shelf. 29" wide, 53" high.
181. **A Victorian walnut Canterbury** with turned and barley twist uprights, single drawer with knob handles, turned feet with brass and ceramic castors. 20" x 15".
182. **A brass club fender**, with leather cushion top rail, 63" wide.
183. **A brass and leather club fender**. *Minimum external width 57"*.
184. **A wrought iron lamp stand**.
185. **A wrought iron lamp stand**.
186. **A pair of white marble Campana urns**, of part reeded form. 25" diameter, 31" high on wooden plinths.
187. **A Burmese carved hardwood folding stool** with woven wicker seat.
188. **A Victorian painted pine carpenter's box**.
189. **A pair of Art Deco circular pedestal tables** with oval stained beech tops with figures of ladies in landscape by a lake.
190. **A Regency mahogany pedestal table** with circular glazed top, writhen twist stem and moulded trefoil base. 15" diameter.
191. **A brass and hardwood turned smokers stand**.
192. **A Victorian mahogany reading table** with moulded and flamed easel top, turn column and scrolled trefoil base. 19" x 16".
193. **A 19thC ebonised tripod table**, with circular inlaid top, hexagonal tapered pillar, and three scroll legs.
194. **An Edwardian mahogany circular window table**, with undershelf.
195. **An Edwardian mahogany three tier folding cake stand**.
196. **A Victorian mahogany lamp table** with circular moulded top, reeded and tulip carved column and trefoil base. 14" diameter.
197. **A Victorian mahogany towel rail** with turned uprights.
198. **A Victorian mahogany pot cupboard** with moulded top, panelled door with knob handle.
199. **A Victorian mahogany kneehole writing desk**, with leather inset top.
200. **A Victorian walnut marquetry davenport**, with raised bombe pen tray, and four drawer base with opposing dummy drawers having knob handles; 21" wide.
201. **A Jacobean style oak side table**, with single drawer.
202. **A Georgian walnut stool** with drop in seat, shaped frieze and cabriole legs. 17" x 15".
203. **A Victorian walnut trumpet work table** with marquetry and parquetry chess board top (AF), fitted interior and scrolling tripod base.
204. **A Victorian rosewood envelope folding card table**.
205. **A 19thC mahogany Canterbury** with pierced sides to stack/receive papers.
206. **A Victorian rosewood serpentine what-not**, three tiers supported by open barley twist supports, having drawer base and brass castors, 21" wide.
207. **A Victorian mahogany adjustable bed table**, with single pedestal.
208. **A 19thC mahogany side table** with rectangular top, frieze drawer with ring handles and square legs. 33" wide.
209. **A 19thC mahogany side table** with rectangular moulded top, two cock-beaded frieze drawers, with lion mask ring handles and square legs. 41" wide.
210. **A George III mahogany card table** with cross banded canted rectangular folding top, turned pedestal with circular boss, with ebony string and inlay on four sabre legs with brass toes and castors. 36" wide.
211. **An Edwardian rosewood marquetry card table** with envelope folding marquetry top, frieze drawer, basket base with pendant husk inlay and brass and ceramic castors. 22" square.
212. **A Victorian maple and light oak centre table** with circular top, writhen pedestal and trefoil base with ball feet. 28" diameter.
213. **A 19thC oak folding butlers tray** on a folding table base.
214. **A Sheraton mahogany card table** with 'D' shaped string inlaid folding top, cross-banded frieze, square table legs, terminating splayed feet. 36" wide.
215. **A Regency mahogany and rosewood cross-banded card table** with canted rectangular folding top, writhen pedestal, circular boss, supported on four reeded sabre legs with brass paw castors. 36" wide.
216. **A George III mahogany bow front sideboard**, the cross-banded top with three frieze drawers enclosed by square taper legs having oval patera inlay, and terminating in spade feet. 46" wide.





Lot No. 305



Lot No. 306



Lot No. 307



Lot No. 308



Lot No. 309



Lot No. 310



Lot No. 311



Lot No. 312



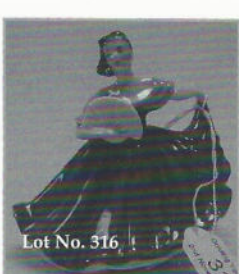
Lot No. 313



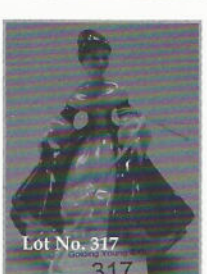
Lot No. 314



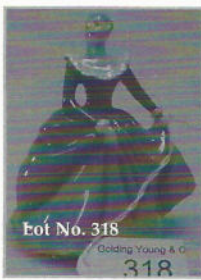
Lot No. 315



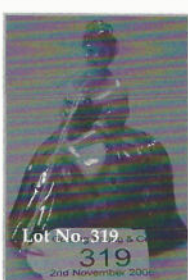
Lot No. 316



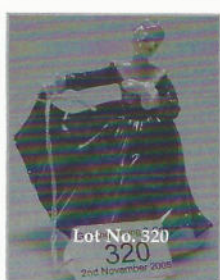
Lot No. 317



Lot No. 318



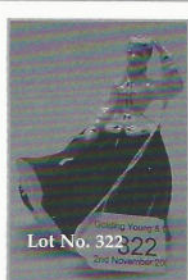
Lot No. 319



Lot No. 320



Lot No. 321



Lot No. 322



Lot No. 323



Lot No. 325



Lot No. 326



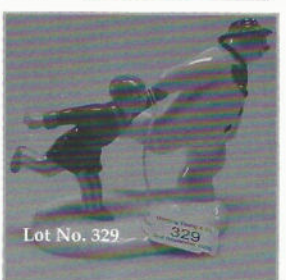
Lot No. 327



Lot No. 324



Lot No. 328



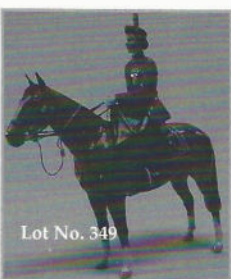
Lot No. 329



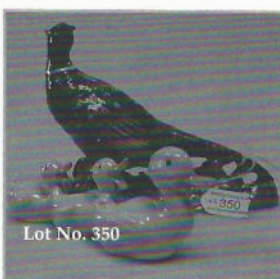
Lot No. 330



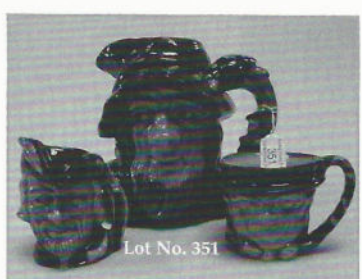
Lot No. 331



Lot No. 349



Lot No. 350



Lot No. 351



Lot No. 354



Lot No. 355



Lot No. 356



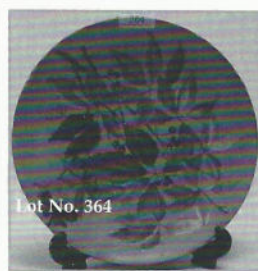
Lot No. 357



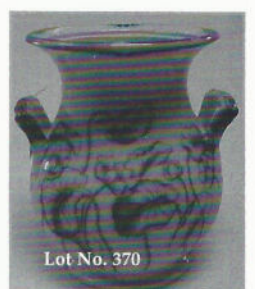
Lot No. 358



Lot No. 359



Lot No. 364

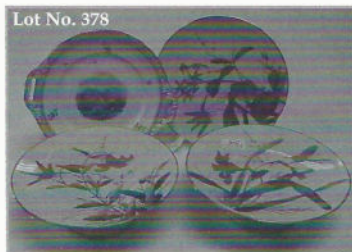


Lot No. 370

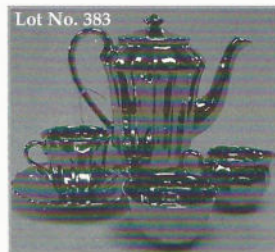




Lot No. 372



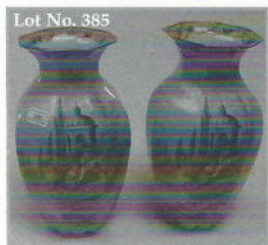
Lot No. 378



Lot No. 383



Lot No. 384



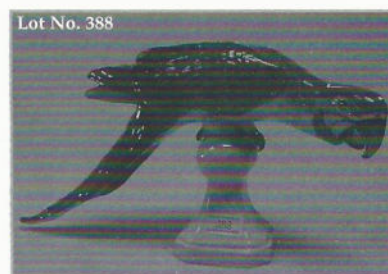
Lot No. 385



Lot No. 386



Lot No. 387



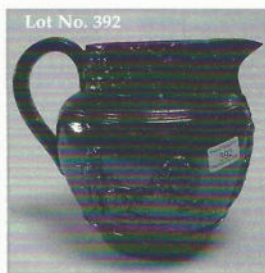
Lot No. 388



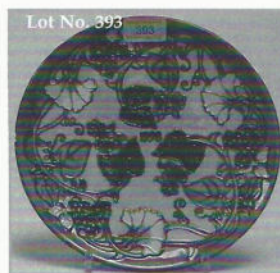
Lot No. 390



Lot No. 391



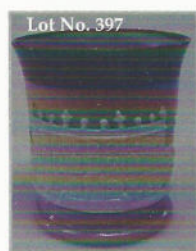
Lot No. 392



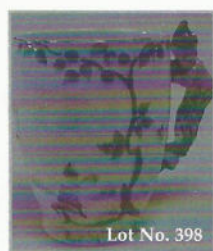
Lot No. 393



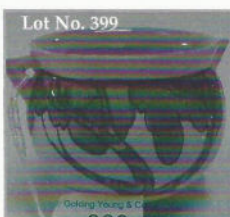
Lot No. 395



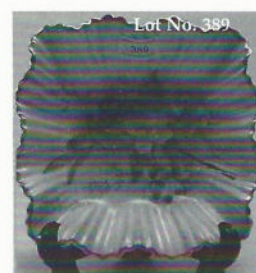
Lot No. 397



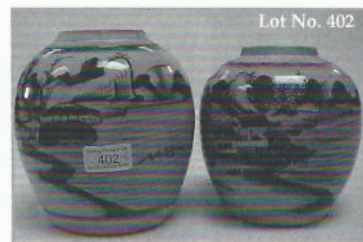
Lot No. 398



Lot No. 399



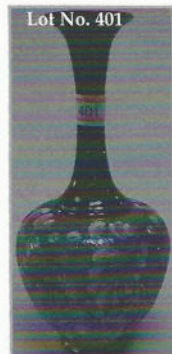
Lot No. 399



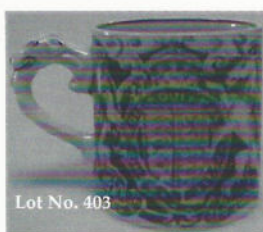
Lot No. 402



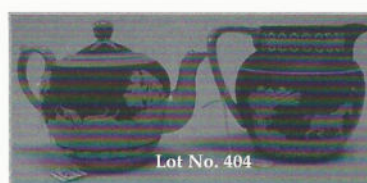
Lot No. 406



Lot No. 401



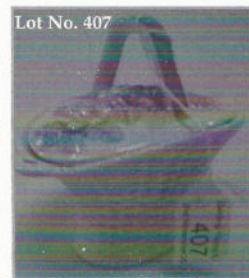
Lot No. 403



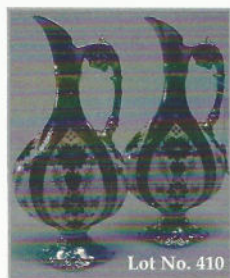
Lot No. 404



Lot No. 413



Lot No. 407



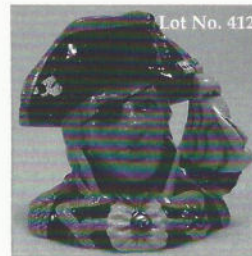
Lot No. 410



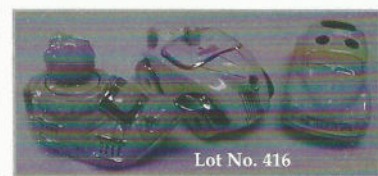
Lot No. 414



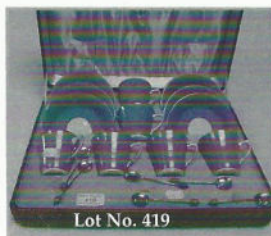
Lot No. 415



Lot No. 412



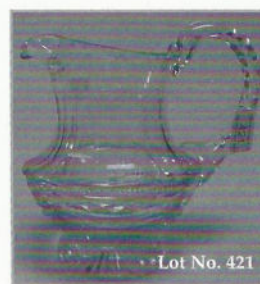
Lot No. 416



Lot No. 419



Lot No. 403



Lot No. 421



Lot No. 423



217. **A 19thC cross-banded satinwood writing table** with leather inset top and having an arrangement of two frieze drawers over two pedestal drawers on square taper legs with brass sleeve castors. 43" wide, 29" deep.
218. **A reproduction mahogany partners desk** with leather inset top, arrangement of drawers and cupboards with brass loop handle and bracket feet. 60" x 42".
219. **A 17thC and later elm refectory table**, the plank top over a plain frieze, on baluster turned legs joined by square framing, 30" x 89".
220. **A pair of 19thC oak benches or forms**, 93" x 7".
221. **A Regency mahogany sofa table** with rosewood cross-banded top, two frieze and opposing dummy drawers with circular ring handle, turned pillar and four sable legs with brass paw castors. 52" x 30".
222. **A Regency mahogany cylinder top desk**, the tambour revealing fitted interior with slide and writing easel, over an arrangement of two long and two short frieze drawers with brass knob handles on square taper legs with brass castors. 39" wide.
223. **A George III mahogany serpentine chest**, of four graduated drawers, with brass ring handles and splay feet; 42" wide.
224. **An Edwardian rosewood marquetry escritoire** with drawer and mirror back, leather inset top, two frieze drawers and square tape legs with brass and ceramic castors. 28" wide.
225. **A 19thC mahogany drop-leaf dining table** on square legs. 63" x 42".
226. **A Victorian walnut oval centre table** with marquetry top, (AF) supported on four reeded and fluted turned legs, supported by a low level shaped stretcher. 34" x 46".
227. **A Regency mahogany drum library table** with leather inset top, an arrangement of drawers and dummy drawers with brass knob handles on a turned pillar with three low sabre legs with brass paw castors. 48" diameter.
228. **An 18thC cross and feather banded walnut chest** (upper part from a chest-on-chest).
229. **A Regency mahogany chest** of three deep and three long graduated drawers, with pressed brass knob handles and lion mask to centre, on turned legs. 45" wide.
230. **A George III mahogany bachelors chest**, of four graduated cock-beaded drawers, with cast brass rococo handles and escutcheons, the top drawer fitted with compartments and writing slope when fully extended supported by lopers, raised on ogee bracket feet. 39" wide.
231. **A George III mahogany chest** of two short and three long graduated drawers, with brass swan neck handles, and having cross-banded top and bracket feet. 38" wide.
232. **A Victorian painted pine side table** with frieze drawer and turned legs. 42" x 27".
233. **A Regency mahogany table mirror** with oval plate, scroll supports, 'D' shaped front with three shaped drawers and ball feet. 23" wide.
234. **A Regency mahogany table mirror** with bevelled rectangular plate, turned uprights, 'D' shaped base with three shaped drawers and ball feet. 27" wide.
235. **An oak Globe Wernicke three level glazed bookcase**. 51" wide.
236. **A Victorian oak spinning stool** with carved shaped top, writhen taper legs and square framing.
237. **A Hirathi carpet** - 2'11" x 4'9".
238. **A Persian carpet** - 6'10" x 9'7".
239. **A William IV rosewood framed rectangular wall mirror**. 17" x 14".
240. **A mahogany framed firescreen**, oblong, with a gros-point woolwork panel of flowers on a blue ground, 21½" wide.
241. **A Harlequin set of six early 19thC elm bar back dining chairs**.
242. **An Edwardian walnut oval extending dining table**, on cabriole legs.
243. **A Victorian carved gilt wood and plaster cartouche pier glass** with satyr mask and shell surmount, bevelled arched plate and scrolling frame. 32" wide, 72" high.
244. **A 19thC child's steamer chair**.
245. **An oak open carver chair**, with leather upholstery having the Govan crest. (AF)  
*Provenance: Lord MacFarlane.*
- 245A. **A 19thC mahogany breakfast table** with oval top, turned pillar, and three scroll and sabre reeded legs with brass paw castors. 48" x 60".

## PORTRAIT MINIATURES

246. **A portrait miniature of Charlotte Brontë**; together with a book with illustrations.
247. **Five various portrait miniatures**, one silver framed.
248. **Viva Holson**. Portrait miniature of a young boy in blue, watercolour on ivory, signed. 4" x 3".
249. **19thC School**. Portrait miniature of a young boy in red, facing dexter, watercolour on ivory. 2" x 1.5".
250. **19thC School**. Portrait miniature of a young man and lady facing sinister, watercolour on paper. 1.74" x 1.25", oval, reeded gilt enamel frames.
251. **Henry Wykes (Ex. 1917-34)** Mayor of Exeter (?) portrait miniature, oval, watercolour on ivory, 4" x 3".
252. **Henry Wykes (Ex. 1917-34)**. A group of three portrait miniatures, believed to be the artist and his wife and daughter, watercolour on ivory.
253. **20thC school**. A pair of portrait miniatures of young ladies, watercolour on ivory 3" x 2", gilt filigree framed.
254. **Helena J. Maguire**. Interior Victorian scenes of boy and girl dancing with dogs, watercolour, signed. 5" x 3.5", gilt frame.



## OIL PAINTINGS

255. **Attributed to Arthur Spooner.** Moored boats on the river, oil on canvas. 20" x 16", in a moulded frame.
256. **Circle of James Stark.** Landscape, oil on canvas. 20" x 24", unframed.
257. **D. Land.** Fishing vessels, moored, oil on canvas, signed.
258. **E. H. monogrammist.** Tethered calf and young boys, oil on panel, monogrammed, 12" x 16", in a gilt moulded frame.
259. **Edward James.** *Feeding chickens*, oil on canvas, signed Edward James, 6" x 9".
260. **F.M.B.** A chestnut hunter in a stable, oil on canvas, initialled, 12" x 11", modern framed.
261. **J. F. Adams.** Pheasants in a snowy landscape, oil on canvas, signed, 26" x 40", in a pine and Hessian frame.
262. **Eric Blood.** Placid Pachyderms, oil on board, 24" x 35", modern framed.
263. **Jean Bonneric.** Coastal scene, oil on canvas, signed, 20" x 40", in a gilt frame.
264. **Jean Bonneric.** Sailing boats moored to a jetty, oil on canvas, signed, 20" x 40", gilt framed.
265. **A Lewis.** *Sunshine Upon Rain*, a village at Marlow on Thames, oil on canvas, signed A Lewis /10 and titled verso, 20" x 30", in a moulded gilt frame.
266. **A Lewis.** *Sunrise*, a village at Stratford on Avon, oil on canvas, signed A Lewis /10 and titled verso, 20" x 30", in a moulded gilt frame.
267. **W Hilton Greensmith.** *Port\*\*\*bach, Mouth of the Conway*, North Wales, oil on canvas, signed bottom left, signed verso with title and dated 1884, 14" x 21", in a moulded gilt frame.
268. **W. Hilton Greensmith.** *Kirk White Cottage*, Wilford, Notts, oil on canvas, signed verso with title and dated December 1886, 14" x 21", in a moulded gilt frame.
269. **W. Hilton Greensmith (Attrib.)** Old Nottingham Pumping Station, oil on canvas, unsigned, 16" x 24", in a gilt moulded frame.
270. **19thC British school.** Chobham Camp, 1853, The Scotch Fusilier's Quarters, oil on canvas, 22" x 30", in a glazed gilt plaster frame.
271. **Brian Ballard.** Still life, jugs with artists brushes, oil on canvas, signed Ballard '99. 14" x 10", in a glazed limed and entwined mounted frame.
272. **19/20thC School.** Lynmouth Pier, oil on card, 6" x 4", in gilt mount and frame.
273. **D.H.** Portrait of an elderly gentleman with glasses, oil on board. Signed D.H within a circle. 18" x 15".
274. **F. M. Hollams.** Shot, Portrait of a Spaniel, oil on beech panel, signed F. M. Hollams '33, titled. 12" x 18", oak framed.
275. **H. S. monogrammist.** The front elevation of a large stone house, oil on canvas.
276. **Walter Grieve.** *An Old Corner Crail*, oil on card. signed Walter Grieve, 1920, titled. 14" x 10".
277. **20thC English School.** Still life of summer flowers, in a terracotta vase decorated with putti, oil on canvas; 34" x 24".
278. **20thC School.** *Two gentlemen studying the figure of a sleeping flower girl in parkland*, oil on panel, indistinctly signed; 15½" x 11½".
279. **Attributed to Mary Wright.** Sailing boats in a cove, oil on canvas. 18" x 26"
280. **William Miller Frazer, RSA. (1864-1961).** Landscape with cattle, oil on canvas, signed W. M. Frazer. 16" x 20" in a moulded cream parcel gilt frame.
281. **F. M. Farey.** Rural landscape in the foothills, oil on canvas, signed.
282. **John S. Shiach.** Salmon fishing on the Tweed St. Drybergh, oil on board, signed, 10½" x 15½".
283. **Oliver Hall (1869-1959).** *'Tree landscape, North Wales'*, oil on canvas, signed, title verso, 14" x 20".
284. **20thC British school.** Portrait of an elderly bearded gentleman facing sinister wearing a hat, oil on canvas. 14" x 10" in a moulded plaster gilt frame.
285. **Spencer Coleman.** A rural landscape with a horse drawn hay cart and stooks in the fields, oil on canvas, signed Spencer Coleman. 24" x 36", in a modern gilt frame.
286. **19thC School.** *'Near Loch E xxx'*, oil on artist's board, signed with a monogram, indistinct title verso; 12" x 9".
287. **Sidoli.** *'Lane Near Clay Cross, Derbyshire'* oil on board, signed and dated '75, 20" x 15½".
288. **K. King.** A gun dog in rough bush, oil on board, signed K. King. 16" x 20", gilt frame.
289. **Kibart.** Still life of flowers in a vase, oil on board. 18" x 22".
290. **19thC English school.** A pair of rural landscapes with figures before a thatched farmstead, the other a village pub. Oils on canvas. 15" x 20" in gilt plaster moulded frames.
291. **Spencer Coleman (20thC),** Moored boats and figure son the broads. Oil on canvas, signed Spencer Coleman. 16" x 24", in moulded gilt frame.
292. **Henry John Dobson (1858-1928).** An interior scene with an elderly lady knitting by the stove. Oil on canvas, signed H. J. Dobson RSW. 12" x 14", in a gilt and glazed frame.
293. **DATSTONS (?)** Naive hunting scene with hounds in landscape, oil on panel, indistinctly signed. 9" x 16", gilt framed.
294. **Pierre LeBeouff.** *'Bergues pas de Calais'*, oil on canvas, gilt framed; 20" x 30".
295. **Pierre LeBeouff.** *'Provins Seine et Marne'*, oil on canvas, signed, modern frame; 20" x 30".
296. **Frank Boothman.** Huntsman in landscape, oil on board. signed Frank Boothman, 1953. 18" x 24", gilt framed.
297. **Keith Shackleton.** Mallard and Pintail's, oil on board, signed Keith Shackleton 19/51. 20" x 24" in original frame, marked Verso 'Royal Academy exhibition, Keith Shackleton, 175 Piccadilly, London, W1' Mallard and Pintail's'.



298. **Charles Leaver.** A Winter Landscape with figure leading on a path to church, oil on canvass. Signed C. Leaver. 1853. 25" x 30" in a carved and moulded gilt frame.
299. **Alfred Pollentine (1836-90).** *St Paul's Cathedral, Antwerp.* Oil on canvass. Signed A. Pollentine 90. Titled 'Verso'. 24" x 20" in a moulded gilt frame.
300. **Jack Smith.** Hunting with hounds, castle in the background, oil on canvass, signed Jack Smith. 24" x 36".

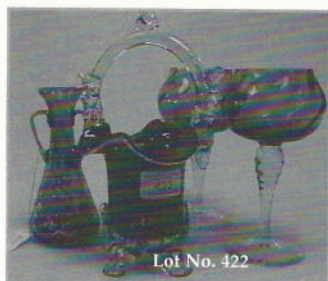
## CERAMICS

301. **A Coalport figure,** 'Ladies of Fashion' series, Merry Christmas.
302. **A Coalport figure,** 'Ladies of Fashion' Elizabeth.
303. **A Coalport figure** entitled 'Happy Birthday'.
304. **A Royal Doulton classics figure** Sophie, no HN4620.
305. **A Coalport figure** entitled 'With Thanks'.
306. **A Royal Doulton classics figure,** Elizabeth.
307. **A Royal Doulton figure** "Delight", HN1772.
308. **A Coalport figure** entitled 'Debutant Poppy'.
309. **A Coalport figure** entitled 'Birthday Wishes'.
310. **A Royal Doulton Figure,** HN2176 Autumn Breeze.
311. **A Royal Doulton Figure** HN3208, Emma.
312. **A Royal Doulton Figure,** HN3269, Christine.
313. **A Royal Doulton Figure,** HN3218, Sunday Best.
314. **A Royal Doulton Figure,** HN3310, Diana.
315. **A Royal Doulton Figure,** HN3499, Top o the Hill.
316. **A Royal Doulton Figure,** HN3214, Elaine.
317. **A Royal Doulton Figure,** HN3174, Southern Belle.
318. **A Royal Doulton Figure,** HN3220, Fragrance.
319. **A Royal Doulton Figure,** HN3744, Victoria.
320. **A Royal Doulton Figure,** HN3213, Kirsty.
321. **A Royal Doulton Figure,** HN3212, christmas Morn.
322. **A Royal Doulton Figure,** HN3321, Gail.
323. **A Royal Doulton Figure,** HN3268, Buttercup.
324. **The Snowman series,** 'The Wrong Nose'.
325. **The Snowman series,** 'The Special Moment'.
326. **The Snowman series,** 'Dancing at the party'.
327. **The Snowman series,** 'Hush, don't wake them'.
328. **The Snowman series,** 'The Bashful Blush'.
329. **The Snowman series,** 'The Adventure Begins'.
330. **A Snowman snow globe** with motorcyclists.
331. **A Beswick figure,** Beswick centenary Jemima Puddleduck.
332. **A Beswick figure,** 1893-1993 Celebration Peter Rabbit.
333. **A Royal Doulton figurine** from Wind in the Willows, entitled 'No amount of Shaking'.
334. **A Royal Doulton Figure** 'The Barmaid' D7180.
335. **A Royal Doulton figure** 'Sometimes Autumn Tickles your Nose'.
336. **A Beswick figure,** #853, Giraffe - natural.
337. **A Royal Doulton figure,** of a black and white spaniel, 5" high.
338. **A Beswick figure,** #1500, Boy on Pony - Palomino, gloss.
339. **Royal Doulton Figure,** 'Eeyore made a Wintery Wish list'.
340. **Royal Doulton Bunnikins figure** 'Angel Bunnikins'.
341. **The Bunnikins figure,** 'Mary Mary Quite Contrary Bunnikins'.
342. **A Beswick Beatrix Potter "Duchess" figure,** gold back stamp, 3.75" high.
- 342A. **A Bunnikins figure,** 'Sweet Dreams Baby Bunny'.
343. **A Beswick figure,** #1082, Leopard, gloss.
344. **A Beswick figure,** Podgy Pig Ltd ed # 1724.
345. **A Beswick figure,** #1435 Seated Cat, grey striped gloss.
346. **A Beswick Guernsey cow,** # 1248B.
347. **A Beswick Ayrshire cow,** #1350.
348. **A Beswick Bull** C H Whitehill Mandate.
349. **A Beswick figure,** H. M. Queen Elizabeth II, on Imperial, Trooping the Colour, 1957.
350. **A Beswick pheasant and Beswick ducks.**
351. **Royal Doulton character mug** D6438 Rip Van Winkle and Robin Hood D6534 and Tony Mellor.
352. **An Amphora figure group** of a young female goat herder and a brace of goats.
353. **A Japanese satsuma square section jar,** painted with panels of court scenes and flora, signed to base, no cover, 3½" high.
354. **A Quimper Faience pottery butter dish.**
355. **A Pratt ware pot lid,** transfer printed with a bear baiting scene, complete with base; 3" dia.
356. **A Beswick Walt Disney Nursery tea set,** comprising one teapot, one milk jug, one sugar bowl, four saucers, four cups, four tea plates; a small chip to one tea plate and one cup, light crazing, some slight loss of gilding, small chip to teapot spout.
357. **A blue and white meat plate.**
358. **A terracotta double handed vase** with Moroccan style decoration.
359. **Two Staffordshire flat-backed figures,** one of Dick Turpin, one of Tom King.

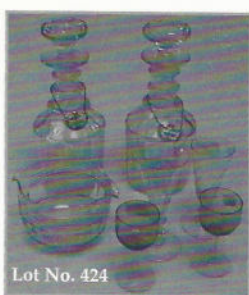


360. **A Continental porcelain table centrepiece**, modelled as a Countrywoman, supporting a pierced basket on her head, flanked by two tree stumps, on rocaille base, 9½" high.
361. **A 19thC Continental porcelain two-handed pot pourri vase and cover**, of ogee shape, on a knopped pierced pedestal, printed with amorini panels and encrusted with flowers, the pierced cover with flower encrusted finial, 9½" high.
362. **A German porcelain figure group**, of a seated woman with masked jester, she in a flowered 18thC costume, a cockatoo on her left hand, a bowl of cherries in her lap, 7" high faux Carl Theodore mark in underglaze blue (losses to tree).
363. **A 19thC German porcelain figural candlestick**, modelled as a scantily dressed woman in flower sprigged dress, holding a child, on a serpentine shaped flower encrusted base, 13" high (damaged).
364. **A Minton's cabinet plate**, hand painted with butterflies and berries on a turquoise ground, 10" dia., painted verso W. R., with references 4437 and 4256.
365. **A reproduction Majolica two-handed jardiniere**.
366. **A Glyn Colledge for Denby floral ewer**.
367. **A Victorian majolica jardiniere**, basket moulded with flowers and leaves in relief, impressed mark 'Holdcroft' to base.
368. **A Dresden porcelain table centrepiece**, with figural base and pierced bowl.
369. **A bronzed terracotta bust of Milton**, marked verso 'R. U. 1871, Deponirt'.
370. **A Victorian floral transfer printed two-handed pail**.
371. **An Arthur Wood moulded pottery jug**.
372. **An Amhurst Japan pattern pedestal bowl**.
373. **Booth's fruit d'Orient plate, jug and three others (5)**.
374. **A Spode oval platter**, transfer printed in brown with cattle over a bridge.
375. **A selection of Booth's pottery**, including Real Old Willow part tea service, Lowestoft Deer serving dish, and tureen with cover and stand.
376. **A filigree work and glass scent bottle**, and tea pot.
377. **A Poole Aegean pattern Delphis dish**, and two similar Guernsey pin dishes.
378. **A 19thC Bodley part dessert service**, comprising: two tazzes and six plates, each piece painted and gilt with differing flowers and insect against a celadon ground, pattern number: 5/566; a porcelain bread and butter plate, painted with a landscape vignette within a gilt border, with integral handles.
379. **A late 19thC Chinese plate**, enamelled overall with differing flowers against a black ground, six character mark to underside. 7.5" diameter (rivetted repair).
380. **A 18th/19thC famille rose charger**, centrally enamelled with birds, flowers, blossom and rocks, within a flower sprigged green ground border, 16" diameter (rivetted repair).
381. **A 17thC Italian maiolica charger**, centrally painted with mythological tableau, within a mask and scroll border, painted monogram AS verso. 15.5" (rivetted repair).
382. **A pair of Chinese famille rose plates**, each painted with a flower spray within a cartouche, flower sprigged border. 9" diameter.
383. **A Wade gilt-ground coffee service**, of fluted form, comprising: coffee pot, six cups and saucers, cream and sugar bowl.
384. **A Pinder, Bourne & Hope earthenware dessert service**, comprising: a pedestal comport, two oval and three circular footed dishes and eleven plates; each piece printed and painted with a rose circle and well against a turquoise border.
385. **A pair of late 19thC Bourne & Leigh earthenware vases**, decorated in the 'Watteau' pattern. 13" high, (one repaired).
386. **A Noritake fruit bowl**, internally decorated with panels of exotic birds against a brown ground, the shaped rim with integral handles, 8.5" diameter; and a pair of matching hexagonal vases, 8.5" high. Blue factory marks.
387. **A Cauldon ovoid vase**, painted with a bird of prey on a branch against a yellow ground, signed A. Winkle. 8" high. Another vase, painted with a small bird on a branch, on three feet. 3.75" high (2).
388. **A modern Royal Dux figure** of a blue feathered parrot perched on a pedestal, 16" wide, pink triangle and printed marks.
389. **A Carlton ware dish**, of fluted oblong form, decorated to the well with flower spray and foliage against a blue ground, gilt line rim. 7.5" wide.
390. **A Carlton ware biscuit barrel**, decorated with flowers and leaves against a blue ground, plated mounts and cover. 5.5" high.
391. **A Losol Ware 'Andes' pattern fruit set**, decorated with parrot amongst colourful flowers, comprising: a fruit dish and six small dishes.
392. **A 19thC salt glaze ale jug**, the neck with applied vine moulding, the ovoid body applied with the Royal crest and recumbent lions, 8" high.
393. **A Moorcroft pottery plate**, 'Summer's End', circular, tube lined and painted with blackberries, leaves and convolvulus, c.1998, number 746/750, impressed factory marks and painters initials. 8.5" diameter.
394. **A Charlotte Rhead 'Ankara' baluster jug**, tube lined and painted with yellow, orange and blue flowers and green leaves, pattern number 5983. 6.5" high.
395. **A Clews chameleon Ware earthenware vase**, ovoid, painted with brown leaves against a mottled blue ground. 7" high.
396. **A pottery cache-pot**, of circular bellied form, with lobed rim, moulded with shells, reeds and a wrythen flute girdle, painted with figured landscapes and flowers, inscribed to underside Jaques Borelli 1781. 10" high, (repaired).





Lot No. 422



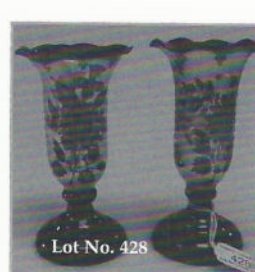
Lot No. 424



Lot No. 431



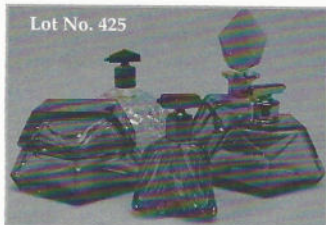
Lot No. 427



Lot No. 428



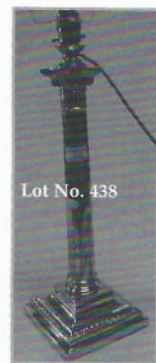
Lot No. 429



Lot No. 425



Lot No. 432



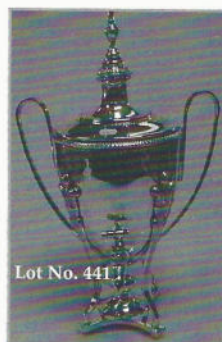
Lot No. 438



Lot No. 433



Lot No. 454



Lot No. 441



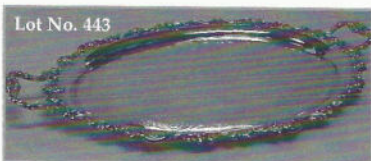
Lot No. 449



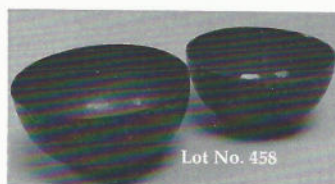
Lot No. 450



Lot No. 446



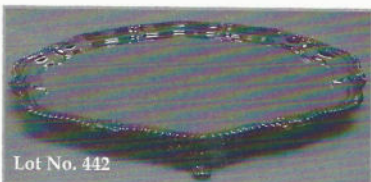
Lot No. 443



Lot No. 458



Lot No. 451



Lot No. 442



Lot No. 445



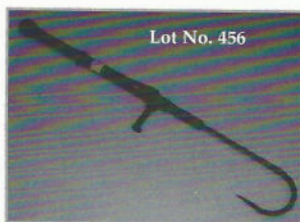
Lot No. 444a



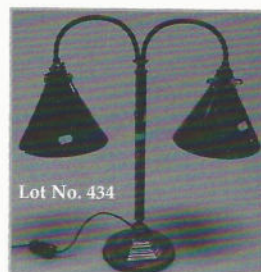
Lot No. 452



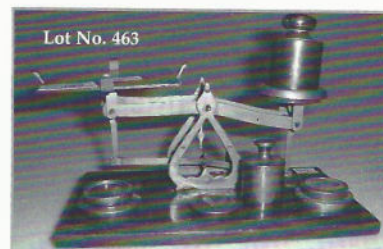
Lot No. 459



Lot No. 456



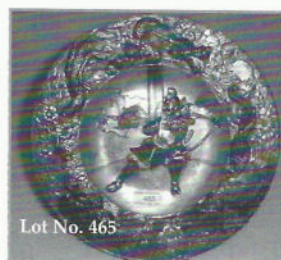
Lot No. 434



Lot No. 463



Lot No. 453



Lot No. 465



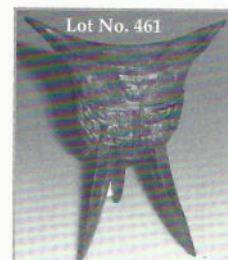
Lot No. 468



Lot No. 464



Lot No. 466



Lot No. 461





Lot No. 471



Lot No. 474



Lot No. 472



Lot No. 476



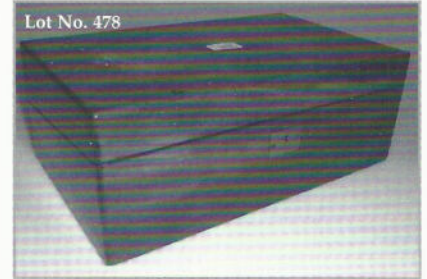
Lot No. 467



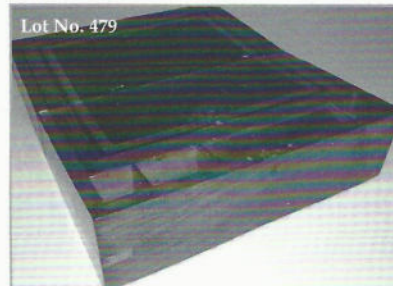
Lot No. 475



Lot No. 486



Lot No. 478



Lot No. 479



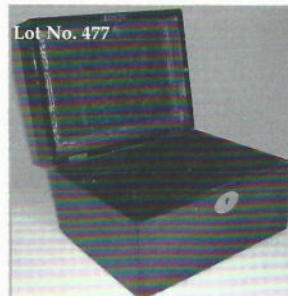
Lot No. 480



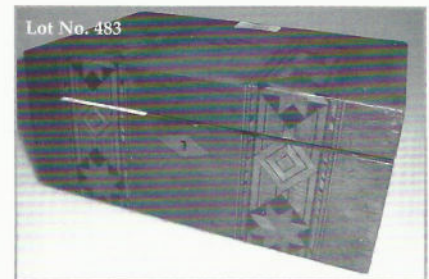
Lot No. 481



Lot No. 484



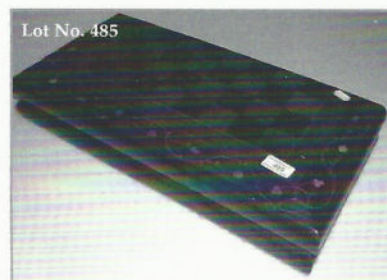
Lot No. 477



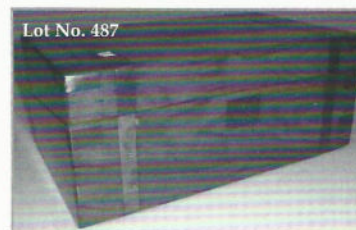
Lot No. 483



Lot No. 490



Lot No. 485



Lot No. 487



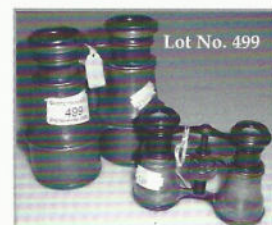
Lot No. 494



Lot No. 493



Lot No. 498



Lot No. 499



397. **A saltglazed stone beaker** by Pearson & Co, Chesterfield, having griffin over a cartouche, inscribed P. H. 1906 and verso scene of Chatsworth House.
398. **A porcelain nursery mug**, moulded and painted with an elf on a branch. 4" high.
399. **A Clarice Cliff Bizarre cauldron vase**, painted with the Honolulu pattern in blue, pink and green. 3" high, (some small chips to rim and one foot).
400. **A Noritake fruit bowl** painted with exotic birds and flowers within a panelled screen against a pearlised ground, blue border and gilt rim with integral handles. 9.25" wide.
401. **A Royal Doulton Slaters Patent bottle vase**, the lace ground enamelled with turquoise and white flower, below a blue ground neck with everted rim, 10" high.
402. **A matched pair of 19thC Chinese blue and white ginger jars**, painted with island landscapes. 7.5" and 7" high (lacking covers).
403. **An Edward VIII commemorative mug**, designed by Dame Laura Knight, printed in colours with profile, Royal Standard and heraldic beasts, lion moulded handle. 33.5" high.
404. **A Copeland Spode blue jasper tea pot** with applied hunting scenes; a jug, similar, 6" and 5" respectively.
405. **A Moorcroft pottery vase**, tube lined and painted with Orchids against a buff blue ground, 5" high, impressed marks and painted facsimile signature in blue.
406. **A Moorcroft pottery vase**, baluster shape, decorated with pink clover against a cream ground, 6.5" high, impressed factory marks.
407. **A Newport Pottery Clarice Cliff basket and cover**, with a pale yellow weave body, the cover with overhead handle, moulded and painted with flowers. 4.5" high.
408. **A Clarice Cliff Bizarre model of a country cottage**, with red tiled roof, yellow walls, blue doors and windows, painted with flowers. 2.75" high.
409. **A Royal Crown Derby jar and cover**, painted and gilt with an Old Imari pattern, no.1128. 7" high.
410. **A pair of Royal Crown Derby ewers** painted and heavily gilt with Old Imari pattern, no. 1128. 10.25" high. (1AF)
411. **A Royal Doulton figure of Vice-Admiral Lord Nelson**, modelled by Alan Maslankowski, no. 159/950, standing in typical pose on a circular plinth, with bucket and coiled ropes, the sides printed and painted with various flags and shipping vignettes. 13" high, with certificate and original box.
412. **A Royal Doulton character jug**, Vice-Admiral Lord Nelson, D6932, designed by Stanley James Taylor, 6.5" high.
413. **A Royal Doulton pottery Fish Eagle decanter**, modelled by John G Tongue, c.1984. 10.5" high.
414. **A Royal Doulton figure 'Vanity'** HN2475. 5.5" high.
415. **A Royal Doulton figure 'Cookie'** HN2218. 5" high.
416. **A Sadler type pottery novelty teapot modelled as a racing car and driver**; a Lingard pottery teapot modelled as the old woman who lived in a shoe; and a Sadler pottery model of a saloon car (3).
417. **A Victorian majolica spill vase**, in the rustic form of a tree base.
418. **A Doulton Slaters patent bottle vase**, the lace ground enamelled with flowers beneath a mottled green neck with everted rim; together with a Doulton kidney shaped side dish, printed and painted with flowers; another similar.
419. **An Art Deco green floral printed cabaret set**, cased with six silver coffee bean spoons on suite, case bearing the retailer's mark of 'Sam Lyon, Diamond Merchant, Blackpool'. *Provenance: This was given as a golfing prize to the vendor's mother.*

## GLASS & LIGHTING

420. **A Bohemian ruby glass mug**, with acid etched simple flower forms, inscribed 'Present from Rhyl'; a ruby glass small decanter; a ruby flashed vase with painted floral decoration; a Murano salt; another small salt. (5).
421. **A 19thC Irish cut glass water jug**, of shouldered baluster form, with a panelled, hobnail and swag cut body, faceted handle and radial art base. 8" high.
422. **A ruby glass basket with milk glass rim and clear glass handle**, prunts and feet, 9" high; a pair of amethyst glasses with clear glass wrythen stems, 6.5" high; a green glass vase, enamelled and gilt with a floral panel between the loop handles, 5.75" high (4).
423. **A studio glass vase**, organically moulded and internally decorated with brown streaks. 10" high.
424. **A pair of 19thC spirit decanters**, each with mushroom stoppers, three ring necks and panelled circular bodies, 10.5" high; a flute glass; two small glasses with emerald green bowls; a glass rinser and a moulded flute glass, (6).
425. **An Art Deco smoked grey glass part dressing table set**, comprising of scent bottle, with spine stopper, scent spray and covered dish; a cut glass scent spray; a blue glass scent spray. (5)
426. **A 19thC French ormolu and glass table centrepiece**, the moulded amethyst glass dish with waved border, supported by four scroll branches with swan terminals on a pierced square domed base with mask ornament. 9.25" high, 19" wide.
427. **A Vasart thistle shape glass vase**, the neck internally decorated in turquoise and pink over a mottled white body. 6.75" high. Vasart in script to underside.
428. **A pair of Bohemian ruby and frosted glass vases**, of slender baluster form with everted frill rims, decorated with flower sprays, lightly gilt on domed circular base. 6.25" high.
429. **A pair of Facon de Venice stemmed goblets** with applied flowers and scroll prunts; a pair of ruby flashed tapering vases, 4.75" high; a ruby acid etched liqueur glass; a pair of ruby glass vases, 4" high (7).



430. **A Venetian blue opaque and clear glass six branch chandelier** with a baluster stem supporting a terminal bowl with pendant finial, the scrolling branches with flower sconces and surrounded by eight daffodil stems and foliage branches, (some damage).
431. **An Art Deco table lamp**, the circular base mounted with a ceramic figure of a female dancer in a pink and blue floral gown, (lacking shade). 11.25" high.
432. **An Art Deco glass hanging centre light**.
433. **A brass table lamp**, with a slender stem rising from a globular base, raised on an open framework with shaped platform base, on toupie feet, cream silk shade. 42" overall.
434. **A brass desk lamp**, the hexagonal stem supporting two downwardly scrolling arms, each with green glass shades (one slightly damaged), on a raised hexagonal base. 20" high.
435. **A pair of porcelain and brass table lamps**, the vase shaped bodies enamelled with flower prays against a celadon ground, a cast brass and ring handle to each side, on toupie feet, silk shades. 30.5" high overall.
436. **An alabaster vase shaped table lamp** with leaf calyx, on a square base, black pleated shade. 28" high overall.
437. **A brass table lamp**, with a reeded stem and foliage calyx, on a tricorn base with grotesque mask ornament, raised on three scroll and cast feet, with a pleated silk shade. 30.5" overall.
438. **An EPNS Corinthian column table lamp**, on a square stepped and swept base, pleated silk shade, 27" high overall.
439. **A pair of silver plated 3-light candelabra**, cast with scrolls and foliage, each with two reeded scrolling branches, on a circular domed foot with conforming ornament. 19.5" high.

## METALWARE

440. **A silver-plated hot water urn**, ovoid with two loop handles, reeded supports with Prince of Wales feather terminals, on a concave platform base, bun feet. 22.5" high.
441. **A silver-plated hot water urn**, ovoid with two loop handles, reeded supports with Prince of Wales feather terminals, on a concave platform base, bun feet, 22.5" high.
442. **A large silver plated tray**, circular, the pie crust border with gadroon and shell detail, on four foliate scroll feet. 23" diameter.
443. **A silver plated oval tea tray**, with two handles, the border cast with foliage and scrolls, on four rudimentary feet. 28.5" over handles.
444. **A polished pewter meat dish**, oval with a shaped moulded rim, stamped VALDI Bestmetal verso, 22.5" wide; a silver plated dish, circular, with a shell and foliate cast border, 11.5" diameter (2).
- 444A. **An EPNS chafing dish**, oval with bead borders and loop handles on four scroll strap-work feet.
445. **An 18thC ormolu planter**, of boat shape, east in high relief with floral sprays, foliage and scrolls, mounted with a putti to each side. foliate scroll handles, on four scroll feet, tin liner, 19.25" wide.
446. **A silver plated table candlestick**, of lobed foliate design with removable nozzle, 10 1/4" high.
447. **A silver plated cast taperstick**, with removable nozzle, 4 1/4" high.
448. **A pair of Chinese brass incense burners**, each surmounted with the dog of Fo, and having panelled bodies with stylized birds and flora; 14" high.
449. **A copper hot water urn**, with two brass handles and tap, on domed foot.
450. **A set of four brass ships single burner oil lamps**, of vase shape, on domed feet, 8" high, three with glass chimneys. Provenance: Kingbird, Grimsby fishing vessel c.1933.
451. **A Walker's Cherub III ship-log**, in a brass case with enamelled recording dial, gimbel mount, together with a four-fin brass sinker.
452. **Three copper ships navigation lamps**, Masthead, Port and Starboard. Provenance: Kingbird, Grimsby fishing vessel c.1933.
453. **A 19thC copper saucepan and cover** both with iron handles; a copper posher; a copper grain scoop with twined wood handle; and a copper jug (4).
454. **An Indian brass ewer**, the tapering circular body embossed with foliate scrolls, single loop handle. 12" high.
455. **A Hardy Bros. telescopic brass salmon gaff**, stamped Hardy Bros. Ltd. Makers: Anwick.
456. **A set of four brass bell weights**, 6" to 3.75".
457. **An A.M Bubble Sextant Mark IXA**. Serial no. 14193/42, in a fitter case.
458. **A pair of early 20thC cloisonne bowls**, enamelled with birds, blossom and flowers against a blue ground. 9.75" diameter.
459. **A Chinese white metal and enamel circular box and cover**, decorated in relief in shades of blue and manganese with birds of paradise and flowers, the cover with shishi finial. 6.5" diameter.
460. **A bronzed metal figure of a stork**. 19" high.
461. **A cast bronze tripod censor**, with a loop handle and hieroglyphic detail. 7.5" high.
462. **A Huntley & Palmer biscuit tin**, modelled as a run of eight classical books, joined by a strap, printed in colours. 6.25" x 4.5" x 6.25"
463. **Postal scales and weights**.
464. **An early 20thC glass and oxidised-brass sunshine recorder** by Casella London, no. 6751, the 4" diameter glass sphere within the curved recording mount, with graduated adjustment, on a flat base with three levelling screws. 9.5" high.
465. **A Japanese gilt bronze charger**, centrally decorated in a low relief with a Samurai warrior in a landscape, the border cast with celestial dragons, clouds, chrysanthemums and other flowers. 12.5" diameter.



466. **A pair of Indian copper wall plaques**, a Pyrene brass cased fire extinguisher and a copper and porcelain chafing dish (4).
467. **A brass gun barrel diameter measure**, in a fitted mahogany case.
468. **A brass cartridge filler with turned ebonised handle**, on a rectangular metal base.
469. **A green painted metal and brass cartridge filler** by Lightwood & Son XL turnover 'model no. 2502/6' on mahogany stand.
470. **A brass shot measure** with turned wooden handle together with an ebonised and brass turned handle by James Dixon, stamped no. 1144N.
471. **A copper, brass mounted powder flask**, embossed by James Dixon & Sons, embossed with dead game; another of the fluted design; another with bead borders (3).
472. **A copper brass mounted powder flask** of a fluted design; another with basket-weave and leaf detail; another of plain oblong canted form (3).
473. **A copper brass mounted powder flask with shell detail**; another embossed with formal scrollwork; another small example embossed with an eagle (3).
474. **Three leather, brass mounted powder flasks.**
475. **Two horn, brass mounted powder flasks**, one stamped Sykes.
476. **After P.J. Mene.** A gilt brass figural group of a greyhound and a spaniel on oval base and ceramic plinth. 7" high.
- COLLECTORS ITEMS I**
477. **A Victorian rosewood workbox**, with mother-of-pearl inlay.
478. **A Victorian flamed mahogany work box**, with brass inlay.
479. **A Victorian brass bound walnut writing box.**
480. **An Italian olive wood puzzle trinket box**, in the form of books, with Sorrento style inlay and marked "Ricordo di Napoli".
481. **A William IV rosewood tea caddy**, of sarcophagus form, the interior fitted with two lidded flanking a bowl aperture, on compressed bun feet. 12" wide.
482. **An olivewood puzzle jewel casket**, in the form of books, with Sorrento style inlay.
483. **A 19thC mahogany work box** with Tunbridge ware type banding, the interior with a fitted tray. 10" wide.
484. **A 19thC walnut writing box**, with brass mounts, the interior with a leather cloth slope, single ink well and quill and stamp trays. 11.75" wide.
485. **Two 19thC Killarney stained boxes:** A beech folding games box, of rectangular moulded form, the chequerboard top within chevron banding and foliate inlay, the interior with backgammon surface; together with two treen dice cups and a drafts set. 20" x 10". A 19thC stained pine glove box, oblong, the hinged cover inlaid with a clover panel, inscribed with the initial E.J.C. 2.25" wide.
486. **Spare lot.**
487. **A 19thC walnut writing box**, with brass banding, inscribed with a monogram, the interior with a leather cloth writing slope, stamp, quill and ink wells. 15.75" wide.
488. **A early 19thC tortoiseshell tea caddy** of casket form, with ivory interior banding, two lidded compartments and on bun feet. 7" high x 8.5" wide.
489. **An Edwardian mahogany serving tray**, of shaped rectangular form, having shell inlaid centre and brass handles.
490. **A reproduction mahogany decanter / bottle stand**, with turned handle.
491. **A walnut carved tankard**, and bamboo carved sleeve vase, both with brass fittings (2).
492. **Four walking sticks**, various materials.
493. **A walnut, brass bound circular fruit bowl**, on raised foot. 11" diameter.
494. **A mahogany cross banded canteen of serpentine form**, containing a silver plated old English suite of cutlery (six place settings), the canteen 18.5" wide.
495. **Floral tile field**, old lock, gents travel set and warming cabinet.
496. **Cased drawing set**, and other brass and metal ware.
497. **An 18thC brass mortar and ladle.**
498. **A group lot of wooden items**, including an aneroid ship's wheel barometer, cigarette box, butter dish etc. (5).
499. **Two pairs of brass field glasses**, one large, one small.
500. **Two pairs of brass field glasses**, one large, one small.
501. **A family of seven miniature bronze elephants** on oblong canted bases.
502. **A rosewood equestrian carved figure of a prancing horse**, on an oblong canted oak base. The horse, 12" high, 13" wide.
503. **Taxidermy: A goose with light brown plumage.** 22" tall, on a oblong wooden base.
504. **Taxidermy: A Sparrow hawk**, perched on a wooden branch in a naturalistic landscape stained wooden case, 13" x 11".
505. **Taxidermy: A pair of jays** in a naturalistic landscape, passe par tout glazed case. 16.5" x 20"
506. **Taxidermy: A pike**, in a glazed case labelled 'Pike, Caught Old Trent, Date 1932, Weight 23lb'.
507. **Taxidermy: A glazed case containing an assortment of birds** in a naturalistic landscape on branches with ferns, including pheasant, jays, thrush. Case 36" x 40".
508. **Six glass Fahrenheit thermometers** by Negretti and Zambra and others, each approximately 13" long.
509. **An Ikoflex twin lens reflex camera.**

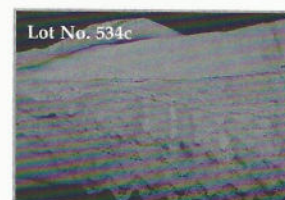
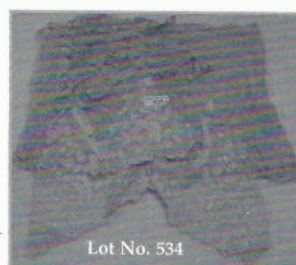
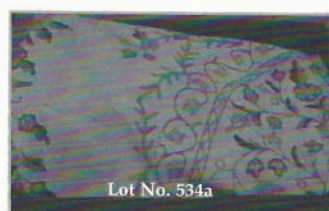
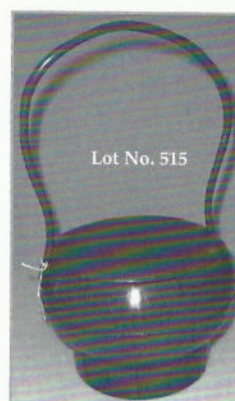
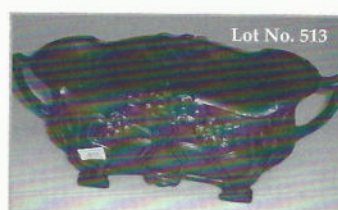
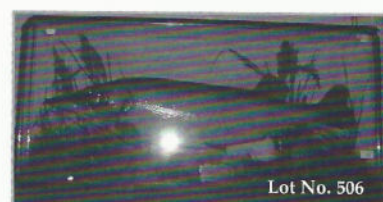
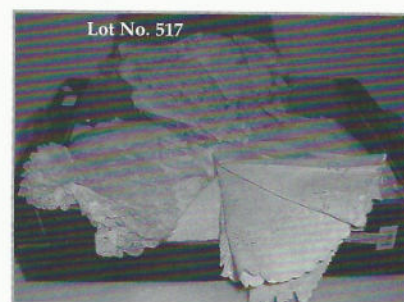
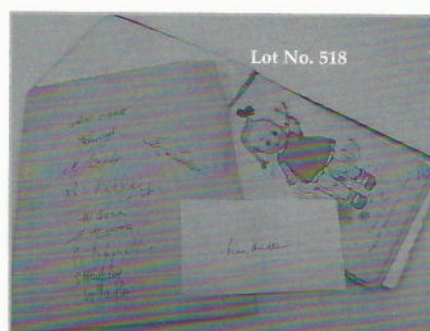
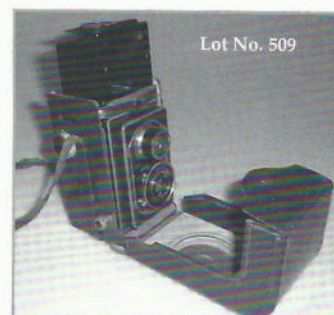
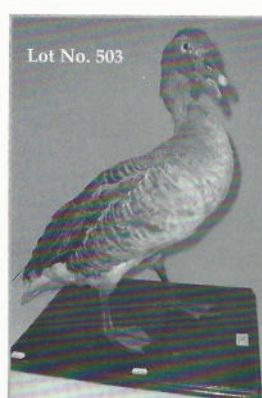
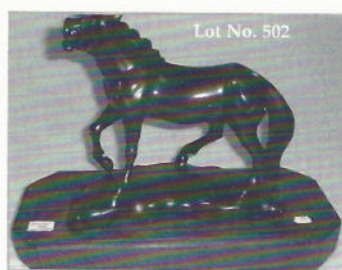


510. A Minolta 7000 35mm camera and flash.
511. A Franke and Heidecke Rollei magic camera, in leather case.
512. Four pottery developing tanks for plate cameras.
513. A cast iron Art Nouveau two handled planter.
514. A violin with carved marked finial, two part back inlaid with a marquetry town scene, inscribed around the rib with Latin legend.
515. A far eastern red lacquered basket and cover.
516. A collection of porcelain beer tap pulls, mainly hunting scenes.
517. A quantity of lace embroidered cloth, napkins, linens etc.
518. An early 20thC autograph album including a loose autograph signature of Len Hutton; a sheet of notepaper bearing signatures of the Nottinghamshire cricket team c.1930's including Larwood, Lilley, Voce, Payton and Keeton.
519. An Eastern European paperweight,  $3\frac{3}{4}$ " dia., another paperweight, smaller.
520. A copper and brass warming pan with turned handle.
521. A pair of brass 'GNR' carriage lamps.
522. A pair of brass 'GNR' carriage lamps.
523. A pair of brass 'GNR' carriage lamps.
524. A pair of brass 'GNR' carriage lamps.
525. A pair of brass 'GNR' carriage lamps.
526. A pair of brass 'GNR' carriage lamps.
527. A middle eastern glass pipe in fitted case.
528. A pair of early 20thC cushion moulded oval photograph frames with crown and scroll crusting, with easel stands. 12.5" x 9".
529. A Tunbridge inlaid workbox (AF).
530. A pair of stained resin temple dogs, their front paws raised on ornamental urns, 4.5" high.
531. A early 20thC ivory box and cover, oval, carved in relief with tigers and elephants, the disc cover with elephant finial. 3" high.
532. A small Anglo-Indian box, two satin beech boxes with florally printed lids, a treen shaving bowl, a vapour-light and ivory circular box and cover.
533. A souvenir of the Caribbean cricket tour of 1968, featuring a set of nine stamps and team signatures, framed.
534. A quantity of lace.
- 534A. A patchwork quilt, a cowl work cover.
- 534B. A patchwork and a cowl work cover.
- 534C. Two crochet covers and a white woven cover.
- 534D. A patchwork quilt, assorted linens, crochet etc.
- 534E. Two damask cloths, linens, embroideries etc.

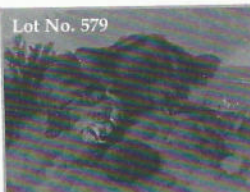
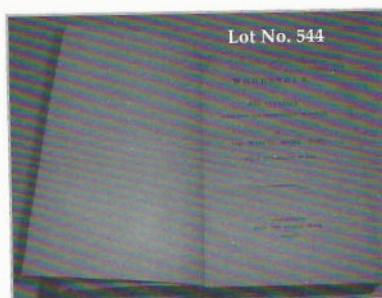
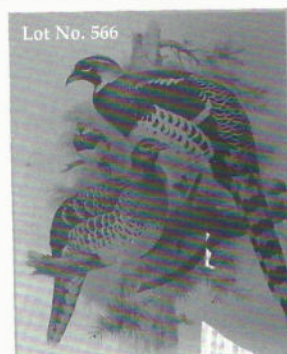
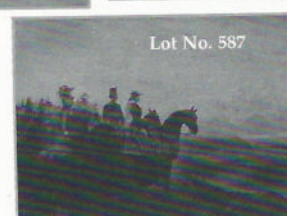
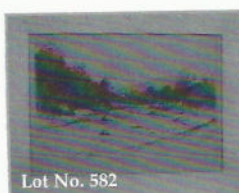
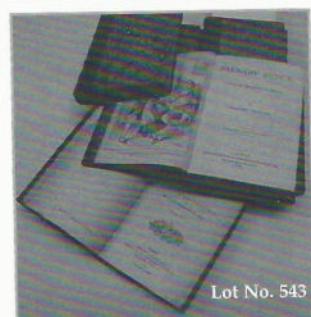
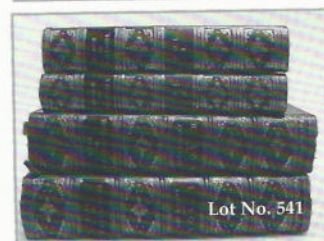
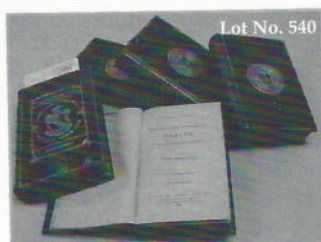
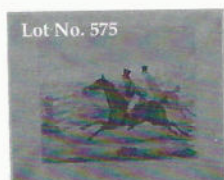
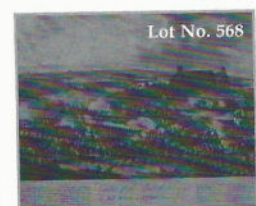
## BOOKS & EPHEMERA

535. An early 20thC postcard album containing approximately 200 cards, mainly G.B. topographical, some U.S.A., the album contained within a slip case.
536. An early 20thC postcard album containing approximately 300 cards including: Bruce Bairnsfather and other related cards, Glamour, Topographical, Flower Studies, Harry Payne, Regimental etc.
537. An early 20thC postcard album containing approximately 430 cards including: a good collection of Mabel Lucie Atwell, McGill and other humorous, Greetings, Topological, Bonzo series.
538. An early 20thC postcard album containing approximately 80 cards including humorous, 1st world war, greetings and topographical.
539. Hope Moncrieff (A.R) - Classic Myth and Legend; Romance and Legend of Chivalry; Square (Charles) - Celtic Myth and Legend; Mackenzie (Donald) - Teutonic Myth and Legend; original cloth gilt (4).
540. MaCaulay (Thomas Babington) - Critical and Historical essays, 2 vols, 1909 and three further works, full calf, gilt, raised spine bands (5).
541. Morley (John) - The Life of William Ewart Gladstone, 2 vols. 1905, tree calf, gilt decor. raised spine bands; Ruskin (John) - Ruskin on Pictures, 2 vols. 1902, tree calf, gilt decor. raised spine bands, (given as college prizes and bearing their crest).
542. Mackinder (H.J) - The Rhine: It's Valley and History, 1908, with numerous colour illustrations after Mrs James Fardine, full calf, gilt, raised spine bands; six further works, all full calf, gilt (given as college prizes and bearing their crest), (7).
543. Hugo (Victor) - Oeuvres de Victor Hugo, 5 vols, no date c.1831, 1/4 movoc. and a quantity of binding, two with college crests (14).
544. A quantity of leather bound books, mainly early 20thC, some with college crests.
- 544A. Bible in English, The Holy Bible containing the Old and New Testaments, 1859; The Common Book of Prayer, 1854; The Psalms of David, 1859; all in contemporary grey morocco by Hayday, elaborately tooled in gilt, the prayer book with a brass centrepiece, binding and clasp, aeg. presented in a walnut casket, of semi-cartouche form, intaglio carved with foliate scroll panels, 14.5" x 9.5" x 8". Therefore the bible is inscribed on end-paper, relating to the inscription on the brass centrepiece.
545. Ward Lock & Co Ltd - (pub.) - A Pictorial and Descriptive Guide to Worcester; five further guides to North Wales, (Northern and Southern sections), Dublin, Dover and Margate, original red cloth boards (6).
546. Grant (Charles) - The History of Mauritius or the Isle of France, 1801, three folding maps, stained and repaired,  $\frac{3}{4}$  calf gilt, spine partially missing; Sharpe (Samuel) - The History of Egypt, 2 vols, 5th edition, 1870, woodcut illustrations,  $\frac{3}{4}$  calf marble boards; Lane (Edward William) - An Account of the Manners and Customs of the modern Egyptians, 2 vols, 5th edition, 1871 (5).











547. **Bent (Theodore Mr and Mrs)** - Southern Arabia, 1st edition, 1900, port. frantis ½ tone illustrations from photos, J maps, pubs. ads. at rear, original cloth gt. slightly rubbed upper joint mildly split; with Suez Telegraph>Library stamp on half-title.
548. **Five antique and art reference books.**
549. **Travel Guides:** Baedker's Switzerland, Southern France and Italy; Cook's Riviera and Pyrenees; Wadlock Switzerland (5).
550. **Raleigh (Sir Walter).** *The Historie of the World*, in five books. For H. Lownes, G. Latham and R. Young, 1628, England. Title portrait, one folding map, loose, original full calf, new end papers (in distressed condition).
551. **Smith (William).** *A New and Compendium History of the County of Warwick, Birmingham*, 1830, eng. title and numerous eng. pls including a single page map, some spotting. Contemp. full calf, re-spined.
552. **Westall & Martin** - Illustrations of the New Testament, two vols, 1835/6, 96 b/w illus. Contemp. full calf, some wear, scuffing and stains.
553. **Turnor, Edmund.** 'Collections for the History of the Town and Soke of Grahtham', containing the authentic Memoirs of Sir Isaac Newton, printed for William Miller, Albermarle Street, by W. Bulmer & Co., St. James' 1806.
554. **'British Sports & Sportsmen - Hunting'**, 1 vol, gt. leather, Royal Edition No 241/250.
555. **The Sportsman - British Sports and Sportsmen**, Sportsmen of the Past, 2 vols. n.d. c.1908, ltd. ed. no 539/1000. Introduction by Horace G. Hutchinson, photogravures, full calf gilt, marble and papers.
556. **British Sports and Sportsmen - Commerce and Industry**, n.d. ltd. ed. no 557/1000, photogravures with tissue guards, some spotting, mainly in margins, full calf gilt.
557. **Flavius Josephus** - Works, in two books, Antiques and Wars of the Jews, illustrations woodcuts and one folding map n.d. c.1675. first 84 pages detached and badly worn, subsequent pages to 132 partially detached, original paper backed boards.
558. **Wodehouse (P. G.)** - *Uncle Dynamite*, 1948; *Jeeves and the Feudal Spirit* 1954; *Service with a Smile* 1961, *Galahad at Blaudings* 1965, all first editions with dust wrappers; eight further volumes, four paperback (12).
559. **Wheatley (Dennis)** - *The Devil and all his Works*, 1971; *The Launching of Roger Brook*, n.d.; *Strange conflict*, 1942; all with dust wrappers (3).
560. **Carroll (Lewis)** - Picture Book, 1st ed. contemp. cloth gilt and three other titles by this author (4); Kipling (Rudyard) - *A Choice of Songs*, 1st ed. 1925 and Departmental Ditties, (6).
561. **Mickey Mouse Annual** - 1949, a good copy; and Teddy Tail's Annual, 1936, 1937, 1939, (1939 spine damaged), (4).
562. **Grahame (Kenneth)** - *Dream Days* x 4, *The Golden Age* x 2; Wrightsow (Partricia) - *Balyet, The Nargun and the Stars, The Crooked Snake, A little Fear*, (10).
563. **Orczy (Baroness)** - *The Nest of the Sparrowhawk, His Majesty's Well-beloved, By the Gods Beloved, The Triumph of the Scarlet Pimpernel, The Honorable Finn; Fairlie (Gerard) - Captain bulldog Drummond, Hands of bulldog Drummond, Bulldog Drummond Stands Fast* (8).
564. **Six assorted natural history books.**
565. **Brazil (Angela)** - *Bosom Friends*, and four further children's titles; Lofts (W.O.G) & Adley (D.J) - *The Men Behind Boys Fiction*, (6).
- 565A. **A large quantity of sale catalogues**, mainly Sothebys, Christies and Vennet-Smith, including autograph, postcards, firearms, printed works and early oak.
- 565B. **Dickens (Charles)** - *Household Words*, vols 1, 5, 9, 10, 12 (5), contemporary ¾ calf gt. Revue Des Deux Mondes, 5 vols, and a quantity of leather bindings.

## PRINTS

566. **After John Gould.** Calophasis Elliotti, Phasianus Deccollatus, Phasianus Soenmerringi, Phasianus Versicolor, set of four reproduction colour prints, plate size 16" x 11.75".
567. **After Haghe**, The Military Review, The Camp at Chobham, The Troops Returning to their Encampment after a Field Day. Hand coloured lithograph by Edmund Walker, c.1853, pub. by Ackermann, image size 11.5" x 32.5" (heavily restored margins).
- 567A. **After Spy.** Five Vanity Fair caricatures, entitled 'Bow Street', 'The Recorder', and 'London Sessions', 'Wit and Wisdom' and 'Worship Street', together with a further entitled 'Three Dowagers' (6).
568. **After W. H**, title *Centre of the British Army at Lahayesainte, June 18th 1815*, engraving by P. Sutherland, coloured aquatint, c.1816. 11.5" x 14.25".
569. **By and after Augustus Butler**, The Review at Chobham - The Troops passing for Her Majesty, June 21st 1853, The Camp at Chobham, taken immediately after the arrival of the troops, June 14th 1853, hand coloured lithographs, c.1853, a pair, 14" x 20".
570. **Read & Co (Publishers)** - The Great Military Camp at Chobham, half tone lithograph, 11" x 21".
571. **A gilt framed Arnst lithograph** of the Royal Review of Scottish Volunteers
572. **After Thomas Webster.** The Rubber, an engraving in a Hogarth frame.
- 572A. **Two landscape oils**, unframed.
573. **After R. B Davis.** T. Goosey Huntsman, to the Belvoir Hounds, lithograph by J W Giles, c.1836, India paper, image size 12 x 16.75.
574. **After J. Ferneley.** Portrait of T. Goosey (Huntsman) and a part of the Belvoir hounds. Lithograph by Miss Ferneley c.1836. 17.5" x 22"



575. **19thC School.** 'Full Cry', hand coloured etching, image 8½" x 9¾".
576. **After J Mortlock.** The SS Great Britain leaving Bristol, 1845, HMS Victory, HM Dockyard, Portsmouth Hampshire, a pair, black and white facsimile etchings. 8" x 10".
577. **After J. F Herring (senior).** *The Scant Meal*, steel engraving 7" x 9.5".
578. **Henry Graves (publisher),** An equestrian landscape, mezzotint c.1885, India paper, image size 5.5" x 8.75".
579. **After Landseer.** A proof colour engraving by Henry Graves & Co.
580. **19thC study of a 16thC gentleman holding a wizened head,** etching, proofed before letter, indistinct script to lower margin. Image size 11.25" x 9.5".
581. **After Lionel Edwards.** Hunters over a drystone wall in moorland landscape, reproduction colour print, limited edition 20/500, pub. by the Tryon Gallery, c.1978, image size 13½" x 21½".
582. **Landscape etching,** signed in pencil.
583. **Two etchings,** one of fountain in mineries, the other of the old tea trader, signed in pencil to the margins.
584. **A 1940's film poster - L'aigle des mers** (The sea hawk), starring Errol Flynn, Brenda Marshall and Claude Reins. Printed in colour. 16.25" x 12.5, together with a booklet of sheet music with music by Herguy Carmichael 'How Little We Know' from the film 'To Have and Have Not'.
585. **A 19thC Japanese school.** A study of three Japanese court ladies, coloured woodblock. 14.75" x 9.75". Together with a pen and ink style sketch, Bridge of size, Venice.
586. **After Alan Fearnley.** *Just Another Day at the Office*, reproduction colour of Michael Schumacher goes about his business in the very special 2001 season. Signed in pencil by the artist and Schumacher. Ltd ed. colour print no. 426/500. Image size 15.5" x 23.5".
587. **After G Thomas.** Her Majesty at the Review.
588. **A hand coloured linear map** with the arms of Stamford.
- 588A. **A hand coloured linear map** with the arms of Stamford.
589. **A hand coloured map of the Hundred of Eythorne.**
590. **Two 19thC flower prints;** a quantity of P&O and orient shipping line blank menu cards, various designs; and two unframed engravings.
593. **William Bartol Thomas (1877-1947).** Misty moorland Landscape, watercolour, signed W.B Thomas. 8" x 13.5" Partial Boston galley, label verso.
594. **William Bartol Thomas (1877-1947).** Boston Stump from the Market Place, watercolour over pencil, signed. 15.75" x 11.75".
595. **W Hamilton.** Aurora in a chariot with muses, watercolour, heightened body colour, signed W Hamilton R.A 1797. 5" x 26". Provenance:Radburn Hall sale.
596. **Powell May.** *Children and chickens outside a thatched cottage on a country lane, surrounded by trees,* watercolour / heightened white, signed; 11½" x 18½".
597. **19thC school.** Study of a blind man and his dog, watercolour. 11.5" x 8.5".
598. **William Lakin Turner (1867-1936).** Chelsea Reach, watercolour, signed and dated 1897. 10.75" x 4.75".
599. **G. Morris.** Mediterranean fishing boats, watercolours, a pair, signed. 6.75" x 20".
600. **Tom Nesbit.** Half length portrait of a dark haired lady in pink shawl coat, pastel, signed. 25" x 19".
601. **Basil Nightingale (1864-1940).** Grief. A study of a saddle horse, watercolour and body colour, signed and dated 1908. 17.25" x 23".
602. **Basil Nightingale (1864-1940).** *A Hot Scent.* Two Hound in a landscape, watercolour and body colour, signed and dated 1908. 17.5" x 23.5"
603. **J. C. Reed.** A River landscape with Kingfisher perched on a wooden jetty by a heavily leafed bank and meadow beyond, indistinct watercolour and height and body colour, indistinctly signed. 12.5" x 18.5", artists label verso.
604. **School of George Romney.** Study of Lady Hamilton, watercolour. 9.5" x 7". Provenance:Radburn Hall sale.
605. **Miss E.M. Percival.** St Mary's Church, Stamford, Watercolour. 11.25" x 9.25". Title and artists signature verso.
606. **W.T. Bradley Chambers.** Steep hill at Lincoln, Bridge over the river Witham, Lincoln, Charcoal, signed, a pair. 9.5" x 6".
607. **A pair of coastal landscapes,** watercolours, in gilt frames.
608. **Chris Hoggett.** Dried Hosta leaf, watercolour, signed in pencil.
609. **H. C. B. (Phiz?).** A young bearded figure wearing a hat and leading a pig by the back leg, watercolour.
610. **J. Hardwicke Lewis.** A winter landscape with figure sledging in the French Alps, and marked Caux, and monogrammed 'JHL:07', watercolour.
611. **F. Wilfred Lawson.** Landscape with trees in the foreground, pastel, signed and titled 'Buxton, 1913'.
612. **J. Guitton.** Mediterranean coastal scene with fisherman and sailing barges, watercolour, signed 10.75" x 15.5".
613. **J. Guitton.** Mediterranean fishing boats in a rocky cove, watercolour, signed. 11" x 15.75".

## WATERCOLOURS

591. **Wilfred Rene Wood (1888-1976).** *Golden Dog Lane*, Norwich, watercolour, signed Wilfred R. Wood, artists label verso. 11" x 6".
592. **Wilfred Rene Wood (1888-1976).** Church Street, Norwich, watercolour, signed Wilfred R Wood, artists label verso. 11" x 6.75".



614. **W. H. Earp.** A pair of lake scenes with mountains in the distance, boats and cattle in the foreground, watercolours, signed W. H. Earp.
616. **Frederick Brown.** 'He loves me, He loves me not', 'Are you afraid?' A pair of watercolour illustrations for postcards, signed. 9.5" x 6.25" (in one frame).
617. **J.J Wilson.** *In Scarborough Harbour*, pencil sketch signed with initials, 4.5" x 6.5".
618. **Conor.** An upturned fishing boat by lake, watercolour, signed. 11" x 6".
619. **A. P. Humphrey.** Common Partridge and Belvoir Castle, watercolour, signed, 14" x 18", artist & R.A. Exhibition labels (1973) verso.
620. **19th school.** Study of a milanese lady in 17thC dress, watercolour, 5.5" x 4.24".
621. **Alex Oxley.** *Trask*, pen and ink cartoon study of a motorcyclist. 10.25" x 7".
622. **C. J. Holmes.** *Sunset - gargraze.* Landscape, watercolour, signed and dated 1935.
623. **F. McSweeney.** White bogland, mixed media, 10" x 14".
624. **Disney.** Cartoon sketch of Mickey mouse, bears signature and studio stamp, 10.25" x 7.5".
625. **Disney.** A humorous hand-coloured cartoon of Mickey and Minnie Mouse in a compromising position, bears a stamp saying Walt Disney Co. 1936.
626. **E. Earp.** A Continental shoreline with boats, watercolour, signed E. Earp.
627. **E. Earp.** Fisherman and boats, watercolour, signed E. Earp.
628. **19thC school.** London Bridge in the 18thC, watercolour and ink, 19.75" x 8.5".
629. **M. O. Wigmore.** Gulls over a rocky cliff, watercolour, signed.
630. **A coastal watercolour,** gilt framed.
631. **J. Berkeley Hewitt.** Derwent Water and Loch Achran, a pair of watercolours, signed.
632. **A late Victorian sampler by Kate Warn,** dated 1887, worked in coloured threads with letters of the alphabet, verse and motifs, framed. 11.5" x 9.5".
633. **A set of six coloured oleographs** depicting composers in decorative gilt frames, 8.5" x 6.5" overall.

## COLLECTORS ITEMS II

634. **A Vickers Machine gun,** serial no. B1936, built Dec 1944, armoured nose cone, standard battle site, brass bead block and retaining original finish. Also fitted with a seldom seen mountain bracket for a long range dial site and complete with original transit case. *This gun is sold with a Birmingham proofhouse certificate of deactivation (DA74960-1996).* N.B. No license is required to own this gun.
635. **A pair of Japanese shibiyama panels,** depicting figures within prunus trees, inlaid with ivory, bone, and lacquer, 34" x 17".
- 635A. **A pair of decorative Chinese paintings on silk.**

## CLOCKS & BAROMETERS

636. **An Edwardian walnut architectural mantel clock,** the dial having applied silvered floral spandrels, chapter ring with Arabic numerals and eight-day movement striking chimes. 19" high.
637. **A 19thC French oak cased mantel time piece** with blue and white floral enamel dial and frieze. 13" high.
638. **A Victorian polished slate and liver marble architectural mantel clock,** marked 'Goldsmith's Alliance Ltd' to the dial, eight-day movement striking a bell. 13" high.
639. **A Victorian polished slate and variegated marble mantel clock,** the dial having Roman numerals and exposed escapement, Brocot eight-day movement, striking a bell, 14" high.
640. **A 19th Century walnut and metal mounted shelf clock.**
641. **An early 20thC mahogany stained bracket clock** with silvered dial with chime/ silent, eight-day movement striking chimes, 15" high.
642. **A late 19thC stained beech wall clock,** with two par dial having Roman numerals and eight-day movement striking a gong. 18" high.
643. **An Edwardian oak-framed aneroid barometer.**
644. **A Seiko drop dial wall clock.**
645. **A 19thC rosewood marquetry drop dial wall clock** with Roman numerals and marked 'STEWART, Limerick'; eight-day movement, 28" high.
646. **An Edwardian oak aneroid barometer.**
647. **A 1930's walnut cased wall clock,** the single door revealing a gilt circular dial with Roman numerals and four bevel glass panels, eight-day chiming movement. 36" high.
648. **A 19thC French portico clock,** the ebonised case having ormolu mounts to the columns, and swan and ribbon panels, the silvered dial having Roman numerals, and eight-day movement striking a bell, regulated by a pendulum in the form of an ormolu cherub in a swing, overall height 26".
649. **An early 19thC oak and mahogany banded longcase clock,** with dentil moulded swan-neck pediment and Corinthian capitol pillared hood, full-length trunk door shaped and enclosed by canted panels and plinth. The painted dial having moon roller, Arabic numerals, subsidiary seconds ring, and date crescent, and marked 'Wainwright, Nottingham'; eight-day movement striking on a bell.
650. **A George III flamed mahogany longcase clock,** with swan-neck pillared hood with reeded columns, full length flamed and string inlaid trunk door, similar base and bracket. Square arch brass dial with ship to the moon roller, applied rococo spandrels, silvered chapter ring, silvered seconds ring, date aperture, and marked 'W. Winstanley, Mold'; eight-day movement striking a bell, with chimes.

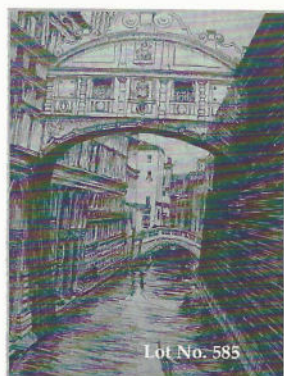


651. **A 19thC satinwood and mahogany longcase clock**, with swan-neck pillared hood, full-length trunk door with Britannia inlaid navette, similar design to the base with Cupid's Bow apron. The painted dial having a moving ship to the arch, anchors to the spandrels, Arabic numerals, subsidiary seconds dial and date crescent, and marked '**Levy & Co, Boston**'; eight-day movement striking a bell.
652. **An early 19thC mahogany longcase clock**, with reeded pillared hood, full-length trunk door, and shaped base. Painted square arch dial with a church to the moon roller, rose and floral spandrels, Roman numerals, subsidiary seconds and date rings, marked '**W. Aatnet, Portsea**'; eight-day movement striking a bell.
653. **A George III black lacquer and Chinoiserie painted longcase clock**, with moulded hood, full-length arch door, and reduced base on bracket feet. The square arch dial having spherical marker to arch, applied cast spandrels, silvered chapter ring with Roman hour numerals, marker '**Thomas Dames, Northampton**', subsidiary seconds ring and date aperture; eight-day movement striking a bell.
654. **A George III black lacquer and Chinoiserie longcase clock**, with inset pillared hood, full-length trunk door and reduced base. The dial having cast amorini spandrels, applied chapter ring '**Jason Cox, Longacre, London**' with Roman numerals and date aperture.
655. **A carved oak longcase clock**, square brass dial with cast applied spandrels, chapter marked '**Geo. Eyre, Kettering**'; eight-day movement striking a bell.
656. **A 19thC flamed mahogany longcase clock**, with moulded and pillared hood, full-length trunk door, plain base with bracket feet and shaped apron. The painted dial having rose, anchor and shield to arch, fan and flower spandrels, Roman hour numerals, subsidiary seconds and date rings, and marked '**Geo. Park, Fraserborough**'; eight-day movement striking a bell.
657. **A 19thC walnut veneered longcase clock**, with moulded hood, full-length trunk door, and reduced base. The brass square dial having applied spandrels, silvered chapter ring with Roman hour numerals, subsidiary seconds ring and date aperture, marked '**John Wife, Son Londini, Fecit**'; eight-day movement striking a bell.
658. **An early 19thC flamed mahogany longcase clock**, with arched hood, the cross-banded trunk having a short door inset by quarter wrythen columns with Corinthian capitols, raised on bracket feet. The painted 13" dial having moon roller to arch, floral spandrels, Roman hour numerals, subsidiary seconds ring and date crescent, and marked in '**B Geronimo, Bristol**'; eight-day movement striking a bell.
659. **An early 18thC oak longcase clock**, with raised dentil moulded hood, full length door, moulded and plinth base, the 10" brass dial having applied cast spandrels, silvered chapter ring with Roman numerals, inscribed '**Thomas Muddle, Tunbridge Wells**' [sic], matted centre engraved with stylized birds, date aperture, single hand, 30-hour movement, striking a bell.
660. **A George III black lacquer and Chinoiserie longcase clock**, with a caddy hood, inset pillars, a full length arched door and reduced plinth. The brass square arch dial having applied spandrels, silvered Tempus Fugit ho-ho bird londe, silvered chapter ring, silvered seconds ring, and date crescent, the matted centre bearing the maker's mark of '**James Goodyer, Guildford**'; eight-day movement striking a bell.
661. **A early 19thC mahogany longcase clock**, with swan-neck coloured hood, cross-banded trunk with quarter inset wrythen columns, 12" painted dial with windmills and cottages to the spandrels, Roman hour numerals, subsidiary seconds ring and date crescent; eight-day movement striking a bell.
662. **An early 19thC oak and mahogany cross-banded longcase clock**, with swan-neck pediment, turned pillar hood, trunk door inset with quarter columns, panelled base and bracket feet. Painted square arch dial, having a hunting scene to the arch, tigers and buildings to the spandrels, painted Roman numerals, subsidiary seconds and date rings, and marked '**Brown & Son, Bingham**'; eight-day movement striking a bell.
663. **A George III flamed mahogany longcase clock**, with swan-neck Corinthian column pillared hood, full-length trunk door, with quarter-inset columns, flamed and string inlaid base. The painted square arch dial having a rural farmyard scene to the arch, shells to the spandrels, Roman hour numerals, subsidiary seconds ring and date crescent, and marked '**Middlemifs, Hull**'; eight-day movement striking a bell.
664. **An 18thC lacquer and Chinoiserie painted longcase clock**, with pagoda hood, full-length trunk door, and plinth base. The brass dial having cast spandrels, silvered silent strike to arch, silvered chapter ring with Roman hour numerals, subsidiary seconds ring and date aperture, the chapter ring inscribed '**Thomas Utting, Yarmouth**'.
665. **A 19thC oak, mahogany and rosewood banded longcase clock**, with swan-neck pillared hood, short trunk door enclosed by quarter-inset reeded pillars, panelled base and bracket feet. The brass square arch dial with cast spandrels and applied arch rondel, '**Broadhead, Belper**', Roman hour numerals, seconds ring and date crescent; eight-day movement striking a bell.

## SILVER & BIJOUTERIE

666. **An Edward VII silver faced watch case**, oblong, embossed with ribbon and husk swag laurel spray hinged with an easel stand, enclosing an open-face pocket watch, Birmingham 1905. 3.75" x 3.5".
667. **A Russian silver cigarette case**, oblong, the front lightly engraved with a trailing floriate border and set with a yellow metal star centred by a ruby, the yellow metal clasp set with a cabachon sapphire, 4.5" x 2.75".
668. **A late Victorian silver heart-shaped vesta case**, engraved with scrolls around a vacant cartouche, Chester 1896, 2" high.





Lot No. 585



Lot No. 588



Lot No. 589



Lot No. 590



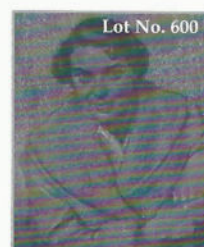
Lot No. 592



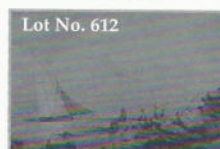
Lot No. 599



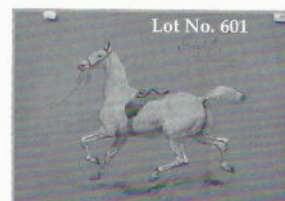
Lot No. 604



Lot No. 600



Lot No. 612



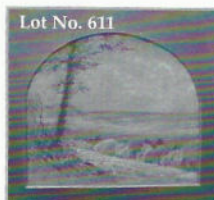
Lot No. 601



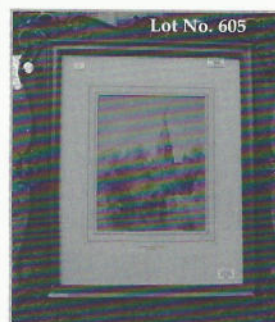
Lot No. 603



Lot No. 609



Lot No. 611



Lot No. 605



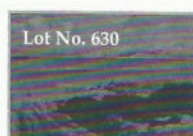
Lot No. 602



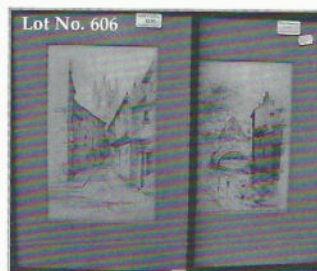
Lot No. 608



Lot No. 610



Lot No. 630



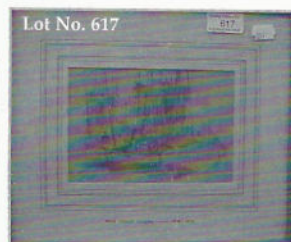
Lot No. 606



Lot No. 607



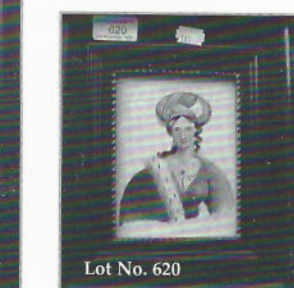
Lot No. 614



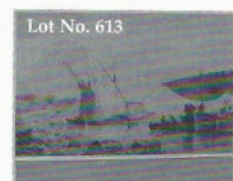
Lot No. 617



Lot No. 618



Lot No. 620



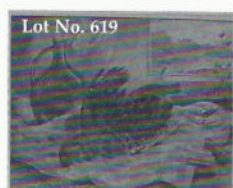
Lot No. 613



Lot No. 615



Lot No. 626



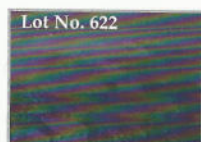
Lot No. 619



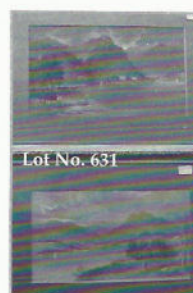
Lot No. 621



Lot No. 627



Lot No. 622



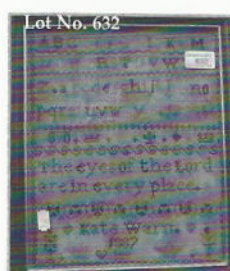
Lot No. 631



Lot No. 594



Lot No. 598



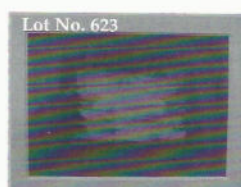
Lot No. 632



Lot No. 628



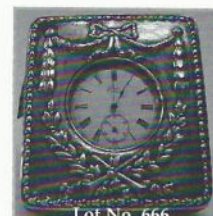
Lot No. 629



Lot No. 623



Lot No. 633



Lot No. 666

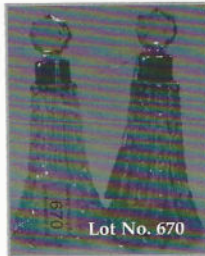




Lot No. 668



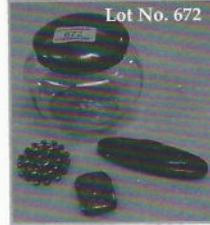
Lot No. 669



Lot No. 670



Lot No. 671



Lot No. 672



Lot No. 673



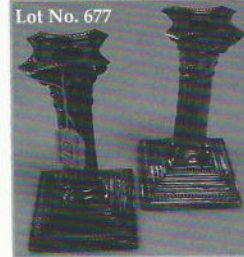
Lot No. 675



Lot No. 674



Lot No. 676



Lot No. 677



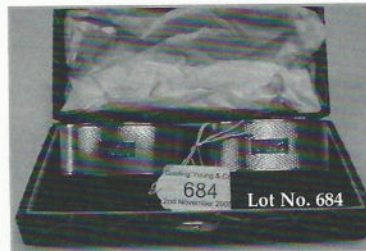
Lot No. 678



Lot No. 682



Lot No. 680



Lot No. 684



Lot No. 696



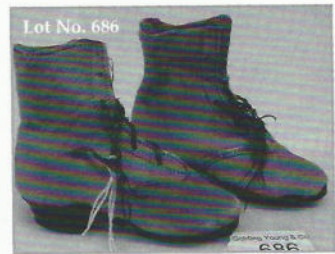
Lot No. 688



Lot No. 693



Lot No. 681



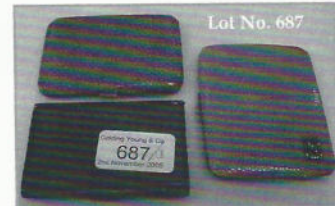
Lot No. 686



Lot No. 683



Lot No. 694



Lot No. 687



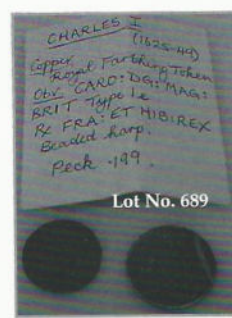
Lot No. 691



Lot No. 685



Lot No. 660



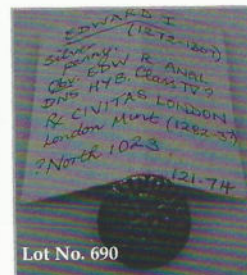
Lot No. 689



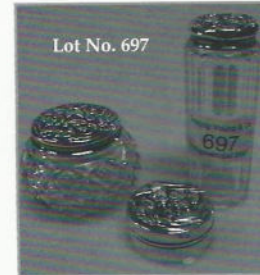
Lot No. 692



Lot No. 664



Lot No. 690



Lot No. 697



Lot No. 706



Lot No. 695



Lot No. 698



Lot No. 699

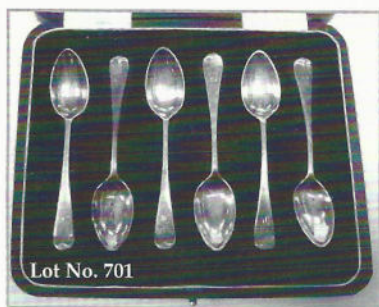


669. **An Edward VII silver novelty pin cushion**, cast as a small bird with velvet pad, Chester assay, date mark rubbed, 1.75" high.
670. **A pair of late Victorian cut glass scent bottles**, with silver collars and faceted stoppers, London 1899, 5" high.
671. **A late Victorian globular art glass scent bottle** with silver collar and faceted stopper, Birmingham 1899, 5.5" high.
672. **A George V glass powder bowl** with a silver cover, initialled M, a silver backed nail buffer, a small silver vesta case, a white metal brooch, (4).
673. **A George V cut glass dressing table jar** with a silver cover, a cut glass salt with silver collar (2).
674. **A Colibri yellow metal machine twined cigarette lighter** incorporating a timepiece, 2" high.
675. **A Coty powder compact**, the machine-twined gilt metal case modelled as a small clutch bag, the interior with mirror and powder aperture, reg. design no. 852784, 3.5" x 2.75".
676. **An assortment of silver and plated irons** including a dressing table bottle and cover, preserve spoons, button hooks, napkin ring and coffee spoons.
677. **A pair of Edward VII silver boudoir candlesticks**, the beaded quatre form sconces over composite columns on stepped square bases with conforming bead borders, London 1903, 6.25" high, [loaded bases].
678. **A late Victorian glass claret jug**, by William Hutton & Sons Ltd, Sheffield, the bell shaped body engraved with three reeded girdles, the silver collar and handle with conforming detail, the flat hinged cover with scrolling thumbpiece, London 1898, 10" high.
679. **A Victorian silver caster spoon**, with a pierced berry bowl and engraved handle, London 1842.
680. **A pair of late Victorian silver napkin rings** by Mappin & Webb, oval, engraved with flowers and foliage, Sheffield 1896, in a fitted case.
681. **An Edward VII silver bon bon dish** by James Dixon, circular with pierced border detail, on a domed foot, Sheffield 1900, 6" diameter, 6oz.
682. **A George V silver snuff box** by George Unite, oval, the hinged cover engraved with the initial SJB, Birmingham 1919, 3.75" wide, 3oz.
683. **A cased set of twelve Victorian salts**, by John Heath and John Middleton (Hukin and Heath), each circular with crimped edges and on three bun feet, gilt interiors, together with eleven salt spoons, London assay various dates, in a cartouche shaped velvet lined case.
684. **A pair of silver machine-turned napkin rings**, oval, engraved with monogram, Birmingham 1941, cased.
685. **A set of six silver teaspoons and matching sugar tongs**, Sheffield 1922, cased.
686. **A pair of miniature ponyskin boots**, with wooden sides, 4" long.
687. **A continental silver-gilt and baisse-taile enamel cigarette case**, oblong, bears import marks for 1927, 3.25" x 2" (minor damage), a pink shagreen effect cigarette case, another green example, both 2.5" x 3.25" (3).
688. **A signed Japanese bone and ivory inro**, four sections, with ojime bead and signed hardwood netsuke, carved with a dragon.
689. **A Charles I farthing token**, Obv CARO DG MAG BRIT Type 1 e RX FRA ET HIB REX. Harp Peck 199., and another. (2).
690. **An Edward I penny**, RX CIVITAS LONDON (1282-83?) North 1023?
691. **A set of six George V silver coffee spoons**, the handles with green enamel terminals, Birmingham 1920, cased.
692. **A set of six Edward VII silver handled tea knives**, with rococo scroll handles, Sheffield 1904, cased.
693. **A silver and faux tortoiseshell powder bowl**, hinge broken, Birmingham 1923.
694. **An ivory lidded pot**, with ivory carving under glass over royal blue guilloche enamel.
695. **A bronze animalier group**, of rutting pigs, on oval stepped base; 4½" wide.
696. **A desk seal**, with an agate handle and amethyst carved seal.
697. **3 Silver topped dressing table jars.**
698. **A George II silver seal top spoon**. Maker WC, London 1739.
699. **A silver mustard**, with gadroon rim, on four paw feet, Birmingham 1924, a silver salt, Chester (modern), both with sapphire liners, and two condiment spoons.
700. **A George IV silver caddy spoon**, with shell bowl and bright cut decoration, London 1823.
701. **A set of six George III silver coffee spoons**, engraved with initial, Sheffield 1921, cased.
702. **A set of six silver teaspoons**, with seal terminals, Sheffield 1946, cased.
703. **Playing cards**: Orient line to Australia, boxes; Union Castle line, England to South and East Africa, boxes; Russell Playing Cards Co. New York, in a deep blue case with NO TRUMPS spinner incorporated into lid, a small collection of India postcards, four tatting shuttles, five lead figures, two gold club buttons.
704. **A cased manicure set.**
705. **A 1948 London XIV Olympiad pendant**, a white metal 1948 Olympiad key ring, enamelled fob and tie pin (4)
706. **A gilt brass easel photograph frame** with pierced scrolling border around an oblong aperture, 9" x 7" overall; a stuffed terrapin; a facsimile S.A.S lapel badge; and a miniature engineers manual, presented by Chas Nelson & Co Ltd.



707. **A pair of early 20thC faux tortoiseshell lorgnettes.**
708. **A natural red stained bone chess set**, height of king 2.5", a tatting shuttle and a policeman's whistle.
709. **A Victorian gold soveriegn.**
710. **An Edwardian half sovereign.**
711. **A George V half sovereign.**
712. **Assorted coins** including 1980 coinage of Great Britain and Northern Ireland in a presentation case, assorted crowns, etc.
713. **A Crimean Service Medal 1854**, awarded to (Sgnt?) Manuel Gunnino with Sebastopol clasp. The Siege of Sebastopol began on the 17th November 1854 against the Russian Army. French and British forces forced the fall of Sebastopol on 11th September 1855.
714. **An Indian Mutiny Medal 1857-1858**, awarded to Thomas Taylor of the 34th regiment, Extract from the Fort William Military Proceedings for August 1860 No.432. From Lieut. Col. D.M Stewart, Assistant Adjutant General of the Army to the Secretary to the Government of India, Military Department (No. 558 dated Simla 3 August, 1860. Forwarded by direction of the Commander in Chief to Secretary Major General Sir R.J.H Birch, KC, for submission to His Excellency the Viceroy in Council. The claim of Her Majesty's 34th Foot to the medal appears valid. Supplementary roll of officers and men of Her Majesty's 34th Regiment who have been employed in the defence of the mutiny in India. Fyzabad, 16th December 1859. Thomas Taylor Private. Operation against rebels Trans Gogra and on Nepal Frontier in March and April 1859 (Medal no.381) In all there were 451 medals given without clasps for this particular operation. The 34th Foot was subsequently renamed the Cumberland and Border Regiment.
715. **A Second Afghan War Medal 1878-79-80.** Awarded to C.A. Sword, with Ali Musjio clasp. The first campaign of the war was led by the Mutiny veteran General Sir Sam Browne VC. The Khyber Pass was forced by taking Ali Musjid on 21st November 1878.
716. **An assortment of silver flatware** including two pairs of sugar tongs, tea and condiments spoons and a folding fruit knife with mother of pearl handle, various dates.
717. **A George V silver pedestal fruit dish**, until a bracketed rim, on plain stem with conforming foot, Birmingham 1922, 9" diameter, 4.75" high, 11.5oz.
718. **A large and heavy silver alms dish**, with domed centre and finely stepped rim, London, modern, 16" diameter, 68oz.
719. **A George IV silver teapot**, boat shape with gadroon rim, reeded girdle leaf capped handle, the spout with foliate and shell detail, on four bun feet, London 1821, 6.25" high, 25oz.
720. **An Edward VII glass and silver mounted decanter** by H. Matthews, the wrythen moulded body having pierced silver mounted shoulders, everted, quadraform spout, conforming pear shape stoppers, Birmingham 1907, 13" high.
721. **A modern cut glass and silver mounted claret jug**, of swept circular form, foliate cut to the body and star cut base, Sheffield assay, 11.5" high; together with a French glass claret jug with plated mounts, 11" high (2).
722. **A George III silver teapot**, rounded rectangular with Greek Key border, over annulated girdle, London 1809.
723. **An Art Deco silver powder compact**, shaped oblong with machine turning, Birmingham 1940, 2.75" x 3".
724. **After Ferdinand Pautrot (1832-1874).** A French gilt bronze group of a pheasant and dormouse, with fern on a rocky outcrop, oral bases, signed F. Pautrot, 12.5" high, 15" wide.
725. **A pair of gilt metal table candlesticks**, each modelled as a stork, the scone issuing from a leafy branch held in its mouth, hung with faceted glass lustres, the whole on a rocaille base, 16" high.
726. **A George III silver tankard**, with floral and scroll decoration, London 1813.
727. **An Edward VII cut glass spherical scent bottle**, with an embossed silver cover, and inner glass stopper, Birmingham 1908, 4½" high.
728. **A George V small silver sweetmeat dish**, Birmingham 1925.
729. **A Victorian silver barrel shaped tankard**, with fern engraved decoration, London 1874.
730. **A George V silver tankard**, stepped foot, straight sides, London 1932.
731. **A modern silver coffee pot**, baluster, on a stepped circular base, cast spout, the domed cover with composition finial and scroll handle, 8½" high, Birmingham 1967, maker: Adie Brothers Ltd, 15oz.
732. **A Victorian silver rowing goblet**, engraved and inscribed, on a knopped stem and circular foot with bead border, London 1870, 6.75" high, 7oz. N.B. Presented by Perth Rowing Club for coxed fours race, c.1872.
733. **A quantity of sundry silver and plated items** including hairbrushes, hand mirror, candlestick etc.
734. **An Edward VII leather travelling case**, lined in emerald green moire, and fitted with various accessories including silver topped glass jars, button hook, a vesta strike and ink well, and associated silver backed dressing table set, button hook and match box cover.
735. **A group of four T.A First World War medals** awarded to Sjt. B.H. Sindall, a miniature set, a Second World War miniature group of five, a Second World War Star, Italy Star, two other military medals and a collection of civic medals.
736. **Five ivory and bone novelties** and an art glass ink well on an oak stand with pew recesses.
737. **A gilt metal half-hunter Arinex pocket watch**, a chrome cased Pinnacle open-face pocket watch, a silver watch chain and two silver fobs.





Lot No. 701



Lot No. 702



Lot No. 703



Lot No. 707



Lot No. 717



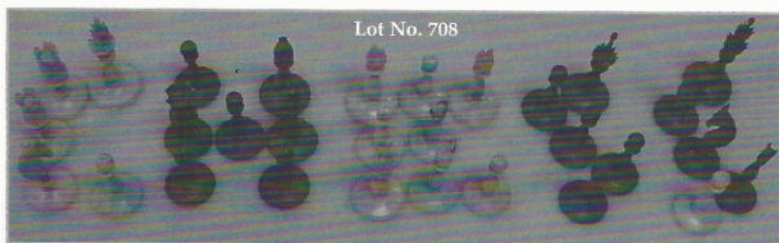
Lot No. 713



Lot No. 714



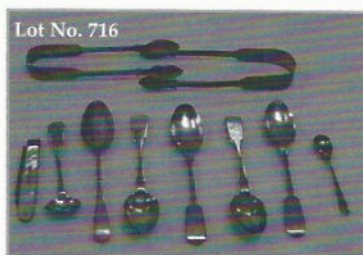
Lot No. 715



Lot No. 708



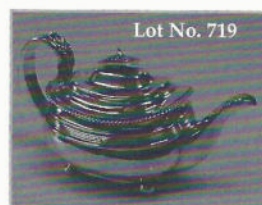
Lot No. 704



Lot No. 716



Lot No. 732



Lot No. 719



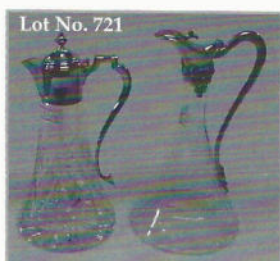
Lot No. 718



Lot No. 720



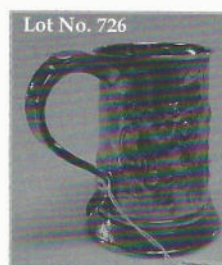
Lot No. 700



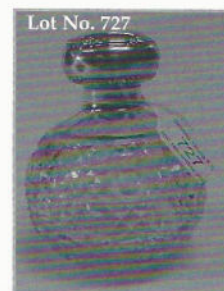
Lot No. 721



Lot No. 722



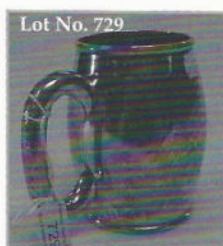
Lot No. 726



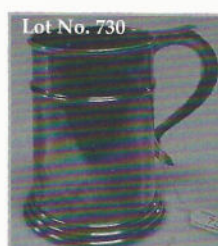
Lot No. 727



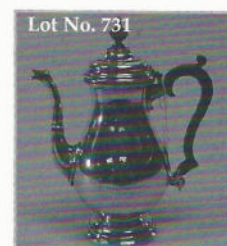
Lot No. 728



Lot No. 729



Lot No. 730



Lot No. 731



## COLLECTORS ITEMS III

738. **A brass 6-light electrolier** cast with floral swags, enclosing a frosted glass shade with cut starbursts, 28" high, 14" diameter.
739. **A quantity of brass ware** including trivets, door stops and horse brasses.
740. **A quantity of oak and cast iron saddle and bridle rests.**
741. **A large Victorian terracotta baluster vase**, with wavy rim, painted with sunflowers.
742. **A cased patented "unwarpable" string inlaid rosewood banjo.**
743. **A Boosey and Hawkes cased trombone** together with sheets music.
744. **A Hohner Mignon II piano accordion** and another cased (2).
745. **A Barcarole Magister Piano-Accordian**, cased.
746. **A square section brass depth gauge**, with knob handle.
747. **Bone handled cutlery** etc.
748. **An old paper guillotine** and box of glass photographic slides.
749. **A leather saddle.**
750. **A leather saddle.**
751. **A pair of wrought andirons.**
752. **A painted carved wooden figured of a lion**, 19" high.
753. **J. Edwards.** A 19thC painted plaster bust of a female, impressed marked verso, J. Edwards sculptor, London 1867. 29" high.
754. **A leather saddle.**
755. **An Edison GEM phonograph**, cased (AF), together with c.35 cylinders.
756. **A Sofono circular electric convector heater.**
757. **A Nestor Martin cast iron stove.**
758. **A Victorian collectors cabinet** with glazed slope top, drawers and fitted cupboards, with an arrangement of ostrich eggs, seashells and birds eggs. *Provenance: Believed to be from the collection of Preston Trust Homes.*
759. **An early 20thC croquet set.**
760. **A quantity of Dinky and other die-cast toys**, in played with condition.
761. **Dinky Supertoys:** No. 651 Centurion Tank, good condition, boxed (box lid with end flaps missing and some biro marks).
762. **Dinky Supertoys:** No. 660 Tank Transporter, good condition, boxed (the box slightly worn and partially split at corner, some biro marks).
764. **Dinky Supertoys:** No 905 Foden Flat Truck with chairs - green, good, boxed (the box split at one end).
765. **Dinky Supertoys:** No. 934 Leyland Octopus Wagon, fair, boxed (the box split at one end).
766. **Dinky Supertoys:** No 972 20-Ton Lorry-Mouthed Crane "Coles", fair, boxed (the box split).
768. **Scalextric:** A quantity of track sections, a power unit, a C77 Ford GT car, a C\$ Electra car and two hand Throttles, all boxed.
769. **A very worn German teddy bear** with a long snout, replace eyes and leather patched back, 22" high.
770. **A collection of approximately 38 Britain's and other Noah's Ark lead animals.**
771. **A Cricket bat** - Leicestershire county Cricket Club Squad 2002, signed in blue biro by 22 members of the team.
772. **A Cricket bat** - Highbury Club, signed by members of the England and West Indies teams, date unknown.
773. **Hornby Dublo:** Royal Scot 4-6-0 locomotive and fender, Royal Scot Diesel locomotive, Peregrine 4-6-2 locomotive and fender, a 0-6-0 tank engine and fender, assorted carriages and commercial wagons including six boxed coaches (red/white striped boxes), power control and circuit control, accessories and track.
774. **Hornby Dublo:** 4-6-2 locomotive and fenders, a 0-6-0 black tank engine and fender, a large quantity of coaches and commercial wagons, some boxed, four Wrenn locomotives (boxed).
775. **An Admiral Cricket shirt** signed by the 2005 England Ashes winning test team.
776. **An old canvas golf bags** and clubs.
777. **A Persian hangar**, with pictorial blade.
778. **A 19thC cavalry sabre**, with brass hilt.
779. **A George V officer sword**, with scabbard.
780. **A broadsword.**
781. **Onwards are a selection of fishing rods and tackle.** *A full inventory will be online at [www.goldingyoung.com](http://www.goldingyoung.com) from Saturday 29th October.*

END OF SALE



# 2006 Saledates

## The Collective Sales

*Viewing Tuesday 2pm to 6pm & Saleday from 9am*

January 11th  
 February 1st  
 March 1st & 22nd  
 April 5th & 26th  
 May 24th  
 June 7th & 28th  
 July 12th  
 August 16th  
 September 6th & 27th  
 October 11th  
 November 15th & 29th  
 December 13th

## The Catalogue Sales

### February 14th & 15th

*Closing date for entries 20th January*

*Viewing: Sunday 1pm to 5pm, Monday 2pm to 7pm,  
 Tuesday 9am to 2pm and Wednesday 9am to 10am.*

### May 10th

*Closing date for entries 14th April*

*Viewing: Monday 2pm to 5pm, Tuesday 2pm to 7pm & Saleday 9am to 10am.*

### August 2nd

*Closing Date for entries 7th July*

*Viewing: Monday 2pm to 5pm, Tuesday 2pm to 7pm & Saleday 9am to 10am.*

### November 1st

*Closing date for entries 6th October*

*Viewing: Monday 2pm to 5pm, Tuesday 2pm to 7pm & Saleday 9am to 10am.*

#### CATALOGUING GLOSSARY

- a) Generally: 'As Found' (AF). This term indicates the lot has some damage. Its absence does not indicate that the lot is free of defect. All lots are SOLD AS SEEN.
- b) Paintings: 'Signed, initialled, monogrammed' - This refers to the present state of the work and is not an attribution is given or inferred.
- c) Books and printed matter: These items are not sold subject to collation and are not returnable once removed from the premises.
- d) Silver & Jewellery: Weights given are approximations given by basic instruments. Quality assessments, dimensions and estimated weights attributed to diamonds and other gemstones have been determined without unsettling the stones, unless otherwise stated, and should, therefore be considered only as approximate, because of limitations imposed by the mount. Generally, estimated weights are calculated by applying standard formulae to the measurements taken. Gemmological descriptions are based on testing carried out with standard equipment, without having the stones unset. Treatments or enhancements that are considered permanent and do not fundamentally alter the nature of the gemstone, such as heat-treatment, and certain traditional processes such as the staining of agates, and colourless waxing and oiling, are not necessarily disclosed.



## IMPORTANT NOTES FOR PURCHASERS

1. **PAYMENT:** Must be made in full immediately after the Auction. The following methods of payment are acceptable.  
a) Cash b) Bankers Draft c) Building Society Cheque d) Cheques (accompanied by a valid card.)  
e) Debit & Credit Cards (the latter subject to a charge of 2% + VAT).

### PAYING BY CHEQUE?

If you are not known to the Auctioneers and wish to pay by cheque above your guarantee card limit WE WILL RETAIN THE GOODS until it has been cleared (7 days). There will be NO EXCEPTIONS to our policy. To avoid UNDUE EMBARRASSMENT for yourself or to our staff, please do not ask for preferential treatment. If you wish to clear goods immediately bring a letter from your Bank or a suitable guarantor reference.

2. **BUYERS PREMIUM** of 15% (with a minimum of £1 per lot) is payable on all lots, plus VAT.
3. **REMOVAL OF PURCHASES:** Goods must be collected as soon as they are paid for, and in the 2 Working Days following the sale. If goods are not collected on these days we reserve the right to charge £1 per lot per day thereafter.
4. **COMMISSION BIDS:** If you are unable to attend this or any of our future sales we will be pleased to bid on your behalf. We always purchase at the lowest possible price, subject to other bids and reserves.  
All bids must be handed to the office on an official form. It remains the responsibility of prospective purchasers to contact GOLDINGS to confirm whether their bids have been successful.
5. **TELEPHONE BIDS:** There are inherent dangers with this practice, therefore all such arrangements are made entirely at the bidder's risk. Telephone bids will only be accepted if the lower estimate is £500 or above. For lots with a lower estimate below this figure Commission Bids Only will be accepted.
6. **SMOKING** is not permitted in any part of the Saleroom.
7. **REFRESHMENTS** will be available Sale day.
8. **ACCOUNT TRANSFER** will not be recognised after the sale. If any lots are purchased for another person, this must be declared at the fall of the hammer.
9. **ESTIMATES.** Our Auctioneers will be available during viewing to give guidance on your prospective purchases.



## CONDITIONS OF SALE

1. These Conditions together with any Notices to Purchasers are the only terms and conditions subject to which Golding Young & Co ("the Auctioneers"), as agents for the Vendor will sell goods to a purchaser ("the Bidder") and all other conditions, whether express, or implied at common law or by statute as are capable of lawful exclusion are hereby excluded.
2. The highest bidder shall be the buyer. The Auctioneers reserve the right of regulating the biddings; of rejecting any bid; and of bidding for, withdrawing, consolidating, dividing or altering the order of lots.
3. The purchase money for each lot with the usual commission of 15% (with a minimum of £1 per lot) plus VAT at the current rate shall be paid at the fall of the hammer (if required). Each lot at the fall of the hammer shall be at the sole risk and expense of the buyer, and shall be paid for and removed immediately after the conclusion of the sale, but no lot shall become the property of the buyer, or be removable until paid for, and if taken away in contravention of these conditions without an order for removal signed by the Auctioneers, they shall have power to seize the same by their servants or agents, or otherwise, or the Auctioneers may recover either the lot sold or the price thereof (at their option) by action at law.
4. No contra account of any description whatever will be allowed to the buyer as a set off, and payment for each Lot shall be made to the Auctioneers or their clerk only, and a buyer paying by cheque must give satisfactory references.
5. For all purposes of this sale the Clerk of the Auctioneers shall be deemed to be the agent of both seller and buyer.
6. A bidder shall not be allowed to retract his bidding after the fall of the hammer, and he shall give up his full name and address if required. The Auctioneers will not recognise the transfer of any lot from one buyer to another, nor make any alteration in the sale book in respect thereof.
7. The Auctioneers are acting only as agents, and give no personal warranty as to the condition, quality or authenticity of any chattels offered for Auction. Any catalogue description is given merely as guide to purchasers, any description can be changed from the rostrum before the lot is sold. If a purchaser buys without previous inspection he will do so at his own risk.
8. Notwithstanding any other terms in these Conditions, if within 7 days of the Sale a purchaser gives notice in writing that a lot is a deliberate forgery, with supporting factual evidence, the Auctioneers may rescind the transaction. The burden of factual proof lies with purchaser, mere opinions will not satisfy. This benefit is not assignable.
9. If any buyer neglect or refuse to comply with the above conditions or any of them, his deposit money (if any) shall be forfeited, and the lot unclaimed may, at the option of the Auctioneers, be resold without notice by public auction or private treaty, and any loss occasioned by such re-sale together with all expenses attendant thereon, or arising under these conditions shall be paid for by the defaulter and be recoverable as and for liquidated damages. This condition is however without prejudice to the right of the Auctioneers to enforce the contract made at this sale if they think fit.
10. Any Notes for Purchasers and Catalogue Glossaries will be construed as Conditions of Sale.
11. The Auctioneers shall be the sole Arbitrators in all matters of dispute relating to those conditions both as between the seller and the buyer and between the several bidders and buyers and their determination on all matters shall be final and binding on all parties concerned.





Lot No. 254



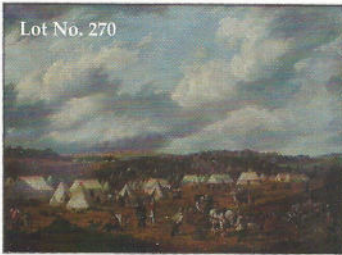
Lot No. 255



Lot No. 256



Lot No. 265



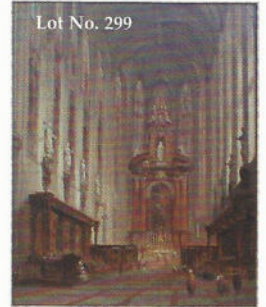
Lot No. 270



Lot No. 292



Lot No. 298



Lot No. 299



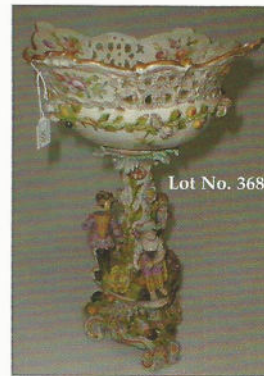
Lot No. 353



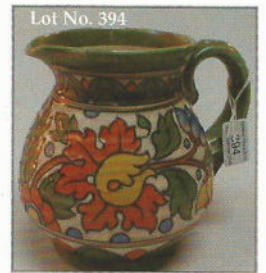
Lot No. 367



Lot No. 380



Lot No. 368



Lot No. 394



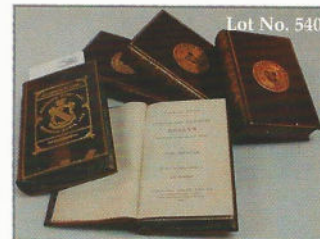
Lot No. 411



Lot No. 489



Lot No. 409



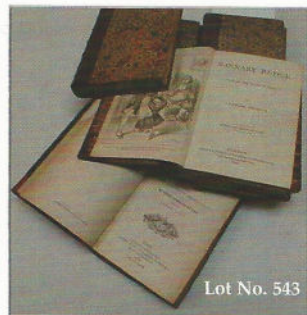
Lot No. 540



Lot No. 462



Lot No. 507



Lot No. 543



Lot No. 591



Lot No. 593



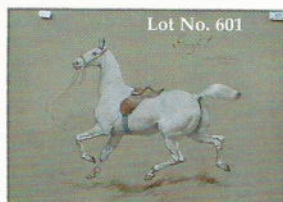
Lot No. 597



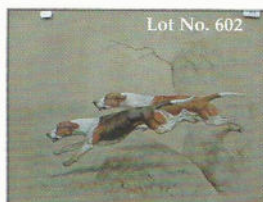
Lot No. 595



Lot No. 616



Lot No. 601



Lot No. 602



Lot No. 603



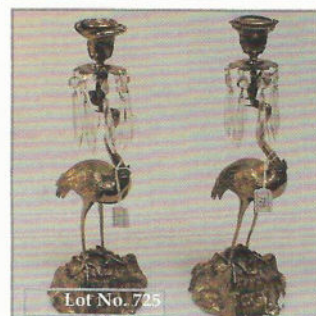
Lot No. 596



Lot No. 667



Lot No. 679



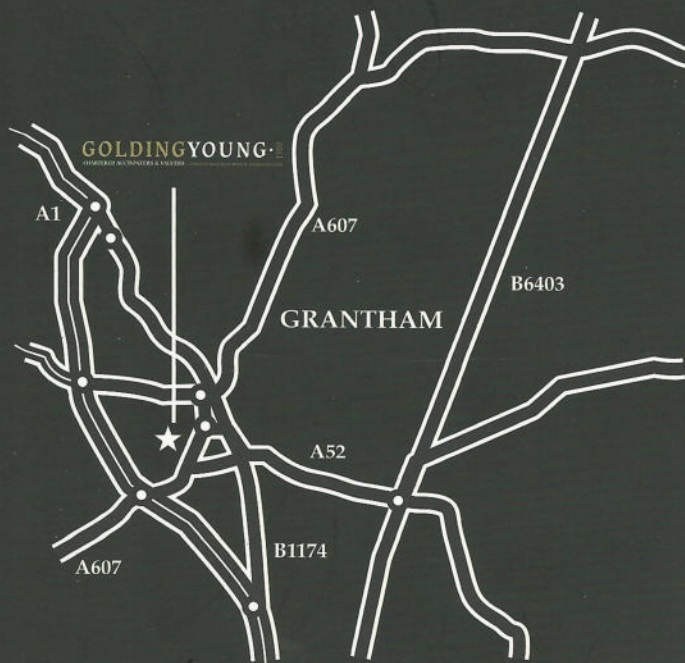
Lot No. 725



Lot No. 724



## How to find us



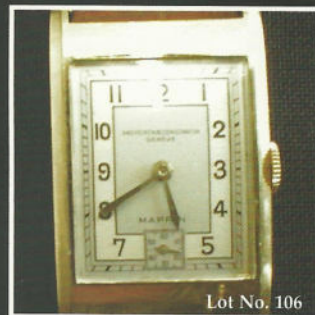
### By Road

From whichever direction you approach Grantham, you can find us if you observe the following rules: Follow signs for Town Centre. Follow signs for Railway Station. At the roundabout leading to "Station Road", continue around to a double viaduct/ railway bridge. Take the right hand arch which leads into Old Wharf Road.

The Salerooms are the first building on the right. There are parking and loading bays in front of the premises.

### By Train

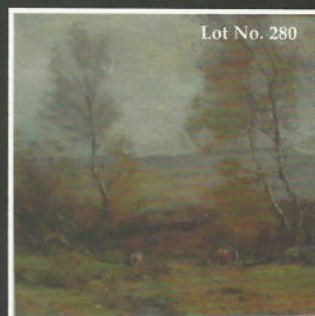
The auction house is situated very closely to the Railway Station, which is served by the East Coast Main Line. Trains run approximately every 20 minutes from Kings Cross during peak times.



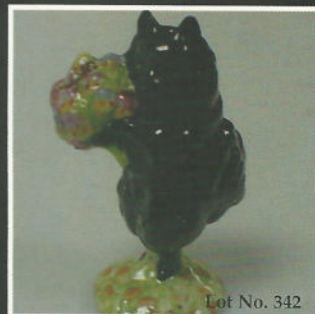
Lot No. 106



Lot No. 426



Lot No. 280



Lot No. 342



Lot No. 268



Lot No. 544A

# GOLDING YOUNG 1900

CHARTERED AUCTIONEERS & VALUERS Commercial Asset Agents • Arts & Antiques Surveyors

Golding Young & Co., Old Wharf Road, Grantham, Lincolnshire NG31 7AA  
Telephone: 01476 565118 Fax: 01476 561475 Email: [enquiries@goldingyoung.com](mailto:enquiries@goldingyoung.com)