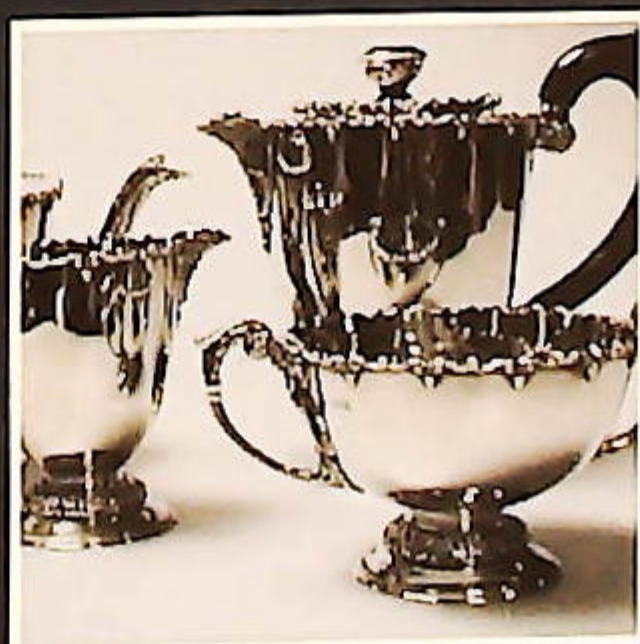


GOLDING YOUNG • 1900

CHARTERED AUCTIONEERS & VALUERS Commercial Asset Agents • Arts & Antiques Surveyors



CATALOGUE SALE

MAY 2004



IMPORTANT NOTES FOR PURCHASERS

1. **PAYMENT:** Must be made in full immediately after the Auction. The following methods of payment are acceptable.
 a) Cash b) Bankers Draft c) Building Society Cheque d) Cheques (accompanied by a valid card)
 e) Debit & Credit Cards (the latter subject to a charge of 2% + VAT).

PAYING BY CHEQUE?

If you are not known to the Auctioneers and wish to pay by cheque above your guarantee card limit WE WILL RETAIN THE GOODS until it has been cleared (7 days). There will be NO EXCEPTIONS to our policy. To avoid UNDUE EMBARRASSMENT for yourself or to our staff, please do not ask for preferential treatment. If you wish to clear goods immediately bring a letter from your Bank or a suitable guarantor reference.

2. **BUYERS PREMIUM** of 15% (with a minimum of £1 per lot) is payable on all lots, plus VAT.
3. **REMOVAL OF PURCHASES:** Goods must be collected as soon as they are paid for, and in the 2 Working Days following the sale. If goods are not collected on these days we reserve the right to charge £1 per lot per day thereafter.
4. **COMMISSION BIDS:** If you are unable to attend this or any of our future sales we will be pleased to bid on your behalf. We always purchase at the lowest possible price, subject to other bids and reserves.

All bids must be handed to the office on an official form. It remains the responsibility of prospective purchasers to contact GOLDINGS to confirm whether their bids have been successful.
5. **TELEPHONE BIDS:** There are inherent dangers with this practice, therefore all such arrangements are made entirely at the bidder's risk. Telephone bids will only be accepted if the lower estimate is £500 or above. For lots with a lower estimate below this figure Commission Bids Only will be accepted.
6. **SMOKING** is not permitted in any part of the Saleroom.
7. **REFRESHMENTS** will be available Saleday.
8. **ACCOUNT TRANSFER** will not be recognised after the sale. If any lots are purchased for another person, this must be declared at the fall of the hammer.
9. **ESTIMATES.** Our Auctioneers will be available during viewing to give guidance on your prospective purchases.



GLOSSARY

- a) Generally: 'As Found' (AF). This term indicates the lot has some damage. Its absence does not indicate that the lot is free of defect. All lots are SOLD AS SEEN.
- b) Paintings: 'Signed, initialled, monogrammed' - This refers to the present state of the work and is not an attribution.
- c) Books and printed matter: These items are not sold subject to collation and are not returnable once removed from the premises.
- d) Silver & Jewellery: Weights given are approximations given by basic instruments.

GOLDING YOUNG • 1900

CHARTERED AUCTIONEERS & VALUERS Commercial Asset Agents • Arts & Antiques Surveyors

Upon instructions from over 150 private and professional vendors
from throughout the region.

GOLDING YOUNG & CO will sell by AUCTION

ANTIQUES, WORKS OF ART AND COLLECTORS ITEMS

WEDNESDAY 5th MAY 2004

| | |
|------------------|--|
| Lots 1 - 151 | Furniture |
| Lots 152 - 199 | Clocks and Barometers |
| Lots 200 - 300 | Silver |
| Lots 301 - 450 | Jewellery, Bijouterie etc |
| Lots 451 - 550 | Pictures |
| Lots 551 - 593 | Books, Ephemera etc |
| Lots 594 - 600 | Decorations |
| Lots 601 - 780 | Metalware, Glassware, Victoriana & Miscellaneous Collectables |
| Lots 781 - 1008 | Ceramics and Glass |
| Lots 1009 - 1033 | Toys |

Lot enquiries

Suki J Burnett A.N.A.V.A.
Jan L Squires P.J.Gem.Dip, F.N.A.V.A.
Colin R Young M.R.I.C.S., F.N.A.V.A.

Accounts enquiries

Mary Rice-Johnston

VIEWING:

Online at WWW.GOLDINGYOUNG.COM from Saturday 1st
and in the saleroom on Sale week
Bank Holiday Monday 2pm to 5pm, Tuesday 2pm to 7pm,
Saleday 9am to 10am.



Golding Young & Co.

Old Wharf Road, Grantham, Lincolnshire NG31 7AA

Telephone: 01476 565118 Fax: 01476 561475 Email: enquiries@goldingyoung.com



Buyers Hotline: 01476 575202

For lot enquiries and commission bids viewday and saledays only.

FORTHCOMING EVENTS

BUYING OR SELLING?

We have the lot!

– OVER 100 YEARS EXPERIENCE FROM YOUR REGIONAL –
CHARTERED AUCTIONEERS, VALUERS, ARTS & ANTIQUES SURVEYORS

THE COMMERCIAL SALES

**Your Regional Market Place
for the sale of business assets,
stock-in-trade, plant,
machinery & equipment.**

Sales in-house and on-site are held throughout the
year as instructed by

Liquidators, Receivers, Bailiffs, The Sheriff's Office,

County Courts and Business Advisors.

Regular consignments of Tools are included in the
Collective sales on behalf of Machine Mart Ltd.

COMMERCIAL CLEARANCES and
SINGLE ITEMS always INVITED

THE CATALOGUE SALES

Your Regional Market Place

**for fine antiques, works of art, jewellery,
silver, ceramics, glass, books,
clocks, furniture
and all fields of collectors' items.**

*Held quarterly, these sales include select items
that need specific and direct marketing
through our select mailing list & databases.*

Up to 200 vendors selling items to a
Worldwide Audience via The Internet.
Past Sale Results now online.

NEXT CATALOGUE SALE:

Wednesday 4th August

CLOSING DATE for entries 2nd July

VIEWING:

Monday 2pm to 5pm,
Tuesday 11am to 7pm & Saledays 9am to 10am
And on-line from the Saturday prior.

VALUATIONS

Free Antiques Auction Advice
Tuesdays 2pm to 6pm

Call Jan Squires for appointments
and home visits at other times.

for sales and services information call

01476 • 565118

THE COLLECTIVE SALES

Your Regional Market Place

**for Victorian, decorative and
second-hand furnishings,
household and personal effects.
Surplus business assets, stock-in-trade,
plant, machinery & equipment**

Every two to three weeks we hold sales of over 600 mixed lots
received from Property Clearances and vendors of single items.

Over 120 vendors sell with us every sale and over 500
are registered to buy.

NEXT SALES: 12th + 26th May

VIEWING: Tuesdays 2pm to 6pm & Saleday from 9am

HOURS of BUSINESS

Monday to Friday 9am to 1pm & 2pm to 5pm
Entries welcome at all times except Saleday

PROPERTIES CLEARED – TRANSPORT ARRANGED
VALUATIONS FOR ALL PURPOSES

FURNITURE

1. A late Victorian walnut cabinet bookcase with two door glazed top over two fielded drawers and panel doors with cast Art Nouveau handles raised on plinth 42" wide, 92" high.
2. A George III oak bureau with shell inlaid fall flap revealing a fitted interior resting on two lopers over four graduated drawers with later handles and bracket feet (AF). 37" wide.
3. A Victorian walnut marquetry pier cabinet with single drawer over single glazed door and plinth base 22" wide.
4. An early 19thC oak two door glazed bookcase with moulded plinth and base 35" wide, 47" high.
5. A Victorian walnut centre table with marquetry and games board inlaid top, turned legs and stretchers 36" x 18".
6. A George III oak supper table with circular top, turned pillar and three outspread legs. 34" diam.
7. A Victorian mahogany spoonback armchair with scroll arms, turned legs, overstuffed serpentine seat and button dralon upholstery.
8. A George III mahogany tea table with rectangle folding top, shaped apron and square legs 31" wide.
9. A 19thC elm pedestal table with octagonal tilt top inlaid with similar mahogany panels and stylised hands on a tapering pedestal with trefoil base and ball feet. 28" diam.
10. A George III mahogany card table with moulded rectangle folding top, drawer with frieze and brass handle on moulded square legs 35" wide.
11. Three early 19thC oak ladder back chairs with rush seats, turned framing, and pad feet.
12. An early Victorian mahogany stool with turned, tulip carved legs and floral woolwork seat. 14" square.
13. A set of Victorian flamed mahogany three level bed steps on turned legs.
14. A pair of Victorian mahogany hoop back chairs with green velvet overstuffed seats and turned forelegs.
15. A 17thC oak coffer with three panel top, hinged to a demi-lune carved two panel base raised on stiles. 43" wide, 24" high.
16. A Victorian oak occasional table with moulded circular top on a turned pillar with galleried revolving undershelf raised on three carved scroll feet 20" diam.
17. A George III flamed mahogany tea table with rounded rectangular folding top and square taper legs with satinwood stringing throughout. 36" wide.
18. A cast brass standard lamp with reeded column and cast foliate scrolling base on paw feet.
19. A Victorian walnut work table with moulded and shaped burr veneered lift top, revealing a fitted interior raised on carved taper uprights, co-joined by a turned stretcher and carved scroll legs with brass and ceramic castors. 26" wide.
20. A Victorian flamed mahogany night table with marble top, single drawer, turned uprights, and single door base on turned feet. 16" wide.
21. A George III oak hanging corner cupboard with dentil moulded cornice and two double panelled doors supported by brass H-Hinges and having shaped interior shelves 40" high, 31" wide.
22. An Edwardian rosewood marquetry escritoire the raised back having integral pen tray and drawers, leather inset slope top and square taper legs with shaped framing and brass and ceramic castors. 21" wide.
23. A late Victorian walnut marquetry corner whatnot with four graduated shelves inlaid with floral motifs linked by turned uprights.
24. A Victorian burr walnut whatnot Canterbury with brass gallery, turned uprights, floral fretwork dividers, single drawer with knob handles, turned feet, brass and ceramic castors. 28" wide.
25. A mid 19thC brass and rosewood inlaid work table of serpentine form with lift top, banded with cast foliate border revealing a mirrored interior with an arrangement of drawers raised on cabriole legs with cast gilt brass mask cabriole legs with scrolling terminals. 24" wide.
26. A Victorian mahogany firescreen, the shaped panel having Berlin woolwork scene of a parakeet on a branch, the stand having turned pillar, trefoil base with bun feet, 19" x 22".
27. A Georgian oak hanging corner cupboard with moulded cornice, the single door having shaped panel and H-hinges 27" wide, 36" high.
28. A Victorian burr walnut work and games table with moulded and shaped swivel and lift top revealing marquetry games board with drawer and slide compartment, raised on carved and turned uprights, co-joined by a turned stretcher on carved scroll feet, 26" wide.
29. A Victorian walnut marquetry loo table with oval moulded and inlaid tilt top raised on four turned columns with foliate carved scroll feet, brass and ceramic castors 48" x 36".
30. A Victorian music stand with rosewood fretwork panel supported by a brass rise and fall column with trefoil cast base.
31. A pair of Victorian mahogany balloon back dining chairs with drop-in seats and turned forelegs.

32. A Dutch style floral marquetry miniature cabinet of bombe form with glazed upper part and three door base, 20thC 34" wide, 36" high.
33. A Dutch style walnut floral marquetry miniature bureau with fall flap revealing fitted interior, single serpentine drawer and bun feet, 20thC 19" wide, 12" high.
34. A Dutch style floral marquetry walnut miniature cabinet bureau bookcase with double arch mirrored door top, over a fall flap and three serpentine drawers with bun feet, 20thC 20" wide, 42" high.
35. A Victorian rosewood marquetry trumpet work table with an octagonal top inlaid with stylised bird amongst foliage revealing a fitted interior, tapering column with three acanthus scrolling legs, 18" diam.
36. A 19thC mahogany campaign commode of box form with cantilever arms supported by a lift top/back, the interior fitted with a flushing mechanism and blue and white transfer printed W.C. 26" wide.
37. A George III oak bureau with fall flap revealing a fitted interior on lopers and four graduated drawers with brass back plates and bracket feet. 34" wide.
38. A George III flamed mahogany bow front chest of 2 short and 3 long graduated drawers with oval pressed back plate handles and splay feet. 40" wide.
39. A 19thC oak corner chair of triangular form with carved and bobbin turned framing.
40. A Victorian mahogany sofa with gadrooned and scrolling frame raised on reeded fluted taper legs, upholstered in green button back velvet 84" wide.
41. A Victorian mahogany spoonback armchair with carved serpentine frame and turned forelegs upholstered in green button back velvet *en suite* to lot 40.
42. A Regency style mahogany twin pillar dining table. 3ft 6 ins wide, 8ft long max.
43. A set of 5 William IV mahogany dining chairs with moulded cresting rails and reeded forelegs.
- 43A. A George IV mahogany dining chair with bar back, reeded forelegs and upholstered *en suite* to lot 43.
44. A set of 6 Victorian oak dining chairs with Turkish carpet panel to seats, barleytwist forelegs and chamfered H-frame stretchers.
45. A Victorian mahogany cabinet bookcase with later moulded cornice, two astragal glazed doors to the upper part and two panel doors and plinth base. 45" wide, 73" high.
46. A George III oak corner cabinet with moulded cornice over two astragal arch glazed doors and two door panel base on bracket feet 44" wide, 80" high.
- 46A. A Chippendale style mahogany pier glass with fretwork frame, shell inlay decoration and rectangular bevelled plate. 22" wide, 39" high.
47. A George III mahogany chest of two short and three long graduated drawers with brass loop handles and ogee feet. 50" wide.
48. A William IV flame mahogany dressing table mirror with rectangular plate supported by part reeded and scroll carved uprights on a shaped and nulled base with bun feet 23" wide, 10" deep, 28" high.
49. A George III oak chest of two short and three long graduated drawers with cross banded and moulded top, brass swan neck handles and bracket feet 39" wide.
50. A 19thC rosewood and ebonised dressing table mirror with shaped rectangular plate supported by octagonal uprights co-joined by a pierced and floral marquetry stretcher adorned with scrolling ormolu mounts throughout. 24" wide, 34" high.
51. A George III oak chest of two short and three long graduated drawers with oval pressed backplate handles and bracket feet. 37" wide.
- 51A. An early 18thC walnut veneered chest of 4 graduated drawers with stringing to the top, sides and drawer fronts, the latter having later knob handles. 37" wide.
52. A George III flamed mahogany chest of two short and three long graduated drawers with moulded top, later brass handles, ball and claw feet. 38" wide.
53. A 19thC Dutch floral marquetry boudoir sofa inlaid with floral panels of figures with cornucopia, birds, urns and flowers, raised on outsplay legs 56" wide, 26" deep.
Provenance: Ex - Holly House, Barrowby.
54. A 17thC oak side table with rectangular moulded top, frieze drawer with brass drop handles, turned uprights and square framing. 32" x 18".
Provenance: Ex - Holly House, Barrowby.
55. A William IV mahogany open armchair with shaped frame, serpentine seat and turned forelegs with brass cup castors upholstered in green brocade.
56. A William IV rosewood library table with rounded rectangular top, sectioned with two adjustable reading slopes, frieze drawer, taper turned pillar, quatrefoil base with bun feet 38" x 23".
57. A William IV mahogany carver chair with over run moulded cresting rail, scrolling bar back and arms, drop-in seat and reeded forelegs.



Lot No. 15



Lot No. 22



Lot No. 26



Lot No. 24



Lot No. 115



Lot No. 120



Lot No. 53



Lot No. 51a



Lot No. 125



Lot No. 71



Lot No. 44



Lot No. 28



Lot No. 30



Lot No. 101

58. An early 19thC flamed and mahogany clerks or school desk with sloped top boxed compartment, single drawer with brass loop handles and turned legs. 32" wide, 28" deep.
59. A set of early 19thC pine library steps, four rung.
60. A pair of late Victorian oak dining chairs with carved and reeded splat backs and turned forelegs.
61. A Victorian mahogany piano stool with circular woolwork rise and fall seat, baluster and carved pillar, trefoil base with bun feet.
62. A 19thC Yorkshire broadseat grandfather chair with upholstered back and seat, turned gallery bow and forelegs.
63. An Arts and Crafts mahogany escritoire with asymmetrical wavy gallery and cabinet back, folding writing slope resting on a single frieze drawer on square taper outplay legs co-joined by a rectangular platform and bearing the retailer's mark of Harrods Stores Ltd. Furniture Department, London SW. 26" wide, 16" deep.
64. A 19thC oak Butler's tray on stand of traditional form 20" x 30".
65. A late 17thC oak side table with rectangular top, frieze drawer with brass knob handles, turned uprights and plain stretchers. 34" wide, 21" deep.
66. A Victorian mahogany cylindrical commode with moquette inset top.
67. An Art Nouveau mahogany boudoir chair inlaid with stylized tulips.
68. A late Victorian walnut stick stand with stretch carved and galleried back overhanging three section receptacle and base raised on turned legs 30" wide.
69. A George III mahogany carver chair with pierced splat back, drop-in seats, square taper legs.
70. A late 19thC mahogany open armchair with part upholstered and pierced high back, bow arms, overstuffed seat and cabriole legs.
Provenance: Ex - Holly House, Barrowby.
71. A pair of 19thC satinwood carver chairs, with floral painted decoration, sabre legs, caned seats and backs. (AF)
Provenance: Ex - Holly House, Barrowby.
72. A Victorian mahogany games table with moulded oval top inset with a chequer board, turned pillar and carved tripod base.
73. A Late Victorian oak dinner gong with carved and turned framing with reeded uprights 24" wide 36" high.
Provenance: Ex - Holly House, Barrowby.
74. A 17thC oak joint stool with moulded top, shaped frieze, turned legs and plain stretchers. 19" x 11".
75. A Victorian bamboo framed firescreen with a printed linen panel.
76. A Victorian upholstered armchair with scrolling back and arms, turned mahogany forelegs with brass castors.
77. An Edwardian mahogany extending dining table with two extension leaves on chamfered square taper legs 45" x 18" max.
78. An Art Deco burr walnut centre table with mirror top, plain frieze, cross banded square pedestal and plinth, 36" square.
79. A late Victorian walnut knee-hole desk with three frieze drawers and three to each pedestal with brass loop handles on castors. 48" x 27".
Provenance: Ex - Holly House, Barrowby.
80. An early 19thC mahogany bow front chest of three graduated drawers with brass oval back plate handles, shaped apron and bracket feet. 36" wide (AF).
81. A Georgian and later mahogany supper table with circular tilt top, turned pillar and three outplay legs. 29" diam.
82. A late Victorian oak knee-hole desk with three frieze drawers and two to each pedestal with brass swan neck handles and block feet. 48" wide, 22" deep.
83. A 19thC flamed mahogany side table on turned legs and having centre drawer and two flanking doors cross banded and string inlaid and later matching top. 42" wide.
84. An Italian marquetry games compendium table, with interchangeable legs and fully fitted compartments, modern.
85. A set of 19thC mahogany wall shelves of waterfall design 24" wide, 29" high, 4" deep.
86. A Victorian rosewood adjustable firescreen with rise and fall panel on sabre legs. 18" wide.
87. A Victorian oak gypsy table with moulded octagonal top, raised on three turned legs joined by a low level stretcher. 26" diam.
88. A Victorian ash and elm child's high chair with barback.
89. Two 19thC mahogany stools.
90. A Victorian walnut footstool with serpentine framing and scroll legs.
91. A set of 4 Edwardian walnut dining chairs with pierced high backs, drop-in seats and cabriole legs.
92. A pair of George III mahogany dining chairs with pierced vase splats, overstuffed seats and square taper legs.

93. **A Victorian mahogany partner's desk** with opposing pedestals of three drawer and door configuration and three drawers to each frieze, plinth base, with brass swan neck handles 6ft wide, 5ft deep.
- 93A. **A Victorian mahogany metamorphic snooker and dining table** on turned legs 5'3" x 3'.
94. **A Georgian style flamed mahogany wardrobe compactum by Howard & Sons Ltd.** of serpentine form, having moulded pendant cornice, two door bow front linen press over two short and three long graduated drawers, flanked by full length hanging doors on plinth base, bearing the mark of Howard & Sons Ltd. 25,26,27 Berners Street, London W. 80" wide, 80" high, 26" deep.
95. **An Edwardian mahogany bureau bookcase** with satinwood cross banding and inlay to the moulded cornice over two astragal glazed doors and fall flap on lopers over four graduated drawers with brass swan neck loop handles and bracket feet. 36" wide, 80" high.
96. **A Jacobean oak court cupboard**, the upper part having two small doors, flanking a centre panel, the lower having two 3-panel lozenge doors. 66" wide, 54" high, 21" deep.
Provenance: Ex - Holly House, Barrowby.
97. **A Queen Anne style walnut corner cupboard** with burr quarter veneered door to top and base on bracket feet 26" wide, 75" high.
98. **A Victorian grain painted pine pot cupboard** with faux malacite inlay to the top and door.
99. **A Victorian mahogany stool** of serpentine form with moulded cabriole legs (one AF).
100. **An early 19thC mahogany bow front dressing table mirror** with rectangular plate, turned uprights, three frieze drawers with knob handles and ball feet. 20" wide, 22" high.
101. **A Regency mahogany twin pedestal sideboard** with shaped splash back, gadrooned and candy twist moulding to each pedestal with an arrangement of lion mask handle drawer over cupboard and two bow front drawers to the centre 93" wide.
102. **A mahogany cabinet by Jas. Shoolbred**, having a serpentine arch pediment over two glazed doors with conforming tracery bars, on slender cabriole legs with pad feet. 73" high, 48" wide.
103. **An Edwardian mahogany marquetry corner cabinet** with swan neck pediment, faux dentil moulded cornice with single astragal glazed door over another and bracket feet 29" wide, 83" high.
104. **A Victorian mahogany double wardrobe** with moulded cornice, two arch doors on plinth base 42" wide.
105. **A Victorian mahogany triple wardrobe** with moulded breakfront cornice, mirrored centre door and flanked by panel doors, revealing pressed drawers and fitted drawers together with full length hanging, 7ft wide.
106. **A George III and later mahogany bureau bookcase** with moulded cornice over two astragal glazed doors, the fall flap revealing fitted interior on lopers over four graduated drawers with brass solid back plate handles and bracket feet. 40" wide, 85" high.
107. **A Louis XVI style parcel gilt chest** of three drawers moulded with neo-classical swags and pendant husks. 36" wide.
108. **A Louis XV style painted armoire** with single arched mirror door with bevelled plate and drawer base, 42" wide.
109. **A late Victorian walnut wardrobe by T Simpson & Sons Halifax**, the canted front having dentil moulded cornice over a mirrored centre, flanked by two carved and part glazed doors with hanging space bearing the makers label T Simpson & Sons Cabinet Makers Halifax, 62" wide.
110. **A fine Edwardian mahogany marquetry corner cabinet** with swan neck pediment over a faux dentil moulded cornice, single glazed astragal glazed door to the upper part, the lower having a single door panel with an extensive neo-classical decoration incorporating ivory, satinwood, tulip and harewood, this decoration extended to all friezes and panels, on bracket feet 29" wide, 85" high.
111. **A 17thC carved oak settle** with lozenge carved five panel back, scroll arms and box seat. 67" wide.
Provenance: Ex - Holly House, Barrowby.
112. **A late Victorian walnut secretaire bookcase** with stretch carved and galleried cornice over a two door glazed cabinet, the base having secretaire drawer with fitted interior over two door base and plinth 36" wide, 83" high.
113. **A 19thC rococo wall mirror** with a heavy foliate scrolling white painted frame 66" high 60" wide.
114. **A Victorian pierced cast iron pub table base**, circular.
- 114A. **A pair of 19thC Coalbrookdale cast iron garden bench ends**, fern pattern.
115. **A 17thC oak coffer** with plain two panel top, demi-lune frieze, two panelled rosette carved front raised on stiles 38" wide, 21" high.
Provenance: Ex - Holly House, Barrowby.
116. **A 19thC carved hardwood jardiniere stand** with shaped marble inset top, enclosed by a carved frieze and foliate scrolling, over a pierced frieze with circular undershelf, the legs carved with grotesque masks and ball and claw feet 24" diam.

117. A 17thC oak gateleg table with oval top, ball turned uprights and plain stretchers on later castors 38" x 47".
118. A late Victorian walnut chest of two short and three long graduated drawers with brass back plate loop handles and plinth base 43" wide
119. A Queen Anne style walnut framed cheval table mirror with shaped bevel plate and moulded framing. 18" wide, 28" high.
120. A Jacobean style carved oak court cupboard with arabesque lined fret frieze supported on carved uprights, credence cupboard centre over two door base on plinth 56" wide, 56" high.
121. A George III mahogany hanging corner cabinet with moulded cornice, single astragal glazed door with panel base 35" wide, 44" high.
- 121A. A late Victorian walnut wardrobe compactum with single mirror door, with hanging space and single mirror door over four drawers with brass loop handles on plinth base 45" wide
122. A George III mahogany chest of two short and three long graduated drawers with moulded top, later ebonised knob handles and bracket feet 38" wide.
123. A George III oak chest of two short and three long graduated drawers with moulded top, replacement brass swan neck handles and bracket feet 38" wide.
124. A Regency mahogany chest of two short and three long graduated drawers with rosewood cross banded top, ebony strung drawer fronts with embossed thistle brass loop handles and splay feet 40" wide.
125. A Regency rosewood card table with cross banded canted rectangular folding top, marquetry frieze, turned and nulled pillar on circular base co-joined by four sabre legs with cast acanthus toes and castors 36" wide.
126. A George III mahogany serpentine chest of four graduated drawers with replacement knob handles and reduced feet 41" wide.
127. A William IV pollard oak card table with crossbanded canted rectangular folding top, on a square taper and waisted pedestal, quatrefoil plinth, on carved scroll feet 36" wide.
128. A late Victorian rosewood marquetry chiffonier with broken arch pediment, galleried and mirrored door back, the lower part having canted open shelves enclosing a single drawer and two doors on turned legs 48" wide.
129. A Victorian mahogany chiffonier with shelved and mirrored back, moulded base with single drawer over two arch doors and plinth 42" wide.
130. A 19thC rectangular wall mirror with gold painted plaster frame 84" x 54".
131. A pair of 19thC ash and elm Windsor chairs with pierced shield backs, turned legs and H-stretchers.
132. A 19thC walnut pedestal of canted square form 13" wide 20" high.
133. A 19thC carved mahogany candle stand with circular moulded top, turned and fluted pillar, acanthus carved outspay legs. 33" high.
134. A period oak foot stool with turned feet and scoop carved frieze 12" x 10".
135. A late Victorian window table with oval fluted frieze on moulded square taper legs with spade feet joined by shaped stretcher and oval undershelf 33" x 20".
136. A 19thC mahogany writing or dressing table with three frieze drawers on square taper legs 36" wide.
137. A mahogany demi-lune side table on square taper legs, 20thC.
138. A set of 4 Victorian rosewood balloon back dining chairs with shaped backs, overstuffed serpentine seats and cabriole legs.
139. A Victorian mahogany balloon back chair with drop in seat and turned forelegs.
140. A pair of late Victorian oak barback dining chairs with overstuffed seats and turned legs.
141. A 19thC giltwood porthole mirror with convex plate, 26" diam.
142. A 19thC gilt gesso wall mirror surmounted with an eagle on a rocky mound with Bachanalain circular frame, convex plate 44" high.
143. A late Victorian walnut wall mirror with swan neck pediment, rectangular bevelled plate, lift box compartment and hanging rail 36" high
144. A pair of 19thC oval gilt gesso girandoles with oval plates and integral three scone scrolls, 26" high.
145. A gilt frame oval wall mirror advertising "La Salamandre Cognac" 33" high, 28" wide
146. A walnut veneered hanging corner cabinet with open shelves 36" high 15" wide.
147. A set of 6 late Victorian oak dining chairs, inc 2 carvers, with carved galleried and panelled backs, overstuffed studded seats, reeded forelegs and H stretchers.
148. A Victorian mahogany torchere with carved candytwist pillar.
149. A Victorian walnut framed open armchair upholstered in sculptured dralon, having turned forelegs with brass cup castors.

150. A mid Victorian walnut nursing chair with tapestry seat and back.
151. A late Victorian walnut nursing chair with carved gallery back.

CLOCKS AND BAROMETERS

152. A 19thC flamed mahogany longcase clock with shaped arched and pillared hood having brass ball and spike finials, full length trunk door with herring bone cross banding and canted sides, similar banded base with splay feet, the painted dial having Turkish figures to arch, rose spandrels, Arabic numerals, subsidiary seconds and date rings and marked "Da*ies, Nth. SHIELDS" 8 day movement striking on a bell 94" high.
153. A Chinoiserie and green lacquer grandmother clock with Pagoda and turned pillar hood having pineapple finials, full length trunk door, and ogee feet, the brass dial having applied amorini spandrels, 'tempus fugit' rondel to arch, silvered chapter ring with numeral numerals, the centre engraved with rococo scrolls over three mast sailing ship, 8 day movement striking on a gong 74" high.
154. A 19thC cross banded mahogany longcase clock with swan neck and turned pillared hood, short trunk door enclosed by quarter inset reeded columns, cross banded base with bracket feet, painted dial having a church in landscape to arch, rose spandrels, Roman numerals, subsidiary seconds ring and marked "Pearce, Grantham", 8 day movement striking on a bell 88" high.
155. A 19thC cross banded oak and mahogany longcase clock with swan neck turned pillared hood, short trunk door enclosed by canted sides, cross banded base, painted floral dial with Roman numerals marked "Hummel, Peterboro" 81" high.
156. A 19thC mahogany stick barometer with broken arch pediment, silvered back plate marked "Porri Nottingham" string inlaid trunk, and convex bulb cover, 40" high.
157. A George III flamed mahogany wheel barometer with swan neck pediment over a silvered hygrometer, thermometer, convex mirror 7½" dial, and level marked "D.Balerina, Warranted", 38" high.
158. An Edwardian carved oak aneroid barometer with painted thermometer over an 8" dial, 34" high.
159. A George III style string inlaid mahogany stick barometer with broken arch pediment, silver back plate marked "Comitti, Holborn" 38" high.
160. A Victorian flamed mahogany wheel barometer with silvered hygrometer over thermometer, 7" dial and level marked "WARRANTED CORRECT" 39" high.
161. A walnut cased drop dial wall clock with shaped and moulded bezel, painted dial with Roman numerals, fretwork trunk door, 8 day movement.
162. A 19thC walnut Vienna regulator wall clock with turned pediment and pillars, two part enamelled dial with 8 day movement with two brass cased weights. 52" high.
163. A mahogany cased electric slave clock by Time Recorders of Leeds.
164. A 19thC Vienna walnut wall clock case.
165. A 19thC French spelter figural mantel clock surmounted with a cavalier on a rococo base, enamel and ormolu dial with 8 day movement 10" high.
166. A longcase clock movement and face, painted with a seated figure with two gun dogs and brace of pheasants, stag and hounds to spandrels, Roman numerals, subsidiary seconds and date rings, marked "J C Elliott, Leeds", 8 day movement, 14" wide, 20" high.
167. A longcase clock movement and dial, the brass dial having maker's rondel to arch "Phip.Avenell, Farnham", silver chapter ring and centre with Roman numerals, subsidiary seconds ring, date aperture, 8 day movement, striking on a bell, 12" wide. 17" high
168. A 19thC polished slate mantel clock of architectural form and having scratched gilt carved and malacite inset decoration, 6" two part enamelled dial with exposed balance wheel. 20" wide, 13" high.
169. An Art Deco cross banded walnut mantel clock with Arabic numerals, and 8 day Jungens movement striking on gongs 12" wide, 10" high.
170. A 19thC polished slate mantel clock inset with scratch card gilt decoration and onyx inlays, 4" parcel gilt dial with Roman numerals, 8" wide 10" high.
171. An Edwardian inlaid mahogany mantel clock with 6" dial with Arabic numerals, 8 day movement striking a gong, 14" wide 11" high.
172. A late 19thC American oak cased mantel clock with 5" gilt and enamel dial with Arabic numerals and having 8 day Ansonia movement. 10" wide 11" high.
173. A Canterbury gilt brass table clock with silver chapter ring and Roman numerals 6" square.
174. A Bentima gilt brass table clock with step base, 8 day movement 5½" square dial.
175. A 1970's Darner Craft table timepiece, the face composed of watch parts 10" square.
176. An early 20thC barleytwist oak mantel clock with Roman numerals 8" high.



177. An early 20thC green ground chinoiserie mantel clock on ball feet 9" wide 6" high.
178. An Edwardian silver and oak cased aneroid barometer of Goliath pocket watch form. Maker HM. Birmingham 1909. 6½" diam.
179. A late Victorian string inlaid oak mantel clock with enamel dial with Arabic numerals, 8 day movement striking on a gong 17" wide, 12" high.
180. A late Victorian oak cased automatic repeating alarm clock by Fattorini & Sons Ltd. Bradford 12" wide 13" high
181. An Edwardian mahogany lancet mantel clock with silvered convex dial, with Roman numerals, fusee movement marked "TAMESIDE no. 8389" 10" wide 14" high
182. A 19thC French figural mantel clock with a dandy and companion in gilt metal around a 3" enamel dial mounted on an alabaster plinth 11" wide, 12" high.
183. A columnar table timepiece with 2" enamel dial with Arabic numerals 11" high.
184. A 19thC American steeple shelf clock with painted dial and alarm by Jerome of Connecticut in rosewood case. 7" wide, 14" high
185. An Edwardian string inlaid mahogany mantel clock with convex silvered dial, Arabic numerals, 12" wide 6" high
186. An Edwardian mahogany balloon time piece inlaid with brass, mother of pearl and satinwood Art Nouveau motifs 3½" convex enamel dial with Arabic numerals, 7" wide, 10" high
187. An Edwardian mahogany mantel clock with satinwood and harewood shell inlay, 3½" enamel dial with Roman numerals, 6" wide, 8" high.
188. An Aesthetic movement gilt brass table clock with pierced and blind cast frame in the oriental manner enclosing a 3½" enamel dial with Arabic numerals, 8" wide, 10" high.
189. A Victorian flamed mahogany bracket clock with 14" painted dial having Roman numerals and marked "D. Spencer, COVENTRY" over a carved floral and scroll support, moulded plinth with block feet, fusee movement, 22" wide, 23" high
190. An Art Deco onyx and marble mantel timepiece with lozenge shaped dial with Arabic numerals, 14" wide 8" high
191. An Art Deco walnut starburst mantel clock, square dial having silver chapter ring with Roman numerals, 8 day movement striking a gong, 14" wide 9" high
192. A 19thC French ormolu figural mantel clock with a cavalier figure surmounting a rococo case, 3" enamel dial with Roman numerals marked "HRY.MARC A PARIS", 8 day movement striking on a bell 10" wide 15" high, and further double plinth.
193. A late 19thC mahogany bracket clock with dome top, 6" silvered dial with Roman numerals marked "Benett, London", 8 day musical movement striking on 4 plus 1 gongs 14" high.
194. A Louis XV style brass clock garniture comprising cast clock and pair of 4 branch candelabra 24" high
195. A Regency mahogany bracket clock with brass inlaid case on ball feet with brass ring handles and pierced fretwork sides, 8" painted dial with Roman numerals and marked "HIGGINS, GLOUCESTER", 8 day repeating movement striking a bell. 12" wide, 18" high.
196. A Louis XV style brass mantel clock with enamel dial with Arabic numerals, 8 day movement striking a gong, 9" wide, 15" high
197. An Edwardian mahogany bracket clock with silvered arch dial having Arabic numerals, silent/chime rondel, slow/fast rondel, 8 day Junghens musical movement striking gongs, 12" wide 14" high
198. An Art Deco 3-colour marble clock garniture with 2" dial, 7" high
199. Spare lot.

SILVER

200. A silver 4-piece dressing table set, of Art Deco design, comprising hand mirror, hair brush and two clothes brushes, Birmingham 1961, and a small hand mirror.(5)
201. A pair of Edward VII silver pepperettes, of annulated baluster form 2½" high, Maker J W, Birmingham 1908, weight nominal, (in fitted case).
202. An Edward VII silver casket by Levi & Soloman, of heart shape, with a padded velvet cover and satin lined interior, 4" wide, Birmingham 1906.
203. A pair of George V silver napkin rings, with engine turned bands, engraved with initials, Maker J R, Birmingham 1938. Weight nominal. Cased.
204. A George VI silver two-handled trophy cup, of plain circular form, inscribed on a knopped stem and stepped foot, 8½" over handles, 6" high. Birmingham 1937. 12 ozs.
205. A George III silver salver by Ebenezer Coker, the centre engraved with flowers, scrolls and diaper panels, within a nulled well and gadroon border, raised on three hoof feet, 9½" diam. London 1763 16 ozs.

206. **An Edward VII silver salver**, having a pie-crust border cast with shells and scrollwork, monogram to centre, raised on three foliate scroll feet, 10¼" diam. Maker H. A. Sheffield 1909. 17 ozs.
207. **An Edward VII silver dressing table tray** by William Comyns & Sons Ltd. of quatrefoil form, the centre embossed with pulti heads within a foliate scroll border, raised fluted rim, 8¼" x 12". London 1902. 12 ozs.
208. **A George V silver Irish teaset** by Wakeley & Wheeler, of ovoid form, comprising teapot, hot water pot, sugar bowl and cream jug, on scroll and berry pierced domed bases, each with waterleaf rim, scroll and berry cast spouts and handles, the teapot and hot water jug with composition handles, the disc covers with amethyst set finials, Dublin 1915. 68 ozs. gross.
209. **An Edward VII silver boat-shaped bowl**, having a scroll and leaf pierced border with inverted ends, the body repousse with flowers, scrolls and peacock tails, vacant cartouche to each side, on plain oval foot, 6" wide, Maker's mark rubbed. London 1904. 9 ozs.
210. **A modern silver cream jug** of baluster form by Wakeley & Wheeler with double scroll handle, on skirt foot 4¼" high London 1969 11 ozs.
211. **A George VI silver two-handled trophy cup**, of circular tapering form, embossed with the figure of an Irish Wolfhound, and inscribed "Birmingham Championship Show 1949" on stepped foot, 7½" high, Maker J R F & Co. London 1938 15 ozs on a circular wooden stand mounted with winners' plaques
212. **A George V silver golf trophy** inscribed, the compressed circular bowl supported by a knopped stem mounted with three golf clubs, on circular foot, 4" high. Maker W M & Co. Birmingham 1931 3 ozs on composite stand.
213. **A Victorian silver bachelor's teapot** by William Hutton, of plain circular form, with raised rim, domed cover and composition finial and scroll handle, 5" high, London 1894, 14 ozs. gross.
214. **A George V silver cigarette box** by Walker & Hall, of rectangular form, 4½" wide Sheffield 1920.
215. **A Victorian silver bowl**, of circular form, having two vacant cartouche and embossed with flowers and C scrolls, 4½" diam. Makers mark rubbed, Birmingham 1897. 8 ozs.
216. **A set of four George III silver salts** by Robert Hennell, of oval form, the pierced sides cast with paterae and swags, raised on four claw and ball feet, 2 ins high, 3¼ ins wide, London 1774, 10 ozs gross (one with clear glass liner).
217. **A Victorian silver chatelaine**, retailed by Walter Thornhill & Co., the hinged mount cast in low relief with cavorting cherubs, trees and rocaille work, hung with three floral cast chains terminating in suspension loops, 7", London 1884 3½ ozs.
218. **An Edward VII baby's silver and mother-of-pearl rattle and teething ring**, the embossed stem hung with six bells, 6½". Maker: C & N. Birmingham 1902, another, modelled as a doll with attached composition well, 4" Newcastle, early 20th century.
219. **A pair of George V silver bon-bon dishes**, the circular diamond quilted bodies with dentil rims, on knopped stems and swept moulded bases, 3½" diam. Maker: BBS Ltd. Birmingham 1931. 7ozs.
220. **A modern silver bowl**, of plain circular form, with stepped rim and domed foot, 3¼" diam. Maker: CJV Ltd, London 1967. 6 ozs
221. **A Victorian silver baptismal mug**, of slightly flared circular form, with two hands of wrythrn fluting, plain loop handle, on plinth foot, 3¼" high. Maker: BB. Birmingham 1897. 4ozs.
222. **A George V silver cigar lighter**, modelled as Aladdin's lamp, with flying leopard mask handle, torch finial, on stepped oval foot, inscribed with initials, 5¼" Birmingham 1929. weighted base.
223. **A George III silver serving spoon**, with shell bowl and flower engraved Old English handle, hallmarks rubbed, and an Edward VII silver miniature cream jug, boat shaped, with half fluted body, 2½" high. Maker: W.D. Birmingham 1803. 4 ozs gross.
224. **A Late Victorian silver card case** by H. Matthews, of rectangular form with hinged cover, the front panel embossed with lovers on a swing in a garden landscape, 3¼" x 1½". Birmingham 1900. 2½ ozs. Containing a set of domino cards.
225. **Four silver napkin rings**, 20th century, various dates and hallmarks.
226. **An Edward VII silver heart shaped miniature casket**, the hinged cover inset with mother-of-pearl shamrock, satin lined interior and on three cabriole legs, 1½" Maker: GS-FS. Birmingham 1909.
227. **An assortment of silver tableware etc** including sugar tongs, ornamental teaspoons, manicure requisites, button hook.
228. **A modern silver machine turned cigarette box**, rectangular, with wood lined interior, 6¼" wide, Birmingham 1963.
229. **A pair of George V silver salts**, with rectangular fluted bodies and everted rims, 2½" wide, Maker W D, Birmingham 1914, with one condiment spoon. In fitted case.

230. A pair of George V silver candlesticks with fixed sconces and knopped swept stems, domed foot, 4¼" high, Birmingham 1921, loaded bases.
231. An Edward VII silver cigarette box, of plain rectangular form with wood lined interior, 7" wide. Birmingham 1909.
232. A Victorian silver butter knife by Hilliard & Thomason, with engraved blade, the shaped handled with flowers, foliage and scrolls, 6½". Birmingham 1852, and a George V basket salt, with pierced sides and don stepped foot, 2½" diam. Birmingham 1920.
233. A pair of George V pierced silver napkin rings, Birmingham 1923, together with two further examples (4)
234. Six 19th century silver teaspoons, various hallmarks, and a George V silver 5-piece cruet set, of pierced circular outline, Birmingham 1926.
235. A modern silver mustard, of rounded rectangular form, with cast border, on four bun feet, Birmingham 1942, together with two pepperettes, Birmingham 1908 and four condiment spoons.
236. An Edward VII silver cased easel timepiece, the circular 2-part dial with Arabic numerals, within a brass bezel, the shaped rectangular silver faced, oak case cast in the Art Nouveau manner, 5¼" x 5½", Birmingham 1907
237. An Edward VII silver pocket watch stand, of lancet form, with ribband flute bands, on four compressed bun feet, 4" high. Birmingham 1908, together with a white metal pocket watch, the case stamped .935.
238. An Edward VII silver pill box, of oval form, the hinged cover inscribed with initials within foliate scroll border, 1¼" wide. Maker: A & L Ltd. Birmingham 1901, together with a Victorian engraved silver vesta case, Chester 1900, and a George V engraved silver stamp envelope, Birmingham 1914. (3)
239. A sterling silver cigarette lighter, modelled as a pocket watch, the case engraved overall with leaves, the 'key wind' when depressed opens the case to reveal mechanism, 2" diam.
240. A Victorian silver vesta case, embossed with scrolls, Birmingham 1894. Together with another, engraved with leafage, Birmingham 1900 and a George V cigarette case, engraved with foliate scrolls, Birmingham 1919 5 ozs gross (3)
241. A Victorian silver bladed folding fruit knife with mother-of-pearl handle, Birmingham 1888, an Edward VII silver hair ornament, Birmingham 1909, a modern silver 'Boston Stump' souvenir teaspoon, an Edward VII silver handled tea knife with mother-of-pearl handle, Sheffield 1902. A George V silver trifled spoon, Sheffield 1930 and a modern silver letter opener with Royal Crest finial. (6)
242. A Victorian silver trinket tray, of segmented form, scroll embossed well within pre-crust rim, 4½" wide. Birmingham 1999. A George V glass powder bowl with silver collar and cover, 3" diam. Birmingham 1923, and two silver napkin rings. (4)
243. A Victorian silver pedestal bon-bon dish by Levi & Solomon, having a circular pierced bowl on swept stem and base, 3½" high, 3" diam. Birmingham 1899. Loaded base.
244. A pair of Victorian silver candlesticks, having fixed sconces with bead borders over plain circular stems, on square swept bases with conforming borders, 5" high, Maker T.A.S. Sheffield 1899. Loaded bases.
245. A George V silver Capstan inkwell by H. Matthews 3½" diam. Birmingham 1910, another example, 2¼" diam. Birmingham 1920. (The latter with indents to cover and rim).
246. A George V silver golf small trophy bowl by Thomas Bradbury & Sons. the plain circular bowl on a swept pedestal and foot with gadroon border, 3¼" diam. Sheffield 1923. 8 ozs (bears inscription).
248. A modern silver sifter spoon, with pierced bowl and thistle finial. Edinburgh 1978.
249. A George V silver basket, of rectangular form with pierced sides, reeded swing handle with foliate ornament, on four claw feet, 6½" wide. Maker: S.B & S.Ltd Chester 1913. 5 ozs.
250. An assortment of Victorian and Edwardian shoe horns, and other requisites.
251. A Silver Jubilee model of the Royal Coach, 3" wide. Birmingham 1977. A George V silver napkin ring, Birmingham 1928, and two pairs of glove stretchers (4)
252. A George V silver 3 piece tea service by Viners, of irregular octagonal form, on claw feet, the tea pot with composition handle and finial. Sheffield 1933. 33 ozs.
253. A harlequin set of George III silver Old English dessert spoons by Peter & Ann Bateman, with inscribed handle 1797 & 1799, together with a George III tablespoon by Eley & Fern. London 1798.
254. An George V silver sifter spoon, with pierced bowl and with Hanovarian handle, Sheffield 1936,
255. A George V silver engine turned powder compact by James Dixon & Son of rectangular form, of square form, having a malachite set clasp, the interior fitted with a mirror, 3" square. Birmingham 1934.
256. A George V silver basket by George Jackson & David Fullerton, of oval form, the everted sides pierced with arabesque, scrolls and trellis, with conforming swing handle and skirt foot, 9½" high over handle, 6 ½" wide. London 1914. 11 ozs

257. A George V silver candlestick, with a removable scone over a composite column stem on stepped foot with bead borders, 6¼" high. Birmingham 1911. Loaded base. Together with another example, of plain circular form, 6½" high. Birmingham 1907.
258. A George V silver mustard, of panelled rectangular form, the hinged cover with scroll thumbpiece and capped scroll handle, reeded foot rim, with sapphire glass liner, 3¼" wide. Maker: SWS & Co. Birmingham 1914. 4.5 ozs
259. A Victorian silver cream jug by Edward, John & William Barnard, of circular slightly bellied form with reeded rim and skirt foot, scroll handle, 3" high. London 1848. 4 ozs. (inscribed & dated)
260. A George V silver and tortoiseshell dressing table set by Alexander Clark comprising hand mirror, hair brush and clothes brush, each piece having laurel wreath and scroll ornament. Birmingham 1924.
261. A George V silver baptismal mug of plain tapering form, with loop handle, 3¼" high. Birmingham 1924. Maker WN Ltd. 4 ozs
262. A Victorian silver mustard, of oval form, embossed with flowers, foliage and scrolls with chevron bands, with plain domed cover and plain angled handle, 3½" wide over handle. Birmingham 1896. Maker: S & C
263. A George V silver cream jug by Thomas Bradley & Sons, the cup shape body with slightly everted rim, scroll handle with trefoil terminal, on stepped dome foot, 3" high. Sheffield Britannia mark 1922. 4.5 ozs.
264. An Edward VII silver napkin ring with pierced decoration, engraved with a monogram. Birmingham 1905. another three examples. 5 ozs gross.
265. A George V silver cream jug and sugar bowl, of oval panelled form, with gadroon rims and reeded angled handles, on four bun feet. Birmingham 1922. Maker: S B Ltd. 9 ozs.
266. A George V silver egg cup by Walker & Hall, with waved reeded rim, on swept pedestal foot, 2½" high. Sheffield 1927 (formerly part of an egg cruet), together with a Victorian salt, of trefoil form, on three bun feet, 2" wide. London 1892. 5 ozs gross.
267. A pair of Victorian silver pepperettes, shaped as churns, embossed with scrolls and foliage round two vacant cartouches, 2¼" high. Sheffield 1891. Maker: H A. 4 ozs.
268. A George VI silver cigarette box, of rectangular form, engraved to the lid, 4½" wide, London 1941, together with a set of six Hanovarian pattern coffee spoons London 1944.
269. A silver cigar cutter with machine turning, 2" London 1957.
270. A set of twelve Victorian silver teaspoons and sugar tongs, with volute handles, Sheffield 1900. In fitted case (one teaspoon damaged).
271. A George V silver Old English pattern teaspoon in fitted case, London 1919, together with a George III Old English Tablespoon, a dessert fork and five George IV teaspoons 7ozs gross.
272. A George IV silver 2-handled trophy cup, of ovoid form with everted rim, scroll handles and on knopped pedestal and stepped foot, 7½" high, London 1933. Maker: C E 11.5 ozs (engraved with monogram and inscription).
273. An Indian silver waiter, with pie-crust rim, the well engraved with facsimile signatures from members of the Kulti Golf Club, on three pad feet, 8" diam. 20thC 13ozs.
274. Four Victorian silver fiddle pattern dessert forks by George W Adams, London 1854 & 1856, and two other examples engraved with monogram. 10ozs gross.
275. Six George VI and later silver fiddle pattern dessert spoons and six teaspoons, various dates and five Edward VII silver handled tea knives, Sheffield 1907. 16ozs gross.
276. Four George IV silver fiddle pattern fish knives Birmingham 1913 together with six 19thC teaspoons, various dates and a George III silver Old English tablespoon, hallmarks rubbed. 14ozs gross.
277. A Victorian silver matched trio comprising dessert spoon, fork and teaspoon by Walker & Hall, engraved with shield and initials. Sheffield 1892 and 1899. 5ozs gross.
278. An Edward VII silver pedestal dish, of circular form, repousse with four vacant cartouche, scrolls, flowers and foliage, over a lobed border, on a plain pedestal foot with stepped base, 5¼" diam, Birmingham 1907, Maker: R & B 9ozs.
279. A Victorian silver teapot, of half fluted oval form, with ebonised fruitwood vase finial and handle, 6" high, Sheffield 1895 Maker: HH 14ozs. gross (inscribed and with damaged handle).
280. An Edward VII silver punch bowl of plain circular form, with cavetto moulded rim, and flying scroll open handles on domed and stepped foot, 15" wide over handles, Birmingham 1907. Maker's mark rubbed 44 ozs on wooden stand.
281. Two pairs of German silver handled cutlery by Ohlenschlager & Riemann of Frankfurt, in a satin lined case.
282. A set of 12 gilt coffee spoons by Christofle and Cie. Paris. fitted in a satin lined case.
283. Five pairs of Victorian dessert cutlery, silver handled.

284. A 19thC Russian silver preserve spoon, stamped 84 standard, with engraved outer bowl and turned handle.
285. An early 20thC silver casket with *baisse taille* enamel hinged cover, raised on four cabriole legs, 3½" wide, (hallmark rubbed, hinge damaged).
286. A pair of Edward VII silver pepperettes of wrythen baluster form, 2¼" high, Birmingham 1903.
287. An early Victorian silver baptismal mug by Charles Reily and George Storer, repousse with an oriental figural landscape and rococo scroll vacant cartouche, cast bamboo loop handle and on rocaille skirted foot, 4" high, London 1837, 7 ozs.
288. A Victorian silver baptismal mug, engraved with scrolls, foliage and strapwork, double scroll handle and skirted foot, 3¼", London 1878, 7 ozs.
289. An Edward VII cased set of silver pistol and scroll handle tea knives by James Dixon & Sons, Sheffield 1905.
290. A cased set of six silver teaspoons, modern.
291. A quantity of silver and Epns inc a Victorian candlestick, hairbrushes, tableware etc (in poor condition).
292. A George V silver cigarette case, of rectangular outline, the cover polychrome printed with an image of a scantily clad woman wearing a wedding veil, table with top hat, cane and gloves, and bearing cigarette and suite of playing cards, signed Cobb, 5" x 3½" Maker EJH, Birmingham 1920, 8 ozs.
- 292A. A George III silver Brandy label by Hester Bateman, modelled as an urn with ribbon tie handle, 2" wide, circa 1770/80
293. A Victorian silver fiddle pattern caddy spoon, engraved with initials. London 1843.
294. A pair of Dutch silver Apostle spoons, the cast handles having mask footers. Maker MG, 1926.
295. A Danish silver nut dish, of circular form, the two applied handles embossed in low relief with foliate detail within pierced framing, 9¼" wide over handles, bears Aalborg assay mark, early 20th century.
296. A silver hot water jug, of rounded oblong form, with moulded shoulders, raised on four bun feet, domed cover, gadroon rim, with composition handle and finial, 8½" high, Sheffield 1948.
297. A George VI silver tea pot and sugar bowl, of shaped oval form, each raised on a skirt foot, the tea pot with composition handle, Birmingham 1937, and a matching cream jug, Chester 1937. 37 ozs gross
298. A collection of Victorian and later silver handled button hooks, contained within a box frame.
299. A collection of Victorian and later silver handled button hooks, in frame mount.
300. A Victorian white metal boot button hook, with foliate and scroll handle, 17".
- 300A. A George V silver shell button dish, on three bun feet, 5" wide, Sheffield 1910, weight nominal.
- 300B. A George V silver sugar basin, of panelled boat shape, with two scroll handles, scroll rim and on four paw feet with leaf terminals, 6" over handles, Glasgow 1913, Maker: JF. 5 ozs.
- 300C. An Edward VII silver tazza, with pierced well within braceleted rim, on knopped pedestal and stepped circular foot, 10" diam. Sheffield 1907 14 ozs.
- 300D. A Victorian silver salver by Robert Hennell, of circular form, the well lightly engraved with floral diaper ground centred by a monogram and dated 1888, within a conforming raised border and bead rim, on three foliate and scroll feet, 10" diam. London 1863, 17 ozs.
- 300E. An Edward VII silver mustard, of oblong lobed form, with gadrooned rim, angulated handle, on four bun feet, 4" wide, Birmingham 1903.
- 300F. A George III coconut cup with silver mounts and feet having black cut decoration and oval cartouche.

JEWELLERY, BIJOUTERIE, ETC.

301. Two heavy silver Alberts, one with agate fob attached, the other with a coin.
302. Five gold wedding bands, various grades and one other stone set ring.
303. A ring set with a sovereign 1903.
304. A ring set with a half sovereign 1912.
305. A ring set with a sovereign 1898.
306. A ring set with a half sovereign 1910.
307. Two half sovereigns 1911, 1913.
308. A pair of 18 ct gold cufflinks, abstract design, London 1982. Maker AC. Co. 25.2 gms.
309. A seed pearl and peridot set pendant, 6 seed pearl set Fleur de Lys joined in a star shape, intersert with small peridots with one set centrally, all in gold hall mark rubbed, maker SB & S. Ltd.
310. A cheroot holder.
311. An expanding jet bracelet, with a compass set in.
312. A Scottish style bracelet, of alternating pink and grey granite columns set between with faceted citrines, all set in white metal.

313. A 9 ct gold square engine turned powder compact, Birmingham 1965 maker W.H.M. scribed S. Cartier.
314. Two heavy graduated curb link silver Alberts, 113 gms combined.
315. A white metal heavy longuard. 54" 73 gms.
316. Two medium weight graduated curb link Alberts. 65 gms combined.
317. A Victorian wide hinged bangle, set with a large red paste cabochon in yellow metal.
318. An oval diamond and sapphire set brooch, a central faceted mid blue sapphire of 11 mm x 7.5 mm, antique shape and cut, milligrain set and surrounded by a pierced setting set with old and rose cut diamonds of 0.4 pts or less totalling some 0.55 pts, white metal backed by yellow metal.
319. A shell cameo brooch, depicting women and children at a monument, set in a scrolling yellow metal frame, infilled with blue enamel. 4.7 mm x 3.7 mm.
320. A ladies yellow metal fob watch, with gold coloured dial, engine turned case stamped 18K
321. A sovereign set ring. 1926
322. A Belle Epoque diamond set heart shaped metamorphic pendant/brooch, the basic open shape set with diamonds, one central stone of 0.50 pts approx. to a pearl dropper from the point.
323. Two small gold coins, ring and watch fob.
324. A yellow metal thimble.
325. Three yellow metal fob watches (AF).
326. Ladies fob watch, floral engraved case stamped 18K.
327. 8 stone set rings, various stones and grades.
328. 2 retractable toothpicks.
329. A Victorian style brooch, a central amethyst of 19mm x 13mm approx. surrounded by gold ball and small pearl set openwork frame in 14ct gold.
330. A ladies five stone diamond ring estimated total mounted weights of stones 0.55 ct. setting stamped 18ct.
331. A gentleman's diamond set signet ring, rose cut stone above girdle only, claw set in 18ct gold. Birmingham 1900
332. A ladies dress ring by Garrard & Co. of yellow square cut, set in line in 18ct. gold.
333. A heavy chain bracelet by Garrard & Co. with three stone set suspended heart shaped motifs with pearls below, stamped 750 weight all in 25.7 gms.
334. A ladies opal and diamond dress ring, the cabochon oval opal 15.2 mm x 14 mm in rub over 18 ct setting surrounded by 24 diamonds of approx 0.01 ct each total weight 6.9 gms. London 1989.
335. An 18ct gold a brooch, in the form of stylised wings with a tear drop shaped opal suspended below, 10 mm x 6.6 mm with a small diamond set at the apex. London 1993
336. An opal set pendant of stylised floral form, the central opal 20 mm x 15 mm surrounded by precious and semi-precious stones set in leaf shapes intersert with pearls, the whole in yellow metal.
337. A necklace of pearls, possibly freshwater, 63 pearls of average size 5.5 mms diam. to white metal clasp. 41 cms length.
338. A silver brooch by Charles Horner, a silver swirl to a thistle head amber paste set centre. Chester 1914
339. A silver brooch by Charles Horner, a rounded triangle with oval insert enamelled in turquoise blue, hammered finish and rose motif. Chester 1911
340. An Art Nouveau style white metal plaque brooch.
341. A 1930's Cyma cocktail watch, rectangular black dial, white metal case to white metal bracelet, inscribed to reverse.
342. A marcasite set plaque brooch, in white metal, early 20thc
343. Three items of Miriam Haskell costume jewellery being a ribbon twist brooch, a shell shaped brooch with faux pearl drop and a black bead bracelet all marked. together with a black glass necklace.
344. Two Art Deco style brooches.
345. A small silver pendant by Charles Horner, with enamelled centre (AF) and a faux pearl bracelet.
346. A yellow metal twisted rope link longuard 56" length, weight 22.8 gms. clasp marked 9ct, chain stamped 10
347. A pocket watch movement, bezel wind and a rose gold fancy link watch chain and T bar. 9ct. 12" length.
348. A Victorian tortoiseshell pique brooch with bird & floral decoration to centre. 4cms diam.
349. A travel clock movement by Drew & Sons, Piccadilly Circus . 6.5 cms diam.
350. A moonstone necklace & ring set in yellow metal (AF).
351. A travel clock movement by Sir John Bennett Ltd, London, 8 day.
352. Scrap gold items.
353. A Ladies gold engine turned cased fob watch (AF)
354. Two Victorian stone set gypsy style rings (both AF).



355. Two gold plated pocket watch cases.
356. Two stone set rings (AF).
357. A bezel wind pocket watch by Russell & Sons Liverpool.
358. Scrap gold items.
359. A Victorian memorial brooch, a locket and ladies fob watch (all AF).
360. A gold plated pocket watch case and a fob watch
361. A silver cased pocket watch and 2 ladies gold cased wrist watches (all AF).
362. A rose gold watch chain and chain pieces.
363. A tortoiseshell cigarette case with applied script initials AOL.
364. A selection of early 20th century costume jewellery.
365. A Chinese porcelain snuff bottle in the form of a small boy.
366. A Chinese blue and white porcelain snuff bottle.
367. A Japanese darkwood netsuke, a study of a large snail.
368. A Japanese fruitwood netsuke, a study of a dutchman standing holding his hat.
369. A Japanese ivory netsuke, a study of a village elder standing in fine kimono holding a child.
370. A Japanese ivory netsuke, a study of a portly village dove keeper standing holding his favourite bird upon the back of his hand.
371. A Japanese ivory netsuke, a study of an elderly Samurai.
372. A Japanese blackwood inro, depicting Kwan Yin seated upon her lotus throne.
373. A pair of ornate filigree Indian ear-rings, set with small red and green stones in yellow metal.
374. A Victorian bloomed gold brooch and ear-ring suite, navette shape brooch and round flower head earrings, each set with a single garnet, cased.
375. An opal set ring, the opal carved with a scarab set in yellow metal
376. A diamond and emerald cluster ring, with an oval central emerald of 6.6mm x 6.2mm surrounded by 14 diamonds, surrounded by 14 emeralds in a basket style setting to a 5 band shoulder shank, all in yellow metal.
377. A Victorian yellow metal cased portrait brooch, ring, watch, other brooches etc.
378. A brooch, in the form of a scorpion, the body being set with variously coloured garnets (5) set in white metal, 2½" long.
379. A ruby faceted glass double ended scent/smelling salts bottle with silver stoppers. 9.5 cm. length.
380. A box link long chain, 54 cms in length with swivel stamped 9, weight 19.6 gms
381. A gold ring with insert portrait of a Georgian gentleman, covered and set as a cabachon with wide scroll engraved shoulders to a flat shank.
382. A late Victorian rectangular silver locket with floral fitted cartouche to front in bi-colour metal, on a medium weight silver belcher chain. 44 cms. length.
383. A gentleman's signet ring, a jade cabochon 7mm x 5 mm claw set in yellow metal stamped 18ct.
384. A gentleman's signet ring, a flat cut blood stone agate claw set in 9ct gold, Birmingham 1955.
385. An Edwardian double sovereign, 1902 and a heavy link chain - T bar stamped 9ct. 37 cms length. Total weight 39.1 gms.
386. An Edwardian sovereign, 1909.
387. A burgundy leather covered jewel case with inner divided tray, Bramah lock and brass carrying handle, by J.W. Allan, 37 Strand London, brass handle plate inscribed F. C. Scott Sanders Lyric Club; and contents, mainly costume jewellery.
388. A small ivory globe with 14ct gold mounts for pendant. 1.7 mm diam. approx.
389. A yellow metal bar brooch with attached wishbone and forget-me-not, stamped 9ct.
390. A small silver jewellery stand as an owl on a perch, Birmingham 1906, Maker AJS 9.5 cms high.
391. A French gold cased pencil, and two gold cased pencils by S. Mordan & Co. London.
392. Three diamond or pearl set stick pins, various designs.
393. A diamond and pearl set stick pin, a pearl set above 3 diamonds, largest 10 pts. approx.
394. A stick pin surmounted by a golden eagle with ruby set eyes.
395. Two turquoise topped stick pins and one topped with turquoise surrounded by tiny diamonds.
396. A yellow metal stick pin showing an Asian deity and matching cuff-links.
397. A yellow metal pencil/pen with a purple stone seal top, engraved overall with acanthus leaves, flowers and scrolls.
398. A yellow metal watch chain, with interspaced banded agate beads stamped 18ct, total weight 23.9 gms.

399. A set of four shirt studs, set with diamonds, the largest, an old cut stone of estimated mounted weight 1.25 cts the other 3 brilliant cut stones totalling approx. 0.95 pts, all mounted in yellow metal.
400. A yellow metal curb link watch chain 35 cms length. 23.7 gms.
403. Bone travel dominoes, gold plated Waltham half hunter pocket watch, silver cigarette case, stamp case, medallion and 9ct gold gentleman's signet ring set with blood stone agate.
404. A Ladies 9ct gold Omega bracelet watch, round champagne dial 1.5 cms diam. gold baton numerals, on a ripple ribbon effect bracelet.
405. A sapphire and diamond set dress ring, in 18ct gold, a small central diamond surrounded by 6 small sapphires.
406. An 18ct gold signet ring, set with a small diamond, a three stone diamond ring stamped 18 ct and plat and a white metal eternity ring (AF).
407. A 1930/40's ladies gold wristwatch, and a yellow metal pocket watch.
408. A yellow metal ring, set with 5 inline turquoise cabochon stones.
409. An opal and diamond set dress ring, a central oval opal 5 mm x 7 mm flanked by 4 small diamonds, flanked by 2 smaller opals, set in gold, marks rubbed.
410. An opal set bar brooch, the opal 9mm x 15mm set centrally, together with an opal set stick pin and opal stud ear-rings.
411. A 9ct gold charm bracelet, with 12 charms, padlock clasp. weight 40.5 gms.
412. An opal set yellow metal bar brooch, with yellow metal oval locket attached.
413. Two small oval brooches, set with blue-john and marcasite, a ring set with blue-john and a pair of stud ear-rings, all in white metal.
414. A gentleman's signet ring, in 9 ct gold set with an oval 'sun stone'.
415. An early 20th century turquoise and diamond set pendant, a small central diamond with 4 small round turquoise set to form a cross suspended from a split bar to a small turquoise set termination, on a fine trace chain, the whole in yellow metal.
416. An Edwardian garnet and seed pearl set pendant, an oval double frame with centrally set garnet and seed pearl set leaves to the cardinal points with a garnet set dropper, all in yellow metal chain stamped 9c.
417. A Victorian memorial brooch, double sided on swivel, a cameo of two peacocks perched on an urn in a bower, the reverse a glass covered woven hair panel. 'C' scroll decoration to front, the whole in yellow metal 6.5 cms x 5.5 cms.
418. A rose gold lightweight watch chain, twisted curb with double section and ball, T bar, swivel and heart shaped charm attached. 9.7 gms.
419. An amethyst and yellow metal brooch, an amethyst and marcasite set brooch, matching ear-rings and similar ring, all in white metal.
420. A mid weight 9ct rose gold watch chain, with carved jade heart, T bar and one silver sovereign case and one white metal sovereign case attached, weight of watch chain 49.4 gms approx. 40 cms length
421. A small Victorian oval memorial brooch, red guilloche enamel to front with white enamel border and small centrally set seed pearl, glass covered hair filled panel reverse in 15 ct gold 2.5 cms x 1.4 cms, (slight damage to white enamel).
422. A mixed lot of bar brooch, stick pins and stock pins, a garnet set bar brooch, 2 fox mask stick pins, a horseshoe pin, a hunting horn and a crop stock pins. (6)
423. A gentleman's 'Everite' gold cased wristwatch.
424. A small leather covered jewel box, containing costume jewellery
425. A pair of circular yellow metal brooches, one inscribed IVY, the other MOLLY.
426. A quantity of costume jewellery, including marcasite and diamante' items. (2)
427. A leather covered jewel box and contents, of small silver and gold items and costume jewellery including jade bracelet and 2 grouse foot brooches.
428. A yellow metal 5 bar gate bracelet with padlock clasp, stamped 9c.
429. A lightweight fob chain with swivel, ball T bar and tassel
430. A stick pin, small brooches and yellow metal fob watch.
431. A display case of trinket items including lace hook, tokens, service medals, cap badges etc
432. A cased set of Royal Family silver coins.
433. Five various bottle stoppers carved as masks and figures.
434. A collection of 10 Victorian and later carved pipes, some silver banded and some cased.
435. A miniature brass carriage clock.

436. A Swiss engine turned gilt metal travel alarm clock with Roman numerals, bun feet and a leather fitted case from the retailers Arthur Saunders & Co. London 2¼" high
437. A gilt brass carriage time piece 6" high.
438. An Omega gentleman's electronic F300Hz chronometer, stainless steel, cased.
439. A cased marble fountain pen and propelling pencil set together with instructions and a gold plated combination pen and pencil.
440. An Edwardian 9ct gold memorial brooch, marquise shape set centrally with a small pink stone flanked by sea pearls, reverse glass missing, Chester 1904.
441. Two gun metal fob watches.
442. A Victorian silver flat curb albert with suspended sixpence and silver ship's wheel compass, the later being Chester 1923.
443. A brass shot measure with ebonised handle, oystershell purse and mahogany bench clask.
444. A Victorian mother of pearl calling card case.
445. Graduated set of brass weights, miniature oil can, keys etc
446. A pair of 19thC Chinese carved ivory figures of seated man and woman 2½" high
447. A 19thC horn snuff box with transfer printed cover depicting a Pope.
448. A Victorian silver stop watch by Metcalfe & Co. of London, cased. London 1876
449. A Victorian brass pocket barometer.
450. A George III pair cased open face verge pocket watch, white dial, Roman numerals, pierced and engraved balance cock, movement scribed William Russel, case with monogram and date 1807, tortoiseshell trim to outer case.
455. Guyot after Watteau. "La Mde. D'Hintres" hand coloured aquatint, 19thC, 9" x 6" (foxed)
456. After Herbert Dicksee. Study of a gypsy girl and dog by a camp fire, sepia, drypoint etching, c.1903 pub. Frost & Reed, signed in pencil to margin, image size 19" x 23".
457. By and after Buckler. "The Cemetery, Boston", sepia lithograph, 19thC, pub. I M Newcomb, Market Place, Boston, image size 9" x 13".
458. A film poster - Walt Disney presents The Great Locomotive Chase, printed in colour by Stafford & Co. Netherfield Nottingham, 21½" x 27½", another Rob Roy, 20½" x 27½".
459. Film Posters - In the Meantime Darling, 17½" x 23", Roxie Hart, 19½" x 26", The Man who came back 21½" x 27½" and That Mad Mr. Jones 18" x 23½". (4)
460. Film Posters - The Master race 21½" x 27½", Cluny Brown 17½" x 23", Ten Little Niggers 17½" x 23" and a colour print of Richard Green 24" x 18".
461. Paulus Pontius 1603 - 1658 after Head of Christ, copper engraving, 15" x 11½", Peter Paul Rubens (1577 - 1640) title partially trimmed and stuck to frame verso.
462. After Wustlich. Reclining girl in a landscape reading, believed to be the Penetant Magdalene, chromolithograph, 19thC. 24" x 36" contemporary gilt frame.
463. After Frank Moss Bennett. Set of three 19thC genre scenes, reproduction colour prints, modern, 9½" x 13½" and 13½" x 9½"
464. After Cecil Aldin. Three colour hunting prints.
465. After Lawson Wood. Colour prints, golfing & fishing etc.
466. After J*** N***. Study of a young woman and child, reproduction colour print, 7¼" x 7½".

PICTURES

451. Jos. Grozar after George Morland. "The Happy Cottagers", "The Gipsies Tent", a pair, coloured mezzotint, originally published 1824 by Z. Sweet, London, later 19thC impressions, image size 17¼" x 21¼". Contemporary black Hogarth frames.
452. After C. Twelvetrees. "Do you know any nice little girl what hasn't any bean?", "I know a little girl what wants a bean", a pair, photogravures, c.1911 8½" x 6¼".
453. By and after James Gillray. "The Union-Club", hand coloured engraving, 19thC, 12" x 17¼" (trimmed to plate mark on three sides).
467. After E. O. E. Somerville, M.F.H. Slipper's ABC of Fox Hunting "Some experiences of an Irish R.T.". "A Patrick's Day Hunt" etc., 21 coloured prints, early 20thC (removed from book and framed). Covers present, but in poor condition.
468. Film Posters - Road House, Smoky, My Darling Clemantine, Gentleman's Agreement, The Luck of the Irish, Guadalcanal diary, and five others (11) all framed.
469. Frank Short after Turner. Crowhurst, Sussex, soft ground etching, signed in pencil and inscribed to W J Rawlinson, blind trade stamp, circa 1902, 8½" x 11½" together with six further etchings and engravings (mostly unframed).

470. **Early 20thC School.** Dancing girls and Caliph, signed etching, 5½" x 8½".
471. **After Wouveman.** The Village Farrier and Returning from Market, copper engravings, 18thC 9¼" x 13½", trimmed to image with superimposed title.
472. **Italian School.** Madonna, and child with attendants, oliograph, 20" x 30" in a fine pierced giltwood and gesso frame.
473. **A collection of 18thC copper engravings, portraits etc.,** book illustrated, some hand coloured, 7" x 4½".
474. **20thC School.** "Lighting Up" study of a Chinaman etching, signed in pencil, 12" x 8½".
475. **19thC School.** Bathing beauties, coloured mezzotint, oval 7½" x 5¼", together with The Infant Christ after Marratt, steel engraving, *image size* 10½" x 7½".
476. **19thC Italian School.** Portrait of a young boy 15½" x 12", another of a young girl 18" x 11", lithographs.
477. **After W. H. Overand.** Nelson on board his flagship at Trafalgar, chromolithograph, 21" x 30".
478. **After A. J. Gough.** A set of six humorous hunting cartoons, coloured prints, early 20thC, 13½" x 9½".
479. **After Basil Bradley.** Otter Hunting in the North - The Last Struggle, engraving from the Illustrated London News, 9¼" x 11¼", another of Otter Hounds. (2).
480. **Three Stevenographs, "The Meet", "Full Cry" and "The Death",** in original mounts 5" x 7¼" in Oxford frames.
481. **A George III needlework sampler by Elisabeth Lister,** dated 1815, worked on a fine linen backing in coloured silks with verse, country house, vases of fruit and flowers, dogs and birds within a flora and counter-flora border, 13" x 13" contemporary mahogany frame.
482. **An early 19thC sampler by Mary Rebecca Richardson,** aged 11 years, dated September 21th (sic) 1838, worked on a fine linen backing in coloured wools with numbers, alphabet, verse, over a country house, trees, birds and dogs within a sprig border, 16½" x 12", in a contemporary walnut frame.
- 482A. **A 19thC woolwork picture** of a shepherdess kneeling with a lamb 19" square in a light oak frame.
483. **An 18thC black and white etching,** study of a countryman, inscribed top corner D... 1770. 9½" x 7¼"
484. **H K Brown (Phiz).** The Two Chestnuts ...Watercolour and pencil sketch/heightened white, unfinished, signed and title indistinctly in pencil, 11" x 19"
485. **19th Century School.** Family group in a landscape, and a couple in a landscape, conte' drawings, 5½" x 7"
486. **After John Ferneley.** 'Tauris' study of a racehorse, Jockey up, oil on card, 5" x 7"
487. **19th Century School,** Turkish soldier and his lover in a moonlit landscape, oil on panel, 11" x 9"
488. **19th Century School.** Merchant and barber's boy, hand tinted print on copper, 12½" x 10"
- 488A. **By & After Lionel Edwards.** The Blackmore Vale, reproduction colour print, signed in pencil, 9¼" x 14¼" [unframed]
- 488B. **J. Kitson.** Bakewell, Berbyshsire, pencil drawing/heightend white signed. 9"x 14½" [unframed]
- 488C. **A & H & J. Hunting - 'over a stream',** pen, ink and body colour, signed with initials, 7" x 8¼" [unframed]
- 488D. **S & B.** Study of a bay horse in a stable, oil on artists paper, signed with monogram, 8½" x 10½" [unframed]
489. **Timothy Tebbs.** Tealby, Lincolnshire, 1993, village scene with figures, oil on canvas, artists name and title verso, 16" x 20".
- 489A. **Tatton-Winter.** Figures in a hilly landscape, watercolour, bears signature bottom right, 6½" x 9½"
- 489B. **Mark Huskinson & Christopher Curtis (20thC).** 'The Country Seat', illus. Huskinson & Rose by Curtis, wash/pen/ink/body colour on buff paper, signed and dated 1984, 15" x 11¼".
490. **Muriel L. Smith RMS** Study of a female nude, oil on canvas laid onto board, signed, 18" x 15"
- 490A. **After Colin Carr,** Village Cricket Match, reproduction colour print, 13½" x 20".
- 490B. **After Williams.** A sketch of a Millhouse.
491. **After Casper Netscher.** A Lady reading a letter, at an open window watched by a male admirer, A Lady with parrot and child, at a window, a pair, oils on oak panel, 8¼" x 6½".
- 491A. **J W Morris (Style of).** Sheep in landscape, oil on canvas, 18" x 14".
492. **Henry Reynolds Steer.** Lover's Tryst, watercolour, signed 17½" x 10½".
493. **A. Ashdown Box.** Wheatfield before a half timbered Tudor house, watercolour, signed and dated (18)'86, 9" x 13".
494. **F. W. Burton.** Ostler with two cart horses in a winter farmyard, watercolour/heightened white, 10½" x 8¼".

495. **T*** G*** 1924.** Conversation with a Cardinal, watercolour/heightened white, signed with monogram and dated 10" x 13".
496. **Attrib. R. Noyes (1780-1841).** Willow tree over a pond, pencil drawing, 6½" x 10½" and a Country House, pencil sketch, 7½" x 10½"
497. **D. H. Parry.** Horses in a yard, watercolour, signed 10" x 15".
498. **Myles Birkett Foster.** Mumbles Head. Fisherman and girl on a cliff top path, lighthouse on headland, watercolour, heightened white, signed with monogram 6¼" x 14¼".
499. **Myles Birkett Foster.** The Lion Inn. Figures and horses outside a busy wayside Inn, watercolour, signed with monogram, 5¼" x 4¼".
500. **A. Claude Strachan.** Horse in a wooded landscape with river to the fore, watercolour, signed and dated 1885. 14½" x 20½".
501. **Crouch (19thC).** View in Beuchwch Isle of Wight - watercolour on paper. 3½" x 5½" signed - Crouch bottom right.
502. ***J. Bafe***.** Study of a young woman, ¾ length, seated facing sinister, in a garden landscape, watercolour and pencil on paper, indistinctly signed and dated 184? bottom right, 14¼" x 11" oval.
503. **Manner of Landseer.** Study of two Borzois, watercolour on paper 6¼" x 9¼" together with a pencil drawing of a hound and terrier and two other works.
504. **Manner of De Wint.** Two men in a rowing boat in a moonlit river landscape, watercolour on paper, bears signature 8" x 11¼" (unframed).
505. **19thC Neopolitan School.** Bay of Naples with fishing boats and pleasure boats, off the coast with Vesuvius to the right, another, the Bay from Naples town with figures in a formal park, buildings to the right, gouache on paper, 19thC, 8¼" x 12¼".
506. **Claude Pratt.** Study of a lady reading a letter by a cottage window, watercolour and pencil on paper, signed and dated 1909 top right, 13¼" x 10¼".
507. **R. Westlake.** Puppies and chicks in a yard, watercolour on paper 8¼" x 12¼".
508. **W. C. Fisher.** River landscape with figures in a rowing boat and barge, two on river bank, watercolour on paper, signed and dated 1912 bottom left, 13" x 18¼".
509. **H. W. Kirkby.** Still life of pears on a branch, another of apples on a branch, a pair, watercolour on paper, signed and dated 1901 26" x 12¼".
510. **19thC School.** A sketch book containing a collection of watercolour pen and pencil sketches, some unfinished, mainly West Country and Wales, mostly initialled F. R. (loose and damaged boards).
511. **A small collection of 19th century & early 20th century watercolours, sketches etc. (all unframed)**
512. **19th Century School.** Snowden from the West of Capel Curig, landscape with fishermen, boat and watering cattle, watercolour/heightend white, 14½" x 21½"
513. **19thC Chinese School.** An album containing a set of twelve pith paper gouache scenes depicting the hobbies of court ladies, each 12" x 7½", exceptional colours.
514. **George Graham.** Castle landscape, watercolour, signed and dated 1916, 18" x 23", inscribed verso "painted by George Graham at Barden 1916", together with another work A. H. Enock, The Eildon Hills from above The Tweed, watercolour, signed, 20¼" x 30".
515. **Dora Rackham.** Study of birds and blossom, watercolour, signed and dated 1892, oval, 12" x 9¼".
516. **A. Plymar? 19thC.** Portrait miniature - head and shoulders of a young woman, facing dexter, watercolour and ink, signed 3½".
517. **19thC School.** Portrait miniature - head and shoulders of a housewife wearing a lace bonnet and brown dress facing sinister, wash and ink. 2¼".
518. **Tom Clough (1867-1943).** River landscape with strewn rocks and tree lined banks, mountains beyond, watercolour, signed 29½" x 45¼".
519. **19thC Chinese School.** A set of four Chinese pith paper gouache studies of female musicians 4¼" x 2¼".
520. **R. Montague (19th/20thC)** Arabian street scenes, a pair, watercolour, gouache and heightened white, signed 5¼" x 9¼".
521. **19thC School.** Workhouse interior with figures by an open fire, oil on canvas, 11" x 12".
522. **F. Roe (early 20thC).** Portrait of a gentleman, half-length seated at a desk, oil on canvas, signed 24" x 18".
523. **19thC School.** Girl feeding a parrot, oil on panel, 20" x 16", label verso inscribed "Purchased at the Countess of Harborough's Sale at Stanley Lodge, Exmouth (Devon) in the year 1884 by H. M. Horn in Topsham.
524. **Marek Maruszewski (20th century Polish)** Landscape, - oil on canvas, signed, 29"x 24". inscribed verso Maruszewski Marek, Siedke VI Kasprzaka 1964.
525. **20th Century School.** Portrait of Sir Keith Alexander Fraser, W.W.I field officer - 7th Hussors, M.P. for Market Harborough, 1918 - 23, half length facing front, in army uniform. oil on canvas, indistinctly signed and dates, 30" x 25". title label verso.

526. **J Tippold-Copie.** Wagoneer and Horses, going at a steady pace, with tethered foal alongside, oil on canvas, signed, 31½" x 39½".
527. **J xxx Dib xxx.** Fishing Boats at Low Tide and Becalmed Fishing Boats, a pair, oil on canvas, indistinctly signed, 21½" x 16".
528. **Dendy Sadler.** Huntsman with clay pipe, outside a country inn, oil on canvas, signed with monogram 20" x 17".
529. **T. Buckley.** Stag and hinds in a highland river landscape, oil on canvas, signed and dated 1913, 24" x 12".
530. **19thC School.** Figures in a winter cottage landscape, oil on canvas, 4¾" x 8¾", another, Gypsies in a lakeland landscape, oil on canvas 8¾" x 4¾".
531. **F. Haynes.** Portrait of an old man, head and shoulders facing sinister, oil on panel, signed 19½" x 15".
532. **19thC School.** Equestrian scene with figures and horses in a stable, oil on panel, 14" x 19".
533. **George Bishop.** Study of a saddled hunter before a wall, oil on board, signed and dated 1914, 13¾" x 17¼".
534. **Peder Mork Monsted (1859-1941).** "Friderikaberg Harg 1926" river landscape with tree lined bank and winding path to the side, oil on canvas, signed, title and dated 16" x 24½".
535. **Jim Orme.** Figures in a country park, with children paddling in a shallow stream, oil on canvas 20" x 24".
536. **Windsor.** Still Life of chrysanthemums in a vase, oil on canvas, signed, 18" x 14".
537. **19th Century School.** Hunting scene, oil on canvas, 8" x 16".
538. **19th/20th Century School.** Fishing boats on a choppy sea, oil on canvas, 8" x 12".
539. **GWB (orG). (19th/20th century).** London from Vauxhall Bridge, oil on canvas, signed with monogram, 21" x 17" Media Society label verso.
540. **B.B. Hemy.** Fishing boat leaving the harbour in a choppy sea, oil on board signed, oval, 10¾" x 14"
541. **W. Fitz.** Study of a West Indian fruit seller, oil on canvas, signed and dated (18)'97, 14" x 10"
542. **B. Fitz.** Head and shoulders portrait of a young woman, oil on canvas, signed and dated 1893, 20" x 16"
543. **19th Century School.** Mountainous landscape with sheep, oil on card, indistinctly signed and dated, 14" x 22".
544. **19th Century School.** Figures on a riverside path, with grazing sheep by cottages, oil on canvas, indistinctly signed, 14" x 18".
545. **19th Century School.** Reclining woman with book, oil on panel, 12" x 16", exhibition label verso.
546. **19th Century School.** Valley of Rocks, Lynmouth North Devon coastal scene with figures, oil on board, 10" x 12". title verso.
547. **19th Century School.** Near Loch E xxx, oil on artist's board, signed with a monogram, 12" x 9" indistinct title verso.
548. **Wilfrid Jenkins.** Figures on a moonlit sea-front street, oil on artist's board, signed, 12" x 19".
549. **A. Hulk.** Figure on a river side path, oil on canvas, signed, 18" x 14".
550. **W.H. Smith.** Still Life of plums and grapes on a grassy bank, another, of grapes peach and greengage with a butterfly, a pair. oil on canvas, signed and dated 1873. 10" x 12" artist's label verso.
- 550A. **Kramer.** Portrait of bearded gentleman, pencil, bears signature Kramer, 1916 bottom right. 10" x 8".
- 550B. **L Knight.** Flanagan & Allen, drawing, bears signature and title 16" x 11"
- 550C. **L. Knight.** Seated ballerina and assistant, believed to be in the dressing room of the Diaghlev Ballet, pencil, bears signature Laura Knight 1920, bottom right 10" x 7".

BOOKS, EPHEMERA, ETC.

551. **Hume (David) and Smollett (Tobias).** The History of England, London circa 1858, 3 vols, ills. with maps in vol. 3. marble and ½ calf boards. gilt spine, by J. Hall, Wainfleet.
552. **Goodall (George).** The Mercantile Marine Atlas, 14th ed. 1952, and Kiepest (Henrico) - Orbis Terrarum Antiquis Notus - Berlin no date, (2)
553. **Chambers Atlas,** circa 1855, together with three further Atlas's 20th century, an ordnance survey map of Great Britain, another relating to the Government Reform Bill of 1832, an engraving after Rowlandson 'How the Treacherous Boer Fights,' and Leichtensteni (Marie) - Holland House, 1 vol. 1874.
554. **Paris (Edmond).** Le Musee de Marine Du Louvre, 1883, ills. folio. blue ½ calf gilt, detached boards,
555. **Butler (Sammuel) - Atlas of Ancient Geography.** circa 1902, marble boards, (top board missing), and Shaffner (Tal.P.) - Illustrated Record of the International Exhibition, 1802, ½ calf, gilt, with raised spine bands, (boards poor) and Heinemann (pub.) - Little Books About Old Furniture, 4 vols. 1919.

556. **Wilson (Dr Andrew) - The Royal Natural History**, 1 vol, circa 1907, ill. ½ calf, gilt, raised spine bands, (scuffed), together with a quantity of similar vols.
557. **Lee (Rawdon B) - Modern Dogs**, 4th ed. 2 vols. circa 1906, cloth boards, gilt decor, and Crawford (Oswald) - **A Year of Sport and Natural History**, 1 vol, 1895, ill. cloth boards, gilt decor. (3)
558. **Barker (Robert), Bible**, 1608. A 'Breeches' bible, lightly time stained and a few torn leaves, re-bound in 19th century full leather over wooden boards, gilt tooling
559. **White (Francis & Co.) - Nottinghamshire History, Gazetteer & Directory**, 1834 Contemporary full leather with blind tooling, lacking spine, and University Press (pub.) **The Apocrypha**, 1925. (2)
560. **Milton. The Paradise Lost**, ill. John Martin, Charles Tilt 1833, 23 b/w mezzotint plates, half-calf, marble boards, (scuffed)
561. **Reade (Charles) - The Cloister & The Hearth**, ill. Gordon Browne, no date, cloth boards, gilt and decor and pictorial top cover, and Smiths Plan of London (folding map) and one other volume.
562. **Hope Moncrieff (A.R.) - Classic Myth & Legend**, Mackenzie (Donald) - **Indian Myth and Legend** and 6 further vols. from the Myth & Legend series, Contemp. cloth boards.
563. **Reeves & Turner (pub.) A Ritual and Illustrations of Freemasonry**, no date, contemp. cloth boards, gilt spine.
564. **Rowling (J.K.) Harry Potter and the Chamber of Secrets**, pre-publication issue, 1999, produced without dust jacket, given to employees by the publishers.
565. **Normand - Ordres D'Architecture**, 19th century, ill. half-calf, raised spine bands (scuffed) and Hoffstadt (Frederic) - **Development of the True Principles of Christian or Painted Architecture**, no date ill. half-calf, (scuffed) (2)
566. **Hulme (F. Edward) - Familiar Wild Flowers**, 4 vols, no date, 1st - 4th series, ill. col. plates, half-calf, gilt decor. and raised spine bands.
567. **Rome Pronti (Domenico). Nuova Racchetta di 100 Vedutine Antiche Della Citta di Roma E Sue Vicinanze**, vol. one only, engraved title, 100 views on 50 plates, full leather boards, gilt decor, and raised spine boards.
568. **Fox (Charles James). A History of the early part of the Reign of James The Second**, London 1808 1 vol, contemp. full leather, boards detached and **The Spectator**, 3 vols, c1745, contemp. calf.
569. **Badminton Library - Yachting**, 1894. vol. one only, and 3 natural history vols, and others (13)
570. **Pickles (Wilfrid) - Between You and Me**, autobiog. 1946, signed by the author, dust wrapper.
571. **Payne (Charles) Known as Snaffles - A Half Century of Memories**, 1949, 1st edition, ill. and with 5 col. plates, orig. cloth boards. and Edwards (Lionel) - **My Hunting Sketch Book**, 1928, 2nd edition, ill. 15 col. plates, orig. cloth boards. (2)
572. **Walton (Izaak) & Cotton (Charles) - The Complete Angler**, 1823, ill. marble end papers & boards, ½ calf, raised spine bands. (scuffed)
573. **A 19th Century Lincolnshire search warrant** dated 1853, and various Bye-Law posters.
574. **An Album relating to the Scouts and Guides** cruise to the Baltic Ports - 1933 and other ephemera.
575. **A George III vellum indenture**, 1790, for Staffordshire/Tamworth.
576. **Football Programmes: Chelsea v C.D.N.A. Bulgaria** 1958, Manchester City v Newcastle United, 1955. Chelsea v Red Banner (Hungary) 1954 plus six later programmes and 2 digests.
577. **A quantity of topographical and other postcards.**
578. **A quantity of saucy postcards**, Bamforth and others, (approx 18)
579. **A quantity of postally used stamps**, mixed, 19thc. and later.
580. **Quantity of stamps**, in 3 albums and ephemera.
581. **A Royal Mail Stamp Album**, containing a good collection of G.B. and other stamps, mint and used.
582. **Gaskell (Ernest) - Lincolnshire Leaders, Social and Political**, ill. portraits, ½ calf, gilt decor, pages detached
583. **A Collection of cigarette card sets**, contained on 4 albums, together with a Racing Pigeon set in Players packet,
584. **Football: A 1966 World Cup Final Ticket**, Saturday July 30th, North Terrace, stamped Complimentary, good condition, together with a programme for the match (2)
585. **Football Programmes: 1962 England v Uruguay**, 1965 England v Austria, 1962 England v France.
586. **Football Programmes: 1963 England v Brazil**, 1962 England v Austria, 1962 England v Iceland.
587. **Football Programmes: 1961 England v Portugal**, 1961 England v Mexico.
588. **Football Programmes: 1960 England v Spain**, 1960 England v Yugoslavia.
589. **Programme: Eighth Army Service of Thanksgiving.**

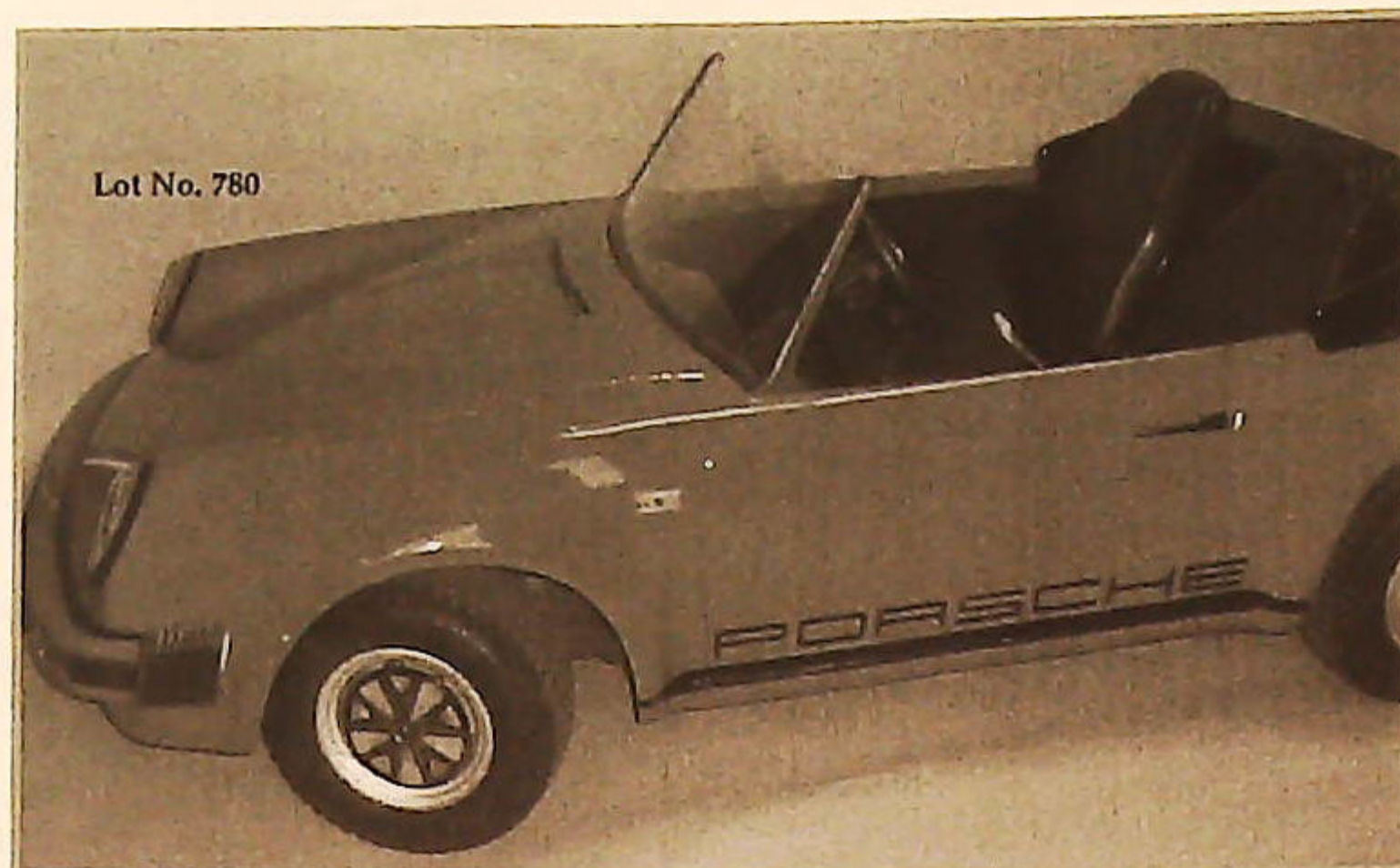
590. A box of assorted books inc: Carter's Cambridge, 1819, [lacking cover]
591. Spare Lot.
592. A Victorian leather bound set of cards marked patience, together with two further sets.
593. A wax seal applied to paper inscribed "Sir Isaac Newton's seal, engraved on green gem belonging to Herbert Burleton yours Bateman"

DECORATIONS

594. Medals. WWII Service and Defence medals and 1939 - 1945 star together with ERII Territorial medal and two sets of dress medals and watch.
595. Medals. Two WWI service medals and a 1937 Coronation Medal.
596. WWI Service Medal, three 1939/1945 stars, the Atlantic star and Machine Gun Corp button badge
597. Football. Two Medals, Vanian cup, Winners and Junior League winners 1953 and two military cap badges.
598. Golf. A rare and early 18ct gold lady's golf medal for Belton Park Golf Club (Grantham) and three further bar brooches.
599. Two Masonic medals, cased.
600. A World War I Military Cross in case, and three related medals, awarded to Rev. William Henry Kay attached to the West Yorkshire Regiment and was awarded the Military Cross in 1916, together with the death plaque, various newspaper clippings, a photograph, his Masonic Regalia.

METALWARE, GLASSWARE, VICTORIANA & MISCELLANEOUS COLLECTABLES

601. A Victorian electroplate napkin ring, mounted on the back of a cast metal deer, on oval base supported on four shell feet 4 1/4" high together with a Victorian EPNS mustard of circular form, sapphire liner, 2 1/2" high, a Chinese white metal 3 piece cruet set and a small 2-handled trophy cup.
602. A Victorian electroplate 6 bottle cruet stand, with a scroll and quatrefoil pierced gallery, on four paterae and trefoil supports (one stopper broken).
603. A Victorian electroplate tea pot of oblong wrythen form, raised on four bun supports, the fluted hinged cover with a composition finial, scroll handle and spout, 6" high.
604. An Art Deco period chrome desk stand, the oblong base with a centre perennial calendar flanked by two spherical inkwells, pen support to the front 9" wide.
605. An electroplate soda stand, with an everted rim with gadroon rim over a pierced bellier body, 8 1/2" diam. together with a wine coaster with cast rim and wooden base 6 1/2" diam.
606. A pair of electroplate sauce boats of George III design with reeded rims, flying scroll handles and on three shell and pad feet, 8" over handles.
607. A George III style plated ink stand, on four foliate scroll feet, fitted with two glass and plated inkwells, flanking a wafer box with detachable taperstick, 11" wide.
608. A pair of electroplate wine coasters, the everted rims cast with rocaile rims over plain bellied bodies, wooden bases, 6 1/4" diam.
609. A pair of plated entree dishes of oblong form with rocaile borders, the domed covers having removable handles 12" wide.
610. A set of six electroplate glass rings, the circular bodies pierced with Phoenix, leaves and scrolls, the twig handles with butterfly thumbpieces, stamped B. Bugh Warsaw.
611. A 19thC electroplate chamberstick, of George III design, the circular stand with shell and scroll rim, supporting a stick of knopped baluster shape with removable scone, the open handle with snuffer 6 1/2" diam.
612. An early 20thC bon-bon basket of elliptical form, supported on four acanthus and acorn feet, the openwork body embossed with a band roses and foliage over opposing arabesque and mask panels, loop handle, with sapphire glass liner, 6" wide, (handle partly detached), together with an EPNS butter dish, with pressed foliate detail and glass liner 5" square (2).
613. A pair of plated candlesticks, each with fixed scone on annulated tapering stem, and octagonal stepped foot 7 1/2" high.
614. An electroplate entree dish, of oblong form, with gadroon borders and removable handle 10 1/4" wide, together with an oval entree dish with bead detail and removable handle, 11 1/2" wide. (2)
615. A Victorian electroplate bottle stand by John Round, with circular platform, slightly scrolling adjustable upright with volute loop handle and circular collar, 12 1/2" high extended, together with an EPNS chafing dish, of circular form, with separate stand and burner.
616. A Victorian plated tea kettle and stand by James Dixon & Sons, of plain circular form with fixed handle, disc cover with bead and leaf finial, supported on scroll uprights with platform base on bun feet, removable burner 14" high.



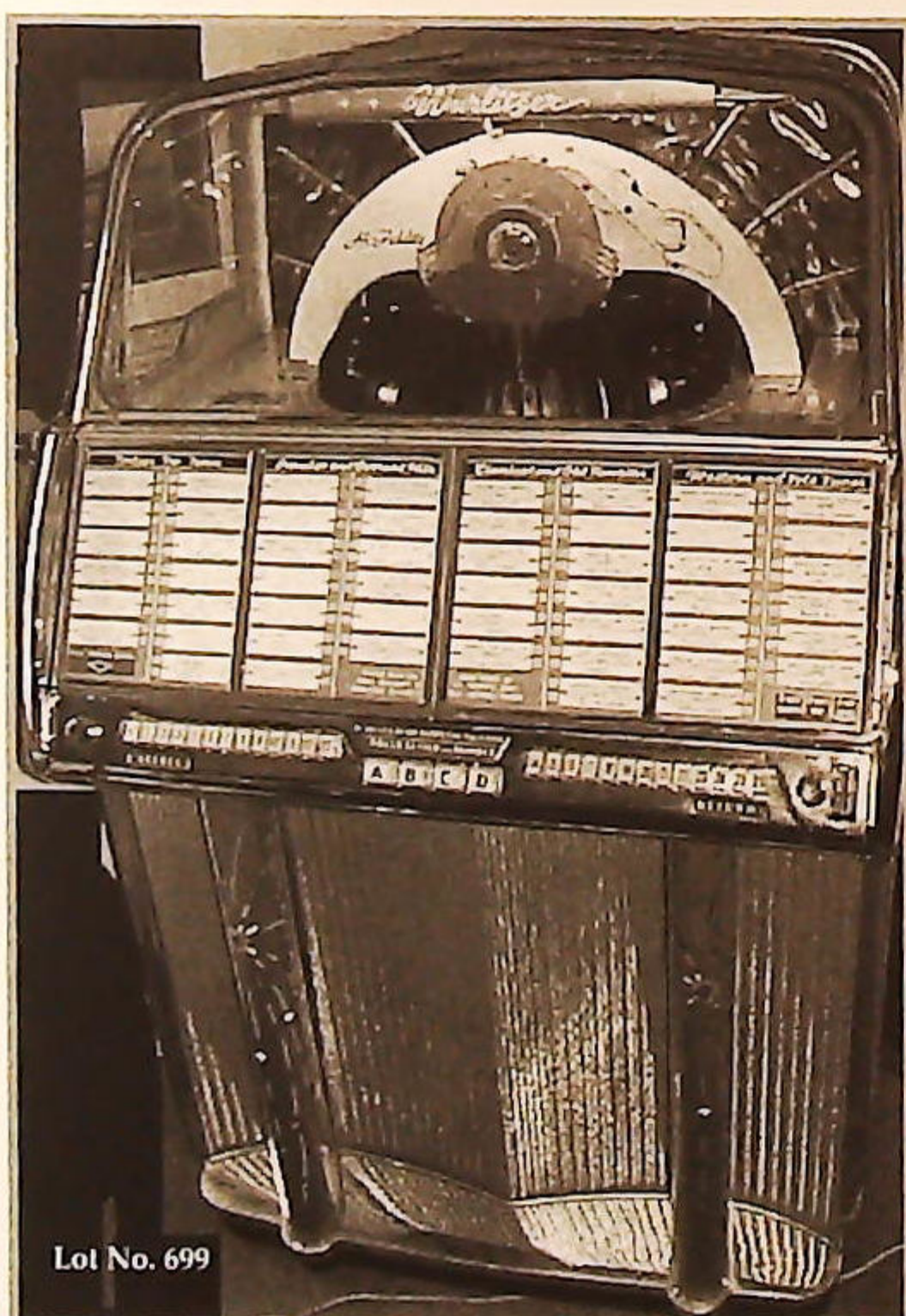
Lot No. 780



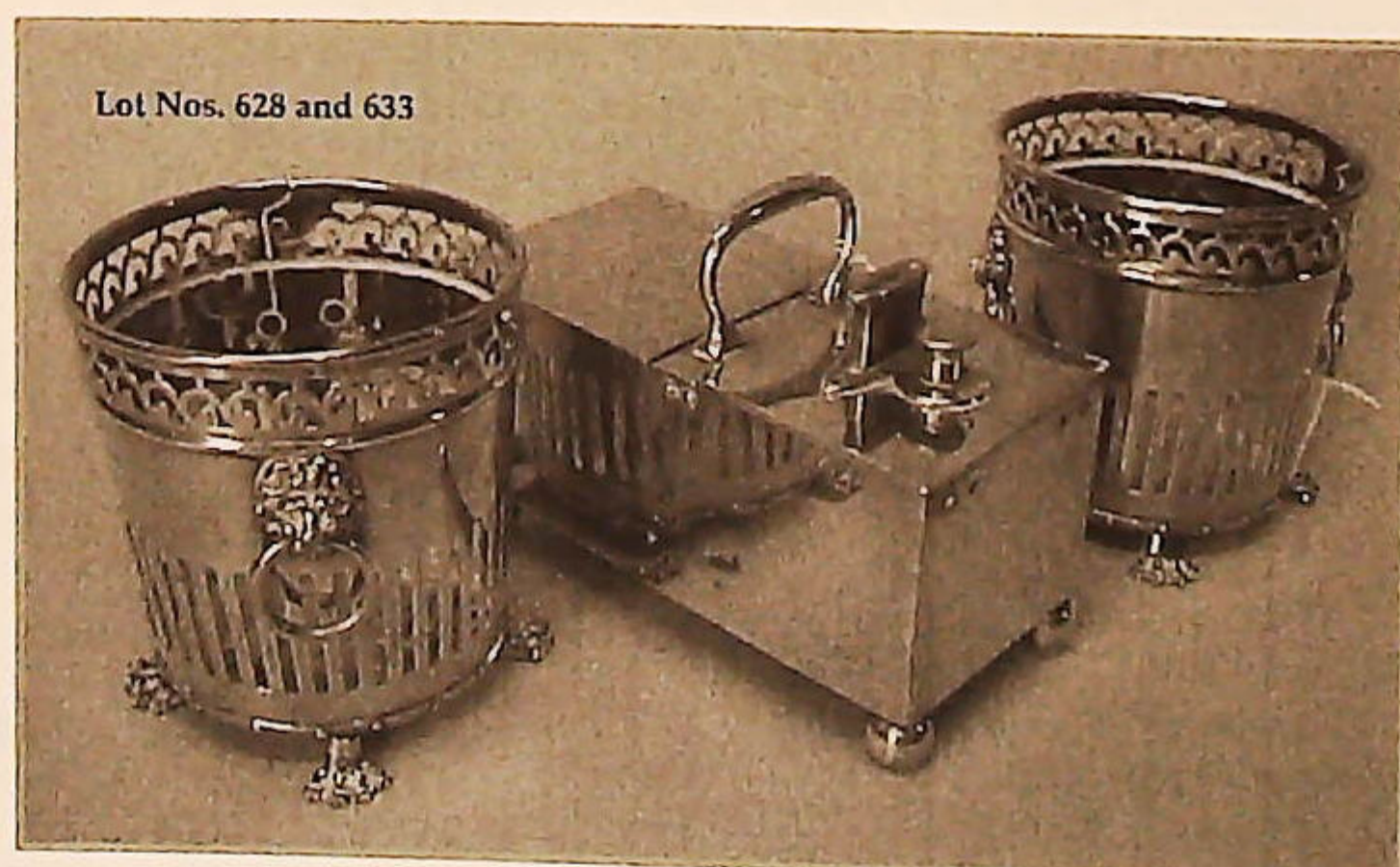
Lot Nos. 617 and 618



Lot No. 654



Lot No. 699



Lot Nos. 628 and 633

617. A Newlyn copper planter by John Pearson, with engraved signature, dated 1891 and No. 460, of spherical form, embossed with a border of phoenix in flight, over a central border of mythical beasts and foliage, the lower border with stiff leaf ornament, 11" high, 12½" diam.
618. An Arts and Crafts copper pedestal dish, of circular form, the platform rim repousse with wrigglework and cabochou detail, on plain tapering cylindrical column and flattened circular foot with conforming ornament 14½" diam.
619. A Meiji period Japanese brass two handled planter, circular, raised on three peg supports, externally embossed and engraved with figures and birds in landscapes, 17" over handles.
620. An Indian brass planter of circular tapering form, embossed with mythical beasts and trees within stiff leaf borders, on wooden base 10½" diam.
621. A pair of George III brass candlesticks, constructed in the parts, with fixed sconces on annulated circular columns, domed feet 7" high.
622. An early 20thC brass ashtray, circular, mounted with a cast figure of an owl, with green and black glass eyes, standing on a book, 3½" high, a cast figure of a standing cat dressed in hunting attire, on domed circular base with stiff leaf detail, 5¼" high, a cast brass figure of a Hindu god, 6¼" high, a small copper and brass jug and a copper vase (5)
623. A small pewter measure or flagon, of inverse ovoid form with annulated body, scroll handle and skirted foot, 4¼" high, touchmark for Austen & Sons, a pewter circular salt by Dixon & Sons, 2¼" diam. and a German pewter vase, 3½" high. (3)
624. A 19th century pewter porringer, circular, with two open scroll handles, the exterior engraved with three line border, 8½" over handles, touchmark to base.
625. An 18th century pewter charger by Gardiner, 14¼ ins diam, together with a plate with folded rim by Bush & Perkins, 12 ins diam. (crack to well)
626. An 18th century pewter plate by Bush & Perkins, with folded rim, 9¼ diam. another by Thomas Compton, 1775 - 1817, 9½ ins diam. another c. 1750, 9½ ins diam.
627. A Victorian brass gas lamp, the adjustable scroll bracket and supported on a partially fluted column with loop terminal, and on domed circular foot, 18½ ins high.
628. An early 19thC brass tobacco 'penny-in-the-slot' dispenser, of oblong form, with loop handle and flanked by two hinged covers, on four bun feet, 9½ ins wide, stamped Richs Patent.
629. A pair of Meiji period Japanese bronze vases, of circular tapering form with everted rim, decorated in relief and engraved with birds, prunus trees, 5¼ ins high.
630. A Kayserzinn pewter sac vase, embossed in relief with chrysanthemum, 3¼ ins high, a Victorian silver on copper ½ pint mug with plain loop handle, 3¼ ins high, a coopered wooden vase with copper bands and glass base, 4 ins high (3)
631. A set of brass balances by Avery, on wooden base, 18 ins high, 14 ins wide.
632. A George III brass tea kettle and stand, of oval moulded form, the overhead handle with fruitwood grip, upwardly curving spout, and domed cover, the stand with conforming carrying handle, pierced body, on four cabriole legs with pad feet, 22½ ins high overall.
633. A pair of Georgian pierced brass wine cooler frames, of circular tapering form, having a vitruvian scroll border, with two lion mask and ring handles, on four claw feet, 6¼" diam.
634. A Georgian brass candlesticks, with fixed sconces on baluster and tapering columns, panelled socle and square platform base raised on four trefoil feet, 9 ins high.
635. A matched pair of brass lidded measures, each with differing composition finials, loop handles, the bodies with reeded girdles, 6 ins high.
636. A pair of cast brass peerage wall candle sconces, each with two branches, with ribbon swags and tassels, 17 ins high, modern, together with a brass castor of baluster form, 9¼ ins high, a toasting fork and a boot horn.
637. A pair of 19thC French painted figures of a grape picker and a female companion as a harvester, 11 ins high, on circular wooden plinths.
638. A pair of late 19thC. bronze figures of young girls, one with a watering can, the other with a bundle of fruit and a scythe, on circular marble bases. 10" high.
639. A heavy brass pestle and mortar, 8 ins high and 4 ins diam. respectively.
640. An Indian brass and copper military bugle, stamped Nadir Ali & Co, Meerut, 1942, 11 ins high.
641. A 19thC French bronze two-handed shallow dish by F. Levillain, the well cast in high relief with two Greek figures carrying a wine vessel, signed, and cast by F. Barbedienne, marked to underside, 15¼ ins over handles
642. An Edwardian electroplate 3-bottle tantalus, the oblong frame with loop handle, vitruvian scroll frieze, on four shaped bracket feet, fitted with hob nail glass decanters, two with spirit labels, 14 ins high. (key missing)
643. An Edwardian oak tantalus, with brass carrying handle, fitted with 3 moulded glass bottles, 12¼ ins high.

644. An Edwardian oak tantalus with electroplate mounts applied decorative panels, having a hinged box base and carrying handles to the side, fitted with 3 decanters, 13 ins high.
645. A copper coal helmet with swing handle, and on tapering base.
646. A late 19thC copper samovar, raised on a circular tapering base, having a waisted cover with urn finial, two wrythen cast handles with mask terminals and brass tap 20" high.
647. A stoneware ale flagon, stamped J.R. Ropson, 90, Westgate, Grantham, no. 442 and maker's mark SKEY, TAMWORTH 14 ins high.
648. An early 20th century leather tankard, of plain tapering form, with scroll handle, and sterling silver collar and shield inscribed 'To John Lloyd From the Principals Theatre Royal, Glasgow - Panto 1914 - 15' 7 ins high
649. A carved rosewood figure of a seated Buddah, with pendulous earlobes and a serene expression, on lotus base, 15 ins high.
650. A WMF silver plated football trophy cup, the bell shaped bowl repousse with stylised ornament, linked to the bulbous stem by two pierced handles, the domed foot with conforming girdle and engraved 'Eigentum Des Priua Stammtisches Der Zeppelin - Oberreal Schule Konstanz Jnkernat FussballTurnier Lustenau' Man 1908. 18" high.
651. A Regency gilt brass three-light candelabra, with crystal drops.
652. A 19thC Boulle tea caddy, premiere partie, with cast framework, 2 section fitted interior, 11" wide, 6" high.
653. A leather bound brass single pull telescope, inscribed W. Cass of Goole.
654. An Edwardian oak tantalus, with plated mounts, fitted with three decanters, secured by a 2-part hinged box with fitted interior, drawer below holding playing cards and markers, mounted with presentation shield. 13½ ins high.
655. A 19thC Swiss musical box, playing six airs, as listed, in a burr walnut, crossbanded and ebonised case, on racket feet, 19½ ins wide.
656. A 19thC Swiss musical box, playing six airs, as listed on the paper label, colour printed with vignettes, in a rosewood case inlaid with floral spray within box lines, 13½" wide.
- 656A. A 19thC Swiss musical box, with 10 airs and showing 3 bells with butterfly strikers, 6" barrel, 18" wide.
657. An Edwardian oak smoker's cabinet, with a raising lid over a single door, inset with an embossed metal panel of Art Nouveau design, fitted interior, over a full width drawer, 15½ ins wide.
658. An early 20thC box frame portrait of rectangular form, the gilt inner frame with arched slip, and mounted with rococo scroll and garland ornament, 20½ x 18 ins overall.
659. An Art Deco tablelamp, modelled as gilt spelter dancer, her hands raised aloft supporting a torpedo shaped glass shade, on a 3-part stepped marble base, 17½ ins high. (shade cracked)
660. An Art Deco lamp. modelled as a gilt spelter dancer, her head tilted back and her raised arms holding a circular disc, with pink marbled glass globe, a circular tapering plinth, 19 ins high.
661. A Victorian terrestrial globe, of small size, with brass axis, turned fruitwood columns, and stepped square oak plinth, 8 ins high (AF)
662. A stained and natural ivory carved chess set, King 4¼ ins high, (incomplete and some damages)
663. A pair of 19th century brass candlesticks, with fixed sconces on knopped and baluster columns, domed feet, 9½" high.
664. A pair of 19th/20th century brass candlesticks, on knopped columns, and square canted feet, 8¼ ins high.
665. A small copper kettle, oval, with brass mounts, 9" high.
666. A set of four 19th century brass candlesticks, with diamond knopped and ribbed columns, on square canted bases, 12" high.
667. A large copper dish, of circular form, with shallow well, 22 ins diam. together with a copper 2-part lantern, with pierced gallery, 17½ ins diam.
668. Five pressed brass chargers, various designs, largest, 24 ins diam.
669. An Adam style polished steel fender, of bowed rectangular form, with pierced and bead detail, paterae mounts, and urn finials, 19thC. 52 ins wide.
670. A wooden leadlined 'Japkap' toilet cistern, 23 ins wide
671. A quantity of Victorian and later button hooks, with mother-of-pearl, horn, bone and ivory handles, in 2 box frames.
672. A pair of gilt metal, onyx and glass table lustre candlesticks, cast with foliate scrolls, on square waisted bases and four cast feet, another, similar, 13 ins high, modern.
673. A plaster bust of Queen Victoria, together with three other busts. (4)
674. Advertising: Two boxes of Price's Mikado Candles, with colour printed pictorial labels, together with 2 boxes of table knives.

675. An early 20th century mahogany and brass fishing reel, $3\frac{1}{2}$ ins diam.
676. A Hardy Bros. 'Perfect', alloy and brass fishing reel, with composition handle, $3\frac{1}{2}$ ins diam.
677. A 19th century polished coconut half-shell vessel, raised on three Epns lion mask and pad feet, and with Epns rim, $3\frac{1}{4}$ ins diam.
678. A giant box of safety matches, manufactured by Jonkopings, Sweden, $12 \times 7\frac{1}{2}$ ins
679. An early 19thC 'Tortoiseshell' mantilla frame, with embossed frieze decoration, 11" wide, in original fitted leather case.
680. An African tribal spear, 30 ins long, a plaited cosh, a Chinese model sword constructed from coins, and a gun barrel cleaner. (4)
681. A Scottish cruciform rapier, with wire grip, stamped with a medallion inscribed Gloria In Excelcis Deo, the blade inscribed Royal Order of Scotland, in leather and metal sheath, 39 ins overall.
682. A Cruciform rapier, by Spencer, London, with shagreen grip, in leather and metal sheath, 35 ins overall. (AF)
683. A Zulu hardwood Knobstick, 35 ins long.
- 684.
685. A Magic Lantern with Edison-Screw projector lamp, with brass slide carrier and original chimney, mounted with plaque embossed 'The Monarch'
686. A Cooke & Wheatstone Differential Galvanometer, in a mahogany lancet case, with silvered dial, stamped G.P.O. circa 1860, 7 ins high.
687. A French Phonograph, with steel mechanism, stamped with Cockeral trade mark, in wooden housing, $11\frac{1}{4}$ ins wide (lacking horn)
688. An Edison 'Gem' Phonograph, serial no G1511371, with black cast iron frame highlighted with gold paint, with aluminium horn, with curved top fitted with carrying handle, $9\frac{1}{4}$ ins wide, together with five cylinders in original card cases.
689. A Magic Lantern brass projection lens
690. A Bingoscope 9 mm projector, and a Quarz cine camera.
691. A black metal and wood mounted enlarger lamphouse, for plate cameras.
692. A Kodak Six-20 folding camera, black, in original case with instructions.
693. Bausch & Lomb $\frac{1}{4}$ plate camera, in black case, and access.
694. Sanderson Junior $\frac{1}{4}$ plate camera, in mahogany casing, and access.
695. A Butcher's Boys Own tin plate and brass Magic Lantern, electric model, (lacking top cover) in tin plate carrying case.
696. A box containing approximately 75 black and white lantern slides, comprising, religious texts, hymns, prayers, a set of 8 coloured slides 'British Battleships', 7 of 8 coloured slides 'Peter Pan', and set of 8 coloured slides 'The British Navy'
697. A pair of gilt brass 3 light electrolier with marble shades.
- 697A. A late 19thC gilt metal hanging centre light with 6 branches 27" diam.
- 697B. A 19thC Black Forest carved softwood wall bracket, pierced with a scene of a huntsman with a hound, 27" high.
698. A 19thC Venetian glass 3 light chandelier with clear, opaque and blue decoration. 36" high, 28" diam.
699. A Wurlitzer 1800 multi-selector phonograph 'Jukebox', circa 1955
700. A 19thC cast iron safe. 24" x 16".
701. Two 19thC Carpenters' tool chests together with a large selection of tools including chisels, plough planes, moulding planes etc.
702. A wrought iron dog basket with integral cast back plate 20" wide, 12" deep, 38" high.
703. A set of 4 concrete Campana garden urns with Bacchanalian decoration 23" wide 27" high (various damages)
704. A Doulton Lambeth stoneware garden urn moulded with stylized leaves 18" diam 24" high (AF)
705. A pair of 19thC terracotta garden urns of foliate leaf design with fluted pedestal bases 39" high (AF).
706. Golf: early metal shafted irons - Jigger, H. Roffe; Mashie, H. Roffe; 9 iron spade Mashie, Walter Hagen; 6 iron, Robert Forgan Parshot Mashie, L5 R. Forgan & Son Ltd; 3 iron, H. Roffe. (6)
707. Golf: early metal shafted irons - 5 iron, George Nicholl Pin Rake; 2/3 iron. Forgans 'Lady Luck'; 3 iron, Thirnton & Co Ltd. Wizard De Luxe Noshok; 3 iron special, T. Stewart; 1 iron, Henry Cotton; 2 iron L/hand, Forgan Empire. (6)
708. Golf: early metal shafted woods. Driver W. West Woodhall Spa, with bone inset face, wood, Wilson, Ryder Cup Model, with bone weighted insert, face and back, with imitation bamboo shaft, Driver, Robert Forgan with bone insert face, Brassie/Driver (Ladies) Forgans 'Lady Luck' (4)
709. Golf: early metal shafted irons, Spalding, Henry Cotton 9 iron; Mashie Niblick, H. Roffe; Mashie Niblick - George Nichol; Mashie Niblick, Tom Auchterlonie, (no grip); 7/8 iron, Forgans 'Lady Luck'; 5 iron, Forgans Gold Medal, (6)

710. Golf. Various hickory shafted irons and bag.
711. A jadeite and rock crystal handled umbrella and another (2)
712. A court scene picture decorated in relief in a moulded ebonised frame 16" x 12" overall.
713. A top hat (boxed)
714. A Casali piano accordion. (cased)
715. Two 19thC clear glass poison bottles 14" and 13".
716. A 19thC brass bound walnut circular fruit bowl together with pestle and mortar, camera and light meters.
717. A 19thC Chinese carved openwork cylinder vase.
718. An electroplate two branch electric wall light of Baroque design 12" high.
719. A Scandinavian painted telephone with brass mounts.
- 719A. An extensive collection of 19thC and later domestic irons and associated items, including flats, smoothing, gas, goffering, etc.
720. A large 19thC copper two handled cooking pan with rococo scroll and reeded handle to cover. 22" diam 16" high.
721. A Victorian copper log bucket on paw feet 24" diam 20" high.
722. A Victorian hammered copper log bucket 20" diam. 16" high.
723. A bronze 3 blade propeller 24" diam.
724. Five various clock weights.
725. A pair of brass fitted coach lanterns with horseshoe shaped bevelled lights 18" high.
726. A pair of nickel plated coach lamps with oval glass lights 18" high.
727. A pair of bronzed marley horse figures on oak plinths 17" high.
728. A Victorian cast iron caravan stove with pierced oval base mounted with a sectional figure group of two fighting knights on horseback.
729. A small specimen case containing various slides of human tissue.
730. Three cased sets of specimens of human tissue.
731. A pair of Victorian blue glass lustres with gilt decoration and prismatic drops 12" high
732. A pair of late 19thC vaseline glass posy holders with two loop handles, pressed moulded feet, 4½".
733. A Whitefriars red tinted bark effect cylindrical vase, white base 15cm together with a similar period green tint and white overlay dimple baluster shape vase impressed mark LG 6" and a 1950's green tinted rib sided cylindrical vase with bubble inclusions 5½"
734. A Whitefriars cylindrical bark finish table bowl 8" diam. together with a late 20thC blue tinted and frosted fruit bowl with overall floral design 11½" diam and four other pieces of glassware of late 20thC date.
735. A pair of Continental brown bottle decanters with simple trailed loop handle, having Sheffield plate loop stoppers with cork plugs inscribed Gin and Claret 7½" (exc stoppers).
736. A Cranberry glass of frilled edge, pedestal grape dish with base knop, flat conical foot, 8¼" (slight chip to rim).
737. A Cranberry glass pinched edge posy holder having a white pontil clear loop rusticated handle 5½".
738. A Cranberry glass fluted cylindrical vase having a pinch trailed foot, with similar exaggerated looped rim 5" high.
739. A 19thC Cranberry glass sugar basin of plain design having a clear glass foot with white pontil 4" diam.
740. A 19thC Cranberry glass claret jug of plain form having a circular base, upward tapering body, mounted, silver plate rim, loop handle scrolled and hinged lid engraved in the aesthetic mode, white pontil 10½".
741. A Cranberry glass frill edged pedestal sugar basin, the main body having a dimpled effect supported on a lustre column with flat conical foot 6¼"
742. A set of 3 wine glasses having cranberry glass bowls of conical form with clear glass pedestal column and conical foot 5"
743. A set of 11 late 19th/early 20thC cranberry glass ice plates having slight waved rims with shallow centre, white pontil, 6"
744. A Cranberry glass fluted rim sugar basin having a trailed clear glass edge, supported on pinched clear glass projecting feet 6"
745. A cranberry glass water jug having a frilled rim, lustre form with dimpled body having a reeded loop trailed clear glass handle 9"
746. A Cranberry glass pinched edge posy holder having a white pontil clear loop rusticated handle 5½".
747. Cranberry glass epergne having a square frilled edge base, with two projecting frilled edge flower trumpets with spiral trailed pinch glass and two clear glass exaggerated looped canes 14"

748. A 19thC opaque cranberry and clear glass table centre epergne having a circular frilled edge base with a centre brass mount having trumpet with frilled edge and spiral turned clear glass embellishment, two flower trumpets of smaller dimension with two twisted and looped clear glass canes supporting two flower form loop handled baskets 22cm.
749. A mid 20thC Orrefors clear glass single stem flower vase with the deep base engraved. 5¼"
750. An amber tinted and clear handled posy basket, squat pedestal foot with white pontil, 5".
751. An electroplate rectangular entree dish with scrolling decoration and detachable handle.
752. An electroplate oval tea caddy with part reeded body, turned handle and bun feet 6" high.
753. A pair of taxidermy foxes' masks mounted on oak shields from the East of Middleton Hunt, 1930s.
754. A George III mahogany tea caddy, with brass loop handles. (no interior).
755. A Victorian brass corinthian columnar oil lamp with cranberry glass reservoir, 33" high.
756. A Victorian gilt spelter figural table lamp and having a moulded Bacchanalian vaseline glass reservoir. 29" high.
757. A Georgian mahogany 3 section country tray with brass handle.
758. A Victorian oak and brass beam balance with drawer for removable fittings. 9" wide.
759. A black lacquer easel photograph frame with mother of pearl and ivory chinoiserie decoration 11" high.
760. A 19thC Sorrentoware olivewood and marquetry wall bracket with back plate and folding demi-lune shelf. 16" high.
761. Three Victorian stoneware jelly moulds and set of tin brioche pans and cutters.
762. A Victorian Marchpane cutter.
763. Spare Lot.
764. A brown patinated bronze model of a horse marked with monogram HG and stamped RICH. BLN. BARTH MARIENDORF 5" wide 2½" high.
765. An 18thC bronze ink stand, of rectangular form, the top cast with a female figure kneeling with arms aloft as a pen rest, each well being guarded by half set maidens with cornucopia, 15" x 7".
766. After the antique. A pair of black patinated bronze figures of male athletes on square plinth.
767. A 19thC electroplated wine coaster with vine and leaf cast border over a reeded trelliswork frame and turned base. 8" diam.
768. Two Victorian brass detachable stove trivets of circular design with serpent supports 7" diam.
769. Various ladies evening bags including a rose patterned beadwork example (boxed)
770. Linen cover, black shawl and selection of lacework doyleys and trimmings.
771. A WWI German bayonet and sheath.
772. A German SA type dagger with sheath.
773. A 19thC copper powder flask and leather shot flask (2).
774. A lady's handbag, formed from the body and mask of a baby crocodile.
775. A Victorian red leather jewellery box and another.
776. A Victorian mahogany folding music stand and an olive wood folding two section photograph frame.
777. A Victorian mahogany microscope case.
778. A pair of silvered copper jars with covers and an inlaid Eastern face mask.
779. Five various 19thC boxes each having embossed arts and crafts pewter panels inset with semi-precious stones and Ruskin pottery tablets.
780. A Child's Porsche 911 convertible car with Honda petrol engine and disc brakes, 88" long.

CERAMICS AND GLASS

781. A Walter Moorcroft oval ash tray with centre hibiscus design, impressed mark "Made in England" 6¼"
782. A 1950's Beswick pottery bowl designed by Colin Melbourne Pattern No. 1404 having a brown tone exterior with urchin etched grey interior 10"
783. A mid 19thC Majolica glazed English pottery bread dish of oval form having a relief of basketwork design with fern motifs, centre oval tortoiseshell glaze 14"
784. A 1950's Midwinter Mexicana coffee set designed by Jessie Tate, 20 piece.
785. A 19thC Derbyshire terracotta glazed tyg having slip decoration with applied panels containing initials and traces of date 5¼"
786. A Royal Worcester porcelain Naturalistic double ended bamboo form vase in the Aesthetic mode having loop handle, pastel colourings with gilt enhancement, pattern number 958. Date cipher for 1912, 8".

787. A pair of late 18th/early 19thC Staffordshire pottery models - standing half dogs splashed with cobalt blue, bowed ribbon, flow blue base, 8½".
788. A pair of 19thC Staffordshire pottery mantelpiece ornaments in the form of seated children with attendant dogs, limited enamel colouring on white ground 7".
789. A 19thC Continental white glazed pottery wall bracket having a rectangular platform supported by 6 Gam bola putti 15¼".
790. A mid 20thC exuberantly decorated Paris porcelain egg shaped casket having symbols and motif of a classical nature, gilt metal hinged lid with similar projecting foot 7½".
791. Two Torquay terracotta and slip decorated teapots of cottage form with angle position loop handle and spout measuring 9" x 7½" respectively.
792. A pair of 20thC Staffordshire pottery standing half dogs rust tones 9".
793. A single seated Staffordshire pottery half dog with russet tones distinctly modelled fur, glass eyes (one deficient) 11"
794. A pair of 19thC russet toned seated half dogs having gilt decorated collars.8".
795. A pair of Victorian Staffordshire pottery white glazed seated half dogs with limited enamel colouring 10".
796. A particularly fine Royal Worcester porcelain aesthetic period oriental inspired ewer having an ivory body with gilt enhanced scrip? decoration of leaves and berries with attendant butterflies, bears impressed mark and transfer mark numbered 892 and U4 11".
797. An Art Deco period cast plaster model of a standing female in flowing garment with two attendant Borsoi dogs on a plinth base height 20½"
798. Three pieces of 19thC Cantonese porcelain comprising a teapot complete with lid having a berry and scroll finial, a sucere with cover (AF) and cream jug decorated with genre subjects and panels containing scrollwork, insects and flora. 9", 7" and 6¼" respectively.
799. A 18th/19thC Nankin porcelain tea caddy decorated with pagoda and coastal scenes, later Continental hard paste stopper 5¼".
800. A Royal Doulton stoneware buff coloured jug with relief decoration of hunt scene and seated Toby, loop reeded handle 6" together with a similar in a greyhound loop handle, rim pierced for pewter lid now deficient 9¼" and a cylindrical twin grip tobacco pot having royal heraldic motif, rose and classical figures (hairline crack with married cover) 7½".
801. Spare lot
802. A Fieldings Crown Devon Teck design washbowl 8¼".
803. An early 19thC silver lustre decorated leaf moulded jug having leaf decorated cameo of happy male opposed by an unhappy male portrait 5".
804. A 1950's Kensingtonware pottery wall pocket Texas impressed design, ivory body with gilt and enamelled floral sprays 7¼".
805. A pair of Fielding & Co. pottery mantelpiece ewers with floral transfer having gilt square shaped with handles, transfer mark 13" high.
806. A Fieldings Devonware Pearline shell edged lustre dish 10¼" together with a similar three division preserve dish 7", and an oval form baluster pearl ware water jug with square loop gilt handle 7½". together with a fluted cylindrical jug with a scrolled rim, loop handle 7" (4).
807. A Fielding & Co. Crown Devon Erin pattern vase of baluster form 12¼".
808. A Fielding & Co. Devonware Etna pattern waisted cylindrical vase 9".
809. A Fielding & Co. Devonware pottery vase with brown transfer and enamelled floral and scroll design 8¼".
810. A Fielding & Co. Crown Devon pottery wash basin Teck pattern 16" diam together with a similar pottery covered powder bowl and a single candlestick.
- 810A. An Art Deco period Crown Devon pottery vase of baluster form, pattern no. A303 leaf design of dancing deer amongst foliage 8".
811. A late 19thC Copeland pottery (late Spode) meat platter having a gravy depression, transfer and enamelled decorated rim of stylized flowers 20¼".
812. A 19thC Samson Hancock & Sons pottery oval meat platter having centre and border decoration in Aesthetic manner 21".
813. A pair of Meiji period Japanese Satsuma baluster vases having brocade moulded shoulders and base, the main central band decorated with children playing games 18" (one rim AF).
814. A 19thC Staffordshire white glazed seated pottery half dog 8¼" together with a later beige toned Staffordshire seated half dog 6¼".
815. A Sylvac pottery model white glazed terrier dog with black detailed sponge coat impressed number 1380 11¼".
816. Two Japanese Imari squat vases each approx 3½".



817. A Sylvac pottery model of a seated highland terrier Impressed number 3457 (indistinct), beige coat with black toned paws, nose and ears 5".
818. An early 20thC Royal Worcester porcelain mantel vase no. 270, lush ground with floral design signed K Blake Miniatures.
819. A pair of 19thC Staffordshire russet toned half dogs seated with gilt chains, together with a single similar 11½" and 8" respectively.
820. A 19thC Staffordshire pottery mantelpiece ornament in the form of two russet toned dogs, one seated on a barrel 8½".
821. Two 20thC Staffordshire pottery copper lustre decorated spaniel jugs together with an early 20thC beige tone seated Staffordshire half dog with glass eyes, one deficient 9¼" and 10¼" respectively.
- 821A. A 19thC Prattware paste pot lid, design piece 4¼"
822. A 19thC Prattware paste pot lid design "The Sportsman"
823. A 19thC Prattware paste pot lid - design "Church of the Holy Trinity Stratford on Avon" having a beaded border (restored) 4½" framed
824. A 19thC Prattware paste pot lid design "The Battle of the Nile" 4¼"
825. A 19thC Prattware paste pot lid - design "Rifle contest Wimbledon 1868". 4". Ebonised frame.
826. A 19thC Prattware paste pot lid - design "The Travellers rest" (repaired) 4½" framed.
827. A Chinese blue and white baluster vase and cover decorated with a landscape scene and stylized lappet base 16" high (some damage to rim).
828. A 19thC olive green pottery baluster vase 16" high.
829. A Chinese blue and white ginger jar and cover decorated with prunus blossom 12" high (some damage to rim).
830. A Meiji period Japanese Imari charger decorated with 3 panels with stylized birds around a floral rondel centre, wavy rim 16" diam
831. An early 19thC blue and white wash bowl insert having transfer printed landscape decoration and brass plumbed centre and marked "PANORAMA" in underglaze blue and having impressed mark TT within a rope knot and stamped 81
832. A Victorian pottery jardiniere moulded with a shell and scroll green and gilt rim and having 6 bulbous panels hand painted with lilies 15" diam, 12" high.
833. A pair of 19thC German polychrome bisque figures of a boy and girl, the boy stood holding a rifle, the girl holding a doll of a French soldier with detached head 16" high
834. A Meiji period Japanese satsuma baluster vase decorated with a scene of a coach within trees and foliage 15" high
835. A pair of Doulton Slater's patent baluster vases decorated throughout with blue and white floral motifs on a gilt background, impressed marks to base 16" high.
836. A Chinese famille rose jardiniere and stand decorated with opposing circular panels of court figures 11" diam 9" high
837. A Chinese blue and white garden seat decorated with opposing panels of dragons 12" diam. 19" high.
838. A Victorian blue and white W.C. having transfer printed floral decoration and marked "WATERFALL CLOSET RD NO. 267648".
839. A Victorian pail and cover transfer printed in brown and enhanced in gilt and marked "FLORA, W. & B" to base.
840. Two Victorian blue and white chamber pots having floral transfer printed decoration.
841. A pottery figure of an owl seated on two books having glass eye inserts. 16" high
842. A 19thC porcelain lamp gilt and pink ground with floral decoration, the brass fittings converted for electricity 20" high.
843. A Chinese cloisonne squat bowl decorated with a yellow dragon on a black ground, four character mark to base 12" diam. (some damage).
844. A Royal Crown Derby porcelain tray with shaped and raised gilt blue edge, the centre field embellished with basket decoration, marked to base with registration number 204893 18" x 14"
845. Three Royal Crown Derby Japan pattern serving dishes marked 2451L to base.
846. A Meiji period Japanese Kutani figure, seated with a large censer on his head and shoulder. 10" high.
847. A set of 6 Continental faience side plates.
848. A Royal Worcester porcelain oil lamp model no 1468 of blush ground enriched in gilt with floral panels registration number 151831 with vaseline glass shade 26" high.
849. A pair of Sitzendorf porcelain figures of a boy and girl with lambs and another figure group of family.

850. Three Victorian graduated pottery meatplates, with transfer printed decoration.
851. A Victorian style bargeware kettle, moulded with floral sprigged decoration. 8".
852. A German polychrome stoneware stein, ½ltr. with pewter mounts and tavern scene.
853. A Meiji period Japanese Imari plate decorated in the basket pattern 12" diam.
854. A Victorian Staffordshire cow creamer, black glazed on terracotta.
855. A Victorian Staffordshire cow creamer, black glazed on terracotta.
856. Four Meiji period Japanese Imari plates 9" diam.
857. A pair of Royal Crown Derby table candlesticks, painted in the Imari palette and heavily gilt, the sconces with metal sleeves, on fixed knopped tapering columns, square concave bases moulded with dolphins to each corner, pattern no 1128, 10¼ ins high, modern.
858. A Meiji period Japanese Imari baluster vase 7" high and a similar bowl 7" diam. (2)
859. A Royal Doulton cabinet plate by F Harper, the mottled blue border enclosing a highland landscape with cattle watering, signed. 10" diameter.
860. An early 19thC Derby dish with gilt to red and blue floral decoration and a Mason's Ironstone plate.
861. A Minton blue and white tile depicting a winged pixie riding upon a bat.
862. A Weymss ware preserve jar and cover painted with a pair of plums
863. A small pair of Minton's bottle vases in opposing yellow and pink grounds with gilt decoration, further Royal Crown Derby bulbous vase and Soho pottery pedestal bowl (4).
864. A Fieldings Crown Devon Art Deco vase of tapering square form with pinched rim having mottled cream over a blue ground 8" high
865. A Japanese Satsuma baluster vase of square form decorated with court figures and Samurai enriched in gilt, painted seal to base 10" high
866. A Doulton Lambeth stoneware jug commemorating the Golden Jubilee of Queen Victoria 5" high.
867. A Losolware oval blue and white meat plate, a Royal Worcester model 783 Ewer (AF), Victorian brown transfer printed mug and pewter teapot. (4)
868. A 19thC majolica wall plaque of oval moulded form with foliate rim and central cartouche with classical scene with seated figure within gardens 13" wide.
869. A Royal Crown Derby cabinet plate by J. Doyle, the wavy rim having gilt and turquoise dot decoration, the centre field painted with a scene of a huntsman taking a fence 10" diam.
870. A Mason's Ironstone quadrant serving dish, painted with stylized birds and flora together with a Plymouth pottery transfer printed plate in the Chinese Palace with impressed mark of PP Coy verso
871. An early 18thC polychrome Delft dish with yellow border and floral centre 12" diam. (much repair)
872. Two Japanese blue and white wall plates both depicting exotic birds 12" diam.
873. A Copeland Spode dinner service of Peplow design comprising 3 graduated oval meat plates, 6 dinner plates, 6 dessert plates, 6 side plates, 2 sauce tureens and stands (no covers) and 2 further tureens (one cover only), printed mark to base noting manufacture for Harrods.
874. An extensive Royal Crown Derby porcelain dinner, tea and coffee service, transfer printed in blue and white "Mikado" pattern.
875. Three Chinese plates, Japanese bowl and octagonal dish. (5)
876. A Faience plate painted with a witch being hung, dated 1792 and a drug jar (2).
877. A Meissen porcelain tea bowl and saucer (AF), a Samson Armorial shell dish, pierced basket and Fairing with pigs (4).
878. A 19thC pottery bottle vase in the style of Linthorpe, yellow ground 18" high.
879. A pair of Chinese blue and white cylinder vases decorated with birds and prunus around figures carrying a vase. 12" high.
880. An English pottery teapot with rustic moulded handle and spout and decorated in slip bearing the words "THOMAS TOFT 1689" 4¼" high (no cover).
- 880A. A pair of Chinese baluster temple vases, blue ground with floral fields enclosing court scenes. 53" high.
881. A Beswick Beatrix Potter Figure, Tailor of Gloucester, gold backstamp
- 881A. A Beswick Beatrix Potter Figure, Mrs Tittlemouse, gold backstamp.
- 881B. A Beswick Beatrix Potter Figure, Benjamin Bunny, gold backstamp.

- 881C. A Beswick Beatrix Potter Figure, Hunca Munca, gold backstamp.
- 881D. A Beswick Beatrix Potter Figure, Mrs Tiggy Winkle, gold backstamp.
- 881E. A Beswick Beatrix Potter Figure, Miss Moppett, gold backstamp.
- 881F. A Beswick Beatrix Potter Figure, Lady Mouse, gold backstamp. (AF)
882. A Beswick Beatrix Potter Figure, Mrs Tittlemouse, brown back stamp
883. A Beswick Beatrix Potter Figure, Timmy Tiptoes, brown back stamp
884. A Beswick Beatrix Potter Figure, Jemima Puddle Duck, brown back stamp
885. A Beswick Beatrix Potter Figure, Benjamin Bunny, gold back stamp
886. A Beswick Beatrix Potter Figure, Pigling Bland, brown back stamp
887. A Beswick Beatrix Potter Figure, Foxy Whiskered Gentleman, gold back stamp
888. A Beswick Beatrix Potter Figure, Ribby, gold back stamp
889. A Beswick Beatrix Potter Figure, Squirrel Nutkin, gold back stamp
890. A Beswick Beatrix Potter Figure, Old Mr Brown, gold back stamp
891. A Beswick Beatrix Potter Figure, Mrs Tiggy Winkle, gold back stamp
892. A Beswick Beatrix Potter Figure, Samuel Whiskers, gold back stamp
893. A Beswick Beatrix Potter Figure, Timmy Tiptoes, gold back stamp
894. A Beswick Beatrix Potter Figure, Tommy Brock, gold back stamp
895. A Beswick Beatrix Potter Figure, Flopsy, Mopsy and Cottontail, gold back stamp
896. A Beswick Beatrix Potter Figure, Aunt Pettitoes, gold back stamp.
897. A Beswick Beatrix Potter Figure, Mrs Tittlemouse, gold back stamp
898. A Beswick Beatrix Potter Figure, Mr Benjamin Bunny, gold back stamp
899. A Beswick Beatrix Potter Figure, 'Goody Tiptoes, gold back stamp
900. A Beswick Beatrix Potter Figure, Timmy Willie. gold back stamp
901. A Beswick Beatrix Potter Figure, The Old Woman Who Lived In A Shoe, gold back stamp
902. A Beswick Figure, of a Siamese cat. no 1887, gloss, dark brown points
903. A Beswick Figure, a seated cat no 1031, gloss, black body, grey front, green eyes.
904. A Beswick Figure, Tigress no 1486 4 1/4" high.
905. A Beswick Ware/Royal Doulton figure group, The Wind in the Willows on the River, WIW1 Limited edition. 294/1908
906. A Royal Doulton seriesware vase, straight sided, 'Mr MacCawber' 2 1/4" high.
907. A Royal Doulton seriesware onion vase, 'Fagin', 3" high.
908. A Royal Doulton seriesware jug, Dickensware 6 1/2" high.
909. A Royal Doulton miniature vase, 'Bobbie Burns' 3" high.
910. A Royal Doulton figure, of a hound yawning no H.N. 1099
911. A Royal Doulton character jug - Collectors Club - Sir Henry Doulton 4 1/2"
912. A Royal Doulton character jug, Collectors Club - John Doulton, 4 1/2"
913. A Royal Doulton figure - The Auctioneer - Collectors Club.
914. A Royal Doulton figure, 'The Girl Evacuee' HN 3203 limited edition 5068/9500
915. A Royal Doulton figure, 'The Boy Evacuee', HN. 3202, limited edition 2632/9500
916. A Royal Doulton figure, 'The Homecoming', HN. 3295 limited edition 1586/9500
917. A Royal Doulton figure, 'Welcome Home' HN.3299 limited edition. 267/9500
918. A Royal Doulton figure, 'The Poacher' HN. 2043
919. A Royal Doulton figure, 'Please Sir' HN. 3302 limited edition.
920. A rare Royal Doulton character jug, 'Mephistopheles' D5757 6" high
921. A Royal Doulton figure, 'The Leisure Hour' HN 2055
922. A Royal Doulton figure, 'Groucho Marx' HN.0777 limited edition. 624/9500
923. A Royal Doulton figure, 'Oliver Hardy' HN. 2775 limited edition 329/9500

924. A Royal Doulton figure, 'Stan Laurel' HN. 2774 limited edition 329/9500.
925. A Royal Doulton figure, 'Charlie Chaplin' HN. 2771 limited edition 3782/5000.
926. A Royal Doulton figure, 'Good Morning' HN. 2671. matt finish.
927. A Royal Doulton figure, 'The lobster Man' HN. 2317
928. A Royal Doulton figure, 'Song of the Sea' HN. 2729
929. A Royal Doulton figure, 'The Boatman' HN. 2417
930. A Royal Doulton figure, 'The Helmsman' HN. 2499.
931. A Royal Doulton Teapot, Collectors Club, Old Salt. D6818.
932. A Royal Doulton Figure, 'Rose' HN.1368
933. A Royal Doulton Figure, 'Mandy' HN. 2476
934. A Royal Doulton Figure, 'The Stylish Snowman'
935. A Royal Doulton Figure, 'Pianist Snowman and Piano.
936. A Royal Doulton Figure, 'Cowboy Snowman'
937. A Royal Doulton Figure, 'Peregrine Falcon' HN. 3541 signed limited edition.
938. A Royal Doulton Figure, 'Autumn Breeze' HN. 1934
939. A Royal Doulton Figure, 'A Victorian Lady' HN.727.
940. A Royal Doulton Figure, 'The Hinged Parasol' HN.1579.
941. A Royal Doulton Figure, 'Silks & Ribbons' HN.2017
942. A Royal Doulton Figure, 'Sweet Lavender' HN. 1373.
943. A Royal Doulton Figure, 'Bonnie Lassie' HN. 1626.
944. A Royal Doulton Figure, 'A Flambe' seated fox' 5½"
945. A Royal Doulton flared trumpet vase, cream ground with oriental style pink and purple peony decoration with gilt highlights and borders, Doulton Burslem mark, JWS A1787 5½"
946. A Royal Doulton, Titian tea cup, grey/green mottled ground with Egyptian figures in ochres, blues and browns. 3"
947. A Royal Doulton, pair of Flambe' Woodcut vases, elongated bottle shape with shortened neck no. 1617. 13½"
948. Four Royal Doulton character plates, 'The Mayor' T.C. 1050. 'The Hunting Man' T.C. 1049. 'The Admiral' D6278. 'Shakespeare' D6303.
949. A Royal Doulton collectors plate, 'Welcome to Woodstump' Country Companions.
950. A Royal Doulton figure, A Golden Retriever, one forepaw raised, mouth open, matt finish. 6¼".
951. A Royal Worcester figure, 'Queen Mary I' CW 506 limited edition 206/4500
952. A Wedgwood parian bust, of The Right Honourable Margaret Thatcher MP, Prime Minister after Oscar Nemon, Ltd Edition No. 54/500. 8" high, with certificate.
Provenance: This was a display in birthplace of Baroness Thatcher, when The Premier Restaurant.
953. A Russian pottery figure of a terrier, seated white with grey ears and patches. 8"
954. A Royal Dux wall plaque of a jester and owl in skintones, orange, yellow and browns. 7" x 7". no.15175
955. A Royal Dux wall plaque of a terrier eyeing a beetle, circular surrounded in cream ground with orange, black and brown. 6" diam.
956. A NAO figure, of a mother and small girl child. 9½"
957. A NAO figure, of a top hatted boy holding a cake.
958. A set of Goebel Disney's Snow White and The Seven Dwarfs figures, c.1950 (damage and repair to head of Sleepy, slight chip on foot of Bashful and Grumpy). Snow White 6", Dwarves 3½"
959. A set of 5 glass musicians and dancers, probably Eastern European. 4" average
960. A Crown Staffordshire figure No. 53 Wren, two blue wrens on a flowered branch by J. T. Jones 6"
961. A Moorcroft pin dish, blue ground with pink and purple anemone, 4½" diam, impressed mark and rubbed paper label.
962. A William Moorcroft ginger jar, olive green ground with lime coloured leaves and peach hibiscus blossoms. 6", signed on base and paper label to base and inside cover.
963. Two Moorcroft baluster vases, both dark blue ground, one with hibiscus flowers, in mauve and blue, one with anemones in similar colours 5½" impressed marks.
964. A William Moorcroft plate, olive green ground with yellow and mauve hibiscus flowers, impressed mark and signed 10¼" diam.
965. A Moorcroft plate, dark blue ground, red poppy and bud, seed pods and leaves in shades of green, signed J K, impressed mark 10¼".

966. **A Crown Ducal lotus jug** by Charlotte Rhead, mottled beige ground, brown branches pink and purple blossom and leaves in shades of green, green handle and rims, blue tube lining, impressed 146, signed C Rhead 8½"
967. **A Crown Devon Fieldings double cornucopia wall pocket**, rouge royal ground with polychrome oriental style bridge and pagoda decoration with gilt highlights and rim No. A575 6½"
968. **A varied selection of Crown Devon items** including an urnular vase, small jug, jam pot, sugar bowl etc (10)
969. **Six coffee cups and saucers** by Susie Cooper, a harlequin set in muted pastel colours with wild flower decoration to cups.
970. **A Carltonware cruet** as a flat mushroom stand with smaller mushrooms as the condiment containers 4"
971. **A Troika square taper vase** by Tina Doubleday, brown/cream mottled body with stylized hieroglyphics to the back and an Egyptian Ankh to the front, signed base 6½"
972. **A Carltonware jug** of oval outline rouge royale ground with polychrome dragon fly, bullrush and water lily decoration with gilt highlights and rims 8½" No. 1676
973. **A Celtic Pottery (Newlyn) baluster vase**, in shades of blue and black and a similar tankard, straight sides. 7½" and 6" (2)
974. **A Royal Doulton Bunnikins full size teapot**, rabbits and postman to front, oval feeding dish with Christmas scene and small pin dish with drummer.
975. **A Shelley Art Deco tea service** painted with flag iris, being a 12 place setting of cup, saucer, and plate together with sugar bowl, cream jug and two bread plates Reg. no. 756633
- 975A. **A large Royal Doulton seriesware Jardiniere** with turned foot depicting night watchmen, marked D1944, 12" high, 14½" diam.
976. **A Vienna porcelain plaque** hand painted with a portrait of a pensive young lady dressed in a black and white ruffle dress 8" high
977. **An unusual antiquity candlestick figure** of a lady lying full length holding an offering bowl 12" long
978. **A pierced creamware plate**, Coalport floral plate and slipware serving dish (3)
979. **A miniature chamber pot** inscribed "I love but thee, Oh, smile on me", and a miniature copper kettle (2)
980. **A Midwinter seated deer** and pair of similar wall masks.
981. **A 19thC porcelain figure group** of Eros, on an oval base 8" wide 8" high
982. **A Royal Crown Derby tea service** decorated in the Imari palette, comprising 6 cup, saucer and plate trios and two circular bread plates.
983. **A Losolware jug** in the Shanghi pattern together with Victorian dinner plates.
984. **A tin glazed earthenware charger**, of polychrome decoration having a leaping bull to the centre field and various animals to the border marked verso *a.v.b* DEGOMEZ, SEVILLA. 13" diameter.
985. **Mother of pearl plaque**, Carltonware dish and cover, Carltonware curling stone and Wedgwood teapot (4)
986. **An English porcelain plate**, painted with differing flowers to the well, the moulded border with flower sprigs, pattern no 565, 8½" diameter; together with a plate of shaped rectangular form, gilt birds against a blue ground, the well painted with a border of pansies. (2).
987. **A mid 19thC French brass pedestal dish** having raised tablets of hand painted watercolour miniatures of Parisian scenes, 9" diam.
988. **A Victorian Staffordshire figure** of a fishwife, polychrome decoration. 12".
989. **A Chinese enamel baluster vase** of hexagonal form with opposing panels of birds, flora and landscape on a turquoise ground 15" high
990. **A Chinese enamel baluster vase** of hexagonal form, the yellow ground panels decorated with pink and green floral trails 12" high
991. **A Wedgwood porcelain trinket box** having gilt floral decoration on a blue ground with hinged cover and marked to base the retailer's mark of T Goode & Co. 4" square
992. **Advertising: A Taylor Bros. of London** lithographed mustard tin, decorated with sporting panels of shooting, cricket, fishing, sailing, tennis, rugby and hunting.
993. **A Victorian pottery two handle pail and cover** decorated in a blue marbled finish 18" high
994. **A large 19thC ale glass** with tapering bowl, dome foot and white pontile engraved with the initials R G 17" high
995. **A German porcelain figure** of a parrot seated on a branch marked EHS to base 8" high
996. **A Minton Aesthetic movement water jug**, blue ground with black stylized decoration, impressed mark to base and no. 1550 10" high
997. **A pair of Vion Bauny polychrome bisque figures** of young ladies seated on chairs, applied oval mark VB 7" high

998. A Victorian drabware jug moulded with rustic handle and bamboo body embellished with grapes and vines, date lozenge to base 9" high
999. A pair of Victorian drabware jugs moulded with loop handle and scrolling foliate body 5" high
1000. A Victorian Majolica strawberry dish moulded with floral decoration 12" wide
1001. A Victorian Prattware pot with transfer printed lid depicting a garden seat with a flute player.
1002. A Royal Worcester two handled vase, model no 1076 c.1892, 6" high
1003. A pair of Poole pottery candelabra, each of 3 light form moulded grapes and leaves, impressed mark to base and marked "MAGNOLIA WHITE" 9" high
1004. A Kinzo porcelain baluster vase with blue and gilt borders enclosing a hand painted landscape with trees, church and lake 12" high
1005. A Carter Stabler Adams Poole pottery bowl 9" diam (AF)
1006. An Abbeydale (Derby) coffee service in the chrysanthemum pattern comprising 6 coffee cans, 6 saucers, sugar bowl, creamer and coffee pot.
1007. A Victorian cut crystal oil bottle with blown stopper, loop handle, hobnail cut body and silver neck and spout. Birmingham 1900.
1008. A Wedgwood Jasperware tankard decorated in relief with neo-classical figures, with silver rim, impressed marks of Elkington & Co. and Wedgwood. London 1911.

TOYS

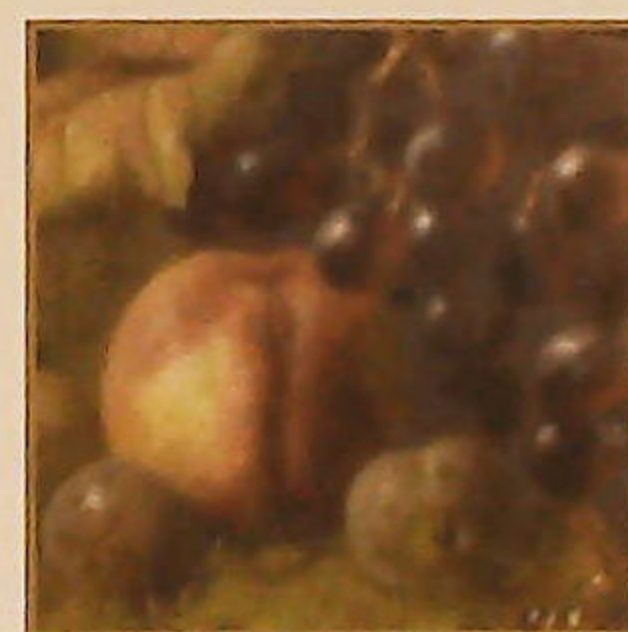
1009. Nine Venetian glass figures all playing musical instruments, average 6" high
1010. Britains figures: 7 huntsman, 2 foxes and four hounds (some AF).
1011. A quantity of playing cards, mainly childrens including Noddy, Muffin the Mule and Enid Blyton Packs.
1012. A Mamod M.E.3. Marine steam engine.
1013. 3 Boxed Lima "O" scale railway carriages and track.
1014. Mamod Steam Railway Company items including SLi locomotive, trucks, track etc
1015. Three Victory wooden jigsaw puzzles and one of horses and huntsman (no box).
1016. A box of German Brucken - Baukasten (boxes of bricks for building bridges).
1017. An early large Mickey Mouse soft toy pointed nose, smiling mouth with teeth drawn onto plush face, red shorts, tan hands and shoes 22"
1018. A felt German Haus Frau tea cosy and two porcelain half doll tea cosies. (3)
1019. A Mettoy Banshee Racer, box complete but used condition.
1020. A Palitoy Talking Action Man Commander, boxed.
1021. 3 various unboxed Action Man figures and a good quantity of accessories.
1022. Boxed Subutteo, Supacar, battery operated Mercedes car, robot, other games and toys.
1023. A tin plate model, 745 Moon Rider Space Ship - no box.
1024. A tin plate model clockwork railway set (AF)
1025. A small quantity of lead farm animals etc (AF)
1026. A tin plate and plastic model of a clown playing drums.
1027. A cast metal money box - a gentleman, seated drops coin from hand into breast pocket.
1028. A German tin plate toy "Bizzie Lizzie" clockwork maid sweeping.
- 1028A. A clockwork model of a chaffinch, together with an acrobat bear. (2)



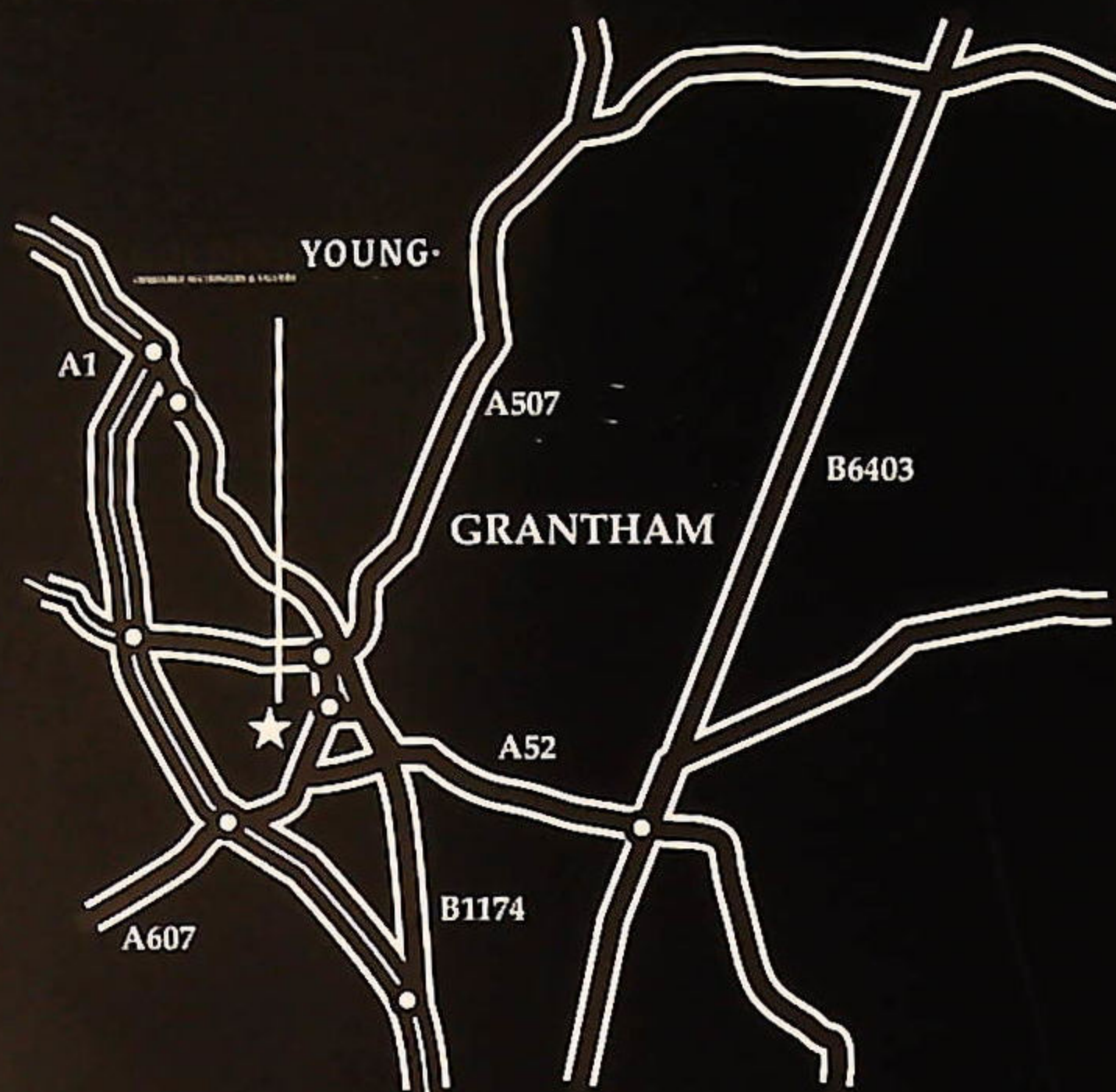
- 1029. **A small boy doll** with bisque head, hands and feet 11".
- 1030. **A Mamod live steam steamroller** together with a Meccano hand generator.
- 1031. **A Matchbox SF5 double track race set**, extra track, loops, power booster etc.
- 1032. **A Triang radio controlled Cargo Ship M. S. British Adventurer** with a Tri-ang Radio Master control box.
- 1033. **A Tri-ang 00 gauge R3 Goods train set**, R81 Station Set, R23 Mail Coach set together with other locomotives, rolling stock, track, station buildings, accessories and control boxes.

CONDITIONS OF SALE

1. These Conditions together with any Notices to Purchasers are the only terms and conditions subject to which Golding Young & Co ("the Auctioneers"), as agents for the Vendor will sell goods to a purchaser ("the Bidder") and all other conditions, whether express, or implied at common law or by statute as are capable of lawful exclusion are hereby excluded.
2. The highest bidder shall be the buyer. The Auctioneers reserve the right of regulating the biddings; of rejecting any bid; and of bidding for, withdrawing, consolidating, dividing or altering the order of lots.
3. The purchase money for each lot with the usual commission of 15% (with a minimum of £1 per lot) plus VAT at the current rate shall be paid at the fall of the hammer (if required). Each lot at the fall of the hammer shall be at the sole risk and expense of the buyer, and shall be paid for and removed immediately after the conclusion of the sale, but no lot shall become the property of the buyer, or be removable until paid for, and if taken away in contravention of these conditions without an order for removal signed by the Auctioneers, they shall have power to seize the same by their servants or agents, or otherwise, or the Auctioneers may recover either the lot sold or the price thereof (at their option) by action at law.
4. No contra account of any description whatever will be allowed to the buyer as a set off, and payment for each Lot shall be made to the Auctioneers or their clerk only, and a buyer paying by cheque must give satisfactory references.
5. For all purposes of this sale the Clerk of the Auctioneers shall be deemed to be the agent of both seller and buyer.
6. A bidder shall not be allowed to retract his bidding after the fall of the hammer, and he shall give up his full name and address if required. The Auctioneers will not recognise the transfer of any lot from one buyer to another, nor make any alteration in the sale book in respect thereof.
7. The Auctioneers are acting only as agents, and give no personal warranty as to the condition, quality or authenticity of any chattels offered for Auction. Any catalogue description is given merely as guide to purchasers, any description can be changed from the rostrum before the lot is sold. If a purchaser buys without previous inspection he will do so at his own risk.
8. Notwithstanding any other terms in these Conditions, if within 7 days of the Sale a purchaser gives notice in writing that a lot is a deliberate forgery, with supporting factual evidence, the Auctioneers may rescind the transaction. The burden of factual proof lies with purchaser, mere opinions will not satisfy. This benefit is not assignable.
9. If any buyer neglect or refuse to comply with the above conditions or any of them, his deposit money (if any) shall be forfeited, and the lot uncleared may, at the option of the Auctioneers, be resold without notice by public auction or private treaty, and any loss occasioned by such re-sale together with all expenses attendant thereon, or arising under these conditions shall be paid for by the defaulter and be recoverable as and for liquidated damages. This condition is however without prejudice to the right of the Auctioneers to enforce the contract made at this sale if they think fit.
10. Any Notes for Purchasers and Catalogue Glossaries will be construed as Conditions of Sale.
11. The Auctioneers shall be the sole Arbitrators in all matters of dispute relating to those conditions both as between the seller and the buyer and between the several bidders and buyers and their determination on all matters shall be final and binding on all parties concerned.



How to find us



By Road

From whichever direction you approach Grantham, you can find us if you observe the following rules: Follow signs for Town Centre. Follow signs for Railway Station. At the roundabout leading to "Station Road", continue around to a double viaduct/ railway bridge. Take the right hand arch which leads into Old Wharf Road.

The Salerooms are the first building on the right. There are parking and loading bays in front of the premises.

By Train

The auction house is situated very closely to the Railway Station, which is served by the East Coast Main Line. Trains run approximately every 20 minutes from Kings Cross.



GOLDING YOUNG 1900
 CHARTERED AUCTIONEERS & VALUERS Commercial Asset Agents Arts & Antiques Surveyors

Golding Young & Co., Old Wharf Road, Grantham, Lincolnshire NG31 7AA
 Telephone: 01476 565118 Fax: 01476 561475 Email: enquiries@goldingyoung.com