

# GOLDING YOUNG • 1900

CHARTERED AUCTIONEERS & VALUERS Commercial Asset Agents • Arts & Antiques Surveyors



**CATALOGUE SALE**  
NOVEMBER 2004

[WWW.GOLDINGYOUNG.COM](http://WWW.GOLDINGYOUNG.COM)



## IMPORTANT NOTES FOR PURCHASERS

- PAYMENT:** Must be made in full immediately after the Auction. The following methods of payment are acceptable.  
 a) Cash b) Bankers Draft c) Building Society Cheque d) Cheques (accompanied by a valid card.)  
 e) Debit & Credit Cards (the latter subject to a charge of 2% + VAT).

### PAYING BY CHEQUE?

If you are not known to the Auctioneers and wish to pay by cheque above your guarantee card limit WE WILL RETAIN THE GOODS until it has been cleared (7 days). There will be NO EXCEPTIONS to our policy. To avoid UNDUE EMBARRASSMENT for yourself or to our staff, please do not ask for preferential treatment. If you wish to clear goods immediately bring a letter from your Bank or a suitable guarantor reference.

- BUYERS PREMIUM** of 15% (with a minimum of £1 per lot) is payable on all lots, plus VAT.
- REMOVAL OF PURCHASES:** Goods must be collected as soon as they are paid for, and in the 2 Working Days following the sale. If goods are not collected on these days we reserve the right to charge £1 per lot per day thereafter.
- COMMISSION BIDS:** If you are unable to attend this or any of our future sales we will be pleased to bid on your behalf. We always purchase at the lowest possible price, subject to other bids and reserves.  
  
All bids must be handed to the office on an official form. It remains the responsibility of prospective purchasers to contact GOLDINGS to confirm whether their bids have been successful.
- TELEPHONE BIDS:** There are inherent dangers with this practice, therefore all such arrangements are made entirely at the bidder's risk. Telephone bids will only be accepted if the lower estimate is £500 or above. For lots with a lower estimate below this figure Commission Bids Only will be accepted.
- SMOKING** is not permitted in any part of the Saleroom.
- REFRESHMENTS** will be available Saleday.
- ACCOUNT TRANSFER** will not be recognised after the sale. If any lots are purchased for another person, this must be declared at the fall of the hammer.
- ESTIMATES.** Our Auctioneers will be available during viewing to give guidance on your prospective purchases.





# GOLDING YOUNG 1900

CHARTERED AUCTIONEERS & VALUERS Commercial Asset Agents ♦ Arts & Antiques Surveyors

Upon instructions from over 150 private and professional vendors including the principal contents of Manthorpe Lodge, Grantham.

## GOLDING YOUNG & CO will sell by AUCTION ANTIQUES, WORKS OF ART AND COLLECTORS ITEMS

### MONDAY 1st NOVEMBER 2004

Lots 1001 - 1026	Automobilia
Lots 1027 - 1049	Architectural Items
Lots 1057 - 1224	Jewellery, Watches & Bijouterie
Lots 1225 - 1250	Music: Rock, Pop & Instruments
Lots 1251 - 1438	20thC Glass, Ceramics, Collectables, etc
Lots 1439 - 1502	Toys

### TUESDAY 2nd NOVEMBER 2004

Lots 2000 - 2100	Books, Stamps, Maps & Ephemera
Lots 2101 - 2236	Textiles
Lots 2237 - 2505	19thC & Earlier Glass, Ceramics, Collectables, etc

### WEDNESDAY 3rd NOVEMBER 2004

Lots 3000 - 3044	Clocks & Barometers
Lots 3045 - 3172	Pictures, Prints & Miniatures
Lots 3201 - 3376	Antique & Decorative Furniture

#### *Lot enquiries*

Suki J Burnett A.N.A.V.A.

Jan L Squires PJ Gem.Dip, F.N.A.V.A.

Colin R Young M.R.I.C.S., F.N.A.V.A.

#### VIEWING:

Online at [WWW.GOLDINGYOUNG.COM](http://WWW.GOLDINGYOUNG.COM) from October 26th  
and in the saleroom on Sale week

Saturday 30th 9am to 1pm, Sunday 31st 1pm to 5pm

Monday to Wednesday 9am to 10.30am STRICTLY

We welcome Tim Wonnacott FRICS and the BBC Bargain Hunt Team  
for 'LIVE' programmes on Monday and Tuesday.



**Golding Young & Co.**

Old Wharf Road, Grantham, Lincolnshire NG31 7AA

Telephone: 01476 565118 Fax: 01476 561475 Email: [enquiries@goldingyoung.com](mailto:enquiries@goldingyoung.com)



**Buyers Hotline: 01476 575202**

For lot enquiries and commission bids viewday and saledays only.



## BUYING OR SELLING?

We have the lot!

– OVER 100 YEARS EXPERIENCE FROM YOUR REGIONAL –  
CHARTERED AUCTIONEERS, VALUERS, ARTS & ANTIQUES SURVEYORS

### THE COMMERCIAL SALES

Your Regional Market Place  
for the sale of **business assets**,  
**stock-in-trade**, **plant**,  
**machinery & equipment**.

Sales in-house and on-site are held throughout the  
year as instructed by

Liquidators, Receivers, Bailiffs, The Sheriff's Office,

County Courts and Business Advisors.

Regular consignments of Tools are included in the  
Collective sales on behalf of Machine Mart Ltd.

COMMERCIAL CLEARANCES and  
SINGLE ITEMS always INVITED

### THE CATALOGUE SALES

Your Regional Market Place

for fine antiques, works of art, jewellery,  
silver, ceramics, glass, books,  
clocks, furniture  
and all fields of collectors' items.

*Held quarterly, these sales include select items  
that need specific and direct marketing  
through our select mailing list & databases.*

Up to 200 vendors selling items to a  
**Worldwide Audience via The Internet.**  
Past Sale Results now online.

NEXT CATALOGUE SALE:

Wednesday 9th February 2005

**CLOSING DATE for entries 7th January**

VIEWING:

Monday 2pm to 5pm,  
Tuesday 11am to 7pm & Saledays 9am to 10am  
And on-line from the Saturday prior.

### VALUATIONS

Free Antiques Auction Advice  
Tuesdays 2pm to 6pm

Call Jan Squires for appointments  
and home visits at other times.

for sales and services information call

**01476 • 565118**

### THE COLLECTIVE SALES

Your Regional Market Place

for Victorian, decorative and  
second-hand furnishings,  
household and personal effects.  
**Surplus business assets, stock-in-trade,  
plant, machinery & equipment**

Every two to three weeks we hold sales of over 600 mixed lots  
received from Property Clearances and vendors of single items.

Over 120 vendors sell with us every sale and over 500  
are registered to buy.

NEXT SALES: 10th + 24th November

VIEWING: Tuesdays 2pm to 6pm & Saleday from 9am

## GLOSSARY

- |  |   |
|--|---|
| a) Generally: 'As Found' (AF). This term indicates the lot has some damage. Its absence does not indicate that the lot is free of defect. All lots are SOLD AS SEEN. | c) Books and printed matter: These items are not sold subject to collation and are not returnable once removed from the premises. |
| b) Paintings: 'Signed, initialled, monogrammed' - This refers to the present state of the work and is not an attribution.  | d) Silver & Jewellery: Weights given are approximations given by basic instruments.   |

### HOURS of BUSINESS

Monday to Friday 9am to 1pm & 2pm to 5pm  
Entries welcome at all times except Saleday

PROPERTIES CLEARED – TRANSPORT ARRANGED  
VALUATIONS FOR ALL PURPOSES



## DAY ONE

## AUTOMOBILIA

1001. A Wakefield Castrol Motor oil poster advertising Captain Malcolm Campbell, World Land Speed Record, Daytona Beach February 5th 1931, printed in colour, 23" x 17½".
1002. A Wakefield Castrol Motor Oil poster advertising Major Sir Henry Seagrave record breaking land speed record in Gold Arrow, at Daytona Beach, March 11th 1929, printed in colour, 22½" x 17".
1003. A Wakefield Castrol Motor Oil poster advertising Major H. O. D. Seagrave's world land speed record in a Sunbeam car, March 29th 1927, printed in colour, 23½" x 17".
1004. A Castrol Motor Oil poster advertising Captain Malcolm Campbell's World Land Speed Record, Daytona Beach, February 19th 1928, printed in colour, 23" x 17½".
1005. An early 20thC Veteran car bell, with winding mechanism.
- 1005A. A 'New' Green Shield stamps advertising poster, in an A frame, Total Premium verso.
1006. A wool motoring jacket, leather lined, ¾ length.
1007. A set of four Castrol oil cans, 10½" to 4½", together with a Castrol Motor oil drum, 15" high. (5)
1008. A Rolls Royce "Spirit of Ecstasy" car mascot, mounted on a petrol cap, 6½" high.
1009. Two sets of Castella postcards by Eric Bottomley, Vintage vehicles.
1010. A set of "Bristol" engines playing cards.
- 1010A. A Smith's dashboard clock, 3" dia.
1011. A 1940's radiator grill from a Wolseley.
1012. A chrome plated radiator grill for an Austin A40.
1013. An illuminated hotel sign, marked English Tourist Board - Facilities.
1014. A P & H acetylene generator lantern, with 6" lens, c.1914
1015. A pair of head lamps from a commercial vehicle, with 8" lens.
1016. A Bausch & Lomb 'Star' headlamp, with 10" lens.
1017. A BP Motor Spirit petrol can, 2 gallon with brass cap.
1018. An Esso petrol can, 2 gallon with brass cap.
1019. A pair of chrome flag motifs, inscribed "Right Monkey!", 12" long
1020. A TIM Conductors ticket machine, with scroll and leather strap.
1021. A Ford chromium plated head lamp with 8" lens, 3 other lucas lamps and another (5)
1022. A graduated set of three leather suitcases, with chrome fittings and further case. (4)
1023. A 1969 Honda stepthrough moped, reg no YNN 8H, sold with MOT expired October 99, no V5.
1024. A 1947/8 Wolseley 8, green, bearing foreign registration CY9902 (Ceylon), sold with the export/import documentation of 1995/6, Ceylon AA badge.  
*Provenance:* This car was bought by the vendor in Colombo, Sri Lanka, in 1995, where the bodywork had recently been restored by taking it back down to metal. It had not yet been fully re-sprayed, as it was eventually to be shipped by container back to the UK. Mechanical work undertaken later in the UK is recorded in the documents which we hold. The vintage car enthusiast who was selling it introduced the vendor to the family of the first owners. They stated that the car had been imported into Sri Lanka in 1948 (independence year), by the then Chief Medical Officer of Health based in Chilaw, on the western coast.
1025. A 1956 Ford Popular, registration RSV 634, black, 48722 recorded miles, last change of keeper 1992, sold with V5 and MOT to 8th June 2005
1026. A 1966 Daimler 250 V8 saloon, 2.5 litre, wire wheels, automatic, registration number MCH 616D, c.71,650 recorded miles.  
*Provenance:* The vendor has been the current owner for twenty five years and is selling with the 'green' log book and service history. We believe that the vehicle has had only four owners, three of them local, the vehicle has been stored since it was taken off the road in 1984.

## ARCHITECTURAL ITEMS

1027. A 1970's park swing, with child and infant seats, manufactured by Wicksteed.
1028. Three corner hayracks.
1029. A pair of 19thC arch top steel gates, each 4' wide by 7' 6" high
1030. A substantial safe door, lining plate and accessories, manufactured by C. Smith, Birmingham. 39" wide, 74" high.
1031. A cast iron portico of floral design. 55" wide
1032. A cast iron pulley wheel, cauldron, jam pans and hobby irons.
1033. An anvil.
1034. An anvil.



1035. A pair of Victorian cast iron pillars, and pierced support brackets, by G.R Cowen and Co., Nottingham.
1036. A pair of Victorian cast iron half round columns, with Corinthian capitols and pierced support brackets, column height 7' 6" to capital.
1037. Set of three Victorian cast iron columns, with Corinthian capitols and pierced support brackets. 7' 6" high to capital.
1038. A pair of Victorian cast iron garden urns, of classical campana shape, on square taper pedestals. 26" dia., 52" high.
1039. A Victorian cast iron safe, with key. 21" high, 13" deep, 14" wide.
1040. Six Victorian cast iron gutter hoppers.
1041. Four chimney pots.
1042. A small cast iron corner trough.
1043. A small D - shaped trough.
1044. A small D - shaped trough.
1045. A small D - shaped trough.
1046. A small D - shaped trough.
1047. A pair of cast iron garden bench ends.
1048. A Victorian cast iron bootscraper.
1049. A Royston Fine Ales enamel advertising sign, wooden frame. 19½" x 122".

## JEWELLERY, WATCHES & BIJOUTERIE

1057. A mother-of-pearl cigarette holder, with 9ct gold collar, 3½" long, cased.
1058. An Art Deco style diamond set ring, of Odeanesque styling, the central diamond of approx 0.15ct surrounded by a rectangular setting of small diamonds, all in white metal stamped 14k
1059. A 18ct gold gypsy style ring set with three small opals interset with pairs of tiny diamonds. London assay.
1060. A diamond set ring, four tiny diamonds set in a lozenge shape of white metal to yellow metal shank stamped 18ct and PLAT.
1061. A 9ct gold signet ring, set with a cabachon tigers eye.
1062. A 9ct gold pendant, tear drop shape, set with a citrine.
1063. A gold and ivory bracelet, four tusk shaped ivory bars joined by gold chain.
1064. Two 9ct gold cubic zirconium & coloured stone dress ring.

1065. An oval amethyst set pendant, in 9ct gold, together with a 9ct gold symbolic pendant. (2)
1066. Three pairs of gold ear-rings, various designs.
1067. Two 18ct gold diamond & sapphire set cluster rings.
1068. A mixed lot of silver fobs, bar brooches, fancy Albert, etc.
1069. A Jewellery box, containing costume and silver jewellery items.
1070. Four pairs of ear-rings, various designs.
1071. Four 9ct gold sapphire set dress rings, various designs.
1072. A mixed lot, containing pockets watches, vestas, cigarette cases etc.
1073. A small selection of silver and marcasite jewellery.
1074. Three white stone set rings.
1075. A 9ct gold multi link bracelet, with matching ear-rings.
1076. A multi link chain, stamped 375 42cms. weight 7.8gms.
1077. Two sets of cufflinks, and a key ring.
1078. A hollow silver hinged bangle, with bright cut decoration.
1079. Two stone and pearl set necklets.
1080. A silver and enamel panel linked bracelet, alternating circular turquoise enamel and rectangular royal blue enamel panels. Birmingham 1911. Maker J.F.
1081. Two small brooches, agate pendant and small seed pearl set buckle.
1082. A mixed lot of seven dress rings.
1083. A signed Chinese formed porcelain snuff bottle, depicting Kwan upon her lotus throne.
1084. A signed Chinese partail blue and white porcelain snuff bottle, decorated with enamels.
1085. A large Chinese blue and white porcelain snuff bottle.
1086. A signed Japanese fruitwood netsuke, a study of turtles having made there home in a large folded lotus leaf.
1087. A signed Japanese fruitwood netsuke, a study of a cockerel and a male chick standing together on a tzumi
1088. A signed Japanese blackwood netsuke, a study of an Owl alighting upon a branch.



Lot No. 1014



Lot No. 1018



Lot No. 1038



Lot No. 1120



Lot No. 1213



Lot No. 1138



Lot No. 1244



Lot No. 1272



Lot No. 1323



Lot No. 1418



Lot No. 1449



Lot No. 1369



Lot No. 1492





1089. A signed Japanese cypruswood netsuke, a study of a pear, a large cicada insect feeding upon it.
1090. A signed Japanese ivory netsuke, a study of a fishmonger cutting up a large fish with a sword.
1091. A signed Japanese ivory netsuke, a study of a mermaid of mythology seated upon a rock.
1092. A signed Japanese ivory netsuke, a macabre study of a human skeleton seated upright holding a wine gourd.
1093. A signed Japanese ivory netsuke, a study of a Samurai in casual kimono.
1094. A signed Japanese ivory netsuke, a study of the court entertainer, Ashi-Odori, his magical props carried in a basket upon his back.
1095. A signed Japanese ivory inro, decorated overall in deep cut chinkinbon carving with further deep cut centre panels finely depicting deities and sages.
1096. A signed Japanese silkwood inro, each side depicting jackals at rest, internally hand-painted glass ojimi bead and mounted with a fine blackwood manju netsuke depicting a dragon.
1097. A yellow metal Scottish bar brooch, mounted with a sprig of heather, white pearl beads as flower heads.
1098. A green tourmaline and diamond cluster ring, yellow metal shank stamped 18ct.
1099. A plain 9ct gold "D" shaped wedding band and another.
1100. A triple row diamond and sapphire eternity ring, a row of sapphires between two rows of diamonds, all set in white metal to white metal shank.
1101. A contemporary design silver pendant on chain. Birmingham 1983.
1102. A 9ct gold half hoop eternity ring set with tiny white stones.
1103. A lozenge shaped dress ring in 9ct gold set with nine small opals.
1104. A Millenium gold sovereign pendant, 2000.
1105. An opal set ring, the opal carved with a scarab 12mm x 9mm in a yellow metal setting to yellow metal shank stamped 18ct.
1106. Two 9ct gold ladies dress rings of similar pierced design set centrally with a small white stone.
1107. A 9ct gold ladies lozenge shaped stone set cluster ring set centrally with a blue topaz, surrounded by fourteen small diamonds, set in white gold to yellow gold shank. Birmingham 1989.
1108. Two brooches with polychrome mineral and shell inserts, in white metal, one a butterfly, the other a fan.
1109. A pair of ornate filigree Indian ear-rings, set with small red and green stones in yellow metal.
1110. A Saudi Arabian gold "peacock eye" pendant set with an oval turquoise cabachon, similar bracelet, ring and earrings.
1111. A stone set rectangular pendant, with a yellow metal frame
1112. A ladies dress ring, three oval pale blue sapphires surrounded by small diamonds in plaque form set in white gold to yellow gold shank, 18ct. London 1988.
1113. A ladies dress ring, a cluster of six mid blue pear cut sapphires set in floral form, interset with seven small diamonds set in 18ct white topped yellow gold based mount to split shoulders London 1988.
1114. A Tissot ladies wristwatch, with expanding bracelet.
1115. An ivorine egg with a gold bar brooch, mounted with a swallow with seed pearls. (2)
1116. A gentleman's signet ring 9ct yellow gold with oval head with "sun ray" effect set with a small diamond. London 1965. 7.5g.
1117. A diamond set stick pin, the floral cluster of seven diamonds, the central stone mounted estimate weight 0.10ct., 6 stones of mounted estimated weight 0.02ct - 0.12ct. total, all set in yellow based white metal topped mille grain setting.
1118. A diamond set stick pin, a floral cluster of ten diamonds, the central diamond of estimated mounted weight 0.12 ct. surrounded by nine small diamonds, all set in yellow metal.
1119. A gentleman's bark effect signet ring with square head and wide shoulders, stamped 9ct. 9.4g.
1120. A diamond solitaire ring, set in white metal 6 claw mount stamped PLAT, with small baguette set shoulders, central stone with Anchor Cert Diamond Certificate, No. 151024-001, mounted estimated weight 5.31 cts, round brilliant cut, clarity VSI, colour K, size 11.31 x 11.33 x 6.34 mm approx, Ring size I - J. Viewing by request only.
1121. A 5 stone set diamond ring, the central emerald cut diamond supported by two pairs of graduated baguette diamonds, all mounted in white metal stamped PLATINUM, the central diamond with Anchor Cert Diamond Certificate No. 151024-002 mounted estimated weight 3.23 cts, emerald cut clarity VSI, colour E, size 10.44 x 7.54 x 4.76 mm approx. baguette diamonds - two off 6 x 2mm approx. = 0.40ct, two off 4 x 1.5mm approx - 0.20 ct. Total mounted estimated weight of diamonds 3.83 cts. Ring size J - K. Viewing by request only.



1122. **A Victorian turquoise and diamond set pendant** of bombe form with central diamond set star, three diamond set suspended points and a diamond set leaf shaped suspender, hair insert panel verso, silver and gold setting.
1123. **An Art Nouveau brooch** depicting a raised woman's head upon a fig leaf, in pink and yellow metal, stamped 15KT. Maker EGB.
1124. **A bracelet of 24 sovereigns**, soldered and joined, overlapping with side links with one 1912 sovereign mounted and hung on the safety chain. *Total weight 100gms approx.*
1125. **A full hoop eternity ring** set with small square cut green stones interset with small round diamonds, all in 9ct gold, Birmingham 1991. Maker AC & Co.
1126. **A five stone diamond set ring**, Victorian design in-line setting stamped 18ct, maker WO. *Total estimated diamond weight 0.08ct.*
1127. **A medium weight curb link bracelet** in 9ct rose gold with padlock clasp. 18cm, weight 27gms, Birmingham assay.
1128. **A Victorian bloomed gold brooch**, oval cushion shape with recess ball set decoration, centrally set oval cabachon garnet 4cm x 3cm, weight all in 11gms.
1129. **A shell cameo brooch** depicting the winged messenger with staff, mounted in yellow metal 4.5cm x 3.5cm.
1130. **A ladies fob watch** in a case stamped 18K, engraved overall with flowers and foliage, bezel wind, gold ornate dial with black Roman numerals.
1131. **A Victorian ladies dress ring**, a central rectangular garnet surrounded by seed pearls, surrounded by round facet cut garnets, the whole mounted in yellow metal stamped 18ct, total weight 5.9gms.
1132. **A Victorian memorial brooch**, the centre hair filled insert surrounded by seed pearls set in a dark blue enamelled surround 2cm x 1.5cm.
1133. **A three stone diamond ring**, the central round brilliant cut stone flanked by two old cut stones, total mounted estimated weight, 0.50ct set in simple claw setting, stamped PLAT, shank worn. *Weight all in 2.5gms*
1134. **An 18ct gold stone set Ladies dress ring**, three cabachon opals interset with pairs of tiny diamonds in an open claw setting to wide shoulders and D shaped shank. *Weight all in 4.2gms.*
1135. **An 18ct gold diamond and emerald set dress ring**, gypsy style setting with three diamonds interset with two emeralds, the setting with 'C' scroll decoration. *Total mounted estimated weight of diamonds 0.16ct., total mounted estimated weight 0.20ct., total weight 5gms.* London 1966.
1136. **A gentleman's 9ct gold signet ring**, plain wide shoulders and shank, engraved on the slightly shield shaped top with the crest and motto of Tottenham Hotspur FC. London 1990. *Weight 8.9gms.*
1137. **A solitaire diamond ring**, claw set in white metal, *mounted estimated weight 1.30 ct*, clarity P3, colour not assessed, round brilliant cut.
1138. **A Cartier ladies' silver (925) wristwatch**, automatic, case no. 8103728, rectangular dial, sun/moon phase aperture, date aperture, baton numerals and sweep second hand, 24 hour inner ring, on a leather strap.
1139. **A Victorian yellow metal citrine set bracelet**, nine round faceted citrines in multiple clawed settings with twisted links between to tongue and clip fastening with safety chain, *each stone 10x10mm approx length 17cm.*
1140. **A Victorian brooch**, an oval high domed cabachon agate set in an oval mount with flower and leaf engraving, 3cm x 2.5cm.
1141. **A brooch of crossed Khukris** in yellow metal stamped 18c, weight 3gm, possibly Ghurka regiment.
1142. **A light-weight rose gold longuard**, belcher link with swivel, (broken at one point) 59" length, weight 19gms.
1143. **A sapphire and diamond set cluster ring**, the central oval sapphire 7mm x 8mm surrounded by twelve small illusion set diamonds, white metal setting to yellow metal shoulders and shank, stamped 18ct, weight 5.8gms.
1144. **A small oval fob seal** in yellow metal with engraved quartz seal depicting an eagle with an arrow in its breast attached to a fancy link chain stamped 9ct, weight 8.2gms, length 46cm.
1145. **A George V double sided agate fob** in 9ct gold mount, attached to a fancy bar and link tri-colour gold watch chain (AF) Chester 1924. *Total weight 21.9gms.*
1146. **A pair of sapphire and diamond cluster ear studs**, small central diamond illusion set in white metal surrounded by twelve small sapphires on white metal posts with butterflies.
1147. **A three stone emerald and diamond set ring**, a central emerald 8mm x 6.8mm flanked by two old cut diamonds 5.6mm x 5mm, the whole set in yellow metal to shank. *Mounted estimated weight of the emerald 2.00cts; mounted estimated weight of diamonds 1.57cts; total weight all in 5.3gms.*
1148. **A three stone sapphire and diamond ring**, the central sapphire of 6.8mm x 6mm flanked by two diamonds of 4.2mm dia, set in white metal claw settings to yellow metal shank stamped 18ct, total weight 4gm.



1149. A Victorian memorial ring, a central rectangular hair filled insert surrounded by seed pearls set in black enamel to gold mound, wide acanthus leaf shoulders to banded shank, inscription on reverse reads, "Mary Francis Fisher dies March 18th 1841 aged 28", London 1831, 18ct.
1150. A fancy link collarette, a brickette design with knot loops below, the whole in yellow metal stamped 15c, length 44cm, weight 42.8gms.
1151. A Victorian brooch, a heart shaped locket, inscribed 'Toi et Moi' suspended below a bower set with small turquoise and translucent beads, the whole in yellow metal.
1152. A Jaeger-Le-Coultré ladies' gold cased wristwatch, a round white baton dial with reeded bezel on an unassociated expanding bracelet.
1153. A Scottish grouse claw brooch, the claw set in a white metal mount with an amethyst set into the top.
1154. An 18ct gold gentleman's wristwatch early 20thC, white dial with subsidiary date and second hand, red numeral '12', loop lugs, on a leather strap.
1155. A gentleman's stainless steel Omega wristwatch, mid-20th century, satin dial, Arabic luminous numerals, subsidiary second hand, on a leather strap.
1156. A yellow metal bar and link watch chain with naval and other small charms attached; together with a brooch.
1157. A pair of cufflinks, silver and enamel scalloped tops depicting the letter 'K' with chain and bar Birmingham 1984.
1158. A nurses ornate belt buckle in white metal and another buckle and an eagle brooch in yellow metal.
1159. A ladies' gold cased bracelet wristwatch by Excalibur.
1160. An 18ct gold diamond set ring, the small diamond in an illusion star setting to bark finish shank. Birmingham 1973.
1161. An 18ct white gold, white stone cluster ring. London 1992.
1162. A mixed lot of costume and white metal items, including brooch, buckle, beads etc.
1163. A lightweight twisted link 9ct gold chain, diamante pieces and a Tegra ladies' wristwatch.
1164. Two white metal pocket watches (AF).
1165. A white metal watch chain adornment, linked bars with turquoise and pink glass inserts to a flower shaped suspender.
1166. A Victorian hinged bangle set with nine graduated opals, interset with pairs of tiny diamonds, the whole set in yellow metal, largest central opal 6mm x 4mm to the smallest, 4mm x 2mm.
1167. A Stratton powder compact, with rose decoration.
1168. A finely carved shell cameo brooch, the detailed and intricate carving depicting a Dutch village scene with figures, house cottages and trees by a river, mounted in yellow metal with glass covered aperture to the reverse. 5cm x 4cm.
1169. An 18ct gold cased ladies fob watch, gold dial with black Roman numerals.
1170. A gentleman's stainless steel Rolex Oyster Perpetual Datejust wristwatch on bracelet.
1171. A Victorian memorial brooch with hair insert front and back in 'C' scroll and plume mount in yellow metal, 5.5cm x 4.5cm.
1172. A set of six ivory teething bars and ring.
1173. A quantity of single earrings and three stone set dress rings.
1174. A selection of white metal chains and pendants.
1175. A 9ct gold ingot on fine trace chain. Sheffield 2004. 11.2gm.
1176. A gentleman's gold cased wristwatch, penknife and signet ring.
1177. A 9ct gold signet ring, wristwatch and bangle.
1178. A half sovereign, 1982 mounted in a double rope pendant setting.
1179. A Victorian 9ct gold ring set with three opals. Birmingham 1891.
1180. A 22ct gold narrow wedding band, and 18ct gold wedding band, a full loop eternity ring set with white stones and one other stone set ring.
1181. A gypsy style sapphire and diamond set ring, three sapphires and two diamonds, set in yellow metal stamped 18ct.
1182. A solitaire diamond ring, the brilliant cut diamond of mounted estimated weight 0.30ct in an octagonal white metal rub over setting to a yellow metal shank stamped 18ct and PLAT
1183. A solitaire diamond ring, the round brilliant cut diamond of mounted estimated weight 0.07ct, illusion set in white metal to engraved shoulders and yellow metal shank stamped 18ct.
1184. A 9ct gold eight bar gate bracelet, with padlock clasp and safety chain. 17.7gms London 1976
1185. Three gold cased ladies watches.



1186. **A Victorian memorial brooch**, set with a red stone. (AF)
1187. **A 9ct rose gold curb link watch chain**, with swivel and T bar, 39 cms. length 22.1 gms.
1188. **A 9ct gold three bar gate bracelet**, with padlock clasp. 9.3gms London 1996.
1189. **A 9ct gold charm bracelet**, nine charms, padlock clasp and safety chain. 26.5gms. London 1968.
1190. **A charm bracelet with thirteen charms**, some 9ct hallmarked, 13.2gms.
1191. **A 9ct gold charm bracelet with six charms**, padlock clasp and safety chain. 11.3gms.
1192. **An Edwardian open work brooch**, set centrally with a faceted amethyst in yellow metal marked 15ct. 4cms length
1193. **An Accurist gold cased ladies wrist watch**, on open link bracelet, rounded off square gold baton dial.
1194. **An 18ct gold cased ladies fob watch**, bezel wind. London import mark 1912.
1195. **A five stone in line diamond ring**, set in yellow metal, together with another (AF) both stamped 18ct.
1196. **A five stone emerald and diamond ring**, three diamonds set alternately with two emeralds, all stones 3 x 3mm approx. set in white metal claw settings to 9ct gold shank London 1987
1197. **A five stone diamond ring**, slightly graduated round brilliant cut stones totalling mounted estimated weight 0.38ct set in claw settings to 18ct gold shank. London 1976
1198. **A Victorian flower head ring**, set with various stones, acanthus leaf shoulders to shank, all in yellow metal.
1199. **A solitaire diamond ring**, a small diamond, illusion set, with two tiny stones set in each shoulder to 18ct gold shank London 1976. together with another similar ring.
1200. **A modern design silver ring**, square head set with a piece of natural amethyst on a square shank. London 1989. Maker AMB; together with a Danish silver bracelet of sympathetic design. (2)
1201. **A 1950's necklace and ear-rings**, costume jewellery, the design of joined flowers in shades of blue and green, reminiscent of Schiaparelli but unsigned.
1202. **Two gold cased ladies wrist watches**.
1203. **A 9ct gold stone set bracelet**, five joined pairs of small diamonds and sapphires, channel set, joined by loops and bars. 7½" long
1204. **A rose gold hollow and link bracelet**, padlock clasp, 18cm length, weight 13.2gms. Stamped 9ct
1205. **A 9ct gold graduated cuff link bracelet**, with padlock clasp and safety chain. 18.5gms, length 18cm
1206. **An 18ct gold sapphire and diamond set flower head ring**, London 1962, 2.8gm
1207. **A 9ct gold bar brooch**, as crop and horses head.
1208. **A horse head cameo brooch**, in a 9ct gold frame, modern. 2.5 x 1.75cm
1209. **A 9ct gold stone set teddy bear brooch**.
1210. **An 18ct gold three stone diamond ring**, central round brilliant and diamond mounted, estimated weight 0.25ct, and two outer diamonds. London 1983. Total mounted estimated weight 0.32ct.
1211. **A 9ct gold aquamarine and diamond oval cluster ring**. London 1998.
1212. **A stick pin mounted with a cricket bat**, another of a horse head and a golfing figure brooch, all in 9ct gold.
1213. **A diamond and multi gem set articulated collar necklace of eastern influence**, the front section being of free form twist leaf and knot design, set with round brilliant and bagette diamonds and marquise and round emeralds and sapphires, with an oval drop centre front, the whole set in white precious metal. Total weight 135gms approx.
1214. **A shell cameo brooch**, a ladies head with floral headdress, set in yellow metal mount. 5 x 4cms
1215. **A shell cameo brooch**, a woman resting a lyre on a plinth, set in a rose metal frame, stamped 9ct, 6 x 4.5cms
1216. **A Victorian style garnet set hinged bangle**.
1217. **An early 20thC twisted link chain**, with green and clear glass bead spacers in yellow metal, stamped 9ct, length 52", total weight 20.3gms
1218. **An Indian style necklace**, fancy chain links with green enamelled spacers, with green beaded tassle centre front, white metal. 36ins long, 39gms
1219. **A contemporary design dress ring**, in white precious metal set with 10 small diamonds. 9gms
1220. **A lava cameo brooch**. 4 cm x 3 cm approx
1221. **A five stone diamond set ring**, old cut stones, graduated. Total mounted estimated weight 1.20cts.
1222. **A memorial locket and another**, both in yellow metal.
1223. **A ring set with a cats eye effect stone**, in yellow metal.



1224. A very large faceted amethyst ring, oval, set in yellow metal with symbolic A and W to sides.  
48.8 gms, amethyst 2cm x 1.75cm approx.

## MUSIC: ROCK, POP & INSTRUMENTS

1225. An important Beatles Autograph Group: being a fan club application form signed by all four members inscribed "lots of love from the Beatles". The autographs are framed glazed and mounted scripted "Elizabethan rooms Nottingham March 7th 1963". Show compared by Keith Gordon. Autographed on reverse of fan club application form. Supporting acts on the night- Jerry and the Pacemakers, Billy J Kramer and The Dakotas, and The Big Three.  
*Provenance:* The vendor is the personal recipient of these autographs as he compared the show. This information has been kindly submitted by him together with a letter of guaranteed authenticity.
- 1225A Country and Western; Johnny Cash Tour 1972 and another souvenir booklet; Sounds of Marlboro Country with George Hamilton IV and Hank Williams, the front cover autographed by Hank Williams, others including Slim Whitman, George Hamilton IV
1226. Vince Eager, two mounted records with pictorials and autograph.
1227. The Shadows, mounted record foot tapper, photograph and autographs of Brian Licorice Locking and Bruce Welch
1228. The Shadows, mounted pictorial collage and autograph of Brian Licorice Locking.
1229. Don Partridge, mounted single "Blue Eyes" and autograph.
1230. Autographs, mounted group, Brian Licorice Locking, Chaz McDevitt, Wee Willie Harris, Jess Conrad and another.
1231. Wee Willie Harris, mounted LP "Goes Ape!" and photograph with autograph.
1232. Autographs, mounted group including Helen Shapiro, David Hamilton, PJ Proby and another.
1233. Marty Wilde, mounted single "Donna" and autograph.
1234. Sue Pollard, mounted single "Starting Together" and photograph with autograph.
1235. Ken Dodd, mounted single "Tears" and photograph with autograph.
1236. Paige and Dixon, mounted single "I know him so well" and single autograph.
1237. Vince Hill, mounted single "Doesn't anybody know my name?" and photograph with autograph.
1238. Joe Brown, mounted single "It only took a minute" and autograph and photograph.
1239. Don Estelle, mounted single "Whispering Grass" and autograph with photograph.
1240. Jess Conrad, mounted single "Mystery Girl" and signed photograph.
1241. Johnny Dallas, mounted single "Round Britain Medley" with various signatures to slip case and further photograph. (1)
1242. Lord Sutch, mounted single "Flashing Lights" and autograph photograph.
1243. Twinkle, mounted single "Terry" and autograph photograph.
1244. BILL HALEY & THE COMETS: 'Gold Disc' for (We're Gonna) ROCK AROUND THE CLOCK, on Brunswick Records No. 05317, white on black label.  
*Provenance:* This 'Gold Disc' was the property of the vendor's father, Eric I. Mosley, who worked for the Decca Record Company, New Malden, from 1946 to its demise in the 1980s. He started as the Works Chemist, with principal responsibilities for quality control and electroplating. This gold disc is almost certainly a full-scale trial of 1955/56 to ensure that the gold plating process for the final disc (of 1956) met their standards. It is therefore almost certainly the only copy, apart from the presentation disc.  
*Significance:* The contract with Bill Haley & the Comets was signed on 1st April 1954 in Decca's New York office for four records a year, with a 5% royalty, and \$5,000 in advance. This completed the move from the Essex record label to the Decca record label. This version of *Rock around the clock* was recorded on April 12th in the newly kitted out Hifi Recording Studio A at the Pythian Temple. The significance of this gold record is difficult to over-emphasise. It was the first rock & roll recording that achieved Gold status, and heralded the true rock & roll era. It is specifically mentioned as a definitive influence by such artists as Chuck Berry, Bo Diddley, Elvis Presley, and Jerry Lee Lewis. *Rock around the clock* has now been recorded by more than 200 artists worldwide and the record is cited on internet sites as being one of the 20th century's true musical quantum leaps forward.
1245. The Searchers, a group lot of memorabilia including three miniature guitars with autographs, signed photographs, two plectrums, and five signed CDs.
1246. Disney, three HMV 78 Rpm records; Snow White and the Seven Dwarfs BD516, Pinocchio BD823, and Alice in Wonderland BD1274.
1247. A violin, bearing label *Joseph Guarnerius fecit Cremona anno 1717*.
1248. A mandolin, having a tortoiseshell inset body with a mother of pearl butterfly, and bearing label *Luigi Poppi, Palermo*.



1249. **A mandolin**, with tortoiseshell inlaid case, and bearing label Sistema de Meglio, Napoli.
1250. **A violin**, with single piece back, no label, and bow.
- 1250A. **An early 20thC table top wind-up concert hall gramophone**, with travelling arm, mahogany framed with a baize covered turntable and massive brass horn speaker which has a freestanding iron support, the nickel plated needle housing marked Mettrophe specially made for E.M.G., with original box, 16" square, the horn 47" long.

## 20THC GLASS, CERAMICS, COLLECTABLES, ETC.

Please note that lots 1251 to 1261 will be sold out of sequence at a set time of 12.15pm

1251. **A silver thimble cast as a seated cat**. Maker C&CC. London 1988.
1252. **An Art Deco Royal Falconware cheese dish and cover**, moulded with polychrome floral decoration and bearing the printed mark of J H Weatherby and Sons Ltd. Reg no. 80097.
1253. **A set of six silver Art Nouveau buttons**, repousse decorated with pierced floral patterns enclosed by a gadrooned border. Maker JMB. Chester 1901. 1¼" dia.
1254. **A high domed round cabachon set ring**, the stone showing some chatoyancy, possibly chrysoberyl, in a simple filled back rub over mount, to an unmarked yellow metal shank.
1255. \* **A Tiffany style table lamp**.
1256. \* **A Tiffany style table lamp**.
1257. \* **A Tiffany style table lamp**.
1258. **An Arthur Wood moulded pottery jug**, with polychrome decorated floral handle, baluster body formed by sunrise over a garden wall embellished with flowers, printed mark to base. 8" high.
1259. **Three 19thC turned bone lace making bobbins**, each having coloured glass spangles and poker work names for Betsy, Jane and Lucy.
1260. **A Schmidt and Co. porcelain cheese dish**, formed as a stylized shell, with pearlescent glaze and marked with crest of Scarborough, printed mark to base of Porzellanfabrik Viktoria (Victoria).
1261. **A boxed set of 19thC German building blocks**, printed cover marked *Französische Architektur*. (French Architecture).
- 1261A. **A Booths 'Silicon China' part breakfast set**, the yellow cell ground painted with bands of blue and yellow, with moulded fruit handles and finials, together with a Booths soup-dish and stand.
1262. **A Booths 'Silicon China' part dinner service**, polychrome printed with fruit clusters, bearing T. Goode & Co. retailer's mark.
1263. **A Booths 'Silicon China' ovoid vase and cover**, polychrome decorated with a Chinese landscape, between floral bowls, a smaller vase, similar and matching plate and coffee can (four).
1264. **An extensive Booths 'Real Old Willow' dinner and tea service**, printed in blue with gilt line rims, pattern no. A8025.
1265. **A Booths 'Silicon China' warming dish and cover**, a coffee pot, a dinner plate and other pieces, each with yellow cell ground, painted with flower baskets.
1266. **A Booths 'Silicon China' Lowestoft border pattern part dinner and te A service**, painted with flower sprigs within blue cell and lambrequin borders.
1267. **A pair of 19th century ironstone plates**, printed in the Aesthetic manner with birds, blossom and foliage, together with a Booths Fruit D'Orient plate.
1268. **A Booths coffee service**, the black and terracotta grounds with gilt chinoiserie transfers (five saucers only), and three later saucers, and another sugar bowl.
1269. **A Booths Allies mug**, printed with eight uniformed soldiers, carrying national flags, c.1914.
1270. **A Booths breakfast condiment set**, 'Tulip' pattern, another printed in blue, and four-bar toast rack, three coffee cups and saucers and a coffee pot.
1271. **A small collection of Booths 'Silicon China' dinner ware**, each piece decorated in the Worcester manner, with stylised birds amongst foilage and reserves of flowers and birds against a blue scale ground, together with a pierced dish and a moulded dish, of square form in the same palette.
1272. **A Booths 'Silicon China' punch bowl**, painted and gilt in the Worcester manner, with stylised birds and flowers against a blue scale ground, the interior with flowers and insects within a lambrequin border, 11" dia.
1273. **A Booths cup, cover, table lamp**, painted and gilt in the Worcester manner with stylised birds and flowers against a blue scale ground.
1274. **Three Booths 'Lowestoft Dear' blue and white plates**, together with a Booths blue and white tea cannister, of shouldered rectangular form, printed with Chinese landscapes.
1275. **A Coalport Silver Jubilee mug**, with accompanying brochure, six pottery commemorative mugs, a Matchbox Silver Jubilee bus and two 1977 crowns.



1276. A Lladro figure in A Victorian lamp lighter, 19" high.
1277. A Coalport miniature 'Pageant' pattern tea pot, cream jug and sugar bowl and cover, boxed, a Caverswell miniature Silver Jubilee cup and saucer.
1278. A quantity of 20thC commemorative mugs
1279. A Goss porcelain model of a Bronze Pot found in Upper Kirkgate Aberdeen, decorated with the flags of the Allies, 3½" high, another Goss piece, of a flagon, decorated with George V commemorative crest, 1911, 2½" high. (2)
1280. A Royal Worcester miniature tyg, painted with flowers against a blush ivory ground, circa 1902.
1281. An assortment of early 20thC pottery including two teapots, together with a carnival glass vase.
1282. A pair of cast brass table candlesticks, with fixed sconces over foliate columns with guilloche knobs, the square bases pierced with flowers and foliage, 8" high.
1283. A cast brass inkwell, of circular waisted form, on a raised foot rim, the hinged domed cover with urn finial, the flange base cast with a scroll and shell border, 3¼" high.
1284. An early 20thC oak tantalus, with plated mounts, fitted with three moulded glass decanters with faceted stoppers, 14½" wide.
1285. An Edwardian oak smoker's cabinet, with a bevelled glass door panel, the interior fitted with three drawers, each with brass handles, porcelain tobacco jar and ashtray, 17" high, 11½" wide.
1286. A large 'Vienna' porcelain charger, decorated to the centre with an 18thC family group in a garden landscape, within a buff border gilt with trailing foliate borders, 22½" diameter, 20thC.
1287. A J. Bourne & Son Danesby Ware baluster vase, moulded in relief with storks and rushes against a naturalistic ground, 9½" high.
1288. An Art Deco period pottery vase, with pierced flower holder, of octagonal tapering form, painted with simple flower forms against a yellow ground with sponged detail, 7" high.
1289. A Stanley ware Jacobean pattern fruit bowl, printed and painted with exotic flowers against a deep blue ground, 9" dia.
1290. A Moorcroft vase painted with the anemone pattern against a blue/green ground, 6" high (repaired chip to rim).
1291. A pottery jardiniere, painted in the round with a riverscape with kingfisher and lily pad, signed R. Dean, 9" high.
1292. A continental porcelain plate, centrally painted with a classical scene within a formal gilt and terracotta border against a deep green ground, 9½" dia; a pottery plate, printed to the centre with a classical scene after Kauffman, within a bead inner border, against a green ground gilt with flowers, 11" dia. (2)
1293. Two Poole pottery penguins, standing on triangular bases, 8½" and 5½" high.
1294. A Beswick Beatrix Potter Foxy Whiskered Gentleman, 4¼" high; and Ribby, 3½" high, gold backstamps (ear tip missing).
1295. A Beswick pottery owl, version one, no. 1046, 7¼" high.
1296. A Beswick pottery budgie, no. 1217, 5½" high.
1297. A Beswick pottery figure of a buzzard, Beneagles Scotch Whisky decanter, 6½" high.
1298. A Royal Doulton character jug, Neptune, no. D6548, designed by M. Henk, 7" high.
1299. A Royal Doulton character jug, Old Salt, no. D6551, designed by G. Sharpe, 8" high.
1300. A Royal Doulton miniature character jug, John Peel, no. D6130, designed by H. Fenton, 2¼" high.
1301. A Royal Doulton spaniel, no. HN1002, 6½" high (extensively restored).
1302. A Royal Doulton character jug, Sairey Gamp, no. D5451, designed by Harradine & Fenton. 6¼" high.
1303. A Beswick character jug, Micawber, no. 310, 9" high.
1304. A Beswick figure of a seated Alsatian dog, 13¼" high.
1305. A Beswick figure of a dappled horse, 8" high.
1306. A Beswick figure mounted lifeguard in the Household Cavalry, 9½" high (repaired).
1307. A Beswick figure H. M. Queen Elizabeth II mounted on Imperial Trooping the Colour 1957, 10¼" high.
1308. A Royal Doulton figure, Cerise, HN1607, 5½" high (restored).
1309. Royal Doulton Disney's 101 Dalmatians 1) Perdita 2) Pongo 3) Lucky 4) Penny
1310. A Beswick model of the Dulux Old English Sheepdog, his right paw resting on a tin of paint, 12¼" high (chip to the edge of paint-tin).
1311. A Goebel figure of a kingfisher clinging to a hollow oak tree trunk, 7" high.



1312. **A continental Majolica figure of a fisherboy**, holding a basket of fish, with a basket over his head, on moulded base and square plinth, 15" high.
1313. **A Mettlach stoneware beer stein**, incised and painted with an extensive landscape, within twig and leaf framing, the hinged cover with Gothic text, scroll metal thumbpiece over scroll handle, 9" high.
1314. **A pair of Austrian porcelain vases**, the neck and pierced handles gilt with stylised plant forms, the bodies painted with poppies, 11" high.
1315. **A Royal Winton Briar pattern three-piece tea service**, glazed green and moulded with flowers, comprising teapot, hot water jug and cream jug (sugar bowl missing), together with a Royal Winton celery dish.
1316. **Carlton ware**: Hollyhock jug, 4½" high; a strawberry and lily dish, 3½" square; a lobster and leaf moulded small dish, 5¼" wide; and a Beswick leaf moulded sauce boat. (4)
1317. **A Royal Worcester pin tray**, of dished form with shaped rim, the yellow mottled body with applied flower spray, 4" wide, c.1937.
1318. **A Royal Crown Derby pin tray**, of shaped square form, polychrome printed with a spaniel in a landscape, signed G. Gresley, 3¼" square, pattern 0977, c.1937.
1319. **A Royal Crown Derby Old Avesbury plate**, with waved rim, printed and polychrome painted with exotic birds amongst foliage, 8½" dia, modern.
1320. **Nine Royal Winton Chelsea pattern tea plates**, of octagonal form, printed and painted with flowers against a yellow ground, mottled blue wells, 5" wide.
1321. **A Chinese Sang de Boeuf baluster vase**, with everted rim, 14½" high.
1322. **A Minton pottery vase**, of compressed baluster vase with elongated neck, with streaky turquoise glaze, 13" high, impressed marks, model no. 508.
1323. **A Clarice Cliff bachelor's tea service**, painted in the Crocus pattern, comprising teapot, milk jug and sugar bowl, green and gilt printed factory marks.
1324. **A Clarice Cliff tea service**, painted in the Crocus pattern, comprising six cups, saucers and plates, milk jug, preserve dish (lacking cover) and three egg cups, together with a matching pin tray and six dinner plates, and a Susie Cooper Dresden pattern soup dish and stand.
1325. **A Cantonese temple vase**, with everted rim, mounted with shi-shi, enamelled with figural panels against a floral ground, 24" high.
1326. **A Belleek vase** with a wrythen shell moulded body with scalloped rim, decorated with an applied floral spray, 3½" high, 20thC (repaired), a pair of Belleek vases, of ovoid form, moulded in low relief with swans, 5½" high, Belleek Collectors Society mark in red, a Belleek trinket box and cover, 3½" dia. (4)
1327. **A Belleek shell moulded cream jug** with coral handle, 4" high, modern green factory mark, another jug, tinted green, on mollusc feet and coral handle, 3" high, a vase moulded with Celtic panels and painted with shamrocks, 6" high. (3)
1328. **A Belleek pepper pot and lidded mustard**, the shell moulded bodies painted with shamrocks, a shell moulded tea bowl and a trinket dish with moulded handle and painted with shamrocks, 5½" wide. (4)
1329. **A pair of Royal Crown Derby small vases**, decorated in the Derby Posies pattern, 2½" high, boxed, and similar miniature cream jug and sugar bowl, and a 1953 commemorative pin tray, boxed.
1330. **Poole Pottery: an Aegean pattern pin tray**, a flower painted pin tray, another with abstract colours, two shell dishes, preserve pot and cover, pin tray, and small vase. (8)
1331. **A Samson porcelain bowl**, decorated in the Chinese European manner with flowers and moulded scrolls, painted with armorials to the exterior, 7½" dia.
1332. **A Bohemian cranberry cased glass vase**, of ovoid form, painted with flowers, 6" high.
1333. **A French turquoise glass Eau de Toilette bottle** with pewter mounts, a similar jar, labeled Coton D'Egypte, and a similar scent spray. (3)
1334. **An early 20thC glass honey pot**, etched with simple plant forms and with plated bee finial and stand, 4¼" high.
1335. **An early 20thC opalescent glass fruitbowl** by Vallon, moulded externally with bunches of cherries and leaves, signed G. Vallon, made in France, 9¼" dia.
1336. **A pair of early 20thC iridescent pink vases**, of ovoid form, the raised necks with pierced chrome collars, 5" high.
1337. **An early 20thC six-bottle cruet stand**, of rectangular form with centre loop handle, on bracket feet, 10½" high.
1338. **A Jeane Gille bisque figure of a dandy**, polychrome decorated, standing holding a love letter, applied tablet mark to base, 12" high; and two others. (3)
1339. **An oak panel**, carved in profile of a spaniel head, 12½" x 10¼", inscribed verso carved by Herbert Crowe from oak from Sandringham Church 1950.



1340. A Royal Crown Derby cup and saucer, painted and gilt in the Imari palette, pattern 4971, circa 1918, together with a cake knife with Imari handle.
1341. A Beswick pottery figure of a seated cat, model no.1857, 8¼" high.
1342. A brass chamberstick with champleve enamelling, the scone centred on a fleur de lis base, and with trefoil handle, 8½" high.
1343. A pair of cut glass decanters, with faceted panels and slice cut decoration, mushroom stoppers, 8½" high.
1344. An early 20thC pottery vase, of circular tapering form, highly glazed in deep blue breaking to brown and green, 19" high.
1345. An early 20thC table centrepiece, the circular mirrored base supporting an amber glass vase with frill edge and applied clear prunt, clear stem, 12½" high.
1346. A Japanese earthenware vase, of ovoid form, with two rudimentary handles, the brown body enamelled and gilt with stylised plant form, Meiji period 1865-1911, 19" high.
1347. A pair of pottery wall plates, circular, one painted with flowers and a butterfly, the other with birds on a branch, both signed John Malkini, 10½" dia.
1348. A Shelley nursery cup and saucer, printed in colour with a Mabel Lucy Attwell image and verse, together with a nursery tea cup, saucer and plate printed with images and nursery rhyme.
1349. A Maling bowl, of circular form, decorated with a band of sea serpents, cornucopia and fruit against a mottled orange ground, internally with a pink mottled ground, 8π" dia.
1350. A Limoges bottle vase, painted and gilt with flowers and foliage against a cream ground, 9½" high.
1351. A Royal Doulton Dunkirk tankard mug, edition no. 677/14,750. Polychrome printed with a scene depicting the evacuation of Dunkirk, 5" high.
1353. An American style bit, head collar and reins, the bit of stainless steel, maker Elliman, made in England, the tack of leather with American silver engraved buckles and adornments, marked Rodeo Sterling.
1354. An Arts and Crafts glass dish, of rectangular form, having a copper lid, centred by a raised medallion, with relief scrolling and blue and green enamelled panels, 5¼" x 4¼", together with a small travelling inkwell. (2)
1355. An early 20thC oak smoker's cabinet, with pressed panelled doors, enclosing a fitted interior, 10" x 11".
1356. A set of oak and brass bellows, 19¼".
1357. An Arts and Crafts fruitwood tray, of rectangular form, carved with Tudor roses and flower quadrants, on six bun feet, 18" x 7".
1358. An early 20thC set of bone and ebony dominoes, in a wooden case.
1359. An extensive collection of salmon flies, in a wooden box.
1360. An early 20thC oak tray, inlaid to the centre with shell patera, the raised edge fitted with two handles, 20" wide.
1361. A wooden caddy of rectangular form, with applied Chinese style fretwork panels, with conforming finial and stand, 10½" high overall.
1362. A pair of Viners EPNS two-branch three-light candelabra, the knopped and baluster stems supporting erred scroll branches, on circular domed feet, 13" high.
1363. An early 20thC EPNS inkwell, the orb shaped well engraved with border detail, supported on three Wyvern feet, 3½" high.
1364. A set of six EPNS napkin rings with buckle detail, numbered 1 to 6.
1365. A set of six EPNS table candlesticks, with extending circular columns, cast with floral and scroll bands, 8π" high extending to 10½" high.
1366. An EPNS gallery tray, of rectangular form, engraved to the centre with scrolls, flowers and leafage, pierced gallery and on four bun feet, 24½" x 16".
1367. An EPNS water jug, with gadroon rim, the composition handle with foliate terminal, 8½" high, an EPNS helmet shaped cream jug, 4¼" high, a table cigar lighter, modelled as a Roman lamp, a port strainer, a pair of sauce boats and a pair of asparagus tongs (seven).
1368. An early 20thC mahogany mirrored wall shelf, the bevelled glass flanked by twin turned pilasters, shelf below with pierced gallery, 26" high.
1369. After H Eichberg. A pair of patinated spelter figures of Greek athletes, one with a discus, one with a boulder, on rocky bases and rectangular plinth, signed H. Eichberg, 13" high.
1370. An Art Nouveau pewter wood lined box, of square form, moulded in relief with flower heads linked by rudimentary panels, 8" square, 5½" high.
1371. AN EPNS spoon warmer, cast as a mollusc shell, on oval foot with foliate cast border, 6" high, an EPNS inkwell modelled as a hat, 4½" dia. and a foliate cast wick trimmer. (3).
1372. A Royal Crown Derby oval bonbon dish, with shaped rim, decorated in the Old Imari palette, 1916, pattern number 1128, 9" wide.



1373. **A pair of Royal Crown Derby circular bonbon dishes**, with waved rims and pierced handles, decorated in the Old Imari palette, pattern number 1128, 6¼" over handles.
1374. **A pair of Royal Crown Derby circular bonbon dishes**, with shaped rims, decorated in the Old Imari palette, pattern number 1128, 4½" diameter.
1375. **A set of four Royal Crown Derby circular pin trays**, decorated in the Old Imari palette, pattern number 1128, 4¼" diameter.
1376. **A Royal Crown Derby dessert bowl**, decorated in the Old Imari palette, 6½" diameter, two matching soup plates, pattern number 1128, 8½" diameter.
1377. **A set of four Royal Crown Derby oval pin trays**, with shaped rims, decorated in the Old Maris palette, pattern 1128, 5½" diameter.
1378. **A Royal Crown Derby cake platter**, decorated in the Old Imari palette, pattern 1128, 1923, 9" diameter.
1379. **A pair of Royal Crown Derby heart shaped pin trays**, decorated in the Old Imari palette, pattern 1128, 4¼".
1380. **A pair of Royal Crown Derby heart shaped pin trays**, decorated in the Old Imari palette, pattern 1128, 4¼".
1381. **A Royal Crown Derby trefoil pin tray**, decorated in the Old Imari palette, pattern number 1128, 4½".
1382. **Seven Royal Crown Derby dinner plates**, decorated in the Old Imari palette, pattern no. 1128, 10¼" diameter.
1383. **A set of twelve Royal Crown Derby dessert plates**, decorated in the Old Imari palette, pattern number 1128, 8½" diameter.
1384. **Seventeen Royal Crown Derby tea plates**, decorated in the Old Imari palette, pattern 1128, 6¼" diameter.
1385. **A Royal Crown Derby plate**, decorated in the Old Imari palette, pattern 1128, 9" diameter, two matching plates, slightly smaller, 7¼" diameter.
1386. **A Royal Crown Derby cake plate**, with a moulded and shaped rim, decorated in the Old Imari palette, pattern 8706, 1934, 9" diameter.
1387. **A Royal Crown Derby cake stand**, with a waved border and centre loop handle decorated in the Old Imari palette, pattern 1128, 8½" diameter.
1389. **A pair of German porcelain matchstrickers**, modelled as children with dog and toys, 4" high.
1390. **A pair of Royal Doulton Flambe 'Rouge et Noir' small bottle vases**, incised number 1606, 4¼" high.
1391. **A Beswick pottery figure of a brown and white calf**, 3" high.
1392. **A Royal Crown Derby candlestick**, pattern no 1128. 10" high.
1393. **Two set of six Royal Crown Derby tea knives**, decorated with Derby Posies pattern, cased.
1394. **A Poole pottery vase**, the elongated neck over a spherical body incised with deep dentil banding, grey and buff glazes, probably by Jennie Haigh, 12" high, incised A113 and SH monogram.
1395. **A pair of Royal Grafton bone china plates**, printed in colour with damsons and grapes within gilt borders, 11" diameter.
1396. **A Caithness 'Cauldron Aqua' paperweight**, an abstract flower paperweight, another abstract paperweight. (3)
1397. **Five millefiori glass paperweights**.
1398. **A millefiori glass paperweight ink well**, two abstract flower paperweights, and two abstract paperweights. (5)
1399. **A Beswick country folk series figure**, Rabbit Baking, brown backstamp.
1400. **A Beswick Winnie the Pooh series figure**, Piglet, gold backstamp.
1401. **A Hasselblad camera**, with 80mm lens.
1402. **A Digiston 50mm camera lens**.
1403. **A Sonnor 150mm camera lens**.
1404. **A pottery figure of an owl**, seated on two books having glass eye inserts. 16" high.
1405. **A Cima pottery bowl**, with sgraffito rose decoration and lobed rim, marked Cima Perugia Italy. 13" dia. (AF)
1406. **A collection of eleven Staffordshire style pottery buildings**, being money boxes, pastille burners and ornaments.
1407. **An Edwardian dressing table and toilet set** by Gallimore and Co., being ecru ground with a deep band of roses on a black ground comprising ewer & bowl, two chamber pots, shaving mug, soap dish and an oval tray with a variety of accessories.
1408. **A Royal Cauldon dinner service**, cream ground with holly chrome floral decoration, comprising of two tureens, oval serving dish, sauce tureen with stand, six 10" plates, six 9" plates and six 8" plates.
1409. **A Copeland Spode chinese rose pattern octagonal meat plate 15"** and a Victorian willow patterned meat dish (2).
1410. **A tribal carved stool**, formed by a figure kneeling and supporting a dish 9" high.
1411. \* **A Tiffany style table lamp**.



1412. **Platedware;** viz. Three electroplate trays, pair of spill vases, sugar bowl, etc.
1413. **An early 20thC ebony part dressing table set** of six items.
1414. **Nine assorted paperweights,** various styles and unmarked/signed.
1415. **An early 20thC leather bound casket** with inset gilt metal handle inscribed " E .M.Redmayne 8 February 1906" 9" wide
1416. **Two Beswick pottery dishes** and a T.G.Green stoneware platter (3)
1417. **An early 20thC majolica spill vase** with an integral basket-weave and leaf mounted stand. 6" dia.
1418. **A Beswick hunting group** comprising four mounted riders, four hounds, and a fox.
1419. **An early 20thC oak tantalus,** fitted with two cut glass decanters, 10" wide
1420. **A Kevin Francis figure of Marilyn Monroe,** Ltd Edition 671/2000, with certificate and box, 10" high
1421. **A Kevin Francis figure of Marlene Deitrich,** Ltd Edition 405/750, with original box, 8½" high
1422. **A Kevin Francis figure " Tea with Clarice Cliff"** Ltd Edition, 744/2000, with original box, 9" high.
1423. **A Beswick figure of a fox,** 2¼" high, minor chip to front foot.
1426. **A pair of Chinese baluster vases,** with wavy crimped rims, bottle necks and decorated in polychrome enamels with birds and flora, 24" high.
1427. **A Corlet Excelsior pigeon racing timer,** wooden cased.
1428. **An early Ericsson French telephone.**
1429. **A moulded glass figure of a peacock,** 8".
1430. **A two-tier cakestand,** mahogany finished with 2 cloud glass platforms.
1431. **An E R Watts & Son theodolite,** no. B46, mahogany cased, 1938.
1432. **An E R Watts & Son microptic alidade,** no. 60911, mahogany cased, 1948.
1433. **A Whitefriars clear glass bowl,** 6" diameter.
1434. **An early pair of competition football boots,** child's size 11.
1435. **A Policeman's lot:** comprising truncheon, handcuffs, whistle, masonic apron and motoring badge.
1436. **A bronze plumblin.**

1437. **A rosewood and brass mortice gauge and a level.** (2)

1438. **Woodworking tools,** including rabbit plane, saws, chisels etc.

1438A. **Wheelwrights tools.**

## TOYS

1439. **A group lot of toys,** including clapping monkey, bartender, etc. (7)
1440. **An enamel sign,** Pearce's Ice Cream, 30" x 48".
1441. **Various dolls,** including Bionic woman.
1442. **Various plastic dolls,** 1950s on.
1443. **Matchbox;** Series collective set, etc. boxed.
1444. **Diecast;** various, models, unboxed and playworn.
1445. **Diecast;** various models unboxed and playworn.
1446. **Corgi;** Classics, Bedford O Series LNER, similar Pantechnicon Circus, Billy Smart's AEC Mercury Truck and Trailer, boxed. (3)
1447. **Corgi;** various ones, unboxed and playworn.
1448. **A Dinky Supertoys Big Bedford truck in Heinz 57 Varieties livery,** unboxed.
1449. **Corgi toys,** no's 158, Lotus Climax, 238 Jaguar mark X, 218 Aston Martin D.B.4, 324 Marcos 1800 G.T, 154 Ferrari, all boxed, and a corgi 384 VW and a Budgie model railway engine, both boxed (8)
1450. **A quantity of small Corgi,** models of yesteryear and other vehicles, unboxed.
1451. **A Heubach Koppelsdorf doll,** bisque headed, marked 300-2., 18".
1452. **A Heubach Koppelsdorf doll,** bisque headed, marked 300.2., 18".
1455. **Days Gone.** Age of steam, Ltd. ed. No 0479/1500, 22ct gold plated set of 3 majestic steam wagons, boxed and mint.
1456. **A quantity of Matchbox super,** Corgi and other vehicles, various condition, - no boxes
1457. **A quantity of Lesney Matchbox and other vehicles,** in a played with condition, - no boxes.
1458. **A quantity of Dinky and other vehicles,** in a played with condition including some military - no boxes.
1459. **A quantity of McDonald's toys and figures,** from TV and film - no boxes or packaging.
1460. **A quantity of model cars,** mostly Corgi and Matchbox, unboxed, condition various



1461. **A quantity of Models of Yesteryear**, in red and other boxes.
1462. **Nine models of Yesteryear**, in cream boxes.
1463. **Models of Yesteryear**, and Matchbox style boxes No's 13, 4, 7, 8, 9, 6, Y2, Y10, Y11, Y5, Y12, 2, Y16, 12, together with two in cerise and yellow boxes, No's Y2 and Y9.
1464. **10 Limited Edition Matchbox Originals**, card and bubble package.
1465. **Three Dinky Die Cast**, No's 207, TR7 223, McLaren M8A Can Aim, 112 Purdey's TR7, all boxed.
1466. **"The Dinky Collection" Special Edition**, model DY-S10 1950 Mercedes Benz Diesel Omnibus type 0.3500; boxed and outer.
1467. **Four "The Dinky Collection"**, models including a Heinz 57 van, all boxed.
1468. **A quantity of "The Dinky Collection"**, models, all boxed (10)
1469. **A large quantity of Britain's plastic play figures**, mostly American civil war and American Indians and a small quantity of green and red Meccano.
1470. **A Dinky No 404 Conveyancer Fork Lift Truck**, yellow box.
1471. **A Dinky No 673 Scout Car and 670 Armoured Car**, yellow boxes, one end flap missing each.
1472. **A Dinky 352 Ed. Straker's Car**, yellow box.
1473. **A Dinky 408 Big Bedford Lorry**, repainted, yellow box.
1474. **A Dinky No 194 Bently Coupe'**, yellow box.
1475. **A Dinky No 150 Rolls Royce Silver Wraith**, yellow box, end flap missisng
1476. **A Dinky No 251 Aveling Barford Diesel roller**, yellow box.
1477. **A Dinky Toys No 955 Fire Engine**, with extending ladder, boxed, blue stripped.
1479. **Corgi; Classics**, etc, various, boxed.
1480. **Matchbox; Models of Yesteryear**, various boxed.
1481. **Dinky; Zygon - Maraunder 368, Patroller 363, War Chariot 361**; boxed. (3)
1482. **Corgi, Juniors**, various unboxed and playworn.
1483. **Aircraft die cast**; various unboxed and playworn.
1484. **Dinky; 8 vehicles** being nos. 344, 449, 156, 176, 260, 120 plus Ferrari Berlinetta and Escort Police car, unboxed and playworn.
1485. **Corgi; Revopak Refuse Collector, 3 BP Tankers**, etc.
1486. **Majorette**; 7 boxed vehicles and other.
1487. **Triang**; tipper lorry.
1488. **Matchbox**; 27 1970/80s Superfast models, boxed.
1489. **Commercial die cast**: Dinky; Transit Ambulance, Mercedes Benz, AEC Tanker, ERF Fire Tender; 2 x Matchbox DAF car transporter. (6)
1490. **A 1960s Tonka twin crane recovery vehicle**.
1491. **Art Armand Maiselle composition doll, 20"** and another.
1492. **A tin plate clockwork Mickey Mouse drummer toy**, legs unattached but present, together with a saxophone playing tin plate Mickey Mouse with cymbals between his heels, 6½" and 6".
1493. **A Dinky Supertoys model 983**, Dinky Auto Service car carrier with trailer, boxed.
1494. **A Corgi model no. 224 Bentley Continental Sports Saloon**, boxed, together with a Corgi model 261 James Bond's Aston Martin D.B.5 boxed. (2)
1495. **A Tri-ang Minic clockwork ladybird**, boxed.
1496. **A composite doll 18" tall**, glass eyes, open mouth, mark on back of neck K star R 128/7 Germany 43/46 together with another unmarked doll.
1497. **An Armand Marseille bisque headed doll**, with brown mohair wig, closing eyes, open mouth, with fully joined composition body, model no. 590/9, 26" high, in fine lawn gown.
1498. **A large yellow fur Teddy bear, 27" tall**, bearing a Merrythought label on his foot, Kapok stuffed, glass eyes, felt pads, muzzle worn.
1499. **A yellow box Pelham puppet**, no. 518, a girl with yellow felt hair.
1500. **A small collection of play worn Dinky, Corgi and other vehicles**.
1501. **A Philips True to Life Terrestrial globe**, on a wooden base, 12"
1502. **A Mobo tinsplate rocking horse**.



## DAY TWO

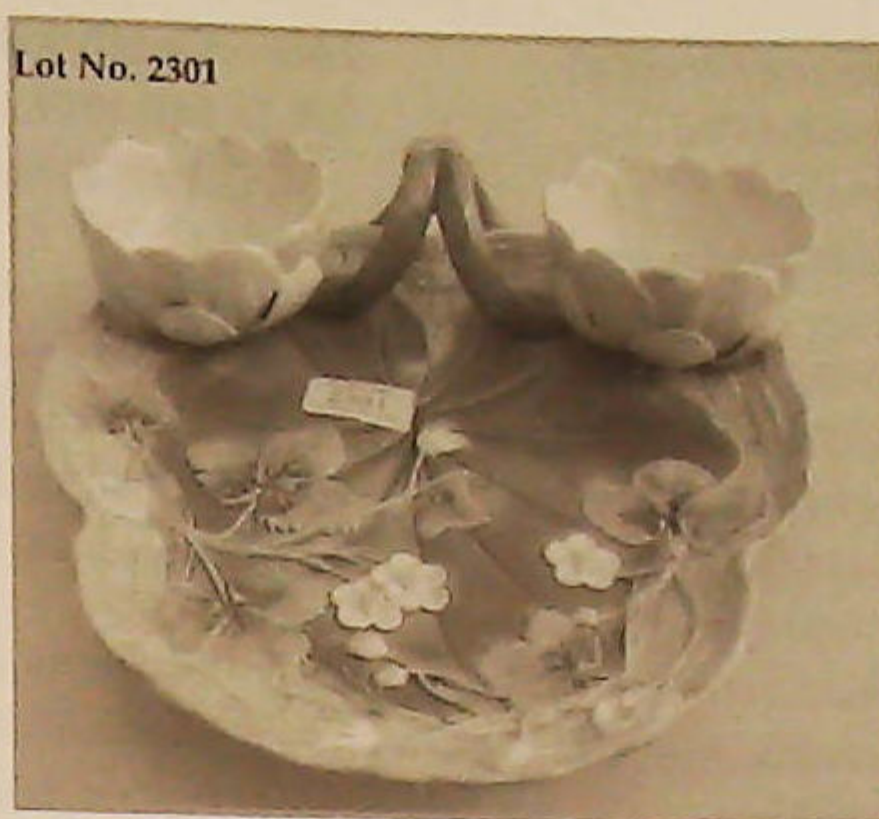
### BOOKS, STAMPS, MAPS, EPHEMERA

2000. **Le Carre (John)**, *A Small Town in Germany*, 1st Ed. 1968, d.w. and three further titles by this author, all 1st Ed., d.w. - **MacLean (Alistair)** - three titles, 1st Eds. d.w., **Bradbury (Malcolm)** - four titles.
2001. **Finn (Frank) Robinson (E. Kay)**, *Birds of Our Country*, 2 vols., illustrated, no date, ex-libris Derek Holmes with his bookplate, cloth boards with gilt decoration and a quantity of related titles.
2002. **Racing Illustrated**, three volumes. July 1895 to December 1896. Volumes 1 and 2, ½ calf skin; volume 3, full Moroc. Covers worn and distressed.
2003. A quantity of Sotheby's and Christie's sale catalogues.
2004. **Pennant (Guy)**, *Sailing Small Cruisers*, 1954, illus. d.w. and other related titles.
2005. **Deighton (Len)**, *Spy Story*, 1st Edition 1974, d.w. and eight further titles by this author, all 1st Ed. and with d.w.
2007. **Drabble (Margaret)**, eight titles, 1st Eds, d.w. **Bradbury (Ray)** - two titles.
2008. **Grisham (John)**, four titles, 1st Eds, d.w. **Wolfe (Tom)** - two titles, 1st Eds, d.w. and others.
2009. A quantity of modern first edition novels.
2010. A quantity of modern first edition novels.
2011. **The Book of Common Prayer**, 1872, gilt edges, ivory boards, the front board mounted with a cross, enclosed within a scroll, flower pierced framing with two clasps, the spine gilt with raised spine bands.
2012. **Three early 20thC photograph albums and contents**, mainly black and white family portraits, the leather boards with relief embossed decoration.
2013. **An early 19thC postcard album** of approximately 190 cards, including local topographical, humorous, animal etc.
2014. **An early 20thC postcard album**, containing a large quantity of mainly topographical views, another album, containing architectural views.
2015. **An early 19thC photograph album and contents**, with embossed leather boards and gilt metal clasp, another (AF).
2016. **Three cigarette card albums and contents**, including military, flowers, buildings, Dickens, portraits together with a box of sets, part sets and mixed.
2017. **A quantity of loose cigarette cards** including **Players Footballers** 1928-9, **Wills Cricketers** 1928, **Carrera Black Cat Greyhound Cards** etc.
2018. **A scrap book partially filled with Victorian scraps and greeting cards**, the album in poor condition, together with a postcard album, mixed, mainly topographical views. c.1930's.
2019. **Four cigarette card albums** containing **Players Footballers** 1928, (40 out of 50), **Birds**, **Products of the World**, **Leaders of Men** etc.
2020. **The Lord Roberts Memorial Fund Stamp Album**, laid down with 120 portraits of 2nd World War personalities, cloth boards, gt. decor.
2021. **Cigarette cards**: **Trains of the World** 1939 (40), **Champions of stage and screen** 1934, **Famous Jockeys** 1936, **Sporting personalities** 1936, **Champions 1st** 1934, **Champions 2nd** 1935 etc. in a black album.
2022. **Cigarette cards**: **Players**, **Dickens characters** 1923, **Wills Butterflies** 1927, **Morris Motor Series** 1922, **The Queens Dolls House** 1925, **Treasure Island** 1924, etc. in a red album.
2023. **Cigarette cards**: **Players Regimental Uniforms** 1912, **British Pedigree Stock** 1925, **Regimental Standards and Cap Badges** 1930, **Wills - Roses 2nd set** 1913 etc. 12 sets in blue album.
2024. **Cigarette cards**: **Players Aircraft of the RAF** 1938, **Wills Association Footballers** 1935, **Players Dandies** 1932 etc. 9 sets and part sets, green album.
2025. **Cigarette cards**: **Gallagher Footballers** 1926, **Players Football Caricatures** 1927, **Ocean Greyhounds** 1938, etc. 16 sets and one set of miniatures, dark blue gilt album.
2026. **Cigarette cards**: **Wills Garden Hints**, **Gallahers Dogs** 1st 1936, **Navy** 1937, **Racing scenes** 1938, **Portraits of Famous Stars** 1935, **Shots from Famous Film Sets** 1935, in two albums, together with three **Castella** albums "Classic Sports Cars", "British Aviation", "The Donington Collection" (5).
2027. **Cigarette cards**: **Wills British Butterflies** 1927, **Wild Birds** 1932, **Ogdens Pottery** 1925, **Life in the tree tops** 1925, **The story of sand** 1935 etc. **Players Past and Present** 1916, **Army badges** 1939, etc in two albums.
2028. **Cigarette cards**: **Musical Celebrities** 1912, **Arms of the Bishopric** 1907, **Famous Boys** 1924, **Railway Centenary** 1925 etc.
2029. **The Radio Times Vol. 1 No. 1 Sunday September 28th 1923**. Leading with an article by Arthur R. Burrows "Whats in the Air", priced at Two Pence in good condition, with light foxing to front page and previously folded.
2030. **A collection of early 20thC postcards** including **New York**, **shipping**, **railway**, **greetings**, **First World War** etc.

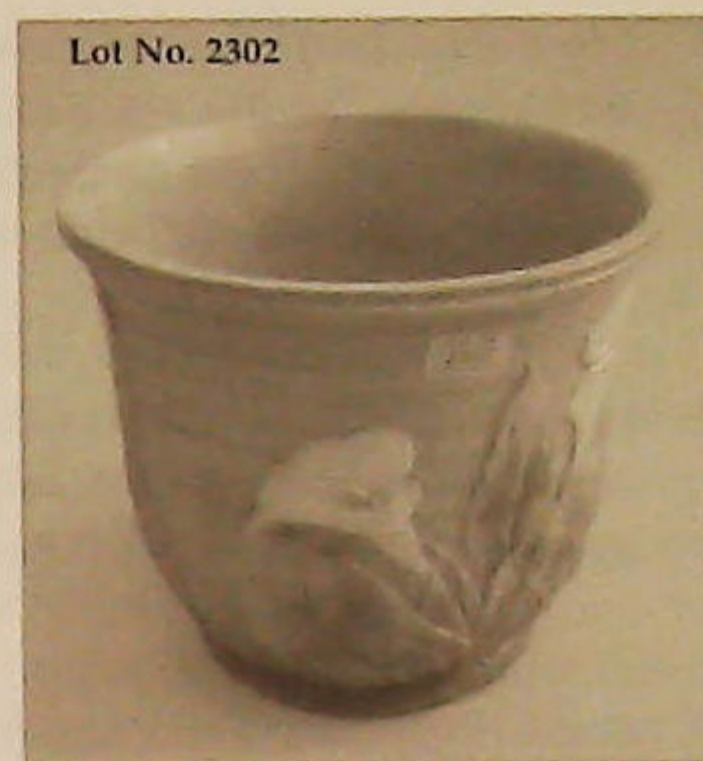




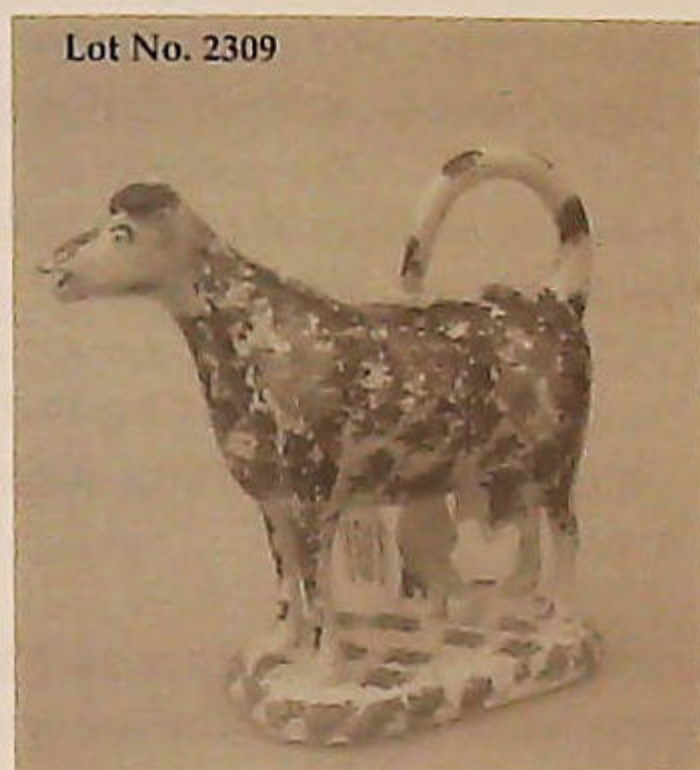
Lot No. 2104



Lot No. 2301



Lot No. 2302



Lot No. 2309



Lot No. 2327



Lot No. 2415



Lot No. 2418



Lot No. 2453



Lot No. 2452



Lot No. 2480



2031. **Moss (Fletcher)** Pilgrimages to Old Homes mostly on the Welsh Border, 1903, Pilgrimages to Old Homes 1906, The Fourth Book of Pilgrimages.....1908, The Ffth Book of Pilgrimages .....1910, four volumes, orig. cloth boards, gt. decor,
2032. **Hogarth (William)** - Works, 2 vols. 1833, steel engravings, marble end papers, orig. full calf gilt decor. vol II top board detached, spine torn, worn extremities to both.
2033. **Guys Hospital.** A collection of nine certificates relating to Mr. Thomas Blasson, noting his attendance and subsequent qualifications on a number of courses, notably Midwifery and the Diseases of Women and Children, signed and dated 1855, Materia Medica and Therapeutics 1855, Principles, Practise and Theory of Surgery 1855 etc. contained within a tin cylinder.
2034. **Two Pirelli Calendars** 1985 and 1986.
2035. **Cigarette cards:** Assorted sets and part sets from circa 1907, including Cricketers, Motor cards, Country seats, Punch cartoons etc., two albums.
2036. **The Beatles Show:** Show Programme early 1960, presented by Arthur Howes including the Rhythm and Blues Quartet, The Vernon Girls, Peter Jay and The Jay Walkers, programme with publicity photograph, gold covers (torn), also Billy Fury programme, Granada "Lets Move It" and other; a quantity of Theatre Programmes and a football programme Luton Town V Nottingham Forest 1959.
2037. **Pomeroy (Ralph Legge).** The Story of a Regiment of Horse - Regimental History from 1685 to 1922 of the 5th Princess Charlotte of Wales Dragon Guards, two vols 1924, illus. vol II portrait frontis detached, orig cloth boards, gt. spines slightly faded, together with Weetnam (Captain W.C.C.) The Sherwood Foresters in the Great War 1914-1919, one vol 1920, portrait frontis Lieut. Col. G H Fowler, orig. cloth boards gt. and two Notts and Derby Sherwood Foresters badges.
2038. **The Panorama or Traveller's Instructive Guide Through England & Wales,** London no date, circa 1800, county maps, hand coloured 8to.
2039. **Fisher (A Hugh).** Through India and Burmah, London c1905, illus. orig. cloth boards, first edition.
2040. **Fowles (John).** The Magnus, First edition, London 1966, orig. cloth boards and d.w.
2041. **Peary (Robert E).** Northward over the Great Ice, two vols., London 1898, portrait frontis, orig. red cloth boards.
2042. **Naipaul (V.S.).** A House for Mr. Biswas, Andre Deutsch 1961, 1st edition orig, crimson cloth boards and pictorial dust wrapper.
2043. **Golding (William)** (i) Pincher Martin, 1956, Free Fall 1959, The Spire 1964, Rites of Passage 1980, all first editions, all with dust wrappers.
2044. **Fleming (Ian).** Goldfinger 1959, On Her Majesty's Secret Service 1963, The Spy who loved me 1962, You only live twice 1964, all first editions, From Russia with love, 4th edition 1958, all with dust wrappers, (Goldfinger d.w. in poor condition).
2045. **Charteris (Leslie).** The Saint Sees It Through 1947, The Saint in Miami 1940, Call for the Saint 1948, first editions, all with dust wrappers, Meet the Tiger 1928, first edition no dust wrapper; The Saint Sees It Through second edition 1950, dust wrapper (5).
2046. **Fleming (Ian) - Goldfinger 1959, 1st Edition** - no dust wrapper and Hilton (James) - Goodbye Mr Chips, 1934, 1st Edition dust wrappers. (2)
2047. **H.B- The Modern Traveller 1898** illustrated B.T.B. Verse, original dec. boards.
2048. **Punch, or The London Charivati** - 1859-1865 15vds, orig. cloth board, gt. decor, faded and some wear.
2049. **Cricket: India Cricket Tour of 1959,** souvenir programme, showing the Indian team on front cover, and Yorkshire, Sussex and Surrey teams inside, fixtures on the back; a Surrey County Cricket Club programme, England V India Thursday, August 20th, 1959 (5 day match) priced 4d; Nottingham Forest V Manchester United football programme, 1959, Lincoln City V Notts County, 1958 plus 2 78 rpm records.
2051. **Kitto (John) - The Pictorial Bible 1855,** 4 vols, illustrated with steel engravings and word cubs calf gt. decor.
2052. **Robinson (Chas.N.) - Celebrities of the Army,** 1900, illustrated with 72 reproduction col plates of military notables with text, original cloth board gt. decor, Matwell (Sir Herbert). Sixty years a Queen, C. 1897, original cloth boards gt. decor. (2)
2053. **A collection of Victorian lithographed greeting cards.**
2054. **Stamps.** An extensive stock book of German and Commonwealth postage stamps with a catalogue in excess of £2,500
2055. **Stamps.** A extensive stock book of Australian postage stamps with the catalogue value in excess of £1,000
2056. **Stamps.** A stock book of mainly GB, Commonwealth and World stamps with a catalogue value in excess of £9,000
2057. **Stamps.** A stock book of Commonwealth postage stamps with a catalogue value in excess of £1,000



2058. **Stamps.** An album of Danish, Icelandic and Swiss postage stamps with a catalogue in excess of £1,800
2059. **Stamps.** An important stock book of German stamps, Italian stamps and others with a catalogue value in excess of £27,000
2060. **Stamps.** An album of mainly mint postage stamps of Cocos Islands with a catalogue value in excess of £500
2061. **Stamps.** Two important albums of French and French Colonial postage stamps with a catalogue value in excess of £10,000
2062. **Stamps.** A stock book of Ugandan, Tanzanian, Jamacian postage stamps with a catalogue value in excess of £600
2063. **Stamps.** Barbados, Rodesian/Zimbabwe and Malawi postage stamps (3)
2064. **Stamps.** Sheets of GB, Commonwealth and World stamps with a catalogue value in excess of £1,100
2066. **Mason, Christopher.** The Art of the Steal, published Putnam
2067. **Fox (Charles James).** A History of the early part of the Reign of James The Second, London 1808 1 vol, contemp. full leather, boards detached and The Spectator, 3 vols, c1745, contemp. calf.
2068. **An early 20thC postcard album** containing approx. 60 cards including views WW1, greetings and humorous.
2069. **Waugh (Evelyn)** The Ordeal of Gilbert Pinfold, 1st Edition 1957, orig. cloth boards d.w., A Tourist in Africa, 1st Edition 1960, orig. cloth boards, d.w. The Diaries of..... 1st Edition 1976, orig. cloth boards no d.w. (4)
2070. **Godfree (Mrs L.A.)** Lawn Tennis, How to Improve Your Game circa 1926; Myers (A Wallis) Lawn Tennis Its Principles and Practice 1930, foxing and time staining, and three other titles.
2071. **Apollo Space Mission;** a letter dated circa 1969 from Astronaut Roosa from Apollo 14 to Mr Fred Turner, an employee of NASA; a piece of gold foil from spacecraft 103 Apollo 8 Mission; various original photographs from an Apollo mission showing moon and craters and the Earth from space; 1st day covers etc
2072. **An early 20thC autograph album** circa 1917/18 with verse drawings and watercolour sketches.
2073. **Books;** various titles including WW1, autobiographies etc.
2074. **Three Rupert Annuals,** circa 1953/4 and six further titles.
2075. **Olympiad 1936;** vol 1 Die Olympischen Winterspiele Vorschau Auf Berlin, vol 11 Die XI Olympischen Spiele in Berlin 1936 and three German cigarette card albums.1918-34 and 1936
2076. **Britannia Depicta or Ogilby Improv'd Eman** Bowers 4th edition 1736, Road maps with a table or index of the cities and market towns etc. taking their distances from London (some pages stained) top board detached; Paterson (Daniel) A New and Accurate Description of all the Direct and Principal Crossroads in England and Wales, 6th edition 1784, top board detached. (2)
2077. **Curcellaei (Stephani)** Novum Testamentum 1699 with presentation inscription on fly leaf, ex libris of Rev. W Wass, Edmund Hall Oxford, embossed full calf with metal clasps, top board detached.
2079. **The Royal Geographical Pastime or the Complete Tour of Europe** by Thomas Jeffreys, Geographer to the King, a folded linen-backed map in a slip case, explanation of the game printed on both sides of the maps circa 1768.
- 2079A. **Four packs of playing cards** and "Bobs Y'r Uncle" card game.
2080. **Cigarette Cards:** Ogdens New Century Photo Album 2nd Edition 1902, together with Wills Aviation and other part sets, other albums and two tins of loose cards.
2081. **Lawrence( D.H.)** Collected Poems, 1st single volume edition, 1932, d.w. The Plumed Serpent 1926 (lacks dust wrapper) ; Kangaroo, 1923 (lacks dust wrapper); Kipling (Rudyard) 4 titles.
2082. **Crombie (Charles)** The Rules of Golf Illustrated, no date, copyright of Perrier French Natural Sparkling Water, 24 chromolithographs, paperbacked boards.
2083. **Three WW1 silk cards** and three silk handkerchiefs.
2084. **A black and white photograph of Donald Campbell,** standing in the cockpit of Bluebird which in turn is on the back of a transporter, various photographs of Formula 1 racing cars in the British Grand Prix of 1958/59.
2085. **A late 19thC photograph album** printed with chromolithographic floral images, the purple velvet boards with gilt metal mounts and clasp.
2086. **Senich (Peter R )** The German Sniper 1914-45, Paladin Press 1982, d.w.
2087. **Broughton-Mainwaring (Major Rowland)** Historical Record of the Royal Welsh Fusiliers, London 1889, illus. orig. cloth boards, gt, decor.
2088. **Leopardi (Giacomo)** Canti number 321, Florence 1936, ¾ moroc. gt. raised spine bands; Pascoli (Giovanni) Myrica, 1st Edition Milan 1935, gt. cf. raised spine bands, 7 further titles. (9)



2089. **Bruce Bairnsfather-** a collection of 48 sepia postcards from Bystanders "Fragment from France" series, mounted in a small postcard album.
2090. **Alecto Historical Editions-** The Lincolnshire Domesday Facsimile, 3 vols. folios and maps 1988, Ltd Ed No 117, studies 1987, Introduction and Translation 1992 in a slip case.
2091. **Two early 20th century postcard albums, mainly view and humorous.**
2092. **A collection of early 20th century postcard of Calcutta, Bangalore and Durban,** a quantity of black and white photographs of India and twelve Calcutta Tramways tickets.
2093. **Two early 20th century postcard albums, mainly views and humorous.**
2094. **An early 20th century postcard album, mainly views, two cricket, two shipping, some humorous; a late 19th century scrap album. (2)**
2095. **A Collection of Maps, various.**
2096. **A quantity of theatre and concert programmes.**
2097. **The Magic Circle:** Goodliffe Abracadabra, 38 vols in 19, 1-46, vols 9/10, 11/12, 13/14, 15/16, missing 1946-1967, blue cloth boards.
2098. **Various childrens games and books, Dads Army, Fuzzy Felt etc.**
2099. **Football:** Arsenal v Tottenham Hotspur 1954, Arsenal v Blackpool 1950 Chelsea v Burnley 1948, Arsenal v Chelsea 1957/8, England v Ireland 1950 (Rugby) a few F.A. Cup Final tickets, Wembley 1953,54,58,59 and assorted programmes.
2100. **Lewis (Ralph) Sir William Russell Flint 1880-1969** London 1980, d.w.

## TEXTILES

2101. **An early 19thC needlework picture** of a country girl in a hayfield, church beyond, worked in coloured silks and wool, against a silk wash ground, 8 1/4" x 6 1/2".
2102. **A Victorian white linen tablecloth** with crochet and drawn thread work, a pair of white linen bloomers and a small tray cloth. (3)
2103. **Four needlework firescreen panels.**
2104. **A turkey work, bead and silver thread panel,** worked on a turquoise silk panel.
2105. **An early 20th century blue satin fan,** painted with blossom and butterflies, feather trimmed and with silvered sticks.
2106. **A Victorian beadwork hand-held fire screen,** the shield shape panel embroidered with bead and pearl flowers, with brass framing and ceramic handle, together with two velvet ornamental slippers, embroidered with beads. (3)
2107. **A quantity of late Victorian and later crochet trimmed cloths** and associated items.
2108. **A white leather Masonic apron** trimmed in pale blue gosgrain ribbon.
2109. **A black satin shoulder cape with crochet panels,** and a black lace caplet. (2)
2110. **A Chinese silk kimono,** embroidered in coloured silks on a ivory/blue ground.
2111. **A Victorian red velvet circular cloth** with a heavy beadwork panel around the circumference, and a blue beadwork panel.
2112. **A box of assorted linens, embroideries etc.**
2113. **A box of assorted lace, linen embroideries.**
2114. **A quantity of early 20th century baby's nightwear,** and other textiles.
2115. **Five tortoiseshell hair ornaments.**
2116. **A Victorian tortoiseshell hair comb,** with pierced foliate scroll decoration.
2117. **A Victorian tortoiseshell mantilla frame.**
2118. **A Victorian faux tortoiseshell mantilla frame,** with Kemple and scroll detail.
2119. **A quantity of late 19th and early 20th century linen** and other textiles.
2120. **Two bowler hats,** early 20th century in Drapers box.
2121. **A lady's lace trimmed bonnet,** various hair combs etc.
2122. **A grey felt top hat by Hilhouse & Co, New Bond St. London, 7 1/4"** inside front to back.
2123. **A Olinawa Panama hat** in Draper's box.
2124. **A black silk top hat, by Christy's London, 7 1/2",** in hat box labelled Tress & Co. London.
2125. **A black silk top hat, by Tress & Co, London,** made expressley for H.H. Cox (successor to Tryner Lynn, 70 High Street, Grantham), 7 1/2", in a fitted leather hat box with carrying handle, strap and miniature padlock.
2126. **An ivory damask tablecloth and six matching napkins.**
2127. **A black silk top hat by Henry Heath Ltd, 8",** in original card box and leather hat box.
2128. **A Victorian fan,** mother of pearl sticks, overlaid with cutwork lace, *stick length 9"*.
2129. **A Victorian fan,** amber celluloid sticks overlaid with fine lace, *stick length 8"*.



## SILVER AND PLATED WARES

2145. **A Victorian silver and glass hip flask.** London 1870.
2146. **An Edward VII silver caster spoon,** Sheffield 1907 and a preserve spoon Sheffield 1924.
2147. **A pair of Edward VII silver specimen vases,** of circular tapering form, the bodies pierced with scrolling panels, one with a glass liner, the other lacking and damaged, weighted bottoms, Birmingham 1907, 4 ¼ " high
2148. **A continental white metal bowl,** on pedestal, 9" dia.
2149. **A silver model of a turbine blade,** engraved HMS Queen Elizabeth, Chester 1913 2½"
2150. **A silver mounted leather purse,** Birmingham 1900, another, 1887 and a quill with white metal mount.
2151. **An early Edward VII silver cased carriage timepiece,** having a French movement, the circular white dial with Roman numerals, the case embossed with foliate and C scrolls, the fascia with palmette, scroll loop handles and on four bun feet, with key, 3¼" high, Birmingham 1900.
2152. **A continental silver tea caddy,** square with half ?? corners, repousse with opposing portrait cartouche and urns within a laurel wreath, the cover engraved with a Tudor rose, 4¼" high, 8oz.
2153. **A pair of Edward VII silver casters,** baluster with wrythen fluting, each embossed with a scrolling cartouche filled with a crow, the pierced cover with flame finial, 8" high, London 1902, Maker J G & Co. 19oz.
2154. **An Edward VII silver caster,** the pierced ovoid body lined with sapphire glass, the domed cover with baluster finial, on a plain spreading foot with reeded rim, 6½" high, Birmingham 1905, Maker M & B.
2155. **A late Victorian silver letter opener,** of plain tapering form with loop handle, 10" long, Birmingham 1900, Maker T H, 5oz.
2156. **A modern silver quaich,** of circular form, mounted with two pierced handles, 6" wide across handles, London 1945, 5oz.
2157. **A George III silver cream jug,** of oval panelled form, with a folded rim and reeded loop handle, 4½" high, London 1797, Makers mark rubbed 4oz.
2158. **A late Victorian silver canister,** of circular form, with machine turned engraving, with compressed bun and cover, 3½" high, 2¼" dia. Birmingham 1891, Maker A & JZ. Together with a George V silver pierced sugar basket, of ovoid form, on domed foot with bead rim, (handle and glass liner missing), 3½" high, Chester 1912, 6oz gross.
2159. **A Victorian silver cream jug,** of oval form with based lobing, angulated loop handle, 4½" high, London 1893, Maker George Mandley Jackson, together with a late Victorian silver cream jug, similar, 3 high, Sheffield 1896, 5oz. gross.
2160. **A George III silver caddy spoon,** having a plain oval bowl with spade handle, engraved with initials, 3½" London 1808, Maker T.J.
2161. **An Edward VII silver hair pin box,** and hinged cover, repousse overall with foliate scrolls and shells, the cover centred by a vacant cartouche, 3½" wide, Chester 1903.
2162. **A Victorian silver dish,** of plain circular form, on a raised foot rim, 3½" dia. London 1882. Maker John Figg, 4½ oz.
2163. **A George V silver six piece cruet set,** a circular panelled form, each piece with annulated girdle and gadroon rims, comprising two salts, two mustards with scroll handle and domed covers, all with sapphire glass liners and two pepperettes, Birmingham 1931, 9oz.
2164. **A pair of modern silver wine goblets,** the bell shaped bowls engraved with foliate scrolls, on slender knopped baluster stems and plain domed feet. 4¼" high, 7oz (cased)
2165. **A modern silver specimen vase,** with bead rim, over a slender tapering body with basal knop, on domed foot. 6½" high, together with a modern silver small tray, with associated glass liner, circular. 4¼" dia. (2)
2166. **A Victorian silver two-handled sugar bowl,** of oval form, with bright cut engraving, 3" high, Edinburgh 1871, Maker Hamilton & Inches, 6oz, together with a matching white metal cream jug. (tests as silver) (2)
2167. **A George V silver rose bowl,** of plain circular form, with a black plastic lining, 5" dia. Birmingham 1930. Together with a George V silver pepperette, of annulated baluster form 4" high, Birmingham 1916.
2168. **Five silver lobster picks,** each with embossed lobster medallion handle, 7¼" long, Sheffield 1964, together with a set of six George V silver lobster tongs, Sheffield 1923, engraved with initials, 13oz gross.
2169. **Two pairs of George III silver sugar tongs,** 1813 and 1820, another pair, later, a pair of silver condiment spoons, 1819, another smaller, and a small silver purse, with concealed mirror to the front, on chatelaine chains, Chester 1914.
2170. **A William IV silver tea pot,** of rounded rectangular form, on four bun feet, with a half lobed body, domed cover and spout, the handle with leaf capping, London 1830, 20oz, Maker TW.



2171. A cut glass sugar sifter with silver cover,  $6\frac{1}{4}$ " high, 1971.
2172. Two silver backed hairbrushes, a silver backed hand mirror and a clothes brush, various hallmarks. (4)
2173. A George V silver napkin ring, engraved with foliate scrolls, Chester 1923, another Chester 1915, another similar. (3)
2174. A George V silver coaster with gadrooned rim, with later glass dish base, an EPNS ink well, an EPNS purse with chatelaine chain (AF). (3)
2175. A George V silver caddy spoon, of plain design, London 1807, another of similar design, Birmingham 1814 (two).
2176. A William IV silver sugar caster spoon, by William Eaton, with foliate pierced bowl and fiddle pattern handle, London 1937.
2177. An Edward VII silver vesta case, engraved with foliate scrolls, Birmingham 1903, a silver sugar shovel with mother-of-pearl handle, hallmark rubbed, a silver napkin ring, Birmingham 1922, a pair of sugar tongs, London 1894.
2178. A set of six silver Hanovarian pattern dessert forks, Birmingham 1933, a similar tablespoon 1931, 13oz gross.
2179. A set of six George III silver teaspoons by William Bateman, Old English pattern, engraved with initials, London 1817, 3oz.
2180. Various part sets of 18thC and later teaspoons, etc.
2182. An Edwardian silver pig pin cushion by Levi & Soloman. Birmingham 1905.
2183. Five pairs of Victorian dessert cutlery, silver handled.
2184. Two pairs of German silver handled cutlery by Ohlenschlager & Riemann of Frankfurt, in a satin lined case.
2185. A set of 12 gilt coffee spoons by Christofle and Cie. Paris. fitted in a satin lined case.
2186. A George V silver three-piece tea set, of panelled form with cartouche shoulders, capped scroll handles, the tea pot with composition handle and finial, Birmingham 1934. Maker ALQ. 30oz gross.
2187. A George V silver sauce boat by Elkington & Co., of oval bracketed form, on pad feet with shell knees, flying scroll handles, 5", Birmingham 1934, 3oz.
2188. A matched set of four George III silver berry spoons, each with silver gilt bowls repousse with fruit and berries, engraved handles, London 1806 (2), 1809 and 1817, variously by Stephen Adams, Thomas and George Hayter, and unknown, 9oz gross, in a fitted velvet lined case with Mappin Brothers retail stamp.
2189. A Victorian silver cream jug, sugar bowl of shell form, on oval dished foot, together with a pair of pierced sugar trays with shell bowls, the jug 3" high, the sugar bowl  $3\frac{1}{2}$ " high, Sheffield 1890. Maker HA. 7oz gross in fitted velvet lined case.
2190. A pair of Edward VII silver candlesticks, the detachable beaded sconces over fluted columns, on square domed foot, 5" high, Birmingham 1904, weighted bases. Maker WB Ltd.
2191. A set of six silver teaspoons with trefoil handles, Sheffield 1962. Maker F&W (cased).
2192. A set of six silver handled tea knives, Sheffield 1938, (cased).
2193. A set of four Edward VII silver salts by James Deakin, of circular form, each on three bun feet, repousse with floral detail and bosses.  $13\frac{1}{8}$ " dia. together with four spoons, Sheffield 1904 (cased).
2194. A George III silver caster spoon, with a pierced fruit moulded bowl and bright cut handle,  $6\frac{1}{4}$ " long, Edinburgh 1804. Maker AH.
2195. A pair of Arts & Crafts silver and oak candlesticks, with barley twist stems, Birmingham 1940,  $7\frac{1}{2}$ " high.
2196. A cake slice and bread knife with Kings pattern silver handles, modern.
2197. An Edward VII silver five-piece manicure set, each piece embossed with flowers and scrolls, Birmingham 1905/6, with fitted leather case.
2198. A George V silver inkwell, of circular flared form, the hinged cover with reeded girdle, London 1919,  $3\frac{1}{4}$ " dia.
2199. A silver baptismal mug, concave, with an annulated basal ring, folded rim and foot and scroll handle, 3" high, Birmingham 1939, in a fitted box.
2200. A late Victorian five-piece carving set, with polished horn handles and silver ferrules, Sheffield 1888, comprising knife and fork, game knife and fork and steel, in an oak case, bearing Mappin & Webb retailer's mark.
2201. A Victorian silver gravy spoon, fiddle pattern, by William Eaton, London 1839, 12" long, and two tablespoons, by William Eaton and Henry Holland, London 1840, and London 1848, all engraved with initial W. 10.5 ozs.
2202. An Edward VII planished silver bowl, circular, with everted rim, on raised foot rim, 5" dia. Chester 1903, 8ozs.
2203. A William IV silver fish slice, by William Eaton, with foliate pierced blade and fiddle pattern handle, engraved with initial, 12", London 1836, 6 ozs.



2204. **A Victorian silver shell dish**, on three bun feet, 5½", London 1890, and a pair of wishbone sugar tongs, Birmingham 1903.
2205. **A pair of Victorian silver salts** of circular form, with egg and dart rims, the bodies repousse with flowers and foliage, on three pad feet with shell knees, 3" *dia.* London 1858, 6ozs.
2206. **A George V silver cruet set**, of plain circular form, with annulated rings and reeded foot, comprising salt, pepper, mustard and spoon, London 1932, cased. (liner missing from salt).
2207. **Five pairs of George III silver sugar tongs** with bright cut decoration, 6ozs. *gross.*
2208. **A Victorian silver small hand mirror**, the bevelled glass within a C scroll and floral frame, with scroll and pierced diaper handle, 8", Birmingham 1899.
2209. Spare lot.
2210. Spare lot.
2211. **An early 20thC cut glass scent bottle**, of circular flared form, with silver collar dated 1912, faceted spire stopper, 5" *high.*
2212. **An early 20thC cut glass scent bottle**, of spherical form, with silver collar, dated 1914, faceted ball stopper, 4½" *high.*
2213. **Four George III Irish silver tablespoons**, with bright cut decoration and engraved with a heraldic crest, Dublin c.1797 10ozs. *gross.*
2214. **Six Continental silver Hanovarian pattern table forks**, stamped A. Frenais Blanc. 5, 15ozs.
2215. **A pair of George III silver tablespoons** with bright cut decoration, engraved with initials, London 1809, two further tablespoons, 1797 and 1809, 9ozs.
2216. **A pair of modern planished silver small vases**, with slightly everted rims, 2½" *high*, 6.5 ozs.
2217. **A silver butter dish**, of oval form, with pierced gallery sides, on four trefoil feet, sapphire glass liner, 1926, 5¼" .
2218. **An Edward VII silver card case**, of curved oblong shape, engraved with a monogram and overall with foliate scrolls, 3¼" *wide*, Sheffield 1901.
2219. **A Dutch silver tobacco case**, of slightly rounded oblong form, cast in relief, with fishermen and dancing figures within C scroll cartouche, 2½" x 1¼".
2220. **An Art Deco period silver powder compact** of square canted form, embossed G to cover, 3" *square*, Birmingham 1934, together with another powder compact. (2)
2221. **Four early 20thC silver cigarette cases**, 13ozs. *gross.*
2222. **A Sterling silver planished ashtray**, set to the centre with a Republica Argentina 1894 coin, inscribed to the underside ON THE OCCASION OF THE LAUNCHING OF THE S.S. ARGENTINA - MOORE MCCORMACK LINES INC. 3½" *dia.*
2223. **Five Continental silver gilt spoons**, with guilloche handles and differing figural finials.
2224. **Ten George III and later silver tablespoons**, Hanovarian, fiddle pattern and Old English patterns, mainly London hallmarks, 20ozs. *gross.*
2225. **A set of six George III silver teaspoons** by George Burrows, with bright cut decoration, London 1781, 3oz.
2226. **A set of six Edward VII silver teaspoons**, with scroll and shell cast handles, Sheffield 1911, 7 ozs.
2227. **Various part sets of silver teaspoons** 25ozs. *gross.*
2228. **A silver watch chain**, circular photograph frame, folding knives, matchbox cover, various hallmarks, EPNS knife rests, miniature playing cards, hat pins, tie pins, white metal posy vase (a lot).
2229. **Three silver pin trays** engraved with a crest inscribed "ESSE QUAM VIDERI" London 1934, 3¼" *dia.*, four silver bladed tea knives, Sheffield 1912, a Victorian cake server, Sheffield 1900, and a silver cigarette case engraved with leaves.
2230. **A white metal mounted polished coconut shell**, raised on three pierced feet with wrythern cast capitols, the mounts embossed with a repeat pattern of lunette panels enclosing flowers, 4½" *high*, together with a filigree white metal vanity case, the square outer cover worked with a monogram within Persian scrolls, the inner cover inscribed "To my darling wife - Iraq 1945 - with love Alex, 3π" *square.*
2232. **A late Victorian cut glass eau de cologne bottle**, of oblong form, mounted in silver, cast and pierced with C scrolls, flowers, and foliage, hinged cover, Birmingham 1900, 6½" *high.*
2233. **Seven late Victorian Silver handled button hooks**, and two shoe horns.
2234. **A Victorian silver mounted hip flask**, with a partly bound raffia woven body, engraved with a monogram, London 1870, 5¼" *high.*
2235. **A modern silver marrow scoop**, Sheffield hallmark, 8¼" *high.*
2236. **A Silver drum-shaped mustard** with scroll thumbpiece and scroll handle, Chester 1913, levier missing, another, of baluster form with cut rim, domed cover, scroll handle, on three claw feet, Chester 1913, levier missing, a condiment spoon. (3)



## 19THC & EARLIER GLASS, CERAMICS, COLLECTABLES, ETC.

2237. A 17thC oak box, of rectangular shape, carved to three sides with foliate scrolls, iron lock plate and later iron hinges, 17" wide.
2238. A 19thC mahogany miniature chest of two short and three long drawers, on bracket feet with swept apron, 14½" wide.
2239. A early 19thC tortoiseshell tea caddy, of bow front pagoda form inlaid with a building and floral mother of pearl inlays.
2240. A George III brass tea kettle and stand, of oval moulded form, the overhead handle with fruitwood grip, upwardly curving spout, and domed cover, the stand with conforming carrying handle, pierced body, on four cabriole legs with pad feet, 22½" high overall.
2241. A pair of Victorian drabware jugs moulded with loop handle and scrolling foliate body 5" high
2242. A WMF electroplate ewer, of moulded foliate form with Art Nouveau loop handle marked WMF EP OX I/O 9" high.
2243. A pair of electroplate candlesticks, of foliate form entwined with vines, 10½" high
2244. A Meiji period Japanese Kutani elliptical dish, 13"
2245. A set of four Wedgwood eel plates, blue and white, with shi-shi panels, and a further Willow pattern example. (5)
2246. A Meiji period Japanese bronze tripod censor and cover, with Dog of Fo finial, 9" high.
2247. A Hardy three piece split cane fly rod, Palaknona, "The Fairy, no. A11747, 10' long with extension in a bamboo case, together with a letter from Hardys stating the date of manufacture to be November 1905.
2248. A Hardy two piece carbon fibre fly rod, Richard Walker Reservoir Superlite, 9' 3" in length in a canvas case.
2249. An Allcocks three piece split cane fly rod, Commodore, 10' length in a canvas case.
2250. A two piece split cane fly rod, 7' 2" in length in a canvas case.
- Please note that lots 2251 to 2261 will be sold out of sequence at a set time of 12.15pm
2251. A Guild School hammered pewter 5 piece tea set, by James Dixon and Sons, comprising of oval two handled tray, teapot, water jug, sucre and creamer marked *Bell Brand* to base.
2252. An Edwardian silver fruit knife, the mother of pearl handle engraved with floral motifs. Maker TM. Sheffield 1901.
2253. A Grimaud twin set of miniature French playing cards fitted in a leather case, 19thC.
2254. An early 20thC Tunbridge ware cigarette box, the lift top releasing a three layer cantilever cigarette dispensary, raised on block feet, 6" wide.
2255. A Meiji period Japanese Kutani figure, seated with a large censer on his head and shoulder. 10" high.
2256. A Doulton Lambeth Slater's patent jardiniere, impressed mark, 17" dia. (some moulding loss)
2257. A pair of 19thC German polychrome bisque figures of A boy and girl, the boy stood holding a rifle, the girl holding a doll of a French soldier with detached head 16" high
2258. An Art Nouveau oval copper dish, the raised rim embossed with stylized hearts and flower buds, 12".
2259. A stained beech aircraft propeller, 31" long, having the central boss fitted with a German aneroid barometer with a cream dial.
2260. A late Victorian technical drawing set, extensively fitted with dividers, trammels, plotters, compasses, etc., in a burr walnut brass-bound case, lined and labelled *Stanley, 3 Great Turnstile, London WC.*
2261. A Hardy 'Palakona' split cane fishing rod, 3 section with brass mounts, Murdoch and Universal fittings.
- 2261A. A pair of Victorian Staffordshire pottery seated spaniels, with iron red splashes, yellow painted eyes and gilt moulded collar and chain. 10" high.
2262. A pair of Victorian Staffordshire pottery seated spaniels, glazed white with yellow painted eyes. 9½" high.
2263. A pair of Victorian Staffordshire pottery seated spaniels, with brown splashes and black collar and chair. 9" high.
2264. A matched pair of Victorian Staffordshire pottery animalier groups, of cows and calf, on an oval moulded base. 8" high.
2265. Two Prattware pot lids, "The Trooper" and "The Master of the Hounds", both with bases. 4" dia.
2266. A pair of 19thC. pottery figures, in 18thC. costume both by a stream holding a fishing basket. 7" high.
2267. A 19thC. Cranberry glass heart shaped dish, with a clear glass handle and a clear pontil. 6¼" wide over handle.
2268. An orange Carnival glass shaped fruit bowl, a similar sugar bowl and cream jug, and another glass fruit bowl. (4)



2269. A Measham 'Bargeware' large tea pot, with applied moulded motif's inscribed *Mrs W Hadden Stockingford 1907*, the domed cover with teapot finial. 13" high.
2270. A Measham 'Bargeware' teapot, with applied moulded floral motifs inscribed *Hannah Dunning 1888* and the domed cover with knobbed finial. 8" high.
2271. A Victorian glass table epergne, the wavy edged dished base supporting three glass trumpets with frill edges and clear fronts.
2272. A matched pair of George III mallet shaped decanters, each with three neck rings over faceted shoulders and fluted basal body, mushroom stoppers. 9½" high.
2273. A pair of George III decanters, of square shouldered form, each with chip cut edges, one inscribed *Rum*, the other *Brandy* both within foliate cartouche and with faceted ball stoppers. 9¼" high.
2274. A mid-19thC. decanter, of channeled cylindrical form, with faceted neck, single neck ring and conforming shoulders, the paneled body alternately engraved with pendant fruiting vine and with hollow flat raised top stopper. 9¼" high.
2275. A 19thC. wine glass cooler, of circular form with a diamond cut girdle over a circular facets. 4" high.
2276. A 19thC. wine glass cooler, with basal faceting. 4" high.
2277. A 19thC. cut glass preserve jar and cover, cut with a band of strawberry diamonds above fluting, cover with conforming decoration. 5" dia.
2278. A 19thC. cut glass butter dish and cover, having a raised cone fluted rim over facet and diamond banding, the domed cover with fluted knop finial. 5" dia.
2279. A 19thC. cut glass sugar bowl, having a scalloped rim over facet and strawberry diamond cut bands. 4¾" dia.
2280. A 19thC. cut glass Celery jar, with bell shaped bowl having comb and facet banding on facial baluster stem and plain circular foot. 9¼" high.
2281. Three glass rummers, the bucket shaped bowls with basal fluting and on single knopped stems. 5½" high, together with another similar.
2282. A set of four early 19thC. rummers, the straight sided bowls on plain stems with basal knop and circular foot. 5½" high.
2283. A set of six whiskey tumblers, with basal fluting 4½" high, together with a pair of 19thC. ale glasses with basal fluting on plain stems, 7" high, a large ale glass with basal fluting on plain stem and domed circular foot, 8" high, and a large tumbler of similar design. 6½" high.
2284. A 19thC. glass condiment jar, with circular panel form, 6¼" high, together with two moulded glass cream jugs, with added etching to the bodies, a helmet shaped cream jug and a cut glass bowl with circular and prismatic cutting. 4½" high.
2285. A pair of 19thC. bell shaped wine glasses, with faceted knopped stems and circular foot, together with three custard glasses, two small tumblers with applied shell decoration, a small tumbler with facet and prismatic cutting, a small bell shaped wine glass with faceted body, knopped stem and on stepped circular foot and a small 19thC. wine glass with etched and facet cut decoration on faceted stem and domed circular foot, and a pair of liqueur glasses with thistle bowls on plain stem and stepped domed foot. (12)
2286. A pair of 19th century ruby glass tables lustres, each with enamel and gilt decoration, baluster stem and domed foot, with prismatic drops, 14½" high.
2287. A Masons ironstone footbath, painted in underglaze blue and gilt with celestial dragons, moulded handles to either side, 19" wide, blue factory mark c.1850.
2288. A 19th century blue and white pottery meat plate, printed with the Willow pattern, 14" wide.
2289. A Victorian moulded glass inkwell, of hexagonal form, with a cast brass hinged cover, 3¾" high.
2290. A 19thC porcelain posy vase, modelled as an ovoid vase resting on the back of a swan, applied with garlands of forget-me-nots and leafage, 8½" high.
2291. A 19thC majolica celery plate, a nut dish, moulded with acorns, another plate with moulded swan handles.
2292. Seven 19thC moulded pottery jugs.
2293. A 19thC Jasperware Stilton cheese dome and stand, applied with classical figures and motifs, 10½" high, 11" dia.
2294. A Royal Doulton stoneware miniature teapot, cream jug and sugar bowl and two further miniature jugs, each applied with moulded motifs against a buff and brown ground, the teapot 4" high.
2295. A late 19thC porcelain 'Welsh Costume' part tea service, printed in black and over-painted with colours, a moustache cup, a God Speed the Plough jug (chipped) and three decorative plates.
2296. A 19thC majolica strawberry dish, of lobed form, with bird cresting, fitted with an integral cream jug and sugar castor, painted with strawberry plants, 11" wide.
2297. A pair of late 19thC porcelain plates, one painted with primroses and pussy willow, the other with daffodils, both against a blue and buff ground, 9" dia., signed with monogram verso.



2298. A 19thC majolica preserve dish and cover, probably of Minton, modelled as a holly covered bird's nest on a tree branch, with blue tit finial, turquoise interior, registration diamond for 1873, 6¼" high (wing tips missing).
2299. A Bretby majolica nut dish, moulded as an oak leaf and applied with nuts, 11¼" wide, impressed factory mark, no. 1116, reg. no. 295659.
2300. A majolic A tobacco jar, of circular form, moulded with lurchers, rabbits in woodland, 4¼" dia., a Majolica tea cup and saucer, moulded with ferns against a fawn wicker ground, pink interior (two).
2301. A George Jones majolica strawberry dish, moulded as a lily pad and strawberries against a blue woven ground, with a bifurcated twig handle flanked by two lily flower dishes, 11" wide, impressed marks and registration diamond for 1876.
2302. A George Jones majolica jardiniere, of circular form moulded in relief with lilies and foliage against a blue ground, yellow rim and lilac interior, 10¼" high 12¼" dia., impressed factory marks.
2303. A George Jones Majolica 'Continents' centrepiece, the lilac interior dished top above a column and oval base modelled as an oak tree surrounded by a dog and game bird amongst foliage, registration lozenge to base, 1862, 8" high.
- 2303A. A 19thC English majolica game pie dish, of oval form, the basket weave body moulded in relief with holly leaves and berries with twig handles, the cover with fox and swan finial with fern detail. 13" wide.
2304. A Minton majolica platter, of oval form, moulded with lily pads, flowers and bull rushes, 24" wide, cipher for 1861.
2305. A majolica game pie dish, of oval form, moulded in relief with dead game and fruiting vine, 11¼" wide, (restored).
2306. A Majolic A pedestal comport, modelled as a lily pad with centre flower, the base moulded with foliage and rocks, and mounted with a stork, 6" high, together with three matching plates, another similar and a leaf (six) moulded plate.
2307. A 19thC copper lustre jug, with moulded scroll handle, 6ins high, a pair of buff ground moulded potted meat jars (covers missing), 4¼" wide, a pair of white ground porcelain salts, modelled as a walnut on twig base, 2¼" high.
2308. A Locke & Co. Worcester posy vase, modelled as a scrolling acanthus leaf, in blush ivory glaze with gilt highlights, 4¼" high, painted mark Locke & Co. Worcester 174.
2309. An early 19thC Whieldon type cow creamer, with milkmaid, glazed with black and pink sponging, green sponged base, 6¼" high.
2310. Two early 19thC glass rummers, each with bucket shape bowls on plain stems and circular foot, 5¼" high, a miniature rummer with faceted bowl, knopped stem and on circular foot, 3½" high, and a medicine measuring jug, 2¼" high.
2311. A pair of late 19thC pottery vases, of ovoid form, the raised necks with gilt transfer detail, the bodies painted and gilt with blossom, 10¼" high.
2312. Edwardian sundae dishes/champagne saucers.
2313. Spare lot.
2314. A Burleighware blue and white willow pattern dinner service, comprising three graduated rectangular meatplates 16 - 11", twelve dinner plates, six side plates, two tureens with covers and sauceboat.
2315. A Burleighware blue and white willow pattern dinner service, comprising three graduated rectangular meatplates 16 - 11", twelve dinner plates, six side plates, two tureens with covers and sauceboat.
2316. An English porcelain plate, painted with differing flowers to the well, the moulded border with flower sprigs, pattern no 565, 8¼" dia; together with a plate of shaped rectangular form, gilt birds against a blue ground, the well painted with a border of pansies. (2).
2317. A pair of late 19thC porcelain ovoid vase urns, painted with flowers, with metal spouts, handles and base 19" high.
2318. A late Victorian opaque glass oil lamp, of Wrythen moulded form, painted with flowers, 23" high.
2319. A Staffordshire pottery figure of Napoleon III, on horseback, 7½" high; and two black glaze cow creamers, 8" wide (1AF).
2320. A pair of Japanese Kutani dishes, of circular form, on raised foot rim, painted with figural landscapes within a deep red border, overlaid with gilt, pierced and shaped rims, 8½" dia.
2321. A Whieldon pottery plate, having a gadroon and bracketed rim, with a brown sponged glaze with yellow, green and grey highlights, 9¼" dia., circa 1750.
2322. A 19thC part dessert service, of moulded form, painted with differing flowers, moulded blue fruiting vine and gilt leafage, comprising three comports, 9" wide and two plates, 8½" dia.
2323. A Chinese plate, enamelled overall with differing flowers against a black ground with gilt tracery fern. 7½" dia.
2324. A Royal Doulton stoneware shaving mug, of baluster form, with applied moulded motifs of deer, hounds and windmills, against a buff and brown ground, 4¼" high.



2325. **A Royal Doulton stoneware tobacco jar**, cover and inner cover, of inverted baluster form. Modelled in relief with stylised flowers and leaves against a mottled green ground, artist's initials of Maud Bowden, 6" high.
2326. **A late Victorian claret jug**, the glass body with star-cut base, and with EPNS collar, hinged cover and handle, cast in relief with Bacchanalian mask spout, amorini masks and fruiting vine, the cover with rampant lion and shield finial, the handle with bifurcated terminals, 13½" high.
2327. **A Doulton Lambeth stoneware tyg by Hannah Barlow**, the buff ground with three boldly incised lions, the three handles with applied flower-heads, glazed in blue, with a silver rim, Sheffield 1873, 7½" high.
2328. **A Doulton Lambeth stoneware jug**, commemorating the death of General Gordon at Khartoum in 1884, the buff ground with applied motifs and inscriptions, artist's initials, probably Rosina Brown, dated 1884, 7¼" high.
2329. **A pair of Doulton Slaters patent sleeve vases**, the rough brown lace ground decorated with simple flower forms, between green and blue borders and brown annulated rings, 7½" high.
2330. **A pair of Doulton stoneware vases by Ethel Beard**, of inverted baluster form, the mottled blue ground decorated with applied pedestal medallions and dotted roundels, 12½" high.
2331. **A Doulton Lambeth stoneware jug** commemorating the death of William Ewart Gladstone, printed with portrait and quotations in brown against a buff ground, below the title 'England's Great Commoner', 7½" high.
2332. **A large treacle glaze frog loving cup**, moulded in relief with scenes below and vine border, moulded branch handles, two frogs to the interior, 12½" over handles, 6¼" high.
2333. **A treacle glaze mug**, moulded in relief with hunting scenes below a vine border, leaf moulded handle, 5¼" high.
2334. **A 19thC Staffordshire pottery figure group**, of a male musician and his female companion, 7" high.
2335. **A 19thC Staffordshire pottery figure group of a young man**, in an underglaze blue jacket, beside a young woman seated with a book, 7" high.
2336. **A 19thC Staffordshire pottery figure 'War'**, soldier on horseback, holding a flag and shield. 12¼" high.
2337. **A 19thC pottery cow creamer**, with a brown and white glaze, on oval green moulded base, 7½" wide (chips to horns).
2338. **A 19thC porcelain Rockingham style part tea service**, each piece painted with differing landscapes, within gilt scroll and wire borders against a grey ground, pattern no. 125.
2339. **A quantity of Flight, Barr & Barr Worcester tea ware**, each piece gilt with a border pattern of foliate panels, scroll and lambrequin girdle, comprising two coffee cans, four tea cups, and a sugar bowl, impressed mask circa 1813-40; together with a Locke & Co. two-handled ovoid vase, painted and gilt with fruit and leaves (cover missing) 3" high; and a Ridgeway stand, painted with floral sprays within cartouche reserves against a grey ground, 10½" dia.
2340. **A Doulton Lambeth stoneware Dewar's Whisky water jug**, modelled with applied hunting scenes and printed in black, John Dewar & Sons Limited, Distillers, Perth, 4" high.
2341. **A pair of 19thC green ground leaf moulded plates**, 9" dia., a pair of 19thC majolica leaf moulded plates, 8½" dia., and Amherst Japan ironstone dish, 6¼" dia.
2342. **A Cauldron ware chamber pot**, printed in blue with continental landscapes, 8½" dia.
2343. **A late 19thC frosted glass table epergne**, the pedestal dished base with green frill edge, supporting a knopped trumpet vase with conforming rim, 14¼" high.
2344. **A pair of creamware plates** with pierced borders, 7" dia, a pair of flower painted plates with gilt borders, 9" dia., and three plates from a 19thC dessert service.
2345. **Four pieces of crested china** and a small stoneware teapot with pewter cover.
2346. **A Copeland pottery jelly mould**, of oval form, with leaf moulding, another jelly mould, circular, with swirl moulding. (2)
2347. **A late 19thC Staffordshire 'Rustic' pattern pottery dinner service**, printed in brown in the Aesthetic manner.
2348. **A Prattware type figure of a seated dog**, with blue sponge ware body, on platform base, 3½" high.
2349. **A 19thC continental pottery flask**, moulded and painted in underglaze blue with scrolls and simple flower forms, 5½" high, together with a majolica sauce boat, moulded as shells with coral handle, 3½" high.
2350. **A set of six white metal decorative spoons**, in two sizes. cast in the Dutch manner, pierced and gilt with figures, masks and scrolls, 5½" (two) 5" (four), in a Tiffany & Co. fitted box.
2351. **A patinated bronze figure of a seated fisherman**, wearing only a hat, playing with a turtle, on oval base, 12" high.



2352. A pair of 19thC spelter figures of Bacchanalian amorini, on circular waisted socles, 11" high.
2353. A 19thC mahogany brass-bound writing slope, (AF) 19¼" wide.
2354. A 19thC copper warming pan with ebonised handle.
2355. A 19thC copper warming pan with ebonised handle.
2356. A 19thC copper warming pan with ebonised handle.
2357. A 19thC mahogany tea caddy, of rectangular form, the cover and fascia panel inlaid with a shell, on four metal feet (interior lids missing) 7½" wide.
2358. A 19thC mahogany tea caddy, of rectangular form, with box and ebony banding, the interior having two lidded compartments, each with bone finials, on four brass bun feet, 8½" wide.
2359. A late 19thC continental ebonised jewellery casket, mounted with gilt metal foliate cartouche mounts to each corner, conforming handle and escutcheon, on dolphin feet, gold quilted interior, 7" square.
2360. An early 19thC figured mahogany jewellery box, of rectangular form, bound in brass, the interior with a partially restored velvet lined tray, 17¼" wide.
2361. A South Seas turtle shell, 12".
2362. Spare lot.
2363. A Victorian casket, of rectangular form, overlaid with mother-of-pearl quilting, 8¼" wide.
2364. A 19thC casket, of rectangular form, covered in leather cloth, the hinged cover overlaid with embossed gilt metal, bail handles to the sides, the interior fitted with a removable tray, and containing a collection of shells/snails, mainly in circular specimen boxes, many labelled, 11½" wide.
2365. A 19thC three-section tea caddy, of rectangular form, inlaid with box banding and quadrant corners, with later bracket feet, the interior with three lidded compartments, 11" wide.
2366. A Victorian rosewood sewing casket, of rectangular form, inlaid with mother-of-pearl roundels, fitted interior tray, 8¼" wide.
2367. A 19thC figured mahogany oval tray, with box and cross banded border and scroll handles, 20" wide.
2368. A 19thC figured mahogany oval te A tray, with raised gallery and scroll handles, 26½" wide.
2369. A 19thC coromandel tea caddy, of rectangular form with a domed cover, the interior fitted with two removable lidded boxes, 9" wide.
2370. A 19thC amboyna sewing casket, with metal bound edges and escutcheons, the interior fitted with a lift out tray, 9¼" wide.
2371. A Victorian papier mache cake tray of circular bracketed form, inlaid with mother of pearl flowers and gilt with fern, having an overhead pierced gilt metal swing handle, 10½" dia.
2372. A 19thC mahogany box, of rectangular form with later line inlay, on four bun feet, the interior simply fitted, 7" wide together with a satin beech box, the cover overlaid with a chromolithograph of a bird and inscribed "A present from Crystal Palace" 4½" wide. (2)
2373. An early 19thC figured mahogany tea caddy, of rectangular form, bound in boxwood, with a brass bail handle, and ivory escutcheon, the interior fitted with two lidded boxes, flanking a mixing aperture with later glass bowl, 12" wide.
2374. An early 20thC figured mahogany two-section te A caddy, D rectangular form, with box and ebony banding, the cover with centre ring and plate handle, the interior fitted with two covers, each with ceramic knops, 8½".
2375. A copper and painted metal carriage lamp by Miles of Cheltenham, 19" high.
2376. A pair of fine electroplate table centrepieces by Thos Bradbury & Sons, each raised on three toupie feet, the lobed and anthemion cast plateau, supporting later cut-glass dish over the centre fluted column with three scroll bracelets and a foliate calyx, flanked by three mythical winged beasts, the circular base with paterae border, 10" high, bears registration mark for 1866.
2377. An assortment of 19thC and later metalware including two brass trivets, jam pan, horses hames etc.
2378. Four pairs of 19thC brass candlesticks, 6½" to 10".
2379. A copper tea urn with brass tap, the domed cover with turned wooden handle, 15" high.
2380. Two 19thC copper kettles, with fixed overhead handles, 11½" high.
2381. Two 19thC copper kettles, with fixed overhead handles, 11½" high.
2382. A pair of 19thC brass candlesticks, each with plain sconces, over knopped stems, on domed foot with scalloped rim, 8" high.
2383. A pair of 19thC brass candlesticks each with scallop edge sconces over knopped stems and moulded square foot with indented corners, 7¼" high.
2384. A 19thC cast brass allegorical figure of a winged god with tablet, on rocky flower strewn base, square plinth, 7" high, 7½" wide.



2385. A pair of brass ladles with pierced handles, 16".
2386. A pair of Chinese brass baluster vases, engraved with auspicious motifs and moulded in relief with celestial dragons chasing the sacred pearl, 10" high.
2387. A pair of Indian white metal shell dishes, each raised on three claw feet with foliate capping, externally embossed with panels of wild animals, trees, temple and plant forms, 5½" wide.
2388. An Arts and Crafts pewter 3 piece tea service, of circular studded form, the teapot with wooden handle, stamped W. & Co. English Pewter Hand Beaten Homeland.
2389. A 19thC copper and brass warming pan, the cover with pricked decoration, with turned fruitwood handle, 44".
2390. A 19thC copper warming pan, with pierced cover and turned fruitwood handle, 41".
2391. A late Victorian EPNS. water can, of oval form, engraved with fern in the Aesthetic manner, 7½" high; a late Victorian oak and plated biscuit barrel, with horn handles and feet, 6½" high, and an EPNS small cream jug embossed with scrolls and flowers, 2" high. (3)
2392. A Victorian EPNS six-bottle cruet stand, of rectangular form, with beaded centre loop handle, fitted with six moulded glass bottles, three with plated covers, 9½" high.
2393. A 19thC Cantonese bottle vase, enamelled with alternating panels of birds and insects with flowers and figural interiors, 14" high.
2394. A pair of 19thC blue and white dessert dishes, printed to the centre with rural river landscapes with boating figures, within a rose printed border, moulded with vines and with waved trim, 8½" wide.
2395. A 19thC German porcelain two-handled cup, painted with flower sprays, and encrusted with roses, on scroll feet, 4¼" over handle.
2396. A continental majolica Toby jug, modelled as Samuel Smith with dead game, 8" high.
2397. Spare lot.
2398. A 19thC Japanese bronze tripod censor, cast with grotesque lizard handles, (cover missing), 5½" high.
2399. A 19thC pottery nut dish, of shaped oval form, moulded in high relief with horse chestnuts and leaves, with a squirrel handle, perched on a branch, holding a nut, 10" dia. (repaired).
2400. A late Victorian clear glass table epergne, the dished base supporting four trumpet vases with frill edge, 22" high.
2401. A 19thC cut glass decanter, with faceted three ring neck, over a broad panel of wrythen flute panels, slice and panel cut below, with spire finial, 13" high, together with two Edwardian sherry decanters. (3)
2402. A 19thC frosted glass celery jar, etched with classical figures, on a clear knopped stem and circular foot, 9½" high.
2403. A Copeland saltglaze moulded jug, of baluster form, moulded in relief with musical instruments, face mask and foliate scrolls, 9½" high, another, 8¼" high.
2404. A Masons ironstone jug, of octagonal form, painted in the Imari palette, with serpent handle, 5" high, together with an earthenware jug of ovoid form, applied with hunting scenes in low relief, below and ribbed brown glaze neck, 8" high (chips to rim). (2).
2405. A Staffordshire pottery figure of an innkeeper's wife, seated pouring from a jug of ale, on square base, 6¼" high.
2406. A pair of late Victorian green striated glass vases, the trilobe bodies of a fluted knopped stem, with applied clear glass leaf form base, 7" high. (Some damage to one).
2407. A late Victorian EPNS and cut glass biscuit barrel and stand, the barrel with cut glass body, domed cover, cast with lotus and with compressed ball finial, the stand having a pierced gallery, lily pad border on three scroll cast feet, 10" high.
2408. A Victorian lady's notepad, with an EPNS cover and pencil, embossed with foliage and simple flower forms in the Art Nouveau manner, suspended from a chatelaine chain and hook.
2409. A silver plated sauce boat with gadroon rim and flying scroll double handle, together with two white metal pill boxes and covers (3).
2410. A 19thC burr walnut box, of rectangular form, with crossbanded borders, 10½" wide.
2411. A matched set of six cranberry glass wine glasses with clear stems, 5" high.
2412. A 19thC turned wood and ebonised horn hoof cleaner, 5", a pair of cast iron sugar cutters, an an EPNS hinged casket, engraved with strapwork, foliate and scroll detail, 5¼" wide. (3).
2413. An 18thC Wheildon plate, of oval form, with a scroll moulded and diaper pierced border, glazed in green, brown, yellow and grey hues, 9½" wide.
2414. A pair of 18thC Wheildon plates, with shaped and gadroon borders, predominantly brown with green splashes, 9½" dia. (one cracked).
2415. A pair of 18thC Wheildon plates, of octagonal circular form, with mottled and marbled ground, predominantly grey, blue and green, 8½" dia.



2416. An 18thC Wheildon plate, of circular form, with moulded and shaped border, with green and yellow glaze, 9" wide.
2417. An 18thC Wheildon plate, of circular form, with moulded and shaped border, having brown and grey glaze, 9½" dia.
2418. An early 18thC Albarello, painted in blue and inscribed E.E. SASAPHRA, NH to underside in blue, 7½" high, some glaze losses.
2419. An 18thC Staffordshire agate model of a seated cat, glazed in ochre and brown, 4¼" high. (Some glaze loss to the ear tips and foot rim).
2420. A pair of 18thC porcelain figures, probably Bow, of seated cherubs, each holding a flower painted vase, one with blue drape, on flower encrusted bases, 3½" high. (repairs).
2421. An 18thC delft stein, painted in green, blue and yellow with a dancing figure in a landscape, loop handle, pewter hinged cover and orb thumbpiece, 10" high. (cracked).
2422. A 19thC opaque blue glass and gilt metal candle lamp, with pierced gallery over a baluster column gilt with foliate scrolls, on an ornately cast gilt metal base, 24½" high.
2423. A small collection of miniature items including four bisque dolls, 2½" high, a stoneware ale jar, two stoneware jugs, papier mache tray, and Mary Gregory mug, two Cadbury's boxes, one containing miniature dolls clothes, scent bottles etc.
2424. A soapstone twin bowl pipe, 5½", a cranberry glass scent bottle with horn casing, 4½" high, (damaged), a needlework print by George Baxter of Prince Albert, in a mahogany frame, 4½" x 4" overall, two white metal skewers, with shell cast terminals and ring handles, 12" x 10" long.
2425. A 19thC Spode pottery plate, painted with flowers to the well, repeated to the border, against diaper reverse, 10" dia. pattern no. 3154.
2426. A 19thC Vienna style porcelain plaque, of oval form, painted with a head and shoulders portrait of a young girl, with long wavy brown hair, 2½" x 2", in an embossed red leather case, 5" x 5½".
2427. A Scrimshaw cylindrical box and cover, inscribed and decorated with a compass and full masted sailing ship, bears date 1879, a small Scrimshaw tooth, decorated and inscribed Whaler Swan, a Scrimshaw seal with hand finial (3).
2428. A replica Coronation Anointing spoon, cased, together with a large quantity of silver fobs.
2429. A French enamel box, decorated to the cover with a courting couple, and with flowers and diaper panels to the side, internally with flowers, 2 x 2½", inscribed to the base 'Lille 1763', another, of elliptical form, decorated with hunting scenes, 2¼" wide, another in poor condition. (3)
2430. Two early 19thC brass detachable stove trivets of circular design with serpent supports 7" diam.
2431. A 19thC French bronze two-handled shallow dish by F. Levillain, the well cast in high relief with two Greek figures carrying a wine vessel, signed, and cast by F. Barbedienne, marked to underside, 15¼" over handles.
2432. A Victorian blue ground pottery oil lamp base, with gilt scrolling mounts.
2433. An olive wood circular dish, having a marquetry panel of a bird amongst flowers to the well, 10½" dia. (crack).
2435. A set of Victorian brass cup weights, four others and a lithographed box.
2436. A Victorian walnut writing box, with fitted interior.
2437. A fine 19thC. walnut campaign writing box, brass bound and double opening fitted interior. 18" wide.
2438. A Victorian leather writing box, with fitted letter and document racks and fall flap.
2439. A Victorian copper grape harvester.
2440. A Victorian copper warming pan, with turned handle.
2441. A Victorian copper pan, with iron handle.
2442. A 19thC. copper 2 handle rectangular kettle, by Jones. 20" x 16".
2443. A 19thC beech yoke.
2444. A flintlock blunderbuss, with brass fittings, 28".
2445. A 19thC dress sword with wire grip, 32".
2446. A Victorian Epns 6 bottle cruets set, the circular stand with pierced gallery, on three pierced scroll feet, cast centre handle (damaged), fitted with six crystal bottles, 11" high.
2447. A 19thC ebonised easel frame, of rectangular form, with gilt slip, mounted gilt metal strapwork, foliate and floral cartouche engraved with a monogram and dated 1859, 16½" x 13".
2448. A set of three 19thC graduated copper water jugs of cone shape, with wide spouts and loop handles, 12" to 9".
2449. A pair of brass and copper hunting horns, by Henry Keat & Sons, Stoke Newington, London 20" long (one AF).
2450. A late 19thC patinated spelter figural group of a Marley Horse and attendant, after Cousteau, on oval ebonised base, fitted as a table lamp with cream silk shade 49" overall.



2451. **After Eugene Aizelin.** A 19thC bronze figure "Mignon" seated, facing dexter, with a mandolin at her feet, from the foundry of Barbedienne, signed and bearing the A. Collas Reduction Mecanique seal to the rear. 27" high.
2452. **After Emile-Louis Picault.** A pair of 19thC bronze figures, of a minstrel and an armourer, on square bases, signed PICAULT, bears traces of green paint, 18½" high.
2453. **After Hippolyte Moveau.** A 19thC bronze figure group of a Huntsman and two hounds "L'ecourtier" he with a horn to his mouth, signed, on circular base. 21" high.
2454. A pink marble figure group of a polar bear and her cub, reared up on her hind legs, on circular marble plinth. 21½" high.
2455. A 19thC copper jelly mould, of oval form, stamped M with a crown, 6½" wide, together with a copper two handled cream pan, 11½" dia. and a chafing dish, printed in blue and white with copper base, 10¼" dia. (3).
2456. A Continental brass jardiniere, of oval form, embossed with vine leaves and grapes, grotesque mask and ring handles to the sides, on four claw and ball feet, tin liner, 15½" wide, together with a brass saucepan with cast iron handle, and a copper saucepan with turned wood handle.
2457. A late 19thC ivory page turner, inscribed "Lucile" R.T.Y.C. 17½".
2458. A Mauchlineware string box of spherical form, printed with an image of Durham Cathedral, 3½" diameter; a letter opener with an applied sepia image of The Douglas Hotel Brodick, 9¼" long. (3)
2459. A powder horn, indistinctly carved.
2460. Seven tailors "marking out" forms, stamped N.Good.
2461. A Victorian silver and horn handled parasol, Birmingham 1896 and four other walking sticks (5)
2462. A Victorian brass bell doorstep.
2463. A 19thC elm cutlery tray.
2464. A Lancaster magic lantern.
2465. A Tycos Cyclo-Stormograph plotter, by Steward of Leicester, on an oak plinth.
2466. A Doulton Lambeth stoneware spirit barrel.
2467. A Victorian willow pattern meatplate, and another.
2468. A Chinese blue and white tureen, with mask handles, 11".
2469. A continental porcelain tea service, 12 place setting, painted with scabious and gilt decoration.
2470. A Victorian 3-colour bisque oval dish, gilt and moulded with cherubs, on a wooden stand.
2471. A Soho pottery toilet seat, in 'Holborn' pattern, 4 piece.
2472. A majolica nut dish and three other meat plates.
2473. A pair of Masons ironstone cylinder vases, in the willow pattern, printed mark, 10" high.
2474. An oriental carved jar and cover, polychrome painted with stylised birds, 8" high, pipe and stand. (3)
2475. A Georgian mahogany cutlery tray, with brass handle.
2476. A French faience armorial charger and further plate.
2477. A Victorian brass and mahogany magazine rack.
2479. A knarled walking stick, carved with an adder and mask handle with snuff.
2480. A pair of scrimshaw teeth, depicting a boy and girl, signed E. Webster, 4½".
2481. A hardwood carving of a walrus, 8" high.
2482. Shepherds crook, whippetree, etc. (5)
2483. A pair of Chinese blue and white jardiniere, 22" diameter, 22" high.
2484. Three 19thC salt glazed stoneware flagons and a spirit barrel.
2485. A pair of brass and cast iron hexangol lantern stoves, converted to electricity, 24" high.
2486. A Cauldon meatplate and 2 others.
2487. An 18thC Chinese tea cup and saucer, enamelled in the European manner with diaper panels of flowers.
2488. An early 20thC Indian hardwood folio stand, carved with foliate panels, 30" high
- 2488A. An early 19thC pearlware tea bowl, and saucer printed in green with rural figural landscapes, the saucer amidst rose border, together with a Newhall type tea bowl and saucer and a further tea bowl.
2489. A horn handled carving knife and fork.
2490. A Victorian cast iron trivet, with turned wooden handle.
2491. A 19thC brass cased pocket barometer, compass and thermometer in a leather case.
2492. A quantity of military cap badges, in a glazed wooden cabinet.



2493. **Medals:** WW1 group of 4 including For Bravery medal, Pte 11747 R Lawrence 2/w.Yorks, also 1936/7 North West Frontier and other WW2 medals, various other medals including QEII Imperial Service medal and assorted cap badges etc.
2494. **Medals:** WW1 and WW2 service and defence medals etc.
2495. A 19thC brass oil lamp base, with a glass reservoir, on a stepped circular base with twist knopped column, the reservoir with paterae bosses. 24" high
2496. A quantity of old tins and grocery packaging.
2497. A quantity of old tins and grocery packaging.
2498. A quantity of old tins and grocery packaging (2 boxes).
2499. A quantity of old tins and grocery packaging.
2500. A quantity of old medicine bottles and toiletries.
2501. Taxidermy; a glass fronted case displaying two Crested Jays amongst naturalistic foliage, 13½" x 25"
2502. Taxidermy: a glass fronted case displaying a Barn Owl and two Long Eared Owls, a Red Squirrel and a Thrush, amongst naturalistic foliage. 22" x 27"
2503. Taxidermy: a glass fronted case displaying four red squirrels amongst naturalistic foliage, 21" x 18".
2504. Taxidermy: a glass fronted display case displaying a mallard duck amongst naturalistic foliage, 16" x 14".
2505. Taxidermy: a glazed cabinet displaying a Night Jay against a tree bark amongst foliage 7" x 15".



## DAY THREE

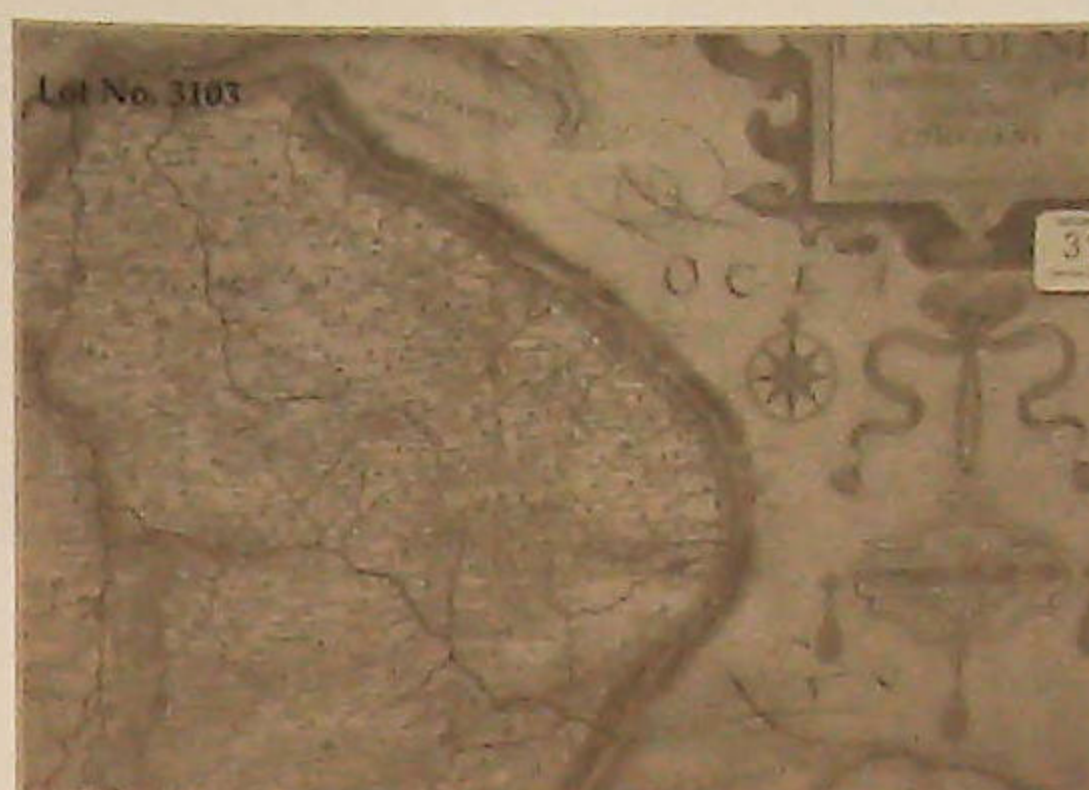
### CLOCKS & BAROMETERS

3000. **An Edwardian mahogany aneroid barometer** with marquetry case and having thermometer over a 4" dial. 18" high.
- 3000A. **A 1930s oak cased wall clock** with silver dial, Arabic numerals, eight day movement striking agong 32" high.
3001. **A 19thC oak and mahogany longcase clock**, with painted dial with seconds dial and calendar aperture, painted with cottages and Roman ruin to the arch, signed *Henry Goodwin, Newark*, of 8 day movement, the hood with a swan neck pediment and turned pilasters, the crossband trunk with triple lisp door, on deep plinth, 83" high.
3002. **A 19thC flamed mahogany longcase clock**, with swan neck pediment, reeded square column hood, the trunk having full length door enclosed by reeded insert columns, canted base with ogee feet, the painted 14" dial having churches to the spandrels, roman numerals, seconds ring, date crescent and marked *J. KANT, Manchester*, 8 day movement, striking on bell. 87" high.
3003. **A Victorian flamed mahogany long case clock**, with swan neck octagonal pillared hood, over a concave and rounded trunk with short door, deep fielded panel base and turned feet, the 13" dial being painted with Gothic ruins to the arch, cottages and churches to the spandrels, having Roman numerals, seconds ring and date ring, and marked *J. SMITH, KEIGHLEY*. 8' high.
3004. **A mid 18thC oak longcase clock**, having a 12" square brass dial, with silvered chapter ring, seconds dial, date aperture, engraved with foliate scrolls to the centre, mask spandrels and signed *Jos Tilly, London*, of 8 day movement. The hood with a cavetto cornice over dentil frieze and four barleytwist pilasters, the trunk with a rectangular moulded door, over plinth, 80" high.
3005. **An early 19thC mahogany longcase clock**, the painted dial with seconds dial, gilt floral spandrels, with figural landscape to the arch, of eight day movement, the hood with arched pediment, turned parcel gilt pilasters, the trunk with arched door flanked by canted corner, over a deep crossbanded plinth, 81½" high.
3006. **A 19thC mahogany and oak longcase clock**, the painted dial with seconds dial, with a landscape to the arch, signed *Pearce, Grantham*, of eight day movement, the hood with swan neck pediment surmounted by three brass orb and eagle finials, turned pilasters, the trunk with satinwood strapping to the frieze, shaped cross banded door flanked by canted corners with acorn terminals. 88" high.
3007. **An 18thC flamed mahogany longcase clock**, with arched and pillared hood, the trunk quarter inset with pillars and having full length crossbanded door, canted (and reduced) base, the brass 13" dial having moon roller to the chased arch and applied spandrels, the chapter ring having Roman hour numerals, Arabic minute numerals, the matted centre having subsidiary seconds ring and date aperture within an oval cartouche marked *Seddon FRODSHAM*. 8 day movement, striking on bell. 8' high to arch.
3008. **An 18thC mahogany longcase clock**, with swan neck fluted pillar hood having verre eglomise panels, the trunk being quarter inset with fluted columns and full length shaped door, canted base with plinth, the 13" brass dial having painted and silvered moon roller to the arch, cast amorini spandrels, applied silvered chapter ring with Roman hour numerals and Arabic minute numerals, the centre field being a date ring with floral chased centre marked *Rathbone, MIDDLEWICH*, 8 day movement, striking on bell. 88" high.
3009. **A 19thC mahogany wheel barometer**, with ebony and box stringing to the onion-top case, having silvered hygrometer over thermometer, convex mirror, 7" dial, bezel point and thermometer marked *DAVIS & Co, ROYAL POLYTECHNIC, REGENT ST.* 38" high.
3010. **An Edwardian carved oak aneroid barometer**, with thermometer over a 6" inch dial. 26" high.
3011. **An early 20thC oak aneroid barometer**, with pierced frame and milk glass thermometer, over 7" inch dial. 32" high, presentation inscription.
3012. **A 19thC German wall clock**, with walnut and ebonised case, 8 day movement striking a gong. 38" high.
3013. **A 19thC French wall clock**, with a stained and carved beech case, the dial having a applied enamel Roman numerals, eight day movement striking a gong. 24" high
3014. **A Gledhill Brook time recorder**, oak cased.
- 3014A. **A Victorian flamed mahogany bracket clock**, with 14" painted dial having Roman numerals and marked "D. Spencer, COVENTRY" over a carved floral and scroll support, moulded plinth with block feet, fusee movement, 22" wide, 23" high
3015. **A 1930's oak cased wall clock**, with eight day chiming movement. 31" high
3016. **A Foster Callear ships clock and barometer combination**, on a mahogany panel, modern.
3017. **A gilt-brass and cloissone carriage timepiece**, the enamelled dial having subsidiary seconds, date and day rings. 7" high



3018. A gilt-brass and cloisonne repeater carriage clock, the enamelled dial having subsidiary day, date and alarm dials. 8" high
3019. A 19thC French gilt-brass carriage alarm clock, having panels of painted and printed Aesthetic decoration, having enamelled dial with Roman numerals. 8" high
3020. An English gilt-brass carriage time piece, with enamelled dial having Roman numerals and marked *MARCKS & Co. LTD*, being made for the colonial market having an escapement heat compensator. 7" high, in an associated leather case.
3021. A 19thC French marble portico clock, with ormolu mounts, two part brass and enamel dial, Roman numerals, 8-day movement, striking a bell, inscribed *L. MARTI & Cie*. 15" high
3022. A 19thC French ormolu figural mantel clock, having a semi-clad neo-classical maiden, supporting a column with rushes around and silvered chapter ring with Roman numerals, a winged cherub amongst rushes on a step base with turned feet. 10.5" high
3023. An early 20thC mahogany mantel clock, with moulded and stepped case, silvered dial with Roman numerals, marked *Fattorini and Sons Ltd, Bradford*, 8-day chiming movement, 13" wide, 11" high.
3024. A 19thC French alabaster figural mantel clock, surmounted with a knight in 17thC costume, dial having applied Roman numerals, 8-day movement striking a bell, 17" high.
3025. An Art Deco oak mantel clock, with 8-day movement striking a gong, 16" wide, 11" high.
3026. A 19thC French onyx mantle clock, with urn surmount and 8-day movement striking a bell. 11" high, 11" wide.
3027. A 19thC American rosewood beehive alarm clock, by the Ansonia Clock Company. 16" high
3028. A 19thC boulle mantel clock, with lyre shaped body, stepped and ormolu mounted plinth, convex enamel dial marked *HRY. MARC A PARIS*. 8-day movement striking a bell. 10" wide, 13" high.
3029. A late 19thC oak cased mantel clock of architectural form, with brass dial having Roman numerals, 8-day movement striking a gong, 12" high.
3030. A 19thC French ormolu and porcelain clock garniture, with 8-day movement striking a bell, mounted on velvet and gilt plinths, clock height 16", urn heights 13" excluding plinths.
3031. An early 20thC mahogany mantel clock, the silver concave dial having Arabic numerals, 8-day German movement striking a gong. 13" high.
3032. A 19thC French porcelain figural mantel clock retailed by Tiffany and Company, New York, the floral rococo case embellished with pink flowers, cupids and a cherub with a cornucopia, 8-day movement striking a bell. 12" wide, 12" high.
3033. A French gilt-brass four-glass clock, having bevelled panels and a paste bezel floral enamel dial with Arabic numerals, 8-day movement striking a gong and marked *JAPY FRERES*, the pendulum bob having a hand painted portrait miniature signed *V\*\*iz*, 12" high.
3034. A flamed mahogany mantel timepiece, with stepped top and ogee bracket feet, convex enamel dial marked *Curtis & Horsepool, Leicester*. 9.5" wide, 7" high.
3035. A Dresden porcelain clock garniture, having cherubs to the floral clock and seated maidens to each 3-branch candelabrum. 10" high.
3036. An early 20thC inlaid mahogany mantel clock, with silvered dial having Arabic numerals, 8-day German movement, striking a gong. 17" wide, 10" high.
3037. A 19thC French porcelain figural mantel clock, in the Jacob Petit style, being blue ground with gilt decoration and having floral panels, enamelled dial with Roman numerals, 8-day movement striking a bell, surmounted by a Medieval lady petting a greyhound, glazed in strong colours with gilt highlights, 9½" high.
3038. A late 19thC French gilt-brass mantel clock, having bamboo and floral decorated verre eglomise panels to the side and lower parts of the front aspect, the upper part having a gilt brass dial with Arabic numerals, 8-day movement striking a bell, 14" high.
3039. A 19thC ebonised and boulle mantel clock, with shaped top, waisted body and moulded base, enamelled dial with Roman numerals, 8-day movement striking a bell, marked *JAPY FRERES*. 16" high.
3040. A 19thC French bronze and ormolu figural mantle clock, surmounted with a female in long robes with a ewer, over a polished slate case with ormolu adornments, enamel dial with Roman numerals, 8-day movements striking a bell, marked *VINCENTI & CIE*.
3041. An UCRA Art Deco clock garniture, having a silvered dial with Roman numerals set to a two colour marble and onyx case, and pair of matching urns, clock height 22", 10" wide.
3042. A 19thC polished slate and marble mantel clock, of architectural form, with gilt Roman numerals and French 8-day movement striking a bell, marked *WURTEL*. 14" wide, 9" high.









Lot No. 3242



Lot No. 3253



Lot No. 3264



Lot No. 3254



Lot No. 3256



Lot No. 3276



Lot No. 3279



Lot No. 3293



3043. **A 19thC French cold painted spelter mantel clock**, formed in relief with a moustached gentleman pushing a barrow of coal with sunburst, buildings and trees in the distance, marked CANTONNIER, having an enamel dial with Roman numerals and 8-day movement striking a bell. 20" high

3044. **A Victorian flamed mahogany mantel clock**, with steeple case, dial with Roman numerals, 8-day movement striking a gong. 23" high

3044A. **An early 20thC mahogany miniature longcase clock**, with 8-day Peerless chiming movement. 34" high.

3044B. **A late 19th /early 20thC wall clock barometer**, in a cast patinated metal case, the aneroid barometer signed J.J. Wainwright to the enamelled dial, the clock with a French 8-day pendulum controlled striking movement, 25" high

3044C. **An early 20thC timepiece**, the brass case cast as a horseshoe enclosing the drum shape movement and flanked by riding whips. 10½" high

## PICTURES, PRINTS & MINIATURES

3045. **Keller (20thC German)**. Still life of flowers in a vase, oil on canvas, 28" x 24", signed Keller bottom right, gilt framed.

3046. **Ginnell (20thC British)**. Fishing boats moored in harbour with a windmill, the fisherman tending their nets, oil on canvas, 24" x 36", signed and dated Ginnell 1974 bottom left, floral parcel-gilt frame.

3047. **F. Scheffler**. Winter landscape with a stream meandering through trees, oil on canvas, 26" x 40", signed F. Scheffler bottom right, moulded gilt frame.

3048. **B. Anderson (20thC)**. An interior scene with figures seated smoking clay pipes and gaming at tables, oil on canvas, 24" x 36", signed B. Anderson bottom right, in a gold painted plaster frame.

3049. **After T Earnshaw**. The north west view of St Mary's Church, Nottingham, engraving, pub. Barnsdoll & Akerman 1827, 11" x 12".

3050. **A 19thC colour print of cattle**, gilt framed.

3051. **By + after Sydney William Carline**. 1) The Cathedral, Lincoln 2) Lincoln Cathedral 3) Lincoln City. Etchings, signed and titled in pencil, plate sizes 4¼" x 5¼" (unframed).

3052. **C\* E\* Judson**. Kettlewell and Burnsall, Wharfedale, a pair, watercolours over pencil, signed and dated 1938, 8" x 9¼".

3053. **John Hoyland R.A.** Seated figure - life study 1957, pencil, 14½" x 10", Graves Art Gallery label verso.

3054. **W. A. Clarke**. Horse in a stable, oil on canvas, signed and dated 1943, 16¼" x 20", artist's details verso.

3055. **G. B. Cox**. East End Farm, Seale, watercolour, signed, 10¼" x 7½".

3056. **By and after Laura Knight**. Spanish Dancer no.1, Spanish Dancer no.2. Etchings, signed in pencil, title verso, plate size 10" x 8¼". A Pair.

3057. **R. G. Reeve after Turner**. Hawking 1) The Departure 2) The Rendez-vous 3) The Fatal Stoop 4) The Disgorging; set of four, hand-coloured aquatints, image size 15" x 12".

3058. **Spy [Leslie Matthew Ward]**. A Masters Meet, coloured lithograph, trimmed to image, 13" x 19".

3059. **Morland**. Ostlers, horse and dog in a farmyard, oil on canvas, bears signature, 14" x 20".

3060. **19thC School**. Riverscape with figures, ruined castle on the adjacent hillside, watercolour, indistinctly signed and dated 1882, 11" x 14¼", partial letter verso.

3061. **Sidney Stanley**. The Horseguards, Whitehall, watercolour/pencil, signed, 7¼" x 10", artists biography, verso.

3062. **James P. Power R.B.A.**, a canal in Holland, watercolour, signed, 12" x 17½", artist's biography verso.

3063. **Brandl (J?)**. Mountainous lakeland landscape, oil on canvas, signed and dated (19)54, indistinctly titles verso, 18¼" x 24½".

3064. **Douglas Chandler**. Le Port, Menton, pen/ink, artist's label verso, 8" x 10½".

3065. **After Frank Brangwyn**. Busy river scene with figures in the shadow of a bridge, buildings beyond, etching with hand colouring, 10¼" x 12½".

3066. **After Frank Brangwyn**. Figures in a Venetian street hand coloured lithograph, 12¼" x 17¼".

3067. **After Frank Brangwyn**. Market Day, Conte' etching, 10¼" x 16½".

3068. **After Frank Brangwyn**. Moorish travellers with attendants, hand coloured lithograph, 13" x 18".

3069. **After Frank Brangwyn**. Gypsy Caravan, hand-coloured lithograph, 11¼" x 17¼".

3070. **After Frank Brangwyn**. Figures on a staircase, hand-coloured lithograph, 13¼" x 17".

3071. **19thC School**. Extensive landscape with blackberrying figures on a low hillside, figures on a path below, forest and hills distant, oil on canvas, 24½" x 43"



3072. **A 20thC American School.** La Salle, coloured etching, indistinctly signed in pencil, 7½" x 12½"
3073. **A pair of coloured prints,** of Japanese interiors with women and children playing, early 20thC. 19" x 15".
3074. **A. Howard.** The Horse Trader, oil on canvas, signed. 13" x 19".
3075. **Thomas Sherwood LA Fontaine.** Exmoor pony in a landscape, oil on canvas, signed, 16" x 20".
3076. **Fred Thurlby.** Shipman Hack, study of a chestnut gelding in a landscape, oil on canvas, signed and dated 1893, 17" x 22".
3077. **Fred Thurlby.** Farewell, study of a black gelding in a stable, oil on canvas, signed and dated 1895, 18" x 24".
3078. **20thC School.** Parrot on a branch with hovering butterflies, printed in coloured enamels on slate, 15½" x 11½".
3079. **Manner of Reynolds.** Head and shoulders portrait of a lady, pastel, 25" x 16", oval.
3080. **Norwich School (manner of) 19thC.** Summer river landscape with moored wherries, figures and cottages by the water's edge, oil on panel, 12" x 16".
3081. **19thC School.** Reclining woman with book, oil on panel, 12" x 16", exhibition label verso.
3082. **Marek Maruszewski (20th century Polish).** Landscape, - oil on canvas, signed, 29" x 24". inscribed verso Maruszewski Marek, Siedke VI Kasprzaka 1964.
3083. **Kramer.** Portrait of bearded gentleman, pencil, bears signature Kramer, 1916 bottom right. 10" x 8".
3084. **J\*\*\* Duton (20thC).** Hilltop village near Macon, oil on canvas, signed verso, 16" x 13".
3085. **After David Shepherd.** Roosters, reproduction colour print, signed in pencil, blind trade guild stamp, limited edition 674/850, 8¼" x 15½".
3086. **Edmund Morrison Wimperis (1835 - 1900).** A Dorsetshire Pastoral, grazing sheep in a water meadow, signed with monogram and dated '99, watercolour/scratching out, 9" x 13¼".
3087. **John James Wilson (attrib).** On Scarborough Harbour - moored fishing boats, signed with initials, pencil drawing, 4½" x 6½".
3088. **19thC Italian School.** Portrait of a young boy 15½" x 12", another of a young girl 18" x 11", lithograph
3089. **Armfield (19thC).** Resting cattle and fowl, in a meadow, farmhouse beyond, oil on canvas, 9" x 12¼".
3090. **Frederick Brown. NEAC (1851-1941).** He loves me! - He loves me not! Are you afraid? two illustrations, signed, watercolour/ink, 9½" x 6½", singly framed.  
*\*Frederick Brown was a Professor at the Slade School of Art between 1892 - 1918.*
3091. **After David Shepherd.** Young Kudu, Young Eland, a pair, reproduction colour prints, signed in pencil, blind trade guild stamp, 7¼" x 10¼".
3092. **C. McKinley (19thC).** Scottish Highland landscapes, a pair, oil on canvas, signed, 16" x 24" (re-lined).
3093. **Charles J Payne.** "Snaffles" Oh! To be in England, Now that April's there (Robert Browning) scene at a polo match, colour print with remarque, pencil signed, image signed 12¼" x 21".
3094. Spare lot.
3095. **After Gasler (20thC).** A set of reproduction colour prints, landscapes, riverscape, city and organic. 16" x 18¼".
3096. **19thC School.** Near Loch E xxx, oil on artist's board, signed with a monogram, 12" x 9" indistinct title verso.
3097. **19thC School.** Figures on a riverside path, with grazing sheep by cottages, oil on canvas, indistinctly signed, 14" x 18".
3098. **L\*\*\* Roope. (20thC).** At Boultham Park, Lincoln, summer landscape with water meadows, township beyond, signed and dated 1974, watercolour, 8½" x 13".
3099. **20thC English School.** Still life of summer flowers, in a terracotta vase decorated with putti, oil on canvas, 34" x 24".
3100. **After Robert Taylor,** The Dambusters, reproduction colour print, signed in pencil by Air Marshall Sir Harold (Mick) Martin, KCB, DSO, DFC, AFC, with a short history of the Dambuster's raid to bottom margin, 19¼" x 23½".
3101. **H. N. Christiansen.** Evening in the Norwegian Fjords, oil on canvas, signed, 20" x 30".
3102. **Laura Knight.** Study of Richard Crofts Powell, c.1912, pencil, signed, 8" x 10".
3103. **Saxton Kip.** Lincolniae, double sheet hand coloured map, title and scale, cartouches, c.1637, 11½" x 13¼".
3104. **Herbert Menzies Marshall R.W.S. R.E.** Rye Bay c.1890, watercolour/ heightened white, signed with initials, 5¼" x 8".
3105. **E. Hirst.** Still life of chrysanthemums, oil on artist board, signed, 12¼" x 9½".



3106. **20thC Japanese School.** Still life of a vase of flowers on a table, watercolour on silk, signed seal mark, 15" x 10".
3107. **Michael Bell.** Village scene with figures, wash and ink, 13" x 19¼".
3108. **Frederick J. Watson.** Eagle owl, watercolour/ ink/ heightened white, signed, 4½" x 5¼".
3109. **Paul Maze.** Still life of flowers and figure, pastel on grey paper, signed, 10½" x 13½".
3110. **Barbara Jones.** Cottage in a country garden, hills beyond, signed and dated 1937, 13½" x 9½".
3111. **20thC School.** Beseiged Thoughts, 1st World War scene, 19½" x 15½".
3112. **Clarence Roe.** Rabbits on a woodland path, oil on canvas, signed, 40" x 50".
3113. **Sylvester Stannard.** Rural landscape with family in a horse driven cart crossing a ford, watercolour, signed, 9¼" x 13¼".
3114. **A. Zinkeisen.** Still life of Sweet Williams in a pewter tankard, watercolour and pencil, signed 17¼" x 13".
3115. **Bowen.** Still life of flowers in a mug, watercolour, signed, 14¼" x 19".
3116. **Marjorie Cox.** Head and shoulders study of a setter, watercolour, signed and dated 1958, 10" x 6½".
3117. **S. R. Badmin RWS.** Across the Valley, watercolour, signed, 4¼" x 5", James Webb - coastal scene with full masted schooner, watercolour, signed, 6¼" x 10". (2)
3118. **Dunlop.** Winston Churchill - portrait, oil on board, signed, 19¼" x 14".
3119. **H. Echlin Neil R.V.A.** Annalony Valley, Mourne Mountains, landscape, pastel, signed, 10¼" x 14½".
3120. **Sylvester Stannard.** Country garden with a bridge over stream amongst flowers, watercolour, signed, 14½" x 10½".
3121. **R. Barrett Davis.** Windsor Castle, pencil and wash, signed and dated 1805, 9¼" x 14".
3122. **Manner of Frank Moss Bennett.** 19thC Interior Scene. Country gentleman at the end of a meal, oil on canvas, 18¼" x 20¼".
3123. **J. W. Casey.** Country cottage with woman feeding chickens, hills beyond, watercolour, signed and dated 1920, 6" x 8¼".
3124. **J. W. Casey.** Mount Errigal - Donegal, watercolour, signed and dated 1939, 4¾" x 8".
3125. **L. Lewis.** Rural landscape, haycart crossing a river bridge, thatched cottage nearby, watercolour/heightened white, signed and dated 1885, 8¼" x 15".
3126. **K. McKay.** At Carrick - A - Rede, Co. Antrim. Horn Head Port-Na-Blagh, watercolours, signed, a pair, 5½" x 11".
3127. **E. W. Wray.** Countryside, Brittany - watercolour, inscribed verso and dated 1913, 13½" x 9½".
3128. **L. Ricci.** Study of a falconer, watercolour, signed and dated 1875, 13¼" x 9¾".
3129. **19thC School** Fishing boats in a choppy sea, cliff top castle ruin in the distance, oil on canvas, (relined), 12" x 22".
3130. **Claude Hayes R.I.** Haymaking, watercolour, signed, 12½" x 17½".
3131. **19thC School.** Woodland landscape with turbaned figure seated by a lane, saddled horse nearby, watercolour and pencil, signed with monogram and dated 1884, 17¼" x 26".
3132. **H. E. Allen.** Rocky mountain stream falling between sheer cliffs, watercolour, signed, 14" x 12".
3133. **Nicol.** Killarney, river landscape with stone bridge, hills beyond, watercolour, signed and dated 1887, 9¼" x 19½".
3134. **Kathleen Bridle.** Lough Conn, Co. Mayo, watercolour, signed and dated 1956, 14" x 20¼".
3135. **19th/20thC School.** Mistletoe, pen, ink and wash, 18" x 12".
3136. **Roland Suddaby.** Old House, Pinner, watercolour/ink, signed, 13¼" x 17½".
3137. **E. Ellis.** Coastal scene with wrecked boat and figures, watercolour, 12" x 19¼".
3138. **Claude Hayes R. I.** On the Norfolk Coast, watercolour, signed, 14½" x 20¼".
3139. **19thC Irish School.** Figures in a hilly landscape, watercolour, 12¼" x 18¼".
3140. **19th School.** Donkey rides on the beach, humorous escapades, hand coloured aquatints, 6¼" x 9¼".
3141. **Walter Cox after Millais.** Girl with cherries, etching, signed in pencil, facsimile artist signature in margin with rose remarque, blind trade guild stamp, plate size 16" x 13", together with a hand coloured etching of a 16thC German nobleman. 12½" x 8".
3142. **A quantity of 18thC and later prints** including fashion plates, etchings, Arthur Rackham illustrations, cycling and a Tallis Railway Map of Great Britain, unframed,



3143. **A quantity of 18thC and later prints** including racing, railway, maps and topographical - unframed.
3144. **After George Morland.** A visit to the child at Nurse, hand tinted mezzotint by Ward, 1st pub. 1788, later impression, image size 17" x 21 1/4".
3145. **Ostell's New General Atlas, London 1812** with 30 maps by J. C. Russell, hand coloured, single sheet, apart from the world (detached) and Chart of the world, re-stuck behind Romanum Imporium, Europe stained, remainder mostly good, boards re-stuck and stained, copy map of Dorsetshire 1805, hand coloured two fold map, various town plans, county maps, magazine illustrations etc. (a lot)
3146. **Disney study of Mickey Mouse**, watercolour over pencil, inscribed Studio 3 Scene 1, M. Mouse, signed and bears studio stamps Walt Disney Co. 1936, 9 1/2" x 7 1/2".
3147. **S R Badmin.** Cottage landscape with figures at the garden gate, watercolour, signed, 17" x 25".
3148. **E Hayes RHA.** Fishing boats on a choppy sea, oil on board, 16" x 24".
3149. **R H Hill.** Landscape, watercolour, signed, 6" x 8 1/2".
3150. **William Frederick Settle (attrib.).** Ships off a rocky coastline, watercolour, signed with monogram, 7" x 15".
3151. **Percy French.** Highland landscape with lake, watercolour, signed and dated 1907, 6" x 12".
3152. **Ernest Dale.** Fishing boats at sea, watercolour, signed, 6" x 9".
3153. **Horatio Pearson.** Figure on a Country lane, watercolour, signed and dated 1909, 16 x 11".
3154. **Owen Bowen.** Farmyard with hay cart, watercolour, signed 11" x 15".
3155. **After Henry Moore (1898 - 1986).** Sculptured objects, 1949, Pub. school prints Ltd. colour lithograph, 19 1/2" x 29 1/2".
3156. **After David Shepherd.** A small print of an elephant, signed to mount in pencil.
3157. **After Casper Netscher.** A Lady reading a letter, at an open window watched by a male admirer, A Lady with parrot and child, at a window, a pair, oils on oak panel, 8 1/4" x 6 1/2".
3158. **Attrib. R. Noyes (1780-1841).** Willow tree over a pond, pencil drawing, 6 1/2" x 10 1/2" and a Country House, pencil sketch, 7 1/2" x 10 1/2"
3159. **19thC English School** Head and Shoulders portrait miniature of a 17th century nobleman, watercolour, 2 1/4", gilt frame.
3160. **K. Collings.** Capt. John Ronaldson - Died 1832, head and shoulders portrait miniature, watercolour, signed, 2 1/4", ebonised frame.
3161. **A\*\*\* Birbeck (19th/20thC).** Summer river landscape with grazing sheep by the meandering river with wild flowers and willows, another, with sheep on a country path, with a pond in the foreground, a pair, signed, watercolour/heightened white, 13 1/2" x 20 1/4". *entry* TBC
- 3161A. **An early 20thC Chinese school portrait**, head and shoulders of a young woman, pencil, signed, 14" x 10".
3162. **Cecil Hodgkinson.** Two mallards in flight over marshlands, watercolour, signed, 8 1/2" x 11"
3163. **Cecil Hodgkinson.** Mallards in flight, watercolour, signed, 4 1/4" x 25"
- 3163A. **Edwin Steele.** Still life of fruit, oil on canvas, signed and dated 1910, 20" x 24".
3164. **A.S.C.** A quantity of caricature portraits, watercolours, framed, c1936.
3165. **A WWI souvenir**, a silk and lace handkerchief painted with a ruined abbey, inscribed "Souvenir of Ypres, framed, 20" x 21"
3166. **A large quantity of 1950's and 1960's film posters.**
3167. **L. Mountain.** Figures fishing on a riverbank, township beyond, oil on canvas, signed and dated 1903, 20" x 14"
3168. **After J.M. Whistler,** St. James Street, London 1878, The View from Boodles, Parker Gallery label verso. 10" x 6"
3169. **E. Duncan.** Study of a horse, watercolour and pencil, signed and dated 1852, 6 1/2" x 8 1/2".
3170. **J.D.Harding,** a portfolio, 13 sepia lithographs of European views, 1837, 7" x 5"
3171. **H.Aiken.** Spree at Melton Mowbray 1837 12" x 15", unframed.
3172. **A late 18thC copper engraving,** "The Cathedral Church of Peterborough" 17" x 22"

## ANTIQUÉ & DECORATIVE FURNITURE

3201. **A Bokhara red ground carpet**, having a multi-coloured central field design within a multi-border frame, 12' 5" x 9' 4".
3202. **An 18thC French sycamore armoire**, with a projecting cornice over two doors, each with bracketed inset panels with shell cresting, pierced metal escutcheons, with shaped apron, on stile feet, 62" wide.
3203. **An early 20thC dwarf chest of four drawers**, the top with satinwood cross banding. 35" high, 16" wide



3204. **A George III style mahogany serpentine fronted sideboard**, with a centre drawer, flanked by a deep drawer and single door cupboard, all with box crossbanding and ebony stringing, on tapering legs with spade feet, 48".
3205. **A William IV rosewood library table**, with rounded rectangular top, sectioned with two adjustable reading slopes, frieze drawer, taper turned pillar, quatrefoil base with bun feet 38" x 23".
3206. **An early 19thC mahogany tilt-top table**, the oblong top on baluster turned pedestal and three down swept legs, 27" x 22½".
3207. **A Liberty style Mushrebiyeh three fold confessional screen**, c.1890 each panel 31" wide.
3208. **A 19thC mahogany campaign commode**, of box form with cantilever arms supported by a lift top/back, the interior fitted with a flushing mechanism and blue and white transfer printed W.C. 26" wide.
3209. **A set of six late Victorian oak dining chairs**, with rectangular Turkish rug upholstered backs, overstuffed seats on barleytwist front legs joined by panelled H stretchers.
3210. **An early 19thC mahogany commode** of bow fronted form, the rising eared top above a single door with diamond panelling and centre brass handle, dummy drawer below, flanked by foliate and wrythen half round pillars. 25" wide.
3211. **A set of six Victorian rosewood balloon back dining chairs**, the backs with carved foliate detail, pierced and scroll tie rails, velvet covered serpentine seat and on French cabriole legs.
3212. **A Victorian Prie-Dieu chair**, with original woolwork upholstery, on turned oak front legs and brass castors.
3213. **A pair of George III mahogany carver chairs**, with overrun cresting rails, barback, rush seats and turned legs.
3214. **A George III mahogany night table with raised top**, cut out handles, single door with brass knob handle, cupids bow apron and moulded square legs. 14" wide x 28" high.
3215. **An Edwardian mahogany window seat**, with string inlay and floral marquetry decoration with oval patera and bell flowers, with concave seat and square taper legs. 42" wide.
3216. **A George III mahogany cricket table**, circular top, plain frieze and three chamfered triangular taper legs. 29" dia.
3217. **A George III oak side table**, with moulded and cross banded top, frieze drawer with brass swan neck handles, shaped frieze and chamfered square taper legs. 31" wide.
3218. **A Edwardian mahogany Pembroke table**, with oval top with ebony stringing and satinwood crossbanding, bow front frieze drawer with brass loop handles raised on shaped legs joined by a low level platform. 20" x 36", 23" high.
3219. **A Victorian mahogany library table**, the moulded top having two reading/writing slopes on an octagonal taper pillar with rise and fall action, quatrefoil base and bun feet. 36" x 18.
3220. **A late Victorian carved walnut music cabinet**, with broken arch pediment to a mirrored raised back, having single mirrored door and blind fret tracery on bracket feet. 25" wide.
3221. **A set of Victorian walnut wall shelves**, with shaped top, moulded shelves, 27" wide, 33" high.
3222. **An Edwardian mahogany music cabinet**, with satinwood cross banding and having a single glazed panel door over four graduated draws with brass loop handles. Raised on square taper legs. 21" wide.
3223. **A 17thC oak coffer**, with a two panel top, carved frieze over three lozenge carved panels, raised on stiles and having ebonised channel decoration throughout. 42" wide, 19" deep, 24" high.
3224. **An early 19thC oak tripod table**, with plain square tilt top on a turned pillar with three out splay legs, with ball feet, 26" square.
3225. **Fine quality reproduction oak centre table**, with circular top having carved outer band of reverse S scrolls, on a heavy baluster pillar, raised on three out splay legs. 5' dia.
3226. **A 17thC style settle**, upholstered in grey/blue floral upholstery and having bobbin turned framing. 65" wide.
3227. **A Continental sofa**, in the Regency style with oak and beech simulated rosewood framing and brass ornament, upholstered in blue striped Dupion 74" wide.
3228. **A set of six Sheraton style mahogany dining chairs**, with shield backs, carved with Prince of Wales feathers, overstuffed drop in seats, on reeded square taper legs with spade feet and H frame stretchers.
3229. **A set of six Louis XVI style cream painted dining chairs**, with blue regency stripe studded upholstery.
3230. **A set of six late Victorian walnut dining chairs**, with moulded open backs with reeded gallery, overstuffed leather seats and turned fore legs.
3231. **A Victorian carved walnut chaise longue**, with stylised urn gallery, scratch carved baulk on turned legs with brass and ceramic castors, upholstered in cerise buttoned dralon.



3232. A George III style mahogany settle, having a plain cresting rail over three shaped X panels with centre rondels, scroll arms, overstuffed red leather studded seat raised on four moulded saber fore legs with block feet. 59" wide.
3233. A George III oak corner chair, heavily carved throughout the back with a Chippendale style vase splat surmounting a bow arm with further splats to the square framing, brown leather over stuffed, studded upholstery, with turned legs and carved cabriole foreleg.
3234. A late Victorian mahogany carver chair, with pierced and shaped back, bow arms, saddle seat and cabriole legs, co-joined by a crinoline stretcher.
3235. A 17thC oak mule chest, with three panel top over three moulded octagonal panels, the single draw having three faux drawer front, raised on stiles. 51" wide, 21" deep, 30" high.
3236. A 17thC and later panel chest, of two short and three long graduated drawers, with brass back plate handles and turned feet. 29" wide, 18" deep, 32" high.
3237. A 19thC mahogany lowboy, with plain top over three moulded drawers with heavy brass swan-neck handles, on square taper legs with brass feet. 34" wide.
3238. An early 18thC elm table, with three plank top and plain framing on square taper legs. 37" x 25".
3239. A late Victorian oak buffet, of two levels, with square taper fluted legs with brass cup castors. 54" wide, 21" deep, 35" high.
3240. A late Victorian walnut side cabinet, in two sections with moulded top over two drawers with brass pressed back plate handles over two panelled doors and plinth base. 36" wide, 19" deep, 36" high.
3241. A George III mahogany chest, of four graduated flame veneered drawers, with brass swan neck handles enclosed by quarter inset fluted columns with a moulded top and reduced bracket feet. 37" wide, 21" deep, 30" high.
3242. A Victorian mahogany chiffonier, with fret work gallery over the raised scrolling back, wavy moulded top with cushion drawer over two arch panel drawers and plinth base. 48" wide, 28" deep, 56" high.
3243. A 19th C mahogany side cabinet, with flame veneered top over two draws with brass ring handles, over two tracery panelled flame veneer doors on bracket feet. 50" wide, 22" deep, 39" high.
3244. A George III oak chest, of 2 short and 3 long graduated drawers, brass swan neck handles and bracket feet. 36" wide.
3245. An 18thC oak lowboy, with moulded top over three drawers with brass loop handles, shaped apron and cabriole type legs with turned feet. 29" wide, 19" deep, 28" high.
3246. A Victorian walnut spoon back armchair, upholstered in red button draylon.
3247. A set of four late Victorian carved walnut dining chairs, with shaped cresting rail, overstuffed pink dralon panelled backs and seats, reeded four legs with brass and ceramic castors and H stretchers.
3248. A set of four Victorian balloon back dining chairs with carved rails, overstuffed tapestry, serpentine seats and cabriole legs.
3249. A set of four Edwardian mahogany dining chairs, the shaped top rail inlaid with paterae within satinwood stringing, over pierced ribbon moulded splats, loose seats, on front cabriole legs.
3250. A set of eight late 19thC dining chairs, including two carvers, having shaped cresting rail, pierced vase splat, studded leather seats, cabriole legs and H frame stretchers.
3251. A 19thC mahogany centre table, with serpentine top and frieze, raised on moulded slender square taper legs with spade feet. 36" x 20"
3252. A George III mahogany tea table, with rectangular folding top, frieze draw with pierced up plate handles, on turned legs with puff feet. 29" wide (and 29" square when open).
3253. A 17thC oak coffer, with three panel top over a demi-lune carved frieze, three panel front divided by marquetry channeling, raised on stiles. 45" wide, 21" deep, 24" high.
3254. A Victorian figured walnut breakfront music whatnot, having brass gallery over two levels of marquetry and spring decoration, the base having central glazed door revealing leather fronted shelves listing *Dance, Songs, Genl. Music*, having turned and carved vertical supports, turned feet with brass and ceramic castors. 45" wide, 16" deep, 41" high.
3255. A William IV work/games table, with rectangular folding top over single drawer with knob handle, tulip carved uprights, turned structure and turned feet on castors. 21" wide.
3256. An early 18thC oak mule chest, with plain moulded top, the front aspect having four fielded shape top panels over two cross banded drawers with brass drop handles and bracket feet. 5' wide, 22" deep, 33" high.
3257. A late 19thC Vernis Martin vitrine, with pierced gallery to the shaped and moulded top over a bow front glazed door with fete gallant painted scene base and complimentary serpentine sides, raised on shaped legs and having gilt brass moulding and adornments throughout. 26" wide, 14" deep, 59" high.



3258. **A Victorian flame mahogany bow front chest**, of two short and three long graduated drawers with knob handles, cupids bow apron and splay feet. *45" wide, 42.5" high*
3259. **A Victorian flame mahogany bow front chest**, of two short and three long graduated drawers with knob handles, cupids bow apron and splay feet. *45" wide, 42.5" high*
3260. **A Victorian mahogany chest**, of two short and three long graduated drawers with knob handles and bun feet. *44" wide.*
3261. **A 19thC mahogany chest**, with rosewood banded top, over a brushing slide and two short and three long graduated drawers with knob handles and splay feet. *39" wide, 20" deep, 43" high.*
3262. **A late Victorian ebonised pier cabinet**, with gilt tracery and scratch carved decoration in the Aesthetic manner, crossbanded in burr maple and having a jasperware neo-classical plaque of a maiden to the central door. *24" wide*
3263. **A set of three middle eastern hardwood occasional tables**, ebonised and having Tonbridge inlays, mother of pearl panels and Star of David centres. *Two tables 17", one table 22"*
3264. **A Regency rosewood teapoy**, of sarcophagus form, with brass string decoration supported on an acanthus carved baluster stem and short sabre legs terminating in brass toes with castors. *16" wide, 25" high.*
3265. **An Edwardian mahogany bedroom chair**, with marquetry splat back inlaid with satinwood, box and bone on square taper legs with spade feet.
3266. **A late 19thC mahogany hall chair**, in the Hepplewhite manner, with shaped and carved splat back, overstuffed floral tapestry studded seat on square taper legs with block feet.
3267. **A 19thC stained beech stool**, with a rectangular loose seat above moulded framing, on four cabriole legs with shell moulded knees and claw and ball feet, *23" wide.*
3268. **An Edwardian string inlay mahogany corner chair**, with shaped cresting rails, pierced splats with turned uprights, square seat with floral upholstery on square taper legs with spade feet co joined by a shaped x frame structure.
3269. **An early 20thC mahogany full size billard table** by Thurston & Co., on turned legs, together with a Hartley shade, billiard cues etc.
3270. **A set of three 19thC walnut framed tub chairs**, the reeded top rail with scroll terminals, supported on three reeded and turned uprights, above a solid oak two part seat, on four spirally fluted, turned and channelled legs.
3271. **A Victorian rosewood nursing chair**, with moulded and carved acanthus and bead framing, upholstered in floral tapestry to back and seat, carved and fluted forelegs.
3272. **A Victorian corner nursing chair** with buttoned floral brocade upholstery, with carved walnut fore legs with brass and ceramic castors.
3273. **An early 20thC mahogany display cabinet**, with moulded top and two astragal glazed doors on cabriole legs. *38" wide, 11" deep and 53" high.*
3274. **A George III Oak hanging corner cupboard**, with moulded corners canted side and single door, embellished with an oval shell patera and parquetry lozenge stringing. *41" high, 32" wide*
3275. **A 19thC style extending dining table with 11 section top**, veneered in elm or pollard oak, the pullout mechanism supported by 9 taper turned legs with fluting and cabachon decoration on brass castors. *54" wide, 20' max.*
3276. **A set of 15 barley twist oak dining chairs in the Carolean manner**, with crown carved cresting rail and splat structure and recessed seats with loose squabs.
3277. **An Edwardian mahogany display cabinet**, with cornucopia marquetry shaped back, stylised frieze over a leaded glazed single door, outline with stringed decoration and having under shelf joining the square legs. *22" wide, 13" deep, 53" high.*
3278. **A Victorian simulated rosewood Prie-Dieu chair**, with carved cresting rail and sculptured velvet back and seat on carved cabriole legs with brass and ceramic castors.
3279. **A Regency mahogany partners writing or library table**, crossbanded and inset with a tooled leather skiver, having two pairs of opposing frieze drawers with brass knob handles, raised on turned legs with brass cup casters. *4' square*
3280. **A 19thC Dutch floral marquetry table**, having dished serpentine top, inlaid with lion spandrels and a central floral field of a urn with butterflies and a mythical bird, frieze drawer with brass knob handles, shell carved and shaped frieze, raised on moulded, stained and inlaid cabriole legs on fine brass castors. *31" wide, 19" deep, 29" high.*
3281. **A pair of carved Blackamoor lamp holding figures**, of traditional design. *64" high*
3282. **An early 19thC mahogany Pembroke table**, with satinwood cross banded oval top, single frieze drawer, raised on square taper legs with spade feet. *30" x 18"*
3283. **A 19thC mahogany Pembroke table with rectangular top**, single frieze draw with brass knob handle, chamfered square legs with X structure. *28" x 38"*



3284. A late Victorian walnut knee-hole desk, with moulded top with leather insert, three frieze drawers and three graduated drawers to each pedestal, having pierced brass back plate loop handles, plinth base with castors. 4' x 2' 2"
3285. A late Victorian mahogany hall stand, of architectural form having galleried and leaf carved back with oval bevel plate, brass hooks, single drawer, turned and fluted uprights and stick stand base. 43" wide, 91" high
3286. A Victorian mahogany secretaire bookcase, with moulded top over two glazed doors, the secretaire drawer with knob handles revealing a fitted interior over two panel doors and plinth base. 48" wide, 91" high.
3287. An early 19thC mahogany secretaire bookcase, with moulded cornice over two astragal glazed doors, the single drawer having solid brass back plate looped handles, revealing a fitted interior over two panelled doors and plinth base. 44" wide, 89" high.
3288. An early 20thC walnut veneered display cabinet, in George I style, having two serpentine glazed doors over two shaped base doors, raised on short carved ball and claw feet with shell and acanthus adornments. 53" wide, 75" high.
3289. An early 20thC Japanese etagere, formed by interlinked fan shaped panels, having gilt and painted Chinoiserie landscape decoration. 29" high, 19" wide.
3290. A George III mahogany bureau and associated bookcase, the upper part having blind fret and dental moulded decoration with two astragal glazed doors over a full flap revealing a fitted interior, resting on lopers over four graduated drawers with brass solid back plate loop handles and bracket feet. 42" wide, 85" high.
3291. An early 20thC mahogany cabinet on stand, with an open dentil moulded pediment, over a peardrop frieze, the two doors with fielded panels, the interior with two adjustable shelves, resting on a projecting stand with conforming apron, with tapering legs and pad feet. 41" wide.
3292. A regency mahogany set of wall shelves, of four levels joined by turned uprights. 33" wide, 31" high.
3293. A William IV mahogany press cupboard with moulded cornice, over two fan moulded arch doors, over two short and two long graduated drawers with knob handles and wrythen ball feet. 50" wide, 85" high
3294. A pair of 19thC oak forms of refectory styling, with rounded rectangular seats, shaped and profiled uprights and block feet. 7" x 8'
3295. An extensive late 19thC satinwood Aesthetic bedroom suite, comprising: a breakfront 3 section wardrobe, with open pediment centred by an urn finial, the centre door with bevelled mirror, the interior with three press shelves over four drawers, flanked by doors with fielded panels and paterae detail, 83" wide; a dressing table with full length mirror suspended between two pedestal cupboards; a washstand with marble top and half back with a set of twelve Minton's "Shakespeare" tiles after John Moyr Smith (each 5 1/4" square), a double bedstead, bedside cabinet, chest of drawers, tallboy and commode (8).
3296. A Regency mahogany daybed, the scrolling ends having swan carved terminals applied gilt metal trophy and profiled sabre legs. 27" deep, 70" long.
3297. A Regency style giltwood mirror, the convex circular glass within a cavetto ball mounted frame with eagle and scroll surmount, and shell foliate apron, 40" x 23".
3298. A sandalwood campaign box with brass fittings, 28" wide.
3301. An early 19thC figured mahogany breakfast table, the circular top with gadroon moulded edge, narrow frieze with bead mouldings, supported on a tapering rectangular pillar with bead and reed corners, terminating in a swept plinth with conforming moulding, supported on an inverted platform base with applied rondels and on lobed feet. 49" dia.
3302. An early Victorian mahogany breakfast table with moulded square tilt top, on an octagonal taper pillar and quatrefoil scroll base. 4' square.
3303. A 19thC carved oak side cabinet with low level splash back, two cushioned drawers over two panelled doors and shaped base. 4' wide.
3304. A Chinese low side table with carved frieze and plain top, 36" deep, 88" wide, 16" high.
3305. A pair of Edwardian brass single bedsteads.
3306. A reproduction oak dresser with plate rack top and spice drawers, three drawer base with hot board and bracket feet. 65" wide, 76" high.
3307. A Victorian mahogany side cabinet, with moulded top and two panelled doors and plinth base. 50" wide, 23" deep, 39" high
3308. A George III oak hanging corner cupboard with dental moulded cornice, single crossbanded door revealing serpentine shelves. 42" high, 29" wide
3309. An Edwardian mahogany dressing chest with satinwood and ebonised stringing, vertical bevel plate enclosed by a bank of drawers and a plinth base. 48" wide



3310. **An Edwardian string inlaid mahogany music stool**, with shaped arms and spade feet.
3311. **A late Victorian carved walnut sideboard**, raised on cabriole legs. *62" wide*
3312. **A set of four mahogany balloon back dining chairs**, with overstuffed brown studded leather seats and cabriole legs.
3313. **A pair of late Victorian ladies and gentlemen's open arm chairs**, with green button Dralon upholstery.
3314. **A 19thC beech open arm chair**, with spindle back and rush seat.
3315. **A Victorian side table with leather skiver top**, raised on turned legs. *42" x 25"*
3316. **A set of four George III elm dining chairs** with gate backs and upholstered seats.
3317. **An Edwardian beech office chair**, with curved back and swivel base.
3318. **A Victorian stained pine and walnut chaise longue** on turned legs, upholstered in gold Dralon.
3319. **Late Victorian brass and walnut screen**, with single glazed panel. *31" wide*
3320. **A Victorian mahogany Sutherland table** with moulded rectangular top, with turned legs and brass cup castors. *30" x 36"*
3321. **A William IV rosewood breakfast table**, with circular tilt top, staged hexagonal pillar and trefoil base with reeded feet. *4' dia*
3322. **A Victorian mahogany breakfast table**, with moulded tilt top, taper turn pillar, crossbanded trefoil base with carved paw feet.
3323. **A Edwardian mahogany revolving bookcase**, *18" square, 33" high*
3324. **A Liberty's style occasional table**, with moulded square top and turned legs terminating in metal and glass ball and claws. *15" square, 28" high*
3325. **Three Globe Wernicke stacking bookcases**, *1 x 2 height, 2 x 3 height*
3326. **A Victorian walnut marquetry music cabinet**, with single door and plinth base. *23" wide*
3327. **A late Victorian open arm chair with panelled back**, overstuffed seat and moulded square tapered fore legs with brass and ceramic castors.
3328. **A metal bound pine sea chest.**
3329. **A metal bound pine sea chest.**
3330. **A Victorian footstool**, and another with cabriole legs (2)
3331. **A late Victorian carved walnut purdonium.**
3332. **A George III elm commode chair**, with pierced vase splat.
3333. **An early Victorian mahogany open arm chair**, with scroll arms, turned forelegs and brass cup castors.
3334. **A late 19thC bamboo occasional table**, of three heights having Chinoiserie decoration.
3335. **An eastern hardwood metamorphic library chair/steps**, with large splat back and cabriole legs.
3336. **An early 19thC flamed and mahogany clerks or school desk**, with sloped top boxed compartment, single drawer with brass loop handles and turned legs. *32" wide, 28" deep*
3337. **A Regency mahogany breakfast table**, with rectangular tilt top, turn pillar and four moulded out splay legs. *28" x 42"*
3338. **A Hepplewhite style mahogany carver chair**, with shield back, reeded arm supports and square taper legs.
3339. **A 19thC mahogany Pembroke table**, with moulded top, frieze drawer with circular brass loop handles and chamfered square legs with brass castors. *30" x 38"*
3340. **A Regency mahogany Pembroke table**, with reeded top, single frieze draw, candy twist legs with brass cup castors. *33" x 50"*
3341. **A Heal's walnut dining suite**, having satinwood banding and comprising an extending table and twelve chairs including two carvers.
3342. **A Louis XVI style night table**, with marble top, single drawer over door on turned legs.
3343. **A Victorian mahogany reading/writing table**, moulded top having two adjustable surfaces, taper turned pillar with rise and fall action, shaped base on three bun feet. *20" x 34"*
3344. **An early 20thC walnut knee hole writing or dressing table**, with brass drop handles. *48" wide*
3345. **An early Victorian rosewood chair**, with carved back, overstuffed seats and fluted forelegs.
3346. **A 19thC mahogany chest of 4 graduated drawers**, with oval pressed back plate handles, and turned feet. *35" wide*
3347. **A Victorian walnut marquetry davenport**, with domed and raised pen tray, slope top and an arrangement of four drawers with knob handles and opposing dummy drawers. *21" wide*
3348. **An antique carved pine and oak hall chair.**
3349. **A 1940's upholstered three piece suite.**

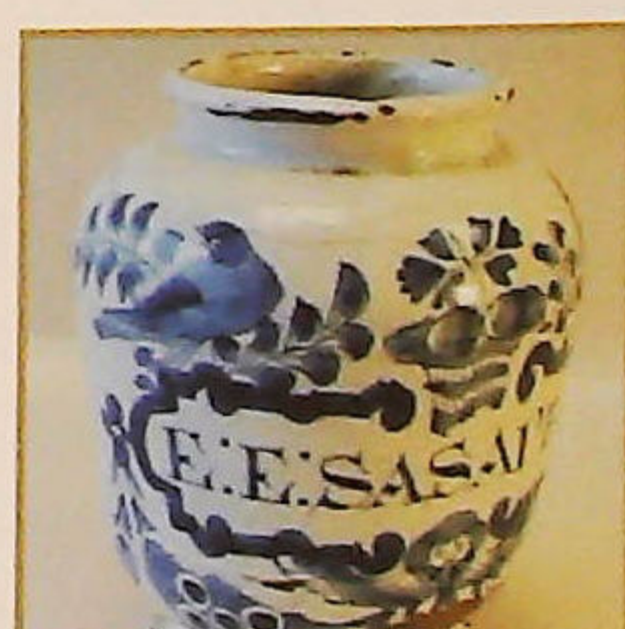
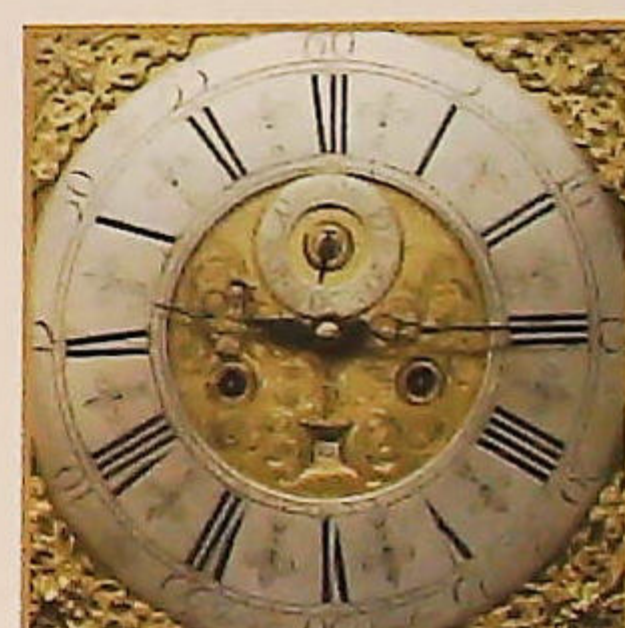


3350. A late Victorian ebonised overmantel mirror, with gilt scratch card decoration and floral motifs. 36" wide, 36" high.
3351. A George III oak hanging corner cupboard, with moulded cornice, single door with crossbanded decoration. 39" high, 29" wide.
3352. A Victorian mahogany breakfast table, with circular moulded tilt top, with an hexagonal taper pillar and three out splay legs. 4' dia.
3353. A Victorian flamed mahogany sideboard, with rococo scroll splash back, single frieze drawer joining two pedestals with oval applied decoration, fitted with drawers and cellaret on plinth base. 87" wide
3354. A 1920s carved oak sideboard, with Bacchanalian back, with two centre drawers enclosed by single doors, raised on baluster support with stretchers. 5' wide.
3355. A 19thC upholstered armchair, with button back and projecting arms, on giltwood French cabriole legs with applied moulding.
3356. A pair of late Victorian walnut ladies and gentlemen's chairs, with carved decoration and floral damask upholstery.
3357. A set of 19thC olive wood hanging wall shelves, with carved top and turned uprights dividing the shaped shelves. 22" wide, 27" high.
3358. A Victorian oak hall chair of Gothic design.
3359. An 18thC elm kitchen chair, with gate back and solid seat.
3360. A harlequin set of six ladderback kitchen chairs.
3361. A pair of 19thC mahogany and elm kitchen chairs with gate backs and rush seats.
3362. A set of six William IV dining chairs, including two carvers with scroll arms, drop in seats and turned fore legs.
3363. A Regency style mahogany dining table, with circular reeded top, gun barrel pillar and four reeded sabre legs with brass paw castors. 45" dia. plus further leaf
3364. A 19thC mahogany Pembroke table, the twin flaps with rounded corners, having a frieze drawer and opposing dummy drawer, each with brass swing handles and stamped oval backplate, on square tapering legs. 39" x 32".
3365. A late Victorian upholstered salon suite, comprising two seater sofa, tub chair, open armchair and four side chairs, with pierced vase splats and cabriole legs.
3366. A late Victorian carved walnut salon suite, comprising chaise longue and pair of armchairs with pierced supports and cabriole legs, modern upholstery.
3367. A 19thC gold painted pier glass, 2' 7" high.
3368. A Victorian mahogany breakfast table, with oval moulded top, turned pillar and three scroll legs. 4' x 3' 6"
3369. A large and heavy reproduction wall mirror, with a gilt mirrored oblong frame with serpentine arch with foliate ornament, 35" x 30"
3370. A late 18thC oak and marquetry specimen cabinet, probably south German, of oblong form, the front fascia panel dropping down to reveal an arrangement of 10 drawers around a centre cupboard, these and the interior of the front panel inlaid with pictorial strapwork and foliate panels, 27" x 15" x 15"
3374. A 19thC firescreen, the beech frame enclosing an embroidered paisley panel. 30" x 34"
3375. An early 20thC mahogany folding cakestand, with patent label, The Monoplane, British patent no. 222276 30½" high.
3376. An Art Deco two coloured glass rectangular mirror.
- END.



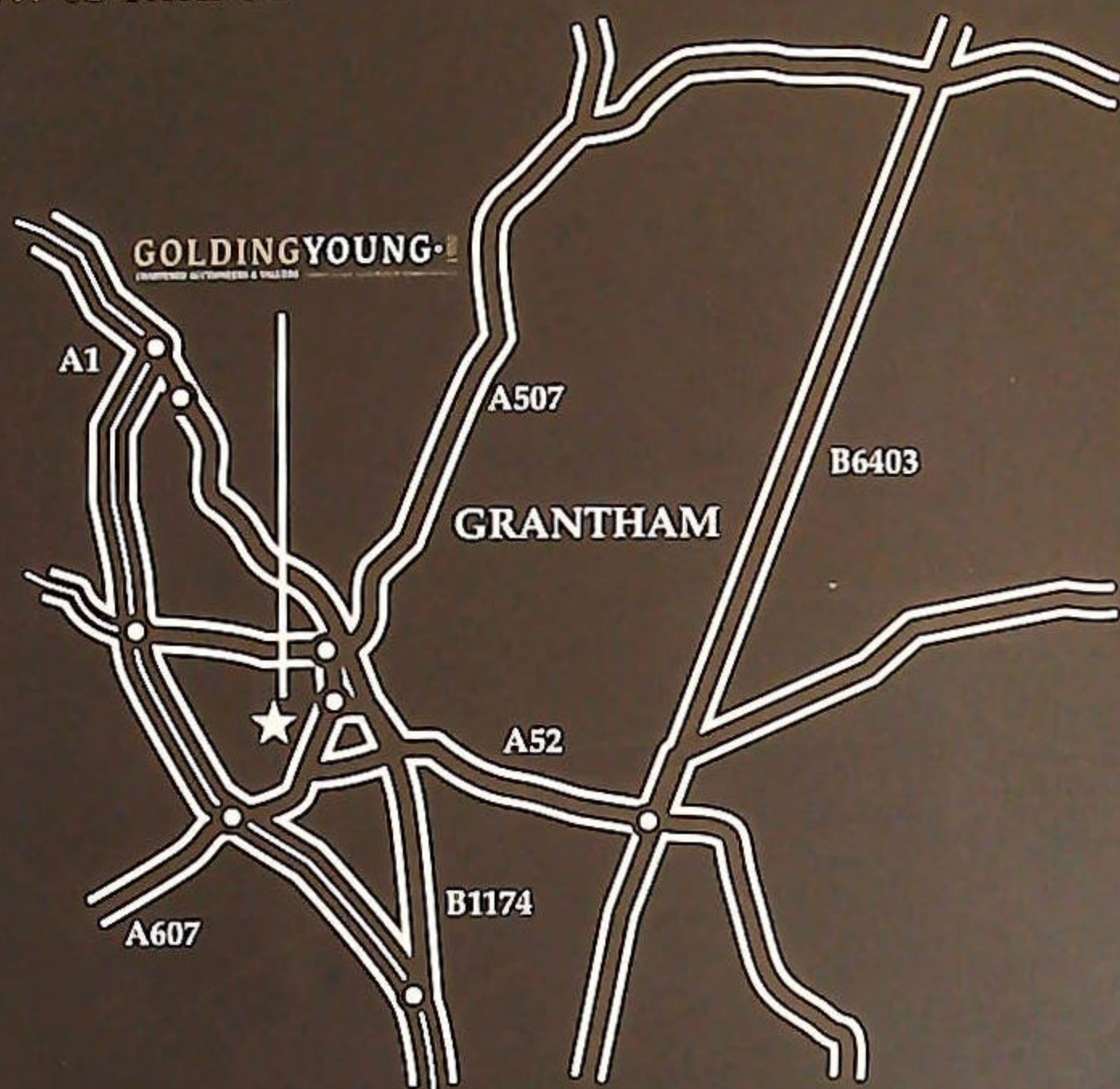
## CONDITIONS OF SALE

1. These Conditions together with any Notices to Purchasers are the only terms and conditions subject to which Golding Young & Co ("the Auctioneers"), as agents for the Vendor will sell goods to a purchaser ("the Bidder") and all other conditions, whether express, or implied at common law or by statute as are capable of lawful exclusion are hereby excluded.
2. The highest bidder shall be the buyer. The Auctioneers reserve the right of regulating the biddings; of rejecting any bid; and of bidding for, withdrawing, consolidating, dividing or altering the order of lots.
3. The purchase money for each lot with the usual commission of 15% (with a minimum of £1 per lot) plus VAT at the current rate shall be paid at the fall of the hammer (if required). Each lot at the fall of the hammer shall be at the sole risk and expense of the buyer, and shall be paid for and removed immediately after the conclusion of the sale, but no lot shall become the property of the buyer, or be removable until paid for, and if taken away in contravention of these conditions without an order for removal signed by the Auctioneers, they shall have power to seize the same by their servants or agents, or otherwise, or the Auctioneers may recover either the lot sold or the price thereof (at their option) by action at law.
4. No contra account of any description whatever will be allowed to the buyer as a set off, and payment for each Lot shall be made to the Auctioneers or their clerk only, and a buyer paying by cheque must give satisfactory references.
5. For all purposes of this sale the Clerk of the Auctioneers shall be deemed to be the agent of both seller and buyer.
6. A bidder shall not be allowed to retract his bidding after the fall of the hammer, and he shall give up his full name and address if required. The Auctioneers will not recognise the transfer of any lot from one buyer to another, nor make any alteration in the sale book in respect thereof.
7. The Auctioneers are acting only as agents, and give no personal warranty as to the condition, quality or authenticity of any chattels offered for Auction. Any catalogue description is given merely as guide to purchasers, any description can be changed from the rostrum before the lot is sold. If a purchaser buys without previous inspection he will do so at his own risk.
8. Notwithstanding any other terms in these Conditions, if within 7 days of the Sale a purchaser gives notice in writing that a lot is a deliberate forgery, with supporting factual evidence, the Auctioneers may rescind the transaction. The burden of factual proof lies with purchaser, mere opinions will not satisfy. This benefit is not assignable.
9. If any buyer neglect or refuse to comply with the above conditions or any of them, his deposit money (if any) shall be forfeited, and the lot uncleared may, at the option of the Auctioneers, be resold without notice by public auction or private treaty, and any loss occasioned by such re-sale together with all expenses attendant thereon, or arising under these conditions shall be paid for by the defaulter and be recoverable as and for liquidated damages. This condition is however without prejudice to the right of the Auctioneers to enforce the contract made at this sale if they think fit.
10. Any Notes for Purchasers and Catalogue Glossaries will be construed as Conditions of Sale.
11. The Auctioneers shall be the sole Arbitrators in all matters of dispute relating to those conditions both as between the seller and the buyer and between the several bidders and buyers and their determination on all matters shall be final and binding on all parties concerned.





## How to find us



### By Road

From whichever direction you approach Grantham, you can find us if you observe the following rules: Follow signs for Town Centre. Follow signs for Railway Station. At the roundabout leading to "Station Road", continue around to a double viaduct/ railway bridge. Take the right hand arch which leads into Old Wharf Road.

The Salerooms are the first building on the right. There are parking and loading bays in front of the premises.

### By Train

The auction house is situated very closely to the Railway Station, which is served by the East Coast Main Line. Trains run approximately every 20 minutes from Kings Cross.



# GOLDING YOUNG • 1900

CHARTERED AUCTIONEERS & VALUERS Commercial Asset Agents • Arts & Antiques Surveyors

Golding Young & Co., Old Wharf Road, Grantham, Lincolnshire NG31 7AA

Telephone: 01476 565118 Fax: 01476 561475 Email: [enquiries@goldingyoung.com](mailto:enquiries@goldingyoung.com)