



EST  
1864

**GOLDING YOUNG**

Country House Marquee Sale

Tuesday 5th July and  
Wednesday 6th July 2016



CHARTERED AUCTIONEERS & VALUERS • ARTS & ANTIQUES SURVEYORS



EST  
1864  
**GOLDING YOUNG**



## Thinking of selling?

Executors, solicitors, accountants, insurers, corporations and government departments, have to exhibit due diligence when instructing. Use this checklist to do the same, with a few reasons why you may wish to choose us.

**We are regulated by RICS**  
Better Regulation for Us.  
Better Protection for You.  
Accept Nothing Less.

**Our online catalogues**  
For over 20 years our catalogues have been online and our experience ensures they are placed in front of the right buyers in the global market.

**Our sales results**  
June 2016 saw our 94th consecutive month with a sale at either Bourne, Grantham or Lincoln producing a sold rate of over 90%. Good advice, great results for hundreds of vendors every month.

*Join their success with an entry in our next sale!*

[goldingyoung.com](http://goldingyoung.com)

## HOUSE CLEARANCE

If there is that hidden 'find', it will be to your direct benefit.

Every week we take instructions for House Clearance for all of the prominent firms of Solicitors in the area, as well as from Private Individuals, Trustees and Executors.

If you are dealing with the content of a property, please contact us at the earliest point.

A visit to the premises by one of our qualified and experienced appraisal staff will offer the best advice for Security, Valuation and Sale.

### DISPOSE OF NOTHING

Often things thought to be rubbish are saleable.

### IMMEDIATE ACTION IS REQUIRED

Once a property is uninhabited it is a target for burglars and your insurance may be invalid.

Items removed from premises are listed and handled by our professional carriers. Goods are then allocated to the next appropriate sale to ensure the highest sale return.

We also deal with the unsaleable residue, disposed of in the most cost-effective and environmentally friendly way, giving a total service.



### PROPERTIES CLEARED, PROMPTLY AND EFFICIENTLY

Call: John Ireland MA MRICS - 01778 422686  
For Bourne, Stamford, Peterborough Region and Southern Counties

Call: Craig Bewick BA (Hons) FNAVA - 01476 565118  
For Grantham Region and The Midlands

Call: John Leatt ASFAV - 01522 524984  
For Lincoln Region and Northern Counties



*Upon instructions from the executors of  
Euan Robertson (Dec'd)*

Golding Young & Mawer will sell over 1,200 lots by Auction  
in a two-day marquee sale on the premises at

**Leasingham Manor**

Leasingham, Near Sleaford, Lincolnshire NG34 8JL

**Saledays:**

On Tuesday 5th & Wednesday 6th July 2016 at 10am

**Viewing:**

Saturday 2nd, Sunday 3rd, Monday 4th from 10am to 4pm  
& Saledays from 8.30am to 10am

**Refreshments:**

There will be a range of refreshments available throughout  
viewing and saledays available from  
Leasingham Manor Farm Shop adjacent to the Manor.

**Parking & Access:**

There is no onsite parking. The village has narrow roads.  
Please be considerate of neighbouring properties and other drivers.  
whilst being mindful of safety.

**Sale Administration & Enquiries:**

The Bourne Auction Rooms – 01778 422686

[bids@goldingyoung.com](mailto:bids@goldingyoung.com)



- 1. A 2009 Mercedes-Benz E280 CDI Sport estate car, silver, 72,518 recorded miles, 3-litre diesel, Tip-Automatic, MOT to 17/10/16, one owner, full service history.  
£7500-9000
- 2. 3541 E. A cherished registration number plate held on retention.  
£1000-1500



## PROBATE – INHERITANCE TAX ASSESSMENT

For many Executors and Trustees the responsibility of dealing with a deceased's Estate is a once-in-a-lifetime experience. You have to make a number of important decisions in a very short space of time and all when the loss is most difficult to come to terms with.

The position of Executor is an important one in law and has defined personal liability and responsibility. To exhibit due diligence to beneficiaries and more importantly HM Revenue & Customs, an Executor or advisor will instruct a firm Regulated by RICS.

Even if the estate will be taxed at 0%, a valuation remains an essential tool for an Executor. The inventory will still be used for identification of bequests, trust items, family division and proof of value.

Our valuations are prepared to the International Valuation Standards requirement of the 'Red Book'.

The report will cover sections of:


- Jewellery
- Vehicles
- Antiques, Fine Art & Collections
- General Furniture & Effects



For initial advice contact the following Chartered Auctioneers & Valuers:

Bourne, Stamford & South  
Colin Young MRICS  
01778 422686

Grantham, Lincoln & North  
William Gregory MRICS  
01522 524984



### Removals – Household & Commercial

- Free Quotations
- Full Packing Service
- Suppliers of Packing Materials
- Shipping & Storage Arranged
- Antiques & Fine Art Specialists
- Specialist Piano Movers
- Office Movers

Contact Andrew Lowes on 07970 742577 for a quote  
or email [lowes@goldingyoung.com](mailto:lowes@goldingyoung.com)

[goldingyoung.com](http://goldingyoung.com)

## PRIVATE CLIENT & PROFESSIONAL SERVICE DEPARTMENT

We value personal property for private and corporate clients. Our team have valued family heirlooms, art collections and museum holdings for a variety of purposes.

We are the only auction house in the region to have a bespoke Private Client Department with:

- Three Chartered Arts & Antiques Surveyors
- Two RICS/ Antiques Trade Gazette professional assessment award-winning valuers
- Two In-house qualified jewellery valuers
- Experience in abundance and diversity since 1864
- Ten professional staff with RICS, NAVA or SoFAA qualifications.



## Jewellery & Silver

3.  
A 9ct gold belcher neck chain,  
9g.  
£80-100

4.  
A 9ct gold box link neck chain,  
16.1g.  
£150-200

5.  
A 9ct gold masonic medallion.  
2.2g.  
£20-30

6.  
A hollow curb link bracelet,  
with padlock clasp, stamped  
9C, 14.9g.  
£130-150

7.  
An 18ct gold cased mid size  
open face pocket watch, key  
wind with gold damascened  
dial, black Roman batons and  
hands, *total weight* 54.6g.  
£150-250

8.  
A gentleman's signet ring, set  
with an opal, marked 18C,  
7.7g *all in*.  
£120-150

9.  
Two gentleman's 9ct gold  
signet rings, with stone set  
heads, 9g *all in*.  
£80-120

10.  
A Victorian memorial brooch,  
set with a garnet, hair filled  
memorial window verso in  
yellow metal.  
£30-50

11.  
A George V silver powder  
compact by Mappin & Webb,  
with a mid blue guilloche  
enamel lid, mirror to cover,  
Birmingham assay.  
£40-80

12.  
A Victorian memorial brooch,  
black enamel, gold colour  
lettering to the front with  
carved jet insert, back crystal  
missing.  
£20-40



▲ 13.  
A Victorian 18ct gold cased  
mid size pocket watch, with  
engine turned case, gold  
damascened dial, gold  
numerals and hands, key  
wind, London 1835.  
£250-350

14.  
A small selection of agate and  
hard stone cabochons and  
slices.  
£20-30

15.  
A rococo design brooch, cast in  
white metal, unmarked.  
£20-30

16.  
A 1960's designer bracelet, with  
tension fastener, maker OLV,  
stamped 925, V7 and a crown,  
possibly Scandinavian, set with  
a large crystal with rutile like  
inclusions.  
£30-50

17.  
A bar brooch as a scimitar, set  
with coral and garnet stones to  
the handle, together with  
another set with seed pearls and  
aquamarine, both set in rose  
colour metal, (2).  
£30-50

18.  
A pair of cufflinks, of Oriental  
script design, stamped 585.  
£30-50

19.  
Three mid 20thC ladies' gold  
cased watches.  
£60-80

20.  
A memorial stick pin, with hair  
insert and two stone set  
examples, (3).  
£30-40

21.  
A Victorian bull's eye agate  
stick pin, and three other  
examples, (4).  
£40-60

22.  
A Victorian agate set stick pin,  
and two other examples, (3).  
£30-40

23.  
Three stone set stick pins.  
£30-40

24.  
A Waltham gold plated pocket  
watch, two white metal  
examples and an Albert, (4).  
£30-40

25.  
An Edwardian silver sovereign  
case, Birmingham 1905 on  
chain, together with a white  
metal vinaigrette, unmarked (2).  
£30-50

26.  
A Silver Jubilee medal, and  
two dress medals, (3).  
£20-30

27.  
A pair of 9ct gold cufflinks, set  
with royal blue gold stone,  
9.4g *all in*.  
£80-120

28.  
A 9ct gold carnelian and hard  
stone set fob, and attachments  
in yellow metal.  
£30-50

29.  
A miniature 19thC agate desk  
seal, with white metal mount,  
the seal is a pale amethyst  
carved with initial U and the  
top is agate, 22mm high.  
£20-30

30.  
Four dirks, with silver or white  
metal mounts, horn or bog oak  
handles, various sizes.  
£60-100

31.  
A provincial Scottish three  
tassel dress sporran with a  
silver cantle, repeating pierced  
heart and roundel design,  
leather back, Alexander & John  
Smith, Aberdeen, Edinburgh  
1950, 24.5cm long.  
£50-80

32.  
A French Art Deco yellow  
metal combined cigarette and  
vesta case, with geometric  
design in white and black  
enamel, the thumb piece set  
with small diamonds, one  
missing, indistinct mark to  
interior, probably 18ct gold but  
untested, 9cm x 4.5cm.  
£1800-2200

33.  
A George V silver milk jug,  
with reeded handle, London  
1912, 14oz.  
£100-150

34.  
A Victorian silver 4-bottle  
cruet, Maker JD&WD, Sheffield  
1898. 16 oz stand.  
£120-150

35.  
A cut crystal claret jug, with  
silver handle and mounts,  
London assay.  
£100-150

36.  
A George III silver tankard, of  
plain form, maker I K, London  
1792, 10ozs.  
£300-400

37.  
An Edwardian ladies heart  
shaped tortoiseshell and silver  
desk stand, with ink well,  
maker Geo Young & Co, London  
1903.  
£150-250

38.  
A cake basket marked Sterling,  
with pierced scroll border,  
initialled monogram 'MS' to the  
centre, 12ozs, 30cm.  
£120-180



# Silver

39.  
A late Victorian silver five-piece cruet set, by George Wish, Sheffield 1899/1900, each piece with bracketed borders, on pad feet, 7oz gross, in a fitted case. £70-100

40.  
A pair of Victorian silver circular salts, of squat conical form and on three feet, engraved with ferns and flowers, Birmingham 1881, and a pair of spoons, in fitted case for four (lacking a pair of salts and spoons) £30-40

41.  
A George V silver seven-bar toast rack, by Hukin & Heath, Birmingham 1913, with a ring handle to centre, on compressed bun feet, 15cm long, *approximate weight 7oz.* £70-100

42.  
A George V silver salver, presentation inscription', Sheffield 1927, 11oz. £90-120

43.  
A George V engine turned silver cigarette case, bearing the initials A, Birmingham 1927 by Walker & Hall, 4oz. £35-50

44.  
A George V silver table epergne, in the form of a silver vase with three smaller detachable specimen vases, marks for Chester and Birmingham circa 1912, (AF) £80-100

45.  
A George V silver capstan inkwell, Birmingham 1918, the hinged cover bearing inscription, with oak base, 16cm diameter. £50-70

46.  
A George V engine turned silver cigarette case, Chester 1938, 4oz. £30-50

47.  
A George VI silver two-handled trophy cup, by Elkington, Birmingham 1937, with inscription to body, on a moulded foot rim, 8cm high, 2oz, together with a George V silver small candlestick, 15cm high, and a silver specimen vase, 13cm high, both weighted. (3). £30-50

48.  
A silver cigarette case, with crest bearing initials W.G.H, Chester, possibly 1926, 3oz. and ashtray. (2) £30-40

49.  
A set of six chased silver napkin rings, monogrammed GR, Birmingham assay. £80-120

50.  
A pair of George VI silver sauce boats, with flying scroll handles and three shell stepped feet. Maker D & F. London 1946, 12ozs. £150-200

51.  
A set of six Victorian Irish silver tea spoons, embossed for the Horticultural Society of Ireland, verso prize details, Philip Weekes, Dublin 1866, 5.04oz. £100-150

52.  
A set of nine George V silver table forks, initial engraved, Hamilton & Inches, Edinburgh 1911, 18.45oz. £120-180

53.  
A George III silver pap boat, gilt interior, John Emes, London 1808, 20.5oz. £80-120

54.  
A pair of Victorian silver fish servers, with floral and foliate decoration, Martin Hall & Co, Sheffield 1866, 8.19oz. £100-150

55.  
A George V silver three piece tea set, Birmingham 1932, 19.57oz. £150-200



56.  
A white metal circular silver dish, possibly American, embossed with flowers and rococo scrolls, stamped silver, 30cm dia., 25.84oz. £80-120

57.  
A white metal twin handled oval dish, possibly American, with embossed foliate decoration, stamped silver, 23.27oz. £100-150

58.  
A George III silver twin handled semi-fluted sugar bowl, London 1813, together with a further sugar bowl with embossed rococo scroll decorations, Birmingham 1908, 17.77oz. £120-180

59.  
A George III silver soup ladle, initial engraved, William Eley & William Fearn, London 1820, 6.36oz. £150-200

60.  
A George V silver twin handled bowl and spoon, monogram engraved, Mappin & Webb, London 1912, cased, 8.35oz. £70-100

61.  
A set of six Victorian silver table forks, decorated in the Victoria pattern, monogram engraved, Chawner & Co London 1864, together with a pair of dessert spoons and a serving spoon, London 1855, 23.98oz. £150-200

62.  
A quantity of George V silver flatware, decorated in the Old English pattern, comprising six serving spoons, six table forks, nine dessert forks and twelve dessert spoons, 64.84oz. £400-600

63.  
A set of six William IV silver table forks, decorated in the Kings pattern, crest and monogram engraved, Glasgow 1831, 20oz. £150-200

64.  
A set of three Victorian silver table forks, decorated in the fiddle, thread and shell pattern, crest engraved, Chawner & Co 1862 and 1865, and three George IV silver table forks, decorated in the Kings pattern, Glasgow 1828, 18.77oz. £120-180

65.  
A set of six Edward VII/George V silver Old English pattern soup spoons, initial engraved, four London 1903 and two London 1922, 13oz. £80-120

66.  
Two white metal trefid spoons, monogrammed and bearing dates for 1727 and 1728, 1.92oz. £200-300

67.  
A pair of George III silver sugar tongs, with bright cut engraving, London 1792, monogrammed pair, London 1790, and two further pairs, 4oz. £40-60



68.  
A Danish silver spoon, L  
Erlandsen 1928, 1.28oz.  
£20-30

69.  
A near pair of George V silver  
condiment sets on trays,  
Birmingham 1929 and 1931,  
12.82oz.  
£80-120

70.  
An Edward VII silver  
christening cup, London 1905, a  
George V cup, Birmingham  
1923, and another, London 1926,  
8.35oz. (3).  
£60-90

71.  
A William & Mary trefid  
spoon, William Scarlett, London  
assay, 1.57oz.  
£150-250

72.  
A William & Mary silver trefid  
spoon, later monogrammed and  
dated 1703, London 1691,  
1.22oz.  
£150-250



73.  
A pair of William & Mary  
silver trefid spoons,  
monogrammed, London  
1692, 2.37oz.  
£300-400

74.  
A pair of Victorian Kings  
pattern table spoons, Chawner  
& Co, London 1840, and three  
table spoons decorated in the  
Victoria pattern, monogram  
engraved, London 1864.  
£80-120

75.  
Four George III silver Old  
English pattern table spoons,  
London 1810/11 and a George  
IV spoon, London 1822, 10.70oz.  
£70-100

76.  
A George VI silver twin  
handled trophy, presentation  
engraved Uasin Gishu  
Gymkhana Club Prince of  
Wales Stakes 1939, London  
1939, a further trophy,  
Birmingham 1919, and a  
Victorian goblet with beaded  
decoration, London 1883,  
16.71oz.  
£100-150

77.  
A Victorian silver cream jug, of  
baluster form with embossed  
floral decoration, shield reserve,  
raised on three pad feet, John  
Keith, London 1857, 7.3oz.  
£60-90

78.  
A George III silver twin  
handled loving cup, of baluster  
form, Jacob Marsh, London  
1776, 12.15oz.  
£150-200

79.  
A pair of George III silver  
serving spoons, with bright cut  
decoration, monogrammed  
reserve, George Gray, London  
1793, 3.82oz.  
£40-60

80.  
A set of five Victorian Irish  
silver dessert spoons,  
embossed for the Horticultural  
Society of Ireland, verso prize  
details, Philip Weekes, Dublin  
1866, 6.55oz.  
£100-150

81.  
A set of six George III silver  
teaspoons, decorated in the Old  
English pattern, monogram  
engraved, Godbehere, Wigan &  
Bult, London 1812, further set of  
six spoons, London 1810/11,  
and six bright cut teaspoons,  
initial engraved, Samuel  
Davenport, London 1793,  
7.61oz.  
£80-120

82.  
A George V silver mustard pot,  
Mappin & Webb, Birmingham  
1918, Edward VII, Jersey  
creamer pepperette,  
Birmingham 1901, and an  
Edward VIII three piece cruet  
set with spoons, and blue glass  
liner, Birmingham 1926, 7.71oz.  
£60-90

83.  
A set of nine Victorian silver  
teaspoons, decorated in the Old  
English pattern, monogram  
engraved, Josiah Williams & Co,  
Exeter 1856, 6.62oz.  
£50-80

84.  
A Victorian silver fork and  
steel and ivory handled knife  
set, crest engraved, Charles  
Boyton II, London 1854, boxed.  
£30-50

85.  
A set of six George III silver  
teaspoons, decorated in the Old  
English pattern, initial  
engraved, Peter, Ann & William  
Bateman, London 1800, four  
further spoons, William  
Summer I, London 1802, and a  
harlequin set of ten teaspoons,  
9.36oz.  
£70-100

86.  
A George VI silver egg cup,  
Birmingham 1944, semi fluted  
cream jug, Edward VII silver  
baby's spoon. Birmingham  
1908, baby's spoon and pusher,  
Walker & Hall, Sheffield 1975,  
boxed, and a white metal bud  
vase, 6.42oz.  
£40-60

87.  
A set of six Victorian silver  
teaspoons, decorated in the  
fiddle pattern, monogram  
engraved, Henry Holland,  
London 1871, and five further  
teaspoons, Samuel Hayne &  
Dudley Cater, London 1853, 7oz.  
£40-60

88.  
A late 19thC silver novelty  
snuff box, modelled as a  
recumbent cow, Berthold  
Muller, import marks, Chester  
1903.  
£50-80

89.  
A set of five Victorian silver  
teaspoons, decorated in the  
Queens pattern, monogram  
engraved, possibly William  
Clarke Shaw, Glasgow 1849,  
and six teaspoons decorated in  
the Kings pattern, James  
Wright, Edinburgh 1836, 6.94oz.  
£50-80

90.  
An Edward VII silver novelty  
pin cushion, modelled as an  
elephant, Adie & Lovekin Ltd,  
Birmingham 1905.  
£60-90

91.  
A set of eleven Victorian silver  
teaspoons, decorated in the  
fiddle pattern, initial engraved,  
James Wright, Edinburgh 1869,  
five George III teaspoons,  
Edinburgh 1811, three further  
1810, and five spoons with  
bright cut engraving, Robert  
Gray, Edinburgh, circa 1800,  
12.31oz.  
£80-120

92.  
An Edward VII silver novelty  
pin cushion, modelled as a pig,  
Adie & Lovekin Ltd,  
Birmingham 1907.  
£60-90

93.  
Scottish and other silver  
teaspoons, George III and later,  
decorated in the fiddle, Kings  
and Old English patterns,  
8.72oz, (a quantity).  
£50-80

94.  
A set of five Dumfries silver  
teaspoons, decorated in the  
fiddle pattern, monogram  
engraved, maker David Gray, a  
pair of dessert spoons possibly  
Scottish provincial, and six  
silver Old English pattern  
teaspoons, maker Edward  
Livingstone, Dundee, 6.71oz,  
(13).  
£100-150

95.  
A set of nine Aberdeen silver  
teaspoons, decorated in the  
fiddle pattern, monogram  
engraved, maker William  
Jamieson, three and dessert  
spoons, maker George Book,  
and five further Aberdeen  
teaspoons, 11oz, (19).  
£200-300

96.  
A Scottish provincial sugar  
spoon, decorated in the fiddle  
pattern, monogram engraved,  
Alexander Mollison, Aberdeen,  
another by William Jamieson,  
the third by George Sangster,  
Aberdeen, also bearing  
hallmarks for Edinburgh 1854,  
1.86oz.  
£120-180



# Silver

97.  
A 19thC American white metal dessert spoon, for A & J Plant, stamped sterling, a Kristensen table fork, and three Continental white metal tablespoons, 8.97oz.  
£50-80
98.  
A set of four Victorian silver mustard spoons, decorated in the Kings pattern, Chawner & Co, London 1858, a pair of William IV silver mustard spoons decorated in the Old English pattern, James Beebe, London 1835, and three George III fiddle pattern mustard spoons, 4.62oz.  
£60-90
99.  
A pair of George III silver sugar tongs, Edinburgh 1814, William IV pair of tongs, Glasgow 1834, a pair of scissor action sugar tongs, Birmingham 1925, George III caddy spoon, London 1804 and two further, London 1830 and Birmingham 1868, 8.72oz.  
£50-80
100.  
An Edward VII silver and enamel commemorative menu holder, showing arms for Jersey and Corbiere, Birmingham 1904, Dutch white metal spoon with sailing boat terminal, Georgian silver and commemorative spoons, two Scottish pickle forks and sundry silver, white metal and plated flatware, 13.85oz all in.  
£40-60
101.  
A George III silver marrow scoop, Thomas Wallis II, London 1777, 1.99oz.  
£60-100
102.  
A William IV silver pedestal basket, with swing handle, embossed with flowers and 'C' scrolls, crest engraved, London 1835, 17.32oz.  
£200-300
103.  
A George III silver soup ladle, initial engraved, Thomas & William Chawner, London, 5oz.  
£150-200
104.  
A Victorian silver sugar sifter, of semi fluted baluster form, shield reserve presentation engraved Samuel Walton Smith, London 1886, 23cm high, 7.87oz.  
£60-100
105.  
A Georgian silver soup ladle, monogram engraved, possibly London 1740, 4.79oz.  
£150-200
106.  
A George III silver twin handle trophy, of baluster form, monogram engraved, London 1784, 11.31oz.  
£100-150
107.  
A Victorian silver basket, of fluted oval pedestal form with engraved foliate decoration, Walker & Hall, Sheffield 1883, 9.19oz.  
£100-150
108.  
A pair of French white metal candle holders, with fluting and embossed decoration, Bointaburet a Paris, 11cm high, 23.37oz.  
£150-200
109.  
A George III silver teapot, of oval form with bright cut engraving, Edinburgh 1795, 18.39oz. (AF).  
£100-150
110.  
A pair of George IV silver Old English pattern stuffing spoons, crest engraved, Alexander Edmonston III, Edinburgh 1823, 6.71 oz.  
£100-150
111.  
A George III silver marrow scoop, London 1768, 1.44oz.  
£50-80
112.  
A pair of George III silver tablespoons, decorated in the Hanoverian pattern, monogram engraved, William Collings London 1775, and two further pairs, William Sumner & Richard Crossley and John Scofield, London 1778, 11.7oz.  
£80-120
113.  
A pair of George III silver tablespoons, decorated in the Hanoverian pattern, crest engraved, David T Pater, Dublin 1766, and a further spoon, bowl with shell back, monogram engraved, London 1766, 6.75oz.  
£60-100
114.  
A pair of George II silver table spoons, decorated in the Hanoverian pattern, initial engraved, Robert Sallam, London 1759, and two George III spoons, London 1766, 7.81oz.  
£60-100
115.  
A set of four George III silver tablespoons, decorated in the Old English pattern, monogram engraved, George Smith London 1784, 8.58oz.  
£60-100
116.  
A set of four George III silver tablespoons, decorated in the Old English pattern, monogram engraved, Walter Brind, London 1798, 9oz.  
£60-100
117.  
A pair of George III silver tablespoons, decorated in the Old English pattern, monogram engraved, and two further pairs, London 1790, 1804 and 1806, 11.99oz.  
£80-120
118.  
A pair of George III silver tablespoons, decorated in the Old English pattern, monogram engraved, and two further pairs, London 1766, 1791 and 1823, 14.37oz.  
£100-150
119.  
A group of George III silver table spoons, decorated in the Old English pattern, various makers and years, 15.3oz.  
£100-150
120.  
A George III Irish silver tablespoon, decorated in the Old English pattern, initial engraved, Law & Bayly, Dublin 1795, 2.21oz.  
£40-60
121.  
A George IV silver butter knife, William Charmer II, London 1826, another Charles Boynton 1827, two cream ladles, James Thomas, London 1825 and Glasgow 1833, and a mustard spoon, Glasgow 1825, 6.84oz.  
£50-80
122.  
A pair of George III silver dessert spoons, decorated in the Old English pattern, crest engraved, Williams Eley, Fearn & Chester, London 1813, and three matching Victorian spoons, H J Lias & Son, London 1858, 6.84oz.  
£50-80
123.  
A set of four George III silver table forks, decorated in the Old English pattern, crest engraved, William Eley, Fearn & Chawner, London 1809, 8.39oz.  
£60-90
124.  
George III silver dessert spoons, decorated in the Old English pattern, 6.49oz, (a quantity).  
£50-80
125.  
A pair of George IV silver table forks, decorated in the Old English pattern, William Chawner II, London 1829, and two further pairs Richard Grove, London 1821 and Jonathan Hayne, London 1824, 12.15oz.  
£80-120
126.  
A set of four George III silver dessert spoons, decorated in the Old English pattern, monogram engraved, Mary & Elizabeth Summer, London 1813, 4.78oz.  
£40-60
127.  
Georgian silver flatware, including a fiddle and thread table fork, crest engraved William Eley and William Fearn, London 1806, and a pair of dessert spoons, monogram engraved, London 1823, 8.48oz., (a quantity).  
£60-90



128.  
A set of four Victorian silver dessert spoons, decorated in the Old English pattern, and three further spoons, initial engraved, Charles Boyton II, London 1871 and 1892 respectively, 11.28oz.  
£80-120

129.  
A set of three Victorian silver table spoons, decorated in the Old English pattern, initial engraved, John Smith, Dublin 1886, 7.10oz.  
£60-90

130.  
A set of three Victorian silver table forks, decorated in the Old English pattern, Goldsmiths Alliance, London 1887, and a pair of dessert forks, crest engraved, Josiah Williams & Co, Exeter 1865, 10.25oz.  
£80-120

131.  
A Victorian silver basting spoon, decorated in the fiddle and thread pattern, monogram engraved, Mary Chawner and George Adams, London 1840, and an Old English pattern basting spoon, initial engraved, A B Savory & Sons, London 1855, 9.54oz.  
£100-150

132.  
A pair of George III Irish silver table spoons, and a further pair, crest and motto engraved, Law, Dublin 1792 and James Keating, Dublin 1795, 8.55oz.  
£80-120

133.  
Silver flatware, including a Kings pattern tablespoon, Mackay & Chisholm, Edinburgh 1842, two butter knives, table fork and a Victorian pattern dessert spoon, 10.89oz, (a quantity).  
£80-120

134.  
A Victorian Irish silver tablespoon, decorated in the Old English pattern, initial engraved, Dublin 1886, further spoons, Finlay & Field, Glasgow 1851 and two silver butter knives, 9.22oz.  
£60-100



135.  
A pair of Victorian silver tablespoons, decorated in the Old English pattern, initial engraved, Charles Wallis, London 1850, further pair, John James Whiting, London 1844, and another pair Josiah Williams & Co, Exeter 1879, 14.17oz.  
£100-150

136.  
Victorian silver table forks, dessert forks and dessert spoons, decorated in the Old English pattern, including three dessert spoons, Robert Wallis, London 1851, 11.25oz, (a quantity).  
£80-120

137.  
A harlequin set of silver pistol handled knives, comprising twelve table knives and dessert knives.  
£80-120

138.  
Silver flatware, decorated in the Old English pattern, William Hutton & Sons, Sheffield 1960, etc, 33.56oz all in, (a quantity).  
£200-300

139.  
Silver flatware, decorated in the Old English and Hanoverian pattern, various makers, 42.69oz all in, (a quantity).  
£300-500

140.  
A set of five Victorian silver dessert forks, and four dessert spoons decorated in the Old English pattern, monogram engraved, Josiah Williams & Co, London 1896, 15.17oz.  
£100-150

141.  
A pair of George V loaded silver candlesticks, of baluster form, Birmingham 1922, 15.5cm high, further pair, 10cm high, and a pair of Victorian silver semi-fluted spill vases, embossed with flowers, Birmingham 1890, 23.59oz all in.  
£60-90

142.  
A group of Victorian and later silver handled shoe horns, and button hooks with embossed rococo foliate decoration, one Indian white metal cane handle, late 19thC, spiral embossed with a village scene, a pair of French white metal shoe buckles, 19thC, and a belt buckle foliate engraved with shield reserve, J Grant 185\*, stamped Mathierson Elgin.  
£60-90

143.  
A George III silver toddy ladle, with a turned wooden handle, Alexander Gardner, Edinburgh. 50.5cm long, and a further ladle set with a George III shilling 1787, with a whalebone handle, 36cm long, (2).  
£40-60

144.  
A pair of Russian silver table forks, crest engraved, Aleksandr Frans Fan-der-Flit, St Petersburg, and a pair of matching dessert forks, bears Kotoshnik marks, 8.16oz.  
£80-120

145.  
A group of cut glass match strikers, with silver mounts, largest 8cm x 9cm, (6).  
£40-60

146.  
A set of eleven William IV silver teaspoons, decorated in the Old English pattern, initial engraved, David McDonald, Glasgow 1834, 5.84oz.  
£50-80

147.  
A silver wine tasting cup, London 1978, fluted silver dish, Birmingham 1961, George V silver card salver, Sheffield 1913, vesta case, Chester 1923, 8.84oz, a cut glass ash tray of globular form with a silver mount, London 1909, and a pair of silver backed hair brushes with engine turned decoration, London 1947.  
£100-150

148.  
A matched pair of William IV silver tablespoons, decorated in the Old English pattern, monogram engraved, London 1833 and 1834, and a pair of Victorian tablespoons, London 1866, 8.97oz.  
£60-100

149.  
George III and later silver teaspoons, chiefly decorated in the Old English and Hanoverian patterns, 15.36oz, (a quantity).  
£100-150

150.  
Silver table and dessert spoons, a cream ladle, table and dessert forks, chiefly decorated in the Old English pattern, 30.44oz, (a quantity).  
£200-300



# Samplers & Clocks

## Samplers

**151.**  
A Victorian pictorial and motto sampler, by Emma Inman aged 8 and dated 1844, embroidered with the VR coat of arms, an image of the temple of Jerusalem with a floral bouquet and bird banding, glazed and framed, 44.5cm x 50cm. (AF).  
£100-150

**152.**  
A pictorial motto decorative sampler, set with alphabet and the ditty 'Industry Is A Precious Jewel', signed Baucher, dated 1797, glazed and framed, 40cm x 29cm. (AF).  
£60-80

**153.**  
A Victorian alphabetic, numeric and motto sampler, by Elizabeth Porter dated 1848, decorated in colours, glazed and framed, 31cm x 24cm, (AF).  
£20-40

**154.**  
A Victorian alphabetic, numeric and motto sampler, 'Jesus Permits Thy Gracious Name', by Susan Thorpe aged 9 years, dated 1886, in colours, 48cm x 38cm, glazed and framed.  
£20-40

**155.**  
A George IV pictorial and motto sampler, 'If You Dear Girl Would Happy Be ...' by Jane Smith, 1832, embroidered with houses, flowers etc., with an outer floral banding, 54cm x 40cm, glazed and framed (AF).  
£80-120

**156.**  
A Victorian alphabetic and numeric sampler, probably by Maggie Creighton dated 1876, in colours, 38.5cm x 28cm, glazed and framed.  
£20-30

**157.**  
A Victorian pictorial and alphabetic sampler, decorated with flowers and animals in colours, with a floral banding, 15.5cm x 24cm, glazed and framed (AF).  
£20-30

**158.**  
An early 19thC pictorial sampler, by Dee Makey, dated March 27th, centred by a flower bowl flanked by birds, in colours, 39.5cm x 51cm, glazed and framed.  
£80-120

**159.**  
A 19thC alphabetic and pictorial sampler, decorated with trees, ship and birds with an outer floral border, 34cm x 32cm, glazed and framed, (AF).  
£40-60

**160.**  
A George III pictorial and motto sampler, 'Give Glory To God Why Children Of Men...', by Caroline Inman aged 8, embroidered with a castle and trees and with an outer floral banding, 43cm x 34cm, glazed and framed, (AF).  
£120-140

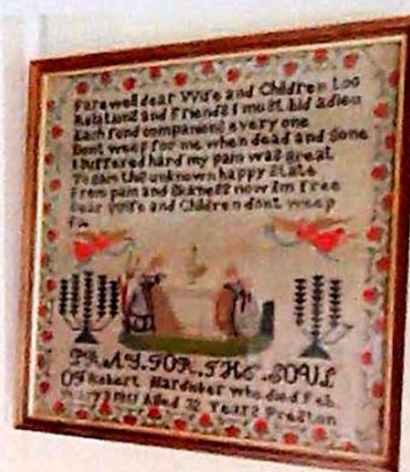
**161.**  
A Victorian alphabetic and numeric sampler, by Fanny Dove Hamel, dated 1846, 24cm x 23cm, glazed and framed (AF).  
£20-30

**162.**  
A George IV alphabetic, numeric and motto sampler, 'May I Seek Until I Find ...', by Charlotte Vickers, dated 1820, in colours, 28cm x 25.5cm, glazed and framed, (AF).  
£50-80

**163.**  
An alphabetic and numeric sampler, in colours, probably late 19thC, 35cm x 30cm, glazed and framed, (AF).  
£20-30

**164.**  
A Victorian pictorial and motto sampler, 'The Leaves Are Green ...', by Sarah Anne Garratt, dated 1851, 27cm x 30cm, glazed in oak Oxford frame (AF).  
£30-50

**165.**  
A Victorian pictorial and motto sampler, 'I've Done This Work To Let You See ...', by Mary Hiltons, decorated with dog and with floral outline, dated 1858, 33.5cm x 34.5cm, framed.  
£30-50



**166.**  
A Victorian motto mourning sampler, 'Farewell Dear Wife And Children To Relations And Friends ... Pray For The Soul Of Robert Hardicker, Who Died February 3rd 1851 Aged 32 years, Preston,' with an outer floral banding and inner vases, with mourning figures probably by a different hand, 59cm x 59cm, glazed and framed.  
£100-150

**167.**  
A 19thC woolwork embroidery, boats before building, 43cm x 55cm, in Oxford frame.  
£40-60

**168.**  
A pair of George III needlework samplers, worked by Arabella Warnes in 1803, 19cm x 15cm.  
£60-90

**169 to 178**  
Spare Lots



## Clocks & Barometers



- ▲ 179.  
A George III bracket clock, with an 8 day chiming fusee movement, circa 1760, the mahogany case with a brass handle and an arched dial decorated with foliate spandrels, on bun feet, possibly adapted 49cm high overall £1400-1800

180.  
A 20thC Admiral Fitzroy's barometer, 105cm high. £60-90

181.  
A mid 19thC mahogany wheel barometer, by Zenoni and Dutti, Edinburgh, the case inlaid with patera and shells with silvered dial, (AF), 96cm high. £70-90

182.  
A 19thC mahogany and boxwood wheel barometer, by D. Guger of Boston, with a finely engraved silvered dial beneath a silvered thermometer scale with mercury tube, the case with broken swan neck pediment centred by a gilt brass finial, 97cm high. £75-125

183.  
A 19thC French alabaster mantel clock, with eight day movement striking a bell. £40-60

184.  
Various 19thC mahogany wheel barometers, all requiring attention. £150-250

185.  
A 20thC oak cased stick barometer. £80-120

186.  
A 20thC Admiral Fitzroy's barometer, 105cm high. £60-90

187.  
A 19thC rosewood stick barometer, with later silvered register and a beaded frame marked for R Bradley, Staindrop, 104cm high. £150-250

188.  
An early 19thC painted rosewood wheel barometer, with swan neck pediment over hygrometer, thermometer, convex mirror, 20cm silvered dial, bezel and level marked WARRANTED CORRECT, 95cm high £50-80

189.  
A modern gilt metal timepiece by Angelus, the square case with ball finials, enclosing a silvered dial with Arabic and bead numerals, on bun feet, 11cm high. £20-30

190.  
An early 20thC patinated spelter mantel clock, the shaped case surmounted by a scantily clad figure of a man in chains in the manner of Roncourt, replacement quartz movement, 35cm high. £40-60

191.  
A 19thC Continental timepiece, the porcelain dial painted with blue Arabic numerals and floral swags, within a glazed biscuit porcelain case, flanked by a cherub, applied foliate scrolls and flowers to a rustic base, 17cm high, on an oblong wooden stand under a glass dome. £50-70

192.  
A modern quartz timepiece, by Kitney & Co London, the white dial enclosed within a red enamel and velvet case with gilt cresting, easel stand, 19cm x 13cm. £30-40

193.  
A modern German quartz timepiece, the cream dial with Roman numerals, subsidiary dials and moon phase quadrant, signed *Enses seit 1879* beneath dial, in an arched gilt case, 18cm high. £30-40



- ▲ 194.  
A 19thC gilt brass Egyptian Revival mantel clock, with eight day French movement striking a bell, marked V A D to back plate, the brass dial with black Roman numerals within a foliate bezel, the trapezium shaped case surmounted by a sphinx on a stepped plinth, the dial flanked by attendants in relief, on a canted plinth centred by winged falcons, on toupie feet, 37cm high, 31cm wide. £300-400



- ▲ 195.  
A 19thC French white marble and gilt spelter mantel clock, with eight day movement striking on a bell, the back plate signed Edwards, Paris, the white dial with blue Roman numerals and enclosed within an arched case moulded with classical detail, flanked by a female seated on a couch holding dividers and folio, a table globe on the other side, the base of swept oblong shape with rounded ends, on toupie feet, 45cm high, 50cm wide. £200-300



- ▲ 196.  
A George III style mahogany cased bracket clock, the silvered dial signed Henry Overall, Dover, with Roman numerals and Arabic seconds, calendar aperture and strike/silent to the arch, with eight day fusee movement striking on a bell, the case with ogee caddy top surmounted by a gilt metal handle, four urn finials to the corners, the door with brass spandrels and flanked by pierced sound panels, on ogee feet, 55cm high, together with a wall bracket. £800-1200



# Antiques & Collectables



197.  
A late 19th/early 20thC brass skeleton timepiece, unsigned, with single fusee movement, with a pierced dial, Roman numerals to shield shape cartouches, on a white marble plinth, 30cm high.  
£200-300

198.  
A 19thC alabaster mantel clock, with eight day movement striking on a bell, the gilt metal dial with Roman numerals within a foliate bezel, the movement surmounted with a figure of Mercury on a deep plinth with foliate frieze, on bun feet, 47cm high.  
£100-150

199.  
A 19thC mahogany and oak crossbanded longcase clock, B Farrar, Pontefract, with thirty hour movement, the painted dial with Arabic numerals, wheatsheaf spandrels, shells to arch, the hood with swan neck pediment, above the trunk with concave arch door, on splay bracket feet, 217cm high.  
£250-400



200.  
An 18thC longcase clock, John Downes of London, with eight day movement, striking on a bell, the brass dial with Roman numerals, seconds dial and calendar aperture to the matted centre, strike/silent to arch, the painted Chinoiserie case with arched hood and conforming trunk door, 208cm high.  
£700-1000

## Antiques & Collectables

201.  
A reproduction Chinoiserie tea canister, formed as a table lamp, together with a pair of similar blue tole ware urns (3).  
£50-80

202.  
A pair of 19thC cast two colour metal figural candlesticks, depicting a lady with basket and man with gun (AF), 31cm high.  
£50-80

203.  
A pair of 19thC silver plated candelabra, with four branch/five light top, with chains around a taper column with elephant mask terminal, the base being applied with stylised leaves on four paw feet, 58cm high.  
£150-250

204.  
A 19thC Old Sheffield plate tea urn, with urn finial to cover, loop handles and a stepped square base on ball feet, together with associated strainer, 40cm high.  
£80-120

205.  
A 19thC Old Sheffield plate tea urn, with urn finial to cover, reeded looped handles and stepped square base with turned feet and bearing crest with motto 'Fortis etque fidelis'.  
£100-150

206.  
An early 19thC copper tea urn, of Egyptian design and influence, 40cm high.  
£100-200

207.  
A Regency black lacquer and chinoiserie tea caddy, Chinese export with two pewter caddy inserts and carved paw feet, 24cm wide.  
£100-200

208.  
An early Victorian Scottish mahogany sarcophagus tea caddy, with bone inset thistle motif to the cover and three compartment interior, with satinwood stringing and brass lion mask handle and feet, 35cm wide.  
£100-200

209.  
A pair of Victorian cast metal tazzae, with detachable bowl and supported on three female busted serpents, on a trefoil base, 23cm high.  
£50-80

210.  
A pair of early 20thC mahogany candlesticks, with fluted and wrythen stems, 55cm high.  
£50-80

211.  
A pair of early 20thC mahogany candlesticks, with reeded columns, 54cm high.  
£50-80

212.  
A pair of early 20thC oak candlesticks, with reeded and turned stems, 35cm high.  
£30-50

213.  
A pair of 19thC bronze and glass two branch candlesticks, 30cm high.  
£50-80

214.  
A pair of 19thC bronze figures, of a stork standing upon a turtle, 16cm high, plus differing bases.  
£50-80

215.  
A pair of late Victorian tazzae, formed with ormolu framed base, each having a seated Parianware female figure and cut glass dish top (one dish missing).  
£100-200

216.  
A pair of Victorian gilt metal framed vase or candle holders, with glass dome bases and drops, 26cm high.  
£40-60

217.  
A pair of 19thC French rococo gilt brass candlesticks, and a similar table salt of urnular form on marble base, 25cm and 23cm.  
£40-60





90.



254.



31.



37.



32.

[goldingyoung.com](http://goldingyoung.com)



203.



245.



205.



220.



237.



304.



# Antiques & Collectables

218.  
A late 20thC kingwood decanter stand, by Laurence Ganney, inset with two engraved decanters depicting Leasingham Manor by Terry Barnatt.  
£40-80
219.  
A collection of 19thC Scottish and Irish horn beakers and cups. (41)  
£200-300
220.  
A collection of 19thC horn beakers and cups, with silver and white metal mounts (8).  
£150-250
221.  
A Sheraton revival mahogany serving tray, of kidney shape, with satinwood inlaid shell, 60cm wide.  
£40-80
222.  
A Sheraton revival mahogany serving tray, of kidney shape, with satinwood floral inlay, 60cm wide.  
£40-80
223.  
A Sheraton revival mahogany serving tray, of kidney shape, with satinwood inlaid shell, 60cm wide.  
£40-80
224.  
A 19thC Sheraton mahogany oval serving tray, with satinwood shell inlay and rosewood crossbanding, 55cm.  
£40-80
225.  
A 19thC Sheraton mahogany oval serving tray, with satinwood shell inlay, 60cm.  
£40-80
226.  
A 19thC Sheraton mahogany oval serving tray, with satinwood oval patera inlay, 60cm.  
£40-80
227.  
An 18thC Scottish snuffbox, in the form of a short horn with pewter mounts, and a horn thistle shape toddy cup (2).  
£50-100
228.  
A pair of cut glass mallet decanters, with prismatic stoppers and a pair of silver plated rococo coasters.  
£40-60
229.  
A pair of Victorian faceted glass wall mirrors, with wheel cut bulb candle holders (AF), 24cm high, together with a large central portrait mirror plaque (3).  
£40-60
230.  
A group of silver plated wares, including two branch candelabrum, three piece EPBM tea set, tea caddy, strawberry dish, etc. (a group lot).  
£80-120
231.  
A Victorian cast iron door stop, in the form of a griffin passant, 36cm high.  
£40-60
232.  
A Victorian magnifying glass, with carved cartouche ivory handle, 26cm, and a 19thC carved ivory patchbox (2).  
£60-90
233.  
A 19thC silver plate and copper inkstand, and pair of similar telescopic candlesticks, 20cm high, (3).  
£40-60
234.  
Two wrought iron wall mounted oil lamps, and a brass wall lamp fitted for electricity (3).  
£30-50
235.  
A 19thC French parcel gilt bronze urn and cover, with pineapple finial and mask scroll handles, 20cm high.  
£50-80
236.  
A pair of Victorian specimen marble and polished slate obelisks, 39cm high.  
£100-200
237.  
A pair of Victorian polished slate obelisks, inset with hard stone and malachite floral trails, 37cm high.  
£100-200
238.  
An Edwardian table oil lamp, with faceted clear glass reservoir, Corinthian column stem with marbled effect inset on a square stepped base, 55cm high.  
£80-120
239.  
Four 19thC pietra dura slab weights, 13cm x 9cm, down.  
£40-80
240.  
A burr walnut rectangular box, with campaign brasswork, 18cm wide.  
£40-60
241.  
A 19thC French silvered and gilt bronze inkstand, in the form of an eagle on a rocky mound overlooking a dead deer and fawn, 16cm dia.  
£100-200
242.  
A pair of early 19thC bronze figural candlesticks, with stag and deer seated to the base, 13cm high.  
£80-120
243.  
An early Victorian lacemaker's cushion, and bobbins.  
£50-80
244.  
Brassware, including a pair of armorial plates and two latticework chambersticks, 29cm dia., candlesticks etc.  
£30-50
245.  
A Victorian Anglo-Indian carved ivory desk thermometer and compass, with glass dome modelled as a garden sundial, compass top, scaled column and carved base, 13cm high, paper dial with makers mark, by C Essex & Co London.  
£200-300
246.  
A Victorian copper saucepan and cover, 27cm dia.  
£50-80
247.  
Two 18th/19thC copper saucepans, with spade terminal handles, 18cm and 20cm dia.  
£50-80
248.  
A Victorian copper saucepan cover, 36cm dia.  
£50-80
249.  
A graduated set of three Victorian copper saucepan covers, 24cm down.  
£30-50
250.  
A pair of Victorian formed wall oil lanterns, and a pair of Victorian brass ejector candlesticks with oval bases, both 26cm high.  
£40-60
251.  
Brass and copperware, including two kettles, jug, foot warmer, modern stand and wooden bellows (a group lot).  
£40-60
252.  
A Victorian brass and pierced steel fire fender, 89cm wide.  
£40-60
253.  
A Victorian beadwork pennant screen, on a red ground, with brass wall bar, 49cm high.  
£50-80
254.  
A Victorian beadwork pennant screen, on a blue ground, with brass wall bar, 49cm high.  
£50-80
255.  
A Robert Thompson of Kilburn Mouseman bowl, 23cm dia.  
£80-120
256.  
A Newlyn Arts & Crafts copper rectangular tray, hammered and embossed with stylised fruit, stamped verso NEWLYN, 59cm x 40cm.  
£100-200
257.  
A small Victorian shell ornament, with applied moss, under a glass dome, 26cm high.  
£40-60
258.  
Three brown agate paperweights, including one with a spherical knop handle.  
£70-100
259.  
Two 19thC pietra dura slab weights.  
£20-30



260.  
Spare Lot
261.  
A Regency ormolu mounted rouge marble cassolette, of urn shaped design with goat's head mask mounts and floral swags, 26cm high.  
£50-70
262.  
A Victorian cast iron Mr Punch door porter, 33cm high, and another. (2)  
£30-40
263.  
A 19thC copper warming pan, with turned wood handle.  
£10-20
264.  
Two brass watering cans, and a copper jug marked J S & S, (3).  
£30-50
265.  
A 19thC copper jelly mould, and a copper ice cream bombe mould, (2).  
£30-40
266.  
A serpentine model lighthouse table lamp, with rock base, 37cm high.  
£40-60
267.  
A WMF Art Nouveau white metal two handled table centre stand, of oval design and with a repousse figure of a woman, lacking liner, 46cm.  
£40-60
268.  
A WMF Art Nouveau two division stand, with loop handle, 37cm.  
£70-100
270.  
A WMF electroplated table stand, with figural stem supporting a cylindrical cup and six recessed divisions to the base, 23cm high.  
£70-100
271.  
A pair of mahogany candlesticks, with slender fluted and tapered columns and circular bases, and another, 55cm high, (3)  
£80-120
272.  
Spare Lot
273.  
An Art Nouveau pewter two handled dish, decorated with pinks, and a beaten pewter candlestick, (2)  
£40-60
274.  
A Regency ormolu candelabrum, with three acanthus capped scrolling arms, with ram's mask terminals on a baroque centre and triform base, with sphinx figures and applied cartouches, 50cm high.  
£200-400
275.  
Two 1960's Unicorn retro plastic salt and pepper mills, and a Carltonware cubist cruet. (3)  
£20-40
276.  
A vintage Kiwi groomer shoe cleaning stand.  
£20-40
- 277-294.  
Spare Lots
295.  
A pair of Neo-Classical design giltwood wall lights, 62cm high.  
£40-80
296.  
A George III pewter charger, with a touch mark of MADELIN OF LONDON, 42cm dia., together with a further three similar period chargers, 38cm dia.  
£100-150
297.  
Two George III pewter plates, one with touch marks for Thomas Camplin (?), and another (2).  
£40-80
298.  
A 19thC silver plated dish stand, with warming base, 34cm over handles, a silver plated inkstand, and tray. (3)  
£50-80
299.  
A pair of Sheraton style brass wall lights, with ribbon and oval patera decoration, each with two lights, 69cm.  
£40-80
300.  
A Victorian rosewood screen, with central panel having a lithograph of a duck, 55cm high.  
£30-50
301.  
A Victorian garniture of gilt brass candlesticks, each cast with female figures on a marble base, 43cm high.  
£50-80
302.  
Victorian salt glazed stoneware, being two spirit barrels, Nawell's patent footwarmer and douche pan (4).  
£30-50
303.  
A Victorian brass bound walnut writing box, 35cm wide.  
£40-80
304.  
A Victorian flamed mahogany apothecary box, with scales to drawer (AF). 25cm high.  
£40-80
305.  
A Victorian copper saucepan and cover, with iron handles, 27cm dia., and bearing crest with crown over DN28.  
£80-100
306.  
A cast brass desk inkwell, of square form, classically moulded with acanthus scrolls and other details, the centre well with green liner and hinged cover, quill stand to fore, 18cm x 18cm, together with a Chad Valley Roller Dumper, with wooden and fabric roller, 10.5cm wide, (2).  
£30-50
307.  
A Sheffield Plate desk stand, of oblong shape with a hinged cover mounted with shell thumbpiece, conforming shell handles to sides, the interior fitted with two inkwells flanking a covered stamp well, on bun feet. 24cm wide.  
£60-80
308.  
A 19thC papier mache serving tray, the oval outline with a black banding highlighted with gilt floral scrolls centred with a hand painted scene of figures before stream and mountains with clouds gathering, in the manner of Betteridge but unmarked, 60cm x 78cm, (AF).  
£30-50
309.  
A Sheraton revival mahogany serving tray, of kidney shape, with satinwood inlaid shell, 60cm wide.
310.  
A brass torch form table lamp, 46cm high.  
£40-60
311.  
A Victorian beadwork tray stand, with ebonised frame, 53cm wide.  
£30-50
312.  
A 19thC riveted copper log bucket, 58cm dia.  
£50-80
313.  
Brass and copperware, including 18thC copper cauldron, taper bucket, saucepan and samovar (4).  
£50-80
314.  
A 20thC bronze candle stand, in the Baroque style converted to electricity, 41cm high.  
£40-60
315.  
A 19thC mahogany rectangular tray, with shell inlay, 50cm x 30cm.  
£40-60
316.  
Spare Lot
317.  
A Sheraton revival mahogany serving tray, of kidney shape, with floral marquetry inlay.  
£40-60
318.  
A Regency rosewood Boulle desk stand dish, 36cm x 29cm.  
£350-450 – no image needed
319.  
Two Robert Thompson of Kilburn 'Mouseman' bread boards, and four others (6).  
£50-80
- 320 to 332  
Spare Lots



# Sculpture



337.



344.



370.



390.



338.



353.



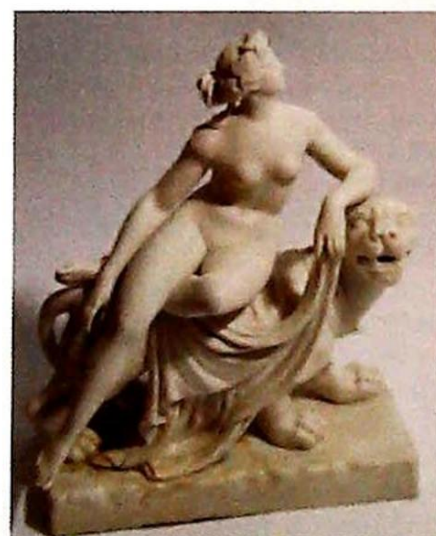
375.



395.



341.



355.



387.



398.



347.



369.



389.



## Sculpture



- ▲ 333. An 18thC Sevres biscuit group of two lovers eating grapes, seated against a tree-stump encrusted with a fruiting vine and with a Spaniel at their feet, entitled 'Les Mangeurs de Raisin', and further incised 'Bachelier', and '1779' to the base, with impressed Sevres mark, on a detachable shaped ormolu plinth, 25cm high overall. £500-800



- ▲ 334. A late 19thC/early 20thC cold painted figure of a young banjo player, seated on a high stool with simulated bamboo legs, in the manner of Bergman, 39.5cm high. £1000-1500

335. A 19thC French School. A bronze bust of a female facing sinister, with a draped and sashed dress, rounded socle and square plinth, black patination, 35cm high. £200-300

336. After the Antique. A male portrait bust, resin, 55cm high. £80-120

337. A 20thC bronze figure, of a short horn bull, with dark brown patination, 22cm high, 39cm long. £200-300

338. After Charles Valton (1851-1918). A patinated spelter figure of a longhorn bull and a companion figure of a shorthorn bull, both signed to oval bases and raised on wooden plinths, 30cm x 30cm and 26cm x 30cm overall. (2). £150-200



- ▲ 339. After Georges Gardet (1863-1939). A bronze figure of a longhorn bull, standing on a rocky base, green patination, signed, 35cm x 35cm overall. £300-400

340. A small bronze figure of a shorthorn bull, with brown patination, 6cm x 8cm, together with a mid brown patinated figure of a shire horse, on a rectangular plinth, 25cm x 27cm, (2). £50-80

341. A 19thC Parian figure group, of a woodman and his sweetheart sitting on a rock, she holding a nest of fledgling birds, 33cm high. £80-120

342. After Pierre-Jules Mene (1810-1879). Entitled 'Le Chasse au Lapin', a Parian group of three dogs, 31cm long, 16.5cm high, (damage to two of the tails). £20-40

343. A Weldon Pottery bisque figure group of a pointer and a setter, moulded on oval rustic base within a bronze foliate scroll stand, impressed mark and painted mark W, 41cm long, 26cm high. £80-120

344. A 19thC salt glazed figure of the Duke of Marlborough, in military uniform on horseback and supported on a rustic tree stump, with an oval base, faint underglaze blue mark F to the base, 30cm high. £200-300

345. A 19thC alabaster figure of Hercules, in a standing pose and leaning on a fleece draped stump, with his club, some losses including the left hand, 34cm high, (AF). £20-40

346. A 19thC alabaster figure of a semi-nude classical standing female figure, with her right hand raised and wearing a long gown, on a square slab plinth base, losses including left hand and three fingers to the right hand, 70cm high (AF). £30-40

347. A 19thC Parian figure group of a boy and a girl, seated on a rock, the boy with two rabbits in a basket, on an oval plinth base, 28.5cm high. £70-100

348. A 19thC Copeland Parian figure group of a lady and a gentleman, in 18thC dress and in a humorous pose in the manner of Hogarth, impressed mark to the base, gentleman's right hand missing, 21.5cm high (AF). £30-50

349. A 19thC Parian figure of James Watt, seated by a stove with kettle, impressed marks, minor losses, 28cm high, (AF). £30-50

350. A pair of 19thC Parian models of recumbent greyhounds, the dog in a sleeping pose and the bitch with head raised, 20cm long. £50-70

351. A 19thC Copeland Parian jardiniere group of The Three Graces, with lattice work basket to the top and triform base with lappet border, impressed mark, 53cm high. £150-250

352. After G Ruggeri. Wrestlers and a figure of David, in resin, 16.5cm and 31cm high respectively. £20-40

353. A reconstituted marble bust of a young woman, wearing a turban headdress, 56cm high. £100-150

354. A 19thC white glazed figure of The Dying Gaul, Gladiatore Mori Ponto, indistinct impressed mark to the reverse, 29cm long, 19cm high, (AF). £30-50

355. A 19thC Parian figure group of Ariadne and the panther, on a rectangular plinth base, 36cm high. £100-150

356. Two mid 19thC green and white pottery figures, of Diana seated with a dog and another classical female figure seated with an eagle, impressed marks L&M, 35cm and 37cm high respectively, (AF). £30-40

357. A 20thC patinated spelter figure of a Greek warrior, in a lunging pose with shield, lacks sword, on a rectangular plinth, 22.5cm high. £30-40

358. A 20thC patinated spelter figure of a Greek warrior, in a lunging pose with shield, lacks sword, on a rectangular plinth, 22.5cm high. £30-40



# Sculpture & Ceramics

**359.**  
Two 20thC patinated spelter figure of a Greek athlete, in a standing pose, with a ball balanced on his outstretched arm, on a square plinth base, 27cm high.  
£60-90

**360.**  
A 20thC patinated spelter figure of a Greek athlete, in a standing pose with arm raised aloft holding a laurel wreath, on a square plinth base, 34cm high.  
£30-50

**361.**  
A 19thC green marble figure, of a classical semi-nude male figure, in a haunched stance with outstretched arms, sharpening a knife, on a rustic rectangular plinth base, 19.5cm high, (AF damage to the nose).  
£40-60

**362.**  
A 19thC black soapstone model of a cockerel, 15cm high, (AF minor losses).  
£20-30

**363.**  
A 19thC spelter model of a dog, in a standing pose with raised front leg, on a oval rustic base, 12cm high.  
£20-30

**364.**  
A 19thC bronze model of a greyhound, in the style of Pierre-Jules Mene, on an oval base, 16cm high, (AF lacking tail).  
£50-70

**365.**  
A bronze patinated model of a pointer, 25cm long, and another of a boxer dog puppy, 16cm high, (2).  
£20-30

**366.**  
A 20thC white metal desk stand, in the form of a setter, in a standing pose, on an oval alabaster base, 20cm long, 11cm high.  
£70-100

**367.**  
An early 20thC bronze model of a recumbent whippet, on a black slate plinth, 19cm long, 11cm high.  
£30-50

**368.**  
A late 19thC bronze model of a recumbent male lion, on a rustic oval base, the edge of the foot stamped 18292, 21.5cm long, 14cm high.  
£80-120

**369.**  
A 19thC French School bronze harvest figure group, of a girl and two boys, one with a sickle and the other with a nest of birds, on an oval rustic base, 23cm long, 23cm high.  
£150-250

**370.**  
After F Voulet. A bronze figure of a young woman dancing, with outstretched arms and flowing gown, signed, 25cm high.  
£100-200

**371.**  
A bronze model of a stag, on rustic base and black marble plinth, 26cm high.  
£50-70

**372.**  
An early 20thC bronze model of a stag in a standing pose, mounted on a grey marble plinth, 12.5cm high.  
£30-40

**373.**  
A 19thC spelter group of two pointers, on a oval rustic base, 25cm long, 22cm high.  
£30-40

**374.**  
After Herman Eichberg. Two patinated spelter figures of Roman soldiers, both in standing poses and one with a spear and shield and the other with a bow and arrow, signed, 34cm and 37cm respectively  
£50-80

**375.**  
After Pierre-Jules Mene (1810-1879). A bronze model of a seated terrier, signed, on green marble plinth, 18cm high.  
£200-300

**376.**  
After Franz Bergman. A pair of cold painted table lamps, formed with male figures in green and red garb, 27cm high.  
£100-150

**377.**  
A bronze patinated figure of a boxer, with arms raised, on a grey marble plinth, 23cm high.  
£40-60

**378.**  
A green carved soapstone model of a boar, 12cm high.  
£30-40

**379.**  
An early 20thC hollow cast bronze model of a standing buffalo, on a rustic base, marked JB2441 to the oval foot, 13cm high.  
£50-70

**380.**  
A small bronze classical figure of a seated youth, extracting a thorn from his foot, 9.5cm high.  
£50-70

**381.**  
A bronze model of a goat, in a standing pose, on a wooden plinth, 21cm high.  
£50-70

**382.**  
A pair of 19thC hollow cast bronze figures, of Ariadne and the panther and a lioness, 15cm high including marble base.  
£200-300

**383.**  
A 19thC spelter model of a rampant unicorn, 21cm high.  
£20-30

**384.**  
A cast iron model of a male lion, in a standing pose, with foot on a ball, on a rectangular plinth, 24cm long, 16cm high.  
£30-40

**385.**  
Two late 19thC cast nickel dogs, (lacking silver plate), with registration diamond marks, one stamped J\*G, and inscribed SH in the casting, 9cm high.  
£20-30

**386.**  
A spelter model of a standing male lion, on a plinth base, 25cm long, 16.5cm high.  
£30-40

**387.**  
After Pierre-Jules Mene (1810-1879). Falkirk, a bronze group of an Arab mare and stallion, signed and inscribed, (tail AF), 54cm long, 33.5cm high.  
£200-400



**388.**  
A 1930's bronze model of a stag, with green and brown patination in a standing pose and mounted on an Art Deco style black marble stepped plinth, the reverse stamped bronze, 63cm high.  
£400-600

**389.**  
After Pierre-Jules Mene (1810-1879). A bronze model of a stallion, on a rustic base, black marble oval plinth, 39cm long, 33cm high.  
£200-300

**390.**  
A black pottery bust of a young Grecian woman, on a white marble plinth, 38cm high.  
£100-150

**391.**  
A white marble figure of a classical semi-nude woman, in a standing pose, 54cm high, (AF).  
£25-35



**392.**  
After Pierre-Joules Mene (1810-1879). A figure group of three dogs at a rabbit hole, entitled 'OAU Docteur Gondouin son ami a crevice', 1879, signed and inscribed, with green patination, 36cm long, 20.5cm high.  
£600-800



## Glass & Ceramics

393.  
After Joseph Boffill. A modern bronze patinated figure of a ballerina, 37cm high.  
£30-40

394.  
Manner of Rodin. A bronze figure of a gymnast, on a wooden plinth, 30cm high.  
£40-60

395.  
A bronze figure of a classical style nude male, partially entwined by a python, on a square rustic base, 61cm high.  
£200-300

396.  
A mid 19thC Parian classical figure bust of young female, inscribed G. Delpech, Regd; Art Union of London, impressed mark to base and dated 1855, 33cm high  
£80-120

397.  
An early 20thC bronze model of a stag beetle on an oak leaf, mounted on a rouge marble plinth, 15cm x 10cm.  
£30-50

398.  
A bronze patinated white metal bust of a Roman centaur, 37cm high.  
£70-100



399.  
A 19thC French bronze model of a pointer, indistinctly signed, on a white marble plinth, 41cm long, 61cm high.  
£300-500



400.  
After Egletine Lematre. Apporte! .., bronze model of a setter running, on a rustic base, 43cm long, 17.5cm high.  
£500-700



401.  
An 18thC Staffordshire pottery Whieldon type tea caddy, the shouldered square body with an upper bead banding raised with scrolls and flowers, with a tortoiseshell glaze in green and brown, on a shaped foot, 11cm high.  
£300-500

402.  
A Royal Doulton matt finish figure of a Staffordshire bull terrier, in brown and white colourway, printed marks beneath, 12cm high.  
£20-40

403.  
A 19thC brown West Moore & Co. pottery blue and white serving dish, the oval body decorated with a geometric and floral border and further central scrolls and flowers impressed marks beneath, 30cm wide.  
£20-30

404.  
An early 19thC creamware drainer stand, the oval body with a pierced centre, transfer printed to the top 'Mountain', (AF) 29cm wide.  
£30-50

405.  
A late 18thC blue and white pearlware coffee pot, the bellied circular body transfer printed with figures before buildings, with a floral decorated handle and associated domed lid on circular foot, (AF) 30cm high.  
£30-50

406.  
A 19thC blue and white transfer printed drainer stand, Genevise pattern, the oval body part pierced and decorated with buildings and trees, on moulded compressed orb feet, printed marks beneath, 27cm wide.  
£30-50

407.  
A 19thC pearlware blue and white sailor's motto jug, the bulbous body with a Willow pattern decoration and central cartouche reading 'Sarah Carter O Lord be Thou My Guide And Bring Me Safe To Land ... 1831', with beak spout and floral highlighted handle on circular foot, unmarked, 14cm high.  
£50-80

408.  
A 19thC pearlware sponge pattern tankard, the cylindrical body with a geometric floral pattern with ear shaped handle on circular foot, incised circle mark beneath, 11cm high.  
£20-40

409.  
A late 19thC Royal Commemorative Queen Victoria Diamond Jubilee earthenware plate, transfer printed with the bullock roasted on West Leigh Heath dated 1837-97, with a blue outer rim on circular foot, 22cm dia.  
£20-40

410.  
Various Brown and Polson's pottery kitchenalia, comprising a Paisley flower dish with moulded crimped edge and transfer printed centre, an Improved Popular pie funnel, a Clark's Pyramid Fairy Mould Cup and a blancmange mould with recipe to the exterior, 12cm high (4).  
£50-80

411.  
An 18thC Caughley porcelain asparagus server, in blue and white Oriental pattern, decorated with a figure before water and trees, with an outer geometric banding, unmarked, 8.5cm wide, and two others (3).  
£40-60

412.  
Various Maling pottery Cobblestones pottery, comprising a baking powder jar, jug, funnel and plate, 15cm dia., each with JH Awmack retailer's marks beneath, etc. (A quantity).  
£50-80

413.  
A pair of 18thC Chinese export blue and white porcelain salts, each with a shaped octagonal outline decorated with figures in boats before water, buildings and birds, on inverted bases with blue banding, 5cm high. (2)  
£50-80

414.  
A late 18thC Leeds Creamware jelly mould, of typical domed outline with uniform piecing, set with paper label reading 'Busland', and an 18thC creamware dish with a part pierced geometric body, 19.5cm dia. (AF) (2).  
£50-80

415.  
A Fribourg and Treyer pottery tobacco jar, the square body with removable lid revealing plain interior, transfer printed with a coat of arms and various other patronage, on a cream ground, (AF) 12cm high.  
£20-40

416.  
A 19thC black transfer printed tankard, the cylindrical body decorated with figures fishing, with plain ear handle on circular foot, (AF).  
£10-20

417.  
A late 19thC Choisy le Roi food warmer, the cylindrical body with moulded 'S' scroll handles, with a compressed domed lid and orb finial, the interior liner and front opening on circular foot, brown printed mark beneath, 21cm high.  
£40-60

418.  
A pair of mid-19thC Copeland and Garrett serving leaf dishes, the first of shaped rectangular form, with veined leaves and gilt highlighted handles on a moulded oval foot, black printed crown mark beneath no.7196, and another similar, 27cm wide (2).  
£50-80



# Ceramics

419.  
Spare Lot

420.  
**A 20thC Plichta London Wemyss style pottery pig**, seated and handpainted with thistles to the body, in green and pink, printed marks and initialled F W beneath, 11cm high.  
£30-50

421.  
**Two early 19thC Derby porcelain figures**, each of a shepherdess, polychrome decorated and dressed in finery holding lambs with floral garlands on bocage backs with hollow bases, one numbered 60, with painted no.52 and impressed no.3 beneath, 14cm high (2).  
£60-80

422.  
**A 19thC Mason's Ironstone blue and white part serving service**, comprising a pair of lidded tureens, each of hexagonal outline, decorated with birds, flowers and scrolls, with domed lids, set with floral knobs, flanked by moulded dragon head handles, one with a stand, 37cm high, and a similar sauce tureen (a quantity).  
£50-80

423.  
**A pair of early 19thC Dutch Delft blue and white tin glazed earthenware vases**, of shouldered form, raised with scrolls and decorated with flowers and trees, on shaped bases, each marked 19½ 0 beneath, 29cm high (2).  
£80-120

424.  
**An early 19thC Staffordshire creamware sauce tureen**, the oval body with domed lid, polychrome decorated with an oak leaf border and shaped handle, predominantly in green and yellow, the main body similarly decorated on an oval foot, with a brown line border, unmarked, 30cm high.  
£40-60

425.  
**A matched pair of early 19thC pottery bocage figures of dogs**, each in standing pose, one backed by a tree bough on naturalistic floral encrusted bases, numbered 27 etc., possibly Ralph Salt, 11cm high (2, unmarked, AF).  
£80-120

426.  
**A mid-19thC Staffordshire pink lustre cow creamer**, in standing pose, with tail handle and body picked out in pink and orange sponging on a naturalistic base with oval stopper, unmarked, 16cm high.  
£50-80

427.  
**A pair of 19thC Staffordshire pink lustre cow creamers**, each in standing pose, their tails formed as handles and bodies sponged in pink floral pattern, each with stoppers, on green naturalistic bases, 15cm high, unmarked, (2).  
£100-150



428.  
**A mid-19thC Staffordshire leopard and cubs spill vase group**, polychrome decorated, formed as a leopard aside two cubs with an attacking serpent on a bocage treework stem, polychrome decorated predominantly in green, brown and yellow, on an oval foot (unmarked).  
£300-500

429.  
**A mid-19thC Staffordshire flatback lion and unicorn clock group**, the circular dial surmounted by a crown flanked by the beasts on a part bocage base, polychrome decorated predominantly in green, yellow, blue and pink, with a gilt lined scroll front, 26cm high.  
£50-80

430.  
**An 18thC creamware sauceboat**, the ellipse shaped body sparsely decorated with a green, orange and brown dot and line banding on a moulded oval foot similarly decorated, unmarked, handwritten collector's label no.302 beneath, 20cm wide.  
£50-80

431.  
**An early 19thC Derby porcelain sauceboat on stand**, of Neo-Classical design, the ellipse shaped body flanked by moulded handles with gilt highlights, with a shaped lid, with section for ladle and entwined handle on a separate base similarly decorated with green banding, purple crown mark beneath, 24cm wide.  
£20-40

432.  
**Two similar 19thC Pearlware sauceboats on fixed stands**, each ellipse shaped body decorated with differing arrangements of flowers, one surmounted by a scroll handle, each on bases with an outer floral banding, unmarked, 19cm high etc., (2).  
£30-50

433.  
**An 18thC Staffordshire creamware sauceboat on fixed stand**, the Neo-Classical designed ellipse body surmounted by a shaped lid, with moulded handle, decorated with a brown geometric pattern and set with an armorial crest of arm holding arrow, the base similarly decorated, unmarked, in the manner of Wedgwood.  
£80-120

434.  
**A 19thC majolica pottery spill vase**, in the form of a standing setter, the body sponged in brown, set with two baskets on a naturalistic base predominantly in brown and green, with a brown glazing to the underside, unmarked, 17cm high.  
£50-80

435.  
**A 19thC Mason's Ironstone jar and cover**, the octagonal body typically decorated with vases of flowers, surmounted by a domed lid with a compressed circular knob picked out with gilt highlights, on a shaped base, printed marks beneath, 50cm high.  
£30-50

436.  
Spare Lot

437.  
**A 19thC Mason's Ironstone jug**, the shaped body polychrome decorated with various geometric floral patterns and berries in blue and orange with gilt highlights, on a shaped base, blue printed crown mark beneath, 30cm high.  
£20-30

438.  
**An 18thC Sevres porcelain saucer**, with gilt highlights hand painted with garlands of flowers predominantly in pink and blue and broken by medallions of further flowers, on circular foot, double Louis mark beneath and date letter OO, 13.5cm dia, and two other various saucers to include early 19thC Derby etc. (3).  
£60-80

439.  
**A 19thC porcelain sucrier**, the inverted bellied body hand painted with flowers and butterflies, predominantly in green, orange, blue and yellow, flanked by moulded handles and surmounted by a domed lid with shaped knob, on a circular foot, numbered 53 beneath with handwritten label J R Daniel, 16cm high.  
£20-30

440.  
**An 18thC creamware part dessert service**, possibly Thomas Pardoe, comprising plates and oval side plates, each with moulded flowers and centred by hand painted flowers to include Great Monsonia, 27cm wide, etc., (3).  
£50-80



441.  
A 19thC Moore and Co blush ivory vase, of architectural outline, set with a flowerhead with further flowers on a gilt highlighted barkwork base, flanked by two similar designed garniture, 16cm high, pink marks beneath circa 1880 (3).  
£20-40
442.  
A 19thC Prattware pot lid, Dr Johnson, 11cm dia., polychrome decorated on stand, and three others (4).  
£30-50
443.  
A 19thC Chinese design vase, the circular shouldered body decorated with figures, pagoda, fence and trees with an upper and lower geometric and floral banding, surmounted by a domed lid on circular foot, unmarked, probably English earlware, 19cm high.  
£20-40
444.  
A late 19thC Mason's Ironstone jug and bowl, the jug with gilt highlighted serpent handle with polychrome decorated body, decorated with flowers predominantly in green, pink and orange, on a shaped foot with matching bowl, printed marks beneath, 29cm high.  
£20-40
445.  
An early 19thC Dixon Austin and Co Sunderland pottery plaque, 'Prepare To Meet Thy God', with yellow and black outline and black lettering, impressed marks beneath, 18cm dia.  
£50-80
446.  
A Woods Cherry Areca Sleaford transfer printed jar and cover, black lettering, 9cm dia, a Highland Pottery plate, blue and white soap dish etc. (A quantity).  
£30-50
447.  
A 19thC Prattware pot lid, the Ning Po river, transfer printed and polychrome decorated on stand, 11cm dia., and another (2).  
£20-30
448.  
A mid-19thC brown stoneware spirit barrel, the oval body with leaf decoration with upper berries and leaves and centred by lion and unicorn coat of arms with front tap (vacant), unmarked but possibly Brameld, now converted to electricity, 73cm high.  
£50-80
449.  
A set of four 19thC Spode pottery plates, each of shaped outline, hand painted with scenes of St Andrews, Fife, Rochester Castle, Hereford and The Remains Of Latton Priory Elsey, with gilt highlights with an inner powder blue border, each 23cm wide, printed and painted marks beneath, (4).  
£100-150
450.  
A 19thC Prattware pot lid, 'Turillo Pinx', polychrome transfer printed on a mottled gilt highlighted base, 11cm dia.  
£20-30
451.  
A 19thC Prattware pot lid, 'On Guard', polychrome transfer printed, on stand, 11.5cm dia., and two others, 'Low Life' and 'A Fix'. (3, AF).  
£30-50
452.  
A 19thC Prattware pot lid, 'The Village Wedding Tenier's', with diamond registration mark, Cross & Blackwell mark beneath, polychrome transfer printed on stand, 11cm dia., and two others (3).  
£20-40
453.  
A Dutch Delft tin glazed earthenware classical figure group, of a nude astride serpent on the water, picked out in colours, unmarked, probably 19thC, 19cm high.  
£30-40
454.  
An early 20thC Royal Doulton Slater's patent teapot, the circular body with domed lid, thumb mould handle and plain spout on circular foot, impressed marks beneath, 18cm high.  
£20-30
455.  
A 19thC Wemyss Pottery candlestick, with circular dish holder and cylindrical tapering stem on an inverted square block base, hand painted with thistles in green, yellow and pink, printed Goode and impressed marks beneath, 18cm high.  
£40-60
456.  
A pair of 20thC Griselda Hill pottery Wemyss style candlesticks, each with compressed circular dish holders and cylindrical stems on square bases, decorated with thistles predominantly in green, purple and pink, painted marks beneath, 34cm high (2).  
£100-150
457.  
A 19thC Wemyss Pottery quaich, the circular body hand painted with flowers in pink and green with inverted geometric handles on a circular foot, impressed mark Wemyss Ware RH&S beneath, 28cm wide (crazed).  
£50-80
458.  
A 19thC Wemyss Cabbage Rose jug and bowl, the bulbous shaped jug, 17cm high with shaped handle decorated with floral sponging, the body decorated with pink and green flowers on a circular foot, the matching bowl with printed Goode and impressed Wemyss marks beneath. (2)  
£100-150
459.  
A late 19thC Wemyss handkerchief vase, the inverted cylindrical body hand painted with cabbage rose in pink and green on a circular foot, painted mark beneath, 15cm high, (AF).  
£30-50
460.  
A late 19thC Wemyss Pottery vase, with overhanging floral top and cylindrical stem, decorated with cabbage rose in pink and green, on circular foot, painted marks beneath 16cm high, (AF).  
£30-50
461.  
A 19thC Wemyss Pottery teapot, the circular body with moulded handle and stem and compressed circular lid with orb knob, the body decorated with cabbage rose in pink and green, on circular foot, painted and printed marks beneath, 15cm high, (AF).  
£20-30
462.  
A 19thC Wemyss Pottery side plate, the circular body hand painted with fruit in orange and green, with a green border on circular foot, painted marks beneath, 17cm dia., (AF).  
£20-30
463.  
A 19thC Wemyss Pottery vase, the trumped shaped inverted cylindrical body hand painted with cabbage rose in green and pink, on a circular foot, painted marks beneath, 20cm high, (AF).  
£20-30
464.  
A 19thC Wemyss Pottery chamber pot, the inverted circular body hand painted with cherries predominantly in green, pink and brown, on a circular foot, printed Goode and printed marks Wemyss Ware RH&S beneath, 15cm high, (crazed).  
£100-150
465.  
A 19thC Wemyss Pottery vase, the inverted cylindrical body hand painted with cherries predominantly in green, pink and brown on circular foot, painted mark beneath, 12cm high.  
£30-50
466.  
A 19thC Wemyss Pottery vase, the inverted trumpet body hand painted with cabbage rose in pink and green on circular foot, impressed and painted marks beneath, 20cm high, (AF).  
£20-30
467.  
A 19thC Wemyss Pottery vase, the inverted cylindrical body hand painted with cabbage rose in pink and green on circular foot, painted marks beneath, 11cm high, (AF).  
£20-30



# Ceramics

468.  
Various 20thC Mason's Patented Ironstone blue and white china, to include miniature chamber pot, 20cm wide, jug and bowl etc., each similarly decorated with birds and flowers, printed marks beneath, and a beaker (4).  
£20-30

469.  
An early 19thC porcelain stand, in the rococo style, raised with crustaceans and raised with shells with a shaped gilt highlighted outline and centre painted green with sections for three various bottles, on a shaped oval base, unmarked, 33cm wide. (AF).  
£40-60

470.  
A 19thC Wemyss Pottery jug, the cylindrical body with angular handle decorated with Bon Jour cockerel design, predominantly decorated in black, red and green, on a circular foot, painted Wemyss and Goode marks beneath, 7cm high, (AF).  
£20-30

471.  
A modern Wemyss Griselda Hill Pottery tile, hand painted with a cat amongst grass in black and green, printed and impressed marks beneath, 16cm high, and another similar (2).  
£20-40



▲ 472.  
A tin glazed earthenware teapot, the compressed circular body with 'C' scroll handle and cylindrical spout, decorated with birds predominantly in orange, blue and yellow with an upper floral geometric banding, domed lid and compressed knop, on circular unmarked foot, attached label marked 'Early English, 1740 1- 1750'.  
£200-300

473.  
An 18thC English blue and white Delft tin glazed plate, the circular body decorated with Oriental vases and stools with an outer floral and brown line banding, on circular foot, partially decorated verso, 27.5cm dia.  
£30-50

474.  
An early 19thC blue and white transfer printed plate, decorated with a farmhand and cow before house, trees and mountains with an outer leaf banding on unmarked circular foot, 25cm dia.  
£20-40

475.  
An 18thC Chinese export blue and white porcelain bowl, decorated with a figure and fence before pagoda and trees with birds in the distance with an outer geometric banding broken by stylised flowers, on an unmarked circular base, 23cm dia.  
£20-40

476.  
An 18thC English tin glazed earthenware Delft plate, the circular body centred by flowerheads with a double outer latticework banding on circular (unmarked) foot, 20.5cm dia. and a quantity of other items.  
£40-60

477.  
A 19thC Staffordshire flatback spill vase, of a gentleman huntsman aside dog and dead game, polychrome decorated predominantly in orange, blue, green and pink, with a part bocage back, on an oval part gilt lined base, 26cm high.  
£20-30

478.  
Various 19thC Mintons transfer printed hearth tiles, each decorated with Classical scenes in brown and white, to include warriors etc., raised marks verso 'Mintons China Works Stoke-on-Trent', 16cm x 16cm (a quantity).  
£30-50



479.  
An early 20thC Continental porcelain vase, in the manner of Kaufmann, the shouldered body with trumpet stem, gilt highlighted and hand painted with a front panel of a courting couple before trees, on a circular base, unmarked, probably Austrian, 41cm high.  
£30-50

480.  
A Chinese Ming style dragon garniture set, the centrepiece formed as a dragon before circular panel, raised with Chinese lettering and flanked by smaller Dogs of Fo, on a shaped base, predominantly decorated in green and yellow, 50cm high and two similarly decorated garniture, all early 20thC. (3).  
£100-200

481.  
A 19thC brown stoneware jug, the moulded body raised with tulips, with a shaped handle, on circular foot, unmarked possibly Derbyshire, 19.5cm high.  
£15-25

482.  
A modern blue and white pottery Lazy Susan centrepiece, the circular body with gilt outline centred by an urn with front tap, articulating at the centre, decorated with the Willow pattern on a circular foot, unmarked, 37cm high.  
£30-50

483.  
A pair of late 19thC Mintons Moustiers pattern sucriers, each ellipse shaped body with shaped lids and ring handles, flanked by further scroll handles decorated with orange flowers and an upper floral banding on removable bases, 16cm high, (2).  
£20-40

▲ 484.  
A pair of early 19thC Dutch Delft blue and white milkmaid and cow groups, each with standing cow on floral pattern aside a lady and gentleman on shaped bases, inverted K and B mark above G mark beneath, numbered 8/3, with paper collector's label, 19cm high, (2 AF).  
£250-350

485.  
An early 19thC Staffordshire bocage group of sheep and lamb, each picked out in red, the sheep initialled EC, before a tree bough on a part floral base, possibly Walton, unmarked, 10cm high.  
£30-50

486.  
An 18thC pottery blue and white tea caddy, the shaped body with plain cylindrical top in a Neo-Classical design, with stylised pillars and blue garlands on a shaped foot or base, probably Leeds, (unmarked), 11cm high.  
£80-120

487.  
An 18thC Liverpool blue and white porcelain cider tankard, the cylindrical body with strapwork handle decorated with Oriental style buildings and trees with an upper geometric banding, 14cm high. (AF).  
£100-150

► 488.  
An early 19thC porcelain Mansion House dwarf, typically decorated in standing pose with gilt orb buttons and floral waistcoat, yellow and blue jacket and floral hat on a naturalistic floral base, wearing black shoes with gilt highlights, unmarked probably Derby, 24cm high.  
£200-300



489.

A late 18thC blue and white porcelain tankard, the cylindrical body decorated with fruits and leaves, with plain handle on circular foot, crescent mark beneath numbered 7, probably Caughley but of very white porcelain, 11cm high. £50-80

490.

A late 18thC Worcester porcelain chestnut basket, the shaped pierced outline centred by a floral section on circular foot, impressed marks and painted number 3 beneath, 19cm wide. £50-80

491.

A 20thC Wedgwood bone china fruit bowl, 50th Anniversary of the Garden Club of America, transfer printed with gilt highlights with interior eagle and shield motif, printed marks beneath, 25cm dia. £20-40

492.

A late 18thC Caughley porcelain cabbage leaf jug, with satyr mask head spout and moulded scroll handle, the body decorated with parrot and fruit pattern on circular foot, blue crescent mark beneath, 23cm high. £80-120



493.

An 18thC English porcelain blue and white cup, the cylindrical body decorated with flowers with a plain handle on circular foot, unmarked, 9.5cm high. £40-60

494.

An 18thC Worcester blue and white porcelain sauceboat, with textured slipper body and 'C' scroll ear shaped handle, on oval foot, decorated with panels of flowers with an open crescent mark beneath, 10cm high. £50-80

495.

An 18thC blue and white porcelain sauceboat, of cape outline, the textured body decorated with flowerheads with a thumb scroll handle on shaped oval foot, probably Liverpool, 8cm high. £100-200

496.

An 18thC blue and white Worcester porcelain bottle and bowl set, in the Oriental manner, decorated with figures, trees and pagoda, the bottle on circular foot with inverted stem, 24cm high, and similar bowl (2, AF). £100-200

497.

An 18thC Caughley blue and white porcelain punch bowl, the circular body with an inner geometric outline, decorated with tree to the centre, the exterior decorated with Oriental boat, trees, birds and buildings on a circular foot, open crescent mark beneath, (AF), 23cm dia. £80-120

498.

An 18thC blue and white porcelain tea bowl, the cylindrical body decorated with panels of flowers, on circular foot, with inner banding, unmarked possibly Liverpool or Vauxhall, 9cm dia. £30-50

499.

An early 19thC Staffordshire pearlware blue and white inkwell, the cylindrical body with an upper floral banding, decorated with panels of buildings on an unmarked circular foot, 10cm high. £20-40

500.

An 18thC blue and white porcelain tea bowl and saucer, 14cm dia., each decorated with an arrangement of flowers on a white ground, each unmarked possibly Worcester, (2). £30-50

501.

Various 19thC wares, to include an English pottery slop bowl in the Oriental manner, polychrome decorated with panels of figures, 16cm dia., a Spode dish, Imari style plate, etc. (a quantity). £10-20

502.

A modern Pink Panther Collection dish, decorated with figural handle to the back, 19cm wide, another similar and various owl lamps, (a quantity). £10-20

503.

An early 19thC Spode no. 2461 pattern and other part service, to include teapot, 26cm wide, stand, milk jug, quantity of various cups, saucers, other black transfer printed wares, (a quantity, AF). £30-50

504.

Various 18thC and later porcelain and pottery, to include a polychrome decorated floral slop bowl, 16cm wide, Pinxton style dish and cover, other cups, saucers, plates, inverted dish, transfer printed and hand painted plates, etc. (a quantity). £20-30

505.

An 18thC English tin glazed Delft tile in purple, decorated with a semi-clad figure in a garden, probably Brislington, 14cm x 14cm, another of a figure in a boat before buildings and a polychrome tin glazed earthenware tile, decorated with flowers (3). £40-60

506.

An early 19thC Derby porcelain vase, of campana form, hand painted with panels of flowers with gilt highlights, flanked by raised ring scroll handles on an inverted circular stem with further gilt highlights and red crown mark beneath, 17cm high. £40-60

507.

Various 19thC Staffordshire and other decorative jugs, to include a Staffordshire pink lustre design example decorated with deer in a naturalistic setting with barkwork handle, polychrome decorated in green, yellow and pink, 18cm high, a similar designed jug, another hunting scene jug, etc. (4). £30-50

508.

An 18thC green bottle, of shouldered cylindrical form, (uncorked), 25cm high. £30-50

509.

An early 19thC Staffordshire pottery motto tankard, the cylindrical body transfer printed with various mottos to include 'Wish Not So Much To Live Long As To Live Well', in black with plain ear handle on a circular moulded base, 10cm high. £40-60

510.

A late 18thC Pearlware God Speed The Plough style tankard, polychrome decorated with an upper floral banding, the main body decorated with various farming tools, wheat sheaf etc., with a strapwork handle, on a circular foot, 12cm high. £30-50

511.

Various pottery etc., to include a Royal Terracotta porcelain polychrome jug, 20cm high, and bowl, each piece decorated with panels of figures on an orange ground with gilt highlights, a Staffordshire lustre jug and a pink lustre hare coursing and snipe shooting jug, of shell shaped outline on textured base, (4). £30-50

512.

Various part tea services, to include Royal Worcester Astley pattern, to include dish, 20cm dia., cups, saucers etc., each piece polychrome decorated, an Imari finish part service, Royal Doulton Burgundy pattern part service, etc. (a quantity). £20-30



# Ceramics

513.  
A 20thC Moorcroft powder blue part service, to include cups, 5cm high, etc., and a quantity of other similar wares, coffee pot, vase, plates, side plates, etc., many pieces with impressed marks beneath (a quantity).  
£50-80
514.  
A Copeland and Spode Maritime Rose pattern part service, to include sugar bowl, 8cm high, cups, saucer, jugs, side plates, serving plates etc., (a quantity).  
£40-60
515.  
A Wedgwood Poterat part service, to include graduated dishes, shaped circular serving plates, 21cm wide, other plates etc., each piece polychrome decorated (a quantity).  
£40-60
516.  
A late 19thC semi-porcelain part tea service, polychrome decorated and gilt highlighted with upper floral garlands predominantly in blue, pink and green, to include sugar bowl, serving plates, cups etc. (a quantity).  
£40-60
517.  
A Chinese porcelain blue crackle vase, the bulbous body with cylindrical stem, in blue with black highlights on a circular glazed turquoise foot, 24cm high.  
£50-80
518.  
A Chinese porcelain glazed vase, the cylindrical stem in purple with side seal mark, 29cm high.  
£100-150
519.  
Various 19thC and later earthenware, to include Mason's Ironstone serving dish, polychrome decorated with a Willow pattern, with boats, figures on bridge, buildings etc., with a shaped outline, 49cm wide, similar plates, a quantity of Burleigh blue and white pottery etc., (a quantity).  
£30-50
520.  
Various 19thC and later porcelain part services, pottery cups, 6cm high, Coalport design cabinet cups etc., (a quantity).  
£20-30
521.  
An early 19thC Derby and associated part service, many pieces decorated with an upper blue banding with gilt floral highlights with circular handles on circular feet, to include cups, 7cm high, a quantity of other 19thC porcelain, part tea services, etc. (a quantity).  
£40-60
522.  
Various Poole pottery, to include a compressed bowl, with floral banding no.221, printed and impressed marks beneath, 16cm dia., jug, etc., (a quantity).  
£10-20
523.  
Various items, to include Ringtons Maling ware jug, with floral decoration on a lustre body, with moulded handle, 21cm high, Gibson and Sons hand painted jug, various cabinet plates, swan ornament, a Copeland Spode Italian bowl, etc., (a quantity).  
£20-30
524.  
An early 20thC Mason's patent Ironstone jug and bowl, the shaped jug decorated with birds and flowers, polychrome decorated predominantly in blue, orange and yellow, 25cm high, and a similarly decorated bowl, (2).  
£20-30
525.  
Various 19thC Ironstone china dinnerware, comprising various shaped plates, each polychrome decorated with flowers predominantly in green, blue and red with gilt highlights, 22cm wide, (a quantity).  
£30-50
526.  
A pair of early 20thC porcelain vases, each of campana form with pierced gilt highlighted handles, the main bodies each decorated with panels of flowers on shaped feet with block bases, 21cm high, and a similarly decorated vase, larger, (3).  
£10-20
527.  
Various decorative jugs, to include a 19thC English stoneware example, decorated with Oriental figures, 21cm high, a Parian style jug, copper lustre etc., (a quantity).  
£10-20
528.  
A 19thC Davenport Ironstone jug, the shaped body decorated with flowers with an upper banding and gilt highlights, on a shaped base, with dragon handle in predominantly green, orange and blue, anchor mark beneath, 25cm high.  
£20-40
529.  
Various Minton fish hearth tiles, polychrome decorated predominantly in green, yellow and black, marks beneath, 15.5cm x 15.5cm, (a quantity).  
£50-80
530.  
An early 20thC Wedgwood and Co Narcissus pattern jug, the shaped pottery body decorated with flowers predominantly in pink, yellow and green, with a turquoise banding, printed marks beneath, 33cm high.  
£10-20
531.  
A 19thC stoneware game pie dish, in the manner of Wedgwood, the oval body with lid, with game handle, raised with further game and flowers, undecorated and unmarked, 27cm wide, (AF).  
£30-50
532.  
A 19thC Mintons Moustiers pattern tureen, the shaped part textured oval lid with an outer floral banding in orange, centred by a ring handle and flanked by further handles, the main body similarly decorated on stand, 39cm wide, printed marks beneath.  
£20-30
533.  
A mid-19thC Davenport pottery tureen, of oval outline, transfer printed with flowers with an outer rope twist banding in purple and turquoise, on a shaped base, printed marks beneath, 46cm wide.  
£20-30
534.  
A pair of decorative Oriental design blue and white vases, each octagonal body decorated with a floral butterfly and insect banding and with panels of figures beneath, 39cm high, unmarked, and two D-end planters in purple and white with an upper moulded banding, probably early 19thC, (4).  
£30-50
535.  
Various pot lids etc., comprising black and white transfer printed examples, John R Wood Sleaford Chemist, 6cm dia., Cross & Blackwell jar, another for Dijon mustard and a Bear's grease lid for James Atkinson, (4).  
£30-50
536.  
Various black and white transfer printed pot lids, toothpaste jars, etc., to include Cherry Toothpaste with a shaped square lid, on base, 5cm high, Wood's Toothpaste, another similar, cold cream jars, another blue transfer printed for Carrick's Cumberland Dairy For Thick Cream, (a quantity).  
£50-80
537.  
A Bourne, Johnson & Latimer black transfer printed universal inhaler, the shouldered body with cork top and removable lid set with two circular holes, black transfer printed on a purple and cream ground, 17cm high, and a similar decorated Dr Nelson's inhaler (2).  
£50-80
538.  
A 19thC Chinese pottery garden seat, 44cm high.  
£200-300
539.  
Victorian Staffordshire pottery, including a bough group watchstand and seven pastille burners/cottages (8).  
£60-100
540.  
A Victorian multicolour sulphide glass dump paperweight, 10cm dia., and two further smaller weights and a Langley stoneware match striker (4).  
£60-90



541.  
A First Glass three colour pedestal bowl by Bob Crooks, numbered 1772, 18cm dia. £50-80

542.  
An Edwardian garniture of Cauldon pottery, being a pair of square section vases and bowl, 24cm high, (3). £30-50

543.  
Paperweights and glass dish, being a Kerry glass green swirl, Isle of Wight blue and gilt, another and green dish (4). £30-50



544.  
A 19thC Continental porcelain plaque, painted with a Roman lady in an interior, 37cm x 20cm. £300-500

545.  
A Victorian Staffordshire lustreware teapot, decorated with reserves 'Happy may you be...' and 'Those who lure good tea', an Ironstone pot pourri vase, blue and white invalid feeding cup and a blue and white botanical four division toast rack etc. (a quantity). £50-80

546.  
A pair of 19thC Staffordshire porcelain figures of spaniels, modelled seated on naturalistic bases, 13cm high. £50-80

547.  
A 19thC Copeland pottery vase, of octagonal baluster form, decorated with birds, 44cm high, a Rockingham style pot pourri vase and cover, 49cm high, and an Ashworth's Ironstone wash jug (AF), (3). £40-60

548.  
Two Victorian cut glass lustres, and two cut glass epergnes (4). £60-90

549.  
A gold glass witches' ball, 24cm dia. £30-50

550.  
A Moorcroft pottery table lamp, of baluster form, decorated in the Hibiscus pattern, 18cm high. £50-80

551.  
A set of three early 19thC blue and white supper dishes, transfer decorated in the Willow pattern, together with one lid. £30-50

552.  
Two pairs of late 19thC green glass lustres, with faceted cut glass drops, 33cm and 27cm high respectively (AF). £50-80

553.  
A group of Regency and later glass, including a Bristol blue glass 'Rum' bottle, white overlaid glass scent bottle, wine rinser and a pair of finger bowls (a quantity). £40-60

554.  
A composite set of late 19thC Bristol blue glass finger bowls, and three green glass bowls. £50-80

555.  
A Longtons pottery vase, late 19thC, of cylindrical form decorated with prunus blossom against a turquoise cracked ice ground, on a brass stand, 31.5cm high. £80-120

556.  
A pair of early 19thC botanical dessert plates, and an oval dish, possibly Thomas Pardoe, painted with Great Monsonia, Siberian Iris and Jasmine (3). £100-150

557.  
An early 19thC Crown Derby porcelain desk stand, of serpentine form with integral pen box and inkwell, gilt foliate decorated against a cobalt blue ground, raised on lion's paw feet, 21cm long. £80-120

558.  
A pair of Chinese blue and white porcelain garden seats, of barrel form, decorated in blue and white with dragons and flowers, 48cm high. £50-80

559.  
An early 19thC blue and white pottery soup tureen, cover and stand, transfer decorated in a botanical pattern, 46.5cm long, 31cm high (AF). £60-90

560.  
A quantity of 19thC and later cut glass wine glasses. £60-90

561.  
A quantity of Richard Ginori porcelain tea and coffee wares. £40-60

562.  
A quantity of 19thC drinking glasses. £40-60

563.  
A Mason's oak lemonade set, comprising two jugs and ten beakers, each embossed with oak leaves and acorns. £80-120

564.  
A group of late 18th/early 19thC dram glasses, each with single long stems. £40-60

565-570.  
Spare Lots

571.  
A late 18thC blue and white Pearlware sauceboat, with moulded scroll slipper outline, plain strapwork handle and shaped base, the body decorated with flowers and an upper geometric banding set with an interior floral decoration, 11.5cm high. £30-50

572.  
An 18thC blue and white Oriental design shell shaped dish, and another pickle dish of leaf shaped outline with stem handle, decorated with figures and pagoda, each unmarked, 12cm wide, (2). £20-30

573.  
A late 18thC English porcelain tea bowl, polychrome decorated with an arrangement of flowers in pink, yellow and green on a circular foot, with an inner geometric polychrome banding, possibly Newhall, 9cm dia. £20-30

574.  
An 18thC blue and white Caughley sugar bowl, the circular body decorated with Oriental buildings and flowers on a circular foot, with interior decoration, blue crescent mark beneath, 13cm dia. £30-50

575.  
A late 18thC English porcelain tea bowl and saucer, 12cm dia., each polychrome decorated with flowers, with outer floral bandings predominantly in orange, green and blue, probably Newhall, (2). £20-40

576.  
An 18thC blue and white Lowestoft porcelain tea bowl, the circular body decorated in the Oriental manner with buildings and trees, on an unmarked circular foot with an inner geometric banding, 8.5cm dia. £30-50

577.  
An 18thC blue and white Caughley porcelain tea canister, the cylindrical body decorated with various flowers and butterflies, on a circular foot, with an upper double line banding, blue crescent mark beneath, 13cm high. £60-80

578.  
An 18thC blue and white porcelain tea bowl, the circular body with an outer yellow and inner geometric banding, the exterior decorated with Oriental houses and trees, on an unmarked circular foot, 5cm high. £20-30



# Ceramics

579.  
An 18thC English blue and white porcelain vase, the shouldered body with an upper geometric banding, decorated with Oriental buildings and trees on a circular foot, slender crescent mark beneath, 12.5cm high.  
£100-150
580.  
A pair of 18thC English blue and white porcelain sauceboats, each of cape outline, decorated with Oriental figures, one on the back of an ox before buildings, with shaped ear handles, 9cm high, possibly Lowestoft (2).  
£100-200
581.  
An early 19thC Minton Pottery desk thermometer, the central brass plate in a heavily encrusted polychrome decorated case, with flowerheads, gilt highlights etc., on a crescent designed base centred by a further flowerhead predominantly in blue, pink, green and yellow, labelled verso, 19cm high.  
£80-120
582.  
An 18thC English blue and white porcelain tea bowl, decorated with Oriental pagodas, streams and other buildings, on a circular foot possibly Liverpool, (unmarked), 8.5cm dia.  
£30-50
583.  
An 18thC blue and white porcelain tea bowl, the circular body decorated with Oriental trees, pagoda and other building with an inner geometric banding, unmarked possibly Liverpool, 8cm dia.  
£30-50
584.  
A 19thC Bohemian ruby flash glass beaker, the tapering cylindrical body decorated with leaves and panels, one entitled 'Conversationssalin Fiat Lingen', on a clear glass base, 11.5cm high.  
£20-40
585.  
An 18thC English blue and white porcelain tea bowl, decorated with an Oriental figure on bridge before buildings and trees, on a circular gilt lined base pseudo Chinese mark beneath, probably Worcester, 8cm dia.  
£20-40
586.  
A matched pair of 18thC blue and white porcelain tea cups, each bell shaped body decorated in the Oriental manner, with upper geometric bandings and shaped handles on plain circular feet, unmarked both possibly Lowestoft, 6.5cm dia., (2).  
£60-80
587.  
An 18thC blue and white porcelain sauceboat of small proportion, with shaped outline and ribbed border with thumb scroll handle, (unmarked), 5cm high.  
£30-50
588.  
An 18thC blue and white porcelain cream jug, the shaped body with upper flowing rim and ear handle, on shaped base, decorated with Oriental figures before buildings and hills, with an inner geometric banding unmarked probably Worcester, 8cm high.  
£30-50
589.  
A late 19thC/early 20thC Bohemian ruby flash glass jar and cover, of shaped outline raised with various panels to include Frauzensbrude, on a florally shaped foot, 21cm high, (AF).  
£30-50
590.  
A 19thC Bohemian green glass tumbler, etched with panels entitled 'Landeck', raised with gilt orbs on a plain circular base, 9cm high.  
£30-50
591.  
A 19thC Continental porcelain centrepiece, formed as a cherub holding fan, polychrome decorated with flowers predominantly in green, yellow and red, on a shaped base with gilt highlights, unmarked, 22cm high, (AF).  
£20-30
592.  
A late 18thC English porcelain figure group, of Time clipping the wings of Putti, polychrome decorated with gilt highlights predominantly in turquoise, red and brown, on a shaped unglazed base and impressed number 2 beneath, probably Derby, but unmarked, 27cm high, (AF).  
£80-120
593.  
A 19thC Bohemian glass and enamel table lustre, the castellated top on an inverted stem terminating in a circular protruding base, highlighted with panels of flowers with gilt highlights, with a partial plain glass stem, 32cm high, and an arrangement of various droppers.  
£50-80
594.  
An 18thC blue and white Caughley porcelain slop bowl, the circular body centred to the interior with a rosette of flowers, the exterior decorated with birds, flowers and foliage on a circular foot, blue filled crescent mark beneath, 16cm dia., (AF).  
£15-25
595.  
An early 19thC porcelain sucrier, the shaped body centred by an urn with gilt highlights and shaped lid with inverted knop, numbered N65 beneath, 16cm high.  
£10-20
596.  
An early 19thC English porcelain teapot, in the manner of Newhall, with a bulbous body and compressed lid with floral knop, each polychrome decorated in pink, green and purple, with a shaped spout and moulded thumb handle, 15cm high.  
£80-120
597.  
A 19thC English porcelain cabinet cup and saucer, 17cm wide, each of shaped outline decorated with sea crustaceans with gilt outlines, numbered 1177 beneath, (2).  
£10-20
598.  
An 18thC Chinese export porcelain teapot, decorated in a Newhall type palette, the bulbous body polychrome set with flowers predominantly in pink, purple and green, surmounted by a domed lid with shaped knop, with plain spout and handle on circular foot (unmarked, AF).  
£40-60
599.  
A 19thC Bohemian green glass gilt highlighted and enamel beaker, the bell shaped body decorated with panels of flowers predominantly in purple, orange, blue and green, on a circular foot with an upper gilt highlighted border, 13cm high, (AF).  
£30-50
600.  
A 19thC Staffordshire figure group, Samson and the Lion, polychrome decorated predominantly in green, purple, orange and grey, on a part gilt lined base, 31cm high, (profusely damaged).  
£10-20
601.  
A 19thC Pearlware figure, of a piper aside dog on a bocage ground, polychrome decorated in brown, green and yellow on a shaped pierced base, 17cm high.  
£50-80
602.  
A pair of 19thC Continental pot pourri vases, each hinged lid with gilt orb knop of pierced outline, raised above tapering cylindrical bodies, hand painted with flowers with gilt highlights and gilt handles, on inverted circular bases terminating in block feet, unmarked, 19cm high, (2).  
£20-40
603.  
Various early 19thC black transfer printed wares, comprising a Staffordshire teapot of compressed circular outline, with domed lid, the main body decorated with panels of children before buildings and trees, 13cm high, a Continental opaque cider tankard and a transfer printed jug. (3).  
£40-60



604.  
A Derby semi-porcelain  
sucrier, the ribbed circular body  
with domed lid and gilt  
highlights on a saucer base,  
painted red crown mark  
beneath, 14cm high, and a  
Copeland and Garrett teapot,  
the shaped body transfer  
printed with an compressed  
knop handle (2).  
£10-20
605.  
Three various lidded sucriers,  
comprising Neo-Classical  
design, possibly Spode, with a  
black transfer print of cherubs  
with gilt highlights, 12cm high,  
another similar transfer printed  
example and an early 19thC  
Coalport floral decorated  
sucrier, with associated lid  
(3, AF).  
£10-20
606.  
Various 18thC and later  
porcelain, to include a tea bowl  
and saucer, of ribbed circular  
outline, decorated with flowers  
in the manner of Pinxton, 5cm  
high, a tea bowl and saucer with  
fleur-de-lys decoration, cream  
jug, sauceboat, stand, cup, etc.,  
(a quantity).  
£40-60
607.  
An early 20thC Naples Capo di  
Monte porcelain lidded  
chocolate cup, heavily  
decorated and raised with  
Classical figures, with a figural  
knop with rope twist handles in  
green and white, polychrome  
decorated on a gilt lined base,  
blue N and crown mark  
beneath, 15cm high.  
£40-60
608.  
Various Dr Wall and other  
Worcester blue and white  
coffee cups, all late 18thC to  
include Three Flower pattern,  
others with Oriental design of  
buildings, 6cm high, others for  
Caughley etc., various marks  
beneath (a quantity).  
£150-250
609.  
An 18thC blue and white  
porcelain tea bowl, decorated  
with trees, birds and houses,  
with an inner floral banding  
and central floral highlights,  
possibly Lowestoft, 8cm dia.  
£30-50
610.  
An early 19thC Oriental design  
tea bowl and saucer, 15cm dia.,  
each polychrome decorated in  
the famille rose palette, and a  
further 18thC Chinese design  
tea bowl, decorated with panels  
of figures, flowerheads etc. (3).  
£100-150
611.  
Various 18thC and later coffee  
cans, cups etc., to include one  
polychrome decorated with  
classical figures, 6cm high etc.,  
(a quantity, AF).  
£30-50
612.  
Various 18thC and 19thC  
porcelain, to include a Newhall  
style tea bowl and saucer, 16cm  
wide, polychrome decorated  
predominantly in pink, a cream  
jug with blue and gilt  
highlighted rim, hand painted  
sucrier on stand, etc.  
(a quantity).  
£30-50
613.  
A 19thC French terracotta  
dolls's head, formed as a child  
with a fly in their eye, with  
material top, 9cm high.  
£40-60
614.  
Various porcelain, comprising a  
pair of Derby style crumb  
coated lamb spill vases,  
probably Sampson, 11cm high,  
another similar and an  
undecorated figure of a child  
playing flute aside dog,  
possibly Derby, all unmarked,  
(4, AF).  
£30-50
615.  
Various blue and white ware  
etc., to include an early 19thC  
blue and white transfer printed  
cylindrical jar decorated in the  
Willow pattern with an upper  
floral banding, 11cm high, slop  
bowls, cups, saucers, tea bowls  
etc. (a quantity, AF).  
£30-50
616.  
Three various 19thC  
Staffordshire figures, to  
include equestrian figure, 19cm  
high, clock group etc. (3).  
£20-30
617.  
Two pairs of 19thC blue and  
white pottery knife rests, each  
of shaped rectangular outline,  
one pair decorated with scrolls  
and latticework, 10cm wide, etc.  
(4).  
£20-30
618.  
An early 19thC pearlware blue  
and white jug, transfer printed  
and decorated with Oriental  
trees, pagoda and other  
buildings, with an upper floral  
and yellow line banding, with  
plain handle, moulded spout on  
circular foot, and another  
similar but smaller, (2, AF).  
£30-50
619.  
Various porcelain, to include a  
blue and white leaf shaped  
pickle dish, 13cm high, a small  
quantity of other wares, etc., (4).  
£20-30
620.  
Various 19thC and later china  
pottery, transfer printed teapot,  
14cm high, etc., (a quantity).  
£10-20
621.  
Two early Victorian cut crystal  
bon bon urns, with covers,  
34cm high.  
£50-80
622.  
A Victorian ironstone  
hexagonal tureen, with stand  
and cover by J & WR.  
£80-120
623.  
A Victorian slip glazed  
earthenware lamp base,  
40cm dia.  
£40-60
624.  
A Mason's Ironstone jug,  
23.5cm high.  
£40-60
625.  
A Clarice Cliff 'My Garden'  
jug, black ground with palm  
tree handle, 23cm high  
£40-80
626.  
A 19thC Staffordshire clock  
group, the circular dial  
surmounted by poodle and  
flanked by two spaniels,  
predominantly decorated in  
orange, green and black with  
gilt highlights on a gilt lined  
base, 25cm high.  
£30-50
627.  
A pair of 19thC Staffordshire  
equestrian group figures, each  
sparsely decorated with gilt  
highlights, 33cm high, and  
another polychrome decorated  
figure, (3).  
£20-30
628.  
A 20thC pottery figure, of a  
standing cockerel, picked out in  
red and yellow with black  
painted eyes, on a naturalistic  
base, predominantly in white,  
turquoise, green and blue,  
unmarked, 68cm high.  
£20-30
629.  
A 19thC treacle glazed pottery  
figure, of a standing cat, in  
black and yellow on a shaped  
base (unmarked), 29cm high.  
£50-80
630.  
A 19thC Mason's Ironstone  
meat plate, the shaped oval  
outline centred with an Oriental  
scene of boats before bridge and  
buildings, with an outer floral  
and geometric banding,  
predominantly in green, yellow  
and blue, printed marks  
beneath, 53cm wide.  
£20-40
631.  
An early 20thC Royal Doulton  
jug, the cylindrical body  
decorated with a bird on a tree  
bough predominantly in brown,  
yellow, green and cream, on a  
circular foot with printed marks  
beneath, no.D3614, 33cm high.  
£30-50
632.  
An early 20thC Royal Doulton  
jug, on cylindrical body transfer  
printed with boats on calm  
waters, on a circular foot,  
printed marks beneath,  
no.D2959, 35cm high.  
£20-40
633.  
Two 18thC Chinese blue and  
white chargers, (completely  
rebuilt), 35cm dia.  
£30-50
634.  
A Victorian porcelain Lazy  
Susan, of Aesthetic design, (AF)  
on a mahogany pedestal,  
56cm dia.  
£30-50



# Ceramics

635.  
A 19thC Copeland & Garrett **comport**, the shaped dish in green and white with gilt floral highlights, on an inverted acanthus leaf stem terminating in shaped foot, printed marks beneath, 30cm wide, and a Schizanthus comport of similar design, (2).  
£20-30
636.  
A 19thC Derby **part service**, to include large oval tureen, 35cm wide, plates etc., decorated with flowers predominantly in pink, yellow, red and blue, with gilt highlights, red crown, D and cross marks beneath, (a quantity).  
£40-60
637.  
An early 19thC **porcelain part dessert service**, comprising shaped serving dish, 28cm wide and seven plates, each similarly decorated with a variety of flowers, with a part pierced outer banding with gilt highlights, various numbers beneath to include 27153 etc., (a quantity).  
£20-40
638.  
A quantity of 19thC **porcelain plates**, to include one decorated with summer flowers with gilt highlights and a quantity of numbered botanical plates etc., each with gilt highlights, 21cm wide etc. (a quantity).  
£30-50
639.  
A Wedgwood **Poterat pattern part dinner service**, to include serving plate, 43cm wide, two lidded tureens, sauce tureen, plates, etc., each typically polychrome decorated, (a quantity).  
£40-60
640.  
Four graduated **Mason's Ironstone blue and white meat plates**, each of octagonal outline, decorated with a stylised Willow pattern, printed marks beneath, 38cm wide, etc. (4).  
£40-60
641.  
A late 19thC **Mason's Ironstone part dinner service**, comprising a lidded tureen, 30cm wide, two others smaller, sauce boat on stand and a serving plate, each decorated in red and purple with a bird and floral pattern, with partial gilt highlights, (a quantity).  
£30-50
642.  
**Various 19thC stoneware jugs**, to include Copeland & Garrett style decorated with raised moulded religious figures, acanthus capped angular handle, 23cm high, an E. Walley patent green glaze jug decorated with hunting scenes and two others similar, (4).  
£50-80
643.  
A 19thC **Derby style jug**, decorated in black with flowers, with an upper moulded spout, strapwork handle and set with gilt highlights on a circular (unmarked) foot, 23cm high.  
£20-30
644.  
A 19thC **Staffordshire Genuine Opaque China sauce tureen**, the oval body with domed lid and space for ladle, polychrome decorated with flowers on a white ground, raised on oval foot flanked by blue shell handles and surmounted by floral knop, printed marks beneath, 36cm high.  
£20-30
645.  
An early 19thC **Spode blue and white transfer printed chamber pot**, the circular body decorated with figures and cattle before castle and trees, on circular foot, printed marks beneath, 28cm wide.  
£80-120
646.  
A 19thC **semi porcelain comport**, with a shaped outline with gilt highlights, centred by hand painted roses in pink and green, on an inverted gilt highlighted stem and bell shaped foot, (unmarked, probably English), 28cm wide.  
£20-30
647.  
A pair of 19thC **Bohemian ruby clear and etched glass vases**, each with shaped castellated tops, with tapering cylindrical bodies on inverted domed feet, 37cm high, (2, AF).  
£30-50
648.  
A 19thC **Ironstone pottery jug**, with shaped outline and elaborate handle, transfer printed with a floral design predominantly in blue, red and green on an unmarked foot, 28cm high.  
£20-30
649.  
A 19thC **Mason's Ironstone blue and white pottery jug**, with shaped rim and stylised dragon handle, the main body decorated with Oriental pagodas and trees with an upper floral banding on shaped foot, printed marks beneath, 32cm high.  
£20-40
650.  
A 19thC **Ironstone china turkey dish**, with a shaped outline and central veined drainer, decorated with vases and flowers with an outer floral banding, predominantly in blue, orange and green, with a yellow painted rim, printed marks beneath, no.266, 52cm wide.  
£30-50
651.  
A 19thC **English Ironstone china meat plate**, the shaped octagonal outline centred with an arrangement of flowers predominantly in orange, green and blue with gilt highlights, with a yellow line banding, numbered 993, with printed marks verso, 38cm wide.  
£20-30
652.  
A late 19thC **semi-porcelain comport**, the shaped outline centred with a flower in pink and green, with naturalistic double strap and leaf handles on an acanthus topped stem and a shaped base, numbered 2/700 beneath, 39cm wide.  
£20-30
653.  
A 19thC **Sitzendorf figure of a child**, holding basket of flowers before a tree bough, polychrome decorated predominantly in pink, green and red, on a gilt lined base with double blue cross line mark beneath, 12cm high.  
£20-30
654.  
A mid-19thC **Staffordshire figure group**, of a gentleman in Highland dress hunting deer aside dog on a naturalistic gilt lined base, predominantly decorated in green, brown and black, 39cm high.  
£20-40
655.  
Two 19thC **Staffordshire flatback figures**, to include a clock group, the Arabic dial flanked by figures in Highland dress, predominantly in orange, green and black on a gilt lined base, 22cm high, and another (2).  
£20-30
656.  
A 20thC **Beswick pottery Friesian cow**, Claybury Leegwater, printed marks beneath, 13cm high.  
£30-50
657.  
A 20thC **Beswick pottery Friesian calf**, (style one), printed marks beneath, 8cm high.  
£20-40
658.  
A 20thC **Beswick pottery Highland bull**, 14cm high, (AF).  
£15-25
659.  
**Various 20thC pottery figures of cattle**, to include a Highland bull, possibly Melba, another in treacle glaze, horned calf, hand painted plate decorated with Ayrshire cow, etc. (a quantity)  
£20-30
660.  
A 20thC **Beswick pottery black faced ewe** 6cm high, and lamb. (2, AF).  
£10-20
661.  
A **Beswick pottery Friesian cow**, Claybury Leegwater, printed marks beneath, 11cm high.  
£30-50



662.  
A 20thC Beswick pottery Hereford bull, printed marks beneath, 16cm high.  
£30-50
663.  
A 20thC Beswick pottery Ayrshire bull, Whitehill Mandate, printed marks beneath, 13cm high.  
£40-60
664.  
A 20thC Poole Pottery figure of a leaping dolphin, in black and turquoise, printed marks beneath, 20cm high, and a figure of an otter with fish (2).  
£15-25
665.  
A 19thC Staffordshire milkmaid group, formed as a cow and lady, each polychrome decorated on a naturalistic base, predominantly in brown, green, black and white, on a gilt lined base, unmarked, 25cm high, (AF).  
£20-30
666.  
A GDR WA Blue Crown figure of milkmaid and cow, decorated in blue and brown on a naturalistic base, printed marks beneath, 15cm high, and a pottery figure group of a standing sheep with bell, (2).  
£15-25
667.  
A 20thC Continental pottery group of a standing cockerel of large proportion, with orange plumage and yellow beak on a naturalistic base, highlighted with flowers predominantly in blue and green on a concave base, unmarked, possibly Capodi Monte, 63cm high.  
£30-50
668.  
A 20thC pottery figure of a standing Friesian cow, in black and white with horns, unmarked, 24cm high.  
£20-30
669.  
A late 19thC Dairy Supply Limited pottery figure group, of a milkmaid and cow, the standing horned beast in brown colourway aside milkmaid on oval base, predominantly in brown, green, yellow and blue, printed marks beneath, 30cm high, (AF).  
£30-50
670.  
A mid-19thC Staffordshire pottery cow creamer, in sponged black and brown decoration with gilt highlights on an oval gilt lined base, 14cm high, another in orange and white sponging and another similar, (3, AF).  
£20-40
671.  
A 19thC Staffordshire Willow pattern cow creamer, in standing pose with tail handle and stopper on a naturalistic base in blue, green and white with grey highlights, unmarked, 13cm high.  
£20-30
672.  
A late 19thC Staffordshire pottery cow creamer, with tail handle and stopper with brown sponging and gilt highlights on plain oval base, 13cm high, and another similar on gilt lined base, (2, AF).  
£15-25
673.  
A very early 19thC Staffordshire pottery cow creamer and milkmaid group, with tail handle and stopper, with pink sponging on a shaped green base, paper label beneath, circa 1800, 14cm high, (AF).  
£100-150
674.  
A mid-19thC Staffordshire cow spill vase group, the horned beast with entwined tail, sponged in black on a white ground on a naturalistic base predominantly in green, with a gilt lined rim, unmarked, 15cm high, (AF).  
£30-50
675.  
An early 19thC Leeds Pottery cow creamer with milkmaid, with tail handle, predominantly sponged in black and pink on a blue splash base (minus lid), 16cm high.  
£80-120
676.  
A 19thC Staffordshire cow creamer, with entwined tail and lid, sponged in black and yellow on an oval textured green base, 13cm high.  
£20-30
677.  
A 19thC Staffordshire blue and white cow creamer, with tail handle and stopper, the body in a stylised Willow pattern on a shaped part green base with a full line banding, 13cm high, (AF).  
£20-30
678.  
A 19thC Staffordshire cow creamer, with tail handle and stopper, in brown and white on a textured green base with a line banding, the horns picked out in gilt, 12cm high, and four others similar, (5, AF).  
£40-60
679.  
An early 19thC Staffordshire lustre cow creamer, with tail handle, the body picked out in pink and orange on white ground on a green naturalistic base, circa 1820, 15cm high, (minus stopper, AF).  
£30-50
680.  
A mid-19thC Staffordshire cow creamer, with tail handle and stopper, sponged in black on a textured green base with an all-round gilt banding, 13cm high, (AF).  
£20-40
681.  
A 19thC Staffordshire cow creamer, with tail handle and stopper, the body picked out in orange on a plain white base, with a gilt banding, another similarly decorated, a black glazed example with gilt highlights and another in brown, (4, AF).  
£40-60
682.  
A 19thC Staffordshire cow creamer, with tail handle and stopper, in orange sponging, the horns and eyes picked out in gilt on a plain base with further gilt lined banding, 13cm high, (AF).  
£10-20
683.  
A late 18thC Staffordshire cow creamer and milkmaid group, naively sponged in brown on a cream ground on shaped base with a latticework banding, 13cm high, (lacking stopper), with Golding Young & Co. Grimsthorpe Castle Lot 82 label beneath. (AF).  
£100-150
684.  
A late 19thC Jackfield style pottery cow creamer, with tail handle and stopper, in black with gilt highlights on a plain oval base with further gilt banding, 12cm high, a brown glazed example and another in orange, white and green, (3, AF).  
£30-50
685.  
A 19thC Staffordshire pottery cow and calf group, the standing beast sponged in brown before calf, on a naturalistic base with stream in blue, green and brown, numbered 2 beneath, 13cm high.  
£20-30
686.  
A 19thC Staffordshire cow creamer, with tail handle and stopper in brown on white ground on a naturalistic base painted green with gilt highlights and banding, 12cm high, another in black and another in sponged decoration (3, AF).  
£20-40
687.  
A mid-19thC Staffordshire milkmaid and cow spill vase group, the standing beast eating a bocage of flowers before a milkmaid and stream backed with a spill vase tree trunk, polychrome decorated predominantly in green and blue with gilt highlights, 19cm high.  
£30-50
688.  
A late 18thC Yorkshire creamware cow creamer, with tail handle, sponged in brown and grey on a green base with outer moulding, 14cm high, (lacking stopper, AF).  
£80-120
689.  
A 19thC pottery cow and calf group, in gold lustre highlights on a naturalistic base with a brown lined banding predominantly in purple, green and brown with a stream to the front, unmarked, possibly Staffordshire, 14cm high, (AF).  
£20-30



# Ceramics

690.  
A 19thC Staffordshire pottery cow creamer, in brown sponging with gilt highlights on an oval foot with gilt banding, 13cm high, and four other cow creamers (5, AF).  
£20-30

691.  
A late 19thC Continental bisque figure group, of a standing horned cow on a naturalistic oval base, picked out in colours, unmarked, 12cm high, (AF).  
£15-25

692.  
An early 20thC Royal Dux cow creamer, with tail handle and stopper, picked out in orange on a white ground with gilt highlights, the partial naturalistic base with further gilt banding, reading 'Though Only A Cow I Feel Quite Proud For Bring You Pure Milk From The Dairy...', printed marks beneath, 15cm high (AF).  
£20-30

693.  
A near matching pair of Staffordshire cow creamers, with tail handles and stoppers, each in brown glazes with gilt highlights on moulded oval bases with gilt line bandings, 14cm high, and another very similar (3, AF).  
£20-40

694.  
A late 19thC Jackfield style pottery cow creamer, with tail handle and stopper, the black body gilt highlighted with a floral pattern on an oval base with further gilt banding, 14cm high, and two others similar (3, AF).  
£20-40

695.  
A late 18thC Leeds Prattware cow creamer and calf group, with tail handle, sponged in black and purple on a naturalistic base, with further green and blue sponging, 16cm high (minus stopper, AF).  
£80-120

696.  
An early 19thC Staffordshire Prattware cow creamer, the main body sponged in brown and yellow on an inverted green glazed base, circa 1800, 11cm high, handwritten beneath Thomas Fell 1825 (AF).  
£40-60

697.  
A pair of late 19th/early 20thC semi porcelain figures of a cockerel and hen, each heavily decorated in green and black with gilt highlights on naturalistic bases, 27cm high etc., (2).  
£30-50

698.  
A 20thC naive pottery terracotta finish figure of a standing cow, sponged in orange and yellow on a white ground, on a shaped rectangular base, unmarked, 28cm high, (AF).  
£10-20

699.  
A 20thC Studio pottery bellarmine, the bulbous body with mask head cylindrical spout and stylised acanthus handle on circular foot, lustre finish glazes of turquoise, brown and purple, unmarked, 18cm high, and a modern Grecian pottery dish (2).  
£10-20

700.  
Seven various treacle glazed pottery figures of Highland and Aberdeen Angus calves, each in standing pose, unmarked, 7cm high, (all, AF).  
£10-20



701.  
A pair of Dutch Delft tin glazed earthenware figures of cattle, each in recumbent pose, polychrome decorated to the bodies in orange, green and blue, on blue splash bases, each marked PVM beneath, probably late 18thC or early 19thC, 10cm high, (AF).  
£300-500

702.  
A Dutch Delft tin glazed earthenware recumbent cow flower brick, polychrome decorated with flowers predominantly in orange, yellow and blue, blue marked HR beneath, probably early 20thC, 14cm high.  
£30-50

703.  
A 19thC British Sports brown transfer printed ale tankard, the cylindrical body decorated with figures on horseback hunting with hounds, with an angular ear shaped handle, printed marks beneath, 10cm high, and a later transfer printed mug (2).  
£20-30

704.  
Various Farmer's Arms God Speed The Plough pottery wares, to include a loving cup, 11cm high, and two others smaller, similar ale tankard and a colour variation mug, 11cm high, each typically polychrome decorated, various marks beneath (5).  
£20-30

705.  
A pair of 19thC Staffordshire figures of farmhands, comprising boy and girl, each sat aside wheat sheaves, with spill vase backs, polychrome decorated predominantly in yellow, green, orange and black, on black striped bases, numbered 23 beneath, (2).  
£20-40

706.  
A 19thC Staffordshire equestrian group, the figure holding wheatsheaf and basket, polychrome decorated predominantly in yellow, green, brown and blue on a gilt lined base, 26cm high.  
£30-50

707.  
Various polished stone Studio style figures of animals, to include elephant, 11cm high, and two cats, and a figure of a duck (4).  
£20-30

708.  
A Sheberg Isle of Man bisque figure, of a recumbent lamb, picked out in black, impressed marks beneath, 5cm high.  
£30-50

709.  
A quantity of Richard Ginori coffee wares.  
£30-50



710.  
A pair of 18thC Sevres porcelain vases, each of Neo-Classical design with shouldered tapering circular bodies and inverted stems, surmounted by domed lids with acorn finials, with angular handles, each hand painted with scenes of cherubs before a stream, castle and mountains, on inverted squat trumpet stems and shaped bases, double blue Louis marks beneath, 38cm high, (2).  
£800-1200

711.  
A late 19thC Staffordshire milkmaid and cow group, the standing beast on a naturalistic base, with the milkmaid in front holding pail, predominantly in brown, yellow and orange on a brown lined base, 26cm high, (AF).  
£20-40

712.  
A Staffordshire pottery bull baiting group in the manner of Obadiah Sherratt, the angry beast behind the irate farmer, with terriers to the head and neck, on a green painted base entitled 'Bull Beating Now Captain Lad', unmarked, probably early 20thC, 15cm high.  
£200-400

713.  
A mid-19thC Staffordshire maid and cow figure group, polychrome decorated in black and white sponging, she in yellow hat, blue jacket and orange apron, with gilt highlights on a naturalistic gilt highlighted base, 17cm high.  
£20-30



714.  
A Continental pottery figure of a standing pheasant, polychrome decorated in typical palette on a naturalistic concave base, unmarked, 47cm high. £30-50

715.  
A 20thC Beswick pottery Friesian bull, Coddington Hiltbar, printed marks beneath, 13cm high. £30-50

716.  
A 19thC porcelain figure, of a seated hound, with gold anchor mark, 8cm high, and a pair of Staffordshire Spaniels on blue cushion base, 9cm high. (3) £30-50



717.  
A porcelain dinner plate from The Raphael Service of Imperial Porcelain Manufactory, St Petersburg, Period of Alexander III (1884-1894), dated 1891, the cavetto painted en grisaille with female figure and two putti on an iron red ground in a hexagonal reserve, the rim border with three roundels each depicting a putto within classical friezes, with gilt Imperial cypher dated 1891 23.5cm dia. £6000-9000



718.  
A porcelain dinner plate from The Raphael Service of Imperial Porcelain Manufactory, St Petersburg, Period of Alexander III (1884-1894), dated 1887, the cavetto painted en grisaille with figures on rearing horses on an iron red ground in a hexagonal reserve, the rim border with three roundels depicting Pan and others within classical friezes, with gilt Imperial cypher dated 1887 23.5cm dia. £6000-9000



719.  
A porcelain oyster dish from the Raphael Service of Imperial Porcelain Manufactory, Period of Nicholas II (1896-1917), dated 1899, the cavetto painted en grisaille with a finely painted figure on a rearing horse on an iron red reserve, within nine radiating panels decorated with winged mythical creatures and foliage, with gilt Imperial cypher dated 1899, 14.5 cm £3000-5000

720.  
Three Russian porcelain tea cups and two saucers, Period of Alexander III (1884-1894), the gilt decoration and with green Imperial cipher £200-400



721.  
A Lalique opalescent glass vase decorated in the Moissac pattern, tapering form moulded with vertical bands of leaves, etched mark, 12.5cm high. £400-600

722.  
A set of ten early 19thC English porcelain plates, decorated in the Imari style. £180-250

723.  
A pair of early 19thC French faience rococo vases and covers, possibly Veuve Perrin of Marseilles, with pierced covers and rims, the body painted with roses and pansies and having a cartouche painted en grisaille landscape with polychrome seated female, 33cm high £200-300



724.  
An early 19thC Derby porcelain garniture of campana urns, with gilt decoration and reserves of floral sprays, red mark period, 16cm and 20cm (heavy damage to the largest). £300-400

725.  
A late 19thC Minton dessert service, each having turquoise and gilt borders and floral central reserves, comprising two high comports, four low comports, six plates. £100-150

726.  
A pair of Carl Thieme Dresden porcelain cabinet plates, with reticulated rococo borders having polychrome panels of flowers, enriched in gilt and central fields of floral sprays, mark to base in underglaze blue, 26cm dia. £80-120

727.  
A pair of Whieldon pottery dinner plates, silver shaped, 24cm dia. £80-120

728.  
An early 19thC blue and white pottery spittoon, the shaped circular body with plain handle and spout profusely decorated with pagoda, other buildings and trees on a circular foot, marks beneath, 11cm high. £100-150

729-730.  
Spare Lots



# Paintings

## Paintings

starting at 6.30pm

Robin Wheeldon (b. 1945).  
Lots 751 to 756.



▲ 751.  
'Clydesdale and Steam Plougher', oil on board, signed and dated 1983, 25cm x 45.5cm.  
£150-250



▲ 752.  
'Horse Harvest', oil on board, signed and dated 1985, 32cm x 56cm.  
£150-250



▲ 753.  
'Lincoln Longwools', oil on board, signed and dated '90, 40cm x 61cm.  
£150-250



▲ 754.  
'Full Cry', oil on board, signed and dated 1984, 29.5cm x 57cm.  
£150-250

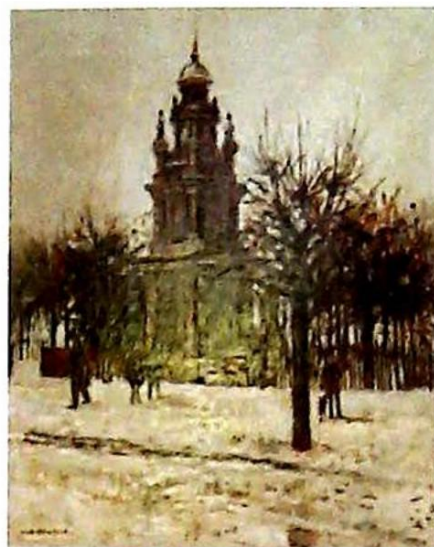


▲ 755.  
'Plough Team & Huntsman', oil on board, signed and dated 1984, 37.5cm x 59cm.  
£150-250



▲ 756.  
'Steam Threshing', oil on board, signed and dated 1984, 46cm x 66cm.  
£150-250

Peter Brannan (1926-1994).  
Lots 757 to 778.



▲ 757.  
The Monument, oil on board, signed and dated (19)68, 49.5cm x 39cm.  
£400-600



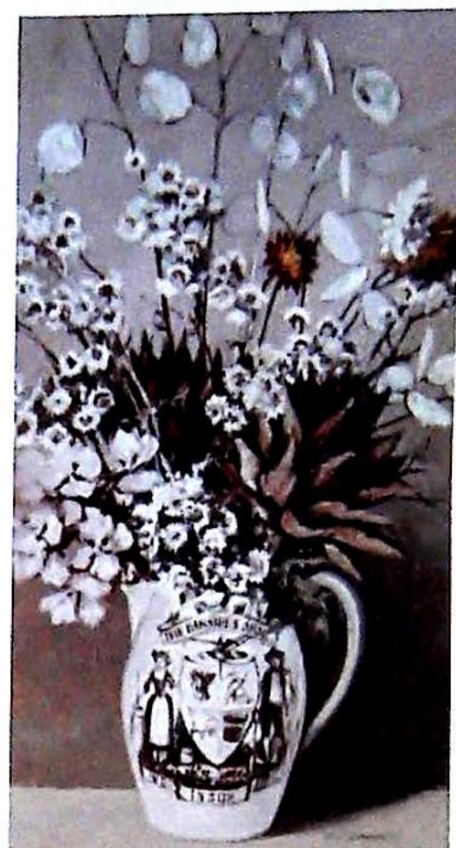
▲ 758.  
Seaside - bathing pool, oil on board, signed and dated 1975, 44cm x 75cm.  
£800-1200



▲ 759.  
Caravas, oil on board, signed and dated 1967, label verso Royal Society of British Artists, 28cm x 44.5cm.  
£300-500



▲ 760.  
Brick Pit, oil on board, signed, dated (19)78, and titled verso, 60cm x 78cm.  
£400-600



▲ 761.  
Dried flowers in The Farmer's Arms jug, oil on board, signed and dated (19)79, 43cm x 23.5cm.  
£150-250



▲ 762.  
Station Approach, oil on board, signed, dated (19)82, title verso, 29.5cm x 40cm.  
£400-600



▲ 763.  
Coastal view sand dunes, signed and dated (19)80, 34cm x 35cm.  
£200-400





▲ 764.  
Nottinghamshire landscape, oil on board, signed, dated (19)77, and titled verso, 57cm x 70cm.  
£300-500



▲ 765.  
Coastal view, oil on board, signed and dated (19)80, 26cm x 40cm.  
£200-400



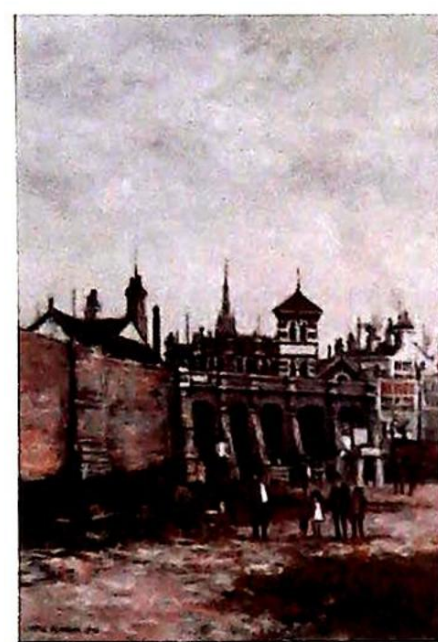
▲ 766.  
By The Sea, oil on board, signed and dated (19)78, 26.5cm x 33.5cm.  
£200-300



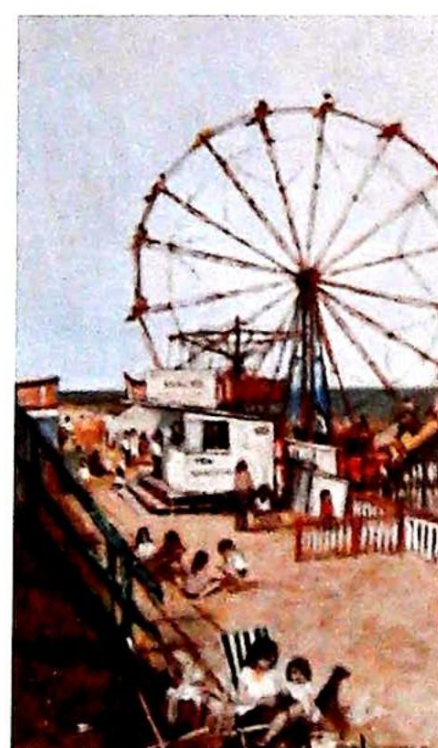
▲ 767.  
Coastal view with bathers, oil on board, signed and dated (19)84, 52cm x 68.5cm.  
£500-800



▲ 768.  
Behind the sea wall, oil on board, signed, dated (19)77 and titled verso, 27.5cm x 59.5cm.  
£200-400



▲ 769.  
The Bridge, oil on board, signed, dated 1970 and titled verso, 37.5cm x 25.5cm.  
£300-500



▲ 770.  
East Coast Beach, oil on board, signed, dated (19)82, and titled verso. Label verso - The Federation of British Artists - The Mall Galleries, 37.5cm x 25.5cm.  
£400-600



▲ 771.  
Sunday School, oil on board, signed, dated (19)77 and titled verso, label verso The Trafford Gallery, London, 30.5cm x 40cm.  
£200-400



▲ 772.  
School Yard, oil on board, signed, dated (19)78 and titled verso, 27.5cm x 41cm.  
£200-400



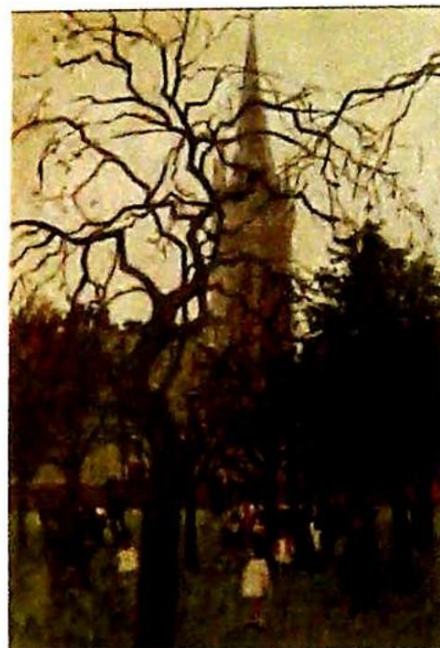
▲ 773.  
Coastal view behind the Dunes, oil on board, signed and dated (19)80, 25cm x 33cm.  
£150-250



▲ 774.  
Coastal view, oil on board, signed and dated (19)84, 18.5cm x 22.5cm.  
£150-250



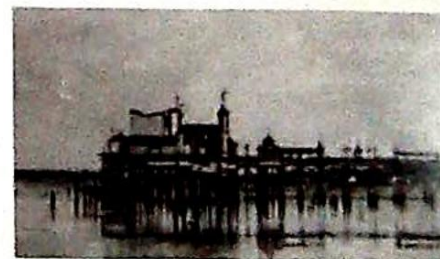
▲ 775.  
Children at the crossing, oil on board, signed and dated (19)75, 24cm x 37.5cm.  
£200-400



▲ 776.  
People in the park, oil on board, signed and dated (19)67, label verso The Trafford Gallery, 119 Mount Street, London, W1, 48cm x 31cm.  
£400-600



▲ 777.  
Docks with figures in the foreground, signed and dated '74, oil on board, 18.5cm x 39cm.  
£200-400



▲ 778.  
Pier, oil on board, signed and dated (19)80, 33.5cm x 59cm.  
£400-600



# Paintings

William Bartol Thomas  
(1877-1947).  
Lots 779 to 815.



▲ 779.  
Boston Stump, oil on canvas,  
signed,  
68cm x 47.5cm.  
£400-600

780.  
Spare Lot

781.  
River Witham and Boston,  
watercolour,  
titled verso,  
14.5cm x 21.5cm.  
£150-250



▲ 782.  
Beach scene with figures,  
watercolour,  
signed and dated 1911,  
25cm x 35cm.  
£200-300

783.  
Farmhouse and track,  
watercolour, signed,  
20cm x 35cm.  
£150-250

784.  
Lincolnshire Coast, watercolour,  
signed and titled verso,  
14cm x 21cm.  
£150-250



▲ 785.  
Masted ships - river view,  
watercolour, signed,  
34cm x 42cm.  
£200-300

786.  
Sand Dunes, watercolour,  
signed and titled,  
34cm x 51cm.  
£200-400



▲ 787.  
Nabob, watercolour, signed,  
dated 1902, and titled,  
50cm x 61cm.  
£200-400



▲ 788.  
Coastal Scene, watercolour,  
signed,  
23cm x 35cm.  
£300-500



789.  
Somersby by Iron Hill,  
watercolour, signed and titled  
verso,  
25cm x 35.5cm.  
£150-250



▲ 790.  
Sand Dunes, watercolour,  
signed,  
23cm x 35cm.  
£200-400

791.  
Landscape with farm workers,  
watercolour, signed,  
13cm x 23.5cm.  
£150-250

792.  
Rural landscape with shire  
horses, watercolour, signed,  
13cm x 25.5cm.  
£150-250



▲ 793.  
Boston Church, watercolour,  
signed, dated 1897 and titled,  
25cm x 17.5cm.  
£300-400

794.  
View of Grantham by  
moonlight, watercolour, signed  
and titled verso,  
18.5cm x 44cm.  
£200-300



▲ 795.  
Leaving the Cinema Boston,  
watercolour, signed and  
titled,  
20cm x 27cm.  
£300-500

796.  
Masted ships on coastal scene,  
watercolour, signed,  
9.5cm x 14cm.  
£40-60

797.  
Masted ship on beach,  
watercolour,  
9.5cm x 14cm.  
£40-60

798.  
Lincolnshire landscape,  
watercolour, signed,  
10cm x 13cm.  
£40-60

799.  
Boston Stump, watercolour,  
signed,  
12cm x 9cm.  
£40-60

800.  
Lincolnshire landscape,  
watercolour, signed,  
13cm x 20cm.  
£40-60

801.  
Figures on a beach, watercolour,  
signed and dated 1898,  
32cm x 23cm.  
£80-120



▲ 802.  
Ship in moorings,  
watercolour, signed,  
10cm x 14cm.  
£100-200



803.  
Landscapes, watercolour,  
signed, 15.5cm x 9cm.  
£100-200



▲ 804.  
House and garden,  
watercolour, signed,  
31cm x 47cm.  
£200-300



▲ 805.  
Country landscape with  
village church, watercolour,  
signed,  
18cm x 27cm.  
£200-300



▲ 806.  
Country landscape with  
village church, watercolour,  
signed,  
18cm x 26cm.  
£200-300



▲ 807.  
Watersplash - at Langton  
Lane by the church (near  
Spilsbury), watercolour,  
signed and titled verso,  
19.5cm x 30cm.  
£200-300



▲ 808.  
Masted ships and tugs in  
harbour, watercolour, signed,  
21cm x 34cm.  
£300-400



▲ 809.  
Boston marketplace, signed  
and titled verso,  
27cm x 40cm.  
£300-500



▲ 810.  
River Witham Boston,  
watercolour,  
26cm x 37.5cm.  
£300-500



▲ 811.  
Country track with rabbits,  
watercolour, signed,  
34cm x 46cm.  
£200-400



▲ 814.  
Country view with  
farmhouse, watercolour,  
signed and dated 1897,  
19.5cm x 35cm.  
£150-250

815.  
Coastal view - sand dunes,  
watercolour, signed,  
25cm x 35cm  
£150-250



▲ 812.  
Boston Stump from the  
sluice bridge, watercolour,  
signed and titled verso,  
34cm x 25cm.  
£300-500

▼ 813.  
Boston Stump, watercolour,  
signed and dated 1898,  
34cm x 24.5cm.  
£300-500





# Paintings

## Other Artists

816.  
20thC British School.  
Harvesting, mountains distant,  
oil on board,  
21.5cm x 30cm.  
£15-20
817.  
20thC British School. Study of  
a shorthorn bull in a stable, oil  
on canvas, 33cm x 45cm,  
together with a study of a bull  
in a landscape, oil on canvas,  
30cm x 46cm, (2).  
£40-60
818.  
C.H. Smart (Early 20thC British  
School). Farm labourers at rest  
beneath trees, watercolour,  
signed lower right,  
40.5cm x 27cm, together with  
two further works similar, both  
unattributed, (3).  
£40-60
819.  
20thC British School.  
Ploughing scenes, watercolour  
and body colour - a pair,  
20cm x 34cm.  
£40-60
820.  
H.J. Rhodes (20thC British  
School). Figure in a horsedrawn  
cart, with tethered horse to rear,  
on a country lane, watercolour,  
signed lower right,  
25.5cm x 41cm.  
£60-80
821.  
J.F. Adams (20thC). Leasingham  
Manor, oil on board, signed,  
95cm x 111cm.  
£40-60
822.  
Vincent Selby (1919-2004).  
Country cottage in river  
landscape, oil on board, signed,  
14cm x 29cm.  
£40-60
823.  
20thC British School. Rural  
landscape, oil on canvas,  
indistinctly signed,  
39.5cm x 60cm.  
£80-120
824.  
Keith Roper (b.1946).  
Lincolnshire landscape, pastel,  
signed and dated,  
19cm x 24cm.  
£30-50

825.  
Edward King Redmore (1860-  
1941). Coastal scene, oil signed,  
28cm x 35cm.  
£80-120
826.  
20thC British School. Head and  
shoulders portrait, oil on board,  
17.5cm x 14cm.  
£40-60
827.  
Spare Lot
828.  
George Wright (19th/20thC).  
Angler in river landscape, oil on  
canvas, signed and dated 1910,  
29cm x 44.5cm.  
£50-80
829.  
I.A. Assiter (20thC). River  
landscape at sunset, oil on  
board, signed and dated 1967,  
37cm x 51cm.  
£30-50
830.  
Diggle (20thC). Leasingham  
Manor, watercolour, signed,  
37cm x 55cm.  
£30-50
831.  
John Grove (20thC). The Manor  
Leasingham, watercolour,  
signed, 33cm x 44cm.  
£30-50
832.  
J.F. Adams (20thC). Leasingham  
Manor, oil on board, signed,  
95cm x 102cm.  
£30-50
833.  
20thC British School. Male  
study, watercolour,  
51.5cm x 30cm.  
£50-80
834.  
20thC British School. Male  
study, watercolour, indistinctly  
signed and dated  
(19)38, 37.5cm x 27cm.  
£50-80
835.  
Joan M. Hargreaves (20thC).  
Farmstead, pastel, signed,  
31cm x 52cm.  
£30-50
836.  
Cecil Markham (19th/20thC).  
Garden path, watercolour -  
a pair, signed and dated,  
24cm x 17cm (2).  
£30-50

837.  
John Bartram (20thC). Straw  
bales, watercolour, signed and  
titled verso, 32cm x 47cm.  
£30-50

838.  
19th/20thC School. Angler at  
river edge, watercolour,  
35cm x 44cm.  
£30-50



- ▲ 839.  
J. Hall (19thC). Country  
landscape with figures, oil  
on canvas, signed, 38cm x  
48cm.  
£150-250



- ▲ 840.  
Engelina Helena Schlette  
(1875-1954). Head and  
shoulders portrait of a young  
woman, oil on canvas,  
signed, 52cm x 43cm.  
£150-250

841.  
A. Baker (19thC). River  
landscape with figures, oil on  
canvas, signed, 49.5cm x 67.5cm.  
£100-200

842.  
A. Baker (19thC). River  
landscape, oil on canvas,  
signed, 49.5cm x 67.5cm.  
£100-150

843.  
20thC British School. P/O  
Papyrus Bumff order OC  
Sanitation - a set of six wartime  
cartoons, watercolour,  
31cm x 25cm (6).  
£50-80

844.  
P. Watson (20thC). Mountain  
landscape with figure, oil on  
canvas, signed,  
34cm x 54.5cm.  
£100-200

845.  
Valencia Chaves (20thC).  
Courtyard scene, oil on canvas,  
signed, 44cm x 34cm.  
£40-60

846.  
Albert Edward Bowers (19thC).  
Country landscape with sheep,  
watercolour, signed,  
35cm x 50cm.  
£100-200

847.  
Jan Gutting (19th/20thC). Floral  
still life, oil on board, signed,  
24cm x 19cm.  
£100-200

848.  
John Edmund Mace (1889-  
1952). Winter hunting scene, oil  
on canvas, signed,  
39.5cm x 49.5cm.  
£100-200

849.  
Thomas Ambrose (20thC).  
Figure in rural landscape,  
watercolour, signed,  
24.5cm x 35cm.  
£50-80

850.  
W. Reeves (19th/20thC). Sheep  
in highland scene, pastel,  
signed, 47cm x 37cm.  
£50-80



- ▲ 851.  
Roderick John Lovesey  
(b.1944). Masted ships at low  
tide, oil on canvas, signed,  
39cm x 55cm.  
£150-250

852.  
G.W. Kidger (20thC). A  
Nottinghamshire landscape  
No.175, oil on board, signed  
and titled verso, 48cm x 59cm.  
£30-50



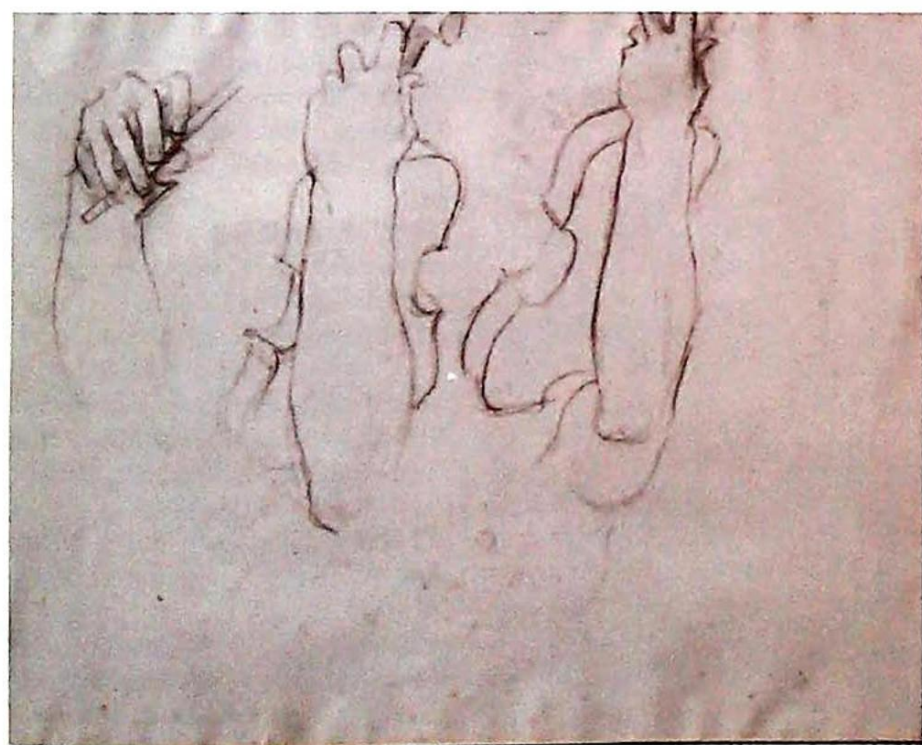
853.  
W.N.F. Milton (20thC). Norfolk landscape No.2, oil on canvas, signed and dated (19)68, label verso John Whibley Gallery, Cork Street, London, 39.5cm x 50cm.  
£50-80

854.  
Sheila Parkinson (20thC). Wilsford Village, acrylic on board, signed and titled verso, 51.5cm x 35cm.  
£30-50

855.  
John Edmund Mace (1889-1952). Shooting scene, oil on canvas, signed, 29cm x 39cm.  
£100-200



▲ 856.  
Jan Mortel (1906-?). Horse and dog in stable, oil on board, signed, 38cm x 48cm.  
£300-500



▲ 857.  
John Singer Sergeant (1856-1925). Multiple figures playing the violin, crayon, 46cm x 60cm.  
£1000-2000

858.  
C. Goddard (19th/20thC). Sheep on hillside, oil on canvas, signed, 39cm x 55cm.  
£80-120

859.  
J. Henshaw (19th/20thC). Cottage on woodland track, oil on canvas, signed, 28.5cm x 49.5cm.  
£50-80

860.  
C. Mate (19th/20thC). Sheep on hillside, watercolour, signed, 26cm x 36.5cm.  
£50-80

861.  
Victor P. Sharpe (b.1922). Wood ducks - early morning light, mixed media, signed and titled verso, 38cm x 54cm.  
£30-50

862.  
W. Evans Linton (1878-?). Cattle, watercolour, signed, 15.5cm x 33cm.  
£30-50

863.  
B. Moner? (20thC). Alpine landscape, watercolour, signed, 18cm x 24cm.  
£30-50

864.  
J.M. Henderson (20thC British School). Shorthorn dairy cows in a landscape, oil on canvas, signed and dated 1937 lower right, 61cm x 87cm.  
£60-80



▲ 865.  
After Thomas Gainsborough (1727-1788). Sunset: Carthorses Drinking at a Stream (c.1760), oil on canvas, bears signature, 39.5cm x 59.5cm.  
£800-1200

866.  
George Law Beetholme (c.1830 - c.1880). River landscape, oil on board, signed, a pair, 44.5cm x 29cm.  
£200-300

867.  
19thC British School. Rolf the First 1883, oil on canvas, 17cm x 24cm.  
£80-120

868.  
19thC British School. Racehorses and Jockey, oil on board, 8cm x 16cm.  
£40-60

869.  
19thC Continental School. Classical study of a maiden, oil on board, 28.5cm x 22.5cm.  
£40-60



▲ 870.  
18thC British School. Woodland track with figures and a dog, 83cm x 66cm.  
£600-800



▲ 871.  
18thC Continental School. Lakeland scene with figures in a boat, oil on canvas, 49cm x 59.5cm.  
£400-600



# Paintings

872.  
19thC British School. River landscape, oil on board, a pair, 49cm x 57cm.  
£150-250

873.  
T.A. (19thC). Country landscape with shepherd and sheep, oil on board, 34cm x 59.5cm.  
£100-200



▲ 874.  
19thC British School. Young gentleman on horseback with hounds, oil on canvas, 65cm x 90cm.  
£600-900

875.  
Charles Pigott (1863-1949). Shepherd and sheep, watercolour, signed, 38cm x 73cm.  
£150-250



▲ 876.  
Walter Fryer Stocks (1842-1915). Cornfield, watercolour, signed and dated 1886, 24.5cm x 37cm.  
£200-300

877.  
John Mitchell (1838-1926). Country landscape with haystack and farm workers, watercolour, signed, 20cm x 33cm.  
£200-300

878.  
Lewis Pinhorn Wood (1848-1918). Barge in river landscape, watercolour, signed and dated 1896, 18cm x 29.5cm.  
£80-120

879.  
Lewis Pinhorn Wood (1848-1918). River landscape with town in the background, watercolour, signed and dated 1896, 18cm x 31.5cm.  
£80-120

880.  
Lewis Pinhorn Wood (1848-1918). Country landscape with figure, watercolour, signed, 29cm x 45cm.  
£80-120

881.  
19thC British School. Stately home and park, watercolour, 20.5cm x 30cm.  
£40-60

882.  
W. Tauton (19thC). Country landscape driving sheep, watercolour, signed, 23.5cm x 33cm.  
£60-90



▲ 883.  
Patrick Nasmyth (1787-1831). River landscape with castle and figures, oil on board, bearing label verso, 17cm x 21.5cm.  
£150-250

▼ 884.  
19thC Continental School. Persian child with cat, oil on canvas, 24.5cm x 34.5cm.  
£150-250



885.  
19thC British School. River landscape, watercolour, a pair, 29cm x 42cm.  
£80-120

886.  
Alexandre Evariste Fragonard (1780-1850). Ghost of Conscience, watercolour, signed, 35cm x 26.5cm.  
£150-250

887.  
18thC Continental School. River landscape, watercolour, 17cm x 23cm.  
£60-90

888.  
19thC British School. Country view with thatched cottage, oil on canvas, 29cm x 24cm.  
£80-120

889.  
M.E. (19th/20thC). Farmer feeding animals, oil on board, initialled, 24cm x 31.5cm.  
£120-180

890.  
19thC British School. Figure on horseback with maiden and young family, oil on canvas, 34.5cm x 29cm.  
£150-250

891.  
19thC British School. Hanging game - still life, oil on canvas, 18cm x 25cm.  
£60-90

892.  
19thC British School. Portrait of a lady, oil on canvas, 75cm x 62cm.  
£100-200

893.  
19thC Continental School. The young cavalier actor holding scales, oil on canvas, 94cm x 76cm.  
£200-400

894.  
19thC British School. Figure in landscape, oil on board, 25cm x 37.5cm.  
£40-60

895.  
19thC British School. Masted ship in coastal scene, oil on canvas, indistinctly signed and dated, 16.5cm x 34cm.  
£150-250

896.  
19thC British School. Masted ships on choppy seas, oil on board, 24cm x 31cm.  
£80-120

897.  
19thC British School. Head and shoulders portrait of a young man, oil on panel, 9cm x 7cm.  
£40-60

898.  
19thC British School. Country scene with thatched cottage, watercolour, monogrammed, 14cm x 19.5cm.  
£40-60

899.  
19thC British School. Sheep in river landscape, oil on canvas, initialled, 34cm x 24cm.  
£30-50

900.  
19thC British School. River landscape, oil on canvas, indistinctly signed, 21.5cm x 26.5cm.  
£40-60

901.  
W. Nichol森 (19thC). Angler in river scene, oil on canvas, signed and dated 1876, 38.5cm x 71.5cm.  
£50-100



902.  
19thC British School. Shepherd and sheep in landscape, oil on canvas, indistinctly signed and dated 1900, 29.5cm x 65cm.  
£100-200

903.  
19thC/20thC Continental School. Mountain landscape, oil on paper, 17cm x 24cm.  
£30-50



▲ 904.  
Attributed to David Roberts (1796-1864). Classical riverscape, oil on canvas, 29cm x 60cm.  
£200-300

905.  
Alfred Bryant (19thC). Jannette, oil on board, signed and dated 1879, 26cm x 38cm.  
£100-200

906.  
19thC British School. Working horses and cart, ink drawing, 34cm x 25.5cm.  
£50-80

907.  
19thC Continental School. Coastal scene, watercolour, initialled and dated 1859, 13cm x 18.5cm.  
£30-50

908.  
Spare Lot

909.  
19thC British School. Coastal scene, oil on canvas, 51cm x 60.5cm.  
£40-60

910.  
19thC British School. The Family, oil on canvas laid on board, 40.5cm x 50cm.  
£30-50

911.  
19thC British School. Cattle at the river, watercolour, 9cm x 13.5cm, and two others (3).  
£30-50

912.  
19thC British School. The lower cascade of the Reichenbach, watercolour, 45cm x 35cm.  
£30-50



▲ 915.  
J. Hall (19thC English School). Figures before a forest gathering on a summer's day, oil on canvas, signed, 39cm x 48cm.  
£300-500

918.  
D....? (19thC English School). Study of a champion bull in a stable, winner of the Suffolk Fat Cattle Club 1874, oil on canvas, indistinctly signed lower right, 41cm x 51cm.  
£100-150

919.  
William Artingstall (act.1873-c.1900). Figure in mountain landscape, watercolour, signed and dated (18)82, 29.5cm x 42cm.  
£80-120

920.  
A. St\*\*\* (19thC). River and woodland landscapes, oil on canvas - a pair, signed, 52cm x 41.5cm.  
£50-80

921.  
M.C. Hunt (19th/20thC). Winter woodland landscape, oil on canvas, signed, 32cm x 52.5cm.  
£80-120

922.  
V. Mayer (19th/20thC). Barn door, oil on canvas, signed, 45.5cm x 35.5cm.  
£50-80

923.  
J. Mortimer (19thC). Coastal view, watercolour, signed, 25cm x 35cm.  
£40-60



▲ 913.  
S.L. (early 19thC Naive School). Cricket at Wroxham on the Broads, partial match with hot air balloon in the distance, oil on canvas, signed, titled and monogrammed, 36cm x 49.5cm.  
£300-500

914.  
L.H. Delint (18thC English School). Bishopschen Palace, Yorkshire, watercolour and body colour, initialled and dated 1778, 31cm x 46cm, with Lincoln Fine Art card with seal.  
£200-300

916.  
(19thC English School). Standing figure in a landscape with horse and dog, church distant, oil on canvas, 49cm x 65cm.  
£100-150

917.  
W.S. Earp (18th/19thC British School). Study of cattle in a highland landscape, oil on oak panel, signed lower right, 35cm x 27cm.  
£60-80



# Country House Sale Day Two

## Garden Statuary



- ▲ 1001.  
A Victorian wrought iron arbour, 312cm square.  
£800-1200

1002.  
A terracotta campana garden urn, with Bacchanalian frieze, on a stoneware pedestal, 130cm high (AF).  
£100-200

1003.  
A lead effect water cistern, circa 75cm cubed.  
£40-60

1004.  
A terracotta campana garden urn, with impressed maker's name of Mark B Blanchard & Co Blackfriars London, 56cm high. (AF).  
£40-60

1005.  
A modern verdigris finish metal statue of a discus thrower, 67cm high.  
£50-100



- ▲ 1006.  
A Victorian wirework plant stand, of three tier demi-lune form, 99cm wide.  
£150-250

1007.  
Wirework plant stands, being a Regency wirework circular example (AF), a wrought iron scroll pedestal aspidistra stand and modern three tier corner stand (3).  
£100-200

1008.  
Conservatory furniture, being a hardwood bench, two wicker chairs and wicker table (4).  
£40-60

1009.  
A pair of terracotta lobed planters, 45cm dia., together with glazed Oriental planter with tree, other planters in the conservatory and a footbath (a quantity).  
£50-100

1010.  
A lead effect cistern, 125cm wide.  
£50-100

1011.  
A saddle stone base.  
£40-60

1012.  
A cast iron garden bench, in the Coalbrookdale fern pattern, 152cm over arms.  
£100-150



- ▲ 1013.  
A cast iron garden bench, in the Coalbrookdale fern pattern, 105cm over arms.  
£100-150



- ▲ 1014.  
A pair of cast iron campana garden urns, of fluted form, 77cm high.  
£200-300

1015.  
A set of four hardwood planters, and contents, 44cm square.  
£50-100

1016.  
A pair of garden statues, of boy and girl, on pedestals, pre-cast concrete, 114cm high.  
£40-60

1017.  
A pair of hardwood garden benches, with Chinese lattice back, 116cm wide.  
£80-120

1018.  
A pair of garden statues of a young boy and girl, with basket and flowers, pre-cast concrete, on pedestals, 110cm high.  
£30-50

1019.  
The contents of the tower store room, being various wooden planters.  
£50-100

1020.  
The contents of the tower, being a Victorian cast iron pedestal table, a pair of wicker conservatory chairs, Victorian pine recliner and coconut matting.  
£50-100

1021.  
A quantity of terracotta and glazed garden planters.  
£40-60

1022.  
A pair of cast iron campana garden urns, of fluted form, 45cm high.  
£80-120

1023.  
A Regency style wrought iron garden bench, of lattice form, with folding foot stand, modern, 153cm wide.  
£80-120

1024.  
A pair of Victorian cast iron campana garden urns, on stands, 105cm high  
£200-400

1025.  
A pair of lead effect square garden planters, and contents, 46cm cubed.  
£50-100

1026.  
Two pairs of circular terracotta planters, of tapering form, 30cm dia., and two larger examples, 40cm dia.  
£40-60



1027.  
A stone baluster pedestal, mounted with an orary by Westwood Dials, 110cm overall height, and a further balustrade pedestal (2).  
£50-100

1028.  
Two blue glazed circular garden planters, two graduated terracotta examples and modern wrought iron bird feeder (5).  
£40-60

1029.  
A garden duet swing seat.  
£50-100

1030.  
A cast aluminium garden table, 99cm dia.  
£30-50

1031.  
A set of four stone seated greyhounds, 70cm long, 40cm high.  
£150-250

1032.  
A pair of celadon glazed octagonal garden planters, of tapering form, 66cm dia.  
£50-100

1034.  
An iron strapped stone slab trough, 130cm x 85cm, 70cm high.  
£50-100

1035.  
A pair of terracotta square planters, decorated with floral scale repeated pattern, 53cm high.  
£80-120

1036.  
A pair of reconstituted stone planters, of octagonal form with tulip moulding, 52cm high.  
£50-100

1037.  
A pair of stone lion garden ornaments, 50cm high, together with a Victorian cast iron bootscraper (3).  
£50-100

1038.  
A set of four lead effect lattice rectangular planters, 71cm wide.  
£50-100

1039.  
A wrought iron mechanical bootscraper.  
£50-80

1042.  
Assorted terracotta stone and other planters, in the courtyard not listed hereafter.  
£50-100

1043.  
A pair of modern rectangular stone planters, with rose boss decoration, 80cm wide.  
£50-100

1044.  
A pair of Victorian cast iron campana garden urns, 52cm high.  
£100-200

1045.  
Three various sized stone grinding wheels.  
£50-100

1046.  
A hand hewn stone bullnose trough, 80cm x 55cm, 40cm high (AF).  
£50-100

1047.  
A hand hewn stone trough, 94cm x 54cm. (AF).  
£50-100

1048.  
A hand hewn stone rectangular trough, with divider, 76cm x 45cm, 23cm deep.  
£100-200

1049.  
A hand hewn demi-lune stone trough, 65cm wide.  
£100-200



1050.  
Two bullnose hand hewn stone troughs, 35cm x 45cm.  
£100-200

1051.  
Three small hand hewn troughs.  
£100-150



1052.  
A hand hewn stone bullnose trough, 55cm x 90cm.  
£100-200

1053.  
A hand hewn D-shaped trough, 85cm wide (AF).  
£50-100

1054.  
A graduated set of three stone grinding wheels, 45cm, 40cm and 30cm.  
£50-100

1055.  
An 18thC hand hewn stone trough, 83cm wide (AF).  
£30-50

1056.  
A hand hewn millstone, 72cm dia.  
£50-100



1057.  
A hand hewn millstone, circa 90cm dia.  
£50-100

1058.  
A pair of circular cast concrete planters, 55cm dia.  
£20-40

1059.  
A hand hewn stone trough, 46cm x 53cm, 19cm high.  
£50-100

1060.  
A set of four terracotta garden planters, of circular tapering form, 72cm dia. (one AF).  
£60-90



1033.  
A low stone garden table, with slab top resting on two floral capitol bosses, 134cm x 74cm.  
£150-250

1040.  
A harlequin group of nine terracotta circular planters, another plastic and a lattice rectangular planter (12) being placed in the alley from courtyard to gardens.  
£50-100

1041.  
A wrought iron framed garden table, with glass top, 84cm x 140cm.  
£50-100



# Furniture

## Furniture



- ▲ 1061.  
A George III mahogany and satinwood demi-lune card table, the top with a broad crossband with boxwood and ebony stringing above a plain strung frieze on square tapering legs with spade feet, 70cm high, 44cm deep, 89cm wide.  
£250-350

1062.  
A pair of mahogany torcheres, the circular dished top on a wrythen and leaf carved column and moulded base, possibly constructed from bedposts, 143cm high, the top 30cm dia.  
£100-200

1063.  
A George III mahogany hall chair, with a shield shaped back, a serpentine solid seat on square tapering legs with H-stretcher.  
£70-90

1064.  
A pair of George III mahogany side chairs, each with a pierced back, a drop in seat on chamfered legs with H-stretcher.  
£50-70



- ▲ 1065.  
A George IV mahogany and satinwood card table, the rectangular top with rounded corners, the frieze inlaid with oval patera on a turned column and canted platform, with splayed legs and brass terminals and castors, 75cm high, 47cm deep, 97cm wide.  
£250-350

1066.  
A George IV mahogany hall chair, of klismos type, with a bar back on oval support with shaped solid seat on turned legs.  
£80-120

1067.  
A George IV mahogany hall chair, the shaped back painted to the centre with the letter 'R', with a solid seat on square tapering legs.  
£50-70



- ▲ 1068.  
A mahogany sofa in George III style, with a serpentine padded back, arms and seat upholstered in cream damask fabric on square channelled legs with H-stretcher, 180cm wide.  
£300-500

1069.  
A 19thC gilt gesso wall mirror, with a 'C' scroll and floral crest above a moulded frame with rectangular plate, 121cm high, 58cm wide.  
£70-90

1070.  
A pair of green and gilt painted torcheres, with a circular top and a triangular undertier, 105cm high, 25cm dia.  
£40-60

1071.  
An early 19thC mahogany hat or coat stand, with central turned support and twelve shaped arms on tripod base, 166cm high  
£150-200

1072.  
A mahogany umbrella stand, carved with scrolls etc., with a painted drip tray to the base, 106cm high, 45cm wide.  
£50-100

1073.  
A William IV rosewood library table, the rectangular top with a beaded edge on tapering end supports with flat undertier and brass castors, 73cm high, the top 68cm x 130cm.  
£200-300

1074.  
A brass lantern shaped light fitting, with four bevelled glass sides, chain suspension, the lantern 53cm high, 28cm wide.  
£50-100

1075.  
A 19thC green marble pedestal, with a circular top and reeded column on octagonal base, 107cm high, 30cm dia.  
£150-250



- ▲ 1076.  
A walnut side chair, with a shaped solid splat, a drop in seat on cabriole legs with H-stretcher and pad feet, largely mid 18thC but some later timber.  
£60-80



- ▲ 1077.  
A 19thC gilt gesso console table, with a shaped white marble top above a frieze decorated with leaves etc., centred with a Neo-Classical maiden, on tapering legs headed by swags with undertier centred with two handled urn, 87cm high, 45cm deep, 114cm wide.  
£300-400

1078.  
A 19thC gilt gesso overmantel mirror, with rectangular plate, the frame moulded with leaves and berries, 125cm high, 113cm wide.  
£50-70

1079.  
A set of three brass wall lights, one with three branch, two with two branch, each cast with leaves and berries, 47cm high, 40cm wide.  
£80-120

1080.  
A Continental gilt gesso and painted wall mirror, the top with a broken pediment centred with a shell above a central bevelled rectangular plate surrounded by four further plates, within a ribbon moulding, 74cm x 46cm.  
£70-90

1081.  
A late 18th/early 19thC country made fruitwood open armchair, with a carved rail, a pierced splat and shaped scroll arms, a green leather padded seat on channelled legs, adapted.  
£50-70



1082.  
A George III mahogany bow fronted serving table, of plain form with square tapering legs, 90cm high, 66cm deep, 164cm wide.  
£600-800

1083.  
A George III mahogany cellarette, of rectangular form, the hinged lid revealing divisions for bottles, on later feet, 42cm high, 35cm deep, 67cm wide.  
£200-300

1084.  
A modern mahogany table in Chippendale style, the shaped top with a raised border, the frieze with bead and reel edging on square tapering reeded legs, with leaf carved brackets and pierced X-shaped stretcher, 67cm high, 48cm deep, 86cm wide.  
£80-120

1085.  
A Victorian mahogany stool, with shaped sides on cabriole legs, headed by leaf carving and terminating with paw feet, lacking upholstery, 54cm wide.  
£70-90

1086.  
An early 19thC mahogany tea table, the rectangular top with a boxwood strung edge above a frieze drawer, on square tapering legs headed by marquetry floral urns, 73cm high, 42.5cm deep, 92cm wide.  
£150-250

1087.  
A set of twelve early 19thC mahogany dining chairs, each with a bar back, a padded seat, with square tapering legs and H-stretcher, two with arms.  
£1200-1800

1088.  
A pair of early 19thC giltwood and gesso wall lights, each carved with a central eagle, bows, arrows and tassels etc., the two candle arms with broad drip pans etc., 87cm high, 34cm wide.  
£250-350

1089.  
A 19thC gilt gesso overmantel mirror, the crest decorated with a Neo-Classical bust, surrounded by leaves and berries, flanked by urns and swags, the rectangular plate flanked by reeded columns on an ebonised base, 179cm high, 158cm wide.  
£200-300

1090.  
A cast iron fire grate, with urn finials on tapering supports, 57cm wide, converted for gas.  
£40-60

1091.  
A pair of Continental gilt brass fire dogs, each decorated with an urn and a scroll with applied leaf casting on iron base, 39cm high.  
£50-70

1092.  
A pair of modern Chinese brass cranes, each on a circular base, 86cm high.  
£70-90

1093.  
A Continental brass adjustable fender, with urn shaped ends and flame finials, 68cm wide.  
£50-70

1094.  
A modern painted fire screen, with applied and printed decoration in the form of an urn of flowers with insects, 81cm high, 84cm wide.  
£30-50

1095.  
An early 19thC mahogany Pembroke table, the oval top with a moulded edge above a frieze drawer opposing a false drawer on square tapering legs with brass castors, 86cm wide.  
£70-90

1096.  
A pair of green simulated marble columns, each with a circular top and cylindrical column, on an ebonised plinth, 104cm high, the top 34cm dia.  
£120-180

1097.  
A 19thC style wirework rectangular jardiniere, with shaped sides and an undertier, 102cm wide.  
£70-90

1098.  
A 19thC wirework rectangular jardiniere, with shaped sides and an undertier, 75cm wide.  
£80-120

1099.  
A 19thC Continental walnut torchere, the top with a shaped border on gryphon type carved support, with scrolling tripod base, 94cm high, the top 33cm wide.  
£120-180

1100.  
A pair of 19thC French Empire style mahogany and parcel gilt armchairs, each with a padded back, armrest and seat, the arm supports carved with swan heads and necks on tapering legs with paw feet, one chair with some gilt metal mounts.  
£200-300

1101.  
A walnut open armchair, with a solid splat, shepherd's crook shaped arms and a padded seat on cabriole legs with pad feet and turned H-stretcher, in part 18thC but adapted.  
£80-120

1102.  
A pair of Continental brass girandoles, each cast with a mask above a shaped plate and three scrolling arms with flat sconces, 32cm wide.  
£70-90



1103.  
A pair of gilt wall mirrors in the Chinese Chippendale style, each elaborately decorated with a pagoda to the top above foliate 'C' scrolls, etc., with a rectangular plate, 160cm high, 80cm wide.  
£200-400





# Furniture



- ▲ 1104.  
A mahogany dining table in Regency style, the circular top with loose outer leaves and on shaped supports, with a concave platform and sabre legs with brass paw terminals, 183cm dia., 228cm max.  
£600-800



- ▲ 1109.  
An early 19thC mahogany breakfront sideboard, the veined white marble top above three frieze drawers and two deep drawers each with later lion mask handles, on square tapering legs with splayed feet, 91cm high, 74cm deep, 147cm wide.  
£300-500

- ▲ 1105.  
A George III mahogany serpentine fronted sideboard, with raised back and an arrangement of three frieze drawers above a tambour slide, flanked by a cellarette drawer and a door, on square tapering legs headed by marquetry urns, 115cm high, 64cm deep, 214cm wide.  
£600-800

1106.  
An early 20thC armchair, upholstered in buttoned dralon on castors.  
£40-60

1107.  
A Continental style gilt brass chandelier, with eight scrolling arms drilled for electricity, 82cm wide.  
£200-300

1108.  
A pair of George III mahogany side chairs, each with a bellflower and patera carved crest rail above a pierced splat, a green leather padded seat, on channelled legs with H-stretcher.  
£100-150

1110.  
A Victorian gilt gesso overmantel mirror, the foliate crest centred with an oval patera, the arched frame with a moulded edge, 161cm x 140cm.  
£150-250

1111.  
A 19thC ebonised butler's tray stand, with folding mahogany top, possibly from a card table, 64cm wide.  
£15-25

1112.  
A pair of cream and parcel gilt painted Continental open armchairs, each with a padded back, armrest and seat, on turned legs.  
£150-250



- ▲ 1113.  
A George IV rosewood and brass inlaid drum top library table, with a red leather insert above four drawers and four false drawers, on a concave triform column and platform with splayed legs with leaf cast brass terminals, 77cm high, 107cm dia.  
£600-800

1114.  
A pair of gilt gesso wall mirrors, each with a moulded cornice, a rectangular plate surrounded by moulded and leaf foliate frame, 122cm high, 63cm wide.,  
£150-250



- ▲ 1115.  
Three mahogany window seats in George III style, each with scroll ends and a padded seat, on turned tapering legs, 103cm wide  
£400-600

1116.  
A late 19thC gilt brass fender, with urn finials and a pierced foliate centre rail, 134cm wide.  
£70-90

1117.  
A brass fan shaped folding spark guard in 19thC style, with a turned finial on a shaped base, 67cm high.  
£20-30

1118.  
A George III mahogany card table, the rectangular top with a moulded edge above a plain frieze on channelled legs with pierced brackets, 71cm high, 43cm deep, 90cm wide.  
£200-300

1119.  
A Victorian walnut pole screen, with a later banner depicting terrier, parrots etc., on a brass support, the turned base on scroll carved legs, 152cm high.  
£60-80

1120.  
A Victorian mahogany nursing chair, with a blue leather buttoned back and seat, on turned legs with ceramic castors.  
£50-70

1121.  
A William IV rosewood open bookcase, with a plain frieze above column supports headed by simple capitols on plinth base, 101cm high, 44cm deep, 221cm wide.  
£200-400

1122.  
An early 19thC mahogany chest of drawers, the hinged caddy top with a crossbanded border over an arrangement of two short drawers, a fall front drawer and fall foot long door above a double fall front door, on bracket feet, adapted as a hi-fi cabinet, 99cm high, 53cm deep, 107cm wide.  
£80-120

1123.  
A five branch electrolier, with acanthus boss and pineapple finial, and two matching wall lights (3).  
£100-150



1124.  
A Victorian footstool, with a padded circular woolwork seat on four cabriole legs, 30cm dia. £40-60

1125.  
A 19thC mahogany stool, with a square padded woolwork top on slender turned legs, 34cm wide. £40-60

1126.  
A mahogany two tier low table, with a green leather insert above a moulded edge on chamfered legs with brackets, 51cm wide. £30-50

1127.  
A modern dark green leather electric reclining armchair, on castors. £80-120

1128.  
A late Victorian rosewood footstool, with a circular green leather top on spiral turned supports with bobbin turned stretchers and turned feet, 50cm dia. £80-120

1129.  
An early 19thC brass floor lamp, with a reeded Corinthian column, the square base applied with four paw feet, with a shade, 160cm high overall. £70-90

1130.  
A mahogany Canterbury in George III style, with four slatted divisions above two frieze drawers on turned legs with brass castors, 48cm wide. £50-80



▲ 1131.  
A Victorian Chesterfield sofa, upholstered in buttoned dark brown vintage style leather on turned legs with ceramics castors, 205cm wide. £500-700

1132.  
A mahogany coffee table, the rectangular top with a green leather insert and a moulded edge on chamfered legs with brackets, the top 76cm x 152cm. £30-50



▲ 1133.  
A Victorian Chesterfield sofa, upholstered in dark brown leather, on bun feet, 205cm wide. £400-600

1134.  
A mahogany two tier occasional table, the rectangular top with a green leather insert and a moulded edge on chamfered legs with brackets, 65cm high, 47cm wide. £40-60

1135.  
A 20thC brass floor lamp, in Art Nouveau style with cylindrical column, with square section supports on a triform base with rounded feet and a shade, 157cm high. £80-120

1136.  
A mahogany Gainsborough type open armchair, upholstered in button green leather with studded borders, on chamfered legs with H-stretcher. £100-150

1137.  
A George III mahogany open arm chair, with a pierced ladder back, scrolling arms and a green leather padded seat with studded borders on square section legs with H-stretcher. £60-80

1138.  
Spare Lot

1139.  
A mahogany open arm chair in Sheraton style, the shield shape back with reeded rails carved with patera, scrolling arms with a padded seat on square tapering reeded legs. £100-150



▲ 1140.  
An early 19thC mahogany secretaire chest, the crossbanded top above a fitted fall front drawer, with leather insert with figured mahogany ovals above two panelled doors enclosing an arrangement of six drawers on square section feet, 100cm high, 53cm deep, 106cm wide. £250-350

1141.  
A set of four 19thC mahogany dining chairs, each with a pierced splat, a drop in seat on square tapering legs. £80-120

1142.  
A late 19thC/early 20thC brass Art Nouveau floor lamp, with a central cylindrical column, square sectioned splayed supports and oval feet, with a shade, 171cm high. £50-70

1143.  
A Victorian mahogany open arm chair, with a padded back, armrest and seat in buttoned green leather, on X-shaped end supports. £150-250

1144.  
A Victorian mahogany box ottoman, the rectangular top inset with a geometric woolwork and a moulded base on bun feet, 67cm wide. £60-80

1145.  
A walnut side chair, the splat with feather banding, with a drop in seat on cabriole legs with turned H-stretcher, largely mid 18thC. £50-70

1146.  
A late 19thC/early 20thC pine pew, incomplete 94cm wide. £30-50

1147.  
A 20thC pierced brass fender, with turned urn finials and central oval cartouche, 125cm wide. £40-60

1148.  
A large cast iron fire back, decorated with the Royal crest, 79cm high, 98cm wide. £100-150

1149.  
A Victorian mahogany open arm chair, with a padded back, armrest and seat in buttoned green leather, on X-shaped end supports. £150-250

1150.  
A 19thC Burmese hardwood spoon back side chair, carved overall with leaves, etc., with a padded seat on shaped legs. £100-150

1151.  
A George IV mahogany tea table, the rectangular top with rounded corners on a turned column and four reeded splayed legs with brass paw terminals, 73cm high, 45cm deep, 90cm wide. £150-250

1152.  
An oak Delft rack, of breakfront form, with a pair of burr yew crossbanded doors, flanked by three plate shelves on moulded end supports, 18thC but adapted, 150cm high, 192cm wide. £200-300

1153.  
An early 20thC brass floor lamp, of cylindrical form on a circular base with three moulded feet, and a shade, 175cm high. £30-40

1154.  
An 18thC fruitwood side chair, with a solid splat, a green leather padded seat on cabriole legs with turned H-stretcher and pad feet. £70-90



# Furniture

**1155.**  
A small 18thC mahogany fret frame wall mirror, with a pierced crest and a moulded frame, 33cm high, 18.5cm wide.  
£20-30

**1156.**  
A late 19thC French gilt gesso side chair, the elaborate pierced back with a central oval decorated with scrolls, a quiver etc., on reeded supports with a shaped needlepoint seat on tapering legs.  
£30-50

**1157.**  
A mahogany coffee table, the oval top with two drop leaves on chamfered supports with rectangular undertier, 123cm wide.  
£40-60

**1158.**  
Spare Lot

**1159.**  
An Edwardian mahogany jardiniere stand, with circular moulded top with slatted supports on a triform base with turned feet, lacking liner and incomplete, 37cm dia.  
£25-35

**1160.**  
A pair of 1960's Danish style rosewood open armchairs, each with a black padded leather back and loose cushion with shaped arms and turned legs, New York retailer's label to underside and Armstrong stamped to the hinged feet, and a pair of side chairs (4).  
£200-300

**1161.**  
An early 19thC mahogany bidet, with rectangular cover, the base with a shaped top on turned legs, lacking liner, 55cm wide.  
£30-50

**1162.**  
A George III mahogany washstand, the square top with recesses for a bowl and two beakers above an undertier with a drawer on chamfered legs with circular undertier with X-shaped supports, 33cm wide.  
£40-60

**1163.**  
A George III mahogany stool, with a green leather seat on channelled tapering supports, 87cm.  
£120-180

**1164.**  
A Challen baby grand piano, in walnut case, faded (AF), 143cm wide.  
£150-250

**1165.**  
A mid 19thC gilt gesso overmantel mirror, the crest decorated with Neo-Classical figures, putto, lions, chariots etc., above three bevelled rectangular plates flanked by Corinthian columns, 88cm high, 146cm wide.  
£150-250

**1166.**  
Spare Lot

**1167.**  
A 19thC Continental oak open bookcase, the top with a moulded edge above a shelf on short scrolling feet, 105cm high, 122cm wide.  
£100-150



**1168.**  
An early 19thC mahogany, ebony and boxwood strung sideboard, with a central door inlaid with a figured oval flanked by four drawers to each side on turned legs, 92cm high, 141cm wide.  
£250-350



**1169.**  
A late George IV mahogany and satinwood crossbanded card table, the rectangular top with re-entrant corners above a plain frieze inlaid with a central oval patera on square tapering legs headed by crosshatching, 76cm high, 45cm deep, 89cm wide.  
£350-450



**1170.**  
A 19thC gilt gesso wall mirror, the broken pediment with a central scrolling finial above a bevelled rectangular plate, surrounded by scroll moulding, the shaped base with a central mask, 102cm wide.  
£500-800

**1171.**  
Spare lot

**1172.**  
A 19thC mahogany tea table, the canted rectangular top with a rosewood crossband above a frieze drawer on square tapering legs, 73cm high, 47cm deep, 97cm wide.  
£200-300

**1173.**  
A 19thC mahogany pole screen, with an oval banner inset with a beadwork floral panel on tripod base, 139cm high.  
£50-80

**1174.**  
A late 19thC Dresden porcelain cartouche shaped wall mirror, decorated overall with putti, flowers and leaves, with a mahogany backing, lacking candle arms, (AF) 80cm x 40cm.  
£70-90

**1175.**  
An early 19thC mahogany dressing table mirror, the rectangular plate on turned supports, the base with a single drawer on brass ball feet, 41cm wide.  
£40-60

**1176.**  
An early 19thC mahogany side chair, with double reeded bar back, drop in seat and square tapering legs.  
£20-30

**1177.**  
A Victorian burr walnut revolving bookcase, the circular top with an adjustable light fitting, on a turned column with shaped galleried undertier, on tripod base, the top 37cm dia.  
£150-250

**1178.**  
A retro style sofa/bed, with buttoned back with turned feet.  
£10-20

**1179.**  
A mahogany and beech three tier dumb waiter, with turned supports on bun feet, 145cm high, 75cm wide.  
£60-80

**1180.**  
A pair of French gilt wood style salon chair, each with Bergere caned back and seat, on fluted tapering legs.  
£30-50

**1181.**  
A pair of gilt metal two branch wall lights in Adam style, each cast with ribbons, leaves, patera etc., 29cm wide.  
£150-250

**1182.**  
A George III mahogany washstand, the circular moulded top with recess for a bowl etc., on turned supports with triangular two drawer undertier, above a circular undertier and tripod base with pad feet, 83cm high, 29cm wide and a Copeland jug and bowl.  
£80-120

**1183.**  
A George III mahogany fret frame, the later rectangular plate with a moulded border, 60cm high, 31cm high.  
£40-60

**1184.**  
A 19thC stripped pine corner washstand, with a shaped back, recesses for beakers and bowls above an undertier with a central drawer flanked by two false drawers and a shelf for a bowl, on splayed legs, 64cm wide, and an associated blue and white part washstand set.  
£60-80



1185.  
Two similar George III mahogany side chairs, each with a pierced splat, a green leather padded seat, and H-stretcher.  
£80-120
1186.  
A late 18thC/early 19thC mahogany dressing table mirror, the rectangular plate on plain tapering end supports, the base with three ogee drawers on bracket feet, 41cm wide.  
£40-60
1187.  
A late 18thC/early 19thC mahogany dressing table mirror, the rectangular plate with parcel gilt slip on tapering supports, the base with three ogee shaped drawers, on ogee bracket feet, 43cm wide.  
£70-90
1188.  
A George III mahogany chest of drawers, the rectangular top with a moulded edge above a fitted drawer with writing slope etc., and three further long drawers with later pierced brass handles on ogee bracket feet, 89cm high, 53cm deep, 106cm wide.  
£150-250
1189.  
A George III style mahogany washstand, with circular moulded top on turned supports with triangular two drawer undertier and a bowl stand, on cabriole legs with pad feet, 80cm high, 32cm dia.  
£60-80
1190.  
Two 1960's retro style mahogany LP record cabinets, each with two sliding doors, one with an ebonised plinth, 50cm wide.  
£20-40
1191.  
An Art Deco tub shaped chair, later upholstered in purple dralon with fringed border on ball feet.  
£40-60
1192.  
A George III mahogany open arm chair, the shield shaped back with a pierced splat, with a blue leather padded seat on square tapering legs with H-stretcher.  
£40-60

1193.  
A Venetian wall mirror, with a central bevelled canted rectangular plate, surrounded by smaller plates engraved with flowers, leaves, etc., 80cm x 45cm.  
£150-250
1194.  
A Victorian oak pot cupboard, with a three quarter gallery above a drawer with turned wooden handle, on turned tapering legs, 79cm high, 34cm wide.  
£40-60
1195.  
An early 19thC mahogany pot cupboard, with a three quarter gallery above a cockbeaded door on square tapering legs, 84cm high, 39cm wide.  
£40-60
1196.  
A late 18thC/early 19thC Irish oval wall mirror, with moulded ebonised and gilt bands inset with faceted glass cabochons, 53cm x 43cm.  
£150-250
1197.  
An early Victorian mahogany open bookcase, with a later three quarter gallery above two adjustable shelves on a plinth base, 95cm high, 31cm deep, 127cm wide.  
£80-120
1198.  
A pair of George III mahogany side chairs, with a scroll carved back with a pierced splat, a padded seat with inserted floral woolwork on channelled legs with leaf brackets.  
£120-180
1199.  
A George IV mahogany Pembroke table, the rectangular top with rounded corners above a frieze drawer on turned column and four splayed legs with brass terminals and castors, 84cm wide.  
£150-250

1200.  
An early Victorian mahogany inverted breakfront wardrobe, with a moulded cornice centred by two panelled doors, two short and three long drawers flanked by two full length doors on later plinth and bun feet, 186cm high, 228cm wide.  
£200-300
1201.  
A pair of 19thC mahogany side chairs, each with a padded back and seat, with brass studded borders, upholstered in blue damask type fabric on chamfered legs with H-stretcher.  
£200-300
1202.  
An early Victorian walnut occasional table, the octagonal top inlaid in specimen timbers with a sunburst and parquetry cube border, with a petalated edge on scroll supports with triangular undertier and concave beaded platform with scroll carved feet, 68cm high, 44cm wide.  
£150-250
1203.  
An unusual pair of Victorian mahogany drop arm corner chairs, each with a padded back and seat upholstered in peacock feather fabric on turned legs with ceramic castors, the underside with brass fittings enabling the chairs to be locked together to make a sofa.  
£200-300
1204.  
A 19thC giltwood and gesso fire screen, the oval beaded frame inset with a woolwork panel depicting figures within a floral cartouche on a turned column and four beaded cabriole shaped legs, 120cm high, 71cm wide.  
£80-120
1205.  
A mahogany and ebony strung cheval mirror in Regency style, the rectangular plate with shaped crest on tapering supports headed by brass finials on four splayed legs with brass terminals, 170cm x 70cm.  
£120-180



- ▲ 1206.  
An early 19thC mahogany serpentine fronted chest of drawers, with an arrangement of four graduated drawers, each with later Prince of Wales feathers cast brass handles, bone lozenge shaped escutcheons on bracket feet, 101cm high, 54cm deep, 117cm wide.  
£300-500
1207.  
An early 19thC mahogany and boxwood strung dressing table mirror, the oval plate on shaped supports applied with bone roundels, the serpentine fronted base with three drawers on ogee bracket feet, 40cm wide.  
£100-150
1208.  
A George III mahogany night commode, the square top with a shaped gallery above a paneled door and a pull out drawer enclosing a recess for a commode, 78cm high, 55cm wide.  
£80-120
1209.  
A George III mahogany night commode, with a shaped gallery above a tambour door and two false drawers revealing a recess for a commode, 76cm high, 50cm wide.  
£80-120
1210.  
A Continental gilt metal balderquin, with a moulded leaf carved edge and a central rococo scroll and flower crest, later applied with cream and maroon drapes etc., 60cm wide.  
£150-250
1211.  
A pair of brass adjustable wall lights, each with a simulated candle fitting, extending to approximately 47cm.  
£30-50

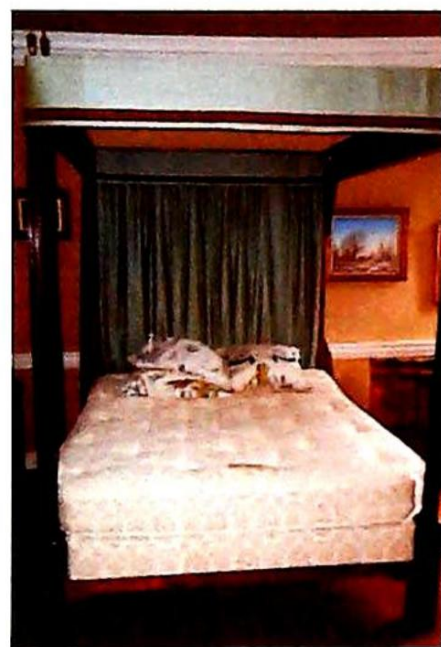


# Furniture

**1212.**  
Four early 20thC mahogany clothes rails, to include a triple clothes rail on shaped supports, various sizes.  
£40-60

**1213.**  
A mid 18thC walnut commode chair, with a vase shaped spat, scrolling arms and a padded seat with deep shaped apron on cabriole legs with brass castors, lacking internal fittings.  
£100-150

**1214.**  
A George III mahogany night commode, with a shaped gallery above two false drawer doors above a double pull out drawer, on bracket feet, 80cm high, 54cm wide.  
£70-100



▲ **1215.**  
A mahogany four poster bed, with reeded tapering end posts, pine frame, green and brown drapes and brass finials, 18thC but later additions. 241cm high, 197cm long, 170cm wide  
£600-800

**1216.**  
A late George III mahogany, ebony and boxwood strung night commode, with a shaped gallery above two figured doors above a deep drawer with recess and oval lion mask handles, 83cm x 63cm.  
£70-100

**1217.**  
A pair of early 20thC gilt gesso window seats, each with a moulded ribbon carved frame, cane sides and seat, on turned legs, 75cm wide.  
£200-300



▲ **1218.**  
A mid 18thC walnut and burr walnut chest of drawers, with a feather and crossbanded top above two short and three long drawers with brass teardrop type handles, on bracket feet, 92cm high, 57cm deep, 97cm wide.  
£600-800

**1219.**  
A walnut dressing table mirror, the rectangular plate on tapering supports, the stepped base with an arrangement of three short and two long featherbanded drawers with brass handles, on bracket feet, 72cm high, 44cm wide, in part mid 18thC.  
£70-90

**1220.**  
An Art Nouveau style brass adjustable floor lamp, of tubular form with shaped supports and feet, with a shade, 175cm high overall.  
£60-80

**1221.**  
A George III mahogany and boxwood strung corner washstand, with a raised back, recesses for bowl, flanked by later cups, the undertier with a central drawer flanked by two false drawers, terminating with a bowl stand on splayed legs, 57cm wide.  
£70-90

**1222.**  
A George VI coronation limed oak stool, designed by Edward Barnsley, made by Waring and Gillow, with a padded seat on chamfered legs, stamped to underside, 47cm wide.  
£100-200

**1223.**  
A 19thC mahogany tilt top occasional table, the circular top with a moulded edge on a turned column and tripod base with pad feet, 78cm dia.  
£40-60

**1224.**  
A Regency mahogany adjustable fire screen, with green watered silk pleated top and sliding banner, reeded frame and on a turned and reeded column with concave rectangular platform, splayed legs and brass castors, 112cm high, 65cm wide.  
£120-180

**1225.**  
A George IV simulated rosewood bergere chair, the frame carved with leaves and scrolls with a blue leather buttoned loose seat, on turned and reeded tapering legs with brass castors.  
£200-300

**1226.**  
An unusual 19thC oak hall chair, with a shaped pierced back, a saddle seat on splayed feet with turned H-stretcher.  
£60-80

**1227.**  
An early 19thC mahogany and ebony strung corner washstand, with a raised back, recesses for a central bowl flanked by beakers, the undertier with a central drawer flanked by two false drawers, each with lion mask handles, also with a bowl support on splayed legs, 66cm wide.  
£70-90



▲ **1228.**  
A set of four 18thC walnut dining chairs, each with a pierced splat, a drop in seat, on cabriole legs with H-stretcher, later additions.  
£400-600



▲ **1229.**  
A late George III mahogany dressing table, with a raised shaped gallery, the top with a moulded edge above a writing slide, flanked by a false drawer and a drawer containing inkwells above four further short drawers, each with ebonised handles on square tapering legs with brass castors, in the manner of Gillows, 75cm high, 53cm deep, 92cm wide.  
£350-450

**1230.**  
Spare Lot

**1231.**  
A Victorian walnut chaise longue, the moulded show frame carved with flowers, with cream damask type upholstery on cabriole legs.  
£200-300

**1232.**  
A 19thC rococo giltwood fire screen, with 'C' scroll frame and Berlin woolwork floral panel.  
£120-180

**1233.**  
A mahogany armchair in Howard style, upholstered in kilim patterned material, on turned legs with ceramic castors.  
£150-250

**1234.**  
A walnut open arm chair, with a pierced splat, scroll carved arms, a padded seat on cabriole legs with pad feet, 18thC elements.  
£80-120

**1235.**  
An Edwardian mahogany towel rail, of turned form with flat stretcher, 73cm wide, and another similar (2).  
£50-70



1236.  
A Victorian gilt gesso urn stand, cast with scrolls, flowers and leaves on tripod base (AF), 84cm high, the top 43cm dia.  
£30-40

1237.  
An mahogany washstand, the three quarter gallery with pierced side handles on tapering legs, early 19thC in origin, 94cm wide.  
£50-70

1238.  
A Continental giltwood stool, the padded top with a square woolwork insert of flowers and a central phoenix type bird, on scrolling legs with ebonised feet, 67cm wide.  
£70-90

1239.  
A gilt gesso wall mirror, the frame decorated with flowers, 189cm high, 73cm wide.  
£50-70

1240.  
A late 18thC/early 19thC Dutch walnut armoire base, the two long drawers with gilt brass rococo style handles, flanked by canted corners on massive ball and claw feet, 75cm high, 63cm deep, 187cm wide.  
£80-120

1241.  
A Victorian mahogany overmantel mirror, with shell and leaf carved crest, the moulded frame applied with corner brackets, (plate AF), 178cm high, 223cm wide.  
£120-180

1242.  
A pair of hall chairs in George III style, each painted in grey with a central greyhound crest, and with a shaped back, seat and supports.  
£100-150

1243.  
Spare Lot

▶ 1244.  
A William IV rosewood card table, the rectangular top with rounded corners above a panel frieze on a turned and leaf carved column, concave platform and paw feet, 75cm high, 46cm deep, 92cm wide.  
£150-250

1245.  
A George III mahogany drop leaf table, on turned tapering legs with pad feet, 107cm wide.  
£60-80

1246.  
A 19thC pine simulated rosewood smoker's stand, the circular top with a hinged turned tobacco jar, applied with horse and jockey, a recess for matches, an ashtray stand and recesses for pipes, etc., on a turned column, circular moulded platform and bobbin turned feet, 90cm high, 27cm wide.  
£70-100

1247.  
A walnut lowboy in mid-18thC style, the rectangular quarter veneered top with a cross and feather banding and a moulded edge above a frieze drawer, two short drawers around an arched recess on cabriole legs with pointed pad feet, 76cm high, 51cm deep, 77cm wide.  
£150-250

1248.  
A set of four late 19th/early 20thC mahogany Arts and Crafts style dining chairs, each with a rectangular solid splat inlaid with a shell, a cane seat on cabriole legs with turned H-stretcher, in the manner of Richard Norman Shaw.  
£100-150

1249.  
A Continental gilt gesso console table, with a Greek key border applied with scroll moulding on shaped legs with pierced brackets and hoof feet, lacking top (AF), 95cm high, 43cm deep, 115cm wide.  
£200-300

1250.  
Spare Lot



▶ 1251.  
A Victorian oak partners desk, with moulded top having leather inset, with three frieze drawers and three drawers to each pedestal and obverse three frieze drawers and two cupboards, with brass campaign handles, 137cm x 106cm.  
£300-500

1252.  
An Edwardian oak folio stand.  
£80-120



▶ 1253.  
A George III mahogany breakfront side cabinet, with satinwood strung doors and crossbanded flamed panels, revealing open cupboards to the left and three fitted drawers to the right, on square taper legs, 102cm wide, 85cm high, 54cm deep.  
£300-500

1254.  
A brown leather chesterfield sofa, 200cm wide.  
£100-200

1255.  
A pair of brown leather low club armchairs, 90cm wide, 95cm deep.  
£100-200

1256.  
Spare Lot



▶ 1257.  
A George II walnut bureau, with herringbone crossbanding to fall flap revealing a fitted interior resting on loppers over three graduating drawers with brass back plate handles and bracket feet, 92cm wide.  
£250-400

1258.  
A Louis XVI style giltwood double headboard, 153cm wide.  
£50-100

1259.  
A turned mahogany hat and coat stand, on three outspread legs.  
£50-80

1260.  
Four wrought iron and wirework garden chairs, including armchair.  
£80-120

1261.  
An Edwardian brass and iron cot.  
£30-50

1262.  
Spare Lot

1263.  
A pair of George III mahogany dining table D-ends, of demi-lune form, on square taper legs, 122cm wide, 55cm deep, 25cm high.  
£150-250

1264.  
An early Victorian flamed mahogany breakfront side cabinet, with two moulded doors, 83cm wide (no top).  
£100-150



# Furniture

1265.  
A William IV rosewood pole screen, with brass pole, vacant screen, tulip carved circular base.  
£50-80
1266.  
A Victorian giltwood fire screen or gong stand, 119cm high.  
£50-80
1267.  
A late Victorian brass telescopic lamp standard, with scrolling leaf base.  
£50-80
1268.  
A William IV flamed mahogany chair, with tulip bar back, drop in seat and turned legs.  
£50-80
1269.  
Three Sheraton string inlaid mahogany dining chairs, including carver.  
£80-120
1270.  
A pair of oak framed highback chairs, with tapestry upholstery and turned framing in 17thC style.  
£60-90
1271.  
A pair of early 18thC oak dining chairs, with vase splats and a further chair (3).  
£50-80
1272.  
A 19thC settee, with square taper legs and brass cup castors, 170cm wide.  
£150-250
1273.  
A Victorian mahogany chaise longue, with button damask upholstery and scrolling frame, 180cm.  
£150-250
1274.  
An 18thC parcel gilt mahogany wall mirror, of rococo scrolling form, with ho-ho bird pediment and bevelled plate, 130cm high, 130cm wide, (AF).  
£150-250
1275.  
A Victorian walnut pole screen, with shield screen and tripod base.  
£50-80
1276.  
Four various 19thC fire screen pole stands.  
£80-120
1277.  
A Victorian mahogany torchere, with reeded column.  
£40-60
1278.  
A reproduction rococo mahogany easel stand, 110cm high.  
£40-60
1279.  
A 19thC French gilt brass fire fender, comprising two foliate rococo chenets and interlinking bar, 120cm wide.  
£100-150
1280.  
A Georgian mahogany dressing table mirror, with rectangular plate, 56cm wide.  
£30-50
1281.  
A Victorian rosewood piano stool, with circular rise and fall seat.  
£50-80
1282.  
A 19thC cushion mirror, with embossed brass frame and bevel plate, 67cm high.  
£60-100
1283.  
A Victorian style mahogany stool, with circular floral woolwork seat, 40cm dia.  
£30-50
1284.  
A Victorian ebonised bentwood child's chair, with gilt inlay, and another (2).  
£40-60
1285.  
Ladies and gentleman's Louis XVI giltwood low seated salon chairs, (2, AF).  
£50-100
1286.  
A Victorian satin walnut stool, with bird's eye maple band, 50cm x 28cm.  
£40-60
1287.  
A pair of Victorian cast iron lamp standards, with gilded and anodised column, converted to electricity.  
£50-80
1288.  
A Victorian mahogany Pembroke table, with two frieze drawers, opposing dummies and octagonal taper legs, 56cm x 80cm max.  
£80-120
1289.  
A 19thC mahogany show frame sofa, with striped upholstery and channelled square taper legs, 180cm wide.  
£300-500
1290.  
A 19thC gilt wood and gesso wall mirror, of cartouche form with egg and dart moulded top and four bevelled plates, 105cm high, 55cm wide.  
£100-150
1291.  
A Victorian mahogany child's chair, and an associated table stand. (2, AF)  
£30-50
1292.  
A Chippendale style mahogany double headboard, and modern gilt canopy with drape.  
£40-60
1293.  
A George III giltwood and gesso pier glass, with egg and dart and dentil cornice, Corinthian capitols, 80cm high.  
£100-150
1294.  
A set of seven William IV mahogany dining chairs, including two carvers with carved overrun cresting rails and turned forelegs  
£500-700
1295.  
A late 19thC / early 20thC mahogany kneehole desk, in the manner of Thomas Chippendale, the rectangular top with three black tooled gilt leather inserts, within a leaf carved border, the front of which has canted corners, above an arrangement of nine drawers, flanked by foliate pilasters, opposing a panelled back on bracket feet, 127cm wide.  
£1200-1500
1296.  
A George III mahogany bachelor's chest, or four graduated drawers with brass handles and a brushing slide, 110cm high, 122cm wide, 60cm deep.  
£225-275







▲ 1297.  
A set of six 19thC Thames Valley yew Windsor side chairs, with rondel and pierced splat backs, elm seats and H-frame stretchers.  
£2750-3250



▲ 1298.  
A Victorian figured walnut writing table, with gilt tooled skiver, two frieze drawers, ebonised mouldings and banding, 116cm x 62cm.  
£700-900



▲ 1299.  
A Victorian figured walnut twin pedestal desk, with gilt tooled skiver, three frieze drawers and three to each pedestal, 123cm x 65cm.  
£900-1200

1300.  
A George III mahogany low press cupboard, with two panelled doors, a single shelf with recesses for various shelves, flanked by original brass carrying handles, on bracket feet, 123cm wide  
£250-350

1301.  
A Sheraton mahogany dressing table mirror, with shield shaped plate and three drawer serpentine base on ogee feet, 45cm wide.  
£175-225

1302.  
A set of Regency mahogany hanging wall shelves, 95cm wide.  
£180-250

▼ 1303.  
A George III mahogany dining table, with two demi-lune ends and centre with fall flaps on square taper legs, 270cm x 120cm.  
£750-1000



1304.  
A Victorian rosewood corner whatnot, of three levels with barleytwist supports and scroll feet.  
£225-275



▲ 1305.  
A George III mahogany demi-lune sideboard, with three deep frieze drawers, brass backplate handles and square taper legs, 153cm wide.  
£1200-1500



▲ 1306  
A George III mahogany carver chair, with wavy splat back, crook arms, drop in seat and reeded square taper legs, 63cm over arms.  
£300-400



▲ 1307.  
An 18thC walnut chest, of two short and three long graduated drawers with herringbone and watered veneer top, with lion mask handles and bracket feet, 96cm wide.  
£250-350



▲ 1308.  
A 19thC French figured walnut and marquetry credenza, with gilt metal mounts, 150cm wide.  
£700-900

1309 to 1319.  
Spare Lots



# Rugs & Prints

## Rugs

1319.  
An Iranian Bokhara design rug, red ground, 157cm x 111cm.  
£50-80

1320.  
A Bokhara design rug, red ground, 140cm x 96cm.  
£30-50

1321.  
An Afghan rug, 230cm x 174cm.  
£40-60

1322.  
A Bactiare rug, 192cm x 128cm.  
£60-80

1323.  
A Hamadan rug, 192cm x 130cm.  
£40-60

1324.  
A Mahal rug (AF), 210cm x 164cm.  
£20-40

1325.  
An Afghan rug (AF), 177cm x 130cm.  
£20-40

1326.  
An Afghan rug, 240cm x 172cm.  
£20-40

1327.  
A Hamadan rug, 173cm x 94cm.  
£30-50

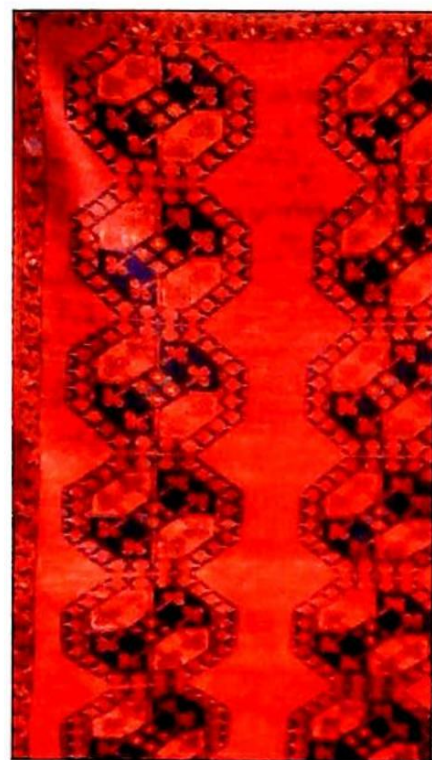
1328.  
A Hamadan rug, 190cm x 104cm.  
£20-40

1329.  
An Ardebil rug, 164cm x 120cm.  
£20-40

1330.  
A Belouch prayer rug, 142cm x 103cm.  
£20-40

1331.  
A Karajan runner, 225cm x 112cm (width measured at narrowest point due to hour glass shape).  
£20-40

1332.  
An Afghan kelim, 270cm x 116cm.  
£60-80



▲ 1333.  
An antique Afghan rug, 210cm x 125cm.  
£80-120

1334.  
An Afsha rug, 190cm x 130cm.  
£40-60

1335.  
A Derbend rug, 160cm x 116cm.  
£80-120

1336.  
A Heriz rug, 130cm x 92cm.  
£30-50

1337.  
A Pakistan bokhara design rug (AF), 185cm x 123cm.  
£20-40

## Prints

1391.  
Greenwood (20thC). Leaf fall, artist signed coloured etching 27/250, dated (19)79, 44cm x 51.5cm.  
£30-50

1392.  
Norman Webster (b.1924). A dog in landscape, Oswaldkirk Yorkshire, artist signed coloured etching 10/30, dated 1977, 30.5cm x 41cm.  
£30-50

1393.  
Norman Webster (b.1924). Bush Cottage, Rickarton, Scotland, artist signed coloured etching 8/50, dated 1978, 33.5cm x 39cm.  
£30-50

1394.  
Gilbert (20thC). One rook be crows, three crows by rooks, artist signed coloured etching 6/50, dated (19)77, 27cm x 35.5cm.  
£30-50

1395.  
19thC coloured print, The Fortune Teller, 10cm x 8cm, and three others (4).  
£40-60

1396.  
18thC School. Vue des Boulevard prise du premier cafe pres le Reservoir de la Ville. A Paris chez Mondhard Rue St Jacques, a coloured print, 20cm x 36.5cm.  
£30-50

1397.  
After Donowell. View of the printing house and the theatre museum, part of All Saints' College and St Mary's Church in the University of Oxford, published according to the Act of Parliament 1755, later coloured, 28cm x 48cm.  
£40-60

1398.  
Late 17th/early 18thC Continental School. Palace with courtyard and figures, later coloured print, numbered 15, 25cm x 38cm.  
£50-70

1399.  
Vindesorium? 17thC/early 18thC Continental School. Figures in a townscape, later coloured, 19cm x 50cm.  
£50-70

1400.  
After George Baxter. Maidens in river landscape, coloured print, 36.5cm x 47.5cm.  
£20-40

1401.  
After Shayer. The Age Brighton Coach in 1852, colour engraving by Charles Hunt, plate size 46cm x 67cm.  
£40-60

1402.  
After Herring. Number One Coach Horses, colour engraving by Charles Hunt, plate size 55cm x 76cm.  
£40-60

1403.  
After Davis (W.H.) engraver. Short horned ox, 4 years and 4 months old, bread and fed by his Grace the Duke of Rutland, chromolithograph, 53cm x 69cm, (AF).  
£40-60

1404.  
After Alken. Derby Stakes, 1820, colour print by S & J Fuller, plate size 21cm x 43cm.  
£40-60

1405.  
After Kuyff. Grimsthorpe in the county of Lincoln, colour engraving by John Kip, plate size 31cm x 48cm.  
£40-60

1406.  
After Alken. Four cock fighting colour prints by C R Stock, plate size 13cm x 17cm.  
£50-80

1407.  
After Robin Wheeldon. Moneys Mill Sleaford, reproduction colour print no. 652/950, signed in pencil to lower margin, image size 29.5cm x 42cm.  
£15-20

## General Furnishings

Lots 1338 to 1390 will be the residual general miscellaneous items in the property including books, wines, CD's, outdoor effects, etc. An addendum will be available at viewing.



1408.  
An agricultural poster, 'Les Instruments Agricoles No 612', printed by Kapp - Paris, circa 1900, 80cm x 58cm.  
£30-50

1409.  
After William Henry Davis. Study of prize cattle, set of four engravings by Hacker, circa 1858, 14cm x 21.5cm.  
£40-60

1410.  
Illustrated London News. The London Christmas Cattle Show, 1858, hand coloured engraving, 38cm x 54cm, together with another from the same publication of prize cattle and sheep and 'The Aylesbury Dairy Company - the Start from St Petersburg Place, Bayswater,' coloured engraving, 17cm x 23cm. (3).  
£30-50

1411.  
Style of George Morland. Figures in a winter landscape breaking ice, with cattle, 18thC, coloured engraving, trimmed to image 45.5cm x 60.5cm.  
£30-50

1412.  
After Henry Strafford and others. Studies of prize cattle, a set of eight lithographs, circa 1850, 12.5cm x 20cm, together with an engraving of a short horned bull, 13cm x 21cm, (9).  
£25-40

1413.  
Richard Ison (20thC). Gertrud Eating and Basil the Pig, a pair of pastel drawings, signed, titled verso 1985, 19cm x 26cm, together with a coloured etching by and after Laura Boyd, 'Farmyard Gossip', 90/250, signed in pencil to lower margin, 13cm x 15cm, (3).  
£40-60

1414.  
After Samuel Allen. 'Smithfield Used Up', hand coloured lithograph, published by Read & Co London, circa 1855, 53cm x 70.5cm, and F.C. & C. Lewis, 'A View in Smithfield on a Friday Afternoon', hand coloured engraving, image size 38cm x 53cm, (2).  
£60-80

1415.  
After Thomas Weaver. Portrait of Thomas William Coke, Esq., MP for Norfolk, inspecting some of his Southdown Sheep ... coloured mezzotint by Ward, circa 1880, 58cm x 73cm.  
£100-150

1416.  
After George Garrard. Holderness cow in a farmyard with figures and dogs, coloured mezzotint by Ward, circa 1798, image size 45cm x 60cm.  
£200-300

1417.  
After Thomas Weaver. Two Durham oxen, mezzotint by Charles Turner, circa 1827, image size 55cm x 71cm.  
£200-300

1418.  
After Thomas Weaver. 'A short Horned Heifer, 7 years old, bred and fed by Mr Robert Colling of Barmpton near Darlington...', coloured mezzotint by William Ward, circa 1811, image size 45.5cm x 60cm.  
£150-200



1419.  
After J Bradley. The Airedale Heifer, hand coloured aquatint by R.G. Reeve, circa 1820, 42.5cm x 61cm.  
£250-350

1420.  
After H Strafford. Study of a short horn bull, Sir Thomas Fairfax, hand coloured lithograph by J.W. Giles, circa 1841, 48cm x 62cm.

1421.  
After Richard Ansdell. 'A Scene at Wiseton', coloured engraving by W.H. Simmons, 50cm x 61cm.  
£80-120

1422.  
After H Strafford. 'The Castle Howard Oxen', lithograph by J.W. Giles, circa 1840, 53cm x 70cm.  
£100-150

1423.  
After George Garrard. The Holderness Cow, coloured mezzotint by Ward, circa 1798, 48cm x 61cm.  
£200-300

1424.  
William Henry Davis. Short Horned Ox, chromolithograph by Day & Son, circa 1854, image size 52cm x 68cm.  
£200-300

1425.  
19thC School. Wide Bargate Sheepmarket, Boston, Lincolnshire, coloured lithograph, trimmed to image, 42cm x 60cm.  
£40-80

1426.  
After Percy Forster. Portrait of the Celebrated Short Horned Cow Bracelet, lithograph by Thomas Landseer, 19thC, image size 39cm x 50cm.  
£100-150

1427.  
After William Henry Davis. The Everingham Short Horned Prize Cow, coloured aquatint by Harris, published by Fores, circa 1843, image size 40cm x 55cm.  
£100-150

1428.  
By and After William Henry Davis. Short Horn Ox, 3 years 9 months old, coloured lithograph, circa 1850, image size 35cm x 50cm.  
£100-150

1429.  
After George Stubbs. The Lincolnshire Ox, stipple engraving by G.T. Stubbs, circa 1791, 39cm x 49cm.  
£150-200

1430.  
After Fryer. The Craven Heifer, engraving by J. Whessell, circa 1812, image size 45cm x 59.5cm.  
£200-300

1431.  
After John Boulton. The Durham Ox, engraving by J. Whessell, first published 1802, later impression, 51cm x 62cm.  
£100-150

1432.  
After George Garrard. Wobourn Sheep Shearing, engraving first published 1811, later impression, 53cm x 76cm.  
£80-100

1433.  
After Thomas Weaver. The Unrivalled Lincolnshire Heifer, coloured mezzotint by Wm. Ward, circa 1813, 49cm x 60cm.  
£100-150

1434.  
By & After William Henry Davis. An Improved Short-Horned Cow, coloured lithograph, circa 1836, 44cm x 52cm. and After J. Burenger. The Famous Lincolnshire Ox, lithograph, 47cm x 53cm (2).  
£125-175

1435.  
After Richard Ansdell. The Country Meeting of the Royal Agricultural Society, steel engraving by S.W. Reynolds, published circa 1845 by Thomas Agnew, 55cm x 126cm, together with a framed key plate identifying the members, 20cm x 53cm, (2).  
£150-200

1436.  
After George Garrard. The Durham White Ox, coloured mezzotint by Wm. Ward, first published 1813, later impression, image size 44cm x 60cm.  
£60-80

1437.  
After Edwin Landseer. A British Boar, coloured etching by Thomas Landseer, published circa 1852, 32cm x 45cm.  
£80-120

1438.  
After Joseph Francis Gilbert. East Street Sheep Market, Chichester, aquatint by M. Dubourgand addressed to Duke of Richmond, circa 1814, 46cm x 61cm.  
£50-80

1439.  
Late 19thC School. London Smithfield Club Fat Cattle Show Class 37 Cotswold First Prize ... study of three sheep in a landscape, chromolithograph, mid 19thC, 32cm x 45cm.  
£60-80



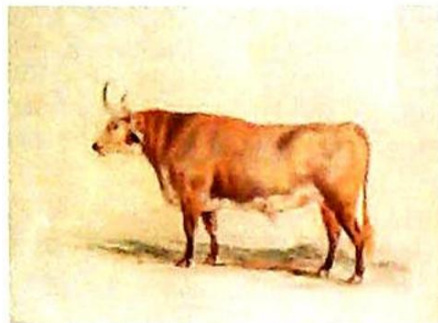
2300 - 1310

## Prints

1440.

An 1822 auction poster, for 'the elegant and commodious stone and sashed mansion house in Leasingham', 44cm x 28cm and a 1927 auction poster for arable land and farm buildings and the residents of Leasingham manor, 32cm x 21cm (2).

£50-80



▲ 1441.

After George Garrard. Holderness Cow; Herefordshire Ox; The Improved Longhorned of Leicestershire; Sussex Ox; A Fat Highland Ox; a set of five hand coloured engravings, published by Garrard circa 1800-01, 36cm x 48cm.

£300-400

1442.

Greenwood (C & J). Map of the County of Lincoln from an actual survey made in the years 1827 & 1828, engraved by Josiah Neele, 1831, 63cm x 74cm.

£80-120

1443.

After W\*\*\* Hay (19thC). Town of Banff, hand coloured aquatint by I. Clark, 25cm x 36cm.

£25-40

1444.

After Thomas Weaver. A Short Horner Heifer, 7 years old, mezzotint by Wm. Ward, published by W. Robinson, Darlington circa 1811, trimmed to margins, title laid down on mount, image size 40.5cm x 59cm.

£60-80

1446.

Illustrated London News. The Lincolnshire Horse Fair. The Annual Horse Fair at Horncastle, Lincolnshire. The Smithfield Club Cattle show at The New Agricultural Hall Islington, hand coloured engravings, (3).

£50-70

1447.

After Dodd. Lincolnshire Sheep, hand coloured copper engraving by Pass, circa 1800, 22cm x 17.5cm, together with a study of a Wether, 'killed in October 1798 by Mr Hopper of Kilham near Bridlington, Yorkshire...' aquatint published by E. Walker 1798, 22cm x 28cm, (2).

£30-50

1448.

After Thomas Sidney Cooper. Resting Cattle and Watering Cattle, a pair of hand coloured lithographs, published by Ackermann circa 1838, 31cm x 45cm, (2).

£60-80

1449.

After William & Henry Barraud. The Meet at Badminton, steel engraving by William Giller, circa 1847, 55cm x 84cm.

£75-125

1450.

By & After Joseph Kirkpatrick. Ploughing scene and Taking Home the Harvest, coloured etchings, signed in pencil to lower margin, artist proof blind stamp lower left, plate size 19.5cm x 29.5cm and 29.5cm x 19.5cm respectively, (2).

£60-80

1451.

A set of ten reproduction portrait silhouettes.

£30-50

1452.

Six portrait silhouettes, including three Regency examples.

£60-90

End of Sale



## Paintings, Drawings & Sculpture

Any statement as to authorship, attribution, origin, date, age, provenance and condition is a statement or opinion and is not to be taken as a statement or representation of fact. Golding Young & Mawer reserve the right, in forming their opinion, to consult and rely upon any expert or authority considered by them to be reliable.

A picture catalogued with the forename(s) and surname of the painter is in our opinion a work by that artist; e.g. Joseph Mallord William Turner. When an artist's forename(s) is not known, a series of asterisks followed by the surname of the artist, whether preceded by an initial or not, indicates that in our opinion the work is by the artist.

1. **Attributed to....** is in our opinion probably by the artist.
2. **Studio of....** is in our opinion a work from the studio of the artist which may or may not have been executed under his direction.
3. **Circle of....** is in our opinion a work of the period of the artist executed under his immediate influence.
4. **Follower of....** is in our opinion a work by a painter working in the artist's style, contemporary or nearly contemporary, but not necessarily his pupil.

5. **Manner of....** is in our opinion a work in a style related to that of the artist, but of a later date.
6. **School....** is in our opinion the picture was executed at that time and in that location.
7. **After....** is in our opinion a copy of any date after a work by that artist.
8. The term **signed** and/or **dated** and/or **inscribed** means that in our opinion the signature and/or date and/or inscription are from the hand of the artist.
9. The term **Bears signature** and/or **dated** and/or **inscription** means that in our opinion the artist's name and/or date and/or inscription have been added by another hand.
10. All references to signatures, inscriptions and dates refer to the present state of the work.
11. Dimensions are given height before width.

## Artist's Resale Right Scheme (Droit de Suite)

Following the UK's implementation of the EU Artist's Resale Right directive in February 2006, living artists are entitled to receive a resale royalty each time their art work is sold in the UK by an art market professional, subject to certain conditions. In January 2014 this has been extended to the sale of works of art of artists who have died in the previous 70 years, despite the wishes of the British Art Market Federation and other professional bodies. This payment is calculated on qualifying works of art which are sold for a hammer price or best bid price of more than EUR 1000. The UK sterling equivalent of EUR 1000 will fluctuate in line with prevailing exchange rates.

The actual qualifying threshold will be calculated by the Artist's Resale Right Service Hub based on the European Central Bank reference rate published at 2.15pm on the day of the sale.

The royalty charge will apply if the hammer price is more than the UK sterling equivalent of EUR 1000. The royalty charge will be added to buyer invoices and must be paid before items can be cleared. No handling costs or additional fees with respect to these charges are retained by auctioneers despite us having to undertake all of the extra and considerable administration work. This sum is then paid by us to a 'not-for-profit' collecting society, who will actually extract their administration fees. Any residual amount may go to benefit the artist.

Portion of the hammer price (Euro's EUR)	Royalty rate
1000 to 50,000	4%
50,000.01 to 200,000	3%
200,000.01 to 350,000	1%
350,000.01 to 500,000	0.5%
Exceeding 500,000	0.25%

VAT is not payable on this royalty charge. A maximum royalty charge is 12,500 EUR. Revised 4th January 2011.



- ▲ 712.  
A Staffordshire pottery bull baiting group in the manner of Obadiah Sherratt, the angry beast behind the irate farmer, with terriers to the head and neck, on a green painted base entitled 'Bull Beating Now Captain Lad', unmarked, probably early 20thC, 15cm high.  
£200-400



**The Bourne Auction Rooms**  
Spalding Road, Bourne,  
Lincolnshire PE10 9LE

E: [bourne@goldingyoung.com](mailto:bourne@goldingyoung.com)  
T: +44 (0) 1778 422686  
F: +44 (0) 1778 425726

**The Grantham Auction Rooms**  
Old Wharf Road, Grantham,  
Lincolnshire NG31 7AA

E: [grantham@goldingyoung.com](mailto:grantham@goldingyoung.com)  
T: +44 (0) 1476 565118  
F: +44 (0) 1476 561475

**The Stamford Valuation Office**  
1, The George Mews  
Station Road, Stamford  
Lincolnshire PE9 2LB

E: [stamford@goldingyoung.com](mailto:stamford@goldingyoung.com)  
T: +44 (0) 1780 751666

**The Lincoln Auction Rooms**  
Dunston House, Portland Street,  
Lincoln, Lincolnshire LN5 7NN

E: [lincoln@goldingyoung.com](mailto:lincoln@goldingyoung.com)  
T: +44 (0) 1522 524984  
F: +44 (0) 1522 535600

**The Lincoln Auction Rooms\***  
Thos Mawer House, Station Road  
North Hykeham, Lincoln LN6 3QY

E: [lincoln@goldingyoung.com](mailto:lincoln@goldingyoung.com)  
T: +44 (0) 1522 524984  
F: +44 (0) 1522 535600

*\*from August 2016*

**[goldingyoung.com](http://goldingyoung.com)**

