

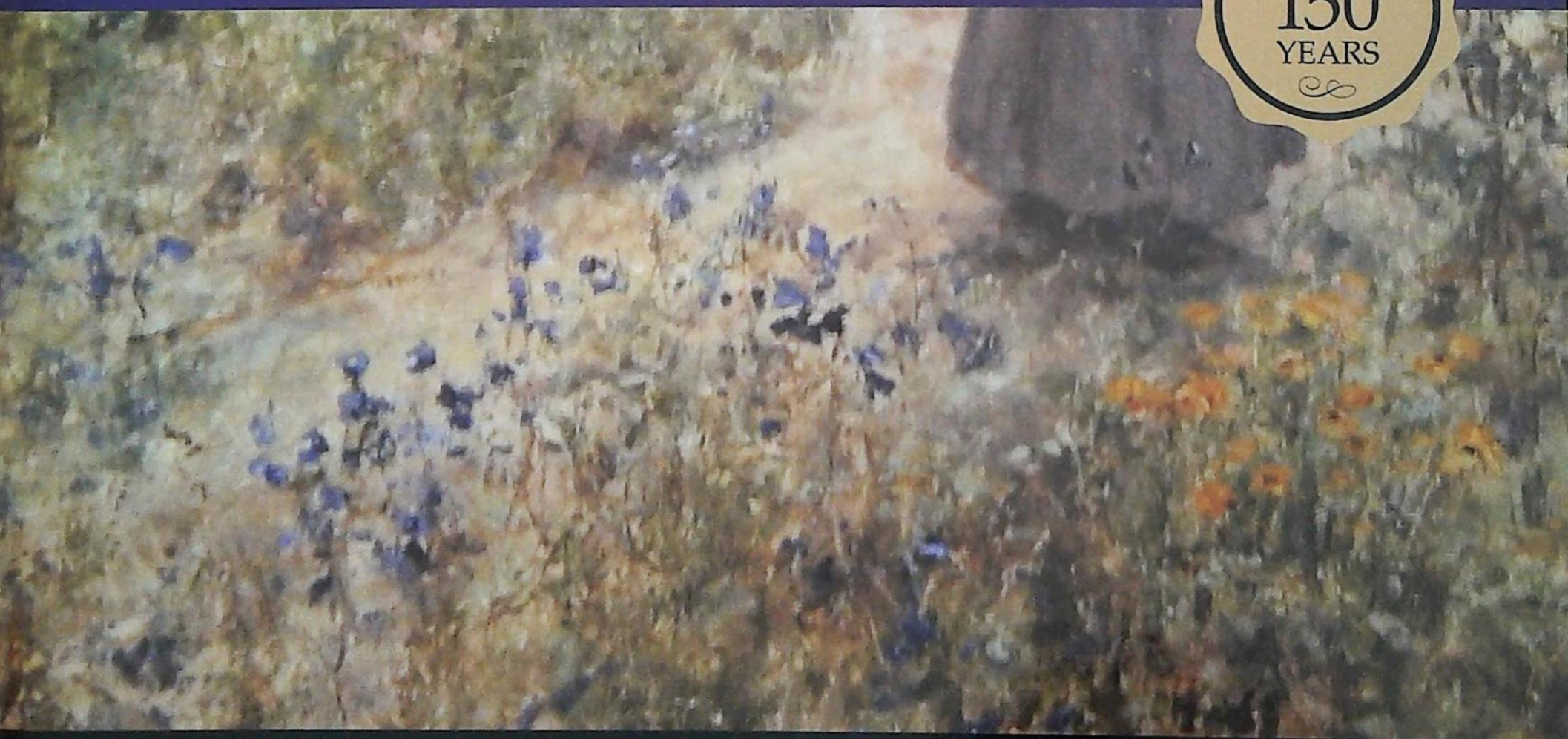


GOLDING YOUNG

EST
1864

Evening Auction of Fine Art

Wednesday 26th November 2014 at 7pm



CHARTERED AUCTIONEERS & VALUERS • ARTS & ANTIQUES SURVEYORS

GOLDING YOUNG

EST
1864



Thinking of selling?

Executors, solicitors, accountants, insurers, corporations and government departments, have to exhibit due diligence when instructing. Use this checklist to do the same, with a few reasons why you may wish to choose us.

We are regulated by RICS
Better Regulation for Us. Better
Protection for You.
Accept Nothing Less.

Our live webcast auctions
Our 150 years' experience means we
get the best for our clients from holding
our important sales live webcast on
the internet.

Our sales results
August 2014 saw our 72nd consecutive
month with a sale at either Bourne,
Grantham or Lincoln producing a
sold rate of over 90%. Good advice,
great results for hundreds of vendors
every month.

Join their success with an entry in our next sale!

goldingyoung.com

HOUSE CLEARANCE

If there is that hidden 'find', it will be to your direct benefit.

Every week we take instructions for House Clearance for all of the prominent firms of Solicitors in the area, as well as from Private Individuals, Trustees and Executors.

If you are dealing with the content of a property, please contact us at the earliest point.

A visit to the premises by one of our qualified and experienced appraisal staff will offer the best advice for Security, Valuation and Sale.

DISPOSE OF NOTHING

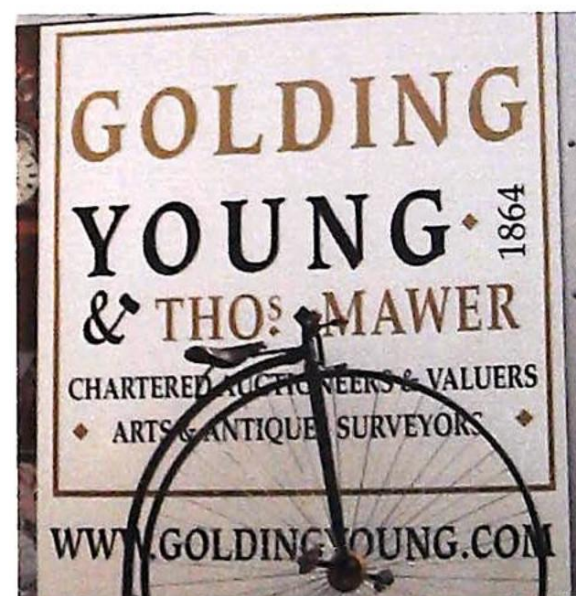
Often things thought to be rubbish are saleable.

IMMEDIATE ACTION IS REQUIRED

Once a property is uninhabited it is a target for burglars and your insurance may be invalid.

Items removed from premises are listed and handled by our professional carriers. Goods are then allocated to the next appropriate sale to ensure the highest sale return.

We will also deal with the rubbish. It is disposed of in the most cost-effective and environmentally friendly way.



PROPERTIES CLEARED, PROMPTLY AND EFFICIENTLY

Call: Alastair McPhie-Meiklejon BSc - 01778 422686
For Bourne, Stamford and Southern Counties

Call: Andrew Doubleday MNAVA - 01476 565118
For Grantham Area and The Midlands

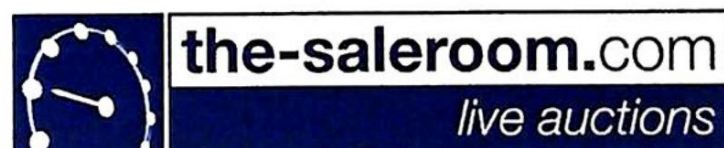
Call: John Leatt ASFAV - 01522 524984
For Lincoln Area and Northern Counties

Art Auction

Wednesday 26th November 7pm
The Lincoln Auction Rooms

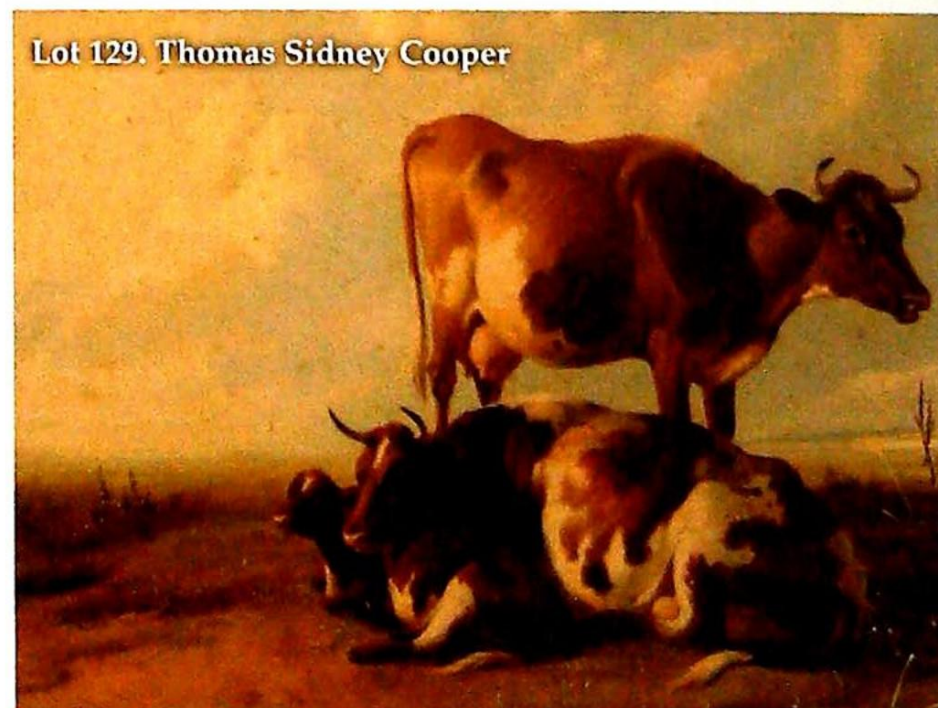
Viewing: Sunday 23rd November from 2pm
Tuesday 25th November 10am - 4pm
& Saleday from 2pm

Bid online or simply watch the sale live at



All enquires to William Gregory MRICS

Front cover image: Lot 89



INFORMATION FOR BUYERS

1. **Introduction:** The following informative notes are intended to assist Buyers, particularly those inexperienced or new to our salerooms. All sales are conducted on our printed 'Conditions of sale' which are readily available for inspection and normally accompany catalogues. Our staff will be happy to help you if there is anything you do not fully understand.
2. **Agency:** As auctioneers we usually contract as agents for the seller whose identity, for reasons of confidentiality, is not normally disclosed. Accordingly, if you buy your primary contract is with the seller.
3. **Estimates:** Estimates are designed to help buyers gauge what sort of sum might be involved for the purchase of a particular lot. The lower estimate may represent the reserve price and certainly will not be below it. Estimates do not include the buyer's premium or VAT (where chargeable). Estimates are prepared some time before the sale and may be altered by announcement before the sale. They are in no sense definitive and are subject to constant revision.
4. **Buyers premium:** The 'Conditions of sale' oblige buyers to pay a buyer's premium at 17.5% on the hammer price of each lot purchased with a minimum of £1 per lot. In the case of lots purchased 'Live On-line' or via www.the-saleroom.com or www.i-bidder.com this will be charged at 22.5% on the hammer price. In addition, VAT is payable on this premium (see below).
5. **VAT:** An asterisk (*) indicates that VAT is payable by the purchaser at the standard rate imposed by current UK law on the hammer price as well as being an element in the buyer's premium, lots are noted in the saleroom by a red dot on the lot number. This imposition of VAT is likely to be because the seller is registered for VAT within the European Union and is not operating the Dealers Margin Scheme or because VAT is due on importation into the UK. The double symbol (**) indicates that the lot has been imported from outside the European Union and the present position is that these lots are liable to a reduced rate of VAT on the gross lot price (i.e. both the hammer price and the buyer's premium). Lots which appear without either of the above symbols indicate that no VAT is payable on the hammer price. This is because such lots are sold using the Auctioneers' Margin Scheme and it should be noted that the VAT included within the premium is not recoverable as input tax. (VAT rates are changing with frequency, please check with HMRC. VAT will be charged as set by Government at the time of sale.)
6. **Condition and description of lots.** We are primarily, agents for the seller. We are dependent on information provided by the seller and whilst we may inspect lots and act reasonably in taking a general view about them we are normally unable to carry out a detailed or any examination of lots in order to ascertain their condition in the way in which it would be wise for a buyer to do. Intending buyers have ample opportunity for inspection of goods and, therefore, accept responsibility for inspecting and investigating lots in which they may be interested. Please note carefully the exclusion of liability for the condition of lots contained in the 'Conditions of sale'. Neither the seller nor we, as the auctioneers, accept any responsibility for their condition. In particular, mechanical objects of any age are not guaranteed to be in working order. However, in so far as we have examined the goods and make a representation about their condition, we shall be liable for any defect which that examination ought to have revealed to the auctioneer but which would not have been revealed to the buyer had the buyer examined the goods. Additionally, in specified circumstances lots misdescribed because they are 'deliberate forgeries' may be returned and repayment made. There is a 21 day time limit from the date of sale, not date of collection or receipt. (The expression 'deliberate forgery' is defined in our 'Conditions of sale').
7. **Electrical goods:** Items are tested by a qualified electrician for SAFETY ONLY. An item that passes the PAT safety test may not work. Conversely, an item that fails the test may work with just minor repair. 'Working Order' and 'Safe' are two completely different concepts. The only thing you may take for granted is that the item will be safe at the point of sale. Items that have failed will have their cabling cut to source, labelled and sold 'For Trade Only'. To use the object you will have to change it radically from what was sold to you. Therefore, the Auctioneers cannot be held responsible after the point of sale. Those items sold genuinely as 'antiques or collectables' will not have been tested and if bought for use must be checked over for compliance with safety regulations by a qualified electrician before use. This is an express condition.
8. **Export of goods:** Buyers intending to export goods should ascertain (a) whether an export licence is required and (b) whether there is any specific prohibition on importing goods of that character because, e.g. they may contain prohibited materials such as ivory. Ask us if you need help
9. **Bidding in person:** Some form of identification with proof of address will be required if you are unknown to us. Bidders may be required to register before the sale commences and lots will be invoiced to the name and address on the registration form. Account transfers will not be recognised or facilitated under any circumstances.
10. **Absentee bidding:** Commission bids may be left with the auctioneers indicating the maximum amount to be bid excluding buyers' premium. They will be executed as cheaply as possible having regard to the reserve (if any) and competing bids. If two buyers submit identical commission bids, the auctioneers may prefer the first bid received. If there are genuine reasons why you are unable to leave a Commission Bid and you wish to bid by telephone we may accommodate on lots where your opening bid will be £500 or above. There are inherent dangers with this practice; therefore all arrangements shall be entirely at the bidder's risk. Absentee bid instructions must be received by telephone, fax or email 12 hours prior to the sale.
11. **Live Internet Banking:** In completing the bidder registration on www.the-saleroom.com and providing your credit card details and unless alternative arrangements are agreed with Golding Young Limited, you
 - (i) authorise Golding Young Limited, if they so wish, to charge the credit card given in part or full payment, including all fees, for items successfully purchased in the sale via www.the-saleroom.com or www.i-bidder.com, and
 - (ii) confirm that you are authorised to provide these credit card details to Golding Young Limited through www.the-saleroom.com or www.i-bidder.com.
12. **Methods of payment:** Accounts are due for settlement SALEDAY. The following methods of payment are acceptable. There will be NO EXCEPTIONS to this policy. To avoid undue embarrassment for yourself or our staff, please do not ask for preferential treatment.
 - i. **Cash.** Single payments up to £10,000 only.
 - ii. **Debit Card.** No limit with chip & pin. (CNP limit £500).
 - iii. **Credit Card.** (Fee of 2%+vat) No limit with chip & pin. (CNP limit £500).
 - iv. **Bank Drafts & Building Society Cheques.** No limit. Due to forgeries, we will retain the goods for 3 working days to establish clearance of funds.
 - v. **Cheques.** Accepted up to the limit of the guarantee card for immediate clearance. For sums exceeding this, and you are not known to the auctioneers, we will retain the goods for 7 working days to establish clearance of funds.
 - vi. **Bank Transfer.** Please see details on our website.
13. **Collection and storage:** Goods can be collected as soon as they are paid for and within two working days following the sale. If goods remain with us and we have no contrary written advice of your intentions the items will be moved to storage and reasonable labour charges levied and storage at the rate of £2+vat per lot per day thereafter for small items and £10+vat per lot per day for furniture and large items.
14. **Postage and packing:** Options for buyers are available at www.goldingyoung.com/buying-shipping or ask a member of staff.

Lots subject to normal VAT rules are marked in the text-only catalogue with a single asterisk character (*) or a single dagger symbol (†) to indicate a VAT added rate of 20%.

Lots subject to normal VAT rules are marked in the text-only catalogue with a single 'at' character (@) to indicate a VAT inclusive rate of 20%.

Lots subject to normal VAT rules are marked in the text-only catalogue with double asterisk characters (**) or a double dagger symbol (§) to indicate a VAT added rate of 5%.

Lots subject to normal VAT rules are marked in the text-only catalogue with double 'at' characters (@@) to indicate a VAT inclusive rate of 5%.

Lots marked in the text-only catalogue with a bullet character (•) are subject to the Artist's Resale Right Scheme.

Paintings, Drawings & Sculpture

Any statement as to authorship, attribution, origin, date, age, provenance and condition is a statement or opinion and is not to be taken as a statement or representation of fact. Golding Young & Mawer reserve the right, in forming their opinion, to consult and rely upon any expert or authority considered by them to be reliable.

A picture catalogued with the forename(s) and surname of the painter is in our opinion a work by that artist; e.g. Joseph Mallord William Turner. When an artist's forename(s) is not known, a series of asterisks followed by the surname of the artist, whether preceded by an initial or not, indicates that in our opinion the work is by the artist.

1. **Attributed to....** is in our opinion probably by the artist.
2. **Studio of....** is in our opinion a work from the studio of the artist which may or may not have been executed under his direction.
3. **Circle of....** is in our opinion a work of the period of the artist executed under his immediate influence.
4. **Follower of....** is in our opinion a work by a painter working in the artist's style, contemporary or nearly contemporary, but not necessarily his pupil.

5. **Manner of....** is in our opinion a work in a style related to that of the artist, but of a later date.
6. **School....** is in our opinion the picture was executed at that time and in that location.
7. **After....** is in our opinion a copy of any date after a work by that artist.
8. The term **signed** and/or **dated** and/or **inscribed** means that in our opinion the signature and/or date and/or inscription are from the hand of the artist.
9. The term **Bears signature** and/or **dated** and/or inscription means that in our opinion the artist's name and/or date and/or inscription have been added by another hand.
10. All references to signatures, inscriptions and dates refer to the present state of the work.
11. Dimensions are given height before width.

Artist's Resale Right Scheme (Droit de Suite)

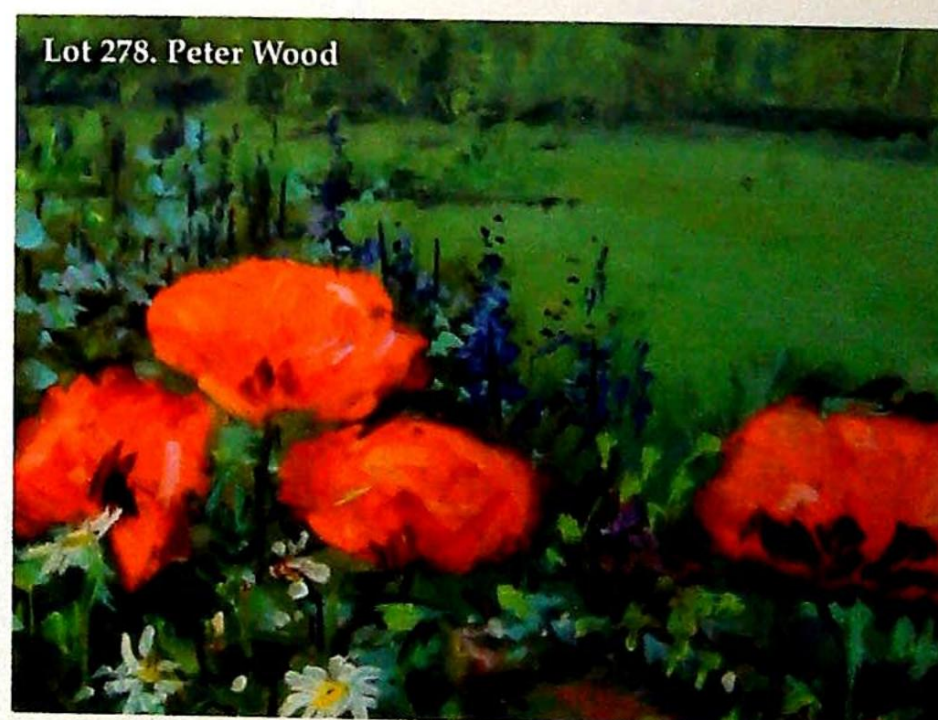
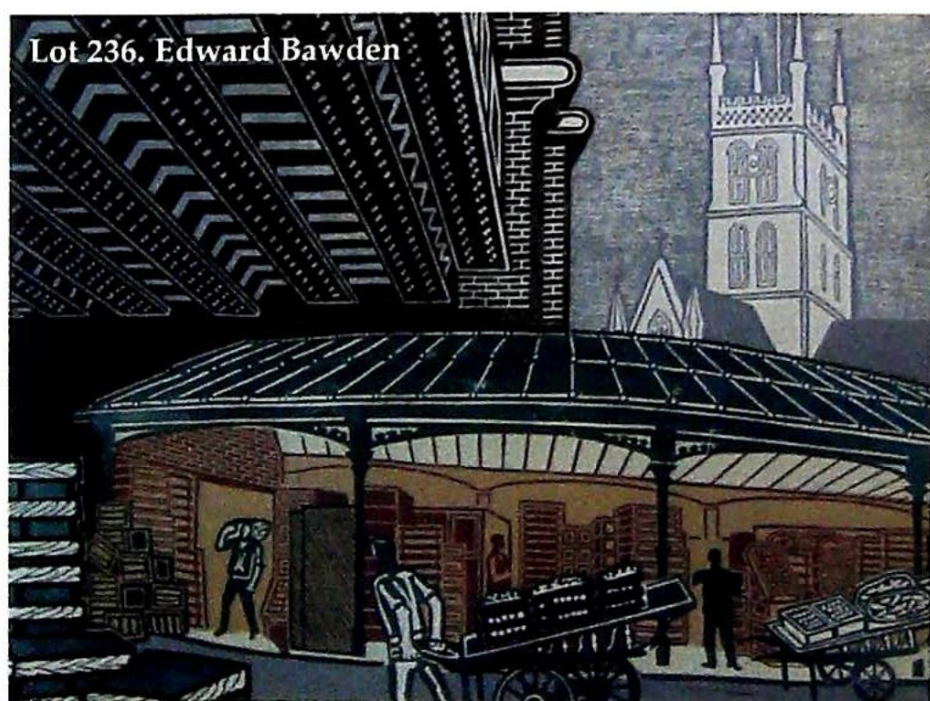
Following the UK's implementation of the EU Artist's Resale Right directive in February 2006, living artists are entitled to receive a resale royalty each time their art work is sold in the UK by an art market professional, subject to certain conditions. In January 2014 this has been extended to the sale of works of art of artists who have died in the previous 70 years, despite the wishes of the British Art Market Federation and other professional bodies. This payment is calculated on qualifying works of art which are sold for a hammer price or best bid price of more than EUR 1000. The UK sterling equivalent of EUR 1000 will fluctuate in line with prevailing exchange rates.

The actual qualifying threshold will be calculated by the Artist's Resale Right Service Hub based on the European Central Bank reference rate published at 2.15pm on the day of the sale.

The royalty charge will apply if the hammer price is more than the UK sterling equivalent of EUR 1000. The royalty charge will be added to buyer invoices and must be paid before items can be cleared. No handling costs or additional fees with respect to these charges are retained by auctioneers despite us having to undertake all of the extra and considerable administration work. This sum is then paid by us to a 'not-for-profit' collecting society, who will actually extract their administration fees. Any residual amount may go to benefit the artist.

Portion of the hammer price (Euro's EUR)	Royalty rate
1000 to 50,000	4%
50,000.01 to 200,000	3%
200,000.01 to 350,000	1%
350,000.01 to 500,000	0.5%
Exceeding 500,000	0.25%

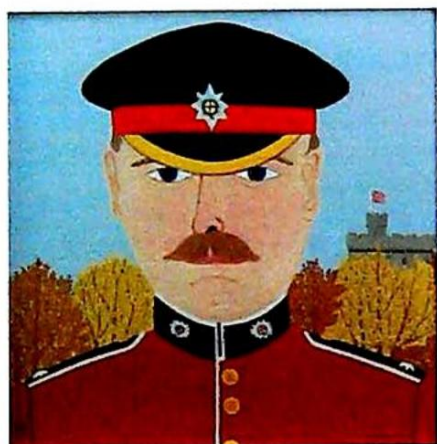
VAT is not payable on this royalty charge. A maximum royalty charge is 12,500 EUR. Revised 4th January 2011.



Lincoln Fine Art Sale



▲ 1
Vincent Haddelsey (1934-2010)
The Hunt over the field, oil on canvas, initialled, 44cm x 59.5cm
£800-1200



▲ 2
Vincent Haddelsey (1934-2010)
Coldstream Guards, oil on board, initialled, signed, titled and dated 1970 verso, 27cm x 27cm
£400-600



▲ 4
Vincent Haddelsey (1934-2010)
French hunting scene, oil on canvas, initialled, 36.5cm x 45cm
£600-900



▲ 3
Vincent Haddelsey (1934-2010)
Polo Match, oil on canvas, initialled, 52cm x 79.5cm
£1200-1800



▲ 5
Vincent Haddelsey (1934-2010)
Cloverdale Stampede, oil on canvas, initialled, titled and signed verso, 49cm x 59cm
£400-600



▲ 6
Vincent Haddelsey (1934-2010)
Des Chevaux et Des Holmes, presentation cased folio of 36 artist signed prints



▲ 7
Vincent Haddelsey (1934-2010)
Herdsman of the Fourth Banner, Pkoduuction Brigade Inner Mongolia 1980, oil on canvas, initialled, titled and signed verso, 102cm x 51.5cm
£300-500



▲ 8
Vincent Haddelsey (1934-2010)
Mongolian Herdsman on Horseback, oil on canvas, 91cm x 102cm, and four other primarily sketches on canvas (5)



▲ 9
Vincent Haddelsey
(1934-2010)
Dieu De La Foret, enamel,
signed and titled verso,
92cm x 46cm



▲ 10
Vincent Haddelsey
(1934-2010)
Morning Horse Ride, artist
signed limited edition
coloured print, 25/36,
35cm x 60cm



▲ 11
Vincent Haddelsey
(1934-2010)
Competition with shire horses,
artist signed limited edition
coloured print, 34/42,
27cm x 43cm



▲ 12
Vincent Haddelsey
(1934-2010)
Guardsman and horse, artist
signed coloured print,
27cm x 43cm



▲ 13
Vincent Haddelsey
(1934-2010)
Horse Racing, artist signed
limited edition coloured print,
14/50, 27cm x 43cm



▲ 14
Vincent Haddelsey
(1934-2010)
French Dressage, artist signed
coloured print, 27cm x 43cm



▲ 15
Vincent Haddelsey
(1934-2010)
French Huntsmen, artist
signed limited edition
coloured print, 20/45,
27cm x 43cm



▲ 16
Vincent Haddelsey
(1934-2010)
Windmill Corner, artist signed
coloured print, 27cm x 43cm



▲ 17
Vincent Haddelsey
(1934-2010)
Over the bar fence, artist
signed coloured print,
27cm x 43cm



▲ 18
Vincent Haddelsey
(1934-2010)
Horse Racing - The Parade,
artist signed limited edition
coloured print, 16/36,
38cm x 76cm



▲ 19
Vincent Haddelsey
(1934-2010)
Polo Match, artist signed
limited edition coloured print,
6/36, 38cm x 76cm



▲ 20
Vincent Haddelsey
(1934-2010)
Horse Race, artist signed
coloured print, 38cm x 55cm



▲ 21
Vincent Haddelsey
(1934-2010)
The Hunt Passing By, artist
signed limited edition
coloured print, 25/25,
31cm x 52cm



▲ 22
Vincent Haddelsey
(1934-2010)
The Hunt at the Statue,
artist signed limited edition
coloured print, 7/30,
36cm x 59cm



▲ 23
Vincent Haddelsey
(1934-2010)
The Hunt at the Close, artist
signed coloured print,
42cm x 58cm

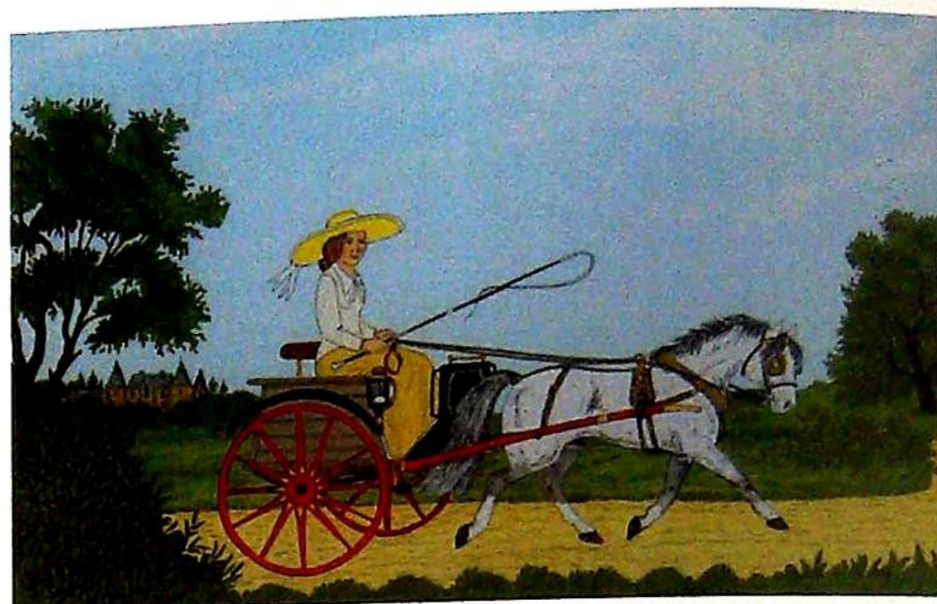
Lincoln Fine Art Sale



▲ 24
Vincent Haddelsey
(1934-2010)
Horse Race Past the Crowd, artist signed limited edition coloured print, 31/35, 29cm x 60cm



▲ 28
Vincent Haddelsey
(1934-2010)
Horseman, artist signed limited edition coloured print, 12/50, 27cm x 43cm



▲ 32
Vincent Haddelsey (1934-2010)
Horse and Trap, artist signed limited edition coloured print, 59/60, 26cm x 43cm



▲ 25
Vincent Haddelsey
(1934-2010)
Shire Horses and Wagon, artist signed limited edition coloured print, 60/67, 27cm x 43cm



▲ 29
Vincent Haddelsey
(1934-2010)
Rounding up the Horses, artist signed limited edition coloured print, 4/12, 27cm x 43cm



▲ 33
Vincent Haddelsey
(1934-2010)
Past the Water, artist signed limited edition coloured print, 24/37, 27cm x 43cm



▲ 26
Vincent Haddelsey
(1934-2010)
Horse and Cart, artist signed limited edition coloured print 2/6, 27cm x 43cm



▲ 30
Vincent Haddelsey
(1934-2010)
In the Paddock, artist signed limited edition coloured print, 16/24, 27cm x 43cm



▲ 34
Vincent Haddelsey
(1934-2010)
Stage Coach and Horses, artist signed limited edition coloured print, 7/36, 38cm x 76cm



▲ 35
Vincent Haddelsey
(1934-2010)
Polo Match, coloured print, 27cm x 43cm and another Huntsman (2)



▲ 27
Vincent Haddelsey
(1934-2010)
Horse Guard, artist signed coloured print, 27cm x 43cm



▲ 31
Vincent Haddelsey
(1934-2010)
At the Start, artist signed limited edition coloured print, 19/30, 26cm x 44cm



▲ 36
Vincent Haddelsey
(1934-2010)
Horses and Carriage, artist signed limited edition coloured print, 22/36, 27cm x 57cm



▲ 37
Vincent Haddelsey
(1934-2010)
Horse Racing Parade, artist signed limited edition coloured print, 38cm x 76cm



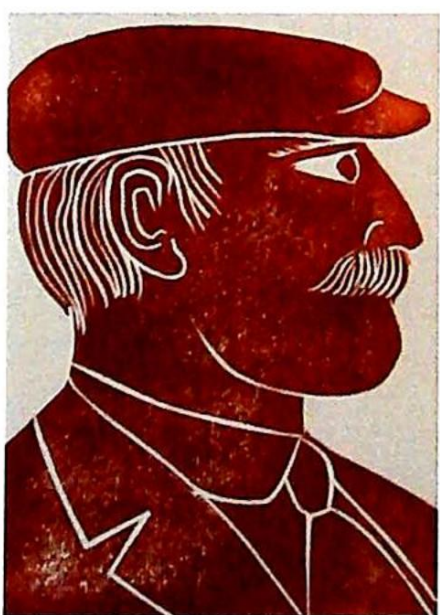
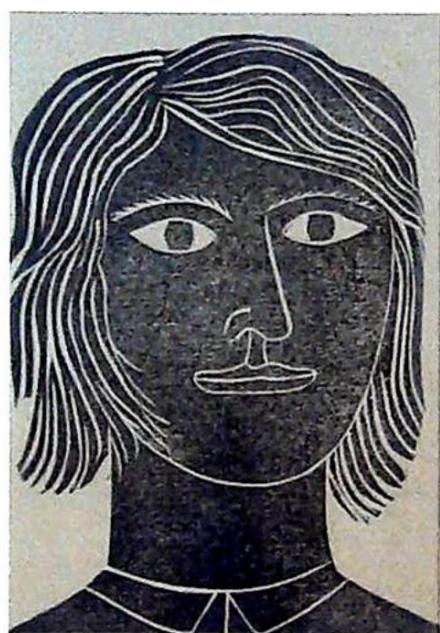
▲ 38
Vincent Haddelsey
(1934-2010)
At the Blue Boar, artist signed limited edition coloured print, 91/200, 30cm x 45cm



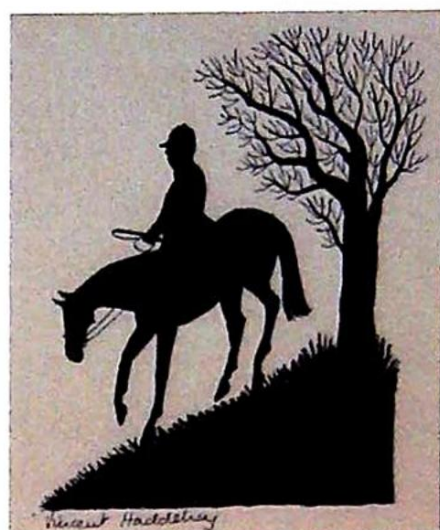
▲ 39
Vincent Haddelsey
(1934-2010)
Riding past the Manor House, artist signed coloured print, 38cm x 55cm



▲ 40
Vincent Haddelsey
(1934-2010)
Over the Fields, artist signed coloured print, 37cm x 57cm



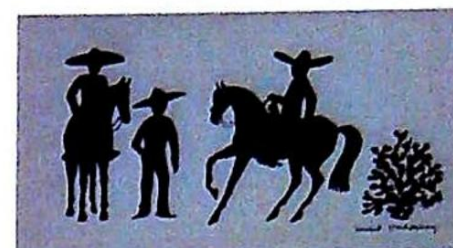
▲ 41
Vincent Haddelsey
(1934-2010)
Portrait, artist signed lino print, 2/12, 24cm x 19cm and two others (3)



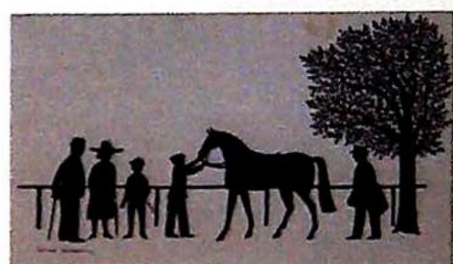
▲ 42
Vincent Haddelsey
(1934-2010)
Horse and Rider, ink, signed, 11.5cm x 11.5cm and another (2)



▲ 43
Vincent Haddelsey
(1934-2010)
Man and Dog, ink, signed, 11cm x 17cm and another (2)



▲ 44
Vincent Haddelsey
(1934-2010)
Horse and Rider, ink, signed, 11cm x 17cm and another (2)

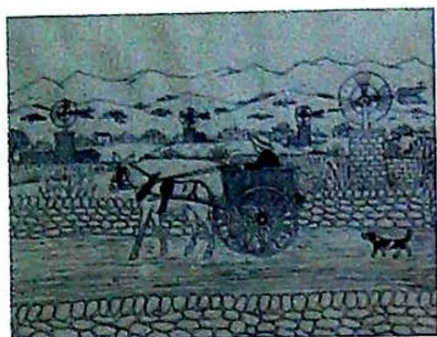


▲ 45
Vincent Haddelsey
(1934-2010)
Racing Horse, ink signed, 18cm x 31cm



▲ 46
Vincent Haddelsey
(1934-2010)
Silver Band, artist signed etching 5/12, 17cm x 27.5cm

Lincoln Fine Art Sale



▲ 47
Vincent Haddelsey
(1934-2010)
Horse and Cart, ink, signed,
21.5cm x 27cm



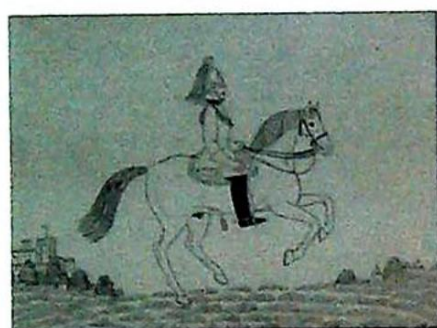
▲ 51
Vincent Haddelsey
(1934-2010)
Polo Match, artist signed
etching, 25/50,
14.5cm x 19.5cm



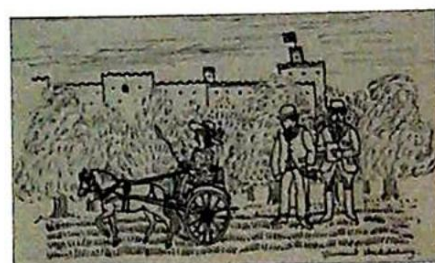
▲ 55
Vincent Haddelsey
(1934-2010)
Dressage, artist signed limited
edition coloured print, 2/20,
16cm x 22.5cm



▲ 58
Vincent Haddelsey
(1934-2010)
Tattershall Castle Steam Boat,
artist signed limited edition
coloured print, 5/100,
19.5cm x 29cm



▲ 48
Vincent Haddelsey
(1934-2010)
Guardsman, artist signed
etching, 24/50, 15cm x 20cm



▲ 52
Vincent Haddelsey
(1934-2010)
Horse and Cart, ink, signed,
10cm x 17cm



▲ 56
Vincent Haddelsey
(1934-2010)
Artist Studio, artist signed
limited edition coloured print,
1/25, 15cm x 26cm



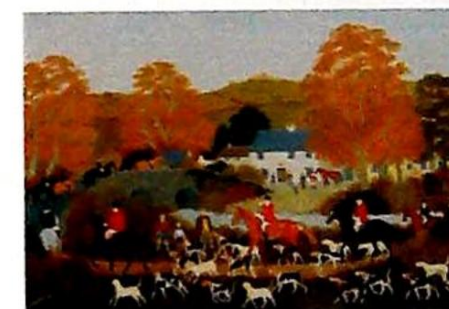
▲ 59
Vincent Haddelsey
(1934-2010)
The Hunt, coloured print,
39cm x 63cm



▲ 49
Vincent Haddelsey
(1934-2010)
Shire Horses and Cart, artist
signed etching, 6/12,
18cm x 24cm



▲ 53
Vincent Haddelsey (1934-2010)
Trainer on horseback, watercolour, signed, 19.5cm x 32.5cm



▲ 60
Vincent Haddelsey
(1934-2010)
Going Home, artist signed
limited edition coloured print,
5/36, 21cm x 31cm



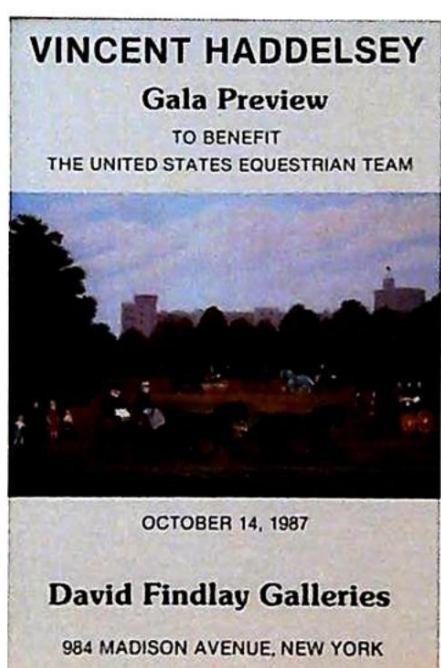
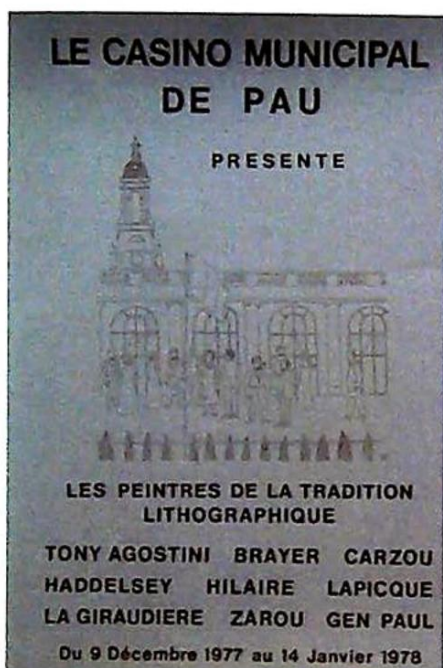
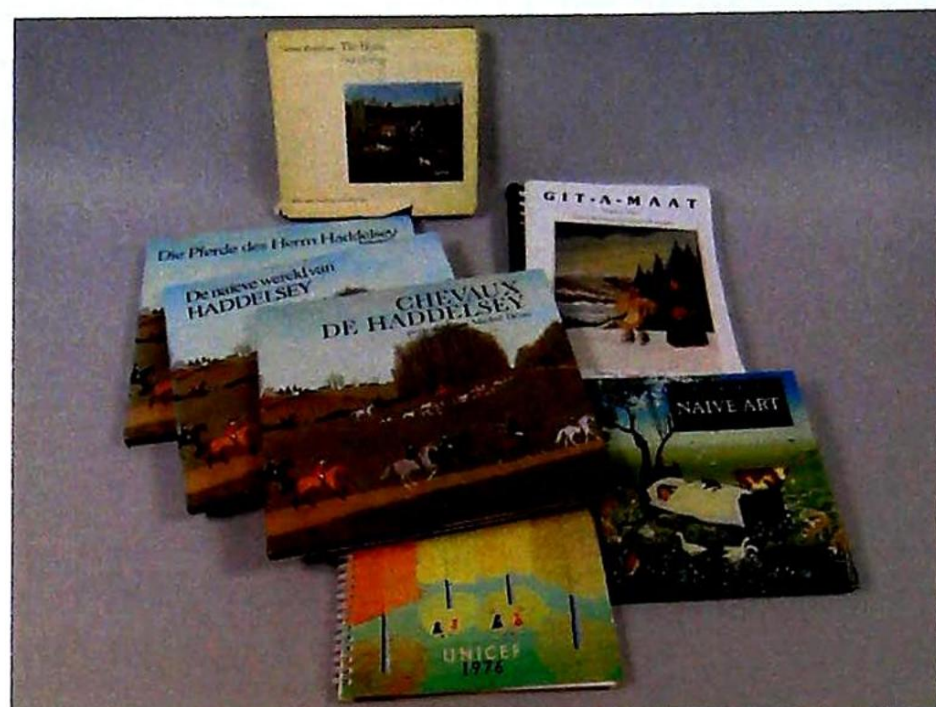
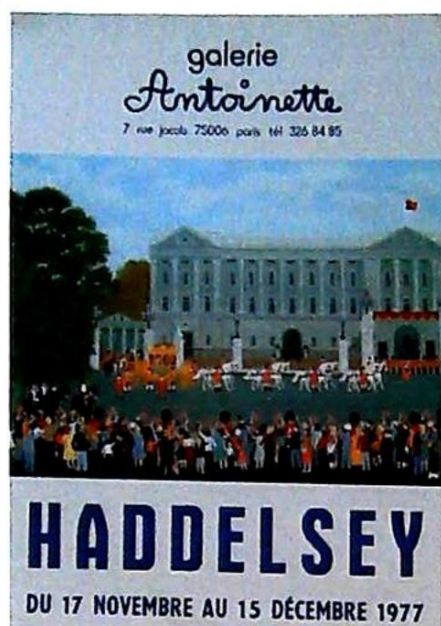
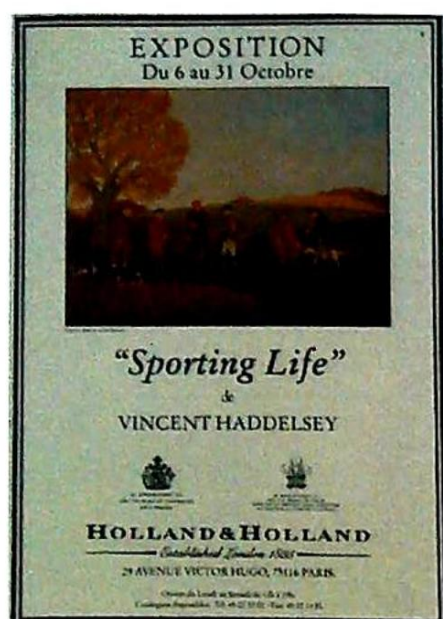
▲ 50
Vincent Haddelsey
(1934-2010)
Horses and Sledge, artist
signed etching, 12.5cm x 20cm



▲ 54
Vincent Haddelsey
(1934-2010)
Horse and Cart, artist signed
limited edition coloured print,
3/10, 18cm x 28cm



▲ 57
Vincent Haddelsey
(1934-2010)
Racing Horse, artist signed
limited edition coloured print,
13/25, 16.5cm x 22.5cm and
another



▲ 63
Vincent Haddelsey (1934-2010)
Artist books, etc, quantity.



▲ 61
Vincent Haddelsey (1934-2010)
Four exhibition posters.

▲ 64
Vincent Haddelsey (1934-2010)
Exhibition brochures, newspapers, etc, quantity.



▲ 62
Vincent Haddelsey (1934-2010)
Artist sketches, part works, etc, large quantity.



▲ 65
Vincent Haddelsey (1934-2010)
Artist signed prints, drawings, sketches, large quantity.

▲ 66
Vincent Haddelsey (1934-2010)
Artist signed coloured prints. (6)

Lincoln Fine Art Sale



▲ 70
Vincent Haddelsey
(1934-2010)
Various artist signed coloured
prints, etchings and studio
works.

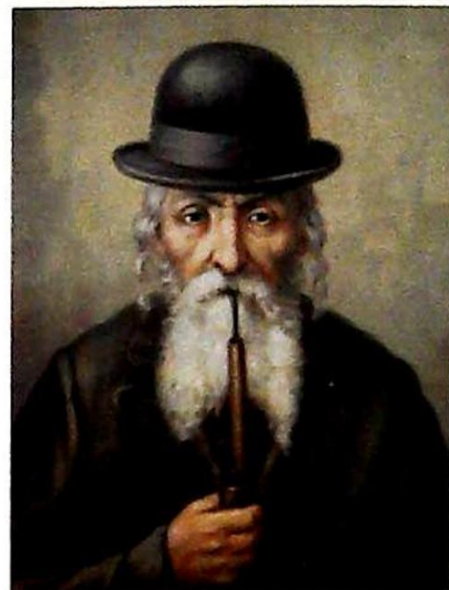
▲ 76
Sonya Grobler (20thC)
Village scene with figures and
rowing boat, watercolour,
signed, 35.5cm x 54cm
£50-80



▲ 69
Vincent Haddelsey
(1934-2010)
Various artist signed coloured
prints.



▲ 71
Vincent Haddelsey
(1934-2010)
Various artist signed coloured.



▲ 77
J Rut (20thC)
Rabbi smoking a pipe, Judaica
oil on canvas, signed,
49.5cm x 39.5cm

▲ 67
Vincent Haddelsey
(1934-2010)
Stag, ceramic, monogrammed,
14.5cm x 14.5cm, and two
other works. (3)



▲ 72
Vincent Haddelsey (1934-2010)
Various artist signed etchings.



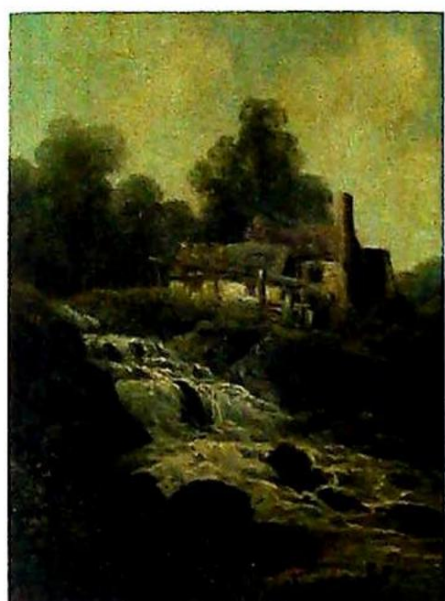
▲ 78
18thC British
Lake and landscape with
figures, oil on panel,
14cm x 20cm. £50-100



▲ 68
Vincent Haddelsey (1934-2010)
Various artist signed coloured prints, etchings, etc.



▲ 73
Vincent Haddelsey
(1934-2010)
Artist and exhibition
brochures, etc, large quantity.



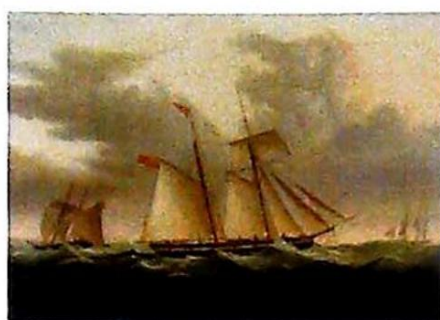
▲ 79
William Stone (1842-1913)
Cottage by waterfall, oil on canvas, signed, 39cm x 29cm.
£150-250



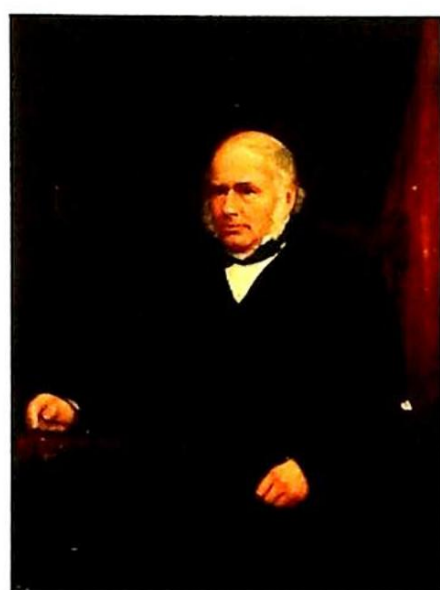
▲ 80
Robert Gallon (1845-1925)
Horse and rider in river landscape, oil on canvas, signed, 49.5cm x 75cm
£300-500



▲ 81
John Wallace (1841-1905)
Harbour scene with masted and paddle ships, oil on canvas, signed, 50cm x 75cm
£300-500



▲ 82
T Wright (19thC)
Masted ship flying British Ensign, oil on canvas, signed and dated 1835, 39cm x 53.5cm
£300-500



▲ 83
19thC British School
Portrait of a gentleman, oil on canvas, 57cm x 44.5cm
£60-90



▲ 84
George Hindle Harrison (19thC)
St Georges Church from the River Don, Doncaster, oil on canvas, signed and dated 1888
£50-100



▲ 85
19thC British School
Rural landscape with cottage, figure and sheep, oil on canvas, 35cm x 52cm
£50-100



▲ 86
After Sir Joshua Reynolds
Lady Louisa Manners, pastel, 93cm x 68cm
£100-200



▲ 87
Alice M Morton (19th/20thC)
River scene with bridge, Cathedral, figures fishing in the foreground, oil on canvas, signed and dated 1875, 24cm x 34.5cm
£50-80



▲ 88
James William Buxton Knight (1842/4-1908)
Cottage with figures and sheep, watercolour, signed, 50cm x 50cm
£150-250



▲ 89
Henry John Yeend King (1855-1924)
Maiden in floral cottage garden, oil on canvas, signed, 60cm x 90cm
£2000-4000

Lincoln Fine Art Sale



▲ 90
David Maitland Mackenzie (1800-1875)
River landscape with figures, oil on canvas, signed, 29cm x 60cm
£100-200



▲ 91
Edmund Morison Wimperis (1835-1900)
Gathering Furze, watercolour, initialled and dated (18)98, 34cm x 52cm
£200-300



▲ 92
Henry George Hine (1811-1895)
Coastal scene with figure in the foreground, watercolour, signed and dated 1864, 18cm x 43cm
£150-250



▲ 93
William Bennett (19th/20thC)
Sunset off Brixham, watercolour, signed and dated 1929, 22cm x 28cm
£50-80



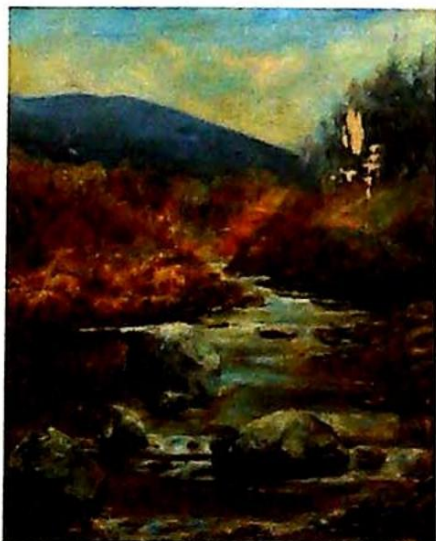
▲ 94
Henry Earp (1831-1914)
Cattle in river landscape, watercolour, signed, 17cm x 44cm.
£80-120



▲ 95
Claude Rowbotham (1864-1949)
Lake scene with figures, watercolour, signed, 19.5cm x 47cm.
£60-90



▲ 96
Francis Muschamp (1951-1929)
Fishing on a river, oil on canvas, signed, 34.5cm x 43.5cm.
£300-500



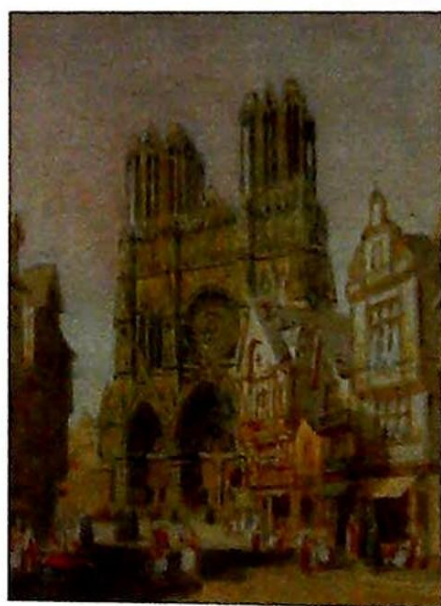
▲ 97
19thC British School
River landscape, oil on canvas, signed, 59cm x 49cm
£50-80



▲ 98
Thomas William Hammond (1854-1935)
The Mill at Blakeney, Norfolk, pastel, signed, 22cm x 35.5cm
£60-90



▲ 99
19thC British School
The Edge of the Wood, watercolour, titled verso, 23.5cm x 34cm.
£30-50



▲ 100
Henry Thomas Schaefer (act 1873-1915)
Rheims, watercolour, signed and titled, 25cm x 18cm
£60-90



▲ 101
Charles Rowbotham (1856-1921)
Mediterranean coastal scene, watercolour, signed, 29cm x 80cm.
£150-250



▲ 102
Henry Charles Fox (1860-1929)
Country track with horses, watercolour, signed, 37cm x 53cm.
£120-180



▲ 103
Edwin St. John (act 1880-1890)
River scene, watercolour, signed and dated 1879, 60cm x 42.5cm.
£100-200



▲ 104.
Herbert Menzies Marshall
(1841-1913)
Knightsbridge, watercolour,
signed, 13.5cm x 20.5cm
£300-500



▲ 108
John Harding
(18th/19thC).
Portrait of an angel,
watercolour, signed and dated
1820, 13cm x 10cm, oval
£50-£80



▲ 111
Frank Rawlings Offer
(1847-1932)
Coastal scene with fishing
boats and figures, oil on board,
signed, 25cm x 39.5cm
£80-120



▲ 115
Ellen Vernon (19thC)
Sheep on a moorland path,
watercolour, signed and titled
verso, 27cm x 38cm
£100-150



▲ 105
19thC School
Bathers in the river, oil on
board, 23cm x 32cm
£50-100



▲ 109
Frank Henry Mason
(1876-1965).
Masted ship in stormy waters,
watercolour, signed and dated
(19)14, 15cm x 23cm
£200-£300



▲ 112
Frank Rawlings Offer
(1847-1932)
Landscape with figures in
the foreground, oil on board,
signed, 22cm x 30cm
£80-120



▲ 116
Thomas Francis
Wainwright (1794-1883)
Sheep in moorland landscape,
oil on canvas, signed, 34.5cm
x 45cm
£200-400



▲ 106
Frederick Hines
(act. 1875-1928)
Royal Common Surrey,
watercolour, signed and titled,
27cm x 37cm
£80-120



▲ 110
G Van De Stadt
(19th/20thC).
Dutch river landscape, oil on
canvas, signed, 16.5cm x 23cm
£50-£80



▲ 113
Frank Rawlings Offer
(1847-1932)
Rural river scene, oil on board,
signed, 24cm x 39cm
£80-120



▲ 117
Paul Bertram (1833-1901)
A November afternoon,
watercolour, signed and titled
verso, 24cm x 34.5cm
£50-80



▲ 107
Frederick Hines
(act. 1875-1928)
On Reigate Heath Surrey,
watercolour, signed and titled,
27cm x 38cm
£80-120



▲ 114
James Webb (19thC)
Masted ships unloading on the beach, oil on board, signed,
19cm x 39cm
£200-300

Lincoln Fine Art Sale



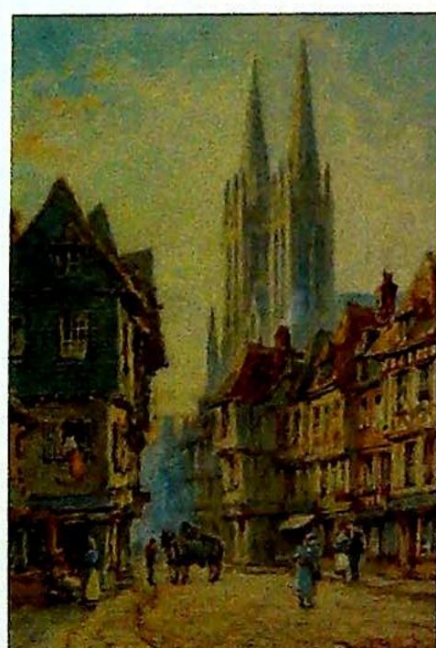
▲ 118
Bernard Sleight (1872-1954)
Shepherds and sheep, print
with highlight, 20cm x 38cm
£30-50



▲ 119
19thC British School
Masted boats on choppy sea,
watercolour, 17cm x 24.5cm
£60-90



▲ 120
J.D. Harding (18th/19thC)
Landscape with windmill and
figures, watercolour,
25cm x 35cm
£40-80



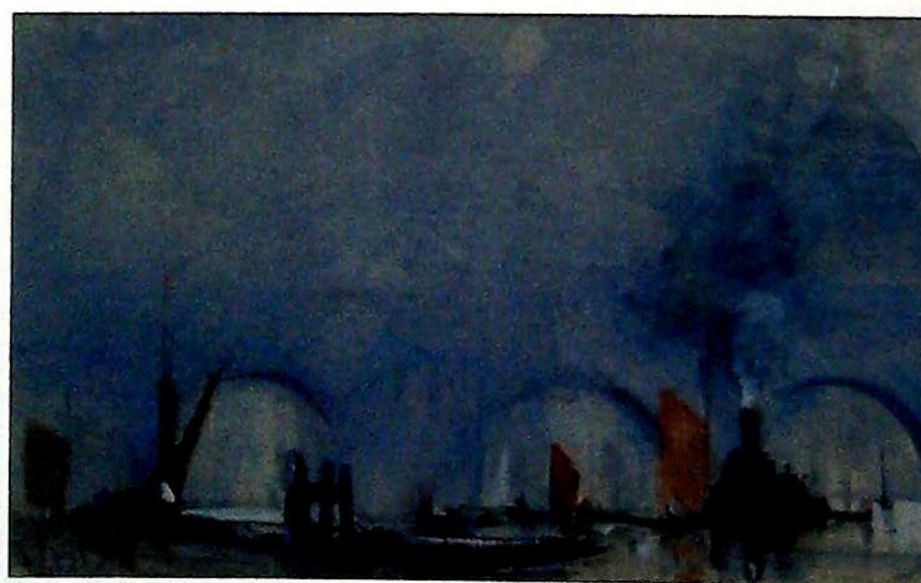
▲ 121
David Roberts
Quimper Brittany, watercolour,
signed, 37.5cm x 26cm
£150-250



▲ 122
H F Wood (19th/20thC)
River scene with windmill,
pastel, signed and dated
(19)08, 30cm x 22cm
£40-60



▲ 123
**John St Helier Lander
(1869-1944)**
St Helier Jersey, landscape
view, oil on canvas, signed and
dated 1904
£300-500



▲ 124
Hercules Brabazon Brabazon (1821-1906)
The Thames London, watercolour, initialled, 12.5cm 20.5cm
£500-800



▲ 125
18thC Dutch School
Three figures in tavern school,
oil on board, 19cm x 15.5cm
£200-300



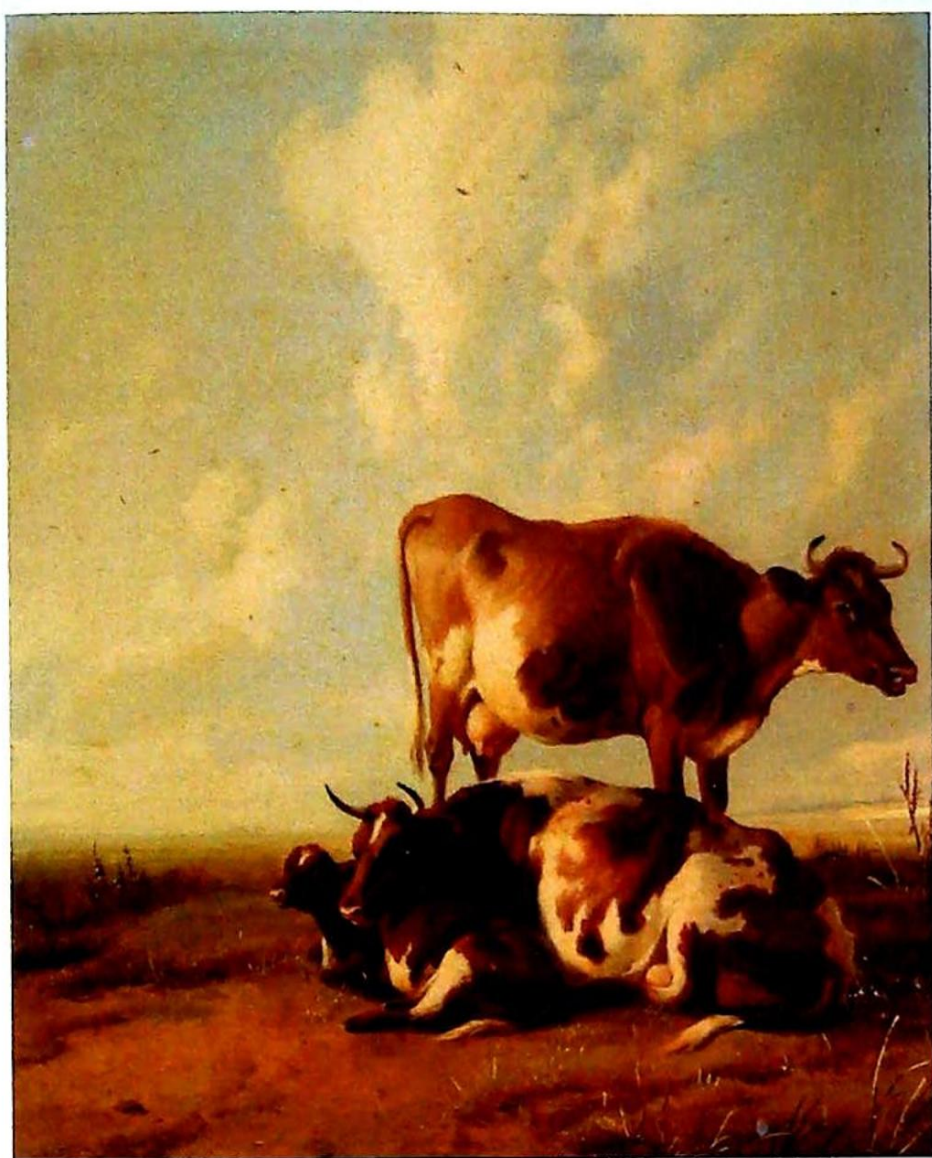
▲ 126
**William Payne
(1755/60-c.1830)**
Coastal scene with figures,
watercolour, signed,
11cm x 15cm
£100-200



▲ 127
**Samuel Owen
(1768/9-1857)**
Coastal scene with fishing
boats and figures, watercolour,
signed, 13cm x 11cm
£200-300



▲ 128
Samuel Austin
River scene with hay barge,
watercolour, 21.5cm x 31cm
£200-300



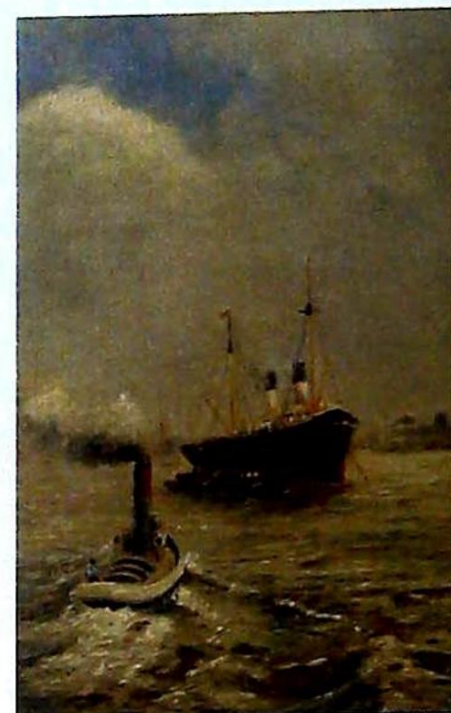
▲ 129
Thomas Sidney Cooper (1803-1902)
Cattle resting, oil on board, signed and dated 1879,
34cm x 27.5cm
£2000-3000



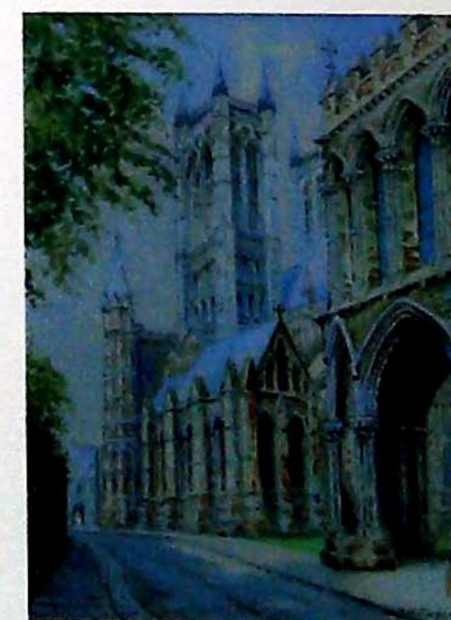
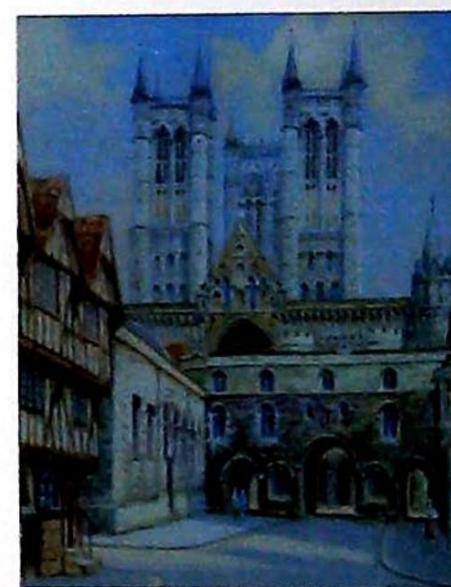
▲ 132
19thC British School
Crystal Ball, pencil drawing,
32cm x 24cm
£60-90



▲ 133
William Lee Hankey (1869-1952)
Field and sky near Amberley,
watercolour, signed and dated,
20cm x 37cm
£100-200



▲ 134
A. W. Higham (19thC)
Steamer and tug boat, oil on
board, signed, 30cm x 19cm
£150-250



▲ 135
Albert H Findley (1880-1975)
Lincoln Cathedral,
watercolour - pair, signed,
16cm x 12cm
£40-60



▲ 130
19thC Dutch School
Interior scene, family with
pets, oil on board,
45cm x 40cm
£250-450

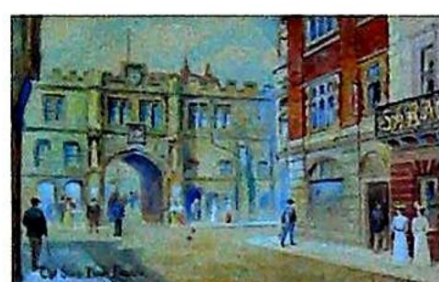


▲ 131
Gunner F J Mears (c.1890-1929).
Night patrol, watercolour, signed, 26cm x 36cm
£800-£1200

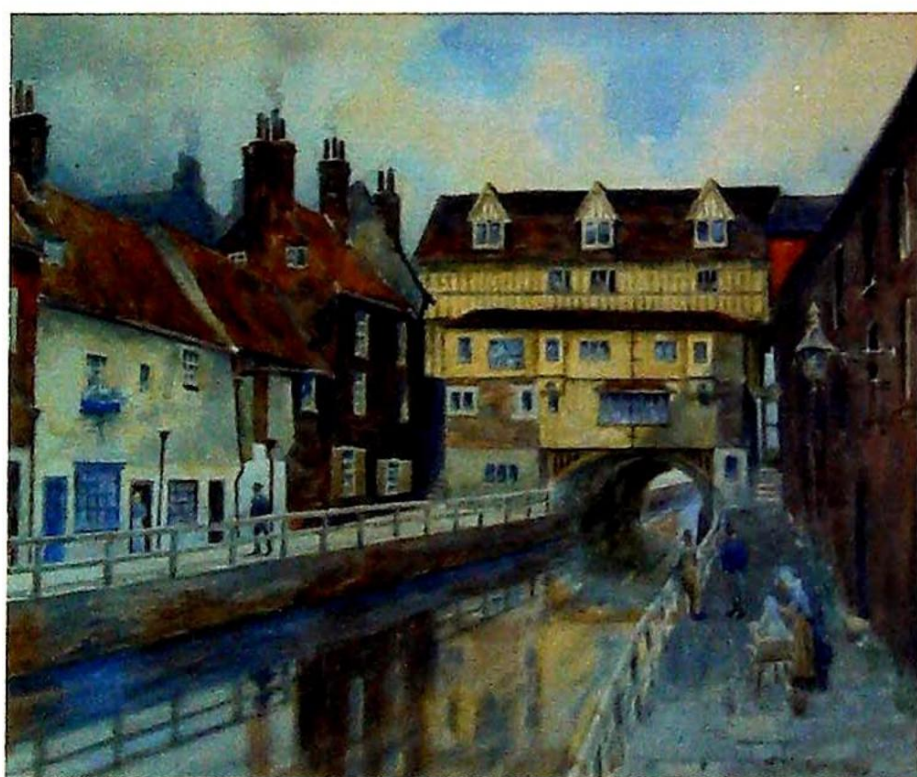
Lincoln Fine Art Sale



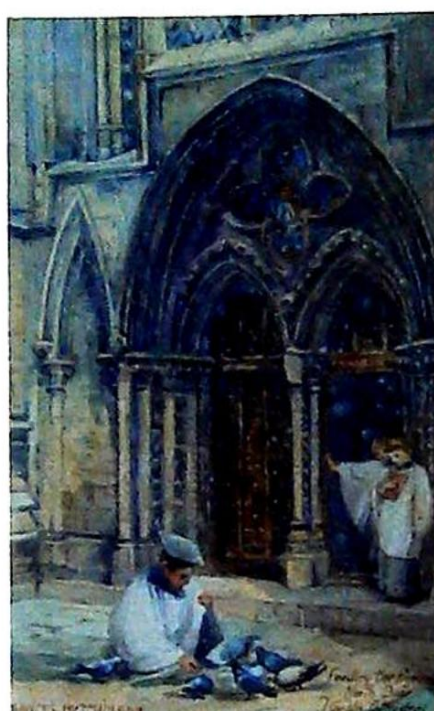
▲ 136
Arthur C Payne
(19th/20thC)
The Roman Arch Lincoln, watercolour, signed and titled, 17cm x 27cm
£50-80



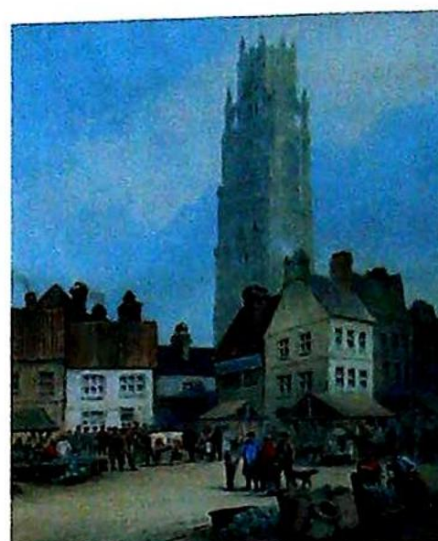
▲ 137
Arthur C Payne
(19th/20thC)
The Stonebow Lincoln, watercolour, signed and titled, 17cm x 27cm
£50-80



▲ 138
E Vickers (19th/20thC)
High Bridge Lincoln, watercolour, signed and dated 1906, 25cm x 39cm
£50-80



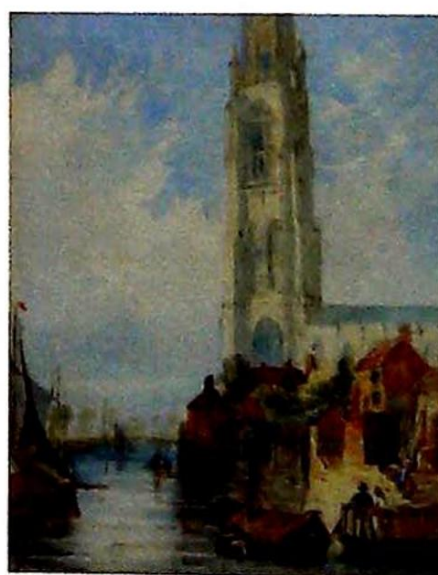
▲ 139
Frances Hutchinson
(19th/20thC)
Feeding the pigeons, north door Lincoln Cathedral, watercolour, signed and titled, 27cm x 17cm
£50-80



▲ 140
19thC
Boston Stump, coloured print, 42cm x 35cm
£80-120



▲ 141
J P Neale (19thC)
Lincoln, ink drawing, titled and dated 1809, 23cm x 32cm, with six others by the same hand
£50-80



▲ 142
19thC British School
Boston Stump, watercolour, indistinctly signed, 27cm x 17cm
£50-80



▲ 143
Robert A Gardner
(1850-1926)
A house, oil on board signed and dated 1919, 30cm x 36cm
£80-120



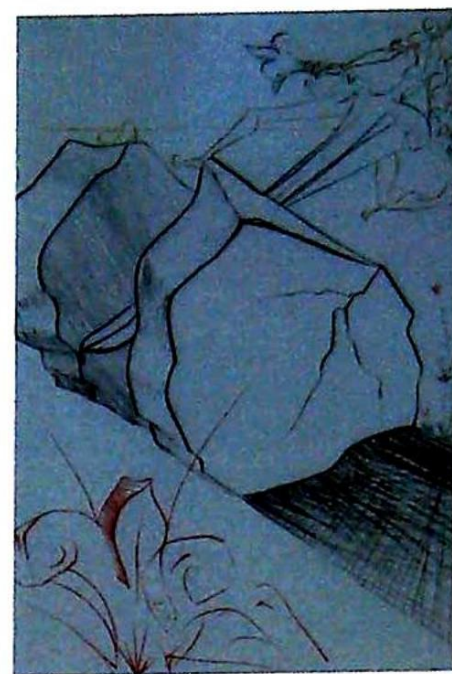
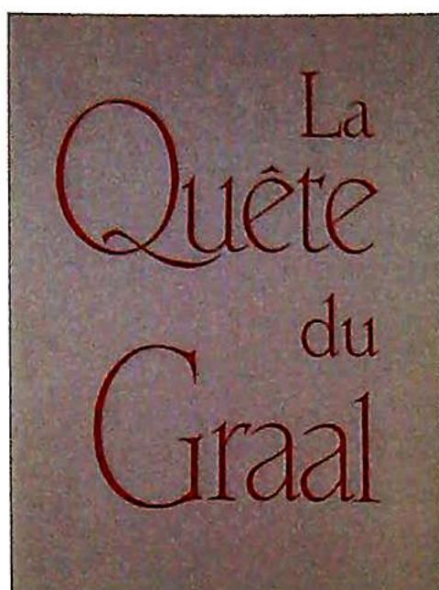
▲ 144
Robert A Gardner
(1850-1926)
A thatched cottage and haystacks, oil on board signed and dated 1919, 30cm x 36cm
£80-120



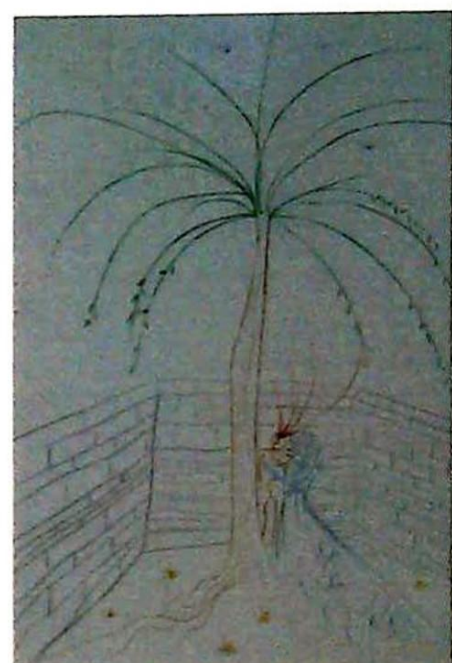
▲ 145
Robert A Gardner
(1850-1926)
A landscape with cart track, oil on board signed and dated 1919, 30cm x 36cm
£80-120



▲ 146
Robert A Gardner
(1850-1926)
A river scene with houses and figures, watercolour, signed, 24 x 35cm
£80-120



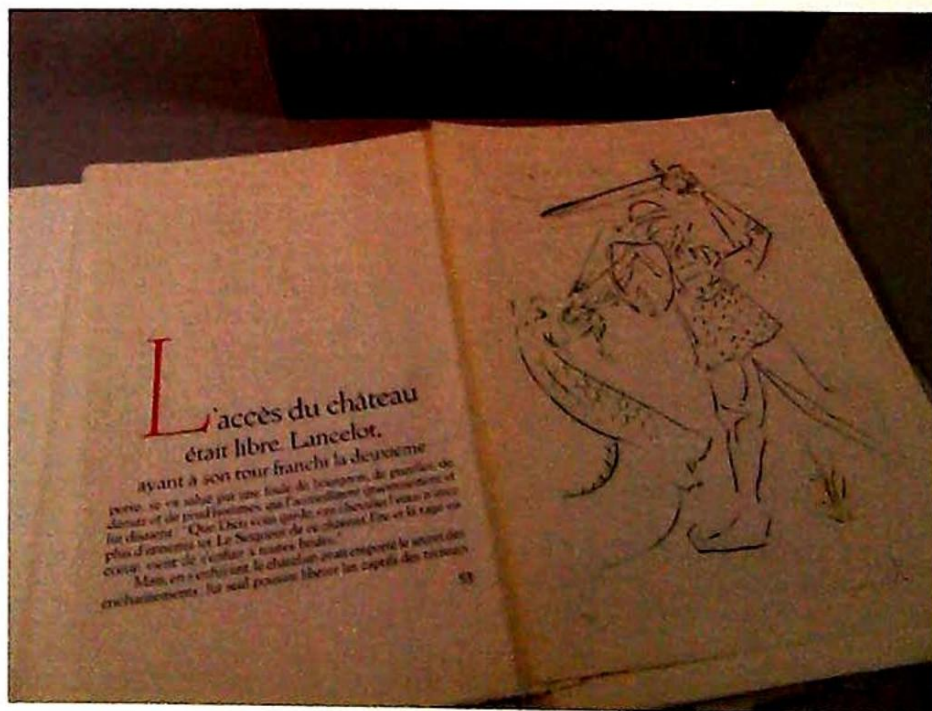
▲ 147
Robert A Gardner
(1850-1926)
A village scene with a church and houses across open land, oil on board, signed and dated, 1907, 27 x 36cm
£60-80



▲ 148
Robert A Gardner
(1850-1926)
Still life composition of flowers and a bowl, oil on canvas, signed and dated 1899, 60 x 44cm
£60-80



▲ 149
Colin Carr (1929-2002)
Boston Stump, watercolour, signed, 12.5cm x 7.5cm, oval
£40-60

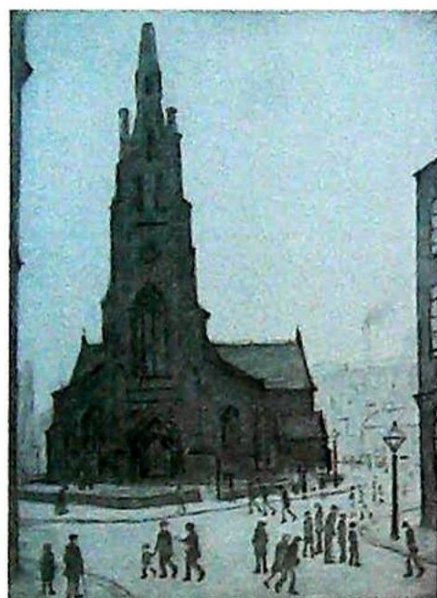


▲ 150
Salvador Dali (1904-1989)
La Quete du Graal, seven signed etchings (five framed), number 190/250, with portfolio, binding and original slip case, 45cm x 32cm (7), with copy receipt - Art Concorde, Paris 1980
£3000-5000

Lincoln Fine Art Sale



▲ 151
Bernard Dunstan (b.1920)
Orchestra, artist signed limited edition coloured print, 37/350, dated 1979, 34.5cm x 33cm
£80-120



▲ 152
Laurence Stephen Lowry (1887-1976)
St Simon's Church Salford, artist signed limited edition print, 52/300, 38cm x 28cm
£300-500



▲ 153
David Shepherd (b.1931)
African Evening, Zambezi waterhole, artist signed limited edition coloured print, 187/950, 37cm x 61cm
£50-80



▲ 154
David Shepherd (b.1931)
An African landscape, artist signed limited edition coloured print, 180/950, 38cm x 69.5cm
£50-80



▲ 155
William Russell Flint (1880-1969)
Festive Preparations, Manosque, artist signed coloured print, 41cm x 57cm
£50-80



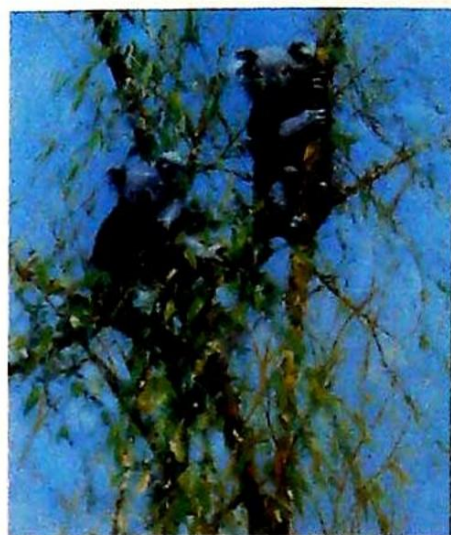
▲ 156
William Russell Flint (1880-1969)
Model for Elegance, limited edition coloured print, 34cm x 49.5cm
£250-350



▲ 157
Gustav Klimt
Erotic drawing, Thames & Hudson, 1 volume, in slip case.
£100-200



▲ 158
David Shepherd (b.1931)
High Noon, artist signed limited edition coloured print, 729/850, 23cm x 40.5cm
£30-50



▲ 159
David Shepherd (b.1931)
Up a Gum Tree, artist signed limited edition coloured print 96/950, 56cm x 46.5cm
£50-80



▲ 160
Donald McIntyre (1923-2009)
Cegin Y Drawl, oil on board, signed and titled verso, 39cm x 100cm
£2000-3000



▲ 161
Alfred Daniels (b.1924)
West Pier Brighton, oil on board, signed, dated 1970 and titled verso, 29.5cm x 52cm, with a letter from the artist
£400-600



▲ 162
Christopher Glanville (b.1948)
Shipping on the Thames, oil on board, signed and dated, 38cm x 48cm
£100-150



▲ 163
Lyall Ross (20thC)
Portrait of a young woman, oil on canvas laid on board, signed, 56cm x 46cm
£200-300



▲ 164
20thC Continental School
Garden fountain within ruins, oil on canvas, 65.5cm x 76cm
£200-300



▲ 165
David Lake (b.1966)
Australian landscape, oil on board, signed, 39cm x 49cm
£100-200



▲ 166
David Vango (b.1950)
Floral still life, oil on board, signed, 49cm x 39cm
£50-100



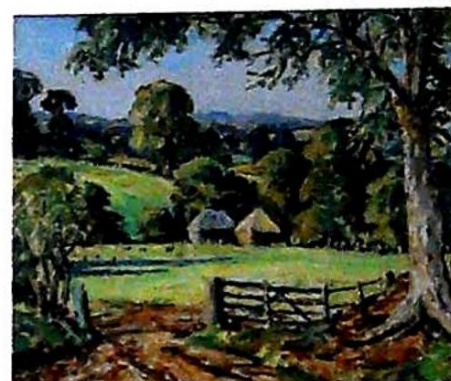
▲ 167
P. Bopuclax (20thC)
Red ballet shoes, oil on canvas, signed, 49.5cm x 59.5cm
£100-200



▲ 168
Joan Oxland (20thC)
In hot house Roath Park No.3, oil on canvas, signed, titled and dated 1958, 49cm x 39cm
£40-60



▲ 169
Max Muhlberg (20thC)
Winter Morning, oil on canvas, signed, 60cm x 90cm.
£50-80

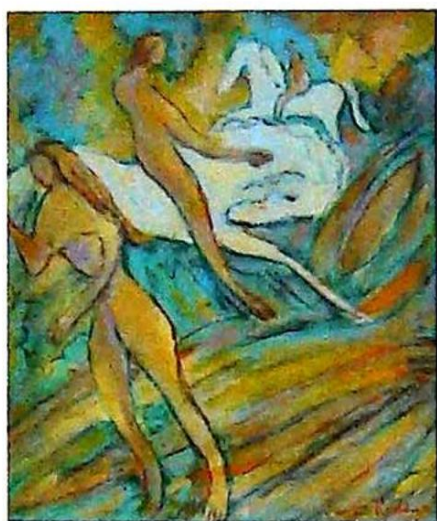


▲ 170
K. P. Johnson (20thC)
Near Castle Grey Somerset, oil on board, signed and titled verso, 60cm x 70cm.
£50-80



▲ 171
David Ponsonby (1901-?)
Portuguese serving girl, pastel, signed, 60cm x 39cm.
£100-200

Lincoln Fine Art Sale



▲ 172
20thC Continental School
Figures on horseback, oil on board, indistinctly signed, 38cm x 32cm
£200-400



▲ 175
David Waller (20thC)
Fox, oil on canvas, signed, 49.5cm x 39.5cm.
£50-100



▲ 178
Karl Wood (1888-1958)
Bridge over river, watercolour, signed and dated 1948?, 15cm x 22cm.
£50-80



▲ 180
James Paterson (20thC)
Bideford Quay, watercolour, signed, titled and dated (19)73, 29cm x 40cm.
£50-100



▲ 173
Ted Harrison (b.1926)
Boy with a parrot, pen drawing with highlight, signed and dated (19)60, label verso, 29.5cm x 22cm
£200-300



▲ 176
Peter Lightfoot (b.1932)
Red Plant 2, oil on canvas, signed, titled and dated 1972, 48.5cm x 99.5cm.
£600-900



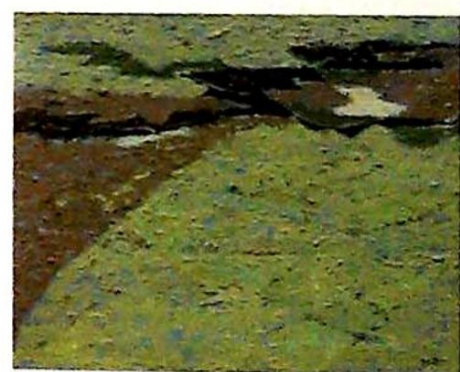
▲ 177
Janice Glew (20thC)
Abstract, oil on canvas, signed and dated 2006 verso, 23cm x 61cm.
£250-350



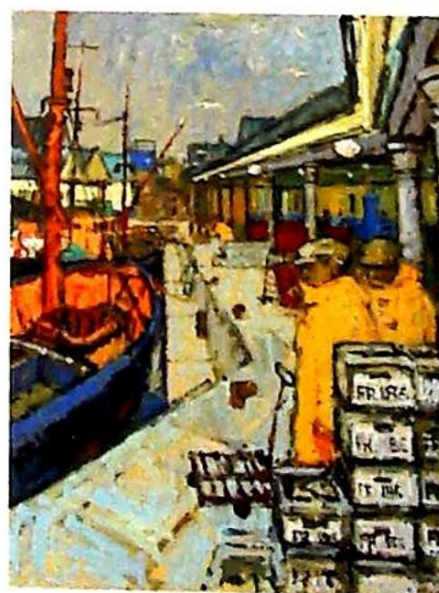
▲ 174
P. Hollis (20thC)
Raising the flag, oil on canvas, signed, 50cm x 101cm.
£100-200



▲ 181
John Frederick Pettinger (19th/20thC)
Quat at Wells Next to Sea Norfolk, oil on canvas, signed, 31cm x 39.5cm.
£100-200



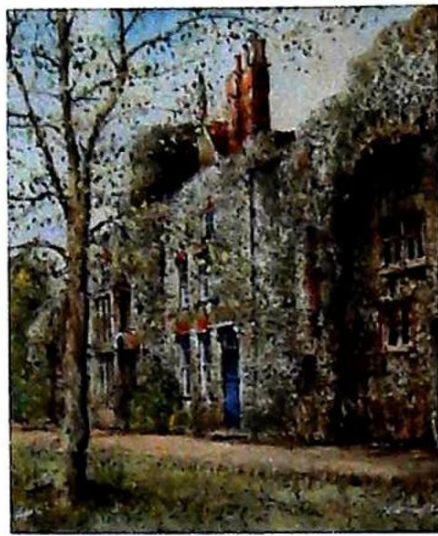
▲ 182
Jean-Claude Reussner (b.1929)
Au Bout de la Vaccee 1967, oil on canvas, initialled and titled verso, 50cm x 61cm.
£100-150



▲ 179
R. Wylie (20thC)
Trawler at the fish docks, oil on board, signed, 127cm x 102cm.
£100-200



▲ 183
P. Bopuclax (20thC)
Rural scene, oil on canvas,
signed and dated (20)02,
59.5cm x 69.5cm.
£100-200



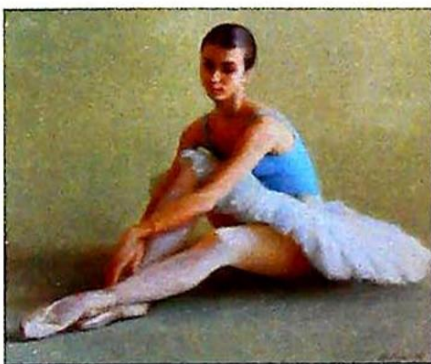
▲ 186
Reg Siger (20thC)
Country house, watercolour,
signed, 21cm x 17cm.



▲ 189
O. L. Benny (?) (20thC)
Landscape, oil on board,
signed, 29cm x 39cm.
£50-80



▲ 192
Devon Huston (20thC)
Coastal scene, watercolour,
signed, 11cm x 17cm,
and another.
£30-50



▲ 184
P. Bopuclax (20thC)
Ballerina, oil on board, signed
and dated (20)02,
48cm x 59cm.
£100-200



▲ 187
Franz Xaver Wolf (1896-1989)
European street sellers, artist
signed number coloured
etching 172/300, 28cm x 33cm.
£50-80



▲ 190
Peter Godfrey Coker (1926-2004)
Leadgate Cumberland,
watercolour, signed,
37cm x 24cm
£250-350



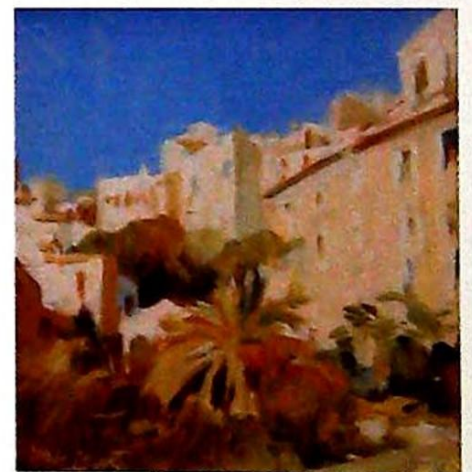
▲ 185
B. Joseph (20thC)
Storks in river scene, oil on
canvas, signed, 121cm x 151cm
£100-200



▲ 188
E. B. Angelis (20thC)
Courtyard, oil on board,
signed, 14cm x 19cm.
£100-150



▲ 191
Jay Ward (20thC)
Candle still life, oil on board,
signed, 24cm x 19cm.
£30-50



▲ 193
John R. Townsend (1930-2013)
Italy, oil on board, signed and
dated 1979, 19cm x 17.5cm.
£50-80

Lincoln Fine Art Sale



▲ 194
G. N. B. Huskinson (20thC)
Lough Derg County Tipperary, oil on board, signed and titled verso, 24cm x 29cm.
£30-50



▲ 195
Audsley Power (20thC)
Ink pots and Immortelles, oil on canvas, signed and titled verso, 23.5cm x 28.5cm.
£30-50



▲ 196
Margaret Palmer (1922-?)
Ballerina, oil on board, signed, 28.5cm x 23.5cm.
£50-80



▲ 197
Brian Roxby (20thC)
St Maurin, Tarn et Garonne, oil on board, signed and titled verso, 19cm x 29cm.
£30-50



▲ 198
H. Dary (20thC)
Mediterranean coastal scene, watercolour, signed, 13cm x 22cm.
£50-80



▲ 199
Jane Charlotte Halford (19th/20thC)
Coastal scene, watercolour, signed, 23cm x 34cm.
£30-50



▲ 200
Edward Bainbridge Copnall (1903-1973)
Study for public commission, oil on canvas, signed, 60cm x 49.5cm.
£100-200



▲ 201
James Wright (b.1935)
Woodland walk, oil on board, signed, 17cm x 27.5cm.
£50-100



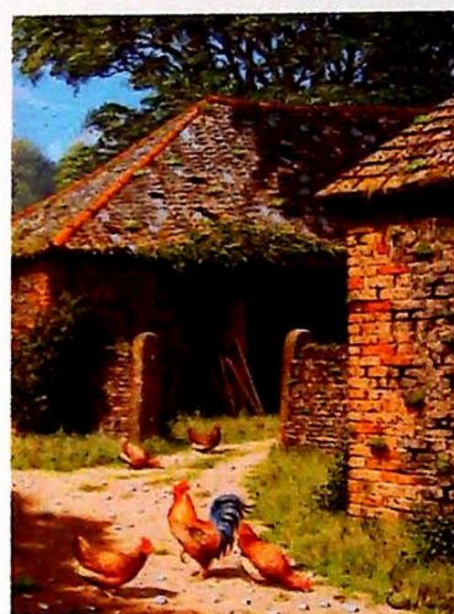
▲ 202
John Bampfield (b.1947)
Cavalry Charge, oil on canvas, signed, 49.5cm x 75cm.
£100-200



▲ 203
John T. Kenney (1911-1972)
Jack Littleworth ('The Quorn' huntsman) Tilton Road, Billesdon Coplow, oil on canvas, signed, 59cm x 90cm.
£1500-2500



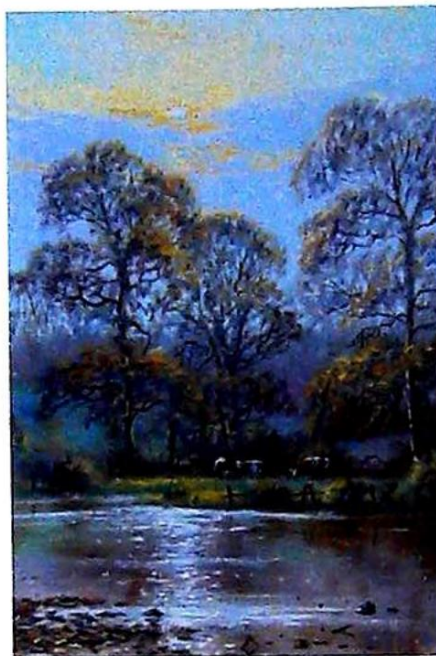
▲ 204
20thC British School
Hunting scenes, oil on board, pair, 22cm x 32cm.
£80-120



▲ 205
Edward Hersey (b.1948)
Chickens in farmyard, oil on canvas, signed, 39.5cm x 29cm.
£300-500



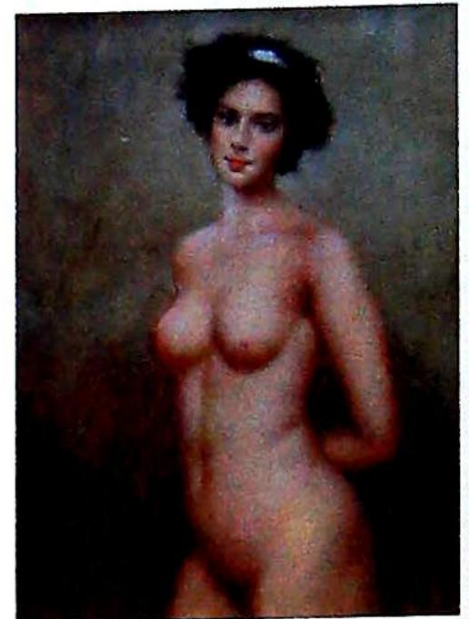
▲ 206
Edward Hersey (b.1948)
Duck in farmyard, oil on canvas, signed, 39.5cm x 29cm.
£300-500



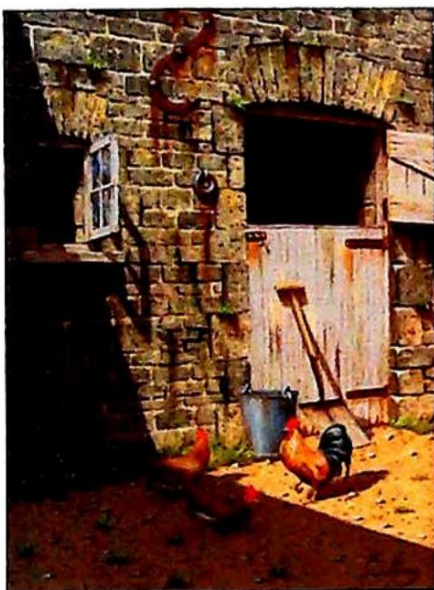
▲ 209
Martin Spencer Coleman (b.1952)
Country river landscape, oil on board, initialled, 32cm x 22cm.
£100-200



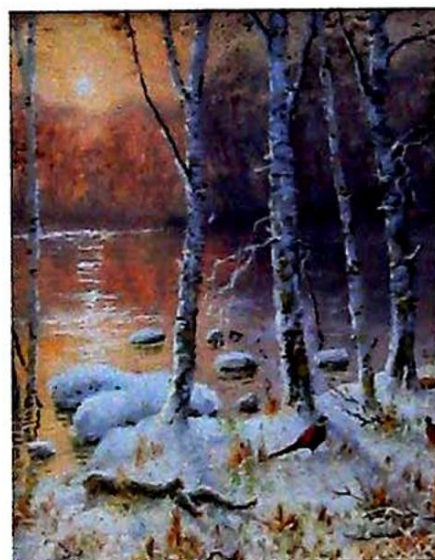
▲ 211
Martin Spencer Coleman (b.1952)
Cattle at rivers edge, oil on board, initialled, 32cm x 24cm
£100-200



▲ 214
20thC Continental School
Study of a female, oil on board, 24.5cm x 19cm.
£100-150



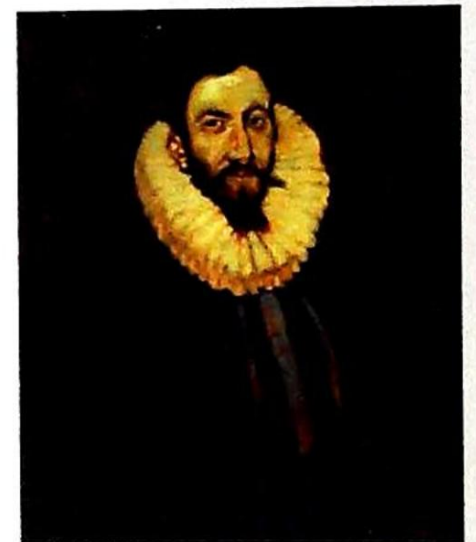
▲ 207
Edward Hersey (b.1948)
Chickens and cockerel in farmyard, oil on canvas, signed, 39.5cm x 29cm.
£300-500



▲ 210
Martin Spencer Coleman (b.1952)
Winter scene, oil on board, signed, 34cm x 27cm.
£100-200



▲ 212
M. H. Willford (19th/20thC)
Mounts Bay from Marazion Beach near Penzance, watercolour, signed and titled, 30cm x 37cm.
£50-80



▲ 215
George Alfred Boden (1888-1956)
Portrait of a Gentleman wearing a ruff, watercolour, signed, 29cm x 23.5cm.
£50-80



▲ 208
Frank Wright (b.1928)
On Guard, oil on canvas, signed and titled verso, 29cm x 44cm.
£150-250



▲ 213
Stephen Cummins (b.1943)
Lone swan, oil on board, signed, 12.5cm x 12.5cm.
£50-80



▲ 216
20thC British School
Woodbridge Tide Mill, oil on board, indistinctly signed and titled verso, 24cm x 29cm.
£150-250

Lincoln Fine Art Sale



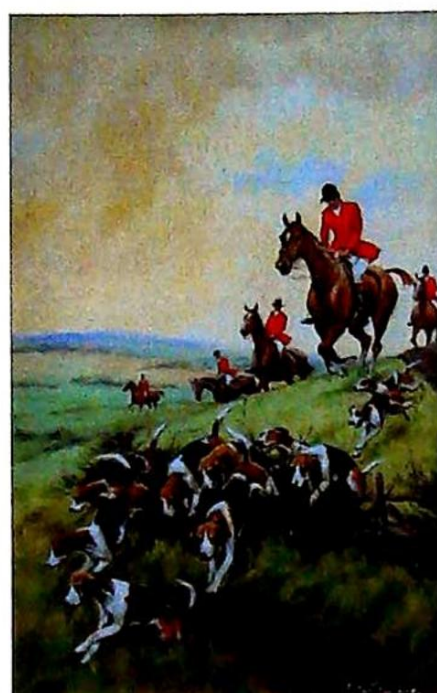
▲ 217
Mary Gray (20thC)
Copy of Spritsail barge putting to sea by Edward Seago, oil on board, titled verso, 24.5cm x 39.5cm.
£50-80



▲ 218
Serge Labegorre (b.1932)
Lawase a Bizarroux, oil on board, signed and titled verso, 25.5cm x 33.5cm.
£100-150



▲ 219
Glynn Williams (b.1955)
The Call, oil on board, signed, 25cm x 30cm
£200-300



▲ 220
Glynn Williams (b.1955)
Over the fence, oil on board, signed, 29cm x 18cm
£150-250



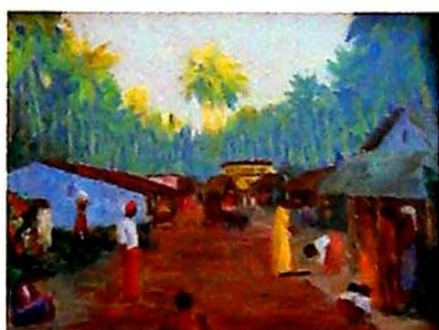
▲ 221
Glynn Williams (b.1955)
Through the Beck, oil on board, signed, 28cm x 15cm
£150-250



▲ 222
H. Gabriel (20thC)
River landscape, oil on canvas, signed, 50cm x 75cm
£50-100



▲ 223
William Leslie Crispe (19th/20thC)
The Rock Table Mountain, oil on board, signed and titled verso, 42cm x 54cm.
£100-150



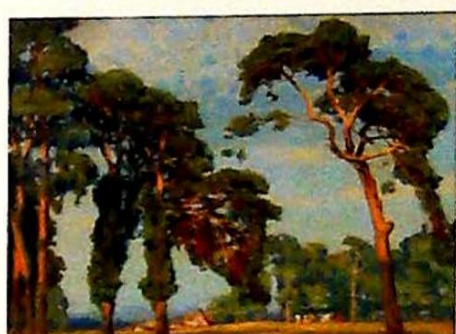
▲ 224
Philippe Maurice Hill (1892-1952)
AT Ceylon, oil on board, monogrammed, dated 1929, titled verso, 23.5cm x 31cm.
£150-250



▲ 225
Ray Austin Crooke (b.1922)
Sydney Harbour, oil on board, signed, 21cm x 29cm
£1500-2000



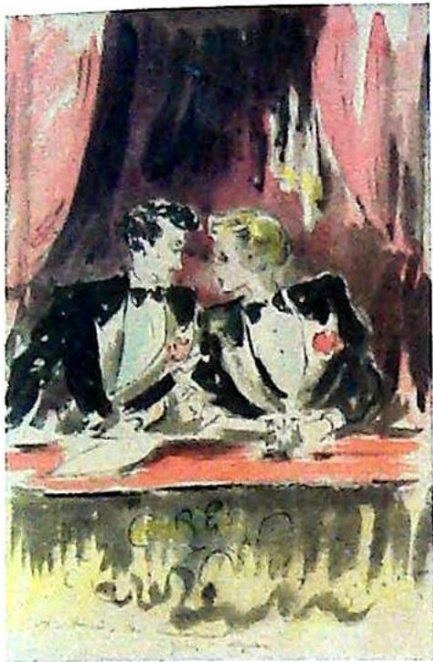
▲ 226
Carole Hensher (20thC)
Figure in landscape, watercolour, signed, 30cm x 38cm.
£100-200



▲ 227
Edward Louis Laurenson (1868-1940)
A Sussex Farm, oil on board, signed, 32cm x 43cm.
£400-600



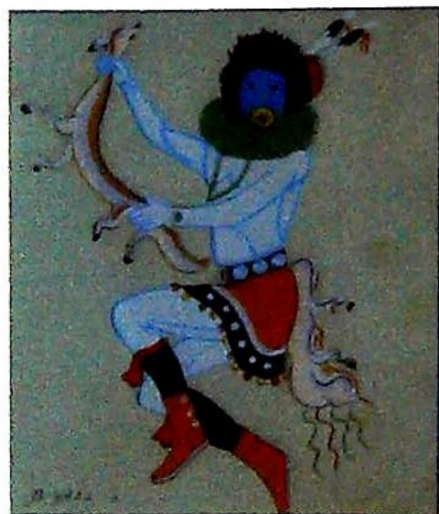
▲ 228
John Grimble (?-1997)
Boston, oil on board, signed and dated (19)78, 40cm x 50cm.
£100-150



▲ 229
Guy de Neyrac (1900-1950)
Dinner suits, watercolour, signed, dedicated to New York 1932 verso, 45cm x 30cm.
£200-300



▲ 230
20thC Russian School
Head and shoulders portrait, oil on board, signed and titled, 32.5cm x 23cm.
£200-300



▲ 231
Beatien Yazz (b.1928)
Dancer, watercolour, signed, 15cm x 13cm.
£150-250



▲ 232
20thC Russian School
Moscow, artist signed coloured print dated (19)67, 29cm x 39cm, and two others.
£50-100



▲ 233
Oswald Grill (1878-1964)
Flowers in landscape, oil on canvas, signed, 47cm x 63cm
£400-600



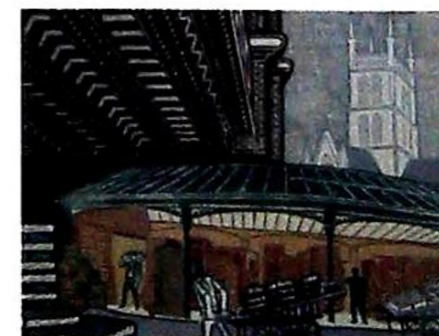
▲ 234
Francis Rose (1909-1979)
Portrait of a young man, oil on board, signed and dated 1932, 74cm x 56cm.
£200-300



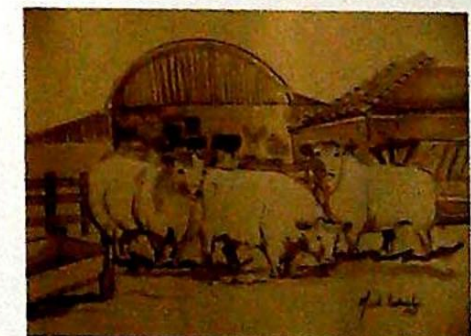
▲ 237
20thC
The Patrol Trophy, oil on board, 85cm x 104cm.
£200-300



▲ 235
Edward Bawden (1903-1989)
Smithsfield, artist signed limited edition lithographic print, 62/75, 46cm x 62cm
£800-1200

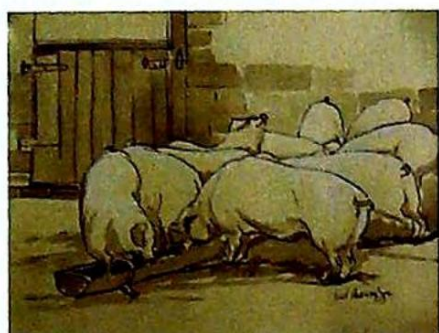


▲ 236
Edward Bawden (1903-1989)
Borough, artist signed limited edition lithographic print, 74/75, 46cm x 61cm
£800-1200

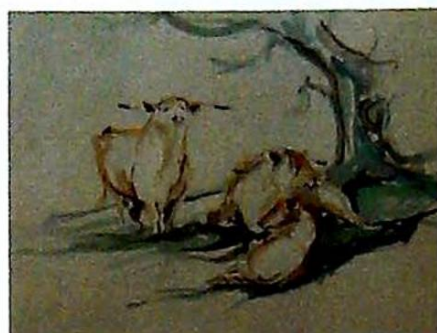


▲ 238
Mark Huskinson (b.1935)
Cattle, watercolour, signed and dated (19)82, 25cm x 35cm.
£30-50

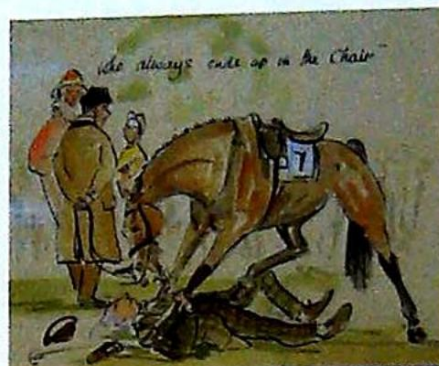
Lincoln Fine Art Sale



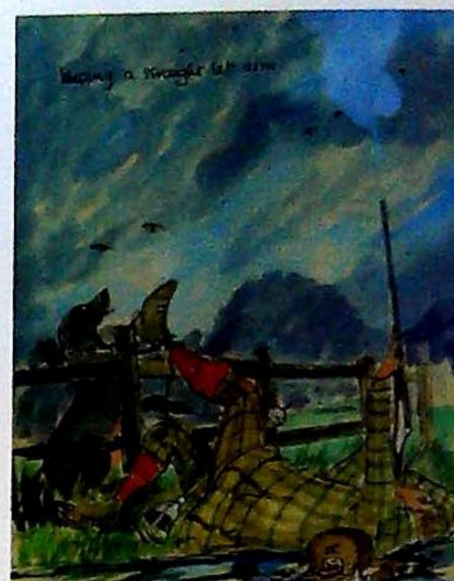
▲ 239
Mark Huskinson (b.1935)
Pigs, watercolour, signed and dated (19)82, 25cm x 35cm.
£30-50



▲ 243
Mark Huskinson (b.1935)
Cattle, watercolour, 38cm x 55cm.
£30-50



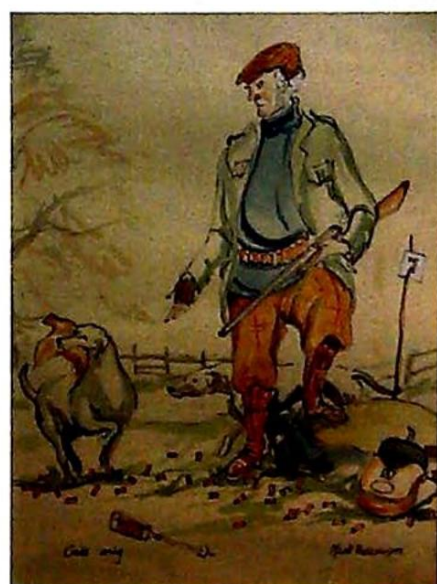
▲ 246
Mark Huskinson (b.1935)
Who always end up in the chair, watercolour, signed, 21cm x 26cm
£50-80



▲ 249
Mark Huskinson (b.1935)
Keeping a straight left arm, watercolour, signed, 25cm x 20cm
£50-80



▲ 240
Mark Huskinson (b.1935)
Greyhounds, watercolour, signed, 28cm x 50cm.
£30-50



▲ 244
Mark Huskinson (b.1935)
Cocks Only, watercolour, signed and titled, 52cm x 38cm.
£30-50



▲ 247
Mark Huskinson (b.1935)
Race Horses, crayon, signed and dated (19)96, 25cm x 32cm.
£30-50



▲ 250
Elva Joan Blacker (1908-1984)
Elthams Fascinator, watercolour, a pair, signed and dated 1956, 31cm x 49cm
£50-100



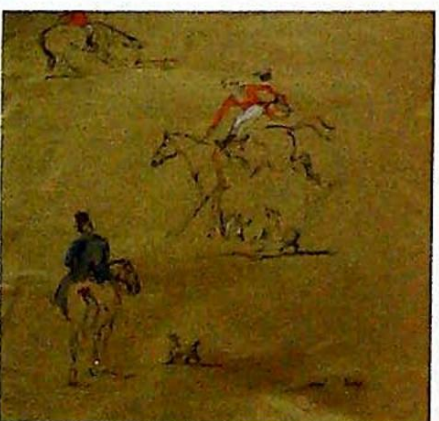
▲ 241
Mark Huskinson (b.1935)
Cattle, watercolour, signed and dated 1982, 38cm x 55cm.
£30-50



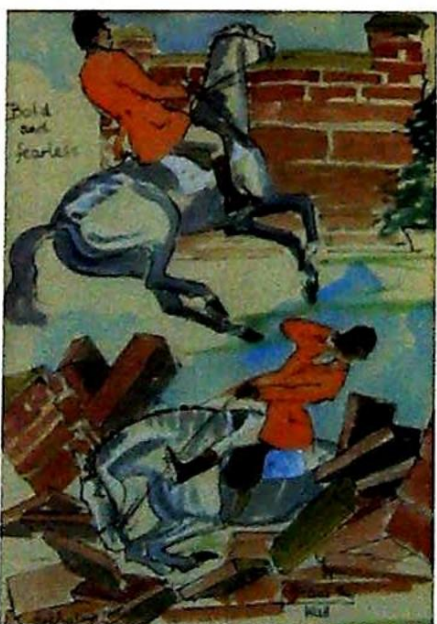
▲ 248
Mark Huskinson (b.1935)
The Perfect Hostess II, watercolour, signed and titled, 27cm x 29cm
£50-80



▲ 251
Bryan Ross (20thC)
Coastal scene, oil on canvas, signed and dated 1982, 21.5cm x 75cm
£30-50

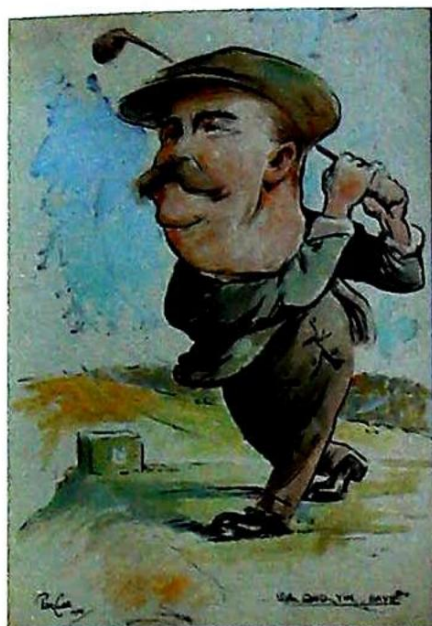


▲ 242
Mark Huskinson (b.1935)
Style, watercolour, signed and titled, 48cm x 50cm.
£30-50

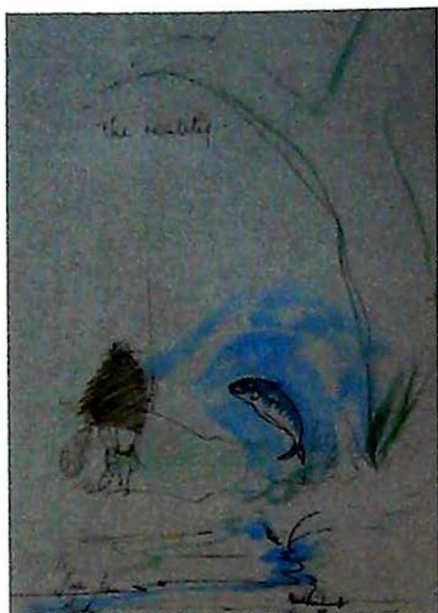


▲ 245
Mark Huskinson (b.1935)
The Vets Inspection, watercolour, signed, titled and dated (19)95, 19.5cm x 27.5cm
£50-80





▲ 252
Tom Curr (1887-1958)
Guid Yin, Davie, watercolour, signed, titled and dated 1924, 62cm x 40.5cm
£100-200



▲ 253
Mark Huskinson (b.1935)
The Reality, ink and watercolour, signed and titled, 26cm x 17.5cm, plus two others. (3)
£50-80



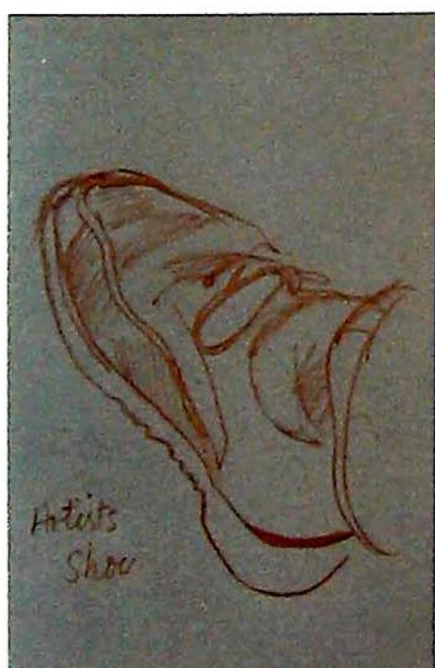
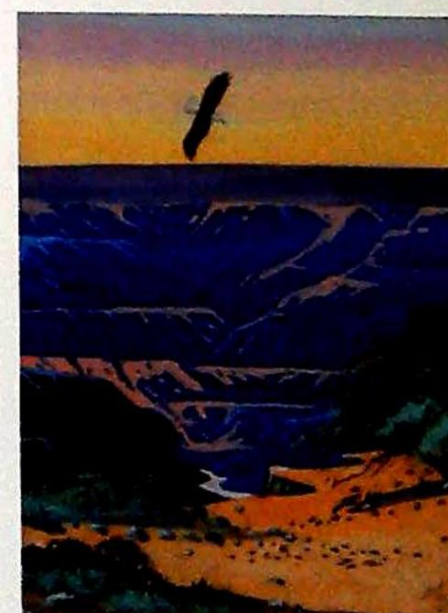
▲ 256
► **Mark Huskinson (b.1935)**
Head and nude study of a young girl, pastel drawing, signed, dated 1968, titled verso, 30cm x 20cm, and another. (2)
£50-100



▲ 254
20thC British School
Masted ships flying Ensign, oil on canvas, 29cm x 39cm
£30-50



▲ 257
► **William T. Zivic (b.1930)**
Wigwam in landscape, horse and rider, watercolour, pair, signed and dated (19)94, 7cm x 22cm, and another titled South Rim.
£100-200



▲ 255
20thC Continental School
The Kiss, oil on board, 29.5cm x 22cm.
£30-50

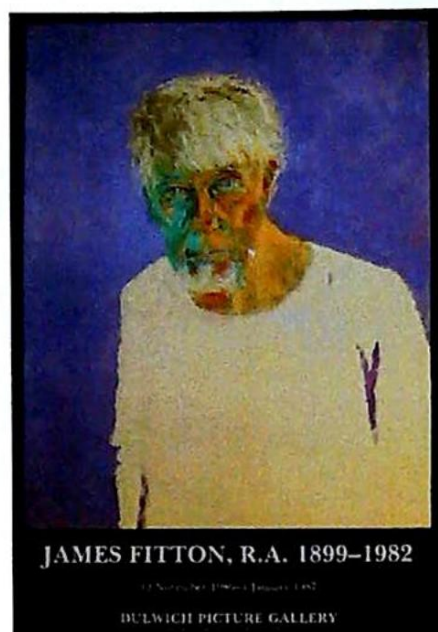
Lincoln Fine Art Sale



DAVID BLACKBURN - A LANDSCAPE VISION

1 October - 2 November 1986

DULWICH PICTURE GALLERY



JAMES FITTON, R.A. 1899-1982

11 November 1986 - 1 January 1987

DULWICH PICTURE GALLERY



▲ 260

Samuel Fenton (b.1923)

Eden, watercolour, signed, 27cm x 37cm, bears label The Arun Art Centre.

£50-80

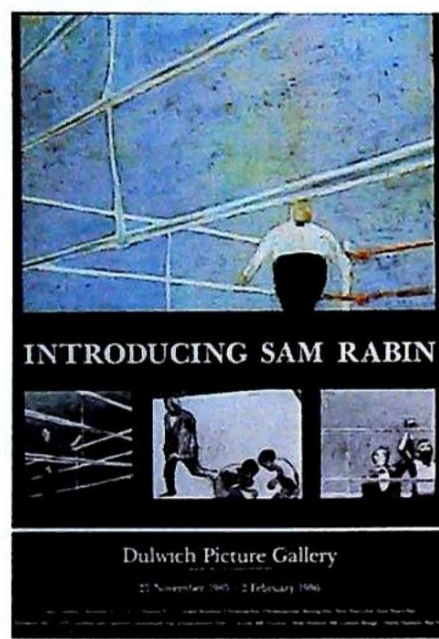


▲ 262

Edwin Marsh (20thC)

Rural landscape, watercolour, signed, 28.5cm x 39.5cm.

£30-50

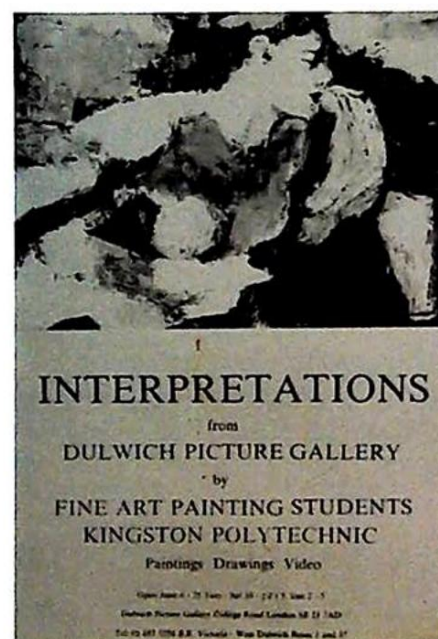


▲ 258

David Blackburn

A Landscape Vision - Dulwich Picture Gallery - 1986, an artist signed gallery poster, 76cm x 51cm, and five other posters. (6)

£30-50



▲ 261

Mark Huskinson (b.1935)

The Parson, oil on canvas, signed, 49.5cm x 59.5cm

£50-100



▲ 263

Margaret Hockney (20thC)

Orchids, photograph, pair, signed and dated 2004, 20cm x 39cm.

£50-80

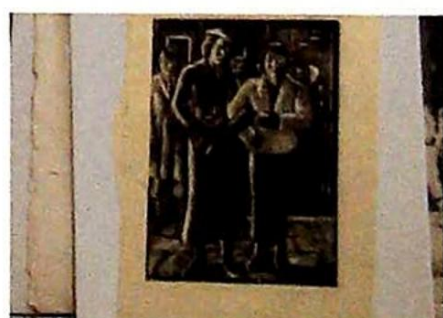


▲ 259

Mary I. Hailwood (1908-1983)

The Weight Lifter, etching, 15cm x 21cm, and six others (7)

£100-150

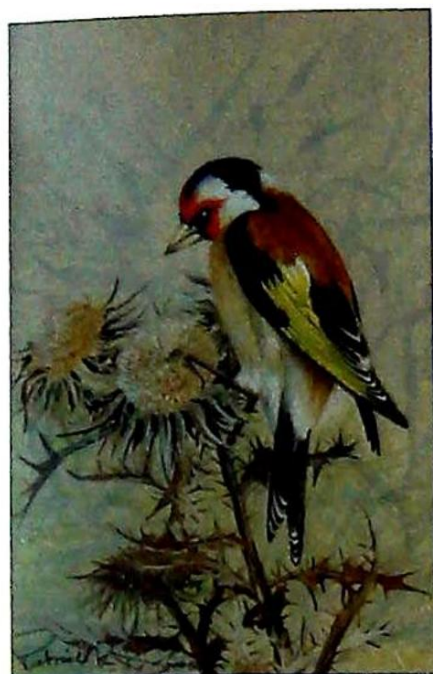


▲ 264

Patrick Donovan (b.1944)

Bird on a branch, watercolour, signed and dated (19)91, 22cm x 22cm, and another. (2)

£50-100



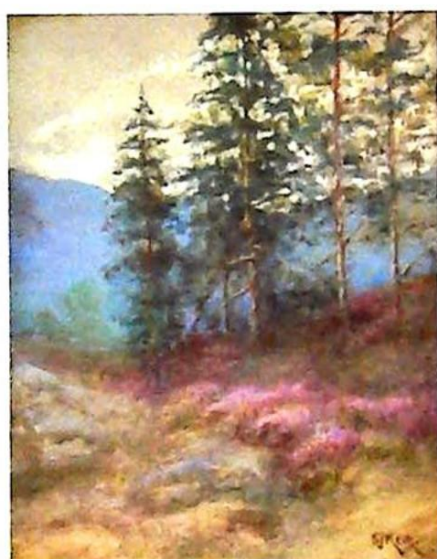
▲ 265
Patrick Donovan (b.1944)
Goldfinch, watercolour, signed and dated (19)88, 14.5cm x 10cm, and another (2) £50-100



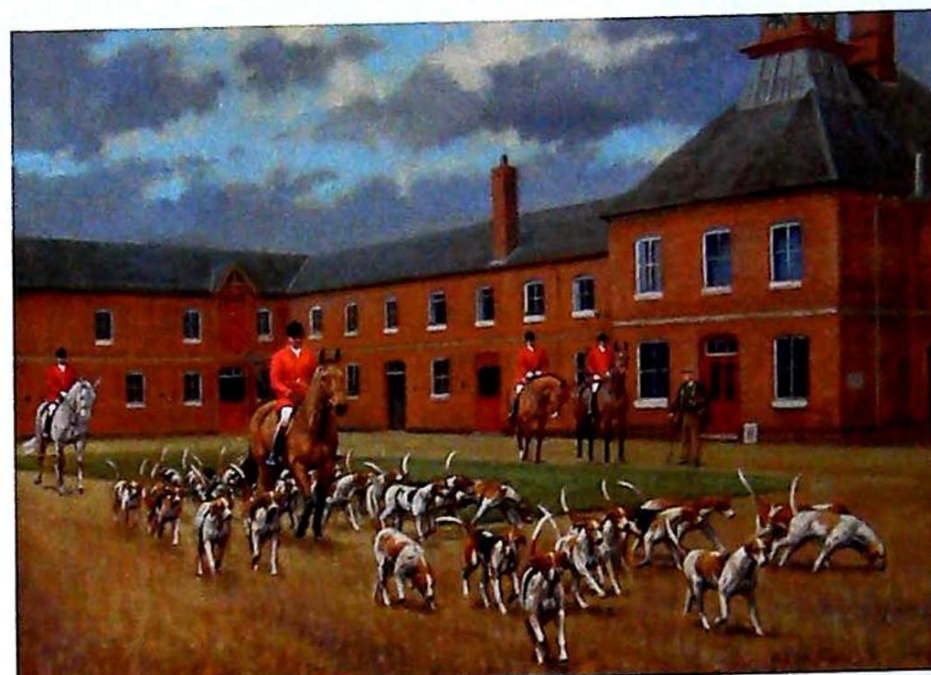
▲ 266
► **Patrick Donovan (b.1944)**
Thrush, watercolour, signed and dated (19)88, 11cm x 16cm, and two others. (3) £50-100



▲ 267
M. T. Hla (20thC)
Far Eastern river scenes, watercolour, pair, signed, 18cm x 27cm £30-50



▲ 268
S. J. Ker (20thC)
Woodland landscape, watercolour, signed, 23cm x 18cm. £40-60



▲ 269
Neil Cawthorne (b.1936)
The Hunt at the Stables, oil on canvas, signed and dated (19)92, 50cm x 70cm £400-600



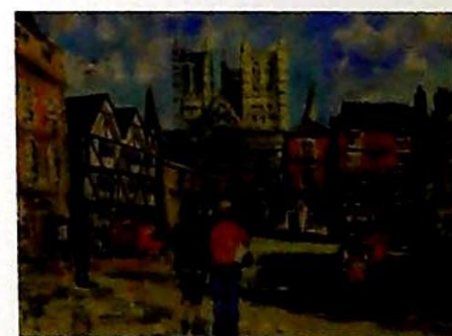
▲ 270
Ross Foster (20thC)
Figure on the beach, oil on board, signed, 24cm x 17.5cm. £50-80



▲ 271
Ross Foster (20thC)
Garden Party, oil on board, signed, 34.5cm x 44cm. £80-120



▲ 272
John Hutton (1906-1978)
Abstract depicting various interpretations of the human form, mixed media on board, 68cm x 109cm. Provenance: Exhibited at The Gallery of Art, Peterborough Museum. £50-100



▲ 273
Peter Wood (b.1951)
Lincoln, watercolour, signed, 50cm x 73cm, and another.

Lincoln Fine Art Sale



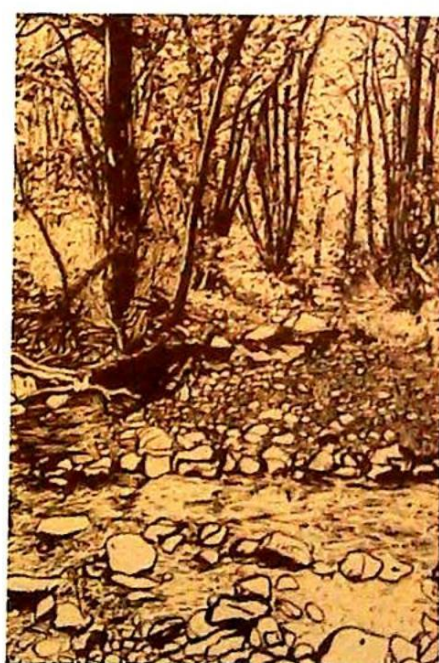
▲ 274
Peter Wood (b.1951)
Coastal scene, oil on canvas, signed, 50cm x 75cm, and another.



▲ 276
Peter Wood (b.1951)
Horses, oil on canvas, signed, 45cm x 59cm, plus two others.



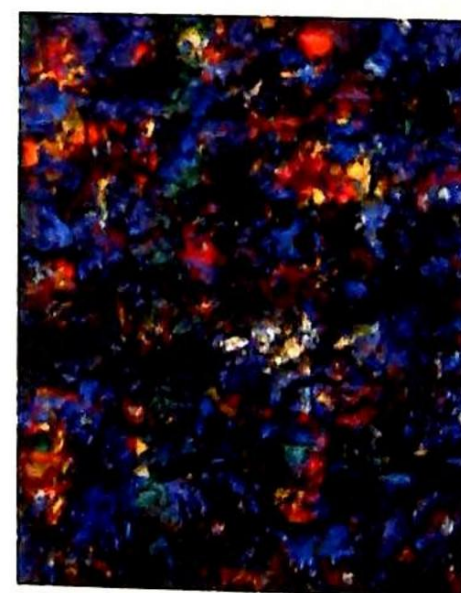
▲ 275
Peter Wood (b.1951)
Figure in floral landscape, oil on board, signed and dated 2001, 46cm x 46cm, plus two others.



▲ 277
Peter Wood (b.1951)
Sunflowers, oil on board, signed, 50cm x 39cm, plus five others.



▲ 278
Peter Wood (b.1951)
Floral study, oil on board, signed, 19cm x 24cm, plus six others.



▲ 279
Peter Wood (b.1951)
Floral landscape, oil on board, signed, 24cm x 19.5cm, plus eight others.



▲ 280
Peter Wood (b.1951)
River landscape, watercolour,
25cm x 34cm, and a quantity of
other works.



▲ 281
Peter Wood (b.1951)
River landscape, watercolour,
signed, 49.5cm x 70cm, plus
eleven others.



▲ 282
Peter Wood (b.1951)
Rural landscape, watercolour
and pastel, signed,
36cm x 53cm, plus two others.



▲ 283
Peter Wood (b.1951)
Flower stall, watercolour,
signed, 47cm x 29cm,
plus nine others.



▲ 284
Peter Wood (b.1951)
River landscape, oil on canvas,
signed, 50cm x 76cm,
plus two others.

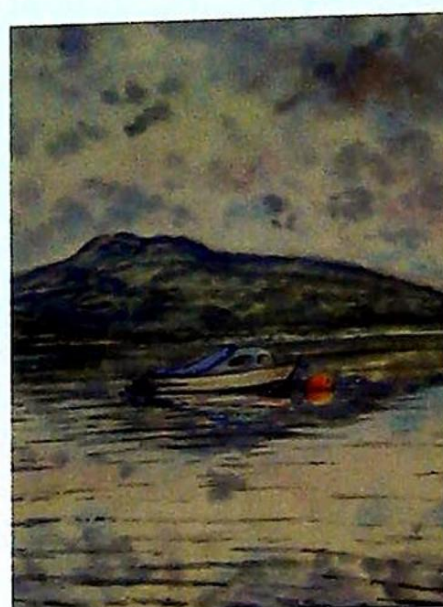
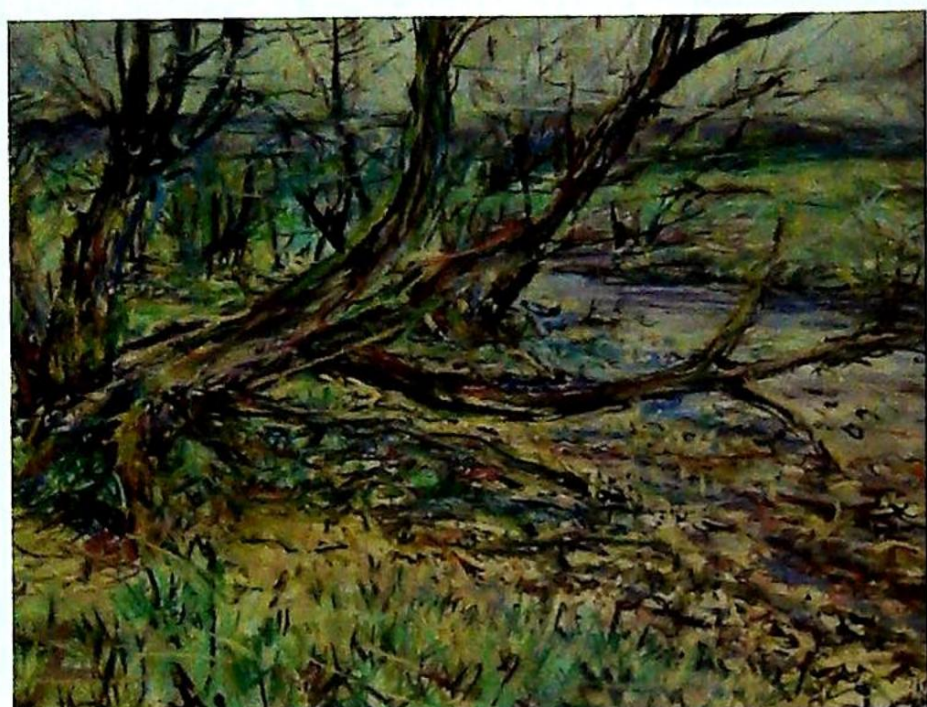


▲ 285
Peter Wood (b.1951)
Ullswater lakes, pastel, signed,
33cm x 50cm, plus nine others.

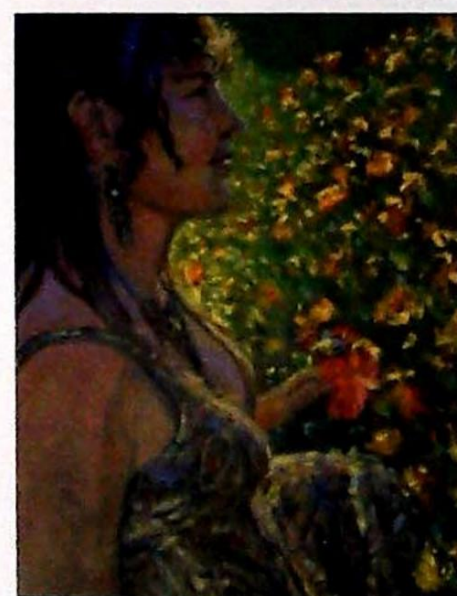


▲ 286
Peter Wood (b.1951)
Landscape, oil on canvas,
signed, 49cm x 69cm,
plus another.

Lincoln Fine Art Sale



▲ 287
Peter Wood (b.1951)
Woodland landscape, pastel, signed, 33cm x 50cm, plus nine others.



▲ 288
Peter Wood (b.1951)
Playtime 2, oil on canvas, signed, 102cm x 127cm, and another.

▲ 289
Peter Wood (b.1951)
Coastal scene, oil on canvas, signed, 81cm x 102cm, and another.

▲ 290
Peter Wood (b.1951)
Lake, boat in landscape, watercolour, signed, 52cm x 34cm, and nine others.



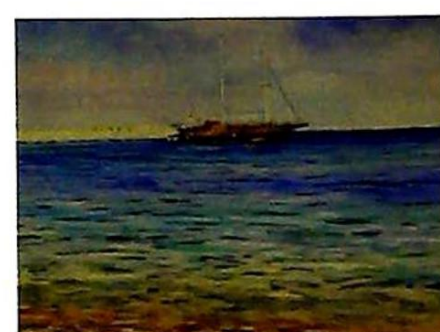
▲ 291
Peter Wood (b.1951)
Walking in the garden, oil on canvas, signed, 69cm x 49cm, plus four others.



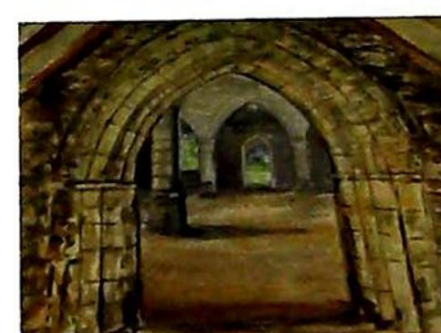
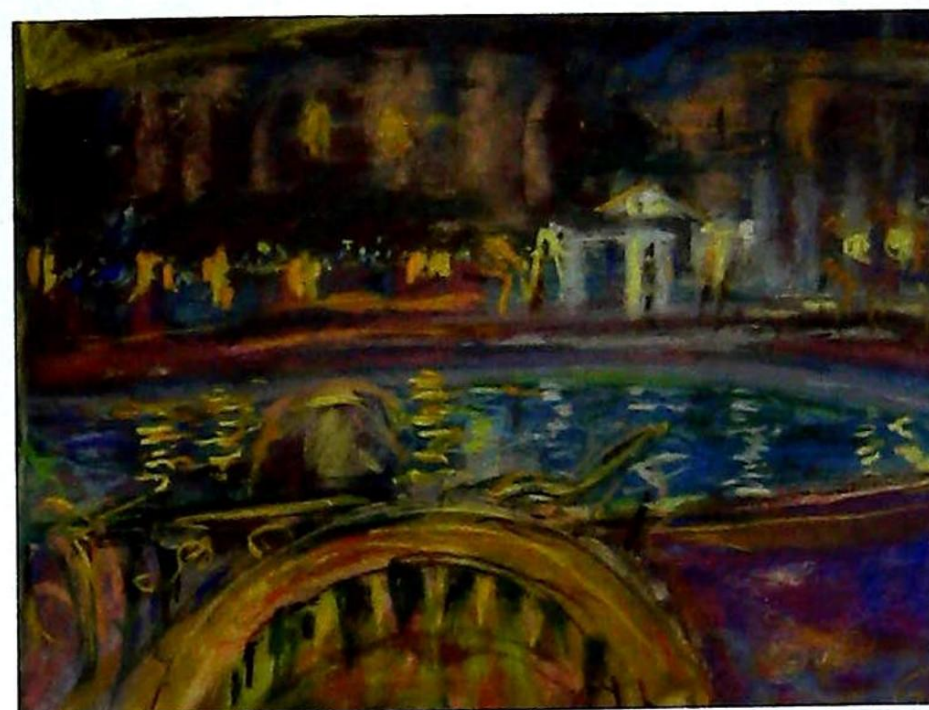
▲ 292
Peter Wood (b.1951)
Market scene, watercolour,
signed, 34cm x 52cm,
plus nine others.



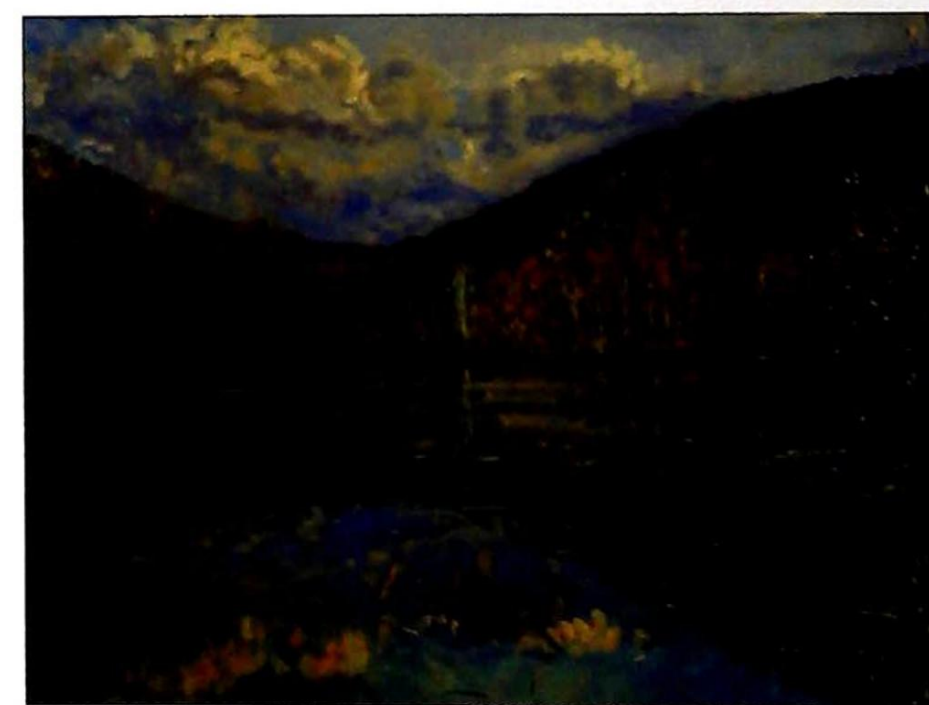
▲ 293
► **Peter Wood (b.1951)**
Floral study, watercolour,
signed, 35cm x 53cm,
plus two others.



▲ 294
Peter Wood (b.1951)
Floral study, watercolour,
signed, 52cm x 36cm,
plus nine others.



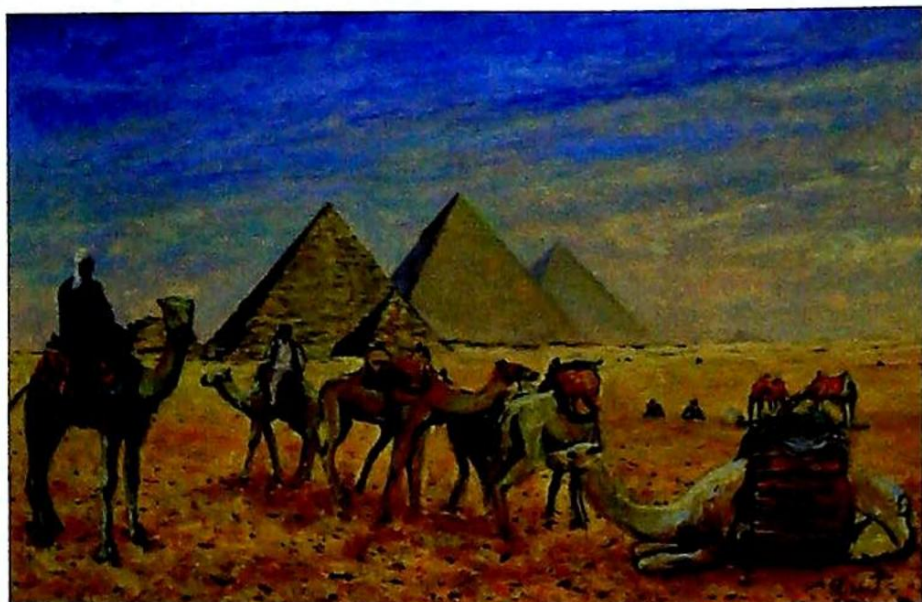
▲ 295
Peter Wood (b.1951)
Beach scene, pastel, signed, 36cm x 53cm, plus nine others.



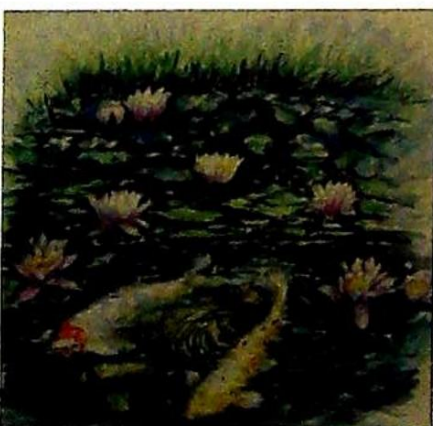
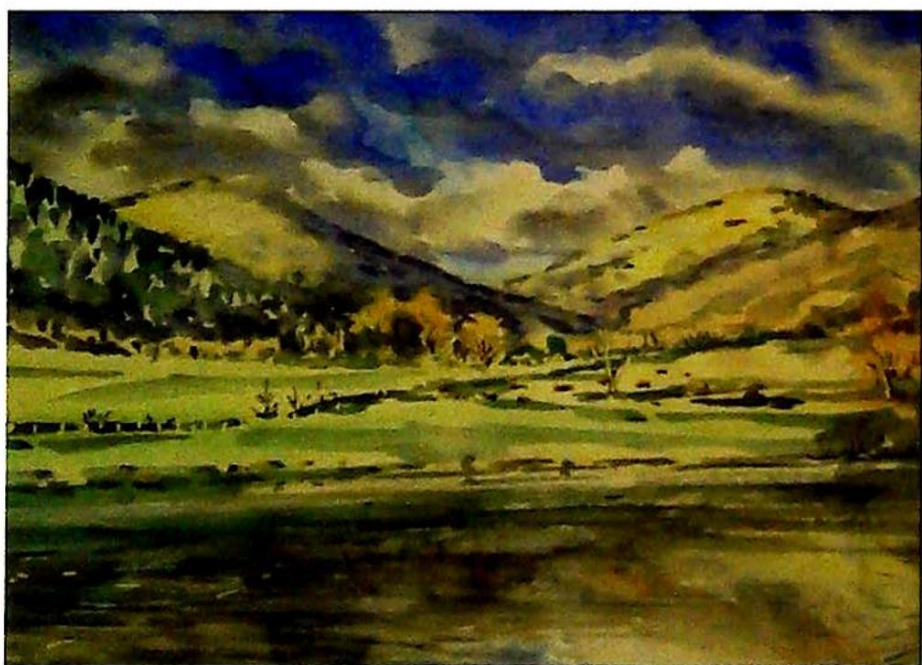
▲ 296
► **Peter Wood (b.1951)**
River landscape, oil on canvas,
signed, 69cm x 75cm,
and another.



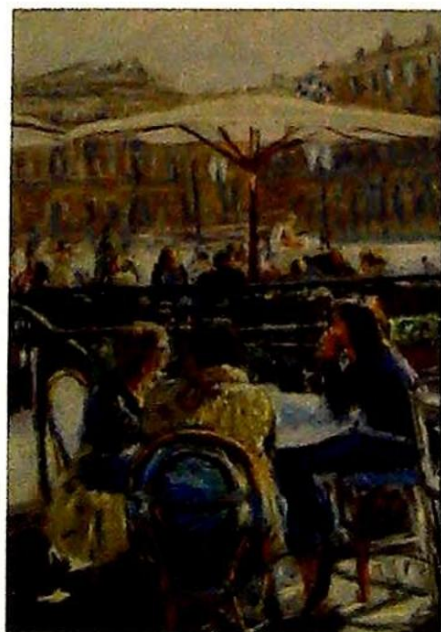
Lincoln Fine Art Sale



▲ 297
Peter Wood (b.1951)
Pyramids and camels, oil on board, signed, 50cm x 75cm, plus two others.



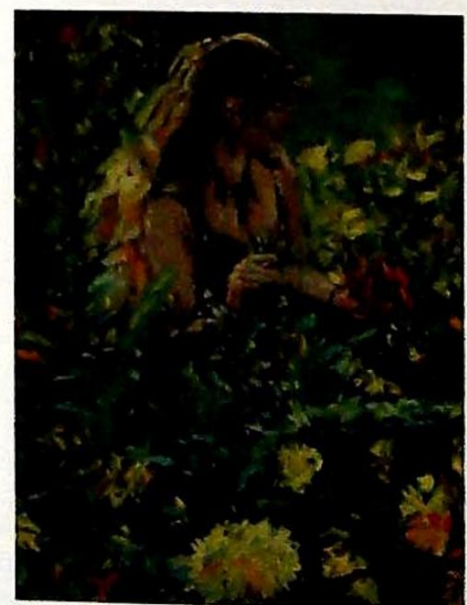
▲ 298
Peter Wood (b.1951)
Fish and lilies, watercolour, signed, 49cm x 49cm, plus two others.



▲ 299
Peter Wood (b.1951)
Rural landscape, pastel, signed, 33cm x 52cm, plus two others.



▲ 300
Peter Wood (b.1951)
In the floral garden, oil on board, signed, 50cm x 40cm, and another.

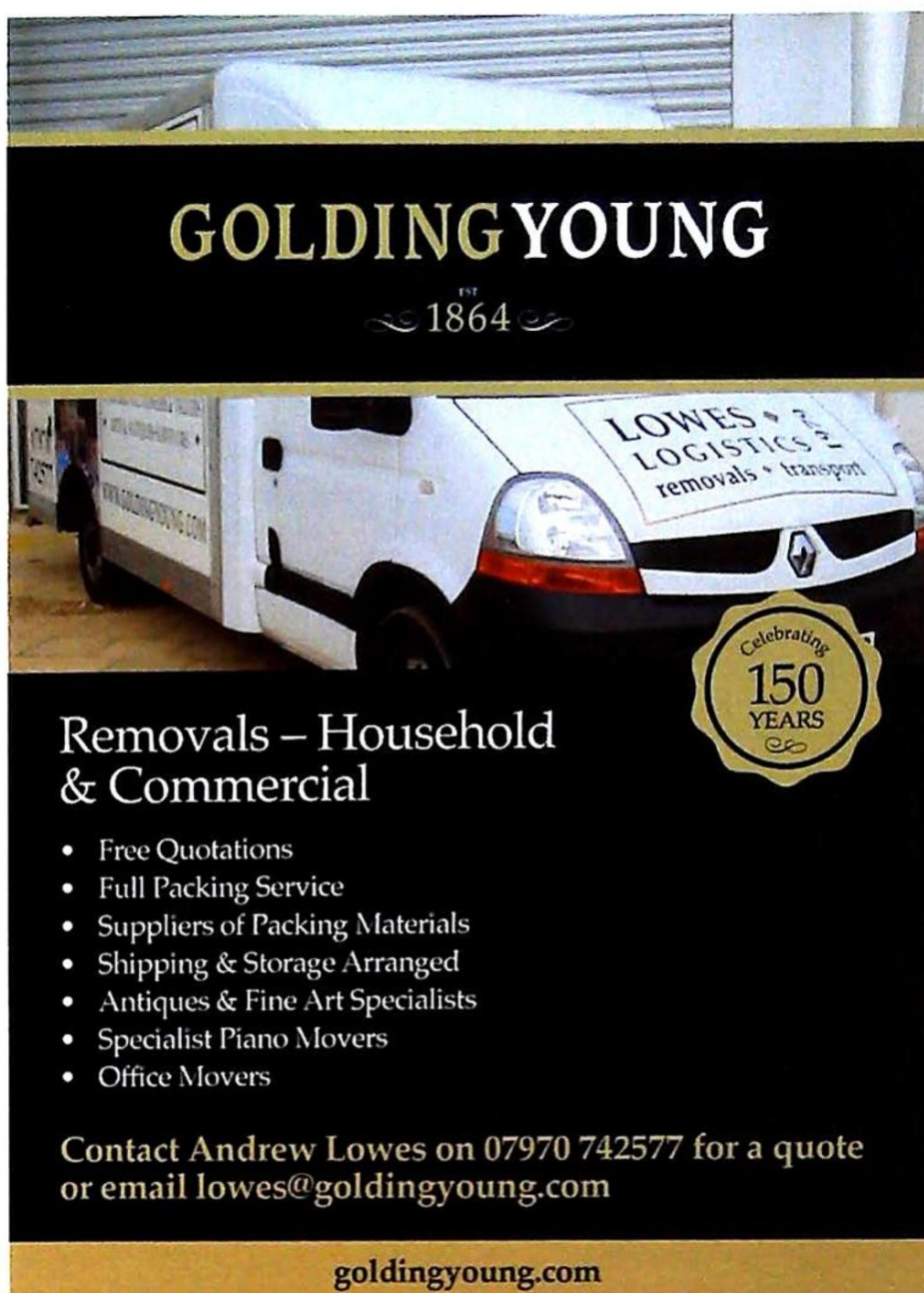


PRIVATE CLIENT & PROFESSIONAL SERVICE DEPARTMENT

We value personal property for private and corporate clients. Our team have valued family heirlooms, art collections and museum holdings for a variety of purposes.

We are the only auction house in the region to have a bespoke Private Client Department with:

- Two Chartered Arts & Antiques Surveyors
- Two RICS/Antiques Trade Gazette professional assessment award-winning valuers
- In-house qualified jewellery valuers
- Experience in abundance and diversity since 1864
- 11 professional staff with RICS, NAVA or SoFAA qualifications.



GOLDING YOUNG
ESTD 1864

Removals – Household & Commercial

- Free Quotations
- Full Packing Service
- Suppliers of Packing Materials
- Shipping & Storage Arranged
- Antiques & Fine Art Specialists
- Specialist Piano Movers
- Office Movers

Contact Andrew Lowes on 07970 742577 for a quote or email lowes@goldingyoung.com

goldingyoung.com

AUCTION APPRAISAL



We offer a FREE appraisal service at our offices for items you may wish to consign to auction.

This comprises advice for the most appropriate sale, a pre-sale estimate to encourage buyers and a reserve if necessary.

Items can be accepted at each of the Auction Rooms **Monday to Friday 9am to 1pm & 2pm to 5pm.**

Every Friday the valuers are available without appointment from **9am to 1pm.**

You can also email images to valuers@goldingyoung.com

FREE home visits can also be arranged, please call your nearest saleroom to speak with the resident valuer.

Alastair McPhie-Meiklejon - Bourne 01778 422686

Craig Bewick - Grantham 01476 565118.

John Leatt - Lincoln 01522 524984

A			H			R		
Angelis, E B	188		Haddelsey, Vincent	1-73		Reynolds, After Sir Joshua	86	
Austin, Samuel	128		Hailwood, Mary I	259		Reussner, Jean-Claude	182	
B			Halford, Jane Charlotte	199		Roberts, David	121	
Bampffield, John	202		Hammond, Thomas William	98		Rose, Francis	234	
Bawden, Edward	235, 236		Hankey, William Lee	133		Ross, Bryan	251	
Bennett, William	93		Harding, J D	120		Ross, Lyall	163	
Benny, O L	189		Harding, John	108		Rowbotham, Charles	101	
Bertram, Paul	117		Harrison, George Hindle	84		Rowbotham, Claude	95	
Blackburn, David	258		Harrison, Ted	173		Roxby, Brian	197	
Blacker, Elva Joan	250		Hensher, Carole	226		Rut, J	77	
Brabazon, Hercules Brabazon	124		Hersey, Edward	205, 206, 207		S		
Boden, George Alfred	215		Higham, A W	134		Schaefer, Henry Thomas	100	
Bopuclax, P	167, 183, 184		Hill, Philipe Maurice	224		Shepherd, David	153, 154, 158, 159	
C			Hine, Henry George	92		Siger, Reg	186	
Carr, Colin	149		Hines, Frederick	106, 107		Sleigh, Bernard	118	
Cawthorne, Neil	269		Hla, M T	267		St. John, Edwin	103	
Cooper, Thomas Sidney	129		Hockey, Margaret	263		Stone, William	79	
Copnall, Edward Bainbridge	200		Hollis, P	174		T		
Coker, Peter Godfrey	190		Huskinson, G N B	194		Townsend, John R	193	
Coleman, Martin Spencer	209, 210, 211		Huskinson, Mark	238 - 249, 253, 256, 261		V		
Crispe, William Leslie	223		Huston, Devon	192		Van De Stadt, G	110	
Crooke, Ray Austin	225		Hutchinson, Frances	139		Vango, David	166	
Cummins, Stephen	213		Hutton, John	272		Vernon, Ellen	115	
Curr, Tom	252		J			Vickers, E	138	
D			Johnson, K P	170		W		
Dali, Salvador	150		Joseph, B	185		Wainwright, Thomas Francis	116	
Daniels, Alfred	161		K			Wallace, John	81	
Dary, H	198		Kenney, John T	203		Waller, David	175	
de Neyrac, Guy	229		Ker, S J	268		Ward, Jay	191	
Donovan, Patrick	264, 265, 266		Klimt, Gustav	157		Webb, James	114	
Dunstan, Bernard	151		King, Henry John Yeend	89		Willford, M H	212	
E			Knight, James William Buxton	88		Williams, Glyn	219, 220, 221	
Earp, Henry	14		L			Wimperis, Edmund Morison	91	
F			Labegorre, Serge	218		Wolf, Franz Xaver	187	
Fenton, Samuel	260		Lake, David	165		Wood, H F	122	
Findley, Albert H	135		Lander, John St. Helier	123		Wood, Karl	178	
Flint, William Russell	155, 156		Laurenson, Edward Louis	227		Wood, Peter	273 - 300	
Foster, Ross	270, 271		Lightfoot, Peter	176		Wright, Frank	208	
Fox, Henry Charles	102		Lowry, Laurence Stephen	152		Wright, James	201	
G			M			Wright, T	82	
Gabriel, H	222		Mackenzie, David Maitland	90		Wylie, R	179	
Gallon, Robert	80		Marsh, Edwin	262		Y		
Gardner, Robert A	143 - 148		Marshall, Herbert Menzies	104		Yazz, Beatien	231	
Glanville, Christopher	162		Mason, Frank Henry	109		Z		
Glew, Janice	177		McIntyre, Donald	160		Zivic, William T	257	
Gray, Mary	217		Mears, Gunner F J	131		P		
Grill, Oswald	233		Morton, Alice M	87		Palmer, Margaret	196	
Grimble, John	228		Muhlberg, Max	169		Paterson, James	180	
Grobler, Sonya	76		Muschamp, Francis	96		Payne, Arthur C	136, 137	
N			O			Payne, William	126	
Neale, J P	141		Offer, Frank Rawlings	111, 112, 113		Pettinger, John Frederick	181	
O			Owen, Samuel	127		Ponsonby, David	171	
Offer, Frank Rawlings	111, 112, 113		Oxland, Joan	168		Power, Audsley	195	
P			P					
Palmer, Margaret	196		Palmer, Margaret	196				
Paterson, James	180		Paterson, James	180				
Payne, Arthur C	136, 137		Payne, Arthur C	136, 137				
Payne, William	126		Payne, William	126				
Pettinger, John Frederick	181		Pettinger, John Frederick	181				
Ponsonby, David	171		Ponsonby, David	171				
Power, Audsley	195		Power, Audsley	195				

PROBATE – INHERITANCE TAX ASSESSMENT

For many Executors and Trustees the responsibility of dealing with a deceased's Estate is a once-in-a-lifetime experience. You have to make a number of important decisions in a very short space of time and all when the loss is most difficult to come to terms with.

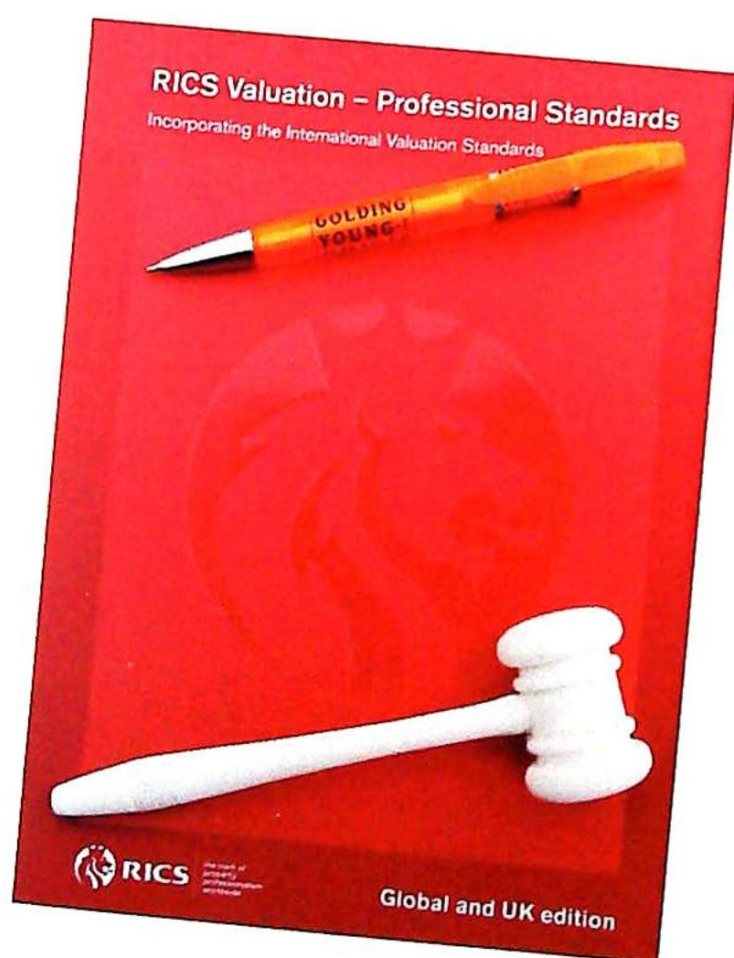
The position of Executor is an important one in law and has defined personal liability and responsibility. To exhibit due diligence to beneficiaries and more importantly HM Revenue & Customs, an Executor or advisor will instruct a firm Regulated by RICS.

Even if the estate will be taxed at 0%, a valuation remains an essential tool for an Executor. The inventory will still be used for identification of bequests, trust items, family division and proof of value.

Our valuations are prepared to the International Valuation Standards requirement of the 'Red Book'.

The report will cover sections of:

- Jewellery
- Vehicles
- Antiques, Fine Art & Collections
- General Furniture & Effects



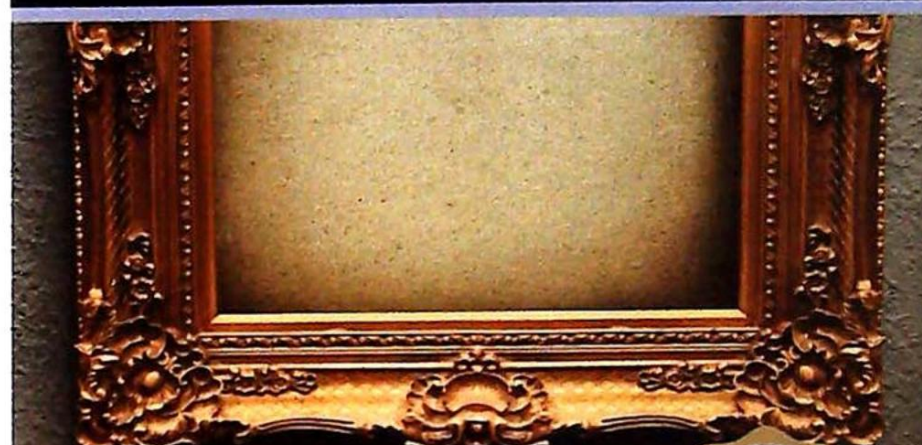
For initial advice contact the following Chartered Auctioneers & Valuers:

Bourne, Stamford & South
Colin Young MRICS
01778 422686

Grantham, Lincoln & North
William Gregory MRICS
01522 524984



The wrong time to find out
what it was worth...



Over 25 million pounds of
antiques & fine art valuation in
UK & Europe so far in 2014.

GOLDING YOUNG

EST
1864

Our senior valuers
William Gregory MRICS
and Colin Young MRICS
offer free advice for Insurance,
Tax Planning and Probate reporting
and of course the sale of
single items and collections.

The Bourne Auction Rooms
+44 (0) 1778 422686

The Lincoln Auction Rooms
+44 (0) 1522 524984

The Grantham Auction Rooms
+44 (0) 1476 565118

The Stamford Valuation Office
+44 (0) 1780 751666

CHARTERED AUCTIONEERS & VALUERS
ARTS & ANTIQUES SURVEYORS



goldingyoung.com

goldingyoung.com

**The Bourne
Auction Rooms
Spalding Road, Bourne,
Lincolnshire PE10 9LE**

**E: bourne@goldingyoung.com
T: +44 (0) 1778 422686
F: +44 (0) 1778 425726**

**The Grantham
Auction Rooms
Old Wharf Road, Grantham,
Lincolnshire NG31 7AA**

**E: grantham@goldingyoung.com
T: +44 (0) 1476 565118
F: +44 (0) 1476 561475**

**The Lincoln
Auction Rooms
Dunston House, Portland Street,
Lincoln, Lincolnshire LN5 7NN**

**E: lincoln@goldingyoung.com
T: +44 (0) 1522 524984
F: +44 (0) 1522 535600**

**The Stamford
Valuation Office
1, The George Mews,
Station Road, Stamford,
Lincolnshire PE9 2LB**

**E: stamford@goldingyoung.com
T: +44 (0) 1780 751666**



**RICS - The Hallmark of a professional
auction house offering executor &
private client advice & services for
valuation, auction sale & property
clearance**