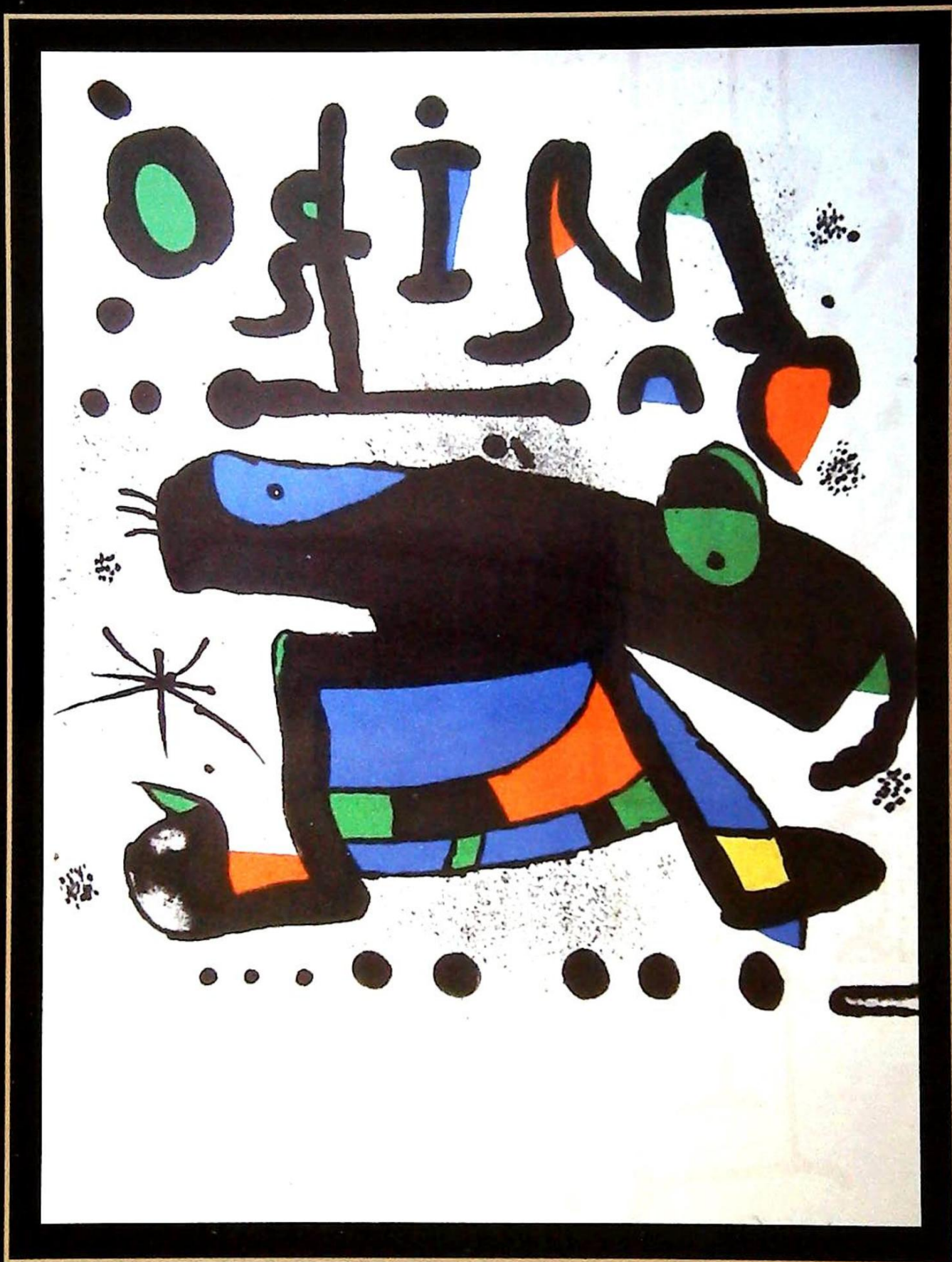


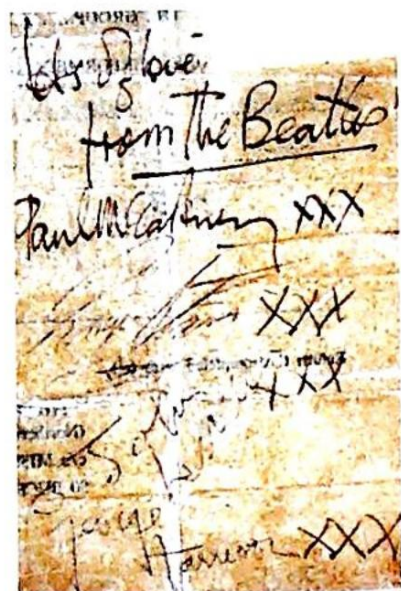
EVENING SALE OF FINE ART



Wednesday 27th February 2013 at 7pm

GOLDING YOUNG & MAWER ♦ 1864

FINAL CALL FOR ENTRIES

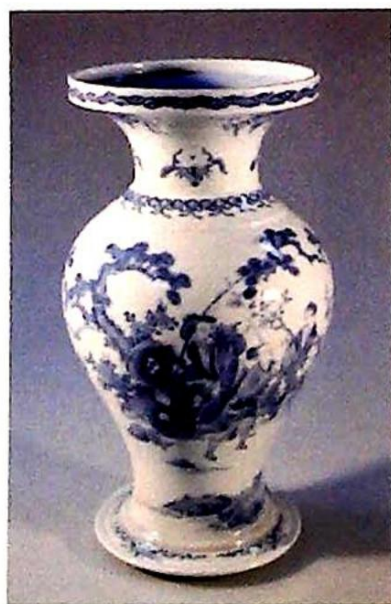


Autographs from March 1963
£1,500-2,500

MONTHLY COLLECTIVE SALE

The Grantham Auction Rooms

**Wednesday 6th &
Thursday 7th March**



Japanese Hirado
£800-1,200

ASIAN ART SALE

The Grantham Auction Rooms

Wednesday 13th March

www.goldingyoung.com

GOLDING YOUNG & MAWER • 1864

The Grantham Auction Rooms
Old Wharf Road, GRANTHAM
Lincolnshire NG31 7AA
Tel: +44 (0) 1476 565118
Fax: +44 (0) 1476 561475
Email: grantham@goldingyoung.com



WWW.GOLDINGYOUNG.COM

The Lincoln Auction Rooms
Dunston House, Portland Street
LINCOLN, Lincolnshire LN5 7NN
Tel: +44 (0) 1522 524984
Fax: +44 (0) 1522 535600
Email: lincoln@goldingyoung.com



Lot 1

Evening Sale of

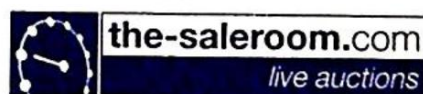
FINE ART

Wednesday 27th February 2013 at 7pm at
The Lincoln Auction Rooms

Viewing: Sunday 24th February 2pm-5pm
Tuesday 26th February 10am-4pm
& Saleday 2pm-7pm

Catalogues £10

Bid online or simply watch the sale live at



All Enquiries to William Gregory MRICS

Front Cover image: Lot 184

Back Cover image: Lot 25

GOLDING YOUNG & MAWER 1864

The Grantham Auction Rooms
Old Wharf Road, GRANTHAM
Lincolnshire NG31 7AA
Tel: +44 (0) 1476 565118
Fax: +44 (0) 1476 561475
Email: grantham@goldingyoung.com



WWW.GOLDINGYOUNG.COM

The Lincoln Auction Rooms
Dunston House, Portland Street
LINCOLN, Lincolnshire LN5 7NN
Tel: +44 (0) 1522 524984
Fax: +44 (0) 1522 535600
Email: lincoln@goldingyoung.com

IMPORTANT INFORMATION FOR BUYERS

1. **Introduction:** The following informative notes are intended to assist Buyers, particularly those inexperienced or new to our salerooms. All sales are conducted on our printed 'Conditions of sale' which are readily available for inspection and normally accompany catalogues. Our staff will be happy to help you if there is anything you do not fully understand.
2. **Agency:** As auctioneers we usually contract as agents for the seller whose identity, for reasons of confidentiality, is not normally disclosed. Accordingly, if you buy your primary contract is with the seller.
3. **Estimates:** Estimates are designed to help buyers gauge what sort of sum might be involved for the purchase of a particular lot. The lower estimate may represent the reserve price and certainly will not be below it. Estimates do not include the buyer's premium or VAT (where chargeable). Estimates are prepared some time before the sale and may be altered by announcement before the sale. They are in no sense definitive.
4. **Buyers premium:** The 'Conditions of sale' oblige buyers to pay a buyer's premium at 17.5% on the hammer price of each lot purchased with a minimum of £1 per lot. In the case of lots purchased 'Live On-line' or via www.the-saleroom.com or www.i-bidder.com this will be charged at 22.5% on the hammer price. In addition, VAT is payable on this premium (see below).
5. **VAT:** An asterisk (*) indicates that VAT is payable by the purchaser at the standard rate imposed by current UK law on the hammer price as well as being an element in the buyer's premium, lots are noted in the saleroom by a red dot on the lot number. This imposition of VAT is likely to be because the seller is registered for VAT within the European Union and is not operating the Dealers Margin Scheme or because VAT is due on importation into the UK. The double symbol (**) indicates that the lot has been imported from outside the European Union and the present position is that these lots are liable to a reduced rate of VAT on the gross lot price (i.e. both the hammer price and the buyer's premium). Lots which appear without either of the above symbols indicate that no VAT is payable on the hammer price. This is because such lots are sold using the Auctioneers' Margin Scheme and it should be noted that the VAT included within the premium is not recoverable as input tax. (VAT rates are changing with frequency, please check with HMRC. VAT will be charged as set by Government at the time of sale.)
6. **Condition and description of lots.** We are primarily, agents for the seller. We are dependent on information provided by the seller and whilst we may inspect lots and act reasonably in taking a general view about them we are normally unable to carry out a detailed or any examination of lots in order to ascertain their condition in the way in which it would be wise for a buyer to do. Intending buyers have ample opportunity for inspection of goods and, therefore, accept responsibility for inspecting and investigating lots in which they may be interested. Please note carefully the exclusion of liability for the condition of lots contained in the 'Conditions of sale'. Neither the seller nor we, as the auctioneers, accept any responsibility for their condition. In particular, mechanical objects of any age are not guaranteed to be in working order.
However, in so far as we have examined the goods and make a representation about their condition, we shall be liable for any defect which that examination ought to have revealed to the auctioneer but which would not have been revealed to the buyer had the buyer examined the goods. Additionally, in specified circumstances lots misdescribed because they are 'deliberate forgeries' may be returned and repayment made. There is a 21 day time limit from the date of sale, not date of collection or receipt. (The expression 'deliberate forgery' is defined in our 'Conditions of sale').
7. **Electrical goods:** Items are tested by a qualified electrician for SAFETY ONLY. An item that passes the PAT safety test may not work. Conversely, an item that fails the test may work with just minor repair. 'Working Order' and 'Safe' are two completely different concepts. The only thing you may take for granted is that the item will be safe at the point of sale. Items that have failed will have their cabling cut to source, labelled and sold 'For Trade Only'. To use the object you will have to change it radically from what was sold to you. Therefore, the Auctioneers cannot be held responsible after the point of sale. Those items sold genuinely as 'antiques or collectables' will not have been tested and if bought for use must be checked over for compliance with safety regulations by a qualified electrician before use. This is an express condition.
8. **Export of goods:** Buyers intending to export goods should ascertain (a) whether an export licence is required and (b) whether there is any specific prohibition on importing goods of that character because, e.g. they may contain prohibited materials such as ivory. Ask us if you need help.
9. **Bidding in person:** Some form of identification with proof of address will be required if you are unknown to us. Bidders may be required to register before the sale commences and lots will be invoiced to the name and address on the registration form. Account transfers will not be recognised or facilitated under any circumstances.
10. **Absentee bidding:** Commission bids may be left with the auctioneers indicating the maximum amount to be bid excluding buyers' premium. They will be executed as cheaply as possible having regard to the reserve (if any) and competing bids. If two buyers submit identical commission bids, the auctioneers may prefer the first bid received. If there are genuine reasons why you are unable to leave a Commission Bid and you wish to bid by telephone we may accommodate on lots where your opening bid will be £500 or above. There are inherent dangers with this practice; therefore all arrangements shall be entirely at the bidder's risk. Absentee bid instructions must be received by telephone, fax or email 12 hours prior to the sale.
11. **Live Internet Bidding:** In completing the bidder registration on www.the-saleroom.com and providing your credit card details and unless alternative arrangements are agreed with Golding Young Limited, you
 - (i) authorise Golding Young Limited, if they so wish, to charge the credit card given in part or full payment, including all fees, for items successfully purchased in the sale via www.the-saleroom.com or www.i-bidder.com, and
 - (ii) confirm that you are authorised to provide these credit card details to Golding Young Limited through www.the-saleroom.com or www.i-bidder.com.
12. **Methods of payment:** Accounts are due for settlement SALEDAY.
The following methods of payment are acceptable.
There will be NO EXCEPTIONS to this policy.
To avoid undue embarrassment for yourself or our staff, please do not ask for preferential treatment.
 - i. **Cash.** Single payments up to £10,000 only.
 - ii. **Debit Card.** No limit with chip & pin. (CNP limit £500).
 - iii. **Credit Card.** (Fee of 2%+vat) No limit with chip & pin. (CNP limit £500).
 - iv. **Bank Drafts & Building Society Cheques.** No limit. Due to forgeries, we will retain the goods for 3 working days to establish clearance of funds.
 - v. **Cheques.** Accepted up to the limit of the guarantee card for immediate clearance. For sums exceeding this, and you are not known to the auctioneers, we will retain the goods for 7 working days to establish clearance of funds.
 - vi. **Bank Transfer for Lincoln Auctions.** Payments to Golding Young Limited - Auction Clients Account - Lincoln. 40-22-19 33667200. HSBC, 88 Westgate, Grantham NG31 6LF Swift Code MIDLGB22. IBAN is GB45MIDL40221933667200
13. **Collection and storage:** Goods can be collected as soon as they are paid for and within two working days following the sale. If goods remain with us and we have no contrary written advice of your intentions the items will be moved to storage and reasonable labour charges levied and storage at the rate of £2+vat per lot per day thereafter for small items and £10+vat per lot per day for furniture and large items.
14. **Postage and packing:** Options for buyers are available at www.goldingyoung.com/buying-shipping or ask a member of staff.



21

Artist's Resale Right Scheme (Droit de Suite)

Following the UK's implementation of the EU Artist's Resale Right directive in February 2006, living artists are entitled to receive a resale royalty each time their art work is sold in the UK by an art market professional, subject to certain conditions. In January 2013 this has been extended to the sale of works of art of artists who have died in the previous 70 years, despite the wishes of the British Art Market Federation and other professional bodies. This payment is calculated on qualifying works of art which are sold for a hammer price or best bid price of more than EUR 1000. The UK sterling equivalent of EUR 1000 will fluctuate in line with prevailing exchange rates.

The actual qualifying threshold will be calculated by the Artist's Resale Right Service Hub based on the European Central Bank reference rate published at 2.15pm on the day of the sale.

The royalty charge will apply if the hammer price is more than the UK sterling equivalent of EUR 1000. The royalty charge will be added to buyer invoices and must be paid before items can be cleared. No handling costs or additional fees with respect to these charges are retained by auctioneers despite us having to undertake all of the extra and considerable administration work. This sum is then paid by us to a 'not-for-profit' collecting society, who will actually extract their administration fees. Any residual amount may go to benefit the artist.

Portion of the hammer price (Euro's EUR)	Royalty rate
1000 to 50,000	4%
50,000.01 to 200,000	3%
200,000.01 to 350,000	1%
350,000.01 to 500,000	0.5%
Exceeding 500,000	0.25%

*VAT is not payable on this royalty charge. The maximum royalty charge is 12,500 EUR.
Revised 4th January 2011.*



1

- 1 Lucien Pissarro (1863-1944)
Cottage by the Road,
Duton Hill,
oil on canvas, signed with monogram
and dated 1915,
43cm x 53.5cm
Provenance: The James Collection,
as stated from our clients purchase receipt
from Browse & Darby Ltd in 1978
£16000-22000

- 2 Graham Vivian Sutherland (1903-1980)
Welsh Mountain,
ink and watercolour, signed and dated 1939,
12.5cm x 16.5cm
£800-1200

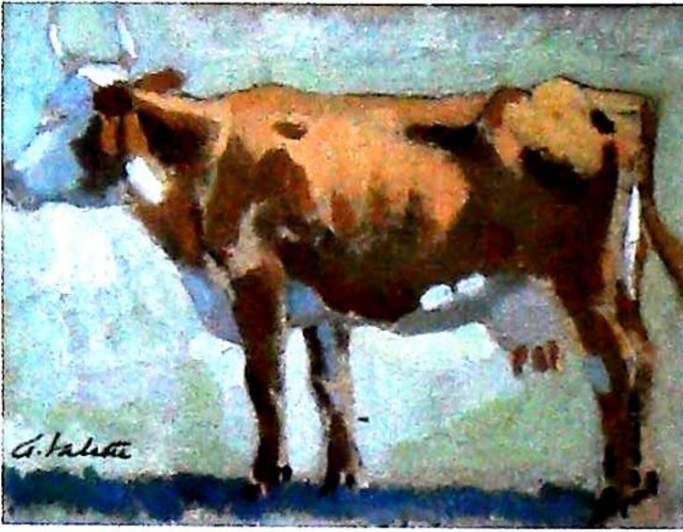


2



3

- 3 George Chinnery (1774-1852)
ink drawing,
study of two oriental men - Chinese barber,
12cm x 9cm
£500-800



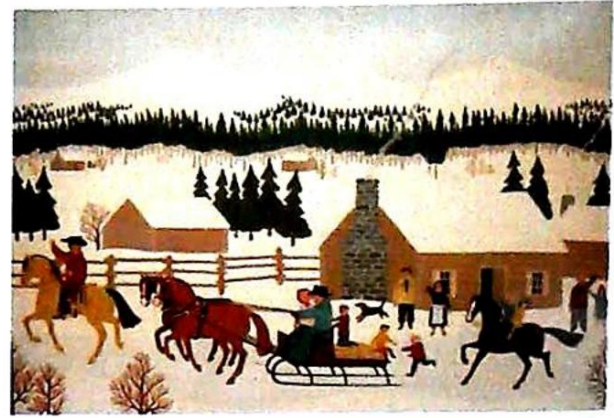
4

- 4 Adolphe Valette (1876-1942)
Study of a cow,
oil on paper, signed,
11.5cm x 15cm
£1200-1400



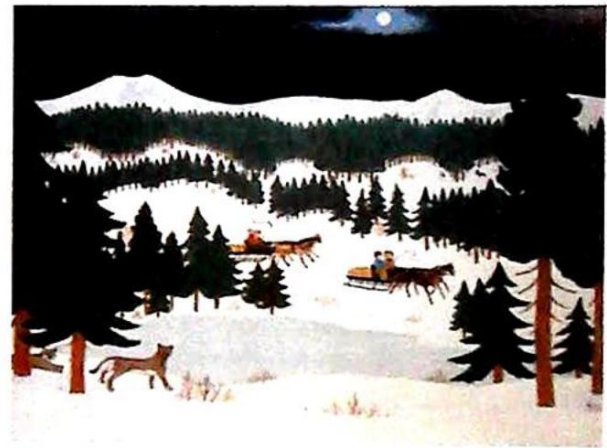
5

- 5 Adolphe Valette (1876-1942)
Study of two cows,
oil on paper, signed,
15.5cm x 11cm
£1200-1400



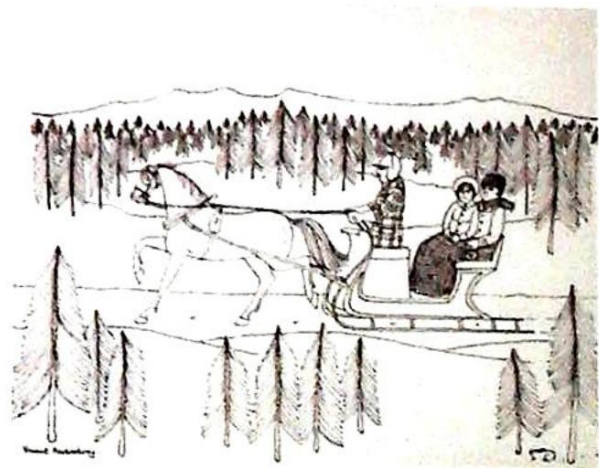
6

- 6 Vincent Haddelsey (1934-2010)
Winter in the Cariboo,
oil on board, initialled and dated 1968,
31cm x 44cm
Label verso Arthur Tooth & Sons Ltd, London
£400-600



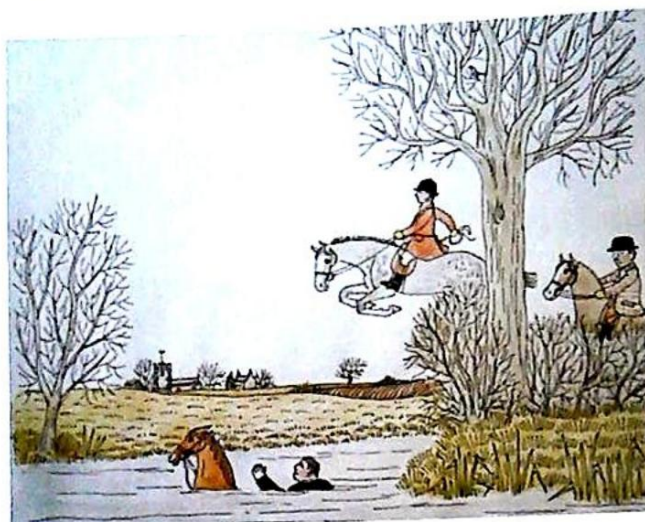
7

- 7 Vincent Haddelsey (1934-2010)
Home by Moonlight,
oil on canvas, initialled and dated 1969,
23.5cm x 32cm
£400-600



8

- 8 Vincent Haddelsey (1834-2010)
Sledge ride in woodland,
ink, signed,
21cm x 26.5cm
and another cowboy on horseback (2)
£50-100



9

- 9 Vincent Haddelsey (1934-2010)
Look before you leap,
ink and watercolour, signed,
16cm x 19cm
and seven other ink/watercolour drawings (8)
£50-100



10

- 10 Vincent Haddelsey (1934-2010)
French huntsman on horseback,
watercolour drawing, signed and dated 2001,
16cm x 24cm
and three other items (4)
£50-100



11

- 11 Vincent Haddelsey (1934-2010)
Cattle herding,
artist signed coloured print,
27cm x 43cm
£50-80



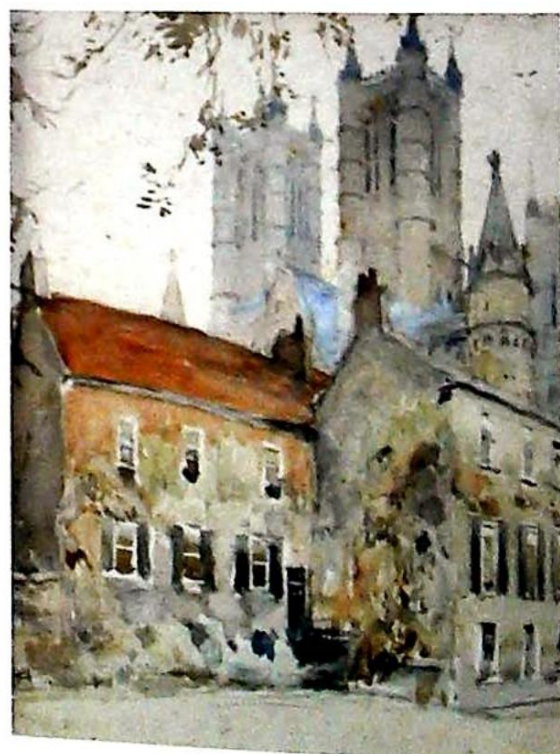
12

- 12 Vincent Haddelsey (1934-2010)
Horse race - back in the paddock,
artist signed coloured print,
27cm x 43cm
£50-80



13

- 13 Vincent Haddelsey (1934-2010)
Sledge ride,
artist signed limited edition coloured print 28/50,
27cm x 43cm
£50-80



14

- 14 Alfred George Webster (1852-1916)
Lincoln Cathedral,
watercolour, signed,
35cm x 24.5cm
£50-80



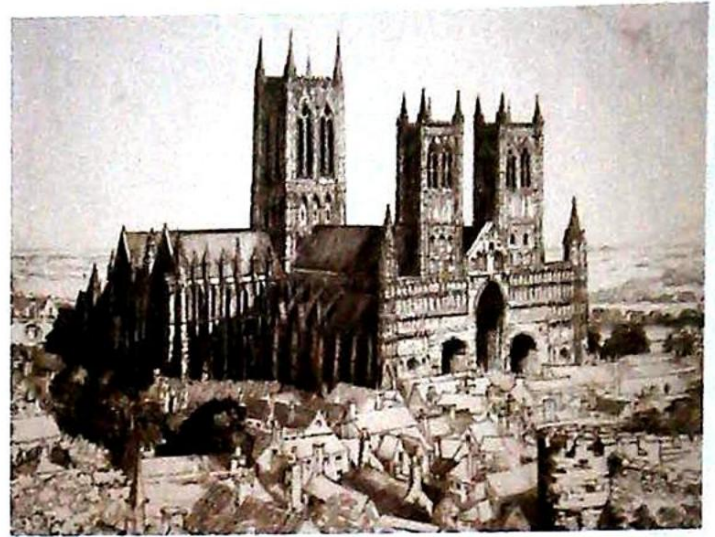
15

- 15 Terence George Storey (19th/20thC)
Waterwheel,
oil on canvas laid on board, signed
and dated (18)98,
40cm x 22cm
£50-80



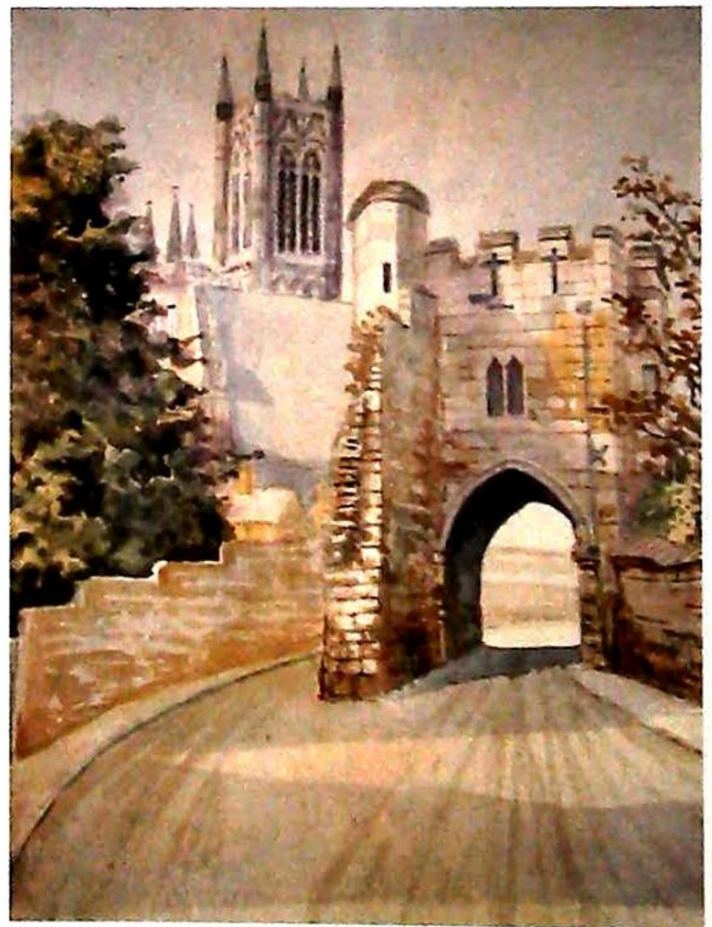
16

- 16 William Edward Millner (1849-1895)
Cows in the field,
oil on board, initialled,
30cm x 47.5cm
£50-80



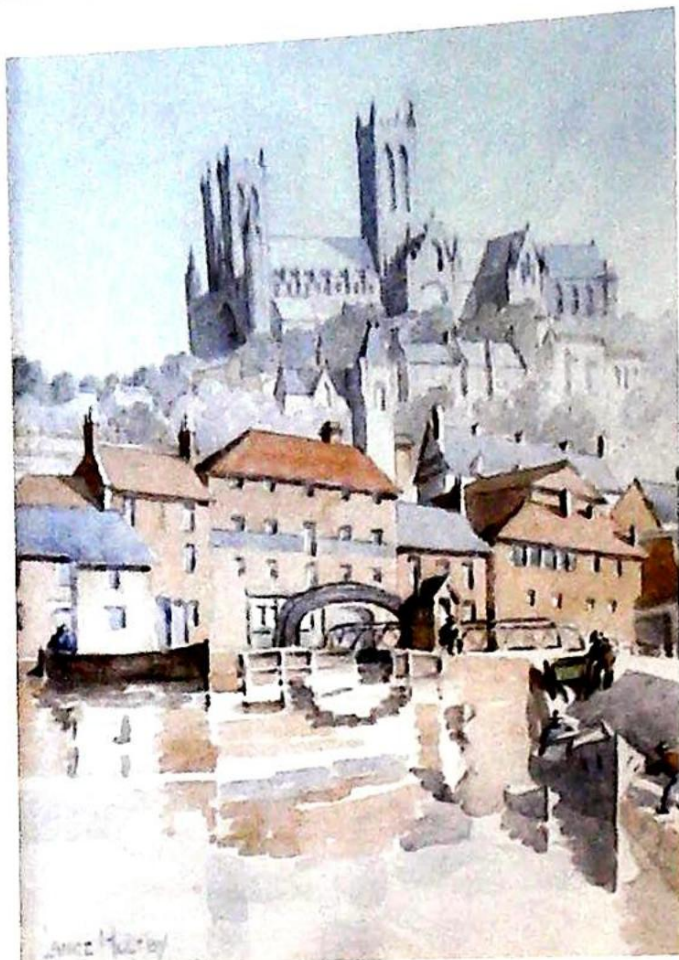
17

- 17 D Deighton (19th/20thC)
Sunset Lincoln Cathedral,
artist signed etching,
15cm x 21cm,
plus others,
various artists (19)
£30-50



18

- 18 John Bangay (20thC)
Newport Arch, Lincoln,
ink and watercolour, signed and dated (19)73,
19.5cm x 39cm
plus three others and another signed
Webster (5)
£30-50



19

- 19 Lance Holtby (20thC)
Lincoln Cathedral from the Brayford,
watercolour, signed,
25.5cm x 18cm
£60-90



20

- 20 E Holmes (20thC)
The Glory Hole (Lincoln),
oil on board, signed,
21.5cm x 33.5cm
and another Sunset in Winter,
signed John C Moore (2)
£50-80



21

- 21 William Barton Thomas (1877-1947)
River landscape with figure fishing,
watercolour, signed,
17cm x 26cm
£300-400



22

- 22 Edwin Aldridge Haddock (1921-1996)
Fathoms Five,
oil on canvas, signed,
123cm x 92cm
£50-80



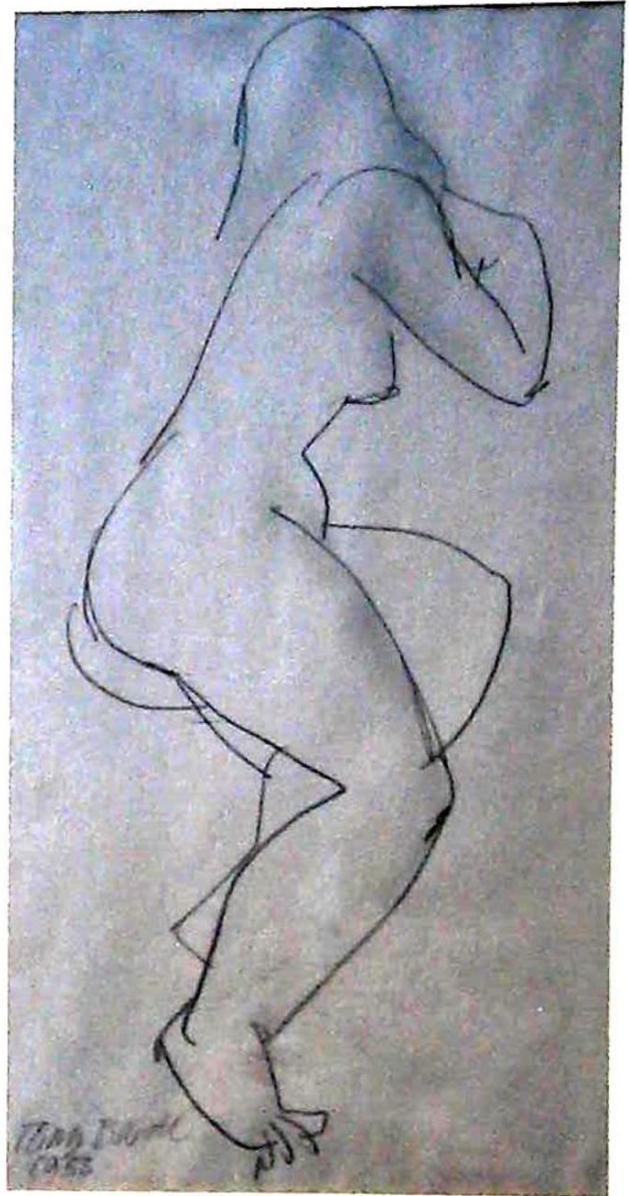
23

- 23 Edwin Aldridge Haddock (1921-1996)
Abstract,
oil on board, initialled,
122.5cm x 91cm
£50-80



24

- 24 David Vango (b.1950)
Blue Hole,
oil on board, signed,
121cm x 93cm
£50-80



25

- 25 Antonin (Tony) Bartl (1912-1998)
Female study,
pencil, signed and dated 1953,
36.5cm x 20.5cm
£300-500



26

- 26 Antonin (Tony) Bartl (1912-1998)
Street scene,
watercolour, signed,
25cm x 31cm
£300-500



27

- 27 Antonin (Tony) Bartl (1912-1998)
Seated portrait - Jocelyn,
pastel, signed,
94cm x 69cm
£300-500



28

- 28 James D Preston (20thC)
River Trent,
oil on canvas, pair, signed,
23.5cm x 28.5cm
£100-200



29

- 29 Hai Stinet Yeung (b.1936)
Coastal scene with landscape,
oil on canvas, signed,
44cm x 65cm
£50-80



30

- 30 Peter Lightfoot (b.1932)
Saturn - imaginary view of Planet Saturn,
oil on board, signed and dated 1969,
59cm x 89.5cm
£800-1200



31

- 31 John Trickett (b.1952)
Spaniel,
oil on canvas, signed,
49cm x 39cm
£250-450



32

- 32 John Trickett (b.1952)
Woodland landscape,
oil on board, signed,
29cm x 36.5cm
£150-250



33

- 33 20thC British School
Coastal scene with figures,
oil on board,
24cm x 29cm
£80-120



34

- 34 Alfred William Rich (1856-1921)
Mill on the Ouse,
watercolour, signed,
26cm x 36cm
Bears label verso Thos Agnew & Sons,
London
£120-180



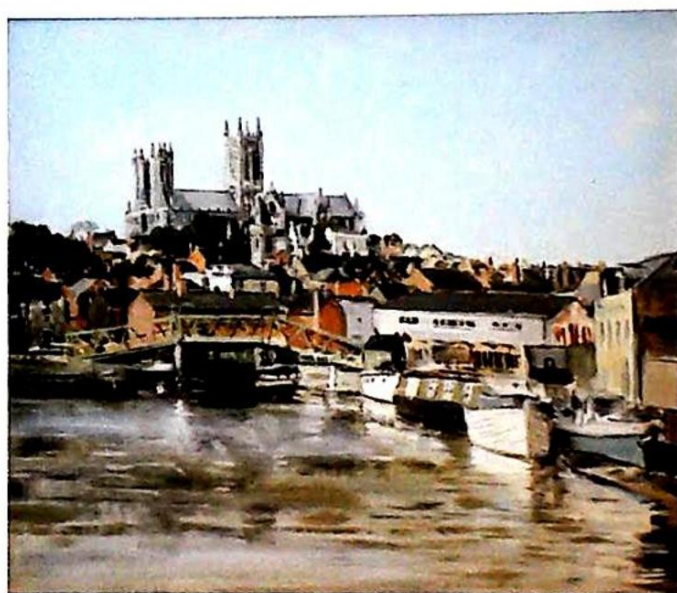
35

- 35 Joseph Halford Ross (1866-?)
Cobham Wood, Kent,
watercolour, signed,
27.5cm x 55cm
£80-120



36

- 36 Val Norman (19thC/20thC)
Pett's Wood, St Mary Cray, Kent,
watercolour, signed,
28cm x 55cm
£80-120



37

- 37 20thC British School
Lincoln Cathedral from Brayford,
oil on board,
24cm x 28cm
£50-80



38

- 38 Martin Spencer Coleman (b.1952)
The Farm at Dorking,
oil on canvas, signed and titled verso,
48cm x 99cm
£200-300



39

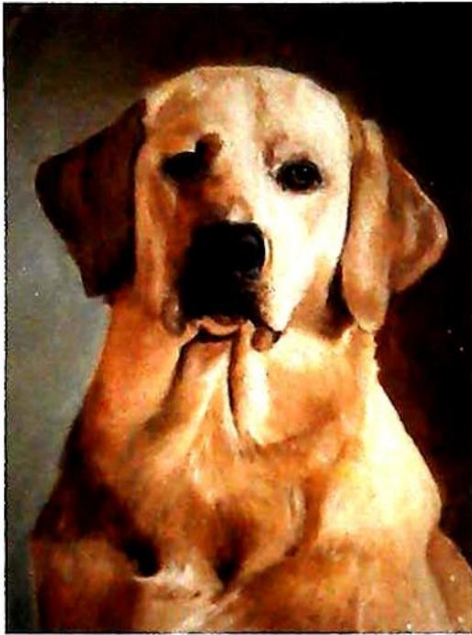
- 39 Simon Lewis (b.1945)
Study from the inside looking out,
oil on canvas, signed,
titled and dated 1980 verso,
91cm x 91cm
Bears label Lincolnshire and Humberside Arts
£80-120



40

- 40 Janice Kok (20th century)
Life study, female reclining,
charcoal drawing, signed,
37cm x 77cm
£50-100

Lots 41-48 Studio Contents of
Wilhelmina Burdett-Somers
Louth Lincolnshire Artist



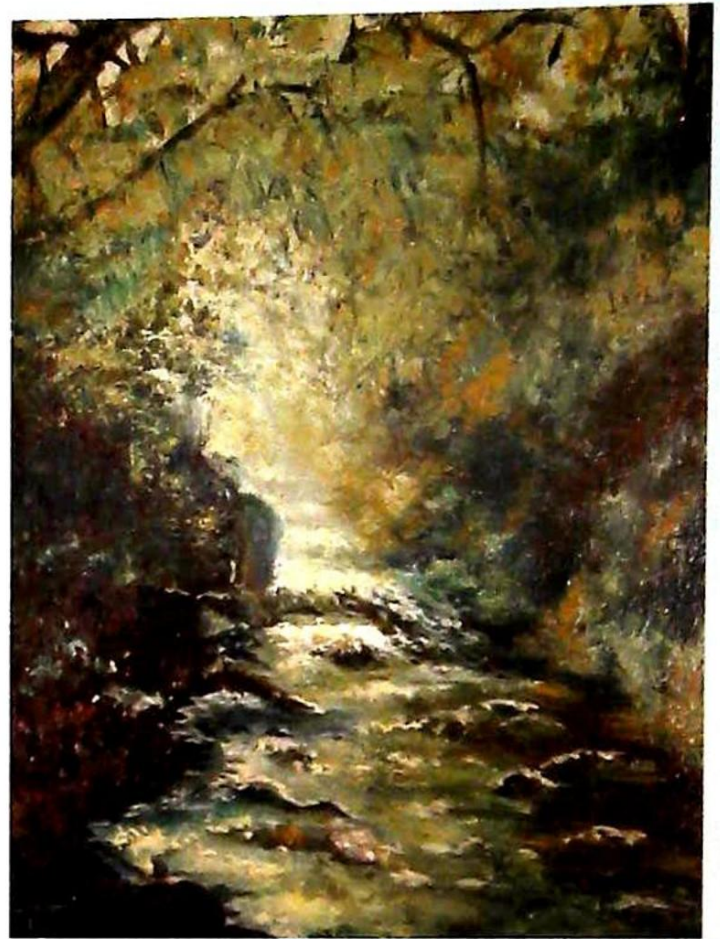
41

- 41 Wilhelmina Burdett-Somers
True Friend,
oil on copper (oval), signed,
10cm x 7.5cm
and two others,
Welsh Springer Spaniel (3)



42

- 42 Wilhelmina Burdett-Somers
Danny,
oil on copper, signed and dated 1984,
8.5cm x 6cm (oval),
and two others Tosca,
The Foal (3)



43

- 43 Wilhelmina Burdett-Somers
Various sketch books,
oil on boards,
clay figure (12)



44

- 44 Wilhelmina Burdett-Somers
Winter landscape,
oil on board, signed,
17cm x 24cm
and three others



46

- 45 Wilhelmina Burdett-Somers
Various studio works,
oil on boards, prints (15)



46

- 46 Wilhelmina Burdett-Somers
Steam train,
oil on canvas, signed,
29cm x 39cm
and two others



47

- 47 Wilhelmina Burdett-Somers
Hay wagon and horses,
oil on canvas, signed and dated 1984,
35cm x 44cm
and two others



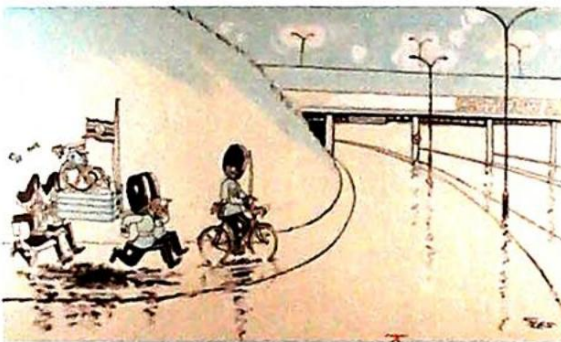
46

- 48 Wilhelmina Burdett-Somers
Floral still life,
oil on canvas, signed,
78cm x 58cm
and another, riverscene



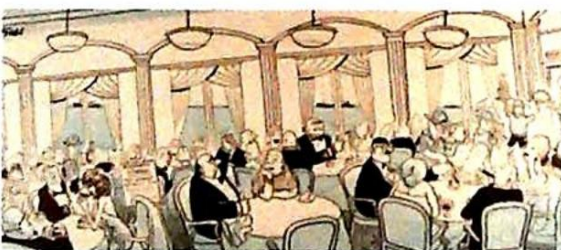
49

- 49 Carl Ronald Giles OBE (1916-1995)
The 1979 annual cover,
an original artists coloured proof drawing,
with overlay for rear cover,
ink and watercolour, unframed,
52cm x 63cm
£1500-2500



50

- 50 Carl Ronald Giles OBE (1916-1995)
Idi Amin being taken to Heathrow Airport
Departures.
An original artist's proof drawing dated
10th June 1977,
pen and watercolour, signed, unframed,
38.5cm x 54cm
£600-900



51

- 51 Carl Ronald Giles OBE (1916-1995)
The Seamen's Strike.
An original artists cartoon proof for issue
12th August 1960, captioned 'Sure
everybody's got their coffee before we've got
our soup - everybody didn't call the volunteer
staff a bunch of black legs',
pen and watercolour, signed,
framed on card,
28cm x 54cm
£500-700



52

- 52 Carl Ronald Giles OBE (1916-1995)
USA Votes Today.
An original cartoon proof dated 2nd Nov 1976,
pen and watercolour, signed, unframed,
38.5cm x 53cm
£700-1000



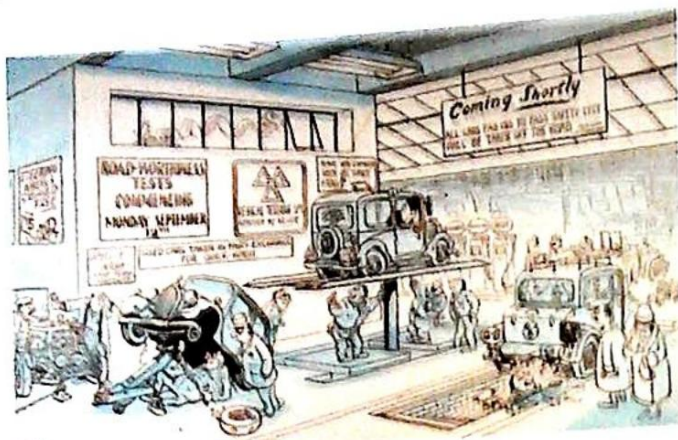
53

- 53 Carl Ronald Giles OBE (1916-1995)
Wage Restraint Ends.
An artist's original cartoon proof dated
8th July 1977,
pen and watercolour, signed, unframed,
38.5cm x 54cm
£500-700



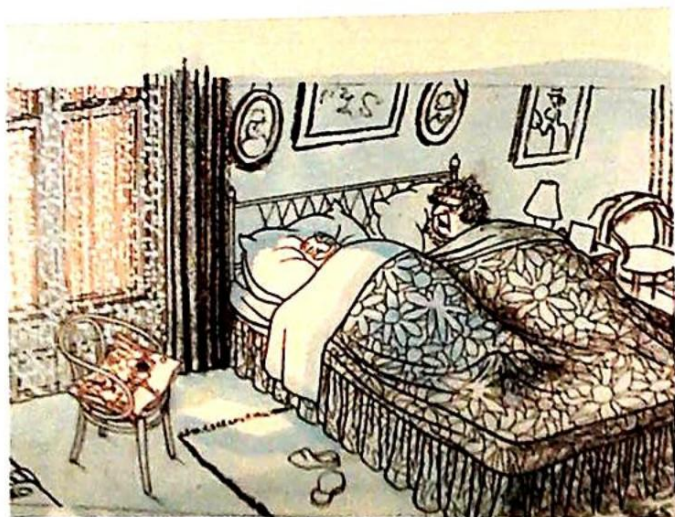
54

- 54 Carl Ronald Giles OBE (1916-1995)
Petrol Economy: The Chairman's
Car-Sharing Rota.
An original cartoon proof dated 1st April 1977,
pen and watercolour, signed,
37cm x 52cm
£400-600



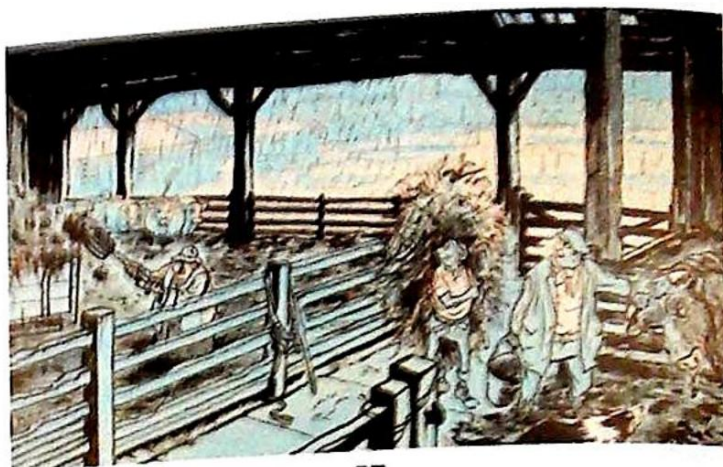
55

- 55 Carl Ronald Giles OBE (1916-1995)
Introduction of the MOT.
An original cartoon drawing dated 11th September 1960, captioned 'Well, Sir, if you're seriously thinking of having her tested on Monday I shouldn't waste your money filling her up'.
pen and watercolour, mounted but unframed, signed,
36cm x 54cm
£1000-1500



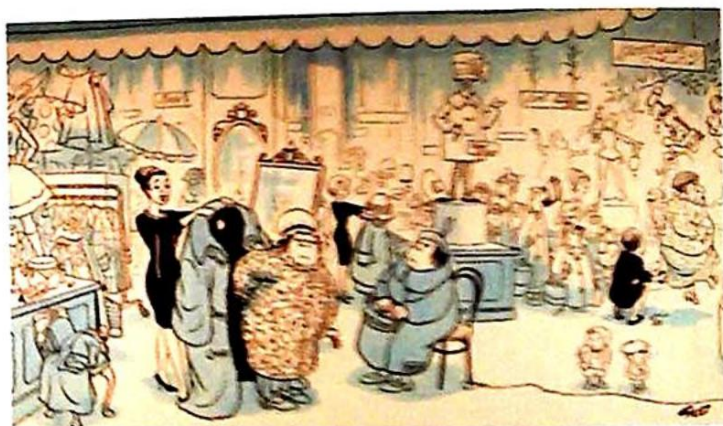
56

- 56 Carl Ronald Giles OBE (1916-1995)
Sue Barker's 1977 Wimbledon Semi-Final.
An original artists cartoon proof,
pen and watercolour, signed, unframed,
38.5cm x 54cm
£500-800



57

- 57 Carl Ronald Giles OBE (1916-1995)
New toilet range for men, with woodland aroma.
An original artists cartoon proof, captioned 'So that's what the boy Tom's been using all these years',
pen and watercolour, signed, mounted on card,
36cm x 54cm
£600-900



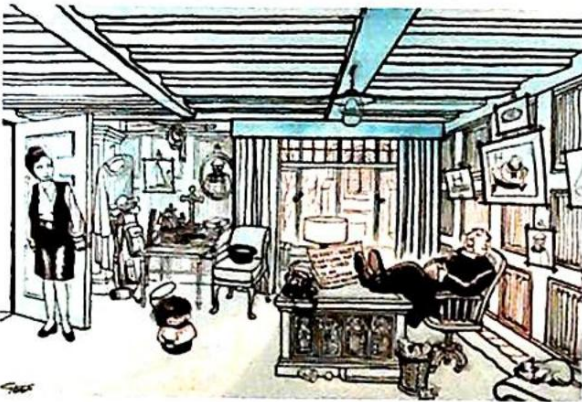
58

- 58 Carl Ronald Giles OBE (1916-1995)
An original proof drawing dated 12th June 1960, captioned 'Yes, Modom, I did read that Lady Lewisham thinks some shop girls hope their customers drop dead, preferably outside the store, before they have the bother of serving them, and I couldn't agree more',
pen and watercolour, signed, mounted but unframed,
36cm x 54cm
£500-800



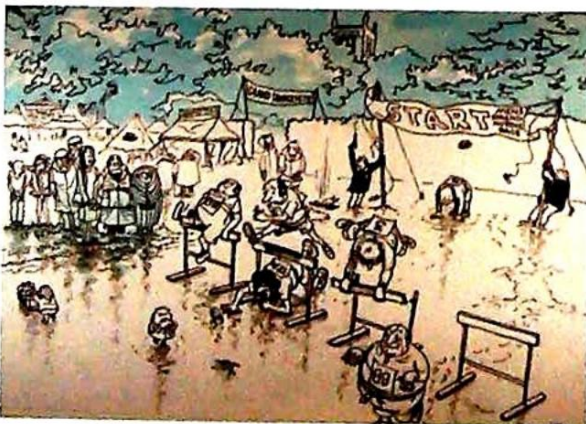
59

- 59 Carl Ronald Giles OBE (1916-1995)
Men's Accessories.
An artist's original cartoon proof dated
14th August 1979,
pen and watercolour, signed, unframed,
38.5cm x 54cm
£500-800



60

- 60 Carl Ronald Giles OBE (1916-1995)
Hermit Leaves Fortune for The Lord.
An original cartoon proof dated
23rd January 1977,
pen and watercolour, signed, unframed,
37cm x 52cm
£500-700



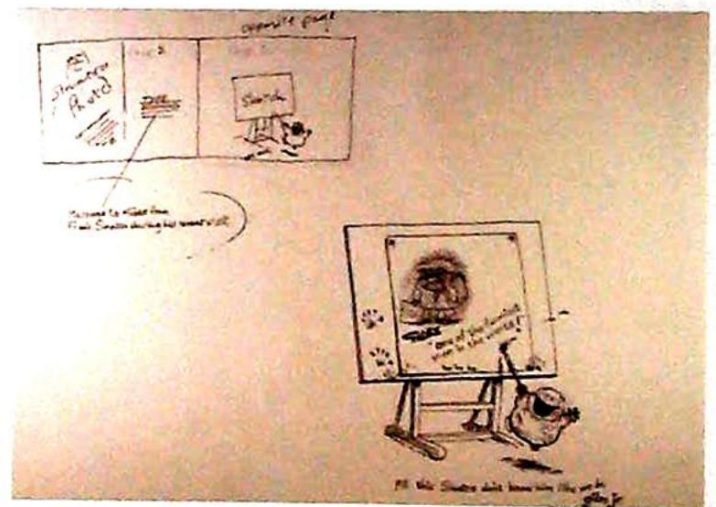
61

- 61 Carl Ronald Giles OBE (1916-1995)
Grand Church Fete.
An original artists proof dated 25th May 1980,
pen and watercolour, signed, unframed,
38cm x 54cm
£500-700



62

- 62 Carl Ronald Giles OBE (1916-1995)
Spring Flies.
An original artists cartoon proof dated
29th April 1979,
pen and watercolour, signed, unframed,
38cm x 54cm
£400-600



63

- 63 Carl Ronald Giles OBE (1916-1995)
An artists proof for the introductory page of
the 1979 annual,
pen, signed, unframed,
38.5cm x 54cm
£300-500



64

- 64 Bai Yun (b.1938)
A Family Letter,
oil on canvas, signed and titled verso,
119cm x 73cm
£500-800



65

- 65 20thC South Africa
Table Mountain,
landscape, oil on canvas,
30cm x 40.5cm
£80-120



66

- 66 20thC American
New York skyline,
watercolour,
12cm x 14cm,
and another titled verso "Jacks" (2)
£50-80



67

- 67 Sohan Qadri (1932-2011)
Orange Soliloquy,
oil on canvas, signed and titled verso,
60cm x 100cm
£1500-2500



68

- 68 Indian School (20thC)
Five figures,
watercolour, indistinctly signed and dated
(19)70,
8cm x 27cm
£50-80



69

- 69 Maurice Canning Wilks (1910-1984)
Killarney,
oil on canvas, signed,
49cm x 67cm
£800-1200



72

- 72 George Vernon Stokes (1873-1954)
Border Terriers,
artist signed coloured etching 57/75,
26cm x 29cm
£80-120



70

- 70 George K Gillespie (1924-1995)
River landscape,
oil on canvas, signed,
40cm x 50cm
Bears label F G Davis & Sons Belfast
£500-800



73

- 73 Walter Eastwood (1867-1943)
Watendlath,
watercolour, signed and titled verso,
24cm x 34.5cm
£50-80



71

- 71 Paddy (Paddy) MacMiadhachain (b.1929)
The Volcano of La Palma,
oil on board, signed and titled verso,
39.5cm x 90cm
£250-350



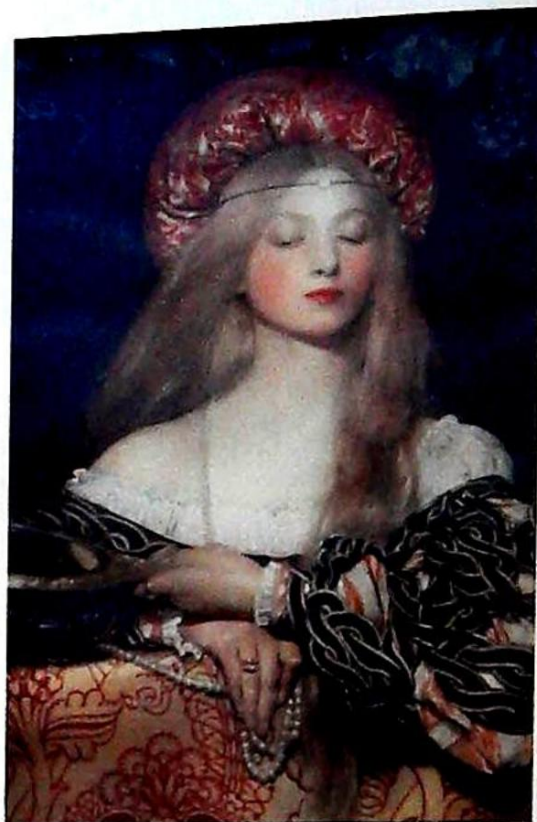
74

- 74 Teresa Clarke (1886-1988)
Portrait of a young woman,
oil on canvas,
44cm x 33cm
£150-250



75

- 75 Frank Cecil Gill (1869-1941)
River scene with shepherd,
oil on canvas, signed and dated 1931,
29cm x 39cm
£80-120



76

- 76 Frank Cadogan Cowper (1877-1958)
Vanity,
artist signed coloured print,
dated 1908,
46cm x 30cm
£150-200



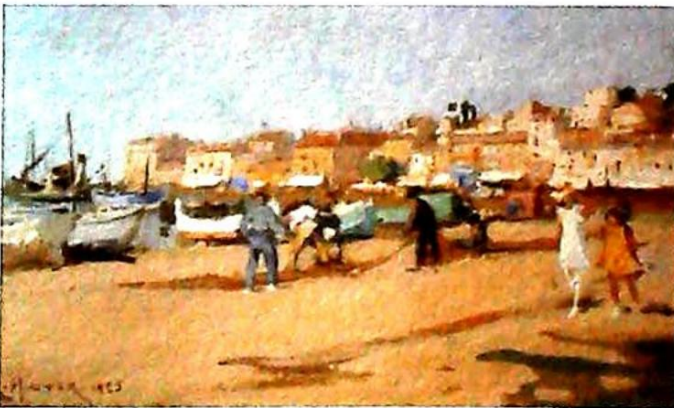
77

- 77 Floris Mary Gillespie (1882-1967)
Anemones,
watercolour, signed and titled verso,
34cm x 24cm
£80-120



78

- 78 Therese Lessore (1884-1945)
Lovely Day for a Row,
watercolour,
28cm x 18cm
Bears label The Savile Gallery London
£100-200



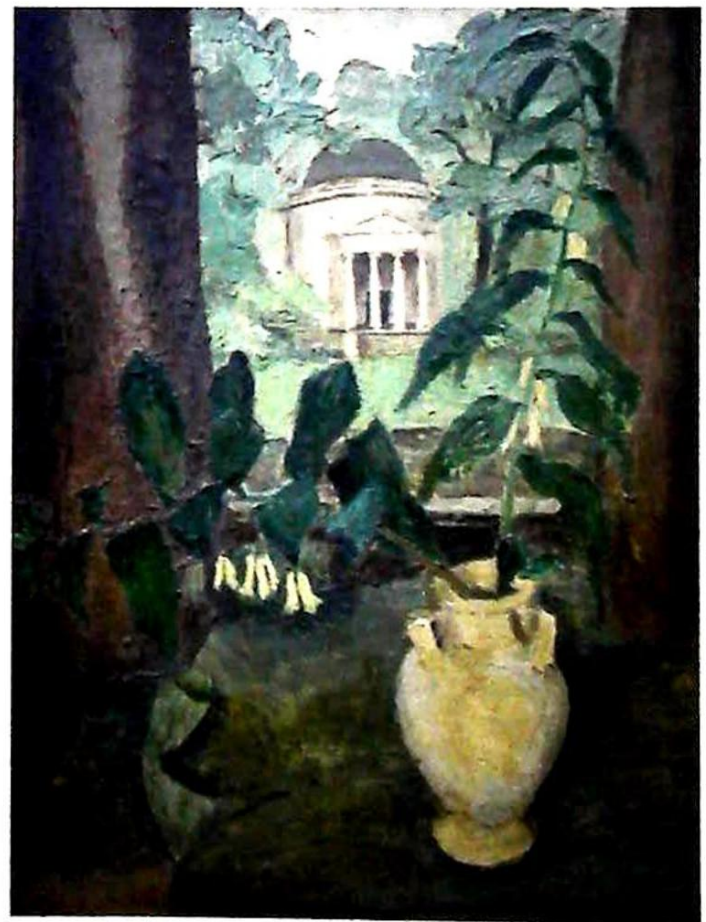
79

- 79 E Hunter (19th/20thC)
Strolling next to fishing boats,
watercolour, signed and dated 1925,
21cm x 33cm
£120-180



80

- 80 Maurice Levis (1860-1940)
Chateau de Josselin,
oil on board, signed and dated 1924 verso,
12cm x 16cm
£600-800



81

- 81 Mary Potter (1900-1981)
Garden view from the window,
oil on board,
60cm x 49.5cm
Provenance - purchased from the artist
£4000-6000



82

- 82 Mick Magani (1920-1984)
A diverbird in a billabong abounding with
salmon and other fish,
pigment on board, signed and titled verso,
59cm x 28.5cm
£200-300



83

- 83 Francis Stanley Lymburner (1916-1972)
Seated ballerina,
ink drawing, signed,
32cm x 24.5cm
£300-500



84

- 84 Laurence Stephen Lowry (1887-1976)
A street scene - St Simons Church Salford,
artist signed limited edition print 52/300
37.5cm x 28cm
£300-400



85

- 85 Sam Maclamon (b.1923)
Bay view,
oil on board, signed,
29.5cm x 40cm
£150-250



86

- 86 Gerard Passet (b.1936)
Seution dans les Champs,
oil on canvas, signed,
39.5cm x 32cm
£150-250



87

- 87 George Crossland Robinson (1858-1930)
Dutch farmhouse in mountain setting,
oil on board, signed,
29.5cm x 37.5cm
£200-300



88

- 88 Jean Laurent (1898-1988)
Masted ship off the coast,
oil on board, signed,
39cm x 49.5cm
£400-600



89

- 89 Rowland Henry Hill (1873-1952)
The Church, believed to be on Tenerife,
watercolour drawing, signed and dated 1938,
28cm x 38cm
£150-200



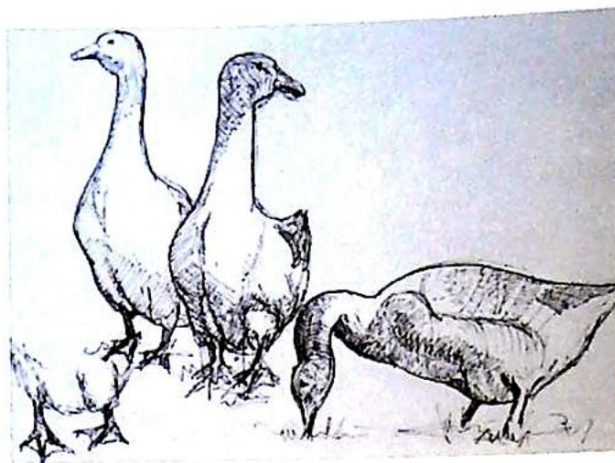
90

- 90 Geoffrey Sandford Mann (19th/20th century)
A landscape,
watercolour and acrylic,
48cm x 46cm
£30-50



91

- 91 George H. Wimpenny (19th/20th century)
Rievaulx Abbey, Yorkshire,
oil on canvas,
18cm x 29cm
£50-80



92

- 92 Ronald White (20thC)
Geese,
ink, signed,
23.5cm x 33.5cm
Bears label Lincolnshire Artists Society
£30-50



93

- 93 Charles Hardaker (b.1934)
Canal scene,
oil on board, signed,
44.5cm x 60cm
£100-150



94

- 94 A Keynes (19th/20thC)
Lake shore and mountain landscape,
oil on canvas, signed and dated (19)29,
45cm x 62cm
£80-120



95

95. 20thC British School
Farmhouse,
oil on canvas,
30cm x 45cm
£50-80



96

- 96 W Wasdell Trickett (19th/20thC)
Lulu II,
oil on canvas, signed,
titled and dated 1938,
39.5cm x 49.5cm
£80-120



97

- 97 Paul Bisson (b.1938)
Romney Marsh,
artist signed limited edition coloured etching
162/250,
14cm x 27cm
and another Oast House (2)
£50-80



98

- 98 John Brunsdon (b.1933)
Rhossili Bay,
artist signed limited edition coloured etching
31.150,
60cm x 45cm
£50-100



100

- 100 Henry Matthews (1912-1991)
The Serenade from Opera Il Seraglio,
artist proof screen print,
74cm x 56cm
and two others Canales Vivaldi,
Midsummer Nights Dream (3)
£50-80



99

- 99 John Brunsdon (b.1933)
Worms head,
artist signed limited edition coloured etching
132/150,
60cm x 45cm
£50-100



101

- 101 Peter Bradshaw (b.1931)
Victorian street scene with horse and cart,
oil on board, signed,
38cm x 28cm (oval)
Bears gallery receipt
£50-80



102

- 102 Peter Bradshaw (b.1931)
Victorian street scene with trams and horse
and carts,
oil on canvas, signed,
30cm x 40cm
£80-120



103

- 103 Henry Stark (19th/20thC)
Figures in lakeland view,
watercolour, signed and dated 1950,
26.5cm x 37cm
£50-80



104

- 104 James V Horton (b.1948)
Cromer Beach and pier,
watercolour, signed and dated (19)86,
25cm x 36cm
£80-120



105

- 105 George Milodim(?) (20thC)
French street scene,
oil on canvas,
37.5cm x 40.5cm
Bears label verso
£100-150



106

- 106 A.D. (20thC)
Black trees,
oil on canvas, initialled and titled verso,
59cm x 80cm
£50-80



107

- 107 Steven Jones (b.1959)
Summer Day St James Park London,
oil on canvas laid on board, signed,
27cm x 37cm
£150-250



108

- 108 Steven Jones (b.1959)
Emptying watering can in rock pools,
oil on canvas laid on board, signed and
titled verso,
25.5cm x 30cm
£100-200



111

- 111 Jean Fabert (20thC)
Boating lake Paris,
oil on canvas, signed and titled verso,
50cm x 61cm
£100-150



109

- 109 Stephan De Haan (20thC)
Dutch river landscape in winter,
oil on canvas, signed,
60cm x 90cm
£150-250



110

- 110 Gordon Willbond (20thC)
Italian quarter, Locarno,
oil on board, signed and titled verso,
48.5cm x 58.5cm
£150-200



112

- 112 Richard Combes (b.1963)
Self portrait,
oil on canvas, signed and dated (19)95,
60cm x 45cm
£300-500



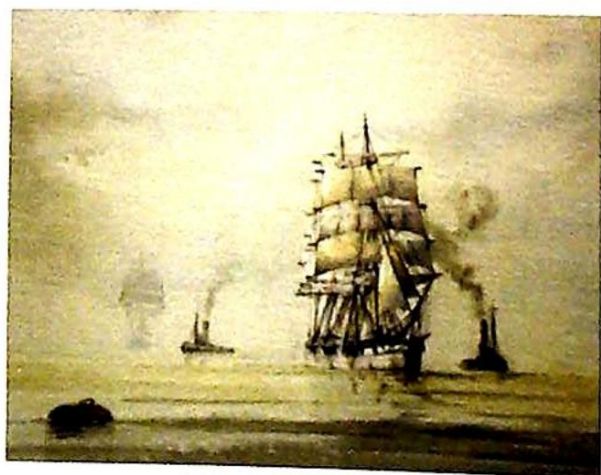
113

- 113 M Wilson (?) (20thC)
Silver birch and daffodil, woodland scene,
oil on canvas, signed,
64cm x 78.5cm
£200-300



114

- 114 David C Bell (b.1950)
Masted ship full sail at sea,
watercolour, signed,
34.5cm x 52cm
£150-250



115

- 115 David C Bell (b.1950)
Masted ships and paddle steamers,
watercolour, pair, signed,
20cm x 28.5cm
£150-250



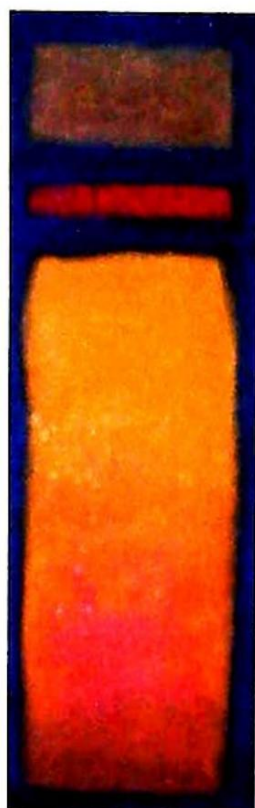
116

- 116 B Verhonsen (20thC)
Dutch winter scene,
oil on board, signed,
19cm x 24cm
£150-200



117

- 117 20thC Continental School
Saint George and the Dragon,
oil on board,
16cm x 12cm
£50-80



118

- 118 Ian Scott Massie (20thC)
Abstract,
gouache, signed,
36.5cm x 12cm
£30-50



119

- 119 Paul Riley (20thC)
Floral still life,
watercolour, signed
32cm x 49cm
£50-80



120

- 120 Peter Hodson (b.1951)
Coastal landscape,
gouache, signed,
12.5cm x 65.5cm
£30-50



121

121. Tommaso Principe (b.1942)
Horse and cart,
flower sellers,
oil on canvas, pair, signed,
28.5cm x 22cm (2)
£50-100



122

- 122 Marisa Mallor (b.1942)
Wine glass and cherry's,
oil on board, signed,
28.5cm x 19cm
£200-300



123

- 123 J Kraus (20thC)
Poplar trees in woodland scene,
oil on canvas laid on board, signed,
92cm x 120cm
£50-100



124

- 124 N H Christonson (20thC)
Continental winter scene with figures walking
along river bank,
oil on canvas, signed,
60cm x 80cm
£120-180



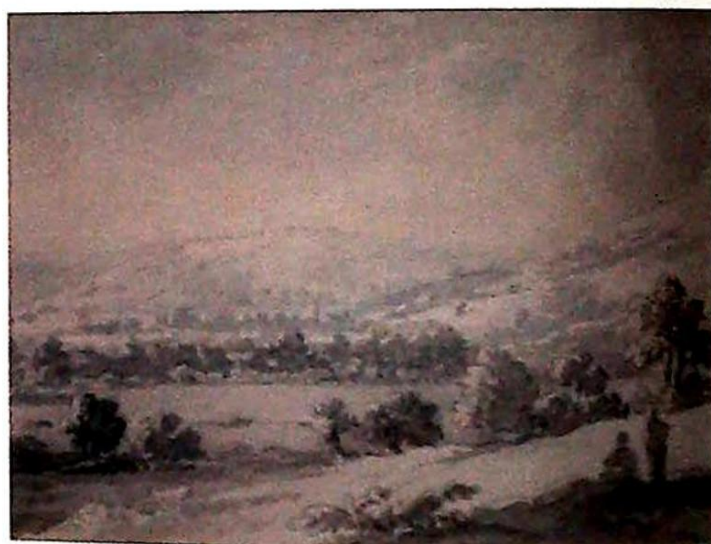
125

- 125 Thomas Bush Hardy (1842-1897)
Margate,
watercolour, signed and dated 1883,
12.5cm x 18cm
£150-250



126

- 126 Anthony Thomas Devis (1729-1817)
Rocky landscape with sheep standing on an
overhanging crag,
pencil and watercolour,
13.5cm x 20cm
Bears label verso Sabin Galleries,
Cork Street, London
£80-120



127

- 127 Anthony Thomas Devis (1729-1817)
Landscape near Tunbridge Wells,
grey ink and water,
13.5cm x 20cm.
Bears label verso Sabin Galleries,
Cork Street, London
£80-120



128

- 128 Richard Parkes Bonington (1802-1828)
Breton Fisherman,
watercolour,
11.5cm x 16.5cm
Label verso - purchased Sothebys 1957
£400-600



129

- 129 Paul Camoin (18th/19thC)
Figures in country landscape,
watercolour, signed,
12.5cm x 13cm
£80-120



130

- 130 J C Sammons (19thC)
Watermill Wisbech,
watercolour, signed and dated 1842,
21cm x 28.5cm
£80-120



131

- 131 Henry John Boddington (1811-1865)
Angler on the river bank,
oil on canvas, signed,
19.5cm x 24cm
£120-180



132

- 132 19thC British School
Fruit still life,
oil on canvas, indistinctly signed
29.5cm x 34.5cm
£50-100



133

- 133 18thC Continental School
Angel and Cherub,
oil on board,
36cm x 28cm (oval)
£80-120



134

- 134 19thC Italian School
Bay Naples,
watercolour, indistinctly signed and
dated 1830,
31.5cm x 45cm
£250-350



135

- 135 David II Cox (1809-1885)
River landscape,
watercolour, signed and dated 1871,
17cm x 25cm
£100-200



136

- 136 David II Cox (1809-1885)
Horses and cart in landscape,
watercolour, signed and dated 1869,
33cm x 51cm
£200-300



137

- 137 Anthony Thomas Devis (1729-1817)
Field next to Mr Polhills,
ink and watercolour,
13cm x 19cm
Bears label Thos Agnew & Sons Ltd
£100-200



138

- 138 19th/20thC British School
Coastal scene with figures,
watercolour, indistinctly signed and dated 1911,
28cm x 46cm
£40-80



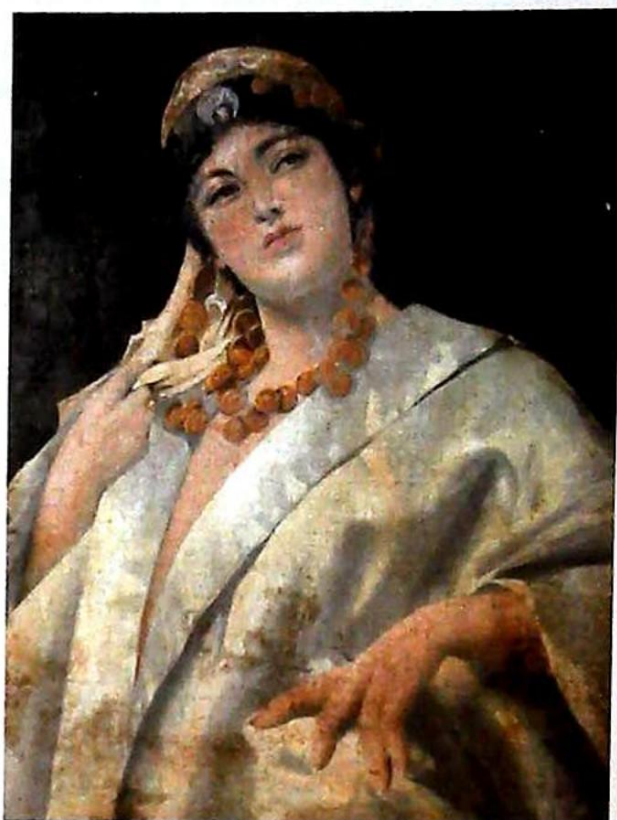
139

- 139 James Francis Danby (1816-1875)
Sunset over river landscape,
oil on board,
24.5cm x 32cm
Bears label verso,
£400-600



140

- 140 Alfred Vickers (1786-1868)
Country landscape with horse, cart and
three figures,
oil on board, signed,
26.5cm x 36.5cm
Label and stamp verso Charles Robertson &
Co London
£300-500



141

- 141 19thC Continental School
Half length portrait Eastern Dancer,
oil on canvas laid on board,
45.5cm x 34cm
£50-80



142

- 142 George Armfield (1808-1893)
'The rat trap',
oil painting on canvas,
41cm x 31cm
£200-300



143

- 143 Joseph Horlor (1809-1887)
Fisherman seated by a stream with mill in
landscape,
oil on canvas,
46cm x 67cm
£300-500



144

- 144 Farquharson (19th/20th century)
winter scene with two figures beside a village,
oil on canvas,
40cm x 60cm
£100-150



145

- 145 19thC British School
Classical floral still life,
oil on canvas,
61cm x 41cm
£60-90



146

- 146 18thC Continental School
Gentleman in tavern scene,
oil on metal panel,
16.5cm x 19cm
£50-100



147

- 147 Early 19thC British School
Beauties in interior scenes,
oil on board, pair,
24cm x 19.5cm (2)
£80-120



149

- 149 A L (20thC)
Claude, dog portrait,
oil on board, monogram,
29cm x 19cm
£100-200



148

- 148 Geoffrey H Pooley (b.1908)
Autumn landscape,
oil on canvas, signed and titled verso,
45cm x 54.5cm
£100-200



150

- 150 After John Constable
Salisbury Cathedral from the meadow,
oil on canvas,
54cm x 66.5cm
£100-200



151

- 151 Emile Tremblay (19th/20thC)
Coastal landscape, possibly Dielette,
oil on board, signed,
22cm x 36cm
£300-500



152

- 152 Frank Stratford (19th/20thC)
Highland cattle in mountainous landscape,
oil on canvas, pair, signed,
75cm x 62cm (2)
£500-800



153

- 153 19thC British School
Half length portrait of a maiden,
oil on canvas,
75cm x 62cm
£150-250



154

- 154 19thC British School
Sailing ships and barges off the coast,
watercolour,
55cm x 83cm
£300-500



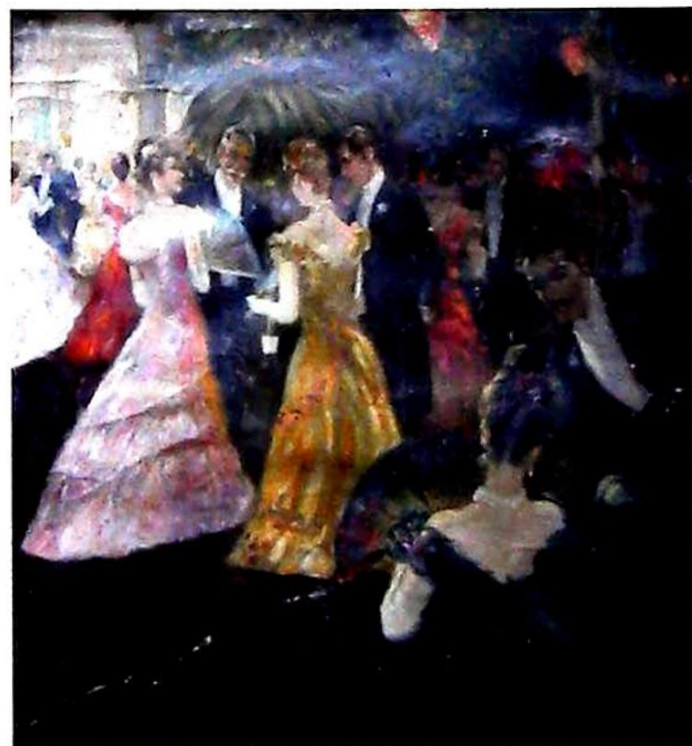
155

- 155 19thC Italian School
Young maiden,
oil on panel,
31cm x 26cm
Bears label Paoletti & Ferretti
£120-160



157

- 157 John Wilson (19th century)
Masted ships at sea,
oil on canvas, signed,
35cm x 46cm
£150-200



158

- 158 John Stevens (19th/20thC)
The Conversation at the ball,
oil on canvas, signed,
61cm x 51cm
£150-250



156

- 156 S T (19thC)
Mount Edgecombe and masted in harbour
(titled verso),
oil on panel,
19cm x 28cm
£100-200



159

- 159 19thC British School
Coastal wreck,
oil on canvas,
49cm x 74cm
£200-300



160

- 160 John Wainwright (19thC)
Still life of flowers, fruit and birds,
oil on canvas, signed and dated 1870,
44cm x 34cm
£500-800



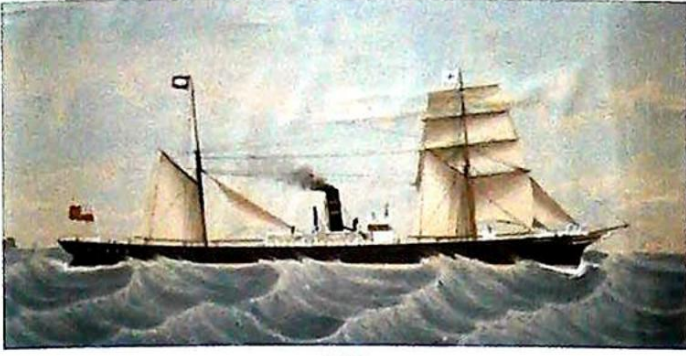
161

- 161 Edward Benjamin Herbert (1857-1893)
Hunting scenes - The Fall and The Kill,
oil on canvas, a pair, signed,
30cm x 54.5cm
£300-500



162

- 162 19thC British School
Half length portrait of a gentleman,
oil on board,
12cm x 16cm (oval)
£40-60



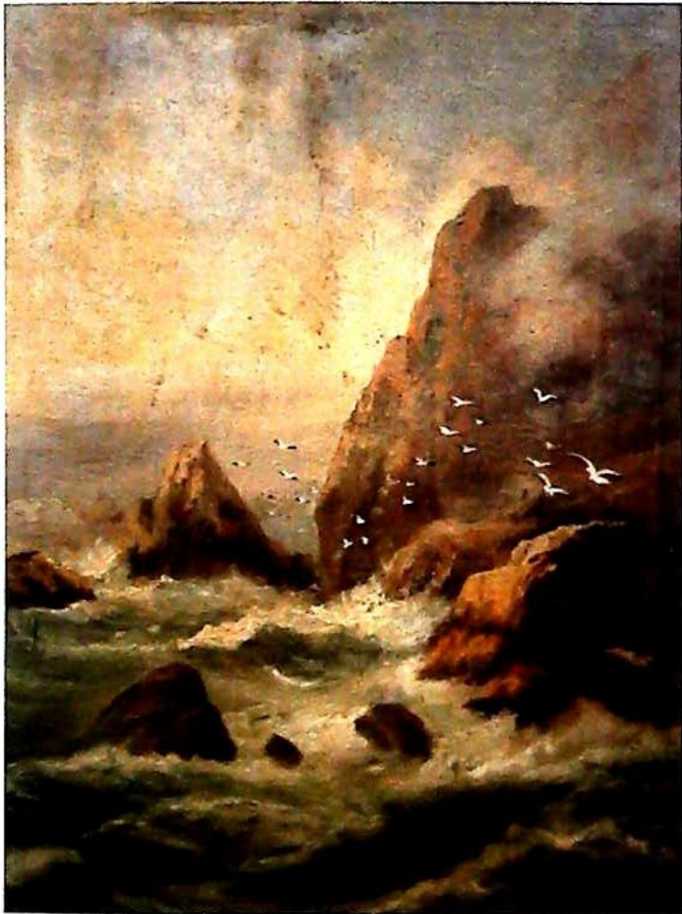
163

- 163 Anthony Lusco(?) (19th/20thC)
British merchant class ship - Brynclas,
watercolour with highlight, signed and
dated 1887,
37cm x 63cm
£150-250



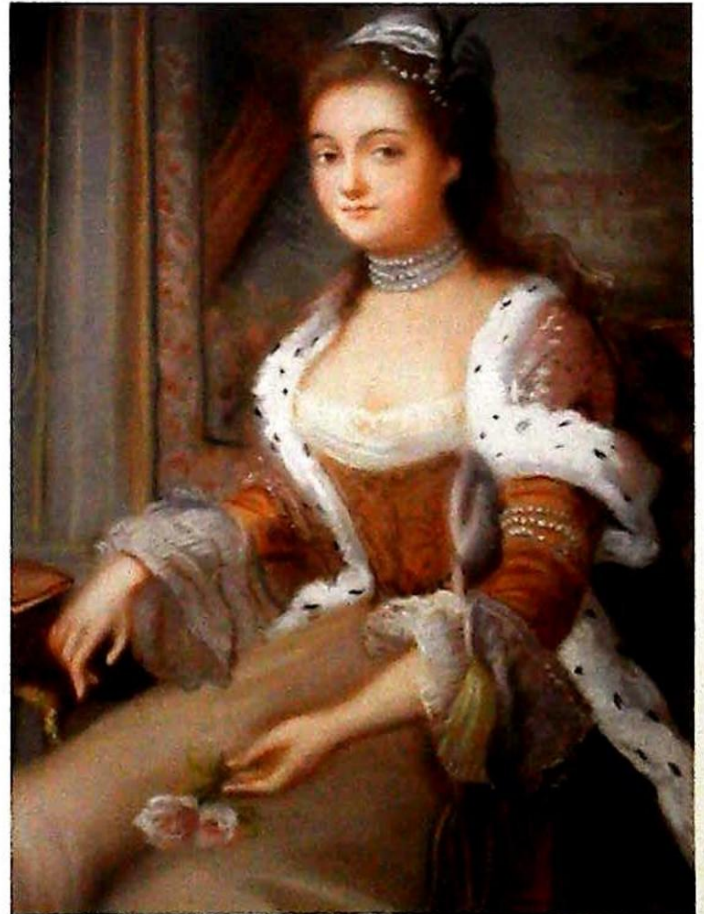
165

- 165 William Yates Snr (19thC)
River landscape with figures,
oil on canvas, signed,
39cm x 60cm
£200-300



164

- 164 19thC British School
Coastal cliffs,
oil on canvas,
indistinctly signed,
60cm x 39.5cm
£50-80



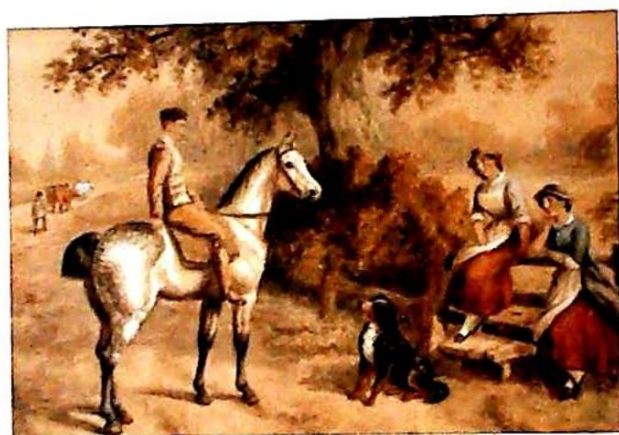
166

- 166 19thC Continental School
Portrait of a lady seated in finery holding
a flower pastel,
59cm x 47cm (oval)
£120-180



167

- 167 19thC British School
Thatched cottage and garden,
watercolour,
27cm x 32cm
£40-60



168

- 168 Edward Benjamin Herbert (1857-1893)
Rural scenes, figures on horseback,
watercolour, pair, signed and dated (18)90,
22cm x 32cm
£80-120



169

- 169 Alfred East (1819-1913)
Rural landscape with working horses,
oil on canvas, signed,
34cm x 44cm
£150-250



170

- 170 F Gibson (19th/20thC)
Shepherd with sheep,
oil on board, signed and dated (19)10,
44cm x 62cm
£200-300



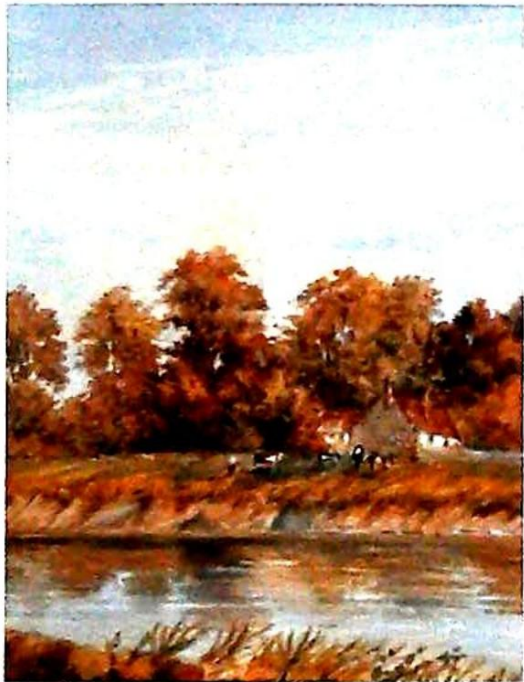
171

- 171 Jan Van Neesen (20thC)
Floral still life,
oil on canvas, signed,
60cm x 50cm
£80-120



172

- 172 Warren Williams (1863-1941)
Conway Castle Snowden,
watercolour, pair, signed in pencil,
2.5cm x 4cm
£100-200



173

- 173 Helen Allingham (1848-1926)
Farmhouse in river landscape,
watercolour, signed,
16cm x 12cm
£400-600



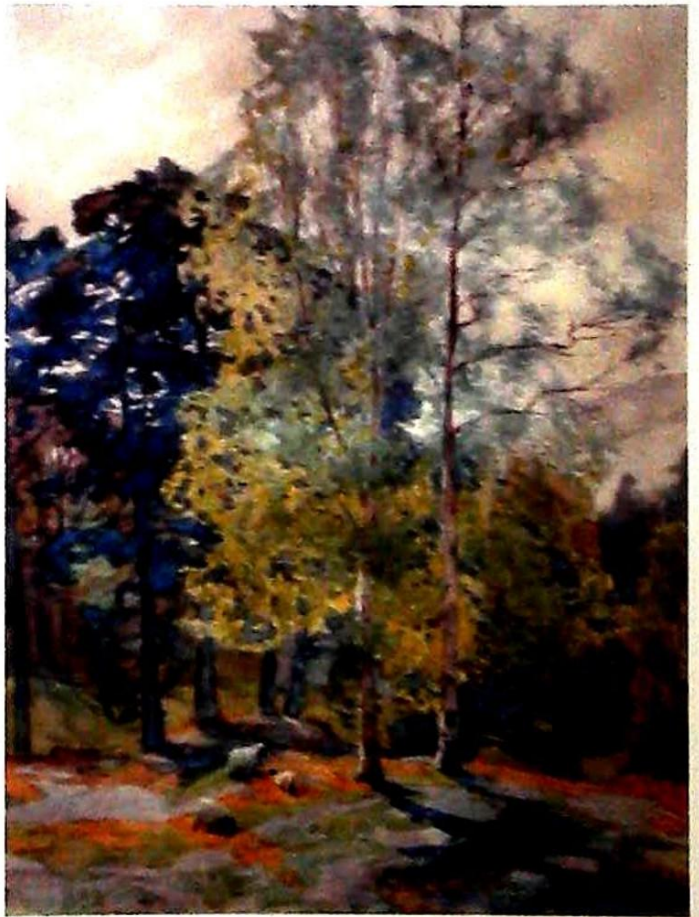
174

- 174 M T (19th/20thC)
Three masted frigate,
watercolour, initialled,
14cm x 22.5cm
£30-50



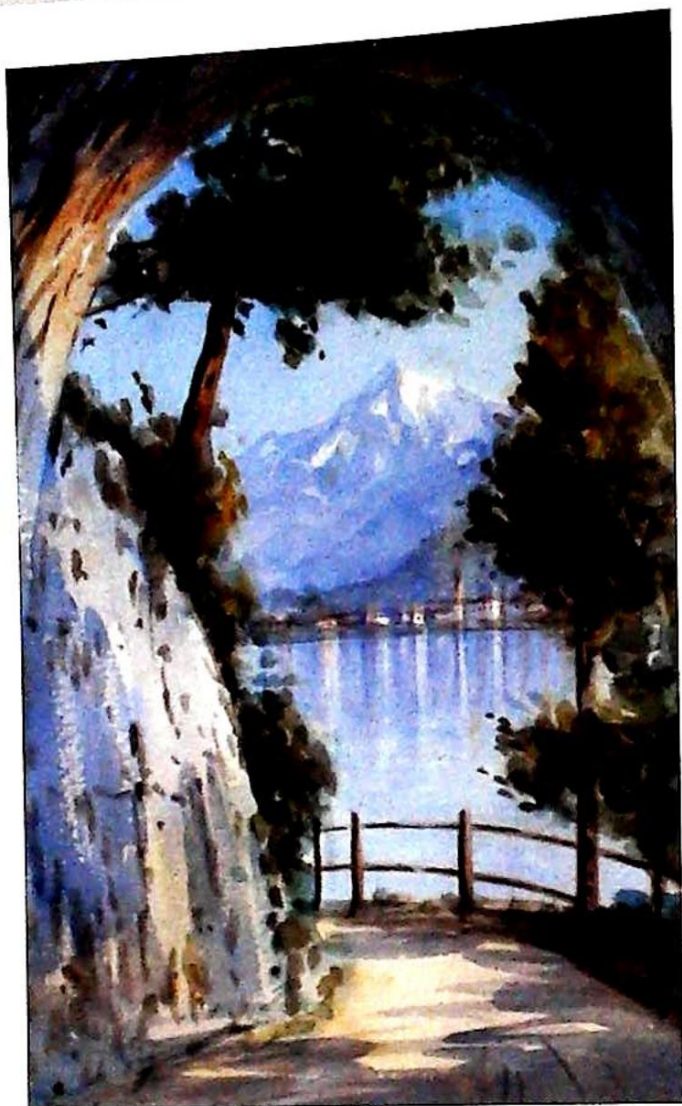
175

- 175 Albert Rosser (20thC)
Red Pike from Crammock Water,
watercolour, signed and titled verso,
24cm x 34cm
£50-80



176

- 176 Alfred Heaton Cooper (1864-1929)
Morning in Ambleside,
watercolour, signed and titled verso,
54cm x 37cm
£500-800



177

- 177 19thC Continental School
View across Lake Garda,
watercolour, indistinctly signed,
20cm x 13.5cm
£50-80



178

- 178 19thC Continental School
Coastal scene,
watercolour, indistinctly signed,
17cm x 25cm,
and another,
river landscape
£30-50



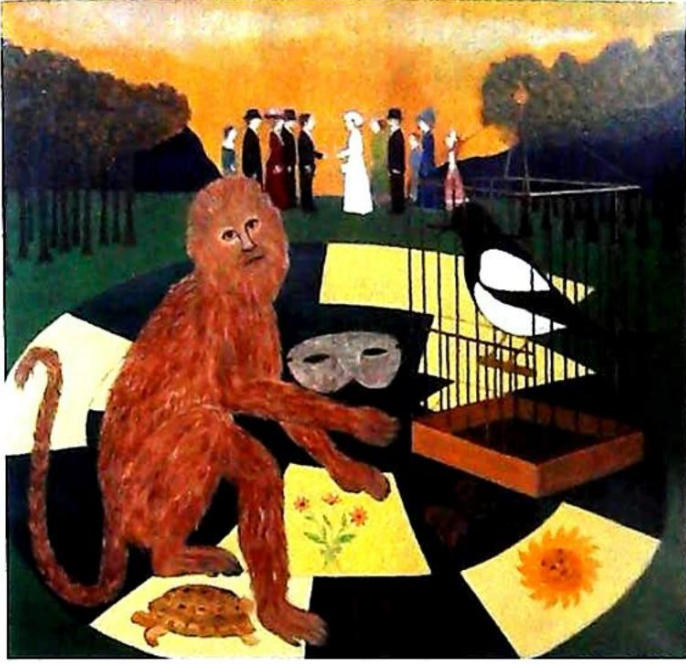
179

- 179 19thC British School
Character portraits,
ink drawings (3),
8cm x 5.5cm
and a pencil drawing Bridgett (4)
£30-50



180

- 180 L H Gillett (20th century)
Culver Cliff, Sandown from Shanklin
Isle of Wight,
watercolour, signed and dated 1946,
13.5cm x 22.5cm
£30-50



181

- 181 Jacqueline Fromenteau (20thC)
Pourquoi pas nous?
oil on canvas, signed, titled and dated 1971
verso,
100cm x 100cm
£100-200

- 182 Sue Riley (20thC)
Francesca,
resin bronzed,
28.5cm x 56cm
£200-300



183

- 183 W A Kirkby (20th century)
A modernist beech carved torso signed
maker's mark in pen to base,
30cm high
£30-50



182

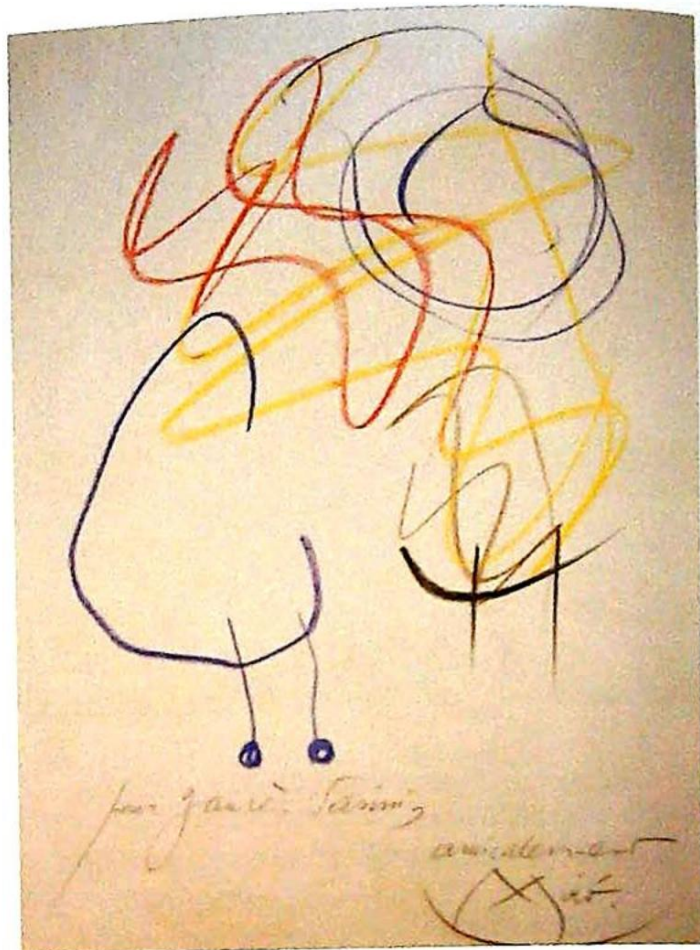
Lots 184-197: From the collection of Jaures Vasini who worked as a magazinier at the Galerie Maeght in Paris from the late 1960s until 1984.

During this time he hung paintings for the exhibitions of artists including Chagall, Miro and Braque and was given signed lithographs, books and other ephemera by the artists



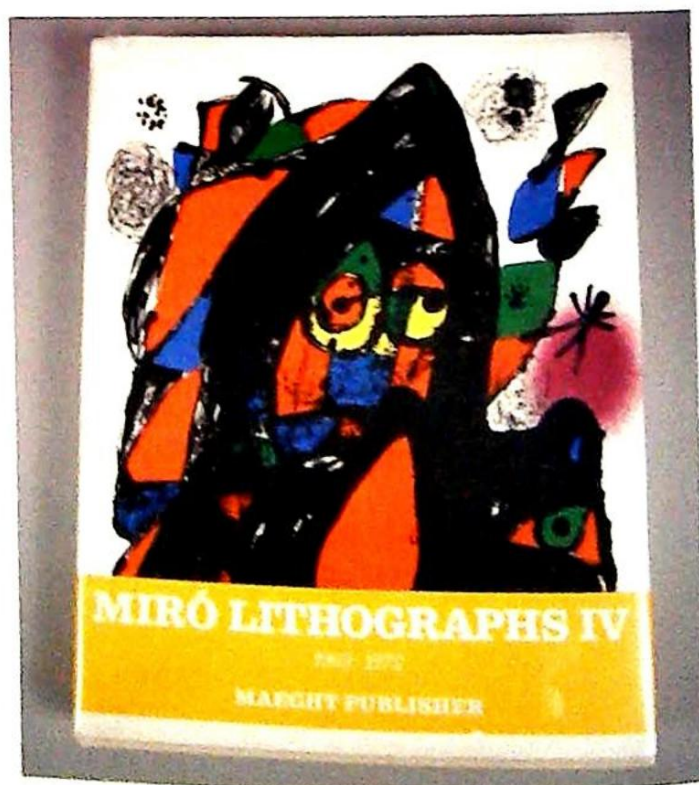
184

- 184 Joan Miro (1893-1983)
Affiche pour l'exposition Miro Seibu,
Museum Art, Tokyo,
artist signed limited edition coloured
print XX/XX,
71cm x 49cm
£400-600



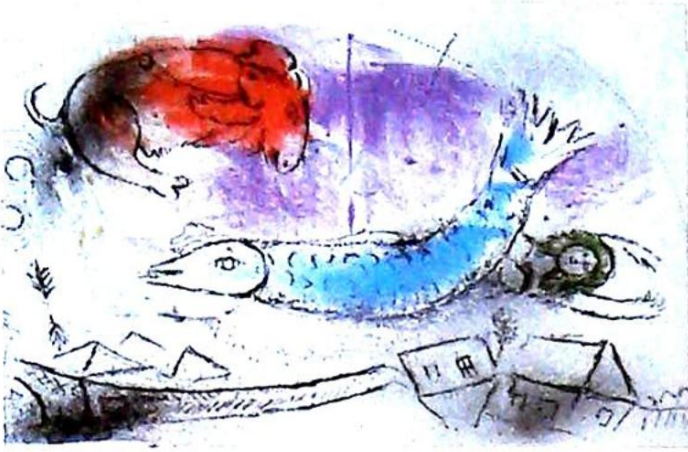
185

- 185 Joan Miro (1893-1983)
Coloured drawing - pour Jaures Vasini - inside
cover - Derriere le mirror - circa 1970,
Two 'La Galerie Maeght' exhibition
catalogues,
contents of folder
£400-600



186

- 186 Miro Lithographs IV (1962-1972)
Maeght Publisher 1981 - 1 volume
£30-50



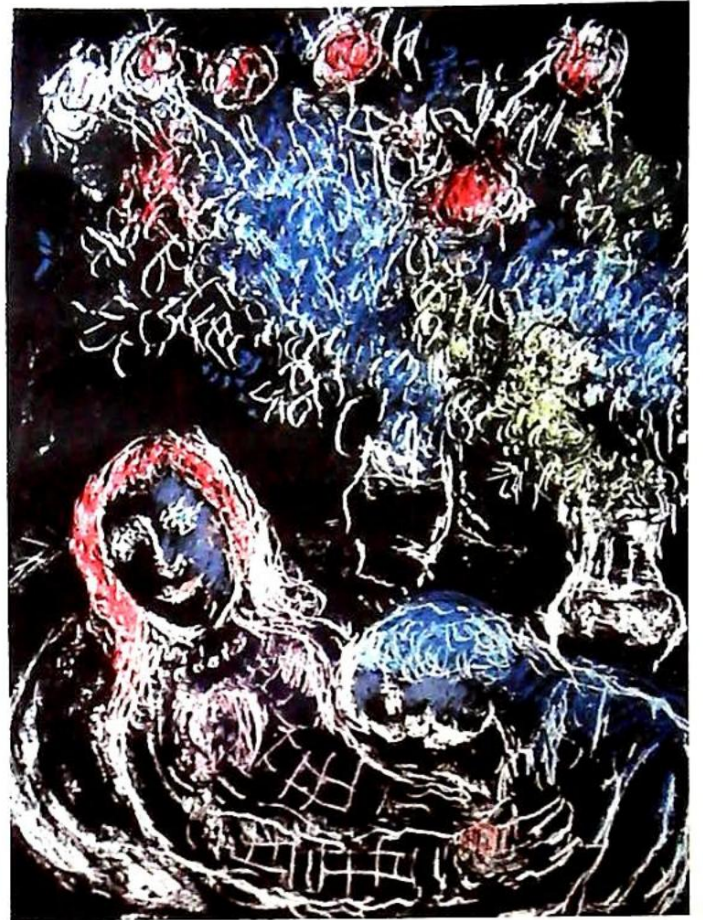
187

- 187 Marc Chagall (1887-1985)
Le poisson bleu,
artist signed limited edition coloured
lithographic print 7/90,
30cm x 40cm
£500-800



188

- 188 Marc Chagall (1887-1985)
Maternité au Centaure,
artist signed limited edition coloured
lithographic print, 7/90,
43cm x 37cm
£500-800



189

- 189 Marc Chagall (1887-1985)
Couple sur fond noir,
artist signed coloured lithographic print,
33cm x 25cm
£300-500



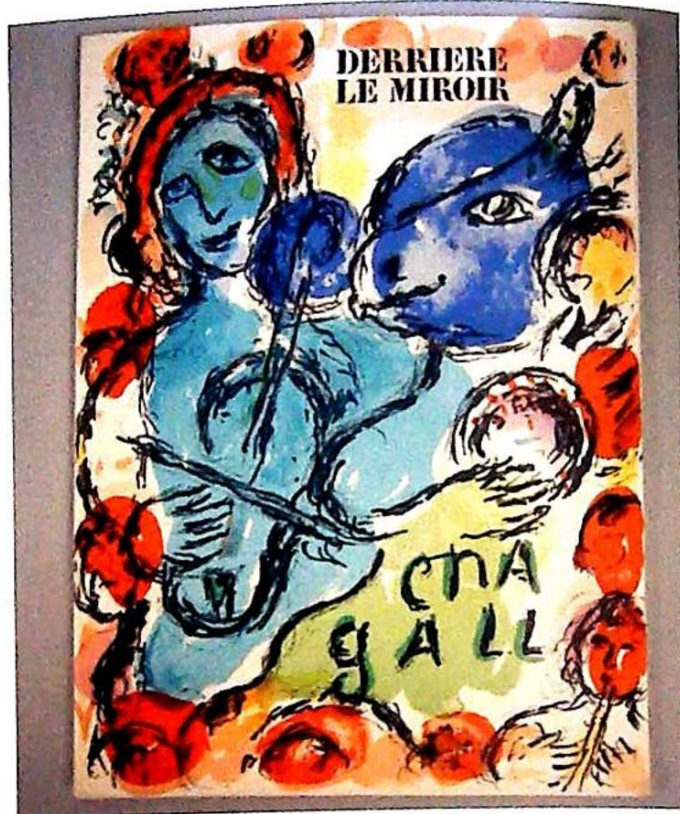
190

- 190 Georges Braque (1882-1963)
Gelinotte (1960),
artist signed coloured lithographic print,
48cm x 55cm
£400-600



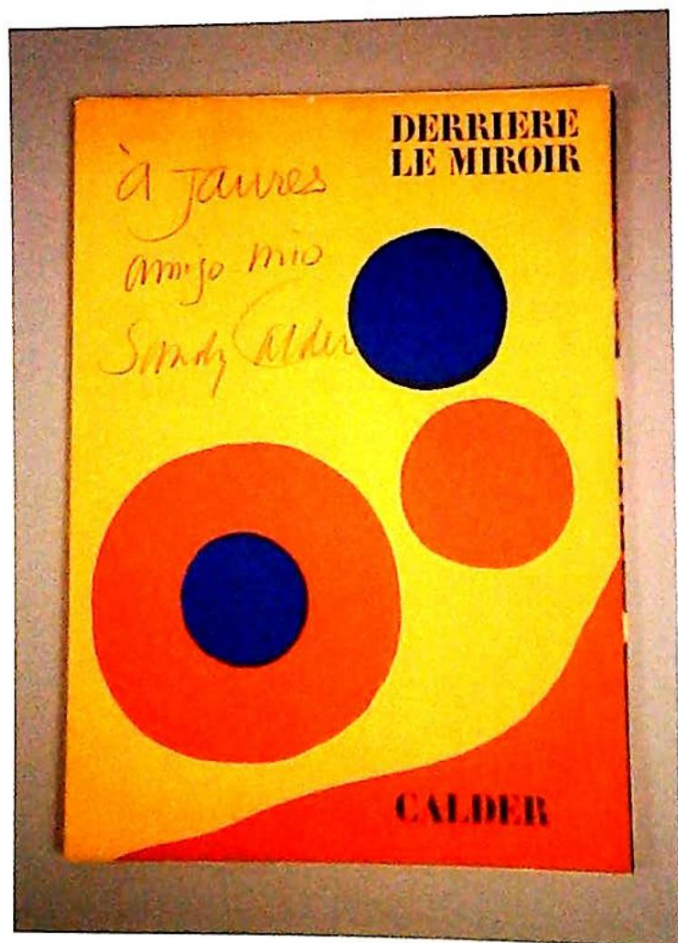
191

- 191 Georges Braque (1882-1963)
Birds,
artist signed coloured lithographic print,
48cm x 55cm
£400-600



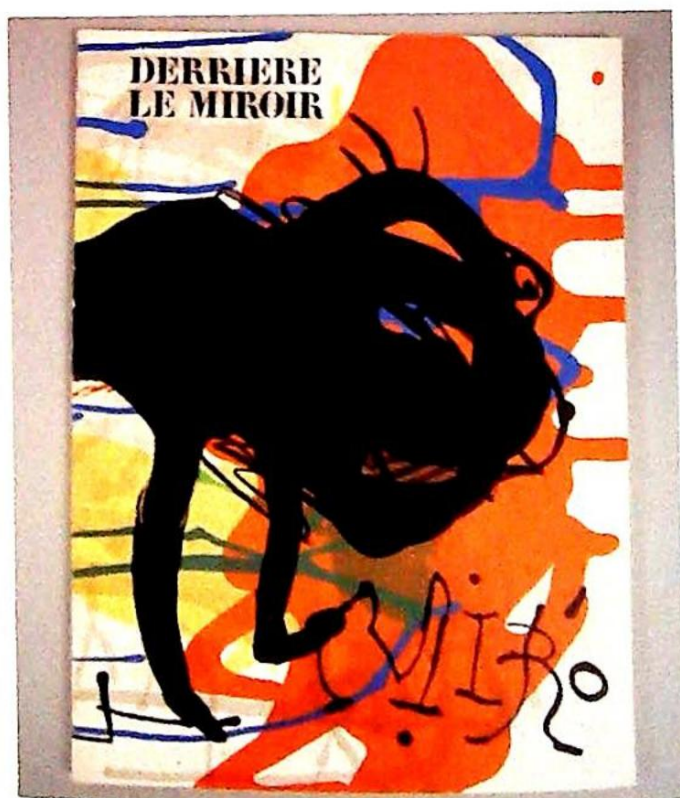
193

- 193 Derriere le Miroir
Chagall, No. 66, 67, 68 -1954,
and three others
No. 27, 28 - 1950, No. 235 - 1979,
No. 198 - 1972 (4)
£50-100



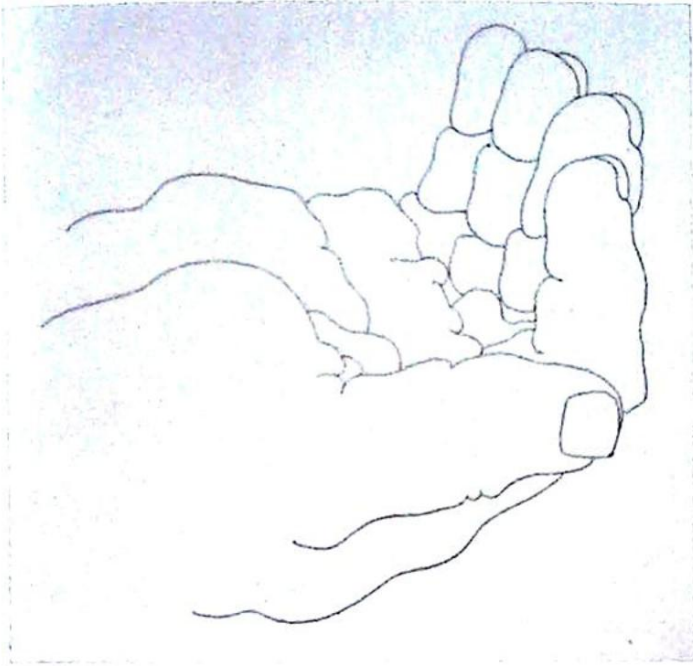
192

- 192 Derriere le Miroir
Calder - No. 201 - Janvier 1973,
signed by the artist,
two others
No. 212 Janvier 1975, No. 190 Fevrier 1971 (3)
£80-140



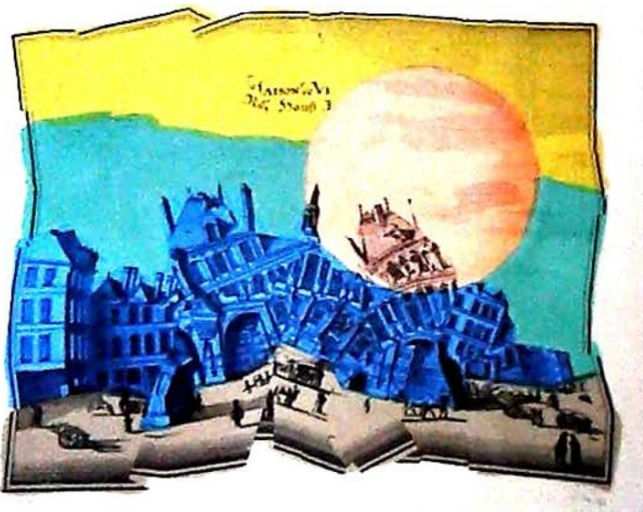
194

- 194 Derriere le Miroir
Chillida - No. 174 - 1968,
and six others:
No. 195 -1971, No. 203 - 1973,
No. 205 - 1973, No. 207 - 1974,
No. 224 - 1977, No. 240 - 1980 (7)
£50-100



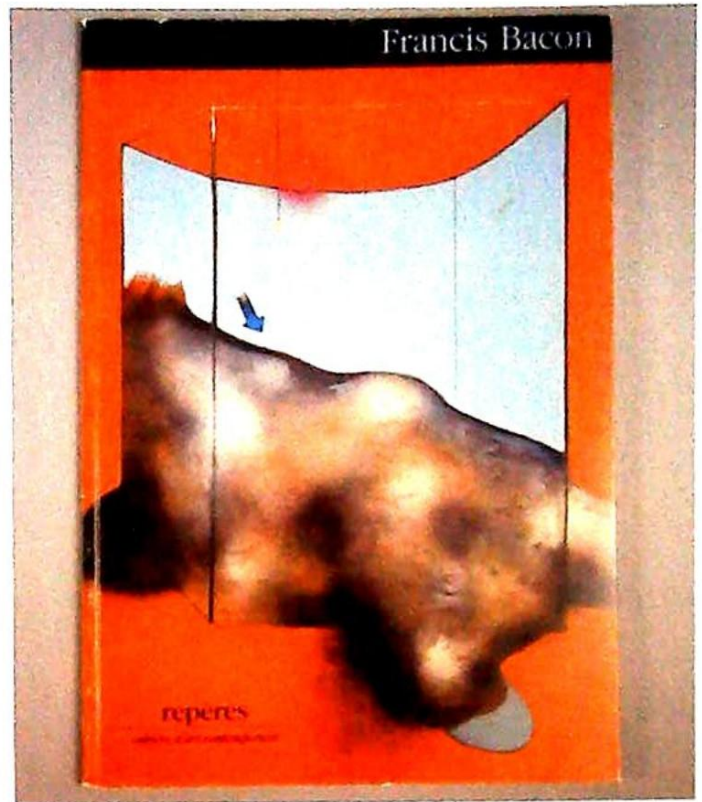
195

- 195 P.A. Artist signed etching, The Hand, another titled Nude Study, and a gilt framed print after Bonnard (3) £50-100



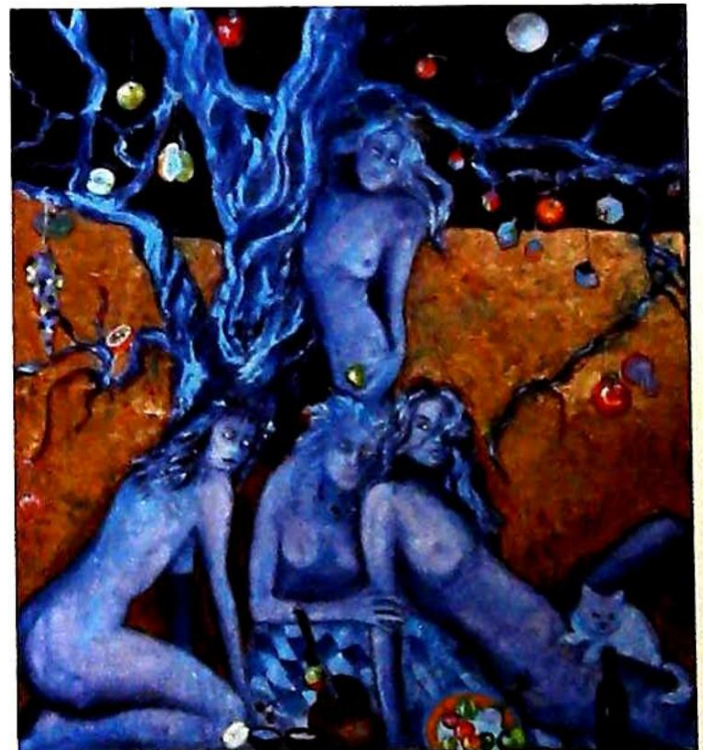
196

- 196 Artist signed coloured lithographic prints Carte de Viste, Assa, and another artist signed limited edition coloured lithographic print Maison (3) £50-100



197

- 197 Bacon Francis - Sylvester David Francis Bacon Peintures Recentes Reperes Cahiers d'art Contemporain No.10 signed copy, and a Bragues catalogue (2) £100-200



198

- 198 Linda Sutton (b.1947) Four witches under the harvest moon, mixed media, signed and dated 1991 verso, 90cm x 84cm Bears label The Ogle Gallery Cheltenham £200-400



199

- 199 Linda Sutton (b.1947)
Miranda and Caliban,
mixed media, signed and dated 1991 verso,
93cm x 89cm
Bears labels The Ogle Gallery Cheltenham
£200-400



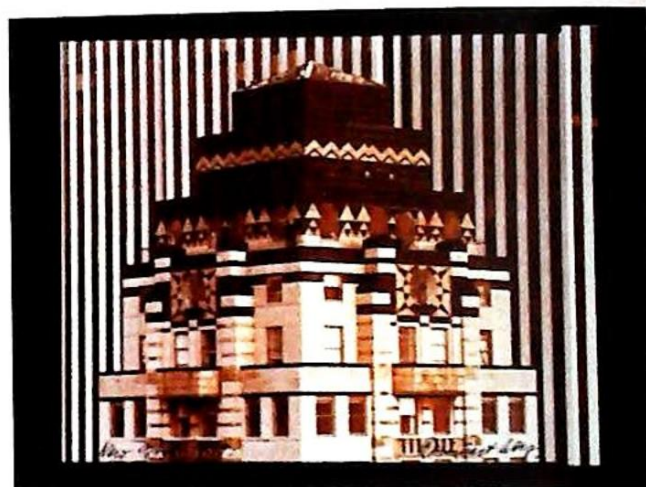
200

- 200 Tayo Tekovi Quayé (b.1954)
Weeping mother,
artist signed numbered coloured etching 8/10
and dated (19)78,
30cm x 20cm
and two others Drunkard II and Beggar II (3)
£150-250



201

- 201 H H Welch (20thC)
Abstract landscape,
oil on canvas, signed and dated (19)67,
65cm x 91.5cm
£100-150



202

- 202 Reinhart Wolf (1930-1988)
New York,
coloured photograph, signed and dated 1979,
23.5cm x 30cm
£100-150



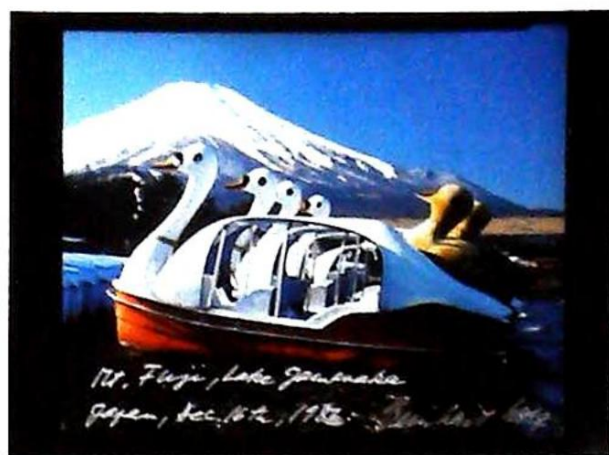
203

- 203 Reinhart Wolf (1930-1988)
Georgia,
coloured photograph, signed and dated 1979,
23.5cm x 30cm
£100-150



204

- 204 Reinhart Wolf (1930-1988)
Marietta, Nevada,
coloured print, signed and dated 1983,
23.5cm x 30cm
£100-150



207

- 207 Reinhart Wolf (1930-1988)
Mount Fuji Japan,
coloured photograph, signed and dated 1986,
23.5cm x 30cm
£100-150



205

- 205 Reinhart Wolf (1930-1988)
Wien Austria,
coloured print, signed and dated 1984,
23.5cm x 30cm
£100-150



208

- 208 Reinhart Wolf (1930-1988)
Municipal Gymnasium Fujisawa Japan,
coloured photograph, signed and dated 1987,
23.5cm x 30cm
£100-150



206

- 206 Reinhart Wolf (1930-1988)
Collection of Rice Wines Kyoto Japan,
coloured photograph, signed and dated
1985/86,
23.5cm x 30cm
£100-150



209

- 209 Raoul Dufy (1877-1953)
Musicienne,
artist proof coloured lithographic print,
Arches France - watermark,
47cm x 65cm
£80-120



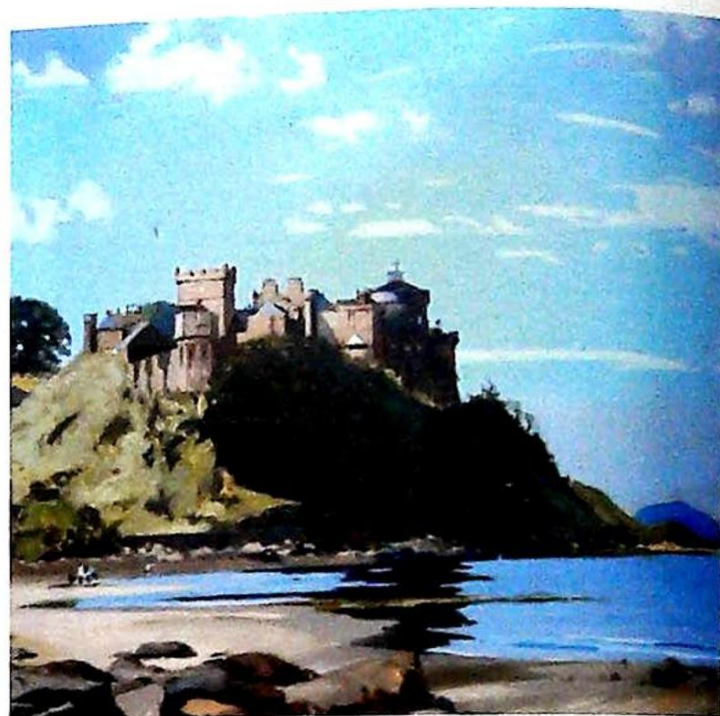
210

- 210 Raoul Dufy (1877-1953)
Revene,
artist proof coloured lithographic print,
Arches France - watermark,
64cm x 46cm
£80-120



211

- 211 Isaac Tarkay (b.1935)
Women,
artist signed limited edition lithographic print
233/350,
85cm x 95cm
£80-120



212

- 212 *Kenneth Steel (1906-1973)
Culzean Castle,
oil on canvas,
60cm x 60cm
£100-200



213

- 213 *Julia Wilson (20thC)
Kintyre seascape,
oil on board, signed,
53cm x 80cm
£50-80



214

- 214 *Julia Wilson (20thC)
River Orchy Argyll,
oil on board, signed,
53cm x 80cm
£50-100



216

- 216 *Alastair Clark (b.1968)
Food chain,
artist signed lithograph print,
35cm x 50cm
and another Cross Pollination 2/5 (2)
£50-100



215

- 215 *Alastair Clark (b.1968)
Sleeping City,
artist signed lithograph print,
58cm x 95cm
and another Intersecting Pieces 4/6 (2)
£50-100



217

- 217 *Jeremy King (b.1933)
White Cross Hotel,
river scene,
artist signed limited edition lithographic print
147/250,
40cm x 60.5cm
and another River Bridge (2)
£50-100



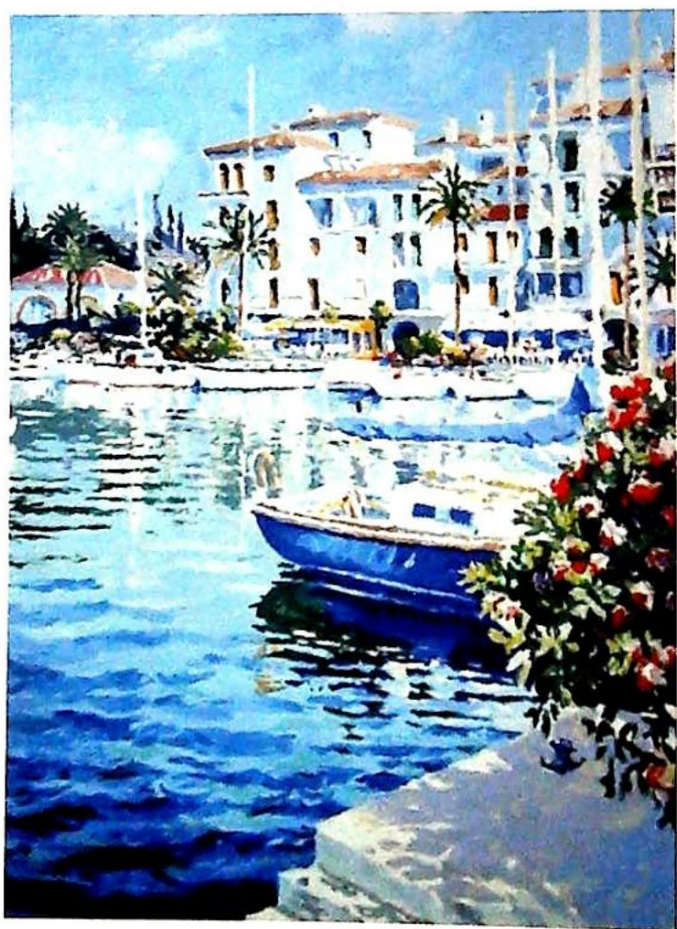
218

- 218 *Christopher Penny (b.1947)
Summer Garden I,
artist signed limited edition lithographic print
83/325,
51cm x 68cm
and another Summer Garden II (2)
£50-100



220

- 220 *Ilana Richardson (20thC)
Lace cloth, Yaffo
artist signed limited edition screen print 3/175,
44.5cm x 60.5cm
and two others Panlcia 72/175,
Seaside Cafe 31/250 (3)
£50-100



219

- 219 *Guy Noble (b.1959)
Manna II,
artist signed limited edition lithographic print
294/350,
76cm x 56cm
and two others Morsanto,
Temitia Di Pomino (3)
£50-100



221

- 221 Unknown
By Milton Abbas
Artist signed limited edition coloured print
40/150,
and two others (3)
£30-50

Index of artists

A		H		Q	
Allingham, Helen	173	Haddesley, Vincent	6 - 13	Qadri, Sohan	67
Armfield, George	142	Haddock, Edwin Aldridge	22, 23	Quaye, Tayo Tekovi	200
B		Hardaker, Charles	93	R	
Bangay, John	18	Hardy, Thomas Bush	125	Rich, Alfred William	34
Bartl, Tony	25, 26, 27	Herberte, Edward Benjamin	161, 168	Richardson, Ilana	220
Bell, David C	114, 115	Hill, Rowland Henry	89	Riley, Paul	119
Bisson, Paul	97	Hodson, Peter	120	Riley, Sue	182
Boddington, Henry John	131	Holmes, E	20	Robinson, George Crossland	87
Bonnington, Richard Parkes	128	Holtby, Lance	19	Ross, Joseph Halford	35
Bradshaw, Peter	101, 102	Horlor, Joseph	143	Rosser, Albert	175
Braque, Georges	190, 191	Horton, James V	104	S	
Brunsdon, John	98, 99	Hunter, E	79	Sammons, J C	130
Burdett-Somers, Wilhelmina	41 - 48	J		Stark, Henry	103
C		Jones, Steven	107, 108	Steel, Kenneth	212
Camoin, Paul	129	K		Stevens, John	158
Chagall, Marc	187 - 189	Keynes, A	94	Stokes, George Vernon	72
Chinnery, George	3	King, Jeremy	217	Storey, Terence George	15
Christonnsn, N H	124	Kok, Janice	40	Stratford, Frank	152
Clark, Alastair	215, 216	Kraus, J	123	Sutherland, Graham Vivian	2
Clarke, Teresa	74	L		Sutton, Linda	198, 199
Coleman, Martin Spencer	38	Laurent, Jean	88	T	
Combes, Richard	112	Lessor, Therese	78	Tarkay, Isaac	211
Cooper, Alfred Heaton	176	Levis, Maurice	80	Thomas, William	21
Cowper, Frank Cadogan	76	Lewis, Simon	39	Tremblay, Emile	151
Cox, David II	135, 136	Lightfoot, Peter	30	Trickett, John	31, 32
D		Lowry, Laurence Stephen	84	Trickett, W Wasdell	96
Danby, James Francis	139	Lusco, Anthony	163	V	
De Haan, Stephan	109	Lymburner, Francis Stanley	83	Valette, Adolphe	4, 5
Deighton, D	17	M		Vango, David	24
Devis, Anthony Thomas	126, 127, 137	Maclarnon, Sam	85	Verhonsen, B	116
Duffy, Raoul	209, 210	MacMiadhachain, Padraigh	71	Vickers, Alfred	140
E		Magani, Mick	82	W	
East, Alfred	169	Mallor, Marisa	122	Wainwright, John	160
Eastwood, Walter	73	Mann, Geoffrey Sandford	90	Webster, Alfred George	14
F		Massie, Ian Scott	118	Welch, H H	201
Fabert, Jean	111	Matthews, Henry	100	White, Ronald	92
Fromenteau, Jacqueline	181	Millner, William Edward	16	Wilks, Maurice Canning	69
G		Milodim, George	105	Willbond, Gordon	110
Gibson, F	170	Miro, Joan	184, 185	Williams, Warren	172
Giles OBE, Carl Ronald	49 - 63	N		Wilson, John	157
Gill, Frank Cecil	75	Neeson, Jan Van	171	Wilson, Julia	213, 214
Gillespie, Floris Mary	77	Noble, Guy	219	Wilson, M	113
Gillespie, George K	70	Norman, Val	36	Wimpenny, George H	91
Gillett, L H	180	P		Wolf, Reinhart	202-208
		Passet, Gerard	86	Y	
		Penny, Christopher	218	Yates Snr, William	165
		Pissaro, Lucien	1	Yeung, Hai Stinet	29
		Pooley, Geoffrey H	148	Yun, Bai	64
		Potter, Mary	81		
		Preston, James D	28		
		Principe, Tommaso	121		

Fine Art Sale 26 September 2012 - Sale Results

1	£11000	54	£60	101	£95	147	£50	202	£85
2	£780	55	£60	102	£45	148	£420	203	£160
3	£1900	56	£85	103	£580	149	£20	204	£220
5	£110	59	£45	104	£55	150	£45	205	£1050
7	£600	61	£55	105	£55	151	£48	207	£500
8	£250	62	£55	106	£150	152	£70	208	£900
9	£80	63	£70	107	£210	153	£27	209	£130
11	£60	64	£50	108	£100	154	£110	210	£120
12	£170	65	£38	109	£95	155	£40	211	£110
13	£75	66	£340	110	£1600	157	£1000	214	£550
14	£170	67	£700	111	£50	159	£42	215	£110
15	£20	68	£280	112	£80	160	£20	216	£75
16	£20	69	£280	113	£55	161	£35	217	£100
17	£20	70	£420	114	£260	162	£130	218	£100
18	£260	71	£150	115	£220	163	£130	219	£130
23	£110	72	£70	116	£400	165	£200	220	£200
24	£42	73	£38	117	£55	166	£100	221	£500
25	£160	74	£38	118	£75	167	£10	222	£750
26	£190	75	£240	119	£550	168	£190	223	£850
27	£55	76	£170	120	£380	169	£140	224	£22
28	£65	77	£170	121	£80	170	£50	225	£22
29	£320	78	£400	122	£550	171	£75	226	£22
30	£650	79	£280	123	£650	172	£110	227	£850
31	£80	80	£300	124	£320	173	£320	228	£190
32	£220	81	£55	125	£80	174	£340	229	£150
33	£200	82	£50	126	£140	175	£42	230	£240
34	£100	83	£100	127	£550	176	£750	231	£550
36	£65	84	£20	128	£440	177	£420	232	£240
37	£85	85	£50	130	£75	178	£38	233	£500
38	£70	86	£18	132	£500	179	£65	235	£280
39	£150	87	£10	133	£75	180	£80	236	£950
40	£80	88	£10	134	£45	181	£75	237	£750
41	£380	89	£10	135	£150	183	£190	238	£420
42	£200	90	£10	136	£220	184	£75	239	£170
43	£85	91	£32	137	£280	185	£170	240	£200
44	£45	92	£85	138	£120	186	£170	241	£130
45	£460	93	£25	139	£65	188	£48	242	£160
46	£680	94	£40	140	£65	193	£35	243	£170
47	£280	95	£35	141	£700	195	£150	244	£320
48	£280	96	£10	142	£750	196	£190	245	£650
49	£160	97	£30	143	£300	197	£55	246	£1000
50	£40	98	£10	144	£130	199	£140	247	£90
51	£120	99	£32	145	£300	200	£240	248	£150
53	£420	100	£95	146	£55	201	£60		

Luke Jerram
Revealing the Invisible
02 Feb—14 Apr 2013

Exquisite glass works relating to science, engineering and design featuring multi-tiered chandeliers and clear glass sculptures of viruses and bacteria. Visually captivating, beautiful and jewel-like.

**see.learn.shop.eat.
experience.visit.**

Navigation Wharf,
Carre Street, Sleaford,
Lincolnshire, England
NG34 7TW

Tel: +44 (0)1529 308710
www.nationalcraftanddesign.org.uk

**The
National
Centre
for
Craft
& Design**

**nc
cd**



**Synchronise: Creating
Craft Collaborations**
09 March—02 June 2013

Over 20 Design Factory members have embraced the challenge to collaborate and create new work, presenting a fresh merging of disciplines including textiles, ceramics, furniture, jewellery and clock making.

**see.learn.shop.eat.
experience.visit.**

Navigation Wharf,
Carre Street, Sleaford,
Lincolnshire, England
NG34 7TW

Tel: +44 (0)1529 308710
www.nationalcraftanddesign.org.uk

**The
National
Centre
for
Craft
& Design**

**nc
cd**

**design
factory**





Travis Seymour

19th Feb - 3rd March

Gill Nadin Retrospective

5th March - 17th March

Bishop Grosseteste Students

19th March - 31st March

Katy Jade Dobson

2nd April - 14th April

Tina Robson

16th April - 28th April

Alec Shepley

30th April - 12th May

NOLITEX

14th May - 26th May

Smart Moves

28th May - 9th June

Joshua Lockwood

11th June - 23rd June

Lauren Cooke

25th June - 7th July

Sam Scorer Gallery

5 Drury Lane Lincoln LN1 3BN

01522 589899

www.samscorergallery.co.uk

www.facebook.com/SamScorerGallery

PRIVATE CLIENT & PROFESSIONAL SERVICES DEPARTMENT

We value personal property for private and corporate clients. Our team have valued family heirlooms, art collections and museum holdings for a variety of purposes.

We are the only auction house in the region to have a bespoke Private Client Department with:

- Three Chartered Arts & Antiques Surveyors
- Two RICS/Antiques Trade Gazette professional assessment award-winning valuers
- An in-house qualified jewellery valuer
- Experience in abundance and diversity since 1864
- 10 professional staff with RICS, NAVA or SoFAA qualifications





AUCTION APPRAISAL

We offer a **FREE** appraisal service at our offices for items you may wish to consign to auction.

This comprises advice for the most appropriate sale, a pre-sale estimate to encourage buyers and a reserve if necessary.

Items can accepted at each of the Auction Rooms
Monday to Friday 9am to 1pm & 2pm to 5pm.

Every Friday the valuers are available without appointment **from 9am to 1pm.**

You can also email images to valuers@goldingyoung.com

FREE home visits can also be arranged, please call your nearest saleroom to speak with the resident valuers about these.

John Leatt at Lincoln **01522 524984** or
Luke Handley at Grantham **01476 565118.**

PROBATE – INHERITANCE TAX ASSESSMENT

For many Executors and Trustees the responsibility of dealing with a deceased's Estate is a once-in-a-lifetime experience. You have to make a number of important decisions in a very short space of time and all when the loss is most difficult to come to terms with.

The position of Executor is an important one in law and has defined personal liability and responsibility. To exhibit due diligence to beneficiaries and more importantly HM Revenue & Customs, an executor or advisor will instruct a firm Regulated by RICS.

Even if the estate will be taxed at 0%, a valuation remains an essential tool for an executor. The inventory will still be used for identification of bequests, trust items, family division and proof of value.

Our valuations are prepared to the International Valuations Standards requirement of the 'Red Book'.

The report will include the sections of:

- Jewellery
- Vehicles
- Antiques, Fine Art & Collections
- General Furniture & Effects

**For initial advice contact the following
Chartered Auctioneers & Valuers:**

Grantham & South – Luke Handley MRICS – **01476 565118**
Lincoln & North – William Gregory MRICS – **01522 524984**



Providing your insurers with a written valuation will enable you to obtain the cover that is best suited to your requirements. If you are telling your insurer what is to be covered, they know the risk and can calculate the premium accurately and offer the best policy.

Over-insuring your personal property results in paying high premiums for unwanted cover. This can be as costly as discovering that something is not covered when you have to make a claim.

The requirements of each client are different and your needs will be assessed by one of our Chartered Arts & Antiques Surveyors.



INSURANCE VALUATIONS

We would discuss what needs to be included in the report and offer guidance to the cost. It may be necessary to do a pre-valuation inspection where large collections or specialist items are to be included.

A draft valuation report is provided initially for your approval.

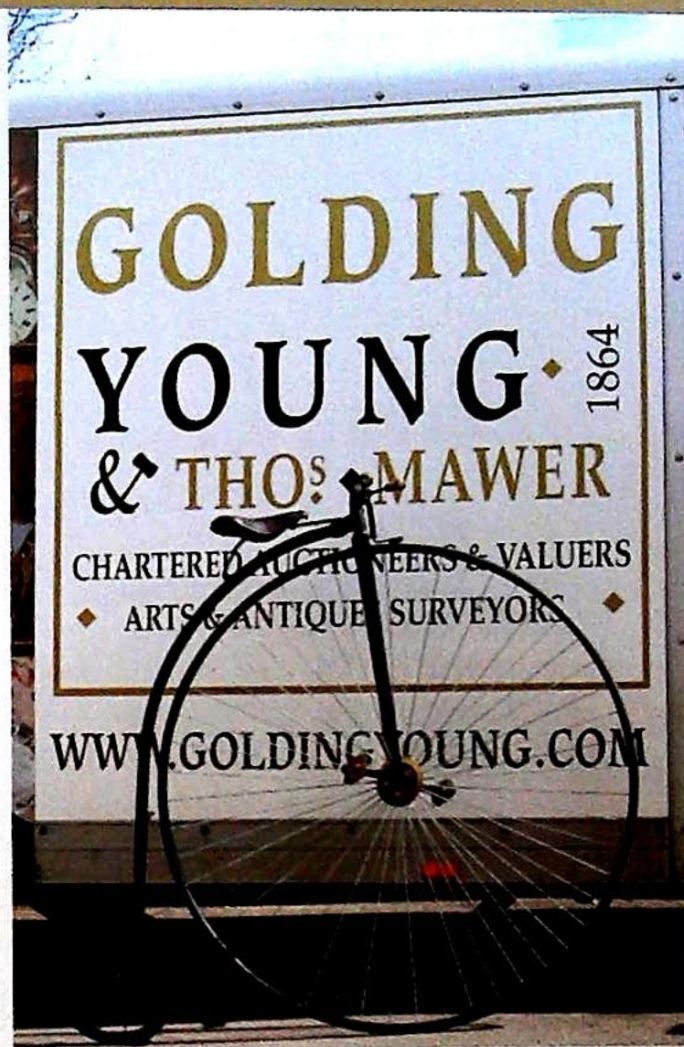
The report will contain a full description of each item, the basis of the valuation and its reinstatement value. Photographic records are usually provided too.

Upon approval, two copies of the final formally bound report is dispatched to you.

For appointments and quotations contact William Gregory MRICS on 01522 524984.

REMOVALS – HOUSEHOLD & COMMERCIAL

- Free Quotations
- Full Packing Service
- Suppliers of Packing Materials
- Shipping & Storage Arranged
- Antiques & Fine Art Specialists
- Specialist Piano Movers
- Office Movers



Contact Andrew Lowes on 07970 742577 for a quote
or email lowes@goldingyoung.com



Adding Value... and
maximising your net return.

HOUSE CLEARANCE

If there is that hidden 'find', it will be to your direct benefit.

Every week we take instructions for House Clearance for all of the prominent firms of Solicitors in the area, as well as from Private Individuals, Trustees and Executors.

If you are dealing with the contents of a property, please contact us at the earliest point.

A visit to the premises by one of our qualified and experienced appraisal staff will offer the best advice for Security, Valuation and Sale.

DISPOSE OF NOTHING – Often things thought to be rubbish are saleable.

IMMEDIATE ACTION IS REQUIRED –

Once a property is uninhabited it is a target for burglars and your insurance may be invalid.

Items removed from premises are listed and handled by our professional carriers.

Goods are then allocated to the next appropriate sale to ensure your highest sale return.

We will also deal with the rubbish. It is disposed of in the most cost-effective and environmentally friendly way.

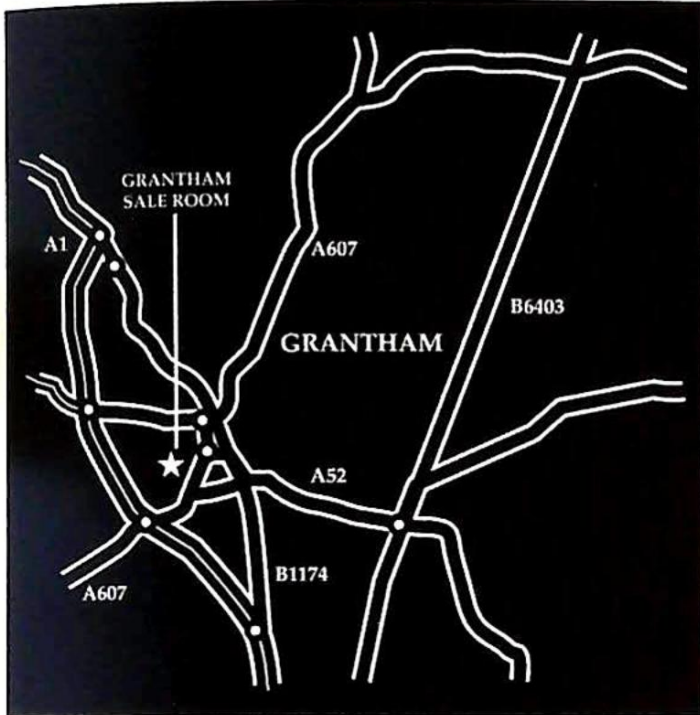
PROPERTIES CLEARED, PROMPTLY AND EFFICIENTLY

Call **Andrew Doubleday MNAVA**
on **01476 565118** for Grantham Area
& Southern Counties

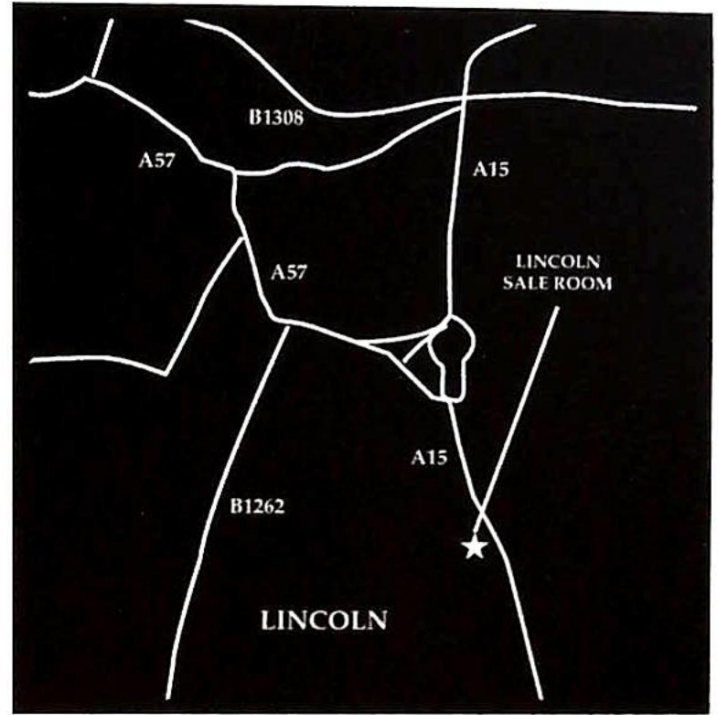
Call **John Leatt ASFAV**
on **01522 524984** for Lincoln Area
& Northern Counties

HOW TO FIND:

Grantham Auction Rooms



Lincoln Auction Rooms



The Grantham Auction Rooms are in Old Wharf Road, just south of Grantham town centre. Approaching from the A1 or the A607 from Melton Mowbray, go under the A1 dual carriageway and on to the next junction. The junction has a railway viaduct over. Old Wharf Road is immediately sharp left just under the viaduct and just before the junction.

However, whichever direction you approach Grantham, you can find us if you observe the following rules: Follow signs for Town Centre. Follow signs for Railway Station. At the junction leading to "Station Road", continue around to a double viaduct/railway bridge. Take the right hand arch which leads into Old Wharf Road.

The Salerooms are the first building on the right. There are parking, disabled and loading bays in front of the premises. For those with SatNav the postcode is NG31 7AA.

The Golding Young & Mawer salerooms at Dunston House are situated in central Lincoln on the East end of Portland Street at the foot of Pelham Bridge (Canwick Road). By car, approaching from the South, take the last turning on the left just before the road rises to the bridge.

Approaching from the North (via Broadgate) go over the bridge and turn towards Jacksons Building Centre/Tesco on to Kesteven Street.

Follow the road around to the left and drive under Pelham Bridge to Portland Street. Turn left and you will see Dunston House on the right. Portland Street is also accessible from Lincoln's High Street, opposite the Ritz public house.

The salerooms are within walking distance of the main railway station and bus depot.

Notes

THINKING OF SELLING?

Here is the checklist of professional sellers at auction.

Executors, solicitors, accountants, insurers, corporates and government departments have to exhibit due diligence when instructing.

Use this checklist to do the same,
with a few reasons why you may wish to choose us.

- **Regulated by RICS**

This means that a firm is regulated and inspected by the Royal Institution of Chartered Surveyors. Firms have to comply to the strictest rules of Client Accounting, Professional Practice and Complaints Handling. Only one of the top three International firms of auctioneers manage to achieve full compliance, fewer still in the UK regions. *Better Regulation for Us. Better Protection for You. Accept Nothing Less.*

- **Chartered Auctioneers & Valuers**

You may be surprised to learn that there is no legal requirement for qualification and many firms use the terms 'auctioneer' or 'valuer'. Chartered status is the Hallmark of a Professional Auctioneer.

- **Arts & Antiques Surveyors**

We know the use of the word 'expert' is somewhat over indulged. We have a specialist Private Client and Professional Services Department with the largest concentration of A&A Surveyors of any firm in the region. Head of Department, William Gregory and Managing Director, Colin Young are both winners of The Antiques Trade Gazette/RICS prize for professional assessment. If you are submitting valuations to HM Revenue & Customs, Insurance Companies or Financial Institutions please speak to us for a free consultation.

- **Internet Auction Catalogues**

The high standards of cataloguing exhibited herein are provided by experienced professionals. All of our cataloguers are members of RICS, NAVA or SoFAA. This standard has to be reproduced on-line, every time and every lot; or there is simply no point doing it. We also illustrate lots online free of charge.

- **Live Webcast Auctions**

The good news with placing auctions online is there are more buyers. That is also bad news. There are new risks with the new technology. Magnified with un-regulated firms using it as marketing gloss and failure to protect their clients when it goes wrong. Our 149 years of auction experience is the substance behind the gloss that gets the most for our clients from Live Auctions.

- **House Clearance**

To place over £2.5m of personal property under the hammer in 2012 we had to clear a lot of properties. It is the core of our services. To achieve this we have to provide a full service of dealing with everything from the fine art, antiques, jewellery, collectables, furniture, vehicles and just as important, disposing of the rubbish. We are pleased and able to provide clearance at all levels by our dedicated in-house team of valuers, removers and auctioneers.

- **Sale Results**

You only have to go to our website to see why to use us. There are over 10 years of results to judge us by. We do not need to list unsolds post-sale because February 2013 saw our 54th consecutive month with a sale at either Grantham or Lincoln producing a sale rate of over 90%. Good advice, great results for hundreds of vendors every month.

***Join their success with an entry
in the next Collective Sale***

