

**GOLDING YOUNG & MAWER** 1864  
CHARTERED AUCTIONEERS & VALUERS ♦ ARTS & ANTIQUES SURVEYORS

**THE CONTENTS OF  
THE MANOR HOUSE, WADDINGTON, LINCOLN**



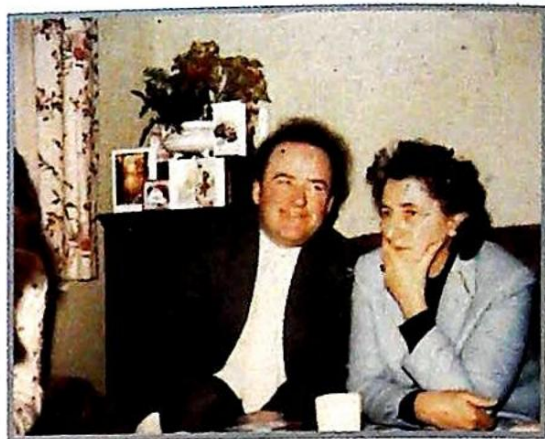
**SATURDAY 26TH MAY, 2012 AT 10AM**



## Auctioneer's Introduction

*This sale is being held by kind instructions from the Executors of the late Richard 'Dick' Ratcliffe.*

Richard Ratcliffe dealt in antiques for over 50 years in and around Derbyshire, Leicestershire and Lincolnshire. Now the contents of his home, The Manor House at Waddington, near Lincoln, will go under the hammer at The Lincoln Auction Rooms.



The sale is the collection of a person of encyclopaedic knowledge and whose real passion was for all things from the eighteenth century or before. The contents are a result of a lifetime of collecting, not only as a dealer but also because of a love of beautiful and interesting objects.

Born in Derby, Richard bought his first antique at the age of 14 and after completing National Service, he started his antiques business in 1954.

Three years later he married Jean and the business became J and R Ratcliffe Antique Dealers. The couple's first shop together was on London Road in Derby and then at Old Hall Farm in Old Normanton, Derby.

By 1965 they moved to Ashby-de-la-Zouch in Leicestershire and had a shop in Market Street and a stand at Woburn Abbey Antiques Centre for a time. They also became members of the British Antique Dealers' Association (B.A.D.A.).

In 1971, Richard & Jean moved to Silk Willoughby, near Sleaford and opened a shop on the Derby Road in Nottingham and latterly had a shop in North Parade, Grantham.

In 1986, they left Silk Willoughby and moved to Waddington, near Lincoln, and sold antiques through one of the antique centres at Newark. Their final shop was in the Norman House on Lincoln's Steep Hill.

Richard stopped dealing full-time in 2001 but continued to keep an interest in antiques and fine art. He passed away in December 2011.

As a client of this firm for many decades he was highly respected by our auctioneers, well liked by the staff and sadly missed by all.

Please enjoy the catalogue, his collection and the sale.

Bid, well, as we bid farewell.

*Colin R Young*

Colin R Young MRICS FNAVA ASFAV



# GOLDING YOUNG & MAWER <sup>1864</sup>

CHARTERED AUCTIONEERS & VALUERS ♦ ARTS & ANTIQUES SURVEYORS

Upon instruction from the Executors of Richard Ratcliffe (Dec'd)

Golding Young & Mawer will sell by Auction

Over 550 lots removed from The Manor House, Waddington, Near Lincoln



In a Collective Sale of  
Antiques, Fine Art & Decorative Furnishings

**At The Lincoln Auction Rooms**  
Dunston House | Portland Street | Lincoln | LN5 7NN  
**On Saturday 26th May, 2012 at 10am**

## Order of Sale:

- 1-139 European Ceramics and Glass
- 140-219 Asian Ceramics
- 220-268 Silver & Platedwares
- 269-318 Pictures
- 319-458 Metalware, Boxes, Clocks, Etc.
- 460-625 Furniture

## Viewing:

Thursday 24th May, 10am to 7pm

Friday 25th May 2pm to 5pm

Saleday 8.30am to 10am

*Café Reserve will be open during view and sale times*

**All enquiries for this sale to**

John Leatt ASFAV

William Gregory MRICS

on

**01522 524984**

or email

**bids@goldingyoung.com**



## IMPORTANT INFORMATION FOR BUYERS

- 1. Introduction:** The following informative notes are intended to assist Buyers, particularly those inexperienced or new to our salerooms. All sales are conducted on our printed 'Conditions of sale' which are readily available for inspection in our offices and on-line. Our staff will be happy to help you if there is anything you do not fully understand.
- 2. Agency:** As auctioneers we usually contract as agents for the seller whose identity, for reasons of confidentiality, is not normally disclosed. This sale includes select items from vendors other than the main estate. Accordingly, if you buy your primary contract is with the seller.
- 3. Estimates:** Estimates are designed to help buyers gauge what sort of sum might be involved for the purchase of a particular lot. The lower estimate may represent the reserve price and certainly will not be below it. Estimates do not include the buyer's premium or VAT (where chargeable). Estimates are prepared some time before the sale and may be altered by announcement before the sale. They are in no sense definitive.

- 4. Buyers premium:** The 'Conditions of sale' oblige buyers to pay a buyer's premium at 17.5% on the hammer price of each lot purchased with a minimum of £1 per lot. In the case of lots purchased 'Live On-line' or via [www.the-saleroom.com](http://www.the-saleroom.com) this will be charged at 22.5% on the hammer price. In addition, VAT is payable on this premium.
- 5. VAT:** No lots in this sale are subject to VAT on the hammer price.
- 6. Condition and description of lots.** We are primarily, agents for the seller. We are dependent on information provided by the seller and whilst we may inspect lots and act reasonably in taking a general view about them we are normally unable to carry out a detailed or any examination of lots in order to ascertain their condition in the way in which it would be wise for a buyer to do. Intending buyers have ample opportunity for inspection of goods and, therefore, accept responsibility for inspecting and investigating lots in which they may be interested. Please note carefully the exclusion of liability for the condition of lots contained in the 'Conditions of sale'. Neither the seller nor we, as the auctioneers, accept any responsibility for their condition. In particular, mechanical objects of any age are not guaranteed to be in working order.

However, in so far as we have examined the goods and make a representation about their condition, we shall be liable for any defect which that examination ought to have revealed to the auctioneer but which would not have been revealed to the buyer had the buyer examined the goods. Additionally, in specified circumstances lots misdescribed because they are 'deliberate forgeries' may be returned and repayment made. There is a 21 day time limit from the date of sale, not date of collection or receipt. (The expression 'deliberate forgery' is defined in our 'Conditions of sale').

- 7. Electrical goods:** Items are tested by a qualified electrician for SAFETY ONLY. An item that passes the PAT safety test may not work. Conversely, an item that fails the test may work with just minor repair. 'Working Order' and 'Safe' are two completely different concepts. The only thing you may take for granted is that the item will be safe at the point of sale. Items that have failed will have their cabling cut to source, labelled and sold 'For Trade Only'. To use the object you will have to change it radically from what was sold to you. Therefore, the Auctioneers cannot be held responsible after the point of sale. Those items sold genuinely as 'antiques or collectables' will not have been tested and if bought for use must be checked over for compliance with safety regulations by a qualified electrician before use. This is an express condition.
- 8. Export of goods:** Buyers intending to export goods should ascertain (a) whether an export licence is required and (b) whether there is any specific prohibition on importing goods of that character because, e.g. they may contain prohibited materials such as ivory. Ask us if you need help.

- 9. Bidding in person:** Some form of identification with proof of address will be required if you are unknown to us. Bidders may be required to register before the sale commences and lots will be invoiced to the name and address on the registration form. Account transfers will not be recognised or facilitated under any circumstances.
- 10. Absentee bidding:** Commission bids may be left with the auctioneers indicating the maximum amount to be bid excluding buyers' premium. They will be executed as cheaply as possible having regard to the reserve (if any) and competing bids. If two buyers submit identical commission bids, the auctioneers may prefer the first bid received. If there are genuine reasons why you are unable to leave a Commission Bid and you wish to bid by telephone we may accommodate on lots where your opening bid will be £500 or above. There are inherent dangers with this practice; therefore all arrangements shall be entirely at the bidder's risk. Absentee bid instructions must be received by telephone, fax or email 12 hours prior to the sale.
- 11. Live Internet Bidding:** In completing the bidder registration on [www.the-saleroom.com](http://www.the-saleroom.com) and providing your credit card details and unless alternative arrangements are agreed with Golding Young Limited, you

- authorise Golding Young Limited, if they so wish, to charge the credit card given in part or full payment, including all fees, for items successfully purchased in the sale via [www.the-saleroom.com](http://www.the-saleroom.com), and
- confirm that you are authorised to provide these credit card details to Golding Young Limited through [www.the-saleroom.com](http://www.the-saleroom.com)

- 12. Methods of payment:** Accounts are due for settlement SALEDAY.

The following methods of payment are acceptable.

There will be NO EXCEPTIONS to this policy.

To avoid undue embarrassment for yourself or our staff, please do not ask for preferential treatment.

- Cash.** Single payments up to £10,000 only.
- Debit Card.** No limit with chip & pin. (CNP limit £500).
- Credit Card.** (Fee of 2%+vat) No limit with chip & pin. (CNP limit £500).
- Bank Drafts & Building Society Cheques.** No limit. Due to forgeries, we will retain the goods for 3 working days to establish clearance of funds.
- Cheques.** Accepted up to the limit of the guarantee card for immediate clearance. For sums exceeding this, and you are not known to the auctioneers, we will retain the goods for 7 working days to establish clearance of funds.
- Bank Transfer for Lincoln Auctions.** Payments to Golding Young Limited - Auction Clients Account - Lincoln.  
40-22-19 33667200. HSBC, 88 Westgate, Grantham NG31 6LF.  
Swift Code MIDLGB22. IBAN is GB45MIDL40221933667200.

- 13. Collection and storage:** Goods can be collected as soon as they are paid for and within two working days following the sale. If goods remain with us and we have no contrary written advice of your intentions the items will be moved to storage and reasonable labour charges levied and storage at the rate of £2+vat per lot per day thereafter for small items and £10+vat per lot per day for furniture and large items.



1. **A pair of 18thC Chelsea porcelain figures modelled as colourfully dressed courtiers, each holding the open lid of oval shaped baskets, with dogs seated at their feet, resting on flower encrusted tree stumps, on pierced rococo scroll bases, gold anchor marks, circa 1760, 21cm high**  
£1200-1500
2. **A Derby bisque figure group, modelled as four cherubs around a tree catching birds, the cages at their feet, probably modelled by Nicholas Joseph Francois Gauron, incised no. 234 to base with incised factory mark, circa 1782-1800, 25cm high**  
£200-300
3. **A pair of 19thC Coalbrookdale porcelain two handled pedestal vases of baluster shape, painted to each side with floral sprays, framed by encrusted summer flowers, scroll handles, the moulded pedestal with green flower and rococo scroll to foot, embellished with gilt overall, 17cm high**  
£175-250
4. **An early 19thC dessert service, each piece finely painted with baskets of flowers and fruit, within cobalt blue borders, embellished with gilt, comprising a pair of square serving dishes, a pair of lozenge shape dishes and nine plates, unmarked**  
£200-300
5. **A 19thC Coalbrookdale porcelain circular two handled box and cover, painted with sprays of flowers, the cover with butterflies, further encrusted with summer blooms, on a rococo scroll mounted foot rim, 21cm wide over handles**  
£175-225
6. **A Meissen figure of a young shepherdess feeding an ailing lamb from a dish, on a rococo scroll base, underglaze blue crossed swords and incised F19, 13cm high**  
£150-200
7. **A pair of Derby bisque figures, modelled as a young girl holding a basket of fruit, her male companion with a basket of flowers on circular scroll moulded bases, incised no. 20, 16.5cm high**  
£200-300
8. **An 18thC Delft dish painted in blue with simple flowers forms within geometric borders, the everted rim with seed heads, reserved against a diaper frieze, 30cm diameter**  
£150-200
9. **An early 19thC pearlware dinner service, printed in blue with the Filigree pattern comprising a large meat plate with gravy wells, two sauce tureens, covers and stands, a covered tureen, an open serving dish, small serving plate, eleven large plate, six pudding plates, ten tea plates and five soup plates and sauce ladle (44)**  
£300-500



1



2



3



4





5



6



7



8

10. An 18thC Derby porcelain figure of a John Wilkes, standing beside a pedestal with a book, on a rococo scroll base, 31cm high £200-300
11. An early 19thC English porcelain tea canister painted in puce with flowers, a matching milk jug, three deep saucers, a coffee can and a tea bowl and saucer and another saucer, hand decorated mark to underside of a clover leaf (9) £100-150
12. An early 19thC Jasperware cylindrical vase, a Wedgwood type two handled Jasperware vase on a black ground, a Wedgwood Jasperware teapot with a band of blue vines and grapes and a Wedgwood type pale blue Jasperware pot pourri basket (4) £60-80
13. A pair of 19thC German bisque porcelain figures of ladies beside tables of fruit, each on a rectangular base, cross swords mark with a triangle to underside, 13cm high £30-50
14. A 19thC German bisque figure of a neo-classical male in a chariot, 21cm high £30-50
15. A pair of Victorian white opaque glass ewers, each decorated with bulrushes on a tapering base, 35cm high £60-80
16. A Victorian white mottled glass vase decorated with a centurion in gilt on a blue ground, 38.5cm high and a pair of Victorian white opaque glass vases decorated with flowers, 16cm high (3) £40-60
17. An early 19thC Newhall type porcelain egg cup decorated with flowers, hand painted mark to base 'N3', 5.5cm high £20-30
18. A pair of 19thC German bisque figures of a gentleman and lady beside a goat and a dog on a circular base, 23.5cm high £40-60
19. A 19thC bisque porcelain figure of a lady with a putto beside a pedestal, 33cm high £40-60
20. A Victorian porcelain figure of a lady seated whilst holding opera glasses, 17.5cm high and a German porcelain candlestick figure of a young boy wearing a blue coat (lacking scone) (2) £30-40
21. An early 19thC caneware two handled tureen and stand (lacking lid) and other 19thC and later ceramics £30-40
22. Three spiral glass ornamental trumpets, 28cm, 22cm and 21cm high £50-80
23. A 19thC hob nail cut oval glass dish, 33cm wide £30-50
24. A Victorian glass vase with white trail decoration, 21cm high and a Loetz type iridescent glass bowl and a white glass leaf shaped dish (3) £30-40



25. A pair of Victorian green satin glass vases with a frill neck, 20cm high £30-40
26. A pair of Victorian green glass vases and a white opaque vase applied with a serpent (3) £40-60
27. A Victorian green glass bottle shaped vase with gilt rim, 33cm high, another vase with a petal rim, 33cm high and a jar and cover, 17cm high (3) £30-50
28. A pair of Victorian opaque pink glass bottle shaped vases, 27.5cm high £60-80
29. A Victorian white opaque glass two handled vase, a pair of jars and covers, a pair of fluted vases, a pair of bottle shaped vases and another vase (8) £80-120
30. A 19thC turquoise glass tazza, possibly American, a Victorian blue satin glass vase, a blue overlay glass vase and a bottle (5) £80-120
31. A pair of 19thC English porcelain dessert plates, painted with botanical specimens, with blue borders with gilded details, 22cm diameter, together with a Wedgwood creamware shell-shape comport with a moulded rim picked out in brown, the well painted with a green trailing leaf frieze, impressed mark and No. 29, 21cm diameter (3) £30-40
32. A graduated set of three early 19thC drabware jugs, each decorated in blue with acanthus, 12cm-16cm high £80-120
33. A Victorian porcelain figure of a lady carrying a ewer wearing a turban, in the white, 26cm high and a 19thC pottery bowl decorated in blue with a fisherman beside a church, 26cm diameter (2) £20-30
34. A modern Italian style Maiolica pottery jar, converted to a table lamp, with shade, 77cm high overall £30-40
35. A pair of pottery bowls, possibly 18thC, each with a white and green mottled glaze, 18cm diameter £20-30
36. Three 19thC Staffordshire pottery jugs, each decorated in relief with neo-classical figures on a powder blue ground, 12cm and 9cm high and a similar mug £20-30
37. A pair of early 19thC Derby heart-shaped dishes, each decorated with roses within meandering leaves and blue flowers, hand painted mark in red to underside, 25.5cm high £40-60
38. A mid 19thC Staffordshire porcelain mug painted with flowers and bearing the name John Joseph Wood, another similar, Kate 1858 and another bearing a motto (3) £40-60



9



10



11



32





45



49

47. A pair of 19thC porcelain plates, each painted with flower sprays, 25cm diameter £20-30
48. A pair of Victorian white opaque glass bottle shaped vases, each painted with flowers and leaves, 24cm high £30-40
49. An early 19thC Staffordshire part tea set, each piece decorated with flowers on a moulded ground, comprising two handled sucrier and cover, slop bowl, milk jug, pair of plates, eight saucers and six cups (19) £80-120
50. A 17thC Westerwald stoneware flagon, decorated with roundels on a blue ground, with pewter mounts (lacking lid), 26cm high £50-80
51. A 19thC German stoneware flagon with a hinged pewter lid, decorated overall with figures, shells, leaves and scrolls, 29cm high £20-30
52. An 18th/early 19thC glass ale flute decorated with barley, another ale flute, 18thC of tapering form and a 19thC hob nail cut glass jug (3) £40-60
53. A 19thC Paris porcelain two handled vase decorated in neo-classical style with a male artist beside a female figure, on a dark green ground with gilt borders, later black marbled base, 30cm high £60-80
54. Spare Lot - Refer to online catalogue
55. A 19thC glass urn engraved with thistles, grapes and vines on a square base, 25cm high £80-120
56. Spare Lot - Refer to online catalogue
57. A Gien porcelain jar and cover decorated with gilt bands and with a monochrome landscape, printed mark to underside £10-20
58. A 19thC Mocha Ware jug with striped decoration, 22cm high £20-40
59. A pair of 19thC cut glass bonbonieres, each with a facet cut knob and square base, 33cm high £70-90
60. A Victorian glass bell with a blue tinted bowl, 24cm high £30-50
61. A Bloor Derby coffee can and saucer decorated with blue flowers, printed iron red mark to base £20-30
62. A 19thC Continental Delft plate decorated in blue with flowers and with an ochre yellow border, 23cm diameter £20-30
63. Two Sevres style porcelain breakfast cups, each decorated with figures and a matching saucer, printed mark to underside in red, Chateau de Bizy and blue printed Sevres style mark for 1846 (3) £30-50

39. A Murano type pale blue glass bowl £20-40
40. A 19thC Staffordshire blue and white tureen and cover, printed with the Asiatic Pheasant pattern and another dark blue printed bowl decorated with a European river landscape (2) £20-30
41. A 19thC pearlware basket decorated with puce bands (a/f), 23cm wide £20-30
42. A matched pair of Victorian stoneware mugs, each decorated in relief with a hunting scene on a pale blue ground, 8.5cm high and another similar on a dark brown ground (3) £30-40
43. A 19thC Victorian relief moulded mug decorated with a hunting scene and with a brown band, 13cm high £30-40
44. A Victorian stoneware relief moulded jug decorated with a hunting scene and with a cobalt blue band, and another similar decorated neo-classical scenes of putti with eagles and lions (2) £40-60
45. A matched pair of 19thC Nailsea type paperweights or dumps, each decorated with a vase containing three flowers, 14cm high £80-120
46. A Victorian vaseline glass scent bottle and stopper, 13cm high and a cut glass scent bottle and stopper (2) £20-30



64. An early 19thC Worcester type porcelain tea bowl and saucer decorated in black and gilt, a similar cup and other English porcelain £40-80
65. A 19thC Minton type porcelain part tea service decorated with leaves on a blush ivory ground £30-40
66. An 18thC Delft bowl decorated in blue with flowers and leaves, 23cm diameter £30-40
67. A Copenhagen Eneret terracotta figure of a female nude holding an apple beside a pedestal, impressed mark P. Ipsen, Kiebenhavn 36cm high £30-50
68. A 19thC Wedgwood black basalt figure of Venus, 24cm high £80-120
69. A 19thC stoneware brandy urn decorated with the royal crest, lions and knights on horseback, converted to a table lamp, 64cm high overall £30-50
70. A 19thC cut glass pedestal fruit bowl, cut with foliate swags, on a plain stem from a square lemon squeezer foot, 18cm high, 22.5cm diameter £40-60
71. A pair of German porcelain figures in the form of a gentleman carrying a cauldron and spoon and a lady carrying shoes, each part glazed in turquoise on rococo scroll bases, 27cm high £100-150
72. A 19thC Majolica vase decorated in relief with a dragon, clouds and other oriental motifs, 63cm high £200-300
73. A 19thC cut glass cream jug, possibly Irish, with a step cut spout and neck, over a lobed body, 9.5cm high £30-50
74. A Japanese nut, finely carved with wild animals around a peach tree, signed with character marks, 3cm, together with two smaller examples (3) £40-60
75. A cut glass spherical box and cover, with a faceted knob, the diamond cut body etched with a monogrammed shield, 15.5cm high £30-50
76. A pair of 19thC glass salts with ruby and gilt reverse decorated bases, another similar with a portrait of a young boy, 7cm (3) £30-50
77. A 19thC pottery ovoid jug, the spout and handle moulded with leaves, the body moulded in relief with a hunting scene against a powder blue wash ground, 14.5cm high, together with a Till & Sons pottery Grecian pattern drainer, printed in grey, 33cm wide (2) £30-50



68



71



72





83



87



90

78. A pair of Dutch Delft vases, lightly moulded, with everted necks, painted in blue with a village landscape within a scroll cartouche, VB in a monogram to underside, 14.5cm high £40-60
79. A 19thC emerald green glass pedestal salt, the bowl decorated with rudimentary scrolls, on a knopped stem from a circular foot, with conforming scroll detail, 9cm high £20-30

80. An 18thC treacle glazed earthenware jug, of squat baluster form with a moulded overhead handle, 21cm high £30-50
81. An English Delft baluster vase, painted in blue with a floral panel, rudimentary flower opposing, 18.5cm high and a 19thC Dutch Delft vase, of flattened baluster form, the front painted in blue with a figural windmill landscape, enclosed by moulded and painted flowers, painted B:P to underside, 24.5cm high (2) £60-80
82. A pair of 19thC Dutch Delft vases, of flattened baluster form, each painted with a figure in a landscape, in a simple scroll panel, 15.5cm high, together with a Continental pottery stein with pewter cover and foot, polychrome painted with a musician in a landscape, 18.5cm high (3) £40-60
83. A 19thC Delft plate, the slightly dished well painted in blue with blossoms, within a narrow diaper border, 35cm diameter together with a Delft pottery saucer dish, painted with flowers and leaves within a repeat floral scalloped border, 23cm diameter (2) £75-125
84. A 19thC Staffordshire pottery small Toby jug, holding a jug of ale, with a blue jacket and orange breeches, 11cm high, another porcelain jug, modelled as a smiling monarch, wearing a crown and holding a jug of ale (chipped), 11cm high, together with a pair of hard paste porcelain yellow ground vases, as obelisks, applied with flowers and incised with hieroglyphics on stepped square bases, 17.5cm high and a pair of Mintons porcelain cups and saucers, with two further saucers, printed with a Chinese landscape in iron red (10) £40-60
85. A pair of 19thC ironstone soup plates, printed in black and polychrome painted in the chinoiserie manner, pattern no. 4400, 26cm diameter, together with a pottery example, and a Pratt Ware pot lid with base, colour printed with a Strasbourg street scene, 12cm diameter (4) £40-60
86. Spare Lot - Refer to online catalogue
87. An 18thC Derby bocage candlestick, modelled as a seated cherub, holding a flower in his right hand, the scone supported in his left, on rocaille base, painted N in script to base, 17.5cm high £75-125
88. A pair of Derby white bisque figures, modelled as cherubs, each seated before a tree stump on rocky bases, incised no. 213 to bases, 13cm high £60-80
89. A pair of 19thC Samson hard paste porcelain figures, modelled as two street traders in 18thC costume, on scroll pierced bases, faux gold anchor marks, 18cm high £50-70



90. An 18thC Derby porcelain figure of a shepherdess standing with flowers gathered in her apron, a lamb at her feet, on pierced rocaille base, 22.5cm high £100-150

91. A 19thC bisque figure modelled as a cobbler, seated at his work bench, looking up at a bird on its cape, 14cm high £40-60

92. A pair of 18thC Derby porcelain figures, modelled as cherubs, each holding a vase of flowers, flower encrusted circular bases, 10cm high £80-120



92

93. A 19thC German porcelain figure of a bird, Berlin, painted in russet and iron red with black and yellow wings, on a tree stump, underglazed blue mask and impressed P to base, 10cm high, together with a Thuringia figure of a bird, with yellow plumage, on a stump, underglaze blue anchor to base, 10cm high (2) £100-150



93

94. A 19thC Derby campana vase with entwined snake handles, encrusted with a frieze of flowers and embellished with gilt against a rich blue ground, on a waisted circular foot, printed mark in red 1820-1840, 12.5cm high £50-70

95. A 19thC Continental porcelain campana vase with scroll handles, painted with floral sprays above a bead border, the lower body with a matt green glaze, on a square base, unmarked, 12.5cm high together with a shaped side dish, painted with roses within a gilt rim, 23cm (2) £50-70

96. A pair of 19thC Coalbrookdale porcelain cornucopia vases, each encrusted with summer flowers and embellished with gilt, no. 1490 to bases, 13cm high £50-70



97

97. A 19thC Coalbrookdale porcelain basket, the handle and rim encrusted with summer flowers, internally painted with colourful blooms, butterflies and gilt bows, no. 6207 to underside, 18cm high £100-150

98. A 19thC Coalbrookdale porcelain ink stand, the two handled base painted with summer flowers within an apple green gilt embellished rim, encrusted with flowers, with a pair of covered urn shape inkwells, with conforming detail, pattern no. 2/2843, 125/175, 27.5cm wide £100-150



98

99. A 19thC Staffordshire pottery figure group modelled as a boy climbing a tree with a young girl seated, on a circular base, 17cm high, together with a German porcelain figure of a pastry chef, on scroll base, probably Volkstedt, 18cm high (2) £30-50

100. A 19thC porcelain tray, of oval moulded form, finely painted to the centre with a spray of summer blooms, within a Celeste blue border with two floral reserves, and pierced shell handles, embellished in gilt, 44cm wide, unmarked £75-125





100



101



103



106

101. Two early 19thC Sunderland type lustre tankards, each with a white metal lid inset with a coin and medallion £100-150
102. A 19thC Continental faience plate decorated with a bird, a Japanese koro and an alabaster vase (3) £40-60
103. A pair of mid 19thC Spode porcelain vases and covers, each decorated in gilt with oriental figures, birds and flowers, on a puce ground, 43cm high £600-800
104. A 1920's Grimwades fairy lustre bowl (a/f), 30cm diameter £50-80
105. A late 18thC Nailsea type double spirit flask, 22cm long £20-30
106. A 19thC Prattware pottery dessert service, comprising a pedestal comport, seven footed comports and sixteen plates, colour printed with differing topographical views within ochre and gilded brocade printed borders £400-600
107. A 19thC English porcelain armorial plate, possibly Chamberlains Worcester, painted and gilded with a crest within a cobalt blue and gilt well, the border painted with a puce feather and gilt leaf ornament, 22.5cm diameter £40-60
108. A cabinet plate painted to the centre with a spray of summer flowers, within an apple green border, reserved with three floral panels and gilt, 26cm diameter £30-50
109. An 18thC Worcester tea bowl and saucer printed in underglaze blue, open crested mark and W, together with a Worcester bowl, printed with flowers and leaves, open crescent mark, 16.5cm diameter (3) £40-60
110. A pair of 19thC Minton majolica salts, each in the form of a boy and girl carrying a basket, impressed mark and date stamps to base, 21cm high £200-300
111. An 18thC Derby porcelain oblong serving dish and a matching plate, each decorated with floral sprays and leaf entwined blue bands, within blue and gilded borders, the former with puce mark circa 1770 and a Derby porcelain moulded circular saucer dish, with cobalt blue and gilt foliate detail, puce mark circa 1820, 20.5cm diameter (3) £40-60
112. A 19thC Spode pottery part dessert service, printed and painted with flowers against a brown cracked ice ground, comprising two shell shape comports, two oval comports and five plates, printed mark in brown £30-50



113. A Belleek lustre glaze shell vase on scroll base, modern printed mark in green, 21.5cm high £30-50
114. A stoneware flagon of circular shouldered form, with a flared rim and lug handles, covered in a heavy indigo blue glaze, 20cm high, together with a pottery campana vase with a blue/brown mottled glaze, 24cm high and a Wedgwood caneware baluster vase, with moulded frieze, 16.5cm high (3) £30-40
115. A pair of Royal Copenhagen plaques, each moulded with angels, signed Eneret to the reverse, 15cm diameter £20-30
116. A late 18thC Worcester teapot, cover and stand decorated in black and gilt with flowers and a matching tea bowl and saucer £40-60
117. An 18thC Worcester teapot and cover, printed with flowers, crescent mark, 18cm wide £50-80
118. A 19thC brown basalt teapot, a creamware teapot and two others (4) £50-80
119. A 19thC Staffordshire pearlware loving cup decorated with Billingsley roses, 23cm wide £80-120
120. A 19thC German porcelain chocolate pot, decorated in blue, with a turned wood handle and later gilt metal mounts £100-150
121. A 19thC Wedgwood cream basalt bottle vase, with a brown band, decorated in relief with figures, 17cm high £70-90
122. An early 20thC continental faience inkstand with two wells and covers, decorated with flowers and blue scroll borders £40-60
123. Various 18thC and 19thC port glasses and other glasses £30-50
124. Various 19thC wine glasses etc £30-50
125. Various 19thC wine glasses etc £30-50
126. A 19thC Brampton type salt glazed jug decorated with a hunting scene, 15cm high £30-40
127. A 19thC copper lustre jug decorated with flowers, 15cm high £20-30
128. A Staffordshire blue printed bowl, a blue and white ginger jar, a relief moulded jug etc. £20-30
129. Three 19thC Staffordshire pottery cottages £60-80
- 130-139. Spare Lots - Refer to online catalogue
140. A Japanese Imari bowl and cover, a Chinese blue and white teabowl and a saucer £30-40



110



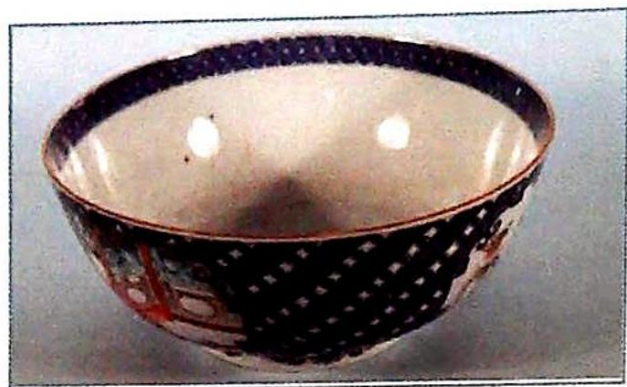
120



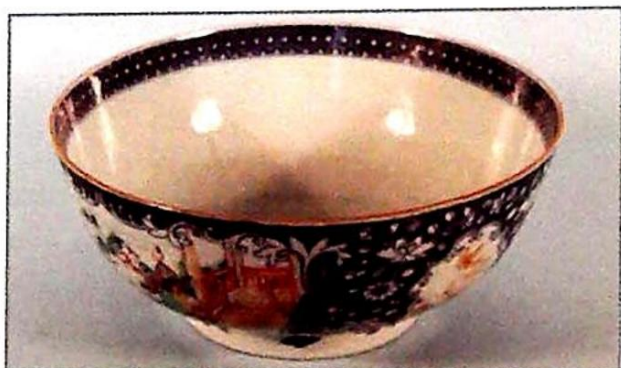
141

141. A 19thC ebonised and parcel gilt folding fire screen, inset with painted Chinese marble panels depicting figures and with script, on tapering supports and scroll feet, 80cm wide £150-250





142



143



146



149

142. An 18thC Chinese blue and white export bowl with a floral spray to the interior and diaper border, painted with reserves of interior scenes with figures and antiques in polychrome enamels, 25.5cm diameter  
£100-150

143. An 18thC Chinese blue and white export bowl with a floral spray to the interior and diaper border, painted with two reserves of figures posing on a terrace, in polychrome enamels, 28.5cm diameter  
£100-150

144. Two 18thC Chinese blue and white plates painted with floral sprays, 23cm diameter  
£30-50

145. An 18thC Chinese liver red glazed ogee shaped bowl with Qianlong underglazed blue seal mark to the foot, 19.5cm diameter  
£70-100

146. An 18thC Chinese Sang de Boeuf bottle vase, 20cm high  
£100-150

147. An 18thC Chinese octagonal bowl with slightly flared sides, the interior with raised decoration of recumbent deer within a border of flower heads and scrolls, 18.5cm diameter  
£80-120

148. An 18thC Chinese celadon green flat baluster vase with two handles and slightly fluted body and pierced foot, 16.5cm high  
£70-100

149. An 18thC Chinese blue monochrome circular dish with slightly flared rim, Qianlong underglazed blue seal mark to the foot, 19.75cm diameter  
£100-150

150. An 18thC Chinese Nanking cargo blue and white bowl, the interior painted with a landscape of boulders and shrubs, and a flower to the centre, the exterior with brown glaze, Christies Nanking Cargo lot sticker number 2614, 15cm diameter  
£80-120

151. A 19thC Chinese Imari circular fluted bowl, painted with panels of floral sprays and a central floral medallion, 12cm diameter  
£20-40

152. An 18thC Chinese blue and white bowl, the interior with painted sprigs of flowering branch decoration and a diaper border, the exterior with a fawn glaze, hand painted underglazed blue mark to the foot, 18.5cm diameter  
£100-150

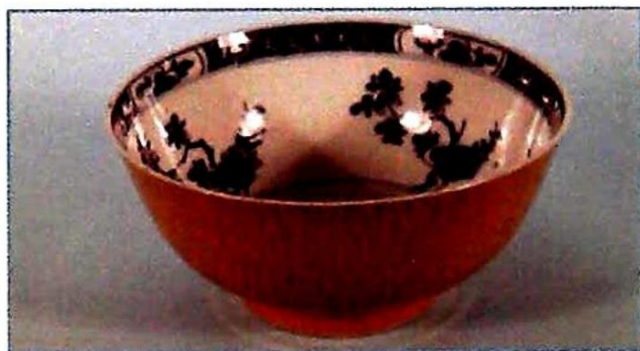
153. An 18thC Chinese blue glazed double gourd vase with a slender neck, painted in gilt with shrubs and a mallet, 22.5cm high  
£70-100

154. A 19thC Chinese bottle vase with two reserves of famille rose decoration of flowering branches and butterflies, underglaze blue double ring mark to the foot, 20cm high  
£70-100

155. An 18thC Chinese blue and white ginger jar painted with three reserves of humorous characters on a scale ground within flower sprigs and a hatched border, 21.5cm high (lacking cover)  
£40-60



156. An 18thC Chinese blue and white flat baluster wall vase with trailing flowers and foliage within lappet borders, lacking scroll handle, 18cm high; a Chinese blue and white cover and a modern Chinese blue and white baluster jar and cover (3) £20-30
157. A late 19th/early 20thC Japanese earthenware charger decorated with samurai, 40cm diameter £100-150
158. A late 19thC Japanese Imari dish with a lobed edge decorated with flowers and leaves, 44cm wide £200-300
159. A pair of late 19thC Japanese Kutani vases, each decorated with figures, 30cm high £450-550
160. A late 19thC Chinese soapstone figure of a gentleman, part painted, 10cm high £20-30
161. A Chinese Ming Dynasty celadon green snuff bottle with scroll decoration and lappet collar, having two ring handles, 7cm high £70-100
162. An 18thC Chinese famille rose cylindrical mug painted with a figure in a landscape and small panels of flowers, 14cm long £20-30
163. A pair of small Chinese blue and white bowls, painted with bands of Chinese characters, text to the interiors and exteriors, 8cm diameter £30-50
164. An 18thC Chinese export blue and white teapot painted with two reserves of landscapes and figures, decoration in polychrome enamels with diaper borders and scale ground, heightened in gilt, 17.5cm high £100-150
165. An 18thC Chinese famille rose teapot painted with Shibunkins, now with replacement silver leaf capped spout and query scroll handle, 16cm high £60-100
166. An 18thC Chinese blue and white export teapot painted with landscape, lake and figure decorations and diaper, scale and scroll border, with a stylised dragon spout, 16.5cm high £150-250
167. An 18thC Chinese bullet shaped teapot painted with two reserves of mandarin figures on a terrace in a landscape with replacement silver spout, 14.5cm high £50-70
168. A small Chinese Imari teapot painted with flowering branch decoration, 12cm high £50-70
169. A large 18thC Chinese blue and white baluster vase and cover with trailing flowerheads, foliate scrolls within lappet borders with later clobbered polychrome enamelled decoration, 64cm high, on an ebonised wooden stand £200-300



152



158

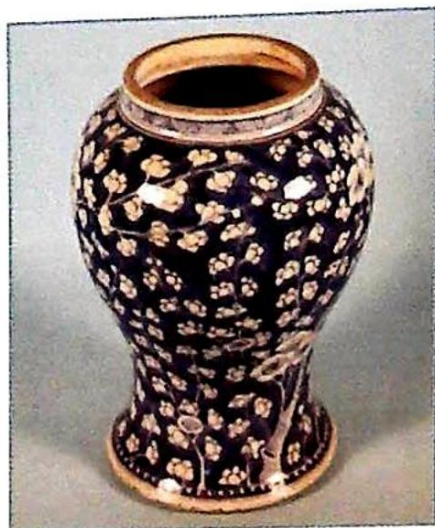


159

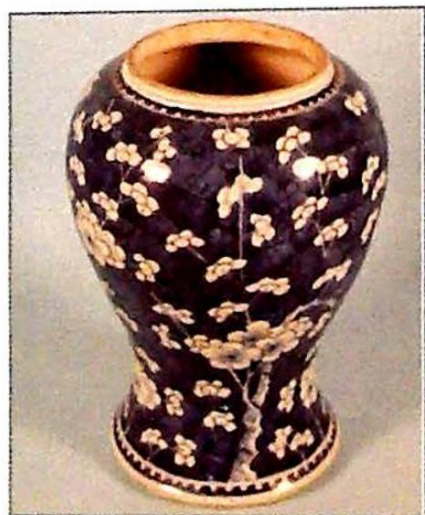


169





171



172



173

170. A 19thC green soapstone figure of Guan Yin holding a flower and mounted on a carved soapstone stand, 38cm high, now incorporated as a table lamp base £80-120

171. An 18thC Chinese blue and white baluster vase painted with prunus decoration, lacking cover, 26cm high £100-150
172. An 18thC Chinese blue and white baluster vase painted with Prunus decorations and hatched border, 27cm high £100-150
173. An 18thC Chinese blue and white baluster vase painted with Prunus decoration, lacking cover and now with hardwood cover and stand, 31cm high £100-150
174. Four Chinese Imari circular dishes, painted with flowers and butterflies, 22cm diameter £60-80
175. 18thC Chinese export teaware comprising two bowls, three saucer dishes and a larger dish, all with mandarin figures and landscape decoration in polychrome enamels (6) £40-60
176. A Chinese blue and white shallow bowl painted with scroll motifs, 25cm and another similar bowl, 21.5cm diameter (2) £40-60
177. An 18thC Chinese blue and white plate with fence and shrub decoration, 29cm diameter and another Chinese blue and white plate with floral motifs, 27cm (2) £50-70
178. A Chinese blue and white ginger jar, 14cm high with stand and another (2) £30-50
179. An 18thC Chinese blue and white charger, the centre painted with a basket of flowers within a border of diaper, hatched and scale panels, painted Artemisia leaf mark to the foot, 38cm diameter £200-300
180. An 18thC Chinese blue and white octagonal dish painted with landscape, lake and pagoda decoration within a scroll and key border, 33.5cm diameter £100-150
181. A Chinese Imari circular charger with terrace medallion centre and trailing foliate scroll border, 35cm diameter and another 18thC circular dish with panels of flowers, 30cm diameter (2) £70-100
182. An 18thC Chinese blue and white dish painted with geometric medallion centre, 22cm diameter £50-70
183. An 18thC Chinese blue and white octagonal dish painted with landscape decoration within a diaper scroll border, 26cm long £70-100
184. An 18thC Chinese blue and white octagonal dish painted with landscape decoration within a diaper scroll border, 26cm long £70-100
185. An 18thC Chinese blue and white octagonal dish with a landscape centre and scale scroll border, 29cm long £70-100



186. Two 19thC Chinese blue and white tea cups and saucer dishes, each with landscape and pagoda decoration, one pair matching with gilt decoration and three famille rose tea cups £20-40
187. A 19thC Chinese blue and white jar and cover painted with landscape decoration and gilt borders, 13.5cm £50-70
188. A 19thC Chinese Blanc de Chine bottle vase, the neck entwined with a dragon, 17.5cm high and a Blanc de Chine flat baluster two handled vase, 13.5cm high (2) £70-100
189. An 18thC Chinese blue and white circular dish painted with landscape decoration, 20cm diameter £60-80
190. A Chinese celadon and blue glazed scalloped bowl, 21cm diameter on a hardwood stand £100-150
191. A Chinese 18th/19thC blue glazed cup with slightly flared rim, painted in gilt with flowers (gilt is now mainly lacking), 9cm high £20-30
192. A Chinese Sang de Boeuf squat spherical vase, four character underglaze blue mark to the base, 5cm high, on a hardwood stand £60-80
193. A 19thC Chinese blue and white slender bottle vase decorated with antiques and a lappet border, 19cm, base drilled £50-70
194. A large 18thC Chinese blue and white baluster vase and cover painted with mountains and lake scenes, within floral scroll border, now with metal collar to the neck and hinged strap and hasp, 60cm high £150-200
195. A 19thC Chinese turquoise glazed bottle vase with sgraffito decoration of flowers and scrolls with lappet border, 33cm £1000-1500
196. A Chinese Ming Dynasty green glazed terracotta vase with a band of raised animal decoration, 29cm high £1000-1500
197. A Chinese Ming Dynasty green glazed funereal pot and cover with moulded cover, on three feet, 25cm high £80-120
198. A pair of modern Blanc de Chine figures of Guan Yin, converted to table lamps £40-60
199. A 19thC Chinese porcelain double gourd shaped hexagonal porcelain vase, decorated in blue with flowers, drilled for a lamp £40-60
200. A Chinese grey and cream baluster porcelain vase with sgraffito decoration of scrolls and a turquoise glazed Chinese vase £40-60



179



180



194



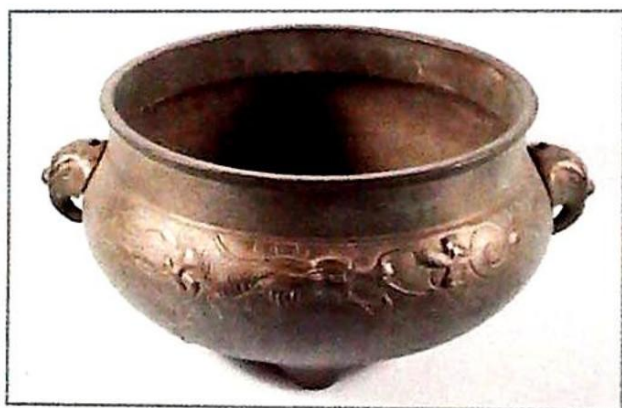
195

201. A pair of late 19thC Japanese Imari porcelain vases and covers, each decorated with flowers, £60-80
202. A Chinese green glazed pottery vase with four handles £30-40
203. A pair of Japanese Imari baluster vases, each decorated with a dragon, with a diaper edge £200-300





203



207



208

204. A Chinese famille rose dish, decorated in the Canton style with flowers, birds and figures, 24cm diameter £40-60
205. A Japanese carved ivory netsuke carved in the form of a warrior, 4.5cm high £70-90
206. A Chinese white metal filigree brooch inset with an ivory panel decorated with a cockerel, 4.5cm wide £70-90
207. A Chinese bronze two handled bowl decorated with a dragon and with elephant mask handles, 38cm wide £100-150
208. A late 19thC Japanese Meiji period bronze incense burner and cover, with a yellow and silver metal inlay of leaves, 14cm high £180-220
209. A Chinese white soapstone table lamp in the form of an immortal and companion, now as a table lamp £80-120
210. A 19thC Chinese bronze figure of nobleman on horseback, 25cm high £150-250
211. A Chinese bronze figure of an immortal carrying a scroll, 13cm high £60-80
212. A Chinese Blanc de Chine figure of Guan Yin, 40cm high £40-60
213. A 19thC Chinese baluster porcelain vase, decorated with figures, 23cm high £50-80
214. A Chinese bronze candlestick, with pieced decoration, converted to a table lamp £120-180
215. A 19thC Chinese blue and white plate, 23cm diameter, etc £20-30
216. A 19thC Chinese celadon glazed bowl of tapering form £100-150
217. A late 19thC Chinese famille rose small saucer dish decorated with coloured enamels with a landscape £100-150
218. A late 19th/early 20thC Japanese lacquered workbox decorated with figures, animals and leaves £50-80
219. A 19thC Chinese export lacquer table top cabinet with a shell carved crest above two doors enclosing shelves and doors on bracket feet £100-150
220. A Continental silver spoon with scroll decorated stem, the hardwood handle carved with leaves £10-20





210



217



219



221



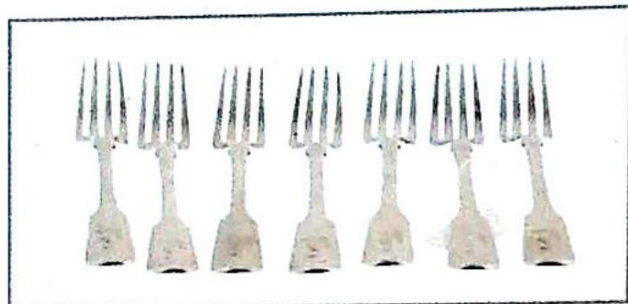
222



223

221. An early 19thC three piece tea service of oval form with bright cut decoration comprising teapot with composition handle, two handled silver gilt sugar bowl and milk jug, Newcastle, possibly by Ann Robertson, *approx.* 31ozs gross £400-600
222. A late 19thC pierced and embossed oval swing handle fruit basket, Sheffield 1889, RMEH, *approx.* 21ozs £350-480
223. A two handled presentation cup presented in 1834, hallmarks obliterated, 27ozs £300-400
224. An early 19thC silver gilt cream jug with cast foliate border, reeded handle standing on four orb feet, London 1813, *approx.* 6ozs £75-140





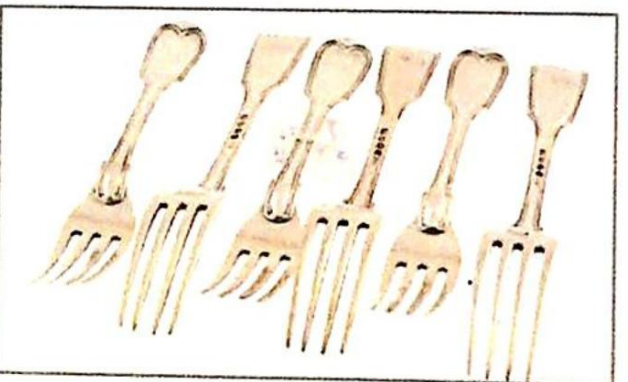
240



241



242



243



259

225. A Georgian silver wire seven bar toast rack, London 1805, SA, approx. 4ozs £50-100

226. A mid 19thC oval embossed silver gilt cream jug with scroll handle, London 1840, GF, approx. 3.5ozs £40-60

227. A pair of Hester Bateman sugar bows, pierced and bright cut decorated, circa 1800 £60-120

228. An octagonal lidded silver mustard pot, pierced and engraved, standing on four orb feet, Chester 1812 and a plain Birmingham hallmark napkin ring £30-60

229. Two pairs of Georgian bright cut decorated sugar bows £20-30

230. Two pairs of 19thC hallmarked sugar scissors £35-70

231. A pair of early 19thC pierced and engraved sugar bows, maker IW £20-40

232. A set of six early 19thC bright cut teaspoons, maker ER £20-40

233. A collection of miscellaneous tea and dessert spoons, 19thC, approx. 12ozs £150-200

234. A Continental silver gilt sifter spoon £30-60

235. A set of six Fiddle pattern tablespoons, London 1827, WB, approx. 14ozs £170-260

236. An early 19thC Fiddle pattern toasting fork, London 1830, TCS, approx. 5ozs, 31cm £60-120

237. A basting spoon, London 1801, WS, approx. 5ozs, 33cm £60-80

238. A pair of Fiddle pattern basting spoons, London 1827, JS, approx. 9ozs, 31cm £120-180

239. A pair of Fiddle pattern basting spoons, London 1844, HH, approx. 9ozs, 31cm £120-180

240. Seven heavy Fiddle pattern table forks, London 1824, IH, 14+ozs approx. £170-250

241. Nine Fiddle pattern dessert spoons, six matching, London 1839 + 3 1834, approx. 13 ozs £150-200

242. Six Fiddle pattern Scottish table forks, Edinburgh 1822, maker GF, approx. 12ozs £150-200

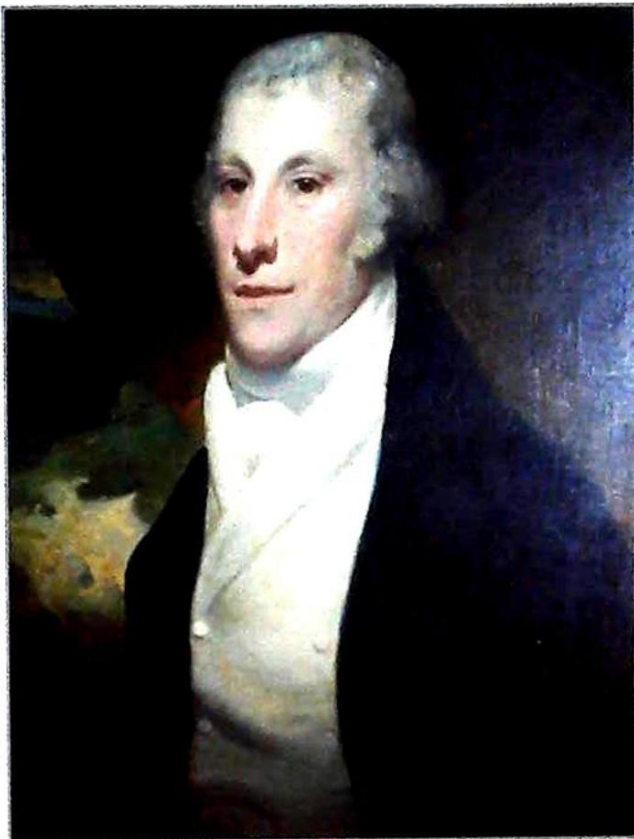
243. Six Fiddle pattern early 19thC dessert forks with reeded borders, London 1831, approx. 12ozs £160-220

244. An early 19thC Fiddle pattern sauce ladle, unrecognised town mark, maker WR £20-40

245. Two early 19thC London hallmark tablespoons, one possibly by Hester Bateman £20-40

246. A set of six early 19thC teaspoons, London 1828, approx. 3ozs £30-50





247. A set of six late 18thC teaspoons, approx. 3ozs  
£25-50
248. A pair of early 19thC Fiddle pattern dessert spoons, London 1834 and a table fork London 1812, 4+0zs  
£50-65
249. Five various antique silver condiment spoons  
£30-60
250. An early Victorian Birmingham hallmark pickle fork and a pair of fine filigree silver, possibly Indian (unmarked) sugar bows  
£15-25
251. A set of six pistol handle hallmarked silver tea knives with steel blades, five others, six table knives, twelve dessert knives and a silver handled carving knife  
£30-60
252. A heavy pair of early 19thC embossed fiddle pattern sugar bows, London 1830, approx. 2ozs  
£30-50
253. An early 19thC triangular three bottle tandalus on a plated stand with ribbed bottles and circular stoppers, standing on three orb feet  
£40-70
254. A 19thC plated six cup egg cruet with spoons  
£30-60
255. A pair of Old Sheffield plate table candlesticks on square bases with beaded decoration and detachable sconces, 23.5cm high  
£40-70
256. A pair of Old Sheffield plate table candlesticks on tapering stems with beaded borders and stepped circular bases, detachable sconces, 28.5cm  
£30-60
257. An Old Sheffield plate rectangular two handled fruit basket with gadrooned and foliate border, approx. 33cm x 27cm  
£40-80
258. Spare Lot - Refer to online catalogue
259. A 19thC yellow metal paste set turban ornament (Sarpech), the openwork aigrette set with a central ruby coloured stone within faceted white stones, the tapered lower section similarly set with a closed back and spear terminal, mounted with a pin, 13cm long  
£100-150
260. Spare Lot - Refer to online catalogue
261. A 19thC Continental silver and agate snuff box, oblong, the hinged cover and base of bevel edge polished agate panels, mounted in silver with wrigglework borders, indistinct marks to flange, 8.5cm x 4.5cm  
£100-150
262. Spare Lot - Refer to online catalogue
263. A 19thC silver plated tea urn with part fluted decoration, 60cm high  
£30-50
264. A 19thC silver plated two handled tray, engraved with a crest  
£80-120
- 265-266. Spare Lots - Refer to online catalogue





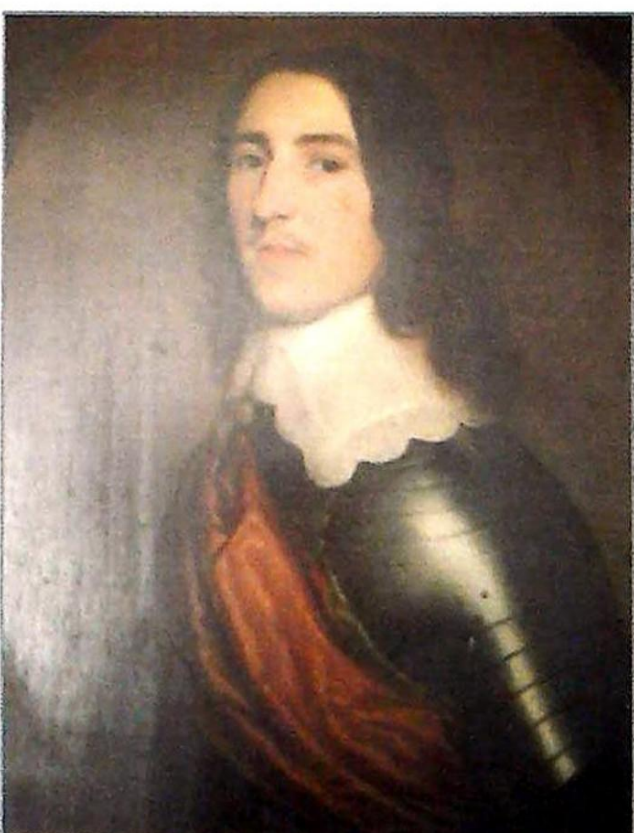
268



269



271



270

267. Late 18thC School – Portrait of a gentleman and his wife, oil on canvas, a pair, relined, unsigned, 74 cm x 61cm £600-800

268. Manner of Sir Peter Lely – Portrait of a lady, by reputed the Duchess of Portsmouth, oil on canvas, 74cm x 62cm £2000-3000





272

269. Anonymous (19th/20th Century School) - Study of a young woman and child, seated in a chair before a window, oil on board, unsigned, 31 cm x 25 cm. Giltwood and gesso frame £200-300

270. Gerrit Van Honthorst (1590-1656) - Half length portrait of a gentleman, facing dexter, wearing a suit of armour, oil on panel, signed G Honthorst 1649 lower left, indistinctly title of the sitter verso, Sr. Tomas Oghel Maijsior?, 74 cm x 60 cm Giltwood and gesso frame £8000-12000

271. Anonymous (17th/18th Century School) - Half length portrait of a lady, facing sinister, wearing a low cut purple gown, a pearl necklace, in a feigned oval cartouche, oil on canvas, re-lined, 76 cm x 64 cm. Giltwood and gesso frame £4000-6000

272. Anonymous (Early 19th Century School) - Half length portrait of a young naval officer, facing sinister, in a gold braided uniform, pastel, unsigned, 57 cm x 45 cm. Giltwood and gesso frame £1000-1500

273. Anonymous (17th/18th Century School) - Half length portrait of a be-wigged gentleman, facing sinister, wearing a cravat with a brown coat, oil on canvas, ova, 75 cm x 62 cm. Bears a hand written label verso relating to the Butler Pomfret family of Tenderton, Kent. Giltwood and gesso frame £2000-3000



273



274



275





278



279

274. **Thomas William Morley (1859-1925)** - Figures before a church, on a misty morning, watercolour/heightened white, signed and dated '12 lower right, 36 cm x 53 cm. Giltwood and gesso swept frame £250-350

275. **Anonymous (19th Century School)** - Interior scene, seated figure of a housekeeper in a large country kitchen, before a fire, a footman lounging nearby, another figure at work, oil on canvas, unsigned, 63 cm x 74 cm £400-600
276. **Hullmandel (eng.)** - Henry The Seventh Chapel (Westminster Abbey), North Side, black and white aquatint and engraving, pl. no. III, 56 cm x 69 cm. Framed and glazed £20-30
277. **After George Morland (1763 - 1804)** - Rustic folk outside cottages, a pair, soft ground etchings, trimmed to image, 47 cm x 57 cm, late 18th century. Giltwood and gesso frames £75-100
278. **Alfred Rouby (1849- 1909)** - 'Un Coin d'Atelier', still life of lilac and roses, oil on canvas, signed lower left, 61 cm x 46 cm. Gilt frame £300-500
279. **Anonymous (17th/ 18th Century English School)** - Three-quarter length portrait of a gentleman, in a powdered wig, wearing a russet jacket and embroidered waistcoat, in a landscape, oil on canvas, unsigned, re-lined, approx. 120 cm x 99 cm. Giltwood and gesso frame £1000-1500
280. **After Van Dyke** - Pierre Paul Rubens, a portrait, copper engraving, another, of Ludovicus Magnus, 43 cm x 40 cm, together with an 18th century mezzotint after Leluy, of two children in a garden, 36 cm x 26 cm. All framed and glazed £30-50
281. **After George Morland (1763 - 1804)** - Fishermen; Smugglers; a pair of coloured aquatints, trimmed to image, 44 cm x 55 cm. With verre eglomise glass in giltwood and gesso frames. £200-300
282. **A pair of late 18th century reverse prints on glass**, 'Flight into Egypt' and 'Return from Egypt' pub. circa 1799 by P. Stampe, Leather Lane, Holborn, London, 36 cm x 25 cm £40-60
283. **Anonymous (19th Century English School)** - Portrait of a Clergyman, full length, seated in a library, pastel and black chalk, 50 cm x 36 cm. Giltwood and gesso frame £150-200
284. **After Joseph Wright of Derby by John Raphael Smith** - The Widow of An Indian Chief Watching The Arms of Her Deceased's Husband, mezzotint, circa 1789, image size 44 cm x 49 cm; together with an engraving after Elstrak of Mary Queen of Scots and Lord Darnly, 29 cm x 24 cm and other printed works £40-60
285. **Thomas Edward Case (19th Century English School)** - Miss Sarah Clayton, half portrait, wearing a black lace trimmed bonnet, pink dress with a white lace trimmed collar, pastel, artists label and sitters details verso, 60 cm x 44 cm. Giltwood and gesso frame Provenance: By family repute from Ridding Park, Yorkshire £1000-1500





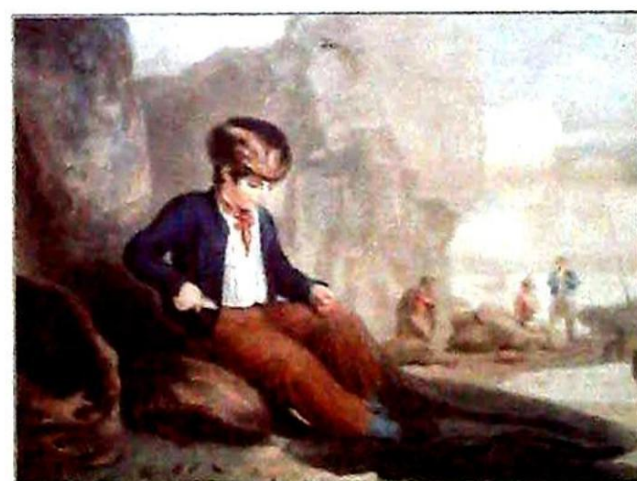
281



283



285



288





296



315

286. Ainslie (Sir Robert, and Mayer, Luigi). - 'Kirkclisia' and 'Pitesti' from Views in the Ottoman Empire, a pair of aquatints, pub. by W. Watts, circa 1802, text verso, 27 cm x 35 cm. Framed and glazed £40-60

287. After Richard Westall by Dutterreau & Jose - Study of a young shepherd and sheep in a landscape and a companion work of a young gypsy, soft ground etching with aquatint, 25 cm x 19 cm, in rosewood frames with gilt slip, together with a 19th century sepia wash sketch of figures around a lake, 13 cm x 21.5 cm (3) £60-80

288. 19th Century School - A young fisherman and companion work of a young girl in an interior, soft ground etchings, a pair, 24 cm x 32 cm. In verre eglomise glass and gilt frame £100-150

289. After Claude de Lorraine by W. Smith - Judgment of Paris, copper engraving, 18th century, 38 cm x 52 cm, together with J. P. Le Bas after David Teniers, La Basse Cour, copper engraving, circa 1743, 33 cm x 44 cm. Framed and glazed (2) £40-60

290. After Raphael - Comitas; Meekness, copper engraving, circa 1765, another after Zampieri Diva; St. Agnes, circa 1759, 49 cm x 35 cm. Framed and glazed (2) £60-80

291. After Francis Cotes by N. Green - Joseph and John Gulston Esq., mezzotint, pub. by Sayer 1771, plate size 44 cm x 51.5 cm, together with The Benevolent Lady and The Happy Meeting, a pair of Conte engravings after Bartolozzi and Morris, first pub. 1793, later impressions, 46 cm x 36 cm (3) £40-60

292. After Petrus Cortonensis by Robert Strange - Caesar Putting Away Pompeia Receives Calphurnia as His Wife and The Finding of Romulus and Remus, a pair, 18th century copper engravings, 50.5 cm x 40 cm £50-70

293. After Clarkson Stanfield - The Coast of Ischia, steel engraving, circa 1844 for The Art Union of London, image size 34.5 cm x 57 cm £40-60

294. After N Coypel - Le Triomphe De Galathee, engraving, image size 30.5 cm x 43 cm together with Mrs Orby Hunter, after Hoppner, mezzotint, circa 1800, 63 cm x 39 cm (2) £40-60

295. After J F Herring Senior - Hunting scenes, a pair, oil on canvas laid onto card, 58 cm x 74 cm. Loose in frames £50-70

296. James Wilson Carmichael (1800-1868). Shipping on the Thames London, oil on canvas, 70cm x 135cm. Provenance: The estate of Peter Hunt of Bransby. £3500-4500

297. A 19thC silk and hairwork picture depicting a couple strolling in the country, entitled A View Near Hendon Middlesex, in giltwood frame, 22cm wide £80-120

298. 18thC School. Portrait of a young man; Portrait of an elderly bearded man, oil on board, ovals, wax seal verso, 14cm x 11.5cm. £250-350

299. D V Morrison. A topographical scene of a waterfall, watercolour, 22cm x 26cm, inscribed to reverse Cameron Highlands - The Cameron Highlands was a hill station developed by the British in Malaya. The area was devoted to agriculture and contained tea plantations £10-20

300. After James Northcote by James Fittler - Captain MacBride, portrait, 18th century copper engraving, 46 cm x 34 cm, together with two 19th century pencil sketches of a young girl and head of a woman and child (3) £50-70

301. In the manner of Thomas Lound. Figures on a bridge before Corfe Castle in the distance, watercolour, 50cm x 60cm £100-150

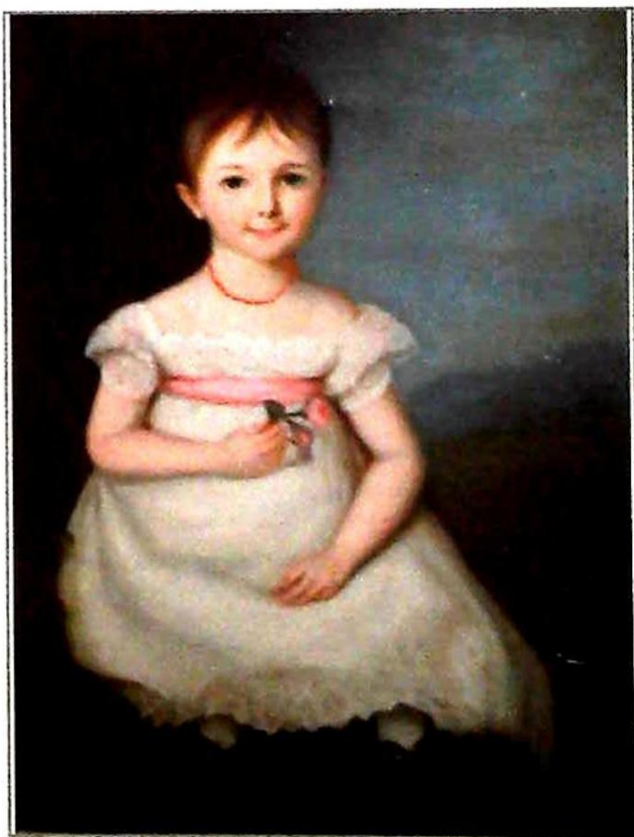
302. 19thC English School. A mountainous landscape with river in the foreground, figure fishing with child and dog, oil on canvas, inscribed to reverse F Robinson, 40cm x 54cm £40-60





309

303. Willis Pryce. Moorland scene with stream, oil on board, bearing signature, 24cm x 30cm £30-40
304. 19thC School. Marine scene depicting shipping in stormy seas against a headland, oil on canvas, bearing monogram JHP, 15cm x 22cm £60-80
305. J T Haverfield. Figures in a field before a church, oil on canvas, 25cm x 32cm £40-60
306. E Chester. A still life with flowers and grapes, oil on board, signed, 30cm x 40cm £80-120
307. After William Callow. A scene at the port of Utrecht, watercolour, 17cm x 24cm £20-40
308. Two late 19thC/early 20thC watercolour sketch books £40-60
309. Anonymous (19th Century English School) - Half length portrait of a gentleman and companion work of his wife, oils on canvas, re-lined, 78 cm x 64 cm. Gilt frames £1500-2000
310. A Regency oval silkwork and painted panel depicting a young girl gathering sticks, 20 cm x 17 cm together with another of Jesus with two children, 39 cm x 39 cm, both in verre eglomise mounts and gilt frames (2) £75-100
311. A 19thC oval silkwork panel of a basket of flowers within an entwined border, 52 cm x 46 cm, worn around the perimeter. Gilt frame £80-120



314

312. Anonymous (19thC School). Study of a young child with a book and a companion work of a head and shoulders portrait of a young woman in 17thC costume, charcoal, crayon and body colour on sepia paper, unsigned, 51cm x 44cm, in oak parcel gilt frames with gilt slips £75-125





335



330

313. Anonymous (19thC School). Figures in abbey ruins, figures by a river bridge with abbey beyond, sepia aquatints, mounted to image, 41.5cm x 56cm, framed and glazed (2) £40-60
314. 19thC School. Portrait of a young girl holding a rose, oil on canvas, unsigned £300-400
315. V. Johnson (C.1770-1830). Figures by a cottage, oil on canvas, signed V. Johnson Nott. (Nottingham?) 1791, 65cm x 80cm. £300-400
316. Attributed to John Varley Jnr. A wooded landscape, watercolour over pencil, signed and dated (18) 90 16cm x 23cm £30-50
317. J MacDiarmid (19thC). Glen Lyon Perthshire, watercolour, signed and dated 1913, 23cm x 24cm £30-50
318. A George III embroidered map of England Wales and part of Scotland and worked in coloured silks onto a pale gold silk panel, the image within an oval embroidered chenille border and ribboned and floral swags, signed with initials AMN Newark school 1803, 58cm x 41cm. £300-400
319. A brown leather shooting bag with part canvas strap bearing the initials S.E.B.P., 28cm wide £40-60

320. A leather shooting bag with a part canvas strap bearing the initials S.P., 26.5cm wide £40-60
321. A late 19th/early 20thC leather hat box with brass lock, 34cm wide £80-120
322. A leather shooting bag with part canvas strap bearing the initials R.E.P., 22cm wide, another leather shooting bag and a canvas and leather shooting bag (3) £50-80
323. A silver plated sandwich tin in leather case, a set of three square section spirit flasks in leather case stamped Finnigans, Bond Street, London and a rectangular leather sandwich case £60-80
324. A pair of Barr & Stroud binoculars in a leather case and a pair of Dienstglas binoculars in leather case (2) £40-60
325. A Third Reich leather holster with cord belt, 19cm high £30-50
326. A tan coloured leather hunting bag bearing the initials R.E.P. with part canvas strap, 28cm wide £50-80
327. Three leather shooting belts with recesses for cartridges, each with a brass buckle, a similar belt with holster and a leather belt bearing the name of M Harvey & Co Walsall and with date 1916 £80-120
328. Five brown canvas and leather shotgun cases with some straps and two khaki canvas and leather shotgun cases (7) £80-120
329. A pair of gentleman's black leather riding boots and trees, the sole approx. 27cm long £60-80
330. A leather and brass bound shotgun case bearing the label to the interior for Daniel Fraser & Co Edinburgh and the name to the travelling case and the lid of J C Buntin Dunalastair, 76cm wide and a pair of Hensoldt binoculars in leather case £250-350
331. A leather shotgun case, a leather and canvas shotgun case and a turned wood and brass arm rod (3) £50-80
332. A leather suitcase retailed by Austin Reed and three other suitcases (4) £60-80
333. A gentleman's leather dressing case, partly fitted to the interior with silver jars, each with silver plated covers £60-80
334. An early 19thC Scrimshaw cow horn powder flask, with turned wooden cap and screw filler cap, the body incised with a coastline and ship above the name 'Quebec', the reverse with incised rhyme - 'That which my father old hath made and left me to posses, do i dearly hold to shew my worthiness, A W, 1803', 35cm. £700-900



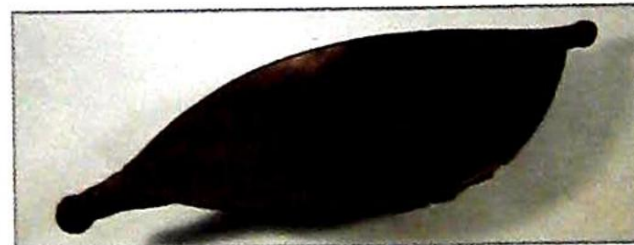
335. A George IV pocket globe by Lane, the continents outlined in red and green, labelled Lane's Improved Globe, London 1829, in a black fish skin case lined with celestial maps, 7.5 cm diameter. £2800-3500
336. A George V dress sword with plated hilt and leather scabbard and handle, 103cm long £100-150
337. An Edward VII dress sword with a plated hilt, shagreen handle and leather scabbard, 97cm long £100-150
338. A George V dress sword with plated hilt, leather scabbard and outer case, 103cm long £300-400
339. A pictorial souvenir and History of the 1st Battalion Lincolnshire Regiment Poona, India 1909, bearing label presented by Mr S N Tuplin, Scunthorpe, the above was an ex. R.S.M. £100-150
340. Spare Lot - Refer to online catalogue
341. A Papua New Guinea ceremonial carved wooden fruit bowl in the form of a boat, possibly Tami Island, 51cm wide £200-300
342. A Sepik River carved wooden bowl with ornate handles, 54cm wide £150-250
343. An early 19thC yew wood jewellery box with a gilt metal handle and ebony and boxwood strung border, 22cm wide £100-150
344. A late 19thC Armand Marseille type doll with leather body, the later neck and shoulders stamped AM8 DE and the number 3200, with a later painted canvas head, 62cm long and a suitcase etc. £20-30
345. A pair of late 18th/early 19thC walnut and gilt metal bellows carved with a central mask surrounded by flowers and leaves, 52cm long £60-100
346. A pair of 19thC brass fire dogs, each with a turned finial and a male mask, 31cm high £80-120
347. A cast iron fire back with an arched top decorated with a crest, 48cm x 46cm £60-80
348. A 19thC pierced brass trivet decorated with a winged figure and urns on four cast iron feet, 31cm wide £30-40
349. A 19thC bow fronted pierced steel fender with beaded borders, 107cm wide £40-60
350. A Victorian cast iron door stop in the form of a sphinx, 24cm high £20-30
351. A pair of Continental pierced brass table easels in rococo style, 56cm high £40-60



338



341



342

352. A 19thC satinwood and marquetry sarcophagus shaped sewing box, pin cushion, bun feet, 16cm wide £40-60
353. An early 20thC Continental specimen timber and marquetry musical box, 19cm wide £10-20
354. An early 19thC French silvered brass candlestick engraved with flowers on a domed base, 23cm high £50-80
355. A late 19thC Continental terracotta bust of a young girl on a rouge marble base, 30cm high £80-120
356. An 18thC walnut tea caddy with sycamore and ebony banding, the hinged top with a moulded edge enclosing a vacant interior on bracket feet, 27cm diameter £40-60
357. A Victorian rosewood and brass inlaid workbox on bun feet, 28cm diameter £60-80
358. A pair of 19thC turned brass candlesticks of tapering form with a domed foot, 26cm high £150-250
359. A mid 19thC French white marble and gilt metal portico mantel clock, a pair of associated early 19thC gilt metal and marble candlesticks, each cast with an eagle support on a square base, 21cm high (3) £300-400





358



359



364

360. A late 18th/early 19thC pierced copper warming pan with a turned mahogany handle, 123cm long  
£60-80
361. An early 19thC copper and brass warming pan with a flower engraved lid and a turned mahogany handle, 125cm long  
£50-100
362. An early 19thC oak candle box with a hinged lid, 33.5cm wide  
£60-80
363. A 19thC oak and iron coopered spirit barrel, 24cm wide  
£20-30
364. After Giambologna. A pair of bronze figures of Mercury & companion, each on black marble bases (2)  
£800-1200
365. A late 18thC oak candle box with a hinged lid, 39cm wide  
£80-120
366. A 17thC carved lion mask bracket, 15cm high  
£15-20
367. A pair of late 19thC cast iron and brass fire dogs, each decorated with a sunflowers in the Arts & Crafts style, 19cm deep  
£50-80
368. A late 19th/early 20thC wicker basket and lid with locking rod, 26cm wide  
£20-30
369. An early 20thC oak table lectern on a twisted column and square base, 32cm wide  
£40-60
370. A set of late 19thC Continental walnut and brass bellows, each carved with leaves and foxes, 75cm wide  
£25-35
371. A late 18th/early 19thC turned fruitwood cat or bowl stand, 38cm wide  
£40-60
372. A Victorian mahogany miniature breakfast table with a circular top, turned column and triform base, 15cm diameter  
£40-60
373. An early 19thC oak two division cutlery box, 32cm wide  
£40-60
374. A set of four graduated weights with hinged cover, 7cm wide  
£30-40
375. A Victorian rosewood wheel barometer, with hygrometer over thermometer, mirror, silvered dial and level, marked J Usher Optician Lincoln.  
£60-90
376. An 18thC brass alms dish, possibly Nuremberg with inscription and central panel of neo-classical figures, 48cm diameter  
£200-400
377. A pair of 19thC turned lignum vitae candlesticks, each with a gilt brass sconce and a tapering base, 30cm high  
£400-600





383

378. A pair of 19thC Continental bellows, each carved with leaves and scrolls, 73cm long £30-40

379. A 19thC Continental gilt metal chandelier with eight sconces cast with leaves and shells, suspended with tapering drops and beads, 83cm high, 45cm wide £300-500

380. A Regency rosewood and checker banded sarcophagus shaped tea caddy with gilt metal mounts on paw feet, 23cm wide £150-250

381. A 19thC French gilt metal and chempleve enamel desk set in the manner of Barbedienne, each piece decorated in the oriental manner with flowers, comprising a two handled inkwell and stand and a pair of candlesticks (3) £200-400

382. Two early 19thC bronze candlesticks, each with a floral sconce and mounted with a recumbent deer beside a tree on a rectangular base, 13cm high £100-150

383. A pair of early 19thC gilt metal candlesticks, each suspended with eight cut glass drops on a lappet column and domed base, 30cm high £180-250

384. A pair of Victorian blue glass cornucopia vases, each mounted with a gilt metal hand on a rectangular alabaster base, 18cm high £100-150

385. A 19thC Continental two handled bronze vase in the neo-classical manner, cast with figures and leaves on a tapering base, 28cm high £250-350

386. A 19thC copper and brass warming pan with a turned fruitwood handle, 104cm long £20-30

387. A pair of 19thC pierced brass trivets, a pair of pheasant shaped fire ornaments, a rectangular snuffer tray and candle snuffers etc. £30-50

388. A pair of 19thC Middle Eastern brass and silvered beakers, each decorated with leaves, flowerheads and with an inscription, 12cm high £80-120



376



379



380



381





385



389



391

389. A William IV wax bust of a lady on a rectangular pedestal, impressed to the reverse London published by H.WEIGALL, 3 St James Street, July 1837 in a glass dome with a ebonised base, 32cm high overall £200-300
390. A painted terracotta plaque of four putti, 14cm x 37cm £30-50
391. A Victorian papier mache tray by Jennens & Bettridge, painted centrally with an Asiatic pheasant, flowers and insects on a black ground, stamped to reverse, 80cm x 60cm £200-300
392. A 19thC ebonised and turned wooden bowl, possibly sycamore, 18cm diameter £40-60
393. A 19thC alabaster vase carved with swags of flowers, 40cm high £150-200
394. A 19thC brass and iron fender, 96cm wide £40-60
395. A pair of 19thC French gilt metal candlesticks cast in rococo style with leaves and scrolls, 31cm high £150-250
396. A mid 19thC marine chronometer by John Poole of Fenchurch Street London, with a two day movement, number 3725, in a mahogany case, in later travelling case, 18cm wide. Provenance: Ex Sothebys Lot 264, 1st October 1992 £2000-3000
397. A 20thC brass marine chronometer by Joseph Sewell of Liverpool, number 5208, in a brass bound teak case, 19cm wide £300-500
398. A pocket chronometer by Ulysse Nardin in a plated case, number 120528, 6.5cm diameter, later mahogany case £200-300
399. An MOD pocket chronometer, the dial signed E.M.T. 1548, in a plated case, 6cm diameter, mahogany travelling case £150-200
400. The Ship's chronometer by Marvin E Whitney and Chronometer Makers of the World by Tony Mercer (2) £10-20
401. A large Turkish carpet with a design of medallions on a red ground, shortened and lacking two sections of border, 336cm x 448cm £180-250
402. A pair of early 19thC bronze and gilt metal two branch candelabra, each cast with grapes and vines and suspended with cut glass beads and drops on a baluster column and tapering base, 29cm wide £300-400
403. A pair of 19thC bronzed vases, each with blue glass inserts, 15cm high £40-60



404. A 19thC porcelain relief moulded bust of a General, in an oval ebonised frame, 17cm x 13cm, a 19thC cast iron plaque in the form of three putti, 10.5cm wide and a painted crest containing three red squirrels in ebonised frame, 14cm wide (3) £50-80
405. Romanus, Jacobus Laurent: *Antiquae Urbis Splendor Praecipua Eiusdem Te* copper engraved views of ancient and modern Rome, with 4 unnumbered en the Vatican and Pope; includes 3 separate titles, originally published 1641, first title repaired with slight loss and some foxing, light sta Urbanus VIII, pope, dated 1623 and of the author, taken in 1609, original oblong folio, Rome, 1641 £1000-1500
406. A late 19thC japanned barometer in a banjo shaped case, 96cm high £80-120
407. A pair of giltwood and gesso two branch wall lights decorated with acanthus, 59cm high £100-150
408. An Empire style gilt metal two branch wall light decorated with masks and acanthus, 63cm high £80-120
409. A 19thC brass skeleton clock with a fusee movement, a pierced silvered dial, on a white marble base with glass dome, 14cm high £250-350
410. A Victorian toleware and iron coal scuttle, 30cm wide £60-80
411. A large quantity of brass and gilt metal furniture fittings to include castors, hooks, chandelier parts etc. £80-120
412. A 19thC insurance plaque with painted decoration "County" mounted on a wooden shield, 25cm wide £30-50
413. A French bronze and gilt metal mantel clock with an enamel dial mounted with an urn flanked by vases on flowers, supported by two turned columns and a rectangular base £250-350
414. A set of three 19thC brass fire implements, 68cm long £100-150
415. A set of three early 19thC polished steel and brass fire implements with a pierced shovel, approx. 80cm long £100-150
416. A set of three early 19thC steel and brass fire implements, approx. 73cm long £100-150
417. A 19thC Continental circular timepiece with an enamelled dial and walnut case, 10cm diameter £30-50
418. A late 19th/early 20thC Black Forest carved hors d'oeuvre dish with stylised branch handle and two frosted glass covers, 40cm wide £40-60
419. A large quantity of gilt metal, turned wood and other furniture handles, keys, parts etc. £30-40



396



397



398



401



In 2011 we sold over 30,000 Lots.....

## Grantham



£2,800 January



£2,800 February



£36,000 March



£4,400 April



£26,000 May



£1,400 June



£11,500 July



£1,100 August



£1,000 September



£12,000 November



£15,000 October



£8,100 December

**GOLDING YOUNG & MAWER** ♦ 1864

CHARTERED AUCTIONEERS & VALUERS ♦ ARTS & ANTIQUES SURVEYORS

The Grantham Auction Rooms  
Old Wharf Road, GRANTHAM  
Lincolnshire NG31 7AA  
Tel: +44 (0) 1476 565118  
Fax: +44 (0) 1476 561475  
Email: [grantham@goldingyoung.com](mailto:grantham@goldingyoung.com)

Every Sale is a  
Catalogue Sale



We could not review all of them, but here are a few highlights

## Lincoln



£2,300 January



£9,000 February



£1,000 March



£14,500 April



£4,200 May



£5,200 June



£4,200 July



£2,500 September



£8,200 August



£2,900 October



£4,600 November



£3,675 December

**GOLDING YOUNG & MAWER** 1864  
CHARTERED AUCTIONEERS & VALUERS ♦ ARTS & ANTIQUES SURVEYORS

**Online & Webcast**  
**1st & 3rd Wednesday Each Month**

The Lincoln Auction Rooms  
Dunston House, Portland Street,  
LINCOLN, Lincolnshire LN5 7NN  
Tel: +44 (0) 1522 524984  
Fax: +44 (0) 1522 535600  
Email: lincoln@goldingyoung.com





402



409



413

420. A Victorian silver policeman's whistle and cover, Jennens & Co Birmingham 1866 (the whistle marks for London 1875), on a belcher link chain with lion mask medallion clasp, 5.5cm diameter, 51cm long overall £150-200



414



415



420

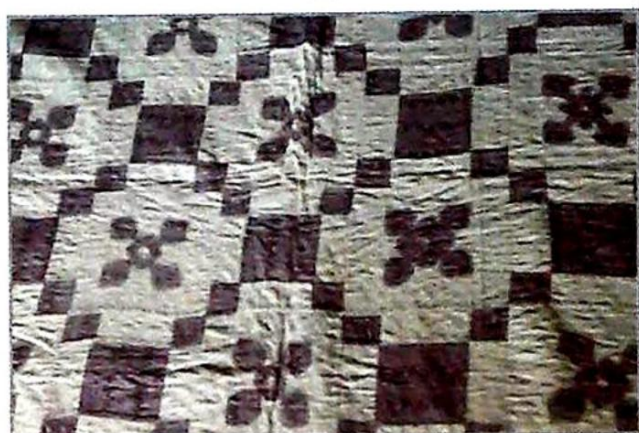
421. A 19thC pewter students type oil lamp, various tankards etc. £40-60
422. A 19thC copper, brass and gilt metal Continental ewer decorated with masks, mythical beasts and figures, 30cm high £60-80
423. A 19thC copper warming pan with turned and ebonised handle, 121cm long £20-30
424. A gilt metal circular casket, inset with mother of pearl panels, together with a gilt metal seal set with a cornelian, intaglio carved with an early steam engine and initials, an ivory knight chess piece, three cut metal circular buttons and a pair of silver set paste cuff links (8) £50-70
425. An Italian olivewood circular box and screw cover, the latter inlaid with a country woman, inscribed Bellagio, 7cm £20-30
426. An 18thC pewter tankard, the hinged cover with a scroll thumbpiece, scroll handle with hoof terminal, the plain body on a moulded foot rim, touchmarks to base, 19cm high, together with four 19thC pewter tankards (5) £50-100



427. A late 18thC Bavarian pewter dish, three touchmarks for Johan George Klingling, Blockzin, having a folded rim, 30cm diameter, a smaller example 25.5cm diameter together with a pewter tobacco box and cover and an open salt and pepperette (5) £60-80
428. A 19thC Bavarian pewter hexagonal flask and screw cover, the panels engraved variously with hunting scenes and scrolling foliage, the cover with a swing loop handle cast with two open mouthed fish with ball, manufacturers mark to base, 28cm high £40-60
429. A 19thC pewter charger with a folded rim, three faint touchmarks to underside, 43cm diameter, a pewter food warmer with swing handles to side, 24.5cm diameter, two Victorian pewter tankards and two pewter plates (a/f) (5) £60-80
430. A 19thC pewter oil lamp, the oil reservoir (lacking cover) on a tall stem with applied handle from a dished circular base, 23cm high, a silver plated chamber stick with gadroon borders, the thumbpiece handle fitted with a snuffer (damage to rim) etc. £30-40
431. A Victorian papier mache pen tray, an inlaid match case, a bone fan etc £40-80
432. A 19thC ormolu gas light, cast with scrolls and leaves £80-120
433. A set of four brass candlesticks in mid 18thC style, each with canted square bases £80-120
434. An ebonised wall mirror in the form of a portico, constructed from old timber £30-50
435. A set of six 19thC brass piano casters and wheels £30-60
436. An early 20thC copper dressing table set, enamelled with birds and flowers, in a fitted case £40-60
437. A pair of 19thC bronze chambersticks, each cast with grapes and vines £60-80
438. A 19thC German papier mache spectacles case and a carved pipe (2) £40-60
439. A pair of modern red glazed pottery table lamps, each with a shade and a brass base, 59cm high £40-60
440. A Paisley silk shawl, 164cm x 320cm and a wool Paisley shawl, 156cm x 154cm (2) £40-60
441. A quantity of furniture handles, escutcheons etc. £30-40
442. A 19thC log cabin quilt, with cream and pink floral fabric £80-120



426



443



444



447





449



460



461



466

443. A 19thC purple patchwork quilt, with applique decoration, 203cm x 224cm £100-150
444. A 19thC multicoloured patchwork quilt, 223cm x 250cm £100-150
445. An Egyptian Cairo ware brass bowl inlaid in white metal and copper with a design of leaves and calligraphy, 13cm diameter £20-30
446. After Doris Lindner. A bronzed cast model of a Dachshund, signature to body, 27cm long £60-80
447. A 1920's/30's green shagreen ivory cigarette box and a cigarette case (2) £100-150
448. An early 20thC woolwork picture of the Steam Ship Dilwara, also decorated with the Lincolnshire Regiment emblem and South Africa, 37cm x 50cm. The Dilwara from shipping was known to have taken officers of the 2nd Lincolnshire Regiment to South Africa in 1900 £100-150
449. A pair of watered silk curtains with applique leaves and flowers, 280cm x 123cm wide £80-120
450. An Aubusson type rug decorated with flowers on a blue and brown ground, 242cm x 149cm £60-80
451. An ebony walking stick, a malacca stick and two others £50-70
452. A 19thC carved horn caddy spoon and a hardstone brooch decorated with flowers in a gilt metal mount (2) £20-30
453. A Victorian pierced bone fan, some damage and a carved bone horse and trap (2) £30-40
454. A quantity of furniture escutcheons, handles, mounts etc. £30-40
455. Spare Lot - Refer to online catalogue
456. A pair of 19thC embroidered cuffs, each with foliate decoration and framed and glazed £20-30
457. A 19thC linen applique bed cover, 236cm x 224cm £80-120
458. A chenille bed cover decorated in brown with flowers, 172cm x 170cm £20-30
459. Spare Lot - Refer to online catalogue
460. A late 18thC German giltwood console table with a pierced and carved frieze on cabriole supports with floral stretcher, the later marble top with moulded edge, 79cm high, 42cm deep, 74cm wide £1000-1500
461. An 18thC gilt gesso rectangular wall mirror, the frame decorated with leaves, possibly with original bevelled plate, 106cm x 52cm £200-300





467

462. A giltwood and velvet lined column shaped floor lamp with a circular base on bun feet and a shade, 74cm high £80-120

463. A George III mahogany pole screen with a later floral work banner on tripod base, 153cm high £50-100

464. A William IV rosewood pole screen, the rectangular banner with an embroidered silk panel, on a part brass and reeded column, triform base with paw feet, 151cm high £50-100

465. An early 19thC mahogany tilt top occasional table with a dish top, on turned column and tripod base, 70cm high, 47cm diameter £80-120

466. A 19thC French sofa, in Louis XVI style, the later painted frame carved with foliate scrolls and flower heads, upholstered in yellow and pale blue striped fabric, on cabriole legs, 160cm wide £300-500

467. A Regency mahogany reading stand with an octagonal cross banded top on a leaf carved and reeded baluster column and tripod base with turned feet, 176cm high at its lowest, the top 33.5cm x 40cm £200-300

468. A walnut chest on stand, the top with a moulded edge over and above an arrangement of four small and three long drawers, the base with three drawers around an arched apron on turned supports with 'X' shaped stretcher and bun feet, later additions, 163cm high, 61cm deep, 102cm wide £2000-3000

469. A French giltwood and gesso jardiniere with carved sides on cabriole legs with liner, 74cm wide £350-400



468



469

470. An early 18thC walnut open armchair, carved overall with foliate scrolls and flowerheads, the part-caned back with two putti holding a crown, on spirally fluted supports, with a drop-in seat, 60cm wide £300-500

471. A pair of George III mahogany side chairs, each with an oval back and pierced splat, the padded seat on square tapering legs with "H" stretcher £150-250

472. A George III walnut oval drop leaf table, on cabriole legs with flower carved knees and ball and claw feet, 75cm high, the top 139cm x 122cm £400-600





470



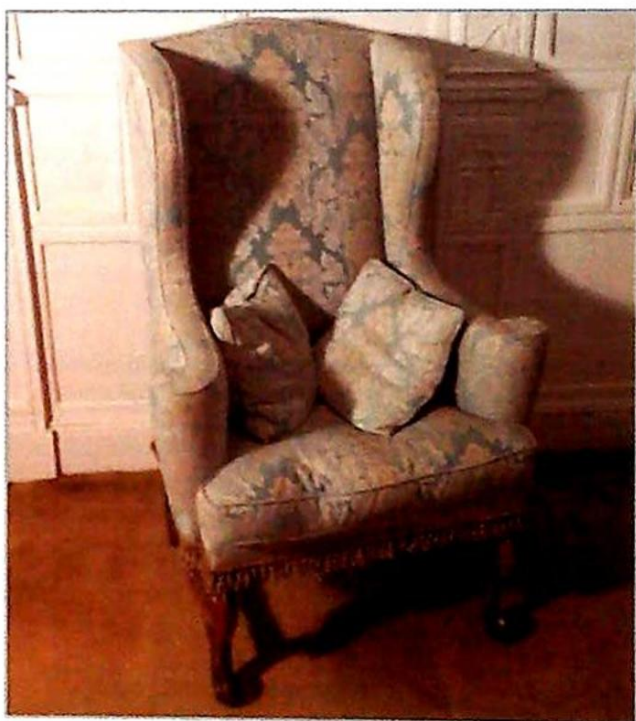
472



475



473



474

473. A late 19th/early 20thC giltwood and gesso vitrine, the moulded frame decorated in part with foliate scrolls, with a glazed side door enclosing two glass shelves, chamfered legs, 168cm high, 47cm deep, 87cm wide  
£400-600

474. A wingback armchair, in part early 18thC, upholstered in green and gold damask with fringed borders, on scroll carved supports with turned "H" stretcher, 78cm wide  
£400-600

475. An 18thC giltwood and gesso oval wall mirror with pierced decoration, 'C' scrolls and leaves, with a later plate, 95cm x 52cm  
£300-500





479



480

476. A George III mahogany demi lune tea table with boxwood stringing on square tapering reeded legs and block feet, 94cm wide £200-300

477. An 18thC Dutch mahogany bombe shaped commode, the rouge marble top with a moulded edge above three drawers with gilt metal mounts on splay feet, 86cm high, 61cm deep, 125cm wide £3000-5000

478. A George III mahogany rectangular card table with a carved border above a plain frieze with moulded legs and pierced brackets, 91cm wide £300-400

479. An 18thC oak gate leg table with an oval top on turned supports, 74cm wide £150-250

480. A 19thC Continental pine console table with a white marble top over a frieze drawer, on scrolling legs and paw feet, 89cm high, 76cm wide £200-300

481. A 19thC mahogany side cabinet, the top with a moulded edge above two panelled doors, 90cm wide £100-150



476



477



478

482. A William IV rosewood library table, the rectangular top with rounded corners above one drawer and a false drawer to the sides, on plain end supports with scroll carved brackets and leaf cast terminals and a flat stretcher, the top 60cm x 90cm £300-500

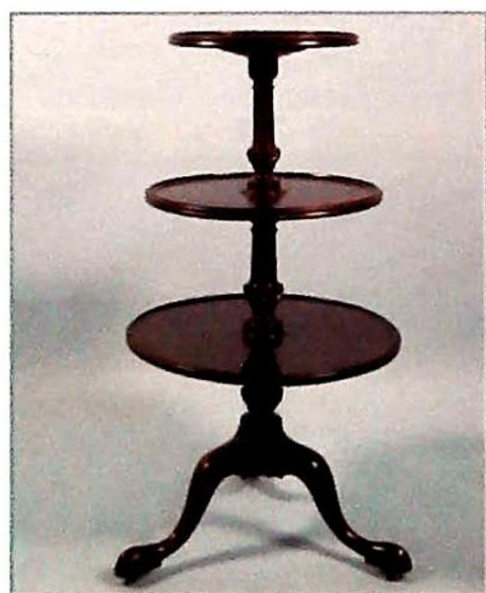




481



482



483

483. A George III mahogany dumb waiter with three graduated dished tiers on turned and part wrythen supports and tripod base with pad feet, 111cm high £900-1200



484



485

484. An early 19thC mahogany, satinwood and boxwood strung work table with a side drawer, on square tapering legs with 'X' stretcher, 51cm wide £200-300
485. An 18thC oak side table, the rectangular top with moulded edge above a frieze drawer, two doors enclosing a painted interior, on turned supports with stretchers, 96cm high, 69cm wide £150-200
486. A George IV mahogany side cabinet with a black fossilized marble top, a frieze drawer above two glazed panel doors, flanked by leaf carved canted corners on paw feet, 105cm wide £500-800
487. An early 19thC mahogany tilt top table with a circular top on a turned column and tripod base, the top 75cm diameter £120-150





493



486



498



490

488. A 19thC turned fruitwood spinning wheel on tripod base, 75cm high £80-120

489. A mahogany pole screen in George III style, the oval banner with a carved border inset with a tapestry type panel with flowers surrounding a fountain, on a turned column with leaf carved tripod base on paw feet, the banner 61cm wide £50-100

490. A Victorian mahogany collector's cabinet, with two panel doors enclosing seven drawers with turned wood handles on a plinth base, 82cm high x 76cm wide £300-500

491. A turned oak stool with a padded seat and 'X' shaped stretcher, 33cm wide £60-80



492

492. A pair of mid 19thC mahogany elbow chairs, each with bar back carved with flowers and scrolls, padded arm rests and seat, on fluted legs £1200-1500

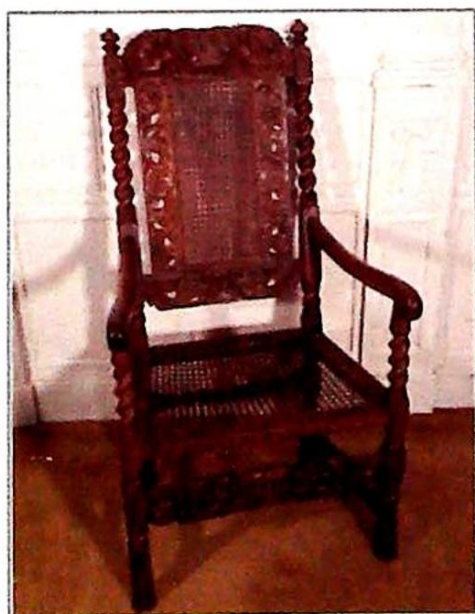




501



502



503

493. A mid 18thC walnut and cross banded swing frame dressing table mirror with turned brass finials, the rectangular plate within a moulded frame, the base with three drawers, on bracket feet, 43cm wide £100-150



504

494. An early 19thC mahogany swing frame dressing table mirror, the oval plate on shaped supports, the bow fronted base with a central marquetry patera and three drawers with turned bone handles, on bun feet, 51cm wide £100-150
495. An early 19thC mahogany pole screen with a later floral woolwork banner on a turned column and tripod base, the banner 42cm wide £50-100
496. A 19thC two fold fire screen inset with panels of Victorian scraps £60-80
497. A Victorian gilt brass pole screen base with a spirally fluted column and tripod base in the gothic style, 163cm high £60-80
498. A George III mahogany three tier dumb waiter of graduated form on wrythen and turned supports, a leaf carved tripod base and scroll feet, 105cm high, bearing the label for The British Antique Dealers Association stating certified over 100 years old £1000-1500
499. A turned oak child's rocking chair with a rush seat £60-100
500. A 19thC Continental bronze girandole, the circular mirror with pierced and beaded borders and a female mask to the crest, with five scrolling candle arms, £80-120
501. An 18thC oak side table, the rectangular top with a moulded edge above a plain frieze on turned supports with 'X' shaped stretcher and bun feet. £150-200





505

502. A late 17thC oak and marquetry mule chest, the top with a moulded edge above an arcaded frieze, the front carved with foliate scrolls, leaves and urns above a lower drawer, on stile feet, possibly Yorkshire, 84cm high, 143cm wide £400-600

503. An 18thC and later walnut open armchair, the part-cane back with carved decoration of leaves and two putti flanking a crown, on spirally turned supports and hoof feet, 62cm wide £200-300

504. A George III oak and mahogany cross banded standing corner cabinet with an inverted breakfront cornice above two arched panelled doors flanked by reeded pilasters, the base with two doors, on a plinth, 242cm high, 123cm wide £800-1200

505. A 17thC carved oak bible box, the hinged lid enclosing three drawers on a later base with a frieze drawer and bobbin turned legs with 'H' stretcher, 93cm high, 70cm wide £100-150

506. A late 17thC/early 18thC oak side chair with a leaf carved panel back over a solid seat with spirally turned stretchers, on turned feet £70-90

507. A George III mahogany oval breakfast table on a turned tapering column from four sabre legs with brass castors, 70cm high, the top 89cm x 122cm £250-300

508. A set of six George III mahogany dining chairs, each with a pierced splat, the drop-in seat on chamfered legs with 'H' stretcher £600-800

509. An oak refectory style table, the plank top with cleated ends on trestle end supports with central upright flat stretcher, in part 17thC, 79cm high, the top 101cm x 186cm £800-1200



507



508



509



511





510



512

510. A mahogany wingback armchair in George III style upholstered in brass-studded tan leather, on chamfered legs with 'H' stretcher, 56cm wide  
£200-300

511. A 17thC oak three tier buffet with a carved frieze on cup and cover supports, block feet, 109cm high, 46cm deep, 111cm wide  
£2000-3000



514



516

512. A late 17thC oak court cupboard carved overall with leaves, the top with two panel doors on turned supports, the base with a further two panel doors on stiles, 162cm high, 140cm wide  
£800-1200

513. A 19thC giltwood overmantel mirror in Egyptian style with an inverted breakfront cornice above a frieze decorated with lion masks and shells, with three bevelled plates flanked by caryatids, 77cm high, 137cm wide  
£100-200

514. An early 19thC fruitwood occasional table, the top with two rounded drop flaps on part written and ebonised column from a tripod base, 75cm high, 74cm wide  
£150-250

515. An 18thC oak tilt top table, the oval top with a moulded edge on baluster turned column from a tripod base, 68cm wide  
£150-200

516. A mid 18thC walnut tea table, the rectangular top with rounded corners on cabriole legs with pad feet, 81cm wide  
£300-400

517. An early 19thC mahogany gout stool on turned tapering legs, 86cm wide  
£40-60

518. A 19thC oak wingback armchair upholstered in multi coloured fabric and with tasselled fringe on turned supports  
£250-300





521



518



523

519. A mid 18thC rectangular gilt wall mirror with re-entrant corners moulded with leaves around a bevelled plate, 64cm x 105cm £30-40

520. James Green, London. A George III longcase clock, the arched silvered dial with subsidiary strike/silent dial, seconds dial and date aperture, with an eight day striking movement, the mahogany case with reeded pillars and pilasters, with an arched door to the trunk, on bracket feet, 243cm high £2000-3000

521. A set of six George III mahogany dining chairs, each with a pierced splat, drop-in seat on tapering legs with 'H' stretcher £600-800

522. A 19thC white variegated marble column of turned form on tapering base, 104cm high £200-250

523. A George III mahogany and boxwood strung corner wash stand with three recesses for bowls and beakers, above an undertier with central drawer and stretcher and splayed legs, 56cm wide £100-150



520



522





524



527



528

524. A 19thC giltwood and gesso French settee with a moulded and carved frame, padded back and seat on cabriole legs, 155cm wide and two matching armchairs £300-400

525. A pair of early 20thC Continental armchairs, each with a stained beech show frame, button back and cabriole legs £200-300

526. An early 19thC mahogany torchere with a circular dished top, turned column and tripod base, 73cm high £80-120

527. A pair of George III mahogany bergere armchairs, each with a reeded frame, caned back and sides, loose cushions, padded arms rests, on turned tapering legs with brass castors. £4000-6000



529



530

528. A Regency Goncalo Alves sofa table, with boxwood stringing, the rectangular top with rounded corners above a frieze drawer on four turned supports with concave platform and sabre legs with brass castors, the top 66cm x 152cm £1000-1500

529. A 19thC French vide poche, the rectangular top with two hinged compartments and a recess with a side drawer on lyre shaped supports with stretcher and outswept legs, 73cm x 43cm £200-300

530. A Regency mahogany giltwood and gesso wall mirror with an eagle crest, the moulded frame mounted with spheres, 71cm wide £300-500





537



534



540



535

531. An oak side table, in part 17thC, with a rectangular planked top over a plain frieze with turned supports, 113cm wide £100-150

532. An 18thC oak side chair with a solid vase shaped splat, over a solid seat with turned stretcher £40-60

533. An ash and elm stool with tapering legs and 'H' stretcher, 41cm wide £30-40

534. A George III mahogany secretaire bookcase, the moulded cornice above a pair of astragal glazed doors, the base with a fitted drawer above two panel doors on bracket feet, 238cm high, 120cm wide £1200-1500

535. Two similar late 17th/early 18thC Portuguese hardwood side chairs, each with a caned back and seat and turned supports with pierced rail and 'H' stretcher on Braganza feet £300-500



538





541



544

536. A Victorian gilt gesso overmantel mirror with an arched crest, 141cm x 114cm £60-80

537. A William IV rosewood table, the circular top inset with brown variegated marble, on an octagonal tapering column and concave triform base with scroll feet, 70cm x 39cm £200-300

538. A set of six walnut dining chairs, in late 17th/early 18thC style, each scroll carved cresting rail with a central bird, on spirally turned supports with a caned back rest and seat and 'H' stretcher, bearing the retailers label for W Charles Tozer of Brook Street London, in part constructed from old timbers £400-600

539. An 18thC oak tilt top table, the top with a shaped edge, on a turned column and tripod base, 70cm wide £80-120

540. A pair of carved oak side chairs, in part late 17thC, each decorated with scrolls and leaves on turned supports with a padded seat £200-400

541. An early 19thC rosewood and satinwood cross banded cylinder bureau cabinet, the top with a pierced gilt gallery above a pair of glazed doors and two drawers, the base with a fitted interior and two graduated drawers on square tapering legs, 175cm high, 92cm wide £1500-2000

542. An early 19thC elm corner armchair with solid splats, turned supports and a rush seat, 27cm diameter £150-200



543



546





550



547



551



549

543. An early 19thC mahogany tilt top table, the circular top later dished and inlaid with checker bands on a turned column and tripod base, 29cm diameter £150-200

544. A 19thC giltwood fauteil with an oval padded back, arm rest and seat on turned tapering legs £150-250

545. Spare Lot - Refer to online catalogue

546. A Regency rosewood and boxwood strung sofa table, the rectangular top with rounded corners above a frieze drawer on twin turned end supports with a stretcher on leaf carved sabre legs with brass castors, the top 147cm x 69cm £600-800

547. A George III mahogany Gainsborough type chair with a padded back, arm rests and seat on chamfered legs with 'H' stretcher £300-500

548. A George III mahogany commode armchair, the back with wavy supports, with a padded seat on chamfered legs with 'H' stretcher £60-80

549. A 19thC Japanese lacquer three fold screen decorated in relief with figures and trees in gilt on a black ground, 165cm wide £200-300





551



552



553

550. An early 18thC black and red lacquered bureau decorated overall with oriental figures in gilt, the fall enclosing a fitted interior above a frieze drawer and five tapering feet on integral stand with chamfered legs and 'H' stretcher, 97cm high, 37cm deep, 63cm wide £8000-12000

551. A pair of late 17th/early 18thC walnut side chairs, each with leaf carved decoration, the caned back on spirally turned supports £250-350



556



557

552. A George III mahogany and parcel gilt fret frame wall mirror, the pierced crest decorated with a bird, with a rectangular plate, 108cm x 69cm £200-300

553. A George III mahogany tilt top table, with a circular dished top on a baluster turned column and tripod base, 68cm diameter £200-300

554. A George III mahogany drop leaf table on turned tapering legs and pad feet £80-120

555. A George III mahogany and boxwood strung rectangular Pembroke table with a frieze drawer on square tapering legs, 82cm wide £50-80

556. A 17thC carved walnut day bed with a caned back and seat, decorated overall with foliate scrolls, flowers and crowns, some later additions £250-350

557. A 19thC French mahogany wash stand, with a dished oval top on shaped supports with undertier, 50cm wide £120-150

558. A 19thC mahogany urn stand in Chippendale style with a pierced gallery and frieze, a candle slide on cluster column supports with 'X' stretcher and block feet, 93cm wide £100-150





574



560

559. A set of 19thC mahogany wall shelves on turned supports, 67cm wide £100-150

560. An 18thC panelled oak cradle with an arched canopy, on stiles, 113cm wide £200-300

561. An Edwardian mahogany four fold screen with red canvas inserts, each leaf 67cm wide £40-60

562. A pair of Regency rosewood and brass side chairs, each with a caned back panel and seat, on sabre legs and a similar elbow chair £30-50

563. An 18thC mahogany oval drop leaf table on turned tapering legs with pad feet, 89cm wide £40-60

564. A set of four 19thC bar back Windsor side chairs with the makers stamp JB for probably an Oxford maker, in ash, elm and beech. £150-200

565. A late 19thC black japanned pot cupboard, 32cm wide £30-50

566. A late 19th/early 20thC pine and stone knife sharpener £50-80

567. A mahogany bookcase with two glazed doors and various furniture parts etc. £30-40

568. A set of four Continental mahogany dining chairs, each with a moulded frame upholstered in a brown rexine on turned tapering legs £60-80

569. A 19thC oak stool on turned supports, 181cm long £60-80

570. A Victorian mahogany marble top wash stand and various furniture parts etc. £50-100

571. A late 19th/early 20thC black japanned bookcase with two glazed doors, the base with a frieze drawer on cabriole legs, 179cm high, 103cm wide £200-300



564



571

572. A George III mahogany bidet stand with creamware insert on channelled legs £40-60

573. A modern dolls house in George III style with a simulated slate roof, on a stained beech stand, 134cm wide £100-200





576



585



579



580

574. A Victorian mahogany wind-out extending dining table, with moulded border, raised on reeded supports to brass cup castors, three leaves, 298cm extended. £1500-2000

575. An early 19thC French elm *Lit en Batteau*, the tapering ends headed by female busts on wooden castors, 107cm deep, 204cm long £150-250
576. An early 19thC mahogany tilt top table, the circular top on a baluster turned column and tripod base, 30cm diameter £200-300
577. An early 19thC reeded mahogany pole screen with a floral woolwork banner on tripod base, 166cm high £50-100
578. A pair of George III elm side chairs with pierced splats, on chamfered legs £30-40
579. A 19thC satinwood and rosewood cross banded demi lune console table on square tapering legs, 79cm high, 53cm deep, 124cm wide £1000-1500
580. A 19thC mahogany and brass open armchair with a padded back and seat on square tapering legs with 'H' stretcher £200-300
581. A George III oak side chair with a solid splat and a drop in seat on cabriole legs with 'H' stretcher £50-80
582. A 19thC French *fauteuil* carved with flowers and with a moulded frame, the cane back and seat on cabriole legs, later painted in cream and green £150-250
583. A George III mahogany adjustable fire screen on plain end supports with splay feet, 55cm wide £80-120
584. An early 19thC mahogany bow fronted dressing table mirror, the oval plate on shaped supports, the cross banded base with three drawers on bracket feet, 71cm wide £80-120





593

585. A Victorian papier mache tilt top table by Jennens & Bettridge, the circular top decorated with oriental figures and buildings in gilt and inlaid in mother of pearl on a black ground, on a baluster column with circular platform and scroll feet, 52cm diameter £150-200

586. An early 19thC mahogany and boxwood strung commode, the hinged rectangular top with a moulded edge above an arrangement of three false drawers and two false cupboard doors on bracket feet, 63cm wide £80-120

587. An 18thC giltwood oval wall mirror with a stylised rope twist type frame and an urn crest, 100cm x 55cm £400-600

588. An oak side table, the rectangular top with a moulded edge on turned supports with stretchers, constructed from 17thC timbers, 90cm wide £100-150

589. A late 17thC/early 18thC panelled oak chest of drawers, the top with a moulded edge above three drawers with turned wood handles, on stiles, 106cm wide £300-400

590. A 19thC oak and elm occasional table with a circular top on turned column and tripod base, 70cm high £60-80

591. An early 18thC oak side table, the planked top with a moulded edge above a frieze drawer on turned supports with 'X' stretcher and bun feet, 76cm wide £150-200

592. A pair of side chairs in late 17thC style, each carved with leaves and scrolls with a padded seat, one silvered and one gilt £80-120

593. An oak oval gate leg table on spirally turned supports with bun feet, in part early 18thC, the top 106cm x 130cm £300-400

594. An early 19thC elm open armchair with a solid splat and rush seat, on turned tapering legs with pad feet £100-150



587



589



591





595



600



597



598



599

595. An oak side table in early 18thC style with a frieze drawer on spirally turned supports with 'X' stretcher and bun feet, 76cm wide £150-250

596. A George III oak wash stand with a circular top inset with a later added 18thC delft bowl, above two triangular undertiers on cabriole legs, the top 26cm diameter £100-150
597. A late 17th/early 18thC walnut side chair with a carved and pierced crest, a cane back rest and seat with shaped supports, 'H' stretcher and Braganza feet £200-300
598. A late 17th/early 18thC walnut open armchair with a pierced crest, rail back and shaped arms with turned stretchers and Braganza feet, later additions £200-300
599. A mid 18thC oak side table, the rectangular top with a moulded edge above a plain frieze on cabriole legs with pad feet. £200-300
600. A late 17th/early 18thC walnut open armchair, the leaf carved back with a caned insert, drop in seat, shaped arms on spirally turned supports, later additions £200-300
601. An 18thC oak lowboy, the rectangular top with a moulded edge above an arrangement of three drawers, the rounded shaped apron on cabriole legs with pad feet, 79cm wide £200-300
602. A 17thC oak chest, the front with a central panel with an arched portico, flanked by lozenge shaped panels, on stiles, 114cm wide £250-350
603. A late 18th/early 19thC oak tilt top table, the circular top with a moulded edge on a bird cage with a baluster turned column and unusual tripod base £400-600





605



607

604. A Regency gilt gesso circular wall mirror, the moulded frame inset with spheres within a leaf moulded border and reeded ebonised slip, 67cm diameter £150-250

605. A 19thC Continental gilt metal and ebonised cushion shaped mirror with a ripple moulded frame, 110cm x 75cm £200-300

606. A set of four 19thC ebonised side chairs in the manner of William Morris, each with a rush seat £80-120

607. A pair of 19thC giltwood and gesso side chairs, each with a padded back and seat on cabriole legs £100-150

608. A Victorian birds eye maple three tier what-not, with a raised gallery, on turned uprights and a frieze drawer with brass castors, 100cm high, 44cm wide £200-300

609. A Victorian birds eye maple and line inlaid chest of two short and three long drawers, on a plinth base, 120cm wide £200-300



601



602



603

610. A Victorian walnut and marquetry credenza with gilt metal mounts, the central drawer flanked by two bowed glazed doors, on a plinth base with bun feet, 106cm high, 113cm wide £600-800





608



611

611. A George III satinwood and tulip wood cross banded dressing table mirror, the circular plate on shaped supports, the serpentine fronted base with three drawers on ogee bracket feet, 43cm wide £100-150

612. A George III mahogany oval Pembroke table with a frieze drawer on square tapering legs with brass castors, 91cm wide £150-250

613. An 18thC oak mule chest, the hinged rectangular top with a moulded edge above a panelled front with a drawer, on stiles, 140cm wide £300-400

614. A 19thC satin birch side cabinet with a frieze drawer above two panelled doors with fabric inserts flanked by reeded pillars, 109cm wide £300-400

615. A Spanish ebonised cabinet base decorated with spirally turned supports on scroll feet, with a later black marble insert, 72cm wide £100-200

616. A late 17thC/early 18thC oak open armchair upholstered in brown leather with brass studs, later additions £200-300

617. A wingback armchair upholstered in dark red velvet on turned tapering legs £150-250

618. An early 19thC black Japanned work table decorated with buildings, flowers and birds on a black ground, the octagonal hinged lid enclosing a plain recess above a silk wool-bag, on square tapering legs with brass castors, 53cm wide £200-400



609



610

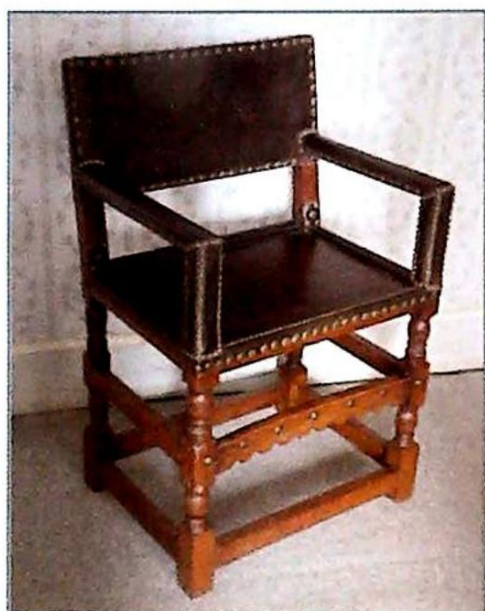




615



612



616



613



614



617

619. An early 19thC mahogany dressing table mirror, the circular plate on shaped supports, the serpentine fronted base with three drawers on bracket feet, 56cm wide  
£80-120

620. A William IV mahogany wardrobe with five drawers, each with turned wood handles, flanked by two panel doors on a plinth base, 179cm high, 231cm wide  
£300-500





618



620



622



621

621. A George III longcase clock, signed Robert Skelton, Malton circa 1750-1775, of eight day striking movement, the arched brass dial with a silvered chapter ring, an in a figured mahogany case with reeded pillars and brass Corinthian capitals and a swan neck pediment on bracket feet, 226cm high overall £1500-2000

622. A two handled composition campana shaped urn cast with classical figures £200-300

623. A George III oak and mahogany banded bow fronted corner cabinet, 64cm wide £150-200





624



625

624. An early 19thC oak delft rack with three shelves,  
120cm wide £100-150

625. A period Genoese rococo gilt-wood framed  
multi-plate wall mirror, in the 18thC manner,  
118cm wide, 107cm high.  
Provenance: Bitchfield Manor, Near Grantham  
£2500-3500

End of Sale

For additional lots, all illustrations, errata ad  
adendum please refer to our online catalogue.

## To Visit The Saleroom



The Lincoln Auction Rooms at Dunston House are situated in central Lincoln on the East end of Portland Street at the foot of Pelham Bridge (Canwick Road.) By car, approaching from the South, take the last turning on the left just before the road rises to the bridge.

Approaching from the North (via Broadgate,) go over the bridge and turn towards Jacksons Building Centre/ Tesco on to Kesteven Street.

Follow the road around to the left and drive under Pelham Bridge to Portland Street. Turn left and you will see Dunston House on the right. Portland Street is also accessible from Lincoln's High Street, opposite the Ritz public house.

The salerooms are within walking distance of the main railway station and bus depot.

## To Watch or Bid Online

If you cannot attend the sale you can watch  
or bid online

By clicking on the following logo



live auctions  
the-saleroom.com

from the homepage at

WWW.GOLDINGYOUNG.COM



## TRANSPORT & REMOVALS

Golding Young & Mawer provide Removal Services,  
Property Clearance and Transport for items submitted for Auction.



For a full range of services please contact  
Andrew Lowes directly on  
(07970) 742577

- Removal Services •

Household & Commercial  
Local & Long Distance

- Packaging Services •

Antiques & Fine Art Specialists  
Materials Supplier  
Shipping & Storage Arranged

- Collections & Deliveries •

Single Items or Regular Contracts

- Bespoke Professional Service •

Over 30 years experience working with Golding Young & Mawer

**LOWES** ♦  
**LOGISTICS** 1979  
removals ♦ transport

*Delivering Waddington Manor to the Lincoln Auction Rooms*



# **SPECIALIST PICTURE SALES**

**At The Lincoln Auction Rooms**

**The British Art Market is in a renaissance with collectors and connoisseurs continuing their quest for the finest works.**

**Investors at all levels are also revisiting the market in difficult economic times.**

**The results achieved at Lincoln in our dedicated sales have been strong for 20thC British regional artists, encouraging once more for 19thC landscapes, and decorative watercolours at the lower end are being seen as excellent value for money.**

**Entries are now invited for the**

**Next Sale on**

**Wednesday 26th September 2012**

**Call William Gregory MRICS on 07872 455883  
to discuss your consignment**





[WWW.GOLDINGYOUNG.COM](http://WWW.GOLDINGYOUNG.COM)

**GOLDING YOUNG & MAWER** 1864  
CHARTERED AUCTIONEERS & VALUERS ♦ ARTS & ANTIQUES SURVEYORS