



THOS. MAWER & SON LTD.

Auctioneer & Valuers Established in 1864



The March Antique Sale

Saturday 27th March 2004 commencing at 10.30am

On View:

Friday 26th 10am-4pm & morning of sale from 9am

Catalogues £5.00

COMMISSIONS

The Auctioneers are pleased to execute commissions for intending buyers in confidence as cheaply as is allowed by any other bids. **All telephone bids must be confirmed in writing or by fax by 4pm the day prior to sale, telephone bids will not be accepted for lots on which the top estimate is under £500.00.** We cannot guarantee to execute bids received on the morning of sale.

BUYER'S PREMIUM

There is a 15% premium (inclusive of VAT) payable on the final hammer price of each lot.

REGISTRATION

All prospective purchasers are requested to register and obtain a bidding number prior to the start of the sale.

CATALOGUE DESCRIPTIONS

Care is taken to ensure that any statement as to authorship, attribution, origin, date and provenance is reliable and accurate, but all such statements are statements of opinion and are not to be taken as statement or representations of fact. Thos. Mawer & Son Ltd. reserve the right, in forming their opinion, to consult and rely upon any expert or authority reasonably considered by them to be reliable. While an identification of damage is given in some instances, an absence of such advice does not imply that a lot is free from defect. Prospective purchasers are strongly advised to inspect any lot on which they intend to bid. All measurements and weights are approximate and should be verified by intending purchasers

ESTIMATES

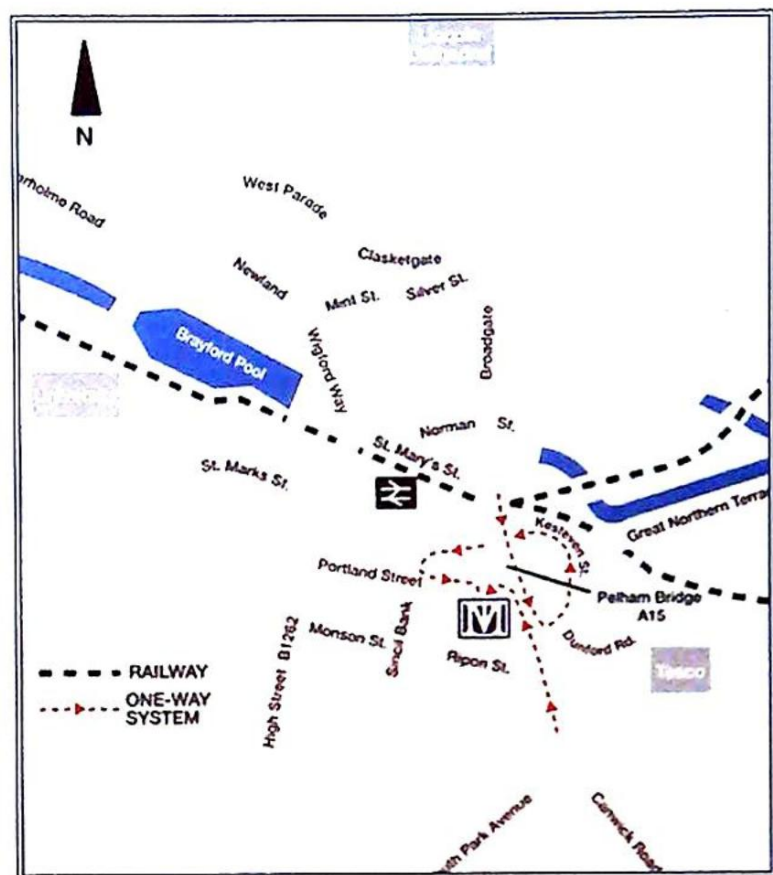
Estimates for lots under £100.00 are not printed in the catalogue. On lots that are reserved, the reserve will not be greater than the published estimate at the time the catalogue goes to press.

PAYMENT OF ACCOUNTS

All Lots should be paid for and collected immediately following the sale. Any lots not collected by 4.00pm on the wednesday following sale day will incur storage charges (minimum £25.00 plus VAT per lot).

Payment for all lots must be made on the day of sale and methods are (1) CASH, (2) CHEQUES supported by either a letter of Reference from your bank or a cheque guarantee card to cover the sum of your purchase, (3) BANKERS DRAFT, (4) DIRECT DEBIT CARDS such as "Switch", "Delta", "Classic", "Connect", (5) CREDIT CARDS subject to a 2% premium charge.

No lots in this sale are the property of Thos. Mawer & Son.



LOCATION

The Thos. Mawer & Sons salesrooms at Dunston House are situated in central Lincoln on the east end of Portland Street at the foot of Pelham Bridge (Canwick Road). By car, approaching from the south take the last turning on the left just before the road rises to the bridge.

Approaching from the north (via Broadgate), go over Pelham Bridge and turn left towards Jacksons Building Centre/Tesco on to Kesteven Street. Follow the road around to the left and drive under Pelham Bridge to Portland Street. Turn left and you will see Dunston House on the right. Portland street is also accessible from Lincoln's High Street, opposite the Ritz public house.

The salerooms are within walking distance of the main railway station and bus depot.

ENGLISH & CONTINENTAL PORCELAIN & POTTERY

- Royal Doulton. A Victorian part toilet set, pattern D367 comprising two jug and bowls, small comport, oval lidded trinket container, two vases, chamber pot, (spare lid) and a trinket pot etc. £100-£150
- "Bisto" (Bishop & Stonier Ltd). A pair of wash jugs retailed by Maple & Co, the green ground decorated with birds of paradise among peonies, 32cm high
- Various toilet ware - two chamber pots, two wash jugs etc.
- A XIX century blue and white transfer print bowl, 33.5cm diameter
- A pair of XIX century Satsuma pale blue ground baluster vases, the floral decoration with coloured enamels and gilt highlights, 45.5cm high £200-£300
- Limoges. A cobalt blue banded and gilt decorated part dessert service comprising two comports four smaller ditto and five plates
- Aynsley Bone China. Eight cobalt blue and gilt decorated coffee cups and saucers, pattern 7081
- "Bisto" (Bishop & Stonia Ltd). A cobalt blue and gilt decorated tea service comprising two bread and butter plates, jug and bowl, 11 cups and 12 saucers and 12 side plates
- Royal Doulton pattern D2775 - 7 x 21cm diameter transfer print dessert plates decorated with prunus and exotic birds in a garden
- A Victorian blue pottery dessert service comprising six plates and a matching two handled dish with moulded borders and decorated with flowers in a cornucopia, gilt highlights, plates approx. 23cm diameter
- A XIX century Chinese famille rose bowl decorated with figures in typical costume amid blossom and flowers, 31cm diameter
- Oriental china. A Cantonese bowl, Nanking Cargo tea bowl and saucer, smaller bowl and another saucer
- Sundry oriental china - 15 pieces
- Royal Worcester (all damaged/deficient) - two ewers, shape 1144, four vases, 2141, 1582, 1661 & 2269, and a leaf shaped dish, 1404
- Royal Worcester. A vase shape 1720 with painted GE initial to base (lid missing)
- Limoges, a floral decorated dessert service with gilt highlights and borders comprising two pedestal comports, 23cm diameter; two triangular dishes approx. 25cm; two oval dishes 28cm x 21cm and ten 22cm diameter plates £100-£150
- Coalport impressed 82K12 and painted number C.6464/D. A dessert service comprising two pedestal comports, 22cm diameter, two oval and two square comports and twelve 22cm diameter plates - all with cobalt and gilt lined borders, printed with pink roses
- W.G. & Co France. A porcelain dessert service with moulded scalloped borders decorated with floral sprays and comprising a circular comport, circular shallow dish, 23cm, an oval ditto 26cm x 22cm and six plates, 23cm diameter £100-£150
- Crown Devon Fieldings. An oblong pottery musical cigarette box decorated with Irish landscapes, the front with "Killarney" and the ends "In The Gap of Dunloe and Muckcross Gates" 21cm x 12cm x 9cm
- Booths silicone china. A pair of cabinet plates, the scale blue ground with panels of fancy birds with elaborate gilded borders, 23cm diameter
- Collingwoods England pattern 1322. A pair of cabinet plates, the cobalt blue borders with panels of summer flowers and gilt highlights, 22cm diameter
- Elkin Knight & Co. A lozenge shape early XIX century blue and white transfer print meat plate, printed mark "Lancaster" (cracked), 40.5cm x 53cm
- Elkin Knight & Co impressed mark. An early XIX century blue and white transfer print lozenge shape meat plate, transfer print mark "Lancaster" (cracked), 48cm x 37cm (matches the previous lot)
- Elkin Knight & Co impressed mark. Three small lozenge shape early XIX century transfer print dishes - figure on horseback outside a cottage, each 18cm x 13cm
- A blue and white transfer print sauce tureen and cover with moulded handles, the domed lid with a floral finial, printed with rural scenes, figures seated on a wall before a castle, unmarked, with two other damaged identical tureens, approx. 15cm high, 22.5cm wide



Lot 1



Lot 5



Lot 2



Lot 9



Lot 19



Lot 22



Lot 6

26. A XIX century willow pattern blue and white transfer print sauce tureen with shaped body and lid, another similar with a stand, each approx. 19cm x 8cm
27. Elkin Knight & Co. A "Lancaster" pattern mazarine, 32cm x 23cm
28. A XIX century blue and white transfer print plate "Belvoir Castle", 26cm diameter
29. Spode impressed 27 and 5. A pair of XIX century blue and white transfer print plates, rustic scenes, 25cm diameter
30. Seven early XIX century blue and white transfer print plates "Nantmill", (possibly Elkin Knight & Co, but no impressed mark), 21cm diameter
31. An early XIX century blue and white transfer print plate, "Denton Park", 21.5cm diameter; and another "The Rookery", 18.5cm
32. A set of eight blue and white transfer print plates, Byland Abbey, Yorkshire, 25cm diameter and one dish also 25cm
33. Willow pattern - two meat plates, tureen and sundry other blue and white china including a small pair of oval tureens and covers
34. A pair of oval blue and white transfer print willow pattern dishes with scalloped borders, 27cm x 19cm
35. Copeland Italian Spode. A fruit bowl, 24cm diameter
36. A XIX century blue and white transfer print dish in the form of a leaf and an Adams tea caddy, copy of the 1780 Chinese pattern
37. A pair of Continental blue and white tapering vases, 16cm high
38. A Continental hard paste porcelain posy holder, elaborately decorated with a seated maiden amid flowers and a Dresden porcelain candelabra
39. A pair of gilt metal and porcelain table lamps (electric, handle missing) and another pair of similar ditto
40. Sundry decorative china - a pair of dressing table jars and covers, jardiniere, a jug, plate and dish (6)
41. Carltonware. A green jug decorated with classical females in relief and a Carltonware ochre ground tapering vase with panels of exotic birds, 17cm and 20cm
42. A XIX century Continental campana armorial vase with moulded gilded handles on a square base, 20cm high
43. A pair of Continental porcelain two handled vases decorated with floral garlands, banded in blue with gilt highlights (one minus lid), 14.5cm high
44. A two handled Continental porcelain armorial vase, another baluster vase, another larger 'Paris' decorated with garlands and strewn flowers and a tapering armorial vase "M & Co Saxonia"
45. A XIX century transfer print jug commemorating "Her Most Gracious Majesty Queen Adelaide & His Most Gracious Majesty King William", the lobed body printed in one colour - crazing, some damage and discolouration, 17cm high
46. Royal Crown Derby. Two modern ornaments - a blue tit and a rabbit
47. A circular squab cloisonne bowl decorated with a dragon, 20cm diameter
48. A Parien bust of Mozart on a square plinth, incised mark R & L in an oval, 19.5cm high
49. A tobacco jar and cover in the form of a monks head, his hood forming the lid, approx. 18cm high
50. Doulton Lambeth. A jug commemorating "The Reign of Queen Victoria Remember the 60th Year" and round the lid "Fear God Honour The Queen", and below the handle "The Gift of Lees Knowles MP" - handle glued
51. A XIX century Damm style figure of a girl carrying a goose in a basket on her shoulder, naturalistic base, 16cm high
52. A late XIX century Continental well coloured model of a semi naked winged maiden with a peacock at her side, on a rococo scroll base with anchor mark, possibly Sampson Paris £100-200
53. Royal Worcester. A melon shape vase and cover with gilt borders, painted with trailing flowers, date code 1892, decorators initials JH, approx. 16cm high



Lot 39



Lot 51



Lot 42



Lot 43

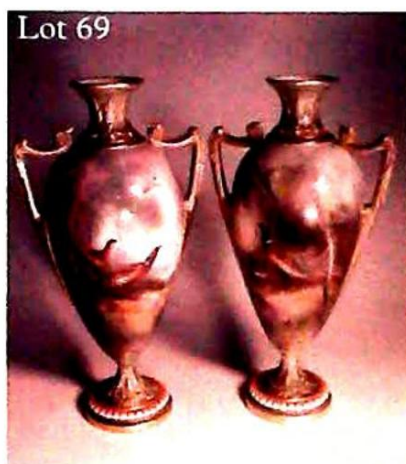


Lot 49

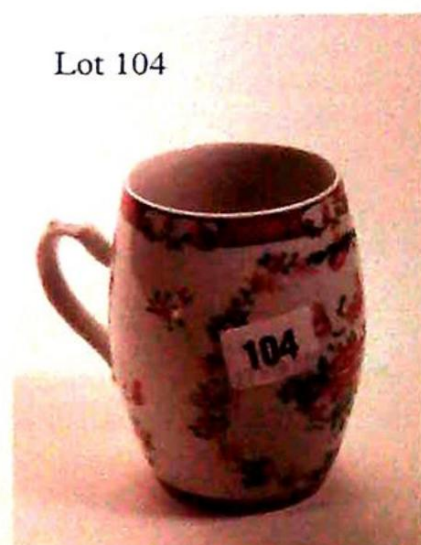
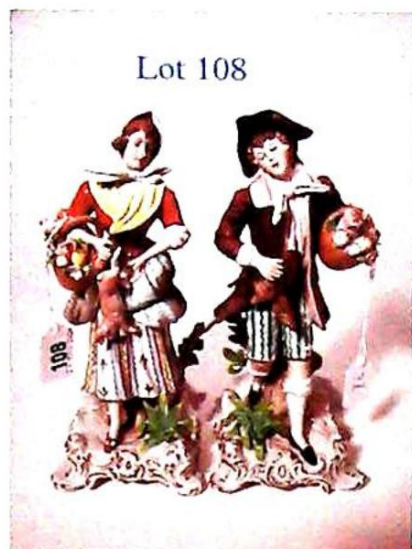


Lot 55

54. A "Victoria" Worcester style hors d'oeuvre dish divided into three bowls, each painted with summer flowers, the shaped edge gilt lined, loop handle
55. A XIX century Continental paperweight modelled as a boxer dog lying with his paws outstretched on an oblong base painted with flowers and with gilt highlights, impressed beneath "58 No. 1645", underglaze blue cross swords, 20cm long, 6cm high (dogs tail missing)
56. A XIX century figure of a fruit seller, another group of mother and children together with five other pieces of decorative china and figures (8)
57. A Continental well coloured porcelain figure of Neptune, 23.5cm high £100-£200
58. Continental porcelain monkey band figures - trumpeter, flutist, cello player, violinist and conductor - each with impressed numbers beneath and approx. 15/16cm high
59. Decorative china:- Pekinese on a cushion by Basil Matthews, Goebel figure "Sackart" etc. (6)
60. Chinese famille rose baluster vase decorated with figures in typical costume
61. Newport Pottery. Bizarre by Clarice Cliff. A blue chintz pattern beehive preserve pot and cover, approx. 9cm high £150-£200
62. A bizarre "Crocus" pattern bonjour coffee pot, sifter and a 15cm side plate £200-£300
63. A "Crocus" pattern bizarre preserve pot and cover
64. Clarice Cliff Bizarre. A "Marguerite" pattern conical sugar sifter, printed factory marks, 13.5cm £350-£450
67. A large pair of XIX century Imari tapering vases, 44.5cm high £120-£220
68. Newhall. A tea set comprising six tea bowls and saucers, 15cm diameter slop bowl, another 11.5cm and a jug 11.5cm £250-£400
69. Royal Worcester 1902 pattern 2192. A pair of ovoid tapering two handled vases painted with cock pheasants and signed "Jas. Stinton" (one with restoration to handles), 26.5cm high £300-£500
70. A XIX century Crown Derby cabinet plate, two Kaloin ware wall plates (a/f) and a Victorian pottery jug decorated with blossom and with a hinged pewter lid
71. A pair of Continental bisque figure ornaments, a girl holding fruit and a boy with a monkey on his arm, under glass domes, 32cm high
72. Two pairs of Victorian opaque painted glass vases, another similar larger and a pottery ewer painted with flowers
73. Copelands China retailed by Thomas Goode & Co. A dessert service banded in cobalt blue with castellated and "jewelled" border, comprising two comports, a bowl and eight plates, 22cm diameter £200-£300
76. A pair of Staffordshire seated King Charles spaniels with flesh coloured muzzles, the white moulded bodies with chains and padlocks to the collars, 21cm £100-£200
77. A pair of Staffordshire seated King Charles spaniels, the bodies decorated in brown with painted eyes and flesh coloured muzzles, raised number beneath "4", 19cm
78. A pair of seated Dalmatians with gilt painted collars, padlocks and chains on oval purple bases, gilt lined, 12.5cm high
79. A pair of seated cats, the yellow bodies with green neck bows on oblong green painted and gilt lined bases, 18cm high
80. A staffordshire flatback Crimean War figure group, Zouave & English Officer standing beside a drum, 20.5cm high £250-£350
81. A Staffordshire figure group of musicians, he with a violin and she with a tambourine, on a scroll moulded base, 24cm high £100-£200
82. A pair of Staffordshire figures - Scottish boys astride goats, with applied bocage on oval bases, 12cm high
83. A pair of figures - a hunter with his hound and gun, his lady plucking a bird, both seated on circular gilt lined base, approx. 21cm high £150-£250
84. A Staffordshire portrait figure "K. of Sardinia" in military dress, astride his horse, 29.5cm high £180-£280



85. A pair of Staffordshire military portrait figures, each titled on a banner to the base "Lord Kitchener" and "Gen. French", both mounted in military uniform, the horses and figures with gilt highlights against green painted backgrounds on oval bases £300-£500
86. Crown Devon. A cow creamer marked "Jersey" and another similar brown pottery cow creamer
87. A Staffordshire spillholder figure group - two children either side of a tree trunk, a XIX century teapot, and a pepperette as a pot bellied character holding a foaming jug of ale, wearing a tricorne
88. Staffordshire ornaments - spillholder, recumbent sheep, castle and flower seller figure (4)
89. Royal Doulton. A flow glazed jardiniere decorated with raised flower heads, impressed mark beneath and number 8510, 17cm high
90. A large French salt glazed blue decorated pottery jug, 29cm
91. An XVIII century delft tin glazed plate (damaged) and a XIX century Derby sucrier and cover, the body painted with a gilt and blue foliate design, puce mark beneath number 26
92. A XIX century Salopian pale blue overlay cylindrical lidded jar with incised fern and grass decoration, 11cm
93. A Continental figure group of two girls and a boy with two dogs seated and with two roses to the gilt decorated oval scroll base, gold painted anchor beneath and number 38 (possibly Sampson Paris), 4.5cm high £100-£150
94. A XIX century blue and white transfer print oval mazzarine, 30cm x 22.5cm, another slightly smaller, 27cm x 20cm and two small oval plain white mazzarines
95. A circular blue and white willow pattern transfer print comport and a gravy boat
96. A Masons ironstone china blue and white transfer printed chamber pot and a pair of sandwich plates with shaped borders
97. A cylindrical blue medicine bottle and stopper, plain glass ditto labelled "Pot"; "Brom" and another larger similar bottle
98. A pair of cylindrical clear glass decanters and stoppers, the cut trellis pattern bodies with gilt decoration, 23cm
99. A moulded Victorian stoneware jug with a pewter cover "November 1830 published by C Mcigh, Handley, Julius Caesar 12", 21.5cm
100. A Majolica jug with a pewter hinged cover decorated with a child and dog, 21cm
101. A pair of Grafton China City of London badged conical beakers, 9cm; a mug "a present from Whitchurch"; another christening mug dedicated to Sarah Wood and a Bloor Derby coffee can (5)
102. A Victorian moulded mask jug decorated with card players and with copper lustre highlights, elaborate scroll handle, 18cm; and a salt glazed jug decorated with panels of classical figures
103. A Meissen comport, the cobalt blue border with gilt vignettes, centred with ripening fruit, underglaze blue cross sword mark beneath (a.f), 15cm high, 30cm diameter
104. A XIX century famille rose tankard, 12cm high
105. Royal Dux impressed 2295 5 "Water Carrier", 28.5cm high
106. Royal Dux. A pair of figures, a girl with a dove on her shoulder carrying a jug, number 2132; and a girl holding a drape around her, number 2133, approx. 21cm high £80-£130
107. Royal Dux. A posy holder, a young girl looking into a shell, leaning forward, incised number 1117 and 40, 15cm high
108. Sitzterode. A pair of well coloured figures of a man and woman - she with a basket of flowers holding a rabbit and he with a basket of flowers holding a bird, rococo scroll bases, approx. 23cm high £150-£250
109. Sitzterode. A well coloured figure of a girl with a basket wearing a turban like head scarf on a gilt highlighted base, 19.5cm high £80-£130
110. A pair of Continental figures, he with a basket of flowers and she with a hat on rococo scroll bases, unmarked, 12cm
111. Sitzterode. A small pair of well coloured figures, she with a basket of posies and he with a stick and bundle on his shoulder, 10.5cm
112. Rudolstadt Volkstedt. A pair of figures - musicians, he with a lute and she with castanets on circular gilded bases, 16cm £70-£120



113. A pair of bisque figures of a boy and girl, elaborately dressed, she with a blue dress and raised gilt dots, he with a brown coat and blue cummerbund, 27cm high

PRINTS

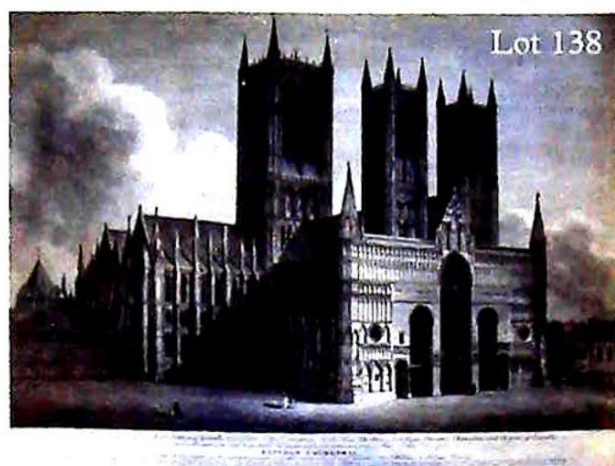
136. A series of prints of Italian churches in Rome, printed for Jno. Bowles Cornill (8) - two framed
137. After Thomas Espin An XVIII century print - the North West view of the town of Louth image approx. 35cm x 53cm
138. After W Burgess An early XIX century print - Lincoln Cathedral, marked in the margin "proof" approx. 40cm x 57cm
139. A XIX century coloured print - view of a building in Hyde Park for the Great Exhibition 1851 19cm x 45cm overall in a wide oak frame
140. Two XIX century prints - Cleve Church Lincolnshire and the Roman Arch of Lincoln, 16cm x 21cm, 18cm x 24cm, contemporary frames
141. Various prints including The Prior's Door, Ely Cathedral; After Howarth Canarvon Castle (4) etc.
142. Two XIX century French engravings - "Decoration de la Salle de de Spectacle" Versailles 1745; and another "Chateau de Versaille" on the marriage of Philippe II 1739, 71cm x 52cm and 45cm x 92cm
143. A set of four late XIX century Continental engravings - Dutch landscapes, villages etc., moulded oak frames, all approx. 16cm x 24cm
147. After J Winterhalter A large pair of engravings - young Queen Victoria and Prince Albert, in elaborate gilt frames surmounted by crowns on cushions, image approx. 75cm x 57cm
148. After Moorland Two coloured engravings - children feeding goats and a tea garden; and another of mother of child in a formal garden, impressed PKO, Princellas Association published 1918, ornate gilt frame
149. A pair of coloured Victorian prints in gilt lined silhouette mounts titled "Children Bird Nesting" and "Favourite Chickens", image approx. 40cm x 50cm £100-£150

150. After Sir Joshua Reynolds His Royal Highness The Prince of Wales, published 1790, another His Royal Highness George Prince of Denmark, The Countess of Rochford etc. (6)

151. After Titian, Philip King of Spain; another Henry Prince of Wales; a coloured print George III in an oval mount and his wife
152. A collection of prints - The Right Reverend Edward Lord Bishop of Lincoln (2 - one in colour); two photographs, one by G Hadley of Lincoln and another photograph and print of a Lincoln Bishop, all framed (6)
153. A series of four early XX century coloured prints of young ladies in elaborate bonnets and another similar print of Mrs Cosway (5)
154. A XIX century engraving - The Meet with huntsmen, riders, children and hounds, image approx. 56cm x 71cm
155. After C.A.S. Douglas A pair of XIX century hunting prints - "A Roadside Meet" and "Ten Miles from Kennels", 23cm x 67cm £100-£200
156. After Gainsborough Portrait of a lady, oval gilt frame, surmounted by ribbon brocade
160. The Armorial Bearings of Michael Marcus Sleight with a small photographic copy; The Armorial Bearings of Eleanor, daughter of Sir George Frederick Sleight in a shield shape frame and a copy of the records of the college of arms awarding Sir G.F. Sleight his Baroncey; the Armorial Bearings of George & Ann Brockway, a small unknown armorial and extract of an illuminated manuscript

PAINTINGS ETC.

161. Jesse Madelaine Walpole Four watercolour drawings - Nr. Ullswater, Widecombe in the woods, and two larger pictures of parish churches, untitled
162. Three watercolours - E.C. Edgson "Wold Country Nr. Horncastle", H.B. West "Wold Newton" and another of Kelston Church (3)
163. A watercolour drawing - fisher folk and vessels beneath cliffs, 20.5cm x 37cm
164. Attributed to Thomas Hearn on the mount - a pastoral scene with figure and mule crossing a wooden bridge, castle amid trees in the distance, see verso extract from Country Life, watercolour drawings, 25.5cm x 35cm

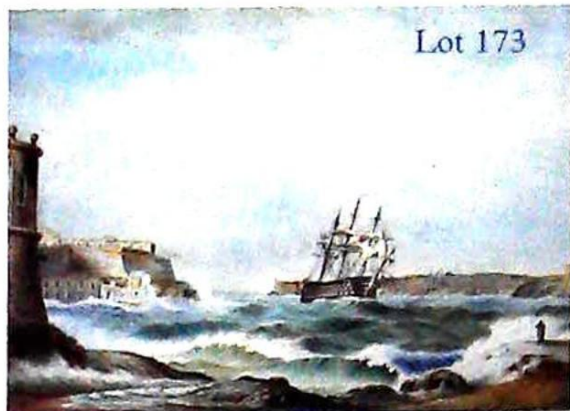


165. Attributed to Copley Fielding on the mount A watercolour drawing of a road and a stone wall with figure and fishing rod 12cm x 20cm £150-£250
166. Thomas Churchyard A watercolour drawing - Felixstowe Cliffs, gallery label verso, Albany Gallery, inscribing on the original frame "Emma", intended for the artist's daughter 7cm x 9.5cm £200-£400
167. John Cuthbert Hare Brede Place, Sussex - Fine Art Society Ltd, gallery label verso, January 1968 17.5cm x 16.5cm £100-£150
168. J Allen Shuffkey s. Oxford College - watercolour drawing 34.5cm x 25.5cm
169. D Brockway Easter 1908, a pencil sketch - a XVII century street scene with butchers shop in the foreground; and Dorothy Brockway - 7/27/08, a pencil sketch - figures by a cottage 30cm x 39.5cm (2)
170. H Yates s. A parish church with figures in the foreground, watercolour drawing 47.5cm x 67.5cm £80-£150
171. Michael Brockway s. Norwich Cathedral, see gallery label verso, watercolour drawing 36cm x 54cm
172. An Italian lake scene with figures in the foreground, watercolour drawing, unsigned 46cm x 52cm
173. XIX century English School A three deck, three masted war ship running for shelter in a continental port, watercolour drawing, unsigned 36cm x 52cm £100-£200
174. Louisa Lady Waterford Figures in a forest, ink sepia wash on paper, Gerald M Norman Gallery label verso 10cm x 16cm £250-£500
175. Louisa, Lady Waterford Watercolour drawing in demi lune format - mother and child, Gerald M Norman Gallery label verso 8cm x 13cm £80-£160
176. Louisa, Lady Waterford The Good Samaritan, watercolour drawing, Fine Art Society Gallery label verso 44cm x 29cm £150-£300
177. Thomas Hartley Cromek Newport Lincoln, looking towards Bailgate watercolour drawing, Albany Gallery label verso 21.5cm x 30cm £100-£200
178. XIX century Italian School mother and infant attended by a child holding a finch in one hand and a cross, the landscape setting with sheep beyond watercolour on card 11.75cm x 15.3cm £200-£400
180. An XVIII century style oval pastel portrait of Ann Boleyn in an oval gilded frame surmounted by a crown in ribbons, 71.5cm x 58cm £300-£500
181. Madonna and Child red chalk heightened with white on green paper, indistinctly signed 17cm x 9.5cm
186. XVIII century Continental school Portrait of Franciscus Xaverius Feller - Bruxelli 1750? an oil on canvas 48cm x 40cm
187. Portrait of a Victorian gentleman seated (possibly one of the Sleight family) 75cm x 62cm, ornate contemporary gilded frame
188. XVII century English School portrait of a gentleman, old label verso Robert Williamson, Sunnybank, Ripon and stencilled (auction house?) No. 221AR 69cm x 54cm £150-£250
189. Half length portrait of a gentleman in riding habit set in a landscape, 90cm x 69cm in ornate frame
190. Late XVIII/early XIX century school Half length portrait of a gentleman in a flowing wig wearing a red unbuttoned tunic and white shirt, unsigned, old label verso relating to Sir John and Lady Millbank and traces of German newspaper pasted to the stretcher 89cm x 69cm
191. XVIII century school A pair of oval half length portraits - a gentleman in flowing grey wig wearing a blue tunic and white stock, his lady with a low cut crimson lace trimmed dress 74cm x 61cm, ornate oval gilt frames
192. XVIII century English School Gentleman seated reading by candle light from a document oil on panel 24cm x 18cm
193. XIX century English School A half length portrait of a lady in a black dress with lace blouse and carrying a red stole, landscape setting oil on prepared mill board 43cm x 35cm, ornate gilt frame
194. A XIX century oval portrait of a lady in a garden, old paper label verso - Mrs Francis Roach at Rochdale Passage, died 7th Jan. 1848, 27cm x 23cm £100-£150

Lot 168



Lot 173



Lot 177



Lot 190



Lot 178



Lot 188



Lot 191



Lot 191



195. A circular portrait of figures in a garden bearing a plaque G Moorland - XX century, gilt frame, 29cm diameter
196. Continental School a mother holding a bunch of black grapes over her infant baby in a wooden cradle oil on board 39cm x 29cm £150-£250
197. J B Crome attributed on the frame Continental moonlit river landscape with figure in a rowing boat in the foreground and ruins on a hill oil on canvas 30cm x 40cm £300-£600
198. A Victorian paddle steamer at sea oil on Windsor & Newton prepared mill board, maple frame 34cm x 44cm £180-£280
199. After Baker? old label verso "Bala Lake North Wales" oil on canvas 31cm x 47cm
200. Cavendish Morton 1958 s.d. titled on the frame verso "The Age of Elegance" - a neo classical building 30cm x 41cm
201. Norman Garstin s. old label verso "The Red Houses" N Garston, 4 Wellingdon Terrace, Penzance, the frame is labelled W Taylor & Co, Bayswater 60cm x 48cm £200-£400
202. Helen McCarvill a still life study, label verso The Mall Galleries, Helen McCarvill, 80 Leehurst Road, Lewisham, exhibited 1987 oil on board 60cm x 90cm
203. H Bennett (Grimsby) five various oils on panel - Lincolnshire Churches and a watercolour signed "Joy" Binbrook Hall
211. A XIX century needlework alphabetical and numerical sampler worked by Elizabeth Shilleto 1824, 30cm x 25.5cm £70-£130
212. A memorial sampler dedicated to Ann Bee & her son John, the daughter of Charles & Jane Blow of Billingham, worked by Ann Fairweather in 1830, 41cm x 31cm; and another larger sampler by Charlotte Sleight dated 1832 (distressed), 43cm x 57cm £100-£150
213. A XVII century hand coloured map of Lincolnshire by Hondius 1610, illustrated with the coats of arms of Lincolnshire families and a map of the City of Lincoln, 41cm x 54cm overall £100-£150

MINIATURES N.B. Sizes are the approximate size of the image, except where stated otherwise

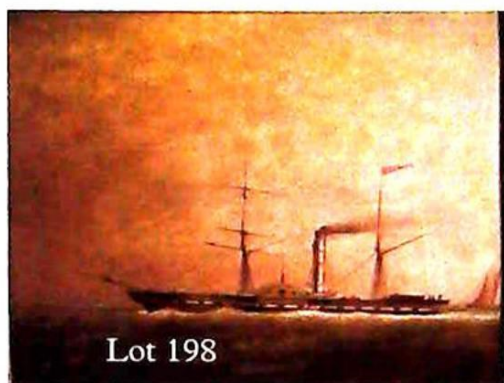
220. A Victorian silhouette written verso "Shelley" from the Desmond Cope collection, (illustrated in the History of Silhouettes), black and gilt metal frame, 10cm x 8cm £100-£200
221. A pair of bronze bas relief religious plaques after Francisco Putinati, contained in elaborate hardwood and gilded frames, approx. 8cm x 14cm £250-£350
222. Portrait of a lady dressed in finery with an elaborate hat set with pearls and a red jewel, indistinctly signed, ivory and gilt metal filigree frame, the oval miniature approx. 8.5cm x 6.5cm £80-£150
223. George IV in formal dress monogrammed HK, ivory frame, 7cm x 5.5cm £80-£150
224. A XIX century lady indistinctly signed, ivory frame 8.2cm x 6.2cm £80-£150
225. Four miniatures:- two circular in ivory frames, 4.5cm diameter; another double framed and Madonna and child in ivory and brass filigree frame, 6cm x 4.7cm £100-£150
226. A print of Charles Dickens in a velvet and gilt brass frame and on the reverse a scrap of paper "yours truly Charles Dickens", 13cm diameter overall £70-£120
227. Queen Victorian. A circular miniature on ivory in a filigree brass frame, 5cm diameter £80-£150
228. Two miniatures of unnamed young ladies, XIX century style, one circular gilt brass frame, the other in an oval ebonised moulded frame, 4.5cm x 3.5cm and 5.5cm diameter £70-£140
229. An oval portrait of a military gentleman written verso, "portrait of Captain R Hays, Light Dragoons 1772" with framers label Thomas Doe, Worcester, painted on ivory, 12cm x 10cm £500-£900
230. An oval Victorian miniature portrait of a gentleman wearing a white stock and black coat, unsigned, brass frame glazed both sides, appears to be painted on card, 10cm x 7.5cm £80-£130
231. A circular miniature of a XVI century gentleman, written verso "Joh. Keppler 1571-1630 J.ab Heyden Pinxt", 7cm diameter £100-£200
232. A mementomori miniature of a Victorian gentleman, the oval plain brass frame with a blue enamelled back centred with plaited hair, 6cm x 5cm £200-£400



Lot 195



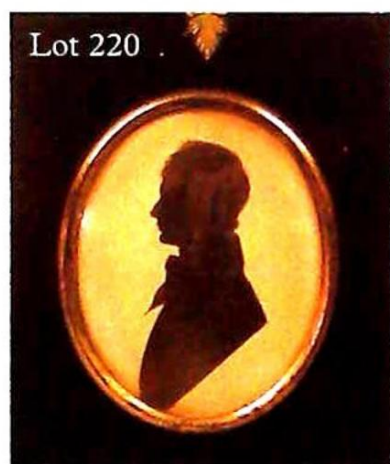
Lot 197



Lot 198



Lot 200



Lot 220



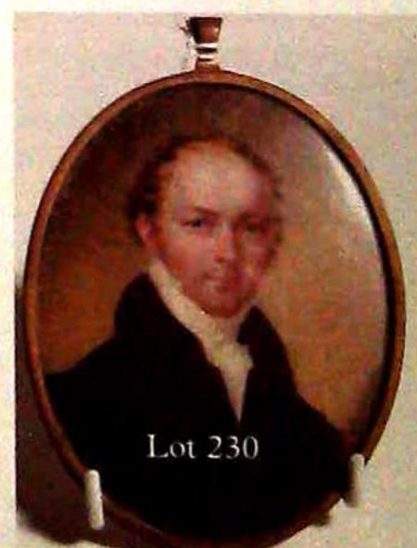
Lot 232



Lot 231



Lot 229



Lot 230

233. An oval mementomori miniature of a Victorian gentleman in military uniform, the reverse plaited hair with an inner pearl outlined oval and monogram, unsigned, appears to be on ivory, 6.5cm x 5.5cm £200-£300
234. An oval miniature of a young lady in a plated frame, written verso "Miss Chambers", 3.5cm x 3cm £100-£150
235. A small oval miniature of a Georgian lady in a blue dress, brass frame with closed back, 4cm x 3cm £100-£150
236. An oval miniature of a cleric engraved on the closed brass back, "Reverend J Preston, Obt. 23rd September 1806, aged 68", 7.5cm x 6cm £100-£150
237. An oval mementomori portrait miniature of an early XIX century gentleman, the brass frame converted to a brooch, the back with hair raised as a floral spray, 6cm x 4.5cm £200-£400
238. An oval miniature of a young man, blue coat with a black stock, embossed gilt metal frame, 5.5cm x 4.5cm £100-£150
239. A rectangular portrait miniature, written verso "Antique Miniature on Ivory George III", 9cm x 7cm, modern Hogarth type frame £100-£200
240. A portrait miniature of David Garrick, labelled verso "similar to the museum portrait at Stratford in Avon etc.", contained in an oval ivory frame with applied gilt brass ribbon bouquets and standing on two floral scroll feet, miniature 13cm x 10.5cm and frame approx. 20cm x 15cm £150-£250
241. Portrait of a young lady in a red dress, filigree gilt brass rectangular frame, XX century, 11cm x 9.5cm overall
242. Portrait of a Victorian lady wearing a straw bonnet with roses and carrying a basket of pink roses, signed Ch. Roze, contained in an elaborate gilt brass and fabric frame, 17cm x 12cm, the frame 27cm x 20cm overall £200-£400
243. An oval portrait of a young Victorian lady wearing a feather bonnet contained in an elaborate gilt brass and fabric frame, written verso "after Sir Thomas Laurence, Duchess of Wellington", 16cm x 12cm, the frame 33.5cm x 17cm £200-£400
244. Portrait of a Victorian lady wearing a lace bonnet, appears to be on ivory, elaborate gilt frame, 10cm x 8cm, frame 20cm x 18cm £100-£200
245. An Elizabethan style portrait of a young boy, oil on copper, 20cm x 17cm £100-£200
246. An oval coloured print of Ferdinand George Waldmuller (self portrait) 13.5cm x 10cm
247. After Moorland. Two circular coloured prints of young ladies, verso "The Shepherdess" and "Thoughts On A Single Life" 23cm diameter overall
- GLASS
251. A pair of green Continental cylindrical vases, richly decorated with vignettes of lilies in classical frames, castellated tops, 31cm high
252. A XIX century Bohemian goblet with ruby flashed facet bowl and topographical named view on a circular foot, 14cm
253. A set of six tall hock glasses on tapering triple knopped stems
254. A heavy cut glass ships decanter with mushroom stopper
255. A heavy cut glass campana shape vase on a circular star cut foot, 22cm high
256. A heavy cut glass sherry decanter and stopper
257. A richly decorated two handled vase with much gilding and applied floral sprays on a pink glass body, 15cm high; and a pale blue glass decanter with leaf moulded stopper
258. Two XIX century hob nail cut sweet meat jars and covers on square star cut bases, 33cm high
259. A three trumpet vaseline glass epergne on a plated stand, 34cm high £80-£130
260. Four various XIX century cut glass decanters
261. A set of eight Richardson cut glass whisky tumblers and six larger Webb tumblers
262. A Victorian cranberry glass table centre, the central posy holder on a tapering plain glass stem with moulded plain glass border and with three posy holders radiating from the petal shaped base (a/f)

Lot 233



Lot 235



Lot 239



Lot 238

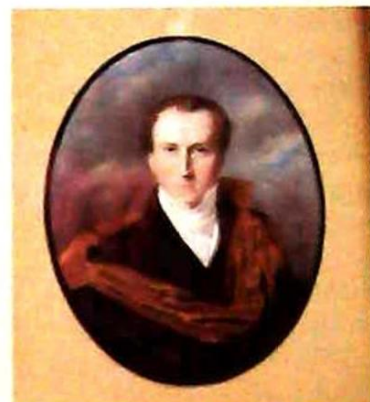


Lot 240

Lot 242



Lot 245



Lot 246



Lot 251



Lot 259



Lot 234

263. Five hob nail cut large conical goblets on circular feet and four smaller similar glasses
264. A collection of 12 various, mainly XIX century glasses including goblets, an ice cream licker and a custard cup
265. A collection of ten various, mainly XIX century decanters
266. A set of six large facet cut claret glasses
267. A set of twelve facet cut stemmed port glasses (almost matching the previous lot)
268. A set of six facet cut wheel etched port glasses and five similar ditto
269. A cut glass lamp shade and two others; a vase etc.
270. A heavy cut glass fruit bowl on a circular star cut foot, a facet cut cake stand and another (3)
271. A ruby glass wash bowl and jug, the jug with a plain glass "C" scroll handle, the bowl 35cm diameter, jug 28cm high
272. A set of six stemmed cut glass sherry glasses, six larger ditto, four Richardson sherry glasses and three tumblers
273. A pair of Victorian cut glass table candlesticks hung with prism drops on facet cut knopped stem and circular star cut base, 15cm £100-£200
274. A pair of Victorian plain glass lustres hung with prism drops (converted to electric table lamps - some damage)
275. A White Friars Elizabeth II Silver Jubilee commemorative facet cut cane paper weight, 1952-1977, the design centred with a crown, the base 7.4cm diameter
- 275A. A pink, white and gold decorated paperweight, approx. 7cm high
- 275B. A millefiori mushroom paperweight with red, green, blue and white canes, 6.5cm diameter
276. Ten wine glasses with ruby glass bowls and plain stems, a matching jug and three circular posy holders
277. Fourteen wine glasses with ruby glass bowls and plain stems
278. A pair of pink glass table lamp shades etched with lilies, 17cm
279. A tapering pink glass oil lamp shade, the fluted body etched with floral garlands and with a floral border, 17cm
280. A pink glass oil lamp shade acid etched with classical decoration, 16cm high
281. A Victorian table oil lamp with a pink glass reservoir on a pressed inverted brass support and black ceramic base, etched glass globe
282. A pair of XIX century table oil lamps with cut glass reservoirs on corinthian column supports (converted to electricity), approx. 55cm £250-£350
283. A Victorian plated brass table lamp on a black ceramic base, another corinthian column lamp (part) and two shades
284. A pair of posy holder table centres, the gilded metal frames decorated with harebell festoons and supporting five hob nail cut conical glass posy holders
285. A large pair of Bohemian gilt overlay vases, the alternate diamond cut overlay white glass and floral painted panels on the elongated bulbous bodies beneath tapering trumpet shape necks, on circular feet, 44cm high £600-£900

METALWARE, TREEN & MISCELLANY

291. An early XIX century rosewood sacaphagus shaped tea caddy, the interior divided into two compartments with a central mixing bowl, boxwood strung internally and externally and standing on turned feet, 30.5cm wide, 14.5cm deep, 14cm high £100-£150
292. A XIX century rectangular rosewood workbox with a mother of pearl escutcheon and fitted blue velvet lined interior complete with lift out tray and concealed drawer to the side
293. A XIX century rosewood and mother of pearl inlaid writing box with fitted interior
294. A XIX century brass bound rosewood writing box
295. A Victorian fretted brass fender on circular feet, 77cm wide
296. An ornate cast four branch brass candelabra, the neo-classical column standing on claw feet, 62cm high

Lot 273



Lot 275



Lot 275a



Lot 275b



Lot 278



Lot 282



Lot 285



297. A Victorian copper urn, the baluster body with two china handles, a domed cover and turned brass spigot, 46cm high
298. A pair of XIX century turned brass candlesticks on octagonal bases
299. A XIX century ornate gilt metal frame fire screen, approx. 83cm high
301. A white cold cast bust of Caesar, approx. 58cm high £200-£400
302. A white marble portrait bust of a young Victorian lady, her hair in a bun wearing a laced bodice and with a crucifix hung from her neck, on a circular base, approx. 60cm high - unsigned £400-£700 (see illustration on cover)
303. A Masonic medal by Spencer & Co, Masonic Manufacturers London (cased)
304. Two mother of pearl gilt brass mounted containers and a square XVIII century tea caddy (distressed)
305. A facet cut ruby glass double ended scent bottle with embossed silver caps, 4.5cm
306. A papier mache and mother of pearl inlaid oblong snuff box and a lady's purse with mother of pearl facings
307. A pair of mother of pearl mounted gilded brass opera glasses, a Kohler & Son hunting horn and another hunting horn engraved "Edith Brockway from F.S."
308. A small oriental celadon bowl on hardwood stand, four soapstone animals and a small oval bowl
309. A circular carved ivory oriental container, the lid depicting Chinese figures on a bridge in a boat beside trees and another similar needle case
310. A mounted horses hoof by Roland War Picadilly, dated 1888, two spelter ashtrays in the form of pigs and an oval pewter desk inkwell marked "B & P London"
311. A XIX century silver on copper half pint tankard, maker A Williams Roden Street, Nottingham and a XIX century pewter pint tankard, maker James Yates
312. A carved hardwood nutcracker in the form of a mans face (Kitchener), the mouth opening to receive the nut; and a circular bakelite box, the top painted with a horse in a stable
313. Two spring loaded candle holders for lamp fitting, a Victorian brass coal shovel with a blue china handle; a leather money box stamped "J C Vickery, Regent Street", a small jewel box and an amber glass oval jam dish in a pierced metal holder
314. An ebonised and mother of pearl decorated table top book rack and a porcupine quill cigarette box
315. A XIX century mahogany and brass bound box and a hardwood cigarette case with carved applied bone decoration
316. Firemarks:- Sun Insurance 523745 lead with copy of company policy register entry dated 31.10.1786, property in St. Osyth, Essex; London Assurance painted tin plate, Norwich Union painted tin plate and a copy of "The British Firemark 1680-1879 by Brian Wright £150-£250
317. A gilded bust of George IV (?) on a square plinth with laurel wreath, 38cm high, unsigned £200-£350
318. A bronze bust on a circular plinth "His Royal Highness The Duke of York", published by T Hamlet, Jan. 1823, 29cm high £150-£250
319. A miniature bronze portrait bust of a nobleman (Voltaire?) on a circular black veined marble plinth, the bust 10.5cm, 23.5cm overall
320. A bronze statue of a military gentleman (Frederick the Great?) the plinth signed "Devaraux *** a B Berlin", 24.5cm high (overall)
321. A stuffed and mounted bantam (cased) with makers label "H.H. Kew Hairdresser & Taxidermist, 5 Eastgate, Louth"
322. A Victorian mahogany teapot stand with original bead and woolwork cover
323. A Victorian oak desk stand with two glass inkwells, cast brass carrying handle, the rectangular base fitted with two drawers 31cm x 22cm
324. A Georgian serpentine fronted mahogany knife box, boxwood strung and with its' original fitted interior £200-£300
325. A leather gentleman's suitcase by M. Cleghorn, Trunk & Bag Makers, George Street, Edinburgh, with a canvas lined fitted interior £100-£200

Lot 317



Lot 318



Lot 302



Lot 320



Lot 324



326. A wooden model of the XVIII century three masted warship "The US Constellation", the model approx. 96cm long, 63cm high, contained in a purpose made glass case £300-£500

WEAPONS

331. A Victorian truncheon lettered "VR N^o 60 K" and two pairs of old iron police handcuffs and one key numbered 54
332. A flintlock travelling pistol, the lock signed "Hole" and the octagonal barrel "Bristol", with brass pineapple engraved trigger guard and lion mask brass pommel to the butt, checkered grip, approx. 23cm overall £600-£900
333. A percussion muzzle loading fowling gun by C Sharp with engraved lock, horn tipped stock and pineapple trigger guard, approx. 12 bore, 122cm overall (with a cleaning rod) £180-£280
334. A percussion muzzle loading fowling gun by Westwood, approx. 12 bore with engraved lock, pineapple trigger guard and patch box concealed in the butt, 114cm overall (with a cleaning rod) £300-£450

MUSICAL INSTRUMENTS

335. An old violin with two bows (cased)
336. A Victorian rosewood and marquetry inlaid melodion by W. Winrow & Sons, Nottingham with mother of pearl keys and stops
337. A tenor gamba manufactured by Derek Johnson of Lincoln
338. A German treble gamba by Bachle
339. A mandolin, the rosewood panel with floral inlay
340. A mandolin by F Cassaro & G Rompoli dated 1907 with tortoise shell effect panels and mother of pearl inlay
- 340a. A tier drop shape flat back mandolin.
341. A Suzuki guitar number 1664.
343. A cello bow by Sartory Paris, 70.5cm overall
344. A three quarter size cello

SILVER PLATE

351. Silver plate. Wine and spirit labels "Whisky" (2), "Brandy" (4) (six in total)

352. Three bottle stoppers, two with birds, the other with a three masted sailing ship, four decanter labels

- 352A. Crown Staffordshire. A set of eight ceramic decanter labels:- "Brandy" (3), "Sherry" (2), "Whisky" and "Port" and a mother of pearl handled nut pick

353. A Mappin & Webb Princes plate cocktail shaker

354. A pair of wine coasters with gadrooned borders and turned hardwood bases and another similar ditto

355. A horn shaped spoon warmer, the base with a fox to one side and a saddle the other

356. A pair of shell shaped bon bon dishes on sea serpent supports with shell bases

357. A pair of EPNS salts and spoons with gilded interior, original fitted box

358. A Victorian one pint tankard, Oldham Nottingham and a matching half pint tankard

359. A six cup egg cruets with domed covers and six spoons, marked "MW & S"

360. A pair of old Sheffield plate telescopic table candlesticks, the shaped bases with scroll decoration, 21cm high

361. A plated two branch candelabra on a conical turned column and circular base, 36cm high

362. A Victorian silver plate candelabra, the fluted column supported by kneeling camels with three cast foliate arms, 59cm high £300-£500

363. A two handled tea urn with fluted body and serving dish with oval etched glass bowl and two circular bowls in an elaborate plated stand surmounted by a bird

364. A silver plated photo frame with scroll decorated mounts, blue velvet easel back

365. A shell shaped grape dish, an oval lidded biscuit container and a small salver with gadrooned border

366. Sundry plated ware:- a rectangular dish, sugar claws, two pheasants, sifter spoon, strainer etc.



Lot 331



Lot 332



Lot 333 & 334



Lot 355



Lot 362



Lot 356

Lot 340



367. Sundry plated ware - two hot water pots, coffee pot, teapot, elliptical fruit bowl and two butter dishes
368. A serpentine rococo style entree dish and cover, marked beneath "MW & S" (loose handle)
369. Two Georgian style gravy boats with scroll handles and shaped borders on three hoof feet
370. An oval entree dish with beaded border, liner and domed cover, standing on four paw feet, marked beneath "MW & S"
371. Two oval entree dishes, one on four claw feet
372. Three entree dishes, two with domed covers and one rectangular rococo design (no handle)
373. An oval entree dish and cover with beaded border and a sugar container in the form of a coal compodium with scoop
374. A pair of oval tureens with domed covers and beaded borders

SILVER

375. London 1793. An oval card tray with bright cut decoration and central shield surrounded by wreath, three everted feet, maker HC
376. London 1978. A Lincoln Cathedral circular pill box with gadroon decoration, the lid with knight on horseback, scatter hallmark, maker JGC
377. Birmingham 1914. A rectangular photograph frame with easel back, maker Mappin & Webb
378. Birmingham 1914. A pair of cut glass columnar candlesticks with rectangular silver tops and sconces
379. London import mark 1898. A horned cow creamer - standing with head raised, tail arched over back, hinged lidded cover decorated with a fly, hallmarks on stomach and sterling 925, maker/retailer IF & Son Ltd
380. Sheffield? 1903. A classical style three light candelabrum, the tapering body decorated with rams heads, ribbons, bell flowers etc., the three candle holders similarly decorated, the square canted cornerbase with acanthus and vases, makers mark rubbed
381. Hallmarked silver. Miniature circular ashtray with engine turned interior, another with leaf decorated border 7cm diameter, a holder for three cigars, teaspoon, vesta case, small pair of sugar nips, pair of shell and openwork sugar nips, jam spoon and a miniature rectangular photograph frame with ribbon decoration
382. A pair of cast hallmarked silver decanter labels in the form of a standing crowned lion on pierced label "Claret" and "Gin" £80-£130
383. London 1930. An engine turned decorated cigarette case monogram MMS, gilded interior engraved "Michael from Mother Aug. 12th 1944"
384. Birmingham 1922. A small rectangular cigarette box
385. Birmingham 1968. An engine turned monogrammed hair brush, two nickel plated gillette safety razor boxes, State Express Cigarettes silver plated rectangular box
386. Birmingham 1917. A classical design oval mustard pot with openwork body, blue glass liner, three mustard spoons and a specimen vase
387. London 1897. A repousse decorated handled page turner with tortoise-shell blade, 29cm long, 43cm overall £100-£200
388. A fiddle pattern basting spoon, London 1839 £70-£130
389. A set of ten "rat tail" dessert spoons, Sheffield 1915 and four matching table spoons, Sheffield 1896, 27+ozs £170-£220
390. Six shell pattern dessert forks, London 1888, 12ozs £70-£130
391. London 1795/6. A set of six "rat tail" table spoons engraved J & B, maker Peter & Ann Bateman
392. London 1824/5. A set of six "rat tail" table forks with monogram, maker JH
393. Six London hallmarked "rat tail" dessert spoons and five forks (11)
394. Hallmarked silver open work bodied oval bon bon dish with three handles, fork and butter knife and silver handled bread fork
395. A hallmarked octagonal openwork bon bon dish and two sugar nips



Lot 368



Lot 374



Lot 378



Lot 382



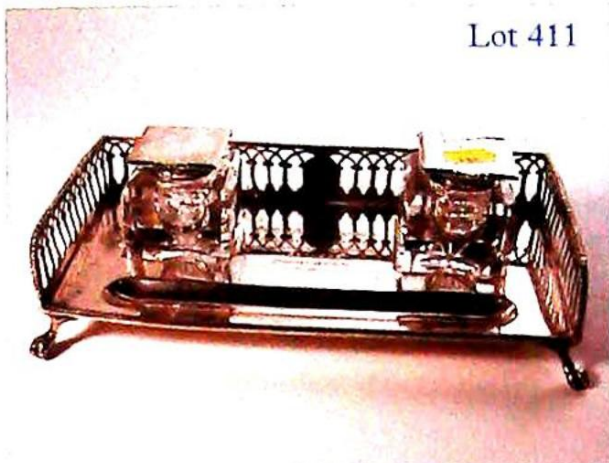
Lot 379

396. Sheffield 1899. A pair of openwork and bright cut engraved spoons in original black and gilded leather and purple velvet and silk lined case, retailer Charles Steven Silversmith, 17 Broad Street, Peterhead
397. A five piece condiment set comprising a pair of salt cellars with blue glass liners, lidded mustard pot and spoon and two pepperettes, Birmingham 1914 £100-£150
398. Birmingham 1922. A pair of salad servers with lily decorated handles, gilded bowls, fitted case
399. Sheffield 1963. A meat skewer
400. Sheffield 1901. A pair of salad servers and a single ditto 1895, maker HA
401. London 1794. Two tablespoons, makers W E I.F & IB
402. Sheffield 1965. A pair of napkin rings with gadrooned edges, engraved "Ford Tunis 1966"
403. Birmingham, various dates - golf trophy, teaspoons (6) - boxed
404. Sheffield 1943. A set of six coffee spoons with tapering handles, makers C.W.F.
405. An embossed decorated sugar castor spoon, four assorted teaspoons, sugar nips, mustard spoons
406. Five silver napkin rings and two EP ditto
407. Birmingham 1953. An engine turned and engraved silver cigarette box with gilded interior, makers AN & S Limited
408. Chester 1899. A pair of ribbed and gilded rectangular salt cellars and Birmingham 1900, a filigree decorated and embossed bon bon dish
409. London 1962/3. A circular silver bon bon dish with tudor rose centre, reeded border, scatter hallmark to rim, maker C & C, 14cm diameter
410. London 1925. A shallow bowl engraved "County & Borough Supt. Golf Challenge" vase 1928"
411. London 1896/7. A presentation desk ink stand with open gadroon edged gallery, pair of silver topped square glass inkwells engraved "To Capt. Rev. W.V. Bagshaw 1st Leicestershire V.E.F. in grateful memory of 1890-1896 Uppingham", maker WC WS, retailer Goldsmith & Co 112 Regent Street, W., raised on four ball and claw feet 21.5cm x 12cm £200-£300
412. London 1914-15. A cut glass and floral swag engraved lemonade jug, star cut base, hallmarked silver rim and a silver on copper oval card tray
413. Birmingham 1905. An Art Nouveau period silver covered photo frame with oak easel back
414. A hot water pot of conical tapering form with composition handle, Birmingham 1933, 12ozs gross
415. A circular teapot with composition handle, London 1890, 22ozs gross £80-£120
416. Birmingham 1938. A hot water jug with composition handle and finial, maker GM & Co.
417. London XIX century. An embossed bodied three footed cream jug, maker HH
418. Birmingham 1918. A presentation silver ashtray with openwork decoration, initials, date 1919
419. Birmingham 1925. A rectangular silver cigarette box with wooden lining, the lid engraved "Lincolnshire Union Annual Meeting, North Shore Golf Club Skegness 1926"
420. Birmingham 1908. A bright cut decorated silver card case with hinged lid, maker M.B
421. Birmingham 1933. An engine turned decorated tinder striker
422. Birmingham 1918. An engine turning decorated cigarette case, maker CET
423. Birmingham 1894. A cigarette case with diagonal ribbed body
424. An oak canteen of fiddle pattern cutlery with reeded border, London 1887 with fish servers 1865 and comprising 12 dinner forks, 12 dessert forks and spoons, 2 sauce ladles, 1 soup ladle, 1 basting spoon, 6 table spoons and 6 tea spoons plus a fish server - in all approx. 120ozs £1500-£2000

JEWELLERY

431. A hallmarked 9 carat gold watch chain, 40cm long £100-£150
432. An unhallmarked 9 carat gold necklace with 19 graduated stones with claw settings, stones varying from 16mm x 10mm to 8mm x 6mm approx. and a matching pair of single stone earrings £500-£750

Lot 411



Lot 417



Lot 424



Lot 413



Lot 432



433. A facet cut sapphire single stone ring surrounded by small diamonds in white gold setting
434. A pair of yellow and white metal (tested as 18 ct.) claw set single stone brilliant cut diamond ear studs, each .35 carats approx. £400-£600
435. A yellow metal fob seal set with shield shape white/fawn stone and a larger yellow metal fob set with swivel three sided citrine £120-£200

436. A pearl hardstone and yellow metal bar brooch with safety chain

COINS & MEDALLIONS

441. Royal mint proof sets:- Great Britain 1983-1995 (13), missing 1993, duplicate 1995
442. Royal mint proof set:- Great Britain 1953
443. Royal Mint:- bronze medallion 500th anniversary of birth of Henry VIII 1491 and two gilded medallions 500th anniversary of the college of arms (3)
444. Proof coins:- 1980 Gibraltar Crown 1981, GB crown, 1982 Falkland Islands liberation and 1982 20p (4)
445. Great Britain:- assorted crowns - 1889, 1896, 1900, 1928, 1935, 1937, 1951, 1953, 1972, 1977 (10)
446. Great Britain coins:- George III crown 1819, George IV crown 1821, George III shilling 1787 (EF) and Victorian double florin 1887 (VF)
447. Great Britain coins:- George III 6d 1816 and half crown 1817, William III crown 1695 and half crown 1697
448. Assorted coinage
449. Medallions:- bronze 1897 Diamond Jubilee, 1902 Coronation, 1902 Coronation (small)
450. A silver medallion:- Queen Victoria, verso "In Commemoration", 3" diameter
451. A bronze medallion commemorating the restoration of Windsor Castle by George IV 1828
452. A medallion:- Duke & Duchess of Portland, 11 June 1889-1914, verso William Arthur Henry Marquess of Titchfield 16 March 1893-1914
453. Bronze medallions:- Napoleon III, Napoleon, Henry IX papal (3)

454. Bronze medallions:- Mary II 1662/1694, George II, Queen Caroline, Princess Charlotte Augusta, George III (5)

455. Kruggerand 1975
456. Guinea George III 1813 and 1797 mounted
457. France, Louis XIV 1/2 ecu - double struck
458. Guinea George III 1793
459. Half Guinea George III 1813
460. Sovereign George III 1820
461. Sovereign George IV 1822
462. Sovereign Victoria 1886
463. Sovereign Victoria 1887
464. Sovereign Victoria 1893
465. Sovereign Edward VII 1907
466. Sovereign Elizabeth II 1965
467. Half Sovereign Victoria 1887
468. Half Sovereign George V 1914
469. Five pounds Victoria 1887
470. Austria Franz Joseph - restrikes, 100 crowns, 1915 and 2 others

CLOCKS, BAROMETERS & MUSICAL BOX

475. A XIX century banjo barometer with an exceptionally large 30cm silvered dial, also with a hydrometer, thermometer and level, the mahogany case with a broken swan neck pediment, 115cm overall £800-£1100
476. Nicole Freres. A XIX century Swiss cylinder musical box playing eight airs, numbered S5270 G51437 and E845, contained in a rosewood box inlaid with musical marquetry, 64cm x 23cm x 16.5cm £600-£1000
477. A XIX century five dial mercury column barometer, the mahogany "banjo" case boxwood strung, the engraved steel dial 26cm diameter and the level signed "D Barelli Horse Fair Bristol", 107cm overall £400-£600

Lot 475



Lot 476



478. A XIX century mahogany five dial banjo barometer, the level signed "Boss Louth", the mahogany case with boxwood and ebony outline (distressed), 95cm £100-£200
479. A Victorian black slate cased mantel clock, inset with green discs the circular white dial with an eight day striking movement, stamped "H P & Co", 24cm high
480. A XIX century mahogany mantel clock, the domed case inlaid with brass, circular white dial with eight day movement £100-£150
481. A XIX century French carriage clock in a neo-classical brass case with repeating alarm movement, 15cm x 10cm x 8.5cm £400-£700
482. A XIX century French carriage alarm clock contained in a brass case with bevelled glass panels with morocco carrying case £100-£150
483. A copy of the Mary Antoinette clock in the Victorian Albert Museum, the circular dial contained in a jeweled bezel, the case of blue porcelain lyre design, mounted with gilt brass swags and surmounted by a sun burst, 39cm high £100-£200
484. A French style boudoir clock contained in an ornate circular gilt brass case with trailing roses and quivers of arrows, the enamel dial surrounded by brilliants, 10cm diameter £100-£200
485. An Edwardian mahogany cased Regency design mantel clock, the circular dial marked "Jays Oxford Street", eight day movement, the case inlaid with brass and with a brass carrying handle, 26cm high £100-£150
486. An early XIX century oak and chevron inlaid mantel clock, the circular steel dial engraved "J W Benson London", eight day movement, 22cm high
487. An Edwardian mantel clock in a mahogany dome shaped case with white enamel dial and eight day movement stamped "Made in France", 20.5cm high
488. An Edwardian mantel clock in a balloon shape boxwood strung mahogany case surmounted by a turned brass finial, circular enamel dial and eight day movement, 31cm high £100-£150
489. A XIX century rosewood cased mantel clock inlaid with mother of pearl roundels and brass stringing with floral pressed brass ring sidehandles and surmounted by a pineapple finial, 37cm high £100-£150
490. A French clock garniture, the lyre shape white case with gilt brass mounts of mistletoe and trailing flowers surmounted by a sun burst, the circular enamel dial marked "Toulouse" with a pair of side urns on gilt metal supports, clock 38cm high £200-£400
491. A highly decorative and elaborate cast brass cased clock garniture of neo-classical design, the clock with a circular enamel dial and eight day striking movement, the ornate case surmounted by a winged eagle on a cushion and flanked by a pair of pierced brass castellated vases, the clock 56cm, vases 25cm £300-£500
492. A XIX century gilt brass and coloured enamel clock garniture of neo-classical design, the clock with a striking eight day movement signed "Philthorff Paris", flanked by a pair of similar urns painted with cherubs and putti and on the reverse a gazebo in formal garden, the clock 42cm high, urns 29cm £600-£900
493. A XIX century French clock garniture, the clock set with Sevres style plaques in an elaborate neo-classical ormolu case surmounted by a two handled urn and flanked by a pair of porcelain urns in similar ormolu mounts, the clock 35cm high £600-£900
494. An early XIX century mahogany and oak longcase clock, the square dial with date aperture and 30 hour movement, engraved acorn design hands, the hood with a broken swan neck pediment and plain columns, the base with a long arched door cross-banded in mahogany, 202cm high £700-£950
495. A XIX century mahogany longcase clock, the arched dial painted with Eastern pagoda roof buildings, with subsidiary date ring and seconds ring, signed "Jonthn. Reed Brampton", the eight day movement contained in a broken swan neck pedimented hood flanked by turned columns, the base enclosed by an arched door, 217cm high, £1400-£1700



496. An XVIII century oak and mahogany longcase clock, the arched painted dial signed "T Marshall Lincoln" with subsidiary seconds ring and date aperture, contained in a swan neck pedimented hood, flanked by fluted columns, the base with long cross-banded door with central patera and key hole for the locking mechanism, 216cm high £1200-£1600

497. A XIX century Lincolnshire oak and mahogany longcase clock, the arched painted dial decorated with fruit and flowers, subsidiary seconds ring, date aperture and signed "Bothamley Boston", contained in a swan neck pedimented hood, flanked by fluted columns, the case enclosed by a long cross-banded door, centred with a diamond inlay and diamond escutcheon, 200cm high £850-£1200

498. A XIX century oak and mahogany longcase clock, the arched dial painted with a rural scene, subsidiary seconds ring and date aperture, enclosed in a swan neck pedimented hood, the case with spirally fluted quarter corners enclosed by a long pointed arched door, centred with a diamond inlay and with a diamond escutcheon, 200cm high £800-£1200

499. An XVIII century oak longcase clock, the square brass dial with single hand signed "John Wood Grantham" and with a date aperture, 30 hour movement, contained in a cushion top hood, the base enclosed by a long door, 181cm high, the dial 25cm square £700-£950 (J Wood recorded as working 1750-1811)

500. A XIX century oak longcase clock, the plain white enamel dial signed "Henry Young" with subsidiary seconds ring and date aperture, contained in a domed hood, flanked by fluted columns, the base enclosed by a long arched door, approx. 208cm high £650-£850

501. A XIX century double weight Vienna wall clock, the brass and enamel dial signed "H Samuel Manchester", contained in an elaborate walnut case decorated by split turnings and surmounted by castellated top with three turned finials and a mask, approx. 122cm high £350-£550

502. A XIX century white dial fusee movement wall clock signed "Bianchi & Son, Tunbridge Wells" in a mahogany case £300-£450

503. A XIX century double weight Vienna wall clock contained in an elaborate walnut case decorated with split turnings, surmounted by a stepped top with central shelf and three turned finials, the enamel and brass dial with a subsidiary seconds ring, approx. 150cm high £300-£500

504. An unusual mid XIX century miniature Vienna double weight regulator wall clock, contained in a fine quality rosewood case with a carved pediment, the 11cm white dial in a gilded metal mount, eight day movement with steel rod pendulum, striking on the hour and half hour 82cm overall, 22.5cm wide £1000-£1600

MIRRORS

509. An oak framed toilet mirror decorated with giltwood cherubs and garlands

510. A late XIX century mahogany toilet mirror, the shaped mirror on square taper supports, the base enclosed by a boxwood strung sloping front on ogee bracket feet, 68cm wide £80-£130

511. A Victorian oval gilt framed wall mirror, the moulded plaster gilt frame decorated with leaves and berries centred with a floral cartouche, 65cm x 39cm

512. A Regency gilt wood convex circular wall mirror surmounted by a winged eagle on a mistletoe garland, the circular frame with inner reeded ebonised slip decorated with applied roundels and with a foliate shell cartouche to the base £500-£800

513. An elaborate foliate gilt frame wall mirror, probably Italian, XX century

514. A XIX century rectangular mahogany toilet mirror on reeded shaped supports

FURNITURE

515. An early XIX century mahogany chest of two short and three long drawers with oval pressed brass handles decorated with thistles, standing on splay feet, 107cm wide £180-£280

516. A Georgian style mahogany bow front sideboard, fitted with a central drawer flanked by two deeper drawers standing on square taper legs terminating in spade feet, 105cm wide, 56cm deep £200-£400

517. A Victorian chest of two short and two long drawers with a raised back and turned wooden knobs, 101cm wide £100-£200

518. A Victorian serpentine fronted chiffonier, the mirror back in a carved shaped frame, the base with one long drawer above a pair of panelled cupboards, flanked by rounded corners with foliate and scroll brackets, 123cm wide £300-£500



519. A Georgian walnut chest of three long drawers, the top double cross-banded and the drawer fronts inlaid, standing on bracket feet, 102cm wide £400-£600
520. An XVIII century fruitwood hanging corner cupboard enclosed by a panel door, beneath a moulded cornice and with three interior shaped shelves, 94cm high £200-£350
521. A French marquetry bow front commode chest of two drawers with a veined green marble top and gilt metal mounts, 70cm wide £200-£400
522. A XIX century mahogany bow front chest of two short and three long cock-beaded drawers with turned knobs and standing on turned feet, 107cm wide £100-£200
523. A pair of circular French empire design side tables or vase stands with veined rouge marble tops and gilt brass mounts, each on four turned tapering legs, 30cm diameter £100-£150
524. A French vitrine, the gilt brass mounts enclosed by a bow fronted glazed central door and with serpentine glazed side panels, raised on shaped legs with gilded claw feet, 140cm high, 68cm wide £400-£600 (key with auctioneers)
525. A Victorian golden oak gothic revival hall table with an elaborately carved castellated back and frieze standing on bobbin turned supports, 103cm wide £100-£200
526. A XIX century figured mahogany chest of two short and three long drawers on splay bracket feet, 104cm wide
527. A late XVIII/early XIX century oak and mahogany cross-banded bow front hanging corner cupboard, the three internal shelves enclosed by double doors with "H" brass hinges, 100cm high £300-£400
528. A Victorian mahogany fold over tea table raised on ring turned supports, 91cm wide £100-£150
529. An early XIX century mahogany chest of two short and three long drawers, the top banded in crossgrain mahogany and line inlaid (distressed), 101cm wide £100-£200
530. A XIX century rosewood fold over games table raised on a tapering turned column with tricorn base and carved fluted feet, 91cm wide £250-£350
531. An early XIX century tall mahogany chest of two short and four long drawers, each with oval pressed brass handles, standing on splay bracket feet, 107cm wide £100-£200
532. A Victorian marble top rosewood side table, fitted with two drawers to the frieze and an ivory plaque "Old London Bridge", on turned flat sided tapering supports, 95cm wide £75-£130
533. An XVIII century panelled oak mule chest with a plain hinged lid, three panel front above two drawer on square stiles, fitted internally with a candle box and two drawers, 143cm wide £250-£350
534. An XVIII century oak side table fitted with a long cock-beaded frieze drawer raised on square supports 72.5cm wide
535. A XIX century rectangular rosewood work table with a fitted drawer to the frieze and sliding silk bag, raised on double barley twist supports with matching stretchers, 60cm wide, 45cm deep £200-£350
536. A XIX century oval mahogany pole screen with a floral woolwork panel, the baluster turned stand with triple reeded splay supports
537. A XIX century Continental jardiniere on an ebonised ormolu mounted stand (distressed)
538. An Edwardian ebonised rectangular bijouterie cabinet with blind fret carving, the reeded legs joined by an undertier, the display cabinet enclosed by bevelled glass, 59cm x 41cm
539. An Edwardian mahogany Sheraton revival bedside cupboard, the raised back with an oval mirror, fitted with a drawer and pot cupboard £70-£130
540. A converted Georgian mahogany corner wash stand as a bijouterie table, the top tier enclosed by a hinged glass lid, the middle tier fitted with a drawer on square out-turned supports £150-£220
541. An Edwardian panelled oak bureau, the fall front enclosing a fitted interior raised above two drawers on barley twist supports, 74cm wide £100-£150
542. A XIX century mahogany linen press, the upper section enclosed by a pair of panelled doors with four internal linen slides beneath a moulded cornice, the base with two short and two long drawers, 143cm wide, 208cm high £550-£750
543. An early XIX century mahogany bow front chest of two short and three long drawers, raised on turned feet, 108cm wide £100-£200

Lot 519



Lot 523



Lot 521



Lot 525



Lot 524



Lot 542

544. A Georgian design mahogany wardrobe enclosed by a pair of panelled and simulated drawer front doors, the interior fitted with linen slides and drawers £300-£500
545. A late XVIII century dresser, the upper section with three plate display shelves beneath a moulded cornice, the base with four central drawers flanked by two further drawers and two panel cupboards, 162cm wide £600-£900
546. A late XIX century mahogany open bookcase, boxwood strung and fitted with five adjustable shelves, 153cm wide £200-£400
547. A XIX century fruitwood panel back hall settle with open arms on baluster turned supports and standing on five legs, 183cm wide £200-£300
548. A XIX century mahogany library table, the frieze with two drawers to each side, raised on tapering fluted supports 160cm x 87cm £500-£1000
549. A XIX century rectangular mahogany pedestal dining table raised on a flat sided column with tricorn base and scroll feet, 129cm x 112cm £300-£500
550. A Georgian three tier mahogany dumb waiter, 110cm high £600-£900
551. A set of eight XIX century mahogany bar back dining chairs with drop-in seats, raised on turned fluted front supports, six singles and two carvers £600-£900
552. A set of four Georgian mahogany dining chairs, the reeded backs with rectangular tablets above "X" splats, overstuffed seats, reeded turned front supports £300-£450
553. A pair of country Chippendale elm side chairs with pierced vase splats, drop-in seats on square supports
554. Two XIX century ash and elm low back Windsor chairs, the turned legs joined by "H" stretchers £150-£250
555. A XIX century Lincolnshire ash and elm comb back Windsor chair £100-£200
556. A Regency mahogany brass inlaid carver chair with 'Trafalgar twist' horizontal splat, scroll arms and sabre front supports £100-£150
557. A pair of Edwardian mahogany open armchairs inlaid with boxwood stringing and with open "X" splats, drop-in leather seats £100-£150
558. A XIX century yew wood Windsor high back chair with pierced vase splats, turned legs joined by a crinoline stretcher £200-£350
559. A Victorian mahogany gentleman's chair raised on cabriole front supports and upholstered in yellow dralon £200-£350
560. A XIX century maple frame prayer chair £75-£150
561. A Victorian carved rosewood frame lady's chair on cabriole front supports £100-£200
562. A XIX century Chippendale design mahogany dressing table stool, the rectangular top on four cabriole legs, carved at the knee and terminating in ball and claw feet £200-£400
563. A Victorian mahogany stool raised on ring turned and baluster columns with an overstuffed woolwork top, £80-£140
564. A well carved Victorian walnut high back hall chair, the carved cresting above an elaborate foliate carved and pierced splat flanked by barley twist columns, the overstuffed seat in woolwork on cabriole front supports £100-£200
565. A pair of XIX century mahogany hall chairs with lozenge shape backs, solid tapering seats, raised on ring turned front supports £100-£200
566. A set of four almost matching Victorian mahogany dining chairs with arched backs, shaped splats, overstuffed seats in red velvet, raised on turned tapering front supports £350-£450
567. A pair of late Victorian mahogany tub chairs with carved pierced splats, ring turned front supports, upholstered in green floral cut moquette type material £100-£200
568. A pair of Victorian rush seated stained beech frame bedroom chairs
569. Three Victorian balloon back walnut cabriole leg dining chairs
570. An Edwardian Sheraton revival mahogany and boxwood strung open armchair with drop-in woolwork seat
571. Three various Edwardian bedroom chairs
572. A set of seven Georgian mahogany dining chairs, the reeded frames with vertical splats on square taper front supports joined by "H" stretchers and comprising six side chairs and one carver



Lot 552



Lot 550



Lot 569



Lot 564



Lot 572

573. A Bosendorfer Wien baby grand piano number 29989 and a piano stool £3500-£6500
574. Bluthner Leipzig. A boudoir grand piano in a rosewood case, number 29190, manufactured circa 1909 £750-£1500
575. A Victorian circular mahogany dining table, raised on a tapering carved column with quadruple carved legs terminating in scroll feet and with pot castors, the top 129cm diameter £550-£750
576. A Regency style mahogany two pillar dining table, the top with a broad satinwood crossband and boxwood and ebony strung, raised on "gun barrel" pedestals with triple reeded splay legs terminating in brass paw feet 156cm x 101cm £100-£200
577. A George II drop leaf gate leg mahogany dining table on tapering supports terminating in pad feet, 136cm x 129cm £200-£400
578. A Regency rosewood circular dining table, the top inlaid with brass stringing, raised on a baluster flat sided column, the circular base on three gilded paw feet, 124cm diameter £2800-£3800
579. A late XIX century walnut wind out extending dining table with two spare leaves on turned legs with original pot castors, 240cm x 121cm extended £500-£800
580. An Edwardian mahogany triple panelled wardrobe with a central mirror door flanked by a pair of panel doors beneath a stepped cornice, the interior fitted with slides and drawers, 195cm wide £150-£250
581. An Edwardian mahogany satinwood banded and boxwood strung bow front dressing table, fitted with a bevel edge mirror above two jewellery drawers, the base with a bow fronted drawer flanked by two pairs of side drawers on square taper legs; with a matching pot cupboard £150-£250
582. A XIX century mahogany fold over top tea table raised on square taper supports inlaid with boxwood stringing, 91cm wide £80-£150
583. An early XIX century circular rosewood dining table, raised on triangular pedestal with tricorn platform base and turned feet on brass castors, 135cm diameter £500-£700
584. An XVIII century oval gate leg breakfast table, raised on taper supports terminating in pad feet, 73cm x 90cm extended £150-£250
585. A Sheraton mahogany demi lune fold over tea table with a shaped frieze, raised on square taper supports inlaid with a shell patera at the head and strung with boxwood, 89cm wide £400-£600
586. A XIX century rosewood serpentine chiffonier, the mirror back in an arched frame on foliate scroll supports, the base enclosed by a pair of doors covered with green pleated material, flanked by carved brackets, 129cm wide £400-£600
587. A Georgian mahogany bird cage tripod table, raised on a turned column with triple cabriole supports, the one piece mahogany top, 67cm diameter £500-£700
588. A Victorian pedestal mahogany and ebonised music canterbury with a raised spindle turned gallery enclosed by a plain glazed door, 54cm wide, 105cm high £100-£200
589. A XIX century mahogany drop leaf dining table with a moulded border, raised on ring turned supports, 124cm x 98cm £100-£150
590. A William IV rectangular rosewood work table, fitted with a long drawer, raised on a flat sided baluster column terminating in a tricorn base on turned feet, 56cm x 37.5cm £300-£500
591. A Sheraton Revival style octagonal revolving lady's work table, fitted with cupboards and three drawers on a mahogany baluster and spirally fluted tripod support £200-£300
592. A Georgian design oval mahogany wine table on a carved column with triple cabriole supports
593. A XVII century style oak coffin stool, the oblong top on four baluster turned supports joined by a shaped frieze and with reeded stretchers
594. A principally XIX century tray top wine table on a flat sided and reeded column with platform tricorn base, 52cm diameter £100-£150
595. A late XVII/early XVIII century oak three panel coffer with lunette carved top rail, black iron lock plate and hasp and wire hinges, 115cm wide, 54cm deep £500-£650
596. A late XVII century panelled oak coffer enclosed by a two panel lid and with a three panel front beneath a relief carved top rail, 112cm wide £100-£200



Lot 578



Lot 585



Lot 574



Lot 590



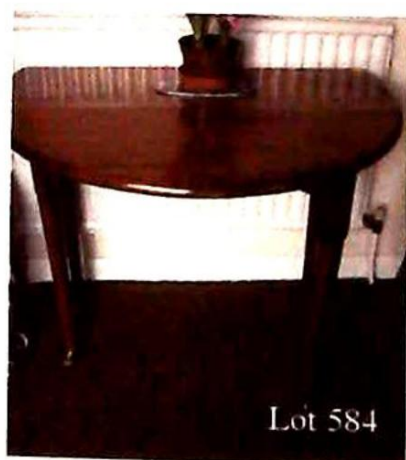
Lot 573

Lot 591



Lot 595

Lot 583



Lot 584



Lot 587



Lot 594

FORTHCOMING SALES

*f*irst Saturday Estate Sales

will take place at 10.00am on

6th MARCH 3rd APRIL 1st MAY 5th JUNE

BOOK SALES

SPECIAL SALE OF THE WORKS OF G.A. HENTY. 27th MAY
ANTIQUARIAN & MODERN BOOKS. 24th NOVEMBER

Further entries accepted for both above sales

VIEWING

Victorian & Later Sales -

Friday prior 12noon-4pm & morning of sale from 8.30am

Antique Sales -

Day prior to sale 10am-4pm and morning of sale from 9am

All other sales - please contact our offices

Catalogues on our website www.thosmawer.com approx. 5 days prior

N.B. Please telephone prior to travelling as dates may be subject to alteration



Sold in our January sale £2400

Valuations Prepared For:

INSURANCE

PROBATE

FAMILY DIVISION

For further information contact

J C Slingsby

clinton.slingsby@thosmawer.co.uk

01522 524894

CONDITIONS OF SALE

1. In these conditions Thos. Mawer & Son act only as auctioneers and agents and the representative of Thos. Mawer & Son conducting the auction is called 'The Auctioneer'

2. Whilst Thos. Mawer & Son make every effort to ensure the accuracy of their catalogue and the description of any lot:

(i) Each lot set out in the catalogue or as divided or combined with any other lot or lots is sold by the vendor with all faults and imperfections and errors or descriptions

(ii) Thos. Mawer & Son do not accept responsibility for the authenticity, attribution, genuineness, origin, authorship, date, age, period condition or quality of any lot unless they have been instructed in writing by the buyer to so certify

(iii) All statements whether printed in the catalogue or made orally as to any of the matters set out in (ii) above are statements or opinion only and are not to be taken as being or implying any warranties or representations of fact by Thos. Mawer & Son unless they have been instructed in writing by the buyers to so certify.

3. The Auctioneer has absolute discretion to divide any lot, to combine any two or more lots or to withdraw any lot or lots from sale, to refuse bids, regulate bidding or cancel the sale without in any case giving any reason or without previous notice. He may bid on behalf of the vendor for all goods which are being offered subject to reserve or at the Auctioneer's discretion.

The highest bidder shall be the buyer. The Auctioneer may at his sole discretion determine the advance of bidding or refuse a bid. If during the auction the Auctioneer considers that a dispute has arisen, has absolute discretion to settle it, or to re-offer the lot.

All conditions, notices, descriptions, statements and other matters in the catalogue and elsewhere concerning any lot are subject to any statements modifying or affecting the same made by the Auctioneer from the rostrum prior to any bid being accepted for the lot

4. The buyer shall pay the hammer price together with a premium of the hammer price - 15% inclusive of VAT

5. Notwithstanding any other terms of these Conditions, if within seven days after the sale Thos. Mawer & Son have received from the buyer of any lot notice in writing that in his view the lot is a deliberate forgery and within twenty-one days after such notification the buyers return the same to Thos. Mawer & Son in the same condition as at the time of the sale and by producing evidence, the burden of proof to be on the buyer, satisfies Thos. Mawer & Son that considered in the light of the entry in the catalogue the lot is a deliberate forgery then the sale of the lot will be rescinded and the purchase price of the same refunded.

The vendor agrees to be bound by Thos. Mawer & Son's decision.

6. Thos. Mawer & Son disclaim any responsibility for default by either the buyer or the vendor because they act as Auctioneers only and therefore do not pay out to the vendor until payment is received from the buyer. Instructions given by telephone are accepted at the sender's risk and must be confirmed in writing forthwith.

7. Every person on Thos. Mawer & Son's premises at any time shall be deemed to be there at his own risk. He shall have no claim against Thos. Mawer & Son in respect of any accident which may occur or injury, damage, loss howsoever caused, save in so far as the injury, damage loss shall be caused by the negligence of Thos. Mawer & Son's employees.

8. Each lot shall be at the purchasers risk from the fall of the hammer and must be paid for in full before the delivery and must be taken away by the purchaser at his own expense within 7 working days following the conclusion of the sale. The Auctioneer shall be entitled to charge storage charges in respect of lots not taken away as aforesaid (minimum charge of £10 plus VAT) and interest on unpaid accounts @ 4% above clearing bank base rate (per day)

9. Cheques which are not honoured by the payee's bank will incur a handling charge of £20 plus VAT for each presentation.

This contract is governed by English Law.



DUNSTON HOUSE • PORTLAND STREET • LINCOLN • LN5 7NN
TELEPHONE 01522 524984 • FACSIMILE 01522 535600
EMAIL auction@thosmawer.co.uk • WEBSITE www.thosmawer.co.uk