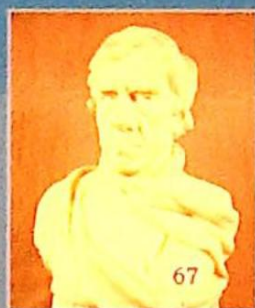




THOS. MAWER & SON LTD.

Auctioneer & Valuers Established in 1864



The Summer Antique Sale

Saturday 26th June 2004 commencing at 10.30am

On View:

Friday 25th 10am-4pm & morning of sale from 9am

Catalogues £5.00

COMMISSIONS

The Auctioneers are pleased to execute commissions for intending buyers in confidence as cheaply as is allowed by any other bids. All telephone bids must be confirmed in writing or by fax by 4pm the day prior to sale, telephone bids will not be accepted for lots on which the top estimate is under £500.00. We cannot guarantee to execute bids received on the morning of sale.

BUYER'S PREMIUM

There is a 15% premium (inclusive of VAT) payable on the final hammer price of each lot.

REGISTRATION

All prospective purchasers are requested to register and obtain a bidding number prior to the start of the sale.

CATALOGUE DESCRIPTIONS

Care is taken to ensure that any statement as to authorship, attribution, origin, date and provenance is reliable and accurate, but all such statements are statements of opinion and are not to be taken as statement or representations of fact. Thos. Mawer & Son Ltd. reserve the right, in forming their opinion, to consult and rely upon any expert or authority reasonably considered by them to be reliable. While an identification of damage is given in some instances, an absence of such advice does not imply that a lot is free from defect. Prospective purchasers are strongly advised to inspect any lot on which they intend to bid. All measurements and weights are approximate and should be verified by intending purchasers

ESTIMATES

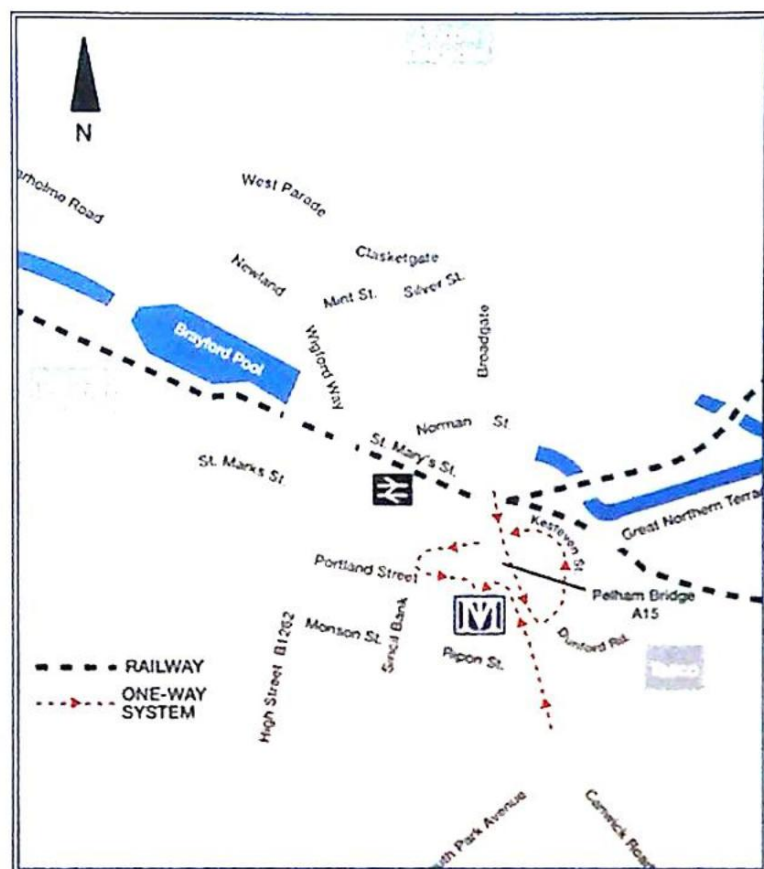
Estimates for lots under £100.00 are not printed in the catalogue. On lots that are reserved, the reserve will not be greater than the published estimate at the time the catalogue goes to press.

PAYMENT OF ACCOUNTS

All Lots should be paid for and collected immediately following the sale. Any lots not collected by 4.00pm on the wednesday following sale day will incur storage charges (minimum £25.00 plus VAT per lot).

Payment for all lots must be made on the day of sale and methods are (1) CASH, (2) CHEQUES supported by either a letter of Reference from your bank or a cheque guarantee card to cover the sum of your purchase, (3) BANKERS DRAFT, (4) DIRECT DEBIT CARDS such as "Switch", "Delta", "Classic", "Connect", (5) CREDIT CARDS subject to a 2% premium charge.

No lots in this sale are the property of Thos. Mawer & Son.



LOCATION

The Thos. Mawer & Sons salesrooms at Dunston House are situated in central Lincoln on the east end of Portland Street at the foot of Pelham Bridge (Canwick Road). By car, approaching from the south take the last turning on the left just before the road rises to the bridge.

Approaching from the north (via Broadgate), go over Pelham Bridge and turn left towards Jacksons Building Centre/Tesco on to Kesteven Street. Follow the road around to the left and drive under Pelham Bridge to Portland Street. Turn left and you will see Dunston House on the right. Portland street is also accessible from Lincoln's High Street, opposite the Ritz public house.

The salerooms are within walking distance of the main railway station and bus depot.

CERAMICS & GLASS

1. A pair of XIX century Satsuma pale blue ground baluster vases, the floral decoration with coloured enamels and gilt highlights, 45.5cm high £80-£150



2. Newhall. A XIX century part tea service comprising teapot and ten assorted cups with black and white transfer prints of mother and child, black line highlights to teapot and cups and another Newhall teapot decorated with rose sprays, base with circular Newhall mark and number 1508 (a/f); Newhall saucer etc. (24)

3. Newhall. A tea set comprising six tea bowls and saucers, 15cm diameter slop bowl, another 11.5cm and a jug 11.5cm (15) £150-£200

4. Royal Doulton. A rectangular plate with shaped edges - hunting scene after Charles Simpson DE6326 "Across the Moor"; a Bavarian porcelain trio; ribbon plate with cherubs and three "onion" pattern plates (8)

5. XIX century Staffordshire willow pattern part tea service comprising six cups, saucers and plates, basin, cream jug and sandwich plate (21)



6. A Continental porcelain group of a warrior standing in a boat pulled by a swan, he with a winged helmet, 25cm high



7. A Continental figure group of two girls and a boy with two dogs seated and with two roses to the gilt decorated oval scroll base, gold painted anchor beneath and number 38 (possibly Sampson Paris) 4.5cm high; and a XIX century Salopian pale blue overlay cylindrical lidded jar with incised fern and grass decoration, 11cm £100-£150



8. A pair of Chinese blue and white vases decorated with stylised flowers, 36cm high

9. A Chinese pottery vase decorated overall with trailing foliage and flowers, the neck with pair of applied dogs of foe and salamanders, 36cm high



10. A XIX century figure of a fruit seller, another group of mother and children together with five other pieces of decorative china and figures (8)

11. A "Victoria" Worcester style hors d'oeuvre dish divided into three bowls, each painted with summer flowers, the shaped edge gilt lined, loop handle



12. A Staffordshire toby jug "The Squire" wearing a tricorne hat, green jacket, rust red waistcoat, yellow trousers, seated on a corner chair £80-£140



13

13. Two XIX century Staffordshire figures of Gladstone standing with right hand resting on the top of a pillar, each 36cm high (see Pugh p.219 figure 47) £100-£200



14

14. A XIX century Continental porcelain clock garniture decorated with cherubs, fruit and flowers, the clock and candlesticks with scrolling bases (3)

15. A set of three XIX century

Staffordshire ironstone plates decorated with stylised brambles, three finished in pink and gilt, pattern number 1440, one other with orange ground and gilt number 1439; each with impressed scroll surrounded mark, porcelain opaque CM (4)

16. Copelands China retailed by Thomas Goode & Co. A dessert service banded in cobalt blue with castellated and "jewelled" border, comprising two comports, a bowl and eight plates, 22cm diameter (11) £150-£250

17. W G & Co France. A porcelain dessert service with moulded scalloped borders decorated with floral sprays and comprising a circular comport, circular shallow dish, 23cm, an oval ditto 26cm x 22cm and six plates, 23cm diameter £80-£120



18

18. Moorcroft Made in England, impressed mark. A tapering pomegranate vase, signed in green, 21.5cm high (two small chips beneath the foot) £120-£180

19. A faience tin glazed charger



19

with foliate decoration in blues, green and yellow, 34cm diameter



20

20. A XIX century English china dessert service, the centres painted with summer flowers and comprising two tall comports, four smaller and twelve plates, each 23cm diameter (two comports broken, other damage and discolouration) £150-£250



21

21. A pair of Chinese porcelain narrow necked vases decorated with stylised flowers and coloured bands, 25cm high £150-£200

22. Clarice Cliff Bizarre. A "Marguerite" pattern conical sugar sifter, printed factory marks, 13.5cm £300-£400

23. A Heredities ceramic figure of a standing horse with neck arched towards two fox hounds

24. A Beswick connoisseur model of Red Rum and jockey, winner of the Aintree Grand National 1973, 1974 and 1977 etc. £300-£400

25. A shoulder doll mounted on a pin cushion with sawdust filling



26

26. An XVIII century blue and white decorated (broken) bowl, the exterior with Chinese style buildings, the interior with motto "Success to trade and navigation", 31cm diameter



27. A Japanese large charger painted with mountainous landscape and assorted flowers, 68cm diameter

31. A heavy cut glass ships decanter with mushroom stopper



32. A Jacobite portrait glass, the trumpet shaped bowl engraved with a cameo portrait of The Young Pretender and motto "Audentior. Ibo" decorated with rose and thistles", air twist stem (glued), 18cm high £200-£400 (formerly on loan to the Kings Lynn Museum)

33. A pair of Victorian vaseline glass bulb holders with pink frilly rims on moulded spiral decorated necks, the ribbed bodies on moulded feet and another white glass painted vase

34. A set of six facet cut wheel etched port glasses and five similar ditto

35. A late XIX century milk glass miniature vase raised on five clear amber feet

MISCELLANY, COLLECTABLES, METALWARE ETC.

39. Usher, James Ward. An Art Collectors Treasures, 1 vol. - issued by Lincolnshire Museums 1977

40. A Regency rosewood sarcophagus shaped tea caddy, strung with ebony and boxwood lines and cross banded, the interior fitted with two tea compartments and a mixing bowl, lion mask ring handles and raised on claw and orb feet, 30cm wide £70-£130



41. An oak barrel form jug with brass bands, brass handle and neck, 69cm to top of spout

42. A pair of XIX century brass beam scales on a rectangular mahogany base with single drawer and spirit level, 26cm wide x 13cm, 38cm high (lacking one pan)

43. A XIX century burr walnut writing box with ebony string inlay, the top inset with brass plate "S. Bell 11 June 1875"; the fitted interior with green and gilt lined velvet slope, 40cm wide £70-£130



44. A XIX century brass bound writing box with fitted interior, 35cm wide

44A. An early XIX century mahogany brass bound writing box with a fitted interior and side drawer

45. An early XIX century rosewood sarcophagus shaped tea caddy, the interior divided into two compartments, with a central mixing bowl, boxwood strung internally and externally and standing on turned feet, 30.5cm wide, 14.5cm deep, 14cm high £70-£130

46. A Victorian black lacquer and mother of pearl inlaid stationery box, the rising lid revealing tiered shelves, single drawer under with pen tray, 25cm wide



47. A XIX century tortoise-shell sarcophagus shaped tea caddy, the lid opening to reveal a red velvet lined interior with two tortoise-shell lidded containers, moulded glass mixing bowl, 32cm wide £1700-£2500



48. A pair of mahogany wall brackets, each with shaped shelf and back, ebony diamond inlay to back

49. A XIX century French bayonet and metal scabbard dated 1877, an oriental sword and scabbard and a spear with wooden shaft and metal tip

50. A flintlock travelling pistol, the lock signed "Hole" and the octagonal barrel "Bristol", with brass pineapple engraved trigger guard and lion mask brass pommel to the butt, checkered grip, approx. 23cm overall £400-£600



50

51. An ornate cast four branch brass candelabra, the neo-classical column standing on claw feet, 62cm high



52

52. A brass corinthian column oil lamp with vaseline glass reservoir and shade, 67cm high

53. An iron fire back cast with a crowned lion rampant and date 1639, 59cm wide

54. F Barbenienne Fondeur. A semi naked bronze female torso, her lower body with a drape, impressed manufacturers mark to the plinth, 95.5cm high £2000-£3000



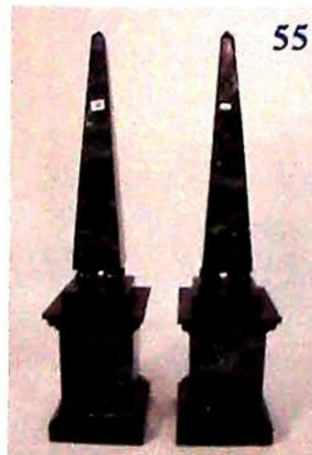
54

green/black veined marble obelisks, 100cm high £600-£900

56. A metal wall light of cherub holding an arching stem of three flowers forming the light, with a shaped foliate back plate, 47cm high

57. A Suzuki guitar number 1664

58. A tenor gamba



55

manufactured by Derek Johnson of Lincoln

59. An old violin with two bows (cased)

60. A mandolin, the rosewood panel with floral inlay

61. A Netsuke in the form of a sleeping man with monkey on its' back stealing from a basket, 5cm x 2.5cm approx. £100-£150

62. A Masonic medal by Spencer & Co, Masonic Manufacturers London (cased)



63

63. South Sea Islands(?) XIX century bone teethers (8)

64. A large brass bell dated 1945 on an iron bracket

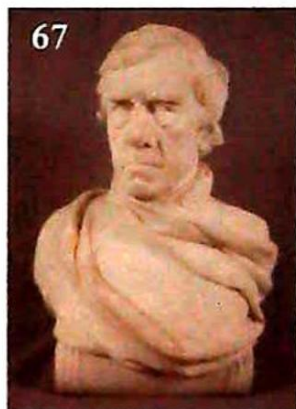
65. A pierced brass fender of neo-classical design, 140cm wide

66. A pair of brass vases embossed band to shoulder and pair of Satyr ring handles, impressed Belgica D.F 32.5cm high

67. A white marble portrait bust of Brougham (Lord Brougham) impressed John Adams-Acton Fecit, 37cm high (Adams carved a number of public statues, one of his more famous of General Napier in Trafalgar Square £400-£500)

68. A set of three long handled brass fire irons

69. A pair of poker work and carved timber panels titled "A Quiet Game of Nap" 31cm x 42cm



67

SILVER, PLATE & POCKET WATCHES

71. A repousse decorated hallmarked silver back five piece dressing table set comprising two hair brushes, mirror and two clothes brushes, another smaller clothes brush, silver topped jar and scent bottle (8)

72. Dublin 1913/14. A chalice with everted bowl, baluster stem, each with applied scrolling, raised on a circular hollow foot with gadrooned edge, later engraved "presented ... Grimsby Police ... December 1922", 19cm high



72

73. A horned cow creamer, standing with head raised, tail arched over back, hinged lidded cover decorated with a fly, hallmarks on stomach and sterling 925, maker/retailer IF & Son Ltd

74. A silver on copper tudor rose pattern coaster with turned wooden base and a Continental silver covered handled and gilded cake server (cased)

75



75. A pair of Birmingham hallmarked corinthian column silver candlesticks, 18cm high

76. Birmingham 1931. A three piece silver tea service comprising teapot, hot water jug and sugar basin, maker ALD and a batchelors silver teapot, Birmingham 1931, maker B & W Ltd and a hallmarked spoon



76

77. Birmingham 1934. A tudor rose style silver card tray, 15cm diameter and a hallmarked silver sugar sifter spoon with fruit decoration (a Georgian spoon later modified)

78. Exeter 1815. A pair of fiddle pattern tablespoons, monogrammed D, maker JH

79. Two hallmarked silver tablespoons - London 1820, maker TD and London 1822, maker WE and WF

80. Hallmarked silver:- pair of bright cut sugar nips, 12 assorted teapoons, butter knife and a napkin ring

81. Exeter 1852/3. Six fiddle pattern table forks, four dessert forks, five dessert spoons, monogrammed, maker Henry Ellis and a plated fiddle pattern dessert spoon

82. A set of ten "rat tail" dessert spoons, Sheffield 1915 and four matching table spoons, Sheffield 1896, 27+ozs £150-£250

83. London 1824/5. A set of six "rat tail" table forks with monogram, maker JH

84. A hallmarked silver gentleman's pair cased pocket watch by Bothamley Boston, number 65835, the case hallmarked London 1839, together with a

Belga pocket watch with Swiss movement and two lady's base metal cased fob watches (4)

85. Chester 1873. An engine turned decorated gentleman's silver pocket watch by Carryer Bros. (a/f) together with hallmarked chain with swimming medal fob by Graves Sheffield

86. A cased set of Kings pattern dessert knives with sterling silver handles and a cheese knife, butter knife, bread knife and cake server of similar pattern

87. A magnificent table centre with three scroll branches supporting pierced bowls connected to a tapering column with larger bowl topped with a vase, standing on a triangular base with foliate scroll feet, 69cm high £200-£300

CASED FISH

91. Two roach preserved by W F Homer, Woodgrange Road, Forest Gate, London, the bow fronted case gilt lined and titled Roach 11lb 10.5ozs and 11b 7ozs caught in the Witham at Bardney by R Poole, 30th December 1918, the case 75cm wide, 37cm deep £400-£600



91

92. A preserve tench by J Cooper & Sons, labelled "Tench 3lb 2ozs caught by P Bancroft at Midville August 15th 1923", the bow fronted case 58cm x 31cm £300-£500



92



93. A bream caught by H Walker in the Witham at Bardney, 5th March 1918, 5lbs 9ozs 9ors, preserved by J Cooper & Son in a bow fronted case measuring 69cm x 39cm £400-£600



94. A specimen pike preserved by J Cooper & Sons, 28 Radnor Street, St Lukes, London EC and labelled "Caught by C B Hughes at Norton Place November 9th 1924, weight 22lbs", the bow fronted case outlined in gilt and measuring 123cm wide, 44cm high £700-£1100



95. A brown bear skin rug with full head, approx. 195cm nose to tail, 150cm wide, shot by the owners grandfather circa 1914 £250-£400

RUGS

101. An old middle Eastern carpet

102. Five old Middle Eastern rugs (well worn)

103. A large multi coloured oriental design wool carpet, 11ft x 15ft

104. A Persian style wool carpet

PICTURES, PRINTS, SAMPLERS

110. Michael Brockway s. Norwich Cathedral and gateway see gallery label verso, watercolour drawing 36cm x 54cm



111. English School - J Smith 1875, s.d. 1875 watercolour drawing of a river valley, skiff tied to a rock in the foreground, sheep in the middle distance



with mountains beyond 21cm x 29cm, mounted

112. R Suddaby s. A watercolour drawing of a flooded meadow 24cm x 51cm, mounted and framed



113. Chas. Rowbotham s.d. 1885? A watercolour drawing - mountainous river landscape with cattle drinking 30cm x 45cm, mounted and framed

114. Dunlop s. A watercolour drawing of a Continental village, seen through a wooden trestle bridge 26cm x 34cm, mounted and framed

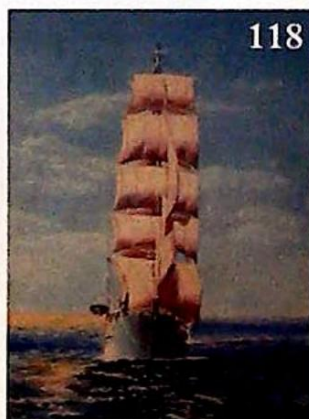
115. Roland H Hill 1899 s.d. A watercolour drawing of an English village, thatched roof houses and church tower in the middle ground 14cm x 22cm, mounted and framed

116. JW Carey 1935 s.d. A watercolour drawing of a mere with flowering iris in the foreground, woods and mountains beyond 22cm x 30cm, mounted and framed

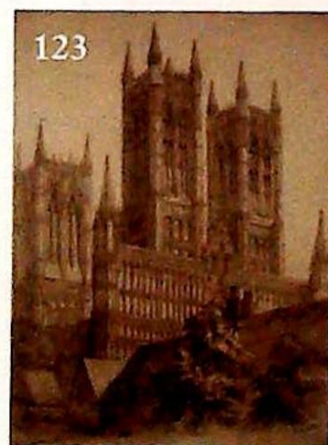


117. RV Pitchforth s. A watercolour drawing - boats at Lymington, title label verso 36cm x 55cm, mounted and framed

118. T Stewart s. A watercolour drawing of a wind jammer in full sail, seen head on 45cm x 27cm, mounted and framed



119. M Gianni s. "Malta" - a watercolour drawing of two sailing boats moored, others beyond in sail, mountainous landscape in background 18cm x 34cm, mounted and framed



121. Continental School oil on canvas - Madonna and child 59cm x 49cm, gilt frame

122. E. Klee s. Dutch School still life, spring flowers, oil on canvas 50cm x 61cm

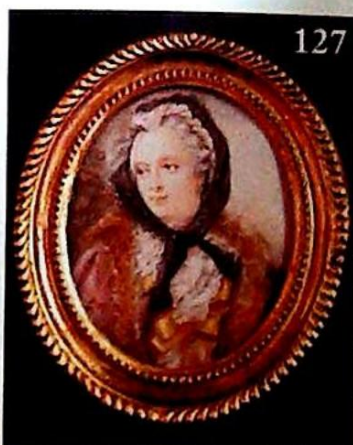
123. J B Ladbroke s. (1803-79) pencil sketch of West Front of Lincoln Cathedral, North West View, see verso letter from Norfolk Museum Service dated 1981 doubting signature 42cm x 31cm

124. After Samuel Buck Three engravings - Somerton Castle, South West Prospect of Lincoln Castle, north view of Lincoln Palace taken from the top of the minster

125. William Kip A map of Sussex - framed XVII book plate hand coloured

126. XIX century oriental oil on canvas (indistinctly signed) A Far Eastern market scene with many figures, stalls and buildings set amongst trees, purchased by the vendors father in the Far East 33cm x 53cm £250-£350

127. An oval Victorian portrait miniature on ivory of a lady wearing a black head scarf with fur trimmed coat, 9cm x 7.5cm



128. H Todd A set of four circular oil paintings, rustic scenes with figures, one with sheep - three signed or monogrammed 19cm diameter £100-£200

129. A late XVIII century alphabetical pictorial and motto sampler by Sarah Elmitt aged 12 years, 1797, framed, 41cm x 42cm

130. An oak framed sampler, 35cm x 24cm



131. Attributed to Copley Fielding on the mount Watercolour drawing - a lane bordered by a stone wall, mountainous landscape 12cm x 20.5cm

132. Madonna and child red chalk heightened with white on green paper, indistinctly signed 17cm x 19.5cm

133. Assorted prints. Hastings and St Leonards Pier, XIX century Naval Captains in dress uniform etc. (5)

134. D Gould s. Watercolour drawing - country house with a figure carrying fagots 25cm x 33cm

135. Four assorted monochrome prints - Greenwich 1926, Lancaster Castle gateway, Norwich and Greenwich Hospital (4)

136. A pencil sketch on brown paper - sailing barges by a pier, another Croyland Bridge and an oil on canvas - lovers in a Regency interior, indistinctly signed (3)

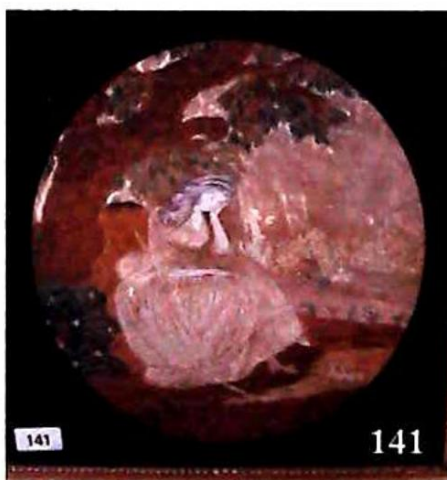
138. William Widgery s. A pair of watercolour drawings - a gorge between trees with autumn foliage and another stream with trees 45cm x 28cm



139. A XIX century coloured print of a three funnel steam ship - City of Paris (torn)

140. After W R Bigg A pair of early XIX century mezzotints - family with spinning wheel and animals by a cottage and the companion print - with children before the cottage door 47cm x 57cm £100-£200

141. A pair of early XIX century silkwork pictures - young lady with harvest field in the distance and another - young lady with dog on a lead, in oval black glass mounts approx. 36cm x 20cm £250-£350



142. XX century English School oil on artists board, written verso - Lily Thornton Exh. Liverpool 1895-1909 oil on board - white cottages in a landscape 26cm x 30cm



143. An XVIII century style oval pastel portrait of Ann Boleyn in an oval gilded frame surmounted by a crown in ribbons, 71.5cm x 58cm £300-£500

144. A pair of bronze bas relief religious plaques after Francisco Putinati, contained in elaborate gilded and hardwood frames, approx. 8cm x 14cm £180-£250

145. XVII century Italian School Large oil on canvas - The Deposed Christ and attendants 210cm x 126cm £300-£600



MIRRORS

155. A neo-classical design gilded over-mantel mirror, 143cm wide £100-£200

156. An XVIII century style gilded over-mantel mirror, the frame carved with foliate scrolls and surmounted by an open cresting, 207cm wide

157. An antique Italian carved gilt wood frame over mantel mirror, 98cm wide £100-£200

158. A Victorian rosewood over mantel mirror decorated with turned columns, 79cm wide

159. A George III style rectangular mahogany frame wall mirror

160. A XIX century oval plaster gilt girandole with three candle sconces, the mirror surmounted with fern leaves with a pair of half round matching wall brackets, the mirror 92cm x 53cm approx.

161. A substantial Victorian rectangular over mantel mirror in a moulded mahogany frame, 146cm wide with a bank of narrow drawers on which it has been standing.

CLOCKS & BAROMETERS

170. A XIX century mahogany five dial banjo barometer, the case boxwood strung and the level signed "Barelli Bristol", 107cm £150-£250

171. A XIX century mahogany and boxwood strung five dial banjo barometer, the level signed "C Faveri Lincoln", 99cm

172. A XIX century Swiss Bells Insight musical box playing 12 airs and contained in a chinoiserie decorated ebonised case, 55cm wide, 30cm high £500-£700

174. An Edwardian clock in a domed oak case, the circular white dial marked "A & J Bell Ltd. Leeds French make"

175. An Edwardian mantel clock in an architectural design part walnut veneered case with paper label "HAC, 14 day strike, made in Wurttemberg", 39cm high

176. A XIX century black forest mantel clock, the long door with a glazed pictorial panel of hunters with a deer, paper label "The Bonus Tea Association and given with eight pounds of their tea", 33cm high

177. A XIX century "drum" mantel clock in a walnut and ebonised case, the circular dial signed "Hry Marc Paris" (damaged), eight day striking movement, 22cm high

178. A XIX century gilt metal cased mantel clock depicting a recumbent figure with a basket of fruit, circular white dial with striking movement, ebonised plinth and glass dome, 32cm high



179. A XIX century gilt metal cased mantel clock surmounted by a maiden seated, circular white dial, ebonised plinth and dome, 35cm high

180. A Victorian black slate and grey veined marble cased presentation mantel clock dated 1882 with circular white enamel dial and eight day striking movement, 33cm high

181. A mantel clock in an oak domed shaped case with circular white dial and French jewelled movement, and a XIX century mantel clock in a pine case enclosed by a glazed door (2)

182. A French mantel clock, the white enamel dial signed "Martin Basket and Co. Paris" contained in a plain polished slate case, 33cm high

183. A XIX century mantel clock with circular white dial and with eight day striking movement in a domed shaped black slate case with marble discs and gilded foliage, 26cm high

184. A XIX century black slate and marble mantel clock with gilded dial and enamel chapter ring, striking movement, 22cm high

185. A Victorian mantel clock, the circular gilt metal and enamel dial with eight day striking movement by The Ansonia Clock Company, black metal case surmounted by a brass prancing horse, 37cm high

186. A Victorian mantel clock with circular white enamel dial and striking movement, the black slate case with coloured marble highlights, 23cm

187. A XIX century black forest cuckoo clock contained in a "gothic" style relief carved hardwood "church" case, 57cm high £100-£150

188. An elaborate XIX century French gilt metal cased mantel clock depicting a hunter holding game birds with his gun and retriever, the circular clock with an eight day striking movement with circular porcelain sevres style dial, the plinth inset with two further porcelain plaques, ebonised plinth and glass dome, 38cm high £150-£250

189. A XIX century French gilt metal and white alabaster mantel clock, the white enamel dial with eight day striking movement and



the case with a boy seated on a barrel holding aloft a hammer, ebonised plinth and glass dome, 30cm high £80-£150



190. A XIX century gilt metal cased mantel clock depicting a rider slaying panthers, the circular white enamel dial with French eight day striking movement, the plinth cast with dead game and a

quiver of arrows, 46cm high with an ebonised plinth and glass dome £100-£200

191. A XIX century French three part white alabaster and gilt metal decorated mantel clock, the circular brass dial with enamel white numerals, eight day striking movement (with deficiencies)

192. A XIX century mantel clock, the circular white enamel dial with a revealed escapement, contained in a black slate case with gilded lion mask side handles, eight day striking movement, 34cm high

193. A XIX century mantel clock with black polished slate dial and gilt numerals, the architectural case with a rouge marble embellishment, 33cm high

194. A XIX century French gilt metal cased mantel clock surmounted by a seated boy reading a book, circular white enamel dial, 30cm high

195. A XIX century "gingerbread" Seth Thomas mantel clock contained in an elaborate fret cut case enclosed by a glazed painted door, 54cm

196. A XIX century mantel clock with a circular white dial, the rectangular black slate case embellished with coloured mable pillars and flowers, 21cm high

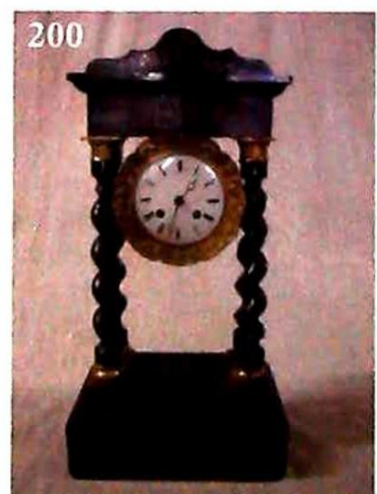
197. An Edwardian mantel clock in a mahogany domed case with striking movement, 27.5cm high

198. A XIX century rosewood cased mantel clock inlaid with mother of pearl roundels and brass stringing with floral pressed brass ring side handles and surmounted by a pineapple finial, 37cm high £80-£130



199. A French gilded metal and painted wooden cased mantel clock, the case decorated with figures and stylised flowers and surmounted by a seated putti playing a flute £200-£300

200. A XIX century French portico clock, the ebonised and marquetry inlaid case with four barley twist columns, each with gilt brass capitals holding the circular eight day enamel dial clock, stepped marquetry inlaid plinth, 48cm high £200-£300



201. A XIX century French gilded mantel clock surmounted by a maid before a doorway, the circular white enamel dial signed "Sylvester L. Samui? A Paris", on an oval ebonised plinth with a (damaged) glass dome, 38cm high £80-£140



202. An early XX century mantel clock in a domed figured mahogany case strung with boxwood, the circular white enamel dial in a gilt metal bezel with an exposed escapement, eight day French quarter hour striking movement, 30cm high

203. A Victorian black slate and rouge marble based mantel clock, the circular enamel dial with recessed centre and French movement, 28cm high

204. A XIX century black forest cuckoo clock in a chalet style relief carved oak case, 39cm high £180-£280

205. A XIX century French empire alabaster cased mantel clock with gilt caryatids surmounted by a gilded lion, ivory chapter ring in pressed gilt bezel with glass dome and ebonised plinth, the clock 34cm high £150-£220



206. A XIX century white alabaster neo-classical design portico clock with a circular embossed gilt dial and pendulum, French striking movement, glass dome, 46cm high £100-£150

207. A Victorian black slate mantel clock in a neo-classical architectural case, the circular gilt dial with filigree centre marked "Bowman London", 29cm high

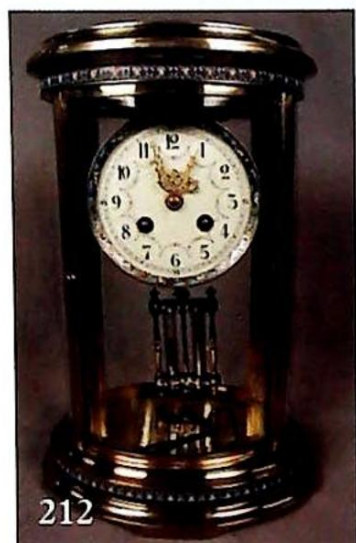


208. A French brass cased carriage clock, white roman dial

209. A late Victorian mantel clock in an architectural design polished hardwood case with circular paper dial and striking movement, 38cm high

210. Miscellaneous horological books, magazines, old auction catalogues and some model engineering magazines (two boxes)

211. A XIX century black slate and marble embellished mantel clock with ivorine and gilt metal dial with recessed centre, the case surmounted by a gilded orb, approx. 30cm overall



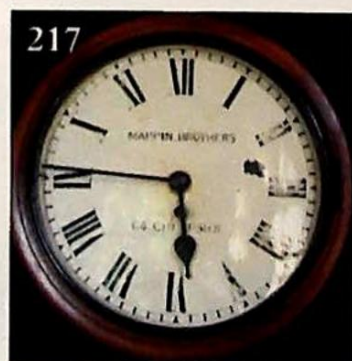
212. An oval gilt metal and cloisonne enamel cased four glass mantel clock with French movement and mercury compensating pendulum, the white dial painted with floral swags, 30.5cm high £450-£650



215. A Vienna wall clock contained in a walnut case surmounted by an eagle, eight day movement striking on a gong, approx. 92cm overall £120-£180

216. A XIX century spring driven Vienna wall clock contained in a polished hardwood case decorated with split turnings, approx. 94cm

217. A XIX century mahogany case fusee white dial wall clock lettered "Mappin Bros. Cheapside", 38cm diameter overall £250-£350



218. A double weight Vienna wall clock contained in a walnut case, the door flanked by half turned columns, circular white enamel dial with subsidiary seconds ring, eight day striking movement, approx. 126cm overall £350-£450



219. A double weight Vienna wall clock contained in a fine walnut case decorated with carved columns and a scroll carved pediment with turned finials, eight day striking and repeating movement, approx. 126cm overall £350-£450



220. A XIX century American drop dial wall clock with eight day movement, the white dial "sold by W Horne & Sons Leyburn", the walnut case decorated with marquetry bands £100-£150



221. An Edwardian oak cased wall clock with circular steel dial, the eight day movement striking the hour and half hour, the door with bevelled glazed panels, 70cm £80-£140

222. A spring driven Vienna wall clock, the elaborate polished case surmounted by a prancing horse on a castellated pediment, circular white dial with striking movement approx. 100cm



223. A XIX century drop dial fussee wall clock with white enamel painted dial, the rosewood case with mother of pearl inlay, approx. 73cm
£350-£450

224. A spring driven Vienna wall clock contained in an elaborate walnut case decorated with split turnings, circular steel dial with striking movement, approx. 121cm

overall

225. A XIX century double weight Vienna wall clock, the fine walnut case elaborately decorated with split turnings and surmounted by an eagle on a castellated top, the circular enamel dial with subsidiary seconds ring, approx. 140cm overall £400-£600



226. A XIX century spring driven Vienna wall clock striking on a gong contained in a polished split turned decorated case, 72cm

227. A XIX century rosewood cased wall clock, the painted dial with 30 hour movement striking on a gong, paper label "E N Welch manufactured MFG. Co. USA", 66cm

228. An XVIII century longcase clock movement, the square brass dial with applied spandrels, silvered chapter ring and dial centre signed "Jonothan Marr Retford", with date aperture, 30 hour



movement, 29cm square £400-£600



231. An XVIII century 30 hour longcase clock, the square brass dial with applied spandrels, date aperture and silvered chapter ring signed "Benja.. Rogers Chesterfield" (early XVIII century); the square oak hood with a moulded cornice, with turned columns to each corner, the long door with a bulls-eye aperture on a stepped plinth, 196cm high £600-£900

232. A longcase clock with square brass dial signed "Thos. Cox Thornbury" with date aperture, contained in an oak case, the square hood with broken swan neck pediment, the trunk enclosed by a

long door; eight day striking movement, 208cm high £500-£800

233. A XIX century oak and mahogany longcase clock, the arched dial painted with a boy launching a sailing ship and with stylised sea shells to the spandrels signed "Richard Holt Newark" (1804-1845), contained in a broken swan neck pedimented hood with brass orb finials flanked by turned columns, the shaped door cross-banded in mahogany and between plain quarter columns; eight



day striking movement, 212cm high £800-£1200



234. A XIX century mahogany longcase clock, the arched dial painted with pagoda roof Indian buildings with stylised floral spandrels, subsidiary date and seconds ring, signed "Jonthn. Reed Brampton", contained in a broken swan neck pedimented hood with turned columns, the case enclosed by an arched door,

eight day striking movement, 220cm high £1300-1700

235. A mahogany longcase clock, the arched moon roller dial painted with globes and gilding to the spandrels, signed "Jno. Juler N. Walsham" (1753-1773), the tall mahogany case with a domed hood, inlaid with a shell and with gilt vase finials, flanked by fluted columns, the base with a long arched door on a rectangular cross-banded



plinth with ogee feet, 251cm high £700-1200



236. A XIX century oak and mahogany cased clock, the arched dial painted with buildings and a figure crossing a foot bridge with floral spandrels and outlined in gilt with subsidiary seconds ring and date aperture, signed "J Page Jnr. Market Rasen" (1826-1885); the

broken swan neck pedimented hood with three eagle finials flanked by fluted columns, the case enclosed by a mahogany banded arched door, flanked by quarter spirally fluted columns; eight day striking movement, 196cm high £900-£1300

237. A XIX century figured mahogany cased grandfather clock, the arched dial painted with churches to the corners and with a rocking ship in the arch (not working), also with a subsidiary date aperture, "R Elliott Mexbro", the broad mahogany case decorate with bobbin turned columns, cross-grain and banded with rosewood; eight day striking movement, 236cm high £1200-£1800



238. A XIX century oak and mahogany cased clock, the arched dial painted with sheep and lamps and with a boy and sheep in the dome, subsidiary seconds ring and signed "Wm. Hewson Lincoln" (1818-1863), the swan neck pedimented hood with three brass finials and fluted columns, the trunk enclosed by a cross-banded door with a central diamond inlay and flanked by reeded quarter columns; eight day striking movement, 21cm high £1000-£1500



FURNITURE

250. An Edwardian neo-classical design mahogany china display cabinet, the centre section with a concave glazed panel, flanked by two doors, each with ribbon and

mistletoe carved mahogany ovals, separated by reeded columns with carved capitals, 154cm wide, 116cm high £600-£900

251. A high quality Sheraton Revival mahogany china display cabinet, the upper section with a hinged door set with bevel glass as a bijouterie compartment, the base enclosed by two single and a pair of double doors and fitted with two drawers, satinwood banded and boxwood strung, raised on square supports with spade feet, 106cm wide, 147cm high £600-900



252. A small Sheraton Revival mahogany double wardrobe, the moulded cornice above a pair of fielded panel doors crossbanded and boxwood strung, the interior with a fitted shelf, 95cm wide, 189cm high £200-£300

253. A Victorian mahogany cylinder desk, the interior fitted with small drawers and pigeon holes above a sliding writing surface, fitted with compartments and a slope on three drawer pedestal supports with panel sides, 141cm wide £800-£1200



254. A fine Georgian mahogany astragal glazed display cabinet on an associated stand, the moulded dentil cornice above a pair of astragal glazed doors, the base fitted with two drawers with lion mask ring handles, 120cm high, 222cm high £1000-£1500

255. A magnificent neo-classical design figured mahogany gentleman's wardrobe with a shaped cornice surmounted by an urn between foliate brackets, enclosed by three doors, two with oval satinwood banded fielded panels and with four drawers beneath, the shaped plinth



with stepped feet, 193cm wide £400-£650

256. A magnificent Georgian mahogany press cupboard with a chequer banded moulded cornice, the figured doors inlaid with ovals above two short and two long drawers, each with circular press brass loop handles, standing on splay bracket feet, 122cm,



231cm high £1700-£2500

257. An Edwardian mahogany sheraton revival design pedestal banded in satinwood and with a fielded panel door and simulated drawer over, 62cm wide



258. An XVIII century oak bureau, the fall front enclosing an interior fitted with a series of pigeon holes and small drawers either side of a central cupboard, the base with four graduated drawers on turned feet, 101cm wide £100-£200

259. A Victorian rosewood serpentine fronted mirror back chiffonier, the arched mirror in a foliate and scroll carved frame, the base enclosed by a pair of doors with pleated fabric panels, flanked by old scroll brackets, 129cm wide £300-£500



266. A Georgian mahogany bird cage tripod table, raised on a turned column with triple cabriole supports, the one piece mahogany top 67cm diameter £300-£500



267. A George III mahogany linen cabinet enclosed by a pair of panelled doors with three internal slides above a long drawer, raised on bracket

feet and with bold cast brass swan neck side handles, 129cm wide, 90cm high £400-£700

268. A George III mahogany chest of three long drawers, the top with moulded border and standing on shaped bracket feet, 110cm wide, 54cm deep £150-£250



269. A late Victorian rosewood corner cabinet, the upper section with bevelled mirror panel back and marquetry inlay, the canopy on turned tapering columns above a glazed bijouterie display cabinet, the base with two drawers, a glazed display cabinet and open side shelves, 194cm high £400-£600

270. An XVIII century two panel oak blanket chest enclosed by a hinged lid with two internal fitted compartments and panelled sides, 114cm wide, 63cm deep £200-£300



271. An Edwardian rosewood settee with upholstered arms and back rests above a spindle turned gallery set with oval marquetry inlaid splats, swept arms on turned reeded front supports £70-£140



260. A Georgian mahogany bird cage tripod table on "gun barrel" pedestal with triple cabriole supports, the top 77cm diameter (distressed) £150-£300



261. A Sheraton design mahogany secretaire bookcase, the moulded cornice above a pair of astragal glazed doors, the base with a fitted secretaire drawer above a pair of fielded panel doors enclosing slides, cross-banded in satinwood, boxwood and ebony strung and standing on bracket feet, 110cm wide, 229cm high £600-£900

262. A Georgian mahogany chest of two short and two long drawers on shaped bracket feet, 115cm wide £100-£200

263. A large early XIX century mahogany chest of two short and three long cock-beaded drawers with cluster half columns to each side raised on turned feet, 126cm wide £75-£140

264. A George III oak bureau, the slope front enclosing small drawers, the base fitted with four graduated long drawers on bracket feet, 91cm wide £100-£200

265. A XIX century mahogany bow front chest of three drawers (distressed), 106cm wide



272. A Georgian mahogany bow front double door hanging corner cupboard flanked by fluted pilasters with a stepped moulded cornice, 96cm high £450-£650

273. A pair of Georgian astragal glazed mahogany bookcases with dentil moulded cornices, diamond pattern astragal glazed doors, 203cm high, 80cm wide

274. An early XIX century mahogany square piano now converted to a sideboard with three drawers raised on square taper supports originally from Blyborough Hall, 162cm wide



275. A set of seven (six singles and one arm) Georgian elm dining chairs with plain curved cresting rails above vertical interlay splats, drop-in seats on square taper supports joined by plain stretchers £300-£450



276. A Georgian mahogany 'D' end dining table with spare leaf, 195cm x 134cm £100-£200

277. A Victorian oval mahogany loo table raised on a turned baluster and fluted column with triple cabriole supports and scroll feet, 120cm x 89cm

278. A Victorian mahogany umbrella stand divided into compartments on six turned tapering fluted columns with turned finials, 180cm wide



279. Four almost matching Victorian mahogany dining chairs with arched backs, overstuffed serpentine fronted seats in red plush on turned front supports £150-£250



280. A Georgian rectangular mahogany side table fitted with two drawers to the frieze raised on square taper supports, 94cm x 43cm

281. A Georgian mahogany gate leg drop leaf dining table, 107cm x 148cm £100-£200

283. A XIX century circular rosewood breakfast table raised on a triangular column with tricorner platform base and turned feet, 133cm diameter £300-£500



284. A Sheraton Revival mahogany boxwood strung and inlaid pembroke style occasional table fitted with a single frieze drawer and raised on square taper supports, 94cm x 66cm extended £200-£300

285. A mahogany extending dining table on bold cabriole supports with pad feet, with two spare leaves, 240cm x 120cm extended £300-£500

286. A XIX century rectangular mahogany pedestal dining table raised on a flat sided column with tricorner base and scroll feet, 129cm x 112cm £300-£500

287. A Georgian mahogany tilt top tripod table, 73cm diameter £150-£250

288. A late XIX century walnut wind out extending dining table with two spare leaves on turned legs with original post castors, 240cm x 121cm extended £200-£400

289. A George II drop leaf gate leg mahogany dining table on tapering supports terminating in pad feet, 136cm x 129cm £200-£300



290. A Regency pedestal breakfast table on quadruple reeded supports with brass paw castors, 110cm x 97cm with the leaves extended £100-£200

291. A XIX century mahogany drop leaf dining table with a moulded border, raised on ring turned supports, 124cm x 98cm



292. An Edwardian mahogany satinwood cross-banded and boxwood strung bijouterie table, the top with a bevel glass panel on square taper supports, 61cm wide £200-£300

293. An XVIII century panelled oak child's crib on rockers, 95cm long, 44.5cm wide £300-£500



294. A Georgian style mahogany kneehole desk, the top with a moulded border, two cock-beaded frieze drawers, one with a paper label "Druce & Co Cabinet Makers etc.

London", fitted with three drawers to each pedestal standing on bracket feet, 84cm wide £400-£650

295. A Victorian mahogany open bookcase with applied carved brackets and three adjustable shelves, 104cm wide £100-£150

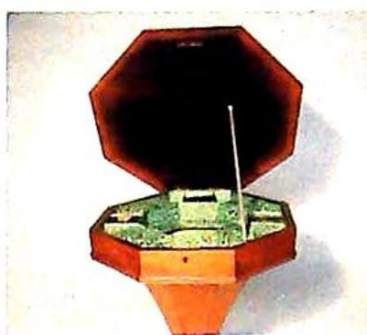


296. A XIX century high back broad arm windsor chair with "curly" pierced structure, baluster turned lower spindles and turned legs joined by similar stretchers £150-£250



297. A set of Victorian oak metamorphic library chair/steps £150-£250

298. An oriental carved hardwood frame screen, centred with a porcelain plaque of figures in typical costume with a dragon the screen pierced and carved with fruiting trailing vine, 84cm x 50cm £350-£450



299. A Victorian octagonal rosewood conical workbox with fitted interior on triple carved cabriole supports £200-£300



300. A Georgian three tier mahogany dumb waiter, 110cm high £600-£900

301. A Victorian rosewood two tier buffet, the undertier with two drawers on tapering turned supports, 100cm wide, 56.5cm deep £300-£450

302. A Georgian mahogany architects table with hinged top, green leather writing surface, raised on a square taper support, fitted with a single drawer to the frieze, 93cm x 62cm £500-£700



303. A XIX century mahogany fold over top tea table raised on square taper supports inlaid with boxwood stringing, 91cm wide £80-£150



304. A Victorian ebonised mahogany and gilt decorated pedestal music canterbury with a raised spindle gallery enclosed by a single glazed door with four internal shelves, each with gold lock leather labels, 53cm wide, 115cm high



305. A Victorian polished pine pedestal specimen chest of eight drawers, the drawers held shut by split turned columns to each side, standing on turned feet, 51cm wide, 78cm high £100-£150

305



306. A Sheraton Revival mahogany and satinwood banded envelope card table, the interior lined in green baize and with four counter wells, fitted with a frieze drawer and raised on square taper supports joined by an "X" stretcher, 55.5cm square £400-£550

306



307. A George III mahogany boxwood strung demi lune fold over games table with cross-banded top raised on square taper supports £250-£350

307

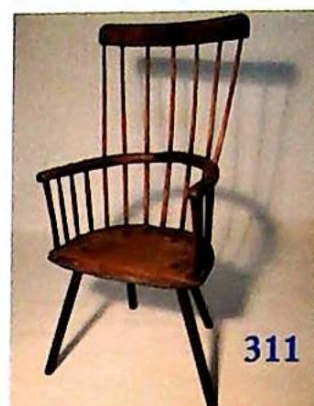


308. A Victorian mahogany extending dining table raised on cabriole supports with ball and claw feet, with a spare leaf, 177cm x 111.5cm extended £300-£500

309

309. Six Georgian mahogany dining chairs with horizontal pierced carved and reeded splats, overstuffed seats on square taper front supports £450-£650

310. An XVIII century small oak chest of four drawers with panel sides (distressed), 76cm wide



311. A West Country comb back primitive Windsor chair, XVIII century and later £100-£200

311

312. A XIX century ash high back windsor chair with pierced vase splat, turned underarms on ring turned legs joined by an "H" stretcher £100-£200

313. A rectangular mahogany butlers tray

314. A Victorian mahogany writing table, the oblong top with rounded ends, inset with a green tooled leather writing surface, raised on turned and fluted tapering supports joined by baluster turned stretchers, fitted with a single frieze drawer, 96cm x 55cm £400-£500



314

315. A set of four Georgian mahogany dining chairs, the reeded backs with rectangular tablets above "X" splats, overstuffed seats, reeded turned front supports £300-£450

316. A Victorian carved mahogany frame chaise longue £100-£200



317

317. A Georgian design mahogany frame settee with spirally fluted rails, the arms carved with birds heads and on stylised hoof feet, 170cm wide £300-£500

318. A small XVIII century oak plate rack with a moulded dentil cornice over three shelves, 134cm wide (distressed)



319

319. A Coalbrookdale cast iron horse chestnut pattern garden seat, the back and seat frame stamped "Coalbrookdale" 184cm wide £600-£900

320. An Edwardian mahogany chevron inlaid marble top wash stand



321

321. A Victorian gentleman's chair with relief carved shaped walnut frame, scroll arms, the knees carved with flowers, raised on cabriole supports joined by a serpentine floral relief carved stretcher, upholstered in buttoned burgundy dralon type material £300-£500

322. A pair of Victorian figured mahogany bed ends with shaped crestings and turned finials, 95cm wide

323. A Victorian mahogany hanging corner cupboard, the moulded cornice above a single door with applied carved mouldings enclosing two shaped shelves £100-£200

324. A Victorian mahogany spoonback gentleman's armchair with scroll arms on turned and fluted front supports upholstered in buttoned maroon dralon £200-£300



325

325. A Victorian mahogany frame spoonback gentleman's armchair upholstered in button maroon dralon with scroll arms and cabriole front supports joined by serpentine stretcher £300-£500

326. A set of six (four singles and two carvers) Chippendale style mahogany dining chairs with pierced vase splats and drop-in seats £300-£400



327

327. An XVIII century hanging oak corner cupboard banded in mahogany with a moulded stepped cornice, the single door enclosing three shaped shelves £120-£220

328. A Chippendale design mahogany carver chair with shaped carved cresting, pierced interlaced splat and scroll carved arms, drop-in seat, raised on cabriole front supports with ball and claw feet £70-£130



329. A set of four Victorian walnut dining chairs with oval carved backs, overstuffed seats on serpentine front stretchers with cabriole front supports £200-£300

330. A pair of Victorian heavily carved oak gothic design hall chairs surmounted by opposing lions, each side of shield shape cresting, with foliate splats, flanked by fluted turned columns, solid carved seats on turned and block supports



331. A four fold carved mahogany frame neo-classical design screen with floral fabric panels, each panel 168cm x 56cm

332. A Victorian walnut three tier what-not separated by turned columns and with a carved and pierced gallery, 54.5cm wide supports, the base enclosed by a boxwood strung sloping front on ogee bracket feet, 68cm wide £80-£130

Forthcoming Sales

First Saturday Estate Sales

will take place at 10am on 3rd July, 7th August 4th September

Autumn Book Sales

Antiquarian & Modern Books

24th November

We are now accepting entries for our Autumn Antique Catalogue
Free Presale Appraisal

Catalogues on our website www.thosmawer.com approx. 5 days prior
(N.B Please telephone prior to travelling as dates may be subject to change)

All sale items can be viewed on the prior day or by appointment
in special circumstances.



Valuations Prepared For:

INSURANCE

PROBATE

FAMILY DIVISION

For further information contact

J C Slingsby

clinton.slingsby@thosmawer.co.uk

01522 524984

CONDITIONS OF SALE

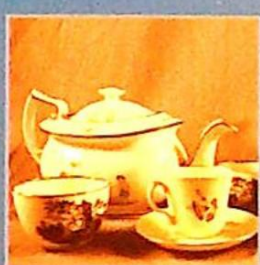
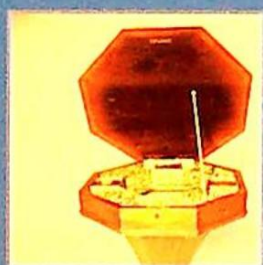
1. In these conditions Thos. Mawer & Son act only as auctioneers and agents and the representative of Thos. Mawer & Son conducting the auction is called 'The Auctioneer'
2. Whilst Thos. Mawer & Son make every effort to ensure the accuracy of their catalogue and the description of any lot:
 - (i) Each lot set out in the catalogue or as divided or combined with any other lot or lots is sold by the vendor with all faults and imperfections and errors or descriptions
 - (ii) Thos. Mawer & Son do not accept responsibility for the authenticity, attribution, genuineness, origin, authorship, date, age, period condition or quality of any lot unless they have been instructed in writing by the buyer to so certify.
 - (iii) All statements whether printed in the catalogue or made orally as to any of the matters set out in (ii) above are statements of opinion only and are not to be taken as being or implying any warranties or representations of fact by Thos. Mawer & Son unless they have been instructed in writing by the buyers to so certify.
3. The Auctioneer has absolute discretion to divide any lot, to combine any two or more lots or to withdraw any lot or lots from sale, to refuse bids, regulate bidding or cancel the sale without in any case giving any reason or without previous notice. He may bid on behalf of the vendor for all goods which are being offered subject to reserve or at the Auctioneer's discretion.

The highest bidder shall be the buyer. The Auctioneer may at his sole discretion determine the advance of bidding or refuse a bid. If during the auction the Auctioneer considers that a dispute has arisen, has absolute discretion to settle it, or to re-offer the lot.

All conditions, notices, descriptions, statements and other matters in the catalogue and elsewhere concerning any lot are subject to any statements modifying or affecting the same made by the Auctioneer from the rostrum prior to any bid being accepted for the lot
4. The buyer shall pay the hammer price together with a premium of the hammer price - 15% inclusive of VAT
5. Notwithstanding any other terms of these Conditions, if within seven days after the sale Thos. Mawer & Son have received from the buyer of any lot notice in writing that in his view the lot is a deliberate forgery and within twenty-one days after such notification the buyers return the same to Thos. Mawer & Son in the same condition as at the time of the sale and by producing evidence, the burden of proof to be on the buyer, satisfies Thos. Mawer & Son that considered in the light of the entry in the catalogue the lot is a deliberate forgery then the sale of the lot will be rescinded and the purchase price of the same refunded.

The vendor agrees to be bound by Thos. Mawer & Son's decision.
6. Thos. Mawer & Son disclaim any responsibility for default by either the buyer or the vendor because they act as Auctioneers only and therefore do not pay out to the vendor until payment is received from the buyer. Instructions given by telephone are accepted at the sender's risk and must be confirmed in writing forthwith.
7. Every person on Thos. Mawer & Son's premises at any time shall be deemed to be there at his own risk. He shall have no claim against Thos. Mawer & Son in respect of any accident which may occur or injury, damage, loss howsoever caused, save in so far as the injury, damage loss shall be caused by the negligence of Thos. Mawer & Son's employees.
8. Each lot shall be at the purchasers risk from the fall of the hammer and must be paid for in full before the delivery and must be taken away by the purchaser at his own expense within 7 working days following the conclusion of the sale. The Auctioneer shall be entitled to charge storage charges in respect of lots not taken away as aforesaid (minimum charge of £10 plus VAT) and interest on unpaid accounts @ 4% above clearing bank base rate (per day)
9. Cheques which are not honoured by the payee's bank will incur a handling charge of £20 plus VAT for each presentation.

This contract is governed by English Law.



DUNSTON HOUSE • PORTLAND STREET • LINCOLN • LN5 7NN
TELEPHONE 01522 524984 • FACSIMILE 01522 535600
EMAIL auction@thosmawer.co.uk • WEBSITE www.thosmawer.co.uk