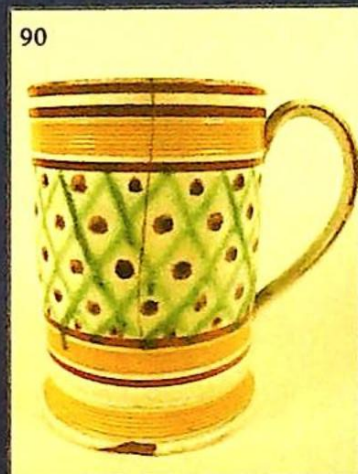




THOS. MAWER & SON LTD.

Auctioneer & Valuers Established in 1864



## The Autumn Antique Sale

Saturday 25<sup>th</sup> September 2004 commencing at 10.30am

On View:

Friday 24<sup>th</sup> 10am-4pm & morning of sale from 9am

Catalogues £5.00



## COMMISSIONS

The Auctioneers are pleased to execute commissions for intending buyers in confidence as cheaply as is allowed by any other bids. All telephone bids must be confirmed in writing or by fax by 4pm the day prior to sale, telephone bids will not be accepted for lots on which the top estimate is under £500.00. We cannot guarantee to execute bids received on the morning of sale.

## BUYER'S PREMIUM

There is a 15% premium (inclusive of VAT) payable on the final hammer price of each lot.

## REGISTRATION

All prospective purchasers are requested to register and obtain a bidding number prior to the start of the sale.

## CATALOGUE DESCRIPTIONS

Care is taken to ensure that any statement as to authorship, attribution, origin, date and provenance is reliable and accurate, but all such statements are statements of opinion and are not to be taken as statement or representations of fact. Thos. Mawer & Son Ltd. reserve the right, in forming their opinion, to consult and rely upon any expert or authority reasonably considered by them to be reliable. While an identification of damage is given in some instances, an absence of such advice does not imply that a lot is free from defect. Prospective purchasers are strongly advised to inspect any lot on which they intend to bid. All measurements and weights are approximate and should be verified by intending purchasers

## ESTIMATES

Estimates for lots under £100.00 are not printed in the catalogue. On lots that are reserved, the reserve will not be greater than the published estimate at the time the catalogue goes to press.

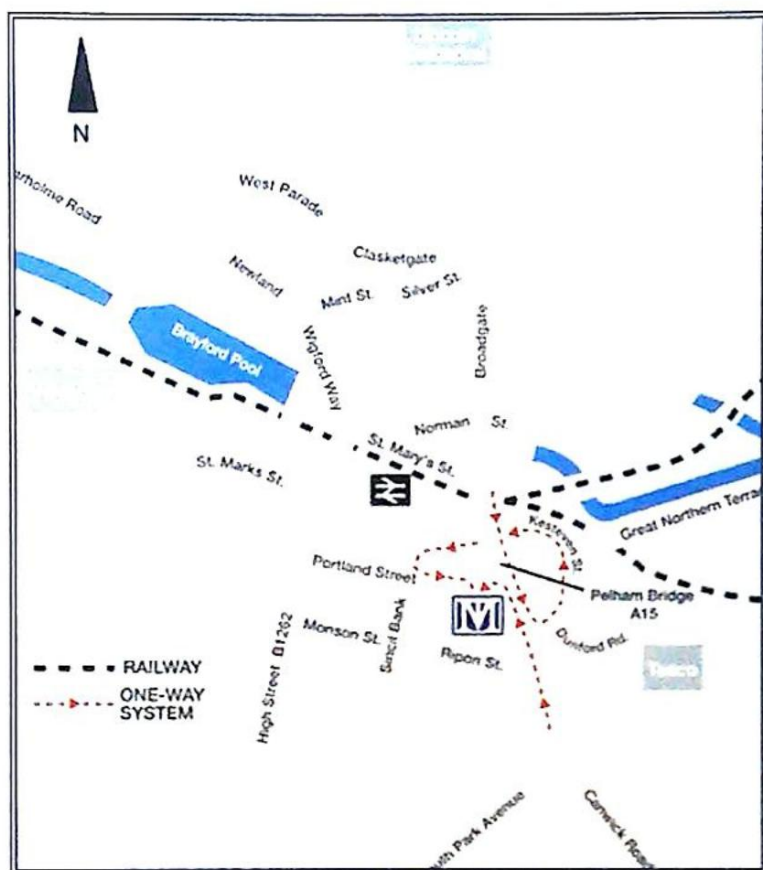
## PAYMENT OF ACCOUNTS

All Lots should be paid for and collected immediately following the sale. Any lots not collected by 4.00pm on the wednesday following sale day will incur storage charges (minimum £25.00 plus VAT per lot).

Payment for all lots must be made on the day of sale and methods are (1) CASH, (2) CHEQUES supported by either a letter of Reference from your bank or a cheque guarantee card to cover the sum of your purchase, (3) BANKERS DRAFT, (4) DIRECT DEBIT CARDS such as "Switch", "Delta", "Classic", "Connect", (5) CREDIT CARDS subject to a 2% premium charge.

No lots in this sale are the property of Thos. Mawer & Son.





## LOCATION

The Thos. Mawer & Sons salerooms at Dunston House are situated in central Lincoln on the east end of Portland Street at the foot of Pelham Bridge (Canwick Road). By car, approaching from the south take the last turning on the left just before the road rises to the bridge.

Approaching from the north (via Broadgate), go over Pelham Bridge and turn left towards Jacksons Building Centre/Tesco on to Kesteven Street. Follow the road around to the left and drive under Pelham Bridge to Portland Street. Turn left and you will see Dunston House on the right. Portland street is also accessible from Lincoln's High Street, opposite the Ritz public house.

The salerooms are within walking distance of the main railway station and bus depot.





## COLLECTION OF BISQUE FIGURES

1. A pair of figures - boy and girl, he in top hat and she wearing headscarf, each 14cm high
2. A pair of piano babies, both crawling with children on backs, each 10cm high
3. A pair of figures - children riding elephants, each 12.5cm high
4. A pair of figures - boy and girl on swings, each 9cm high
5. A pair of figures with shells - boy and girl posy holders, each 13cm high
6. A figure - seated boy holding sickle, 9cm high
7. A pair of figures - children with St Bernard dogs, each 10cm high
8. A figure - boy playing violin, seated 10cm high
9. A pair of miniature piano babies, each 6cm high
10. A pair of figures - she holding a puppy, he in top hat and with walking stick, each 16cm high
11. A pair of figures - girl and boy with St Bernard dogs (a/f), each 12cm high
12. A pair of figures - he with hands in pockets, she with a doll and muff, each 17cm high
13. Three busts of girls, each 10cm high
14. A figure group - boy and girl arm in arm, 19cm high
15. A pair of girl posy holders, each 12cm high (a/f)
16. A girl wearing a bonnet with books under her arm, 18cm high
17. A piano baby wearing a yellow smock and bonnet, 12cm and figure - boy in top hat and frock coat, 13cm (a/f)
18. Candlestick, figure of a boy, 21cm high (a/f) and a pair of candlesticks, boy and girl, 18.5cm high (3)
19. A figure of a milk maid with two buckets, 17cm high
20. A pair of boy and girl spillholders, he doffing his hat, she holding a basket, each 23cm high
21. A pair of figures, girl with spade and boy with accordion, each 22cm high
22. A girl holding doll, book and trumpet, 22cm high
23. A girl holding a puppy on a pillow, 22cm high
24. A boy with glasses wearing a pink coat, 18cm high
25. A wall ornament - lady with mandolin, 11cm high
26. Two figure groups of two girls, each 15cm high and figure - boy mandolin player, 16cm high (3)
27. Two small piano babies (identical), of girls holding yachts, each 8cm high
28. Two miniature piano babies, 5.5cm and a standing miniature boy, 9cm high (3)
29. A girl in yellow straw hat holding a puppy, 30cm high
30. A figure group, boy and girl, she with a fan and he playing a flute (a/f), 27cm high
31. A figure of a girl in mop hat (a/f), 22cm high and figure of a boy clapping, 23cm high (2)
32. A figure group - she with watering can, he with spade, 27cm high
33. Two similar figures - girls in aprons and mop caps, both a/f, each 26cm high (2)
34. A figure group - she with a fan, he holding a handkerchief 29cm high (a/f)
35. A figure of a girl dressed in a bathing suit holding an anchor 29cm high a/f and a figure of a girl in cream and pink dress with blue sash 26cm high
36. A pair of figures, boy and girl - she holding a broken toy soldier, he holding a musket, standing on bases, 43cm high each
37. A figure group - she holding sheet music, he playing a flute, 35cm high
38. A pair of figures - she with a fan, he with hand on hip, 30cm high



39. A pair of figures - she with fan and he with flute, 27cm high each (2)

40. A pair of Victorian bisque figures of a musician in a folk costume and a dancing lady in traditional costume, impressed mark S & S to base (Daniel Sutherland & Sons circa 1865-75), 25cm/26cm high



41

42. A pair of figures of a lady and gentleman dressed in finery with gold beaded costume, 34cm high



43

41. A pair of figures of a lady and gentleman dressed in finery, he wearing a top hat, she with basket of fruit and wearing a bonnet with ribbon, 33cm high

43. A cream bisque figure of a little girl tying her shoe laces, sitting upon a cushion with tasselled corners, 9cm high

## CERAMICS

50. Adderleys Ltd. An early XX century "Delhi" pattern dinner service comprising soup tureen and ladle, 2 veg dishes, 2 sauce tureens and ladles, 5 graduated meat plates, 12 each dinner, soup and dessert plates, 10 cheese plate (56) £150-£200



51

51. A XIX century pottery figure of a fish wife with fish in her apron, a fish trap to the side, standing upon a shallow square base, potters mark to the underside (possibly Leeds), 16.5cm high £100-£200

52. An early XIX century portrait bust of the Duke of Wellington on a hexagonal plinth, 10cm high

53. A XIX century salt glazed stoneware caricature jug, the body decorated in relief of a figure with a large hooked nose (The Duke of Wellington?) and also campaign scene of a soldier's life using a drum as a table



53

54. An early XIX century Staffordshire pottery figure of a gardener with flower pot in hand and spade beside him, in bocage, on a shallow square base, 14cm high £100-£200



55

55. A Victorian Staffordshire figure of a girl in a bonnet holding a bird cage with a small dog in attendance, 12.5cm high £80-£120

56. An early XIX century Staffordshire creamware figure of a lady gardener in a hat holding a basket of fruit, standing on a shallow square base, 14.5cm high £80-£100

57. An early XIX century Staffordshire figure of shepherdess caressing a gamboling lamb (a/f), possibly John Walton, 13.5cm high

58. A rare late XVIII century Ralph Wood style creamware figure of "Winter" - a chimney sweep, standing against a green/brown tree stump, the soot bag at the left, brush in left hand pocket, 18cm high (a/f) £400-£600



58

60



59. An early XIX century Staffordshire small jug moulded with four painted figures in high relief and with a twig form handle, 9cm

60. An early Victorian Staffordshire figure of a cobbler, "Souter Johnny", well modelled seated on a shallow square base, 12cm high



61. An early XIX century Staffordshire figure - Master Lampton, the son of Lord Lampton, 1825 (see Pugh pages 601 and 633) together with his pair, possibly a younger sister, 12.5cm high (2) £170-£220

62. A Staffordshire flatback spillholder figure group of Joseph and Mary, she upon the donkey holding The Christ child, 24cm high

63. A XIX century Staffordshire pottery of a ewe and a lamb in bocage, standing on an ovular form base, 13.5cm high £100-£200



64

64. An XVIII century Staffordshire pearlware figure of "Hope" with anchor on a square lined base, 18.5cm high £80-£160

65. A two sided figure "Gin" and "Water" depicting drink and sobriety, standing on a spreading base, 21.5cm high (a/f)

66. Three Staffordshire pastille burners in the form of cottages, the bodies decorated with flowers in relief, 13.5cm high and a Staffordshire figure of a fox stalking a swan, surrounded by an arch and hill, 12cm high (4)

67. Three XIX century Staffordshire figures of greyhounds - a/f



68

68. A pair of Staffordshire spaniels with pup, mottled decoration and blue base, together with a single Staffordshire spaniel flatback, 15.5cm and 11cm high



70

69. A XIX century Staffordshire blue and white willow type pattern cider mug (a/f), 10.5cm high, 11.5cm diameter and an early XIX century cider mug in the Sampson style (a/f) (2)

70. A XIX century Staffordshire seated King Charles spaniel with puppy on an oval blue base, gilt highlights and pink nose, 22cm high

71. An Allerton & Sons style earthenware tobacco jar, 13cm high

72. A pair of large XIX century seated King Charles Spaniel chimney ornaments with pink noses and gilt highlights, 32cm high



71



73. A pair of seated King Charles Spaniels with copper lustre decoration and a single ditto, 22cm high (3)

73

74. A pair of Victorian Staffordshire spaniels, the bodies in gilt relief on a white ground, 25cm high

77. A XIX century French "Nidderviller" figure group; two small boys, the elder giving the smaller child a drink of water from a bowl, 19cm high £200-£300



77

78. Rudolstadt Volkstedt. A pair of XIX century German porcelain figures by ENS and EKKERT, he with clasped hands and she holding flowers, each in floral dress, 'PE' mark to bases, 23/24cm high £80-£120

79. Rudolstadt Volkstedt. A pair of XIX century German porcelain figures by ENS and EKKERT - he holding flowers and she holding a bowl of fruit, each in floral dress, one with painted hayfork mark to base, approx. 25cm high £80-£120

80. An early XX century earthenware figure in a lilac coloured dress, her arms folded wearing a cap, standing on base with curved background, in the style of Gwendoline Parnell, the base incised "Battersea 1923", 19cm high £180-£250



80



81. A XIX century Parian ware portrait bust of a young lady, her hair plaited with flowers, the bodice of her dress lace trimmed, 27cm high

82. Two Parian ware portrait busts - Apollo Belvedere and Diana the Huntress on black glass plinths, each approx. 28cm high (1 a/f)



81

83. A late Victorian Doulton Lambeth sugar bowl in salt glaze with applied hunting scene, tavern figures etc., hallmarked silver rim, 1895, 10cm



84

83

84. A mid Victorian salt glazed tobacco jar (Brampton?), impressed Richard Ingleby Baslow 1867, the body decorated in relief with cherubs at play and with two applied scroll handles, 10cm high

85. Two Newhall style tea bowls, a Sunderland lustre ware coffee cup, a XIX century Newhall style milk jug with foliate polychrome decoration to the body, a coffee can and an ironstone foliate dish (6)

86. A XIX century delft ware pill box, a Continental coffee pot of waisted form, polychrome flower head decoration, a Continental blanc de chine turkey form menu holder, a Royal Worcester plant holder and a stylised Jasperware flower basket (5)



87 part

87. An early XIX century rare Spode tea service, the white ground with en grisaille print process decoration of mainly animals bordered in gilt, comprising teapot, sugar bowl (both with covers), oval plate, nine tea cups and saucers and ten other cups, a slop bowl and saucer and a milk jug - hand painted mark to base, Spode pattern 557 (36 items) £200-300

88. George Jones. A Majolica part dessert service - comport and three plates, decorated with chestnut leaves

89. A pair of XIX century green glazed dessert plates moulded with nasturtium, other leaves and wheat ears, 21cm x 27cm



89

90. A pair of "Encaustic jet" circular plaques manufactured by E Brookes & Son Handley, depicting summer flowers, 24cm diameter



90

91. XIX century Sunderland lustre ware jug dedicated to George Hough Nottingham dated 1851, another jug with copper lustre and raised floral bands and a Sunderland lustre teapot (a/f) (3)

92. XIX century copper lustre and blue banded teaware - two jugs, bowl and saucer, cup and saucer and a teapot (7)

93. An early XIX century Dixon & Co Garrison pottery tankard, the body with a "west view of the Iron bridge over the Wear etc.", Dixon & Co 1813, the interior with a climbing frog, 11.5cm high



93

94. A late XIX century earthenware puzzle jug decorated with a brown mottled glaze by C H Branham, Barham Devon, incised signature to the base and castle in relief, 20cm high

95. An early XIX century Sunderland pink lustre jug of ovular form, centred with the west view of an iron bridge over the River Wear, opened 9th August 1796, verso The Sailors Tear, 15cm high (a/f)



95



96. An early Prattware cider tankard of cylindrical form, the body decorated with green trellis work within yellow fluted bands, all on a white ground (a/f), 16cm high

97. Newhall. An XVIII century tea bowl and saucer painted with strewn flowers between a pink border

98. An early XX century Arcadian china bell, topped with the head of a suffragette, "Votes For Women", illustration of Kirkby Malham Church, verso "This One Shall Have a Vote", 11cm high



98 front



98 back

99. A XIX century blue and white earthenware sauce boat with willow pattern decoration, 8.5cm high (a/f) and a pair of blue and white transfer printed shallow form plates centred with a cartouche showing a ruined house, 18.5cm diameter (3)

101. A XIX century blue and white transfer printed meat plate - English landscape, 44.5cm wide

102. An Italian Maiolica vase decorated with figures fleeing a burning castle, satyr and mask with scrolling serpent handles, painted mark M/Pesaro, 46cm high £150-£250

104. An early XX century Copeland Late Spode soup tureen, the cover with gilt artichoke finial encircled with flowerhead and leaf meander and bordered by blue stepped bands, the body similarly decorated and flanked by gilt scroll handles, together with a smaller sauce tureen and dish (2)

105. An early XIX century part tea set, Newhall style, two tea bowls (1 a/f), three saucers and a slop bowl; the bodies decorated in leaf and fruit decoration (6)



105 part

106. A XIX century pearlware bowl, 15.5cm diameter, an early XIX century Staffordshire bowl, transfer printed with ruined church and bridge over a river and verso with church and cottages on a shallow foot, 16cm diameter, together with a pair of Staffordshire vases of squat ovoid form, the body decorated in flowers and leaf in polychrome, 11cm high (4)



107

107. A set of six Clarice Cliff "Crocus" pattern dessert bowls and a sugar bowl, marks to base £150-£200

108. An early XX century studio pottery vase, the body of tapering ovoid form, decorated with pelicans and abstract pattern, all in polychrome by Thomas Forester & Sons, printed mark to base and potters mark A Dean, 21cm high; and a French faience paperweight in the form of a gargoyle (2)



109

109. A XX century Moorcroft box and cover, the body with fresias in bud, the cover with fresias in bloom, polychrome, all on a teal ground, 12cm diameter £100-£150

110. A Moorcroft Florian ware vase set with three outswept handles, signed in green to the base (a/f), 13.5cm high



110





### 111 part

111. A Victorian dinner service "Balmoral" by EFB & Co - 3 oval meat plates, 5 oval serving plates, 34 dinner plates, a soup tureen and stand, 4 sauce tureens and stands (1 cover missing), vegetable dish, 4 tureens and covers, 8 side plates, 11 soup bowls, one comport and one salad dish, decorated with roses, bordered with gilt scrolls on a white ground £250-400

112. A mid Victorian blue and white earthenware meat dish, the body decorated with a mother cradling a child amidst a terrace and formal buildings, mark to base Sydenham J Clementson, together with a late Victorian Staffordshire blue and white willow pattern meat plate, 38.5cm wide (2)

113. A graduated set of matched willow pattern meat plates, transfer printed in blue and white, from 35cm x 41cm to 14cm x 19cm - six plates

114. A XIX century Staffordshire Majolica jardiniere and stand, the jardiniere with lobed everted rim and spreading flower head and decorated in blue, green and pink, the waisted form base with scroll work in relief, similarly decorated, 76cm high



114



115

115. Coalport. A framed porcelain plaque - Views of England and Wales - Caernarvon Castle after J M W Turner

116. A late XVIII century blue and white tin glazed dish, hand painted, willow pattern style body with a geometric band and a boxed dot border on a white ground, 23cm diameter; together with a similar period plate, 23cm

117. A late XIX century Copeland late Spode Imari charger of foliate and leaf decoration leading to a wavy gilt border, pattern 2907, printed and impressed mark verso, 36.5cm diameter

131. A Chinese pottery vase decorated overall with trailing foliage and flowers, the neck with pair of applied dogs of foe and salamanders, 36cm high



132. A large Japanese charger painted with mountainous landscape and assorted flowers, 68cm diameter

132

133. A XIX century Austrian portrait vase of waisted ovular form, the body centred with a panel of a young woman in a shawl within a gilded frame, the whole on a magenta ground, 41cm high £90-£120



133

134. A XIX century Chinese blue and white coffee cup and saucer, willow pattern design, unmarked



135

135. A pair of Chinese blue and white baluster formed vases with domed lids and dog of foe finials, 31cm high

136. A Chinese willow pattern blue and white bowl held on a shallow foot, 26.5cm diameter and a XIX century Japanese Imari bowl with foliate and bird decoration, the interior with flower head and leaf meander centred with a family group of figures (a/f), 27.5cm diameter (2)





137 part

137. A XIX century Japanese Imari bowl with flower head and leaf decoration, standing on a shallow foot, the interior with similar decoration, 26.5cm diameter and a XIX century Japanese bowl, the body with foliage and leaf, with ducks swimming, on a shallow foot, the interior with fruit and leaf decoration, 21.5cm diameter (2)

138. A XIX century oriental bowl, the body decorated with figures and foliage cartouches, standing on a shallow foot, 15cm diameter; a pair of oriental plates of raised square form with canted corners, 13cm wide (3)

## GLASS



143

143. An Arts & Crafts Kuttrolf form glass decanter, the top with a silver twin pouring lip set with a globular whirl pattern stopper, Birmingham 1894, 25cm high; together with a mallet form glass decanter, the body etched with oak leaves and acorn decoration, rising to a triple ring neck and daisy ring stopper, 30cm high

144. A late XIX century cut glass decanter of globular form, the body facet cut with a star cushion, all rising up to a bulbous stopper, 22.5cm high; together with an elongated cube form glass decanter with cross petal decoration to the body and a diamond cut stopper, 15.5cm high and a pair of facet cut glass custard cups, 7.5cm high

145. A pair of XIX century mallet form cut glass decanters, the bodies with line and facet cut decoration, star cushion, rising to a triple ring neck and facet and star cut stopper, 26cm high £100-£120

146. A XIX century mallet form cut glass decanter, the body facet cut with star cushion base, rising to a triple ring neck and facet cut stopper, together with a XIX century decanter of ovoid form with a triple ring neck, 20cm high and a claret jug of ovoid form with facet and line cut and star cushion base, 25cm high (3) £100-£150

147. A pair of XIX century conical cordial glasses with air twist stems, the circular feet with unground pontils, 18cm high



148 part

148. A bell shaped cordial glass with an air twist stem and circular foot, another smaller similar glass, a tall conical glass, the knop stem with a tear drop and three miscellaneous conical glasses (6)



149 part

149. A XIX century wheel etched glass with a bell shaped bowl and cotton twist stem on a circular foot, 15cm; and another wine glass, wheel etched with fruiting grape and a bird, unground pontil, 12cm (2)

150. Three conical ale glasses wheel etched with barley and vine leaves, two with folded feet, and all with unground pontils (3)

151. Three heavy conical rummers and a circular ditto, all with unground pontils, 13/14cm high (4)

152. A set of seven sherry glasses, XIX century cordial glass with wheel etched bowl, two XVIII century cut glass cordial glasses on square bases and a larger circular glass with a lobed body (11)



153. Sundry glasses including a thistle shaped wine glass, a pair of conical cordial glasses, coloured glass drinks stirrer and two plain ditto and a collection of glass cocktail sticks in the form of umbrellas and some with coloured birds

154. A XIX century conical ale glass with a double knop stem and folded foot, 19cm high £150-£250



154



155

155. An early XIX century glass bowl, the circular foot with an unground pontil and the body etched with a fly fisherman in a landscape, 23cm high, 18cm diameter £100-£200

156. A collection of mainly XIX century ale glasses and three ribbed conical glasses with a note "given to Martha Todd in her marriage to Henry Keightley June 28th 1851" (16)



156 part

157. A collection of mainly XIX century stemmed glasses, some facet cut (13)

158. A large XIX century facet cut ale glass, five stemmed cordial glasses and another wheel etched glass (7)

159. Two facet cut mixing bowls and a glass cooler

160. A heavy hob nail cut flower bowl, a pair of facet cut carafes and a small circular heavy based liqueur decanter (4)

161. A pair of Victorian amber glass lustres, the waisted stems with chip and gadroon form decoration, rising up to a plateau with hob nail and facet cut decoration, holding hanging diamond cut lustres, all standing on a facet cut spreading foot, 42cm high (1 lustre missing) £200-£300

## METALWARE & COLLECTABLES

168. Five small bronze/brass ornaments of animals - a wolf, oxen, deer, cockerel and elephant

169. An oriental soapstone figure of a sage, another glazed Chinese figure and an earthenware oriental idol (3)

170. A carved ivory figure of a Japanese man and other figures, damaged (3)

171. An oriental carved ivory parasol handle, a rat on a tree approached by a frog, approx. 10cm



172 - 174

172. An oriental soapstone figure group of a seated man and boy with basket, 8cm high

173. A Japanese soapstone figure of a sage clutching a fruit and another holding a small figure, 20cm high

174. Three soapstone figures of oriental sages, each approx. 17cm high

175. A brass plated foe dog perfume bottle inlaid with corals and blue glass having black and white eyes, the head removable to hold a glass perfume phial 11.5cm high

176. A Regency ivory band and white metal monkey child's rattle, the ivory band is engraved with the letter 'C', 11.5cm long

177. A Georgian fruitwood clay pipe case with brass decoration, stars, sun and moon etc., date 1739 on the hinge, 24cm long £100-£200



176



178. A XIX century lady's percussion muff pistol, the rosewood stock inlaid in silver(?) with flower head and leaf and scroll decoration, the octagonal turn off barrel marked "Smith London", folding trigger, 12cm long



178



179

"Riengen blaa maa du ei forfmaa" £100-£200

180. A collection of 172 XIX century Italian paste "cameos" including many familiar classical and mythological characters such as Hercules, Minvera, Medusa etc., also some medieval - Dante, Cupid and Da Vinci's Last Supper; each cameo in a gilded paper frame, Italian XIX century, in the style of James Tassie £1200-£1800



180 part

181. Two oval cast bronze relief plaques depicting Alexander the Great and Paulus, in oval mounts, the moulded frames with gilt inner slips, the plaques approx. 13cm x 10cm and 14cm x 12cm



181

182. A pair of green/black veined marble obelisks, 100cm high £400-£600

183. An iron dog grate, the basket 39cm x 26cm



184

184. An Edwardian etched glass oil lamp, the reservoir raised on a fluted brass stand and ending in a spreading foot, 64cm high



185

185. A brass oil lamp standing on a spreading base rising with a corinthian column, pink tinted glass reservoir and shade, 64cm high

186. A large XIX century oval pewter meat plate, 58cm wide, 44cm high

187. A large copper pan with lid and iron handle

188. A brass fire kerb with central rail, 130cm wide

189. A set of three long handled fire irons

190. A brass fire screen inset with a bevel edge mirror

191. A plain oval mahogany tray with a raised gallery

192. A XIX century oval mahogany tray, boxwood strung with a plain gallery, 76cm wide

193. A Victorian walnut brass bound writing box, the interior fitted with a writing slope and compartment



193

194. A XIX century Swiss "bells in sight" musical box playing 12 airs and contained in a chinoiserie decorated ebonised case, 55cm wide, 30cm high £500-£700

195. A XIX century yew wood ruler and an XVIII century (?) oval miniature box made from bark and pine (2)



196. A George III domed mahogany tea caddy with brass handle and sectional interior



196



197

197. A Victorian rosewood toilet box, the lid inlaid with a tulip shape mother of pearl medallion, the interior with a lift out tray and fitted compartments and with a side drawer £75-£120

198. An XVIII century mahogany box, the hinged lid crossgrain mahogany and ebony strung, fitted with a drawer, 42.5cm wide

199. A XIX century rosewood book slide with brass decoration (a/f)



199

200. A XIX century wooden and brass bound corn measure (a/f) £100-£150

## SILVER & PLATE



210

210. A pair of XIX century silver plated rococo style candlesticks, the everted base with flower head and scrolled in relief, rising to a waisted stem with acanthus leaf and scroll work, ending in a detachable nozzle, 32.5cm high

211. A Victorian silver plated epergne, the intertwined three branch body with grape vine and fruit in relief, the branch ends holding sweet meat baskets with pierced fine basket rope twist handles, lined in etched glass, all rising up to an etched glass inverted bowl with wavy line border, 54cm high £200-£300

212. Silver plate:- a cigarette box with gadroon edge, a bullet shaped teapot with etched design and ebonised knob, an Adams style plated jug, hot water pot and a plated sauce boat with pierced edge (5)

213. A George III silver teapot by Walter Brind with ovular body, inscribed with flower head and scroll, centred with a cartouche; London 1789 £150-£250



213

214. An early XX century silver communion set of octagonal form comprising a wine decanter, wine goblet and a wafer tray, Birmingham 1928, fitted case £100-£150

215. A George III silver ladle, "rat tail" pattern, London 1810, 32cm long

216. A Birmingham hallmarked baluster shaped sugar sifter by Elkington & Co., circular pierced top above a decorative strapwork body, 24cm high

217. A magnificent Sheffield hallmarked silver punch bowl by Walker & Hall 1908-1909, 26cm diameter, 20cm high, approx. 46.5 ozs and a plated ladle £250-£375

218. A pair of Birmingham scatter hallmarked christening goblets, the funnel tops on turned stems, 13.5cm high

219. A mid XX century three piece silver plated cocktail shaker, 21cm high

220. A Limited Edition decorative London hallmarked silver goblet commemorating the wedding of Prince Charles and Princess Diana, the bell shaped cup above coats of arms and griffins, No. 728/1000 approx. 9.5ozs

221. A London hallmarked goblet commemorating the 7th centenary in 1980 of the completion of Lincoln Cathedral, Limited Edition No. 343

222. Hallmarked silver Mappin & Webb bon bon dish, two compressed circular salt cellars (1 a/f) with spoons and a pepper pot (4)

223. A London hallmarked fox's head stirrup cup, 17cm high 1965/6



223A. London hallmarked fox's head stirrup cup, 8cm high, 1965/6

224. A boxed set of silver fruit spoons and sugar nips, London 1931



224

225. A set of six silver coffee spoons with a black bean terminal by Purcell, Birmingham 1964 - cased

226. A silver elephant pin cushion (marks rubbed) and a 1920's child's white metal and chain dress purse with a shield shaped .920 silver lock



227

227. A George V silver mustard pot of squat cylindrical form with a plateau handle and hinged lid, blue glass liner within, Birmingham 1918, 6cm high, 3 troy ozs

228. Four Victorian silver mustard spoons, London 1836 and 1857; silver sauce spoon, Sheffield 1964; Victorian silver marrow spoon, London 1858, marked TS; two silver sugar nips Sheffield 1901 & 1908, marked JR (8)

229. A pair of George III silver spoons with crested capitals, the stems with later incised lozenge decoration and repousse fruit decorated bowls, 22cm long



230

230. A Chester hallmarked three footed sauce boat £250-£350

231. A Birmingham hallmarked model of a trotting horse with front leg lifted, standing on a marble base, 13cm high

232. A Birmingham hallmarked silver standing hound, 3cm long, London 1971/2 and a Birmingham fox corkscrew and bottle opener (3)

233. Sheffield hallmarked silver. A pair of miniature horse shoes dated 1961/62 and a London hallmarked model of a fox, 7cm, 1972-73

234. Five spoons with repousse fruit decorated bowls and a tea strainer with pierced foliate decoration, various dates 1807-1905

235. A George V silver handled button hook and shoe horn with repousse decoration, Chester 1910, 23cm long

236. A Birmingham hallmark set of six teaspoons, 1971-1972, the handles topped with foxes heads, made for Garrard & Co, in leatherette presentation box

237. Five Georgian silver fiddle pattern teaspoons with incised initials, London 1821 and 1829; a serving spoon with incised crest and motto, London 1852

238. Four souvenir silver spoons:- A Dutch windmill spoon, three American commemorative spoons of the Statue of Liberty; Indian head and "Boston" in relief, the bowl with the State House (4)

239. Birmingham 1903-04. A pair of cased preserve spoons

240. A Victorian silver sauce spoon with a beaded border handle, Birmingham 1869; a Victorian silver spoon; a late XIX century silver knife; a Swedish silver handled butter knife with foliate decoration and a Victorian pickle fork, Sheffield 1849 (5)

241. A Victorian silver miniature baluster vase with incised scroll leaf decoration, London 1862, 7cm high; a Swedish silver dome bottle cover with repousse decoration; a pair of Swedish silver miniature beakers, the bodies with dancing figures and animals in repousse, 4.5cm high (4)

242. A George III silver chamber stick and snuffer with detachable nozzle, loop handle and thumb piece, London 1801, 9cm diameter, 5ozs £100-£200

243. An early XX century Swedish silver snuff box, the hinged lid with incised line decoration, mark JAL and an Indian white metal oval form pill box, decorated with a lion (2)

244. A silver pill box of shallow ovular form with hinged lid, possibly Georgian (marks rubbed) together with a William IV silver pill box, London 1833, 5.5cm diameter and 4.5cm diameter respectively



245. A XIX century silver vase of tapering trumpet form, the hammered body complemented with incised line decoration on a spreading foot, import Hallmark Chester 1889, 9.5cm high; a Victorian silver cylindrical beaker with crest and motto, Birmingham 1855, 7cm high; a Continental .800 silver beaker with incised line border, 6.5cm high and an engraved goblet (4)

246. Two dressing table appointments with tapering cylindrical bodies

247. A set of ten "rat tail" dessert spoons, Sheffield 1915 and four matching table spoons, Sheffield 1896, 27+ troy ozs £100-£200

248. Georg Jensen. A set of twelve XX century gold plated sterling silver dessert spoons, the pear formed bowl rising to a terminal, each spoon showing a differing flower



248

heads, each marked in sequence on reverse 1971-1982, stems marked RA AB, sterling Denmark, hallmark of three crowns, letter S £120-£180

249. Birmingham hallmarked silver. A decorative fruit dish, the pierced bowl with decorative scroll surround above a stand, with wavy edged foot, dated 1908-1909

## **POCKET WATCHES, JEWELLERY ETC.**

260. A XIX century natural green crystal necklace, the stones interspersed in sizes

261. A Swedish silver loop shawl pin brooch having insized flower head capitals, the pin with a trumpet form capital, 10cm long

262. Georg Jensen. A pair of boxed silver cuff links, the faces of squat cube form, the link of shallow oval form, the shanks marked "Georg Jensen"

263. A late Victorian yellow metal albertina, a fine belcher chain 40cm long, baton form button holder and chain tassel

264. A William IV silver gent's fob watch, the enamel face with arabic figures and gold spade hands, the view case London 1831, 5cm wide £100-£200

265. An 18 carat gold cased open face pocket watch with engine turned Roman dial, fusee movement, together with a bi-metal fine chain, ornate plated fob with white glass monogram and two keys £200-£300

266. A white metal cased pocket watch by Stiffell, Geneve, engraved Roman dial, engine turned case, gold plated chain and a small pencil set with citrine

267. A lady's 18 carat gold pocket watch by Goldsmiths Co. London No. 21303 £100-£150

268. A late XVIII century pocket watch signed "Caleb Pitt London", number 487, white enamel dial (a/f) - tortoise-shell set pair case £100-£200

269. A silver pair cased pocket watch by Jno. Smith London, number 755, the case London 1785 £80-£120

270. A late XVIII century silver pair cased pocket watch, white enamel Roman dial with central panel depicting a plough team, trees and church spire in the background £120-£150

271. Five pocket watches (in need of repair) including three with silver cases, six watch keys, a plated case retractable awl

## **SAMPLERS & PICTURES**

276. A late Victorian numerical pictorial and motto sampler by Minnie Jane Eyden, dated 1881 (in 1881 she is living in Lenton, Nottingham) 35cm x 27cm

277. A XIX century woolwork maritime picture of a masted ship "Bessie", mounted in heavily carved oak frame, 36cm x 28cm £120-£160

278. A XIX century woolwork - interior scene, seated military gentleman being offered gifts, painted frame, 43cm x 58cm

279. A large mid XIX century pictorial sampler by Hannah Stow dated April 1845, decorative mahogany frame, 63cm x 59cm

282. An early XIX century British School portrait minature, gouache of a young gentleman in a black frock coat, mounted in an ebonised frame, 8.5cm high £80-£120



283. Edwards, Lionel  
Two lithographs showing the Blankney Hunt, each signed to the mount in pencil, 26cm x 42cm and 29cm x 39cm, another showing the



283

Whaddon Chase signed to the mount in pencil, 39cm x 50cm and a limited edition King lithograph, number 221/250, signed to the mount in Hogarth style frame (4)

284. Hall, H J  
A large XIX century lithograph of Lincoln from the South Common, signed in pencil to the mount £80-£150

285. Widgery, Frederick  
Watercolour - mountainous landscape, the mount titled "East Mill Dartmoor" in flowing gilt frame 27cm x 46cm £100-£200

286. Edwards, Lionel  
A set of four lithographs showing various hunts, each mounted with personalised pencil sketch in matching oak frames each lithograph 12cm x 17cm £200-£400

287. A XIX/XX century watercolour on paper - mountainous landscape, 22cm x 32.5cm

288. Biscombe Gardner, W  
Seascape - seated fisherman, written to the mount "Ollicombe Beach Nr. Babbacombe, N. Devon", in flowing gilt frame 36cm x 25cm £400-£600

289. Hawthorn, Wilfrid C  
XIX century watercolour - Stoneleigh Warwickshire, mounted and framed 26cm x 34cm £80-£160

290. Hawthorn, Wilfrid C  
XIX century watercolour - The Village Green. Stoneleigh, rural scene with woman outside a house, mounted and framed 26cm x 30cm £80-£160



291

291. Hunn, Thomas Henry  
Watercolour drawing of Penshurst, a shepherd with flock on a country lane, mounted in a swept gilt frame 26cm x 35cm £200-£300

292. Stannard, Sylvester  
A XIX century watercolour drawing of a thatched cottage, mounted and framed 24.5cm x 34cm £700-£1200

293. Leslie, Peter  
Oil on canvas, a pair - a wheat field during harvest with stooked sheaves and a river scene with shepherd and flock gilt frames 29cm x 39.5cm £300-£500



293

294. Turner, George s. and dated 1901  
Oil on board - a shepherd with flock on country lane, written verso "near Idridgehay, Derbyshire" George Turner 1901" 31cm x 41cm £200-£300



294

295. George Turner s.d.  
Oil on canvas - a harvest scene, written verso "The Evening Hour Harvesting Nr. Kirk Ireton George Turner 1900" 30cm x 45cm £200-£300



295

296. Fraser, Connor Bruce s.  
An early XX century oil on canvas - head and shoulder portrait of a Victorian soldier, 53cm x 44cm

297. Oil on canvas  
A calm seascape in decorative beaded gilt wood frame 14cm x 32cm, indistinctly signed to the frame verso



296



298. Edwards, Lionel

A set of six lithographs with images to include The Duke of Rutland Hounds, The Belvoir, The Haythrop nr. Stow on the Wold, The Old Berkshire etc, 17cm x 25cm £100-£200

299. Hines, Theodore

XIX century oil on canvas - landscape believed to be Loch Katrine, decorative gilt frame 50cm x 75cm £1200-£1500



300

300. Vessey, T  
XIX century  
oil on canvas -  
rural  
landscape,  
shepherd with  
flock  
reproduction  
gilt frame  
28cm x 39.5cm

301. Vickers, A H  
Oil on canvas -  
woman walking by a  
stream, decorative  
gilt frame 21cm x  
30cm £300-£500



301



302. Continental  
school Oil on  
canvas - courting  
couple by a river,  
indistinctly signed,  
decorative gilt  
frame (a/f) 61cm x  
74cm £200-£300

302

303. Moores, A  
N  
Two watercolours  
of The Nile and  
an ocean scene,  
dated October  
1961, one has  
moon landing  
and a view of the  
earth to the  
reverse



303 part

304. Pair of coloured prints - a continental river  
landscape, gilt frames, indistinctly signed

305. Findley, A.H. A pair of watercolour drawings  
showing "the mayor's parlour" and "the old town  
hall, Leicester", each mounted, framed and titled  
27cm x 34cm £300-£500

306. An early XX century watercolour drawing of an  
English landscape, monogrammed PMP, 32cm x 38cm

307. Walton, S 1882 s.d. oil on canvas - a full length  
portrait of a 16th Lancer 29cm x 19cm £100-£150

308. Benjamin, J S Two watercolour drawings  
inscribed verso on frame - Killculman Nr Dunluce N.  
Ireland and Jedburgh Abbey, s.d. '95 and '96 18cm x  
34cm, mounted and framed £300-£400

309. JFM 1924 An English naive style oil on board of  
a Kentish chemists shop, initialled 35cm x 24cm,  
framed

310. William Cook '73 (one monogrammed and  
dated) A pair of watercolour drawings in oval mounts  
- fishermen coming ashore to a beach beneath cliffs  
and figures and a rider before a watermill 39.5cm x  
32cm £1800-£2600



310



## CLOCKS & BAROMETERS

311. A XX century Jaeger  
Le Coultre Atmos perpetual  
mantel clock, held within a  
four view glass case, banded  
in brass, standing on a  
similar shallow bracket base,  
serial number 429180,  
22.5cm high £200-£300



311



312. A late Victorian ormolu  
Cartel clock, the body with  
anthemion leaf and scroll  
decoration, rising up to a putti  
finial, the enamel dial with fine  
flower and leaf decoration, arabic  
figures and gilt filigree hands,  
34.5cm high £300-£500

312



313. A XIX century French style boule mantel clock, the body decorated in premier parte, the gilt dial with Roman numerals within a brass and glass bezel, fitted with anthemion leaf and scroll mounts and similar feet, rising to a caddy top with a leaf finial, 33cm high £150-£200

314. A XIX century oak and mahogany longcase clock, the arched dial painted with allegorical figures, the eight day movement in a broken swan neck pedimented hood, the base enclosed by a long arched cross-banded door, 219cm high £900-£1350



314



315

315. An early XIX century mahogany and oak longcase clock, the dial painted with flowers (the movement in pieces), the case with a broken swan neck pedimented hood flanked by reeded columns, the long door cross-banded, inlaid with a shell patera and with reeded canted corners, 226cm high £600-£900



316

316. A XIX century grandfather clock contained in a relief carved oak case, the arched dial painted with fruit and flowers and with an eight day movement, the case enclosed by a long arched door, 221cm high £500-£700



317

317. A XIX century Vienna wall clock, the walnut case having ebonised split mouldings, compensating pendulum, enamelled dial, approx. 125cm high £80-150

318. A XIX century Vienna single weight wall clock with ebonised and walnut case, rod pendulum, enamelled dial with subsidiary seconds ring, approx. 103cm high £200-£300

319. A XIX century wall clock with inlaid and fretwork decorated walnut case, flanked by turned columns, scrolling tiered base, enamel dial, approx. 96cm high £100-£140



320. A XIX century Vienna wall clock with compensating pendulum, contained in an elaborate walnut case decorated with split mouldings, surmounted by a stepped top with rearing horse, enamel and brass dial, approx. 105cm high £100-£150

320



321

321. A XIX century Vienna wall clock with compensating pendulum contained in a walnut case decorated with split turnings, enamel and brass dial, approx. 90cm high £80-£130

322. A XIX century wall clock with mahogany case, white Roman dial, named "Softly Louth" £80-£120

322



323



323. A XIX century five dial mercury column barometer, the boxwood strung mahogany case with broken swan neck pediment, engraved steel dial, 20cm diameter, the level signed "Bellatti & Son Newark", 100cm overall £120-£180

326. A XIX century black forest cuckoo clock in a chalet style relief carved oak case, 39cm high £180-£280

327. A XIX century French mantel clock in the neo-classical style, the circular Roman numeral dial beside a maiden, the plinth decorated in the Grecian style, on a painted wooden base, approx. 39cm high £80-£120



## RUGS

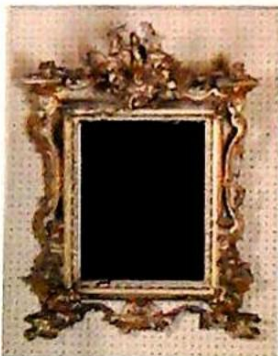
329. A miniature Bokhara style rug, 65cm x 52cm
330. A Middle Eastern rug with triple border, 140cm x 237cm
331. A Middle Eastern rug with triple border and three central guls, 123cm x 178cm
332. A Middle Eastern prayer rug, 84cm x 139cm
333. A Middle Eastern prayer rug, 89cm x 158cm
334. A small Middle Eastern rug with floral border and three central guls, 74cm x 123cm
335. A Middle Eastern rug with quadruple border and six panel field, 114cm x 196cm

## MIRRORS



340

341. An oval Victorian mahogany frame toilet mirror on foliate carved supports, the shaped base with a hinged trinket compartment £80-£130



342. An XVIII century rococo style gilt wood wall mirror, the rectangular plate surmounted by a heavily carved scroll and shell border with central cherub above, approx. 75cm x 51cm (distressed) £150-£250

342

343. A XIX century gilded wall mirror, the rectangular plate surrounded by a foliate band, acanthus column and four rosettes, 70cm x 108cm



344

344. A Victorian mahogany toilet mirror, the rectangular glass on scroll supports with a figured mahogany shaped base on roll feet, 57cm wide



345

345. An oval gilt wood wall mirror, surmounted by a foliate cartouche and with a similar base contained in an elaborate moulded frame, 85cm



346

346. An XVIII century gilt wood neo-classical design wall mirror, surmounted by a stylised urn and festooned with ribbons above foliage, the rectangular plate in a moulded frame, 112cm x 54cm



347

347. A XIX century gilded wall mirror, the stepped cornice with applied spheres above a panel moulded in relief with foliage and shells, the plate enclosed by fluted columns and with an ebonised reeded inset, 89cm x 58cm

348. A large Victorian mahogany over mantel mirror, the moulded frame carved with fruit, 216cm x 168cm overall £100-£200

349. A XIX century square mahogany toilet mirror on reeded supports, the boxed base fitted with two drawers standing on turned feet

350. A rectangular XIX century plaster gilt wall mirror, elaborately moulded with foliage and flowers (damaged), 23cm x 83cm

351. A substantial Victorian rectangular over mantel mirror in a moulded mahogany frame, 146cm wide (with a bank of narrow drawers on which it has been standing)

352. An oval mahogany dressing table mirror on horn shaped supports with scroll feet



## FURNITURE



355

355. An XVIII century oak and mahogany banded hanging corner cupboard the dentil cornice above two panelled doors with three internal shaped shelves, 120cm high £280-£380

356. A XIX century mahogany chest of two short and three long drawers with turned ebonised handles, raised on bracket feet, 98cm wide £80-£140



356



357. An elaborate Victorian brass double bedstead £300-£500

357

358. A set of six Victorian mahogany dining chairs, the backs with central upholstered spats above overstuffed seats, raised on cabriole front supports £400-£600



359

359. An XVIII century oak low boy the top with a moulded border above one long and two deep drawers over a shaped frieze, raised on square chamfered supports, 82cm wide £300-£400

360. A Continental burr walnut chest of three drawers with applied mouldings to the canted corners, 73cm x 43cm £80-£130



360

361. An XVIII century Hepplewhite design mahogany carver chair and two similar dining chairs (distressed)



362. A Georgian mahogany bookcase on a (later) Chippendale style stand enclosed by a pair of astragal glazed doors beneath a moulded cornice, 111cm wide £200-£300

362

363. A Victorian mahogany inverted breakfront three door sideboard, the mirror back in a moulded mahogany frame surmounted by a carved cresting, the base fitted with three oak lined drawers and three cupboards, one with a cellerette, 166cm wide £300-£500



363

364. A XIX century upholstered armchair on turned mahogany front supports

365. A XIX century mahogany bow front chest of two short and four graduated drawers raised on shaped bracket feet, the drawers with original turned wooden knobs, 105cm wide £80-£130



366

366. A Victorian mahogany cylinder desk, the interior fitted with a series of pigeon holes and small drawers over a rising writing surface, each pedestal fitted with three drawers, 122cm wide £300-£500

367. A XIX century mahogany bow front chest of two short and three long drawers, raised on splay bracket feet, 96cm wide £120-£220

368. An early XIX century secretaire bookcase, the upper section enclosed by a pair of astragal glazed doors beneath a serpentine shaped cornice, the base fitted with a secretaire drawer and three further long drawers, each with embossed circular brass handles, raised on turned legs, 93cm wide £450-£650

368





369. An early XIX century mahogany secretaire bookcase, the upper section enclosed by a pair of astragal glazed doors, the base with a fitted secretaire drawer and three further long drawers, each with oval pressed brass handles, on bracket feet, 115cm wide, 222cm high £600-£900



369

375. A George III mahogany bureau, the fall front enclosing a fitted interior, the base with four graduated drawers, each with elaborate gilt brass handles and brass escutcheons, standing on bracket feet, 91.5cm wide £400-£600



375



370

370. A George III mahogany tallboy, the upper section with two short and three long graduated cock-beaded drawers beneath a moulded cornice, the base with three further graduated drawers, original cast brass handles, blind fret canted corners, on ogee bracket feet, 125cm wide, 164cm high, 60cm deep £1600-£2400



376

376. An early XIX century rosewood serpentine fronted chiffonier with an arched mirror back and a foliate frame, the base enclosed by a pair of doors each with green pleated material and applied scroll brackets to each side, 129cm wide £200-£300

371. A Victorian figured mahogany press cupboard, the upper section enclosed by a pair of panelled arched doors, the base with two short and two long drawers, on turned feet, 133cm wide £200-£400

372. An early XIX century rosewood fold over tea table, the frieze with applied foliate scrolls, raised on a bulbous flat sided column on quadruple feet, 107cm wide £1000-£1500



372

377. An early XIX century mahogany secretaire bookcase, the upper section enclosed by a pair of astragal glazed doors with arched glazing bars beneath a cavetto cornice, the base with a fitted secretaire drawer, the exterior simulated with two drawers, three further drawers beneath, all with turned mahogany handles and raised on turned feet, 121cm wide £600-900



377



373. Part of a Georgian mahogany wash stand, now as a side table with a single drawer

373

374. A Sheraton Revival mahogany and satinwood banded envelope card table, the interior lined in green baize and with four counter wells, fitted with a frieze drawer and raised on square taper supports joined by an "X" stretcher, 55.5cm square £350-£450



378

378. An XVIII century mahogany bureau with ebony strung fall revealing a fitted interior above four graduated drawers, oval brass handles, ogee bracket feet, 105cm wide £300-£600

379. A XIX century bow front mahogany chest of two short and three long drawers on bracket feet, joined by a shaped apron, 106cm wide

380. An XVIII century chest of three long graduated drawers beneath a brushing slide with original brass handles and escutcheons raised on bracket feet, 99.5cm wide

381. A principally Georgian Hepplewhite design mahogany four poster bed approx. 4' 6" wide, the reeded columns carved with wheat, panelled headboard and a blind fret carved cornice £700-£1200



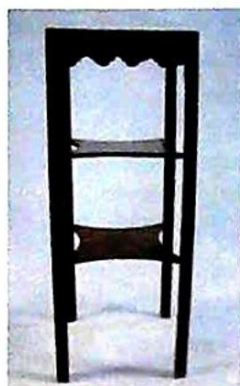


382

382. An XVIII century two panel oak blanket chest enclosed by a hinged lid with internal fitted compartments and panelled sides, 114cm wide, 63cm deep £200-£300

383. A square Georgian mahogany wash stand (distressed)

384. A late XIX century elaborate mahogany dressing table with triple mirror back, two trinket drawers, two long and two short drawers to the base either side of the shaped frieze, raised on bold cabriole supports £150-£250



383

385. An early XIX century mahogany boxwood strung chest of two short and three long drawers on bracket feet with turned ebonised handles, ivory diamond shaped escutcheons and boxwood strung, 99cm wide £100-£150



386

386. A Victorian lady's mahogany frame spoonback chair on cabriole front supports, upholstered in buttoned blue dralon £120-£180

387. A grand mahogany pedestal sideboard with a shaped panelled back, central narrow drawer, one pedestal fitted with slides and the other a cellerette; possibly Scottish, 244cm wide £300-£600

388. An XVIII century oak two panel coffer on reeded stiles, 105cm wide £250-£350



388

389. An XVIII century elm chest of two short and two long drawers - distressed, 93cm wide

390. A Victorian mahogany hall chair, the back carved in deep relief centred with a shield and initials



391

391. An early XIX century oak tripod table raised on a turned column, the circular top 55cm diameter



392

392. An early XIX century black lacquer and gilt decorated pole screen, the circular glazed panel with a woolwork of summer flowers £70-£130



393

393. A XIX century mahogany pole screen on a tricorn base, the oval woolwork panel of a vase of flowers £200-£300

394. A XIX century rosewood double chair back sofa, centred with a carved shell and standing on cabriole



394

front supports, with a side chair upholstered to match and a rosewood square foot stool on a cushion shaped base £150-£250

395. An Edwardian piano stool, the hinged lid providing a compartment for music, the frame plain strung £100-£200



395

396. A XIX century mahogany fold over top breakfast table with turned taper legs, 127cm x 152cm extended



397. A XIX century rectangular mahogany tripod table on a turned column with triple splay feet, the top 76cm x 48cm £80-£140

397





398. A Victorian open armchair with overstuffed back, seat and arms in pink velor, the arms on turned support and turned front legs with original pot castors £100-£150

398



406

406. A principally XVIII century demi lune mahogany games table on plain square tapering supports, 75cm wide £150-£200

399. A Victorian mahogany foot stool on cabriole supports joined by serpentine rails, the top upholstered in crimson velor



399

407. A Victorian mahogany "D" end writing table inset with green tooled leather above a long drawer to the frieze, raised on fluted tapering supports joined by a turned "H" stretcher £200-£300



407



400

400. A XIX century square foot stool on out-turned rosewood supports joined by an "X" stretcher (distressed) £100-£150



408

408. An early XIX century plain mahogany Pembroke table fitted with a single drawer to the frieze and an opposing dummy, raised on square taper supports, 97cm x 70cm extended £100-£150

401. An oval Victorian rosewood breakfast table, raised on a flat sided bulbous and carved pedestal with tricorn platform beneath, the top 86cm x 107cm

402. A small walnut Georgian style bow front side table fitted with two short and one long drawer, raised on square taper supports terminating in spade feet, 49.5cm wide £200-£300



402

409. A Victorian mahogany kneehole desk fitted with three drawers to each pedestal, 114cm wide

410. A Victorian button back settee with bold foliate carved mahogany arms and cabriole legs, upholstered in red velor, approx. 210cm wide £200-£300



410

403. A Georgian mahogany "D" shape fold over games table, the top crossbanded and boxwood strung, raised on square taper supports terminating in spade feet, 89cm wide £150-£250



404

404. A Victorian mahogany three part kneehole desk, fitted with three frieze drawers and three drawers to each pedestal, each with turned mahogany knobs, 122cm wide, 70cm deep £300-£450



411

411. A Georgian mahogany and boxwood strung secretaire bookcase, the upper section enclosed by a pair of astragal glazed doors, the fitted secretaire drawer inlaid with ovals and chevron banding, above three further drawers with oval pressed brass handles and raised on shaped bracket feet, 110cm wide, 230cm high, 58cm deep £700-£1200

412. An oval Victorian burr walnut and marquetry inlaid side table, raised on twin spirally fluted column support with quadruple legs carved at the knee, joined by a turned stretcher, the top 76cm x 50cm



413. A Victorian mahogany chiffonier, the 'D' shaped back with a central bold cartouche, the base fitted with a cushion fronted drawer above two panelled cupboards, 111cm wide £100-£200



414

414. A pair of Regency mahogany sabre leg dining chairs with plain reeded horizontal splats and overstuffed seats

415. An early XVIII century oak waisted bureau of small proportions, the interior forward fitted above a well, the base with two short and two long drawers on bracket feet, 73cm wide £1000-£1600



415

416. A Victorian burr walnut credenza with gilt brass mounts, the centre enclosed by a panelled door with a Sevres style porcelain plaque, flanked by glazed bow fronted display cupboards, 150cm wide £800-£1200



416

417. An early XIX century mahogany breakfast table, the oblong top ebony strung and with a wide crossband, raised on a fluted column with triple reeded splat legs terminating in brass paw castors, 135cm x 88cm £200-£400



417

418. A Victorian oval mahogany Sutherland table, raised on baluster turned columns with cabriole scroll supports, joined by a turned stretcher 134cm x 105cm £200-£300



418

419. A XIX century rectangular mahogany pedestal dining table raised on a flat sided column with tricorn base and scroll feet, 129cm x 112cm £200-£400

420. A Victorian extending mahogany dining table with one spare leaf, raised on turned fluted supports with pot castors, 207cm x 135cm £500-£800



421

421. A set of six Victorian mahogany balloon back dining chairs with overstuffed seats on turned front supports £300-£500

422. A set of five country elm Hepplewhite design dining chairs with vertical central pierced splats, drop-in rush seats on square taper supports £200-£400



422

423. A set of seven (six singles and one arm) Georgian elm dining chairs with plain curved cresting rails above vertical interlay splats, drop-in seats on square taper supports joined by plain stretchers £300-£450

424. A set of eight early XIX century mahogany dining chairs with horizontal splats, drop-in seats, raised on square taper supports joined by "H" stretchers; two carvers and six singles £400-£800

425. Six Georgian mahogany dining chairs with horizontal pierced and reeded splats, overstuffed seats on square taper front supports £450-£650



426

426. A pair of country Chippendale side chairs with pierced vase splats, drop-in rush seats, raised on square supports, joined by "H" stretchers

427. A XIX century mahogany pedestal with a hinged lid raised on bracket feet, 50cm wide

428. A George III mahogany tall boy, the upper section with three short and three long drawers, beneath a moulded cornice and with reeded canted corners, the base with a brushing slide and three further oak lined drawers, raised on bracket feet and with original brass escutcheons and key plates, 110cm wide, 180cm high £1400-£1900



428

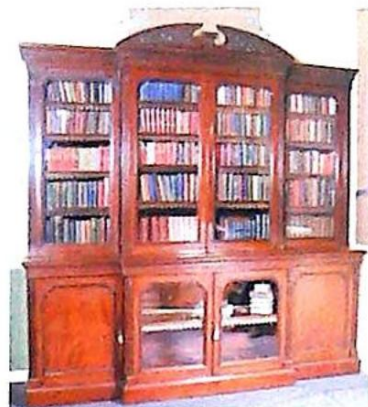
429. A Georgian mahogany corner wash stand, the undertier fitted with a central drawers and two dummies





430

430. A XIX century rectangular mahogany tripod table, raised on a turned column with splay feet



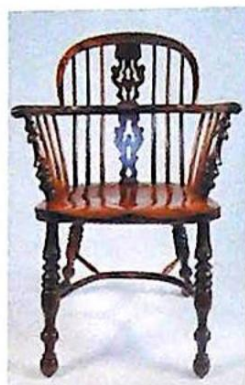
433

433. A XIX century mahogany breakfront library bookcase, the moulded dentil cornice surmounted by a broken pediment, the upper section enclosed by four glazed doors flanked by reeded columns, the base centred with a pair of glazed doors flanked by panelled doors, fitted with adjustable mahogany shelves with tooled leather pelmets, 268cm wide, 273cm high and 70cm deep £6000-£9000



431

431. A heavily carved oak Gothic design hall chair on turned legs joined by an elaborate stretcher



432

432. A XIX century yew wood Windsor chair with "curly" pierced splat on turned supports joined by a crinoline stretcher £150-£250

434. Large quantity of books (as contained in library bookcase in above lot)

## Forthcoming Sales

**First Saturday Estate Sales**

**2nd October 6th November**

**4th December**

\*\*\*\*\*

**Autumn Book Sale**

**Antiquarian & Modern Books**

**Further entries accepted**

From Walcott Hall following the sale of the property  
**A particularly fine Burroughes & Watts full size snooker table**  
 "the best table we have ever been instructed to sell"



Valuations Prepared For:

**INSURANCE**

**PROBATE**

**FAMILY DIVISION**

For further information contact

**J C Slingsby**

[clinton.slingsby@thosmawer.co.uk](mailto:clinton.slingsby@thosmawer.co.uk)

**01522 524984**



## CONDITIONS OF SALE

1. In these conditions Thos. Mawer & Son act only as auctioneers and agents and the representative of Thos. Mawer & Son conducting the auction is called 'The Auctioneer'

2. Whilst Thos. Mawer & Son make every effort to ensure the accuracy of their catalogue and the description of any lot:

(i) Each lot set out in the catalogue or as divided or combined with any other lot or lots is sold by the vendor with all faults and imperfections and errors or descriptions

(ii) Thos. Mawer & Son do not accept responsibility for the authenticity, attribution, genuineness, origin, authorship, date, age, period condition or quality of any lot unless they have been instructed in writing by the buyer to so certify.

(iii) All statements whether printed in the catalogue or made orally as to any of the matters set out in (ii) above are statements or opinion only and are not to be taken as being or implying any warranties or representations of fact by Thos. Mawer & Son unless they have been instructed in writing by the buyers to so certify.

3. The Auctioneer has absolute discretion to divide any lot, to combine any two or more lots or to withdraw any lot or lots from sale, to refuse bids, regulate bidding or cancel the sale without in any case giving any reason or without previous notice. He may bid on behalf of the vendor for all goods which are being offered subject to reserve or at the Auctioneer's discretion.

The highest bidder shall be the buyer. The Auctioneer may at his sole discretion determine the advance of bidding or refuse a bid. If during the auction the Auctioneer considers that a dispute has arisen, has absolute discretion to settle it, or to re-offer the lot.

All conditions, notices, descriptions, statements and other matters in the catalogue and elsewhere concerning any lot are subject to any statements modifying or affecting the same made by the Auctioneer from the rostrum prior to any bid being accepted for the lot

4. The buyer shall pay the hammer price together with a premium of the hammer price - 15% inclusive of VAT

5. Notwithstanding any other terms of these Conditions, if within seven days after the sale Thos. Mawer & Son have received from the buyer of any lot notice in writing that in his view the lot is a deliberate forgery and within twenty-one days after such notification the buyers return the same to Thos. Mawer & Son in the same condition as at the time of the sale and by producing evidence, the burden of proof to be on the buyer, satisfies Thos. Mawer & Son that considered in the light of the entry in the catalogue the lot is a deliberate forgery then the sale of the lot will be rescinded and the purchase price of the same refunded.

The vendor agrees to be bound by Thos. Mawer & Son's decision.

6. Thos. Mawer & Son disclaim any responsibility for default by either the buyer or the vendor because they act as Auctioneers only and therefore do not pay out to the vendor until payment is received from the buyer. Instructions given by telephone are accepted at the sender's risk and must be confirmed in writing forthwith.

7. Every person on Thos. Mawer & Son's premises at any time shall be deemed to be there at his own risk. He shall have no claim against Thos. Mawer & Son in respect of any accident which may occur or injury, damage, loss howsoever caused, save in so far as the injury, damage loss shall be caused by the negligence of Thos. Mawer & Son's employees.

8. Each lot shall be at the purchasers risk from the fall of the hammer and must be paid for in full before the delivery and must be taken away by the purchaser at his own expense within 7 working days following the conclusion of the sale. The Auctioneer shall be entitled to charge storage charges in respect of lots not taken away as aforesaid (minimum charge of £10 plus VAT) and interest on unpaid accounts @ 4% above clearing bank base rate (per day)

9. Cheques which are not honoured by the payee's bank will incur a handling charge of £20 plus VAT for each presentation.

This contract is governed by English Law.





**DUNSTON HOUSE • PORTLAND STREET • LINCOLN • LN5 7NN**  
**TELEPHONE 01522 524984 • FACSIMILE 01522 535600**  
**EMAIL [auctions@thosmawer.co.uk](mailto:auctions@thosmawer.co.uk) • WEBSITE [www.thosmawer.co.uk](http://www.thosmawer.co.uk)**