



THOS. MAWER & SON LTD.

Auctioneers & Valuers Established in 1864



Antique Sale

Saturday 24th January 2004 Commencing at 10.30am

On View

Friday 23rd 10.00am - 4.00pm & morning of sale from 9.00am

Catalogues £5.00

COMMISSIONS

The Auctioneers are pleased to execute commissions for intending buyers in confidence as cheaply as is allowed by any other bids. **Telephone bids will not be undertaken for lots estimated at less than £500. All telephone bids and commissions must be confirmed in writing or by fax by 4pm the day prior to sale.** We cannot guarantee to execute bids received on the morning of sale. **Special attention is drawn to Condition 2C of the Terms & Conditions.**

BUYERS PREMIUM

There is a 15% premium payable on the final hammer price of each lot.

REGISTRATION

All prospective purchasers are requested to obtain a bidding number prior to the start of the sale.

CATALOGUE DESCRIPTIONS

Care is taken to ensure that any statement as to authorship, attribution, origin, date and provenance is reliable and accurate, but all such statements of opinion are not to be taken as statement or representations of fact. Thos. Mawer & Son Ltd. reserve the right, in forming their opinion, to consult and rely upon any expert or authority reasonably considered by them to be reliable

CONDITION REPORTS

We regret that we are unable to provide condition reports on the morning of the sale. Attention is drawn to Condition 2 of the general Conditions of Sale printed at the back of this catalogue and in particular condition 2 (iii).

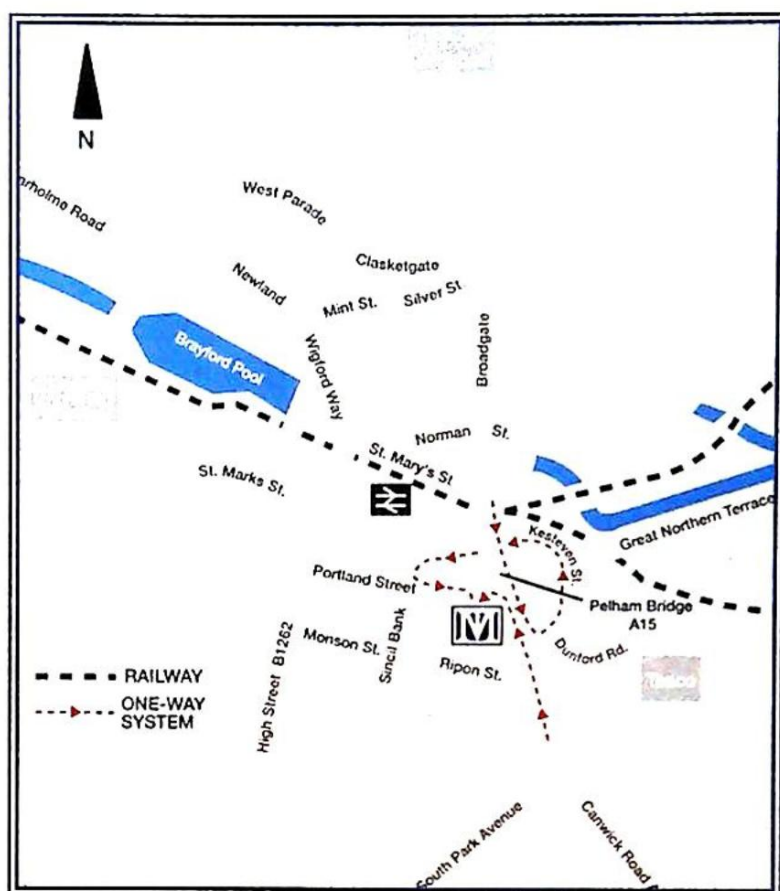
ESTIMATES

While an identification of damage is given in some instances, an absence of such does not imply that a lot is free from defect. Prospective purchasers are strongly advised to inspect any lot on which they intend to bid. All measurements and weights are approximate and should be verified by intending purchasers. No lots in this sale are the property of Thos. Mawer & Son Ltd.

All lots should be paid for and collected within 7 days of the sale. Any lots not collected after this time will incur storage charges.

PAYMENT OF ACCOUNTS

Payment of all lots must be made on the day of sale and methods are (1) **Cash**, (2) **Cheques** supported by either a letter of Reference from your bank or a cheque guarantee card to cover the sum of your purchase, (3) **Bankers Draft**, (4) **Direct Debit Cards** such as 'Switch', 'Delta', 'Classic', 'Connect', (5) **Credit Cards** subject to a 2% premium charge.



LOCATION

The Thos. Mawer & Son salerooms at Dunston House are situated in central Lincoln on the east end of Portland Street at the foot of Pelham Bridge (Canwick Road). By car, approaching from the south take the last turning on the left just before the road rises to the bridge.

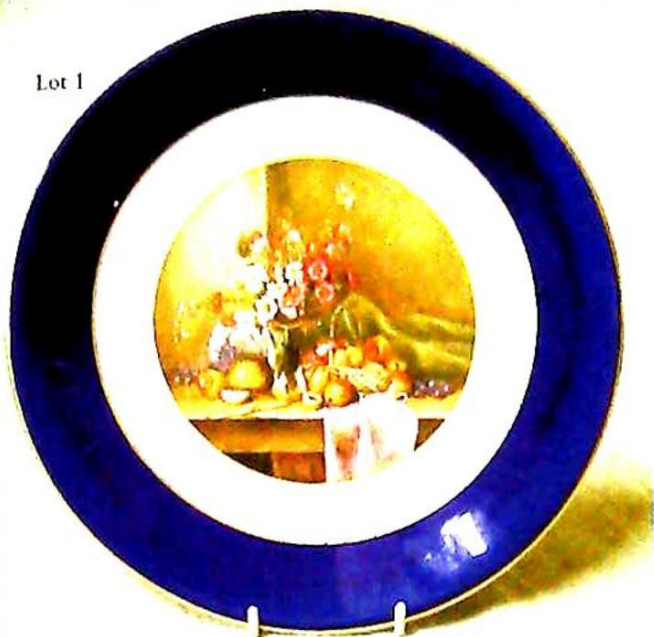
Approaching from the north (via Broadgate), go over Pelham Bridge and turn left towards Jacksons Building Centre/Tesco on to Kesteven Street. Follow the road around to the left and drive under Pelham Bridge to Portland Street. Turn left and you will see Dunston House on the right. Portland Street is also accessible from Lincoln's High Street, opposite the Ritz public house.

The salerooms are within walking distance of the main railway station and bus depot.

ENGLISH & CONTINENTAL PORCELAIN & POTTERY

1. Royal Worcester. J Ayrton - a plate with still life of fruit and flowers on a table, blue and gilt border, date mark 1915, 23cm diameter £120-£180
2. Furnival's Limited "Old Chelsea" pattern. An earthenware dinner service comprising ten plates x 26cm diameter, eleven plates x 22cm diameter, eleven plates x 17.5cm, five graduated oval serving plates 27cm-46cm, two covered vegetable tureens, two sauce tureens, stands and ladles £100-£200
3. XIX century Staffordshire - a royal blue, gilt and floral decorated part tea service comprising 16 cups, 7 saucers, oval serving plate, covered sugar, slop basin (a/f)
4. An XVIII century tea cup and saucer decorated with blue flowers and checked panels, the cup with double intertwined strap handle, possibly Leeds £100-£140
5. A pair of crumb coated Staffordshire lambs standing against boughs, applied bocage to the oval bases, 9cm high
6. A XIX century Staffordshire flatback spillholder, black and white dog lifting a child by his shirt, 20cm high £80-£140
7. A XIX century flatback figure of a Scottish piper, bagpipes over his left shoulder, 36cm high; and an almost identical companion £80-£160
8. A pair of XIX century Staffordshire flatback dog and tree vases, 33cm high £50-£100
9. A Charles Meigh embossed fruiting vine parian wine jug, the base with combined makers and mark, registered September 1844, number 2116 and 21960 (hairline cracks)
10. A XIX century porcelain jug, the bulbous body decorated with Billingsley style flowers and dedicated to John Lees, Cotton Spinner and Manufacturer, Stockport (handle partly missing)
11. Rudolstadt Volkstedt Thuringia - a pair of Meissen style porcelain figures of a musician playing a flute, his companion lady dancing holding a rose, each figure wearing cream flowered and gold wheat eared clothes standing on round naturalistic gilt and rose decorated bases, blue painted mark, each 24cm high (damage to fingers) £100-£200
12. Berlin. A covered chocolate cup, the turquoise body decorated with gilt swags, ribbed lower panel, the lid with floral swags and leaf handle (a/f)
13. Vienna. A pair of lidded chocolate cups, the highly decorated mauve and red bodies with heavy gilt decoration, each with a panel depicting classical scenes, 8cm high (1 a/f), blue mark and painted number 34
14. A Continental figure group of two girls and a boy with dogs standing on a rose decorated gilt scroll base, gold anchor mark ?Samson Paris £50-£100
15. Dresden. A pair of porcelain compots, wrythen bowl and stem decorated with summer flowers and gilt scrolling borders, blue painted mark, the top 21cm diameter, 12cm high (1 a/f) £100-£150
16. A Meissen style ink stand, the oval tray with sky blue ground, gilt fleur de lys, quatrefoil panels depicting figures in landscapes; and a pair of barrel shaped inkwells similarly decorated, the lids with rose finials, painted AR mark beneath, the tray 28cm x 19cm, 11cm high overall (chips to lids) £100-£200
17. A Delftware blue and white plate decorated with basket of flowers (a/f) (originally from the collection of the Bishop of Lincoln Dr. Kenneth Riches), 23cm diameter
18. A XIX century Salopian pale blue overlay cylindrical lidded jar with incised fern and grasses decoration, the lid with acorn knop, incised mark, 11cm high (minor chips) £50-£100

Lot 1



Lot 4



Lot 5



Lots 12 & 13



Lots 9 & 10



Lot 11



Lot 6



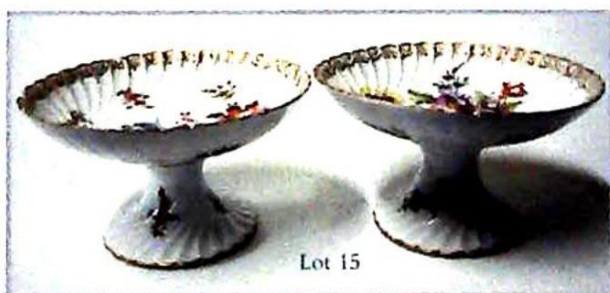
Lot 16



Lot 17



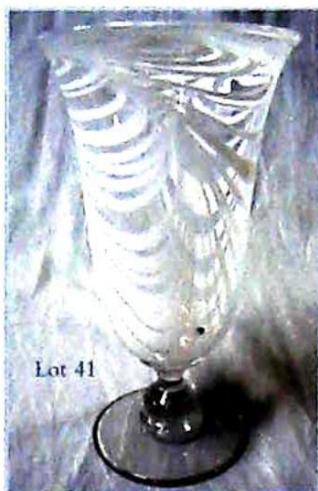
Lot 15



19. Crown Derby. A XIX century white bodied gilt and blue decorated two handled lidded sucrier, painted puce mark number 26
 20. A Chinese porcelain cylindrical teapot, painted willow pattern scenes, gilded strawberry knob to lid, crossed strap handle, 12cm high (hairline cracks)
 21. Coalport. A porcelain part dessert service comprising four plates and comport with cobalt blue and gilt borders, the centres with summer flowers; green printed mark, paint pattern 8151/A to plates and 8151 to comport £75-£150
 22. A large XIX century Imari charger decorated in typical pallet with a multitude of peonies and foliage in a watery setting with ducks, shaped border, 47cm diameter £100-£180
 23. A XIX century oval Imari wavy edge plate, 34cm x 30cm £50-£100
 24. A Chinese porcelain mug with panels depicting courtesans interspersed with flowers and gilding, 15cm high £80-£160
 25. Wedgwood. A circular Jasperware cheese dish and domed cover decorated in relief with romanesque figures across and oak leaves, 28cm diameter
 27. Coalport. An apple green, gilt and floral decorated shallow dish, pattern 2665; and another dish decorated in gilt with scrolling lines
 28. Limoges. Guerin-Pouyat - Elite Limited:- A floral and gilt decorated porcelain dessert service comprising six plates and two comports £100-£150
 29. Delft. A pair of XVIII century style standing cow ornaments, 10cm high (a/f)
 30. A pair of XIX century Worcester style narrow neck bulbous bodied stoppered vases with serpent handles to shoulders decorated with summer flowers and grasses, 21cm high, paint mark 1/1678
 31. A royal blue, gilt and floral decorated two handled vase, gilt and green double inkwell, a small Royal blue and gilt decorated porcelain bon bon dish and a similar jug (all a/f) (4)
 32. Royal Worcester. A small footed dish decorated with fruit, signed Moseley and an oblong ditto signed A. Shuck (both a/f)
 33. Sevres. A comport with pale yellow ground, rose border, gilt highlights, 22cm diameter (restored); and a Dresden trinket box with gilt metal mounts
 34. A XIX century English tea service, the apple green ground with gilded foliate decoration comprising - 12 cups and saucers, 12 side plates, 2 bread and butter plate and four similar small vases £100-£170
 35. An early XIX century transfer printed jug decorated with a sportsman shooting over two pointers, 11.5cm high and a double lipped copper lustre jug
 36. Royal Dux model 2029. A pony and cart, the cart monogrammed AHII, 28cm x 11.5cm
 37. Three XIX century Prattware pot lids "Embarking For the East"; "The Village Wedding" and a similar modern - all framed (3)
- GLASS
41. A Nailsea glass celery vase, the bell shaped body with wrythen white decoration, short single knob stem, domed circular foot, 24cm high £100-£200
 42. XIX century vaseline glass single trumpet epergne, the base in the form of a multi crimped dish (a/f)
 43. A pair of mallet shaped cut glass decanters, the bodies with hot nail cutting, faceted triple ring neck, star cut cushion and hob nail cut stoppers, 26cm £100-£200
 44. A XIX century vaseline glass epergne, the central tall trumpet flanked by three lower ones, the base formed by a crimped dish, 45cm high £200-£400



Lot 24



Lot 41



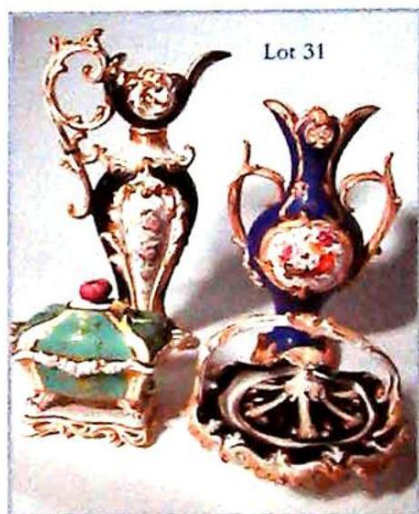
Lot 44



Lot 30



Lot 43



Lot 31



Lot 42



Lot 34



Lot 35



Lot 29



Lot 25



Lot 26

45. A pair of XIX century lustres, the white glass bodies with green painted overlay, printed panels of cherubs and gilt highlights, prism drops, 36cm high £200-£400
 46. A XIX century glass and silver plate mounted biscuit barrel, the ribbed body with engraved flowers and title, 16cm high
 47. A XIX century cut glass vase with hob nail cut body, square star cut base, 22cm high (chips); a pair of fern decorated wheel engraved finger bowls, 10cm diameter; a XIX century rummer with wheel engraved decoration and knop stem; slice cut custard glass and two other glasses (7)
 48. A late XVIII century glass sewing lamp with bulbous water reservoir, the top a hollow knopped stem, drawn handle with thumb piece on a domed folded foot, 26cm high £60-£120
 49. A fine heavy hob nail cut claret jug, 30cm high
 50. A XIX century conical glass with spirally fluted knop stem and unground pontil, 15cm
 51. A millefoire glass inkwell with matching stopper, 11cm high
 52. A XIX century glass tazza with pink flashed cut rim and foot with frosted bands and cut decoration, hollow faceted stem, 12cm high, the top 15cm diameter £50-£100
 53. A XIX century table centre, the circular gadroon decorated base supported by three cast cherub head feet, the cranberry glass lower bowl with scalloped ground edge, the central column formed by two putti riding on a dolphin supporting a star cut and wheel etched floral decorated clear glass dish held in place by a screw in candle holder (a/f), 48cm high
 54. A set of six XIX century green wine glasses
- BRASS, COPPER & TREEN
60. An early XIX century brass and steel fender with vertical supports for the three long handled steel irons, the fender on brass paw feet, 139cm wide £280-£380
 61. A XIX century iron and brass rectangular grate of cushion form standing on bulbous cast legs, 66cm wide, 32cm deep £300-£500
 62. An ornate brass fire kerb, 122cm £100-£150
 63. A Victorian all brass kerb with pierced decorated front, 77cm wide £80-£130
 64. A Victorian brass kerb, 87cm
 65. A heavy brass desk inkstand with two lidded inkwells (liners missing), the whole in the form of a seat with curved open back, centred with an oval shield, the front supported by a pair of stylised female figures with crossed animal feet, together with a brass paper knife, 40cm x 20cm
 67. A pair of Continental cast brass oval shaped panels depicting a maiden offering flowers to a statue of cupid, a dog at her feet, applied female head to base, 26cm x 20cm
 68. A XIX century copper urn with domed fluted cover, side handles and turned spigot, 43cm high £80-£130
 70. A Dutch style heavy cast brass chandelier with six "S" scroll arms, radiating from a central boss, the terminal cast with an open winged bird, approx. 65cm £200-£300
 71. A XIX century brass frame hall lantern enclosed by bevelled and plain glass panels, 60cm high, 33cm square £800-£1200
 72. A Victorian brass frame hall lantern with a cylindrical yellow glass shade, the fitting approx. 30cm high, 18cm diameter
 73. A copper and nickel mounted coaching horn, maker Dan Godfrey & Sons, 428 Strand, London, 117cm long (damage to part of the mounts)
 74. Three matching XIX century brass table candlesticks of neo-classical design on square bases, 26.5cm high



Lot 45



Lot 48



Lot 53



Lot 60



Lot 71



Lot 61

75. A pair of Victorian brass candlesticks plus two others
76. A circular hammered brass spittoon
81. A XIX century mahogany rectangular box with two lift out compartmented trays, underside of lid label "Atwood's Superior Semi Flatened Hooks & Eyes"
82. A XIX century mother of pearl inlaid tortoise-shell tea caddy, the brown velvet lined lid opening to reveal two lidded compartments with bone finials, the body raised on four turned ivory feet (a/f) £400-£800
83. A Victorian collectors cabinet, the top enclosed by a hinged lid, the base with five narrow drawers £120-£170
84. An oval Scandinavian workbox, decorated in relief and with an inner lift out tier, 46cm x 32cm, 24cm high

SILVER PLATE

88. A pair of plated decorative decanter labels "Gin" and "Rum" and another lozenge shape with beaded border "Whisky"
89. A XX century patent cocktail shaker, the cylindrical body revolving to provide the mixtures of various cocktails, indexed around the neck
90. Silver plate wine labels, octagonal shape - "Hock", "Claret", "Moselle", "Port" and three smaller "Maderia" (2) and "Sherry" (1) (seven in total)
91. Silver plate. Wine and spirit labels - "Brandy" (2), "Madeira" (3), "Whiskey" (2) (seven in total)
92. Silver plate. Wine and spirit labels - "Whiskey" (2), "Brandy" (4) (six in total)
93. Silver plate. Wine and spirit labels "Orange", "Barsack", "Port", "Madeira"; crescent shaped "Madeira", "Rum" with grape decoration, two with embossed borders, Madeira and Port, two unengraved labels, vine decoration "Brandy" (ten in total)

94. Silver plate. A pair of three footed sauce boats with gadroon decoration, each with stand; and an oval entree dish with gadroon edging, the lid with embossed and cut decoration
95. A Victorian silver plate candelabra, the fluted column supported by kneeling camels with three cast foliate arms, 59cm high £500-£700
96. A pair of silver on copper candelabra, the sconces and base with acanthus leaf decoration, 26cm high £100-£200

SILVER

97. A Birmingham hallmarked silver and blue enamel six piece dressing table set in original silk lined oval box, retailer L Barraclough & Sons, 64 Briggate, Leeds £100-£200
98. Chester 1906/7, 1909/10 Three rectangular wine labels engraved "Port", "Claret", "Madeira", maker SI Limited
99. London 1909/10. A fruit comport with oval lobed and scroll decorated swivel dish supported on an acanthus and swag decorated cast openwork base, raised on four scroll feet, the dish inscribed "To Flo and Lou from Mother on the occasion of their Silver Wedding 1923-48", 40cm max, dish 23cm x 19cm £80-£120
100. Birmingham 1841/2. A pair of wine labels of leaf form, pierced names "Sherry" and "Port", maker JW - Joseph Willmore
101. Birmingham 1913/14 Asprey & Co Ltd - a pie crust edge three footed silver 18cm diameter £100-£200
102. Birmingham 1913/14. An oval half ribbed bodied hinged lidded tea caddy with gilded interior, maker JR £80-£160
103. Birmingham 1913/14. A ten sided pierced floral decorated stemmed bon bon dish, maker ? H Matthews, 10cm high; Birmingham 1914/15 - a silver napkin ring, maker A Bros.; and a bright cut decorated gilt interior cigarette case Birmingham 1917/18, maker CE & FD Ltd



Lot 82



Lot 83



Lot 84



Lot 89



Lots 90, 91 & 92



Lot 95



Lot 100



Lot 98



Lot 99

104. Sheffield 1923/4. A pair of baluster stem circular rib decorated candlesticks on weighted bases, maker T.A.S., 19cm high
105. London 1877/8 A pair of scatter hallmarked circular salts with beaded edge, raised on three shell and paw feet, maker ECB
106. London 1915/16 An octagonal bodied waisted sugar castor with gadroon decorated foot, maker EBS Limited, the base stamped W Mansell Lincoln 21cm high £80-£160
107. Birmingham 1825/6. An engraved silver viniagrette, maker Thos. Shaw £100-£200
108. Chester 1916/17. A lozenge shaped footed swing handled fruit basket with pierced decoration, the base stamped Jays 142 and 144, Oxford St. W
109. Birmingham 1934/5. A two handled silver cup with stepped circular base, 12cm high
110. Birmingham 1914/15. A three piece tea service with semi ribbed bodies and gadroon and shell edging, the teapot with ebony handle and finial, maker W.A. £150-£250

JEWELLEY

114. Costume jewellery:- a large brooch set with coloured stones, smaller oval silver brooch centre with a facet cut pale blue stone, silver locket and chain and a circular silver brooch (5)
115. A yellow metal fob seal set with shield shape white/fawn stone and a larger yellow metal fob set with swivel three sided? citrine £120-£200
116. A XIX century yellow metal intaglio seal with armorial crest and a 50cm watch chain £150-£250
117. A XIX century yellow metal and hardstone set intaglio fob seal, motto "spero in deo" with a 52cm watch chain £150-£250
118. A cameo brooch of a lady with necklace within a white metal and marcasite frame stamped 800 £80-£120
119. A pair of yellow and white metal (test as 18carat gold) claw set single stone brilliant cut diamond ear studs, each .35 carats approx. £400-£600
120. A XIX century gold coloured and metal, pearl and malachite set small rectangular brooch, reverse engraved verso April 17 1886 £80-£120
121. A pearl hardstone and yellow metal bar brooch with safety chain £60-£90
122. A facet cut sapphire coloured single stone ring surrounded by small diamonds in white gold setting
123. A three stone emerald and diamond ring in PLAT setting £250-£350
124. A sapphire dress ring surrounded by small diamonds in 9 carat yellow gold setting £75-£150
125. A three stone diamond ring, claw set in 18 carat yellow gold, approx. 1.75 carat total £1000-£1500
126. A solitaire diamond ring of approximately .75 carats in an 18 carat yellow gold claw setting £400-£600
127. A lady's engraved silver cased fob watch with opulescent enamel and gilt roman dial, the case stamped 935, the interior case engraved "Maud"; an engraved Birmingham hallmarked locket and chain; and marcasite set bow brooch stamped 835 (3)
128. A French steel cased pocket watch with white roman dial, four subsidiary calendar dials, moon phase, seconds, days, date and months; with a mahogany Maltese cross design easel backed display stand

Lot 110



Lot 137



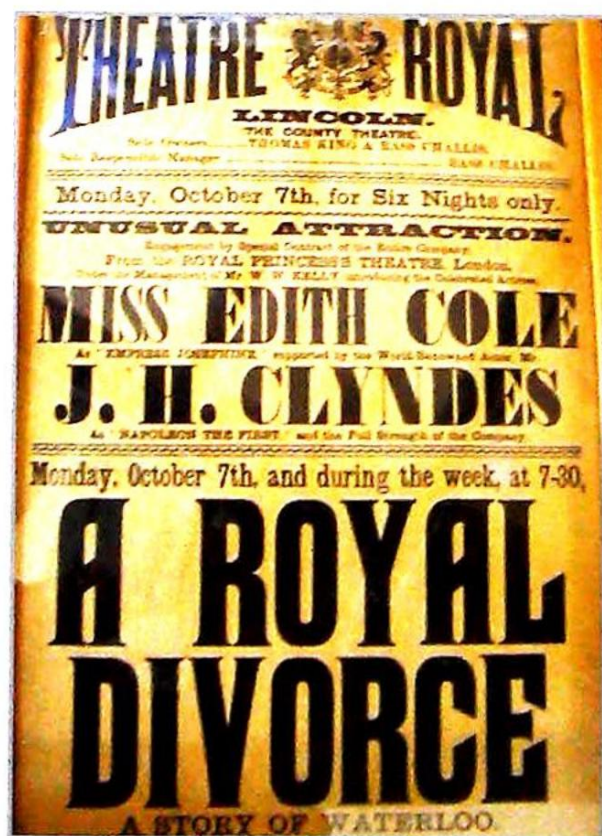
BYGONES, COLLECTABLES & MISCELLANY

130. A pair of turned ivory circular lidded boxes, the lids with an elephant and tiger respectively and each with pair of engraved tigers; one box with makers logo - a beetle, each 6.5cm diameter
131. Two circular turned ivory boxes with floral decorated lids, 6.5cm diameter and a square ivory box containing coloured glass beads
- 131A. An Indian ivory carved figure group, man and woman, she with a water urn on her head and he wearing a head dress, turned hardwood stand, 13cm high
132. An engraved silver topped ebonised walking cane
133. Two stag horned handled walking sticks
134. An oval wicker log basket and a large hamper basket
135. A pair of mid XIX century papier mache hand screens of cut rectangular form embossed with scrolling foliage, the panels depicting a wild fowler with his dogs, turned red painted handle £200-£400
136. A collection of XIX century astronomical lantern slides depicting the moon, earth etc., contained in original box £100-£200
137. Apothecary's glass bottles:- bulbous purple glass bottle, gilt label "TR: CARDAM: C:" and a pair of olive green glass cylindrical bottles painted title "TINCT: SEMMAE AND ZINCIB"
138. A small wooden box containing coloured printed lantern slides "Alice in Wonderland" etc.
141. An early XIX century salt glazed dated puzzle jug inscribed "GEORGE UPTON 1834 From Mother Earth I Took My Birth, Then Found A Jug By Man, And Now Stand Here Filled With Good Cheer, Taste Of Me If You Can", 22cm high £80-£120
142. A Victorian hand made toy farm with buildings, hedging, wooden figures and animals comprising church, cottage and a house, large and small barn, haystack, hedgerows and trees £120-£220
143. A graduated set of three XIX century papier mache trays with gilded borders, mother of pearl inlay and the centres with prints of children, the largest 74cm x 58cm to 41cm x 33cm £100-£200
145. A tin plate and brass magic lantern with adjustable lens, tin plated carrying case £100-£200
146. A tin plate and brass magic lantern (converted to electricity), the case bearing label patent number 245?, the lens cap cover engraved 7in., RD number 230577 with tin plate carrying case £80-£150
147. "The Game of War" manufactured for HM Government by R H Stevens & Co Ltd, retailed by Wm. Ives Lincoln. A mahogany games compendium containing approx. 600 pieces together with scales, score board etc. (for further details, please request information received from The National Army Museum with the auctioneers) £500-£1000
148. A very large XIX century hewn stone horse trough, 142cm wide, 87cm deep, 51cm high, the stone sides approx. 10/11cm thick £400-£600
149. Theatre Royal Lincoln bill poster "A Royal Divorce" (story of Waterloo by W G Wills)
150. A XIX century turned boxwood four section cylindrical spice container labelled "Nutmeg", "Cloves", "Mace" and "All Spice", 20cm high
- 150A. A pair of XIX century oak well carved wall brackets in the form of eagles with outstretched wings above fruit, pine cones and foliage, 42cm high

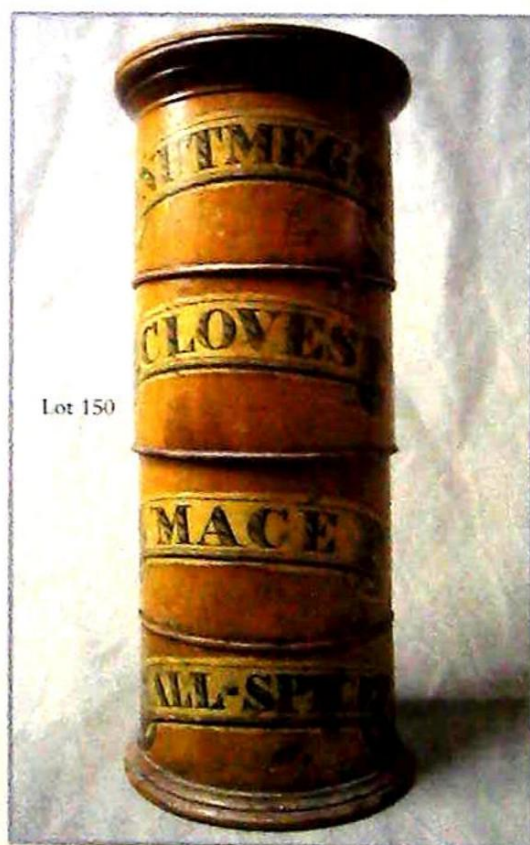
Lot 131A



Lot 148



Lot 149



Lot 150

ANTIQUÉ GUNS & EDGED WEAPONS

151. A XIX century cavalry sword
152. A steel bladed bone handled lapland skinning knife, 16cm long
154. A Chinese dagger, the pressed metal scabbard decorated with fish, stylised dragons and set with circular turquoise stones
155. A Chasseporte bayonet
156. A Lebel bayonet and scabbard
157. A brown bess socket bayonet
158. A Swiss bayonet, black plastic scabbard (modern)
159. A 1912 cavalry sword, 107cm overall
160. A decorative cast steel court sword and leather scabbard, 98cm
161. A court sword with embossed brass hilt and mother of pearl handle, (no scabbard), 95cm
162. A French type cavalry sword (no scabbard), 105cm
163. An 1822 pattern artillery sword (no scabbard), 105cm
164. A Khanda all steel Indian sword with scabbard
165. A brass hilted officers sword, (no scabbard) 92cm overall
166. A Spanish court sword (no scabbard), 88cm
167. A Jambiga with leather scabbard, applied silvered metal decoration, 33cm overall
168. A Jambiga with brass scabbard, 39cm overall
169. A short bladed Indian tulwar, 47cm
170. A native dagger with wooden handle, 39cm overall
171. A copper powder flask with embossed shell pattern decoration
172. A Moroccan brass and silvered metal powder flask
173. A copper powder flask with embossed decoration and another (no pourer)
174. A leather shot pouch
175. A horn powder flask with brass fittings, a small horn powder flask with decorative carving and another plain ditto
- 175A. Two shot pouches with brass measures
- 175B. Two plain copper powder flasks
176. A large cow horn powder flask
177. A percussion pistol with checkered grip, engraved lock, the octagonal twist off barrel engraved "Bourne" £70-£130
178. A steel barrel flintlock blunderbuss, 72cm overall £250-£350
179. A four barrel pepper box percussion revolver by Clark of London £120-£180
180. An Afghan flintlock musket, the butt inlaid with mother of pearl and brass, 135cm overall
181. A Belgian percussion travelling pistol with folding trigger, 21cm overall
182. A percussion holster pistol, 34cm overall
183. A percussion holster pistol with brass trigger guard and backplate, 35cm overall
184. A percussion pocket pistol with twist off barrel, 17cm overall
185. A percussion pocket pistol, 15cm overall
186. A percussion pocket pistol with circular twist off barrel, 18cm overall



187. A percussion pocket pistol with octagonal twist off barrel, 18cm
188. A percussion pocket pistol, 18cm overall
189. A Continental percussion pistol with embossed silvered metal butt plate and decorative carving to the stock, 19cm overall
190. An Indian percussion holster pistol, 33cm overall
191. A Russian deactivated carbine rifle
192. A flintlock musket, 105cm overall £200-£300
193. A sporting cross bow £100-£200
194. Four XIX century bullet moulds
195. A percussion pocket pistol with circular twist off barrel and folding trigger, 18cm overall
196. An Eastern dagger with carved wooden handle and embossed leather scabbard plus another (2)
- 196A A XIX century percussion musket
- 196B A hardwood (*lignum vitae*?) cleaning rod with brass fitting
- 196C A shooting stick by Swaine Brigg, London – The Shotover

MIRRORS

197. A mahogany boxwood and satinwood banded Sheraton revival style dressing mirror, the bow fronted base fitted with three drawers on bracket feet, 76cm wide, 77cm high high £150-£250
198. A rectangular wall mirror, the gilt frame moulded with acorns and oak leaves, 87cm x 71cm £100-£200
199. A rectangular XIX century mirror in an ornate foliate plaster gilt frame, 86cm x 71cm £100-£200
200. A Victorian dressing table mirror, the mahogany frame on barley twist supports, the 'D' shaped white vein marble base on mahogany plinth and feet
201. A XIX century overmantel mirror, the frieze depicting a hog hunt and the frame with spiral columns beneath a moulded cornice, 165cm wide, 98cm high £300-£500
202. A Georgian mahogany fret mirror, 68cm x 41cm £150-£250
203. A Georgian mahogany dressing table mirror, the rectangular base fitted with three concave drawers on bracket feet, approx. 64cm high £200-£300
204. A XIX century rectangular mahogany cheval mirror on a turned frame £150-£250
205. A XIX century oval giltwood neo-classical design wall mirror, surmounted by a shaped urn flanked by foliate scrolls, 108cm high
206. A pair of oval gilt wood mirrors, the elaborate frames with mistletoe and foliate scrolls, 115cm x 52cm £600-£900
207. A XIX century neo-classical design gilt frame over mantel mirror, 140cm x 181cm £200-£300
208. A Victorian plaster gilt domed over mantel mirror, the decorative frame surmounted by flowers £150-£250
209. A large Victorian moulded frame rectangular overmantel mirror, 186cm wide, 150cm high
210. An oval Victorian mahogany dressing mirror on carved supports, the bow fronted base forming a lidded compartment approx. 80cm high £70-£130

PICTURES & PRINTS

211. W Noel Johnson s. A watercolour drawing titled on the mount "The Ebb Tide and The Dawn" 66cm x 99cm £400-£800
212. W Noel Johnson s. A watercolour drawing titled on the mount "A Calm Evening Loch Ranza Isle of Arran N.B." 65cm x 97cm £400-£800
213. T Mortimer s. A pair of watercolour drawings - Continental town scenes with sailing vessels and timbered buildings 18cm x 36cm £150-£250



Lot 203



Lot 204



Lot 206

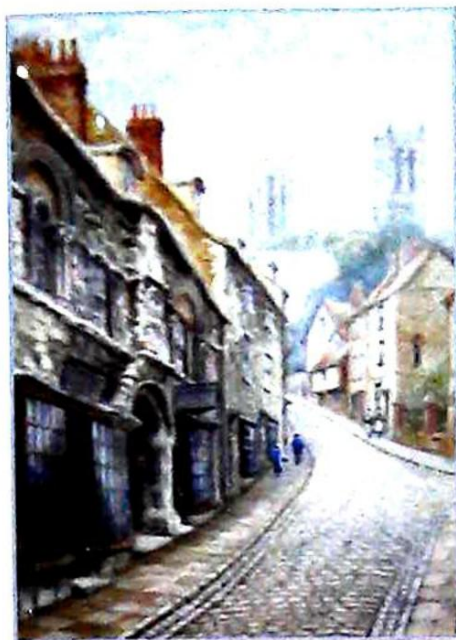


Lot 211

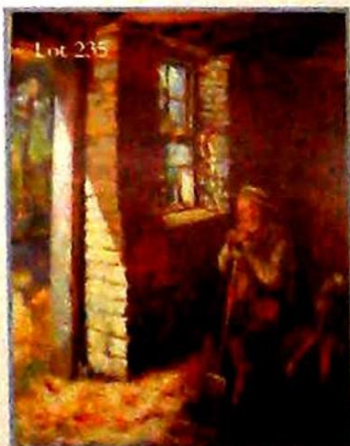


Lot 205

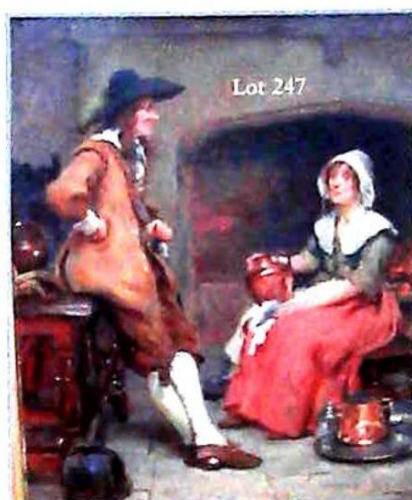
214. A A Pursglove 1903 A pair of watercolour drawings - a woodland scene (SD) and figure on lane by a duck pond (S) 75cm x 54cm £100-£200
215. Mary Towne c.1830 A set of three watercolour drawings:- A Curlew Sandpiper, The Stone Curlew and The Common Snipe, mounted and framed, labelled verso with details of inscriptions on the mount £200-£400
216. F M Chase s. Watercolour drawing - The Doges Palace Venice with gondolier in the foreground contemporary plaster gilt frame (damaged) 21.5cm x 34.5cm £600-£900
217. J A Brindley 1889 s.d. A watercolour drawing - coastal scene with windmills 25cm x 35cm; and canvas laid on panel - seascape attributed to W E Norton, 26.5cm x 36.5cm
218. C Ward s. Watercolour drawing - cattle by a lake 19.5cm x 26cm
219. G H Findley A pair of watercolour drawings - Exchequergate and The Jews House, Lincoln 29.5cm x 20cm £200-£300
220. A watercolour drawing - cattle by a loch Victorian plaster gilt frame 47cm x 72cm £100-£200
221. Godfrey B Hall 1889 s.d. A river landscape with figures in a rowing boat 27cm x 47cm
222. W H Manger? '04 Oil on canvas - Brayford Lincoln with figure sculling and the Cathedral in the distance 49cm x 74cm £200-£350
223. E J Hewston s. A pair of watercolour drawings - a rocky coastline with sailing vessel and a loch scene with figures in a boat each 23cm x 34cm
224. Hamilton Glass SSA Watercolour drawing - fisher folk on the shore 24cm x 35cm; and another mountainous lake scene 34cm x 26.5cm
225. H M Sinclair 1924 signed, dated and titled Watercolour drawing - "Carpet Bazaar Cairo" 22.5cm x 28cm £150-£250
226. J Villiegas s. Watercolour drawing - The Toreador with his lover leaning against a stone building 22cm x 15cm £300-£500
227. D W Haddon RBA s. XIX century oil on card, titled on the gilt slip "Old Cornish Fisherman" 47cm x 24cm £150-£250
228. After J M W Turner engraved by C Turner Sepia print titled "Calm" and the companion print - Foreshore with sailing vessel and many figures image 17.5cm x 26.5cm and 18cm x 25.5cm
229. A pair of Baxter type coloured prints, Victorian interiors, silhouette framed, image 14cm x 11cm
230. A set of four XIX century Baxter prints, each image 14cm x 10.5cm
231. Claude Hayes s. Watercolour drawing - "Near Cley, Norfolk" 24cm x 34cm £150-£250
232. Claude Hayes s. Watercolour drawing - "Near Lewes, Sussex" - figure peat cutting 34cm x 51cm £200-£400
233. Claude Hayes s. Watercolour drawing - "Haymaking near Herne Bay" 35cm x 52cm £200-£400
234. C B monogrammed Oil on canvas - portrait of an Edwardian lady in a grey dress holding a parasol resting on a stile 73cm x 49cm £1000-£2000
235. T G Storey Oil on canvas - an old man seated on a wheelbarrow within a barn, his chin resting on a fork 72cm x 57cm £200-£300
236. A J Jansen Antwerp '06 Oil on canvas - The Steamer Ashton 30cm x 50cm £300-£600
237. A J Jansen Antwerp '06 Oil on canvas - The Steamer Retford 39cm x 59cm £200-£400



Lot 219 (pair)



238. After Baxter A XIX century print of a young girl hiding a sealed love letter in a tree image 6.5cm x 26cm
239. After Baxter A coloured print - a young girl seated by a tree with a letter in her hand image 36cm x 26cm
240. Alfred Elias s. Oil on canvas - "Crossing the Salt Marshes" 62cm x 75cm £500-£1000
241. Portrait of an old gentleman seated, a pigeon on his wrist, written verso, "Portrait of James Hodgetts of Wednesbury?, a well known pigeon flyer and bell ringer, painted 1859 by T Manning". Oil on card 20cm x 17cm
242. XIX century style English School Oil on board - pony and cart attending sailing ships on a beach with figures and a dog, monogrammed M 17.5cm x 25cm
243. XIX century English School Oil on card - figures on a lane 16.5cm x 18.5cm
244. L Willems s. Oil on canvas - children at play 43cm x 56cm £400-£700
245. Neimann Oil on canvas "Richmond" signed and titled 37cm x 75cm £2500-£4000 (*see front cover for illustration*)
246. After J F Herring jnr. (attributed on the mount to J.F.H. Senior) Oil on panel - chestnut and grey horse standing by a stream on which there are mallard ducks, cows by a thatched byre in the distance 19cm x 24cm £100-£300
247. J Sanderson Wells s. Oil on panel - a maid polishing copper in conversation with her master, who is dressed in XVIII century garb, pictured in a kitchen interior before a large stone fireplace 25cm x 20cm £1000-£1500
248. T Whittle 1884 s.d Oil on canvas - "Among the Lakes" - figures and cattle on a lane before a rocky outcrop with lakes in the distance 40cm x 60cm £500-£1000
249. Oil on canvas - horse in a stable, indistinctly signed, written verso, owner 1896 Mr Greswold Willis MS, Woolhope Nr Hereford 29cm x 39cm £200-£400
250. Neimann '73 Oil on panel - a river landscape with figures in a boat and on a path adjacent, Hoveringham, Nottinghamshire, indistinctly signed and titled verso 20cm x 37cm £1500-£2500
251. J E M***? Oil on panel - XIX century English river landscape with figure on a path and sailing boat on a river, windmill in the distance 24cm x 34cm £500-£800
252. XIX century Continental School A watercolour drawing - continental town with lake, boats and ferry 62cm x 97cm £150-£250
253. XIX century English School Oil on canvas - cattle by a lake 37cm x 69cm
254. H White 19** Oil on panel - portrait of a gentleman seated half length and two Victorian portraits of ladies in wide rosewood frames
255. Thomas Matthew Rooke 1842-1942 Watercolour drawing - Auxerre Cathedral from the Yonne, signed and dated 1903 in lower hand corner 40cm square £200-£300
256. M Allen. A watercolour sketch of a continental town entitled "Malines"; a watercolour sketch of pansies in a vase and Arthur Mills - sheep on a lane (3)
257. After Cecil Aldin A pair of coloured prints titled "Good Morning Mrs Flannigan" and "Good Morning Squire Brown" image 21cm x 38cm £100-£200
258. Baxter prints:- two oval country scenes - congregation approaching church; a family outside their cottage, gilt frames
259. T G Storey Oil on canvas - Pennels Nurseries 25cm x 34cm
260. An early XIX century sampler worked with verses, trees, birds, buildings and animals by Mary Ann Adams 19th December 1831, contemporary wide mahogany frame, 41cm x 31cm; plus two modern samplers - The Girl Guides Prayer and The Guide Laws, Florence Mary Bordman £250-£350



261. XVIII century style Oil on card - portrait of an old man 49cm x 38cm
262. Angus Rands A winter river landscape, studio label verso "Arncliffe, Liffedale Yorks" 44cm x 69cm £100-£200
263. Kenneth Shoesmith s.d. 1911 Watercolour drawing - three masted sailing ship in a blue sea 20cm x 35.5cm £350-£450
(the catalogue of this artists work is with the auctioneers and sold with this lot)
264. A XIX century oil on canvas The Fallen Christ tended by women, contemporary plaster gilt frame 70cm x 80cm
265. N J Thornton A pair of watercolour drawings - lake scenes with figure fishing and figure in a rowing boat 23cm x 33cm
266. XIX century English School. Oil on board - figures on a beach with pony, white cliffs and sailing boats in the distance, monogrammed M 29cm x 38cm
267. XIX century English school Oil on panel - figures on a ferry with horses 21cm x 26cm £100-£200
268. John Sell Cotman. A pencil sketch of a pensive lady, oval, framed; the reverse a letter from Judith Robinson, Keeper of Norwich Castle Museum relating to Cotman (family tradition is that the lady is a family member and was sketched by Cotman whilst visiting) 23cm x 18cm £300-£500
269. Blaeu. A late XVII century hand coloured map of Lincolnshire, 42cm x 50cm with margins in a double sided frame to reveal text on reverse £300-£500
271. A XIX century brass lantern clock by the Goldsmith & Silversmith Company, 112 Regent Street, London, 40cm high £400-£600
272. A French brass cased carriage clock, white Roman dial with original distressed red leather case
273. A XIX century French architecturally cased carriage clock, the circular white roman dial surrounded by fretwork £100-£200
274. A brass skeleton clock under a glass dome (damaged) on a marquetry inlaid oval walnut base, the clock requiring minor repair £600-£900
275. A XIX century five dial banjo barometer signed "Vitta Stafford", 96cm £150-£250
276. An oak and mahogany longcase clock, the circular enamel dial signed "Holliswell & Son Derby", with date aperture and 30 hour movement, enclosed by a broken swan neck pedimented hood flanked by reeded columns; the case enclosed by a long cross-banded door and flanked by fluted quarter columns, 212cm high £800-£1200
277. A XIX century Scottish drum head mahogany longcase clock, the flat steel dial engraved "James Whitelaw, Edinburgh", eight day striking movement, the case enclosed by a mahogany crossgrain banded door flanked by fluted quarter columns £900-£1500
278. A XIX century longcase clock, the arched dial painted with a figure on horseback, a spaniel at foot and signed "B Musson Louth"; contained in a broken swan neck pedimented hood, the base enclosed by a shaped door, cross-banded in mahogany, eight day striking movement £800-£1200

CLOCKS

270. A XIX century bracket clock, the ebonised architectural case with gilt brass finials and corinthian columns, the arched brass dial with steel chapter ring, chime and silent control and Cambridge chimes striking on eight bells, 46cm high, 31cm wide £800-£1200
279. An XVIII century oak longcase clock, the square brass dial with face of the moon and date aperture, signed "Thos. Lister" contained in a square hood with a stepped cornice flanked by plain columns, the base enclosed by a long shaped door; 30 hour movement, dial 30cm square, overall height 204cm £800-£1200

Lot 268



Lot 270



Lot 275



Lot 276



Lot 274



Lot 271



Lot 273



Lot 277



Lot 278



Lot 279



280. A XIX century oak and mahogany longcase clock, the arched dial painted with a sportsman shooting woodcock over a dog, the brass hands cast with crowns and the dial indistinctly signed by a Market Rasen maker, contained in a swan neck pedimented hood, the case enclosed by a shaped door centred with a diamond inlay, 218cm high
£900-£1400

ORIENTAL CARPETS & RUGS

285. A cotton oriental style carpet, 350cm x 262cm
286. A flat weave rug, approx. 150cm x 74cm
287. A flat weave rug, square pattern, pink, pale green and white
288. A flat weave carpet, green border with flowers, centre panel pale blue, pink border, flowered
289. An oriental carpet runner, red, royal blue ground 300cm x 100cm
290. A Middle Eastern carpet runner, pink, fawn, brown patterned 186cm x 107cm
291. A multi border dark red patterned rug, 205cm x 140cm
292. A Middle Eastern rug, multi bordered, rose, dark blue, orange pattern 288cm x 181cm
293. A Middle Eastern carpet/rug, faded red and black, 216cm x 150cm
294. A cotton rug depicting a Middle Eastern hunting scene, 100cm x 75cm
295. A Middle Eastern rug, multi band floral border, 148cm x 90cm
296. An Iranian rug, orange, green, black garden design, 130cm x 70cm
297. A miniature rug, blue ground, cream and orange decoration, 89cm x 31cm
298. A miniature Belouch, 39cm x 44cm
299. A small Persian mat, 63cm square

300. A Persian rug, red ground, multi bordered, 134cm x 86cm
301. A small Persian rug, red, blue, orange garden design 85cm x 50cm
302. A small Persian rug, red ground, fawn and blue, 67cm x 51cm
303. A green ground fawn, orange and white hall runner
304. A fawn, brown and black hall runner
305. A blue, rose and white hall runner

FURNITURE

315. A Victorian oak library bookcase by Marsh, Cribb & Jones, the moulded cornice with ebonised roundels to the frieze and foliate carved brackets, the base with three panelled cupboards, each section with four adjustable bookshelves, now enclosed by plain glazed doors, 296cm wide, 186cm high
£1500-£2500
316. A Victorian carved mahogany frame settee with bold scroll carved underarms and substantial turned front legs upholstered in blue dralon, approx. 220cm wide
£350-£550
317. A Knole type settee, approx. 160cm wide
£200-£400
318. A XIX century walnut library bookcase, the upper section enclosed by a pair of plain glazed doors with leaf carved brackets beneath a moulded cornice, the base with a long drawer and double cupboard, 93cm wide, 198cm high £400-£600
319. An XVIII century oak hanging corner cupboard enclosed by fielded panel door with three shaped internal shelves, 92cm high
£150-£250
320. A XIX century mahogany triple bookcase, the upper section enclosed by plain glazed doors beneath a moulded cornice, the base with three panel doors, 186cm wide, 227cm high £700-£1100



321. A figured mahogany XVIII century drop leaf gate leg dining table, 133cm x 111cm
£200-£350
322. A XIX century oak tripod table on turned column and cabriole supports, 84cm diameter
£80-£140
323. A XIX century rectangular mahogany side table with a raised back on ring turned supports, 121cm wide £200-£300
324. A principally XVIII century oak hanging corner cabinet, the stepped dentil cornice above a single astragal glazed door flanked by reeded sides and with three internal shelves, 110cm high £400-£600
325. A Georgian mahogany chest of two short and three long drawers fitted with a brushing slide and raised on bracket feet, 87cm wide £450-£650
326. A Georgian chest of four graduated cock-beaded drawers, each with lion mask brass ring handles, flanked by fluted columns with carved capitals and standing on carved feet, the shaped apron centred with a stylised flowerhead, 102cm wide, 51cm deep £1500-£2300
327. A XIX century rectangular mahogany pedestal dining table raised on a flat sided column with tricorn base and scroll feet, 129cm x 112cm
328. A Regency rosewood side cabinet with gilt brass mounts enclosed by a single panel door, flanked by turned columns, standing on turned feet, 91cm wide £250-£350
329. A fine Victorian ebonised and ormolu mounted cabinet, the top with a beaded perimeter above a bone inlaid classical frieze, centred with a circular stone, enclosed by a plain glazed door flanked by fluted corinthian columns, 91cm wide, 113cm high £450-£650
330. A gilt frame three fold neo-classical design draught screen, 58cm x 192cm £800-£1200
331. A George III mahogany bureau, the fall front banded in crossgrain mahogany and enclosing a fitted interior above four graduated cock-beaded drawers with oval pressed brass handles, ivory diamond escutcheons, standing on bracket feet, 99cm wide £350-£500
332. A XIX century mahogany press cupboard, inlaid and banded in satinwood and boxwood, the moulded cornice above two panel doors enclosing three linen slides, the base with two short and two long drawers on bracket feet, 118cm wide £450-£650
333. A XIX century mahogany chest of three long cock beaded drawers standing on turned feet, 104cm wide £100-£200
334. An early XIX century mahogany and brass mounted square piano converted to a sideboard, now with three deep drawers and three narrow drawers raised on turned fluted supports, 172cm wide £150-£250
335. A Georgian mahogany secretaire of four graduated drawers, each with brass swan neck handle and butterfly escutcheons, the top drawer fitted with a series of pigeon holes and smaller drawers, raised on shaped bracket feet, 109cm wide, 58cm deep £400-£600
336. A XIX century mahogany library table, the frieze with two drawers to each side raised on tapering fluted supports 160cm x 87cm £1000-£1500
337. A Victorian burr walnut rectangular side table banded and boxwood strung on turned fluted taper legs joined by an "X" stretcher, 99cm x 50cm £200-£300
338. A XIX century mahogany wash stand with a raised back, the frieze fitted with two cock-beaded drawers on turned supports, 91cm wide, 54cm deep £250-£350
339. An Edwardian satinwood and boxwood strung envelope games table on square taper supports joined by an "X" stretcher, 54cm square £400-£600
340. A late XIX century mahogany neo-classical design china display cabinet, the centre section enclosed by a bow fronted door, flanked by open display shelves with fretted carved galleries and bevel mirror backs, separated by corinthian type columns and carved overall in deep relief with a foliate design, 184cm high, 154cm wide £700-£1100



Lot 324



Lot 325



Lot 332



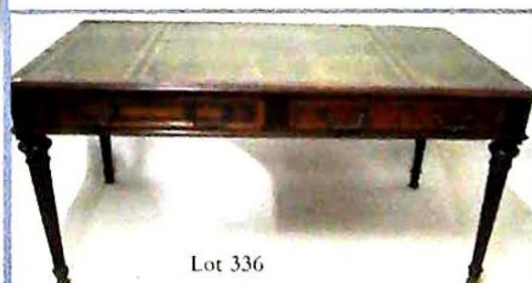
Lot 330



Lot 329



Lot 339



Lot 336



Lot 340

341. A fine early XX century Chippendale revival bow front mahogany sideboard with a raised carved back, gadrooned borders fitted with two drawers and two cupboards, one with a cellerette and with slides, standing on carved claw feet, 197cm wide £400-£600
342. An XVIII century oak buffet (with alterations) raised on baluster turned and blocked supports with an open pot board base, 117cm wide £700-£900
343. A XIX century mahogany pedestal sideboard, 220cm wide £100-£200
344. An XVIII century oak chest of two short and three long drawers with original swan neck brass handles on bracket feet, 94cm wide, 45cm deep, 79cm high £400-£600
345. A rectangular antique mahogany side table, raised on square legs joined by a "H" stretcher, 80cm wide
346. An XVIII century chair back settee with cane seat raised on turned fluted supports, 101cm wide £300-£500
347. A good quality Sheraton revival mahogany china display cabinet of serpentine form, cross-banded in satinwood, boxwood strung and marquetry inlay, enclosed by double doors standing on square taper supports joined by a shaped shelf, 106cm wide £400-£600
348. A principally XIX century elm hanging corner cupboard, the three shaped sides enclosed by a panelled door beneath a moulded cornice, 94cm high £100-£200
349. A XIX century mahogany chest with carved gadrooned border fitted with two drawers on a relief carved stand on ball and claw supports, 123cm wide, 62cm deep
350. A XIX century mahogany cylinder desk with a fitted interior and the base enclosed by a pair of panelled doors flanked by turned columns, 117cm wide £1000-£1500
351. An Edwardian mahogany satinwood banded and marquetry inlaid lady's cylinder desk, the hinged fall with a fitted interior beneath two drawers with one long drawer to the frieze, raised on square taper supports joined by a shaped stretcher, 75cm wide £700-£1100
352. An XVIII century three panel oak coffer, the front carved in deep relief with figures and stylised foliage, enclosed by a plain three panel lid and with diamond relief carving to the side panels, raised on square stiles, 125cm wide, 54cm deep £400-£600
353. A XIX century mahogany writing desk, the superstructure with two small drawers and a gilt brass gallery above tooled green leather writing surface, the frieze fitted with a central drawer and two smaller side drawers, 122cm wide, 58cm deep £450-£700
354. A XIX century drop leaf mahogany dining table on ring turned tapering supports, 178cm x 107cm £100-£200
355. A Victorian mahogany drop leaf dining table on turned legs 120cm x 177cm extended
356. A Victorian circular mahogany dining table raised on a tapering flat sided column with tricorn base and claw feet, 120cm diameter £120-£160
357. A Victorian circular mahogany dining table, raised on a tapering carved column with quadruple carved legs terminating in scroll feet with pot castors, the top 129cm diameter £550-£750
358. A XIX century richly carved oak corner chair with bold cabriole front supports terminating in ball and claw foot £150-£250
359. A set of four Victorian mahogany balloon back dining chairs with overstuffed seats, serpentine front rails on turned front supports £200-£350
360. An early XIX century rectangular mahogany lady's work table fitted with a long drawer above a silk container upholstered in yellow material, plain trestle ends on scroll feet joined by a shaped stretcher, 61cm wide £200-£300
361. A XIX century rectangular oak breakfast table raised on a flat sided column with platform base, the top 124cm x 98cm



362. A XVII century oak three panel coffer with relief carved top rails, iron lock and hasp, 113cm wide £200-£300
363. A Georgian rectangular mahogany drop leaf gate leg breakfast table raised on taper legs terminating in pad feet, 115cm x 89cm extended
364. An XVIII century rectangular mahogany side table fitted with two cock-beaded drawers to the frieze, raised on square taper supports, 76cm wide £100-£200
365. A Chippendale design mahogany stool, the rectangular top upholstered in brown dralon and raised on cabriole supports, carved at the knee terminating in ball and claw feet 62cm x 47cm £500-£900
366. An oval mahogany loo table raised on a turned column with quadruple cabriole supports, the top 120cm x 88cm £200-£300
367. A Victorian carved mahogany frame lady's chair upholstered in green dralon and raised on cabriole front supports £180-£280
368. An antique oval drop leaf mahogany Pembroke table fitted with a bow fronted frieze drawer and opposing dummy, raised on square taper supports, 94cm x 76cm (distressed) £150-£250
369. Steinweg Nachg Braunschweig. A grand piano, the frame numbered 7846, rosewood case £500-£1000
370. A Victorian walnut music stool with circular rising top on a fluted baluster column with cabriole supports carved at the knee with flowers and terminating in scroll feet £80-£140
371. Thomas Tomkinson maker to His Majesty, Dean Street, Soho, London. A XIX century square piano in a mahogany case, the top crossgrain banded, raised on baluster turned legs with brass castors number 9235 £200-£400
372. A Victorian burr walnut fold over games table raised on a well carved quadruple column support with scroll cabriole legs and a central finial to the undertier, 92cm wide, 64cm deep £400-£600
373. A Georgian three tier mahogany dumb waiter, 110cm high £800-£1200
374. An antique French side table, the circular marquetry top with burr walnut centre, raised on three square taper columns with swept carved feet, 61cm diameter
375. An antique mahogany bureau, the fall front enclosing a fitted interior above three drawers with oval pressed brass handles, standing on bracket feet, 90cm wide £150-£250
381. An early XIX century figured mahogany press cupboard enclosed by a pair of fielded panel doors banded in satinwood, the base with two short and two long cock-beaded drawers on bracket feet (the upper section now converted to a wardrobe), 123cm wide, 197cm high £800-£1200
382. A Georgian mahogany corner wash stand fitted with an undertier on square splay feet and a blue and white transfer printed wash bowl £100-£200
383. A three fold gilt fire screen with glazed top and upholstered in green regency stripe material, each panel 156cm x 46cm £200-£300
384. A pair of veined grey marble campagna shape urns and pedestals, approx. 80cm high £500-£800
385. A rectangular mahogany bidet on baluster turned legs (no liner)
386. A XIX century oval mahogany pedestal side table on tricorn base £200-£300
387. An XVIII century 'D' end mahogany dining table with spare leaf on square chamfered supports 168cm x 130cm extended £300-£500



388. A pair of Edwardian walnut frame bergere chairs with upholstered backs and cane sides on short cabriole front supports £100-£200
389. A XIX century ash and elm Windsor armchair, the turned legs joined by a crinoline stretcher £100-£200
390. A Victorian burr walnut octagonal workbox of conical form on triple carved cabriole supports £200-£300
391. A Georgian rectangular dressing table stool, the tapering walnut cabriole legs terminating in pad feet, overstuffed top, 49cm x 34cm (with restorations) £400-£600
392. A XIX century circular mahogany tripod table, the vase turned column with triple cabriole supports, the one piece top 63cm diameter
393. A XIX century mahogany fold over games table, raised on ring turned supports, 90cm wide £150-250
394. An XVIII century rectangular mahogany pad foot gate leg dining table, 137cm x 129cm extended £200-£400
395. An XVIII century oak cricket table, the top 86cm diameter £300-£500
396. A Victorian burr walnut needlework table, the hinged oblong top enclosing a fitted interior, raised on quadruple fluted columns joined by a similar stretcher on carved splay feet, 60cm wide £400-£600
397. A XIX century fire screen, the reeded mahogany frame enclosing a floral panel, raised on shaped feet with brass toes and with brass urn finials, 76cm wide
398. A XIX century rosewood piano stool on a turned column
399. A nest of three Edwardian mahogany occasional tables, inlaid with satinwood and pateras to the centre of the largest, on turned supports with splay feet (leg repaired) £150-£250
400. A good set of six Victorian rosewood balloon back dining chairs with pierced carved horizontal splats, cabriole front supports and overstuffed seats £600-£900
401. A Victorian mahogany tub chair upholstered in tan leather with turned spindle back and turned front supports £200-£300
402. A mahogany framed gentlemen's chair with scroll arms and cabriole front legs upholstered in buttoned green dralon £300-£450
403. A Victorian mahogany frame lady's chair upholstered in button dralon and raised on turned front supports £100-£200
404. A Victorian mahogany Sutherland table on baluster turned supports with scroll feet, the serpentine shaped top approx. 97cm x 90cm extended
405. An unusual Victorian button back armchair, the walnut frame carved with lions heads at the arms, raised on turned supports £150-£250
406. An Edwardian mahogany boxwood strung and marquetry inlaid chair with shaped top rail, upholstered arm pads above an open gallery and saber front supports £150-£250
407. An antique wingback open armchair, raised on cabriole front supports terminating in pad feet £200-£400
408. An Edwardian rosewood frame inlaid armchair upholstered in mink dralon on slender turned front supports £200-£350
409. A XIX century ash and elm stickback windsor chair £140-£220
410. A XIX century mahogany carver chair with shaped horizontal splat, scroll underarms, overstuffed seat, raised on ring turned front supports £80-£150

Lot 388



Lot 393



Lot 390



Lot 391



Lot 395



Lot 399



Lot 405 (detail)



Lot 396



Lot 407



Lot 409



Lot 410



411. An Edwardian mahogany and boxwood strung open armchair with lattice back, standing on turned tapering front supports
412. A Victorian walnut frame library chair raised on turned fluted supports, now with blue dralon upholstery, minus castors £100-£200
413. A harlequin set of five Victorian mahogany balloon back dining chairs, the overstuffed seats upholstered in green dralon on turned fluted tapering front supports £250-£350
414. A Victorian spirally fluted mahogany torchere (now converted to a standard lamp) £80-£120
415. A XIX century rectangular oak snap top tripod wine table on a baluster turned column £80-£150
416. An ornate wrought iron gate centred with a knight in armour standing in a portico, the arched frame 225cm, 114cm wide £200-£400
421. A Georgian oval mahogany drop leaf pad foot breakfast table raised on slender tapering supports, 97cm x 90cm £100-£200
422. An XVIII century oval oak gate leg dining table 150cm x 126cm extended £150-£250
423. A high quality Sheraton Revival three piece bedroom suite in mahogany with satinwood banding and marquetry inlay, comprising double wardrobe with central double cupboard above drawers, matching chest of two short and four long drawers and dressing table £500-£1000
424. A magnificent Edwardian mahogany Sheraton Revival bedroom suite, chevron banded and boxwood strung comprising double wardrobe with bow fronted centre section above an open display niche and bank of drawers, matching marble top wash stand and dressing table £1500-£2500
425. A high quality Victorian mahogany breakfront wardrobe enclosed by four panel doors, the centre section with slides and drawers, bold moulded corners and fluted columns with carved brackets to each side, approx. 227cm wide £1000-£2000
426. A Victorian mahogany double wardrobe, the moulded cornice above two doors, each with mirror plates, the plinth fitted with one long drawer, approx. 155cm wide £400-£600
427. An Edwardian mahogany satinwood banded triple wardrobe enclosed by panelled doors with a central cupboard and drawers to the base and matching dressing table £400-£600
428. A magnificent Victorian mahogany four poster bed, the tapering turned columns carved with shells, supporting a moulded cornice with mahogany serpentine foot and panelled head, the frame approx. 5' wide £1000-£2000



Lots 411 & 406



Lot 416 (detail)



Lot 425



Lot 424



Lot 416



Lot 423



Lot 428



Lot 412

CONDITIONS OF SALE

1. In these conditions Thos. Mawer & Son act only as auctioneers and agents and the representative of Thos. Mawer & Son conducting the auction is called 'The Auctioneer'.
2. Whilst Thos. Mawer & Son make every effort to ensure the accuracy of their catalogue and the description of any lot:
 - (i) Each lot set out in the catalogue or as divided or combined with any other lot or lots is sold by the vendor with all faults and imperfections and errors or descriptions.
 - (ii) Thos. Mawer & Son do not accept responsibility for the authenticity, attribution, genuineness, origin, authorship, date, age, period condition or quality of any lot unless they have been instructed in writing by the buyer to so certify.
 - (iii) All statements whether printed in the catalogue or made orally as to any of the matters set out in (ii) above are statements or opinion only and are not to be taken as being or implying any warranties or representations of fact by Thos. Mawer & Son unless they have been instructed in writing by the buyers to so certify.
3. The Auctioneer has absolute discretion to divide any lot, to combine any two or more lots or to withdraw any lot or lots from sale, to refuse bids, regulate bidding or cancel the sale without in any case giving any reason or without previous notice. He may bid on behalf of the vendor for all goods which are being offered subject to reserve or at the Auctioneer's discretion.

The highest bidder shall be the buyer. The Auctioneer may at his sole discretion determine the advance of bidding or refuse a bid. If during the auction the Auctioneer considers that a dispute has arisen, has absolute discretion to settle it, or to re-offer the lot.

All conditions, notices, descriptions, statements and other matters in the catalogue and elsewhere concerning any lot are subject to any statements modifying or affecting the same made by the Auctioneer from the rostrum prior to any bid being accepted for the lot.

4. The buyer shall pay the hammer price together with a premium of the hammer price - 15% inclusive of VAT.

5. Notwithstanding any other terms of these Conditions, if within seven days after the sale Thos. Mawer & Son have received from the buyer of any lot notice in writing that in his view the lot is a deliberate forgery and within twenty-one days after such notification the buyers return the same to Thos. Mawer & Son in the same condition as at the time of the sale and by producing evidence, the burden of proof to be on the buyer, satisfies Thos. Mawer & Son that considered in the light of the entry in the catalogue the lot is a deliberate forgery then the sale of the lot will be rescinded and the purchase price of the same refunded.

The vendor agrees to be bound by Thos. Mawer & Son's decision.

6. Thos. Mawer & Son disclaim any responsibility for default by either the buyer or the vendor because they act as Auctioneers only and therefore do not pay out to the vendor until payment is received from the buyer. Instructions given by telephone are accepted at the sender's risk and must be confirmed in writing forthwith.
7. Every person on Thos. Mawer & Son's premises at any time shall be deemed to be there at his own risk. He shall have no claim against Thos. Mawer & Son in respect of any accident which may occur or injury, damage, loss howsoever caused, save in so far as the injury, damage loss shall be caused by the negligence of Thos. Mawer & Son's employees.
8. Each lot shall be at the purchasers risk from the fall of the hammer and must be paid for in full before the delivery and must be taken away by the purchaser at his own expense within 7 working days following the conclusion of the sale. The Auctioneer shall be entitled to charge storage charges in respect of lots not taken away as aforesaid (minimum charge of £10 plus VAT) and interest on unpaid accounts @ 10% above clearing bank base rate (per day).
9. Cheques which are not honoured by the payee's bank will incur a handling charge of £20 plus VAT for each presentation.

FORTHCOMING SALES

First Saturday Estate Sales will take place at 10am on

7th FEBRUARY 6th MARCH 3rd APRIL

Antiquarian & Modern Books

21st JANUARY at 1pm

on view from 9am

Antique Furniture, Silver, Pictures, Clocks, China

24th MARCH

VIEWING

Victorian & Later Sales – Friday prior 12noon–4pm & morning of sale from 8.30am

Antique Sales – Day prior to sale 10am–4pm and morning of sale from 9am

Catalogues on our website www.thosmawer.com approx. 5 days prior

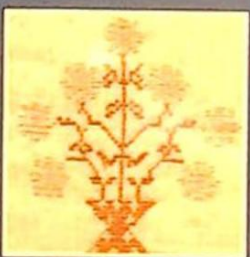
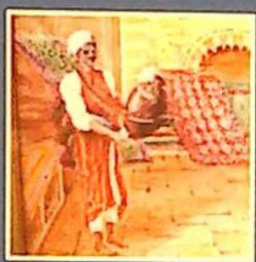
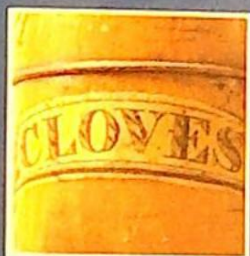
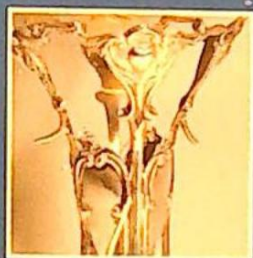
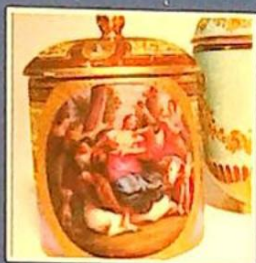
N.B. Please telephone prior to travelling as dates may be subject to alteration



Valuations Prepared For: INSURANCE PROBATE FAMILY DIVISION

For further information contact
J C Slingsby
clinton.slingsby@thosmawer.co.uk

01522 524984



DUNSTON HOUSE • PORTLAND STREET • LINCOLN • LN5 7NN
TELEPHONE 01522 524984 • FACSIMILE 01522 535600
EMAIL auction@thosmawer.co.uk • WEBSITE www.thosmawer.co.uk