



THOS. MAWER & SON LTD.

Auctioneers & Valuers Established in 1864

ANTIQUE SALE
Thursday 29th May 2003



Lot 224 – Moorcroft “Moonlit Blue” plate

commencing at 11am

On View:-

**Wednesday 28th 9.30am-4.30pm & morning of sale
from 9am**

Catalogues £5.00

COMMISSIONS

The Auctioneers are pleased to execute commissions for intending buyers in confidence as cheaply as is allowed by any other bids. **Telephone bids will not be undertaken for lots estimated at less than £500. All telephone bids and commissions must be confirmed in writing or by fax by 4pm the day prior to sale.** We cannot guarantee to execute bids received on the morning of sale.

BUYER'S PREMIUM

There is a 15% premium payable on the final hammer price of each lot.

REGISTRATION

All prospective purchasers are requested to register and obtain a bidding number prior to the start of the sale.

CATALOGUE DESCRIPTIONS

Care is taken to ensure that any statement as to authorship, attribution, origin, date and provenance is reliable and accurate, but all such statements are statements of opinion and are not to be taken as statement or representations of fact. Thos. Mawer & Son Ltd. reserve the right, in forming their opinion, to consult and rely upon any expert or authority reasonably considered by them to be reliable.

CONDITION REPORTS

We regret that we are unable to provide condition reports on the morning of the sale.

ESTIMATES

Estimates for lots under £100.00 are not always printed in the catalogue. On lots that are reserved, the reserve will not be greater than the published estimate at the time the catalogue goes to press.

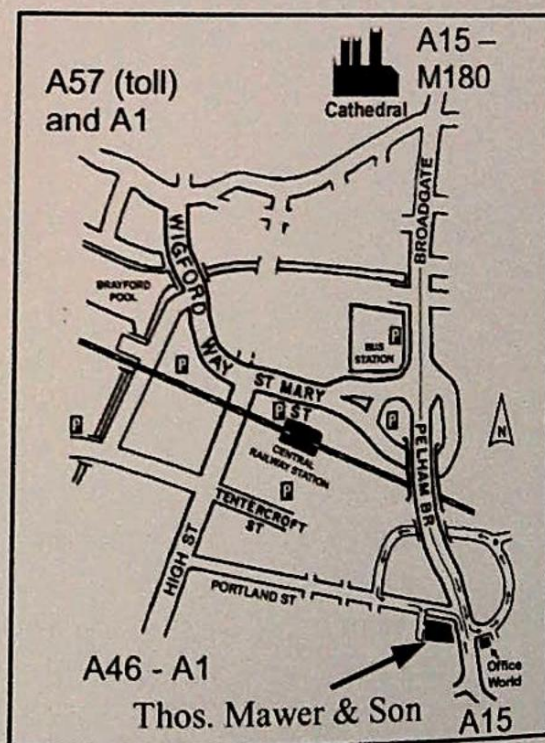
IMPORTANT NOTICES

While an identification of damage is given in some instances, an absence of such advice does not imply that a lot is free from defect. Prospective purchasers are strongly advised to inspect any lot on which they intend to bid. All measurements and weights are approximate and should be verified by intending purchasers. No lots in this sale are the property of Thos. Mawer & Son Ltd.

All Lots should be paid for and collected within 7 days of the sale. Any lots not collected after this time will incur storage charges.

PAYMENT OF ACCOUNTS

Payment for all lots must be made on the day of sale and methods are (1) CASH, (2) CHEQUES supported by either a letter of Reference from your bank or a cheque guarantee card to cover the sum of your purchase, (3) BANKERS DRAFT, (4) DIRECT DEBIT CARDS such as "Switch", "Delta", "Classic", "Connect", (5) CREDIT CARDS subject to a 2% premium charge.



POT LIDS

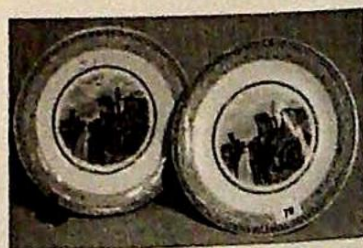
1. The Wolf and The Lamb, 10.5cm
2. Dr Johnson, 10cm
3. Hide & Seek, 10cm
4. Uncle Toby, 10cm (edge chips to base)
5. The Bear Pit (no glass dome to Ostrich Pit), 7.5cm - Ball No. 6
6. Lady with Hawk - Ball 106 (hairline crack)
7. Floral still life, small, 7cm - Ball 131/30 (crack to base)
8. Shakespeare's Birth Place, exterior, 10cm - Ball 226 (dotted border, chip to border)
9. Shakespeare's Birth Place, interior, 10cm - Ball 227 (dotted border)
10. Seven Ages of Man, 10cm - Ball 230 (chip to rim)
11. A Letter from the Diggings, 10cm - Ball 360 (line & dotted border, hairline cracks)
12. Ann Hathaway's Cottage, 10cm - Ball 228 (dotted border, chip under rim)
13. Preparing for the Ride, 10cm - Ball 351 (crazed)
14. Preparing For the Ride, 10cm - Ball 351 (pale colours)
15. Embarking For the East, 10cm - Bal 206 (chips under rim)
16. Il Penseroso, red waistcoat, 10cm - Ball 235
17. Bears on Rocks (black bears), 9cm - Ball 10
18. A Fix, 10cm - Ball 256
19. A Pair, 10cm - Ball 252
20. Girl With Grapes, 10cm - Ball 345 (fancy chain border, chip under rim)
21. High Life, 10cm - Ball 274 (chip on base)
22. Low Life, 10cm - Ball 275
23. Transplanting Rice, 10cm - Ball 332 (line border)
24. On Guard, 10cm - Ball 340
25. The Chin Chew River, 10cm - Ball 218 (double line border, small edge chip)
26. The Second Appeal, 10cm - Ball 330
27. The First Appeal, 11cm - Ball 329C
28. Examining The Nets, 10cm - Ball 54
29. The Shrimpers, 10cm - Ball 63 (small chip on edge)
30. The Harbour, Margate, 12cm - Ball 40
31. Royal Harbour, Ramsgate, 10cm - Ball 42 (two line border)
32. Pegwell Bay, established 1760, sandy road and pathway, 10cm - Ball 25
33. The Picnic, 12cm - Ball 354
34. Strathfieldsaye, 11cm - Ball 188 (repaired)
35. The Late Duke of Wellington, 10cm - Ball 161 (laurel leaf border, hairline crack); The late Prince Consort and Garibaldi (a/f) (3)
36. The Waterfall, 10cm - Ball 365 (double line border)
37. The Fishbarrow, 10cm - Ball 58 (hair line crack)
38. Hauling the Trawl, 10cm - Ball 53 (hairline crack)
39. Hauling the Trawl, 10cm - Ball 53 (deep colours)

POT LIDS...

40. War, 10cm - Ball 219 (crazed)
41. Peace, 10cm - Ball 220 (edge chip to rim)
42. Peace, 10cm - Ball 220 (blue edge, inscription verso)
43. The Cavalier, 10cm - Ball 356
44. A Race or Derby Day, 10cm - Ball 257
45. Master of the Hounds, 10cm - Ball 247 (line and dotted border)
46. The Sportsman, 10cm - Ball 259
47. The Fair Sportswoman, 10cm (chip to base)
48. Trafalgar Square, 10cm - Ball 201
49. Philadelphia Exhibition 1876, 10cm - Ball 147
50. Harbour of Hong Kong, 10cm - Ball 221 (line border)
51. New York Exhibition 1853, 12cm - Ball 142 (reproduction)
52. The Grand International Buildings of 1851, 13cm - Ball 133 (chips to base)
53. Buckingham Palace, 12cm, framed - Ball 176 (reproduction)
54. Vue De La Ville De Strasbourg Prise Du Port, narrow border; with base - Ball 333
55. Fording the Stream, salmon colour edge and base, 10cm - Ball 335 (base chipped)
56. Strasbourg, with mottled pot, 12cm - Ball 331
57. The Farriers, with base, 12cm - Ball 324 (discoloured)
58. Bears on Rocks (red/brown bears), 9cm - Ball 10
59. Windsor Castle and St George's Chapel, 8cm - Ball 177 (edge infilled)
60. Milking The Cow, with base, 5cm x 8cm - Ball 391 (chips)
61. War, oblong, 8cm x 14cm - Ball 212 (chip); and Peace, oblong, 8cm x 14cm - Ball 213 (a/f) (2)
62. The Waterfall, a Pratt plate, framed, 10cm - Ball 365
63. The Queen, God Bless Her, a circular plaque, 16cm - Ball 319 (fancy border)
64. A paste jar - Constantinople, 8cm high - Ball 80
65. A paste jar - Continental Fish Market, 11cm high - Ball 71
66. A paste jar - Pegwell Bay, Kent - Ball 69 (body discoloured)
67. Lobster Sauce, with window, 10cm - Ball 49
68. The Village Wedding, no towel - Ball 240
69. The Village Wedding, with towel - Ball 240

PRATTWARE

70. A plate - Ruined Temple and comport (border 123) - Ball 421 (2) (*illus*)
71. A comport - Roman Ruins, 26cm diameter - Ball 420 (border 123)
72. Two plates "On Guard" and "Uncle Toby", border 123 with pink, 18cm diameter



Lot 70



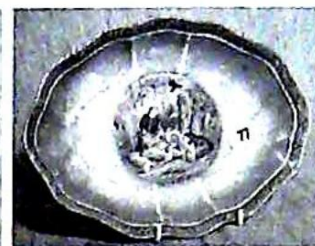
Lot 73



Lot 75



Lot 76

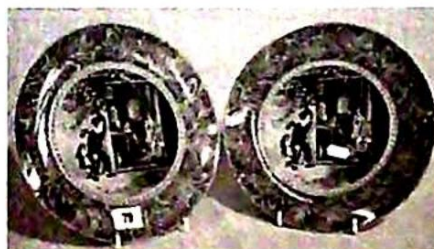


Lot 77

73. Two plates - The Queen, God Bless Her; and Preparing For the Ride; and a comport - each with border 123, 21cm and 23cm diameter (3) (*illus*)
74. A plate - Travellers Resting, 21cm diameter (harebell border)
75. A comport and plate - Landscape and River Scene, decorative gold border - Ball 416 (*illus*)
76. A plate - The Game Bag, border 123, blue inner band, back stamp F & R Pratt & Co, Fenton, England, 22cm diameter - Ball 260 (*illus*)
77. A scalloped oval dish - The Game Bag, border 123 with green inner band (rubbed), printed mark Royal Cauldon England (*illus*)



Lot 78



Lot 79



Lot 81

78. Two dessert dishes - Conway Castle, one blue border, the other green - Ball 217 (2) (*illus*)
79. A pair of plates - The Truant, malachite borders, 24cm diameter - Ball 413 (2) (*illus*)
80. A pair of plates - The Hop Queen, malachite borders, 24cm diameter - Ball 414
81. A comport - The Hop Queen, oak leaf border, 24cm diameter - Ball 414 (a/f) (*illus*)
82. A pair of plates - Mr & Mrs Gladstone, ribbed gilded borders, 23cm diameter (a/f) (2)
83. A plate - See You My Boy, 21cm diameter - Ball 311

84. A stained wooden collectors table top cabinet with 11 drawers, 65cm high
85. A mahogany collectors cabinet with eight graduated glass topped drawers, lockable glazed outer door, 64cm high
86. A XIX century Staffordshire earthenware toilet bowl decorated with poppies
87. Three Leeds creamware strainers

MALING

89. 6612 - a vase, rose marie, Victoria green, 20cm high
90. Six lustre cups and eleven saucers
91. Made for Ringtons Limited - a pair of 1953 Coronation jugs, 12cm high and matching teapot (3)
92. Made for Ringtons - 1937 Coronation octagonal vase, two beakers and two Coronation beakers presented by City & County of Newcastle and Northumberland County Council 1911 and a souvenir mug St Gabriels Church 1912-1962 (6)
93. A pair of City of Leeds Coronation plates 1902 and a City and County of Newcastle Upon Tyne Coronation souvenir plate 1911 (3)
94. Six transfer printed dinner plates, 24cm diameter decorated with summer flowers, impressed triangle mark, circa 1888/1910; a matching sauce boat and six cups, saucers and plates decorated with blue and gilt border, a white earthenware jug, Carltonware lettuce bowl and four condiments
95. A lettuce leaf salad bowl with lobster handle, 22cm; pair of salad servers; another lettuce leaf salad bowl with lustre finish, 20cm diameter; and four leaf design sundae dishes with lustre glazed gilt edging, 9cm high (8)
96. Pattern 6564 - embossed blossom bough covered butter dish, oval dish, 26cm long and a footed fruit bowl, 27cm diameter (3)
97. Pattern 6294 - a "blossom" vase, pink ground and exterior decorated in red and blue flowers, 21cm high
98. Pattern 6597 - A jug "Azalea" Jap. green lustre, 27cm high
99. Three lustre glazed oval wavy edge flower vases, printed mark 1929/63, two x 15cm high, 28cm long and the other 19cm x 28cm (3)
100. Four assorted lustre decorated vases - shaded green, 16cm high, leaf form everted rim, 27cm high, shaded blue stemmed, 3cm high, shaded yellow bulbous, 27cm high, printed mark 1929/63 (*illus*)
101. A multi colour lustre bowl with speckled blue interior, 17cm diameter, printed mark, pattern number; a biscuit barrel, 17cm high and a two handled waisted vase, 15cm high (3) (*illus*)
102. Pattern 6527 - Chintz, chestnut brown, painted colours - an ashtray, 8cm square; a shallow bowl, 19cm diameter; and a stemmed two handled cup, 11cm diameter (3)
103. A "Japan" pattern plate, 23cm diameter, impressed triangular mark EPM
104. "Rosalind" - an oval fruit bowl, 25cm long, 6546 yellow; and a milk jug 6548, 9cm high; "Golden Spray" 6578 - a pair of candlesticks, 7cm high; a small bowl 6549, 10cm diameter; a boat shaped shallow fruit bowl, 6546, 28cm long (6)



Lot 100



Lot 101

105. A "Rosine" pattern three footed flaring vase, 20cm high, printed mark; and a shallow oval bowl 6526 - "Springtime", waved, blue, 26cm long; a "Clematis" pattern green waved lobed soup dish, 13cm diameter (3)

106. Made for Ringtons Limited Newcastle - two flower bowls with removable tops, the bodies decorated with pansies, light green ground, dark blue borders and tops, 20cm diameter and a matching taller vase and cover, 17cm high (*illus*)



Lot 106

107. Made for Ringtons - Chintz blue, painted colours - a jug, 20cm high; and a hexagonal teapot, printed mark 1930-55; and another Ringtons lustre decorated embossed leaf decorated teapot, green printed mark (*illus*)



Lot 107



Lot 108

108. Two wall pockets, pattern 6612 and 6614 with green waved ground, 15cm high; and a similarly decorated oval wavy edge vase, 19cm wide, pink waved ground (*illus*)

109. Pattern 6357 - "Bambola" matt glazed and multi-coloured vase, 22cm high; a jug 19cm high; and a plain fruit dish, 27cm diameter (3)

110. A pair of silvered pink narrow neck vases, 23cm high and matching oval footed vase, 27cm wide (3)

111. A yellow ground and floral decorated jug, 18cm high; green and flowered footed cake dish; two "Jesmond" pattern plates, printed triangle CTM mark, 26cm diameter; an unmarked lustre and butterfly decorated hors d'oeuvre dish (5)

112. 6587 "Brocade" pale fawn shallow footed fruit dish, 27cm long; small vase pattern 1666, black ground, oriental birds, 17cm high; and a small oval pot, two panels of seaside scenes, 6cm high (3)

113. 6532 - "Venice scenes", on tinted ground, pair of flared vases, 18cm high; oblong covered box, 13cm long (a/f); diamond shaped dish, 29cm long; and a shallow bowl, 19cm diameter (5) (*illus*)



Lot 113

114. 6573 "Peony Rose" ruby lustre - rectangular dish, 29cm long; lobed soup bowl, 13cm diameter and a footed bowl, 22cm diameter; 6569 "Peony Rose" aero green shallow dish, 26cm long (4) (*illus*)

115. 6584 - "Blossom", a flared vase, 16cm high; another pair of vases, 26cm high; and a vase, 21cm high (4)

116. 6584 "Blossom" - a boat shaped shallow vase, 17cm long; a circular handled basket, 18cm diameter; a salad bowl, 22cm diameter with servers (5)



Lot 114

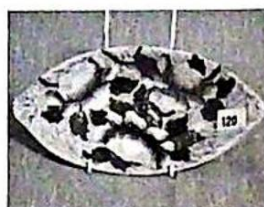
117. A set of three ribbed bodied lustre and floral decorated jugs, 15cm high; a lidded butter and oval shallow vase, 25cm long; a pair of salt and pepper pots (7)

MALING ...

118. A lustre decorated dimple bodied oval top vase, 20cm high; a jug with pink interior, 17cm high; and a boat shaped shallow vase, 33cm long (*illus*)
119. Made for Ringtons - a pair of "Blossom" decorated hexagonal jugs, 20cm high; two grape decorated jugs, 18cm and 16cm and matching coffee pot, 20cm (5)



Lot 118



Lot 120



Lot 121



Lot 122



Lot 123



Lot 125

120. 6505 "Peona, Victorian Green" - an oval dish, 26cm long (*illus*)
121. 6425 - a plate, garden scenes, green panels, 29cm diameter (*illus*)
122. A plate - Apple Blossom and Windmill, 28cm diameter (*illus*)
123. A pair of plates - Peonies and Butterflies, green ground, 28cm diameter (*illus*)
124. A jug - pale blue ground with embossed flowers, 17cm high and an oval vase, 18cm high (2)
125. Made for Ringtons - a blue transfer printed hexagonal vase decorated with York Minster etc., 17cm high, printed mark 1930/55; a similarly decorated vase, 12cm high; and a Willow pattern lobed open vegetable bowl (*illus*)
126. Made for Ringtons - an octagonal jug, multi coloured flowers against a blue background, 19cm high

ENGLISH & CONTINENTAL PORCELAIN & EARTHENWARE

127. Clarice Cliff. A baluster harvest jug moulded with wheatsheafs, wheat ears and flower heads, the loop handle of apples and pears, on a circular foot, 26cm high, back stamp, signature Clarice Cliff, Newport Pottery Co. England £100-£150 (*illus*)
128. Clarice Cliff. A shallow bowl with embossed flower decoration against a pale beige ground, printed mark number 286 L/S, 23cm diameter
129. An Aller Vale earthenware jug with multi colour stylised foliage decoration, 16cm high; Poole - a jug with painted floral decoration, impressed stamp and number 310, painted mark IPB, 15cm high (a/f)
130. A XIX century willow pattern meat plate, 36cm x 29cm (hairline crack)
131. A XIX century willow pattern meat plate with gravy well, 47cm x 37cm



Lot 127

132. A XIX century willow pattern meat plate, impressed mark, crown and printed mark "Ironstone China" 47cm x 37cm
133. Copeland Spode's Italian pattern meat plate, printed mark, impressed mark Copeland M31 37cm x 27cm
134. Copeland Spode's Italian - a ribbed bodied two handled comport, printed mark and number 26 26cm diameter, 14cm high
135. A XIX century Staffordshire clock group with three Scottish ladies, 25cm high (*illus*)
136. A XIX century Staffordshire flatback cottage with central tower decorated with royal blue roof and orange chimney, 19cm high (*illus*)
137. A XIX century Staffordshire flatback figure of a rearing zebra, 16cm high (*illus*)
138. A XIX century Staffordshire flatback vase of children carrying dogs, more dogs at their feet, flanking a tree stump, 18cm high
139. A XIX century Staffordshire crumb coated lamb, 8cm long (*illus*)
140. A XIX century Staffordshire flatback group of a Scottish shepherd and his lass with sheep on her lap, seated against a tree stump, 21cm high (*illus*)
141. A XIX century Staffordshire flatback group of Scotsman sailor and another, seated at a table drinking (bottle top damaged), 20cm high (*illus*)
142. John Maddock & Sons Limited "Royal Vitreus" - an earthenware toilet jug and bowl decorated with rose sprigs, gilt lining
143. Mintons. A pair of transfer printed tiles after Moyr Smith (chipped); and two Dutch tin glazed tiles with blue decoration
144. Two late XIX century Staffordshire earthenware blue and white decorated oval meat plates with star shaped central panel with birds surrounded by blossom, maker BAP Limited, 41cm and 48cm long
145. A Samson porcelain bust of Washington, gilt anchor mark, 7cm high
146. A Meissen style wavy edge coffee cup and saucer decorated with stylised Chinese dragons and fighting cocks in red ochre; an XVIII century tea bowl decorated with butterflies; a Chinese small bowl; a XIX century Chinese saucer; a small Continental porcelain stemmed dish and a floral decorated miniature vase (7)



Lot 135



Lot 136



Lot 137



Lot 138



Lot 139



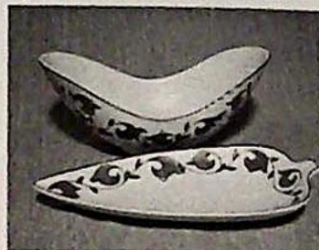
Lot 141

ENGLISH & CONTINENTAL PORCELAIN & EARTHENWARE ...

147. Two XIX century Staffordshire china cups and saucers with gilt and beige decorated borders and multi colour enamel central decoration, one numbered 2/5356, the other 2/8367
148. A pair of Miles Mason style shallow dishes decorated with Chinese figures surrounded by flowers, 19cm diameter
149. A set of six Canton famille vert plates, 18cm diameter
150. A XIX century canton porcelain famille rose bowl, the exterior decorated with figures on a terrace, the interior with decorated rim and central panel of two figures, 26.5cm diameter £200-£300 (*illus*)
151. A Chinese famille rose charger decorated with floral border, central well with landscape, 32cm diameter (stapled and repaired)
152. Crown Ducal - an elliptical fruit bowl, cream ground decorated in grey and red, with an entwined foliate style design; and a matching leaf shaped dish 6904 and 6907 (*illus*)
153. Worcester. A Dr. Wall period bowl, 15cm diameter
154. Worcester. A Dr Wall period tea bowl and saucer decorated in Chinese style, the bowl 8cm diameter, saucer 12cm
155. The Nanking Cargo - two items purchased from Harrods:- three pavilion suit plate; The Ming Cargo - blue cosmetic box
156. A XIX century Japanese Satsumaware koro and cover, the bowl decorated with birds and flowers, raised on three child figures, the lid with an elderly gentleman and child, 26cm high (child on lid, hand missing)
157. A large turquoise flow glazed jardiniere, marked beneath "THDeck" (Theodore Deck - French) with applied bronzed dog of foe handles on a hardwood oriental stand, the jardiniere approx. 28cm high, 50cm diameter £400-£550 (*illus*)
158. A XIX century Staffordshire majolica jardiniere and stand, the jardiniere with lobed everted rim and stepped base decorated in Royal blue, pale blue and brown, scrolling and "jewelled" decoration, the four sided base similarly decorated, 126cm high overall £300-£500 (*illus*)
159. A pair of XIX century Vienna porcelain three footed vases and covers decorated with Kaufman style panels, rose and dark green decoration with gilt highlights, 24cm high
160. A XIX century porcelain vase of campana form, royal blue body, floral cartouches with gilt borders, enamelled flower sprigs and gilt butterflies, pair of lion mask handles, red painted mark, CB228, 15cm high £80-£120 (*illus*)



Lot 150



Lot 152



Lot 157



Lot 158



Lot 160

161. Noritake. A pair of classical design ovoid bodied two handled narrow neck lidded vases on stepped square bases decorated in black and gilt with oval landscape panels, 28cm high (*illus*)



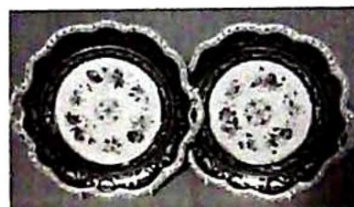
Lot 161

162. Belleek "Shamrock" pattern - a covered honey pot, 12cm high; saucer, 14cm diameter; lobed handle dish, 14cm diameter; a salt cellar, 8cm long; a miniature shell pattern jug, 8cm high (hairline crack to spout); and a small baluster decorated basket bowl, the rim decorated with individual flowers, impressed mark Olyhore Co. Donegal Ireland, 9cm diameter (6) (*illus*)



Lot 162

163. A pair of XIX century Staffordshire dessert plates, the central well decorated with summer flowers and gilt medallion, the border royal blue with gilt over-painting, the wavy edge gilded, 22cm diameter, red painted number 1179 (*illus*)



Lot 163

164. Wedgwood - a set of six plates, the borders decorated with purple flowers and trailing foliage, made for James Powell & Sons, Whitefriars Glassworks, London, pattern X7068, 23.5cm diameter

165. Royal Worcester porcelain - a miniature jug with branch style handle, decorated with a wren, signed W.Powell, 6.5cm high; a Dresden miniature chamber stick decorated with floral swags and gilt; and a Wedgwood pale blue Jasper vase, 9cm high

166. Two XIX century blue and white ginger jars with carved turned and pierced hardwood tops, 24cm high (1 a/f) (*illus*)



Lot 166

167. A XIX century Continental porcelain figure of a young girl standing wearing a frilly puff sleeve apricot coloured dress with gilt floral highlights, wearing a ribbon in her long brown hair, 37cm tall

168. A pair of XIX century Staffordshire figures, the girl seated against a bough holding a tambourine and the boy with a monkey on his arm, applied bocage decoration, oval bases (some damage), also a figure group man and woman either side of a tree stump, he seated on a gate, each 16cm-18cm high £100-£150 (*illus*)



Lot 168



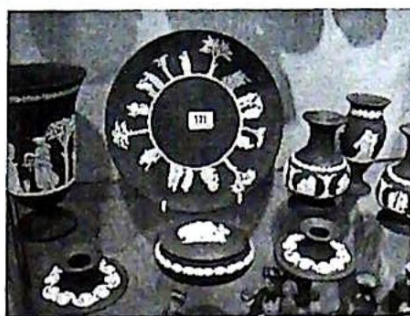
Lot 169

169. A Continental porcelain figure of a man carrying a child on his right shoulder, he dressed in pale blue floral decorated short jacket and mauve and rose patterned knee breeches, 24cm high (*illus*)

ENGLISH & CONTINENTAL PORCELAIN & EARTHENWARE ...



Lot 170



Lot 171



Lot 172

170. Rudolstadt Volkstedt - a twelve piece monkey band (some a/f) £800-£1400 (*illus*)
 171. Wedgwood deep blue Jasper - a plate 24cm diameter; pair of vases 13cm; vase 14cm; pair of squat candlesticks 4cm high; large vase 19cm high and an oval box 10cm long (8) (*illus*)

172. Wedgwood 1977 Jubilee - pair of Royal blue jasper boxes, dish 11cm diameter; larger ditto 17cm diameter (4) (*illus*)

173. Wedgwood blue overlay Jasper - three vases, 13cm; vase 12cm high; jug 9cm high, hot water jug 13cm (no lid); cylindrical jar and cover 12cm high; Leicester miniature vase 5cm high; and an Adams tyg "Oswestry" 5cm high (9) £60-£100 (*illus*)



Lot 173

174. Wedgwood blue overlay Jasper rectangular pin box "Wembley 1924", 9.5cm long

175. Wedgwood blue overlay Jasper - pair of cylindrical vases 25cm high

176. Wedgwood. A blue overlay Jasper squat circular two handled sugar basin with frieze of classical figures, silver rim, Birmingham 1902, stamped Wedgwood England 12.5cm diameter

177. Wedgwood blue overlay Jasper - vase 17cm high; jug 15cm high; cylindrical vase 9.5cm high; box 5cm diameter; covered jar 10cm high and a tray 26cm x 19cm (6) £80-£100 (*illus*)



Lot 177

178. Wedgwood. A pair of Keith Murray fluted bodied wall pockets, overall glaze in jade green, printed mark with signature and impressed marks, 20cm high

179. Doulton stoneware - a pair of Doulton & Slaters patent vases with everted rims, the exterior decorated in gold, white, red and pale green, partially glazed interiors, impressed mark



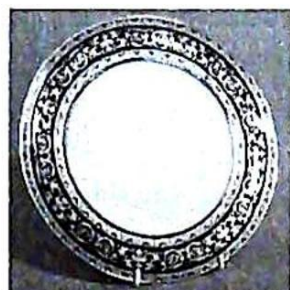
Lot 179



Lot 180

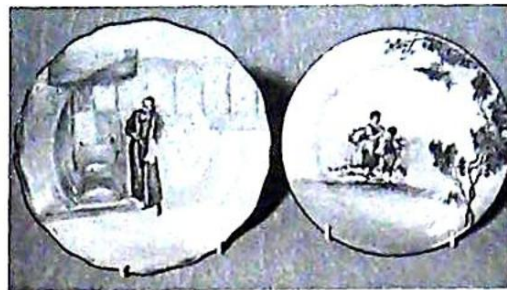
180. A XIX century blue and white transfer printed octagonal meat plate, depicting The Villager after Turner, floral border, maker ? Elkin, Knight & Co, mark Royal coat of arms "warranted Opaque China", 52cm x 40cm £250-£350 (*illus*)

181. Raynaud & Co Limoges
- a set of four royal blue
and gilt decorated
porcelain dinner plates,
26cm diameter (*illus*)



Lot 181

182. Doulton series ware - a
wavy edge plate
"Shylock" 21.5cm and



Lot 182

- another old English scenes "Gleaners" 19.5cm (*illus*)

183. Royal Doulton a figure HN1843 "Biddy Penny Farthing"
(*illus*)



Lot 183

184. Royal Worcester china figure - "Winters Morn", 20cm high

185. Royal Worcester china figure - "Summers Day", 19cm high

186. Royal Crown Derby. An octagonal gilt decorated bowl, red
printed mark, 24cm diameter

187. Royal Crown Derby 1128 pattern - a plate, 21.5cm
diameter, printed mark, date code LI

188. Royal Crown Derby pattern 1128. A pair of wavy edge
cabinet plates, 21cm diameter £70-£120

189. Royal Crown Derby pattern 1128. A goblet, 12cm high

190. Royal Crown Derby pattern 1128. A diamond shaped dish with pierced foliate
side handles, 22cm x 20cm

191. Royal Crown Derby pattern 1128. A small shaped dish, 7cm and an oval ditto,
13cm x 9cm

192. Royal Crown Derby pattern 1128. A pair of circular dishes, 10.5cm diameter

193. Royal Crown Derby pattern 1128. A rectangular cigarette box with lid, 10cm
x 9cm and a table lighter with Ronson movement

194. Royal Crown Derby pattern 1128. A pair of small tapering vases, 6.5cm

195. A Royal Crown Derby model of a duck in blue and gilt and a blue and white
plate

196. Royal Crown Derby pattern A1237 "green Derby panel" - a cup and saucer

197. Limoges Le Reine China. A collection of decorative china, 16 pieces
including two cabinet plates, vases, a kettle and stand, trinket box etc.

198. Grainger Worcester. A pair of XIX dessert plates, the centres painted with
summer flowers between cobalt blue and gilt borders with raised white bead
enamel decoration, 3.5cm diameter

199. A XIX century Bloor Derby cup and saucer, cobalt blue banded with gilded
scatter leaf decoration and borders

200. Wedgwood. A pair of commemorative plates "The American Sailing Ship
Plates" depicting Union and Raven

GLASS

203. A hob nail cut scent bottle with steeple stopper and deep embossed silver collar
204. Four XIX century green glass piano stops
205. A pair of XIX century green glass and enamel decorated lustres with prism drops, 35cm high (incomplete) and two lamp chimneys
206. A 1930's electric lamp base fashioned from clear pale green frosted glass as a scantily clad maiden seated on rocks with a vase on her shoulder
207. A French Art Deco clear pale blue glass ashtray of canted rectangular shape, fashioned as a female nude lying face down in a pool of water, 11.5cm long
208. A XIX century cut glass jug of baluster shape with central hob nail band flanked by three rings, cut rim base and handle, 18.5cm high
209. A set of three XIX century faceted cylindrical decanters, two with cushion stoppers, the other with faceted ball stopper; a slice cut spirit tumbler and two liqueur glasses (6)
210. Two XIX century graduated green and pink glass jugs with clear pink strap handles, 14cm high and a pair of similar glass specimen vases, 20cm high
211. A pair of early XIX century wine glasses with cut rim and faceted bowls, single annular stem and star cut bases, 11cm high; a single slice cut wine glass, 12cm high; and a pub spirit glass with faceted stem, 12cm high
212. Cranberry Glass - three bowls with moulded clear glass rims, a small jug and three red flashed liqueur glasses (*illus*)
213. Cranberry glass - a bowl with clear feet, another similar bowl and cream jug (3) £80-130 (*illus*)
214. A set of four Victorian wine glasses with ruby coloured bowls, plain circular feet, and five similar glasses £70-£140 (*illus*)
215. A XIX century Bohemian ruby flash glass pedestal bowl with semi ovoid dish, lobed rim, engraved with fruiting vine band, 21cm high £60-£120
216. A set of four Irish cut glass ice plates, 22cm diameter
217. An Art Deco period mirrored and frosted glass two handled tray, the border formed by six oblong blocks decorated with flowers and two handles decorated with sleeping stags, 47cm long, 20cm wide (minor damage to handles)
218. A pair of XIX century clear fluted glass epergnes on brass bases, 25cm high
219. A XIX century brass column lamp with clear glass reservoir, 48cm high excluding chimney



Lot 212



Lot 213



Lot 214

220. An early XX century slice cut glass flower specimen vase with diamond cut decoration, silver rim, Birmingham 1902, 14cm high; another specimen vase of shaft and globe fluted form, silver rim Birmingham 1902, 20cm high; and another pair of specimen vases with ribbed and horizontal cut decoration, the silver rims London 1905, 22cm high (4)

MOORCROFT

221. "Flamminian" - a tobacco jar and cover, tubelined, roundels, overall green glazed body, green signature, date 10-1913, marks 1913, 13cm high £350-£500 (*illus*)
222. "Flamminian" - a narrow neck bulbous bodied vase with three foliate roundels to shoulder, overall red glaze, the base with insized signature and printed mark "Liberty & Co", 21cm high £600-£800 (*illus*)



Lot 221



Lot 222



Lot 223



Lot 224



Lot 225



Lot 226

223. "Cornflower" pattern - a match holder, green signature, 7cm high £150-£250 (*illus*)
224. "Moonlit Blue" landscape - a plate, blue initial, impressed mark, 16.5cm diameter £250-£350 (*illus*)
225. "Eventide" - a saucer, 14cm diameter £100-£150 (*illus*)
226. "Claremont Toadstool" - a miniature bowl, blue initials and impressed mark, 6cm high £150-£200 (*illus*)
227. "Pomegranate" - a miniature bowl, green initials, 6cm high £150-£200 (*illus*)
228. "Magnolia" (blue ground) - a tiny vase, printed mark, 5cm high £50-£80 (*illus*)
229. "Pomegranate" - a small waisted vase, impressed mark £140-£180 (*illus*)
230. "Plum" - a small tazza with Tudric pewter foot, 11cm diameter, 7cm high £200-£300 (*illus*)

Lots
227,
228
& 229



Lot 230



MOORCROFT ...



Lot 231



Lot 232



Lot 233



Lot 234

231. "Pomegranate" - a small jar and cover, blue initials, impressed mark, 9cm high £180-£240 (*illus*)
232. "Pomegranate" - a powder bowl and cover, blue initials, impressed mark, 15cm diameter £300-£400 (*illus*)
233. "Grape & Leaf" (blue ground) - a round box and cover, blue initials, impressed mark, 11cm diameter £200-£300 (*illus*)
234. "Anemone" - a salt glazed squat vase, brown initials, impressed marks including signature, Potters to HM The Queen, 8cm high £150-£200 (*illus*)



Lot 235



Lot 236



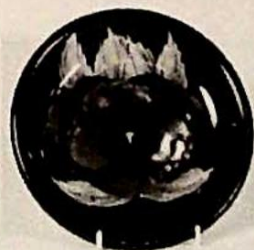
Lot 237



Lot 238

235. "Vine Leaves & Grapes" (blue/green body) - a squat vase impressed mark, 8cm high £150-£200 (*illus*)
236. "Grapes & Leaves" (dark blue ground) - small bulbous vase, blue signature and impressed marks, 10cm high £180-£240 (*illus*)
237. "Ruby Lustre" - a tobacco jar and cover, blue initials, signature and impressed mark, 13cm diameter £150-£200 (*illus*)
238. Green lustre - a squat narrow neck vase, impressed marks, 10cm high £75-£125 (*illus*)

239. "Pansy" - a plate, green initials, impressed mark £200-£300 (*illus*)



Lot 239



Lot 240



Lot 241

240. "Pomegranate" - a plate, green signature, impressed mark Moorcroft Burslem England 783, 22cm diameter £200-£300 (*illus*)
241. "Poppy" - a comport with EPNS base, blue initials, impressed mark, 18cm diameter, 12cm high £200-£300 (*illus*)



Lot 242



Lot 243



Lot 244



Lot 245

242. Moorcroft. "Hibiscus" (pink and green) - a small vase, impressed mark 7.5cm high £75-£125 (*illus*)

243. "Hibiscus" (pink and green) - a small dish, impressed mark, 9.5cm diameter £60-£100 (*illus*)

244. "Hibiscus" (yellow ground) - a plate, green initials, impressed mark, 26cm diameter £200-£300 (*illus*)



Lot 246



Lot 247

245. "Pansies" (dark blue ground) - a bowl, impressed signature Potter to HM the Queen etc., 21cm diameter £300-£500 (*illus*)

246. "Iris" - a squat narrow neck bulbous vase, green signature, impressed marks M32, 17cm high £500-£700 (*illus*)

247. "Hibiscus" (green ground) - a charger, green initials and date 1976, red printed label Potter to the late Queen Mary, 31cm diameter £400-£500 (*illus*)

248. "Poppies" (dark blue ground) - large shallow bowl, blue initials, impressed signature and marks, Potter to the Queen, 31cm diameter £700-£900 (*illus*)



Lot 248

249. "Sang De Boueff" - a large narrow neck hand turned vase, impressed marks, 30cm high £250-£350 (*illus*)

250. Pomegranate pattern - a miniature narrow neck vase, impressed marks, 10cm high; and a miniature matching bowl, impressed marks and painted initial, 7cm high (small chip to rim)



Lot 249



Lot 251



Lot 252

251. "Florian Ware", peacock design - a pair of cylindrical vases, green painted mark "WM des", 18cm high £2000-£3000 (*illus*)

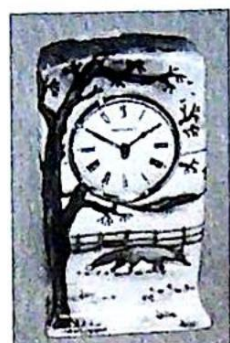
252. A "Jumeirah" vase 95/10, impressed mark, painted initials etc., 27cm high £300-£500 (*illus*)

253. A "Frajipani" vase 304/10, impressed mark, painted initials etc., 26cm high £180-£280 (*illus*)

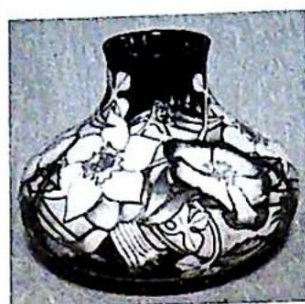


Lot 253

MOORCROFT ...



Lot 254



Lot 255



Lot 256



Lot 257



Lot 258

254. A "Woodside Farm" mantel clock, impressed mark, painted initials etc., 16cm high £200-£300 (*illus*)
255. A "Golden Jubilee" vase 32/8, impressed mark, painted initials etc., 17cm high £200-£300 (*illus*)
256. A "Spiraxia" vase 98/11, impressed mark, painted initials, limited edition No. 91 of 300 design by Emma Bossoms, 30cm high £600-£800 (*illus*)
257. A "Sam Buru Giraffe" enamel ginger jar, 7cm high (in fitted box) £100-£200 (*illus*)

258. "Anemone" - a plate, green monogram, silver dash, 26cm diameter £150-£250 (*illus*)
259. "Finches" - a plate, green monogram, silver dash, 26cm diameter £150-£250 (*illus*)



Lot 259



Lot 260

260. "Finches" - pin tray, impressed marks, silver dash, 11.5cm diameter and another (2) £80-£160 (*illus*)
261. "Finches" - a ginger jar, 11cm high and a matching small vase 10cm high, impressed marks, silver dash £80-£160 (*illus*)

Lot 261



Lot 262



Lot 263



Lot 264



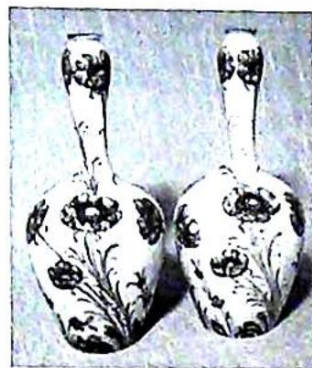
Lot 265



Lot 266

262. "Anemone" - a jug, green monogram, silver dash 34/94, 15cm high £100-£200 (*illus*)
263. A vase, impressed marks, silver dash, 14cm high £80-£160 (*illus*)
264. "Hibiscus" - a rectangular box and cover, later paper label, 9cm long £80-£160 (*illus*)

265. "Foxglove" - a lamp base, wooden foot, 23cm overall £80-£160 (*illus*)
 266. "Orchids" - a vase, green monogram, silver dash, 27cm high £150-£300 (*illus*)



Lot 267



Lot 268



Lot 268



Lot 270

267. "Poppies" - a pair of Macintyre Florian ware vases, design 401753, green signatures, 25cm high (one vase restored) £1200-£1800 (*illus*)
 268. "African Lily" on blue ground - a bowl impressed Moorcroft Made in England, original paper label by appointment etc., 25cm £200-£300 (*illus*)
 269. "Hibiscus" - a bowl and cover, impressed mark, original paper label, 16cm diameter £200-£300 (*illus*)
 270. "Aquilegia" - a plate, 21cm diameter, standing on a base formed by a candlestick, 11cm high, impressed mark, factory second (*illus*)
 271. Two colour trial plates - "Gold Ochre 16362" and "Trial 16785 27.9.99", impressed mark, each 11.5cm diameter
 272. "Columbine" - a pair of table lamps with cream shades, base 22cm high, impressed mark
 273. "Finches" - a table lamp with cream shade, 21cm high, impressed mark
 274. "Columbine" - two small vases, 8cm high, two small dishes, 11cm diameter (1 a/f)
 275. Richard Dennis - catalogue of Moorcroft Pottery exhibition, London 1973
281. Carltonware - a footed bowl, blue speckled ground, overpainted, tree and flowers in colours and gilt, painted mark 1/11081 3787, 18cm diameter
 282. Samson. A Chelsea style figure of a grape picker; a XIX century Staffordshire leaf shaped dish (2)
 283. A Watcombe pottery candlestick
 284. Royal Crown Derby. "Thrush Chicks" date code XXVIII (a/f); a XIX century blue and white oval pottery basket and a terracotta and enamel painted teapot
 285. A XIX century cut glass wine glass washer with hobnail and facet cutting, 10cm high

SILVER, PLATE, JEWELLERY & OBJETS



Lot 302

Lot 301



Lot 307

307

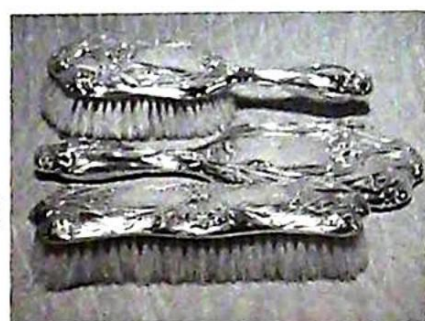
301. A hallmarked silver topped scent bottle with hobnail cut ball shaped body (*illus*)
302. London 1926/7. A pair of openwork bodied silver salt cellars with reeded rim and scroll handles, raised on square reeded base, maker J. B.C. and S £80-£160 (*illus*)
303. A silver mounted large rectangular photograph frame with cushion moulded silver borders and oak easel back, hallmarks worn, 24cm tall £50-£100
304. London 1900 and Birmingham 1908. Two silver mounted plain rectangular photograph frames with easel backs, 15cm tall
305. London 1724/5. A scatter hallmarked tankard, the scroll handled engraved "IS", maker Matthew Lofthouse, 8cm high (some damaged)
306. Birmingham 1904. A manicure set comprising two glass panelled trinket jars with silver repousse covers decorated with winged cupid heads, nail buffer, scissors, nail file and nail lancet - original fitted case (distressed); Chester 1914 - a similar decorated button hook with scrolled repousee handle
307. Birmingham 1903/4. A pair of fretted and engraved specimen vases with fluted rims (one lacking blue glass liner), maker AC, 12cm (*illus*)
308. A set of ten fiddle pattern teaspoons, London 1893/4 and six coffee spoons, Sheffield 1900/1
309. Chester 1906/7. A lidded mustard pot with blue glass liner, maker GN RH; a Gladwin Ltd Sheffield "Embassy" circular gadroon edge three footed mustard pot with blue glass liner, the body engraved "Chez Quaglino" and a small silver plated sauce boat, 11cm long
310. A silver square cigarette box, the hinged cover engraved with initials, hallmarks rubbed, 8.5cm square; a pair of Birmingham hallmarked silver encased dwarf table candlesticks, the domed circular bases with urn shape socles, 7cm tall (a/f); and a pair of Birmingham hallmark openwork oval four footed condiment holders
311. London 1883/4 - a pair of tablespoons, makers John Aldwinckle and James Slater
312. Two hallmarked silver vesta cases with bright cut decoration; enamel top compact (a/f); two silver brooches, engine turned decorated cigarette case, nail cleaner and a continental bracelet
313. Hallmarked silver:- a whistle, stamp box, cheroot holder case, engraved ditto, thimble

314. A silver three piece breakfast tea service with cushion shaped bodies, gadrooned borders and circular feet, the teapot with ebonised handle and finial, Sheffield 1902, approx. 20ozs gross £100-£150 (*illus*)



Lot 314

315. Sheffield 1909, 1910, 1911 and 1912 - a silver backed five piece dressing table set, Art Nouveau style, each piece with repousse decoration of flower heads, fleur de lys and ribbon scrolls, comprising two hair brushes, two clothes brushes and a hand mirror £200-£400 (*illus*)



Lot 315

316. A hallmarked silver five piece dressing table set comprising a pair of hair brushes, pair of clothes brushes and a hand mirror with engine turned and gadrooned decoration

317. Sheffield 1867/8 A four piece silver tea service, the ovoid bodies decorated with scrolling and monogrammed with date 1869, 69ozs £800-£1200

318. London 1799. An oval bodied teapot with central reeded band, gadroon edge top, the lid with rectangular knob on circular reeded pillar, the body raised on four ball feet, maker EW, 620grams £80-£160

319. Birmingham 1929/30. A circular footed bowl with folded rim and foot, 18cm diameter, 12cm high

320. A Birmingham hallmarked cruet comprising lidded mustard pot embossed with tulips, two square salts raised on four shaped feet and a pepperette

321. A pair of plain silver Sheffield hallmark napkin rings - cased

322. An early Victorian London hallmarked plate, 19cm diameter £100-£140

323. A pair of spiral design hallmarked silver salts £70-£140

324. A silver handled shoe horn, button hook, magnifying glass and sugar nips

- 324A. A London hallmarked silver tankard with loop handle - later engraved

- 324B. Three silver handled button hooks, two shoe horns and a cake slice

- 324C. An oblong hallmarked silver cedar lined cigarette box dated 1886

325. Sheffield 1932/3 - five grapefruit spoons in a fitted case; and a set of EPNS fish cutlery

326. 4 swan neck salt cellars, three having clear glass liners, 6cm long; a boat shaped openwork holder decorated with swags and ribbons, blue glass liner, 12cm long; a filigree four footed cylindrical handled lidded mustard pot with blue liner, 9cm high and a drum shaped fretted handled lidded mustard pot on three orb feet, 9cm high £200-£300

327. A XIX century electro plated nickel silver five bar toast rack in the form of a swan, the handle formed by the curved neck of the bird, raised on four ball feet

328. A silver plated wine funnel with gadroon edge, 15cm long

329. Prince's plate meat dome by Mappin & Webb and a plated toast rack

SILVER, PLATE, JEWELLERY & OBJETS ...

330. A XIX century six bottle cruet on an oval plated stand with cast bracket feet
331. Silver on copper - an openwork oval bodied basket with gadrooned edge, raised on a solid foot, 28cm long
332. A late XIX century silver plated oval cylindrical biscuit barrel with hinged cover decorated with foliage and repousse decoration, twin lion mask and ring handles on an integral oval beaded base, raised on four claw and ball feet, 22cm wide £60-£120
333. An EPNS fruit basket with ornate cast scroll and leaf decorated border, swing handle, scrolled foot, 26cm diameter
334. A pair of carved ivory handle bright cut decorated silver plated fish servers with original fitted case (case distressed) and an oak case containing six fish knives and forks with carved ivory handles - case now includes a set of six dessert knives and forks with mother of pearl handles
335. A mahogany box containing six silver plated and engraved fish knives and forks with mother of pearl handles
336. A XIX century silver plated and rams horn decorated desk set comprising moulded glass inkwell on a three hoof footed leaf decorated stand and matching pair of candlesticks with rams head decoration, ink stand, 46cm wide, candlesticks 27cm high (inkwell damaged) (*illus*)
337. An oval two handled tea tray, seven custard glasses, brass ewer and a table screen
338. A Victorian shell shaped bon bon dish on triple nautilus pedestal with rock strewn base, 11cm high
341. Chester 1907/8. A pin cushion in the form of a chick emerging from an egg, 2.5cm high
342. A pair of miniature repousse decorated silver fronted photograph frames with velvet covered easel backs, 5cm high
343. Birmingham 1897. A silver buckle of an oval open pierced scrolling design, bright cut decoration and another similar; a silver plated Art Nouveau style buckle decorated with young lady reading and with mirror and flowers; and a pierced foliate plated buckle (4)
344. A lady's unhallmarked gold bar brooch set with nine seed pearls engraved Verso W.G.S. 1900, 5cm long
345. An early XIX century tortoise-shell and silver piquet rectangular and chamfered scent bottle container decorated with oval motifs within pendant, husks, interior clear glass bottle with stopper, 5cm tall £80-£160
346. An oval cameo brooch, lady's head; and another oval cameo brooch, figure standing on a cloud pouring wine into a cup (cracked)
347. A Victorian 9 carat and bead mounted circular miniature pendant photograph frame with reverse engine turned decoration on a gold chain; and a blue and white enamel fronted and single diamond chip set heart shaped gold locket with white metal chain (2)



Lot 336

348. Nine assorted gold and other rings
349. A white metal ring set with oval black glass cabouchon, a similar ring, mother of pearl ring, 18 carat plain signet ring (not engraved), a mother of pearl inset ring and a moonstone style set marcasite ring (6)
350. A gent's 9 carat gold stick pin with seed pearl and turquoise set flowerhead in a brown leather fitted case
351. A ten stone diamond ring set with four larger stones and six diamond chips in a 22 carat hallmark setting £200-£300
352. A solitaire diamond ring in an 18 carat gold and platinum claw setting £250-£350
353. Two plain gold rings, another signet ring and a gold ring set with a small diamond (4)
354. A 1930's sapphire and diamond ring, the dark square cut sapphire mounted on shoulders inset with tiny chip diamonds and sapphires, platinum bezel, orange gold shank £80-£160
355. A late Victorian seven stone sapphire and diamond ring, the oval and circular cut water sapphires spaced by paired small chip diamonds, 18 carat gold shank £100-£200
356. A three stone diamond crossover ring, small rose cut stones, collet set, small chip diamonds to the shoulders, 18ct orange gold shank
357. An aquamarine ring, the oval stone set in a pierced claw setting, 18carat gold and platinum bezel and shank £100-£200
358. An oval bloodstone set signet ring, 9 carat gold shank
359. A Victorian 18 carat ring fashioned as a buckle, star set with two tiny chip diamonds £50-£100
360. A five stone diamond and sapphire ring, the central sapphire flanked by two smaller diamonds and two smaller sapphires, unmarked shank £100-£200
361. Two 22 carat plain wedding rings, Birmingham hallmarks; a 9 carat wedding ring and another scrap ring (4)
362. A three stone garnet ring (two stones missing) with 9 carat gold shank; a somewhat similar ring with 9 carat shank (two stones missing), another ring set with brilliants (a/f) and another six multi colour stone ring (4)
363. A solitaire diamond ring of approximately .75 carats in an 18 carat yellow gold claw setting £600-£800
364. A four stone diamond cross-over ring with tapering shoulders, white gold mount stamped 18ct and PT £500-£700
365. A solitaire diamond ring, approximately 1 carat in a yellow gold claw setting stamped .75 (18ct) £850-£1100
366. An oval turquoise glazed pottery brooch impressed "Ruskin" in a white metal setting and another circular brooch decorated in relief with Grecian figures
367. A 9 carat gold Albert chain and bar with a intaglio seal £300-£500
368. A Victorian gold coloured and turquoise enamelled oval mementomori brooch set with a single seed pearl
369. A silver gilt engraved wrist bangle and an eternity ring

SILVER, PLATE, JEWELLERY & OBJETS ...

370. A gent's Jaeger Le Coultre wristwatch on a leather strap £250-£450 (*illus*)
371. A 14K Hunter cased gold dress pocket watch, white enamel dial, the case engraved with foliage and birds and stamped "Dueber" £75-£130
372. A blue and white enamel open face silver cased lady's fob watch stamped .935
373. An open faced "Express English Lever" pocket watch by G.Graves Sheffield, the silver case Chester hallmarked
374. Four hallmarked silver topped glass dressing table containers, a pump action scent bottle and an ivory scent bottle (6)
375. An engraved HM silver vesta case, an "800" standard repousse decorated miniature container with gilded interior; a Birmingham HM collapsible tumbler; silver plated screw top needle case, plated vesta case, ivory handled miniature magnifying glass, mother of pearl handled button hook, mother of pearl handled trowel bookmark, tooth pendant & steel bladed bone handled knife and a pair of blue coloured bakelite napkin rings in a small box (11)
376. A facet cut blue glass scent bottle with embossed silver top, 8.5cm, a plain similar ditto and a bone teether mounted with a teddy bear
377. A bright cut engraved hallmarked silver badge in the form of a Maltese Cross with central circular panel depicting foresters with coats of arms and motto dated 1846, the cross decorated with stag head crest, arrows and hunting horn, the reverse inscribed "A.D.F." presented to P C James Lowry by the Officers and Brs. of Port Foresters Home 1177 for the Zeal and Fidelity with which he filled the post of Chief Ranger 2nd Oct. 1849, 15cm high
378. Birmingham 1907 etc. Three miniature two handled cups, each 3cm high, turned ebony bases and a Birmingham and Chester hallmarked miniature chocolate set with oblong tray, 14cm long
379. Four assorted hallmarked silver napkin rings
380. A case of silver coffee bean teaspoons and a lady's Shaeffer fountain pen
381. A XIX century slice cut glass flask with shouldered oval section and faceted shoulders, having a beaten removable lower cup of honeycomb design and similar mushroom shaped stopper, London 1895, 14cm high; slice cut glass flask with a shouldered oval section with silver plated semi ovoid cover, 13.5cm high; a silver topped circular inkwell and silver topped dressing table jar (4)
382. Netsuke:- Carved ivory peasant having his basket stolen by a monkey, 6cm wide; a netsuke fashioned as a horse; a carved bone netsuke as Hotei clutching his sack of wind; a netsuke as two puppies playing; and an Okimono as a hare and leveret with coral inlaid eyes (5) £150-£300 (*illus*)



Lot 370



Lot 382

383. A late XIX/early XX century 9carat gold leaf design pendant set with seed pearls and two green coloured stones - now converted to a brooch
384. A cased set of 1887 proof coins £5-3d £700-£900 (*illus*)
385. 1927 - A Royal mint proof set crown-3d (silver 3d missing)



Lot 384

BYGONES & MISCELLANY

390. Three stoneware one gallon jars "The Home Brewed Ale Stores, 13 Woodborough Road" No's 103, 108 and 114
391. A two gallon stoneware jar with brass tap, impressed "J. Tyler, Black Horse, Linwood"
392. A stoneware jar "Norton & Turton Lincoln" (chip to lip)
393. A ceramic Navrati "Extra Size No. 2" cigarette jar and lid, and a "Balkan Sobranie Cigarettes" box by S Fielding & Co Ltd (*illus*)
394. An earthenware jar "Ariston Yaghourt Co", stoppered jar "Blanch Flower & Sons, Yarmouth" Dundee marmalade and The Universal inhaler (4)
395. Advertising Ware:- Grimwades Quick cooker bowl; Buttercup Dairy Co jar; Coopers marmalade jar; Schweppes ashtray; Youngers Scotch Ale ashtray; Twyford's sanitary ware ashtray; two small Keillers marmalade jars; larger ditto (9) (*illus*)
396. A "Scottie Burns Old Scotch Whisky" 1/4 gallon flagon, importers Mihalovitch, Fletcher & Co, Cincinnati USA
397. A stoneware flagon "Liqueur Scotch Whisky Edward Gayton, 91 High Street, Southampton"
398. Two small stoneware jars - Country Wine from P.J. Taylor Hampshire"; and "Lifeboat Inn, Hayling Island"
399. A McCallum's Perfection Scots Whisky flagon, impressed mark Buchan
400. A Wade Bell's Whisky flagon, 1977 Jubilee flagon and a stoneware jar with Royal crest
401. A stoneware ginger beer bottle "Arnold & Co Lincoln Ltd"
402. Two leather concertina style collapsible glove boxes
403. Beswick No. 1559 - a model of a Siamese cat and an African elephant; and Beswick advertising ware No. 1517 "Double Diamond Works Wonders" (a/f) (3)



Lot 393



Lot 395

BYGONES & MISCELLANY ...

404. Goss. A parian ware bust - Shakespeare, 10cm high (*illus*)
405. Goss. A Sedan chair, Broadway Arms (*illus*)
406. Goss. A parian ware floral brooch and a coloured floral brooch (*illus*)
407. Five blue bodied and transfer printed jars, varying subjects including Shakespeare
408. A Chinese soapstone carving of three baskets and flowers, 20cm wide, 13cm high
409. A stoneware mortar and pestle; pair of butter pats and a toilet "pull" handle
410. A blue glass fire grenade "NB Glass Works Perth"
411. A pale blue glass "Fisch's Bitters" bottle
412. A XIX century clear glass fly trap
413. An "Idris" clean glass bottle, eight other bottles and a pair of green glass "pistol" bottles (11)
416. Two miniature tortoise-shell bone and mother of pearl mandolins, 13cm long; and a similar guitar, 14cm long (a/f) (*illus*)
417. A pair of XIX century cast iron garden urns, the circular fluted bodies on square pedestals, 52cm high overall, 38cm diameter £100-£200
418. Henry Wilkinson, Pall Mall, London - an early XX century officer's sword, blade number 13077, engraved with Royal cipher GVR and crest motto "Qui Hon Este Fortiter", blade 80cm long, leather and wire bound grip, openwork guard, brown leather scabbard with metal mounts £80-£120
419. A Royal Naval Lieutenant's jacket; and a Gieves Matthews & Seagrove Limited metal box with label EWH Blake RN containing a bicorn hat, epaulettes and belt £150-£250 (*illus*)
420. An alabaster portrait bust of Caesar, approx. 50cm high £300-£450 (*illus*)
421. After P.J. Mene. A bronze "Fox hunt" depicting a huntsman on horseback leading five hounds, 64cm high, 65cm long on a black marble base £200-£400 (*illus*)
422. A XIX century sampler panel, 63cm long, 18cm wide
423. A Victorian nursery basket on a folding metal frame with brass orb finials



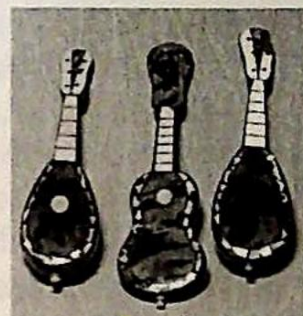
Lot 404



Lot 405



Lot 406



Lot 416



Lot 419

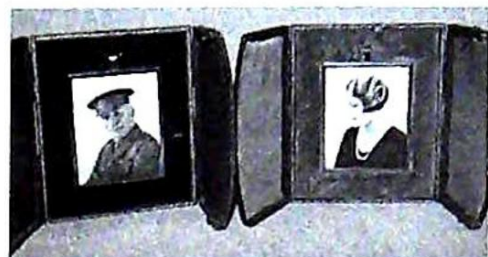


Lot 420



Lot 421

430. A group of four miniature portraits on ivory - two ladies and two gentlemen, one in military uniform - all unnamed, contained in folding brown leather gold tooled cases, 8.5cm x 7cm (*illus*)



431. A late Georgian oval composition cameo depicting a classical head of a man within a gold oval band and on the original black papier mache canted rectangular frame, 9cm x 8cm



Lot 430

432. A XIX century Continental porcelain oval plaque painted with a bust length portrait of a pretty brown haired woman with feather trimmed hat clutching a spray of flowers, contained in a carved wooden frame decorated with roses, easel back, 27cm high (damage to frame)
433. A Regency period painted silhouette bust portrait of a woman, original papier mache black lacquered frame, 12cm x 10cm; an early XX century oval portrait miniature of a young woman with ribbon tied bonnet, indistinctly signed in blue in a Regency period frame, 11.5cm x 10cm (2)

PICTURES & PRINTS

434. F. Krause A Continental landscape with cow herd walking beyond an arched stone bridge spanning a gorge, mountainous landscape 60cm x 50cm £300-£500
435. XIX century English School A pair of oils on canvas - figures below cliffs before a stormy sea monogrammed in red JB 15cm x 20cm, in fine XIX century plaster gilt frames £150-£250
436. BB Hemy s. Two shipping pictures - three masted war ship under full sail, the other a two masted shipping boat leaving harbour, oval mounts, gilt frames £200-£400
437. A XIX century watercolour drawing of a stately home - Saundby House Bridlington, 21cm x 33.5cm and a print - Continental sea front 21cm x 32cm
438. A XIX century watercolour drawing - "The Glory Hole, Lincoln" 17cm square
439. A set of four XIX century hand coloured hunting prints
440. T. Ivester Lloyd A pair of watercolour drawings, each signed and titled - "Private 11th Foot, the Devonshire Regt. 1750" and "Grenadier 11th Foot 1768 The Devonshire Regt." - on grey paper 34cm x 26cm overall £300-£500
441. J Gerardty 1879 A horse and chickens in a landscape setting Oil on panel 30.5cm x 22.5cm £150-£250
442. R. Gajani A watercolour drawing - Venetian scene with sailing barge and gondolas 23cm x 41cm £70-£120

PICTURES & PRINTS ...

443. XIX century English School Watercolour drawing of a thatched cottage and buildings with two children and cat in the foreground, initials MF 1873, lower right hand corner 20cm x 37cm, mounted and framed £70-£140
444. Ian Houston (XX century) An oil on board - view of Lincoln 21cm x 26cm £200-£300
445. L Boequenel 1886 Oil on canvas, still life - vase of flowers and an open book 30cm x 38cm, framed £200-£400
446. J. Thors Oil on canvas - an English country landscape with figure in the middle distance 29cm x 50cm £700-£1100
447. School of Lanseer Oil on canvas - hounds attacking a boar 69cm x 100cm £150-£250
448. Henry Jno. Livens 1909 Oil on canvas - highland cattle by a loch 40cm x 60cm £100-£200
449. Warren Williams ARCA A watercolour drawing - Anglesea, a rocky shoreline with sailing vessels and figures in a rowing boat 20cm x 34cm £75-£130
450. Gabriel Carelli A watercolour drawing of a rocky path with figure beneath a tree in the foreground 17cm x 25cm with receipt verso £350-£650
451. XIX century Scottish highland cattle in a landscape Pair oils on canvas - one indistinctly signed (Jamie Archer?) 60cm x 90cm
452. F T Daws /30 Portrait of an Airedale Terrier titled "Ch: Thet Tetrach" Oil on canvas 28cm x 36cm £900-£1300
- 452A. F T Daws /31 Portrait of an Airedale Terrier titled "Thet Tinted" Oil on canvas 28cm x 36cm £900-£1300
453. Emily Rice 1913? Shepherd and sheep on a cliff top Oil on canvas 44cm x 74cm
454. Ernest T Potter A pair of watercolour drawing - English thatched and timbered country cottages in landscape settings by water 29cm x 40cm £100-£200
455. After Thos. H Shepherd Prints - four views of Bath, published 1829, framed plus four assorted prints (8)
456. Baxter prints - "The Royal Exchange", "St Ruth's Priory" and "Balmoral Castle", framed (slightly marked)
457. XIX century English School a portrait of Mrs Goffin of Gautby Hall, Lincolnshire; seated wearing a lace trimmed bonnet Oil on canvas, in original plaster gilt decorative frame 74cm x 61cm £300-£500
458. A XIX century plan of the City of Lincoln by James Sandby Padley (Surveyor) 1842 dedicated to Sir Edward French Bromhead, 120cm x 105cm - when folded contained in a red morocco case to resemble a book
459. Clarence Hy. Roe A watercolour - stag with hinds on a rocky outcrop beneath a cloudy sky 55cm x 90cm £900-£1200
460. Clarence Hy. Roe Oil on canvas - stag on a rocky outcrop 59cm x 90cm £700-£1200

- 461. Greg Danville 1937 A mixed media drawing titled "working drawing for a rock" executed on brown paper 129cm x 110cm
- 462. Greg Danville The Sad Merchants, made in London, mixed media picture executed on brown paper 116cm x 80cm
- 463. A pair of watercolour drawings - river landscapes, monogrammed K.C. 30cm x 43cm
- 464. An early XIX century convex wall mirror, the circular frame with applied orbs, surmounted by an eagle with outstretched wings on a pedestal and with foliate brackets to the sides and beneath, 102cm overall £350-£600

BRASS & TREEN

- 468. A brass telescopic standard lamp, now converted to electricity
- 469. A four gallon conical copper beer jug with loop handle, 44cm high (*illus*)
- 470. A XIX century copper bed warmer on a turned ebonised handle, 104cm
- 471. A XIX century two gallon copper beer jug with inset lead, excise stamp, 35cm high (repair to neck and handle)
- 472. A pewter charger with scatter touch mark, 47cm diameter (*illus*)
- 473. A XIX century neo-classical design brass fender with swept rails, rams horn motifs, 134cm wide; a circular fire guard and associated fire irons £150-£250
- 474. A XIX century half gallon copper beer jug with lead inset, excise stamp, 22cm high
- 475. A pair of Georgian brass candlesticks with shaped square petallate bases, knot stems and with urn shaped socles, 17cm high £100-£200
- 476. A Victorian copper kettle with circular body, a brass country house watering can and an oval brass tea caddy (3)
- 477. A Victorian copper kettle with oval body
- 478. A XIX century heavy copper pan with turned interior, brass carrying handles, 42cm x 32cm
- 479. Two brass fire dogs and a circular copper kettle
- 480. A beaten copper coal scuttle and a heavy copper cylindrical pail with swing handle, 34cm high (2)
- 484. A mahogany writing slope with brass handles, 51cm x 25cm
- 485. An Art Deco ebonised tea tray with raised brass gallery
- 486. A Victorian beadwork stand in an ebonised moulded frame with two brass carrying handles, 56cm x 28cm
- 487. A rosewood marquetry inlaid coal compodium with brass fittings and a shovel £80-£130



Lot 469



Lot 472

BRASS & TREEN



Lot 488 (shown closed & open)



Lot 489 (shown closed & open)

488. A smoker's cabinet in the form of a four wheeled horse drawn wagon, the rising lid concealing a two compartment interior for cigars, the underside of the lid with silver plated removable embossed miniature tray & holder for matchbox, the drivers box seat forming a cigarette box, the body having a pair of miniature carriage lamps, the whole on cast metal wheels, 38cm long, 29cm high £300-500 (*illus*)
489. A XIX century yew veneered sarcophagus shaped caddy with string inlay, the lid opening to reveal two hinged wooden removable canisters, a central well with glass mixing bowl, brass ring handles and feet, 31cm long £300-£500 (*illus*)
490. A XIX century mahogany miniature chest of two short and three long drawers standing on bracket feet, 32cm wide, 34cm high £80-£130
491. An attractive XIX century walnut, brass and bone inlaid box, the interior divided into three compartments
492. A sarcophagus shape early XIX century mahogany tea caddy, the lid with a central pressed brass loop handle in the form of a basket of flowers, the interior with two compartments and a central glass mixing bowl
493. A Victorian burr walnut chevron banded two compartment tea caddy
494. A XIX century rosewood brass bound lap desk, the interior with a writing slope and pen tray; and another similar - no interior
495. A XIX century mahogany knife box with checker and string inlay, the sloping lid with oval patera; the fitted interior also checker inlaid, 39cm high £250-£400 (*illus*)
496. A XIX century rosewood and mother of pearl inlaid workbox - distressed
497. A Georgian mahogany tea caddy with checker string inlay decoration, swing brass carrying handle, bone inlaid shield shaped key escutcheon, short bracket feet, the lid opening to reveal green velvet lined interior, 26cm wide £100-£200 (*illus*)
498. An early XIX century rosewood and brass inlaid lap desk with a fitted interior - distressed

Lot 495
(shown
closed &
open)



Lot 497

499. An early XIX century lozenge shape mahogany workbox, the top cross-banded and boxwood strung together with sundry contents; and a rosewood mother of pearl inlaid workbox - no interior
500. A Japanese black lacquered papier mache glove box, handkerchief box, two circular boxes, letter rack and two Victorian souvenir modern boxes (7)
501. A Victorian oak table top stationery cabinet enclosed by a pair of hinged doors, the interior fitted with letter compartments, day and date calendar and two inkwells above a drawer £70-£140
502. A Swiss cylinder musical box playing in six airs, woodgrain case with boxwood stringing, 42cm wide £300-£500
503. A mahogany dressing mirror with a lift up storage compartment
504. A Victorian mahogany toilet mirror on barley twist supports with a serpentine shaped base
505. A rectangular Victorian mahogany toilet mirror

RUGS

510. A Bokhara rug - the rose coloured ground with typical design in dark blue, red and orange, 170cm x 120cm
511. Three old oriental rugs, each with multiple borders and geometrical designs - well worn
512. Three oriental pattern rugs, predominately pink
513. A flat weave Kelim and two oriental rugs - well worn
514. A large Persian design multi-colour pattern carpet, predominately blue, 14ft x 8ft £300-£400

CLOCKS & BAROMETERS

516. A XIX century banjo barometer and thermometer, the mahogany case inlaid with shell and circular patera, the silvered dial signed "Dominick Gureri & Co Boston", 97cm overall £250-£350
517. A XIX century rosewood stick barometer, the steel dial contained in a carved moulded frame above a thermometer, 114cm overall £600-£850
518. An Edwardian weather station providing barometer, clock and thermometer, the oak case of neo-classical design flanked by corinthian columns and with applied brass mounts, 26cm high, 42cm wide (thermometer replaced) £60-£120 (*illus*)



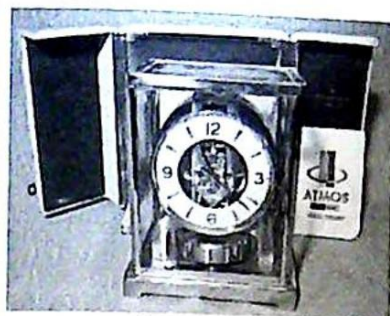
Lot 518

CLOCKS & BAROMETERS ...

519. A French brass cased carriage clock with alarm and repeating movement, white enamel dial, the works enclosed by bevel glazed panels, the backplate with a trade mark, cross swords L'Epee and stamped "Made in France", the case 13cm x 9cm £600-£900 (*illus*)



Lot 519



Lot 521

520. A Victorian black slate Palladian design mantel clock with eight day striking movement, 32cm high

521. Jaeger Le Coultre "Atmos Classic" mantel clock, number 183502 (1950-60) with original front opening cream kid covered carrying case (one side glass panel missing & one top screw) 22" high £300-£600 (*illus*)

522. "Potonie Paris". A XIX century French porcelain cased mantel clock, gilt and floral decoration, white roman dial (a/f) (*illus*)



Lot 522

523. A skeleton table clock built by L.R.A. Bryan (then of Horncastle) in 1984, together with the construction drawings and tools; contained in a bevel glass case on a white marble base, the clock approx. 40cm high £500-£1000 (*illus*)

524. A XIX century French mantel clock in Empire style, the gilt metal case fashioned as a maiden holding a book, seated beside the drum movement with a pink and floral painted dial with black Roman numerals and gilt highlights, the lower section with floral festoons and beading, inset with a porcelain rectangular panel painted with putti; the movement striking on a bell, on a gilded wood base with beaded edge, the whole piece beneath a glass dome on an ebonised plinth base, 47cm high, 48cm wide £400-£600 (*illus*)

Lot 523



525. A XIX century painted dial longcase clock movement, the arch painted with a scene of fishermen and signed Thomas Read, Taporley; eight day striking movement, dial plate 14" wide, 19.5" high £300-£400



Lot 524

526. A XIX century Vienna wall clock, the striking movement with white enamel dial contained in a polished hardwood case with castellated top, surmounted by a prancing horse, the door decorated by split turnings £100-£150

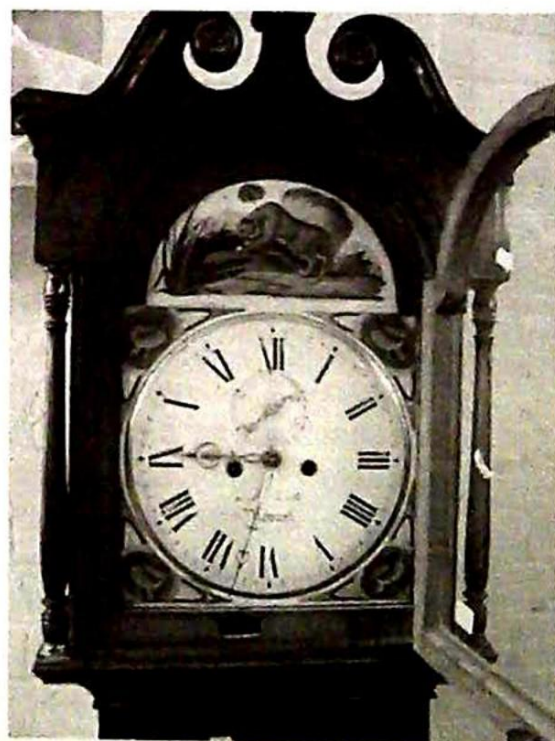
Lot
527



Lot
528



527. A XIX century grandfather clock contained in an oak and mahogany case, the arched painted dial signed "Richd. Holt Newark" contained in a broken swan neck pedimented hood, the base enclosed by a shaped cross-banded door (distressed) £700-£1000 (*illus*)
528. A XIX century longcase clock, the arched brass and silvered dial engraved "Arnold Tadcaster" contained in a broad mahogany and oak case with broken swan neck pediment, turned columns, boxwood and ebony inlay and a shaped door £800-£1200 (*illus*)
529. A XIX century grandfather clock contained in a decorative oak and mahogany cross-banded & inlaid case, the painted raised dial signed "Richd. Holt Newark", the arch with a scene of a tiger attacking a crocodile, the 8 day movement enclosed in a broken swan neck pedimented hood, the base with a short door centred with a shell patera £900-£1400 (*illus*)
530. A XIX century white dial wall clock in a circular stained hardwood case £100-£200
531. A XIX century circular white dial wall clock with fusee movement, mahogany cased, dial 12" diameter (distressed) £200-£300



Lot 529

FURNITURE



Lot 536



Lot 537

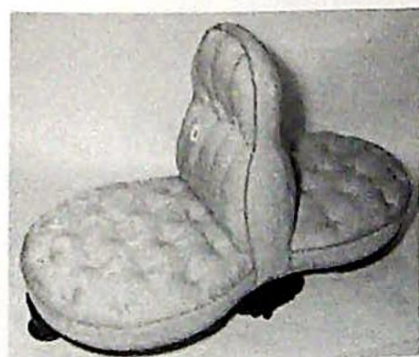


Lot 538

536. An XVIII century rectangular oak side table fitted with a single frieze drawer raised on bobbin turned supports joined by plain stretchers, the top 79cm x 51cm (*illus*)
537. An elaborate late Victorian mahogany breakfront side cabinet fitted with central display cupboard, flanked by two smaller ditto, raised on carved cabriole supports joined by a serpentine shaped undertier, 135cm wide £100-£200 (*illus*)
538. A Victorian mahogany pedestal pot cupboard with original white porcelain handle £100-£150 (*illus*)
539. A reproduction child's windsor armchair with pierced brass splat
540. A XIX century corner chair constructed of symmetrical spindle turned rails, joined by thinner vertical supports, above a rush seat, the legs with matching stretchers £100-£150
541. A Victorian serpentine fronted walnut four tier what-not, the narrower top tier with a fret carved back and each tier separated by spirally fluted tapering columns, 50cm wide £150-£250 (*illus*)
542. An early XIX century bow front mahogany chest of four graduated drawers, the top with a boxwood inlaid border and the drawers oak lined and with original oval press brass handles, 108cm wide £250-£350
543. An Edwardian mahogany satinwood cross-banded display cabinet enclosed by a pair of plain glazed doors, raised on square taper supports, 77cm wide
544. A Victorian love seat upholstered in figured buttoned damask type material £200-£400 (*illus*)
545. An Edwardian mahogany side cabinet of Sheraton revival design, cross-banded in satinwood and boxwood strung, fitted with four central drawers, flanked by bow fronted cupboards, raised on square taper legs, 125cm wide £200-£350



Lot 541



Lot 544



Lot 546



Lot 547



Lot 550

546. An XVIII century elm corner chair, the broad shaped arms and back on baluster turned columns with two pierced splats above a drop-in rush seat raised on square legs with plain stretchers £250-£350 (*illus*)
547. A child's wing armchair upholstered in tan leather, standing on brass castors - early XX century (*illus*)
548. A Victorian mahogany drop leaf occasional table raised on turned tapering legs, 81cm x 94cm £80-£140
549. A XIX century oak and mahogany banded chest of two short and three long graduated cross-beaded drawers, raised on bracket feet, 99cm wide £150-£200
550. An Edwardian piano stool with a rising top on ring turned supports and stretchers (*illus*)
551. A late XIX century mahogany chest on chest, the upper section with three short and two long drawers beneath a moulded cornice, the base with three long drawers raised on turned legs, 102cm wide £300-£450 (*illus*)
552. An early XIX century mahogany drop leaf pembroke style occasional table on turned and fluted supports fitted with a single drawer to the frieze, 97cm x 96cm extended £150-£200 (*illus*)
553. A rectangular Georgian mahogany side table, the top with a moulded edge above a long frieze drawer, raised on fluted supports, 75cm wide £400-£600
554. An early XIX century press cupboard, the upper section enclosed by a pair of panel doors above a long drawer raised on bracket feet, 129cm wide £300-£500



Lot 551



Lot 552

FURNITURE ...



Lot 555
(shown
closed &
open)



555. A Victorian mahogany cylinder pedestal desk, the interior fitted with a writing slide and two compartments below two banks of drawers and pigeon holes, three drawers to each pedestal, 137cm wide £750-£1100 (*illus*)



Lot 556



Lot 557
(set of 6)



Lot 558
(set of 6)



Lot 560
(set of 4)



Lot 561

556. An Edwardian mahogany tub chair, the frame boxwood strung and inlaid with a central upholstered back panel, vertical shaped side splats raised on square taper supports (*illus*)
557. A set of six Victorian rosewood balloon back dining chairs with carved and pierced horizontal scroll splats, overstuffed seats with serpentine fronts raised on cabriole front supports £600-£800 (*illus*)
558. A set of six Victorian mahogany balloon back dining chairs with drop-in seats, turned tapering front legs £300-£500 (*illus*)
559. A XIX century figured mahogany circular breakfast table, raised on a tapering triangular column with platform base and carved claw feet, 119cm diameter
560. A set of four Georgian mahogany dining chairs with shaped top rails, pierced vertical splats, drop-in seats upholstered in green fabric on square chamfered front supports joined by an "H" stretcher £350-£650 (*illus*)
561. A mid XIX century mahogany shield back hall chair with a shaped solid seat raised on turned taper supports (*illus*)

562. A Victorian mahogany triple wardrobe with a fitted interior, the central mirror door beneath a moulded cornice, 192cm wide £300-£500

Lot 563
(set of 6)



Lot
564



563. A set of six Victorian mahogany dining chairs with shaped backs, overstuffed seats, turned and fluted tapering front supports £400-£600 (*illus*)

564. An early XIX century mahogany pedestal sideboard with a shaped back, the lowered centre with two frieze drawers, the pedestals each with two drawers, one fitted with a cellerette, standing on turned legs, 197cm wide £600-£950 (*illus*)

565. An XVIII century oak chest on chest, the moulded cornice above three short and two long graduated drawers, the base with a brushing slide and three further drawers on shaped bracket feet, 110cm wide, 195cm high £1500-£2000 (*illus*)

566. A late Victorian pedestal side cabinet, the top with a superstructure surmounted by urns and inset with a bevel mirror, the base enclosed by a panel carved door, 36cm wide, 35cm deep £100-£150



Lot 565

567. A Victorian mahogany bow front chest of two short and three long cock-beaded drawers with original turned handles on turned feet, 109cm wide £200-£350
568. A Victorian figured mahogany chest of two short, three long drawers with a cushion fronted drawer over, flanked by turned columns on a shaped plinth, 126cm wide £200-£400
569. A XIX century stripped pine dresser with later plate rack, the base fitted with six drawers and a central panel cupboard, 188cm wide, 54cm deep £200-£300
570. A set of four William IV mahogany dining chairs with curved top rails, overstuffed seats on turned and fluted front supports £400-£600 (*illus*)



Lot 570
(set of 4)

FURNITURE ...

571. A XIX century mahogany carver chair with plain horizontal splat, drop-in seat on ring turned and fluted supports; and another similar side chair £100-£200 (*illus*)



Lot 571



Lot 574

572. A carved mahogany fire surround of neo-classical design, 185cm wide, 158cm high £100-£200

573. A pair of Victorian mahogany bed ends with barley twist columns

574. A Victorian mahogany duchess dressing table with a shaped mirror on carved supports, three small drawers and central frieze drawer raised on carved cabriole legs joined by an undertier, 104cm wide £200-£300 (*illus*)

575. A Victorian walnut hexagonal needlework box, the top marquetry inlaid with a draughts board, raised on triple carved cabriole supports £200-£300 (*illus*)



Lot 575

Lot 576

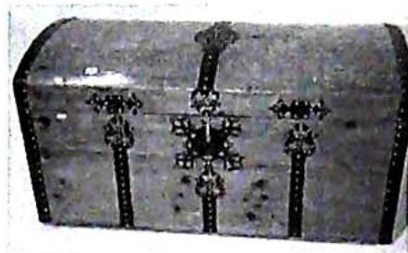


Lot 577



576. An XVIII century walnut bureau, the top, fall and drawers herringbone banded, the interior forward fitted above a well, the base with two long drawers standing on shaped bracket feet, 91cm wide £1000-£2000 (*illus*)

577. An antique walnut kneehole desk, the top with a brown gold tooled inset leather above a central frieze drawer with four drawers to each of the bow fronted pedestals, 121cm wide, 53cm deep £800-£1000 (*illus*)



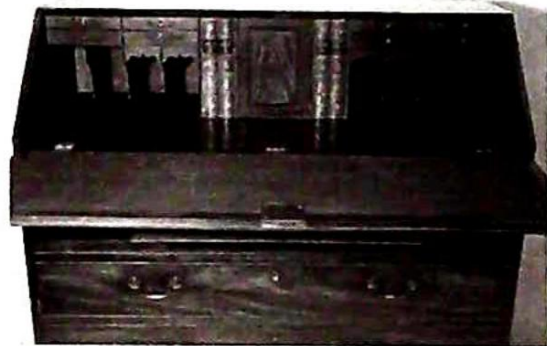
Lot 579



Lot 578
(set of 4)

Lot
578

578. A XIX century circular mahogany spider leg table raised on a vase turned column with tilt top, 57cm diameter £100-£200 (*illus*)
579. A polished pine metal mounted dome top cabin trunk, 117cm wide (*illus*)
580. A set of four Georgian mahogany dining chairs, the rectangular backs with reeded vertical splats above drop-in seats on square taper supports joined by "H" stretchers £250-£350 (*illus*)
581. An oval Georgian mahogany gate leg dining table, 150cm - 522cm extended £300-£400



Lot 582 (shown closed & open)

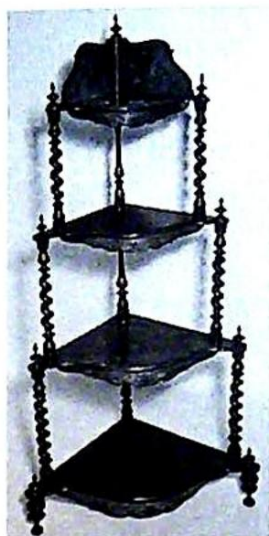
582. A George III mahogany bureau, the fall front enclosing an interior fitted with small drawers and pigeon holes either side of a central cupboard flanked by "book end" secret compartments, the base with three short and three long graduated cock-beaded drawers on shaped bracket feet, 117cm wide £800-£1200 (*illus*)
583. An Edwardian mahogany octagonal window table, marquetry inlaid on four sides with neo-classical urns bordered by boxwood stringing, raised on four square taper supports with oval patera at the head of each leg, the base with galleried undertier on spindle turned supports, 85cm diameter £400-£600 (*illus*)



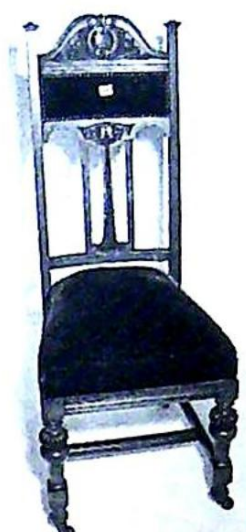
Lot
583

FURNITURE ...

584. An Edwardian octagonal mahogany window table on turned legs joined by an undertier
585. A Victorian mahogany serpentine front corner what-not of four graduated tiers separated by barley twist columns, the shelves with shaped aprons and marquetry inlay £100-£200 (*illus*)
586. A set of four early XIX century art deco carved oak high back dining chairs £250-£350 (*illus*)
587. An oval mahogany mid XIX century extending dining table with two spare leaves, raised on a plain turned column with platform base, 195cm x 121cm £700-£1200 (*illus*)
588. A XIX century rectangular mahogany side table fitted with a long oak lined frieze drawer raised on turned tapering supports, 107cm wide, 55cm deep £100-£200



Lot 585



Lot 586



Lot 587

Lot 589

Lot 590



589. A XIX century mahogany carving table with panelled frieze, raised on ring turned taper supports, 104cm wide, 39.5cm deep (*illus*)
590. A Georgian mahogany drop leaf side table fitted with a long frieze drawer, raised on square taper legs with carved pierced frets to the corners, 130cm x 69cm extended £400-£650 (*illus*)



Lot 591 (set of 4)



Lot 592 (set of 4)



Lot 593 (set of 6)

591. A set of four Victorian simulated rosewood salon chairs with floral carved shaped backs, serpentine fronted overstuffed seats on cabriole front supports £200-£300 (*illus*)
592. A set of four early XIX century rosewood dining chairs, the backs carved with foliage with horizontal splats decorated with three roundels, the overstuffed seats on ring turned front supports £400-£600 (*illus*)
593. A set of six late Victorian scratch carved dining chairs with solid vertical splats, overstuffed seats upholstered in pink dralon, turned front supports terminating in pot castors £600-£900 (*illus*)



Lot 594 (shown horizontal & tilted)

594. An early XIX century figured rosewood circular dining table, raised on a tapering turned column with tricorn platform base and scroll feet, 120cm diameter £1000-£1500 (*illus*)

FURNITURE ...

595. An early XX century extending mahogany dining table raised on cabriole supports with ball and claw feet, the top with a moulded edge, measuring 188cm x 122cm extended £600-£900 (*illus*)

Lot 595



596. A substantial Victorian mahogany library table stamped with the makers name "T Willson, 68 Great Queen Street, London", fitted with three frieze drawers to each side and raised on bulbous relief carved legs, 148cm x 230cm £1500-£2000 (*illus*)



Lot 596

(& makers name)



597. Midland Railway - a heavy stained timber waiting room bench with plain rail back, monogrammed "MR", the scroll arms on baluster supports with shaped boarded seat, standing on six legs, 212cm wide £150-£250
598. An Edwardian mahogany overmantel, the shaped top with a moulded dentil cornice, tapering fluted columns joining two shelves, inset with an oval bevel edged mirror, 134cm wide £90-£130
599. A pair of Victorian walnut frame dining chairs with oval back foliate carved splats and cabriole front legs £70-£120

600. A pair of Victorian walnut carved frame dining chairs on carved cabriole legs with scroll feet £100-£170
601. An XVIII century mahogany writing table fitted with two frieze drawers on square taper legs, 83cm x 45cm £150-£250
602. A George III circular mahogany breakfast table raised on a "gun barrel" column with quadruple reeded splay legs on brass castors, 130cm diameter £700-£1200 (*illus*)
603. An Edwardian mahogany chevron strung china display cabinet enclosed by two astragal glazed doors above two drawers, 66cm high, 34.5cm wide £150-£250



Lot 602

END OF SALE

Valuations Prepared For

INSURANCE

PROBATE

FAMILY DIVISION

For further information contact

J C Slingsby

01522 524984

FORTHCOMING SALES

JUNE

7th at 10am - *f*irst Saturday Estate Clearance Sale
*Victorian & Later Furniture, Bygones
& Collectables & All House Contents*

JULY

5th at 10am - *f*irst Saturday Estate Clearance Sale
*Victorian & Later Furniture, Bygones
& Collectables & All House Contents*

AUGUST

2nd at 10am - *f*irst Saturday Estate Clearance Sale
*Victorian & Later Furniture, Bygones
& Collectables & All House Contents*

Instructions to Bid

Ref:

Name (BLOCK CAPITALS)
 Address

 Tel. Fax

Please bid on my behalf for the following lots, up to the price entered below. I agree to comply with the conditions of sale and understand that in the case of a successful bid, a buyer's premium of 15% will be payable on the hammer price. Bids will be executed as cheaply as is permitted by other bids or reserves, if any. Goods must be collected on saleday unless arrangements are made with the Auctioneers.

AT THE FALL OF THE HAMMER, ALL GOODS ARE HELD AT THE RISK OF THE PURCHASER.

| Lot No: | Brief Description | Bid price exc. Premium | Lot No: | Brief Description | Bid price exc. Premium |
|---------|-------------------|---------------------------|---------|-------------------|---------------------------|
| | | | | | |
| | | | | | |
| | | | | | |
| | | | | | |
| | | | | | |
| | | | | | |
| | | | | | |
| | | | | | |
| | | | | | |
| | | | | | |
| | | | | | |

(MORE OVERLEAF.....)

PLEASE COMPLETE THE SIGNATURE AND DATE BLOCK OVERLEAF TO VALIDATE YOUR INSTRUCTIONS TO BID ✂

Instructions to Bid
(CONTINUED FROM OVERLEAF)

[illegible]

Signed..... Date

Commission bids **MUST** be received by 4.00pm on the day prior to the sale. Fax 01522 535600 (24 hours)

Please tick box if you require a quotation for posting and packaging: With insurance: ☐ Without insurance: ☐

CONDITIONS OF SALE

1. In these conditions Thos. Mawer & Son act only as auctioneers and agents and the representative of Thos. Mawer & Son conducting the auction is called 'The Auctioneer'
2. Whilst Thos. Mawer & Son make every effort to ensure the accuracy of their catalogue and the description of any lot:
 - (i) Each lot set out in the catalogue or as divided or combined with any other lot or lots is sold by the vendor with all faults and imperfections and errors or descriptions
 - (ii) Thos. Mawer & Son do not accept responsibility for the authenticity, attribution, genuineness, origin, authorship, date, age, period condition or quality of any lot unless they have been instructed in writing by the buyer to so certify.
 - (iii) All statements whether printed in the catalogue or made orally as to any of the matters set out in (ii) above are statements or opinion only and are not to be taken as being or implying any warranties or representations of fact by Thos. Mawer & Son unless they have been instructed in writing by the buyers to so certify.
3. The Auctioneer has absolute discretion to divide any lot, to combine any two or more lots or to withdraw any lot or lots from sale, to refuse bids, regulate bidding or cancel the sale without in any case giving any reason or without previous notice. He may bid on behalf of the vendor for all goods which are being offered subject to reserve or at the Auctioneer's discretion.

The highest bidder shall be the buyer. The Auctioneer may at his sole discretion determine the advance of bidding or refuse a bid. If during the auction the Auctioneer considers that a dispute has arisen, has absolute discretion to settle it, or to re-offer the lot.

All conditions, notices, descriptions, statements and other matters in the catalogue and elsewhere concerning any lot are subject to any statements modifying or affecting the same made by the Auctioneer from the rostrum prior to any bid being accepted for the lot
4. The buyer shall pay the hammer price together with a premium of the hammer price – 15%.
5. Notwithstanding any other terms of these Conditions, if within seven days after the sale Thos. Mawer & Son have received from the buyer of any lot notice in writing that in his view the lot is a deliberate forgery and within twenty-one days after such notification the buyers return the same to Thos. Mawer & Son in the same condition as at the time of the sale and by producing evidence, the burden of proof to be on the buyer, satisfies Thos. Mawer & Son that considered in the light of the entry in the catalogue the lot is a deliberate forgery then the sale of the lot will be rescinded and the purchase price of the same refunded.

The vendor agrees to be bound by Thos. Mawer & Son's decision.
6. Thos. Mawer & Son disclaim any responsibility for default by either the buyer or the vendor because they act as Auctioneers only and therefore do not pay out to the vendor until payment is received from the buyer. Instructions given by telephone are accepted at the sender's risk and must be confirmed in writing forthwith.
7. Every person on Thos. Mawer & Son's premises at any time shall be deemed to be there at his own risk. He shall have no claim against Thos. Mawer & Son in respect of any accident which may occur or injury, damage, loss howsoever caused, save in so far as the injury, damage loss shall be caused by the negligence of Thos. Mawer & Son's employees.
8. Each lot shall be at the purchasers risk from the fall of the hammer and must be paid for in full before the delivery and must be taken away by the purchaser at his own expense within 7 working days following the conclusion of the sale. The Auctioneer shall be entitled to charge storage charges in respect of lots not taken away as aforesaid (minimum charge of £10 plus VAT) and interest on unpaid accounts @ 4% above clearing bank base rate (per day)
9. Cheques which are not honoured by the payee's bank will incur a handling charge of £15 plus VAT for each presentation.

This contract is governed by English Law.



THOS. MAWER & SON LTD.

Auctioneers & Valuers Established in 1864

DUNSTON HOUSE • PORTLAND STREET • LINCOLN • LN5 7NN

TELEPHONE 01-522-524984 • FACSIMILE 01-522-535600

E-MAIL auctions@thos-mawer.co.uk

WEBSITE www.thos-mawer.co.uk