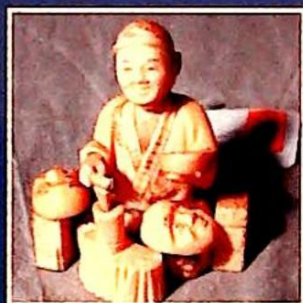
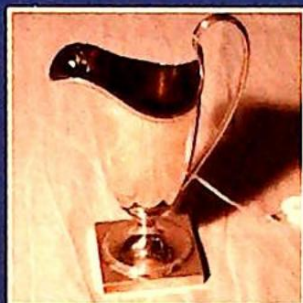




THOS. MAWER & SON LTD.

Auctioneers & Valuers Established in 1864



Lot 329

The Autumn Antique Sale

Thursday 25th September 2003 Commencing at 11.00am

On View

Wednesday 24th 9.30am - 4.30pm & morning of sale from 9.00am

Catalogues £5.00

COMMISSIONS

The Auctioneers are pleased to execute commissions for intending buyers in confidence as cheaply as is allowed by any other bids. **Telephone bids will not be undertaken for lots estimated at less than £500. All telephone bids and commissions must be confirmed in writing or by fax by 4pm the day prior to sale.** We cannot guarantee to execute bids received on the morning of sale. **Special attention is drawn to Condition 2C of the Terms & Conditions.**

BUYERS PREMIUM

There is a 15% premium payable on the final hammer price of each lot.

REGISTRATION

All prospective purchasers are requested to obtain a bidding number prior to the start of the sale.

CATALOGUE DESCRIPTIONS

Care is taken to ensure that any statement as to authorship, attribution, origin, date and provenance is reliable and accurate, but all such statements of opinion are not to be taken as statement or representations of fact. Thos. Mawer & Son Ltd. reserve the right, in forming their opinion, to consult and rely upon any expert or authority reasonably considered by them to be reliable

CONDITION REPORTS

We regret that we are unable to provide condition reports on the morning of the sale.

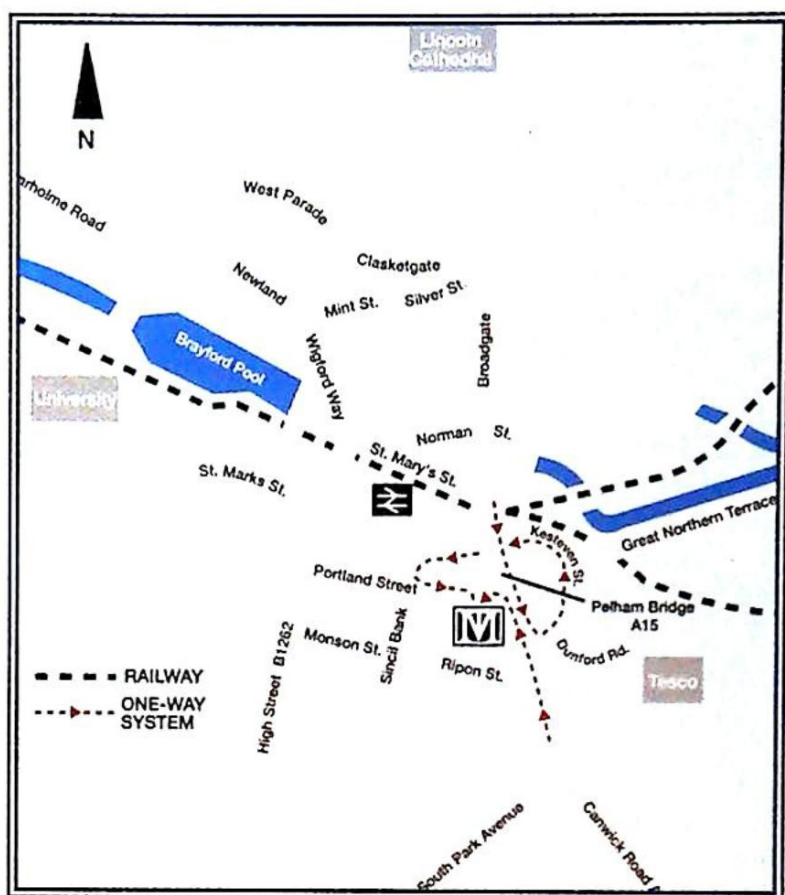
ESTIMATES

While an identification of damage is given in some instances, an absence of such does not imply that a lot is free from defect. Prospective purchasers are strongly advised to inspect any lot on which they intend to bid. All measurements and weights are approximate and should be verified by intending purchasers. No lots in this sale are the property of Thos. Mawer & Son Ltd.

All lots should be paid for and collected within 7 days of the sale. Any lots not collected after this time will incur storage charges.

PAYMENT OF ACCOUNTS

Payment of all lots must be made on the day of sale and methods are (1) **Cash**, (2) **Cheques** supported by either a letter of Reference from your bank or a cheque guarantee card to cover the sum of your purchase, (3) **Bankers Draft**, (4) **Direct Debit Cards** such as 'Switch', 'Delta', 'Classic', 'Connect', (5) **Credit Cards** subject to a 2% premium charge.



LOCATION

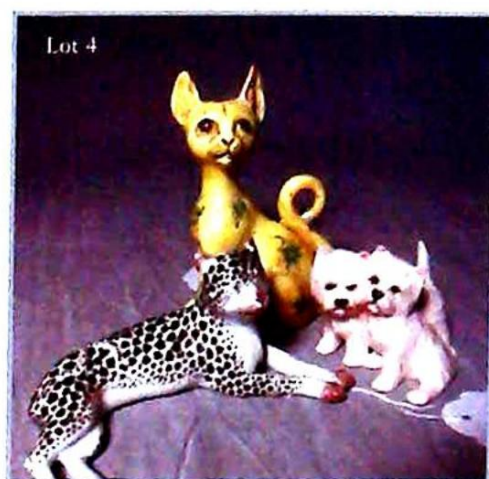
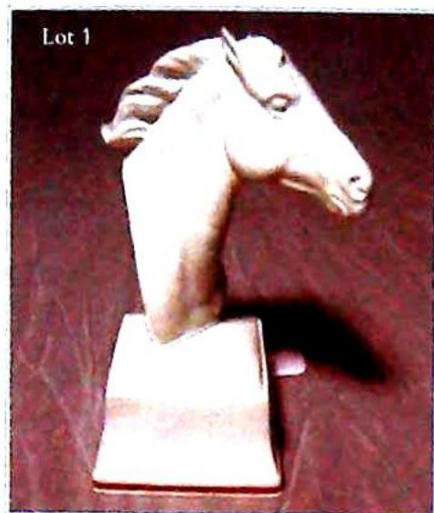
The Thos. Mawer & Son salerooms at Dunston House are situated in central Lincoln on the east end of Portland Street at the foot of Pelham Bridge (Canwick Road). By car, approaching from the south take the last turning on the left just before the road rises to the bridge.

Approaching from the north (via Broadgate), go over Pelham Bridge and turn left towards Jacksons Building Centre/Tesco on to Kesteven Street. Follow the road around to the left and drive under Pelham Bridge to Portland Street. Turn left and you will see Dunston House on the right. Portland Street is also accessible from Lincoln's High Street, opposite the Ritz public house.

The salerooms are within walking distance of the main railway station and bus depot.

ENGLISH & CONTINENTAL PORCELAIN & POTTERY

1. Royal Worcester. An underglazed white porcelain bust on square base plinth of "Lampon" - a champion racehorse, made c.1956/9
2. A XIX century Meissen style porcelain figure of a lady gardener, tending vine with grapes on wall at left side, blue hat (two small chips), blue bodice, pink fichu, yellow over dress and pink petticoat. flowered at hem, sprigged apron, pale blue crossed swords, mark beneath, square base, Meissen or Samson (hand and vine damaged), 11cm high
3. Royal Doulton HN1677 "Tinkle Bell", blonde hair, white and blue bonnet, pink dress, basket in her right hand, posy in left, paintress mark 35, 12cm high
4. A porcelain recumbent leopard, underglaze dark blue, mark possibly Samson of Paris copying Meissen, 12cm long; a Beswick group of two West Highland white Terriers; and an early XIX century porcelain cat, yellow body, green leaves, Galle style (3)
5. A porcelain bust of child Princess Zephrine De Bourbon (modelled originally by J J Kandler) in white cap, blue bow at left, pink sprigged shawl, turquoise bodice, black and gold striped at front, posy of flowers on left shoulder, circular base, gilt scrolls around, blue crossed swords mark beneath and No. 15 in red, 15cm high
6. A mid XIX century Staffordshire cottage pastille burner with open chimney, crumbing on roof, gothic window and doors, oval flowered base, c.1840-50's, 11cm high
7. A mid XIX century Staffordshire porcelain cottage two part pastille burner, flower encrusted base with hollow for pastille, flowered roof and walls with open windows c.1840's (damage to flowers and leaves), 11cm high
8. "Noddy Girl" in unglazed porcelain blue dress, white pinafore and pantalettes, red boots, blue anchor mark, 11cm high; and a glazed figure of a child holding a toy horse, blue jacket, peach dress, white pantalettes and black boots, 9cm high (2)
9. A "Niderviller" French faience figure group, showing two boys, the older giving small boy water from a bowl (copied from a Custine original in 1780 with a birds nest instead of a bowl), early XIX century (cracks to base), 19cm high
10. W T Copeland. A relief moulded white stoneware barrel shape harvest jug, moulded registration diamond mark for 1853, 17.75cm high
11. An early XIX century tan stoneware jug with white applied hunting and sporting motifs, white serpent or snake wound around rim, mouth forming spout, tail its handle - unmarked (perhaps Minton) daisy shape white raised patch on base, impressed 20, 1830
12. A XIX century octagonal ironstone jug decorated with floral leaf designs in blues, cobalt blue snake handle, William Kirby & Co, Sutherland Pottery, Fenton Staffordshire 1879-85, approx. 16cm; and a pink lustre decorated ale jug, the four cornered body with stripe decoration, c.1810-20 (firing crack), 15cm high (2)
13. Doulton Lambeth:- brown/fawn glazed stoneware bowl with applied cream motifs of sporting themes, the smoking man, sailor, windmill etc., hallmarked silver rim, London 1895; and a French ovoid terracotta vase, brown green and fawn "William The Conqueror "Hic Ducem Willem" from Bayeux Tapestry, incised on base RRBV (rim chip) (2)
14. Two Minton plates - one soup plate has Minton year mark, impressed in centre, gilt shells and hand painted flowers (a/f) and a pink and gilt plate, hand painted flowers, no mark, but Minton style, gilded edge (riveted crack); and Liverpool or Lowestoft blue/white porcelain tea dish and saucer decorated with Chinese bridge, house etc.; Crown Derby Japan pattern breakfast cup; Copeland cup and matching saucer, the cup gilt, blue and lemon yellow, the saucer gilt (all pieces a/f); a Wedgwood creamware trio of cup, saucer and plate, Japan pattern in blue, iron red and leaf green on dotted ochre ground (a/f) Williams? mark c.1875 (9)



15. A Bacchus and Pan large jug, based on a Ralph Wood model, believed to be designed by Voyez, Bacchus is back to back with Pan holding a cornucopia with a dolphins head spout, painted green and orange, a grey chained sea lion handle, "The God" wearing a lion skin seated on a brown striped barrel draped in fruits and flowers, "Pan" with vines round his hips, holding a goblet and pipes, circular base marbled in blue and red c.1800-20 (see "Hawley" jug p1 174 p.219 "Prattware" 1780-1840 by John & Griselda Lewis), 33cm high 33cm high £400-£500
16. A pair of XIX century white and gilt Staffordshire spaniel dogs, left and right with free paw, gilt chain and padlock, pink roses spotted black, grey paws, 20cm high
17. A pair of XIX century glossy black cats, black glaze with gilt features and whiskers with two free paws, seated on oblong cushions, lined and tasselled in gilt, white enamel eyes (possibly Jack Field, Craven Dunhill & Co Ltd 1870-80) (small chips to cushions), 19cm high
18. A late XVIII/early XIX century toby jug "Hearty Goodfellow" in Prattware colours, brown breeches, buckled shoes, manganese grey/blue coat, ochre and green patterned waistcoat, green/ochre tricorne hat, ochre ale jug in right hand, pipe in left (a/f), c. 1790-1800, 29cm high £120-£220
19. An early XIX century toby jug "The Drunken Parson" or "Doctor Johnson", wearing a black coat & tricorne hat, grey wig slightly askew pours his drink from a jug onto a knee, a glass in his left hand, c.1830 (attrib to Enoch Wood)(minor chips), 17cm high; & a XIX century toby tobacco jar and black hat lid, cobalt blue coat, checked or tartan waistcoat, orange knee breeches, glass in left hand, jug in right, grey wig, rounded base, c.1890-1900, 12cm inc. hat (hat damaged) (2)
20. Early Staffordshire or Yorkshire version of Mansion House dwarf, the man decorated in Pratt colours, blue doublet, ochre breeches, white stockings, white hair and moustache, tall conical brown hat, ochre/red rosette, round hollow greenish base, c.1790-1800, 15.5cm high
21. A XIX century Staffordshire inkwell and pen holder, girl in 1840's style plumed hat, cobalt blue coat and yellow fichu looking over fence at her three spotted rabbits and hutch, oval crumbed base (unrecorded), 12cm high
22. A XIX century Staffordshire pair of white French poodles in lion clip carrying green/orange baskets of crumbed flowers in their mouths, oval bases with gilt motifs, 8cm high £100-£150
23. A late XIX century porcelain seated greyhound, beige with blue collar, green oval base (crack in body and front paws), 14cm high
24. A Meissen shepherd, shearing his sheep seated on a tree stump, in pink waistcoat pink and turquoise striped breeches, gartered in iron red, black plumed hat, shears in left hand, sheep on his knee, made as a candelabra base, column with bocage, white and green circular base, underglazed blue large crossed swords mark, 28cm high £100-£200
25. A XIX century Meissen figure of a young woman seated on a cushioned stool, modeller M.V. Acier at Meissen, the woman in flowered bunched up skirts, lace at hem, neck and sleeves, small dog on her knee, his image in mirror she holds, (from the senses Sight), 15cm high £100-£200
26. An XVIII century tea cup and saucer decorated with blue flowers and checked panels, the cup with double intertwined strap handle, possibly Leeds £150-£250
30. A mid XIX century Portobello flatback group of two fish wives, brightly coloured, lifted up skirts and aprons, striped petticoats, c. 1845/50 (crack to base) 24cm high £80-£130
31. A Staffordshire figure of Napoleon mounted on horseback, horse facing left, he wearing a cocked hat, long cobalt blue coat, breeches and knee boots, orange cloak billowing behind, oval base with coloured crumbing (kiln crack), 24cm high £100-£150

Lots 31 & 32



Lot 15



32

Lot 19



Lot 20



Lot 24



Lot 25



Lot 18



Lots 21 & 22



32. A mid XIX century Staffordshire miniature figure of Napoleon in orange coat, cocked hat and knee boots, standing against a cannon, right arm inside coat, tricolour flags behind, circular base, 1840's (crack and two small chips to base), 9cm; and an underglaze painted French hard paste porcelain head and shoulder portrait of Napoleon in cocked hat, blue cloak and high iron red collar, made as an inkwell and pen rest (small chips to one side of hat), 9cm high (2)
33. A mid XIX century Staffordshire portrait figure of the Duke of Wellington in post war times, mounted on a spirited horse wearing top hat, black coat and white breeches, stock and waistcoat, circa 1850 (restored), 27cm high (unrecorded) £100-£200
34. An early XIX century Staffordshire group "Sailors Return" on hollow oblong base with canted corners; the sailor in cobalt blue and trousers, black kerchief and hat, kneels on a box of dollars, embracing his lady in orange bonnet, grey apron and flowered dress, the man holding a purse in his hand (damaged and restored), 23cm high £150-£250
35. A mid XIX century Staffordshire portrait figure of "William Shakespeare" leaning on a pillar, books on top, pointing a finger to a manuscript, in a peach robe, gilt decoration, waistcoat and pink sponged breeches, on an oval cut out base decorated in gilt, c. 1845-50 (cracks to base) 22cm high £150-£250
36. A late XVIII/early XIX century Staffordshire figure of "Winter" as a skater, a man with arms folded in black hat, tan cloak or sack, striped waistcoat and yellow knee breeches, well modelled in underglaze enamels c.1790-1810, 19cm high £80-£160
37. An early XIX century Staffordshire figure of "Autumn" as a boy, bare foot, squeezing grapes into a glass, black hat, brown coat, white shirt and yellow breeches, he is standing against a tree stump, square base, c.1800/10 (paint chips), 20cm high £80-£160
38. A late XVIII/early XIX century Staffordshire square base figure of "Spring" as a barefoot girl, fair hair in ringlets and bandeau tip tilted hat, flowers in her right hand, basket of flowers in her left hand, laced pink and yellow bodice, floral dress, pink petticoat, 1790-1810 (chips to base), 19cm high £80-£160
39. A Staffordshire figure of "Hope", lady in yellow, turquoise edged mantle, leaning on an anchor, sandalled feet, flowered robe with blue sash, square hollow base (anchor end missing, neck appears restored), 18cm high £80-£160
40. An XVIII century Staffordshire figure of "Charity", baby in left arm, naked toddler at her side under her yellow, turquoise bordered mantle, sandalled feet, flowered robe, an older child at her right side in a brown dress, carrying a horn book, hollow square base, 19cm high £80-£160
41. A mid XIX century figure of Queen Victoria and the Princess Royal - Victoria wearing crown, seated, full length cobalt blue dress and ermine edge cloak, her right arm round Princess Victoria Alexandrina, wearing a dress and pantalettes, c.1843, 15cm high
42. A XIX century figure, believed to be Napoleon III's Queen Eugenie and Prince Imperial, she sitting on a tree stump nursing her red haired baby son in her lap in a long robe, she is in white with gilt flowers and wearing a plumed head dress, finely painted face, white cat or dog with tan sponging sits at left side, 19cm high (unrecorded) £80-£160
43. An early XIX century figure representing "Water" as a fish wife, the fair haired bonneted woman standing on the shore, water and shells at her feet, fish held in her gown, flowered petticoat, fish trap in her left hand, square base, potter or decorators mark beneath, c.1820, 17cm high £100-£200
44. An early XIX century Staffordshire figure of a woman out hawking (one of the elements representing "Air"), wearing a turquoise coat, frilled shirt, black high boots and checked skirt, left hand holding a hunting horn, right hand a hawk near her hat, square based Walton type, 1820 (crack to right arm and lip of horn), 17.5cm high £80-£160
45. A figure of "Bacchus", dressed in leopard skin drape and vines, wine cask behind resting on vine and grape covered green mount, a glass in his left hand, bunch of grapes in right, dark blue painted decoration to base, square hollow base (right arm cracked, firing crack in left leg) - possibly Leeds Pottery, 18cm high £100-£200

Lot 33



Lot 34



Lot 35



Lot 36



Lot 37



Lot 39



Lot 40



Lots 43 & 44



Lot 42



Lot 41



Lot 45



46. A Staffordshire figure of "Neptune" shown standing on a spouting dolphin, bearded wearing orange and ochre crown, yellow and brown robe, sockets in hands for trident, square base (unrestored, some paint flaking on rocky base and two small chips, trident missing), possibly Enoch Wood 1820/30 - see Pat Halfpenny, 24cm high
47. A Staffordshire figure of "Venus" (probably by Enoch Wood) with classical mantle, mauve green lined, flower sprigged gown, naked breast, hair in Grecian style held by orange circlet, winged cupid to right, her left hand on dolphins tail, square base, 1820-30 (some flaking of green enamel on dolphins tail), 23cm high
48. A pair of early XIX century Staffordshire figures known as "The Sportsman" and "The Archeress", he wearing a stock & turquoise coat, yellow breeches & knee boots, black hat, satchel and a powder flask, holding a shotgun, pointer dog standing beside him, potter or decorators mark beneath, possibly John Walton (1820); The Archeress in plumed hat, blonde hair, turquoise coat and flower edged gown, bow in her left hand and arrow in her right, a quiver is slung from her shoulder, target against the tree stump behind her (end of bow missing), 18cm high (2) £150-£250
49. "The Lost Sheep", well modelled and underglaze printed in polychrome colours, unmarked, Yorkshire by either Thomas Hawley's Kilnhurst Pottery or William Hawley's Top Pottery (1795-1810, page 117 of Pat Halfpenny's book, also page 73 of "Prattware" by John & Griselda Lewis) (sheep missing from shepherds back, damage to neck and base), 21cm £80-£160
50. A circular Staffordshire figure "Master Lambton" after Sir Lawrence P.R.A. in 1825 "The Red Boy", a frilled shirt, peach breeches, pink waistcoat (see Pugh pages 601 & 633), hollow base, 11cm; and a pair to "The Red Boy" is a girl on a hollow circular base in blue bodice, green and gilt collar, white dress with pink braid, green slippers, her left hand leaning on a rock, 11cm (2). N.B. Charles William Lambton 1818-31, eldest son of first earl of Durham both figures early Victorian, probably late 1830's (unrecorded)
51. A Staffordshire naive style porcelain figure of "The School Mistress" cane in her left hand, she wearing a bonnet, white/blue dress, pink sponged apron, a small girl in white pink edged dress standing to her right arm 1830-40, 12cm high
52. A Staffordshire porcelain girl in a poke bonnet, blue and white dress, pink sponged skirt, the hollow oval base with applied flowers, bird cage in left hand, bird on right hand, a dog jumps up to reach bird, c.1830-40, 13cm high
53. A mid XIX century Staffordshire figure "Fruit Seller", standing against a rock in white and gilt coat, hat and stockings, pink breeches, he holding a basket and fruit in each hand, gilt decorated base, 1840's, hollow base, 12cm high
54. A naive Staffordshire porcelain group of "Sailors Return", sailor in green coat and spotted waistcoat, orange neckerchief and white hat, his lady with sprigged dress, seated on two rocks, the oval base with crumbed decoration, barrel at feet, 1840's (damaged), 12cm high; and a Staffordshire porcelain oblong base "Souter Johnny" sitting on a white cushion wearing a dark green coat, red stocking hat, pink breeches, white waistcoat and yellow apron, holding a flagon in right hand, possibly by Lloyd of Shelton (Pugh p.417, 102), 12cm high
55. A mid XIX century rabbit on an oval green base, he has black ears on a white ground and black patches, mid to late 1850's, paint chips, 8cm long, 5cm high £100-£200
56. A mid XIX century flatback maned lion on rocky base with green crumb against a tree stump as a spillholder, orange lined, 14cm high; and an early XIX century Staffordshire spotted horned deer lying on a green ground mound, pale green leafy bocage behind with blue flowers, hollow oval base, c.1800 (two leaf tops broken), 12cm high (2)
57. An early Staffordshire "Gamekeeper" carrying a fowl over his shoulder, standing on a square base with under and over glaze, in black hat, brown coat, yellow spotted waistcoat and green breeches, impressed "W" beneath base, probably by Walton, 13cm high £150-£300

Lot 46



Lot 47



Lot 48



Lot 50



Lots 51 to 54



Lots 54 to 56



Lot 49



58. An early XIX century Staffordshire lady gardener in white apron, laced red and green bodice, flowered dress, white hat on a green mound, holding a basket of fruit, under and over glaze painted, square base, 1820, 14cm high £100-£200
59. A Staffordshire figure of a shepherdess with flowered yellow bodice and long skirt, sheep standing up at her side, hollow round circular flower strewn base, c.1820-25
60. A figure of "Justice", Grecian styled hair and circlet, turquoise flowered and white robe, her eyes blind, she holding a drawn sword in her right hand, scales in her left, square hollow base (two metal scale pans missing, chip on shoulder), 21cm high £100-£200
61. An XVIII century Staffordshire figure, a bare chested child classically posed on a rock, draped in flowered turquoise edge robe, reclines holding a basket of fruit, oblong base underglazed, c.1790 (hairline cracks and old chips to base), 8cm high £80-£160
62. An early Staffordshire candlestick figure of Cupid in disguise as a tree, standing on a flower strewn square base, naked except for a flowered drape, holding a quiver behind and a club in his hand, pink wings, leafy crown on his head, late XVIII/early XIX century, 22.5cm high £100-£200
63. An early Staffordshire candlestick figure of cupid disguised as a tree, underglaze painted in soft colours, his drapery is yellow, turquoise bordered, scalloped crown, no quiver, hollow square base with a angled incised sides, 23cm high £200-£300
64. An early XIX century Staffordshire horned sheep with lamb and flower at feet, on an oval green base, sheep with iron red patches, bocage behind and well painted, probably Walton or Salt, c.1820, 13cm high £150-£250
65. An early XIX century Staffordshire horned ram, red patched on pea green oval willow base with lamb, crumbing, bocage, matches base, c. 1820, probably Walton or Salt (damage to bocage), 13cm high £100-£200
66. A pair of early XIX century Staffordshire figures of shepherd and shepherdess by John Walton, the pair brightly painted - he in hat, fawn coat, striped waistcoat and yellow breeches, dog at his right side, bocage with flowers behind both figures, she wearing pink flowered hat, red bodice and flowered dress, petting a standing lamb with flower on its head, circular base, typical Walton scroll work painted in blue on bases, bocage complete, John Walton c.1820 (illustrated in Griselda Lewis "Collectors History of English Pottery" page 134 and Pat Halpennys book p.231) 12.5cm high (2) £150-£250
67. An early XIX century Staffordshire pottery figure of a gardener holding a potted plant leaning on a spade, fluted column with fruiting vines, square base, 1820-25 £150-£250
68. A Staffordshire figure of "The Widow of Zarephath", sitting on a rocky green mound with crumbing, square black/white marbled base, she sitting against a tree and bocage wearing a grey/blue mantle lined with green, flowered orange dress, sandalled feet, holding sticks in her left hand, child standing at left, a cruse or barrel at right, early XIX century - possibly Walton or Enoch Wood (some damage), 25cm high £100-200
69. An early XIX century Staffordshire figure "St Matthew", wearing a deep blue, white spotted robe with leather apron holding a scroll in his left hand, broken cross? in his right hand, scroll at base at right, impressed "Hall" (John & Ralph Hall 1814-1822), hollow oval pea green base, glossy green enamel and bocage at back, 19cm high £150-£250
70. An early XIX century figure of "St Mark" named on base, sitting against a tree and bocage, wearing a pink robe, brown green lined cloak, bearded and preaching from a book, shown with a maned lion to right of his feet, hollow oval base (paint chips), 20cm high £150-250
71. An early XIX century figure of "St Luke" standing against a tree with bocage wearing a blue shirt, green and tan cloak and mauve sponged robe, split apron or over skirt, very thick underglaze enamel, he is reading or preaching from a book, an ox lies at his feet to the left, hollow oval pale green base (some chips), 20cm high £150-£250

Lots 57, 58 59 & 61



72. An early XIX century Staffordshire figure of "St John", ribbon at back, he standing against a tree (bocage missing) in a pink robe and blue sash, brown cloak and holding an overflowing cup in his right hand, St John impressed on front of base, impressed panel on rear "SALT" (Ralph Salt 1820-46), hollow oval base (some enamel paint flaking), 18.5cm high £150-250
73. A figure of "St Paul" sitting on a stump bocage, preaching using his sword hilt as a crucifix, book in his left hand, bearded with a purple sponged shirt and brown robe, sandalled feet, oval hollow base, 23cm high - very attractive and brightly coloured piece by John Walton 1825, see 57 plate 41 "Staffordshire Portrait Figures" by John Hall
74. A Walton type Staffordshire figure of "Saint Peter", impressed name on base, the bearded saint kneels on a rock against tree and bocage, wearing a mauve robe and clasping his raised hands, crossed keys at his feet, a book and crowing cockerel at right side c.1820, 21cm high
75. A pair of early XIX century hollow base Staffordshire figures with impressed titles "Widow" and "Elijah", 27cm high (both figures damaged to hand and foliage)
76. A Victorian transfer print "Vista" pattern part dinner service:- a pair of tureens and covers, 29cm diameter; a pair of ditto sauce tureens with ladles and stands, 14cm; a comport, 28cm; meat plate, 33cm diameter; pair of smaller ditto, 25cm; twelve dinner plates, 26cm; twelve dessert plates, 20cm; twelve side plates, 16cm £100-£200
77. XIX century Staffordshire. A blue and white willow pattern decorated leaf shaped pickle dish, 14cm long; an oriental fluted bodied blue landscape painted and gilt decorated bowl, 14cm diameter; and a small early XX century willow pattern decorated coaster, 10cm diameter
78. Flight & Barr. A late XVIII/early XIX century cup and saucer decorated with a green and gold oak leaf and acorn band, gilt swags etc., the cup 7cm high, saucer 13cm diameter, black written mark
79. A XIX century Staffordshire tea cup and saucer decorated with pale yellow and gilt border, the green ground with white and gilt zig zag decoration, central floral panels; and three Continental porcelain cups and saucers (4)
80. Spode. A 276 pattern cup and saucer and a 1645 pattern cup and 967 pattern saucer
81. Sevres. A pair of late XVIII century floral decorated plates, flowers by Taillandier, gilding by Prevost, 24cm diameter £80-£160
82. Bloor Derby. A shallow bowl/plate decorated in Japanese style, red printed mark, 24cm diameter; and another Derby plate with wavy edge and Japanese style decoration, 19cm diameter (hairline cracks, one restored)(2)
83. Mintons. A part dessert service comprising two comports and eight plates decorated with wild flowers and butterflies, printed green mark, pattern No. 5421, 23cm diameter (1 plate a/f)
84. Meissen. A wavy edge plate with panelled decoration of alternate figures and flowers, gilt highlights, blue cross mark erased, 20cm diameter; and another porcelain plate with scroll and floral sprig decoration, gilt highlights, 23.5cm diameter(2)
85. A XIX century porcelain serving plate decorated with floral sprigs, pale blue border, paint mark A6892, 27cm long; a XIX century shallow bowl/plate with wavy edge swirl decoration, 19cm diameter; and a XIX century plate with gilt floral overall decoration, 21cm diameter (3)
86. A XIX century Imari oval plate with open lattice work border, 32cm x 26cm and a hardwood stand
87. A pair of Canton famille rose decorated vases with panels depicting courtiers, the flared neck internally decorated with blossom, 26cm high; and a Celadon ware plate decorated with birds, butterflies and flowers, 19cm diameter(3)
88. A brown treacle glazed frog mug, the exterior decorated with fruiting vine and toppers, 10cm high

Lot 72



Lot 73



Lot 74



Lot 75



Lot 76



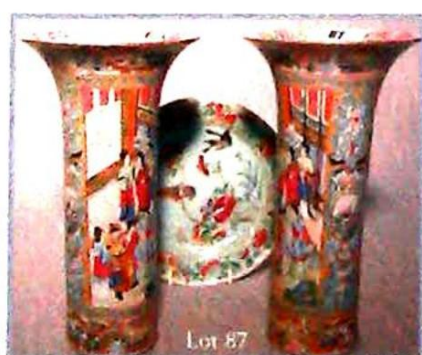
Lot 81



Lot 86



Lot 77



Lot 87

Lot 88



Lots 78 & part of lot 79



89. Three modern Dresden style figures:- boy in green coat holding posies, 15cm high; girl with green and flowered dress with basket of flowers, 15cm high; and man in purple jerkin, yellow trousers seated on a tree stump with basket of flowers, 11cm high £80-£160
90. Masons. A set of three XIX century octagonal ironstone jugs with serpent handles, overall decorated with Chinese landscapes, black printed mark, 17cm, 15cm and 13cm high £60-£120
91. A XIX century ironstone china octagonal jug with frog handle decorated in Japan style, impressed "ironstone china", 13cm high; and another XIX century ironstone china jug with scroll handle decorated in Chinese style, 16cm high (2)
92. Prattware. Four plates, 18cm diameter - "The Poultry Woman", "Cows in stream near ruins", "The waterfall" and "The Red Bull Inn"; and a small mug "A Muleteer", (chip on base) (5)
93. Crown Derby. A XIX century fruit bowl, the rectangular body raised on circular foot, decorated with scrolling foliage in iron red, purple and gold, two strap handles, red painted mark, number 21, 30cm x 20cm (hairline crack) £80-£160
94. A pair of XIX century Japanese gourd shaped vases with hand painted prunus blossom decoration, 25cm high and a baluster vase decorated with a mountainous landscape, 26cm high (a/f) (3)
95. Sevres. A mid XVIII century hexagonal porcelain box with ormolu mounted lid, overall decorated with pale blue and gilt four petal flowers, central rose panel, gilt highlights, 5.5cm diameter
96. Niderviller. A Japan style decorated coffee can, 6cm high; Crown Derby - a French sprig decorated coffee can, 6.5cm high and two Willow pattern transfer printed coffee cans, 6cm high (a/f); a Dresden style yellow ground and bird decorated cup and saucer and a lobed figure and floral decorated saucer; oval cherub decorated porcelain plaque; porcelain saucer; small Dresden style doll figure; Limoges porcelain handle (11)
97. Mintons England. A batchelors part tea set comprising teapot, cream and sugar, two cups and saucers decorated with summer flowers; and two other cups decorated with cranes, pattern B926, four souvenir spoons etc. (17) (one tray)
98. A XIX century Staffordshire blue and white transfer printed jug, 25cm high £50-£100
99. A XIX century Staffordshire blue and white transfer printed charger decorated with floral and foliage border, central scene of figures, buildings etc. beside a lake, in a turned oak circular frame, 41cm diameter £80-£160
100. Copeland Late Spode. A XIX century blue and white transfer decorated bulbous bodied jug with gilt highlights, 20cm high (a/f)
101. An XVIII century Dr. Wall period Worcester tea bowl, decorated in the Chinese manner and another similar bowl, 7.2cm and 7cm diameter (2) £80-£130
102. Royal Worcester. J Ayrton - a plate with still life of fruit and flowers on a table, blue and gilt border, date mark 1915, 23cm diameter £120-£180
103. Miles Mason. A XIX century willow pattern saucer, 20cm diameter; and a XIX century part dinner service "Rhine" pattern, maker JRB - two oval meat plates, covered tureen, sauce tureen and cheese dish (6)
104. A blue and white transfer print chamber pot and an abbey pattern toothbrush holder
105. A XIX century Staffordshire majolica jardiniere and stand, the jardiniere with lobed everted rim and stepped base decorated in Royal blue, pale blue and brown, scrolling and "jewelled" decoration, the four sided base similarly decorated, 125cm high (jardiniere damaged)
106. Losolware. Four assorted transfer printed chamber pots
- 106A. Losolware. Four assorted transfer printed chamber pots
107. F.H. Garner & Michael Archer - English Delftware published by Faber & Faber, 2nd edition 1972 and two other books

Lot 89



108. A tin glazed terracotta handled pot and cover, 13cm high; a circular tin glazed jar with block printed decoration, 5cm high, 8.5cm wide; and a small footed cup, 8cm diameter (3)
109. Delftware. A Chinese style blue decorated plate, 23cm diameter
110. Delftware. A blue decorated landscape plate, 23cm diameter
111. Delftware. A blue and manganese purple decorated plate, 17cm diameter; and a blue, yellow and green decorated plate with central basket of flowers, 22cm diameter (both a/f) (2)
112. Delftware. A blue decorated shallow bowl, 19cm diameter; a plate 19.5cm diameter (a/f) (2)
113. Delftware. Two blue decorated plates, 23.5cm & 23cm diameter; a blue decorated tile (a/f) (3)
114. Delftware. Two blue decorated plates, 22.5cm & 19cm diameter; and a bowl, 23.5cm diameter (3)
115. Delftware. A cylindrical mug decorated with manganese purple and blue flowers, green foliage, pale yellow neck band on handle, 15cm
116. Bristol. A blue and Sopra-Bianco tin glazed plate with landscape of houses and fishermen, 22.5cm diameter, circa 1760-70 (see plate 89a "English Delph Ware" by Garner & Archer) £200-£400
117. Delftware. A pair of dark blue painted shallow bowls with yellow borders, 23cm diameter
118. Delftware. A blue painted plate with central Chinese style panel, 23cm diameter
119. A XIX century Derby plate decorated in blue, ochre and cobalt, ochre cross baton and crown mark beneath, 22cm diameter; and Victorian teaware by Till & Sons - five side plates and a bowl (7)
120. An oriental fluted bodied bowl, the exterior decorated with a landscape, the interior with a cottage, 24cm diameter (a/f); a blue and white hand painted jar and cover, 13cm high (a/f) and an oval blue and white hard paste porcelain plate decorated with landscape, 26cm long (3)
121. A Continental porcelain plate decorated with head and shoulders, portrait of young girl with fur edged cape and hat, 16.5cm diameter
122. Wedgwood. A XIX century earthenware foot bath, 51cm x 44cm, impressed mark beneath
123. A pair of mallet shaped flat sided early XIX century decanters with three ring necks and a hob nail cut sherry decanter and stopper (3)
124. An Italian crystal six branch chandelier hung with prisms and with six scroll bulb holders £300-£400
125. A XIX century Richardson glass specimen vase, citrine body, pale blue bands, applied lizard amid floral sprigs and gilding, c.1870, 22cm high
126. Dutch tiles - "Childrens Games" painted in blue, eight complete and two half tiles, 15cm square
127. Gouda. A jardiniere - brown ground, black outlined stylised flowers, painted mark 353 - Silvia Gouda Holland No. 2655, 20cm high £70-£130
128. A XIX century apple green glass decanter with clear glass drawn reeded handle and hollow steeple stopper; and a cranberry glass reeded bodied narrow necked vase decorated with enamelled flowers and butterfly (2)
129. XIX century glass - two slice cut rummers; three wines; six vine etched wines with slice cut bowls; five smaller ditto (16)
130. An elaborate Victorian seven trumpet vaseline glass epergne (some damage) 52cm high £100-£150

SILVER PLATE

141. A silver plated port funnel with gadrooned border and an old Sheffield plate column table candlestick with loaded base, 19cm high
142. A spherical Victorian heavy cut glass scent bottle with an embossed plated screw on top and internal glass stopper, 15cm high
143. An engine turned plated snuff box with scroll outline; another with a hinged lid; a vesta case and three pairs of sugar bows

Lot 5 part 114 & part 113



Lots 112 & 111



Lot 116



Lot 109, part of lot 114 & 110



Lots 117 & 118



Part of Lot 119



144. A XIX century old Sheffield plate salver with shaped gadrooned border on three scroll and foliate decorated feet, 26cm diameter
145. A pair of plated wine coasters with gadrooned borders and turned hardwood centres, 15cm diameter
146. Five mother of pearl handled fruit knives; three similar crab picks; a fish knife and fork with silver blade; assorted other plated cutlery including a large soup ladle and a pair of fruit servers (26)
147. A cased set of twelve mother of pearl handled fruit eaters by Alfred & Son, Great Yarmouth and an elliptical old Sheffield plate tray with a pierced raised gallery, 9.5cm x 23cm
148. A XIX century two handled tea urn and cover with turned brass spigots, bright cut decoration on a square plinth, 40cm high
149. A XIX century engraved copper tray with cast vine border and scrolling carrying handles, 61cm x 44cm
150. A circular plated two handled serving dish by the Goldsmith & Silversmith Company, 14cm diameter; and a hallmarked silver gilt pocket cigarette case, bright cut decoration
151. A plain circular plated pocket flask by TW & S, 9.5" diameter
152. A plated coffee pot of neo-classical design, the urn shaped body decorated with floral garlands and with an elaborate scroll handle, hinged dome lid and circular foot, 31cm high, trefoil hors'doeuvre dish and 2 others
153. A pair of plated fish servers with engraved blades and scroll decorated handles - cased
154. A silver plated six piece condiment set by Hardy Bros. Ltd. Jewellers, Australia, in fitted box; and a XIX century silver plated repousse decorated lidded mustard pot with blue liner; two egg cups; bone handled crumb scoop; and cheese scoop
160. A London salver with pie crust edge standing on three scroll and leaf cast feet, 1907, 27ozs, 40cm diameter £100-£150
161. A George III oval sugar basket, the body with pierced arcaded decoration, reeded rim, swing handle and oval foot, with blue glass liner, London 1793, maker Crispin Fuller, 9cm high, 17cm wide £250-350
162. A George III plain compressed circular teapot with reeded band to the body, hinged lid, composition finial and scroll handle, London 1814, maker **EB, approx. 18ozs gross £180-£250
163. A small Georgian silver helmet shaped cream jug with fluted rim, scroll handle and stepped fluted foot, 11cm, London (marks rubbed) £150-£230
164. An oval repousse decorated pressed silver jewel cask with hinged lid and satin lined interior, Birmingham 1895, 10cm x 8cm
165. A Victorian fluted tapering and embossed silver two handled sugar basin on a stepped foot, 8cm high
166. A Georgian design silver taper stick, the turned column on a stepped loaded base with inverted corners, Birmingham 1903, 11cm
167. A George III fiddle pattern fish slice with a decoratively pierced blade, London 1808, maker TJ, 30.5cm overall
168. A George III fish slice with decorative pierced blade, London 1805, maker IG, 30cm overall
169. A pair of antique silver sugar nips with pierced bright cut decoration and spade shaped ends; and a smaller later pair of plain silver sugar nips
170. A pair of George III old English pattern sauce ladles, monogrammed - marks obliterated, maker JJ, 18.5cm overall £100-£150
171. Twelve XIX century matched silver table forks, fiddle pattern, approx. 29ozs £70-£130
172. Twelve Victorian and earlier fiddle pattern dessert forks and spoons, some with monograms and heraldic crests, approx. 34ozs

SILVER

159. Sheffield 1867/8. A four piece silver tea service, the ovoid bodies decorated with scrolling and monogrammed with date 1869, 69ozs £600-£800

Lots 166, 178 179 & 183



173. A pair of early XIX century London hallmarked table spoons, maker SR IED
174. A pair of early Victorian fiddle pattern table spoons by MC London 1837, first mark
175. A set of six early XIX century London hallmark teaspoons by Wm. Eley, Wm. Fearn and Wm. Chawner
176. A set of six teaspoons and seven other miscellaneous silver teaspoons
177. A set of six plain soup spoons, London 1922, approx. 13.5ozs
178. A George III seven bar toast rack with "C" scroll carrying handle, reeded frame on four foliate and hoof feet, London 1816, possibly Wm. Burwash, 11ozs, 16cm x 9cm £200-£300
179. A small spherical cream jug with reeded collar and scroll handle, marked beneath "Rossi Norwich", 6.5cm high
180. A heavy oval tea tray, the dished centre with a fluted raised border and two heart shaped handles, 52cm x 34.5cm, Sheffield 1913, maker HA, retailed by Windsor Bishop, Norwich, approx. 52ozs £280-£380
181. A Victorian coffee pot, the tapering body part fluted and with double horizontal banding, the hinged lid an ebonised finial and square section ebonised handle, standing on four spherical feet, London 1899, maker H.S., 21.5cm high, approx. 24ozs gross £170-£260
182. A circular hot water jug with hinged domed cover and stepped foot, brown composition finial and scroll handle, 22cm high, Birmingham 1932, approx. 14ozs gross £120-£180
183. An XVIII century style baluster sugar dredger with decorative pierced domed cover, turned finial on a stepped foot, 13.5cm high £120-£180
184. An Art Nouveau design trinket tray, Birmingham hallmarked; a silver napkin ring and a plated ditto
185. An early Victorian rectangular snuff box with scroll engraved hinged lid, silver gilt interior, Birmingham hallmark, 1843 Nathaniel Mills, 7.5cm x 3cm
186. A set of six fish eaters with mother of pearl handles, silver bolsters and foliate and scroll engraved blades, Sheffield 1900, maker HF - in a walnut case £150-£250
187. A butter dish in a circular hallmarked silver mount with two pierced handles; a glass preserve jar with a silver top (2)
188. London 1869/70. An engraved salver with shell and scroll pattern border, engraved with pressed - griffins head erased, three rococo scrolling feet, maker RH, 23cm diameter
189. Sheffield 1935. A pie crust edge circular silver tray on three ball and claw feet, Jubilee hallmark, maker H.F. & Co, 32cm diameter £150-£250
190. Tessiers Ltd. London. A circular cream jug with a scroll handle, scatter hallmark 1914, maker AP FP, 10cm diameter, 5.5cm high £120-£180
191. Three Birmingham hallmarked presentation miniature cups engraved "C. M.G.C." and a hallmarked silver collapsible beaker London 1895/6, maker CD, retailer Mappin & Webb (4)
192. An oval pierced ornate press silver bon bon dish on four cast feet and a pocket cigarette case with bright cut foliate decoration
193. Sheffield 1908/10 A three piece fluted bodied tea service £200-£300
194. London 1806. An early XIX century shell shaped caddy spoon by EM
195. A Georgian design helmet cream jug with reeded border and handle on a square base, Sheffield 1896, 14.5cm high £120-£180
196. A child's christening set comprising tapering beaker and spoon and fork, all decorated with fern design, London 1874 by EB JB & WB, in a Hunt & Roskell presentation case £100-£150
197. A small Victorian silver christening tankard, the ribbed body decorated with foliage and ferns and with an elaborate scroll handle, London 1847, contained in a Hunt & Roskell case £70-£120

Lots 180, 181 & 182



Lots 189 & 188



Lots 193 & 203



Lot 195



198. A baluster London hallmark specimen vase with weighted base, 13cm; and an ivorine napkin ring monogrammed "B" in applied silver
199. Victorian Kings pattern cutlery by G.A. 1863 comprising 12 table forks, 6 table spoons, 6 dessert spoons and forks, 4 salt spoons, 10 teaspoons - approx. gross weight 120ozs £600-£1000
200. An Irish fiddle pattern basting spoon, Dublin 1807 by SN
201. A set of six fiddle pattern teaspoons, table spoon, two dessert spoons, a caddy spoon and silver handled button hook, various dates - Victorian or earlier
202. Sheffield 1917/18. A cased set of twelve silver teaspoons and pair of matching sugar nips, gadroon decorated, monogrammed, maker CB & S in a velvet and silk lined case
203. A hallmarked silver engine turned decorated rectangular cigarette box ; a small ashtray and a pair of pie crust edge presentation coasters
204. An early XIX century hallmarked silver folding 6" ruler, maker JJ
205. A hallmarked silver salver with pie crust edge, four paw feet, retailers mark "Robinson & Co, The Square, Shrewsbury", Birmingham 1921/2, 25cm diameter
206. A hallmarked silver christening tankard decorated with a nursery rhyme "Hey Diddle Diddle The Cat And The Fiddle", hallmarks rubbed, 8cm high £80-£120
207. Birmingham 1926/7. A small footed two handled sweet meat dish with pierced edging, maker Adey Bros., 6cm high, 9cm diameter; Birmingham 1938/9. A three footed bon bon dish with pierced decoration, 9cm diameter; a bright cut decorated silver cigarette case with gilded interior and a cased silver plated bottle opener (4)
208. Sheffield 1930/31. A glass inkwell, maker Walker & Hall (no glass liner)
209. London? 1775/6. A meat skewer, maker JL
210. London 1821/2. A fiddle pattern basting spoon engraved "J R" maker William Bateman
211. Hester Bateman. Four bright cut decorated sugar nips
212. Peter & William Bateman. Two bright cut decorated sugar nips and two Peter & Ann Bateman nips
213. William Bateman. Three hallmarked silver nips
214. Peter & William Bateman. Two hallmarked silver bright cut decorated sugar nips
215. A case containing six assorted condiment spoons (mainly early XIX century)
216. Eight various hallmark silver condiment spoons and two butter knives
217. Two hallmarked napkin rings and a pair of Georgian bright cut and decorated sugar nips
218. London 1837/8. A fiddle pattern basting spoon engraved "H", maker CB
219. London 1839/40. An old English pattern spoon engraved, maker Wm. Bateman and David Ball; and an earlier spoon - marks rubbed
220. A set of three early Victorian three footed salts with beaded borders (with damage)
221. A hallmarked cast silver sifter spoon with gilded shell bowl, phoenix crest
222. A pair of George III bead pattern double ended marrow scoops, London 1778, maker TT, 22cm £200-£300
223. A plain oval silver ink stand with a hinged lid and glass liner, Birmingham 1919
224. London 1960/1. A small circular dish with scatter hallmarks, 8cm diameter; London 1923/4 - a small five bar toast rack
225. London 1893 - a repousse decorated rose bowl with crest and presentation inscription "IM to HGK 26.9.93" maker George Maudsley Jackson, 21cm diameter, 17ozs £180-£250

Lots 205, 206, 208 & 209



JEWELLERY

239. Five stick pins set with semi precious stones, 9ct gold covered pocket knife
240. An engine turned circular continental silver powder compact, 5cm diameter
241. A lady's fob watch with white enamel floral decorated dial and continental silver floral decorated case
242. An engine turned rectangular silver gilt snuff box by SML Ltd, Birmingham 1861 £80-£140
243. A late XIX century/early XX century reticulated necklace pendant of bow form set with 3 pink stones and small diamonds, with five silver link chain £400-600
244. A solitaire diamond ring of approximately .75 carats in an 18 carat yellow gold claw setting £500-£800
245. A large green natural rock crystal contained in an unmarked naturalistically styled openwork gold coloured frame
246. A 1911 gold sovereign mounted in an openwork plaited 9 carat gold frame to be worn as a pendant
247. An 18 carat gold scroll brooch set with small coloured stones, makers mark HGM
248. Georg. Jensen. A necklace of 14 oval silver discs with raised centres plus matching clasp, 42cm overall £100-£200
249. Georg. Jensen stamped Sterling Denmark 106. A bracelet formed of ten silver ellipses joined to the centre by a silver chain, approx. 17cm
250. Georg. Jensen 925S Denmark 339 and 147. A stylised star silver pendant and brooch, the pendant on a silver chain £120-£220
251. A Victorian gold diamond chip black enamel and pearl mourning ring
252. A Victorian unhallmarked gold bangle with panels set with alternate red and white stones
253. A Birmingham hallmarked bright cut engraved 9 carat bangle
254. A lady's 18 carat gold ring set with single diamond flanked by diamond shoulders
255. A 22 carat wedding band, eternity ring, a signet ring set with single diamond and gent's ring (4)
256. A lady's hallmarked gold solitaire diamond ring
257. A lady's hallmarked gold ring set with four diamonds forming a square
258. A silver charm bracelet with 21 charms and two loose charms
259. A mementomori brooch, the oval frame inset with black enamel, the swivel two sided brooch with photographic head and shoulders portrait of gentleman in hunting pink, the reverse a leaf arrangement of hair
260. An 18 carat gold cased pocket watch with engine turned back, white enamel roman dial, maker J Pearce, White Friargate, Hull, No. 34724; and a 9 carat chain (watch not working) £200-£300
261. A sterling silver crescent brooch set with brilliants, a reticulated white metal fish, small heart pendant and a bangle
262. A medallion of Queen Victoria and Prince Albert dated 1854, 6cm diameter (edge knocks)

BYGONES, COLLECTABLES & MISCELLANY

263. A full adult zebra skin
264. A leopard skin
266. A cow horn powder horn and mark one drill hand grenade (incomplete) (2)
267. A plain copper and brass powder horn; another metal ditto and three small calibre bullet moulds
268. Three XIX century leather shot flasks, one stamped "Golding Bury"
269. A Bartram & Co leather covered powder flask and another Sykes patent
270. An embossed copper powder flask "Colts" patent with cannon and American flags

Lot s 249 & 250



Lot 259



Lot 260

271. A plain copper powder flask, the nozzle stamped "W Hawksley" and another with part fluted decoration (nozzle missing)
272. An embossed copper powder flask; and another with foliage decoration (2)
273. Three copper powder flasks - shell pattern, stag hunting and birds in a landscape (3)
274. A Japanese ivory figure of a mask maker, XIX century
275. A cast iron figurial door stop of a highland soldier, 36cm
276. A XIX century stoneware flagon with loop handle, 40cm; and another smaller, 31cm (2)
277. An XVIII century portrait miniature of Queen Anne wearing a long flowing wig and crown, her dress with a wide lace collar, the gilt metal frame engraved "token of friendship from HR to JB 4th June 1782", monogrammed HR conjoined, double sided frame, the back beige silk, 7cm x 5cm £300-£500
278. Lehmann. A tin plate toy "Gustav The Busy Miller" - original (dilapidated) box, the toy in generally good condition with only slight loss of paint, appears almost unused £200-£300
279. A malacca walking cane with a hallmarked silver top, London 1927, reputedly the property of Sir Herbert Arles of White Lodge, Thoresby and then Holme Pierpoint Nottingham
280. G Wheatstone & Co. A 48 key treble Eola with six fold bellows and chromium plated ends, contained in its' original leather travelling case £500-£800
281. G Wheatstone. A 48 key English Concertina with fretted rosewood ends, five fold bellows in a rosewood travelling case £300-£500
282. Busson Paris. A "Flutina" with string inlaid ebonised mahogany frame, sixteen dynatronic and two keys with mother of pearl tops, on the treble side and two bass's and air vent on the bass side, impressed makers mark, with mahogany stained wooded case, brass carrying handle, 29cm wide £150-£250
283. A XIX century Thompson patent hermaphrodite corkscrew (a/f - lacking dusting brush and suspension ring)

284. A Timuri Belouch rug, 402cm x 254cm £450-£600

ANTIQUÉ GUNS & EDGED WEAPONS

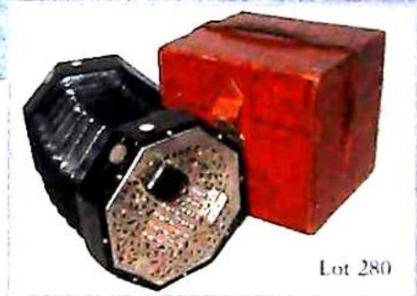
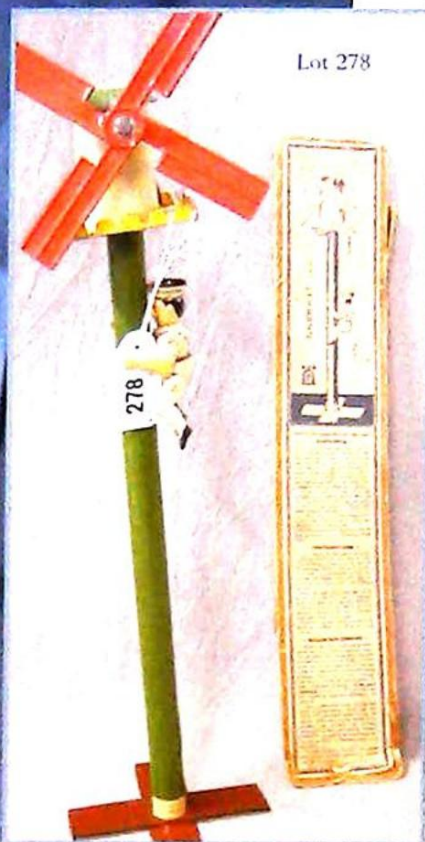
285. An XVIII century Continental flintlock pistol, the lock engraved "J. Storna", 6" tapering steel barrel with gilt metal inlay, the walnut stock with gilt metal mounts and trigger guard, set with seven medallion portraits, probably of French heads, 10.5" overall
286. A cannon barrel flintlock pocket pistol, the walnut stock with an engraved steel butt and trigger guard, 7" overall

Provenance for Lots 285 and 286 - sold by A Jackson & Sons (Auctioneers) Lincoln in 1967 being in the ownership of the late Miss Kennedy of 8 James Street, Lincoln, inherited by her from Arthur Amcotts Kennedy who lived at 2 Exchequergate Lincoln, copy of whose notes dated circa 1926 are with the Auctioneers
287. A holster pistol by Mortimer & Son London, drum conversion, full stock, complete with ram rod, 21.5cm barrel £300-£500
288. A double barrelled flintlock pistol with rainproof pans, plain silver butt cap, full stock, 17.5cm barrels £250-£350
289. A percussion holster pistol, Crown VR to lock plate, stirrup ram rod, lanyard ring to butt, 21.5cm barrel £250-£350
290. A French percussion musket, brass mounts, single hinged backsight, full stock, 107cm barrel £200-£300
291. A Victorian carbine 1858, leaf backsight, Martini Henry bayonet fitting, butt stamped with WD arrow £200-£300
292. A box lock flint double barrel tap action pistol by Ketland & Co., slab butt with silvered escutcheon, 7.5cm barrels £400-£500
293. A percussion cap pocket pistol, Birmingham proof mark, checkered butt, 7.5cm barrel £100-£200
294. A pin fire pistol, Liege, 7.5cm barrel, folding trigger with ram rod £100-£150
295. A pin fire pistol, Liege, 7cm barrel, folding trigger with ram rod £75-£130

Lot 274



Lot 278



Lot 280



Lot 281



Lot 282



Lot 287



Lot 288



Lot 285



Lot 289



Lot 292



Lot 286

296. A pin fire revolver, Leige, 7mm bore with ram rod, 11cm barrel £100-£200
297. A Kriegsmarine Naval dirk by CLEMEN & JUNG, Solingen, engraved blade, brass lightening bolt decorated scabbard £150-£250
298. A Luftwaffe second pattern dirk with hanging straps £150-£250
299. A German R.A.D. dagger, maker Karl Julkrebs, Solingen, control mark Rajd Ges.Gesch., blade with motto Arbite adelt, stag horn grip with black painted and metal mounted scabbard (two screws missing to scabbard mounts) £200-£300
300. A German Army dagger by Christians Werk, Solingen, amber coloured hilt £100-£200
301. A German S.A. dagger by C.G. Haenel, Suhl, blade etched "Alles Fur Deutschland", brown painted scabbard with hanging strap £150-£250
302. A German S.A. dagger, maker RZN, control mark M7/116, blade etched "Alles Fur Deutschland", black painted scabbard (some paint chips to scabbard) £150-£250
303. A French Lebel bayonet and scabbard
304. A Japanese style heavy Katana with leather bound hilt and scabbard £100-£200
305. A British Infantry Officer's sword, 1796 pattern, tracings of etching in blue and gilt on blade, blade 82cm long, no scabbard £75-£150
306. A French naval cutlass, 1840, anchor on blade, 68cm blade, complete with leather scabbard £150-£250
307. A French naval cutlass, 1840, anchor on blade, 68cm blade complete with leather scabbard £150-£250
308. A Victorian court sword with etched blade, 78cm long, gilt hilt with crest (no scabbard) £100-£200
309. A US Navy sword with etched blade, 70cm long, brass hilt, leather scabbard with metal roped mounts, 1852 £100-£200
310. A British infantry officer's sword, 1885 pattern, 87.5cm blade (no scabbard) £100-£150
311. A Victorian Light Infantry sword by Wilkinson, etched blade, 82cm long, plated hilt, leather scabbard, some rust to blade and hilt
312. A British Cavalry sword, 83cm blade, steel scabbard £100-£200
313. An Edward VII brass hilted sword with etched blade, 82cm long, stamped 2068 on top edge, plated scabbard £100-£200
314. A plated cut steel hilted court sword with plain blade, leather scabbard with steel mounts £100-£150
315. A Wilkinson Battle of Britain commemorative sword, 88cm blade, decorated with World War II figures, fighter planes etc., hilt in the form of eagle with outspread wings, wooden grip, pommel with epergy of Churchill £100-£200
316. A German Luftwaffe sword by PAUL WEYSVERG Solingen, 72.5cm blade, leather and wire bound grip, leather metal mounted scabbard with hanging strap £150-£250
317. A British sword bayonet, Yatagam blade, pattern 1856 (no scabbard)
318. A British sword bayonet, Yatagam blade, pattern 1856 (no scabbard)
319. A German butchers knife style bayonet with saw back (no scabbard); and two bayonet scabbards
320. A cruciform hilted sword by Kenning London, crossed bones hilt and skull pommel, 73cm etched blade (no scabbard) £100-£150
321. A German officers sword with plated stirrup hilt, wire bound grip, 82cm etched blade, blued panel depicting field artillery, pommel engraved "Oftfries Feld Art.Regt. No. 62" (no scabbard, blade rusted and loose in hilt); and a plated scabbard £150-£250
322. A George V gilt hilted court sword by Wilkinson, etched 81cm blade (no scabbard) £100-£200
323. A French chasepot bayonet with 58cm blade, initial WM to top of blade (no scabbard)



Lots 294, 295 & 296



Lot 297



Lot 298



Lot 299



Lot 304



Lot 308



Lot 300



Lot 309



Lot 311



Lot 301



Lot 314



Lot 320



Lot 302

324. An Eastern native sword with wooden hilt, 48cm blade
325. A Russian Kindajl 34cm blade, the silver hilt with miello work and similarly decorated scabbard £100-£200
326. A slender engraved bladed sword with brass mounted cruciform, engraved "W Dickson", black painted brass mounted scabbard, 71cm blade
327. An Austrian single edged sword by Tiller Wien, brass hilt, 76cm blade, brass mounted black leather scabbard

SCIENTIFIC INSTRUMENTS

328. A Sextant by Gilbert, Leadenhall, London in a mahogany box, retailer label Hayes Brothers, Cardiff, with Norie's Nautical Tables 1908
329. An extremely rare Elizabeth I pocket sundial, signed and dated AR Fecit 1585, engraved with the owner's name Geo Seyntpoll and his shield; brass, gilded (now corroded on exterior). Major axis 48mm, minor axis 41mm, thickness 14mm.

The top is decorated with foliage in urn and female face in central part, and at the sides with crested birds, inside the lid, the name and shield of the owner Sir George St. Paul of Snarford and Carlton, Knight and Baronet, born 1562, died 28 November 1613; chapter ring, signature, date and 16 hours, magnetic compass-well with original wind rose and mica cover; the base decorated with flowers in a vase, the side inscribed with a motto VT VITA SIC FVGIT HORA. Fitted over the compass well is a gilt brass frame that supports a folding gnomon and a chapter ring. The angle of the gnomon measures approx. 54° and the modern latitude of Snarford is 53° 20'. The marked hours of daylight run from IIII (am) to VIII (pm).

(For information on Augustine Ryther (c.1550-1593) see G.L'E. Turner *Elizabethan Instrument Makers: The Origins of the London Trade in Precision Instrument Making* (Oxford, 2000), pp. 27-29, 173-78) (see front cover for illustration)

BRASS, COPPER & TREEN

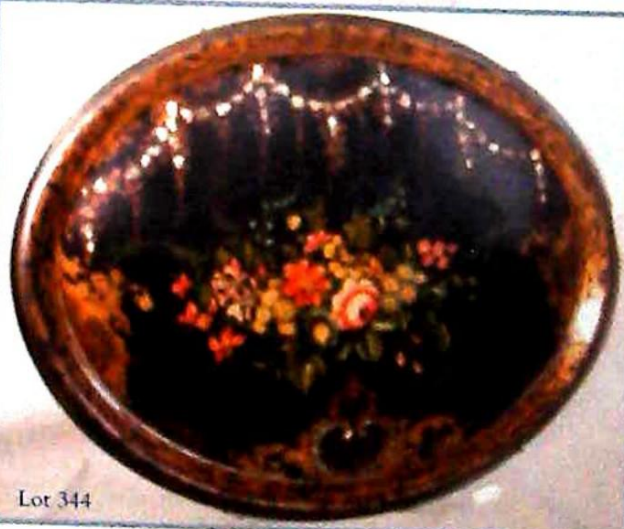
331. Three XIX century fluted food moulds, each approx. 5cm high
332. Three XIX century copper food moulds in the form of horses hooves
333. A XIX century copper jelly mould of stepped "X" form "registered April 29 1860", 16cm high
334. An oriental polished copper and white metal censor; an egg coddler and a small copper spirit kettle and stand marked "Jubilee" (3)
335. A XIX century circular copper kettle with a swing handle; copper saucepan with metal side handle and lid; copper measure and a miniature kettle (4)
336. A XIX century turned brass pestle and mortar, 10cm high
337. A brass spirit burner with turned ebonised side handle and two miniature brass coffee pots
338. A pair of gilt metal table candelabra hung with twelve prism drops on turned fluted bases, 18cm high
339. A large circular copper XIX century side handle shallow saucepan, 33cm diameter; a XIX century circular copper bowl, 29cm and a copper colander with brass side handles (3)
340. An early XIX century wrought iron three legged trivet
341. Pewter. Six assorted XIX century tankards, salt cellar and cream jug (8)
342. Pewter. A XIX century Watts and Harton, London two handled shallow dish, 24cm diameter; a charger 42cm diameter; and a lidded jug engraved "G P Hegwein 1862", 27cm high (3)
343. A XIX century oval papier mache tea tray, the black and gilt border set with mother pearl, the framing a scene of two men of war discharging cannons, 77cm x 61cm £300-£500
344. A XIX century oval papier mache tea tray centred with a display of summer flowers between a gilded border with mother of pearl inlay, 76cm x 60cm £200-£300



Lot 328



Lot 343



Lot 344

345. A XIX century mahogany boxwood strung tea caddy, the interior divided into two compartments either side of a central glass mixing bowl, the lid with a pressed basket of fruit design, brass handle
346. An oriental lacquer and chinoiserie decorated workbox, the interior with lift out tray and carved bone fittings, 28.5cm x 20.5cm (a/f)
347. A XIX century papier mache dome top tea caddy painted with flowers and inlaid with mother of pearl, the interior with two lidded compartments; and a circular papier mache dish (2)
348. A XIX century fine quality coromandel jewel box with etched gilt brass hinges and lock, the interior with two fitted lift out trays, 30.5cm wide £200-£400
349. An XVIII century mahogany and boxwood string inlaid sarcophagus shaped tea caddy, the lid opening to reveal two compartments with lids, brass ball feet, 24cm long
350. A substantial XIX century mahogany brass bound writing box, the interior fitted with compartments and a writing slope and with a side drawer, 55.5cm x 27cm
351. An XVIII century oak table cabinet enclosed by a panelled door concealing an interior fitted with seven small drawers and compartments, the plinth with a further long drawer, 67cm high, 44cm wide (with deficiencies) £100-£200
352. A XIX century satinwood apprentice piece, chest of two short and three long graduated cock-beaded drawers standing on turned feet and with original turned brass knobs to each drawers, 35cm wide, 18cm deep, 36.5cm high £300-£500
353. A XIX century German carved fruit wood group of a pheasant family standing on rocks with an ebonised architectural style mahogany plinth, 22cm high, 25cm wide (minor damage to foliage) £400-£800
354. A substantial bronzed figural lamp depicting a seated girl with fruit on her knee beneath spreading leaves supporting two pink glass petal design shades and bulb fittings, rouge marble base, approx. 97cm overall £300-£500
355. An Austrian cold painted bronze hawk standing on a naturalistic marble base with wings outstretched, 40cm high £1000-£1500
356. A XIX century mahogany kidney shaped tray with shell patera, alternate mahogany and satinwood gallery, pair of brass carrying handles, 58cm long £100-£200
357. An ornate pair of heavy cast brass fire dogs, 73cm high £200-£300
358. A detailed wooden model of an XVIII century 50 gun three masted man o'war 150cm overall £300-£400
359. A XIX century miniature mahogany chest of two short and three long drawers, with moulded glass handles, 41.5cm wide, 43cm high £100-£200
360. After P J Mene. A cast bronze group, XVIII century rider on horseback with four hounds on leashes, oval black marble base, 83cm x 45cm - XX century £200-£400

PICTURES, PRINTS & MIRRORS

361. After Cecil Aldin A pair of coaching prints - one titled "The Eton Coach" and the other "The Glasgow and London Royal Mail Coach" contemporary Edwardian oak frames, image 26cm x 70cm
362. F M Chase s. The Doges Palace Venice with gondolier in the foreground Watercolour drawing in contemporary plaster gilt frame (damaged) 21.5cm x 34.5cm £600-£900
363. David Cox junior Watercolour drawing of a blood hounds head and shoulders 31cm x 23cm, framed £100-£200
364. Arthur Findley Watercolour drawing of Lincoln Cathedral seen from Castle Square, signed A H Findley in the right hand column, mounted and framed 39cm x 30cm £200-£300
365. Sir Frank Brangwyn RA (1867-1956) Two soft ground etchings - Continental town scenes, signed in pencil lower right hand margin 35cm x 18cm and 31cm x 35cm, mounted and framed



Lot 362



Lot 348



Lot 350



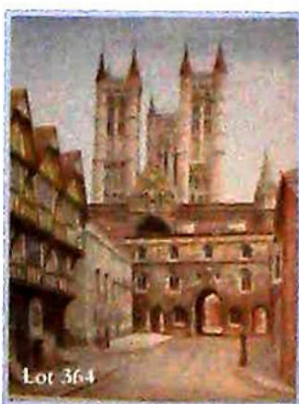
Lot 357



Lot 358



Lot 352



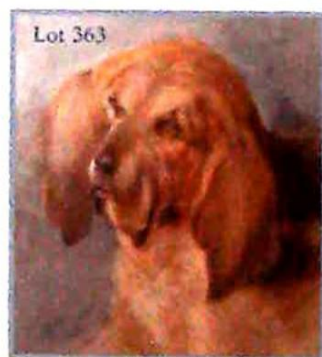
Lot 364



Lot 361



Lot 353



Lot 363



Lot 354



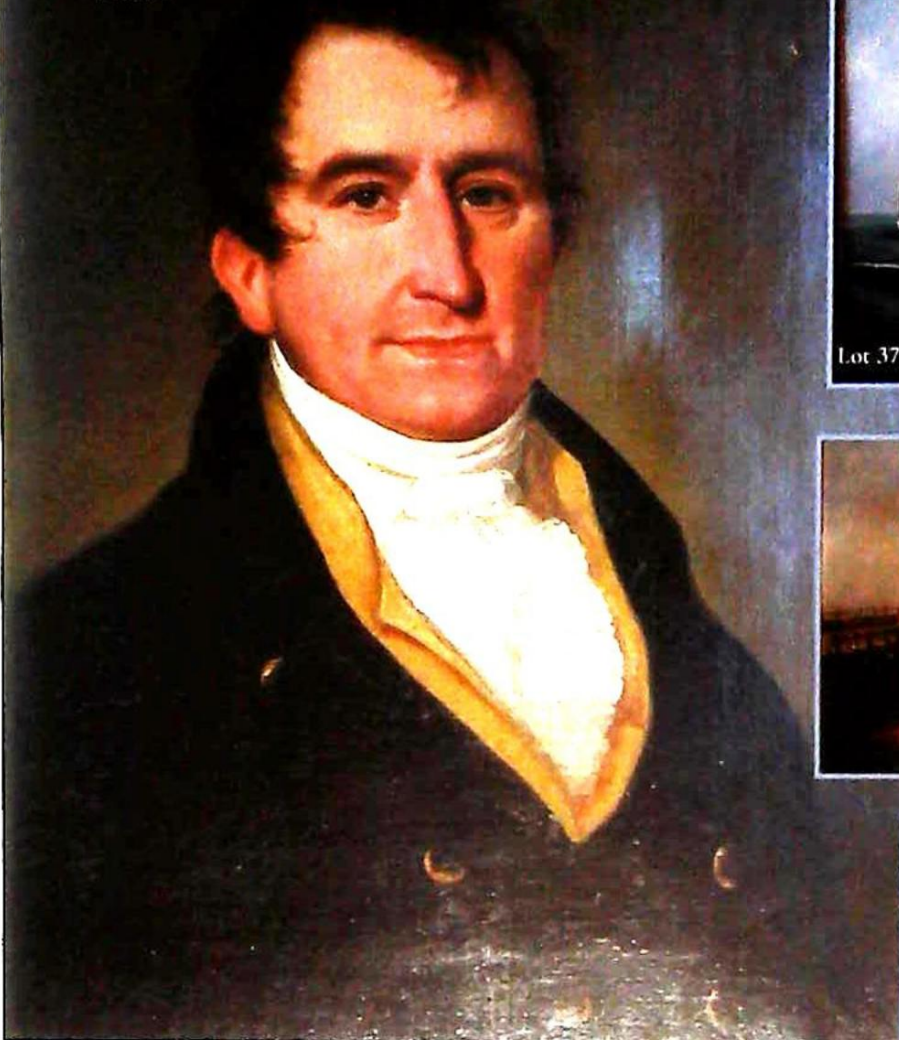
Lot 355



Lot 345

366. James Mason s. Watercolour drawing of a wood pigeon sitting in a tree in a urban landscape, label verso - Lincolnshire artist died 1950 19cm x 26cm £100-£200
367. A half length portrait of Magnus Ohren wearing a blue coat with brass buttons, a yellow collar and white crevate, label verso "Magnus Ohren Surveyor of H.M. Sloops 1790, Grandfather of Magnus Ohren of Sidnum, the sec..t resident engineer of the Crystal Palace Gas Co. 1885" Oil on canvas 60cm x 50cm £200-£500
368. Clarence H Roe The Monarch of the Glen - a stag standing alert on a rocky outcrop in a mountainous Scottish landscape Oil on canvas signed C. Roe 60cm x 90cm £500-£800
369. Clarence H Roe s. Stag and Hind in a mountainous Scottish landscape Oil on canvas 55cm x 90cm £500-£800
370. A J Jansen Antwerp '06 The Steamer Retford Oil on canvas 39cm x 59cm £200-£400
371. A J Jansen Antwerp '06 The Steamer Ashton Oil on canvas 30cm x 50cm £300-£600
372. Robert Morden. A hand coloured map of Lincolnshire 36cm x 42cm framed
373. L Boeuenel 1886 s.d. A still life study of a vase of flowers beside an open book 31cm x 39cm £200-£400
374. After W. Brand Two XIX century steel engravings - Boston the haven from below the town bridge; and The Port images 11.5cm x 16cm, maple frames £70-£130
375. After Saml. & Nathl. Buck. "South East view of Norwich Castle" - XVIII century coloured engraving dedicated to Sir Edmund Bacon etc. image approx. 19cm x 37cm; after Hodgson - a XIX century engraving, the vegetable market in Guildhall, Norwich, approx. 17cm x 24cm; and another signed artist proof - C.M Nicholls RE (3)
376. W Large. Norwich Cathedral from Grammar School meadow, watercolour drawing signed, dated and titled 29cm x 17.5cm; and after John Salmon - a XIX century coloured print of Norwich Cathedral (2)
377. G Hopper 1930 Portrait of a Springer Spaniel, signed and dated verso "Try - One Of The Best Dogs That Breathed" 34cm x 29cm £200-£400
378. XIX century English School bearing a plaque "The Old Jetty, Yarmouth, John Moore circa 1882" oil on canvas - figures on the jetty and many sailing vessels on a stormy sea 24cm x 39.5cm
379. J Villiegas s. The Toreador Watercolour drawing - The Toreador with his lover leaning against a stone building 22cm x 15cm £300-£500
380. Emily Price 1913 sd An oil on canvas - a shepherd resting with his flock on a cliff top 33.5cm x 74cm
381. Ernest T Potter s. A pair of watercolour drawings - English thatched and timbered country cottages in landscape settings by water 29cm x 40cm £100-£200
382. T Ivester Lloyd A pair of watercolour drawings, each signed and titled "Private 11th Foot, the Devonshire Regt. 1750" and "Grenadier 11th Foot 1768 The Devonshire Regt." - on grey paper 34cm x 26cm overall £200-£400
383. E H 1911 A watercolour drawing - Lincoln from the South East 18cm x 25.5cm
384. C Rackham? A broadland scene with wherry and windmill watercolour drawing, signed and dated '02 16cm x 32cm
385. Charles M Baldock s. and titled "Whalebone" - portrait of a fox hound in a landscape setting oil on artist board? 24cm x 33cm £500-£700 (a companion picture was sold by Sothebys at Thoresby Hall May 1989, Lot 656)
386. After F Cecil Boulton A set of four coloured coaching prints "On the Road to Bath" etc. 27cm x 39cm, mounted, oak frames
387. BB Hemy s. Two shipping pictures - three masted war ship under full sail, the other a two masted shipping boat leaving harbour, oval mounts, gilt frames £200-400

Lot 367



388. F Krause A Continental landscape with cow herd walking beyond and arched stone bridge spanning a gorge, mountainous landscape 60cm x 50cm £300-500
389. An early XIX century rectangular mahogany dressing table mirror, raised on reeded supports the base fitted with 3 bow fronted drawers 51cm wide £120-£180
390. An early XIX century rectangular mahogany dressing table mirror, raised on reeded supports, the base fitted with two bow fronted drawers, 46cm wide £120-£180
391. A pair of XIX century ornate plaster gilt oval girandoles surmounted by classical figures framed with acanthus, each with three candle sconces on foliate branches, 76cm high, 48cm wide £200-£400
392. A XIX century plaster gilt overmantel mirror, surmounted by an oval cartouche and mistletoe, the foliate relief carved frame decorated with scrolling brackets, 134cm wide, 144cm high £250-£400
393. An imposing XIX century oval wall mirror, the plaster gilt frame elaborately decorated with a vase of flowers above a rams head, flanked by cherubic figures enclosing a bevel glass plate, 143cm x 83cm £300-£500
394. XVIII century English School Oil on panel - figures and a dog in a tavern? interior (dilapidated) 44cm x 60 £600-£900
395. J C Morrison Oil on canvas - Fisher folk mending their nets by the quayside with many village figures looking on and a lady playing a violin, unframed 31cm x 51cm £600-£900
396. E.K. Redmore S. Oil on canvas. A pair of Seascapes, ships at anchor and ships in a stormy sea 29 x 44.5cm £300-500
400. A XIX century bracket clock, the arched engraved flat silvered dial with three train movement and silent and chime indicator, the ebonised case with elaborate ormolu mounts, bearing a presentation plaque dated 1885, 66cm high £1500-2500
401. A XIX century rosewood cased banjo barometer and thermometer inlaid with mother of pearl, the 80cm diameter dial signed "Chenery Bungay" 94.5cm overall £180-£280
402. A XIX century rosewood stick barometer and thermometer, the case surmounted by a carved cross with a moulded frame surrounding the silvered dial, the reservoir enclosed by a square base decorated with a stylised petal, 115cm high £400-£600
403. A XIX century five dial mercury column mahogany banjo barometer, the case boxwood strung and with a broken architectural pediment centred with a turned brass urn, the level signed "Roberts Downham", 101cm £400-£500
404. A XIX century Vienna wall clock with gilt metal pressed decorated dial and enamel chapter ring, the stained hardwood case surmounted by a prancing horse on a castellated top and elaborately decorated with split turnings, approx. 128cm overall £250-£400
405. A XIX century double weight Vienna wall clock, the circular white enamel dial with subsidiary seconds ring contained in a walnut cased decorated with split turnings, 97cm overall £450-£650
406. A circular drop dial wall clock signed "Dwerrihouse Ogston & Bell London", 36cm diameter £700-£1100
407. A XIX century spring driven Vienna wall clock, the circular white chapter ring with a pressed brass floral decorated centre contained in an elaborate walnut case decorated with split turnings and surmounted by an eagle with outstretched wings, 92cm high £180-£250

CLOCKS & BAROMETERS

399. A XIX century French sevre and ormolu clock garniture of neo-classical design, the clock surmounted by an elaborate urn and inset with sevre style panels painted with cherubs, with a pair of almost matching urns, clock 50cm high, urns 40cm £400-£600

Lot 391



Lot 395



Lot 406



Lot 399



Lot 400



Lot 401



Lot 402



Lot 403



Lot 404

408. A XIX century mahogany cased tavern clock, the circular painted dial with subsidiary seconds ring signed "Church Norwich", enclosed by a long shaped door, approx. 132cm high, the dial approx. 38cm diameter £1500-£2500
409. A XIX century French carriage clock in a gilt metal case of architectural design, the works enclosed by plain bevel glazed panels, with an enamel chapter ring, 12cm high
410. A French carriage clock, the rectangular dial lettered "Wm. Bruford & Son Exeter & Eastbourne made in France"; the movement contained in a brass case enclosed by bevel glass panels and in its original red morocco outer travelling case, 7cm high £100-£150
411. A XIX century walnut dome cased mantel clock, the circular steel dial with striking movement, the case with fretted sound panels to each side, 23cm high £250-£350
412. A XIX century mahogany longcase clock, the arched raised dial painted with figures in a harvest field and signed "Shepperley & Pearce Nottingham"; eight day striking movement within a broken swan neck pedimented hood flanked by turned columns, the base with a shaped door flanked by further columns, standing on splay bracket feet, 230cm high £1000-£1500
413. A XIX century mahogany longcase clock, the arched painted dial with subsidiary seconds ring and date aperture signed "A Shaw, Billingboro" contained in a broken swan neck pedimented hood flanked by turned columns with brass capitals, the base enclosed by a long arched door with reeded canted corners, 207cm high £800-£1300
414. A XIX century north country regulator longcase clock, the white dial signed "Macadam Sunderland" with subsidiary seconds and date ring, the oak case enclosed by a long shaped door standing on bracket feet, 226cm high £2000-£3000
415. A Wurlitzer Victory juke box constructed circa 1940 £6500-£8500

416. An XVIII century mahogany longcase clock, signed in the arch "Thomas Lister" with subsidiary seconds ring and date aperture, applied chased brass spandrels, the eight day movement contained in a domed hood with moulded cornice and plain pilasters, the base enclosed by a long arched door, 226cm high £1400-£1900
417. A Victorian longcase clock with circular white painted dial signed "R. Norton Stamford" with subsidiary seconds ring, contained in a domed hood, the base enclosed by a rectangular figured mahogany door with a broad crossband, 302cm high £900-£1300
418. A XIX century banjo barometer, the rosewood onion top case with thermometer and enamel 24cm dial, 106cm overall £100-£200

FURNITURE

426. A Georgian design carved mahogany easel £400-£600
427. A XIX century mahogany double wardrobe enclosed by a pair of panelled doors beneath a moulded cornice standing on bracket feet, 120cm wide, 197cm high £200-£350
428. A pair of XIX century solid mahogany shield back hall chairs, the shaped backs carved in relief above tapering solid seats on ring turned fluted front supports £100-£200
429. An Edwardian Sheraton Revival style mahogany china display cabinet inlaid with marquetry floral swags and boxwood stringing, enclosed by a pair of astragal doors with two cupboards beneath, raised on square taper supports, 124cm wide £500-£700
430. An early XIX century giltwood console table, carved with birds and a cherub riding a sea serpent, shaped marble top, 97cm wide £1000-£1600
431. A Georgian design 'D' ended extended dining table, the mahogany top with a wide crossband, raised on square taper supports, 125cm diameter (no spare leaf) £300-£500
432. A George III design mahogany batchelors chest with fold over top, two short and three long cock-beaded drawers, standing on shaped bracket feet, 72cm wide £400-£800



433. A XIX century mahogany chest of two short and three long cock-beaded graduated drawers, the top with a white boxwood inlaid, the drawers with original oval pressed brass handles, standing on bracket feet, 123cm wide £150-£250
434. A XIX century Continental oak chest of three drawers with relief carved handles and foliate carved escutcheons with panelled sides, moulded top and cornice, 102cm wide, 47cm deep £80-£150
435. A Victorian oak cheval mirror frame with barley twist and fluted supports and elaborate scroll carved feet
436. A George III style square mahogany two tier side table fitted with a single drawer and raised on square taper supports £70-£140
437. A XIX century mahogany hall stand, the upper section with turned coat pegs and centred with a mirror, the base with a shaped marble top, narrow frieze drawer raised on stylised lyre shaped front supports, 107cm wide £200-£300
438. A Victorian mahogany chiffonier with a shaped back, centred with a carved cartouche, the base fitted with two cushion fronted drawers above double cupboards, 121cm wide £200-£300
439. A Victorian duchess mahogany dressing table, the rectangular mirror with carved bracket supports, standing on two small drawers with a central compartment enclosed by a curved hinged lid, the base fitted with a frieze drawer raised on scroll carved front supports, 116cm wide £200-£300
440. A Victorian walnut and rosewood octagonal tripod table with a games board top, broad diamond cross-band and moulded edge, raised on a tapering spiral column with triple cabriole legs carved in relief, 52cm diameter £300-£500
441. A XIX century figured mahogany inverted breakfront pedestal sideboard, the raised back with carved scroll decoration fitted with one long and two short drawers above two cupboards, one with a cellerette drawer enclosed by panel doors, 195cm wide, 69cm deep £500-£900
442. A George II English walnut side chair with solid vase splat, carved cresting, the cabriole supports shell carved at the knee terminating in pad feet with block and turned stretcher £200-£350
443. A Chippendale design mahogany side chair with a pierced shaped splat, drop-in seat and square supports joined by an "H" stretcher
444. A Victorian walnut writing table, the rectangular top with a single drawer beneath, raised on four bobbin turned supports supported by carved cabriole legs and joined by bobbin turned stretcher, original pot castors, 91cm x 53cm £200-£400
445. An antique French side table, the circular marquetry top with burr walnut centre, raised on three square taper columns with swept carved feet, 61cm wide £200-£300
446. An antique rectangular mahogany occasional table on square chamfered supports, 55cm x 40cm
447. An unusual rectangular Victorian music stool stamped "H Brook & Co Ltd", the mahogany frame with a gilt metal mechanism providing adjustable seat height £100-£200
448. A Victorian walnut octagonal conical workbox on triple cabriole legs £100-£200
449. A XIX century figured mahogany bow front chest of two short and three long cock beaded drawers raised on swept bracket feet, 105cm wide
450. A XIX century mahogany chiffonier with shaped back, the base enclosed by a pair of panelled doors flanked by barley twist columns on a square plinth, 122cm wide £100-£200
451. An early XIX century mahogany breakfast table, the rectangular top above a single frieze drawer and opposing dummy, raised on a turned baluster column with four reeded swept feet, terminating in brass castors, 111cm x 83cm extended £400-£600
452. An XVIII century two panelled oak coffer with a gauge carved top rail raised on high stiles, 101cm wide, 50cm deep £400-£500

Lot 452



Lot 438



Lot 439



Lot 447



Lot 440



Lot 448



Lot 437



Lot 442



Lot 444



Lot 451



Lot 434

453. An XVIII century oak blanket box with a plank top and plain four panelled front, 133cm wide £100-£200
454. A Victorian settee, the frame elaborately carved with a pierced foliate design, raised on cabriole front supports with scroll arms, relief carved at the knee, upholstered in buttoned beige floral pattern material £400-£650
455. A set of four early XIX century rosewood dining chairs, the backs carved with foliage, the horizontal splats with three roundels, overstuffed seats on ring turned front supports £400-£600
456. A pair of Sheraton Revival shield back side chairs with carved pierced splats, boxwood inlay, the overstuffed seats upholstered in floral material raised on square taper front supports £80-£150
457. A George III circular mahogany breakfast table raised on a "gun barrel" pedestal with quadruple reeded splay legs on brass castors, 130cm diameter £400-£650
458. A set of three XIX century rosewood dining chairs with carved and pierced horizontal splats, overstuffed seats and cabriole front supports
459. A set of six mid Victorian rosewood balloon back dining chairs with foliate pierced carved shaped horizontal splats raised on cabriole front supports with overstuffed seats £700-£1000
460. A Victorian mahogany extending dining table raised on turned fluted supports with one spare leaf, 195cm x 116cm extended £500-£900
461. A late Victorian polished hardwood extending dining table raised on turned supports with one spare leaf, 174cm x 106cm extended £300-£600
462. A set of six (four single and two carvers) late Victorian dining chairs with pierced vase splats beneath scroll shape top rails, the seats with gold dralon upholstery and raised on cabriole front supports £250-£400
463. A Victorian circular mahogany pedestal breakfast table raised on a turned column with triple cabriole supports, 120cm diameter £75-£150
464. A set of four heavy Victorian mahogany dining chairs, the carved frames with horizontal splats, overstuffed seats on turned and fluted front supports £100-£200
465. A Georgian mahogany 'D' end dining table with a spare leaf, raised on square taper supports, 167cm x 129cm extended £400-£650
466. A rectangular Victorian mahogany side table raised on turned taper supports, 106cm x 45cm
467. A XIX century pine plank top farmhouse table on three "X" supports joined by metal stretchers, 277cm x 79cm £400-£700
468. A George III mahogany bureau, the fall front enclosing a forward fitted interior with a series of compartments and serpentine shaped drawers, either side of a central cupboard, the base with three long graduated drawers raised on ogee bracket feet, 102cm wide £400-£650
469. A XIX century bow front mahogany boxwood strung chest of two short and three long drawers with oval pressed brass handles on bracket feet, 100cm wide £300-£400
470. A gilded and white painted French style side table fitted with three drawers to the frieze raised on square taper support, 137cm wide
471. A small Georgian mahogany bookcase cabinet enclosed by plain glazed doors beneath a shaped cornice, 78.5cm wide, 92cm high £100-£200
472. A XIX century lacquered bow front hanging corner cupboard, the door painted with a peacock amidst fruit trees, with shaped display shelves above and below, 143cm overall
473. A three tier serpentine fronted mahogany Victorian what-not, the shelves separated by turned and fluted columns, 40cm to 52cm
474. A late Victorian mahogany library table with inset tan leather top, fitted with two drawers to the frieze, raised on turned supports, 121cm x 60cm £100-£200

Lot 454



Lot 457



Lot 459



Lot 456



Lot 463



Lot 465



Lot 461

475. A late XIX century French oak bureau-cum-vitrine enclosed by a plain glazed door, the secretaire with a sloping fall front and fitted interior beneath display shelves with a mirror back, three drawers beneath, 104cm wide £300-£600
476. A XIX century square rosewood and amboyna veneered pedestal wine table with cross-banded top, flat sided baluster column, tricorn base with three carved paw feet, top 50cm square £300-£450
477. A Victorian lady's chair, the walnut frame carved in relief with roses and foliage, raised on short cabriole legs and upholstered in buttoned green dralon £300-£450
478. A Victorian mahogany serpentine fronted five tier what-not, the shelves separated by spirally fluted columns standing on turned feet, 37.5cm to 72cm £180-£280
479. An early XIX century figured mahogany bow front chest of four graduated drawers raised on turned feet, 101cm wide, 65cm deep £300-£500
480. A Georgian mahogany hanging corner cupboard, the dentil moulded cornice with a blind fret carving above an astragal glazed door enclosing three shelves, 104cm high £300-£400
481. A Georgian mahogany cupboard and stand enclosed by a fielded panelled door beneath a long drawer, 145cm high, 59cm wide £300-£500
482. A Hepplewhite period camel back mahogany side chair with pierced splat, drop-in seat, square chamfered supported joined by an "H" stretcher £70-£150
483. A George III design breakfront mirror back sideboard, the upper section with a projecting canopy on fluted supports with brass capitals and inset with a bevel edge mirror, the base fitted with two drawers and two cupboards, one with a cellerette, raised on square taper fluted supports terminating in spade feet, 167cm wide £700-£1000
484. A George III design corner cabinet, the upper section enclosed by an astragal glazed door, the moulded dentil cornice with three internal display shelves, the base enclosed by a fielded panel door standing on bracket feet, 197cm high £400-£600
485. A set of eight Victorian mahogany balloon back dining chairs with drop-in seats, curved front rails, turned tapering front supports £500-£800
486. A Victorian oak gothic revival heavily carved display cabinet enclosed by a pair of glazed doors and decorated with lion mask and bold scrolls, 135cm wide £150-£250
487. A XIX century child's commode rocking chair with high panelled back, shaped sides and enclosed base £100-£200
488. A XIX century mahogany chest of three drawers, each with oval pressed brass handles and raised on bracket feet, 93cm wide, 51cm deep £200-£400
489. A George III figured mahogany chest of four graduated cock-beaded drawers flanked by reeded columns with carved capitals, standing on acanthus carved feet joined by a shaped apron, the drawers with pressed brass lion mask handles, 102cm wide, 51cm deep £1500-£2000
490. A XIX century rectangular mahogany wash stand with hinged rising top, the front resembling a drawer above a single cupboard enclosed by a panelled door, 61cm wide £100-£150
491. An early XIX century mahogany and oak tripod wine table, the one piece top on a ring turned baluster column with triple splay legs, 52cm diameter £150-£250
492. An Edwardian mahogany boxwood inlaid box settle with shaped back, open arms, standing on shaped bracket feet, 129cm wide
493. A XIX century rosewood fold over top pedestal card table on a tapering column carved with upturned acanthus, the platform base with four bold lion paw feet, 91cm wide £500-£700



Lot 475



Lot 476



Lot 477



Lot 478



Lot 480



Lot 487



Lot 489



Lot 491



Lot 493



Lot 494

494. A Victorian walnut framed lady's chair carved in relief with trailing flowers and raised on cabriole front supports - now upholstered in pink buttoned material £250-£380
495. An elaborately carved oriental hardwood wall display cabinet, inlaid with birds amid foliage, 73cm x 58cm £100-£150
496. A Georgian mahogany tray top commode, the gallery with two carrying handles, the base enclosed by a pair of doors above the commode drawer, 55cm wide, 46cm deep £450-£650
497. A XIX century circular rosewood wine table, the hinged top with a banjo catch, raised on a flat sided column with tricorn base on turned feet, 42cm diameter
498. A XIX century mahogany fire screen with sliding panels, the reeded frame on leaf carved swept supports terminating in claw feet £100-£200
499. A XIX century carved mahogany frame open arm two seater sofa raised on cabriole front supports and upholstered in button pink velour £600-£900
500. An octagonal occasional table, the walnut and marquetry inlaid top with multiple crossbanding and chevron inlay, raised on four shaped tapering legs joined by an undertier, 58cm wide £200-£400
501. A small Georgian mahogany 'D' shaped sideboard, fitted with a long central drawer flanked by a deep cellerette and a cupboard, the front simulated as two drawers, with central napery drawer raised on four sabre front supports, 126cm wide £800-£1200
502. A Victorian 'D' shape mahogany duchess dressing table on cabriole front supports with claw foot, 88cm wide
503. A Georgian mahogany secretaire, the secretaire drawer fitted with a series of pigeon holes and crossbanded narrow drawers either side of a central cupboard, the base enclosed by a pair of door inlaid with mahogany crossgrain circles and enclosing three oak slides, 121cm wide, 57cm deep £700-£1100
504. A Victorian inverted breakfront mahogany pedestal sideboard, fitted with a central drawer and two cupboards, one with slides, one with a deep cellerette drawer, 181cm wide £150-£250
505. A XIX century mahogany toilet mirror, the rectangular frame on turned supports, the base with two cushion fronted drawers, 61cm wide
506. A Victorian mahogany toilet mirror, the arched frame on scroll supports, the serpentine fronted base with a hinged compartment, 66cm wide
507. A XIX century mahogany spider leg pedestal wine table, the rectangular top 53cm x 41cm £70-£120
508. A Victorian walnut conical workbox on triple carved cabriole supports £150-£250
509. A Victorian oak console table raised on shaped relief carved front supports, 121cm wide
510. A XIX century square dressing table stool, raised on turned mahogany legs with overstuffed woolwork top
511. A set of eleven early XIX century mahogany dining chairs comprising six singles with two matching carvers and three further very similar chairs; the horizontal top rails reeded and outlined with stringing, the splats centred with three conjoined circles two with open centres above overstuffed seats on ring turned front supports £3000-£5000
512. A XIX century rosewood fold over top games table, raised on a turned column carved with a foliate design on a platform base with turned legs, 90cm wide £300-£500
513. A Victorian circular mahogany dining table, raised on a tapering carved column with quadruple carved legs terminating in scroll feet with pot castors, the top 129cm diameter £550-£750



CONDITIONS OF SALE

Third Party Liability. Every person on Thos Mawer & Son Ltd (hereafter referred to as Mawer) premises at any time shall be deemed to be there at his own risk. He shall have no claim against Mawer's in respect of any accident which may occur or injury, damage or loss howsoever caused, save insofar as the injury, damage or loss shall be caused by the direct negligence of Mawer's employees.

GENERAL CONDITIONS OF SALE

1. **Definitions.** In these Conditions Mawer's, who act only as auctioneers and agents for the vendor, are called "The Auctioneers", and the representative of Mawer's conducting the Auction is called "The Auctioneer".
2. **General.** Whilst Mawer's make every effort to ensure the accuracy of their catalogue and the description of any lot:
 - (a) Each lot as set out in the catalogue or as divided or combined with any other lot or lots is sold by the vendor with all faults, imperfections and errors of description.
 - (b) Mawer's do not accept responsibility for the authenticity, attribution, genuineness, origin, authorship, date, age, period, condition or quality of any lot, unless they have been instructed in writing by the vendor so to certify, and in such case the Auctioneers to so as agents of the vendor and are not themselves responsible for such claims.
 - (c) All statements, whether printed in the catalogue, made orally or given as a condition request form, as to any of the matters set out in (b) above are statements of opinion only and are not to be taken as being or implying any warranties or representations of fact by Mawer's, unless they have been instructed in writing by the vendors so to certify, and in such case the Auctioneers do so as agents of the vendor and are not themselves responsible for such claims.
 - (d) Any claim under any Statute must be received in writing by the Auctioneer within ten days of the sale.
3. **The Auction**
 - (a) The Auctioneer has absolute discretion to divide any lot, to combine any two or more lots, to withdraw any lot or lots from the sale, to refuse bids, regulate bidding or cancel the sale without in any case giving any reason or without previous notice. He may bid on behalf of the vendor for all goods which are being offered subject to reserve or at the Auctioneer's discretion.
 - (b) The highest bidder shall be the buyer except in the case of a dispute. If during the auction the Auctioneer considers that a dispute has arisen, he has the absolute discretion to settle it or to re-offer the lot. The auctioneer may at his sole discretion determine the advance of bidding or refuse a bid.
 - (c) Each lot is put up for sale subject to any reserve price placed by the vendor. Where there is no reserve price (but not otherwise) the seller has the right to bid either personally or by any one person (who may be the Auctioneer).
 - (d) All conditions, notices, descriptions, statements and other matters in the catalogue and elsewhere concerning any lot are subject to any statements modifying or affecting the same made by the Auctioneer from the rostrum prior to any bid being accepted for the lot.
4. **Rescission.** Notwithstanding any other terms of these Conditions, if within fourteen days after the sale Mawer's have received from the buyer of any lot notice in writing that in his view the lot is a deliberate forgery, and within twenty-one days after such notification the buyer returns the same to Mawer's in the same condition as at the time of sale and by producing evidence, the burden of proof to be upon the buyer, satisfies Mawer's that considered in the light of the entry in the catalogue the lot is a deliberate forgery, then the sale of the lot will be rescinded and the purchase price of the same refunded. In the event of a dispute then the matter shall be settled by arbitration, the arbitrator to be nominated by the President of the Royal Institution of Chartered Surveyors. Both the buyer and the vendor agree to be bound by the decision.
5. **Default.** Mawer's disclaim responsibility for default by either the buyer or the vendor because they act as agents for the vendor only and therefore do not pay out to the vendor until payment is received from the buyer. Instructions given by telephone are accepted at the

sender's risk and must be confirmed in writing forthwith.

6. In the event of a sale by private treaty both the vendor and the buyer agree to be bound by the General and any Special Conditions of Sale.

BUYERS CONDITIONS

7. **Inspection.** Each buyer by making a bid for a lot acknowledges that he has satisfied himself fully before bidding by inspection or otherwise as to all the Sale Conditions, the physical condition of and description of the lot including but not restricted to whether the lot is damaged or has been repaired or restored.
8. **Property and Risk.** Legal title will not pass to the buyer until the lot(s) has been paid in full and the Auctioneers shall be entitled to a lien on any lot until the purchase price (as defined in 22 below) is paid in full but each lot is at the sole risk of the buyer from the fall of the hammer. Each buyer shall forthwith give his full names and permanent address and if called upon to do so by the Auctioneer shall forthwith pay to Mawer's such proportion of the purchase price as the Auctioneer may require. If the buyer fails to do so, the lot may at the Auctioneer's sole discretion be put up again and re-sold.
9. Every bidder shall be deemed to act as principal unless there is in force a written acknowledgement by Mawer's that he act as agent on behalf of a named principal.
10. **Removal of Goods.**
 - (a) No purchase shall be claimed or removed until it has been paid for and the sale has been conducted. All purchases shall be paid for and removed at the buyer's risk and expense by the end of the second working day after the sale, failing which the Auctioneer shall not be responsible if the same are lost, stolen, damaged or destroyed, and all lots not so removed shall remain at the risk of the buyer and subject to a minimum warehousing charge of 25p per lot per day. If they are not paid for and removed within seven days of the sale the Auctioneer may re-sell them by auction or privately without notice to the buyer. Any liability which there may be on the part of the Auctioneer in respect of any loss shall be restricted to a maximum of the price paid by the buyer of the lot.
 - (b) In the event of any failure of the buyers to comply with any of the above conditions the damages recoverable by the seller of the Auctioneers from the defaulter shall include any loss arising on any re-sale of the lot, together with the charges and expenses in respect of both sales, and together with interest at 2% above TSB PLC Base Rate upon the price of any lot which has not been paid for within 48 hours of the sale, and any money deposited in part payment shall be held by the Auctioneers on account of any liability of the defaulter to them or to the seller. The Auctioneers are unable to accept payment from successful bidders other than in cash or by the bidder's own cheque. Cheques drawn by third parties, whether in the Auctioneer's favour or requiring endorsement, cannot be accepted.
11. **Purchase Price.** The purchaser shall pay the hammer price together with a premium of 15% of the hammer price (adjusted for VAT as necessary). The premium at the appropriate rate is payable by all purchasers. The amount invoiced in respect of the premium will be inclusive of VAT but this VAT will not normally be recoverable by the buyer. The vendor authorises the Auctioneer to deduct commission and expenses at the stated rates from the hammer price and acknowledges the Auctioneer's right to retain the premium payable by the purchaser.

IMPORTANT NOTES FOR BUYERS

BIDS

We will be pleased to execute bids on behalf of intending buyers, and no charge is made for this service. Lots will be purchased as cheaply as permitted by other bids and reserves. Bids must be submitted to the Commissions Department at least half an hour before the sale commences, and should be entered on the forms provided. Bids left by telephone will be accepted only on the condition that they are at the sender's risk, and must in any case be confirmed in writing.

EXPORT LICENCES

An export Licence is required for certain items leaving the United Kingdom. The obtaining of a relevant Licence is the responsibility of the buyer.

FIRST SATURDAY CLEARANCE SALES

will take place on first Saturday of every month:

OCTOBER

4th at 10am

NOVEMBER

1st at 10am

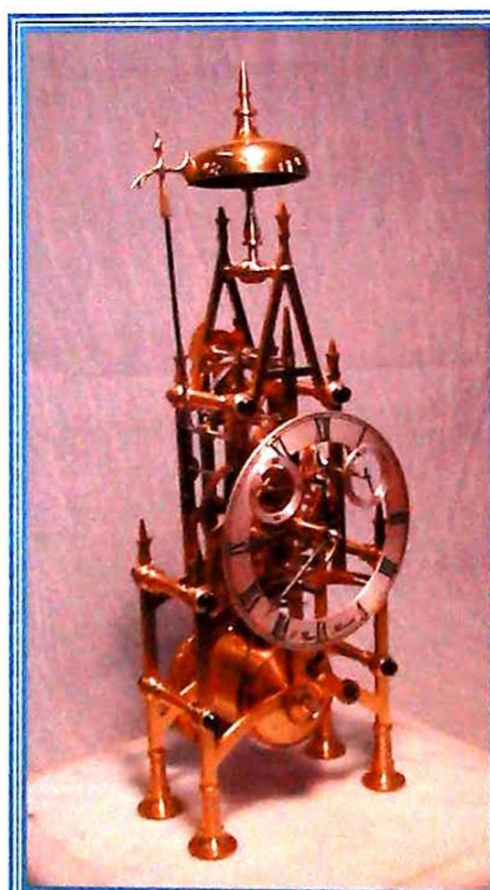
DECEMBER

6th at 10am

VIEWING

- Victorian & Later Sales - Friday prior 12noon-4pm & morning of sale from 8.30am
- Antique Sales - Day prior to sale 9.30am-4.30pm

Catalogues on our website www.thosmawer.com
approx. 5 days prior



Valuations Prepared For: INSURANCE PROBATE FAMILY DIVISION

For further information contact
J C Slingsby
clinton.slingsby@thosmawer.co.uk

01522 524984



DUNSTON HOUSE • PORTLAND STREET • LINCOLN • LN5 7NN
TELEPHONE 01522 524984 • FACSIMILE 01522 535600
EMAIL auction@thosmawer.co.uk • WEBSITE www.thosmawer.co.uk