



THOS. MAWER & SON LTD.

Auctioneers & Valuers Established in 1864

Catalogue of

ANTIQUE FURNITURE & EFFECTS



Lot
197

to be sold at 11am

Wednesday 24th April 2002

On view:

Sunday 21st 2pm-4pm
Monday 22nd 10am-4pm
Tuesday 23rd 10am-4pm

Catalogues £5.00

COMMISSIONS

The Auctioneers are pleased to execute commissions for intending buyers in confidence as cheaply as is allowed by any other bids. **All telephone bids must be confirmed in writing or by fax by 4pm the day prior to sale.** We cannot guarantee to execute bids received on the morning of sale.

BUYER'S PREMIUM

There is a 15% (inc. VAT) premium payable on the final hammer price of each lot.

REGISTRATION

All prospective purchasers are requested to register and obtain a bidding number prior to the start of the sale.

CATALOGUE DESCRIPTIONS

Care is taken to ensure that any statement as to authorship, attribution, origin, date and provenance is reliable and accurate, but all such statements are statements of opinion and are not to be taken as statement or representations of fact. Thos. Mawer & Son Ltd. reserve the right, in forming their opinion, to consult and rely upon any expert or authority reasonably considered by them to be reliable.

CONDITION REPORTS

We regret that we are unable to provide condition reports on the morning of the sale.

ESTIMATES

Estimates for lots under £100.00 are not always printed in the catalogue. On lots that are reserved, the reserve will not be greater than the published estimate at the time the catalogue goes to press.

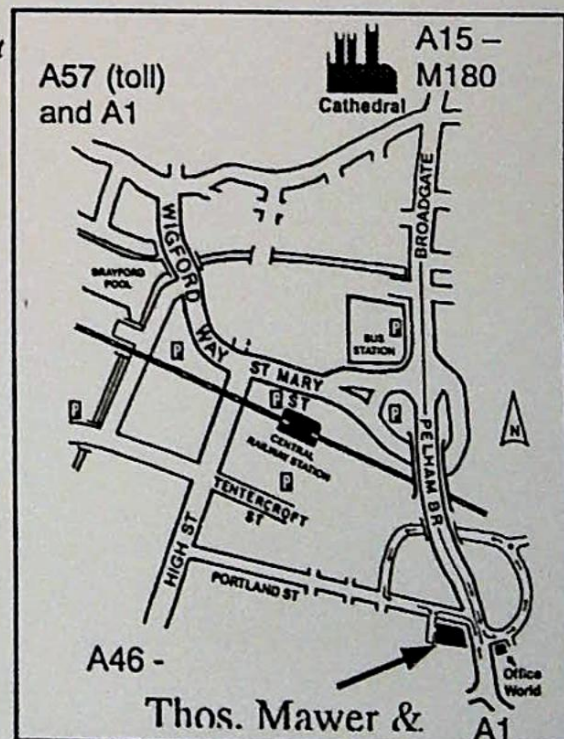
IMPORTANT NOTICES

While an identification of damage is given in some instances, an absence of such advice does not imply that a lot is free from defect. Prospective purchasers are strongly advised to inspect any lot on which they intend to bid. All measurements and weights are approximate and should be verified by intending purchasers

All Lots should be paid for and collected within 7 days of the sale. Any lots not collected after this time will incur storage charges.

PAYMENT OF ACCOUNTS

Payment for all lots must be made on the day of sale and methods are (1) CASH, (2) CHEQUES supported by either a letter of Reference from your bank or a cheque guarantee card to cover the sum of your purchase, (3) BANKERS DRAFT, (4) DIRECT DEBIT CARDS such as "Switch", "Delta", "Classic", "Connect", (5) CREDIT CARDS subject to a 2% premium charge.

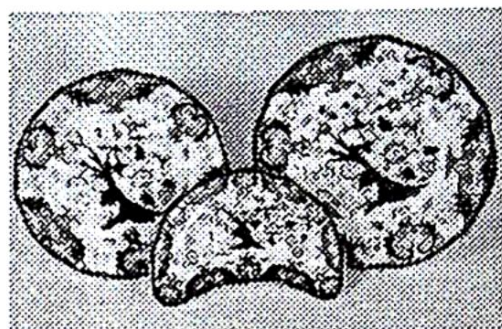


CERAMICS

1. Royal Crown Derby pattern 383 - salad plates (6), printed mark, year cypher 1896 (*illus*)

2. Royal Crown Derby pattern 383 - six plates, 26cm diameter, printed mark year cypher 1895 and 1904 (*illus*)

3. Royal Crown Derby pattern 383 - six plates, 22cm diameter, printed mark, year cypher 1904 (*illus*)



Lots 1, 2 & 3

4. Royal Crown Derby pattern 383 - three soup bowls, 26cm diameter, printed mark, year cypher 1895

5. Royal Crown Derby pattern 383 - two soup bowls, 26cm diameter, printed mark, year cypher 1895

6. Royal Crown Derby pattern 383 - a serving dish, 33cm wide, printed mark, cypher 1895

7. Royal Crown Derby pattern 383 - muffinier, lidded tureen, serving plate, 38cm wide; plate 22cm diameter - various dates (all a/f)

8. Royal Crown Derby pattern 1128 - dish 16cm diameter, cypher 1901; plate 16cm diameter, post 1921

9. Royal Crown Derby pattern 1128/1299 - two handled footed vase, 10cm high; and a vase pattern 1520/6249, 13cm high (a/f)

10. Royal Crown Derby pattern 1128 - sandwich plate, 24cm diameter, printed mark, year cypher 1978

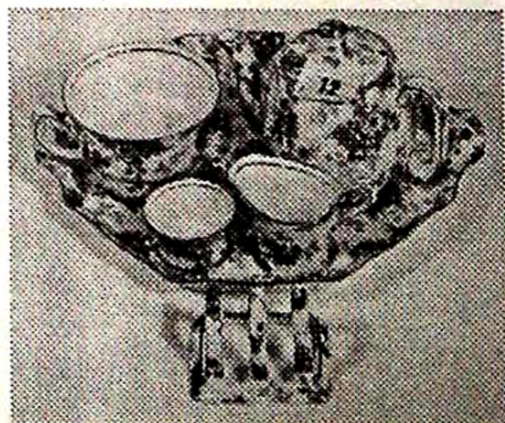
11. Royal Crown Derby pattern 1128 - pair of plates, 26cm diameter, printed mark, year cypher 1975

12. Royal Winton. A "Cotswold" Chintz individual breakfast set £300-£500 (*illus*)

13. Shelley China pattern 13774 Polestar - sandwich plate, five side plates, milk jug, sugar basin

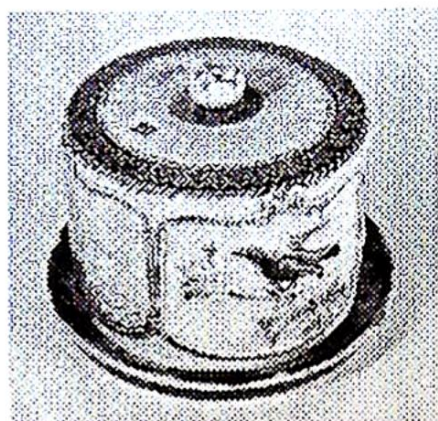
14. An early XIX century blue transfer printed pearlware bowl, 19cm diameter

15. Masons patent ironstone china - a pair of mid XIX century soup bowls decorated in red ochre with two birds on a tree, 24cm diameter, impressed mark



Lot 12

16. Susie Cooper. A meat plate, 36cm long; smaller ditto, 28cm long; fruit bowl 24cm diameter; six cereal bowls 16cm diameter and a circular covered two handled tureen (a/f), 14cm diameter, printed mark - a Susie Cooper Production Crown Works Burslem England



Lot 20



Lot 23



Lot 25

17. Susie Cooper. A pair of side plates, 17cm diameter; plate 15cm diameter; plate 14cm diameter; Fragrance C485 cup and saucer; four coffee cans decorated with gilt stars (10)

18. An early XX century Japanese egg shell china part tea service comprising teapot, cream, sugar, four cups and saucers - decorated in pale blue with landscape panels, gilt highlights, printed mark L & Co, Nippon



Lots 24, 33, 93, 109 & 110

19. A Limoges style porcelain comport, the fluted body decorated with summer flowers, 23cm diameter
20. A Majolica style earthenware cheese dome and dish decorated with stylised birds and foliage, 17cm high £400-£600 (illus)
21. An early XIX century two handled oval fruit dish, royal blue ground, floral panels, gilt highlights, 31cm wide £50-£100
22. A XIX century earthenware two handled vase, the pale blue ground decorated with pink and blue lilies, gilt highlights, scrolling gilded handles, 67cm high (1 handle a/f) £50-£100
23. A glazed terracotta figure of a lady making pillow lace, 22cm high £100-£200 (illus)
24. A Staffordshire figure group of a Negro seated on a cotton bales with a young girl by his side, 28cm high (minor damage) (illus)
25. Royal Worcester "Crownware" bowl pattern number CW162, decorated with castles, islands and stylised gilt trees, 23cm diameter £100-£200 (illus)
26. Royal Worcester - a porcelain scarf bracket vase, green painted mark, pattern number 1175, 22cm long
27. Royal Worcester - a cream blush porcelain Amphora and stand flower holder, purple printed mark, pattern number 1908, 10cm high

28. Noritake China - a part service comprising four cups, three saucers, coffee pot and sugar, decorated in heavy gilt and royal blue (10) (sugar a/f)

29. Charlotte Rhead - a jug decorated with multi-coloured flowers, yellow bands and handle, 21cm high, printed Crown Ducal mark and hand written signature £200-£400 (*illus*)



Lot 29

30. Crown Devon:- A set of three graduated taper cylindrical jugs painted with gilt foliage, pink floral sprigs, gilt strap handles, 16cm, 18cm, & 20cm high, printed mark (gilding rubbed) (*illus*)

31. Vienna Porcelain:- A wall plate with central panel of three figures in a landscape surrounded by gilt key pattern and leaf borders with outer green/gilt panel border, entitled verso "Mione und Amor" 25cm diameter £100-£200 (*illus*)



Lot 30

32. A hard paste porcelain wall pocket with pair of nesting birds and foliage, 16cm high (a/f)

33. A Staffordshire cottage with royal blue roof, orange chimney, garlanded with flowers, 21cm high (*illus prev page*)

34. XIX century Chinese hard paste porcelain tea bowl and two handled cup, both decorated with willow pattern decoration (a/f)



Lot 31

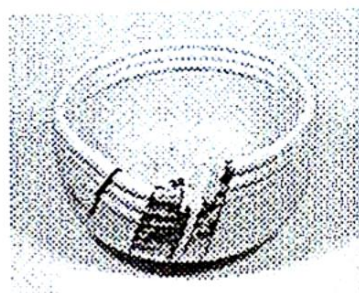
35. Moorcroft:- The 1897/1997 Centenary "Yacht vase", 23cm high, impressed and painted marks, number 1185 (with certificate) £200-£400 (*illus*)

36. Gordon Baldwin. A white glazed earthenware bowl, the triple rim with cut out section and applied diagonal panel, the base bearing inscription "for Jane from the Baldwins March 1977", hand painted monogram GB 77, 22cm diameter, 12cm high £200-£300 (*illus next page*)

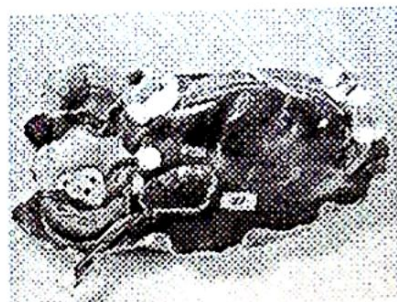


Lot 35

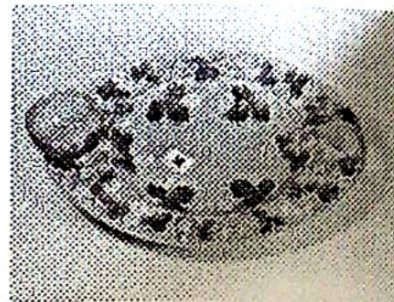
37. George Jones & Sons Ltd. A Majolica strawberry dish in the form of a lily leaf, the handle with intertwining flowers, fitted with cream jug and sugar basin with sifter spoon, leaf serving spoon to dish (a/f) (*illus next page*)



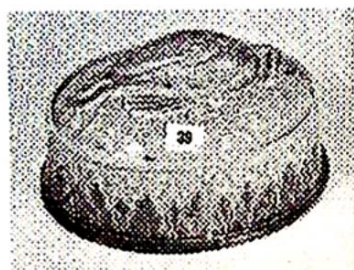
Lot 36



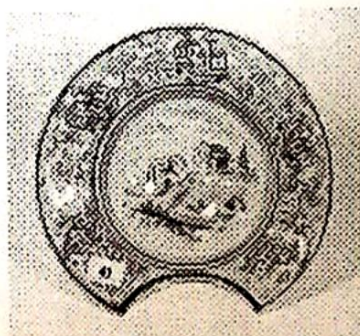
Lot 37



Lot 38



Lot 39



Lot 41



Lots 43 & 47

38. George Jones & Son Ltd. A Majolica oval strawberry plate, the pale blue ground decorated with applied strawberry leaves, flowers and fruit, holes to rim for jug and basin (basin missing), 37cm long (*illus*)
39. A Majolica game tureen and cover, the lid decorated with a partridge, internal cream earthenware lift out liner (lid repaired), 27cm long (*illus*)
40. A XIX century copper lustre earthenware octagonal teapot; a blue banded copper lustre jug 16cm high and a pink and copper lustre jug, 9cm high (minor chips)
41. A tin glazed barbers bowl decorated with blue buildings, trees and bridges, 26cm diameter (*illus*)

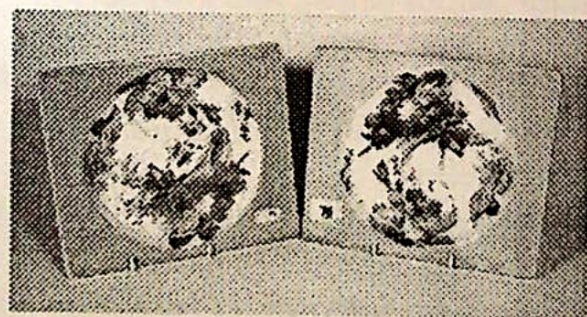
Imari

42. Imari. A pair of plates decorated with typical palette, 21cm diameter
43. Imari. A charger decorated in royal blue, ochre and gilt with stylised foliage, 38cm diameter £100-£200 (*illus*)
44. Imari. A pair of plates decorated with fluted rims, in typical palette, 21cm diameter
45. Imari. Two fluted edge bowls decorated in typical palette, 22cm diameter
46. Imari. A wavy edge plate with underglaze blue, central roundel and band, surrounded by red ochre and green trees, panels and figures, 23cm diameter
47. Imari. Three fluted edge plates decorated in typical palette, 22cm and 21cm diameter (*illus*)

- 47A. Imari. A pair of XIX century low bulbous vases decorated in typical palette, 13cm high
48. Imari. Two plates decorated in typical palette, 18cm and 21cm diameter; and an underglazed blue printed plate with impressed mark, 21cm diameter
49. Imari. A gourd vase, narrow neck vase, three jars, miniature vase, three small bowls and a plate (12)
50. Cauldon. A pair of ironstone plates decorated in underglazed blue with pink, yellow and gilt highlights; pair of Leighton soup plates and a French earthenware plate - all 26cm diameter (5)
51. A pair of XIX century porcelain plates with fluted borders, decorated in underglazed blue with pink, rose, yellow, orange, green and gilt highlights in Japanese style, 20cm diameter; and a porcelain plate decorated in rust, royal blue, green, yellow and gilt, overall floral band, 20cm diameter (3)
52. Royal Doulton. A 1977 Silver Jubilee Queen Elizabeth II loving cup, number 112/250 with certificate, 26.5cm high
53. Copeland Spode. A 1937 commemorative tankard with cartouche of King and Queen, gilt decoration, 18cm high
54. Copeland Spode. A blue transfer printed commemorative jug, coronation of King Edward VIII, May 1937, 15cm high
55. Royal Doulton. A honey glazed earthenware half pint tankard, coronation George V 1911, 12cm high (minor chips); and a white earthenware brown transfer printed beaker presented by their Majesties, Crystal Palace June 30th 1911, 10cm high (2)
56. Tuscan China. A loving cup HM King Edward VIII, Coronation May 12th 1937, 13cm high
57. Hammersley China. A loving cup King George VI Coronation 1937, 10cm high
58. Paragon China. A loving cup and plate, King George VI Coronation May 12th 1937
59. Foley China. A Victoria Diamond Jubilee 1897 part tea service comprising teapot, cream and sugar, two breakfast cups and saucers, cup and saucer - 10 pieces
60. Doulton Lambeth. A silver rimmed stoneware beaker, Victoria R.I. 1837-1897, 13cm high
61. Doulton Burslem. A Victoria brown transfer printed 1897 Jubilee beaker; Victoria 1897 Jubilee mug presented by the Mayor of Grimsby; and a Royal Doulton green transfer printed beaker Kings Coronation Dinner 1902 (3)
- 61A. XIX century commemorative container - River Wear Bridge and other items (9)

62. Albion Cobridge. A Parien jug decorated overall with crests of Great Britain, pewter lid, 16cm high
63. Staffordshire Bone China. An 1887 Jubilee cream jug, cup, saucer and plate (4)
64. Foley China. A commemorative trio, Coronation 1902
65. A Staffordshire earthenware jug 1887 Jubilee, 17cm high; a Gray & Co beaker 1911 Coronation; a 1902 Coronation tankard (3)
66. A City of Leeds 1902 Coronation plate presented by Ambrose Edmund Butler JP, Lord Mayor, transfer to the reverse "Coronation postponed to Aug. 9 1902"; and a Crown Staffordshire miniature tankard - Queen Elizabeth II 1953 (2)
67. An earthenware plate, "Victoria Regina Crowned 28th June 1838", 16cm diameter; and octagonal earthenware plate, Queen Victoria & Prince Albert, 15cm diameter (a/f); and a tankard Prince & Princess of Wales married 1863 (3)
68. An oval embossed copper wall plaque depicting Queen Victoria and her children, Balmoral and Windsor Castles, seated Britannia, 30cm x 27cm
69. A moulded glass Victoria Silver Wedding dish, 10th March 1888, 23cm long; a moulded glass Royal Jubilee 1887 photo frame; three glass beakers 1897 (2) and 1911; commemorative jug 1972 and a Rowntree & Co miniature chocolate tin, souvenir of the visit to Leeds by the King & Queen, 7th July 1908 (7)

Clarice Cliff

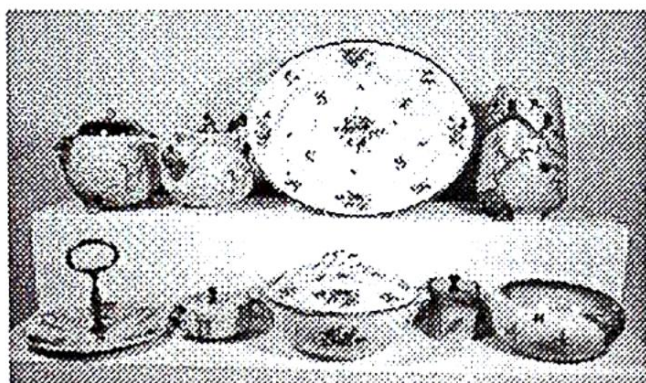


Lot 70

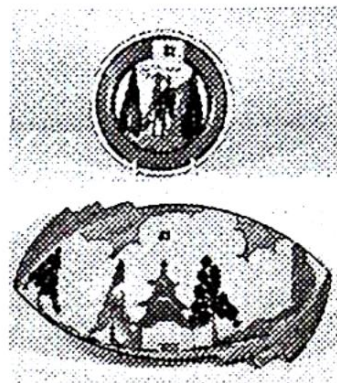


Lots 71-75 & 77

70. Clarice Cliff. "Love in a Mist" - two Royal Staffordshire Biarritz plates, one blue and green, the other pink and green, printed mark (*illus*)
71. Clarice Cliff. A lidded tureen, shaded cream body and lid with band of green leaves, printed mark, registered number 748858, paint number 8914, 21cm diameter (*illus*)
72. Clarice Cliff. "Orange Capri" - a Bizarre tazza on electro plated stand, 23cm diameter, printed factory marks £80-£150 (*illus*)
73. Clarice Cliff. "Water Lily" - a bowl modelled in relief, painted in yellow, green and blue, printed factory mark, 20cm wide £120-£220 (*illus*)



Lots 78-80, 84 & 86



Lots 82 & 83

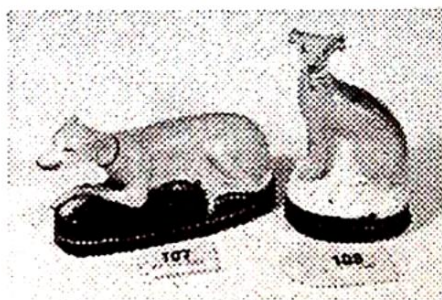
74. Clarice Cliff. "Viscaria" - A bowl painted in colours, printed factory marks, 22cm diameter £80-£150 (*illus prev page*)
75. Clarice Cliff. "Crocus" - a Bizarre bowl painted in colours, printed factory marks, 20.5cm diameter £100-£150 (*illus prev page*)
76. Clarice Cliff. "Crocus" - four Royal Staffordshire plates, 16.5cm diameter (wear); and a Bizarre sugar bowl, 8cm diameter (a/f) £100-£150
77. Clarice Cliff. "Autumn" - a Fantasque Bizarre bowl, 20.5cm diameter (wear) £100-£150 (*illus prev page*)
78. Clarice Cliff. "Cherry Tree" - a 989 vase moulded with tree boughs, in colours, printed marks, 20.5cm high £80-£150 (*illus*)
79. Clarice Cliff. "Celtic Harvest" - A pattern 68A teapot; 62A biscuit barrel with plated cover, sugar basin with plated cover and cake plate with metal handle, painted in colours, printed factory marks (4) £150-£250 (*illus*)
80. Clarice Cliff. "Sunrise" - a preserve jar with plated lid, painted in colours, printed mark, 7.5cm high (*illus*)
81. Clarice Cliff. "Ravel" - a sandwich set comprising oblong dish, 29.5cm long and six octagonal plates, 14cm diameter, printed marks £70-£150
82. Clarice Cliff. "Orange Trees & House" - A Fantasque plate, painted in coloured, printed factory mark, 15cm diameter £80-£140 (*illus*)
83. Clarice Cliff. "Kew" - a Bizarre 475 bowl painted in colours, printed marks, 32cm wide £250-£350 (*illus*)
84. Clarice Cliff. "Viscaria" - a Hiawatha bowl, painted in colours, printed factory mark, 20cm diameter (*illus*)
85. Clarice Cliff. A covered tureen sugar basin and milk jug, printed marks; and a Royal Staffordshire cup, saucer and plate, printed with red sailing boat; and a Bizarre plate painted with black, orange and yellow band, 23cm diameter (8) - (faults)
86. Clarice Cliff. "Olde Bristol Porcelain designed by Duvivier circa 1770, reproduced by Clarice Cliff" - a pair of covered tureens, 20cm diameter and an oval serving plate, 35cm wide, printed mark (*illus*)

87. Clarice Cliff. A beige glazed 833 pattern embossed bowl, 18cm diameter; and a green glazed 817M mug, printed marks (hairline cracks)
88. Royal Doulton "Dickensware" - plates (3), Sam Weller, Mr Pickwick and Sairey Gamp
89. Bloor Derby. A fluted diamond shaped dish decorated with royal blue border and gilt foliage, 28cm wide
90. A pair of XIX century Staffordshire octagonal jugs decorated in Japan style with scrolling handles, 18cm high; and a copper and pink lustre jug, 11.5cm high (rim chips)
91. A XIX century Continental terracotta figure of a woman wearing a bonnet, holding a fish (repaired)
92. A XIX century Staffordshire flatback figure "Peace", 30cm high
93. A XIX century Staffordshire flatback group of a man and woman, she holding a basket and balancing a sheaf of corn on her head, he wearing a tricorne hat with blue scarf over his arm, 33cm high (*illus 2nd page*)
94. A XIX century copper lustre jug with mask spout, the body having central blue bands decorated with flowers, 15cm high
95. An early XX century Staffordshire earthenware octagonal teapot and hot water jug decorated in Japan pattern; a XIX century boat shaped hexagonal two handled sauce dish with brown transfer print of squirrels and hazelnuts, 20cm long; and a transfer printed pottery watering can (a/f)
96. Gibson & Sons Burslem "Windsor Artware" - a "Kemna" pattern bulbous narrow neck vase decorated with budgies and prunus blossom on a black ground, 18cm high
97. A late XIX century unmarked Jasperware square decanter with handle, the pale green body decorated with fruiting vine and hanging game, the neck and top having silver mounts, Sheffield 1898, 20cm high
98. A XIX century Staffordshire blue and white printed bowl, "Florence" pattern, 25cm diameter
99. A Continental porcelain double shell shaped bowl with central scrolling handle, the interior decorated with summer flowers, 28cm wide, printed mark CFH
100. Doulton Lambeth. A stoneware taper bodied jug with ribbed body, royal blue neck with foliage, brown handle and base, 21cm high, impressed number 4647, initials EA, marked DLE, the silver rim hallmarked Sheffield 1896 (handle repair) (*illus*)
101. Doulton Lambeth. A taper bodied stoneware jug with ribbed body, Royal blue neck with foliage, brown handle and base, 20.5cm high, impressed number 4345, initials ? FH, mark DLE, the silver rim hallmarked Sheffield 1896 (*illus*)

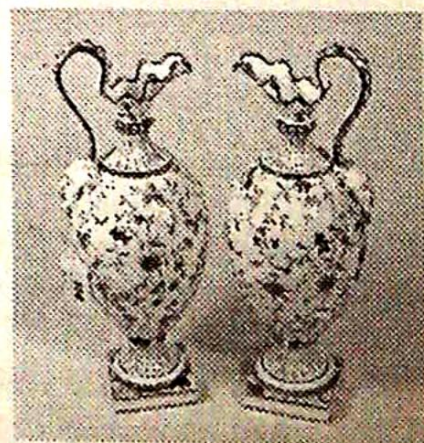


Lots 100-102

102. Doulton Lambeth. A pair of taper bodied stoneware beakers with ribbed bodies, royal blue neck with foliage, brown base, 12cm high, impressed number 6895, mark DLE, hallmark silver rim Sheffield 1898 (*illus prev page*)
103. A tin glazed plate decorated in blue with stylised flowers, 26.5cm diameter
104. A Chinese Celadon glazed plate decorated with birds, flowers and butterflies, 26.5cm diameter
105. A mid XIX century pale blue transfer printed turkey plate with gravy well, 50cm long
106. A XIX century Staffordshire flatback figure of William Wallace in highland dress, 40cm high
107. A XIX century Staffordshire pen holder in the form of a reclining greyhound, facing left, front paws crossed, 14cm long (chip to ear) (*illus*)
108. A Staffordshire figure of a seated greyhound facing left, 13cm high (minor chips to ears) (*illus*)
109. A XIX century Staffordshire flatback windmill figure group, 30cm high (*illus 2nd page*)
110. A Staffordshire spillholder figure group, the boy and girl each side of a tree bough, their arms resting on a bucket, she with a bird, 25cm high (*illus 2nd page*)
111. A pair of Continental figures of a boy and girl, each with dogs, she with fruit held in her apron, 24cm high
112. A pair of Continental figures, boy and girl with lamb and dog at foot, he with a trumpet, she with a wheatsheaf, impressed Germany 3883, 24cm high
113. A pair of Japanese Noritake two handled vases and covers, the ovoid bodies centred with oval panels, painted with coloured flowers and with gilt highlights, 26cm high
114. A pair of Minton ewers, the ovoid bodies with rams mask handles, fluted necks and frilled edges, decorated in blue and gilt on a cream ground and with leaf mould above the square bases, 29cm high (crack and reglued to one rim) £200-£300 (purchased Bishop of Lincoln Sale 1980's) (*illus*)
115. A porcelain leaf moulded jug with mask spout, scroll handle, the white ground decorated with gilt highlights, 17cm high (purchased at the sale of the contents Old Rectory, Leadenham)



Lots 107 & 108

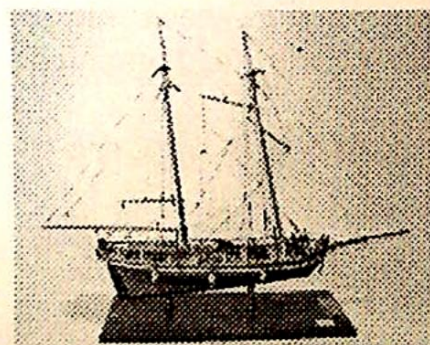


Lot 114

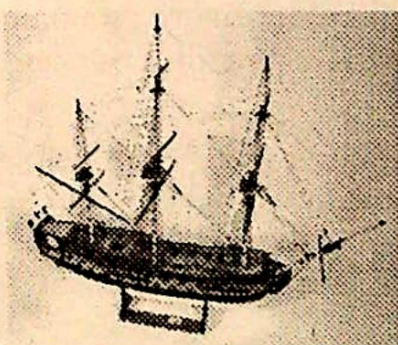
116. A pair of Continental cabinet plates, transfer printed with classical scenes and a similar cup and saucer
117. A Continental figure of a child musician, brightly coloured with a yellow jacket on a moulded circular gilded base, 16cm high
118. A white pottery jug moulded in relief with putti and with copper lustre highlights; and a blue moulded jug with mask spout
119. An Art Deco design tapering jug decorated in orange and another two handled vase
120. A XIX century Staffordshire flatback clock figure group, 36cm high

MISCELLANY

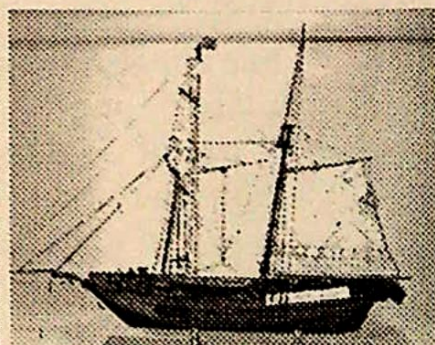
123. Papier mache zoo animal models (10)
124. A Victorian brass oil lamp with ornate cast iron hinged wall bracket
125. A Victorian cast metal fender
126. Made up kit models of sailing ships:- HMS Victory, Prince 1670, Sovereign of the Seas, and Nueva Casimira 1850 (4)
127. Sailing ship model:- XVI century Spanish Galleon, 67cm long and another HMS Bounty 50cm long
128. Sailing ship model:- HMS President 1806, 50cm long; and another Royal Louis, 46cm long
129. Sailing ship model:- La Reale De France 1690, 82cm long



Lot 130



Lot 133



Lot 135

130. Sailing ship model:- Alert 1818, 74cm long on a wooden stand bearing brass plaque with makers name D H Byford (*illus*)
131. Sailing ship models:- Glorieux, 48cm long; and La Couronne, 43cm long
132. Sailing ship model:- French Frigate, 100cm long on a rectangular oak plinth
133. Sailing ship model:- HMS Gloucester 1737, 4th Rate, 88cm long (*illus*)
134. Sailing ship model:- Soleil Royal 1st Rate 100 Guns 1650, 80cm long with mahogany plinth
135. Sailing ship model:- Yankee Clipper, 86cm long (*illus*)
136. Sailing ship model:- Golden Hind 1577-1579, 60cm long; and another

137. Hornby 'O' gauge clockwork - a Midland Railway 4-2-2 locomotive and tender, number 650 and three carriages
138. A brass model of a World War I Triton tank, 13cm
139. A pair of XIX century papier mache coasters with gilt decoration, 14cm diameter
140. A Victorian mother of pearl inlaid rosewood jewel box, the interior lined with blue paper, lift out tray, 25cm wide
141. A circular leaded glass panel, 26.5cm diameter - Alice in Wonderland, with a central circular panel of Alice surrounded by assorted characters from the book
142. A circular turned brass based oil lamp with milk glass reservoir with floral band, circular dome shaped etched glass shade, 58cm high overall



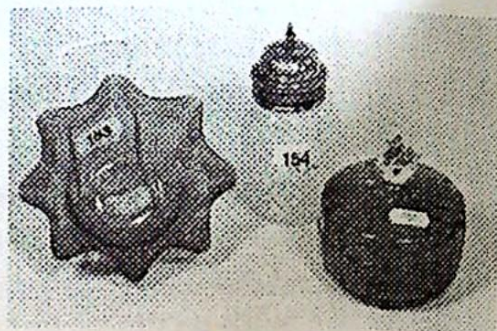
Lot 143



Lot 146 & 147

143. A pair of XIX century cold painted spelter figure of Blackamoors, 23cm high (repaired) (*illus*)
144. A pair of gold painted spelter figures of ladies, one holding a lyre and pan pipes, the other a telescope and globe (missing), 36cm high (gilding worn)
146. A wine goblet with ovoid bowl, decorated with scrolling flowers and foliage, on a double series opaque twist stem, 18.5cm high, 9cm diameter (*illus*)
147. A pair of wine goblets with faceted drawn bowls decorated with fruiting vine, annular stem, 15cm high (*illus*)
148. Lalique. A frosted clear glass circular bowl and cover with ball knop, signed to base R. Lalique France, number 27, 16cm diameter (a/f)
149. A pair of XIX century pale blue clear glass baluster candlesticks with cut decoration to base stem and bowl, 22cm high
150. A pestle shaped cut glass decanter with octagonal cut stopper; a cut glass posy bowl with plated top, a cut glass sugar caster with plated top (3)
151. A red flashed tapering nine sided pickle jar with cushion stopper; and a ring necked red flashed oil bottle with moulded stopper

152. A pair of late XVIII century club shaped decanters with triple cut ring neck, faceted shoulders and half ribbed body, lozenge shape stoppers, 29cm high (1 a/f)
153. A wavy edge cranberry glass bowl with multi ribbed border, 13cm diameter; and a Cranberry glass jam pot and cover with clear glass knop, 10cm diameter (*illus*)
154. A pale yellow and drawn white opaque glass decorated ovoid bodied sugar caster with plated top, 14cm high (*illus*)
155. Carnival Glass - a purple flashed fluted bowl decorated with cherries, pears and apples, 22cm diameter
156. A pair of glass beakers with etched and gilded monogram "W", 13cm high, a smaller beaker with applied monogram "B", 11cm high and four wine goblets with drawn trumpet bowls, 18cm high
157. A XIX century brass corinthian column oil lamp with stepped lion mask decorated base, glass reservoir, 57cm high £150-£250
158. A XIX century percussion musket, 122cm long £100-£200
159. A XIX century mother of pearl and brass inlaid rosewood workbox, the pale blue silk lined interior with lift out compartmented trays, complete with assorted silks, buttons etc., 30cm wide
160. A cast iron and brass fire kerb, 125cm wide and fire front
161. A XIX century copper coal helmet with tubular swing handle
162. A Kayseri silk on silk tree of life pattern rug, 164cm x 102cm £600-£900 (*illus*)
164. A footman's uniform, the royal blue jacket with gold braid, gilded buttons with fish and leaves crest, canary yellow lining with matching waistcoat and canary yellow velvet knee breaches with buttons stamped "F. Hall Cambridge"
165. A marquetry inlaid rosewood musical box playing eight airs, 35cm wide
166. An Edwardian string inlaid mahogany mantel clock by Mansell Lincoln, circular white dial, eight day movement, 23cm high
167. A circular oak cased "Patent Metallic Thermometer number 1383 by Stanley, 13 Railway Approach, London Bridge", registering 0-110 degrees Fahrenheit, 26cm diameter

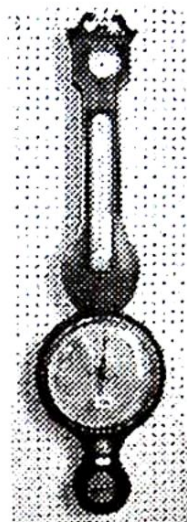


Lots 153 & 154

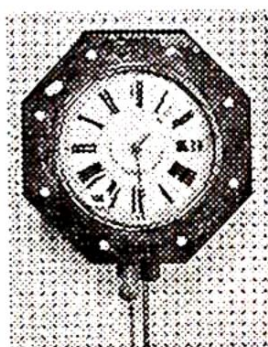


Lot 162

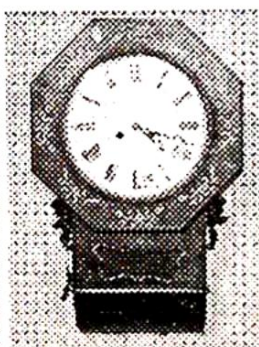
168. A XIX century mahogany wheel barometer by L. Belatti Lincoln with dry/damp dial, thermometer, the dial silvered above bone adjustment knob and spirit level, 96cm long (*illus*)
169. A Black Forest octagonal walnut cased wall clock with mother of pearl inlay, circular white roman dial, weight driven (*illus*)
170. A Black Forest inlaid walnut cased wall clock, spring driven with circular Roman dial £100-£200 (*illus*)
171. A XIX century Mauchlin ware turned sycamore string container depicting Hartlepool Lighthouse (a/f)
172. A cast metal figure of an athlete about to hurl a rock, on a square grey alabaster base, 17cm high



Lot 168



Lot 169



Lot 170



Lot 174



Lot 176

173. A pair of small bronze incense holders, a bronze incense burner on stand, Chinese bronze mirror, Japanese Samurai base metal circular plaque and a Chinese earthenware teapot
174. A cast metal and gilded "Neptune" door stop, 37cm high (*illus*)
175. Simon & Halbig 1079. A 24" bisque headed doll with jointed composition body, £150-£250



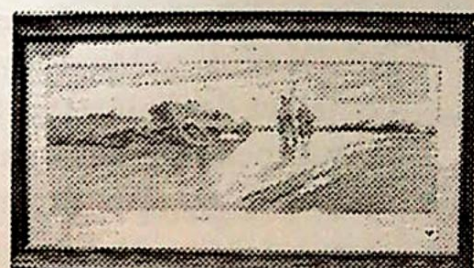
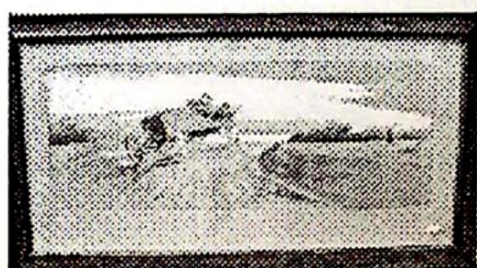
Lot 177

PICTURES, PRINTS ETC.

176. Oil on panel "To Thomas Weston from Sir John Lavery 1935" - a full length portrait of the jockey in silk, written verso in pencil Mr Thomas Weston Jockey, York House, All Saints Terrace, Newmarket 44cm x 24cm £500-£900 (*illus*)
177. A photograph of Lincoln Racecourse (Carholme) - Tommy Weston mounted being led back to the winners enclosure having won the Lincolnshire handicap in 1946, framed 28cm x 37cm (*illus*)

178. A Victorian oval plaster gilt overmantel mirror of neo-classical design, surmounted by a foliage cartouche, the frame leaf moulded with hare bells and flanked by two oval plaques and cherubs in jasper colours, originally purchased from the sale at Norton Place, Caenby circa 1945/6, approx. 160cm high, 156cm wide £500-£1000
179. A wall mirror, the ogee moulded frame in gilt and silver, 125cm x 89cm £100-£200
180. A wall map - the Falkland Islands "surveyed by Captain F Fitzroy and B.J. Sullivan RN" with additions, corrected 1899, 100cm x 135cm

Lot 181



181. After E. Montaut 1904 A pair of coloured lithographs of motoring scenes titled "L'Embardee" and "L'Epave" images 29cm x 77cm £150-£300 (*illus*)
182. XIX century Continental School A Mediterranean sea scape with a fortified tower on a rocky promontory overlooking a bay, figures seated beneath 42cm x 59cm £100-£200
183. Oil on canvas A portrait of a Victorian gentleman wearing a black frock coat, half length 26cm x 64cm
184. Moore's Tally Ho to the Sports A set of four coloured hunting prints, each titled, published 1853 image 42cm x 61cm £200-£400
185. After H Alken A series of four coloured cock fighting prints image approx. 13cm x 17cm £80-£140
186. A XIX century coloured print titled "The Pointers and Pheasants", French after the XVIII century original
187. XIX century English School A watercolour drawing - portrait of a gentleman seated half length 22cm x 17cm

Lot 188



188. G.R.P. Jarvis A series of four watercolour drawings - figures of Walcheren ... a beggar, a washer woman, a knife grinder and a country woman with matches; early XIX century each approx. 17cm x 15cm £500-£800 (*illus*)

189. After Cecil Aldin A coloured print titled "Brighton" - a dog cart drawn by a pair of ponies with Lurcher alongside 22cm x 50cm £70-£140
- 189A. G. Sykes A watercolour drawing of a village street, a man entering a cottage 24cm x 34cm
- 189B. English School A watercolour drawing of cottages in a cove, fishing nets drying, a group of figures netting rabbits 24cm x 34cm
190. Two pairs of coloured sporting prints - double framed
191. A watercolour drawing of the Thames, showing the Swan Hotel, (according to the vendor executed by Annogonni) 13cm x 12cm (*illus*)
192. Yorkshire. Printed map by C. Smith 1808, hand coloured, divided into Ridings, on four sheets, 64cm x 53cm approx. £150-£250
193. A XIX century watercolour drawing titled "The Fish Market at Dieppe", unsigned, but probably by G.R.P. Jarvis 16cm x 21cm £100-£200
194. After Turgis A pair of XIX century coloured lithographs, "Nemorin" and "Estelle", contemporary mahogany frames 26cm x 33cm overall
195. A pair of watercolour drawings - Mallard & Teal and Woodcock & Partridge 22.5cm x 29cm £100-£200
196. Louisa Atkinson 1864 A watercolour drawing - a brace of English partridge 13.5cm x 21cm (*illus*)
197. Charles Jagger 1811 A miniature portrait on ivory of Charles De Laete Waldo-Sibthorp, commissioned as a gift to his wife Maria for their wedding day Feb. 21st 1811; Sibthorp in his uniform as Captain of the 4th Dragoon Guards 11cm x 9cm £1000-£2000 (*illus front page*)
198. After L S Lowry Coloured lithograph - Northern town scape, signed by the artist 43cm x 54cm £350-£550
199. A watercolour drawing - entrance to Bishop Russel's Chapel, Lincoln Cathedral, 20cm x 25cm
200. A watercolour drawing - Lincoln Cathedral interior, 22cm x 29cm



Lot 191

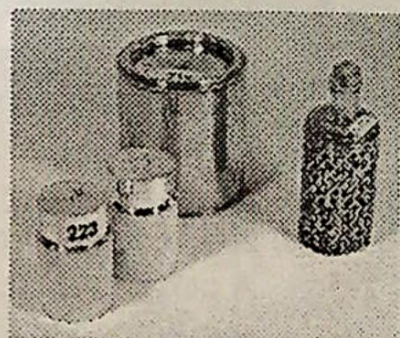


Lot 196

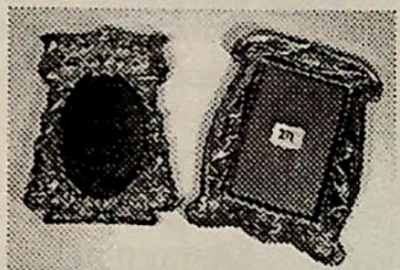
SILVER & PLATE

201. A silver plated oval tea tray decorated with band of classical Grecian figures, rope border, pair of mask handles, 81cm wide
202. A silver plated rectangular tea tray, pair of scroll handles, gadroon and shell patterned border, engraved with crest, monogram A.R.B.C and 11 signatures, 29cm wide

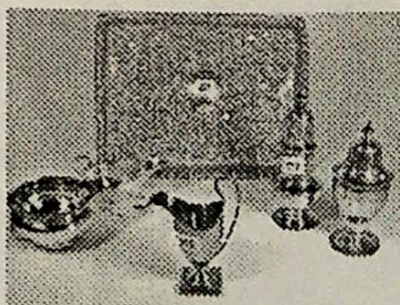
203. A silver plated soup ladle, maker WW; half pint tankard; butter knife; sugar nips; cased set of cake forks; old silver on copper candle snuffer and tray (7)
204. A cased pair of Mappin & Webb silver plated bone handled fish servers, a cased set of six dessert knives and forks, a cased set of six cake forks and server and other plated cutlery (19)
205. A XIX century bone handled three piece carving set, plated fish servers, pickle forks, dessert forks etc. - quantity
206. Seven assorted hallmarked silver napkin rings, two mustard spoons, butter knife etc.
207. A set of six hallmarked silver coffee spoons, Birmingham 1933/4, maker TS
208. A set of six hallmarked silver coffee spoons with angular knopped stems, Birmingham 1938/9 and a set of silver plated bean top coffee spoons
209. A set of hallmark silver bean top coffee spoons, Sheffield 1924/5
210. A hallmarked silver presentation cylindrical string canister, engraved W.R.L. from R.S.C. August 19 1899; London 1898/9, maker H W & Co Ltd (*illus*)
211. A hallmarked silver Art Nouveau style photo frame decorated with repousse scrolls and flowers, Sheffield 1903/4, maker M & W; and a silver frame decorated with flowers and Kingfishers, Chester 1903/4, 21cm high (a/f) (*illus*)
212. A pair of hallmark silver three footed bon bon dishes, Birmingham 1927/8, maker W.N. Limited, 12.5cm diameter
213. A hallmarked silver matchbox sleeve with engine turned decoration, Birmingham 1886/7; a small rectangular silver plated container inset with George III sixpence 1816, 6cm long; a cylindrical container with a lid and base inset with Edward VI silver coins, 5cm long; and a silver plated rectangular snuff box with double hinge lid, 5.5cm long (4)
214. A hallmarked silver bon bon dish with folded rim, 14cm diameter, Sheffield 1903/4; a silver plated bon bon dish, 13cm diameter; and a repousse decorated silver covered bottle, Birmingham 1899 (3) (*illus*)
215. A hallmarked silver cream jug with square base, London 1792/3 (*illus*)
216. A hallmarked silver presentation salver on three ball and claw feet, engraved H.J.J.G. and verso from J.S.B. Jny-August. 1935, London 1923/4, maker E & Co Limited, 25.5cm diameter, 600grams (*illus next page*)



Lots 210, 214 & 223

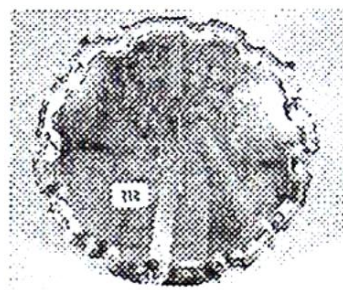


Lot 211



Lots 215, 217 & 218

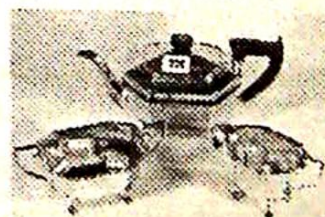
217. An XVIII century style hallmark silver sugar castor, London 1926/7; and a silver plated urn shaped sugar castor (2) (*illus prev page*)
218. A hallmarked silver sauce boat with three hoof feet, Birmingham 1931/2 and another silver sauce boat with gadroon rim, marks rubbed (2) (*illus prev page*)
219. A hallmarked silver tankard with scroll handle, 9cm high, Birmingham 1913/14; and a miniature horn beaker, 6.5cm high with hallmark silver cross
220. A pair of engine turned hallmarked silver gent's hair brushes, Birmingham 1948/9 in original box
221. A hallmarked silver dressing table tray with repousse cherubs, birds and foliage, 32cm x 25cm, Birmingham 1898/9 £80-£120
222. A pair of hallmarked silver specimen vases, a miniature heart shaped photo frame, small rectangular photo frame, two napkin rings and a silver plated spoon 1982 (7)
223. A pair of hallmarked silver condiments with frosted bark effect cylindrical bodies, London 1979, 8cm high (*illus prev page*)
224. A hallmarked fretted silver dish holder, 9cm diameter, Birmingham 1903/4 and a repousse decorated hallmark silver bottle holder, Birmingham 1902/3 (2)
225. A set of four hallmark silver reeded boat shaped salt cellars, London 1887/8, maker JA & TS; and four non-matching spoons in original purple silk and velvet octagonal case (*illus*)
226. A hallmarked silver three piece octagonal shaped cruet, Birmingham 1933/4, original fitted case
227. A hallmarked engine turned silver cigarette case, the gilded hallmark silver sifter spoon with floral decorated bowl and stem, London 1809/10
228. Six hallmarked silver coffee spoons, monogrammed AE; six other teaspoons and a pair of sugar nips
229. A hallmarked silver octagonal shaped three piece tea service, Sheffield 1945/6, maker EV (*illus*)
230. Hallmarked silver cutlery comprising six serving spoons, twelve table spoons and forks, twelve dinner forks, Sheffield 1901/2, monogrammed, maker JR, 2300grams £400-£500 (*illus*)



Lot 216

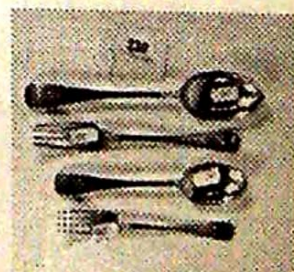


Lot 225

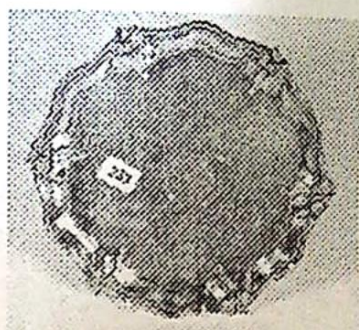


Lot 229

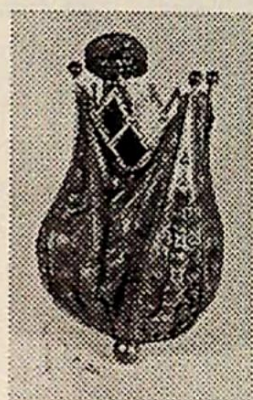
Lot
230



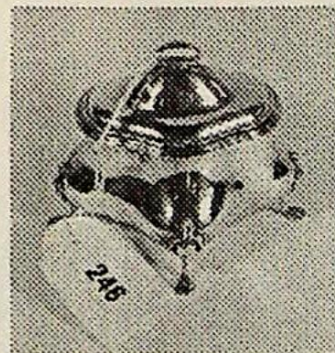
231. A mahogany canteen containing a set of twelve silver plated bone handled fish eaters (with original gift tags) 1916
232. An assortment of hallmarked silver cutlery including spoons, table forks, dessert forks etc. (22 items)
233. A hallmarked silver Tudor Rose shaped engraved salver, raised on three scroll feet, decorated with central crest, motto "Nobilis Otto" and scrolling flowers, London 1854/5, maker GP, 25cm diameter, 600grams (*illus*)
234. A blue enamelled engine turned hallmarked silver cigarette case, three napkin rings, an ostrich feather hat pin, two Japanese hardwood bone inset card markers and a XIX century ormolu and silk expanding lady's purse (*illus*)
235. Hallmarked silver cutlery - six Kings pattern dessert forks and one table fork London 1900; five silver covered pistol grip dessert knives and a butter knife
236. Hallmarked silver - two pairs of clothes brushes; pair of gent's hair brushes; hand mirror; two cut glass rectangular pin boxes - all with repousse decoration
237. A silver mounted horn beaker with plaque "L.R.C. Junior Fours 1867", 13cm high; and a globular glass scent bottle with cut floral garlands (top missing)
238. A hallmarked silver circular salver with beaded border, three scroll feet, London 1783/4, maker HI, 15cm diameter, 300grams
239. An Asprey London hallmark silver circular salver with reeded rim, London 1945/6, 20.5cm diameter, approx. 500 grams
240. A hallmarked silver ribbed bowl, London 1891/2, maker GB, 9.5cm diameter
241. A pair of hallmarked silver bon bon dishes with ribbed rims, the base inset with George II shillings, London 1926/7, maker HB, 9cm diameter
242. A hallmarked silver three foot repousse decorated bowl, London 1875/6, maker RH, 13cm diameter
243. A cream jug with a ribbed waisted body, raised on circular foot, scroll handle, 10cm high
244. A hallmarked silver cream jug with ribbed waisted body, gilded interior, scroll handle, London 1839/40, maker HD, 13cm high
245. A hallmarked silver taper stick, London 1903/4, maker TB, 10cm high
246. A hallmarked silver quatrefoil shaped bowl with hinged lid, gilded interior, raised on four paw feet, Birmingham 1938/9, maker E & Co, 11cm wide (*illus*)



Lot 233

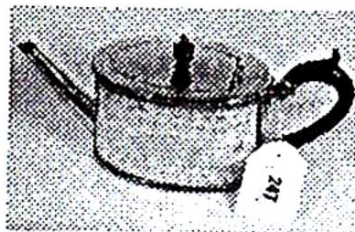


Lot 234



Lot 246

247. A hallmarked silver oval bodied teapot with bright cut decoration, the lid with an ebony urn finial, ebony handle, scatter hallmark, London 1874/5, maker RH, 500 grams all in (*illus*)

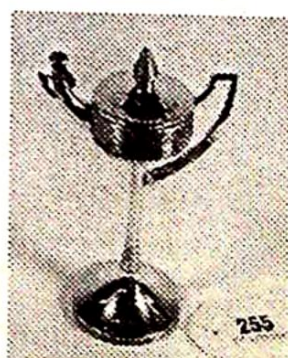


Lot 247



Lot 248

248. A hallmarked silver spirit kettle with stand, half ribbed body with gadroon edging, part ebony handle, the base with ribbed scroll legs and shell feet, Sheffield 1894/5, maker JD & S, 600 grams all in (*illus*)
249. A hallmarked silver three piece fretted silver cruet, Birmingham, mixed dates
250. A three piece hallmarked silver cruet with gadroon edging, hoof feet, Birmingham 1926/7, maker D & B
251. A hallmarked silver casket shaped three piece cruet, London - marks rubbed
252. A hallmarked silver two piece cruet 1927/8; and an oval tortoise-shell topped pill box with gilded interior, 6.5cm wide
253. A pair of silver plated sauce boats; a larger ditto and a small quantity of plated cutlery
254. A hallmarked silver two handled presentation cup engraved Ledbury Hunt Puppy Show 1937 "Treasure" 1st Prize Bitch Class; Sheffield 1935/6, maker Walker Hall & Sons Ltd, 14cm high
255. A hallmarked silver table lamp, the circular ribbed body raised on a slender stem and circular ribbed base, engraved A.W.C. from C.F.D.; Birmingham 1910/11 (*illus*)
256. Four silver plated bottle labels - "Serscial", "Sherry", "Malmsey", "Bual"; a silver on copper coaster; ribbed bowl 11cm wide; EPNS presentation cup 1894, 13cm high; pair of silver plated salt cellars and tea strainer
257. A classical design silver on copper coffee pot and similar footed sugar bowl, and a repousse decorated sugar spoon
258. A XIX century silver plated hot water jug, the bulbous body decorated with chariots and horsemen, the lid with helmet knop, the scroll handle with mask, 29cm high £50-£80
259. Silver plate - sauce boat; pair of footed bowls 4cm diameter and a pair of salts raised on ball and claw feet, 10cm long
260. A pair of hallmarked silver napkin rings engraved F1 and F2; Chester 1915/16 in original presentation box; a cased set of hallmarked silver teaspoons, Sheffield 1906/7



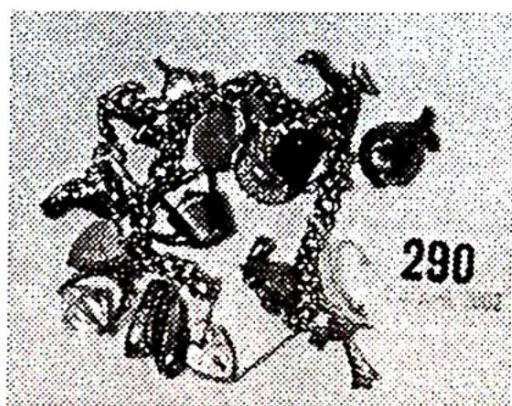
Lot 255

- 261. A pair of Chester hallmarked salt spoons in original fitted case, 1916
- 262. A pair of hallmark silver bon bon dishes and matching spoon, Sheffield 1908 and 1911; a Birmingham hallmarked specimen vase and two silver plated spoons
- 263. A Mansell of Lincoln silver plated circular fruit bowl with swing handle; a silver plated four bottle cruet; a silver plated stand with bone china flosmaron design cream jug and sugar basin; and a silver plated tapering oval bodied teapot (5)
- 264. A Victorian fiddle pattern table spoon and two dessert spoons, one by William Bateman
- 265. Three Victorian fiddle pattern teaspoons
- 266. Two pairs of condiment spoons
- 267. A pair of hallmarked silver square based candlesticks, London 1906, 14cm high; and an EPNS fruit set

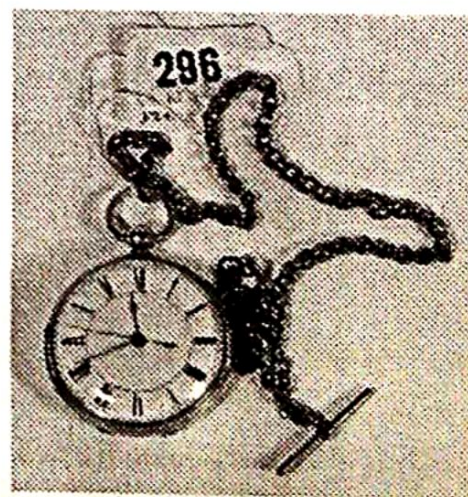
JEWELLERY

- 276. A 1908 sovereign and 1913 half sovereign
- 277. A 9 carat gold hollow link chain bracelet with padlock catch
- 278. A 9 carat gold locket with plaited hair to reverse; another locket and chain and a scrap gold gent's signet ring
- 279. An unhallmarked 18 carat gold and platinum dress ring set with three sapphires and four smaller diamonds
- 280. An unhallmarked 14 carat gold bangle, the shoulders set with 15 bands of three diamonds £400-£600
- 281. An early XX century 9 carat gold pendant set with amethyst and seed pearls on a rope necklace, together with two other fine gold link chains
- 282. An unhallmarked gold bar brooch set with single aquamarine and two seed pearls
- 283. A hallmarked silver napkin ring in box; a hallmarked engine turned silver stamp box, Birmingham 1889/1900; an unhallmarked 15 carat white gold ring
- 284. A red velvet container with a citrine set stick pin, circular silver and tortoise-shell naval brooch inscribed "to my dear wife from George"; souvenir brooch Dunkerque; silver and enamel ATS lapel brooch and a pair of Robbie Burns gold plated cuff links
- 285. A gent's 18 carat gold wedding ring and a lady's 22 carat wedding ring
- 286. An unhallmarked gold bar tie pin set with thistle and single citrine and a dress ring set with three citrines (2)

287. A mother of pearl and silver bladed pocket fruit knife; a filigree brooch and chain; a pair of pearl set earrings; an arabic silver pendant; a "Blackwatch" silver and silk sporrion brooch etc.
288. An 18 carat gold dress ring set with single blue stone and brilliants £100-£150
289. A 9 carat gold signet ring set with oval pale mauve stone £100-£150
290. A 9 carat gold bracelet with 17 charms £120-£180 (*illus*)
291. An unhallmarked gold brooch with reticulated multi diamond set leaves and flowers and four pearl pendants; together with a white metal and paste set bar brooch and blue stone costume brooch £250-£500
292. A lady's 9 carat gold cased fob watch with bright cut case monogrammed "MW", white enamel Roman dial, fitted box
293. A lady's 14 carat gold cased fob watch with engraved case, gilt roman dial
294. A lady's 9 carat gold miniature fob watch with engraved case; a Swiss hallmark silver lady's fob watch and an import hallmark silver lady's fob watch
295. A hallmarked silver pair cased gent's pocket watches, white roman dial London 1874/5; a case with watch makers label "Inverness"; and a Waltham steel cased pocket watch with Roman dial
296. An 18 carat gold open face pocket watch by S. Wharton, Great Grimsby with 9 carat gold chain, 37cm long £400-£600 (*illus*)
297. A 9 carat gold double Albert watch chain with 1892 half sovereign fob and a gold plated Hunter watch £150-£200
298. A lady's Krug-Baumen Marquis wrist watch with steel and gold plated case and strap, quartz movement
299. Two XIX century turned bone lace bobbins, one with brass wire and spot decoration

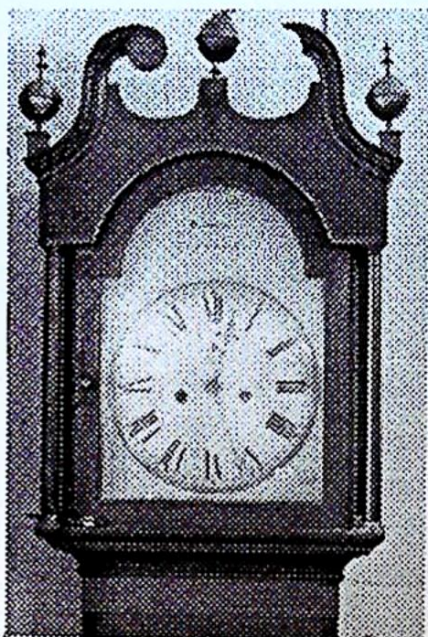


Lot 290

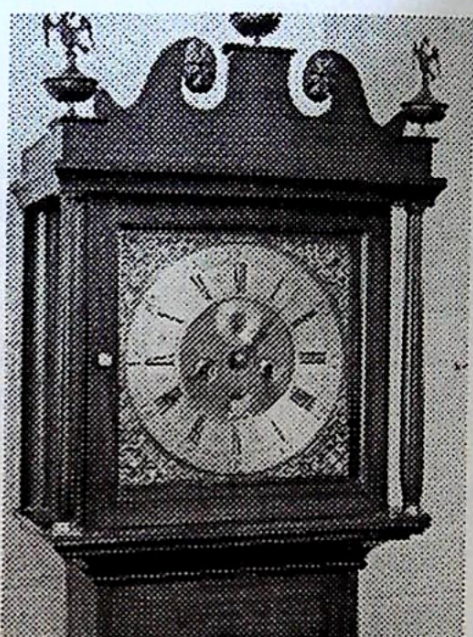


Lot 296

LONGCASE CLOCKS



Lot 330

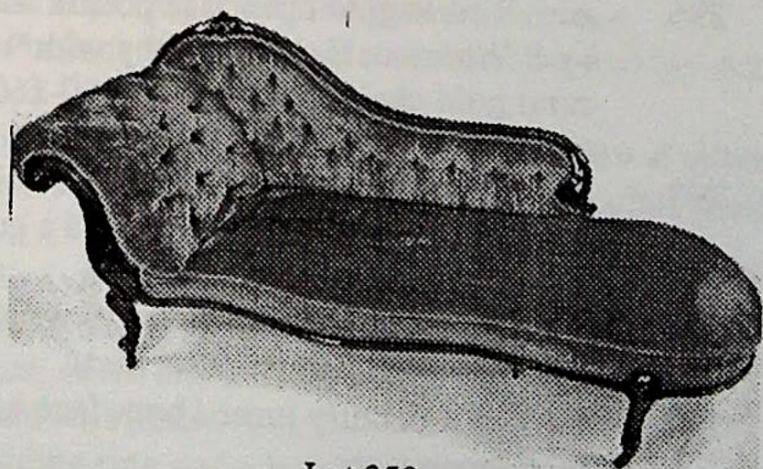


Lot 331

330. An early XIX century longcase clock, the raised enamel Wilson dial signed in the arch "Bunyan Lincoln"; eight day striking movement, contained in a broken swan neck pedimented oak and mahogany hood, flanked by plain columns and enclosed by an arched cross-banded long door £2000-£3000 (*illus*)
331. An early XIX century mahogany longcase clock, the square brass dial signed on the silver chapter ring "Hariman Workington", subsidiary seconds dial, date aperture & applied cast brass spandrel, 8 day striking movement, enclosed in a swan neck pedimented hood, flanked by fluted columns, the base with a long arch door, £2500-£3500 (*illus*)

FURNITURE

350. A mid Victorian chaise longue, the polished walnut frame carved with foliate and scroll motifs, the serpentine base raised on cabriole supports with pot castors £400-£700 (*illus*)

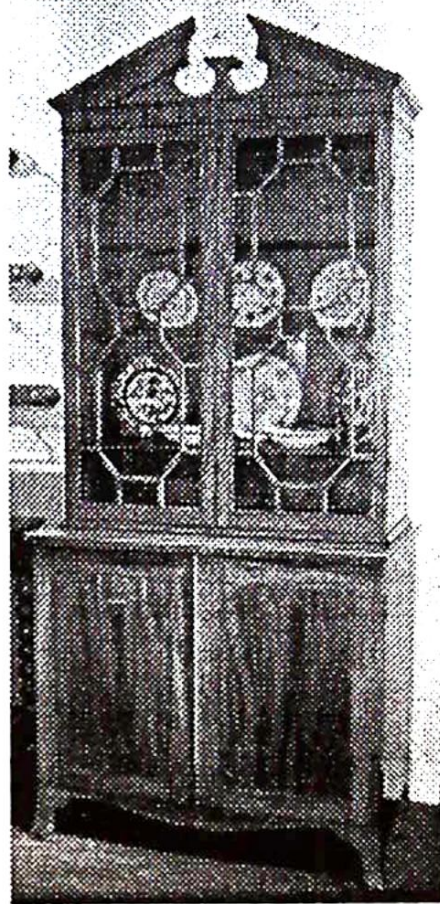


Lot 350

351. A baby grand piano by Beulhoff in a polished faded rosewood case, (with original receipt, purchased in 1907 from Archibald Ramsden of Leeds) and an Edwardian box seated stool £500-£1000

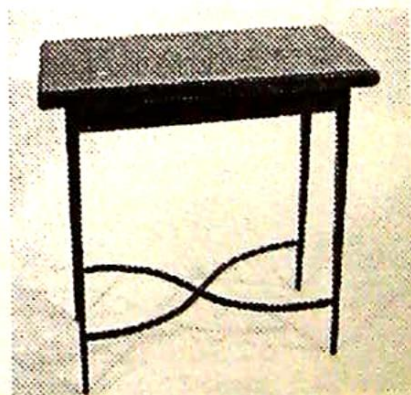


Lot 352



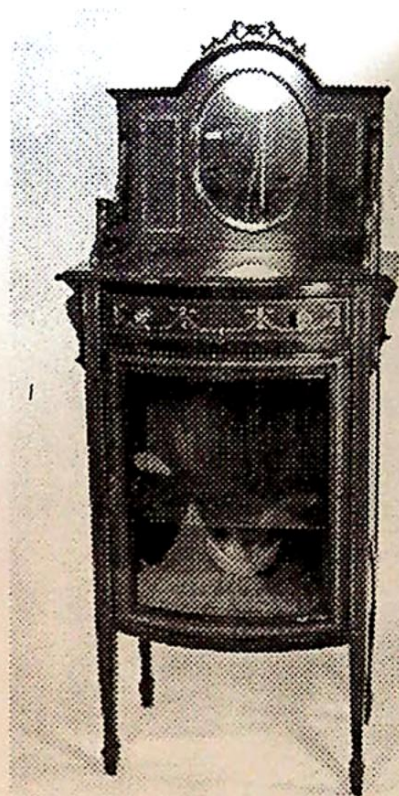
Lot 353

352. A well carved Victorian gothic revival oak hall stand, fitted with a single glove drawer, flanked by stick compartments and raised on bobbin turned supports on bracket feet, 92cm wide (*illus*)
353. A Georgian mahogany boxwood strung library bookcase enclosed by a pair of astragal doors beneath a broken architectural pediment, the base enclosed by blind doors, strung with boxwood and ebony, raised on splay bracket feet, 102cm wide, 221cm high £2000-£3000 (*illus*)
354. A set of five Victorian mahogany dining chairs with curved horizontal splats, overstuffed seats raised on turned and fluted front supports £250-£450
355. A XIX century mahogany drop leaf dining table raised on ring turned taper supports, 178cm x 107cm £200-£400
356. A Victorian mahogany dining chair carved in relief with roundels and raised on turned front supports
357. A Sheraton Revival mahogany satinwood banded and ebony strung fold over card table, raised on slim taper supports joined by an "X" stretcher, 68cm wide £150-£250 (*illus*)
358. A XIX century mahogany side cabinet enclosed by a pair of fielded panel doors, 94cm wide £150-£250

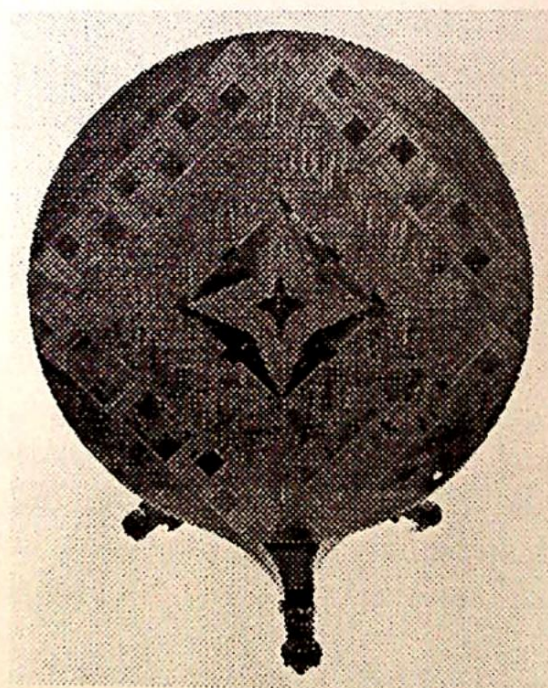


Lot 357

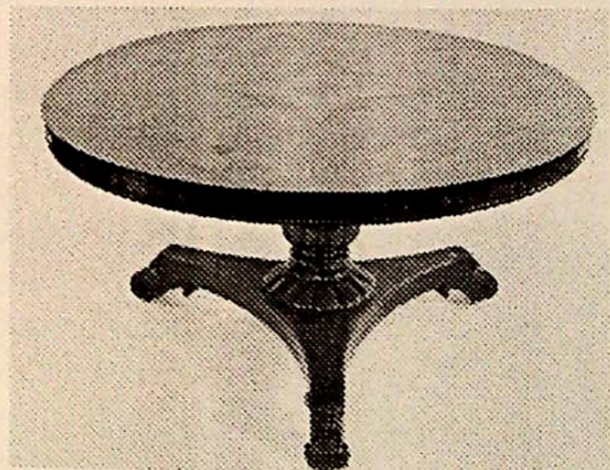
359. An Edwardian mahogany bow front china display cabinet cross-banded in satinwood, boxwood strung, the drawer painted with harebells, the raised back inset with an oval mirror beneath a carved ribbon bouquet, 60cm wide £250-£350 (*illus*)
360. A set of four late Victorian relief carved dining chairs with overstuffed seats, turned and fluted front supports £250-£350
361. A mid Victorian circular mahogany dining table, the parquetry top on a fluted bulbous pedestal, tricorn platform base with scroll carved feet, 134cm diameter £500-£900 (*illus*)



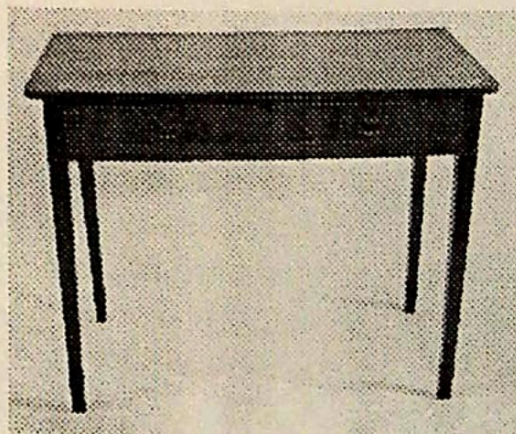
Lot 359



Lot 361



362. A XIX century mahogany side table fitted with two boxwood strung drawers, raised on square taper supports, 90cm wide £200-£350 (*illus*)
363. A Victorian figured walnut serpentine sided centre table, raised on double turned tapering columns, each with cabriole legs and joined by a turned stretcher, 90cm wide



Lot 362

364. A mahogany and satinwood cross-banded side table of neo-classical design, fitted with one narrow and two deeper drawers to the frieze, the tapering legs carved in relief with harebells, 84cm wide £150-£250 (*illus*)



Lot 364

365. A well carved Victorian rosewood frame open armchair, the serpentine front rail on cabriole supports upholstered in blue dralon £440-£580

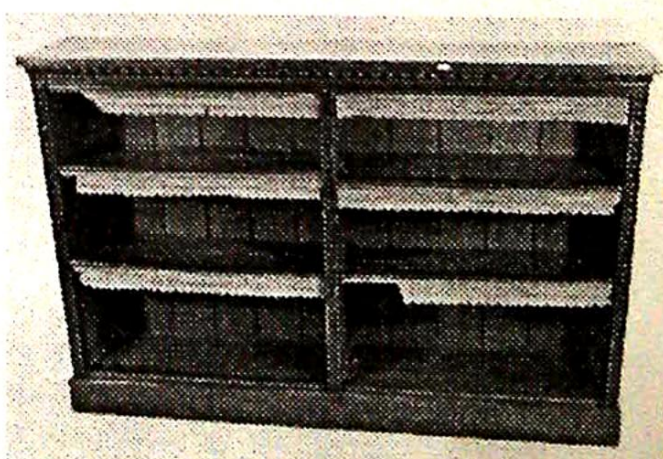
366. A set of six Sheraton Revival mahogany dining chairs (four singles and two carvers), the backs with marquetry panels above "X" stretchers and the frames boxwood strung, the overstuffed seats upholstered in gold dralon, raised on square taper front supports £400-£700 (*illus*)



Lot 366

367. A Victorian burr oak open bookcase with two adjustable shelves on a plain plinth, 148cm wide, 32cm deep £400-£650 (*illus*)

368. A XIX century ash stickback windsor chair on ring turned supports joined by an "H" stretcher £50-£100

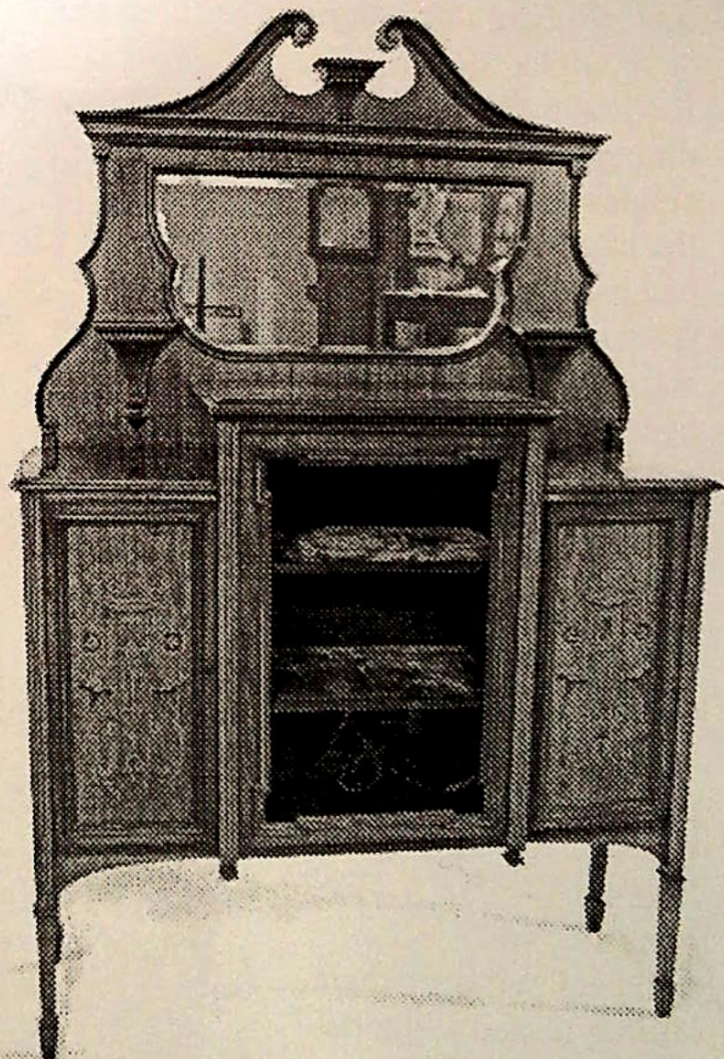


Lot 367

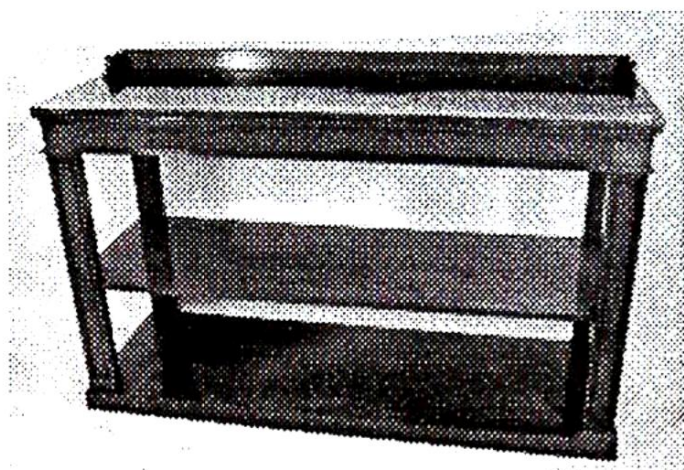
369. A Victorian rosewood frame open armchair upholstered in blue dralon and raised on fluted front supports

- 370. A Georgian bow front mahogany chest of two short and two long drawers raised on splay bracket feet, 101cm wide £200-£350
- 371. A square Georgian mahogany wash stand, the undertier fitted with a drawer, the square legs joined by a shaped undertier £150-£250
- 372. An oval mahogany dressing table mirror in a turned frame
- 373. A rectangular Georgian mahogany dressing table mirror in a fluted frame
- 374. An oval mahogany dressing table mirror in a turned frame
- 375. An antique two pillar Georgian design mahogany dining table, raise on reeded triple legs, terminating in cast brass paw castors, with spare leaf 230cm x 101cm extended £350-£650
- 376. A XIX century mahogany hanging corner cupboard, the dentil cornice above a single panel door enclosing three internal shaped shelves and two drawers, 112cm high £350-£450

Lot 377

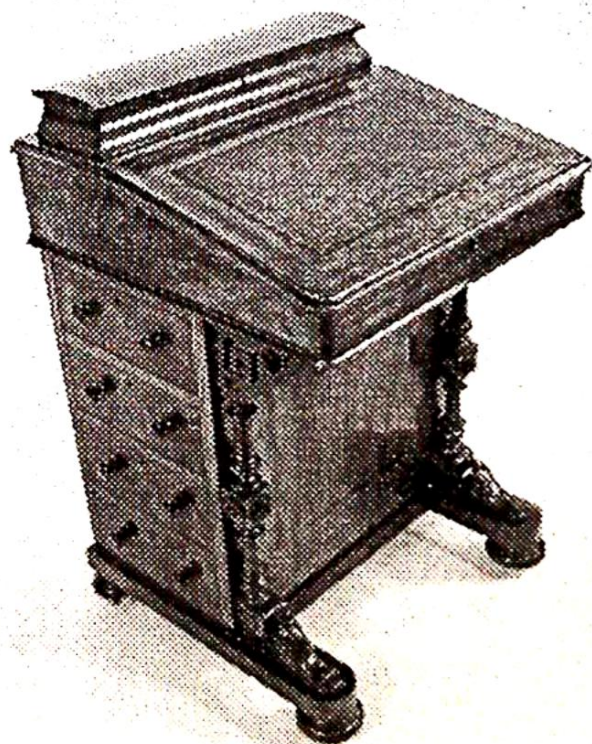


- 377. A Sheraton Revival display cabinet, the mirror back beneath a broken swan neck pediment and with two display shelves, the base centred by a glazed



Lot 378

378. A Victorian mahogany three tier buffet, 154cm wide, 53cm deep
£500-£750 (*illus*)



Lot 379

379. A Victorian walnut Davenport desk, boxwood and ebony strung and crossbanded, the slope top enclosing two small drawers and fitted with four drawers to one side, 53cm wide
£1400-£1800 (*illus*)

380. A Victorian walnut conical workbox, the interior fitted with compartments, standing on relief carved triple cabriole supports
£300-£500 (*illus*)



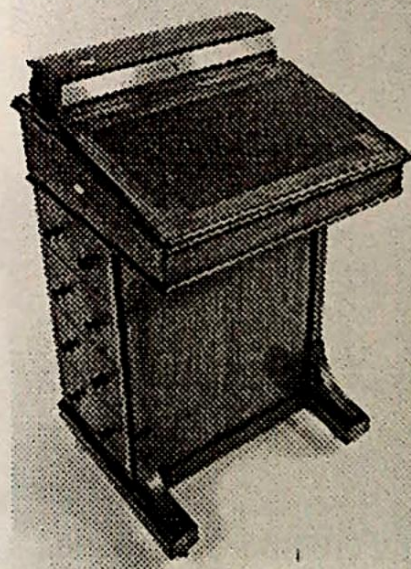
Lot 380

Lot 381



381. A Victorian burr walnut canterbury, the upper section with a gilt metal pierced gallery, cross-banded and boxwood strung on four baluster carved and turned supports, the base fitted with a single drawer on turned legs with original pot castors £650-£1000 (*illus*)

Lot 382



382. A Victorian walnut boxwood strung and cross-banded Davenport desk, the upper section with a stationery compartment above a writing slope with four drawers to one side £700-£950 (*illus*)
383. A Georgian mahogany chest of two short and three long drawers on bracket feet with brass swan neck handles, 91cm wide £350-£650 (*illus next page*)
384. A Victorian mahogany bow front chest of two short and three long drawers on turned legs, 92cm wide



Lot 383

- 385. A Georgian style armchair with swept sides, carved mahogany scroll arms raised on square supports with spade feet £200-£300
- 386. An XVIII century oak three panel coffer, enclosed by a plank top and raised on high stiles, 121cm wide £250-£350
- 387. An XVIII century oak slope top bible box carved in deep relief with a foliate design, 65cm wide £300-£400

- 388. A French walnut marble top pot cupboard fitted with a single drawer and drop down front on turned fluted legs joined by an undertier, 38cm £100-£200 (*illus*)



Lot 388

- 389. A Victorian mahogany Duchess dressing table, the mirror on turned supports, the 'D' shaped base with a central drawer raised on tapering turned legs joined by a platform base £200-£300
- 390. An Edwardian mahogany single wardrobe, satinwood cross-banded and inlaid with a patera and a ribbon bouquet, enclosed by a mirror door above a single drawer £600-£900
- 391. A Victorian triangular upholstered corner chair on turned mahogany legs
- 392. A Victorian mahogany box commode with folding chair back
- 393. A XIX century oval mahogany breakfast table raised on a baluster column with quadruple cabriole supports, 95cm diameter £350-£450

END OF SALE

LINCOLNSHIRE ANTIQUES WEEK

in conjunction with DDM Auction Rooms, Brigg & Goldings, Grantham

by direction of Christopher Nevile & Others

THE AUBOURN HALL CELLAR SALE

Surplus furniture both ancient and modern, general household effects etc.

Saturday May 18th

to be held in a marquee upon the premises

The catalogue will be posted on www.invaluable.com/thos-mawer

approx. 7 days prior

ESTATE CLEARANCE SALES TAKE PLACE ON

*f*irst Saturday of each calendar month

& include

*Victorian & Later Furniture, Bygones & Collectables
modern effects, electrical goods etc.*

posted on www.invaluable.com/thos-mawer Tuesday preceding sale

Sales start at 10am & are on view Friday prior 12noon-4pm & morning of
sale from 8.30am

FREE VALUATION CLINIC

EVERY FRIDAY 9.30AM-12NOON

AT DUNSTON HOUSE

Ref:

Address

Tel

Fax

Please bid on my behalf for the following lots, up to the price entered below. I agree to comply with the conditions of sale and understand that in the case of a successful bid, a buyer's premium of 11.75% will be payable on the hammer price. Bids will be executed as cheaply as is permitted by other bids or reserves, if any. Goods must be collected on saleday unless arrangements are made with the Auctioneers.

AT THE FALL OF THE HAMMER, ALL GOODS ARE HELD AT THE RISK OF THE PURCHASER.

[illegible]

(MORE OVERLEAF.....)


PLEASE COMPLETE THE SIGNATURE AND DATE BLOCK OVERLEAF TO VALIDATE YOUR INSTRUCTIONS TO BID

Instructions to Bid

[illegible]

Signed..... Date.....
 Commission bids **MUST** be received by 4.00pm on the day prior to the sale. Fax **01522 535600 (24 hours)**
Please tick box if you require a quotation for posting and packaging:

With insurance:	
Without insurance:	



CONDITIONS OF SALE

1. In these conditions Thos. Mawer & Son act only as auctioneers and agents and the representative of Thos. Mawer & Son conducting the auction is called 'The Auctioneer'
2. Whilst Thos. Mawer & Son make every effort to ensure the accuracy of their catalogue and the description of any lot:
 - (i) Each lot set out in the catalogue or as divided or combined with any other lot or lots is sold by the vendor with all faults and imperfections and errors or descriptions
 - (ii) Thos. Mawer & Son do not accept responsibility for the authenticity, attribution, genuineness, origin, authorship, date, age, period condition or quality of any lot unless they have been instructed in writing by the buyer to so certify.
 - (iii) All statements whether printed in the catalogue or made orally as to any of the matters set out in (ii) above are statements or opinion only and are not to be taken as being or implying any warranties or representations of fact by Thos. Mawer & Son unless they have been instructed in writing by the buyers to so certify.
3. The Auctioneer has absolute discretion to divide any lot, to combine any two or more lots or to withdraw any lot or lots from sale, to refuse bids, regulate bidding or cancel the sale without in any case giving any reason or without previous notice. He may bid on behalf of the vendor for all goods which are being offered subject to reserve or at the Auctioneer's discretion.

The highest bidder shall be the buyer. The Auctioneer may at his sole discretion determine the advance of bidding or refuse a bid. If during the auction the Auctioneer considers that a dispute has arisen, has absolute discretion to settle it, or to re-offer the lot.

All conditions, notices, descriptions, statements and other matters in the catalogue and elsewhere concerning any lot are subject to any statements modifying or affecting the same made by the Auctioneer from the rostrum prior to any bid being accepted for the lot
4. The buyer shall pay the hammer price together with a premium of the hammer price – 15% (inc. VAT).
5. Notwithstanding any other terms of these Conditions, if within seven days after the sale Thos. Mawer & Son have received from the buyer of any lot notice in writing that in his view the lot is a deliberate forgery and within twenty-one days after such notification the buyers return the same to Thos. Mawer & Son in the same condition as at the time of the sale and by producing evidence, the burden of proof to be on the buyer, satisfies Thos. Mawer & Son that considered in the light of the entry in the catalogue the lot is a deliberate forgery then the sale of the lot will be rescinded and the purchase price of the same refunded.

The vendor agrees to be bound by Thos. Mawer & Son's decision.
6. Thos. Mawer & Son disclaim any responsibility for default by either the buyer or the vendor because they act as Auctioneers only and therefore do not pay out to the vendor until payment is received from the buyer. Instructions given by telephone are accepted at the sender's risk and must be confirmed in writing forthwith.
7. Every person on Thos. Mawer & Son's premises at any time shall be deemed to be there at his own risk. He shall have no claim against Thos. Mawer & Son in respect of any accident which may occur or injury, damage, loss howsoever caused, save in so far as the injury, damage loss shall be caused by the negligence of Thos. Mawer & Son's employees.
8. Each lot shall be at the purchasers risk from the fall of the hammer and must be paid for in full before the delivery and must be taken away by the purchaser at his own expense within 7 working days following the conclusion of the sale. The Auctioneer shall be entitled to charge storage charges in respect of lots not taken away as aforesaid (minimum charge of £10 plus VAT) and interest on unpaid accounts @ 4% above clearing bank base rate (per day)
9. Cheques which are not honoured by the payee's bank will incur a handling charge of £15 plus VAT for each presentation.

This contract is governed by English Law.



THOS. MAWER & SON LTD.

Auctioneers & Valuers Established in 1864

DUNSTON HOUSE • PORTLAND STREET • LINCOLN • LN5 7NN

TELEPHONE 01-522-524984 • FACSIMILE 01-522-535600

E-MAIL auctions@thos-mawer.co.uk

WEBSITE www.thos-mawer.co.uk