



THOS. MAWER & SON LTD.

Auctioneers & Valuers Established in 1864

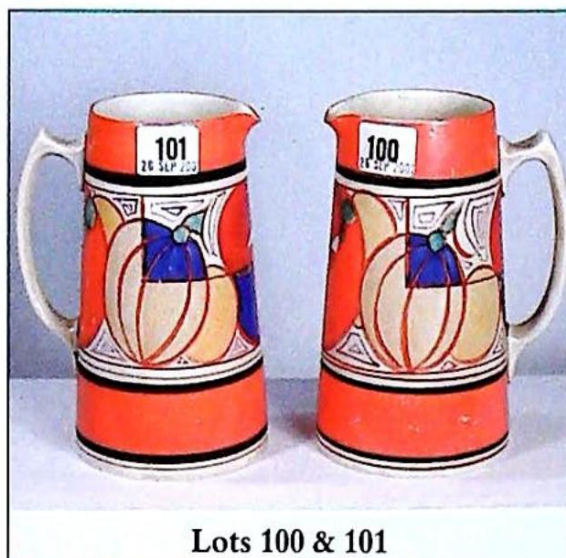


September 26th 2001

THOS. MAWER & SON LTD.



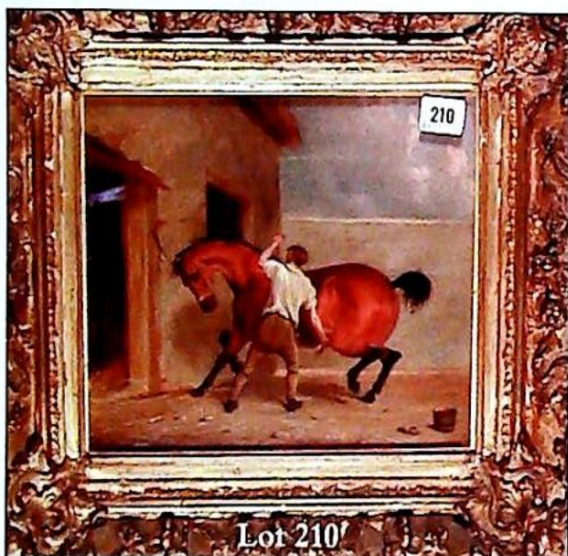
Lot 36



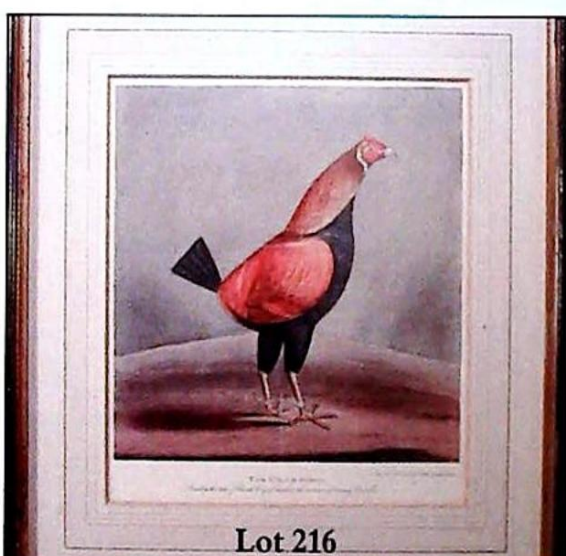
Lots 100 & 101



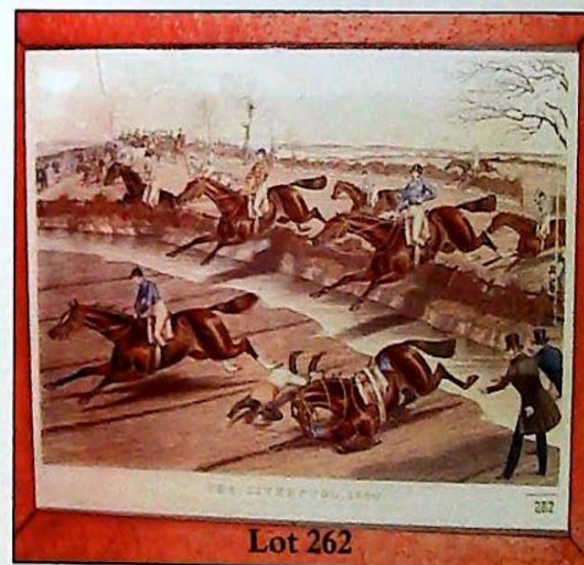
Lot 394



Lot 210



Lot 216



Lot 262



Lot 408



Lot 489



Lot 488

By instructions from the Executors of the late Mrs R Ransom
the contents of Greatford House, Spilsby
& from other Lincolnshire owners
(Removed for convenience of sale)

XVII, XVIII, XIX Century Furniture

Mirrors, Clocks & Barometers

Pictures & Prints

Silver, Ceramics & Objets d'Art

To be sold by auction on
WEDNESDAY 26th SEPTEMBER 2001 at 11am

MRS ROSALYS RANSOM 1908-2001



The daughter of Colonel and Mrs Wigfull, she was brought up in the Brocklesby Country where from an early age she had ponies and hunters. She married Bill Ransom, her second husband at the end of the war.

At High Dyke, Wellingore in Lincolnshire, she schooled top class ponies and hunters and won the ladies side saddle class at Windsor three years in succession. To win a bet, she drove a pair of thoroughbred grey mares, Silver Glitter and Silver Pearl from Lincolnshire to Wales. Whatever she did, she was always immaculately turned out. She disliked sloppiness in any form.

She was a Pony Club legend, not only for her knowledge of horses and their care, but for her love and understanding of children. She was Area Commissioner of Area 6 for a time (East Midlands).

Although she never won the Waterloo Cup (for coursing), one of her greyhounds was runner up, but she did win the Altcar Cup with her greyhound Mighty Fine.

Sadly she was involved in a motoring accident in 1956, and in spite of being warned otherwise, she once again rode side saddle, hunted and trained greyhounds. She joined her husband Bill in the Mastership of the Blankney Hounds.

She won the show hunter of the year with Spey Cast in 1965 and won many top level driving classes.

She was founder member of the Burghley Horse Trials and founder President of the Lincolnshire Branch of the British Driving Society.

Bill Ransom died in 1988, but she continued judging and training greyhound for friends. She will always be remembered for her kindness and consideration.

ON VIEW: Sunday 23rd 2pm-4pm, Monday 24th 10am-5pm, Tuesday 25th 10am-1pm

COMMISSIONS

The Auctioneers are pleased to execute commissions for intending buyers in confidence as cheaply as is allowed by any other bids. All telephone bids must be confirmed in writing or by fax by 4pm on the day prior to sale. We cannot guarantee to execute bids received on the morning of the sale.

BUYER'S PREMIUM

There is an 11.75% premium payable on the final hammer price of each lot inclusive of VAT. Lots subject to VAT on the whole price are prefixed by *.

REGISTRATION

All prospective purchasers are requested to register and obtain a bidding number prior to the start of the sale.

CATALOGUE DESCRIPTIONS

Care is taken to ensure that any statement as to authorship, attribution, origin, date and provenance is reliable and accurate, but all such statements are statements of opinion and are not to be taken as statement or representations of fact. Thos. Mawer & Son Ltd reserve the right, in forming their opinion, to consult and rely upon any expert or authority reasonably considered by them to be reliable. While an identification of damage is given in some instances, an absence of such advice does not imply that a lot is free from defect. Prospective purchasers are strongly advised to inspect any lot on which they intend to bid. All measurements and weights are approximate and should be verified by intending purchasers.

CONDITION REPORTS

We regret that we are unable to provide condition reports on the morning of the sale.

ESTIMATES

Estimates for lots under £100.00 are not always printed in the catalogue. On lots that are reserved, the reserve will not be greater than the published estimate at the time the catalogue goes to press.

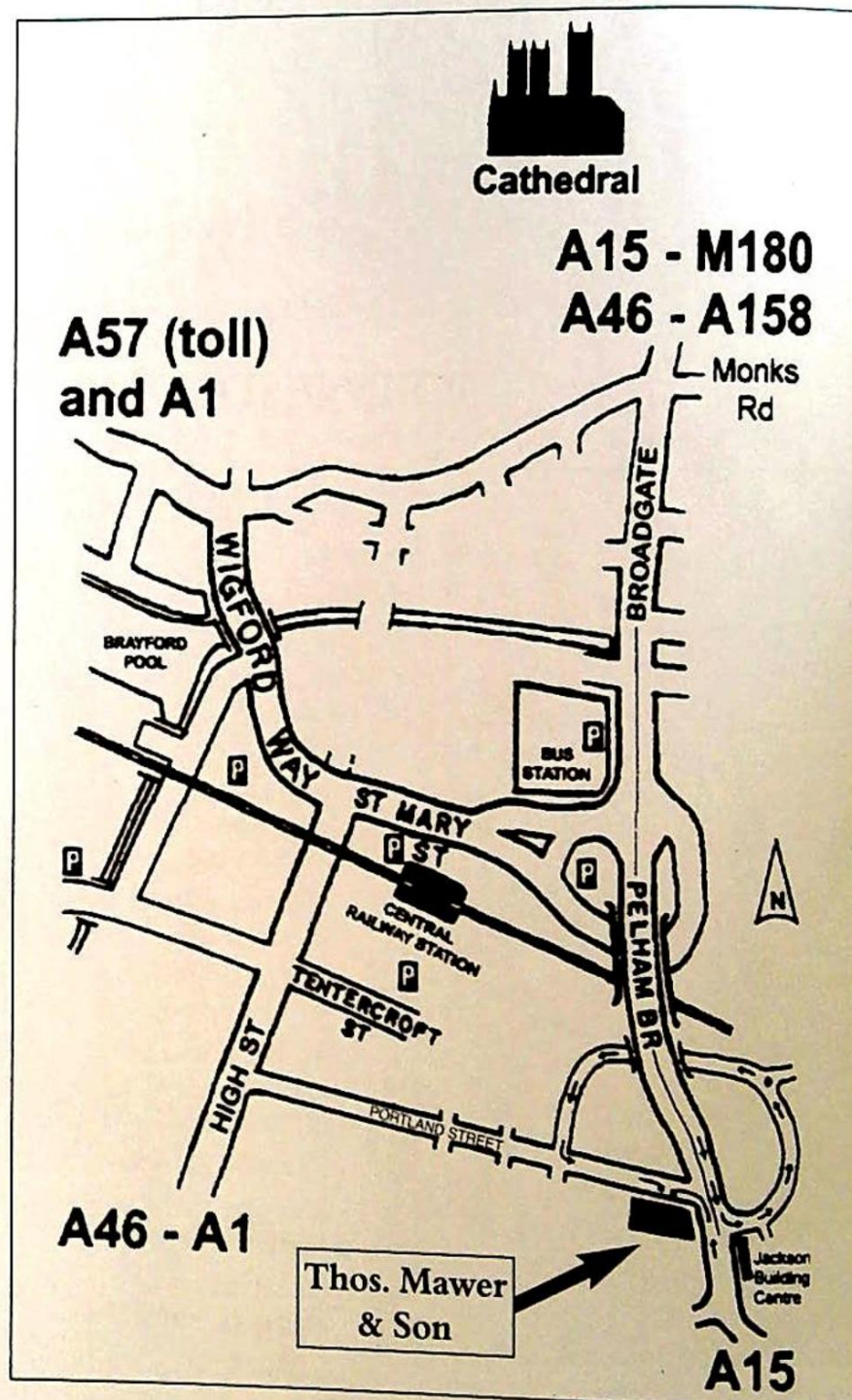
REMOVAL OF LOTS

All lots should be paid for and collected immediately following the sale. Any lots not collected within seven days may incur removal and storage costs (minimum £15.00 + VAT per lot).

PAYMENT OF ACCOUNTS

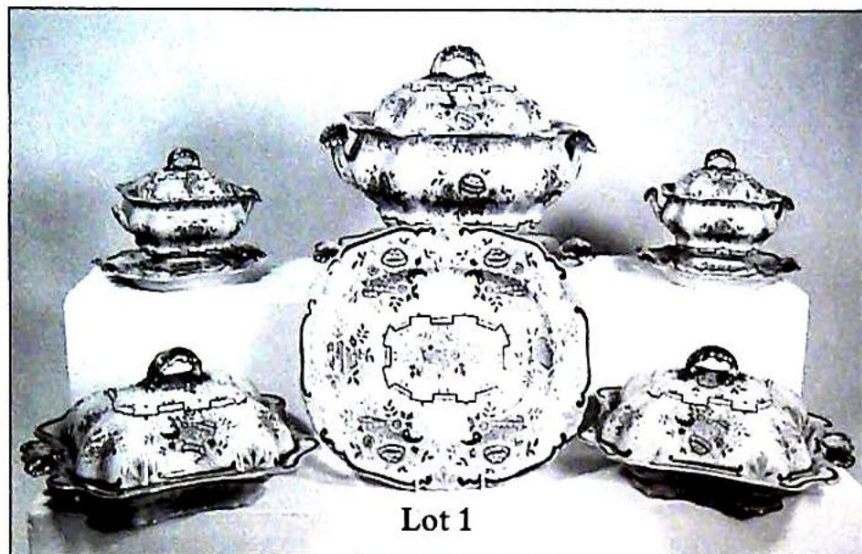
Payment for all lots must be made on the day of sale and methods are (1) CASH, (2) CHEQUES supported by either a letter of reference from your bank or a cheque guarantee card to cover the sum of your purchase, (3) BANKERS DRAFT, (4) DIRECT DEBIT CARDS such as 'Switch', 'Delta', 'Classic', 'Connect', (5) CREDIT CARDS subject to a 2% premium charge.

No lots in this sale are the property of Thos. Mawer & Son Ltd.



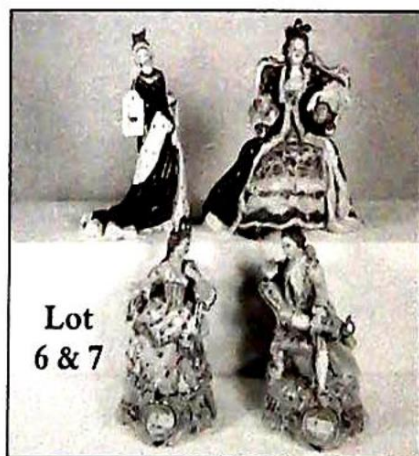
On some lots obvious repairs/damage are noted:- (A/F) the absense of comment does not in any way guarantee the lot is free from defect. There is a buyers premium of 11.75% including VAT on the hammer price. The lots from Mrs Ransom's estate are denoted by ®.

CERAMICS



Lot 1

1. A XIX century dinner service, floral printed cobalt and gilt highlights (damages) - approx. 100 pieces £300-£500 *Illus.* ®
2. A XIX century Prattware jug, relief moulded with hounds in a landscape, 15.5cm high £50-£100 *Illus.* ®
3. Crown Staffordshire Fine Bone China. A pair of Cockatoo's designed by J.T. Jones, 32.5cm high ®
4. Four plain white models of birds, gilt highlights - Golden Pheasant, Cockerel and Parrots 20-24cm ®
5. Four Continental coloured models of garden Finches set against bocage, gilded bases, approx. 12cm ®
6. Two Continental porcelain figures - a XIX century lady dressed in crinoline seated in a gilt lined chair, 24cm, and another of a Queen in a cobalt robe trimmed with ermine, 23cm (a/f) *Illus.* ®
7. A pair of late XIX century Dresden male and female figures, predominately in canary yellow, both seated and dressed in finery, rococo gilt lined bases, 19cm £200-£300 (a/f) *Illus.* ®
8. A late XIX/early XX century bull baiting group in the manner of Obdiah Sherat, 15cm high, the base 18cm x 7cm £200-£400 *Illus. Cover* ®



Lot 6 & 7

9. A Nankin style blue and white bowl decorated with pagoda roof buildings and landscape scenes, 29cm diameter and a similar XIX century Chinese export blue and white charger, 46cm diameter (riveted) £100-£150 ®
10. Eight various Celadon enamel plates decorated with figures, exotic birds etc., 4x 19cm, 2x 23cm and 2x 26cm £50-£100 ®
11. Sundry oriental china including a shallow dish, 36cm; and a baluster vase and cover etc. (7) ®
12. An oval blue and white Chinese export shallow dish, 26.5cm & another lozenge shaped plate, 30.5cm x 22.5cm £40-£80 ®
13. A Chinese baluster vase decorated with figures in typical costume and with applied salamanders, 16cm, a famille rose plate 23cm and a large Imari bowl, 31cm (af) £40-£70 ®
14. Skeeling & Co. Baronial Views - "Ingestrie" a XIX century blue and white transfer printed stilton comport, 29cm and Copeland & Garrett - a blue and white tureen stand "September", 34cm £80-£120 ®
15. A collection of small porcelain and enamel boxes including a XIX century French patch box decorated with cock fighting scenes (a/f) (10) ®
16. A collection of decorative Continental and English china including Vienna, Coalport etc. - two coffee cups and saucers, an oval Meissen style ditto etc. (a/f) (25) ®
17. No Lot
18. A Naples style figure group - Adam & Eve embracing, 18cm & a miniature group of a man & woman dressed in finery ®
19. A Sevres style porcelain desk stand, the oval bowl decorated with floral panels and gilt highlights on a green ground, raised on four paw feet, standing on a shaped base £50-£100 *Illus.* ®
20. Royal Doulton HN1099. A hound puppy seated; also a Staffordshire beagling hare, an alabaster recumbent greyhound and a porcelain fox scent bottle (4) ®



Lot 19

- 20A. A Sevres style porcelain chocolate cup, cover and saucer, the cobalt ground with reserved panel - portrait of a lady, gilt highlights with raised



Lot 20A

- white enamelling (chip to lid), cup 7cm £80-£150 *Illus.* ®
21. XIX century Masons patent ironstone china. A pair of circular tureens decorated in Japan style with domed covers and flower finials, 26cm diameter ®
22. A set of four porcelain menu holders, modelled as wreaths, the centres painted with flowers on gilt bordered cushions £100-£150 ®
23. A pair of XIX century white pottery wall brackets moulded as horses heads with horse shoes and gilded decoration, 28cm £50-£100 *Illus.* ®
24. Coalport retailed by T. Goode & Co. A wash bowl, trinket box and cover (damaged), a part trinket set and sundry other decorative china ®
25. Sundry decorative china - bowl with cock fighting scenes, blue and white jug, "Prussian Star" pattern blue and white dishes (6) etc. ®
26. Five x 24cm diameter cabinet plates decorated with cock fighting scenes (a/f) *Illus.* ®
27. A XIX century Worcester part coffee/tea service, the fluted body decorated with gilt and cobalt blue leaf design, blue Crescent mark (27) £100-£150 *Illus.* ®



Lot 23



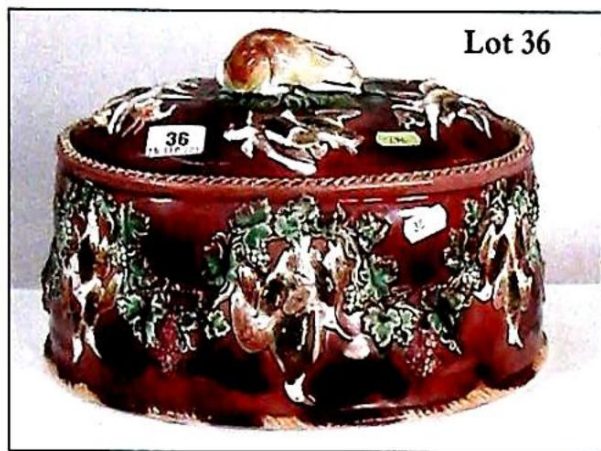
Lot 26

28. An alabaster table lamp, Continental porcelain vase shape ditto, blanc de chine oval mirror "T Goode & Son", the frame moulded with laurel and three other lamps ®
29. A pair of Continental porcelain campana shape vases, 22cm diameter (now converted to table lamps) ®
30. A pair of Continental ovoid two handled vases (as table lamps) with gilt brass mounts, the cobalt blue ground with gilded highlights and reserve panels of summer flowers, 42cm overall £300-£600 *Illus.* ®
31. A XIX century English china tea service, the yellow ground with gilded decoration, pattern 2222 (68) £70-£130 ®
32. An oriental earthenware model of a Tang style horse, 36cm high and a resin model of a gorilla ®
33. A Victorian opaque glass vase painted with a garden finch amid flowers (now as a table lamp); a large Cantonese style baluster vase and cover; and two wrought iron table lamps ®
34. Sundry decorative XVIII/XX century tea ware - tea bowls etc. (18) £40-£80 ®



Lot 30

35. Wedgwood "Peace" pattern. A XIX century dinner service transfer printed and over painted, centred with doves, the borders with trailing ribbon swags and foliage:- 4 oval tureens in sizes, one ditto (no lid), two meat plates, 19 dinner plates, 7 soup plates, 5 dessert plates, 7 cheese plates @
36. Wedgwood.
An oval game tureen decorated in relief with fruiting vine and hanging game, with inner liner, the lid modelled with hare as a finial
(cracked), 28cm, 13cm high £300-£600 *Illus.* @
37. Six XIX century Worcester style coffee cans and saucers, the reserve panels painted with fancy birds decorated in scale blue with gilded highlights, with five saucers; and a Dresden porcelain desk stand @
- 37A. Sundry decorative XIX century and other tea ware including three lustre decorated cups and saucers, seven dessert plates, Worcester bowl and cover etc. (28) @



Lot 36

BESWICK BEATRIX POTTER FIGURES



Please Note:- The rare figure "Duchess" from this collection will be sold in a later sale. If you are interested in this figure, please register your name and address and we will advise you of the sale date.

38. Amiable Guinea Pig £60-£120 @
39. Diggory Diggory Delvert (2) £30-£60 @
40. Aunt Petticoes, Mr Benjamin Bunny, Old Mr Pricklepin (3) £40-£80 @
41. Tom Kitten and Butterfly, Foxy Reading and Tom Thumb (3) £20-£40 @
42. Mrs Rabbit Cooking, Lady Mouse made a Curtsy and This Pig Had None (3) £20-£40 @
43. Mr Alderman Ptolemy, Cousin Ribby (2) £20-£40 @
44. Fierce Bad Rabbit, Hunca Munca Sweepina (2) £20-£40 @
45. Tabitha Twitchet and Miss Muppet; Timmy Willie Sleeping £30-£60 @
46. Goody & Timmy Tiptoes £15-£30 @
47. Pig Wig £50-£80 @
48. Sir Isaac Newton £50-£80 @
49. Poorly Peter Rabbit and Old Mr Brown (2) £20-£40 @
50. Tommy Town Mouse; Chippy Hackee; Little Black Rabbit (3) £30-£60 @
51. Appley Dapple - first version £50-£100 @
52. Pickles £80-£120 @
53. Sally Henny Penny; Mrs Rabbit and Bunnies, Mrs Tiggy Winkle (3) £30-£60 @
54. Jemima Puddleduck made a feather nest, Rebecca Puddleduck (2) £20-£40 @
55. Benjamin Wakes Up, The Old Woman Who Lived In A Shoe and Benjamin Ate a Lettuce Leaf (3) £15-£30 @

Lots 56-80 are figures with oval gold back stamps

56. Anna Maria £80-£160 @
57. Benjamin Bunny - first version £80-£100 @
58. Cecily Parsley - first version £50-£100 @
59. Foxy Whiskered Gentleman - first version £50-£100 @
60. Flopsy, Mopsy & Cotton-tail; Goody Tiptoes (2) £50-£100 @
61. Hunca Munca £30-£60 @
62. Jemima Puddleduck - first version and Lady Mouse (2) £40-£80 @
63. Little Pig Robinson - first variation (blue striped) £80-£160 @
64. Miss Moppet - first variation £30-£60 @
65. Mr Benjamin Bunny - first version £100-£200 @
66. Mr Jeremy Fisher - first version, first variation £50-£100 @

67. Mrs Flopsy Bunny £30-£60 ®
68. Mrs Rabbit - first version £100-£200 ®
69. Mrs Tiggy Winkle £30-£60 ®
70. Mrs Tittlemouse; The Old Woman Who Lived In a Shoe (2) £50-£100 ®
71. Peter Rabbit £40-£80 ®
72. Pigling Bland - first variation £70-£140 ®
73. Ribby £40-£80 ®
74. Samuel Whiskers £40-£80 ®
75. Squirrel Nutkin - first variation £30-£60 ®
76. Tabitha Twitchet - first variation £50-£100 ®
77. Timmy Tiptoes - first variation £50-£100 ®
78. Tailor of Gloucester - first version & Timmy Willie £40-80 ®
79. Tom Kitten - first version £40-£80 ®
80. Tommy Brock - first version £80-£160 ®
81. Appley Dapdly's Nursery Rhymes musical box; Jemima Puddleduck photo frame; and Border Fine Arts "Yock-Yock in the clothes basket" (3) £20-£40 ®
82. A Continental porcelain three branch candlestick decorated with a lady with muff, 37cm £200-£300
83. W Copeland & Sons. An earthenware dinner service, 12 settings including tureens and covers (70) £100-£200
84. A set of three Ashworth transfer printed plates - country scenes, 23cm diameter £30-£60
85. A pair of XIX century blue transfer printed rectangular bowls, landscape with figures, 28cm; and an Adams Abram patent "cosy" teapot decorated in Art Nouveau style (a/f) £30-£60
86. A pair of M Rejon Limoges plates, blue ground, gilt floral spray, 21cm diameter £30-£60
87. A XIX century Staffordshire earthenware "Bute" pattern dinner service, 31 assorted plates, 5 graduated serving plates, 2 covered tureens and 6 other similar plates
88. A Crown Derby style china tea service:- 12 cups, saucers, plates, two sandwich plates, cream and sugar (40) £60-£120
89. A pair of Staffordshire spaniel ornaments, white with gilt highlights, 27cm high
90. A pair of Staffordshire spaniel ornaments, white with gilt highlights, 35cm high
91. A Staffordshire figure of a man in a blue coat, mauve breeches, hat with a ribbon, 29cm high
92. A pair of Continental porcelain figures of grape pickers decorated in blue, ochre and gilt, 20cm high £30-£60
93. A XIX century porcelain trefoil shape handled dish decorated with birds and flowers, 29cm diameter and three other decorated porcelain dishes £30-£60

94. A XIX century blue and white transfer decorated plate - fishermen by a river, 25cm diameter; two blue and white bowls and another plate £30-£60
95. A Dresden style campana shape vase and cover decorated in blue and gilt with panels of courtesans, 25cm high (a/f)
96. A Berlin porcelain ewer, the blue body with gilt scroll handle and Satyr mask, swan neck below spout, 32cm high, Pfennigmarke stamp c. 1847/9 (a/f) £100-£200
97. A XIX century Staffordshire oval bodied comport decorated in Japan pattern, raised on blue/gilt foot, painted No. 268, 33cm wide £350-£500



98. A set of three Italian unglazed terracotta figure groups of seated figures in regional clothing (a/f) £50-£100 *Illus.*

99. Doulton Burslem - a dessert service, cream ground with gilt shading centrally painted with Iris comprising comport

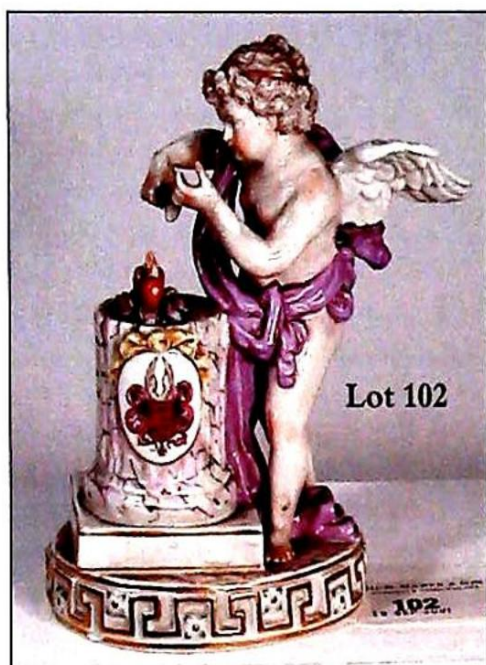


- and 12 plates, signed D.Dewsbury, printed mark retailed Philips, Oxford Street, London R. No. 72067, C.2581, plates and comport 22cm diameter (1 plate a/f) £600-£800 *Illus.*
100. Clarice Cliff - Melon pattern a "Fantasque Bizarre" conical jug, printed marks (light scratches), 17cm high £300-£500 *Illus. Cover*

101. Clarice Cliff. Melon pattern a "Fantasque Bizarre" conical jug, printed marks (light scratches), 17cm high £300-£500 *Illus.*

Cover

102. A XIX/XX century Continental porcelain figurine of a cherub with ewer standing beside a marbled pillar decorated with an armorial crest, circular base with gilt key pattern £100-£200 *Illus.*



103. An XVIII century style porcelain miniature chest of four drawers, the top and sides painted with figures, ships and trees, the drawers with floral sprigs, 22cm wide, 14cm high £200-£300

MISCELLANY INC. EQUESTRIAN, FIELD SPORTS MEMORABILIA & HABIT

N.B. The African skins have appropriate licences.

109. A mounted pair of highland cow horns, 132cm wide £20-£40

110. A Zebra skin, 150cm long *Illus.*

111. Two Impala skins, 107cm long

112. Five Dik-Dik skins, approx. 53cm long

113. One Grants Gazelle skin 90cm long and two Thomson Gazelle skins, 114cm long

- 113A. An African Gazelle skin, 94cm long

114. A Lioness skin, complete with head mount, 187cm long £600-£1000 *Illus.*

115. An oval papier mache patchbox, the lid painted with hunting



scenes, a similar small tray, a turned hardwood patch box with hunting scenes (3) £40-£70 ®

116. A cold painted car mascot of a leaping hare and another silvered metal mascot - a foxes mask £50-£100 ®

117. A XIX century turned mahogany tray, painted in oils with a foxes mask, 50cm diameter ®

118. 17 metal and enamel decorated badges - British Horse Society, Pony Club, Horsing etc., and a collection of 23 hunt buttons manufactured by Pitt & Co £50-£100 ®

119. A collection of embossed card judges show badges (large quantity), some enamelled badges and winners medallions ®

- 119A. A quantity of race badges including Pontefract, York, Catterick 1940-1960's

- 119B. A handbill for the "Navenby Boothby & Blankney Open Coursing Meeting Thursday 9th Feb. 1911", 38cm x 24cm, framed £20-£40

- 119C. A large basket containing show rosettes, a box of show prize cards & five oval metal "Horse of The Year Show" plaques ®

120. XIX/early XX century postcards - horses and racing, including old Caistor race card 1943 and two portraits of horses in polished metal horse shoe frames ®

121. A silk driving hat by Herbert Johnson, an oak plaque "BDS Wellingore 1970", and an Ann Wall model of a lady riding side saddle with hound following, No. 105/350 ®

- 121A. Lock & Co Hatters, St James's Street, London - three bowler hats ®

- 121B. A XIX century leather hat box containing a silk riding top hat by Lock & Co, London and another similar hat ®

- 121C. A XIX century leather hat box containing two silk top hats by Lock & Co. London ®

- 121D. An opera hat by Gibus 8/10 Chandos Street, London ®

122. A large XIX century glass with baluster stem, now dedicated to Mrs Ransom 1967, 30cm high, 17.5cm diameter *Illus.* ®



Lots 122 & 123c

123. Five brandy balloons etched with cock fighting scenes, a tumbler etched with a hare, a mallet shaped cut glass decanter and a fruit bowl ®

- 123A. A set of five XIX century Bristol green glass wine glass rinsers £100-£200

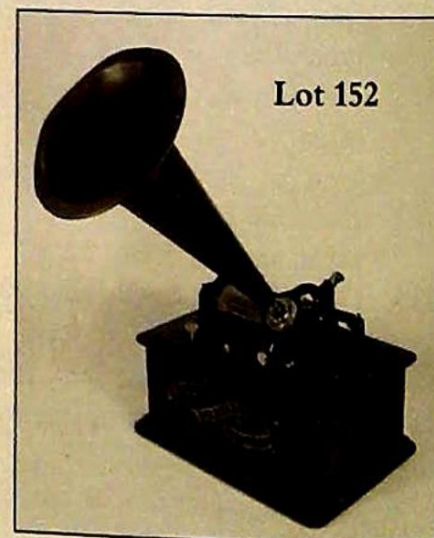
- 123B. XIX century glasses:- 8 hollow stem wines; six assorted flutes and one cut wine (15) £30-£60 ®

- 123C. A pair of XIX century hand cut hexagonal glass candlesticks with hollow tear drop stems, 24cm high £200-£300 *Illus.*
124. Three driving whips, three riding whips etc. (7) ®
125. Two leather covered swagger sticks, a cane ditto etc. (6) ®
126. A slender whip, the bone handle carved with a greyhound's head, another with a silver coloured greyhound and 12 postcards in two frames - South of England Coursing Club Champion Stakes 1979 Newmarket ®
127. Two walking sticks, one with a greyhound's head in bone, the other similar in painted wood ®
128. Two pairs of leather riding boots with trees by Maxwell London and Rowell & Sons Melton Mowbray ®
129. A collection of driving and other harness, bits etc. ®
130. A side saddle by Champion & Wilton, two other saddles, a saddle horse (a/f), silks, gloves, hats, blankets etc. ®
131. Two Blankney Hunt formal evening dress coats, a hunt coat, hacking jackets etc. (9) ®
- 131A. A "Jackson, Nottingham" trunk containing a part croquet set and a black leather Gladstone bag ®
132. A framed cock fighting display "The Irvles & Order of Cocking" with a collection of spurs, hackles etc., and a fitted XIX century mahogany box containing cock spurs ®
133. P. Spicer & Sons, Taxidermists Leamington - a foxes mask, a hares with foxes brush 1936 and an otter's foot ®
134. A cased display of birds including a Cuckoo, Kingfisher, Gull etc. £30-£60
135. A supercast steel fishing rod by Hearne of Detroit, the aluminium multiply reel joined to a pistol grip handle which connects to the steel rod, 153cm overall, a three piece cane rod with spare tip and another fly rod £60-£90
136. A Noris Shakespeare 6" centre pin sea reel and a Young's Beaudex 3.5" fly reel

137. Asprey, 166 New Bond Street. A Victorian burr walnut dome top casket containing two square liqueur decanters



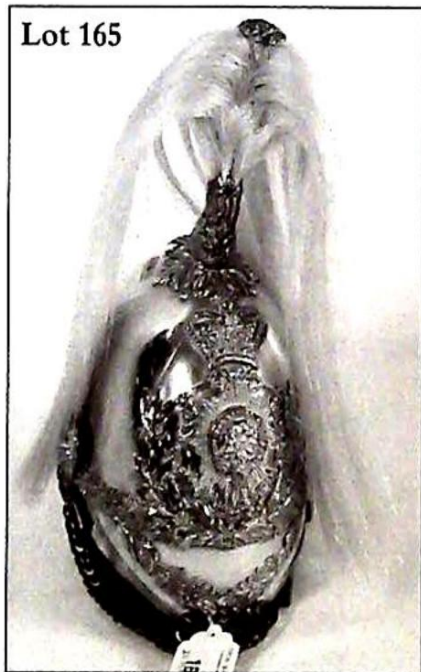
- with tot glass stoppers, cut brass mounts and shaped carrying handle £200-£400 *Illus.* ®
138. A XIX century black lacquered desk ink stand with pair of moulded ink containers having cast brass tops with foxes mask and vines, 30cm wide £70-£140 *Illus.* ®
139. A walnut miniature chest of four drawers with brass handles, 31cm wide, 30cm high ®
140. A miniature table top swing mirror with mahogany frame, splay feet, 38cm high ®
141. A XIX century Japanese lacquer workbox containing an assortment of bone reels etc., 29cm wide £40-£80 ®
142. A Japanese red lacquer cylindrical container decorated overall with figures, the lid revealing lift out trays, containing assorted sewing silks etc., 25cm high, 27cm diameter ®
143. A lacquer crumb tray, three gold/black lacquer bowls and three similar plates, pair of painted wooden containers and five other small containers (14) ®
144. A Japanese lacquered bowl with red interior depicting a bird and pine branches, 24cm diameter; a plain black lacquer bowl, 33cm diameter and a pair of rectangular hardwood stands ®
145. A red leather jewel box with velvet interior, 15cm wide; a pair of tortoise-shell ormolu mounted opera glasses in leather case; a leather stud box; small circular mirror; a tapestry tray and a pine box (6) ®
146. A brass carriage clock with white enamel dial, red leather carrying case £50-£100
147. A burr sycamore octagonal tea caddy with chased leaf decoration, 13cm high £20-£40
148. A XIX century brass bound mahogany jewel box with black/gilt leather interior, lift out tray, the top with inset brass handle, 25cm wide £40-£80
149. A XIX century ebony string inlaid mahogany caddy with pair of sycamore veneered containers, 31cm w £40-80
150. A XIX century mahogany table top folding book stand, 24cm wide £15-£30
151. A "Schutz Marke" polyphon musical box with comb movement, in walnut case with colour print in lid, and 17 discs £450-£900 *Illus.*
152. An "Edison Standard Phonograph" in a green



stained oak case with horn, and a fitted case of 20 cylinders £200-£400 *Illus.*

153. An Elkington & Co copper container with pair of wicker handles, tinned interior, 28cm high, 32cm diameter £30-£60
154. A beaten copper circular tray, 57cm diameter, a lozenge shape brass tray, three brass containers, brass horse shoe knocker and brass hand note holder (7) £30-£60 @
155. A XIX century brass oval bodied coal helmet with wrought iron swing handle, a brass scoop with turned wooden handle, tongs and poker £70-£120 @
156. A bell metal mortar, 11cm high, 13cm diameter £20-£40 @
157. A bone snuff box with tortoise-shell inset lid, 5cm wide; and another wooden snuff box, 5cm wide £30-£60
158. A cold painted cast metal model of a stag, 13cm high £30-£60
159. 16cm wide, 15cm high £40-£80
160. A pair of XIX century embossed white metal photo frames decorated with cherubs and scrolling foliage £25-£50
161. A XIX century mother of pearl inlaid rosewood writing box with sloping front, 30cm wide; and a string inlaid rosewood box, 25cm wide £30-£60 *Illus.*
162. A XIX century brass bound walnut writing box with green leather writing slope, 30cm wide £50-£100
163. A brass barrel flintlock blunderbuss with folding bayonet and ram rod, maker Twigg, 79cm long £1100-£1400
Illus. Cover
164. A travelling flintlock pistol by Smith, with 6" octagonal barrel, full walnut stock, 28cm overall £400-£600
165. A Victorian officers helmet of the 2nd West Yorkshire Yeomanry, silver plated skull with gilt fittings and white horse hair plume, together with three spare plumes £300-£500 *Illus.*
166. A pair of bronze two handled urns decorated in relief with vines and bearded heads, turned green marble bases, 25cm high overall £1200-£1500 *Illus.*
167. A pair of Continental brass vase shape table lamps on turned slate bases, 47cm high £200-£300

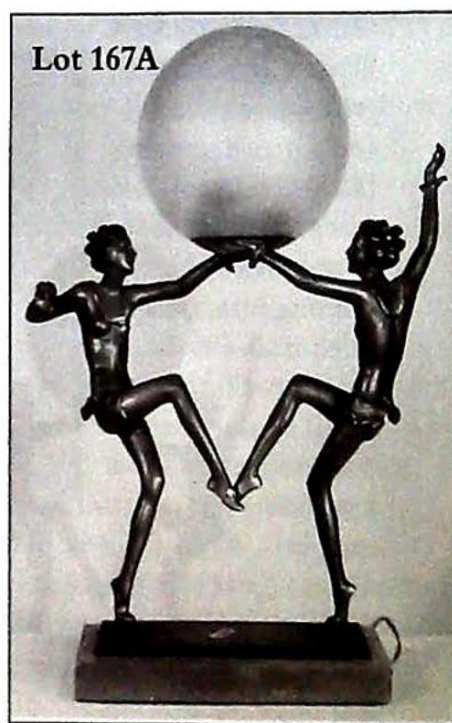
Lot 165



Lot 166

- 167A. An Art Deco lamp of a pair of bronzed metal dancers wearing frilled short skirts, holding aloft a crazed glass ball shade, rectangular alabaster base, 46cm high £100-£200 *Illus.*

Lot 167A



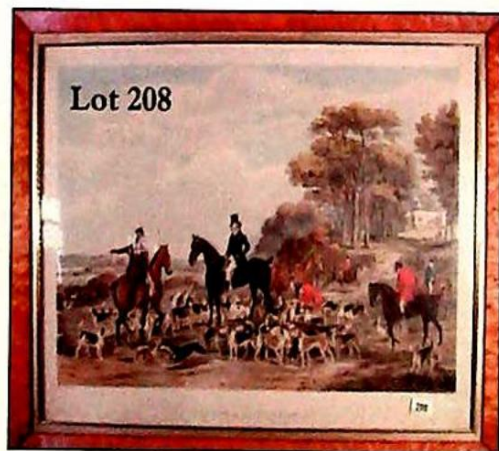
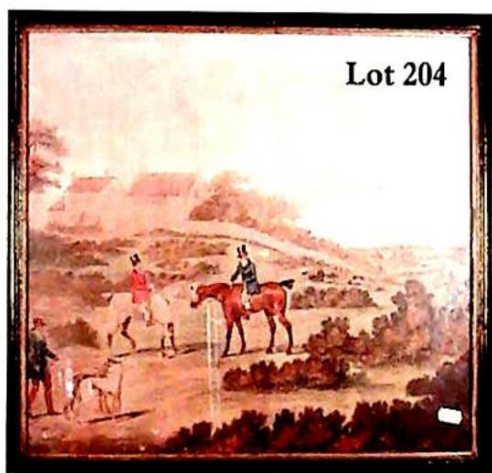
168. An Adams style pierced polished brass fender with rams head motifs, 124cm wide & a brass and iron footman £60-£120 @
169. A painted pine dome topped box, the black body decorated with birds and flowers, 46cm wide; and a reproduction XIX century style tray £25-£50 @
170. A XIX century walnut coal box with brass hinges, carrying handle and shovel, galvanised liner £50-£100 *Illus.*
171. A late XIX century walnut coal box with carved lid, brass carrying handle and shovel, galvanised liner £50-£100
172. An assortment of table cloths and other linen @
173. An "M F" 33cm cylinder Swiss musical box in a burr walnut string inlay & ebonised case with brass carrying handles, 86cm long, plus three additional cylinders - cased £4500-£5500 *Illus.*
174. An Armand Marseille bisque head doll with sleep eyes, open mouth, composition jointed body, black lace hat, ermine stole, blue velvet dress, lace edged underclothes, head

marked AM 370, 61cm high £200-£300

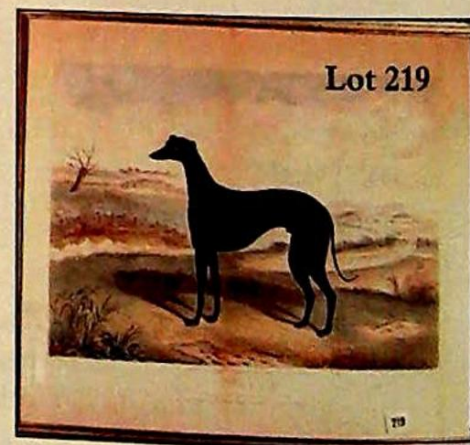
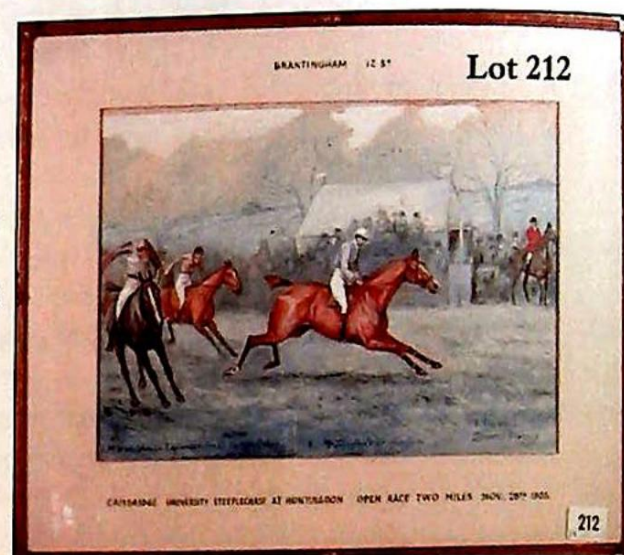
175. An S.F.B.J. bisque headed doll with sleep eyes, open mouth, composition jointed body, lace edged cotton night dress, head marked SFBJ 60 Paris 4, 51cm high £250-£500
176. A XIX century Chinese black lacquer chinoiserie decorated folding dressing table mirror and drawers, 29cm x 22cm £70-£130

PICTURES & PRINTS

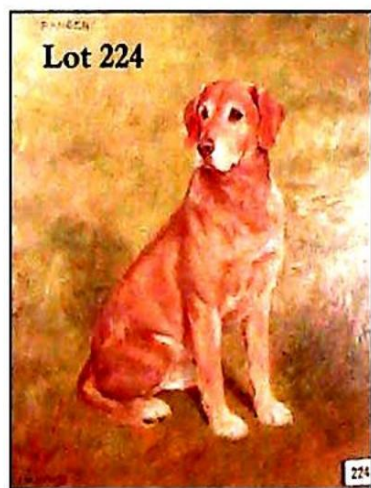
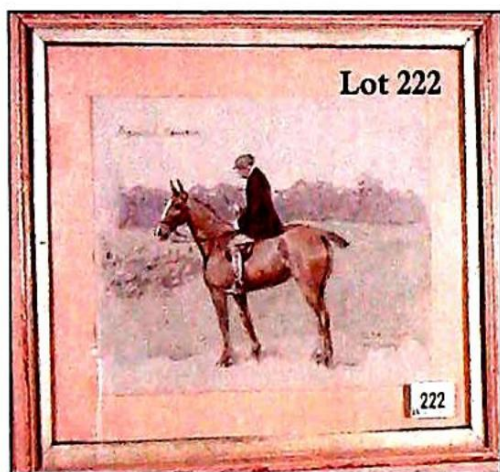
201. After Shell Beale A coloured print - horse and rider in Autumnal landscape, 37cm x 55cm; After John King:- A limited edition print 192/250 - The Burton Hunt and after Lionel Edwards "The Blankney" (3) ®
202. After Seymour. A XIX century print - The return from a course on Lambourn Downs, two other greyhound prints and a pencil drawing (4) ®
203. After Alken. A set of four coloured hunting prints, each titled £40-£80 ®
204. A series of four XVIII century hand coloured prints - hare coursing (no margins), 40cm x 47cm £200-£300 *Illus.* ®
205. A pair of oval brass framed oleographs - figures of children; an oval frame still life panel and an oval framed print - hound and pups (4) ®
206. Colin Carr 1974 a watercolour drawing - a fox peering through flowers and foliage 29cm square ®
207. After John Leech a coloured print titled "The Old Fox Hunter" 43cm x 63cm ®
208. After E.C. Turner A XIX century col. print "The West Acre Stag Hounds", maple frame 67.5cm x 83cm overall £80-130 *Illus.* ®



209. A set of four XIX century style French hunting prints in XIX century maple frames 32cm x 36cm overall ®
210. XIX century English School A groom rubbing down a Chestnut Hunter in stable yard in contemporary plaster gilt frame 24cm x 29cm £1000-£1500 *Illus.* Cover ®
211. Three XIX century style prints of ladies in oval/circular frames (3) ®
212. Cuthbert Bradley 1905 signed and dated Mr Whitehead's Laplander etc. in the Cambridge University steeple chase at Huntingdon, November 28th 1905 23cm x 33.5cm £500-£700 *Illus.* ®
213. J.C. Harrison two watercolour drawings in circular mounts of flying ducks - one titled "Female Teal" 12.5cm x 14cm diameter £100-£200 *Illus.* Cover ®
214. After W.J. Shayer A pair of circular coloured prints - fox hunting 30cm diameter £70-£120 ®
215. After Hancock A XIX century monochrome print - English racehorses, maple frame; an oval print "coursing" and another print "hunting" (3) ®
216. After Pollard Two XIX century prints of game cocks - "Yorkshire Hero" and "The Champion" 42.5cm x 40.5cm overall £120-£180 *Illus.* Cover ®
217. A pair of XIX century monochrome mezzotints of game cocks (no margins) 69cm x 57cm overall £80-£130 ®
218. After Alken Three hand coloured cock fighting prints titled "Death, Throat", "Cock Fighting Plate I" and "Cock Fighting Plate II" (3) ®
219. After Hunt A XIX century colour print "Donald Winner of the



- Waterloo Cup 1876" 47cm x 58cm £80-£140 *Illus.* ®
220. A maple framed print - a fighting cock; another titled "The Earth Stopper and The Sportsman" etc. (3) ®
221. Sundry photographs including horse racing, steeple chasing etc., plus 12 various coloured framed prints - one box ®
222. Snaffles A watercolour drawing titled Ashwell Spinneys "To Arthur Flint from Snaffles", 19cm x 25cm £50-£100 *Illus.* ®
223. T. Ivester Lloyd oil on canvas - a beagle "Bashful" 40cm x 50cm £80-£130 ®
224. F.M. Hollams oil on board - a Golden Labrador "Ranger" 45cm x 39cm £200-£400 *Illus.* ®
225. A print "The Burderop Shoot" and three others - Jockeys, watercolour landscape etc. ®
226. A XIX century portrait of Mrs Richard Wigfull (mother of Mrs Ransom), titled, signed and dated verso 1894, 60cm x 50cm £150-£250 ®
227. A Preure Oil on panel - still life 73cm x 61cm, oval mounted, gilt frame £400-£600
228. Continental School Oil on panel - still life with silver and jug 63cm x 53cm, oval mount, gilt frame £400-£600
229. G Metsu Oil on panel - two hounds gilt frame £200-£400
230. After Hondcoeter Oil on panel - Exotic Birds 41cm x 51cm, framed £250-£350
231. Continental School Oil on panel - still life of fruit 51cm x 61cm
232. Continental School Oil on panel - still life of flowers 61cm x 51cm
233. A Japanese print of many boats beneath a bridge 37cm x 8cm
234. English School A watercolour drawing of beached fishing boats in a harbour under clearing skies 37cm x 53cm, mounted and framed £200-£400



235. Samuel Austin 1796-1834 A watercolour drawing - East Cliff Hastings, signed verso 23cm x 30cm, mounted and framed £600-£700
236. A watercolour drawing of fishing boats and steam packet in a stormy sea off Dover, indistinctly signed 30cm x 44cm, framed £200-£300
237. L. Smithson A pair of XIX century watercolour drawings of coastal shipping beside quays, signed and dated '91 12cm x 17cm, mounted and framed £500-£700
238. Norie A watercolour drawing of fishing boats in a stormy sea 11cm x 18cm, mounted and framed £400-£600
239. Frederick William Hulme 1816-1884 A watercolour drawing - N. Wales landscape (N.B. He exhibited at the Royal Academy 1852-1884) 12cm x 26cm, mounted and framed
240. An early XIX century watercolour drawing of a watermill in a glade 17cm x 25cm, mounted and framed £80-£160
241. Albert Clark Oil on canvas of a bay shire horse 40cm x 49cm, framed £600-£800
242. Valentine Bartholomew A watercolour drawing - still life of flowers in a vase, signed and dated 1873 (label verso ... flower painter to Her Majesty) 41cm x 34cm, gilt frame £100-£200
243. XIX Century English School Oil on canvas - a gentleman in a green coat seated beside a table, book on his knee 20cm x 17cm, gilt frame £50-£100
244. Leeson Rowbotham fl. 1925-70 A watercolour drawing - a country hamlet Buncton Manor, Sussex, signed 12cm x 17cm, mounted and framed £150-£300
245. Arthur Anderson Fraser A watercolour drawing - river scene near Cambridge signed with monogram dated 1894 26cm x 37cm, mounted and framed £500-£700
246. Augustus Walford Weedon 1838-1908 a watercolour drawing - The New Forest near Brockenhurst, signed 23cm x 52cm, mounted and framed £500-£700
247. Edward Hull A watercolour drawing - The Watermill, signed 31cm x 44cm, mounted and framed £500-£700
248. W.H. Finch A pair of watercolour drawings - Wimbourne, Dorset and Hartington, Middlesex, signed mounted and framed £700-£900
249. Henry John Sylvester Stannard 1870-1951 A watercolour drawing of a Cotswold village, signed 28cm x 37cm, mounted and framed £800-£1200
250. An engraving of three gentlemen, one holding a vase on a woodland path 21cm x 15cm, mounted and framed £50-£100
251. School of Barker of Bath A pen and ink sketch of smugglers in a cave 26cm x 21cm, mounted and framed £100-£200

252. Italian School A pencil sketch of The Virgin and Child mounted and framed £50-£100
253. An XVIII century school pencil sketch of a lady, head resting on her hand 24cm x 19cm, mounted and framed £80-£160
254. Italian School a pencil sketch of Christ with the Virgin Mary and Saints 28cm x 17cm, mounted and framed £100-£200
255. A set of eleven early XIX century hand coloured engravings of officers involved in the Napoleonic Wars (published by Richard Evans, White Row, Spitalfields, London 1815-16) 23cm x 35cm, mounted and framed £250-£350
256. Sir William Russell Flint RA A signed print "Le Quatorze Juillet" published by Frost & Reed Ltd 1956 48cm x 61cm, mounted and framed £400-£600
257. L.S. Lowry A signed print of a 1943 painting - street scene with park beyond, church on sky line 47cm x 61cm, mounted and framed
258. A XIX century woolwork sampler with animals, flowers and religious verse by Margaret Lewis, aged 11 years, Ystrad Mynach school 1874, 60cm x 62cm, maple frame £400-£500
259. A XIX century woolwork sampler with animals, flowers etc. within a border of rose buds and leaves, by Margaret Thomas Llansawel November 1873, 66cm x 64cm, framed £400-£500
260. A set of seven book plates of XVIII century Spanish noblemen, 13cm x 9cm, framed £20-£40
261. After Holbein A set of three engravings by A.A. Bierling 1647-9 and one by Holler 1647 13cm x 9cm, framed £20-£40
262. A pair of early XIX century racing prints:- "The Liverpool 1840" and "Chances of The Steeple Chase", 39cm x 49cm, birds eye maple frames £50-£100 *Illus. Cover*
263. T Clough A watercolour drawing of a fisherman mending a lobster pot outside a white washed thatched cottage, a girl approaching from the sea 58cm x 43cm, mounted and framed £700-£900 *Illus.*

Lot 263



JEWELLERY

271. Two signet rings, an eternity ring and two narrow platinum rings £50-£100 ®
272. A 9 ct. gold hollow link bracelet with lock clasp; & a long chain, 168cm £50-100 ®

273. A XIX century gilt metal and black enamel brooch "In Memory of", a 9 carat gold bracelet and a rolled gold ring set with brilliants £30-£60 ®
274. A white metal bracelet set with brilliants and central cabochon "ruby" ®
275. A set of four 9 carat gold and blue enamel dress studs, a stock pin, a blue enamelled pencil holder and a champagne swivel stick £30-£60 ®
276. A bracelet made of Peruvian coins, a gold plated lorgnette, magnifying glass, silver on copper pill box, set of three paste star brooches etc. £30 -£60 ®
277. A XIX century 18 carat gold ring set with three small sapphires and two diamonds £250-£350
278. A 9 carat gold ring set with two diamonds and one sapphire £200-£300
279. A 9 carat gold ring set with three Australian sapphires and two diamonds £600-£900
280. A 9 carat white gold ring with oval setting of small diamonds and central amethyst; and an 18 carat white gold chased decorated wedding ring £100-£200
281. A 9 carat gold Albert chain, 38cm long £180-£220
282. A 1965 sovereign in a 9 carat gold mount £40-£60
283. An unhallmarked 18 carat gold ring set with five small diamonds £200-£300
284. An Omega lady's 9 carat gold wrist watch in original box £100-£200
285. A double row cultured pearl necklace with case £200-£300
286. An 18K dress ring centred with three square cut sapphires surrounded by 14 small diamonds £200-£400
287. A Morado concealed watch with white metal closing covers, marked 1257-250M, 5cm wide £200-£300
288. Three hallmarked silver watch fobs and a 1935 boxing medal £25-£40
290. A diamond and platinum band £400-£500
291. An unhallmarked 18 carat "MIZPAH" gold ring £20-£40
292. A diamond cluster ring £400-£500
293. A deco style ruby and diamond brooch £700-£900

SILVER & PLATE

301. A Victorian long handled old English pattern basting spoon, London hallmark, 31cm overall £50-£80 ®
302. A pair of late Victorian oval part fluted pedestal salt boats £40-£80 ®
303. An Edwardian baluster jug with shaped handle on a turned stepped foot, London hallmark and a smaller similar jug (2) £60-£90 *Illus.* ®



Lots 303, 306, 320, 328 and 337

304. A pair of square cut glass silver mounted dressing table jars, 11.5cm high £40-£80 ®
305. A collection of small silver items including a pocket flask, teapot stand, small cup, embossed pill box, plated top modelled with a hare and a hallmarked wine coaster (8) £70-£120 ®
306. A pair of George III London hallmark wine coasters with pierced galleries on turned hardwood bases, marks rubbed, 12cm diameter, and another hallmarked coaster (3) £200-£300 *Illus.* ®
307. A set of six Sheffield hallmark apostle spoons together with four coffee spoons with horse motifs and four others with heraldic crests £30-£50 ®
308. Two pairs of Victorian fruit eaters, a butter knife and a fork £20-£40 ®
309. 13 various, mainly antique silver teaspoons ®
- 309A. A pair of Georgian hallmarked bright cut silver sugar nips and a pair of sugar tongs £40-£80
310. A hallmarked silver composite dressing table set, Birmingham 1903, pair of glove stretchers and a dressing table jar
311. A set of six hallmarked Irish silver table forks and six matching dessert forks, maker SN Dublin 1822 £40-£80
312. A set of four hallmarked silver dessert spoons, maker Walker & Hall Sheffield 1923 £30-£60
313. A set of six hallmarked silver fiddle pattern teaspoons, maker SH/DC, London 1937 £30-£60

314. A pair of Irish hallmarked silver fiddle pattern, serving spoons, maker WW, Dublin 1807 £30-£60
315. Ten assorted hallmarked Irish silver tea spoons, various makers and dates £25-£50
316. Twenty two assorted hallmarked silver teaspoons, including Georgian £30-£60
317. Assorted hallmarked silver cutlery:- four table spoons, two jam spoons, pair of sugar nips, ten small spoons, five forks etc. £20-£40
318. Two hallmarked silver button hooks £15-£30
319. Six assorted Danish "silver" spoons and forks c.1830's £20-£40
320. A hallmarked silver three piece condiment set, Birmingham 1976 £40-£80 *Illus.*
321. A set of six hallmarked silver coffee spoons (replicas of the Coronation anointing spoon), London 1937, cased £25-£50 ®
322. A small hallmarked silver cased travelling clock with red enamelled face, gilt numerals and hands, maker CF London 1897, movement marked JTC 52020, retailed Rowlands & Frazier, 145 Regent Street £500-£700

323. Maker RH
London 1777 and
1789 A set of
four George III
hallmarked silver
wine coasters
engraved with a
crest, rampant
lion, turned
wooden bases,
12cm diameter
£2500-£3500
Illus.



324. A set of hallmarked silver Georgian style coffee spoons and a pair of sugar nips, cased, maker J R Sheffield 1916
326. An entree dish and cover 20cm long; entree dish and cover 24cm long, set of three graduated oval dishes, another oval dish and a pair of handles £50-£100 ®
327. A Georgian design teapot & a Victorian coffee pot £30-£60 ®
328. A seven bar toast rack and a "toast" rack (2) £20-£40 *Illus.* ®
329. A cigarette box "Players" National Gold Leaf Point to Point Championship 1968 qualifying race winner £15-£30 ®
330. Silver plated rimmed horn beaker engraved with a fox and rabbit, presentation pewter tankard, two plated bon bon dishes, a pair of hare knife rests etc. £30-£60 ®
331. Two pairs of grape scissors and an egg cutter £20-£40 ®

332. An Art Nouveau pewter waisted drinking cup decorated with acorns and oak leaves, motto "Hubertus Sanctus", 14cm high £20-£40 ®

333. A model of a fighting cock, wooden plinth, figure 31cm high £100-£200 *Illus.* ®

334. A XIX century silver on copper oval sewing tray with shaped pierced gallery, 62cm long £100-£200 ®

335. An engraved circular salver with gadroon edge, 25cm diameter ®

336. A silver plated two handled tray engraved "Woman of the Year 1958", 76cm x 49cm £200-£300

337. A pair of silver plated Corinthian column table lamp bases, 30cm high £50-£100 *Illus.* ®

338. Three assorted silver plate fruit baskets £30-£60

339. A cut glass oval fruit dish on a silver plated stand, raised on two mask feet and pair of winged female warrior handles £70-£150 *Illus.*



340. A bachelor's silver plated three piece tea set

341. Silver plated cutlery:- Eight place settings of nine pieces; four table spoons, butter and cheese knives and a pair of fish servers (80)

RUGS

372. An oriental rug with red panels within a blue border, 280cm x 165cm £100-£200 ®

373. A Turkoman rug centred with a multi lozenge design between seven borders, 210cm x 130cm; and a Bokhara crimson and ground rug, 144cm x 82cm £60-£120 ®

374. A Middle Eastern hand made rug, the centre woven with a lozenge design between multiple borders, 240cm x 104cm £40-£80 ®

375. A Middle Eastern rug with brown ground, red and blue detail, three guls to centre, 140cm x 94cm £20-£40



MIRRORS

376. A small XIX century neo-classical mirror flanked by Grecian columns and decorated in relief with figures amid vines, 60cm x 40cm £80-£150 *Illustrated* ®

377. A pair of carved gilt wood girandoles (candle holders missing), the frames with "C" scrolls and rose heads enclosing shaped mirror plates, 72cm x 38cm overall £200-£400 ®

378. A gilt wood dressing table mirror, the oval plate in a foliate frame on scroll supports with a shaped base, 49cm high £50-£100 ®

379. A rectangular toilet mirror, the Japanned frame and stand with gilt chinoiserie decoration, 63cm high, 43cm wide £100-£200 ®

380. A XIX century English neo-classical design peer glass, the moulded cornice above painted glass panel of swag and tail flowers and foliage, flanked by Corinthian columns, written with foliage, 182cm x 84cm £1000-£1500 ®

381. A XIX century carved gilt wood wall bracket of an eagle with outstretched wings taking a hare, 52cm x 34cm overall £150-£250 *Illus.* ®

382. An oriental crimson lacquer and gilt decorated wall mirror, the relief carved frame separated with scrolls and stylised foliage, 84cm x 45cm overall ®

383. A neo-classical design gilt frame oblong robing mirror, the upper section with a framed French print "La Promenade Du Soir", 147cm high, 30cm wide £60-£100 ®

384. A pair of XVIII century carved gilt wood wall mirrors, surmounted by Prince of Wales plumes and flanked by winged Griffinesque masks, the shaped domed mirror plate in a floret carved frame (with alterations), 162cm x 62cm £1200-£1800 *Illus.* ®

385. A pair of XVIII/XIX century Continental carved gilt wood wall mirrors, surmounted by an elaborate shell design



cartouche and with bold "C" scrolls to the corners carved in relief with foliage and flower heads, 116cm x 62cm £800-£1200 *Illus. Cover* ®

386. A small pair of XVIII/XIX century Florentine gilt wood mirrors, the oval plates in elaborate bold foliate scroll frames, 43cm x 34cm £200-£400 *Illus.* ®



Lot 386

387. A carved gilt wood framed XVIII century style over mantel mirror, surmounted by winged cherub mask, decorated with flower heads in deep relief, 116cm x 71cm £300-£500 *Illus.* ®

388. A XIX century neo-classical plaster gilt frame wall mirror with a gilt and penwork glass panel decorated with fruiting vines, flanked by spirally fluted columns enclosing the oval mirror plate, 102cm x 51cm overall £600-£800

389. A XIX century gilded over mantel mirror, the frame decorated with applied turnings beneath a stepped cornice, 90cm x 57cm £200-£300 *Illus.* ®

390. A Chippendale period fret mirror, the mahogany framed centred with a gilded cartouche, the mirror with an inner relief moulded gilt slip, 75cm x 44cm £300-£400 ®



Lot 387

391. An XVIII century carved gilt wood frame wall mirror, surmounted by an urn joined with trailing flowers to the scroll frame, with applied flower heads in deep relief, the mirror plate in two parts, 150cm x 62cm overall £3500-£4500 *Illus. Cover*

392. A gilt and plaster framed rectangular wall mirror, approx. 56cm x 45cm ®

CLOCKS & BAROMETER

393. An ornate brass mantel clock, the circular white dial in a pierced all brass frame, studded with coloured glass and cast with cherubs, foliage and flowers, 36cm x 23cm overall £60-£110

394. A Regency mantel clock, the circular painted dial signed "Willett London" with fusee movement, mounted in a rosewood drum case on an oblong base inlaid with brass stylised sea serpents, 42cm high, 33cm wide £600-£800 *Illus. Cover*

395. A XIX century white dial wall clock with fusee movement; mahogany cased, approx. 38cm diameter £150-£250

396. A XIX century five dial banjo barometer, the rosewood case surmounted by a horn pediment with a silver barometer dial, 24cm diameter, 106cm high £150-£250

397. A XIX century mahogany banjo five dial barometer, the level signed "B Pedrone Glasgow", the base boxwood and ebony strung and with a broken swan neck pediment, the barometer dial 26cm diameter, 109cm high overall £500-£700

398. A XIX century longcase clock, the painted dial signed "P. Clapham Brigg" with an eight day striking movement, contained in an open mahogany swan neck pedimented hood with three orb finials, the trunk enclosed by a long cross-banded shaped door, 217cm high overall £1200-£1800 *Illus.*



Lot 398

399. An XVIII century oak longcase clock, the arched brass dial signed "Saml. Robson North Shields" with applied chased spandrels and engraved disc of Old Father Time in the arch, eight day striking movement, contained in a rectangular hood with stepped dentil moulding, the trunk enclosed by a long shaped door, 198cm high £900-£1300

400. A XIX century mahogany longcase clock, the engraved brass dial with eight day striking movement, contained in a broken swan neck pedimented hood, the trunk with a short shaped door, 250cm high overall £400-£750

FURNITURE

401. A Georgian mahogany Lancashire style chest of two short and three long cock-beaded graduated drawers, flanked by reeded cluster columns raised on ogee bracket feet, the oak lined drawers with original swan neck brass handles, 125cm x 54cm £400-£600 ®



Lot 402

402. A George III mahogany chest of two short and three long graduated oak lined cock-beaded drawers, fitted with a brushing slide and with reeded quarter columns to the



Lot 405

corners, raised on ogee bracket feet (depleted) 104cm wide, 54cm deep £500-£800 *Illus.*

403. A Georgian mahogany corner wash stand with a raised back, the lower tier fitted with a central drawer and two dummies, standing on splay bracket supports, 39cm deep £200-£300 ®
404. A Georgian mahogany side table decorated with boxwood and ebony stringing, fitted with a long oak lined drawer and raised on square taper supports, 62cm wide, 39cm deep £80-£120
- 404A. A circular Victorian commode stool fitted with a retracting step to the plinth, the top and step covered in green tooled

- leather; now bleached and polished, 41cm diameter ®
405. A late XVIII century serpentine mahogany sideboard, the cross-banded top above two central napery drawers flanked by three narrow drawers and raised on six square taper legs with polished brass swan neck handles, 147cm wide, 68cm deep, 86cm high £1000-£2000 *Illus.* ®
406. A pair of XVIII century mahogany demi-lune side tables, raised on square taper supports terminating in spade feet, 114cm wide, 56cm deep £600-£800 *Illus.* ®
407. An XVIII century oak mule chest, the hinged lid above a four panel front with two drawers to the base, 125cm wide, 54cm deep £200-£300
408. An XVIII century oak dresser, the open back plate rack, with a moulded shaped and pierced cornice above two display shelves, the base with three cock-beaded drawers, the pierced and shaped decoration repeated on the apron, raised on square taper legs, 160cm wide, 46cm deep, 186cm high £4500-£6500

Illus. Cover

409. An early XIX century mahogany bow front chest of two short and two long cock-beaded drawers, each with oval pressed brass handles showing figures driving oxen, on splay bracket feet,



Lot 411

- joined by a shaped apron, 90cm x 52cm £350-£550 *Illus.* ®
410. A Georgian mahogany chest of three long cock-beaded drawers, the top with a broad crossgrain band and moulded edge, raised on splay bracket feet, joined by a shaped apron, 92cm x 44cm £300-£600 *Illus.* ®
411. A well proportioned George II faded walnut bureau, the cross-banded and herringbone inlaid fall enclosing a fitted interior above four graduated drawers, raised on original bracket feet, 51cm wide, 100cm high £3000-£5000 *Illus.* ®
412. A XIX century mahogany chest of two short and three long oak lined cock-beaded drawers, raised on bracket feet, 108cm wide, 47cm deep, 120cm tall £100-£200
413. A Victorian black lacquer chinoiserie decorated chest of two

short and two long drawers, raised on bracket feet, the drawer fronts with oriental scenes, figures in gardens and exotic birds, 87cm wide £300-£500 ®



Lots 414 & 415

414. A Queen Anne design black Japanned and floral decorated bureau, the fall front concealing a fitted interior of pigeon holes and small drawers above two short and one long drawer, raised on taper cabriole supports terminating in pad feet, 56cm wide £300-£500 *Illus.* ®
415. An early XIX century papier mache oblong tray, gilt decorated with tigers among foliage with floral gilt decorated board, 77cm x 56cm (on a later stand) £600-£850 *Illus.* ®
416. An oval Japanned urn stand with chinoiserie decoration and raised on square taper legs, 65cm high ®

417. An antique oriental design black lacquer cabinet enclosed by a pair of panelled doors, gilt decorated with figures, buildings etc., raised on cabriole legs, 112cm wide, 32cm deep, 141cm high £200-£400 *Illus.* ®



Lot 417

418. A XIX century Chinese red lacquer cabinet decorated in gilt with flowers, butterflies, dragons etc., enclosed by two pairs of fielded panel doors and raised on square stiles, 45cm wide, 72cm high £600-£800

419. A Chinese red lacquer wardrobe decorated with birds, trees and landscape scenes, enclosed by a pair of doors with a large circular black iron lock plate, the interior fitted with shelves, drawers and the chest with a rising lid, 125cm wide, 63.5cm deep, 196cm high £900-£1600



Lots 423, 468 & 170

420. An XVIII century black Japanned bow front corner cupboard with chinoiserie decoration of figures before a building on a cabriole leg stand, 162cm high, 64cm wide £300-£500 ®
421. A pair of XIX century carved gilt wood frame foot stools, raised on short cabriole legs, labelled on the frame "Constantine & Co's, Cabinet & Upholstery Warehouse Leeds", No.35766, 46cm x 28cm £300-£500
422. An octagonal Victorian burr walnut centre table, the quarter veneered top with marquetry decoration on a quadruple column support with carved legs, 88cm diameter £150-£250
423. An XVIII century style camel back window seat with wing arms upholstered in pink dralon raised on square taper legs, 115cm wide, 56cm deep £150-£250 *Illus.* ®
424. A XIX century mahogany double sided music stand with lyre supports, raised on an adjustable column with tricorn platform base £700-£900 *Illus.*
425. An XVIII century oak coffer enclosed by a plain lid with two panel front raised on high stiles, original iron lock plate, 100cm wide, 41cm deep, 54cm high £200-£400 ®
426. An XVIII century oval oak gate leg dining table fitted with a frieze drawer, raised on tapering ring turned supports with square splay feet, 93cm x 102cm extended £500-£800 ®



Lot 424

427. A reproduction distressed oak gate leg coffee table on baluster turned supports, 60cm x 65cm extended £50-£100 ®



Lots 406 & 428

428. A XIX century rectangular mahogany needlework table fitted with a single drawer to the frieze above the fabric covered silk bag, raised on tapering square column with platform base on turned feet, the top 47cm x 35cm £500-£700 *Illus.*

429. A XIX century Victorian wash stand with circular white veined marble top, raised on three baluster turned supports joined by a tricorn base, on turned feet centred with a marble stand for the wash jug, 52cm wide £100-£150

430. A XIX century burr walnut kneehole desk, the top inlaid with tan tooled leather, above a central frieze drawer and three drawers to each pedestal, raised on bracket feet, 135cm x 6cm x 72cm high £1500-£2300 *Illus. Cover* ®

431. A XIX century mahogany hall settle, the curved back with shaped square section vertical splats, joined to open arms with a rush upholstered drop-in seat, raised on square taper supports, 140cm wide £400-£600 *Illus.*



Lot 431

432. A George III small dressing table, the "D" front with one long and two deep drawers, raised on square taper supports (with later alterations), 94cm x 52cm x 76cm high £300-£500 ®

433. A Regency sabre leg carver chair, the ebonised frame brass mounted; lozenge shaped horizontal splat above a cane seat with scroll arms £200-£300 ®

434. An early XIX century chaise longue, the carved mahogany frame standing on reeded tapering legs with a reeded foot, now upholstered in pink button dralon £500-£800

435. A XIX century chaise longue, the shaped rosewood frame carved with scrolls, raised on bulbous turned legs and now upholstered in brown dralon £300-£450

436. An XVIII century oval gate leg dining table fitted with single frieze drawer and raised on turned and block supports, 125cm x 104cm extended £200-£300

437. A Georgian mahogany cutlery box on a later stand ®

438. An XIX century serpentine fronted mahogany two tier whatnot, 50cm x 42cm (with alterations) £100-£200 ®

439. A Georgian square mahogany commode stool, 50cm x 41cm £50-£100 ®

440. An early XIX century rectangular mahogany dressing table mirror, the oblong base with two drawers, 52cm x 42.5cm overall ®

441. A XIX century bow front mahogany hanging corner cupboard decorated with boxwood stringing and enclosed by a single door, 71cm high £150-£250

442. A Victorian mahogany frame double sofa, the centre relief carved with foliage and flower heads, raised on cabriole legs & upholstered in green fabric, approx. 170cm wide £600-£800



Lot 443

443. A pair of George III style demi lune card tables, painted with classical vignettes of lovers, vases of flowers and floral trellis work panels, raised on turned tapering supports with pad feet, 84cm, 42cm deep (closed) £900-£1400 *Illus.* ®



444. A Sheraton mahogany demi-lune fold over tea table inlaid with boxwood stringing and with oval pateras of vases to each leg, 92cm x 45cm £600-£800 *Illus.* ®
445. An XVIII century oval oak gate leg dining table raised on baluster turned legs joined by square stretchers, 138cm x 107cm extended £350-£500
446. A pair of octagonal two tier Sheraton design dumb waiters, each tier with a wavy gallery and boxwood stringing, raised on fluted columns with quadruple splay feet £200-£400 ®
447. An XVIII century oak bureau, the fall front enclosing a forward fitted interior above a central well, the base with two short and two long drawers, raised on bracket feet, 93cm wide £1200-£1800
448. A French gilt wood commode chair with cane panelled back and seat, raised on cabriole supports £100-£200 ®
449. An XVIII century three fold gilt wood screen, the upper section of each leaf with four bevelled glazed shaped panels, the lower fabric covered, each panel 61cm x 203cm £800-£1200 ®
450. A XIX century gilt wood frame open armchair, the cameo back and scroll arms decorated with acanthus, raised on turned and fluted front supports, upholstered in pale green damask £400-£600 ®
451. A XIX century gilt wood window stool, raised on cabriole supports and upholstered in figured pink fabric, old label to frame, 141cm x 56cm £400-£600 ®
452. A XIX century French Kingwood vitrine with rouge marble top, ormolu mounted, the long plain glazed door enclosing three internal shelves, raised on cabriole supports, 72cm x 38cm, 64cm high £1500-£2500 *Illus.* ®

453. A Victorian walnut breakfront chiffonier (base) enclosed by three doors, each with mirror panels and inlaid with boxwood marquetry panels, grained white marble top, 134cm wide, 39cm deep, 86cm high £200-£400 ®
454. A good quality XX century Chippendale design carver chair £50-£100 ®
455. An antique Chippendale style carver chair with pierced splat, green dralon upholstered drop-in seat, raised on square supports joined by an "H" stretcher £50-£100 ®



456. A set of seven (six singles and one carver) George III mahogany dining chairs with reeded horizontal splats, drop-in seats with grey/blue dralon, raised on square taper front supports joined by "H" stretchers £800-£1200 *Illus.* ®



457. A small George III mahogany bureau, the fall front enclosing a fitted interior above two short and two long cock-beaded oak lined drawers, raised on shaped bracket feet, 84cm wide, 48cm deep, 94cm high £800-£1200 *Illus.* ®
458. A pair of XIX century mahogany dining chairs with reeded vertical splats, overstuffed seats, raised on ring turned front supports £80-£130 ®
459. A XIX century French gilt wood frame fire screen with silk floral panel, raised on splay feet, 66cm x 98cm £150-£250 ®

460. A Georgian design oak chest of three long drawers, the top crossgrain banded, raised on bracket feet, 89cm x 47cm £300-£500 ®



Lot 457

461. A Georgian mahogany circular piano stool with a rising top, raised on reeded splay legs £50-£100 ®
462. A rectangular antique mahogany stool, raised on reeded legs, joined by an "H" stretcher £30-£60 ®
463. An early XX century armchair upholstered in figured pink fabric and raised on square taper legs terminating in spade feet £50-£100 ®
464. A pair of Victorian ebonised and gilt decorated circular foot stools on four bobbin turned feet, the tops upholstered in woolwork, 30cm diameter £50-£100 ®
465. A small antique foot stool with a woolwork covered top, raised on four turned mahogany legs £20-£40 ®
466. A George II style mahogany dressing table stool, the cabriole legs carved at the knee with a shell design, drop in seat worked with roses, another similar with overstuffed tapestry upholstered seat on pad feet ®
467. A George III camel back side chair with pierced splat, drop-in seat upholstered in green dralon and another with a vase shaped pierced splat and woolwork seat (two) ®
468. A Victorian satin walnut square foot stool, raised on turned supports with a woolwork top, 34cm £50-£100 *Illus.*
469. A well proportioned mid Victorian rosewood stool, the frame carved in deep relief with foliage, flower heads and scrolls, raised on cabriole supports, 65cm x 78cm £550-£750 *Illus. Cover*
470. A set of six Victorian spoonback mahogany dining chairs with horizontal scrolling splats, overstuffed seats in red dralon raised on turned front supports £300-£500

471. A set of four Victorian mahogany spoonback dining chairs, the scroll horizontal splats above overstuffed seats on baluster turned front supports £300-£500
472. A set of four Victorian walnut frame spoonback dining chairs, the frames headed by a cabochon style relief carving above pierced and carved horizontal splats, overstuffed seats on cabriole front supports £300-£500 *Illus.*
473. A set of five (four singles and one carver) oak spindle back dining chairs with rush seats, raised on turned supports with pad feet £200-£400
474. A pair of Victorian elaborately carved ebonised frame salon chairs on cabriole front supports £50-£100
475. A set of five (two carvers and three singles) Edwardian dining chairs, the satin walnut frames with inlaid top rails above pierced vertical splats; drop-in seats upholstered in crimson dralon on plain supports £300-£500

476. A set of four Victorian spoonback walnut frame dining chairs, the splats pierced and carved with foliage and flower heads,



Lots 476 & 472

- hand worked rose design woolwork seat coverings, raised on cabriole front supports £300-£500 *Illus.*
477. A Victorian carved mahogany frame open armchair decorated in deep relief with stylised foliage, open scrolling arms, raised on cabriole front supports, joined by a serpentine rail £400-£600 *Illus.*
478. A Victorian gentleman's spoonback armchair with scroll arms, cabriole supports, now upholstered in mustard button dralon £200-£400
479. A set of eight XVIII century ash and elm spindle back dining chairs with solid seats, the turned supports joined by opposing baluster turned stretchers on pad feet £800-£1300
480. A set of four Victorian mahogany spoonback dining chairs, the overstuffed seats above baluster turned and fluted supports £300-£500

481. A Georgian mahogany bureau, the fall front enclosing a fitted interior of small drawers and pigeon holes, the base with three cock-beaded drawers standing on bracket feet, 105cm wide £400-£600

482. An antique astragal glazed hanging corner cupboard enclosed by a single door with two internal shaped shelves, 104cm high £200-£400

483. A XIX century spider leg tilt top wine table, the circular mahogany top on a ring turned column, 59cm diameter £200-£300

484. A wing armchair raised on bold short cabriole front supports carved in relief at the knee £250-£400 *Illus.*

485. A nest of three oblong reproduction mahogany coffee tables £50-£100 @

486. A Georgian mahogany secretaire, the top drawer fitted with pigeon holes and small drawers above three long cock-beaded drawers standing on shaped bracket feet, 112cm wide, 54cm deep £1250-£1600

487. A late XVIII/early XIX century Continental chestnut armoire, the moulded cornice above two shaped panel doors, the interior fitted with two drawers, standing on short legs, joined by a shaped apron and with polished brass hinges and lock plates, 215cm x 153cm overall £1200-£1800

488. A substantial, principally Elizabethan refectory table on two richly carved bulbous supports with a central rail on "Y" shaped brackets, carved scroll feet, 260cm x 84cm £7000-£11000 *Illus. Cover*



489. An XVIII century oak court cupboard, the lunette carved cornice dated 1703, above a pair of panelled doors carved with stylised masks, the base enclosed by fielded panel doors and with iron butterfly hinges, 140cm wide, 165cm high, 56cm deep £1800-£2300 *Illus. Cover*

490. A four tier oak bookcase by the Globe Wernicke Co. Ltd £300-£400

491. A pair of neo-classical gilded wood fluted columns on triangular tapering bases decorated in relief and standing on bold paw feet, 169cm high £900-£1500

492. A mahogany cased pianola by Raymond New York, complete with piano stool and a good selection of pianola rolls (four boxes) £100-£200

493. A Beckstein upright pianoforte, mahogany and walnut case with brass candle sconces and floral inlay, number 42628 £200-£400

494. A Georgian mahogany chest of two short and three long oak lined cock-beaded drawers with original swan neck brass handles on shaped bracket feet, 106cm wide, 54cm deep £250-£400

495. A XIX century mahogany chest of two short and three long cock-beaded drawers with turned ebony knobs, centred with bone, standing on bracket feet, 107cm x 46cm £300-£450

496. An Arts & Crafts Liberty style oak bedroom suite, the wardrobe enclosed by panelled doors, the upper section with glazed leaded doors, matching dressing table and wash stand £1500-£2500 *Illus.*



497. An Arts & Crafts design mirror back oak sideboard, the pierced cornice above a cupboard enclosed by leaded glazed doors, the rectangular bevel edge mirror standing on a base with two drawers and double cupboard with four relief carved panels, 153cm wide, 47cm deep, 210cm high £400-£800



Lot 498

498. An XVIII century Irish oak Chippendale design silver table, the frieze carved in deep relief with griffins heads, either side of a bowl of fruit, raised on shaped foliate carved legs terminating in paw feet, with later top 95cm wide, 61cm deep £700-£1200 *Illus.*

499. A XIX century Moorish profusely inlaid combination fold over games table, the interior with a well and backgammon board, raised on cabriole square section legs, 88cm wide, 44cm deep, 85cm high £800-£1300 *Illus. overleaf*



Lot 499

500. An XVIII century oval oak gate leg dining table, raised on turned and block supports and fitted with a single drawer to the frieze, 89cm x 115cm extended £400-£600
501. A Georgian style wing armchair, raised on square stained hardwood front supports with an "H" stretcher £150-£250
502. A Georgian mahogany two tier corner wash stand with a raised shaped back, the intermediate shelf fitted with a single drawer and two dummies standing on square swept feet £100-£200
503. An XVIII century style panelled oak Welsh dresser, the upper section with two plate display racks beneath a carved cornice, the base enclosed by two panel doors and decorated with split turnings, 162cm wide, 191cm high, 50cm deep £350-£500
504. An Edwardian mahogany sideboard with a raised back, two drawers with a cupboard beneath, enclosed by panel doors, standing on square fluted feet, 151cm wide, 56cm deep £75-£150
505. A circular Victorian mahogany breakfast table, raised on a flat sided tapering column, the tricorn base on turned feet, 103cm diameter £150-£250
506. A circular cast iron garden table on three leaf cast supports joined by a triangular base with scroll feet, 50cm diameter £50-£100 @
507. A magnificent Victorian mahogany sideboard, the elaborate back carved in deep relief with fruit and foliage and inset with mirrors in shaped frames with display shelves on scroll supports, the base fitted with three drawers and three cupboards enclosed by fielded panel doors and fitted internally, 196cm wide £1300-£1700

END OF SALE



Lot 381

ESTATE CLEARANCE SALES TAKE PLACE ON
fIRST SATURDAY OF EACH CALENDAR MONTH

at 10 am and include

Victorian, Edwardian, Reproduction Furniture,

Bygones, Collectables, & General House Contents,

Catalogues available only on the internet 4-5 days prior to sale

www.invaluable.com/thos-mawer



FREE VALUATION CLINIC

Every Friday between 9.30am - 12 noon

AT DUNSTON HOUSE

CONDITIONS OF SALE

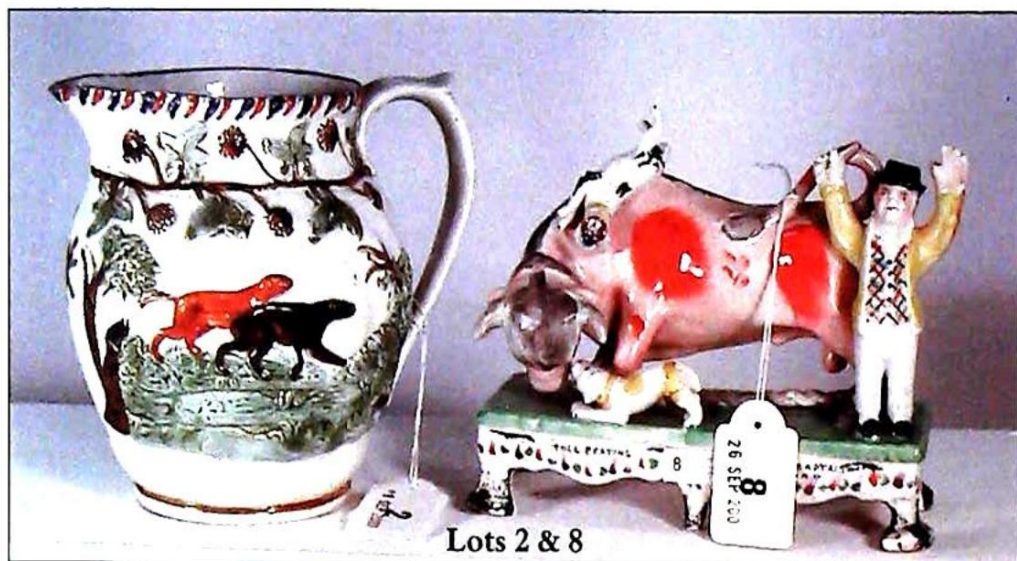
1. In these conditions Thos. Mawer & Son act only as auctioneers and agents and the representative of Thos. Mawer & Son conducting the auction is called 'The Auctioneer'
2. Whilst Thos. Mawer & Son make every effort to ensure the accuracy of their catalogue and the description of any lot:
 - (i) Each lot set out in the catalogue or as divided or combined with any other lot or lots is sold by the vendor with all faults and imperfections and errors or descriptions
 - (ii) Thos. Mawer & Son do not accept responsibility for the authenticity, attribution, genuineness, origin, authorship, date, age, period condition or quality of any lot unless they have been instructed in writing by the buyer to so certify.
 - (iii) All statements whether printed in the catalogue or made orally as to any of the matters set out in (ii) above are statements or opinion only and are not to be taken as being or implying any warranties or representations of fact by Thos. Mawer & Son unless they have been instructed in writing by the buyers to so certify.
3. The Auctioneer has absolute discretion to divide any lot, to combine any two or more lots or to withdraw any lot or lots from sale, to refuse bids, regulate bidding or cancel the sale without in any case giving any reason or without previous notice. He may bid on behalf of the vendor for all goods which are being offered subject to reserve or at the Auctioneer's discretion.

The highest bidder shall be the buyer. The Auctioneer may at his sole discretion determine the advance of bidding or refuse a bid. If during the auction the Auctioneer considers that a dispute has arisen, has absolute discretion to settle it, or to re-offer the lot.

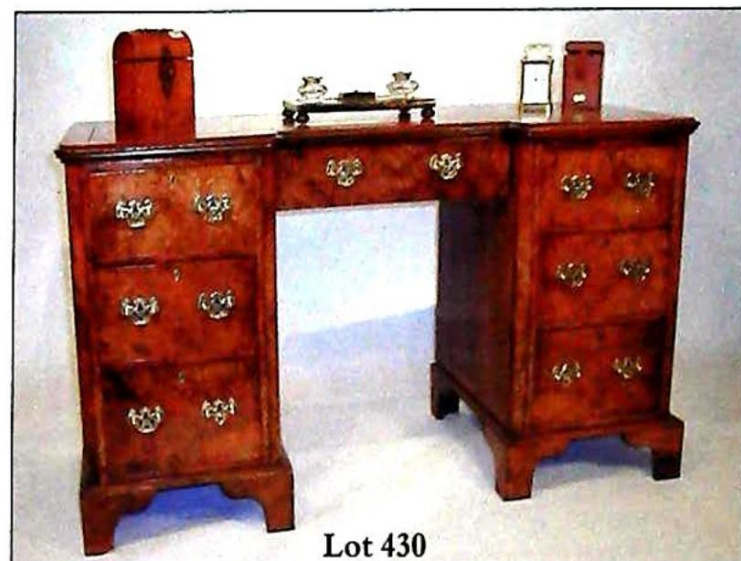
All conditions, notices, descriptions, statements and other matters in the catalogue and elsewhere concerning any lot are subject to any statements modifying or affecting the same made by the Auctioneer from the rostrum prior to any bid being accepted for the lot
4. The buyer shall pay the hammer price together with a premium of the hammer price – 11.75% (including VAT).
5. Notwithstanding any other terms of these Conditions, if within seven days after the sale Thos. Mawer & Son have received from the buyer of any lot notice in writing that in his view the lot is a deliberate forgery and within twenty-one days after such notification the buyers return the same to Thos. Mawer & Son in the same condition as at the time of the sale and by producing evidence, the burden of proof to be on the buyer, satisfies Thos. Mawer & Son that considered in the light of the entry in the catalogue the lot is a deliberate forgery then the sale of the lot will be rescinded and the purchase price of the same refunded.

The vendor agrees to be bound by Thos. Mawer & Son's decision
6. Thos. Mawer & Son disclaim any responsibility for default by either the buyer or the vendor because they act as Auctioneers only and therefore do not pay out to the vendor until payment is received from the buyer. Instructions given by telephone are accepted at the sender's risk and must be confirmed in writing forthwith.
7. Every person on Thos. Mawer & Son's premises at any time shall be deemed to be there at his own risk. He shall have no claim against Thos. Mawer & Son in respect of any accident which may occur or injury, damage, loss howsoever caused, save in so far as the injury, damage loss shall be caused by the negligence of Thos. Mawer & Son's employees.
8. Each lot shall be at the purchasers risk from the fall of the hammer and must be paid for in full before the delivery and must be taken away by the purchaser at his own expense within 7 working days following the conclusion of the sale. The Auctioneer shall be entitled to charge storage charges in respect of lots not taken away as aforesaid (minimum charge of £10 plus VAT) and interest on unpaid accounts @ 4% above clearing bank base rate (per day).
9. Cheques which are not honoured by the payee's bank will incur a handling charge of £15 plus VAT for each presentation.

This contract is governed by English Law.



Lots 2 & 8



Lot 430



Lot 385



Lot 391



Lot 163



Lot 213



Lot 469



DUNSTON HOUSE · PORTLAND STREET · LINCOLN · LN5 7NN

TELEPHONE 01522 524984 · FACSIMILE 01522 535600

EMAIL auctions@thos-mawer.co.uk

WEBSITE www.thos-mawer.co.uk