

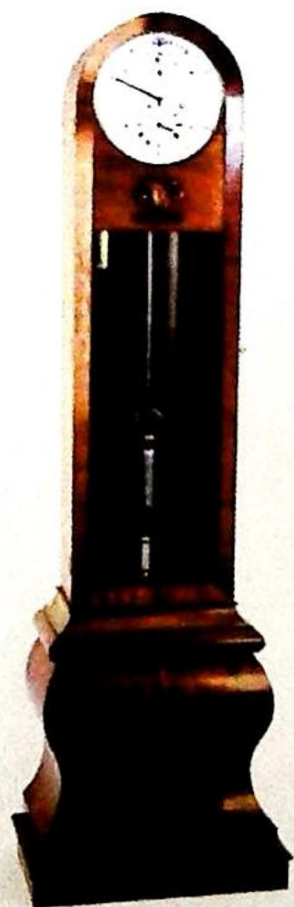


THOS. MAWER & SON LTD.

Auctioneers & Valuers Established in 1864

BY INSTRUCTIONS FROM EXECUTORS & LOCAL VENDORS

**OVER 400 LOTS OF
ANTIQUF FURNITURE, CHINA,
GLASS, CLOCKS,
SILVER, PICTURES, PRINTS,
COLLECTABLES ETC.**



*Lot 321
"Longcase
Regulator
Clock
by
Usher Lincoln"*



**To Be Sold by Public Auction on
SATURDAY 23rd JUNE
2001 at 11am**

**On View: Friday 22nd 10am-4pm or by appointment
Catalogues £5.00**

COMMISSIONS

The Auctioneers are pleased to execute commissions for intending buyers in confidence as cheaply as is allowed by any other bids. **All telephone bids must be confirmed in writing or by fax by 4pm the day prior to sale.** We cannot guarantee to execute bids received on the morning of sale.

BUYER'S PREMIUM

There is an 11.75% premium payable on the final hammer price of each lot inclusive of VAT. Lots subject to VAT on the whole price are prefixed by *

REGISTRATION

All prospective purchasers are requested to register and obtain a bidding number prior to the start of the sale.

CATALOGUE DESCRIPTIONS

Care is taken to ensure that any statement as to authorship, attribution, origin, date and provenance is reliable and accurate, but all such statements are statements of opinion and are not to be taken as statement or representations of fact. Thos. Mawer & Son Ltd. reserve the right, in forming their opinion, to consult and rely upon any expert or authority reasonably considered by them to be reliable.

CONDITION REPORTS

We regret that we are unable to provide condition reports on the morning of the sale.

ESTIMATES

Estimates for lots under £100.00 are not always printed in the catalogue. On lots that are reserved, the reserve will not be greater than the published estimate at the time the catalogue goes to press.

IMPORTANT NOTICES

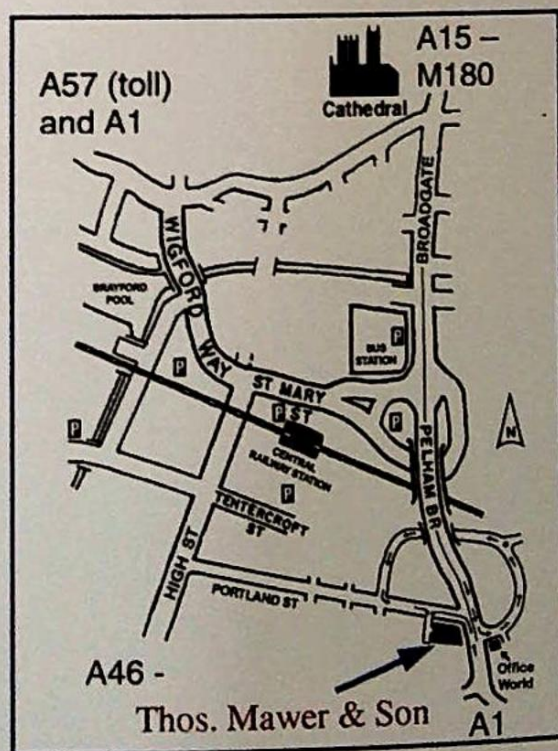
While an identification of damage is given in some instances, an absence of such advice does not imply that a lot is free from defect. Prospective purchasers are strongly advised to inspect any lot on which they intend to bid. All measurements and weights are approximate and should be verified by intending purchasers

All Lots should be paid for and collected immediately following the sale. Any lots not collected within five working days of the sale date will be removed to our store, removal expenses and storage charges will be incurred (minimum £15.00 plus VAT per lot).

No lots in this sale are the property of Thos. Mawer & Son.

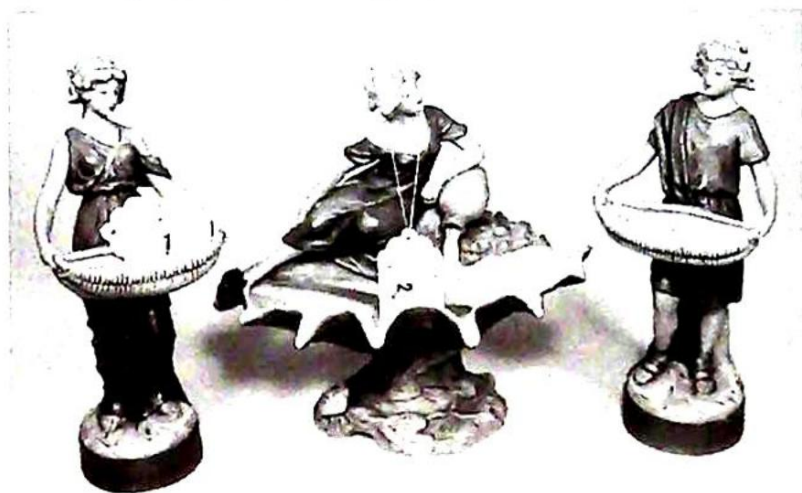
PAYMENT OF ACCOUNTS

Payment for all lots must be made on the day of sale and methods are (1) CASH, (2) CHEQUES supported by either a letter of Reference from your bank or a cheque guarantee card to cover the sum of your purchase, (3) BANKERS DRAFT, (4) DIRECT DEBIT CARDS such as "Switch", "Delta", "Classic", "Connect", (5) CREDIT CARDS subject to a 2% premium charge.



CERAMICS

1. A pair of Royal Dux male and female figures carrying baskets, painted in pastel shades with gilt highlights on circular bases, triangular pad marks beneath, 28cm high £250-£350 *illustrated*



Lots 1 & 2

2. A Royal Dux figure - female with a ewer seated on a conche shell supported on a leaf strewn base, painted in pastel shades with gilt highlights, triangular pad mark beneath, 29cm high, 27cm wide £250-£400 *illustrated*



Lot 3

3. An Austrian allegorical figure of a female driving two horses, a posy holder, painted in Dux style colours with gilt highlights, transfer printed mark Vienna and impressed Made in Austria, 29cm high, 36cm wide £350-£500 *illustrated*
4. An Austrian ewer, the pastel ground decorated with flowers, the knopped neck pierced, shaped and with an elaborate handle, gilt highlights, 24cm high £70-£120

5. A XIX century Imari dish, the fluted body with a "wavy" border, decorated in typical palette with flowers and alternate panels, gilt highlights, 28cm diameter £50-£100 *illustrated*



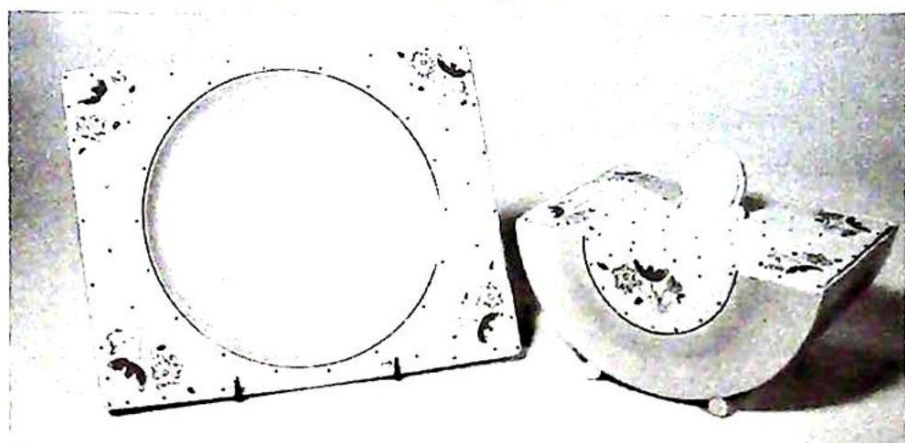
Lots 5, 20 & 53

6. A collection of Japanese Satsuma style pottery including a pair of bottle vases, 15cm, a taller similar vase, 25cm, and four others - baluster and tapering (7) £50-£100
7. A Fieldings Royal Devon two handled vase, a pair of smaller similar, an Imari baluster vase and a Victorian glass vase (5) £15-£30
8. Two pairs of XIX century hard paste vases on pedestals, brightly decorated in emerald greens and painted with panels; another pair of tapering vases with elaborate handles, and a single ditto encrusted with flowers - all with damage £20-£40
9. A XIX century salad bowl with a plated rim and a pair of pottery handled and silver plate servers, decorated in Royal blue and ochre with gilt highlights £20-£40
10. A ruby glass jug with a plain handle and a XIX century porcelain christening mug "John Cuthbert 1863"
11. Two Continental porcelain figures - a gentleman with a lamb at this feet and a lady seated setting flowers to a bonnet, both brightly coloured and with gilt highlights, 18cm and 14cm £50-£100
12. Carltonware. A pair of Kang Hsi pattern baluster vases and covers, 28cm and a matching 20cm diameter bowl £200-£400 *illustrated*



Lot 12

13. A continental figure of a lady carrying a basket of posies decorated predominately in blue with gilt highlights, circular base, impressed mark beneath AIL? 20A, 40cm high £70-£120



Lot 14

14. Royal Staffordshire "Biarritz" - Bizarre by Clarice Cliff. A dinner service comprising a pair of half round tureens and covers, a sauce boat, three oblong serving plates with oval dish centres, 40cm x 27cm and 30cm x 21cm, six oblong plates 26cm x 21cm, six 23cm x 19cm and six 18cm x 15cm £300-£600 *illustrated*
15. Two XIX century porcelain christening mugs "Eleanor Barron 1867", "Hannah Barron" and a third Derby style mug, the blue ground decorated with gilding and reserved panels of summer flowers £80-£130
16. Two XIX century jugs, one with a stylised dragon handle and a floral decorated pink banded sauce tureen and stand (3)
17. Spode. A two handled baluster vase, the mauve ground with gilt high lights and a reserved landscape panel, river flowing through a stone bridge, painted number 408, 13cm high (one handle detached)
18. A Continental quatrefoil shape Bisque porcelain trinket box, the lid with raised decoration of cherubs and swans in a gilt cartouche and a Limoges porcelain lidded trinket box painted with summer flowers
19. A Sevres porcelain ink stand, the mauve ground with gilt highlights and reserved panels of summer flowers; and a small Continental leaf shaped dish painted with flowers £50-£100
20. An Imari vase, tapering form decorated in typical palette, 31cm high £50-£100 *illustrated previous page*
21. A Continental comport, the conical pierced basket with applied floral sprays, the supports moulded as bulrushes with two naked children, 30cm high £60-£120
22. A XIX century porcelain cabinet plate, the mauve border interlaced with gilt mistletoe, the centre painted with summer flowers; another the centre painted with a castle and figures £50-£90

- 22A. Royal Doulton. A wavy edge cabinet plate decorated in deep blue with gilt highlights and another dessert plate, the centre painted with summer flowers, pink border
23. A XIX century Dresden candle holder, modelled with a Satyr decorated with applied flowers and gilt highlights, the base on four scroll feet (now converted to an electric table lamp), approx. 40cm high - some damage £200-£400 *illustrated*
24. Royal Doulton seriesware "Under the Greenwood Tree" - an octagonal dish, 24cm diameter
25. Royal Doulton - a cup, saucer and tea plate decorated with hunting scenes on a pale yellow ground, green lined border
26. E.Radford. A posy holder painted with ranuculous numbered beneath 514.4H
27. Royal Doulton. A large character jug "Parson Brown" £20-£30
28. Newport Pottery "Bizarre" by Clarice Cliff. A "Delecia" pattern bowl, 20cm diameter £150-£250
29. A pair of Staffordshire flatback chimney ornaments, seated King Charles spaniels, gilt highlights, collars and curly tails, 22cm high



Lot 23



Lots 30 - 35 (part)

30. James Kent Ltd. "Dubarry" pattern. A tea service comprising six cups and saucers, six tea plates and a bread and butter plate (20) *illustrated*
31. James Kent "Dubarry" pattern. A four piece tea service comprising teapot and stand, hot water jug with counter weighted metal lid, slop bowl, milk jug, two covered sugar containers *illustrated*

32. James Kent Ltd. "Dubarry" pattern. A cheese dish and cover
33. James Kent Ltd. "Dubarry" pattern. A fruit set comprising six fruit bowls and a serving bowl
34. James Kent Ltd. "Dubarry" pattern. A graduated set of three jugs *illustrated*
35. James Kent Ltd. "Dubarry Ltd". A conical three piece cruet and stand *illustrated*
36. Phoenix Ware. A pair of "Roslyn" pattern flat sided vases with domed covers, 44cm high
37. Phoenix Ware "Roslyn" pattern. A pair of baluster vases and covers, approx. 27cm high

BEATRIX POTTER FIGURES



Lots 38, 39, 43, 45, 46 & 47

38. "Lady Mouse" BP-3b *illustrated*
39. "Mrs Tiggly Winkle" - BP-3b second version *illustrated*
40. "Cecily Parsley" - BP-3b
41. "Flopsy, Mopsy & Cotton Tail" - BP-3b
42. "Mrs Flopsy Bunny" - BP-3b
43. "Ribby" - BP-3b *illustrated*
44. "Jemima Puddle Duck" - BP-3b
45. "Peter Rabbit" - BP-3b *illustrated*
46. "Pigling Bland" - BP-3b First Version *illustrated*
47. "Cousin Ribby" - gold back stamp BP-2 *illustrated*
48. "Tailor of Gloucester" - BP-3b
49. "Hunca Munca" - gold back stamp BP-2

50. A Burmantofts faience cylindrical stick stand, relief moulded with flowerheads, turquoise glazed, 57cm high - body cracks *illustrated* (see lot 384)
51. A Winchcombe oval earthenware slip glazed dish, 22cm x 13cm
52. A large Continental salt glazed stein, relief decorated in glaze and overglazed in blue, moulded with a coat of arms; two smaller similar lidded steins
53. A pair of Imari vases, the fluted tapering bodies decorated in typical palette, each with circular panels of dragons amid foliage, 30cm £75-£125 *illustrated* (previous pages)
54. A Victorian wax fruit display with dried grasses and brightly coloured finches, all under a glass dome, approx. 34cm high £30-£60



Lots 55, 56 & 57

55. W. Moorcroft. "Oberon" pattern - a ginger jar *illustrated*
56. W. Moorcroft. "Peacock Feather" pattern - a squat vase, 12cm high *illustrated*
57. W. Moorcroft. "Peacock Feather" pattern - a vase, 20cm high *illustrated*
58. W. Moorcroft. A conical bowl, the outside divided into panels and internally decorated with blue Iris, signed in green, impressed Moorcroft Burslem England M92, 23.5cm diameter, 30cm high £500-£1000
59. W. Moorcroft. A pair of baluster vases decorated with peaches and black grapes, impressed Moorcroft Burslem England and signed in green M46, 18.5cm high £500-£1000
60. Minton. A Boston "Japan" pattern ten piece dessert service comprising four comports and six fruit plates, printed globe mark beneath and impressed "Minton BB" £100-£200

61. A XIX century china part tea service decorated in "Japan" pattern comprising 7 cups, 6 saucers (13) and a Diamond China Ltd tea service decorated with floral sprigs, royal blue and gilt comprising 12 cups, saucers, plates, 2 sandwich plates, cream jug and basin (40)
62. Royal Doulton. A black Jasper bust "To Celebrate the Wedding of HRH Princess Anne" model No. 713, on a wooden/velvet base
63. A XIX century Imari charger decorated in typical palette with reserved panels on cobalt blue and gilt ground, 41cm diameter £120-£180
64. A XIX century transfer printed toilet jug, 33cm high
65. A Staffordshire pottery biscuit barrel, coaching scenes; and a pair of XIX century painted glass vases
66. Goebel Hummel. Girl with two geese 473/0 and boy with basket 513/0
67. Beswick 1453. White Boar "Wall Champion Boy 53"; Wade - two Walt Disney dogs and Beswick - running hare
68. A XIX century cabinet cup and saucer decorated in blue and gilt with panels of flowers; a XIX century transfer printed cup and saucer; a Continental porcelain handled dish and five small plates and Royal Worcester - a small white porcelain cornucopia vase
69. A mother of pearl shell with fretted decoration and name "Horace"; a carved soft wood double desk inkwell surmounted by a sitting Alsatian
70. Royal Crown Derby pattern 1128. An oval dish, 25.5cm and a small dish 11cm £40-£80
71. Wedgwood. A circular earthenware tureen decorated in relief with fruiting vine and with an inner liner, 18cm diameter
72. A pair of XIX century copper and pink lustre decorated goblets and a similar conical beaker
73. A copper lustre jug with blue bands and a blue lustre bowl
74. Eight pieces of XIX century lustre decorated pottery
75. An Edwardian china biscuit barrel, the spirally fluted body decorated with flowers, with a plated lid and swing handle
76. Two transfer printed jugs
77. Royal Doulton Lambeth impressed 3530 and monogrammed "EB" - a blue ground vase painted with trailing fruit, 18cm high
78. Royal Worcester. A cauldron shaped vase, the peach ground decorated with flowers; and a Continental cobalt blue vase decorated with gold flowers
79. A XIX century Satsuma vase and cover, the enamelled ground decorated with a wide band of trellis, gilding and oriental motifs, 27cm high

GLASS



Various 18th & 19th century glasses commencing at lot 101

101. A rummer, the bucket shaped bowl engraved with Sunderland Bridge and monogram "FCH"; on a bladed knop stem, 16cm high (N.B. Sunderland Bridge was opened in 1796) £200-£300 *illustrated*
102. A rummer, the ovoid bowl decorated with ribbons and anchor shields, short plain stem, 13cm high £40-£80 *illustrated*
103. A wine glass, the ovoid bowl decorated with ribbons and flutes, faceted stem, fluted foot, 14cm high £20-£40 *illustrated*
104. A tumbler engraved with leaves, 15cm high; and a glass tankard decorated with flowers and leaves, flute cut sides, loop handle, 10cm high £20-£40 *illustrated*
105. An oval glass measure, engraved with hare bells, "Bartsai Emlik" and 100gr measure verso, 10cm high; and a pair of wine glasses with black enamel decoration of a lady's head in profile surrounded by a frame and flowers, black lined rim and foot, 16cm high £30-£60 *illustrated*
106. A wine glass with trumpet bowl, multi air twist stem, domed foot, 18cm high £40-£80 *illustrated*
107. A wine glass with round funnel bowl, engraved with fruiting vines, double knop stem, 18cm high £30-£60
108. A wine glass, the cup shaped bowl decorated with scrolls, on a double series opaque twist stem, 14cm high (chip to foot) £30-£60
109. The Bridge Crystal Glass Company Ltd - Mayflower Glass 1620-1970, limited edition No. 667/900 £25-£50
110. The Bridge Crystal Glass Company Ltd. - Pope John II British Visit 1982 glass, hob nail cut bowl, air twist stem 17cm high £25-£50
111. A set of seven jelly glasses, decorated with wavy faceted band, folded feet, 9cm high £50-£100

112. An ovoid bowl rummer engraved EIIR Coronation June 2nd 1953 £15-£30 *illustrated*
113. Five rummers, the bucket bowls on a bladed knop stem, each 12cm high £40-£80
114. Three rummers, the ovoid bowls on a bladed knop stem, and an ovoid bowl rummer with a lemon squeezer base, 13cm high £40-£80
115. A rummer, the ovoid bowl decorated with fern leaves, short plain stem, 15cm high; an rummer with ovoid bowl decorated with leaves, 13cm high and a wine glass with bucket shaped bowl decorated with scrolling vines, 12cm high £30-£60
116. A wine glass with drawn trumpet bowl, tier drop plain stem, domed foot, 15cm high £30-£60
117. A wine glass with ogee bowl on a double opaque twist stem, domed foot, 20cm high £50-£100
118. A wine goblet with facetted bowl and stem, 18cm high; another goblet with facetted bucket and stem, 15cm high and a rummer, 14cm high £20-£40
119. A red flashed glass tankard engraved with sprigging and panels of flowers, 11cm high; three red flashed glass wine glasses decorated with fruiting vine, 9cm high and a smaller glass 8cm high £30-£60
120. A wine glass, the drawn ovoid bowl engraved with flowers, on a plain stem and folded foot, 14cm high £40-£80
121. A wine glass, the drawn ovoid bowl on a plain stem and folded foot, 14cm high; a wine glass with drawn funnel bowl on plain stem and folded foot, 14cm high £50-£100
122. A wine glass, the bucket bowl engraved with swags on a blade knopped stem and folded foot, 10cm high; a wine glass with bucket bowl, bladed knopped stem, folded foot, 10cm high; and wine glass with bucket bowl, knopped stem, folded foot, 11cm high £30-£60
123. Three wine glasses with facetted bucket bowls, knop stems, folded feet, each 10cm high and a wine glass with ovoid bowl, plain stem and folded foot, 10cm high £30-£60
124. A facetted bowl custard cup on knop stem, 9cm high and twelve assorted facetted bowl wine glasses
125. A pair of trailing vine decorated wine glasses, 12cm high; six blade knop stem glasses and four others (13)
126. A toast masters glass and another heavy based glass, a glass measure and thirteen other various wine glasses (16)
127. A mallet shaped decanter with fluted body and ball stopper, 30cm high; two sweet meat dishes, jug with enamelled decoration, four coloured flashed wine glasses, ice bucket, two jugs and two tumblers, eight liqueur glasses and a modern double knopped stem glass (22)

- 128. Eight assorted rummers and two bucket bowled glasses (10)
- 129. A cut glass claret jug with "silver" mounts and handle, 28cm high £100-£200
- 130. A cut glass claret jug with Art Nouveau style pewter mounts and handles, 36cm high overall £150-£300
- 131. A green glass scent bottle with alternate panels of hob nail cutting and flowers on white enamelled backgrounds, overall gilt decoration, clear glass stopper with gilt decoration, 15cm overall £50-£100
- 132. An Art Nouveau iridescent green glass inkwell with pierced pewter overlay, hinged brass lid and mount; a blue/green glass waisted vase with drawn glass decorated neck; a cut glass sugar caster and a pair of glass specimen vases on cast bases in the form of a girl fish seller

SILVER



Lot 141 onwards

- 141. A hallmarked silver sugar caster, London 1964/5 £80-£160
- 142. A hallmarked silver sauce boat with three shell feet, London 1962/3, maker WR & S, 7ozs £50-£100
- 143. Sheffield 1948/9 - three sauce boats, maker "HA", 12ozs
- 144. Silver gilt copies of the Coronation anointing spoon (three large, one small); eight Continental gilded spoons and a cast Continental sugar spoon
- 145. A cased set of six silver coffee spoons and matching sugar nips, London 1909 £30-£60
- 146. A hallmarked silver dish with Celtic design border, 20cm diameter, London 1946 £50-£100

147. A repousse silver frame table mirror 51cm x 37cm, a small silver 2 handled cups, Birmingham 1914, a silver mustard pot with liner, Sheffield 1898, a silver condiment holder Chester 1898, a silver 3 piece dressing table set Birmingham 1938, a plated buckle napkin ring, a cased set of 12 coffee spoons and a plate teapot £150-£300
148. A pair of hallmarked silver bon bon dishes with fretted borders, Birmingham 1932/3 £40-£80
149. A hallmarked silver cream jug and sugar basin with gadroon decoration, ball feet, London 1879/80, 11ozs £50-£100
150. A hallmarked silver two handled cup with waisted fluted body and scroll handles, Chester 1929, 8ozs £50-£100
151. A hallmarked silver cream jug with gadrooned body and a sugar basin, Sheffield 1894/5, maker retailer Mappin & Webb London, 2ozs; and a hallmarked silver rimmed cut glass specimen vase, Chester 1903/4 £50-£100
152. A hallmarked silver dressing table set comprising quatre-foil shaped tray, hair brush, mirror and clothes brush decorated with scrolling foliage and cherubs heads, dates 1900 and tray 1902, together with a silver backed comb £40-£80
153. A hallmarked Britannia silver early XVIII century style three piece tea service, London 1911 and 1916/7, Crichton Bros. London and New York, 50ozs all in £300-£600
154. A hallmarked silver chalice, London 1944/5 maker ED, 18cm high, 10ozs £50-£100
155. A hallmarked silver sauce boat, Chester 1920/1, 5ozs £30-£60
156. A hallmarked silver ten sided dish, scatter hallmark, London 1958/9, stamped on the base "Roche" 1908-1958, 7.5cm diameter £20-£40
157. A hallmarked silver sauce boat, Birmingham 1972/3, a George III Scottish hallmarked sauce ladle, a hallmarked silver pepper pot and mustard pot with blue glass liner £50-£100
158. A scatter hallmarked silver teapot, London 1809/10, maker James Ede? and Alexandra Hewat; and a matching sugar basin and cream jug with gilded interiors, London 1809/10, maker CF, 33ozs all in £300-£500
159. A scatter hallmarked teapot in rococo style, scrolling handle, raised on four cast feet, London 1841/2, maker WH, 25ozs £150-£300
160. A cased set of two berry spoons with gilded spoons and matching sugar spoons, each with bright cut decoration, London 1835/6 and 1836/7, makers Alice Burrows and George Burrows II
161. A mahogany canteen of silver bladed fish eaters with bone handles, Sheffield 1907/8 (12), retailed by Kirk & Co. Ltd Silversmiths, 7 White Friargate, Hull

162. A hallmarked silver egg cruet with gadrooned decoration, London 1897/8, Goldsmiths & Silversmiths Company, 16ozs £100-£200
163. A hallmarked silver cigarette box; a bridge marker; silver plated mustard pot with blue glass liner; circular silver photograph frame and silver rimmed miniature porcelain centred dish £40-£80
164. Five assorted hallmarked silver napkin rings and a silver top cut glass sugar castor £30-£60
165. An import hallmarked sterling silver lady's chain purse, the frame decorated with scrolling flowers £20-£40
166. A cased set of eight gilded bowl hallmarked silver coffee spoons with twist stems, bullet shaped tops monogrammed "N" (one broken)
167. A set of six hallmarked Kings pattern table forks London 1852/3, 14ozs £50-£100
168. A set of seven hallmarked silver dessert forks monogrammed "S", Exeter 1844/5, 10ozs £30-£60
169. Two Dublin hallmarked berry spoons and another Georgian berry spoon, 5ozs £30-£60
170. Hallmarked silver - two fiddle pattern table spoons, a Georgian table spoon, four fiddle pattern coffee spoons, two salt spoons, two pairs of sugar nips, steel bladed knife, dinner fork, bread fork and three souvenir spoons £30-£60
171. A silver inlaid tortoise-shell lady's purse with blue silk lining, 6.5cm long £30-£60
172. Georg. Jensen. A sterling silver pill box with oval body stamped "Sterling Denmark 329C and Georg. Jensen" 3.5cm long £40-£70
173. A table canteen containing a set of 12 place setting Kings pattern Sheffield plate cutlery £300-£450
174. A pair of hallmarked silver weighted base specimen vases (marks rubbed)
175. A silver mounted gaud, two Victorian coloured glass silver top scent bottles and a mustard pot - no lid
176. A Birmingham hallmark three piece cruet and tray
177. A Chester hallmark pot pourri, two pickle forks etc.

SILVER PLATE

180. A pair of XIX century steel cone sugar cutters, 21cm long £15-£30
181. A silver plated table centre, the base formed by three mythical winged animals standing on a triangular base supporting a ball with four holders, each with wheel decorated clear glass trumpets, 35cm high £80-£160

182. A fine pair of silver plate entree dishes with gadroon and shell decorated base, the lid with scrolling Art Deco style foliage, cast shell pattern handles, 28cm long £100-£200
183. A silver plated oval shaped entree dish with gadroon decoration, 30cm long
184. A three piece silver plated tea set with gadroon decoration
185. A XIX century silver and copper oval tray, 28cm long and an old Sheffield plate oval bodied teapot with wooden handle
186. A cased pair of silver plated bone handled fish servers
187. An early XVIII century style coffee pot with a wooden handle stamped "Mackay & Chisholm Edinburgh" and a one pint EPNS coffee pot
188. A silver plated oval bodied four piece tea service with bright cut decoration by George Butler and Co., Trinity Works, Sheffield
189. A circular silver plated fruit dish with swing handle, 29cm diameter; a two handled silver plated sugar basin; a silver plated coffee pot, teapot, butter dish with glass liner and a spirit measure
190. A pair of silver plated and ebony handled salad servers and a cased three piece dessert set, an assortment of plated cutlery and a plated mounted oval ceramic two handled tray, 38cm long
191. A pair of silver plated church candlesticks, the multi knop stem supported on three footed triangular bases, 32cm high
192. A pair of silver plated corinthian column candlesticks, 17cm high

JEWELLERY

201. A shell cameo of a lady with shoulder length curled hair, 9 carat gold mount
202. A hallmarked 18 carat gold signet ring set with a small diamond and an unmarked gold garnet and pearl ring
203. A hallmarked 9 carat gold ring set with five graduated milk opals
204. A 9 carat gold leaf brooch set with five garnets and eleven seed pearls and a pair of 9 carat gold garnet and pearl earrings
205. An 18 carat gold ring set with three rubies and two small diamonds
206. A case containing an Italian cameo ring and a pair of matching earrings, retailer Ditta Lopez Naples
207. A 9 carat gold chain bracelet with 27 charms and five unmounted 9 carat gold charms £150-£300
208. A Victorian green glass double ended scent bottle, silver mounted; a cut glass silver top dressing table scent bottle, an atomiser and a cheroot holder £50-£100

209. A Victorian diamond ring, the elliptical scroll setting with a centre old cut brilliant diamond of approx. 1.25 carats, flanked by two further .25 carat stones and with six small stones to the corners, set in unmarked yellow gold £4500-£6000
210. An 18K dress ring centred with three square cut sapphires surrounded by 14 small diamonds £300-£500

BANK NOTES & EPHEMERA

211. Bank of England C.P. Mahon - £1 green D17 974372 printed May 1926, plate 2 £70-£90
212. Bank of England 10/- brown J.C. Hollom £1 green - J.S. Fforde (mint) £10-£20
213. Bank of England £20 Somerset, missing numbers (fair) £20-£40
214. Bank of England 10/- brown, Hollom (23 mint notes) £30-£50
215. Bank of England £5 white, 5 October 1926 336E 40085 (E.F.)
216. Northumberland Bank - two un-issued £1 notes
217. Newark Bank £20 note No. 240 9 April 1806
218. Plymouth Dock Bank, Devonshire £5 note No. 651 1st January 1819
219. Yeovil Old Bank, Somersetshire £5 note No. H348 25 March 1818 £10-£20
220. Tamworth Old Bank £5 note no. C6355 17 June 1816 £10-£20
221. Weald of Kent Bank £1 note No. 7729 30 August 1813 £10-£20
222. Burlington & Driffild Bank £5 notes No. 1208A - 8 July 1857 and B1572 - 3 September 1880 £20-£40
223. Reading Bank £5 note No. 34572 - 4 July 18(?)3 £15-£30
224. Farnham Bank £5 note No. 18631 - 1st October 1882 £15-£30
225. Gloucester Old Bank £1 notes No. 730 - 2nd June 1813 and 2673 - 2nd September 1811
226. Coronation of King George IV (1821) - Admission Ticket Hall No. 3967, mounted on brown paper; damages £15-£30
227. French postcards - unused, 972 L'Aeroplan Farman en plein vol 25 L'Aeroplan Bleriot 39 Le Ballon dirigeable "Republique" and nine other cards £10-£20
228. The "Talkie" cigarette card by The Record Cigarette Company - Anne Grey; The Houston Sisters and Dorothy Dickson in original wrappers (3) £60-£80
229. A set of Victorian specimen postal orders - first issue 1/- to 20/- (10) EF £100-£150
230. States of Jersey 6d note and two 1/- notes, nine mint £1 notes (E2R blue ZB148 7) £15-£30
231. 10/- Treasury notes (12) - all well used
232. £1 Treasury notes (60) - all well used
233. Bank of England brown 10/- notes - mixed dates, face value £161.10.0 (fair to good)

234. Bank of England mauve 10/- notes - mixed dates face value £37.10.0 (fair to good)
235. Bank of England - green £1 notes - Catterns (3) 1 x NNL; 2 x LNN - fair
236. Bank of England - green £1 notes - Peppiatt (57) - fair to good
237. Bank of England - green £1 notes - Beale (2) - fair
238. Bank of England - green £1 notes - Beale (28) - fair
239. Bank of England - green £1 notes - Beale (185) - fair to good
240. Bank of England - green £1 notes O'Brien (72) - fair to good
241. Bank of England white £5 issued 1944 (2) - fair
242. Bank of England white £5 notes issued 1945 (11) - fair
243. Bank of England white £5 notes issued 1947 (2) - fair
244. Bank of England - white £5 issued 1949 (3) - fair
245. Bank of England - white £5 issued 1950 (3) - fair
246. Bank of England - white £5 issued 1952 (1)
247. Bank of England - blue £1 (100) - fair
248. Bank of England - blue £1 (100) - fair
249. Bank of England - blue £1 (100) - fair
250. Bank of England - blue £1 (100) - fair
251. Bank of England - blue £1 (100) - fair
252. Bank of England - blue £1 (100) - fair
253. Bank of England - blue £1 (100) - fair
254. Bank of England - blue £1 (100) - fair
255. Two Russian bank notes circa 1919 - mint £30-£60
256. Bank of England notes:- J.B Page - £1 green (2); Hollom £1 green (1); Somerset £1 green (1); Fforde 10/- brown (1); O'Brien £1 green (1)
257. A barograph by James Makin & Co Ltd, Birmingham, contained in an oak cabinet with bevel glazing £75-£150
258. A XIX century ebony lap desk, the interior fitted with compartments, small drawers and a hinged writing slope
259. A XIX century mahogany shot bucket with three brass bands, rope and leather covered handle £200-£400

PICTURES, PRINTS, SAMPLERS ETC.

270. Charles Hancock 1855 s.d. "Awaiting Orders" - a Border Collie on a grassy knoll observing a flock of sheep 68cm x 160cm £400-£700
271. After Thomas Weaver engraved by W.Ward an early XIX century print "The Unrivalled Lincolnshire Heifer" fed by Thomas Willoughby of Orby, Nr. Burgh and dedicated to General Manners M.P. etc. etc., dated June 13th 1813, coloured 61cm x 51cm £600-£900

272. After J Tennant engraved by R.L. Wright An early XIX century print "An Extraordinary Fat Lincolnshire Heifer", this remarkable animal of a pair of twins was bred by Mr Harrison of East Keal and fed by Mr Benniworth of Toynton All Saints etc. etc., coloured, early XIX century 59cm x 52cm £600-£900
273. A XIX century mirror in an ornate plaster gilt frame, 36cm x 32cm overall £20-£40
274. Margaret Barratt s. portrait of a hunter and black Labrador, oil on canvas (believed to be Bosworth Park, Leics.) 50cm x 60cm £400-£600
275. Pascoal De Souza s. girl with doll, oil on board, label verso "The Trafford Gallery, 119 Mount Street, London" 76cm x 55cm £50-£100
276. Herbert H Collyer 1940 s.d. a w/c drawing - a summer garden 26cm x 36cm



Lot 277

277. A XIX century oil on card - Lincoln from Stamp End showing Stamp End Lock in the foreground, unsigned, XIX century 33cm x 52cm £200-£400 *illustrated*
278. A XIX century woolwork - a seated figure with a swan, contemporary rosewood veneer frame 54cm square



Lot 279

279. William Langley s. o/c - sand dunes with the sea beyond 40cm x 60cm £50-£100 *illustrated*

280. Walter Lewis o/c - country landscape with river and thatched buildings 29cm x 49cm Victorian plaster gilt frame £80-£120
281. Paul Briddon s. w/c - a Continental town scene with church and street market in the foreground 76cm x 53cm £50-£100
282. Oil on board XIX century style Arab horseman in desert landscape 50cm x 60cm, ornate moulded gilt frame £350-£450
283. XIX century English School A travellers camp at the edge of a forest with figures and donkeys by a camp fire, a harvest field in the distance 74cm x 124cm £1500-£2500
284. H Dunatti o/c - a young girl in a blue dress on stone steps leaving church (?), many figures 77cm x 61cm £800-£1200
285. XIX century English School o/c - fishing smacks in a stormy sea 49cm x 73cm £150-£250
286. A large and impressive oval Victorian wall mirror, the bevel plate contained in an open plaster gilt frame of entwined hare bells and roundels, 152cm x 107cm overall £300-£600
287. A Georgian mahogany fret mirror surmounted by a gilded bird, 70cm x 39cm overall £150-£250
288. An XVIII century needlework sampler worked with the alphabet, flowers and a legend dated 1799 (faded), 31cm x 26cm £50-£100
289. Four XIX century samplers worked with the alphabet numbers etc., various dates 1817-1876 £50-£100
290. Two Victorian woolworks - one a dog flushing a mallard, the other a study of roses £60-£120
291. A Victorian woolwork of a lady 49cm x 37cm £50-£100
292. A XIX century needlework picture after Moorland - figures by a cottage "The Contented Waterman?" 23cm x 29cm £75-£130
293. A XIX century o/c "Madonna" wearing a blue cloak - oval 25cm x 20cm
294. A folio of sketches and watercolour drawings, also sketch books and other material by Miss Kathleen Elliott 1890-circa 1975 who lived at 1 Greestone Place, Lincoln and whose father was the Cathedral Librarian £100-£200
295. An illustrated autograph book, mainly early XX century, the property of Miss Kathleen Elliott (as above lot)
296. A rectangular wall mirror contained in an ornate plaster gilt frame, 111cm x 83cm overall £50-£100
297. Oil on canvas - a couple by a river, she naked, he with a basket of fish at his side 74cm x 61cm £400-£600
298. A XIX century wall mirror, the plaster gilt frame of neo-classical design surmounted by a central cartouche, decorated with trailing flowers and with egg and dart moulding, 128cm x 72cm overall £300-£500
299. William Langley s. o/c - cattle in a river landscape with thatched buildings 51cm x 76cm, unframed £100-£200

300. A pair of Victorian watercolour portraits of a man and woman and an oval miniature of a gentleman in profile (3)
301. A pair of Victorian oval mounted portrait figures of a male and woman heightened with watercolour



Lot 302

302. P. Sandby 1761? s.d. w/c - written verso "Bathwell Castle in Glidsdale" 30cm x 42cm *illustrated*
303. F. Burchell w/c - three thatched cottages amid trees, hills in the background, three children playing in the foreground 44cm x 59cm, mounted and frames £80-£120
304. After Russell Flint A limited edition print 425/850 - "Rococo Aphrodite" £100-£200
305. After Steven Pearson a signed artist print - "Tiger in the Grass"
306. XVIII century Italian School a priest kneeling before a regal lady 28cm x 19cm £50-£100
307. After Clawson a pencil drawing heightened with watercolour - a girl kneeling in a garden 18.5cm x 24cm
- 307A. XVIII century Continental school portrait of a child, oil painted on an oval panel 22cm x 17.5cm £100-£200

CLOCKS

308. A XIX century Vienna double weight wall clock contained in a walnut case decorated with split turnings £200-£400
- 308A. A Victorian mahogany cased American wall clock, the square enamel dial with striking movement, original paper label "extra eight day rolling pinion steel pivot brass clocks" by Birge Peck & Co, Bristol, Conn., the face enclosed by painted glass doors of the Smithsonian Institute Washington, 82cm high £120-£180

309. An XVIII century style cast brass cased lantern clock, the dial engraved "Rattray & Co Dundee", eight day striking movement £50-£100
310. A XIX century style mantel clock contained in a brass and cloisonne enamelled case with repeating alarm movement - distressed, 16cm high £100-£200
311. A XIX century mantel clock in a neo-classical architectural case decorated with enamel and with a black slate cornice and plinth - distressed, 25cm high £100-£200
- 311A. A XIX century brass cased carriage timepiece, the rectangular white dial and movement enclosed by bevel glazed panels £65-£120
312. A green onyx and gilt metal mounted neo-classical design three part clock set, the clock with a circular enamel dial and French striking movement marked "Barillet Demontable Brevete S.G.D.G." and numbered 1000169; case surmounted by an urn and with two flanking three branch candelabra, approx. 48cm high £200-£400
313. A white dial wall clock signed Woodward, Derby No. 206, contained in a satinwood and mahogany inlaid case £400-£600
314. A XIX century rosewood case four dial barometer £100-£200
315. A XIX century oak and mahogany longcase clock, the arch painted dial signed "Thos. *** Derby", 30 hour movement - distressed £300-£600
316. A XIX century French comptoire clock, the elaborate pressed brass face with a circular white enamel dial signed "Le Corre a Quimperle", contained in a fruitwood case, embossed with wheat ears and flowers, the long door with a glass aperture £500-£700
317. A longcase clock contained in a fine figured mahogany XVIII century case, the brass dial with phase of the moon aperture, engraved "OBA Brandreth Middlewich", contained in a swan neck pedimented hood with blind fret panels and plain columns, the base with quarter fluted corners, flanking the long arched door £2000-£3000 *illustrated*



Lot 317 (& detail)

318. An XVIII century mahogany longcase clock, the arched painted dial signed "W.N. Godfrey Winterton" (rubbed), eight day striking movement, contained in a pagoda shaped hood, the base enclosed by a long door, inlaid with a large oval outlined boxwood stringing £1750-£2600 *illustrated*



Lot 318 (& detail)

319. An XVIII century oak longcase clock, the square brass dial signed James Todd, Bradford, contained in a broken swan neck pedimented hood, the base with quarter columns and a long shaped door, 30 hour striking movement £800-£1400
320. An XVIII century oak longcase clock with square painted dial, the rectangular hood with a cavetto cornice, the base enclosed by a long door; eight day striking movement £1300-£1700
321. The James Usher regulator longcase clock formerly in Usher's Jewellers Shop, Lincoln, the silvered dial with sweep minute hand, subsidiary second and hour dials, the Victorian mahogany case with a glazed door enclosing the mercury pendulum scale on a carved mahogany bracket, with thermometer, on a bombe shaped plinth, 204cm high, dial 30cm diameter £4000-£8000 *illustrated (front page)*

BYGONES, COLLECTABLES ETC.

322. A XIX century circular copper bed warmer - water type on a turned hardwood handle £30-£60
323. A XIX century 17" diameter heavy copper two handled preserve pan
324. A pair of decorative brass candle trap lamps with horse shoe shape fronts, black painted bodies and etched glazed panels £80-£160
325. A pair of highly ornate cast brass fire dogs with pierced circular orbs, applied handles, the base with cherub faces on lion paw and scroll feet, 72" high £500-£750
326. An ornate XIX century brass fender, 142cm wide £400-£600
327. Three medieval style weapons - an axe, a ball mace and a spiked mace

328. Heubach & Kopplesdorf No. 250.5/0 Germany - a pot headed moving eye doll with composition jointed body, approx. 40cm overall £70-£130
- 328A. Gebruder Heubach. A bisque headed moving eye, open mouth doll with jointed wooden body and contemporary clothes, approx. 42cm overall £120-£180
329. A yellow plush jointed teddy bear with glass eyes, 34cm high £50-£100



Lot 330

330. A specimen Perch, 2lbs, 3.75ozs "caught by F.Ramshaw River Witham at Langrick August 1927", mounted in a naturalistic setting, bow fronted gold lined case £350-£450 *illustrated*



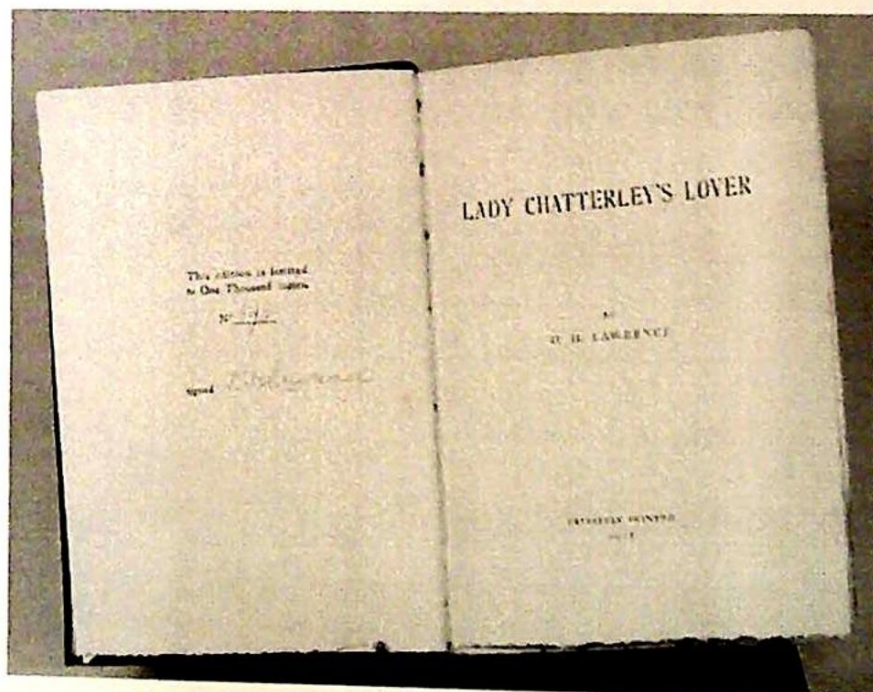
Lot 331

331. A preserved Roach caught by H.A. Davies 1911, 1lb 12.5ozs, mounted by J. Cooper & Sons and contained in a bow fronted case together with an accompanying photograph of the angler *illustrated*
332. A preserved and mounted grey squirrel with a pine cone on a branch
333. A preserved and mounted barn owl, it's wings partly open



Lot 334

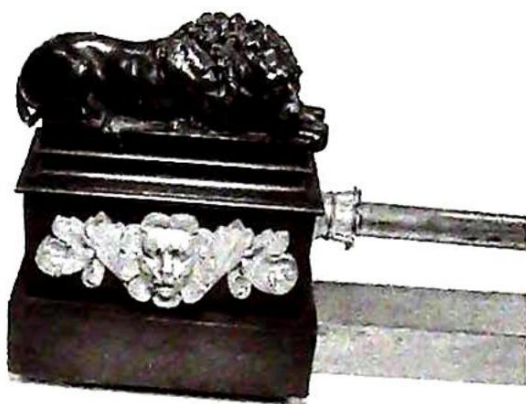
- 334. An oval mahogany Sheraton revival tea tray inlaid with urns, trailing swags and ribbons around a central patera; gilt brass gallery with two carrying handles, 73cm x 43cm overall £200-£300 *illustrated*
- 335. A large oval yew wood tea tray inlaid with a central shell patera, cross-banded and with a wavy gallery, 86cm x 55cm £75-£150
- 336. A XIX century mahogany brass bound lap desk with a fitted interior £50-£100
- 337. A XIX century walking hardwood cane, the plated mount with an ivory tooth as a handle *illustrated (see lot 384)*



Lot 338

- 338. LAWRENCE, D.H. Lady Chatterley's Lover, privately printed (Florence 1928 Tipografia Guintina) No. 693 of 1000 copies, signed by D.H.L., pages untrimmed, original grey/brown paper - covered boards, paper label, professionally restored on spine and hinges, First Edition, cloth covered box, leather label £2000-£3000 *illustrated*

339. A XIX century French Empire design fender, mounted with two bronze recumbent lions and ormolu lions heads, 98cm wide £600-£800
illustrated



Lot 339
(detail)

- 339A. A XIX century steel and brass fender, 132cm wide £180-£130
340. A Cogswell & Harrison .410 walking stick shot gun, 88cm long £200-£400
341. A XIX century counter weighted hanging oil lamp with embossed brass reservoir in a brass frame decorated with rampant lions, hanging on double brass chains, white glass shade £300-£500
342. A 12 bore non-ejector game gun by Charles Boswell, 30" barrels £50-£100
343. A 12 bore double barrel hammer gun, stock and action only £10-£20
- 343A. A metal gun cabinet
344. A Dutch style five light brass light fitting £200-£400
- 344A. A two tier prism glass light fitting on a gilt metal frame
345. A stuffed and mounted badger and three foxes
346. An English sword with blade engraved with crown and crest, pierced hand guard with cypher GVR, blade 82cm long, brown leather scabbard
347. A fruitwood butter mould of a swan, a bone apple corer, a tiny horn tot glass and wick scissors
348. A washed Afghan carpet, approx. 225cm x 330cm £150-£250

FURNITURE

349. An antique foot stool with a floral woolwork embroidered top, raised on cabriole legs £70-£120
350. A two seater roll arm settee with a shaped back £50-£100
351. A Victorian roll back Chesterfield settee £50-£100
352. A George III mahogany oblong fold over games table, raised on square taper supports terminating in spade feet, 86cm wide £500-£700
353. An Edwardian mahogany serpentine fronted dining room cabinet, cross-banded and boxwood strung, enclosed by double doors standing on square taper legs with spade feet 122cm wide £150-£300
354. A XIX century mahogany over-mantel mirror, the shaped frame surmounted by a carved scroll crest, 144cm wide

355. A XIX century Carolean style oak high back elbow chair with carved scroll crest, the upholstered back panel flanked by turned tapering columns on opposing scroll front supports joined by a carved stretcher £450-£550



Lot 356



Lot 357

356. A Victorian "Gothic" revival style oak hall stand, elaborately carved in relief with a central bevel mirror and fitted glove drawer, 122cm wide £250-£400 *illustrated*
357. An oak Welsh dresser, the upper section with a moulded cornice, pierced shaped frieze, three plate display shelves flanked by cupboards, the base with three drawers, raised on cabriole supports, 136cm wide £1500-£2500 *illustrated*
358. An XVIII century oval oak gate leg dining table, fitted with a single frieze drawer and raised on turned and block supports, 125cm x 104cm extended £200-£300
359. An XVIII century mahogany bow front chest of two short and three long cock-beaded drawers, standing on splay bracket feet, 109cm wide £200-£400
360. An XVIII century oval oak gate leg dining table, fitted with two drawers and raised on baluster turned and block supports, 163cm x 137cm extended £800-£1400
361. A set of five elm spindle back dining chairs (four singles and one carver) with rush seats, turned front stretchers raised on turned legs terminating in ball feet £400-£600
362. A set of six Dutch ebonised bentwood cafe chairs with circular cane seats £300-£500

- 363. An antique rectangular mahogany breakfast table raised on a turned column, quadruple cabriole reeded legs terminating in brass castors, the top 149cm x 90cm £200-£400
- 364. A set of four Victorian mahogany spoonback dining chairs with overstuffed seats, raised on cabriole front supports £300-£500
- 365. A Victorian lady's rosewood dressing table, the elaborate top centred with serpentine display shelves, flanked by cupboards and drawers, the base with three frieze drawers, raised on cabriole front supports, 118cm wide £800-£1400
- 366. An XVIII century oblong mahogany stool with a hinged lid
- 367. A George III mahogany secretaire, the interior fitted with a series of drawers and pigeon holes above three long cock-beaded drawers raised on shaped bracket feet, 102cm wide £1000-£1500
- 368. An Edwardian mahogany china display cabinet inlaid with boxwood stringing, the door with an oval plain glazed panel and painted decoration, 61cm wide £80-£140



Lot 369

- 369. A French Louis XVI style Kingwood serpentine front three drawer commode chest, stamped "ZWIENER PARIS" with shaped marble top and bold gilt brass mounts, 127cm wide , 60cm deep £3000-£5000
illustrated
- 370. An Edwardian mahogany revolving bookcase, the top inlaid with a circular patera and satinwood banded, 50cm square £380-£500
illustrated (next page)
- 371. An XVIII century mahogany fold over games table, the top and frieze inlaid with ebony stringing, raised on ring turned tapering supports, 88cm wide £600-£800

372. An XVIII century open arm mahogany carver chair
373. A George III mahogany fold over games table, the double cross-banded top with boxwood and ebony stringing repeated on the frieze, raised on square taper supports terminating in spade feet, 91cm wide £800-£1200
374. A XIX century mahogany four poster bed £800-£1500
375. A XVII century oak coffer, the three panel front carved in relief and with inlaid initials, enclosed by a panelled lid, 129cm wide £200-£300
376. An antique oval mahogany drop leaf dining table, raised on cabriole supports, carved at the knee with masks and terminating in ball and claw feet, 133cm x 98cm extended £100-£200



Lot 370



Lot 377

377. An XVIII century oval oak gate leg dining table, raised on baluster and block turnings, the top 111cm x 130cm extended £500-£1000 *illustrated*
378. A XIX century figured mahogany fold over top tea table, raised on a flat sided tapering column with platform base, 90cm wide £200-£400
379. A late Victorian salon suite, the mahogany frame carved in relief with foliage and stylised flowers comprising - chaise longue, pair of open armchairs and six side chairs £900-£1400
380. A Victorian open armchair, the walnut frame carved in relief with foliage and scrolls, upholstered in figured beige damask type material £300-£500
381. An XVIII century circular oak pedestal tilt top table raised on a baluster turned column with triple cabriole supports
382. Collard & Collard. An upright iron framed pianoforte contained in an Edwardian mahogany marquetry inlaid case, boxwood strung and cross-banded in satinwood £500-£1000

383. A XIX century figured mahogany bureau, the panelled fall enclosing a fitted interior of pigeon holes and drawers, the base with three long cock-beaded drawers, on bracket feet, 106cm wide £250-£450



Lots 50, 337 & 384

384. A Georgian mahogany two tier dumb waiter, the tiers separated by turned tapering column, raised on triple cabriole supports with ball and claw feet £500-£800 *illustrated*



Lot 385

385. An XVIII century oval oak gate leg dining table fitted with two drawers on ring turned tapering and block supports, 126cm x 140cm extended £600-£1200 *illustrated*



Lots 386 & 387

- 386. A set of six Victorian walnut dining chairs with shaped backs, pierced splats and cabriole front supports £800-£1300 *illustrated*
- 387. A set of six Georgian mahogany dining chairs with vertical reeded splats, overstuffed seats, raised on ring turned front supports £300-£600 *illustrated*



Lot 387A

- 387A. A Georgian mahogany breakfast table raised on a turned column with quadruple reeded supports terminating in brass lion paw castors, 132cm x 100cm £500-£1000 *illustrated*
- 388. A green onyx pedestal with gilt brass mounts £150-£300

- 389. A Victorian oval mahogany loo table, raised on quadruple cabriole supports, 117cm x 87cm £150-£250
- 390. A Victorian mahogany framed double end sofa, serpentine front rail, raised on cabriole front supports, the frame with applied pierced and carved foliate brackets £350-£550
- 391. An XVIII century oak refectory table with boarded top, raised on square taper supports, 166cm x 83cm £300-£500
- 392. A set of five George III mahogany dining chairs, the square backs with "X" splats, centred with a roundel, the drop-in seats raised on square taper supports £400-£700
- 393. A circular mahogany drop leaf dining table, raised on shaped tapering legs with pad feet, 120cm diameter £600-£900
- 394. An XVIII century Hepplewhite design dining chair
- 395. A Georgian mahogany bow front chest of two short and two long cock-beaded drawers, raised on splay bracket feet, 92cm wide £200-£350
- 396. A Hepplewhite design camel back three seater settee with scroll arms, raised on foliate relief carved supports £800-£1300



Lot 397

- 397. A satinwood writing table, the frieze drawer fitted with a writing slope, cross-banded, boxwood and ebony strung, raised on square taper supports joined by an undertier, 58cm x 45cm £900-£1400
illustrated
- 398. A mahogany bow front bedside cabinet raised on square taper supports

399. A small XVIII century walnut chest of two short and two long drawers, raised on bracket feet, 77cm wide £400-£700 *illustrated*



Lot 399

400. An XVIII century mahogany fold over games table, the top cross-banded in satinwood and kingwood with boxwood and ebony stringing, raised on square taper supports with spade feet, 91cm wide £500-£850



401. A XIX century 18" terrestrial globe by W & A K Johnstone "Geographers, Engravers & Printers to the Queen 1891" on a mahogany stand, the base with a compass and three scroll supports £2000-£3000 *illustrated*

402. An XVIII century oak hanging corner cupboard with fielded panel doors and three shaped shelves £200-£400
403. A XIX century mahogany bar back dining chair with sabre front legs, drop-in seat with blue velvet upholstery
404. An XVIII century mahogany press cupboard, the upper section enclosed by a pair of fielded panelled doors above two short and two long drawers, raised on bracket feet, 131cm wide £500-£700
405. A XIX century French provincial refectory table fitted with two frieze drawers raised on square chamfered legs, the top 197cm x 73cm £2000-£3000
406. A Victorian oak pedestal specimen chest of ten narrow drawers, 40cm wide £80-£150
407. A XIX century ash and elm low back Windsor chair with baluster turned underarms on turned legs joined by an "H" stretcher £200-£300
408. An antique mahogany kneehole desk, the top centred with an oval shell patera and boxwood strung, fitted with ten drawers surrounding the central recess cupboard and raised on shaped bracket feet, 101cm wide £500-£700
409. An Edwardian mahogany pedestal bedside cupboard, the top chevron inlaid and boxwood strung, the panelled single door inlaid with an urn, raised on bracket feet, 42cm wide £150-£250
410. A polished pedestal cabinet enclosed by a single panel door, 52cm wide £50-£80
411. An Anglo-Indian mahogany side table with an elaborate spindle turned gallery and raised on turned legs, 69cm wide £100-£200
412. A Victorian oak kneehole desk fitted with three drawers to the frieze and three to each pedestal, 127cm wide £200-£300
413. A large Victorian mahogany chest of two short and three long drawers raised on turned legs, 122cm wide £150-£250
414. An Edwardian kidney shaped lady's desk £1000-£2000
415. An Edwardian chaise longue, the hardwood frame with pierced shaped splats, scroll end, raised on turned legs and upholstered in piped pink brocade type fabric with matching cylindrical cushion £150-£250
416. A Victorian gentleman's open armchair, the frame carved in relief raised on turned front supports and upholstered in pink button dralon
417. An Edwardian tub chair, the frame line inlaid and with a marquetry splat, raised on cabriole front supports

- 418. An early XIX century mahogany chest of two short and three long cock-beaded drawers, 98cm wide £200-£300
- 419. A pair of Victorian mahogany dining chairs, the seats upholstered in green dralon £50-£100
- 420. A set of four Edwardian salon chairs, the vase shaped splats marquetry inlaid, the overstuffed seats raised on cabriole front supports £70-£120
- 421. The base of a Georgian mahogany corner wash stand
- 422. A Victorian walnut lady's chair, the frame elaborately carved with foliate and scroll design raised on turned front supports £120-£180
- 423. An XVIII century demi-lune side table with a hinged top, raised on taper supports terminating in pad feet, 84cm wide £200-£400

END OF SALE

FORTHCOMING SALES

Estate Clearance Sales take place on

*f*irst Saturday of each calendar month

Victorian & Later Furniture, Bygones & Collectables
modern effects, electrical goods etc.

7th JULY 4th AUGUST 1st SEPTEMBER 6th OCTOBER

The J.G. Ruddock Collection

of

Model Railway & Associated Rail Memorabilia

Wednesday 18th July at 12noon

Valuations prepared for

INSURANCE

PROBATE

FAMILY DIVISION

For further information contact

J C Slingsby

01522 524984

*Free valuation clinic every Friday morning at our offices
9.30am to 12noon (no appointment necessary)*

Instructions to Bid

Ref:

Name (BLOCK CAPITALS)
 Address

 Tel Fax

Please bid on my behalf for the following lots, up to the price entered below. I agree to comply with the conditions of sale and understand that in the case of a successful bid, a buyer's premium of 11.75% will be payable on the hammer price. Bids will be executed as cheaply as is permitted by other bids or reserves, if any. Goods must be collected on saleday unless arrangements are made with the Auctioneers.

AT THE FALL OF THE HAMMER, ALL GOODS ARE HELD AT THE RISK OF THE PURCHASER.

Lot No:	Brief Description	Bid price exc. Premium	Lot No:	Brief Description	Bid price exc. Premium

(MORE OVERLEAF.....)

PLEASE COMPLETE THE SIGNATURE AND DATE BLOCK OVERLEAF TO VALIDATE YOUR INSTRUCTIONS TO BID

Instructions to Bid

(CONTINUED FROM OVERLEAF)

[illegible]

Signed..... Date.....

Commission bids **MUST** be received by 4.00pm on the day prior to the sale. **Fax 01522 535600 (24 hours)**

Please tick box if you require a quotation for posting and packaging:

With insurance:	
-----------------	--

Without insurance:	
--------------------	--



CONDITIONS OF SALE

1. In these conditions Thos. Mawer & Son act only as auctioneers and agents and the representative of Thos. Mawer & Son conducting the auction is called 'The Auctioneer'
2. Whilst Thos. Mawer & Son make every effort to ensure the accuracy of their catalogue and the description of any lot:
 - (i) Each lot set out in the catalogue or as divided or combined with any other lot or lots is sold by the vendor with all faults and imperfections and errors or descriptions
 - (ii) Thos. Mawer & Son do not accept responsibility for the authenticity, attribution, genuineness, origin, authorship, date, age, period condition or quality of any lot unless they have been instructed in writing by the buyer to so certify.
 - (iii) All statements whether printed in the catalogue or made orally as to any of the matters set out in (ii) above are statements or opinion only and are not to be taken as being or implying any warranties or representations of fact by Thos. Mawer & Son unless they have been instructed in writing by the buyers to so certify.
3. The Auctioneer has absolute discretion to divide any lot, to combine any two or more lots or to withdraw any lot or lots from sale, to refuse bids, regulate bidding or cancel the sale without in any case giving any reason or without previous notice. He may bid on behalf of the vendor for all goods which are being offered subject to reserve or at the Auctioneer's discretion.

The highest bidder shall be the buyer. The Auctioneer may at his sole discretion determine the advance of bidding or refuse a bid. If during the auction the Auctioneer considers that a dispute has arisen, has absolute discretion to settle it, or to re-offer the lot.

All conditions, notices, descriptions, statements and other matters in the catalogue and elsewhere concerning any lot are subject to any statements modifying or affecting the same made by the Auctioneer from the rostrum prior to any bid being accepted for the lot
4. The buyer shall pay the hammer price together with a premium of the hammer price – 11.75% (including VAT).
5. Notwithstanding any other terms of these Conditions, if within seven days after the sale Thos. Mawer & Son have received from the buyer of any lot notice in writing that in his view the lot is a deliberate forgery and within twenty-one days after such notification the buyers return the same to Thos. Mawer & Son in the same condition as at the time of the sale and by producing evidence, the burden of proof to be on the buyer, satisfies Thos. Mawer & Son that considered in the light of the entry in the catalogue the lot is a deliberate forgery then the sale of the lot will be rescinded and the purchase price of the same refunded.

The vendor agrees to be bound by Thos. Mawer & Son's decision.
6. Thos. Mawer & Son disclaim any responsibility for default by either the buyer or the vendor because they act as Auctioneers only and therefore do not pay out to the vendor until payment is received from the buyer. Instructions given by telephone are accepted at the sender's risk and must be confirmed in writing forthwith.
7. Every person on Thos. Mawer & Son's premises at any time shall be deemed to be there at his own risk. He shall have no claim against Thos. Mawer & Son in respect of any accident which may occur or injury, damage, loss howsoever caused, save in so far as the injury, damage loss shall be caused by the negligence of Thos. Mawer & Son's employees.
8. Each lot shall be at the purchasers risk from the fall of the hammer and must be paid for in full before the delivery and must be taken away by the purchaser at his own expense within 7 working days following the conclusion of the sale. The Auctioneer shall be entitled to charge storage charges in respect of lots not taken away as aforesaid (minimum charge of £10 plus VAT) and interest on unpaid accounts @ 4% above clearing bank base rate (per day)
9. Cheques which are not honoured by the payee's bank will incur a handling charge of £15 plus VAT for each presentation.

This contract is governed by English Law.



THOS. MAWER & SON LTD.

Auctioneers & Valuers Established in 1864

DUNSTON HOUSE • PORTLAND STREET • LINCOLN • LN5 7NN

TELEPHONE 01-522-524984 • FACSIMILE 01-522-535600

E-MAIL auctions@thos-mawer.co.uk

WEBSITE www.thos-mawer.co.uk