

The J.G. Ruddock Collection (inc. some lots from other vendors) of

MODELS

@ RAILWAY MEMORABILIA

*To be sold at Public Auction on
Wednesday 18th July 2001 at 12 noon*



THOS. MAWER & SON LTD.

Auctioneers & Valuers Established in 1864

Dedicated to the memory of

Jack Ruddock

1916 - 1997

The J.G. Ruddock collection (inc. some lots from other Vendors) of

MODELS & RAILWAY MEMORABILIA

To be Sold by Public Auction on

Wednesday 18th July 2001 at 12 noon

at

*Dunston House
Portland Street
Lincoln*

*On View: Tuesday 17th 11am - 4.30pm
or by appointment*

COMMISSIONS

The Auctioneers are pleased to execute commissions for intending buyers in confidence as cheaply as is allowed by any other bids. All telephone bids must be confirmed in writing or by fax by 4pm the day prior to sale. We cannot guarantee to execute bids received on the morning of sale.

BUYER'S PREMIUM

There is an 11.75% premium payable on the final hammer price of each lot inclusive of VAT. Lots subject to VAT on the whole price are prefixed by *

REGISTRATION

All prospective purchasers are requested to register and obtain a bidding number prior to the start of the sale.

CATALOGUE DESCRIPTIONS

Care is taken to ensure that any statement as to authorship, attribution, origin, date and provenance is reliable and accurate, but all such statements are statements of opinion and are not to be taken as statement or representations of fact. Thos. Mawer & Son Ltd. reserve the right, in forming their opinion, to consult and rely upon any expert or authority reasonably considered by them to be reliable.

CONDITION REPORTS

We regret that we are unable to provide condition reports on the morning of the sale.

ESTIMATES

Estimates for lots under £100.00 are not always printed in the catalogue. On lots that are reserved, the reserve will not be greater than the published estimate at the time the catalogue goes to press.

IMPORTANT NOTICES

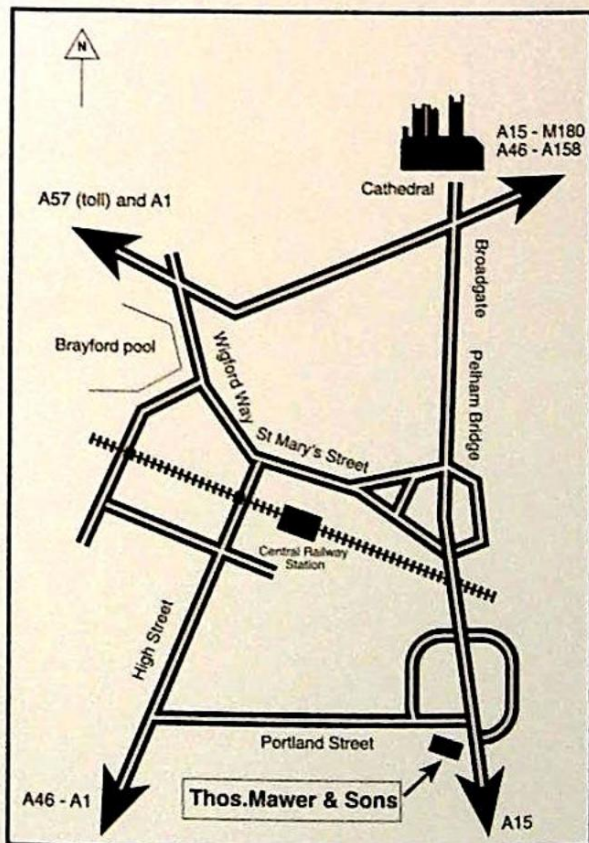
While an identification of damage is given in some instances, an absence of such advice does not imply that a lot is free from defect. Prospective purchasers are strongly advised to inspect any lot on which they intend to bid. All measurements and weights are approximate and should be verified by intending purchasers.

All Lots should be paid for and collected immediately following the sale. Any lots not collected within five working days of the sale date will be removed to our store, removal expenses and storage charges will be incurred (minimum £15.00 plus VAT per lot).

No lots in this sale are the property of Thos. Mawer & Son.

PAYMENT OF ACCOUNTS

Payment for all lots must be made on the day of sale and methods are (1) CASH, (2) CHEQUES supported by either a letter of Reference from your bank or a cheque guarantee card to cover the sum of your purchase, (3) BANKERS DRAFT, (4) DIRECT DEBIT CARDS such as "Switch", "Delta", "Classic", "Connect", (5) CREDIT CARDS subject to a 2% premium charge.



J G Ruddock

1916 - 1997

Jack Ruddock was interested in many things, and he always researched his areas of interest thoroughly, becoming an authority in his chosen subjects. This was particularly so for his passion for railways, which led him, with Rodney Pearson, to research and write "The Railway History of Lincoln". Inevitably his curiosity and enquiring mind led him to search out and collect a quantity of background material, in addition to the models which are on sale.

All of the models have some connection with Lincoln. The LNER and LMS locomotives used the track across High Street; Queen Mary had her crankshaft forged by Clarkes; the Royal Coach over-nighted at Leadenham; and of course Foster, Ruston and Robey were all well known manufacturers of agricultural and power equipment.

It is hoped that the purchasers of the models, and the ephemera, will derive as much pleasure from them as did the remarkable Jack Ruddock and his family.

Lot | Description

1. Axholme Joint Railway Internal Correspondence dated 25th September 1926 - way bills February 1942 and March 1942
2. Ambergate, Nottingham and Boston and Eastern Joint Rails Company - share transfer certificate dated 30th December 1846
3. Banbury & Cheltenham Direct Railway Company - 1873 Debenture Stock, interest on £100 half year to the 1st May 1885
4. Barry Railway - Memo regarding accident to George Allen June 1902
5. Bristol & Exeter Railway - luggage ticket dated 1st December 1876
6. Caledonian Railway - letter from the transfer department Glasgow regarding lost certificate for £35.00 of 4% conv. pref stock 1904
7. Cheshire Lines Committee - memo, complaint 1901 and a parcel way bill Chester (Northgate) to Mansfield 29th June 1896
8. Chester & Crewe Railway - receipt for purchase of ten shares £50.00 each dated 10th July 1839
9. Dundee & Arbroath Joint Railway - ticket "Shipping Traffic 2"
10. Furness Railway - memo from Secretary and General Managers office Barrow in Furness 30th December 1910
11. Great Central Railway - interest note for 4% preference stock dated 31st December 1898; and way bill - Worksop to Mansfield dated 1900; fish way bill Grimsby Docks to Mansfield 20th October 1899; dividend voucher 1921; parcels way bill Nottingham Arkwright Street to Mansfield 20th July 1899
12. Great Eastern Railway - single line working during repairs or obstruction, pilot mans order to the engine driver - unused; and a way bill Spooner Row to Skipton dated March 17th 1899.
13. Great Eastern Railway - luggage labels, mainly Norfolk and Suffolk (25)
14. Great Northern Railway - share certificate for £25.00, number 109171 dated 1st July 1846
15. Great Northern Railway - share certificate £25.00 number 173236 dated 1st July 1846

Lot | Description

16. Great Northern Railway - parcels way bill Boston to Mansfield 1st May 1872, an interest statement 3% debenture stock, half year to 30th June 1895, an envelope - urgent invoices (unused), parcel way bill from Grantham to Mansfield 18th August 1873
17. Great Northern Railway leaflet - Agricultural Societies Shows 1904
18. Great Northern Railway - two timetables - Peterborough October Fair special trains between Boston and Peterborough Wednesday October 3rd 1888; Lincoln Fair additional passenger trains from Lincoln-Kings Cross April 25th & 26th 1889
19. Great Northern Railway - through trains timetable "from 1st July 1852 until further notice", London Kings Cross to Glasgow
20. Great Northern Railway - timetable of the journey of His Majesty the King from Cambridge to London Kings Cross on Wednesday 8th January 1908
21. Great Northern Railway - parcels way bill from Kings Cross to Mansfield 7th February 1898
22. Great Central, North Eastern & other railways - timetable of the special train of His Majesty the King, Ollerton to Advie, Monday 16th September 1907
23. Great Northern & North Eastern Railways - journey of their Royal Highnesses Prince & Princess of Wales and suite, from London (Kings Cross) to Newcastle and Alnwick, Monday 29th June 1908
24. Great Northern, N.E., N.B., and G.N of S Railways - timetable of the special train conveying Her Majesty the Queen and suite, London Kings Cross to Ballater, on Thursday 12th August 1909
25. Great Northern Railway - four luggage labels, to Heckington, Spilsby, Eastville and Horncastle; and a G.N & G.E. joint railway label - Grimsby
26. Great North of England, Clarence & Hartlepool Junction Railway - memo regarding dividends dated 27th August 1898
27. Great Northern and Great Eastern Joint & Great Northern Railways - journey of His Majesty the King and Suite, from Blankney to Kings Cross, Saturday December 14th 1907, framed

Lot | Description

28. Glasgow & Southwestern Railway Company - goods and parcels invoice Kirkcudbright station, 14th August 1894 and passenger train traffic invoice November 1st 1903
29. Great Western Railway - parcels way bill Llangollen to Bala, 8th November 1895, luggage label Lincoln, memo from goods department to Church Stretton 3rd September 1894, memo from A.J. Burr District Goods Manager, Shrewsbury to Church Stretton 21st May 1895 and memo from District Goods Manager Office Shrewsbury to Church Stretton 19th June 1895
30. The Highland Railway - debenture interest note 16th May 1910, goods invoice Wick to Thrumster, 24th March 1874
31. Hull, Barnsley & West Riding Junction Railway and Dock company - memo from the Goods Department Alexandra Dock Station Hull to Skipton, 23rd May 1900 and another dated 18th December 1901
32. Kington & Eardisley Railway - wagon label dated 21st February 1876, number 176 and an unused way bill
33. Lancashire and Yorkshire Railway - parcels way bill, Shepley to Dronfield via Penistone, 13th February 1877 and a memo from the Secretary's Office Manchester, 26th October 1916; and a way bill Blackburn to Daisyfield, 21st July 1881; memo to Dronfield dated May 2nd 1872
34. Levin & Eastern Fife Railway - parcel way bill St. Monans to Largo, 5th April 1872
35. Lancashire & Yorkshire Railway - dividend voucher for the half year ending 30th June 1897, wagon labels Goole Dock to Skipton November 1899 and Hampton to Skipton
36. London Midland & Scottish Railway - letter relating to fares between Dinas Junction and Bedgelert dated 24th June 1926
37. London & North Western Railway - memo from the goods department, Liverpool dated November 29th 1901 regarding carting stone; and a timetable London Euston to Birmingham, Shrewsbury, Manchester and Liverpool, March 1905 until further notice; parcels way bill London Road Manchester to Mansfield, 16th April 1877

Lot | Description

38. London & North Eastern Railway - unused labels, insured goods, two from Swineshead, luggage labels to Lincoln to Broxbourne, an unused return ticket for soldiers, naval seamen, police etc. No. 852, an excess luggage label (unused)
39. London & North Eastern Railway - Agricultural Society Shows 1929 general instructions
40. London & North Eastern Railway - Lincolnshire District Train Service, ticket facilities 8th July - 29th September 1935
41. London & North Eastern Railway - letter from District Passenger Manager Newcastle-upon-Tyne to the Town Clerk of Coldstream regarding Coldstream Town Council cheap tickets to Edinburgh, dated 15th May 1925
42. Lancashire, Derbyshire & East Coast Railway - report of the Directors and statement of accounts half year ending 31st December 1904
43. Manchester, Sheffield & Lincolnshire Railway - way bill Sheffield to Mansfield, 24th June 1860?, way bill Worksop to Dronfield November 2nd 1872, fish way bill Grimsby Docks to Mansfield, 10.9.1873, parcels way bill Manchester to Mansfield, 8th February 1892 and an interest and dividend account half year ending 31st December 1869 & another half year ending 31st December 1867
44. Maryport & Carlisle Railway - railway clearing house abstract of fish traffic received at Carlisle from Whitehaven ending 31st May 1861, and an abstract of parcel books 24th May 1861
45. North Eastern Railway - goods invoice York to Hawsker, 11th December 1918; memo from the Goods Department York December 2nd 1901; memo from Secretary's Office York, a transfer of £6,240 worth of N.E.R. debenture stock
46. North British Railway - dividend statement 1913, memo from the goods department Aberdeen to Skipton, dated 3rd April 1902
47. Pamphlet "To the provisional committee of the Northampton, Lincoln and Hull Railway" arguing about the date of registration with a rival dated 23rd October 1845
48. Midland Railway Company - dividend statement, 31st December 1911
49. Norfolk and Suffolk Joint Railways Committee - unused receipt of letter

Lot | Description

50. North Staffs Railway - luggage label
51. Midland Railway - parcels way bill St. Pancras London to Mansfield, 12th April 1872.
52. Letter from the Railway Clearing House, Hewson Square London to R. Evans Esq., Festiniog Railway, Port Madoc regarding general railway classification goods 1st April 1924 edition.
53. Southern Railway - dividend statement half year ended 31st December 1931
54. Sheffield and Midlands Railway Companies Committee - parcels way bill from Hyde to Rowsley, 10th August 1887
55. South Eastern & Chatham Railway - way bill number 26002 with counterfoil dated 6th January 1906, an unused label "livestock handle with care", Continental services August 1919 timetable London and Paris etc, luggage label London Victoria to Paris Nord and an LC & DR label Dover H
56. Manchester, Sheffield & Lincolnshire Railway - arrangements for workmens excursions from Gainsborough, Saturday July 25th 1891
57. Whitehaven Cleator & Egremont Railway - dividend statement, half year ending 30th June 1873
58. Taff Vale Railway - engineers office Cardiff, memo announcing the opening of the new station at Lower Penarth on Monday next, 29th January 1897
59. Port Patrick & Wigtownshire Joint Railways - livestock label Whithorn, Castle Douglas No. 785487, 6th December 1927
60. Shropshire and Montgomeryshire Railway - Train staff ticket between Meole Brace and Shrewsbury, undated 1910+
61. Kent & East Sussex Railway - perishable label, LB & SCR higher value livestock label, London & Southwestern Railway - label to M & S W J Railway via Andover Junction, LMS livestock label Stranraer Harbour to Castle Douglas - an unused wagon ticket 1920's
62. Luggage labels - Hull and Barnsley railway wagon "empty home" to Stair foot, East & West Yorkshire Union Railways - from Thorpe, dated 1907, Midland and Great Northern Railway - Joint committee, to Walsall Midlands, via Bourne and Saxby; and a circular LMS label "Order your goods by LMS"

Lot | Description

63. Luggage labels - Various companies to Lincoln (10); Great Northern Railway to Navenby; LNER to Grantham and GNR to Five Mile House
64. A folder of assorted photographs and postcards of railway engines including Midland Railways, GNR and a sepia postcard of Lincoln from the Brayford
65. A Newcastle-upon-Tyne bank £5.00 note dated 2nd April 1800
66. London & Birmingham Railway - timetable page undated, possibly circa 1840, framed
67. Smiths Railway map of 1836 - London section, mounted and framed; a set of 25 framed and mounted Wills cigarette cards, railway engines 1924
69. David C. Bell Fine Art Reproductions - 60041 Salmon Trout and 60024 Kingfisher and a coloured print of G.E.R. 7' gauge 4-2-2 express locomotive number 10
70. Map of the stations on the Midland Railway system, engraved by the American Bank Note Company New York, USA - framed
71. "Carly" railway areas map "showing the systems of railways now under the control of the principal railway companies with proposed amalgamations of Lancashire and Yorkshire with the London and Northwestern etc." - framed
72. A map of the "Manchester, Sheffield and Lincolnshire railway and its connections" March 1865 - framed
73. The railway calendar for 1839 by Bradshaw, with map depicting railways, 88cm x 56cm, signs of folding and some foxing, now framed
74. Johnstones Railway Map 1866 showing the railways of England and Scotland, mounted on linen, originally folded, now framed, 80cm x 53cm
75. Cheffin's map of "The English and Scotch railways, 4th edition", mounted on linen, some foxing, now framed, 69cm x 58cm
76. A set of seven plans for the Honington to Lincoln Railway Line opened in 1867, showing the profiles and route between Honington and Lincoln (1 mounted)
77. Ordnance survey maps 1/2500 of Lincoln and environs showing railways, 1932 edition

Lot | Description

- 78.** Great Central Railway and its connections - a poster of the British Isles published by Geographia Ltd. London AC4, 101cm x 69cm - mounted
- 79.** James Sandby Padley - plan of the City of Lincoln, new edition corrected to 1868 showing the City 15 years after the railways arrived, mounted for wall hanging, published 1911 by Poole Bros. Chicago, 56cm x 112cm
- 81.** Midland Counties Railway - elevation of viaduct over the River Avon, hand coloured, some folding, slightly foxed, mounted and framed, 26cm x 79cm
- 82.** A coloured print "Birds eye view of Immingham (Grimsby), deep water docks" 40cm x 80cm, mounted and framed
- 83.** Midland Railway distance diagram, scale 1 inch to 1 mile, sheet 23, showing the area south of Lincoln to Fulbeck with inset diagram of Lincoln, date January 1904, together with a black and white photograph, an aerial view of Lincoln Railways, mounted on card
- 84.** Black and white photographs of Lincoln, Lincoln Stations, an aerial view of the City; mounted on three cards
- 85.** Black and white photographs - Smith Clayton Forge Ltd. saddle tank, "Witham" and "Wonder"; Clayton rail cars, two photographs - Robey & Co. tank engines; mounted on card
- 86.** Photographs and photocopies - history of the locomotive engine; Midland Railway wagon; map of Lincoln 1830; Great Central Railway 1905 etc. - mounted on two cards, together with photocopies of Lincoln goods yards, mounted
- 87.** After Ward - framed coloured print of South African Railways, 4-8-2 loco
- 88.** Framed coloured print of The Enterprise Steam Omnibus - reprint
- 89.** After Allen Fearnley '74 - a coloured print of 4472 Flying Scotsman passing a saddle tank, framed 50cm x 76cm
- 90.** After Terence Cuneo April 1967 - L.N.E.R. 3442 Great Marquess, framed and LMS 5593, framed
- 91.** After Allen Fearnley - framed coloured print "The Rocket"
- 92.** After Terence Dabley 1971 - a coloured print of early railways Lincoln with the Brayford and the City behind, 36cm x 50cm, mounted and framed

Lot | Description

- 93.** Paul Twine 4/71 oil on board - Harwich Express in Lincoln Station 50cm x 70cm, framed
- 94.** F. Moore - oil on board - North Eastern Railway 442 Atlantic Class Locomotive and tender, after the design of Sir Vincent Raven, 38cm x 80cm, framed - F. Moore was a pseudonym for Mr Rudd an artist of the locomotive publishing company whose work is thought to have included the W.D. & H.O. Wills Cigarette Card Series of 1924
- 95.** Stewart Pearson '91 oil on board - The Old Midland Railway Station (St. Marks) 61cm x 71cm, unframed
- 96.** A poster - G.W.R. "St. Ives", 89cm x 58cm, reprint
- 97.** A poster - B.R. "Barmouth", 71cm x 49cm, reprint
- 98.** A poster - "Thomas Cook holiday tours", 71cm x 49cm, reprint
- 99.** A poster - L.N.E.R. "Woodhall Spa It's Quicker by Rail" by Frank Newbold, 102cm x 64cm, unframed
- 100.** A poster - L.N.E.R. "Lincoln It's Quicker by Rail", an illustration of the Angel Choir, Lincoln Cathedral "Now in the process of restoration at a cost of £30,000" by Fred Taylor, 101cm x 127cm
- 101.** Maps - The Route of the Railway from London to Paris via Bologne; French by A. Letillier, all linen backed, folding, date unknown, probably 1840-1850, showing London to Amiens 80cm x 106cm
- 102.** G.N.R. - Guide to Angling Resorts by J.H.R. Bazley, published 1909
- 103.** Wyld's Rail road map of England and Wales published London 1836
- 104.** Bradshaw's Rail Companion published in 1844
- 105.** Lyle, Oliver "The Efficient Use of Steam" H.M. Stationery Office 5th impression 1956, 900pp
- 106.** Bucknall, Rixon - boat trains and channel packets published Vincent Stewart Ltd London 1957
- 107.** Rodakowski, Ernest - The Channel Ferry, advantages and feasibility of a train ferry between England and France, London 1905
- 108.** Bradshaw's Railway Guide April 1910 - David & Charles reprint, second impression August 1968

Lot | Description

- 109.** Railway Clearing House - official handbook of railway stations etc., formerly owned by North Eastern Railway dated 1st February 1905, stamped "claims agent office York", cover loose
- 110.** Rose, Joshua - Modern machine shop practice J.S. Virtue and Co London 1922
- 111.** Clarke, Daniel - Railway Machinery, "A Treatise on the mechanical engineering of Railways embracing the principles and construction of rolling and fixed plant", volume 2; contains at least 60 and many smaller fine detailed plates of engineering, drawings of early locomotives and their workings; Blackie & Son 1855
- 112.** Collard, William "Proposed London & Paris Railway", London & Paris in 2hrs 45mins, 200pp plus map - N.B. the proposed railway was 7' guage and includes costings, arguments and timetables, Published P.S. King & Son Ltd, Orchard House, Westminster 1928
- 113.** Wills Cigarette Cards - railways and engines, an album; Royal Journey a retrospect of Royal trains in the British Isles published by the British Transport Commission; Lincolnshire Railway Stations by Eric Croft 1993
- 114.** Pencil sketch from a note book - Great Western Railway, broad guage locomotive of "Firefly" class after an accident (noted as Firefly itself, possibly however Fireking) Sarrington Road on 25th October 1840, mounted and framed
- 115.** Great Northern and G.N. & G.E. Joint Railways - circular No. 28.582a, instructions to rail staff for the journey of His Majesty the King of Spain and suite, Blankney (GN & GE) to Kings Cross, on Saturday 6th December 1913; together with a blank enclosure slip
- 116.** Great Northern Railway. A circular 32.807a, instructions to rail staff for the journey of the Royal train from Kings Cross to Grantham; and Leadenham to Kings Cross on Thursday 20th July 1916
- 117.** Midland Railway, Goods Managers Offices, Derby - a circular dated 13th May 1867, relating to the goods, traffic rates on the newly opening Honington and Lincoln Branch (Great Northern Co)
- 118.** Two maps - one showing railways leading to Lincoln, and the other to Bourne, Stamford etc. 16cm x 26cm

Lot | Description

- 119.** A common stock certificate for the Chicago and Eastern Illinois Railway Company, dated 1921
- 126.** Maps - London Underground Electric Railways printed by Johnson, Riddle & Co Ltd, London; and Underground maps, cycling maps etc. (20)
- 127.** Assorted documents relating to The South Wales Railway Co. including the brief for the promoters (Parliament session 1847) and accompanying later bills, mid 1850's - a quantity
- 128.** Assorted documents relating to The Oxford, Worcester & Wolverhampton, Newport, Abergavenny and Hereford, and Worcester & Hereford Railways Bill (1860), and earlier letters - a quantity
- 129.** Postcard posted in Tepitz, Germany 21 September 1897 - "To The Midland Railway Goods Dept., St Pancras London" regarding a claim
- 130.** Hants & Dorset Motor Services Ltd - an unused set of tickets 1d - 1/6 (18 packs) - mint
- 131.** Ian Allan Ltd - Trains Illustrated Annual 1961, Loco Spotters Annual 1959 and The World Guide to Model Trains (3)
- 132.** LNER - A lawn edging spade, stamped 1944, green painted handle, 89cm long
- 133.** An L.M.S. workman's warning horn and The Acme Thunderer whistle
- 134.** A cast iron weight with a lady; 3 cast metal engine paper weights and 2 "N" gauge Pullman coaches
- 135.** S.N.C.F. - a paraffin railway lamp with circular clear glass front, maker Albert Butin, Paris, 55cm high
- 136.** British Rail (M) - a paraffin railway lamp with clear glass bullseye lens, 43cm high
- 137.** British Rail (M). A hand lamp by Eli Griffiths & Sons, Birmingham, 28cm high
- 138.** British Rail (M) - a water can "Beechfield", 41cm high
- 139.** British Rail (M) - a tail lamp, 50cm high
- 140.** Cast iron incline signs (10)
- 141.** Engineering in Miniature - April 1979 to May 1993 in binders (14)
- 142.** Model Engineer 1988 to 1993 in 12 binders

Lot | Description

- 143.** Dehail & Grenier, Paris - An SNCF brass acetylene railway lamp
- 144.** The "King Arthur" paperweight depicting No. 763 Sir Bons De Garis? of the Southern Railway King Arthur class, 1/8" scale, original box (F), loco (F) and three others
- 145.** British Railways - a motor driver's donkey jacket (1968) - unused, a waistcoat, overcoat and a pocket watch in a chrome holder
- 146.** A silver cased open face pocket watch, English lever movement by 'A. Yewdall Leeds' and a Bulova wrist watch
- 147.** A silver cased open face pocket watch and an Acme Thunderer whistle engraved 'B.R. (E)'
- 148.** A Winegartens railway pocket watch in original box

MODELS

- 201.** Two CWS open coal wagons - 15" gauge, maroon/black, "Coal and Divi", and "C.W.S. Ltd" Coal Dept. London, Railway Wagon Builders & Repairers Peterborough 1937, makers plate "CWS Builders Peterborough", 142cm long overall
- 202.** An open coal wagon, 7.5" gauge, varnished wood body, interior "red lead finish"; wooden stop buffers, metal detailing, brass wheels, 64cm long overall
- 203.** A "Robey" horizontal steam engine and boiler and pump (1" scale), made in Robeys in 1895
- 204.** A model of a "Robey" stationary steam plant (1" scale) with engine and dynamo (N.B. the dynamo is actually a fractional mains motor 70rpm driving the model for exhibition purposes)
- 205.** A model of a "Robey" uniflow horizontal steam engine (1" scale) with electric motor, mounted, 51cm long
- 206.** A set of six gauge "0" L.N.E.R. "Teak" coaches comprising five double bogie coaches and four wheel guards/goods van
- 207.** An "0" gauge model of G.C.R. 2-4-0 locomotive and tender No. 502 "Zeebrugge" in lined green with maroon frame, 41cm long
- 208.** An "0" gauge model of G.C.R. 4-6-0 locomotive No. 424 "City of Lincoln" and tender in lined green livery with maroon frame, 44cm long
- 209.** An "0" gauge model of L.N.E.R. locomotive No. 8524 "Duke of Connaught" and tender in lined green livery, black frame, 41cm long

Lot | Description

- 210.** An "0" gauge diorama with G.E.R. 2-4-0 locomotive No. 793 and three six wheel coaches of 1905, representing the Harwich Boat Train Express passing a track maintenance gang, perspex covered case, 138cm long
- 211.** A "0" gauge Diorama of Midland Railway 4-4-0 locomotive 1757 "Beatrice" in maroon lined livery with two 6 wheel coaches, passing a siding with a six wheel coach and a workman walking towards a lineside shack, 120cm long base
- 212.** An "0" gauge model of Midland Railway 4-2-2 locomotive No. 35 and tender in lined maroon livery, with driver and stoker, 31cm long
- 213.** A "1" gauge live steam G.C.R. 4-6-2 tank locomotive No. 165, green lined livery in a display case with two model cars, cased 130cm long
- 214.** Hornby "0" gauge - three Pullman coaches - Arcadia, Jolanthe and Xenobia, each 33cm long
- 215.** A 3.5" gauge L.M.S. 2-6-4 tank locomotive No. 2305 and three double bogie carriages, maroon lined livery with two sections of show track, each 244cm long
- 215A.** A "1" gauge Pullman car "Arcadia" by Clayton, modelled by S. Redhead, display case 74cm long
- 216.** An Exhibition quality 3.5" scale LNER Shire class locomotive 245 "Lincolnshire" in lined green livery, 120cm long, showtrack and plinth, 140cm long
- 217.** A 3.5" gauge live steam model of L.M.S. Locomotive 2773 "Princess Marina" in maroon lined livery, 115cm long with track, 155cm long
- 218.** A Bassett Lowke 3.5" gauge model of the L.N.W.R Royal Saloon of 1903, with one side removed to reveal interior fittings, display case, 152cm long; together with a copy of "Palaces on Wheels"; Royal carriages at the National Railway Museum HMSO 1981
- 219.** A Diorama 3.5" scale Liverpool and Manchester Railway locomotive "Lion" with wagon; and a Hornby "Rocket" and carriage with drivers and stokers and two figures on a stile, 185cm long

Lot | Description

- 220.** Three "00" gauge locomotives and tenders ie. LNER 4-4-0 No. 245; G.C.R. 4-6-0 No. 424 "City of Lincoln" and LNER No. 2805; and three LNER "Teak" double bogie coaches
- 221.** A Diorama of "00" gauge G.N.R. Ivatt Atlantic (unpainted), and three Hornby tin plate coaches travelling south on GN & GE line; LMS 4-4-0 locomotive and 6 wagons -perspex case
- 222.** A Diorama of two heavy horses and a "Ruston" single furrow plough depicting the plough team on a field edge, against a fence, 130cm long
- 223.** A Diorama of a stackyard during threshing with a "Robey" steam engine, driving a "Foster, Lincoln" threshing machine and elevator with 10 figures and pair of heavy horses, electrified. Maker C.W. Glentworth, Louth (1.5" scale), base in 3 sections, each 122cm long (366cm overall)
- 224.** A Waterline model of "Queen Mary" in a mahogany and perspex display case, 184cm long
- 225.** A Waterline model of "Queen Mary" in a mahogany and perspex display case, 100cm long
- 226.** A Waterline model of "Queen Elizabeth" in a mahogany and perspex display case, 100cm long
- 227.** A painted wooden model of a twin screw tug with red, black, blue hull; white superstructure, 97cm long
- 228.** A 1.5inch scale model of a Wm Allchin Ltd., Northampton traction engine "Royal Chester", maroon lined paint, red lined wheels, 67cm long
- 229.** A brass model of a double furrow horse plough by Cooks of Lincoln 1910, for a team of six horses, 58cm long, mahogany plinth
- 230.** A scale model of a four wheel pony trap, black lined body, red lined wheels with draw pole; pair of lamps, whip and steps, 54cm long (including pole)
- 231.** An early XX century black and white photograph 0-6-0 saddle tank engine No.63, maker Andrew Barclay Sons & Co Ltd, Caledonia Works Kilmarnock No.1123 1908; and another 0-6-0 saddle tank engine No. 69 rebuilt by Easton Gibb & Sons Westminster 1910

Lot | Description

- 251.** A 2.5" gauge live steam L.B.S.C.R. 4-8-4 tank locomotive "Helen Long" in green lined livery (N.B. made in 1950's based on 1920's drawings), 77cm long, show track 80cm long
- 252.** Trix Twin Main Line Railway - BR locomotive "Pycheley" 62750 (green); three maroon coaches; two open wagons; double bogie wagon; guards van, track and controller (boxed)
- 253.** Trix Twin Main Line Railway - BR locomotive "Pycheley" 62750 (green); two red/cream coaches, track, controller (boxed), and a Meccano A2 control unit
- 254.** Hornby Dublo - R099 Silver Fox, original box
- 255.** Hornby Dublo - R027 Mallard, original box
- 256.** Hornby Dublo - R938 Flying Scotsman
- 257.** Hornby Dublo - locomotives "Sir Nigel Gresley", "Mallard"
- 258.** Hornby Dublo "Flying Scotsman" and coach set
- 259.** Hornby Dublo locomotive - "Britannia"
- 260.** Hornby Dublo - locomotives 55022 "Royal Scots Grey", 9006 "The Fife and Forfar Yeomanry" 47711 "Grey Friars Bobby"
- 261.** Hornby Dublo locomotives 45039 "The Manchester Regiment" D1000 "Western Enterprise" and D285
- 262.** Hornby Dublo locomotives D6830 (3); D3035 Shunter; D5572; D1738; 25247 (7)
- 263.** Hornby Dublo - locomotive Intercity unit
- 264.** Hornby Dublo - assorted goods wagons
- 265.** Assorted "00" gauge track, buildings, part assembled kits etc.
- 266.** Railway Modeller and other magazines
- 267.** British Rail timetables
- 268.** Hornby Series - "0" gauge LMS 4-4-0 locomotive 1185 GWR guards van (no roof), level crossing (gate missing) and a quantity of track including points, crossover etc. - all contained in a Victorian pine painted box, 82cm long £120-£180
- 269.** Hornby Dublo - 32098 T.P.O. mail van (2), mint box F
- 270.** Hornby Minित्रix - N gauge N211 A4 pacific 4-6-2 Mallard (green), original plastic box
- 271.** Matchbox Collectables - assorted in original boxes, a quantity

Lot | Description

- 272.** A Sinclair C5 (as new), owners handbook and accessories book
- 273.** Hornby Series "O" gauge - a clockwork LNER "Flying Scotsman" with tender
- 274.** Hornby 'O' gauge type 501 - a LNER tank engine and tender
- 275.** Hornby 'O' gauge LNER 4-6-3 tank engine, Hornby Series rolling stock (10 with damages), large quantity of track, tin plate station, signal box, crossing gates, points etc.
- 276.** A wooden box containing a quantity of meccano including instructions for outfit No. 4 & 6 and meccano gears outfit B
- 277.** A Fleischmann 'OO' gauge railway display mounted on a board approx. 4'6" x 3' 6", fully modelled as a Bavarian village including diesel and steam locos, gradient loco, rolling stock (13), three transformers and spares



201



201



WOODHALL SPA

IT'S QUICKER BY RAIL

BROMO-IODINE WATERS — FIRST CLASS GOLF

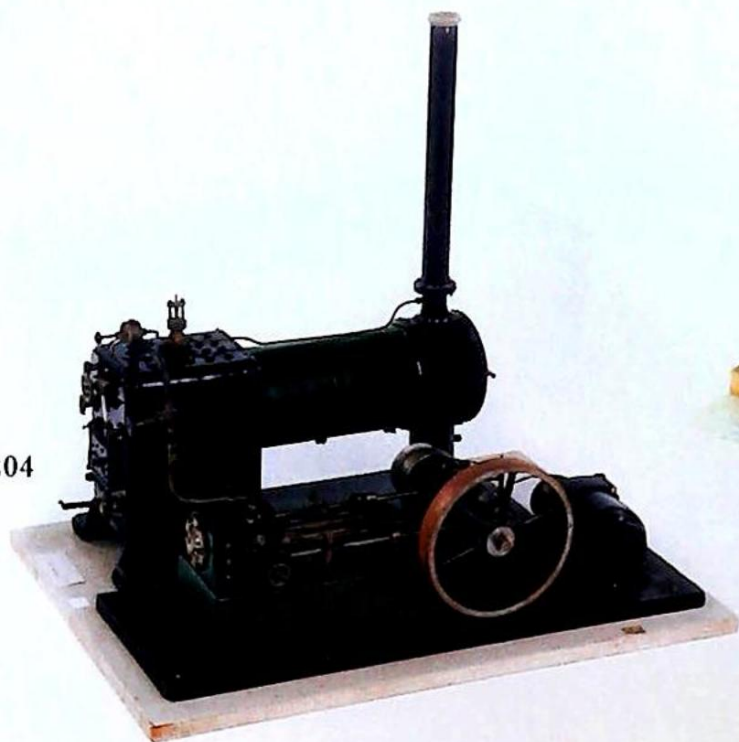


202

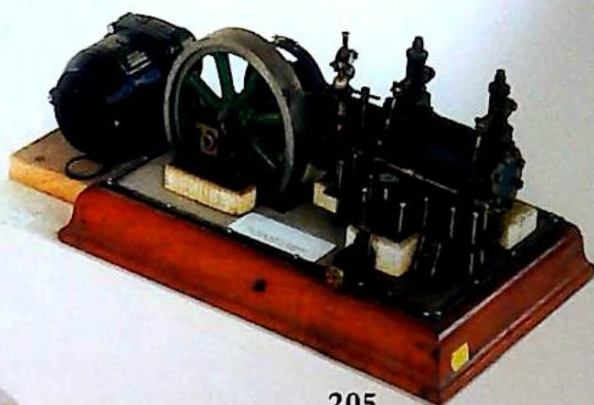


203

204



205



211



210

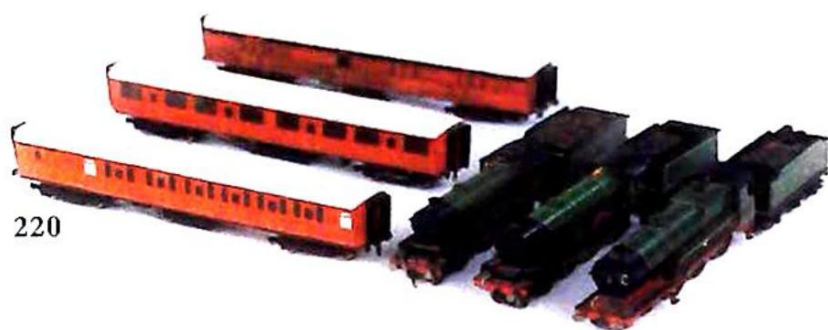


212

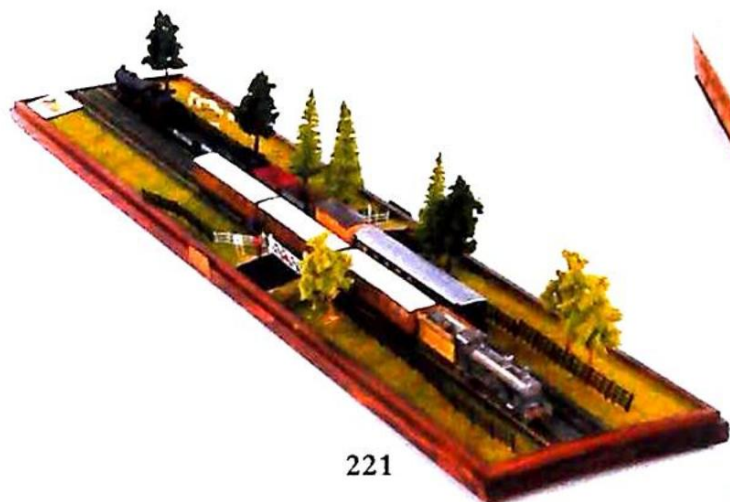




216



220



221



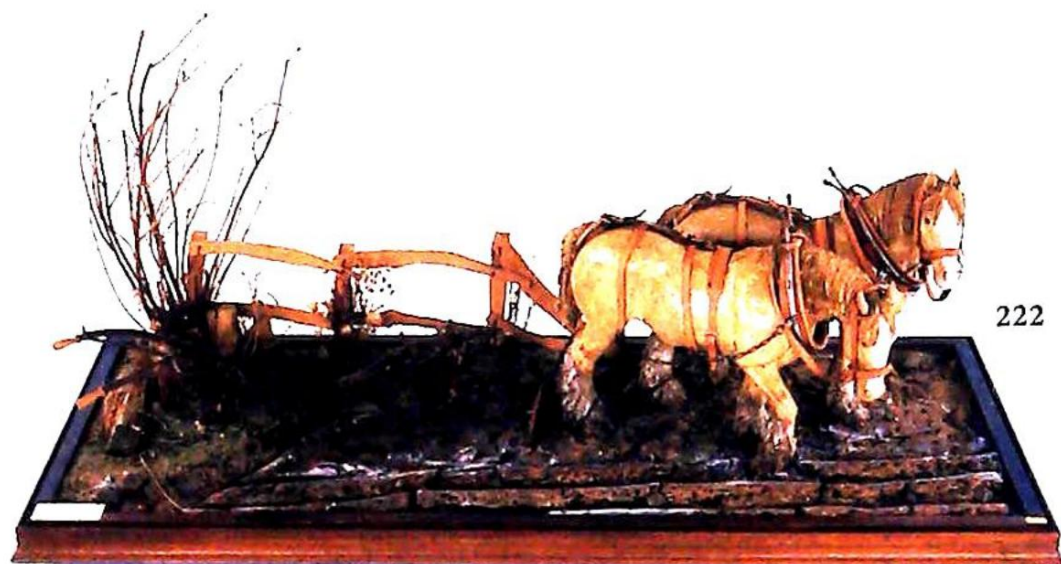
206

207



215A

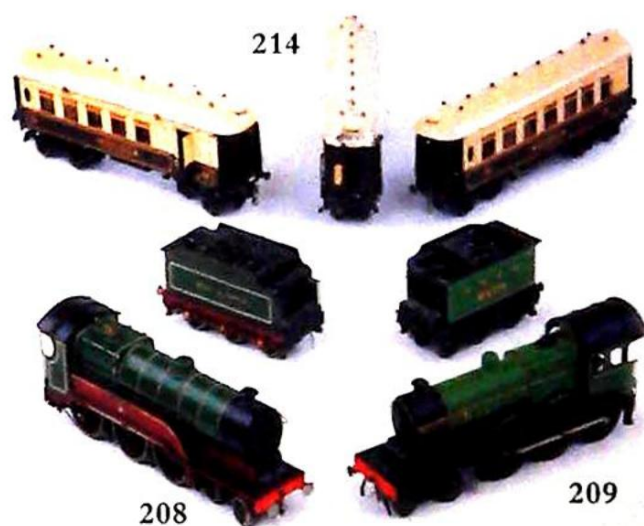




222



213



214

208

209



219



223

CONDITIONS OF SALE

1. In these conditions Thos. Mawer & Son act only as auctioneers and agents and the representative of Thos. Mawer & Son conducting the auction is called 'The Auctioneer'
2. Whilst Thos. Mawer & Son make every effort to ensure the accuracy of their catalogue and the description of any lot:
 - (i) Each lot set out in the catalogue or as divided or combined with any other lot or lots is sold by the vendor with all faults and imperfections and errors or descriptions.
 - (ii) Thos. Mawer & Son do not accept responsibility for the authenticity, attribution, genuineness, origin, authorship, date, age, period condition or quality of any lot unless they have been instructed in writing by the buyer to so certify.
 - (iii) All statements whether printed in the catalogue or made orally as to any of the matters set out in (ii) above are statements or opinion only and are not to be taken as being or implying any warranties or representations of fact by Thos. Mawer & Son unless they have been instructed in writing by the buyers to so certify.
3. The Auctioneer has absolute discretion to divide any lot, to combine any two or more lots or to withdraw any lot or lots from sale, to refuse bids, regulate bidding or cancel the sale without in any case giving any reason or without previous notice. He may bid on behalf of the vendor for all goods which are being offered subject to reserve or at the Auctioneer's discretion.

The highest bidder shall be the buyer. The Auctioneer may at his sole discretion determine the advance of bidding or refuse a bid. If during the auction the Auctioneer considers that a dispute has arisen, has absolute discretion to settle it, or to re-offer the lot.

All conditions, notices, descriptions, statements and other matters in the catalogue and elsewhere concerning any lot are subject to any statements modifying or affecting the same made by the Auctioneer from the rostrum prior to any bid being accepted for the lot
4. The buyer shall pay the hammer price together with a premium of the hammer price - 11.75% (including VAT).
5. Notwithstanding any other terms of these Conditions, if within seven days after the sale Thos. Mawer & Son have received from the buyer of any lot notice in writing that in his view the lot is a deliberate forgery and within twenty-one days after such notification the buyers return the same to Thos. Mawer & Son in the same condition as at the time of the sale and by producing evidence, the burden of proof to be on the buyer, satisfies Thos. Mawer & Son that considered in the light of the entry in the catalogue the lot is a deliberate forgery then the sale of the lot will be rescinded and the purchase price of the same refunded. The vendor agrees to be bound by Thos. Mawer & Son's decision.
6. Thos. Mawer & Son disclaim any responsibility for default by either the buyer or the vendor because they act as Auctioneers only and therefore do not pay out to the vendor until payment is received from the buyer. Instructions given by telephone are accepted at the senders risk and must be confirmed in writing forthwith.
7. Every person on Thos. Mawer & Son's premises at any time shall be deemed to be there at his own risk. He shall have no claim against Thos. Mawer & Son in respect of any accident which may occur or injury, damage, loss howsoever caused, save in so far as the injury, damage loss shall be caused by the negligence of Thos. Mawer & Son's employees.
8. Each lot shall be at the purchasers risk from the fall of the hammer and must be paid for in full before the delivery and must be taken away by the purchaser at his own expense within 7 working days following the conclusion of the sale. The Auctioneer shall be entitled to charge storage charges in respect of lots not taken away as aforesaid (minimum charge of £10 plus VAT) and interest on unpaid accounts @ 4% above clearing bank base rate (per day).
9. Cheques which are not honoured by the payee's bank will incur a handling charge of £15 plus VAT for each presentation.

This contract is governed by English Law.

Estate clearance sales on the *f*irst Saturday of each calendar month

7th JULY 4th AUGUST 1st SEPTEMBER 6th OCTOBER

*& include Victorian & Later Furniture, Bygones & Collectables
modern effects, electrical goods etc.*

Posted on **www.invaluable.com/thos-mawer** Tuesday preceding sale.

Sales start at 10am & are on view Friday prior 12noon-4pm

Valuations prepared for
INSURANCE • PROBATE • FAMILY DIVISION

For further information contact
J C Slingsby 01522 524984

Free Valuation Clinic every Friday morning at our offices
9.30am to 12noon (no appointment necessary)



DUNSTON HOUSE • PORTLAND STREET • LINCOLN • LN5 7NN
TELEPHONE 01522 524984 • FACSIMILE 01522 535600
EMAIL auctions@thos-mawer.co.uk
WEBSITE www.thos-mawer.co.uk