

*Over 800 Lots of  
Antique Furniture, China, Glass, Clocks,  
Silver, Jewellery, Pictures, Prints,  
Collectibles etc*

*To Be Sold by Public Auction on  
WEDNESDAY 5th July 2000 at 10am*



Lot 805

**THOS. MAWER & SON LTD.**

*Auctioneers & Valuers Established 1864*

63 Monks Rd, Lincoln LN2 5HP

Tel: 01522 524984, Fax: 01522 535600, E-mail: [mawer.thos@lineone.net](mailto:mawer.thos@lineone.net)



On View: Sun. 2<sup>nd</sup> 2pm-4pm, Mon. 1pm-4.30pm, Tues. 9am-1.45pm  
N.B. Limited Viewing Tues. from 2pm

Entry by Catalogue only Sunday & Monday  
Catalogues £5.00

### COMMISSIONS

The Auctioneers are pleased to execute commissions for intending buyers in confidence as cheaply as is allowed by any other bids. **All telephone bids must be confirmed in writing or by fax by 4pm the day prior to sale.** We cannot guarantee to execute bids received on the morning of sale.

### BUYER'S PREMIUM

There is an 11.75% premium payable on the final hammer price of each lot inclusive of VAT. Lots subject to VAT on the whole price are prefixed by \*

### REGISTRATION

All prospective purchasers are requested to register and obtain a bidding number prior to the start of the sale.

### CATALOGUE DESCRIPTIONS

Care is taken to ensure that any statement as to authorship, attribution, origin, date and provenance is reliable and accurate, but all such statements are statements of opinion and are not to be taken as statement or representations of fact. Thos. Mawer & Son Ltd. reserve the right, in forming their opinion, to consult and rely upon any expert or authority reasonably considered by them to be reliable.

### CONDITION REPORTS

We regret that we are unable to provide condition reports on the morning of the sale.

### ESTIMATES

Estimates for lots under £100.00 are not always printed in the catalogue. On lots that are reserved, the reserve will not be greater than the published estimate at the time the catalogue goes to press.

### IMPORTANT NOTICES

*While an identification of damage is given in some instances, an absence of such advice does not imply that a lot is free from defect. Prospective purchasers are strongly advised to inspect any lot on which they intend to bid. All measurements and weights are approximate and should be verified by intending purchasers*

*All Lots should be paid for and collected immediately following the sale. Any lots not collected by 4.00pm on the Thursday following the day of the sale will be removed to our store and removal expenses and storage charges incurred (minimum £15 + VAT per lot)*

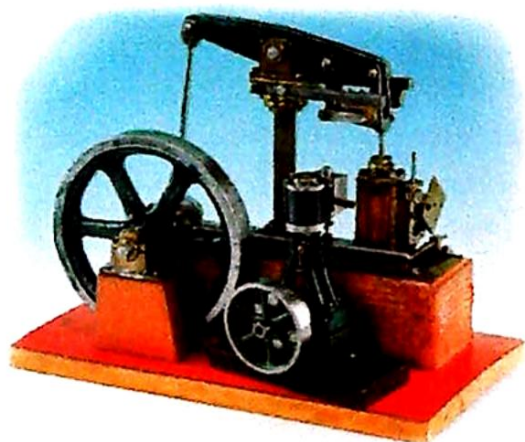
### PAYMENT OF ACCOUNTS

Payment for all lots must be made on the day of sale and methods are (1) CASH, (2) CHEQUES supported by either a letter of Reference from your bank or a cheque guarantee card to cover the sum of your purchase, (3) BANKERS DRAFT, (4) DIRECT DEBIT CARDS such as "Switch", "Delta", "Classic", "Connect", (5) CREDIT CARDS subject to a 2% premium charge.



## BYGONES, COLLECTABLES, TOYS & MODELS ETC.

- 301. Collectors plates. Royal Worcester 'The Woodmans Cottage', Royal Grafton 'Tyke', Knowles China 'Chandlers Cottage' (3)
- 302. Collectors plates, Chinese 'Forbidden City' x 2 and two Russian Design style plates
- 303. Collectors Plates - German (4)
- 304. Collectors Plates - German (5)
- 305. Four XIX century brass padlocks, keys, leather vesta case 'W. King, Optician, Louth', WWII match cover, porcelain shoulder doll etc
- 306. A gas mask tin containing a hand grenade case, aircraft shell case, woollen ball, mother of pearl purse, signet ring etc
- 307. Britains Ltd. 9F horse roller (boxed), 6F general purpose plough with 2 horses, 5F farm waggon (boxed), 40F farm horse and cart (boxed) and assorted farm animals, wooden fenced paddock
- 307A. A model of a 'Stuart' metal press 29cm high and a model flywheel etc
- 307B. A model of a stationary engine 17cm high



Lot  
307C

- 307C. A model of a beam engine *illustrated*
- 307D. A part Meccano Set 4 with instructions etc
- 308. Models of Yesteryear. 1982 Limited Edition pack of 5 models and Harrods Y29 (3)
- 309. Models of Yesteryear. Y1 -11 25 cream coloured boxes
- 310. Matchbox Models of Yesteryear. Y3 -28 33 various, red coloured boxes
- 311. Matchbox models of Yesteryear. Y11 - 25 - 25 various cream boxes
- 312. Matchbox Models of Yesteryear. Y3, 5, 12, 13 & 22 - 20 various, straw coloured boxes
- 313. Matchbox Models of Yesteryear. Y12-3, 1912 Ford Model T van, Arnotts Biscuits
- 314. Matchbox Models of Yesteryear. 1912 Model T van - Sunlight Seife

- 315. Matchbox Models of Yesteryear. Y12-3 - 1912 Ford Model T Van - Coca Cola
- 316. Matchbox Models of Yesteryear. Y3-4 - 1912 Ford Model T Tanker - Zeroene
- 317. A Japanese tin plate friction powered Army tank carrier and camouflage tank - makers mark HS, in original box (box damaged)
- 318. Die Cast Models: 'Moko' Farmette Series - cart with single horse & 4 bags of grain, blue farm cart, yellow reins with single horse, J. Hill & Co. stream bridge with hand rail, 2 fence pieces, fir tree, Timpo Toys - bench, T & B - cream Farmers gig, blue wheels & detail, F.G.T. green hen coop, 2 chicks; Britains - assorted animals, trees & zoo animals approx 80 £50-£100
- 319. A green moulded glass dressing table set comprising - tray, pair of candlesticks, three covered containers and ring tree
- 320. A similar lot
- 321. A German World War II dagger with brass scabbard and mounts, plaited silver coloured braided rope attachment
- 321A. A XIX century single barrel percussion musket (approx 16 bore) with walnut stock, pineapple design brass trigger guard and engraved brass butt plate 39" barrel (no ramrod) £100-£150
- 322. A coloured earthenware figure of "Charlie Fox", a painted brass fox, two plated metal foxes, cast metal huntsman and hound, china ashtray, brass cat ashtray and pair of white metal spurs
- 323. A Carnival glass bowl
- 324. A polished stone axe head, 12cm long
- 324A. A Ronson Varaflame lighter and a small box of matchbox labels
- 325. A green salt glazed jug, French blue patterned jug, three miniature china vases, 1953 Coronation plate, 1937 Coronation saucer, 1911 Coronation mug, Wade ashtray with bird, Wade flower trough with squirrel, two pewter tankards, dog figure, part cruets, stoppers etc. - quantity
- 327. A 1950's green glazed earthenware three piece tea set with aluminium slide on covers
- 328. Carved soapstone ornaments (6), a carved bone tiger, two carved ivory tusk containers and a green glazed earthenware jar and cover
- 329. A hexagonal wicker container with metal handles containing a three piece china tea set and an assortment of Japanese tea pots, cups, bowls etc.



330. Malaysian carved wooden figures (7), two carved wooden birds



Lots 331, 334, 336, & 341A

331. Two models of the British "Tank" - Leicester and City of Manchester; and a crested Carltonware china tank HMLS - The British Tanks successfully used against the Germans Combles. Sep. 1916 - Dewsbury crest (3) *illustrated*
332. Foley China 1911 Coronation mug; Continental china mug decorated with putti (2)
333. Crested cup - Gainsborough; miniature vase - Filey; miniature pot - Llandudno (3)
334. Podmore China, Hanley - The War Memorial Sutton in Ashfield, matching crest; Cyclone China - Cenotaph - city of London crest; Victoria China - flat iron, Bridlington and a puzzle jug - West Hartlepool (4) *illustrated*
335. Assorted crested china including the monument, Laceby (a/f), Cannon - The Dysart Arms Buckminster, cups, mugs etc. - a quantity
336. A circular teapot stand - Sleaford *illustrated*
337. Milk pot and cover 12cm - Guernsey; cup and saucer - Hexham; saucer - Loughborough
338. Hythe Cromwellian mortar 3.8cm - Hunstanton St Edmunds; Plymouth old Spanish jug 5.5cm - Essex; miniature mug 3.5cm - Clacton on Sea; Carlisle old salt pot 4.6cm - Kings Lynn (4)
339. A crinkle top bulbous vase 5cm; Sunderland ancient bottle 5.8cm and a Scarborough jug 5.1cm - all with Leeds crest (3)
340. A trumpet top vase, two handles 7.5cm - Newark on Trent; jug 5.2cm - Sutton in Ashfield and a Swindon vase 5.5cm - Newark Castle (3)
341. Exeter flemish goblet, 13cm, arms - Sheffield & Sheffield University
- 341A. A loving cup - Duke of Beaufort "Tintern Abbey" - Chepstow, 7cm *illustrated*

342. Ostend flemish bottle, 6.5cm - 1911 Coronation souvenir, and a crinkle edge dish, 8.3cm diameter - Victoria Jubilee 1897 (2)
343. Hair tidy, the lid decorated with pink roses, 8cm diameter, 9.3cm high, arms - Grantham; mug, 3.8cm and jug 5.2cm - Grantham arms (3)
344. Wall pocket 7.4cm, arms - See of Liverpool; club vase 5.6cm - Kenilworth Priory; Rochester Bellarmine jug - City of London; Devon oak pitcher - Isle of Man (4)
345. National Highland Quach, 9.4cm - Hertfordshire; vase 5cm - Cromarty; sugar basin 5.3cm - City of Edinburgh (2) - (4)
346. Irish Mather 7.6cm - Matlock Bath; old Spanish jug, 5.5cm - Plymouth and a taper vase 5.6cm - Derby (3)
347. Eton vase 8.6cm - Farnborough; miniature jug 4.5cm - Burton on Trent; also miniature cup 3.4cm - Burton on Trent (3)
348. Scarborough kettle 6.6cm; German bomb Bury St Edmunds 6cm - Bingley (2)
349. Waterloo Soldier water bottle 8.3cm - Whitby; Newbury leather bottle 5.8cm - Whitby Abbey (2)
350. Litchfield jug 5.7cm - Grimsby; Abbots cups Fountain Abbey 4.4cm - Stamford; old Manx pot 5cm - Sleaford and a covered pot 5cm - Gainsborough (4)
351. A Lucas "King of the Road" number 656 car lamp and another number 723
352. A glass "Shell" petrol pump top, a tin Castrol motor oil sign, a Shell calendar 1971 and a Shell promotional book
353. A copper kettle, a warming pan (no handle) and Wendy hot water bottle
354. A pair of circular two handled copper jardinieres, a kettle, trivet and a conical jug
355. A bagatelle board and a deer's antler
356. A stoneware flagon, jug, kitchen jars etc. (5)
357. A Hohner Carmen II accordion and the Sascophone xylophone by James Pass & Co, Birmingham
358. A Scarlatti accordion
359. An Autoharp and a Strovioles
360. An old Murphy valve radio
361. A Bush walnut cased mains radio and an Eveready portable ditto
362. A Bush mains radio in a brown Bakelite case, type D.A.C. 90A, and a Ekco type AC97 Superhet mains radio
363. A set of kitchen beam scales and weights, three hurricane lamps and two oil lamp bases



364. An oval tin hat box and a mahogany bed table
365. A carved and painted child's wooden rocking horse
366. Two oval galvanised baths, a watering can, cast iron boot scraper, a white painted bath stool etc.
367. An enamel WWII ARP "Air raid warden's post" sign
368. A Victorian table oil lamp with a plain glass reservoir on an ornate cast metal base
369. A blue and white slop bucket, a stoneware spirit flask, Todd & Sons Leith and an earthenware pancheon
370. Old tennis rackets and presses (5)
371. A cast iron hopper head dated 1886 and a Victorian boot scraper
372. An iron stand with a circular copper bachelor's kettle, a miners lamp, a polished brass bell and bracket and a copper side handled measure
373. A pair of long handled fire irons and a pierced brass skimmer
374. A set of cast iron and brass kitchen beam scales to weight 4lbs
375. A quantity of Edwardian picture frames, photographs etc.
376. A similar lot of Edwardian picture frames, photographs etc.
377. A similar lot of Edwardian picture frames, photographs etc.
378. A wash dolly, copper posher, milk churn and scythe
379. A copper wash posher
380. A watch maker's cabinet and tools, fitted internally with four long and eight short drawers, containing numerous tools, ring sizers, parts, stones etc.
381. A large quantity of loose stones (for repairing jewellery), tourmaline, zircon, crystal etc., and a glass National Association of Goldsmiths plaque etc.
- 381A. A XIX century painted pine tool chest with lift out trays containing an assortment of wood and metal working tools £150-£200
382. A Victorian pedestal cabinet for clock maker's tools, the panel door enclosing two short and four long drawers (according to the vendor made by Swanwicks of Retford in 1898) £150-£250
- 382A. An assortment of mantel clock and pocket watch parts
- 382B. Two XIX century dentist's tooth key extractors £50-£100
- 382C. Assorted leather makers tools contained in a CWS biscuit tin
383. Golf clubs:- 3 old drivers and 2 irons
384. A foxes mask on an oak backboard dated 1958, taxidermist's label "S.A. Nobb's Lincoln", an otter's pad and a fox's brush
385. A heavy iron wall bracket and wooden sign "Coaching House Antiques"
386. Two blow lamps, a copper jug, a trivet etc.
387. A "Sparklets" refillable soda siphon, original box and instructions, leather tape measure and an earthenware tile
388. Six old printed OXO tins, a miner's torch, hunter's pocket knife etc.
389. A bi-lateral letter scale in original box
390. Cut throat razors, binoculars, mincers etc. - one tray
391. Sundry metalware, brass shell cases, horse brasses etc. - one tray
392. Three old wooden planes
393. An Ellams bantam duplicator model No. 1 £50-£60
394. Two suitcases containing early Christmas decorations, mostly glass
395. A pewter meat dome, old white wash jug, glass bottle, white painted towel rail etc.
396. An oak cased chiming mantel clock, oil lamp, box camera, letter rack, oak tray with moulded edge etc.
397. A "National Electric watch cleaner"
- 397A. 12 assorted toffee tins
398. Three enamel signs:- "Cattle Crossing for Levers Feeds" (3)
399. A brass helmet coal scuttle with liner and an oak trouser press
400. A stained beech folding campaign chair
401. A three fold oak fire screen with applied brass decoration, Heron and other birds, bulrushes and flowers
- 401A. A XIX century five sided cast iron paraffin stove the removable lid marked D D & Co. Ltd 72cm high £60-£120
- 401B. A XIX century cast iron stick stand 63cm high 42cm wide
- 401C. A XIX century wrought iron wooden slatted folding two seater bench and a matching chair
- 401D. A wrought iron roadman's brazier
- 401E. A XIX century shallow circular moulded garden urn decorated with flowers the short fluted square base raised on a square plinth 53cm diam top



- 401F. A XIX century pine rectangular wash tub
- 401G. A cast iron ended teak slatted garden bench 1.6m
402. After Theodore Hines - a pair of oak framed prints, Stags £20-£40
403. A mahogany framed rounded top dressing table mirror (no stand)
404. A framed collection of World War I silk valentines (5) and other World War I souvenirs
405. Harold Thornton. An engraving of St. Martins in the fields, c.1920's 31cm x 18cm, framed; another of St. Paul's, London Dec. 23rd 1940, signed 32cm x 25cm, mounted & framed; D.C. Bell - a coloured print of the Ferry Lincoln Castle with Humber Bridge behind, signed & inscribed "Humber Heritage", 32cm x 48cm, mounted & framed (3) £90-£180
406. A framed print bearing the stamp "Girls Friendly Society Lincoln Diocese dated May 1914", oak frame
407. An early XIX century coloured map of Hertfordshire in Hogarth frame
408. A Japanese silkwork picture - figures in a landscape, 42cm x 50cm, framed
409. An assortment of jewellery and ring boxes
410. A bull's head can opener with wooden handle and another wooden handled can opener
- 410A. A metal mounted turned wooden bottle opening to form a smokers pipe
411. A miniature brass photograph frame mounted on a velvet board
412. A Unity pewter sardine dish and stand, a plated butter dish/toast rack, a pair of turned wooden candlesticks, a miniature XIX century willow pattern plate and a silk picture of Queen Victoria £60-£70
- 412A. A horn peacock model, ebony hand mirrors, brass candlesticks, bone handled knives etc
413. A XIX century velvet covered box, the lid depicting Windsor Castle, a box lid Promenade Skegness; a Moss Rimmington & Co mustard tin; a pair of plated wooden handled salad servers, a bone salad spoon; three pewter measures and a lustre glazed vase
414. A Scarborough & Co school wall map of England and Wales

## CHANDELIERS & LAMPS



Lot  
415

415. An early XX century six branch brass chandelier, originally gas and now converted to electricity, the arms joined by trailing prisms and each plain glass drip tray hung with prism drops (with the option on the following two matching lots) £600-£900 *illustrated*
- 415A. A chandelier to match lot 415 £600-£900
- 415B. A chandelier to match lot 415 £600-£900



Lots 416  
& 418

416. A Victorian table oil lamp with an opaque floral decorated glass reservoir, etched globe, plain chimney, standing on a circular relief decorated brass base *illustrated*
417. A Victorian column table lamp with a floral decorated opaque glass reservoir, etched shade on a brass reeded column with stepped ebonised base
418. A Victorian brass column table lamp with plain facet glass reservoir, pink etched glass shade, on a fluted column with embossed glass boss and stepped ebonised base *illustrated*
419. A hanging oil lamp in a brass frame with coloured swirl glass reservoir and opaque shade
420. A table oil lamp with amber glass reservoir, amber tinted reeded shade on a black cast metal base



- 420A. A circular brass oil lamp (no shade) and another with a floral decorated pottery reservoir and plain glass chimney, small blue glass and bedroom oil lamp (3)
- 420B. A XIX century oil lamp with opaque pale cream reservoir decorated with flowers, brass acanthus footed column on a black circular base' fluted cranberry and floral etched shade 48cm high
- 420C. A 1930's gourd shape opaque glass lamp base decorated with yellow pansies, chrome mounts and four glass shades

**CADDIES, BOXES, TREEN,  
METALWARE ETC.**

421. A XIX century mother of pearl inlaid rosewood writing slope, the hinged lid opening to reveal inkwells and pen tray, 45cm wide
422. A XIX century mahogany corner shelf bracket
423. A XIX century mahogany writing box with fitted interior, 35cm wide
424. An early XX century oak smoker's cabinet with brass fretted gallery, the interior with pipe racks and fitted drawer (doors missing)
425. A XIX century rectangular mahogany box with two compartment interior, 27cm wide
426. A XIX century mahogany plate chest with brass carrying handles, baize lined interior, containing a Japanese lacquer box, leather box and small XIX century mahogany caddy
427. A XIX century mahogany casket shaped jewellery box with boxwood stringing, blue silk interior, lift out tray, 26cm diameter
428. A XIX century mahogany jewel box with ebony stringing and mother of pearl inlay, padded purple lid (tray missing)
429. A XIX century rosewood box with mother of pearl detail, 22cm wide £30-£50
430. A XIX century casket shaped mahogany tea caddy with cross-band and boxwood stringing, raised on bracket feet, 20cm wide £90-£120
431. A XIX century mahogany writing box, interior fittings missing, 30cm wide

432. A XIX century mahogany stationery box, 25cm wide
433. A XIX century rosewood and Tunbridge ware banded jewellery box with blue painted interior, 27cm wide
434. A XIX century oak book stand with carved ends and a similar oak and brass bound stand
435. A mahogany cased perpetual calendar and a small brass desk calendar
436. A XIX century straw-work domed top casket with three small drawers, the top lifting to reveal a mirror and glass topped compartmented lift out tray, 24cm wide
437. A XIX century turned oak bowl with motto "Now Good Digestion Wait on Appetite and Health", plated rim, 22cm diameter
438. A carved wooden tea caddy in the form of an owl with glass eyes, 20cm high



Lot  
439

439. An early XIX century pear shaped fruitwood tea caddy with hinged lid, traces of original paint, (stalk finial missing), 15cm high £300-£500 *illustrated*
440. A carved hardwood figure of an Indian elephant, 27cm long

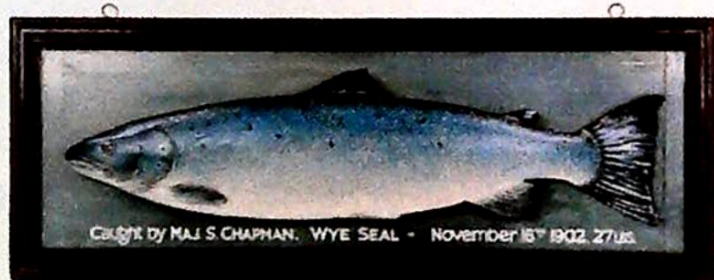


Lots 441, 442 & 443

441. Two Malayan carved hardwood busts of a man and woman in traditional head dress, and an African carved hardwood figure of a warrior *illustrated*



442. A pair of Balinese carved hardwood busts of a man and woman in traditional head dress *illustrated previous page*
443. A Japanese carved hardwood figure of water buffalo and calves surmounted by four laughing figures, 40cm wide *illustrated previous page*
444. Three Japanese carved hardwood figures and stands of figures in traditional dress, 20cm high excluding stands
- 444A. An early XX century octagonal oak cased aneroid barometer with chased silver plated front 26 x 35cm wide
- 444B. A XIX century circular walnut boxwood and rosewood inlaid games table top, 53cm diam
- 444C. A XIX century walnut coal compodium with brass hinges with carrying handle, brass shovel and liner £50-£100
- 444D. A copper warming pan with an ebonised turned wooden handle
- 444E. A similar copper warming pan with an ebonised turned wooden handle
- 444F. A similar brass pierced warming pan
445. A XIX century ebony silver topped cane and an ebony walking stick with silver band
446. A hardwood flute etc. (5)



Lot 447

447. A carved wooden three quarter Salmon trophy "caught by Maj. S. Chapman Wye Seal - November 18 1902, 27lbs" written above P.D. Malloch Perth, mounted on a wooden backboard and in a moulded oak frame, the fish 109cm long £1500-£2200 *illustrated*
448. A carved wooden cuckoo clock with birds and foliage £40-£80
- 448A. A small Tunbridge ware box, cribbage box, domino set (nines), oak stationery holder, ebony rule, ebony pomade holder, 1937 Coronation mirror etc - all contained in a small leather case £20-£40
449. A Victorian plain iron fire curb, 98cm
450. A XIX century brass fender of classical

- design with raised dogs, the moulded kerb centred with a "egg" design, 133cm wide £100-£150
- 450A. A brass standard lamp
451. A XIX century copper kettle with strap handle
452. A XIX century small copper kettle
453. An Art Nouveau copper tankard with strap handle, the body decorated with stylised flowers, 15cm high
454. A cast brass lady's head posy holder mounted on a diamond shape black marble back
455. A brass table gong, brass chamber candlestick, plated sugar helmet and spoon, plated teapot and covered sugar, soup ladle, sauce boat, brass dish, butter knife and spoon
456. Two late XIX century cast metal free standing photo frames; four bone handled dessert knives and forks and a Middle Eastern engraved and beaten brass charger, 35cm diameter
- 456A. An oak canteen retailed by The Goldsmith & Silversmiths Co. containing assorted cutlery and a cased set of cutlery
457. A pair of XIX century brass candlesticks, 23cm high and a pair of cast metal candlesticks in the form of grape vines, 25cm high
458. A XIX century chamber candlestick and snuffer
459. A cast brass crumb scoop, a pair of brass swans, World War I brass lighter, a World War I lighter made from tunic buttons and a pencil sharpener
460. A Chinese bronze ceremonial vessel and lid, 23cm high and a similar vase, 15cm high (lid missing)
461. A ships compass with brass cover, a buoy lamp labelled "The Great Grimsby Coal Salt & Tanning Company Ltd", an oil can and a brass mount
462. A beaten brass tray, 38cm diameter; another, 43cm diameter; a brass bowl, 22cm diameter; a brass bowl and stand, 16cm high; a pair of Malayan pewter two branch candlesticks; a XIX century brass candlestick; a World War II brass jar made from shell cases; a brass shell case ashtray and a Japanese vase
463. A pair of plated entree dishes and covers, the lid with crest - Panama New Zealand and Australian Royal Mail Company Ltd



## GLASSWARE

- |  |  |
|--|--|
| <p>464. A XIX century Bohemian red gilt decorated specimen vase with oval ceramic panel of a lady, 25cm high (a/f)</p> <p>465. A XIX century blue glass ring tree with gilt and enamel decoration</p> <p>466. Cut glass - covered bowl and cover, fruit basket, fruit stand, ashtray, hob nail cut ashtray and a hob nail cut jar</p> <p>467. An oblong silver plated galleried tray with a pair of cut glass decanters and claret jug, each with mushroom stopper, 3 plated labels "Whisky", "Port" and "Sherry"</p> <p>468. A XIX century cut glass sherry decanter and a moulded glass lemonade jug</p> <p>469. Assorted cut glass:- three brandy glasses, six wine goblets, six sherry glasses, tumbler, two liqueurs, two vases, a jug, lemonade set, goblet, sundae dish, four small spirits, three vases, stem wine</p> <p>470. Cut glass:- preserve jar, vinegar bottle, goblet, two brandy glasses, whisky tumbler, wine glass, spirit glass, scent bottle, mustard pot, oil and spirit bottle and a salt cellar</p> <p>471. An amethyst flashed decanter, two ruby overlay hock glasses, green bowl wine glass and two green bowl liqueurs</p> <p>472. A XIX century rummer with baluster stem and two engraved wine goblets</p> <p>473. A XIX century Cranberry glass water jug</p> <p>474. Cut glass:- a pair of champagne flutes, pair of wine goblets, six wine glasses, four small whisky tumblers, three large whisky tumblers and a tankard</p> <p>475. A flared cut glass vase, 26cm high</p> <p>475A. Lalique - a set of six wine glasses, the bowl with angel head and outstretched wings £220-£240</p> <p>476. Cut glass:- powder bowl and cover, pair of candlesticks, tray and scent bottle</p> <p>477. Cut glass:- a flared vase, 21cm high and another vase, 38cm high</p> <p>478. A 1950's moulded glass lemonade set of jug and six glasses</p> <p>479. Cut glass:- five sundae glasses, four large whisky tumblers, one small whisky tumbler, a flared vase - 26cm high, a vase - 17cm high</p> <p>480. A cut glass sugar castor with hallmarked silver top, 19cm high</p> | <p>481. Cut glass:- six sundae glasses, six spirit tumblers, cream jug, ashtray, small bowl, two vases and a lemonade jug</p> <p>482. A heavily cut spirit decanter with mushroom stopper, silver mounted rim, 24cm high and two champagne saucers</p> <p>482A. A XIX century cut glass decanter with steeple stopper and silver painted oval shaped teapot with bone finial to lid £20-£40</p> <p>483. A set of six XIX century moulded glass ice plates</p> <p>484. A cut glass cream jug and sugar; two moulded glass cream jugs and sugars (6)</p> <p>485. Cut glass:- seven sundae glasses and a vase</p> <p>486. A XIX century cut glass sherry decanter</p> <p>487. A XIX century sherry decanter, spirit decanter, wine glasses, two flute shaped wine glasses, hollow stem champagne glass, enamelled water jug</p> <p>488. Cut glass:- fruit bowl, oval jar and cover, three specimen vases and two handled bowl</p> <p>489. A pair of XIX century green glass stopper bottles with gilt decoration, 17cm high; a XIX century sherry decanter and six glass toddy stirrers</p> <p>489A. A pair of green opaque glass vases with enamelled flower decoration</p> <p>490. A Cranberry glass cream jug and sugar bowl</p> <p>491. A pair of Georgian triple ring necked decanters with mushroom stoppers, 25cm high; labels "Whiskey" and "Gin"</p> <p>492. A XIX century multi faceted decanter with mushroom stopper, 28cm high, a narrow neck decanter (a/f) and a claret jug (a/f)</p> <p>493. A XIX century celery vase with knop stem and wheel etched decoration, 23cm high</p> <p>494. A XIX century wine glass cooler, three finger bowls, a tumbler and a pair of moulded small bowls with gilded rims, impressed diamond mark "H"</p> <p>495. XIX century glass:- two enamel decorated jugs, each 15cm high, an enamel decorated decanter 20cm high, etched and enamelled part water set of jug and three tumblers, a scent bottle and a glass inkwell</p> <p>496. Three XIX century press glass stemmed sugar bowls and a fruit plate</p> <p>497. A Cranberry glass vinegar bottle with clear glass stopper and handle, 16cm high</p> |
|--|--|



498. XIX century ruby glass:- a narrow neck vase, 32cm high, an etched and stag decorated vase, 22cm high and a small vase, 9cm high
499. A XIX century Cranberry glass decanter/jug with clear glass stopper and handle, 26cm high
500. A lemonade set of jug and six glasses decorated with blue enamel bands and white vertical lines

### **BESWICK & ROYAL ALBERT** **BEATRIX POTTER FIGURES**

501. Peter Rabbit 1993 Hundredth Anniversary Edition - BP-7b £30-£60
502. Cottontail - BP-3c £40-£60
503. Benjamin Bunny (3rd version) - BP-3b £30-£60
504. Peter Rabbit, light blue jacket - BP-3b £30-£60
505. Benjamin Bunny - Sat on a bank, first version, BP-3b £80-£120
506. Mr Benjamin Bunny & Peter Rabbit - BP-3c £80-£120
507. Little Black Rabbit -BP-3b £30-£60
508. Mrs Rabbit and Bunnies - BP-3b £30-£60
509. Flopsy, Mopsy & Cottontail -BP-3b £30-£60
510. Cecily Parsley -BP-3c £30-£60
511. Old Mr. Bouncer - BP-3c £40-£60
512. Rebeccah Puddle Duck (a/f) - BP-4, Jemima Puddle Duck - BP-3b, Jemima Puddle Duck Made a feather nest - BP-3c, Mr. Drake Puddle Duck - 3P-3c (4) £150-£200
513. Aunt Pettitoes - BP-3b £30-£60
514. Pigling Bland - lilac jacket - Bp-3b £30-£60
515. Pig-Wig (variation 1) - BP-3b £200-£300
516. Little Pig Robinson Spying - BP-3c £100-£150
517. Old Mr Pricklepin - BP-3c £40-£80
518. Mrs Tiggy Winkle (2nd variation) - BP-3b £30-£60
519. Mrs Tiggy Winkle Takes Tea - BP-3c £80-£120
520. Mr Tod - BP-4 £150-£250
521. Foxy Whiskered Gentleman- BP-3b £30-£60 *illustrated*
522. Miss Moppet - BP-3b £30-£60
523. Susan - BP-3b £70-£100



Lots 521, 524, 550, 559 & 560

524. Ginger - BP-3b £350-450 *illustrated*
525. Tom Kitten & Butterfly - BP-3c £120-£160
526. Cousin Ribby - BP-3c £30-£60
527. Tom Kitten (first version 2nd variation) - BP-3b £30-£60
528. Tabitha Twitchit & Miss Moppet - BP-3b £60-£90
529. Ribby - BP-3b £30-£60
530. Goody Tiptoes - BP 3b £30-£60
531. Squirrel Nutkin BP 3b. £30-£60
532. Timmy Tiptoes - BP 3b £30-£60
533. Chippy Hackee - BP 3b £30-£60
534. Hunca Munca Sweeping - BP 3b £40-£80
535. Timmy Willie from Johnny Town Mouse £30-£60
536. Tailor of Gloucester - BP 3b £30-£60
537. Appley Dapply (2nd version) - BP 3c £60-£90
538. The Old Woman who lived in a Shoe - Knitting BP 3b £30-£60
539. Hunca Munca - BP 3b £40-£80
540. Goody & Timmy Tiptoes - BP 3c £100-£150
541. Lady Mouse - BP 3b £40-£80
542. Tom Thumb - BP 3c £60-£100
543. Samuel Whiskers - BP 3b £30-£60
544. Tomasina Tittlemouse - BP 3c Error £60-£100
545. The Old Woman who lived in a Shoe - BP 3c £40-£60
546. Mrs Tittlemouse - BP 3c £60-£90
547. Johnny Town-Mouse BP 3c £40-£60
548. Anna-Maria - BP 3b £90-£120
549. Johnny Town-Mouse with Bag BP 4 £150-£200
550. Mr Jeremy Fisher Digging - BP 4 £150-£200 *illustrated*
551. Sir Isaac Newton - BP 3b £160-£220
552. Jeremy Fisher first version, 2nd variation - BP 3c £50-£80
553. Amiable Guinea-Pig - BP 3b £150-£200
554. Tommy Brock - BP 3b £40-£80
555. Sally Henny Penny - BP 3b £30-£60



556. Mr. Alderman Ptolemy BP 3b £50-£80  
 557. Diggory Diggory Delvet - BP 3c £40-£80  
 558. Old Mr Brown - BP 3b £30-£60  
 559. Pickles - BP 3b £200-£300 *illustrated previous page*  
 560. Duchess - style 2 £150-£250 *illustrated previous page*  
 560A. Duchess £150-£250  
 561. Foxy Reading Country News - BP-6 £15-£30  
 562. Mr McGregor - BP-6 £15-£25  
 563. Pigling Eats His Porridge - BP-6 £25-£40  
 564. And this Pig had none - BP-6 £10-£20  
 565. Little Pig Robinson - BP-6 £10-£20  
 566. Benjamin Wakes Up BP-6 £10-£20  
 567. Mrs Rabbit BP-6 £10-£20  
 568. Peter with Postbag -BP-6 £10-£20  
 569. Peter with Daffodils - BP-6 £10-£20  
 570. Peter and the Red Pocket Handkerchief - BP-6  
 571. Peter ate a Radish - BP-6  
 572. Mrs Rabbit cooking - BP-6  
 573. Peter in Bed - BP-6 £15-£30  
 574. Peter in the Gooseberry Net - BP-6 £15-£30  
 575. Benjamin ate a lettuce leaf - BP-6 £10-£20  
 576. Gentleman Mouse Made a Bow - BP-6 £10-£20  
 577. Hunca Munca spills the beads - BP-6 £10-£20  
 578. No more Twist - BP-6 £10-£20  
 579. The Christmas Stocking - BP-6 £30-£60  
 580. Lady Mouse made a Curtsy - BP-6 £10-£20  
 581. Miss Dormouse - BP-6 £20-£40  
 582. Jemima Puddleduck with Foxy Whiskered Gentleman - BP6 £20-£30  
 583. Mittens and Moppet - BP-6 £30-£50  
 584. Ribby and the patty pan - BP-6 £10-£20  
 585. Tabitha Twitchett - BP-6 £15-£30  
 586. Tabitha Twitchit - BP-6 £15-£30  
 587. John Joiner £10-£20  
 588. Mother Ladybird - BP-6 £10-£20  
 589. Babbitty Bumble - BP-6 £30-£60  
 590. Teatime Collection 20cm plate - Jeremy Fisher  
 591. Teatime Collection - Breakfast Set for two - 11 pieces  
 592. Egg trinket jar and cover - Peter sat down to rest he was very damp from sitting in that can  
 593. Mrs Tiggy Winkle Breakfast set for one (5)

## CERAMICS

594. Five Wade National Westminster pig money boxes  
 595. Two Beswick chestnut horses, head to right, right foreleg raised, 23cm long  
 596. Beswick. A grey shire horse, 21cm high  
 597. Beswick. A brown pony, 16cm high  
 598. Beswick '95 - a chestnut hunter, head to right, 20cm high  
 599. Beswick. A brown stallion, head to right, 18cm high  
 600. Beswick. Two foals  
 601. Beswick. Four hounds  
 602. Beswick. An Osprey decanter, Beneagles Whisky  
 603. Beswick. A Golden Eagle decanter (unmarked)  
 604. Beswick. A Pheasant, model 1225, 20cm high  
 605. Beswick. A Pigeon 1383 and a small Pheasant  
 606. Beswick. A mounted huntsman, a fox and four hounds  
 607. Goebel. Bambi standing against a tree stump, mark DIS 42/A 44  
 608. Goebel. A girl sitting in a bough of blossom 141 3/0  
 609. Goebel. An angel holding a candle, dressed in green 21/0 14  
 610. Goebel. A boy in an apple tree 142 3/0  
 611. A pair of Continental posy holder figure groups - a boy with a puppy, a girl with baby and goose  
 612. A porcelain model of a Bull Mastif marked "Tivoli Kobenhavn"  
 613. A pink moulded pottery teapot in the form of a bag, a Wade pipe stand with a seated West Highland Terrier and George V 1935 mug (3)  
 614. Sylvac. A blue ground jug banded with silhouetted kitchen utensils, No. 2582; and a small stoneware jug  
 615. Royal Lancastrian. A green circular vase 9cm high and a Poole turquoise jardiniere, 11cm high  
 616. A Poole pottery bowl monogrammed BN; two slate grey tureens, the lids printed with mushrooms and a preserve jar and cover (4)  
 617. Shelley. A pair of black ground Art Deco design vases decorated with butterflies and foliage, 17cm high  
 618. Shelley. A grey-blue jug 153619



619. Royal Worcester. An ashtray and a cigarette jar; Shelley - three dishes
620. Shelley. A square bread and butter plate decorated with blue pansies and two others
- 620A. A part china tea service WR2202 - 6 cups, saucers, plates, cream and sugar and a bread and butter plate
621. Royal Cauldron pattern 710/2. A circular fruit bowl decorated with stylised flowers on a beige/brown ground, 23cm diameter
622. Spode Copelands China. A floral decorated fruit bowl with gilt banding, 25cm diameter
623. Royal Doulton. A "Magnela" pattern baluster vase D6298 impressed 8285, 22cm high £30-£60
624. A Charlotte Rhead charger decorated with stylised flowers, painted signature pattern 5803 and printed Crown Ducal stamp, 32cm diameter £150-£250
625. A Macintyre biscuit barrel printed with pink flowers and with a plated lid, cover and swing handle
626. Amherst Japan. An ironstone moulded pottery fruit bowl decorated with an oriental design, 27cm high
627. Wedgwood Pearlware. A "Moresque" pattern tureen, 28cm diameter
628. A Sadler earthenware jug with a pewter lid, a transfer print Victorian teapot and a stoneware jug (3)
629. Crown Devon Fieldings. A rose vase and a Royal Doulton "Oyama" pattern tapering jug (2)
630. Wedgwood Jasperware. Two blue jugs, a Minton soup bowl and a plate
631. Sundry decorative china including a vase, jug, cucumber dish etc. (5)
632. E Radford Burslem. A hand painted chamber candlestick and a XIX century brightly coloured ovoid striped glazed vase
633. A XIX century transfer print wash jug
634. A transfer print wash jug
635. Two Victorian octagonal jugs with moulded snake handles



Lot 636

636. A set of five graduated octagonal jugs

637. decorated in ochre and cobalt blue with gilt highlights, monogrammed beneath "K Co" £150-£250 *illustrated*
638. Three graduated stoneware harvest jugs Doulton. A stoneware match holder decorated with raised flower heads, blue glazed interior
639. Royal Doulton. A cylindrical tapering vase with a blue collar decorated with flower heads, impressed mark 7841
640. Doulton Slaters Patent. A tobacco jar and cover lettered "Alfred A Martin", relief decorated on a sage green ground, banded in brown
641. Three graduated earthenware part treacle glazed jugs
642. A Minton type jug, the cobalt ground decorated in relief with sunflowers and foliage 17cm high, a vase and another jug
643. Charles Meigh. Two jugs of architectural design
644. Charles Meigh. A similar design jug
645. A moulded pottery coloured glazed jug decorated with bunches of grapes and another smaller similarly coloured jug
646. Hornsea. A moulded pottery jug in the form of a tree bough with squirrels amid the leaves, a fawn at the base, impressed mark 96; and another 1930's moulded pottery jug
647. After Kauffman. A part dessert service comprising six plates and a comport, each decorated with alternate panels of lovers in a garden and summer flowers, gilt borders
648. A XIX century Staffordshire seated King Charles Spaniel holding a basket of flowers in its' mouth, 16cm high
649. An oriental design pierced baluster vase with ornate open handles
650. A blue and ochre decorated meat plate and another with a blue/grey border
651. Alfred Meakin. A "Belmont" pattern part tea and dinner service including two tureens, meat plates etc.
652. Wood & Sons. A "Delph" pattern blue and white part dinner service including two oval tureens, sauce boat, meat plates etc.
653. A Minton "Delft" pattern blue and white oval tureen and cover
654. Booths Real Old Willow. A part tea and dinner service (46)



655. Copeland Spode, "Spodes Byron" pattern. A large transfer print breakfast cup and saucer and a Copeland Spode "Chelsea" pattern fruit bowl
656. A Booths jug; 3 Masons breakfast cups and saucers
657. Four XIX century Derby cabinet plates decorated in cobalt blue and ochre with gilt highlights, red painted mark £70-£120
658. An elaborate Continental posy holder of a swan pulling a shell with a standing girl and cherub
659. A pair of Sitzendorf porcelain wall brackets lavishly decorated with applied flowers and a winged cherub; and a similar lamp base supported by three winged cherubs
660. Two Wedgwood black basalt finch ornaments; Royal China Works Worcester - a pair of water lily design wall pockets and sundry other decorative china (13)
661. A Continental porcelain three piece tea service in the form of strawberries
662. Lubern Bone China. A part tea service decorated in gold (20 pieces) and a 1960's Staffordshire "Checkmate" pattern part coffee service (14 pieces)\_
663. Clarice Cliff. A transfer printed wall plate decorated with a watermill, green printed mark, impressed 1152
664. A XIX century porcelain dessert plate, blue banded and pansies, 23cm diameter, a XIX century ribbon plate decorated with flowers, 21cm diameter, a pair of Austrian porcelain plates decorated with roses, 22cm, a similar plate, 22cm and a Portuguese leaf plate, 18cm
665. Minton. Three soup plates and one dessert plate, all banded and floral swag decorated and a Minton soup bowl with pink floral decoration, 23cm diameter
666. XIX century Sunderland pink lustre six cups and saucers and slop basin
667. Kent China. A Japan patterned coffee cup and saucer; coffee cup and saucer unmarked; Royal Crown Derby - a miniature teapot (no lid) and a XIX century Japan pattern teapot with metal lid and spout
668. Royal Crown Derby "Rougemont" pattern - a plate, 26cm and a XIX century ironstone "Berry" pattern jug, 17cm high
669. Newhall. Two diamond shaped teapot stands, patterns 203 and 450

670. A Meissen porcelain covered jar with rust and gilt banding, the body decorated with flowers
671. A XIX century porcelain small rectangular tureen and lid decorated with flowers
672. A French faience oval shaped dish with hand painted decoration of figures beside a lake amongst trees, painted mark "Fait Parmoy Gilot 1773", 30cm long
673. Quimper. A faience jug decorated with a figure and flowers, inscribed beneath the handle "Henriot Quimper France", 16cm high
674. Delft. A glazed earthenware flower trough decorated in blue, 30cm wide, painted mark "Delft 1217"
675. A majolica oval vase with overall green glaze on floral highlights, 22cm wide
676. Royal Albert "Heirloom" pattern 30 - a Spodes Italian side plate, majolica leaf shaped dish, a small Continental trinket pot, Continental blue and white vase, two Booth tea cups and a red glass vase
677. A XIX century shallow dish with royal blue and gilt banding, the central panel of man with harp (faded), 20cm diameter, and a porcelain chamber candlestick
678. Noritake. An ornately decorated china teapot with floral decoration
679. Royal Doulton. A pair of square plates - "Woodside Chenies, Bucks" and "Shakespeare Country, Maxstoke Castle", green printed marks
680. K & T Longton. A blue transfer printed 1911 Coronation plate, 25cm, and a Royal Doulton child's Dickens plate, 26cm
681. An octagonal blue Japan decorated plate, 22cm diameter; two ironstone dinner plates, 26cm, a further plate, 24cm; and six 1937 Edward VIII earthenware egg cups
682. Ivorex Osbourne plaques - The Jews House, Lincoln and Newport Arch, Lincoln
- 682A. 2 Osborne plaques, both Lincoln Cathedral
683. Sylvac. A shallow vase number 2209; GDA France - a breakfast cup and saucer, a pair of late XIX century porcelain two handled vases with green bodies decorated with flowers, 10cm high, a pair of Crown Devon style vases, 16cm, a pair of small Campana vases, 15cm, a Dresden china candlestick, a small china bud vase and an earthenware vase



684. A Continental part tea set with gilt banding comprising teapot, three plates, three cups and saucers, cream and sugar and a Colclough sugar bowl
685. Crown Staffordshire "Black Victoria" pattern part service comprising- six plates 26cm, five plates 21cm, three plates 16cm and an old Foley "Ballerina" pattern three tier cake stand
686. Royal Worcester bone china "Bernina" pattern tea service:- teapot, cream and sugar, six cups, saucers and plates
687. Royal Worcester. A miniature specimen vase; Wedgwood "Turquoise Florentine" pattern coffee cup and saucer; Royal Crown Derby "Royal Antoinette" pattern coffee cup and saucer; Royal Worcester patch box; Dresden and other cups and saucers £50-£100
688. Wedgwood "Cornucopia" Bicentenary Celebration china box and cover containing two unopened packs of playing cards; Wedgwood "Clio" oval trinket box; Limoges leaf shaped porcelain dish and a Dresden lattice work bowl (4) £30-£60
689. An early XIX century Staffordshire china part tea service:- six cups and saucers, three additional saucers, teapot decorated with scrolling cornflowers and a smaller teapot (no lid)
690. Wedgwood Blue Jasper powder bowl and cover and small campana vase
691. Wedgwood blue Jasper shaped powder bowl, cream jug, 1953 Coronation lighter and a XIX century blue Jasper two handled vase
692. Wedgwood Jasper. A blue trinket box and cover, heart shaped ashtray, three circular ashtrays; green Jasper small campana vase; Wedgwood Jasper jar and cover and hair jar (8)
693. Foley Pottery "Rose" pattern chamber pot; Royal Cauldon bowl, 23cm; and a Johnson Bros. open dish
694. An Asiatic pheasant pattern meat plate; blue pattern meat plate, 44cm; blue pattern meat plate, 30cm; two white meat plates; cream chamber pot and stoneware stew pot
695. Copeland Late Spode. A Stilton cheese dish or comport, 32cm diameter, printed mark with registration mark; and a Woods ivoryware 1930's six piece sandwich set; Continental

- porcelain sauce boat and a miniature Japanese vase
696. A XIX century Staffordshire porcelain service comprising:- two plates 24cm, twelve plates 18cm, eleven cups, twelve saucers, sugar and cream
697. Royal Worcester porcelain oven to table ware, overall gilt decoration comprising teapot, milk jug, nine plates - 21cm, nine plates - 17cm, nine cups and saucers, nine additional saucers, six ramekins, two small bowls, two jam pots, salt and pepper, three oil bottles, two white glass hors d'oeuvre plates and 2 egg cups
698. Grimwades. A pair of earthenware chamber pots decorated with roses
699. Masons ironstone china "Regency" pattern - part breakfast service:- 5 plates - 26cm; 3 plates - 21cm; 6 plates - 17cm; oblong sandwich plate, 4 piece cruet, 2 egg cups, covered mustard pot, covered honey pot, sandwich plate, oval dish, cylindrical jar and cover, 5 cereal bowls, sauce boat and stand, cigarette jar, 2 ashtrays, 5 assorted cups, 6 coffee cans, 12 assorted saucers, 4 shallow bowls, shallow bowl, 19cm etc.
700. Mintons "Denmark" pattern dinner service comprising:- 10 plates - 25cm, 11 plates - 22cm, 12 plates - 19cm, 2 sauce boats and stands, covered sauce tureen, 2 covered tureens, 5 graduated meat plates - 28cm-51cm (a/f)
701. Princess earthenware part dinner service comprising:- sauce tureen, ladle and stand, sauce tureen and stand, 2 covered veg dishes, 9 soup bowls, 4 plates - 23cm, 7 plates - 25cm, 4 graduated meat dishes - 25cm-39cm
702. A XIX century Asiatic pheasant pattern ware - two meat plates, assorted plates, tureen covers etc. (11), and two other meat plates
703. Mintons. A blue decorated toilet bowl, 42cm diameter
704. William Adams & Co "Rosetta" pattern part dinner service comprising:- 12 plates - 26cm, 12 plates - 23cm, 12 plates - 18cm, 2 sauce tureens with ladles and stands, two covered tureens and stands (1 with drainer inset) and 4 graduated meat plates
705. Oriental rice ware - assorted bowls, cups, saucers, spoons etc. (37)



- 706. A pair of Japanese Imari plates - 21cm decorated in typical palette
- 707. A pair of Japanese satsuma baluster vases, 39cm high
- 708. A pair of Japanese Satsuma vases - 32cm high
- 709. A Chinese famille vert vase and cover - 33cm high
- 710. A pair of Chinese blue and white vases and covers - 33cm tall, and a blue and white ginger jar and cover
- 711. A XIX century Japanese Imari plate - 28cm, typical palette
- 712. A XIX century Japanese Imari charger - 31cm diameter (repaired)
- 713. A pearlware lattice willow pattern oblong plate - 24cm long, a willow pattern ashtray and a XIX century blue and white transfer printed oval dish
- 714. Riley's semi china - a blue and white transfer decorated plate drainer and a smaller willow pattern plate drainer
- 715. A pair of blue and white tin glazed shallow dishes - 23cm diameter and another blue and white tin glazed plate - 23cm
- 716. A Rhenish beerstein and cover decorated with Germanic Kings, the finial to lid damaged - 49cm high
- 717. Copeland Spode Italian - a shaped shallow dish and cover
- 718. A XIX century improved stone china open willow pattern dish and a willow pattern meat plate, 39cm wide and a sauce ladle
- 719. A Staffordshire XIX century earthenware meat plate with gravy well decorated with blue foliage, 51cm long
- 720. Meissen "Onion" pattern covered tureen, 24cm wide, a matching soup bowl - 23cm and a shallow dish - 24cm
- 721. A set of four XIX century pearlware willow pattern plates - 20cm diameter
- 722. Copeland Spode Italian. An oblong octagonal serving plate printed and impressed marks
- 723. XIX century willow pattern meat plates, assorted sizes (4)
- 724. A Chinese export blue and white willow pattern meat plate - 50cm wide
- 725. Alfred Meakin "Old Willow" pattern - five plates - 22cm; Fenton "The Olde Willow" pattern, pair of tureens, six matching plates - 25cm, three graduated meat plates and a sauce boat; four further plates - 25cm, a Masons

- ironstone Willow pattern vase - 15cm and two Copeland Spode Italian saucers
- 726. Wedgwood "Swallow" pattern blue and white transfer decorated jardiniere - 17cm high, printed and impressed mark
- 727. Maling:- a willow pattern toilet jug and bowl and two vases (4)
- 728. A Chinese blue and white decorated porcelain stick stand, 60cm high (repaired)
- 729. A pair of World War I Wood & Sons plates and a moulded glass 1937 Coronation plate, a small Satsuma vase and an Italian figure
- 730. A XIX century copper lustre glazed earthenware teapot decorated with pink enamel flowers £20-£30



Lots 731, 732 & 733

- 731. Derby - an early XIX century squat jug with royal blue body, gilt highlights and two decorative panels, the base with red painted mark and title near Crich (a/f) £80-£100 *illustrated*
- 732. Crescent China - a highly decorated wrythen bodied china biscuit barrel, the body decorated with alternate blue/gilt and floral panels, metal rim lid and swing handle £80-£120 *illustrated*
- 733. A pair of XIX century Continental porcelain figures of a girl with tambourine in a floral dress and a boy with lute wearing a blue and gilt decorated waistcoat with long purple cape and hat, both raised on scrolling floral decorated bases, 30cm high £70-£140 *illustrated*
- 734. A pair of satsuma narrow necked vases, 30cm high
- 735. A pair of Yoshimi porcelain figures of dogs of fo, 16cm high £20-£40
- 736. A Japanese glazed earthenware ovoid vase, the grey glazed body decorated with blossom, the shaped neck with rope handles, raised on three feet, 50cm high



737. A Continental porcelain centre piece with shell shaped flower holder decorated with roses and cupid, 18cm high
738. Meissen or Vienna. A porcelain figure group of a lady sitting beside a table with spinning wheel holding a bible, 15cm high
739. A XIX century Continental Parian figure of a girl with a ewer on her shoulder decorated in pastel colours (a/f), 40cm high



Lots 740 & 741

740. A pair of XIX century Parian busts of Grecian ladies highlighted in pink and pale blue, raised on circular gilt decorated bases, 32cm high (1 base detached) £200-£400 *illustrated*
741. A marble figure of a young girl with book sitting on an alabaster bench, 30cm high £100-£200 *illustrated*
742. XIX century Staffordshire earthenware toilet set of jug, bowl, chamber pot, soap dish and vase £50-£70
743. A XIX century Staffordshire flatback cottage decorated in orange and natural colours, 17cm high
744. Two XIX century Staffordshire Toby figures - one in the form of a jar and cover, the other with a tricorn hat (top sealed)



Lots 745, 746, 747, 748 & 758

745. A XIX century Staffordshire flatback figure - a boy with a cow by a tree, 25cm high *illustrated*

746. A XIX century Staffordshire flatback figure of a couple with a dog seated on a naturalistic bench (repaired) *illustrated*
747. A pair of XIX century Staffordshire flatback figures of fisher folk, 35cm high £60-£100 *illustrated*
748. A pair of XIX century King Charles Spaniel dog figures, the white bodies decorated with gilt highlights, the base with number 1, 32cm high (a/f) £80-£140 *illustrated*
749. Adams - two breakfast cups and saucers, one decorated with the farmers arms, the other old English sports £90-£140
750. Royal Doulton figure - "Buttercup" HN2309
751. Royal Doulton figure - "Becky" HN2740
752. Royal Doulton character jug "Beefeaters" issued 1946 £50-£100
753. Royal Doulton character jug "Long John Silver" D6335 issued 1951 £50-£100
754. Royal Doulton character jug "The Jester" early 1950's £50-£100
755. Royal Doulton character jug "Monty" issued early 1950's £50-£100
756. Royal Doulton character jug "Falstaff" issued 1949 £50-£100
757. Royal Devon. An earthenware hot water jug decorated with roses and a pewter lid
758. A Staffordshire figurine of a witch riding a goose, 19cm high £50-£100 *illustrated*
760. A pair of porcelain half dolls - ladies wearing orange hats £25-£50
- 760A. A Royal Worcester porcelain candle snuffer "Mrs Caudle", date mark 1895
- 760B. Royal Doulton white ware jug, John Barleycorn (factory firing faults), green printed mark 1939-55, 9cm high



Lots 761, 762 & 764

761. A pair of porcelain half dolls - ladies wearing pink hats £25-£50 *illustrated*



762. Three porcelain half dolls - ladies wearing pink hats £30-£60 *illustrated previous page*
763. Three porcelain half dolls - 1920's bobbed hair styles £30-£60
764. Two porcelain half dolls - ladies wearing wide brimmed hats £25-£50 *illustrated previous page*
- 764A. A porcelain half doll figure with flat back, impressed foreign 13327
- 764B. Three bisque miniature dolls - one negro in original box £30-£40
- 764C. An Armand Marseille porcelain headed composition jointed doll, the head marked '390 A 5/O M. Made in Germany' and a set of lace edged cotton clothing
765. Two 1920's seated porcelain figures and a standing figure in a blue dress
- 765A. A Continental porcelain figurine of a dancer with long blue dress, impressed mark 8456
- 765B. A silk covered pin cushion surmounted by a reclining porcelain lady a Betty Boop miniature doll, jointed miniature baby doll and a fan

### Clarice Cliff



Lots 766, 769 & 770

766. Clarice Cliff Bizarre. A "Crocus" pattern marmalade pot and cover £175-£250 *illustrated*
767. Clarice Cliff Bizarre. "Canterbury Bells" pattern salt pot and mustard pot and cover £150-£250
768. Clarice Cliff. "Crocus" pattern 331 candlestick £100-£200
769. Clarice Cliff Bizarre. "Crocus" pattern salt and pepper pots and mustard £150-£250 *illustrated*
770. Clarice Cliff Bizarre. "Crocus" pattern cream and sugar and covered jam pot £150-£250 *illustrated*
771. Clarice Cliff. "Crocus" pattern two handled soup bowl and stand, rim chip; and Bizarre "Crocus" pattern plate £100-£200



Lot 772

772. Clarice Cliff Bizarre. "Gay Day" pattern bowl, 20cm diameter, rubbing to interior £150-£250 *illustrated*



Lot 773

773. Clarice Cliff. A Fantasque Bizarre "Berries" conical sugar sifter, 13cm high £500-£800 *illustrated*
774. A XIX century Japanese AO - Kutani charger decorated with blue foliage, 30cm diameter £50-£100
775. A XIX century Japanese blue and white charger decorated with a vase of flowers, 46cm diameter £50-£100
776. Weymss. A large tig or loving cup decorated with roses, 19cm high - broken, in need of restoration
777. A pair of XIX century Dresden porcelain pillar candlesticks decorated with floral sprigs and gilt highlights, 17cm high - damaged
778. A XIX century Staffordshire spill vase in the form of a tree stump with bird and nest, 9cm high; a pair of Continental porcelain vases in the form of children pushing wheelbarrows, 12cm high; a XIX century Parian flatback figure of a lady with an urn (a/f) also a Parian flatback figure of a lady and gentleman



779. A XIX century Sunderland copper lustre jug, 14cm high and a smaller jug, 9cm high; and a Sunderland pink lustre cup and saucer £30-£60
780. A XIX century Staffordshire toilet jug, the oval body decorated with flowers and gilded highlights, scroll handle, 30cm high
781. A XIX century Austrian Victoria china teapot, covered sugar and cream jug; a XIX century souvenir cup and saucer, Newark; a XIX century trio and two other cups and saucers
782. A XIX century Japanese rice bowl, the exterior decorated with landscape and script, 16cm diameter; a pair of XIX century Spode stone china Indian tree pattern plates, 20cm diameter; and a pair of Booths silicone china plates decorated with bird and flowers, 23cm diameter
783. Noritake china part tea service:- six cups, saucers, cream jug, teapot; Noritake miniature vase; assorted XIX century Japanese egg shell china cups and saucers, rice bowls etc. - quantity
784. Booths Silicone China retailed by Goode London, part green scale tea service - three cups, plates & saucers (16); child's tea set of four cups and saucers and a teapot, miniature cream jug and bowl, assorted cups etc. - quantity
785. Poole. A covered bowl and stand, impressed mark Carter Stabler Adams Ltd Poole England, pattern 887
786. A XIX century willow pattern oval shape covered tureen with ladle, a smaller willow pattern tureen and stand, a XIX century sauce, stand and lid, two transfer printed sauce boats and a Royal Worcester cafeiniere (no lid)
787. An Adams Tunstall blue and white Jasperware fruit bowl with metal rim, impressed marks; and a Wedgwood blue and white Jasperware jug decorated with dancing figures (handle broken); a terracotta tobacco jar (no lid); and a Japanese terracotta teapot
788. A tin glazed decorated bowl, 33cm diameter, two hardwood vase stands and a black and gilt lacquered hand fan
789. A XIX century white porcelain toast rack, the divisions formed by upright hands; XIX century Skegness souvenir ashtray with pipe, large porcelain cup

- and a souvenir from Aberystwyth - tankard
790. A rust coloured soapstone carving decorated with a dragon; an alabaster plate, pair of vases, campana vase, small vase (2), alabaster egg and five large shells
791. Wedgwood butterfly lustre bowl, 11.5cm diameter (rim chip)
792. Shelley. A white earthenware ring mould
793. A XIX century hexagonal shape earthenware hot water jug decorated in Japan pattern, metal lid; a XIX century stoneware jug with applied decoration, metal rim and a pewter hot water jug
794. A XIX century fairing "The Last One Into Bed Puts Out The Light"
795. Wedgwood black Jasper - sugar bowl and cream jug, impressed mark, 30 - plated rims
796. A XIX century earthenware sardine dish and cover, the body decorated with wild flowers
797. Portmeirion Pottery. A floral decorated chamber pot; Japanese ashtray decorated with palm trees; a 1950's miniature tower souvenir and a Kodak box camera and case
798. A XIX century pearlware plate, willow pattern - sauce tureen and two sauce boats
799. Poole Pottery:- a bowl 12cm diam No 226 and a jug, 9cm high No 676 - impressed mark 'Poole England; and a flower ring 14cm diam, small bowl 8cm and dish 13cm diam - printed marks (5)
800. A Maling vase, Maling vase/soapdish, Cauldon dish, Regal Ware bowl, four blue and white Doulton Watteau plates, Meaking 1950's coffee set, Royal Albert coffee pot, part Bell China coffee service



Lot 801

801. A Royal Doulton stoneware golfing beaker with a hallmarked silver rim, London 1933, 13cm high £300-£500 *illustrated*





Lot 802



Lot 803

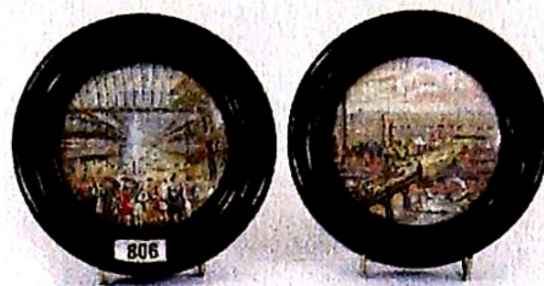
802. A Victorian moulded pottery jardiniere and pedestal, predominately of cobalt blue, the raised decoration in lighter blues and brown, the pedestal 88cm, jardiniere 39cm £200-£400 *illustrated*
803. Minton. A hexagonal moulded pottery all green jardiniere and pedestal, impressed mark and numbered 3137, the pedestal 56cm, jardiniere 36cm high, 39cm diameter £400-£700 *illustrated*



Lot 804

804. Grainger & Co Royal China Works Worcester. A pair of tapering ovoid vases with gilded handles and rims, each painted with a view and titled beneath "Stratford on Avon" and "Melrose Abbey", signed by the artist John Stinton, printed number beneath 195 and written 2616, circa 1890, 27cm high £3000-£4000 *illustrated*
805. Minton Majolica. A life size model of a stork, its' leg raised, the other on a frog and with a green snake in its' beak, standing against bulrushes, shape No. 1916. Modelled probably by John Henk or Paul Comolera, (unsigned) circa 1898, 104cm high £5000-£7500

(see bilb. Minton the 1st 200 Years of Design & Production Joan Jones pub. 1993 page 140 & Dictionary of Minton pub.1990 page 277) *illustrated on catalogue cover*



Lot 806

806. A pair of XIX century Prattware pot lids, one titled "The Crystal Palace", the other "An Exterior View" £100-£150 *illustrated*

### CLOTHING & TEXTILES

807. A silk embroidered panel brightly coloured flowers and exotic birds, 63cm x 69cm and woolwork panel worked with roses £30-£60
808. A collection of Edwardian & Victorian apparel - fans, shoes, purses, parasols and some fashion pamphlets £40-£80
809. A large quantity of lace trimmed caps, lace trimmings, a crochet panel - the majority Victorian, one box £100-£150
810. A black shawl with a tasselled border and a box of mainly black lace trimming £30-£60
811. A crochet bedspread, Victorian clothing, camisoles, pantaloons etc. - one box £40-£80
812. A quantity of Victorian black lace and crochet collars £70-£130
- 812A. A quantity of Victorian cream lace and crochet collars £70-£120
813. An early XX century cream silk cocktail dress, A Victorian cream lace trim shawl etc. £30-£60
- 813A. Six child's christening gowns and underskirts £30-£60
814. Three Victorian lady's nightdresses £40-£70
- 814A. A Victorian blue taffeta skirt and two other black lace dresses £40-£80
815. A Victorian black bonnet, a cream and black bonnet, a black and silver striped underskirt, a black lace overskirt, a shawl and a Victorian black embroidered mantle £80-£140



## SILVER

- 816. An engine turned silver gilt pocket cigarette case, Birmingham hallmark £25-£50
- 817. Four early XIX century table spoons, various dates London hallmarks £35-£70
- 818. Four early XIX century table spoons, various dates London hallmarks £35-£70
- 819. A late Victorian chased and engraved christening mug, maker HA Sheffield 1893 £40-£70
- 820. A silver egg cup, a pair of sugar bows and a cruet spoon £20-£40
- 821. Three early XIX century table spoons £30-£50
- 822. An early XIX century basting spoon, maker HS London 1812 £20-£40
- 823. Four fiddle pattern teaspoons and eight other various teaspoons, mostly XIX century, 6ozs £30-£60
- 824. Seven various dessert spoons including a pair of "rat-tail" spoons, 9ozs £45-£90
- 825. A set of six XIX century fiddle pattern dessert spoons, London 1828, 7+ozs £35-£70
- 826. Six fiddle pattern table spoons monogrammed 'M', maker GA London 1851, 15ozs £70-£100



Lots 826A & 854

- 826A. A Victorian silver mounted cut glass tapering claret jug with domed hinged cover surmounted by a fruit finial, maker RMEH London 1883 £200-£300 *illustrated*
- 827. A circular desk stand with hinged cover, glass liner, Birmingham 1928 £70-£120 *illustrated*
- 828. A silver mounted repousse decorated blotter and a silver pen £20-£40 *illustrated*
- 829. An engine turned photograph frame, oak backed, Chester 1912, 28cm x

- 21cm £60-£90
- 830. A conical engine turned French silver beaker engraved with trailing flowers and foliage, 8l on base, 8.5cm high; two early XX century silver napkin rings and a pierced filigree pill box
- 831. A Georgian baluster three footed cream jug, scatter hallmarked (rubbed) £60-£90
- 831A. A five piece dressing table set, the tortoise-shell effect backs mounted in silver, London hallmarked - cased
- 832. A small oval photograph frame, Birmingham
- 833. A pair of Kings pattern sugar bows, Sheffield; a teaspoon; jam spoon; and a pair of Georgian sugar bows
- 834. A modern tastevin, a small circular dish and a modern scatter hallmark miniature salver



Lots 827, 828, 835 & 836

- 835. A Georgian design sauce boat with lobed body, scroll handle, London 1958, 4ozs £50-£90 *illustrated*
- 836. A modern silver goblet on a wrythern column with turned foot, C.B. & S Sheffield, 6ozs £30-£60 *illustrated*
- 837. A pair of miniature silver two handled presentation cups on ebonised plinths, 92cm high; and a tapering cup with four angular supports £20-£40
- 838. A Lincoln Cathedral 900th Anniversary chalice, No. 1363 - cased with certificate £70-£120
- 839. A Victorian fiddle pattern basting spoon, Exeter 1842 £40-£80
- 840. A hexagonal bon bon dish with beaded border, pierced decoration and applied ornate pierced handles, 10cm x 11cm, Birmingham 1920 £40-60
- 841. A Georgian design three footed salt cellar & spoon and two cylindrical pepperettes £30-£60
- 842. A cylindrical mustard pot with hinged domed cover, blue glass liner and spoon (marks rubbed) £30-£60



843. A tapering ring turned tankard approx. half pint, London W.? 1820, 7+ozs £70-£120
844. A Georgian toddy ladle, the shaped bowl inset with a coin, square reeded horn handle £50-£80
845. A XX century Scottish silver quaich, Broom & Sons 1920 £40-£70
846. A small shell shape butter dish, Birmingham and a pierced press silver bon bon dish £30-£60
847. A silver gilt pill box, the lid embossed with Windsor Castle, Birmingham 1977 £50-£100
848. An elliptical half fluted mustard pot with hinged lid, Sheffield; and a miniature baluster tankard, Birmingham £20-£40
849. A pair of engine turned photograph frames, 7.5cm x 5.5cm and a square frame decorated with silver foliage, 13cm £30-£60
850. A doll's miniature silver four piece tea service with an oblong tray £30-60
851. A Victorian mother of pearl silver bladed fruit knife, a small ditto, a tiny egg shaped pepperette, salt spoons etc. (7)
852. Seven various dessert and tea spoons (2 seal tops)
853. A cut glass silver top scent bottle and a fluted circular silver dressing table jar, Birmingham hallmark
854. A rococo design teapot, the baluster body with domed cover, ebonised handle and finial on four scroll feet, C.C.P. Sheffield 1912, 20ozs gross £150-£200 *illustrated previous page*
855. A Victorian two handled sugar basin, HH London 1855 and a matching milk jug, JS AS London 1844, 7ozs & 12ozs £120-£180
856. A circular salver with shaped moulded border on four scroll feet, the centre engraved with an Adam style urn and shield, B.B.S. Ltd, London 1913, approx. 32ozs, 31cm diameter £250-£350
857. Six "rat-tail" dessert spoons, Birmingham 1940 £50-£100
858. Sixteen, mostly fiddle pattern teaspoons, 10ozs £50-£90
859. Six antique silver dessert spoons, W.B. London 1823, 6+ozs £30-£60
860. A pair of early XIX century table spoons engraved W.H.S., 2 forks, sugar bows, Lincoln Imp spoon & a salt spoon (7) £20-£40

861. A pair of Victorian fiddle pattern table spoons monogrammed 'A' and another similar pair, 9ozs £35-£65
862. Six dessert forks, C.B. & S Sheffield 1934, 7ozs £35-£60
863. Three fiddle pattern dessert spoons, four dinner forks, a silver bladed mother of pearl handled butter knife and another similar, 18ozs gross £40-£80
864. A silver mounted desk blotter and correspondence folder, H.M. Birmingham 1901 and W.C. London 1902
865. A three piece lobed cruet, the mustard with a hinged lid - all on cast scroll feet, Birmingham 1936 £40-£80
866. An early XIX century silver gilt vinaigrette with chased and engraved decoration, hinged grille, I.?W. Birmingham 1823 £50-£100
867. A pair of pressed oval pierced silver bon bon dishes, G.N.R.H. Chester 1904 £30-£60
868. An engine turned pocket cigarette case and another with chased decoration (2) £30-£60
869. A filigree cigarette holder, cylindrical cigarette holder case, filigree pill box etc. (7) £30-£60
870. A three footed baluster cream jug with scroll handle, Chester (date rubbed) £40-£80
871. A set of six coffee spoons, B.B.S. Ltd, Birmingham - cased £15-£30
872. A small presentation two handled cup on an ebonised plinth, Birmingham, 10cm, a similar goblet 14cm, a silver backed hand mirror, a silver mounted comb (a/f)
- 872A. An eight place setting canteen of Kings pattern silver cutlery comprising fish knives and forks, table knives and forks, dessert spoons and forks, soup spoons, four table spoons, sixteen teaspoons, carving knife, fork and steel £1200-£1800
873. A vesta case engraved with stylised foliage, Birmingham, an early XIX century etui decorated with flower heads and scrolls, no hallmark, monogrammed beneath E+S, a globular plain glass match container with a Birmingham hallmarked silver mount, a pair of engine turned Birmingham napkin rings & and early XIX century silver gilt vinaigrette (part)



- 873A. A three piece engine turned silver back dressing table set, a Chester hallmark pocket cigarette case and a pair of plated grape scissors £40-£70
- 873B. A set of six Walker & Hall coffee spoons and matching sugar bows - cased; and four similar coffee spoons
- 873C. A seal top teaspoon, butter knife with engraved blade and a cruet spoon
- 873D. Seven various teaspoons, a pair of sugar bows etc. (14)
- 873E. A pair of antique bead pattern salt spoons, a mother of pearl and silver pocket knife and a tiny glass pepperette with a silver top (5)
- 873F. A circular silver mounted cigarette lighter, a pair of plated nut crackers and a cake fork
- 873G. A three piece cruet comprising pepperette, circular salt with blue glass liner and lidded mustard pot, Birmingham hallmark; and another glass pepperette with a silver top
- 873H. Ten silver handled tea knives, an antique silver dessert spoon and fork and a pair of claw sugar bows £20-£40
- 873J. A silver backed hand mirror, a small plain Birmingham hallmark photo frame and a cruet spoon
- 873K. A silver gilt pocket cigarette case and three gold coloured chains hung with a small diamond, ruby and emerald
- 873L. An early XIX century helmet cream jug, London hallmark £35-£60

### PLATE

874. A pair of chased and engraved fish servers, stamped WH; a lady's powder compact and a moulded fruit bowl with a plated rim
875. A blue glass cream jug in a ornate pierced plated stand with a matching two handled sugar basin
876. An oval embossed plated dish and a six piece tea service stamped "Colonial"
877. An octagonal Art Deco style dish with ivory angular handles, various jam spoons, butter knife, pickle spoons etc., and a baluster hot water pot with a square handle on four feet, and a plated sauce boat and stand £20-£40
878. A hammered circular rose bowl with lion mask handles, day and date calendar, an ashtray mounted with a bird, a long handled basting spoon, two

- table spoons and a quantity of pre-decimal coinage including a ten shilling note
879. A circular desk stand (no liner), a plated muffinier with a domed folding cover, a fruit embossed sugar spoon and a double jigger spirit measure
880. A four piece plated and engraved tea service stamped "EPBM", a circular tapering teapot presented in 1918, a Walker & Hall gravy boat and a plain bowl £50-£100
882. A plated table centre with three plain swirl glass trumpets and a circular teapot stamped "EPBM" £30-£50
- 882A. A plated table centre with a green vaseline glass trumpet shaped posy holder
883. A wheel etched plain tapering glass claret jug with plated handle and mount, Mappin & Webb "Princes plate" £60-£100
884. A plated muffinier, the circular hinged body opening flat, with a pierced grill on a tree bough effect stand £30-£60
- 884A. A XIX century plated urn with domed cover, the tapering body with lion ring mask handles on four reeded legs terminating in claw feet, joined to the shaped base £70-£120
- 884B. A large rectangular plated two handled tea tray, a pie-crust edge salver and an oval dish with pierced sides £30-£60
- 884C. A rectangular entree dish with beaded border and a swing handle pierced decorated cake basket £40-£60
885. A three piece half fluted tea service stamped "EPNS A1 Viners" £30-£60
886. A Victorian rectangular shaped and embossed swing handle cake basket
887. A pair of fish eaters with pierced engraved blades and ivory handles, cased
888. Sundry plated items including a pickle fork, spoon, framed photograph, set of Lotus black beads, half bone beads etc.
889. A pair of shell shape fruit spoons - cased, dessert spoons and forks, jam spoon, pickle fork, tea knives, spoons, hand mirror etc.
890. A circular fruit bowl, pickle and jam spoons, table spoons, sifter spoon etc.
891. A plated meat dome with a fruiting vine design handle, engraved with a family crest £40-£60



- 892. An oval galleried tea tray with a shaped gadrooned border, 61cm x 41cm £40-£60
- 893. Sundry plate including sauce ladles, a soup ladle, salad servers, crumb scoop, egg cups, cruet stand etc. - one tray
- 894. Plated cruet stands with three bottles and a pair of plated candlesticks
- 895. A Victorian oval three piece tea service engraved with trailing foliage and comprising a teapot with ebonised handle, two handled sugar basin and milk jug £30-£60
- 896. A mahogany cutlery canteen containing baize lined lift out trays and a large quantity of assorted old cutlery
- 897. A pair of plated fish eaters - cased; an oak canteen and contents, mainly cruet spoons
- 898. A hunting horn with plated mounts and a set of fish eaters

### JEWELLERY, WATCHES ETC.

- 899. A 14 stone diamond ring set with two rows of graduated square cut stones in white metal with 18carat yellow gold shank, approx. 2 carats £2000-£3000
- 900. A Rolex 18ct white gold lady's watch with Orchid integral bracelet number G361, Swiss 18K assay £2000-£3000 *illustrated*
- 901. A 63" 9 carat gold guard chain £150-£250
- 902. An 18 carat yellow gold mounted claw set ruby and diamond dress ring with open scroll shoulders £150-£250
- 903. An oval dress ring centred with a sapphire coloured stone surrounded by small diamonds set in yellow 9 carat gold £140-£180
- 904. A three stone diamond cross over ring, stamped "18ct PLAT" £100-£150
- 904A. A three stone sapphire dress ring in an elliptical 9carat yellow gold setting surrounded by chip diamonds £120-£180
- 905. An Edwardian bead work lady's evening purse
- 906. A gold bamboo design lady's wrist bangle £30-£60



Lot 900

- 907. Racine Geneve - an 18K gold half Hunter pocket watch with jewelled through case back winding movement £320-£420
- 908. An 18K gold cased open face lady's fob watch with Swiss movement, engraved "examined by J W Benson Maker to the Queen etc." £50-£100
- 908A. A gentleman's Continental silver pocket watch; a gentleman's steel case pocket watch, assorted watch keys, Vic. brass lock etc
- 908B. A XIX century steel case gent's pocket watch with white enamel face depicting an army officer of Boer War era and a S. African 2.5shilling brooch £40-£80
- 909. A small solitaire diamond ring in an 18carat yellow gold setting, two plated vesta cases etc. £20-£40
- 910. A 9 carat gold lady's bracelet hung with 15 9 carat charms £70-£130
- 911. A collection of hat pins, bar brooches, an amber glass costume brooch etc.
- 911A. A collection of five scent bottles (3 with atomisers)
- 911B. Tie pins:- a 9c gold Lincoln Imp, another Imp tie pin; 9c gold amethyst set pin; 9c citrine and seed pearl; 2 oval lockets and chains; oval cameo brooch of a young child; embroidery scissors; hat pins; REME brooches (2) etc
- 911C. A large quantity of mainly 1950's costume jewellery contained in a vanity case, jewellery case and musical box
- 911D. Four 'Gwenda' tap-flap powder compacts - crinoline ladies
- 911E. Four 'Gwenda' tap-flap powder compacts - exotic birds
- 911F. Packaging:- British leather ware, 5 display cards complete with leather pocket purses, 15 boxed leather effect wallets, five 1950's ladies handbags
- 912. Watch parts, gilt metal chains and others, magnifying glass etc. - one bag
- 913. Four hat pins, six bar brooches and an Eastern silver bracelet, two brooches and tie clip decorated with figures etc.
- 914. A 9 carat gold link lady's necklace £80-£130
- 915. Two matching Seiko quartz wrist watches, lady's and gent's on articulated gilt metal bracelets £50-£100
- 916. A collection of costume jewellery, links, parts, a Revue wrist watch, a Cross pen and pencil set, Seiko lady's wrist watch etc.



917. A solitaire diamond ring, approx. 1/2 carat set in 18 carat yellow gold £130-£220
918. A half hoop yellow gold eternity ring set with two diamonds flanked by six square cut sapphires £70-£150
919. An 18 carat gold dress ring set with a small diamond in an engraved star and flanked by two pink stones £40-£70
920. A 9 carat buckle ring, two plain 22 carat gold wedding rings and an 18 carat dress ring - stones missing (4) £50-£100
921. A large heavy 9 carat gold gent's signet ring engraved "R", approx. 12 grams £20-£40
922. A five stone diamond ring, the larger stone approx. 1/4 carat, claw set in 18 carat yellow gold £200-£300
923. A 9 carat gold gate bracelet £30-£60
924. A 9 carat engraved gold bangle £30-£60
925. A 9 carat gold chain bracelet interspersed with coloured stones and with a pair of matching ear studs £30-£60
926. An 18 carat yellow gold dress ring set with three ruby coloured stones and chip diamonds £70-£120
927. A 1980 gold sovereign in a gilt metal pendant setting on a fine chain, one link stamped "9ct"
928. A "Main Line 9 carat gold" necklace, stamped on one link
929. Two nine carat gold hollow interlinked knot brooches, a heart shaped 9 carat locket and a signet ring set with a chip diamond (4)
930. An 18 carat yellow gold set dress ring of floral pattern with nine chip diamonds
931. A late XIX/early XX century open face fob watch, the engine turned dial with raised Roman numerals and floral banding, the case stamped "warranted fine silver"
932. A large quantity of costume jewellery including a graduated silver chain, hat pins, earrings, brooches, five wrist watches, a pendant watch etc. (two bags) and two strings of simulated pearls - cased
933. A 9 carat gold bar brooch centred with a brilliant cut solitaire and surrounded by seed pearls, a 9 carat gold half hoop eternity ring set with tiny sapphires and diamonds, an enamelled RAF brooch, an oval gilt mounted locket, scrap gold ring, a platinum ring and an engraved silver wrist bangle (7) £70-£150
934. An 18 carat gold and platinum set ring with 9 diamonds and a platinum wedding ring

935. An 18 carat gold pendant set with 18 diamonds and central milk opal on a fine gold chain £2000-£3000



Lot 944

944. A XVII century flemish wall hanging worked with a landscape scene between a fruit and foliate border, 206cm x 235cm and another small piece of similar (modern) fabric £2200-£3200 *illustrated*
- 944A. A patchwork quilt 130cm x 200cm
- 944B. A burgundy chenile table cover with tassel edging 205cm x 166cm
- 944C. An oriental rug - Hamadan 149cm x 105 £40-£80
- 944D. An oriental rug - Baluch 160cm x 90cm £30-£70

### PICTURES, PRINTS ETC.

945. An oval portrait miniature of a young girl wearing a white lace dress trimmed with a pink ribbon, envelope verso Barbara Ann Cracroft-Amcotts April 1935, with a lock of hair; watercolour on card £200-£300
946. T H Wheeler London 1842 (signed verso) an oval portrait miniature of a Victorian gentleman; watercolour on paper £100-£150



Lot 947



947. Edward Armfield s., oils on canvas Terriers ratting in a barn, a pair in ornate contemporary plaster gilt frames 75cm x 62cm £5000-£7000 *illustrated previous page*
948. O. Bach, oil on canvas laid on board Danish interior scene with figures at a table and a young boy delivering a letter 172cm x 98cm £100-£200
949. Italian School, oil on canvas Madonna and child 17cm x 14cm, and a similar print in a birds eye maple frame £30-£60
950. P. Smith 1908, oil on card twilight landscape 15cm x 30cm £20-£40
951. After Holbein a XIX century engraving titled "The Country Attorney and his Clients" 41cm x 51cm £50-£100
952. A XIX century engraving after Landseer in a maple frame
953. F.V. St. Clare s. pair of watercolour drawings - alpine lake scenes 35cm x 50cm £40-£60
954. Five various black and white etchings - old houses and town scenes, mostly signed by the artists
955. Margaret Lillian Mason, a watercolour drawing Lincolnshire Wolds, labelled verso 24cm x 30cm £30-£60
956. Two watercolour drawings titled verso - Lincoln from the River Witham and Lincolnshire Heights Village, Margaret Lillian Mason 1880-1951 15cm x 20cm and 17cm x 24cm in matching frames and mounts £60-£90
957. XIX century European, oil on canvas a gypsy girl with a child on her knee beside an open fire, indistinctly signed and dated 50cm x 35cm £50-£100
958. An Edwardian lithograph - "Willing Team"; three black and white prints of Lincoln scenes signed by D. Deighton; an old photograph of Newport Art and a print - Kings College, Cambridge
959. A coloured framed Pears lithograph of a young girl wearing a lace bonnet tied with a pink ribbon and an oak framed lithograph of three Victorian ladies dressed in finery
960. After Saunders "The Fortune Teller" published 1784 and after Wheatley - "The Careless Milk Maid" published 1791; after Kauffman - "Venus Regina", also a Chinese bookplate and a page from a French comic £50-£100
961. After Kauffman "Blind Mans Buff" and "Beauty" £50-£100

962. After Cipriani Three sepia prints of cherubs depicting the seasons published 1780's £60-£100
963. After Cipriani Two circular coloured XVIII century prints - study and composition, and after Kauffman - two Bartozzi prints, Pomona & Flora £70-£130
964. G. Pretty '93, s. watercolour drawing English country landscape, a stone bridge with village beyond 24cm x 32cm
965. XIX century English School, oil on canvas winter landscape with figure on a road 20cm x 39cm in contemporary gilt oak leaf and acorn decorated frame £40-£70
966. Watercolour - "Penny Lane"; two fashion plates framed; oil on board - rocky seascape in a gilt frame
967. Three portrait prints - Nelson etc. in Victorian frames, ??Wade, a watercolour drawing - s. an oil on artists board, coastal landscape and a fashion print
968. Four humorous watercolour drawings on silk - hunting scenes and a coloured lithograph "Tom Bowling" in wide hardwood frame £50-£100
969. After Carey a late XVIII century hand coloured map of Lincolnshire published 1793 30cm x 23cm overall £30-£60
970. A small XVIII century bookplate - Lincolnshire, hand coloured and Rutlandshire after Roper 1808
971. After Ric: Blome an XVIII century hand coloured map of Lincolnshire, a bookplate 40cm x 30cm overall £70-£120
972. After Robt. Morden an XVIII century bookplate, a hand coloured map of Lincolnshire 39cm x 44cm £75-£140



Lot 973

973. XIX century English School, oil on card a liver and white and a black and white setters in a landscape setting, indistinctly signed "Graeme" 12.5cm x 25.5cm £200-£400 *illustrated*





Lot 974

974. Peter De Wint. Whitby - label verso The Parker Gallery, 2 Albamarle Street, London, drawn in chalk on tinted paper 11cm x 20cm £300-£500 *illustrated*



Lot 975

975. Peter De Wint. A Harvester resting - from the Sir Geoffrey Harmsworth Collection BT at Agnews 1966 and The Usher Art Gallery (see exhibition labels verso) 11cm x 14cm £1000-£1500 *illustrated*
976. Colin Carr 1978 watercolour drawing Tealby with figure walking in the foreground 20cm x 20cm £100-£150
977. Colin Carr 1964 watercolour drawing "A Shop at Caistor, Lincoln"; with 1902 period goods and fittings 19.5cm x 17cm £180-£280
978. A pair of Edwardian black and white prints titled "A Credit to His Family" and "A Disgrace to His Family"; two black and white prints - Lincoln and two coloured prints - Lincoln & York (6)

### MIRRORS

979. An oval plaster gilt frame mirror decorated in relief with beading and foliage, bevel mirror plate 100cm x 69cm £150-£250

980. A Victorian cushion frame mirror, richly decorated with gilded metal flower heads, moulded ebonised slips to the bevel edge mirror plates, 103cm x 86cm £200-£400
981. A Regency design circular gilt frame convex wall mirror surmounted by a gilded eagle with outstretched wings resting on a plinth flanked by leaves, the circular frame decorated with orbs, approx. 100cm overall £300-£500



Lot 981A

- 981A. A XIX century oval plaster gilt girandole surmounted by an oval cartouche surrounded by fruiting mistletoe, the stepped frame with applies ovals, above three candle sconces finished with a scroll bracket to the base, 110cm x 56cm £300-£500 *illustrated*

### CLOCKS & BAROMETERS

982. An early XIX century five dial mahogany barometer, the level signed "H. Pearce", 94cm £150-£250



Lot 983

983. An engraved oval brass strut timepiece "Thos. Cole for R & S Garrard & Co", with silvered dial, roman numerals, engraved centre and surround, back wind movement in original Morocco outer case (requires attention) 16.5cm £1000-£1500 *illustrated*

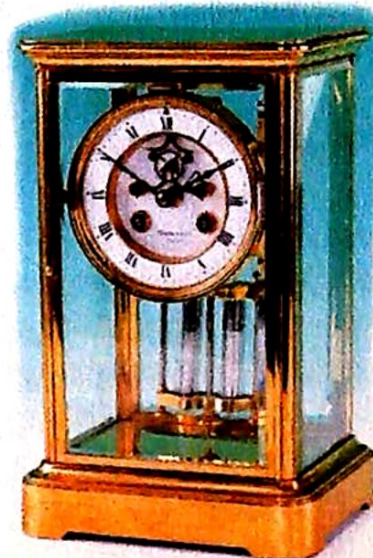


984. An American wall clock with paper label "Jerome & Co., Newhaven Conn." in a rectangular mahogany case with a glass door (distressed) £30-£60
985. An Edwardian oak cased wall clock enclosed by a bevel glazed door
986. An Edwardian mantel clock in an oak case with arched steel dial, eight day striking movement £30-£40



Lot 987

987. A Victorian mantel clock in a domed rosewood marquetry inlaid case, the engraved gilt dial lettered "Robt. H. Halford, Fenchurch Street, London", 36cm high £200-£400 *illustrated*
988. A Victorian mantel clock in an architectural black slate and marble case, the circular dial with enamel chapter ring and brass centre, French striking eight day movement, 34cm high £50-£100
989. A three piece green onyx clock garniture of architectural design, the clock with a revealed escapement to the gilt brass dial and with eight day striking movement, flanked by two gilt brass mounted urns, the clock 35cm £300-£500
990. A Victorian black slate case mantel clock, the enamelled dial lettered "A Hurst Paris", eight day striking movement, 21cm high £40-£80
991. An Edwardian mahogany balloon cased mantel clock inlaid with boxwood stringing, oval patera and with white enamel dial and eight day French movement, 23.5cm high £70-£120
992. An Edwardian mahogany cased mantel clock inlaid with boxwood stringing and chevron inlay, circular white enamel dial, 23cm high £50-£100
993. A late Victorian alarm mantel clock, the circular white dial lettered "Fatterini & Sons, Bradford" contained in a decorated case, 41cm high £50-£100
994. A Victorian brass cased clock garniture decorated with coloured applied cloisonne flowers, the clock case of architectural form and with an eight day striking movement, flanked by two campana shaped urns, all on gilt wood plinths, 28cm high £150-£250
995. A gilt brass cased mantel clock, the circular white enamel chapter ring with revealed escapement signed "Maple & Co, Paris", the movement enclosed by bevel glass panels, 27cm high £250-£400 *illustrated*
996. A "Seth Thomas automatic eight day long alarm" mantel clock contained in a rectangular oak case with a presentation plaque dated 1911, 24cm high and a plated half pint tankard £120-£180
997. An Edwardian mahogany boxwood strung balloon case mantel clock, the circular white dial lettered "J H Potter Sheffield", 24cm high £50-£100
998. A XX century walnut cased Grandmother clock with an eight day chiming movement, square brass dial and applied spandrels £150-£250
999. A XIX century oak and mahogany cross-banded longcase clock, the painted white arch dial signed "Eusden Gainsbro"; eight day striking movement, the works enclosed by a broken swan neck pedimented hood, the base with a short cross-banded drawer £1000-£1500



Lot 995





Lot  
999A

- 999A. A XIX century mahogany longcase clock by Usher of Lincoln, the arched painted dial with subsidiary seconds ring and date aperture, and in the arch "David playing before Saul", contained in a broken swan neck pedimented hood, the base enclosed by a shaped door and inlaid overall with boxwood stringing £2000-£3000 *illustrated*
1000. A XIX century oak longcase clock, the arched dial painted with birds amid fruit and with a subsidiary seconds ring and date aperture, contained in a broken swan neck pedimented hood, the base with an arched moulded door and reeded corners £1000-£1500

### FURNITURE

1001. A pair of Victorian Aesthetic movement ebonised open armchairs with arched top rails, fan shaped cane splats, the open arms on turned tapering supports above rush seats standing on turned front legs joined by a similar front stretcher £300-£600
1002. An late Victorian tub chair, the polished mahogany frame with three pierced carved splats on turned front legs, upholstered in pale blue dralon £70-£120
1003. A panelled and carved XVII century design hall cupboard enclosed by a two panelled centre door beneath a relief carved frieze standing on circular fluted legs, 153cm wide £300-£500
1004. A Sheraton Revival mahogany open armchair, the back with a series of vertical plain splats, each inlaid with boxwood stringing above a drop-in seat

1005. raised on turned front supports £50-£100  
An XVIII century oak hanging corner cupboard, the moulded cornice above a single (now) leaded glazed door
1006. A Victorian mahogany duchess pair comprising dressing table and marble top wash stand, each piece on bulbous turned column supports joined by a shaped platform base £250-£350
1007. A good Victorian carved rosewood frame chaise longue upholstered in mink button dralon, raised upon cabriole front supports joined by a carved shaped front rail £750-£1100
1008. Three similar XVIII century oak side chairs with solid boarded seats on turned frames and with turned splat backs £150-£250
1009. A Victorian slatback fruitwood open arm Grandfather chair, the shaped seat raised on turned supports joined by plain stretchers £200-£300
1010. A Victorian mahogany frame sofa with moulded straight back, shaped arms raised on turned supports with original pot castors, upholstered in rust fabric with two circular cushions £300-£400
1011. A small early XVIII century design oak chest of two short and two long drawers, the centre drawer with raised cushion geometrical moulded fronts, on block supports, 76cm wide £250-£350
1012. An Eastern brass top coffee table, the tray engraved with Egyptian figures and animals, standing on a six legged folding hardwood base inlaid with bone, 59cm diameter £40-£70
1013. A George III mahogany bureau, the fall front enclosing a series of small drawers with pigeon holes each side of a central cupboard, the drawer fronts boxwood strung, the base with four graduated cock-beaded oak lined drawers, each with swan neck (original) handles, standing on bracket feet, 109cm wide (distressed) £600-£900
1014. A Victorian mahogany hall stand with four shaped arms, each with turned coat pegs, the central column inset with a narrow mirror, the shaped base with a glove drawer standing on a central lyre shaped pierced support £150-£250
1015. A set of four Victorian heavy mahogany dining chairs stamped "Reilly's Patent", the curved backs with solid vertical central splats above overstuffed seats with serpentine front



- rails on turned and fluted front supports with metal castors £250-£350
1016. A XIX century biedermeier cabinet fitted with a single drawer above a double cupboard enclosed by a pair of panel doors, 96cm wide £70-£140
1017. A late XVIII century oak bureau, the fall front cross-banded in mahogany and enclosing a fitted interior of small drawers and pigeon holes, the base with four graduated drawers standing on bracket feet (distressed), 92cm wide £300-£500
1018. A Victorian drop end two seater settee on turned supports with metal castors, upholstered in pale green dralon with blue braid trim and with two cushions £100-£200
1019. A late Victorian/Edwardian drop end settee raised on short cabriole front supports with metal castors and two cushions (upholstery matching the previous lot) £100-£200
1020. A principally XVIII century oak lowboy, the top with a moulded edge above one long and three short drawers, standing on cabriole supports joined by a shaped frieze, 78cm wide £150-£250
1021. A Sheraton Revival mahogany and satinwood banded lady's writing desk, the top inset with a tooled leather above a single frieze drawer and four further drawers fitted to one side, standing on square taper top supports with original pot castors, cast brass original handles, 92cm x 53cm £400-£600
1022. An antique oak side cabinet enclosed by a pair of doors primitively carved in relief with figures and vines, 73cm wide, 70cm high £75-£150
1023. The centre from an XVIII century oak gate leg table £100-£200
1024. A small antique hall seat, the plank back above a box base enclosed by two hinged lids standing on square stiles, 84cm wide £70-£120
1025. A hexagonal oak pedestal side table, the top with a diamond inlay above six small drawers to the frieze standing on a turned baluster column with triple cabriole legs, 54cm diameter £300-£400
1026. A rectangular Edwardian oak stool on barley twist and block supports
1027. An unusual hardwood Gothic style nursing chair with pierced shaped and carved back, woolwork seat, standing

- on cabriole front supports joined by arcades £70-£130
1028. A reproduction pedestal wine table and an oriental hardwood table with a carved frieze
1029. A pair of late Victorian hardwood framed lady's chairs with scroll shaped top rails, elaborately carved pierced splats above overstuffed seats standing on short cabriole front supports £40-£80
1030. A XIX century ash and beech carver chair with reeded top rail, double splat joined by three turnings, turned under arms, the wide seat on ring turned front supports joined by an "H" stretcher £170-£250
1031. Two Victorian Gothic design heavily carved oak frame hall chairs, the backs flanked by barley twist columns above cane seats on block and turned supports £50-£100
1032. A late Victorian walnut octagonal window table on four turned legs united by an undertray £50-£80
1033. A Victorian oak fold over top games table raised on four flat sided columns, each carved at the base with stylised foliage joined by a matching stretcher standing on swept feet, 92cm wide £150-£250
1034. A Victorian figured mahogany chest of two short and three long drawers with original turned knobs standing on a plain plinth with turned feet - with key, 112cm wide £400-£600
1035. Three matching XVII century oak dining chairs with vertical moulded splats beneath carved crestings, the solid seats standing on square supports with plain stretchers £300-£500
1036. The base of a Georgian mahogany cabinet resembling two chests of drawers, each with two short and three long graduated cock-beaded oak lined drawers on bracket feet £700-£1200
1037. A turned hardwood plant stand on three shaped supports
1038. An elaborate late Victorian china display cabinet, the centre section enclosed by a pair of bowed glazed doors and lined in green plush, flanked by a pair of side cabinets with floral astragals either side of a central open display shelf, standing on short ball and claw feet, 140cm wide £450-£650



1039. A mahogany corner display cabinet, the moulded cornice above a plain glazed door with four internal shelves, 120cm high £75-£150
1040. A XIX century figured mahogany chest of four long hardwood lined drawers on a plain plinth, 104cm wide £350-£450



Lot 1041

1041. A Victorian mahogany dressing table, the oval mirror on carved supports above three shaped trinket drawers, the base with a central frieze drawer on bold carved cabriole scroll supports united by an undertier, 120cm wide £250-£350 *illustrated*
1042. A XIX century figured mahogany pedestal bedside cupboard enclosed by a single panelled door £120-£180
1043. An antique mahogany side table fitted with a narrow drawer raised on opposing double scroll supports on an "H" design base with brass capped castors, the top 44cm square £200-£300
1044. An Edwardian mahogany and boxwood strung cabinet enclosed by a panelled door £40-£80
1045. A late Victorian window table with a moulded serpentine border standing on scroll supports united by an undertier, 75cm diameter £200-£300
1046. A XIX century high back ash and elm Windsor armchair with pierced shaped splat, turned underarm, the saddle seat on turned front supports joined by an "H" stretcher £80-£140
1047. A XIX century slatback Grandfather chair £40-£80
1048. A XIX century high back Windsor armchair with pierced splat on turned front supports joined by an "H" stretcher £200-£300
1049. A set of six Chippendale design mahogany dining chairs, with elaborate

- scroll carved top rails, pierced splats, drop-in seats, raised on cabriole front supports, carved in relief at the knee and terminating in ball and claw feet £700-£1200
1050. A mahogany china display cabinet enclosed by a single Gothic astragal glazed door raised on short cabriole supports terminating in ball and claw feet (matching previous lot) £100-£150
1051. A figured mahogany Chippendale design sideboard, the centre with two concave drawers flanked by a pair of cupboards, one with a cellerette, raised on six short cabriole legs terminating in ball and claw feet (matching previous lots), 167cm wide £200-£400
1052. An Edwardian oval mahogany side table with a moulded edge raised on four taper supports terminating in pad feet £50-£100
1053. A figured Victorian mahogany bow front chest of two short and three long drawers, raised on shaped bracket feet, 106cm wide £200-£300
1054. John Broadwood & Sons. An upright six octave pianoforte number 54298 in a rosewood and marquetry inlaid case
1055. A Laurinat & Co Berlin upright iron framed overstrung pianoforte contained in a panelled figured walnut case with piano stool containing sheet music £100-£200
1056. A Victorian mahogany half tester bed £200-£400
1057. A Victorian pine house maid's cupboard, the upper section enclosed by a pair of panelled doors standing on a similar base in original woodgrain effect paint finish, 138cm wide £250-£400
1058. An elaborately carved late Victorian walnut mirror back sideboard, the upper section with a broken horn pediment above a central display shelf, above a projecting canopy inset bevel mirror, fretted and pierced shaped sides, the base with 2 drawers either side of a central cupboard & with 2 further cupboards, one fitted with a cellerette, 152cm wide £600-£1000
1059. A Georgian mahogany corner wash stand with a raised back, the undertier fitted with a drawer on square supports £100-£200
1060. A late Victorian carved hardwood frame corner chair with pierced shaped



- splats, the seat upholstered in brown dralon raised on tapering supports joined by a turned "X" stretcher
1061. A Victorian figured mahogany serpentine sided needlework table fitted with a single frieze drawer raised on double tapering barley twist supports joined by a turned stretcher with four scroll feet £250-£350
1062. A pair of Sheraton Revival boxwood inlaid side chairs with trellis open stretchers centred with roundels above dralon upholstered seats on square taper supports £50-£100
1063. A boxwood and ebony inlaid corner chair with vertical splats, brown dralon upholstered seat on turned tapering front supports £50-£100
1064. An oval mahogany wavy edge galleried tea tray centred with a shell patera and with two brass handles on a later stand £100-£150
1065. A Victorian oak two tier pedestal compodium, each section enclosed by a panelled drop down front, the base with a carved plinth £80-£150
1066. A Sheraton Revival mahogany satinwood banded and boxwood strung lady's chair with a pierced diamond splat, overstuffed mink dralon upholstered seat raised on turned front legs £50-£100
1067. A carved hardwood African elephant as a vase stand £100-£200
1068. A single Victorian walnut dining chair, the balloon back carved with foliage above an overstuffed seat raised on cabriole front supports
1069. A Victorian mahogany hall chair with a shield shaped back, solid seat, raised on turned tapering flat sided supports £40-£70



Lot 1070

1070. A delicate early XIX century rosewood music canterbury with tapering spindle turnings, the corner columns ring turned and with fluted finials, fitted

- with a single drawer, raised on short turned legs with original castors £800-£1200 *illustrated*
1071. A good quality Sheraton Revival mahogany china display cabinet, the frame cross-banded in satinwood and strung with boxwood and ebony lines, the breakfront enclosed by a plain bevel glazed door, flanked by two astragal glazed panels, raised on short square supports, 136cm wide £600-£900
1072. A set of eight (2 + 6) mahogany Hepplewhite style dining chairs with pierced 'wavy' horizontal splats and drop-in green dralon seats £1500-£2000
1073. A George III rectangular mahogany fold over games table raised on plain square supports, 86.5cm wide £170-£300
1074. A Victorian mahogany bow front chest of two short and three long drawers with spirally carved canted corners raised on turned feet, 107cm wide £150-£200



Lot 1075

1075. A Victorian burr walnut, marquetry inlaid drop leaf Sunderland table, raised on turned and spirally decorated columns with double cabriole scroll feet, the oval top 103cm x 90cm £400-£600 *illustrated*
1076. An oriental hardwood hanging wall shelf and a miniature relief carved chest of two short and three long drawers
1077. A Victorian mahogany open hanging wall shelf on shaped side brackets £80-£130
1078. An early XIX century mahogany Pembroke table fitted with a single drawer to the frieze raised on square taper supports, 91.5cm x 80cm extended £250-£350



1079. A plain Georgian mahogany drop leaf dining table raised on square taper supports, 109cm x 154cm £250-£350
1080. A Georgian design mahogany serpentine front sideboard with a cross-banded top, fitted with a central bow fronted drawer and flanked by a pair of cupboards standing on six square taper legs, 145cm wide £200-£300



Lot  
1081

1081. A George III mahogany tallboy, the upper section with a moulded dentil cornice above two short and three long cock-beaded oak lined drawers, the base with three further drawers standing on bracket feet, all with original swan neck brass handles and brass escutcheons, 120cm wide £2000-£3000 *illustrated*
1082. A late Victorian walnut mirror back sideboard, the upper section with a broken horn pediment top, inset bevel glass mirror above a serpentine display shelf, the base fitted with cupboards and drawers, 139cm wide £100-£200
1083. An XVIII century oak linen chest enclosed by a plain plank top with a three panel front raised on high stiles, 130cm wide £350-£450
1084. A George III oak chest, the rectangular top with a thumb mould edge above a configuration of two short and three long graduated drawers, each with original swan neck brass handles and standing on shaped bracket feet, 94cm wide £550-£650
1085. An oak three piece pedestal knee hole desk fitted with three frieze drawers and three drawers to each pedestal, the

- top with an inset leather effect writing surface, 122cm x 69cm £200-£300
1086. A Georgian drop leaf circular mahogany dining table raised on plain chamfered supports, 118cm diameter £500-£650
1087. A Victorian mahogany chest of two short and three long drawers with original turned wooden knobs centred with mother of pearl, raised on square legs, 125cm wide £100-£200
1088. A Victorian mahogany frame fire screen on four swept feet with boxwood stringing
1089. A Victorian breakfront rosewood credenza with a white veined marble top above a double cupboard enclosed by fretted panel doors and flanked by two cupboards with bowed panel doors, 156cm wide £500-£800
1090. An Edwardian mahogany two tier drop leaf occasional table by Warings "makers to the King", the top inlaid at the corners with stylised birds standing on square taper supports joined by an undertier, original label beneath £200-£300
1091. A Victorian mahogany triple wardrobe enclosed by plain panelled doors, the interior fitted with drawers, 176cm wide
1092. \*A three part early XX century kneehole desk, the top inset with green leatherette, fitted with three frieze drawers and three drawers to each pedestal, all with brass handles, 137cm x 71cm £300-£500
1093. A XIX century mahogany pembroke table with oval top, single drawer, square taper legs, brass castors 92cm x 76cm £130-£180
1094. An early XIX century rosewood framed double scroll ended day bed upholstered in green dralon, button backed with two roll cushions £400-£500
1095. A late XIX century inlaid mahogany single wardrobe with drawer to base (door mirror missing) 103cm wide £60-£120
1096. A XIX century 'X' framed square stool the seat upholstered in rose pattern cross stitch 55cm
1097. An early XIX mahogany chest of three long cock beaded drawers 100cm x 51cm





Lot 1098

1098. A small George III mahogany chest of four graduated drawers, the top with a thumb moulded edge and banded with chequered inlay repeated on the drawer fronts, standing on shaped bracket feet, 91cm wide £1000-£1500 *illustrated*



Lot 1099

1099. A Georgian mahogany bow front chest of four long graduated cock-beaded drawers, the top with a reeded edge, the drawers oak lined standing on splay bracket feet, 102cm wide £800-£1400 *illustrated*



Lot 1100

1100. A Victorian oval burr walnut loo table, the border carved in relief with a foliate design above a shaped frieze, standing on quadruple column supports ending in cabriole legs, all carved in relief with foliage and centred with a turned finial, the top 114cm x 84cm £1000-£1500 *illustrated*
1101. An Edwardian nursing chair upholstered in pink brocade
1102. An early XIX circular stool upholstered in salmon pink satin raised on three carved feet

### End of Sale

**N.B. Thos. Mawer & Son Ltd act only as agents for the owners/Executors of the lots offered for sale. Only one lot is included in this sale which is the property of a Thos. Mawer & Son employee.**

*All studio photographs by  
Kamara Photographic Studios Lincoln  
Tel: 01522 524202*

*Catalogue © PC Mentor Tel: 0800 0749104*



**OUR NEXT SALE OF**  
***EDWARDIAN & LATER***  
***FURNITURE***

**JULY 12<sup>th</sup> 2000 at 11am**



**Ref:**

**Fax:**[illegible]

**NOTE: PLEASE COMPLETE THE SIGNATURE AND DATE BLOCK OVERLEAF TO VALIDATE YOUR INSTRUCTIONS TO BID.**



**Instructions to Bid**  
(continued from overleaf)

[illegible]

Signed ..... Date .....  
 Commission bids MUST be received by 4.00pm on the day prior to the sale.  
 Fax: 01522 535600 (24 hours)  
 Please tick box if you require a quotation for ..... ☐

**Please tick box if you require a quotation for posting and packaging:**

With insurance

Without insurance



## CONDITIONS OF SALE

1. In these conditions Thos. Mawer & Son act only as auctioneers and agents and the representative of Thos. Mawer & Son conducting the auction is called 'the Auctioneer'.
2. Whilst Thos. Mawer & Son make every effort to ensure the accuracy of their catalogues and the description of any lot:
  - (i) Each lot set out in the catalogue or as divided or combined with any other lot or lots is sold by the vendor with all faults and imperfections and errors or descriptions.
  - (ii) Thos. Mawer & Son do not accept responsibility for the authenticity, attribution, genuineness, origin, authorship, date, age, period condition or quality of any lot unless they have been instructed in writing by the buyer to so certify.
  - (iii) All statements whether printed in the catalogue or made orally as to any of the matters set out in (ii) above are statements or opinion only and are not to be taken as being or implying any warranties or representations of fact by Thos. Mawer & Son unless they have been instructed in writing by the buyers to so certify.

3. The Auctioneer has absolute discretion to divide any lot, to combine any two or more lots or to withdraw any lot or lots from sale, to refuse bids, regulate bidding or cancel the sale without in any case giving any reason or without previous notice. He may bid on behalf of the vendor for all goods which are being offered subject to reserve or at the Auctioneer's discretion.

The highest bidder shall be the buyer. The Auctioneer may at his sole discretion determine the advance of bidding or refuse a bid. If during the auction the Auctioneer considers that a dispute has arisen, has absolute discretion to settle it, or to re-offer the lot.

Each lot is put up for sale subject to any reserve price placed by the vendor. Where there is no reserve price (but not otherwise) the seller has the right to bid either personally or by any other person (who may be the Auctioneer). All conditions, notices, descriptions, statements and other matters in the catalogue and elsewhere concerning any lot are subject to any statements modifying or affecting the same made by the Auctioneer from the rostrum prior to any bid being accepted for the lot.

4. The buyer shall pay the hammer price together with a premium of the hammer price – 11.75%, (inc. VAT).
5. Notwithstanding any other terms of these Conditions, if within seven days after the sale Thos. Mawer & Son have received from the buyer of any lot notice in writing that in his view the lot is a deliberate forgery and within twenty-one days after such notification the buyer returns the same to Thos. Mawer & Son in the same condition as at the time of the sale and by producing evidence, the burden of proof to be on the buyer, satisfies Thos. Mawer & Son that considered in the light of the entry in the catalogue the lot is a deliberate forgery then the sale of the lot will be rescinded and the purchase price of the same refunded.

The vendor agrees to be bound by Thos. Mawer & Son's decision.

6. Thos. Mawer & Son disclaim any responsibility for default by either the buyer or the vendor because they act as Auctioneers only and therefore do not pay out to the vendor until payment is received from the buyer. Instructions given by telephone are accepted at the sender's risk and must be confirmed in writing forthwith.
7. Every person on Thos. Mawer & Son's premises at any time shall be deemed to be there at his own risk. He shall have no claim against Thos. Mawer & Son in respect of any accident which may occur or injury, damage, loss howsoever caused, save in so far as the injury, damage loss shall be caused by the negligence of Thos. Mawer & Son's employees.
8. Each lot shall be at the purchasers risk from the fall of the hammer and must be paid for in full before the delivery and must be taken away by the purchaser at his own expense by 12 noon on the day following the conclusion of the sale. The Auctioneer shall be entitled to charge storage charges in respect of lots not taken away as aforesaid (minimum charge of £10 plus VAT).
9. Cheques which are not honoured by the Payee's bank will incur a handling charge of £15 plus VAT for each presentation.



**Valuations prepared for**

***INSURANCE***

***PROBATE***

***FAMILY DIVISION***

*For further information contact*

***J C Slingsby***

***01522 524984***

*Free valuation clinic every Friday morning at our offices  
9.30am to 12noon (no appointment necessary)*

***Specialist Licensed Trade Valuers***