

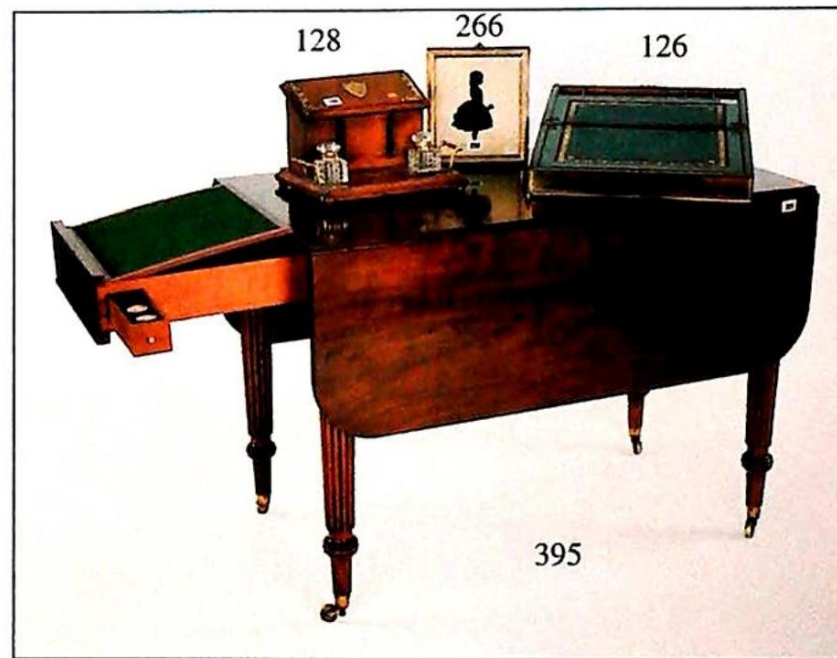
THOS. MAWER & SON LTD.

Auctioneers & Valuers · Established in 1864

Antiques and Fine Art



*Wednesday 28th April
at 11am*



THOS. MAWER & SON LTD.

Auctioneers & Valuers · Established in 1864

*By instructions from Executors in the estate of the late Mrs. N. Stabler
the contents of 58 Sunderland Street, Tickhill also the estate of Richard Harobin, Canwick, Lincoln
and entirely from other local vendors and Executors*

**ANTIQUE FURNITURE, CLOCKS,
EUROPEAN, ORIENTAL AND ENGLISH
POTTERY AND PORCELAIN,
SILVER, PLATE AND JEWELLERY,
PICTURES AND PRINTS,
BYGONES, COLLECTABLES AND BOOKS**

Auction

Wednesday 28th April 1999

Commencing at 11.00a.m.

View Times

Sunday 25th April - 2.00p.m.-4p.m.

Monday 26th April - 2.00p.m.-4.30p.m.

Tuesday 27th April - 9.30a.m.-4.30p.m.

No viewing on morning of sale

Front cover: Lot 557

Back cover: Lot 559

Catalogue £6.00

(admits two to view)

**THE LINCOLN SALEROOM
63 MONKS ROAD, LINCOLN LN2 5HP
TELEPHONE: (01522) 524984
FAX: (01522) 535600
EMAIL: mawer.thos@lineone.net**

COMMISSIONS

The Auctioneers are pleased to execute commissions for intending buyers in confidence as cheaply as is allowed by any other bids. **All telephone bids must be confirmed in writing or by fax by 4p.m. the day prior to sale.** We cannot guarantee to execute bids received on the morning of sale.

BUYER'S PREMIUM

There is a 11.75% premium payable on the final hammer price of each lot inclusive of VAT. Lots subject to VAT on the whole price are prefixed by *.

REGISTRATION

All prospective purchasers are requested to register and obtain a bidding number prior to the start of the sale.

CATALOGUE DESCRIPTIONS

Care is taken to ensure that any statement as to authorship, attribution, origin, date and provenance is reliable and accurate, but all such statements are statements of opinion and are not to be taken as statement or representations of fact. Thos. Mawer & Son Ltd. reserve the right, in forming their opinion, to consult and rely upon any expert or authority reasonably considered by them to be reliable.

CONDITION REPORTS

We regret that we are unable to provide condition reports on the morning of the sale.

ESTIMATES

Estimates for lots under £100.00 are not always printed in the catalogue. On lots which are reserved the reserve will not be greater than the published estimate at the time the catalogue goes to press.

IMPORTANT NOTICES

While an identification of damage is given in some instances, an absence of such advice does not imply that a lot is free from defect. Prospective purchasers are strongly advised to inspect any lot on which they intended to bid. All measurements and weights are approximate and should be verified by intending purchasers.

All Lots should be paid for and collected immediately following the sale. Any lots not collected by 4.00p.m. on the Thursday following the day of the sale will be removed to our store and removal expenses and storage charges incurred (minimum £15 + VAT per lot).

CERAMICS, GLASS ETC.

- 1 A Carltonware two handled tapering vase decorated with tree branches, 21cm high, a Samfordware pictorial jug - girl at the fireside, a pottery jardiniere and a pottery figure of a crinoline lady (4)
- 2 A Radford cream jug with painted floral decoration, 6.5cm, a Beswickware lettuce dish decorated with tomatoes, three pottery jugs and a lustre decorated mug with a central blue band and floral motif (6)
£40-60
- 3 Beswickware. A leaf design three compartment dish with a decorated tomato, a single dish and a Crown Devon triangular salad bowl (3)
- 4 A Royal Doulton figure of a fox decorated in an orange/red glaze, marked beneath and inscribed 12, 14cm high
- 5 A Royal Doulton seriesware jug with a pictorial band above a stylised ivy coated stone wall, titled "A Jackdaw of Rheims the Cardinal drew off each plum coloured shoe", shaped loop handle, marked beneath D2532, 15cm
£40-60
- 6 A Spode transfer print and floral painted plate, 25cm diameter, a transfer print Willow pattern wall plate, a blue and white transfer print oval meat plate and a Burleighware toothbrush holder (4)
- 7 A Victorian pottery model of a liver and white King Charles spaniel with gilt highlights, applied glass eyes, 34cm, and a Victorian pottery jug (2)
- 8 A Crown Devon Fieldings jug and bowl decorated in transfer print and painted with floral patterns (A/F)
- 9 Two flat sided blue and white transfer print decorated vases, a pair of Continental porcelain pictorial wall plates and four various meat plates (8)
- 10 A late XIX century Staffordshire transfer print decorated part dinner service "Flora" pattern comprising - three graduated meat plates, a gravy boat (A/F), twelve plates 19cm, twelve plates 24cm and twelve plates 26cm
- 11 A pair of porcelain dishes, the bowls decorated with painted posies, 25cm, and a small Copeland China bowl
- 12 A Royal Doulton character jug "Sairey Gamp" 16cm, a glazed pottery basket weave design planter and a Noritake coffee pot (3)
£50-80
- 13 A late XIX century Staffordshire transfer print decorated wash jug, slop pail, lid and chamber pot, marked beneath "Roseberry England", registration impressed 160727
- 14 A Victorian Staffordshire model of a King Charles spaniel with lustre decoration, King George V and VI commemorative mugs, an Aynsley nurseryware mug and a small character jug "Chubby" (5)
- 15 A pair of Victorian Continental porcelain figures - a girl and boy with dogs on naturalistic bases, 23cm high
- 16 A pair of XIX century Continental spillholders - husband and wife titled on the bases "I'm starting for a long journey" and "I'm off with him", 11cm high
- 17 A Grindley's half tea service decorated with blue and white transfer print and gilt highlights, printed beneath "Haddon" comprising 6 cups and saucers, 6 side plates, sugar bowl, cream jug, bread and butter plate (21)
- 18 A XIX century English transfer print decorated part tea service comprising 6 cups, 12 saucers, 11 side plates, 2 bread and butter plates and a slop dish (32)
- 19 Two XIX century Continental nodding head ornaments - oriental man and lady, 12cm high, and another similar Bisque figure - a baby pulling off it's sock, 11cm (3)
- 20 A pair of XIX century Staffordshire models of crouched dogs, 6.5cm, a pair of porcelain figures - sheep, and another pug dog (5)
- 21 A XIX century Fairing titled on the rim "When a man's married his troubles begin", a pottery money box in the form of a cottage and a Continental trinket jar and lid - Punch & Judy (3)
£50-80
- 22 A pair of Victorian Staffordshire figures - standing King Charles spaniels with birds to the mouth, decorated in rust blotched and feathery coat on naturalistic bases, 10cm, and a Staffordshire figure - girl standing by an urn (A/F) (3)
£100-150
- 23 A Crown Devon Fieldings figure of a lady in a crinoline dress with posy decorated in pastel colours, 18.5cm high, and a Coalport bone china figure titled "Joan", 8cm (2)
- 24 A XIX century English china wall plate with floral decoration and gilt highlights, and a blue and white tin glazed dish (A/F) (2)
- 25 Continental porcelain ornaments to include commemorative cup and saucer, Harbour mouth and lighthouse Whitby - a trinket jar and cover in the form of an egg, a miniature jardiniere and stand, a stem vase, a teapot and a glazed earthenware hanging bell (8)
- 26 Three Masons Ironstone dishes decorated in blue and rust red, impressed marks beneath, 24cm diameter
- 27 Three Fieldings floral decorated plates with gilt highlights, 23cm, and a George V commemorative tea cup and saucer
- 28 A pair of Crown Ducal ovoid tapering vases, the light brown and cream ground decorated with a hand coloured transfer print design - bird of paradise in a tree, marked beneath "Avis", and a Victorian chamber pot
- 29 A pair of Staffordshire pottery models of seated spaniels, wearing chain collars, painted faces and gilt highlights, 31.5cm high
£60-90
- 30 A Bridgwoods china tea service decorated with a hand coloured transfer print of flowerheads and leaves, marked beneath "Dutch", comprising 11 cups, 12 saucers, 12 side plates, 2 sandwich plates, milk jug and slop dish (39)
- 31 A XIX century English china tea service decorated with hand coloured transfer print tree branches and flowers, comprising 11 cups, 12 saucers, 4 side plates, 1 sandwich plate, milk jug and slop bowl (30)

- 32 A commemorative wall plate by C.W.S. Longton to "Clown Co-operative Society Ltd Central Stores coming of age 1889-1910", 24cm diameter
- 33 A pair of XIX century nurseryware wall plates with central hand coloured transfer prints titled "The Queen" and "The First Step", Victorian registration marks verso, 18cm diameter £40-60
- 34 Fieldings Devon Ware. A graduated set of three Pearlina lustre finish pottery jugs, a Continental porcelain dish, a boxed waxed seal and a chrome mounted tea tray (6) £50-80
- 35 A Wedgwood pearlware wash bowl and chamber pot with a green band and gilt decoration, and another chamber pot (3)
- 36 A pair of Victorian nurseryware plates with central coloured transfer print decoration titled "Docility" and "The First Step", Victorian registration mark verso, 18cm
- 37 A XIX century oval dish, the pierced rim with a painted border of trailing vine, 26cm; a similar decorated heart shaped dish; a 19.5cm diameter plate, impressed anchor mark beneath (3)
- 38 Decorative china. A Crown Devon Fieldings dish, a Continental wall plate, a two handled urn, a pair of wall plates and a pair of oriental design dishes (7)
- 39 A pair of Royal China Works Worcester wall pockets modelled as lillies with leaf and branch stems, marked 107, 11cm
- 40 A XIX century pottery comport, the oval two handled bowl decorated with fruits and foliage on a pierced and scroll base (discoloured), and other decorative china to include oriental cups and combined saucers, teapot, two porcelain figures, four glass custard cups (14)
- 41 An oriental ginger jar and cover decorated with figures, a floral decorated bowl and an ovoid jar and cover (3)
- 42 A Continental porcelain baluster stem vase with painted decoration of butterflies and flowerheads, 15cm, and a Beswickware two handled pottery dish (2)
- 43 A pair of Royal Winton tapering vases with floral decoration, an Adams tapering vase decorated with a river scene, and a cut lead crystal paperweight (4)
- 44 A XIX century blue and white transfer print decorated tureen and cover with mask handles - river scene with buildings in the background (A/F), 28cm, and a willow pattern decorated meat plate, 25.5cm (2)
- 45 George Jones & Son. Three graduated blue and white transfer print decorated shredded wheat dishes - a ruined church scene, and other blue and white transfer printed plates (15)
- 46 Copeland Spode Italian; a 19cm bowl, a 17cm bowl, milk jug, toast rack, 25cm octagonal plate, three saucers and two side plates (10) £50-80
- 47 Woods & Sons "English Scenery". A part tea service comprising a teapot, sugar bowl and lid, cream jug, slop dish, four tea cups, four bowls, two side plates, a sandwich plate and five 23cm plates (20)
- 48 Three willow pattern meat plates, 35.5cm, 38cm and 46cm, a 23cm dinner plate and another transfer print decorated meat plate (5)
- 49 An Ashworth's Indian Tree pattern dinner service comprising three graduated oval meat plates 48cm, 41cm and 26cm, two oval tureens and lids, two oval sauce boats, lids, ladles and stands, twelve 26cm plates, eighteen 23.5cm plates, five 20cm plates, eleven 18cm plates (53) £50-100
- 50 A pair of Dutch circular wall plaques with painted scenes - woodland and river, signed and marked on the reverse "Society Seramique Maestricht", 43cm diameter £70-120
- 51 F Winkle & Son Limited. Two graduated oval transfer print decorated meat plates, 46cm & 42cm
- 52 Royal Worcester. A Mansfield pattern six piece coffee service (A/F) and twelve sherry glasses (24)
- 53 Davenport. A meat plate decorated with a floral design and gilt, 41cm, and a matching two handled circular tureen and cover, 25cm diameter (repaired)
- 54 Myott & Sons. A transfer print decorated dinner service comprising a graduated set of four oval meat plates, four serving dishes, stand, seven 25cm dinner plates, ten 22.5cm plates and eight 20cm plates (34)
- 55 Copeland Late Spode. Thirty dinner plates and thirty dessert plates, the borders decorated with trailing ribbons and flowers, pattern No. D2660
- 56 Four Continental porcelain wall plates, the centres decorated with flowering fruits and gilt borders, 21cm, a porcelain three compartment dish with a gilt handle and wavy edge decorated with floral transfer print, 25cm
- 57 Victorian transfer print dinnerware. A Rhine patterned tureen, ladle and stand, a asiatic pheasant serving dish and cover on a circular stand, an oval two handled dish and cover, two plates, cream jug and a lamp base (9)
- 58 Wedgwood 1994. A "Jasper Lady Templetown" cream jug, 8cm high (boxed)
- 59 Royal Crown Derby. An Imari patterned octagonal bowl richly decorated to both interior and exterior, 20.5cm diameter
- 60 Royal Crown Derby. A pair of Imari pattern wavy edge plates, 21.5cm diameter
- 61 Royal Crown Derby. A pair of Imari pattern wavy edge plates, 21.5cm diameter
- 62 Royal Crown Derby. Four Imari pattern dishes, 10.5cm
- 63 Royal Crown Derby. A set of six Imari pattern tea cups and saucers
- 64 Royal Crown Derby. A set of six Imari pattern tea plates, 16cm diameter
- 65 Royal Crown Derby. A pair of Imari pattern dishes, the shaped sides with burnish gilt scroll handles on oval feet, 28cm wide

- 66 Three Prattware type wall plates, the centres decorated with scenes - XIX century gentlemen and animals to water, 21cm diameter, and two oriental famille vert decorated plates, 18cm (5)
- 67 A XIX century leaf design decorated two handled dish, 25cm wide, a 19.5cm plate, another leaf and cucumber, two Imari style dishes and a pair of dinner plates (7)
- 68 A XIX century English China tea service decorated with trailing vine and gilt borders comprising eight tea cups, twelve shallow cups, twelve saucers, twelve side plates, two sandwich plates and a slop basin
- 69 A blue and white transfer print wash bowl - oriental river scene, a jug - cattle drinking, a small bowl and a Copeland preserve jar and cover - landscape (all a/f)
- 70 Macintyre. A pottery match holder, a Grindley fruit bowl, Tudor ware dish, wall plate and a floral decorated jug (5)
- 71 An early XIX century Staffordshire figure group titled "RUALER &" - a man and woman seated on a tree, square base, 16cm high; a Samson tea canister and a Newhall bowl decorated with roses (all damaged)
- 72 A XIX century Staffordshire figure group - male and female standing by a bough with a vase of flowers, the circular base with a gilt line, 43cm high (cracked)
- 73 A XIX century transfer print coloured tea service comprising nine tea cups, ten saucers, twelve tea plates, two sandwich plates and two floral decorated jugs and a wall plate (36)
- 74 A Royal Devon two compartment dish with floral decoration and gilt handle, a Florentine bowl, a similar plate and salad bowl and a Limoges wall plate (5)
- 75 A Crown Devon Fieldings shell shaped dish with transfer print and hand coloured floral decoration, a salad dish decorated with a central urn and flowers and a floral decorated dish and cover (3)
- 76 A Devon Ware Fielding toilet set comprising wash jug and bowl decorated with flower heads, trailing swags and gilt with similar chamber pot, three large dishes and covers, two open dishes, two small dishes and covers and a toothbrush holder (11)
- 77 A Crown Devon Fieldings teapot decorated with birds of paradise impressed beneath "Georgian 2"; a similar unmarked cheese dish and cover, butter dish and cover, candlestick, cream jug, plate, two handled sugar basin and a ring stand (8)
- 78 A Crown Devon Fieldings jardiniere, a Royal Devon dish, a cheese dish, similar fruit bowl, dish, cover and dessert bowl (6)
- 79 A Crown Devon Fielding jug, another, a vase, another unmarked, hat pin holders, toothbrush holder (6)
- 80 A XIX century blue and white transfer print floral decorated toilet set comprising chamber pot, soap dish and cover, eight piece dressing table set and an Abbey patterned plate (11)
- 81 A pair of floral decorated Minton's wall plates, a pair of XIX century leaf design wall plates and a Parianware jug impressed 'Dudson'
- 82 A Clarice Cliff "Bizarre" square candlestick decorated with a cottage and trees, 6cm wide
- 83 An opaque glass vase with a shaped rim, the oval body decorated with a scene of a girl and boy, 35.5cm high, and an ivy decorated Parianware jug with pewter lid
- 84 A Continental porcelain figure of a bulldog, 14cm high and a glazed pottery figure of a dog (2)
- 85 Bretby. An Art Nouveau jardiniere, the two shaped handles with applied coloured stones, the centres decorated with a Kingfisher, duck and flowers, impressed beneath 1526K, 27cm high (a/f) £50-80
- 86 A pair of classical design pottery vases with a relief panel of maidens and soldiers, on tricorn bases, 43cm high
- 87 A pair of oriental baluster vases painted with figures in an interior and with warriors on horseback, 44cm high (a/f)
- 88 Seven floral decorated cabinet plates and two pottery vases
- 89 A XIX century Staffordshire jardiniere and stand transfer printed with roses and central panels of maidens 93cm high; and three glass hanging light shades (4)
- 90 A Royal Worcester porcelain stem vase, the hexagonal tapering body painted with posies on a cream ground and with gilt highlights raised on three scroll feet, date 1906, marked 1043, 14.5cm high £100-150
- 91 A concrete bird bath supported by three plaster semi naked ladies
- 92-100 No lots
- 101 A moulded glass decanter, two small cut lead crystal decanters, enamel decorated glass, four sugar crushers, a Victorian two handled blue glass dish and a porcelain figure of an Arabian lady (A/F) (10)
- 102 A pair of green lustre wavy edge dishes, 18cm diameter, and a pair of orange lustre dishes
- 103 A square XIX century glass decanter with painted gilt decoration, a small plain ditto, a cut glass sugar dredger and a green glass float (4)
- 104 A Victorian cranberry glass dish with a plain wavy edge raised on six pinched feet, 15cm diameter, and another similar
- 105 No lot
- 106 An oval glass dish, the sides facet cut with a blue rim, 12cm wide, and a moulded glass ornament of a swan
- 107 A pair of XIX century opaque glass baluster vases with painted decoration of dogs raised on circular stepped bases with gilt borders, 30cm high £100-150
- 108 A XIX century glass tankard, the facet cut lid with plated mount to a loop handle, the side body etched with a three masted ship within a bevelled oval, the star cut base dated 1852, 14.5cm high £60-90

- 109 Two globe sherry decanters and a lead crystal decanter (3)
- 110 A green glass fisherman's float stamped "Made in England" and three blue glass plates with a larger dish (4)
- 111 An early XX century opaque glass hanging light shade decorated with fruiting vine
- 112 An Art Nouveau influenced hanging lampshade, the leaded frame inset with ten shaped opaque glass panels, each decorated with an abstract design
- 113 A cut lead crystal spirit decanter and stopper with London hallmarked silver label "Whisky" and a facet cut sherry decanter
- 114 A tapering glass vase on a baluster stem and circular foot, the etched decoration of flowing ferns and vine, and a lead crystal dish on a hexagonal and star cut base

VICTORIANA, METALWARE, CADDIES & BOXES ETC.

- 121 A Victorian foot stool, the circular wooden frame upholstered with a beadwork panel
- 122 A XIX century mahogany toilet mirror, the rectangular bevelled plate on two square tapering columns with shaped splay feet united by a moulded rail, 74cm wide £60-90
- 123 A XIX century rosewood trinket box, the rectangular lid enclosing a fitted interior, 47.5in. wide
- 124 A Georgian mahogany toilet mirror, the rectangular plate on turned supports, the bow front base fitted with three drawers raised on four turned feet, 51cm high £150-250
- 125 A XIX century Victorian mahogany toilet mirror on a serpentine shaped base
- 126 A XIX century brass bound mahogany writing box, the fitted interior with a tooled leather slope and brass angles, 21cm wide £70-100
- 127 A XIX century rosewood two compartment tea caddy, two horn beakers, a cased set of oriental painted pictures on rice paper and shaken copy of Gullivers Travels (4)
- 128 A Victorian oak desk stand with brass mounts, the stationery compartment with a hinged lid above a pen tray and two square glass ink bottles £70-120
- 129 A Tunbridge ware two compartment tea caddy, the domed lid decorated with a building and floral border, the tapering flat sided body with a wide border of leaves and foliage, 26cm wide, 15.5cm high £100-200
- 130 A Victorian mahogany workbox (distressed) and a brass adjustable candlestick
- 131 A pair of cast brass candlesticks and two glass ink wells
- 132 A pair of Victorian cast brass candlesticks, 22cm high

- 133 A Victorian table oil lamp, the plain glass reservoir on a cast and pierced tapering base, (later) decorative globe shade, 55cm high
- 134 A pair of cast gilt metal frame bevel edged table mirrors, decorated with a pierced flowing swag and floral design, 39cm x 23.5cm
- 135 A pair of late XIX century brass candlesticks of Renaissance design with fruiting vine, cherubs and bird's heads on claw feet, 27cm high
- 136 A pair of brass fire dogs and a set of three fire irons £120-180
- 137 An early XX century brass table lamp, the green glass shade on a straight reeded column a four footed stepped base, 48cm high
- 138 A Victorian table oil lamp with a moulded pink glass reservoir on a fluted brass column with domed pierced cast iron base, 48cm high £50-100
- 139 A XIX century cast iron door stop in the form of a sea serpent, 38cm high
- 140 A pair of Victorian cast brass candlesticks on square bases, a pierced brass stand on a turned base and a table oil lamp
- 141 A XIX century copper kettle, a copper and iron stand, a beaten copper bowl and eight various horse brasses on two leather straps (11)
- 142 A XIX century copper warming pan with a turned wooden handle, the lid engraved with a bird
- 142A A polished brass fire kerb 132cm wide
- 143 A large brass school hand bell with a turned wooden handle, a table bell, candlestick; a poker and stand and a brass hose nozzle (5)
- 144 A XIX century copper and brass warming pan on a turned wooden handle
- 145 A XIX century brass chamber candlestick, a set of brass fire tongs and a cast brass door stop
- 146 Three XIX century conical copper jugs and a third gill measure (4)
- 147 A set of buffalo horns
- 147A A wood and metal frame sack barrow by Slingsby
- 147B A pair of leather riding boots and trees
- 147C A pair of leather riding boots, two pairs of trees, a pair of riding boot top protectors and a horn handle crop

BOOKS

- 148 Hubble, Edwin. The Realm of the Nebulae O.V.R. 1936, 8vo, cloth, DW torn and defective on spine, ills., inscribed on fly by E.H. to Dame Ethel Locke King
- 149 Potter, Beatrix. Three titles - "The Story of a Fierce Bad Rabbit", "The Tailor of Gloucester", "The Tale of Peter Rabbit" (DW) (no dates) (the first inscribed 1956), rubbed, the second defective on the spine

- 150 No lot
- 151 Manuscript commonplace book of Mary Ann Darton of London 1830-1860, 8vo, calf gilt rubbed, on approx. 105pp, verses etc. and pencil and watercolour drawings - 1 volume £30-50
- 152 Hill, J.W.F. Mediaeval Lincoln. C.U.P. 1948, green cloth and "Forgotten Lincoln" and Griggs, F.L. Highways and Byways in Lincolnshire - 3 volumes £20-30
- 153 Hill, J.W.F. Mediaeval Lincoln. C.U.P. 1948, green cloth and Hill, J.W.F., Tudor and Stuart Lincoln, C.U.P. 1956, green cloth, dw worn and chipped - 2 volumes £20-30
- 154 Hill, J.W.F., Mediaeval Lincoln. C.U.P. 1948, green cloth and Hill, J.W.F., Tudor and Stuart Lincoln, C.U.P. 1956, and "Forgotten Lincoln" (covers stained) - 3 volumes £20-30
- 155 Lincolnshire in 1836. Displayed in a series of nearly 100 engravings on steel and wood ... Lincoln, John Saunders 1836, 8vo, half sheep, worn, folding map and many plates - some spotting and staining, worm damage mostly in gutter towards end £40-50
- 156 Oldfield, Edmunds. A topographical and historical account of Wainfleet and the Wapentake of Candleshoe London 1829, 8vo, t.p. browned, some spotting and browning of plates (6 plates on steel, others on wood in text), orig. half roan, worn and rubbed £60-70
- 157 Directory. The City of Lincoln Directory 1857, Charles Akrell, High Street, Lincoln. Tall 8vo, orig. orange boards, cloth spine, rubbed and Akrell's City of Lincoln Directory for 1881, 8vo (4 prelims removed ? advts) £30-50
- 158 Birch, W.de. G. The Royal Charters of the City of Lincoln, Henry II to William III. Cambridge 1911, 8vo, red cloth, ills., slight damage. With The Date Book for Lincoln and Neighbourhood, R.E. Leary, sm. 8vo, after 1866, orange boards, cloth spine - 2 volumes £25-40
- 159 White, Wm. History, Gazetteer and Directory of Lincolnshire 1842, 8vo, orig. calf (no map) £40-50
- 160 Illingworth, Rev. Cayley. A Topographical Account of the Parish of Scampton ... and of the Roman antiquities lately discovered there .. London 1810, 4to, orig. grey boards, pages untrimmed, 2 maps, t.p. engr., and other plates (one folding) spine stripped, presentation copy £40-50
- 161 Dixon, William. Free Masonry in Lincolnshire, Lincoln - James Wilkinson 1894, 8vo, blue cloth £15-30
- 162 Howlett, Bartholomew. A selection of views in the county of Lincoln ... London, William Miller 1805, 4to, contemp. Russia leather, rebaked, mep's, insc. on fly "Wm Cloyne Subscription Copy" (Bishop of Cloyne), letter press by Bulmer £200-300
- 163 Hume, David. The History of England ... to 1688, London 1808-10, 8vo, 10 vols, straight grain calf, rubbed, faded on spines, most labels missing £50-60
- 164 Bindings. Shelf of leather bindings - 50 volumes (various conditions) £50-80

- 164A Miles, W.J. - Modern Practical Farriery, Ldn. Mackenzie, half morocco (binding broken), 4to, plus two others on veterinary subjects (3 vols)
- 164B Fox Hunting, Lonsdale Library 1930 plus 3 others on horses and hunting and 8 pamphlets
- 164C Horse and Hound Year Book, 16 volumes 1949-50, 1959-1975 plus 1 other (17 vols)
- 164D What Katy Did, The Old Man of the Mountain, Veterinary Counter Practice, Horses, Dogs, Birds, Cattle, First Aid Book (4 vols)

BYGONES, EPHEMERA, POST & CIGARETTE CARDS ETC.

- 165 A horn handled walking stick with a Birmingham hallmark silver collar
- 166 A collection of Victorian and later photographs including tin type portraits, postcards etc. (approx. 48 items)
- 167 An oak framed photograph 'Country house and garden' another 'Gentleman on horseback', School photograph - 'Horbling Group 3', portrait 'Lady with bicycle' and three others (7)
- 168 An ebonised walking stick with horn handle and silver collar - Chester hallmarked and a silver topped walking cane (2)
- 169 Bamboo effect umbrella with silver mounts, four walking sticks and another umbrella (6)
- 169A Four wooden shafted golf clubs, two drivers, a brass putter "R. Forcan & Son" and another
- 170 Meccano. A quantity of part sets contained in four boxes including two clockwork motors, tins, distressed catalogue pages etc
- 170A Four walking sticks, blackthorn, bamboo, cherry etc
- 171 An old glass bottle - Bowen & Co, Steam Mineral Water Works, Stroud another Niblett & Co and four others (6)
- 172 A set of antelope horns and another
- 173 Painted letter rack, another, two corkscrews with bone handles, two wicker baskets and misc. door knobs
- 174 A Lucas wax cylinder player the cast iron frame with gilt lines in an oak case with dome lid 23cm wide
- 175 A qty of commemorative books, magazines to include: Our King & Queen - Pictorial Record Of Their Times, Weekly Illustrated - The Royal Wedding etc - large qty
- 176 Victorian. A ladies three quarter length day jacket with button through front and flared back panels the emerald green corded effect fabric decorated down the front and hem with embroidered vining flowers and butterflies lined with peach silk, the collar, sleeves, hem and back panels trimmed with pleated peach silk and green lace, the sleeves having panels of ruched green velvet £80-120

- 177 A tin box in the form of a trunk, 13cm wide, a boxed table tennis games with softwood and paper bats, packaging, tins and boxes (10)
- 178 A table croquet set with eight 30cm mallets, wire hoops on weighted bases, balls etc. - contained in a wooden box, the inside lid with paper instructions, and a Pressman plate camera (no lens)
- 179 A Read's patent brass pump contained in a mahogany case, a brass and mahogany four section extending telescope, 41cm and a cased part manicure set (3)
- 180 A set of draughts pieces, tiddly winks, dice, wooden counter contained in a mahogany box, a leather cased bridge set (unused), a Victorian leather bound photograph album and a hand mirror (4)
- 181 A horn beaker, turned softwood bowls, a lacquered box containing pewter pump, small evening purse, a woven hair watch chain, compass, whistle (18)
- 182 Edward VIII commemorative calendars 1937, another 1931, an unframed poster and a souvenir book Queen Victoria (5)
- 183 Bacon's map of Lincolnshire, three Victorian tin type photographs - family portraits, three calendars and five portrait photographs (12)
- 184 A mahogany tobacconist's cigar box, the lift up lid painted "Smoke the OB Brands 1D, 2D, 3D", with a fitted interior, the back with a carrying handle, the front inset with a gilt and black glass pane 29cm wide, and a early XIX century turned wooden truncheon (2)
- 185 A Valentine heart shaped pin cushion with decorative beads 14cm, a decorative painted fan, various postcards including gentleman on his Douglas motorbike, paper coasters and two fish ornaments
- 186 An oval mahogany tray with brass rim, two horn beakers, an enamel pill box, five glass marbles, two ivory jars, figure of a Scotty dog, cloisonné vase, bottle pourer in the form of a horse's head, turned wooden trinket jars - Lincoln Imp, inkwell and a Phillips 9in. terrestrial globe and stand (22)
- 187 A chrome plated mascot - footballer kicking a ball impressed DESMO, 13cm high
- 188 Crested China. Models of urns and vases (8), a Bisque model of a doll, 8cm (a/f), a sovereign purse, watch fobs, costume jewellery etc.
- 189 Old tins, Thorne's toffees, Red Breast Flake (3), tin money boxes "Save for the Holidays" etc. (3), two painted wooden trinket boxes etc., and four lace collars etc.
- 190 The combination kitchen set. A child's tin plate toy with fridge, sink and cooker contained in a printed card kitchen layout, 51cm wide
- 191 Linen and lace table cloths, needlework souvenir 1st World War handkerchiefs (9)
- 192 An early XX century composition doll with jointed limbs and contemporary costume, 50cm
- 193 An early XX century pot headed doll impressed "Germany 6 1/2" with sleep eyes, open mouth and jointed wooden body, wearing an embroidered night dress, 68cm £200-300
- 194 Four stuffed toy animals - monkey, cat, penguin and a rabbit, all approx. 9cm high
- 195 A miniature teddy bear with golden yellow plush, jointed neck, arms and hips, 9cm £20-40
- 196 A soft toy model of a rabbit, straw filled, yellow plush with glass eyes, 18cm high £100-150
- 197 A teddy bear with long plush, glass eyes, stitched nose, open mouth, hump backed and felt pads, 62cm, and another smaller 20cm £200-300
- 198 An 'O' gauge 0-4-0 live steam engine by Bowman Models LMS 30 livery (a/f)
- 198A A Davies & Kidder's patent magneto electric shock machine contained in a mahogany box
- 198B A cased gramophone record "An address of welcome to His Majesty King George V at the opening ceremony of the Tyne Bridge"; and a gladstone bag (a/f) (2)
- 199 The Hamilton Collection. Official 1991 Star Trek 25th Anniversary Boxed Limited Edition Plates. No. 1012B - Kirk, No. 2732K - Spock (2)
- 199A The Hamilton Collection. Official 1991 Star Trek 25th Anniversary Boxed Limited Edition Plates. No. 4904B - Sulu, No. 4640A - Chekov (2)
- 199B The Hamilton Collection. Official 1991 Star Trek 25th Anniversary Boxed Limited Edition Plates. No. 0630B - McCoy, No. 0048B - Ohura (2)
- 199C The Hamilton Collection. Official 1991 Star Trek 25th Anniversary Boxed Limited Edition Plate. No. 4996A - Scotty and another from 'The Voyagers Plate Collection' No. 1226A - U.S.S. Enterprise NCC-1701 (2)
- 199D The Hamilton Collection. A mounted photo plaque titled 'Where no man has gone before' - Captain James T. Kirk, autographed by William Shatner (1)
- 200 The Hamilton Collection. Thunderbirds Limited Edition Plate, No. 2178 'Scott Tracy Pilot: Thunderbird 1', No. 2330 'Virgil Tracy Pilot: Thunderbird 2' (2)
- 200A The Hamilton Collection. Thunderbirds Limited Edition Plate, No. 2078 'Thunderbird 3: Mission to outer space', No. 0579 'Undersea adventure with Thunderbird 4' (2)
- 200B The Hamilton Collection. Thunderbirds Limited Edition Plate, No. 1417 'Thunderbird 5: Calling International Rescue', No. 0856 'Lady Penelope - London Agent', No. 0058 'Thunderbirds are go' (3)
- 201 Postcards. Lincoln - Arboretum, High Street, St Benedicts, Lincolnshire, Newark, approx. 60 cards, also approx. 400 plastic sleeves
- 202 Postcards. 1st World War, greetings - Bamforth series, also silks and other greetings - approx. 307 cards
- 202A Postcards. Church, Hitchin, Utterby, Louth also Romantic, Greetings etc approx 160 contained in two albums, Chatterbox 1893,4,5, 1 Volume a/f (3)

- 203 Postcards. Sheffield, Wetwang 1906, Grimsby, Colchester, Windsor Castle, London, Trams etc. - approx. 102 cards, in original album
- 204 Postcards - Animals, Louis Wain - cats, dogs, butterflies (22) £30-50
- 205 Postcards - general, greetings - Huddersfield, in an album - approx. 135 £30-50
- 206 Postcards - general, greetings, in an album - approx. 120, plus stamp album and photograph album and Horne's Official Guide to Whitby - 1 volume
- 207 Postcards. Mainly greetings and comic, also cigarette cards, tea cards, adventure booklets, Mary Merrilees, etc. (quantity)
- 208 Postcards. First World War, greetings, actors, actresses, silks - good selection contained in an album, approx. 400 cards £60-120
- 209 First World War silk postcards (8), 2 silk handkerchiefs, quantity of old greeting cards
- 210 The Beatles. Magical Mystery Tour - two singles contained in a pictorial booklet 1967, twenty six single records - various artists
- 211 Press photographs, various subjects - large quantity
- 212 T.T. Races Isle of Man, The World's Championship Road Race, official programme and guide - 1952,53,55,57,59,1960-1968 inc., 73, Scoreboard booklets 1955, 59,60,64 (20)
- 213 T.T. Races - Isle of Man, The World's Championship Road Race, Report Newspapers large quantity 1950-60's plus other ephemera, picture cards etc
- 214 Football. Topical Times Panel Portraits Album of Star Footballers, World Cup Final 1966 Souvenir Programme, Final Blackpool V Bolton Wanderers 1953, 1974 Commonwealth Games programmes (7)
- 215 Valentine Cards. Victorian and later, postcards, cigarette cards, Coronation 1937 programme - Louth, commemorative medallion Grimsby 1879, silks 'Victory For The Allies' - approx 20
- 216 Gallagher - 14 sets contained in original booklets, W.D. & H.O. Wills - 10 sets contained in original booklets, plus odds (24)
- 217 Ardath - Famous Footballers, film, stage and radio stars, Silver Jubilee 1910-1935 in leather effect albums (3)
- 218 Ardath Tobacco Co. Ltd. Who is this? plus Godfrey Phillips - Famous Minors etc (4), John Player & Coronation series Ceremonial Dress (4), W.H. & F.J. Horniman 'On Safari' (3) - plus odds (13)
- 219 John Player - National Flags, Cycling, Naval Craft, Animals of the Countryside, T.A. in original albums plus 4 tins containing approx 24 sets and odds
- 220 Barratt & Co. Famous Footballers A3, A4, Test Cricketers also ten cards, clay pipes, lighter etc
- 221 Salmon & Gluckstein Ltd. The Post In Various Countries - 1900 issue full set £200-300
- 222 Wills. Military Motors, Players Army badges - odds contained in cigarette picture album, another, Gallagher Ltd, snapshots, postage stamp album, two annuals, photograph frame etc (8)
- 223 Wills. Railway Locomotives, Dogs, Gallagher. Wild animals, British Birds, Butterflies and Moths, Ogdens. British Birds etc, sets and odds contained in four albums
- 224 Wills. Cinema Stars, G. Phillips. Screen Stars, Carreras. Film Stars, Film Favourites, Brook Bond. African Animals, Exploring The Ocean, The Arctic, Indians of Canada - 1 album
- 225 Kensitas. Silks, Flags, Carreras. Orchids, Typhoo. Trees of the Countryside, British Birds And Eggs, Wills. Roses - 1 album
- 226 Gallagher, British Birds, Player. Racing Caricatures, Military Uniforms, National Flags, Past & Present, Drum Banners, Carreras. Camera Studies - 1 album
- 227 Brook Bond PG Tips. Creatures of Legend, Going Wild, The Secret Diary of Kevin Tipps, 40 Years Of The Chimps, The Wonderful World of Keven Tipps, International Soccer Stars, 40 Years Of Cards, Pyramid Power - 1 album
- 228 Senior Service. The Navy, Ogdens. Cricket 1926, Famous Rugby Players, Player. War Decorations, Army Corps, Old Sporting Prints, Gallagher. Famous Footballers, Wills. Old Furniture, Millchoff. Real Photographs - 1 album
- 229 Jacob & Co. - 200. Craven. Kings and Queens, Ogdens. Poultry Rearing, Carreras. Film Stars, Players. Footballers 1928-9, Phillips. Prizes For Needlework, Railway Engines, Model Railways, Film Favourites, Our Puppies, Churchman. In Town Tonight, Wills. British Butterflies, Straight Line Caricatures, Wonders Of The World, British Birds - 1 album
- 230 Wills. Alpine Flowers, Arms Of Foreign Cities, Phillips. Aircraft, Ogdens. Derby Entrants 1926, Motor Races 1931, Senior Service. Winter Scenes, Sights of Britain, Silks, Flags, Brook Bond. Unexplained Mysteries, Journey Downstream, Olympics, Lyons Tea. Australia - 1 album
- 231 A quantity of odds, swaps and part sets approx 60 titles
- 232 Gallagher. Trains Of The World, Butterflies, Texaco. Cricket Cards, Mobil. Vintage Cars, Player. Boy Scout & Girl Guides, Gilbert & Sullivan, Wills. Railway Engines, Children Of All Nations, Do You Know, Wonders, Ogdens. Children Of All Nations, Leaders of Men - 1 album
- 233 Challis. Wild Birds At Home, Brook Bond. Bird Portraits, Topical Birds, Wild Birds In Britain, Tetley. British Birds, Ogdens. British Birds, Foreign Birds, Poultry, Player. Aviary And Cage Birds, Curious Beaks, Game Birds & Wild Fowl, Wild Birds, Birds And Their Young, Gallagher. British Birds, Wills. Life In The Tree Tops - 1 album
- 234 Lifeguard Products. British Butterflies, Swettenhams. Butterflies And Moths, Millers. Animals And Reptiles, Glengettie. Animals Of The World, Clover. Pre historic Animals, Barbers. Dogs, Sharp - Hey Presto, Co-op. Tropical Birds etc, Voucher. Family Crests - 1 album

- 235 Wills. Radio Celebrities, Carreras. Film Stars, Gallagher. Film Partners, Famous Film Scenes, Portraits Of Famous Stars, Champions Of Stage & Screen, Film Episodes, Shots From Famous Films etc - 1 album
- 236 Players. Film Stars contained in original album also 19 others, 1 album 'Birds' and a qty of picture postcards, spare albums etc
- 237 A quantity of odd tea cards - two boxes
- 238 Gallagher. Wild Flowers, Garden Flowers, Wills. Garden Flowers, Flower Culture In Pots, Old English Garden Flowers, Wild Flowers, Brooke Bond. Wild Flowers, Lamberts. Cacti - 1 album
- 239 Player. British Live Stock, Player. Natural History, Derby & Grand National Winners, Wild Animal heads, Animals Of The Countryside, Dogs, Gallagher. Dogs, Wild Animals, Brooke Bond. Asian Wildlife, African Wildlife, British Wildlife - 1 album
- 240 Wills. Association Footballers, Ships, Badges, Wild Flowers, Players. Coronation, Dogs, Cricketers, Carreras. Regalia, British Birds, Phillips. British Butterflies, Ogdens. Birds Eggs, Modern British Pottery, Abdulla. Old Favourites, Senior Service. Bridges of Britain, Dogs, Millhoff. Real Photographs
- 241 Player - Grandee. British Birds, Endangered Wildlife, Famous MG Marques, Top Dogs, British Butterflies, Doncella. Golden Age Of Motoring, British Mammals etc - 1 album
- 242 A quantity of 'odds' - 3 boxes part sets
- 243 Player. Fresh Water Fish, Flags of The League of Nations, Uniform Of The T.A., Dandies, Footballers, Army Badges, Products Of The World, Cricketers 1934, Browns. History Of The Railways, Horniman. Pets, Lyons. HMS 1902, 1962, Ogdens. Jockey & Owners Colours, Gallagher. Army Badges - 1 album
- 244 Brooke Bond. History Of Aviation, Inventors And Inventions, Wonders Of Wildlife, Queen Elizabeth, Incredible Creatures, The Saga Of Ships, Transport Through The Ages, History Of The Motor Car, Flags, Famous People, Adventurers & Explorers etc - 1 album
- 245 Brooke Bond. Butterflies Of The World, Trees In Britain, Wildlife In Danger, Freshwater Fish, British Costume, The Sea, Police File, Vanishing Wildlife, Olympic Greats, Pre historic Animals, Space - 1 album
- 246 Mobil. Grand Prix Motor Racing, Carreras. Sight Of Britain, Beautiful Scotland, Wills. World Of Speed, English Period Costumes, Drapkari?? Girls Of Many Lands, ATC. Famous British Ships, Gregg's. Birds, Gallagher. The Navy, Lea. English Birds, Ships - 1 album
- 247 Gallagher. Sporting Personalities, Wills. Household Hints, Gardening Hints, Player. Kings & Queens, Smoker, Miniatures, Thackeray, Riders, People Of The Empire, Phillips. Our Dogs, Carreras. Dogs & Friends, Military Uniforms - 1 album
- 248 Collectors. Railway Locomotives, Wills. Lucky Charms, The Sea Shore, Royal Navy, Railway, Speed, Roses, Gallagher. Racing Scenes, Famous Jockeys, Aeroplanes, Players. Cricketers 1938, Football Caricatures - 1 album
- 249 Oliver. German Orders & Decorations, German Uniforms, Lamberts. Game Birds, B.T. Ltd. Pirates & Buccaneers, Kensitas. Silks & Flags, Phillips. Public Eye, Player. Cycling, Naval Dress, Pugilists, Sea Fishes, Wills. Historic Events, Churchman. Howlers - 1 album
- 250 Players. Belgian Architecture, Arms Of Companies, Gilbert & Sullivan, Characters From Dickens, Cries Of London, R.A.F. Badges, Phillips. Derby Winners & Jockeys, Wills. Overseas Dominions, Roses, Flowering Trees & Shrubs, Homeland Events, Carreras. Vintage Cars - 1 album

PICTURES & PRINTS

- 251 A framed print after Arthur Elsley published by Bovril titled "The Huntsman"
- 252 An artists proof print titled "The End of the Day" Belton Beagles, 22cm x 34.5cm
- 253 A pair of maple framed prints titled "Partridge Shooting" and "Pheasant Shooting" £40-60
- 254 A pair of oak framed prints after Roeseler titled "In the Hands of the Philistines" and "Defeat of the Philistines", and another print "The Harrier Kennel" (3)
- 255 Four framed prints after Daniell - Scottish harbour scenes
- 256 A gilt framed coloured print titled "The View of Royal Highness cottage at Old Windsor", 39cm x 39.5cm
- 257 A framed print after Cecil Aldin - horse and hounds, 37cm x 50cm, and an oil on canvas "Pottergate, Lincoln"
- 258 A framed engraving titled "Croyland Bridge, Lincolnshire"
- 259 Four framed engravings - Gedney, Moulton, Kirton and Tydd St Mary churches
- 260 An XVIII century engraving after Joseph Baker titled "The North West Prospect of the Cathedral Church of Lincoln"; maple frame, 60cm x 73cm £100-200
- 261 A XIX century coloured print after John Buckler - south west view of the Cathedral church of Lincoln, re-mounted in a stepped gilt frame, 48cm x 62cm £100-200
- 261A A XIX century alphabetical sampler, 26cm x 29cm
- 262 An XVIII century engraving after J. Collins titled "The South West Prospect of the Cathedral Church of St. Mary Lincoln", re-mounted in a stepped gilt frame, 48cm x 69cm £100-150
- 263 A pair of coloured prints after Lionel Edwards titled "The End of a Good Gallop" and "Forrard, Forrard"

- 264 An oak framed coloured print "The Hunt", another titled "The Earl of Derby's Stag Hounds" and two framed lithograph prints - hunting scenes (4)
- 265 A XIX century needlework, the central panel with a gentleman and dog at his feet, floral border, framed, 29.5cm x 35cm
- 266 Four XIX century framed silhouettes - three young girls and a lady
- 267 A Victorian watercolour drawing three children playing outside a country cottage 18cm x 14cm, gilt frame £100-150
- 268 A XIX century watercolour drawing cattle grazing in the grounds of a country house and abbey 19.5cm x 34cm, gilt frame
- 269 W.J. Boddy 1832-1911 watercolour old house in Skeldergate 27cm x 18cm, gilt frame £150-250
- 270 Watercolour drawing river landscape, framed and a framed and mounted photograph - Winston Churchill on horseback
- 271 H. Curuen. Oil on board riverscape with rowing boats, dated 1907 29cm x 59.5cm, gilt frame
- 272 Arthur Bradsbury. Oil on board still life - flowers and vase 24cm x 23cm, framed
- 273 A XIX century oil on canvas portrait of a gentleman 78cm x 64cm, gilt frame and another
- 274 H.K. Storie? Pair of watercolour drawings country rivers scenes 22.5cm x 45cm £60-90

SILVER, PLATE & JEWELLERY

- 275 A Continental plated wine bottle holder £100-150
- 275A A Victorian design plated chamber candlestick and two circular salts with blue glass liners
- 275B An oval galleried tea tray with a gadrooned border, silver plate on copper, 60cm x 41cm
- 276 A pear shaped teapot and matching hot water pot, the hinged domed lids topped with a turned bone finial, shaped bone handles, stamped beneath TL & EM, 21cm and 22cm high £80-120
- 276A James Deakin & Sons, Sheffield. A table centre of two stags beneath branches, oak leaves and acorns (a/f), 28cm high
- 277 A circular swing handled dish with egg and dart rim, pierced border and central patera raised on a circular foot, another with pressed scroll decoration by Mappin & Webb and a six slice toast rack
- 278 A XIX century six bottle cruet (one bottle missing), a four bottle cruet, two bottles, four slice toast rack and a tapering oval teapot
- 279 A six bottle cruet on a circular base, stamped Walker & Hall, and a similar four bottle cruet £100-150
- 280 A six bottle cruet (matching lot 279), and another four bottle cruet (part) £40-70

- 281 A XIX century watering can, the ribbed oval body with floral engraved decoration and a tapering circular spout, 20cm, and a plain tapering circular hot water pot (2) £100-150
- 282 A four piece tea service with engraved floral decoration by Walker & Hall Sheffield, the teapot engraved "presented to G. Young by the Engineer Officers of the R.M.S. Minnedosa" on the occasion of his marriage September 30th 1919 and a rectangular two handled tea tray
- 283 A XIX century claret jug, the glass body with a facet cut stem and star cut base, the plated mount with a "C" scroll handle (stopper missing), 23cm high
- 284 An oak cased set of fish eaters and servers with bone handles and engraved blades, and a cased set of six Birmingham hallmark silver coffee spoons (2)
- 285 A four bottle cruet, a four cup egg cruet and spoons, sugar helmet and a pair of Art Nouveau style stem vases (6)
- 286 A pair of rectangular entree dishes and covers with detachable handles and ribbed borders, 28cm wide £50-80
- 287 An oval entree dish and cover, two salvers, a pierced decorated fruit dish, a cased set of side knives and a pair of salad servers (6)
- 288 A circular two handled soup tureen and cover, ladle, pair of fish servers, nut crackers, glass condiment and salt pots and other cutlery
- 289 A silver plate on copper oval tea tray, the applied border of fruiting vines forming a pair of leaf scroll loop handles, the centre engraved by a broad band of vines and trellis, on four scroll feet, 72cm wide
- 290 A Victorian facet cut claret jug with plated mounts 32cm high £60-120
- 291 A pair of Edward VII silver candlesticks with pressed decoration and weighted bases by J. Bros. Chester 1908, 16.5cm high £70-120
- 292 A cased set of six George V silver Lincoln Imp coffee spoons - Birmingham 1931, two silver napkin rings, a preserve spoon and a plated dish with pierced decoration (5)
- 293 A George III silver cream jug, the oval ribbed body with engraved decoration - London 1801, and an Edward VII silver octagonal dish with two pierced handles by Aired & Thompson, Glasgow - London 1901 (2)
- 294 A commemorative silver goblet - the seventh Centenary (1980) of the completion of Lincoln Cathedral, Limited Edition number 20
- 295 Sheffield 1918 A pair of George V square tapering stem vases with shaped rims and pierced decoration, 22cm high
- 296 A George V circular ink well with a hinged lid - Birmingham 1912, two dressing table candlesticks, a silver backed mirror, comb and brush (a/f) (6)
- 297 Birmingham 1932 A George V baluster body teapot, hinged lid with fluted finial, shaped scroll handle and leaf cast border, 19cm high £60-90

- 298 Chester 1919 A George V two handled presentation cup engraved "Egyptian Command at Championship 1921-22", 22cm high, and a Birmingham hallmark presentation goblet (2)
- 299 London 1902 A pair of Edward VII tapering stem vases with wavy tops and circular bases, 18cm high
- 300 A George V silver mounted glass preserve jar with facet cut decoration, swing handle levered to open a circular lid - London 1935, a later silver spoon and a London hallmark oval salt pot and lid with a blue glass liner (2) £60-90
- 301 A pair of pressed and pierced decorated bon bon dishes, the bases stamped Hamilton & Co, Calcutta, 14cm wide £60-90
- 302 An Anglo Indian tea caddy, the hinged lid with a floral border, the body with pressed panels of animals and buildings raised on four shaped feet and a similar small sugar basin £40-70
- 303 An Anglo Indian three piece condiment set with engraved scroll decoration £60-90
- 304 An Anglo Indian oval tea tray with a shaped and pierced border 51cm £60-90
- 305 A cased set of George V teaspoons and sugar tongs - Sheffield 1924 and two photograph frames
- 306 A George V breakfast toast rack - London 1934, a set of plated sugar tongs and a comb mount (3)
- 307 A rectangular silver mounted photograph frame - Birmingham, 16cm high and another oval frame
- 308 Seven various silver teaspoons, a London hallmark sauce ladle and a pair of plated sugar scissors (9)
- 309 A Chester hallmark silver thimble and various beads
- 310 A Victorian five bottle cruet, the stand with a shaped handle on a plain column with leaf gadroon border; pierced sides, to five claw feet by J.D. & Son, Sheffield 1900 £150-250
- 311 An Elizabeth II salver of plain design with a shaped stepped border raised on four scroll feet, 30.5cm wide, approx. 31 troy ozs £150-250
- 312 A Victorian four piece tea service by The Goldsmiths Alliance, London 1875; the baluster body richly decorated with foliage and flowers, the hinged covers with birds of prey finials, each piece raised on scroll feet, approx. 82 ozs. £800-1200
- 313 A large presentation two handled cup and cover, the lid with a foliate knop, the body with two "S" scroll handles and foliate engraving on a turned foot, approx. 73.5 ozs, 29cm high, 19cm diameter £700-1000
- 314 A pair of three branch Adam design table candlesticks on fluted tapering columns with oval weighted bases, R & B Sheffield, 17cm high £150-250
- 315-319 No lots
- 320 A Victorian sovereign dated 1899
- 321 A George V sovereign dated 1915
- 322 A George V half sovereign dated 1914
- 323 A Victorian half sovereign dated 1878
- 324 A 9 carat engine engraved locket on a fine chain
- 325 An unmarked gold coloured metal guard chain, 45cm
- 326 A 22 carat gold wedding ring, an 18 carat signet ring and another engraved Mizpah
- 327 A 22 stone eternity ring and a three stone dress ring in an 18 carat gold mount
- 328 A four stone amethyst dress ring
- 329 An emerald and diamond dress ring on a gypsy mount, a seed pearl and amethyst ring, a three stone diamond dress ring and four commemorative crowns (7)
- 330 A 14 carat gold wedding ring and an earring
- 331 A German gilt metal lady's rope twist neck chain, 120cm long
- 332 A pair of modern solitaire diamond earrings, each claw set within an offset circular 14K mount £150-250
- 333 A Pinchbeck brooch, a claw brooch, enamel buttons, carved jet pendant and a lady's pocket watch (11)
- 334 A modern jewellery box and contents of earrings, beads, identity chain, imitation pearls etc.
- 335 A graduated silver Albert watch chain, a pendant fob and two vesta cases
- 336 A pair of folding pince-nez with engraved decoration, contained in a leather presentation case, dated 1881
- 337 A 9 carat gold medallion fob, the scroll and pierced border with a central plaque engraved "Ilkeston Bicycle Club", in a leather bound jewellery case £30-60
- 338 A George V silver four compartment cigar case with engraved decoration and gilt interior and a gilt metal cigarette case
- 339 A pair of black opal drop earrings, each with two claw set stones £70-130
- 340 A Syme gent's wrist watch on a leather strap
- 341 A Jaeger Le Coultre lady's 9 carat bracelet watch, model 91211 with original guarantee and case £200-300
- 342 A Bulova lady's wrist watch with chain bracelet, two other lady's wrist watches and a pocket watch
- 343 An Omega T-Master wrist watch on an articulated bracelet, the back stamped 18K
- 344 A Perona 9 carat gold lady's wrist watch on a metal expanding bracelet, another, and a pendant (3)
- 345 A gent's silver cased open face pocket watch with white enamel dial, another with engraved decoration and decorative enamel face, a graduated silver Albert chain with fob dated 1900 and various commemorative coins £40-60

- 346 A silver cased open face fusee pocket watch, the white enamel dial signed John Bennett, London
- 347 Various old wrist watches, pocket watches parts (21)
- 348 An enamel decorated brooch - Grecian lady, a pair of 9 carat cuff links, seed pearl dress ring and a gilt metal trinket box and contents
- 349 A XIX century brooch centred with a single stone
- 350 An aquamarine pendant on a pierced shaped mount with a 9 carat gold guard chain, 42cm

HUNTING MEMORABILIA, MEDALLIONS, RALLY BADGES ETC.

- 351 A XIX century enamel pill box, the oval lid decorated with a seated maiden and a gilt metal mounted egg shaped trinket box (2)
- 352 A carved horn snuff box decorated with a scene of a huntsman and hounds, 6.5cm wide, and a Bakelite vesta case commemorating Edward VII (2)
- 353 The Olympic Games 1908. A Judges commemorative medallion decorated with a scene of Roman chariot and four horses, the reverse with a maiden, marked Elis, Athens, Paris, St Louis, London in commemoration of the Olympic Games held in London 1908 - in original gilt tooled leather case, 5cm diameter £100-150
- 354 Car rally badges - Hastings RAC Rally 1933, Bournemouth RAC Rally 1934, RAC Torquay Rally March 1936, Armstrong Siddeley RAC Rally 1932 and a circular plaque St. Christopher Protect Us - all mounted on a wooden board £120-180
- 355 Two officers dress belts by Hawk & Co., 14 Piccadilly
- 356 Two RAF cap badges and nine uniform buttons
- 357 Six hunt buttons - Essex Union, Brannan Moor, Percy Northumberland, Hampshire, Fitzwilliam Northants, Tickham West Kent
- 358 Seven hunt buttons - East Cornwall, South Devon, Ashford Valley Kent, West Norfolk, Bedale North Riding, Morpeth Northumberland
- 359 Seven hunt buttons - Holderness Yorks, Airedale Beagles, North Herefordshire, Pendle Forest, High Peak Harriers
- 360 Twenty One hunt buttons to include Grove and Rufford, Retford and Notts, Tedworth Wilts and Hants, Easton Harriers
- 361 Six hunt buttons to include Four Burrow Cornwall, Crawley, Brocklesby, Worcestershire, Belvoir Duke of Rutland Lincs
- 362 Thirty one hunt buttons to include CFH, NBB, FD, HL, NSH, RALLYE, CH, DH, FD etc.
- 363 A XIX century oval miniature of a gentleman, 8cm contained in an ebonised wooden frame and a crystal type print (a/f) contained in a gilt frame
- 364 A XIX century oval portrait miniature of a military gentleman, 8cm, contained in a gilt metal mount and ebonised wooden frame
- 365-368 No lots
- 369 A Lincoln Cathedral commemorative bronze medallion stamped "J Wiener, F. Brussels", on the reverse the South Transept - original leather case £15-25
- 370 Three George III buttons, each with portraits of ladies, military cap badges, medals and a World War I tobacco tin

RUGS

- 371 A Belouch pattern rug, approx. 1.95m x 1.10m £100-150
- 371A A Gabeh pattern rug, approx 1.6m x 1m £50-100
- 372 A Kashan pattern rug, approx. 1.47m x 1.07m £130-180
- 372A A Hamadan pattern rug, approx. 1.38m x .91m £70-120
- 373 A Hamadan pattern rug, approx. 1.52m x 1.05m £80-120
- 373A A Shiraz pattern rug, approx. 1.58m x .83m £80-120
- 374 A Belouch pattern rug, approx. 2.12m x 1.16m £120-170
- 374A A Belouch pattern rug, approx. 1.92m x 1.10m £100-150
- 375 A Belouch pattern rug, approx. 1.76m x .96m £100-150
- 375A A Belouch pattern rug, approx. 1.9m x .9m £120-170
- 375B A Joshghan style carpet, approx. 3.85m x 2.72m £500-650

CLOCKS, BAROMETERS & MUSICAL BOXES

- 376 An early XIX century five dial mahogany boxwood strung banjo barometer signed 'Jn. Sordelli, London' the silver barometer dial 10ins diam
- 377 A XIX century mahogany boxwood and ebony strung banjo five dial barometer signed 'Austin' Scarborough, the silvered barometer dial 10ins diam £200-400
- 378 A XIX century drop dial wall clock with a fusee movement signed A.T. Garton, Lincoln contained in a mahogany case (requiring restoration) £150-250
- 379 A XIX century drop dial wall clock contained in a walnut inlaid case with pierced foliate carved brackets, 8 day striking movement £200-300
- 380 A white dial railway clock contained in a hardwood case the dial lettered B.R.(E). No. 8334 with fusee movement £150-250

FURNITURE

- 381 A XIX century oak cased drop dial wall clock enclosed by a glazed door revealing the brass faced pendulum £50-100
- 382 A Swiss cylinder musical box playing ten airs with three bells having enamelled butterfly strikers, original paper label, contained in a walnut cross banded and inlaid case the lid with the Royal cypher 48cm £700-1000
- 383 A Victorian musical box, the 20.5cm pinned cylinder with a single cone, contained in a rosewood case with boxwood stringing and central marquetry panel of a bird on a branch 42.5cm wide £200-300
- 384 A heavy Victorian slate and marble mantel clock in an architectural case the circular black and gilt lettered dial with a revealed escapement flanked by Corinthian columns on a square plinth, with applied brass mounts 55.5cm high 48cm wide £75-150
- 385 A XIX century balloon case mahogany mantel clock with applied gilt brass mounts, pressed brass dial with individual white enamel numbers 25cm high £50-100
- 386 A Victorian concertina labelled 'J.H. Ebbelwhite, Old Gate, London' with rosewood fret cut ends contained in a rosewood carrying case £80-120
- 387 A XIX century elaborate and decorative gilt brass clock garniture the clock surmounted by a putti holding a telescope the blue porcelain Sevres type dial with Roman numerals and a floral decorated centre above a painted panel of winged cherubs, flanked by two side urns all under glass domes the clock 47cm high £600-1000
- 388 A XIX century oak and mahogany longcase clock the arch painted dial decorated with cottages and a lady feeding swans, signed Jas. Usher, Lincoln 8 day striking movement, original paper case label £1500-2000
- 389 A XIX century oak and mahogany longcase clock the square dial signed Jno. Foster, Lincoln painted with shell spandrels and with a 30 hour striking movement £600-900
- 389A An early XIX century mahogany longcase clock, the painted raised dial signed "Thomas Masters Southampton", with subsidiary seconds dial and date aperture, the case enclosed by a long arched door £1800-2500
- 390 A XIX century oak and mahogany longcase clock the painted dial signed "Dickinson, Boston" and decorated with fruit and flowers, 8 day striking movement £1200-1800
- 391 An XVIII century mahogany longcase clock the arched brass dial with a silvered chapter ring, a phase of the moon aperture and lunar cycle to the arch, centred with a subsidiary seconds hand and date aperture signed 'T. Lewis, Bristol', 8 day striking movement enclosed in a broken swan neck pedimented hood flanked by plain columns, the base with a long shaped door £1700-2600
- 392 An XVIII century oak and mahogany banded longcase clock the square brass dial with applied spandrels signed "Thos. Bridg. Londini Fecit", with a 30 hour alarm movement contained in a square hood flanked by plain columns £1000-1500
- 393 An XVIII century mahogany side table the top with a thumb moulded border above two drawers to the frieze raised on square chamfered supports 137cm wide 49cm deep £500-1000
- 394 An XVIII century mahogany bow front chest of three long cockbeaded graduated drawers the top crossbanded and boxwood strung standing on splay bracket feet 102cm wide, 52cm deep £700-1200
- 395 A XIX century mahogany dropleaf writing table fitted with two drawers to the frieze one with a writing slope, inkwells and pen tray raised on fluted tapering supports terminating in brass castors 124cm x 102cm extended £500-900
- 396 An Edwardian mahogany wardrobe inlaid with satinwood banding enclosed by a bevel mirror plate door flanked by glazed panels and standing on a long drawer with bracket feet 132cm wide 210cm high £400-600
- 397 A late Victorian walnut breakfront sideboard base fitted with two drawers to the centre above a double cupboard flanked by two further drawers and cupboards all with relief carved floral decorated panels 148cm wide £70-130
- 398 An early XIX century mahogany extending dining table raised on turned tapering fluted supports the top strung with ebony and the frieze with two dummy drawers 198cm x 136cm extended (with two leaves) £2000-4000
- 399 Three XIX century mahogany dining chairs with carved horizontal splats, overstuffed seats raised on turned front supports £100-150
- 400 Four various pine and mahogany Victorian curtain poles and a quantity of rings £50-100
- 401 A XIX century ash stick back Windsor chair with turned under arms and turned front supports united by a 'H' stretcher £150-230
- 402 A late Victorian gong suspended in a carved Gothic design oak frame £50-100
- 403 A Georgian mahogany corner washstand the centre tier fitted with a single drawer and two dummies (distressed) £100-150
- 404 A Victorian walnut display cabinet inlaid with boxwood lines, gilt brass mounts and enclosed by plain glazed doors standing on turned feet 90cm wide 105cm high £300-500
- 405 An XVIII century oak side chair with a solid panel back, boarded seat standing on turned and block supports £50-100
- 406 A XIX century high back yew wood Windsor armchair with a vase shaped pierced splat, turned underarms and turned front supports £200-400
- 407 A XIX century mahogany military chest of two short and three long drawers on turned supports, 91cm wide £300-500
- 408 A set of six XIX century mahogany dining chairs with plain horizontal splats, drop-in seats raised on turned front supports £500-700

- 409 An XVIII century style oak draw leaf refectory table raised on bobbin turned supports united by an "H" stretcher, 228cm x 76cm extended £300-600
- 410 An Art Nouveau style oak sideboard fitted with drawers, fielded panelled cupboard and a double door glazed cupboard with oxidised foliate hinges on turned supports, 152cm wide £100-200
- 411 A Victorian brass mounted oak coal box £30-60
- 412 A faded mahogany hanging wall cupboard enclosed by two panelled doors beneath a display shelf on shaped brackets £70-130
- 413 A Victorian oak chest of two short and three long drawers raised on bracket feet, 91cm wide £120-180
- 414 A XIX century mahogany drop-leaf breakfast table raised on turned tapering supports, 84cm x 97cm extended £120-180
- 415 An early XIX century bow fronted commode chest with a hinged rising top and fitted interior (distressed) £50-100
- 416 A mahogany three tier folding cake stand £40-80
- 417 A pair of Victorian mahogany cane seated bedroom chairs £50-100
- 418 A mahogany cane seated bedroom chair and a painted papier mache stick stand
- 419 A XIX century drop-leaf mahogany breakfast table raised on turned supports 120cm x 85cm extended (distressed)
- 420 A XIX century mahogany towel rail £40-80
- 421 A Georgian mahogany wine table with a circular tray top, baluster turned column raised on triple cabriole supports, 56cm diameter £400-600
- 422 An XVIII century reeded mahogany pole screen with a lozenge shape tapestry upholstered panel raised on triple out-turned legs united by an undertier £200-350
- 423 An XVIII century oak bureau, the interior fitted with pigeon holes and small drawers above four long graduated drawers, 93cm wide £400-600
- 424 An XVIII century bow front mahogany side table with a raised back, two frieze drawers raised on plain square supports (restored), 104cm wide £150-250
- 425 A XIX century mahogany kneehole dressing table fitted with a central cock-beaded drawer flanked by four narrower drawers and raised on turned supports terminating in brass castors, 102cm wide £350-550
- 426 An upright pianoforte by Berkeley, the iron frame numbered 2174, contained in a panelled mahogany case £150-250
- 427 An upright pianoforte signed "Avenue London", contained in a stained hardwood case £50-100
- 428 A German upright overstrung pianoforte by Edseiler Liegnitz, contained in an ebonised inlaid case, numbered 39819 £100-200
- 429 A pianola by Wreburne-Apollo London, "The Apollo Player & Piano Company Limited London" in a polished mahogany case complete with a pedestal cabinet and a number of rolls £150-250
- 429A A Victorian burr walnut cased upright piano with a fret carved sound panel raised on bold cabriole front supports terminating in paw feet £50-100
- 430 A George III design XX century mahogany duet stool with a hinged rising top, raised on cabriole supports with shell motifs at the knee and pad feet
- 431 A mahogany dressing table stool raised on bold cabriole supports terminating in ball and claw feet, the hinged upholstered lid concealing an internal compartment
- 432 An Edwardian oak bureau bookcase, the upper section enclosed by leaded stained glass doors above a fall front, the base fitted with two short and two long drawers, 91cm wide £300-500
- 433 A late Victorian walnut mirror back sideboard, the canopy centred with a bevelled plate beneath a protruding shelf on two turned supports, the base fitted with drawers and cupboards on turned feet, 152cm wide £150-250
- 434 A painted Victorian pine chest of two short and three long drawers, standing on turned feet, 109cm wide £80-140
- 435 A Victorian maple effect painted pine chest of two short and three long drawers standing on turned feet, 106cm wide £100-150
- 436 An early XIX century woodgrain effect painted mule chest fitted with a long drawer to the base and with metal carrying handles to either side £70-120
- 437 A Victorian mahogany framed button back armchair raised on turned and carved front supports with brass castors £250-350
- 438 Two Victorian elm bar back kitchen chairs
- 439 A Victorian mahogany tripod table, the oval top on a bobbin turned column, 50cm diameter
- 440 A XIX century ash and elm high back Windsor chair with a pierced shaped splat raised on turned supports £130-180
- 441 A XIX century rush seated corner chair on a bobbin turned frame
- 442 A single Victorian mahogany dining chair with a carved horizontal splat
- 443 A set of eleven late Victorian mahogany dining chairs, the plain frames with fluted decoration, horizontal splats, overstuffed seats raised on turned front supports (originally from Lincoln Assize Court) £300-500
- 444 A XIX century stickback Windsor chair raised on turned supports £80-140
- 445 A small Georgian design wingback armchair raised on cabriole front supports with pad feet £100-200
- 446 A Georgian plain mahogany gate leg drop-leaf dining table 121cm x 96cm extended £100-150
- 447 A small XVIII century oak gate leg occasional table, the oval top raised on block and turned supports united by plain stretchers, 69cm x 61cm extended £150-230

- 448 A Victorian satin walnut bedroom pair comprising dressing table with fitted drawer to the frieze and matching marble top tile back wash stand £150-250
- 449 A late Victorian walnut bedroom pair; the wardrobe enclosed by a mirror door above a long drawer, the dressing chest with two trinket drawers and three long drawers to the base £200-300
- 450 A Victorian panelled mahogany single wardrobe enclosed by a mirror door and fitted with a long drawer to the base £100-200
- 451 A large simulated woodgrain painted tin trunk by Jones Bros. Wolverhampton, £70-130
- 452 A XIX century painted pine linen box with brass carrying handles £50-100
- 453 A XIX century painted woodgrain finish linen box with iron carrying handles £50-100
- 454 A Victorian pine scrub top kitchen table on turned legs, 106cm x 74cm £40-60
- 455 A XIX century mule chest with original woodgrain finish paintwork and fitted with a long drawer and iron carrying handles
- 456 A late Victorian satin walnut dressing chest fitted with two small trinket drawers and two short and two long drawers to the base, original brass handles £100-150
- 457 A pair of Victorian cane seated balloon back bedroom chairs
- 458 A Victorian oak wash stand with a hinged lid raised on plain legs with a towel rail to one side, (originally from Lincoln Assize Court) £30-60
- 459 A large Victorian mahogany chest of two short and three long drawers, standing on a plain plinth, 117cm wide £100-200
- 460 A particularly well made late Victorian oak combination wardrobe, the hanging cupboard enclosed by a mirrored door, with a double door hat cupboard to one side above a chest of two short and three long drawers and with a single wide drawer to the plinth, 120cm wide £150-250
- 461 A Victorian Chesterfield suite comprising drop-end settee and two roll armchairs, all upholstered in rust coloured buttoned dralon £100-200
- 462 A well carved Victorian mahogany Art Nouveau design single wardrobe, the shaped pierced cornice above a dentil frieze, enclosed by a single bevel mirrored door with glazed pierced panels standing on a single deep drawer to the base, 122cm wide £150-250
- 463 An Edwardian panelled oak three door sideboard with a carved raised back, two long drawers to the frieze, standing on turned and block supports united by a moulded stretcher, 149cm wide £60-120
- 464 An Edwardian beech frame salon suite comprising two seater settee with triple splat back, two armchairs and three side chairs £150-250
- 465 A XIX century mahogany bookcase top enclosed by a pair of astragal glazed doors, 87cm wide £50-100
- 466 A late Victorian mahogany Sunderland table on ring turned supports with matching stretchers £70-150
- 467 An Eastern octagonal relief carved hardwood occasional table decorated with berries and foliage and with panelled pierced foliate carved sides, 35cm diameter £50-100
- 468 An Art Nouveau oak hall stand, the back with six brass coat hooks, an inset bevelled mirror, three green tiles, the base with a frame for sticks and umbrellas £120-180
- 469 An Everitt's patent wardrobe enclosed by a pair of panelled doors and with a fitted interior, 118cm wide £100-150
- 470 A late Victorian chaise longue, the oak frame with a raised upholstered back on a spindle turned gallery and on turned supports £70-150
- 471 A Victorian pedestal mahogany display cabinet enclosed by plain a glazed door £50-100
- 472 A late Victorian walnut bedroom pair comprising single wardrobe and marble top tiled back wash stand £200-400
- 473 A late Victorian walnut dressing chest with triple bevel edge mirrors, the base with three long drawers standing on turned feet, 91cm wide £200-300
- 474 A Victorian slatback grandfather chair £80-140
- 475 An early XIX century stickback ash and elm Windsor chair with swept underarms above a wide saddle seat raised on turned supports £120-180
- 476 A pair of XIX century mahogany dining chairs with plain reeded backs, overstuffed seats on turned tapering front supports £20-40
- 477 A polished pine bench on shaped legs, 213cm long £80-120
- 478 A Victorian mahogany chiffonier with a raised serpentine shaped back, two shaped frieze drawers, the base enclosed by a pair of fielded panel doors and with applied scroll brackets, 110cm wide, £350-550
- 479 An XVIII century oak coffer enclosed by a three panel lid above a relief carved top rail and three panel front, raised on high stiles, 117cm wide £150-250
- 480 A Victorian figured mahogany chest of two short and three long drawers on a plain plinth, 103cm wide £200-300
- 481 A set of four Edwardian mahogany dining chairs, the high backs with shaped pierced splats, drop-in seats, raised on cabriole supports terminating in pad feet and united by ring turned stretchers £100-150
- 482 A XIX century mahogany satinwood strung and banded display cabinet enclosed by a pair of astragal doors, raised on a plain plinth, 122cm wide £200-400
- 483 A set of XIX century mahogany floor standing display shelves, the five shelves with graduated separations on baluster turned supports joined by "X" stretchers, 74m wide, 92cm high £300-500
- 484 An Edwardian mahogany side table, cross-banded in satinwood, ebony strung and centred with a shell patera, raised on square supports united by an undertier, the rectangular top 61cm x 39cm £150-250

- 485 A late Victorian oval mahogany Sunderland table cross-banded in satinwood, standing on square taper supports joined by fretwork panels, the oval top 77cm x 61.5cm extended £70-130
- 486 A Georgian rectangular mahogany fold over top tea table raised on square supports, 93cm wide £100-200
- 487 A high quality Edwardian floor standing display cabinet enclosed by bevelled glazed panels surrounding a central door, standing on turned tapering supports, the interior lined in original velvet, 102cm wide, 101cm high £200-300
- 488 An Edwardian mahogany pedestal display cabinet enclosed by a single astragal glazed door on square supports, 66cm wide, 130cm high
- 489 A Victorian walnut carved frame open armchair, the padded back flanked by two fluted tapering columns beneath a foliate scroll, the open arms standing on bulbous turned and block supports, the design repeated on the front legs £250-350
- 490 A French Empire influenced pedestal display cabinet, the upper section enclosed by a single glazed door and flanked by glazed side panels with two internal shelves, the base enclosed by a pair of marquetry inlaid doors decorated with ribbon hung vases of flowers, the cabinet standing on turned tapering supports and with applied gilt brass mounts, 86cm wide, 176cm high £400-700
- 491 A late Victorian satin walnut five piece bedroom suite comprising single wardrobe enclosed by a bevelled mirror door, dressing chest of three drawers, marble top tiled back wash stand and two cane seated bedroom chairs £300-600
- 492 An Edwardian mahogany plant stand inlaid with satinwood, the square legs united by an undertier
- 493 An oval Victorian mahogany loo table raised on a baluster turned column with triple cabriole legs, the top 119cm x 90cm £300-500
- 494 A Victorian Gothic influenced relief carved oak hall chair with an oval cane panelled back and cane seat on turned and block supports with barley twist stretchers £70-120
- 495 A large Victorian figured mahogany bow front chest of two short and three long drawers flanked by bobbin turned quarter columns and raised on turned feet, 120cm wide £70-120
- 496 A magnificent Victorian figured mahogany double pedestal sideboard, the shaped back with massive applied scroll and foliate carvings flanking a central shell and foliate open cartouche, the serpentine napery drawer flanked by two bombe cupboard doors, one enclosing a cellerette, 216cm wide £700-1200
- 497 A Victorian burr walnut serpentine display shelf separated by baluster turned columns and standing on turned feet, 93cm wide, 94cm high £300-500
- 498 A set of four Art Nouveau influence mahogany dining chairs with shaped pierced splats and top rails, overstuffed seats, turned tapering baluster front supports £100-200
- 499 An Edwardian walnut sideboard by Maple & Co., with a raised serpentine back, the base with three long drawers flanked by cupboards, one fitted with a cellerette, standing on square tapering supports united by a double scroll stretcher, 198cm wide £200-400
- 500 A George III oval mahogany pembroke table raised on square taper supports terminating in spade feet, the top 131cm x 93cm extended £500-700
- 501 A XIX century stickback child's Windsor chair £50-100
- 502 A Georgian mahogany pembroke table fitted with a single frieze drawer and an opposing dummy raised on square taper supports, 95cm x 86cm extended £200-300
- 503 A Victorian brass double bedstead £250-400
- 504 A Victorian Gothic design six legged window stool with two raised arms, the serpentine sides on six cabriole legs carved at the knee and terminating in ball and claw feet, green damask drop-in seat £100-200
- 505 A Victorian mahogany chest of two short and three long drawers raised on a plain plinth, 103cm wide £100-200
- 506 An early XIX century figured mahogany chest with a configuration of three small drawers, two short drawers and two long drawers, flanked by reeded columns and raised on turned feet with original turned mahogany knobs, 110cm wide £300-500
- 507 A late Victorian walnut Davenport desk with a fitted stationery compartment, the sloped top concealing two internal drawers and fitted with four drawers to one side with opposing dummies, 53cm wide £300-400
- 508 A Victorian mahogany hall stand with four shaped arms, each with two turned coat hooks, the central column inset with a mirror glass above a hinged glove box flanked by brass rimmed stick stands £150-250
- 509 A large XIX century mahogany chest of two short and three long drawers flanked by flat sided columns with carved capitals, 124cm wide £150-250
- 510 An Edwardian window seat, the mahogany frame inlaid with boxwood and ebony stringing, the concave back, sides and seat upholstered in green dralon raised on square taper supports terminating in spade feet £250-400
- 511 A late Victorian two seater settee with buttoned upholstered back above an elaborate carved urn and foliate splat and two smaller side splats, raised on turned front supports £150-250
- 512 A set of four heavy oak frame dining chairs with shaped relief carved top rails, padded backs, drop-in seats raised on turned tapering supports united by "H" stretchers £150-250
- 513 A circular mahogany snap top tripod table £50-100
- 514 A Victorian oak extending dining table raised on turned legs, 215cm x 123cm £300-600
- 515 A XIX century painted bureau, the fall front revealing a fitted interior with four long drawers beneath (distressed), 99cm wide £150-300

- 516 An Edwardian stained hardwood frame corner chair with pierced shaped splats centred with an oval patera £30-60
- 517 An XVIII century oak plain two panel coffer raised on high stiles, 92.5cm wide £200-300
- 518 An early XIX century mahogany bow fronted chest of two short and two long cock-beaded drawers, standing on shaped bracket feet united by an apron, 98cm wide £250-350
- 519 A Victorian mahogany three part desk fitted with three frieze drawers and three drawers to each pedestal, 134cm wide £300-500
- 520 An Edwardian walnut coal compodium with a drop down front and tin liner £40-80
- 521 An Edwardian walnut coal compodium bearing a presentation plaque dated 1920, the hinged compartment with a tin liner £40-80
- 522 A small plain Victorian mahogany pedestal sideboard fitted with three drawers to the frieze, one cupboard with a cellerette, 123cm wide £200-300
- 523 An XVIII century oak Lancashire dresser, the hinged top with two internal drawers and a candle compartment, the base cross-banded in mahogany fitted with two dummy drawers and five further drawers between canted inlaid corners raised on ogee bracket feet, 164 wide £500-800
- 524 The Lebus desk. A roll top office desk enclosed by an "S" shaped tambour standing on two pedestals, each fitted with four drawers, 126cm wide £300-500
- 525 An Edwardian walnut office side cabinet enclosed by a tambour door and fitted with a writing slide, 120cm wide £120-180
- 526 A late Victorian walnut dressing table fitted with three bevelled mirrors, the upper section with corner glazed cabinets enclosed by double doors, the base with two frieze drawers standing on square tapering legs united by an undertier, 107cm wide £150-250
- 527 Three Edwardian mahogany bone and marquetry inlaid sabre leg side chairs with padded upholstered backs and seats and vertical splats £100-150
- 528 A Victorian cylinder top biedermeier mahogany desk, the interior fitted with small drawers, the base with three further drawers (distressed), 100cm wide £400-800
- 529 A cast iron circular Britannia pub table with a non-burn inlay to the circular mahogany top £60-90
- 530 A cast iron circular Britannia pub table with a non-burn inlay to the circular mahogany top £60-90
- 531 A cast iron circular Britannia pub table with a non-burn inlay to the circular mahogany top £60-90
- 532 A cast iron circular Britannia pub table with a non-burn inlay to the circular mahogany top £60-90
- 533 A circular cast iron base Britannia bar table with a solid mahogany top
- 534 A circular cast iron base "lady's head" design pub table with a circular solid mahogany top
- 535 An unusual Gothic Victorian oak four sided pedestal fitted with a single drawer and cupboard enclosed by fielded panel marquetry and relief carved door centred with musical instruments, each corner with a turned column capped by an applied brass lion mask, 100cm high, 55cm wide £300-500
- 536 A Victorian walnut marquetry inlaid pedestal display cabinet enclosed by a plain glazed door with three internal shelves, 53cm wide £80-140
- 537 A XIX century plain mahogany chest of two short and three long drawers with original turned knobs and raised on turned feet, 94cm wide £250-350
- 538 A set of eight XIX century elm bar back dining chairs with drop-in seats on plain square taper supports £200-350
- 539 Three Victorian oak framed chairs and three others
- 540 A XIX century carved oak elbow chair with a shaped top rail, solid vase shaped splat raised on turned and block supports £60-120
- 541 An early XIX century mahogany bow front chest of two short and three long cock-beaded drawers raised on bracket feet united by a shaped apron, 108cm wide £300-500
- 542 A Georgian mahogany wardrobe enclosed by a pair of fielded panel doors, each with two dummy drawer fronts beneath a dentil cornice, fitted with a long cock-beaded drawer to the base and raised on shaped bracket feet, 145cm wide £200-400
- 543 An XVIII century oak bureau, the fall front enclosing a fitted interior with four long drawers to the base on bracket feet, 91cm wide £400-600
- 544 An early XIX century bow front mahogany chest of two short and three long drawers inlaid with boxwood stringing and cross-banded in rosewood, the drawers with pressed circular brass knobs raised on splay bracket feet united by a shaped apron, 112cm wide £400-600
- 545 A late Victorian walnut Davenport desk with a stationery compartment, writing slope and cupboard base £100-200
- 546 A XIX century rosewood writing table raised on solid shaped scroll carved lyre ends with double cabriole supports, the rectangular top with an inset writing surface, moulded edge fitted with a frieze drawer 84cm x 69cm £400-800
- 547 An Edwardian oak bureau bookcase, the upper section enclosed by leaded glazed doors, the base with a fall front and three long drawers
- 548 A pair of Edwardian walnut and beech frame armchairs with cane backs and sides, overstuffed seats on turned and block supports £60-90
- 549 A Victorian four tier corner what-not inlaid with marquetry vases £50-100
- 550 A XIX century mahogany towel stand
- 550A A pair of Edwardian armchairs upholstered in trellis pattern material raised on plain mahogany supports £180-250

- 551 An XVIII century elm commode chair, a slatback kitchen chair and an Edwardian bedroom chair (3)
- 552 A pair of reproduction gothic design elm side chairs with pierced splats, saddle seats raised on cabriole supports
- 553 A late Victorian side chair, the elaborate mahogany frame inlaid with marquetry with swept sides, overstuffed seat on cabriole front supports
- 554 A Victorian figured pedestal mahogany sideboard, the shaped back centred with a foliate cartouche, the top with a wavy moulded edge above three concave drawers, the fitted pedestals enclosed by fielded panel doors, 185cm wide £300-600
- 555 An XVIII century hanging oak corner cupboard enclosed by a panelled door with three internal shelves 101cm wide £100-150
- 556 An XVIII century oak bureau, the fall front revealing a fitted interior with a series of pigeon holes and small drawers, the base with four long drawers, each with drop brass handles and solid shaped plates, raised on bracket feet, 92cm wide £600-750
- 557 A Victorian mahogany cylinder desk, the interior with a series of pigeon holes and small drawers above a sliding writing surface fitted with a rising slope and pen tray, the pedestals each with three mahogany lined drawers, 122cm wide £1500-2500
- 558 A figured mahogany biedermeier secretaire, the counter weighted fall front revealing a fitted interior of a series of drawers around a central cupboard, the base with three long drawers raised on turned feet, 103cm wide £1200-1800
- 559 A Georgian mahogany chest on chest, the upper section fitted with two short and three long graduated oak lined drawers with original swan neck brass handles, the base with three further drawers raised on shaped bracket feet, 109cm wide, 180cm high £2000-3000
- 560 An XVIII century mahogany hanging corner display cabinet enclosed by a single diamond astragal glazed door beneath a moulded dentil cornice, inlaid with key pattern banding and ebony stringing, 111cm high £300-500
- 561 A XIX century mahogany reading table, the top with two bookstands and rising on a brass ratchet, the platform base on large original brass wheel castors, the top 88cm x 51cm £400-650
- 562 A Regency figured mahogany breakfast table raised on a triangular pillar with applied foliate brackets standing on a tricorn base with bold carved paw feet, the tilting top with a beaded border, 96cm diameter £800-1200
- 563 A small George III mahogany chest of two short and three long graduated cock-beaded drawers on bracket feet (restored), 77cm wide, 42cm deep, 78cm high £800-1400
- 564 A XIX century satin wood octagonal side table, cross-banded with mahogany and with a burr walnut moulded edge, raised on tapering fluted supports united by an "X" stretcher, all with gilt brass mounts, the brass castors stamped ***bear & Co., 66cm diameter, 61cm high £450-800
- 565 A Victorian mahogany frame carver chair with a rosewood veneer bone and marquetry inlaid vase shaped splat, padded seat, raised on cabriole front supports £100-200
- 566 An Edwardian serpentine sided mahogany window table, the cabriole legs united by an undertier £50-100
- 567 A late Victorian walnut single wardrobe enclosed by a bevelled mirror door flanked by fielded panels beneath a stepped cornice, fitted with one long drawer to the base on square legs £100-150

END OF SALE

FORTHCOMING SALES 1999

WEDNESDAY 21ST APRIL

Edwardian and Later Furniture and Effects

WEDNESDAY 12TH MAY

General Household Furniture and Effects

WEDNESDAY 26TH MAY

Edwardian and Later Furniture and Effects

All sales commence at 11a.m. (unless stated otherwise)
and are on view Tuesday prior to sale.

SATURDAY 5TH JUNE

Book Auction

Lincoln Castle at 12 noon

The Works of the XIX Century Author G. A. Henty

Viewing: Morning of sale from 9.30a.m.
(or by prior appointment at our Salerooms)

CONDITIONS OF SALE

1. Description of lots in the catalogue, although believed to be correct, are for identification and guidance purposes only. In no way is there any warranty given or implied as to the accuracy or content of any description or condition of items. All lots are sold subject to all faults and imperfections, if any, and purchasers must satisfy themselves as to the description or authenticity of any lot or lots.
2. The highest bidder shall be the purchaser at the Hammer Price. In the event of any dispute arising the Auctioneer shall, at his discretion, re-offer the lot or lots. In any event his decision shall be final and binding.
3. Every purchaser shall be deemed to act as a principal unless there is written acknowledgement with the Auctioneers that the purchaser acts as an agent for a named and accepted principal.
4. The Auctioneers reserve the right to refuse any bid from any person and to refuse admission to the premises at their discretion of any person.
5. All lots are deemed to become the purchasers responsibility in full at the fall of the hammer when a Contract of Sale is made and the purchaser assumes the safe custody of the lot or lots.
6. The Auctioneer acts as agents between vendor and purchaser and are not responsible for any default by either the vendor or the purchaser.

PAYMENT OF ACCOUNTS

1. Intending purchasers unknown to the Auctioneers are kindly requested to make arrangements with the Auctioneers prior to the Sale regarding payment. If such arrangements are not made purchases will not be released until payment is received and in the case of cheques until they have been cleared.
2. All lots must be paid for in full on the day of the Sale and before removal from the Salerooms.
3. A Buyer's premium of 11.75% of the Hammer price is payable by the purchasers of all lots inclusive of V.A.T.

REMOVAL OF GOODS FROM THE SALEROOM

1. The purchaser shall at his own expense remove the lot or lots purchased not later than midday after the day of the Auction. Failure to comply with this condition will incur removal, storage and insurance charges.
2. No lot may be removed before payment.

COMMISSION BIDS — must be received by 4p.m. day prior to sale

1. The Auctioneers will be pleased to exercise commission bids on behalf of purchasers, providing they are submitted in writing; in such a manner so as to purchase on behalf of the client by exceeding the highest Saleroom floor bid or next highest book bid or vendors reserve by one bid only.
2. Telephone bids will be accepted providing the Auctioneers have received confirmation of the callers' intention to make a telephone bid subject to the usual references and prior to the commencement of the Sale.

Valuations prepared for

Insurance

Probate

Family division

for further information contact

J. C. Slingsby

01522 524984

*Free valuation clinic every Friday morning at our
offices 9.30a.m. to 12.00 noon
(no appointment necessary)*

INSTRUCTIONS TO BID

Date of Sale.....

Please bid on my behalf for the following lots, up to the price entered below. I agree to comply with the conditions of sale and understand that in the case of a successful bid, a buyer's premium of 11.75% will be payable on the hammer price. Bids will be executed as cheaply as is permitted by other bids or reserves, if any. Goods must be collected on sale day unless arrangements are made with the Auctioneers.

AT THE FALL OF THE HAMMER, ALL GOODS ARE HELD AT THE RISK OF THE PURCHASER.

NAME (BLOCK CAPITALS)

ADDRESS.....

.....

Tel. Fax.

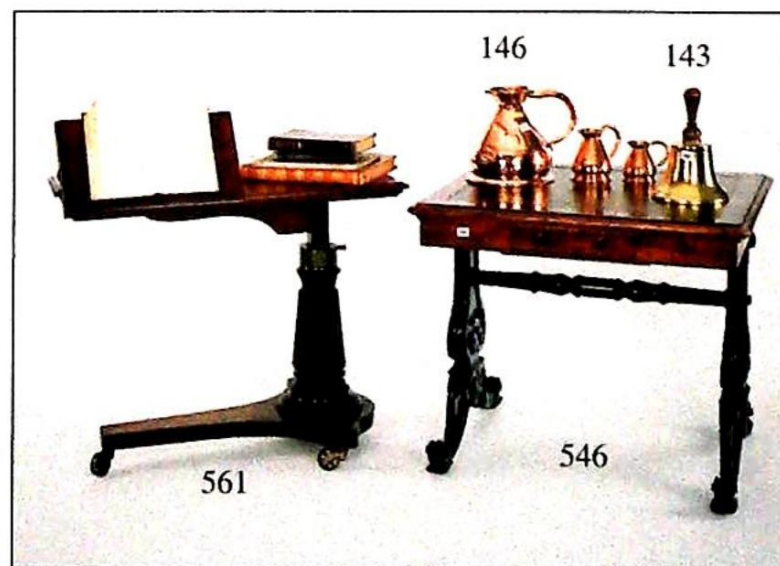
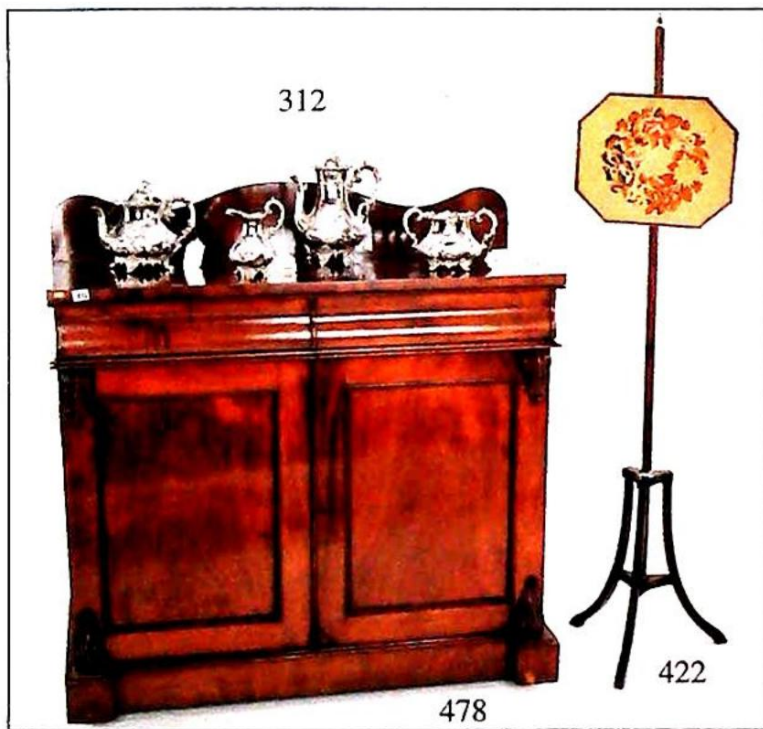
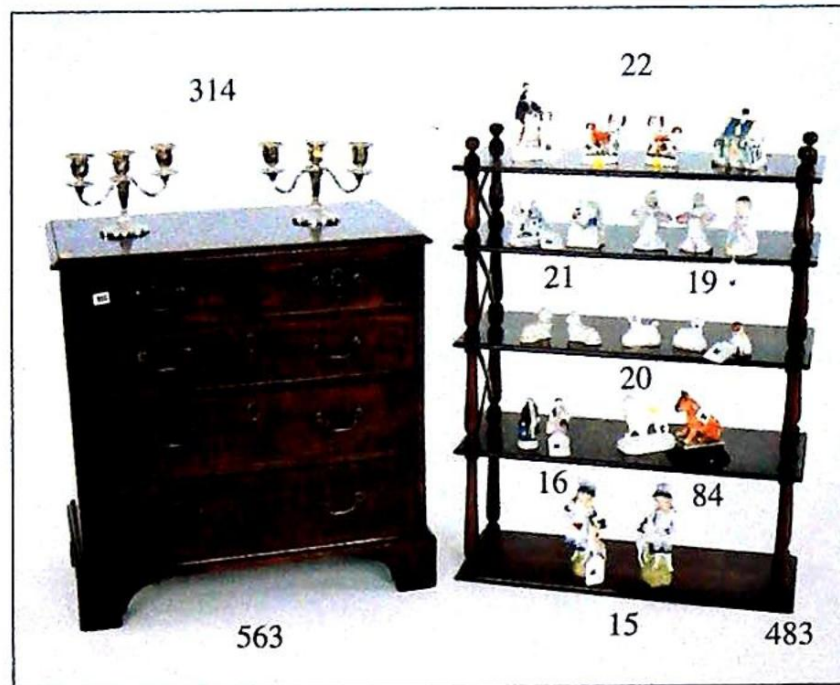
Lot No.	Brief Description	Bid price exc. Premium

(MORE OVERLEAF.....)

PLEASE COMPLETE THE SIGNATURE AND DATE BLOCK OVERLEAF TO VALIDATE YOUR INSTRUCTIONS TO BID

(CONTINUED FROM OVERLEAF)

The Lincoln Saleroom, 63 Monks Road, Lincoln LN2 5HP
Telephone: (01522) 524984 Fax: (01522) 535600





THE LINCOLN SALEROOM
63 MONKS ROAD, LINCOLN LN2 5HP
TELEPHONE 01522 524984
FAX 01522 535600