

THOS. MAWER & SON

AUCTIONEERS & VALUERS SINCE 1864
By instructions from Executors, Trustees & Local Vendors



Lot 300

**ANTIQUE FURNITURE,
CLOCKS,
SILVER & JEWELLERY,
CERAMICS,
PICTURES & PRINTS,
OBJETS D'ART
& COLLECTABLES**

Auction

Wednesday 29th July 1998

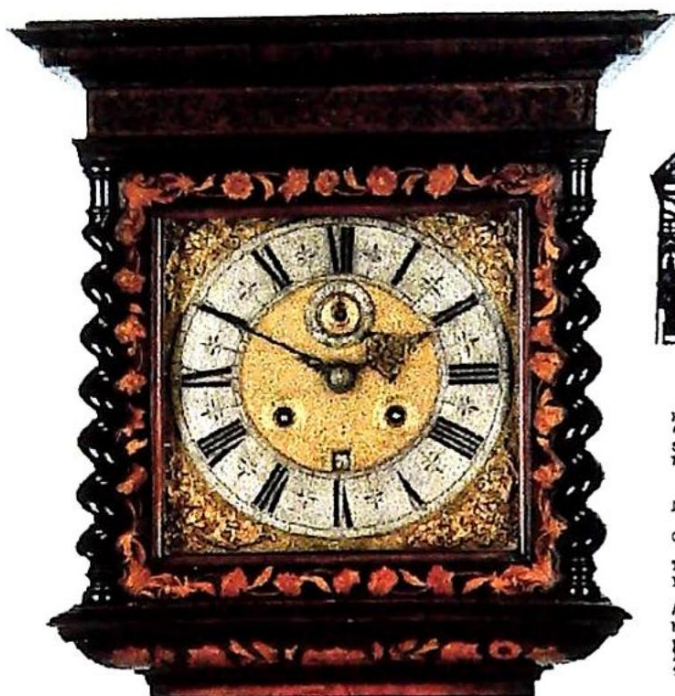
at 11am

On View

Sunday 26th,	2.00 - 4.00pm
Monday 27th,	2.00 - 4.30pm
Tuesday 28th,	9.30am - 4.30pm

Catalogues £4.00
(admits two to view)

**THE LINCOLN SALEROOM
63 MONKS ROAD, LINCOLN LN2 5HP
TELEPHONE: (01522) 524984
FAX: (01522) 535600**



(Receipt found with clock)

QUINNEYS Ltd.

WALTER NEEDHAM

Antiques



Charles I Galleries
21, Colindale Avenue, London N4 3BE
Tel: 0181 435 1111
Fax: 0181 435 1112

CHARLES I GALLERIES & ST. MICHAEL'S RECTORY
21/41 BRIDGE STREET ROW, CHESTER

Nov 10th

1984

W. Craft Esq
42, Colindale Street
Gospel Oak
London.

Dear Sir
Many thanks for yours of the 29th to hand. Re the Month Long
Clock by Henry Harper, of London, circa 1664.

The Sizes are as follows viz 7'6" High, 11 1/2" wide on Case, with an
11" Dial

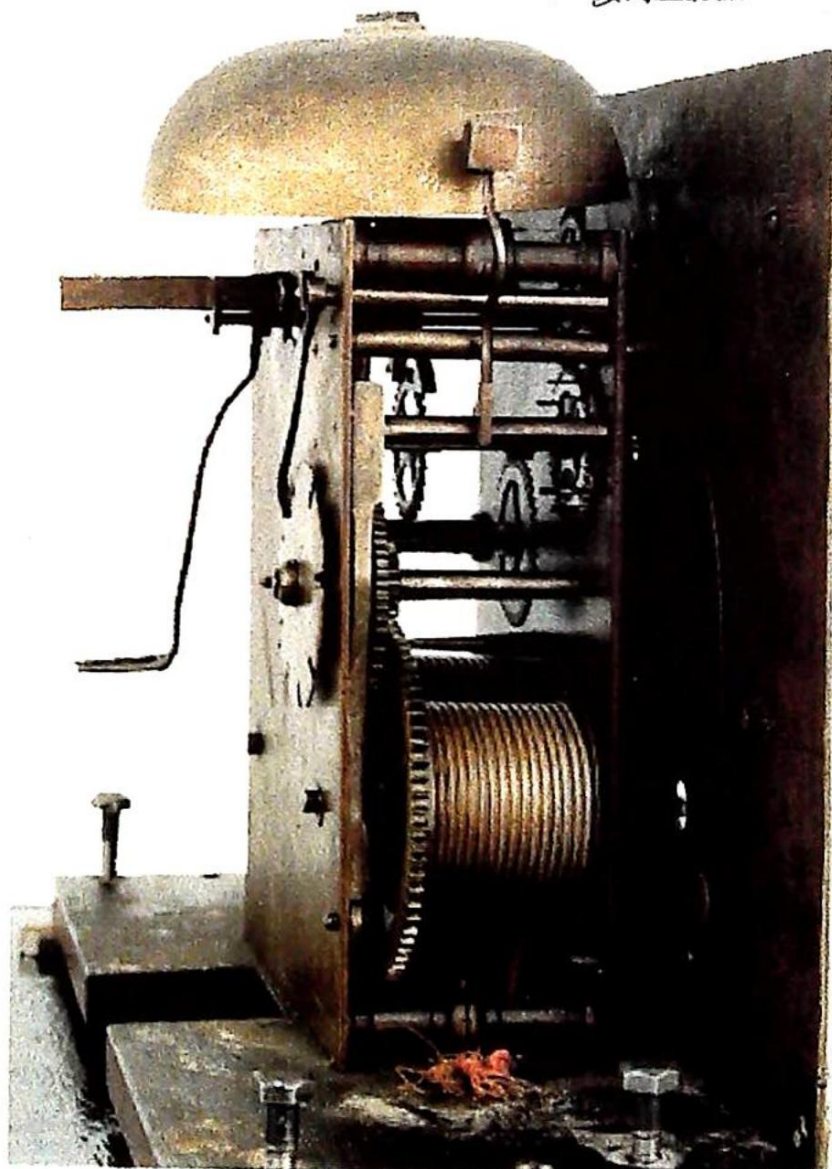
Although I do not remember quoting the Clock at £1250 at the Fair, I
have bought another one since, so am prepared to accept the above
price.
I have had a Photograph taken to day, so will send same on in about 7 or
8 days

Thanking You I Remain Dear Sir

Yours Faithfully

Walter Needham
W. Quinneys Ltd

Lot 300. A late XVII
century walnut and
marquetry longcase clock,
the square 11 inch brass
dial with matted centre,
ringed winding holes and
engraved calendar aperture,
silvered chapter ring with
inner quarters and cherub
head spandrels, elaborate
blued steel hands, signed
"Henry Harper London",
the month duration
movement with five ringed
pillars and outside locking
plate strike, heavy brass
cased weights
7 feet high £12-18,000



NOTES CONCERNING THIS SALE

There is a buyers premium of 11.75% including VAT on the hammer price.

On some lots obvious repair/damage are noted:- (A/F), the absence of comment does not in any way guarantee the lot is free from defect.

Estimates

Estimates are given after the lot description for the guidance of prospective purchasers. There will be no reserve prices in excess of the upper estimate. Where there is no estimate given, the lot is usually expected to make less than £100

VAT

Please note all lots marked with an * are subject to VAT over and above the hammer price.

Terms

The sale is conducted under the terms and conditions printed at the end of this catalogue and also printed on the reverse of the sales invoice. A copy will be provided on request, but all purchasers are deemed to buy with full knowledge of same whether or not they have requested a copy. **All lots must be paid for on sale day**

Delivery

The Auctioneers will be pleased to arrange local and national delivery at the purchasers expense (by pre-payment) if required. Quotations on request. All goods must be insured by the purchaser and are held at the purchaser's risk.

CHINA & GLASS

1. Royal Winton. Bladons Cafe Marguerite pattern dinner plate and matching jug, a Winton yellow ground jug and a small Queen Ann pattern comport
2. Royal Winton. Grimwades, England. A Marguerite pattern high tea service comprising: cake stand, 3 graduated plates, 2 serving bowls, hot water pot, milk jug, 2 sugar bowls, cream jug, sugar, wavy edged dish, also a similar 7 piece sandwich set £150-250
3. Royal Doulton. A seriesware cup and saucer printed with a stage coach pulled by four horses and an Art Deco design Burleigh Ware lily pond pattern jug (*illus. centre pages*)
4. A Continental coloured porcelain portrait bust with an elaborate hat, waistcoat and bows, and a pair of bisque figures of children
5. A Wedgwood Fairyland lustre ovoid vase printed with exotic butterflies and moths numbered Z4832F (*illus. centre pages*)
6. Royal Doulton. A figure "Sweet Ann" HN1318 (*illus. centre pages*)
7. A Victorian pink glass claret jug with a plain spiral glass handle and turned stopper, and another plain (A/F)
8. A tapering glass vase painted with sheep in a landscape, a cylindrical ditto "Autumn", four other painted glass vases and a heavy amber glass bowl
9. Sundry decorative glassware including a pair of lily design posy holders, a white glass goblet, a fluted bowl etc. (9)
10. A pair of mallet shaped flat sided decanters with star cut bases, and another moulded glass decanter
11. Shelley England. A table lamp, the tapering ribbed base painted with stylised flowers and foliage
12. A Royal Worcester green diamond shaped dish moulded with fruiting vine and a Minton cabinet plate printed with floral bouquets
13. A small Beswick green leaf triangular dish moulded with a tomato, a Shorter & Sons dish moulded with grapes and a Hancocks leaf moulded dish
14. A large Staffordshire leaf moulded dish, a double ditto, a porcelain strainer and a green poppy design dish
15. Royal Albert Crown China "Lovain" pattern. A part tea service - 11 cups and saucers, 12 tea plates, 2 bread and butter plates, 2 milk jugs and a slop bowl
16. An English transfer printed "Tyne" pattern half tea service comprising 6 cups and saucers, bread and butter plate, 6 tea plates, teapot and slop bowl
17. A 39 piece transfer printed tea service
18. Carltonware. A brown and cream breakfast set; 4 egg plates, 2 shaped dishes, a sauce boat and stand, larger ditto, an ashtray and 2 other plates
19. A XIX century named view comport "Ouchey" (A/F)
20. A XIX century tapering vase, the cobalt blue ground with reserve panels of roses elaborately decorated with gilt borders, wheat ears and foliage, 3.5" high £100-£140
21. A majolica coloured glazed leaf moulded plate and an oval green dish moulded as a flower head impressed "England 1007"
22. A pair of blue and white Adams mugs after the 1780 Chinese pattern
23. An unmarked fruit bowl decorated in green, yellow and blue with stylised foliage
24. A Shelley type bowl and a commemorative plate "President of the United States John F Kennedy"

25. A pair of Continental porcelain ornaments of a boy and girl, and three small pottery chickens
26. A "Pinxton" design doll's tea service and a porcelain miniature campana shape urn painted with Chinese figures
- 26A. An English pottery Sunderland lustre stag hunting jug moulded in relief, 6.5" high
27. A porcelain cow creamer, the brown and white cow with a looped tail as a handle, gilt horns on an oval grassy base, 4" high (**illus. centre pages**)
28. A plain white cow creamer on an oval base (horns broken) (**illus. centre pages**)
29. Three XIX century majolica urns (probably Quimper), each painted with allegorical scenes, and a Continental figure of a cherub (all damaged) (**illus. centre pages**)
30. A Continental porcelain two branch candelabra elaborately moulded with flowers and foliage, a semi-naked man with a ewer at his side (A/F)
31. An English pottery figure of a shepherdess and lamb standing by a tree, impressed verso "Walton" in a banner, 6" high
32. A Minton plain white child's chamber pot, impressed marks, 5.75" diameter
33. A XIX century green glass Stourbridgeware paper weight inset with a vase of flowers
34. A XIX century oriental blue and white vase and cover with reserve panels of flowers and figures in typical costume, 9"
35. "Bizarre" by Clarice Cliff. A crocus pattern bowl, 7" diameter (**illus. centre pages**)
36. H.G. Wood Ltd. A moulded coloured tapering pottery jug - a tavern scene, 10" high
37. A Continental art pottery elliptical fruit stand brightly decorated with fruit
38. A Paragon china part tea service, 36 pieces each decorated with stylised tulips
39. A child's tea service printed with nursery animals - Peregrine, Muffin, Louise etc. (15)
40. Two XVIII century tin glaze blue and white wall tiles (**see rear cover**)
- 41 - 45. Similar lots, each of two tiles
46. Six XVIII century tin glaze tiles (in pieces)
47. A green glass eye bath and a small vase with an unground pontil
48. Royal Albert Crown China. A part tea service decorated in coloured enamels between gilt borders, 10 tea cups and saucers, 12 plates, 2 bread and butter plates, a slop bowl and milk jug
49. A Victorian mosaic pattern comport by W.C. & Co, the repeat pattern border in iron red and mauve, and a matching circular tureen and cover
50. A Victorian transfer printed teapot and stand, a square moulded fruit bowl, a cruet, a part trinket set and breakfast cup and saucer
51. A coloured pottery sailing ship, a plaster model of a ship and a smaller cream pottery ship, a white shell shaped flower vase
52. A XIX century Staffordshire spillholder flatback figure group of two greyhounds, one standing and one lying beneath, coloured in pink and grey on a naturalistic ground (A/F), 11" high £100-£200 (**illus. centre pages**)
53. Enoch Wedgwood Tunstall Ltd. A collection of six blue and white transfer printed character saucers and two other saucers

54. Six Copeland Spode Italian pattern saucers
55. Four Art Deco design Foly china coffee cans and saucers and a Tuscan china similar ditto
56. A Victorian moulded pottery green glazed jardiniere and stand
57. Two coloured pottery Staffordshire character jugs of bearded men, the handles moulded one in the form of a pipe and one a feather, and a pair of tapering stoneware blue glazed and floral banded vases
58. A Winton chamber pot decorated with transfer printed bands of Dutch windmills, and another decorated with a single blue band
59. A pierced Staffordshire pottery salad dish and stand and a pair of two handled vases decorated with pink roses
60. A copper lustre enamel decorated jug, a moulded copper lustre jug, another smaller, a three compartment hors d'oeuvre dish with gilt highlights and four oriental pattern side plates
61. A pair of table lamps, the ceramic centres painted with nesting birds with cast brass capitals on square bases
62. A Coudon flat sided blue and white chariot pattern jug, a Japanese vase, a small jug and an oriental dish painted with a fish
63. A moulded blue glass sugar basin, a tapering pink glass jug with a plain handle and a cabinet plate centred with a painted coastal scene between gilt and cobalt blue borders
64. Grafton China. A half tea service decorated with a floral design on a cream and gilt ground
65. A pair of Venetian glass candle lamps with ribbed gold bases and open side handles, and plain moulded glass shades £80-£140
66. A Wedgwood blue jasperware cylindrical biscuit barrel with raised relief decoration of classical figures and with plated mounts, also a Jasperware trinket box and cover and an Elizabeth II saucer
67. A XIX century Staffordshire blue and white "swallow" pattern fluted column (for a jardiniere), 21" high £70-£130
68. A pair of cobalt blue ground ovoid vases with reserved floral panels richly decorated with gilt highlights and with swan handles, 11.5" high
69. A Victorian pottery transfer printed leaf shape hors d'oeuvre dish with gilt highlights, and a three compartment French porcelain hors d'oeuvre dish decorated with gilt and blue foliage on a pink ground
70. A French china part tea service (18), and a Noritake coffee set (12)
71. Shelley. A bone china half tea service transfer printed with spring flowers
72. Doulton Burslem. A Mona pattern rectangular wash bowl
73. A pair of tapering cylindrical two handled vases, the cobalt blue ground with reserved floral panels, richly decorated with gilt highlights, 14" high
74. A plain white Victorian two handled foot bath
75. An Edwardian glass biscuit barrel, wheel etched with flowers and foliage and with a Walker & Hall plated swing handle and cover
76. Royal Doulton. A series-ware cabinet plate D6308, and a Lovatt stoneware jug
77. Two Copeland Spode "Virginia" pattern plates, two others, three Doulton "Lorraine" bowls, and a pair of heart shaped ruby glass dishes
78. Shelley Bone China. A 21 piece tea service - pattern number 13752 Charm
79. A quantity of blue and white transfer printed dinner ware including two tureens and covers, a sauce boat etc.

80. Wedgwood. A part tea service, the cream ground with floral decoration and gilt highlights
81. An Edward XVIII Coronation plate, a George IV Coronation plate and a blue and white plate strainer
82. A XIX century Continental porcelain figure of a lady carrying a basket with three birds, blue striped pinafore dress, a cat at her feet on a scroll base, restored 8.5" high
83. A XIX century commemorative china plate hand coloured and transfer print decorated Victoria Crowned 28th June 1838 6.75"
84. A baluster shaped satsuma vase with small mask handles, gilt decoration, hardwood base 7.5" high (a/f) and a Masons blue and white jar
86. A green tinted glass tapering vase with ringed base etched with a scene of a three masted ship 10" high
87. A lustre decorated glass tapering vase with blue tinted rim 10" high and a campana shaped pottery posy holder
88. A pair of Limoges gilt decorated plates, a pair of XIX century blue glass basket weave design dishes, teapot stand and a bone china wavy edge dish
89. Two Victorian blue tinted glass ornamental walking sticks with loop handles and corkscrew stems
90. A pair of Parienware figures - male and female musicians (A/F)
91. Doulton Lambeth. A stoneware jug transfer decorated "South Africa 1900", 8.5" high
92. Royal Worcester. A cream jug, the body in the form of a barrel with branch handle, painted with a scene of a bird and leaves signed N.Powell, 2.5" high

PICTURES & PRINTS

101. A XIX century coloured print "View of the City of Lincoln" modern frame and two others "Lincoln Cathedral"
102. Oil on board "View of Lincoln" and two framed prints "The Strait" and "Lincoln Cathedral"
103. A XIX century coloured print "City of Lincoln, South East View" modern frame and three others
104. Two early XIX century prints after Hogarth "The first and second stages of cruelty" later oak frames
105. A gilt framed print "Sailing ships on a stormy sea"
106. Two framed coloured prints after Sartorius "Coursing views near Epsom"
107. Two prints "Nude study" and "Canal scene" - modern frames
108. Two watercolour drawings "Natural floral still life" and "Bird feeding chicks" in gilt frames
109. E. Ellis s. Oil on card, three oval pictures of Country scenes, gilt frames
110. Two XIX century coloured portrait photographs 'Gentleman and Lady' in decorative floral gilt frames mounted within mahogany outer frames 12.5" x 10.5" overall
111. E. Dunkley s. O/C Two beach and coastal scenes dated (18) '94 & '95, gilt frames 12.5" x 16.5"
112. E. Dunkley s. O/C country lakeland scene dated (18) '98 gilt framed 19.5" x 29.5"
113. L. Richards s. O/C County river scene (possibly Trent) farm workers and Hay Carts, oak framed 15.5" x 23.5" £100-200

114. Theo. Moore B.W.S. s. O/C Mediterranean village, label verso, framed 15.5" x 21.5"
115. H.B. Freer s. W/C "Fishing Trawler on a stormy sea" 9.5" x 13.5" in a gilt frame £100-£200
116. W. Hunt s. W/C label verso "Head of a boy" decorative gilt frame 5" x 7"
117. Bowers s. W/C Country lane with figures and animals, modern gilt frame 8.5" x 12.25"
118. E. Hayes s. W/C Pair label verso. "Rowing together off the rocks at South Island"? and "French Riggers off coast Newhaven" 8.5" x 19.5" in gilt frames £200-£400
119. A XIX century woolwork - Parrot on a branch with flowers heads and leaves - oval gilt frame 15" x 19" £50-100
120. J. Oyer s. W/C "Estuary scene" framed 12" x 16"
121. E.D. Bridge s. Oil on artist's board "Fishing Harbour" dated '57 framed 11" x 15"
122. A XIX century gilt acanthus leaf and scroll frame inset with a bevel edged mirror plate 19" x 24" overall and a 12" x 10" similar frame
123. Oil on card, portrait of a Monk oval 10" x 8.5" and an oval gilt frame
124. J. Cresswell s. W/C "County Scene" a mahogany framed print, and a gilt framed oleograph
125. Oil on metal panel, Dutch School "Figures outside an Inn" - gilt frame 6" x 7.75" £100-200
126. C.A. Clark s. W/C "The Glory Hole, Lincoln" dated 1925, gilt frame 6" x 4"
127. C. Money s. W/C pair "Sailing Ships" dated '39 framed 13" x 6.5"
128. T. Bartl s. O/C Portrait "John A Hadley" (Consultant at Lincoln) dated '49, frames 30"x 26" £200-300
129. Peter Brannan s. Oil on artist board "West Front Lincoln Cathedral on winters day" dated '63, gilt frame 13.5" x 10.5" £150-250
130. A East s. A coloured pencil drawing - pheasants and fox, pair, wooden frames 4.75" x 6"
131. Oil on canvas. Still life - books and a vase, gilt frame 24" x 18", and another
132. Oil on canvas. Still life - apples, jug and imari plate, gilt frame 18" x 23.5"
133. A pair of Japanese embroidered tapestry pictures - mountain and garden scenes, modern frames, 24" x 22"
134. A Webster s. W/C - Country Lane to Lincoln?, 6.5" x 14", and another - building entrance, both gilt frames
135. S Bullock s. W/C - Lincoln Cathedral, label verso, framed, 7" x 10.5", and another W/C - church
136. E Jahn s. W/C - Lake Scene and fishing boat, gilt frame, dated 1893
137. A E White s. O/C - Stonebow, Lincoln dated 1894, gilt frame, 5.75" x 7.75" £100-£150

CRESTED CHINA

Lots 139-150 illustrated on centre pages

139. Crested China. Carlton - "A Policeman's Lot is not a Happy One" - City of London, 5.5"
140. Crested China - fishing boat, Mablethorpe, 5" and Arcadian - fishing trawler, Grimsby, 5"

141. Crested China - fixed wing plane, Sleaford, retailed by W.K. Mortons & Sons, Sleaford, 6"
142. Crested China. Carlton - moped, Downham Market, 4.5"
143. Crested China. Willow Art - "Mons Meg Canon, Blackpool", 5" and Carlton - "Canon, Bridlington", 5"
144. Crested China. Podmore - Westminster Abbey, City of London, 5" high
145. Crested China. Royal Stafford - model of British tank, Doncaster, 4" and Arcadian - model of tank, Peterborough, 5.5"
146. Crested China. Arcadian - car, Ipswich, 4.5" and Charabanc - Ilfracombe, 5.5"
147. Crested China. Swan - ambulance, Aldershot, 3.5" and Victoria - air ship, Matlock Bath, 5"
148. Crested China. Arcadian - warship, Warminster, 4.5" and Swan - model of new submarine, Northampton, 5"
149. Crested China. Fenton - watering can, Boston, 3" high, two Continental wheelbarrows Skegness and urn, Scarborough
150. Crested China. Swan - a model of Tommy on sentry duty, Spalding, 4.5" high, Clock Tower, Skegness (2), salt pot, Louth and Lincoln Cathedral (A/F)

METALWARE

151. A heavy ormolu four-branch ceiling candelabra, the central tapering column of classical design, the four foliate arms radiating from a fluted boss (now converted to electricity), 19" £300-£500
152. A leaf moulded ormolu five branch pendant candelabra, the branches radiating from a central column, 1' 2" £200-£300
153. A pair of gilt leaf moulded double wall sconces (electric)
154. A pair of gilt metal ribbon design double wall sconces (electric)
155. An Edwardian brass frame leaded and stained glass hall lantern
156. A Victorian oil lamp on a heavy cast metal base with a plain moulded glass reservoir and etched glass globe shade
157. A pair of Victorian turned brass candlesticks on flat sided shaped bases, 9" high
158. A XIX century oval copper kettle and a rectangular pierced brass trivet
159. A XIX century circular copper saucepan with a brass side handle
160. A XIX century pewter wine funnel
161. An oval XIX century copper kettle (no lid)
162. A pair of candle powered coach lamps enclosed on two sides by bevel glass with polished reflector panels (now converted to electricity)
163. A magnificent Victorian copper urn, the campana shaped body beneath a domed cover with moulded scroll handles and a turned brass spigot, raised on a leaf moulded pedestal and foot, 1' 6" high £350-£450 (illus. centre pages)
- 163A. A Victorian plated tea urn, the domed cover with fluted decoration above a cast border, the two side handles with turned bone centres on a tapering column, the square base with four orb feet £200-£300
164. A Victorian copper urn and cover with two ebonised side handles raised on a turned column, the shaped base on four turned feet, 1' 6" high (illus. centre pages)
165. Four embossed French pewter plates centred with a coat of arms, the heads of nobles and a nautilus shell design, 9" diameter

211. Moko Lesney - a Matchbox series die-cast model car - Hillman Minx No. 43 in original box
212. Moko Lesney - A Matchbox series die-cast model car - Volkswagen, Matchbox International Express Livery No. 34 in original box
213. Moko Lesney - a Matchbox series die-cast model - van, Dunlop Livery No. 25 in original box
214. Moko Lesney - a Matchbox series die-cast model car - Ford Zodiac Convertible No. 39 in original box
215. Moko Lesney - a Matchbox series die-cast model - Ruston Bucyrus crane, major pack No. 4 in original box
216. Moko Lesney - a Matchbox series die-cast model - car transporter accessory pack No. 2 in original box
217. Moko Lesney - a Matchbox series die-cast model - Saracen Personnel carrier No. 54 and M3 personnel carrier No. 49 (A/F) in original box
218. Moko Lesney - a Matchbox series die-cast model - garage in original box
219. Wade England. Disney - Lady & The Tramp (6) plus three others
220. A painted die-cast money box - Negro head, a die-cast puppet Muffin the Mule, a 'pigs in clover' puzzle, a doll and a soap gift set
221. A.M. Germany 351/5K - a bisque head baby doll, brown sleeping eyes and an open mouth
222. Dollindoll - Made in England. A papier-mâché baby doll with sleeping eyes and open mouth, with linen night clothes, approx. 25"
223. A polished pine dolls rocker, the facing seats on a gilt decorated metal frame and square block base, 22" wide, 20" high £100-£200
224. A wax headed doll, the young girl with blonde hair, blue glass eyes and open mouth, pot lower arms and legs with a straw stuffed body, wearing a satin dress with red ribbon and lace under garments, 13.5" long
225. A yellow plush straw stuffed teddy bear with pointed nose and short arms (A/F), 13"
- 225A. A pottery tobacco jar and cover in the form of a monkey's head and composition baby doll
226. Cigarette cards - John Player & Sons in original albums, film stars, the Kings & Queens of England, sea fishes, international air liners, our King & Queen, motor cars and a booklet - 100 views of Oxford
227. Cigarette cards - W.D. & H.O. Wills in original albums - radio celebrities (2), Association Footballers 1935-36 (2), railway engines, safety first, the reign of King George V
228. Cigarette cards - W.D. & H.O. Wills - famous inventions
229. Cigarette Cards - Gallagher - aeroplanes
230. Cigarette Cards - Gallagher - "My Favourite Part", butterflies and moths
231. Cigarette Cards - sets and parts in original albums, John Player - Royal Air Force, RAF badges, national flags and arms (2), cycling, motor cars, our King & Queen (2), modern naval craft, cricketers 1938, international air liners, military uniforms
232. Cigarette Cards - sets and parts contained in 2 albums to include Ogdens, birds eggs, British birds, Wills - Do You Know and gardening hints
233. Cigarette Cards - sets and parts contained in an album - Players history of naval dress, regimental standards and cap badges, Wills - wild flowers, railway engines

- 233A. Cigarette cards - sets and odds, various to include WD & HO Wills - speed, ships, badges, cricketers 1918, Gallaher - Navey, dogs (17)
- 233B. Cigarette cards, albums - Players - naval craft, air liners, national flags, also WD & HO Wills, Ogdens - leaders of men, Piccadilly Juniors, photo - popular personalities, sets and odds (12)
234. Postcards - mainly actresses and personalities, approx. 34 cards
235. Postcards - various, mainly Great Britain views, London & Ireland - approx. 79 cards
236. Postcards - Lincoln and Lincolnshire to include Nettleham, Monks Road, High Street, Lincoln Cathedral from cemetery, The Rectory Navenby - approx. 46 cards
237. Postcards - after Louis Wain (3), Franked Lincoln 06, 07 and Bournemouth 03, plus others, mainly animals - 22 cards
238. Annuals and pamphlets - Bibby's 1912 and 1914, London illustrated London news, Jamaica, also trade cards, Schoolgirls Weekly, stars of the silver screen, De Beukelaer - film stars etc.
239. Pictorial and advertising calendars - A Miller Cliff Garage, Welton, 1940's, 50's and 60's, also Queen Elizabeth II prints - approx. 21 items
240. A painted advertising counter stand - Beatrix Potter "Peter Rabbit" in a blue jacket running on a grass bank, the base with gilt lettering, 16.25" high (**illus. centre pages**)
241. A Marklin 00 gauge 4-6-2 locomotive with eight wheel tender and two carriages, also an 0-4-0 locomotive and four wheel tender, three carriages, eight goods wagons, signal and station boards - contained in a two tier home-made wooden box
242. Hornby Series - an 0 gauge No. 2 cattle truck (boxed), a No. 2 lumbar wagon (boxed), a carriage and a Leeds Model Co. Ltd G.W.R. brake carriage (boxed)
243. A Bassett Lowke Ltd 0 gauge, a standard 0-6-0 goods electric locomotive and six wheel tender, 1456 L.N.E.R. (boxed), an L.M.S. open wagon (boxed), a L.N.E.R. covered wagon (boxed), a S.R. open wagon (boxed) and three boxes of tin plate electric rails
- 243A. Hornby train passenger set No. 51, 0 gauge clockwork in original box with tested label and guarantee date 24.12.54, also Hornby series tin plate station and sundry track £150-£250
- 243B. A tin plate 0 gauge reversing electric train set in original box
- 243C. Hornby Dublo 00 gauge electric 2-6-4 tank goods train, B.R. set in original box
- 243D. Hornby Dublo 00 gauge electric passenger train 'Silver King' B.R. (E.R.) - part set in original box, also another Silver King, Duchess of Montrose 0-6-2 tank locomotive - (boxed), four boxed coaches, power units, track and sundry station and buildings
- 243E. Hornby Railways. A modern 3.5" gauge live steam set, Stephens rocket, boxed with G104 coach, track and points
244. Lesney Matchbox, die-cast model vintage cars - Y1, Y2, Y3?, Y4-Y16 - all in original boxes
245. A Birmingham hallmark silver six piece manicure set (cased), a case of six soup spoons and a Kodak box camera
246. H. Loveridge and Co. Wolverhampton - a tin cased hand lamp
247. A quantity of old dentist tools

248. Dinky Supertoys - A die-cast model - Foden diesel 8 wheel wagon No. 501, Guy 4 ton lorry No. 511, Guy flat truck No. 513 - all in original boxes
249. An addressograph class 500 addressing machine, the manual operated cast iron frame contained in a leather effect case
250. A mahogany cash register with a single drawer and bell release
251. Columbia Phonograph Co. An oak cased wax cylinder player with chrome attachments, 3 wax cylinders (hood and horn missing)
252. Alfred Graham & Co. A Amplion type AR 19 relay speaker, the horn design with wooden panels raised on a chrome plated circular base, 15" diameter, 20" high
253. Chadburn Bros. Opticians, Sheffield. A tin cased magic lantern and brass lens, electric conversion with 18 slides, biblical scenes, 5 slide action-punch, two mechanical and 11 others
254. An Aldis old type electric projector
255. A Bailey No. 5.5 plane, a block plane and four various saws
- 255A. Davis Level & Tool Co. A cast iron mounted level, the brass circular central dial stamped "PAT SED 17 1867", scroll fret casting, 12"
256. Tri-ang Minic Toys - a tin plate clockwork model car with original box, and CK - a tin plate clockwork model of an aeroplane "Loop the Loop"
257. A stuffed owl mounted on a naturalistic setting (cased) (illus. centre pages)
258. A stuffed red squirrel mounted on a naturalistic base (cased)
- 258A. MC Michael Radio Ltd. A model 851U walnut veneered table top radio, 16.5" wide and a Marconi portable radio in a leather effect case
- 258B. Murphy Radio Ltd. Type A48 - a walnut veneered and painted cased radio, 18.5" wide
- 258C. Ekco. A model A160 walnut and mahogany veneered table top radio, 19.5" wide
- 258D. MC Michael Radio Ltd. A twin Supervox walnut veneered radio, the front with twin circular fret speakers, central frequency display and three brown Bakelite knobs, 24.5" wide
259. A Hohner Verdi III piano accordion (cased)
260. An eight string banjo, chrome plated, 24"
- 260A. His Master Voice. An oak cased table top wind up gramophone, the caddy top lifting to reveal a turntable and chrome fittings, the front with a fret work panel, 18.5" wide £100-£150
261. An oriental silk work wall hanging, the centre design with two dragons within a landscape, floral corners with a repeat border, 26" x 38"
262. Two oriental silk work panels, figures within a garden, 3.5" x 9.5" (framed)
263. Glass photographic negative slides - Lincoln Cathedral, Nettleham Road?, James Street? and churches, beach, countryside, portrait - approx. 70, also various transparencies and wooden slide mounts
264. A "Flandria" Art Deco style coach built four wheel pram with chrome frame and green leather effect hood

BOOKS

265. Maund, B. The Botanic Garden. Part IX Ldn, 1833. 4tp. engr. t.p. browned. 48 hand coloured plates on 12 leaves. orig boards, very soiled and worn

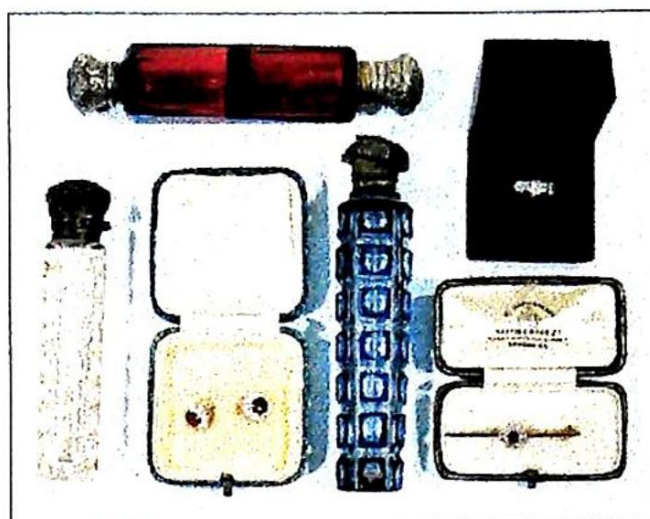
266. Bloch, Ivan. Sexual Life in England Past and Present. Ldn. Francis Aldov 1938
1/1000 copies (not numbered) ill. with plates after Hogarth, Rowlandson etc.
Black cloth, rubbed
267. Lennon, John. A Spaniard in the works. Ldn. Cape. 1965 + 3 'Beatles' paperbacks
(4 vols)
268. Mansel. Sympson, E. Memorials of Old Lincolnshire. Ldn. Allen 1911. + 3 other
Lincs books + 4 others (8 vols)
269. Dentistry and Medicine 18 vols (19th & 20th cent) + 2 others
270. Culpeper, Nicholas. The Complete Herbal Ldn. Kelly. 1850 4to. engr part. Many
small hand coloured engr on 20 leaves. Black half calf, worn
271. Gale, Frederick. Modern English Sports. Ldn. 1885 rubbed and soiled + 17 other
vols (18 vols)
272. Books inc Chatterbox 1905, Dick Barton x 2, Boys Own 1879 (29 vols)
273. An autograph football programme - Tottenham Hotspur -V- Nottingham Forrest
Feb. 10 1962, signed by the Tottenham team, Blanchflowers, Greaves, Smith,
Norman, Brown etc.
274. Lincoln Directory (KELLY) 1965 + a similar for 1903 (lacks title page) + 1 other
volume (3 vols)
275. Pilkington, Mrs "The Spoiled Child" Ldn, 1799 '12mo. + 1 other Juvenile (1801)
both very worn + odd vols (13 vols)

CLOCKS & POCKET WATCHES

276. A XIX century walnut cased spring driven wall clock with 5" diameter white
enamel dial
- 276A. A XIX century mahogany cased drop dial wall clock with fusee movement, 12"
dial (distressed) £150-£250
- 276B. A XX century French blue lacquered chinoiserie cased mantel clock, 4" circular
dial and two ebonised oval photograph frames
- 276C. A XIX century architecturally cased slate and marble mantel clock with gilt metal
mounts, 4.5" enamel dial, brass "8" day striking movement, stamped 662-58, 17"
high £150-£250
277. Four wrist watches, two lady's and two gent's in gold or plated cases
- 277A. A lady's hexagonal dress watch set with tiny brilliants and two links connecting to
the black cord bracelet
278. A XIX century Chester hallmark silver cased gentleman's pocket watch with a
white enamel dial and subsidiary seconds ring, the movement signed "Williams,
Keighley", and another small watch in a "fine silver case"
279. An eight day striking mantel clock, the circular white enamel dial signed
"Mansell, Lincoln", contained in a domed mahogany case standing on four turned
brass feet
280. A 14K patent lever chronograph by H. Samuel with three case winding movement
£250-£350
281. A XIX century French mantel clock contained in an elaborate leaf moulded
ormolu case surmounted by a floral finial, the circular steel dial with an eight day
striking movement, the pendulum on a silk suspension, 12" high £400-£600 (illus.
centre pages)

282. A lady's white enamel dial pocket watch, the case profusely engraved with floral decoration and stamped 18K contained in an original morocco leather bound case
283. An 18 carat gold lady's cocktail watch, the circular dial surrounded by small diamonds on an 18ct expanding bracelet £250-£350
284. A steel cased gentleman's pocket watch, a larger Swiss pocket watch in a gold coloured metal case, and a lady's wrist watch
285. A gentleman's Hunter cased pocket watch with a Waltham Watch Company movement, the case stamped "14K"
- 285A. Kay Worcester. A 9ct gold cased gentleman's pocket watch
286. A Continental silver cased lady's watch with a decorated white enamel dial, another similar and a metal cased gentleman's pocket watch
287. A 13" silver watch chain hung with a silver thre'pence and a hallmark vesta case
288. AWWK Waltham Mass. An enamel dial Birmingham hallmark silver cased gentleman's pocket watch, another in a metal case, and a rotary steel cased wrist watch
289. An early XVIII century pendulum watch movement signed "Hch. Ouerbury, Rotterdam", with pierced decorated pillars and engraved with a maiden in a landscape "Soyez Joyeux" £250-£350 (**illus. centre pages**)
290. A Rolex Tudor oyster stainless steel gent's wrist watch, the case numbered 790374166, and another silver cased lady's wrist watch on an expanding bracelet
291. A 14K gold cased lady's fob watch with a decorated enamel dial
292. Six various pocket and wrist watches
293. A XIX century Swiss silver cased pocket watch, the white dial marked "Baume Geneve", the backplate engraved "examined and sold by G Gray, Maidestone", through case winding movement
294. A XIX century gentleman's pocket watch in a Chester hallmark silver case, the back plate signed "G.J. Wicks, Cambridge"
295. An early XIX century fusee pocket watch, the back plate signed "B Clowes, Liverpool", contained in a Birmingham hallmark silver case, the circular white enamel dial (damaged)
296. An early XX century brass cased gravity driven mantel clock, the falling dial on two columns, the glass face revealing the escapement and pendulum, 10" high £75-£130
297. A spring driven Vienna wall clock, the compensating pendulum revealed through a brass glazed door, the hardwood case partly walnut veneered and decorated with split turnings and foliage, 3' 3" £75-£130
298. An Edwardian oak cased aneroid barometer and thermometer "British Made", 2' 8" overall
299. A XIX century double weight Vienna wall clock with an enamel dial, contained in a stained hardwood case elaborately decorated with split turnings beneath a castellated top, 4' 3" overall £300-£500
300. A late XVII century walnut and marquetry longcase clock, the dial signed "Henry Harper London" with month duration movement £12000-£18000 (**illus. front page & inner cover**)
301. An early XIX century oak and mahogany banded longcase clock, the arched painted dial signed "Jonas Lazarus, Lincoln", with subsidiary seconds ring and date aperture; eight day striking movement, enclosed by a pagoda shaped hood flanked by fluted columns, the base with a long cross-banded door, centred with a feather patera £1600-£2400 (**illus. centre pages**)

Lot 338



Lot 324

Lot 337

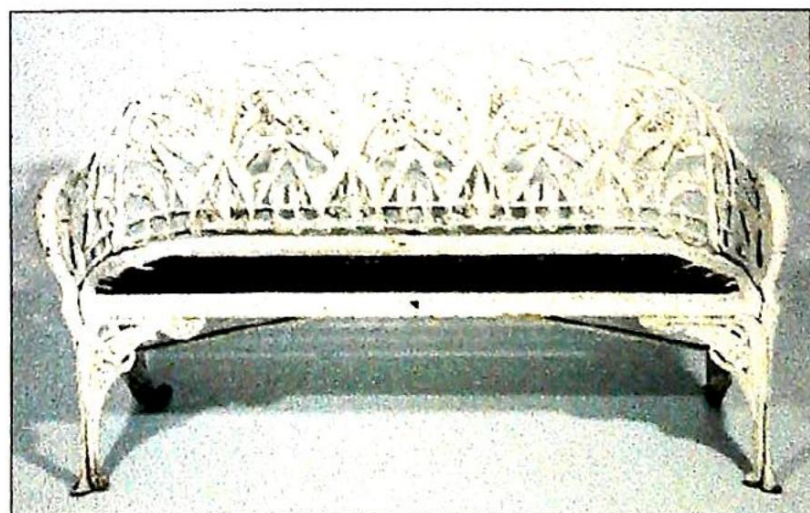
Lot 332

Lot 331 Lot 337



A selection of collectables, lots 204 onwards

Lot 388



Lot 257 Lot 171

Lot 29



Lot 240

Lot 513

Lot 139 - 150

Lot 28 Lot 52 Lot 27



Lot 507



Lot 506

Lot 518



Lot 3

Lot 5

Lot 6



Lot 496



Lot
35

Lot 517

Lot 164

Lot 163



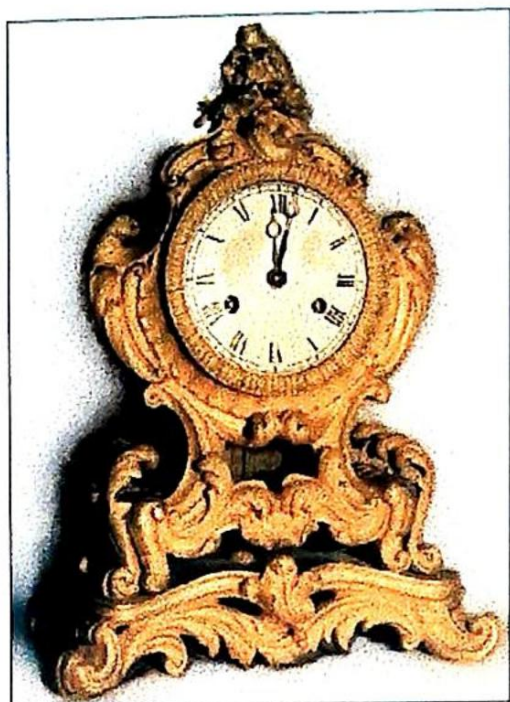
Lot 195

Lot 196

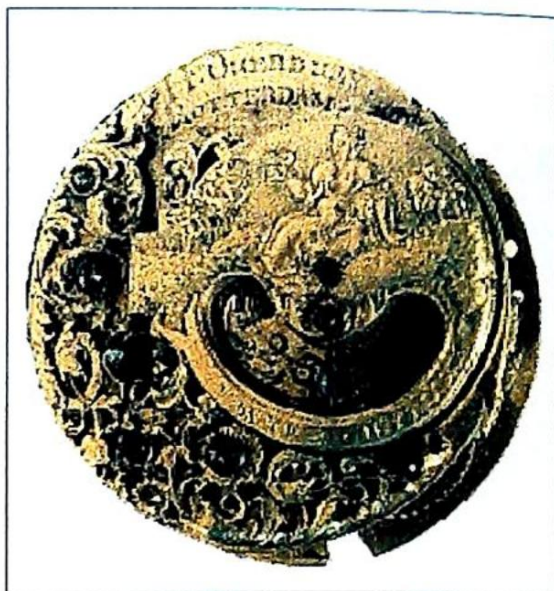
Lot 501

Lot 492

Lot 281



Lot 289



Lot 302



Lot 301

302. An early XIX century oak and mahogany banded longcase clock, the arched painted dial signed "W. Chapman, Lincoln" and decorated with cottages and an angler in the arch, enclosed by a broken swan neck pedimented hood, the base with a long door, cross-banded and inlaid with a diamond; eight day striking movement £1400-£2000 (illus. centre pages)
303. * The Gledhill-Brook Time Recorders Ltd patent. A wall mounted clocking in clock in a stained case
304. * The Gledhill-Brook Time Recorders Ltd patent. A wall mounted clocking in clock in an oak case

JEWELLERY

305. A 9ct gold watch chain, 14" long, and a lady's bangle £140-£160
306. A diamond bracelet designed as five articulated tapering plaques ending with circular loops, the central plaque set with a single diamond (later expanding clasp) £300-£500
- 306A. A lady's bracelet with alternate circular elongated and triple links, all set with a multitude of tiny brilliants
307. A solitaire diamond centred platinum set bar brooch £200-£300
308. A five stone diamond ring in an 18ct gold setting £600-£900
309. An emerald and diamond cluster ring, the octagonal cut emerald with a border of fourteen brilliant cut diamonds £300-£500
310. A 9ct gold Lincoln Imp brooch, two pairs of hallmark cufflinks and other sundry silver and costume jewellery
311. Costume jewellery, plated spoons, napkin ring, commemorative coins, silver handle glove stretcher etc.
312. Victorian and later gold and silver brooches, badges, buttons, approx. 45 items
313. Five silver hallmarked thimbles, two others, five various rings, two watch chains etc.
314. Two tie pins and two hallmark dress rings
315. A silver match case, engraved tobacco box, fruit knife, badges and costume jewellery - contents of two lacquered boxes
316. A gold plated watch chain, coins, tie pin - contents of an old sweet tin
317. Two silver hallmarked and mother of pearl decorated fruit knives
318. A leather collar box containing 15 strings of various beads and neck chains, all costume, a gilt metal bracelet set with blue glazed terracotta, other damaged beads and parts, and a square metal box and contents
319. A 9 carat hollow gold chain bracelet with a padlock hasp
320. A 22 carat plain gold wedding ring
321. A three stone dress ring in a gypsy setting, and an engraved heart shaped locket containing two photographs
322. A circular diamond cluster dress ring, the central stones surrounded by eight smaller stones, set in 18 carat yellow gold (N.B. one small stone does not test as diamond) £200-£300
323. A 9 carat gold hallmarked link watch chain with "T" bar and a mounted sovereign fob, 14" £240-£340
324. A three stone diamond ring, the claw setting on a gold mount £700-£1100 (illus. centre pages)

- 325. A three stone diamond ring, the claw setting with a large centre stone flanked by two small stones, 18 carat gold mount £250-£350
- 326. A 1912 George V sovereign
- 327. A 9 carat hallmarked gold graduated Albert watch chain, "T" bar and a blood stone fob, 9" £200-£300
- 328. A diamond and sapphire 19 stone dress ring
- 329. A diamond and sapphire cluster dress ring
- 330. A diamond and emerald 21 stone three piece dress ring
- 331. A pair of ruby and diamond cluster earrings, each centred with a claw set ruby with a border of ten diamonds £250-350 (**illus. centre pages**)
- 332. A ruby and diamond bar brooch, the cluster centred with a claw set ruby having a border of ten diamonds (matching lot 331) £100-200 (**illus. centre pages**)
- 333. A 9ct gold graduated Albert watch chain 17" long 60gms £200-300
- 334. A diamond tie pin centred with a single stone, stud and pin mounts original case
- 335. A 9ct gold link watch chain with "T" bar and two fobs 14" long approx 60gm and a 1912 George V half sovereign £200-300
- 336. A 9ct gold watch chain with floral design terminals 12" long approx 40gms £160-220
- 337. A blue and plain facet cut glass scent bottle 5", and a silver mount scent bottle Birmingham 1899 (**illus. centre pages**)
- 338. A Victorian ruby glass double scent bottle with gilt metal mounts 5" £80-120 (**illus. centre pages**)
- 339. A cut glass horn shaped scent bottle with engraved silver mounts London 1901 8.25" £80-120
- 340. A XX century Pinchbeck lady's brooch, another, a lacquer snuff box and a plated bottle stopper
- 341. A 1902 Edward VII sovereign
- 341A. A 1913 George V sovereign
- 341B. A 1913 George V sovereign
- 341C. A 1980 Elizabeth II sovereign
- 341D. Two Edward VII half sovereigns 1906/1909
- 342. A 9ct gold plain match case and a gents signet ring

SILVER, PLATE, MINIATURES & OBJET D'ART

- 343. Two engraved silver match cases, another with a watch chain, five plate cases including novelty 'Gentleman behind outhouse door'
- 344. Two Chester silver envelope stamp cases and a Birmingham silver match box cover
- 345. A silver compact case, trinket box, card case, plated trinket box, pepper pot and an enamel top box
- 346. A silver propelling pencil and fruit knife, a cased pair of cufflinks, bridge pencils, cocktail stick, wine tasting dish, button hook, horn beaker, candle snuffs, pickle fork and sugar nip
- 347. A 1904 Edward VII sovereign and a 1910 half sovereign
- 349. A silver plated part canteen of cutlery and miscellaneous flat ware contained in a mahogany canteen box with a lift out tray
- 350. Birmingham 1823 - a cased set of silver reading spectacles

351. Hoyer - an oval portrait miniature of a lady at her desk within an ivory penwork decorated, seed pearl and gilt metal frame, 6.25" x 4.75" overall £100-£200
352. An indistinctly signed oval portrait miniature of a young maiden within an ivory penwork, decorated seed pearl and gilt metal frame, 6.25" x 4.75" overall (matching lot 351) £100-£200
353. An indistinctly signed portrait miniature of a young mother and baby, ivory and gilt metal frame, 4" x 3.5" overall
354. A XIX century carved amber cigar holder, another with 9ct gold mount and two silver mounted ditto - all in original cases
355. A Meerschaum pipe carved with a dog, original case, 3"
356. A Meerschaum pipe carved with a dog, original case, 3.25"
357. A gentleman's pipe with amber mouth piece in original case, 4.5" and three glass pipettes
358. A Meerschaum pipe carved with a cupid angel in original M. Czapek case, 5.5"
359. Cased plated teaspoons, glass preserve dishes, dessert spoons and various boxes of knives
360. A silver plated four piece tea service and Walker & Hall plated oval tea tray
361. A boxed set of six Continental silver collectors teaspoons
362. Two silver napkin rings, a plated three piece preserve set and two sets of imitation pearls
363. A cased set of bone handled fish eaters
364. Sheffield 1911 A cased set of 12 silver bright cut teaspoons and sugar tongs £80-£120
- 364A. Chester 1913 A pair of silver tapering circular spill vases, 8.25" high £150-£250
365. Sheffield 1908. A cased set of six silver apostle spoons and sugar tongs, a Birmingham silver shell shaped butter dish and plated knife
- 365A. London 1913 A silver comport stand, the circular top with a "C" scroll border on a tapering stem and foot, approx. 14oz, 8.5" diameter £300-£400
366. Birmingham 1932 A three piece silver tea service, 31ozs gross £240-£380
- 366A. Birmingham 1890 A silver three footed sauce boat with scroll handle, 3oz £120-£160
367. A Chester hallmarked silver napkin ring (marks rubbed)
- 367A. Birmingham 1900 A silver octagonal sided sugar sifter, 3oz, 7" high £120-£160
368. Birmingham 1928 A silver teapot, 8ozs gross, and a Victorian plated teapot
- 368A. London 1886 A silver mustard pot (no spoon), 2oz
369. Sheffield 1918 A pair of silver mounted photograph frames, 5" x 3.5"
370. Birmingham 1909 A silver mounted circular photograph frame and a pair of smaller frames
371. Eight various silver hallmarked teaspoons
372. London 1818 A pair of silver serving spoons and two silver dessert spoons
373. Chester A cased silver handled shoe horn and button hook
374. Birmingham 1909 A silver backed hair brush, a 1905 hallmark silver back hand mirror and a silver mounted comb
375. Birmingham 1970 A silver four piece tea service comprising two tea pots, milk and sugar, makers mark D.M., approx. 58ozs gross £300-£500
- 375A. Sheffield 1921 A silver three piece tea service, the octagonal sided teapot with an ebonised finial and handle, on a stepped foot, 36oz gross £550-£750

RUGS

- 376. A Belgium new wool rug, the dark red ground with geometrical design borders and central motifs, approx. 11' 10" x 8' 2" £400-£600
- 377. A rug decorated with a central beige and red floral design panel on a black ground with multi-pattern borders, 30" x 24" and another 25" x 22"
- 377A. A multi pattern red ground carpet, 11' x 12'

FURNITURE

- 378. A XIX century mahogany cupboard, the panelled doors revealing fitted shelves, raised on a plain plinth, 30" wide
- 380. A XIX century mahogany cabinet, the single door with turned wooden knob revealing a fitted shelf (includes books), 19" wide
- 381. A Victorian carved walnut piano stool, the upholstered circular top with height adjustable screw fitting, raised on three cabriole supports carved with floral decoration £100-£150
- 382. A pair of XIX century ash and elm bar and stick back kitchen chairs
- 383. A late XIX century oak bedroom suite, the wardrobe with a shaped cornice, central mirror door, flanked by four inset Art Deco design copper plaques, the base fitted with two drawers, 5' 5" wide, matching dressing table and 4' 7" bed frame £200-£300
- 384. Two XIX century ash and elm hoop and stick back kitchen chairs
- 385. A XIX century sewing machine cabinet and a Victorian towel rail (A/F)
- 387. A Victorian cast iron pedestal garden table with a circular white marble top, the base decorated with scrolls and on scroll feet, 2' 6" diameter £250-£350
- 388. A Coalbrookdale "Lily of the Valley" pattern cast iron garden seat, 4' 3" wide £1000-£1500 (illus. centre pages)
- 389. A lead sundial, the dial with a shaped circular surround, held aloft by a putti figure standing on a raised naturalistic base, 26" high £100-£200
- 390. A XIX century cast iron ended garden bench, 4' 7.5" wide £300-£500
- 391. A XIX century cast iron ended scroll backed garden bench, 5' 2" wide £300-£500
- 392. A cast iron base pedestal table in the manner of Christopher Dresser with a shaped mahogany top, 21" diameter £150-£250
- 393. A XIX century cast iron based pub table - Victory, with a thumb moulded circular top, 22" diameter £150-£250
- 394. A Victorian six tier what-not stand with shaped shelves on bobbin turned supports, 36" wide £300-£400
- 395. An Edwardian mahogany china display cabinet with a single glazed door on square supports, 24" wide £300-£400
- 396. An Edwardian mahogany and boxwood strung china display cabinet, the single glazed door with painted decoration raised on square tapering supports, 27.25" wide, 67" high £200-£300
- 397. A XIX century mahogany bow front chest of two short and three long drawers with turned wooden handles (no feet), 3' 1" wide £150-£250
- 398. An early XIX century Regency rosewood sofa, the moulded top rail above an upholstered back, and arms with "C" scrolls, acanthus leaf and paterae carved facing, tapering reeded supports with brass cups and castors, 7' wide £800-£1200

399. A XIX century painted pine towel rail and a timber blanket box
400. A XIX century design mahogany tripod table with a plain rectangular top, 27.5" high
401. A late Victorian mahogany single wardrobe enclosed by a panelled door inset with a bevel mirror and flanked by two astragal glazed panels, and decorated with applied mouldings, 3' 4" wide
402. A Victorian mahogany chest of four drawers, 3' 6" wide
403. An Edwardian mahogany bureau, the fall front inlaid with a shell patera above three long drawers, all inlaid with ebony and boxwood stringing, 2' 6" wide £100-£150
404. An Edwardian mahogany double wardrobe enclosed by two panel doors either side of a central mirror above two drawers, the stepped cornice doors and drawers all cross banded and inlaid with boxwood £120-£180
405. The base of a XIX century ash and elm Windsor chair
406. A XIX century patent mahogany box commode, internally fitted with a blue and white transfer print commode and originally with a flushing system £100-£150
407. A XIX century mahogany hanging plate rack with five shelves on plain stepped end supports, 4' 8" high, 3' 5" wide
408. A Georgian circular mahogany side table on three cabriole supports, the one piece top 2' 4" in diameter (reduced in height)
409. An Edwardian walnut window table with a moulded pie-crust border, raised on four cabriole supports carved at the knee with husks and united by an undertier
410. An XVIII century mahogany Pembroke table, the top cross-banded in satinwood and boxwood strung, centred with a shell patera fitted with a single frieze drawer and raised on square taper supports terminating in spade feet, 3' x 2' 9" extended £300-£500
411. An Edwardian oak gate leg dining table with a moulded wavy border raised on barley twist and block supports, 3' 6" x 4' 10"
412. A pair of XIX century nursing chairs, the mahogany frames carved in relief above overstuffed seats raised on turned front supports £70-£120
413. An Edwardian oak Lebus desk enclosed by a tambour and fitted with four drawers to the side above a slide £150-£250
414. A Victorian painted pine chest of two short and three long drawers raised on turned legs with original knobs and simulated birds eye maple paintwork, 3' wide £120-£180
415. A Victorian painted pine linen chest
416. A XIX century bar back elbow chair with a shaped elm seat, raised on turned supports united by an "H" stretcher
417. A Victorian walnut fire screen raised on bobbin turned supports and centred with a fabric panel
- 418 - 422 have been removed from the former Lincoln theological college**
418. * A XX century oak refectory table by Curtis & Mawer, Lincoln, 7' x 3' 2"
419. * A XX century oak refectory table, by Curtis & Mawer, Lincoln, 7' x 3' 2.25", and two benches, 7' long
420. * A XX century oak refectory table by Curtis & Mawer, Lincoln, 7' x 3' 2" and two benches 7' long
421. * A XX century oak refectory table by Curtis & Mawer, Lincoln, 7' x 3' 2.25", and two benches 7' long

422. * A XX century oak refectory table by Curtis & Mawer, Lincoln, 11' x 3' 2.25", and two benches 9' long
423. A XX century oak dresser, the plate rack with a stepped cornice, central shelf flanked by two panel cupboards, the base with three drawers decorated with applied moulding above a shaped apron, raised upon slender cabriole supports, 4' 3" £600-£900
424. A late XIX century mahogany stick stand with a central glove box
425. An Edwardian bookcase, the upper section with a stepped cornice, two glazed doors, the open base with two adjustable shelves, 3' 1" wide £300-£500
426. An oriental octagonal work table extensively inlaid with multi-coloured woods and mother of pearl, the hinged top revealing a silk compartment £100-£150
427. A XIX century rectangular mahogany drop leaf breakfast table raised on tapering supports terminating in pad feet, 3' 8" x 3' extended £200-£300
428. A heavily carved gothic design Victorian oak hall chair, the cresting rail centred with a crown supported by winged cherubs, the cane back panel and seat flanked by barley twist and relief carved rails, raised on block and turned supports with barley twist stretchers
429. An early XIX century mahogany pot cupboard enclosed by a single panel door above a long oak lined drawer, standing on four chamfered legs united by an "X" stretcher £200-£300
430. A XIX century oval mahogany drop-leaf dining table, raised on fluted supports, 5' 5" x 3' 7" extended
431. A George II design walnut cabriole legged dressing stool carved at the knee with a shell motif and terminating in pad feet £200-£300
432. A Victorian mahogany open armchair, the shield back elaborately carved with a foliage design and centred with an inlaid floral panel, the shaped seat raised on square taper supports terminating in spade feet, strung throughout with bone line inlay £150-£250
433. A Georgian mahogany "D" hall table, the deep frieze with a cross-banded edge, standing on plain square taper supports 3' 5" wide
434. A Victorian button back overstuffed lady's chair upholstered in pink dralon raised on carved rosewood cabriole supports united by a serpentine front rail £180-£280
435. * An Edwardian circular mahogany side table raised on four square taper supports terminating in spade feet
436. An upright grand pianoforte by Mason & Hamlin, Boston, USA - number 14802, contained in an architecturally designed dark hardwood case £200-£300
437. * A pair of Edwardian oak hall chairs, the rectangular splats inset with fluted roundels above tapering solid seats raised on turned tapering supports
438. A Victorian rectangular mahogany side table, fitted with two drawers to the frieze and raised on turned tapering supports, 2' 6" wide £150-£230
439. A square Edwardian mahogany box commode
440. An oriental hardwood vase stand raised on four square supports, united by an undertier, 1' 2" x 11" £60-£100
441. A pair of Victorian oak hall chairs, the circular backs carved in relief with parchment scrolls above tapering solid seats on turned supports £60-£100
442. A XIX century rectangular mahogany fold over top games table, the turned tapering legs with spirally fluted banding on original pot castors, 3' wide £200-£300

443. An Edwardian mahogany satinwood banded and boxwood strung bedside cupboard enclosed by a single fielded panel door and raised on four tapering supports £120-£180
444. A heavy oak linen chest deeply carved in relief with a three masted sailing ship, the front with a roundel and lozenge design £70-£130
445. A Victorian button back lady's chair raised on carved cabriole front supports £150-£250
446. A reproduction mahogany bookcase enclosed by a pair of astragal glazed doors raised on shaped bracket supports with three internal shelves, 3' wide £100-£150
447. A Victorian mahogany show-wood frame double settee, the shaped back with buttoned red crimson dralon upholstery, with a serpentine front rail, raised on cabriole supports £600-£900
448. An Edwardian circular mahogany plant stand, the reeded legs united by an undertier £70-£120
449. A Victorian mahogany bookcase, the plain glazed doors enclosing three adjustable shelves raised on bracket supports, 3' 9" wide £200-£300
450. A heavy oak rectangular two tier plant stand
451. A reproduction oak tripod wine table
452. An Art Deco burr walnut six piece bedroom suite comprising double wardrobe, dressing table, compactum, pedestal bedside cupboard and pair of single bed ends £300-£500
453. A reproduction mahogany finish serpentine front lady's dressing table, fitted with two long and two short drawers raised on square taper supports, and a reproduction Georgian style toilet mirror
454. * A Victorian mahogany library table fitted with two drawers to the frieze and raised on turned tapering supports terminating in brass castors
455. * A Victorian mahogany library table raised on turned tapering supports with original brass castors fitted with two drawers to the frieze (re-finished)
456. * A set of three Victorian balloon back oak dining chairs, raised on turned spirally fluted supports with overstuffed seats
457. * An upholstered armless side chair on turned fluted supports
458. An oval Edwardian window table, raised on four Art Nouveau design shaped legs, united by elaborate stretchers and an undertier £70-£120
459. A set of four mahogany dining chairs with shaped top rails, pierced splats, drop-in seats raised on square supports united by "H" stretchers £100-£200
460. A rosewood cased baby grand piano by T.G. Payne London, number 40111 £500-£800
461. A late Victorian mahogany kneehole desk fitted with five drawers raised on turned supports united by moulded stretchers, 4' 6" wide
462. A Victorian mahogany curtain pole and rings with turned finials, 8' 2"
463. A Victorian richly figured mahogany bookcase base fitted with three bow fronted frieze drawers above a central double cupboard flanked by two further cupboards and with four applied columns surmounted by lion masks and terminating in paw feet, 6' 6" wide £400-£600
464. A Victorian mahogany curtain pole and rings with turned terminals, 3' 10", a bamboo ditto with brass terminals and an all brass ditto
465. A French carved fruitwood frame double bed with padded headboard and foot united by shaped and carved side rails £400-£500

466. A Georgian design mahogany fold over "D" shaped tea table inlaid with boxwood stringing and raised on plain square supports, 3' wide £200-£300
467. A Victorian walnut buffet, the base enclosed by a pair of panel doors raised on turned feet £150-£250
468. A Victorian figured mahogany bow fronted chest of two short and three long drawers, with original turned wooden knobs centred with mother of pearl raised on bold turned feet, 3' 8" wide
469. An oval mahogany writing desk fitted with a single drawer to the frieze, open bookshelves to either end, and raised on square taper supports, 3' 10" x 2' 4" £400-£600
470. An Edwardian mahogany china display cabinet decorated with boxwood stringing and raised on square supports, enclosed by a single glazed door
471. A Victorian figured mahogany chest of three drawers, 2' 11" wide £100-£200
472. A Victorian design mahogany spoonback lady's chair upholstered in green striped material and raised on cabriole front supports £200-£300
473. A Victorian walnut display cabinet enclosed by a pair of plain glazed doors with three internal shelves
474. An Edwardian mahogany knee-hole dressing table, the top and drawer fronts with satin wood banding, raised on square supports terminating in brass castors £200-£300
475. A black lacquer chinoiserie decorated tilt top wine table raised on a turned column with triple cabriole supports £120-£180
476. A set of six Victorian walnut frame balloon back dining chairs with floral carved splats, overstuffed seats, raised on cabriole front supports £500-£800
477. An XVIII century walnut side table, the top strung and banded in crossgrain walnut, fitted with a long frieze drawer with original brass drop handles raised on plain square supports, 2' 5" x 1' 3" £200-£400
478. A Victorian music stool with a circular rising top on a turned column with three cast metal cabriole leaf moulded legs £70-£120
479. A Victorian mahogany chest of two short and three long drawers, 3' 1" wide £70-£140
480. A Georgian design mahogany bonheurs du jour, the upper section fitted with stationery compartments and drawers, with a long drawer to the frieze raised on delicate fluted supports, 1' 6" wide £150-£250
481. A gothic design side table, the rectangular top standing on four cluster column legs, 2' 3" wide £120-£180
482. A Victorian mahogany Duchess dressing table fitted with three trinket drawers, a single drawer to the frieze, raised on turned fluted front supports united by an undertier £200-£300
483. A Georgian design wing back armchair raised on carved ball and claw cabriole supports £200-£400
484. A mahogany two fold screen
485. A Victorian gothic design oak side table, the trestle ends carved with figures and trees, united by a carved flat stretcher, 4' 4" wide £200-£300
486. An ash and elm child's Windsor chair £100-£150
487. An XVIII century spindle back elm elbow chair with a rush seat raised on plain turned supports united by a baluster front stretcher £180-£220

488. A Victorian mahogany double door wardrobe (cornice missing) £100-£150
489. A Victorian oak three part pedestal knee hole desk with a green leather writing surface, three frieze drawers and three drawers to each pedestal, 4' wide £500-£750
490. A pair of reproduction mahogany library steps, the open steps on column supports raised on short cabriole ball and claw legs £250-£350
491. A Victorian walnut china display cabinet enclosed by a plain glazed door inlaid with boxwood stringing and floral decoration, 2' 6" wide £350-£450
492. A XIX century rectangular mahogany wine table raised on a turned column with triple cabriole feet, the top 1' 6" x 1' 10" £150-£250 (**illus. centre pages**)
493. An Edwardian oak bow front display cabinet enclosed by a pair of leaded glazed doors, 2' 5" wide £50-£100
494. A Georgian mahogany bureau, the well figured fall revealing a fitted interior with a series of small drawers either side of a central cupboard, the base with three long cock-beaded drawers, 3' 2" wide £700-£1100
495. A richly figured Georgian mahogany oval drop leaf breakfast table, raised on tapering supports terminating in pad feet, 4' 4" x 3' 4" extended £250-£370
496. A Victorian walnut and marquetry inlaid china display cabinet with ormolu mounts enclosed by a shaped plain glazed door with original red velour interior lining, 3' wide, 3' 7" high £1000-£1500 (**illus. centre pages**)
497. A pair of XIX century oak hall chairs, the backs with spirally turned vertical splats and columns united by moulded horizontal rails, the wide shaped solid seats on turned supports united by turned stretchers £300-£500
498. A Georgian mahogany occasional table with a 2' 10" diameter one piece mahogany top, raised on a turned column with triple cabriole supports £300-£500
499. A XIX century rectangular mahogany wine table with a raised moulded border on a ring turned pedestal with tricorn platform base on turned feet, the top 1' 9" x 1' 3" £200-£300
500. An XVIII century oak bureau, the fall front revealing a forward fitted interior above a well, the base with two short and two long drawers, raised on bracket feet, 3' wide £500-£700
501. A small Georgian mahogany bow fronted chest of four graduated cock-beaded drawers, the top with a boxwood strung edge, with original oval pressed brass handles on splay bracket feet, 3' wide £700-£1100 (**illus. centre pages**)
502. A set of five XIX century mahogany dining chairs with plain figured mahogany top rails, pierced horizontal splats decorated with roundels, drop-in seats and saber leg front supports, four singles and one carver £800-£1300
503. A Georgian mahogany bureau, the fall front revealing a fitted interior with a series of long drawers and pigeon holes, above four graduated cock-beaded drawers with original oval pressed brass handles raised on shaped bracket feet, 3' 4" wide £800-£1200
504. A Victorian design kneehole writing desk, the green leather and gold tooled writing surface above three frieze drawers and three further drawers fitted to each pedestal, 4' wide £400-£600
505. An Edwardian figured walnut fold over top demi-lune games table lined with green baize and raised on cabriole supports terminating in ball and claw feet, 2' 7" wide £200-£300

506. An oval walnut quarter veneered drop-leaf dining table, the top with a moulded border and banded in cross-grain walnut, fitted with a single oak lined frieze drawer and raised on cabriole supports terminating in pointed pad feet - principally XVIII century with later alteration, 4' 3" x 3' 5" extended (**illus. centre pages**)
507. A Victorian figured walnut canterbury, the serpentine top with a raised back on pierced lyre supports, the canterbury base on barley twist columns above a serpentine single drawer, raised on turned supports terminating in brass castors, 2' wide £700-£1200 (**illus. centre pages**)
508. A reproduction mahogany kneehole desk fitted with three drawers to the frieze and three to each pedestal, raised on shaped bracket feet, the top inlaid with a brown leather writing surface, 3' 8" wide £400-£600
509. A Victorian design five tier corner what-not separated by turned columns with fret carved decoration £100-£150
510. An early XX century oak bureau by Lebus, the top with a shaped gallery rail, two section fall revealing a fitted interior, the base with a central drawer flanked by two pedestals each with four deep drawers raised on bracket feet, 4' wide £300-£500
511. An XVIII century oak hanging corner cabinet with an arched panelled single door revealing three painted shaped shelves, 31" wide, 36" high £150-£250
512. A small Georgian oak chest of two short and three long cock-beaded drawers raised on bracket feet, 2' 7" wide £400-£650
513. An XVIII century mahogany bow front six legged sideboard, the drawer fronts with boxwood stringing, the cellerette drawer and cupboard inlaid with oval shell patera, raised on six taper supports, 5' 5" wide £700-£1200 (**illus. centre pages**)
514. A tall Georgian figured mahogany chest of two short and four long cock-beaded, oak lined graduated drawers, raised on shaped bracket feet, 3' 7" wide £400-£650
515. A XIX century circular rosewood dining table, raised on a tapering flat sided column, the tricorn base with three scroll supports, 4' 2" diameter £600-£850
516. A late XVIII century mahogany chest of two short and three long drawers, the top and drawer fronts boxwood strung, with ivory escutcheons and oval pressed brass handles raised on shaped bracket feet, 3' 5" wide £400-£600
517. A XIX century marquetry vase stand, the "D" shaped top raised on a single opposing "C" scroll column, the panelled back on a shaped base with a beaded border, 1' 6" wide, 2' 9" high £1500-£2300 (**illus. centre pages**)
518. A XIX century ormolu and marquetry inlaid fold over top tea table, the top with a central musical marquetry panel flanked by birds amid foliage repeated on the shaped frieze, the legs with bold applied ormolu mounts, 3' wide, 1' 6" deep £3000-£4000 (**illus. centre pages**)
519. A XIX century mahogany fold over top tea table, the top with a double line inlay raised on a turned column supported by a four footed platform base, 2' 10" wide £400-£700
520. A pair of Continental oak pot cupboards each fitted with a single drawer, carved panel door on shaped supports with veined marble tops, 15.5" wide £200-£300
521. A pair of mahogany framed Hepplewhite style side chairs with overstuffed seats, square tapering front supports on spade feet £150-£250
522. A pair of early XX century walnut frame open armchairs on square tapering front supports united by an "X" stretcher £400-£500

523. A set of six early XX century mahogany framed Hepplewhite design dining chairs, the loop backs with a pierced centre splat carved with wheat ears and harebells, drop-in seats, raised on square tapering front supports united by "H" stretchers £800-£1200
524. An early XX century oak dresser, the open plate rack with stepped cornice shaped and fret frieze, the base fitted with two drawers, applied moulding, on turned supports united by a pot board, 36" wide £400-£600
525. A XIX century mahogany pedestal wash stand, the thumb mould top above eight graduated drawers and a central drawer, 3' 10" wide £150-£250
526. An XVIII century oak single cupboard, the door fitted with two field panels, 20" wide
527. A XIX century mahogany cupboard, the moulded cornice above two double flame grained panel doors, on a shaped plinth with turned feet, 3' 6" wide, 5' 6" high £200-£300
528. An XVIII century oak coffer, the moulded lid above a front panel carved with flower heads and foliage, 3' 4" wide, 1' 10" high £120-£180
529. A Georgian oak chest of drawers, the moulded top above four graduated long drawers with gilt metal swan neck handles, raised on square bracket feet, 2' 10" wide, 2' 7" high £500-£800
530. A XIX century yew wood high back Windsor chair, the back with a central pierced splat (upper section missing), shaped seat on turned supports united by a crinoline stretcher £200-£300
531. An oak bookcase, the upper section with a galleried top rail, shaped sides with two shelves, the base with carved decoration and fitted with shelves, 3' wide £100-£150
532. A Victorian walnut ormolu mounted display cabinet, the single boxwood strung glazed door revealing velvet lined interior with two fitted shelves, raised on bracket feet, 2' 6" wide £700-£1200
533. A Georgian mahogany fold over tea table, the frieze with a fitted drawer raised on square tapering supports, 3' wide £150-£250
534. A late XIX century corner cabinet, the upper section with a stepped cornice, boxwood stringing, a single astragal glazed door revealing shaped shelves, (the lower section produced later to match), with a single door fitted with four fielded panels, 86" high, approx. 38" wide £700-£1200
535. A Victorian walnut mirrored back credenza, the shaped front with a central cupboard door inlaid with a spray of flower head design, applied scroll moulding, flanked by blind fret panels and two mirror doors, and split turning with acanthus leaf capitals, 6' wide £1500-£2200
536. An Edwardian mahogany display cabinet, the top and sides inset with bevelled glass panes revealing a blue velvet lined interior, raised on square supports, decorated with a carved blind fret headed by "C" scroll brackets on square stepped feet, 30" wide 30.5" high £400-£600
537. A Victorian mahogany bow fronted chest of two short and three long drawers standing on turned legs £300-£400
538. An unusual Edwardian mahogany and satinwood banded serpentine sided occasional table, raised on turned supports united by intricate stretchers £150-£250

END OF SALE

FORTHCOMING SALES

Wednesday 12th August

General Household Furniture & Effects

Wednesday 26th August

Edwardian & Later Furniture & Decorative Effects

Wednesday 16th September

XIX & XX Century Furniture, Collectables & Effects

Wednesday 30th September

General Household Furnishings & Effects

Wednesday 14th October

Edwardian & Later Furniture & Decorative Effects

Wednesday 21st October

*Antique Furniture, Ceramics, Pictures & Prints,
Silver, Jewellery, Objets D'Art & Collectables*

Ref:

Address.....

Tel..... Fax

AT THE FALL OF THE HAMMER, ALL GOODS ARE HELD AT THE RISK OF THE PURCHASER.

[illegible]


PLEASE COMPLETE THE SIGNATURE AND DATE BLOCK OVERLEAF TO VALIDATE YOUR INSTRUCTIONS TO BID

Instructions to Bid

[illegible]

Signed..... Date.....
Commission bids **MUST** be received by 4.00pm on the day prior to the sale. Fax **01522 535600 (24 hours)**
Please tick box if you require a quotation for posting and packaging:

With insurance:	
Without insurance:	



CONDITIONS OF SALE

1. In these conditions Thos. Mawer & Son act only as auctioneers and agents and the representative of Thos. Mawer & Son conducting the auction is called 'the Auctioneer'.
2. Whilst Thos. Mawer & Son make every effort to ensure the accuracy of their catalogues and the description of any lot:
 - (i) Each lot set out in the catalogue or as divided or combined with any other lot or lots is sold by the vendor with all faults and imperfections and errors or descriptions.
 - (ii) Thos. Mawer & Son do not accept responsibility for the authenticity, attribution, genuineness, origin, authorship, date, age, period condition or quality of any lot unless they have been instructed in writing by the buyer to so certify.
 - (iii) All statements whether printed in the catalogue or made orally as to any of the matters set out in (ii) above are statements or opinion only and are not to be taken as being or implying any warranties or representations of fact by Thos. Mawer & Son unless they have been instructed in writing by the buyers to so certify.

3. The Auctioneer has absolute discretion to divide any lot, to combine any two or more lots or to withdraw any lot or lots from sale, to refuse bids, regulate bidding or cancel the sale without in any case giving any reason or without previous notice. He may bid on behalf of the vendor for all goods which are being offered subject to reserve or at the Auctioneer's discretion.

The highest bidder shall be the buyer. The Auctioneer may at his sole discretion determine the advance of bidding or refuse a bid. If during the auction the Auctioneer considers that a dispute has arisen, has absolute discretion to settle it, or to re-offer the lot.

Each lot is put up for sale subject to any reserve price placed by the vendor. Where there is no reserve price (but not otherwise) the seller has the right to bid either personally or by any other person (who may be the Auctioneer). All conditions, notices, descriptions, statements and other matters in the catalogue and elsewhere concerning any lot are subject to any statements modifying or affecting the same made by the Auctioneer from the rostrum prior to any bid being accepted for the lot.

4. The buyer shall pay the hammer price together with a premium of the hammer price – 11.75%, (inc. VAT).
5. Notwithstanding any other terms of these Conditions, if within seven days after the sale Thos. Mawer & Son have received from the buyer of any lot notice in writing that in his view the lot is a deliberate forgery and within twenty-one days after such notification the buyer returns the same to Thos. Mawer & Son in the same condition as at the time of the sale and by producing evidence, the burden of proof to be on the buyer, satisfies Thos. Mawer & Son that considered in the light of the entry in the catalogue the lot is a deliberate forgery then the sale of the lot will be rescinded and the purchase price of the same refunded.

The vendor agrees to be bound by Thos. Mawer & Son's decision.

6. Thos. Mawer & Son disclaim any responsibility for default by either the buyer or the vendor because they act as Auctioneers only and therefore do not pay out to the vendor until payment is received from the buyer. Instructions given by telephone are accepted at the sender's risk and must be confirmed in writing forthwith.
7. Every person on Thos. Mawer & Son's premises at any time shall be deemed to be there at his own risk. He shall have no claim against Thos. Mawer & Son in respect of any accident which may occur or injury, damage, loss howsoever caused, save in so far as the injury, damage loss shall be caused by the negligence of Thos. Mawer & Son's employees.
8. Each lot shall be at the purchasers risk from the fall of the hammer and must be paid for in full before the delivery and must be taken away by the purchaser at his own expense by 12 noon on the day following the conclusion of the sale. The Auctioneer shall be entitled to charge storage charges in respect of lots not taken away as aforesaid (minimum charge of £10 plus VAT).
9. Cheques which are not honoured by the Payee's bank will incur a handling charge of £15 plus VAT for each presentation.

A selection of Delft tiles, see Lot 40

