



Lot 254

Auction July 12th
1995



Lot 215



Lot 65

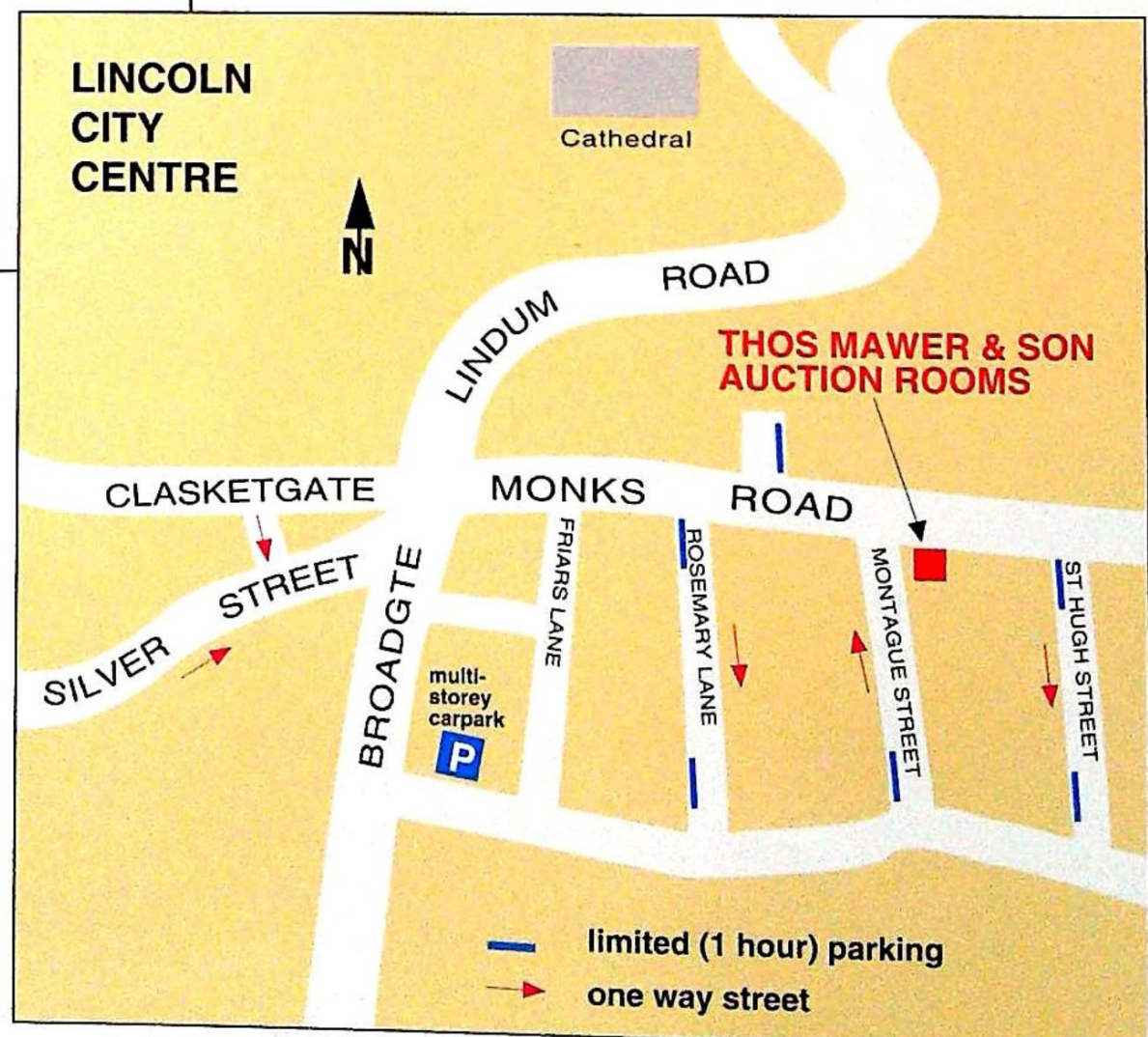
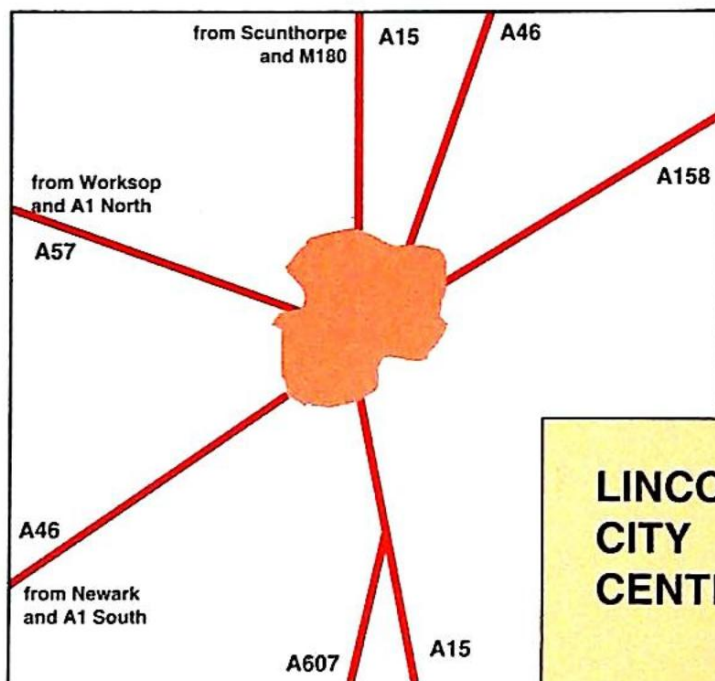
THOS MAWER & SON

AUCTIONEERS & VALUERS SINCE 1864

Forthcoming Sale:- 12th September 1995

Special sale of Books and Prints
to include a collection of Books by
G A Henty, and sporting Books
from the estate of David Poucher.
(Further entries may be accepted.)

Telephone 01522 524984
for further details



By instruction from the Executors
in the Estate of David Poucher
and from other Executors and
Lincolnshire Vendors

The contents of

**Manor Farm House
West Barkwith
Lincolnshire**

(removed for convenience of sale to the
Lincoln Salerooms)

Comprising:-

**XVIII and XIX Century Furniture
English, European & Oriental
Ceramics, Silver and Plate,
Oriental Carpets & Rugs, Oil
Paintings, Water Colours and
Prints.**

To be sold by Auction on

Wednesday July 12th 1995

commencing at 11am

On view

Sunday 9th July 2.30pm - 4.00pm

Monday 10th July 2.30pm - 4.30pm

Tuesday 11th July 9.30am - 4.30pm

Catalogues price £5.00 (£5.50 post paid)
(admits two to view)

GENERAL INFORMATION

Commission Bids

The Auctioneers will be pleased to execute commission bids on behalf of purchasers unable to attend the sale. Bids will be executed as cheaply as is permitted by other bids. **Commissions must be submitted in writing by 5pm day prior to sale day.** Successful bidders will be notified by post following the sale. Please note at the fall of the hammer goods are held at the risk of the purchaser.

FAX bids (24 hour 01 522 535600)

Payments by cheque

Goods cannot be released until cleared funds have been received by the Auctioneers Bankers. Purchasers wishing to pay by cheque are requested to obtain clearance from the Auctioneers Prior to the Sale Day. Cheques accompanied by a Bankers Guarantee can be accepted up to the limit of the card. Building Society cheques payable direct from the Building Society Account (Not personal cheques) will be accepted or a Bankers Draft.

PLEASE NOTE

LOTS WILL ONLY BE RELEASED ON PRODUCTION OF THE RECEIPTED ACCOUNT.

ALL ACCOUNTS MUST BE PAID ON SALEDAY

Clearance of Purchasers

As far as possible all lots should be collected on the day of the sale or by 3pm the day following the sale. Purchasers are reminded on the fall of the hammer the goods are held at the risk of the purchaser and no claim for loss howsoever occasioned will be accepted by the Auctioneers. Uncollected lots will incur storage charges (min £10 + VAT per lot)

Sale Results

If you would like the results of this sale please send a s.a.e. to the Auctioneers Offices.

Attention is drawn to the conditions of sale printed in this catalogue under which this sale is conducted.

OUR FREE VALUATION CLINIC is held every Friday morning at our Salerooms between 9.30 am - 12 noon - no appointment necessary.

For items too large to be brought to the Saleroom we are pleased to give advice from photographs or arrange a home visit. Our Valuers travel throughout the East Midlands.

CONDITIONS OF SALE

1. In these Conditions Thos. Mawer & Son act only as auctioneers and agents. The representative of Thos. Mawer & Son conducting the auction is called 'the Auctioneer'.
2. Whilst Thos. Mawer & Son make every effort to ensure the accuracy of their catalogues and the description of any lot:
 - (i) Each lot as set out in the catalogue or as divided or combined with any other lot or lots is sold be the vendor with all faults, imperfections and errors or descriptions.
 - (ii) Thos. Mawer & Sons do not accept responsibility for the authenticity, attribution, genuineness, origin, authorship, date, age, period, condition or quality of any lot unless they have been instructed in writing by the buyer to so certify.
3. The Auctioneer has absolute discretion to divide any lot, to combine any two or more lots or to withdraw any lot or lots from the sale, to refuse bids, regulate bidding or cancel the sale without in any case giving any reason or without previous notice. He may bid on behalf of the vendor for all goods which are being offered subject to reserve or at the Auctioneer's discretion.

The highest bidder shall be the buyer. The Auctioneer may at his sole discretion determine the advance of bidding or refuse a bid. If during the auction the Auctioneer considers that a dispute has arisen, has absolute discretion to settle it, or to re-offer the lot.

Each lot is put up for sale subject to any reserve price being placed by the vendor. Where there is no reserve price (but not otherwise) the seller has the right to bid either personally or by any other person (who may be the Auctioneer). All conditions, notices, descriptions, statements and other matters in the catalogue and elsewhere concerning any lot are subject to any statements modifying or affecting the same made by the Auctioneer from the rostrum prior to any bid being accepted for the lot.
4. The buyer shall pay the hammer price together with a premium of 10% of the hammer price plus V.A.T.
5. Notwithstanding any other terms of these Conditions, if within seven days after the sale Thos. Mawer & Son have received from the buyer of any lot notice in writing that in his view the lot is a deliberate forgery and within twenty-one days after such notification the buyer returns the same to Thos. Mawer & Son in the same condition as at the time of sale and by producing evidence, the burden of proof to be upon the buyer, satisfies Thos. Mawer & Son that considered in the light of the entry in the catalogue the lot is a deliberate forgery then the sale of the lot will be rescinded and the purchase price of the same refunded. The vendor agrees to be bound by Thos. Mawer & Son's decision.
6. Thos. Mawer & Son disclaim responsibility for default by either the buyer or the vendor because they act as Auctioneers only and therefore do not pay out to the vendor until payment is received from the buyer. Instructions given by telephone are accepted at the senders risk and must be confirmed in writing forthwith.
7. Every person on Thos. Mawer & Son's premises at anytime shall be deemed to be there at his own risk. He shall have no claim against Thos. Mawer & Son in respect of any accident which may occur or injury, damage loss howsoever caused, save in so far as the injury, damage or loss shall be caused by the negligence of Thos. Mawer & Son's employees.
8. Each lot shall be at the purchaser's risk from the fall of the hammer and must be paid for in full before the delivery and must be taken away by the purchaser at his own expense by 12 noon on the day following the conclusion of the sale. The Auctioneer shall be entitled to charge storage charges in respect of lots not taken away as aforesaid and shall be entitled to a minimum of £10.00
9. Cheques which are not honoured by the payee's bank will incur a handling charge of £15 + VAT for each presentation.

Figures given after each lot are estimated prices, estimates are **not** given for lots under £50.00. There is a buyers' premium of 10% plus VAT on the hammer price. On some lots obvious repairs/restoration are noted, the absence of comment does not in any way guarantee the lot is free from defect.

PORCELAIN

- 1 **Carltonware.** A cylindrical "pinched" mantle vase, the cream/peach ground decorated with scattered poppies and (incised) gilt bands. *11ins high*
- 2 **Masons patent Iron stone China.** A flat sided jug decorated in an oriental design in cobalt blue, ochre and gilt, 7 various transfer decorated plates, 2 beaten pewter tankards and sundry china
- 3 **Royal Doulton.** A stoneware baluster jug decorated with the mask of a bearded man and the legend "Fill what you will and drink what you fill" incised Doulton mark beneath, *9ins high* £120-£180
- 4 **Royal Doulton.** A figurine "Christmas Time" HN2110 £80-£130
- 5 **A XX Century heavy cut glass dressing table** set comprising; oval dressing table tray with a mirror base, applied cut glass handles and decoration, 2 scent bottles (one an atomiser with no bulb), a powder bowl and another Art Deco angular non-matching scent bottle. £80-£130
- 6 **Carltonware.** A collection of leaf moulded china; 3 compartment hors d'oeuvre dish, 2 compartment ditto and single matching dish, pair of condiments and a mug and cover £40-£80
- 7 **Carltonware.** Two oval basket weave moulded dishes and a circular salad bowl decorated with tomatoes £30-£60
- 8 **Carltonware.** Eight pieces including a small jug and stand, two "lilies", a leaf dish etc. £40-£70
- 9 **A Carltonware "Foxglove" bowl and leaf moulded dish and other decorative china** (6)
- 10 **Three old green glass wine goblets and three ruby glass** ditto on plain stems
- 11 **A Shelley blue and green toast rack and a Japanese condiment set** in the form of spring flowers and fruit
- 12 **Sundry decorative and commemorative china** (11)
- 13 **Royal Doulton.** Three tiny character jugs, a small ditto Parson Brown and a Beswick preserve jar "Sairey Gamp"
- 14 **A tray of sundry decorative china** including an Imari plate, 2 lady's head egg cups etc.
- 15 **Two square cut glass spirit decanters, a water jug and two glass ink-wells**
- 16 **Seventeen pieces of XIX Century lustre decorated teaware**
- 17 **Seven various china chamber candlesticks and a dressing table tray, five transfer decorated**
- 18 **A pair of cut glass baluster decanters and stoppers and another conical ditto**
- 19 **Six XIX Century pink lustre decorated tea cups and saucers**
- 20 **A Victorian meat plate** with floral gilt and blue decoration, the fluted edge with a gilt line, *20ins*
- 21 **A XIX Century Prattware oblong pot lid "Alexandra Palace 1873"**
- 22 **A circular XIX Century Prattware pot lid "Hauling in the Trawl"**
- 23 **Doulton Lambeth Silcon.** A conical stoneware jug decorated in relief with geometrical blue and brown motifs, *8ins*
- 24 **Doulton Lambeth.** Two baluster vases decorated in blue and lovat with panels of stylised foliage and flowers

- 25 **A circular brown swirl glass table centre, a pink glass vase, small green jug, and an overlaid multi-coloured glass vase with a tall neck**
- 26 **A pair of XIX Century lustre glass vases** with applied green leaves
- 27 **Five conical XIX Century port glasses and a slice cut decanter**
- 28 **R Bridgewood & Son.** A pair of fine china thistle shaped posy holders with a Victoria registration number beneath £60-£90
- 29 **Two XIX Century plain white moulded pottery jugs and a pair of Worcester transfer decorated plates**
- 30 **Royal China Works, Worcester.** A posy basket supported on a naturalistically modelled tree bough, and another in the form of a flowerhead, a Coalport cabinet plate with a pictorial centre, a Belleek dish etc. (6) £50-£80
- 31 **Two trays of sundry decorative china** including a white and gold banded part tea service, lustre tea pot, bisque figure of a boy with a cat etc.
- 32 **An English pottery XIX Century part tea service** painted with landscapes and comprising 12 cups and saucers, 9 tea plates, 2 bread and butter plates, and a slop bowl £50-£100
- 33 **A Poole pottery plate,** brightly decorated in red and green on a yellow ground
- 34 **An 11inch diameter Imari dish, a Davenport hunting jug, English tea bowl and saucer, and 8 Minton Delft pattern dinner plates** £40-£65
- 35 **A pair of XIX Century Satsuma vases** signed "Nihon Kinkozan zo", the baluster bodies decorated with birds of paradise amid flowers and foliage, *8 1/2ins high* £80-£140
- 36 **A pair of Davenport pastille burners,** with pierced covers the deep blue ground decorated with sprays of flowers in colours, and supported upon gilt paw feet. (One damaged) *5ins square* £150-£220
- 37 **A blue scale punch bowl** in the Worcester style, printed with bouquets of flowers, peacocks and insects with gilt highlights, *11ins diameter* £100-£200
- 38 **An XIX Century Japanese Imari vase and domed cover** decorated in underglaze blue, iron red and gilt; the cover with a dog of Fo finial; on a hardwood plinth, *18ins high* £200-£300
- 39 **A pair of XIX Century Japanese Imari vases and covers,** decorated in underglaze blue, iron red and gilt, on square hardwood plinths, *13ins high* £400-£600



Lots 38 and Lot 39 (a pair)

- 40 **A XIX Century Japanese Imari large dish** decorated in underglaze blue, iron red and gilt, *18ins diameter* £300-£500
- 41 **A pair of square dishes** in First Period Worcester style, decorated with panels of birds and flowers, *8ins* £20-£40

- 42 A collection of XIX Century Derby teaware in Japan pattern comprising tea pot, cover and stand, sucrier with cover and stand, two cream jugs, 6ins diameter basin, two square plates, two circular plates, four coffee cans, six tea cups and six saucers £400-£600
- 43 A Royal Worcester dinner service, the white ground banded in royal blue and gilt, decorated with a crest bearing the motto 'Fructu Cognoscitur Arbor' 87 pieces £500-£900
- 44 A XIX Century German porcelain group of youth and maiden in XVIII Century garb seated before a fire symbolical of Winter on an oval gilt lined base, 6ins high £100-£150
- 45 A pair of English decorated German vases of ovoid form, with scroll work in gilt, winged caryatid handles, painted with hunting and skating scenes marked beneath 'Powell 91 Wimpole Street'. (Restoration to wings). Cross swords mark in blue, 12ins high £300-£600



Lot 45

- 46 A XIX Century German group, as a gallant and lady in XVIII Century garb, beside a tree in which sits a cupid; oval gilt scroll decorated base underglaze blue crossed swords & impressed 180 5, 12ins high, the base 10ins x 6ins £200-£350



Lot 46

- 47 A pair of early XIX Century cups and saucers (probably Worcester), decorated with an adaption of the Japan pattern in underglaze blue, iron red and gilt £70-£130
- 48 A XIX Century English porcelain basket, the cobalt blue ground with gilt scroll work, the centre painted with a lakeland landscape, within gilt borders and spandrels painted with flowers in colours and with a looped foliate handle numbered beneath 2/162, 9ins square £200-£300
- 49 A pair of XIX Century German figures of a youth and maiden, each holding baskets of flowers, the former wearing a black tricorne hat, plum coloured coat and striped knee breeches, carrying a bird, the latter wearing a bonnet and skirt with red bodice carrying a rabbit, on rococo scroll base, 8ins high £250-£375



Lot 49

- 50 A XIX Century German candlestick group as a maiden and cupid, standing before a flower encrusted bocage tree. (Converted to an electric table lamp with shade), 14 1/2 ins high £150-£250



Lot 50

- 51 A First Period Worcester circular fluted dish, the white ground painted with green swags and gilt centered with clusters of strawberries and plums, 8ins diameter £150-£230
- 52 A XIX Century Dresden square tray, with gilt rococo scroll work to the edge, painted with a spray of flowers in natural colours. Cross swords mark in blue, 16ins £200-£400
- 53 A XIX Century German group of a lady and gentleman in XVIII Century garb, one holding a bird cage, the other a bird with a hound at their feet. Cross swords mark in blue, impressed 26, 12ins high, the oval gilt scroll base 8ins x 5ins £300-£600
- 54 A XIX Century Meissen figure of a young lady in a lace trimmed gown, holding a fan of playing cards, and standing beside a table. Underglaze blue crossed sword marked beneath impressed F64 43, 6.25ins high £300-£500
- 55 A set of eight XIX century Derby plates, the white ground edged in gilt, the turquoise borders decorated with swags of garden flowers. Mark 'D' under a crown in blue enamel, 9ins diameter £400-£650
- 56 A pair of XIX Century English porcelain campana shaped mantle vases decorated with panels of bridges and flowers in cobalt blue, ochre and gilt (damaged), 6 1/2 ins high £30-£60
- 57 A Shelley "Chelsea" pattern tea service of 69 pieces £50-£100
- 58 An Edward VIII Coronation transfer decorated commemorative mug, and a George V Silver Jubilee transfer printed tea cup and saucer
- 59 Royal Doulton. A "Gainsborough W.M.C. & I Souvenir of Edward VII Coronation 1902", breakfast cup and saucer, another George V Coronation 1911 and 2 smaller ditto by Royal Doulton
- 60 Three claret glasses and three silk First World War French postcards (unused)
- 61 Worcester Flight Barr and Barr An early XIX Century dessert service, decorated with panels of birds of paradise in landscapes within scrolling gilt borders; comprising:- a comport (restored), three square shallow dishes, twenty plates impressed mark FBB; printed mark "Flight Barr and Barr proprietors of the Royal Porcelain Works, Worcester etc" £2000-£3000

Lot 61 (part)



- 62 An early XIX Century English tea and coffee service, the white and yellow ground gilded and painted with panels of garden flowers; comprising:- twelve coffee cups, twelve tea cups, twelve saucers, two plates, tea pot and stand, bowl, sucrier, cover, and cream jug £1000-£2000



Lot 62

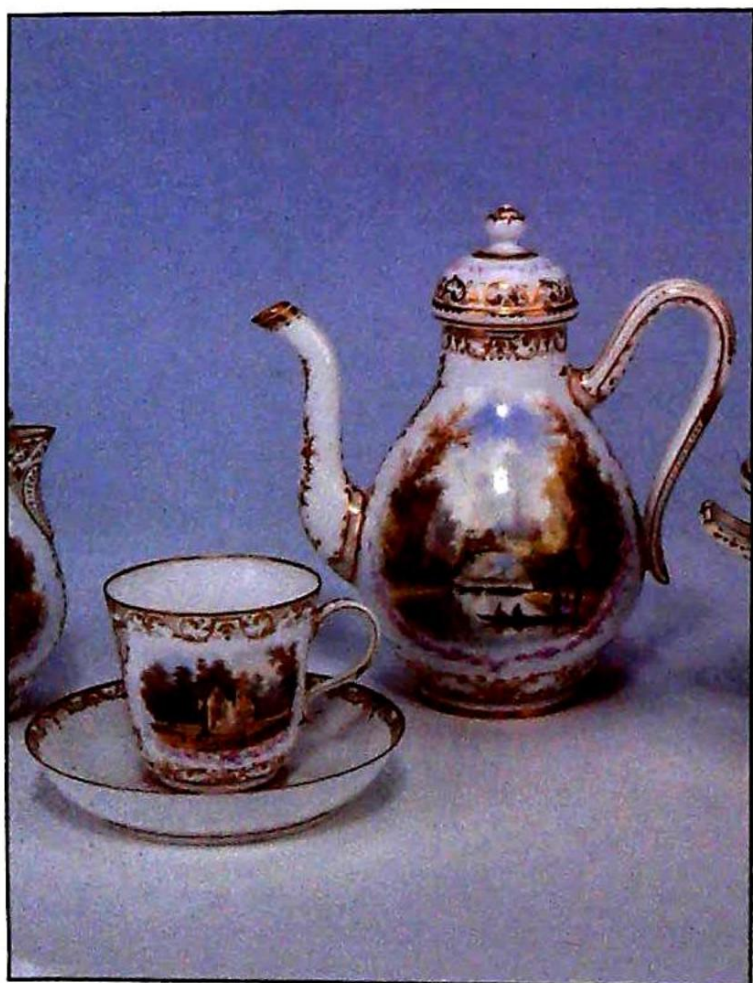
- 63 A XIX Century Japanese Imari bottle vase, well decorated with flowers, foliage and birds in iron red underglaze blue and gilt, 24ins high £1000-£1600



Lot 63

- 64 A XIX Century Vienna cabaret, the deep blue ground decorated with scroll work in gilt, each piece painted with scenes from mythology in the manner of Angelica Kauffman and each titled verso. Comprising - tea pot and cover, sugar basin, cream jug, four cups and saucers, large two handled plateau. Mark in blue £700-£1200

- 65 A XIX Century Sèvres cabaret, the white ground painted with landscapes around Villeneuve. Comprising:- coffee pot, sugar basin, cream jug, four cups and saucers, large oval tray. Presented in 1855 by the Empress Eugenie to the Marquis of Breadalbane, during the state visit of Queen Victoria to Paris 1855 with a letter from the French Ambassador on behalf of the Empress (in original fitted case) £2500-£4000



Lot 65 (part)

- 66 A pair of Coalport ice pails, covers and liners with elaborate gilt entwined handles, the white ground painted with bouquets of garden flowers and scattered fruit, the green band to the covers, necks and pedestals with small landscape vignettes, the covers with gilt cone finials £2000-£4000



Lot 66

- 67 A heavy glass desktop pen stand with 2 fountain pens and holders
68 A Victorian fluted brass table oil lamp with double wick and etched glass shade 24ins £65-£110
69 A heavy circular cut glass fruit bowl, 14ins diameter
70 Three coloured modern pottery German beer steins with hinged pewter lids

METALWARE ETC

- 101 A heavy pair of XIX Century turned brass table candlesticks, 12ins high £40-£80
102 A pair of XIX Century turned brass candlesticks 10 1/2 ins high £30-£60
103 A XIX Century polished copper conical 1 gallon jug, 12ins high £70-£130
104 A XIX Century polished copper kettle, the top with an acorn finial £40-£70
105 A XIX Century circular polished copper two handled preserve pan. 11 1/2 ins diameter £30-£60
106 A XIX Century polished brass chamber candle-stick with wick scissors £30-£60
107 A heavy turned brass pestle and mortar £20-£40
108 Sundry small brass ornaments (6) £10-£20
109 A conical brass and copper jug and two copper jelly moulds
110 An Art Deco design pressed conical brass jug 11ins and 5 hand bells
111 An Edwardian oak and brass two compartment post/delivery wall mounted letter rack £20-£35
112 An Adam design dog grate with brass urn finials, pierced brass base and cast brass front supports 29ins wide, 18ins deep overall £300-£600
113 A set of 3 brass long handle fire irons £75-£150
113a A pierced brass serpentine shaped fender
114 An intricate wrought heavy metal fire screen £50-£100
115 An Eastern engraved metal kettle, 2 pewter pint tankards and a heavy metal dish "Hamburg"
116 A turned polished brass electric table lamp
117 A pair of turned brass table lamps and conical beige shades
118 A EPBM four piece fluted tea service and a conical plated copper jug

- 119 John C Carlson Limited, Ashton-U-Lyne. A pair of cylindrical polished copper urns with turned brass spigots, 2ft 6ins high £100-£200
- 120 Sundry brass handles, door furniture and effects (1 box) and an old tin plate car and "Modern Wonders for Boys Annual"
- 121 A XIX Century circular copper bed warmer £50-£100
- 122 A similar lot £50-£100
- 123 A XIX Century copper powder flask pressed with a shell motif
- 124 A Victorian brass hanging oil lamp (converted to electricity) suspended in a brass frame with plain glass chimney and (modern) opaque shade
- 125 An Oriental black laquer chinserie decorated casket with a lift out tray and fitted with a drawer; A Victorian rosewood workbox (2) £30-£60
- 130 A Georgian dressing glass in a walnut frame, suspended between tapering uprights, the base with three drawers £300-£450
- 131 An early XIX Century mahogany miniature bow front chest with two short and three long drawers; an apprentice piece, 13ins wide x 13 1/2 ins high £200-£350



Lot 131

- 132 A rectangular Georgian walnut frame wall mirror with a moulded gilt inset and bevelled mirror plate, 2ft 10ins x 1ft 10ins £150-£250
- 133 A George IV gilt convex wall mirror, the circular frame with spherical motifs, and an inner reeded ebonised border, the cresting as a lyre with eagle terminals, approx. 4ft overall the mirror, 2ft diameter £800-£1200
- 134 A Georgian oval mahogany tea tray with a "wavy" gallery and brass carrying handles, 24ins x 17ins £130-£220
- 135 An oval Sheraton design mahogany tea tray, inlaid with a shell patera and boxwood lines with two brass carrying handles, 26ins x 17ins £150-£250
- 136 An oval mahogany tea tray with a moulded edge centered with a shell patera, 22ins x 16ins £75-£130
- 137 A similar kidney shaped tray, 23ins x 15ins £50-£100
- 138 A mahogany and parcel gilt wall mirror in the Chippendale style, the cresting and frame carved with scroll work and with a gilt bird surmount, 2ft 10ins x 1ft 7ins overall £100-£150
- 139 An oval boxwood strung mahogany framed wall mirror £20-£40
- 140 A similar lot £30-£60
- 141 A brass framed postal beam scale and weights (postal rate 1oz=1d) on a shaped mahogany base plate £30-£60
- 142 A Victorian mahogany frame, oval beadwork tea pot stand worked with butterflies and a parrot amid foliage £40-£70
- 143 A pair of Edwardian oak "barley twist" table candlesticks, a folding domino marker board, an ivory letter opener and a plain circular brass tray
- 144 A bamboo walking cane with a horn handle, another silver mounted, and a tapering walking cane
- 145 A Victorian desktop walnut writing box with brass corners, an internal writing slope and pen tray (distressed)
- 146 An old cow horn carved with churches, fortified buildings, forts, figures and three masted sailing ships £50-£80
- 147 A foliate scroll gilded wall bracket, the top 11ins x 6 1/2 ins
- 148 An old mandolin contained in a (dilapidated) case
- 149 A mah-jong set contained in an oriental relief carved hardwood cabinet, with 5 internal drawers
- 150 A Victorian rosewood brass bound writing box, the interior fitted with a leather covered writing surface, ink-wells, pen tray and a secret drawer £50-£100
- 151 An XVIII Century mahogany boxwood strung tea caddy and a rosewood ditto with two internal compartments £30-£60
- 152 A XIX Century rosewood mother of pearl inlaid ladies workbox, fitted internally with a lift out tray and raised upon circular brass feet
- 153 An Edwardian oak smoker's cabinet enclosed by a glazed door beneath a shaped gallery with two external pipe racks and an internal drawer £40-£75
- 154 An oak metal bound barrel (as an umbrella stand) painted with the Royal coat of arms £40-£70
- 155 A reproduction mahogany framed six legged foot stool upholstered in regency stripe.
- 156 A black lacquered walking cane with a cast brass greyhounds' head handle
- 157 A pair of naval cutlasses with brass mounted hilts and leather and brass scabbards £50-£100
- 158 A W.M.F. ovoid green metal vase, 8ins high £50-£100
- 159 A German hunting knife, the gilt brass handle in the form of a deers foot decorated with acorns and the blade engraved with hunting scenes, with an oriental dagger contained in an animal skin scabbard (2) £40-£80
- 160 A German engraved metal plaque and a XIX Century gilt metal frame oblong wall mirror
- 161 An eight branch glass (electric) chandelier hung with prism drops from a central boss £75-£140
- 162 A similar six branch chandelier £75-£140
- 163 A XIX Century painted tin coal compodium with a hinged lid, cast metal handle and shovel (distressed), and a brass four branch electrolier £40-£70

PICTURES AND PRINTS

- 180 A reprinted XIX Century coloured racing print in an elaborate gilt frame
- 181 Cox.
Portrait of a man tuning a violin. An over-painted print oil on board, 6ins x 5ins £75-£130
- 182 XIX Century English School,
written Verso (indistinctly) Figure by a trout stream, painting by Burton?..** to the Prince of Wales, trout stream near Hillingham?" 4 1/2 ins x 3 1/2 ins £50-£100

- 183 A pair of silk oriental needleworks centered with a coloured floral design the surround worked with gold wire - framed approx. 11ins square
- 184 Two similar silkwork panels
- 185 Two similar ditto
- 186 A small oriental silkwork panel, a reproduction plaque of a pastoral scene in relief, an oval reproduction portrait of a Victorian gentleman (3)
- 187 A pair of oval pastel drawings of rose bouquets signed MFAU***-80, step gilt frames
15ins x 11ins £40-£80
- 188 A XIX Century silk-work picture of a small child seated with a cat on a bench outside a cottage label Verso "worked by Emily Earl 1818", 9ins x 7ins £150-£250
- 189 Currier & Ives, New York (published by) A pair of coloured prints titled The "sports" who lost their "tin" and the "crowd" that "scooped" the pools
11ins x 15ins
- 190 After R P Bonington
A Normandy coastal scene with fishing boats and figures, fisherman in the foreground.
Oil on wooden panel, 15 x 21ins £400-£800



Lot 190

- 191 A circular XIX Century coloured engraving of two lovers resting beneath a tree, approx. 12ins diameter, and another small coloured print of a young child in a silhouette oval glass mount (2)
- 192 In the manner of Frans Hals
Portrait of a nobleman
Oil on canvas 8ins x 6.5ins £40-£75
- 193 A pencil drawing of Worcester Cathedral, monogrammed
7ins x 11ins
- 194 Three XX century oils on canvas
Farmyard fowl Each approx. 10ins x 8ins
- 195 Joseph Knight
A watercolour drawing titled Verso "An October day North Wales" 26ins x 37ins £100-£200
- 196 Figures on a stone bridge
An oil on card 11ins x 15ins £50-£100
- 197 J.B. Pyne
Figures on a beach by a wreck
Signed indistinctly and dated An oil on card
11 1/2 ins x 18ins £75-£120
- 198 H English 190*
A pair of watercolour drawings, figures gathering willow and a shepherdess with her flock.
11ins x 17 1/2 ins £80-£140
- 199 W.F. (monogrammed and dated 1920) Fishing smacks.
A pair of watercolour drawings,
8ins x 5ins

- 200 Apol?
Winter landscapes with windmills A pair of watercolour drawings in circular mounts, 6 1/2 ins diameter and another watercolour - a ruined church, 7ins x 9ins
- 201 A XIX Century woolwork picture of a child resting against a dog 13ins x 20ins
- 202 A pair of unframed watercolours Fenland scenes, a signed print log gathering, a pencil portrait of a young lady 1872, a water colour drawing 'a fishing lodge' 1945 etc., all unframed
- 203 After Fred Slocombe
Two signed prints, a woodland path and gathering faggots, published 1911 19ins x 13ins and 13ins x 19ins
- 204 After J Alplege Brewer
A signed print Ely Cathedral, published 1911 19ins x 13ins
- 205 After Arthur Turrell
"The Jungfrau" signed print, published 1911 15ins x 21ins and After Wilfrid Ball "Venice" and another after W Wyllie 'Hotwalls Portsmouth' (3)
- 206 Goodwin signed
A pair of XIX Century oil paintings on canvas of water in woody rural setting, figures fishing, cottages in the distance
21ins x 17ins £400-£700



Lot 206 a pair



- 207 After L.J. Stevens
A Dutch interior scene with a lady seated by a window
A print mounted on canvas
15ins x 12ins £30-£60
- 208 W.Garthwaite monogrammed - signed and titled Verso
The entrance to Ramsgate Harbour and fishing vessels in a choppy sea.
Oil on panel 6ins x 10ins £200-£350
- 209 After J F Herring
A farmyard scene with horses in the foreground, a thatched barn and poultry
Oil on canvas - XX Century 16ins x 24ins £150-£300
- 210 Colin Graeme Roe (signed)
Studies of a lakeland and fox terrier; a pair
Oils on canvas 9ins x 7ins
- 211 Dutch School
A still life of a bowl of strawberries, bunches of grapes, roses and a half peeled lemon upon a pewter dish with oysters and butterflies upon a table. Bearing date 1652 and indistinctly signed.
Oil on panel 16ins x 13ins £500-£1000



Lot 211
(detail)
see previous
page

212 Italian School after Jacob Bogdani

Two similar over-door still life paintings - an assemblage of flowers upon a stone ledge and fruit in dishes, with clusters of grapes, figs, plums, and cut lemon before a red curtain: In gilt scrolled cartouche frames. (Old labels verso sold at Fulwell Park 1901 and Pollard Hall, nr. Leeds 1964 when acquired by David Poucher)

19 1/2 ins x 33 ins (overall approx.)

£1000-£2000



Lot 212 a pair



213 XIX Century Continental school

A continental port with shipping and medieval buildings and figures on the quay

Oil on canvas 12 ins x 17 ins

£150-£250

214 XIX Century English School in the manner of John Constable

Landscape with a fisherman beside a river, a woman resting under trees in the middle distance

Oil on canvas

9 1/2 ins x 12 ins

£300-£600



Lot 214

215 Edward Ladell

A still life - peaches, grapes, raspberries, pear, hazlenuts and a wine glass upon a stone slab. Monogrammed E.L.

Oil on canvas 9 1/2 ins x 11 1/2 ins

£4000-£7500



Lot 215 (detail)

216 XIX Dutch School

A still life of a basket of fruit

Oil on canvas 14 1/2 ins x 19 ins

£100-£150

217 Four XIX Century coloured engravings of famous

Lincolnshire houses/views. (Scrivelsby Hall and two of Gainsborough)

218 After Clarkson-Stanfield

Fishing boats at anchor, a small pair of coloured prints in oval mounts 3 1/2 ins x 3 ins

219 A pair of XX Century coloured prints

still life study of grapes and fruit 7 ins x 16 ins

220 A still life study of apples, nuts and foliage - a water colour drawing (unsigned)

10 ins x 14 ins

221 Two still life studies of flowers and sycamore leaves, watercolour drawings (unsigned)

222 After Hamilton

A framed bookplate reading by a fire 5 1/2 ins x 6 1/2 ins

223 A coloured print from the XIX Century scene,

Rescue from shipwreck 9 1/2 ins x 13 ins

224 After W. Miller

A XIX Century monochrome print 'a master of arts' and a framed bookplate a map of Lincolnshire dated 1808

225 XIX Century French print

"Les Suites Du Feu De La Drogue" 7 ins x 8 ins

226 After E.K. Johnson

'Pot-pourri' a coloured print

227 After T. Kitchen

A framed bookplate a map of Lincolnshire with a XIX Century monochrome print of 2 dogs (2)

228 T.S. Hutton

Stirling Castle, a watercolour drawing signed

14 ins x 21 ins

£500-£700

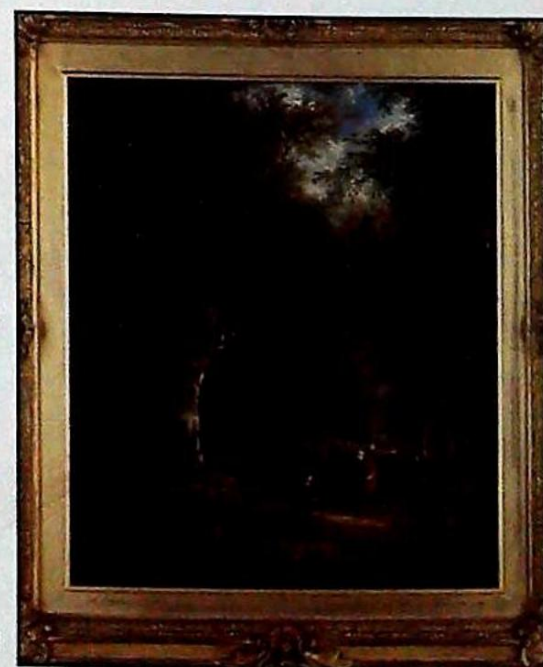
229 W. Shayer Senior

A woodland path with a woman and two children gathering bracken beside an avenue of trees

Oil on canvas

14 1/2 ins x 12 1/2 ins

£1200-£1800



Lot 229

230 N.S. Crichton
 "Rouen" timbered buildings with figures, a stone bridge and the river. A watercolour drawing, old label Verso, signed
18ins x 13ins £150-£250

231 Richard Banks Harraden, R.B.A.
 "Lincoln Cathedral and Castle from Braeford Water"
 Watercolour drawing signed
11½ x 17¼ ins £2000-£3000

CLOCKS AND BAROMETERS

240 Admiral Fitzroy's barometer, a Victorian mercury column barometer, the paper back plate printed with Admiral Fitzroy's special remarks etc., the case also containing a thermometer and atmosphere gauge,
3ft 5ins high £100-£150

241 C.Realini Preston; A Georgian five dial 'banjo' barometer in a mahogany and boxwood strung case surmounted by a swan-neck pediment, *3ft 2ins high* £300-£500

242 A circular white dial wall clock contained in a cast painted gold metal case stamped "Honi Soit Qui Mal Y Pense" and decorated with sea serpents and an anchor, 13ins overall; with a Victorian box

243 A XIX Century gilt brass carriage clock, the rectangular white dial with an eight day movement enclosed by bevel glass panels, 4ins high in its' original Morocco travelling case
£70-£120

244 A XIX Century "Gingerbread" clock with a circular white dial, eight day movement striking on a gong, contained in an elaborate pokerwork case enclosed by a glass door, approx. *2ft high* £40-£70

245 The Gladstone watch. A Swiss watch contained in a magnifying glass case revealing the jewelled movement and face, and a polished brass cased surveyors compass £40-£80

246 Circular white dial ships clock with a brass bezel (distressed) *8ins diameter* £30-£60

247 A Victorian black rectangular metal cased mantle clock with a circular white dial, centered with fluted brass and with a pressed brass outer ring, the case decorated with gilt foliate scrolls, *10ins high* £30-£60

248 A XX Century mahogany cased bracket clock, the brass dial with a silvered chapter ring and applied spandrels, three train chiming movement contained in a mahogany domed top case with applied gilt brass decoration,
12ins high £75-£150

249 A XIX Century Vienna wall clock, the circular white dial with a pressed gilt brass centre and eight day striking movement, contained in a rectangular hardwood case decorated with split turnings,
approx. 30ins overall £50-£100

250 A Victorian walnut marquetry banded wall clock with a circular white enamel dial, revealed pendulum and applied foliate carved wings £70-£130

251 A similar lot, the dial signed "Martin Wilkinson, Newark", contained in a rosewood case, the glazed door with a fretwork panel £100-£150

252 A XX Century white dial Bentina wall clock

253 A XX Century Smiths Enfield circular white dial wall clock in a polished hardwood case

254 A late XVIII Century bracket clock the white enamel dial plate inscribed "John Walker London", with gilt foliate spandrels, the movement striking on eight bells and a bell gong, the cross banded satinwood case with brass sound grilles to the sides, the arched hood capped with a brass vase and urn finials; carrying handles to the sides, on brass ogee feet,
2ft high, 1ft 3ins wide, the dial 12ins x 8ins £4500-£7000

255 An early XIX Century bracket clock in a domed mahogany case, the brass dial plate inscribed "Maurice Lyon London" with pierced brass spandrels and silvered chapter ring the movement striking on a single bell, the case with a brass carrying handle and brass grill sound panels,
dial 9¾ins x 7ins, overall 15ins x 10½ins £700-£1200

256 A XVIII Century bracket clock in a mahogany case, with brass dial plate inscribed "John Crouch", Kensington and steel chapter ring applied, foliated spandrels, the case with brass carrying handles acorn finials and bracket feet,
dial 9½ins x 7ins, the case 18ins x 11ins £2500-£3750



Lot 256

257 By instructions from the Royal Insurance Company.
 A XIX Century long cased clock, the arch painted dial signed "Wm. Straham Barton", enclosed in a pagoda type hood centered with a patera, the oak case mahogany banded. (The case and dial substantially damaged and sold as "salvage")
£200-£400 (sold + VAT)

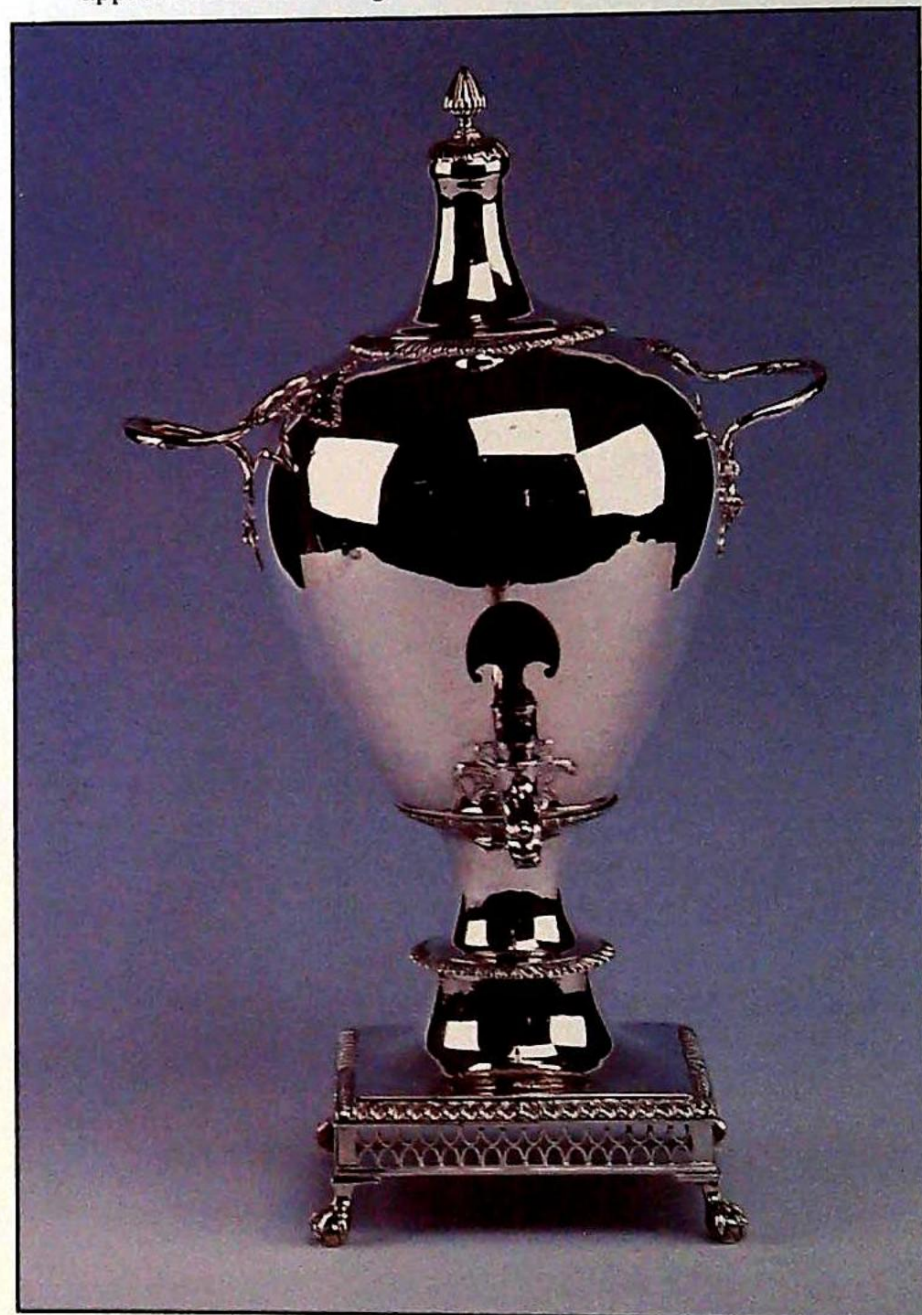
258 A XIX Century long cased clock, the arched painted dial signed "Mackinder, Spilsby" (faded) and decorated with a figure fishing in the arch and country cottages, eight day striking movement, contained in a hood surmounted by a broken swan neck pediment, the oak and mahogany banded case with a long door
£500-£750

259 A Vienna spring driven striking wall clock, the hardwood case with split turnings
£40-£75

SILVER PLATE, JEWELLERY ETC

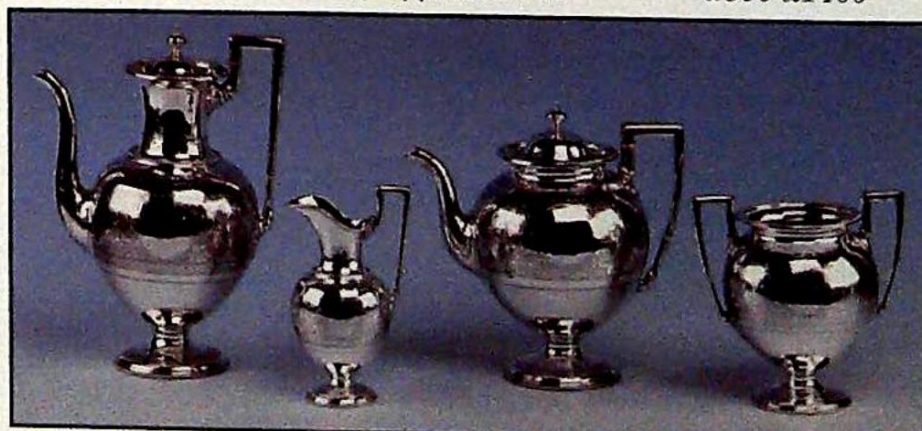
- 270 A matched set of six early XIX Century silver tea spoons, two hallmark cigarette cases and a continental two prong pickle fork £30-£60
- 271 A pair of early XIX Century table spoons *London 1806 Maker T.B.*
- 272 An 18 carat gold 3 stone diamond ring with scroll decoration to the shoulders £50-£100
- 273 A continental hallmark chain-link ladies evening purse £30-£50
- 274 A double Albert watch chain hung with an oval flat chased locket (believed gold but not tested) 16ins overall £70-£130
- 275 A set of 12 Victorian fiddle patterned teaspoons with a pair of (non-matching) sugar bows Maker I.L.H.L. London 1839 £40-£70
- 276 An engine turned silver gilt cigarette case, A Bros. Limited, Birmingham 1930 a scrap silver bowl etc.
- 277 A pair of rectangular open work salt cellars with gadroon borders raised on four tapering legs with spherical feet; ruby glass star cut liners and silver spoons London 1813 £80-£130
- 278 A small baluster pepperette with a pierced domed cover, a pair of XIX Century plain sugar bows, Victorian silver bladed butter knife and a chased and engraved preserve spoon £25-£50
- 279 William Shorrock, London
A silver.cased hunter pocket watch with a circular white enamel dial and through case wind London 1864
An "English lever" metal cased pocket watch and a Benson Incabloc gold cased gents wrist watch £50-£100
- 280 Jaeger-Le-Coutre. A gold cased circular gentlemen's wrist watch £75-£150
- 281 Seven various glass and silver topped dressing table and scent bottles, a small pepperette, an elliptical oriental silver coloured trinket box and a ladies fob watch £40-£80
- 282 A rococo design silver plate 3 branch candelabra on a square stepped base decorated with strewn flowerheads, the column with upturned acanthus and with two fluted scroll arms, 19ins high £150-£250
- 283 A flat sided baluster sugar dredger with a pierced domed top
- 284 A set of silver table cutlery, the handles with engraved initials 'P'. Comprising - two table spoons, two sauce ladles, twelve dessert spoons, twelve tea spoons, two salt spoons, a pair of sugar tongs London 1888/1901 approx. 35ozs £250-£350
- 285 A George III long handled basting spoon London 1796 Samuel Hennell
- 286 A set of six Victorian table forks, the handles with engraved initials 'P' (and two plated ditto) London 1854. George Angell approx. 15ozs £60-£120
- 287 A set of six Victorian dessert forks the handles engraved with initial 'P' London 1854 George Angell approx. 10 ozs £50-£90
- 288 A pair of George II table spoons London 1755 £40-£60
- 289 A pair of George IV salt spoons, engraved with initial 'P' William Trayes and a Victorian Mother of Pearl handle, silver bladed butter knife London 1824
- 290 A set of twelve scottish silver old English patterned tea spoons J & W M Edinburgh 1843 £40-£80

- 291 A silver gilt sifter spoon London 1899 Five "Bean end" Birmingham hallmark coffee spoons and two silver salt spoons
- 292 Cork & Son, Sheffield. A set of eight ivory handled dinner knives and eight dessert knives, various plated forks, seven fiddle pattern plated dessert spoons, a large ladle, sauce ladle etc.
- 293 Three cased sets of six tea knives and a ditto set of cake forks
- 294 A pair of Victorian London hallmark sugar bows and a barrel shape tea infuser
- 295 A Georgian silver toddy ladle with a whale bone handle £70-£130
- 296 A pair of flat sided silver table candlesticks Birmingham 1921, 7½ins high £40-£70
- 297 A magnificent George III vase shaped tea urn, with gadrooned edge, the square pierced base supported upon four claw and ball feet London 1765. Francis Crump. approx. 75oz 19ins high £1200-£1800



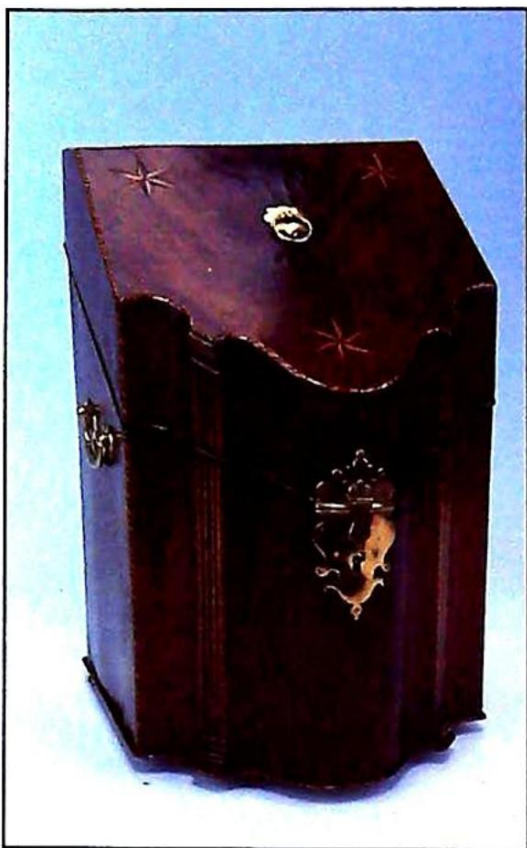
Lot 297

- 298 A Victorian tea and coffee service with beaded edge, the ground flatly chased with flowers, and supported upon pedestal feet. Comprising - tea pot, coffee pot, cream jug and sugar bowl. FSJH Sheffield 1880. approx. 77oz £800-£1400



Lot 298

- 299 A Sheraton mahogany serpentine front cutlery canteen, the hinged lid inlaid with three star motifs strung with boxwood and ebony, the interior with a fitted compartment containing a set of twelve George III table knives and forks, and a set of twelve dessert knives and forks with silver handles. Sheffield 1782 John Sykes & Co, 14½ins high x 9ins £1200-£1800



Lot 299

- 300 A pair of George II table candlesticks, with slender single knopped stems and foliate feet
London 1749 40oz John Cafe £1000-£1500

WINE

- 310 One bottle Ch. Calon Segur Grand Cru 1970, one bottle Ch. Canon La Gaffeliere Grand Cru 1985, one bottle Ch. La Cardonne 1987 (3)
311 One bottle Saint Julien 1987, one bottle Ch. Gloria Saint Julien 1982, one bottle Ch. Vignelaure 1984 (3)
312 One bottle Anjou 1984, one bottle Ch. Malard 1988, one bottle Santenay Grand Clos Rousseau 1987, one bottle Bourgogne 1987 (4)
313 Bottle of Remy Martin XO Special and one bottle Massandra Black Muscat 1957 (2)

ORIENTAL CARPETS, RUGS AND RUNNERS

- 314 A Bokhara rug the deep crimson ground worked with guls between multiple borders
5ft x 3ft 2ins £50-£100
315 A predominately crimson Bokhara rug centered with diamond shaped motifs between multiple borders,
6ft 2ins x 3ft 4ins £50-£100
316 Small oriental prayer rug worked with stars, guls and motifs,
4ft 4ins x 2ft 6ins £30-£60
317 Two old oriental carpets (faded)
5ft x 3ft and 4ft 6ins x 2ft 7ins £20-£40
318 A Persian rug with a pink field decorated with motifs in blue and brown tones,
5ft 3ins x 3ft 5ins £60-£100
319 A Persian rug, the deep sienna field decorated with birds, animals and motifs in a central lozenge panel
5ft 4ins x 3ft 5ins £75-£150
320 A multi-coloured Persian rug centered with a large star and worked with stylised flowers between multiple borders,
6ft 5ins x 4ft 4ins £75-£150

- 321 A Persian rug, the lozenge shaped central panel decorated with multiple roundels on a crimson ground between multiple borders, 6ft 8ins x 5ft 3ins £100-£200
322 An oriental carpet runner centered with three lozenge shaped medallions on a deep red field between multiple borders, 7ft 8ins x 2ft 4ins £75-£100
323 A small Bokhara type prayer rug (faded and holed)
4ft x 2ft 3ins £20-£40
324 A Persian rug, the rectangular central panel with a deep blue field decorated with motifs between multiple borders,
4ft 10ins x 2ft 10ins £50-£100
325 An oriental patterned rug in blue and crimson (old Harrods label), 7ft 2ins x 4ft 4ins £75-£150
326 A small Bokhara design rug, the deep crimson ground decorated with motifs between multiple borders,
4ft 4ins x 3ft £50-£100
327 A Persian carpet, the pink ground decorated with flowers and foliage in tones of blue and green between multiple borders, 13ft 6ins x 10ft 8ins £200-£400
328 An oriental carpet, the pink ground decorated in tones of turquoise, brown and beige with guls foliage and flowerheads, 11ft 10ins x 8ft 8ins £100-£200

- 329 A pair of old Oriental carpets closely worked with an intricate floral design around a central turquoise ground panel framed in deep red, 7ft 6ins x 4ft 6ins £500-£1000
330 An oriental carpet runner, the crimson ground worked with guls and floral motifs between multiple borders, approx. 18ft x 2ft 8ins £100-£200



Lot 329

- 331 An oriental crimson blue and beige ground rug worked with guls between multiple borders, 6ft 6ins x 4ft 3ins £40-£80
332 An old pair of linen curtains worked in coloured wools with a floral and foliate design, approx. 7ft 4ins drop, 6ft wide £100-£200

- 333 A Quum silk rug, the pale buff field with an all over design of stylised birds, flowers, animals and with hunting scenes, 7ft 1ins x 4ft 5ins £1500-£2300



Lot 333

FURNITURE

- 335 A set of four XIX Century mahogany dining chairs**, the open backs with horizontal splats centered with roundels above drop in seats raised on turned tapering front supports
£175-£250
- 336 A Victorian four tier corner what-not**, the mahogany shelves inlaid with marquetry vases and separated by spirally fluted turned columns
£70-£140
- 337 XIX Century ash and elm highback Windsor armchair** raised on ring turned supports united by an "H" stretcher
£120-£160
- 338 A Victorian figured mahogany fold over top tea table** raised on ring turned tapering supports,
3ft 2ins wide
£150-£220
- 339 An XVIII Century walnut high back side chair** with a solid vase shape splat, drop in upholstered seats, raised on cabriole front supports terminating in pad feet and united by tapering turned stretchers
£130-£180
- 340 A XIX Century mahogany tiered set of three hanging wall shelves**, *2ft 1ins wide*
£60-£120
- 341 A Victorian walnut pedestal display cabinet** enclosed by a plain glazed door inlaid with marquetry and boxwood lines and with gilt brass mounts,
2ft 6ins wide
£300-£450
- 342 A mahogany cased baby grand pianoforte** (un-named)
£500-£1000
- 343 The base of a XIX Century rosewood what-not** fitted with a single drawer
£30-£60
- 344 A mahogany bookcase** enclosed by a pair of plain glazed doors with three internal shelves,
3ft 5ins wide
£50-£100
- 345 An XVIII Century oak and fruitwood top wine table** raised on a turned column,
the top 2ft 1ins x 1ft 8ins
£170-£230
- 346 An XVIII Century mahogany bureau**, the fall front revealing a series of pigeon holes and small drawers, the base with four graduated oak lined cock-beaded drawers raised on shaped bracket feet
3ft 1ins wide
£500-£850
- 347 A XIX Century mahogany extending dining table** raised on turned tapering supports with original pot castors
4ft 5ins x 3ft 5ins
£300-£500
- 348 A Victorian black painted dining room cabinet** the centre section enclosed by a pair of glazed doors flanked by open shelves and raised on shaped legs
£20-£40
- 349 George III mahogany fold over top games table**, the baize lined surface fitted with counter-wells and raised on square chamfered supports,
2ft 10ins wide
£300-£500
- 350 A Georgian mahogany chest** of four long graduated drawers with oval (original) pressed brass handles and ivory escutcheons raised on shaped bracket feet,
3ft 1 1/2ins wide
£300-£500
- 351 An antique oval oak gate leg dining table** raised on barley twist supports, the oval top approx. 4ft x 3ft 2ins extended
£150-£250
- 352 An XVIII Century oak Lancashire mule chest** with a plain plank top, five fielded panel front above two long drawers,
5ft 2ins wide
£275-£375
- 353 A Victorian mahogany bedroom pair** comprising of dressing table with swing mirror, four trinket drawers and three freeze drawers raised on turned front columns and a semi-circular veined white marble top wash stand
£200-£300
- 354 An Art Deco Lebus oak mirror back sideboard**, the upper section with a projecting canopy on two turned column supports inset with a bevelled mirror, flanked by beaten copper panels worked with a floral design, the base fitted with two drawers and a double cupboard enclosed by fielded panel doors carved with a floral motif, *4ft wide*
£300-£500
- 355 An Edwardian Sheraton revival mahogany double wardrobe** inlaid with boxwood stringing and shell motifs, and fitted with two drawers to the base, *5ft 3ins wide*
£200-£300
- 356 A Victorian mahogany chest** of two short and three long drawers with turned knobs on a plain plinth,
3ft 5ins wide
£150-£230
- 357 An XVIII Century European cabinet stand**, deeply carved in relief with a foliate design around three arches on barley twist supports with matching stretchers,
4ft 3 1/2ins wide 1ft 11ins deep
£200-£300
- 358 Steinhart. A walnut case upright overstrung piano** number 23998A
£300-£500
- 359 A XIX Century chess board top, circular pedestal table** raised on three cabriole supports
£200-£300
- 360 An unusual 1950's oak bedroom suite**, the dressing table with a domed mirror and with two tall plated lamps to either side, the central well of plate glass on three step drawers with a matching double wardrobe, compactum, bed ends and similar dressing table chair
£200-£300
- 361 A circular Victorian mahogany commode stool** with an inset green leather top
£30-£90
- 362 An oak pedestal bedside cupboard**, the back inset with a metamec clock and with an electric bulb holder over
- 363 An Edwardian satin walnut bedroom pair** comprising dressing chest with circular mirror, three drawers and double cupboard beneath, and a chest of four drawers
£130-£180
- 364 A Victorian mahogany framed ladies chair** raised on turned tapering fluted supports with original brass castors
£170-£240
- 365 An XVIII Century oak bureau**, the fall front revealing a fitted interior with a series of pigeon holes and drawers either side of a central cupboard, the base fitted with four graduated drawers raised upon shaped bracket feet,
3ft wide
£400-£650
- 366 An antique oval mahogany drop leaf dining table** raised on plain square support,
approx. 6ft x 4ft extended
£100-£150
- 367 A polished frame American rocking chair**, the back and seat upholstered in mustard coloured draylon
£70-£130
- 368 A stylish Art Deco design walnut veneer dining suite** comprising; rectangular table on open oval supports, sideboard enclosed by two shaped doors either side of a central glass display cabinet and a similar "multibeau" cocktail cabinet fitted with bottle holders etc., and four dining chairs upholstered in cream leather effect material
£300-£500
- 369 A George III mahogany carver chair**, the back with two horizontal splats centered with rectangular veneered panels, fluted arms raised on ring turned supports, the overstuffed seat on tapering reeded legs with 'H' stretchers, with a single matching side chair
£120-£180
- 370 An Edwardian mahogany satinwood strung boxwood inlaid side cabinet** fitted with four drawers and a cupboard raised upon tapering supports united by an undertier, *2ft 7 1/2ins wide*
£150-£250
- 371 A Regency mahogany framed fire screen** with rising and sliding crimson stripe upholstered panels raised on curved fluted supports with brass lion paw castors
£150-£220



Lot 371 and Lot 409

- 372 A XIX Century French Empire design ebonised credenza**, the open centre section with a mirror back above a spindle turned gallery with double cupboard beneath, flanked by a pair of plain glazed doors with applied gilt brass edges and corinthian capitals and decorated overall with gold lines, *5ft 6ins wide* £150-£250
- 373 A Victorian figured mahogany chest** with long serpentine top drawer above two short and three long drawers, the turned knobs with mother of pearl centres and flanked by plain columns raised on turned feet, *4ft wide* £200-£300
- 374 A pair of Victorian mahogany framed boxwood strung open armchairs**, the crestings with urns and swags carved in relief, with floral upholstered back panels, overstuffed seats and arm pads, raised on square tapering supports with spade feet £400-£650
- 375 A George III oval red walnut pad foot drop leaf dining table**, *3ft 9ins x 3ft 6ins extended* £300-£500
- 376 A Victorian mahogany specimen cabinet of twelve drawers** containing a collection of shells and butterflies bearing a presentation plaque dated 1905 £200-£300
- 377 A XIX Century Continental rosewood chest** of four long drawers with a white veined marble top and canted corners, *4ft 3ins wide* £250-£400
- 378 A Victorian satin walnut dressing chest** fitted with three mirrors and a spindle turned gallery with two trinket drawers, the base with two short and two long drawers and original cast brass handles, *3ft 6ins wide* £120-£170
- 379 A George III design reproduction mahogany serpentine front dining room cabinet** fitted with a brass open gallery, central cutlery drawer flanked by two napery drawers above a double cupboard raised on shaped bracket feet, *3ft 6ins wide* £200-£400
- 380 A Victorian mahogany chiffonier base** fitted with two drawers above a double cupboard with applied scroll brackets, *4ft 6ins wide* £75-£130
- 381 A Victorian figured mahogany pedestal sideboard**, the mirrored back in a heavy carved frame with a central shield cartouche, the base with a long drawer and two cupboards with an internal cellarette drawer, *7ft wide* £650-£1000
- 382 A triple mahogany wardrobe**, the stepped cornice carved in relief with a foliate design repeated on the perimeter of the panelled doors, the interior with two short and two long drawers and two hanging rails, *6ft 8ins wide* £150-£300
- 383 A Georgian mahogany bureau bookcase**, the upper section enclosed by a pair of astragal glazed doors, the fall front inlaid with an oval and opening to reveal six long drawers and series of pigeon holes, the base with four graduated drawers upon bracket feet, *3ft 6ins wide* £1000-£1500

- 384 A Georgian mahogany partners desk**, each side fitted with two frieze drawers, three drawers to the pedestal and a folio cupboard, the cross-banded top inset with a leather effect writing surface, *4ft square* £3000-£5000 - (Sold + VAT)



Lot 383

- 385 A Victorian oval walnut quarter veneered loo table** inlaid with marquetry, the turned column on four carved legs *3ft 10ins x 2ft 9ins* £275-£350
- 386 An oriental octagonal hardwood opium table** profusely inlaid with bone £50-£100
- 387 An Edwardian circular satinwood window table**, the top inlaid with a central roundel and strung raised on four tapering square supports united by an undertier, *21 1/2ins diameter* £275-£375
- 388 An Edwardian walnut pedestal bedroom cabinet** with two open shelves beneath a bevelled mirror, the base with four long drawers, *1ft 6ins wide* £100-£200
- 389 A Victorian pine blanket box** with original wood grain effect paintwork £50-£100
- 391 A mahogany George III design serpentine fronted chest** of four graduated drawers beneath a writing slide, the top and drawer fronts banded in cross grain mahogany raised on bracket feet, *2ft 4ins wide* £200-£300
- 392 A French Empire design side table**, the rectangular veined grey marble top on a gilt wood stand with four fluted tapering supports, *1ft 11ins x 1ft* £100-£200
- 393 A plain George III mahogany demi-lune fold over top tea table** raised on square tapering out curved legs, *3ft wide and 17 1/2ins deep* £400-£600



Lot 393

- 394 A small mahogany chest of Georgian design, with five graduated drawers, each with ivory lock plates and swan neck brass handles supported upon bracket feet,
2ft 6ins wide,
1ft 5ins deep
£1000-£1500

Lot 394



- 395 A Georgian mahogany enclosed wash stand, with double flaps to the top, a frieze drawer and incurving lower panel, raised on plain square supports,
1ft 2ins square
£250-£350

Lot 395



- 396 A Georgian mahogany camel back single chair in the Hepplewhite manner with pierced vase shaped splat, carved with wheat ears and acanthus, over stuffed seat on square tapered legs with a plain "H" stretcher
£75-£150
- 397 A small George III mahogany side table with a narrow frieze drawer on square chamfered legs
2ft 6ins wide
£200-£300
- 398 A XIX Century high back yew and elm windsor chair with crinoline stretcher and shaped seat,
£300-£500
- 399 An XVIII Century yew windsor chair with pierced vase splats curved under arms, shaped elm seat on turned legs joined by a crinoline stretcher
£350-£550
- 400 A similar yew windsor chair with 'curly' pierced splats turned under arms and legs joined by a crinoline stretcher
£300-£500

- 401 A similar lot £250-£400

- 402 A similar lot with a solid shaped splat
£250-£400

- 403 A late XVIII Century oak Welsh dresser, the top with an open plate rack flanked by two astragal glazed cupboards, the base with five drawers above an open pot board,
5ft wide x 6ft 8ins high
£2500-£3750

Lot 403



- 404 An XVIII Century oak hanging corner cupboard, enclosed by a panelled door with mahogany cross banding, and with three internal shaped shelves,
3ft 4ins high, 2ft 6ins wide
£250-£400

- 405 A XVIII design oak delft rack centered with display shelves and flanked by two panel cupboards all beneath a moulded cornice,
4ft 9ins wide, 3ft high
£200-£350

- 406 A pair of mahogany elbow chairs of Chippendale design, with serpentine crestings, pierced vase shaped back splats, carved with tasselled motifs and supported upon cabriole legs ending in paw feet
£450-£650



Lot 411

Lot 406 (a pair)

- 407 XIX Century oak three part knee hole desk fitted with three frieze drawers and three drawers to each pedestal with an inset gilt tooled green leather top,
4ft wide x 2ft 3ins
£500-£700

- 408 A pair of Regency style mahogany demi-lune tables with boxwood stringing to the top and frieze on four tapering legs; makers stamp beneath Cope & Willmington,
2ft 10ins wide
£700-£1200

- 409 A XVIII Century mahogany circular tripod table, the top carved with shell and scroll motifs, upon a bird cage support, the turned column carved in relief on triple curving legs ending in paw feet,
29ins diameter top
illustrated on previous page
£400-£600

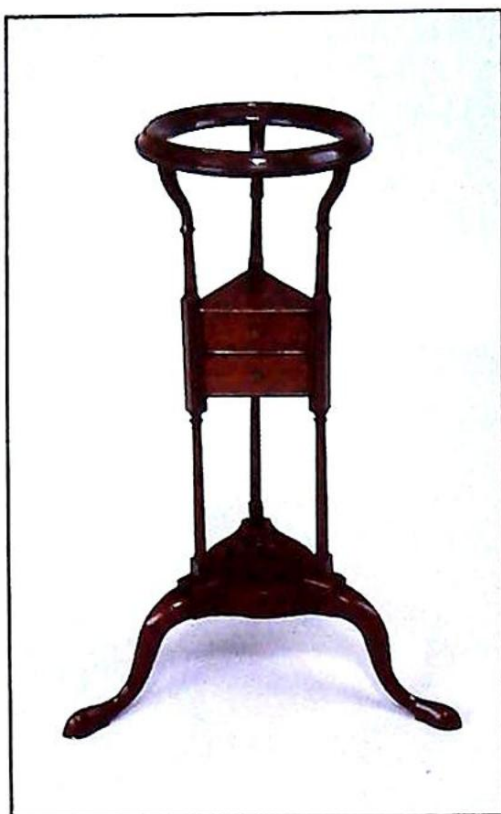
- 410 An XVIII Century mahogany silver table of oblong serpentine form, with pierced rail gallery, the spirally fluted column supported upon triple curving legs carved with acanthus foliage, and terminating in paw feet,
top 24ins x 20 1/2ins
£700-£1200

Lot 410



- 411 A late XIX Century mahogany small glazed specimen display table on slender tapering legs with boxwood stringing,
19ins x 14ins
illustrated above
£400-£650

- 412 An XVIII Century mahogany wash stand, with circular moulded aperture to the top, two drawers to the centre section, and supported upon curving cabriole legs with a dish stand to the centre, 2ft 7ins high £400-£700



Lot 412

- 413 A Georgian mahogany Sheraton design card table the rectangular cross banded top with rounded front corners on square tapering legs terminating in brass castors, boxwood and ebony strung with a green baize covered interior £800-£1400



Lot 413

- 414 A pair of Victorian design armchairs upholstered in contrasting striped glaze material with a matching two seater settee £500-£800
- 415 A Georgian design wing arm two seater settee upholstered in a dune coloured pattern stripe and raised on short supports with brass and pot castors £400-£800
- 416 A mahogany urn stand in the Geo. III manner manufactured by Arthur Brent & Sons of Norwich, the square top with a shaped border raised on tapering column with spirally fluted knops and triple cabriole supports £150-£250
- 417 A mahogany wine table in the Geo III style with an 11inch diameter dish top, tapering turned column on cabirole support £75-£120
- 418 A similar ditto with an 11 inch square top £75-£120
- 419 An oval mahogany coffee table with a triple cross-banded top on a turned column with quadruple splay feet and brass castors £80-£140
- 420 A pair of French tulipwood small pedestal commodes of four drawers each, mounted in ormolu, 13 1/2 ins wide £200-£400
- 421 A Georgian mahogany circular top tripod wine table with turned central column and vase shaped knop on pad feet £80-£130

- 422 A XIX Century box stool covered in green damask with melon fluted feet and castors
- 423 A walnut bedroom suite of triple wardrobe, dressing table, compactum with 3 drawers and two bedside cupboards £200-£300
- 424 A Georgian mahogany chest of three drawers with oval brass handles raised on splay bracket feet, 3ft 1ins wide £200-£400
- 425 A Victorian rocking horse now dapple painted with a long brown mane and tail (restored) £300-£450
- 426 Georgian mahogany gentlemen's wardrobe enclosed by a pair of fielded panel doors beneath a dental cornice raised on splay bracket feet, 4ft 8ins wide, 1ft 11ins deep, 6ft high £300-£600
- 427 A XIX Century mahogany chest of two short and three long cock-beaded drawers with oval pressed brass handles, inlaid mother of pearl escutcheons and shaped bracket feet, 3ft 4ins wide, 1ft 8ins deep, 3ft 5ins high £300-£500
- 428 A Victorian button back armchair on turned front supports with brass castors, upholstered in gold draylon £100-£200
- 429 A mahogany George III design pedestal chest of six cock-beaded drawers raised on bracket feet with a shaped apron, 24ins wide, 17ins deep, 3ft 6ins high £300-£500
- 430 A reproduction pedestal mahogany cabinet fitted with three cross banded drawers on shaped bracket supports, 1ft 8ins wide £80-£100
- 431 A mahogany three pillar dining table of George III design, each pillar with a vase turned column ending in reeded quadruple supports with brass capped feet; with two additional leaves, 12ft 3ins x 3ft 9ins (extended) £2500-£5000



Lot 431

- 432 An XVIII Century Sheraton design mahogany serpentine fronted sideboard inlaid with boxwood and ebony lines, fitted with a napery drawer over a cupboard enclosed by a tambour slide, flanked by drawers and a cellarette cupboard, supported upon six tapering legs with spade feet; the top drawer fronts and legs cross-banded/line inlaid, 5ft wide 2ft 3ins deep £3000-£6000



Lot 432

- 433 A set of two carving and six single Hepplewhite "camel back" mahogany dining chairs with serpentine crestings, pierced vase shaped back splats, supported upon fluted and tapering legs £3000-£5000



Lot 433

- 434 A principally early XIX Century mahogany and rosewood bookcase, the upper section enclosed by four astragal glazed doors beneath a stepped cornice the lower section with four fielded panel doors flanked by cylindrical pillars with brass capitals, 6ft 4ins x 7ft £1000-£2000



Lot 434

- 435 A satinwood bow front sideboard in the Adam manner with a "sunburst" veneered top, the central drawer, flanked by two cupboards, boxwood and ebony chevron banded and inlaid with trailing ribbons and harebells, supported upon six square tapering legs, 4ft 6ins wide 1ft 8ins deep £1200-£2200



Lot 435

- 436 A Sheraton design XVIII Century mahogany secretaire bookcase of narrow proportions, the upper part enclosed by gothic astragal glazed doors, the secretaire drawer opening to reveal a concave fitted interior of drawers and pigeon holes, over two panelled doors with oval inlay and supported upon splay bracket feet, 7ft 2ins high x 2ft 7ins wide £5000-£7000



Lot 436

- 437 An XVIII Century oak bureau, the fall front cross-banded in mahogany with a fitted interior and three graduated drawers to the base on bracket feet (distressed) £300-£500
3ft wide
- 438 A late Victorian octagonal mahogany window table stamped beneath Jas Shoolbred & Co., raised upon turned tapering supports with fluted urn shaped knobs united by an "X" stretcher, £130-£200
3ft 2ins diameter
- 439 A Victorian figured mahogany chiffonier fitted with two shaped drawers to the frieze, the cupboard base enclosed by a pair of panelled mahogany doors with applied foliate brackets 4ft 9ins wide £100-£150
- 440 A XIX Century Boulle serpentine shaped dining room pedestal cabinet, enclosed by a shaped door beneath a veined white marble top with applied bold gilt metal female heads and masks (distressed), £250-£350
3ft 9ins wide
- 444 A horse drawn gig, the brass wheel hubs stamped "W Harrison Builder Balham" the body 5ft 5ins x 3ft, the wheels 4ft diameter (un-restored) £350-£750
- 445 A garden seat with heavy cast iron decorative ends and swept slatted back and seat £300-£500
- 446 Two reproduction lead jardiniere cast with floral swags, 1ft 11ins wide, 10/11ins deep £40-£70
- 447 A XIX Century stone trough, approx. 3ft 4ins x 1ft 6ins £30-£70
- 448 A rectangular reconstituted stone jardiniere decorated in relief with Cherubs at Play, approx. 2ft 10ins x 1ft 3ins £30-£60
- 449 A similar lot £30-£60
- 450 A similar lot £30-£60

END OF SALE

THOS MAWER & SON
THE LINCOLN SALEROOM

ESTABLISHED 1864

Fine Art Auctioneers, Valuers,
Licensed Trade Valuers

REGULAR SALES OF
ANTIQUES, BYGONES &
CURIOS

FORTNIGHTLY GENERAL
SALES

VALUATIONS PREPARED
FOR INSURANCE PROBATE
& FAMILY DIVISION

The Lincoln Saleroom, 63 Monks Road, Lincoln LN2 5HP

Telephone: 01-522 524984

Facsimile: 01-522 535600