



# GOLDINGS



## A PROPERTY LEEDS SERVICE

45 HIGH STREET, GRANTHAM, LINCOLNSHIRE NG31 6NE. TEL: 0476 590211. FAX: 0476 590998.

Upon Instructions from Treasury Solicitor, Estate of Olive Guest,  
Messrs Thompsons Solicitors, and others.

CATALOGUE OF AUCTION SALE

OF

# Antiques

## AND BYGONES



WEDNESDAY, 29TH NOVEMBER 1989

COMMENCING 10.00 A.M.

AT THE SALEROOM, OLD WHARF ROAD, GRANTHAM, Lincs. NG31 7AA

VIEWING: TUESDAY 28TH NOVEMBER - 1.00 PM TO 6.30PM  
SALEDAY - 9.00 A.M. TO 10.00 A.M.

All enquiries please ring the Saleroom (0476) 65118

MISREPRESENTATION ACT 1967 Property Leeds (UK) Ltd for itself and for the vendors or lessors of this property whose agents they are give notice that the particulars are a general outline only for the guidance of intending purchasers or lessees, and do not constitute an offer or contract. All descriptions and any other details are given without responsibility and any intending purchasers or tenants should not rely on them as statements or representations of fact but must satisfy themselves by inspection or otherwise as to the correctness of them. No employee of Property Leeds (UK) Ltd has any authority to make or give any representation or warranty whatever in relation to this property.

SURVEYORS · AUCTIONEERS · VALUERS · ESTATE AGENTS



## CONDITIONS OF SALE

1. The highest bidder shall be the buyer. The Auctioneers reserve the right of regulating the biddings; of rejecting any bid; and of bidding for, withdrawing, consolidating, dividing or altering the order of lots.
2. The purchase money for each lot with the usual commission of 5% plus VAT at 15% shall be paid at the fall of the hammer (if required). Each lot at the fall of the hammer shall be at the sole risk and expense of the buyer, and shall be paid for and removed immediately after the conclusion of the sale, but no lot shall become the property of the buyer, or be removable until paid for, and if taken away in contravention of these conditions without an order for removal signed by the Auctioneers, they shall have power to seize the same by their servants or agents, or otherwise, or the Auctioneers may recover either the lot sold or the price thereof (at their option) by action at law.
3. No contra account of any description whatever will be allowed to the buyer as a set off, and payment for each Lot shall be made to the Auctioneers or their clerk only, and a buyer paying by cheque must give satisfactory references (if required).
4. For all purposes of this sale the Clerk of the Auctioneers shall be deemed to be the Agent of both seller and buyer.
5. A bidder shall not be allowed to retract his bidding, and he shall give up his full name and address if required. The Auctioneers will not recognise the transfer of any lot from one buyer to another, nor make any alteration in the sale book in respect thereof.
6. The Auctioneers are acting only as Agents, and have no personal knowledge as to the correctness or otherwise of the description of the Property offered for sale, and give no personal warranty as to the health, condition, quality, genuineness, authenticity, or otherwise; each lot is therefore sold with all defects and errors of description, if any. The purchaser is deemed to have inspected the lot he buys, and if he buys without previous inspection he shall be deemed to have done so at his own risk.
7. If any buyer neglect or refuse to comply with the above conditions or any of them, his deposit money (if any) shall be forfeited, and the lot uncleared may, at the option of the Auctioneers, be resold without notice by public auction or private contract, and any loss occasioned by such re-sale together with all expenses attendant thereon, or arising under these conditions shall be paid for by the defaulter at this sale and be recoverable as and for liquidated damages. This condition is however without prejudice to the right of the Auctioneers to enforce the contract made at this sale if they think fit.
8. The Auctioneers shall be the sole Arbitrators in all matters of dispute relating to these conditions, both as between the seller and the buyer and between the several bidders and buyers and their determination on all matters shall be final and binding on all parties concerned.

---

### PURCHASER SLIP

To avoid mistakes and to save time each Purchaser will oblige GOLDINGS by filling in this slip on making their first purchase and then handing it to the Auctioneers Clerk

NAME: ..... FIRST LOT NO: .....

ADDRESS: .....  
.....  
.....



## NOTES

1. PAYMENT: Must be made in full immediately after the Auction. The following methods of payment are acceptable.
  - a) Cash
  - b) Bankers Draft
  - c) Building Society Cheque
  - d) Cheques with a valid card for accounts up to limit stated on that card. For accounts over that limit the Auctioneers reserve the right to retain the goods until such time as that cheque has been cleared.
2. Removal of Purchases: Goods purchased must be collected as soon as they are paid for. Collections can be made either saleday or in the next two working days following the sale. If goods are not collected on these days the Auctioneers reserve the right to charge £1.00 per lot per week commencing Monday following the Auction.
3. If you require your purchases delivering a representative of LOWES REMOVALS will be available to assist.
4. Buyers Premium/Purchasers Commission: of 5% + VAT is payable on all lots.
5. (AF): These letters following catalogue description indicate that the lot has some damage. Meaning "As Found", the term is used at the Auctioneers discretion and its absence does not mean that the lot is perfect. All lots are **SOLD AS SEEN.**
6. Commissions to Purchase: If you are unable to attend this or any of our forthcoming sales we will be pleased to bid on your behalf. We always attempt to purchase at the lowest possible bid. All bids must be in writing and handed to the office on an official bid form. It remains the responsibility of the prospective purchaser to contact Messrs GOLDINGS to confirm whether their bids have been successful.
7. Refreshments will be available on Saleday.  
No Smoking is allowed in the main Saleroom..



## BYGONES & MISCELLANEA

1. Copper Incubator on wrought iron stand 21" high.
2. Baird & Tatlock brass Chemical Balance in Glazed Case.
3. Panchen and 3 Stoneware Jars.
4. GPO No 2 Table Telephone with handpiece and mahogany Bellbox.
5. 2 Parsons-Sloper Patent Table Telephones with Bakelite handles (AF)
6. Bakelite handled Wall Telephone with Bell and Connection Box.
7. Table Telephone (AF) and GEC Bakelite Bellbox.
8. Assorted Bellboxes, headphones, etc.
9. Pr Continental Wall Plaques, figures of an elderly couple, the lady knitting and gentleman reading (AF)
10. Lace fronted Gentlemans Waistcoat and a Beadwork Handscreen (AF)
11. Tooled and gilt leatherbound Photograph Album
12. 2 Old Photograph Albums and Scrapbook (AF)
13. Gold Lustre Witch's Ball
14. German marble based and glass cased brass Chemical Balance.
15. Victorian boxwood handled Handbell.
16. Victorian ebonised handled brass Handbell
17. Victorian elm handled Handbell.
18. Large copper Blowlamp.
19. Qty. glass and stone Marbles.
20. Victorian cast iron Club Fender Plinth 54" wide.
21. Indian brass painted tray (AF)
22. Tapestry Tablecover 60" x 54"
23. 32 vols. Collins Classic Novels.
24. Brass oil Lamp.
25. Plaster bust of Guy Gibson Q.C. signed Dora Webb L.M.S. 1936-7 on reverse, 19" tall
26. 5 Cane Carpet Beaters.
27. 5 Wooden handled steel Carpet Beaters.
28. 4 - 10" dia. circular 3 footed Display Stands.
29. Victorian gilt framed Woolwork Sampler 'Welcome' 24" x 10"
30. 6 brass and ceramic Coathooks.
31. Old Cricket Bat.
32. Woolwork Sampler 'Peace Be Still' 19" x 8"
33. Framed "Buffaloes" Certificate and framed London College Certificate
34. Steel Hatbox, brass fire extinguisher, cobblers last, etc.
35. 2 pine Hat Display Stands.
36. Bowler Hat.
37. Mrs Beeton's Household Management Book
38. Qty. old Bottles
39. Qty. old Bottles
40. Bristol blue glass Bottle and 4 other coloured bottles.
41. 5 Pretty Polly Stocking Advertising Card Cutouts.
42. Titled Clothes Hangers, etc.
43. Old Radio Spares
44. Old glass Inkwells and Bottles
45. Qty Medicine Bottles, etc.
46. 2 Small Maple Picture Frames
47. 5 Small Magnifying Glasses
48. 2 Large Magnifying Glasses
49. 2 - 3" Magnifying Glasses
50. 2 - 3.5" Magnifying Glasses
51. 8 pairs of old Spectacles.
52. Pr. Geo. Wig-Spectacles
53. Enlarging glasses and Magnifiers
54. Mahogany Fishing Reel
55. Musical Toilet Roll Holder
56. 3 Handbrushes, Handmirror and inlaid Circular Salver.
57. Crocodileskin Ladies Nightbag.
58. Pot eggs, billiard balls, etc.
59. Boxed Mortar Board
60. Oil lamp parts, etc.
61. Osterich feathers, leather gauntlets and 2 games.
62. Bottle of 1934 Kayser & Co Mosel Wine
63. Bottle of 1937 Lemoire Champagne
64. Quantity of old Keys
65. Quantiy of Clock Keys
66. 3 Patchwork Quilts
67. Sheffield plate 3 branch Candelabra
68. Old tins and sundry metalware
69. Copper filter and copper posher
70. Bone handled Carving Set
71. 3 Stoneware hot water bottles



72. 2 Flatirons and 19thC. embossed shell pattern metal Wall Light.
73. Blue cased Ensign E29 Box Camera
74. Silver plated oblong Bon-Bon Dish
75. 3 Silver plated Tankards
76. Pr. Horse Blinkers and Leathers
77. Pr. Steel Hames
78. Vic. Oil Lamp with glass reservoir
79. Maxim Inhaler Set, Hearing Trumpet and Dolls Furniture
80. Ladies Writing Case.
81. Vic. Tonbridgeware Workbox
82. Vic. Tonbridgeware Workbox
83. Vic. painted papier Maché wall mounting Paper Rack and Riding Crop
84. Pr. silver plated Cockerels 8" tall
85. Brownie Reflex Camera
86. Old Hair Clippers, Bakelite Alarm Clock, etc.
87. Type P.11 Military Compass
88. Vic. brass Warming Pan
89. 2 old Shell Petrol Cans and Copper Posher
90. Fine Vic. walnut Tonbridgeware Workbox
91. Vic. brass hanging Oil Lamp
92. Vic. brass oil Footwarmer (AF)
93. Brass Doorknobs, etc.
94. Oil lamp hangers, terracotta milk bottle cover, etc.
95. Marx Toys tinsplate train and tender with 2 Pullman Streamline coaches and track.
96. German Simon & Halbig porcelain Doll with articulated body and closing eyes. 24" tall.
97. "Reliable" Canadian moulded doll with closing eyes
98. Schultz-Marke German celluloid Doll in part original box 6.5" tall.
99. Vic. English porcelain head, torso and armed Doll on a crinoline base.
100. Fine German straw filled STEIFF Teddy Bear with pronounced hump back and metal disc in left ear 28" tall. (illustrated on front cover).
101. German straw-filled STEIFF Teddy Bear Bear 20" tall (AF)
102. Silver platedware and silver napkin ring.
103. Silver plated 3 piece Cruet with blue glass liners.
104. BM Dolls Teapot and Cream Jug
105. Pr. ebonised framed Daguerrotypes - believed to be grandparents of Miss May Smith OBE, Horbling.
106. Wooden Model Galleon - 24" tall
107. Vic. brass twist column Oil Lamp with cranberry glass shade - 32" tall.
108. 2 old Birdcages
109. Old "George" Pub Sign and 2 large Picture Frames
110. Tonbridgeware Workbox
111. Fitted Mahogany Writing Slope
112. Brassware
113. Pr. polished Coconut Jars. Pr napkin rings, etc.
114. Carved hardwood Bowl on stand, etc.
115. 3 Native hardwood Figures
116. Tribal Mask and New Guinea Figurehead
117. Carved Native Figure
118. 3 Carved Native Figures, etc.
119. 2 Carved wood and skin string instruments.
120. Late 19thC. Spelter Figure of a Greek Mythological Warrior 17" tall.
121. Pr. 19thC. Spelter Figures of Goddess' with Cherubs' 19" tall. (AF)
122. 19thC. Spelter figure of a Fisherman (AF)
123. Kiwi Polishes Cobbler's Last and Box
124. 'Toyplane' Toffee Tin, Sausage Maker and 4 Flatirons
125. Coromandel Desk Calendar
126. Copper and wrought iron 1914-16 Somme Picture Frame
127. Wooden Printing Blocks in tray.
128. Wooden stemmed Cobblers Lasts, lock and first aid box.
129. Boxed Breadknife and Board and mahogany Recorder (AF)
130. 3 Silver banded Walking Sticks
131. Brass Crumbtray and Brush, snuffer, etc.
132. Silver plated Bon-Bon Dishes, etc.
133. Silver plated Muffin Dish and Bon-Bon Dishes
134. Old Keys, Beer Bottle, etc.
135. Old Medicine Bottles
136. Oak Biscuit Barrel with silver plated top.
137. Vic. Mother of Pearl inlaid Rosewood Workbox.
138. Pr. 19thC square based brass Candlesticks 9" tall
139. Carved Soapstone Spill Vase
140. Carved Soapstone Spill Vase
141. Brass Trench Periscope
142. WWII American Helmet
143. 4 old jigsaws and game
144. Building and picture blocks
145. 3 Golly Dolls
146. Toys, Dolls, etc.
147. 4 Model Boats.
148. 2 Model Cannons



149. Assorted Wooden Toys
150. 3 WWI framed Silks
151. Tortoiseshell Hair Slide
152. Watchmakers Glass Fitting Jig and Presses.
153. Elm Bellows and an embossed Brass Logbox.
154. Olivewood Cardcase and Cellulose Fan.
155. German Rigoletto Concertina
156. 2 Box Cameras, Toast Rack, etc.
157. Small Vic. Oak Box, pr Brass Tongs and pr. Copper Candlesticks.
158. 2 Stoneware Beer Bottles
159. 4 Graduated Earthenware Pancheons
160. 19thC. circular Pewter Ink Stand
161. Oval silver plated galleried Tray
162. Fine Edw. mahogany oblong Tray with floral inlay.
163. Hammered copper and wrought iron semi-circular Fender. 48" wide.
164. Vic. brass Shop Balance
165. Qty old Woodworking Tools
166. Mandolin (AF)
167. Stoneware Beer Bottles  
Geo Treace, Nottingham
168. 2 Leaded light Bookcase Doors.
169. Dominoes.
170. Brass tray, Bookstand, etc.
171. Newmaid self-generating upright vacuum cleaner
172. Horsebrasses, bellows and toasting fork
173. 2 Egyptian style figures
174. 6 frames of pinned Butterflies
175. Inlaid oak Tray with a silver plated gallery
176. Vic. brassbound Writing Slope
177. Art Nouveau oil lamp with amber glass reservoir
178. 2 leather suitcases
179. 19thC. mahogany Box
180. Brass Car Horn
181. Vic. style copper kettle
182. Large copper Jardineire
183. Jaguar carlight with 2 figures as a Deskstand
184. Bronze figure of a young boy seated on a trivet
185. Iron Fireside Companion Set
- 185A - ditto -
- 185B - ditto -
186. Dinky Toys Tipper Lorry
187. Early AA Badge.
188. Model Revolver (AF)
189. 4 Napkin rings and Spoon (AF)
190. Profusely carved Ivory Parasol Handle
191. Lead Piper Figure
192. 5 mounted Lead Soldiers (AF)
193. 8 Lead Grenadier Guardsmen
194. Articulated mounted Lead Soldier

195. Wills Woodbine Dominoes and 2 Score Boards
196. Brass Oriental Chest Lock with Key
197. Bosun's Whistle, Car Mascot, etc.
198. Toffee Hammers, Nutmeg Grater, Spring Balance, etc.
199. 3 Travellers Inkboxes
200. 2 Scent Bottles.

## CLARICE CLIFF

201. Royal Staffordshire circular Tureen with cover and 2 meatplates with gold and red pinstripe decoration
202. Pr circular Tureens with green and gilt pinstripe decoration (no covers)
203. Pr. circular Tureens, with covers, Meatplate and 3 Soupbowls with green and gilt pinstrip decoration
204. Green banded ecru ground two handled Soup bowl.
205. Fluted ecru Vase with turquoise interior 10" tall (AF)
206. Royal Staffordshire Honeyglaze Crocus pattern Fruitbowl 8" dia.
207. Bizarre Crocus pattern Sugar Bowl (AF)
208. Crocus pattern Sideplate 9" dia.
209. Bizarre Beechwood pattern Fruitbowl 9" dia.
210. Unusual Wilkinson Ltd raised shallow Fruitbowl decorated with passionfruits and brown forage in the foreground 10" dia.
211. Bizarre black, yellow, red and orange banded bowl 5.5" dia.
212. Cabbage Leaf pattern Bowl 7" dia.
213. My Garden pattern flared and fluted Fruitbowl 12" dia.
214. Celtic Harvest 3 footed Fruitbowl with chrome plated rim 10" dia.
215. Celtic Harvest Preserve Jar with cover
216. Celtic Harvest Sugar Bowl (no cover)
217. Wilkinson Ltd oblong posy bowl 11" long
218. My Garden Spill Vase 6" tall
219. Newport Pottery 3 footed and handled Vase with vines in relief on an ecru ground 10" tall
220. Wilkinson Ltd. 4" square dish

## GLASS & CERAMICS

221. 4 Trumpet shape epergné Glasses
222. Enamel glass Beaker 'A Present from Blackpool' and 2 further Beakers
223. 5 glass Paperweights (AF)
224. Vic. colour-twist glass column, Night Light and Bowl (AF)
225. 3 handled Nightlights in amber, green and clear glass.
226. Vic. glass Flycatcher
227. Staffordshire black ground and rose pattern urn shaped Rosebowl.
228. Staffs. black ground orchid pattern Vase
229. Wedgewood style Rosebowl and small Oriental Vase.
230. Susie Cooper style Coffee Percolator
231. Newport Pottery black ground Comport



232. Chinese blue and white Baluster Shape Vase 18" tall.
233. Chinese figure of a bearded gentleman 12" tall
234. Chinese figure of a pot-bellied young man 14" tall
235. Floral Jug and Bowl Set (AF)
236. 19thC Staffordshire Parianware flatback figure "Faith, Hope & Charity"
237. 19thC Staffordshire figure Scottish Lad with Dog 7" tall
238. 19thC Staffordshire flatback figure Scottish Lad with Goat 10" tall (AF)
239. 19thC Staffordshire flatback 2 figure group The Straw Carrier 13" tall
240. 19thC Staffordshire flatback 2 figure group The Straw Carrier 13" tall
241. Pr. Staffordshire brown and white Spaniels 6" tall.
242. Late 19thC famille-rose Cantonese Plate decorated with enamels 8.5" dia.
243. Plate, Tankard and Leedsware style bowl (all AF)
244. 4 pieces Crestedware
245. Crown Devon style Vic. Jug and Bowl Set (AF)
246. 2 - 10" and 3 - 8" Davenport Rose and Lily pattern transfer printed plates.
247. Vic. 24 piece Chapman part Tea Service
248. 10 floral pattern Vic. Tiles
249. 5 Vic. Tiles
250. 16 assorted Vic. Tiles
251. 2 Glass Hatpin Jars
252. Pr. green glass Spill Vases decorated with enamels and similar ruby glass Spill Vase
253. Vic. Worcester Botanical Plate 8" dia.
254. Derby style Teapot presented Christmas 1910
255. Torquayware Cream Jug and Pepper Pot (AF)
256. Pr. Vic. German Bisque figures of a boy and girl 7.5" tall
257. Pr. German Bisque figures of boy and girl and further glazed figure
258. Set of 4 Vic. clear glass Rummors
259. 5 Vic. clear Port Glasses
260. Vic. faceted clear glass Water Jug
261. Vic. faceted clear glass Cream Jug (AF) 3 glass salts, pickle jar and mustard pot
262. 1937 Coronation Beaker, Lincoln Cathedral Cup and Saucer and Crested Jug
263. Cornucopia Shaving Mug and Brush
264. 2 Blue and white Meatplates (AF) and Willow Pattern Paté dish.
265. Relief windmill pattern Butter Dish and Fruit Basket
266. 4 pieces miscellaneous Chinaware
267. Pr. miniature Satsuma Baluster Vases, small figure etc.
268. Vic. pressed glass Vase, etc.
269. 2 cut glass Vases
270. 10 pieces assorted Mason's Chinaware (AF)
271. Wedgwood Botanical Plates and 2 Botanical Ironstone plates.
272. Glass cruet, sauce boat, etc.
273. City of London crested model - Cenotaph
274. Doulton style pottery Milk Jug and lidded Jar.
275. Geo VI pressed glass Coronation Plate and 3 other Coronation plates.
276. 2 Glass Scent Bottles
277. Wash Jug, etc.
278. 4 bottle glass Cruet on silver plated stand (AF), glass Preserve Jar and Mustard Pot
279. 15 assorted cut and engraved Glasses.
280. Glass Rolling-pin and 4 pieces wax fruit
281. Pigfaced Stirrup-Cup, Wedgwood tile (AF) and Marmalade Pot.
282. Pr. German Wallplates with Scenes of Menai Bridge and Conway Castle.
283. Cut glass Fruitbowl with a silver rim
284. Set of 6 cut glass Champagne Flutes
285. Set of 8 Stuart cut crystal Beakers
286. Set of 6 faceted glass Champagne glasses with double knop stems
287. Crested WWI Tank model (AF)
288. 2 crested Cenotaph models
289. Crestedware: 2 model cannons and 2 model submarines (AF)
290. Minton rosebud pattern Jardiniere Pedestal
291. 2 Vic. Cheese Dishes
292. 22 piece blue and white part Dinner Service
293. Assorted chinaware
294. Assorted Crestedware
295. 3 various Cup, Saucer and Plate Sets
296. Royal Doulton Bunnykins Bowl and Minton Tile.
297. W H Goss Jug transfer printed-Symonds Vat
298. Vic. air twist Glass Stirrer
299. Assorted glassware
300. Assorted glassware
301. Vic. gilt Tea Service comprising 6 prs Cup and Saucer and 2 Sandwich Plates (AF)
302. 3 T'ang style figures, etc.
303. Crown Devon Fieldings Chamber Pot
304. Part fluted 40 piece floral Tea Service
305. Queen Victoria Golden Jubilee Tankard
306. 1902 Coronation Beaker and 1911 Coronation Mug
307. Arcadian crested model Fireplace.
308. 3 Miniature engraved glass Tankards
309. Pr. Vic. enamelled ruby glass Lustres 14" tall.
310. 2 Torquayware Jug and glass plant holder
311. Large Chinese turquoise ground Ginger Jar
312. Chinese blue and white Teapot.
313. 3 early 19thC. ironstone plates decorated with birds and flora
314. 5 Imari plates (AF)
315. 5 Imari plates (AF)
316. Unusual leaf pattern Imari plate
317. 19thC. Imaria basket pattern plate
318. 19thC green Imari plate (AF)
319. 4 Imari plates (AF)
320. 2 oval Meatplates
321. Crestedware
322. 1920's Royal Doulton sandwich plate, 6 side plates and bowl
323. 2 glass whiskey barrels
- 324 to 340 SPARE LOTS



## TEXTILES, LINEN & CLOTHING

341. Vic. 2" Beadwork Belt 27" long
342. Qty Garters
343. Pr. Vic. jet Beadwork Shoulder Covers.
344. 1920's blue Swimming Costume with white trim and rubber cap.
345. 1920's black lace Mourning Shawl
346. Lace apron and qty of crochet
347. 2 Ladies Waistcoats with crochet upper section
348. Cloverleaf pattern Damask Tablecloth 60" x 60"
349. Fleur de lys pattern Damask Tablecloth 68" x 64"
350. Assorted placemats with embroidered borders
351. Damask Tablecloth 45" x 45"
352. Turkoman Rug 86" x 36"
353. Ladies Cotton Nightgown
354. Ladies Cotton Nightgown
355. Childs Cotton Nightgown
356. 3 Embroidered Tablecovers
357. Assorted Tablecovers, etc.
358. Damask Tablecover 75" x 45" (AF)
359. Red and White floral pattern Wool Tablecover 80" x 68"
360. Brown fur Stole
361. Red ground Eastern Rug with an ivory diamond centre medallion, floral borders 56" x 42"
362. Red and blue ground Eastern Carpet with 4 diamond medallions in the centrefield and basic geometrical patterns to the borders (AF) 113" x 62"
363. Qty handmade Lace
364. Edw. Christening Gown
365. Edw. Ladies Bonnet
366. 1920's blue Ladies Evening Dress
367. Tablecovers, etc.
368. 2 Bedspreads - 1 patchwork and 1 embroidered
369. Patchwork Cover (AF)
370. Edw. Nightdress
371. Brown Fur Stole
372. Lace Bolero
- 373 to 378 SPARE LOTS

## BOOKS & EPHEMERA

379. Unframed engravings.
380. Tea and Cigarette Cards
381. Qty Vic. paper Memorials
382. Qty Postcards and Photographs
383. Qty. Needlework and Embroidery Magazines, etc.
384. Qty. Cookery Books
385. C.120 editions of The Antique Dealer and Collectors Guide. C.1950
386. C.80 late 1960's Coin Auction Catalogues mainly Glendinings
387. C.40 late 1960's assorted Auction Catalogues
388. Vols 3 and 4 of The Antique Dealer and Collectors Guide
389. Antique collecting books, etc.
390. First Edition - French Engravers of the 18thC. with 97 illustrations
391. First Edition novel - The Vicar of Wakefield with 5 Heliogravures
392. 3 Vic. Art of Change-Ringing Books
393. Books and early photographs of Road Transport
394. Qty assorted photographs, etc.
395. Postcards
396. Railway ephemera
397. Music Books and Music Sheets
398. Qty photographs, etc. (2 boxes)
399. Assorted Books
400. 2 annuals and photograph albums.
401. Coin books
402. Coin books
403. Photographs, etc. (2 boxes)
404. Art Reviews, etc.
405. Assorted Books
406. Gold Leaf Newspaper, Coronation Souvenirs, etc.
407. 1926 Auction Catalogue of The Kelham Estate and further catalogue
408. Set of 6 Butterfly Series Prints by Mabel Lucie Attwell
409. Colour advertising Prints and Posters
410. 3 Unframed Pears Prints (AF)
411. 3 Unframed Prints
412. 3 Unframed Prints
413. 6 Unframed Prints
414. Unframed Landseer Lithograph, Engravings, etc.
415. Qty Gergian Interior Design Drawings
416. Assorted Prints, Magazines, etc.
417. An Early Mappin & Webb Christmas Brochure
418. The Picture Robinson Crusoe Storybook
419. Vic. Scrapbook
420. Vic. Scrapbook



- 421. 33 vols. The Shire Horse Society Stud Book 1890 to 1931
- 422. C.120 Late 1960's Sothebys Art Auction catalogues, mostly with realisation sheet.
- 423. - ditto -
- 424. The Whopper Scrap Book
- 425. 1931 Blackpool Illuminations Souvenir Booklet and 2 1930's Posters
- 426. Royal Commemorative Newspapers, etc.
- 427. The Modern Boys Book of Aircraft and Guinness Book of Records.
- 428. Assorted Books.
- 429. 3 Spirally Changing Prints
- 430. Qty.advertising cards-Pears,Lux,Sunlight,etc.

## ART

- 431. Large oak framed Print of a young girl praying
- 432. Oak framed engraving entitled 'Moise Expose sur le Nil'
- 433. Gilt framed oval portrait engraving of a girl by C Baxter
- 434. Pr. framed Prints "Between two Pines" and "The Boyhood of Raleigh".
- 435. Humorous print "Wild Oats"
- 436. Pr. portrait prints of Edward VIII
- 437. Framed monochrome print "The Evening Prayer"
- 438. Gilt framed signed engraving Given by the Queen in commemoration of her 50th reigning year 1887.
- 439. Small hand coloured engraving "Grantham Market Place 1836"
- 440. Framed engraving of The Lady Dover
- 441. Framed engraving "L'Agréable Lecture"
- 442. Oak framed monochrome print of a rural scene
- 443. Gilt framed watercolour. signed S Mortimer of Gurnard's Head, Cornwall 10" x 14"
- 444. Framed watercolour of butterflies and flowers enclosed by a religious verse
- 445. Unframed oil on canvas coastal scene with figures and boats 13" x 17"
- 446. Gilt framed oil on canvas of a Rocky Coastal Scene with fishing boat in the mid ground signed J C Jones 16" x 24"
- 447. Oil on canvas mountain scene with lake in the foreground signed E Leslie 16" x 24"
- 448. Gilt framed oil on canvas a view of Windsor Castle signed C Jones 1920 6" x 14"
- 449. Gilt framed oil on canvas country scene with buildings in the mid ground signed C Jones 1920 9" x 14"
- 450. Unframed oil on canvas of a lady, gentleman and child in an arboretum signed A J Fry 12" x 18"

- 451. Oil on board of a camel and an Arab signed H Watson 1920 7" x 10"
- 452. Vic. watercolour Highland Loch scene initialed E.S. 7" x 10"
- 453. Framed watercolour of figures and buildings in the foothills of the Himalayas
- 454. Small Italian style print
- 455. Watercolour cartoon of a speedboat with toucan and penguin aboard signed Terry Thomas
- 456. Watercolour Highland scene signed F Pears/26 7" x 10"
- 457. Print of 2 semi-nude Classical Maidens in an ornate gilt frame.
- 458. Watercolour river scene with 3 sailing boats, buildings and trees to the banks, signed S Peck 9" x 20"
- 459. Gilt framed oil on canvas North African scene of a mosque by water with 2 figures with camels in the foreground signed E Newcombe 8"x 16"
- 460. Half-length portrait oil on canvas of a gentleman reading his newspaper 24" x 18"
- 461. Oak framed monochrome watercolour signed E Vickers entitled Carhilype Charity, Lincoln
- 462. Pr modern coaching scene prints
- 463. 2 Prints
- 464. Gilt framed oil on canvas painting of a stream signed P Bromerie 25" x 20"
- 465. Gilt framed oil on canvas painting of a Moorland Landscape signed Sam Varley 1896 20" x 30" (AF)
- 466. Pr framed coastal scene prints
- 467. Oil on card painting and modern framed watercolour
- 468. Gilt framed oil on canvas Landscape painting indistinctly signed, probably French 18" x 32"
- 469. Unframed landscape oil on canvas monogrammed TS or ST '58 16" x 24"
- 470. Gilt framed oleograph of a reclining lady reading a book
- 471. Gilt framed gouache painting of the snow-capped Alps signed C Ward 10" x 13"
- 472. Large framed print Morning on the River Conway - North Wales by Ernest Welbourn
- 473. Framed oil on board Landscape Autumn Glade
- 474. Framed pencil drawing of three pears signed G.B.
- 475. Still Life oil on board - flowers in a vase signed Appleyard
- 476. Print - Three Blind Mice
- 477. Print - Two Little Doves
- 478. Oriental oil painting
- 479. Coloured engraving - Death of Horatio Viscount Nelson
- 480. Large oak framed print of Major J Bouch with the Belvoir Hounds signed in pencil by artist of the original painting.



## SILVER

- 491. Albert Watch Chain
- 492. Geo. style Sauceboat with double C scroll handle, gadrooned rim and 3 paw feet on a plated saucer
- 493. Cigarette Case - Birmingham 1905
- 494. Embossed silver backed Hairbrush - Birmingham 1908
- 495. Napkin ring - Birmingham Assay
- 496. Geo. Punch Ladle
- 497. Silver topped glass Hatpin Jar
- 498. - ditto -
- 499. Silver topped glass Scent Bottle (AF)
- 500. 6 Mappin & Webb bone handled fish knives with 5 matching fish forks - Sheffield Assay
- 501. 6 - 19thC fiddle pattern Teaspoons
- 502. Set of 5 Mappin & Webb seal-top Coffee Spoons
- 503. 2 Forks - London 1831
- 504. Bengal fiddle pattern Soup Spoon
- 505. Mother of pearl handled folding Fruit Knife - Birmingham 1871
- 506. Circular dwarf Candlestick - Birmingham 1934
- 507. Eggcup engraved 'David' - Sheffield 1919
- 508. Albert Watch Chain with 2 bloodstone fob seals.
- 509. Geo. tortoiseshell handled folding Knife and Fork pair
- 510. Geo. teaspoon and an Edwardian salt spoon

## CLOCKS & WATCHES

- 511. 14K gold cased Ladies Pocketwatch engraved with flora and a cartouche
- 512. Silver cased 15 jewel Wristwatch (AF)
- 513. Late Victorian Gents silver cased Pocketwatch with roman numerals and seconds ring by H Samuel, Manchester
- 514. 800 Standard silver cased Gents Pocket watch, Helvetia (AF)
- 515. Mahogany cased Bracket Clock with Westminster Chimes (AF)
- 516. 8 day Mantel Clock
- 517. 8 day Mantel Clock (AF)
- 518. 30 hour Mantel Clock
- 519. Garniture of 2 30 hour clocks and an aneroid barometer by Mercer believed to be from the liner 'Port Melbourne' each 10"dia.
- 520. Geo. III string inlaid mahogany Longcase Clock, with painted square-arch dial having shell designs to the arch and spandrels, roman numerals, date and seconds rings, by J Neilson, Glasgow. The hood having a swan-neck pediment, 7' tall. (AF)
- 521. Silver cased Pocketwatch (AF)
- 522. Silver cased Pocketwatch

523.

524.

## JEWELLERY & NETSUKE

- 525. 9ct. Gold 56" Belcher Chain
- 526. 9ct. Gold Ring and 2 plated Chains
- 527. 9ct. Gold Eternity Ring
- 528. 9ct. Gold Cameo Ring
- 529. 9ct. Gold single stone Dress Ring (AF)
- 530. 9ct. rose gold Zodiac Ring
- 531. 9ct. rose gold flower ring set with cultured pearls and rubies.
- 532. 9ct. rose gold Keeper Ring set with cultured pearls.
- 533. 9ct. rose gold Keeper Ring set with cultured pearls and garnets.
- 534. 9ct. rose gold Cluster Ring set with cultured pearls and a ruby
- 535. South African mining Bracelet
- 536. Chains, pendants, etc. (AF)
- 537. Signed Japanese hardwood Netsuke a study of a fish and a crane forming themselves into a ring
- 538. Well detailed signed Japanese hardwood netsuke a study of two fish
- 539. Good quality Japanese ivory netsuke a study of a Buddhist Goddess rising from a lotus blossom
- 540. Good quality signed Japanese ivory netsuke a study of a man holding a large mallet
- 541. Fine quality signed Japanese ivory netsuke a study of Buddha his young servant sleeping upon his shoulders
- 542. Fine quality signed Japanese ivory netsuke a study of Jurogin the Immortal of all Wisdom with his large domed head.
- 543. Costume jewellery, etc.
- 544. 9ct. gold diamond and ruby Cluster Ring
- 545. 9ct. gold Dress Ring

## COINS & MEDALS

- 546. 1893 Crown
- 547. 1676 Crown
- 548. 1845 Crown
- 549. 2 Maundy Coins
- 550. 3 Groats - 2 x 1843 and 1855
- 551. Ten Shilling Note
- 552. 1797 - 2d.
- 553. Assorted Coins
- 554. Tokens, Stamps, etc.
- 555. c.60 Assorted Coins
- 556. 1889 Crown
- 557. Qty. Coins mainly Georgian (AF)
- 558. 1797 1d. and 2d. Coins (AF)
- 559. Assorted Banknotes



## FURNITURE

560. Oddfellows and Buffaloes Sashes
561. 2 RAOB GSB Medals.
562. 2 Masonic Steward Medals
563. 2 silver Masonic Medals
564. 2 silver RAOB Medals
565. 2 silver Oddfellows Medals
566. Masonic Medal and RAOB Medal
567. Royal & Loyal Chapter Medal
568. Chains and Fobs
569. 1927 Florin
570. 3 Masonic Medals
571. WW1 Military Cross
572. Edw. VII Territorial Decoration Medal
573. 1880 Kabul to Kandahar Medal
574. 1896 Ashanti Star Medal
575. Khedives Sudan Medal
576. Khedives Egypt Medal
577. Korean Medal
578. 3 Imperial Service Medals
579. Qty. Pennies
580. c.1400 ½d.
581. c.1000 1d.
582. c.1000 1d.
583. c.1000 1d.
584. Assorted Coins and Tokens
585. Assorted Coins and Tokens
586. c.150 Farthings mainly 19thC.
587. c.600 Farthings
588. c.40 Half Crowns
589. c.120 silver 3d.
590. c.150 Shillings and qty. Two Shillings
591. C.500 6d.
592. 12 Florins
593. c.200 3d.
594. 2 Regimental Badges
595. 1804 Irish 6 Shilling
- 596.
- 597.
- 598.
- 599.
601. Set of 6 Regency style Dining Chairs (AF)
602. Geo III mahogany D Shape Sidetable with turned legs.
603. Geo. elm gateback Kitchen Chair
604. Edw. mahogany Occasional Table with undershelf
605. Vic. barback Kitchen Chair.
606. 19thC. mother of pearl inlaid lacquer circular tip-top Pedestal Table on tripod base.
607. Geo. III mahogany D shape Sidetable on turned legs.
608. Queene Anne style Stool with tapestry seat ball & claw feet and an X-frame stretcher
609. Vic. reclining Daybed
610. Set of 4 Queen Anne style Dining Chairs
611. 19thC pine Blanket Box
612. 19thC pine Blanket Box
613. 3 Vic. balloon back Bedroom Chairs
614. 5 Vic. mahogany ballonback Dining Chairs
615. Oak barleytwist gateleg Table
616. Pr. late 19thC. Dining Chairs with galleried backs.
617. Pr. 19thC. elm gateback Dining Chairs
618. Vic. mahogany 2-drawer Sidetable with slender turned legs.
619. Marquetry inlaid Vic. walnut 4 tier corner Whatnot
620. Vic. Childs Chair (AF)
621. Vic. pine Cricket Table with undershelf
622. Vic. mahogany 2 drawer Sidetable with turned handles and legs
623. Edw. string inlaid mahogany Folding Cot
624. Vic. pine traytop Washstand
625. Geo.II walnut veneered Bureau with fall flap concealing fitted interior, 3 graduated drawers with brass loop handles and escutcheons on bracket feet 31.5" wide
626. Geo.II oak Chest of 3 long and 2 short drawers on bracket feet 37" wide
627. Late Vic. ebonised Display Cabinet on cabriole legs.
628. Geo.III oak single drawer Sidetable with shaped frieze and square legs. 27" wide.
629. Set of 4 Queen Anne style Dining Chairs
630. Harlequin set of 4 19thC. elm spindleback Kitchen Chairs
631. Late Vic. wind-out Dining Table with 2 extra leaves on part fluted legs 42" x 83" max.
632. Set of 4 Vic. mahogany balloonback Dining Chairs with tapestry drop-in seats and turned front legs.
633. Vic. brass Polescreen Stand on a giltwood base.
634. Heavy oak wall Display Cabinet with bevelled glass door 26" tall x 22" wide.



- 635. Oak Firescreen
- 636. Small Vic. mahogany swing Toilet Mirror
- 637. Pr. late Vic. string inlaid Children's Chairs with pierced vase splats, floral marquetry, taper legs and spade feet
- 638. Red lacquer and mother of pearl inlaid Jardiniere Stand
- 639. Compact pine Collectors Chest
- 640. Vic. mahogany swing Toilet Mirror
- 641. Vic. mahogany swing Toilet Mirror
- 642. Vic. mahogany Stool on turned legs
- 643. Geo. mahogany Bible Box
- 644. Geo. style heavy upholstered Gents wing Armchair with padfeet and turned stretcher
- 645. Vic. pine scrubtop Kitchen Table
- 646. Wm IV mahogany Carver Chair with fluted front legs.
- 647. Pr. cane seated Bedroom Chairs (AF)
- 648. Late Vic. mahogany octagonal occasional/ work Table with undershelf
- 649. Heavy barleytwist oak dropleaf Dining Table
- 650. Early Geo. oak Mule Chest with 3 fielded panels over 2 drawers. 48" wide.
- 651. Set of 6 Vic. mahogany fanback Dining Chairs with taper turned front legs and "regency" stripe upholstery
- 652. 19thC. mahogany Kneehole Desk
- 653. Vic. occasional Table on taper turned legs.
- 654. Late Vic. marquetry inlaid kidney shape occasional Table with undershelf.
- 655. Compact 17thC. oak 3 panel Coffin
- 656. Early Geo. elm gateback Rocking Chair
- 657. Set of 6 Vic. style balloonback Dining Chairs.
- 658. 19thC. scrubtop Kitchen Table
- 659. 19thC. pine Sidetable
- 660. Late Vic. ebonised occasional Table with undershelf
- 661. Geo. III mahogany Pembroke Table
- 662. Barleytwist oak occasional Table
- 663. 19thC. lathback Grandfather Chair
- 664. 19thC 2 seater Sofa
- 665. 19thC. Rocking Horse (AF)
- 666. Oak windout Dining Table on square taper legs 42" x 56" max.
- 667. Vic. Chesterfield Sofa
- 668. Oak 4 drawer Chest
- 669. 19thC. lathback Rocking Chair (AF)
- 670. Pine single drawer Sidetable with fall flap to the rear.
- 671. Thonet bentwood Carver Chair
- 672. Edw. mahogany Record Cabinet
- 673. Art Nouveau marbletop Washstand with tiled back.

- 674. Edw. windout Dining Table on turned legs with extra leaf 42" x 56" max (AF)
- 675. Edw. string inlaid mahogany Jardiniere Stand
- 676. Vic. 5 drawer Chest
- 677. Geo. mahogany demi-lune Sidetable on square taper legs.
- 678. Vic. painted pine traytop Chest of 2 long and 2 short drawers, turned handles and feet.
- 679. Oak single drawer Sidetable.
- 680. 19thC. rush seated mahogany Chair (AF)
- 681. 19thC. elm spindleback Chair (AF)
- 682. Heavily carved Geo. oak Welsh Dresser (illustrated)

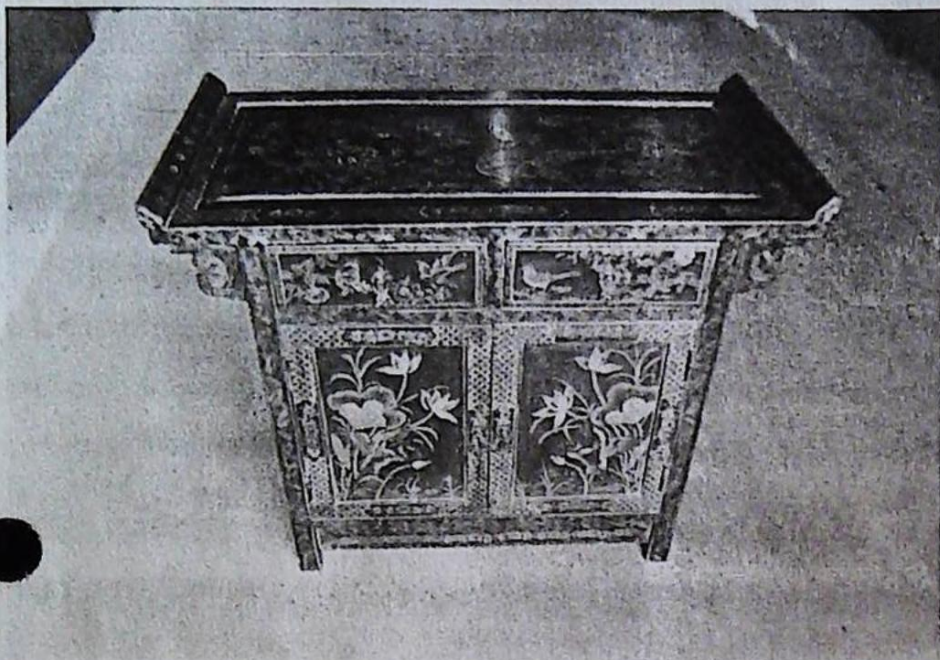


- 683. Vic. barleytwist rosewood prie-dieu Chair
- 684. 19thC. flamed mahogany Sofa Table on pedestal quatrefoil base (illustrated)





685. Vic. walnut Writing Table with 2 drawers either side of the slope top joined by a gallery, 2 drawers to the frieze, turned handles and feet.
686. Fine 19thC. black lacquer Cabinet painted with butterflies, cockerel, water lilies, peonies, etc. (illustrated)

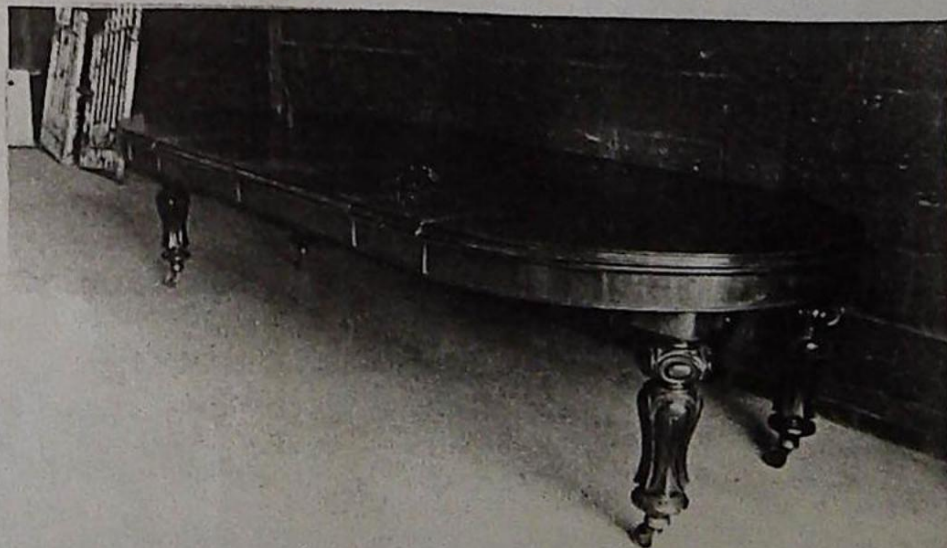


705. Mahogany Wardrobe (AF)
706. D-shape walnut Display Cabinet
707. Geo. style astragal glazed bow-front Display Cabinet with ball & claw feet, the top decorated with gadrooned carving and blind fretwork
708. Vic. mahogany Chest on Chest with turned handles and feet 45" wide.
709. Edw. marquetry inlaid and crossbanded mahogany Wardrobe and Dressing Chest
710. Late Vic. Dressing Chest
711. Vic. bleached mahogany Chest of 3 long and 2 short drawers, with turned handles and feet.
712. Vic. flamed mahogany Chest of 3 long and 2 short drawers, with turned handles and feet.
713. Edw. satinwood dressing Chest (AF)
714. Late Vic. burr walnut cased Upright Piano by Challen & Son, London
715. Barleytwist oak 3 piece Bedroom Suite
716. Pr. early 19thC wrought iron gates with pineapple finials each 36" wide.
717. Pr. gilt framed oval Wall Mirrors
718. Carved oak framed Wall Mirror
719. Vic. mahogany framed oval Wall Mirror
720. Art Nouveau carved walnut Bedstead 54" wide
721. Vic. brass and iron Bedstead 54" wide
722. Edw. mahogany Overmantel mirror

687. Edw. carved walnut mirrorback Dresser
688. Edw. marquetry inlaid single Wardrobe with drawer base.
689. Vic. gilt framed Overmantel Mirror.
690. Vic. walnut Dresser Base
691. Vic. mahogany Chest of 3 long and 2 short drawers, turned handles and feet.
692. Edw. Dressing Chest
693. Vic. painted pine Bed - 50" wide.
694. Radiogram
695. Fine late Vic. marquetry inlaid Triple Wardrobe and Dressing Chest
696. Compact mahogany Wardrobe
697. Geo. oak Chest of 3 long and 2 short drawers with turned handles, bracket feet and shaped apron.
698. Vic. mahogany mirrorback Chiffonier 41" wide.
699. Beaded oak double Wardrobe with mirror door and drawer base.
700. Edw. inlaid mahogany Wardrobe with mirror door and drawer base.
701. An impressive Vic. mahogany wind-out Dining Table with D-ends, 4 extra leaves, and quality tulip-carved legs with brass castors 54" x 122" max (illustrated).
702. Geo. style mahogany astragal glazed Bookcase Top Dresser.
703. Ornate serpentine fronted Vic. pine Chiffonier/Dresser
704. 19thC. pine Platerack Top Dresser with 2 door and 2 drawer cupboard base 64" wide.

#### LATE ENTRIES

- 101A. Armand Marseille bisque headed Doll with closing eyes and articulated body 29" tall.
- 101B. - ditto - 19" tall.
- 101C. Simon & Halbig bisque headed Doll with closing eyes and articulated body. 23" tall.





## F O R T H C O M I N G   A U C T I O N   S A L E S

- 13th December 1989 - Household furniture, Bric-a-Brac
- 3rd January 1990 - Household furniture, Bric-a-Brac
- 17th January 1990 - Catalogued Sale of Antique Furniture,  
Silver, Ceramics, etc.  
Entries for the catalogue close  
Monday, 8th January
- 31st January 1990 - Household Furniture, Bric-a-Brac
- 14th February 1990 - Household Furniture, Bric-a-Brac
- 28th February 1990 - Catalogued Sale of Antique Furniture,  
Silver, Ceramics, etc.  
Entries for the catalogue close  
Monday, 20th February 1990.
- 14th March 1990 - Household furniture, Bric-a-Brac
- 28th March 1990 - Household furniture, Bric-a-Brac
- 11th April 1990 - Catalogued Sale of Antique Furniture,  
Silver, Ceramics, etc.  
Entries for the catalogue close  
Monday 2nd April 1990

Please note that the above sale dates for 1990 differ slightly to those stated in previous information sheets. All sales will continue to be held on Wednesdays. We apologise for any inconvenience caused.