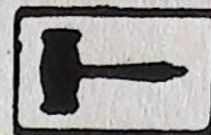




# GOLDINGS



**A PROPERTY LEADS SERVICE**

45 HIGH STREET, GRANTHAM, LINCOLNSHIRE NG31 6NE. TEL: 0476 590211. FAX: 0476 590998.

Upon instructions from the Estate of W.R. Pollard (Dec'd),  
Executors of S Batty, Local Solicitors, Lincolnshire Police and others

CATALOGUE OF AUCTION SALE  
OF

## Antiques AND COLLECTORS ITEMS



**WEDNESDAY, 24TH JANUARY 1990**

**COMMENCING 10.00 A.M.**

**AT THE SALEROOM, OLD WHARF ROAD, GRANTHAM, Lincs. NG31 7AA**

**VIEWING: DAY PRIOR TO SALE - 1.00PM TO 6.30PM**  
**SALEDAY - 9.00AM TO 10.00AM**

**All enquiries please ring the Saleroom (0476) 65118**

MISREPRESENTATION ACT 1967 Property Leads (UK) Ltd for itself and for the vendors or lessors of this property whose agents they are give notice that the particulars are a general outline only for the guidance of intending purchasers or lessees, and do not constitute an offer or contract. All descriptions and any other details are given without responsibility and any intending purchasers or tenants should not rely on them as statements or representations of fact but must satisfy themselves by inspection or otherwise as to the correctness of them. No employee of Property Leads (UK) Ltd has any authority to make or give any representation or warranty whatever in relation to this property.

**SURVEYORS · AUCTIONEERS · VALUERS · ESTATE AGENTS**



## CONDITIONS OF SALE

1. The highest bidder shall be the buyer. The Auctioneers reserve the right of regulating the biddings; of rejecting any bid; and of bidding for, withdrawing, consolidating, dividing or altering the order of lots.
2. The purchase money for each lot with the usual commission of 5% plus VAT at 15% shall be paid at the fall of the hammer (if required). Each lot at the fall of the hammer shall be at the sole risk and expense of the buyer, and shall be paid for and removed immediately after the conclusion of the sale, but no lot shall become the property of the buyer, or be removable until paid for, and if taken away in contravention of these conditions without an order for removal signed by the Auctioneers, they shall have power to seize the same by their servants or agents, or otherwise, or the Auctioneers may recover either the lot sold or the price thereof (at their option) by action at law.
3. No contra account of any description whatever will be allowed to the buyer as a set off, and payment for each Lot shall be made to the Auctioneers or their clerk only, and a buyer paying by cheque must give satisfactory references (if required).
4. For all purposes of this sale the Clerk of the Auctioneers shall be deemed to be the Agent of both seller and buyer.
5. A bidder shall not be allowed to retract his bidding, and he shall give up his full name and address if required. The Auctioneers will not recognise the transfer of any lot from one buyer to another, nor make any alteration in the sale book in respect thereof.
6. The Auctioneers are acting only as Agents, and have no personal knowledge as to the correctness or otherwise of the description of the Property offered for sale, and give no personal warranty as to the health, condition, quality, genuineness, authenticity, or otherwise; each lot is therefore sold with all defects and errors of description, if any. The purchaser is deemed to have inspected the lot he buys, and if he buys without previous inspection he shall be deemed to have done so at his own risk.
7. If any buyer neglect or refuse to comply with the above conditions or any of them, his deposit money (if any) shall be forfeited, and the lot uncleared may, at the option of the Auctioneers, be resold without notice by public auction or private contract, and any loss occasioned by such re-sale together with all expenses attendant thereon, or arising under these conditions shall be paid for by the defaulter at this sale and be recoverable as and for liquidated damages. This condition is however without prejudice to the right of the Auctioneers to enforce the contract made at this sale if they think fit.
8. The Auctioneers shall be the sole Arbitrators in all matters of dispute relating to these conditions, both as between the seller and the buyer and between the several bidders and buyers and their determination on all matters shall be final and binding on all parties concerned.

---

## PURCHASER SLIP

To avoid mistakes and to save time each Purchaser will oblige GOLDINGS by filling in this slip on making their first purchase and then handing it to the Auctioneers Clerk

NAME: ..... FIRST LOT NO: .....

ADDRESS: .....  
.....  
.....



## NOTES

1. PAYMENT: Must be made in full immediately after the Auction.  
The following methods of payment are acceptable.
  - a) Cash
  - b) Bankers Draft
  - c) Building Society Cheque
  - d) Cheques with a valid card for accounts up to limit stated on that card. For accounts over that limit the Auctioneers reserve the right to retain the goods until such time as that cheque has been cleared.
2. Removal of Purchases: Goods purchased must be collected as soon as they are paid for. Collections can be made either saleday or in the next two working days following the sale. If goods are not collected on these days the Auctioneers reserve the right to charge £1.00 per lot per week commencing Monday following the Auction.
3. If you require your purchases delivering a representative of **LOWES REMOVALS** will be available to assist.
4. Buyers Premium/Purchasers Commission: of 5% + VAT is payable on all lots.
5. (AF): These letters following catalogue description indicate that the lot has some damage. Meaning "As Found", the term is used at the Auctioneers discretion and its absence does not mean that the lot is perfect. All lots are **SOLD AS SEEN**.
6. Commissions to Purchase: If you are unable to attend this or any of our forthcoming sales we will be pleased to bid on your behalf. We always attempt to purchase at the lowest possible bid. All bids must be in writing and handed to the office on an official bid form. It remains the responsibility of the prospective purchaser to contact Messrs GOLDINGS to confirm whether their bids have been successful.
7. Refreshments will be available on Saleday.  
No Smoking is allowed in the main Saleroom..



1. Copper Incubator on stand.
2. Large box of Safety Matches
3. Art Deco chrome plated Table Lamp
4. Early Royal Barlock Typewriter
5. Geo. oak Shoe Box
6. Brass Table Lamp and Cobblers Last
7. Mahogany Stationery Rack
8. Mahogany Money Box and Pine Tea Caddy
9. Split Cane Fishing Rod
10. Sheffield Plate Oval Tray with pierced gallery (AF)
11. Beaded Silver plated oval Meat Dish
12. Silver plated Ice Pail
13. Silver plated Tazza
14. Silver plated Flagon
15. Silver plated 2 handled Fish Serving Tray
16. Silver plated galleried Dish with glass liner
17. Circular silver plated pierced Tray
18. Circular silver plated Tray
19. Circular revolving silver plated Cake Stand
20. Silver plated Kedgerie Server
21. Silver plated Kedgerie Server
22. Silver plated Kedgerie Server
23. Silver plated Bowl
24. Delfini Accordion (AF)
25. The Viceroy Halian Model Accordion
26. Treen Tablelamp
27. Floral painted papier maché circular Tray
28. Kodak folding Camera
29. Vic. walnut brassbound Writing Slope
30. Indian brass Inkstand
31. WW1 bullet shape Moneybox, First Aid Box and further Moneybox
32. Cigarette Purse and Evening Bag
33. Plated 2 tier Cakestand
34. Rococo Britannia metal Epergné garniture
35. Brass letter rack, thermometer, cribbage boards, etc.
36. Breadboards, cream maker, butter pats, etc.
37. 2 Soda Syphons and 3 Glass Jars
38. Leather suitcase, old RAC Wall Map and 2 further Maps
39. Gramophone
40. Linen and Lace
41. Bowler Hat
42. Voightlander Brilliant Camera (AF) and Filters
43. 2 bone Napkin Rings and 2 Clothes Brushes
44. Art Nouveau copper Coal Box

45. Oak cased Singer Sewing Machine
46. Vic. leather Gladstone Bag
47. Vic. Brass and Oak Shoe Box
48. Pewter Tankard, Tablelamp, Can Opener, Reel and Breadboard
49. Wicker Basket and quantity Indian Brassware
50. Indian brass Smokers Stand
51. Pieces of Lace, etc.
52. Vic. brass framed Mirror Firescreen
53. 4 old Car Bar Badges
54. Split Cane Fishing Rod
55. Pr mother of pearl inlaid Lacquer Panels 18" x 11"
56. Red lacquer Photograph Frame
57. Box of old Wooden Puppets
58. Vic. copper Coal Helmet
59. Vic. copper Coal Kettle
60. Vic. brass Oil Lamp with glass reservoir
61. 6 bottle Cruet on silver plated Stand (AF)
62. Vic. mahogany Writing Slope
63. Oblong swing handled silver plated bon-bon Dish
64. Candlesnuffer/Trimmer and 2 Brass Bowls
65. Mahogany cased brass Drawing Instruments (AF)
66. Assorted silver plated ware
67. Repro. brass Coal Helmet
68. 2 brass Salvers and brass Jardinière
69. 9 Biggles Books
70. Geo. copper Chocolate Pot -
71. Geo. brass Pepper Pot
72. 2 - 19th cent. copper Sieves
73. 3 pieces Copperware
74. Pr. brass Vases and 3 lacquer Boxes
75. Bellows, Horse Brasses, etc.
76. 2 silver plated Tankards
77. Cased set of 12 silver plated Teaspoons
78. Small Coffin shaped Fairground Range
79. 2 Vic. calico Nightdresses
80. Lace and Ribbon (2 bags)
81. 2 Embroidered Cushions
82. Bone handled items, etc.
83. 2 Fans, Studs and Buttons
84. Crocodileskin effect Writing Case.
85. Good quality Fur Coat
86. Embossed Circular plaque
87. 1920's spelter group of two stags on an onyx and black marble base in the Art Deco manner - signed Zimovain (illustrated)
88. ASC Officers Tunic and Trousers
89. Leather Suitcase



90. 2 Leather Music Bags
91. Mahogany Cash Till
92. Vic. brass Oil Lamp with milk glass shade (AF)

The purchasers of the following 4 lots must produce a firearms/shotgun certificate before they are taken from the premises.

93. 12 bore Side by Side Shotgun
94. 4.10 Rifle (AF)
95. 12 bore single barrel Shotgun (AF)
96. C.120 Eley 12 bore Shot 6 Cartridges
97. Decoy Pigeon
98. Brass Chest Lock
99. Articulated mounted Lead Soldier
100. 8 Lead Grenadier Guardsmen
101. 5 Mounted Lead Soldiers (AF)
102. Lead Piper Figure
103. Profusely carved Ivory Parasol Handle
104. The Chemistry of Pottery by Simeon Shaw
105. 1898 Infants Magazine
106. Vic. Builders Catalogue
107. Moneybox, Table Quoits, etc.
108. Rowntrees Enamel Sign (AF)
109. Sundries
110. Tools
111. Miniature Vices, etc.
112. Qty. obstetricians instruments
- 113.
- 114.
- 115.
- 116.
- 117.
- 118.
- 119.

## **SILVER, JEWELLERY, ETC.**

120. Cufflinks, studs, etc.
121. Spare lot
122. " "
123. " "
124. 9ct. gold 5 bar gate Bracelet (AF)
125. 18ct. gold solitaire Ring
126. 9ct gold 9 stone Dress Ring
127. 9ct gold Ring (AF)
128. 9ct. gold plated silver 3 stone Dress Ring
129. 9ct. gold heart shape garnet & zirconia ring
130. 9ct. gold Wedding Band
131. 9ct. rose gold seven stone garnet half hoop ring
132. 9ct. rose gold fancy dress ring with garnets and cult. pearls.
133. 9ct. rose gold Gipsy ring set rubies
134. 9ct. rose gold large cluster ring set mauve stone & pearls

135. 9ct rose gold cluster Ring, rubies/emeralds/cult. pearls.
136. 9ct rose gold Fleur-de-lys ring garnet/spinel
137. 9ct rose gold collet set twist Ring with 2 blue stones
138. 9ct. rose gold Signet Ring set sapphires
139. 9ct. rose gold black onyx Pendant on 16" 9ct. trace chain.
140. Platinum ring set 2 diamonds & square sapphire.
141. 3 watches
142. Rotary quartz ladies Wristwatch
143. 9ct gold and palladian single stone dress Ring
144. 9ct. gold Cameo Ring
145. 22ct. gold Wedding Ring
146. 18ct. gold single stone dress Ring
147. Gold coloured Art Deco Ring
148. 9ct. gold single stone ring
149. 9ct gold signet ring
150. 18ct. white gold ring with single diamond
151. 9ct. gold 16" Collarette Necklace
152. 9ct. gold mounted 1½" Cameo Broach
153. 9ct. gold oval Locket
154. 9ct. gold oval Locket and Chain
155. 1977 Silver Ingot and Chain
156. Silver 3d. ring and silver charm bracelet
157. Leaf engraved silver oval band Bracelet with safety chain
158. 2 pearl effect necklaces
159. Triple pearl effect necklaces with 3 clasps
160. Qty. Costume Jewellery in case.
161. Carved Ivory Parasol Handle
162. Spare lot
163. 6 silver Mappin & Webb bone handled Fish Knives with 5 matching Forks - Sheffield Assay
164. Silver Photograph Frame - London 1895
165. Fiddle pattern Fork & Spoon London 1877
166. 1797 - 2d.
167. 1804 Irish 6 Shilling
168. 1927 Florin
169. 1797 1d. and 2d. Coins (AF)
170. Qty. Banknotes
171. Chinese hand painted porcelain snuff bottle - ditto - with gold lacquer
172. Approx. 1ct. of genuine emeralds, each stone correctly cut and polished (faceted and not cabachon)
173. A similar lot
174. Signed Japanese hardwood netsuke a well detailed study of a cockerel
175. Signed Japanese hardwood netsuke study of a crane and a fish forming themselves into a ring.



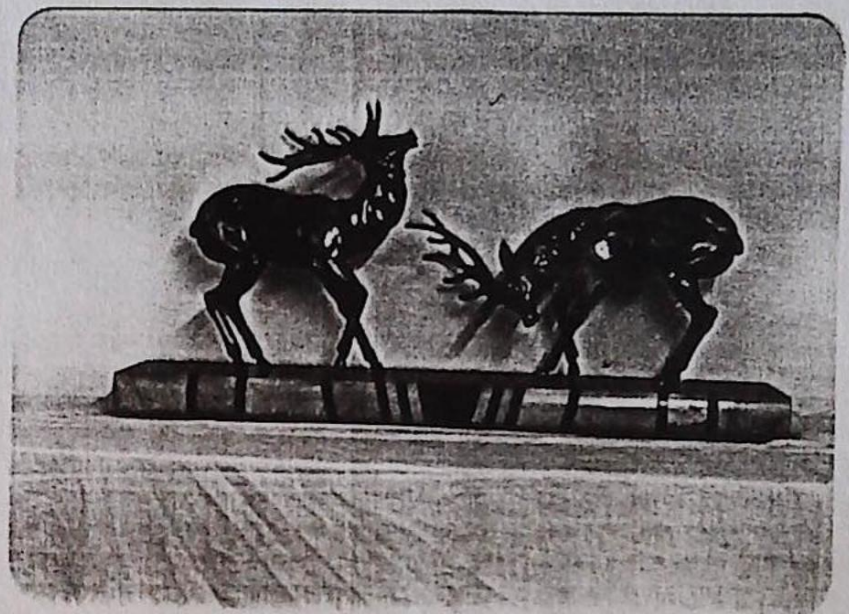
- 176. Signed Japanese ivory netsuke a study of a man carrying a lantern
- 177. Finely detailed Japanese ivory netsuke study of a Geisha
- 178. Good quality Japanese ivory netsuke a study of an eagle carrying off a baby monkey
- 179. Well detailed signed ivory netsuke a rare study of a double headed dragon
- 180. 9ct. gold St. Christopher pendant

## CLOCKS

- 181. 8 day oak cased Wall Clock
- 182. 30 hour slate Mantel Clock
- 183. Art Nouveau glass columnar Mantel Clock
- 184. American rosewood cased 8 day Mantel Clock
- 185. Mid Vic. figural Mantel Clock with Japy Frere 8 day movement under a glass dome (illustrated)
- 186. Spare lots
- 187.
- 188.
- 189.
- 190.

## TOYS

- 191. 25" tall golden plush Teddy Bear
- 192. 12" tall golden plush Teddy Bear with pointed nose, long arms and feet
- 193. 29" tall Teddy Bear (AF)



LOT 87



195. 16" tall Teddy Bear
196. 11" tall Teddy Bear
197. Cork filled Teddy Bear (AF) 12" tall
198. 19th cent. German wooden painted Noah's Ark on wheels with figures
199. Safari Land Rover Pedal Car
200. Tri-ang Circus Van 23" long

#### GLASS AND CERAMICS

201. Vic. tulip shape clear glass Celery Vase
202. Cut glass Water Jug
203. Vic. gilt decorated clear glass Lustre
204. 2 pressed glass Fruit Bowls
205. Vic. milk glass Rolling Pin
206. Floral transfer printed Chamber Pot
207. Paragon 20 piece Tea Service (1 cup missing)
208. Tuscan hand painted Cup, Saucer and Plate Trio
209. Sutherland Cup, Saucer and Plate Trio
210. Davenport hand painted Cup and Saucer
211. Salisbury & New Chelsea Teaware
212. 15 piece Coffee Set
213. 3 graduated Lancaster & Son transfer printed Jugs
214. Vic. Crown Derby gilt decorated Cup and Saucer (AF)
215. 3 New Hall (1930's) Soup Bowl and Saucers
216. Green floral Maling Vase
217. 2 Coronet Jugs
218. Cauldon transfer printed Plate
219. Assorted Chinaware
220. Shelley Freesia pattern Serving Plate
221. Geo. glass Wine Funnel
222. Belleek Cup and Saucer
223. Gilt decorated Cheese Dish and Biscuit Barrel
224. Soho Pottery Wall Pocket
225. Gilt decorated Staffs. Wall Plaque
226. 2 pieces Sowerby glass
227. Old Foley Breakfast Set
228. 5 pieces Glassware
229. Part Tea Service (AF)
230. Ironstone Cup, Saucer and Plate Trio (AF)
231. Assorted Chinaware
232. 3 Jugs
233. Celtic Beehive 3 piece Teaset with Chrome Covers (AF)
234. 26 peice 1930's Susie Cooper part Dinner Service
235. 10 piece 1930's Susie Cooper part Tea Service

236. Vic. floral decorated Stilton Cheese Dish
237. Edw. green ground rosebud pattern 7 piece Chamber Set
238. Continental Vic. Cheese Dish
239. Gilt decorated Vic. 9 piece Dressing Table Set (AF)
240. Vic. floral transfer printed Jardinière
241. Vic. transfer printed Pail
242. Vic. Meatplate
243. 39 piece Tea Service (AF)
244. Pr. Vic. milk glass baluster Vases (AF)
245. Set of 6 Vic. faceted Port Glasses
246. 2 Staffs Teapots
247. Vic. floral Shaving Mug
248. Assorted glass and chinaware
249. Pr 1932 blue pottery Baluster Vases commemorating Grantham Co-op's Diamond Jubilee - 5" tall
250. Glass paper weight
251. Glass paper weight
252. Royal Doulton Fruit Bowl (AF)
253. Asiatic Pheasant Meatplate
254. Commode Pot, etc.
255. Vic. pink floral Jug & Bowl Set (AF)
256. Wedgwood 'Woodland' pattern oval Meatplate
257. Wedgwood 'Avon Cottage' pattern oval Meatplate
258. 2 Wedgwood 'Lochs of Scotland' Bowls
259. 21 piece floral Tea Service
260. 19th Cent. Staffs. Japanese tree pattern 2 handled Loving Cup
261. Royal Doulton character Jug 'Porthos'
262. Fluted 40 piece floral Tea Service
263. 5 Cups and 6 Saucers gilt decorated in the Rockingham style.
264. Set 4 Hammersley Coffee Cans and Saucers
- CLARICE CLIFF:
265. Celtic Harvest 3 footed Fruitbowl with chrome plated rim 10" dia.
266. Celtic Harvest Preserve Jar with cover
267. Wilkinson Ltd oblong Posy Bowl 11" long
268. Bizarre black, yellow, red and orange banded bowl 5.5" dia.
269. Royal Staffordshire Honeyglaze Crocus Pattern Fruitbowl 8" dia.
270. Unusual Wilkinson Ltd raised shallow Fruitbowl decorated with passionfruits and brown forage in the foreground 10" dia.
271. Pr. circular Tureens with green and gilt pinstripe decoration (no covers)
272. Royal Staffordshire circular Tureen with cover and 2 meatplates with gold and red pinstripe decoration
273. Tuscan Sandwich Set
274. 15 price Coffee Set



## ART

275. Crested Cenotaph Model (B. Empire Exhibition 1924)
276. 6 pieces Crestedware (AF)
277. Langley Coffee Pot and Owl Figure
278. Small Geo. Glass Funel
279. Chapman part Tea Service (AF)
280. Art Deco Style part Tea Service
301. Gilt framed Vic. oval Needlework Picture on silk
302. Pr of Etchings 'The Houses of Parliament' and 'The Tower Bridge' by B Law
303. Etching of 'Westminster Abbey' by Adrian Hill and further print
304. 2 Maple Photograph Frames
305. Painting of Bluetits on a milk glass panel (AF)
306. Framed print - 'An Unwilling Playmate'
307. Small watercolour garden scene signed M H Inglis
308. Small gilt framed oil painting of a cottage signed E M Wildman
309. 2 framed British School prints
310. Framed Map of Essex
311. Gilt framed oil on board portrait of a Victorian Lady
312. Framed watercolour of the Nene Valley Signed S.W. '80 8" x 11"
313. Framed engraving - The Lady Constance
314. Unsigned watercolour Landscape
315. Landscape oil on board signed W Collins
316. Small gilt framed watercolour coastal scene with figures and sailing boats
317. 2 Portraits
318. Religious Print
319. Gilt framed print of a 17th Cent. Lady
320. Gilt framed Watercolour of the Swiss Alps signed C Ward 10" x 13"
321. Heavy gilt framed print of Classical Figures
322. Heavy gilt framed print of a young boy
323. Watercolour of a pair of hands signed Magritto 15" x 11"
324. Oak framed print - a 19th Cent Interior Scene
325. Oak framed oil on canvas - Harvest Scene signed W H Woodall 16" x 20"
326. Pr. oak framed Elmer Keene Prints
327. 7 framed Photographs of the South African Campaign
328. 3 - ditto -
329. Qty. oak framed Photographs
330. Pr. Prints



# CUNARD EPHEMERA

- 341. 'Eight Decades of Progress' - a Cunard History and Development Pamphlet given at the British Empire Exhibition, Wembley 1924
- 342. 2 old Photographs - the obverse and reverse of the Certificate of British Registry for the 1907 Mauretania
- 343. 15 sheet illustrated 'Souvenir of the Cunard Liner Berengaria' in sealed presentation folder
- 344. 1929 Cunard Christmas Number Illustrated Brochure
- 345. RMS Aquitania Brochure
- 346. Cunard White Star 1st Class Brochure and Pamphlet 'The Giant Cunarders'
- 347. RMS Queen Mary Portfolio including the guide to accommodation, radio souvenir, menus, etc.
- 348. Queen Mary - A Triumph of British Ship-building - the Cunard Line Story of Ship
- 349. Queen Mary Inaugural Coasting Cruise Menu, Itinerary, Officer and Passenger List
- 350. RMS Queen Elizabeth Portfolio including Guide to Accommodation, Menus, Passenger List, etc.
- 351. RMS Mauretania Launching Souvenir, Sectional Diagram, etc.
- 352. Cruise News, Ocean Times, etc.
- 353. RMS Coronica Portfolio including Inaugural Cruise Menus, Passenger List, Programme and Advertising Brochure
- 354. 3 pieces of carved wood from the Mauretania.

## FURNITURE

- 361. Set of 10 Dining chairs (2 carvers) in the Chippendale Style
- 362. Geo. oak 4 panel-back Settle with cabriole front legs
- 363. Shaped mahogany occasional table with undershelf.
- 364. Pr. 19th Cent. spindleback Kitchen Chairs
- 365. Pr. 19th Cent. lathback Kitchen Chairs
- 366. Parquetry topped Occasional Table
- 367. Geo. oak Hall Chair with carved splat-back
- 368. Vic. lathback Kitchen Chair
- 369. 19th Cent. mahogany Breakfast Table 4'4 x 4' on pedestal base

- 370. Pr. Edw. Dining Chairs
- 371. Late Vic. mahogany Occasional Table with 3 drawers and square taper legs 1'10 x 1'6
- 372. Set of 4 Bentwood Chairs
- 373. 6 button leather Vic. balloon back Dining Chairs
- 374. Barleytwist oak Drawleaf Dining Table
- 375. Nest of 3 Tables
- 376. Heavy oak Sideboard 5' wide
- 377. Painted pine 2 door Cupboard
- 378. Rosewood Display Cabinet
- 379. Small walnut Wall Cabinet
- 380. Vic. mahogany Pot Cupboard
- 381. Late Vic. mahogany Chiffonier
- 382. Oak Towel Rail
- 383. Painted towel Rail
- 384. Vic. 9 peice Salon Suite
- 385. Heavy 19th Cent. carved oak Coffe
- 386. Edw. Child's Chair with pierced vase splat
- 387. Barleytwist oak Firescreen
- 388. Painted pine 2 door Cupboard
- 389. Set of 6 Vic. style balloon back Dining Chairs
- 390. Barleytwist oak Occasional Table
- 391. Wrought iron Standard Lamp.
- 392. Fine Edwardian marquetry rosewood Salon Suite (illustrated)
- 393. Oak Hall Table
- 394. Art Nouveau marbletop Washstand
- 395. Wm IV mahogany Breakfast Table on turned pedestal, 3 splay legs with brass toes and castors
- 396. Mahogany Occasional Table
- 397. Geo. oak Chest of 3 graduated drawers, shaped frieze and bracket feet 36" wide
- 398. Vic. Lincolnshire Dresser
- 399. Oak Coffee Table
- 400. Geo. mahogany D shape folding Cardtable with square taper legs
- 401. Set of 6 late Vic. walnut Dining Chjairs with pierced vase splat
- 402. Vic. drop-arm Chesterfield Sofa 5'6 wide x 2'7 deep



403. Barleytwist oak Stick Stand
404. Jardinière Stand
405. Vic. mahogany bowfront Chest of 3 long and 2 short drawers, turned handles and bracket feet
406. Vic. mahogany Chiffonier Base
407. Vic. mahogany D Shape Side Table on taper turned legs
408. Heavy upholstered Armchair with cabriole front legs
409. Geo. style oak Bureau
410. Satinwood marbletop Washstand
411. Geo. oak Gateleg Table with draw to frieze 3'8 x 4'10
412. Pr. Queen Anne style Dining Chairs
413. 19th Cent. spindleback Grandfather Chair (AF)
414. 19th Cent. elm Kitchen Chair
415. Geo. III mahogany Carver Chair with pierced vase splat in the Hepplewhite manner
416. Circular Occasional Table
417. Satinwood Washstand
418. Pr. rush seated elm gateback Chairs
419. Geo. mahogany Pot Cupboard
420. Vic. mahogany Jardinière Stand
421. Set of 4 Barleytwist oak Dining Chairs
422. Pink Lloyd Loom Chair with brass feet
423. Modern oak Bureau
424. Vic. towel rail
425. Geo mahogany Pembroke Table
426. Late 19th Cent. mahogany Corner Cabinet inlaid with oyster shell
427. Edw. mahogany Display Cabinet on cabriole legs 3'9 x wide x 7' tall
428. Early 20th Cent. oak Roll Top Desk
429. Vic. mahogany Chest of 4 long and 2 short drawers, turned handles and splay feet 3'8 wide.
430. Pr. mahogany Smokers Stands
431. Red lacquer 4 fold firescreen
432. Rosewood framed overmantel Mirror
433. Small adjustable Screen (AF)
434. Gilt porthole Mirror with eagle finial
435. Mahogany overmantel mirror
436. Girandole (AF)
437. Dome top Trunk
438. Oak overmantel Mirror
439. Red ground Eastern Carpet with 3 blue centre medallions 3'9 x 8'10
440. Mustard ground Eastern Runner 2'9 x 8'10
441. Large Carpet 9' x 12' (AF)
442. 18' x 9' Axminster Carpet
443. 10'6 x 13' 6 Axminster Carpet
- 444.
445. Geo. oak Chest of 3 long and 2 short Drawers, brass handles and splay feet 3'6 wide
446. Art nouveau oak Wardrobe and Dressing Table
447. Oak triple Wardrobe, Dressing Table and Chest
448. Vic. mahogany 4 drawer Scotch Chest
449. Breakfront oak Mirror Back Dresser 4' wide
450. Geo. mahogany Chest of 3 long and 2 short drawers on bracket feet 3'4 wide
451. Lacquered folding 2 tier stand
452. Heavy oak Mirror Back Dresser 5' wide
453. Mahogany double Bedstead
454. Oak " "
455. Vic. brass and iron single Bedstead (AF)
456. 2 Vic. iron single beds (AF)
457. Late Vic. walnut Dressing Chest and marbletop washstand
458. Oak single Wardrobe
459. Edw. walnut double Wardrobe and Dressing Chest
460. Large Wingback Armchair
461. Vic. mahogany Library Table on taper turned legs and 2 drawers to either side 4' x 8'
462. Oak Library Table with single D end (AF)
463. Vic. mahogany oval Loo Table (AF)
464. Fine Edwards & Roberts mahogany Bedroom Suite comprising Triple Wardrobe Compactum, Dressing Table and marbletop Washstand.
465. Vic. walnut Mirror back Dresser 4'6 wide
466. Vic. painted pine Wardrobe
467. Black lacquer overmantel Mirror
468. Vic. satin birch Chest of 3 long and 2 short Drawers
469. Vic. walnut Dressing Chest/Washstand Unit
470. Oak freestanding Bookshelves
471. Vic. carved oak Hall Chair
472. Vic. terracotta pedestal Garden Urn
473. Painted late 19th Cent. Fauteuil
474. Geo. style Compact oak Bureau with fall flap, 4 graduated handles, brass handles and bracket feet 26" wide
475. Vic. mahogany spoonback Nursing chair with cabriole front legs, upholstered in pink dralon



- 476. Vic. pine Gothic arch top door and frame c.6'6 tall
- 477. 19th C. oak arch top panel door and frame c.5'6 tall
- 478. Goddin wood burning stove
- 479. Unusual late Vic. carved and painted 3 branch Standard Lamp
- 480. Art Nouveau copper 3 branch Chandelier
- 481. Geo. elm Windsor Chair with H frame stretcher
- 482. Pr. late 19th Cent. oak Doors 9'2 tall x 4'8 wide
- 483. 19th Cent. carved gilt oak Torcheré Stand
- 484. 19th Cent. ceramic Jardinière Pedestal figured with 3 Griffins
- 485. Geo. oak Child's Rocking Chair
- 486. Pr. stoneware Classical Fluted Garden Urns on pedestals 4'6 tall
- 487. Geo. Windsor Chair
- 488. Vic. carved oak Corner Cupboard on stand
- 489. Vic. mahogany pedestal Kneehole Writing Desk
- 490. Late Vic. button-back Gents Armchair
- 491. Large Vic. gilt overmantel Mirror
- 492. Ornate gilt framed Wall Mirror
- 493. Regency ropetwist leg Piano Stool
- 494. Vic. mahogany bun footed stool
- 495. Harlequin set of 6 Vic. Dining Chairs
- 496. Vic. gilt Overmantel Mirror
- 497. Oval mahogany framed Wall Mirror
- 498. Adam style Wall Mirror
- 499. Circular gilt Mirror
- 500. Vic. Mahogany pull out Dining Table on heavy turned legs and with 4 extra leaves 10' x 4'2 max.



# 1990 AUCTIONS CALENDAR

(JANUARY TO JULY)

- 10th January - Household Furniture, Bric-a-Brac
- 12th January - Commercial Catering Equipment
- 24th January - Catalogued Sale of Antique Furniture, Silver, Ceramics, Pictures, etc.  
Entries for the catalogue close Monday 15th January.
- 29th January - Surplus Office and Shop Equipment
- 7th February - Household Furniture, Bric-a-Brac.
- 21st February - Household Furniture, Bric-a-Brac.
- 7th March - Catalogued Sale of Antique Furniture, Silver, Ceramics, Pictures, etc.  
Entries for the catalogue close Monday 26th February.
- 21st March - Household Furniture, Bric-a-Brac.
- 4th April - Household Furniture, Bric-a-Brac.
- 18th April - Catalogued Sale of Antique Furniture, Silver, Ceramics, Pictures, etc.  
Entries for the catalogue close Monday 9th April
- 2nd May - Household Furniture, Bric-a-Brac.
- 16th May - Household Furniture, Bric-a-Brac.
- 30th May - Catalogued Sale of Antique Furniture, Silver, Ceramics, Pictures, etc.  
Entries for the catalogue close Monday 18th May.
- 13th June - Household Furniture, Bric-a-Brac.
- 27th June - Household Furniture, Bric-a-Brac.
- 11th July - Catalogued Sale of Antique Furniture, Silver, Ceramics, Pictures, etc.  
Entries for the catalogue close Monday 2nd July.
- 25th July - Household Furniture, Bric-a-Brac.