



Established 1900

— GOLDINGS —

Auction Rooms

Old Wharf Road, Grantham, NG31 7AA

Telephone: 0476 · 65118 Fax: 0476 · 590998

Head Office: Goldings, 45 High Street, Grantham, NG31 6NE · Tel: (0476) 590211

Auctioneers

Valuers

Surveyors

Estate Agents

AUCTION SALE CATALOGUE OF

Antique

FURNITURE & EFFECTS

ON

Saturday 23rd March 1991

Commencing at 10.00 am



Viewing: FRIDAY 22nd MARCH 1991 2 pm to 7.30 pm
AND SALEDAY 9 am to 10 am

Terms: CASH - CHEQUES BY ARRANGEMENT ONLY.

PRICE: £1.00

THE COMPLETE AUCTION SERVICE

Auction Sales in our Salerooms or on your premises of: Antique & Modern Furniture & Effects · Office Shop & Catering Equipment · Vehicles · Plant & Agricultural Machinery · Stock-in-Trade · Business Assets · Liquidations & Receiverships · VALUATIONS undertaken for Insurance, Probate, Family Division and Sale Purposes · Full HOUSE CLEARANCE Service ·

VAT No. 586 0636 19

CONDITIONS OF SALE

1. The highest bidder shall be the buyer. The Auctioneers reserve the right of regulating the biddings; of rejecting any bid; and of bidding for, withdrawing, consolidating, dividing or altering the order of lots.
2. The purchase money for each lot with the usual commission **10 %** plus VAT at 15% shall be paid at the fall of the hammer (if required). Each lot at the fall of the hammer shall be at the sole risk and expense of the buyer, and shall be paid for and removed immediately after the conclusion of the sale, *but no lot shall become the property of the buyer, or be removable until paid for*, and if taken away in contravention of these conditions without an order for removal signed by the Auctioneers, they shall have power to seize the same by their servants or agents, or otherwise, or the Auctioneers may recover either the lot sold or the price thereof (at their option) by action at law.
3. No contra account of any description whatever will be allowed to the buyer as a set off, and payment for each Lot shall be made to the Auctioneers or their clerk only, and a buyer paying by cheque must give satisfactory references (if required).
4. For all purposes of this sale the Clerk of the Auctioneers shall be deemed to be the agent of both seller and buyer.
5. A bidder shall not be allowed to retract his bidding after the fall of the hammer, and he shall give up his full name and address if required. The Auctioneers will not recognise the transfer of any lot from one buyer to another, nor make any alteration in the sale book in respect thereof.
6. The Auctioneers are acting only as agents, and give no personal warranty as to the condition, quality or authenticity of any chattels offered for Auction. Any catalogue description is given merely as guide to purchasers, any description can be changed from the rostrum before the lot is sold. If a purchaser buys without previous inspection he will do so at his own risk.
7. Notwithstanding any other terms in these Conditions, if within 7 days of the Sale a purchaser gives notice in writing that a lot is a deliberate forgery, with supporting factual evidence, the Auctioneers may rescind the transaction. The burden of factual proof lies with purchaser, mere opinions will not satisfy. This benefit is not assignable.
8. If any buyer neglect or refuse to comply with the above conditions or any of them, his deposit money (if any) shall be forfeited, and the lot uncleared may, at the option of the Auctioneers, be resold without notice by public auction or private contract, and any loss occasioned by such re-sale together with all expenses attendant thereon, or arising under these conditions shall be paid for by the defaulter at this sale and be recoverable as and for liquidated damages. This condition is however without prejudice to the right of the Auctioneers to enforce the contract made at this sale if they think fit.
9. Any Notes for Purchasers and catalogue Glossaries, where used, will be construed as Conditions of Sale.
10. The Auctioneers shall be the sole Arbitrators in all matters of dispute relating to these conditions both as between the seller and the buyer and between the several bidders and buyers and their determination on all matters shall be final and binding on all parties concerned.

PURCHASER SLIP

To avoid mistakes and to save time Purchaser will oblige
GOLDINGS by filling in this slip on making their first purchase
and then handing it to the Auctioneers Clerk

NAME: FIRST LOT NO:

ADDRESS:

.....

.....

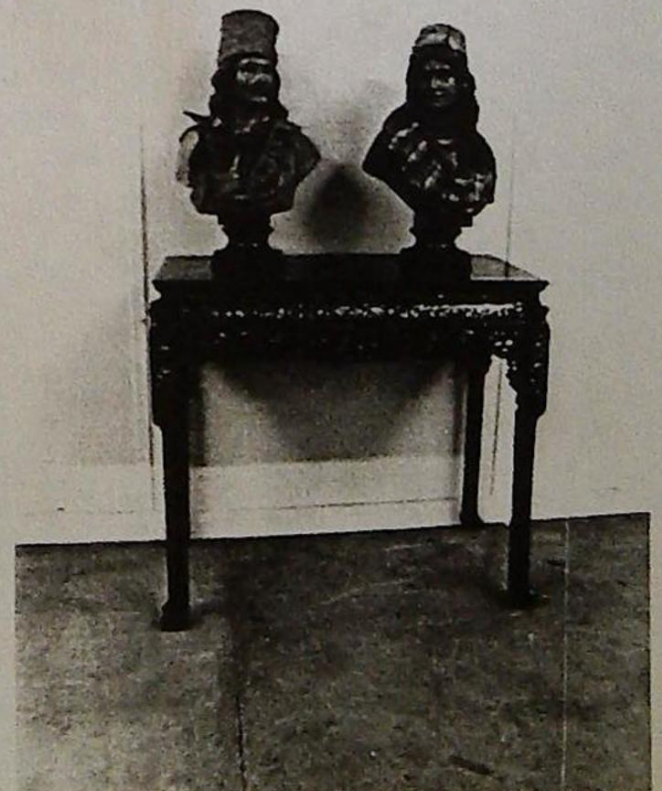
IMPORTANT NOTES FOR PURCHASERS

1. PAYMENT: Must be made in full immediately after the Auction. The following methods of payment are acceptable.
 - a) Cash
 - b) Bankers Draft
 - c) Building Society Cheque
 - d) Cheques with a valid card for accounts up to limit stated on that card. For accounts over that limit the Auctioneers reserve the goods until such time as that cheque has been cleared.
2. Removal of Purchases: Purchases must be collected as soon as they are paid for, and in the two working days following the sale. If goods are not collected on these days the Auctioneers reserve the right to charge 30 pence per lot per day thereafter.
3. A Buyers Premium of 10% + VAT is payable on all lots.
4. Commission to Purchase: If you are unable to attend this or any of our forthcoming sales we will be pleased to bid on your behalf. We always attempt to purchase at the lowest possible bid. All bids must be in writing and handed to the office on an official bid form. It remains the responsibility of the prospective purchaser to contact Messrs GOLDINGS to confirm whether their bids have been successful.
5. Smoking is not permitted in the main Saleroom.
6. On no account, for what ever reason, will Goldings staff transfer any lots from one purchaser's invoice to another. If a Lot is purchased for another person this must be declared at the fall of the hammer.

Cover Illustrations are Lots 284 & 282.



Lots 99, 187, 74, 124.



Lots 283 & 127

BYGONES AND MISCELLANEA

1. Mangle
2. Colour glazed leaded light Panel. 36" x 44".
3. Large early 19th C. Tapestry.
4. Pr. of 19th C. cast iron Garden Urns. 14" tall.
5. Set of four unusually shaped 19th C. cast iron Garden Urns. 30" tall.
6. Pr. of heavy solid oak panelled Doors. 9' tall x 5' opening. Complete with frame.
7. Victorian Advertising Pub Mirror, Jeffreys Pale Ale. 48" tall, 72" wide.
8. Ornate cast iron Hallstand of a hunting design, having a rifle, powder flask and game depicted at the base. 5'10" tall.
9. 18th C. hand hewn Stone Font. On a five pillar cluster column.
10. Early Victorian mahogany Stool on bun feet.
11. Shell shaped lead Birdbath with figure of a seated cherub and bird. 16" tall.
12. Victorian mahogany Dressing Table Mirror having a shaped base with lift flap and carved swan supports.
13. Cast iron Doorstop of a knight.
14. Oval galleried copper two handled Tray.
15. 19th C. mahogany Campaign Mirror.
16. Circular brass Kettle Stand.
17. Circular brass Preserve Pan.
18. Victorian brass and iron sliding Wall Trivet.
19. Glazed oak Countertop Display Case. 56" x 22"
20. Glazed oak Countertop Display Case. 56" x 22"
21. Tabletop display case.
22. Brass Jardiniere and Wall Plate.
23. Brass faced Salter Trade Balance.
24. Brass Oil Lamp.
25. Brass Preserve Pan.
26. Old Pye Radio.
27. Mahogany and rosewood Banjo by John Grey & Sons, 'Dulcetta' London.
28. Copper fender.
29. Art Nouveau brass Fender.
30. Old street lamp bracket.
31. Four shell shape copper Lamp Covers.
32. Mahogany plough plane.
33. Edison Bell radio album record set.
34. Collection of 78 rpm Records.
35. Three old Gas Lamps.
36. Small carved oak Panel.
37. Five Books.
38. Brass Fire Extinguisher.
39. Set of brass Fire Irons.
40. Three silver banded Walking Sticks.
41. Wooden Shoe Stretchers.
42. Children's Encyclopaedia, 10 vols.
43. Wooden Building Blocks.
44. Brass Armorial Wall Plate. 26" dia.

45. Heavy brass Corinthian Candlestick. 12" tall.
46. Versailles et les Trianons, photographic portfolio.
47. Palais National de Malmaison, photographic portfolio.
48. Die Geschichte der Kerche, illustrated folio.
49. Four pieces of hammered pewter.
50. Brass Primus Stove.
51. Brass Primus Stove.
52. Four Brass Bullet Cases.
53. Five brass plaques and a B.R. toilet roll holder.
54. Mamod model Steam Tractor.
55. Copper Kettle
56. Hornby type 50 clockwork Engine with carriages, track, etc...
57. Small ivory Buddhist figurine.
58. Pr. Victorian gilt brass and ebony Sconces. (AF).
59. Two ladies Evening Bags.
60. Sporrans, Fighting Cocks, etc.
61. Victorian yew Moneybox.
62. Brass Hod, Stampholder and pewter Caddy, etc.
63. Cast brass bear Money Box.
64. Dominoes and chess pieces.
65. Small mahogany Box and a small Bell cast from a German aircraft.
66. c. 30 assorted painted lead soldiers.
67. Painted lead Farm Animals.
68. Painted lead Horses and Carts.

69. c.120 Assorted Postcards, mainly European.
70. c. 120 Assorted Postcards, mainly G.B.
71. c.120 Assorted Postcards, mainly Italian.
72. c.100 Assorted Postcards, mainly European.
73. c.60 Assorted Postcards of architecture, etc.
74. Musical automaton figure of a bisque headed girl in a barrel, with moving arms legs and head. 15" tall.
75. Brass and copper Miner's Lamp.

GLASS AND CERAMICS

91. Cut glass Vase. 8" tall.
92. Green ground Chinese bottle Vase.
93. Porcelain figure of a lady in 18th C. dress, bearing a gold anchor mark to base. (AF)
94. Unusual blue glass Vase.
95. Doulton's self pouring Teapot.
96. Spode style Creamer.
97. Continental style Coffee Pot.
98. Chinese earthenware Tea Infuser.
99. Samson figure of a dandy 18th C. gentleman. 6.1/2" tall (AF)
100. Staffordshire type figure of a boy seated with a monkey.
101. Green glass Jug and modern Delft Vase.
102. 19th C. Continental figure of a man.

103. Two Victorian ruby glass Lustres.
104. Pr. continental urn shaped floral Vase
105. Glass tray with dolls china.
106. Cut glass Comport.
107. Pressed glass Decanter.
108. Cut glass mint sauce Dish.
109. Pr. pressed glass Decanters.
110. Pr. vaseline glass spill Vases.
111. Muffin Dish and Plates.
112. Three 19th C. Worcester style fluted Cups.
113. Two Cups and Saucers.
114. Set of eight shell Napkin Rings and Longton Creamer.
115. Set of 5 Wedgwood style Table Stands.
116. Continental bisque figure of a boy and dog.
117. Green and white Jug and Bowl.
119. Set of three graduated Chinese blue and white Jardinieres.
120. Peach ground Chinese bottle Vase.
122. Set of three graduated Chinese blue and white Jardinieres.
123. Peach ground Chinese bottle Vase.
124. First period Worcester blue and white baluster Vase hand painted with Oriental designs. 5" tall.
126. Staffordshire slipware Honey Pot.
127. Pr. of Austrian pottery Busts of a lady and gent, slight damage. 28" tall. Illustrated.
128. Glass Scent Bottle.

SILVER AND PLATE

141. EPBM Teapot.
142. Silver plate Toastrack.
143. Silver plated Claret Jug.
144. Silver plated circular Salver.
145. Georgian style silver plated Salver with scalloped shell edge and three paw feet.
147. Carved set of six silver handled butter Knives. Birmingham Assay.
148. Cased pair of silver plated Kings pattern Fish Servers.
149. Oval silver photograph frame. Birmingham 1912.
150. Edwardian shell shape Butter Dish. London 1901.
151. Silver Sugar Castor. 5" tall. Birmingham 1922.
152. Four Georgian silver Tablespoons. London Assay.
153. Five bottle Cruet on a silver plated stand.
154. Five Georgian silver Teaspoons.
155. Large two handled Rococo silver plated Tray.

JEWELLERY AND BIJOUTERIE

161. Gilt framed Limoges miniature Plaque.
162. Mother of pearl handled letter Knife.
163. Two silver Bangles.
164. Silver gilt ingot Pendant.
165. Gold plated curb Watch Chain.
166. 19th C. oval Portrait Miniature of a lady.

- 167. Gold cased ladies Fob Watch and a silver top shell Pill Box.
- 168. Eternity Ring
- 169. Platinum Ring
- 170. Good quality diamond solitaire Ring with six stones set to the shoulders.

CLOCKS, WATCHES AND BAROMETERS

- 181. Silver gents Pocket Watch with fusee movement and protective outer case. Chester 1869..
- 182. Georgian style inlaid mahogany Stick Barometer.
- 183. Victorian rosewood Stick Barometer by Mason & Son, Dublin.
- 184. Two longcase clock movements and square arch painted face.
- 185. Dual faced hanging electric Clock.
- 186. 19th C. French ormolu figural Mantel Clock with an 8-day Japy Freres movement (AF)
- 187. 19th C. French figural Mantel Clock, the base being slate with ormolu mounts, the upper section being a cast spelter figure of a Roman and an 8-day movement.
- 188. Carved oak Bracket Clock with brass face and 8-day movement.
- 189. Walnut effect circular Alarm Clock.
- 190. Slate 8-day Mantel Clock (AF)

- 191. Ebonised Bracket Clock with gilt brass mounts and Corinthian columns each side of the dial, striking 8-day movement. 17" tall.
- 192. Victorian marble Garniture Clock Set with a French movement.
- 193. Brass Ship's Clock, dated 1951.

PAINTINGS AND PRINTS

- 201. Framed Great War discharge notice.
- 202. Large maple framed colour lithograph of a girl with a dog.
- 203. Oak framed photograph of Bonchurch, Isle of Wight.
- 204. Maple framed print of Queen Victoria's family in 1887.
- 205. Pr. oak framed prints of Deer.
- 206. Modern watercolour of geese in flight.
- 207. Set of four Hogarth engravings, 'The Election'.
- 208. Oak framed period scene print 'The Wayside Inn'.
- 209. Interior scene print in an ebonised frame.
- 210. Pr. modern gilt framed Hunting Scene prints.
- 211. Gilt framed watercolour of the 'New Inn'. 10" x 8".
- 212. Pr. framed oval watercolour painting of Galleons.
- 213. Oak framed watercolour of a Budgerigar. 11" x 8".
- 214. Pencil and watercolour drawing of Newport

- 215. Early 17th C. map of Lincolnshire.
- 216. Modern Fenland landscape painting.
- 217. Modern still life painting of flowers.
- 218. Liverpool harbour scene in an oak frame.
- 219. Set of four unframed hand coloured Hunting scenes after Alken.
- 220. Set of six unframed hand coloured Golfing scenes after Fuller.
- 221. Pr. Regency prints of ladies.
- 222. E Middleton 1933, pencil and watercolour cottage scene of the Yorkshire Dales. 7" x 10".
- 223. Pr. oil paintings of Sailing Ships off a rocky coastline, in beaded oak frames. Signed J Croft. 11" x 21".
- 224. Gilt framed watercolour of a farm in the foothills. Signed W Roe. 7" x 9".
- 225. 19th C. oil on canvas of a lady.
- 226. E Nevil. A watercolour 19th C. Street Scene of Antwerp in a gilt frame. 15" x 11".
- 227. Italian School. A 19th C. oil on canvas scene of Pan with five putti, fruit, and a goat, surrounded by trees. Relined canvas in a modern frame. 32" x 55".

- 228. Oil on canvas highland scene with four cattle seven sheep and a goat in the foreground, the background portraying mist in the foothills. In a modern frame. 24" x 36" illustrated.



- 229. Gilt framed Continental Riviera town scene. Bears signature Montullo. 4" x 9".
- 230. F W Scarborough. Superb watercolour of a fishing village, probably Cornish. Composition consists of four moored boats being attended by three fishermen, with hills in the background. In a gilt frame. 7" x 21".
- 231. Modern oak framed print of a still life by Redon, exhibited in the Usher Gallery, Lincoln

232. Pr. of gilt framed coloured portrait engravings of ladies.

FURNITURE

241. Set of four oak Dining Chairs.
242. Edwardian walnut octagonal Occasional Table with turned legs.
243. White painted occasional table with caned undershelf, fluted legs and patera decoration.
244. George III mahogany single Dining Chair in the Hepplewhite manner, with drop-in tapestry seat.
245. Regency mahogany Carver Chair with scroll arms and turned front legs.
246. Victorian mahogany Chaise Loungue with turned legs.
247. 19th C. bamboo effect single Dining Chair with rush seat.
248. Chinese design needlework Firescreen in a bamboo frame.
249. Kidney shaped piano Stool.
250. Victorian mahogany Commode Chest.
251. Mahogany Canterbury
252. Victorian wrought iron telescopic Standard Lamp.
253. Purdonium.
254. Old draughtsman's Chair.
255. Georgian oak folding Tea Table with drawer to frieze.
256. Late 19th C. Continental set of 6 Dining Chairs.
257. Georgian elm country Dining Chair with pierced vase splat and rush seat. (AF)
258. Victorian elm Smoker's Bow Chair.
259. 19th C. elm Windsor Chair, stamped Taylor, Grantham on the seat.
260. Pedestal Table with a circular onyx top, brass twist stem and cast iron tripod base.
261. Georgian style tripod Wine Table.
262. Pr. late Victorian Dining Chairs having panel backs, H-frame stretchers and part fluted legs.
263. Compact oak Bureau with barleytwist legs. 18" wide.
264. Piano stool with walnut cabriole legs.
265. Late Georgian oak Pembroke Table with two dummy drawers, on turned legs.
266. Edwardian mahogany Occasional Table with undershelf.
267. Georgian style two tier Dumb Waiter.
268. 19th C. mahogany Pembroke Table, with brass toes.
269. Victorian button back Nursing Chair with turned front legs.
270. Set of six William IV mahogany Dining Chairs with bar backs, drop-in seats and turned front legs.
271. Edwardian walnut Sutherland Table with an octagonal top.
272. Compact oak Bureau with barleytwist legs. 18" wide.

273. Drop-arm two seater Sofa.
274. Georgian pine Wall Shelves.
275. Victorian flamed mahogany Pot Cupboard of fluted pedestal design with marble top.
276. William IV mahogany circular snap-top Breakfast Table on turned pillar, the trefoil base having scroll feet and acanthus carvings. 50" dia.
277. Drop-arm Chesterfield Sofa with cabriole front legs.
278. Late Victorian floral upholstered walnut open Armchair.
279. Late 19th C. crossbanded mahogany bowfronted Writing Table with square taper legs, spade feet and brass handles. 48" wide.
280. 18th C. oval oak gateleg Dining Table with turned legs, plain stretchers and drawer to the frieze. 48" x 42".
281. 19th C. mahogany Partner's Desk with brass swan neck handles. 46" x 72".
282. Victorian rosewood circular snap-top Breakfast Table, with shaped pedestal and trefoil base. Stamped Miles & Edwards, 134 Oxford Street, London. 1480. Illustrated on front cover.
283. 19th C. Oriental hardwood Altar Table, the fretwork frieze and legs being inlaid with mother of pearl scenes of birds and flora. Illustrated.

284. Victorian rosewood Escritoire with slide action writing drawer exposing satinwood drawers and pigeon holes behind a mirror, scroll carved decoration and glazed base. The top slides forward to release two secret compartments. Drawer stamped W Priest, 1 & 2 Tudor Street, Blackfriars. Illustrated on the front cover.
285. Art Nouveau mahogany Display Cabinet with leaded glazed doors, floral inlays and quality fretwork. Illustrated.
286. Pr. bamboo Screens.e
287. Tambour fronted ladies Writing Desk.
288. to 310 spare lots.
311. Indian Carpet. 10'6 x 9'3
312. Victorian painted pine Chest of three long and two short drawers.
313. Reproduction mahogany Bookcase Top Cabinet. 39" wide.
314. 19th C. American walnut Office Cabinet with two folding doors concealing 24 drawers.
- Please note: A further conignment of 10 lots of good quality Chinese furniture will be included in this sale.



FORTHCOMING AUCTION SALES

=====

HOUSEHOLD FURNITURE AND EFFECTS

on Wednesday 3rd April 1991 at 10 am

(and fortnightly thereafter)

Viewing: Day prior to Sale 10 am to 4.30 pm

Saleday 9 am to 10 am

Entries for Household Sales accepted until Thursday prior to sale

Upon instructions from Gateway Foodmarkets Ltd. Liquidators,
Local Firms, and Others.

OFFICE, SHOP & CATERING SALE

on Monday 8th April 1991 at 11 am

Liquidated Stock of a Sports Shop; c 450 lots inc. new clothing and equipment for football, athletics, aerobics, tennis, cricket, golf, rugby, etc. and a quantity of radios, cassetts, plagers, etc.

Shop Stock of Costume and other Jewellery; c. 250 lots of gold and silver rings, brooches, earrings, necklaces, cameos, bracelets, cufflinks, vesta cases, etc.

Also a good selection of new and used Office and Commercial Catering Equipment.

Further entries invited. Viewing from 9 am Saleday only.

Tenders are invited for the following:

Stock of a Grantham Double Glazing firm: inc. uPVC window frames, sealed units, doors, weatherboards, etc.

Stock of specialist Hi-Fi Equipment spares: inc. speakers, turntables, connectors, tuners, etc.

Viewing by appointment during office hours from 1st April.

Tenders close 10 am Monday 8th April, forms available soon.

Entries are now being accepted for our next catalogued sale of

ANTIQUES & COLLECTABLES

on Saturday 4th May 1991 at 10am

Viewing: Day prior to sale 2 pm to 7.30 pm
Saleday 9 am to 10 am

Further entries invited. Catalogues £1.25 by post (pre-paid).

PROFESSIONAL HOUSE CLEARANCE SERVICE AVAILABLE

For **FREE VALUATIONS AT YOUR HOME OR BUSINESS** and information
about sales call the Auctioneers on (0476) 65118

ANTIQUES AND COLLECTABLE SALES

4th May 15th June 10th August

21st September 2nd November 14th December

Sales commence 10 am on the Saturday Morning

Viewing: 2pm to 7.30pm Day prior to the sale
and 9 am to 10 am Saleday

Catalogue entries close second Thursday prior to the sale

HOUSEHOLD FURNITURE AND EFFECTS SALES

Fortnightly on Wednesdays

Viewing: Day prior to Sale 10 am to 4.30 pm
Saleday 9 am to 10 am

Entries close Thursday prior to sale

OFFICE, SHOP AND CATERING EQUIPMENT SALES

8th April 20th May 1 July

26th August 7th October 18th November

Sales commence 11 am with viewing from 9 am Saleday Only.

Entries close Thursday prior to the sale