

Established 1900

-GOLDINGS-

THE GRANTHAM AUCTION ROOMS

Upon instructions from the Executors of Miss Mary Merry (Dec'd),
Private Collectors and House Clearances from throughout the Region

GOLDING YOUNG & CO. will sell by AUCTION



Antique & Later Furniture & Effects

On Wednesday 22nd October, 1997 at 10 a.m.

Golding Young & Co.

Old Wharf Road, Grantham, Lincolnshire, NG31 7AA

Telephone: (01476) 65118

Fax: (01476) 61475

CONDITIONS OF SALE

1. These Conditions together with any Notices to Purchasers are the only terms and conditions subject to which Golding Young & Co. ("the Auctioneers") as agents for the Vendor will sell goods to a purchaser ("the Bidder") and all other conditions, whether express, or implied at common law or by statute as are capable of lawful exclusion are hereby excluded.
2. The highest bidder shall be the buyer. The Auctioneers reserve the right of regulating the biddings; of rejecting any bid; and of bidding for, withdrawing, consolidating, dividing or altering the order of lots.
3. The purchase money for each lot with the usual commission of 10% plus VAT at the current rate shall be paid at the fall of the hammer (if required). Each lot at the fall of the hammer shall be at the sole risk and expense of the buyer, and shall be paid for and removed immediately after the conclusion of the sale, *but no lot shall become the property of the buyer, or be removable until paid for*, and if taken away in contravention of these conditions without an order for removal signed by the Auctioneers, they shall have power to seize the same by their servants or agents, or otherwise, or the Auctioneers may recover either the lot sold or the price thereof (at their option) by action at law.
4. No contra account of any description whatever will be allowed to the buyer as a set off, and payment for each Lot shall be made to the Auctioneers or their clerk only, and a buyer paying by cheque must give satisfactory references.
5. For all purposes of this sale the Clerk of the Auctioneers shall be deemed to be the agent of both seller and buyer.
6. A bidder shall not be allowed to retract his bidding after the fall of the hammer, and he shall give up his full name and address if required. The Auctioneers will not recognise the transfer of any lot from one buyer to another, nor make any alteration in the sale book in respect thereof.
7. The Auctioneers are acting only as agents, and give no personal warranty as to the condition, quality or authenticity of any chattels offered for Auction. Any catalogue description is given merely as guide to purchasers, any description can be changed from the rostrum before the lot is sold. If a purchaser buys without previous inspection he will do so at his own risk.
8. Notwithstanding any other terms in these Conditions, if within 7 days of the Sale a purchaser gives notice in writing that a lot is a deliberate forgery, with supporting factual evidence, the Auctioneers may rescind the transaction. The burden of factual proof lies with purchaser, mere opinions will not satisfy. This benefit is not assignable.
9. If any buyer neglect or refuse to comply with the above conditions or any of them, his deposit money (if any) shall be forfeited, and the lot uncleared may, at the option of the Auctioneers, be resold without notice by public auction or private treaty, and any loss occasioned by such re-sale together with all expenses attendant thereon, or arising under these conditions shall be paid for by the defaulter and be recoverable as and for liquidated damages. This condition is however without prejudice to the right of the Auctioneers to enforce the contract made at this sale if they think fit.
10. Any Notes for Purchasers and Catalogue Glossaries will be construed as Conditions of Sale.
11. The Auctioneers shall be the sole Arbitrators in all matters of dispute relating to those conditions both as between the seller and the buyer and between the several bidders and buyers and their determination on all matters shall be final and binding on all parties concerned.

Auctioneers: C. Robin Hall FRICS FAAV & Colin R. Young FNAVA



Established 1900

-GOLDINGS-

• Fine Art Auctioneers & Valuers •

THE GRANTHAM AUCTION ROOMS

Golding Young & Co
Telephone: (01476) 565118

Old Wharf Road, Grantham, Lincs NG31 7AA
Fax: (01476) 561475

GOLDING YOUNG & Co. will sell by AUCTION

Antique & Later Furniture & Effects

On Wednesday, 22nd October, 1997, at 10 a.m.

Circa 700 Lots including
FURNITURE, PICTURES, SILVER & PLATEDWARE,
GLASS, CERAMICS, JEWELLERY,
CLOCKS & WATCHES, BYGONES
AND COLLECTORS ITEMS

Viewing Times:

Sunday 19th	2 p.m. to 4 p.m.
Tuesday 21st	2 p.m. to 7 p.m.
Saleday 22nd	9 a.m. to 10 a.m.

Cover Illustration:
Lot 501

Sales & Services are available on the INTERNET @ <http://www.thesaurus.co.uk/gy&c>

IMPORTANT NOTES FOR PURCHASERS

1. **PAYMENT:** Must be made in full immediately after the Auction. The following methods of payment are acceptable.
 - a) Cash
 - b) Bankers Draft
 - c) Building Society Cheque
 - d) Cheques, accompanied by a valid card. For accounts above the stated card limit, we reserve the right to retain the goods until clearance is established.
2. **BUYERS PREMIUM:** of 10% + VAT is payable on all lots.
3. **REMOVAL OF PURCHASES:** Goods must be collected as soon as they are paid for, and in the Two Working Days following the sale. If goods are not collected on these days we reserve the right to charge £1 per lot per day thereafter.
4. **COMMISSION BIDS:** If you are unable to attend this or any of our future sales we will be pleased to bid on your behalf. We always purchase at the lowest possible price, subject to other bids and reserves.

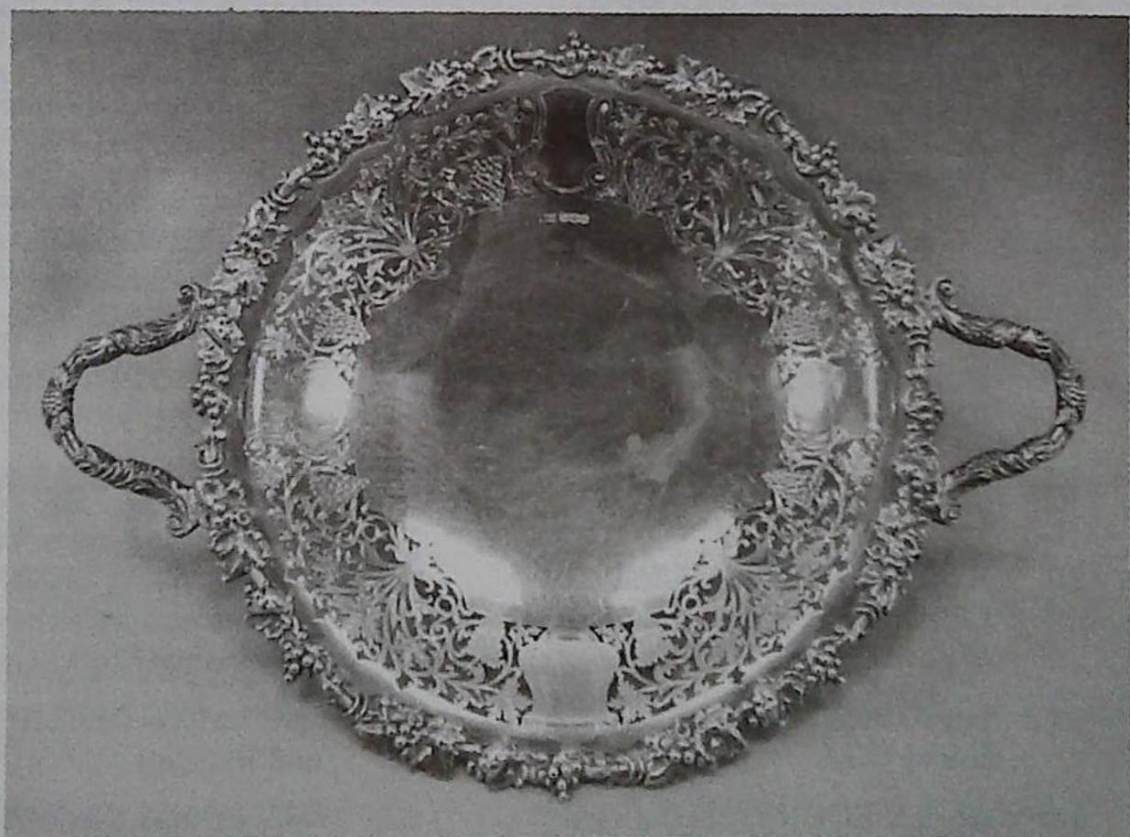
All bids must be handed to the office on an official form. It remains the responsibility of prospective purchasers to contact GOLDINGS to confirm whether their bids have been successful.
5. **TELEPHONE BIDS:** There are inherent dangers with this practice, therefore all such arrangements are made entirely at the bidder's risk. Telephone bids will only be accepted if the lower catalogue estimate is £500 or above. For lots with a lower estimate below this figure Commission Bids Only will be accepted.
5. **SMOKING:** is not permitted in any part of the Saleroom.
6. **REFRESHMENTS:** will be available Saleday.
7. **ACCOUNT TRANSFERS:** will not be recognised after the sale. If any lots are purchased for another person, this must be declared at the fall of the hammer.

GLOSSARY

- a) **Generally:** '*As Found.*' (AF). This term indicates the lot has some damage. Its absence does not indicate that the lot is free of defect. All lots are SOLD AS SEEN.
- b) **Paintings:** '*Signed, initialled, monogrammed.*' This refers to the present state of the work and is not an attribution.
- c) **Books and printed matter:** These items are not sold subject to collation and are not returnable once removed from the premises.
- d) **Silver & Jewellery:** Weights given are approximations given by basic instruments.



Lot 596



Lot 405

COLLECTORS' ITEMS & MISCELLANEA

1. An Edwardian inlaid mahogany Georgian style CANDLE BOX. £50-80
2. A mahogany seven drawer SPEIMEN CHEST. £40-60
3. A pair of brass CANDLE-STICKS.
4. An electroplate copper KETTLE. £20-30
5. An Edwardian DOLLS PRAM. £80-120
6. Six various LIGHT SHADES.
7. A small brass PRESERVE PAN.
8. An early copper WARMING PAN with pierced and chased decoration. £40-70
9. A 19thC Venetian WALL MIRROR. £60-90
10. A large embellished TABLE COVER. £20-30
11. A Huntley & Palmer Bell BISCUIT TIN and another. £20-30
12. A suite of 3 Chinese CLOISONNE VASES. £30-50
13. A Victorian metal CASSO-LETTE with decoration in relief of putto.
14. Two Artists PALETTES and a box of OILS.
15. An oak BOOKSTAND, fitted single drawer.
16. 4 stoneware FOOTWARMERS
17. 4 copper WARMING FLASKS
18. 2 aluminium BED WARMERS.
19. 3 copper BED WARMERS
20. A collection of 11 aluminium hot WATER BOTTLES.
21. A pair of leather Horse Brass Straps, an OIL CAN, a FUNNEL, a brass garden PUMP and an antique style metal clock.
22. A fibre glass witches MASK.
23. A carved Welsh LOVE SPOON, a Willow Pattern PLATE and 'Thin Ice' Film POSTER in frame.
24. A collection of 18 stoneware HOT WATER BOTTLES. £100-150
25. A collection of 9 stoneware HOT WATER BOTTLES.
26. A 19thC Berlin woolwork PICTURE of Joseph and Mary. 17" x 13". Framed.
27. A small collection of stone JARES, BOTTLES and CONTAINERS.
28. Four various JELLY MOULDS.
29. An embossed brass TRAY, an advertising TRAY, 4 metal plaques and a tinware advertising Clock.
30. Five various CRUMB SCOOPS and Brushes.
31. Four various CRUMB SCOOPS and Brushes.

32. A satin walnut Hall Mirror. 13".
33. Two electroplated TRAYS, a set of 6 SOUP SPOONS and a triptych FRAME.
34. A leaded coloured glass LIGHT.
35. An album of various 78rpm RECORDS.
36. A mahogany brass inlaid fold-out WRITING SLOPE. £50-80
37. A Model STEAM ENGINE. £40-60
38. Two petrol blue glass SODA SYPHONS.
39. A part case of 'Royal Brew' and Silver Jubilee half pine BOTTLES of BEER.
40. A Stones Beer brass CANNON.
41. Eight various pub water JUGS and 2 Guinness BEER HEADS.
42. Five various half-pint bottled BEERS and a miniature WINE.
43. A 'Player's Please' rectangular TRAY and a similar 'Capstan Navy Cut' example.
44. A Japanese LACQUERED BOX with bird decoration.
45. A set of reproduction BRASS BALANCES.
46. A reproduction brass COMPANION SET.
47. A Victorian OIL LAMP with cast base, green glass reservoir. £85-100
48. A Victorian pierced steel and brass FENDER. £60-90
49. A 19thC copper COAL HELMET. £60-80
50. A pair of 19thC spelter FIGURES. £60-80
51. A 19thC rosewood, mother of pearl inlaid, rectangular WORKBOX on bun feet. 11". £40-60
52. A 19thC mahogany sarcophagus shaped twin compartment TEA CADDY. £20-30
53. A Gents leather TRAVEL CASE. £25-40
54. A George III mahogany TEA CADDY. £100-150
55. A George III mahogany TEA CADDY. £100-150
56. Two Victorian WORKBOXES and a TAZZA.
57. An oval mahogany TRAY.
58. A pair of Victorian brass CANDLESTICKS and pair of Tapersticks.
59. A pair of RAM'S HORNS, mounted.
60. A celluloid 'Pedigree' DOLL.
61. A 19thC mahogany WRITING BOX. £60-80
62. A Victorian velvet covered mirrored BOX. £50-80
63. A Victorian wool SAMPLER by Ann Turner. Aged 12. 1876. £50-80
64. A set of BRASS BALANCES and weights. £30-40
65. A Victorian pierced steel and brass FENDER. £40-60

66. A set of 3 gilt metal mounted frosted glass LIGHT GLOBES with fittings.
67. Two pairs of Horse's HAMES.
68. A simulated leather cased SHOE CASE.
69. Two embossed BRASS CHARGERS, one with heraldic motifs.
70. A brass Shire HORSE in a Farrier's Shop.
71. A Parcel gilt CARVED FIGURE of an Indian deity 22". £70-100
72. A small Riley Billiards SCORE BOARD. £20-30
73. A Victorian oak BALLOT BOX (AF). £40-60
74. A Lyons Tea Enamel SIGN.
75. A CHIPPENDALE mahogany TEA CADDY with brass mounts and handle and a plain mahogany instrument box.
76. A large brass PRESERVE PAN with swing handle. 14".
77. An embossed brass LOG BASKET with lion mask handles. £30-50
78. A 19thC copper KETTLE. £30-50
79. A 19thC copper KETTLE.
80. A copper WARMING PAN with turned wood handle. £40-60
81. A grained pine dome topped TRUNK. 22". £30-50
82. A pressed steel COACH LAMP.
83. Two brass ROASTING JACKS. £50-70
84. Two stone HOT WATER BOTTLES.
85. An oxidised brass HALL LIGHT with cut glass bowl. £30-50
86. A set of 3 antique brass FIREIRONS and a brass SAUCEPAN. £40-60
87. A wrought iron COMPANION SET.
88. A pair of Victorian SPELTER FIGURES of Warriors on circular bases. £80-120
89. A set of 6 brass Imperial/Metric Weights.
90. A graduated set of 5 brass SAUCEPANS with iron handles. £40-60
91. A brass PRESERVE PAN, a copper BEE SMOKER and circular TIN and COVER.
92. An iron COFFEE GRINDER on an oak base.
93. A set of iron SCALES with graduated brass WEIGHTS.
94. A cast iron SEWING MACHINE by Muller (No 15) of Berlin.
95. A reproduction brass Motor Horn.
96. Various steel and hickory shafted GOLF CLUBS in a canvas bag.
97. A Victorian twin compartment mahogany TEA CADDY with spoons.
98. Three various JEWELLERY BOXES.

99. A Victorian quart PEWTER MUG and an Edwardian Pint example.
100. A pair of Victorian PEWTER PLATES, 9".
101. A quantity of assorted METAL BUTTONS.
102. A Copeland Jumbo CUP and SAUCER, an Oriental TEAPOT and a 1935 Commemorative MUG.
103. A cased taxidermy CUCKOO. £50-70
104. A leather HAT BOX and TOP HAT. £25-35
105. A Japanese lacquered KODANSU. £20-30
106. A Collection of 26 CLAY PIPES some with masonic and other motifs and mounted on a framed board. £60-80
107. A Collection of 11 CLAY PIPES mounted on a board. £30-40
108. 5 Churchwarden CLAY PIPES mounted on a board. £30-40
109. Nine stoneware Spirit BARRELS. £30-50
110. A pair of lead Gutter HOPPERS with the (Bowes) Family Crest, over motto 'Vis Omita Fortior' and 'Sans Variance Terme Devie', dated 1725. £600-800
111. A pair of Regency HAND SCREENS, the card panels with applied and hand-painted floral decoration. £150-200.
112. A Japanese bronze KORO. £30-50
113. A pair of spelter FIGURES of GLADIATORS. 14". £40-60
114. A 19thC papier mache black lacquer TRAY. £60-80
115. An OIL LAMP on wooden base. £20-30
116. An early brass LADEL. £20-30
117. A Victorian brass PRESERVE PAN. £25-40
118. A Victorian copper SKILLET. £25-40
119. A Victorian copper SAUCEPAN. £25-40
120. Slazenger 1903 Lawn BOWLS SET. £100-150
121. A THEODOLITE in a mahogany case with Staves. £50-80
122. A Victorian stuffed PLOVER in case.
123. A stuffed HERON on a naturalistic stand.
124. A pair of stuffed FIGHTING COCKS on turned wood bases.
125. A stuffed SQUIRREL mounted on a frame.
126. A set of 3 graduated OAK CASKS. £30-50
127. A Yoke with Chains.
128. A mahogany Smokers STAND.
129. A Bavarian carved walnut Wall Bracket.
130. A glass OIL LAMP with wrought iron column.
131. A set of 6 pairs of FISH EATERS and a pair of FISH SERVERS.

132. A 19thC mahogany brass strung foldout WRITING BOX with a coromandel interior. £90-120
133. A gentlemans leather fold-out TOILET CASE with plated mount bottles. £25-40
134. A black BOWLER HAT.
135. Three pressed steel RAILWAY LAMPS.
136. A Bush RADIO in a bakelite case.
137. A French 19thC brass STATIONERY HOLDER elaborately decorated with mask faces, acanthus and flanked by caryatid figures. £40-60
138. A large plaster Spaniel Dog and a pair of matching smaller examples.
139. A stoneware PIPPIN.
140. A stoneware PANCHEON.
141. A tinware decorated BISCUIT TIN in the form of an antique desk set.
142. A leather GLADSTONE BAG.
143. A leather Masonic CASE with a small amount of regalia.
144. A set of BALANCES with brass pans and a cased set of graduated brass weights. £20-30
145. A Wilcock 12 bore side by side SHOTGUN Serial No. 90975.
146. A Victorian 12 bore side by side SHOTGUN Serial No. 54978.
147. A Starting PISTOL.
148. Tokens and Coins.
149. A miniature brass FISHING REEL with ratchet $1\frac{3}{4}$ " and 2 pub measures.
150. A Khukri KNIFE. £20-30
151. A Webley Service AIR RIFLE Mark II. £280-350
152. A pair of TREEN fishing line WINDERS.
153. A STEEL COMPASS by Stanley of London. £30-40
154. A pair of 19thC miniature LEATHER SHOES. 4".
155. Various Writing Accessories, Seals, Instruments, Glasses, Playing Cards, etc.
156. A Victorian tortoiseshell and bouille JEWELLERY BOX. £60-80
157. A quantity of Military BUTTONS.
158. A 19thC carved tortoiseshell SNUFF BOX of curved form, a brass 'domino Vesta Case' and a heart-shaped brass Snuff Box dated 1867.
159. A Continental porcelain FIGURE of a young woman. (AF)
160. An 8 piece Robertson GOLLY BAND. £30-40
161. A small circular aneroid BAROMETER.

GLASS & CERAMICS

162. A pair of opalescent glass VASES with classical profile portraits. £40-60

163. A pair of fern decorated opalescent glass VASES. £40-60
164. A Pheonix ware 2-handled floral decorated VASE.
165. 6 Rummors. £70-90
166. 4 Rummors. £30-40
167. A mid 18thC baluster GLASS MUG with scrolled handle. 5¹/₂". £250-300
168. An 18thC CORDIAL GLASS with engraved bowl and conical folded foot. 5¹/₂". £200-250
169. An 18thC CORDIAL GLASS with moulded ogee bowl and folded foot. 5¹/₂". £170-200
170. An 18thC CORDIAL GLASS with ogee bowl over conical folded foot. 5¹/₄". £140-170
171. A mid 18thC STRONG ALE GLASS with a half wrythen moulded bowl and solid foot. £75-100
172. A similar lot with full wrythen bowl. 5". £85-110
173. A similar lot with a three-quarter wrythen bowl. 5". £90-120
174. A similar lot with full wrythen bowl and folded foot. 4¹/₂". £85-100
175. A late 18thC STRONG ALE GLASS with blown moulded half wrythen bowl and solid foot. 4¹/₂". £70-100
176. A similar lot with full wrythen bowl. 4³/₄". £70-100
177. A mid 18thC DRAM GLASS with ogee bowl, short thick stem and wide folded foot. 4¹/₄". £140-180
178. A late 18thC DRAM GLASS with a vine engraved ogee bowl, short stem and solid foot. 4". £85-100
179. A pair of Cantonese baluster VASES and COVERS. 11". (AF)
180. A 19thC Staffordshire flatback FIGURE of a Hunter. 14¹/₂". £80-100
181. A pair of 19thC Staffordshire flatback FIGURES of Highwaymen on Horseback. (AF) £50-80
182. A pair of flow blue EWERS. £50-80
183. Two Carnival glass VASES.
184. Two Victorian floral VASES. £30-40
185. A German stoneware EWER (AF) and Jug. £50-80
186. A Majolica JARDINIERE (AF) £100-150
187. A small quantity of Edwardian and later GLASSES.
188. An Oriental style underglaze blue octagonal Jardiniere.
189. A famille rose style TEA SERVICE. £30-40
190. A 'Gaudy Welsh' part TEA SERVICE. £35-50
191. A quantity of claret bordered TEA WARE. £40-50

192. A quantity of Orange Flower TEA WARE.
193. A floral decorated blue and brown TEA SERVICE. £35-50
194. Six Victorian presentation MUGS.
195. A Shelley 17 piece 'Heather pattern' TEA SET.
196. A Poole Pottery preserve JAR and COVER.
197. An Art Deco floral WASHBOWL and JUG. £40-60
198. A Willow pattern STILTON STAND. £25-35
199. A Victorian Bargeware TEAPOT. £30-40
200. A Royal Winton Anemone 3-tier CAKESTAND. £60-100
201. A Slag glass BEAKER and an INKWELL.
202. A Japanese IMARI PLATE, 8 1/2".
203. Three blue and white PLATES, a Machin SUCRIER, an Alcock VASE and a Staffordshire PASTILLE BURNER.
204. A large quantity of blue and white Willow Pattern Teaware.
205. A 19thC Dresden ovoid VASE with female buse handles and Watteauesque panels on a yellow ground. £45-60
206. Five pieces of 18th/19thC Teaware.
207. A Crown Ducal CONDIMENT SET with floral decoration.
208. An Allcock PIN TRAY with landscape scene on a blue ground. £35-50
209. A pair of 18thC Chamberlain's Worcester TEA BOWLS and SAUCERS.
210. A Ridgways helmet-shaped JUG with claret and gilt decoration.
211. A Miles Mason blue and white TRIO.
212. A Miles Mason blue and white TRIO.
213. A relief moulded JUG, c.1835. £30-50
214. A Chamberlain's Worcester COFFEE CAN.
215. A Chamberlain's Worcester CREAM JUG.
216. A Yorkshire Pottery MONEY BOX with polychrome decoration, c.1860. £150-200
217. A Victorian porcelain relief moulded JUG.
218. A blue and white Grainger TEAPOT.
219. A porcelain and floral polychrome DESSERT DISH.
220. A Sunderland lustre MUG and 2 Dresden TEA CUPS. (AF)
221. A large shaped clear glass VASE with crimped neck.
222. Spare Lot
223. Six various Crown Devon STORAGE JARS and a pair of Sugar and Flour SHAKERS.

224. Ten various Crown Devon shallow Dishes and Bowls.
225. Three Commemorative BEAKERS, a CANDLESTICK (AF), 2 Cups and a Saucer.
226. Five pieces of Crown Devon silver lustre decorated TEAWARE including Jugs and a Teapot.
227. A similar 4-piece batchelor TEA SET.
228. A pottery cottage Butter DISH, a ladle, a SOAP DISH, a pair of PLATES and an ASHTRAY.
229. A Fieldings Devonware 'Ascot' pattern FRUIT BOWL.
230. A Crown Devon 'Esk' pattern FLOWER HOLDER.
231. A plaster COTTAGE and similar PLAQUE and 3 novelty ORNAMENTS.
232. Various pottery MASKS, Wall Pockets, etc. (8)
233. A pair of Devon 'Sylvan Lustre' tapering VASES. 9 1/2". £50-80
234. Three Crown Devon DISHES, a Preserve Pot and Cover, an Art Deco style trailed red VASE and a narrow bowl.
235. A Fielding & Co Sevres pattern JAR and COVER and a BOWL, LID and STAND.
236. A similar COMFORT and PLATE.
237. Elizabeth II and other novelty China and metalware. (6)
238. A Royal Devon 'Riga pattern' lustre VASE with gilt decoration. 10 1/2".
239. A Crown Devon pewter lidded 'Spring pattern' JUG.
240. A Crown Devon pewter lidded 'Windsor pattern' JUG.
241. A Crown Devon 'Etna pattern' ovoid VASE and a PLATE.
242. A Crown Devon 'Festoon pattern' JUG.
243. A Crown Ducal COMFORT with bird decoration.
244. A pair of glass lamp GLOBES, a glass CHIMNEY and a green glass Continental narrow BOTTLE.
245. An Imari scalloped PLATE, a pair of blue and white transfer SOUP BOWLS and a Cup.
246. A pair of Staffordshire style SPANIELS with iron red sponging. 11 1/2".
247. A set of 5 Alfred Meakin PLATES, a TRIO, a pub ASHTRAY and GLASS and a SALT and PEPPER.
248. Eleven various Crown Devon CUPS, JUGS and BOWLS.
249. Nine similar JUGS.
250. A 1950's Crown Devon PRESERVE JAR in holder, a SALT and PEPPER and MUSTARD and a Staffordshire CONDIMENT SET in plated holder.

251. A Crown Devon 'Old England' large CUP and SAUCER, an oils BOTTLE and a pair of SPILL VASES.
252. Five Crown Devon Butter DISHES and PRESERVE JARS with covers and a small STAND.
253. Nine Crown Devon and other BOTTLES, FLASKS and CONDIMENTS.
254. Five 19thC Staffordshire floral and gilt decorated PLATES.
255. A Wade Whiskey DECANter commemorating the birth of Princess Eugenie, 23rd March 1990 (full).
256. A rose pattern TOILET JUG and a floral decorated BOWL (AF)
257. A Crown Devon 'Cries of London' BOWL and a Mattita pattern BOWL.
258. A pair of landscape pottery PLATES in velvet frames.
259. A Fieldings rococo pattern floral DISH with green border and a gilded example.
260. A Fieldings ware Crazy pattern TEAPOT and STAND, BISCUIT BARRELL, PRESERVE JAR and STAND and a HOT WATER JUG.
261. A large quantity of Crown Devon 'Stockholm' pattern TEA and DINNER WARE.
262. A Crown Devon SUGAR AND CREAM and STAND on a green ground and yellow ground Butter DISH and KNIFE.
263. Five various pottery posy WALL PLAQUES.
264. A Crown Devon 'Wye Pattern' waisted VASE. 12".
265. A Crown Devon BISCUIT BARREL and COVER.
266. A Crown Devon 'Haddon pattern' BISCUIT BARREL and COVER.
267. A Crown Devon rose pattern BISCUIT BARRELL and an 'Elm Pattern' example (lids missing).
268. A Crown Devon scalloped edge BOWL with bird decoration. 10".
269. A Crown Devon circular Pottery PLAQUE with floral decoration. 11 1/4".
270. A pair of Copeland oval MEATPLATES. £70-90
271. A set of 12 BABYCHAM GLASSES with wrythen stems.
272. A set of 4 similar GLASSES, 3 champagne SAUCERS and 2 pub Water Jugs.
273. A Susie Cooper SOUP BOWL and a small SHALLOW BOWL.
274. A copper coal HELMET. £50-70
275. A Sylvac pottery wicker HAT. £25-35
276. A Rockingham style Victorian VASE, FIGURE and BISCUIT BARREL. £25-40
277. A pair of CHINESE GLASS FIGURES of Guanyin on brass lamp stands. £100-150

278. Cut crystal WATER JUG and Glasses.
279. Glass SALTS.
280. 3 Kaufmann design VASES.
281. 2 Biscuit JARS, 2 Preserve POTS and CRUET. £25-40
282. A 7-piece TOILET SET with transfer Inn Scenes. £50-70
283. A blue and white part DINNER SERVICE.
284. A Victorian Indian Tree part TEA SERVICE. £30-50
285. An Art Deco green frosted glass TRINKET SET.
286. A Cranberry glass BOTTLE.
287. Four pieces CRESTEDWARE.
288. Teabowls, glasses, etc.
289. A Nailsea pink glass POSY BASKET with crimped rim. £70-90
290. A Royal Worcester miniature AMPHORA. 6". £20-30
291. A baluster JUG with applied decoration. £30-40
292. A pair of red glass SPILL VASES. 6". £60-80
293. An Arita blue and white underglaze decorated baluster VASE with flared neck. 16". £120-150
294. A 19thC Worcester floral decorated COMFORT. £70-90
295. A Georgian cut glass RUMMER with square foot. £30-50
296. A conical bowl glass RUMMER. £30-50
297. A late Georgian WINE GLASS with a conical engraved bowl. £40-60
298. A pair of glass SWEETMEAT DISHES. £50-70
299. A set of 4 Masons Ironstone transfer decorated SOUP PLATES. £100-140
300. A Noritake SUGAR BOWL with gilt decoration.
301. A pair of 19thC floral decorated TEACUPS.
302. A green glass tall VASE with moulded decoration.
303. A Victorian 5-piece floral and gilt decorated TOILET SET. £60-80
304. A cut glass POSEY BOWL and a similar lidded BOX.
305. Set of 6 pierced porcelain PLATES.
306. A cut glass square DECANTER with faceted stopper and a mallet-shaped example with hobnail cut decoration.
307. A cut glass DECANTER with swag decoration.
308. 2 Circular moulded glass BOWLS with waved rims
309. A Grainger & Co. WORCESTER 27 Piece TEA SERVICE with gilded decoration. £50-80
310. A 19thC. Continental porcelain FIGURINE of Count Lafayette. £60-80

311. A Samson oval SNUFF BOX decorated with armorial. £60-80
312. An 18thC. salt glazed reticulated DISH with acanthus decoration and a Victorian acorn moulded BOWL. £30-50
313. A 'Sunderland Bridge' lustre decorated BOWL. 9¹/₂". (AF) £40-60
314. A 19thC engraved glass RUMMER
315. A Royal Doulton character JUG 'Toby Philpots'. (AF)
316. A Doulton Lambeth circular TOBACCO JAR. (AF)
317. Pair of Royal Winton lustre decorated VASES.
318. A large quantity of MINTON and HAMMERSLEY Indian Tree pattern dinner and tea ware. £50-80
319. A Japanese SATSUMA part TEA SERVICE.
320. A Royal Doulton 'Robin Hood' TEAPOT and HOT WATER JUG. £30-50
321. A 19thC 'Lavinia Pattern' transfer decorated helmet-shaped TOILET JUG and BOWL. (AF) £40-70
322. A Victorian Copeland oval transfer decorated MEATPLATE depicting Abbey Ruins. 19". (AF) £40-60
323. A larger plain example with decorated border and well.
324. A pair of Victorian baluster EWERS with rose transfer decoration.
325. A quantity of GLASSWARE including 2 decanters, sherry glasses, tot glasses, a bowl, etc.
326. A Royal Crown Derby octagonal FRUIT BOWL, 9". £130-170
327. A Worcester blue and white circular SUGAR BOWL. 4¹/₂" high £70-100
328. A Samson 'Derby' FIGURE of a recumbent sheep, 4". £60-80
329. A STONE JAR by J R Ropson of Grantham.
330. A set of 3 Victorian pink glass DECANTERS. £180-250
331. A large Maling VASE. £30-40
332. A large Govan VASE. £20-30
333. A Beleek JUG. £30-40
334. A blue and white Chinese JAR depicting 8 Immortals. £80-120
335. A pair of Chinese baluster TEMPLE VASES. 4' 2" high. £400-500
336. A pair of Japanese Kutani baluster VASES decorated with panels of Geishas, Noblemen and Chrysanthemum. 14". (AF) £400-600 *Illustrated on page 15*
337. A pair of Continental porcelain VASES in the form of maidens draped around shells on rococo bases. 8³/₄". (AF) £50-80
338. A Japanese Satsuma VASE of ovoid form decorated with opposing panels of dignitaries and attendants in landscapes on a moss green ground with lappet and floral decoration. The neck applied with knotted cord handles. 6". (AF). £50-100



Lot 597



Lot 336

Upon kind instructions from Mr. Garry Pyke,
over 2500 items from his Private Collection and

DIE-CAST & on Friday, 7th November



VIEWING: Thursday, 6th November 2003
*NOTE: This Sale can be seen during viewing for the October

OUR NEXT CATALOGUED TOY SALE
We are pleased to accept further Collections

Lot 600



Lots
663 & 598



339. A group of 3 various Willow Pattern transfer decorated PLATES. (AF)
340. An 18thC. moulded TEAPOT with silver spout. £50-80
341. A 19thC Staffordshire pottery FIGURE GROUP of 2 lovers seated in an arbour. 14". £30-50
342. Four 19thC DRINKING GLASSES including a Cordial Glass with a faceted bowl and knop stem.
343. A rose pattern TOILET SET including jug and bowl.
344. An 'English Bone China' TEA SERVICE of approximately 37 pieces.
345. A large Victorian blue and white oval MEATDISH with well.
346. 3 Volumes 'The World's Greatest Paintings', 'Spurgeon, The People's Preacher' and 'The Standard Encyclopaedia'.
347. A Chinese brass BALUSTER VASE with entwined dragon decoration in relief 10". £40-60
348. A JAPANESE blue and white PLATE and a Russian BOWL in the Chinese taste. £40-60
349. 6 Pottery BOWLS from the Vung Tai Cargo. £40-60
351. EDWARDS R & JOURDAIN M. Georgian Cabinet Makers. 1946. 4to, plates, cloth.
352. EDWARDS R & JOURDAIN M. Georgian Cabinet Makers C.1700-1800. 1962. Revised Edition, 4to, plates, cloth.
353. CESCINSKY H & GRIBBLE E R. Early English Furniture and Woodwork. 1922. 2 vols, in one, 4to, plates, cloth.
354. SALAMAN M C. French Colour Prints of the XVIII Century. 1913. Large 4to, plates, cloth.
355. MELLON COLLECTION. British Sporting and Animal Paintings 1655-1867 and British Sporting and Animal Drawings, c.1500-1850. 1978, 2 vols, 4to, plates, cloth.
356. SILTZER Capt F. The Story of British Sporting Prints, c.1910. Plates, cloth.
357. An album of approximately 50 POLAR EXPEDITION ENGRAVINGS. £40-70
358. Bound copy of The Graphic Indian Number 1870's.
359. A KELLY'S DIRECTORY of Lincoln 1959.
360. W A Thorpe. History of English and Irish Glass. 2 vols.
361. Hurlbutt. Bristol Porcelain and Illustrations for the Catalogue of the Trapnell Collection.
362. Hodgkin. Examples of Early English Pottery, named, dated and inscribed.

BOOKS

350. DBDIN T F. A Bibliographical Antiquarian and Picturesque Tour in the Northern Counties of England and Scotland. 1838. 2 vols., large 8vo, plates, half calf, rubbed.

363. Assorted Pottery Books.
364. M H Longhurst. English Ivories.
365. Assorted Art Books.
366. Counterfeits, Imitations and Copies; Old English Clocks; Chinese Art.
367. A set of Lambert & Butler 'Dance Band Leader' Cigarette Cards (25).
368. SKELTON R A. Decorative Printed Maps of the 15th to 18th Centuries. 1952. Plates, cloth.
369. JOURDAIN M & ROSE F. English Furniture. The Georgian Period (1750-1830). 1953. 4to, plates, cloth, d.w.
370. SYMONDS R W & WHINERAY B B. Victorian Furniture. 1965. 4to, plates, cloth.
376. A signed Japanese ivory NETSUKE, of a small octopus upon an empty turtle shell, signed. £40-60
377. A signed Japanese ivory NETSUKE of Ebisu, the God of Fishermen, holding a koi carp. £50-70
378. A signed Japanese ivory NETSUKE of a village elder dressed in detailed kimono. £60-80
379. A signed Japanese ivory three case INRO, decorated overall in Chinkinbori fine carving, its face side depicting love-making Samauri and Geisha, its reverse depicting a bird in foliage to indicate tranquility, with a rose quartz ojime and signed hardwood netsuke. £90-120

NETSUKE

371. A signed Japanese hardwood NETSUKE of an Ox. £30-40
372. A signed Japanese hardwood NETSUKE of a prone boar. £30-40
373. A Japanese ivory SEAL NETSUKE with a seated serpent. £60-80
374. A signed Japanese ivory NETSUKE of a Bear clawing a stylised skull. £70-90
375. A Japanese ivory NETSUKE of an emancipated student, signed. £40-60

JEWELLERY & BIJOUTERIE

380. A gold plated Hunter POCKET WATCH.
381. Ladies 9ct gold Everite WATCH on 9ct snake link bracelet. £30-40
382. Ladies 18ct. gold Hamilton WATCH on expander bracelet. £30-40
383. 9ct. gold signet RING and St. George RING.
384. Ladies 14ct gold Eterna WATCH on 14ct snake link bracelet. £80-100

385. An 18ct gold aquamarine and diamond flowerhead RING. £100-150
386. A brass and copper cushion PURSE.
387. Various bone and metal JEWELLERY including bracelets and a necklace.
388. A quantity of Eastern copper and brass JEWELLERY
389. Two WWI SERVICE MEDALS.
390. An 18ct gold POCKET WATCH by Hadley of London. £150-200
391. An amethyst BROOCH.
392. A three stone diamond RING claw set in an 18ct gold and platinum shank (c.65pts.). £250-350
393. A ladies 9ct gold ROTARY WRISTWATCH with a square champagne dial and textured strap. £60-80
394. A 3-strand PEARL NECKLACE with a 9ct rose gold clasp in the form of 2 hearts, each set with 3 rubies. £325-425
395. A gold plated Waltham POCKET WATCH engraved with a stag and a CHRONOGRAPH in a plated case.
399. An EPNS 3-piece TEA SERVICE with scalloped rims.
400. A plated copper twin branch CANDELABRA.
401. An Art Deco lated shallow BOWL and a SPIRIT BURNER STAND.
402. A plated hexafoil embossed BOWL, a swing handled BASKET, and a twin branch CANDLESTAND.
403. A plated pierced swing-handled BASKET and a 5-bar TOAST RACK.
404. An electroplated galleried TRAY. £20-30
405. A George V silver 2 handled COMFORT with vine rim and pierced border. Maker Walker & Hall. Sheffield 1930. 42oz. £450-550 *Illustrated on page 3*
406. A Victorian silver part reeded EWER. London 1890. 11oz all in. £80-120
407. A Victorian silver part fluted EWER. Maker EH, London 1884. 21oz all in. £280-350
408. A George V Mappin & Webb silver TEAPOT. Sheffield 1912. 21oz all in. £150-200
409. An Edwardian silver circular POWDER BOWL. London 1901. £50-80

SILVER & PLATEDWARE

396. Two plated TEAPOTS.
397. A cased set of 6 pairs of mother of pearl handled fruit KNIVES
398. An electroplate glass lined BISCUIT BARREL. £25-40
410. A 17thC style Britannia silver PORRINGER. Maker JV. London 1896. 5¹/₂oz. £280-350
411. A 6-bottle CRUET on an electroplate stand. £60-90

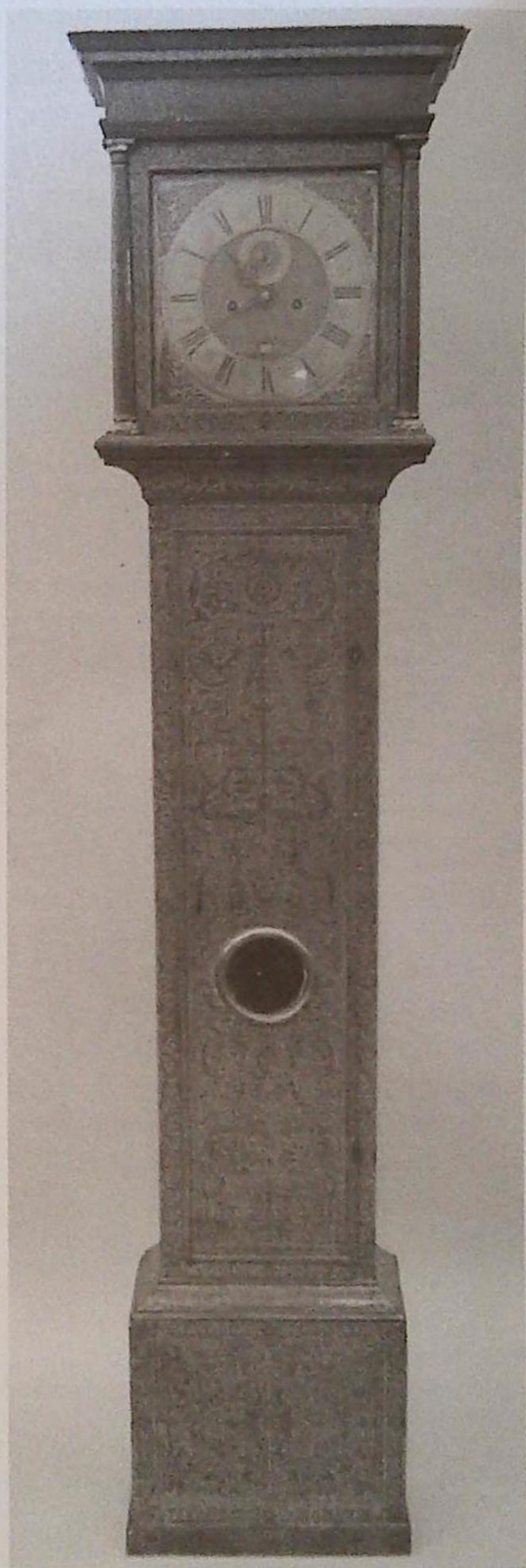
412. A pair of green/clear glass dimple VASES with silver rims. £40-60
413. A pair of Sheffield Plate CANDLESTICKS.
414. A set of 6 Old English pattern silver TEASPOONS. London 1805. £30-40
415. A set of 4 fiddle pattern SALT SPOONS, London 1826 and 4 silver fiddle pattern TEASPOONS, Sheffield 1903.
416. A pair of Old English pattern TABLESPOONS. London 1812.
417. A silver handled BUTTON HOOK and SHOE HORN. Chester assay.
418. A pair of silver SUGAR BOWS, London 1782 and a rat tail bowl DESSERT SPOON, Dublin 1829.
419. A HAND BRUSH with repousse decorated EPNS handle and back.
420. A pair of silver SPECIMEN VASES. Birmingham 1901. 5". £30-50
421. A silver SPECIMEN VASE with glass liner. Birmingham 1910. 6".
422. A Liberty's style rectangular silver PHOTOGRAPH FRAME with cabochon stone inset. Birmingham assay. £30-50
423. A matched set of 6 silver fiddle pattern DESSERT FORKS, London assay. 9oz. £30-50
424. A Victorian silver bladed Butter Knife with mother of pearl handle by George Unite.
425. A set of 4 Victorian fiddle pattern DESSERT SPOONS, London assay. 4 1/2 oz.
426. A set of 6 Old English pattern silver TEASPOONS, London assay. £30-40
427. Six various silver TEASPOONS and miscellaneous platedware.
428. A Georgian style silver SUGAR CASTOR with pierced cover. Birmingham assay. £30-50
429. A small circular cushion framed SILVER EASEL MIRROR. Birmingham assay. 5 1/2".
430. A Walker & Hall 3-piece plated TEA SET.
431. Thirteen assorted plated TEASPOONS and a pair of EPNS sugar NIPS.
432. Eight various fiddle pattern Victorian silver TEASPOONS and 4 1930/1940 examples.
433. A set of 6 silver TEASPOONS. Sheffield 1938.
434. Three silver APOSTLE TEASPOONS Sheffield 1927, 2 Hong Kong silver TEASPOONS, an Egg Spoon Sheffield 1905 and a Sugar Spoon Sheffield 1962.
435. A pair of SUGAR NIPS London 1938, a SALT SPOON London 1817 and a plated SALT SPOON and BUTTER KNIFE.
436. A Victorian silver 'initial' Brooch London 1892 and Celtic style 5-stone dress Brooch.
437. Nine various Georgian silver TEASPOONS and a DESSERT SPOON, London 1827

438. A glass SALAD SPOON, a pair of glass CARVER RESTS and a plated Trophy Cup.
439. A silver handled MAGNIFYING GLASS, Birmingham 1911.
440. An EPNS topped glass hair tidy and hairpins.
441. A pair of plated FISH SERVERS, a Silton SCOOP and 2 bread FORKS.
442. An EPNS pierced SERVING SPOON and a pair of EPNS Berry Spoons.
443. A pair of fiddle pattern silver TABLESPOONS, Exeter 1842 and French design silver Tablespoon.
444. A pair of Victorian silver topped cut glass Vinegar and Oil BOTTLES, London 1874/75. £30-50
445. A glass HAIR TIDY with silver rim and lid Birmingham 1912 and 1914 and an octagonal glass dressing table JAR with silver lid, London 1901.
446. A Victorian pierced oval SILVER SALT with Cranberry glass liner and plated spoon, London 1896.
447. A gadrooned edge circular PIN TRAY with scattered hallmarks, Birmingham 1972 and a circular ASHTRAY with loaded base, Birmingham 1953.
448. A Victorian glass MUSTARD POT with silver rim and lid, Birmingham 1861 and an Old English pattern SPOON, London 1810.
449. A scalloped edge SILVER BOWL on 3 hoof feet, Birmingham 1907.
450. A silver PEPPER POT, London 1909.
451. A cased set of 6 EPNS Grapefruit Spoons.
452. A cased set of 6 bean end COFFEE SPOONS, Sheffield 1960.
453. A cased MANICURE SET of 6 silver or silver mounted pieces, Birmingham 1934/35.
454. A pair of electroplate mounted HORSE HOOF TROPHIES, 'inkwell and pin cushion'. Inscribed Full Cry 1924-30, Rowland Ward Picadilly. £100-150
455. Two BM TEAPOTS and a Benares brass TRAY. £15-25
456. Electroplate part fluted COFFEE AND TEAPOT. £20-30
457. A Britannia metal SUGAR and CREAM and horn BEAKER.
458. A circular silver SUGAR BOWL with scalloped rim and on 3 hoof feet. Chester assay.
459. A cased set of 6 EPNS TEASPOONS and SUGAR BOWS and a cased set of TEA KNIVES.
460. A set of 11 fiddle and thread pattern DESSERT FORKS and 6 pairs of FISH KNIVES and FORKS.

- 461. A pierced silver Bon Bon DISH.
Sheffield assay. £40-60
- 462. A Continental silver baluster
CLOISSONNE VASE with
overlaid silver cagework
decorated with flowers on an
engine turned ground.(AF)
£200-300
- 463. A carved walnut BOX with
various plated and Continental
silver flatware.
- 464. A silver-handled BREAD FORK,
2 silver SPOONS and a silver
BUTTER KNIFE.
- 465. An ART NOUVEAU design
plated INKWELL with cut glass
bottle. £50-70
- 466-500 Spare Lots

CLOCKS & BAROMETER

- 501. A William & Mary walnut and
seaweed marquetry LONGCASE
CLOCK, with 5 pillar 8 day
movement striking on a bell, the
12" square brass dial having
cast spandrels, chapter ring
with roman numerals inscribed
JOHN FINCH, LONDON the
matted centre having seconds
ring and date aperture. 7' high.
Illustrated on cover. £7000-9000
- 502. A Georgian oak LONGCASE
CLOCK with pillared hood, 10"
square dial, cast brass span-
drels, roman numerals, date
aperture and nameplate Corba
Cranefield Sherringham. 6'3".
£750-1000



503. A 19thC LONGCASE CLOCK by Bothamley of Boston. The oak case with mahogany crossbanding and fluted quartered columns to the trunk. The 12" arched enamelled dial with floral spandrels housed in a hood with a swan-neck pediment. 8 day striking movement. 81 1/2" high. £1000-1250
504. A fine 19thC flamed mahogany STICK BAROMETER by Abraham, Optician, Bath. £300-500
505. A Black Forest WALL CLOCK, walnut frame around a glass dial. Wooden plates movement striking hours and half hours. Two cone weights and a pendulum, late 19thC. £150-200
506. A Vienna style WALL CLOCK, walnut cased, enamel chapter ring to dial. Striking hours and half hours, late 19thC. £150-200
507. A brass SHIP'S CLOCK with circular enamelled dial. £200-250
508. A Victorian polished slate MANTEL CLOCK. £30-50
509. A 19thC French brass MANTEL CLOCK with elaborate pierced and raised decoration, 8-day striking movement. £80-120
510. A stripped pine Starburst WALL CLOCK. £90-120
511. An American oak cased striking WALL CLOCK with a circular enamelled dial. £40-60
512. A Victorian spring-driven WALL CLOCK. £100-150
513. An Edwardian MANTEL CLOCK in decorated case with Westminster and Whittington chiming movement and silvered chapter ring. £250-350
514. An oval brass CARRIAGE CLOCK with 2 subsidiary dials. £200-300
515. A 19thC French spelter figural MANTEL CLOCK with enamel chapter ring. 19" high. £250-300
516. An American 8-day striking WALL CLOCK with circular enamelled dial and a rosewood and walnut case. £125-175
517. An Art Deco walnut mantel CLOCK with Westminster Chime.
518. An oak cased 'Napoleon's Hat' CLOCK with Westminster Chimes.
519. A 'Junghans' brass CLOCK with battery movement and under a glass dome.
520. A Victorian marble and slate mantel CLOCK with incised decorations and brocot movement. £50-70

PICTURES

521. A pair of colour PRINTS of Doncaster Races. £150-200
522. 19thC Primitive Oil on Canvas of Horse and Figures. £200-300

523. A 19thC OIL ON PANEL.
An Elizabethan Court Scene.
19¹/₂" x 20¹/₂". Unsigned, gilt
framed. £150-200
524. W G Pecker. Sheep in a
mountainous landscape. OIL
ON CANVAS. 19¹/₂" x 29".
Signed, gilt framed. £60-80
525. A facsimile map of Lincolnshire
after J Cary. Framed.
526. A framed PRINT of Oliver
Cromwell. £30-40
527. A framed PRINT of Young
Wellington. £40-60
528. A Victorian CRYSTOLEUM.
£40-60
529. D Martin. A woman with a
parasol and children in a
garden. OIL ON CANVAS,
signed. 15¹/₂" x 23¹/₂",
gilt framed. £200-300
530. M Clarke. Sailing boats on the
Nile. WATERCOLOUR, signed.
8" x 10", framed.
531. Richard William. A Church in a
landscape. WATERCOLOUR,
signed. 7¹/₂" x 11", framed.
£45-65
532. Henry H Parker. The Crown
Inn at Avebury. WATER-
COLOUR, signed. 10" x 12",
framed. £30-50
533. J McGregor Wilson. Sailing
Boats on Loch Fyne.
WATERCOLOUR, signed.
7" x 11", framed. £70-100
534. R Herd. Stockley Bridge, OIL
ON CANVAS, signed. 9" x 6¹/₂",
gilt framed. £80-120
535. James T Barker. Landscape
with cattle grazing near a river,
OIL ON CANVAS, signed.
8" x 11", framed. £60-80
536. W Artingstall. A highland scene
with figures. WATERCOLOUR,
signed. 9¹/₂" x 14¹/₂", framed.
£80-120
537. J T Williams. Coastal Headland
with sheep grazing.
OIL ON CANVAS, signed.
12" x 9", framed. £60-80
538. A PHOTOGRAPH of a Welsh
Woman in tall hat, oak framed
and a photograph PRINT of
Marilyn Monroe, framed.
539. A small primitive OIL on
PANEL, a Still Life of flowers
and 3 military costume panels.
540. Three various Frames.
541. Three pairs of circular framed
PRINTS.
542. A WATERCOLOUR portrait
of a young woman and
2 WATERCOLOURS by
L Campbell.
543. M Greenhough. A landscape
with Castle and Figures, OIL on
PANEL, signed. 7¹/₂" x 15",
framed.
544. A small Landscape WATER-
COLOUR, a PEN and INK view
of Llansteffan and PASTEL of a
Cottage, framed. (3)
545. 19thC English School.
Fishermen in Landscape with
Church, oil on board. 18" x 26".
£40-60
546. A 19thC rosewood framed
Masonic Engraving. £60-80

547. A 19thC colour PRINT of Bavarian Mother and Child.
548. A 19thC hand coloured engraving, A Short Ride.
549. An Oriental CORK PICTURE of a landscape.
550. WWI colour Print, England's Call.
551. A Victorian mahogany PICTURE FRAME. £40-60
552. An Ackermann print of 'Mango' the 1837 St Leger Winner in a swept mahogany frame.
553. Peter Foster. Belvoir from Kipton. A WATERCOLOUR, signed and dated 1980. 18" x 14", framed. £20-40
554. W Dendy Sadler. Portrait, signed proof 1909. £20-30
555. ** Thornton. Floral sprays, pair, signed, watercolour. 15" x 8", oval gilt frame. £50-80
556. A Victorian oleograph - Spare the Weeds. £30-40
557. M Gianni. Vesuvius, signed, watercolour, 6" x 11", maple framed. £90-120
558. W Lee Hankey. Day Trippers near La Rochelle, watercolour, title and date on mounted board, 1908. 9" x 12". £80-120
559. A 19thC Ackermann engraving, TULIP. £25-40
560. A 19thC Ackermann Engraving, PASSION FLOWERS. £25-40
561. A 19thC chromo lithograph Portrait of Madame Patti. £40-60
562. G Richards. Coastal scene, watercolour, gilt framed. 10" x 20" £70-90
563. E H Bennett. Crantock Bay, Newquay, watercolour, signed. 13" x 20". £70-90
564. A Victorian colour lithograph Farmyard Scene.
565. A Victorian Woolwork PICTURE.
566. A Pears PRINT - Butterflies. £30-50
567. A Pears PRINT - Bubbles, maple framed. £40-60
568. Pears ENCYCLOPAEDIA 1954/55.
569. A small French landscape PRINT, gilt framed.
570. A pair of PRINTS of ducks, framed.
571. A pair of coloured PRINTS of Lloyd's and the Stock Exchange, framed.
572. A pair of Quorn Hunt PRINTS after H Alken, framed.
573. A framed PRINT depicting scenes on early Delft tiles, framed.
574. A pair of CHINESE carved cork landscape PICTURES. £40-60
575. 2 watercolours of still life and 2 girls, marine oil and print.
576. A set of 3 framed WATER-COLOURS of village street scenes by D Sawyer. £60-80
577. A gilt framed HUNTING PRINT. £120-180

578. A set of 4 PRINTS of York, Amersham and Windbourne after F Retson, in ebonised frames. £30-50
579. F Thompson. Boston Stump from the Town Bridge. Watercolour, signed. $13\frac{1}{2}'' \times 8''$. Framed and mounted.
580. A 19thC English School. A stable interior with groom, dog and 3 horses. OIL ON CANVAS, unsigned. $19'' \times 25''$. £50-80
581. A framed Portrait PHOTOGRAPH of a boy.
582. A Victorian Print, The Sleeping Minstel. £50-70
583. A pair of Ltd Edition Cartoon Prints by C J Orr. £50-80
584. A Le Blond PRINT No 104 Learning to Rid. £40-60
585. H * Johnson. Landscape, signed, oil on canvas. $12'' \times 18''$. £40-60
586. A Victorian bird's eye maple framed engraved The Preaching of John Knox. £150-200
587. A cased BROOCH and NECKLACE Suite. £75-100
588. A FILM POSTER depicting Audrey Hepburn in Breakfast at Tiffanys. $38'' \times 25''$. £1500-2000
589. A pair of ebonised framed PRINTS of interior scenes.
591. A Dutch oak SIDEBBOARD, the upper section having 4 bevel glazed doors over a bowfront, 4 door base on short cabriole legs $7'5''$ wide, $6'3''$ high. £200-300
592. A Victorian mahogany DISPLAY CABINET with moulded cornice, 2 astragal glazed doors with glass shelves and bevel mirrored back, over a 3 door base. $8'2''$ high, $5'$ wide. £1200-1800
593. A Schlingmann Wertmobel walnut veneer part glazed CABINET with moulded cornice over 6 doors, 5 drawer base on carved paw feet $12'$ wide. $5'8''$ high, $22''$ deep. £400-600
594. An early 19thC rosewood TEAPOY. The fitted section of waisted form with 2 rising compartments for tea and 2 original cut glass mixing bowls. The tapering octagonal column terminating in a concave platform base with scrolled feet and brass castors. Height $30\frac{1}{2}''$. £800-1000
595. A SUITE OF MIRRORS. Early Victorian mahogany cheval mirror, stamped GILLOW under base, together with 2 similar dressing table mirrors, one also stamped GILLOW twice on base. £1200-1800
596. A late Georgian bowfront SIDEBBOARD with plumb pudding mahogany top, flamed doors and drawers, brass ring handles, turned legs. $3'6''$ wide. £1500-2500
Illustrated on page 3

FURNITURE

590. A small Bokhara RUG. £70-90

597. A Regency mahogany BREAK-FAST TABLE with moulded rectangular tilt top on a turned pillar with 4 reeded sabre legs with brass cup castors. 4'6" x 3'6". £1500-2000 *Illustrated on page 15*
598. A Regency mahogany CARD TABLE with rectangular crossbanding, folding top, square taper pillar, raised on 4 sabre legs with brass paw castors. £700-1000 *Illustrated on page 18*
599. A George III mahogany BACHELOR'S CHEST with crossbanded moulded top, brushing slide, 2 short and 3 long graduated drawers, oval pressed brass handles, bracket feet. 34" wide. £1000-1500
600. A Regency mahogany BREAK-FAST TABLE with rectangular top on turned pedestal with 4 sabre legs and brass cup castors. 3'7" x 4'6". £1200-1500 *Illustrated on page 18*
601. A 3-tier SHOP FITTING under marble top with glazed panel advertising 'Mackenzie & Mackenzie High Class Biscuits'. £400-500
602. A Regency rosewood LIBRARY TABLE of rounded rectangular form. The frieze fitted one real and one dummy opposed by a similar arrangement. The circular tapering end supports with leaf carved terminals and square section bases with lion paw feet. Length 54". £2000-3000
603. A William IV mahogany pull out DINING TABLE with tulip carved legs, 2 leaves, 4' x 7'8 max, together with a set of 6 DINING CHAIRS with similar legs and over-run cresting rails. £2800-3500
604. An 18thC oak BUREAU on ogee feet. 2'6" wide. £800-1000
605. A George III mahogany bowfront hanging CORNER CUPBOARD. 3'4" high. £500-700
606. An Edwardian mahogany SUTHERLAND TABLE. £150-200
607. A Georgian mahogany DINING TABLE with oval top on gateleg base with padfeet. £250-400
608. A Victorian pine BLANKET BOX. £30-40
609. A set of 6 Jacobean style oak highback DINING CHAIRS with barleytwist supports and stretchers. £400-600
610. A pair of Victorian walnut DINING CHAIRS with button dralon upholstery and cabriole legs. £50-80
611. An oak gateleg DINING TABLE with turned legs and plain stretchers. £150-200
612. A Queen Anne style CHEVAL MIRROR. £80-120
613. A Victorian oak ball turned WINDOW SEAT. £50-80
614. A Georgian mahogany STOOL. £50-80

615. A Victorian walnut barleytwist STICKSTAND. £100-150
616. A Victorian walnut marquetry 3-tier WHATNOT. (AF) £100-150
617. A George III Mahogany PEMBROKE TABLE. £250-400
618. A Georgian yew Child's WINDSOR CHAIR. £100-150
619. A Victorian barback Child's CHAIR. £20-40
620. A Victorian bobbin turned drop-arm SOFA. £200-300
621. Five 19thC. Chinese Hardwood CHAIRS each with traditional decorative scenes on a black laquer field. £700-900
622. A Victorian mahogany serpentine BOX COMMUNE. £50-80
623. A Georgian oak and mahogany TRIPOD TABLE. £70-100
624. A Georgian oak BUREAU with fall flap, lopers, 4 graduated drawers, brass handles and bracket feet. 36" wide. £400-600
625. A Victorian mahogany serpentine breakfront SIDEBOARD with carved panel back, drawer and 4 arch panel doors. 5' wide. £600-900
626. A George III mahogany bowfront CHEST of 2 short and 3 long graduated drawers, brass knob handles and turned feet. 3'7" wide. £250-400
627. A set of 6 Georgian country barback CHAIRS with rush seats. £400-600
628. A 17thC oak COFFER with 3 panel top and 2 carved panel front, raised on stiles. 3'6" wide. £400-600
629. An early 18thC oak hanging CORNER CUPBOARD with arch fielded panel doors. £400-600
630. A Victorian Mahogany CHAISE LONGUE with carved back and right hand rest. £400-600
631. A Victorian mahogany BIDET on turned legs. £60-90
632. A Georgian mahogany Pembroke TABLE. £150-200
633. A Victorian stripped pine BLANKET BOX. £60-90
634. A shell inlaid mahogany OCCASIONAL TABLE. £40-60
635. An Edwardian mahogany 3-piece SUITE with blind fretwork frieze, ball and claw feet. £300-500
636. A set of 4 leather panel back oak DINING CHAIRS. £100-150
637. An oak extending REFECTORY style TABLE. £80-120
638. An Edwardian reeded walnut framed 3-piece SUITE with sculptured dralon upholstery. £600-800
639. A Victorian mahogany circular 2-tier tabletop DUMB WAITER. £100-150
640. A carved oak STANDARD LAMP. £80-90
641. A small 17thC style COFFER. £100-150

642. A George III ash and elm WINDSOR CHAIR with pierced vase splat. £200-300
643. A George IV mahogany HALL CHAIR. £100-150
644. An oak REFECTORY TABLE with central stretcher, c.6' x 3'6". £300-400
645. A Georgian walnut BUREAU (AF) requiring restoration. £800-1200
646. A 17thC oak 3-panel COFFER carved with floral motifs. £300-400
647. A Georgian mahogany bow fronted hanging CORNER CUPBOARD. £400-600
648. A Victorian mahogany POLE SCREEN on tripod base. £120-180
649. A set of 4 Victorian walnut balloonback DINING CHAIRS. £300-400
650. A pine VAULTING HORSE. £100-150
651. Three Edwardian ebonised galleried NURSING CHAIRS. £70-90
652. A walnut CARD TABLE with rectangular folding top and cabriole legs. £150-250
653. Three Edwardian galleried oak SALON CHAIRS. £40-60
654. A Georgian pine SETTLE. £200-300
655. A pair of George I style walnut SIDE CHAIRS with brocade upholstery, shell carved cabriole legs. £200-400
656. A Knole style WING ARM-CHAIR. £50-70
657. A Victorian grain painted pine DRESSING CHEST and WASHSTAND. £250-350
658. An antique style 3-panel OAK COFFER the front carved with 3 roundels depicting scenes from 'A Midsummer Night Dream' raised on stile supports. *Length 53"*. £250-350
659. An Art Nouveau mirror back oak HALLSTAND with glove and umbrella sections. £80-120
660. A Victorian grain painted pine LINCOLNSHIRE DRESSER. £200-300
661. A Victorian upholstered mahogany OTTOMAN. £50-80
662. Pair of Harrods parcel gilt Baroque style COFFEE TABLES. £300-400
663. A 19thC chinoiserie lacquer on tortoiseshell WORK TABLE with fitted interior and bag slide. £700-900
Illustrated on page 18
664. A Victorian style cast iron PATIO TABLE and 4 CHAIRS. £200-300
665. An Edwardian marquetry X frame STOOL. £250-300
666. A Victorian mahogany BREAKFAST TABLE with moulded circular top, hexagonal baluster pedestal, circular base with 3 scroll feet 3'4" dia. £200-300

667. A Victorian mahogany SOFA FRAME. £40-60
668. 19thC French PIANO. £40-60
669. A Victorian flamed mahogany bowfront CHEST of 2 short and 3 long graduated drawers with knob handles and splay feet. £250-400
670. A Mahogany 4 door WARDROBE with Greek key cornice and blind fretwork. £100-200
671. A Jacobean style oak DRESSER with platerack, 2 drawers and baluster legs. 4'6" wide. £200-300
672. A Victorian mahogany overmantel MIRROR. £100-150
673. A Victorian mahogany barleytwist Overmantel MIRROR. £150-250
674. An 18thC walnut swing TABLE MIRROR on bracket feet. £450-600
675. A Victorian mahogany CHEST of 2 short and 3 long graduated drawers with knob handles. £150-200
676. An Edwardian string inlaid mahogany DOUBLE WARDROBE. £150-250
677. A George III oak BUREAU with mask carved fall flap, lopers, 3 graduated drawers, oval brass handles with bracket feet. 36" wide. £400-600
678. A Victorian rectangular swing TOILET MIRROR.
679. A Victorian flamed mahogany swing TABLE MIRROR. £80-120
680. A William IV mahogany PIER GLASS. £100-150
681. A Regency gilt PIER GLASS with breakfront pediment. £150-250
682. A Victorian oval gilt GIRANDOLE. £200-300
683. A 19thC Flemish carved oak SIDEBORD with split level mirrorback, 2 drawers and 2 door base. 4'6" wide. £550-750
684. A Regency style gilt convex Porthole MIRROR. 14". £30-50
685. A Victorian mahogany TABLE MIRROR with oval glass, shaped base and 2 flaps. £150-200
686. A Victorian mahogany bowfront CHEST of 2 short and 3 long graduated drawers with knob handles and reeded feet. 4' wide. £250-400
687. An Edwardian string inlaid mahogany DOUBLE WARDROBE. £100-200
688. A late Victorian carved mahogany WASHSTAND with grey/liver marbletop. £100-150
689. A Victorian brass and iron DOUBLE BED. £150-200

END OF SALE.

Established 1900

— GOLDINGS —

Chartered Surveyors, Auctioneers, Valuers & Estate Agents
Residential, Commercial, Agricultural, Property Management, Financial Services

45 High Street, Grantham, NG31 6NE

Telephone: 01476 · 590211

PROFESSIONAL SERVICES FOR



RESIDENTIAL

Our established Residential department headed by Chartered Surveyors undertakes sale and valuation of all types of property from Castles to Town Houses; Surveys, Homebuyers Reports, Mortgage, Probate and Insurance Valuations carried out with care attending to individual requirements.



COMMERCIAL

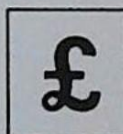
Dealing with the sale and survey of Shops, Offices and Factories. Valuation for Rent Reviews, Lease renewals and negotiations. Rent Arbitration, on behalf of landlord and tenant.

Plant, Machinery & Assets; Sales for Receivers, Liquidators, High Court & County Court. Auction Sales on Site or at The Grantham Auction Rooms for private and public clients alike.



AGRICULTURAL

Our Senior Partner has wide experience in the sale and valuation of Agricultural Properties, conducting Farm Sales and Valuation of Live and Dead Farming Stock for dissolution, Probate and other matters. Together with Rent Reviews, Development Land reports and Annual Stocktaking Valuations.



FINANCIAL SERVICES

Our Experienced Consultant is available to advise on all matters concerning Finance, Mortgages, Insurance, Investment, Planning and Pensions.



PROPERTY MANAGEMENT

Personal service and attention to detail ensures that our management team exploits your investment portfolio whether an Individual Family Home let for a small fee or Office, Factory, Shop or Farm with rent collected and regular inspections made.

Chattels Auctioneer

Colin R. Young FNAVA

Property Management

Mrs. Margaret Pashley

Partners

C. Robin Hall FRICS FAAM

Ian J. Shaw FRICS FNAEA

Financial Service Consultant

John G. Stukins

Residential Sales Manager

Mrs. Jenny Diment FNAEA CPEA

Established 1900

- GOLDINGS -

THE GRANTHAM AUCTION ROOMS



A William & Mary style walnut DESK
Sold in our last Fine Art Sale for

£1,325

NEXT SALE

of

ANTIQUES & FINE ART

Wednesday, 3rd December, 1997

Further entries invited until 17th November

Call Colin Young for a Free Valuation

THE COMPLETE AUCTION SERVICE

Auction Sales of Antiques, Fine Art, Collectables, Modern Furniture & Effects – Office, Shop & Catering Equipment
Vehicles – Plant & Agricultural Machinery – Stock-in-Trade – Business Assets – Liquidations & Receiverships
VALUATIONS undertaken for Insurance, Probate, Family Division and Sale purposes. Full HOUSE CLEARANCE facilities.