

Established 1900

-GOLDINGS-

THE GRANTHAM AUCTION ROOMS

Upon instructions from Executors of Estates, Private Collectors
and House Clearances from throughout the Region

GOLDING YOUNG & CO. will sell by AUCTION

**Antique & Later
Furniture & Effects**

On Wednesday 13th August, 1997, at 10 a.m.

Golding Young & Co.

Old Wharf Road, Grantham, Lincolnshire, NG31 7AA

Telephone: (01476) 65118

Fax: (01476) 61475

CONDITIONS OF SALE

1. These Conditions together with any Notices to Purchasers are the only terms and conditions subject to which Golding Young & Co. ("the Auctioneers") as agents for the Vendor will sell goods to a purchaser ("the Bidder") and all other conditions, whether express, or implied at common law or by statute as are capable of lawful exclusion are hereby excluded.
2. The highest bidder shall be the buyer. The Auctioneers reserve the right of regulating the biddings; of rejecting any bid; and of bidding for, withdrawing, consolidating, dividing or altering the order of lots.
3. The purchase money for each lot with the usual commission of 10% plus VAT at the current rate shall be paid at the fall of the hammer (if required). Each lot at the fall of the hammer shall be at the sole risk and expense of the buyer, and shall be paid for and removed immediately after the conclusion of the sale, *but no lot shall become the property of the buyer, or be removable until paid for*, and if taken away in contravention of these conditions without an order for removal signed by the Auctioneers, they shall have power to seize the same by their servants or agents, or otherwise, or the Auctioneers may recover either the lot sold or the price thereof (at their option) by action at law.
4. No contra account of any description whatever will be allowed to the buyer as a set off, and payment for each Lot shall be made to the Auctioneers or their clerk only, and a buyer paying by cheque must give satisfactory references.
5. For all purposes of this sale the Clerk of the Auctioneers shall be deemed to be the agent of both seller and buyer.
6. A bidder shall not be allowed to retract his bidding after the fall of the hammer, and he shall give up his full name and address if required. The Auctioneers will not recognise the transfer of any lot from one buyer to another, nor make any alteration in the sale book in respect thereof.
7. The Auctioneers are acting only as agents, and give no personal warranty as to the condition, quality or authenticity of any chattels offered for Auction. Any catalogue description is given merely as guide to purchasers, any description can be changed from the rostrum before the lot is sold. If a purchaser buys without previous inspection he will do so at his own risk.
8. Notwithstanding any other terms in these Conditions, if within 7 days of the Sale a purchaser gives notice in writing that a lot is a deliberate forgery, with supporting factual evidence, the Auctioneers may rescind the transaction. The burden of factual proof lies with purchaser, mere opinions will not satisfy. This benefit is not assignable.
9. If any buyer neglect or refuse to comply with the above conditions or any of them, his deposit money (if any) shall be forfeited, and the lot uncleared may, at the option of the Auctioneers, be resold without notice by public auction or private treaty, and any loss occasioned by such re-sale together with all expenses attendant thereon, or arising under these conditions shall be paid for by the defaulter and be recoverable as and for liquidated damages. This condition is however without prejudice to the right of the Auctioneers to enforce the contract made at this sale if they think fit.
10. Any Notes for Purchasers and Catalogue Glossaries will be construed as Conditions of Sale.
11. The Auctioneers shall be the sole Arbitrators in all matters of dispute relating to those conditions both as between the seller and the buyer and between the several bidders and buyers and their determination on all matters shall be final and binding on all parties concerned.

Auctioneers: C. Robin Hall FRICS FAAV & Colin R. Young FNAVA



Established 1900

-GOLDINGS-

• Fine Art Auctioneers & Valuers •

THE GRANTHAM AUCTION ROOMS

Golding Young & Co
Telephone: (01476) 565118

Old Wharf Road, Grantham, Lincs NG31 7AA
Fax: (01476) 561475

GOLDING YOUNG & Co. will sell by AUCTION

Antique & Later Furniture & Effects

On Wednesday, 13th August, 1997, at 10 a.m.

Circa 700 Lots including
FURNITURE, PICTURES, SILVER & PLATEDWARE,
GLASS, CERAMICS, JEWELLERY,
ORIENTAL OBJECTS, CLOCKS & WATCHES,
PHOTOGRAPHIC ITEMS, BYGONES
AND COLLECTORS ITEMS

Viewing Times:

Sunday 10th	2 p.m. to 4 p.m.
Tuesday 12th	2 p.m. to 7 p.m.
Saleday 13th	9 a.m. to 10 a.m.

Cover Illustration:
Lot 381

Sales & Services are available on the INTERNET @ <http://www.thesaurus.co.uk/gy&c>

IMPORTANT NOTES FOR PURCHASERS

1. **PAYMENT:** Must be made in full immediately after the Auction. The following methods of payment are acceptable.
 - a) Cash b) Bankers Draft c) Building Society Cheque
 - d) Cheques, accompanied by a valid card. For accounts above the stated card limit, we reserve the right to retain the goods until clearance is established.
2. **BUYERS PREMIUM:** of 10% + VAT is payable on all lots.
3. **REMOVAL OF PURCHASES:** Goods must be collected as soon as they are paid for, and in the Two Working Days following the sale. If goods are not collected on these days we reserve the right to charge £1 per lot per day thereafter.
4. **COMMISSION BIDS:** If you are unable to attend this or any of our future sales we will be pleased to bid on your behalf. We always purchase at the lowest possible price, subject to other bids and reserves.

All bids must be handed to the office on an official form. It remains the responsibility of prospective purchasers to contact GOLDINGS to confirm whether their bids have been successful.
5. **TELEPHONE BIDS:** There are inherent dangers with this practice, therefore all such arrangements are made entirely at the bidder's risk. Telephone bids will only be accepted if the lower catalogue estimate is £500 or above. For lots with a lower estimate below this figure Commission Bids Only will be accepted.
5. **SMOKING:** is not permitted in any part of the Saleroom.
6. **REFRESHMENTS:** will be available Saleday.
7. **ACCOUNT TRANSFERS:** will not be recognised after the sale. If any lots are purchased for another person, this must be declared at the fall of the hammer.

GLOSSARY

- a) **Generally:** '*As Found.*' (AF). This term indicates the lot has some damage. Its absence does not indicate that the lot is free of defect. All lots are SOLD AS SEEN.
- b) **Paintings:** '*Signed, initialled, monogrammed.*' This refers to the present state of the work and is not an attribution.
- c) **Books and printed matter:** These items are not sold subject to collation and are not returnable once removed from the premises.
- d) **Silver & Jewellery:** Weights given are approximations given by basic instruments.

CIGARETTE CARDS, STAMPS & BOOKS

1. John Player 'TENNIS' Set of 50
2. John Player 'STRUGGLE FOR EXISTENCE' Set of 25
3. Lambert & Butler 'MOTORCYCLES' Set of 50
4. Churchman 'ASSOCIATION FOOTBALLERS' Set of 50
5. John Player 'PLAYERS PAST AND PRESENT' Set of 25
6. W.D. & H. O. Wills 'GARDEN HINTS' (Mint) Set of 50
7. Gallaher 'DOGS' 2nd Series Set of 48
8. W. D. & H. O. Wills 'HISTORIC EVENTS' Set of 50
9. W. D. & H. O. Wills 'AIR RAID PRECAUTIONS' (Mint) Set of 50
10. John Player 'CEREMONIAL & COURT DRESS' Set of 25
11. John Player 'REGIMENTAL UNIFORMS' Blue Back Set of 50
12. Cavanders 'SCHOOL BADGES' Set of 25
13. Churchman 'KINGS OF SPEED' Set of 50
14. John Player 'HIDDEN BEAUTIES' Set of 25
15. W. D. & H. O. Wills 'DOGS' (Mint) Set of 50
16. B. Morris (Forecast) 'RACING GREYHOUNDS' (Mint) Set of 25
17. Carreras (Turf) 'FAMOUS FILM STARS' Set of 50
18. Carreras (Turf) 'FAMOUS CRICKETERS' Set of 50
19. Gallaher 'WILD ANIMALS' (Mint) Set of 48
20. Gallaher 'RACING SCENES' Set of 48
21. John Player 'MODERN NAVAL CRAFT' Set of 50
22. John Player 'ARMY LIFE' Set of 25
23. John Player 'ANIMALS OF THE COUNTRYSIDE' (Mint) Set of 50
24. Gallaher 'FAMOUS FILM SCENES' set of 48
25. Gallaher - Park Drive 'THE NAVY' Set of 48
26. Gallaher 'ARMY BADGES' Set of 48
27. Gallaher 'BUTTERFLIES AND MOTHS' Set of 48
28. Gallaher 'BRITISH BIRDS' Set of 48
29. Gallaher 'DOGS' 1st series Set of 48
30. Gallaher 'FAMOUS JOCKEYS' (Blue back) Set of 48
31. Gallaher 'FILM EPISODES' Set of 48
32. Gallaher 'FILM PARTNERS' Set of 48
33. Ogdens 'FOREIGN BIRDS' Set of 50

34. John Player 'MOTOR CARS' A Series Set of 50
35. W. D. & H. O. Wills 'WILD FLOWERS' 2nd Series Set of 50
36. John Player 'WILD BIRDS' Set of 50
37. John Player 'MINIATURES' Set of 25
38. John Player 'CHARACTERS FROM DICKENS' Set of 25
39. Stephen Mitchal 'ARMY RIBBONS AND BUTTONS' Set of 25
40. John Player 'CYCLING' (Mint) Set of 50
41. Gallaher 'SPORTING PERSONALITIES' Set of 48
42. Gallaher 'TRAINS OF THE WORLD' Set of 48
43. W. D. & H. O. Wills 'SPEED' Set of 50
44. Churchman 'BOXING PERSONALITIES' Set of 50
45. 'Turf' 'RADIO CELEBRITIES' Set of 50
46. Wills 'ALLIED ARMY LEADERS'
47. Players (Grandee) 'FAMOUS MG MARQUEES' Set of 28
48. John Player 'CHAMPIONSHIP GOLF COURSES' Set of 25
49. Ogdens 'BRITISH BIRDS' Set of 50
50. Brooke Bond 'BIRD PORTRAITS' (with address) Set of 50
51. Brooke Bond 'BRITISH BIRDS' Set of 20
52. Brooke Bond 'WILD FLOWERS' Set of 50
53. Senior Service 'SIGHTS OF BRITAIN' 3rd Series Set of 48
54. W. D. & H. O. Wills 'BOROUGH ARMS' (Mint) 4th Series Set of 50
55. John Player 'REGIMENTAL UNIFORMS' Set of 50
56. W. D. & H. O. Wills 'THE REIGN OF KING GEORGE V' Set of 50
57. John Player 'NATURAL HISTORY' (Nice) Set of 50
58. Carreras 'DO YOU KNOW' Set of 50
59. John Player 'ARMY CORPS & DIVISIONAL SIGNS' Set of 50
60. Ogdens 'CHILDREN OF ALL NATIONS' Set of 50
61. A set of Lambert & Butler 'Dance Band Leader' Cigarette Cards (25).
62. 3 Cigarette Card Albums.
63. Assorted Cigarette Cards.
64. Approx. 27 Classic POCKET BOOKS.
65. An 18thC. COMMON PRAYER BOOK, a later example and a small Gainsborough Print.
66. A quantity of reproduction Victorian JUBILEE POSTERS.
67. 3 Religious BOOKS, 2 others and a framed PRINT 'Autumn'.

68. Children's and other books.
69. Album of mainly GB Stamps
70. Assorted 1st Day Covers and World Stamps.
71. Pottery and Porcelain Books (7).
72. Francis Lenygon. Furniture in England 2 vols. etc. (5).
73. Art Reference Books etc. (6).
74. 3 Stamp Albums.
75. Canaries and Cage Birds by Swaysland and Wiener, illustrated with many lithographs: Our Canaries by Claude St. John (2).
76. Bird Books and Landscape Painting (4).
77. Staffordshire Pottery Figures by H. Read and Bow Porcelain by Frank Hurlbutt.
78. 3 Various volumes "The Plays of William Shakespeare", Longfellow's Poetical Works and Scott's Poetical Works.
79. Spare Lot.
80. Spare Lot.
84. 'The Britisher' a leather cased PLATE CAMERA by A. E. Staley & Co.
85. A Rolleicord TLR CAMERA. £20-40
86. 2 Woodworking PLANES.
87. A Ful-Vue and 2 folding CAMERAS. £20-30
88. A Contessa Nettel STEREO-SCOPIC CAMERA. £30-50
89. A Folding PLATE CAMERA. £40-60
90. A leatherbound TELESCOPE.
91. An Ernemann Heag XI Folding PLATE CAMERA. £20-40
92. A Bijou No. 4 portable TYPEWRITER.
93. An Ica Plaskop rigid body STEREOSCOPIC CAMERA. £25-40
94. A pair of BINOCULARS.
95. A small brass MICROSCOPE. £25-40
96. A Stereoscopic VIEWER and SLIDES. £15-25
97. Cameras, plates and sundries.
98. Two wooden bodied DOLLS and various LACE etc.
99. Spare lot. £20-30

COLLECTORS' ITEMS, BYGONES & MISCELLANEA

81. An Agfa Karat CAMERA. £15-25
82. A Victorian mahogany and brass Tropical PLATE CAMERA. £100-150
83. Records and Developing Trays.
100. A Pine Chemist's SPECIMEN CHEST of 6 graduated drawers and electric shock set. £100-150
101. A 'Standard EP' MAGIC LANTERN with 12 slides. £40-60

102. A small four string BANJO in case. £20-30
103. A CEREMONIAL KNIFE with brass mounted scabbard, and a CAVALRY SABRE. £30-50
104. A Bamboo CURTAIN POLE with gilt metal rings and terminals, *length 83"*.
105. Tonbridge inlaid walnut WORKBOX. £20-40
106. A Victorian swing TOILET MIRROR.
107. A Victorian walnut brass bound WRITING SLOPE. £60-80
108. A Hammered copper WATER CAN.
109. A Victorian brass KETTLE STAND. £30-40
110. A Brass MILK SKIMMER and Ladle.
111. A small lidded copper SAUCEPAN.
112. A Brass Kettle, cutlery and penstand.
113. A moulded glass INKSTAND and two bakelite penstands.
114. 4 pairs of wire framed SPECTACLES and a stopwatch
115. An oxidised FIRESCREEN.
116. A Victorian velvet covered PHOTOGRAPH ALBUM. £20-30
117. A Victorian embossed leather covered PHOTOGRAPH ALBUM. £20-30
118. A tray of TOYS including an early 'Muffin the Mule' diecast puppet. £20-40
119. A tray of approx. 28 early DINKY and other VEHICLES. £50-80
120. A Mahogany TEA CADDY and similar workbox.
121. 3 Gentleman's Outfitters Cupboard BOXES.
122. A leather Gladstone BAG and contents.
123. An Edwardian tin HATBOX.
124. An Art Nouveau design embossed copper and brass HORSES HAIR REMOVER £30-50
125. Phillips ADVERTISING FIGURE, an ASHTRAY, and Iron DOOR KNOCKER. £20-40
126. An oak PIPE RACK with 9 various pipes. £20-30
127. An ebonised display containing examples of the cotton industry. £25-40
128. A Bakelite RADIO.
129. An oval oak TRAY with open plated gallery. £50-60
130. A Victorian COAL SCUTTLE. £25-35
131. Leather SUITCASE.
132. A pair of Oak barleytwist CANDLESTICKS with brass sconces 8".
133. Pair of cast iron horse DOOR STOPS. £20-30

134. A Chippendale mahogany twin compartment TEA CADDY. £20-40
135. A Tunbridge inlaid WORK BOX and a rosewood, crossbanded, WRITING SLOPE (AF).
136. Japanese Print and 6 others.
137. Treen bowl, breadplate etc.
138. Silver topped Walking Stick.
139. Silver topped Umbrella etc.
140. A carved teak and blue musical BOX.
141. Glass and platedware.
142. 4 stoneware FOOTWARMERS
143. 4 stoneware FOOTWARMERS.
144. 4 copper WARMING FLASKS
145. 2 aluminium BED WARMERS.
146. 3 copper BED WARMERS
147. A hanging LANTERN.
148. A bakelite TELEPHONE.
149. A Georgian oak BOX with drawer. £40-60
150. A Victorian oak BUTTER CHRUN. £40-60
151. A pair of wrought ANDIRONS. £20-30
152. *A Cut-away MODEL of an automatic transmission unit. £40-60
153. A 33" German bisque headed DOLL. £400-500
154. A 19thC. Coromandel JEWELLERY BOX with fitted interior. £75-100
155. A leather Gladstone Bag.
156. A 19thC. Rosewood rectangular twin compartment TEA CADDY on brass ball feet 11". £150-200
157. A Rosewood brass inlaid rectangular JEWELLERY BOX with fitted interior. £90-120
158. A Victorian figured mahogany brass inlaid JEWELLERY BOX with fitted interior. £90-120
159. Split cane 3 piece FISHING ROD.
160. Split cane 3 piece FISHING ROD.
161. Split cane 3 piece FISHING ROD.
162. Split cane 2 piece FISHING ROD.
163. Split cane 2 piece FISHING ROD.
164. Split cane 2 piece FISHING ROD.
165. Split cane 2 piece FISHING ROD.
166. An oak framed PHOTOGRAPH of Alderman E. M. Nunneley.
167. German Pewter inc WMF Pieces £20-30
168. A German CALCULATING MACHINE and a Sportar CAMERA. £20-30
169. A leather VANITY CASE with ebony brushes and mirrors and plated mount bottles and a modern brush and mirror set. £30-50

170. A pair of CHINESE carved cork landscape PICTURES. £40-60
171. A Parcel gilt CARVED FIGURE of an Indian deity 22". £50-70
172. A TREEN Cup and saucer STAND.
173. A Victorian DOLLS PRAM. £40-60
174. A Victorian DOLLS PRAM. £20-40
175. A Haddon ROCKING HORSE. £250-350
176. A Spong KNIFE SHARPENER (AF). £25-40
177. Butter Churn, Dolly etc.
178. A Victorian treen INKSTAND. £30-50
179. An oak SMOKERS CABINET with bevelled glass door. £80-100
180. Records
181. 2 Old Search Lights.
182. A large COPPER KETTLE and a pierced BRASS TRIVET. £50-70
183. A stuffed BARN OWL on a naturalistic stand. £20-30
184. A Georgian mahogany Duet WRITING BOX. £80-120
185. A pair of Art Nouveau design TINWARE VASES and covers 11". £40-60
186. A Victorian brass and steel COAL SCUTTLE. £80-100
187. A flamed mahogany WORKBOX.
188. Approx 40 Victorian Medicine and Poison BOTTLES. £20-40
189. A Collection of 26 CLAY PIPES some with masonic and other motifs and mounted on a framed board. £80-120
190. A Collection of 11 CLAY PIPES mounted on a board. £40-50
191. 5 Churchwarden CLAY PIPES mounted on a board. £40-50
192. Al Read's Set of GOLF CLUBS. £20-40
193. Pair of chrome plated CAR PENNANTS, 'Right Monkey'. £20-40
194. A 17thC. bell metal POSNET with T.P.B. Water. I cast to the handle. £180-250
195. A George V Dress SWORD by Fenton Bros. Sheffield. £40-60
196. A Victorian CENTREPIECE of fruit under a glass dome. £60-90
197. A 19thC. Steel FOOTMAN. £50-80
198. A Serpentine fronted brass and iron FIREGRATE. £50-80
199. An Edwardian DOLLS PRAM with an Armand Marseille DOLL. £80-120
200. A Plush TEDDYBEAR 15". £20-30
201. A pair of carved Bavarian figural WALL PLAQUES 15". £100-150
202. A display case of REPRODUCTION MEDALS.
203. A display case of REPRODUCTION MEDALS
204. A 19thC rectangular mahogany WRITING BOX. £50-70

205. A BARRISTER'S 19thC. horse hair WIG in decorated tin carrying case signed 'J. F. Guile, Esq.' £70-100
206. An Isnik pattern enamelled copper circular TRAY 16". £20-40
207. An old Auger.
208. A Gramodeck.
209. A set of 3 quilted DOLLS.
210. A 19thC. rectangular mahogany twin compartment TEA CADDY on brass ball feet 9 1/2". £20-30
211. A Victorian brass LANTERN.
212. An Edwardian Oak SMOKERS CABINET. £40-60
213. 2 Pink Paraffin ENAMEL SIGNS.
214. Leaded Glazed Doors.
215. A pair of 19thC. pressed steel COACH LAMPS. £40-60
216. An Art Nouveau style TABLE LAMP in the form of a draped female figure. £20-30
217. An Art Nouveau style TABLE LAMP in the form of a draped female figure. £20-30
218. An Art Nouveau style TABLE LAMP in the form of a draped female figure. £20-30
219. An Art Nouveau style FIGURAL TABLELAMP. £50-80
220. An Art Nouveau style FIGURAL TABLELAMP. £50-80
221. Brass Taper and Candlesticks.
222. 2 Victorian cast iron DOORSTOPS.
223. An oak framed FRETWORK PANEL 'God bless our home' 21" x 26" £25-40
224. 7 various MODEL VEHICLES.
225. A birds eye Maple FRAME.
226. A Salter brass fraced TRADE BALANCE. £20-30
227. A Wilcock 12 bore side by side SHOTGUN Serial No. 90975.
228. A Victorian 12 bore side by side SHOTGUN Serial No. 54978.
229. A Victorian double barrelled 12 bore percussion cap muzzle loading SHOTGUN. £150-200
230. A Leather cased travelling INKWELL and a cut glass example.
231. Tinplate CANNON.
232. A cased Mother of Pearl handled MANICURE SET.
233. A Victorian tortoiseshell CARD CASE. £20-40
234. Tiara, Fan, Penknife, Fob etc.
235. A rare Huntley & Palmer BISCUIT TIN in the form of a black chinoiserie decorated long-case clock 11 1/2" high. *Illustrated on centre pages.*
236. An Edwardian gateback NURSING CHAIR.
237. An embossed POWDER FLASK.
238. A leather and brass SHOT FLASK.
239. A late 17thC. Spanish brass and walnut Miquelet Flintlock PISTOL. 10". £280-350

240. 'The Eddystone' a 6ft Big Game Fishing REEL by Hardy Bros. £100-150

241. Service MEDAL and a Rotary MEDAL.

242.-250. Spare Lots.

GLASS & CERAMICS

251. A Derby INK POT and quill holder decorated floral sprays (AF). £40-60

252. A Set of 6 porcelain polychromed FIGURES 'Cries of London' 3 3/4". £150-200

253. A pair of 19thC. polychromed SITZENDORF FIGURES of male and female harvest figures 4 1/2". £100-150

254. Spare Lot.

255. A Ruskin Miniature GINGER JAR. £30-40

256. A pair of miniature VASES with birds and flora. £30-40

257. A miniature painted VASE. £30-40

258. A Royal Worcester Model 1949 Pedestal URN. *Illustrated on centre pages.* £150-200

259. A Royal Worcester Model 175 POT POURRI painted with sweet peas by Harry Martin. *Illustrated on centre pages.* £450-550

260. A Royal Worcester model 279 POT POURRI painted with Hadley Roses by E. M. Fildes. *Illustrated on centre pages.* £250-350

261. A 19thC. Continental porcelain FIGURINE of Count Lafayette. £30-50

262. A Samson oval SNUFF BOX decorated with armorial. £30-50

263. A fine pair of Royal Worcester James Hadley FIGURES depicting 'Joy' and 'Sorrow'. £400-600

264. A First Period Worcester scalloped edge BOWL decorated in underglaze blue crescent mark 10" (AF) £75-100

265. A 19thC. Staffordshire Pottery GROUP depicting hounds pursuing a deer 6 1/2". £120-150

266. A Chamberlain's Worcester Campana shaped VASE. The Library & Baths 7" (AF) £150-200

267. A Chamberlain's Worcester Campana shaped VASE. Oxford Street 7 1/4". £175-200

268. A 'Grecian Pattern' blue and white part TEA SERVICE. £25-40

269. A Carnival glass SUGAR and CREAM.

270. 2 pieces of TORQUAY WARE.

271. A set of 3 graduated Grecian design JUGS (AF). £20-30

272. A lustre glass BOWL AND COVER.

273. A Limoges floral decorated DRESSING TABLET SET, a CUP and SAUCER, and a PILL BOX.

274. A 19thC. 6 piece TOILET SET (inc jug and bowl), with gilded decoration. £50-80

275. A Standard China 36 piece Duchess pattern TEA SERVICE. £40-60
276. A Burleigh ware 52 piece DINNER SERVICE including meat plates and tureens. £80-120
277. A pair of polychromed STAFFORDSHIRE FIGURES of male and female fruit vendors 4³/₄". £100-150
278. A Paragon china Art Deco design BREAKFAST SET with floral decoration. £30-50
279. A 'GONDA VASE' of Art Nouveau design with floral decoration 7".
280. A LUSTRE floral decorated tapering VASE 5".
281. An opalescent GLASS trumped necked VASE 7¹/₂" and a smaller VASE 6¹/₂" with floral decoration.
282. A pair of small opalescent GLASS VASES 5".
283. A qty of antique and modern ORIENTAL TEA BOWLS AND SAUCERS. £30-50
284. A Fieldings CROWN DEVON circular BISCUIT BARREL and cover with floral decoration 5¹/₂". £40-60
285. A pair of Victorian Chrysanthemum pattern transfer decorated PLATES 9". £20-30
286. A Victorian rose patterned circular STAND 11".
287. An Adams transfer decorated Lorna Doone pattern BOWL AND similar BEAKER.
288. A Shelley bone china TEAPOT decorated with swags.
289. A pair of Victorian moulded Vaseline lemon glass CUSTARD CUPS.
290. A BLANC-DE-CHINE style figure of GUANYIN holding a lotus bud 10". £20-40
291. A WEDGWOOD lozenge shaped blue Jasperware ASHTRAY and a small circular BOWL.
292. A WEDGWOOD blue Jasperware BOWL on a trumped base 9". £20-30
293. A pair of floral decorated green GLASS VASES 7".
294. An 18thC. style BALUSTER JUG with mask spout and similar scroll handle and with gilded greek key pattern decoration 5³/₄" (AF).
295. A PARIS PORCELAIN PLATE with hand painted polychromed flowers within gilt swags and borders 12³/₄" (AF).
296. A matching pair of Victorian opalescent glass baluster VASES with hand painted floral decoration 10³/₄". £30-50
297. A Victorian floral transfer decorated TOILET JUG of baluster form. £20-30
298. A Foley China TEA SERVICE of 21 pieces. £20-30
299. A Shelley 'Blue Empress Pattern' 22 piece TEA SERVICE. £30-50

300. Pair of Cranberry glass spiral trumpet VASES 8". £60-80
301. A Cranberry glass Handkerchief BOWL 6". £30-50
302. A Cranberry glass CREAM JUG 4¹/₄". £30-50
303. A Cranberry glass TABLE JAR with plated lid. etc. £20-30
304. A Cranberry glass lily pad JUG 6". £40-60
305. 2 Cranberry CHAMPAGNE SAUCERS. £30-50
306. A Cranberry glass FLASK 7". £30-50
307. A Cranberry glass trumpet FLOWER EPERGNE in a plated holder. £20-30
308. A Cranberry glass SUGAR BOWL 5".
309. 2 Cranberry CREAM JUGS (AF).
310. 3 Cranberry SALTS (AF).
311. A Cranberry FLASK and 2 CUSTARD CUPS (all AF).
312. A Cranberry BOWL, a SALT and a VASE (all AF).
313. A tin glazed earthenware CHARGER with underglaze blue decoration of a dragon. 12".
314. A Bohemian ruby, silver overlaid, VASE 4".
315. A Cries of London part TEA SERVICE.
316. Staffordshire Sheep and another (AF).
317. German Cruet and figures.
318. Wall MASKS.
319. A Crown Devon CHARGER, BOWL, SOAPDISH and CANDLESTICK.
320. Glass CAKESTAND and 3 floral PLATES by Fieldings.
321. Wine Glasses, lustre CUPS and SAUCERS and DECANTER.
322. Crown Devon red lustre Chinoiserie pieces (3).
323. Crown Devon Red Lustre Chinoiserie Pieces (4).
324. Wade Piggy Bank, Crown Devon CUP, SAUCER and other china.
325. Pair Crown Devon black ground parrot VASES.
326. Crown Ducal black ground rose pattern POTTERY (5).
327. A Staffordshire TOBY JUG.
328. A collection of Crown Devon pearline SERVING DISHES, BOWLS, etc.
329. Assorted Fieldings Pottery.
330. A collection of Osborne 'Iovvrex' moulded PLAQUES.
331. 2 Crown Devon COMPORTS.
332. 3 Crown Devon Oceania pattern SERVING DISHES.
333. Crown Devon CHAMBERPOT painted with long horn cattled signed G Cox.
334. Crown Devon TRINKET TRAY and other ottery

335. A collection of 6 Crown Devon Puppies.
336. Assorted Royal Commemorative ware.
337. A Crown Devon brown ground COFFEE SET.
338. A Washbowl, Fieldings Troy pattern PLATES and FRUIT SET.
339. Crown Devon models of a Cat and Elephant (2).
340. 3 cut crystal RINSER BOWLS (AF),
341. 9 Champagne GLASSES.
342. 2 sets of 4 RUMMERS.
343. A Victorian faceted GOBLET.
344. An early 19thC DERBY PLATE with central pictorial panel by Z. Boveman 9". £175-225
345. A Rockingham octagonal PLATE with central, hand painted, floral spray 10" (AF). £50-70
346. A pair of 19thC Wachtersbach & Seciersbach pottery CANDLESTICKS 1". £90-120
347. A Royal Doulton Rose Elegance pattern Tea, Coffee and Dinner SERVICE. £80-120
348. A Paragon part TEA SERVICE. £20-30
349. 2 Circular moulded glass BOWLS with waved rims
350. A Grainger & Co. WORCESTER 27 Piece TEA SERVICE with gilded decoration. £50-80
351. An ovoid glass liquer stand with beadwork decoration of a parrot. Fitted with four out of six glasses and a decanter. £60-80
352. An 18thC. salt glazed reticulated DISH with acanthus decoration and a Victorian acorn moulded BOWL. £30-50
353. A Bristol floral decorated TOILET JUG AND BOWL (AF). £25-40
354. A Majolica MOON FLASK with applied rose decoration 12". £30-50
355. A MEISSEN reticulated PLATE with hand painted polychrome flowers and insects, and gilded highlights 8". £40-60
356. A Victorian clear glass single trumpet and flower EPERGNE. £30-50
357. A pair of Victorian enamelled glass FLOWER VASES.
358. Decanter and 2 oil bottles.
359. Floral decorated 29 piece part DINNER SERVICE inc vegetable and sauce tureens. £60-90
360. A Crown Devon type CHEESE DISH and cover. £20-30
361. A Victorian Staffordshire Clock FIGURE GROUP (AF). £20-30
362. Two Coronation MUGS.
363. Cut glass BUTTER DISH and liner, cased.
364. An 18thC. moulded TEAPOT with silver spout. £80-120

365. A 19thC. blue and white transfer decorated LADLE.
366. A Victorian acanthus gilded part TEA SERVICE. £50-80
367. Two Slipware JUGS. £20-30
368. A Zsolnay baluster JUG with panels in relief 10".
369. A baluster VASE on a blue ground with gilt handles.
370. A pair of Mary Gregory BLUE GLASS FLASKS with panels of a boy and girl with birds and butterflies 10". £80-120
371. A Staffordshire POTTERY FIGURE of a man standing by a wall 9". £30-50
372. Doulton Figurine 'Lisa' HN2394. £40-60
373. Doulton Figurine 'Clare' HN2793. £40-60
374. Doulton Figurine 'Christmas Day' HN3488. £30-50
375. Doulton Figurine 'Victoria' HN2471. £40-60
376. Doulton Figurine 'Top O' the Hill' HN1834. £40-60
377. Doulton Figurine 'Spring Morning' HN1922. £50-70
378. Doulton Figurine 'Kate' HN2789. £40-60
379. A Royal Worcester FIGURINE 'First Dance' by F. G. Doughty. £40-60
380. Porcelain FIGURE of a lady.

381. A 19thC. porcelain mounted DESKSET including blotter, ink-stand and pair of candlesticks. *Illustration of blotter on front cover.* £250-400

382.-390. Spare Lots.

ORIENTAL ITEMS

391. A pair of Chinese archaistic BRONZE VASES of Gu form decorated in relief 16³/₄". £100-150
392. A Chinese archaistic TEMPLE BELL decorated in relief 14". £60-90
393. A Chinese archaistic funeral TOMB JAR and cover of baluster form with applied strapwork and chain handle 13¹/₂". £60-90
394. A Chinese antique style METAL FIGURE of a seated nobleman 10". £20-30
395. A CHINESE FIGURE of antique style, of a figure seated on the back of a deer 9 1/2". £30-50
396. A Chinese METAL FIGURE of an elder holding a scroll 4³/₄".
397. A pair of CHINESE METAL FIGURES of antique design on rockwork bases 14". £60-80
398. A MING STYLE FIGURE of a seated nobleman 10¹/₂". £30-50
399. An archaistic BRONZE FIGURE of Guanyin 12". £50-80
400. A Chinese brass BALUSTER VASE with entwined dragon decoration in relief 10". £30-50



Lots 260, 258 and 259



Lots 391 to 399



Lot 419



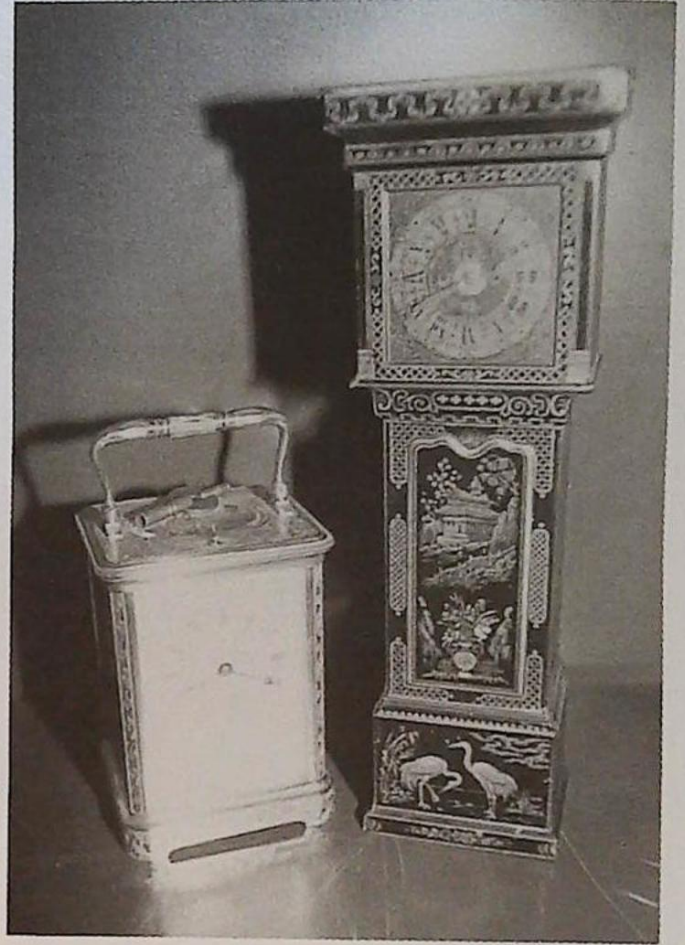
Lot 471



Lot 560



Lot 671



Lots 235 and 469



Lots 82, 85, 91
&
662

401. A pottery SHI-SHI standing on a pierced ball.
402. A signed Japanese hardwood NETSUKE of an Ox. £30-40
403. A signed Japanese hardwood NETSUKE of a prone boar. £30-40
404. A Japanese ivory SEAL NETSUKE with a seated serpent. £60-80
405. A signed Japanese ivory NETSUKE of a Bear clawing stylised skull. £70-90
406. Satsuma bowl, and 2 figures.
407. Celadon Bowl, blue and white plates
408. A signed Japanese hardwood NETSUKE of a prone mermaid holding a Tama ball. £30-40
409. A signed Japanese ivory NETSUKE of a man engaged in lifting a lacquer cabinet. £40-60
410. A signed Japanese ivory NETSUKE of two youths playing fuku-biki, a form of leap-frog. £50-80
411. A signed Japanese ivory NETSUKE of a seated Buddhist monk holding an uchiwa fan before him, attended by his servant. £50-80
412. A signed Japanese ivory CHILD'S INRO, deep kebori carved externally to represent scaled house walls with a bird fern roof, each side having a deep kebori carved panel depicting sages and deities beneath pine trees, corded in brown silk, a small ojime as a bird and with a simple but effective flat manju ivory netsuke also depicting birds. £80-120
413. A Kutani Baluster VASE (AF). £20-30
414. A JAPANESE blue and white PLATE and a CHINESE BOWL.
415. 6 Pottery BOWLS from the Vung Tai Cargo. £50-80
416. A Chinese Famille Verte DISH with floral decoration. 9". £30-50
417. A Kutani Baluster VASE with figural panels 12¹/₂". £20-30
418. A pair of large Imari style JARDINIERES decorated in the traditional palette of ironstone red and blue with flowers and fabulous birds. 18¹/₂". £80-120
419. Porcelain from the 1986 Christie's Nanking Cargo Sale: xlot 5246 Teabowl and saucer, xlot 3718 Plate, xlot 35634 Plate (4). £1000-1200 *Illustrated on centre pages*
420. Spare lot.

WATCHES & JEWELLERY

421. Waltham gold plated POCKET WATCH.
422. Gold Plated Hunter POCKET WATCH.
423. Gold plated POCKET WATCH.
424. Silver cased POCKET WATCH.
425. Silver cased POCKET WATCH.

426. Silver cased POCKET WATCH.
427. An Omega 9ct gold Ladies WRISTWATCH. £80-120
428. A fine 3-stone DRESS RING with central square emerald of 1.94 carats enclosed by 2 round 63 pt. diamonds, on an 18ct. and platinum shank. £3500-4500
429. A Ladies 9 ct. gold cased WRISTWATCH with plated strap, cased.
430. 18ct gold sapphire and diamond RING. £90-120
431. 6 assorted PENDANTS AND BROOCH £30-40
432. Ladies 9ct gold Everite WATCH on 9ct snake link bracelet. £30-40
433. Ladies 18ct. gold Hamilton WATCH on expander bracet. £30-40
434. 9ct. gold signet RING and St. George RING.
435. Ladies and Gents 9ct gold pave set DRESS RINGS (2).
436. Ladies 14ct gold Eterna WATCH on 14ct snake link bracelet. £80-100
437. 9ct gold rope link CHAIN. £20-30
438. 9ct. gold crescent BROOCH set with pearls and rubies. £40-60
439. Spider BROOCH.
440. Costume Jewellery.
441. Silver POCKET WATCH. £35-45
442. A 9ct. gold Belcher NECKLACE 22" 21g. £90-120
443. A 9ct. gold BRACELET and matching COLLAR. 27g. £120-150
444. A 9ct. gold Butterfly BROOCH. £80-100
445. A 9ct. gold Rope CHAIN and cross. 13g. £60-80
446. A 9ct. gold Pearl RING. £15-30
447. A 9ct. gold GATE BRACELET. 27g. £120-150
448. A 9ct. Figaro NECKLACE and T Bar 39g. £200-300
449. A 9ct. Handmade NECKLACE 26g. £150-200
450. A pair of 9ct. stamped EARRINGS. £30-40
451. A pair of 9ct. Garnet EARRINGS.
452. A pair of 9ct. gold boxed Wedding Band EARRINGS.
453. A pair of 9ct. gold boxed Wedding Band EARRINGS.
454. Amethyst BROOCH.
455. Costume Jewellery.
- 456-460. Spare Lots.

CLOCKS

461. A Georgian oak LONGCASE CLOCK with broken arch and fruitwood pillared hood, 12" painted square arch dial with seconds ring and date crescent by H. Bunyan, Lincoln, 8 day movement, 6'6" high. £600-900

462. A Georgian oak and mahogany WALL CLOCK with swan neck pillared hood, circular painted dial, ? of Stamford, 30 hour. £150-250
463. A Georgian Oak and Mahogany LONGCASE CLOCK with swan neck pillared hood, lakeside painted arch, church painted spandrels, 30 hour movement. £400-600
464. An oak aneroid BAROMETER. £50-80
465. A 19thC. engraved gilt metal MANTEL CLOCK with French striking movement 11". £80-120
466. A Walnut cased ALARM CLOCK with gilt metal mounts 7". £30-50
467. A stripped pine Starburst WALL CLOCK. £90-120
468. A Victorian mahogany fusee WALL CLOCK. £100-150
469. A fine chased brass Alarm Repeating CARRIAGE CLOCK, cased. *Illustrated on centre pages.* £700-1000
470. Miniature mahogany Longcase Clock.

masks. 7¹/₂" x 4¹/₂". Maker ETB London 1900, Engraved TIFFANY & CO. *Illustrated on centre pages.* £500-800

472. A silver 3 piece TEA SET Sheffield 1927. 32ozs all in. £250-350
473. A Walker & Hall Presentation SALVER with piecrust border and on scroll feet 8", Sheffield, 1934 11¹/₂ ozs. £80-120
474. A Victorian silver presentation TEAPOT with part reeded and floral chased decoration. Maker Walker & Hall, Sheffield 1893. 19 ozs. all in. £150-200
475. A Victorian silver part reeded COFFEE POT Sheffield 1899. Maker Walker & Hall, 20 ozs. all in. £150-200
476. An Edwardian silver 3 piece TEASET Sheffield 1902 14 ozs. all in. £150-200
477. A Victorian silver HIP FLASK, Chester 1899. 8¹/₂ ozs. £120-150
478. A Continental silver baluster CLOISSONNE VASE with overlaid silver cagework decorated with flowers on an engine turned ground. £200-300
479. A pierced oval electroplate 7 bottle CRUET (AF). £80-120
480. A pair of electroplated SERVERS with pistol handles. £25-40
481. A Victorian silver and ivory STAY BUST. £20-40
482. A bone handled CHEESE SCOOP.

SILVER & PLATEDWARE

471. A fine pair of Tiffany silver SWEETMEAT DISHES, the lobed and wheelcut oval glass liners seated in an anthemion and bell husk trellis work frame, each with 4 stylised swan neck, eagle winged and lion paw

483. A Georgian silver PUNCH LADLE with twist handle. £40-60
484. A hammered electroplated TRAY. £20-30
485. A Georgian silver SAUCE LADLE with ivory twist handle. Newcastle assay. Maker IS. £50-80
486. An EPBM floral chased TEAPOT.
487. An EPBM floral chased TEAPOT.
488. 5 various silver fiddle pattern TEASPOONS, 3 old English examples, an EGG SPOON and a MUSTARD SPOON. £20-30
489. A pair of baluster SILVER PEPPERS Birmingham 1890. £20-30
490. A Silver mounted cut glass circular SALT, an oval MUSTARD and similar SALT in plated holders, a plated PEPPER and a miniature plated TROPHY.
491. A Circular PLATED MUSTARD in a vine leaf frame and with blue glass liner.
492. An electroplated swing handled BASKET of circular lobed form with vine decoration $11\frac{1}{2}$ ". £50-70
493. An EPNS circular MUFFIN DISH with domed cover.
494. A rectangular plated ENTREE DISH (cover missing).
495. A modern, Victorian style, plated TEA AND COFFEE SERVICE, with engraved decoration. £20-30
496. A leather cased set of 6 Mappin & Webb Electroplated NAPKIN RINGS. £30-50
497. An Art Nouveau design lily pad DISH with a reclining female to the side. $10\frac{1}{2}$ ". £40-60
498. An EPBM ROSE BOWL with acanthus decoration in relief. $8\frac{1}{2}$ ".
499. An oval electroplated 2-handled TRAY with engraved decoration. £20-40
500. An electroplated galleried TRAY. £20-30
501. Silver Mounted CLARET JUG. £80-100
502. A Victorian silver chased CLARET JUG (AF).
503. A Silver CIGARETTE BOX. £25-40
504. A small electroplated SPIRIT KETTLE on rustic stand.
505. A silver TAZZA with presentation signatures, Chester 1904, $5\frac{1}{2}$ ozs. £35-50
506. A set of 6 Victorian silver Kings Pattern DESSERT SPOONS London 1860 $12\frac{1}{2}$ ozs.
507. 6 German silver TABLE SPOONS. £20-30
508. An electroplated 4 piece TEASET. £30-50
509. An electroplated 4 piece TEASET. £30-50
510. An oval electroplated ENTREE DISH and TRAY.

511. A pair of silver DWARF CANDLESTICKS, Birmingham assay. £20-30
512. A silver Inkwell and Patchbox. (AF)
513. A set of 4 Victorian Cauldron SALTS by Hennell. £120-180
514. 4 electroplated MEAT SKEWERS.
515. An electroplate BREAKFAST CRUET. £25-40
516. A plated Hors d'oeuvres DISH with 6 cut glass compartments.
517. Electroplate 2-tier CAKESTAND.
518. Electroplated FISH SERVERS in case.
519. Similar 3 piece Set.
520. Piecrust edge TRAY on ball and claw feet. £20-30
521. Electroplated Presentation BOWL with ring handles.
522. Tray of PLATEDWARE inc sauce boats, condiments, crumb scoop, etc. £20-30
523. Set of 6 SILVER TEASPOONS Sheffield Assay. £20-30
524. Set of 6 Silver handled TEAKNIVES.
525. Cased set of 6 SILVER COFFEE SPOONS. £20-30
526. 3 Silver APOSTLE SPOONS.
527. Cased set of 6 Silver CORONATION SPOONS. £20-30
528. Plated 7 bar TOASTRACK and a BREADBOARD in a plated holder.
529. Electroplated rollover BUTTER DISH with engraved decoration. £25-40
530. Electroplated KETTLE on a spirit burner stand. £20-40
531. Walker and Hall electroplated HOT WATER JUG.
532. Cased set of 11 Electroplated TEASPOONS, SUGAR BOWS and PRESERVES SPADE.
533. Cased set of 5 silver gilt TEASPOONS. Sheffield Assay.
534. A tray of PLATEDWARE inc tablemats, teaspoons, napkin rings etc.
535. A tray of CUTLERY inc 2 sets of 6 dinner forks. £20-30
536. A part canteen of Mother of Pearl handled FISH EATERS. £20-30
537. 4 various boxes for containing silver and plate.
538. A Childs PUSHER and FEEDER Birmingham 1934, cased.
539. A pair of silver NAPKIN RINGS Chester 1913. £25-40
540. A pierced circular HOLDER. Birmingham 1921.
541. 2 silver NAPKIN RINGS. Sheffield 1940 and Birmingham 1894.
542. A pair of engine turned silver NAPKIN RINGS Birmingham 1928. £20-30
543. A Silver MUSTARD TANKARD (liner missing), Chester 1922.

544. A silver ASHTRAY Birmingham 1935, 3 various SPOONS, BUTTER KNIFE, and SUGAR BOWS.
545. A small silver part reeded CREAMER and BOWL. Birmingham assay 7¹/₂ ozs. £30-50
546. An embossed silver BON BON DISH Sheffield Assay. £30-40
547. A pair of engine turned silver NAPKIN RINGS, Chester 1928, cased. £20-40
548. A cut glass BISCUIT BARREL with engraved lid and stand £40-60
549. A small silver presentation BOWL. Sheffield assay. £25-40
550. An Art Nouveau embossed silver PHOTOGRAPH FRAME. £50-80

PICTURES

551. A Victorian woolwork PICTURE of a bird, rosewood framed. £50-80
552. A pair of small gilt framed PORTRAITS.
553. A 19thC. OLEGRAPH of a gentleman riding through a park. 17" x 21".
554. Oil on panel. STILL LIFE of game fish on a rocky bank. 11" X 13" signed. £20-30
555. Head and Shoulders PORTRAIT PRINT of a young man. 7" x 5" framed.
556. OIL ON PANEL. Wooded landscape. 9" x 12".
557. Assorted pictures.
558. Assorted pictures.
559. A French COLOURED PRINT detailing a carriage by D. Diderot, framed. £10-20
560. 19thC English School. A hound with bowed head at an interior door, oil on canvas, 29" x 39". *Illustrated on centre pages.* £250-400
561. A 19thC OIL ON CANVAS Figures walking down a wooded path. 11¹/₂" x 19¹/₂" Unsigned, gilt framed. £60-90
562. G. Agar. Highland Landscape, oil on canvas, signed and dated 1878, 18" x 26". £60-80
563. A set of 4 Cock fighting PRINTS after H. Alken. £20-40
564. 3 Antique style SPORTING PRINTS. £25-40
565. A pair of de Breanski Prints and a pair of landscape oleographs.
566. A set of 6 Hunting Scene colour lithographs, entitled Bachelor's Hall. £100-150
567. Nadler. OIL ON PANEL. A Chestnut hunter in a stable interior, signed. 11¹/₂" x 15¹/₂", gilt framed. £300-400
568. Nadler. OIL ON PANEL. A similar lot. 4³/₄" x 6¹/₂". £150-200

569. E. Hartopp. The Old Blue Boar Inn, Leicester, watercolour, signed, 13" x 9", gilt framed. £50-80
570. A pair of 19thC. French colour Fashion PRINTS. £20-40
571. A framed INDENTURE.
572. After T.S. Boys. A colour lithograph of The Strand. £25-40
573. A watercolour of Highgate in 1927, landscape and Laughing Cavalier Print. £20-40
574. Charles E. Brittan. 'Glen Sannox' and 'Moors above Skiskine', pair of watercolours, signed, 11" x 18", gilt framed. £300-400
575. Mountainous landscape, oil on board. 7¹/₂" x 11¹/₂", Gilt framed.
576. Continental OIL ON CANVAS. Rider on horseback with sheep and cattle, near a rocky pool. 19" x 15". £80-120
577. 19thC. WATERCOLOUR on card, A Tudor style property on the edge of a lake with an arched bridge nearby. Signed C.V.D. Ven 14" x 19", Framed and mounted. £30-40
578. L or C Jacob. A pair of oval panels painted with race horses and jockeys, signed. £250-400
579. A pair of Victorian maple framed colour landscape PRINTS.
580. A pair of large acanthus carved oak FRAMES. £20-40

RUGS

581. A small Bokhara RUG. £20-40
582. A Chinese pink ground RUNNER. £20-40
583. A small Bokhara RUG. £100-150
584. A small Oriental RUG. £40-60
585. A Small Bokhara RUG. £20-40

FURNITURE

586. A pair of Victorian BEDROOM CHAIRS.
587. An Edwardian mahogany SUTHERLAND TABLE. £150-200
588. A Victorian rosewood 4 tier Corner WHATNOT with barleytwist supports. £300-400
589. A 17thC. style oak 3 panel COFFER. £150-200
590. An Edwardian marquetry inlaid mahogany SALON CHAIR. £50-70
591. A 17thC. style carved oak 2 panel COFFER. £80-120
592. A Georgian mahogany DINING TABLE with oval top on gateleg base with padfeet. £250-400
593. A pair of Georgian elm spindleback Windsor KITCHEN CHAIRS. £50-70
594. A Georgian ash and elm WINDSOR CHAIR (AF). £80-120
595. A Victorian mahogany traytop WASHSTAND on turned legs. £80-120

596. A Victorian mahogany circular pedestal TABLE. £70-120
597. A 1920's Bergere 2 seater SOFA. £100-150
598. An Edwardian string inlaid mahogany DRESSING CHEST. £40-60
599. A suite of Victorian grain painted pine BEDROOM FURNITURE inc. 2 washstands, traytop chest and another. £400-600
600. A Victorian grain painted pine BOX COMMODE. £25-40
601. An Edwardian brass mounted walnut marquetry PURDONIUM. £80-120
602. A Victorian mahogany windout DINING TABLE with turned baluster legs, brass and ceramic cup castors, 2 further leaves. 4' x 5'10" max. £900-1200
603. A Victorian Child's HIGHCHAIR. £40-60
604. A Victorian mahogany WASHSTAND with white marble traytop and barleytwist legs. £150-250
605. A Georgian CHILDS WINDSOR CHAIR. £80-120
606. A Victorian rosewood open DWARF BOOKCASE 3' wide, 3'4" high. £300-400
607. A set of 4 Regency mahogany barback DINING CHAIRS. £200-300
608. A floral upholstered DAYBED. £150-200
609. A Maples 3 seater floral SOFA with loose cushions. £250-350
610. A blue upholstered drop arm CHESTERFIELD SOFA. £150-200
611. A pair of Victorian walnut DINING CHAIRS with button dralon upholstery and cabriole legs. £80-120
612. A set of 6 Jacobean style oak highback DINING CHAIRS with barleytwist supports and stretchers. £400-600
613. A 19thC. Inlaid mahogany serpentine SIDEBORD with cellarette, lion mask handles, square taper legs and spade feet. £500-800
614. An American Child's ROCKING CHAIR. £40-60
615. A Victorian mahogany CENTRE TABLE with oval moulded top and scroll carved basket base. £500-800
616. Victorian mahogany WALL SHELVES. £40-60
617. A Victorian galleried mahogany upholstered ARMCHAIR. £100-150
618. A Cadbury's Chocolate counter-top DISPLAY CABINET. £100-150
619. A Geo. shell inlaid oak and mahogany hanging CORNER CUPBOARD. £300-400
620. A set of 4 oak ladderback DINING CHAIRS with rush seats. £120-180

621. A green sculptured dralon Chesterfield 3 piece SUITE. £250-400
622. A Victorian mahogany spoonback ARMCHAIR with scroll arms and legs, red buttoned dralon upholstery. £300-400
623. A wavy lathback CHILDS CHAIR with rush seat. £25-40
624. A Victorian upholstered ARMCHAIR. £40-60
625. An oak gateleg DINING TABLE. £40-60
626. An oak SCHOOL DESK with ceramic inkwells. £30-50
627. An early Georgian oak BUREAU with knob handles and bracket feet. £400-600
628. A George III Mahogany PEMBROKE TABLE. £250-400
629. A Barleytwist oak SIDEBORD. £40-60
630. An oak cased CABINET GRAMOPHONE. £80-120
631. A Set of 4 George III mahogany ball and barback DINING CHAIRS with turned front legs. £200-300
632. A Victorian Serpentine SOFA with double scroll back, blue buttoned upholstery, on turned mahogany legs. £350-450
633. A raffia and bamboo PATIO CHAIR.
634. A raffia and bamboo Reclining PATIO CHAIR.
635. A raffia and maboo Reclining PATIO CHAIR.
636. An Edwardian string inlaid mahogany JARDINIERE STAND. £40-60
637. Five 19thC. Chinese Hardwood CHAIRS each with traditional decorative scenes on a black laquer field. £900-1200
638. A pair of deep ARMCHAIRS with carved mahogany paw feet, pink cotton drapes. £120-180
639. A Victorian mahogany CHIFFONIER BASE. £300-400
640. A Regency style reproduction brass inlaid mahogany DINING TABLE on 2 pedestals and 6 (inc 2 carvers) CHAIRS. £400-600
641. A Victorian Mahogany CHAISE LONGUE with carved back and right hand rest. £400-600
642. A Victorian mahogany WINE TABLE. £40-60
643. Georgian mahogany WALL SHELVES. £50-80
644. An Edwardian mahogany glazed 2 door BOOKCASE. 4' wide, 3'6" high. £180-250
645. A Walnut cased GRAMOPHONE £30-40
646. An oak BUREAU on STAND with parquetry fall flap and turned legs. £250-350

647. A 17thC. oak 2 panel COFFER. £150-250
648. An early Victorian mahogany CHIFFONIER BASE. 3'4" wide. £250-400
649. A Chinese rosewood "bamboo" carved JARDINIERE STAND with marble top. £60-90
650. A Pitch pine STOOL. £20-40
651. A Brassbound oak BARREL. £20-40
652. A Victorian carved rosewood 3 footed BASE. £40-60
653. A panelled oak COFFER. £100-150
654. A Victorian Mahogany BEDSIDE TABLE with gun-barrel pillars. £50-80
655. A Victorian mahogany PEMBROKE TABLE with turned legs. £100-150
656. A nest of burr walnut COFFEE TABLES. £60-90
657. A Jacobean style oak DRESSER BASE with barleytwist legs. £200-300
658. A red lacquer Chinoiserie DINING CHAIR. £25-40
659. A Victorian carved walnut DRESSER BASE. £200-300
660. A Victorian mahogany Duchess DRESSING TABLE. £120-180
661. A Georgian Oak CHEST of 4 graduated drawers, knob handles and bracket feet. £250-350
662. A William & Mary style walnut KNEEHOLE DESK. *Illustrated on centre pages.* £1000-1500
663. A Victorian mahogany SIDE TABLE. £80-120
664. A set of 4 William IV style DINING CHAIRS. £80-120
665. A 19thC. mahogany fallflap DINING TABLE with square taper legs. £350-450
666. A Victorian papier mache pedestal TABLE with circular top and base. £50-80
667. A 19thC elm Child's WINDSOR CHAIR (AF). £50-80
668. An Edwardian marquetry CORNER CHAIR. £40-60
669. A Georgian yew and elm spindle-back WINDSOR CHAIR. £250-350
670. A Victorian brown buttoned dralon DAYBED. £80-120
671. A pair of George I style walnut SIDE CHAIRS with brocade upholstery, shell carved cabriole legs. *Illustrated on centre pages.* £400-600
672. An Edwardian mahogany Ladies WRITING TABLE with ebony and boxwood stringing, raised on fluted legs. *Illustrated on page 32.* £700-900
673. A George I style reproduction burr walnut CARD TABLE with crossbanded folding rectangular top on shell carved cabriole legs. £250-400

674. A Kirkman mahogany and Boudoir GRAND PIANO. Serial No. S17258. £500-800
675. A Mahogany PIANO STOOL. £20-40
676. An Edwardian mahogany OCCASIONAL TABLE with undershelf. £50-80
677. An Edwardian string inlaid mahogany bowfront MUSIC CABINET. £50-80
678. An Edwardian string inlaid mahogany folding 3 tier CAKE STAND. £50-80
679. A Victorian painted pine 3 door CUPOARD. £40-60
680. A set 4 leather upholstered oak DINING CHAIRS. £40-60
681. An Edwardian mahogany SIDE CABINET with 2 drawers over 2 cupboards on cabriole legs. £40-60
682. A Victorian pine pig CRATCH. £20-30
683. An oak SIDEBBOARD with 2 drawers over 2 doors with cabriole legs. £70-90
684. Edwardian CHAISE LONGUE with gallery back and button dralon upholstery. £175-225
685. A Harlequin set of 4 Victorian Balloonback mahogany DINING CHAIRS, green dralon seats. £200-300
686. A Victorian style cast iron PATIO SET. £120-180
687. 1930's 4-fold DRESSING SCREEN.
688. A Georgian Elm BUREAU. £250-350
689. A Victorian mahogany BREAKFAST TABLE with moulded circular top, hexagonal baluster pedestal, circular base with 3 scroll feet 3'4" dia. £250-350
690. A Georgian style reproduction CABINET with 2 doors and 2 drawers. £100-150
691. A carved oak REFECTORY TABLE 4'7" x 2'9" and 4 (inc 2 carvers) tapestry CHAIRS. £150-250
692. A Reproduction SOFA TABLE with lyre supports. £100-150
693. An oak CARVER CHAIR with bulbous legs. £30-40
694. A circular oak COFFEE TABLE with bulbous legs. £80-120
695. An oak OPEN BOOKCASE. £30-50
696. An oak OPEN BOOKCASE. £30-50
697. A Schooner CHAIR.
698. A Victorian burr walnut fronted CHEST of 2 short and 3 long graduated drawers with knob handles. £200-300
699. A Regency mahogany glazed BOOKCASE TOP on later base. £80-120
700. A Schlingmann Wertmobel walnut veneer part glazed CABINET with moulded cornice over 6 doors, 5 drawer base on carved paw feet 12' wide. 5'8" high, 22" deep. £500-700

701. A late Victorian light ash WARDROBE COMPACTUM and matching (but painted) Pot Cupboard, Dressing Table and marble Washstand. £600-900
702. An overstrung UPRIGHT PIANO by Spencer of London, mahogany cased. £150-250
703. A Victorian glazed grain painted pine DRESSER. £100-150
704. A pair of Victorian brass and iron 3/4 BEDS. £150-250
705. A Late Victorian satinwood DOUBLE WARDROBE with mirror door. £80-120
706. A late Victorian carved walnut BOOKCASE with glazed 2 door top and 2 drawer and 2 door base. 4' wide, 6'10" high. £600-800
707. A William IV flamed mahogany breakfront SECRETAIRE SIDEBORD. 4'9" wide. £700-1000
708. A Victorian flamed mahogany HALF TESTER BED the footboard carved with lion mask, birds & cartouche and tulip carved pillars. £500-700
709. A Victorian flamed mahogany bowfront CHEST of 2 short and 3 long graduated drawers with knob handles and turned feet. 41" wide. £200-300
710. A Victorian flamed mahogany swing TOILET MIRROR with lift flap. £120-150
711. An UPRIGHT PIANO by Collingwood of London, mahogany cased, and STOOL. £50-80
712. A pair of Victorian grain painted pine SINGLE BEDS. £60-90
713. A Mahogany 4 door WARDROBE with Greek key cornice and blind fretwork. £200-300
714. An Edwardian carved oak SIDEBOARD with swan-neck back, the door and dog kennel base flanked by cupboards. 6'2" wide.
715. A Victorian mahogany CHIFFONIER (AF). £100-150
716. A Jacobean style oak DRESSER with shelf and cupboard top, 2 frieze drawers, potboard and barleytwist legs. £250-400
717. A Victorian satin birch CHEST of 2 short and 3 long graduated drawers. £80-120
718. A Victorian mahogany swing Dressing Table MIRROR.
719. A Victorian mahogany Bowfront CHEST of 2 short and 3 long graduated drawers, knob handles and bracket feet. £200-300
720. A George III mahogany CHEST of 2 short and 3 long graduated drawers, knob handles, bracket feet. 3'6" wide. £180-250
721. A William IV mahogany D-front SCOTCH CHEST of 2 short and 3 long graduated drawers, knob handles, reeded pillars. 4' wide. £300-400

722. An Edwardian mahogany mirrorback DRESSER with gadrooned bowfront with 3 drawers flanked by cupboards. 5' wide. £250-350
723. A Victorian mahogany CHEST on CHEST, the upper section having 2 short and 3 long graduated drawers, the lower having 3 graduated drawers, knob handles, turned feet. 4' wide, 6'8" high. £500-700
724. A Victorian mahogany fitted DOUBLE WARDROBE. £100-150
725. A Reproduction linenfold oak WARDROBE.
726. An oak FIRE SURROUND. £30-50
727. A Pine PLATERACK.
728. A Victorian stripped Satin Walnut WARDROBE. £80-120
729. A Victorian mahogany bowfront SCOTCH CHEST of 2 short and 4 long graduated drawers, knob handles and turned pillars. 48" wide, 5'6" high. £250-350
730. A Victorian giltwood OVERMANTEL MIRROR. £60-90
731. A Victorian flamed mahogany SCOTCH CHEST with gilt brass handles. 50" wide. £200-300
732. An oak HALLSTAND. £50-80
733. An Edwardian mahogany BUREAU BOOKCASE. £350-500
734. An Arts and Crafts mahogany mirrorback SIDEBORD. £500-700
735. A Dutch oak SIDEBORD, the upper section having 4 bevel glazed doors over a bowfront, 4 door base on short cabriole legs 7'5" wide, 6'3" high. £300-400
736. A Victorian oak HALLSTAND. £180-250
737. A Jacobean style oak Mirrorback DRESSER with barleytwist legs and columns. £100-150
738. A Victorian glazed mahogany TRIPLE BOOKCASE. 75" wide 54" high. £100-150
739. A Victorian oak SHOP FITTING with shaped glass top. £120-180

END OF SALE.



Lot 672

Established 1900

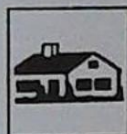
— GOLDINGS —

Chartered Surveyors, Auctioneers, Valuers & Estate Agents
Residential, Commercial, Agricultural, Property Management, Financial Services

45 High Street, Grantham, NG31 6NE

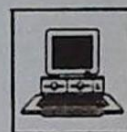
Telephone: 01476 · 590211

PROFESSIONAL SERVICES FOR



RESIDENTIAL

Our established Residential department headed by Chartered Surveyors undertakes sale and valuation of all types of property from Castles to Town Houses; Surveys, Homebuyers Reports, Mortgage, Probate and Insurance Valuations carried out with care attending to individual requirements.



COMMERCIAL

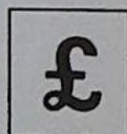
Dealing with the sale and survey of Shops, Offices and Factories. Valuation for Rent Reviews, Lease renewals and negotiations. Rent Arbitration, on behalf of landlord and tenant.

Plant, Machinery & Assets; Sales for Receivers, Liquidators, High Court & County Court. Auction Sales on Site or at The Grantham Auction Rooms for private and public clients alike.



AGRICULTURAL

Our Senior Partner has wide experience in the sale and valuation of Agricultural Properties, conducting Farm Sales and Valuation of Live and Dead Farming Stock for dissolution, Probate and other matters. Together with Rent Reviews, Development Land reports and Annual Stocktaking Valuations.



FINANCIAL SERVICES

Our Experienced Consultant is available to advise on all matters concerning Finance, Mortgages, Insurance, Investment, Planning and Pensions.



PROPERTY MANAGEMENT

Personal service and attention to detail ensures that our management team exploits your investment portfolio whether an Individual Family Home let for a small fee or Office, Factory, Shop or Farm with rent collected and regular inspections made.

Chattels Auctioneer

Colin R. Young FNAVA

Property Management

Mrs. Margaret Pashley

Partners

C. Robin Hall FRICS FAIV

Ian J. Shaw FRICS FNAEA

Financial Service Consultant

John G. Stukins

Residential Sales Manager

Mrs. Jenny Diment FNAEA CPEA

Established 1900

-GOLDINGS- THE GRANTHAM AUCTION ROOMS



A set of 7 Regency Dining Chairs
Sold in our last Fine Art Sale for

£4,300

NEXT SALE

of

ANTIQUES & FINE ART

Wednesday, 22nd October, 1997

Further entries invited until 8th October

Call Colin Young for a Free Valuation

THE COMPLETE AUCTION SERVICE

Auction Sales of Antiques, Fine Art, Collectables, Modern Furniture & Effects – Office, Shop & Catering Equipment
Vehicles – Plant & Agricultural Machinery – Stock-in-Trade – Business Assets – Liquidations & Receiverships
VALUATIONS undertaken for Insurance, Probate, Family Division and Sale purposes. Full HOUSE CLEARANCE facilities.