

Established 1900

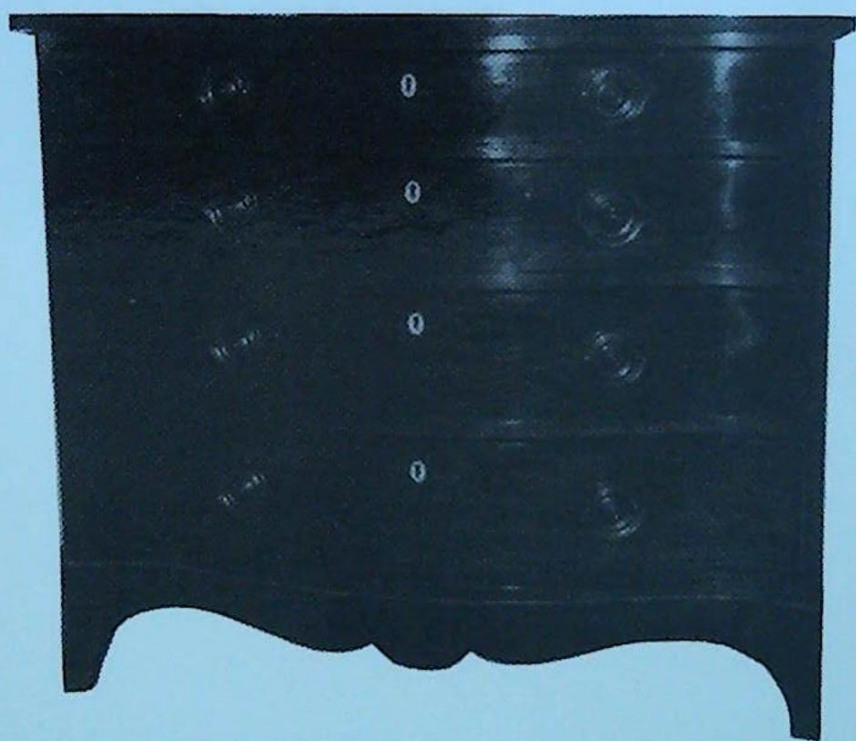
-GOLDINGS-

THE GRANTHAM AUCTION ROOMS

Upon instructions from the Executors Miss E.P.M. Dunbar,
Mrs. H. Ellwood and other Estates, Private Collectors
and House Clearances from throughout Lincolnshire
including the principal contents of a Local Vicarage

GOLDING YOUNG & CO. will sell by AUCTION

Fine Antique Furniture & Effects



On Wednesday, 9th April, 1997, at 10 a.m.

Golding Young & Co.

Old Wharf Road, Grantham, Lincolnshire, NG31 7AA

Telephone: (01476) 65118

Fax: (01476) 61475

CONDITIONS OF SALE

1. These Conditions together with any Notices to Purchasers are the only terms and conditions subject to which Golding Young & Co. ("the Auctioneers") as agents for the Vendor will sell goods to a purchaser ("the Bidder") and all other conditions, whether express, or implied at common law or by statute as are capable of lawful exclusion are hereby excluded.
2. The highest bidder shall be the buyer. The Auctioneers reserve the right of regulating the biddings; of rejecting any bid; and of bidding for, withdrawing, consolidating, dividing or altering the order of lots.
3. The purchase money for each lot with the usual commission of 10% plus VAT at the current rate shall be paid at the fall of the hammer (if required). Each lot at the fall of the hammer shall be at the sole risk and expense of the buyer, and shall be paid for and removed immediately after the conclusion of the sale, *but no lot shall become the property of the buyer, or be removable until paid for*, and if taken away in contravention of these conditions without an order for removal signed by the Auctioneers, they shall have power to seize the same by their servants or agents, or otherwise, or the Auctioneers may recover either the lot sold or the price thereof (at their option) by action at law.
4. No contra account of any description whatever will be allowed to the buyer as a set off, and payment for each Lot shall be made to the Auctioneers or their clerk only, and a buyer paying by cheque must give satisfactory references.
5. For all purposes of this sale the Clerk of the Auctioneers shall be deemed to be the agent of both seller and buyer.
6. A bidder shall not be allowed to retract his bidding after the fall of the hammer, and he shall give up his full name and address if required. The Auctioneers will not recognise the transfer of any lot from one buyer to another, nor make any alteration in the sale book in respect thereof.
7. The Auctioneers are acting only as agents, and give no personal warranty as to the condition, quality or authenticity of any chattels offered for Auction. Any catalogue description is given merely as guide to purchasers, any description can be changed from the rostrum before the lot is sold. If a purchaser buys without previous inspection he will do so at his own risk.
8. Notwithstanding any other terms in these Conditions, if within 7 days of the Sale a purchaser gives notice in writing that a lot is a deliberate forgery, with supporting factual evidence, the Auctioneers may rescind the transaction. The burden of factual proof lies with purchaser, mere opinions will not satisfy. This benefit is not assignable.
9. If any buyer neglect or refuse to comply with the above conditions or any of them, his deposit money (if any) shall be forfeited, and the lot uncleared may, at the option of the Auctioneers, be resold without notice by public auction or private treaty, and any loss occasioned by such re-sale together with all expenses attendant thereon, or arising under these conditions shall be paid for by the defaulter and be recoverable as and for liquidated damages. This condition is however without prejudice to the right of the Auctioneers to enforce the contract made at this sale if they think fit.
10. Any Notes for Purchasers and Catalogue Glossaries will be construed as Conditions of Sale.
11. The Auctioneers shall be the sole Arbitrators in all matters of dispute relating to those conditions both as between the seller and the buyer and between the several bidders and buyers and their determination on all matters shall be final and binding on all parties concerned.

Auctioneers: C. Robin Hall FRICS FAAV & Colin R. Young FNAVA



Established 1900

-GOLDINGS-

• Fine Art Auctioneers & Valuers •

THE GRANTHAM AUCTION ROOMS

Golding Young & Co
Telephone: (01476) 565118

Old Wharf Road, Grantham, Lincs NG31 7AA
Fax: (01476) 561475

GOLDING YOUNG & Co. will sell by AUCTION

Fine Antique Furniture & Effects

On Wednesday, 9th April, 1997, at 10 a.m.

Over 700 Lots including
PERIOD & QUALITY FURNISHINGS, PAINTINGS, PRINTS,
BOOKS, SILVER & PLATEDWARE, GLASS, CERAMICS,
JEWELLERY, CLOCKS & WATCHES, BYGONES
AND COLLECTORS ITEMS

Viewing Times:

Sunday 6th	2 p.m. to 4 p.m.
Tuesday 8th	2 p.m. to 7 p.m.
Saleday 9th	9 a.m. to 10 a.m.

Cover Illustrations:

Front: Lot 616
Rear: Lot 627

Sales & Services are available on the INTERNET @ <http://www.thesaurus.co.uk/gy&c>

IMPORTANT NOTES FOR PURCHASERS

1. **PAYMENT:** Must be made in full immediately after the Auction. The following methods of payment are acceptable.
 - a) Cash
 - b) Bankers Draft
 - c) Building Society Cheque
 - d) Cheques, accompanied by a valid card. For accounts above the stated card limit, we reserve the right to retain the goods until clearance is established.
2. **BUYERS PREMIUM:** of 10% + VAT is payable on all lots.
3. **REMOVAL OF PURCHASES:** Goods must be collected as soon as they are paid for, and in the Two Working Days following the sale. If goods are not collected on these days we reserve the right to charge £1 per lot per day thereafter.
4. **COMMISSION BIDS:** If you are unable to attend this or any of our future sales we will be pleased to bid on your behalf. We always purchase at the lowest possible price, subject to other bids and reserves.

All bids must be handed to the office on an official form. It remains the responsibility of prospective purchasers to contact GOLDINGS to confirm whether their bids have been successful.
5. **TELEPHONE BIDS:** There are inherent dangers with this practice, therefore all such arrangements are made entirely at the bidder's risk. Telephone bids will only be accepted if the lower catalogue estimate is £500 or above. For lots with a lower estimate below this figure Commission Bids Only will be accepted.
5. **SMOKING:** is not permitted in any part of the Saleroom.
6. **REFRESHMENTS:** will be available Saleday.
7. **ACCOUNT TRANSFERS:** will not be recognised after the sale. If any lots are purchased for another person, this must be declared at the fall of the hammer.

GLOSSARY

- a) Generally: 'As Found.' (AF). This term indicates the lot has some damage. Its absence does not indicate that the lot is free of defect. All lots are SOLD AS SEEN.
- b) Paintings: 'Signed, initialled, monogrammed.' This refers to the present state of the work and is not an attribution.
- c) Books and printed matter: These items are not sold subject to collation and are not returnable once removed from the premises.
- d) Silver & Jewellery: Weights given are approximations given by basic instruments.



Lot 620



Established 1900

-GOLDINGS-

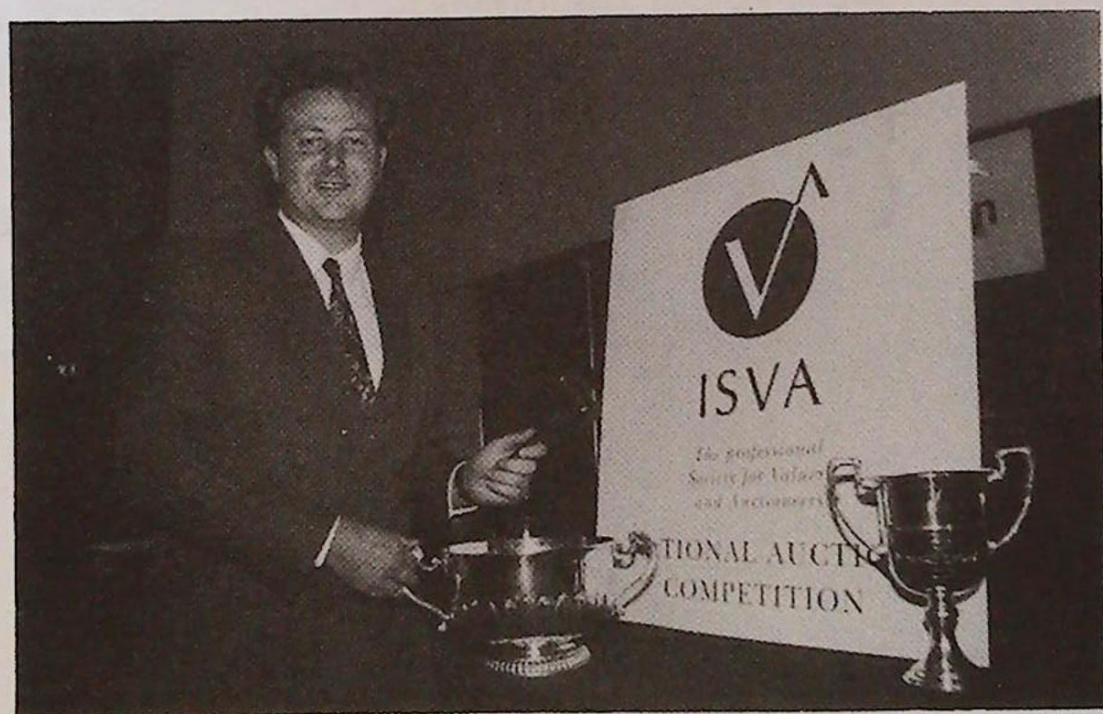
THE GRANTHAM AUCTION ROOMS

• Fine Art Auctioneers & Valuers •

Golding Young & Co
Telephone: (01476) 565118

Old Wharf Road, Grantham, Lincs NG31 7AA
Fax: (01476) 561475

DO YOU NEED THE PROFESSIONAL SERVICES OF AN AUCTIONEER & VALUER?



Colin R. Young, F.N.A.V.A.

1996/97 ISVA Young Auctioneer of the Year

Goldings Auctioneers are Second to None!
Sales, Valuations but above all Service since 1900

PRINTED MATTER

1. Players. Victoria Cross. 1914.
2. R & J Hill. Famous Ships (varnished). 1940.
3. Wills. Wonders of the Past 1926.
4. Players. Characters from Dickens A Series. 1912.
5. Wills. Household Hints. 1927.
6. Wills. Wild Flowers.
7. Wills. Do you Know? 1922.
8. Wills. Historical Events. 1912.
9. Players. Egyptian Kings & Queens and 1907 Highland Clans, album. 1912.
10. Wills. Railway Engines, album. 1936.
11. Players. Modern Naval Craft, album. 1939.
12. Players. Counties and their Industries. 1914.
13. Gallaher. Stars of screen & Stage (Park Drive), green back. 1935.
14. Wills. Do you Know? 2nd Series. 1924.
15. Wills. Overseas Dominions, Canada. 1914.
16. Kelly's Handbook 1907 and Whitakers Peerage, 1911.
17. 2 Stamp Albums.
18. English Domestic Silver, Collection of early Worcester and Chinese Bronzes (3).
- 18A. Herbert Cescinsky. English Furniture of the 18thC, 3 vols.
19. A Victorian set of novels by Lord Litton and Mrs Beeton's.
20. A Victorian FAMILY BIBLE. £20-30
21. RAF and Associated Magazines (3 boxes) and Album of Aviation related items.
22. Falklands Ephemera and RAF Calendars.
23. The Life of a Fox and Diary of a Huntsman by Thomas Smith, 1896.
24. The Old English Landscape Painters by Grant.
25. The Chelsea Porcelain Toys by Bryant.
26. Locke on the Understanding, Dickens, etc.
27. Books on Staffordshire and other pottery.
28. Bryans Dictionary of Painters and Engravers, etc. (3)
29. The English Interior by Arther Stratton.
30. Decoration in England from 1640 to 1760 by Francis Lenygon, 4 vols.
31. The Mansions of England in the Olden Time by Joseph Nash, gilt morocco binding.
32. England Under Victoria.
33. A Victorian PHOTOGRAPH ALBUM. £20-30
34. A Victorian PHOTOGRAPH ALBUM. £20-30

35. A Victorian PHOTOGRAPH ALBUM. £20-30
36. Toad Goes Caravaning and other Books. £10-20
37. A Victorian gilt leather musical Photograph ALBUM. £25-35
38. Eighteen 19thC hand coloured French FASHION PRINTS. £120-180
39. War Papers and Loose File.
40. Picture SILKS. £10-20
41. Seven Victorian Racing Calendars. £50-70

COLLECTORS' ITEMS & MISCELLANEA

42. A Japanese black lacquer JEWELLERY BOX. £10-20
43. A tonella ACCORDIAN. £10-20
44. A carved oak aneroid BAROMETER. £25-40
45. A pair of carved rosewood CANDLES. £40-60
46. An upholstered bun feet FOOTSTOOL.
47. A Victorian oval papier mache TRAY with chinoiserie scenes of people in traditional dress. £150-200
48. A Chinese carved soapstone SPILL VASE. £20-30
49. A Georgian needlework SAMPLER by Elizabeth Taylor, 1802. £80-120

50. A 'Geographia' 10" Terrestrial GLOBE. £50-70
51. Brass and copperware including crumb scoop. £15-25
52. The Game of the Tail-less DONKEY
53. A pair of Chinese lacquer PANELS with birds and flora in relief.
54. Pair of Chinese lacquer PANELS with birds and flora in relief.
55. Assorted RAF Clothing.
56. A Victorian papier mache LAPDESK. £350-450
57. Brass Pump and Hanging Lamp.
58. 2 silver topped CANES.
59. A Georgian short SWORD with silvered handle and grip.
60. Bob Dylan and other Posters.
61. An Edwardian oval TRAY with string inlay. £30-50
62. Lace and Linen.
63. Two pairs STAINED GLASS PANELS believed to have formerly been in Quarrington Church, Nr Sleaford. £100-200
64. 2 taxidermy BIRDS.
65. Leaded glazed PANELS. £30-50
66. A Victorian mahogany SMOKERS' CABINET. £40-60
67. A brass and mahogany Towel HOLDER. £15-25
68. A cast-iron BOOT SCRAPER.
69. A Victorian needlework SAMPLER by M A H Clare, 1848. £300-400

70. Assorted metalware including Marley Horse, pewter Teapot, etc.
71. Assorted FISHING TACKLE including reels by Pridex and Penn Squider.
72. A leather SUITCASE.
73. A Chinese soapstone SPILL VASE. £30-40
74. An oak handled brass HAND BELL. £20-30
75. A Chinese TABLE GONG in a carved hardwood stand. £60-80
76. A hanging brass JARDINIÈRE. £30-40
77. An oriental metal FISH VASE. £40-60
78. A Chinese brass TEAPOT.
79. Butterfly Hinges and other brassware including Pumps.
80. A Georgian mahogany TEA CADDY (AF). £20-30
81. A Victorian copper KETTLE. £20-30
82. A Victorian copper WARMING PAN with swan engraved cover. £40-50
83. Constituent parts of a 17thC oak bible box.
84. AC Wartime Civilian Receiver Set.
85. Type F Field Telephone.
86. Wireless Set No 17 Mk.II
87. B.28 Receiver Set.
88. A German Zither.
89. A Georgian mahogany duet WRITING BOX. £100-150
90. A BOOK PRESS. £20-30
91. A Victorian copper COAL HELMET. £20-30
92. An old cheque PRINTING MACHINE.
93. 2 Victorian brass JAMPANS. £20-30
94. 2 Victorian brass SAUCEPANS. £20-30
95. Leather cased RAC MAP CASE.
96. Scale Models of a Jet Provost, Jet Stream and Hunter. £30-50
97. A pair of carved teak FRAMES. £15-25
98. A Chinese red lacquer circular BOX. £20-30
99. A DRESS SWORD with scabbard and another.
100. A leather SUITCASE.
101. 2 glass BULLSEYES.
102. An Ancient Order of Foresters HORN. £50-70
103. A pair of brass CANDLE-STICKS.
104. A pewter TOBACCO JAR. £25-30
105. A graduated set of tin Nursery Rhyme Boxes. £40-50
106. A red lacquer BOWL and liner.
107. A gilt brass 4-branch CENTRE LIGHT. £30-50

108. A Rabone cast-iron and brass SPIRIT LEVEL.
109. A stoneware electric FIRE.
110. A hammered copper FENDER. £30-40
111. A Model BOAT. £20-30
112. A 3 brass MARTINGALE and nickel bit. £15-25
113. An enamel wall DRINKING FOUNTAIN.
114. A pair of plated Fighting Cocks and a pair of pheasants.
115. Lace and Linen.
116. A Victorian brass FENDER. £25-40
117. A large brass SHELL CASE.
118. A Grantham stoneware Ginger Ale BOTTLE.
119. A Victorian OIL LAMP with pottery base. £80-120
120. 2 Victorian stereoscopic VIEWERS and Slides. £30-50
121. A Victorian brass JAM PAN. £20-30
122. A leather cased rosewood BANJO. £25-35
123. A cast iron KETTLE
124. A rectangular FLAT IRON.
125. 1977 Silver Jubilee needlework PICTURE. £20-30
126. A Victorian needlework SAMPLER by Esther Thomas, 1848. £40-60
127. A painted pine POST BOX. £30-50
128. A pair of stuffed Birds.
129. A Victorian SPINNING WHEEL. £150-200
130. A pair of brass CANDLE-STICKS, 12". £15-25
131. A pair of Victorian cast-iron Punch & Judy DOORSTOPS. £25-40
132. A Victorian oak 2-door SMOKERS' CABINET. £90-120
133. 4 Riding Crops.
134. A Victorian brass PRESERVE PAN.
135. A Victorian oak STATIONERY BOX. £80-120
136. A brass TABLE GONG. £15-25
137. Mrs Beeton's, Biscuit Barrel and opera glasses.
138. A Casige toy SEWING MACHINE. £10-20
139. Ten 4 minute Edison cylinders and an oak Speaker. £20-30
140. A Victorian brass OIL LAMP.
141. Oval gilt WALL MIRROR and 2 others.
142. A Victorian copper KETTLE with acorn finial. £35-50
143. An embossed brass MAGAZINE RACK and a pipin.
144. 2 copper POST HORNS (AF).
145. A metal baluster VASE.
146. An old TENNIS RAQUET.
147. A Victorian brass KETTLE STAND. £25-40

148. A Victorian brass and cast OIL LAMP. £25-40
149. A set of 4 wooden BOWLS. £40-50
150. A Victorian copper SKILLET with 2 brass handles, 16" dia. £40-60
151. A 1920's embossed brass WALL MIRROR. £30-40
152. A pair of cast Prince of Wales Feather Plaques. £30-40
153. A George III copper WARMING PAN with an ebonised handle and a pierced hinged lid engraved with GR and arms 1809, 12" dia. £80-120
154. A pair of 19thC oak CANDLE-STICKS, 13" high. £25-35
155. A 17thC carved oak WALL PANEL in 3.1/2" sections with demi-lune and anthemion carvings, 65" wide. £100-150
156. A Victorian copper SAMOVAR with milk glass handles (AF), brass tap, quatrefoil base with scroll shell feet. £80-120
157. A square early Victorian rosewood TEAPOT STAND with a floral woolwork top, a double moulded edge and 4 bun feet. £40-60
158. A Victorian apple green papier mache TRAY with a raised scalloped edge and floral decorations, impressed B1703 to base, 32" wide. (Toller Illus 4B) £300-400
159. A Victorian papier mache SUPER TRAY with edging around rim and mother of pearl inlaid crest, impressed Jennens & Bettridge, some damage. (Toller illus 7B). £100-150
160. A pair of maple framed collages.
161. A Victorian papier mache INK-STAND decorated in yellow, cream and gilt with 2 crystal bottles. (Toller illus 16A). £250-350
162. A pair of FIGURES in 18thC dress, 4.1/2" high. £100-150
163. A mahogany TABLE LAMP. £50-70
164. A pair of black papier mache BELLOWS. £30-40
165. A Victorian black papier mache BLOTTER with mother of pearl inlay. £50-70
166. A Victorian rosewood TEA CADDY of sarcophagus form (no jar). £100-150
167. A Victorian rosewood WORK-BOX. £30-40
168. An embossed cellulose FOLDER. £20-30
169. Victorian bedroom chair, fender and pine box.
170. Lacquer Box, Moneybox and 2 others.
171. A brass and mahogany LEVEL, boxed.
172. A pair of square base CANDLE-STICKS. £10-20

173. Moulding Planes, etc.
174. Millers Falls No 85 Plane.
175. Plough Planes.
176. Woodworking Planes.
177. A Victorian SCENT BOTTLE with gilt metal mounts and 4 circular miniatures. £50-80
178. A claw carved Meerschaum PIPE BOWL, cased. £10-20
179. A pair of brass mounted Chinese TEA BOWLS. £60-80
180. A Victorian papier mache WALL POCKET depicting a Red Indian and a Taperstick. £30-40
181. A Georgian mahogany oval TEA CADDY with shell inlay motif. £120-150
182. A Victorian iron 4 wheel Coffin BIER. £300-400
183. A jade model of a HORSE and an elephant. £25-40
184. A pair of green serpentine models of DOGS. £350-450
185. A 19thC Belgian 4 column alabaster MANTEL CLOCK with gilt dial and pendulum. £150-200
186. 2 small embossed copper POWDER FLASKS.
187. A 19thC. ivory OKIMONO depicting an elder with staff. £120-180
188. A carved red glassware SCENT BOTTLE. £10-20
189. 2 Chinese carved red lacquer TRINKET BOXES. £30-40
190. Mounted and other lead soldiers. £10-20
191. A copper POWDER FLASK.
192. A Forrest & Sons Fly REEL.
193. A replica Belgian flintlock PISTOL. £20-30
194. Homepride Flour Scales. £15-25
195. An electroplate OIL LAMP with clear glass reservoir. £100-150
196. 3 air MUSIC BOX transfer printed with a chateau. £60-80
197. A Beatles EP - 1964.
198. Pair of WALL BRACKETS.
199. A brass and steel monocular MICROSCOPE by E.Hartrack & A.Prazmouster, Paris, and case of slides. £120-180
200. A set of brass and mahogany postal SCALES with weights. £40-60
201. 2 pairs candle SNUFFERS and folding camera.
202. A Victorian copper KETTLE with acorn finial. £40-50
203. A cased MEDICINE GLASS.
204. A Victorian fitted leather TRAVEL BOX. £90-120
205. A Victorian walnut GAMES CABINET. £180-250
206. A brass and ebony SMOOTHING PLANE. £50-80
207. A miniature brass tip-top TABLE.
208. A miniature hardwood TABLE.

209. A brass and mahogany FISH-ING REEL. £15-25
210. A sidelock percussion PISTOL with walnut handle, octagonal barrel engraved B Sturman London (ram missing). £100-200
211. A pocket PISTOL (AF), rule and thermometer.
212. A James Heeley double lever patent CORKSCREW. £35-45
213. A pair of early 19thC DOORSTOPS depicting the Belton House Hounds. £25-35
214. A pair of 19thC SILHOUETTES. £40-60
215. A set of black slate POSTAL SCALES with malachite inset. £80-120
216. A Prisoner of War straw work elliptical CASE.
217. A 19thC fruitwood treen NEEDLEWORK STAND. £150-200
221. A silver plated POCKET WATCH and CHAIN.
222. A 9ct gold basalt intaglio RING. £25-30
223. Six assorted Pendants and Brooch. £30-40
224. Cased set dress Studs.
225. Cameo Bracelet, silver Bangle, white metal Watch Chain. £10-15
226. An 18ct and platinum 3-stone diamond RING and 9ct 5-stone diamond RING. £35-40
227. A 9ct gold rope link CHAIN. £20-30
228. A 14ct gold Pendant and Chain. £30-40
229. A ladies 18ct gold Hamilton WATCH on expander bracelet. £30-40
230. A ladies 9ct gold Rotary WATCH on 9ct bracelet. £40-60
231. A ladies 9ct gold Everite WATCH on 9ct snake link bracelet. £30-40
232. A ladies 14ct gold Eterna WATCH on 14ct snake link bracelet. £80-120
233. A ladies 9ct gold Longines WATCH on 9ct milanese link bracelet. £90-120
234. Ladies and Gents 9ct gold pave set DRESS RINGS (2). £15-25
235. A 9ct gold half eternity RING. £20-30
236. A 9ct gold half eternity RING. £20-30

JEWELLERY, WATCHES & BIJOUTERIE

218. A Victorian silver Gents POCKET WATCH by Graves, Chester 1901 and another. £15-25
219. A George V 9ct rose gold RING set with single turquoise, Chester 1918. £25-40
220. An Edwardian silver Gents POCKET WATCH, Birmingham 1904. £30-40

237. A 9ct gold Signet RING and St George RING. £15-25
238. Two 9ct gold enamel cluster RINGS. £20-30
239. 18 assorted RINGS. £90-120
240. An Omega gents WRIST-WATCH. £20-30
241. An Omega gent's WRIST-WATCH with expanding bracelet. £20-30
242. An Eterna jewelled silver POCKET WATCH with seconds ring. £60-80
243. A heart shaped pendant on chain and blue bead NECK-LACE (2).
244. A 9ct gold crescent BROOCH set with pearls and rubies. £100-150
245. A 9ct gold pearl leaf BROOCH. £30-40
246. A 9ct gold floral spray BROOCH set with diamonds and rubies. £100-150
247. An Edwardian silver Gents POCKET WATCH, Birmingham 1902.
248. A silver ALBERT, 45g. £20-30
249. An 18ct white gold diamond RING. £50-80
250. A 9ct gold sapphire and diamond RING. £40-60
251. A gents manual Zenith WATCH. £10-20
252. A ladies gold plated Zenith WATCH. £10-20
253. A half Sovereign in 9ct gold mount and 9ct gold chain. £40-60
254. A 9ct gold diamond RING. £40-60
255. A 9ct gold round curb BRACELET. £40-60
256. A 9ct rope Chain and 9ct Cross. £60-80
257. A 9ct rose gold NECKLACE and T Bar. £150-200
258. A 9ct gold round link Belcher NECKLACE. £100-150
259. A 9ct gold handmade bar NECK-LACE. £180-250
260. A 9ct gold flat curb BRACELET. £50-80
261. A 9ct gold garnet EARRING.
262. A 9ct gold open curb NECK-LACE. £28-35
263. A 9ct gold gate BRACELET. £25-30
264. A 9ct gold garnet EARRING and another.
265. A large silver HOOP.
266. A silver enamelled Pendant.
267. A CAMEO with 9ct gold mount. £50-70
268. A silver CHARM BRACELET. 57g. £20-30
269. A 9ct gold double link NECK-LACE. 33g. £150-200
270. A 9ct gold Belcher CHAIN. 14g. £70-90

271. A Continental silver CRUCIFIX WATCH. £200-300
272. A Waltham gold plated POCKET WATCH. £30-40
273. A Victorian gold BROOCH with single diamond and hair to reverse. £90-120
274. A pair of Georgian paste SHOE BUCKLES and another. £35-45
275. A pair of blue glass and metal CLASPS. £15-25
276. 3 pairs of CLASPS. £20-30
277. A Ladies tissot WRISTWATCH with 9ct case and mesh strap. £30-40
278. A fine suite of 14ct gold JEWELLERY incorporating a pearl necklace with sapphire and diamond pendant, sapphire and diamond bracelet and similar earrings. £1750-2250
279. A 9ct gold flat curb NECKLACE. 37g. £160-200 280. A 9ct gold Belcher CHAIN. 16.5g. £70-90
281. A 9ct gold 7-stone diamond half eternity RING. £120-150
282. A 9ct gold 9-stone diamond half eternity RING. £200-250

CLOCKS

283. A leather cased Jaeger TRAVEL CLOCK. £120-180
284. A fine 19thC cold painted brass FIGURAL MANTEL CLOCK surmounted by 2 fighting lions, the base having scroll acanthus work in the manner of Thomas Hope, 16" high, 13" wide. £500-700
285. A Smiths electric WALL CLOCK with a 2' square dial. £100-200
286. A Georgian oak LONGCASE CLOCK with pillared hood, arched trunk door with shell inlay, painted square dial with date crescent, 30 hour movement. £500-700
287. An early 19thC LONGCASE CLOCK of elm, oak and mahogany, the hood having fluted columns and a fluted, canted trunk with large door, a 30 hour movement, striking on a bell behind an 11" square brass dial with roman numerals and applied spandrels, engraved 'Harley, Salops'. £600-800
288. A Victorian walnut drop dial WALL CLOCK.
289. A Victorian walnut WALL CLOCK. £80-120
290. A 1930's oak WALL CLOCK with Westminster Chime. £40-60
291. A Victorian walnut 8-day WALL CLOCK. £120-180
292. Assorted Clock and Watch Spares.
293. A mahogany 8-day MANTEL CLOCK.
294. An inlaid mahogany 8-day MANTEL CLOCK.
295. A mahogany 8-day MANTEL CLOCK.

296. An American walnut and mahogany 8-day MANTEL CLOCK.
297. A Victorian ebonised American MANTEL CLOCK.
298. An oak clock BAROMETER. £30-40
299. A Blick electric clocking-in TIME RECORDER. £20-40
300. A clocking-in TIME RECORDER. £20-40
301. A Victorian polished slate MANTEL CLOCK. £30-40
302. A Victorian walnut 8-day MANTEL CLOCK. £20-30
303. An Edwardian walnut 8-day MANTEL CLOCK. £20-30
304. An Edwardian walnut 8-day MANTEL CLOCK. £30-40
309. Cased set of 6 mother of pearl handled BUTTER KNIVES. £30-40
310. Pair of corinthian columnar silver CANDLESTICKS, Birmingham Assay, 12" high. £700-900
311. A Victorian silver gilt TANKARD with scroll handle, repousse cartouche decoration and relief figure of horse and dog. London 1861. Presentation inscription, 7.5oz. £500-700
312. A Victorian silver and tortoiseshell HAND MIRROR. £50-80
313. A pair of plated TOASTRACKS and Continental BUCKLE.
314. A George V silver PHOTOGRAPH FRAME, Birmingham 1916. £80-100
315. A George V silver Cricket Ball STAND in the form of 3 wickets on a circular base, Sheffield 1926. £80-120

SILVER & PLATEDWARE

305. A fine Victorian silver and tortoiseshell JEWELLERY BOX with velvet and satin lined interior, Birmingham 1897. £300-400
306. A Victorian electroplate EPERGNE with central trumpet surrounded by 3 further detachable mounts. £120-180
307. A Chinese silver BELT. £20-30
308. An electroplate reeded oval SERVING DISH raised on 4 feet. £150-200
316. A silver mounted HIP FLASK. Maker James Dixon & Sons, Sheffield Assay. £40-60
317. A set of Victorian silver Cauldron SALT CELLARS on 3 stepped feet. Maker Richard Hennell London, 1864. £150-200
318. A George III silver LADLE with a shell shaped bowl, London 1765. Maker EJ. 8oz. £150-250
319. A silver plated gallery TRAY. £10-20
320. A Victorian silver pot belly TANKARD, London 1894. 6oz. £60-80

321. A set of 6 Victorian Old English pattern TEASPOONS, London 1895. £30-40
322. A George V silver CADDY SPOON with shell bowl, Birmingham 1913. £20-30
323. Miscellaneous silver and plated items. £25-40
324. A shield based silver DESKCLIP, London Assay. £40-60
325. A silver banded ivory handled CRUMB SCOOP with plated blade. £15-25
326. A silver handled ivory STAY BUST, London Assay. £20-30
327. A George II silver CRUET STAND on four shell feet, London 1745. 24oz. £250-350
328. A claret JUG with silver plated mount. £40-50
329. A cased set of 6 BUTTER KNIVES with silver Kings Pattern handles, Sheffield assay and cased DESSERT CUTLERY.
330. A fine set of Victorian bone handled FISH CUTLERY including 12 pair knives and forks and pair of servers, each blade engraved with different types of fish, silver banded, Sheffield 1891. In an inlaid mahogany case. £200-300
331. A silver plated oval 2-handled TRAY. £20-30
332. A Georgian silver and mahogany base for a CRUET STAND. Rubbed marks. £80-120
333. Silver and plated FOB WATCHES (2).
334. An Edwardian silver 3-footed BOWL, Birmingham 1907. £35-50
335. A mahogany cased set of 6 pairs bone handled FISH KNIVES AND FORKS. £25-35
336. Platedware including tray, 4-piece teaset and 2 pieces pewter. £30-40
337. An electroplate 5-branch EPERGNE. £40-60
338. An electroplate 3-branch CANDELABRA. £50-80
339. A Victorian silver SNUFF BOX with foliate border, engine turned panels and gilt interior. Maker EE, London 1845. 3" x 2". £200-300
340. BM Teapot, Bonbon Dish, etc.
341. A silver faced DESK CALENDAR, Birmingham Assay. £50-70
342. An Indian silver Cigarette CASE. £15-20
343. 3 silver SPOONS. £10-20
344. A silver mounted crystal INKWELL on a bakelite stand. £100-150
345. A pair of circular plated CANDLES. £30-40
346. Assorted Table Silver principally by James Dixon & Sons.
347. An oak CANTEEN of cutlery. £20-30
- 348 - 400 Spare Lots

GLASS & CERAMICS

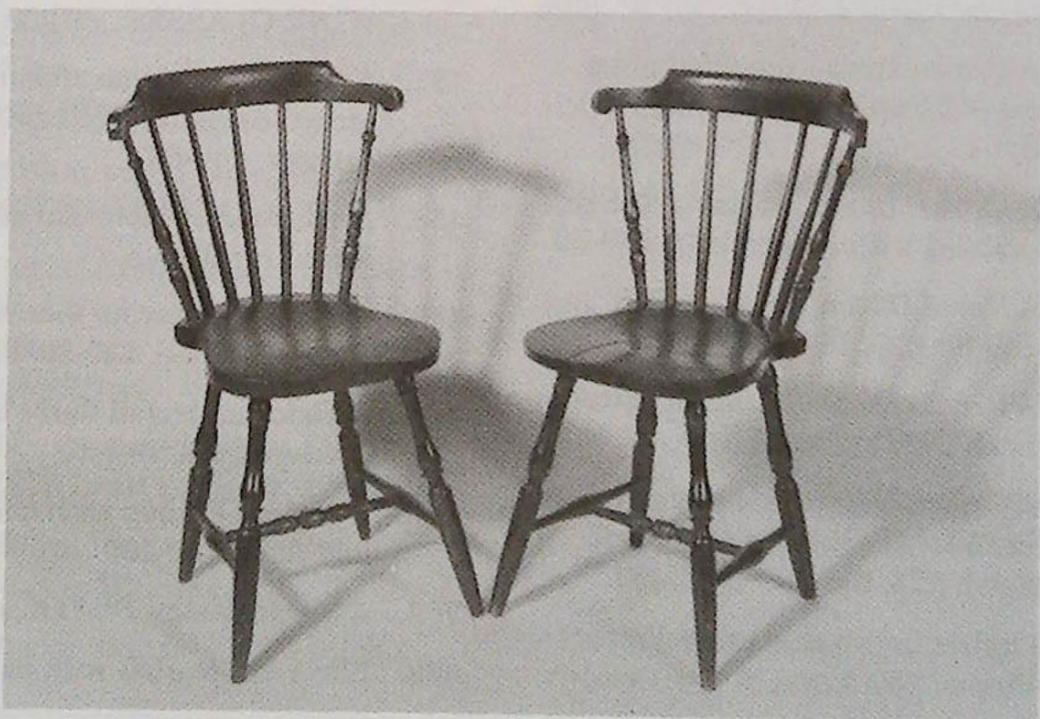
401. A 19thC Majolica BOWL moulded with bullrushes and a sardine. £60-90
402. A Royal Worcester 716 CONCH. £30-40
403. A Moorcroft floral BOTTLE VASE. £25-40
404. A Moorcroft floral BOTTLE VASE. £25-40
405. A Moorcroft floral JAR with cover. £25-40
406. A Royal Worcester model 2491 BOTTLE VASE, hand painted with a peacock, signed A J Bray. £100-150
407. A Doulton stoneware BISCUIT BARREL with plated cover. £35-45
408. A Lladro FIGURE of 2 ballet dancers. £200-300
409. A Meissen blanc-de-chine FIGURE, crossed swords mark, 7". £200-300
410. An interlocked Love Heart PAPERWEIGHT.
411. A 19thC Staffordshire FIGURE GROUP with 4 hounds and deer leaping over a style amongst heavy bocage. £150-200
412. 2 Grantham Armorial PIN BOXES and a Teapot. £20-30
413. A Royal Doulton FIGURE - Priscilla HN1559, 8". £90-120
414. A multi-cane PAPERWEIGHT. £25-40
415. A pair of 19thC German FIGURES of a man dressed in a robe and a lady holding a tea tray, 9" high. £150-200
416. An Adams polychrome MEAT-PLATE - Italian Scenery pattern and Christmas ribbon PLATE. £25-40
417. A pair of German FIGURES, Shepherd and Shepherdess. £15-25
418. A German pottery JAR-DINIÈRE. £20-30
419. A 19thC Staffordshire CHICKEN AND BASKET. £100-150
420. A Victorian TOILET JUG and WASH BOWL. £25-40
421. A Royal Doulton 'Camelot' TEA, COFFEE AND DINNER SERVICE. £150-250
422. An early Worcester SAUCER DISH. £100-150
423. A 19thC Chinese famille rose PLATE. £40-60
424. An 18thC polychrome Bristol Delft PLATE (AF).
425. A 19thC Cantonese 2 handle POT with cover. £80-120
426. A 19thC Chinese blue and white BOTTLE VASE. £100-150
427. A 19thC Cantonese BOTTLE VASE, 14". £100-150
428. A pair of 19thC Chinese green and yellow baluster VASES, 10". £80-120
429. A pair of famille verte Cabinet PLATES. £80-120

430. A 19thC glazed TEAPOT.
431. A Chinese crackleware GINGER JAR.
432. An 18thC 2 handled engraved DECANTER (AF). £30-50
433. A Victorian glass RUMMER. £10-20
434. A Victorian willow pattern MEATPLATE and another. £20-30
435. A floral wavy VASE.
436. A pair of Crown Derby Pendant pattern baluster VASES. £25-40
437. A pair of Crown Devon Etna pattern VASES. £25-40
438. A pair of Crown Devon Wye pattern baluster VASES. £25-40
439. A set of 3 Crown Devon Spring pattern graduated JUGS. £30-50
440. A Crown Devon Wick pattern taper VASE. £20-30
441. A Crown Devon moulded musical JUG playing Auld Lang Syne.
442. A Crown Devon baluster VASE painted with game birds. £30-50
443. A Royal Devon water EWER. £40-60
444. A Crown Devon Windsor pattern Leek DISH. £20-30
445. A Crown Devon Rex pattern BOWL (AF) and similar Fruit Bowl. £25-40
446. Crown Devon and other Pottery Pieces. £30-50
447. A Crown Devon Pearline Water Jug, Stand, Sugar Bowl and Preserve Pot. £20-30
448. A blue and white Cheese Dish, Wall Pocket, Meat Plate and Jelly Moulds. £20-30
449. A pair of Poole Pottery cherub WALL BRACKETS. £25-40
450. Nodding Head Porcelain Figure.
451. A Victorian Aurora Pattern TOILET SET. £40-60
452. Burleighware JUG with sunflower and butterfly moulded design. £40-60
453. 2 sets Harness with brassware. £75-100
454. A Victorian gilt crackle glazed GOBLET.
455. A set of 5 Victorian gilt GLASSES. £50-80
456. A set of 7 Victorian cranberry WINE GLASSES. £60-80
457. A set of Edwardian ribbon etched drinking GLASSES and saucers. £40-60
458. A selection of Victorian cut glass including Dishes.
459. A set of 4 Victorian faceted rinser BOWLS. £25-35
460. A Victorian trefoil floral hors oeuvre Dish. £40-40
461. A pottery Plaque with cherub and flora. £90-120
462. A Spode design PLATE. £10-20
463. Silver lustre JUG with pewter lid.



Lot 623

Lot 681





Lot 583



Lot 565

Lot 498



Lot 622

Lot 629





Lot 618

Lot 617





Lot 638

Lot 770



464. A Chinese blue and white CHARGE (AF).
465. A large floral MEATPLATE. £30-40
466. A pair of 19thC Minton style mottle glazed GARDEN SEATS in the Chinese taste (1 AF). £150-250
467. A Minton topographical CAKE-STAND (AF). £50-70
468. A Victorian COMFORT painted with a scene of Ben Nevis. £50-70
469. A First Period Worcester blue and white PLATE (AF). £40-60
470. A pair of Continental pottery columnar CANDLESTICKS. £70-90
471. A Lladro Figure of 2 nuns. £70-90
472. A Child's 'Berry' pattern TEA SERVICE. £10-25
473. A Prattware LOVING CUP. £20-30
474. A Cauldon part DINNER SERVICE (8). £30-50
475. Two Victorian slop BOWLS (2).
476. A Liverpool pearlware TEAPOT. £60-80
477. A Minton panel PLATE, c.1810. £50-70
478. Graingers floral Plates and 1 earthenware floral Plate, lilac ground (3). £20-30
479. A Don Pottery floral rustic PLATE. £20-30
480. A Coalport Iris PLATE. £15-20
481. A Beardmore Vase and Chinese scene JUG. £10-20
482. Charles Meigh American Scene PLATES (3). £10-20
483. 4 Tureens. £10-20
484. Rogers miniature blue and white PLATES (6). £60-90
485. A 19thC Continental HONEY POT. £10-20
486. A Coalport TRIO. £35-50
487. A small sparrowbeak Jug, floral plate and 2 cups (4). £10-20
488. Assorted Glasses.
489. A Newhall SAUCER DISH. £10-20
490. A Rockingham TRIO. £20-30
491. 8 Rockingham Cups. £20-30
492. A Carltonware lustre BOWL and another. £15-25
493. A brown and white TUREEN and cover. £30-40
494. A pair of ruby overlay glass VASES. £100-150
495. A Majolica Dolphin VASE. £25-40
496. 3 Royal winton leaf DISHES. £25-35
497. A KPM botanical PLATE. £35-50
498. A Martinware JUG decorated with reeds and dragonflies (AF), INCISED '10-18-95 Martin Bros London & Southall' *Illustrated on centre pages.* £50-100

499. A Victorian vaseline glass VASE. £20-30
500. An 18thC TEABOWL and SAUCER painted with strawberries and a Japan pattern CUP and SAUCER. £30-40
501. A pair of Bisto porcelain MENU STANDS.
502. A Doulton stoneware TOBACCO JAR. £30-40
503. A Victorian moulded stoneware JUG with greyhound handle. £25-35
504. A Victorian moulded stoneware JUG with pewter lid. £25-35
505. A Victorian topographical DESSERT PLATE. £25-40
506. A Derby trefoil DISH. £25-40
507. Blue and white pottery and 2 leaf dishes.
508. A Noritake 3 footed BOWL and COMFORT. £50-70
509. A First Period Worcester 'fence' pattern bullet shape TEAPOT. £80-120
510. A Grainger's Worcester topographical CUP and SAUCER.
511. Torquayware (7).
512. German porcelain FIGURES (2).
513. A Beswick model SHIRE HORSE. £30-40
514. A square crystal DECANTER wheel cut with a deer. £30-40
515. A Tudor pottery JARDINEIRE. £20-30
516. A Canton pattern WATER JUG. £20-30
517. An Art Nouveau flow blue WASHBOWL. £30-40
518. A 19thC Majolica JARDINIERE (AF). £20-30
519. Ribbon Plate, Teapot, Jug and pair brass Candlesticks.
520. A pair of Wedgwood Jasperware CANDLESTICKS.
521. A Wedgwood Jasperware BISCUIT BARRELL with plated lid.
522. A Wedgwood Jasperware Pot and Victoria Beaker.
523. A Wedgwood Jasperware Tobacco Jar and cover. £30-40
524. A Sunderland purple lustre FROG MUG depicting the Iron Bridge over the Wear (AF). £50-80
525. A 19thC polychrome RAILWAY MUG. £30-40
526. An 18thC Nankin octagonal blue and white DISH. £80-120
527. A set of 3 graduated Beswick Mallard WALL POCKETS. £25-40
528. A Royal Worcester relief moulded PLATE. £20-30
529. A Wilkinson Honeyglaze Clarice Cliff pottery BOWL. £70-90
530. A Royal Worcester Persian design EWER, 18". £150-200
531. A 19thC celadon SAUCER DISH enamelled with butterflies, peonies and lilies. £50-80

532. A Mettlach MASONIC STEIN moulded with bookbindings and owl thumpiece. £120-180
533. Bowl, Jug, Crumb Scoop, etc. £15-25
534. A 19thC Bohemian ruby overlay glass VASE, 16". £180-250
535. Eight Victorian cranberry glass BEAKERS. £50-70
536. Eight Victorian cranberry glass CUSTARD/JELLY GLASSES. £80-120
537. A Georgian clear glass WINE FUNNEL. £10-15
538. A 19thC Dutch Delft cartouche WALL PLAQUE, a scene of church and windmill at the waters edge, signed Von Kunji, 16" wide. £150-250
539. A 19thC Bohemian white overlay VASE with floral and gilt decoration on a black ground. £150-250
540. A mahogany NEST of TABLES. £50-80
541. An 18thC Chinese PUNCH-BOWL decorated with enamels (AF). £100-150
542. A 19thC Coalport TEA SERVICE comprising teapot, slop bowl, sucrier, bread plates, cups and saucers, decorated in gilt and floral motifs. £180-250
543. A Spode's Imperial FOOTBATH (repaired). £200-300
544. 6 - 19thC Christening MUGS. £60-80
545. A majolica GAME DISH with cover. £30-40
546. 4 graduated Mason's style JUGS. £30-40
547. A Royal Dux porcelain FIGURE of a crinoline lady reading a book. £80-120
548. A Maling Peony Rose pattern flared VASE with pink lustre decoration. £60-80
549. An oval MEATPLATE. £50-70
550. An oval MEATPLATE. £35-45
551. An 18thC Chinese blue and white CHARGER (AF). £70-90
552. A pair of 18thC Chinese famille verte CABINET PLATES. £50-70
553. A 19thC Cantonese TEAPOT with cover. £60-80
554. A 19thC Nankin octagonal BOWL with mask handles. £100-150
555. A Victorian Staffordshire PASTILLE BURNER in the form of 3 octagonal houses. £40-60
556. A blue and white TEAPOT. £25-35
557. A small 19thC Cantonese BOWL (AF). £25-40
558. An 18thC fluted faience BOWL. (AF) £35-50
559. Crown Devon chinoiserie lustre-ware (3). £25-40
560. A Crown Devon Tablelamp.
561. A Victorian 'Ripon' BUTTER DISH. £15-25

562. A Victoria Coronation MUG.
 563. A George & Mary BUTTER DISH.
 564. A pair of Chinese crackleware VASES.
 565. A 19thC terracotta Characature BIRD JUG.†*Illustrated on centre pages* £100-150

PICTURES

566. A Farmyard Scene with 2 shire horses, ducks and labourer, watercoloure signed David Cox 1843. 13" x 19". £200-300
 567. Pair of coastal scenes, oil on card, monogrammed JS and dated 1859. 5.1/2" x 7.1/2". £120-180
 568. An inland mountainous scene and coastal scene, monogrammed EJ and dated 1859, oil on card. 5.1/2" x 7.1/2". £120-180
 569. Jas. Taylor. A thatched cottage in spring gardens, oil on canvas, signed and dated 1938. 20" x 24" in a gilt plaster frame. £300-500
 570. H Hadfield Cubley. The valley of the Mawddach Barmouth, oil on canvas, signed and dated verso 1918. 20" x 30". £650-900
 571. After H P Parker. Portrait of a pensive looking smuggler holding a flintlock pistol, relined oil on canvas, 23" x 19". £400-600
 572. Edwin Ellis (1841-1895). Fishing Boats in Moorings at Low Tide, oil on canvas, signed. 18" x 32" (holed). £250-350
 573. R Darius. A Scene from Gone with the Wind, oil on panel, signed. 32" x 24". Note: possibly used for the artwork and promotion for the film. £350-450
 574. Walter Williams. Seashore with boats and figures at low tide, oil on canvas. 14" x 20", signed. £400-600
 575. 19thC English School. Portrait of the Duke of Wellington. 10" x 8". £100-150
 576. S E Bear. Street Scene, oil on canvas, signed. 18" x 19". £180-250
 577. E Godshaw. An oil sketch of a horse and unmounted rider, oil on canvas, signed. 10" x 13". £150-200
 578. Louise Picard. Summer, a scene of a young girl seated in a rocking chair looking out over summer meadows, oil on canvas. 17" x 20". £120-180
 579. H E Allen. Farm buildings in landscape, tempera. 10.5" x 14", signed. £350-450
 580. Alfred Kingsley Lawrence (1893-1975). Pellegrina, a portrait of a young lady on a chair, oil on canvas. 30" x 20". £200-300
 581. Durocelle. Head of shoulders portrait of a young lady en rocaille, oil on canvas, signed. 18" x 16". £400-600

582. 19thC English School. Conway Castle with boats and figures in the foreground, watercolour. 9" x 13". £300-400
583. William Payne (1776-1830). Figures with a windlass on the seashore, watercolour. 9" x 13". *Illustrated on centre pages.* £400-500
584. D Forbs. Harbour Scene, watercolour, signed. 9" x 6.1/2". £40-60
585. A pair of 19thC Italian PORTRAITS OF young men, oil on canvas, 16" x 12", signed. £120-180
586. Capel *Ury. A Highland Scene, WATERCOLOUR, 8" x 11". £30-50
587. An ENGRAVING of the Death of Lord Robert Manners.
588. An Hogarth ENGRAVING.
589. M.E. Hall. A Belvoir Hound seated in a Stable, OIL ON CANVAS, 36" x 15", signed, in a gilt frame. £250-250
590. Sylvia Howells, Evening Race, oil on canvas, signed. £20-30
591. Fanny D H Calder (19thC). Mountainous Landscape, watercolour, monogrammed and dated 1894, 10" x 15". £50-80
592. 19thC English School. Landscape with red roofed cottage by a river, oil on canvas, monogrammed CK and dated '88. 30" x 20". £100-150
593. 19thC English School. Landscape with trees overhanging a stream, oil on canvas. 18" x 16". £50-80
594. 19thC English School. Shore scene with figures and boats in the distance, oil. 10" x 15". £80-120
595. E. Agar. Highland landscape, signed and dated 1896. 18" x 26". £80-120
596. A primitive Continental Landscape with dog, boy and young lady, oil on canvas. £180-250
597. A Watercolour of Caythorpe, signed R M Brown, 1946. £20-30
598. A pair of Italian PICTURES after Murillo, in gilt frames. £80-100
599. 3 framed CARTOONS by The Ork. £75-100
600. 3 framed CARTOONS by The Ork. £75-100
601. A pair of CARTOON CARICATURES entitled 'The Curate Hears a Call' and 'The Sequel', in a single frame. £50-80
602. Paul Henry. The Blue Hills Connemara, artist's proof print, signed in pencil. £100-150
603. 3 framed colour HUNTING PRINTS. £30-40
604. WATERCOLOUR of a Village in Landscape.
605. 20thC English School. Girls in summer dress by a stream, oil on panel. £180-250
606. Three Cries of London engravings and a pair of colour engravings. £20-30
607. Spare Lot

608. Spare Lot
609. C Robins. A pair of landscape watercolours, 2.1/2" x 7.1/2". £40-60
610. O H Thomas. St Michael's Mount, watercolour. £40-60
611. The Deacon's Mare Print.
612. A pair of humorous dog PRINTS by Peter Frazer. £20-30

FURNITURE

613. An Indian cream ground CARPET. £250-300
614. Large Bokhara style RUG. £60-80
615. An unusual George II COLLECTOR'S CABINET with moulded oak top, the 2-door front painted to represent different types of marble and charriot scenes revealing 18 graduated drawers. 4'6" high x 2'2" wide x 14" deep. £400-600
616. A George III mahogany serpentine COMMODE of 4 graduated drawers with ring handles, ivory escutcheons, shaped apron and splay feet, 38" wide, 32" high. *Illustrated on Front Cover.* £1500-2000
617. A fine 17thC carved and inlaid oak COFFER with a 4-panel top, scoop carved frieze, diamond lozenge panels to front and sides. *Illustrated on centre pages.* £800-1200
618. An early 18thC oak DRESSER BASE with 3 frieze drawers, brass escutcheons and loop handles, raised on cabriole legs. *Illustrated on centre pages.* £1500-2000
619. A 19thC mahogany SQUARE PIANO on 6 reeded legs with brass castors, 42 keys, by John Broadwood & Sons, Maker to HM and the Princesses, Great Putney Street, Golden Square, London. 66" wide. £900-1200
620. A George I walnut BUREAU BOOKCASE, the upper section with a cavetto cornice, 2 glazed doors and candlestands, the middle section having a fall flap concealing a fitted mahogany interior, over a single drawer, the lower section having 2 short and 2 long drawers and bracket feet. *Illustrated to the front of the Catalogue.* £7000-10000
621. A late 17th/early 18thC walnut marquetry miniature CASKET, the arabesque top inlaid 'amor.vincit.onnia', an intricate iron lock and tulip inlaid panel front interspersed by stylised Ionic columns. £800-1200
622. A fine George III flamed mahogany gentleman's DRESSING TABLE, the 2-section top inlaid with neo-classical urns and swags revealing a fitted interior over a similarly inlaid front with single drawer having circular ring handles, raised on square taper legs with brass cup and castors. *Illustrated on centre pages.* £2000-3000

623. A fine set of 7 (including carver) Regency mahogany DINING CHAIRS with ebony strung cresting rail, drape barback, reeded rails and sabre legs, upholstered in a green stripe brocade. *Illustrated on centre pages.* £2500-3500
624. A fine George III mahogany SUPPER TABLE with plain circular tilt top on taper turned pillar with 4 cabriole legs. £1200-1500
625. A Victorian rosewood WORK TABLE, the top having 2 fall flaps, frieze drawer and silk bag, semi-circular support, turned pillar, quatrefoil base and bun feet. £500-700
626. A Victorian mahogany POLE-SCREEN with tripod base and screen of black papier mache with a fine painting of Dunstaffnage Castle. (Toller illus 14). £400-600
627. A Victorian black papier mache OCCASIONAL TABLE with an oval tilt top, shaped pedestal base and 3 feet, decorated with stained mother of pearl flowers, embellished with yellow, cream and gilt. (Toller illus 10). *Illustrated on Rear Cover.* £500-800
628. An early 19thC Beidermier mahogany and burr walnut PIER GLASS. £120-180
629. A George II mahogany concertina folding CARD TABLE with recessed and shaped folding top, plain frieze, slender cabriole legs. *Illustrated on centre pages.* £1800-2500
630. A George III Georgian pedestal TABLE with moulded rectangular top, turned pillar on 3 reeded legs terminating with brass cup and castors. £300-400
631. An upholstered child's 2 seater SOFA and CHAIR. £100-150
632. A pair of late Victorian walnut ladies and gents SALON CHAIRS lightly carved and scratch decorated. £400-600
633. A pair of Victorian walnut DINING CHAIRS with carved cameo backs, overstuffed seat and cabriole legs. £100-150
634. A Victorian carved walnut CHAISE LONGUE with gallery back. £500-700
635. A 19thC Chinese carved hardwood JARDINIERE STAND. £300-400
636. A Victorian DAYBED upholstered in brown dralongo with turned mahogany legs. £100-150
637. A set of 6 Georgian fruitwood DINING CHAIRS with XX barback, square taper legs and framed stretcher. £800-1200
638. A George II mahogany CHEST of 2 short and 3 long graduated drawers with brass escutcheons and swan-neck handles with moulded top and bracket feet. *Illustrated on centre pages.* £600-900

639. A Victorian pine and mahogany DINING TABLE on turned legs. £120-180
640. An Arts & Crafts mahogany OFFICE CHAIR on cabriole legs. £150-250
641. An early Georgian mahogany LIBRARY CHAIR with tapestry back and seat on cabriole legs with scroll feet. £500-800
642. A Victorian mahogany cylindrical POT CUPBOARD with marble top. £300-400
643. A set of 6 Victorian mahogany DINING CHAIRS with green button dralon seats and backs, turned legs. £600-800
644. A Victorian mahogany BREAKFAST TABLE with circular tilt top, taper turned pillar, circular base raised on 3 scroll feet. £600-800
645. A Victorian carved oak oval FIRESCREEN with needlework panel and carved 3 foot base. £100-200
646. A George III mahogany PEMBROKE TABLE with turned legs and brass castors. £150-250
647. A William IV mahogany bergere library CHAIR (AF). £400-600
648. A George II oak hanging CORNER CUPBOARD with fielded panel door. £200-300
649. An elm BLANKET BOX. £40-60
650. A Victorian brass and iron DOUBLE BEDSTEAD. £180-250
651. An ash and elm child's WINDSOR CHAIR. £50-80
652. A Victorian oak PEMBROKE TABLE. £80-120
653. A walnut cased ORGAN by Robert Stather. £50-80
654. A walnut cased ORGAN by Mason & Hamlin. £50-80
655. A stained beech ORGAN by Murdoch. £30-50
656. A compact Victorian mahogany twin pedestal KNEEHOLE DESK. £500-700
657. A George III mahogany traytop WASHSTAND. £200-300
658. A Georgian oak gateleg DINING TABLE. £100-150
659. A Victorian pine WRITING SLOPE with fitted interior. £30-40
660. A Victorian oak DRESSER BASE with 2 drawers and 2 arch doors. £250-350
661. A Victorian mahogany BOX STOOL with woolwork top. £50-80
662. Two reproduction tripod WINE TABLES.
663. A Georgian oak COFFER. £100-200
664. A George II oak SIDE TABLE with drawer (AF). £100-200
665. A 17thC oak COFFER. £400-600
666. A Victorian oak HALL CHAIR with carved back. £60-80

667. A stripped oak BLANKET BOX. £50-80
668. An Art Deco walnut BEDROOM CHAIR. £50-70
669. An oak dropleaf TABLE. £60-90
670. A low ladderback fireside CHAIR. £50-70
671. A pair of Victorian oak button-back DINING CHAIRS. £50-70
672. A mahogany bowfront BUREAU CABINET. £200-300
673. A mahogany tripod WINE TABLE. £30-40
674. A 19thC French giltwood FIRE SCREEN with shelf dividing the colour engraving to the upper section and satin fabric to the lower section. £150-200
675. A 1930's flamed mahogany BUREAU with ball and claw feet. £250-350
676. A wicker ROCKING CHAIR. £80-120
677. An oak BUREAU on stand, principally 18thC. £300-400
678. A 17thC and later oak drop gate-leg DINING TABLE with oval top. £200-300
679. A large panelled oak BLANKET CHEST. £250-350
680. A reproduction Regency mahogany SOFA TABLE. £200-300
681. A set of 8 - 19thC fruitwood KITCHEN CHAIRS with spindlebacks, saddle seats and H stretchers. *Illustrated on centre pages.* £800-1000
682. A Victorian mahogany CHIFFONIER BASE with barleytwist columns. £300-400
683. A Victorian mahogany CHEST of 2 short and 3 long graduated drawers with knob handles. £200-300
684. An Edwardian OCCASIONAL TABLE with undershelf.
685. A set of 6 Edwardian mahogany DINING CHAIRS with open fret cresting rails and splats, cabriole legs. £450-550
686. A barleytwist oak occasional TABLE. £30-40
687. A Victorian carved oak HALL CHAIR with green stripe upholstery.
688. A 3-tier mahogany folding CAKE STAND.
689. A barleytwist tripod WINE TABLE with octagonal top.
690. A Victorian style cast-iron PATIO SET comprising circular table and 4 chairs. £120-180
691. A Victorian style cast-iron PATIO SET comprising circular table and 4 chairs. £120-180
692. An Edwardian SNOOKER TABLE with an oak cover to form a dining table. £400-500
693. A compact oak KNEEHOLE DESK with 2 drawers over 4 to each pedestal. £200-300
694. A Flemish oak drawleaf DINING TABLE with parquetry top, carved twin pedestal base. £200-300

695. A 19thC Dutch mahogany serpentine CHIFFONIER BASE. £500-700
696. A set of 6 Dutch oak DINING CHAIRS with splatbacks and turned legs. £200-300
697. An Edwardian oak WRITING CABINET. £200-300
698. A walnut CHINA CABINET. £60-90
699. A set of 7 (inc carver) bobbin turned oak DINING CHAIRS with leather seats and backs. £300-400
700. An Edwardian PIANO STOOL £20-30
701. A set of 4 Victorian mahogany ballonback DINING CHAIRS with red dralon upholstery. £400-500
702. A Victorian mahogany SIDE TABLE with 2 drawers and leather insert top. £150-200
703. A 1930's RIDING BOOT and CROP STAND £40-60
704. A William IV rosewood OCCASIONAL TABLE. £100-150
705. A 17thC elm SWORD CHEST with later mahogany banding, 45" wide. £350-450
706. A George II oak HANGING CORNER CUPBOARD with a dentil moulded cornice (AF), shaped shelves behind a single panel door, 36" high. £300-400
707. An 18thC ash and elm comb back WINDSOR ELBOW CHAIR. £150-250
708. A 17thC dark oak DRESSER BASE, the 3 plank top carved with triangulate border, 3 frieze drawers with swan-neck handles and oval escutcheons, rondel carving and a cupid's bow apron, turned and square section legs. £1000-1500
709. An early 17thC oak JOINT TABLE, 20.1/2" x 29". £500-700
710. A harlequin set of 6 - 18thC ladderback DINING CHAIRS. £250-350
711. An early 19thC ash and elm spindleback CARVER CHAIR with rush seat. £50-80
712. A 17thC oak JOINT TABLE with ball turned legs, frieze drawer and applied carvings. 21" x 29". £700-900
713. A George III oak fall-flap DINING TABLE with a 6 plank top, 6 square taper legs and block feet, 21.1/2" x 43" x 54" £120-180
714. An 18thC pine BIBLE BOX. £30-40
715. Six beech Arts & Crafts DINING CHAIRS with rush seats. £100-200
716. An early Victorian mahogany fall flap GATELEG TABLE with plain square legs. £180-250
717. A Regency mahogany CARVER CHAIR with scroll arms, and sabre legs. £60-90

718. A late Victorian walnut SUTHERLAND TABLE with a 1/4 veneered top having satinwood and ebonised inlay, on turned legs. £200-300
719. A Victorian walnut DUET STOOL with cabriole legs. £200-300
720. A Victorian mahogany PIANO STOOL with circular rise and fall seat, baluster pillar, trefoil base and scroll feet. £150-200
721. An early 19thC brass serpentine FENDER of neo-classical design, 49" wide, together with irons and footman. £250-350
722. A George III mahogany PEM-BROKE TABLE with frieze drawer and square legs. £700-900
723. A Victorian rosewood CANTERBURY with drawer. £500-700
724. A small Victorian giltwood STOOL with a circular beadwork cover. £100-150
725. A pair of William IV simulated rosewood DINING CHAIRS with carved over-run cresting rail and back, can seats and sabre legs. £250-350
726. A Victorian rosewood GAMES/WORK TABLE with a chequerboard hinged top, slide for silk bag, semi-circular support, turned pillar and a 4-footed circular base. £500-700
727. A Victorian black papier mache CHAIR with mother of pearl and gilt decoration, impressed Jennens & Bettridge. (Toller illus 13B). £200-300
728. A similar CHAIR without mother of pearl. £180-250
729. A Georgian mahogany OCCASIONAL TABLE with a tilt top, turned pillar and tripod base. £200-300
730. A Victorian country pine HALF-TESTER BED. £300-400
731. A George III mahogany SIDE TABLE. £80-120
732. A George III oak CHEST of 3 graduated drawers with brass swan-neck handles, 37" wide. £200-300
733. A Victorian floral painted ROCKING CHAIR. £100-150
734. A Victorian elm CHILD'S CHAIR. £50-70
735. A George II oak CHEST of 5 drawers, drop handles and bracket feet, 38" wide. £300-400
736. A George III mahogany CABINET with traytop, 2 drawers and campaign handles. £50-70
737. A Victorian painted pine CHEST and WASHSTAND. £200-300
738. A Victorian mahogany TOWEL RAIL. £30-40
739. A Georgian mahogany SIDE TABLE with drawer. £200-300
740. A Victorian beech ROCKING CHAIR. £150-200
741. A 17thC style oak JOINT STOOL. £150-250
742. An Arts & Crafts simulated rosewood CARVER CHAIR with a spindleback. £120-180

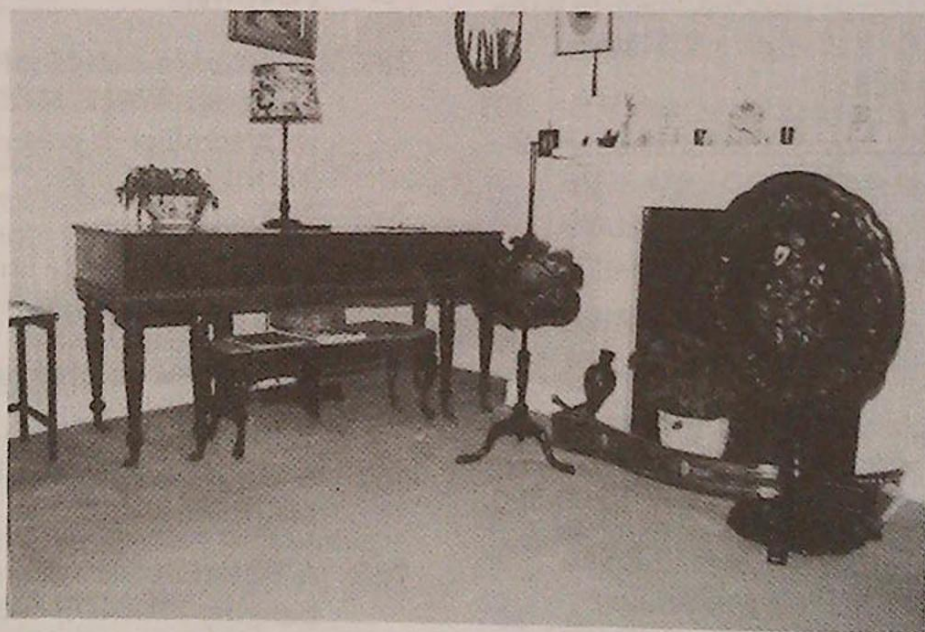
743. A George II mahogany oak CHEST of 2 short and 3 long graduated drawers with later loop handles, on bracket feet, 38" wide. £300-400
744. A Victorian mahogany SINGLE BED. £50-70
745. A George III mahogany traytop WASHSTAND with jug and bowl set. £200-300
746. A William IV oak revolving LIBRARY TABLE with circular leather inlaid top over 2 tiers of a fluted pillar on trefoil base. £300-400
747. A 1930's walnut DINING SUITE comprising extending dining table, 6 dining chairs and sideboard in the Queen Anne style. £800-1200
748. A similar style walnut COCKTAIL CABINET. £300-400
749. A similar china DISPLAY CABINET with bevelled glazed doors. £300-400
750. A Victorian mahogany 2-door glazed BOOKCASE. £150-200
751. A Victorian mahogany open BOOKCASE with cupboard and lift top to each side. £200-300
752. A mahogany upright overstrung PIANO. £100-150
753. A Victorian oak and pine OPEN BOOKCASE, 5'8" high x 5'6" wide x 10" deep. £100-150
754. A 19thC Maple & Co. oak Bankers DESK. £600-800
755. A Victorian mahogany SECRETAIRE BOOKCASE with 2-door glazed top, fitted drawer over 2 door cupboard base. £800-1200
756. Spare Lot.
757. A Waring & Gillows TRIPLE WARDROBE COMPACTUM with Greek key moulded cornice, 3 panelled doors, brass fretwork handles, ogee feet. £600-800
758. An Edwardian mahogany DOUBLE WARDROBE, DRESSING CHEST and WASHSTAND. £200-300
759. A Victorian flamed mahogany CHEST of 2 short and 3 long graduated drawers, turned handles and raised on turned feet. £350-450
760. A Victorian stripped and waxed pine DRESSER with platerack top, cupboard and drawer base with dog kennel on turned feet. £350-450
761. An inlaid mahogany upright PIANO. £60-80
762. A Victorian black framed oval WALL MIRROR
763. A Victorian oak WALL MIRROR with box base. £30-40
764. An Edwardian oak WARDROBE & WASHSTAND. £120-180
765. A Victorian painted pine DRESSER with platerack, 3 drawers and 3 cupboards. £200-300

766. An early Victorian oak Gothic arch BOOKCASE with 2 glazed doors over a 2 cupboard door base, of slender proportions. £600-900
767. A Victorian painted pine FIRE SURROUND. £40-60
768. A George III flamed mahogany PRESS CUPBOARD with 2 panel door top concealing drawers over 2 short and 2 long drawers on bracket feet. £1000-1500
769. A Victorian pine DRESSER with platerack top, 5 drawers and raised on turned legs. £200-300
770. A Victorian inlaid walnut CRE-DENZA. *Illustrated on centre pages.* £900-1200
771. A Victorian painted open BOOK-CASE. 4'2" high x 7'6" wide. £400-600
772. A Victorian flamed mahogany 2-pedestal SIDEBBOARD with scrolled and carved back. £400-600
773. A Jacobean style oak DRESSER. £80-120
774. A Victorian DRESSER with glazed 2 door top, over 2 drawers and 2 carved doors. £200-300
775. A Victorian satinwood BED-ROOM SUITE comprising wardrobe, dressing chest and marbletop washstand. £180-250
776. An Arts & Crafts walnut DOU-BLE BEDSTEAD. £100-150
777. A 19thC giltwood rectangular overmantel MIRROR. £100-150
778. A 19thC Chinese cherrywood DISPLAY CABINET with vine carved cornice and frieze, the cabinet and base carved in the form of bamboo shoots. 6' high. £800-1200
779. A 19thC Padouk carved OVERMANTEL with shelves, rectangular bevelled mirror, ball and claw feet. £300-400
780. An 18thC carved giltwood and gesso PIER GLASS, 31" high. £180-250
781. A George III panelled oak CUPBOARD with 2 doors over 2 doors over 2 drawers, brass knob handles, 73.1/2" high, 39" wide, 14" deep. £800-1000
782. A Victorian carved giltwood and gesso WALL MIRROR with scrollwork columns, 84" high, 54" wide. £300-500
783. A pair of Victorian MIRRORS with sconces. £50-70
784. A Victorian painted pine 2-door CUPBOARD. £50-80
785. A Victorian ebonised WALL MIRROR. £40-60
786. A Victorian fretwork corner hanging MIRROR SHELF. £60-80
787. A Victorian walnut HALL STAND. £100-150
788. A carved gilt oak rectangular WALL MIRROR. £25-35

789. An Edwardian carved mahogany CORNER DISPLAY CABINET with swan neck pediment, dentil cornice, astragal glazed upper section with mirrors over a convex part glazed display base. £1400-1800
790. A Victorian walnut DOUBLE WARDROBE with drawer base. £100-150

791. A Victorian gilt PIER GLASS. £30-40
792. An Edwardian inlaid mahogany OCCASSIONAL TABLE. £80-120
793. A Victorian walnut veneer KNEE-HOLE DESK, with leather inset top and knob handles. £900-1200

END OF SALE



A Selection of Lots

AUCTIONS UPDATE APRIL 1997

GOLDING YOUNG & CO. will sell by AUCTION

GENERAL FURNITURE & EFFECTS

**on Wednesday, 16th April, 1997 at 10.30 am
and weekly thereafter**

to include Furniture, Pictures, Silver, Jewellery, China,
Glass, Tools, Carpets, Rugs, Books, Bric-a-brac, Outdoor
Effects, Cycles, Electrical Goods, etc.

and

on Wednesday, 23rd April, 1997 at 10.30 am

VICTORIAN & LATER FURNITURE & EFFECTS

Already including 30 lots of Victorian Pine viz. Kitchen
Tables, Shop Counter, Cribb, Cupboards, Blanket Boxes,
Chests, Dressing Tables, Dresser, etc.

ENTRIES CLOSE 5pm EACH MONDAY
Saleday Cash for Vendors

Viewing: Tuesday 4 p.m. to 6 p.m. & Saleday from 9 a.m.

MAILING REGISTER SUBSCRIPTION FORM

If you wish to receive our Auction catalogues and detail sheets for one year, please complete and return this form.

1. Antiques & Fine Art Auctions

There are currently planned 5 Sales per annum to include:-

Furniture, Paintings, Prints, Glass, Ceramics, Toys, Silver, Clocks, Watches, Jewellery, Metalware, Stamps, Coins, Books, Arms & Militaria, Bygones, Barometers, Collectors Items, etc.

2. Commercial Auctions

Frequency of Sales determined by instructions from The High and County Courts, Liquidators and Receivers.

Office Equipment, Catering Equipment, Engineering Equipment, Industrial Plant & Machinery, Retail/Wholesale Shop Stock and Fittings, Vehicles; - Assets of a variety of Businesses.

3. Specific Requirements

If you specialise in one area of the above categories (eg. *Books*) please state this to avoid receiving unwanted catalogues.

.....

1. Antiques & Fine Art. (£10) £.....

2. Commercial Auctions. (£5) £.....

Fee enclosed £..... Total

Name: Mr/Mrs/Miss/Title

Address:

.....

.....

.....

Tel: (.....) Date: Our Ref: *ML

AUCTIONS UPDATE APRIL 1997

Upon instructions from the Executors of Estates, Private Collectors and
House Clearances from throughout Lincolnshire

GOLDING YOUNG & Co. will sell by AUCTION

ANTIQUES & FINE ART

On Wednesday, 4th June, 1997 at 10 a.m.

- | | | |
|-------------|-------------|-----------|
| * Furniture | * Pictures | * Silver |
| * Ceramics | * Clocks | * Glass |
| * Books | * Jewellery | * Bygones |

Closing Date for catalogue entries is strictly 19th May

Viewing:

Sunday 1st 2 p.m. - 4 p.m., Tuesday 3rd 2 p.m. - 7 p.m.
& Saleday 9 a.m. - 10 a.m.

Illustrated Catalogue £3.50 (pre-paid by post)

Free Auction Valuations

YOUR LOCAL ANTIQUES ROADSHOW

For the True Value, Talk to Goldings, after all
the I.S.V.A. Young AUCTIONEER of the YEAR is Goldings Auctioneer

WE ACCEPT ENTRIES FOR ALL SALES

Monday-Friday 9 a.m. - 1 p.m. & 2 p.m.-5 p.m.

Properties Cleared - Valuations prepared for all purposes

Visit our INTERNET Website @ <http://www.thesaurus.co.uk/gy&c>

CALL 01476 - 565118

REGIONAL VALUATION OFFICES

GRANTHAM - STAMFORD - BOSTON - RUTLAND

COMMISSION BID FORM

LOT NO	BRIEF DESCRIPTION	PRICE

Bids are left at the senders risk and are accepted subject to our Conditions of Sale.

NAME:

ADDRESS:

.....

.....

.....

TEL:

SIGNATURE:

SALE DATE:

Lots will be purchased at the lowest price as permitted by other bids or reserves.

Prospective purchasers should contact the Auction Rooms after the sale and if successful, the item(s) purchased must be collected and paid for within two days of the sale.

A Buyers Premium of 10% + VAT will be levied on the hammer price, to all purchasers.

Established 1900

— GOLDINGS —

Chartered Surveyors, Auctioneers, Valuers & Estate Agents
Residential, Commercial, Agricultural, Property Management, Financial Services

45 High Street, Grantham, NG31 6NE
Telephone: 01476 · 590211

PROFESSIONAL SERVICES FOR



RESIDENTIAL

Our established Residential department headed by Chartered Surveyors undertakes sale and valuation of all types of property from Castles to Town Houses; Surveys, Homebuyers Reports, Mortgage, Probate and Insurance Valuations carried out with care attending to individual requirements.



COMMERCIAL

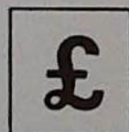
Dealing with the sale and survey of Shops, Offices and Factories. Valuation for Rent Reviews, Lease renewals and negotiations. Rent Arbitration, on behalf of landlord and tenant.

Plant, Machinery & Assets; Sales for Receivers, Liquidators, High Court & County Court. Auction Sales on Site or at The Grantham Auction Rooms for private and public clients alike.



AGRICULTURAL

Our Senior Partner has wide experience in the sale and valuation of Agricultural Properties, conducting Farm Sales and Valuation of Live and Dead Farming Stock for dissolution, Probate and other matters. Together with Rent Reviews, Development Land reports and Annual Stocktaking Valuations.



FINANCIAL SERVICES

Our Experienced Consultant is available to advise on all matters concerning Finance, Mortgages, Insurance, Investment, Planning and Pensions.



PROPERTY MANAGEMENT

Personal service and attention to detail ensures that our management team exploits your investment portfolio whether an Individual Family Home let for a small fee or Office, Factory, Shop or Farm with rent collected and regular inspections made.

Chattels Auctioneer

Colin R. Young FNAVA

Property Management

Mrs. Margaret Pashley

Partners

C. Robin Hall FRICS FAIV

Ian J. Shaw FRICS FNAEA

Financial Service Consultant

John G. Stukins

Residential Sales Manager

Mrs. Jenny Diment FNAEA CPEA

Established 1900

-GOLDINGS-

THE GRANTHAM AUCTION ROOMS



NEXT SALE of ANTIQUES & FINE ART

Wednesday, 4th June, 1997

Entries welcome until 19th May

Call Colin Young for a Free Valuation

THE COMPLETE AUCTION SERVICE

Auction Sales of Antiques, Fine Art, Collectables, Modern Furniture & Effects – Office, Shop & Catering Equipment
Vehicles – Plant & Agricultural Machinery – Stock-in-Trade – Business Assets – Liquidations & Receiverships
VALUATIONS undertaken for Insurance, Probate, Family Division and Sale purposes. Full HOUSE CLEARANCE facilities.