

Established 1900

-GOLDINGS-

THE GRANTHAM AUCTION ROOMS

Upon instructions from the Executors of Estates, Private Collectors and House Clearances from throughout the Region Golding Young & Co will SELL by AUCTION...

**ANTIQUE & LATER
FURNITURE & EFFECTS**

**COLLECTABLE
&
DECORATIVE ITEMS**

On Wednesday 3rd DECEMBER, 1997 at 10am



Viewing: Sunday 30th 2pm - 4pm,
Tuesday 2nd 2pm - 7pm & Saleday 9am - 10am.

Golding Young & Co.
Old Wharf Road, Grantham, Lincolnshire, NG31 7AA
Telephone: (01476) 565118
Fax: (01476) 561475
Internet - <http://www.thesaurus.co.uk/gy&c>

THE COMPLETE AUCTION SERVICE

Auction Sales of Antiques, Fine Art, Collectables, Modern Furniture & Effects - Office, Shop & Catering Equipment
Vehicles - Plant & Agricultural Machinery - Stock-in-Trade - Business Assets - Liquidations & Receiverships
VALUATIONS undertaken for Insurance, Probate, Family Division and Sale purposes. Full HOUSE CLEARANCE facilities.

IMPORTANT NOTES FOR PURCHASERS

1. **PAYMENT:** Must be made in full immediately after the Auction. The following methods of payments are acceptable.
a) Cash b) Bankers Draft c) Building Society Cheque
d) Cheques, accompanied by a valid card. For accounts above the stated card limit, we reserve the right to retain the goods until clearance is established.

2. **BUYERS PREMIUM:** of 10% + VAT is payable on all lots.

3. **COMMISSION BIDS:** If you are unable to attend this or any of our future sales we will be pleased to bid on your behalf. We always purchase at the lowest possible price, subject to other bids and reserves.

All bids must be handed to the office on an official form. It remains the responsibility of prospective purchasers to contact GOLDINGS to confirm whether their bids have been successful.

4. **TELEPHONE BIDS:** There are inherent dangers with this practice, therefore all such arrangements are made entirely at the bidder's risk. Telephone bids will only be accepted if the lower estimate is £500 or above. For lots with a lower estimate below this figure Commission Bids only will be accepted.

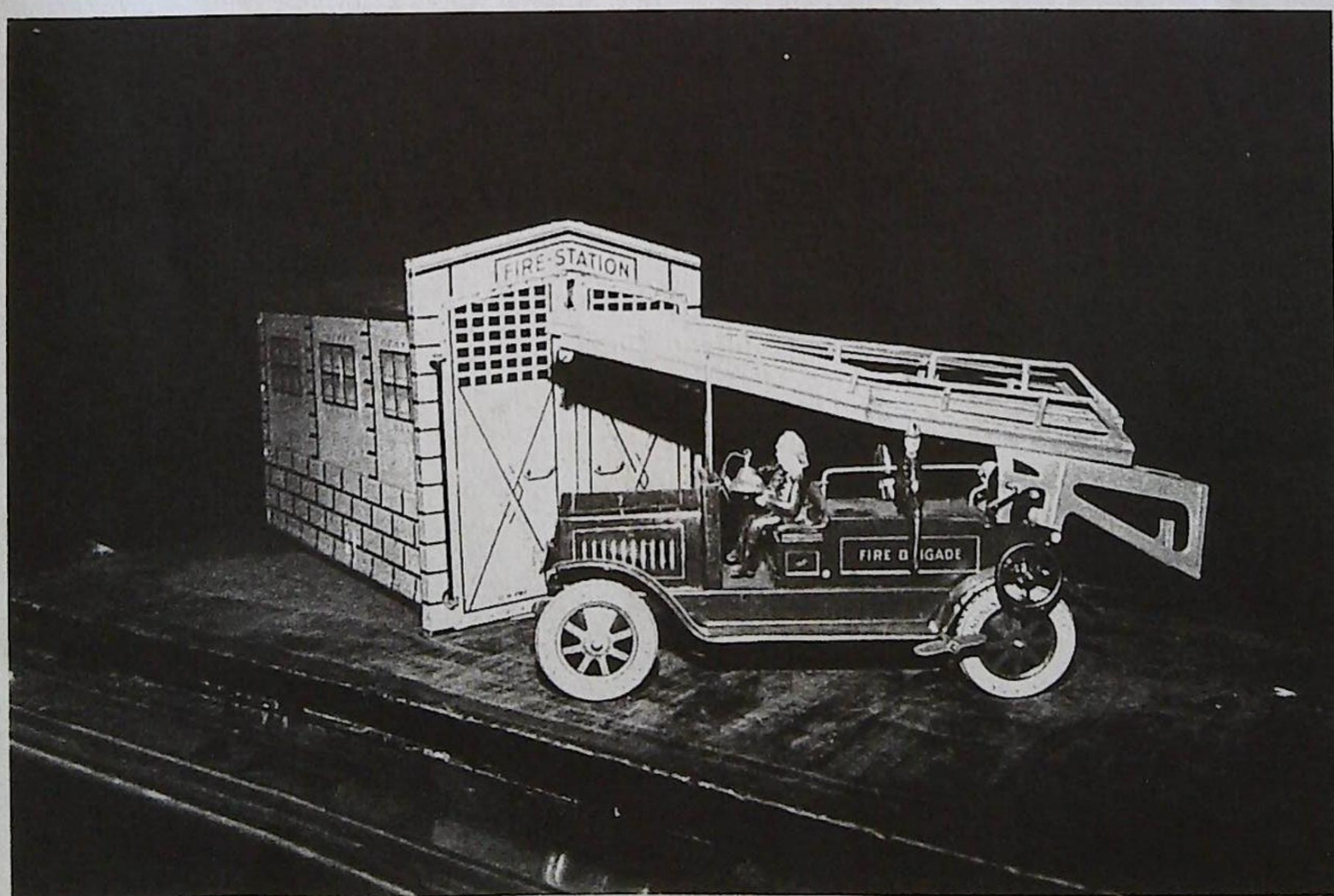
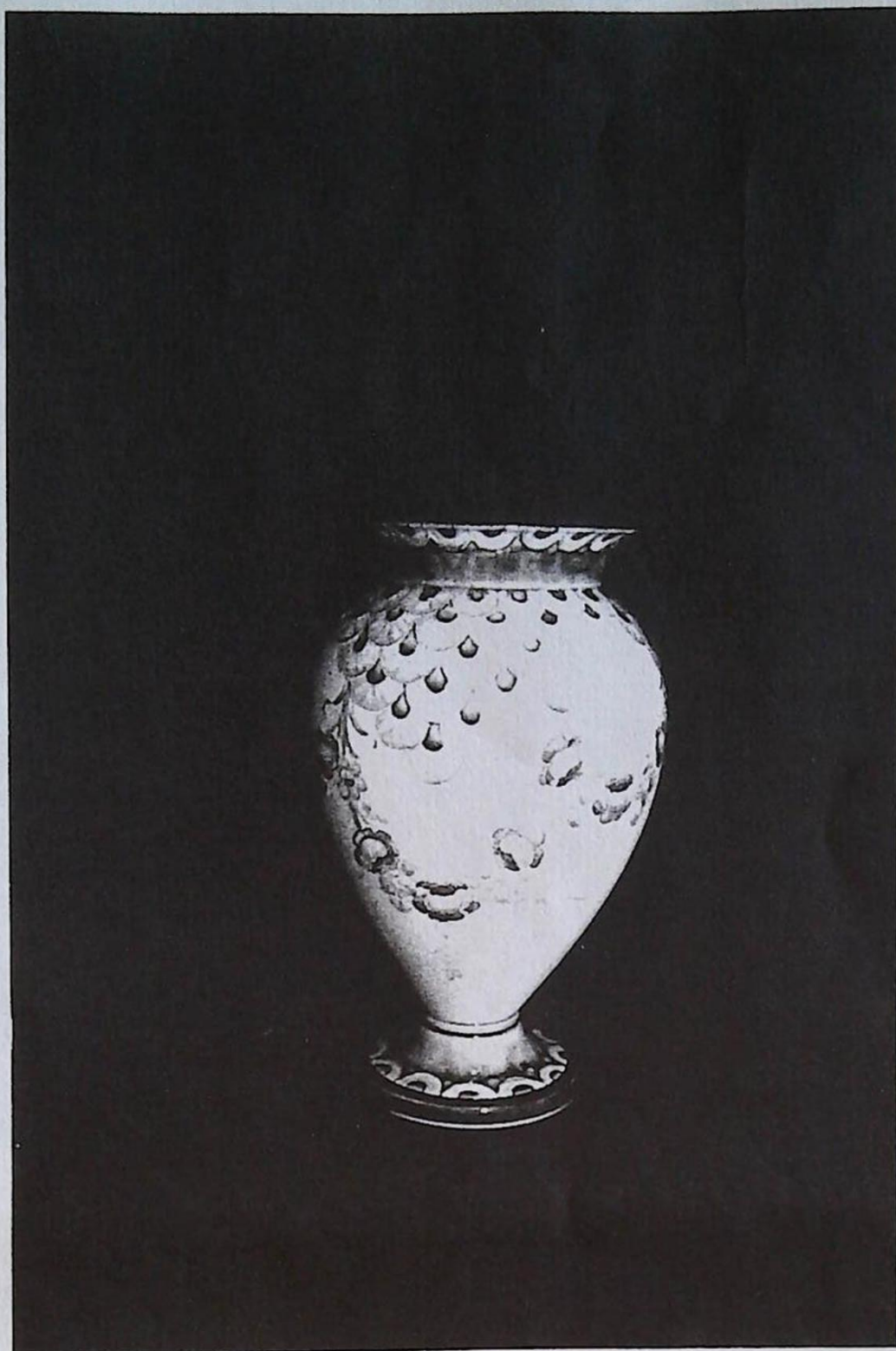
5. **SMOKING:** is not permitted in any part of the Saleroom.

6. **REFRESHMENTS:** will be available Saleday.

7. **ACCOUNT TRANSFERS:** will not be recognised after the sale. If any lots are purchased for another person, this must be declared at the fall of the hammer.

8. **POSTAGE:** If you require us to post your purchases there will be a Handling Fee of £5 + VAT per consignment in addition to the cost of postage. Lots will not be dispatched until payment has been cleared.

Conditions of Sale are displayed at the Pay Office and are available upon request.



**ROYAL DOULTON CHARACTER JUGS -
A Private Local Collection.**

1. Old Charley D5946, 1939-1982, C.Noke
2. Guardsman (AF) D6582, 1986-1992, M.Henk
3. Long John Silver D6512, 1960-1992, M.Henk
4. Falconer D6547, 1960-1992, M.Henk
5. Paddy A, 1939-1960, H.Fenton
6. Mr Micawber A-D6138, 1940-1960, LH & HF
7. Neptune D6555, 1961-1991, M Henk
8. Beefeater D6251, 1947-1953, HF
9. Santa Claus D6706, 1984-1991, M.Abberley
10. Dick Turpin A, 1940-1960, CN & AF
11. Mark Twain D6758, 1987-1990, E.Griffiths
12. Falstaff D6519, 1960-1992, HF
13. The Lobster Man D6652, 1980-1991, D.Biggs
14. Merlin D6543, 1960-1992, G.Sharpe
15. George Washington D6825
16. North American Indian D6665, 1967-1992, M.Henk
17. Tam O'Shanter D6640, 1973-1980, M.Henk
18. John Barleycorn D6041, 1939-1960, C.Noke
19. Tony Wetter D6044, 1939-1960, LH & HF
20. Mr. Pickwick D6245, 1947-1960, V & V
21. Mr. Toby Philpots D6043, 1939-1969, C.Noke
22. Robin Hood D6541, 1960-1991, M.Henk
23. The Cardinal D6129, 1940-1960, C.Noke
24. The Poacher D6515, 1960-1991, M.Henk
25. Catherine Howard D6693, 1984-1989, P.Gee
26. Red Queen D6860, 1990-1991, W.K.Harper
27. Dick Turpin D6951, C.Noke
28. Old Charley D6144, 1940-1960, C.Noke
29. The Cardinal D6258, 1947-1960, C.Noke
30. The Cardinal D6258, 1947-1960, C.Noke
31. Mr. Pickwick D6260, 1947-1960, LH & HF
32. John Peel D6259, 1940-1960, HF.
33. Sam Weller D6147, 1940-1960, LH & HF
34. Fat Boy D6142, 1940-1960, LH & HF
35. Arriet D6256, 1947-1960, HF
36. Paddy D5768, 1937-1960, HF
37. Sam Weller A D5841, 1948-1960, LH & HF
38. The Falconer D6540, 1960-, M.Henk
39. Captain Henry Morgan D6469, 1958-1982, G.Sharpe
40. The Gardener D6868, 1990, S.Taylor
41. Farmer John D5789, 1938-1960, C. Noke
42. Fat Boy D5840, 1948-1960, LH & HF
43. Don Quixote D6460, 1960-, G.Blower
44. Rip Van Winkle D6463, 1957-, G.Blower
45. Sam Johnson D6296, 1950-1960, HF
46. John Peel D5731, 1937-1960, HF
47. Sancho Panca D6461, 1957-1983, G.Blower
48. Parson Brown D5529, 1935-1960, C.Noke
49. Jarge D6295, 1950-1960, HF
50. Gladiator D6553, 1961-1967, M.Henk

51. Guardsman D6575, 1963-1983, M.Henk
52. The Cavalier A-D6173, 1941-1960, HF
53. The Angler D6866, 1990, S.Taylor
54. The Snooker Player D6879, 1991, S.Taylor
55. The Pearly King D6844, 1990-1991, S.Taylor
56. The Pearly Queen D6843, 1990-1991, S.Taylor
57. Falstaff D6385, 1950-, HI
58. Ugly Duchess D6603, 1965-1973, M.Henk
59. Scaramouche D6561, 1962-1967, M.Henk
60. Avld Mac D5824, 1937-1985, HF
61. The Town Cryer D6537, 1960-1973, D.Biggs
62. Granny A-(D6384), 1953-1983, HF & MM
63. Tony Weller D5530, 1936-1960, LH & HF
64. Buz Fuz D5838, 1948-1960, LH & HF
65. The Lawyer D6504, 1959-, M.Henk
66. John Barleycorn D5735, 1937-1960, C.Noke
67. Anne Boleyn D6650, 1980-1990, D.Tootle
68. The Hampshire Cricketer 4813/5000 Ltd Ed, 1985, H.Sales
69. Cardinal D6033, 1939-1960, C.Noke
70. Cardinal A(D6033), 1939-1960, C.Noke
71. John Doulton Collectors Club D6656, 1980, E.Griffiths
72. The Poacher D6464, 1957-, M.Henk
73. The Poacher. (bisque) D6464, 1957-, M.Henk
74. The Sailor D6875, 1991, W.K.Harpers
75. Santa Claus D6705, 1984, M.Abberley
76. Old Charley D5527, 1935-1983, C.Noke
77. Blacksmith D6578, 1963-1983, D.Biggs
78. Long John Silver D6386, 1960, M.Henk
79. Merlin D6536, 1960, G.Sharpe
80. Robin Hood D6534, 1960-1992, M.Henk
81. Falstaff D6385, 1950, H.F
82. Falstaff D6385, 1950, H.F
83. The Poacher D6464, 1957, M.Henk
84. Jim Bean Bourbon/Mr. Pickwick
85. Jim Bean Bourbon/samurai Warrior
86. Jim Bean Bourbon/Uncle Sam
87. Jim Bean Bourbon/Mr Pickwick
88. Jim Bean Bourbon/Mr Pickwick
89. Pick Kwik, Derby Whisky
90. Dewars Whisky/Mr.Micawber
91. Dewars Whisky/Mr. Micawber
92. Dewars Whisky/Fuz Buz
93. Scarborough Peace Celebration Tankard, 1919
94. Bacchus D6499, 1959-1991, M. Henk
95. Beefeater D6206, 1947-1953,
96. Athos D6439, 1956-1991, M.Henk
97. D'Artagnon D6691, 1982, S.Taylor
98. Aramis D6441, 1956-1991, M.Henk
99. Porthos D6440, 1956-1991, M.Henk
100. The Lobster Man D6617, 1968-1991, D.Biggs
101. Gaoler D6570, 1963-1983, D.Biggs
102. Sir Thomas Moore D6792, 1988-1991, S.Taylor

103. Annie Oakley D6732, 1985-1988, S.Taylor
104. North American Indian D6611, 1967-1991, M.Henk
105. Captain Ahab D6500, 1959-1985, G.Sharpe
106. Izzac Walton D6404, 1953-1982, G.Blower
107. The Sleuth D6631, 1973, A.Moore
108. Auld Mac D5823, 1937-1985, HF
109. The Poacher D6781, 1987-1989, M.Henk
110. Apothecary D6567, 1963-1983, M.Henk
111. Falstaff D6287, 1950-, H Fenton
112. Drake A- (D6115), 1940-1960
113. The Mikado D6501, 1959-1969, M.Henk
114. Simon The Cellarer
115. Guy Fawkes D6861, Ltd Ed for Canada
116. Captain Henry Morgan D6467, 1958-1982, G.Sharpe
117. Smuggler D6616, 1968-1981, D.Biggs
118. The Trapper D6609, 1967-1983, M.Henk & D.Biggs
119. Mine Hos D6468, 1958-1982, M.Henk
120. Gone Away D6531, 1960-1982, G.Sharpe
121. Sancho Panza D6456, 1957-1983, G. Blowers
122. The Guardsman D6755, 1986, S.Taylor
123. Veteran Motorist D6633, 1973-1983, D.Biggs
124. Leprechaun D6847, 1990, W.K Harper
125. The Lumberjack D6610, 1967-1983, M.Henk
126. The Collector D6796, S.Taylor
127. The Lawyer D6498, 1959-, M Henk
128. Dick Turpin
129. The Lord Mayor of London D6864
130. Sairey Gamp D5528, 1935-1986, LH & HF
131. John Barleycorn Old Lad
132. Robinson Crusoe D6532, 1960-1983, M.Henk
133. Rip Van Winkle D6438, 1955-, G.Blower
134. Long John Silver D6335, 1960, M.Henk
135. Old Charlie D5420, 1934-1983, C.Noke
136. Robin Hood D6527, 1960-1992, M.Henk
137. Merlin D6529 1960-, G.Sharpe
138. The Poacher D6429, 1955, M.Henk
139. Cardinal D5614, 1936-1960, C.Noke
140. Old Salt D6551, 1961-, G.Sharpe
141. Santa Claus D6675, 1982, M.Abberley
142. Santa Claus D6668, 1981, M.Abberley
143. Toby Happy John (large) D6031, 1939-1991, HF
144. Toby Happy John (small) (AF) D6070, 1939-1991, HF
145. Toby Honest Measure (small) D6108, 1939-1991, HF
146. Toby Falstaff (small) D6063, 1939-1991, C Noke
147. Figure of Micawber, (AF)
148. Wood Pottery Miniature Toby, The Clerk
149. A Royal Doulton FIGURE GROUP - Promenade HN2076.

TOYS

150. A Teletubby DOLL - Laa Laa
151. A Teletubby DOLL - Po

152. A DOLLS HOUSE.
153. Codeg TILL
154. Vulcan Countess SEWING MACHINE, boxed.
155. Merit District Nurse's BAG.
156. 2 Tinplate GLOBES.
157. Ferodo, Andy Pandy BENDY DOLLS etc.
158. Dominoes, Jack-in-the-Box, Crane etc.
159. An early Scalextric RACING SET.
160. Tinplate RANGE, cookpots and mangle.
161. Soccatelle Board.
162. Meccano No. 6 Box and contents.
163. Tri-ang Dolls PRAM and qty. small coloured DOLLS.
164. Dolls PRAM.
165. Boxed STYLOPHONE.
166. Mobo Walking HORSE.
167. David Nixon Super Magic Box and Modern Magic.
168. Pedigree Picnic HAMPER
169. Sindy's WARDROBE and qty of clothing.
170. Tressy 'growing hair' DOLL, boxed.
171. Games, Jigsaws, and games etc.
172. Qty. Marbles.
173. Baby bath, Dolls Crib and other toys.
174. Qty. Tea CARDS.
175. Qty. Pin BADGES.
176. Card Games and Paint Sets.
177. Qty. MARBLES.
178. Dandy, Beano and Rupert ANNUALS.
179. Games etc.
180. Tractor, Farm Animals etc.
181. Loose Matchbox and other cars.
182. Early Grolier Disney BOOKS.
183. Vosper triple screw express turbine POND YACHT, boxed.
184. Old Waddington GAMES.
185. 4 large coloured DOLLS.
186. Tri-ang Express TRAIN.
- 187-8. Matchbox and other commercial vehicles.
- 189-91. Matchbox and other cars.
192. Dinky Zygon Chariot, Patroller & Marauder, boxed (3).
193. Dinky Star Fighter and Matchbox K-39, boxed (2).
194. Trix Trains A. H. Peppercorn LOCOMOTIVE, boxed.
195. Wrenn Railways Duchess of Hamilton LOCOMOTIVE.
196. 2 Tootsie CARS.
197. 3 Arcade Veteran Motors.
198. Models of Yesteryear Mercer 1913 Raceabout.
199. Dinky Boxed Gabriel model T Ford no. 109.
200. Dinky boxed Sam's car from Joe 90 No. 108.
201. Corgi boxed Chevrolet Corvette Stingray Coupe.
202. Dinky boxed Fiat Abarth 2000.
203. Dinky boxed Ferrari 312P.
204. Dinky boxed BMW 2000 TILUX.
205. Tri-ang 4-6-4 Loco Engine
206. Tri-ang Loco/Power unit, Goods Wagon and Pullman Coach

- 207-15. Models of Yesteryear, boxed.
- 216. Corgi blue Metro and Revival Morgan, boxed.
- 217. 4 models of Yesteryear.
- 218-23. Models of Yesteryear, boxed.
- 224. Tri-ang Railways track and rolling stock inc. helicopter car.
- 225. Hornby Dublo DI Level Crossing, boxed etc.
- 226. Corgi 1304 Mig-21, boxed.
- 227. Dinky 721 Junkers JU87B Stuka, Boxed.
- 228. Dinky 651 Centurion Tank.
- 229. Tri-ang Model R3.R Railway Set boxed.
- 230. Dinky Guy Van 917 with Spratt's decals, boxed.
- 231. Dinky Austin Van 472 with Raleigh decals, boxed.
- 232. Dinky Packard Clipper Sedan 180, boxed.
- 233. Minic & Tri-ang Toys (5).
- 234. 6 Dinky Commercials.
- 235. Assorted Dinky Cars.
- 236. Modern die-cast cars.
- 237. Matchbox Unimogs, etc.
- 238. Dinky Coaches and Commercials.
- 239. Hornby Type 30 Clockwork LOCOMOTIVE, rolling stock, and track.
- 240. A JDN (Distler) Lithographed Tinplate FIRE STATION and clockwork FIRE ENGINE. Illustrated.
- 241. Hornby R.52S 0-6-0 3F Tank LOCOMOTIVE with black livery, boxed.
- 242. Tri-ang R.553 4-2-2- Caledonian Single LOCOMOTIVE, boxed.

- 243. Hornby R.855 LNER Flying Scotsman with special corridor tender, boxed.
- 244. Hornby R.259S Britannia LOCOMOTIVE with R.35 Tender, boxed.
- 245. Hornby 'The Midlander' electric TRAIN SET, boxed.
- 246. Wrenn No 2224 2-8-0 8f Goods LOCOMOTIVE, boxed.
- 247. Qty Triang and Hornby Rolling Stock and Accessories.
- 248. Qty Triang and Hornby Rolling Stock and Accessories.
- 249. Qty Triang and Hornby Rolling Stock and Accessories.
- 250. Hornby Dublo EDL12 Duchess of Montrose LOCOMOTIVE, DI Tank Wagon, DI Brake Van, other rolling stock and track, boxed.
- 250A. An ELECTRIC SPEEDWAY SET, boxed.

MISCELLANEA & COLLECTORS' ITEMS

- 251. A Victorian PHOTOGRAPH ALBUM.
- 252. A pair of Victorian copper CANDLESTICKS with circular bases.
- 253. A pair of Victorian brass CANDLESTICKS with square bases.
- 254. A mahogany CANDLEBOX.
- 255. A carved oak EAGLE FINIAL. (AF)
- 256. A Victorian Display of stuffed birds including kingfishers, humming birds, etc under a glass dome and on an ebonised base.
- 257. A polished copper Fire Hood with archers bow apron.
- 258. A similar polished and hammered brass example.
- 259. A Spode DISH (AF) and Dutch print.

260. A Victorian velvet covered mirrored BOX.
261. A Victorian wool SAMPLER by Ann Turner. Aged 12. 1876.
262. A pair of Victorian brass CANDLESTICKS, 7".
263. 2 ENSIGNS.
264. An early copper WARMING PAN with pierced and chased decoration.
265. Tribal SPEARS, Knobi, etc. (4)
266. A Victorian domed CASE of BIRDS.
267. A large embellished TABLE COVER.
268. 2 aluminium BED WARMERS.
269. 3 copper BED WARMERS
270. A collection of 11 aluminium hot WATER BOTTLES.
271. A fibre glass witches MASK.
272. A collection of 18 stoneware HOT WATER BOTTLES.
273. A collection of 9 stoneware HOT WATER BOTTLES.
274. Two electroplated TRAYS, a set of 6 SOUP SPOONS and a triptych FRAME.
275. An album of various 78rpm RECORDS.
276. The Shilling TEAPOT STAND with transfer print of Bardell v Pickwick.
- 277-9. A Victorian rosewood WORKBOX.
280. A Victorian Tonbridgware WORKBOX with fitted interior.
281. A Victorian OIL LAMP with cast base, green glass reservoir.
282. A 19thC copper COAL HELMET.
283. A cut-away MODEL of an automatic transmission unit.
284. A pair of 19thC spelter FIGURES.
285. A carved hardwood Oriental rectangular TRAY.
286. An Indian octagonal pierced metal TRAY. 25".
287. A lignum vitae cylindrical MUG with metal bands. 7.1/2".
- 288-91. A Table Cover.
292. A needlework TABLE COVER.
293. Needlework TABLE COVERS.
294. Mrs Beeton's Family Cookery, 4 tankards and crucifixes.
295. A Victorian mahogany WORKBOX.
296. Two wooden JIGSAWS.
297. A Gents leather TRAVEL CASE.
298. A pair of Victorian brass CANDLESTICKS and pair of Tapersticks.
299. A hammered pewter 3-piece TEA SERVICE.
300. A wrought iron HANGING FRAME.
301. A pair of Regency HAND SCREENS, the card panels with applied and hand-painted floral decoration.
302. Meatplate, 3 glass bowls, cased knives and slice.
303. A brass mounted FIREGUARD.
304. A brass TOASTING FORK, a STEEL and brass FIRE IMPLEMENTS. (5)
305. Butter Pats and grain scoops.
306. A Glue KETTLE.
307. An ivory DRESSING TABLE SET.
308. Two fox's mask SPORTING TROPHIES and another.
309. A brass and copper HORN.
310. An antique style copper and brass COAL HELMET.
311. An elm CANTHEN with plated cutlery.
312. A burr walnut CANTHEN with plated cutlery.

313. An early varnished pine half model of a SAILING BOAT 'True Love' BK221 on a rectangular plaque. Height 25" (overall).
314. A quantity of TREEN desk and table items and a leather PIPE CASE.
315. A George V brass SHIP'S BELL.
316. A pair of modern copper and brass 'port and starboard' lights.
317. A Parcel gilt CARVED FIGURE of an Indian deity 22".
318. Two stoneware FOOTWARMERS.
319. A BBC Crystal RECEIVER SET.
320. A copper WARMING PAN with turned wood handle.
321. A set of 6 brass Imperial/Metric Weights.
322. A tin plate SIGNALLING LAMP.
323. A tooled leather SUITCASE.
324. A copper wall mounted STREET LAMP.
325. A cased taxidermy CUCKOO.
326. A Japanese lacquered KODANSU.
327. A Collection of 26 CLAY PIPES some with Masonic and other motifs and mounted on a framed board.
328. A Collection of 11 CLAY PIPES mounted on a board.
329. 5 Churchwarden CLAY PIPES mounted on a board.
330. Two BM TRAPOTS and a Benares brass TRAY.
331. A pair of spelter FIGURES of GLADIATORS. 14".
332. A Victorian brass PRESERVE PAN.
333. A THEODOLITE in a mahogany case with Staves.
334. A child's Victorian BUILDING BLOCK SET.
335. An early JIGSAW PUZZLE and a PENCIL CASE. (2)
336. A mahogany cased CHEMICAL BALANCE.
337. A pair of Oriental lacquered Trays.
338. A pair of 1950's CURTAINS with airways motifs.
339. A Victorian opalescent glass OIL LAMP with a pink overlay shade.
340. A fine Victorian Corinthian columnar OIL LAMP with a wavy cranberry reservoir, shade.
341. A brass KETTLE on a similar spirit burner stand.
342. Cased taxidermy SQUIRREL.
343. A brass milk SKIMMER.
344. A 4 brass MARTINGALE.
345. Two crescent HORSE BRASSES on a strap and another.
346. An oxidised brass HALL LIGHT with cut glass bowl.
347. A brass cased CLOCK and a brass syringe PUMP.
348. Three various JEWELLERY BOXES.
349. A globular milk glass INKWELL.
350. A cut glass INKSTAND with diamond cut decoration.
351. A brass INKSTAND with 2 cut glass bottles.
352. A moulded green glass INKSTAND.
353. A glass INKSTAND with brass top and base.
354. Tokens and Coins.
355. A sealed vacuum packet container of 50 Woodbine Cigarettes.
356. 3 Graduated Wade Bells Whisky Decanters.
357. 2 Miniature Wade Bells Whisky Decanters.
- 358&9. Bells Whisky Decanter - Prince William
360. Bells Whisky Decanter - Prince Henry.
361. A spelter 2 bottle INKSTAND. (AF)

362. A Victorian rosewood sarcophagus 2 section TEA CADDY with satinwood marquetry.
363. A Continental porcelain head and shoulders portrait plaque of a young woman. 3.1/2" x 2.3/4" Framed.
364. Three old MATCHBOXES.
365. A quantity of #1 and 10 shilling Notes.
366. A small quantity of British pre 1947 silver and copper COINAGE.
367. A small tinware MAGIC LANTERN.
368. A Victorian oval walnut INKSTAND with 2 moulded glass inkwells and a plated stag's head mount.
369. Cassels, A History of Golf in Britain, 1952.
370. A Wills Cigarette CARD ALBUM.
371. 'Coaching Days of England' containing numerous prints and photographs.
372. Spare lot.
373. Assorted Art Books.
374. J M BARRIE. 'Peter & Wendy'. Illustrated by Edmund Blampied. Cloth.
375. Oriental Books

CLOCKS & BAROMETER

376. A Georgian oak LONGCASE CLOCK with pillared hood, 10" square dial, cast brass spandrels, roman numerals, date aperture and nameplate Corba Cranefield Sherringham. 6'3".
377. A Georgian mahogany BANJO BAROMETER by Giacomelli, Belfast. (AF)

378. A Georgian mahogany LONGCASE CLOCK with a repainted dial with floral spandrels, roman numerals, date crescent, moon roller with a sailing ship, Wm Richardson NOTTINGHAM, 8 day movement.
379. An oak GRANDMOTHER CLOCK with Westminster Chimes.
380. An 8-day WALL CLOCK with bevel glass door.
381. A glass panelled brass Jaeger Le Coultre MANTEL CLOCK.
382. A stripped pine Starburst WALL CLOCK.
383. An American oak cased striking WALL CLOCK with a circular enamelled dial.
384. A 'Junghans' brass CLOCK with battery movement and under a glass dome.
385. A mahogany cased BRACKET CLOCK.

GLASS & CERAMICS

386. A 19thC Staffordshire flatback FIGURE of a Hunter. 14.1/2".
387. A German stoneware EWER (AF) and Jug.
388. Wedgwood Napoleon Ivy COFFEE SET.
389. Poole Pottery COFFEE SET.
390. An Imari baluster JUG.
391. A pair of multi coloured glass FIGURES of Clowns.
392. A pair of Continental porcelain figural CANDLESTICKS with floral decoration. 7.1/2".
393. A circular moulded majolica PLATE marked VBS.
394. A Crown Ducal baluster JUG decorated with fruit and flora, signed C Rhead.
395. A Graingers Worcester blue floral TEA and part DINNER SERVICE.

396. A Royal Winton Anemone 3-tier CAKESTAND.
397. An engraved and candytwist glass TRAY.
398. A plaster COTTAGE and similar PLAQUE and 3 novelty ORNAMENTS.
399. Various pottery MASKS, Wall Pockets, etc. (5)
400. A Fielding & Co COMFORT and PLATE.
401. Elizabeth II and other novelty China and metalware. (6)
402. A set of 5 Alfred Meakin PLATES, a TRIO, a pub ASHTRAY and GLASS and a SALT and PEPPER.
403. A pair of glass KNITTING NEEDLES.
404. A copper coal HELMET.
405. A pair of MEISSEN circular BOWLS each with a central floral panel within a quatrefoil border of gilt flower heads in relief on claret and green grounds. Crossed sword mark. 11".
406. An AYNSLEY bone china Collectors PLATE 'The Horse'. 10.3/4"
- 407-11. A boxed PAPERWEIGHT.
412. 2 PAPERWEIGHTS.
413. Coronation Commemorative PLATE and 2 PAPERWEIGHTS.
414. A large blue and white Willow Pattern MEATPLATE, 22".
415. An Ashworth blue transfer decorated oval MEATPLATE with well.
416. A Coalport 9-piece porcelain DESSERT SERVICE comprising 6 plates, 2 dishes and a tazza, all with gilded borders and highlights on a blue ground.
417. A Royal Crown Derby 21 piece Imari pattern part TEA SERVICE.
418. A Willow pattern MEATPLATE with transfer decoration.
419. Two mallet shape DECANTERS.
420. A castleated engraved GIN DECANTER. (AF)
421. A set of 6 lead crystal TUMBLERS.
422. Cut glass PICKLE JAR, Jug and other glassware.
423. Two willow pattern BOWLS.
424. A cut glass SALAD BOWL and Servers.
425. A Royal Doulton stoneware BOTTLE VASE with a landscape background with shepherd and flock.
426. A pair of willow pattern circular pedestal TUREENS.
427. An 18thC multi-airtwist strong ale GLASS.
428. An early 19thC Derby lobed DISH. (AF)
- 428A. A JAPANESE blue and white PLATE and a Russian BOWL in the Chinese taste.
429. Engraved and faceted GLASSWARE.
430. A Wedgwood blue jasperware POWDER BOX and 2 VASES.
431. Wedgwood blue jasperware PIECES.
432. A pair of 18thC Delft PLATES and another (AF).
433. A Carlton leaf DISH and other china.
434. A Victorian Indian Tree part TEA SERVICE.
435. A Coalport Revelry pattern DINNER SERVICE.
436. A cut crystal cylindrical VASE.
437. A Grainger's Worcester miniature CUP and a Japanese Plate.
438. A quantity of Japanese eggshell TEAWARE including teapot, cups, saucers and plates.
439. A Continental porcelain part TEA SERVICE decorated rose heads on a lilac ground.
440. A Bavarian gilded TEA SERVICE with panels of figures.
441. A set of 6 Shelley Coffee CANS and SAUCERS with swag decoration.

442. An 'Adams' Cries of London transfer decorated PLATE, a pair of creamware PLATES and a pair of green edge PLATES. (5)
443. A cut glass square DECANTER with faceted stopper and a mallet-shaped example with hobnail cut decoration.
444. A pair of Victorian glass dump DOORSTOPS.
445. A modern Japanese JAR and COVER with bird and flower decoration.
446. A cut glass DECANTER, an enamelled example and 8 wine GLASSES including a set of 6. (10)
447. Nine various pottery and porcelain PLATES.
448. A Burleigh blue and white transfer decorated part DINNER SERVICE including vegetable and sauce tureens.
449. A Willow pattern blue and white circular COMPOT.
450. A pair of 19thC mallet shaped cut glass DECANTERS with faceted triple ring necks and bull's eye stoppers.
451. A pair of circular cut glass JARS and covers and SPOON WARMER. (3)
452. A cut glass CELERY VASE, a sugar BOWL, a sugar DREDGER and an oils BOTTLE. (4)
453. A quantity of COFFEE CANS and SAUCERS and a gilded teacup and saucer.
454. An 18thC bullet shaped TRAPOT and 2 matching TEA CUPS with polychrome decoration of Oriental figures in landscape settings.
455. A Satsuma ovoid VASE decorated panels of Geishas on a blue ground. 5".
456. A pair of Austrian decorated porcelain PLATES.
457. Three 19thC floral decorated JUGS and a lustre decorated CUP. (4)
458. A Japanese TRAPOT and CREAM, a WINEGLASS, a majolica CANDLESTICK and a Continental SUGAR and CREAM. (6)
459. A quantity of 19thC Imari patterned TEAWARE.
460. A garniture of 3 blue and white transfer decorated Chinese style VASES and COVERS. (AF)
461. A stone china Imari patterned DINNER PLATE.
462. A pair of Queen Victoria Diamond Jubilee Commemorative Plates.
463. A porcelain sugar DREDGER with plated mount and a circular base and cover. Llandudno.
464. A Grainger & Co. WORCESTER 27 Piece TEA SERVICE with gilded decoration.
465. Two circular moulded glass BOWLS, a transfer decorated TRIO and a blue and white CUP. (6)
466. A Crown Devon VASE decorated flowers in relief. 9.3/4" and an Aynsley shallow DISH.
467. A Kutani circular FRUIT BOWL. 9". (AF)
468. Two moulded glass oils BOTTLES and a cut glass JAR and cover.
469. A Victorian floral decorated pink glass VASE. 13".
470. A large quantity of MINTON and HAMMERSLEY Indian Tree pattern dinner and tea ware.
471. A Moorcroft McIntyre Baluster VASE moulded with green and blue lappets and floral garlands 8 1/2" high. Illustrated.
472. A pair of Chinese baluster TEMPLE VASES. 4'2" high.
473. A green and cream 5-piece TOILET SET by Minton after a design by John Wadsworth.
474. A pair of opalescent glass VASES with classical profile portraits.
475. A pair of fern decorated opalescent glass VASES.
476. A Pheonix ware 2-handled floral decorated VASE.
477. A Royal Crown Derby octagonal COFFEE CUP and SAUCER.
478. A Continental miniature TEASET decorated with gilt highlights on a turquoise ground and a miniature SUCRIER, 3 PLATES and a SAUCE BOAT.

479. A Graduated pair of 'Jackfield' Victorian baluster JUGS on a black ground with gilded floral decoration.
480. A JAPANESE 3 piece porcelain TEA SET with gilded decoration.
481. A pair of ORIENTAL blue and white dished PLATES with underglazed prunus decoration. 11".
482. A small Poole DISH and 3 Wedgwood ASHTRAYS.
483. Five SCENT BOTTLES.
484. A Victorian vaseline glass TRUMPET VASE with folded rim.
485. A Jug and Bowl. (AF)
486. A quantity of pottery and porcelain including tea and coffee CUPS, SAUCERS, JUGS, etc.
487. 2 oriental Figures.
488. A Tuscan Decro floral JUG. (AF)
489. A Tuscan Decro floral JUG.

SILVER & PLATEDWARE

490. Six cases of plated CUTLERY
491. Old English plated CUTLERY.
492. Plated COFFEE POT, Crumb Scoop, etc.
493. Plated SNUFFER, Scissors and TRAY.
494. Circular plated TRAY, Salver and 2 Salts.
495. An Art Deco plated shallow BOWL and a SPIRIT BURNER STAND.
496. A plated hexafoil embossed BOWL, a swing handled BASKET, and a twin branch CANDLESTAND.
497. An Edwardian silver circular POWDER BOWL. London 1901.

498. A 17thC style Britannia silver PORRINGER. Maker JV. London 1896. 5.1/2oz.
499. A pair of dimple shaped DECANTERS with electroplated oriental design cagework.
500. A pair of ELECTROPLATED retriever DOGS.
501. A similar pair of COCKERELS.
502. A presentation GOBLET and a smaller example. (2)
503. A Viners composite 3-piece electroplated TEASET.
504. An electroplated spirit BURNER STAND, a musical CHRISTMAS TREE and a CANDLESNUFFER.
505. A pair of plated GRAPE SCISSORS and 3 modern PIECES OF BRASS.
506. An electroplated oval GALLERY TRAY with chased decoration.
507. A similar CIRCULAR TRAY with shell border.
508. A LARGER EXAMPLE with flowerhead border.
509. A pair of electroplated Georgian style COFFEE POTS with floral decoration.
510. A Georgian style electroplated WINE COOLER.
511. An electroplated scalloped edge ICE BUCKET and tongs.
512. A cased set of FRUIT SPOONS and FORKS, other plated cutlery.
513. A harlequin 4-piece electroplate TEASET.
514. An electroplate oval ENTREE DISH.
515. An electroplate oval ENTREE DISH with drainer, raised on 4 scroll feet.
516. An electroplate oval ENTREE DISH with beaded rim.
517. Plated Sauceboat, Bonbon Dish, etc.
518. A Queen Anne style 4-piece SILVER TEA SERVICE sponsored by Garrard & Co London, 1965. 94oz all in.

519. A Georgian style SILVER SAUCEBOAT with gadrooned edge and on boot feet with shell knees. London 1963. 10oz.
520. A Georgian style baluster SILVER CREAM JUG with scroll handle, London 1960. 10oz; a similar SMALLER EXAMPLE, London 1941. 3.1/2oz; and a circular SUGAR BOWL, London 1960. 6.1/2oz.
521. A George VI SILVER TRAY with shaped rim and twin handles. London 1949. 64oz.
522. A cased part canteen of CUTLERY.
523. A silver gilt rectangular BOX with hinged lid. Birmingham 1908.
524. An electroplated circular BASKET with swing handle and on a trumpet base.
525. A similar hammered sectionalised BOWL.
526. An Oriental baluster CREAM JUG decorated in relief, an EGG CUP and a circular glass SALT. (3)
527. An oval electroplated ENTREE DISH and COVER with ribbon-tied reeded decoration.
528. A 4-bottle glass CRUET in an electroplated frame and a 7-bar TOAST RACK.
529. A circular plated GALLERY TRAY with a vine decorated porcelain panel.
530. An EPBM 4-piece TEA SERVICE with half-gadrooned decoration.
531. A Victorian electroplated TEAPOT decorated in relief and pat gadrooned example. (2)
532. An electroplated swing handled rectangular CAKE BASKET on ball feet and a scalloped edge example. (2)
533. A pair of figural metal CANDLESTICKS on rococo bases with twin branch glass holders and a similar single example.
534. An electroplated pierced oval swing handle BASKET, a Georgian style SAUCE BOAT and an oval TRAY STAND. (3)
535. A globular cut glass SCENT BOTTLE with repousse decorated silver top. London 1903.
536. A pair of antique glass DRESSING TABLE BOTTLES with Continental silver tops.
537. An electroplated circular ROSEBOWL with fluted decoration.
538. A circular electroplated SANDWICH TRAY with pierced divider.
539. An electroplated KETTLE with ebonised handle on a spirit burner stand.
540. Silver and plated SPOONS, cruets, etc.
541. A mahogany cased set of 11 pairs of mother of pearl handled FRUIT KNIVES AND FORKS and a single knife.
542. An electroplate 3-piece part reeded BACHELOR TEASET.
543. Eight electroplate SERVING SPOONS.
544. Continental and other silver and plated TEASPOONS and SUGAR BOWS.
545. A pair of EPBM Georgian style SALTS with liners.
546. A silver CIGARETTE CASE, another and a plated Hip Flask.
547. An electroplate 4-piece TEASET of oval section with gadrooned rim.
548. An electroplate framed and glass lined SARDINE DISH.
549. A cased set of 12 pairs mother of pearl handled DESSERT KNIVES and FORKS.
550. An engine turned silver 6-piece DRESSING TABLE SET. Birmingham Assay.
551. An Edwardian silver part reeded MUSTARD POT. Birmingham assay.
552. 10 Georgian silver TEASPOONS.
553. 5 Georgian silver DESSERT SPOONS.
554. A 3-piece silver backed DRESSING TABLE SET. Birmingham assay.
555. A quantity of electroplated CUTLERY and a silver dessert fork. Exeter 1871.

- 556. A BANNOCK TOASTER with turned ebonised handle.
- 557. A cased set of 6 silver handled FRUIT KNIVES. Sheffield Assay.
- 558. A cranberry 3-piece CRUET in a plated holder.
- 559. A Victorian slice cut ruby overlay SCENT BOTTLE with a silver neck.
- 560. A silver topped SCENT BOTTLE and JAR.

NETSUKE, JEWELLERY & WATCHES

- 561. A signed Japanese ivory NETSUKE portrayal of a Geisha in flowing and finely decorated kimono carrying a stringed musical instrument and a closed fan.
- 562. A signed Japanese ivory NETSUKE portrayal of a house-master walking carrying a short stick and a closed empty basket.
- 563. A signed Japanese ivory NETSUKE portrayal of a man drunk and crouched beside a barrel, in his hand he holds his saki gourd.
- 564. A signed Japanese ivory NETSUKE portrayal of Shoki the Demon Queller carrying a small evil horned Oni (Demon).
- 565. A signed Japanese three case ivory INRO, corded in heavy silk braid, with a plain ivory ojime bead and mounted with a signed hardwood netsuke portrayal of a coiled snake.
- 566. A Victorian silver Gent's FOB WATCH.
- 567. Modern brass Carriage CLOCK.
- 568. Costume Jewellery.
- 569. Costume Jewellery
- 570. Costume Jewellery
- 571. Qty RINGS and a Victorian Brooch.

- 572. Costume Jewellery
- 573. A silver RING set with a cabochon amber.
- 574. A miniature brass Carriage Clock Timepiece with white enamelled dial. 3".
- 575. Ladies 9ct gold Everite WATCH on 9ct snake link bracelet.
- 576. Ladies 14ct gold Eterna WATCH on 14ct snake link bracelet.
- 577. A spider TIE PIN set rubies and a similar STICK PIN.
- 578. A Victorian SOVEREIGN RING. 1896.
- 579. A 9ct gold curb and padlock charm BRACELET.
- 580. A 9ct gold tie CLIP.
- 581. A Figaro BRACELET with T bar.
- 582. A 9ct gold garnet set BROOCH.
- 583. A red stone set RING.
- 584. A 9ct gold peridot and diamond set BANGLE.
- 585. A 9ct gold engraved BANGLE.
- 586. An amethyst and pearl set Butterfly BROOCH.
- 587. A 9ct Rotary WATCH.
- 588. A gate BRACELET with padlock.
- 589. A 24" 9ct gold chain and St Christopher.
- 590. A pair 9ct gold EARRINGS
- 591. A 9ct gold fancy NECKLACE.
- 592. A 9ct gold flat curb NECKLACE.
- 593. A 9ct gold Figaro BRACELET.
- 594. A white stone set Ring.
- 595. A Figaro 9ct gold BRACELET.
- 596. A 16" NECKLACE.

597. A 4 bar gate BRACELET.
598. A 9ct gold flat curb BRACELET.
599. A Van Cleef & Arpels BUTTERFLY PENDANT with coral wings and central diamond on an 18ct gold fine belcher chain.
600. An 8-day CLOCK in the form of a mammoth pocket watch by Asprey of London contained in a leather and silver case, Birmingham 1903.
601. An amber CIGAR HOLDER in a silver pendant case. Birmingham 1938.
602. A Victorian repousse decorated elongated oval pin cushion/box. Birmingham 1897.
603. A ladies 18ct gold cased FOB WATCH with engine turned dial.
604. A pair of 9ct gold engraved CUFF LINKS.
605. Various silver and other JEWELLERY including cufflinks, brooches, etc.
606. Various WWI Good Conduct and Service MEDALS. (8)
607. A gold HALF SOVEREIGN RING, 1910.
608. A foliate chased VESTA CASE. Chester 1919.
609. An R101 airship diamante dress BROOCH.
610. A 9ct gold gate link BRACELET. Approx 13gms.
611. A ladies 9ct gold WRISTWATCH with an expanding plated bracelet.
612. A set of graduated AMBER BEADS.
613. Two costume jewellery NECKLACES.
614. A Milanese GOLD BRACELET and matching NECKLACE. Approx 80gms.
615. A shield back HALF SOVEREIGN RING. 1887.
616. A SIMILAR LOT in a filigree mount. 1909.
617. A Swiss silver FOB WATCH with enamelled dial.
618. A brass cased CLOCK with chased steel dial.

619. A Continental silver POCKET WATCH with enamelled dial.
620. A Gentleman's WRISTWATCH with simulated diamond numerals.
621. An 18ct gold and platinum single stone DIAMOND RING.
622. A cut glass DRESSING TABLE BOTTLE with gilt metal top.
623. Silver CIGARETTE CASE.
624. An atomiser SCENT BOTTLE and costume jewellery.

IMPORTANT NOTICE

There will be two Auctioneers selling concurrently. One will commence at Lot 1 at 10am. The other will commence at Lot 641 at 10am. Please bear this in mind when assessing when a lot will be sold.

PICTURES - Commencing 10am.

641. A pair of colour PRINTS of Doncaster Races.
642. Spare lot
643. A facsimile map of Lincolnshire after J Cary. Framed.
644. 19thC Canadian School. Covered and open wagons being driven through a village within a wooded landscape, OIL ON CANVAS, unsigned. 17.1/2" x 20.3/4". Gilt framed.
645. A framed PRINT of Young Wellington.
646. A Varoni. An Arab nomad seated on a camel. WATERCOLOUR ON CARD, signed. 19" x 13". Gilt framed and mounted.

647. M A Bygott. Figures walking along the edge of a Loch. A castle in the distance. WATERCOLOUR ON CARD, signed and dated 1876. 13.1/2" x 19". Gilt framed and mounted.
648. A landscape WATERCOLOUR signed M A Bygott 1876.
649. A WATERCOLOUR of an Arab on a camel signed A Varoni.
650. A small Landscape WATERCOLOUR, a PEN and INK view of Llansteffan and PASTEL of a Cottage, framed. (3)
651. 19thC English School. Fishermen in Landscape with Church, oil on board. 18" x 26".
652. A set of 7 - 17thC ENGRAVINGS depicting early views of London, Hogarth framed.
653. A gilt framed OLEOGRAPH of a bearded old man smoking a pipe. 17" x 14.3/4" overall.
654. A colour engraving of Belvoir Castle.
655. Hubert Vincent Spencer. Chickens and a goat in a farmyard. OIL ON BOARD, signed. 13.1/2" x 9". Framed.
656. J G Nash. Sailing boats near a cottage. OIL ON CANVAS, signed and dated 1906. 9.1/2" x 21". Gilt framed.
657. F M W Cooper. A figure on a path in a landscape at sunset. OIL ON CANVAS, signed. 15.3/4" x 17.1/2". Gilt framed.
658. 'Collecting Ponies'. OIL ON BOARD, unsigned. 14" x 19.1/2". Framed.
659. J A Evans. 'Mapledurham Mill', WATERCOLOUR ON CARD, signed and dated '98. 7" x 9.1/2". Framed.
660. Sailing boat in a landscape. OIL ON CANVAS, unsigned. 8" x 16". Gilt framed.
661. A coloured cartoon sketch. 'Who Said Votes for Women?'. WATERCOLOUR and PENCIL, signed with initials M.B. 1913. 7" X 5". Framed.
662. Highland landscape. OIL ON BOARD, unsigned. 11.1/2" x 19.1/2". Gilt framed.
663. 'Boston Stump'. WATERCOLOUR and PENCIL on card, unsigned. 9" x 6". Gilt framed.
664. A Tudor style house. WATERCOLOUR ON CARD, unsigned. 10" x 12". Framed.
665. On the Buffalo River, Victoria, Australia, a landscape WATERCOLOUR with cattle, signed Flo M Teague, Rose Kenwyn, Redruth 15.8.21. 19" x 29".
666. A colour HUNTING PRINT.
667. Pair of HUNTING PRINTS.
668. Assorted Pictures and Prints.
669. 3 hand coloured ENGRAVINGS of Burley, Belvoir and Masham.
670. Cyril J Frost. A haycart beneath a rainbow in a landscape. OIL ON CANVAS, signed. 19.1/2" x 25.1/2". Gilt framed.
671. Three various PRINTS.
672. F W Culley. A river in a landscape. WATERCOLOUR ON CARD, signed. 13" x 10". Framed and mounted.
673. Prince Charles' Farewell to Flora MacDonald, colour print.
674. Oak framed Picture of Winston Churchill.
675. Pair of colour prints of 19thC Locomotives.
676. A Victorian bird's eye maple framed engraving 'The Preaching of John Knox'.
677. A cased BROOCH and NECKLACE Suite.
678. A Mountainous Landscape. OIL ON BOARD. 7.1/2" x 11.1/2". Gilt framed.
679. James Ward RA (1769-1809). A pair of CARICATURE SKETCHES. Pencil on Card. 6" x 4". Framed and mounted.
680. A pair of Lawson Wood humorous PRINTS.
681. A stone house in a woodland landscape. WATERCOLOUR ON CARD, unsigned. 10" x 14". Bird's eye maple framed.

FURNITURE

691. A Victorian mahogany CARVER CHAIR with scroll arm.
692. An Edwardian mahogany SUTHERLAND TABLE.
693. A Georgian mahogany POT CUPBOARD.
694. A blue drop arm CHESTERFIELD SOFA.
695. A Victorian mahogany TRIPOD TABLE.
696. A cast iron pedestal TABLE.
697. A Childs ROCKING CHAIR.
698. A stripped pine CORNER WASHSTAND.
699. A Victorian bobbin turned SOFA.
700. A Victorian walnut barleytwist STICKSTAND.
701. An oak and elm gateleg DINING TABLE.
702. A 17thC parquet and carved oak 3 panel COFFER.
703. Five 19thC. Chinese Hardwood CHAIRS each with traditional decorative scenes on a black laquer field.
704. An Edwardian string inlaid mahogany DISPLAY CABINET with astragal glazed door and splay legs.
705. A Victorian pine scrub top KITCHEN TABLE.
706. A Victorian pine scrub top KITCHEN TABLE.
707. A William IV mahogany CHAIR.
708. A Regency mahogany BREAKFAST TABLE with moulded rectangular tilt top on a turned pillar with 4 reeded sabre legs with brass cup castors. 4'6" x 3'6".
709. A Victorian mahogany serpentine SOFA with shaped back, scroll arms and reeded legs, upholstered in green button dralon.
710. A Child's DESK and Chair.
711. A tapestry upholstered PIANO STOOL with cabriole legs.
712. A Victorian painted pine traytop CHEST of 2 short and 2 long drawers with knob handles and turned feet.
713. A pair of Edwardian BEDROOM CHAIRS.
714. A 19thC oak WRITING TABLE with 3 drawers and cabriole legs.
715. A George III mahogany CARVER CHAIR with pierced vase splat in the Hepplewhite manner.
716. A pair of Edwardian string inlaid BEDROOM CHAIRS.
717. A large canvas TRUNK.
718. Two pine Travel TRUNKS.
719. A Victorian twin pedestal KNEEHOLE DESK on ogee feet.
720. A Georgian mahogany circular TABLE with later turned legs.
721. A barleytwist oak OCCASIONAL TABLE.
722. A set of 4 Sheraton style mahogany DINING CHAIRS.
723. An Edwardian mahogany circular OCCASIONAL TABLE.
724. A Victorian rosewood 3 tier ETAGERE with barleytwist columns.
725. A VCB patent combined BEDROOM CHAIR and Trouser Press.
726. A 17thC carved oak 3 panel COFFER.
727. A Victorian SOFA on turned legs, upholstered in brown dralon.
728. A mahogany 3-tier folding CAKESTAND.
729. A George III oak bowfront hanging CORNER CUPBOARD with 2 panel doors.
730. A Victorian satin birds CHEST of 2 short and 2 long drawers with knob handles and bracket feet.
731. A Victorian painted pine CHEST of 3 drawers.
732. A set of 5 (inc carver) Jacobean style DINING CHAIRS with barleytwist and bobbin turnings.
733. A mahogany drawleaf DINING TABLE on cabriole legs.

734. A Victorian flamed mahogany CHEST of 4 drawers with knob handles.
735. A Victorian walnut marquetry PIER CABINET with gilt metal adornments.
736. A Victorian spindleback GRANDMOTHER CHAIR.
737. A set of 3 William IV mahogany barback DINING CHAIRS with turned legs.
738. A pair of barleytwist CARVER CHAIRS.
739. A late Victorian oak CHIFFONIER with 2 diagonally moulded doors to the upper and lower sections, on bracket feet.
740. An Edwardian mahogany marquetry BEDSTEAD.
741. A Victorian mahogany marble top WASHSTAND with 4 seasons tiled splashback by Moyr Smith.
742. A small oak OPEN BOOKCASE.
743. A Victorian painted pine CHEST of 2 short and 3 long drawers with knob handles.
744. A Victorian mahogany SIDE TABLE with turned legs.
745. A pine VAULTING HORSE.
746. Three Edwardian galleried oak SALON CHAIRS.
747. Oriental 2-fold SCREEN.
748. A 19thC mahogany PEMBROKE TABLE with knob handles, octagonal baluster pedestal, quatrefoil base and scroll feet.
749. A bentwood ROCKING CHAIR.
750. A set of 3 Georgian elm and mahogany crossbanded COUNTRY CHAIRS.
751. A Child's WINDSOR CHAIR.
752. A circular mahogany OCCASIONAL TABLE.
753. A burr walnut ladies kneehole WRITING TABLE with cabriole legs.
754. A set of 4 Queen Anne style DINING CHAIRS.
755. An Edwardian serpentine BOUDOIR SOFA with cabriole legs.
756. A French mahogany OPEN ARMCHAIR with red stripe dralon upholstery.
757. A set of 4 oak highback OPEN ARMCHAIRS with tan studded leather backs and seats, acanthus carved arms, bulbous legs and H frame stretchers.
758. A set of 4 Dutch walnut balloonback DINING CHAIRS with cabriole legs.
759. A set of 4 Continental gallery back DINING CHAIRS.
760. A light green damask upholstered 2 seater sofa with turned legs.
761. A walnut CARD TABLE with rectangular folding top and cabriole legs.
762. A Georgian elm BUREAU
763. A Victorian mahogany BREAKFAST TABLE with moulded circular top, hexagonal baluster pedestal, circular base with 3 scroll feet 3'4" dia.
764. A set of 6 Thonet bentwood CHAIRS.
771. An 18thC oak BUREAU on ogee feet. 2'6" wide.
772. A Victorian walnut swing TABLE MIRROR with a barleytwist frame.
773. An overstrung upright grand PIANO.
774. A Victorian mahogany serpentine TABLE MIRROR.
775. A burr and walnut veneer overstrung upright PIANO by L. Walter, Berlin.
776. A Victorian walnut cased Cramer PIANO.
777. A Victorian mahogany bowfront CHEST of 2 short and 4 long drawers with knob handles and bun feet.
778. A Georgian burr walnut CHEST of 2 short and 3 long drawers with herringbone crossbanding, brass loop handles and bracket feet.
779. An Art Nouveau inlaid mahogany OVERMANTEL MIRROR.

780. A linenfold oak 3 piece BEDROOM SUITE comprising double wardrobe, tallboy and dressing table. examples.
781. A gilt framed circular CONVEX MIRROR. 802. A pair of steel HAMES.
782. A similar smaller lot. 803. Four Carriage LAMPS.
783. A Victorian mahogany double WARDROBE. 804. Collection of small Vintage ENGINES.
784. An Edwardian walnut WARDROBE (no cornice) and DRESSING CHEST. 805. A Cart JACK.
785. A Victorian mahogany triple WARDROBE with 4 drawer base. 806. A Cart JACK.
786. A Victorian mahogany CABINET BOOKCASE with 2 door glazed top, 2 drawers and 2 door base. 807. A Cart JACK.
787. An oak roll-top DESK with S-shape tambour. 808. An early ATCO rotary MOWER.
788. An Edwardian PIANO SEAT. 809. The Godiva 21" cylinder MOWER by Barford & Perkins, Peterborough.
789. A George III oak BUREAU with mask carved fall flap, lopers, 3 graduated drawers, oval brass handles with bracket feet. 36" wide. 810. An oak BUTTER CHURN.
790. A 19thC Flemish carved oak SIDEBOARD with split level mirrorback, 2 drawers and 2 door base. 4'6" wide. 811. A Melotte Cream SEPARATOR.
791. A Regency style gilt convex Porthole MIRROR. 14". 812. An early Allen SCYTHE.
792. A Georgian SQUARE PIANO by Thomas Soud. (AF) 813. A Lawn ROLLER.
793. A Victorian mahogany bowfront CHEST of 2 short and 3 long drawers with knob handles. 814. A Vintage cylinder MOWER.
794. A carved and dark stained CHEST of 3 drawers. 815. A Vintage cylinder MOWER.
795. A matching WALL MIRROR. 816. A Vintage cylinder MOWER.
796. A rococo style 12-branch CHANDELIER. 817. A pair of HAMES, Yoke and Harness.
797. A Victorian upright PIANO. 818. A patent 'Little Mother' Feeder.
798. An Adam style painted pine and gesso FIRE SURROUND. 819. A Bushell Grain MEASURE.
820. An American Ride-on CAR.
821. An enamel sign 'Wills's Woodbines'.
822. A terracotta SIGN 'Dewbury'.
823. A Doulton Chemical Stoneware Container.
824. A STONE JAR by J R Ropson of Grantham.

RURAL BYGONES

801. Stoneware Bottles including Stamford and Uppingham

END of SALE.

AUCTIONS UPDATE DECEMBER 1997

Upon instructions froms Mrs Anne Chatterton Golding Young & Co will SELL by AUCTION c.40 lots of Pledges and Donations kindly received from Local Businesses and Individuals with the proceeds of sale going to the....

PRINCESS DIANA MEMORIAL FUND

on Tuesday 2nd December, 1997 at 8pm.

at The Grantham Auction Rooms
+ + Fully Licenced Bar + +
Open at 7.30pm

Over 40 Lots including Weekend Cottage Break in Norfolk, Flight in a Light Aircraft, Day at Belton Woods Leisure, 3 pieces of hand made jewellery, ladies gold watch, 2 gold rings, selected wines, etc.

Following the sale you may View the
December 3rd Antique and Collector's Sale until 9pm.

Upon instructions from the Executors of local Estates and others Golding Young & Co will SELL by AUCTION 400-600 Lots of.....

VICTORIAN, MODERN & GENERAL FURNITURE & EFFECTS

On WEDNESDAY'S 10th & 17th December at 10.30am

The sale on the 17th will include the residual contents of a gift shop viz. silver plate, reproduction china, pictures and decorative items.

ENTRIES CLOSE 5pm EACH MONDAY - Saleday Cash for Vendors.

Viewing: Tuesday 4pm to 6pm & Saleday from 9am.

STOCK LIQUIDATION SALE OF BRANDED SPORTS TRAINERS

ON THURSDAY 11th DECEMBER 1997 at 6pm

c.350 lots to include sizes from Childs 13 up to Adult 12
From Top Makers inc Adidas, Umbro, HiTec, Converse, etc

Viewing: 2pm to 6pm Saleday

Note: We held a similar sale in October selling over 350 pairs, on average they sold for 1/4 to 1/3 of Rec Retail Price.