

Established 1900

-GOLDINGS-

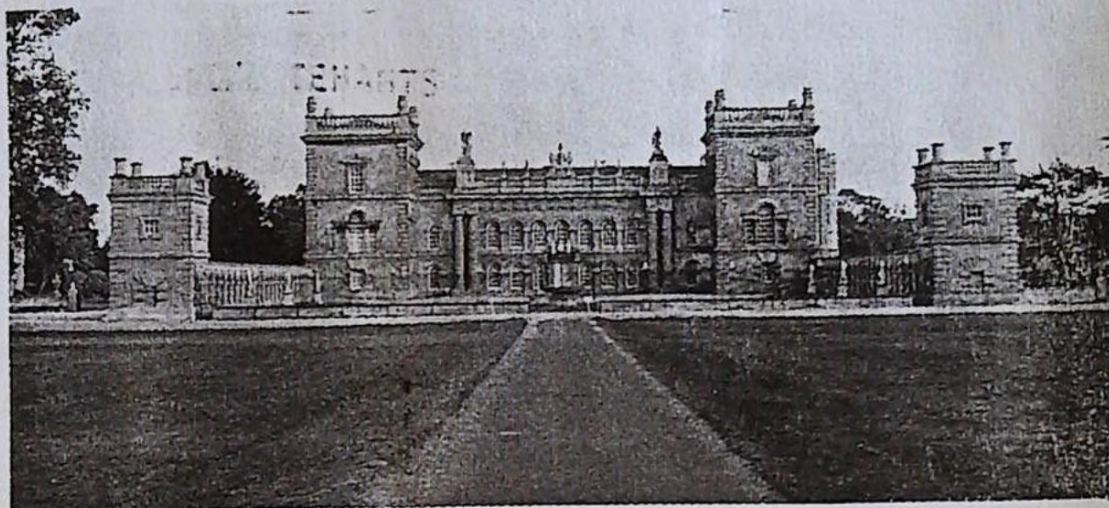
THE GRANTHAM AUCTION ROOMS

Upon instructions from the BBC, Executors of Estates, Private Collectors and House Clearances throughout Lincolnshire

GOLDING YOUNG & CO will sell by AUCTION

**VICTORIAN & LATER
SILVER, CERAMICS, JEWELLERY
PICTURES, METALWARE AND
COLLECTORS ITEMS**

Commencing 11.30am on Sunday 14 July 1996



in a marquee at
Grimsthorpe Castle, Near Bourne, Lincolnshire

At this sale we welcome the BBC who are filming
the forthcoming series of



Viewing Times

Thursday 11 July 10am to 1pm and 2pm to 4pm

(at The Grantham Auction Rooms)

Sunday 14 July 9am to 11.30am

(at Grimsthorpe Castle)

Golding Young & Co.

Old Wharf Road, Grantham, Lincolnshire, NG31 7AA

Telephone: (01476) 565118

Fax: (01476) 561475

THE COMPLETE AUCTION SERVICE

Auction Sales of Antiques, Fine Art, Collectables, Modern Furniture & Effects - Office, Shop & Catering Equipment
Vehicles - Plant & Agricultural Machinery - Stock-in-Trade - Business Assets - Liquidations & Receiverships
VALUATIONS undertaken for Insurance, Probate, Family Division and Sale purposes. Full HOUSE CLEARANCE facilities.

IMPORTANT NOTES FOR PURCHASERS

1. **PAYMENT:** Must be made in full immediately after the Auction. The following methods of payment are acceptable.
a) Cash b) Bankers Draft c) Building Society Cheque
d) Cheques, accompanied by a valid card. For accounts above the stated limit, we reserve the right to retain the goods until clearance is established.
2. **BUYERS PREMIUM:** of 10% + VAT is payable on all lots.
3. **REMOVAL OF PURCHASES:** Goods must be collected as soon as they are paid for (Subject to our payment terms). Staff will be at Grimsthorpe until 5 pm to assist with loading.
If items are not collected by this time a charge for taking them back to The Grantham Auction Rooms will be levied. Furniture £5 + VAT per lot, all other lots £2 + VAT.
Representatives of Lowes Removals will be at hand at the sale to discuss deliveries with you.
4. **COMMISSION BIDS:** If you are unable to attend this or any of our future sales we will be pleased to bid on your behalf. We always purchase at the lowest possible price, subject to other bids and reserves.
All bids must be handed to the office on an official form. It remains the responsibility of prospective purchasers to contact GOLDINGS to confirm whether their bids have been successful.
5. **TELEPHONE BIDS:** There are inherent dangers with this practice, therefore all such arrangements are made entirely at the bidder's risk. Telephone bids will only be accepted if the lower catalogue estimate is £500 or above. For lots with a lower estimate below this figure Commission Bids Only will be accepted.
6. **SMOKING:** is not permitted in any part of the Saleroom.
7. **REFRESHMENTS:** will be available Saleday.
8. **ACCOUNT TRANSFERS:** will not be recognised after the sale. If any lots are purchased for another person, this must be declared at the fall of the hammer.

GLOSSARY

- a) **Generally:** 'As Found.' (AF). This term indicates the lot has some damage. Its absence does not indicate that the lot is free of defect. All lots are SOLD AS SEEN.
- b) **Paintings:** 'Signed, initialled, monogrammed.' This refers to the present state of the work and is not an attribution.
- c) **Books and printed matter:** These items are not sold subject to collation and are not returnable once removed from the premises.
- d) **Silver & Jewellery:** Weights given are approximations given by basic instruments.

1. A 1920/30's DOLLS HOUSE and furniture. £40-60
2. A taxidermy specimen BABY ALLIGATOR £40-60
3. A Victorian extending brass FENDER £40-60
4. A large leatherbound TRUNK £20-30
5. A pair of 19thC brass CANDLESTICKS £20-30
6. A 10" golden plush TEDDY BEAR (AF) £50-80
7. An 8" German bisque headed BABY DOLL (AF) £20-30
8. A 19thC bisque headed DOLL with glass eyes, hair, stuffed body and composite limbs, 17". £80-120
9. A modern VIOLIN, cased with bow. £25-40
10. A modern VIOLIN, cased with bow £25-40
11. An early 1900's VIOLIN with bow £30-40
12. A Victorian brass ROASTING JACK with spit £20-30
13. A Model M101 Aston Martin Secret Ejector CAR, boxed £25-35
14. A pair of Victorian glass baluster VASES with transfer printed decoration (AF) £25-40
15. A Bosey & Hawker TRUMPET £10-20
16. An early 2-piece 10' 2 Greenheart FISHING ROD by Farlow of London £20-30
17. An 1870's French brass handled BAYONET £20-30
18. An 1870's French brass handled BAYONET £20-30
19. An 1870's French brass handled BAYONET £20-30
20. A Mitre Melody split-can FISHING ROD £10-20
21. A BR(M) Railway LAMP £10-20
22. An antique CROSSBOW with bone trigger £60-80
23. A WWI steel 'Tommy' HELMET £20-30
24. A pair of moulded PLAQUES of a fisherman and fishwife, in ebonised frames £30-40
25. A Victorian cast iron DOORSTOP in the form of an alsation £10-20
26. An electroplate 4 trumpet EPERGNE £30-40
27. A cut crystal BISCUIT BARREL with a plated lid and handle £25-35
28. 'The National Band', A German tin-plate TOY HORN GRAMOPHONE £100-150
29. A hammered pewter 4-piece TEASET £25-40
30. A Victorian brassbound rosewood WORKBOX £25-40
31. A hand coloured engraving of GRIMSTHORPE CASTLE £10-25
32. A Chinese crackleware cylindrical VASE, four character mark £25-40
33. A small olive Celadon JARDINIERE £25-40
34. Two small MANTEL CLOCKS, 1 Edwardian string inlaid and 1 oak with hunting print £25-40
35. A black ground floral TRINKET SET £15-25
36. A silver lustre TEAPOT and Water Jug £15-25
37. A pair of electroplate 3 branch CANDELABRA £30-50
38. An electroplate SALVER, Teapot, Creamer and Sugar Bowl £25-40
39. An electroplate SYPHON HOLDER and EGG CRUET £25-40
40. An electroplate 3 piece TEASET £35-50
41. A Ridgeway band moulded JUG with scroll handle and mask spout, impressed mark £40-60
42. Two 18thC Dutch Delft blue and white PLATES £40-60
43. Victory Atlas of the World £15-25
44. A 19thC Cantonese TEAPOT (no lid) £10-20
45. A pair of Victorian Staffordshire SPANIEL SPILL VASES, 13" (AF) £80-120
46. A stoneware TEAPOT dated 1912 £20-30
47. A Victorian walnut JEWEL BOX, satin lined £30-50
48. A brassbound Victorian walnut WRITING BOX £40-60
49. A 19thC blue and white DISH, probably Spode £30-50
50. A pair of Hungarian hand painted WALL PLATES £20-30
51. Two framed African MAPS £10-20

52. An 18thC bone handled FIGHTING HANGAR with curved blade £60-90
53. A JAMBAYA with embossed leather sheath £60-90
54. A Bush brown bakelite RADIO £20-30
55. A Premier cream bakelite RADIO £20-30
56. A straw filled plush ELEPHANT and DOG (AF) £25-40
57. A cased Junior miniature TYPEWRITER and a Victorian leather JEWEL BOX £25-40
58. A Georgian mahogany CUTLERY TRAY £20-30
59. A pair of 1950's oil glass flared VASES £20-30
60. A 19thC Chinese PALETTE MUG (restored) £60-90
61. A 19thC Chinese TEAPOT (AF) £25-40
62. A Victorian brass WOOL DISPENSER £25-40
63. A Victorian mahogany Gents travelling SHAVING BOX £40-60
64. A Moorcroft floral TABLELAMP (AF) £20-30
65. An early 19thC needlework PICTURE of a spaniel on a rug £60-80
66. A 19thC scrimshaw COW HORN with scenes of American Cavalrymen, Sailing Ships and Fortresses £150-200
67. Collection of Horse BRASSES; 2 x 3 brass Martingales, face piece and c16 loose brasses Note: All proceeds from this lot will go to the Imperial Cancer Research Fund. £80-100
68. A Victorian Pictorial SAMPLER £80-120
69. A Royal Doulton FIGURE - Country Lass HN1991 1975-81 £50-70
70. A Royal Doulton FIGURE - Flower Seller's Children HN1342 1929 (chipped rose) £100-150
71. A Victorian "Baltimore" pattern DESSERT SERVICE comprising 10 plates and 3 compots £120-180
72. An unusual 19thC TOMAHAWK with integral pipe £50-80
73. A Wedgwood lustrous BOWL with moulded base, gilt diaperwork and dragons on a blue interior and orange exterior, 10" dia. £200-300
74. A Royal Doulton lustrous BOWL painted with birds and flora on a green background, 10" dia. £100-150
75. Three 19thC TRUNCHEONS; VR, Wm V and Mounted Police £150-200
76. A Carl Zeiss Jena No 70599 black and chrome monocular MICROSCOPE, boxed £80-120
77. A 19thC Russian brass and copper SAMOVAR £80-120
78. A fine 19thC mahogany MINIATURE CHEST of 2 short and 3 long drawers, turned handles and bracket feet £280-350
79. A WWI brass GUNSIGHTING by Ottway & Co £40-60
80. A Victorian gilt brass monocular MICROSCOPE on a turned plinth, 18" high £120-180
81. A Victorian pearl lustre oil glass SPILL VASE with silver neck. London 1890 £20-30
82. An Oriental white metal bamboo pattern PARASOL HANDLE and Sheffield plate MUSTARD POT £25-40
83. A George V silver engine turned SPECTACLE CASE £15-25
84. Two miniature Teapot shaped TEA DUNKERS and a pair of silver trays £40-60
85. A Victorian silver part reeded CREAMER embossed with berries and leaves. Birmingham 1865. 4.25oz. £60-80
86. 2 silver engine turned CIGARETTE BOXES £20-30
87. A 1930's engine turned silver CIGARETTE BOX engraved Lincolnshire Union of Golf Clubs, 1936. Birmingham Assay. £25-40
88. A George V silver cylindrical SUGAR CASTOR. Birmingham 1918. 6oz. £50-80
89. Two 1930's silver flared rim BEAKERS engraved trophies of North Shore Golf Club, Skegness. Chester Assay. 13oz. £80-100
90. An Edwardian Arts & Crafts silver circular JAR with knop handled cover and bell flower motifs. Maker WA. Birmingham 1904. 7.5oz £90-120
91. A George III silver panelled circular MUSTARD POT with shell thumb-piece. Maker John Henry & Charles Lias. London 1813. 4.5oz £80-100
92. An Edwardian silver 'Aladdin' OIL LAMP with an eagle's head handle. Birmingham 1907, c.4oz £90-120

THE GREAT ANTIQUES HUNT

BBC's 'The Great Antiques Hunt' will be selling the following 8 lots (93-100). Guest auctioneers will be taking over the rostrum and the sale of these lots will be part of the programme.

The following items A-F will be included in this section, but will not be allocated a lot number until the saleday.

If you do not wish to be filmed please make yourself known to the production team.

- A. An oval silver plated swing CAKE BASKET, with pierced sides by Walker & Hall £90-120
- B. An Edwardian silver CARD CASE with red Morocco leather lining, Birmingham 1904, initialled 'LW' £120-150
- C. An Edwardian silver mounted and glass MANICURE SET with lidded jar and nail buffer, 1921 £50-70
- D. A Victorian heart shaped SWEETMEAT DISH by Job Hall, 1893 £70-100
- E. A modern silver MODEL of a Kingfisher, 6", 7.5oz £80-120
- F. An Edwardian rectangular dressing TABLE MIRROR with repousse decoration by H Matthews, Birmingham 1901 £200-250
- 101. A fine George III Officer's Flintlock PISTOL stamped TOWER (of London) £500-700
- 102. A 19thC BOWIE KNIFE stamped VR & P Newton, Sheffield, with sheath £200-300
- 103. An antique double barrel Flintlock PISTOL (AF) £25-40
- 104. A replica flintlock MUFF PISTOL £10-20
- 105. An early 19thC box lock percussion PISTOL with walnut handle £50-80
- 106. Eight 19thC humorous pencil sketches Hunting and Coaching Scenes £40-60
- 107. 6 cut-throat RAZORS, rosewood cased £10-20
- 108. An ivory FAN £90-120
- 109. A 19thC Prattware MASK JUG £80-100
- 110. An Asprey circular silver BOWL, base inscribed Designed for The Year of The Rose by Algernon Asprey. London assay. 19oz. £180-220
- 111. A George III silver BOWL with gadrooned rim and foliate scroll handles. London assay. 11oz. £170-220
- 112. A silver topped POWDER JAR. London 1948 £35-45
- 113. Two Georgian silver LADLES £50-70
- 114. An engraved Russian CIGARETTE CASE, stamped 875 £70-90
- 115. A W Wilson McGrew silver taper TANKARD with Greek key border. 7.5oz. £60-80
- 116. A Victorian silver and marble rococo LAMP BASE £120-150
- 117. A brass Sun Fire ASHTRAY £20-30
- 118. Chain-mail Epaulettes, Spur, Daggar and Sporrán £30-40
- 119. A pair of brass SPURS £20-30
- 120. 5 Royal Crown Derby gilt floral COFFEE CANS £50-70
- 121. A Royal Crown Derby blue and white miniature SUCRERE £50-70
- 122. An Edwardian silver and enamel circular BOX. Birmingham 1909 £28-35
- 123. A George V pierced silver BONBON DISH. Birmingham 1920 £40-60
- 124. A pair of Victorian silver repousee SALT BOWLS. Birmingham 1898 £30-50
- 125. A pair of Victorian silver repousee PEPPERETTES. London 1898 £40-60
- 126. An electroplate Candle SNUFFER and TRAY £50-80
- 127. A pair of German FIGURES of Children £20-30
- 128. An Isfahan watercolour MINIATURE £25-40
- 129. A large Brethby floral JARDINIERE £40-60
- 130. An Elephant's Foot STOOL £25-40
- 131. A FIRESCREEN with floral Victorian beadwork panel and later frame £30-50
- 132. Tristram Ellis. Riverboat with two ladies, in the Baltic States, watercolour, 14" x 25", unsigned £380-450
- 133. T Bowles. City of Amsterdam, colour engraving £30-40
- 134. A watercolour of Windsor Castle £25-40

135. A Pear's Print - A Winter's Morning £20-30
136. A pair of watercolours of a lowland Farmhouse, each from a different view. 6.1/2" x 14", bears the monogram of James Lawson Stewart £200-300
137. A Georgian needlework PICTURE of an angel. £60-90
138. 19thC oil of colonnades in a Greek landscape, unsigned. £50-70
139. W F Briggs. Oil portrait of a lady £30-40
140. David Roberts. Street scene, signed, 16" x 10" £150-200
141. A Clarice Cliff Newport Pottery TOBY JUG £100-150
142. An electroplate 2 handled CYCLING TROPHY £30-50
143. A Beswick ADVERTISING CHARACTER JUG - Worthington's Pale Ale £30-50
144. A Susie Cooper cream ground part COFFEE SET, red snow-flake design £40-60
145. Sid Gardner. Mountainous Landscape with lake, watercolour, 13" x 18", signed £150-200
146. A set of 6 late Victorian mahogany DINING CHAIRS gallery backs and turned front legs £400-500
147. A Victorian copper KETTLE with acorn finial £40-60
148. A Victorian Staffordshire TOBY JUG with cover £50-80
149. A Victorian Staffordshire FIGURE GROUP of young lovers and a spaniel. 12" high £25-40
150. 5 Ashworth ironstone SIDE PLATES £50-70
151. An old brass BIRDCAGE £25-35
152. Two embossed copper POWDER FLASKS £30-40
153. Six multi-coloured vaseline glass SAUCERS £40-60
154. A Victorian brass bound walnut DESK BLOTTER £40-60
155. A Georgian 2-section TEA CADDY £50-70
156. An early 19thC Derby quatrefoil DISH together with cup and saucer £35-45
157. A 19thC Cantonese hexagonal BALUSTER VASE, interior scene panels with figures on a floral field. 16". £150-200

158. A 19thC Cantonese shallow PLANTER, 8" x 5" £60-80
159. A 19thC Mandarin MUG with green floral pattern £40-50
160. A late 19thC Continental porcelain FIGURE of Cupid making his love potion. 8". (AF) £100-150
161. A matched pair of 19thC Paris compressed panel VASES painted with cattle and figures in landscape on a gilt and pink ground, sphinx mask handles, 12". £200-300
162. 4 Victorian JUGS (AF) £20-30
163. Four Chinese VASES £20-30
164. Small selection of Commemorative ware
165. A 19thC Staffordshire polychrome POT LID - A Pair £40-60
166. A 19thC Staffordshire polychrome POT LID - The Village Wedding £40-60
167. A 19thC Staffordshire polychrome POT LID - A Fix £40-60
168. A 19thC Staffordshire polychrome POT LID - of a Bear Baiting Subject £100-150
169. A 19thC Staffordshire polychrome POT LID - The Wolf and the Lamb. (AF) £30-40
170. A 19thC Staffordshire polychrome POT LID - The Snow Drift (AF) and another £40-60
171. A pair of Victorian blue and white TURKENS £20-30
172. A Goss 1925 British Empire Exhibition JUG and a glass Bowl £20-30
173. A pair of Victorian brass CHAMBERSTICKS £20-30
174. A Victorian Doulton stoneware HARVEST JUG with silver rim. London 1898 £50-70
175. An electroplate SPOONWARMER in the form of a pear on a leaf. Maker Benetfink & Co £80-100
176. An electroplate MUFFIN DISH, 2 Tankards and 2 Toastracks £20-30
177. A plated 7 piece TEASET £25-40
178. A pair of Bisto porcelain MENUS, white JUG and 2 plates £20-30
179. A pierced brass BON BON DISH with a cranberry liner £30-40

180. Three 18thC TEABOWLS and Saucers £30-40
181. A Victorian vaseline glass BOWL £20-30
182. A Burleighware Art Deco JUG & BOWL SET £40-60
183. A Fieldings Crown Devon WALL MASK of a Dalmatian, Champion of the River £25-40
184. 6 pieces Royal Copenhagen £50-100
185. A Beswick 2 handled circular BOWL and a further plate £20-30
186. A Victorian TEA SERVICE, c.40 pieces £40-60
187. Myott DINNERWARE including meatplates £25-35
188. A pair of Victorian Staffordshire FIGURES of riders on horseback (AF) £80-100
189. A Regency brass inlaid rosewood INKSTAND (AF) £60-90
190. A Victorian brass ROASTING JACK with spit £30-40
191. A Victorian Staffordshire FIGURE GROUP - Auld Lang Syne
192. 3 glass DECANTERS, etc
193. Coronation and other chinaware
194. 2 ebony ELEPHANTS, pair ebony CANDLESTICKS and 2 horn beakers £15-25
195. 2 Boston PRINTS, 2 money boxes, toastrack and German letter dagger
196. An Edwardian shell inlaid oak MANTEL CLOCK with Westminster chimes £30-50
197. An Edwardian inlaid mahogany MANTEL CLOCK £30-50
198. An early 19thC facsimile copy of THE MAGNA CARTA £20-30
199. A Georgian oak BOX £15-25
200. A pair of carved stone CORBEL MASKS £30-50
201. A 19thC green Imari hexagonal BOWL, 10" £60-90
202. 2 pairs KID GLOVES, 1920's
203. A 19thC Chinese pottery circular STAND £30-50
204. A 19thC Chinese pottery TANKARD £30-50
205. A pair of heavy crystal square DECANTERS £30-50

206. A pair of Victorian cut crystal VASES with square bases £30-50
207. A Victorian sliced glass POSY BASKET £25-40
208. A Victorian cut crystal SWEETMEAT BOWL and a CREAMER £20-30
209. An engraved amber MASONIC TUMBLER £20-30
210. A Mallaca DANDY CANE with spirit flask and glass £30-50
211. A plated COFFEE SET on stand
212. 2 Victorian cast iron FENDERS £25-40
213. 19thC English School. Portrait of a young gentleman, oil on board £80-100
214. A Continental STILL LIFE OF FLOWERS, oil on canvas, indistinctly signed, 28" x 36", gilt framed £500-700
215. R Gallon RA (1845-1925). A Summer's Evening, landscape with 3 ladies and a fishing boat, oil on board, signed, 9" x 7" £250-350
216. Clarkson Stanfield RA (1828-1878). Continental Harbour Scene, watercolour, signed and dated 1846, 5" x 6.5" £300-400
217. 3 mahogany FISHING RODS in a J Bernard & son box £100-150
218. Two 19thC double barrelled muzzle loading percussion SHOTGUNS £250-350
219. A pair of Edwardian maple framed PRINTS of the Duke & Duchess of York and family portrait of Queen Victoria £40-60
220. A Cottage interior scene monochrome PRINT
221. 5 Victorian slice cut and engraved RUNNERS with square bases £50-80
222. A pair of cut crystal mallet DECANTERS £20-30
223. A Roman style bubble glass shallow BOWL £20-30
224. A 19thC Staffordshire pottery PULPIT FIGURE of John Wesley £70-100
225. A Staffordshire pottery group of 2 lovers seated (AF) £20-30
226. An Edwardian brass mounted oak PIPE RACK with 5 pipes £30-50

227. A Chippendale design mahogany TEA CADDY with brass loop handle £60-80
228. A 19thC ironstone LOVING CUP with floral decoration £25-40
229. A 'Meissen' onion pattern blue and white PLATE and a transfer decorated BOWL £10-20
230. A lacquer GLOVE BOX with floral decoration
231. A mahogany 'propeller blade' JEWEL BOX and cover £10-20
232. A watercolour of a peasant girl at harvest time. Signed E J Penstone RA, 1877 £100-150
233. 'The Walkden' Sealing Wax Set £5-15
234. A quantity of 1930's medical instruments and syringes £50-80
235. A WWII GAS MASK and HELMET £15-25
236. 5 Assorted BAYONETS £20-40
237. An Edwardian Brass SPIRIT KETTLE £15-30
238. Victorian Brass PAN SCALES £10-20
239. An ebony TRINKET SET £15-30
240. A Victorian Spelter FIGURE £10-20
241. Brass MODEL of a locomotive £10-20
- 241A. A 1930's EMBROIDERY LOOM £40-60
242. A William IV mahogany ROCKING CHAIR £450-600
243. A small inlaid Edwardian serpentine DISPLAY CABINET £450-600
244. An Edwardian rosewood inlaid 3 piece BOUDOIR SUITE £1200-1500
245. A Victorian walnut drop dial WALL CLOCK £250-350
246. An Edwardian inlaid mahogany CHILDS CORNER CHAIR £120-150
247. A Queen Anne style walnut CHEST on STAND, 1920's £500-700
248. An Edwardian inlaid mahogany WINDOW SEAT £350-450
249. A Victorian mahogany framed buttonback EASY CHAIR £250-350
250. A pair of Victorian carved oak HALL CHAIRS £200-300
251. A set of 13 EPNS Kings pattern TEASPOONS £20-30
252. A Continental 9ct gold (part) cased fob watch £10-20
253. A Continental silver cased FOB WATCH and a smaller example £20-30
254. Two hallmarked silver NAPKIN RINGS £20-30
255. An electroplated TEAPOT with design lozenge £25-40
256. A foliate chased silver VESTA CASE. Birmingham £20-30
257. A silver cased POCKET WATCH with fusee by W Kirkpatrick, Lincoln. Chester 1856 £25-40
258. A similar lot £20-30
259. A pair of 19thC French bronze CANDELABRA each with 3 sconces around a crane, reeded column and 3 hoof feet. 24" high £800-1000
260. A fine pair of Georgian style rococo cast and chased silver CANDELABRA. London assay. 138oz £1800-2000
261. A yellow metal DRESS RING £10-15
262. A Chinese white metal SNUFF BOTTLE encrusted with polished hard stones and complete with carrying case £10-15
263. A Chinese horn and ivory SNUFF BOTTLE depicting fretted dragons, carrying ring £20-30
264. A signed Japanese hardwood NETSUKE study of a youth walking with his straw hat upon his back £30-40
265. A signed Japanese hardwood NETSUKE study of a prone horse with a monkey sitting upon it £30-40
266. A Japanese lacquer NETSUKE study of an apprentice Buddhist monk in fine decorated kimono £30-40
267. A signed Japanese ivory NETSUKE study of a monkey laying upon a court hat £30-40
268. A signed Japanese ivory NETSUKE study of a fearsome fish with inset pearl eyes £40-60
269. A Japanese ivory Cicada NETSUKE study of a winged insect £40-60
270. A signed Japanese ivory NETSUKE study of a group of pine cones infested with rats £50-70

271. A 19thC Swedish Filigree silver BASKET of neo-classical form with swing handle and blue glass liner. Dated 1819. 25oz £700-900
272. A cased part MANICURE SET, silver mounted £25-40
273. A late 19thC Japanese painted CREAMER £40-70
274. A pair of 17thC Japanese enamel miniature VASES £10-30
275. A CANTEEN of electroplated Kings Pattern cutlery (6 place settings) £25-40
276. A Victorian CAMBO BROOCH with reversible centre including 3 dancing maidens £100-150
277. An early brass Motor Union CAR BADGE No 5469 mounted as a trophy on radiator cap £150-250
278. A Victorian Watchmaker's PUNCH SET in a blown glass dome on a treen base and another £50-80
279. A Grantham crested STATUE of Sir Isaac Newton £20-30
280. A pair of antique gold framed and handled LORGNETTES £150-200
281. A pair of 19thC French brass and enamel OPERA GLASSES with mother of pearl eye pieces £120-150
282. A George V silver shell BUTTERDISH with knife, cased. Sheffield 1923 £40-60
283. A pair of Edwardian silver WISHBONE TONGS. Chester 1909 £40-60
284. A pair of George IV silver Old English pattern SPOONS and another £30-40
285. A set of 6 Victorian silver fiddle pattern FORKS. London 1846. 13oz £60-80
286. A pair of silver SALT CELLARS and 4 spoons in a box £25-35
287. A Gebruder Heubach 250 13/09 bisque headed DOLL and another £50-80
288. A WWI brass BOOK, apple corer and penknife £15-25
289. A pair of silver PRESERVE SPOONS, London Assay, cased £15-25
290. A pair of plated CANDLESTICKS, child's hairbrush and pair porcelain boots £25-40
291. 3 Lady's WRISTWATCHES AND silver BANGLE £20-30

292. A pair of gold and aquamarine STUD EARRINGS £25-40
293. An 18ct gold and platinum aquamarine RING £70-90
294. An 18ct gold FLOWERHEAD RING, the central ruby enclosed by 8 diamonds £500-700
295. An Omega Gents POCKET WATCH with a harlequin case in a burlwood box £150-200
296. A Victorian gold STOCK PIN mounted with a circular painted porcelain Fox Mask, signed W B FORD 1874 £200-300
297. A Victorian gold STOCK PIN mounted with a small Fox £70-90
298. A boxed Garniture of 18ct gold and citrine JEWELLERY comprising bar-brooch, ring and pair of earrings £150-250
299. An Edwardian/Victorian gold DRESS RING set with 3 oval opals divided by 2 rows of 3 rubies £100-150
300. An Art Nouveau 18ct white gold PENDANT with single diamond and shaped hardstone £200-300

END OF SALE