

GOLDING
THE GRANTHAM AUCTION ROOMS

Upon instructions from the Executors of The Reverend George F Cooper, the Administrators of J S Beaumont, and items from further Properties in Grantham, Stamford and Sheffield.

GOLDING YOUNG & CO

will sell by

AUCTION

ANTIQUES

&

FINE ART

**On Wednesday 7 February 1996
at 10am**

VIEWING TIMES

**Sunday 4th - 2pm to 4pm
Tuesday 6th - 2pm to 7pm
& Saleday - 9am to 10am**

**Catalogues £2 each
Conditions of Sale Available from our Office**

**Golding Young & Co.
Old Wharf Road, Grantham, Lincolnshire, NG31 7AA
Telephone: (01476) 65118
Fax: (01476) 61475**

THE COMPLETE AUCTION SERVICE

**Auction Sales of Antiques, Fine Art, Collectables, Modern Furniture & Effects - Office, Shop & Catering Equipment
Vehicles - Plant & Agricultural Machinery - Stock-in-Trade - Business Assets - Liquidations & Receiverships
VALUATIONS undertaken for Insurance, Probate, Family Division and Sale purposes. Full HOUSE CLEARANCE facilities.**

BOOKS

1. History of Lincolnshire by Wm White 1842.
2. A similar lot with a 1956 Grantham Directory.
3. Charles Reade, The Works of, Library Edition 1895, 13 volumes.
4. Alexandre Dumas. The Romans of Orleans Edition, 1895, 15 volumes.
5. Ltd Edition (80 of 1000) Book of "George Baxter The Picture Printer" by Courtney Lewis £80-100
6. Harry Parkes. 'That sister-in-law of mine', portfolio.
7. Richard Doyle. The Foreign Tour of Brown, Jones and Robinson.
8. 6 small leatherbound BOOKS. £20-30
9. Dickens Works. 19 volumes. Edition de luxe. £40-60
10. Brown's FAMILY BIBLE.
11. Prayer books, Clerical Directories etc
12. Encyclopedias and Novels
13. Stories from The Arabian Knights illustrated by Edmund Dulac. £60-80
14. Brenshaw Village, John Moore; Other Novels, British Towns etc
15. Fenland Rivers, Virgil's Works etc

HORSEBRASSES

17. A 5 brass Martingale.
18. A 3 brass Martingale.
19. A 3 crescent brass Martingale.
20. A triple bell fly Terret Swinger with plume.
21. 6 Face Pieces.
22. 6 Face Pieces.
23. 5 pierced Brasses.

24. 5 pierced Brasses.
25. 5 pierced Brasses.
26. 4 Royal Commemorative Brasses.
27. 3 Royal Brasses on straps.
28. 6 pierced Brasses of horses.
29. 5 pierced Brasses on straps.
30. 4 Sundiscs on straps.
31. 4 Brasses.
32. 4 Brasses.
33. Brass Door Knockers, etc.
34. Nickel bell Pieces, terrets (AF).

COLLECTABLES

35. A Victorian walnut WRITING BOX. £40-60
36. A needlework PICTURE of a tree.
37. 2 osterich feather FANS.
38. A Victorian rosewood WORKBOX. £20-30
39. A Victorian rosewood marquetry WORKBOX. £40-60
40. A Victorian mahogany CADDY with liner. £40-60
41. A Victorian brass inlay rosewood INKSTAND. £35-45
42. A large Victorian papier mache TRAY painted with a hunting scene. £250-350
43. A pair of leather RIDING BOOTS with shields. £40-60
44. A Beer Pull TABLE LAMP £20-30
45. 7 graduated pewter pot-belly TANKARDS £25-40
46. A 19thC Bronze FIGURE of a seated semi naked maiden upon a tortoise 11" £150-200
47. A pewter WINE FUNNEL
48. An oak and canvas TRUNK. £20-30
49. A leather Travel CASE.

50. A Victorian walnut and parquet SEWING BOX, fitted interior. £50-80
51. A Victorian maple SEWING BOX. £40-60
52. A Victorian oak shop front STATIONERY BOX. £80-120
53. A Victorian oak SMOKERS CABINET with 3 drawers. £40-60
54. A Victorian coromandel and brass dome top STATIONERY BOX. £100-150
55. A victorian rosewood WORK BOX. £20-30
56. A small Victorian walnut WRITING BOX. £25-40
57. A Georgian burr walnut square BOX. £30-50
58. A pair of spun brass CANDLESTICKS. £20-30
59. A 'Lucerne' part DINNER SERVICE. £40-60
60. A Victorian copper KETTLE. £30-50
61. 2 flat IRONS, TRIVET and 2 STAMPS.
62. BLOTTER and 2 leather DESK BOXES.
63. The Masonic Regalia of Rev G F Cooper.
64. An oak BOX with brass handle.
65. Old Tins.
66. A Victorian copper WARMING PAN and miniature example. £40-60
67. An Edwardian ebonised WALL MIRROR with shelf. £25-40
68. An oak TRAY.
69. A pith HAT.
70. Cast iron and brass Stair Rods.
71. Umbrellas and Walking Sticks. £20-30
72. A small Victorian cast iron FENDER.
73. An English golden plush TEDDY BEAR, 16". £30-40
74. A Hornby Train Goods Set No 30, boxed. £50-70
75. 4 stoneware FOOTWARMERS. £35-45
76. A Victorian Copper KETTLE £25-40
77. A pair of brass BINOCULARS, cased.
78. A brass and leather pocket TELESCOPE.
79. A Victorian brass SAUCEPAN.
80. An oak BOX and DESKSTAND.
81. A Victorian iron BOWLING HOOP and a brass tripod.
82. A glass SMOKE COLLECTOR.
83. A Victorian cast iron FENDER.
84. A Japanese lacquer BOX, Bowl and Vase. (3)
85. A Georgian needlework PICTURE of Madonna and child and another (2) £40-60
86. 2 small SAMPLERS, Indentures, etc.
87. A woolwork PICTURE of a Cottage.
88. A leather SHOT BELT. £25-40
89. Scales, Hopper, etc.
90. Handcuffs, Candlesticks, etc.
91. A Victorian rosewood JEWEL BOX
92. A Victorian mahogany JEWEL BOX £20-30
93. A pair of early CARRIAGE LAMPS.
94. A Bull WHIP and Riding CROP
95. A Victorian rise and fall OIL LAMP (AF) £30-50
96. A Victorian Brass SAUCEPAN
97. A Portable GRAMAPHONE £40-60
98. A Victorian metal COAL SCUTTLE £25-40
99. An old boxed TABLE BILLIARDS SET
100. A large DOLLS HOUSE and FURNITURE. £120-180
101. A Pewter BEDPAN by Richard Yates. £50-70
102. A Victorian Brass bound walnut WRITING BOX £50-80
103. A Victorian oak DESKSTAND with clear and crystal inkwells £40-60
104. An old brass CAR HORN.
105. An old brass CAR HORN.

106. An old brass CAR HORN.
107. A large brass artillery SHELL CASE.
108. A Hathaway BUTTER CHURN on stand. £150-200
109. A Cased TROMBONE £50-70
110. A hand crafted MODEL of a Victorian Drawing Room. £25-40
111. Brass Car HORN, Apollo & Lucas examples (3).
112. 2 Smiths swing out DASH CLOCKS.
113. A pair of 1930's brass INSPECTION LAMPS.
114. 4 brass grease and oil GUNS.
115. A Pyrex brass FIRE EXTINGUISHER with bracket.
116. 2 Smiths electric DASH CLOCKS.
117. 5 brass HUB CAPS.
118. RAFA and AA BAR BADGES and Mirror.
119. 2 Brown Bros Motorspares CATALOGUES.
120. A brass STIRRUP PUMP.
121. A brass GARDEN SPRAY and FIRE EXTINGUISHER.
122. Low & Carbide Generators and Carriage Lamp. (3)
123. A Carbide Motorcycle LAMP (lens AF).
124. A pair of Georgian brass CANDLESTICKS with petal bases. £120-150
125. A silver topped DANDY CANE. £40-50
126. A set of 4 copper PLAQUES depicting game trophies, 12" X 7", inscribed L Oudry. £350-450
127. A Velo-Silex S3800 MOPED. £120-180
128. A copper MILK SKIMMER £20-30
129. Scales and weights.
130. Feather BOA, 3 parasols including bone finials.
131. A Chinese embroidered silk DRAPE. £40-60
132. A Victorian mahogany WOOLWINDER.
133. A Victorian carved oak arched FOOTSTOOL. £50-70
134. A Victorian mahogany circular FOOTSTOOL in red velvet. £50-70
135. A Victorian yew sarcophagus TEA CADDY. £40-70
136. An Art Nouveau hammered copper hanging LANTERN. £200-300
137. A Continental ivory ink and PEN STAND on turned supports. £25-35
138. A Norah Wellings velvet SAILOR DOLL, 10" high. £30-50
139. 2 Inkwells, tray and plated dish.
140. A fusee gilt brass Marine POCKET BAROMETER by Negretti & Zambra. £250-350
141. A 16 bore box lock ejector SHOTGUN by W & J Jeffrey & Co. Ltd. Serial No. 29837.
142. A Bakelite VESTA CASE
143. A Chinese enamelled SCENT BOTTLE.
144. A Chinese cloisonne enamelled SNUFF BOTTLE with matching spoon and stopper.
145. A hand painted JADE EGG.
146. An old DRAUGHT SET.
147. A Dutch Lady's NIGHTBAG, case, flask, tongs and hand mirror.
148. An Antique REVOLVER (AF).
149. Cigarette Cards.
150. A German porcelain headed DOLL. £80-120
151. An embossed leather and brass SHOT FLASK. £30-40
152. A brass and horn SHOT FLASK. £40-60
153. WWII aerial Bombing Photographs.
154. A part DRAWING SET
155. A Picot PUPPET, boxed 8"
156. Kensitas Flowers Silks
157. 4 Prison Service BADGES including Edward VIII example. £30-40
158. 2 Smith's DASH CLOCKS.

- 159. A chrome plated MASCOT depicting a Jaguar. £20-30
- 160. A Regency rosewood and satinwood 2 section TEA CADDY with brass ball feet. £200-300
- 161. Treen NEEDLE CASES, etc. £20-30
- 162. A Mouseman ASHTRAY. £30-40

GLASS & CERAMICS

- 163. A Coalbrookdale SHOE (AF), bird whistle and figure
- 164. A Satsuma bell shape miniature TEAPOT. £80-100
- 165. A small 19thC Prattware MASK CUP. £100-150
- 166. A blue glass LUSTRE VASE. £20-30
- 167. A Victorian transfer printed WATER JUG. £15-25
- 168. A pair of Dresden SHEEP £45-65
- 169. A pair of Dresden POODLES on shaped bases £100-150
- 170. A 19thC Mandarin TEAPOT with strainer £20-30
- 171. A Meiji period IMARI VASE £20-30
- 172. A Victorian "Poor Richard" PLATE £25-35
- 173. A small Prattware PLATE £35-45
- 174. A Meiji period Imari Baluster VASE and cover £180-250
- 175. An 18thC Blue and white Delft PLATE (AF)
- 176. A 19thC Imari PLATE
- 177. A Victorian blue and white SERVING DISH
- 178. 2 Vienna Creamware RIBBON PLATES £30-50
- 179. A large 19thC Satsuma baluster VASE £140-200
- 180. A 19thC German FIGURE with sword.
- 181. A 19thC German FIGURE Girl with puppy.
- 182. A 19thC German Posy FIGURE.
- 183. A Sitzendorf posy lady FIGURE.
- 184. A Japanese Part TEA SERVICE and a Palissy 3 piece TEASET
- 185. Crestedware
- 186. A Goldschieder FIGURE of 2 dancing girls (believed to be either the Gee or the Doll sisters), 16" high. (AF) £300-£400
- 187. A Mason's Ironstone 'Applique' octagonal bowl. £80-120
- 188. An Amphora Arts & Crafts Moulded VASE with hardstone jewellery £80-100
- 189. A Musical CHARACTER JUG
- 190. A Victorian Polychrome POT LID of Dr. Johns £30-40
- 191. 4 Victorian CUSTARD GLASSES
- 192. 3 Graduated Allerton TOBY JUGS £100-150
- 193. A Chinese blue and white SAUCER DISH 12" dia £80-120
- 194. A Victorian Staffordshire COTTAGE MONEY BOX £75-100
- 195. A Victorian Staffordshire COTTAGE MONEY BOX £75-100
- 196. A Victorian Staffordshire COTTAGE MONEY BOX £75-100
- 197. A Victorian Staffordshire COTTAGE PASTILLE BURNER £60-80
- 198. A Victorian Staffordshire COTTAGE PASTILLE BURNER (AF) £30-50
- 199. A Victorian Staffordshire COTTAGE £60-80
- 200. A Victorian Staffordshire COTTAGE £60-80
- 201. An early 19thC Spode Castle Pattern BOWL 9 1/2" square £80-120
- 202. A Ridgway CUP AND SAUCER
- 203. A Shorter Toby TEAPOT. £20-30
- 204. A New Hall mandarin pattern TEA BOWL and SAUCER. £30-40
- 205. A New Hall SUGAR BOWL.
- 206. A Derby PLATE and another (AF).
- 207. A decorative Victorian blue landscape VASE with gilt handles. £40-60
- 208. 3 graduated Victorian pearlware JUGS, blue Art Nouveau transfer design. £25-40
- 209. A pair of Victorian yellow glass tapered VASES with wavy black rim. £20-30

210. 3 glass LAMPSHADES including a cranberry example.
211. A Victorian cranberry glass SUNDAY DISH. £20-30
212. A Victorian floral DRESSING TABLE SET. £20-30
213. A Victorian floral 6-piece TOILET SET. £60-80
214. A Victorian floral 7 piece TOILET SET. £60-80
215. A Grindley Art Deco TEA SERVICE.
216. Two pairs floral BOWLS.
217. A blue and white quadrant STILTON DISH.
218. A Doulton stoneware BOTTLE VASE.
219. Three floral glass VASES.
220. 2 Chamberpots, etc
221. A yellow stoneware STICKSTAND. £25-40
222. A German part glazed BUST of young lady. £20-30
223. A Victorian TEA SERVICE by Samuel Radford Ltd. £120-150
224. A pair of small German floral porcelain VASES. £20-30
225. A pair of Minton TEA PLATES and a tureen lid.
226. 5 Johnson Bros graduated MEATPLATES, Parakee pattern. £30-40
227. A Shorter FISH PLATE.
228. A pair of Minton Japan pattern TRIOS of cup, saucer and plate. £30-40
229. A British Railways PLATE and pearlware COMPOT.
230. 20 pieces of Oriental design DINNERWARE.
231. A Rockingham landscape DESSERT PLATE.
232. Cranberry glass Candleholder, cocktail sticks and glass Candelabra.
233. A 19thC German garniture of VASES, pink ground, panels painted with country scenes. £80-120
235. A Victorian bubble glass VASE. £20-30
236. A blue and white transfer printed WASHBOWL and JUG. £30-40
237. 2 Toby JUGS.
238. A 19thC Cantonese moulded cylinder VASE. £25-40
239. A small 18thC sparrow-beak JUG. £20-30
240. Spare lot.
241. A German porcelain CLOCK CASE. £25-40
242. Prattware PLATE and other china.
243. A Rockingham landscape DESSERT DISH. £25-35
244. A stoneware JARDINIERE STAND.
245. Two graduated Victorian moulded JUGS. £20-30
246. A purple and white WASHBOWL and JUG. £25-40
247. A Crownford floral TOILET SET. £40-60
248. A cut crystal WATER JUG.
249. A cut crystal DECANTER.
250. 9 Small Chinese BUSTS £25-40
251. 8 clear WINE GLASSES with teardrop stems. £10-20
252. A pair of Japanese blue and white FIGURES of leaping carp, 11" high. £80-100
253. An Imari CHARGER, Meiji period, 16" dia. £200-300
254. A pair of 19thC Cantonese baluster VASES, 14" high. £400-600
255. A fine pair of Chinese blue and white TEMPLE JARS, 12" high. £600-800
256. A pair of Satsuma pot pourri VASES, 7" high. £80-100
257. A Satsuma FIGURE of elderly gentleman with long beard and crook. 7 1/2". £70-90
258. A pair of Victorian Staffordshire pottery POODLES, 10" high. £200-300
259. A Victorian octagonal blue and white MEATPLATE. £120-150
260. 2 18thC Delft TILES.
261. A 19thC FIGURE of a young man in a yellow tunic (AF). £100-150

- 262. A pair of 19thC Ethenian moulded stoneware BEERS, 22" high. £200-300
- 263. A Clarice Cliff Harvest pattern moulded JUG 9" high £100-150
- 264. 5 Victorian glass RUNNERS. £50-70
- 265. 5 Victorian glass RUNNERS. £50-70
- 266. 6 assorted Victorian GLASSES. £30-40
- 267. 2 Victorian faceted CUSTARD GLASSES.
- 268. Goblets, etc. £30-40
- 269. A Grimwade TEAPOT and Bavarian Plate.
- 270. A Shelley CAKESTAND.

NETSUKE

- 271. A signed Japanese hardwood NETSUKE a rare study of Inari the Messenger to the Rice Gods. £30-40
- 272. A signed Japanese hardwood NETSUKE a study of a little pig seated upon a religious hat and with coins in its mouth to depict 'hypocrisy' £40-60
- 273. A signed Japanese hardwood NETSUKE a study of a fat Sumo Wrestler wearing a symbolic apron. £40-60
- 274. A signed Japanese ivory NETSUKE a study of a coiled dragon. £40-60
- 275. A signed Japanese ivory NETSUKE a well detailed study of a ram. £40-60
- 276. A signed Japanese ivory NETSUKE a study of a rope-bound wooden tub containing large peanuts. £40-60

JEWELLERY

- 277. A 9ct gold 3 stone diamond RING (13 pts) £60-70
- 278. A 9ct gold 9 stone diamond and ruby half hoop RING. £50-60
- 279. A 9ct gold blue topaz RING. £35-45
- 280. A 9ct gold 18 stone diamond and ruby RING (diamonds 27 pts). £130-150
- 281. A 9ct gold diamond and sapphire RING. £25-35

- 282. A 9ct gold diamond and blue topaz RING. £30-40
- 283. A 9ct gold diamond and sapphire RING. £20-30
- 284. A silver marquise diamonique RING.
- 285. A silver oval diamonique RING.
- 286. A 9ct gold 14 stone diamond ring (31 pts) £130-150
- 287. A 9ct gold diamond and sapphire RING. £25-35
- 288. A 9ct gold diamond flowerhead RING (22 pts). £35-45
- 289. A 9ct gold gents diamond solitaire RING. £40-50
- 290. A 9ct gold 3 stone diamond ring (15 pts). £40-50
- 291. A 9ct gold 9 stone diamond RING. £35-45
- 292. A 9ct gold 9 stone diamond RING. £35-45
- 293. A 9ct gold diamond and blue topaz RING. £35-45
- 294. A 9ct yellow and white gold diamond RING. £40-50
- 295. A 9ct gold 3 stone diamond RING. £45-55
- 296. A 9ct gold diamond pave RING. £50-60
- 297. A 9ct gold diamond cluster RING (18 pts). £90-110
- 298. A 9ct gold shaped diamond RING.
- 299. A silver gilt diamond solitaire RING with set shoulders.
- 300. A 9ct gold pierced RING.
- 301. A 9ct gold square RING. £25-35
- 302. A 9ct diamond and blue topaz RING (16 pts). £55-65
- 303. 9ct gold RING set with 4 sapphires.
- 304. A 9ct gold wishbone RING.
- 305. A 9ct gold BAND. £20-30
- 306. An 18ct gold wishbone RING. £35-45
- 307. An 18ct gold sapphire and diamond RING (dia 32 pts). £630-680
- 308. An 18ct white gold sapphire and diamond RING (dia 40 pts). £240-280
- 309. A 9ct gold diamond and ruby RING (dia 32 pts). £190-210

310. A 9ct white gold diamond and blue topaz cluster RING (dia 16pts). £140-160
311. A 9ct gold diamond wishbone RING. £50-60
312. A 9ct gold diamond and sapphire cluster RING (dia 18 pts). £140-160
313. A 9ct gold smokey quartz RING. £60-90
314. A 9ct gold aquamarine solitaire RING. £40-60
315. An 18ct gold diamond and ruby cluster RING. £150-200
316. A silver an sapphire Necklace.
317. An 18ct gold LOCKET and chain. £30-40
318. A 1707 enamelled 6d PENDANT. £20-30
319. Three 3 colour gold CHAINS. £20-30
320. 2 fancy link gold CHAINS. £25-35
321. A cased set of 6 'Queensway' Art Enamel and silver BUTTONS. £90-120
322. A yellow metal BANGLE with seed pearls. £50-70
323. A 9ct gold Wedding BAND.
324. A 9ct gold Half Hoop RING.
325. A small Victorian gold MEMORIAL BROOCH. £20-30
326. A Victorian gold Memorial BROOCH. £25-40
327. Amber Cigar Holder and costume jewellery.
328. A plated Pocket Watch.

SILVER & PLATEDWARE

329. A pair of Victorian silver Forks adapted as NAPKIN RINGS. London assay. £50-70
330. 3 silver and mother of pearl FRUIT KNIVES.
331. An electroplate 3 piece TEASET. £25-35
332. 6 pairs of Victorian silver KNIVES AND FORKS with mother of pearl handles Sheffield 1862 £120-150
333. An electro plated 4 piece TEASET £80-120
334. Elkington plated COFFEE POT, Tankard and Sugar Helmet £25-35
335. Six 19thC French silver TEASPOONS.
336. A cased set of 12 silver TEASPOONS with bows. Birmingham assay. £120-180
337. A Victorian silver circular TEAPOT by John Winter & Co., Sheffield 1839. 21oz. £200-300
338. 7 Victorian silver APOSTLE SPOONS with gilt bowls. Sheffield 1892. £100-150
339. A Victorian silver SNUFF BOX. Birmingham 1899. £30-50
340. A silver trowel NOTE CLIP and caddy spoons.
341. A George III silver PORRINGER. London 1779, 9oz. £280-350
342. An EPBM TEAPOT, ivory finial.
343. A 4 bottle crystal CRUET on electroplate stand. £20-30
344. An electroplate circular 4-piece TEASET. £25-40
345. An electroplate BOTTLE CRADLE. £25-40
346. A pair of silver salt and pepper MILLS. London Assay. £40-60
347. A Britannia standard CREAMER with scroll handle, 3oz. £40-60
348. A cased set of 10 silver NAPKIN RINGS. Birmingham assay. £80-120
349. An Edwardian silver PEPPERETTE. Chester 1907. £30-40
350. A silver SUGAR CASTOR. Birmingham assay. £40-60
351. A pair of French silver serving SPOONS. £40-60
352. A Georgian and Victorian (Exeter assay) Serving SPOONS. £25-35
353. A silver engine turned CIGARETTE CASE. Chester assay. £20-30
354. A silver engine turned SALVER. Birmingham 1915. £80-120
355. A cased silver DRESSING TABLE SET (AF). £70-90
356. A Sheffield Plate TANTALUS with 3 circular cut crystal decanters. £250-350

357. A fine Victorian papier mache WORKBOX with mother of pearl inlay and gilt decoration. £250-350

358. A George III silver CREAMER. London Assay. 2oz 10dwts. £90-120

CLOCKS & BAROMETERS

359. A Tissot lady's WRISTWATCH.

360. A George III mahogany BANJO BAROMETER inscribed Ceppi & Shelbourne, Grantham. £250-350

361. A large Victorian black slate 8 day MANTEL CLOCK £50-80

362. A George III inlaid mahogany BANJO BAROMETER by A Pagani, Nottingham. £250-350

363. A Victorian papier mache MANTEL CLOCK.

364. An oak 8-day WALL CLOCK, 1930's £30-50

365. A Georgian oak LONGCASE CLOCK painted dial by J Farnworth, Nottingham, 30 hour movement. £400-600

366. A French brass EASEL CLOCK. £25-40

367. A National CLOCK and brass aneroid Barometer (2) £20-30

368. An English Brass CARRIAGE CLOCK £100-150

LATE ENTRIES

369. A Landscape WATERCOLOUR

370. A plated Gallery TRAY £80-120

371. A cased BANJO £35-50

372-475 Spare Lots

PICTURES

476. A pair of maple framed Rural PRINTS. £35-50

477. A pair of Sherrin landscape PRINTS, Hogarth framed. £20-30

478. 4 Spy PRINTS £25-35

479. A wooded landscape in oil signed Mary Crouch 1967.

480. Henry Barlow Carter (Attrib). Shipwreck off Whitby beneath the monastery, watercolour, unsigned, 12.1/2" x 17.1/2". £700-900

481. Oak framed PRINT of a short horned bull.

482. Niemann E. J. (Jnr) Landscape with meandering river and castle in the background, Oil on canvas, signed, 12" x 20", gilt plaster frame. £400-600

483. A Lionel Edwards colour HUNTING PRINT. £20-30

484. A Haigh colour HUNTING PRINT. £20-30

485. A 1901 monochrome PRINT depicting Masters of British Hounds by Dickinson & Foster with proof mark and pencil signature, accompanied by the key plate. £150-200

486. A monochrome HUNTING PRINT with proof mark and pencil signature of Frank Paton and Cecil Cutler. £80-120

487. After Alken, Fores Hunting Casualties, plates 3, 4 & 6. £30-40

488. After Herring. Fores Stable Scenes, plates 1-4. £40-60

489. A colour lithograph of Racehorse and Jockey. £25-35

490. 2 colour lithographs of the Winners' Enclosure and The Allcomers. £50-70

491. 2 Ellison Dog PRINTS

492. 2 colour lithographs of Raceday. £50-80

493. A colour PRINT of The Late Fred Archer. £40-60

494. An 1899 monochrome SHOOTING PRINT with proof mark and pencil signature of Archibald Thorburn. £100-150

495. An 1897 monochrome BATTLE SCENE Print with proof mark and pencil signature of G W Giles. £80-100

496. An 1897 monochrome BATTLE SCENE Print with proof mark and pencil signature of Francois Flemeng and another. £100-150

497. An 1894 monochrome BATTLE SCENE Print signed in pencil G D Giles. £100-150

498. R S White. Village Church and Bridge, watercolour, signed. £30-50

499. 19thC English School. Stabled Racehorse, oil on canvas, indistinctly signed, 12.1/2" x 16.1/2". £150-250

500. A Humorous Coaching PRINT

501. George Goodwin Kilburne. Interior scene of a young lady playing the piano, oil on canvas, signed and dated 1875, 10.1/2" x 8.1/2". £600-800

502. J.Plumb. Landscape with a castle by a lake, oil on canvas, signed. 22" x 32". £80-120
503. Paul Fripp. Mill House, oil-on-board, 16" x 20", signed and dated 1928, oak framed. £50-70
504. A Margaret Tarrant PRINT of girl with fairy.
505. A pair of 19thC colour FASHION PRINTS on silk. £20-30
506. 2 Louis Wain style CAT PRINTS. £25-35
507. A pair of PRINTS of Boating scenes by Garman Morris. £25-40
508. A floral spray painted on milk glass.
509. A pair of colour PRINTS in Hogarth frames. £25-40
510. A set of 13 Cries of London PRINTS. £30-50
511. 19thC English School. Portrait Study of a white bearded elderly gentleman, Oil on canvas, lined on board 14" x 10" £80-120
512. J Ducher. Riverscape, oil on canvas, signed and dated 1928, 16" x 20". £40-60
513. 2 colour engravings of Apethorpe Hall & Deene Park and 2 needlework pictures of Lincoln and Peterborough Cathedrals. £20-30
514. A Cornish PRINT and watercolour of Ferry Caudabec.
515. A print of Tintern Abbey, oak framed.
516. Grantham King's School photograph 1950 and a landscape print.
517. An Eastern miniature watercolour of a Temple, and a print. £25-40
518. Two 19thC Jasperware Pictures, framed. £40-60
519. Two 19thC Jasperware Pictures, framed. £25-40
520. A coloured Print of cottage signed Victor Manniey in pencil.
521. 3 ornithological PRINTS.
522. A colour MAP of Lincolnshire.
523. A colour print 'La Course', Hogarth frame.
524. S Harrison. Market Scene, oil on canvas, marked 'Quimper - Normandy' verso, signed and dated 1899, 19" x 15". £200-300

525. 19thC English School. Rural landscape, oil on canvas, indistinctly signed. 16" x 25". £150-200
526. A Redoutte print of Rose.
527. A Victorian colour engraving, 'The Worship of Bacchus', 22" x 39", gilt framed. £250-350
528. After Shayer. Donkey in landscape, oil on canvas, 12" x 17". £180-250
529. An engraving after Bartolozzi, Hogarth framed. £20-30
530. P.MacGregor Wilson RSW. The sound of the Mull, WATERCOLOUR, signed. 7" x 10". £40-60
531. A Graham. Landscape, oils on card, pair, signed, 8" x 15". £25-40

RUGS

532. A Persian Tabriz CARPET. £280-350
533. A Persian Serab RUG. £120-150
534. A Belough RUG. £80-100
535. A Persian Kilim. £90-120
536. A small Indian RUG. £20-30

FURNITURE

537. A 19thC Beidermaier Mahogany BUFFET £200-300
538. A Victorian Mahogany COMMODE CHEST £80-120
539. An Edwardian Walnut MUSIC CABINET £150-200
540. A Victorian painted pine CHEST with traytop and serpentine front. £300-400
541. 3 carved oak and leather DINING CHAIRS. £50-80
542. A 19thC crossbanded mahogany POT CUPBOARD. £180-250
543. A 19thC mahogany WINE TABLE. £40-60
544. A 19thC mahogany WINE TABLE. £30-40
545. A Victorian mahogany CHEST of 2 short and 2 long drawers. £90-120
546. A Victorian walnut NURSING CHAIR. £40-60

547. A Victorian elm STOOL. £20-30
548. A Victorian elm and yew GRANDMOTHER CHAIR. £100-150
549. An Edwardian WASHSTAND, no top.
550. An Edwardian satinwood Gramophone CABINET. £50-80
551. A Victorian grain painted pine LINCOLNSHIRE DRESSER. £150-200
552. A limed oak STANDARD LAMP. £20-30
553. An American oak and elm GRANDFATHER CHAIR. £100-150
554. A Georgian grain painted pine hanging CORNER CUPBOARD. C.2'6 high. £60-90
555. A Victorian carved walnut CHAISE LONGUE with serpentine seat and cabriole legs. £250-350
556. A Victorian CHAISE LONGUE with turned walnut legs and red floral moquette coverings. £150-200
557. A Georgian painted pine BLANKET BOX. £40-60
558. A Victorian pine scrubtop KITCHEN TABLE with 2 drawers and fall flap. £80-120
559. A Victorian painted pine CHEST of 6 drawers with scrub top. £50-80
560. A Victorian lathback GRANDFATHER CHAIR. £60-80
561. A set of 4 Edwardian walnut DINING CHAIRS, red floral moquette covers. £100-150
562. A William IV mahogany scroll arm CARVER CHAIR. £80-120
563. A Victorian SMOKER'S BOW CHAIR with double H Stretcher.
564. A Victorian pine scrubtop KITCHEN TABLE. £80-120
565. A Victorian spoonback LADIES CHAIR. £120-180
566. A 1930's reclining CHILD'S CHAIR.
567. A Victorian NURSING CHAIR with turned front legs. £30-40
568. A Victorian lathback GRANDFATHER CHAIR. £50-80
569. Four SIDE CHAIRS, matching the previous lot. £40-60
570. A Victorian mahogany STEP COMMUNE. £20-30
571. A small oak OPEN BOOKSHELF. £25-40
572. An Edwardian stringed mahogany DOUBLE BED. £50-80
573. A George III mahogany PEMBROKE TABLE. £200-300
574. A barleytwist TORCHERE. £30-50
575. A Victorian grain painted POT CUPBOARD. £30-50
576. An oak LOGBOX. £25-40
577. A William IV rosewood OCCASIONAL TABLE. £50-80
578. A Victorian satinwood WRITING DESK with leather insert moulded top, door and fluted legs. £280-350
579. A Victorian mahogany OPEN BOOKCASE, 15" deep, 39" high, 6" wide. £300-500
580. A late 19thC French parcel gilt 4-fold SCREEN of rococo design. £200-300
581. A William IV mahogany spoonback OPEN ARMCHAIR in blue rexine (AF). £100-150
582. A George III mahogany CHEST of 2 short and 3 long drawers, later handles and caddy top. £120-180
583. A 19thC mahogany PEMBROKE TABLE. £120-150
584. A 19thC Austrian mahogany WRITING TABLE with gilt brass mounts. £800-1200
585. A Victorian mahogany DOUBLE BED with barleytwist headboard. £100-150
586. A Victorian pine extending DINING TABLE, The 'K' patent. £150-250
587. A Victorian SOFA with padfeet (AF). £70-100
588. An Edwardian mahogany OCCASIONAL TABLE with undershelves, inlaid with satinwood panels and crossbanding. £450-550
589. A Victorian mahogany STOOL with cabriole legs, shaped frieze and red velvet upholstery. £500-700
590. A George II mahogany TEA TABLE with folding rectangular top and square legs. £200-300
591. An early 19thC black lacquer and chinoiserie CARVER CHAIR, caned seat and back. £150-200
592. A mid 19thC French floral marquetry 3 tier ETAGERE. £280-350
593. A George III mahogany WIGSTAND. £250-350

594. A pair of Victorian DINING CHAIRS in the Chippendale manner. £30-50
595. A Victorian mahogany windout DINING TABLE with D ends, 3 leaves, reeded square taper legs, brass castors. 93" x 48" max. £900-1200
596. A set of 4 19thC mahogany DINING CHAIRS with pierced splats in the Hepplewhite manner. £350-450
597. A 1930's burr walnut ESCRITOIRE/BOOKCASE with central quartered veneered, fall front with fitted interior over three drawers and flanked by glazed leaded light book compartments. Raised on short cabriole supports. 48" wide £180-250
598. A Victorian cast iron FIREPLACE. £50-80
599. A George III mahogany BUREAU BOOKCASE, two astragal glazed doors over a fall flap concealing a fitted interior, 4 graduated drawers pierced brass handles and escutcheon. 42" wide, 94" high. £900-1200
600. A stripped pine BUFFET. £150-200
601. An early 19thC mahogany bowfront CHEST of 2 short and 3 long drawers, knob handles and turned feet, 40" wide. £280-350
602. A Regency mahogany CHEST of 2 short and 3 long graduated drawers, brass knob handles, splay feet, 41" wide. £200-300
603. A Fine Victorian Walnut CREDENZA with scroll carving, framed mirrorback, shaped marble top and 3 mirror doors, 49" wide. Illustrated on centre pages £900-1200
604. A cherub carved oak WALL MIRROR. £20-30
605. A George III mahogany SECRETAIRE BOOKCASE with astragal glazed 2-door bookcase over a satinwood fitted secretaire drawer over 3 graduated drawers, turned handles and feet. 49" wide. (No cornice). £600-900
606. A Regency mahogany BUFFET with lion mask heads, reeded pillars and four paw feet. £400-600
607. A Queen Anne Walnut CHEST of 2 short and 3 long graduated doors, moulded top, drop handles and bracket feet 41" wide. Illustrated on centre pages £900-1200
608. A rosewood cased overstrung UPRIGHT PIANO by J + J Hopkinson, London. £80-120
609. An oval gilt framed WALL MIRROR.
610. A late Victorian walnut CHIFFONIER with mirror back and drawer over 2-door cupboard base. 42" wide. £350-450
611. A late Georgian oak CHEST of 2 short and 3 long drawers, knob handles and bracket feet. 42" wide. £120-180
612. A late Victorian walnut linenfold DOUBLE WARDROBE, WASHSTAND and DRESSING CHEST. £250-350
613. A Victorian satinwood marbletop WASHSTAND with Arts & Crafts tile back. £60-90
614. A Victorian satinwood CHEST and DRESSING CHEST. £120-180
615. A George III mahogany CAMPAIGN CHEST of 2 short and 2 long drawers, recessed brass handles, turned feet. 42" wide. £300-400
616. A 19thC cross banded mahogany PRESS CUPBOARD with 2 doors over 2 short and 2 long drawers. 52" wide, 6'6" high. £600-900
617. A large Victorian MIRROR FRAME (AF).
618. An oak framed bevel WALL MIRROR.
619. A Victorian Tonbridgeware overmantel MIRROR. £20-30
620. A 19thC stripped pine CORNER CUPBOARD, 6'6" high. £300-400
621. An oak BEDROOM SUITE comprising Wardrobe, marbletop washstand, dressing chest and double bed.
622. A Victorian mahogany WARDROBE with mirror door. £100-150
623. A Victorian carved walnut DRESSER with broken arch pediment, mirrorback, 2 drawers over 2 doors. £180-250
624. A panelled oak COURT CUPBOARD. £200-300
625. A gilt carved rococo WALL MIRROR. £150-200
626. A late Victorian carved walnut SIDEBOARD. £180-250

END OF SALE



LOT 480



LOT 501



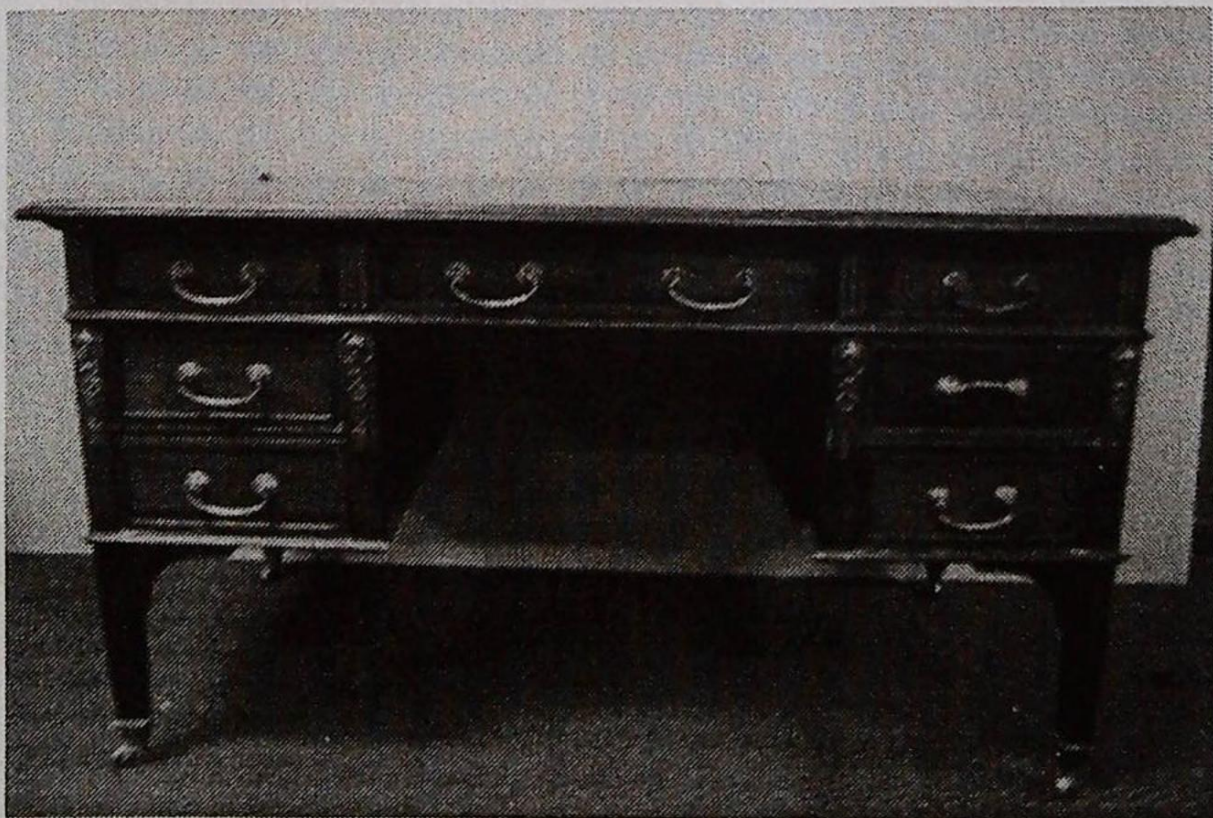
254

255

253

255

254



LOT 584