

Established 1900

**-GOLDINGS-**

**THE GRANTHAM AUCTION ROOMS**

Upon instructions from the Executors of Estates, Private Collectors,  
and House Clearances from throughout Lincolnshire.

GOLDING YOUNG & Co. will sell by AUCTION  
**Antiques & Fine Art**



**On Wednesday, 7th August, 1996 at 10.00 a.m.**

**Golding Young & Co.**

**Old Wharf Road, Grantham, Lincolnshire, NG31 7AA**

**Telephone: (01476) 65118**

**Fax: (01476) 61475**



## CONDITIONS OF SALE

1. These Conditions together with any Notices to Purchasers are the only terms and conditions subject to which Golding Young & Co. ("the Auctioneers") as agents for the Vendor will sell goods to a purchaser ("the Bidder") and all other conditions, whether express, or implied at common law or by statute as are capable of lawful exclusion are hereby excluded.
2. The highest bidder shall be the buyer. The Auctioneers reserve the right of regulating the biddings; of rejecting any bid; and of bidding for, withdrawing, consolidating, dividing or altering the order of lots.
3. The purchase money for each lot with the usual commission of 10% plus VAT at the current rate shall be paid at the fall of the hammer (if required). Each lot at the fall of the hammer shall be at the sole risk and expense of the buyer, and shall be paid for and removed immediately after the conclusion of the sale, *but no lot shall become the property of the buyer, or be removable until paid for*, and if taken away in contravention of these conditions without an order for removal signed by the Auctioneers, they shall have power to seize the same by their servants or agents, or otherwise, or the Auctioneers may recover either the lot sold or the price thereof (at their option) by action at law.
4. No contra account of any description whatever will be allowed to the buyer as a set off, and payment for each Lot shall be made to the Auctioneers or their clerk only, and a buyer paying by cheque must give satisfactory references.
5. For all purposes of this sale the Clerk of the Auctioneers shall be deemed to be the agent of both seller and buyer.
6. A bidder shall not be allowed to retract his bidding after the fall of the hammer, and he shall give up his full name and address if required. The Auctioneers will not recognise the transfer of any lot from one buyer to another, nor make any alteration in the sale book in respect thereof.
7. The Auctioneers are acting only as agents, and give no personal warranty as to the condition, quality or authenticity of any chattels offered for Auction. Any catalogue description is given merely as guide to purchasers, any description can be changed from the rostrum before the lot is sold. If a purchaser buys without previous inspection he will do so at his own risk.
8. Notwithstanding any other terms in these Conditions, if within 7 days of the Sale a purchaser gives notice in writing that a lot is a deliberate forgery, with supporting factual evidence, the Auctioneers may rescind the transaction. The burden of factual proof lies with purchaser, mere opinions will not satisfy. This benefit is not assignable.
9. If any buyer neglect or refuse to comply with the above conditions or any of them, his deposit money (if any) shall be forfeited, and the lot uncleared may, at the option of the Auctioneers, be resold without notice by public auction or private treaty, and any loss occasioned by such re-sale together with all expenses attendant thereon, or arising under these conditions shall be paid for by the defaulter and be recoverable as and for liquidated damages. This condition is however without prejudice to the right of the Auctioneers to enforce the contract made at this sale if they think fit.
10. Any Notes for Purchasers and Catalogue Glossaries will be construed as Conditions of Sale.
11. The Auctioneers shall be the sole Arbitrators in all matters of dispute relating to those conditions both as between the seller and the buyer and between the several bidders and buyers and their determination on all matters shall be final and binding on all parties concerned.

Auctioneers: C. Robin Hall FRICS FAAV & Colin R. Young FNAVA





Established 1900

**-GOLDINGS-**

• Fine Art Auctioneers & Valuers •

THE GRANTHAM AUCTION ROOMS

Golding Young & Co  
Telephone: (01476) 565118

Old Wharf Road, Grantham, Lincs NG31 7AA  
Fax: (01476) 561475

GOLDING YOUNG & Co. will sell by AUCTION

# Antiques & Fine Art

On Wednesday, 7th August, 1996, at 10 a.m.



**Viewing Times:**

Sunday 4th: 2 p.m. to 4 p.m.

Tuesday 6th: 2 p.m. to 7 p.m.

Saleday 7th: 9 a.m. to 10 a.m.

**Cover Illustration:**

Lot 201

**Frontispiece Illustration:**

Lot 46



## IMPORTANT NOTES FOR PURCHASERS

1. **PAYMENT:** Must be made in full immediately after the Auction. The following methods of payment are acceptable.  
a) Cash   b) Bankers Draft   c) Building Society Cheque  
d) Cheques, accompanied by a valid card. For accounts above the stated card limit, we reserve the right to retain the goods until clearance is established.
2. **BUYERS PREMIUM:** of 10% + VAT is payable on all lots.
3. **REMOVAL OF PURCHASES:** Goods must be collected as soon as they are paid for, and in the Two Working Days following the sale. If goods are not collected on these days we reserve the right to charge £1 per lot per day thereafter.
4. **COMMISSION BIDS:** If you are unable to attend this or any of our future sales we will be pleased to bid on your behalf. We always purchase at the lowest possible price, subject to other bids and reserves.  
  
All bids must be handed to the office on an official form. It remains the responsibility of prospective purchasers to contact GOLDINGS to confirm whether their bids have been successful.
5. **TELEPHONE BIDS:** There are inherent dangers with this practice, therefore all such arrangements are made entirely at the bidder's risk. Telephone bids will only be accepted if the lower catalogue estimate is £500 or above. For lots with a lower estimate below this figure Commission Bids Only will be accepted.
5. **SMOKING:** is not permitted in any part of the Saleroom.
6. **REFRESHMENTS:** will be available Saleday.
7. **ACCOUNT TRANSFERS:** will not be recognised after the sale. If any lots are purchased for another person, this must be declared at the fall of the hammer.

## GLOSSARY

- a) Generally: '*As Found.*' (AF). This term indicates the lot has some damage. Its absence does not indicate that the lot is free of defect. All lots are SOLD AS SEEN.
- b) Paintings: '*Signed, initialled, monogrammed.*' This refers to the present state of the work and is not an attribution.
- c) Books and printed matter: These items are not sold subject to collation and are not returnable once removed from the premises.
- d) Silver & Jewellery: Weights given are approximations given by basic instruments.



## ANTIQUARIAN & COLLECTORS' BOOKS

1. An early 19thC facsimile copy of  
THE MAGNA CARTA
2. The Complete American Farrier  
and a sketchbook
3. Wayside and Woodland  
Blossoms, 2 vols and Wayside  
and Woodland Trees
4. Plant Traps and Decoys by F M  
& L T Duncan; Birds, Shown to  
the Children and The World I  
Know by Westell and Turner
5. 6 vols on Woodland and Forestry  
and 8 miscellaneous vols
6. Smith's Catalogue Raisonne of  
the eminent Dutch, Flemish and  
French Painters, 8 vols  
+ supplement
7. Olliver Goldsmith. A History of  
the Earth and Animated Nature  
in 2 vols, half calf, over 2,000  
illustrations
8. The Works of Bret Harte, 6 vols,  
gilt blue cloth
9. John Locke. An Essay  
concerning Human  
Understanding, 1819, 2 vols.
10. Rosenberg. Der Goldschiede  
Markzeichen, 4 vol set
11. British Birds, Nests and Eggs,  
vols 1, 3, 5 and 6 and The Bird  
by Jules Michelet 1869
12. The National Gallery 100 Plates  
in Colour, 2 vol set
13. W G Thompson. A History of  
Tapestry
14. Ceramic Art in Great Britain,  
2 vol set
15. C A Markham. Church Plate of  
the County of Northampton
16. John Harwood Hill. The  
History of the Parish of  
Langton, Leics 1867
17. The pictorial Museum of  
Animated Nature, 2 vols
18. Warwickshire County  
Biographies in the reign of  
Edward VII, gilt morocco
19. G E Hering. Mountains and  
Lakes of Switzerland, etc  
complete with 18 colour plates
20. Book of Wild Flowers
21. Comic History of England,  
Oxford Blues, Ye Sundial Booke
22. Rembrandt, His Works and 2 vol  
catalogue
23. Chinese Pottery Books (4)
24. Women Painters and other Art  
Books
25. Cripps. Old English Plate, etc  
(4)
26. Furniture, Clocks and Rug Books  
(4)
27. English Pottery Factory Book (4)
28. English Pottery Factory Books  
(4)
29. Henry Haward. Histoire de la  
Faience de Delft and 2 others
30. Old Pottery Books (6)



31. Books on Irish Glass and Militaria
32. Discourses of Reynolds, Mountains of Piemont, etc
33. Heraldic Illustrations 1845 and 1846
34. M L Solon. The Art of the Old English Potter, Ltd Edition 22 of 250, 1883
35. C A Markham. The Stone Crosses of the County of Northamptonshire, Ltd Edition 19 of 50
36. The Turner Gallery, 2 folios of engravings and Book
37. Old Lincolnshire, vol 1 1885
38. Rebecca West. Black Lamb and Grey Falcon, 2 vols.
39. Butler's Works, 6 vols, half calf marbled
40. Practical Decoration of Furniture, 3 vols
41. VRI Hér Life and Empire
42. Algernon Sidney. Discourses concerning Government
43. Works of the Epistles, 3 vols skin bindings
44. Bryan's Dictionary of Painters and Engravers, 5 vol set
45. Bryan's Dictionary of Painters and Engravers, 3 vol set

## COLLECTORS' ITEMS & MISCELLANEA

46. A 1963 MGB Roadster CAR.  
Fully restored 2 years ago and 6,000 dry miles since, Olde English White, M.O.T., (pull handle model). *Illustrated on frontispiece.* NOTE: *The car will only be available for viewing on the Tuesday and Saleday.* £6000-8000
47. A late Victorian toleware PERAMBULATOR £400-500
48. A mid Victorian wickerwork PERAMBULATOR £400-500
49. A finely crafted wooden MODEL of the 3 mast SAILING SHIP 'SUPERBE', in a glazed case. *54" high, 60" wide, 26" deep. Illustrated.* £1200-1500
50. Heavy horse HARNESS, etc £20-30
51. A Victorian rosewood marquetry WRITING BOX with fall flap concealing a fitted interior £300-400
52. A fine 19thC EASEL FRAME of foliate ivory openwork over a tortoiseshel ground. *11" high* £100-150
53. A Regency rosewood sarcophagus WORKBOX with mother of pearl inlay and fitted interior £140-180



54. An early Victorian coromandel shaped and domed STATIONERY BOX, the top and strapwork decorated with intricate floral Tonbridgeware, by Edmund Nye. £350-450
55. An RAOB mounted Buffalo HEAD £120-150
56. A brass and copper COAL BUCKET £20-30
57. A WWI parafin LAMP £20-30
58. A Carl Zeiss Jena No 70599 black and chrome monocular MICROSCOPE, boxed £60-80
59. A WWI steel 'Tommy' HELMET £20-30
60. A pair of Victorian brass CANDLESTICKS £20-30
61. A Victorian walnut dome top WORKBOX £25-40
62. A Victorian mahogany WORKBOX £20-30
63. A 19thC pine WRITING SLOPE
64. 1 1930's floral transfer decorated LIGHT SHADE
65. A brass SHELL CASE Companion Set £20-30
66. An old DINNER JACKET £20-30
67. Musical Ephemera inc 1966 NME £15-25
68. Brass Tea CADDY and pair brass CANDLESTICKS £20-30
69. A 1920/30's DOLLS HOUSE and furniture. £40-60
70. 2 pairs KID GLOVES, 1920's
71. A 19thC bisque headed DOLL with glass eyes, hair, stuffed body and composite limbs, 17". £50-80
72. Qty Bottles and Jars
73. A satin BONNET, cloak, etc £5-15
74. A Grantham stoneware SPIRIT BOTTLE, T Broughton Walkergate £100-150
75. A Victorian Pictorial SAMPLER £50-80
76. A Victorian pierced brass FENDER, 32" wide £50-80
77. Collection of Horse BRASSES; 2 x 3 brass Martingales, face piece and c16 loose brasses  
*NOTE: All proceeds from this lot will go to the Imperial Cancer Research Fund. £30-50*
78. A George V DRESS SWORD £60-90
79. An ebonised and bone Prisoner of War BOX £20-30
80. A WWI brass GUNSIGHTING by Ottway & Co £25-40
81. A Victorian mother of pearl chinoiserie DESK BLOTTER £50-70
82. A Victorian brass ROASTING JACK with spit £20-30
83. A Victorian brass LADLE £5-15
84. An Antique 4-brass MARTINGALE £40-60



85. An Antique 4-brass MARTINGALE and stirrups £40-60
86. A Victorian copper KETTLE £30-50
87. A cast iron circular PLAQUE "Great Eastern Railway" £20-30
88. A Victorian copper KETTLE £20-30
89. A Victorian oval FRAME and portrait (2) £10-20
90. A small Victorian galleried brass FENDER £25-40
91. A large leatherbound TRUNK £20-30
92. A pair of 19thC brass CANDLESTICKS £15-25
93. An early 2-piece 10' 2 Greenheart FISHING ROD by Farlow of London £20-30
94. A Philco bakelite RADIO £20-30
95. A pair of Greek style brass WALL LIGHTS £25-40
96. Assorted glass LAMPSHADES and 2 picture lights £40-60
97. A hammered pewter 3-piece TEASET and a Water Jug £20-30
98. A pair of Victorian circular brass CANDLESTICKS and 2 reproduction pairs £50-70
99. A Victorian OIL LAMP with clear glass reservoir £40-60
100. A 19thC French spelter MARLEY HORSE and another £25-40
101. A set of Victorian brass FIRE IRONS £25-40
102. A WWII GAS MASK and HELMET £15-25
103. A Chippendale design mahogany TEA CADDY with brass loop handle £60-80
104. A pair of Victorian brass CANDLESTICKS £20-30
105. A Victorian marble based brass CANDLESTICK £5-15
106. 3 mahogany FISHING RODS in a J Bernard & son box £80-100
107. A pair of Victorian circular brass CANDLESTICKS £25-35
108. A pair of Victorian circular brass CANDELSTICKS £25-35
109. A pair of Victorian brass CANDLESTICKS £18-25
110. An old brass BIRDCAGE £15-25
111. A Victorian brass bound walnut DESK BLOTTER £30-40
112. 'The Walkden' Sealing Wax Set £5-15
113. An old Stamp Album
114. A signed Japanese ivory OKIMONO of a serpent entwined at the feet of a man carrying fruit and figures, 10" high £150-200
115. A signed Japanese ivory OKIMONO of a traveller and children carrying his bag of belongings above his head, 10" high £200-300



116. A signed Japanese ivory OKIMONO of a fisherman losing part of his catch, 8" high £250-350
  117. A signed Japanese ivory OKIMONO of a man carrying a sickle and baskets, 9" high £150-200
  118. An ivory FAN £70-90
  119. A Victorian 12 bore side by side SHOTGUN £150-250
  120. Ignacio Ugartechea-Eibap Spanish 12 bore side by side SHOTGUN £100-150
  121. 6 Regimental CAP BADGES including a WW1 Tank Corps example
  122. A 19thC bronze cased nest of graduated WEIGHTS £80-120
  123. A collection of approximately 37 1960's/1970's Robinson Golliwog figures and 6 lapel badges £60-80
  124. A pair of 19thC French bronze CANDELABRA each with 3 sconces around a crane, reeded column and 3 hoof feet. 24" high £600-800
  125. A George III tortoiseshell and ivory pagoda shape TEA CADDY. *Illustrated.* £1000-1400
  126. A Regency tortoiseshell, brass and silver mounted dome top TEA CADDY. *Illustrated.* £900-1200
  127. A Victorian oval tin with APOTHECARY SCALES £20-30
  128. A 19thC Oriental KNIFE and CHOPSTICKS in a shagreen effect lacquer scabbard £80-120
  129. A box-lock percussion PISTOL (AF) £15-25
  130. Military Buttons and Badges £20-30
  131. A Victorian brass and coromandel DRESSING TABLE BOX fitted with silver and plated mounted jars and accessories £300-400
  132. A Corgi Toys 1127 Simon Snorkel FIRE ENGINE, boxed £25-40
  133. A pair of Baxter PRINTS on panel £40-60
- 
- ## GLASS & CERAMICS
- 
134. A Royal Worcester model 716 miniature SHELL, 1909 £30-50
  135. A Royal Crown Derby blue and white miniature SUCCRE £35-45
  136. A Grantham crested STATUE of Sir Isaac Newton £15-25
  137. An oriental Bowl and Copenhagen Vase £10-20
  138. A Royal Worcester cream ground PIN DISH with cover, 1918 £50-70
  139. A Royal Worcester 1021 miniature EWER, 1904 £50-70



140. A Royal Worcester cream ground miniature TYG, 1904 £40-60
141. A Royal Worcester cream ground model 1326 POT with cover, 1907 £50-70
142. A Royal Worcester CUP AND SAUCER painted with birds, 1907 £50-70
143. A Royal Worcester shallow square DISH painted with flora, 1904 £180-250
144. A Royal Worcester cream ground model 1094 EWER painted with a floral spray, 1908 £150-200
145. A similar lot £150-200
146. A Royal Doulton Kingsware pot belly GOLFING JUG, 9" high. *Illustrated.* £350-400
147. A Royal Doulton Kingsware pot belly GOLFING TANKARD, 6" high. *Illustrated.* £200-250
148. A Chinese BOWL with a central serpent enclosed in a red diaperwork field, with red, blue and green enamel panels, Wan-Leih mark in underglaze blue, 10" diameter £180-250
149. A fine pair of Chelsea FIGURES of a young boy and girl surrounded by floral bocage, on scroll bases, 11" high. *Illustrated.* £1000-1500
150. A pair of Hungarian hand painted WALL PLATES £20-30
151. A pair of Victorian glass baluster VASES with transfer printed decoration (AF) £25-40
152. A small olive Celadon JARDINIERE £25-40
153. 2 Wedgwood pearlware PLATES and 2 Copeland saucers, impressed marks £25-40
154. A pair of 1950's oil glass flared VASES £15-25
155. 4 Wedgwood TURKEY PLATES and tankard £20-30
156. A set of 6 German 19thC stoneware Kitchen STORAGE JARS and SALT POT £80-120
157. A 19thC Austrian green stoneware MODEL of an ELEPHANT (AF), 26" high £100-200
158. 8 large WINE GLASSES
159. A Victorian cranberry glass EPERGNE (AF) £100-200
160. 2 Royal Crown Derby Japan pattern CUPS and SAUCERS and teaplate £30-50
161. A Royal Crown Derby style 18-piece TEA SERVICE £40-60
162. A pair of Victorian gilt pink glass LUSTRE VASES (1 AF), 14" high £100-200
163. A Chatsworth flow blue DINNER SERVICE of over 45 pieces £120-180
164. A Royal Crown Derby style octagonal FRUIT BOWL £25-40
165. A late 19thC German pierced porcelain BASKET with cherubs by von Shierholtz, 12" £80-120



166. A pair of Victorian crystal DECANTERS £20-30
167. A 19thC Japanese Kutani CREAMER £25-40
168. A Beswick 2 handled circular BOWL £20-30
169. A 19thC Prattware MASK JUG £50-80
170. A 19thC Chinese TEAPOT (AF) £20-30
171. A 19thC green Imari hexagonal BOWL, 10" £70-90
172. A 19thC Chinese pottery TANKARD £30-50
173. A pair of heavy crystal square DECANTERS £30-50
174. A large Bretby floral JARDINIERE £25-40
175. 5 Royal Crown Derby gilt floral COFFEE CANS £35-45
176. A Victorian Doulton stoneware HARVEST JUG with silver rim. London 1898 £35-45
177. A Royal Doulton lustrous BOWL painted with birds and flora on a green background, 10" dia. £60-90
178. A Wedgwood lustrous BOWL with moulded base, gilt diaperwork and dragons on a blue interior and orange exterior, 10" dia. £120-150
179. A 19thC Cantonese hexagonal BALUSTER VASE, interior scene panels with figures on a floral field. 16". £120-150
180. A 19thC Staffordshire polychrome POT LID - A Pair £35-45
181. A Belleek hexagonal shaped twist VASE £30-40
182. A pair of Belleek oyster shell CUPS and 4 saucers £20-30
183. Oriental Teabowl, figures, etc £25-40
184. A Roman design Scent Bottle STAND, porcelain lion and a trio £25-40
185. Vaseline Bowl, Lampshades and other glassware
186. A pair of Victorian DECANTERS and an ale glass £25-40
187. A Japanese eggshell china TEA SERVICE £20-30
188. A Roman style bubble glass shallow BOWL £15-25
189. A Victorian CHAMBER POT AND WASHBOWL £20-30
190. A Royal Crown Staffordshire floral decorated TEA SERVICE £60-80
191. A Losolware TOILET SET comprising chamber pot, washbowl, ewer, soap dish and shaving mug £100-150
192. A Victorian flow-blue DINNER SERVICE £100-150
193. Fruitset and other glassware including cranberry trumpets



194. A 'Glossana' handpainted floral PLAQUE and a further pair £25-40
195. A Royal Doulton EWER painted with drinking Cavaliers £25-40
196. A 19thC Wedgwood Jasperware JUG with pewter lid £20-30
197. Washbowl, plates, etc
198. A Sutherland floral TEA SERVICE £30-50
199. A Victorian TEA SERVICE with a green floral border £30-50
200. A 19thC Staffordshire pottery PULPIT FIGURE of John Wesley £70-100
201. A Staffordshire pottery group of 2 lovers seated (AF) £20-30
202. A 19thC ironstone LOVING CUP with floral decoration £25-40
203. A pair of glass SWANS £10-20
204. A set of 6 Victorian cut crystal SUNDAY GLASSES £30-50
205. A cut crystal VASE £10-20
206. 2 Carltonware DISHES £15-25
207. A Wade Heath JUG depicting a pedestal birdhouse £25-40
208. Botanical Plate, Teapot and Sugar Bowl £15-25
209. Water Jug and engraved glasses £10-20
210. A Victorian DECANter and 2 Bowls £10-20
211. A porcelain BISCUIT JAR £15-25
212. A pair of Royal Doulton stoneware baluster VASES, 14" high. *Front cover illustration.* £450-600
213. A Victorian star-cut crystal DECANter £20-30
214. A 19thC SPILL VASE transfer decorated on a pink ground £20-30
215. A pair of cut-crystal CANDLESTICKS, 9" high £30-40
216. A pair of 19thC German bisque SPILL FIGURES £30-40

## CLOCKS, WATCHES & BAROMETERS

217. A Negretti and Zambra brass MARINE BAROMETER £300-400
218. A 19thC flamed mahogany LONGCASE CLOCK, the pillared hood having swan neck pediment, the moon crescent painted with a sailing boat, spandrels with windmills and Boston Stump, *Maker Wm S Arnold BOSTON*, 8 day movement with seconds ring and date crescent, the trunk having arch door and cluster columns, the base having bracket feet. 91" high £1200-1500



219. A George III oak LONGCASE CLOCK with Greek key cornice, pillared hood, square arch brass dial with silvered name disc and chapter ring, seconds ring and date crescent, *Maker John Hargreaves SLEAFORD*, 8 day movement £1200-1500
220. A Georgian oak LONGCASE CLOCK, dentil cornice, pillared hood, square painted dial, seconds ring, date crescent, 8 day movement £450-600
221. A 19thC Black Forest MANTEL CUCKOO CLOCK, 23" high £280-350
222. A 19thC French ormolu FIGURAL MANTEL CLOCK surmounted by Napoleon on horseback, 17" high £300-400
223. A late 19thC French gilt-brass CARRIAGE CLOCK, cased (AF) £100-150
224. A 19thC French ormolu MANTEL CLOCK with painted porcelain orb, dial and panel. £800-1000
225. A Longines Conquest automatic Gents WRISTWATCH £100-150
226. A Tissot gold plated Seastar Seven Gents WRISTWATCH £50-80
227. A fine French gilt brass CARRIAGE CLOCK. £300-400
228. A Garrard quartz WRISTWATCH, service presentation from Ford Motor Company (no inscription) £80-100

229. A gentleman's hunter POCKET WATCH with foliate chased gold plated case £60-80

## SILVER, PLATEDWARE & BIJOUTERIE

230. An electroplate 2 bottle PICKLE STAND £25-40
231. An electroplate 4-piece canted TEASET £100-150
232. An electroplate INKSTAND with 2 crystal wells and bun feet, 9" x 6" £100-150
233. A plated 7 piece TEASET £25-40
234. An electroplate globular SPIRIT KETTLE on rustic stand £60-80
235. An electroplate TRAY £20-30
236. Various plated Cutlery, etc £5-15
237. An electroplate pierced TAZZA £10-20
238. An electroplate rectangular CAKEDISH with swing handle £25-40
239. An electroplate TEAPOT, sugar bowl and 2 creamers £20-30
240. An electroplate London shape TEAPOT and CREAMER £15-25
241. Four pieces plated TEAWARE £20-30
242. Hors D'oeuvre DISH and other plated ware
243. An oak CANTEEN of 6 pairs bone handled fish Cutlery and Server £25-40

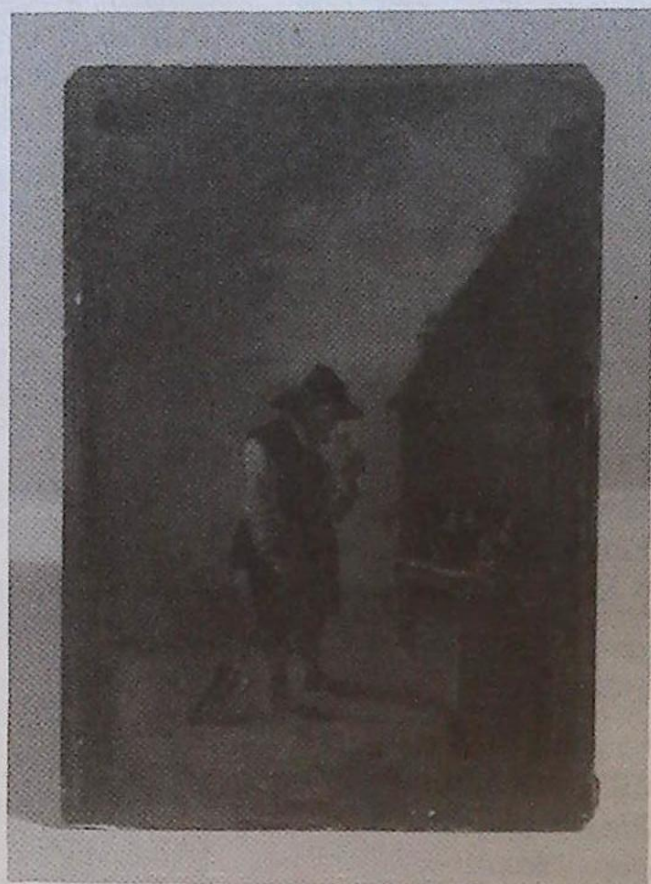


244. An electroplate TEAPOT and COFFEE POT £20-30
245. An electroplate columnar TABLELAMP on a 4 footed square base £90-120
246. A Victorian silver VINAI-GRETTE of shaped rectangular form, engine turned top and base, gilt interior with foliate openwork. Maker TJ (Tyrle Joel or Thomas James). London 1866. 44mm. *Illustrated*. £250-350
247. A George III silver rectangular SNUFF BOX with engine turned decoration and gilt interior. Maker Thomas Straw. 55mm £100-150
248. A similar lot with a heavy floral rim. Maker Thomas Shaw. Birmingham 1841. 65mm £150-250
249. A George III silver rectangular SNUFF BOX pinstruck with a scene of huntsman walking his horse, gilt interior. Maker Thropp & Taylor. Birmingham 1810. 60mm £250-350
250. A Victorian silver-gilt oval SNUFF BOX with bright-cut foliate scrolls. Maker Charles Reily and WS. London 1837. 90mm £500-700
251. A Victorian silver mounted rectangular AGATE BOX with canted corner. 65mm £150-250
252. A George III silver oval-section SNUFF BOX. Maker RB. London 1802. 75mm £80-120
253. A Victorian silver mounted cowrie shell SNUFF BOX with mountainous landscape design £200-300
254. A Victorian silver mounted swirled MOTHER OF PEARL BOX. 70mm £120-180
255. An Edwardian silver cherub embossed MATCHBOX HOLDER. Birmingham 1902 £30-40
256. A 19thC tortoiseshell and ivory BOX, 100mm. (AF) £60-90
257. A 19thC Dutch engraved silver circular PILL BOX £80-120
258. A late 18thC French parcel silver-gilt OVAL BOX with a foliate bright-cut field, the central raised panel depicting the Muses, bearing the reverse discharge mark of Orleans, 1780/91. *Illustrated*. £800-1000
259. A Victorian silver mounted ETUI cased in an ivory egg. *Illustrated*. £300-400
260. An oval electroplate ENTREE DISH £20-30
261. 2 electroplate CAKEBASKETS £25-35
262. A set of 12 Victorian silver fiddle pattern DESSERT FORKS, London 1846. 21oz £100-150
263. A set of 6 George III silver fiddle pattern TEASPOONS. London 1784 £25-40
264. 2 George III silver TABLESPOONS. 4.1/2oz £25-35



265. 6 William IV silver fiddle pattern DESSERT SPOONS, 9oz £40-60
266. 5 George III silver Old English pattern TEASPOONS by Eley & Fearn £15-25
267. An ivory bead NECKLACE £60-80
268. An electroplate miniature seated DACHSUND on plinth £30-40
269. An Edwardian silver miniature TEDDY BEAR Pen Wiper. S & Co. Birmingham 1909 £30-50
270. An Edwardian silver bird PIN CUSHION. Chester 1905 £60-90
271. A silver CREAMER & SUGAR BOWL with Celtic strapwork. Birmingham assay. 12oz £80-120
272. A French electroplate oval EASEL MIRROR, 14" high £80-120
273. A pair of pierced circular electroplate WINE COASTERS £45-60
274. A Tiffany & Co Art Nouveau electroplate INKSTAND with scrollwork pentray and bird finial £60-80
275. A matched Victorian silver 3-piece TEASET of compressed globular form with bright-cut engraved cartouches. Maker SS. Retailer Goldsmiths Alliance Ltd. London assay. 39oz all in £375-425
276. A George V pierced silver BONBON DISH. Birmingham 1920 £25-35
277. A pair of Victorian silver repousee SALT BOWLS. Birmingham 1898 £25-35
278. An Edwardian silver 'Alladin' OIL LAMP with an eagle's head handle. Birmingham 1907, c.4oz £60-80
279. A Danish silver handled bottle OPENER £15-25
280. A pair of Edwardian silver WISHBONE TONGS. Chester 1909 £25-35
281. A cased set of 12 silver-gilt TEASPOONS, a limited edition No 384 (certificated) sculpted by David Cornell and struck by John Pinches in 1971 £120-180
282. A pair of antique gold framed and handled LORGNETTES £100-150
283. A Victorian crystal INKWELL mounted with a silver-gilt tray and cover. Maker SW. London 1853 £100-150
284. A pair of George V pierced silver SPILL VASES (AF). 5.75oz £30-50
285. A pair of hammered silver GOBLETS with rustic stems. Maker JMD. London 1974. 10oz. £40-60
286. A pair of Edwardian silver navette shape CANDLESTICKS. Maker T.A.S. Sheffield 1908. 12" high £250-350





Lot 408



Lot 447





Lots 259,  
246 & 258



Lots 125 & 126



Lot 435





Lot 517



Lot



Lots 355





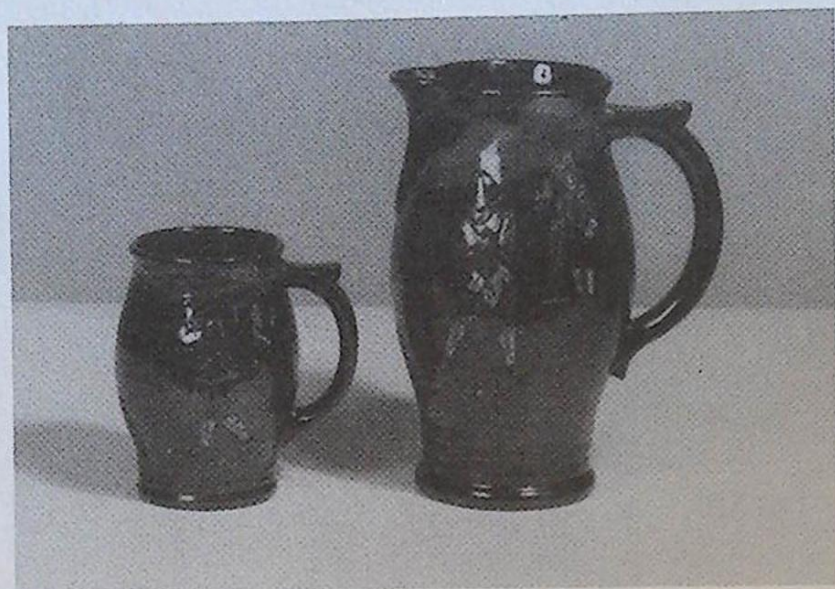
Lot 516

Lot 520



Lot 356

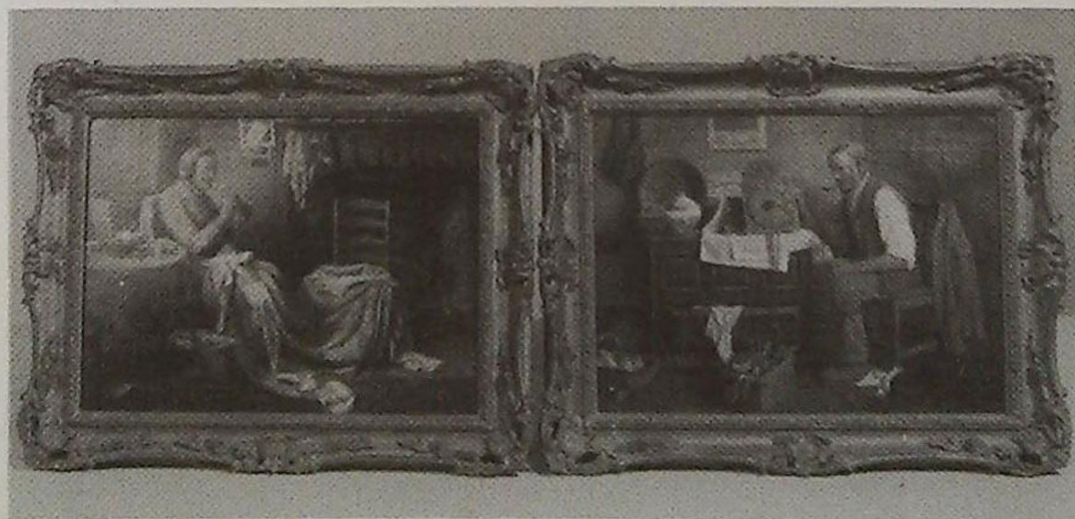




Lots 146 & 147



Lot 149



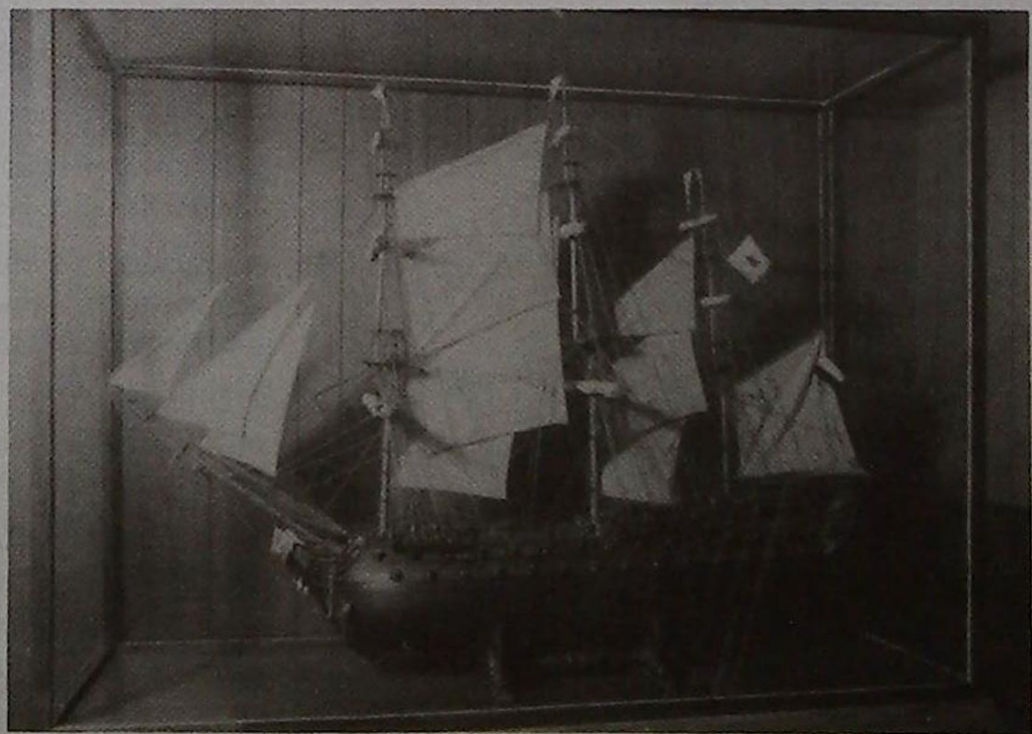
Lot 357





Lot 352

Lot 49





287. A set of 13 EPNS Kings pattern TEASPOONS £20-30
288. An electroplated TEAPOT with design lozenge £25-40
289. A foliate chased silver VESTA CASE. Birmingham £20-30
290. An Oriental white metal bamboo pattern PARASOL HANDLE and Sheffield plate MUSTARD POT £20-30

291-350. Spare Lots.

## PICTURES

351. Cedric Gray. Landscape with sheep dogs and sheep in the Highlands, oil on canvas, signed and dated, 36" x 28", in heavy gilt plaster frames £700-1000
352. H Blande Sparks (fl.1890's). Summer Flowers, a study of 2 young ladies in full length dresses on a terrace with a table, basket and garlands, watercolour, signed and inscribed verso title, 22" x 16". *Illustrated.* £1200-1500
353. William Henry Hunt (1790-1864). Study of an elderly lady in bonnet and young girl on a chair, en grisaille watercolour. 12" x 10" £300-400
354. A Continental STILL LIFE OF FLOWERS, oil on canvas, indistinctly signed, 28" x 36", gilt framed £500-700
355. Sidney Richard Percy (1821-1886). Landscape with cattle and figures on a wooded footpath, oil on canvas, 27" x 36". NOTE: *The landscape is presumably of Nottinghamshire as a verso label states was lent to the Castle Museum in 1882. Illustrated on centre pages.* £4000-6000
356. Edward Holmes R.A. The Prawn Fishers, oil on canvas, 18" x 24", in a gilt plaster frame inscribed with the title, artist and 'Exhibited Royal Academy 1869'. *Illustrated on centre pages.* £4000-6000
357. H S Tozer. A pair of interior scenes, one of an old lady making a patchwork quilt, one of an old man mending a wall clock, oil on canvas, signed, 11" x 15", gilt framed. *Illustrated.* £3000-4000
358. J Mellor. Castle overlooking a river, 2 women at the water edge, oil on canvas, signed. 24" x 36", modern gilt frame £180-250
359. Archibald Thorburn (1860-1935). Grouse, pencil sketch, initialled and dated 1914 £50-80
360. F D Hardy (1826-1911) Portrait of the artist's brother, pencil sketch, signed and dated £50-80
361. V M Hillyer. A Child's History of the World, painted storybook illustrations £35-45
362. Quaker of the Olden Time book illustration £35-45



363. Pair of 19thC colour prints of young ladies £20-30
364. A 19thC watercolour view of an Asian house £15-25
365. A 19thC colour engraving of a View on the Aluta Wallachio, c.1844 £20-30
366. A study of the artist signed C E Parendier £30-40
367. Arther Capel (19thC). A pen sketch of Torquay Harbour £45-60
368. A 19thC watercolour of a stag being attacked by dogs in a stream £45-60
369. A 19thC study of a French colonnade fronted building £60-80
370. Andre Bachelin. Portrait study of a gentleman, in crayons, signed and dated 1871 £70-90
371. A Krault. Bombay streetscene, watercolour, signed £30-40
372. Henry Gastineau (1791-1876) Attrib. Near Markley, Sussex, watercolour 10" x 14" £300-400
373. 19thC colour lithograph of Vista de la Alhambra £15-25
374. A double sided picture and a silver point 1841 print Christening of the Princess Royal £20-30
375. A 19thC print of Aberdeen Cathedral £15-25
376. 19thC watercolour of cottages by a stream £20-30
377. A 19thC watercolour of a floral spray £30-40
378. A Victorian oil on canvas of a church by a river £20-30
379. I Beatrice Thompson. Stabled horse, oil on card, signed and dated 1937. 16" x 20" £60-90
380. 19thC English School. Hunting Dogs by a river, oil on canvas, 24" x 16" £60-80
381. Karl Itschner. Dancing girls, pen and ink sketch, signed £30-40
382. Robertson Blain. Gateway in Hamburg, watercolour, signed £45-60
383. Nelson Dawson. Swiss Alps scene, crayon, signed £45-60
384. E Brachis. Winter landscape, oil on panel, 11" x 15" £90-120
385. \*wen Bowen. Landscape with sheep and shepherd, oil on board, signed, 10" x 15" £90-120
386. G Stoewer. A young couple on the beach, oil on canvas, signed and dated Anvers 86, 18" x 26" £450-600
387. Chinese School. Exotic birds in a garden £100-150
388. M.S. Head and shoulder portrait studies of a Bavarian/Swiss boy and girl, oils on canvas, one initialled and dated 06. 16" x 15" £80-120
389. A set of 6 hand coloured lithographs - GOLFING £50-80



390. An oak framed oil PORTRAIT of an elderly lady sat at a desk £40-60
391. Panoramic print of the Battle of Yser
392. A Elsey. A colour print of girl and kittens £20-30
393. A Victorian maple picture FRAME £25-40
394. A watercolour of a Millhouse, indistinctly signed and dated £50-70
395. C \*\*ttins. Sandalford Bridge near Newbury, oil on card, signed and titled, 11" x 14" £90-120
396. A Victorian oil on canvas Landscape with man and stile £20-40
397. A rosewood framed Print - The Young Rogue £20-30
398. A print of a Bull £10-20
399. A. Suker. Rough Coastal Waters, watercolour, signed, 16" x 27" £350-450
400. William Russell Flint. Print of a docked 3 mast ship, 88/1000 £70-100
401. R. Widdowson. Steam through a forest, watercolour, signed and dated 1919 12" x 9" £25-40
402. J. Chester. Dutch fishing fleet, watercolour, signed £40-60
403. A watercolour of Lock Gates, initialled J. C. £25-40
404. C. M. Mc\*\*\*. Landscape with stream, watercolour, signed 27" x 21" £150-200
405. A watercolour of Windsor Castle £25-40
406. A pair of gilt framed Landscape watercolours. £40-60
407. A Pear's Print - A Winter's Morning £20-30
408. 19thC Dutch School. Street Scenes with figures, oil on copper, 10" x 7". *Illustrated.* £250-350
409. 19thC English School. Full length portrait of a mariner, oil on canvas, 36" x 28", gilt plaster framed £100-200
410. \* Rigor. Sailing Boats, watercolour, signed £25-40
411. A modern oil on canvas of a Cottage £30-40
412. Two Ltd Edition signed Prints by Rosmarie Chambers £50-70
413. A Spy Print - A Masters' Meet £25-40
414. 3 Spy Prints £30-40
415. 3 Spy Prints £30-40
416. Webster Lloyd colour Hunting Print £10-20
417. Vlam\*\*\*\*. Red roofed cottages in alpine foothills, oil on canvas, mounted on board with script '1932', 12.1/2" x 17" £50-80
418. Hugh Knollys. Winter in East Anglia, oil. £15-25



419. Le Follet colour Print £15-25
420. Clarkson Stanfield R.A. (1828-1878). Continental Harbour Scene, watercolour, signed and dated 1846, 5" x 6.5" £280-350
421. F. Drinkwater. Pair Landscapes, oil on canvas, 16" x 22" £60-90
422. A Victorian CRYSTOLEUM of a young lady playing the mandolin, in oils under a convex glass £80-120
423. James Holland R.W.S. (1800-1870). Architectural stonework with figures, watercolour, signed, 6.1/2" x 8" £180-250
424. Three 19thC monochrome PRINTS of the Napoleonic Wars £80-100
425. A large colour Print - Le Depart pour la chasse £100-150
426. An Isfahan watercolour MINIATURE £25-40
427. T Bowles. City of Amsterdam, colour engraving £20-30

## ORIENTAL RUGS

428. A Persian Baktiar CARPET £280-350
429. A Hamadan RUG £150-200
430. A Belouch RUG £80-120
431. A Persian Kashan RUG £120-150
432. A Persian Hamadan RUNNER

£150-200

433. A Persian Kelim RUG £80-120
434. A fine red ground Indian CARPET £200-300

## FURNITURE

435. A Victorian ebonised DISPLAY CABINET with central mirror door flanked by glazed doors, gilt metal fittings. 6' wide, 44" high, 17" deep. *Illustrated.* £800-1000
436. A pair of brass CHENETS with fleur-de-lys cartouche base, 36" high £150-250
437. A Victorian rectangular mahogany tilt top BREAKFAST TABLE £650-800
438. A set of 6 late Victorian mahogany DINING CHAIRS gallery backs and turned front legs £400-500
439. A set of 5 Victorian mahogany balloonback DINING CHAIRS with turned legs £300-400
440. A Victorian windout DINING TABLE the moulded top being single leaf insert, on turned legs. 60" x 43" max. £700-900
441. An Edwardian string inlaid mahogany CORNER CABINET raised on square taper legs £500-700



442. A William IV rosewood CARD TABLE with folding swivel top, turned pillar, quatrefoil base and turned feet with castors £400-600
443. An 18thC BUREAU veneered in burr walnut with crossbanded borders, the fall flap concealing pigeon holes and drawers, over 4 graduated drawers, brass handles and bracket feet, 36" wide £600-900
444. A George III mahogany pedetel TABLE with moulded rectangular top turned and reeded pillar, 3 splay legs bearing brass cup castors £250-300
445. A 19thC Beidermier CHEST of 4 long graduated drawers with brass escutcheons £450-600
446. A Victorian mahogany CHEVAL MIRROR on a carved scrollwork stand £900-1200
447. A George III mahogany TEA TABLE with folding crossbanded top, box-strung drawer, square taper legs and spode feet. *Illustrated.* £1200-1500
448. A pair of late 19thC Sheraton inlaid mahogany CARVER CHAIRS £400-500
449. A carved oak and tapestry FIRESCREEN £25-40
450. A Victorian mahogany BOX COMMODE £40-60
451. An Edwardian walnut dropleaf DINING TABLE and 4 chairs £200-300
452. A William IV mahogany CARVER CHAIR with splat back £80-120
453. An oak demi-lune BUFFET CABINET with gadrooned lift top, 2 doors, raised on ball and claw feet. £250-300
454. A William IV mahogany CHIFFONIER with raised back, 2 drawers and 2 doors, knob handles and turned feet £400-600
455. An Edwardian mahogany TOWEL RAIL £20-30
456. An elm 2-tier BOOK RACK £40-60
457. A set of 4 Victorian carved walnut balloonback DINING CHAIRS with tapestry seats and cabriole legs £500-700
458. 3 Edwardian galleried DINING CHAIRS £25-40
459. An Edwardian breakfront CHEST of 5 drawers £80-100
460. A Victorian mahogany LIBRARY TABLE with moulded leather top, 4 frieze drawers with knob handles, raised on turned octagonal legs. 4' x 3' £400-600
461. A Victorian mahogany spoonback NURSING CHAIR with cabriole legs £150-250
462. A small Victorian mahogany windout DINING TABLE £350-400



463. A 17thC oak 2 panel COFFER  
£300-500
464. A pair of CARVER CHAIRS  
£25-40
465. A George III mahogany bowfront  
CHEST of 3 drawers, brass  
handles and splay feet, 37" wide  
£200-300
466. An Edwardian oak single  
pedestal KNEEHOLE DESK  
£250-350
467. An oak WRITING TABLE with  
2 drawers £80-120
468. A Victorian brass mounted cast  
iron STICKSTAND £100-150
469. A set of 4 late Victorian walnut  
DINING CHAIRS with carved  
and galleried panel backs  
£80-120
470. A 19thC French walnut and  
mahogany marbletop CHEST of  
3 drawers, raised on reeded legs.  
£200-300
471. A pair of 19thC French  
mahogany SALON CHAIRS  
with carved splats and cabriole  
legs £400-500
472. A 19thC oak Lancashire  
gateback CHAIR £40-60
473. A set of 4 Edwardian highback  
DINING CHAIRS with pierced  
splats £70-100
474. A Victorian TORCHERE with  
cast iron base £25-40
475. A 17thC carved oak BIBLE BOX  
£150-200
476. An Edwardian mahogany  
PIANO STOOL on taper legs  
£40-60
477. A pair of Victorian cast iron  
classical campana fluted  
GARDEN URNS, 16" high  
£250-350
478. An Edwardian upholstered  
folding WING ARMCHAIR  
£100-150
479. A marbletop Continental POT  
CUPBOARD £50-80
480. A Victorian walnut CHAISE  
LONGUE with gallery and  
turned legs £120-180
481. A Jacobean style carved oak  
CARVER CHAIR with rush  
seat, 19thC £280-320
482. A WINDSOR CHAIR with  
crinoline stretcher £100-150
483. A set of 4 Carolean style  
barleytwist oak DINING  
CHAIRS with crowned cresting  
rails, 19thC £200-300
484. A barleytwist oak dropleaf  
DINING TABLE £125-175
485. A Victorian walnut KNEEHOLE  
DESK, moulded top with leather  
insert, 3 frieze drawers and 3 to  
each pedestal, knob handles.  
48" x 26 £800-1000
486. A Victorian grain painted pine  
LINCOLNSHIRE DRESSER  
£150-250
487. A Victorian grain painted pine  
CHEST of 2 short and 3 long  
drawers £150-200



488. An oak gateleg DINING TABLE with turned legs £50-80
489. A Georgian oak 2 drawer SIDE TABLE £100-150
490. A set of 5 (inc carver) Regency mahogany barback DINING CHAIRS with sabre legs £350-500
491. A bobbin turned oak COFFEE TABLE with circular top £80-120
492. A pair of Victorian Gothic revival oak HALL CHAIRS £120-180
493. A Regency mahogany PEMBROKE TABLE on square taper legs £100-150
494. A George III mahogany WASHSTAND £150-200
495. A 19thC oak SIDE TABLE with drawer £50-80
496. A George oak pedestal TABLE with circular tilt-top turned pillar and tripod base, 20" diameter £120-180
497. A Victorian mahogany framed 3 fold DRESSING SCREEN £120-180
498. An Edwardian mahogany SALON CHAIR with marquetry panels of rosewood, bone, etc £150-200
499. A 19thC Continental TUB CHAIR upholstered in red floral brocade £120-180
500. A Georgian oak LOWBOY with 3 drawers, knob handles and square legs £400-600
501. A Victorian tub ARMCHAIR with turned mahogany legs and loose floral covers £80-120
502. An Edwardian inlaid mahogany SIDEBORD on cabriole legs, 5' wide £250-350
503. A Victorian mahogany 3-fold DRESSING SCREEN £100-150
504. A George III mahogany WASHSTAND with drawer £250-350
505. A George III oak WASHSTAND £90-120
506. A Victorian brass and iron SINGLE BED £90-120
507. A Victorian carved walnut spoonback LADY'S ARMCHAIR in green velvet £450-600
508. A 19thC Beidermier mahogany LOO TABLE with oval moulded top, carved bulbous pedestal, quatrefoil base £380-450
509. A set of four 19thC elm KITCHEN CHAIRS with bar backs and turned legs £100-150
510. A 19thC parquetry inlaid STOOL with turned legs £20-30
511. An antique style oak linenfold panelled BLANKET BOX £40-60
512. A pair of late 19thC French style carved walnut SIDE CHAIRS £120-150
513. A set of 6 Arts & Crafts walnut highback DINING CHAIRS with floral seats £350-450
514. A George II mahogany PEMBROKE TABLE £280-350



515. A Victorian mahogany envelope folding OCCASIONAL TABLE on 3 cabriole legs £200-300
516. An exceptional quality Edwardian mahogany BEDROOM SUITE with extensive marquetry of floral and musical trophies. Comprising compactum wardrobe, pair of double wardrobes, marbletop washstand, dressing chest, pot cupboard and 3 chairs. *Illustrated on centre pages.* £6500-8000
517. A fine Edwardian mahogany DISPLAY CABINET with greek key cornice, reeded columns, astragal glazed doors, cupboard beneath, raised on reeded legs. 74" high, 48" wide. *Illustrated on centre pages.* £800-1000
518. A William IV flamed mahogany SECRETAIRE BIBLIOTHEQUE with moulded cornice, 2 door panel top, fitted secretaire drawer over 2 cupboards. £800-1200
519. A Victorian mahogany breakfront CELLARETTE SIDEBORD, arch backboard, 3 frieze drawers, panelled arch to each pedestal. 8' long £800-1000
520. A late Victorian BOOKCASE with moulded cornice, 2 glazed doors over 2 drawers and 2 panelled cupboard doors. 93" high, 49" wide. *Illustrated on centre pages.* £800-1000
521. A mahogany 1/4 veneered BEDROOM SUITE comprising wardrobe, dressing chest, chest and double bed £120-180
522. A Victorian mahogany kneehole DRESSING TABLE with knob handles £350-450
523. An Edwardian ebonised BUREAU BOOKCASE with shell carved pediment, astragal doors, fall flap, 2 drawers over 2 doors, cabriole feet. £180-250
524. A Victorian gilt framed rectangular OVERMANTEL MIRROR, carved with shell and acanthus borders, 30" high, 48" wide £200-300
525. A fine cut crystal 11-branch ELECTROLIER and a pair of matching WALL LIGHTS £280-350
526. A pair of Victorian brass and iron BEDS £100-200
527. An Edwardian mahogany DOUBLE BED £40-60
528. A 17thC cast iron FIRE BACK dated 1635 £100-150
529. A late Victorian satinwood BEDROOM SUITE comprising wardrobe, dressing chest and washstand £150-250
530. A Victorian mahogany bowfront CHEST of 2 short and 3 long graduated drawers, turned handles and feet. £250-400
531. A mahogany BEDROOM SUITE comprising double wardrobe, chest and dressing chest. £120-180



532. A Victorian satinwood  
WARDROBE with mirror door.  
£80-100
533. A Victorian satinwood DRESS-  
ING CHEST £80-120
534. A Victorian faded mahogany  
DRESSING CHEST £80-120
535. A Victorian white painted 2 door  
CUPBOARD £100-150
536. A fine quality late 19thC Arts &  
Crafts SIDEBORD with  
mirrorback enclosed by carved  
fruits and pillars, 2 drawers  
over 2 carved panel doors on  
ogee feet. £500-700
537. A brass scrolled 3-branch  
ELECTROLIER £100-150
538. A late Victorian satinwood  
DOUBLE WARDROBE  
£150-200
539. A Victorian mahogany CHEST of  
4 long and 2 short drawers with  
knob handles £200-300
540. A 19thC Dutch walnut WALL  
CABINET, 26" high £150-200
541. A late Victorian 'plum pudding'  
mahogany CHIFFONIER with  
galleried mirrorback, 2 drawers  
over 2 doors £400-600
542. A Victorian mahogany CHEST of  
2 short and 3 long graduated  
drawers, knob handles and  
turned feet. 38" wide. £120-180
543. A set of 3 Globe Wernicke  
2-section STACKING  
BOOKCASES £450-600
544. A Victorian walnut DRESSING  
TABLE with drawer and mirror  
back, 3 frieze drawers and 3 to  
each pedestal, brass loop  
handles. £450-550
545. A Victorian mahogany  
DRESSING CHEST with cameo  
mirror, 2 short and 2 long  
drawers, knob handles.  
£300-400
546. A late Victorian 1/4 veneered  
walnut WARDROBE COM-  
PACTUM with mirrored centre  
door £350-450
547. An oak BUREAU BOOKCASE,  
1920's £150-200
548. A Jacobean style carved oak  
DRESSER, 19thC £300-400
549. A Victorian mahogany  
CHIFFONIER with shelved  
scroll back drawer and cupboard  
base £400-600
550. A Victorian brass and iron  
DOUBLE BED £150-250
551. A Victorian brass and iron  
DOUBLE BED £150-250
552. A Victorian brass and iron  
DOUBLE BED £120-180

END OF SALE



Established 1900



**-GOLDINGS-**

• Fine Art Auctioneers & Valuers •

**THE GRANTHAM AUCTION ROOMS**

Golding Young & Co  
Telephone: (01476) 565118

Old Wharf Road, Grantham, Lincs NG31 7AA  
Fax: (01476) 561475

Following the successful opening of our  
**BOSTON OFFICE**  
Golding Young & Co will sell by Auction  
A diverse sale of  
**BOSTONALIA**  
in October, 1996

To include Pictures, Clocks, Ceramics, Ephemera, Marine Items,  
in fact anything that relates to the Town and its History.



W.B. Thomas

One of 7 watercolours already entered  
Estimate: £500-800

---

Our Regional Valuer  
can be contacted every Wednesday from 9 a.m. to 12.30 p.m. at  
**3, RED LION STREET, BOSTON**  
(Messrs Balderstons, Chartered Surveyors)  
**01205 - 365959**





Established 1900

**-GOLDINGS-**

• Fine Art Auctioneers & Valuers •

**THE GRANTHAM AUCTION ROOMS**

Golding Young & Co  
Telephone: (01476) 565118

Old Wharf Road, Grantham, Lincs NG31 7AA  
Fax: (01476) 561475

HAVE YOU BEEN TO ONE OF OUR RECENT

## **GENERAL SALES**

For the last year we have been selling  
350-450 LOTS PER WEEK

Selling Every WEDNESDAY at 10.30 a.m.

Viewing Tuesdays 4 p.m. to 6 p.m. and Saleday from 9 a.m.

### **TAKING ENTRIES EVERYDAY**

Entries for the Wednesday close 5 p.m. Monday

### **SALEDAY CASH PAYOUTS AVAILABLE TO VENDORS**

We provide the quickest turnaround of lots  
for clients in the area.

**COMPETITIVE COMMISSION RATES FOR REGULAR TRADE**



Established 1900



**-GOLDINGS-**

• Fine Art Auctioneers & Valuers •

THE GRANTHAM AUCTION ROOMS

Golding Young & Co  
Telephone: (01476) 565118

Old Wharf Road, Grantham, Lincs NG31 7AA  
Fax: (01476) 561475



W. Savage Cooper

Oil on canvas, 40" x 32", signed and dated 1884-5

Estimate: £5,000-8,000

---

FOR SALE 23rd OCTOBER, 1996  
FURTHER ENTRIES NOW INVITED



## MAILING REGISTER SUBSCRIPTION FORM

If you wish to receive our Auction catalogues and detail sheets for one year, please complete and return this form.

### 1. Antiques & Fine Art Auctions

There are currently planned 5 Sales per annum to include:-

Furniture, Paintings, Prints, Glass, Ceramics, Toys, Silver, Clocks, Watches, Jewellery, Metalware, Stamps, Coins, Books, Arms & Militaria, Bygones, Barometers, Collectors Items, etc.

### 2. Commercial & Agricultural Auctions

Frequency of Sales determined by instructions from The High and County Courts, Liquidators and Receivers, and private individuals/companies.

Office Equipment, Catering Equipment, Engineering Equipment, Industrial Plant & Machinery, Live & Dead Farming Stock, Retail/Wholesale Shop Stock and Fittings, Vehicles; - Assets of a variety of Businesses.

### 3. Specific Requirements

If you specialise in one area of the above categories (eg. *Books*) please state this to avoid receiving unwanted catalogues.

1. Antiques & Fine Art. (£12) £.....

2. Commercial & Agricultural Auctions. (£5) £.....

Fee enclosed £..... Total

Name: Mr/Mrs/Miss/Title .....

Address: .....

.....

.....

.....

Tel: (.....) ..... Date: ..... Our Ref: \*ML .....



Established 1900

# — GOLDINGS —

Chartered Surveyors, Auctioneers, Valuers & Estate Agents  
Residential, Commercial, Agricultural, Property Management, Financial Services

45 High Street, Grantham, NG31 6NE

Telephone: 01476 · 590211

## PROFESSIONAL SERVICES FOR



### RESIDENTIAL

Our established Residential department headed by Chartered Surveyors undertakes sale and valuation of all types of property from Castles to Town Houses; Surveys, Homebuyers Reports, Mortgage, Probate and Insurance Valuations carried out with care attending to individual requirements.



### COMMERCIAL

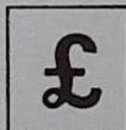
Dealing with the sale and survey of Shops, Offices and Factories. Valuation for Rent Reviews, Lease renewals and negotiations. Rent Arbitration, on behalf of landlord and tenant.

*Plant, Machinery & Assets*; Sales for Receivers, Liquidators, High Court & County Court. Auction Sales on Site or at The Grantham Auction Rooms for private and public clients alike.



### AGRICULTURAL

Our Senior Partner has wide experience in the sale and valuation of Agricultural Properties, conducting Farm Sales and Valuation of Live and Dead Farming Stock for dissolution, Probate and other matters. Together with Rent Reviews, Development Land reports and Annual Stocktaking Valuations.



### FINANCIAL SERVICES

Our Experienced Consultant is available to advise on all matters concerning Finance, Mortgages, Insurance, Investment, Planning and Pensions.



### PROPERTY MANAGEMENT

Personal service and attention to detail ensures that our management team exploits your investment portfolio whether an Individual Family Home let for a small fee or Office, Factory, Shop or Farm with rent collected and regular inspections made.

#### Chattels Auctioneer

Colin R. Young FNAVA

#### Property Management

Mrs. Margaret Pashley

#### Partners

C. Robin Hall FRICS FAW

Ian J. Shaw FRICS FNAEA

#### Financial Service Consultant

John G. Stukins

#### Residential Sales Manager

Mrs. Jenny Diment FNAEA CPEA



Established 1900

**- GOLDINGS -**

**THE GRANTHAM AUCTION ROOMS**



A Victorian papier mache Tray

Sold in our last sale for

**£380**

---

**NEXT SALE**

**of**

**ANTIQUES & FINE ART**

Wednesday, 23rd October, 1996

Entries welcome until 7th October

Call Colin Young for a Free Valuation

**THE COMPLETE AUCTION SERVICE**

Auction Sales of Antiques, Fine Art, Collectables, Modern Furniture & Effects - Office, Shop & Catering Equipment  
Vehicles - Plant & Agricultural Machinery - Stock-in-Trade - Business Assets - Liquidations & Receiverships  
VALUATIONS undertaken for Insurance, Probate, Family Division and Sale purposes. Full HOUSE CLEARANCE facilities.