

Established 1900

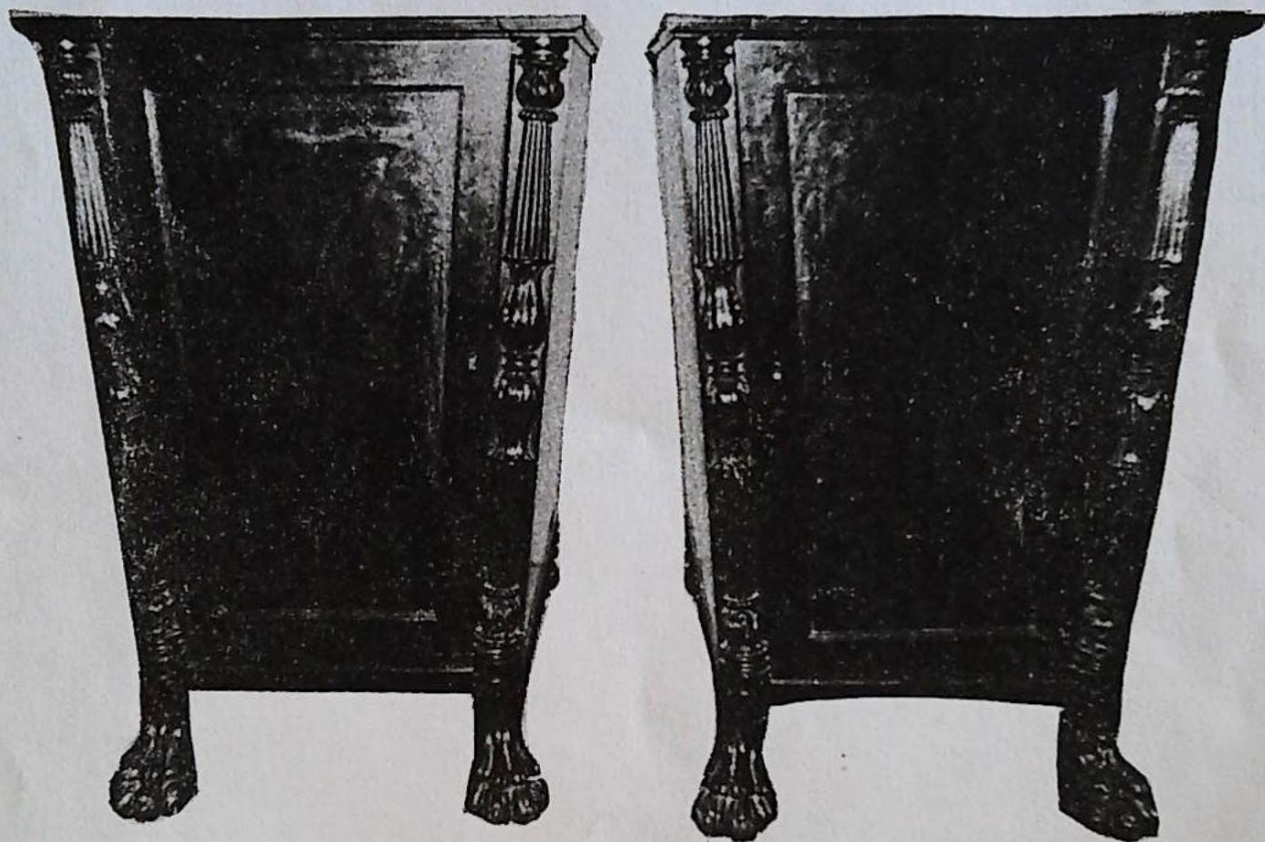
**-GOLDINGS-**

THE GRANTHAM AUCTION ROOMS

Upon instructions from Executors of Estates, Private Collectors  
and House Clearances from throughout Lincolnshire.

GOLDING YOUNG & CO will sell by AUCTION

# Antiques & Fine Art



On Wednesday 5th June, 1996

Commencing at 10am

## VIEWING TIMES

Sunday 2nd 2pm - 4pm  
Tuesday 4th 2pm - 7pm  
& Saleday 9am - 10am.

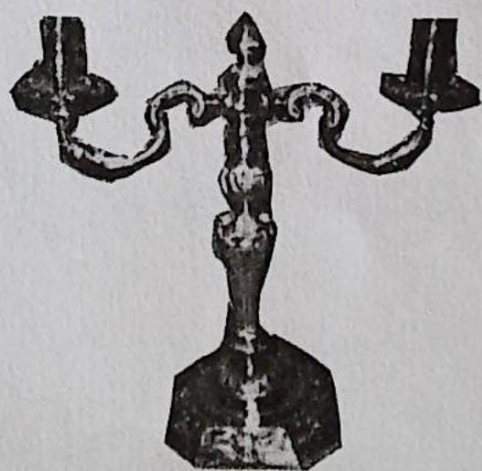
Catalogues £2 each.

Golding Young & Co.  
Old Wharf Road, Grantham, Lincolnshire, NG31 7AA  
Telephone: (01476) 565118  
Fax: (01476) 561475

## THE COMPLETE AUCTION SERVICE

Auction Sales of Antiques, Fine Art, Collectables, Modern Furniture & Effects - Office, Shop & Catering Equipment  
Vehicles - Plant & Agricultural Machinery - Stock-in-Trade - Business Assets - Liquidations & Receiverships  
VALUATIONS undertaken for Insurance, Probate, Family Division and Sale purposes. Full HOUSE CLEARANCE facilities.







## GRANTHAM COLLECTORS' ITEMS

1 - 21. A Grantham Stoneware SPIRIT BOTTLE

22. A Grantham stoneware FOOTWARMER

23. A Grantham stoneware FOOTWARMER

24. A Grantham stoneware FOOTWARMER

25. An early stoneware SPIRIT BOTTLE of the character "Old Tom"

26 - 40. Granthamalia

## BYGONES & MISCELLANEA

41. A Victorian walnut WORKBOX £80-120

42. Tommy Dorsey and other 78rpm boxed Record Sets.

43. A Stradivarius copy VIOLIN with 2 bows, one stamped Nach Vuillamy Paris £80-120

44. The "Readson" Professional Medical Machine

45. A Meiji period Japanese bronze JARDINIÈRE, two 2-colour relief panels of birds on a mottled diaper field £125-175

46. An Eastern brass SPITTOON with handle

47. A Steiff golden plush TEDDY BEAR 15" (af) £100-150

48. A steel MINER'S LAMP

49. A Bosey & Hawker TRUMPET £20-30

50. A BR(M) Railway LAMP £20-30

51. 6 Gilt framed Small PRINTS

52. A Victorian Taxidermy Specimen of 2 squirrels, cased £25-40

53. A Chinese onyx SCREEN with applique hardstone scene, on a wood stand £30-100

54. A Victorian brass WATER CAN £20-30

55. 10 Pot Lid FRAMES

56. A Victorian brass CHAMBERSTICK with snuffer £20-30

57. Plated CANDELABRA and 2 small kettles

58. 7 Hickory shafted GOLF CLUBS in a canvas bag £40-60

59. A SAMPLER, Tealby 1829 £80-100

60. A SAMPLER, Hilary Bickersgill Age 9 £80-100

61. A SAMPLER, Horncastle 1825 £80-100

62. A SAMPLER £80-100

63. A Victorian Pictorial SAMPLER £150-250

64. A Dolls PRAM

65. A leaded light panel

66. A Bowler HAT

67. A Bowler HAT

68. A BOATER

69. Advertising pieces: 3 dog and 1 chicken food

70. A Framed Sampler PICTURE £25-40

71. A Victorian brass JAMPAN

72. An Old Brass MINER'S LAMP £50-70

73. A Mamed TRACTION ENGINE

74. A split cane FISHING ROD £20-30

75. A Brass Military TELESCOPE £50-80

76. A Chinese hardwood framed brass DINNER GONG £80-100

77. Two pairs of brass oil LANTERNS £25-40

78. A brass OIL LAMP

79. A large copper soup KETTLE £80-100

80 - 82. A brass handled BAYONET £20-30

83. Qty Servant's Bells £25-35

84. A Taxidermy Specimen BABY ALLIGATOR. £60-80

85. A SWORDFISH

86. A 2 gallon copper FLAGON £80-100

87. A 1 gallon copper FLAGON £50-80

88. A brown salt-glazed stoneware WATER FILTER. £25-40



89. A 19thC leather FIRE BUCKET. £80-120
90. A 19thC leather FIRE BUCKET £80-120
91. An Arabic style 19thC SABRE and 2 small daggers £25-40
92. 2 stoneware SPIRIT BOTTLES
93. A Victorian brass-bound walnut DUET WRITING BOX £90-120
94. A pair of mounted GISELLE HORNS
95. A pair of mounted ANTLERS
96. A mounted Stag GAME TROPHY £30-50
97. Ladle, knocker, other ironwork and treen
98. A Victorian clockwork ROASTING JACK and spit £30-40
99. 5 old FIREMARKS £50-80
100. Candlesticks, Picture, Chalice and Bottle
101. An old VIOLIN and bow £40-60
102. A 19thC suit of ARMOUR £100-200
103. A cast iron RAILWAY POST - M & G N
104. A cast iron BOWL
105. A leaded glazed PANEL
106. A pair of FIRE DOGS and a small fender
107. A George III flamed mahogany CAMPAIGN WRITING BOX  
£80-120
108. India through the Stereoscope, SLIDES £20-30
109. A small SAMPLER £30-40
110. A Victorian brass extending FENDER £40-60
111. Model BUILDINGS
112. A cased Taxidermy Specimen of a Fox with a pigeon.  
£50-60
113. Candlestick and Pen Tray
114. A Victorian needlework PICTURE of Christ
115. Bowl, brass etc
116. A large leather TRUNK
117. 10' 2 piece Greenheart FISHING ROD
118. A model M101 Aston Martin Secret Ejector CAR, boxed  
£40-60
119. A cast iron circular PLAQUE "Great Eastern Railway"  
£50-80
120. 2 pairs of BELLOWS, MINER'S LAMP and PAN
121. A Fireside COMPANION SET made from Old Bayonets £60-90
122. Thatcher's Needle and metalware
123. Old HANDCUFFS
124. A Cased VIOLIN with bow
125. Pestle and Mortar
126. A pair of carved teak elephant WALL MASKS £70-100
127. A Victorian rosewood TABLE ORGAN £50-80
128. Face piece and other horse brasses
129. 6 cut-throat RAZORS, rosewood cased £20-30
130. A part CHESS SET and WRITING FOLDER
131. A brass TABLE BELL
132. An ivory FAN £120-180
133. Musical Ephemera inc 1966 NME £30-40
134. A Chemists leather box of small SPECIMEN BOTTLES
135. Travel INKWELL etc
136. A 1968 Gold SOVEREIGN £50-60
137. A boxed set of LEAD FIGURES depicting Andy Pandy, Teddy  
and Looby Loo £75-100
138. 3 Coins
139. Spare lot
140. A replica Flintlock MUFF PISTOL £40-60
141. A yellow metal DRESS RING set with large three carat  
red stone and four brilliants
142. A Chinese enamel gilded SCENT BOTTLE



143. An unusual Chinese horn OPIUM BOTTLE complete with carrying cord and horn ring
144. A signed Chinese ivory SNUFF BOTTLE decorated with a large pine tree beneath which sits a Buddhist Monk and inscribed with a prayer £30-40
145. A signed Japanese hardwood NETSUKE a study of an alert seated jackel £30-40
146. A signed Japanese hardwood NETSUKE a rare study of Siamese twins £40-60
147. A signed Japanese ivory NETSUKE a well animated study of a fat sow £40-60
148. A signed Japanese ivory NETSUKE a study of a seated Geisha in fine kimono playing a stringed musical instrument £40-60
149. A signed Japanese ivory NETSUKE a study of a frog upon a large boulder £40-60
150. A signed Japanese ivory flat Sashi NETSUKE depicting children one above the other each in superb decorated kimono £50-70
151. A mid 19thC train of four carved Ivory ELEPHANTS. £175-225
152. An early 19thC box lock percussion PISTOL with walnut handle £80-120
153. Selection of Masonic Regalia £25-40
154. Silk Pictures
155. A Boxed set of Corgi TOYS: 1525, 1505, and 151A Racing Cars and 1126 Transporter £80-120
156. Corgi 439 Chevrolet Fire Chief, boxed £20-30
157. Corgi 154 Ferrari Racing Car £20-30
158. Dinky Supertoys
159. Old Coins, watch and power box
160. Sooty Xylophone, etc. Cards and games £25-35
161. Horse brasses
162. A replica 1873 pattern COLT REVOLVER
163. A replica Flintlock MUFF PISTOL £40-60
- 164 - 170 Spare lots

## GLASS AND CERAMICS

171. A pair of Edwardian glazed pottery LIONS £70-90
172. A floral Leeds Art Pottery VASE, 15" £25-40
173. A Victorian blue and white 6-piece TOILET SET £30-120
174. A blue and white CHAMBER POT.
175. An Addersley TEA SERVICE c. 48 pieces
176. A Victorian blue and white fluted TEA SERVICE £40-60
177. A Chinese famille rose PLATE £30-40
178. A Plated COFFEE SET on stand £20-30
179. A Chinese blossom and peony baluster VASE £30-100
180. A Victorian Bristol blue glass DECANTER (AF)
181. 2 glass DECANTERS
182. Chinese MEATPLATE and other pottery (AF)
183. A Royal Winton BREAKFAST SET £30-50
184. A Victorian enamelled green glass DECANTER £20-40
185. A Victorian cranberry glass Trumpet VASE £30-50
186. A Victorian cranberry glass DECANTER £30-50
187. 6 cranberry glass WINE GLASSES £25-35
188. A Chinese crackleware cylindrical VASE, four character mark £35-50
189. A small olive Celadon JARDINIERE £40-50
190. A Mintons lustrous blue FRUIT BOWL £40-50
191. An Allerton's willow pattern DINNER AND TEA SERVICE £80-120
192. A Tuscan china TEA SERVICE £30-50
193. A Clarice Cliff 'Crocus' pattern Beehive HONEY POT. £80-120
194. 2 Coronation Mugs
195. A Victorian "Baltimore" pattern DESSERT SERVICE comprising 10 plates and 3 comports £200-300



196. A pair of Meiji period Satsuma baluster VASES, red and yellow ground with gilt and enamel painted scenes of birds and flora. 16" high £300-400
197. 1911 & 1937 Coronation Plates
198. A pair of 19thC Nailsea glass ROLLING PINS £30-40
199. A 1940's Wade Pottery FIGURE of a rabbit in top hat with blue coat and smoking a pipe £30-40
200. A 19thC German pink and white Hors D'oeuvres DISH £25-40
201. A floral JUG and BOWL
202. A Floral JUG and 3 PLATES
203. A 19thC Jasperware PLAQUE with plated stand. £20-30
204. A Sunderland purple lustre JUG depicting a West View of Ironbridge, 8" high. £250-350
205. A Sunderland purple lustre JUG depicting a West View of Ironbridge, 8" high (AF) £40-60
206. A Sunderland purple lustre BOWL depicting the Sailor's Farewell, 7" dia. £100-150
207. A Chinese bullet-shape TEAPOT and a stand £50-80
208. A Sunderland MUG depicting a West View of Ironbridge (AF) and the Late Prince Consort POT (AF) £25-35
209. Commemorative Chinaware, Limoges Plate, etc. £20-30
210. A Ridgways "Persia" pattern DINNER SERVICE comprising 4 tureens (1 missing lid), 36 plates (3 sizes), 5 graduated oval meatplates (1 AF) £150-250
211. A Victorian gilt white TEA AND COFFEE SERVICE, c.37 pces £80-100
212. A Victorian floral TEA SERVICE, c. 34 pces £50-80
213. A New Hall part TEA SERVICE comprising teapot, (AF), creamer, sugar bowl, 4 tea bowls and 2 saucers £100-150
214. Minton CUPS AND SAUCERS, blue and white pieces etc
215. Glass water bottle etc
216. A fine Victorian green banded floral FOOTBATH £250-400
217. A Meiji period Satsuma FIGURE of Kuan Yin riding an elephant, signed. (AF) 7.1/2" £100-200

218. A Victorian Staffordshire FIGURE - Soldier's Dream £50-80
219. A Victorian Staffordshire FIGURE GROUP £30-100
220. A Staffordshire Cottage MONEY BOX
221. A pair of German FIGURES
222. 6 assorted Victorian GLASSES
223. Prattware Mask MUG
225. A 19thC Cantonese TEAPOT (no lid)
- 226- 230 spare lots

#### PRINTED ITEMS

231. Gibbon's Rome and other Books (2 boxes)
232. An Album of assorted POSTCARDS
233. 25 framed TRADE CARDS
234. An album of Players "Motor Cars" CARDS and extras
235. TRADE CARDS of Aircraft, Silks etc
236. 2 Volumes BIBLE
237. Dr. Nares. The Memoirs of Lord Burghley, Vol. 1
238. 2 Victorian embossed leather PHOTOGRAPH ALBUMS
239. Life of Christ etc (5)
240. An early hand coloured MAP OF RUTLAND
241. 2 framed African MAPS
242. Victory Atlas of the World
243. Italian Tour Books
244. The Water Babies; Through the Looking Glass; The Legend of Sleepy Willow; Robinson Crusoe (4)
245. Races of Mankind, 2 vols and a photo album
- 246 - 250 spare lots



## CLOCKS, WATCHES & BAROMETERS

- 251. A large silver plated POCKETWATCH £30-40
- 252. A Negretti and Zambra brass MARINE BAROMETER £500-800
- 253. A 19thC brass and champlave MANTEL CLOCK, 8-day movement, enamelled face. £900-1200
- 254. A 19thC gilt spelter MANTEL CLOCK with porcelain painted panels and bird finials. £250-350
- 255. A 19thC pierced brass LANTERN CLOCK. £350-450
- 256. A boxed Watchmakers PUNCH SET. £70-90
- 257. An 8 day mahogany MANTEL CLOCK £30-50
- 258. A walnut cased MANTEL CLOCK £25-40
- 259. An Aneroid BAROMETER and framed Photograph
- 260. An oak cased SCHOOL CLOCK £50-80
- 261. A Black Forest MANTEL CLOCK with cuckoo and alsation figure. £70-100
- 262. An Edwardian inlaid mahogany MANTEL CLOCK £30-50
- 263. A 19thC American walnut drop dial WALL CLOCK £100-150
- 264. A Victorian mahogany Banjo BAROMETER £100-150
- 265 - 270 Spare lots

## SILVER AND JEWELLERY

- 271. Silver banded amber CIGAR HOLDER
- 272. Pair of 9 ct gold Torpedo EARRINGS
- 273. A silver coloured Chain Mail PURSE
- 274. A Lady's Gold WRISTWATCH and another
- 275. A 9ct. gold BUCKLE RING
- 276. Bone handled FISH CUTLERY
- 277. 12 pairs bone handled Dessert CUTLERY, boxed £80-120
- 278. 12 pairs beaded Table CUTLERY, boxed £80-120

- 279. 6 Mother of Pearl handled TEA KNIVES £20-30
- 280. 6 pairs bone handled CUTLERY, boxed
- 281. An electro plate SPIRIT KETTLE on stand £50-80
- 282. A plated and pressed glass TRUMPET VASE £20-30
- 283. Trophy Cup and other platedware
- 284. A pair of Victorian silver DWARF CANDLESTICKS of Corinthian columnar form. Birmingham 1897 £100-150
- 285. A silver Capstan INKWELL and another (AF) £30-50
- 286. A cased set of 6 silver Apostle COFFEE SPOONS and TONGS. Birmingham assay £25-40
- 287. A Victorian silver CHAMBERSTICK with snuffer, Maker RS London 1843 11 oz. £180-250
- 288. A Walker & Hall electroplate CRUET, boxed £40-60
- 289. A 6 bottle CRUET on an electroplate stand
- 290. An electro plated pierced CAKE BASKET with swing handle £30-100
- 291. A fine pair of Georgian style rococo cast and chased silver CANDELABRA. London assay. 138 oz. £2800-3500
- 292. An electro plated embossed WINE COASTER £30-50
- 293. An electro plated ICE BUCKET and TONGS
- 294. An Elkington silver TEAPOT and WATER JUG. Birmingham 1968 38 oz. all in £200-300
- 295. A plated letter SABRE
- 296. A plated Kings Pattern SOUP LADLE
- 297. Plated Kings Pattern and other CUTLERY
- 298. Silver King Pattern and other CUTLERY
- 299. A Britannia Metal TEAPOT £20-30
- 300. A Britannia Metal MEATDISH with cover and warming base £25-40
- 301. A Victorian silver 4 piece TEASET. Sheffield 1897 52oz. all in £500-700
- 302. A pair of silver Sugar CLAWS
- 303. An electro plate TOASTRACK and TROPHY CUP



- 304. An Edwardian silver necked BOTTLE £25-40
- 305. A Victorian silver MOTE SPOON Sheffield 1898 £25-40
- 306. A modern silver Photograph FRAME £25-35
- 307. A 19thC Swedish Filigree silver BASKET of neo-classical form with swing handle and blue glass liner. Dated 1819 25oz. £700-900
- 308. An electroplate Stag LAMP BASE £50-70
- 309. A Victorian silver 7 bar TOASTRACK London 1839 12oz £180-250
- 310 - 320 Spare lots

### PICTURES

- 381. Johan Bauer. Alpine Landscape, oil on canvas, signed, 19.1/2" x 39" £80-120
- 382. A. Suher. Rough Coastal Waters, watercolour, signed, 16" x 27" £350-450
- 383. Pauline Hewitt. Alpine Village in landscape, oil on canvas, signed 25" x 30" £150-250
- 384. William Russell Flint. Print of a docked 3 mast ship, £23/1000 £70-100
- 385. R. Widdowson. Steam through a forest, watercolour, signed and dated 1919 12" x 9" £25-40
- 386. G. Barker. Pair of rocky coastal scenes, watercolour, signed 10" x 7" £120-180
- 387. A pair of 19thC Watercolour. Botanical Specimen £70-100
- 388. J. Chester. Dutch fishing fleet, watercolour, signed £40-60
- 389. \* A. Lunsden. Architectural Gateway with lady, girl and dog, watercolour, signed 10" x 14" £150-200
- 390. A watercolour of Lock Gates, initialled J. C. £25-40
- 391. C. M. Mc\*\*\*. Landscape with stream, watercolour, signed 27" x 21" £150-200
- 392. Madonna with Child Picture and another £20-30
- 393. J. Jameson. Ivy Scar & The Glee Hills, pair of landscapes, gouache, signed and titled 7" x 21" gilt framed £150-250
- 394. A watercolour of Windsor Castle £40-60
- 395. A Pear's Print - A Winter's Morning £30-40
- 396. 19thC Dutch School. Street Scenes with figures, oil on copper 10" x 7" £300-500
- 397. After Alken, Fores Hunting Casualties, plates 3, 4 & 6 £15-20
- 398. A Venetian colour PRINT £10-15
- 399. Lilian May. A sketch of a young girl dated 1912
- 400. Stray Lambs - colour PRINT £15-20
- 401. A primitive oil of a fisherman in a cove, signed. £20-30
- 402. A primitive oil of a fisherman in a cove, signed £20-30
- 403. C\*\*\* Crombie. Snooker Cartoon, watercolour 9" x 13" £30-50
- 404. Watercolour of a lady and print
- 405. \* Rigor. Sailing Boats, watercolour, signed £30-40
- 406. A modern oil on canvas of a Cottage £30-45
- 407. A colour engraving of the Horse, Old Partner £20-30
- 408. Two Ltd Edition signed Prints by Rosmarie Chambers £15-20
- 409. After Alken, Fores Hunting Casualties, plates 3, 4 & 6. £30-40
- 410. 19thC English School. Stabled Racehorse, oil on canvas, indistinctly signed, 12.1/2" x 16.1/2". £110-150
- 411. A Victorian oil on panel, oval Portrait of a gentleman £30-40
- 412. A Small Late 18th/early 19thC oil on softwood panel of a boy with goat £100-200
- 413 - 414 Spare lots
- 415. Dorothy Wollard. A pair of etched prints, Bristol scenes, signed in pencil £25-40
- 416. Hugh Knollys. Winter in East Anglia, oil on board, signed £20-30
- 417. spare lot



418. Cecil Aldin. Hunting print "The Meynell - Away from Ash Gorse" signed in pencil £80-100
419. A colour engraving Belvoir Castle
420. A colour engraving Belvoir Castle
421. A colour engraving Lincoln Castle
422. The Bridesmaid, a Baxter Print £50-80
423. F. Drinkwater. Pair Landscapes, oil on canvas, 16" x 22" £100-150
424. 8 Old Pencil Sketches of Hunting etc £60-80
425. 19thC Oil on canvas Landscape with figures and boat £40-60
426. 2 oak framed prints
427. T Bowles. City of Amsterdam, colour engraving £60-80
428. A pair of watercolours of a lowland Farmhouse, each from a different view 6. 1/2" x 14", bears the monogram of James Lawson Stewart £300-400
429. Schotel. Sailing Ships, watercolour, signed 10" x 16" £600-800
430. P. Signac. Landscape, watercolour, signed £20-30
431. Rural Print
432. Pencil sketch of Stag and Wolves
433. Watercolour of a sailing boat
434. Colour print of a man, boy and boat
435. Frank Durham. Boating scene, oil on canvas, signed 24" x 20" £40-60
436. G. H. Findley. Landscape with church, watercolour, signed, gilt framed £50-80
437. J. H. Skinner. Pair of Castle Scenes, (1 of Durham), watercolour, signed, gilt framed £50-80
438. 100 Famous Portrait Prints, in 4 folios, the collection of Dr. C. Robertson £300-400
439. Fitzgerald. Watercolour
440. Robert Murden hand coloured MAP OF Shropshire

## ROYAL DOULTON

441. Captain Henry Morgan D6467 CHARACTER JUG £30-40
442. The Professor HN2281, 1965-1980 £60-80
443. Sweet Dreams HN2380, 1971-1990 £40-60
444. Cavalier HN2716, 1976-1982 £65-80
445. Flower Sellers Children HN1342, 1929- (chipped Rose) £120-150
446. Happy Anniversary HN3097, 1987- £55-70
447. Country Lass HN1991, 1975-1981- £60-80
448. Nanny HN2221, 1958-1991 £55-70
449. Faith HN3082, 1986; Hope HN3061, 1984; Charity HN3087, 1987, from a Ltd Edition of 9500 £200-250
450. The Rag Doll HN2142, 1954-1986 £35-45
451. Schoolmarm HN2223, 1958-1980 £70-90
452. Pope John Paul II HN2888, 1982-199 £32-40
453. The Centurion HN2726, 1982-1984 £60-80
454. Teatime HN2255, 1972- £35-45
455. Biddy Penny Farthing HN1843, 1938- £40-60
456. The Carpet Seller HN1464, 1931- (slight chip) £65-80
457. The Detective HN2359, 1977-1983 £65-80
458. The Cup of Tea HN2322, 1964-1983 £60-80
459. Falstaff HN2054, 1950-1992 £45-60
460. Captain Cook HN2889, 1980-1984 £100-140
- 460A. Royal Doulton Figure - Tall Storey. £100-140

## FURNITURE

461. A ball and claw footed mahogany SIDEBBOARD £250-350
462. A Victorian walnut STEP CONMODE £40-60



463. A Victorian blue velvet buttonback TUE CHAIR £80-120
464. A Victorian brass and iron DOUBLE BED £200-300
465. A set of 6 Georgian elm gateback COUNTRY CHAIRS £400-600
466. A 19thC X frame walnut STOOL £50-80
467. A Victorian mahogany FOOTSTOOL £25-40
468. A 19thC oak circular Tripod TABLE £100-150
469. A George IV mahogany FEMBROKE TABLE with reeded legs (AP) £250-350
470. spare lot
471. A Victorian walnut LOO TABLE with oval moulded tilt-top and 4 cabriole legs £300-400
472. A set of 4 Queen Anne Style DINING CHAIRS £80-100
473. A set of 4 Edwardian walnut DINING CHAIRS £100-150
474. A pine REPECTORY TABLE £150-200
475. A Victorian picture under glass of figures in a punt £50-70
476. An 18thC walnut MULE CHEST with bracket feet £450-600
477. A large pine CHEST £50-80
478. A set of 6 Victorian barback KITCHEN CHAIRS £120-160
479. An Edwardian Walnut OCCASIONAL TABLE £60-90
480. An oak gateleg TABLE £60-90
481. A Victorian swivel bowback OFFICE CHAIR £80-120
482. Cabriole TABLE LEGS
483. An Edwardian style mahogany REVOLVING BOOKCASE £120-150
484. An Edwardian style mahogany REVOLVING BOOKCASE £120-150
485. A Victorian walnut marquetry 2 door DISPLAY CABINET £600-800
486. A fine 19thC mahogany MINIATURE CHEST of 2 short and 3 long drawers, turned handles and bracket feet £400-600
487. An Edwardian inlaid Mahogany OCCASIONAL TABLE £60-90
488. A set of 4 Edwardian DINING CHAIRS with cabriole legs £80-120
489. A Georgian style wing ARMCHAIR £150-200
490. An Edwardian walnut CHEST £50-80
491. A compact Jacobean oak 3 panel SETTLE £400-600
492. An Edwardian brass telescopic STANDARD OIL LAMP of Corinthian columnar form £200-300
493. A Regency mahogany circular BREAKFAST TABLE with square pillar and 4 sabre legs £700-900
494. A Victorian green dralon CHESTERFIELD SOFA £150-200
495. A pink bordered floral CARPET £60-80
496. A Victorian walnut SUTHERLAND TABLE £250-350
497. A Victorian wrought iron GARDEN BENCH £100-200
498. An early 19thC walnut veneer Kneehole DESK £300-500
499. A pair of 19thC elm wheelback WINDSOR SIDE CHAIRS with cabriole legs and crinoline stretcher £80-120
500. A 19thC ash and elm bowback WINDSOR CHAIR with crinoline stretcher £120-180
501. An Edwardian walnut octagonal OCCASIONAL TABLE £100-150
502. An oak JARDINIÈRE STAND £40-60
503. A Victorian stripped pine BLANKET BOX £40-60
504. A cast iron PUB TABLE with moulded top £60-90
505. A Victorian rectangular mahogany tilt top BREAKFAST TABLE £800-1000
506. An Edwardian mahogany and brass COAL SCUTTLE £50-80
507. A Victorian painted pine BLANKET BOX £60-80
508. A fine Edwardian inlaid mahogany CHEVAL MIRROR with sabre legs £500-700
509. A 17thC oak MULE CHEST, 3 panel front and 3 drawer base £400-600
510. A pair of Edwardian ebonised CHAIRS
511. A Victorian walnut STEP COMMODE £30-50
512. A fine set of 6 Edwardian inlaid mahogany Sheraton style DINING CHAIRS £800-1000



513. A Regency style mahogany scroll-end SOFA late 19thC.  
£400-600
514. An Edwardian mahogany CARVER CHAIR £180-250
515. A set of 6 oak and elm DINING CHAIRS inc 2 carvers  
£200-300
516. A compact Victorian CHESTERFIELD SOFA £250-350
517. A wrought iron GARDEN BENCH £50-70
518. An American walnut SUTHERLAND TABLE £150-250
519. A fine Edwardian inlaid mahogany LADY'S WRITING DESK  
£600-800
520. A red dralon TUE CHAIR £70-90
521. An unusual LOOM CHAIR £60-80
522. A Victorian Rosewood rise and fall PIANO STOOL £80-100
523. An exceptional pair of late Georgian mahogany PEDESTALS  
of tapering form the figured doors enclosed by reeded  
and carved columns terminating in paw feet (Illustrated  
on front cover) £3000-5000
524. An Edwardian walnut DRESSING TABLE £100-150
525. An Edwardian mahogany DOUBLE WARDROBE £200-300
526. A cut crystal CHANDELIER £50-80
527. A Victorian gilt Overmantel MIRROR £80-120
528. A Barleytwist oak SIDEBORD £80-100
529. 3 Brass WALL LIGHTS, 2, 3 & 5 Branch £120-180
530. A Georgian oak CHEST of 3 long and 2 short drawers  
£200-300
531. A Victorian Mahogany DRESSING TABLE MIRROR £120-180
532. Period panelled oak BEDHEAD AND FOOTBOARD £100-200
533. A reproduction Oak DRESSER £80-120
534. An Edwardian mahogany CHEST of 3 long and 2 short  
drawers, brass drop handles £400-500
535. A Georgian style pine DRESSER with platerack £400-600
536. A carved oak PANEL
537. An Edwardian mahogany DOUBLE WARDROBE £150-200
538. An inlaid mahogany DOUBLE BED £80-120
539. A Queen Anne style mahogany DRESSING TABLE £80-100
540. A Georgian style walnut CHEST ON CHEST £200-300

END OF SALE



Established 1900

**-GOLDINGS-**

THE GRANTHAM AUCTION ROOMS

An opportunity to have your treasures and heirlooms sold in a

**COUNTRY HOUSE AUCTION**

at which the BBC will be filming



Commencing 11.30am on Sunday 14 July 1996



at Grimsthorpe Castle, Nr Bourne, Lincolnshire

**VICTORIANA**  
**SILVER, CERAMICS, PICTURES**  
**METALWARE, CLOCKS, ETC**

Closing Date for Entries is  
**FRIDAY 28 JUNE\***

**\*NB:** The sale is limited to 300 lots therefore early entry is  
advised to ensure items are included in this sale.

Golding Young & Co.  
Old Wharf Road, Grantham, Lincolnshire, NG31 7AA  
Telephone: (01476) 565118  
Fax: (01476) 561475

**THE COMPLETE AUCTION SERVICE**

Auction Sales of Antiques, Fine Art, Collectables, Modern Furniture & Effects - Office, Shop & Catering Equipment  
Vehicles - Plant & Agricultural Machinery - Stock-in-Trade - Business Assets - Liquidations & Receiverships  
VALUATIONS undertaken for Insurance, Probate, Family Division and Sale purposes. Full HOUSE CLEARANCE facilities.