



EST
1864

GOLDING YOUNG

Fine Art Sale

Wednesday 27th February 2019



CHARTERED AUCTIONEERS & VALUERS • ARTS & ANTIQUES SURVEYORS

PROBATE – INHERITANCE TAX ASSESSMENT

For many Executors and Trustees the responsibility of dealing with a deceased's Estate is a once-in-a-lifetime experience. You have to make a number of important decisions in a very short space of time and all when the loss is most difficult to come to terms with.

The position of Executor is an important one in law and has defined personal liability and responsibility. To exhibit due diligence to beneficiaries and more importantly HM Revenue & Customs, an Executor or advisor will instruct a firm Regulated by RICS.

Even if the estate will be taxed at 0%, a valuation remains an essential tool for an Executor. The inventory will still be used for identification of bequests, trust items, family division and proof of value.

Our valuations are prepared to the International Valuation Standards requirement of the 'Red Book'.

The report will cover sections of:

- Jewellery
- Vehicles
- Antiques, Fine Art & Collections
- General Furniture & Effects



For initial advice contact the following Chartered Auctioneers & Valuers:

Bourne, Stamford & South
Colin Young MRICS
01778 422686

Grantham, Lincoln & North
William Gregory MRICS
01522 524984

Removals – Household & Commercial

- Free Quotations
- Full Packing Service
- Suppliers of Packing Materials
- Shipping & Storage Arranged
- Antiques & Fine Art Specialists
- Specialist Piano Movers
- Office Movers

Contact Andrew Lowes on 07970 742577 for a quote or email lowes@goldingyoung.com

goldingyoung.com

PRIVATE CLIENT & PROFESSIONAL SERVICE DEPARTMENT

We value personal property for private and corporate clients. Our team have valued family heirlooms, art collections and museum holdings for a variety of purposes.

We are the only auction house in the region to have a bespoke Private Client Department with:

- Four Chartered Arts & Antiques Surveyors
- Two RICS/ Antiques Trade Gazette professional assessment award-winning valuers
- Two In-house qualified jewellery valuers
- Experience in abundance and diversity since 1864
- Ten professional staff with RICS, NAVA or SoFAA qualifications.

Winter *re*VIEW



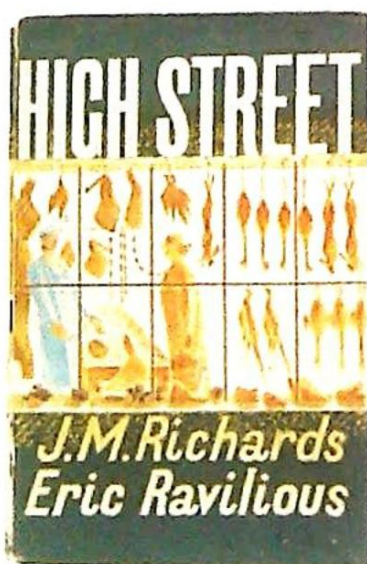
Polar Interest. Ernest Shackleton Lots
SOLD for £14,450



19thC Oriental Scroll
SOLD for £9,400



A 19thC Continental Box
SOLD for £1,300



Richards (J.M.). High Street, first edition
SOLD for £1,100

2019 has started with BANG!.. quite a few of them, actually.

The Golding gavel has hit the block more than 7,750 times since New Year, with our auctioneers selling over 1,100 vendor consignments across the first seven auction sales.

The Grantham Auction Rooms started the avalanche of lots with £14,450 achieved for the first six to go under the hammer alone. A museum quality group of Shackleton polar expedition ephemera was gone in seconds with worldwide media interest and a blizzard of bids following suit.

The specialist Asian Art & Fine Ceramics sale later that evening saw all the usual excitement for rare and desirable porcelain, but the star lots on this occasion was a fine collection of Chinese court clothing, which sold for over £11,000.

The Bourne Auction Rooms saw bidders ravenous for the iconic Ravillious illustrated J M Richards 1st edition of High Street, selling for £1,100. From that point on the flow of entries into the saleroom has been non-stop, particularly for jewellery and the specialist Toys & Automobilia sale. Forthcoming sales are looking very promising indeed. Who said the High Street was dead?

The Lincoln Auction Rooms saw its first big single-owner collection of the year in January with a fine group of ceramics by Moorcroft, Cobridge, Doulton & Beswick realising just over £15,000.

The offering of so many interesting and diverse lots at all of our salerooms saw an increase in bidder registrations, both in the room and online, with really strong prices throughout. Why not have a look at the results online?

With consignments from so many local vendors supporting their local salerooms and a notable number of important executor instructions, the lots have not been in short supply by volume or value.

In other news, our new website went live on the 31st January 2019, after nine months of dedicated planning, investment and development.

As well as nearly two decades of catalogues to *re*VIEW, the site includes many new features including online auction appraisals and if you are thinking of bidding online, we now offer an option to bid directly with us on the internet at GY-Live!

The first 1,000 lot sale at GY-Live! on the 6th February was a great success and there was definitely a desire for buyers to go directly to our site for their bidding experience.

In the fast changing world of auctions this was a bold, strong and market-leading move that has ensured that we remain in pole position with the very latest technology.

The following *pre*VIEW pages highlight a number of important sales coming up this Spring. We are delighted to receive instructions from Gavin & Ross Burns upon their retirement and the closure of St Georges Antiques of Stamford.

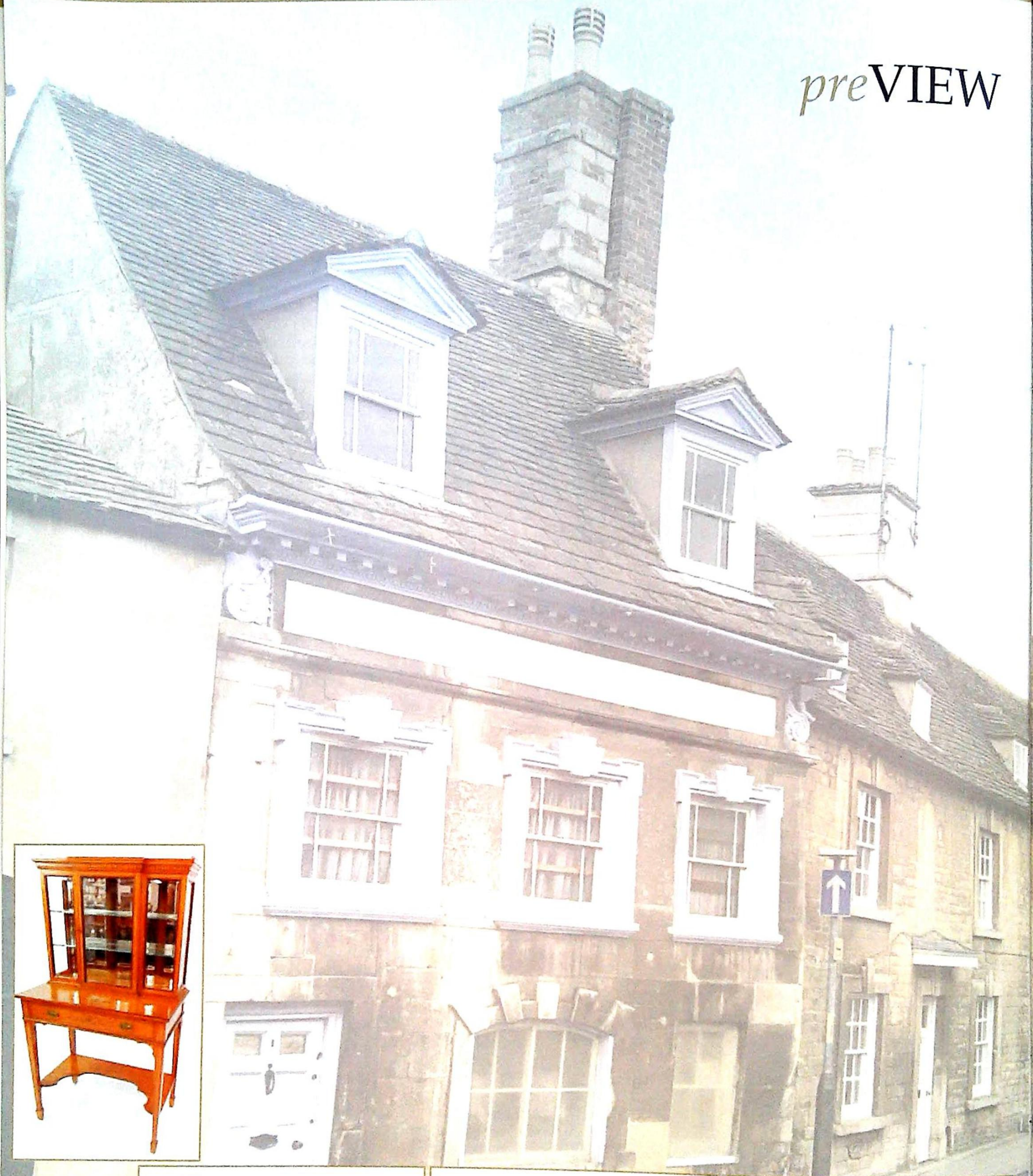
Their support to our salerooms for over 45 years has been highly valued, but the highlight has really come in the last few months from the pleasure of cataloguing some of the finest examples of English furniture, clocks and the antiques they have carefully selected over the decades.

It has been a delight to handle the collection and it is an important once-in-a-lifetime offering of over 500 un-reserved lots that cannot be missed by the connoisseur, the collector or the lover of antiques.

We look forward to your continued support at future sales, whether buying or selling...

The Auction Team @GoldingYoung

*pre*VIEW



*Upon instructions from Messrs G & R Burns upon their retirement
and the closure of St Georges Antiques of Stamford,
Lincolnshire (Est. 1974)*

Golding Young will sell by Auction
Over 500 Un-Reserved Lots
of

Fine English Antique Furniture & Effects

from the 17th to 19th Century including notable &
premier cabinet makers' works within a considerable
inventory of *fresh-to-market* pieces including hundreds of
lots unseen at auction for over a generation.

The first Fine Sale will be at The Bourne Auction Rooms
on Wednesday 24th April followed by
further sales on Wednesday 1st May at Grantham,
8th May at Bourne & finally 15th May at Lincoln.

All enquiries to Colin Young MRICS
on 07976 977169





The wrong time to find out
what it was worth...



Over 40 million pounds of antiques & fine art valuation
in UK, Europe, Asia, Africa & The Americas since January 2014.

EST
1864
GOLDING YOUNG



William Gregory MRICS and Colin Young MRICS
are RICS Registered Valuers and
offer free advice for Insurance, Tax Planning and Probate reporting
and of course the sale of single items and collections.

The Bourne Auction Rooms
+44 (0) 1778 422686

The Grantham Auction Rooms
+44 (0) 1476 565118

The Lincoln Auction Rooms
+44 (0) 1522 524984

CHARTERED AUCTIONEERS & VALUERS ♦ ARTS & ANTIQUES SURVEYORS



goldingyoung.com

*Upon instructions from the executors of
Angela Bishop (Dec'd) of North Hykeham,
Pickering (Dec'd) of Harmston, Alf Ludham (Dec'd) of
Grimsby, Mr & Mrs K Staines (Dec'd) of Grantham,
together with lots selected from
Grantham House, Grantham, The Usher Art Gallery Trust
and a further 70 Vendors choosing a firm Regulated by
RICS to sell their fine art.*

The Lincoln Art Sale

Wednesday 27th February 2019

**At The Lincoln Auction Rooms
Viewing & Selling in The Gallery
At Thos Mawer House
Sale commences at 6pm**

**Viewing: Sunday 24th 2pm-5pm
Tuesday 26th 10am-4pm
& saleday from 2pm**

Bid online or simply watch the sale live at



All enquiries to William Gregory MRICS on 01522 524984

Front cover images:

Top - Lot 80 Peter Brannan (1926-1994).

Lincolnshire Coast, oil on board, signed, dated 1975, titled verso, 64cm x 75cm.

Bottom - Lot 61 John Frederick Herring (1815-1907).

Horses, ducks and chickens in farmyard scene, oil on canvas, signed, 39cm x 49.5cm.

Lincoln Fine Art Sale



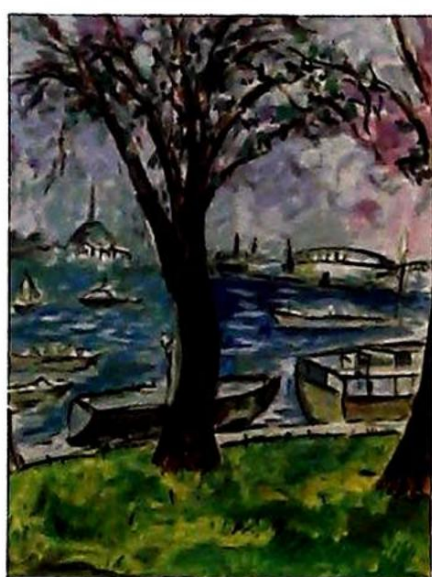
▲ 1.
Laurence Stephen Lowry (1887-1976).
Peel Park, artist signed coloured print, 41cm x 78cm.
£500-1000



▲ 2.
Hans Kerner (20thC).
The happy artist, oil on board, signed, 29cm x 24cm. Gallery label verso.



▲ 3.
Peter Brannan (1926-1994).
Still life, oil on board, signed and dated (19)79, 33cm x 27cm.
£150-250



▲ 5.
Bob Dylan (b.1941).
Sunday Afternoon, artist signed limited edition, coloured print, 97/295, 61cm x 46cm.
Washington Green. Certificate of Authenticity verso.
£500-800



▲ 6.
Late 19thC British School.
Portrait of a young lady with rouged cheeks, oil on canvas, 46cm x 38cm.
£50-100



▲ 4.
Thomas Sidney Cooper (1803-1902).
At Pasture near Canterbury, oil on canvas, signed and dated 1893, 59.5cm x 90cm.
£6000-8000



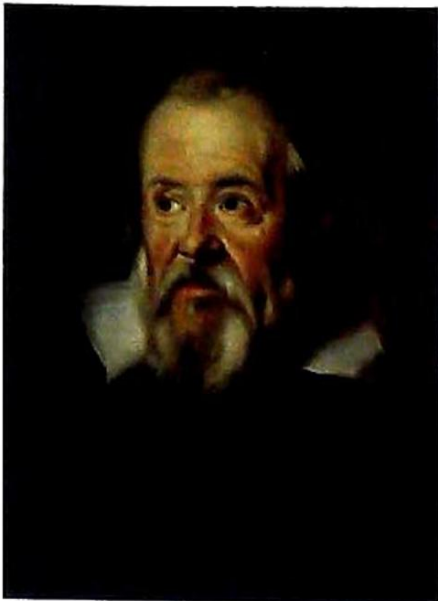
▲ 7.
Thomas Ivester Lloyd (1873-1942).
Seagull, oil on canvas, signed and titled, 39cm x 49.5cm.
£200-400



▲ 8.
Lucy Harwood (1893-1972).
Lucy's Daily, oil on canvas, signed and titled verso, 67cm x 49.5cm.
Provenance. From the Estate Alistair John Ludlam. Alf Ludlam (Alistair John Ludlam) was born in Grimsby in January 1941.
Purchased from the Artist 1964.
£300-500



▲ 9.
John Emms (1843-1912).
Huntsmen, hounds, mares with foal, oil on canvas, signed, 44.5cm x 64.5cm.
£1800-2500



▲ 10.
Continental School.
Galileo Galilei, oil on canvas,
63cm x 45cm.



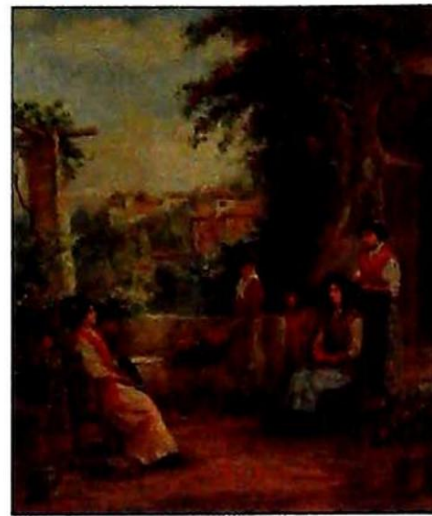
▲ 11.
Thomas Sidney Cooper (1803-1902).
Sheep and cattle in pasture landscape, oil on board, signed,
43.5cm x 59cm.
£4000-6000



▲ 12.
Thomas Sidney Cooper (1803-1902).
Cattle in pasture landscape, oil on canvas, signed and dated 1869,
49.5cm x 75cm.
£3000-5000

13.
19thC British School.
River landscape driving cattle, oil
on canvas, 23.5cm x 32cm.

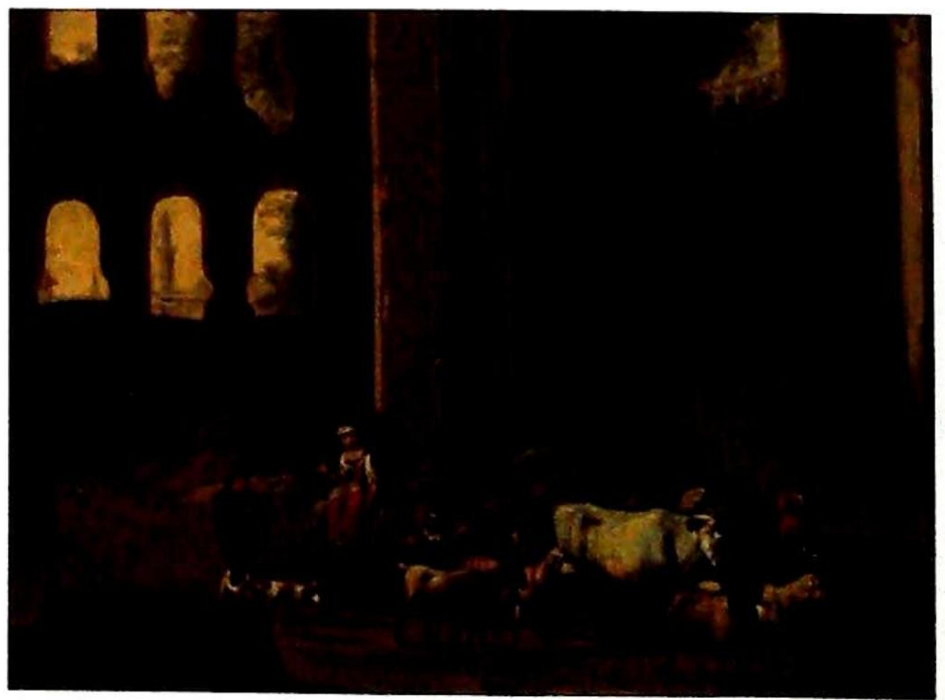
14.
Nicolaas Riegin (1827-1889).
Masted ship and sailing boats off
the coast, oil on board, signed and
dated 1875, 29.5cm x 44.5cm.



▲ 15.
**Andrew Trevor Haddon
(1864-1941).**
Spanish terrace with ladies, oil
on canvas, signed,
73.5cm x 61cm.
£400-600



▲ 16.
Early 19thC School.
Girl seated with cat, wearing
blue shoes and bonnet, oil on
relined canvas, moulded gilt
frame, 75cm x 64cm.
£250-350



▲ 19.
Continental School.
Herder and Wife driving animals in classical landscape, oil on canvas,
50cm x 65cm.
£800-1200



▲ 17.
**William Henry
Williamson (1820-1883).**
Sailing boats off coast, oil on
canvas, signed and dated 1881,
29.5cm x 59.5cm.
£300-500

18.
19thC School.
Rural landscape gathering the hay
with many figures amongst the
corn stooks and tapering stack, oil
on a relined canvas, possibly
Dutch or American colonial,
35cm x 42cm.
£150-250



▲ 20.
William Mellor (1851-1931).
Welsh Landscape, oil on
canvas, signed and inscribed
verso, 39cm x 75cm.
£600-900

21.
William Mellor (1851-1931).
On the Lear(?) North Wales, oil on
canvas, signed and dated,
39cm x 75cm.

Lincoln Fine Art Sale



▲ 22.
M.J. Foster (19thC).
Head and shoulders study of a young woman, watercolour, signed, 35cm x 25.5cm.

23.
B. Halle (19thC).
Gentleman with a violin and dog, oil on canvas, signed and dated 1832, 49.5cm x 39.5cm.
£150-250

24.
19thC Continental School.
Alpine scene, oil on board, 15cm x 17cm.

25.
J. Hamqu(?) (19thC).
The Card Players, The Game Keep, oil on board - pair, signed, 39cm x 29cm.



▲ 26.
Clelia Bompiani Battaglia (1847-1927).
Venetian flower sellers, watercolour, signed, 53cm x 35.5cm.
£200-400



▲ 27.
Guiseppe Razzio (1823-1916).
Middle Easter Horsemen, oil on canvas, signed and dated (18)83, 53cm x 79cm.
£1000-1500

28.
Roberto A.K. Marshall (1849-1926).
On the Clyde - river scenes, oil on canvas - pair, signed, 28cm x 59cm.

29.
H.T. (19thC).
Maiden at prayer, oil on canvas, monogrammed, 33.5cm x 23cm.
£100-150

30.
19thC British School.
Manor House, watercolour, 25.5cm x 36cm.



▲ 31.
Harry Sutton Palmer (1854-1933).
Richmond Castle, watercolour, signed, 35cm x 53cm.
£250-350

32.
Harry Sutton Palmer (1854-1933).
Mountain stream in North Wales, watercolour, signed, 51cm x 73cm.
£150-250



▲ 33.
Thomas Spinks (act.1872-1910).
An afternoon fishing, oil on canvas, signed and titled, 59cm x 89.5cm.
£300-400



▲ 34.
Josep Cusachs (1851-1908).
Cavalry, oil on board, signed, 11cm x 19cm.
£200-300

35.
19thC Continental School.
River scene with watermill and figures, oil on canvas, 26cm x 34cm.



▲ 36.
William Edward Millner (1849-1895).
Ferretting, watercolour, signed and dated 1867, 29cm x 42.5cm.
£150-250

37.
19thC British School.
Stage Coach - The rest stop, oil on board, 28cm x 34cm.
£300-400

38.
Albert George Stevens (1863-1925).
Country lane with horse and wagon, rural landscape, watercolour - pair, signed, 17cm x 25cm.
£250-350

39.
S.S. Roe (19thC).
Coastal scene with masted ship, watercolour, signed, 30cm x 24cm.
£40-60

40.
T. West (19thC).
Figure on a mule, oil on board, signed and dated, 28.5cm x 21cm.
£50-80

41.
John Frederick Tayler (1820-1889).
Returning from the hunt, watercolour, 13cm x 24cm.
Label verso The Walsingham Gallery.
£30-50

42.
M.B. (19thC).
Portrait of a maiden, watercolour, initialled, 13.5cm x 13.5cm.

43.
19thC Continental School.
Tours, watercolour, titled, 34cm x 24cm.
£50-80



▲ 44.
Albert Hartland (1840-1893).
Upper Mersey, watercolour, signed and titled verso, 40cm x 72.5cm.



▲ 45.
Vicente Garcia De Paredes (1845-1903).
The music room - A Duet, watercolour, signed, 28cm x 39cm.
£100-150

46.
Guilia Cecchi (19thC).
River Arno, watercolour, signed,
16cm x 34.5cm.
Label verso Frost and Reed.
£200-300

47.
A. Stone (19thC).
Ely, Wells, watercolour - pair,
signed and titled, 30cm x 49cm.

48.
J. Williams (19thC).
View on the Clapton Road, oil on
canvas, signed and dated 1842,
25cm x 45cm.
£80-120



49.
Fredinando Castelli (19thC).
Portrait of a young girl in
landscape, oil on canvas,
signed, 49cm x 38cm.
£350-450

50.
Clive Newcombe (1847-1894).
Glen Sannox, Isle of Arran North
Ayrshire, watercolour, signed and
dated 1881, 59cm x 80.5cm.
£350-450



51.
Gerg Fischhof (AL TERNI) (1859-1914).
Mediterranean landscape, oil
on canvas, signed, 37cm x 75cm.
£250-350



52.
David Hall McKewan (1816-1873).
The Simla - Tully Moor Park,
Co Down Ireland (as labelled
verso), Fisherman in a rocky
stream and landscape,
watercolour, signed lower left
and dated 1863 or 5, moulded
gilt frame, 50cm x 74cm.
£200-300

53.
Thomas Boother.
Gathering sticks, pen and ink
with brown wash, 30cm x 19cm.
£40-60

54.
J. G. (19thC).
Stirling Castle, watercolour,
initialled and dated 1806,
14cm x 20cm.
£40-60



55.
Frederick Daniel Hardy (1826-1911).
Evening prayer, oil on board,
signed and dated 1891,
17cm x 23cm.
£500-800



56.
George Goodwin Kilburne (1839-1924).
Interior scene - lady asked to
dance, watercolour, signed,
20cm x 27cm.
£200-300

57.
Thomas Sidney (19th/20thC).
Three Cliff Bay nr The Mumbles,
North Sea Fishers, watercolour -
pair, signed, titled and dated 1910,
23cm x 67cm.



58.
George Sheffield (1839-1892).
Seascape, charcoal drawing,
signed and dated 1880,
74cm x 126cm.
£200-300



59.
Copley Fielding (1787-1866).
River landscape with two
anglers, watercolour, signed,
29cm x 43cm.



60.
David Cox (1809-1885).
Mountain landscape with
sheep herder, watercolour,
38cm x 54cm.



61.
John Frederick Herring (1815-1907).
Horses, ducks and chickens in
farmyard scene, oil on canvas, signed,
39cm x 49.5cm.
£1500-2500



62.
Albert Goodwin (1845-1932).
River landscape with cattle,
watercolour, signed and dated
1873, 24cm x 34.5cm.
£80-120

63.
William Cruikshank (1842-1922).
Bullfinch, birds nest, still life, oil
and watercolour, signed,
19cm x 22.5cm.

64.
L. Lewis (19thC/20thC).
Lake scene with sailing boats,
watercolour, signed and dated
(19)01, 36cm x 26cm.

65.
Eugene Joseph Verboeuckhoven (1788/89-1881).
Cattle and sheep, pencil with
highlight, signed and dated 1876?,
34.5cm x 49.5cm.
£300-500

66.
Alfred Frank de Prades (c.1820-c.1890).
Coaching scene, watercolour,
signed, 36.5cm x 52cm.
£150-250

Lincoln Fine Art Sale



▲ 67.
Francois Vernay
(1821-1896).
Fruit still life, oil on canvas,
signed, 44.5cm x 53.5cm.
£300-500

68.
Joseph Paul Pettitt
(1812-1882).
River scene, watercolour, signed,
20cm x 31.5cm.

69.
E. Cooke (19thC).
Country Lane, watercolour,
signed, 21cm x 28.5cm.

70.
19thC Continental School.
Street scene with figures,
watercolour, 31.5cm x 24cm.
and another (2).
£50-80

71.
Alfred James Munnings
(1878-1959).
Soapy sponge, pencil, signed and
titled, 36cm x 25cm.

72.
Gordon Frederick Browne
(1858-1932).
Illustration for Lorna Doone, ink,
initialled, 24cm x 18cm.

73.
Robert Winchester Fraser
(1848-1906).
River landscape, watercolour,
signed, 24cm x 45cm.

74.
19thC British School.
River landscapes, oil on boards -
pair, 23.5cm x 44.5cm.

75.
S.C.F. (19thC/20thC).
Harbour scene, watercolour,
initialled, 12cm x 18cm.



▲ 76.
19thC Continental School.
Maiden spinning cotton, oil on
canvas, 59cm x 34cm.
£200-300

77.
F. Martinus Hulk
(19thC.20thC).
Even tide, watercolour - Pair,
titled verso, 8.5cm x 12.5cm.

78.
19thC School.
Mountain lake scene, watercolour,
indistinctly signed, 24.5cm x 35.5cm.

79.
G.K. Pierson (19thC).
Alpine landscape, watercolour,
signed and dated 1868,
22cm x 30cm.



▲ 80.
Peter Brannan (1926-1994).
Lincolnshire Coast, oil on
board, signed, dated 1975,
titled verso, 64cm x 75cm.
£500-800



▲ 81.
Robin Wheeldon (b.1945).
Percherons, oil on board,
signed, dated 1984, titled
verso, 40cm x 52cm.
£200-300



▲ 82.
Frederick William N
Whitehead (1853-1938).
Lincoln from the river,
watercolour, signed and titled
verso, 15.5cm x 26.5cm.

83.
Clive Richard Browne
(1901-1991).
Seascape, oil on board, signed,
29cm x 39cm.
£100-200



▲ 84.
Thomas George Storey
(1865-1935).
Boston, oil on canvas, signed,
24cm x 34cm.
Exhibition label verso.
£80-120

85.
George Alfred Boden
(1886-1956).
Morning at Digby Lincolnshire,
oil on board, signed and titled
verso 23cm x 33cm.

86.
Herbert John Finn
(1860-1942).
Cloisters Lincoln Cathedral,
watercolour, signed and dated
(18)98, 25cm x 35cm.



▲ 87.
David Paton (20thC).
Landscape, watercolour,
signed and dated (19)75,
21cm x 25.5cm.



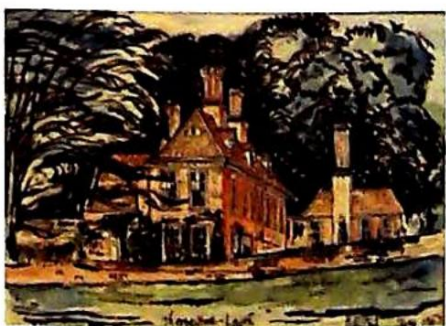
▲ 88.
Len Roope (1917-2005).
Broadgate Lincoln in 1958,
watercolour, signed and titled,
23cm x 32cm.

89.
Len Roope (1917-2005).
Exchequer Gate Lincoln,
watercolour, signed, titled and
dated (19)63, 19.5cm x 26.5cm
and another watercolour signed
Horner (2).

90.
Len Roope (1917-2005).
Lincoln from the Witham,
watercolour, signed, titled and
dated 1987, 17.5cm x 26.5cm.

91.
Len Roope (1917-2005).
Old Cockermouth, watercolour,
signed and titled, 22cm x 32cm.

92.
Len Roope (1917-2005).
Skiddaw Cumberland,
watercolour, signed and titled,
23cm x 33cm.



▲ 93.
Colin Carr (1929-2002).
Thorpe Hall, Louth,
watercolour, signed, titled and
dated 1962, 12cm x 17cm.



▲ 94.
R. Phillimore
(19thC/20thC).
Lincoln Cathedral, artist
signed etching, 24cm x 32cm.

95.
Richard James Mason
(1906-1959).
Riseholme Lincoln, watercolour,
signed and titled verso,
20cm x 28.5cm, and six other
watercolours (7).

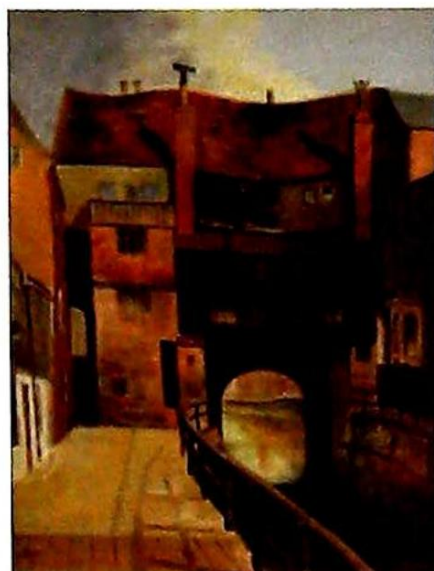
96.
A.E. Beales (20thC).
South Sea Lane Humberston,
watercolour, signed and titled
verso, 27cm x 28cm.
and two other watercolours (3).

97.
M. J. Nicklin (20thC).
Central Lincoln street map, artist
signed, coloured print,
49cm x 58cm.

98.
Johannes Kip (circa 1720).
Doddington in the County of
Lincolne the seate of the Honble
Sr Thomas Hussey Barritt,
monochrome etching,
39cm x 54cm.

99.
Alice Eyre (19thC).
North Porch Lincoln Cathedral
(?), watercolour, signed and titled
verso, 36cm x 53cm.
£60-90

100.
Mark Huskinson (1935-2018).
On the first tee, in aid of the Red
Cross Madame Frou Frou La
Flango, oil on canvas, signed and
dated 2012, 49.5cm x 39.5cm.

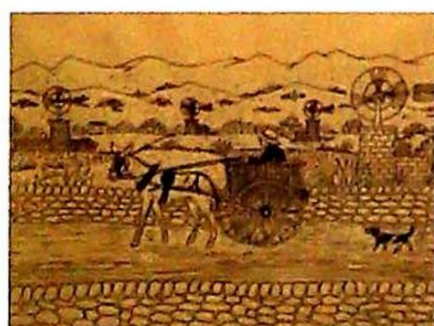


▲ 101.
Alfred Ernest White
(1873-1953).
High Bridge, oil, signed and
dated 1900, 29.5cm x 22cm.
£50-80

102.
Alfred Ernest White
(1873-1953).
Pottergate, oil, signed and dated
1904, 29.5cm x 22cm.
£50-80



▲ 103.
Antonin (Tony) Bartl
(1912-1998).
Pottergate Lincoln, oil on
canvas, signed and dated 1980,
90cm x 120cm.
£200-300



▲ 104.
Vincent Haddelsey
(1934-2010).
Pony and trap, ink drawing,
signed, 21cm x 27cm.

105.
Vincent Haddelsey
(1934-2010).
Man and Dog, ink, signed,
11cm x 17cm and another (2)

106.
Vincent Haddelsey
(1934-2010).
Silver Band, artist signed etching
5/12, 17cm x 27.5cm

107.
Vincent Haddelsey
(1934-2010).
Polo Match, artist signed etching,
25/50, 14.5cm x 19.5cm

108.
Vincent Haddelsey
(1934-2010).
Horse and Rider, ink, signed, 11cm
x 17cm and another (2)

109.
Vincent Haddelsey
(1934-2010).
Horse and Cart, ink, signed,
10cm x 17cm

110.
Vincent Haddelsey
(1934-2010).
Horses and Sledge, artist signed
etching, 12.5cm x 20cm

111.
Vincent Haddelsey
(1934-2010).
Guardsman, artist signed etching,
24/50, 15cm x 20cm

112.
Vincent Haddelsey
(1934-2010).
Drag Wagon, artist signed
etching, 6/12, 19cm x 25cm

113.
Vincent Haddelsey
(1934-2010).
Horse racing - Silhouette, ink,
signed, 17.5cm x 31cm.

114.
Vincent Haddelsey
(1934-2010).
Winning Breed, artist signed and
numbered 11/14.

115.
Vincent Haddelsey
(1934-2010).
Winning breed, artist signed and
numbered XXXVII/L.

116.
Vincent Haddelsey
(1934-2010).
Winning breed, artist signed and
numbered 13/14.

117.
Vincent Haddelsey
(1934-2010).
Winning breed, artist signed and
numbered L/L.

118.
Vincent Haddelsey
(1934-2010).
Winning breed, artist signed and
numbered XLIX/L.

119.
Vincent Haddelsey
(1934-2010).
Winning breed, artist signed and
numbered 178/230.

120.
Vincent Haddelsey
(1934-2010).
Winning breed, artist signed and
numbered 10/14.



▲ 121.
Gill Nadin (1928-1996).
Autumn landscape, oil on
canvas, signed and dated
(19)90, 121cm x 121cm.
£60-80



▲ 122.
Caroline C Matthaei
(20thC).
Thea, carved and painted
limewood, signed and titled
verso, 41cm high.
Provenance: From the Estate of
Alistair John Ludlam,
purchased The Gate Gallery
2007. Alf Ludlam (Alistair John
Ludlam) was born in Grimsby
in January 1941.

Lincoln Fine Art Sale



- ▲ 123.
Lynn Lovitt (20thC).
Head, black glazed terracotta, impressed mark, 37cm high.
Provenance: from the Estate of Alistair John Ludlam, purchased The Gate Gallery 2008. Alf Ludlam (Alistair John Ludlam) was born in Grimsby in January 1941.

Lots 124-136 to be sold on behalf of the Usher Art Gallery Trust (without reserve)



- ▲ 124.
Phil Bowman (b.1954).
The Driftwood Mirror, acrylic, initialled and titled verso, 35.5cm x 60cm.

125.
Morwenna Thistlethwaite (1912-?).
Lady and cat, gouache, monogrammed, 22.5cm x 19cm.

126.
G. Wilson.
Baker, oil on board, signed, dated (19)60, titled verso, 38.5cm x 31cm.

127.
After Winifred Nicholson.
Cyclamen and Primula, coloured print, 37.5cm x 41.5cm.

128.
After David Hockney.
A Private View, Editions Graphiques Gallery London - October 26 to November 12 1988, monochrome poster, 84cm x 57.5cm.

129.
Bobbie Chapman (20thC).
Rude Escape, artist signed, dated (19)68, titled and numbered etching 3/4, 53cm x 37cm.

130.
Marion Brown (20thC).
Autumn park scene, oil, signed, 37cm x 49.5cm.

131.
Michael J Strang (b.1942).
Nanquidno Sunset, oil, signed, titled and dated (19)92 verso, 15cm x 16cm.

132.
H. Paoletti (20thC).
Mediterranean street scene, oil on canvas, signed and dated 1970, 59cm x 49cm.

133.
M.G. Belshaw.
Church entrance, oil, signed, 58cm x 37cm.



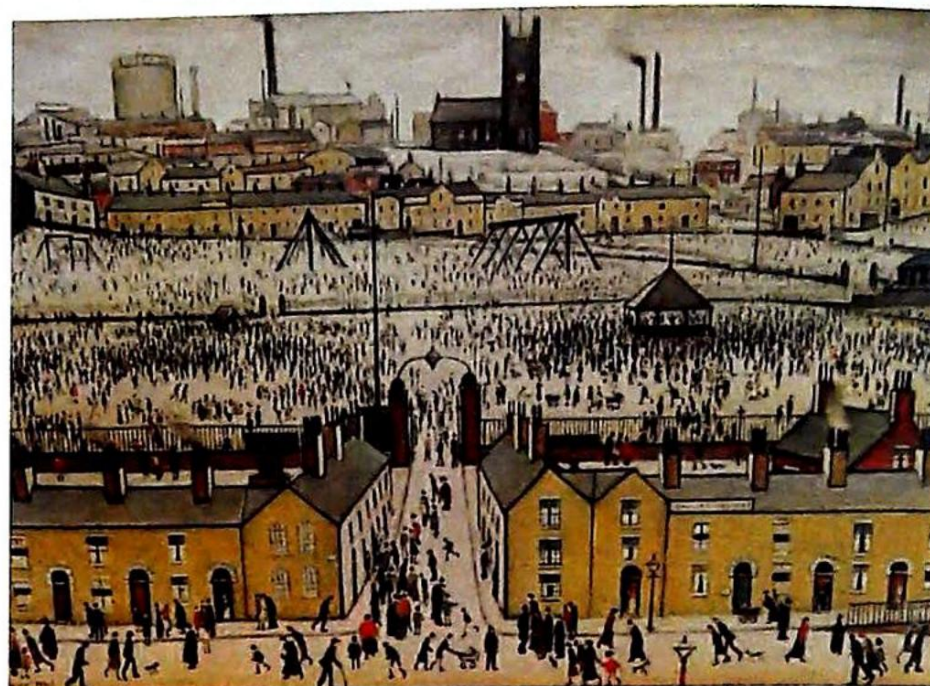
- ▲ 134.
Alfred Ernest White (1873-1953).
Pottergate, oil on canvas, signed and dated (18)98, 29.5cm x 44cm.

135.
Edward R. Mayor.
Kirkby on Bain, artist signed coloured map, 42cm x 30cm, and three others - Woodhall Spa, Sleaford, Horncastle (4).

136.
After George Cruikshank.
Star signs - 12 monochrome prints, 47cm x 75.5cm (overall).



- ▲ 137.
After Laurence Stephen Lowry (1887-1976).
Family discussion, limited edition monochrome print 158/850, 37cm x 25cm. £50-80



- ▲ 138.
Laurence Stephen Lowry (1887-1976).
Britain at Play, artist signed coloured print, 47cm x 61cm. £1500-2500



- ▲ 139.
Laurence Stephen Lowry (1887-1976).
The Pond, artist signed coloured print, 36cm x 58cm. £1500-2500



141.
Charles Frederick Tunnicliffe (1901-1976).
Ducks at the waters edge, artist signed limited edition, coloured print 318/500, 57cm x 66cm.

- ▲ 140.
Bob Dylan (b.1941).
Favela Villa Candido, artist signed limited edition coloured print 261/295, 52cm x 67cm.
With Washington Green Fine Art certificate of authenticity. £500-800



- ▲ 142.
Sandra Blow (1925-2006).
Interaction, artist signed
coloured screenprint.
Provenance: From the Estate
Alistair John Ludlam. Alf
Ludlam (Alistair John Ludlam)
was born in Grimsby in
January 1941.
£300-500



- ▲ 143.
**Frank Brangwyn
(1867-1956).**
A Spanish Bridge, artist
signed, colour print, titled
verso, 44cm x 51cm.
£150-250

144.
David Shepherd (1931-2017).
The Lazy Hazy days of Summer,
artist signed limited edition
coloured print 172/950,
56cm x 62cm.
£30-50

145.
David Shepherd (1931-2017).
Jaguars, artist signed limited
edition coloured print 704/1500,
38.5cm x 61cm.
£40-60



- ▲ 146.
**David Shepherd
(1931-2017).**
Africa, artist signed limited
edition coloured print 97/350,
45cm x 87cm.
£80-120

147.
David Shepherd (1931-2017).
Arctic Foxes, artist signed limited
edition coloured print 907/1500,
27.5cm x 39.5cm.
£30-50

148.
David Shepherd (1931-2017).
Ziggy, artist signed limited
edition coloured print 442/1500,
20.5cm x 19cm.
£30-50

149.
David Shepherd (1931-2017).
African Babies, artist signed
limited edition coloured print
982/1500, 23.5cm x 36cm.
£30-50

150.
David Shepherd (1931-2017).
Lonely gil, artist signed limited
edition coloured print 470/1500,
30cm x 43cm.
£30-50

151.
David Shepherd (1931-2017).
Snow Leopard, artist signed
limited edition coloured print
465/950, 48cm x 74cm.
£50-80

152.
David Shepherd (1931-2017).
Teenage Tiger, artist signed
limited edition coloured print
751/1500, 26.5cm x 34.5cm.
£40-60

153.
David Shepherd (1931-2017).
The Pandas of Wolong, artist
signed limited edition coloured
print 593/1500, 52cm x 69.5cm.
£40-60

154.
David Shepherd (1931-2017).
Cheetah, artist signed limited
edition coloured print 246/350,
47cm x 72cm.
£80-120

155.
David Shepherd (1931-2017).
Baby Tawny, artist signed limited
edition coloured print 633/1500,
20cm x 19cm.
£30-50

156.
David Shepherd (1931-2017).
When I grow up I want to be a
cart horse, artist signed limited
edition coloured print 442/1500,
21cm x 19cm.
£30-50

157.
David Shepherd (1931-2017).
Elephant seals, artist signed
limited edition coloured print
633/100, 36.5cm x 61cm.

158.
**Laurence Stephen Lowry
(1887-1976).**
Britain at play, artist signed
coloured print, 47cm x 61cm.
£800-1200

159.
Jean Harper (1921-2005).
Chapter Two, sleeping child, artist
signed coloured prints, pair,
32cm x 23cm.

160.
Jean Harper (1921-2005).
Chapter two, artist signed,
coloured print, 30.5cm x 23cm.
Provenance: From the estate of
Alistair John Ludlam. Alf
Ludlam (Alistair John Ludlam)
was born in Grimsby in January
1941.

161.
Joan Lock (20thC).
Interior - White coffee pot, Lino-
cut 30/30, signed, titled and dated
(19)91, 39.5cm x 33cm.
Provenance: From the Estate
Alistair John Ludlam. Alf Ludlam
(Alistair John Ludlam) was born
in Grimsby in January 1941.

162.
David Dipnall (20thC).
Autumn - The Celebration, artist
signed, limited edition coloured
print, 442/500, 48cm x 66cm.

163.
Albin Trowski (1919-2012).
Pounds, Pigeons and Chips, artist
signed coloured print, 38cm x 54cm.

164.
Terrick Williams (1860-1936).
Cornish boats, artist signed
coloured print, 33.5cm x 44cm.

165.
Henry Wilkinson (1921-2011).
Irish setter and duck, artist signed
coloured etching 31/75,
27.5cm x 38cm.
£60-80

166.
Eric Doitch (1923-2000).
Watering the window box, artist
signed colour engraving, 6/25,
29cm x 26cm.

167.
20thC Continental School.
Winter landscape, artist signed
coloured etching, 48cm x 62cm.

168.
20thC Continental School.
Winter landscape, artist signed
coloured etching, 51cm x 41cm.

169.
Jem Lees (20thC).
Landscape, screenprint 4/12,
signed and dated (19)74,
3.5cm x 43cm.

170.
Carolyn Trant (b.1950).
Cows in Orchard, artist signed
coloured print 108200,
27cm x 52cm.



- ▲ 171.
Tessa Beaver (b.1932).
Quinces, artist signed coloured
etching 40/90, 34.5cm x 44cm.

172.
Tessa Beaver (b.1932).
New England Maple, artist signed
coloured etching 134/175,
61cm x 51cm.

173.
Tessa Beaver (b.1932).
White pine, artist signed coloured
etching 28/125, 61cm x 51cm.

174.
Tessa Beaves (b.1932).
Spring Shaybark hickory, artist
signed coloured etching 105/175,
62.5cm x 51cm.

175.
Adrian George (b.1944).
Lady and flowers, artist signed
and dated 1992 coloured print,
74cm x 58cm.

176.
Ralph Brown (1928-2013).
Nude study, artist signed
lithographic print 117/200,
72cm x 51cm.

177.
Tessa Beaves (b.1952).
Nautilus, artist signed impressed
print 17/100, 40cm x 37cm and
another Crab (2).

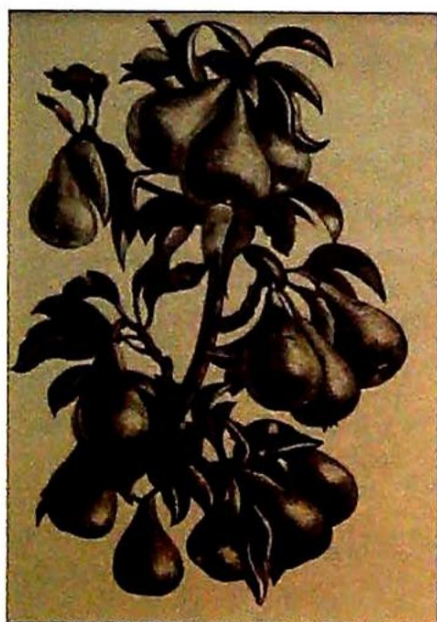
178.
20thC British School.
Seaside I, artist signed coloured
print 12/100, 75cm x 55cm.

Lincoln Fine Art Sale

179.
A.R. Neal (20thC).
Jane in a rose bush, artist signed
coloured print 5/30, 47cm x 34cm.

180.
Rodney Habbuch (20thC).
Fen Chapel, artist signed coloured
print 24/100, 56cm x 76cm.

181.
**Anna Ravenscroft
(19thC/20thC).**
Fishing, artist signed print
18/150, 10cm x 12cm, and another
Farmers (2).



182.
**Claire Leighton
(1898-1989).**
Four Hedges, three
monochrome prints,
13cm x 10cm. (3).

183.
Claire Leighton (1898-1989).
Planting tree, scathing grass, two
monochrome prints, 20cm x 14cm
(2).

184.
Claire Leighton (1898-1989).
The farmers year, two
monochrome prints,
23cm x 29.5cm.

185.
Marc Aspland (20thC).
Golf, artist signed coloured print,
24cm x 28cm.

186.
Marc Aspland (20thC).
Rebecca Adlington, artist signed
coloured print, 24cm x 30cm.



187.
Marc Aspland (20thC).
Tom Daley, artist signed
coloured print with diagram,
47cm x 62cm overall.

188.
Frank Gillette (b.1941).
Horn and shell composition,
polaroid print, 75cm x 59cm.
£300-500

189.
Dyonz (20thC).
Apparition in Walberswick
Church, monochrome print,
59cm x 46cm.
£250-350

190.
Peter Farrington (20thC).
Under the Pier - Lowestoft,
monochrome print, 35cm x 25.5cm.



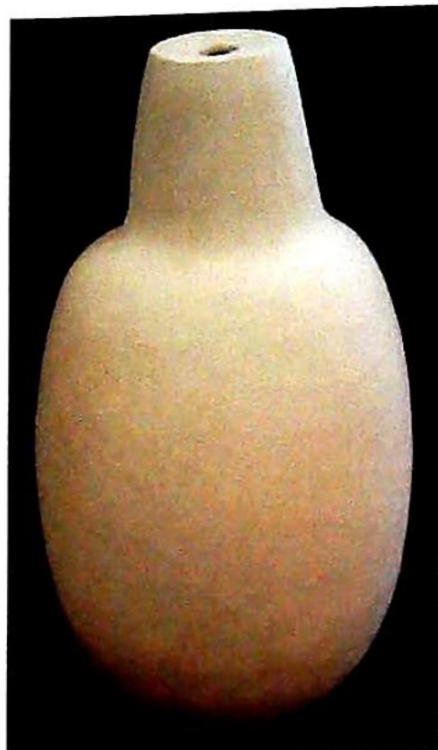
191.
**Katharine Holmes
(b.1962).**
Hazy Autumn Light over farm
and Hills, watercolour and
pastel, signed and dated 2011,
£350-450

192.
Dionne Swift (20thC).
Devore - abstract, needlework and
textile - two, signed, 17cm x 16.5cm.
£80-120

193.
Sarah Carter (20thC).
The blue boat, mixed media,
58cm x 46cm.
£150-250

194.
Gill Wilson (20thC).
Untitled, Fibre pulp, 46cm x 46cm.
£200-300

195.
Robert R. Greehalf (b.1950).
Barn owl, artist signed, coloured
etching 117/150, 33cm x 24.5cm.



196.
Cheryl Horsley (b.1953).
Vase, ceramic, 71cm high.

197.
Cheryl Horsley (b.1953).
Bowl, decorated ceramic,
34cm dia.

198.
Cheryl Horsley (b.1953).
Vase, decorated ceramic,
44cm high.

199.
Cheryl Horsley (b.1953).
Vase, wavy edge, ceramic,
41cm high.

200.
Cheryl Horsley (b.1953).
Vase, tulip, ceramic, 37cm high.

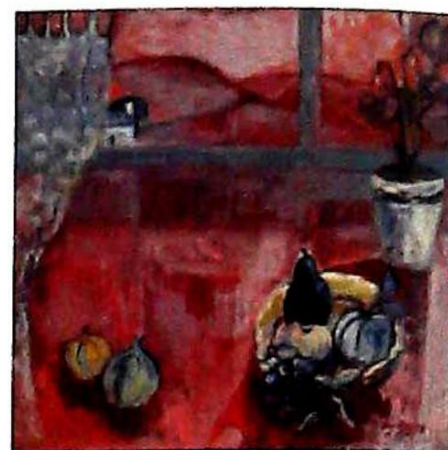
201.
Cheryl Horsley (b.1953).
Flat sided vase, ceramic,
64cm high.

202.
Cheryl Horsley (b.1953).
Bowl, ceramic, 25cm dia.

203.
Cheryl Horsley (b.1953).
Bowl, ceramic, 29cm dia.

204.
20thC School.
Floral stydy, metal sculpture,
25cm high.

205.
20thC School.
Figure study, polished stone.



206.
Iris Stevens (20thC).
Pink still life, oil on canvas,
signed and titled verso,
60cm x 60cm.

207.
Iris Stevens (20thC).
White still life, signed and titled
verso, 34.5cm x 49.5cm.

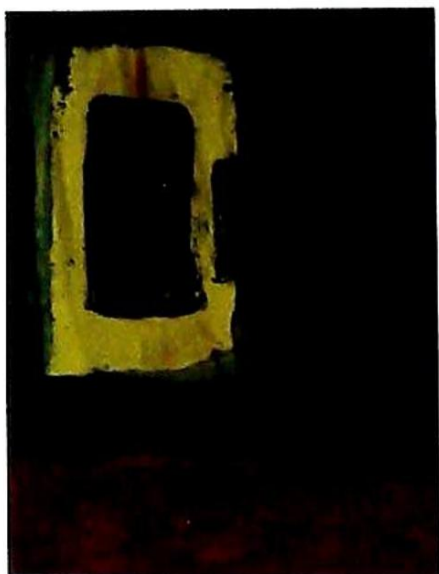
208.
Gladys Rees Teesdale (20C).
Woodland river landscape,
watercolour, signed, 28cm x 39cm,
and another watercolour -
unsigned (2).

209.
**John George Mathieson
(act.1918-1940).**
Floral still life, oil on canvas,
signed, 49cm x 39cm, and an
unframed oil maidens and
children. (2)
£40-60

210.
Alan Oliver (20thC).
Blakeney, watercolour, signed,
dated (19)85, titled verso,
23.5cm x 35.5cm.

211.
Julie Charnick (20thC).
Floral and fruit still life, oil on
board, signed, 29cm x 33cm.

212.
Graham Cox (20thC).
The Greeting / Visitation, ink and
acrylic, signed and titled verso,
71.5cm x 51.5cm.
Provenance: From the Estate
Alistair John Ludlam. Alf Ludlam
(Alistair John Ludlam) was born
in Grimsby in January 1941.



▲ 213.
Clifford Fishwick (1923-1997).
Abstract, oil on board, signed and dated (19)62, 37cm x 27cm.
Provenance: From the Estate Alistair John Ludlam. Alf Ludlam (Alistair John Ludlam) was born in Grimsby in January 1941.
£150-250

214.
Wayne Sleeth (20thC).
Still life with flying bird, oil on board, 49cm x 38cm.
Provenance: From the Estate Alistair John Ludlam. Alf Ludlam (Alistair John Ludlam) was born in Grimsby in January 1941.



▲ 215.
George Rowlett (b.1941).
Early morning light and shadow, Yewboarrow, Great Gable and Landmell, Westwater, Red Ballon to Safell, oil on board, signed, titled and dated 2008 verso, 31cm x 41cm.
Provenance: From the Estate Alistair John Ludlam. Alf Ludlam (Alistair John Ludlam) was born in Grimsby in January 1941.
Purchased: Abbey Walk Gallery, Grimsby
£1000-1500



▲ 216.
George Rowlett (b.1941).
Trees at cold blow, winter sunshine, Frank with dogs, Walmer Kent, oil on board, signed and titled verso, 30cm x 41cm.
Provenance: From the estate of Alf Ludlam (Alistair John Ludlam) was born in Grimsby in January 1941. A gift from the artist.
£1000-1500

217.
Andre Vignoles (1920-2017).
Vase des fleurs, oil on canvas, signed, dated (19)60, titled verso, label verso Arthur Tooth and Sons Ltd London, 64cm x 44.5cm.
£200-300

218.
V N.
Cheapside, oil, initialled and titled verso, 49cm x 59cm.

219.
Pat Bustin (20thC).
The Bluebell Wood, oil on board, signed and titled verso, 59.5cm x 59.5cm.

220.
Hoffmann (20thC).
Alpine Landscape, oil on canvas, signed and dated (19)49, 50.5cm x 75cm.



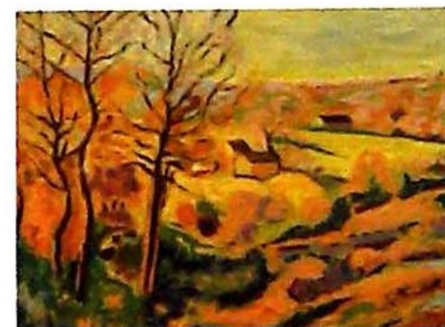
▲ 221.
George Gault (1916-2001).
Floral still life, oil on canvas, signed and dated 1952 verso, 47cm x 60cm.
£150-250

222.
20thC Continental School.
Venice scene, oil on canvas, indistinctly signed, 59cm x 49cm.
£50-100

223.
David Lloyd Evans (1916-?).
Portrait of a woman, oil on canvas, signed, 49.5cm x 39.5cm.
Provenance: From the estate of Alistair John Ludlam. Alf Ludlam (Alistair John Ludlam) was born in Grimsby in January 1941.

224.
Michel Jean Rousseau (b.1927).
Dryuelleux V, oil on canvas, signed and titled verso, 129cm x 96cm.
£200-300

225.
20thC Continental School.
Soldiers at work bench, oil on board, indistinctly signed, 50cm x 70cm.
£100-200



▲ 226.
Armand Guillaumin (1841-1927).
Landscape, oil on canvas, signed, 55cm x 69.5cm.
£300-500

227.
20thC School.
African figures in market scene, oil on canvas, incised verso, 55cm x 34cm.
£200-400



▲ 228.
Bernard Ninnies (1899-1971).
Ludlow Castle, oil on canvas, signed lower left, 62cm x 75cm.
£250-350

229.
Anne Shalling (20thC).
Still life of fruit on a bench, oil on canvas, signed lower right and dated 1938, 35cm x 24cm.
£30-50

Lincoln Fine Art Sale

230.
F. J. Mercer (20thC).
Portrait of a gentleman, oil on canvas, Chapman Bros frame, 25cm x 20cm.
£30-50

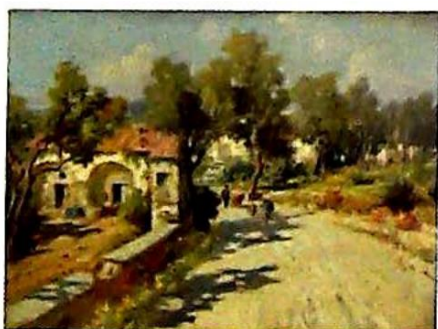


- ▲ 231.
20thC British School.
Nude study, oil on canvas, 60.5cm x 50.5cm.
£100-200

232.
Jean Calogero (1922-2001).
Young girl with flowers in landscape, oil on canvas, signed, 72cm x 59cm.
£150-250



- ▲ 233.
Rowland Suddaby (1912-1972).
Old House, Pinner, (GR London), c1949, watercolour and ink on art paper, signed, 35cm x 46cm.
Verso label stating past prices of four guineas in 1949 and one hundred pounds in 1970.



- ▲ 234.
Jacques Bartoli (1920-1995).
Mediterranean scene with figures and trees hiding building, oil on canvas, signed lower left, 62cm x 82cm.
£200-300

235.
Elai Moyo (20thC).
The Cruel Foe, watercolour, signed and titled, 45.5cm x 30cm.

236.
Lowell Blair Nesbitt (1933-1993).
Abstract landscape, watercolour, signed and dated 1963, 58cm x 76cm.
£200-300



- ▲ 237.
A. del Rey (20thC).
Still life with bottles, oil on board, signed and titled verso, 37cm x 44.5cm.
£50-100

238.
A. del Rey (20thC).
Female study, oil on board, signed, 39cm x 49cm.
£50-100

239.
H C May (20thC).
Zucchini, still life, silk paints on silk, signed 54cm x 48cm.

240.
Pat Bustin (20thC).
Landscape, oil, 28cm x 28cm.



- ▲ 241.
Nick Ellerby (20thC).
The Old Goods Shed, acrylic on board, monogrammed and titled verso, 26.5cm x 38cm.
Provenance: From the estate of Alistair John Ludlam. Alf Ludlam (Alistair John Ludlam) was born in Grimsby in January 1941.
Purchased: The Gate Gallery 2009.

242.
20thC School.
Abstract, multi media, 139cm x 170cm.

243.
Peter Rooke (20thC).
Coming home - Loch Fynne, watercolour, signed and titled verso, 28.5cm x 44cm.

244.
Vlaminck (20thC).
Cottage landscape, oil, signed, 29.5cm x 39.5cm.
£200-300

245.
David Cheng (20thC).
Hong Kong harbour scene. Oil on canvas, signed, titled and dated 1961, 39.5cm x 50cm.
£100-200

246.
Appel (20thC).
Automme, oil on canvas, signed, titled and dated 1957 verso, 60cm x 91cm.
£200-300

247.
Dowler (20thC).
Cafe scene, oil on canvas, signed and dated (19)55, 76cm x 97cm.
£200-300

248.
J.P. Webster (20thC).
Landscape 3, oil on board, signed and titled verso, 45cm x 39cm.

249.
Flora Weatherill (20thC).
Bright Butterflies, oil on board, signed and titled verso, 44cm x 54.5cm.

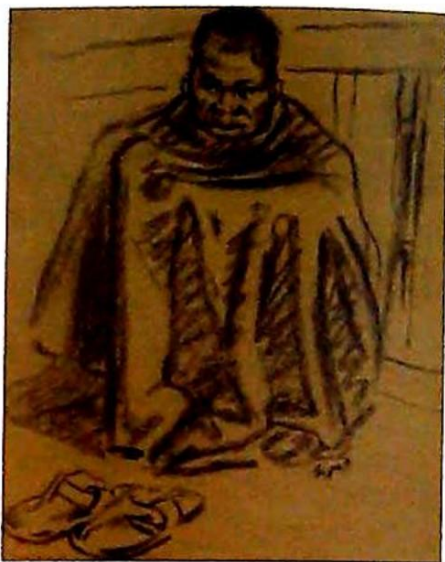
250.
David Weston (1935-2011).
Country landscape with horse and cart, watercolour, signed, 15.5cm x 24cm.



- ▲ 251.
Charles E Cameron (20thC).
Woodland path, watercolour, signed and dated (19)67, 29cm x 21.5cm.

252.
Charles E. Cameron.
River Scene, watercolour, signed and dated (19)71, 22cm x 29cm.

253.
20thC School.
Surrealist landscape, oil on canvas, indistinctly signed, dated 1968 verso, 114cm x 99cm.
£150-250



- ▲ 254.
Hyman Segal (1914-2004).
Marwa Chacha (Mteade-Tanganyika), charcoal, signed and titled, 26cm x 19.5cm

255.
Toulon (20thC).
Sailing yacht in harbour, oil on board, signed, 28.5cm x 39cm.
£100-200

256.
Kevan A. Shaw (20thC).
Dawn flight, oil on board, signed and titled verso, 25.5cm x 36cm.



- ▲ 257.
Watzmann (20thC).
Guther Schwonn Wiesbaden, oil on canvas, signed and titled, 57.5cm x 42.5cm.
£300-400

258.
Ernest William Haslehurst (1866-1949).

River landscape with sailing boats, watercolour, signed, 38cm x 51cm.
£150-250

259.
20thC British School.
River landscape with seated figure, oil on board, 60cm x 44.5cm.
£150-250

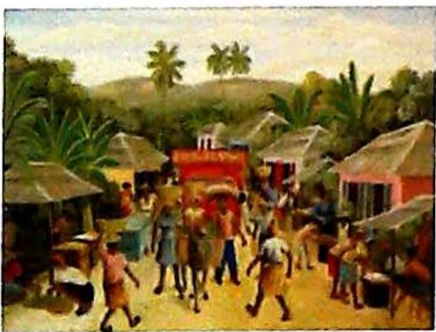


▲ 260.
Faith Kenworthy-Browne (1882-?).
The Agony in the Garden, oil, initialled and titled verso, 31.5cm x 41.5cm.
£50-80

261.
J. David (20thC).
Paris street scene, oil on canvas, signed, 26cm x 21cm.
£80-120

262.
Aime (19thC/20thC).
North African Soldiers, oil on canvas, pair, signed and dated 1886, 60cm x 24cm.
£400-600

263.
H. Kibbler (19thC/20thC).
Coastal scene with fishing boat, watercolour, signed and dated, 44cm x 23.5cm.



▲ 264.
Rory Leonidas (1946-2012).
Cap Hautien - Village Market Day, oil on canvas, signed and titled, 49cm x 59.5cm.
£120-180

265.
Marjorie Christine Bates (1946-2012).
Town Hall and Market Place, Whitby, pastel, signed and titled verso, 36.5cm x 29cm.

266.
20thC British School.
Nude study, oil on canvas, 60cm x 50.5cm.
£120-180

267.
Jean Smith (20thC).
Korcula Yugoslavia, ink, signed, titled and dated 1968, 27.5cm x 38cm.
Bears label Royal West of England Academy Exhibition.

268.
Sidney Agnew Mercer (1904-1971).
Ford house, oil on canvas, signed, titled and dated June 1956, 50cm x 75cm

269.
Arthur John Chamberlain (20thC).
Snow on Mendip, pen and wash, signed, titled and dated (19)69, 36cm x 43cm.
Bears label Royal West of England Academy Exhibition.

270.
20thC Continental School.
Alpine river scenes, oil on canvas - pair, 45cm x 36.5cm.
£150-250

271.
Rib Hilton (19thC/20thC).
Thatched cottage - country scene, oil on canvas, signed, 48cm x 73.5cm.

272.
19thC/20thC Continental School.
Maiden with cats and birds, oil on canvas - pair, 29.5cm x 39.5cm.
£80-120

273.
Poullignen (20thC).
Harbour scene with sailing boats, oil on board, signed, 31cm x 39cm.
£100-200



▲ 274.
William E. Barrington-Browne (1908-1985).
River landscape with fisherman, oil on canvas, signed and dated 1949.
£200-300

275.
A. Metzler (19thC/20thC).
Rural landscape, oil on board, signed, 24cm x 41cm.
£200-300

276.
David Waller (b.1945).
Night ops, Waddington '43, oil on canvas, signed, titled and dated 22.2.80, 49.5cm x 74.5cm and three others. (4)

277.
Italian School.
Classical landscape with figures, oil on canvas, 59.5cm x 74.5cm.

278.
R. Zobor (20thC).
Lake scene with sailing boats, oil on canvas, 58cm x 74cm.
£80-120

279.
Dandi (20thC).
Winter river scene, oil on canvas, 59cm x 80cm.
£50-80



▲ 280.
Gerard Passet (1936-2013).
Woodland walk, oil on canvas, signed, 32cm x 44cm.
£100-200

281.
20thC Continental School.
Alpine scene and figures, oil on board, indistinctly signed, 52cm x 68cm.
£60-90

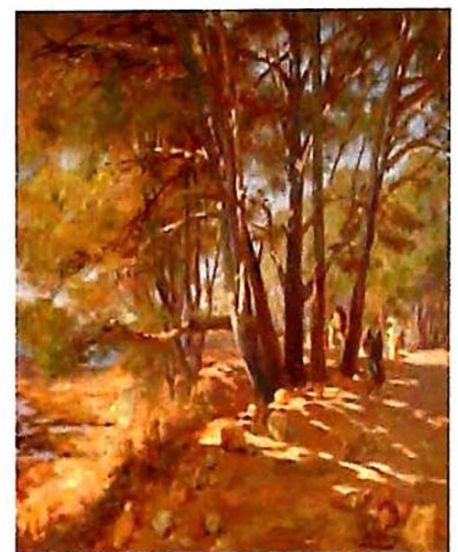


▲ 282.
James Smith Morland (1846-1921).
Old lady knitting, watercolour, signed and dated 1882, 40cm x 29cm.
£80-120

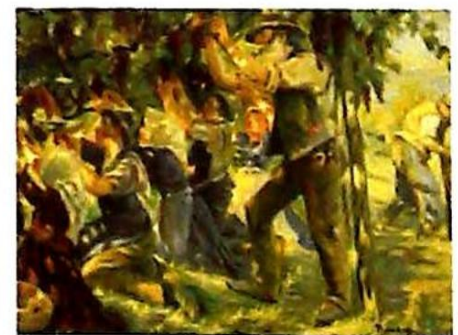
283.
J. De Villiers (20thC).
Rural cottage, pastel, signed, 22.5cm x 37.5cm, and a framed print after John Lancaster (2).

284.
J. Wilson (20thC).
Steam ship in choppy seas, oil on board, signed, 28cm x 38cm.

285.
Eric Erwin (20thC).
Winter scene with figures, oil on canvas, signed and dated (19)95, 48.5cm x 58cm.



▲ 286.
Adolphe Bonny (1849-1933).
Figures by woodland riverside, oil on canvas, signed, 36.5cm x 53cm.
£250-350



▲ 287.
20thC Continental School.
Fruit pickers, oil on canvas, indistinctly signed, 49.5cm x 59.5cm.
£150-250

288.
Gerard Meijer (20thC).
Dutch river scene, oil on canvas, signed, 24.5cm x 29.5cm.

289.
Pieter van Straten (b.1972).
Dutch winter landscape, oil on board, signed, 39.5cm x 59.5cm.

Lincoln Fine Art Sale



- ▲ 290.
Gerhard Lukas-Larson (1911-1965).
Evening flight, oil on canvas, signed, titled and dated (19)58 verso, 59.5cm x 79.5cm.

291.
Nesto Warren (20thC).
Floral still life, oil on canvas, signed, 60cm x 30cm.
£50-80

292.
20thC Continental School.
Alpine landscape, oil on canvas, indistinctly signed, 49cm x 59.5cm.

293.
A. Sanders (20thC).
Flight over coast, oil on canvas, signed, 49.5cm x 70cm.

294.
F. Munez (19thC/20thC).
Still life with coffee pot, wine glass and fruits, oil on canvas, signed and dated 1870, 52cm x 79cm.
£100-200

295.
W.D. Young (19thC/20thC).
Blacksmith scene - showing white horse with lady looking on, oil on canvas, signed, 49.5cm x 59.5cm.

296.
Jacopo Grimani (20thC).
Venice, oil on canvas, signed and titled verso, 60cm x 90cm.
£80-120

297.
20thC Continental School.
Lady in courtyard over Mediterranean, oil on canvas, indistinctly signed, 48cm x 67cm.
£80-120

298.
Charles Ludin (1867-1949).
Woodland scene, oil on board, signed and dated 1918, 20.5cm x 22.5cm.
£50-80

299.
O.K. (19thC/20thC).
Landscape view with church in the distance, ink drawing, initialled, 8cm x 6.5cm.
£200-300

300.
19thC/20thC School.
St George and the Dragon, oil on canvas, 35cm x 28cm.

301.
Antonio Masi.
Off to sea, oil on canvas, signed, 89cm x 108cm.
£300-500

302.
Andrew Grant Kurtis (20thC).
Mountain lake scene, oil on canvas, signed, 60cm x 90cm.

303.
V.R. Williamson.
Lincoln from the River Witham, oil on canvas, signed, titled and dated (19)91, 50cm x 75cm.

304.
Ron Freeman (20thC).
Newark Castle, oil on board, signed and dated 1985, 80cm x 100cm.
£20-40

305.
Digby Page (20thC).
The Window Stream, oil on canvas, signed, titled and dated 1983, 60cm x 90cm.
£50-80

306.
E. Charles Simpson (20thC).
Rural landscape, watercolour, signed and dated (19)71, 37cm x 54cm

307.
After Frederick Halpern.
Arab cloisters scene, 21cm x 29cm.

308.
Peterson.
Naval college, Marineschule Murwick, Germany, watercolour, signed, 27cm x 37cm.
£25-40

309.
Tinus De Jongh.
Rural cottage and river scene, watercolour, signed, 23cm x 36cm.

310.
G.K. Pierson.
Flight from the Kibon, watercolour, signed, titled and dated 1880, 15cm x 33cm.

311.
20thC British School.
Horse riders, oil on board, bears signature, Alan Lowndes, 45.5cm x 60.5cm.

312.
Alan Lowndes (1921-1978).
Theatre in Dieppe 1952/female study, pencil drawing, signed, titled, 36cm x 27cm.

313.
Eli Kobeli (1932-1999).
Apple seller, watercolour, signed, 49.5cm x 35cm, and two others (3).
£150-250



- ▲ 314.
Markey Robinson (1918-1999).
Harbour scene with figures, oil on board, signed, 26cm x 35cm.
£500-800

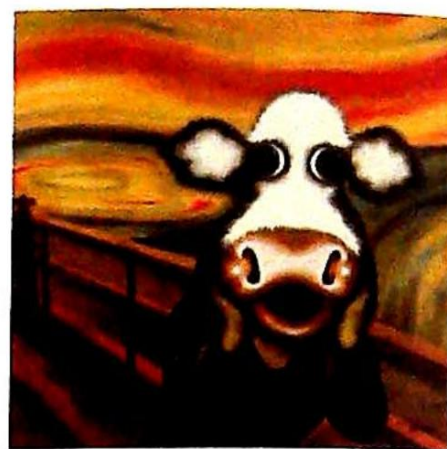
315.
Markey Robinson (1918-1999).
Figures, oil on board, signed, 29cm x 24.5cm.
£500-800

316.
Markey Robinson (1918-1999).
The Clown, oil, signed, 36cm x 24.5cm.
£500-800

317.
20thC Continental School.
Venice, watercolour, indistinctly signed, 28cm x 47.5cm.

318.
Ralph Thompson.
Lion cub and Grasshopper, watercolour, signed, 38cm x 59cm.
£120-180

319.
Caroline Shotton (20thC).
Wallflower, mixed media signed, 121cm x 76cm.
Castle Galleries - (2007) £625
£150-250



- ▲ 320.
Caroline Shotton (20thC).
The Moo, mixed media, 60cm x 60cm.
Castle Galleries - (2007) £550
£150-250

321.
R.W. Milliken.
Partridges/Woodcocks, two artist signed limited edition prints, 35cm x 44cm, and another signed Harrison.

322.
H L Gordon.
Abstract figures, mixed media, signed and dated (19)58, 31cm x 48cm, and another. (2)

323.
20thC School.
Teal and Bee (Tealby, Lincolnshire), watercolour - pair, 24cm x 30cm.

324.
Alphonse Le Gros (1837-1911).
Portrait, artist signed etching, 44cm x 30cm.

325.
Hai Shent Yeung (1936).
Carp, watercolour, signed, 18cm x 28cm.

326.
Lincoln interest.
Folio of prints.

327.
Ann Hopewell (20thC).
Heidi, pastel, signed and titled, 45cm x 57cm.
Artist label verso.

328.
Harold Gosney (20thC).
Fishing boats in harbour, watercolour, and other studio works. (8)
Provenance. From the Estate Alistair John Ludlam. Alf Ludlam (Alistair John Ludlam) was born in Grimsby in January 1941.

Full catalogue online at goldingyoung.com

329.

Dowid Eddington (20thC).

Untitled II seamen, acrylic on panel, signed, dated Aug 12, titled verso, 29cm x 32cm.

Provenance. From the Estate Alistair John Ludlam. Alf Ludlam (Alistair John Ludlam) was born in Grimsby in January 1941.

330.

Nicholas Volley (20thC).

View from my window, oil on board, signed and titled verso, 11cm x 21.5cm.

Provenance. From the Estate Alistair John Ludlam. Alf Ludlam (Alistair John Ludlam) was born in Grimsby in January 1941.

331.

Linda Ingham (20thC).

Sandra Coleman, acrylic on canvas, signed and dated 2012, 39.5cm x 49.5cm.

Provenance. From the Estate Alistair John Ludlam. Alf Ludlam (Alistair John Ludlam) was born in Grimsby in January 1941.

332.

19thC British School.

Masted ships at sea, oil on board, 13.5cm x 20.5cm.

333.

19thC British School.

Holywell - steamer, oil on board, indistinctly signed, 14cm x 29cm.

Further lots and updates
available online.

NOTES

Artist index

NAME: LOT NUMBER

A					
Aime	262	Greenhalf, R.R.	195	P	
Appel	246	Grimani, J	296	Page, D	305
Aspland, M	185 - 187	Guillaumin, A	226	Palmer, H.S.	31, 32
		J.G.	54	Paoletti, H	132
B				Passet, G	280
Barrington-Browne, W.E.	274	H		Paton, D	87
Barker, T	53	Habbuch, R	180	Peterson	308
Bartl, A	103	Haddelsey, V	104 - 120	Pettitt, J.P.	68
Bartoli, J	234	Haddon, T. T.	15	Phillimore, R	94
Bates, M.C.	265	Halle, B	23	Pierson, G.K.	7, 79, 310
Battaglia, C.B.	26	Hamqu, J	25	Poulignen	273
Beales, A.E.	96	Hardy, F.D.	55		
Beaves, T	174, 177	Harper, J	159, 160	R	
Beaver, T	171 - 173	Hartland, A	44	Raggio, G	27
Belshaw, M.G.	133	Harwood, L	8	Ravenscroft, A	181
Blow, S	142	Haslehurst, E.W.	258	Reigin, N	14
Boden, G.A.	85	Herring, J.F.	61	Robinson, M	314 - 316
Bonny, A	286	Hilton, R	271	Roe, S.S.	39
Boother, T	53	Hoffmann	220	Rooke, P	243
Bowman, P	124	Holmes, K	191	Rooke, L	88 - 92
Brangwyn, F	143	Hopewell, A	327	Rowlett, G	215, 216
Brannan, P	3, 80, 88	Horsley, C	196 - 203	Rousseau, M.J.	224
Brown, M	130	Hubbuck, R	180		
Brown, R	176	Hulk, F.M.	77	S	
Browne, C.R.	83	Huskinson, M	100	Sanders, A	293
Browne, G.F.	72			Segal, H	254
Bustin, P	219, 240	I		Shalling, A	229
M.B.	42	Ingham, L	331	Shaw, K.A.	256
				Sheffield, G	58
C		K		Shepherd, D	144 - 157
Calogero, J	232	Kenworthy-Browne, F	260	Shotton, C	319, 320
Cameron, C.E.	251, 252	Kerner, H	2	Sidney, T	57
Carr, C	93	Kibbler, H	263	Simpson, E.C.	306
Carter, S	193	Kilburne, G.G.	56	Sleeth, W	214
Castelli, F	49	Kip, J	98	Smith, J	267
Cecchi, G	46	Kobeli, E	313	Spinks, T	33
Chamberlain, A.J.	269	Kurtis, A.G.	302	Stevens, A.G.	38
Chapman, B	129	O.K.	299	Stevens, I	206, 207
Charnick, J	211			Stone, A	47
Cheng, D	245	L		Storey, T.G.	84
Cooke, E	69	Lees, J	169	Strang, M.J.	131
Cooper, T.S.	4, 11, 12	Le Gros, A	324	Suddaby, R	233
Cox, D	60	Leighton, C	182 - 184	Swift, D	192
Cox, G	212	Leonidas, R	264		
Cusachs, J	34	Lewis, L	64	T	
Cruikshank, W	63	Lloyd, T.I.	7	H.T.	29
		Lock, J	161	Taylor, J.F.	41
D		Lovitt, L	123	Teesdale, G.R.	208
Dandi	279	Lowndes, A	312	Thistlethwaite, M	125
David, J	261	Lowry, L.S.	1, 138, 139,	Thompson, R	318
De Jongh, T	309		158	Toulon	255
Del Rey, A	237, 238	Ludin, C	298	Trant, C	170
De Paredes, V	45	Lukas-Larson, G	290	Trowski, A	163
De Prades, A.F.	66			Tunncliffe, C.F.	141
De Villiers, J	283	M		V	
Dipnall, D	162	Marshall, R.A.K.	28	Van Straten, P	289
Doitch, E	166	Masi, A	301	Verboeckhoven, E.J.	65
Dowler	247	Mason, R.J.	95	Vernay, F	67
Dylan, B	5, 140	Matthaei, C.C.	122	Vignoles, A	217
Dyonz	189	Mathieson, J.G.	209	Vlaminck	244
		May, H.C.	239	Volley, N	330
E		Mayor, E.R.	135	V.N.	218
Eddington, D	329	McKewan, D.H.	52		
Ellerby, N	241	Mercer, F.J.	230	W	
Emms, J	9	Mercer, S.A.	268	Waller, D	276
Erwin, E	285	Meijer, G	288	Warren, N	291
Evans, D.L.	223	Mellor, W	20, 21	Watzmann	257
Eyre, A	99	Metzler, A	275	Weatherill, F	249
		Milliken, R.W.	321	Webster, J.P.	248
F		Millner, W.E.	36	West, T	40
Farrington, P	190	F.W.M.	22	Weston, D	250
Fielding, C	59	Morland, J.S.	282	Wheeldon, R	81
Finn, H.J.	86	Moyo, E	235	White, A.E.	101, 102, 134
Fischhof, G	51	Munez, F	294	Whitehead, F.W.N.	82
Fishwick, C	213	Munnings, A.J.	71	Wilkinson, H	165
Foster, M.J.	22			Williams, J	48
Frank de Prades, A	66	N		Williams, T	164
Fraser, R.W.	73	Nadin, G	121	Williamson, V.R.	303
Freeman, R	304	Neal, A.R.	179	Williamson, W.H.	17
S.C.F.	75	Nesbitt, L.B.	236	Wilson, G	126, 194
		Newcombe, C	50	Wilson, J	284
G		Nicklin, M.J.	97		
Gault, G	221	Ninnes, B	228	Y	
George, A	175			Yeung, H.S.	325
Gillette, F	188	O		Young, W.D.	295
Goodwin, A	62	Oliver, A	210		
Gordon, H.L.	322			Z	
Gosney, H	328			Zobor, R	278

As at the time of printing, lots without estimates are to be sold without reserve, auctioneer's discretion.
See online catalogue for updates.

EST
1864
GOLDING YOUNG



Thinking of selling?

Executors, solicitors, accountants, insurers, corporations and government departments, have to exhibit due diligence when instructing. Use this checklist to do the same, with a few reasons why you may wish to choose us.

We are regulated by RICS
Better Regulation for Us.
Better Protection for You.
Accept Nothing Less.

Our online catalogues
For over 20 years our catalogues have been online and our experience ensures they are placed in front of the right buyers in the global market.

Our sales results
January 2019 saw our 123rd consecutive month with a sale at either Bourne, Grantham or Lincoln producing a sold rate of over 90%. Good advice, great results for hundreds of vendors every month.

Join their success with an entry in our next sale!

goldingyoung.com

HOUSE CLEARANCE

If there is that hidden 'find', it will be to your direct benefit.

Every week we take instructions for House Clearance for all of the prominent firms of Solicitors in the area, as well as from Private Individuals, Trustees and Executors.

If you are dealing with the content of a property, please contact us at the earliest point.

A visit to the premises by one of our qualified and experienced appraisal staff will offer the best advice for Security, Valuation and Sale.

DISPOSE OF NOTHING

Often things thought to be rubbish are saleable.

IMMEDIATE ACTION IS REQUIRED

Once a property is uninhabited it is a target for burglars and your insurance may be invalid.

Items removed from premises are listed and handled by our professional carriers. Goods are then allocated to the next appropriate sale to ensure the highest sale return.

We also deal with the unsaleable residue, disposed of in the most cost-effective and environmentally friendly way, giving a total service.



PROPERTIES CLEARED, PROMPTLY AND EFFICIENTLY

Call: John Ireland MA MRICS - 01778 422686
For Bourne, Stamford, Peterborough Region and Southern Counties

Call: Craig Bewick BA (Hons) MRICS FNAVA - 01476 565118
For Grantham Region and The Midlands

Call: John Leatt ASFAV - 01522 524984
For Lincoln Region and Northern Counties

The Bourne Auction Rooms

Spalding Road, Bourne,
Lincolnshire PE10 9LE

E: bourne@goldingyoung.com

T: +44 (0) 1778 422686

F: +44 (0) 1778 425726

London & South Valuations

E: london@goldingyoung.com

T: +44 (0) 2033 011007

The Grantham Auction Rooms

Old Wharf Road, Grantham,
Lincolnshire NG31 7AA

E: grantham@goldingyoung.com

T: +44 (0) 1476 565118

F: +44 (0) 1476 561475

The Louth & Wolds Office

5 Mercer Row, Louth
Lincolnshire LN11 9JG

E: louth@goldingyoung.com

T: +44 (0) 1507 661864

The Lincoln Auction Rooms

Thos Mawer House, Station Road
North Hykeham, Lincoln LN6 3QY

E: lincoln@goldingyoung.com

T: +44 (0) 1522 524984

F: +44 (0) 1522 681804

The Stamford & Rutland Office

1, The George Mews
Station Road, Stamford
Lincolnshire PE9 2LB

E: stamford@goldingyoung.com

T: +44 (0) 1780 751666