



EST
1864

GOLDING YOUNG

Fine Art Sale

Wednesday 22nd May 2019



CHARTERED AUCTIONEERS & VALUERS • ARTS & ANTIQUES SURVEYORS

PROBATE – INHERITANCE TAX ASSESSMENT

For many Executors and Trustees the responsibility of dealing with a deceased's Estate is a once-in-a-lifetime experience. You have to make a number of important decisions in a very short space of time and all when the loss is most difficult to come to terms with.

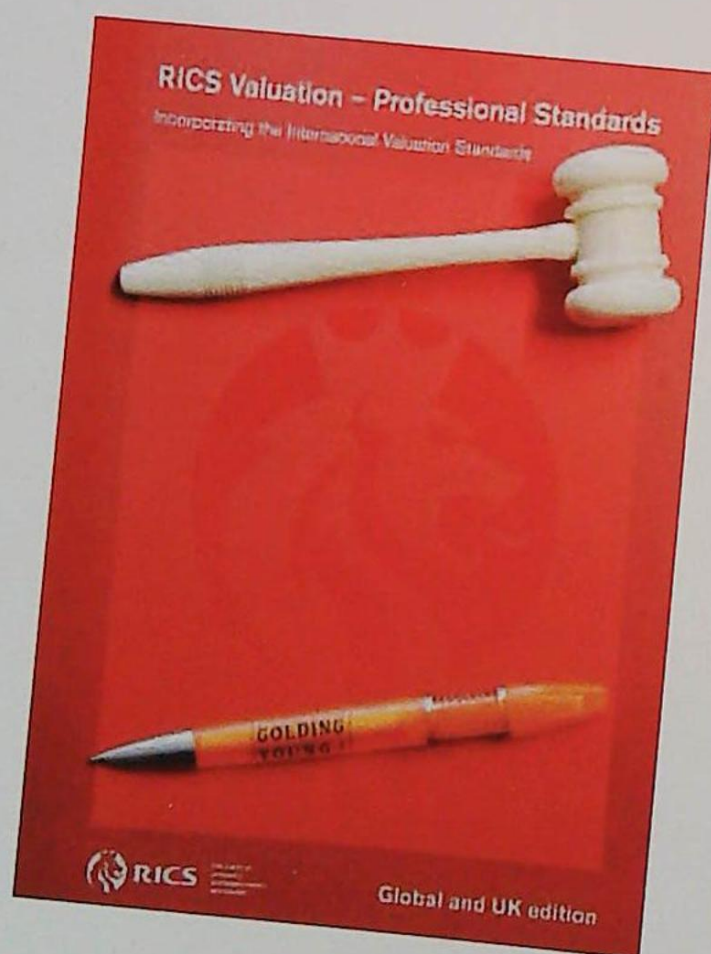
The position of Executor is an important one in law and has defined personal liability and responsibility. To exhibit due diligence to beneficiaries and more importantly HM Revenue & Customs, an Executor or advisor will instruct a firm Regulated by RICS.

Even if the estate will be taxed at 0%, a valuation remains an essential tool for an Executor. The inventory will still be used for identification of bequests, trust items, family division and proof of value.

Our valuations are prepared to the International Valuation Standards requirement of the 'Red Book'.

The report will cover sections of:


- Jewellery
- Vehicles
- Antiques, Fine Art & Collections
- General Furniture & Effects



For initial advice contact the following Chartered Auctioneers & Valuers:

Bourne, Stamford & South
Colin Young MRICS
01778 422686

Grantham, Lincoln & North
William Gregory MRICS
01522 524984



Removals – Household & Commercial

- Free Quotations
- Full Packing Service
- Suppliers of Packing Materials
- Shipping & Storage Arranged
- Antiques & Fine Art Specialists
- Specialist Piano Movers
- Office Movers

Contact Andrew Lowes on 07970 742577 for a quote
or email lowes@goldingyoung.com

goldingyoung.com

PRIVATE CLIENT & PROFESSIONAL SERVICE DEPARTMENT

We value personal property for private and corporate clients. Our team have valued family heirlooms, art collections and museum holdings for a variety of purposes.

We are the only auction house in the region to have a bespoke Private Client Department with:

- Four Chartered Arts & Antiques Surveyors
- Two RICS / Antiques Trade Gazette professional assessment award-winning valuers
- Two In-house qualified jewellery valuers
- Experience in abundance and diversity since 1864
- Ten professional staff with RICS, NAVA or SoFAA qualifications.

St George's Collection *re*VIEW



Four harlequin Windsor chairs
SOLD for £2,600



A collection of tea caddies
SOLD for £6,645



Rayment of Stamford clock
SOLD for £2,650



Gerald Benney silver-gilt & enamel casket
SOLD for £3,600



George II silver lemon strainer
SOLD for £400

The start of 2019 has proven to be one of the most exciting times for us here at Golding Young & Mawer due in no small part to The St Georges Collection, one of the most important collections of antiques to be offered on the market in our region for over a generation.

After three months solid dedication to cataloguing, research, logistics, marketing and taking over 4,000 photographs the Spring Sales were quickly upon us.

The whole process saw a selection of fine period furniture, clocks, barometers, medals, silver, jewellery and much more that were to entirely fill the Grantham & Lincoln salerooms once, and the Bourne saleroom twice.

The run of four back-to-back St Georges Sales began at 10am on 24th April at The Bourne Auction Rooms with a packed saleroom of distinguished antique dealers and many of our private clients filling the seats and aisles. A further 600+ people were registered online to bid and by 8pm and my ten hours on the rostrum, the sale saw buyers spending just over a quarter of a million pounds for lots in the collection and other private clients.

Sale Two, a two-day sale at The Grantham Auction Rooms on the 1st & 2nd May, brought another notable series of results where even some of the lots with a perception of being unfashionable met with above average competition. With our own live bidding platform in only its third month, GY-Live! bidders took 44% of all lots sold online in the webcast part of the sale which did not go unnoticed from the rostrum.

At the time of this catalogue going to print there are still two more St Georges Collection sales to go under the hammer. Please have a look at our website for all the hammer prices, the highlights and of course the services we provide.

As I celebrate my 30th year at Goldings it has been an absolute delight to handle a collection that has not only reminded me of the things I had forgotten about antiques you rarely see anymore, but also that investing in the very best staff over the years means that Golding Young remain the region's first choice auctioneers for all projects and instructions that are complicated, technical and require just that little bit more expertise.

Colin R Young MRICS FNAVAASFAV

Spring *re*VIEW

Whilst the story of 2019 is The St Georges Collection, it has also been very much business as usual in all other areas so far this year. The lot count is rising and so is the number of vendors with well over 3,000 so far as we go to print. So many sales this year have developed and progressed to become two-day sales due to the volume and quality of lots on offer.

The Grantham Auction Rooms has seen a busy time over the last few months with the number of deceased estates and private client consignments increasing. The Fine Ceramics & Asian Art sale for the quarter included some real highlights, with a pair of Royal Worcester vases realising £1,200, a similar designed tea service realising £1,300. Along with some statement oriental pieces such as the Chinese Sang de Boeuf vase realising £2,000 and a Japanese lacquer jewellery box realising £1,200.

The Bourne Auction Rooms has also seen a busy time over this period with a variety of consignments including a jewellery collection, coins, and a variety of Automobilia and toys. The large collection of jewellery included a variety of Victorian and Edwardian pieces along with high end silver costume jewellery. With online bidding and a room of bidders it was certainly much sought after! Furniture has also not been in short supply especially with the St George's retirement collection. However the sale of a Howard & Sons sofa in our monthly collective sale by a private local vendor did not disappoint, realising £7,300 under the hammer.

The Lincoln Auction Rooms have also seen a spike in the amount of lots consigned for the monthly collective sales, with some good results appearing throughout the period. We were pleased to be able to accept instructions from Better Barrow Community Project to sell the collection of the Harrison Garden clock exhibition, with all funds raised going towards their project. For the music lovers out there a nice surprise came into the latest Lincoln Collective Sale by way of a Guiseppe Bargelli violin, and with fierce bidding online and in the room eventually realising £5,000.

The Professional Services Department saw quite a spike in instructions during February and March preparing over 30% more reports than during any other recent preceding months. We hope the increased instructions from executors, solicitors and other professionals, new and established, will be converted into more lots over the forthcoming sales.

GY-live! is going from strength to strength with a large number of bidders moving over to our own platform. Benefits include a 4% reduction in buyers premium compared to online bidding through other platforms. If you are planning on bidding live, why not give GY-live! a try.

We look forward to your continued support throughout the rest of the year whether you are buying or selling...

The Auction Team @GoldingYoung

PS. Watch out for a very 'Special Sale' in September at Grantham...



A Roman strigilated carrara marble sarcophagus, late II / early III century AD, the front elevation with figured ends, one of Diana, centred with a tablet of Neptune, the sides worked with double axes alluding to a battle between Greeks & Amazons
SOLD for £18,000

Spring *re*VIEW



A Howard & Sons three seater sofa
SOLD for £7,300



A Henri Selmer of Paris brass saxophone
SOLD for £1,800



A Chinese porcelain
sang de boeuf vase
SOLD for £2,000



A Breitling Navitimer
wristwatch
SOLD for £1,100



An early 20thC Japanese lacquered box
SOLD for £1,200



An Edwardian silver tray, by James Dixon & Son
SOLD for £1,100



A pair of Royal Worcester
fruit painted vases
SOLD for £1,200



An A.W.Co Waltham hunter pocket watch
SOLD for £1,200



A World War Two group of medals
SOLD for £2,000



A matched 20thC Royal Worcester
fruit painted part service
SOLD for £1,300



A German Third Reich army
camouflage helmet
SOLD for £1,500



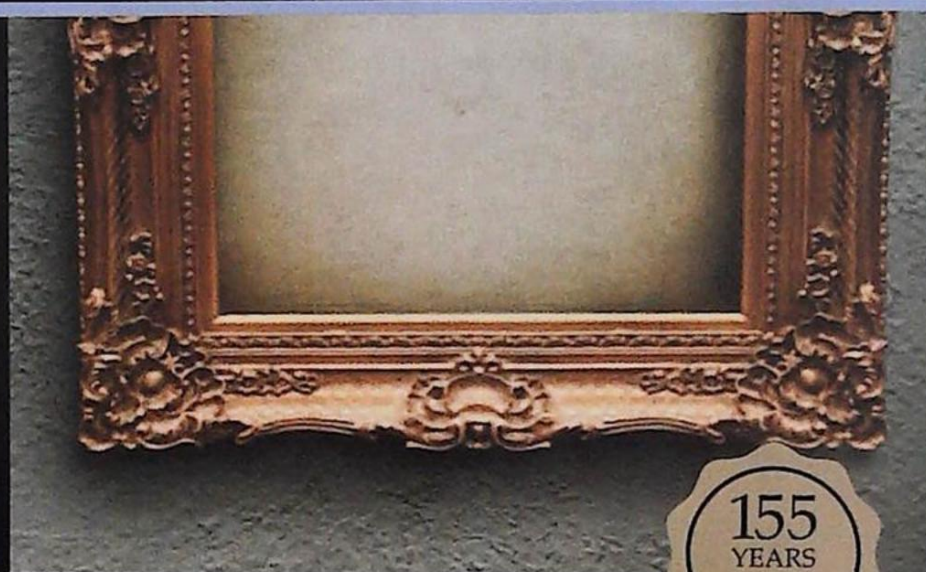
A three stone diamond ring
SOLD for £2,300



A set of six Hans Wegner for Fritz Hansen
Danish teak and plywood 'Heart' dining chairs
SOLD for £1,200



The wrong time to find out
what it was worth...



Over 47 million pounds of antiques & fine art valuation
in UK, Europe, Asia, Africa & The Americas since January 2014.

EST
1864
GOLDING YOUNG



William Gregory MRICS and Colin Young MRICS
are RICS Registered Valuers and
offer free advice for Insurance, Tax Planning and Probate reporting
and of course the sale of single items and collections.

The Bourne Auction Rooms
+44 (0) 1778 422686

The Grantham Auction Rooms
+44 (0) 1476 565118

The Lincoln Auction Rooms
+44 (0) 1522 524984

CHARTERED AUCTIONEERS & VALUERS ♦ ARTS & ANTIQUES SURVEYORS



goldingyoung.com



The Lincoln Art Sale

Wednesday 22nd May 2019
At The Lincoln Auction Rooms
Viewing & Selling in The Gallery
At Thos Mawer House
Sale commences at 6pm

Viewing: Sunday 19th 2pm-5pm
Tuesday 21st 10am-4pm
& saleday from 2pm

Bid online or simply watch the sale live at

GY
- Live!

goldingyoung.com

All enquiries to William Gregory MRICS on 01522 524984

Front cover images:

Top - Lot 5 Francine Van Hove (b.1942).

Le Chapeau Cible, oil on canvas, signed, 33cm x 46cm.

Provenance: Galerie Alaisi Bondel Paris.

Bottom - Lot 117 Clive Richard Browne (1901-1991).

Sunlit Wold, oil on canvas, signed and titled verso, 60cm x 75cm.

Lincoln Fine Art Sale



▲ 1.
Clive Richard Browne (1901-1991).
Near Briggsley, Lincolnshire, landscape, oil on canvas, signed, label dated verso 'Waltham, Grimsby, February 1973', 51cm x 66cm.
£150-250

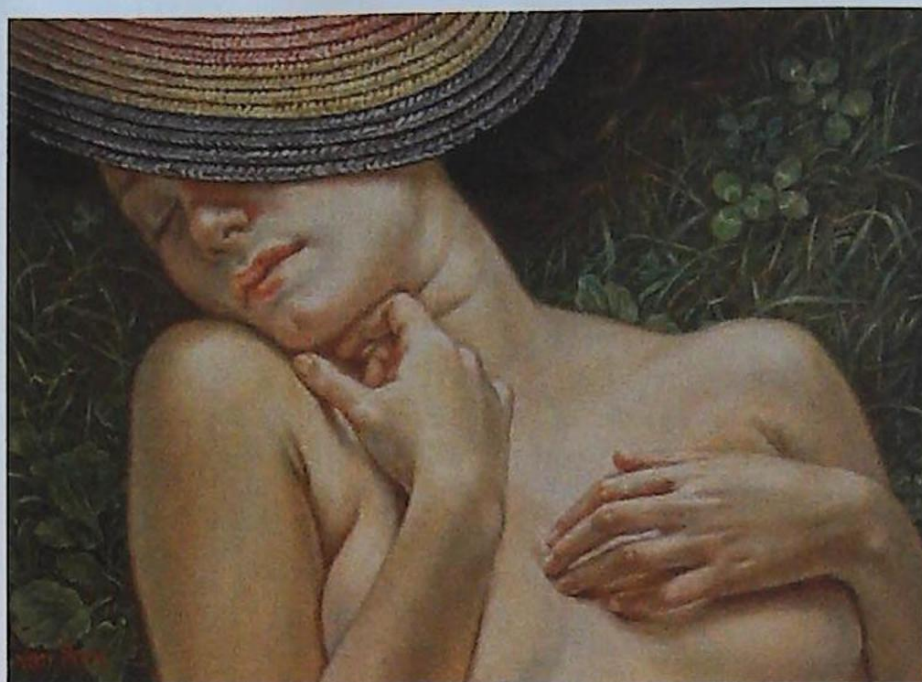


▲ 2.
Laurence Stephen Lowry (1887-1976).
Group of children, artist signed coloured print, 20.5cm x 20.5cm.
£800-1200

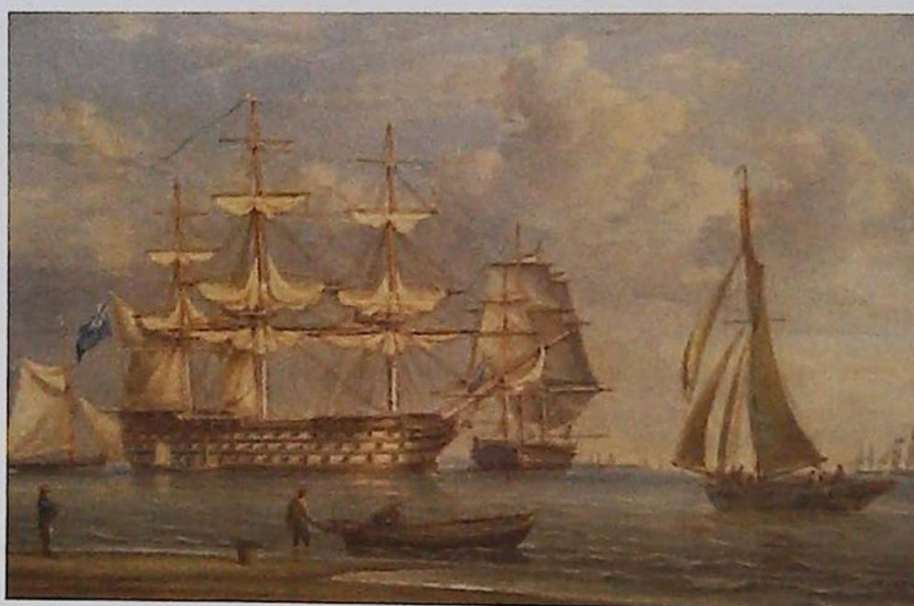


▲ 3.
Peter Brannan (1926-1994).
Kitchen still life, oil on board, signed, dated (19)86 and titled verso, 16.5cm x 19.5cm.
£250-350

4.
Antonin (Tony) Bartl (1912-1998).
Female study, oil on canvas, signed and dated 1975, 102cm x 77cm.
£200-300



▲ 5.
Francine Van Hove (b.1942).
Le Chapeau Cible, oil on canvas, signed, 33cm x 46cm.
Provenance: Galerie Alaisi Bondel Paris
£2000-4000



▲ 7.
William Joy (1803-1867) and John Cantiloe Joy (1803-1867).
Man o' War and other shipping, watercolour, 28cm x 40cm.
£1000-1500



▲ 10.
Percy C Bovill (act c.1883-1907).
Coastal scene with seagulls, oil on canvas, signed, 72cm x 116cm.
£800-1200



▲ 6.
James Webb (c1825-1895).
Masted ships and rowing boats in coastal scene, oil on canvas, 27cm x 67cm.
£500-800



▲ 8.
Jan Van Neeson (20thC).
Flower piece, oil on canvas, signed and titled (verso), 39.5cm x 49.5cm.
£100-150

9.
T.W.S. (19thC).
Gipsy, oil on canvas, initialled, 49.5cm x 59.5cm.



▲ 11.
Thomas Creswick (1811-1869).
Anglers in a river landscape, oil on board - pair, signed, 21.5cm x 26.5cm.
£300-500

12.
Charles France (19thC).
River landscape with sheep and cattle - village with background, oil, signed and dated 1876, 49.5cm x 67.5cm.

13.
Edwin Henry Eugene Fletcher (1857-1945).
Fishing boat, masted ships and steamer off the coast, oil on canvas laid on board, signed John Hayes, 91cm x 70cm.



- ▲ 14.
Hubert Coop (1872-1953).
Quayside with fishing boats and figures, watercolour, signed, 49cm x 64cm.
£300-500

15.
Edward Duncan (1803-1882).
Cattle and sheep in parkland, watercolour, signed, 21.5cm x 30cm.
£80-120



- ▲ 18.
19thC Continental School.
Maiden, oil on canvas, 39cm x 20cm.
£100-200

20.
S. Perry (19thC).
Sidmouth, watercolour, signed and dated 1876?, 24cm x 35cm.



- ▲ 16.
Thomas Sidney Cooper (1803-1902).
Sheep and cattle in pasture landscape, oil on board, signed, 43.5cm x 59cm.
£1500-2500



- ▲ 17.
Thomas Sidney Cooper (1803-1902).
Cattle in pasture landscape, oil on canvas, signed and dated 1869, 49.5cm x 75cm.
£1500-2500



- ▲ 19.
William Raymond Dommersen (1850-1927).
Windsor Castle from the Thames, oil on canvas, signed, 59.5cm x 105cm.
Label verso Wharfedale Galleries Ilkley.
£1000-1500



- ▲ 21.
Henry Morley (1869-1937).
Wood cutting, oil on canvas, signed, 29cm x 39cm.
£200-300

22.
B.H.L. (19thC/20thC).
Sheep on landscape, watercolour - pair, monogrammed, 14.5cm x 22cm.



- ▲ 23.
Alfred William Parsons (1847-1920).
Saintbury, Gloucestershire, watercolour, signed and titled, 26cm x 35cm.
£200-300

24.
M. Walshaw (19thC/20thC).
Figures outside a country cottage, oil on canvas, signed, 34cm x 50cm.

25.
John Steeple (1823-1887).
River landscape with country house in the background, watercolour, signed and dated 1886, 48cm x 69cm.



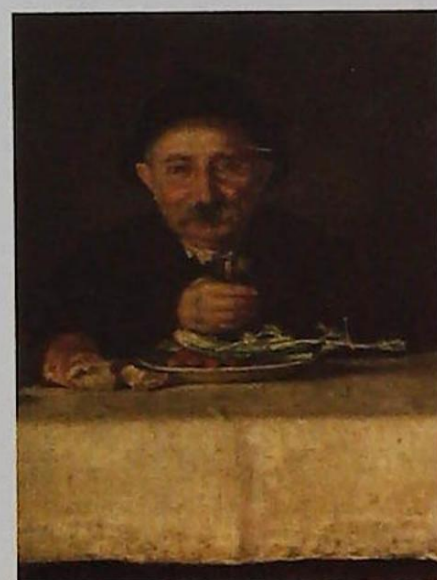
- ▲ 26.
H. Harris (19thC/20thC).
Racing horse and jockey, oil on canvas, signed, 34cm x 44cm.

27.
19thC British School.
River landscape, oil on canvas - pair, 20cm x 30cm.

Lincoln Fine Art Sale



▲ 28.
19thC British School.
Country landscape with ruins -
maidens collecting wood, oil
on canvas, 45cm x 61cm.



▲ 29.
19thC Continental School.
Study of an old man -
lunchtime, oil on canvas,
51cm x 39cm.



▲ 30.
Ellen Cantelo (fl 1859).
Young child picking flowers in
country landscape, oil on tin
panel, signed, 22cm x 48cm.
£100-150

31.
18thC School.
Camel train passing city ruins,
watercolour, 19cm x 30cm.

32.
19thC British School.
Figures in landscape, oil on
canvas - pair, 24cm x 33.5cm.



▲ 33.
Henry H Parker (1858-1930).
Country landscape,
watercolour, signed and dated
1892, 30.5cm x 36cm.

34.
C.N. Rounds (19thC).
Evening Dartmoor, watercolour,
signed, 24cm x 34cm.
Stamp verso J.D. Wheeldon and
Sons.

35.
G.H. Kitchen (19thC).
Arlington Mill, watercolour,
signed and titled, 23cm x 33.5cm.

36.
W Mastoz(?) (19thC).
River landscape, oil on canvas,
signed and dated 1884 verso,
49.5cm x 72cm.

37.
S Kirby (19thC/20thC).
River landscape with waterfall, oil
on canvas, signed and dated,
32cm x 48cm.



▲ 38.
William Sidney Cooper (1854-1927).
Cattle at the rivers edge,
watercolour, signed,
25cm x 35cm.
£80-120

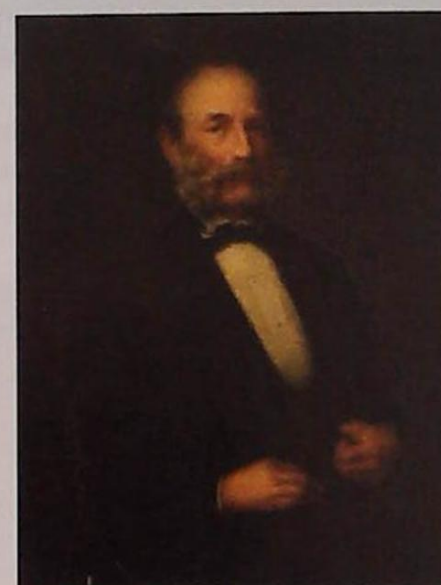
39.
Edward Henry Holder (1847-1922).
River landscape with figures
gather wood on board, signed and
dated 1880, 36cm x 53cm.

40.
19thC School.
Mountain lake scene with figures,
oil on board, 29.5cm x 49.5cm.

41.
Sidney Yates Johnson (act. 1890-1926).
Mountain lake scene with figure
walking, oil on canvas, signed
and dated 1898, 44cm x 80cm.

42.
Henry Birtles (1838-1907).
Shepherd and sheep by the rivers
edge, watercolour, signed and
dated 1879, 33cm x 50cm.

43.
Thomas Harper (19thC).
Figures by the waters edge,
watercolour, signed, 14cm x 22cm.



▲ 44.
P Deceuninck (19thC).
Half length portrait of a
gentleman, oil on canvas,
signed and dated, 98cm x 75cm.

45.
Frank Hider (1861-1933).
Coastal scene with fishing boat,
watercolour, signed, 35cm x 24cm.

46.
Rowland Ward (19thC/20thC).
Mountain river, oil on board,
signed, 29.5cm x 22cm.



▲ 47.
Allen Shuttleworth (19thC/20thC).
Polperro, watercolour, signed,
titled and dated 1932,
36.5cm x 25.5cm.

48.
19thC School.
Coastal scene with sailing boats,
watercolour, 17.5cm x 25cm.

49.
John Gutteridge Sykes (1866-1941).
At the edge of the forest - figures
collecting wood, watercolour,
signed, 46cm x 71cm.
£100-200



▲ 50.
John Gutteridge Sykes (1866-1941).
Mother and daughter along a
woodland path, watercolour,
signed, 46cm x 71cm.
£100-200

51.
Thomas Pyne (1843-1935).
Cattle at the waters edge,
watercolour, signed and dated
1884, 23cm x 34cm.

52.
George McConnell (19thC/20thC).
Thatched cottage, watercolour,
signed, 37cm x 33cm.



▲ 53.
19thC British School.
The Letter, watercolour,
35cm x 25cm.

54.
Frederick John Widgery
(1861-1942).
Heather covered coastal view,
watercolour, signed,
26cm x 36cm.
£200-300



▲ 55.
Cuthbert Bradley
(1861-1943).
Giddy, watercolour, signed,
titled and dated 1935,
23cm x 31cm.

56.
Cuthbert Bradley (1861-1943).
Young woman on horse back with
a dog in the foreground,
watercolour, signed, 25cm x 20cm.

57.
John Paget (19thC).
Rival Cabs, watercolour, signed,
19.5cm x 25cm.

58.
Jas J Bell (19thC/20thC).
Watermill, watercolour, signed,
19cm x 26cm.



▲ 59.
Constance Pitcairn (1853-1913).
The Queen at the Carisbrooke fete, oil on canvas, signed, c.1900,
89cm x 137cm.
Provenance: Holywell Hall Lot 272 25.9.13
£3000-5000

60.
A Woods (19thC).
Dunstanburgh Castle,
Northumberland, watercolour
signed and dated (18)83.



▲ 61.
Jan Wandelaar (1690-1759).
Tabula I, Tabula II, engraving
after Albins, 61cm x 46.5cm (2).
£100-200

62.
Felix Zuliani (c.18thC).
Tabula CCXXIII, Tabula CCXXVI,
Tabula CCXVI, and another IV,
engraving, 62cm x 38cm (4)

63.
Govard Bidloo (1649-1713).
Orteding des Menschelyken,
Lichaams, Amsterdam, *Anatomia*
engravings plus others from
different edition, sixty seven
plates total, 60cm x 35.5cm (69).

64.
19thC British School.
Head and shoulders study of a
Gentleman drawing,
46cm x 39.5cm.

65.
Lancelot Speed
(British 1860-1931).
Children's book illustrations,
including *Honour of Flag*, sepia
watercolour and body colour,
signed, each 61cm x 46cm. (10)
£400-600

66.
Arthur Claude Strachan
(1865-c1938).
Country lane with maiden and
cat, watercolour, signed,
17cm x 26cm.
£100-200

Lots 67 – 112
Studio works
Charles Westland Pilcher
(1870 – 1943)
Born and lived Boston
Lincolnshire



▲ 67.
Charles Westland Pilcher
(1870-1943).
Winter afternoon Woolwich
Reach, watercolour, signed
and titled, 26.5cm x 35cm.



▲ 68.
Charles Westland Pilcher
(1870-1943).
Steamships and barges,
watercolour, dated 1920,
25.5cm x 35cm.



▲ 69.
Charles Westland Pilcher
(1870-1943).
Bow Creek off the River
Thames, watercolour, titled,
28cm x 38.5cm.

70.
Charles Westland Pilcher
(1870-1943).
Thames, watercolour, titled,
26cm x 35cm.

71.
Charles Westland Pilcher
(1870-1943).
Yarmouth, watercolour, signed,
titled and dated Oct 23 1930,
26cm x 35.5cm.

Lincoln Fine Art Sale

72.
Charles Westland Pilcher (1870-1943).
Dock Yarmouth, watercolour, 26.5cm x 36cm.
73.
Charles Westland Pilcher (1870-1943).
Sailing barges, watercolour, signed and dated 9.9.30, 27.5cm x 38.5cm.
74.
Charles Westland Pilcher (1870-1943).
Yarmouth, watercolour, signed and titled, 26cm x 36.5cm.
75.
Charles Westland Pilcher (1870-1943).
River docklands, watercolour, initialled, 27.5cm x 38cm.
76.
Charles Westland Pilcher (1870-1943).
Docks Yarmouth, watercolour, dated Oct 1931, 27cm x 38cm.
77.
Charles Westland Pilcher (1870-1943).
Masted ships on quayside, watercolour, dated 1930, 29cm x 40cm.
78.
Charles Westland Pilcher (1870-1943).
Steamship in dock, watercolour, signed and dated 1930, 28cm x 38cm.
79.
Charles Westland Pilcher (1870-1943).
Dock Yarmouth, watercolour, 26.5cm x 38cm.
80.
Charles Westland Pilcher (1870-1943).
Masted ship on quayside, watercolour, initialled and dated 1929, 21cm x 28cm and two others (3).
81.
Charles Westland Pilcher (1870-1943).
Cranes loading, watercolour, 39cm x 28cm, and two others (3).
82.
Charles Westland Pilcher (1870-1943).
YH91 Golden Gain, watercolour, titled and dated Oct (19)33, 28.5cm x 39cm, and two others (3).
83.
Charles Westland Pilcher (1870-1943).
Yarm Dock, watercolour, 29cm x 39cm, and three others (4).
84.
Charles Westland Pilcher (1870-1943).
Sailing ships on quayside, watercolour, dated Oct 29 (19)34, 22cm x 30cm, and two others (3).
85.
Charles Westland Pilcher (1870-1943).
Yarmouth on the East coast, watercolour, titled verso, 29cm x 38.5cm, and two others (3).
86.
Charles Westland Pilcher (1870-1943).
Yarmouth Dock, watercolour, 20cm x 27cm, and two others (3).
87.
Charles Westland Pilcher (1870-1943).
Plymouth, watercolour, titled verso, 26cm x 36cm, and two others (3).
88.
Charles Westland Pilcher (1870-1943).
A new stern, watercolour, initialled, titled and dated Oct 1933, 24cm x 31cm, and two others (3).
89.
Charles Westland Pilcher (1870-1943).
Loading barrels, watercolour, 37cm x 28cm, and five others (6).
90.
Charles Westland Pilcher (1870-1943).
Windmill in river landscape, watercolour, 21cm x 28cm, and four others (5).
91.
Charles Westland Pilcher (1870-1943).
Docklands, watercolour dated 1929, 24cm x 31cm, and ten others (11).
92.
Charles Westland Pilcher (1870-1943).
Docklands landscape, watercolour, 24cm x 31cm, and four others (5).
93.
Charles Westland Pilcher (1870-1943).
Loading timber, watercolour, 28cm x 38cm, and four others.
94.
Charles Westland Pilcher (1870-1943).
Rochester, watercolour, titled verso, 26cm x 35cm, and seven others (8).
95.
Charles Westland Pilcher (1870-1943).
Rain clouds, Snowdonia, North Wales, watercolour, titled, 22.5cm x 29cm, and nine others (10).
96.
Charles Westland Pilcher (1870-1943).
King's Lynn, Norfolk, watercolour, titled and dated 1929, 26cm x 29.5cm, and seven others (8).
97.
Charles Westland Pilcher (1870-1943).
Repairs at Cathedral, ink drawing, 29cm x 16.5cm, and twenty five others (26).
98.
Charles Westland Pilcher (1870-1943).
Wrentham Mill, watercolour, titled and dated Oct 29 (19)33, 35.5cm x 26cm, and seventeen others (18).
99.
Charles Westland Pilcher (1870-1943).
Steamship in dock, watercolour, dated 1929, 21cm x 27cm, and four others (5).
100.
Charles Westland Pilcher (1870-1943).
Scotch drafters on Sat afterneers, watercolour, signed, titled and dated Oct (19)29, 24cm x 31.5cm, and four other works (5).
101.
Charles Westland Pilcher (1870-1943).
In a paint shop (Fellowe's Gare) in Garleston, Suffolk, watercolour, initialled, titled and dated Oct 28 1932, 23.5cm x 32cm, and three others (4).
102.
Charles Westland Pilcher (1870-1943).
Lowestoft, watercolour, titled and dated Oct (19)34, 27.5cm x 36cm, and two others (3).
103.
Charles Westland Pilcher (1870-1943).
Figure heads of old ships, breakers yard on Thames, etching, 30cm x 76cm, and eighteen others (19).
104.
Charles Westland Pilcher (1870-1943).
Figure heads of old ships, breakers yard on Thames, artist signed etching, 32cm x 18cm, and two others (3).
105.
Charles Westland Pilcher (1870-1943).
Market Square, watercolour, 12.5cm x 18cm, and two others (3).
106.
Charles Westland Pilcher (1870-1943).
Chelsea Old Church, watercolour, signed and titled verso, 33cm x 23cm.
107.
Charles Westland Pilcher (1870-1943).
Millwall, watercolour, titled and dated June (19)13, 28cm x 37cm.
108.
Charles Westland Pilcher (1870-1943).
Works by Dr Pilcher (of Boston), Usher Art Gallery Lincoln - exhibition catalogue, 29 January 1938, another Mr Lunn Galleries 1945, exhibition photographs, Oxford Medical School Menu 1895, Stainer-King black sack and his sword illustrated by C. W. Pilcher, two inscribed volumes, printing blocks and others (Qty).
109.
William Th. Martin Hawksworth (1853-1935).
Charles Westland Pilcher, watercolour works (Qty).
110.
William Th. Martin Hawksworth (1853-1935).
Artist in studio, watercolour, 27cm x 36cm and three others (4).
111.
William Th. Martin Hawksworth (1853-1935).
Harbour scene, watercolour, signed 22cm x 30cm and five others (6).

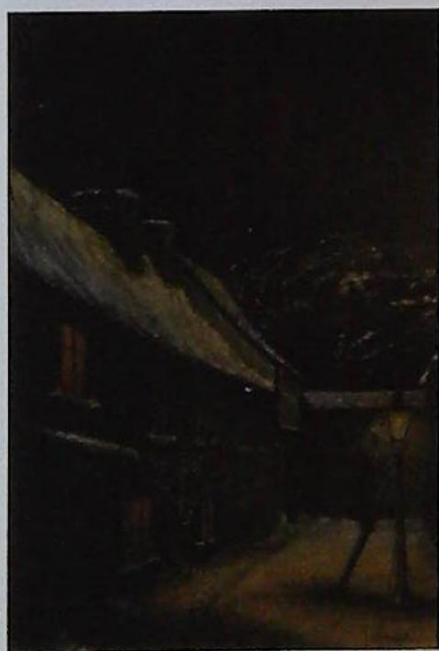
112.
William Th. Martin Hawksworth (1853-1935).
Durham, watercolour, initialled, titled and dated July 12 1904, 20cm x 25cm, and four others (5).

113.
Mark Huskinson (1935-2018).
Five Artist signed coloured prints, Heres Cheers, What a Perfect, Come on, The Seasoned Gun, I think they've found your bird Sir (5).



▲ 114.
Robin Wheeldon (b.1945).
Percherons, oil on board, signed, dated 1984, titled verso, 40cm x 52cm.
£150-250

115.
Eugene Richard Sturgeon (1920-1999).
Lincoln Cathedral, artist signed limited edition coloured print 636/850, 49cm x 59cm.



▲ 116.
Roy Fisk (1916-2007).
James Street, Lincoln, oil on canvas, signed, 65cm x 50cm.



▲ 117.
Clive Richard Browne (1901-1991).
Sunlit Wold, oil on canvas, signed and titled verso, 60cm x 75cm.
£100-200

118.
Clive Richard Browne (1901-1991).
Winter landscape, oil on canvas, signed, 39cm x 49cm.
£30-50

119.
Clive Richard Browne (1901-1991).
The Sma Glen - Perth, oil on canvas, signed and titled, 32.5cm x 40cm
Label verso exhibited Usher Art Gallery 1927



▲ 120.
Edwin Haddock Aldridge (1921-1996).
Abstract composition, oil on board, signed, 61cm x 91cm.



▲ 121.
Peter Lightfoot (b.1922).
Shuttle, oil on canvas, signed, titled and dated (19)88, 49cm x 100cm.
£500-800

122.
Hans Figura (1898-1978).
Sailing ships in Lagoon, oil on canvas, signed, 60cm x 90cm.
£300-500

123.
20thC Continental School.
Alpine river scene with watermill and figure, oil on canvas, indistinctly signed, 91cm x 66cm.
£200-300



▲ 128.
Salvador Viniegra Y Lasso (1862-1915).
Spanish players travelling, oil on canvas, signed, 108cm x 161cm.
£1000-2000

124.
Richard Jack (1866-1952).
From the Pont Neuf Cahors, oil, signed, 34cm x 49cm
Label verso The Fine Art Society Ltd - 1925 Exhibition.
£150-250

125.
19thC/20thC Continental School.
River landscape, oil on canvas, indistinctly signed and dated 1902, 75cm x 98cm
Exhibition label verso.
£300-500

126.
Paulus (19th/20thC).
Cairo market scene, oil on canvas, signed, 59.5cm x 42cm
£200-300

127.
Frantisek Jelinek-Cina (1882-1961).
Fortress in landscape, oil on canvas, signed, 69.5cm x 108cm.
£400-600



▲ 129.
Reinder Visscher (1904-1973).
Farmland Watertoren (Katwyk), oil on canvas, signed and titled verso, 49cm x 63.5cm.

130.
Reinder Visscher (1904-1973).
River landscape, oil on canvas, signed, 38.5cm x 59cm.

131.
Reinder Visscher (1904-1973).
Landscape, oil on canvas, signed, 44.5cm x 57.5cm.

132.
Reinder Visscher (1904-1973).
River landscape, oil on canvas, signed, 48cm x 67cm.

133.
19th/20thC Continental School.
Alpine village, oil on canvas, 59cm x 90cm.
£400-600

134.
Bellver (20thC).
Spanish landscape, oil on canvas, signed, 79cm x 115cm.
£250-450

135.
20thC Continental School.
Winter woodland, oil on canvas, 49.5cm x 60cm.
£100-200



▲ 136.
J. Rays (20thC).
Manor house entrance garden scene, oil on board, initialled and dated (19)43, 44.5cm x 53.5cm.

Lincoln Fine Art Sale

137.
Attributed to J. Rays.
Farm buildings with walled garden, oil on board, 45cm x 53.5cm.
Board back, stencilled, 10F.C.
Guighardaz, Paris, 12, Rue Guaugne.

138.
Michel Dzubenko (20thC).
Interior scene, open window, oil on board, signed 40cm x 32cm.

139.
Michel Dzubenko (20thC).
Figure garden street scene, oil on canvas, signed, 34cm x 26cm.

140.
Michel Dzubenko (20thC).
Jug and fruit still life, oil on canvas, signed, 54cm x 45cm.

141.
Attributed to Michel Dzubenko (20thC).
Interior scene, open window, oil on board, 39.5cm x 32cm.

142.
Michel Dzubenko (20thC).
Jug, tea cup saucer, fruits, oil on canvas, signed (Paris), 44.5cm x 53cm.

143.
Attributed to J. Rays (20thC).
Church and gardens, oil on board, 34cm x 45cm.
Board back stencilled, 10F.C.
Guighardaz, Paris, 14, 12 Rue Guaugne.

144.
Michel Dzubenko (20thC).
Interior scene, figure by a window, (No4 Un interieur rustique), oil on canvas, signed and titled verso, 49cm x 60cm.

145.
J. Rays (20thC).
Floral still life, oil on board, initialled and dated 43(93), 31.5cm x 22.5cm.

146.
Michel Dzubenko (20thC).
Fruit and jug still life, oil on canvas, signed, 44.5cm x 53cm.

147.
J. Rays (20thC).
Fruit and pots still life, oil on canvas, signed and dated (19)42, 60cm x 49cm.

148.
Michel Dzubenko (20thC).
Floral still life, oil on board, signed, 63cm x 52.5cm.

149.
E Pernelle (20thC).
Scenic views, oil on boards - four, signed, 13cm x 8cm (4).

150.
Early 20thC School.
Fete gallante court scenes, with figures, oils on a board - pair, 16cm Dia.

151.
Fowey (20thC).
Coastal scene with yachts, watercolour, signed and dated 1981 verso, 11cm x 16cm.

152.
W. Sands (20thC).
St. Ives, watercolour, a pair, signed and titled, 25cm x 12cm.

153.
19th/20thC School.
Portrait of a young woman, oil on canvas, inscribed L Rossi
Harierose verso, 43.5cm x 33.5cm
£100-200

154.
J. Rays (20thC).
Head and shoulders portrait, oil on canvas, signed and dated (19)43?, 54cm x 44cm.

155.
J. Rays (20thC).
Head and shoulders portrait, oil on board, initialled and dated (19)43, 53.5cm x 44.5cm.

156.
John Murray Thomson (1885-1974).
Sutherland Sunset, oil on canvas, signed and titled verso, 44cm x 59.5cm.
£250-450



157.
Carlo Verdecchia (1905-1984).
Farm landscape with figures, oil on board, signed, 10cm x 18cm.
Label verso - Gemito Galleria - Napoli

158.
Carlo Verdecchia (1905-1984).
Farm landscape, oil on board, signed, 10cm x 18cm.
Label verso - Gemito Galleria - Napoli

159.
Attributed to Carlo Verdecchia (1905-1984).
Cow in field, oil on canvas, 14cm x 23cm.
Label verso La Cornice Napoli



160.
Franco Girosi (1896-1987).
Fiori (1969), oil on board, signed and titled verso 43cm x 30.5cm.
Artist label verso.



161.
Francesco De Nicola (1883-1958).
Napoli, oil, signed, 24cm x 31cm.

162.
Francesco De Nicola (1883-1958).
Rural landscape, oil, signed, 13cm x 22cm.

163.
A. Spinelli (20thC).
Budgerigars, oil, signed, 21cm x 19cm.

164.
20thC Continental School.
Narcissi, oil, 40cm x 49cm.

165.
20thC Continental School.
Garden scene, watercolour, 34cm x 23cm.
Label verso La Cornice Napoli

166.
G. Vecchione (?) 20thC.
River Vulture, oil, indistinctly signed and inscribed verso, 31cm x 21cm.

167.
20thC Continental School.
Masted Galleon, watercolour, 21cm x 11cm.

168.
E.M. (19thC/20thC).
Venice, oil on canvas, initialled and dated 1908, 39.5cm x 54.5cm.
£100-200



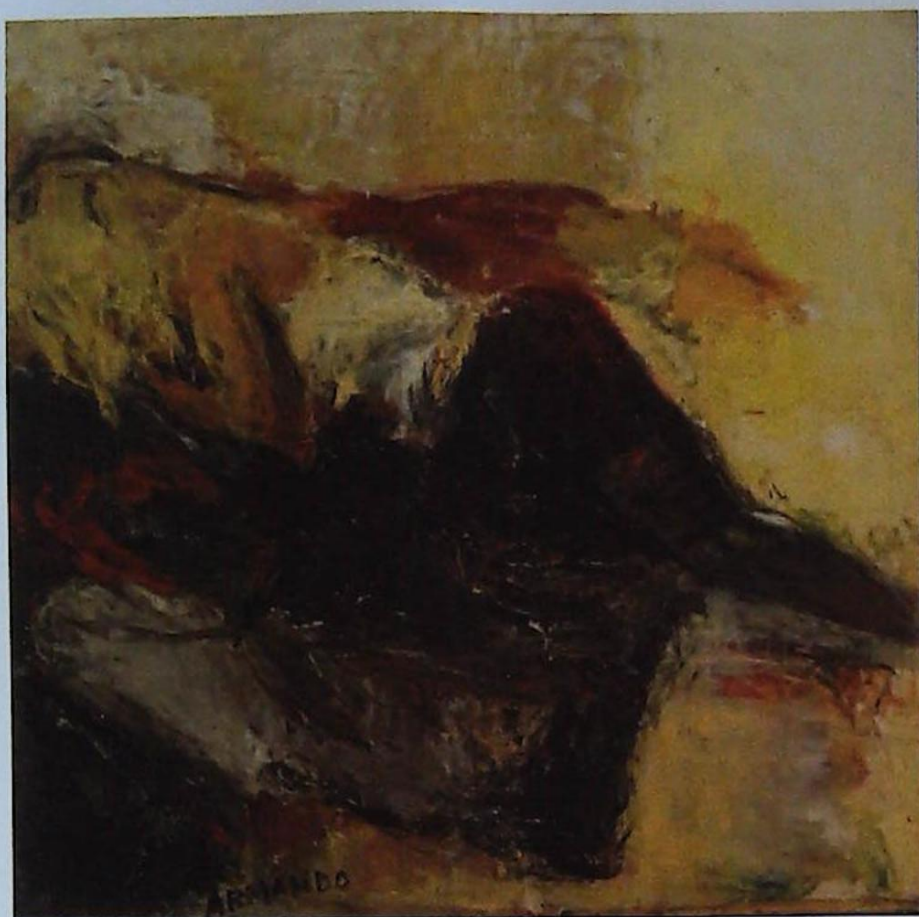
169.
L. Papaluca.
Continental lake scene, oil on board, signed, 36cm x 57cm.
£100-200

170.
20thC Continental School.
Maiden sleeping, oil on canvas, 64cm x 79cm.
£50-100

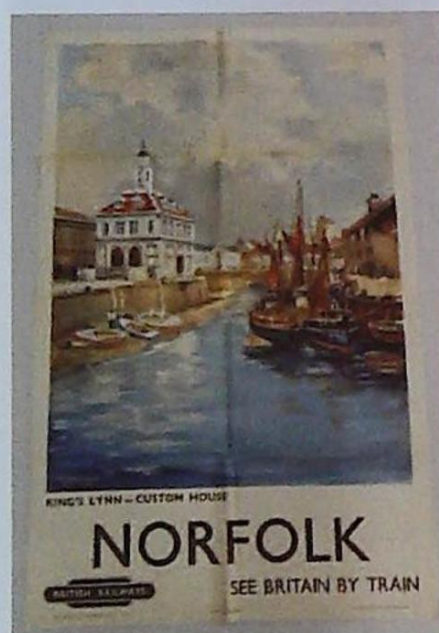


171.
20thC Continental School.
Mediterranean street scene, oil on canvas, indistinctly signed, 60cm x 91cm.
Label verso Guillerma Deys Artists Roma Italy.

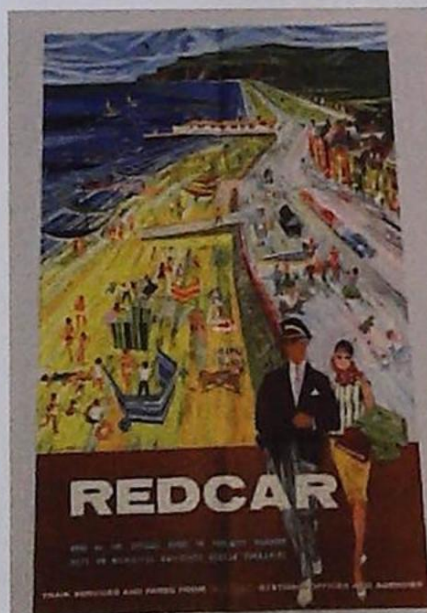
172.
Vilmer(?) 20thC.
Spanish hillside village with figures in the foreground, oil on canvas, indistinctly signed, 59cm x 128cm.



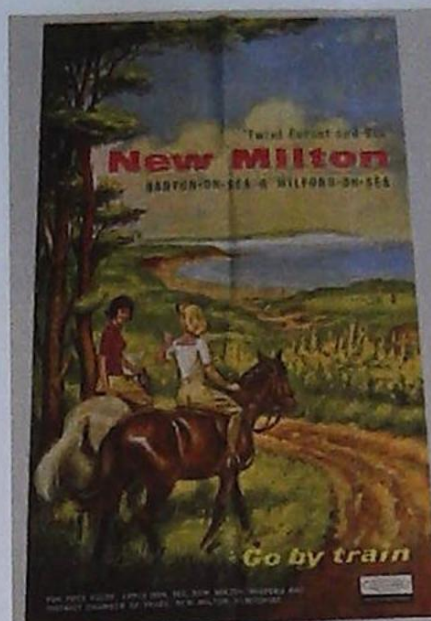
▲ 173.
Herman Dirk Van Dodeweerd (1929-2018).
Female study, oil on canvas, signed, 139cm x 139.5cm.
£3000-4000



▲ 174.
British Railways Poster (Eastern Region).
Norfolk, King's Lynn - Custom House, after Frank Mason, printed Stafford and Co. Ltd, Netherfield, Nottingham, 101.5cm x 63cm.
£100-200



▲ 175.
British Railways Poster (North Eastern Region).
Redcar, after Hugh Cherins, printed Chorley and Pickersgill Ltd., Leeds, 101.5cm x 63cm.
£100-200



▲ 176.
British Railways Poster (Southern Region).
New Milton - Twixt Forest and Sea, artist unknown, printed, Ernest J. Day and Co. Ltd., London, 101.5cm x 63cm.
£100-200

177.
British Railways Poster (Southern Region).
Kent, after Kenneth Bromfield and Joseph McKeown, printed Gilbt. Whitehead and Co. Ltd., 101.5cm x 63cm.
£100-200

178.
British Railways Poster (North Eastern Region).
Overnight to the Continent via Hull - Rotterdam, artist unknown, printed Stafford and Co. Ltd., Netherfield, Nottingham, 101.5cm x 63cm.
£100-200

179.
British Railways Poster (Eastern Region).
Norfolk, after Stobbs, printed Jordison and Co. Ltd., London and Middlesbrough, 101.5cm x 63cm.
£100-200

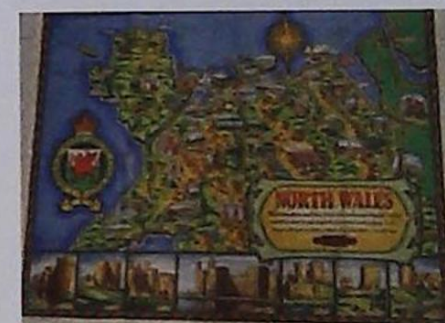
180.
British Railways Poster (Eastern Region).
Essex coast, after Reginald Montague Lander, printed Jordison and Co. Ltd., London and Middlesbrough, 101.5cm x 63cm.
£100-200

181.
British Railways Poster (Scottish Region).
The Firth of Clyde, after John S Smith, printed Stafford and Co. Ltd., Nottingham, 101.5cm x 63cm.
£100-200

182.
British Railways Poster (Western Region).
Barmouth, Queen of the Cumbrian Coast, after Henry Stranger, printed Jordison and Co. Ltd., London and Middlesbrough, 101.5cm x 63cm.
£100-200



▲ 183.
British Railways Poster (Scottish Region).
The Clyde Coast and Loch Lomond, after William Campbell Nicolson, printed, McCorquodale, Glasgow, 101.5cm x 126cm.
£100-200



▲ 184.
British Railways Poster (London Midland Region).
North Wales, after David William Burley, printed, Waterlow and Sons Limited, London and Dunstable, 101.5cm x 126cm.
£100-200

185.
British Railways Poster (Western Region).
Pembrokeshire, Travel by Train, after Leech, printed, Baynard pres, 101.5cm x 126cm.
£100-200

186.
British Railways Poster (Western Region).
Pembrokeshire, Travel by Train, after Leech, printed, Baynard pres, 101.5cm x 126cm.
£100-200

187.
British Railways Poster (Easter Region).
Norfolk Broads, after Raymond Piper, printed Waterlow and Sons Limited, London and Dunstable, 101.5cm x 126cm.
£100-200

Lincoln Fine Art Sale

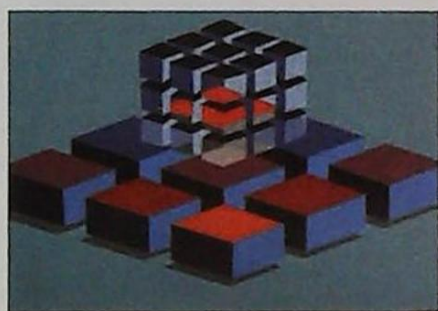
188.
L.R. Black (20thC).
The Cottage Marsingas, watercolour, signed, titled and dated (19)88, 26cm x 35cm and two others Minden Cottage, Sailing boats (3).

189.
Dennis John Hancer (1928-?).
Sailing Yacht, watercolour, signed and dated 1970, 29.5cm x 45cm.

190.
John Rudkin (20thC).
Coastal scene, watercolour, signed, 14cm x 22.5cm.

191.
Braga (20thC).
Impression St Makes Cornwall, watercolour, initialled, signed, titled and dated 1988 verso, 27cm x 37cm.

192.
P. Gray (20thC).
Abstract landscape, oil on canvas, signed verso, 60cm x 84cm.



▲ 193.
Michael Challenger (b.1939).
Cubic Heins 44/60, artist signed, titled and dated (19)74, lithographic print, 61cm x 80cm.

194.
Michael Challenger (b.1939).
Gliding peacefully away, artist signed, titled and dated (19)74, lithographic print, 61cm x 80cm.



▲ 195.
John Piper (1903-1992).
Near Newcastle Emlyn, Cardigan, limited edition screenprint 47/60, stamped K7079 verso, 52cm x 71cm. £500-800



▲ 196.
Clive Francis (20thC).
Noel Coward, artist signed coloured print 63/250, 42cm x 53cm.

197.
S. Redington (20thC).
Peter O'Toole as Jeffrey Bernard, artist signed coloured print 23/30, 68cm x 49cm.



▲ 198.
David Hockney (b.1937).
The Royal Opera - Die Frau Ohne Schatten, artist signed coloured poster, 75cm x 49.5cm. £500-800

199.
After Tomson (20thC).
Ian McKellen Acting Shakespeare - The Playhouse, coloured poster signed by the actor, 50cm x 32cm.

200.
20thC School.
Peter O'Toole in Jeffrey Bernard is Unwell, The Apollo, coloured poster signed O'Toole, Leventon and Mills, 49.5cm x 31cm.

201.
David Shepherd (1931-2017).
Biscuits, artist signed limited edition coloured print 1156/1200, 42cm x 44cm.

202.
William Russell Flint (1885-1969).
Variations II, limited edition coloured print 55/850, 53cm x 70cm.

203.
William Russell Flint (1880-1969).
Artist signed coloured print, 32cm x 60cm.

204.
William Russell Flint (1880-1969).
The festival of Santa Eulalia, Adalusia, limited edition coloured print 283/850, 59cm x 71cm.

205.
After Joseph Mallord William Turner.
Two coloured prints, signed in pencil by Curators of British Museum, 39.5cm x 59.5cm.

206.
Brian Lewis.
Fakenham Mill, artist signed limited edition coloured print 4/250, 28.5cm x 39cm and another, fishing boats at Wells.

207.
Pieta Kosowicz (20thC).
Birds of paradise, artist signed coloured etching 7/50, 17.5cm x 51cm and another signed Trevor Price (2)



▲ 208.
Jurgen Gorg (b.1951).
Body Talk, artist signed limited edition coloured print 166/180, 67cm x 49.5cm.

209.
Jurgen Gorg (b.1951).
Camedia, artist signed limited edition coloured print 8/100, 42cm x 33cm, and another Jansen and Masken (2).

210.
Jurgen Gorg (b.1951).
Erotica I, artist signed limited edition coloured print 209/220, 31cm x 23cm and two others (3).

211.
Jurgen Gorg (b.1951).
Ruokemakt, artist signed limited edition coloured print, 75/190, 47cm x 35cm and another Ausgleich (2).

212.
After Francisco Toledo (b.1940).
Bichu La Jaiba, coloured print, 14cm x 19cm and Manuel Rodriguez Lozano, El Tropic, coloured print, 14cm x 19cm (2)



▲ 213.
After Pablo Picasso (1881-1973).
Portrait of Sylvette, April-May 1954, giclee print signed Sylvette David, numbered 84/1000, 43cm x 33cm, and another numbered 338/1000, with certificate The Giclee Gallery, Gloucestershire and a 2009 catalogue (2). £100-200

214.
Helen Layfield Bradley (1900-1970).
Spring, Summer, Autumn, Winter, set of four artist signed limited edition coloured prints 357/850, 25cm x 32cm.



▲ 215.
George Kennerley (1908-2009).
Floral still life - interior scene, oil, signed, 36.4cm x 36.5cm.
£100-200

216.
Vera Bassett (1912-1997).
Umbrellas and Bays, watercolour, signed and titled verso, 55cm x 36cm.
£50-100

217.
Sam Scott (b.1940).
Spring Snow, artist signed coloured print, 56cm x 76cm.



▲ 218.
John Markey Robinson (1918-1999).
Two figures standing, oil on board, signed, 26cm x 18cm.
£400-600

219.
John Markey Robinson (1918-1999).
Clown, oil on board, signed, 26cm x 20cm.
£300-500



▲ 220.
Staislava Matynsova (b.1954).
Beach scene with figures, oil on canvas, signed Alb. Rigaux, 50cm x 60cm.
£500-800

221.
Irene A Welburn (act c.1936-1940).
Trio, oil on board, signed, 90cm x 57cm.
Artist label verso.

222.
George Anthony Cattawa (b.1931).
Winter Migrants, End of a long Journey, oil on canvas, signed, dated (19)62, titled verso, 75cm x 100.5cm.

223.
Francis A Boxall (20thC).
Maiden, watercolour, signed, 55.5cm x 37cm.

224.
Amy Openshaw (19thC/20thC).
Death from the City, oil on canvas, signed and dated 1895, 49cm x 75cm.

225.
Pamela Smith (20thC).
Abstract composition, multi media, signed and dated 1973, 62cm x 88cm.

226.
Carlos Didd(?) (20thC).
Dancing lady, multi media, indistinctly signed, 39cm x 29.5cm.

227.
Sutter (20thC).
Spatter Abstract composition, oil on canvas, signed and dated (19)84, 100cm x 70cm.



▲ 228.
Horsfield (20thC).
Lancashire Industrial scene, oil on board, signed, titled and dated 1977 verso, 49.5cm x 75cm.

229.
Simon Menzies (20thC).
Nautilus Shell, oil on board, signed and titled verso, 83cm x 74cm.



▲ 230.
George Rowlett (b.1941).
Trees at cold blow, winter sunshine, Frank with dogs, Walmer Kent, oil on board, signed and titled verso, 30cm x 41cm.
Provenance: From the estate of Alf Ludlam (Alistair John Ludlam) was born in Grimsby in January 1941. A gift from the artist.

231.
20thC School.
Mask portrait, carved wooden statue, 71cm high overall.
£300-500

232.
Govinder Nazran (1964-2008).
Cats black and white, composition, stamped and numbered 148/595, 19cm high.



▲ 233.
Govinder Nazran (1964-2008).
Cat blue, composition, stamped and numbered 289/500, 21cm high.

234.
Govinder Nazran (1964-2008).
Cat red, composition, stamped and numbered 124/500, 25cm high.

235.
20thC School.
Floral still life, oil on canvas, indistinctly signed, 48cm x 41.5cm.



▲ 236.
D Watling (20thC).
Street sign Robins Hood Bay, oil on board, signed, dated (19)56, titled verso, 45.5cm x 56cm.

237.
Gordon Allen (20thC).
The Drifters, oil on canvas, signed and titled verso, 60cm x 90cm.

238.
Doris Little.
Chalk pit Polhill, Gouache, signed and titled verso, 37cm x 52cm.

239.
J.F. Maxton.
Highland landscape, watercolour, signed, 27cm x 37cm.

240.
Paul Braddon.
Church interior, watercolour, signed, 26cm x 36cm.

241.
20thC School.
Sailing yacht, oil, 30cm x 39.5cm.

Lincoln Fine Art Sale

242.
Juliet Pannetti (1911-2005).
Portrait - young boy, pastel,
signed and dated 1972,
45.5cm x 30.5cm.

243.
David Morris.
Landscape, watercolour, signed
and dated 1972, 22.6cm x 22.5cm.



▲ 244.
Margaret Eastoe.
Figures in garden scene,
watercolour, signed and dated
1964, 63cm x 50.5cm.



▲ 245.
David Weight.
Stormy sky over Highgate
Hill, watercolour, signed and
titled verso, 54.5cm x 56.5cm.

246.
James Lacey.
River landscape, watercolour,
23cm x 33cm, and another (2).

247.
Adeola Muir.
Dancer, pastel, 11.5cm x 15cm.
Label verso At The Mall Galleries
- NEAC exhibition 1988.

248.
Arthur Miles.
Breezy day, watercolour, signed,
dated (19)68, titled, verso,
25cm x 35cm.

249.
Godfrey Sayers.
Coastal scene with sailing boats,
watercolour, signed, 18cm x 26cm.

250.
D.G.B.
Stately Porch, watercolour,
initialled and dated (19)89,
24cm x 34cm.

251.
Marlene J Watts.
Brighton Enclosure, watercolour,
19cm x 28cm.
Label verso At the Mall Galleries.

252.
Eileen M Smith.
Street scene, watercolour, signed
and dated 1966, 27cm x 38cm.

253.
F Rik Elkan.
Coastal view with fishing boats
and figures, oil on canvas, signed,
28cm x 38cm.



▲ 254.
20thC Continental School.
Paris, oil on canvas,
indistinctly signed and titled,
69cm x 46cm.

255.
J Kugler (1913-?) (20thC).
Woodland landscape, oil on
canvas, indistinctly signed,
59.5cm x 90cm.
£30-50

256.
Knight (20thC).
Continental street scene, oil on
canvas, signed, 59.5cm x 49.5cm.



▲ 257.
Paul Haigh (20thC).
Deben Anchorage, Suffolk, oil
on board, signed and titled
verso, 24cm x 34cm.
Label verso Lincolnshire
Artists' Society.

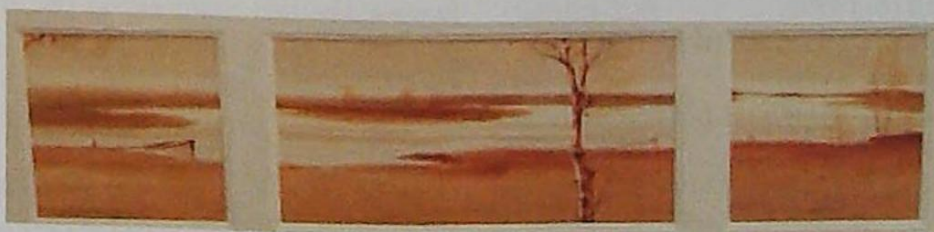
258.
Derek Abel (1925-2008).
Ely, watercolour, signed,
23cm x 53cm.

259.
Semole (20thC).
Abstract composition, oil on
canvas, signed, 77cm x 122cm.



▲ 260.
**Attributed to John Weeks
(1886-1964).**
The Plough, watercolour,
signed, titled and dated 1959
verso, label verso John Leech
Art Dealers Auckland,
26.5cm x 33.5cm.

261.
M.E. (20thC).
Abstract composition, mixed
media - four, initialled and dated
1984, 22cm x 20cm.



▲ 264.
Ged Mitchell (b.1956).
Autumn days IV, watercolour, triptic, signed, 37cm x 100cm overall.
Label verso Castle Galleries.



▲ 262.
Brian Chapman (20thC).
Last race at the Carholme,
pastel, signed, titled and dated
(19)95, 30cm x 51cm.
Artist label verso.

263.
Dorothy Hutton (1889-1984).
Alba Maxima, watercolour,
signed, titled and dated 15 July
1956, 17cm x 19cm.
£50-80

265.
Dionne Swift (20thC).
Devore - abstract, needlework
and textile - two, signed,
17cm x 16.5cm.
£50-80

266.
Peter Farrington (20thC).
Under the Pier - Lowestoft,
monochrome print, 35cm x 25.5cm.

267.
Sarah Carter (20thC).
The blue boat, mixed media,
58cm x 46cm.
£100-200

268.
Frank Gillette (b.1941).
Horn and shell composition,
polaroid print, 75cm x 59cm.
£200-400

269.
Gill Wilson (20thC).
Untitled, Fibre pulp, 46cm x 46cm.
£120-180

270.
**John Dalton(?) (20thC
School).**
Nude studies, two artist signed
lithographic prints, numbered
XI/XX and XVII/XX,
56cm x 75cm.

271.
Peter Issitt (20thC).
D.A.M (Don't Ask Me),
watercolour, signed and titled,
64cm x 46cm.

272.
M Scott (20thC).
Flute player, oil on board, signed,
45cm x 34.5cm, and Dave Jeffrey -
Dances with Horses (2).

273.
G Raven.
Woodland View, watercolour,
signed, 22cm x 13.5cm.

274.
20thC Continental School.
Market scene, oil on canvas,
indistinctly signed, 39.5cm x 29cm.
£100-200

275.
Robert Lyon (1894-1978).
Portrait of Henry Moore 1923,
artist signed limited edition print
19/220, 32cm x 22.5cm.

276.
E.H.S.
Cande near Chaumont, drawing,
initialled, titled and dated 10.6.54,
25.5cm x 37cm.



▲ 277.
Ruskin Spear (1911-1990).
Gentleman smoking pipe,
pencil drawing, signed and
dated, 26cm x 35.5cm.
£300-500



▲ 278.
19thC School.
The Emperor of Germany at
Aldershot - The German Naval
Attache's horse turns rather
too suddenly for him,
watercolour, 11cm x 17.5cm,
and seven other studies
Admiral, Sir Edmund
Conmerill etc (8).
£100-200

279.
W Harrison (20thC).
Seascape - coastal scene, oil on
board, signed, 51cm x 75cm.

280.
G.B.C.
Galleon/landscape, oil on copper
panel - pair, untitled, 25cm x 20cm.

281.
W.H. Rider.
On the Dove Near Harrington,
watercolour and titled verso,
signed, 30cm x 46cm.

Lots 282 - 300
Studio works
John Smith (1934 - 2018)
Lived Southwell
Nottinghamshire



▲ 282.
John Smith (1934-2018).
Rolleston Notts, oil on board,
signed, dated 1990 titled verso,
77cm x 93cm.



▲ 283.
John Smith (1934-2018).
River landscape, oil on board,
50cm x 60cm.



▲ 284.
John Smith (1934-2018).
Continental town scene, oil on
board, signed and dated 2000,
60cm x 49cm.

285.
John Smith (1934-2018).
Vezelay Yonne, oil on canvas,
signed, dated 1989, titled verso,
39cm x 49cm.

286.
John Smith (1934-2018).
Burzel Ardeche, oil on board,
signed, dated 1991, titled verso,
61cm x 92cm, and another titled
Amboise Loire.

287.
John Smith (1934-2018).
Kirkington Church, oil on canvas,
signed, dated 1991, and titled
verso, 29.5cm x 39.5cm, and three
other works (4).

288.
John Smith (1934-2018).
Ceze Cevennes, watercolour,
signed, dated 2000, titled,
23cm x 32.5cm, and another titled
Amboise (2).

289.
John Smith (1934-2018).
Vernie vers le Man, watercolour,
signed, titled and dated 1996,
18cm x 30cm, and two others (3).

290.
John Smith (1934-2018).
Rudelle lot, watercolour, signed,
titled and dated 1994,
17cm x 20cm, and another titled
Estaing (2).

291.
John Smith (1934-2018).
Decazeville lot, watercolour,
signed, titled and dated 1993,
11.5cm x 12cm, and four others (5).

292.
John Smith (1934-2018).
Studio works, prints, signed
(Qty).

293.
John Smith (1934-2018).
Garden scene, oil on board,
signed and dated (20)05,
51cm x 76cm, and ten other works
(11).

294.
John Smith (1934-2018).
Street scene, oil on board, signed
and dated (20)05, 62cm x 92cm,
and six other works (7).

295.
John Smith (1934-2018).
Woman in a bikini, oil on board,
91cm x 71cm, and four other
works (5).

Lincoln Fine Art Sale

296.
John Smith (1934-2018).
Church, oil on board, signed and dated (20)04, 61cm x 71cm, and seven other works (8).

297.
John Smith (1934-2018).
Garden scene, oil on board, signed and dated (20)04, 71cm x 92cm, and seven other works (8).

298.
John Smith (1934-2018).
Boat, oil on canvas, 46cm x 61cm, and five other works (6).



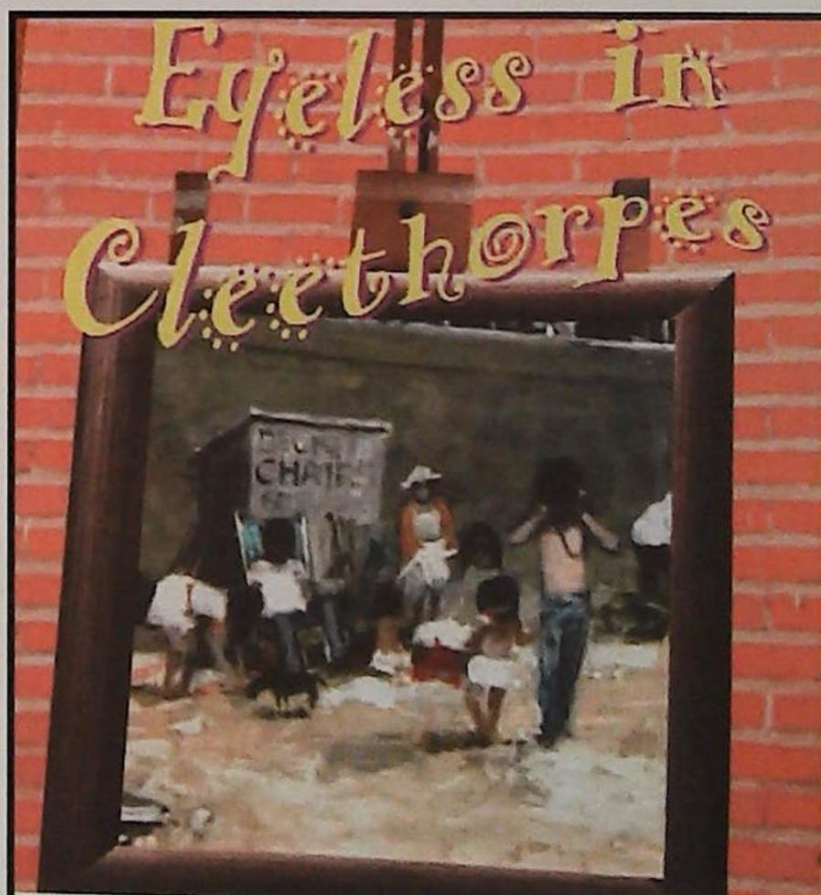
▲ 299.
20thC School.
Pottery flask with glazed decoration, C monogramme, 30cm high.



▲ 300.
J.S. (20thC).
Cylindrical vase, glazed pottery, impressed mark, 18cm high, and five other items.

Further lots and updates
available online.

NOTES



Malcolm Moyes
Eyeless in Cleethorpes:
The Life and Art of Peter Brannan

Sunday 19th May 2pm to 5pm

Meet the Author **Malcolm Moyes**
Talk and signing on his new book
relating to **Peter Brannan**.

Artist index

NAME: LOT NUMBER

A		H		R	
Abel, D	258	Haigh, P	257	Raven, G	273
Aldridge, E H	120	Hanceri, D J	189	Rays, J	136, 145, 147, 154, 155
Allen, G	237	Harper, T	43	Redington, S	197
B		Harris, H	26	Rider, W H	281
D.G.B.	250	Harrison, W	279	Robinson, J M	218, 219
Bartl, A	4	Hawksworth, W T M	109-112	Rounds, C N	34
Basset, V	216	Hider, F	45	Rowlett, G	230
Bell, J J	58	Hockney, D	198	Rudkin, J	190
Bellver	134	Holder, E H	39	S	
Bidloo, G	63	Horsfield	228	E.H.S.	276
Birtles, H	42	Huskinson, M	113	T.W.S.	9
Black, L R	188	Hutton, D	263	Sands, W	152
Bovill, P C	10	I		Sayers, G	249
Boxall, F A	223	Issitt, P	271	Scott, M	272
Braddon, P	240	J		Scott, S	217
Bradley, C	55, 56	Jack, R	124	Semole	259
Bradley, H L	214	Johnson, S Y	41	Shepherd, D	201
Braga	191	Joy, W	7	Shuttleworth, A	47
Brannan, P	3	K		Smith, J	282-300
Browne, C R	1, 117, 118, 119	Kennerly, G	215	Smith, E M	252
C		Kirby, S	37	Smith, P	225
G.B.C.	280	Kitchen, G H	35	Spear, R	277
Cantelo, E	30	Knight,	256	Speed, L	65
Carter, S	267	Kosowicz, P	207	Spinelli, A	163
Cattawa, G A	222	Kugler, J	255	Steeple, J	25
Challenger, M	193, 194	L		Strachan, A C	66
Chapman, B	262	B.H.L.	22	Sturgeon, E R	115
Cina, F J	127	Lacey, J	246	Sutter	227
Coop, H	14	Lasso, S V	128	Swift, D	265
Cooper, W S	38	Lewis, B	206	Sykes, J G	49, 50
Cooper, T S	16, 17	Lightfoot, P	121	T	
Creswick, T	11	Little, D	238	Thomson, J M	156
D		Lowry, L S	2	V	
Dalton, J	270	Lyon, R	175	Van Dodeweerd, H D	173
Deceuninck, P	44	M		Van Hove, F	5
Didd, C	226	E.M.	168	Van Neeson, J	8
Dommersen, W R	19	Mastoz, W(?)	36	Vecchione, G	166
Duncan, E	15	Matynsova, S	220	Verdecchia, C	157, 158
Dzubenko, M	139, 140, 142, 146, 148	Maxton, J F	239	Vilmer	172
E		McConnell, G	52	Vijscher, R	129-132
M.E.	261	Menzies, S	229	W	
Eastoe, M	244	Miles, A	248	Walshaw, M	24
Elkan F R	253	Mitchell, G	264	Wandelaar, J	61
F		Morley, H	21	Ward, R	46
Farrington, P	266	Morris, D	243	Watling, D	236
Figura, H	122	Muir, A	247	Watts, M J	251
Fisk, R	116	N		Webb, J	6
Fletcher, E H E	13	Nazran, G	232-234	Weight, D	245
Flint, W R	202-204	De Nicola, F	161, 162	Welburn, I A	221
Fowey	151	O		Wheeldon, R	114
France, C	12	Openshaw, A	224	Widgery, F J	54
Francis, C	196	P		Wilson, G	269
G		Paget, J	57	Woods, A	60
Gillette, F	268	Pannetti, J	242	Z	
Gorg, J	208-211	Papaluca, L	169	Zuliani, F	62
Gray, P	192	Parker, H H	33		
Girosi, F	160	Parsons, A W	23		
		Paulus	126		
		Pernelle, E	149		
		Perry, S	20		
		Pilcher, C W	67-108		
		Piper, J	195		
		Pitcairn, C	59		
		Pyne, T	51		

As at the time of printing, lots without estimates are to be sold without reserve, auctioneer's discretion.

See online catalogue for updates.

INFORMATION FOR BUYERS

1. **Introduction:** The following informative notes are intended to assist Buyers, particularly those inexperienced or new to our salerooms. All sales are conducted on our printed 'Conditions of sale' which are readily available for inspection and normally accompany catalogues. Our staff will be happy to help you if there is anything you do not fully understand.
2. **Agency:** As auctioneers we usually contract as agents for the seller whose identity, for reasons of confidentiality, is not normally disclosed. Accordingly, if you buy your primary contract is with the seller.
3. **Estimates:** Estimates are designed to help buyers gauge what sort of sum might be involved for the purchase of a particular lot. The lower estimate may represent the reserve price and certainly will not be below it. Estimates do not include the buyer's premium or VAT (where chargeable). Estimates are prepared some time before the sale and may be altered by announcement before the sale. They are in no sense definitive and are subject to constant revision.
4. **Buyers premium:** The 'Conditions of sale' oblige buyers to pay a buyer's premium at 20% on the hammer price of each lot purchased with a minimum of £2 per lot. In the case of lots purchased 'Live On-line' or via www.the-saleroom.com or www.i-bidder.com please see bidding platform for buyers premiums.
5. **VAT:** An asterisk (*) indicates that VAT is payable by the purchaser at the standard rate imposed by current UK law on the hammer price as well as being an element in the buyer's premium, lots are noted in the saleroom by a red dot on the lot number. This imposition of VAT is likely to be because the seller is registered for VAT within the European Union and is not operating the Dealers Margin Scheme or because VAT is due on importation into the UK. The double symbol (**) indicates that the lot has been imported from outside the European Union and the present position is that these lots are liable to a reduced rate of VAT on the gross lot price (i.e. both the hammer price and the buyer's premium). Lots which appear without either of the above symbols indicate that no VAT is payable on the hammer price. This is because such lots are sold using the Auctioneers' Margin Scheme and it should be noted that the VAT included within the premium is not recoverable as input tax. (VAT rates are changing with frequency, please check with HMRC. VAT will be charged as set by Government at the time of sale.)
6. **Condition and description of lots.** We are primarily, agents for the seller. We are dependent on information provided by the seller and whilst we may inspect lots and act reasonably in taking a general view about them we are normally unable to carry out a detailed or any examination of lots in order to ascertain their condition in the way in which it would be wise for a buyer to do. Intending buyers have ample opportunity for inspection of goods and, therefore, accept responsibility for inspecting and investigating lots in which they may be interested. Please note carefully the exclusion of liability for the condition of lots contained in the 'Conditions of sale'. Neither the seller nor we, as the auctioneers, accept any responsibility for their condition. In particular, mechanical objects of any age are not guaranteed to be in working order. However, in so far as we have examined the goods and make a representation about their condition, we shall be liable for any defect which that examination ought to have revealed to the auctioneer but which would not have been revealed to the buyer had the buyer examined the goods. Additionally, in specified circumstances lots misdescribed because they are 'deliberate forgeries' may be returned and repayment made. There is a 21 day time limit from the date of sale, not date of collection or receipt. (The expression 'deliberate forgery' is defined in our 'Conditions of sale').
7. **Electrical goods:** Items are tested by a qualified electrician for SAFETY ONLY. An item that passes the PAT safety test may not work. Conversely, an item that fails the test may work with just minor repair. 'Working Order' and 'Safe' are two completely different concepts. The only thing you may take for granted is that the item will be safe at the point of sale. Items that have failed will have their cabling cut to source, labelled and sold 'For Trade Only'. To use the object you will have to change it radically from what was sold to you. Therefore, the Auctioneers cannot be held responsible after the point of sale. Those items sold genuinely as 'antiques or collectables' will not have been tested and if bought for use must be checked over for compliance with safety regulations by a qualified electrician before use. This is an express condition.
8. **Export of goods:** Buyers intending to export goods should ascertain (a) whether an export licence is required and (b) whether there is any specific prohibition on importing goods of that character because, e.g. they may contain prohibited materials such as ivory. Ask us if you need help
9. **Bidding in person:** Some form of identification with proof of address will be required if you are unknown to us. Bidders may be required to register before the sale commences and lots will be invoiced to the name and address on the registration form. Account transfers will not be recognised or facilitated under any circumstances.
10. **Absentee bidding:** Commission bids may be left with the auctioneers indicating the maximum amount to be bid excluding buyers' premium. They will be executed as cheaply as possible having regard to the reserve (if any) and competing bids. If two buyers submit identical commission bids, the auctioneers may prefer the first bid received. If there are genuine reasons why you are unable to leave a Commission Bid and you wish to bid by telephone we may accommodate on lots where your opening bid will be £500 or above. There are inherent dangers with this practice; therefore all arrangements shall be entirely at the bidder's risk. Absentee bid instructions must be received by telephone, fax or email 12 hours prior to the sale.
11. **Live Internet Banking:** In completing the bidder registration on www.the-saleroom.com and providing your credit card details and unless alternative arrangements are agreed with Golding Young Limited, you
 - (i) authorise Golding Young Limited, if they so wish, to charge the credit card given in part or full payment, including all fees, for items successfully purchased in the sale via www.the-saleroom.com or www.i-bidder.com, and
 - (ii) confirm that you are authorised to provide these credit card details to Golding Young Limited through www.the-saleroom.com or www.i-bidder.com.
12. **Methods of payment:** Accounts are due for settlement SALEDAY. The following methods of payment are acceptable. There will be NO EXCEPTIONS to this policy. To avoid undue embarrassment for yourself or our staff, please do not ask for preferential treatment.
 - i. **Cash.** Single payments up to £7,000 only.
 - ii. **Debit Card.** No limit with chip & pin. (CNP limit £500).
 - iii. **Credit Card.** No limit with chip & pin. (CNP limit £500).
 - iv. **Bank Drafts & Building Society Cheques.** No limit. Due to forgeries, we will retain the goods for 3 working days to establish clearance of funds.
 - v. **Cheques.** Accepted up to the limit of the guarantee card for immediate clearance. For sums exceeding this, and you are not known to the auctioneers, we will retain the goods for 7 working days to establish clearance of funds.
 - vi. **Bank Transfer.** Please see details on our website.
13. **Collection and storage:** Goods can be collected as soon as they are paid for and within two working days following the sale. If goods remain with us and we have no contrary written advice of your intentions the items will be moved to storage and reasonable labour charges levied and storage at the rate of £2+vat per lot per day thereafter for small items and £10+vat per lot per day for furniture and large items.
14. **Postage and packing:** Options for buyers are available at www.goldingyoung.com/buying-shipping or ask a member of staff.

Lots subject to normal VAT rules are marked in the text-only catalogue with a single asterisk character (*) or a single dagger symbol (†) to indicate a VAT added rate of 20%.

Lots subject to normal VAT rules are marked in the text-only catalogue with a single 'at' character (@) to indicate a VAT inclusive rate of 20%.

Lots subject to normal VAT rules are marked in the text-only catalogue with double asterisk characters (**) or a double dagger symbol (‡) to indicate a VAT added rate of 5%.

Lots subject to normal VAT rules are marked in the text-only catalogue with double 'at' characters (@@) to indicate a VAT inclusive rate of 5%.

Lots marked in the text-only catalogue with a bullet character (•) are subject to the Artist's Resale Right Scheme.

EST
1864
GOLDING YOUNG



Thinking of selling?

Executors, solicitors, accountants, insurers, corporations and government departments, have to exhibit due diligence when instructing. Use this checklist to do the same, with a few reasons why you may wish to choose us.

We are regulated by RICS
Better Regulation for Us.
Better Protection for You.
Accept Nothing Less.

Our online catalogues
For over 20 years our catalogues have been online and our experience ensures they are placed in front of the right buyers in the global market.

Our sales results
May 2019 saw our 127th consecutive month with a sale at either Bourne, Grantham or Lincoln producing a sold rate of over 90%. Good advice, great results for hundreds of vendors every month.

Join their success with an entry in our next sale!

goldingyoung.com

HOUSE CLEARANCE

If there is that hidden 'find', it will be to your direct benefit.

Every week we take instructions for House Clearance for all of the prominent firms of Solicitors in the area, as well as from Private Individuals, Trustees and Executors.

If you are dealing with the content of a property, please contact us at the earliest point.

A visit to the premises by one of our qualified and experienced appraisal staff will offer the best advice for Security, Valuation and Sale.

DISPOSE OF NOTHING

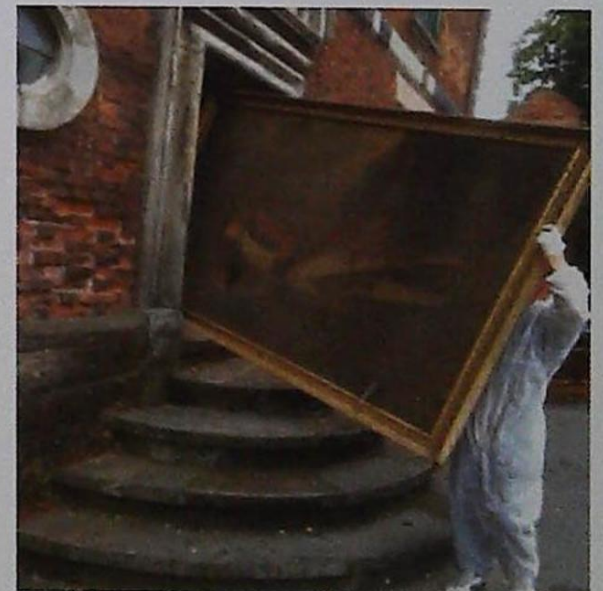
Often things thought to be rubbish are saleable.

IMMEDIATE ACTION IS REQUIRED

Once a property is uninhabited it is a target for burglars and your insurance may be invalid.

Items removed from premises are listed and handled by our professional carriers. Goods are then allocated to the next appropriate sale to ensure the highest sale return.

We also deal with the unsaleable residue, disposed of in the most cost-effective and environmentally friendly way, giving a total service.



PROPERTIES CLEARED, PROMPTLY AND EFFICIENTLY

Call: John Ireland MA MRICS - 01778 422686
For Bourne, Stamford, Peterborough Region and Southern Counties

Call: Craig Bewick BA (Hons) MRICS FNAVA - 01476 565118
For Grantham Region and The Midlands

Call: John Leatt ASFAV - 01522 524984
For Lincoln Region and Northern Counties

The Bourne Auction Rooms

Spalding Road, Bourne,
Lincolnshire PE10 9LE

E: bourne@goldingyoung.com
T: +44 (0) 1778 422686
F: +44 (0) 1778 425726

London & South Valuations

E: london@goldingyoung.com
T: +44 (0) 2033 011007

The Grantham Auction Rooms

Old Wharf Road, Grantham,
Lincolnshire NG31 7AA

E: grantham@goldingyoung.com
T: +44 (0) 1476 565118
F: +44 (0) 1476 561475

The Louth & Wolds Office

5 Mercer Row, Louth
Lincolnshire LN11 9JG

E: louth@goldingyoung.com
T: +44 (0) 1507 661864

The Lincoln Auction Rooms

Thos Mawer House, Station Road
North Hykeham, Lincoln LN6 3QY

E: lincoln@goldingyoung.com
T: +44 (0) 1522 524984
F: +44 (0) 1522 681804

The Stamford & Rutland Office

1, The George Mews
Station Road, Stamford
Lincolnshire PE9 2LB

E: stamford@goldingyoung.com
T: +44 (0) 1780 751666