



EST
1864

GOLDING YOUNG

Antique & Fine Art Sale

Wednesday 21st & Thursday 22nd November 2018



CHARTERED AUCTIONEERS & VALUERS • ARTS & ANTIQUES SURVEYORS

PROBATE – INHERITANCE TAX ASSESSMENT

For many Executors and Trustees the responsibility of dealing with a deceased's Estate is a once-in-a-lifetime experience. You have to make a number of important decisions in a very short space of time and all when the loss is most difficult to come to terms with.

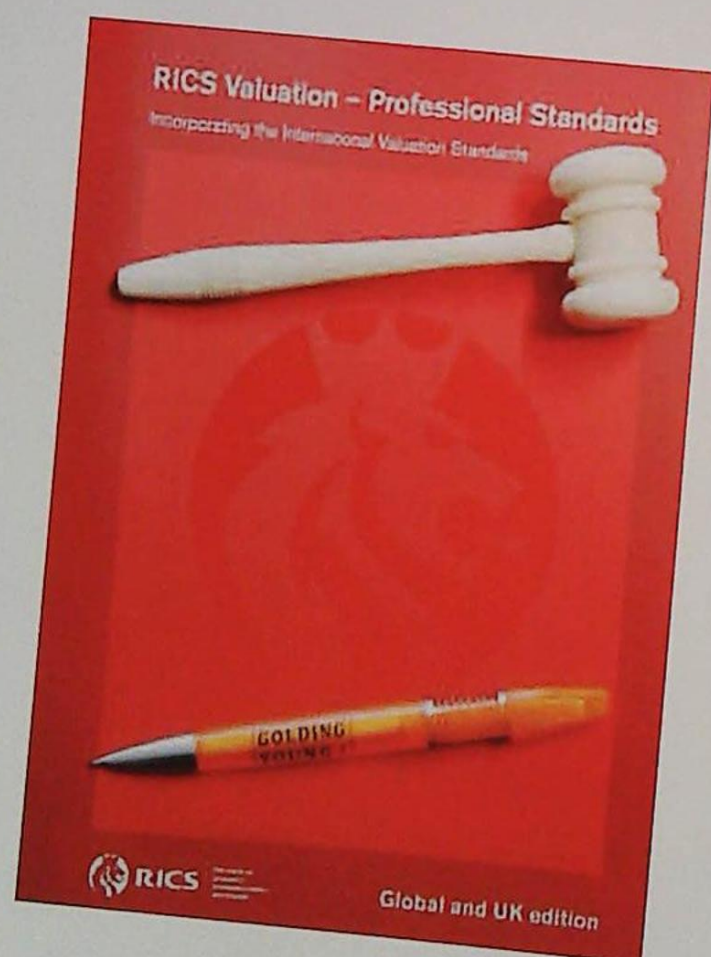
The position of Executor is an important one in law and has defined personal liability and responsibility. To exhibit due diligence to beneficiaries and more importantly HM Revenue & Customs, an Executor or advisor will instruct a firm Regulated by RICS.

Even if the estate will be taxed at 0%, a valuation remains an essential tool for an Executor. The inventory will still be used for identification of bequests, trust items, family division and proof of value.

Our valuations are prepared to the International Valuation Standards requirement of the 'Red Book'.

The report will cover sections of:


- Jewellery
- Vehicles
- Antiques, Fine Art & Collections
- General Furniture & Effects



For initial advice contact the following Chartered Auctioneers & Valuers:

Bourne, Stamford & South
Colin Young MRICS
01778 422686

Grantham, Lincoln & North
William Gregory MRICS
01522 524984



Removals – Household & Commercial

- Free Quotations
- Full Packing Service
- Suppliers of Packing Materials
- Shipping & Storage Arranged
- Antiques & Fine Art Specialists
- Specialist Piano Movers
- Office Movers

Contact Andrew Lowes on 07970 742577 for a quote
or email lowes@goldingyoung.com

goldingyoung.com

PRIVATE CLIENT & PROFESSIONAL SERVICE DEPARTMENT

We value personal property for private and corporate clients. Our team have valued family heirlooms, art collections and museum holdings for a variety of purposes.

We are the only auction house in the region to have a bespoke Private Client Department with:

- Four Chartered Arts & Antiques Surveyors
- Two RICS/ Antiques Trade Gazette professional assessment award-winning valuers
- Two In-house qualified jewellery valuers
- Experience in abundance and diversity since 1864
- Ten professional staff with RICS, NAVA or SoFAA qualifications.

Autumn reView

It has been a very busy autumn with all three salerooms increasing to a three weekly programme of sales. This in turn has lead to a diverse number of lots being offered.



An Anglo Indian box
Sold for £7,500



Olympic Linesman Medal
Sold for £3,000



Gilbert Bayes (1872-1952) figure
Sold for £5,750



Thomas Sidney Cooper (1803-1902)
Sold for £9,000

It has been a very busy autumn with all three salerooms increasing to a three weekly programme of sales. This in turn has lead to a diverse number of lots being offered.

Grantham started the trend with their Asian Art & World Ceramics Sale. This sale included a variety of lots from all around the globe. This then led to their three weekly programme of Collective Sales, from a variety of local vendors. Highlights included the Anglo Indian box to the left selling for £7,500.

Bourne followed with Collective Sales offering a wide range of lots. From jewellery to silver to furniture and much more. Consignments were gathered from a number of local individuals and deceased estates. A busy valuation day in Holbeach led to the entry of the Olympic linesman medal shown to the left, and with much anticipation reaching a sale price of £3,000.

Lincoln have also been very busy within their three week programme, with the last Fine Art Sale reaching a record number of bidders! Lots were gathered from a number of local estates and private vendors, to create the quality sales produced throughout autumn. A key lot of note is the Gilbert Bayes figure shown on the left, consigned through our Louth office and realising £5,750 at auction. The lot sold to a collector in New York, so it has now been shipped across the pond.

As we begin to look forward to the new year it is clear that the auction calendar remains packed with sales. Quality consignments have already been gathered for the forthcoming Asian Art & World Ceramics Sale on Thursday 3rd January, with all our Collective sales looking to be as busy as ever.

Finally my thanks go to the thousands of vendors who have supported us over recent months and each of our 40+ team of valuers, auctioneers, administrators, transporters and porters for their commitment and hard work in delivering such strong results.

We look forward to your continued support at future sales.

Colin R Young MRICS FNAVAASFAV

INFORMATION FOR BUYERS

1. **Introduction:** The following informative notes are intended to assist Buyers, particularly those inexperienced or new to our salerooms. All sales are conducted on our printed 'Conditions of sale' which are readily available for inspection and normally accompany catalogues. Our staff will be happy to help you if there is anything you do not fully understand.
2. **Agency:** As auctioneers we usually contract as agents for the seller whose identity, for reasons of confidentiality, is not normally disclosed. Accordingly, if you buy your primary contract is with the seller.
3. **Estimates:** Estimates are designed to help buyers gauge what sort of sum might be involved for the purchase of a particular lot. The lower estimate may represent the reserve price and certainly will not be below it. Estimates do not include the buyer's premium or VAT (where chargeable). Estimates are prepared some time before the sale and may be altered by announcement before the sale. They are in no sense definitive and are subject to constant revision.
4. **Buyers premium:** The 'Conditions of sale' oblige buyers to pay a buyer's premium at 20% on the hammer price of each lot purchased with a minimum of £2 per lot. In the case of lots purchased 'Live On-line' or via www.the-saleroom.com or www.i-bidder.com this will be charged at 25% on the hammer price. In addition, VAT is payable on this premium (see below).
5. **VAT:** An asterisk (*) indicates that VAT is payable by the purchaser at the standard rate imposed by current UK law on the hammer price as well as being an element in the buyer's premium, lots are noted in the saleroom by a red dot on the lot number. This imposition of VAT is likely to be because the seller is registered for VAT within the European Union and is not operating the Dealers Margin Scheme or because VAT is due on importation into the UK. The double symbol (**) indicates that the lot has been imported from outside the European Union and the present position is that these lots are liable to a reduced rate of VAT on the gross lot price (i.e. both the hammer price and the buyer's premium). Lots which appear without either of the above symbols indicate that no VAT is payable on the hammer price. This is because such lots are sold using the Auctioneers' Margin Scheme and it should be noted that the VAT included within the premium is not recoverable as input tax. (VAT rates are changing with frequency, please check with HMRC. VAT will be charged as set by Government at the time of sale.)
6. **Condition and description of lots.** We are primarily, agents for the seller. We are dependent on information provided by the seller and whilst we may inspect lots and act reasonably in taking a general view about them we are normally unable to carry out a detailed or any examination of lots in order to ascertain their condition in the way in which it would be wise for a buyer to do. Intending buyers have ample opportunity for inspection of goods and, therefore, accept responsibility for inspecting and investigating lots in which they may be interested. Please note carefully the exclusion of liability for the condition of lots contained in the 'Conditions of sale'. Neither the seller nor we, as the auctioneers, accept any responsibility for their condition. In particular, mechanical objects of any age are not guaranteed to be in working order. However, in so far as we have examined the goods and make a representation about their condition, we shall be liable for any defect which that examination ought to have revealed to the auctioneer but which would not have been revealed to the buyer had the buyer examined the goods. Additionally, in specified circumstances lots misdescribed because they are 'deliberate forgeries' may be returned and repayment made. There is a 21 day time limit from the date of sale, not date of collection or receipt. (The expression 'deliberate forgery' is defined in our 'Conditions of sale').
7. **Electrical goods:** Items are tested by a qualified electrician for SAFETY ONLY. An item that passes the PAT safety test may not work. Conversely, an item that fails the test may work with just minor repair. 'Working Order' and 'Safe' are two completely different concepts. The only thing you may take for granted is that the item will be safe at the point of sale. Items that have failed will have their cabling cut to source, labelled and sold 'For Trade Only'. To use the object you will have to change it radically from what was sold to you. Therefore, the Auctioneers cannot be held responsible after the point of sale. Those items sold genuinely as 'Antiques or collectables' will not have been tested and if bought for use must be checked over for compliance with safety regulations by a qualified electrician before use. This is an express condition.
8. **Export of goods:** Buyers intending to export goods should ascertain (a) whether an export licence is required and (b) whether there is any specific prohibition on importing goods of that character because, e.g. they may contain prohibited materials such as ivory. Ask us if you need help
9. **Bidding in person:** Some form of identification with proof of address will be required if you are unknown to us. Bidders may be required to register before the sale commences and lots will be invoiced to the name and address on the registration form. Account transfers will not be recognised or facilitated under any circumstances.
10. **Absentee bidding:** Commission bids may be left with the auctioneers indicating the maximum amount to be bid excluding buyers' premium. They will be executed as cheaply as possible having regard to the reserve (if any) and competing bids. If two buyers submit identical commission bids, the auctioneers may prefer the first bid received. If there are genuine reasons why you are unable to leave a Commission Bid and you wish to bid by telephone we may accommodate on lots where your opening bid will be £500 or above. There are inherent dangers with this practice; therefore all arrangements shall be entirely at the bidder's risk. Absentee bid instructions must be received by telephone, fax or email 12 hours prior to the sale.
11. **Live Internet Banking:** In completing the bidder registration on www.the-saleroom.com and providing your credit card details and unless alternative arrangements are agreed with Golding Young Limited, you
 - (i) authorise Golding Young Limited, if they so wish, to charge the credit card given in part or full payment, including all fees, for items successfully purchased in the sale via www.the-saleroom.com or www.i-bidder.com, and
 - (ii) confirm that you are authorised to provide these credit card details to Golding Young Limited through www.the-saleroom.com or www.i-bidder.com.
12. **Methods of payment:** Accounts are due for settlement SALEDAY. The following methods of payment are acceptable. There will be NO EXCEPTIONS to this policy. To avoid undue embarrassment for yourself or our staff, please do not ask for preferential treatment.
 - i. **Cash.** Single payments up to £7,000 only.
 - ii. **Debit Card.** No limit with chip & pin. (CNP limit £500).
 - iii. **Credit Card.** No limit with chip & pin. (CNP limit £500).
 - iv. **Bank Drafts & Building Society Cheques.** No limit. Due to forgeries, we will retain the goods for 3 working days to establish clearance of funds.
 - v. **Cheques.** Accepted up to the limit of the guarantee card for immediate clearance. For sums exceeding this, and you are not known to the auctioneers, we will retain the goods for 7 working days to establish clearance of funds.
 - vi. **Bank Transfer.** Please see details on our website.
13. **Collection and storage:** Goods can be collected as soon as they are paid for and within two working days following the sale. If goods remain with us and we have no contrary written advice of your intentions the items will be moved to storage and reasonable labour charges levied and storage at the rate of £2+vat per lot per day thereafter for small items and £10+vat per lot per day for furniture and large items.
14. **Postage and packing:** Options for buyers are available at www.goldingyoung.com/buying-shipping or ask a member of staff.

Lots subject to normal VAT rules are marked in the text-only catalogue with a single asterisk character (*) or a single dagger symbol (†) to indicate a VAT added rate of 20%.

Lots subject to normal VAT rules are marked in the text-only catalogue with a single 'at' character (@) to indicate a VAT inclusive rate of 20%.

Lots subject to normal VAT rules are marked in the text-only catalogue with double asterisk characters (**) or a double dagger symbol (‡) to indicate a VAT added rate of 5%.

Lots subject to normal VAT rules are marked in the text-only catalogue with double 'at' characters (@@) to indicate a VAT inclusive rate of 5%.

Lots marked in the text-only catalogue with a bullet character (•) are subject to the Artist's Resale Right Scheme.

Lincoln Antique & Collective Sale

Upon instructions from the executors of Patrick Wright (Dec'd),
12 Drury Lane, Lincoln & others

Wednesday 21st November 2018

At The Lincoln Auction Rooms

Thos Mawer House

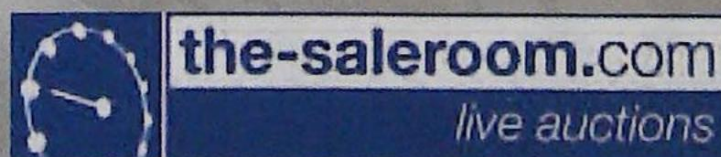
Sale commences 10am

Viewing: Sunday 18th November 2pm-5pm

Tuesday 20th November 10am-4pm

& Saleday 8.30am-10am

Bid online or simply watch the sale live at



All enquiries to John Leatt ASFAV on 01522 524984

Front cover images:

Top: Lot 1. An Edwardian mahogany breakfront bookcase, 213cm H, 250cm W, 45cm D.

Bottom: Lot 3159. Gill Nadin (1928-1996). Summer landscape, oil on canvas, signed and dated (19)90, 121cm x 121cm.

Lincoln Collective Sale



- ▲ 1. An Edwardian mahogany breakfront bookcase, the central section with a dogtooth inlaid and moulded cornice above two astragal glazed doors flanked by two further similar doors with marquetry doors below on a shaped base, 213cm H, 250cm W, 45cm D. £400-600



- ▲ 2. A Victorian oval girandole wall mirror, decorated with wheat ears, flowers, etc., with an arrangement of seven sconces, 150cm H, 105 cm W. £120-180



- ▲ 3. A 19thC gilt gesso console table, with the top later painted with Angels, crests, etc., by Kenneth Riches of Lincoln, the frieze decorated in relief with 'C' scrolls, on turned tapering legs, 89cm H, 178 W, 56cm D. £250-350

4. A 19thC gilt gesso over mantel mirror, with a break front top with a frieze decorated with neo classical style maidens flanked by fluted columns, 147cm x 136cm. £150-200



- ▲ 5. An early 19thC mahogany breakfront sideboard, with brass lion mask handles on square tapering legs, 227 cm W, 85cm H, 66cm D. £150-250



- ▲ 6. A walnut chest on stand, with a moulded cornice above two short and three long ash cross-banded drawers, each with pierced brass handles, the base with two frieze drawers with shaped apron on cabriole legs with pad fee, in part 18thC but adapted, 151cm H, 100cm W, 56cm D. £350-450



- ▲ 7. A pair of gilt wood and gesso Continental plant or urn stands, each decorated with carved flowers, putto masks on a tri form base with scroll carved feet, possibly Italian, 173cm H. £150-250



- ▲ 8. A mid 18thC walnut chest of drawers, the quarter veneered top with a crossbanded border, above two short and three long drawers, with ivory and brass drop handles, on later bracket feet, 98cm H, 94cm W, 53cm D. £200-400



- ▲ 9. A George III style mahogany wingback armchair, upholstered in green textured floral velvet on cabriole legs with padded feet. £150-250



- ▲ 10. A mahogany wingback sofa in 18thC style, upholstered in red textured floral velvet, with gold piping on short cabriole legs, headed by leaf carving with ball and claw feet. £200-300



- ▲ 11. A Victorian walnut Wellington chest, with six drawers with turned handles on a plinth base, 134cm H, 60cm W, 42cm D. £250-350

12. A set of four six branch Venetian style chandeliers, each with cut glass drops, etc., 53cm W and a larger example. (5) £350-450

13. A late 19thC/early 20thC Dutch walnut and feather banded cabinet, the top with a moulded cornice above two doors enclosing adjustable shelves, the base with two short and two long drawers on bracket feet, 101cm H, 99cm W, 50cm D. £150-250

14. An unusual walnut wingback armchair, upholstered in pale blue and gold patterned fabric with studded borders on turned legs with bun feet. £200-300



- ▲ 15. A mahogany sofa in mid 18thC style, upholstered in green damask fabric on carved cabriole legs. £300-400



- ▲ 16. **A George III mahogany bow fronted chest of drawers**, with a plain top above three long drawers, each with oval brass drop handles, above a shaped apron, splayed feet, flanked by brass carrying handles, 88cm high, 62cm deep, 116cm wide.
Auctioneers Note: By family repute this is believed to be formerly the property of the Harewood House Estate.
£1000-1500

17. **A 19thC mahogany bureau**, the fall enclosing a fitted interior over four graduated drawers with drop brass handles and bracket feet, 92cm W.
£80-120



- ▲ 18. **An early 19thC Scottish longcase clock**, by Nielson Love, Anderston, the arched dial painted with a battle scene of the Duke of Wellington at Waterloo and titled to the centre of the dial Lammie of Glasgow, with spandrels painted with emblems of the continents, etc., 8 day four pillar movement in a tall mahogany case with swan neck pediment and boxwood stringing, 233cm H.
£400-600

19. **A mahogany extending dining table**, comprising two D shaped ends each with a reeded border on ring turned column splay legs with brass paw terminals and castors, one loose leaf, 71cm H, 119cm W, 188cm L.
£150-250



- ▲ 20. **A set of six mahogany dining chair in George III style**, each with a pierced splat drop in seat on carved cabriole legs with ball and claw feet, two with arms.
£150-250

21. **A 19thC gilt gesso over wall mirror**, decorated with flowers and rococo scrolls, etc. (AF), 142cm x 82cm.
£60-100

22. **An oak jardinière stand**, with turned dish top on ballaster turned column and circular base with bun feet, 94cm H, 20 cm dia.
£30-50

23. **An Edwardian mahogany and chequer banded oval occasional table**, the quarter veneered top with cross-banded border on splayed legs with under tier, 66cm W.
£10-30

24. **A near pair of George III oak side chairs**, each with a pierced splat on plain legs, one with solid seat, the other drop in seat.
£20-40

25. **A George III style mahogany sofa**, with a camel shaped back, upholstered in green fabric with gilt piping on channelled legs with H stretcher.
£250-350

26. **An Afghan style rug**, with a central cross design on a deep pink ground with multiple borders, 130cm x 93cm.
£30-50

27. **A Persian style multi mihrab prayer rug**, with a design of windows, vases, etc. in multiple colours within a red border, 210cm x 94cm.
£50-70

28. **An Turkish design rug**, with medallions on a beige ground within multiple borders, 200cm x 130cm.
£30-50

29. **A mahogany torchere**, the circular top with a lappet carved border on a part reeded and fluted column decorated with wheat ears on a tripod base, 146cm H.
£60-100

30. **A 19thC mahogany Pembroke table**, with a shaped top above a frieze drawer opposing a false drawer on channelled legs with castors, 75cm H, 74cm W.
£60-100

31. **A 19thC gilt gesso overmantel mirror**, the inverted breakfront cornice above a part turned frieze flanked by flowering double cornucopia above three rectangular plates with reeded ebonised slips, 63cm H, 134cm W.
£60-100

32. **A set of three brass fire implements**, each with a turned ball handle.
£40-60

33. **A cast iron fire or dog grate**, supported by a pair of cast brass fire dogs with lion masks, 67cm W.
£50-80

34. **An early 20thC mahogany overmantel mirror**, the moulded cornice carved with a Greek key border, above a rectangular bevelled plate, 225cm H, 79cm W.
£60-80

35. **A 19thC oak ladder back armchair**, with a drop in seat on cabriole legs with pad feet.
£60-80

36. **A pine low bookcase**, on a plinth base, 70cm H, 162cm W, 37cm D.
£20-40

37. **A stripped pine Pembroke table**, the top with rounded corners on turned tapering legs, 92cm W.
£30-50

38. **A Continental fruitwood side table**, with a double boxwood strung border above a moulded shaped apron on square tapering legs, with splayed feet, 62cm W.
£30-50

39. **A 19thC oak and pine occasional table**, with circular top on a turned column and tripod base, top and bottom associated, 60cm dia.
£30-50

Lincoln Collective Sale

40. **A mahogany extending dining table,** in Regency style, the rectangular top with rounded corners and a moulded edge on twin turned column splayed legs and brass castors, the top 114cm W, 146cm L. £60-100
41. **A set of four George III style mahogany dining chairs,** each with a hooped carved back, a pierced splat and drop in seat on square tapering legs. £80-120
42. **A 19thC ash and elm Windsor chair** with a pierced splat, solid seat and 'H' stretcher (AF). £50-80
43. **A 19thC gilt gesso wall mirror,** decorated with bell flowers, etc, the oval plate surrounded by three brackets or shelves, 90cm H, 60cm W. £80-120
44. **A 19thC gilt gesso girandole,** the rectangular frame decorated with a shell flanked by scrolls, etc., with an oval plate, the candle arms with moulded sconces (AF), 94cm x 72cm. £60-80
45. **A Chinese camphorwood chest,** carved overall with battle scenes, buildings etc., 91cm W. £60-100
46. **A nest of three Edwardian mahogany tables,** each on square tapering legs, the smallest table with an under tier, 47cm W. £40-60
47. **An oak coffer,** with a triple panelled top and front on bun feet, 89cm W. £20-40
48. **A 19thC mahogany occasional table,** with a rectangular top on a turned column and tripod base, 54cm W. £50-80
49. **An early 19thC mahogany commode,** with a cross banded top above a false drawer and a pull out drawer with fitted interior on bracket feet, 74cm H, 57cm W, 51cm D. £50-80
50. **A 19thC gilt gesso girandole,** decorated with scrolls, flowers, etc., and embellished with three candle arms, 95cm H, 55cm W. £60-80
51. **A mahogany open bookcase,** with various adjustable shelves, on block feet, 215cm W. £30-60
52. **A 19thC walnut occasional table,** the circular tilt top on a turned column, tripod base with pad feet, 91cm dia. £80-120
53. **A 19thC French mahogany armchair,** the show-frame carved with scrolls, flowerheads etc., with a floral woolwork padded back and seat, on cabriole legs £80-120
54. **A 19thC mahogany D-shaped table,** with a figured top on channelled tapering legs, 109cm W. £25-40
55. **A 19thC mahogany Pembroke table,** with a frieze drawer, on square tapering legs, 87cm L. £30-50
56. **A George III mahogany occasional table,** the circular top above a bird cage and turned column with leaf carved tripod base with pad feet, 72cm dia. £50-80
57. **A 19thC mahogany Pembroke table,** the rectangular top above a shaped frieze on square tapering legs with x shaped stretcher, adapted, 59cm W. £25-40
58. **A late 17thC/early 18thC oak coffer,** with a carved frieze above arcaded panels, on style supports, 117cm We. £50-80
59. **A late 19thC French beech open armchair,** with a caned back, scroll carved arms, a green velvet squat cushion on cabriole legs. (AF) £25-40
60. **A late 19thC walnut tub shaped armchair,** with a padded back, arm rests and seat, upholstered in green textured fabric, on turned fluted tapering legs with brass castors £25-40
61. **An early 20thC brass fender,** with scroll supports, a pair of fire dogs and similar fire irons. £50-80
62. **An early 20thC mahogany triple dressing table mirror,** with blind fret carved frames, 112cm W.
63. **A mahogany and tulip wood cross-banded television cabinet,** with a false hinged door to the front above a drop down flap on bracket feet, 72cm W. £40-60
64. **Two similar mahogany wine tables,** each with a circular top, turned column and tripod base. £20-40
65. **A mahogany bookcase,** the top with a moulded cornice above two astragal glazed doors including adjustable shelves on ogee bracket feet, 131cm H, 113cm W, 37cm D. £80-120
66. **A gilt standard lamp in Continental style,** with a fluted column and tri form base with paw feet, with a silk type shade. £60-80
67. **Spare Lot.**
68. **A mahogany torchere,** the circular dish top on a reeded column with tripod base, 122cm H. £30-50
69. **A George III mahogany dining chair in Chippendale style,** with a pierced splat, padded serpentine fronted seat and channelled legs. £30-50
70. **A carved Chinese hardwood coffee table,** decorated with warriors, etc., within a geometric and floral border with shaped legs, 100cm W. £40-60
71. **A 19thC mahogany window seat,** with padded arm rests and seat, on channelled offset tapering legs, 103cm W £40-80
72. **A French mahogany show-frame wing chair,** with a padded back, arm rests and seat upholstered in blue damask type material, on cabriole legs £80-120
73. **An early 19thC mahogany serving table,** the rectangular crossbanded top above a plain frieze, on turned tapering fluted legs, in the manner of Gillows, 151cm W £100-150
74. **An Eastern rug,** with a design of multi-coloured medallions, on a red ground with numerous borders, 230cm x 150cm £25-40



- ▲ 75.
A large Kirman carpet, with a central medallion, on a red ground, with floral borders and spandrels, 459cm x 319cm. £100-150

76.
A large Kirman carpet, with a central medallion on a red ground, with floral borders and spandrels, 410cm x 297cm. £100-150

77.
A Persian rug, with a design of flowers, on a rust coloured ground with multiple borders, 206cm x 129cm. £15-30

78.
A pair of George IV mahogany dining chairs, each with a bar back, with column supports, drop in seats, on octagonal tapering legs. £25-40

79.
An early 20thC French fauteuil, with walnut frame, upholstered in floral wool work to the back arms, arm rest and seat, on fluted tapering legs. £25-40

80.
A mahogany open arm chair in George III style, with a pierced splat, drop in seat on channelled counted legs. £25-40

81.
A mahogany open armchair in George III style, upholstered in red textured velvet with reeded arm supports and legs with an H stretcher. £80-120

82.
A Victorian pine scrub top kitchen table, with painted base on turned legs, 107cm W. £30-50

83.
A mid 19thC mahogany wheel barometer by James Usher, Cornhill, Lincoln, with a dry damp gauge, convex mirror, thermometer and engraved silvered dial of a level, 97cm H. £70-90

84.
An early 20thC mahogany triple wardrobe, with blind fret carved decoration on bracket feet, 191cm W. £50-80

85.
A large Turkish carpet, with a geometric design on a typical red ground with multiple borders, 280cm x 370cm. £80-120

86.
A Persian rug, with a central double medallion on a red ground with multiple borders, 159cm x 198cm. £60-80



- ▲ 87.
A Persian Meshed carpet, with a floral design surrounding a central blue pole medallion within multiple borders, 295cm x 200cm. £100-200

88.
A 19thC mahogany sofa, upholstered in blue and gold pattern fabric on square tapering legs. £150-250

89.
An oak and mahogany occasional table, with oval top on a turned column and tripod base, 19thC but adapted, 64cm W. £30-50

90.
A late Victorian walnut open bookcase, with a reeded frieze and sides enclosing adjustable shelves on a plinth base, 100cm H, 88cm W, 29cm D. £70-90

91.
A 19thC ebonised and gilt gesso over wall mirror, decorated with scrolls, etc., 51cm x 34cm, and a convex wall mirror (2). £50-80

92.
Two occasional tables, one a moulded circular top, turned column and cast iron base, the other with a circular top on cabriole legs. £50-80

93.
An Edwardian walnut coal purdonium, with single panel door and plinth base, 37cm W. £15-30

94.
An early 19thC oak bureau, the fall enclosing a fitted interior with a well, the front with a false drawer above an arrangement of one short, three long drawers with oval brass handles and bracket feet, 82cm W. £70-90

95.
An early 20thC adjustable brass standard lamp, with turned column and circular dome base with claw feet. £40-60

96.
A 19thC mahogany bookcase, with two astragal glazed doors sitting on a 19thC mahogany tea table with reeded edge and ring turned tapering legs, 92cm W. £70-90

97.
A 19thC oak and mahogany cross-banded bureau, the fall enclosing a fitted interior above four graduated drawers with brass handles and bracket feet, 92cm W. £60-80

98.
Four 19thC mahogany open armchairs, each with a pierced splat and shaped arms, drop in seat, various styles and designs overall. £70-90

99.
A Victorian mahogany stool, with a padded seat on carved cabriole legs, 60cm W. £80-120

100.
An unusual early 20thC mahogany firescreen, inset with blue and white tiles, decorated with scenes around Lincoln, with shaped legs, 66cm W. £100-200

101.
A Victorian walnut pier cabinet, with a single glazed door enclosing adjustable shelves flanked by gilt metal mounts, the plinth base, 100cm H, 76cm W, 36cm D. £100-150

102.
A Victorian walnut marquetry pier cabinet, with a moulded edge above a marquetry frieze with a glazed door flanked by gilt metal mounts to the stylised pillars on a plinth base with ebonised bun feet, 103cm H, 75cm W, 30cm D. £100-150

103.
A Victorian walnut and marquetry pier cabinet, with an ebonised moulded edge above a marquetry frieze with a glazed door flanked by gilt metal mounts to stylised pillars on a plinth base with ebonised bun feet, 106cm H, 76cm W, 33cm D. £100-150

104.
A Victorian walnut and marquetry pier cabinet, with the frieze decorated with flowers, scrolls, etc. above a single shelf flanked by gilt metal mounts to the stylised pillars on a plinth base door removed, 104cm H, 75cm W, 34cm D. £80-120

105.
A Continental gilt wood overmantel mirror, decorated with a central mask, the remaining frame with flowers, berries, etc., associated pediment, 132cm x 132 cm. £100-200

106.
A Victorian ebonised drop arm Chesterfield sofa, upholstered in blue and gold fabric on turned tapering legs with ceramic castors. £150-250

107.
Spare Lot.

108.
A 19thC Continental walnut open armchair, with an Eagle crest, turned and fluted back support and a caned centre, the shaped arms carved with leaves, etc., with shaped support, the apron carved with scrolls and birds, etc. £100-200

Lincoln Collective Sale



109.
A Victorian mahogany pedestal desk,
the rectangular top with a later red leather inset and a moulded edge above an arrangement of nine drawers with turned handles on a plinth base, 75cm H, 124cm W, 60cm D.
£100-200

110.
A mahogany pedestal desk,
the rectangular top with a later red leather inset above an arrangement of nine drawers with drop handles and plinth base, 69cm H, 107 W, 59cm D.
£100-150

111.
A modern electric rise and fall Ross armchair.
£50-80

112.
An Afghan rug,
with a design of five medallions on a deep red ground with multiple borders, 96cm x 152cm.
£30-50

113.
Two Persian rugs,
each with an all over Herati type design on a navy ground within multiple borders, (worn) 94cm x 184cm and 90cm x 116cm. (AF)
£40-60

114.
Spare Lot.



▲ **115.**
A Regency giltwood convex wall mirror,
with an Eagle crest, the circular frame decorated with spheres, reeded slip, etc., 75cm H, 59cm W.
£100-200

116.
A cream and gilt pedestal in Adam style,
decorated with oval patera, bell flowers, etc., 110cm H, 23cm W.
£60-80

117.
A pair of 19thC gilt girandoles,
each decorated with flowers, ferns, etc., later converted to electricity, 84cm H, 55cm W (AF).
£40-60

118.
A Continental mahogany and cherrywood cross banded armoire,
with gilt metal mounts, the arched doors with bevel plates enclosing hanging rail and adjustable shelves on a plinth base, 122cm W.
£60-100

119.
Three pale green and cream painted pedestals,
a pair and another, decorated with swags, bell flowers, etc on a plinth base, 66cm H, 31cm W.
£100-200

120.
An oak compactum wardrobe,
with two quarter veneered doors enclosing a fitted interior, 107cm W.
£20-40

121.
An early 19thC mahogany elbow chair,
with a pierced splat, shaped arms and drop in seat on cabriole legs and velvet upholstered side chair. (2)
£60-80

122.
A mahogany open armchair,
in George III style with pierced ladder back, shaped arms and a drop in seat with H stretcher and a matching side chair (2)
£60-80

123.
A 19thC gilt gesso over mantel mirror,
with an arched plate, 112cm W.
£30-50

124.
A small mahogany serpentine fronted chest of drawers,
the top with a moulded cornice with a brushing slide and three graduated drawers with drop handles and ball splay bracket feet, 71cm H, 70cm W, 51cm D.
£100-200

125.
A double bed with oak bedhead and foot in late 17thC/early 18thC style,
carved with scrolls, flutes, etc.
£100-200

126.
A Victorian walnut pier cabinet,
with a moulded cornice with a single glazed door on a plinth base, 104cm H, 80cm W, 31cm D.
£80-120

127.
A walnut and mahogany chest of drawers,
the top with a moulded edge above two short, three long drawers, each with brass teardrop handles and bun feet, constructed from old timber, 88cm H, 99cm W, 108cm D.
£80-120

128.
A 19thC gilt gesso girandole,
decorated overall with rope twists, with two candelabra, 66cm x 45cm.
£70-90

129.
A walnut stool,
with a padded seat on cabriole legs with pointed pad feet.
£70-90

130.
A Victorian walnut and marquetry library type table,
the rectangular top with rounded corner and moulded edge on turned, fluted end supports with central stretcher and cabriole legs, 72cm H, 96cm W, 46 D.
£100-200

131.
A mahogany torchere,
with a plain fluted turned column square base, 110cm H.
£60-80

132.
A walnut dressing table mirror in 18thC style,
the shaped arch plate with a bevel edge on tapering supports with brass turned finials, the base with a concave front of three drawers on bracket feet, 44cm W.
£60-100

133.
An Edwardian gilt gesso wall mirror,
oval frame, bevel plate applied with Adam style urn and swags.
£20-40

134.
Two oak side chairs,
each with a solid splat, drop in seat and cabriole legs.
£20-40

135.
A George III mahogany ebony strung bureau,
fall enclosing a fitted interior of four graduated drawers with later brass drop handles and bracket feet, 101cm W. (AF)
£60-80

136.
A mahogany bureau,
fall enclosing a stepped interior above later graduated drawers on bracket feet, adapted from a larger piece, 53cm W.
£70-90

137.
A 19thC gilt gesso oval wall mirror,
the frame decorated with scrolls, ovals, etc.(AF), 136cm x 87cm.
£40-60

138.
An oriental parquet side cabinet,
with two panelled doors enclosing a series of six collector's drawers above a further long drawer on later turn tapering legs, possibly Japanese, 19cm H, 60cm W, 34cm D.
£150-250

139.
Spare Lot.



▲ **140.**
A late 19thC oak Wellington chest,
the top with a moulded edge above seven graduated drawers with turned wood handles on a plinth base, 106cm H, 56cm W, 40cm D.
£150-250

141.
Spare Lot.

142.
A Victorian mahogany four poster bed,
with a moulded cornice above two elaborately pierced and turned posts, later adapted, 152cm W.
£100-200

143.
A 19thC mahogany two tier washstand, with a raised gallery on turned supports, 91cm W. £70-90

144.
A Victorian mahogany wardrobe, with a moulded cornice above a central mirror plate flanked by two panelled doors on a plinth base, 192cm W. £100-150

145.
An early 20thC brass Corinthian column standard lamp, with paw feet and a tasselled shade. £60-80

146.
A Turkish rug, with a design of lozenges on a beige ground with geometric spandrels and multiple borders, 160cm x 244cm. £20-40

147.
A 19thC mahogany armchair, upholstered in blue and gold pattern fabric on turned tapering legs with brass castors and associated footstool. £200-300



▲ 148.
An early 19thC mahogany chest on chest, the top with a dental cornice and a blind fret carved frieze above an arrangement of three short and three long drawers with gilt brass handles, the base with a further three long drawers on bracket feet, 180cm H, 102cm W, 50cm D. £400-600



▲ 149.
An early 19thC mahogany serpentine fronted chest of drawers, the top with a boxwood strung folder above four graduated drawers with oval handles on bracket feet, 99cm H, 120cm W, 54cm D. £800-1200

150.
A Persian carpet, with an all over geometric design on a deep beige ground within multiple borders, 277cm x 343cm. £350-450

151.
A Victorian walnut and marquetry pier cabinet, the top with a moulded edge above a glazed door enclosing shelves flanked by simulated pillars on a plinth base, 102cm H, 76cm D, 32cm W. £100-150

152.
Elizabeth II silver Lincoln Imp spoon, cased, Sheffield 1977, 1/2oz. £10-20

153.
A George V set of six silver coffee spoons, cased, Birmingham 1929, 1oz. £15-30

154.
An Edward VII set of six silver coffee bean spoons, cased, Sheffield 1904, and another set. (AF) (2) £30-40

155.
An early 20thC matched set of ten silver crest spoons, Sheffield, 4oz. £30-50

156.
A 20thC silver mounted wine coaster, with wooden base, marks rubbed. £10-20

157.
A Victorian silver six slice toast rack, marks rubbed, 7oz. £70-90

158.
A George III silver swing handle dish, with pierced decoration, inner blue glass liner, London 1773, 7oz. £70-90

159.
A pair of George III silver serving spoons, four various Georgian teaspoons, five 20thC silver teaspoons and three side knives (AF). £20-40

160.
An Edward VII silver pedestal bowl, Sheffield 1936, two silver preserve spoons, sugar tongs, napkin ring, cigarette case, pin dish, etc. £70-90

161.
A George V silver two handled sugar bowl, with hall ribbed body and matching milk jug, London 1911, 13oz. (AF) £100-150

162.
Two pairs of 9ct gold gents cufflinks, two 9ct gold collar studs, and two coins. (8) £150-250

163.
A pair of unmarked gents cufflinks, with pierced scroll decoration centred with single stone, cased, yellow metal, unmarked. £80-120

164.
The Coronet Stamp Album, part sets mainly British Commonwealth, The Viceroy Stamp Album and contents, and other (3). £40-60

165.
A 9ct gold fancy link bracelet, with padlock clasp, 21g. £150-250

166.
An 18ct gold signet ring, with woven design decoration, 3.7g. £70-90

167.
A 9ct gold signet ring, set with tiny stone and a pair of oval cuff-links, 7.4g all in. £70-90

168.
An early 20thC 9ct gold lady's wristwatch, on a fancy link bracelet. £80-120

169.
A 9ct gold gents pocket watch, by Harris & Son of Liverpool. £150-250

170.
A 9ct gold Limit gents wristwatch, on later leather strap. £70-90

171.
A 9ct gold Tudor Royal gents wristwatch, leather strap, engraved back, cased (AF). £100-200

172.
A 9ct gold Omega Geneve gents wristwatch, on later plated expanding bracelet. £100-200

173.
An early Victorian silver pair cased single fusee pocket watch, by R Willson of Lincoln, with dial named Jon (John) Keteborough instead of the usual numerals, Birmingham 1839. £300-400

Lincoln Collective Sale

174.
Various trinkets,
to include a silver cased cigarette
box, tobacco case, stamp case, and
a plated pocket watch. (4)
£20-30

175.
Costume jewellery,
to include bar brooch, dress rings,
imitation pearls, etc.
£40-60

176.
**A matched set of six
Georgian silver teaspoons.**
£15-30

177.
**Sixteen various Georgian and
later teaspoons.**
£40-60

178.
An Elizabeth II silver goblet,
Lincoln Cathedral 900th
Anniversary 1072-1972, number
1173, with certificate and
presentation box, Birmingham
1971, 6oz.
£60-100

179.
An Elizabeth II silver goblet,
Lincoln Cathedral 900th
Anniversary 1072-1972, number
1174, Birmingham 1971, 6oz.
£60-80

180.
**A quantity of silver plated
wares,**
cased carving set, cake forks, fish
eaters, and other sundry Queens
pattern.
£20-30

181.
**Three canteens of
electroplated cutlery.**
£20-30

182.
**A steel and horn handled
three piece carving set,**
comprising fork, knife and steel,
boxed.
£10-30

183.
**A Continental late 19thC
silver plated food warmer,**
with a pair of embossed vine
handles, raised on four scroll feet,
28cm long
£30-60

184.
**A Danish 20thC white metal
oval tray,**
with an embossed scroll border,
presentation engraved, white
metal, stamped 830, 7oz,
25.5cm long
£40-80



▲ 185.
A Georg Jensen sterling oval footed dish,
decorated in the Magnolia or Blossom pattern, 2B, 20oz
£900-1200

186.
**A pair of Danish hammered
sterling oval entree dishes
and covers in the manner of
Georg Jensen,**
each with floral embossed
handles, raised on four floral
pattern feet, marked S.J. with
Danish marks, white metal,
31cm W, (2)
£1000-1500

187.
**A Desiree Danish studio
pottery part tea service,**
with a two handled tureen, stands
etc.
£10-30

188.
**Late 19thC English porcelain
dessert service of
topographical design,**
with variant landscapes with
central reserves enclosed in
turquoise and gilt borders,
bearing pattern number 2706,
comprising four low comports
and six plates (AF), together with
a 19thC 3-piece gilt tea set.
£30-50

189.
**A 19thC carved gilt wood
baroque table lamp,**
on three feet.
£70-90

190.
**A set of four cast brass
candelabra,**
with cherub bases together with a
19thC French ormolu
candelabrum (5).
£80-120

191.
**A pair of late 19thC
Sitzendorf blanc de chine
figures,**
of a fete gallante young lady and
her beau on a rococo scrolling
base, incised green cross swords
marked base, 32cm H (minor
losses to fingers).
£70-90

192.
**A 19thC French Boullel cartel
mantel clock,**
with ormolu mounts, 8 day
movement striking bell, 33cm H.
£80-120

193.
**A brass and anodised column
Corinthian table lamp.**
£20-30

194.
**A pair of Royal Worcester
neo classical blanc de chine
candlesticks,**
Model 1050.
£30-50

195.
**A Japanese Satsuma
decorated eggshell part tea
set,**
and other decorative china.
£20-40

196.
**A Victorian polished slate
mantel clock**
and various Victorian
topographical dessert dishes.
£20-40

197.
**A walnut cased canteen of
electroplate cutlery.**
£50-80

198.
**A 19thC French Boulle cartel
mantel clock,**
with ormolu mounts and time
piece movement, 30cm H (AF).
£40-60

199.
**A late 19thC/early 20thC oak
and brass bracket clock**
with German eight day
movement striking a gong,
43cm H.
£100-150

200.
**A Victorian burr walnut table
top stationery cabinet,**
with slope top, 30cm W.
£40-60



▲ 201.
**A Victorian rosewood
workbox,**
with mother of pearl inlay and
part morocco fitted interior on
nulled feet,
15cm H, 30cm W, 23cm D.
£70-90

202.
**A 19thC painted cartel style
mantel clock,**
with gilt brass mounts and cherub
finial, eight day movement,
40cm H.
£40-60

203.
**A Victorian oak writing and
stationery cabinet,**
with fitted interior marked rgd.
173368, 21cm H, 31cm W, 17cm D.
£70-90



▲ 204.
**A French gilt brass carriage
clock,**
with column framing, white
enamel dial with Arabic
numerals, eight day movement
striking a gong, 20cm H over
handle.
£100-200

Full catalogue online at goldingyoung.com



- ▲ 205.
After Giambologna.
Mercury, a 19thC hollow cast bronze figural table lamp on integral socle base, 74cm H.
£250-350

206.
A 19thC English porcelain part tea service,
blue ground with japanesque reserves (AF).
£20-40

207.
A Victorian Tunbridge needlework cylinder box,
Georgian tortoiseshell snuff box, etc.
£40-60

208.
A taxidermied fox,
in painted mount with gate, trees etc., the base applied with grasses etc., the ebonised glazed case
91cm W
£40-60

209.
An unusual Danish fender,
of shaped form decorated with swags, 'C' scrolls, etc., 96cm W.
£25-40

210.
After Emanuel Bowen.
An Accurate Map of Lincolnshire Divided Into Wapontakes, printed 1777 later coloured, 52cm x 43cm.
£40-60

211.
After T Kitchen.
A county map of Lincolnshire, later coloured, 21cm x 17cm and another county map of Lincolnshire after Conder (2) and another six similar maps.
£100-150

212.
After Christopher Saxton.
A county map of Lincolnshire, plate no. 26, later coloured, 30cm x 36cm.
£40-60

213.
After J Blaeu.
A county map of Lincolnshire, later coloured, 42cm x 50cm.
£60-80

- 213A.
After Hondius.
Map of Lincolnshire, later coloured, 42cm x 54cm and a map of Lincolnshire after Morden. (2)

214.
After John Speede.
A map of Lincolnshire, later coloured glazed both sides, 39cm x 50cm.
£100-200

215.
A 19thC county map of Lincolnshire,
showing to the bottom left hand corner a view of Lincoln Cathedral, 38cm x 24cm and another similar (2).
£30-50

216.
After C Smith.
A New Map Of The County Of Lincolnshire Divided Into Wapontakes, later coloured, 51cm x 44cm.
£15-30

217.
After C Smith.
A New Map Of County Of Lincolnshire Divided Into wapontakes, later coloured, 52cm x 45cm.
£15-30

218.
After Emanuel Bowen.
An Accurate Map Of Lincolnshire Divided Into Its Wapontakes, later coloured, 72cm x 54cm.
£40-60

219.
19thC School.
Daniel O'Rourke, a gentleman with a race horse, coloured engraving, 47cm x 64cm
£10-30



- ▲ 220.
Wild (Charles).
An illustration of the architecture and sculpture of the Cathedral Church of Lincoln, printer W Bulmer & Co., published by the author, 155 New Bond Street, London, 1819. Gilt and tooled leather folio bindings having been refurbished entirely in 1994.
£80-120

There will be a further 500-800 lots included in this Lincoln Collective Sale.

To view what is coming under the hammer in this and every other auction across our Lincolnshire salerooms, view our full catalogue online at goldingyoung.com

For over 15 years our online catalogues have been the most important way of connecting with collectors and buyers,

Our catalogues can be viewed, downloaded and printed free of charge.

Subscribe now at goldingyoung.com for email alerts.

Paintings, Drawings & Sculpture

Any statement as to authorship, attribution, origin, date, age, provenance and condition is a statement or opinion and is not to be taken as a statement or representation of fact. Golding Young & Mawer reserve the right, in forming their opinion, to consult and rely upon any expert or authority considered by them to be reliable.

A picture catalogued with the forename(s) and surname of the painter is in our opinion a work by that artist; e.g. Joseph Mallord William Turner. When an artist's forename(s) is not known, a series of asterisks followed by the surname of the artist, whether preceded by an initial or not, indicates that in our opinion the work is by the artist.

1. **Attributed to....** is in our opinion probably by the artist.
2. **Studio of....** is in our opinion a work from the studio of the artist which may or may not have been executed under his direction.
3. **Circle of....** is in our opinion a work of the period of the artist executed under his immediate influence.
4. **Follower of....** is in our opinion a work by a painter working in the artist's style, contemporary or nearly contemporary, but not necessarily his pupil.

5. **Manner of....** is in our opinion a work in a style related to that of the artist, but of a later date.
6. **School....** is in our opinion the picture was executed at that time and in that location.
7. **After....** is in our opinion a copy of any date after a work by that artist.
8. The term **signed** and/or **dated** and/or **inscribed** means that in our opinion the signature and/or date and/or inscription are from the hand of the artist.
9. The term **Bears signature** and/or **dated** and/or inscription means that in our opinion the artist's name and/or date and/or inscription have been added by another hand.
10. All references to signatures, inscriptions and dates refer to the present state of the work.
11. Dimensions are given height before width.

Artist's Resale Right Scheme (Droit de Suite)

Following the UK's implementation of the EU Artist's Resale Right directive in February 2006, living artists are entitled to receive a resale royalty each time their art work is sold in the UK by an art market professional, subject to certain conditions. In January 2014 this has been extended to the sale of works of art of artists who have died in the previous 70 years, despite the wishes of the British Art Market Federation and other professional bodies. This payment is calculated on qualifying works of art which are sold for a hammer price or best bid price of more than EUR 1000. The UK sterling equivalent of EU 1000 will fluctuate in line with prevailing exchange rates.

The actual qualifying threshold will be calculated by the Artist's Resale Right Service Hub based on the European Central Bank reference rate published at 2.15pm on the day of the sale.

The royalty charge will apply if the hammer price is more than the UK sterling equivalent of EUR 1000. The royalty charge will be added to buyer invoices and must be paid before items can be cleared. No handling costs or additional fees with respect to these charges are retained by auctioneers despite us having to undertake all of the extra and considerable administration work. This sum is then paid by us to a 'not-for-profit' collecting society, who will actually extract their administration fees. Any residual amount may go to benefit the artist.

Portion of the hammer price (Euro's EUR)	Royalty rate
1000 to 50,000	4%
50,000.01 to 200,000	3%
200,000.01 to 350,000	1%
350,000.01 to 500,000	0.5%
Exceeding 500,000	0.25%

VAT is not payable on this royalty charge. A maximum royalty charge is 12,500 EUR. Revised 4th January 2011.



SOCIETY OF FINE ART AUCTIONEERS AND VALUERS



Lincoln Fine Art Sale

**Upon instructions from The Executors of Patrick Wright (Dec'd),
12 Drury Lane, Lincoln & others**

Thursday 22nd November 2018

At The Lincoln Auction Rooms

Viewing & selling in the Gallery

At Thos Mawer House

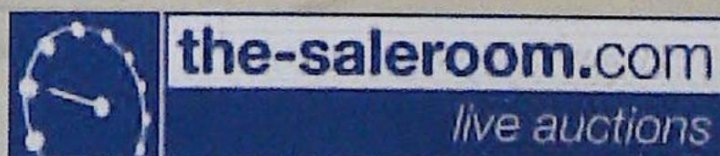
Sale commences 6pm

Viewing: Sunday 18th November 2pm-5pm

Tuesday 20th November 10am-4pm

& Saleday 2pm-6pm

Bid online or simply watch the sale live at



All enquiries to William Gregory MRICS on 01522 524984

**Background image: Lot 3151 Alfred Ernest White (1873-1953).
Castle Square, Lincoln, oil on canvas, signed and dated 1901, 60cm x 50cm.**

Lincoln Fine Art Sale



▲ 3001.
Fred Taylor (1875-1963).
Lincoln from Brayford,
coloured printed railway
poster, 84cm x 124.5cm.
£300-500



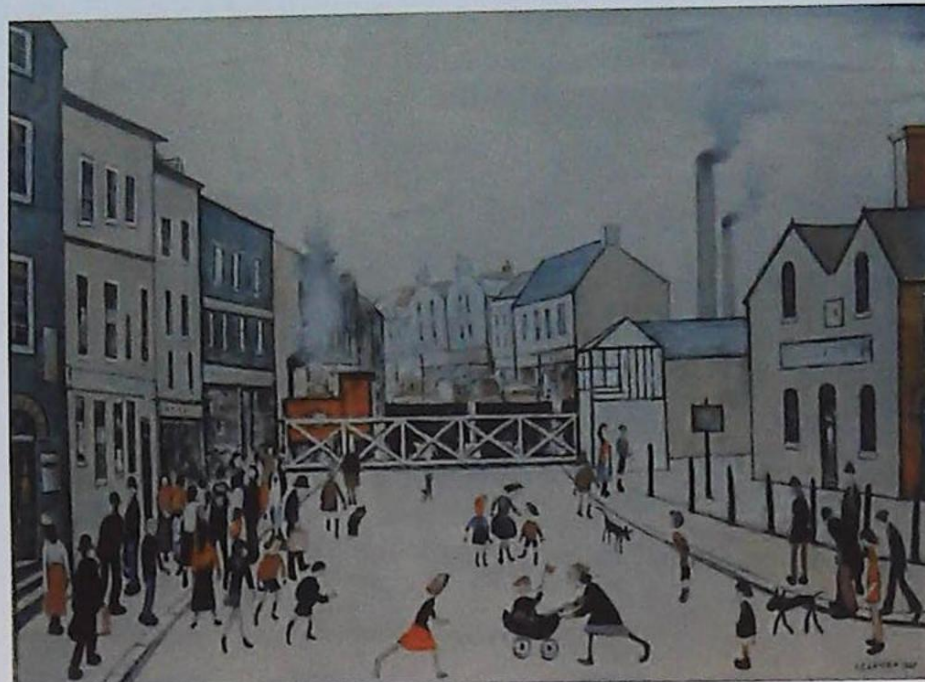
▲ 3004.
Peter Brannan (1926-1994).
Horncastle, oil, signed and
dated (19)86, 16.5cm x 19.5cm.
£150-250



▲ 3005.
**Charles March Gere
(1869-1957).**
Gathering clouds, Hyde Park
Corner, oil on canvas,
monogrammed, dated 1948
and titled, 37cm x 65cm.
£200-400



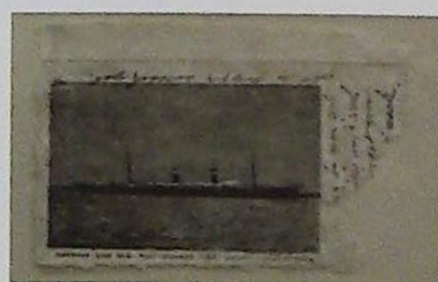
▲ 3006.
R.S. Hunt (20thC).
Oriental street scene,
watercolour, signed,
34.5cm x 52.5cm.



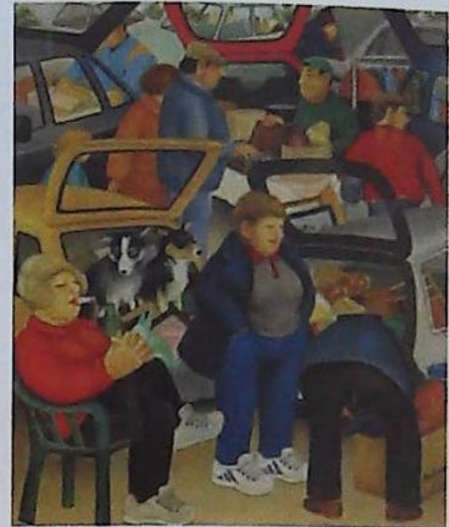
▲ 3002.
Laurence Stephen Lowry (1887-1976).
The Level Crossing, Burton on Trent, artist signed coloured print,
44cm x 58cm.
£2000-3000



▲ 3003.
John Emms (1843-1912).
Hounds and a terrier, oil on canvas, signed, 41.5cm x 36cm.
£1500-2500



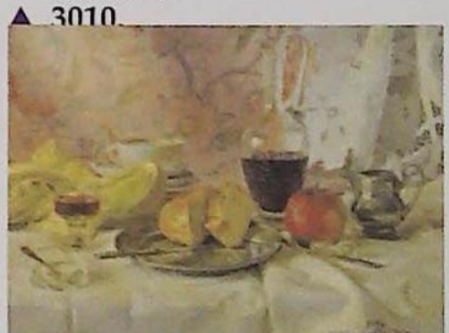
◀ 3007.
**Max Marschner
(1929-2017).**
American Line US Mail
Steamer St Louis, artist signed
print, numbered 3, dated
(19)81, 24.5cm x 31cm.
£50-80



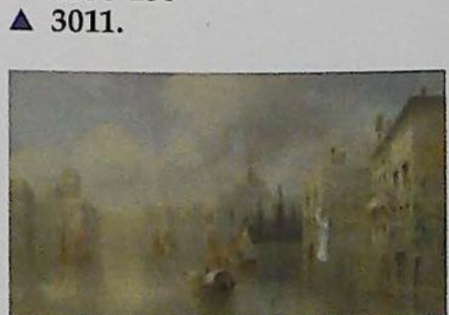
▲ 3008.
Beryl Cook (1926-2008).
Car boot sale, artist signed
limited edition coloured print
185/650, 50cm x 41cm.
£100-200



▲ 3009.
Samuel Lover (1797-1868).
Coastal scene with fishing
boats and figures, watercolour,
signed and dated 1841,
26.5cm x 39.5cm.
£500-800



▲ 3010.
Anna Prokofyeva (b.1960).
Claret Jug, oil on canvas,
signed and inscribed verso,
42.4cm x 57.5cm.
Provenance: Spencer Coleman
Fine Art.
£150-250



▲ 3011.
James Salt (1850-1903).
A Bit of Venice, oil on canvas,
signed, 34cm x 59cm.

3012.
19thC British School.
Rural landscape with sheep, oil on board, 16.5cm x 25cm.



▲ 3013.
William Ward Gill
(1823-1894).
Waterfall on the Irwell, oil on board, signed, titled and dated 1882 verso, 19cm x 24cm
Label verso - Haynes Fine Art.



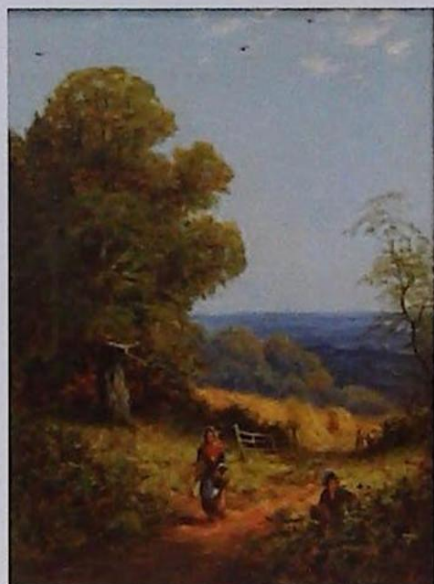
▲ 3014.
Cecil James Keats
(19/20thC).
Leige Belgium, Diriant France, watercolour, pair, signed and titled, 50cm x 32cm.



▲ 3015.
George Augustus William
(1814-1901).
On the Rydal, South Wales, oil on canvas, monogrammed and titled, 59.5cm x 44cm.
£300-500



▲ 3016.
John W Morris
(act. 1865-1924).
Sheep in winter landscape, oil on canvas, signed and dated 1881, 59.5cm x 49.5cm.
£250-450



▲ 3017.
Alfred Herbert
(c1820-1861).
A lane near Haslemere Surrey, oil on canvas, intialled and titled verso, 39cm x 29cm.
Label verso Haynes Fine Art.

3018.
C.H. Thornton (?) (19thC).
River landscape in water mill, oil on canvas, indistinctly signed, 25cm x 35.5cm.

3019.
19thC Continental School.
Mountain river landscape, oil on panel, 14.5cm x 19cm.



▲ 3021.
John Emms (1843-1912).
Huntsmen, hounds, mares with foal, oil on canvas, signed, 44.5cm x 64.5cm.
£2500-3000



▲ 3020.
C. J. Hemming (19thC).
The Chase - terrier and rabbit, oil on canvas, signed and inscribed verso, 52.5cm x 40cm.
£250-350



▲ 3022.
Alfred Augustus
Glendening (c1840-c1910).
The long walk home, oil on board, signed, 41cm x 56cm.
£300-500

3023.
19thC British School.
Mountain river scene with fisherman, oil on canvas, 44cm x 74.5cm.
£70-90

3024.
19thC British School.
River landscape with figure on a rock in the foreground, oil on canvas, 45cm x 75cm.
£70-90

3025.
19thC British School.
Bagpipe player, oil on board, 29cm x 19.5cm.
£30-50



▲ 3026.
Ugo Manaresi (1851-1917).
Fishing at night by fire off the coast, oil on board, signed, 11cm x 15cm.
£300-500



▲ 3027.
Edwin Hayes (1819-1904).
Fishing board in stormy seas, oil, 23cm x 31cm.

Lincoln Fine Art Sale



▲ 3028.
John Dawson Watson
(1832-1892).
Peeling Turnips, oil, initialled
and titled verso, 38cm x 27cm.



▲ 3029.
Abel Hold (1815-1891).
Red Grouse in moorland
heather, oil, signed and dated
1871, 42cm x 52cm.
£300-500



▲ 3030.
James George Philp
(1816-1885).
Cottage at the Lands End,
watercolour, signed,
37cm x 52.5cm.
£100-150



▲ 3031.
Batchelor (19thC).
Country cottage scene with
farmer and horses, oil, signed,
29cm x 24cm.
£50-100



▲ 3032.
Eugene Joseph
Verboeuckhoven
(1788/89-1881).
Cattle and sheep, pencil with
highlight, signed and dated
1876?, 34.5cm x 49.5cm.
£400-600



▲ 3033.
John H Oswald (1843-1894).
Zandvoort, watercolour,
signed, dated 1880, 41cm x 75cm.
£200-300

3034.
J Israels (19thC).
A Meagre Meal, oil on canvas,
signed, 35cm x 29.5cm.
£200-300



▲ 3035.
19thC Continental School.
Venetian canal, watercolour,
15cm x 31.5cm.
£20-40



▲ 3036.
Thomas Sewell Robins
(1814-1889).
A fresh breeze off Portsmouth,
watercolour, signed and titled
verso, 36.5cm x 50.5cm.
Label verso - Heather Newman
Gloucestershire.
£200-300

3037.
A Cordenet (19thC).
Cathedral interior, watercolour,
signed and dated (18)77,
29.5cm x 19.5cm.
£150-250

3038.
Continental School.
Canal scene with figures, oil on
canvas, 53.5cm x 43.5cm.
£150-250



▲ 3039.
Eugene Joseph
Verboeuckhoven
(1798/99-1881).
Goats, pencil with highlight,
signed and dated 1876,
31.5cm x 23cm.
£300-400

3040.
J Denny (19th/20thC).
River landscape, watercolour,
signed, 18cm x 27cm.
£20-30



▲ 3041.
Edward King Redmore
(1860-1941).
Masted ships off the coast, oil
on canvas, signed, 36cm x 90cm.

3042.
Edward King Redmore
(1860-1941).
Masted ships on stormy seas, oil
on canvas, signed, 31.5cm x 74.5cm.

3043.
J.D. Hughes (19thC).
Gathering corn, oil on canvas,
signed, 39cm x 29cm.



▲ 3044.
E Hastings (19thC).
Gentleman seated,
watercolour, dated 1842 verso,
32cm x 27cm.
£80-120

3045.
After Richard Parkes
Bonington (1802-1828).
Vue des Environs de Caen, oil on
canvas, bears signature and titled
verso, 23cm x 31cm.

3046.
19thC British School.
Children playing by the stream,
watercolour, 24cm x 36.5cm.

3047.
19thC British School.
Courting scene with mother and
daughters, overpainted print,
25cm x 32.5cm.

3048.
19thC British School.
Hot Spur, oil on canvas, titled
verso, label verso By the Will of
Sir Richard Sutton, 48.5cm x 60cm.
£250-400

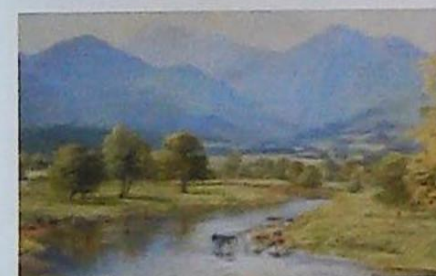


▲ 3049.
Oscar Matthiessen (20thC).
Four wheeled cart, horses and figure, oil on canvas, monogrammed and dated 1937, 48.5cm x 63.5cm.
£100-150



▲ 3050.
J. Clark (19thC).
Study of two dogs, oil on canvas, signed and dated 1885, 75cm x 110cm.

3051.
Robert Holland Walker (act.1882-1922).
Figures on church path, watercolour, signed, 17cm x 26cm.



▲ 3052.
S Bourne (19thC).
Cattle at waters edge, watercolour, signed and dated, 30.5cm x 47cm.

3053.
John Dearman (act.1824-1857).
Dorset Cove, pastel, initialled and dated (18)43.

3054.
W.V. Cook.
Village cottage and lane, oil, signed, 43cm x 59cm.



▲ 3055.
19thC British School.
Study of a horse, oil on canvas, 41cm x 51cm.

3056.
19thC School.
Eastern views, watercolour, three in one frame, 7cm x 8cm.
£80-120

3057.
19thC Continental School.
Gentleman smoking a pipe, oil on panel, 24cm x 17cm.



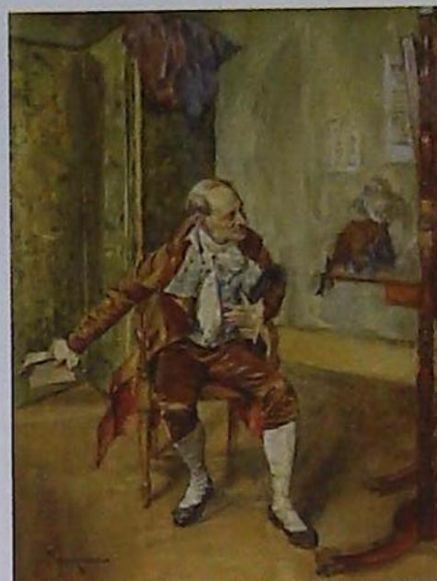
▲ 3058.
James Ulric Walmsley (1860-1954).
River scene with watermill, watercolour, signed and dated 1912, 27cm x 40cm.
£150-250

3059.
James Ulric Walmsley (1860-1954).
Robin Hoods Bay, watercolour, signed and dated 1912, 23cm x 33cm.
£150-250

3060.
Walter Stuart Lloyd RBA (1845-1959).
Country river scene with figures on barges, watercolour, signed, 66cm x 49cm.



▲ 3061.
Abel Hold (1815-1891).
Birds nest, oil on canvas, signed and dated 1875, 24cm x 29cm.
£150-250



▲ 3062.
William Douglas Almond (1866-1916).
A New Role, watercolour, signed, 26cm x 19.5cm.
Label verso - Royal Institution of Painters in Watercolours.
£80-120

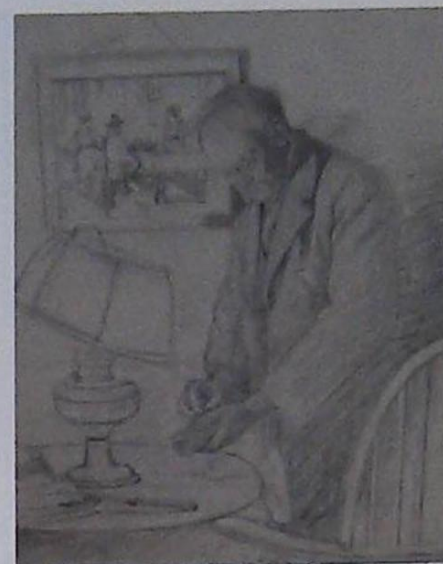
3063.
19thC Dutch School.
Cobbler mending a young girl's shoe, oil on canvas, 33cm x 24.5cm.
£40-60



▲ 3064.
Sydney M Broad (1853-1942).
Woodland track, oil on canvas, signed, 39cm x 59.5cm.

3065.
Sydney M Broad (1853-1942).
River landscape with silver birch trees, oil on board, signed, 16cm x 34cm.

3066.
Sydney M Broad (1853-1942).
Evening amongst the Willows, oil on canvas, signed and titled verso, 44.5cm x 67.5cm.



▲ 3067.
Charles Spencelayh (1865-1958).
Sure to catch, pencil, signed, titled and dated 11.02.32, 50cm x 39.5cm.
Provenance: Lot 160 Sotheby's 2007
£300-500



▲ 3068.
20thC British School.
Thames river scene with steamer and sailing barge, indistinctly signed, 62cm x 87cm.
£100-200



▲ 3069.
Fausto Pratella (1886-1964).
Fisherman at dusk in the Bay of Naples, oil on board, signed, 43cm x 58cm.
£400-600

Lincoln Fine Art Sale



▲ 3070.
A Moffei.
Off to sea, oil on canvas,
signed, 89cm x 108cm.



▲ 3071.
Johan Ulrik Bredsdorff
(1845-1928).
Highland landscape, oil on
canvas, signed and dated 1873,
19.5cm x 34.5cm.
£100-150



▲ 3072.
Andreas Peter Madsen
(1822-1911).
Cattle and sheep with children
on a rocky hillside, oil on
canvas, 29cm x 35.5cm.
£300-500



▲ 3072A.
Otto Haslimd (1842-1917).
Cows in pasture with thatched
cottage, oil on canvas, signed
and dated 1911,
48.5cm x 58.5cm.
£200-300



▲ 3073.
Adolph Alfred Larsen
(1856-1942).
Cow grazing in open
landscape, oil on canvas,
signed and dated 1928,
22cm x 34cm.
£120-180



▲ 3074.
Hans Agersnap (1857-1925).
Country landscape with
figures and thatched cottage,
oil on canvas, signed,
67cm x 96.5cm.
£250-400

3075.
Sylvester Wildt (19th/20thC).
A drawing room - still life study,
oil on canvas, signed and dated
1929, 31.5cm x 26.5cm.
£50-100



▲ 3076.
Nils Penderson Mols
(1859-1921).
A cow herder and three cows
returning home in an
expansive landscape, oil on
canvas, signed and dated
(19)10, artist label verso,
94cm x 135cm.
£400-600



▲ 3077.
Knud Agger (1865-1973).
Coastal scene, oil on canvas,
signed and dated 1916,
50cm x 66.5cm.
£120-180

3078.
Knud Agger (1895-1973).
Woodland track between conifers,
oil on canvas, signed, 31cm x 30cm.
£120-180



▲ 3079.
19thC School.
Rocky country landscape with
figure and cattle, oil on canvas,
signed and dated (18)73,
32cm x 43.5cm.

3080.
Thorald Nis (1842-1905).
Fensmark, oil on canvas, signed,
titled and dated 1888,
31cm x 42cm.
£200-300

3081.
J P Von Vildenradt
(1861-1904).
Rocky beach with seagulls and
shipping in the distance, oil on
canvas, signed and dated 1899,
38.5cm x 77.5cm.
£120-180

3082.
After Raphael.
Portrait study, oil on canvas,
39cm x 34.5cm, and another (2).



▲ 3083.
David Highet (19thC).
Street scene with horses,
carriages, and figures,
watercolour, signed and dated
1883, 34cm x 26cm.

3084.
Henry James Sage
(1868-1953).
Village scene, watercolour, signed,
25cm x 37cm, and a tinted print.
(2)



▲ 3085.
Alfred Frank de Pracles
(c.1820-c.1890).
Gentlemen on horseback,
watercolour, signed,
22cm x 29.5cm.

3086.
Paul Marny (1829-1914).
Harbour scene, watercolour,
signed, 27.5cm x 37.5cm.

3087.
John Keeley (1849-1930).
At Caverswall Staffs, watercolour,
signed, 25.5cm x 37cm.

3088.
Edwin Earp (1851-1945).
Lake scene with fishing boats,
watercolour, signed,
23.5cm x 48cm.



- ▲ 3089.
Claude Graham Muncaster (1903-1974).
The Arun near Peterborough, watercolour, c.1962, signed and titled verso, 20cm x 27.5cm. Labels verso - Royal Society of Painters in Watercolours and The Rowley Gallery.



- ▲ 3090.
Thomas Barker of Leamington (1809-1869).
Bala Lake North Wales, oil on canvas, signed and titled verso, 31.5cm x 47cm.



- ▲ 3091.
August Edwin John (1878-1961).
Little Boy in Red, artist signed coloured print, 29.5cm x 37cm. Label verso - The Arts Council of Great Britain. £200-300



- ▲ 3092.
Louis Justin Laurent Icart (1888-1950).
Young lady leaving a carriage, looked on by a small dog, coloured etching, signed, 50cm x 60cm. £200-300

3093.
B. Nojenti (19thC).
Venice scene, watercolour, signed, 24.5cm x 34cm.

3094.
Maria M. Lathbury (19thC).
Coastal scene with fishing boats, watercolour, signed, 26cm x 38.5cm.

3095.
19thC British School.
Working horses ploughing, over-painted prints - pair, 14cm x 39cm.

3096.
19thC School.
Bonnie Prince Charlie, oleographic print, 45cm x 37.5cm.

3097.
Walter Monckton Keesey (1887-?).
Farm scene, watercolour, signed, 22.4cm x 34.5cm.



- ▲ 3098.
C. Hunt (19thC/20thC).
Gen Sir W. Robertson GCB KCVD DSO Col 2nd Dus ADC to the KMY 1918, watercolour, signed, titled and dated (19)18, 31cm x 21cm, and four others (5). £100-200



- ▲ 3099.
C Hunt (19thC/20thC).
Lieut General Sir H.S. Coward KCB MO Quartermaster-General to the forces, watercolour, signed, titled and dated (19)18, 31cm x 21cm, and four others (5). £100-200



- ▲ 3100.
Peter de Wint (1784-1849).
River scene, pencil, 10.5cm x 21cm. Provenance: Sotheby's Nov 1978. £50-80

3101.
Peter de Wint (1784-1849).
Cattle grazing, pencil, 7.5cm x 14cm. Provenance: Sotheby's Nov. 1978. £50-80



- ▲ 3102.
Thomas George Storey (1865-1935).
Woodland scene, oil on canvas, 20.5cm x 46.5cm. Bears artist label verso. £30-50



- ▲ 3103.
David Paton (20thC).
Hamborough Head, watercolour, signed and dated (19)76, 21.5cm x 31cm. £30-50



- ▲ 3104.
Robin Wheeldon (b.1945).
Brewery Turn Out, oil on board, signed, dated 1983, and titled verso, 25.5cm x 39cm. £100-200

3105.
Robin Wheeldon (b.1945).
Sixties Harvest - Waddington Lincolnshire, artist signed limited edition coloured print, 383/750, 33.5cm x 43.5cm.

3106.
19thC British School.
Lincoln Cathedral interior, watercolour, 48.5cm x 33cm. £40-60

3107.
19thC British School.
Fishing board, Mary of Grimsby, watercolour, 24cm x 30cm. £50-80

3108.
Richard James Mason (1906-1959).
Suffolk - circa 1950, watercolour, 27cm x 39cm. £30-50

3109.
Richard James Mason (1906-1959).
Factory - circa 1935, watercolour, signed, 18.5cm x 22.5cm. £30-50

Lincoln Fine Art Sale



▲ 3110.
Richard James Mason (1906-1959).
Fishing boats in harbour, watercolour - circa 1950, 16cm x 24cm.
£30-50

3111.
Richard James Mason (1906-1959).
Gulls, watercolour, 25cm x 33cm.
£30-50

3112.
Richard James Mason (1906-1959).
Potted plant, watercolour, 34cm x 27cm.
£30-50



▲ 3113.
Albert Henry Findley (1880-1975).
Church in landscape, watercolour, signed, 19.5cm x 27cm.



▲ 3114.
Len Roope (1917-2005).
Edinburgh, watercolour, signed and titled, 17cm x 28cm.
£30-50

3115.
Len Roope (1917-2005).
Skiddaw and Bassenthwaite, watercolour, signed and titled, 24cm x 33.5cm.
£30-50



▲ 3116.
Len Roope (1917-2005).
Cley Mill Norfolk, watercolour, signed, titled and dated 1992, 22cm x 32.5cm.
£30-50

3117.
Len Roope (1917-2005).
Grasmoor Cumberland, watercolour, signed and titled, 25cm x 35.5cm.
£30-50

3118.
Len Roope (1917-2005).
Grasmoor Cumberland, watercolour, titled verso, 22cm x 22.5cm.

3119.
Len Roope (1917-2005).
Vale of Lorton, Evening, watercolour, signed and titled, 24.5cm x 35cm.
£30-50



▲ 3120.
Len Roope (1917-2005).
Sincil bank, Lincoln, watercolour, signed and titled, 23cm x 34cm.
£40-60



▲ 3121.
Peter Brannan (1926-1994).
Still life flowers in blue jug, oil on board, signed and dated (19)81, 30.5cm x 37cm.
£300-500

3122.
Marjorie Christine Bates (1882-1962).
Canning Dock, Liverpool, crayon, signed and titled, 28.5cm x 38cm.
£50-100



▲ 3123.
Marjorie Christine Bates (1882-1962).
Liver and Canard Buildings Liverpool, crayon, signed, 28.5cm x 39cm.
£50-100



▲ 3124.
George Alfred Boden (1888-1956).
Karnak by moonlight, watercolour, signed and titled verso, 49cm x 33cm.
£50-100

3125.
George Alfred Boden (1888-1956).
Elmley Castle, Worcestershire, village street, oil on board, signed and titled verso, 26cm x 37.5cm.
£50-100



▲ 3126.
Alfred George Webster (?-1894).
Lincoln High Street, watercolour, signed, 17.5cm x 24.5cm.
£100-200



▲ 3127.
Frederick Ladbrooke (1812-1865).
Dunholme, Lincolnshire, pencil, signed and titled, 21cm x 30cm.

3128.
Doris Hartley (20thC).
Rosa Regards, watercolour, signed and titled verso, 37.5cm x 27.5cm.
Label verso - Lincolnshire and South Humberside Artists' Society.

3129.
Keith Roper (b.1946).
Ely Cathedral, pastel, signed, titled and dated 1988, 27cm x 38cm.

3130.
A.V.
Castle Square, Lincoln, watercolour, initialled, 37.5cm x 26cm.
£20-40

3131.
F.P. Dickinson.
Vicars Court, Lincoln, watercolour, signed and dated (19)22, 25.5 cm x 35 cm.
£30-50

3132.
19thC British School.
Lincoln Cathedral from The Brayford, Lincoln, oil on canvas, indistinctly signed, 14cm x 24.5cm.
£20-40

3133.
J.M. Burton.
Lincoln from the South East, watercolour, signed, 11.5cm x 17.5cm.
£20-40

3134.
J.M. Burton.
Waterside - Lincoln, watercolour, signed, 11.5cm x 17.5cm.
£20-40

3135.
V. Raymond.
The Brayford, Lincoln, watercolour, signed, 24cm x 30cm.
£10-20



▲ 3136.
Albert Henry Findley
(1880-1975).
Steep Hill, Lincoln,
watercolour, signed,
31.5cm x 36cm.
£80-120

3137.
J.B. (19thC).
Cathedral and archway,
watercolour, initialled,
24.5 cm x 16.5 cm.
£30-50

3138.
J.M. Burton.
High Street, Lincoln, watercolour,
signed, 19cm x 27cm.
£40-60



▲ 3139.
19thC British School.
Minster Yard, Lincoln,
watercolour, 25cm x 29.5cm.
£20-30

3140.
F.P. Dickinson.
James Street, Lincoln,
watercolour, signed and dated
1920, 32.5cm x 21cm.
£30-50

3141.
J. M. Burton.
Newport Arch, Lincoln,
watercolour, signed,
22cm x 14.5cm.
£20-40



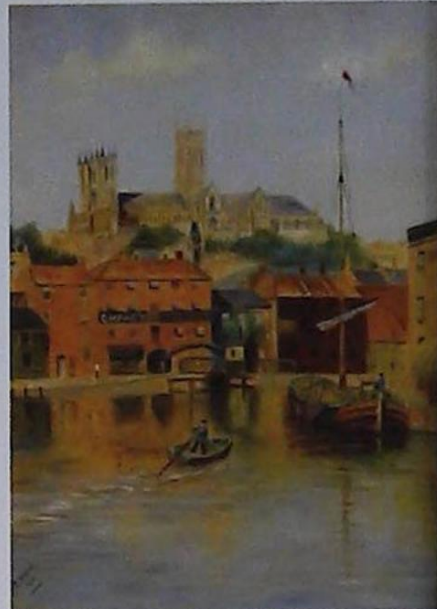
▲ 3142.
Albert Henry Findley
(1880-1975).
Newport Arch, Lincoln,
watercolour, signed, 12cm x
16cm.
£70-90

3143.
Ralph Sharpe.
Interior St Benedict's Church,
Lincoln, watercolour, signed and
titled verso, 33.5cm x 44cm.
£15-30

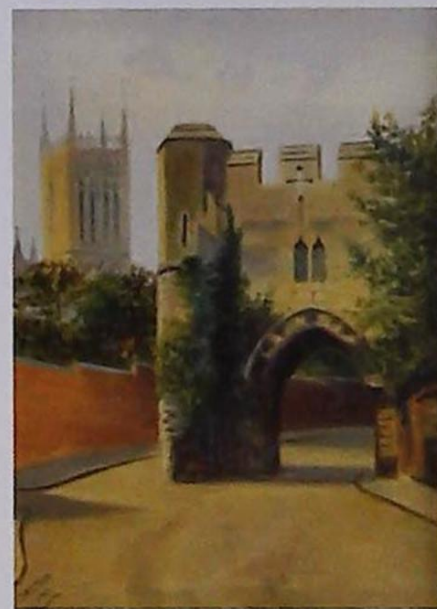
3144.
Alfred Ernest White
(1873-1953).
Stonebow, Lincoln, oil on board,
signed and dated 1910,
22cm x 30cm.
£80-120



▲ 3145.
Alfred Ernest White
(1873-1953).
Pottergate, Lincoln, oil on
canvas, signed and dated
(18)97, 35cm x 29.5cm.
£40-60



▲ 3146.
Alfred Ernest White
(1873-1953).
Lincoln Cathedral from the
Brayford, Lincoln, oil on
board, signed and dated 1901,
30cm x 21.5cm.
£40-60



▲ 3147.
Alfred Ernest White
(1873-1953).
Pottergate, Lincoln, oil on
canvas, signed and dated 1900,
30cm x 21.5cm.
£40-60



▲ 3148.
Alfred Ernest White
(1873-1953).
Lincoln Cathedral from
Northgate, Lincoln, oil on
canvas, signed and dated
(18)98, 44cm x 34.5cm.
£120-180

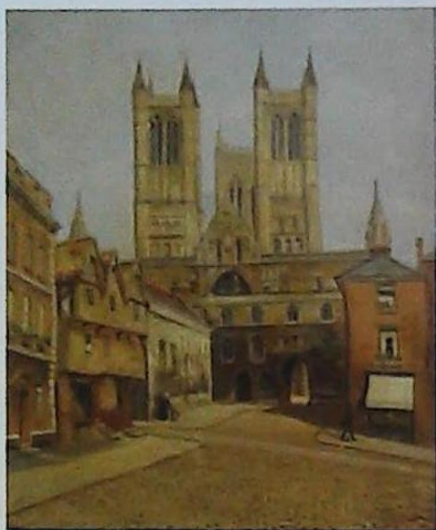


▲ 3149.
Alfred Ernest White
(1873-1953).
Dolphin Inn, Eastgate, Lincoln,
oil on canvas, signed and
dated (18)98, 44.5cm x 34cm.
£150-250



▲ 3150.
Alfred Ernest White
(1873-1953).
Stonebow, Lincoln, oil on
board, signed, 34.5cm x 44cm.
£100-150

Lincoln Fine Art Sale



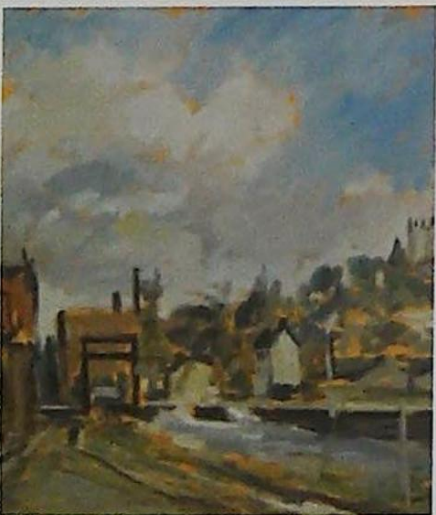
- ▲ 3151.
Alfred Ernest White (1873-1953).
Castle Square, Lincoln, oil on canvas, signed and dated 1901, 60cm x 50cm.
£150-250

3152.
19thC/20thC British School.
Barges and The Brayford, Lincoln, oil on canvas, 29cm x 39.5cm.
£70-90

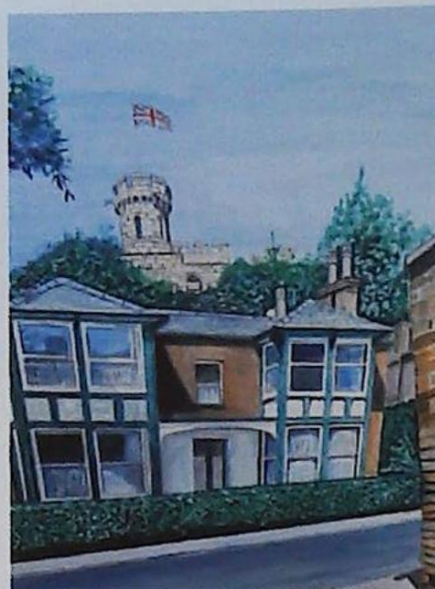


- ▲ 3153.
McCloskey.
Foss Bank Bridge, oil on canvas, signed and dated (19)49, verso, 49cm x 60cm.
£20-40

3154.
19thC British School.
Lincoln Cathedral interior, oil on canvas, 91cm x 60cm.
£40-60



- ▲ 3155.
20thC British School.
Lincoln Cathedral from Waterside South, oil on canvas, 50cm x 75cm.
£15-30



- ▲ 3156.
20thC British School.
12 Drury Lane, Lincoln, oil on canvas, 100cm x 80cm and other signed Fodin (2).
£15-30

3157.
Lance Holtby.
Adam and Eve Inn, Lincoln, watercolour, signed, 25cm x 32cm.
£20-40



- ▲ 3158.
Gill Nadin (1928-1996).
Winter landscape, oil on canvas, signed and dated (19)90, 121cm x 121cm.
£80-120



- ▲ 3159.
Gill Nadin (1928-1996).
Summer landscape, oil on canvas, signed and dated (19)90, 121cm x 121cm.
£80-120



- ▲ 3160.
Gill Nadin (1928-1996).
Autumn landscape, oil on canvas, signed and dated (19)90, 121cm x 121cm.
£80-120



- ▲ 3161.
Antonin (Tony) Bartl (1912-1998).
Lincoln Castle, oil on canvas, signed and dated 1980, 90cm x 120cm.
£300-500



- ▲ 3162.
Antonin (Tony) Bartl (1912-1998).
Lincoln Cathedral, oil on canvas, signed and dated 1980, 90cm x 120cm.
£300-500



- ▲ 3163.
Antonin (Tony) Bartl (1912-1998).
Pottergate Lincoln, oil on canvas, signed and dated 1980, 90cm x 120cm.
£300-500



- ▲ 3164.
Antonin (Tony) Bartl (1912-1998).
Desert Oasis, oil on canvas, signed and dated 1984, 65.5cm x 94.5cm.
£150-250

3165.
John Grove (20thC).
Broadgate Lincoln, pastel, signed, 26cm x 37cm.



- ▲ 3166.
William Bartol Thomas (1877-1947).
Wetland scene with duck flying, watercolour, signed, 19cm x 27cm.
£250-350



- ▲ 3167.
William Bartol Thomas (1877-1947).
Boston night scene, watercolour, signed, 19cm x 26.5cm.
£250-350

3168.
Fredrich William Newton Whitehead (1853-1938).
Lincoln from the river, watercolour, signed and titled verso, 16cm x 26.5cm.
£200-300



- ▲ 3169.
Herbert John Finn (1860-1942).
Lincoln Cathedral, watercolour, signed and dated 1902, 67cm x 86cm.
£150-250

3170.
Colin Carr (1929-2002).
Old Yee - The Picnic, watercolour, signed and dated (19)89, and titled, 25cm x 35.5cm.



- ▲ 3171.
Colin Carr (1929-2002).
The Market Place, Cleethorpes, watercolour, signed, dated (19)89, and titled 25cm x 35.5cm.

3172.
Thomas George Storey (1865-1919).
Lincolnshire landscape, oil on canvas, 24cm x 39.5cm.



- ▲ 3173.
Herbert Rollett (1872-1932).
Somerby Top - Lincolnshire, oil on canvas, signed and titled verso, 29.5cm x 88.5cm.
£600-900

3174.
Herbert Rollett (1872-1932).
Three sketch books - various Lincolnshire views (3).

3175.
Herbert Rollett (1872-1932).
Sketch book, including Dock View (Alexandra), letter signed Arnesby Brown, dated (19)26, including an Exhibition catalogue, Scunthorpe Museum, Grimsby Library, 1971.



- ▲ 3176.
Herbert Rollett (1872-1932).
Humber View, oil on board, titled verso, 20.5cm x 26cm.
Exhibition label verso.
£100-200

3177.
Herbert Rollett (1872-1932).
Landscape, oil on board, 21.5cm x 2cm.
£100-200

3178.
Herbert Rollett (1872-1932).
Landscape, oil on board, inscribed verso 1924, 21cm x 26cm.
£100-200



- ▲ 3179.
Herbert Rollett (1872-1932).
Lake and trees, oil on canvas, signed and titled verso, 40cm x 50cm.
Label verso Welholme Galleries 1988.
£200-400

3180.
Herbert Rollett (1872-1932).
River scene with bridge, oil on board, 41cm x 33cm.
£100-200



- ▲ 3181.
Herbert Rollett (1872-1932).
Humberstone foreshore, oil on board, titled verso, 21cm x 26cm.
Label verso Welholme Galleries verso.
£100-200

3182.
Herbert Rollett (1872-1932).
Coastal scene with sailing boat, oil on board, 22cm x 27cm.
£100-200

3183.
Herbert Rollett (1872-1932).
Landscape, oil on board, signed, 22cm x 27cm.
£100-200



- ▲ 3184.
Herbert Rollett (1872-1932).
Woodland landscape/rural landscape, oil on board, 22cm x 27cm.
£100-200

3185.
Herbert Rollett (1872-1932).
Landscape, oil on board, 25.5cm x 34.5cm.
£100-200

3186.
Herbert Rollett (1872-1932).
Coastal landscape, oil on board, 22cm x 30.5cm.
£100-200

3187.
Herbert Rollett (1872-1932).
Rural landscape/woodlands, oil on board, 22cm x 27cm.
£100-200

3188.
Herbert Rollett (1872-1932).
Woodlands/coastal view, oil on board, 27.5cm x 22cm.
£100-200

3189.
Herbert Rollett (1872-1932).
Woodland landscape, oil on board, 30.5cm x 25.5cm.
£100-200

3190.
Herbert Rollett (1872-1932).
Church, oil on board, 19cm x 24cm.
£100-200

3191.
Herbert Rollett (1872-1932).
Landscape/coastal scene, oil on board, 20cm x 27cm.
£100-200



- ▲ 3192.
Herbert Rollett (1872-1932).
September landscape, oil on board, titled verso, 25cm x 30cm.
£200-300

3193.
Herbert Rollett (1872-1932).
Figures on country track, oil on board, 25.5cm x 30.5cm.
£100-200

3194.
Herbert Rollett (1872-1932).
Coastal scene with sailing boats, oil on board, 22cm x 27cm.
£100-200

3195.
Herbert Rollett (1872-1932).
Landscape, oil on board, 25.5cm x 30.5cm.
£100-200

3196.
Herbert Rollett (1872-1932).
Coastal scene, oil on board, 22cm x 27cm.
£100-200

3197.
Herbert Rollett (1872-1932).
Church landscape/landscape, oil on board, 22.5cm x 27cm.
£100-200

3198.
Herbert Rollett (1872-1932).
Thornton Abbey, oil on board, titled verso, 27cm x 22cm.
£100-200

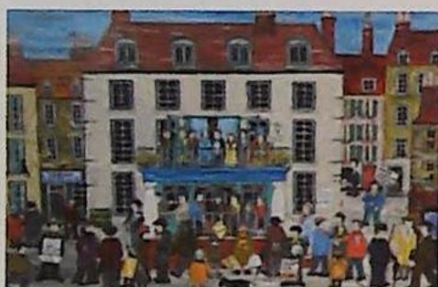
Lincoln Fine Art Sale



▲ 3199.
Herbert Rollett (1872-1932).
Woodland scene, oil on board,
24.5cm x 34.5cm.
£200-300



▲ 3200.
Sir John Alfred Arnesby Brown (1866-1955).
Cow grazing in river
landscape, oil, 27cm x 34cm.



▲ 3201.
Tommy Dean (20thC).
Election night, acrylics, signed,
dated 1999 and titled verso,
34.5cm x 39.5cm.

3202.
Tommy Dean (20thC).
The Jubilee, acrylics, signed and
titled verso, 29.5cm x 34.5cm.

3203.
W.M. Page (20thC).
Louth Market Square,
watercolour, signed, dated (19)82,
and titled verso, 35cm x 41cm.

3204.
Lucy Marschner (20thC).
View at Barney, pastel - Pair,
signed and titled verso,
14cm x 22cm, and another still life
(3).



▲ 3205.
A.M. Fitzpayne (20thC).
Jester and Girl, oil on canvas,
signed, 59cm x 74cm.
£300-500



▲ 3206.
Monique Partridge (20thC).
City scene with figures,
watercolour, signed and dated
2001, 24cm x 34cm.

3207.
Monique Partridge (20thC).
Allotments, watercolour, signed
and dated 2001, 24cm x 34cm.

3208.
Monique Partridge (20thC).
On the prom, watercolour, signed
and dated 2001, 24cm x 34cm, and
another (2)



▲ 3209.
Lydia Bauman (20thC).
Australia, mixed media,
initialled, dated (20)08, titled
verso, 65cm x 65cm.
£250-350

3210.
Lydia Bauman (20thC).
Nude study, sepia and charcoal,
signed, 40cm x 29cm.

3211.
Charles O'Connor (b. 1943).
Saracen's Head Newark on Trent,
watercolour drawing, signed and
titled, 15cm x 16cm.
Artist label verso.



▲ 3212.
Vincent Haddesley (1934-2010).
Narrow boat - Kennet Avon
Canal, oil, initialled and titled
verso.
Label verso - David Findlay
Galleries, New York.



▲ 3213.
John M Brooks (20thC).
Uppate Louth, watercolour,
signed and titled, 34cm x 54cm.
£50-100

3214.
Ron Freeman.
Newark Castle, oil on board,
signed and dated 1985,
80cm x 100cm.

3215.
20thC British.
Low flying aeroplane, ink cartoon
drawing, 66cm x 99cm.
£50-80



▲ 3221.
Laurence Stephen Lowry (1887-1976).
Landscape with farm buildings, artist signed coloured print, titled
verso, numbered 732, 42cm x 50cm.
£2000-3000

3216.
G. Beecham.
Preparations, artist signed limited
edition coloured print, 656/850,
39cm x 57cm.
£15-30



▲ 3217.
Keith Aspinall (1939-2008).
The First Attack - Guy Gibson
at the Mohne Dam, oil on
canvas, signed and titled
verso, 60cm x 90cm.
£100-200

3218.
Keith Aspinall (1939-2008).
Soaring Eagles - F-ISC Eagles, oil
on canvas, signed and titled
verso, 51cm x 76cm.
£100-200

3219.
Keith Aspinall (1939-2008).
Fjord Raider - MK10 Beaufighter
of No.455 Sqn., oil on canvas,
signed and titled verso,
51cm x 76cm.
£100-200

3220.
Bradley Ward (20thC).
The Kings School Grantham, oil
on board, signed and dated 1969,
44.5cm x 59.5cm.



▲ 3222.
Laurence Stephen Lowry (1887-1976).
People standing about, artist signed coloured print, 33.5cm x 49.5cm.



▲ 3223.
Edward Bawden (1903-1989).
Christmas Cactus, watercolour, label verso The Fine Art Society London Royal Academy Summer Exhibition 1989, 48cm x 63.5cm.
£1200-1500



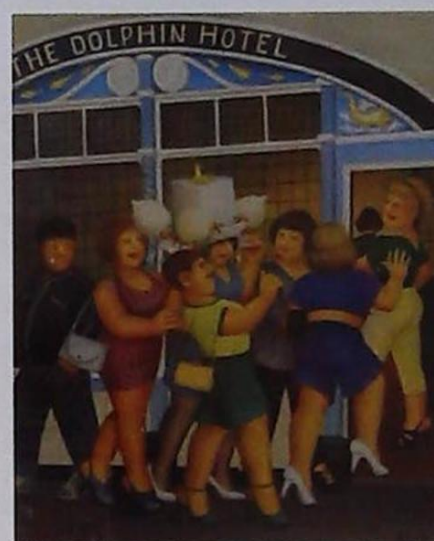
▲ 3224.
Edward Bawden (1903-1989).
Liverpool Street Station, lithographic print, 24cm x 33cm.



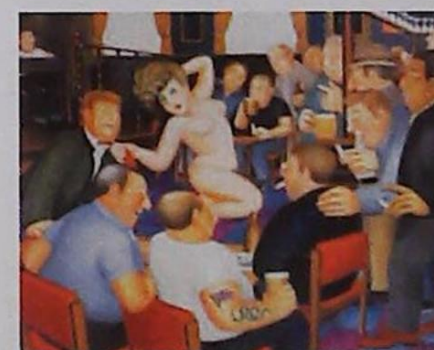
▲ 3225.
Richard Bawden (b.1936).
Norodevichy Convent Moscow, artist signed coloured etching, numbered 8/85, 49cm x 38cm.
£70-100



▲ 3226.
John Piper (1903-1992).
The Street Scene in Gloriana, lithographic print, 17cm x 23cm.
N.B. Produced in association with Benjamin Britton's opera "Gloriana" in celebration of the 1953 coronation.



▲ 3227.
Beryl Cook (1926-2008).
Hen night, artist signed coloured print, 49.5cm x 39.5cm.
£100-200



▲ 3228.
Beryl Cook (1926-2008).
Lunchtime refreshment, artist signed coloured print, 52cm x 62cm,
£100-200



▲ 3229.
Beryl Cook (1926-2008).
Party Girls, artist signed limited edition coloured print, 80/650, 53cm x 56.5cm.
£150-250

3230.
John Piper (1903-1992).
Llangloffan, artist signed limited edition coloured print, 53cm x 69.5cm.

3231.
Robert King (b.1936).
Girl playing the recorder, watercolour, signed, 54.5cm x 34.5cm.
£50-80

3232.
Robert King (b.1936).
Sketch for barges under repair, coloured drawing, signed and titled, 27.5cm x 40cm.
£50-80

3233.
Robert Tavener (1920-2004).
Pierhead, artist signed lithographic print 3/12, dated (19)59, 49cm x 39cm.
£50-100

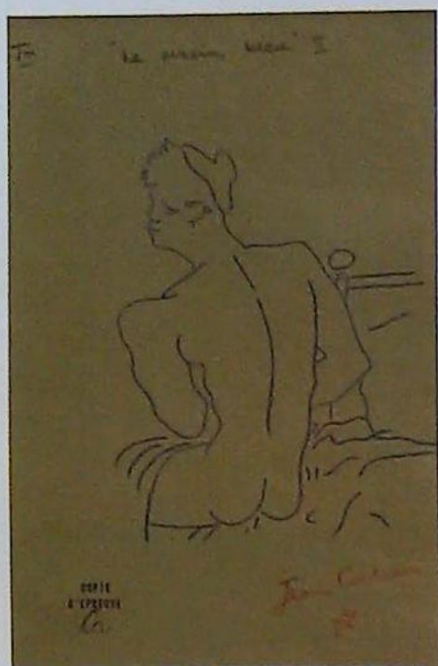
3234.
Lewis Davies (1939-2010).
Reclining nude, pastel and gouache, initialled and dated Nov 2006, 42.5cm x 52.5cm.
£30-50

3235.
William MacTaggart (1903-1981).
Cornfields, artist signed coloured print, 50cm x 58.5cm.
£50-80

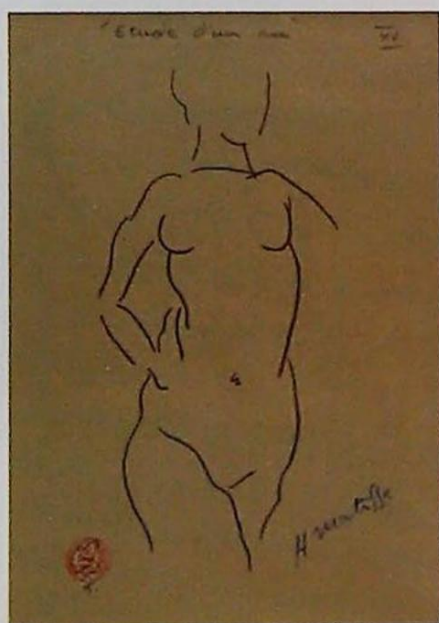


▲ 3236.
Pablo Picasso (1881-1973).
Two women on beach, artist signed print, 17.5cm x 24.5cm.
£200-300

Lincoln Fine Art Sale



▲ 3237.
Jean Cocteau (1889-1963).
Le Marm bleu, artist signed and stamped print, 28.5cm x 19cm.
£200-300



▲ 3238.
Henri Matisse (1869-1954).
Study of a nude, artist signed and stamped print, 28cm x 19cm.
£200-300

3239.
Ray Evans (1920-2008).
The Pinns of Connemara, watercolour, signed and titled verso, 31cm x 37cm.
Artist label verso.
£50-100

3240.
Alan Whitehead (b.1952).
Coastal scene with fishing boats, watercolour, signed, 24cm x 34cm.
£40-80



▲ 3241.
George Large (b. 1936).
Fishermen, watercolour, signed dated (19)94, titled verso, 24.5cm x 16cm.
£150-250



▲ 3242.
Roy Turner Durrant (1925-1998).
Composition with yellow tulip, oil, signed, titled and dated 1949 verso, 24cm x 15.5cm.
Label verso - Wenlock Fine Art - Shropshire.
£300-500



▲ 3243.
Roy Turner Durrant (1925-1998).
Inscape, mixed media, initial and dated (19)57, 20cm x 25cm.
Label verso - Wenlock Fine Art - Shropshire.
£200-300

3244.
Paul Morgan Clarke.
Scullery, watercolour, initialled, 9.4cm x 9.5cm, and two other works - E. V. McHugh, Wendy Elsey (3).

3245.
20thC School.
Abstract, watercolour - pair, 22cm x 13cm, and another work (3).

3246.
David Morris (20thC).
Jamie the Clown, watercolour, signed and titled verso, 16cm x 16cm, and other signed Wendy Elsey (2).



▲ 3247.
20thC.
Portrait of a gentleman in dinner suit - (Stephen Fry), artist signed limited edition coloured print 24/100, 50cm x 38cm.

3248.
Nicholas Barnham (b.1939).
Fishes, lino-cut, signed and titled, 14.5cm x 19.5cm, and another titled Three Ships (2).

3249.
Frances Kelly (20thC).
Guanlan Thunderstorm, lithograph/woodcut, signed and titled, 48.5cm x 70.5cm.
Label verso, Royal Academy of Arts Summer Exhibition 2013.

3250.
Alfred Cohen (20thC).
Fleurs Fantin, artist signed coloured etching 65/125, 35.5cm x 28.5cm, and another titled 'Bi-plane' 1/125 (2).

3251.
Alison Read (20thC).
Ambush, screenprint on fabric, signed, titled, dated (19)99, 26/50, 17cm x 38cm, and another titled 'Woodland landscape.' 19/275.

3252.
Tricia Newell (20thC).
Trees, etching 9/100, signed, 21.5cm x 15.5cm, and another titled Two Hens (2).

3253.
Sue Levington (20thC).
Gift shop, coloured etching 10/100, signed, titled, dated (19)87, 22cm x 26.5cm.

3254.
Nicholas Ward (20thC).
Ventilated Van - Broadlands Joinery, etching 17/36, signed and dated (19)85, another 12 Ton Van, and two others Owls, Mouse (4).

3255.
Francis Wenchman (20thC).
Duck, etching 23/60, signed and titled, 11cm x 11.5cm, and another Mouse, and another signed Peter Forster (3).

3256.
Stan Povall(?) (20thC).
Blue Hill, mixed media, signed, 15.5cm x 16cm, and two watercolour drawings (3).

3257.
Nancy Fletcher (20thC).
Portrait study, pencil, signed and dated (20)04, 16cm x 16cm, and three others (4).

3258.
After C.R.W. Nevinson.
From an office window, coloured print, 44cm x 34cm, and six other works (7).

3259.
Alfred Wallis.
Ships and boats, Kettle's York 7 April-8 July 2012, coloured poster, 41cm x 28.5cm.

3260.
Nottinghamshire Railway Stations thus.
A coloured map, 25.5cm x 18.5cm, and five other items (6).

3261.
20thC School.
Marie de Bourgoyne (1457-1482), needlework, 24cm x 20cm, and three other works (4).

3262.
20thC School.
Figure studies, needlework, 29.5cm x 10.5cm, and four other works (5).



▲ **3263.**
Norah Glover (19thC/20thC).
No.7 footbridge Newbury, oil on board, signed, 74cm x 109.5cm.
Label verso - John Whibley Gallery Ltd Cork Street, London Oct/Nov 1970

3264.
Norah Glover (19thC/20thC).
No. 29 Certosa Pavia, oil on board, signed and dated (19)68, 75cm x 82.5cm.
Label verso John Whibley Gallery Ltd, Cork Street, London, Oct Exhibition 1968.

3265.
Norah Glover (19thC/20thC).
Abstract landscape, oil on board, 50cm x 62.5cm.

3266.
Norah Glover (19thC/20thC).
Tholos Delphi. No. 1, oil on board, signed and dated (19)63, 74.5cm x 59cm.
Label verso - John Whibley Gallery, George Street, London Exhibition March 1965.

3267.
Norah Glover (19thC/20thC).
Kew Palm House, oil on board, signed, 42.5cm x 58cm.
Label verso - John Whibley Gallery Ltd, Cork Street, London Exhibition Oct 1972

3268.
Norah Glover (19thC/20thC).
Greek Town Evening, oil on board, signed and dated (19)65, 60cm x 121cm.
Label verso - John Whibley Gallery Ltd, George Street, London Exhibition March 1965



▲ **3270.**
Donald McIntyre (1923-2009).
Cegin y Drawl, oil on board, signed and titled verso, 39cm x 100cm.
£800-1200



▲ **3269.**
G. Spence (20thC).
Knights, oil on board, signed and dated (19)73, 61cm x 113.5cm.



▲ **3271.**
Jan Clutterbuck (20thC).
The orange sail, oil on board, 49cm x 58.5cm.



▲ **3272.**
Christian Atkinson (b.1939).
Nude study, oil on canvas, signed and dated 1981, 63cm x 52.5cm.
£200-300

3273.
Stan Hunt (20thC).
KWA-GUILTH Swimming 20/150, artist signed and coloured print, 43cm x 55cm, two others, birds and abstract landscape (3).

3274.
Hildred Harman (20thC).
Welland Terrace, Spalding, watercolour, signed and dated 1983, 23cm x 35.5cm, another titled Migennes - River Yonne and another signed R.S. Pills (3).

3275.
Andre Vignoles (1920-2017).
Vase des fleurs, oil on canvas, signed, dated (19)60, titled verso, label verso Arthur Tooth and Sons Ltd London, 64cm x 44.5cm.
£200-300

3276.
D J Bowers.
Borneo Village, oil on board, signed, dated (19)66 and titled verso, 120cm x 75cm.
£15-30

3277.
Sanit.
Bangkok, oil on canvas, signed and dated (19)74, and titled, 44cm x 58.5cm.
£20-40

3278.
M Zain.
Coastal scene, oil on board, signed, 37cm x 58cm.
£15-30

3279.
Poltay (?).
Temple and Palm Trees, oil on board, signed 25cm x 33cm.
£15-30

3280.
P Madies?.
Coastal Scene, oil on board, 23cm x 27cm.
£15-30

3281.
M. Cini (20thC).
Venetian canal, oil on canvas, signed, 48.5cm x 98.5cm.
£40-60

3282.
J Sevano (19thC/20thC).
Venice scene, oil on canvas, signed, 50cm x 39.5cm.

3283.
Joan Peet (20thC).
Harbour scene, oil on board, signed, 39cm x 29cm.

3284.
P.S. Laws (19/20thC).
Venice by Turner, watercolour, signed, dated 1914, titled verso, 26cm x 40cm.
£15-30



▲ **3285.**
Ben Maile (1922-2017).
Trawler at river beaky, oil on canvas, signed and titled verso, 18.5cm x 24cm.
£50-80

3286.
Ben Maile (1922-2017).
Fishing trawlers, watercolour, signed, 14cm x 21.5cm.

Lincoln Fine Art Sale



▲ 3287.
Roger Hilton (1911-1975).
Master ships in harbour, oil on canvas, signed, 49.5cm x 75cm.

3288.
Roger Hilton (1911-1975).
Harbour street scene with carriages, oil on canvas, signed, 71cm x 90cm.



▲ 3289.
Michael Lyne (1912-1989).
The Quorn at Wymeswold, watercolour, signed and dated 1981 verso, 17.5cm x 30.5cm.



▲ 3290.
Michael Lyne (1912-1989).
Fall at the fence, watercolour, signed, 20.5cm x 26.5cm.



▲ 3291.
Steven Scholes (b.1953).
Harbour scene with horse drawn carriage, oil on canvas, signed, 19cm x 29cm.
£150-250



▲ 3292.
Hans Lauritz Waldemar Sorensen (1902-?).
Coastal scene with sailing boat, oil on board, signed, 22cm x 28.5cm.

3293.
Camille Kufferath (19thC/20thC).
Floral still life, oil on canvas, signed, 21cm x 26cm.



▲ 3294.
Terence Bennett (b.1935).
House on a hill, oil on canvas, signed, 28.5cm x 38.5cm.

3295.
Terence Bennett (b.1935).
Whitby, watercolour, signed, titled and dated (19)64, 18cm x 35cm.

3296.
Terence Bennett (b.1935).
Boudeilles on the river Dronne, France, oil on canvas laid on board, signed, 46cm x 59cm.
With South Yorkshire Art Gallery Catalogue 6-25 April 1992.

3297.
Ronald Day (20thC).
Sunny intervals - Greasbro, oil on canvas, signed, dated (19)75 and titled verso, 29cm x 38cm.

3298.
Norman Pinkney (20thC).
House thro' the trees Hound Hill, oil on board, initialled and titled verso, 24cm x 29cm, and another woodland scene (2).



▲ 3299.
William Shone (20thC).
High and Dry at Stanilands, Thorne, oil on board, signed and titled verso, 29cm x 39cm.

3300.
Tony Holahan (20thC).
North of England beach, watercolour, signed and titled verso, 26cm x 35.5cm, and another signed Winstanley (2).

3301.
M.P. Wilson (20thC).
Mill scene, watercolour, signed and dated 1949, 22cm x 26cm, and another signed T Wanless (2).

3302.
Paul White (20thC).
Conversation piece of two people having a laugh, oil on board, signed, 16.5cm x 22cm, and another dated August (19)88 (2).

3303.
Paul White (20thC).
Maidens in the pool, watercolour, signed and dated March (19)87, 36.5cm x 44cm, and another abstract (2).

3304.
Paul White (20thC).
You know what I mean, watercolour, signed and dated (19)86, 32cm x 45cm, and another Birds (2).



▲ 3305.
Brian Glidden (20thC).
Winter The Squirrel Woods Burghwallis, watercolour, signed and dated (19)92, 26.5cm x 37cm.
Together with South Yorkshire Art Gallery catalogue, 8-20 June 1992.

3306.
Brian Glidden (20thC).
Lane in Braithwell, watercolour, signed, dated (19)77, and titled verso, 34.5cm x 42cm.

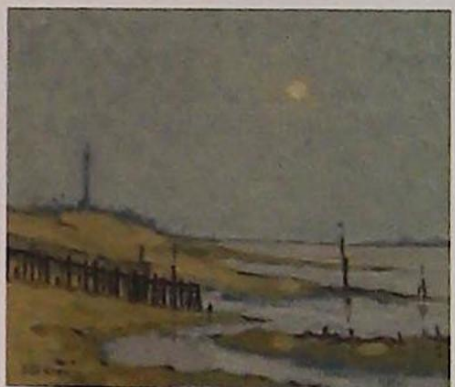
3307.
Brian Glidden (20thC).
Interior Hoyer Farm Burghwallis, watercolour, signed and dated (19)90, 18cm x 27cm.
Label verso - At The Mall Galleries



▲ 3308.
Brian Glidden (20thC).
Masted ship, watercolour, signed and dated (19)87, 12.5cm x 16.5cm.

3309.
Brian Glidden (20thC).
Church in landscape, oil on board, signed and dated (19)77, 18cm x 22cm.

3310.
Brian Glidden (20thC).
River landscape, oil on board, signed and dated (19)77, 18cm x 22cm.



▲ 3311.
Brian Glidden (20thC).
The Foreshore, Grimsby, oil on canvas, signed and dated (19)76, 18.5cm x 21cm.

3312.
John M. Brooks (20thC).
Westgate Louth, watercolour, signed and titled, 33cm x 52cm.
£50-100

3313.
John M Brooks (20thC).
Bolton Abbey, watercolour, signed and titled, 33cm x 52cm.
£50-100

3314.
John M Brooks (20thC).
Gt. Carlton Church, watercolour, signed and titled, 22.5cm x 38cm.
£50-100

3315.
H L Gordon.
Abstract figures, mixed media, signed and dated (19)58, 31cm x 48cm, and another. (2)



- ▲ 3316.
John Doubleday (b.1947).
Nude, bronze statue, signed,
62cm high.
Provenance: Victor Batte-Lay
Foundation
£600-800

3317.
20thC British School.
River landscape, oil on canvas,
signed, 50cm x 80cm.
£20-40

3318.
June Ryan.
Head and shoulders portrait of a
maiden, pastel drawing, signed,
59cm x 46cm.

3319.
David Waller (20thC).
Landscape with ducks, oil on
canvas, signed, 50cm x 75cm, and
an artist signed print Spirit of
Kirkstead. (2)

3320.
British School.
Workers in a Courtyard,
watercolour, 19cm x 28cm.

3321.
Harry Rountree (1878-1950).
Coastal scene, watercolour,
signed, 16cm x 28cm.
£50-80

3322.
A.W.Seaby.
Moorhens, oil on canvas, signed,
35cm x 50cm, and a watercolour -
archway. (2)

3323.
Gerald Robert Tucker.
Sailing ship at sea, watercolour,
signed, 20cm x 27cm, and another
signed Robert Swan. (2)

3324.
P. Bouverie.
Weavers Hall 1970, oil on board,
signed, dated 1978 and titled,
44cm x 59.5cm.

3325.
H.P.
Sailing boat, watercolour,
uninitialled and dated 1950,
24cm x 33cm, and another portrait.
(2)

3326.
Bea Rollitt.
Not Tonight Napoleon,
watercolour, signed and titled
verso, 33cm x 52cm.

3327.
Edward Jeffrey.
Finchale Abbey, watercolour,
signed, dated 1933, titled verso,
35cm x 30cm, and two other
watercolours. (3)

3328.
20thC British.
Coastal scene with sailing boats,
oil on board, 23cm x 31cm, and
another signed E.Kelly. (2)

3329.
Symonnot.
Coastal scene, watercolour,
signed, and another signed
Steuby (2)

3330.
19thC School.
National gallery, watercolour,
12cm x 16cm, and two others
Carden Hall, coastal scene. (3)

3331.
Paul Bertram.
Woodland with figures,
watercolour, signed, 24cm x 34cm,
and another fishing trawler. (2)

3332.
L. Monyarara.
Landscape, watercolour, signed,
39cm x 8.5cm, and another pastel.
(2)

3333.
20thC British School.
Lincoln Castle, oil, 34cm x 44cm,
and another signed Belangh. (2)

3334.
P.E. Tunstill.
Farmstead, oil on board, signed,
49.5cm x 59.5cm, and another
signed Adrienne. (2)

3335.
F. McDonald.
Abstract landscape, oil on board,
signed and dated (19)63,
50cm x 75cm, and another signed
Robert Wilcox. (2)

3336.
Bernard Cooper.
Lake scene, oil on board, signed,
49.5cm x 59cm.

3337.
20thC School.
Landscape, oil on board,
49cm x 59cm.

3338.
M. Miggims (?).
Floral still life, oil on canvas,
71cm x 42cm.

3339.
After Ansel Adams.
Cape Royal Grand Canyon,
photographic reproduction,
60cm x 64cm, and another work
Susie Perring. (2)
£80-120

3340.
Rachel Morley.
Starfish stripe, felt, signed, titled
and dated 2008, 52cm x 39cm, and
another Spirit of Downunder. (2)
£50-80



- ▲ 3341.
Robert Ixer (b.1941).
Country Landscape, oil on
board, signed, 42cm x 74cm.

3342.
Malcolm Fowler (1943-2012).
Save St Paul's, printed slate,
signed and dated (19)94,
37cm x 27cm.

3343.
Chris West.
Buck Inn, watercolour, signed and
titled, 25cm x 6cm, and three other
works. (4)

3344.
Frank Gillette (b.1941).
Horn and shell composition,
polaroid print, 75cm x 59cm.
£500-1000



- ▲ 3345.
David Marsden.
Portrait of Rosamond, oil on
canvas, signed and dated
(19)97, 59cm x 44cm.

3346.
Dennis Syrett.
Clematis and Spanish glass, oil on
canvas, signed, dated 1995 and
titled verso, 34.5cm x 27cm.

3347.
V N.
Cheapside, oil, uninitialled and
titled verso, 49cm x 59cm.

3348.
Zacron.
Between heaven and earth from
the house of skies, artist signed
print, 85cm x 110cm.

3349.
19thC British School.
Abbey, oil on canvas, inscribed
verso, dated 1880, 31cm x 25cm,
and two other pictures. (2)

3350.
Myriam Burton (20thC).
Wood Shed, oil on canvas, signed,
77cm x 56cm, and another The Art
of Stone rubbing. (2)

3351.
Maurice A Cole.
Miss Universe 21st Century, oil on
board, signed, dated (19)92, and
titled verso, and four other works.
(5)

3352.
Maurice A Cole.
Street Scene, oil on board,
46cm x 36cm, and seven other
works. (8)



- ▲ 3353 onwards.
**A collection of Lincoln
related prints and
etchings.**
To be sold in suitable lots, see
website for further details.
Upon instructions from the estate
of Patrick Wright (dec'd),
12 Drury Lane, Lincoln.

Further lots
available to view
online.

Artist index

NAME:

LOT NUMBER:

A

Agersnap, H 3074
Agger, K 3077, 3078
Almond, W.G. 3062
Aspinall, K 3217, 3218, 3219
Atkinson, C 3272

B

Barnham, N 3248
Barker, T 3090
Bartl, A 3161, 3162, 3163, 3164
Batchelor 3031
Bates, M.C. 3122, 3123
Bauman, L 3209, 3210
Bawden, E 3223, 3224
Bawden, R 3225
Beecham, G 3216
Bennett, T 3294, 3295, 3296
Bertram, P 3331
Boden, G.A. 3124, 3125
Bourne, S 3052
Bouverie, P 3324
Bowers, D.J. 3276
Brannan, P 3004, 3121
Bredsdorff, J.U. 3071
Broad, S.M. 3064, 3065, 3066,
Brooks, J.M. 3213, 3312, 3313, 3314
Burton, J.M. 3133, 3134, 3138, 3141
Burton, M 3350

C

Carr, C 3170, 3171
Cini, M 3281
Clark, J 3050
Clarke, P.M. 3244
Clutterbuck, J 3271
Cocteau, J 3237
Cohen, A 3250
Cole, M.A. 3351, 3352
Cook, B 3008, 3227, 3228, 3229
Cook, W.V. 3054
Cooper, B 3336
Cordenet, A 3037

D

Davies, L 3234
Day, R 3297
Dean, T 3201, 3202
Dearman, J 3053
Denny, J 3040
De Pracles, A.F. 3085
De Wint, P 3100, 3101
Dickinson, F.P. 3131, 3140
Doubleday, J 3316
Durrant, R.T. 3242, 3243

E

Earp, E 3088
Emms, J 3003, 3021
Evans, R 3239

F

Findley, A.H. 3113, 3136, 3142
Finn, H.J. 3169
Fitzpayne, A.M. 3205
Fletcher, N 3257
Fowler, M 3342
Freeman, R 3214

G

Gere, C.M. 3005
Gill, W.W. 3013
Gillete, F 3344
Glendening, A.A. 3022
Glidden, B 3305, 3311
Glover, N 3263, 3268
Gordon, H.L. 3315
Grove, J 3165

H

Haddelsey, V 3212
Hartley, D 3128
Harman, H 3274
Haslimd, O 3072A
Hastings, E 3044
Hayes, E 3027
Hemming, C.J. 3020
Herbert, A 3017
Highet, D 3083
Hilton, R 3287, 3288
Holahan, T 3300
Hold, A 3029, 3061
Holtby, L 3157
Hughes, J.D. 3043.
Hunt, C 3098, 3099
Hunt, R.S. 3006
Hunt, S 3273

I

Icart, L.J.L. 3092
Israels, J 3034
Ixer, R 3341

J

Jeffrey, E 3327
John, A.E. 3091

K

Keats, C.J. 3014
Keeley, J 3087
Keesey, W.M. 3097
Kelly, F 3249
King, R 3231, 3232
Kufferath, C 3293

L

Ladbrooke, F 3127
Large, G 3241
Larsen, A.A. 3073
Lathbury, M.M. 3094
Laws, P.S. 3284
Levington, S 3253
Lloyd, W.S. 3060
Lover, S 3009,
Lowry, S.L. 3002, 3221, 3222,
Lyne, M 3289, 3290

M

McCloskey 3153
McDonald, F 3335
McIntyre, D 3270
Madies, P? 3280
Madsen, A.P. 3072
Maile, B 3285, 3286
Manaresi, U 3026
Marny, P 3086
Marschner, L 3204
Marschner, M 3007
Marsden, D 3345
Mason, R.J. 3108, 3112
Matisse, H 3238
Matthiessen, O 3049
Miggims, M? 3338
Moffei, A 3070
Mols, N.P. 3076
Monyarara, L 3332
Morley, R 3340
Morris, D 3246
Morris, J.W. 3016
Muncaster, C.G. 3089

N

Nadin, G 3158, 3159, 3160
Newell, T 3252
Nis, T 3080
Nojenti, B 3093

O

O'Connor, C 3211
Oswald, J.H. 3033

P

H.P.
Page, W.M. 3203
Partridge, M 3206, 3207, 3208
Paton, D 3103
Peet, J 3283
Picasso, P 3236
Pinkney, N 3298
Piper, J 3226, 3230
Philp, J.G. 3030
Poltay? 3279
Povall, S? 3256
Pratella, F 3069
Prokofyeva, A 3010,

R

Raymond, V 3135
Read, A 3251
Redmore, E.K. 3041, 3042
Robins, T.S. 3036
Rollett, H 3173, 3199
Rollitt, B 3326
Roper, K 3129
Rooke, L 3114, 3200
Rountree, H 3321
Ryan, J 3318

S

Sage, H.J. 3084
Salt, J 3011
Sanit 3277
Scholes, S 3291
Seaby, A.W. 3322
Sevano, J 3282
Sharpe, R 3143
Shone, W 3299
Sorensen, H.L.W. 3292
Spence, G 3269
Spencelayh, C 3067
Storey, T.G. 3102, 3172
Symonnot 3329
Syrett, D 3346

T

Tavener, R 3233
Taylor, F 3001,
Thomas, W.B. 3166, 3167
Thornton, C.H. 3018
Tucker, G.R. 3323
Tunstall, P.E. 3334

V

Verboeckhoven, E.J. 3032, 3039
Vignoles, A 3275
Von Vildenradt, J.P. 3081

W

Wallis, A 3259
Walker, R.H. 3051
Waller, D 3319
Walmsley, J.U. 3058, 3059
Ward, B 3220
Ward, N 3254
Watson, J.D. 3028
Webster, A.G. 3126
Wenchman, F 3255
West, C 3343
Wheeldon, R 3104, 3105
White, A.E. 3144:3151
White, P 3302, 3303, 3304
Whitehead, A 3240
Whitehead, F.W.N. 3168
Wildt, S 3075
Wilson, M.P. 3301
William, G.A. 3015

Z

Zacron 3348
Zain, M 3278

As at the time of printing, lots without estimates are to be sold without reserve, auctioneer's discretion.
See online catalogue for updates.



The wrong time to find out
what it was worth...



Over 40 million pounds of antiques & fine art valuation
in UK, Europe, Asia, Africa & The Americas since January 2014.

EST
1864
GOLDING YOUNG



William Gregory MRICS and Colin Young MRICS
are RICS Registered Valuers and
offer free advice for Insurance, Tax Planning and Probate reporting
and of course the sale of single items and collections.

The Bourne Auction Rooms
+44 (0) 1778 422686

The Grantham Auction Rooms
+44 (0) 1476 565118

The Lincoln Auction Rooms
+44 (0) 1522 524984

CHARTERED AUCTIONEERS & VALUERS ♦ ARTS & ANTIQUES SURVEYORS



goldingyoung.com

August Lincoln Art Sale *reView*



Jose Gurvich (1927-1974)
Sold for £9,000



After Rembrandt
Sold for £3,800



Thomas Sidney Cooper (1803-1902)
Sold for £3,400



Johannes M Fasting Wilhjelm (1868-1938)
Sold for £1,600



Thomas Sidney Cooper (1803-1902)
Sold for £7,000



Thomas Sidney Cooper (1803-1902)
Sold for £3,800



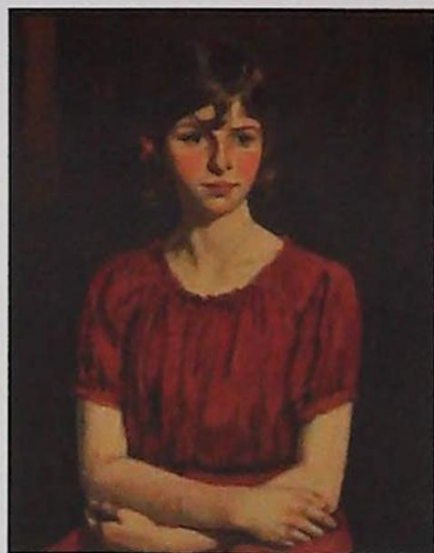
Walter Heath Williams (1835-1906)
Sold for £2,000



Thomas Creswick (1811-1869)
Sold for £1,500



Thomas Sidney Cooper (1803-1902)
Sold for £6,500



Christian Krough (19th/20thC)
Sold for £1,800



Eliseo Meifren Y Roig (1859-1940)
Sold for £4,000



Thomas Sidney Cooper (1803-1902)
Sold for £3,400



Laurence Stephen Lowry (1887-1976)
Sold for £3,600



Thomas Sidney Cooper (1803-1902)
Sold for £1,700



Bob Dyan (b.1941)
Sold for £850



Bob Dyan (b.1941)
Sold for £1,200

EST
1864
GOLDING YOUNG



Thinking of selling?

Executors, solicitors, accountants, insurers, corporations and government departments, have to exhibit due diligence when instructing. Use this checklist to do the same, with a few reasons why you may wish to choose us.

We are regulated by RICS
Better Regulation for Us.
Better Protection for You.
Accept Nothing Less.

Our online catalogues
For over 20 years our catalogues have been online and our experience ensures they are placed in front of the right buyers in the global market.

Our sales results
October 2018 saw our 120th consecutive month with a sale at either Bourne, Grantham or Lincoln producing a sold rate of over 90%. Good advice, great results for hundreds of vendors every month.

Join their success with an entry in our next sale!

goldingyoung.com

HOUSE CLEARANCE

If there is that hidden 'find', it will be to your direct benefit.

Every week we take instructions for House Clearance for all of the prominent firms of Solicitors in the area, as well as from Private Individuals, Trustees and Executors.

If you are dealing with the content of a property, please contact us at the earliest point.

A visit to the premises by one of our qualified and experienced appraisal staff will offer the best advice for Security, Valuation and Sale.

DISPOSE OF NOTHING

Often things thought to be rubbish are saleable.

IMMEDIATE ACTION IS REQUIRED

Once a property is uninhabited it is a target for burglars and your insurance may be invalid.

Items removed from premises are listed and handled by our professional carriers. Goods are then allocated to the next appropriate sale to ensure the highest sale return.

We also deal with the unsaleable residue, disposed of in the most cost-effective and environmentally friendly way, giving a total service.



PROPERTIES CLEARED, PROMPTLY AND EFFICIENTLY

Call: John Ireland MA MRICS - 01778 422686
For Bourne, Stamford, Peterborough Region and Southern Counties

Call: Craig Bewick BA (Hons) MRICS FNAVA - 01476 565118
For Grantham Region and The Midlands

Call: John Leatt ASFAV - 01522 524984
For Lincoln Region and Northern Counties

The Bourne Auction Rooms

Spalding Road, Bourne,
Lincolnshire PE10 9LE

E: bourne@goldingyoung.com

T: +44 (0) 1778 422686

F: +44 (0) 1778 425726

The Grantham Auction Rooms

Old Wharf Road, Grantham,
Lincolnshire NG31 7AA

E: grantham@goldingyoung.com

T: +44 (0) 1476 565118

F: +44 (0) 1476 561475

The Lincoln Auction Rooms

Thos Mawer House, Station Road
North Hykeham, Lincoln LN6 3QY

E: lincoln@goldingyoung.com

T: +44 (0) 1522 524984

F: +44 (0) 1522 681804

London & South Valuations

E: london@goldingyoung.com

T: +44 (0) 2033 011007

The Louth & Wolds Office

5 Mercer Row, Louth
Lincolnshire LN11 9JG

E: louth@goldingyoung.com

T: +44 (0) 1507 661864

The Stamford & Rutland Office

1, The George Mews
Station Road, Stamford
Lincolnshire PE9 2LB

E: stamford@goldingyoung.com

T: +44 (0) 1780 751666

goldingyoung.com

