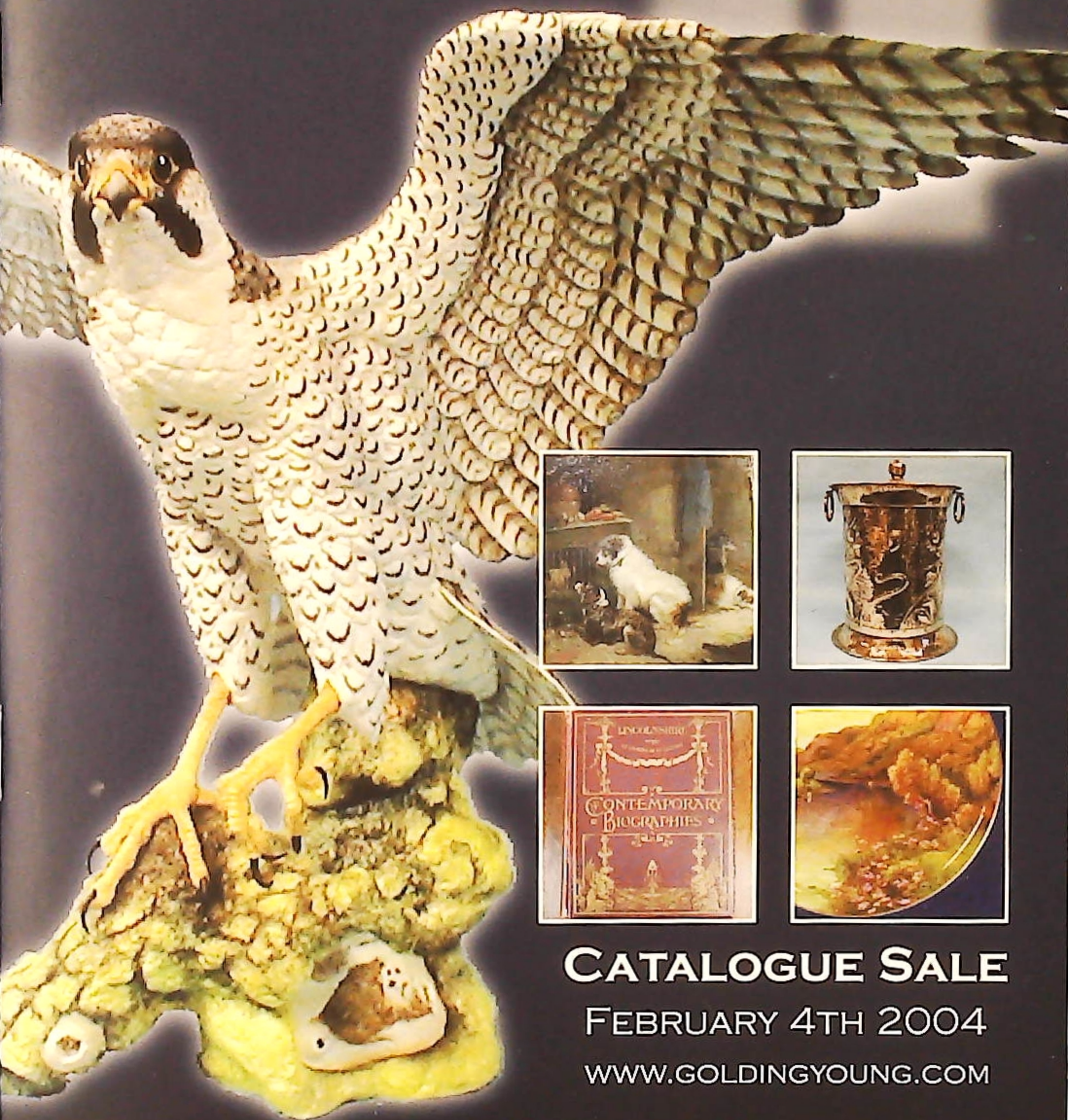


GOLDING YOUNG • 1900

CHARTERED AUCTIONEERS & VALUERS Commercial Asset Agents • Arts & Antiques Surveyors



CATALOGUE SALE

FEBRUARY 4TH 2004

WWW.GOLDINGYOUNG.COM



IMPORTANT NOTES FOR PURCHASERS

1. **PAYMENT:** Must be made in full immediately after the Auction. The following methods of payment are acceptable.
 a) Cash b) Bankers Draft c) Building Society Cheque d) Cheques (accompanied by a valid card) e) Debit & Credit Cards (the latter subject to a charge of 2% + VAT).

PAYING BY CHEQUE?

If you are not known to the Auctioneers and wish to pay by cheque above your guarantee card limit WE WILL RETAIN THE GOODS until it has been cleared (7 days). There will be NO EXCEPTIONS to our policy. To avoid UNDUE EMBARRASSMENT for yourself or to our staff, please do not ask for preferential treatment. If you wish to clear goods immediately bring a letter from your Bank or a suitable guarantor reference.



2. **BUYERS PREMIUM** of 15% (with a minimum of £1 per lot) is payable on all lots, plus VAT.
3. **REMOVAL OF PURCHASES:** Goods must be collected as soon as they are paid for, and in the 2 Working Days following the sale. If goods are not collected on these days we reserve the right to charge £1 per lot per day thereafter.
4. **COMMISSION BIDS:** If you are unable to attend this or any of our future sales we will be pleased to bid on your behalf. We always purchase at the lowest possible price, subject to other bids and reserves. All bids must be handed to the office on an official form. It remains the responsibility of prospective purchasers to contact GOLDINGS to confirm whether their bids have been successful.
5. **TELEPHONE BIDS:** There are inherent dangers with this practice, therefore all such arrangements are made entirely at the bidder's risk. Telephone bids will only be accepted if the lower estimate is £500 or above. For lots with a lower estimate below this figure Commission Bids Only will be accepted.
6. **SMOKING** is not permitted in any part of the Saleroom.
7. **REFRESHMENTS** will be available Saleday.
8. **ACCOUNT TRANSFER** will not be recognised after the sale. If any lots are purchased for another person, this must be declared at the fall of the hammer.
9. **ESTIMATES.** Our Auctioneers will be available during viewing to give guidance on your prospective purchases.



GLOSSARY

- a) Generally: 'As Found' (AF). This term indicates the lot has some damage. Its absence does not indicate that the lot is free of defect. All lots are SOLD AS SEEN.
- b) Paintings: 'Signed, initialled, monogrammed' - This refers to the present state of the work and is not an attribution.
- c) Books and printed matter: These items are not sold subject to collation and are not returnable once removed from the premises.
- d) Silver & Jewellery: Weights given are approximations given by basic instruments.

GOLDING YOUNG • 1900

CHARTERED AUCTIONEERS & VALUERS Commercial Asset Agents • Arts & Antiques Surveyors

Upon instructions from over 125
private and professional vendors from throughout the region.

GOLDING YOUNG & CO will sell by AUCTION

ANTIQUES, WORKS OF ART AND COLLECTORS ITEMS

Wednesday 4th February, 2004 at 10am

Lot enquiries

Suki J Burnett A.N.A.V.A.
Jan L Squires P.J.Gem.Dip, A.N.A.V.A.
Colin R Young M.R.I.C.S., F.N.A.V.A.

Accounts enquiries
Mary Rice-Johnson

VIEWING:

Online at WWW.GOLDINGYOUNG.COM from Saturday 31st
and in the saleroom on Sale week
Monday 2pm to 5pm, Tuesday 2pm to 7pm & Saleday 9am to 10am



Golding Young & Co.

Old Wharf Road, Grantham, Lincolnshire NG31 7AA

Telephone: 01476 565118 Fax: 01476 561475 Email: enquiries@goldingyoung.com



Buyers Hotline: 01476 575202

For lot enquiries and commission bids viewday and saledays only.



19. **Golf:** early metal shafted irons, Spalding, Henry Cotton 9 iron; Mashie Niblick, H. Roffe; Mashie Niblick - George Nichol; Mashie Niblick, Tom Auchterlonie, (no grip); 7/8 iron, Forgans 'Lady Luck'; 5 iron, Forgans Gold Medal, (6)
20. **Golf:** early metal shafted irons - Jigger, H. Roffe; Mashie, H. Roffe; 9 iron spade Mashie, Walter Hagen; 6 iron, Robert Forgan Parshot Mashie, L5 R. Forgan & Son Ltd; 3 iron, H. Roffe. (6)
21. **Golf:** early metal shafted irons - 5 iron, George Nicholl Pin Rake; 2/3 iron. Forgans 'Lady Luck'; 3 iron, Thirnton & Co Ltd. Wizard De Luxe Noshok; 3 iron special, T. Stewart; 1 iron, Henry Cotton; 2 iron L/hand, Forgan Empire. (6)
22. **Golf:** moulded and painted advertising counter figure, a golfer with golf ball face, with grey cap and trousers, blue jumper and red scarf, holding a golf bag, on moulded plinth inscribed 'We Play Dunlop'. 14" high.
23. **An early 20thC novelty biscuit tin,** the lid printed with a football 'Roulette' game, with revolving pointer, stamped 'tp' underside 'The Don Confectionery Co. Ltd, Sheffield, England". 10" diameter.
24. **An early 20thC plaster figure of a young black boy,** in Huckleberry Finn type clothing, holding a clay pipe in his right hand, on moulded base. 21½" high.
25. **A Victorian brass column oil lamp,** with ruby glass reservoir, cranberry shade with frill edge, on square stepped base. 30" high including chimney.
26. **An EPNS two-handled gallery tray,** with engraved border decoration and bead rim. 27½" over handles.
27. **A 19th century miniature oak coffer,** with crossbanded top, on shaped bracket feet. 14" x 8" x 8½"

28. A 19th century mahogany and satin beech folding games box, of rectangular shape, the exterior for chess, and draughts, the interior for back gammon, with ivory and ebony inlays, together with a later draughts and chess set, 15½ x 9½"
29. A French gilt brass portico clock, with black enamel chapter ring, Roman numerals and 8-day movement striking bell, marked M.A. & Co, 1719 145561. 12" high within a 17" high glass dome.
30. A pair of terracotta figures of stylised birds, with brown mottle glaze, on conical stands, in the Wheildon style, 10" high.
31. A pair of Victorian Staffordshire pottery dogs, white glazed, seated, with ochre and black muzzle, yellow eyes, 13" high.
32. A Victorian majolica jardiniere, externally moulded as a tree trunk, with strawberry plants in relief and acorn handles on twig foot, lilac interior, possibly George Jones, 11½" high, 11" diameter.
33. A pair of 19thC. RAUD porcelain vases, hand-painted with opposing fete gallante and floral panels, wavy rims, foliate scroll handles and bulbous body, 20" high (damage, repair and restoration.)
34. A pair Meiji period Japanese Kutani vases, of baluster form, each painted with extensive floral panels.
35. A Victorian bargeware kettle, moulded with floral sprigged decoration. 8".
36. A pair of Linthorpe moulded vases, with yellow internal wavy rim, turquoise exterior, in light relief with sunflowers, impressed to base *Linthorpe 1755 AS*, 9" high. (1AF).
37. A Linthorpe moulded bottle vase, decorated in light relief with trailing flowers, impressed *Linthorpe 1414 SD* to the base, 7" high
38. A Staffordshire cow creamer, black glazed on terracotta.
39. A Staffordshire cow creamer, black glazed on terracotta.
40. A Royal Doulton cabinet plate by F Harper, the mottled blue border enclosing a highland landscape with cattle watering, signed. 10" diameter. Illustrated on front cover.
41. Stamps. The London Stamp Album containing a collection of mainly European postage stamps, with slip case.
42. First Day Covers. a mixed album and quantity of loose stamps.
43. Stamps. an album of Spanish postage stamps.
44. Stamps. an album of GB postage stamps and covers.



Lot No. 32

45. **Stamps.** an album of mixed world postage stamps.
46. **Stamps.** An extensive stock book of German and Commonwealth postage stamps with a catalogue in excess of £2,500
47. **Stamps.** A extensive stock book of Australian postage stamps with the catalogue value in excess of £1,000
48. **Stamps.** An extensive album of GB mint and used postage stamps with a catalogue value in excess of £7,500
49. **Stamps.** A stock book covering GB, Commonwealth, Asia and USA
50. **Stamps.** A stock book of mainly GB, Commonwealth and World stamps with a catalogue value in excess of £9,000
51. **Stamps.** A stock book of Commonwealth postage stamps with a catalogue value in excess of £1,000
52. **Stamps.** A stock book of Commonwealth postage stamps with a catalogue value in excess of £1,600
53. **Stamps.** A stock book of Ugandan, Tanzanian, Jamician postage stamps with a catalogue value in excess of £600
54. **Stamps.** A extensive stock book of Canadian postage stamps with a catalogue value in excess of £600
55. **Stamps.** A stock book of Italian postage stamps with a catalogue value in excess of £1,200
56. **Stamps.** An album of Danish, Icelandic and Swiss postage stamps with a catalogue in excess of £1,800
57. **Stamps.** An important stock book of German stamps, Italian stamps and others with a catalogue value in excess of £27,000
58. **Stamps.** A stock book of Icelandic postage stamps
59. **Stamps.** An album of Norwegian postage stamps with a catalogue value in excess of £650
60. **Stamps.** Hong Kong, Malaysian and Australian albums (3) with a catalogue value in excess of £600
61. **Stamps.** Two important albums of French and French Colonial postage stamps with a catalogue value in excess of £10,000
62. **Stamps.** Stock books of Canadian and South African postage stamps (3)
63. **Stamps.** Sheets of GB, Commonwealth and World stamps with a catalogue value in excess of £1,100
64. **Stamps.** An album of mainly mint postage stamps of Cocos Islands with a catalogue value in excess of £500
65. **Stamps.** Barbados, Rhodesian/Zimbabwe and Malawi postage stamps (3)
66. **Stamps.** An album of World stamps and a quantity of loose mixed stock
67. **Stamps.** A pocket album of GB postage stamps including 1d. Reds.
68. **Stamps.** Four World albums and various loose postage stamps.
69. **First Day Covers.** Portfolio album of Royal Wedding First Day Covers and others etc.
70. **Stamps.** an album of postage stamps and various loose examples.

71. **Stamps; Triumph and Lincoln** albums of World postage stamps and loose stock.
72. **Stamps.** a large, varied and interesting lot of world postage stamps, empty stockbooks and albums.
73. **Mary E Richardson.** The Life of a Great Sportsman (John Maunsell Richardson) Venton & Company Ltd, 1919, gilt cloth boards.
74. **W.T. Pike.** Lincolnshire at the Opening of the 20thC., published 1907, gilt cloth boards. *Illustrated on front cover.*
75. **Marchioness of Londonderry.** Henry Chaplan A Memoir, MacMillan & Co., 1926, gilt cloth boards.
76. **Edward Trollope.** Sleaford and the Wapentakes of Flockswell and Aswardhurn, pub. William Fawcett, Sleaford, 1872 gilt cloth boards.
77. **Bentham (George).** Handbook of the British Flora, illus Fitch, 2 vols, London 1865, original, 1/2 calf, raised spine boards.
78. **Brown (Cornelius).** The Annals of Newark on Trent, London 1879, one vol, illus., half calf gilt decor.
79. **J. Cary and others.** An Assortment of maps of Rutland, Leicestershire and Europe, 18th and 19th Century, 4to.
80. **A late 19thC French ormolu mounted kingwood burea plat**, in the Louis XV style, the shaped top with leather writing surface above 3 frieze drawers, the back with simulated drawers, standing on 4 cabriole legs, each mounted by an espagnolette, on scrolling foliate sabots. 53" wide, 30" deep, 29" high.
81. **A set of six 19thC mahogany dining chairs**, including 2 carvers having camel backs pierced and flared slats, red and white striped brocade overstuffed seats and moulded forelegs.
82. **A set of 4 George III mahogany dining chairs**, with turned cresting rail reeded x-framed backs overstuffed seats and square taped legs. (AF).
83. **A set of eight Regency style dining chairs**, with brass including 2 carvers having overrun cresting rails pierced and brass inlay backs overstuffed cushions pink damask feet and sabre legs. *(The seats do not comply with the Fire Regulations and will be cut from the frames before leaving the premises)*
84. **A Regency style mahogany twin pillar dining table.** 3ft 6" wide, 8ft long max.
85. **A late Victorian walnut extending dining table**, with moulded acanthus top, turned and wrythen legs, brass and ceramic castors. 4ft wide x 4ft 3" long.
86. **A Victorian beech and elm lath back grandfather chair**, with turned legs and h stretcher.
87. **A 19thC ash and elm Windsor chair**, with pierced splat back turned legs and H stretcher.
88. **A club fender**, with turned and galleried brass framing and fitted leather seats. 6ft wide.
89. **A mid 19thC parquetry work table**, with lift top concealing 4 compartments dummy drawers with the octagonal profile, tapering pillar quatrefoil base and turned feet. 19" diameter.



90. **A George III mahogany tea table**, with rounded rectangular tilt top, turned pillar and three outspread legs.
91. **An early 19thC spindle back Windsor chair**, with turned legs and H frame stretcher.
92. **A George III mahogany hanging corner cupboard**, with two bow front doors.
93. **A Victorian flamed mahogany tray top table**, with two frieze drawers, knob handles and turned legs, 45" wide.
94. **An Italian marquetry games compendium table**, with interchangeable legs and fully fitted compartments, modern.
95. **A Victorian upholstered button back low nursing chair**, with walnut fluted forelegs.
96. **A Victorian mahogany tea table**, with folding rectangular top, deep frieze, square taper pedestal, quatrefoil base and bun feet. 36" wide.
97. **A Victorian carved mahogany chaise longue**, with scrolling and galleried back and bulk, on turned legs with brass and ceramic castors, upholstered in buttoned cerise dralon. 70" long.
98. **An Edwardian oak single pedestal desk**, with inset top and 4 drawers.
99. **A Georgian carved oak hanging corner cupboard**, with table base.
100. **An Edwardian marquetry single wardrobe**, with mirrored door and drawer base.
101. **A Late 19thC oak overmantel mirror**, with foliate pierced cresting, pierced frieze centred by stamped brass plaque, over a rectangular bevelled glass, 38 1/4" high, 44" wide.
102. **A club fender**, with brass framing and leather seating, 55 1/2" wide.
103. **An early 20thC oak magazine stand**, the sloping hinged cover, having a moulded design of Crown Imperial's flowers, extending to front panel, raised on pierced end standards, 30 1/2", 18" wide.
104. **A Victorian walnut firescreen**, with pierced cresting, the rectangular frame supported by two barley twist uprights, enclosing a crewel work floral spray, pierced apron, and on scroll end supports joined by conforming stretcher, 45 1/2" high, 31" wide. Illustrated inside front cover.
105. **A late Victorian mahogany nursing chair**, with a shaped moulded and pierced cresting rail over a scroll the foliate pierced splat, overstuffed seat, and on ring turned front legs and castors.
106. **An Edwardian stained beech Sutherland table**, with shell inlay and crossbanding in satin beech, on turned end supports joined by conforming stretcher. 23 1/2 x 27".

107. **An Edwardian mahogany revolving bookcase**, of square shape, the top inlaid with paterae and crossbanding, with open railed sides and on a cruciform base. 32½" high, 19" square.
108. **A late Victorian copper oil lamp and stand**, (converted to electricity), with a hammered copper reservoir, the central front pillar having pierced triform scrolling bracketed support, the contemporary vellum tasselled shade painted with birds and blossom. 60" high. (shade with some damage).
109. **A 19thC Empire style figured mahogany torchere**, the square top on a tapering column with insert panels mounted in gilt metal acanthus leaf, swag and paterae ornament, on plinth base with gilt metal banding. 42½" high, 10¼" square.
110. **A Victorian mahogany framed open armchair**, with a fully upholstered button back, padded scrolling arms, serpentine seat, and on turned front legs with castors, covered in pink velvet.
111. **An Edwardian mahogany salon suite**, each piece with foliate pierced cresting rails over panel splats with coloured inlays on hipped cabriole legs with pad and peg feet; comprising, 2 seat sofa, 2 carvers and four single chairs, covered in green velvet.
112. **An Edwardian mahogany salon suite**, the two chairs with top rails, inlaid with foliate panels flanking shell paterae, over upholstered panel backs, padded arms and overstuffed seats, on turned front legs with casters; together with a 2 seat sofa with conforming centre panel.



Lot No. 111

113. **An early 20thC walnut framed Bergere suite**, with single cane panels, comprising a three seat sofa and 2 matching armchairs, together with a coffee table, ensuite, having a circular top, on four cabriole legs formed by undershelf, 29" diameter.
114. **An early 20th century German walnut cased boudoir grand piano**, by Hagspiel, no. 10434, 86 keys, 60" length, on turned and panelled tapering legs.
115. **A late 19thC brass oil lamp and stand**, the pottery reservoir painted and moulded with an encircling girdle of leaves, with an adjustable column on domed base. 57" high.
116. **A cast iron lamp standard**, the adjustable central turned column supported by scrolling triform brackets.



Lot No. 114



117. A Victorian black enamelled iron and brass bed, with side irons and sprung base. 55" wide.
118. A Victorian mahogany chiffonier, the raised back with foliate scroll cresting above a serpentine shelf, supported by pierced brackets, having two frieze drawers over a double cupboard with plain inset panels, on castors. 46" wide.
119. A oak cased tabletop ships' piano by J B Cramer & Co London.
120. A Victorian mahogany dining table, with one extra leaf, the top with rounded corners, on turned and tapering legs, with ceramic castors, 72" x 48".
121. An early 20thC walnut cabinet, rectangular, with moulded edge top over an open shelf with panelled back and moulded framing, over double cupboard doors with inset panels, on splay legs, 42½" high, 20¼" wide, stamped no. 643808 to front framework.
122. A fine quality Regency style mahogany twin pillar dining table by Arthur Brett & Sons of Norwich, the top with rounded moulded corners, in four sections, the turned pillars having four downswept channelled legs, terminating with brass castors, 118" x 48"; together with a set of eight mahogany dining chairs in the William IV manner, with curved solid top rails, rope front tie rails, overstuffed seats, on turned and baluster front legs, upholstered in pale green satin pique.
123. A Victorian sofa, with an encircling mahogany frame, on tapering square legs with paterae capitols, upholstered in Regency stripe with floral detail. 70" wide.
124. A Knole sofa, with a rich blue figured covering, 2 seat cushions and four loose cushions. 62" wide.
125. A mahogany cabinet by Jas. Shoolbred, having a serpentine arch pediment over two glazed doors with conforming tracery bars, on slender cabriole legs with pad feet. 73" high, 48" wide.
126. A Victorian mahogany 3-tier buffet, rectangular, with turned finials and uprights. 41" high, 46½" wide.
127. An early 19C figured mahogany chest of drawers, the moulded edge rectangular top over an inlaid dentil frieze border, the two short and three long graduated drawers with cockbead moulding, turned knobs and ivory escutcheons, canted sides on splay bracket feet. 49" high, 48½" wide. (three knob handles missing).

128. A Victorian figured mahogany pedestal sideboard, the breakfast top with moulded edge, over three frieze drawers, the centre drawer with raised tablet, the two pedestal cupboards with scroll side pillars, and on scroll feet, 90" wide.
129. A 19thC carved oak side cabinet, 3 tier with turned uprights.
130. A George III painted pine corner cupboard, with dentil cornice, 4 doors, and grotesque masks. c.6' 3" high. (AF)
131. A set of 5 George III mahogany dining chairs, with moulded and shaped backs blue strip drop in seats and square tapered fore legs.
132. A Georgian oak longcase clock, with moulded case having ebonised columns to hood, the 11" brass dial having cast wide spandrels, Roman hour numerals, Arabic minutes subsidiary seconds ring and date crescent and marked *J Green, Althorp*, 8 day movement striking a bell. 6' 6" high.
133. An early 19thC. oak and mahogany crossbanded longcase clock, with painted dial with Roman numerals and marked *Geo Ellis Oakengates*, 30-hour movement.
134. An early 19thC oak and mahogany longcase clock, with swan neck reeded pillared foot, canted trunk with shaped short door, crossbanded base with bracket feet, the painted 12" dial having landscaped arch rose cartouche spandrel Roman numerals subsidiary secondary date crescent marked *B Hutson Louth*. 7ft high.
135. A George III mahogany longcase clock, the hood with broken arch pediment, brass sphere and spire finials and fluted pillars, the arched flame-veneered door flanked by quarter pilasters with carved gilt capitols, on panelled base and shaped apron with bracket feet, the arched brass dial signed '*Saml Milburn, London*', strike/silent dial to arch, subsidiary seconds dial, date aperture, the striking movement with pierced steel hands, 90" high.
136. A George III oak longcase clock, with arched and pillared hood $\frac{1}{4}$ inset pillared trunk with full length arched door having parquetry star inlay and similar to base with plinth 11" brass dial having applied cast and coco spandrels, Roman hour numerals, Arabic minutes, chased centre field inscribed *John I Malkin. Kirkby* and having moon roller to arch and 30-hour movement. 6ft 10" high.



Lot No. 135

137. **An early 19thC oak and mahogany longcase clock**, with swan neck pillared hood inlaid canted trunk with full length door crossbanded with feet with painted 12" dial having floral decoration over a gilt orange field Arabic hour numerals, subsidiary seconds ring and marked *J Saltsby Grantham*, with an 8-day movement striking on a bell. *7ft high.*
138. **A fine Boulle and ormolu mounted bracket clock**, the enamel dial marked Charles Boisin of Paris, surmounted to the top and the glazed door with cherubs, (cast with the period duty mark), *34" high, bracket 10". Illustrated inside rear cover.*
139. **A Victorian walnut cased upright piano by Thomas Oetzmann & Co.**
140. **A walnut cased upright piano by Metzler**, overstrung, 1930/40's.
141. **A 1920/30's mahogany cased upright piano by T M Vincent.**
142. **A mahogany cased pianola**, marked the Triumph Autopiano London, "Autoleon".
143. **A 19thC German walnut cased wall clock**, with brass and enamel bezel dial having Roman numerals, 8 day movement. *2ft 9" high.*
144. **A Victorian rosewood drop dial wall clock**, with pewter inset case, painted dial with Roman numerals and 8-day movement. *28" high.*
145. **An iridescent glass hanging centre light**, of hexagonal form with moulded inserts.
146. **A cut crystal electrolier**, with prismatic drop and hobnail cut bowl. *16" diameter.*
147. **A walnut dining suite**, in the Chippendale manner, comprising sideboard extending dining table and 4 chairs with carved moulding and ball and claw legs.
148. **A Victorian flame mahogany bow front chest**, of 2 short and 3 long graduated drawers with barley twist columns and knob handles, *52" wide.*
149. **A late Victorian carved walnut sideboard.**
150. **A Victorian mahogany Duchess dressing table**, with leather inset top. *39" wide.*
151. **A Georgian style flamed mahogany drum table**, with gilt tooled leather top configuration of frieze drawers carved pillar and tripod base, modern. *36" diameter.*
152. **A 19thC Burmese hardwood tripod table**, with circular tilt top, bulbous pillar, raised on 3 grotesque legs. *22" diameter.*
153. **A fine Regency style mahogany five-pillar dining table**, having turned pillars and plain outspread legs with brass toes and castors. *4ft wide, 20ft 3" long.*
154. **A Victorian burr elm stool**, on 4 rustic legs.
155. **A small elm stool**, with rustic legs.
156. **A late Victorian oak gun cabinet**, with single glazed door and drawer base.
157. **A pair of Samson Derby blanc de chine candlesticks**, formed as figures of a boy with basket of fruit and girl with basket of flowers, blue painted mark. *7" high. (AF).*
158. **A Royal Crown Derby baluster vase**, having 2 handle gilt blue neck and basket pattern body. *7" high.*



159. A pair of Royal Crown Derby ovoid vases, having gilt blue necks, foliage bodies, retailers mark of C. Darby Nottingham. 8" high.
160. An Elkington & Co canteen of silver flatware, comprising a 12 place setting with rat tails and bone handled cutlery, fitted in an oak cabinet. c. 155 oz. (teaspoon missing).
161. A set of 6 Jowanor table forks, white metal with foliate cast terminals.
162. A boxwood portable horse height measure and jockey gauge.
163. A scale model of Napoleons No. 6 battleship.
164. A scale model of the Cutty Sark.
165. Magic lantern slides, being views of Lincoln, Devizes etc.
166. 'Counties of England' boxed game, and 2 further boxes.
167. An electroplate revolving stand, for serving, entree and warming dishes.
168. A horn handled carving set, with silver bands. Maker Mappin & Webb. Sheffield 1928; and six pairs of bone handled electroplate fish cutlery.

169. A horn beaker, papier mache box with painted cover and cloisonne bowl and cover. (3).
170. A Connoisseur of Malbourne Limited edition figure, of a Peregrine Falcon no.21 of 25 from 1983. 21" high. Cover Illustration.
171. A Victorian patchwork cover, 80" x 90".
172. A Victorian truncheon.
173. A Victorian willow pattern meat plate, 15" and copper lustre goblet with tapering bowl.
174. Four various oval slipware serving dishes.
175. Four various rectangular slipware serving dishes.
176. A 19thC French spelter ink stand, of scrolling rococo form mounted with a horse and two wrythen crystal inkwells with floral caps. 12" wide.
177. Treen; a snuff box, with carved reliquary fish, bodkin holder and glass bottle with turned case (3)
178. A 19thC treen tobacco jar and cover.
179. A treen funnel and lignum urn.





180. A mixed lot; comprising pieces of treen, mottled glass bowl and milk glass 2-handled cup and cover with metal work framing.
181. Metalware; including a pair of brass barleytwist candlesticks, copper bellows, pewter plates and brass taper sticks.
182. A carved hardwood figure of an Asian male, carrying a basket. 25" high.
183. A carved oak wall mask, carved 'st' and a small gargoyle. (2).
184. A late 19thC gilt brass three-light candelabra, with crystal drops.
185. A walnut treen tobacco jar, of barrel form and having cover carved with the motto and crest of the Kings XV Hussars.
186. A 19thC burr walnut miniature knife box, of traditional form with slope top and serpentine front. 6" high.
187. A George III mahogany tea caddy, with brass loop handles. (no interior).
188. A pair of Victorian brass candlesticks, with turned stems and further pricket candle stand.
189. Two Chinese Ginger Jars, and further baluster vase. (3).
190. A group lot; comprising 2 large poison bottles, treen fruit bowl, pestle and mortar and camera.
191. A pair of late 19thC. bronze figures of young girls, one with a watering can, the other with a bundle of fruit and a scythe, on circular marble bases. 10" high.
192. A pair of German porcelain plates, painted with flowers, within a shaped border, blue cross sword marks, 19thC, 9½" diameter.
193. Seven Victorian cranberry glass tumblers, of tapering circular form, 3½" high
194. A Delft drug jar, the drug label in dark manganese Gothic letters and inscribed below Roob Sawbuc, 5" high; and a Savona type wet drugs jar, 4½" high, repaired.
195. English porcelain plate, painted with differing flowers to the well, the moulded border with flower sprigs, pattern no 565, 8¼" diameter; together with a plate of shaped rectangular form, gilt birds against a blue ground, the well painted with a border of pansies. (2).
196. Royal Crown Derby, 'Old Imari' pattern, 1128 six tea plates, 6¼" diameter, modern.

197. **Royal Crown Derby, 'Old Imari'** pattern 1128, six dessert plates, 8½" diameter, modern.
198. **An early 19thC Derby dish**, of rounded rectangular form, painted in the Imari palette with prunus blossom and flowers within arabesque and stiff leaf well, dentil rim, factory mark in red, 9½" x 8".
199. **A Royal Crown Derby dessert plate**, Old Imari pattern 1128, 8½" diameter, modern.
200. **A Royal Crown Derby dinner plate**, Old Imari pattern 1128, 10½" diameter, modern.
201. **A Royal Crown Derby tea plate**, Old Imari pattern 1128, 6¼", diameter, modern.
202. **A Royal Crown Derby bon - bon dish**, rectangular, Old Imari pattern 1128, 3½ wide, modern.
203. **A 19th century Vienna plate**, centrally painted with a classical landscape with figures fleeing, in swirling waters, within stamped gilt and polychrome border, painted factory mark, 9¼" diameter.
204. **A Doulton Lambeth vase**, of slender baluster shape, decorated with shaped blue ground panels with applied foliage below, impressed gilt concentric circles, 11" high.
205. **A Venetian glass goblet**, the green frill bowl with wrythen moulding, on a 'swan' stem and on conforming foot, with gold dusting, 8" high.
206. **A 19thC Gaudy Welsh jug**, ovoid, painted with simple flower forms, loop handle, 5" high; **A 19thC pottery large cup and saucer**, printed in brown with scrolling leafage and flowers within Hawthorn borders, gilt rim. and a **19thC moulded jug with pewter lid**. (repaired) (4).
207. **A Mintons pottery fruit bowl**, externally painted with flowers between black and brown banding, early 20thC, 8" diameter.
208. **A pair of late 19thC 'Carlton' square moulded dishes**, decorated in the 'Clematis' pattern, against a pink tinted ground within gilt rims, 8" square.
209. **A Clarice Cliff 'Celtic Harvest' preserve pot**, with cream moulded ground, fruit and flower finial, on three feet, printed factory marks. 4½" high. (chip to cover).
210. **A Clarice Cliff 'Celtic Harvest' preserve pot**, cream ground, fruit and flower finial, on three feet, printed factory marks. 4½" high.



Lot No. 203

Lot No. 217



211. A Victorian cordial jug, of inverted ovoid shape, etched overall with stars, inscribed *J.G.Y. 8th September, 1899* within fern and leaf cartouche, together with two matching stem glasses.
212. Three Victorian pottery nursery plates, the wells printed in black and painted with differing images, within moulded borders and lustre rims.
213. Three early 19th century porcelain tea bowls and saucers, printed with a border pattern in blue, painted with a swagged shield and flower spray, together with a matching sugar bowl.
214. A Japanese earthenware figure of a reclining man, with a fly whisk, dressed in iron red robes. 5½" wide.
215. A 19th century Obidia Sherret type 'Tythe Pig' group, with the vicar and two parishioners, against a tree, a moulded base. 5 ¼" high. (restored). *Illustrated inside rear cover.*
216. A pair of 19th/20th century Japanese Satsuma chargers, enamelled and gilt, with elders in a landscape with dragon panel. 12¼" diameter.



Lot No. 221

217. A 19thC porcelain breakfast service, possibly Ridgways, each piece having a turquoise band against a white ground, heavily gilt with lambrequin, running dog borders and still leaf ornament, approximately 50 pieces.
218. An Italian tan leather stationery box, with gilt tooling, with a domed rising cover enclosing a fabric lined interior, with matching blotting folder.
219. A 19th/20thC box frame, containing two sprays of wax flowers, 11½" x 10".
220. Four 19thC Masons ironstone dinner plates, printed and painted in the Chinese manner with blossom and flowers within a scrolling lace border. 10¼" diameter.
221. An early 19thC porcelain ewer, probably Coalbrookdale, having floral encrusted urnular body. 13" high.
222. A milk glass vase, with gilt leaf decoration, held within a brass rococo scroll stand with rising handle. 11" high.

223. An Edwardian mahogany lancet clock, with patera and string inlay, on four metal bun feet, 9¼" high. (later movement and dial).
224. A Victorian leather bound jewellery box, with gilt line tooling, the hinged cover with inset metal handle, the interior with two removable trays and lined with deep red velvet. 9" x 7" x 5".
225. A pair of cranberry glass 'Mary Gregory' style vases, of panelled ovoid shape, each enamelled with child in a landscape, 7" high; together with a small cream jug and sugar bowl enamelled with a boy chasing a butterfly, clear glass handle, inscribed 'Mrs Marshall 1894'. 3¼" high. (rim chips)
226. A pair of cranberry glass salts, with applied prints; another similar; a similar sugar bowl and a dimple bowl. (5)
227. A cranberry glass bottle vase, painted with flowers, 6¼" high; and a cranberry glass cream jug with clear glass handle. (2).
228. A 19thC Chinese blue and white ginger jar and cover, decorated with prunus blossom against a cracked ice ground, 10" high; a similar pair 6" high and a pair of baluster vases, with similar decoration, 7¼" high. (5)
229. A Victorian cranberry glass epergne, the dished base with frill edge, the central trumpet having clear glass print rim and with three baskets hung from scroll and twist branches. 20¼" high. Illustrated inside front cover.
230. A 19thC German porcelain table centrepiece, having a pierced basket encrusted with flowers, supported on a moulded two-part column with cornucopia branches, the rococo base with maiden and cherubs. 21¼" high. (AF).
231. A late 19thC Royal Crown Derby porcelain part dessert service, printed and painted with cherry blossom within moulded and gilt borders, comprising three serving dishes and five plates, pattern no. 3940.
232. A Ridgways pottery eel plate, printed with an image of Robert Burns, 4¼" diameter; together with a small plate decorated with cherries, 5" diameter. (2).
233. A Royal Doulton figure, 'Amanda', HN3635. 5½" high.
234. A Royal Doulton figure, 'Sentimental Greeting'. HN4250. 6" high.
235. A Royal Doulton figure, 'Welcome', HN 3764. 5¼" high.
236. A Royal Doulton figure, 'Joy', HN3875. 5¼" high.
237. A Royal Doulton figure, 'Harmony' HN4096. 6" high.

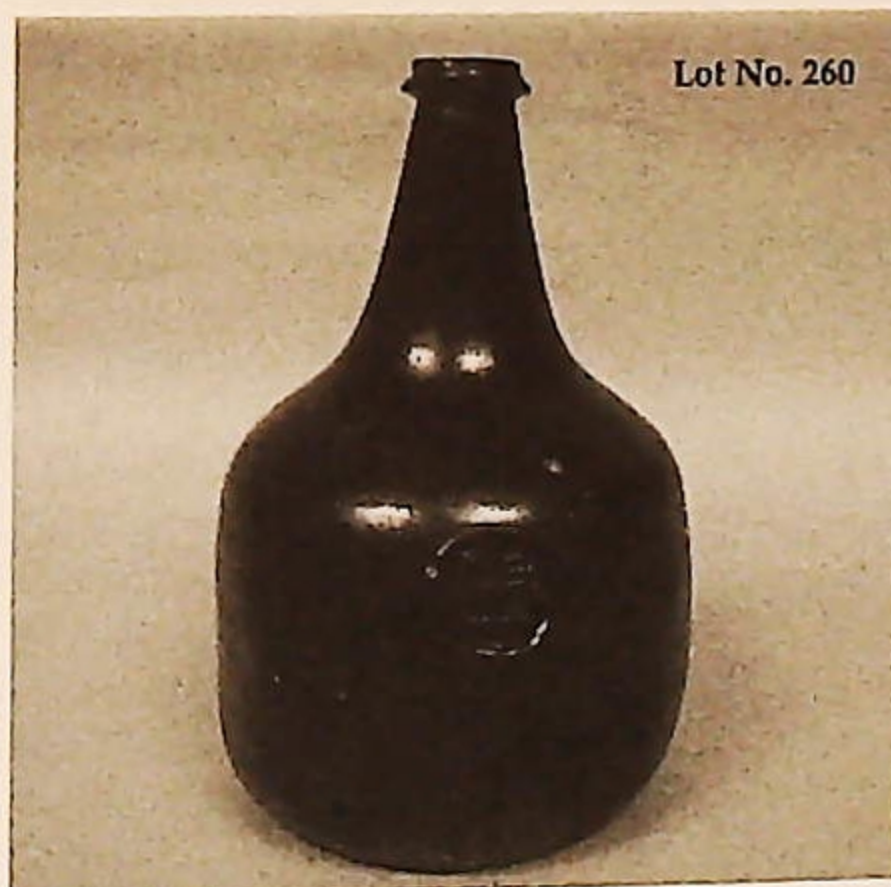


238. A Paragon bone china Art Deco 'Tea for Two' service, printed and polychrome painted with anemones, within green line rims, comprising tea pot, milk jug, sugar bowl, two cups and saucers and a biscuit plate.
239. A Royal Crown Derby vase, of shouldered ovoid shape, 'Old Imari' pattern 1120, 4½" high, modern.
240. A Royal Crown Derby 3-piece cruet set, 'Old Imari' pattern 1128, comprising salt and pepper shakers and a lidded mustard pot, modern.
- 240a. A Beswick Beatrix Potter figure, Mrs Tiggy Winkle, brown backstamp; and Benjamin Bunny (AF).
- 240b. A Beswick Beatrix Potter figure, Timmie Willie, brown backstamp.
- 240c. A Beswick Beatrix Potter figure, Mrs Tittlemouse, brown backstamp.
- 240d. A Beswick Beatrix Potter figure, Jemima Puddleduck, brown backstamp.
- 240e. A Beswick Beatrix Potter figure, Lady Mouse, brown backstamp.
241. A Border Fine Arts figure, The Last Look, limited edition 217/1250, no. BFA204.
242. A 19thC musical clock movement, with painted dial having theatre group to arch with moving figures over Roman hour numerals, Arabic minute numerals subsidiary seconds, date, fast/slow, chimes, subsidiary dials having a double fusee movement playing on 9 bells and having floral chased back plate. 8" wide 13" high.
243. A Copeland Spode's Italian biscuit barrel, with cover and raffia handle.
244. A pair of Bristol blue malt decanters, with stoppers.
245. An iridescent 2 colour glass vase, of cylindrical form having flared lip and engraved *Mdina* to base. 8" high.
246. A pair of Victorian green glass decanters, with enamelled floral decoration clear blown stoppers and loop handles. 11" high.
247. Three Art Deco jugs, by Bewley, Bursley and another.
248. A Slyvac Scottish Terrier, model 1207 and wrythn vase model 1307, both in green. (2).
249. A Carlton Ware bowl, moulded with pansies to the rim. 10" diameter.
250. A fine inlaid Edwardian rosewood miniature longcase clock, with white enamel dial having Roman numerals marked *F. ALDIS Pimlico*, with thermometer to trunk and aneroid barometer to base, 19" high. *Illustrated inside rear cover.*
251. A Carlton Ware floral moulded leaf pattern teapot and a Royal Doulton Tango pattern bachelor teapot. (2).



Lot No. 242

252. An electroplate 3-piece cruet, cased and an ivory ware egg cruet. (2).
253. Two boxed Dinky toys; forklift truck 401 and Euclid rear dump truck 965.
254. A Burleighware baluster vase by Bennett, having floral and parquet decoration, signed. 8" high.
255. A late 17thC. Dutch delft baluster vase, decorated in the oriental taste and marked 'K' to base, 7½" high. *Illustrated inside rear cover.*
256. A 19thC Chinese famille rose figure, standing holding a basket on a rocky base 8" high.
257. A pair of Georgian steel candle snuffers.
258. A cast iron openwork money box, in the form of a building marked 'CITY BANK'.
259. A Beswick model 127R jug, embossed with the palm tree and a green leaf salad dish.
260. An early 18thC. green glass wine bottle, onion shaped and having applied seal with a lion. 8" high.
261. A pair of 19thC Spanish terracotta figures, of men in traditional dress. 12" high. (AF).
262. A 19thC Chinese blue and white bulb pot, of lobed form. 9" high. (AF).
263. A Chinese carved bamboo tea canister, having figures birds and buildings in the relief. 7" high.
264. A Chinese carved openwork cylinder vase.
265. A Meiji period Satsuma figure, seated with a large censer on his head and shoulder. 10" high.
266. A German polychrome stoneware stein, ½ltr. with pewter mounts and tavern scene.
267. A Starkie's patent Negro head money box, polychrome painted cast and alloy.
268. A Grainger's Worcester pot pourri, having pierced cover to a bulbous body embellished in gilt and hand painted with goldfinches, on scrolling supports with a pierced openwork base. 7" high.





269. A pair of Grainger's Worcester cabinet plates, with reticulated borders heightened in pink and yellow, the centre ecru ground embellished with gilt trailing passion flowers, printed mark and year cypher for 1902. 9" diameter.



Lot No. 270



270. A 19thC Boulle tea caddy, premiere partie, with cast framework, 2 section fitted interior, 11" wide, 6" high.
271. After the Antique. Three bronze hand oil lanterns.
272. After the Antique. Two grotesque masks lantern holders and further pottery oil lamp.
273. After the Antique. A green patinated bronze plate, cast in relief with female mask and loop handle, 5" diameter.
274. A Japanese bronze dish, cast in relief with cranes, 4½" diameter; and a Jas. Dixon pewter goblet, 8".
275. A Victorian bone handled cork screw, with brush.
276. Various cork screws; including a Heeley's original patient "pullezi" and Sherry bottle spouts.
277. An interesting necklace, made up from linked seeds, probably Lotus.
278. A tin glazed earthenware charger, of polychrome decoration having a leaping bull to the to the centre field and various animals to the border marked verso a.v.b. DEGOMEZ, SEVILLA. 13" diameter.

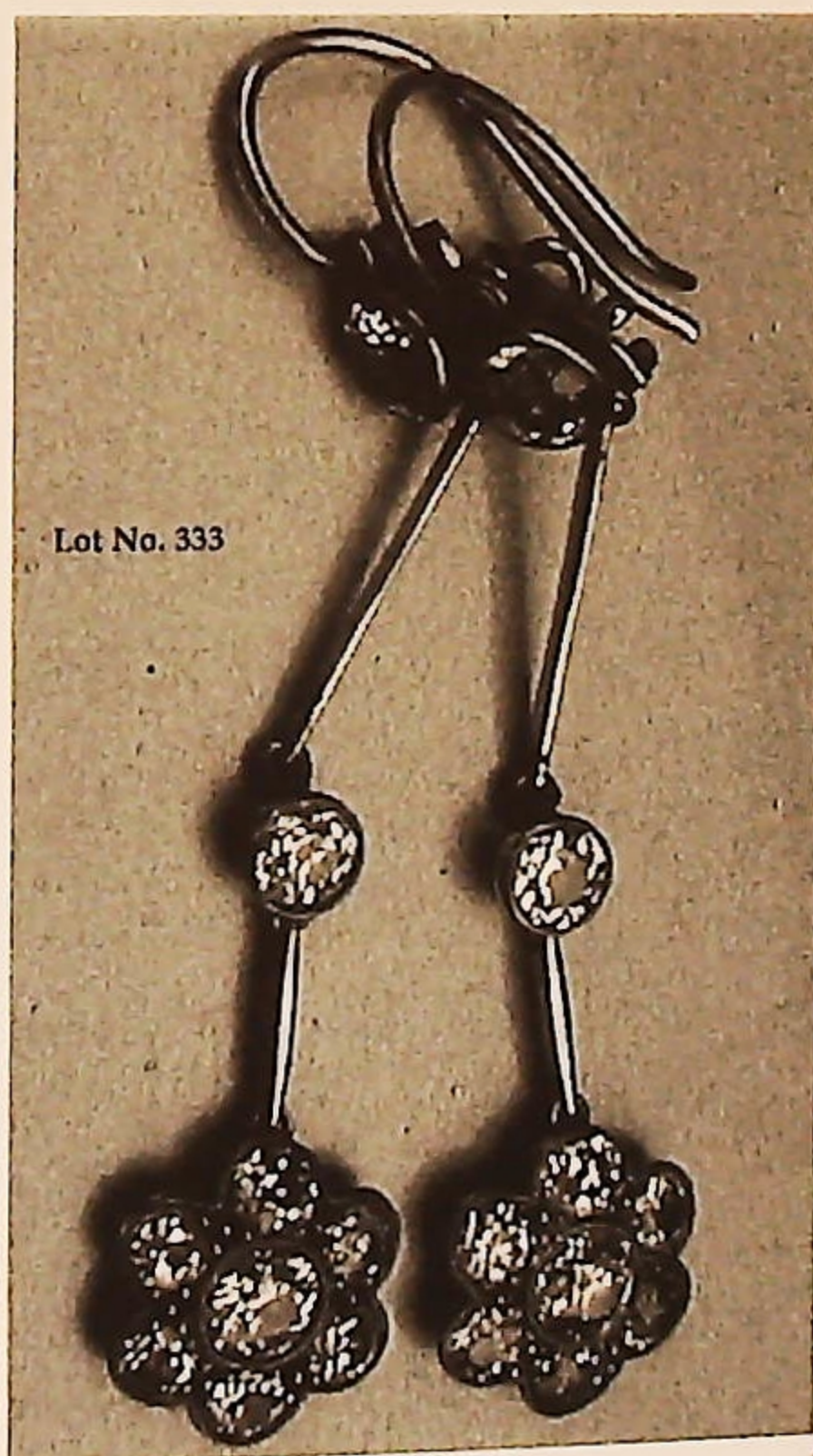
279. A Falconware Art Deco vase, of reeded taper form, mottled in orange, green and yellow. 8½" high.
280. A Willkinson Art Deco vase, in Memory Lane pattern, painted in vibrant orange, yellow and naturalistic colours. 8" high.
281. A Poole Delphis fruit bowl, orange ground and marked with CB monogram to base. 13½" diameter.
282. A hardwood knobstick, pair of hardwood masks and glove stretchers. (4).
283. An Edwardian rosewood table cabinet, with two marquetry doors revealing three internal drawers with pierced loop handles. 10" high, 11" wide.
284. An Art Nouveau beech wall plaque, having scratch carved and poker work decoration of a maiden in profile. 13½" diameter.
285. A leather whip, with 2 colour striped handle.
286. A Victorian Staffordshire figure of a fishwife, polychrome decoration. 12".
287. A Royal Doulton figure, Christine HN2792.
288. A Goldscheider figure of Elizabeth I, 8" high.
289. A Royal Doulton decanter, Sandimans Port.
290. An late 19thC American google eyed doll, with red velvet dress. 15" high.
291. A leather bound brass single pull telescope, inscribed W. Cass of Goole.
292. Four walking canes, including horn handled and silver banded examples.
293. A Celtic broadsword, with pierced basket handle and knotted grip, the reeded blade marked "ME FECIT A FERRIA", 36" long.
294. Books on Antiques, Jacksons hallmarks, Goddens British Pottery and Porcelain,, Slacks English Pressed Glass, Dictionary of British Artists 1888-1940. (4).
295. A Bundy II saxophone, modern, cased.
296. A cast iron miniature stove, marked 'THE ROSE No.1'. 16" wide, 12" deep, 24" high.
297. A set of 3 Victorian brass fire irons.
298. Three polished steel fire irons.
299. A Victorian mahogany writing slope, with raised ink and pen tray and part fitted interior.
300. The Webb miniature lawnmower for children.
301. A George V cut glass vase, with silver collar. London 1933. 8¼" high.



Lot No. 293

302. **A George V silver 3-piece tea set**, of rounded rectangular shape, repousse with flowers, and scrolls, vacant cartouches and gadroon rims, the tea pot with composition handle and finial. Birmingham 1911. *37 ozs gross.*
303. **A pair of George III silver Old English table spoons**, London 1813, engraved with initial B. 4ozs.
304. **A pair of small pickle forks**, with engraved lines and rococo scroll handles, stamped with makers mark only.
305. **A Victorian silver mustard**, with pierced circular body, plain domed cover, and scroll handle. Birmingham 1896.
306. **A pair of cut glass salts**, with silver collars, London 1911; together with another pair, Birmingham 1908; a white metal cinnamon caster and a cut glass unguent pot with silver collar, Birmingham 1902. (6)
307. **A George V silver mustard**, with rounded circular body, domed cover, loop handle and on scroll feet, together with a mustard spoon, Birmingham 1918; a glass hat pin bottle with silver cover, 7", and a butter knife with ivory handle, Birmingham 1842. (4).
308. **A George V cut glass sugar castor**, with pierced silver cover. London 1936. *5½" high.*
309. **Lead figures**; Britain's farmyard animals, figures, horses and implements.
310. **Dinky toys**; all unboxed and some a/f, viz. Dodge tipper, Leyland Royal Tiger, Aveling Barford Road Roller, Blaw Knox Bulldozer, Foden 8-wheel and another.
311. **A Battersby & Co commemorative paper weight.**
312. **Four rectangular paper weights**, with sea side photographs inset and another of Whitby Abbey.
313. **Four circular glass paperweights**, with photographic inserts.
314. **A Chinese famille rose two handled libation cup.**
315. **Three oriental carved miniature ivory figures**, of an elephant, lion and a fisherman.
316. **A yellow metal pendant**, set with an ivory plaque of a mans head.
317. **A crucifix**, possibly made of salt or gypsum beads, threaded on yellow metal.
318. **A 9ct rose gold swivel fob**, set one side with carnelian and the other with bloodstone agate. Birmingham 1900; together with a silver gilt buckle and an oval yellow metal green stone set brooch. (3).
319. **A Wade whimsie shire horse**, from the farmyard set, 1959, No. 10.
320. **19thC School. Portrait miniature** of a young man watercolour mounted in an oval metal frame.
321. **An Edwardian cranberry glass scent bottle**, of cylinder form having floral chased silver top. Maker CM. Birmingham 1904.
322. **Five George III silver teaspoons.** Maker HS. London 1804.
323. **A pair of George V silver cauldron salts.** Birmingham 1917. and associated spoons.
324. **A Victorian silver cased scent bottle**, of cylinder form, having floral chased decoration. London 1884.

325. Two Victorian travelling inkwells.
326. A brooch, two Japanese fans, crossed, in white metal with enamelled decoration.
327. A white metal shield shaped brooch, set with multi coloured stones.
328. A cranberry glass miniature cornucopia perfume bottle, with cut decoration and white metal caps and chain.
329. A brooch, a painted porcelain plaque of a naked woman, set in white metal.
330. A small brooch, in the form of a rat set with turquoise stones, stamped 15ct.
- 330A. A Lady's stone set dress ring, a central oval flat topped ruby with faceted base in rub over setting in yellow metal to white metal shoulders, set with 6 small diamonds on a yellow metal shank, stamped 18ct & PLAT.
- 330B. A quantity of jet and other black bar brooches.
- 330C. A Victorian jet style cameo brooch, and another.
- 330D. A Victorian jet style cameo brooch, and another.
- 330E. A Victorian jet style cameo brooch, and another.
331. An Art Deco stone set yellow metal cocktail watch.
332. A pink metal arm bangle, plain hollow, stamped 9ct. maker S & P weight 10.4 gms.
333. A pair of Victorian diamond set pendant ear-rings, each one a single diamond of 0.25ct, surrounded by six diamonds of 0.10ct, set in mille grain flower form white metal settings, below a bar, then a single mille grain set diamond of 0.16ct, below a bar, then a single mill grain set diamond of 0.25ct to french ear-wires. Total mounted estimated weight of stones 2.52ct.
334. A marquise shaped brooch, with faux opal set in yellow metal stamped 9ct.
335. A 9ct gold Edwardian memorial brooch, marquise shape set centrally with a small pink stone flanked by seed pearls, reverse glass missing, Chester 1904.



336. **A Masonic symbol ball fob**, in yellow metal with white metal interior on a ribbon strap with swivel, stamped 9ct.
337. **A graduated curb link Albert** with swivel in rose colour metal stamped 9c. weight 38.4gms
338. **A Victorian bangle**, twisted rope borders with small diamond set in ribbon wrap to front. stamped 15ct.
339. **An 18ct gold open faced pocket watch**, by T. Gibson Poole, Middlesbrough, white dial, Roman numerals, sweep second hand. bezel wind. London 1909
340. **A 9ct gold engine turned cigarette case**, 11.5cm x 8 cms. Birmingham 1930
341. **An 18ct embossed gypsy style stone set ring**, set with 3 pale blue sapphires and 4 tiny white stones. Chester 1904
342. **An opal and diamond cluster ring**, a central opal of 11mm x 9.5mm with good play of blue and green flashes, surrounded by 12 old brilliant cut diamonds of approx. 0.20ct each, set in yellow and white metal to yellow metal shank. Total mounted estimated weight of diamonds 2.4cts. Total weight all in. 7 gms.
343. **2 white stone set stick pins**, in yellow metal
344. **A 9ct gold Masonic medal & another**
345. **Three yellow metal gentleman's signet rings**
346. **Three wedding bands**, various grades.
347. **Two eternity rings**, in white metal with white stones.
348. **2 rings**, 1 - 22ct, 1 - 18ct, stones missing.
349. **A sapphire and white set cluster ring**, in 9ct gold.
350. **6 full sovereigns**, 1907, 1896, 1901, 1903, 1908, 1905.
351. **6 - 1/2 sovereigns**, 1909, 1912, 1906, 1908, 1912, 1913.
352. **A piece of raw Australian opal**, as a pendant.
353. **A box link long chain**, 54cms in length with swivel stamped 9, weight 19.6 gms
354. **A diamond eternity ring**, in white metal, 19 stones of 0.10cts each. Total mounted weight 1.9cts.
355. **A Chinese imperial blue and white porcelain snuff bottle**, in the form of a miniature urn, jade stopper.
356. **A signed Japanese blackwood netsuke**, egg-shaped study of a three-clawed dragon coiled within its own smoke clouds.
357. **A signed Japanese fruitwood netsuke**, a study of a mythological evil horned Oni.
358. **A signed Japanese ivory netsuke**, study of the fat Buddhist Monk Hoti.
359. **A signed Japanese ivory netsuke**, a study of a young pretty Geisha standing combing her long hair.
360. **A signed Japanese ivory netsuke**, in the form of a picture scroll depicting Daruma being rightened by a large spider.
361. **A signed Japanese ivory netsuke**, a study of a village hunter armed with bow and arrows knelt picking up a large hare.

362. A Japanese black roiro lacquer three case inro, decorated with mother of pearl, gold and silver, corded dark silk. Its ojimi bead as a tiny owl, and mounted with a mother of pearl ball netsuke.
363. A Victorian shell cameo brooch, depicting Neptune. 5cm x 3.75cm.
364. A Victorian brooch, set with the portrait of a lady.
365. A Victorian shell cameo brooch, in an oval yellow metal mount with double rope twist edge of a kneeling woman feeding a large eagle like bird, 5cms x 4.5cms. (some damage).
366. A large Victorian shell cameo, set in an ornate yellow metal frame, a country squire and lady in woodland. 4½ cms x 3½cms.
367. A Victorian shell cameo brooch, a carved male head, possibly Prince Albert, set in rose colour metal, stamped 9c.
368. A Victorian shell cameo brooch, in scrolled yellow metal frame, lady's head 4½cms x 3cms.
369. A Victorian shell cameo brooch, a finely carved lady's head adorned with roses in a silver mount. 4cms x 3cms.
370. A diamond and emerald cluster ring, with an oval central emerald of 6.6mm x 6.2mm surrounded by 14 diamonds, surrounded by 14 emeralds in a basket style setting to a 5 band shoulder shank, all in yellow metal.
371. A ladies stone set cluster ring, a central oval ruby 5mm x 4mm surrounded by 12 small diamonds to 18ct yellow gold shank, hallmark rubbed.
372. An opal ring, the oval opal as a carved scarab 12mm x 9mm in a yellow metal setting to yellow metal shank stamped 18ct.
373. An Edwardian marcasite set white metal ladies fob watch, stamped 935, a bow brooch then looped chain supporting the watch with floral motif cover.
374. Portrait miniature of Napoleon, half-length, in uniform, oval 3¼" gilt metal frame.
375. A double strand pearl necklace, of approx. 119 dark cream pearls, all 7mm with a garnet and pearl clasp in yellow metal.
376. A ladies 9ct gold Rotary bracelet watch, the oval champagne dial having gold batons and hands, close link bracelet.
377. A diamond set white metal bracelet, the chevron links dividing with 6 brilliant cut diamonds claw set on tablets set between, tongue and clip clasp.
378. A pair of ornate filigree Indian ear-rings, set with small red and green stones in yellow metal.



379. **A rose colour metal longuard**, faceted belcher link with spaced faceted beads, with swivel attached, *length 144cms, weight 27.5 gms.*
380. **A graduated link rose gold Albert**, with swivel either end, marked 9, 375, *length 42cms, weight 29gms.*
381. **A rose gold curb link Albert**, stamped 9c with T bar and swivels, *length 40cms, weight 26gms.*
382. **A French jet (glass) bead necklace**, 3 strands of graduated faceted beads
383. **A brooch**, of leaf form, the wire work plain and twisted outline set abstractly with 24 small rubies, approx. total mounted weight 1.2cts setting stamped 750. Total weight 13gms.
384. **A Victorian yellow metal brooch**, of two joined bunches of grapes.
385. **A Victorian oval yellow metal faced locket**, with scalloped edge, engine turned decoration and vacant cartouche to front, *4½cms x 4cms.*
386. **A brooch**, in the form of a scorpion, the body being set with variously coloured garnets (5) set in white metal, *2½" long.*
387. **A diamond half hoop ring**, set with 5 stones.
388. **An early 20thC mid-size yellow metal wrist watch**, on narrow leather strap and a ladies rolled gold bracelet watch.
389. **An open faced 9ct gold cased pocket watch**, by Bell Bros. of Doncaster, with chain. (AF).
390. **A white metal arm band**, a plaited bodied snake gripping its tail in its mouth with pink stone set eyes.
391. **A tie or stock pin**, in 9ct rose gold, with an applied yellow gold fox's head, cased.
392. **A bar brooch**, in yellow metal set with a central flat cabachon opal *15mm x 8mm* flanked by 2 diamonds of approx. *0.60pts* each. Total estimated mounted weight of diamonds *1.20 cts.*
393. **A tie-pin and cufflink set**, typical 1970's design, each part being a pearl set on the flight of an arrow, in yellow metal stamped 18K.
394. **A wheel brooch**, in 18ct yellow gold with 8 blue enamelled spokes to blue sapphire set floral motifs forming the rim, from a star shaped diamond set centre, centre diamond of approx. *0.20ct.*
395. **A 19thC German brass stamp box** and brass cylindrical money box.
396. **A pair of George III silver cauldron salts**. London assay, rubbed marks.
397. **An Edwardian silver butter dish**, of shell form with knife. Maker JD & WD. Sheffield 1901.
398. **A George III silver caddy spoon**, with bright cut decoration to the fiddle pattern handle and shaped rectangular bowl. Maker IB. Birmingham 1820.
399. **An Edwardian silver bonbon dish**, of oval form with pierced diaper work panels and repousse floral and rococo scrolls. Chester assay, rubbed marks.
400. **A Victorian silver bonbon dish**, of scalloped circular form having pierced diaper work panels and repousse decorated scrolls, shells and fruit panels. Birmingham 1897. *4" diameter.*

- 400A. A Swan self-filler fountain pen and pencil set, in cream, with a red leather fitted case.
- 400B. Three 19thc portrait photographs, framed.
- 400C. A Royal Doulton figure, Carrie, HN2800, 6" high.
- 400D. A Royal Worcester miniature loving cup, blush ground with rosebuds, year cypher 1912.
401. A small silver bowl. London 1940; and silver thimble. Birmingham 1925. (2).
402. An Edwardian silver pepperette, of waisted part gadrooned form. Birmingham 1907.
403. A George VI silver butter dish, of canted square form. Maker Walker & Hall. Sheffield 1939.
404. An early 19thC painted tin nutmeg grater and an oval snuff box. (2).
405. A Victorian travelling inkwell and turned mahogany box. (2).
406. A George V cased presentation of fish knife and serving spoon, with chased decoration. Maker TL. Sheffield 1915.
407. A Georgian style silver box, with enamel inset top depicting a Moorland pony. Maker SJR. Birmingham 1970; and a continental circular pillbox embossed with cherubs. (2)
408. A George V silver dish of oval pierced form. Maker S & Co. Birmingham 1915; and a circular silver pillbox. Maker EK. London 1936. (2)
409. A Victorian silver mustard, of oval openwork scrolling form with concave reeded cover and blue glass liner. Maker S* & WS. Sheffield 1896.
410. A George V silver trinket box, of circular form with repousse hinged cover and three scroll feet. Maker W&S. Birmingham assay, rubbed marks. 2½" diameter.
411. An Edwardian silver spill vase. Birmingham 1909; oval silver topped trinket dish and a Dunhill bark effect lighter (3).
412. An Edwardian silver easel photograph frame, of Art Nouveau design embossed with a songbird, oak backed. Birmingham 1904. 7" high.
413. A George V silver easel photograph frame, of plain rectangular form. Birmingham 1915. 6" high.
414. A George IV silver basting spoon, fiddle pattern. Maker RB. London 1826.
415. A pair of George III silver spoons, with later chased and embossed fruit decoration, having gilded bowls and presentation case. Maker IB. London 1807.
416. A George V silver serving dish, of oval form with nulled rim. Maker JR. Sheffield 1912. 12". 14 oz.
417. A Victorian silver trophy cup, inscribed R.P.C.Y.C. Billiard Cup H.C.Pincent 1927-1928. London 1897. 12" high. 20 oz.
418. A Victorian gilt brass sovereign balance and two pairs of wig spectacles.
419. A set of 12 gilt coffee spoons, fitted in a satin lined case by Christofle and Cie Paris.
420. Two pairs of German silver handled cutlery, in a satin lined case by Ohlenschlager & Riemann of Frankfurt.



421. **A Victorian silver dessert fork**, Birmingham 1856, with pierced and engraved tines and hallow cast and scroll and foliate handle, by Hilliard and Thomason; together with another example, London 1875 and a tea knife Sheffield 1922. (3).
422. **A Set of 6 Victorian silver and ivory dessert knives and forks**, the handles moulded with crown finials, Sheffield 1838.
423. **A Russian silver preserve spoon**, stamped 84 standard, 19thC. with engraved outer bowl and turned handle.
424. **An Art Deco chromium plated mantel clock**, with Arabic numerals and concentric ball time indicators, 6" wide, 4" high.
425. **An Art Deco silver backed dressing table set**, 6 pieces. Birmingham assay.
426. **A pair of Chinese silk purses**, with silver and gold threadwork design.
427. **A group lot**, comprising miniature domino set, Russian dolls, snuff box, etc.
428. **A McGill University Montreal medal** awarded for Applied Sciences with relief moulded bust of James Watt and Laurel wreath on reverse, cased.
429. **Coins**: 1819, 1822 & 1894 crowns; Nottingham School Medal; silver football medal C.C.F.C. 1900/1. (5)
430. **Coins**. 10M 1970 proof crown and various, also various Tokens viz, Thomas Tunnel 1843, Lincolnshire Wool Trade 1812, Nottingham and Birmingham.
431. **Fountain Pens**, including Parker and Waterman examples.
432. **A Victorian bloomed gold brooch and ear-ring suite**, navette shape brooch and round flower head earrings, each set with a single garnet, cased.
433. **Two Edwardian brooches**, set with seed pearls; one yellow metal stamped 9ct, the other rose gold; 2 further lockets. (4)
434. **A gold wedding band** and 2 other rings.
435. **A set of 6 Victorian silver coffee spoons**, rat tail. Birmingham 1897.
436. **Two late 19thC Dutch silver caddy spoons**, with embossed decoration.
437. **A fine pair of Victorian dessert cutlery**, silver handled.
438. **A pierced bon-bon dish**, marked Sterling; 2 salts and 5 salt spoons (3 silver). (8)
439. **A George V silver 4 piece teaset**, of circular bellied shape with cast harebell rims, the jug and teapot having composition handles. Birmingham 1933. 54oz all in.
440. **A Gallia Art Nouveau 2 bottle cruet**, with crystal bottles and a cast pewter stand marked 4463 O. GALLIA.

441. **Football: England v Scotland ticket 1947**, Grantham Football Club Ltd Share Certificate, magazine photograph of Notts County Football Club 1926-1927 and a magazine photograph of Notts County Cricket Championship Team 1929.
442. **Cigarette cards**, 2 albums.
443. **Jessie M. King**. The Grey City of the North, (AF).
444. **Lithographed Cards**, various subjects and makers.
445. **Four lithographed articulated animals by Raphael Tuck**, being The Common Fox (2), The Leopard (26), The Horse (4) & Polar Bear (24).
446. **A Victorian hand painted greeting card**, in the form of a Louise XV screen.
447. **A Victorian lithographed Christmas card**, embossed with a lady riding a bicycle entitled "*Riding the high horse*".
448. **Two Victorian lithographed Christmas cards**, one articulated, the other *God Bless*.
449. **A lithograph and gilt "forget me not" card**.
450. **A Victorian lithograph card**, in the form of an embossed bunch of flowers revealing a fan.
451. **A Victorian lithograph card**, articulated, revealing the word "*Friendship*".
452. **A Victorian lithograph card**, marked "*Love consumes my Heart*".
453. **A Victorian lithograph card**, marked "*Truly thine*".
454. **A Victorian lithograph card**, marked "*Health Peace and Plenty*".
455. **Victorian and later lithograph greetings cards**. (8).
456. **Three Louis Wain illustrated lithograph Christmas cards**, by Raphael Tuck.
457. **A Victorian Fan**, a painted scene to the front of lover and his lass in a rose garden by a pond, gilt highlights, the reverse painted with a landscape, mother of pearl sticks with gilt highlights, yellow metal end sticks pierced and engraved and set with purple stones and enamelled oval tablet, (one stick broken), 8" stick length.





458. A Victorian fan, mother of pearl sticks, overlayed with cutwork lace, stick length 9".

459. A Late Victorian fan, amber celluloid sticks overlaid with fine lace, stick length 8".

460. An early 20thC Cuban fan, printed with a bull fighting scene and with wooden sticks, stamped Recuereo, and with hand written text and signatures on the back relating to Cuban life.

461. 19thC English School. 'Taking a Tumble' hunting scene, watercolour on buff paper, 5 1/4" x 7 1/4".

462. After Bartolozzi. A young girl with infant in a landscape, conte' print, circle, 5" diameter.

463. 20thC School. Portrait of a gypsy, oil on canvas, 12" x 8", oak framed.



464. Mark Huskinson & Christopher Curtis (20thC). 'The Country Seat', illus. Huskinson & Rose by Curtis, wash/pen/ink/body colour on buff paper, signed and dated 1984, 15" x 11 1/4".

465. Tatton-Winter 1855-1928. Figures in a hilly landscape, watercolour, bears signature bottom right, 6 3/4" x 9 1/2"

466. Christine A. Woodley. Naturalistic watercolour studies, (3)

467. After Cecil Aldin, Lawson Wood. A mixed lot comprising 3 colour hunting prints, golfing & fishing etc. (6)

468. 19thC School. Landscape, with donkey drover, oil on panel 7" x 9", further oil of a bird in the snow. (2).

469. After Lionel Edwards. 'Quorn 1934', reproduction colour print, signed in pencil lower left, image size 12 1/4" x 24".

470. After Lionel Edwards. Hunters over a drystone wall in moorland landscape, reproduction colour print, limited edition 20/500, pub. by the Tryon Gallery, c.1978, image size 13 1/2" x 21 1/2".

471. * **Earp**. Extensive lakeland view with fisherfolk, moored boats, mountains beyond, watercolour on paper, signed Earp lower right, 9" x 18½".
472. **Cyril Aynstey (19thC)**. 'Fisherman's Cottage, Westmorland Coast' watercolour on paper, signed Cyril Aynstey bottom left, also title and signature verso, 9¼" x 13½".
473. **A C Pettit**. 'After the Storm, Cayton Bay, Yorks' watercolour on paper, signed lower left A A C Pettitt 1902. 11" x 16".
474. **Roy Turlington (20thC)**. Swans, mixed media, framed.
475. **After Rembrandt**. The Money Lender, engraving, pub by Boydell, c.1776. 19¼" x 17".
476. Spare lot
477. Spare lot
478. **After Ladell**. Still Life - Fruit and Flowers, chromolithograph for Pears, framed.
479. **After Havell**. Pheasant Shooting & Partridge Shooting, a pair of colour engraving, plate size, 11" x 14", framed
480. **20thC School**. An Australian outback landscape, oil on board, 12" x 17".
481. **D. MacLise**. Portrait of a young mother with young boy and babe in arms, view over the field of battle from a mountain cave, oil on canvas, signed D. MacLise 1879 bottom left, 30" x 24", gilt frame. *Illustrated inside front cover.*
482. **G W Allinson**. Point to Point, watercolour, signed GW Allinson 1933 bottom right, 14" x 20", framed.
483. **Campbell Taylor, After**. Interior Scene, colour point with Fine Art Trade Guild blind stamp, signed in pencil, plate size 13" x 15".
484. **P.M. Pearce**. Landscapes, a pair, watercolours, signed P M Pearce, one dated 1938. 11" x 14".
485. **J W Morris (Style of)**. Sheep in landscape, oil on canvas, 18" x 14".
486. **H. Buckner**. Still Life, game fruit and flowers on a table, on canvas, 28" x 36".
487. **R A Gardner**. Landscape, watercolour, signed R. A. Gardner 1923 bottom left, 10" x 14", framed.
488. **Mark Huskinson**. Belvoir Kennels, mixed media, on paper, signed and dated 1982. 17" x 24", framed.
489. **Mark Huskinson**. Duke of Rutland's Hounds, mixed media, on paper, 18" x 21" framed.
490. **19thC School**. Interior scene with seated gentleman with lady in attendance, oil on canvas, 28" x 24", gilt frame.
491. **George Smith Armfield**. Cottage interior with terriers, with a caged rabbit, oil on canvas, signed bottom right, 9" x 12", (re-lined), ornate gilt frame. *Illustrated on front cover.*
492. **E Lara (19thC)**. Fishing boats in a Choppy Sea and Boats off the Coast, a pair, oil on canvas, signed bottom left, 16¼" x 24".
493. **F. Cowrert (?)**. Interior scene with a cavalier wooing his lady by the piano, oil on canvas, bears signature bottom left, 9" x 11", gilt frame.
494. **A Victorian woolwork picture**, of a 3 mast battleship, 20" x 24", maple framed.



495. *****ington (19thC. Naive School).** Portrait of a young girl holding a cat, oil on canvas, 25" x 20", unframed.

496. **19thC School.** Winter Landscape with a figure on a path by a thatched cottage, oil on canvas, 30" x 24", gilt framed.

497. **After Archibald Thorburn.** View across marshlands, colour print, signed in pencil.

498. **Kalifa.** Portrait of a nude statue, watercolour, 24" x 11", framed.

499. **After Lionel Edwards.** 'Cottesmore Hunt, 1964', reproduction colour print, signed in pencil, image size 14 1/4" x 19 1/2". (slightly foxed).

500. **G Breanski.** Cader Idris, North Wales, a mountainous landscape with watering cattle, oil on canvas, signed Breanski bottom right, 24" x 42", moulded gilt frame. *Illustrated inside front cover.*

501. **Richard Robjent.** Study of a birds wing and a hand, sepia wash, signed bottom right, 6" x 5", framed.

502. **Fanny Moody,** portrait of a startled cat, oil on board signed , 6 1/2" x 4 1/2", gilt framed.

503. **M. *uginson.** Harvest scene, oil on canvas laid to board, signed bottom left, 5" x 9", modern gilt frame.

504. **A Victorian silhouette of a young boy,** wearing a top hat and holding a fire cracker, 4 1/2" x 3", mahogany framed.

505. **Day & Son (lithographers).** A series of 7 Crimea War scenes, 5" x 7", mounted.

506. **Edward Stanford.** A wall map coloured with the county boundaries and hunt areas of Notts, Lincs, Leics, Hunts, Rutland. 55" x 50".

507. **Alan Waters.** A series of 7 mixed media block wallpieces, various sizes

508. **Alan Waters.** Abstract, oil and acrylic on canvas, 24" x 16", unframed.

509. **Alan Waters.** A series of 4 mixed media block wallpieces, various sizes

510. **A 19thC portrait miniature of a lady,** coloured engraving, in laurel gilt metal frame, leather case.

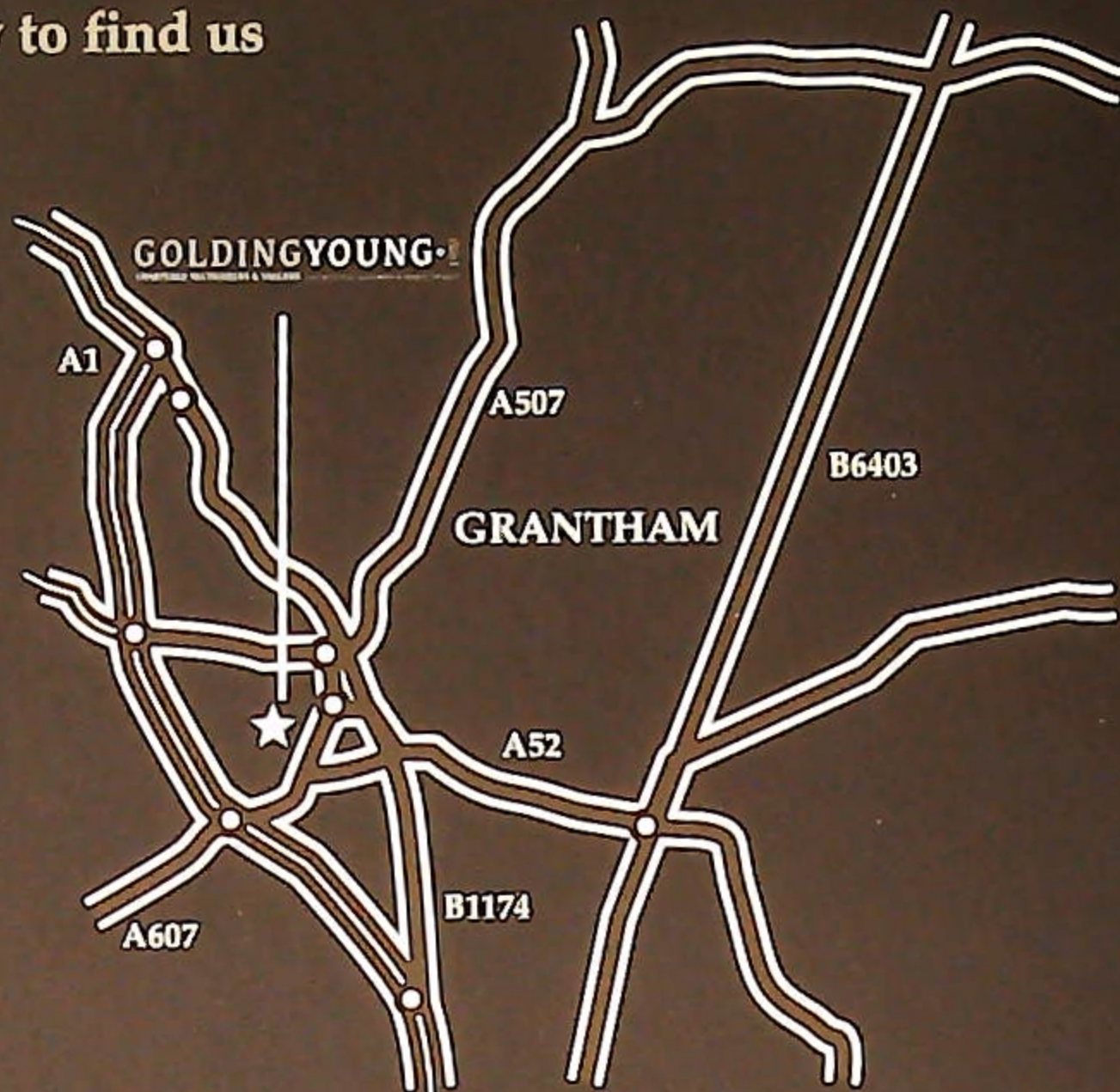
511. **Kramer.** Portrait of bearded gentleman, pencil, bears signature Kramer 1916 bottom right. 10" x 8".

CONDITIONS OF SALE

1. These Conditions together with any Notices to Purchasers are the only terms and conditions subject to which Golding Young & Co ("the Auctioneers"), as agents for the Vendor will sell goods to a purchaser ("the Bidder") and all other conditions, whether express, or implied at common law or by statute as are capable of lawful exclusion are hereby excluded.
2. The highest bidder shall be the buyer. The Auctioneers reserve the right of regulating the biddings; of rejecting any bid; and of bidding for, withdrawing, consolidating, dividing or altering the order of lots.
3. The purchase money for each lot with the usual commission of 15% (with a minimum of £1 per lot) plus VAT at the current rate shall be paid at the fall of the hammer (if required). Each lot at the fall of the hammer shall be at the sole risk and expense of the buyer, and shall be paid for and removed immediately after the conclusion of the sale, but no lot shall become the property of the buyer, or be removable until paid for, and if taken away in contravention of these conditions without an order for removal signed by the Auctioneers, they shall have power to seize the same by their servants or agents, or otherwise, or the Auctioneers may recover either the lot sold or the price thereof (at their option) by action at law.
4. No contra account of any description whatever will be allowed to the buyer as a set off, and payment for each Lot shall be made to the Auctioneers or their clerk only, and a buyer paying by cheque must give satisfactory references.
5. For all purposes of this sale the Clerk of the Auctioneers shall be deemed to be the agent of both seller and buyer.
6. A bidder shall not be allowed to retract his bidding after the fall of the hammer, and he shall give up his full name and address if required. The Auctioneers will not recognise the transfer of any lot from one buyer to another, nor make any alteration in the sale book in respect thereof.
7. The Auctioneers are acting only as agents, and give no personal warranty as to the condition, quality or authenticity of any chattels offered for Auction. Any catalogue description is given merely as guide to purchasers, any description can be changed from the rostrum before the lot is sold. If a purchaser buys without previous inspection he will do so at his own risk.
8. Notwithstanding any other terms in these Conditions, if within 7 days of the Sale a purchaser gives notice in writing that a lot is a deliberate forgery, with supporting factual evidence, the Auctioneers may rescind the transaction. The burden of factual proof lies with purchaser, mere opinions will not satisfy. This benefit is not assignable.
9. If any buyer neglect or refuse to comply with the above conditions or any of them, his deposit money (if any) shall be forfeited, and the lot uncleared may, at the option of the Auctioneers, be resold without notice by public auction or private treaty, and any loss occasioned by such re-sale together with all expenses attendant thereon, or arising under these conditions shall be paid for by the defaulter and be recoverable as and for liquidated damages. This condition is however without prejudice to the right of the Auctioneers to enforce the contract made at this sale if they think fit.
10. Any Notes for Purchasers and Catalogue Glossaries will be construed as Conditions of Sale.
11. The Auctioneers shall be the sole Arbitrators in all matters of dispute relating to those conditions both as between the seller and the buyer and between the several bidders and buyers and their determination on all matters shall be final and binding on all parties concerned.



How to find us



By Road

From whichever direction you approach Grantham, you can find us if you observe the following rules: Follow signs for Town Centre. Follow signs for Railway Station. At the roundabout leading to "Station Road", continue around to a double viaduct/ railway bridge. Take the right hand arch which leads into Old Wharf Road.

The Salerooms are the first building on the right. There are parking and loading bays in front of the premises.

By Train

The auction house is situated very closely to the Railway Station, which is served by the East Coast Main Line. Trains run approximately every 20 minutes from Kings Cross on Sale Day.

GOLDINGYOUNG

CHARTERED AUCTIONEERS & VALUERS Commercial Asset Agents • Arts & Antiques Surveyors

Golding Young & Co., Old Wharf Road, Grantham, Lincolnshire NG31 7AA

Telephone: 01476 565118 Fax: 01476 561475 Email: enquiries@goldingyoung.com