

Established 1900

-GOLDINGS-

— AUCTIONEERS & VALUERS —

Upon instructions from various individuals including the collection of the late Eric Lane of Boston

Golding Young & Co will sell by Auction a catalogued sale of

**MODERN SPORTING GUNS
ANTIQUE ARMS & MILITARIA
& ASSOCIATED ITEMS**

On Saturday 19th June 1999 at 11 am

Including 2 Holland & Holland Royal sidelock ejectors, 12 bores by Jeffrey, Midland, etc.,
4 bores by Towl and Tolley, hammer guns by Collings and Wallis, etc.



Followed at 1 pm by a sale of modern

COLLECTORS ITEMS

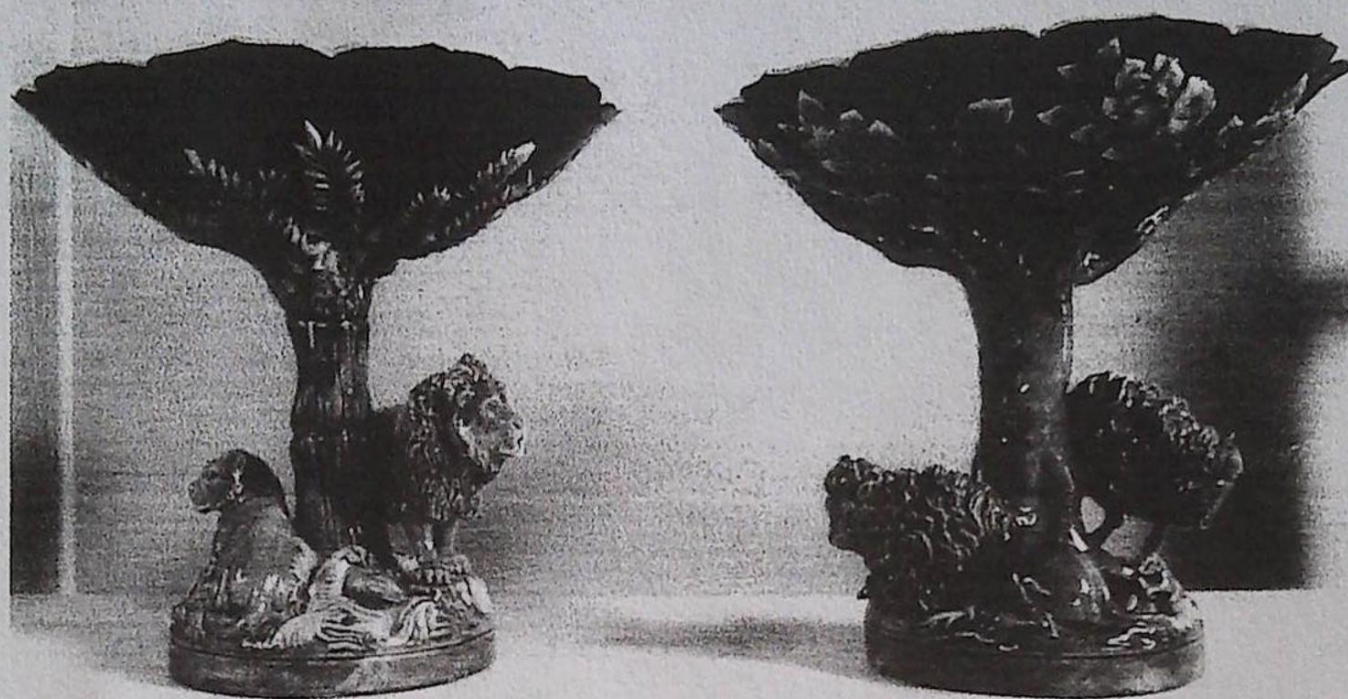
Including Die-cast model cars, Bells whisky commemorative bottles, Franklin Mint items,
300 lots of Cigarette and Tea Cards, 20thC pottery, etc.

Viewing: Friday, 18th 2 pm - 7 pm & Saleday from 9 am

Golding Young & Co., Old Wharf Road, Grantham, Lincolnshire, NG31 7AA
Tel 01476 565118 Fax 01476 561475

Established 1900
-GOLDINGS-
AUCTIONEERS & VALUERS

Antiques Valuation Services



Two George Jones Majolica Centers - Sold for £17,000

FREE AUCTION VALUATIONS

Entries now invited for our forthcoming Fine Art and Specialist Sales of

Antique and later Furniture
European and Oriental Pottery, Porcelain and Glass
Oil paintings, Watercolours and Prints
Books and Printed Items
Dolls, Teddy Bears, Die-cast, Tinsplate and other Toys
Silver, Sheffield and Electro Platedwares
Clocks, Watches & Jewellery
Modern Sporting Guns, Antique Arms & Militaria
Collectors' Items

Our valuer Colin Young FNAVA is available for consultation
Every Tuesday 2pm to 6pm in the Saleroom

For appointments at other times contact Marie Scofield on 01476 565118

*For less portable items or large collections we would be pleased to visit your home
without charge or obligation*

Specialists in the preparation of Insurance and Probate Valuations

IMPORTANT NOTES FOR PURCHASERS

1. **PAYMENT:** Must be made in full immediately after the Auction. The following methods of payment are acceptable.

a) Cash b) Bankers Draft c) Building Society Cheque
d) Cheques, accompanied by a valid card.

PAYING BY CHEQUE?

If you are not known to the Auctioneers and wish to pay by cheque above your guarantee card limit **WE WILL RETAIN THE GOODS** until it has been cleared (7 days). There will be **NO EXCEPTIONS** to our policy. To avoid **UNDUE EMBARRASSMENT** for yourself or to our staff please do not ask for preferential treatment. If you wish to clear goods immediately bring a letter from your Bank or a suitable guarantor reference.

2. **BUYERS PREMIUM:** of 12½% + VAT is payable on all lots.
3. **REMOVAL OF PURCHASES:** Goods must be collected as soon as they are paid for, and in the Two Working Days following the sale. If goods are not collected on these days we reserve the right to charge £1 per lot per day thereafter.
4. **COMMISSION BIDS:** If you are unable to attend this or any of our future sales we will be pleased to bid on your behalf. We always purchase at the lowest possible price, subject to other bids and reserves.
- All bids must be handed to the office on an official form. It remains the responsibility of prospective purchasers to contact **GOLDINGS** to confirm whether their bids have been successful.
5. **TELEPHONE BIDS:** There are inherent dangers with this practice, therefore all such arrangements are made entirely at the bidder's risk. Telephone bids will only be accepted if the lower estimate is £500 or above. For lots with a lower estimate below this figure Commission Bids Only will be accepted.
5. **SMOKING:** is not permitted in any part of the Saleroom.
6. **REFRESHMENTS:** will be available Saleday.
7. **ACCOUNT TRANSFERS:** will not be recognised after the sale. If any lots are purchased for another person, this must be declared at the fall of the hammer.
8. **ESTIMATES:** Our Auctioneers will be available during viewing to give guidance on your prospective purchases

GLOSSARY

- a) Generally: 'As Found.' (AF). This term indicates the lot has some damage. Its absence does not indicate that the lot is free of defect. All lots are **SOLD AS SEEN**.
- b) Paintings: 'Signed, initialled, monogrammed' This refers to the present state of the work and is not an attribution.
- c) Books and printed matter: These items are not sold subject to collation and are not returnable once removed from the premises.
- d) Silver & Jewellery: Weights given are approximations given by basic instruments.

1. Steel 6-gun Cabinet with keys.
2. Canvas gun case and 2 pairs of socks.
3. Canvas and wood Gun Case.
4. Leather Gun Case.
5. Leather leg of mutton Gun Case.
6. Leather leg of mutton Gun Case.
7. 2 Steel Gun Cases and Magazine Box.
8. Steel Gun Cabinet.
9. Canvas Gun Case and 2 cartridge belts.
10. Leather, wood and canvas Cartridge Magazine.
11. Brady Canvas Gun Case.
12. Paradox Gun Cleaner.
13. Paradox Gun Cleaner.
14. Heron Anglers floatation waistcoat.
15. Qty of reels.
16. Redwood Shotgun cleaning kit.
17. Zulu Spear, shield & Club
18. Bayonet
19. 2 Khukri Knives
20. A 3" brass Reel
21. Bruce and Walker Spinning Rod.
22. Silstar Match Picker 320.
23. Shakespeare Carbo.
24. ABU Carbolite 78.
25. Posters Cane Rod. (The Acme).
26. Hardy's (The Perfection) Cane Rod.
27. 2 Fly Boxes.
28. Mitchell Fly Reel and Line.
29. Garcia Intrepid Rim Fly and Line.
30. Intrepid 3 1/2 Fly reel and Line.
31. Pfueger Sea King Reel.
32. Leeda Dragon Fly Reel 100.
33. Salmon Reel.
34. Bag of Line etc.
35. Box of misc items.
36. Gun Sleeve.
37. Pair of Shooting Mits.
38. Cartridge Belt.
39. 2 Boxes Fly tying tackle.
40. 3 Shooting Stick Seats.
41. Fishing Umbrella.
42. Blue Box of Spinners.
43. Keep net.
44. Willow K Reel.
45. Mitchell Reel and 3 spools.
46. Elite reel and 2 spools.
47. Green fishing box and contents.
48. 4 bank sticks and a bite indicator.
49. A Rod bag.
50. A Metal chest of fly tying tackle and tube.
51. Sue Burgess Diamond Back
52. 3 Peter Scott Prints of geese in flight.

53. A Shooting Print on canvas.
54. Norfolk Regiment Silk Picture.
55. WWI Service Medals.
56. Steel cased picnic set.
57. A Bakelite REEL.
58. A Mahogany REEL and 2 others.
59. Malloch type Reel
60. Shooting Books.
61. Bird Books.
62. Books on Antique Arms.
63. Books on Antique Arms.
64. H M Army Chalkboard formerly of the Wharf Road, Grantham office
65. Wood and brass Practice Shell.
66. Reproduction Cartridge Display Case.
67. Shooting Stick.
68. Shooting Stick.
69. 2 Tin Gun Cases.
70. Canvas Gun Case.
71. Bisley Wooden Gun Box.
72. 3 Field Telephones.
73. Shakespeare Graphite Carbon Fly Rod.
74. Hardy Richard Walker Fly Rod.
75. East Anglian Portman Rod.
76. Rim Fly Fishing Reel.
77. Rim Fly Fishing Reel.
78. Milward Cane Rod.

79. 2 Blo Bakelite Reels.
80. Fishing Bag and accessories.
81. Fishing bag and accessories.
82. Keep net and 2 canes.

If you purchase a gun or ammunition that requires a Firearms or Shotgun Permit you will have to show this firstly to the Pay Office when settling your account, secondly to the Head Porter before it is released.

83. 200 Eley Short solid .22 RF and 25 9-gauge Cartridges
84. 3 x 25 Eley Grand Prix 16 gauge cartridges, 1 x 25 Express and 2 part boxes
85. 7 x 25 mixed 12 gauge Cartridges plus 24 loose
86. 8 x 25 Gamebore Supergame 12 gauge 7 shot Cartridges
87. 5 x 25 Eley Maximum 12 gauge 1 3/16 Cartridges
88. Box of 250 Eley 12 gauge 1 3/16oz CC waterproof Cartridges
89. Brass and mahogany Gun Case
90. Leg of Mutton leather Gun Case
91. A Boxlock MUFF PISTOL by Smith of Braintree.
92. A Flintlock PISTOL (AF).
93. Webley Junior MkII .177 Air Pistol and Hurricane Box.
94. Webley Senior .177 Air Pistol.
95. Colt Navy Revolver Patent No. 59754.
96. Early Fish Spear.
97. 2 Pairs Ivory handled boot pulls and spurs and straps.
98. A full box of 24 very rare and early, Ligowsky Patent Clay Pigeon Targets by Georg Eggestorff, Linden, c1890.
99. William Evans 20 bore side by side sidelock ejector Shotgun with walnut stock, rebarrelled by Edwinton, Green & Son, Cheltenham Ser no 4305

100. Browning .22 ins rim fire RIFLE Serial No. 98333
101. Manvram .410 single barrel bolt action Serial No. 260114
102. 9mm bolt action Serial No 233256
103. 9mm bolt action Serial No 233223
104. Anschultz bolt action Serial No 1140372
105. .410 single barrel Shotgun.
106. .410 single barrel Shotgun.
107. Halliday & Co single barrel ejector Serial No 6368.
108. .410 single barrel Shotgun.
109. Holland & Holland Royal 12 bore sidelock ejector side by side Shotgun with well figured rosewood stock, 28" barrells, cased. Serial No 14287.
110. Holland & Holland royal 12 bore sidelock ejector side by side Shotgun, with well figured rosewood stock, 30" replacement barrels (non H & H), No 2 of a pair. Serial No 11403.
111. William Jeffrey & Son 12 bore sidelock ejector side by side Shotgun, 27" barrels, rosewood stock. Serial No 2675.
112. Midland Gun Co 12 bore boxlock ejector side by side Shotgun. Serial No 28080.
113. Kestrel 20 bore boxlock ejector single barrel Shotgun. Serial No 312202.
114. J & W Tolley 4 bore single barrel underlever hammer action Shotgun. Serial No 5343.
115. Thomas Bland & sons 12 bore sidelock ejector side by side 30" barrels, rosewood stock. Serial No 15457.
116. Ward 12 bore side by side hammer action Shotgun Serial No 467188. NB: This is an early conversion Crowley patent from a muzzle loader.
117. Adams 10 bore single barrel hammer action Shotgun Serial No 11264. NB: Nitro proof barrel for 3 1/2" cartridges this year.
118. Charles Smith, Newark, 12 bore double barrell boxlock ejector Shotgun Serial No 17704. The last hand-built gun ever produced by Charles Smith (Newark) Ltd after a commercial gunmaking history in the 19thC. Purchased from the liquidated stock in 1987. It has never been fired, stored with all springs eased and is in pristine condition. A written guarantee will accompany the gun.
119. Fried Krupp 12 bore over/under Shotgun Serial No 279913.
120. Westley Richards Gold Name 12 bore Anson & Deeley patent 2482 ejector side by side Shotgun with 28" Crudington barrels and walnut stock. Ser No 6041
121. Baikal 12 bore boxlock ejector side by side Shotgun Serial No X01517.
122. Unknown Spanish 12 bore single barrel Shotgun No 51353.
123. BSA 12 bore single barrel Shotgun No VB14037.
124. Unknown 12 bore boxlock ejector side by side Shotgun with 'New Barrels' by E Roberts Serial No 107377.
125. Zabala 12 bore sidelock ejector side by side Shotgun Serial No 60639.
126. William Ford. 12 bore boxlock side by side Shotgun with damascus barrels Serial No 1109.
127. Robust 16 bore boxlock ejector side by side Shotgun Serial No 20202
128. Unknown 12 bore single barrel Shotgun Serial No 41553.
129. Unknown 16 bore boxlock ejector side by side Shotgun Serial No 18804.
130. AYA No 4 12 bore boxlock ejector single barrel Shotgun Serial No 570588.
131. Elderkin Silver Century 12 bore under and over ejector Shotgun with 28" barrels multi-choke, single trigger.
132. Unknown 12 bore side by side hammer action Shotgun Serial no 1581.
133. Unknown 16 bore side by side hammer action Shotgun Serial No C18.

134. Mortimer 10 bore side by side hammer action underlever Shotgun.
135. Newbould 16 bore side by side hammer action underlever Shotgun.
136. Seymour 12 bore side by side hammer action underlever Shotgun.
137. T Conway 12 bore side by side hammer action underlever Shotgun with damascus barrels.
138. William Moore & Grey 16 bore side by side hammer action underlever Shotgun.
139. E Page 16 bore side by side boxlock ejector Shotgun.
140. Unknown side by side hammer action Shotgun Serial No 72788.
141. W Horton 16 bore boxlock ejector Shotgun with 26" sleeved barrels Serial No 2175.
142. Larona 12 bore boxlock ejector side by side Shotgun with 28" barrels Serial No 36311.
143. Parker Hale 12 bore sidelock ejector side by side Shotgun with 28" barrels Serial No 164425.
144. Franchi 12 bore over/under single shot trigger Shotgun with 28" barrels Serial No 4100728.
145. BSA 12 bore boxlock non-ejector side by side Shotgun with 28" barrels Serial No 30591.
146. Masters 12 bore boxlock ejector side by side Shotgun with 28" barrels. Serial No 91614.
147. Adams & Co 4 bore single barrel underlever hammer action Shotgun Serial No 10550.
148. Unknown side by side boxlock Shotgun Serial No 8779.
149. Breda brescia single barrel Shotgun Serial No 157724.
150. Christian Hansen of Hamburg 12 bore boxlock ejector Shotgun Serial No 55258.
151. J & W Tolley 8 bore single barrel underlever hammer action Shotgun Serial No 6438 complete with leather case and accessories.
152. Fabbrica Accaiaio Pheonix by Schoeller Bleckman 28 bore side by side boxlock ejector Shotgun with chrome barrels Serial No 4571 complete with leather case. Note: The safety catch was temporarily removed by Holland & Holland in 1968.
153. Rowland Watson 12 bore side by side boxlock ejector Shotgun with 30" chrome barrels and rosewood stock Serial No 11561 complete with brass and leather case, oak lined and marked Lord Charles Montague.
154. J & W Tolley 12 bore side by side boxlock ejector Shotgun with walnut stock Serial No 8277. No 1 of a pair complete with leather and canvas case.
155. Webley & Scott 12 bore side by side boxlock ejector Shotgun Serial No. 132105.
156. Webley & Scott 12 bore boxlock ejector side by side Shotgun with 26" barrels Serial No 139705, cased.
157. Enfield Saddle Carbine.
158. Enfield smooth bore .22 rim rifle with bayonet and scabbard
159. Collings & Wallis side by side hammer action muzzle loading Shotgun.
160. J Towl 4 bore single barrel hammer action muzzle loading Shotgun.
161. Cowley side by side hammer action muzzle loading Shotgun.
162. Unknown side by side muzzle loading hammer action Shotgun.
163. Unknown side by side muzzle loading hammer action Shotgun.
164. Three scrap guns.
165. Antique .22 Air Rifle
166. James Dixon & Sons silver colour Powder Flask.
167. Powder Flask.
168. Powder Flask.
169. Powder Flask.

- | | |
|--|---|
| 172. Flintlock Blunderbuss. | 198. A Mounted Indian Spotted Deer. |
| 173. Flintlock Blunderbuss | 199. A Mounted Stag's head. |
| 174. 19thC brass handed Hangar with scabbard. | 200. Oak framed Print of Sheep. |
| 175. 19thC brass handed Hangar with scabbard. | 201. Victorian oil painting of a fox with a mallard. |
| 176. 18thC brass handed Hangar | 202. 4 Colour Shooting Prints after Alken. |
| 177. Brass handled Bayonet. | 203. A rare Georgian moustache comb, cowhorn with shooting scenes. |
| 178. Brass handled Bayonet. | 204. A yellow metal Bar Brooch in the form of the London Regiment Badge decorated with green and blue enamels and diamonds. |
| 179. Clowes & Woodward of Dublin 'Rifles' Dress Sword with scabbard. | 205. 5 WWI and II Service Medals. |
| 180. Victorian Knurr and Spell Game inc trap, balls, stick. | 206. 3 Metropolitan Police Medals 1897, 1902 & 1911. |
| 181. Victorian Fencing helmet and epee. | 207. 3 Commemorative Medals. |
| 182. BSA Meteor Air Rifle. | 208. 5 WWI & II Service Medals. |
| 183. Left hand Dagger and a scabbard. | 209. 2 Police Medals, cased. |
| 184. Kindjal. | 210. 2 Pocketwatches. |
| 185. Sword, dagger and bayonet. | 211. 4 Postcard Silks. |
| 186. Oak Biscuit Barrel engraved 1st 440yds 1899. | 212. 18" Barnsby General Purpose Saddle. |
| 187. Brass Gaff. | 213. 17 1/2" English Springtree General Purpose Saddle. |
| 188. Tinderbox Lamp. | 214. 17 1/2" English Springtree General Purpose Saddle. |
| 189. Billiard Balls etc. | 215. Full Size Spring Tree Jumping Saddle. |
| 190. Reilly labelled oak Pistol Box. | 216. Hunting Whip. |
| 191. Erskine patent oak cartridge filling case. | 217. Ladies Riding Jacket. |
| 192. Cogswell & Harrison oak, leather and brass magazine. | 218. Gents Riding Jacket. |
| 193. Leather and canvas gun bag. | 219. A gilt framed forest scene OIL ON CANVAS, bears signature H Hadfield Cubley. 30" x 26". |
| 194. 2 Gun Bags. | |
| 195. 2 Boxes Clay Pigeons. | |
| 196. 2 Boxes Clay Pigeons. | |
| 197. 2 Boxes Clay Pigeons. | |

801. History and Dev. of the British Empire. Churchman 1934.
802. Well Known Ties. Churchman 1934
803. Association Footballers. Wills 1935.
804. Actors - Natural & Character Studies. Ogdens 1938.
805. Cycling. Players 1939.
806. Sporting Celebrities. Churchman 1931.
807. Arms and Armour. Players 1909.
808. Butterflies. Players 1932.
809. Rugby Internationals. Wills 1929.
810. Footballers. Churchman 1914.
811. English Period Costume. Wills 1929.
812. Prominent Rugby Players. Smith 1924.
813. Battlefields of Great Britain. Smith 1913.
814. Musical Celebrities. Wills 1912.
815. Famous Explorers. Smith 1911.
816. Racing Pigeons. Ogdens 1931.
817. Uniforms of the Territorial Army. Players 1939.
818. Modern Railways. Ogdens 1936.
819. Prominent Golfers. Churchman 1931.
820. Soldiers of the King. Ogdens 1909.
821. Legends of Great Britain. Churchman 1936.
822. Gilbert & Sullivan. Players 1927.
823. Civil Aeroplanes. Players 1935.
824. Decorations and Medals. Players Post WWII.
825. Landmarks in Railway Progress. Churchman 1931.
826. Old Englands Defenders. Players 1898.
827. Dandies. Players 1932.
828. The "Queen Mary" Churchman 1936.
829. Did You Know. Wills 1922.
830. Loco's rolling stock. Wills 1901.
831. Modern Naval Craft. Players 1939.
832. Garden Flowers. Wills 1933.
833. Seaside Resorts. Wills 1899.
834. Mining. Edwards, Ringer & Bigg 1925.
835. Flags of the League of Nations. Players 1928.
836. British Costumes 100BC to 1904. Ogdens 1905.
837. The Great White City. Salmon & Gluckstein 1908.
838. Coronation Series - Ceremonial Dress. Players 1937.
839. Vanity Fair. Wills 1902.
840. Royal Mail. Wm Clarke & Son 1914.
841. Traditions of the Navy, Army & Airforce. Lambert & Butler 1939.
842. Famous Inventories. Wills 1915.
843. Romance of the Heavens. Wills 1928.
844. Dogs. Hignett Bros & Co. 1936.
845. The Sea-Shore. Wills 1938.
846. British Birds and their eggs. Ogdens 1939.
847. Yachts and Motor Boats. Ogdens 1930.
848. Sports of all Nations. Wills 1901.
849. Men of the moment in sport. Churchman 1928.
850. Shots from the films. Ogdens 1936.
851. Angling. Mitchell & Sons 1929.
852. Country Seals and Arms. Players 1909.

853. The Story of London. Churchman 1934.
854. Wonders of the Past. Wills 1926.
855. Treasure Trove. Churchman 1937.
856. Natural History. Players 1924.
857. The Coronation Series. Wills 1911.
858. Celebrated Bridges. Edwards, Ringer & Bigg 1924.
859. Lucky Charms. Wills 1923.
860. Boy Scouts. Ogdens 1911.
861. Riders of the World. Players 1905.
862. Flowering Trees and Shrubs. Wills 1924.
863. Alpine Flowers. Wills 1913.
864. RAF Badges. Players 1937.
865. Sea Adventures. Ogdens 1939.
866. Dogs. Players 1925.
867. A Tour Round the World. Smith 1904.
868. Leaders of Men. Ogdens 1924.
869. Speed. Wills 1938.
870. Straight Line Caricatures. Players 1926.
871. Merchant Ships of the World. Wills 1924.
872. Keep Fit. Lambert & Butler 1937.
873. Napoleon. Players 1916.
874. Jockeys 1930. Ogdens 1930.
875. War Incidents. Wills 1915.
876. Characters from Dickens. Players 1912.
877. Wonderful Railway Travel. Churchman 1937.
878. Hints and Tips for Motorists. Lambert & Butler 1929.
879. Clan Tartans. Mitchells 1927.
880. Regimental Standards and Cap badges. Players 1930.
881. Old English Garden Flowers. Wills 1913.
882. Celebrated Ships. Wills 1911.
883. Birds and their young. Players 1937.
884. Film Stars. Players 1938.
885. Footballers. Players 1928.
886. Aviation. Wills 1910.
887. National Flags and Arms. Players 1936.
888. Dogs heads. Players 1940.
889. Regimental Crests and Collar Badges. Mitchells 1900.
890. London Characters. Lambert & Butler 1934.
891. Roses. Wills 1912.
892. The Worlds Dreadnoughts. Wills 1910.
893. Dance Band Leaders. Lambert & Butler 1936.
894. Naval Dresses and Badges. Wills 1909.
895. Fire Fighting Appliances. Players 1930.
896. Motor Races. Ogdens 1931.
897. Life in the hedgerows. Wills - never issued.
898. Fish and bait. Wills 1910.
899. Cricket Caricatures by 'RIP'. Players 1926.
900. Railway Engines. Wills 1936.
901. Derby & Grand National Winners. Players 1933.
902. Motor Cycles. Lambert & Butler 1923.
903. Aircraft of the RAF. Players 1938.
904. Motor Cars. Players 1936.

905. Kings and Queens of England. Players 1935.
906. I-Spy Out and About. Priory Tea.
907. British birds. Ogdens 1923.
908. Colour in Nature. Ogdens 1932.
909. Shots from Famous Films. Gallaher 1935. Famous Film Scenes. Gallaher 1935. Portraits of Famous Stars. Gallaher 1935
910. Army Badges. Gallaher 1939.
911. Garden Flowers. Gallaher 1938. Dogs. Gallaher 1936. Butterflies and Moths. 1938.
912. History of Army Uniforms.
913. Roses. Large. Wills 1936. Garden Flowers - New Variety - 2nd series, large. Wills. Flowering shrubs.
914. Dandies. Players 1932. Cries of London. 2nd series. Blue back. 1916 Players.
915. The Reason Why. Gallaher 1924.
916. Wild Flower Art. Carreras 1923. Wild Flowers. Gallaher 1937.
917. Characters from Dickens. Players 1923.
918. Wild Animals. Gallaher 1937. Butterflies and Moths. Gallaher 1938.
919. Do you know? Carreras 1939. Sea Adventure. Ogdens 1939.
920. Orchids. Carreras 1925.
921. Treasure Trove. Churchman 1937. Colonial and Indian Army Badges. Players 1917.
922. History of Naval Dress. Players 1930.
923. British Birds. Tetley Tea 1970.
924. Zoo Studies. Ogdens 1937.
925. Modern British Pottery. Ogdens 1925.
926. Warriors of All Nations. Churchman 1929.
927. Association Footballers. Churchman 1938.
928. East Suffolk Churches. Sepia 1917. Churchman.
929. Squadrons and Aircraft of the RAF. RAFA 1993.
930. Some Cap Badges of Territorial Regiments. Walkers Toffee 1938.
931. British Cavalry Uniforms. Collectables of Spalding 1987. Regimental Uniforms of the Past. Hitchmans Dairies 1973. Historic Military Uniforms. Dairylea. British Uniforms of the 19th century. Unknown issue.
932. German Uniforms SA/SS/HJ. Tony L. Oliver 1971. Victorian and Edwardian Soldiers in Field Dress. Brindley 1987. British Soldiers ABC Mirrors, brown back 1949. Uniforms Tea Time Assorted Biscuits. British Uniforms. Roberts Shoe Polish.
933. Action Soldiers. Mister Softee/Cadbury. Victoria Cross - Heroes in action. Bassetts 1970. The British Army. Glengettie Tea 1970. British Uniforms. Ewbanks 1956. British Cavalry Uniforms. Empson & Son. 1963.
934. British Cavalry Uniforms of the 19th Century. Wilcocks 1963. British Uniforms. Morning Foods Ltd. 1954. British Cavalry Uniforms of the 19th century. Golden Grain Tea 1954. Regimental Uniforms of the past. Badshah Tea Co. 1971. British Uniforms 19th Century. Horsleys Store 1968.
935. British Uniforms 19thC. United Dairies 1962. British Uniforms. Unknown. Badges and Uniforms of Famous British Reg & Corps. Booth & Co. 1967. British Uniforms of 19thC. Unknown. British Cavalry Uniforms. Museum of British Military Uniforms.
936. British Cavalry Uniforms 19thC. Ringtons Ltd. 1971. Regimental Uniforms of the past. Ringtons Ltd. 1966. Military. John Brindley 1987. British Uniforms. Proberts Shoe Polishes. 1955. Military Uniforms. House of Craven 1976.
937. Copes Military Reproduction Set 1996. Two Good Things Reproduction Set 1996. Old England Defenders Reproduction Set 1987. Gallahers Military Reproduction Set 1995. Pirates Reproduction Set 1996. Dogs. Players Reproduction Set 1993.
938. Arms of the British Empire. Wills. 1910.

939. The Sea Shore. Wills 1938.
940. Animalloys. 48 cards. Wills 1934.
941. Borough Arms. 2nd series 51-100 Wills 1904.
942. Arms of Foreign Cities. Wills 1912.
943. Arms of Companies. Wills 1913.
944. Do You Know? Wills 1922.
945. Do You Know? 3rd Series. Wills 1926.
946. Do You Know? Wills 1922.
947. Do You Know? 4th series. Wills 1933.
948. Flower Culture in Pots. Wills 1925.
949. Garden hints. Wills 1938.
950. Garden Flowers (2 sets). Wills 1939.
951. Garden flowers. New Varieties. Wills large 1938.
952. Household hints. Wills 1936.
953. Garden Life. Wills 1914.
954. Household hints. Wills 1936.
955. Life in the tree tops. Wills 1925.
956. Roses. Repro set. Wills.
957. Roses. Wills 1912.
958. Roses. 2nd series 51-100. Wills 1913.
959. Roses (Different) 1-50. Wills 1926.
960. Railway Equipment. Wills 1938.
961. Products of the World. Players 1928.
962. Game Birds and Wild Fowl. Players 1927.
963. Gems of British Scenery. Players 1917.
964. Natural History. Players 1924.
965. Polar Expedition. Players 1915.
966. Players Past and present. Players 1916.
967. Polar Expedition 2nd series. Players 1916.
968. Wild Birds. Players 1932.
969. Regimental Standards and Cap Badges. Players 1930.
970. Uniforms of the Territorial Army. Players 1939.
971. Regimental Uniforms. Blue back. Players 1912.
972. Wonders of the World. Blue back. Players 1916.
973. Shakespearean Series. Players 1917.
974. Struggling for existence. Players 1923.
975. Film Stars. Players 1934.
976. Flags of the League of Nations. 1928.
977. Dogs (heads). Players 1929.
978. Dogs (Scenic Background). Players 1925.
979. Egyptian Kings and Queens and Classical Deities. Players 1912.
980. Curious Beaks. Players 1929.
981. Ceremonial and Court Dress. 1911 Players.
982. Players Past and Present. Players 1916.
983. Wrestling and Ju Jibu. Blue back. Players 1913.
984. Natural History. Players 1924.
985. Nature Series. Players 1909.
986. Coronation Series Ceremonial Dress. 1937.
987. Boy Scout and Girl Guide Patrol Signs and Emblems. Players 1933.
988. Sea Fishes. Players 1935.
989. Army Life. Players 1910.

990. Animals of the Countryside. Players 1939.
991. Countries, Arms and Flags. Thin card Players 1912.
992. Aviary and cage birds. Players 1933. Birds and their young Players - unissued 2nd series. Birds and their young. Players - unissued 1st series.
993. Adventurers and Explorers. Brooke Bond 1973. African Wildlife Brooke Bond 1962. African Wildlife Brooke Bond 1962. A Journey Downstream Brooke Bond 1990.
994. Asian Wildlife Brooke Bond 1962. British Butterflies Brooke Bond 1963. British Butterflies Brooke Bond 1963. British Costume Brooke Bond 1967. British Costume Brooke Bond 1967.
995. Butterflies of the World. Brooke Bond 1964. Chimp Stickers Brooke Bond 1986. Creatures of Legend. Medium Brooke Bond 1994. Discovering our coast Brooke Bond 1989. Famous People Brooke Bond 1969.
996. Famous People (Repro set) Brooke Bond 1969. Features of the World Brooke Bond 1984. Flags and emblems of the World Brooke Bond 1967. Flags and emblems of the World (repro set) Brooke Bond 1967. Freshwater Fish Brooke Bond 1960.
997. Freshwater fish (repro set) Brooke Bond 1960. Going Wild Medium Brooke Bond 1994. History of Aviation. Brooke Bond 1972. History of the Motor Car Brooke Bond 1968. History of the Motor Car (repro set) Brooke Bond 1968.
998. Incredible Creatures Brooke Bond 1986. Incredible Creatures Double Brooke Bond 1986. Inventors and Inventions Brooke Bond 1975. Natural Neighbours Brooke Bond 1992. Natural Neighbours Double Brooke Bond 1992.
999. Olympic Challenge Brooke Bond 1992. Olympic Challenge Double Brooke Bond 1992.
1000. Olympic Greats Brooke Bond 1979.
1001. Wild Flowers 2nd series Wills 1937. Garden hints Wills 1938. Coronation Kensitas 1937. Animal Studies Cavenders Ltd 1936. British birds Gallaher 1937.
1002. Life in the tree tops Wills 1925. Picturesque People of the Empire Ogdens 1927.
1003. The Navy Park Drive Gallaher 1924.
1004. Wild flowers Wills 1923. Garden flowers Gallaher 1938.
1005. Wells Cathedral E & W Anstie. 1935.
1006. Wonders of Nature Lambert & Butler 1924. The Sea Shore Wills 1938. Wonders of the Past Wills 1926.
1007. Wild Flowers 2nd series Wills 1937. Wild Flowers Wills 1936.
1008. Dogs and head by Biegel Players Unissued. Dogs and friend 1936.
1009. Radio Celebrities 2nd series Wills 1934. In Town Tonight Churchman 1938.
1010. Life at Whipsnade Zoo Major Drapskin & Co. 1934. Coronation Kensitas 1937. Fortune Telling Carreras 1926. British Butterflies Lifeguard 1955.
1011. Foreign Birds Cavenders Ltd 1926. Cacti Lamberts of Norwich 1962. Birds and their eggs Lyons Maid 1962. Longleat House Longleat 1967.
1012. People and places Lambert of Norwich 1966 through to Veteran Motor Cars 1962.
1013. Roses De Reszke (Millhoff) 1927.
1014. The Kings Art Treasures 1938.
1015. Foreign Birds 40/50 Ogdens 1924. Ships Badges 36/50 Wills 1925.
1016. Bells Whisky Labels 43 1975. Royal Leamington Spa 1975. Country Life Armitage (Pet food) 1968. Wild flowers Sweetule Prods 1961. Famous pets Trebor Chews 1972. Wild Animals Sweetule Prods 1958. Historical Buildings Sodastream confections 1958. Somerset Cricketers 100 cards Unknown.
1017. Busby Babes West Midlands Collectors 1990. Birds Carroll & Co. 1939.
1018. Animals and reptiles Clover Dairies 1970. Indian Chiefs Burtons 1972. The Fish We Eat. White Fish Authority 1954. Fascinating Hobbies The Collector and Hobbyist 1950. Cricket Pavilions Country Print Service 1991.

1019. Modern British Aircraft Beulah's of Boston 1953. Football Clubs and Badges Unknown. Medals - blank back. Animals of the world - unknown. Medals - blank back. Kings and Queens Kings of York 1954. British Military Aircraft Kelloggs 1963. Jet aircraft of the world Sunecta 1956. The Wild West Express Weekly 1958. The Wild West Express Weekly and red print 1958.
1020. British Birds and their eggs. Gaycon products 1961. Birds and their eggs Sweetule Black back 1959. Tropical birds unknown. Pigeons blank back. Cage birds blank back.
1021. Family pets unknown. Pond life unknown. Cacti unknown. Flowers blank back. International Air Liners Home Counties Dairies 1965. Do You Know? Unknown.
1022. Marvels of the world. Wrights Biscuits Ltd. 1954. Children of All Nations unknown. Musical instruments unknown. Bridges of the World unknown. Castles of Britain unknown. Arms and armour Cadet Sweets 1961. Weapons of defence Sweetule Prods 1959. Cricketers Repro Reeves Chocolate. The England Cricket Team repro.
1023. Britains Maritime History Players 1989. Wonders of the Modern World Players 1985. In Search of Steam Castella 1994. Motoring Castella. Britains Maritime History Players 1989.
1024. Herald Alarms - Feudal Lords 1986. Fruits of trees and shrubs Ringtons Ltd. 1964. Historical scenes 1964. Royal Leamington Spa 1975. Tropical birds Browne's Tea 1966. Birds Empson 1962. Birds and their eggs Glengetti Tea 1970. Wonders of the Deep Browne's Tea 1965. Science in the 20th Century Amaran Tea 1966. Strange but true Coopers Tea 1961.
1025. Island of Ceylon - Ceylon Tea Centre. People and places Browne's Tea 1964. Pond Life Choicest Tea 1966. Dogs Barbers Tea 1961. Dogs Heads Amaran Tea 1965. Old England Amaran Tea 1966. Rare British birds Glengetti Tea 1967. Garden flowers Golden Grain Tea 1971. British Locomotives Glengetti Tea 1959. History of the Railways Glengetti Tea 1974.
1026. History of the Railways 2nd series Glengetti Tea 1975. Naval Battles Glengetti Tea 1971. British Army Glengetti Tea 1976. Aircraft of World War II Hitchmans black back 1966. Wild animals Hornimans Tea 1958. Dogs Hornimans Tea 1961. Pets Hornimans Tea 1960. Army Badges past and present Phillips Tea 1964. Historic East Anglia Lamberts 1961. Wings Across the World Lyons Tea 1962.
1027. Wings of Speed Lyons Tea 1961. Butterflies and moths Lamberts 1960. Game Birds & Wild Fowl Lamberts 1964. HMS 1902-1962 Lyons Tea 1962. (x 2) Wings of Speed Lyons Tea 1961. What do you know Lyons Tea 1957. Australia Lyons Tea 1959. Nature Studies Halpins 1958. Aircraft of the World Halpins 1958.
1028. Do you know Typhoo Tea 1962. Travel through the ages Typhoo tea 1962. Wild Flowers Typhoo Tea 1961. Birds and their eggs Sweetenhams 1958. Evolution of the Royal Navy Sweetenhams 1959. Butterflies and moths Sweetenhams 1958. Into Space Sweetenhams 1959. Animals of the countryside 1959. People and places Ringtons Ltd. 1964. Fruits of trees and shrubs Ringtons 1964.
1029. Head dresses of the world Ringtons 1973. Trains of the world Ringtons 1964. Historical scenes Ringtons 1964. Do You Know Ringtons 1964. Old England Ringtons 1964.
1030. Into Space Brooke Bond 1958.
1031. Olympic Greats Brooke Bond 1979. Play Better Soccer Brooke Bond 1976. Police File Brooke Bond 1977. Prehistoric Animals Brooke Bond 1972.
1032. Queen Elizabeth I and QE II Brooke Bond Blue 1982. QE I and QE II Brooke Bond Black 1982. Small Wonders Brooke Bond Blue 1981. Small Wonders Brooke Bond Black 1981. The Language of tea Brooke Bond 1988. The Dinosaur trail Brooke Bond 1993. The Dinosaur trail Double Brooke Bond 1993. Turtles Double Brooke Bond 1990.
1033. The Magical World of Disney Doubles Brooke Bond 1989. The Dinosaur Trail Brooke Bond 1993. The Magical World of Disney Brooke Bond 1989. The Race into space blue Brooke Bond 1991. The Race into space black Brooke Bond 1991. The Sea - our other world Brooke Bond 1974. The Saga of Ships Blue Brooke Bond 1970 and black 1970. Woodland wildlife Black Brooke Bond 1980 and Green 1980.

1034. Wonders of Wildlife Brooke Bond 1976. Transport through the ages Blue Brooke Bond 1966. Transport through the ages Black Brooke Bond 1966. Trees in Britain Blue Brooke Bond 1966. Trees in Britain Black Brooke Bond 1971. Tropical Birds Blue Brooke Bond 1961.
1035. Tropical Birds Red Brooke Bond Canada 1964.
1036. Unexplained Mysteries Brooke Bond 1987. Vanishing Wildlife Brown Brooke Bond 1978. Vanishing Wildlife Black Brooke Bond 1988. Wild Birds in Britain Blue Brooke Bond 1965. Wild Birds in Britain Black Brooke Bond 1973.
1037. Wild Flowers Blue 2 series Brooke Bond 1955. Wild Flowers Blue 3 series Brooke Bond 1955. Wild flowers Black 2 series Brooke Bond 1973. Wildlife in danger Blue Brooke Bond 1963. Wildlife in danger Black Brooke Bond 1973. 40 Years of Cards Brooke Bond.
1038. 14 pages of part sets of Wills School, City and Borough Arms Series A, 2, 3, and 4 total 202 cards approx.
1039. Army Badges P.S. 27/48 Gallahers. Wild Animals P.S. 18/48 Gallahers.
1040. Plants of Commercial Value P.S. 99/100 Gallaher 1917.
1041. The Reasons Why P.S. 52/100 Gallaher 1924.
1042. Birds Eggs The Scout 1925.
1043. Wonderful World of Disney P.S. 17/24 Typhoo 1975.
1044. Zoo Series P.S. 14/25 Jacobs Biscuits 1924.
1045. Butterflies and moths P.S. 24/50 Players 1904.
1046. Railway Engines 4/25 Godfrey Phillips 1934. How to make your own Wireless Set P.S. 8/25 Godfrey Phillips 1923. Ceremonial and Court Dress P.S. 17/25 1911.
1047. Country Seats and Arms P.S. 3rd series 38/50 Players 1910. Birds Eggs P.S. 23/50 Ogdens 1923. Children of all nations P.S. 29/50 Ogdens 1924.
1048. Aesops Fables P.S. 16/25 Typhoo Tea 1924.
1049. Famous Boys P.S. 23/25 Phillipps 1924.
1050. Poultry P.S. 18/50 Ogdens 1915.
1051. Bodyguard Soap. Butterflies and moths P.S. 28/48 1924.
1052. Wild flowers P.S. 26/48 Gallahers 1939. Passenger Liners P.S. 21/25 Lamberts of Norwich 1965.
1053. Wild Flowers P.S. 49/50 Brooke Bond 1955.
1054. Cinema Stars 3rd series P.S. 26/50 Wills 1931. Coronation of their Majesties P.S. 24/50 Phillips 1937.
1055. British Birds and their eggs P.S. 46/48 Gossage 1924.
1056. I-Spy Aircraft P.S. 49/50 Priory Tea 1961. Great Homes and Castles P.S. 31/35 Sellotape 1974.
1057. Animals and Birds of Commercial Value P.S. 71/100 Gallaher 1921.
1058. British Birds P.S. 44/48 Gallaher 1937. Products of the world 25/50 Players 1928. Tricks and Puzzles 59/100 Black back Gallaher 1933.
1059. Vauxhall 90th Anniversary, Vauxhall 1993. Vauxhall Motor Sports, Vauxhall 1993. Donnington Collection Castella Cigars. British Aviation Castella Cigars.
1060. Roses P.S. 15/50 Wills 1912. Roses 2nd series P.S. 16/50 Wills 1913.
1061. Film Stars 3rd series P.S. 30/50 Players 1938. The Story of the Locomotive P.S. 15/16 Kelloggs 1963.
1062. Dogs Gallaher 1936. Dogs 2nd series Gallaher 1938. Garden flowers Gallaher 1938. Butterflies and moths Gallaher 1938.
1063. London's Buses Pre War Golden Era. London's Buses Post War Golden Era.
1064. The Nose Game Carreras 1927. Dogs Gallaher 1936.
1065. British Birds Ogdens 1923. Birds Eggs Ogdens 1923.
1066. Mining Wills 1931.
1067. Famous British Liners Wills 1935.
1068. Dandy and Beano Collection Bassett & Co. 1990, 4 sets Motorcycle Cards Golden Era. 2 Sets Car Cards Golden Era. Vauxhall Motor Sports Vauxhall 1993. 90th Anniversary Vauxhall - Vauxhall 1993.

1069. British Birds Black cat 1976. Vintage Cars Black Cat 1976. Military Uniforms Black Cat 1976.
1070. "Turtles" Doubles Brooke Bond 1990. Unexplained Mysteries Doubles Brooke Bond 1988. Famous British Ships Mills.
1071. Alpine Flowers Wills 1913. Wild Flowers Wills 1923.
1072. Miniatures Players 1923. Overseas Dominions (Canada) Wills 1914.
1073. Sport Fish Black Cat 1978. Flowers Black Cat 1977. Vintage Cars 1976. Military Uniforms 1976. British Birds 1976. Uniforms of the T.A. Repro Players. Motor Cards Repro Players.
1074. Lucky charms Wills 1923. Dandy & Beano Collection Bassetts 1990. Marvels of the world. Beulahs 1954. Great Welsh Rugby Players. Welsh Rugby Union 1981. Famous Douglas Aeroplanes Orbit Ads.
1075. Modern Transport Sweetule 1955. England World Cup Team '82. Living Creatures of Our World. Bassetts 1979. I-Spy Bridges Priory Tea 1960. Camera Studies Cavanders 1926.
1076. Interesting Animals Marcantonio Ltd through album to Pidgeons.
1077. Zoo Series, Green back, Jacobs Biscuits, 1924 through album to Quiz, Sweetule 1959.
1078. The Tank Story Castella, World of Speed Embassy 1981, World of Firearms Embassy 1982, World of Firearms Embassy 1982, The Patsy Cline Collection, Where's Wally Weetabix.
1079. Jurassic Park Weetabix, Star Trek Weetabix 1994, Matchbox Cars Weetabix 1994. Snow White & The 7 Dwarfs Ready Brek.
1080. Cathedrals and Ministers Fax Pax 1989. Animals Trucards 1972. Australian Test Cricketers Country Print 1993. Legends of Hollywood Victoria Gallery 1991. Cats Golden Era 1993.
1081. Boxing Champions Victoria Gallery 1992. World War II Trucards 1972. The Golden Age of Sail Players Doncella 1978. The Golden Age of Steam Players Doncella 1978 (x 2). Napoleonic Uniforms Players Doncella 1978 (x 2)
1082. The Living Ocean Players Grandee 1985. Military Postcards Pompey Cards. Tourist Office Cards. African Wildlife Players Grandee 1990. British Birds Collection Players Grandee 1980.
1083. British Butterflies Players Grandee 1983. British Endangered Wildlife Players Grandee 1984. Famous M.G. Marques Players Grandee 1981. British Mammals Players Grandee 1982. British Nocturnal Wildlife Players Grandee 1987. Disappearing Rainforest Players Grandee. Wonders of Nature Players Grandee.
1084. The Living Ocean Players Grandee 1985. Top Dogs Collection Players Grandee 1979. Britains Wayside Wildlife Players Grandee 1988. Britains Wild Flowers Players Grandee 1986.
1085. Sport Trucards 1972. Historic Houses Fax Pax 1990. William Shakespeare Typhoo Tea 1937. Trees of the countryside Typhoo Tea 1938. Wild flowers Typhoo Tea 1936.
1086. British Mammals Players Grandee 1982. Britains Endangered Wildlife Players Grandee 1984 (x 3). African Wildlife Players Grandee 1990. Britains Nocturnal Wildlife Players Grandee 1987. (x 2). History of the VC Players Doncella 1980.
1087. Do You Know Regent 1965. Floats (Collect a card) The Angling Times 1986. Natural History Players 1924. Modern Wonders Churchman 1938. Royal Mail Postcards 18. Squadron Prints Postcards 6. British Aviation 1994.
1088. County Badge Collection J. Lyons 1994. Gardens to Visit Kelloggs 1988. Our Puppies Phillips 1936. Priddy Antiques.
1089. Army Regiments - Army 1991. British Regiments 2nd series - Army 1992. "Gran Pop" P.S. Carreras 1934.
1090. Classic Sports Cars Castella 1997. History of Motor Racing Players Tom Thumb 1986. Zoo Babies Players 1937. Unexplained Mysteries Double Brooke Bond 1988. Discovering our Coast Doubles Brooke Bond 1988.
1091. Army Postcards 7. Golden Age of Flying Players Doncella 1977. Soldiers of Waterloo Castella 1995. Country Houses and Castles Players Doncella 1981. 6 Castella Postcards.

1092. Batman Pink Back A & B C Gum 1966. Do You Know Regent 1965. Lifeboats R.N.L.I. 1979. Exploration of Space Players Tom Thumb 1982. Wonders of the Ancient World Players Tom Thumb 1984. Exploration of Space Players Tom Thumb 1982.
1093. International Soccer Stars Brooke Bond P.G. Tips. The Wonderful World of Kevin Tipps Brooke Bond. 40 years of the Chimps Brooke Bond. Pyramid Power Brooke Bond. Wings of Gold. Collect a Card Fish Angling Times. Secret Diary of Kevin Tipps Brooke Bond.
1094. 6 empty card albums.
1095. A large quantity of assorted cards.
1096. A smaller box of cards.
1097. A Jurassic Park collection, 3 Bassett Collections and 3 albums.
1098. A Collection of Tazo's, Flintstone album, and Card Collectors Book 1996.
1099. John Players 'Aircraft'.
1100. Gallaher 'Sporting Personalities'.
1101. Gallaher 'Racing Scenes' Cigarette Cards.
1102. Wills 'Aviation'.
1103. John Players 'Motor Cars'.