



Collective Sale Review
April 2024

GOLDING YOUNG EST 1864

Probate – Inheritance Tax Assessment

For many Executors and Trustees the responsibility of dealing with a deceased's Estate is a once-in-a-lifetime experience. You have to make a number of important decisions in a very short space of time and all when the loss is most difficult to come to terms with.

The position of Executor is an important one in law and has defined personal liability and responsibility. To exhibit due diligence to beneficiaries and more importantly HM Revenue & Customs, an Executor or advisor will instruct a firm Regulated by RICS.

Even if the estate will be taxed at 0%, a valuation remains an essential tool for an Executor. The inventory will still be used for identification of bequests, trust items, family division and proof of value.

Our valuations are prepared to the International Valuation Standards requirement of the 'Red Book'.

The report will cover sections of:

- Jewellery
- Vehicles
- Antiques, Fine Art & Collections
- General Furniture & Effects



Removals – Household & Commercial

- Free Quotations
- Full Packing Service
- Suppliers of Packing Materials
- Shipping & Storage Arranged
- Antiques & Fine Art Specialists
- Specialist Piano Movers
- Office Movers

**Contact Andrew Lowes on 07970 742577 for a quote
or email lowes@goldingyoung.com**

goldingyoung.com

Grantham Collective Review - 3rd April 2024



A George V 9ct gold cased hunter pocket watch, circular enamel dial bearing Roman numerals, subsidiary seconds dial, Waltham Equity movement, keyless wind, the case of plain form, Birmingham 1922, 93.1g all in.
SOLD for £600



Four Victorian cut glass flasks, with Gothic silver mounts and hinged lids, the flasks of fluted form, mounts and lids with textured decoration, bearing embossed monograms, Thomas Johnson I, London 1873.
SOLD for £300



A Royal Crown Derby Imari porcelain gold ground coffee set, pattern no. 1128, comprising six coffee cans and saucers, cased.
SOLD for £340



A South African gold one pond coin 1898, in a yellow metal suspension, on a 9ct rose gold curb link Albert chain, with two lobster claw clasps, and T bar as fitted, 63.1g.
SOLD for £1,200



A late 19thC brass repeater carriage clock, by Webster of Cornhill, London, rectangular enamel dial bearing Roman numerals, subsidiary seconds dial, bearing Arabic numerals, twin barrel movement, with bell strike, the case of conventional form, with clock, silent and quarters lever to the base, repeater button to the top, with key, 14cm high.
SOLD for £320



An Edinburgh Crystal Thistle Pattern suite of table glassware, including champagne flutes, red and white wine glasses, whisky and water tumblers, liqueur glasses, a stirrup cup, and a decanter. (34)
SOLD for £600



A Royal Crown Derby Imari gold ground porcelain basket, of twin handled, footed form, pattern no. 1128, 28.5cm wide.
SOLD for £725



A group of early 20thC stars of vaudeville postcards, many signed, including Louise Gordano, Lillie Soutter, Bert James, Jack Marks, Jan Rudenyl, Harry Titch, Florrie Ford, George Robey and W E Davis.
SOLD for £280



Victorian and later silver and costume jewellery, including a silver locket on chain, jet multi-link bracelet, and a steel chatelaine. (qty)
SOLD for £320



An Edwardian 15ct gold and seed pearl bangle, in a floral and open work design, on a snap clasp, with safety chain as fitted, 13.6g.
SOLD for £370

Grantham Collective Review - 3rd April 2024



A gentleman's 9ct gold cased pocket watch, Mansell of Lincoln, open faced, keyless wind, circular enamel dial bearing Roman numerals, subsidiary seconds dial, S & Company movement, the case of plain form, 77.7g.
SOLD for £360



A George III oak and rosewood cross banded dresser base, with three long drawers, above a shaped apron and turned columns, united by an under tier, on ogee bracket feet, 92cm high x 206cm wide x 45.5cm deep.
SOLD for £1,000



A 9ct gold curb link charm bracelet, with thirteen charms as fitted, on a bolt ring clasp, 34.7g.
SOLD for £550



A group of silver and costume jewellery, including American silver rings, paste and other brooches, belt buckle, beads and simulated pearls. (a quantity)
SOLD for £550



An Omega gentleman's Constellation Calendar gold plated wristwatch, circular champagne dial, centre seconds, date aperture, automatic movement, stainless steel back, on a Hirsch tan leather strap.
SOLD for £380



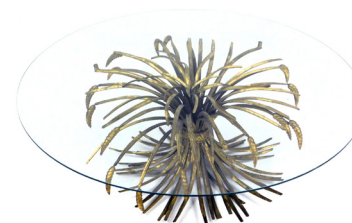
An Elizabeth II gold half sovereign 1982, in a 9ct gold ring mound, cut, approx size U, 11.1g.
SOLD for £260



A group of Navajo and other turquoise set jewellery, including necklaces, bangles and pendants. (a quantity)
SOLD for £400



LPs, 1960s and later rock and pop, including Led Zeppelin, Joy Division, the Beatles, Pink Floyd, The Kinks, Bob Dylan, ELO and the Rolling Stones.
SOLD for £240



A late 20thC continental gilt metal and glass top coffee table, Coco Chanel style, the circular top, raised on tied outswept corn, 39cm high, 105cm wide.
SOLD for £380



A 9ct gold match sleeve, with engine turned decoration, and foliate engraving, with ring suspension, 28.6g.
SOLD for £420

Bourne Collective Review - 10th April 2024



An early 20thC Russian propaganda porcelain teapot, depicting a scene commemorating the end of the Russian Civil War, the front painted with a Bolshevik holding gun standing above map with the dates 1918-1923 verso painted with a depiction of a farm labourer, signed to underside A.Hayakgrob?, 18cm high.
SOLD for £300



A pair of Royal Crown Derby Old Imari porcelain candlesticks, gold ground, pattern 1128, printed marks, 27cm high, boxed.
SOLD for £600



A group of 19thC and later horse brasses, varying in size, to include a Second and Open Class Show Rugby 1888, further 19thC horse brass, etc. (1 tray)
SOLD for £320



An 18ct gold miniature portrait brooch/pendant, with a pierced outer basket, depicting lady in Elizabethan style dress, set with tiny diamonds, on a Prince of Wales feather necklace chain, the pendant 4cm x 3cm, the chain 40cm long, 14.7g all in.
SOLD for £400



A gold fracture filled ruby and cubic zirconia necklace, with a row of alternating round mixed cut fracture filled rubies and cubic zirconias, six claw set to plain collets, with foliate link eight side, to chased end caps and a side lever clasp, tested as 14ct gold, 30g all in.
SOLD for £600



An 18ct white gold diamond dress ring, the oval cut central fancy cut yellow diamond, 9.2mm x 6mm x 3.4mm, approx 1.20ct, flanked by two baguette cut diamonds in rub over setting, each approx 0.25ct, 5.4mm x 3.2mm x 2.2mm, London 1975, ring size N, 4g all in.
SOLD for £850



A two colour gold three row gate link necklace, with white gold and yellow gold links, to a side lever clasp, tested as 18ct gold, 25.38g.
SOLD for £820



A Royal Crown Derby Old Imari porcelain twin handled basket, gold ground, pattern 1128, printed marks, 29cm wide.
SOLD for £850



A large tree root table, the rectangular top raised on two tree root supports, 80cm high, the top approx 122cm x 260cm, together with two benches, each 47cm high, 196cm wide.
SOLD for £360



A Queen Victoria full gold sovereign 1889.
SOLD for £345

Bourne Collective Review - 10th April 2024



A 9ct gold clown pendant and chain, the clown set with semi precious stones, to include ruby, white stones, emerald and sapphire, stamped 375, 3cm high, on a 9ct gold rope twist neck chain, 40cm long, 16.2g.
SOLD for £320



A pair of brown leather wing back armchairs, with button back, stud work and moveable seat, on mahogany pad feet. The upholstery in this lot does not comply with the 1988 (Fire & Fire Furnishing) Regulations, unless sold to a known exporter or upholsterer it will be cut from the frame before leaving the premises.
SOLD for £320



An 18ct white gold, sapphire and diamond pendant and chain, the star design pendant, with three marquise cut sapphires and six diamonds, with an arched diamond set loop, on fine link neck chain, 46cm long, 3.6g all in.
SOLD for £650



Eighteen Intaglio seals, to include a clear glass example with Three Graces, 3cm x 2.5cm, and various smaller green and black examples.
SOLD for £950



A gold omega link collar, with box clasp and figure of eight safety catch, tested as 14ct gold, 33.78g.
SOLD for £860



A Bueche-Girod gentleman's wristwatch, with a square set dial with lapis lazuli type design back, with bark effect outer frame, yellow metal, unmarked, with twenty one jewel movement, the dial 2.5cm x 3cm.
SOLD for £400



A Royal Crown Derby Old Imari porcelain comport, pattern 1128, with acorn embellishment, red printed marks, boxed, 26cm wide.
SOLD for £300



A George V gold full sovereign 1913, spectacle set to a 9ct gold pendant mount, 11.7g all in.
SOLD for £400



A Royal Crown Derby Old Imari porcelain miniature tea service, pattern 1128, comprising oval tray, 19.5cm diameter, teapot, sugar bowl, milk jug and tea cup and saucer.
SOLD for £320

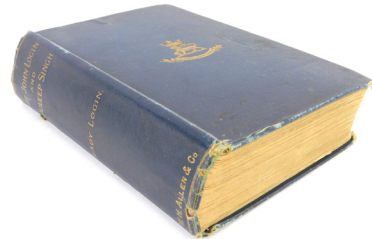


A rose gold curb link bracelet, with heart shaped padlock, clip and safety chain, yellow metal, stamped 9ct, 19cm long, 15.9g all in.
SOLD for £280

Bourne Collective Review - 10th April 2024



A 9ct gold charm bracelet, the curb link bracelet with safety chain and heart shaped padlock, charms to include book, two rings and keys, 16cm long, 33.3g all in.
SOLD for £530



Login (John). Lady Login, by Sir John Login and Duleep Singh, dated 1890, with French black and white character plate and tissue sleeve, with handwritten inscription dated 1897 and bearing signature over leaf, published by WH Allen & Co, in a blue material binding with yielded decoration and crest to front plate.
SOLD for £340



A Victorian gold full sovereign 1900, spectacle set to a 9ct gold pendant mount, 12.7g all in.
SOLD for £440



A Royal Crown Derby Old Imari porcelain twin handled vase and cover, gold ground, pattern 1128, printed marks, 43cm high, boxed.
SOLD for £650



A George V silver rose bowl, with a fluted and reeded design, maker EB Limited number 562, London 1919, 24cm diameter, 19.85oz.
SOLD for £310



A flat curb link neck chain, yellow metal, stamped 375, 49cm long, 21g.
SOLD for £380



A Bang & Olufsen system, comprising a Beocord 6500, Beomaster 6500, Beogram 6500, and Beogram CD6500, all boxed. (4)
SOLD for £800



A Royal Crown Derby Old Imari porcelain compot, gold ground, pattern 1128, printed marks, 26cm wide, boxed.
SOLD for £850



A 9ct gold charm bracelet, with fifteen various charms, safety chain and padlock clasp, 62.6g all in.
SOLD for £1,000



An Elizabeth II full gold sovereign 1966, in fitted box.
SOLD for £355

Bourne Collective Review - 10th April 2024



A group of Royal Air Force station plaques, to include Ballykelly, Bottisham, Binbrook, Feltwell, Middle Wallop, Medmenham, St Athan, North Luffenham, Honington, and others, each on a shield back, 18cm high.
SOLD for £280



A semi precious stone set Middle Eastern style necklace, the pendant cluster with three bars sets with cabochon ruby, emerald and sapphire, and three tiers with three round brilliant cut diamonds, 4cm wide, on a yellow metal chain, 40cm long, stamped 750 to clasp, 11.1g all in.
SOLD for £380



A one tenth of a Krugerrand gold coin pendant and chain, the coin dated 1981, in 9ct gold mount, on a box link neck chain, yellow metal stamped 9kt, 52cm long, 8.1g all in.
SOLD for £250



Various books relating to art and photography, to include Pepper (Terence) Man Ray Portraits, Edward Westwood His Life and Photographs, Dorothy Lange Photographs of a Lifetime, etc. (2 shelves)
SOLD for £380



A 19thC Meissen box and cover, painted in manganese with a coastal landscape, with boats, blue cross swords mark, 10cm high, 13cm wide. (AF)
SOLD for £480



Cigarette, trade and tea cards, some enclosed in an album but mainly loose, to include black and white military processions, royal commemorative and others. (a quantity)
SOLD for £260



An Eastern inspired box link neck chain, yellow metal, clasp stamped 585, 45cm long, 11.8g all in.
SOLD for £320



A Royal Crown Derby Old Imari porcelain jar, pattern 1128, red printed marks, and matched cover with gold ground, 22cm high, boxed.
SOLD for £280



A 9ct gold curb link bracelet, with safety chain and heart shaped padlock, 20cm long, 20g all in.
SOLD for £340



An Elizabeth II Canadian 50 dollars, or Gold Maple Leaf coin, 1983.
SOLD for £1,400

PRIVATE CLIENT & PROFESSIONAL SERVICE DEPARTMENT

We value personal property for private and corporate clients. Our team have valued family heirlooms, art collections and museum holdings for a variety of purposes.

We are the only auction house in the region to have a bespoke Private Client Department with:

- Three Chartered Arts & Antiques Surveyors
- Four RICS / Antiques Trade Gazette professional assessment award-winning valuers
- Two In-house qualified jewellery valuers
- Experience in abundance and diversity since 1864
- Ten professional staff with RICS, NAVA or SoFAA qualifications.



For initial advice contact the following Chartered Auctioneers & Valuers:

Bourne, Stamford & South	Grantham, Lincoln & North
Colin Young MRICS	William Gregory MRICS
01778 422686	01522 524984

Lincoln Collective Review - 17th April 2024



Seven WWI medals, comprising three victory medals, various inscriptions to include SAUSMAN, HANTDER, GEER, two George V British war medals, for SAUSMAN and GEER, a 1914-15 Star, inscribed PTE GERR, and a Victoria India medal, inscribed Assistant Apothary JOHN SAUSMAN, 27th Madras NI, with lucknow clasp.
SOLD for £480



A 19thC Worcestershire regimental helmet, with crest and gilt metal spike, in original tin box, engraved Captain JM Graham with some provenance.
SOLD for £380



A Victorian silver teapot, with leaf moulded thumb piece, on a reeded handle, with shall capped and fluted border, with ivory insulators, bearing the initials ML, London maker Joseph Angell, London 1825, 22.38oz gross. Sold subject to UK ivory laws.
SOLD for £345



A set of fourteen Victorian elm and burr elm dining chairs, each with an arched gadrooned back with moulded leaf carved supports, with a wool work padded back and seat, on turned tapering fluted legs, with H stretcher and ceramic castors.
SOLD for £2,000



An Edward VII full gold sovereign pendant, dated 1910, in a 9ct gold twist work pendant mount, 9.1g all in.
SOLD for £370



A Victorian oak extending dining table, the rectangular top with a moulded edge, on turned and fluted tapering legs, with brass caps, and ceramic castors, five loose leaves, 73cm high, 150cm wide, 421cm long.
SOLD for £1,200



A Victorian full gold sovereign, dated 1891, in a 9ct gold scroll work pendant mount, 11.7g.
SOLD for £410



Two copper and brass ship's lanterns, Port and Starboard, with shaped lenses, 51cm high.
SOLD for £260



A Persian rug, with an all over geometric design, on a red ground with blue spandrels, one wide and four narrow borders, 288cm x 208cm.
SOLD for £220



A dapple grey painted rocking horse, with leather saddle and bridle, etc., on an ash trestle base with turned supports, 128cm high, 150cm long.
SOLD for £650

Lincoln Collective Review - 17th April 2024



A young Victoria head full gold sovereign pendant, dated 1876, in a 9ct gold star mount, 12.3g all in.
SOLD for £440



A Royal Artillery cap, and a West Yorkshire Regiment Australian style hat. (2)
SOLD for £320



A Victorian memorial dress ring, set with three foil backed old cut imitation diamonds, with enamel work band, with white and black flowers, yellow metal unmarked, ring size O, 4.4g all in.
SOLD for £2,400



A green Army dress jacket, with applique and military buttons.
SOLD for £400



A 19thC Persian white metal and niello decorated pistol, 50cm long.
SOLD for £600



A pair of Hiatt late 19thC police handcuffs, numbered 231, and another pair of handcuffs. (2)
SOLD for £550



A Record WWII military wristwatch, signed black dial with broad arrow and stainless steel case, marked WWW, and L11378 529225, and subsidiary dial.
SOLD for £220



A group of wristwatches and pocket watches, to include Avia, Aerolux, Ingersoll, Buren, Medana, and others. (1 box, AF)
SOLD for £340



A replica Edward VII half gold sovereign dress ring, the replica coin dated 1907, in rubbed bark effect yellow metal band stamped 9ct, ring size Q½.
SOLD for £250



Two service medals, comprising an Edward VII Darbar 1903 medal, unawarded with ribbon, and an Elizabeth II Career medal, inscribed 7593194 W.O.CL.2 VJ PAYNE, R.A.O.C.
SOLD for £260

Lincoln Collective Review - 17th April 2024



A Royal Artillery green dress uniform, an RHA waistcoat and pair of trousers, with various badges and bars. (1 box)
SOLD for £260



An air raid siren, The Home Office property number serial stamp, on metal base, 82cm high.
SOLD for £240



Two police medals, comprising a Faithful Service medal, enamel decorated, on an Elkington bar with red and blue ribbon, 8cm high, and an Exemplary Police Service medal, inscribed Constable Charles E Maughan. (2)
SOLD for £240



A longcase clock, the arched dial decorated with Noah's Ark and with pierced spandrels, signed John Wyte, Nottingham, eight day movement, in later carved 19thC oak case, 212cm high.
SOLD for £280



A Queen Elizabeth II St George half gold sovereign ring, the sovereign dated 2005 with warrior on horseback, in a 9ct gold ring mount, set with diamonds to rim and diamonds and rubies to shoulders, formed as the England flag, ring size X½, 10g all in.
SOLD for £330



A Victorian Manchester regimental helmet, with a gilt metal spike, in tin travelling case, with vacant plaque.
SOLD for £340



A collection of museum model medieval brass plaques, rubbing sets, etc., in five fitted cases.
SOLD for £320



A Husqvarna CTH 210 XP petrol ride on mower, with Kawasaki engine and six speed gears.
SOLD for £400



Three Defence Corps and Army jackets.
SOLD for £280



A 19thC pine cricket table, the two piece circular top on a triform scumbled base, with undertier (AF) 68cm high, 83cm wide.
SOLD for £550

GOLDING YOUNG EST
1864

Thinking of selling?

Executors, solicitors, accountants, insurers, corporations and government departments, have to exhibit due diligence when instructing. Use this checklist to do the same, with a few reasons why you may wish to choose us.

We are regulated by RICS

Better Regulation for Us. Better Protection for You.
Accept Nothing Less.

Our online catalogues

For over 20 years our catalogues have been online and our experience ensures they are placed in front of the right buyers in the global market.

Our sales results

July 2020 saw our 141st consecutive month with a sale at either Bourne, Grantham or Lincoln producing a sold rate of over 90%. Good advice, great results for hundreds of vendors every month.

Join their success with an entry in our next sale!

A firm of the highest standing

Being a firm of Chartered Auctioneers & Valuers means that we have not only qualified to the highest standard in the profession, but have to maintain those standards. The first due diligence check any professional makes when needing a formal valuation, or simply selling at auction is for The Hallmark of a Chartered Auctioneer & Valuer - Regulated by RICS.

RICS

The Royal Institution of Chartered Surveyors is the professional body that has been responsible for The Auctioneers Charter since 1970. All members have to complete at least 20 hours CPD or Continued Professional Development every year. All valuation work is prepared to the RICS Red Book requirements incorporating the International Valuation Standards (IVSC) Client Accounting. All client money has to be held in dedicated, ring-fenced accounts with a full audit trail.

NAVA Propertymark

The National Association of Valuers and Auctioneers are an important body within the auctioneering and valuation profession, specifically in our case relating to the sale of chattels or personal property. All members have to complete at least 12 hours CPD or Continued Professional Development every year. They work with auctioneers and consumers alike, to offer regulation and guidance. Membership also provides for Primary Authority with Trading Standards to ensure clarity and understanding.

SoFAA

The Society of Fine Art Auctioneers, formed in 1973, as the name suggests, is a society that exclusively represents the interests of the leading fine art auctioneers in the UK helping them provide the best service to clients. With this level of qualification and accreditation within the firm we pride ourselves on providing a reliable and professional service to get it right.



The Bourne Auction Rooms

Spalding Road, Bourne,
Lincolnshire PE10 9LE

E: bourne@goldingyoung.com

T: +44 (0) 1778 422686

F: +44 (0) 1778 425726

The Grantham Auction Rooms

Old Wharf Road, Grantham,
Lincolnshire NG31 7AA

E: grantham@goldingyoung.com

T: +44 (0) 1476 565118

F: +44 (0) 1476 561475

The Lincoln Auction Rooms

Thos Mawer House, Station Road
North Hykeham, Lincoln LN6 3QY

E: lincoln@goldingyoung.com

T: +44 (0) 1522 524984

F: +44 (0) 1522 681804

The Leicester & Midlands Office

E: leicester@goldingyoung.com

T: +44 (0) 116 473 5735

London & South Valuations

E: london@goldingyoung.com

T: +44 (0) 203 301 1007

The Louth & Wolds Office

E: louth@goldingyoung.com

T: +44 (0) 1507 661864

The Stamford & Rutland Office

E: stamford@goldingyoung.com

T: +44 (0) 1780 7516